
Responses to reviewers' comments on the revised manuscript

Dear Dr. Thomas Mölg,

Please find attached our responses to the reviewer's comments and the revised manuscript, including the revised manuscript with tracked changes. We thank you for handling the manuscript and hope the revised version meets the standards for a publication in TC.

Best regards,
Valentina Radić

Responses to reviewer

General Comments

The authors have thoroughly addressed the comments raised in my initial review and present a much-improved manuscript. The new and revised analyses make the results much more compelling and present a clear message. In particular, the calculation of K_{max} using on-off glacier temperature difference is an addition aspect of novelty and a significant contribution. The inability of measurement errors to account for the observed differences between the model and measurements adds additional urgency to the need for further work to derive better functions to compute turbulent heat fluxes over glaciers. The combination of the two best performing methods for friction velocity and the heat fluxes provides a new avenue for further investigation. I have some remaining minor comments, but no overall general concerns. The manuscript presents a well-constructed and valuable contribution to our understanding of turbulent heat fluxes over glacier surfaces.

We thank the reviewer for his support of this study and for a detailed review on the initial version of this manuscript.

Specific Comments (page-line):

24:2-6 The log-log correlation between observed k and the on-off glacier temperature difference is not very strong ($r = -0.34$) and the figure presented (second two panels of Figure 10) doesn't support the statement that as the temperature difference increases, indicative of higher static stability, the k parameter decreases. From the figure it seems as if high values of k don't appear under large temperature differences, but certainly there is no obvious power-law relationship presented. A log-log plot may highlight this feature. This result is not central to the main result, so I would suggest revising the text or removing this analysis.

We thank the reviewer for catching this spurious result. Indeed, the linear regression in the log-log plot is not resistant to outliers and, in our analysis, the significant correlation ($r = -0.34$) is due to the outliers. Since this result is not central to our study we removed the last two panels in Figure 10, while in the text we now mention that no significant correlation was found between 'observed k ' and on-off glacier temperature difference.

25:9 It is a little ambiguous in the text what formulae were used to calculate heat fluxes for the hybrid method. From what I can tell, equations 19-20, 22-23 were used to calculate Q_H and Q_E , but that instead of calculating u_* with equation 16 and 21, u_* is calculated with equations 33 and 36. Is this correct? If so, then perhaps the full list of equations can be given. The text at 25:12 should also refer to exchange coefficients for heat rather than heat fluxes. Also, please describe how K_{Int} was calculated for the hybrid method (presumably from equation 38?) as well as the value for Pr used.

This is correct. We modified the text to clarify these equations:

'This variant of the bulk method calculates the friction velocity from the K_{Int} method (Eq. (33) and (36)), which is then inserted in the C_{log} method's equations for Q_H and Q_E (Eq. (19) and (20)) with $Pr=1$.'

Editorial Comments

23:2 Please change the use of parenthesis to denote opposites into a full sentence. E.g. explains 61 % of the variance in the 2012 observations and 19 % of variance in 2010 observations.

Done

25:14 Please add reference to Table 2 with Figure 8. It is sometimes difficult to understand which panel of a figure is being referred to in the text and to match the figure captions describing each panel. It would be useful if the multi-panel figure panels were labelled (a), (b), (c)... etc. to aid the reader.

Table 2 is now referenced. The suggested labeling is now added to all multi-panel figures except for figures 4 and 8, where a title is given for each panel showing the same variables on x and y axis.

EVALUATION OF DIFFERENT METHODS TO MODEL NEAR-SURFACE TURBULENT FLUXES FOR A MOUNTAIN GLACIER IN THE CARIBOO MOUNTAINS, BC, CANADA

Valentina Radić¹, Brian Menounos², Joseph Shea^{3,4}, Noel Fitzpatrick¹, Mekdes A. Tessema¹, and Stephen J. Déry⁵

¹Earth Ocean and Atmospheric Sciences Department (EOAS), The University of British Columbia, Vancouver, Canada

²Natural Resources and Environmental Studies Institute and Geography Program, University of Northern British Columbia, Prince George, Canada

³International Centre for Integrated Mountain Development (ICIMOD), Kathmandu, Nepal

⁴Centre for Hydrology, University of Saskatchewan, Saskatoon, Canada

⁵Natural Resources and Environmental Studies Institute and Environmental Science and Engineering Program, University of Northern British Columbia, Prince George, Canada

Correspondence to: Valentina Radić (vradic@eoas.ubc.ca)

Abstract. As part of surface energy balance models used to simulate glacier melting, choosing parameterizations to adequately estimate turbulent heat fluxes is extremely challenging. This study aims to evaluate a set of four aerodynamic bulk methods (labeled as C-methods), commonly used to estimate turbulent heat fluxes for a sloped glacier surface, and two less commonly used bulk methods developed from katabatic flow models. The C-methods differ in their parameterizations of the bulk exchange coefficient that relates the fluxes to the near-surface measurements of mean wind speed, air temperature and humidity. The methods' performance in simulating 30-min sensible and latent heat fluxes is evaluated against the measured fluxes from an open path eddy-covariance (OPEC) method. The evaluation is performed at a point scale of a mountain glacier, using one-level meteorological and OPEC observations from multi-day periods in the 2010 and 2012 summer seasons. The analysis of the two independent seasons yielded the same key findings, which include the following: first, the bulk method, with or without the commonly used Monin-Obukhov (M-O) stability functions, overestimates the turbulent heat fluxes over the observational period, mainly due to a substantial overestimation of the friction velocity. This overestimation is most pronounced during the katabatic flow conditions, corroborating the previous findings that the M-O theory works poorly in the presence of a low wind speed maximum. Second, the method based on a katabatic flow model (labeled as the K_{Int} method) outperforms any C-method in simulating the friction velocity, however, the C-methods outperform the K_{Int} method in simulating the sensible heat fluxes. Third, the best overall performance is given by a hybrid method, which combines the K_{Int} -approach with the C-method, i.e. parameterizes eddy viscosity differently than eddy diffusivity. An error analysis reveals that the uncertainties in the measured meteorological variables and the roughness lengths produce smaller errors in the modeled fluxes than are the differences between the modeled and observed fluxes. This implies that further advances will require improvement to model theory rather than better measurements of input variables. Further data from different glaciers are needed to investigate any universality of these findings.

1 Introduction

Mountain glaciers of British Columbia are experiencing significant mass loss in response to ongoing climate change and are projected to lose most of their current volume by the end of the century (Radić et al., 2014; Clarke et al., 2015). These projections, however, are highly sensitive to the representation of glacier mass balance in the models, in particular to the model parameterizations used to simulate surface melting. All regional to global scale projections of glacier mass changes rely on a relatively simple representation of glacier melting via so-called 'degree-day' or temperature-index' models (Radić and Hock, 2014). Despite relying on empiricism, these models have relatively successfully dealt with the absence of fine-resolution meteorological input data that are, on the other hand, a prerequisite for a good performance of more physics-based surface energy balance (SEB) models. With rapid development of computational resources and availability of global climate models, SEB models will likely be used in future studies of glacier evolution on regional and global scales. To ensure that future models are firmly rooted in theory, new methods are required to test and parameterize turbulent heat fluxes at the glacier surface.

The turbulent sensible and latent heat fluxes are recognized as important components of the SEB over mid-latitude glaciers worldwide (Hock, 2005). When averaged over periods of weeks to months these fluxes are generally less than net radiation. Over daily to hourly time scales, however, sensible and latent energy transfers can exceed net radiation (Hock, 2005). Highest melt rates at these short temporal scales often coincide with times of greatest turbulent heat flux (Hay and Fitzharris, 1988). Direct measurements of turbulent fluxes, by eddy-covariance method, are relatively rare because they require sophisticated instrumentation requiring continuous maintenance making them unsuitable for long-term operational purposes. Few studies exist that have directly measured turbulent fluxes over mountain glaciers and all of these studies are restricted to shorter time intervals, e.g. weeks to couple of months (e.g., Munro, 1989; Forrer and Rotach, 1997; van der Avoird and Duynkerke, 1999; Cullen et al., 2007; Guo et al., 2011; Conway and Cullen, 2013). A more common approach in the studies of SEB on glaciers is to derive the turbulent fluxes through parameterization schemes that utilize the observations of mean meteorological variables such as near-surface air temperature, wind, and relative humidity (e.g. Hock and Holmgren, 2005; Sicart et al., 2005; Mölg et al., 2008; Reijmer and Hock, 2008; Mölg et al., 2009; MacDougall and Flowers, 2011; Sicart et al., 2011; Huintjes et al., 2015; Prinz et al., 2016). The simplest and most widely applied method is the bulk aerodynamic method (bulk method) (e.g., Braithwaite et al., 1998; Oerlemans, 2000). The bulk method is an integrated form of a gradient-flux relation, based on the theoretical work of Prandtl (1934) and Lettau (1934). The bulk method assumes constant vertical fluxes of momentum, heat and humidity in the surface boundary layer, and horizontal homogeneous conditions of the surface.

Despite the common usage of bulk methods in glacier SEB studies, its application is often problematic. Main limitations of the bulk method applied to glacier SEB studies include:

1. **Surface conditions.** The bulk method for sensible heat fluxes relies on the assumption that the difference between near surface air temperature, often measured at 2 m above the surface, and surface temperature adequately represents the near-surface gradient of air temperature. Furthermore, the surface temperature is rarely measured but assumed or modeled, which can introduce a significant error in the estimates of the turbulent heat fluxes (Conway and Cullen, 2013). Similarly, for the latent heat fluxes, the surface vapor pressure is assumed rather than measured.

2. **Roughness lengths of momentum (z_{0v}), temperature (z_{0t}) and humidity (z_{0q}).** To obtain accurate roughness lengths, detailed measurements at a glacier site are needed, either by an eddy-covariance method or by vertical profile measurements. Without them, roughness lengths from other studies are used assuming that the values are universally applicable on similar glacier surfaces (e.g., Greuell and Oerlemans, 1989; Konzelmann and Braithwaite, 1995). Values of z_{0v} derived at glacier ice surfaces widely vary in space and time (Bintanja and van den Broeke, 1995; van den Broeke, 1996). There are few directly measured values for the scalar roughness lengths (z_{0t} and z_{0q}) for mountain glaciers, which led to approaches that assume their values approximate z_{0v} . While this 'effective' roughness length (Braithwaite, 1995) works well as a tuning parameter when the modeled turbulent fluxes are optimized to match the observed ones, it differs from its 'actual' z_{0v} , which only depends on the geometry and distribution of the roughness elements, assuming turbulence is generated by frictional drag. An alternative approach to derive scalar roughness lengths is to relate them to measured z_{0v} via the surface renewal theory of Andreas (1987). That approach found that z_{0t} and z_{0q} over a glacier surface are approximately two orders of magnitude smaller than z_{0v} in an aerodynamically rough flow (Smeets et al., 1998; Conway and Cullen, 2013), but more studies are needed to investigate whether this finding is invariant in space and time. When the eddy-covariance method is used, accurate roughness lengths can only be confidently derived in near-neutral stability conditions that are rarely present at sloped glacier surfaces, especially during the melt season where stable atmospheric stratification often accompanied by a downslope drainage (katabatic) flow dominates. Better constrained values of roughness lengths are needed, especially considering that order of magnitude changes in z_{0v} and z_{0t} alters the modeled turbulent heat fluxes by a factor of two (Munro, 1989; Hock and Holmgren, 1996).
3. **Stability corrections.** Many SEB models applied to snow and ice assume that logarithmic vertical profiles of wind speed, temperature and humidity are valid under prevailing stable conditions and no modification due to the stability effects are necessary (e.g., Munro, 1991; Oerlemans, 2000; Machguth et al., 2006). Experimental and theoretical evidence supports the assertion that Monin-Obukhov (M-O) theory, which requires modification of the fluxes due to the stability effects, is not applicable over sloping glacier surfaces due to violation of the assumptions such as homogeneous, infinite, flat terrain and constant fluxes with height (Denby and Greuell, 2000). When the atmospheric stability is considered in the bulk method, two approaches are commonly used: (a) one that accounts for stability through the bulk Richardson number (Ri_b) (e.g., Wagon et al., 2003; Mölg et al., 2008; Anderson et al., 2010; Gillett and Cullen, 2011) and; (b) another that uses a M-O stability parameter ($\frac{z}{L}$) (e.g., Braithwaite, 1995; Klok et al., 2005; van den Broeke et al., 2005; Hulth et al., 2010). In both approaches, the stability corrections are empirical functions often derived from field studies on a flat and vegetated terrain. Applying the corrections through the two metrics (Ri_b and $\frac{z}{L}$) can significantly alter the modeled heat fluxes, especially in the presence of large positive near-surface temperature gradients during conditions of low wind speed ($< 3 \text{ m s}^{-1}$) (Conway and Cullen, 2013).
4. **Stable boundary layers accompanied by katabatic flow.** Over a sloping glacier surface, a low-level katabatic jet is a common feature, which means that buoyancy enters the horizontal momentum equation and the turbulence arises independently of the surface roughness (e.g., van der Avoird and Duynkerke, 1999). The Prandtl model for katabatic flow that

treats eddy viscosity as a constant value (Prandtl, 1942) is unable to correctly describe the sharp near-surface gradients in wind speed and air temperature that are often observed (Munro, 1989; Oerlemans, 1998). Grisogono and Oerlemans (2001) showed that the Prandtl model can be improved if a varying assigned eddy viscosity profile is used instead of a constant value. Using this 'enhanced' Prandtl model, Parmhed et al. (2004) found that modeled turbulent fluxes at a glacier surface compare well with the measured fluxes during katabatic flows. An alternative approach to incorporate the model for katabatic flow into the bulk method for turbulent heat fluxes was developed following the classical Prandtl model for slope flows (Oerlemans and Grisogono, 2002). The simple model only agrees in the overall pattern that shows an increase in sensible heat flux in response to an increase in air-surface temperature difference. Despite its simplicity, application of the model requires calibration with detailed observations of temperature and wind profiles in the surface boundary layer, in addition to the near-surface meteorological observations. Few such measurements exist on glaciers and therefore these models have not been rigorously evaluated so far.

In light of the above, further research is needed to evaluate and develop methods that are suitable for determining near-surface turbulent fluxes over a sloping glacier surfaces subject to katabatic flows. In particular, our objective is to evaluate the existing framework of bulk approaches commonly used for parameterizing the turbulent momentum and heat fluxes at a glacier surface. We achieve this by comparing the modeled fluxes, i.e. output of the bulk approaches, to measured fluxes, i.e. the fluxes derived from an open-path eddy-covariance (OPEC) method. OPEC measurements are obtained from a mountain glacier in British Columbia (BC), over a short-term window (weeks) for two summer seasons. We first provide a brief overview of the field site, data collection, eddy-covariance data treatment and overall methodology. This is followed by a detailed description of the bulk approaches and their evaluation results, and finalized with the discussion and conclusions.

2 Data and Methods

2.1 Study site and station setup

Castle Creek Glacier lies in the Cariboo Mountains, BC (Fig. 1). The 9.5 km² glacier flows north for 5.9 km, has an elevation range of 2827-1810 m a.s.l. and contributes meltwater to Castle Creek, a tributary of the Fraser River. The glacier's annual mass balance has been monitored since 2009 (Beedle et al., 2014). We utilized the data from an automatic weather station on the glacier (AWS_{glac}): in summer 2010, the AWS_{glac} was installed at 53° 3' 2.99" N and 120° 26' 39.57" W and an altitude of 1967 m a.s.l.; in summer 2012 we installed the AWS_{glac} to within ± 10 m of its 2010 position. Two year-round off-glacier automatic weather stations have been in operation since 2007/2008 (Déry et al., 2010). The stations are situated near the glacier's transient snowline and in the glacier forefield, and are herein referred to as AWS_{up} (53° 2' 36" N, 120° 26' 18" W, 2105 m a.s.l.) and AWS_{low} (53° 3' 45" N, 120° 26' 4" W, 1803 m a.s.l.), respectively. At AWS_{up}, the mean annual air temperature over 2007-2010 was -2.6°C, while summer (Jun-Aug) mean air temperature was 6.6°C. Over the same period, precipitation during summer (Jun-Aug) averages 94 mm at AWS_{up} although rainfall is likely underestimated due to gauge

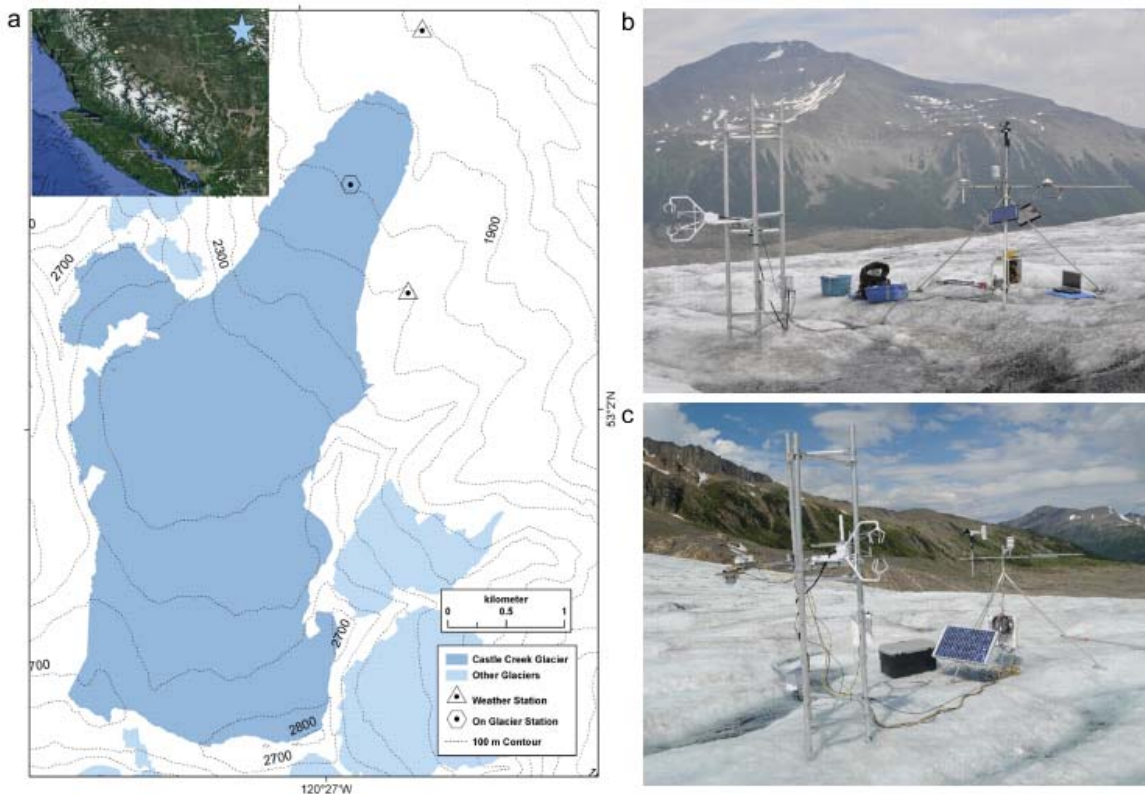


Figure 1. (a) Map of Castle Creek Glacier with locations of automatic weather station on the glacier (AWS_{glac}) and two AWS in the glacier vicinity. AWS_{glac} with eddy covariance tower and floating meteorological tripod during installation, Castle Creek Glacier, (b) 2010 (photo by T. Mlynowski), (c) 2012 (photo by V. Radić).

undercatch at the exposed ridge site where mean monthly wind speeds often exceed 5 m s^{-1} (Déry et al., 2010). The lower part of the glacier ($< 2100 \text{ m a.s.l.}$), where the AWS_{glac} is located, is gently sloping with an approximate mean gradient of 7° .

The AWS_{glac} recorded data over a 12-day period (1-12 Aug) in 2010, and a 29-day period (21 Aug - 18 Sep) in 2012. A Campbell Scientific CR1000 datalogger scanned meteorological data with a sampling frequency of 10 s and averaged these measurements every 10 min. A Rotronic HC-S3 T/RH sensor measured temperature and relative humidity at a height $z_t=1.7 \text{ m}$ above the ice surface, and a RM Young 01503 wind anemometer monitored wind speed and direction at $z_v=2.0 \text{ m}$ (2010 season) and $z_v=1.9 \text{ m}$ (2012 season). Kipp & Zonen sensors (CMP6, CM3, CGR3, and NR-Lite) sensed radiation fluxes (incoming and reflected shortwave-, incoming longwave-, and net radiation). We also respectively recorded surface air pressure and liquid precipitation at the AWS_{up} and AWS_{low} , and we linearly interpolated the measured surface air pressure to obtain surface air pressure at AWS_{glac} . The meteorological sensors at AWS_{glac} , mounted on a floating tripod (Fig. 1), maintained a constant measurement height above the surface over the observational period. We also installed a Campbell Scientific open-path eddy covariance (OPEC) system and sonic ranger (SR50) on a separate tower drilled into the ice about 3 m upglacier of the AWS_{glac} (Fig. 1) (Jarosch et al., 2011). The OPEC system included a sonic anemometer (CSAT-3) and a krypton hygrometer (KH20)

mounted with an initial height of 1.86 m (2010 season) and 2.0 m (2012 season) above the surface. The datalogger recorded three-dimensional (3-D) wind speed, sonic temperature (corrected for water vapor according to Scotanus et al. (1983)) and vapor density fluctuations at 20 Hz. Vapor density fluctuations were later converted to specific humidity fluctuations.

2.2 Eddy-covariance data processing

5 We applied a series of data processing steps Burba (2013) that are part of the Eddy-Pro Software used to process the OPEC data and calculate the turbulent fluxes. The Eddy-Pro processing output yields turbulence statistics and calculated fluxes for each 30-min segment of raw data. The height of OPEC sensors relative to the ice surface changed due to the surface melting throughout the observational period: the net change in 2010 was 0.7 m, whereas this change equaled 0.75 m in 2012. We applied the following corrections to the raw EC data to correct for differences in the height of the sensors above the ice surface, but
 10 none of them yielded substantial (>1 %) differences in 30-min averaged turbulent fluxes. At the beginning of each observational season we leveled the instruments to horizontal and observed negligible tilt at the end of each observational period. For both seasons, we set the CSAT-3 so that the sensor's arm formed a 90° angle to the prevailing down-glacier wind direction to minimize flow distortion due to air flow through the station structure. Before calculating the turbulence statistics, we applied a coordinate rotation to the velocity data to align the streamlines into the mean flow using a planar fit method (Wilczak et al.,
 15 2001). This method sets the vertical axis of the CSAT-3 perpendicular to a hypothetical plane produced from averaged wind measurements during the observation period. Because the glacier surface changes with time, we applied sensitivity tests to assess whether the alignment of the plane needed adjustment and whether a different coordinate rotation method (e.g. double or triple rotation scheme) produced different output. We noted no substantial changes, i.e. no difference >1 %, in the 30-min turbulent fluxes during these tests, however. The latent heat flux data were corrected for oxygen absorption by the KH2O
 20 (Tanner et al., 1993) and for fluctuations in the water vapour density induced by high-frequency changes in air temperature (Webb-Pearman-Leuning correction; Webb et al., 1980). Finally, we applied a series of standardized processing steps consisting of corrections for potentially high and low frequency loss, and sensor separation (Ibrom et al., 2007; Moncrieff et al., 2004; Horst and Lenschow, 2009).

2.3 The algorithm and quality control for roughness lengths

25 The covariances of the 3-D wind velocities, temperature and specific humidity, derived by the OPEC system for each 30-min data segment, relate to the friction velocity (u_*), temperature scale (θ_*) and specific humidity scale (q_*) using:

$$u_* = \left(\overline{u'w'^2} + \overline{v'w'^2} \right)^{\frac{1}{4}}, \quad (1)$$

$$\theta_* = - \frac{\overline{w'T'}}{u_*}, \quad (2)$$

$$q_* = - \frac{\overline{w'q'}}{u_*}, \quad (3)$$

30 where u' and v' are fluctuations of the horizontal wind component around their 30-min mean values, w' is fluctuation of the vertical wind component, and T' and q' represent temperature and specific humidity fluctuations. We also used the OPEC

system to indirectly measure the Obukhov length (L):

$$L = -\frac{T_v u_*^3}{g \kappa w' T_v'}, \quad (4)$$

where T_v is the 30-min averaged virtual temperature (K), g is the acceleration due to gravity (9.81 m s^{-2}), and κ (0.40) is the von Kármán constant. Following Cullen et al. (2007), the turbulent scales and L were then used to derive roughness lengths

5 for each 30-min data segment:

$$z_{0v} = \exp \left[-\kappa \frac{U_{z_v}}{u_*} - \Psi_v \left(\frac{z_v}{L} \right) \right] z_v, \quad (5)$$

$$z_{0t} = \exp \left[-\kappa \frac{T_{z_t} - T_0}{\theta_*} - \Psi_t \left(\frac{z_t}{L} \right) \right] z_t, \quad (6)$$

$$z_{0q} = \exp \left[-\kappa \frac{q_{z_t} - q_0}{q_*} - \Psi_q \left(\frac{z_t}{L} \right) \right] z_t, \quad (7)$$

where U_{z_v} , T_{z_t} and q_{z_t} are 30-min averages for the wind speed (m s^{-1}), air temperature ($^{\circ}\text{C}$), and specific humidity (kg
 10 kg^{-1}) respectively, determined from AWS_{glac} measurements at the sensors' heights ($z_{v,t}$). The surface temperature (T_0) was assumed to be at melting point (0°C) and its vapor pressure at saturation (6.13 hPa) since we did not measure these variables. To reduce errors in our study we only use data for which $T_{z_t} > 1^{\circ}\text{C}$. Our $T_0 = 0^{\circ}\text{C}$ assumption has been found to be more accurate than estimating the surface temperature from the longwave radiation measurements (Fairall et al., 1998) or from a SEB closure (Hock, 2005). Nevertheless, when the surface is not consistently melting, SEB closure can give much better results than
 15 the assumption of the melting surface (e.g. Conway and Cullen, 2013). Estimating T_0 from our radiation data, proved to be unreliable because of the poor accuracy of NR-Lite net radiometer. As part of our uncertainty analysis, we quantify errors in our results due to the $T_0 = 0^{\circ}\text{C}$ assumption. We converted vapor pressure (e) to specific humidity using $q = 0.622 \frac{e}{p}$, where p is observed air pressure (hPa). $\Psi_v(\frac{z_v}{L})$, $\Psi_t(\frac{z_t}{L})$ and $\Psi_q(\frac{z_t}{L})$ (where $\Psi_t(\frac{z_t}{L}) = \Psi_q(\frac{z_t}{L})$) are integrated forms of universal functions based on M-O theory. Many such functions have been developed, and the most widely used is the Dyer-Businger flux-profile
 20 relationship (Businger et al., 1971; Dyer, 1974). Following Conway and Cullen (2013), for stable stratification ($\frac{z_{v,t}}{L} > 0$) we use the expressions of Holtslag and de Bruin (1988) in the following forms:

$$-\Psi_v \left(\frac{z_v}{L} \right) = \frac{z_v}{L} + b \left(\frac{z_v}{L} - \frac{c}{d} \right) \exp \left(-d \frac{z_v}{L} \right) + \frac{bc}{d}, \quad (8)$$

$$-\Psi_{t,q} \left(\frac{z_t}{L} \right) = \left(a + b \frac{z_t}{L} \right)^{\frac{1}{b}} + b \left(\frac{z_t}{L} - \frac{c}{d} \right) \exp \left(-d \frac{z_t}{L} \right) + \frac{bc}{d} - a, \quad (9)$$

where $a = 1$, $b = \frac{2}{3}$, $c = 5$, and $d = 0.35$. For unstable stratification ($\frac{z_{v,t}}{L} < 0$), which was rarely present during our observa-
 25 tional periods, we use the expressions of Dyer (1974).

Turbulence flux data from OPEC systems often contains spurious measurements. The roughness lengths derived from Eq. (5) - (7) widely vary because they rely on several mean and turbulence variables. One way to reduce this scatter is to limit analysis on high-quality data (Andreas et al., 2010). In this study we applied a series of filters to the 30-min data segments (points) obtained during the study period following the approach of Conway and Cullen (2013) and Li et al. (2016). Our
 30 filtering algorithm proceeds as follows:

- 5 (a) 'Basic' filter for z_{0t} and z_{0v} : Remove the points for which $\frac{T_{z_t}-T_0}{\theta_*} < 0$ and $\frac{q_{z_t}-q_0}{q_*} < 0$, which return unrealistically large roughness lengths since the exponents in Eq. (5) - (7) become much larger than unity. One of the main reasons negative values arise is that the bulk approach (finite differences) is a first-order approximation of the gradient-flux approach, and the surface values for T_0 and q_0 are assumed and kept constant in time rather than measured directly for each 30-min segment.
- (b) 'Stationarity' filter: Only use steady-state runs following the method of Foken (2008), which examines the fluxes for different averaging times. Steady-state conditions can be assumed if 5-min and 30-min averaged fluxes do not differ by more than 30 %.
- 10 (c) 'Neutrality' filter: Select near-neutral conditions ($|\frac{z_{v,t}}{L}| < 0.1$) so that the choice of correction functions (Ψ_v, Ψ_t) is not important since $\Psi_{v,t} \rightarrow 0$ for $\frac{z_{v,t}}{L} \rightarrow 0$.
- (d) 'Wind direction' filter: Restrict wind direction to a $\pm 45^\circ$ sector around the glacier center line to minimize sensor arm interference and ensure the longest on-glacier fetch.
- (e) 'Wind speed' and ' u_* ' filters: Use runs for $U_{z_v} > 3 \text{ m s}^{-1}$ and $u_* > 0.1 \text{ m s}^{-1}$ as errors in deriving the roughness lengths become comparatively large for low wind speeds and small friction velocities. In addition, accounting for a relatively strong air flow ($U_{z_v} > 3 \text{ m s}^{-1}$) helps reduce potential errors in T_{z_t} due to radiative heating of temperature sensor during periods of strong solar radiation (Huwald et al., 2009).
- 15 (f) 'Temperature' gradient' filter for z_{0t} : To guarantee that a sufficiently large temperature gradient is detected between the surface and measurement height, only use data for which $T_{z_t} > 1^\circ\text{C}$. As mentioned earlier, this filter also assures that the assumption of melting surface holds.
- 20 (g) 'Moisture gradient' filter for z_{0q} : To ensure for sufficiently large moisture gradients between the surface and measurement height, select data that satisfy $|e_{z_t} - e_0| > 0.66 \text{ hPa}$, corresponding to a difference between $T_{z_t} = 0^\circ\text{C}$ and $T_{z_t} = 1^\circ\text{C}$.
- (h) 'Small values' filter applied to z_{0t} and z_{0q} : Following Andreas et al. (2010) we assumed that the surface exchange of heat and moisture cannot occur at scales smaller than 10^{-7} m . This scale is an approximate mean free path of air molecules at sea level. Considering that this is the minimal scale at which molecular diffusion takes place at the surface, z_{0t} and z_{0q} smaller than this are treated as unrealistic (i.e. eddy diffusivity can take place only at larger scales).
- 25 (i) 'Large values' filter: No study of turbulent fluxes over glaciers determined roughness lengths larger than 1 m. We thus consider any values of roughness length that exceed 1 m as spurious.

We note that it is common to exclude the data during precipitation events as these greatly increase measurement errors associated with the OPEC system. Nevertheless, this filter was redundant in our study because the above filters already removed the points overlapping with precipitation events recorded at AWS_{low} , and because the OPEC system (in particular KH2O) failed

to take measurements during most of these events. To assure that the bulk method evaluation is performed on the high-quality measurements, all of the filters above are applied to the OPEC measured u_* , sensible heat (Q_H) and latent heat (Q_E) fluxes, except the 'neutrality' and 'wind speed' filters. The latter two filters are modified so that: all runs with $|\frac{z_{v,t}}{L}| < 2$ are included in the calculation of fluxes, as well as all runs with $U_z > 1 \text{ m s}^{-1}$. The upper threshold of $\frac{z_{v,t}}{L} = 2$ is chosen because the uni-

5 versal stability functions for stable stratification are commonly defined up to $\frac{z}{L} = 2$ (Foken, 2008), which represents strongly stratified stable regime. The 'measured' 30-min Q_H and Q_E are derived from OPEC data as:

$$Q_H = \rho_a c_p \overline{w'T'}, \quad (10)$$

$$Q_E = \rho_a L_v \overline{w'q'}, \quad (11)$$

where ρ_a is the air density (here OPEC derived), c_p is the specific heat of air at constant pressure ($1005 \text{ J kg}^{-1}\text{K}^{-1}$), and L_v is

10 the latent heat of vaporization (2.514 MJ kg^{-1}).

2.4 Bulk methods

All bulk methods used in this study are rooted in the gradient transport theory or K-theory (Stull, 1988), in which the turbulent fluxes of momentum (τ), sensible heat (Q_H) and latent heat (Q_E) in the surface boundary layer are proportional to the time averaged gradients of wind speed (\overline{U}), potential temperature ($\overline{\theta}$) and specific humidity (\overline{q}), expressed by:

$$15 \quad \tau \equiv \rho_a u_*^2 = \rho_a K_M \frac{\partial \overline{U}}{\partial z}, \quad (12)$$

$$Q_H = \rho_a c_p \frac{1}{Pr} K_M \frac{\partial \overline{\theta}}{\partial z}, \quad (13)$$

$$Q_E = \rho_a L_v \frac{1}{Pr} K_M \frac{\partial \overline{q}}{\partial z}, \quad (14)$$

where z is the height above the surface, K_M is the eddy viscosity, and Pr is the eddy Prandtl number relating the eddy diffusivities for heat (K_H) and vapor exchange (K_E) to eddy viscosity as $K_M = Pr K_H$ and $K_M = Pr K_E$, respectively. Eq.

20 (12) also defines the friction velocity u_* , which we use as a surrogate for surface shear stress. We note that by convention in SEB on glaciers, the heat fluxes are positive (negative) if they transport heat towards (away) from the surface.

We provide an overview of the methodology used to compare and analyze the performance of bulk methods in simulating the turbulent fluxes of momentum, heat and humidity. By definition, the bulk method parameterizes the turbulent fluxes with the use of mean meteorological variables (e.g. wind speed, near-surface temperature and relative humidity) and the bulk exchange

25 coefficient. In total we evaluate two groups of bulk methods (i.e. the integrated form of Eq. (12)-(14)): (1) methods that use the bulk exchange coefficient (C) as a function of roughness lengths and atmospheric stability, henceforth labeled as C-methods and; (2) methods that incorporate simple katabatic wind models in their parameterizations. As part of the C-methods we analyze four bulk methods that are most commonly used on glacier surfaces: (1) C_{\log} method - which relates C only to the roughness lengths assuming logarithmic vertical profiles of wind, temperature and specific humidity, (2) C_{Rib} method - which

30 adds stability corrections in C using the bulk Richardson number (Ri_b), (3) $C_{\text{M-O}}$ - which adds stability corrections in C using the universal stability functions of $\frac{z_{v,t}}{L}$, and (4) C_{SR} method - which is the same as $C_{\text{M-O}}$ in its expression for C , but uses the

surface renewal model of Andreas (1987) to estimate the scalar roughness lengths (z_{0t} and z_{0q}). If not otherwise stated, the roughness lengths are assumed to be constant in time and equal to the mean log value of the OPEC-derived 30-min roughness lengths observed only during the near-neutral conditions and when all the filters are applied to the OPEC data. The group of bulk methods derived from simple katabatic flow models consists of: (5) C_{kat} method - following Oerlemans and Grisogono (2002), and (6) K_{Int} method - using an integrated varying eddy viscosity profile (Grisogono and Oerlemans, 2001; Parmhed et al., 2004). Details of each method (1)-(6) are provided in the sections that follow. The modeled 30-min turbulent fluxes (u_* , Q_H , Q_E) are compared to the equivalent OPEC-derived fluxes with the use of standard evaluation metrics: root-mean-square-error (RMSE), mean-bias-error (MBE) and Pearson correlation coefficient (r). The performance of all six methods will be subjected to a set of sensitivity tests to identify key sources of errors. To do so, we will substitute modeled parameter values, such as friction velocity (u_*) and stability parameter ($\frac{z_{v,t}}{L}$), with their equivalent OPEC-derived values. We will present results together with the description of sensitivity tests to facilitate readability.

2.4.1 C_{log} method

According to the mixing-length theory (Prandtl, 1934) for a neutral surface layer, eddy viscosity can be parametrized as (Stull, 1988):

$$K_M = \kappa z u_*. \quad (15)$$

Inserting these parameterizations in the gradient flux relations (Eq. (12) - (14)), treating u_* , Q_H , Q_E as constants and integrating the equations with respect to height yield the bulk aerodynamic expressions:

$$u_* = C_v U_{z_v}, \quad (16)$$

$$Q_H = \rho_a c_p \frac{1}{Pr} C_v C_t U_{z_v} (T_{z_t} - T_0), \quad (17)$$

$$Q_E = \frac{0.622}{p} \rho_a L_v \frac{1}{Pr} C_v C_q U_{z_v} (e_{z_t} - e_0). \quad (18)$$

where $C_v^2 \equiv C_D$ is a dimensionless exchange coefficient ('drag coefficient') for momentum flux and $C_v C_t \equiv C_H$ and $C_v C_q \equiv C_E$ are dimensionless exchange coefficients for the sensible and latent heat flux, respectively. Alternatively, one can rewrite Eq. (17) and (18) using u_* as:

$$Q_H = \rho_a c_p \frac{1}{Pr} C_t u_* (T_{z_t} - T_0), \quad (19)$$

$$Q_E = \frac{0.622}{p} \rho_a L_v \frac{1}{Pr} C_q u_* (e_{z_t} - e_0). \quad (20)$$

Wind speed (U_{z_v}), air temperature (T_{z_t}) and water vapor pressure (e_{z_t}) represent the time averaged values at their measurement heights $z_{v,t}$ with zero subscript in these variables denoting their surface values (note that $z_t = z_q$). Air density at AWS_{glac} (ρ_a) is derived as the air density at standard sea-level pressure ($\rho_0 = 1.29 \text{ kg m}^{-3}$ at 0°C) multiplied by the ratio between the air pressure estimated at AWS_{glac} (p) and the standard sea-level pressure (p_0 ; 1013 hPa). The dimensionless exchange coefficients

for the neutral atmosphere assume logarithmic profile of wind speed, temperature and humidity with height, and take the following form:

$$C_{v,log} = \frac{\kappa}{\ln\left(\frac{z_v}{z_{0v}}\right)}, \quad (21)$$

$$C_{t,log} = \frac{\kappa}{\ln\left(\frac{z_t}{z_{0t}}\right)}, \quad (22)$$

$$5 \quad C_{q,log} = \frac{\kappa}{\ln\left(\frac{z_t}{z_{0q}}\right)}. \quad (23)$$

2.4.2 C_{Rib} method

This method assumes the same parameterization for $K_{M,H,E}$ (Eq. (15)) as the C_{log} method, but it allows a flux reduction in a stable stratification via the bulk Richardson number (Rib) defined as:

$$Rib = \frac{g(T_{z_t} - T_0)(z_t - z_0)}{T_{z_t} U_{z_v}^2}, \quad (24)$$

10 where temperature is given in Kelvin. For stable conditions ($0 < Rib < 0.2$), which prevail over a melting glacier surface, the coefficient C for the property y (either v , t or q) is (Webb, 1970):

$$C_{y,Rib} = \frac{\kappa}{\ln\left(\frac{z_y}{z_{0y}}\right)}(1 - 5Rib). \quad (25)$$

2.4.3 C_{M-O} method

15 Starting from the parameterization for neutral conditions (Eq. (15)) but allowing $K_{M,H,E}$ to vary in response to atmospheric stability (generally, K for statically unstable surface layer $> K$ for neutral $> K$ for statically stable), K_M can be expressed as:

$$K_M = \frac{\kappa z u_*}{\psi_v\left(\frac{z}{L}\right)}, \quad (26)$$

where ψ_v is a dimensionless shear and L is Obukhov length. Using this approach for K and integrating the flux-gradient equations, the expression for C (for the property y) becomes:

$$C_{y,M-0} = \frac{\kappa}{\ln\left(\frac{z_y}{z_{0y}}\right) - \Psi_y\left(\frac{z_y}{L}\right)}. \quad (27)$$

20 We use the integrated form of M-O stability functions from Holtslag and de Bruin (1988) and Dyer (1974) as expressed earlier in Section 2.3. The calculation of Ψ requires an estimate of L , which requires an estimate of Q_H and u_* . This method thus becomes a root-finding problem for the three coupled equations, which is either solved by Newton's method or a fixed-point iteration method. We chose the latter since the method is shown to successfully work for this set of equations (e.g., Berkowicz and Prahm, 1982; Lee, 1986) and has been widely used in glacier studies (e.g., Munro, 1989; Conway and Cullen, 2013). In
 25 this iterative method each 30-min Q_H and u_* are initially derived assuming the neutral case ($\frac{z_{v,t}}{L} = 0$). This approach allows an estimate of L and Ψ , which in the next iteration yields a new estimate for Q_H and u_* . These steps are repeated until no significant change in Q_H occurs, i.e. the difference becomes $< \pm 1 \text{ W m}^{-2}$, a condition which is satisfied within the first five iterations (Munro, 1989).

2.4.4 C_{SR} method

In all the parameterizations for C we employ a constant value for roughness lengths derived as the mean log value from the 30-min values (Eq. (5) - (7)) calculated for the neutral conditions only. An alternative approach in deriving the scalar roughness lengths ($z_{0s} \equiv z_{0t,0q}$) is through the surface renewal model by Andreas (1987). The model uses simple similarity arguments considering the structure of the viscous sublayer to derive z_{0s} from known z_{0v} as a function of Reynolds roughness number ($Re_* = \frac{u_* z_{0v}}{\nu}$, where ν is the kinematic viscosity of air, equal to $1.46 \times 10^{-5} \text{ m}^2 \text{ s}^{-1}$):

$$\ln\left(\frac{z_{0s}}{z_{0v}}\right) = b_0 + b_1 \ln(Re_*) + b_2 [\ln(Re_*)]^2, \quad (28)$$

where $b_{0,1,2}$ are the polynomial empirical coefficients. This model has been successfully tested for relatively smooth snow and ice surfaces, while for a rough, hummocky glacier surface Smeets and van den Broeke (2008) found that somewhat different values for the polynomial coefficients give better performance.

2.4.5 C_{kat} method

Rather than integrating the flux-gradient relations with a chosen parametrization for K , Oerlemans and Grisogono (2002) derived a bulk approach for surface heat fluxes through a simplified scaling of the governing equations for heat and momentum balance in a 1-D katabatic flow model (Prandtl, 1942). Their basic assumption was that the katabatic flow is characterized by a well defined wind maximum, setting the exchange coefficient for heat proportional to the maximum wind speed and to the height of the wind maximum. With this scaling approach they determined a 'katabatic bulk exchange parameter' for heat flux (C_{kat} , in m s^{-1}) as:

$$C_{kat} = -k k_2 \Theta_s \left(\frac{g}{T_0 \gamma Pr}\right)^{1/2}, \quad (29)$$

where k and k_2 are dimensionless empirical constants, Θ_s is the temperature deficit at the glacier surface (negative value; $\theta(0) = \Theta_s$, $\theta(z \rightarrow \infty) = 0$), and γ is the background potential temperature lapse rate. Defining the exchange coefficient in this way makes the sensible heat flux increase quadratically with the surface temperature deficit:

$$Q_H = \rho_a c_p C_{kat} \Theta_s. \quad (30)$$

Θ_s can be replaced by 2 m air-surface temperature difference (ΔT), but it only yields a crude estimate of the actual temperature deficit. The latent heat flux is similarly expressed as:

$$Q_E = \frac{0.622}{p} \rho_a L_v C_{kat} (e_{z_t} - e_0). \quad (31)$$

Neither Q_H nor Q_E explicitly depend on u_* because the momentum flux and wind speed are obtained from the katabatic flow model in which the eddy viscosity is parametrized through the background variables (Θ_s and γ). C_{kat} becomes smaller as the atmospheric boundary layer becomes more stable (larger γ). As noted in Oerlemans and Grisogono (2002), this is a dynamic effect, which should not be confused with the effect of stratification on the exchange coefficients as predicted by the M-O theory.

Our data are not suitable to adequately test this bulk method since we do not have the vertical profile observations of potential temperature needed to estimate Θ_s and γ . Nevertheless, the data are sufficient to investigate the validity of the quadratic relation between Q_H and ΔT . Assuming that the quadratic fit holds, we optimize C_{kat} for each season independently so that the modeled Q_H gives the best fit to the observed Q_H . Although this optimization can be performed in multiple different ways, we chose to set all the parameters constant except the one used for model tuning. The values of constant parameters are taken from the field data from a 10 km long mountain glacier in the Austrian Alps (PASTEX-94; Greuell and Struijk, 1994): $k_2=1$, $\gamma=0.005 \text{ K m}^{-1}$, $Pr=2$ and $T_0=273 \text{ K}$. The chosen optimization parameter k is then evaluated by minimizing the RMSE between modeled and observed 30-min Q_H for each season separately, using the air-surface temperature difference ($T_{z_t} - T_0$) as a substitute for Θ_s . In addition to this optimization, we investigate whether C_{kat} can be expressed as an empirical function of a proxy variable for the background potential temperature lapse rate (γ). We make use of near-surface air temperature measurements from the two stations in the glacier vicinity (AWS_{up} and AWS_{low}) and assume that the proxy variable is the difference between on-glacier (AWS_{glac}) and off-glacier temperature. We then regress 30-min C_{kat} values, obtained from OPEC-derived Q_H and measured Θ_s (Eq. 30), against the proxy variable.

2.4.6 K_{Int} method

Similarly to the C_{kat} method, this approach assumes a dominant katabatic flow throughout the observational period. Following Grisogono and Oerlemans (2001) and Parmhed et al. (2004) we use the assumed linear-Gaussian profile for eddy viscosity $K(z)$ as

$$K(z) = \frac{K_{max} \exp(0.5)}{H_K} z \exp\left[-0.5\left(\frac{z}{H_K}\right)^2\right], \quad (32)$$

where K_{max} is the maximum value of $K(z)$ (in $\text{m}^2 \text{ s}^{-1}$) reached at the height H_K (in m) above the surface. Near the surface, this parameterization for $K(z)$ is similar to O'Brien's cubic polynomial approximation applicable to neutral and stable boundary layer (O'Brien, 1970; Stull, 1988). In the original model of Grisogono and Oerlemans (2001), K_{max} and H_K are related to the background variables (γ , Θ_s), slope of the surface, and Pr . Inserting the parameterizations for $K(z)$ into the bulk-gradient relations (Eq. (12) - (13)) and integrating them with respect to z (treating K_{max} and H_K independent of z), we obtain the following bulk expressions for the turbulent fluxes:

$$u_* = \left(\frac{U_{z_v}}{K_{Int}}\right)^{1/2}, \quad (33)$$

$$Q_H = \rho_a c_p \frac{1}{Pr} \frac{T_{z_t} - T_0}{K_{Int}}, \quad (34)$$

$$Q_E = \frac{0.622}{p} \rho_a L_v \frac{1}{Pr} \frac{e_{z_t} - e_0}{K_{Int}}, \quad (35)$$

where

$$K_{Int} = \int_{z_0v}^{z_v} \frac{dz}{K(z)} \approx \frac{H_K}{2 K_{max} \exp(0.5)} \left[2 \ln\left(\frac{z_v}{z_0v}\right) + \frac{0.5}{H_K^2} (z_v^2 - z_0v^2) \right], \quad (36)$$

which is valid for $z_v < H_K$.

To adequately determine K_{max} and H_K , detailed observations of the wind speed and temperature profiles with height are required. In the absence of these observations, and similarly to C_{kat} method, we derive the parameter values through the optimization method that incorporates dependency of the two parameters on the proxy variable for γ (i.e. the difference between on-glacier and off-glacier temperature). Since these two parameters (K_{max} and H_K) are inter-related (Parmhed et al., 2004), it is sufficient to optimize one parameter while keeping the other constant. We focus therefore only on optimizing K_{max} while keeping H_K constant. We set $\overline{H_K}=20$ m as a mean observed value from a field study on an Icelandic glacier (Parmhed et al., 2004) as this was the only study we found that directly measured the two parameters. Optimized K_{max} value for each 30-min segment is estimated from Eq. (33) using 30-min OPEC-derived u_* and mean log value of OPEC-derived z_{0v} (from neutral conditions only). The final step is to regress the optimized parameter against the proxy variable. The regression is performed on the 2012 data with identified katabatic flow conditions only, while the 2010 data is used to validate the regression model.

2.5 Uncertainty analysis

For each 30-min roughness length estimate (Eq. (5) - (7)) we calculate its error through the error propagation method for a multi-variable function (e.g., Bevington, 1969). The measurement error for wind speed (δU_{z_v}) and assumed errors for air-surface temperature difference ($\delta \Delta T$) and air-surface difference in water vapor pressure ($\delta \Delta e$) are propagated (retaining the linear terms in Taylor expansion) into the final error for the roughness length. The following error values are used: $\delta U_{z_v} = 0.11$ m s⁻¹, $\delta \Delta T = 0.5^\circ\text{C}$, and $\delta \Delta e = 0.23$ hPa.

We quantify uncertainties in the modeled 30-min fluxes due to: (1) the uncertainty in the roughness lengths; (2) the assumption that the surface temperature is at a melting point; and (3) the systematic error in air temperature due to radiative heating of the temperature sensor. To estimate errors in (1), for each modeled 30-min flux, we use a Monte Carlo approach so that the bulk method is run 1000 times with randomly perturbed roughness length values. The roughness length values are randomly picked from a derived normal distribution of their log values, using the OPEC-derived mean log value and standard deviation (applying all the filters from Section 2.3) as the distribution parameters. The error in each 30-min modeled flux is represented by a standard deviation of the 1000 ensemble runs. The same Monte Carlo approach is used to quantify the uncertainty in (2). For each Monte Carlo run, we randomly prescribe T_0 , assuming that T_0 has a normal distribution with a mean of 0°C and a standard deviation of 0.5°C . Total errors in the modeled fluxes due to (1) and (2) are calculated as root-mean-sum of all individual 30-min errors, and are labeled as δQ_{z_0} and δQ_{T_0} , respectively. Finally, to assess errors in (3), we make use of the air temperature from the sonic anemometer (T_{sa}), where susceptibility to radiative overheating is minimal. The values of T_{z_t} are subtracted from T_{sa} , giving T_{bias} , which during nighttime periods (no solar radiation) is calculated to be 2°C . The nighttime bias is removed from T_{bias} , which is then regressed against the incoming shortwave radiation (K_{down}) within a set of given ranges of measured wind speed (see below). The rationale here is that, for a given K_{down} , the higher the wind speed, the more efficient the natural ventilation of the sensor, leading to smaller T_{bias} (e.g., Harrison, 2010). The linear regression, applied on

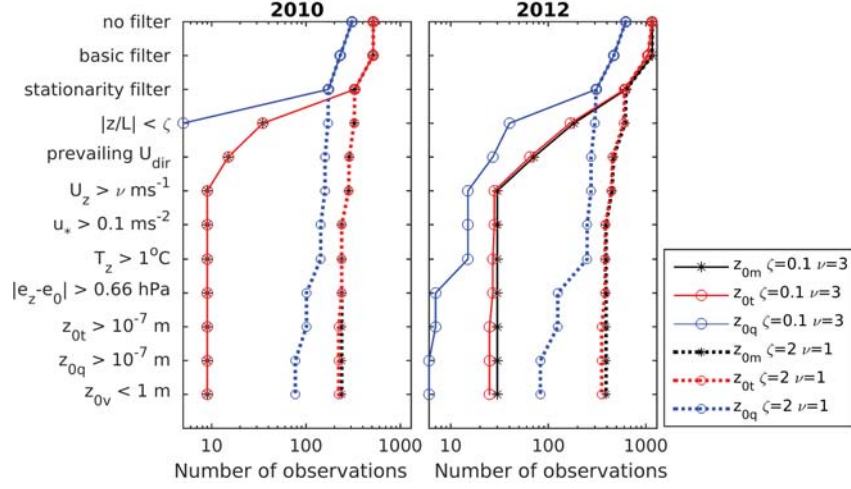


Figure 2. Initial number of observations for estimating the roughness lengths (from 30-min averages of OPEC data) and remaining number of observations after each filter is applied (ordered from top down) for 2010 and 2012 observational periods. Solid line represents the filters used to determine the roughness lengths, and dotted line represents the filters used to determine the fluxes of momentum, temperature and humidity.

the 2012 data, yields the following relationship between T_{bias} and K_{down} :

$$\begin{aligned}
 T_{bias} &= 0.0026 K_{down} + 0.035, \quad \text{for } 1 < U_{z_v} < 2, \\
 T_{bias} &= 0.0018 K_{down} + 0.049, \quad \text{for } 2 < U_{z_v} < 3, \\
 T_{bias} &= 0.0010 K_{down} + 0.063, \quad \text{for } 3 < U_{z_v},
 \end{aligned} \tag{37}$$

- 5 where K_{down} is in W m^{-2} and U_{z_v} is in m s^{-1} . Corrected air temperatures are then calculated by subtracting T_{bias} from T_{z_t} . Differences between the modeled fluxes, derived by the bulk methods with and without corrected temperature, represent the 30-min errors, while their root-mean-sum gives the total error over the observational period ($\delta Q_{T_{bias}}$).

3 Results

3.1 Estimates of the roughness lengths

- 10 We apply the filters discussed in Section 2.3 to the OPEC data to obtain the roughness lengths using the Eq. 5 - 7. For the 12-day observational period in 2010 there are 515 unfiltered measurements for $z_{0v,0t}$ and 307 for z_{0q} . The fewer initial data points for z_{0q} arises from high sensitivity of the KH2O sensor to the build-up of droplets on the sensor window during precipitation events. During these events, the KH2O sensor produced spurious values or failed to record the data, while CSAT-3 recorded observations, albeit with questionable quality. After filtering, usable data are reduced by 98 %, giving nine high-
 15 quality estimates for $z_{0v,0t}$, but none for z_{0q} (Fig. 2). Similarly, the initial number of data points in the 29-day observational

Table 1. Mean and \pm standard deviation (σ) of log roughness lengths of momentum (z_{0v}), temperature (z_{0t}) and humidity (z_{0q}) derived for near-neutral stability conditions ($|\frac{z}{L}| < 0.1$) during 2010 and 2012 observational period (units are in m). Also shown is weighted mean \pm standard deviation (σ_w ; see text) and number of points (N) used to assess these values, i.e. number of points remaining after all the filters have been applied to the original data.

Parameter	mean $\pm \sigma$	weighted mean $\pm \sigma_w$	N	mean $\pm \sigma$	weighted mean $\pm \sigma_w$	N
	2010	2010	2010	2012	2012	2012
	\log_{10} values	\log_{10} values		\log_{10} values	\log_{10} values	
z_{0v}	-2.67 ± 0.66	-2.63 ± 0.67	9	-2.56 ± 0.75	-2.54 ± 0.76	30
z_{0t}	-5.08 ± 1.11	-4.98 ± 0.98	9	-4.58 ± 0.87	-4.52 ± 0.79	25
z_{0q}			0	-4.11 ± 1.15	-3.89 ± 1.09	6

period in 2012 is 1161 for $z_{0v,0t}$ and 621 for z_{0q} , while the post-filtering number of data points are 30 for z_{0v} , 25 for z_{0t} and six for z_{0q} .

Among all the filters, the 'neutrality filter' ($|\frac{z_{v,t}}{L}| < 0.1$) eliminates most of the data points, followed-by the 'stationarity' filter. Despite the significant loss of viable data, these filters are essential to achieve accurate determination of roughness lengths with the bulk method. OPEC-derived fluxes are assumed valid only during the steady-state or stationary conditions (i.e. in the absence of intermittent turbulence and/or gravity waves). For the near-neutral conditions, the choice of the stability correction functions has negligible effect on the calculated fluxes (the correction function approaches zero as $|\frac{z_{v,t}}{L}|$ approaches zero). Furthermore, the near-neutral stability conditions are more commonly observed during overcast and windy conditions rather than during clear-sky conditions with prevailing katabatic flows. This fact minimizes the chance of selecting 30-min intervals with katabatic flows for which the bulk method, used to determine the roughness lengths, might be deficient.

We determine the time windows of prevailing katabatic flows (shaded areas in Fig. 3) by identifying longer periods (several hours to days) with almost stationary down-glacier wind direction (200° for our site) and relatively high mean wind speeds ($> 3 \text{ m s}^{-1}$), preferably reaching maximum 30-min mean values $> 5 \text{ m s}^{-1}$. With this rough identification criteria we may miss some shorter time intervals with katabatic flows, but a more restrictive approach reduces the uncertainty that originates from the selection of katabatic flow periods in our further analysis. The identified prevailing katabatic periods (Fig. 3) overlap with clear sky conditions and with relatively high near-surface air temperatures (T_{z_t}), as is commonly expected for katabatic flows at glacier surfaces (e.g., Oerlemans et al., 1999).

Each roughness length estimate has its respective error (error bars in Fig. 3 derived from the error propagation (Section 2.5). To provide the mean value for roughness lengths during neutral conditions we used the average of their logged values to account for the measurements' log-normal distribution. To incorporate the individual error of each estimate into the mean value, we derive a weighted mean roughness length, where the weights are inversely proportional to the individual errors. The results (Table 1) show that the weighted mean values do not substantially differ from the mean values and we thus use the non-weighted mean values in the remaining analysis. For both seasons, our results show that mean $\log z_{0v}$ is of the order of

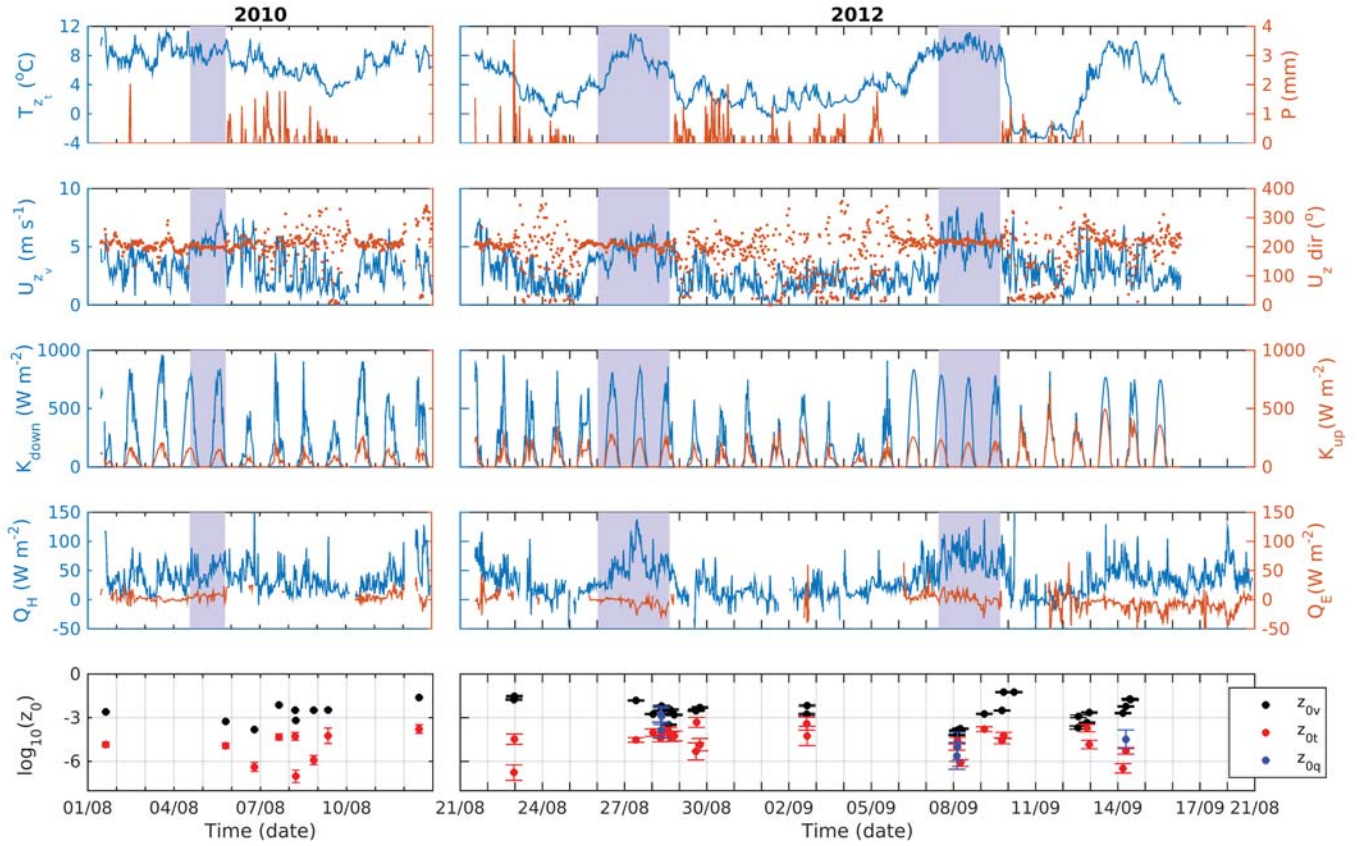


Figure 3. Thirty minute averages of meteorological variables and SEB fluxes measured at the AWS_{glac} in 2010 (left panel) and 2012 (right panel): near-surface air temperature (T_z), accumulated precipitation (P ; measured at AWS_{low}), wind speed (U_z), wind direction (U_{dir}), incoming (K_{down}) and reflected (K_{up}) shortwave radiation, and OPEC-derived sensible (Q_H) and latent (Q_E) heat flux. Bottom panel shows the OPEC-derived roughness lengths for momentum (z_{0v}), temperature (z_{0t}) and humidity (z_{0q}), after filtering the OPEC data, and their estimated errors. Shaded in blue are the identified time intervals of prevailing katabatic flow (see text).

10^{-3} m and two orders of magnitude larger than mean $\log z_{0t}$. The overall error of these mean values, expressed as one sigma (\pm a standard deviation), shows uncertainty of one order of magnitude around the mean value (Table 1). To determine z_{0q} for 2010 season, which had no high-quality measurements for z_{0q} ; we thus assume $z_{0q} \approx z_{0t}$ since the equality holds for the mean log values in the 2012 season.

5 3.2 Inter-comparison of bulk methods

We compare 30-min turbulent fluxes of momentum, sensible and latent heat, derived from the OPEC data (observed fluxes) with the modeled fluxes from each bulk scheme. To ensure that the evaluation is performed on high quality data, only the 30-min fluxes that pass the filters in Section 2.3 are used, however, without the 'neutrality' filter and allowing for $U_z > 1 \text{ m s}^{-1}$ (Fig.

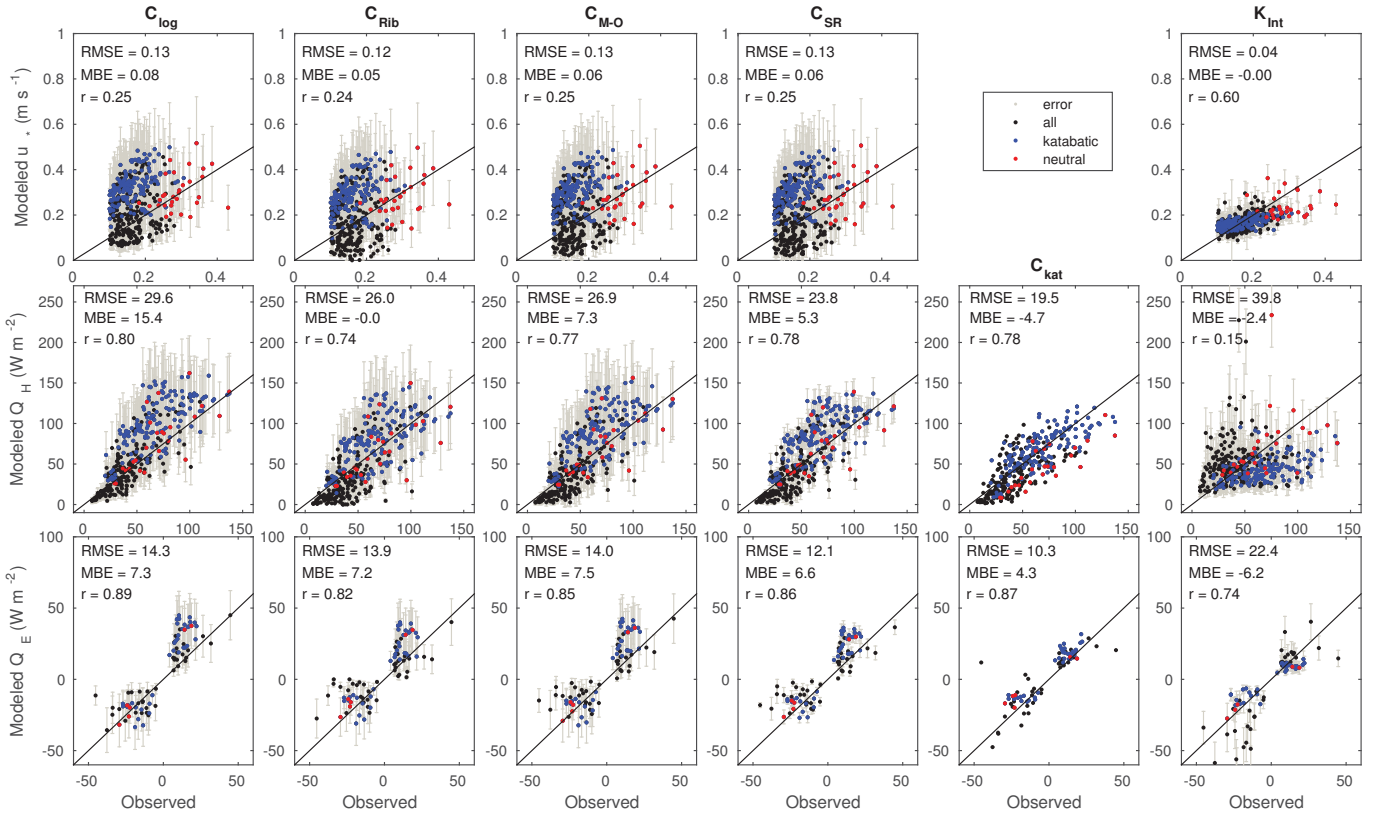


Figure 4. Comparison of 30-min observed (OPEC-derived) versus modeled friction velocity (u_*), sensible (Q_H) and latent (Q_E) heat flux, according to the six bulk methods: C_{\log} , C_{Rib} , $C_{\text{M-O}}$, C_{SR} , C_{kat} , and K_{Int} . Dots and error bars respectively show the mean and standard deviation of Monte Carlo ensembles (see text). No error bars are given for C_{kat} method since it is independent of roughness lengths. Red points denote values during the near-neutral conditions ($|\frac{z_{v,t}}{L}| < 0.1$) only, and blue points indicate values during katabatic flow. Root-mean-square-error (RMSE; W m^{-2}), mean bias error (MBE; W m^{-2}), and Pearson correlation coefficient (r) are provided for each scatter plot.

2). This filtering yielded 239, 222, and 77 values for u_* , Q_H , and Q_E , respectively in 2010, while for 2012 season we obtained 393, 353, and 83 values, respectively. In all methods, if not otherwise mentioned, we assume $Pr=1$, i.e. $K_M = K_H = K_E$.

Modeled fluxes for the 2012 season (y-axis in Fig. 4) are the mean values from the ensemble of Monte Carlo runs with the randomized roughness lengths, whereas the error bars are represented with \pm one standard deviation (σ) of the ensemble. All C-methods poorly simulate u_* ($r=0.25$), with substantial overestimation during katabatic flow, and underestimate u_* during non-katabatic conditions and relatively low wind speeds ($U_z < 3 \text{ m s}^{-1}$). This type of dependency of the bias (modeled minus observed u_*) on the wind speed is present in each C-method (Fig. 5). The K_{Int} method provides the best simulation of u_* ($r=0.60$), while the bias dependence on the wind speed is less pronounced than in the C-methods (Fig. 5). Good performance of K_{Int} method is expected since the parameter K_{max} is optimized to maximize the match between modeled and observed u_* . All C-methods simulate Q_H and Q_E equally well ($r \approx 0.77$) despite their equally poor performance in simulating u_* , while

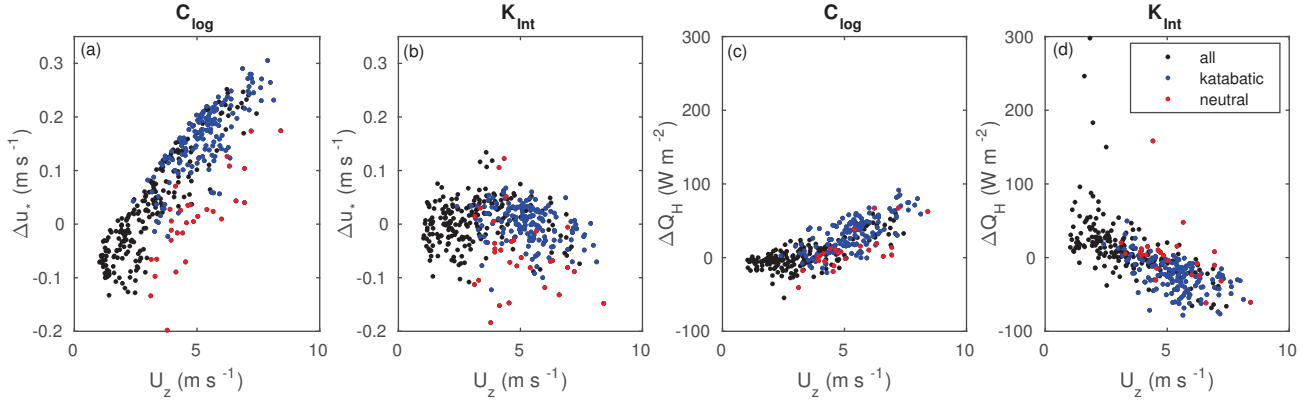


Figure 5. (a-b) Bias (modeled minus observed values) in u_* versus the wind speed, and (c-d) bias in Q_H versus wind speed. Red points denote values during the near-neutral conditions ($|\frac{z_{v,t}}{L}| < 0.1$) only, and blue points indicate values during katabatic flow.

the K_{Int} method performs poorly ($r=0.15$) for Q_H . C_{kat} method performs best in simulating Q_H since its parameter has been optimized with the observed Q_H . The scatter plots for the 2010 season (not shown) are similar to these for the 2012 season, while the correlation values are smaller in 2010 due to smaller sampling period (Table 2).

The performance of the C_{SR} and $C_{\text{M-O}}$ methods accord because the OPEC-derived values for scalar roughness lengths (near-neutral conditions only) largely agree with the estimated values from the surface renewal model (Fig. 6). Large roughness Reynolds numbers (Re_*) estimated for our site indicate a rough flow regime for which the surface renewal model (Andreas, 1987) predicts a scalar roughness length two orders of magnitude smaller than z_{0v} . This prediction is similar to our observed values, especially when the mean log values of roughness lengths rather than their individual 30-min estimates are used. Despite the large scatter of 30-min OPEC-derived $\frac{z_{0t}}{z_{0v}}$ values around the predicted values from the surface renewal model, more than 50 % of the observed values fall between the predictions of Andreas (1987) and those of Smeets and van den Broeke (2008) expected for hummocky ice with $z_{0v} > 1 \times 10^{-3}$ m (Fig. 6).

Intercomparison of the C-methods (Fig. 4) reveals that the performance of $C_{\text{M-O}}$ method is similar to the C_{\log} method. This similarity arises in part because the M-O stability parameter ($\frac{z_{v,t}}{L}$), calculated with the fixed-point iterative scheme of Munro (1989) underestimates the stability during katabatic conditions and overestimates it during conditions with low wind speeds (Fig. 7). The stability corrections that depend on $\frac{z_{v,t}}{L}$ thus have a small effect in modifying the fluxes during the katabatic conditions, while the fluxes are suppressed during the non-katabatic conditions. We also found no correlation between the 30-min OPEC-derived $\frac{z_{v,t}}{L}$ and any of the mean meteorological variables (e.g. temperature, wind speed; Fig. 7), which likely explains the failure of the fixed-point iterative scheme that relies on these dependencies. The poor performance of the stability corrections in the C_{Rib} method also follows from the lack of correlation between Ri_b and the OPEC-derived $\frac{z_{v,t}}{L}$ (Fig. 7). The lack of a relation between Ri_b and $\frac{z_{v,t}}{L}$ disagrees with the proposed stratification-dependent conversion of $\frac{z_{v,t}}{L}$ into Ri_b as presented in Arya (2001). Defining Ri_b through U_z and ΔT (Eq. 24) assumes that the mean variables are a good proxy for the local stability: during the near neutral conditions, ideally characterized by overcast weather with strong winds and relatively

Table 2. Comparison between modeled and OPEC-derived sensible (Q_H) and latent (Q_E) heat fluxes, expressed as root-mean-square-error (RMSE), mean bias error (modeled minus observed; MBE), and Pearson correlation coefficient (r) for 2012 and 2010 (values in parenthesis) observational period, given for a set of six bulk methods and their variants (see text).

Method	Q_H		Q_H	Q_E		Q_E
	RMSE	MBE	r	RMSE	MBE	r
	$W m^{-2}$	$W m^{-2}$		$W m^{-2}$	$W m^{-2}$	
(1) C_{log}	29.6 (28.7)	15.4 (20.6)	0.80 (0.57)	14.3 (11.5)	7.3 (9.7)	0.89 (0.65)
$C_{log} u_*$	15.2 (11.4)	-2.3 (-1.4)	0.87 (0.77)	6.7 (2.9)	1.5 (0.6)	0.94 (0.86)
$C_{log} K_{Int}$	16.4 (13.0)	-4.4 (-1.7)	0.82 (0.66)	7.4 (4.4)	1.0 (1.3)	0.92 (0.73)
(2) C_{Rib}	26.0 (23.7)	0.0 (3.1)	0.74 (0.46)	13.9 (8.7)	7.2 (4.5)	0.82 (0.43)
$C_{Rib} u_*$	26.6 (21.5)	-21.9 (-17.0)	0.84 (0.65)	9.8 (5.0)	2.8 (-2.7)	0.88 (0.65)
(3) C_{M-O}	26.9 (25.3)	7.3 (11.5)	0.77 (0.51)	14.0 (10.0)	7.5 (7.1)	0.85 (0.54)
$C_{M-O} u_*$	20.3 (13.7)	-13.6 (-8.7)	0.84 (0.79)	6.5 (3.0)	1.2 (-0.6)	0.94 (0.85)
$C_{M-O} \frac{z}{L}$	20.1 (18.3)	-5.3 (1.4)	0.78 (0.53)	9.9 (6.4)	4.3 (3.0)	0.88 (0.57)
$C_{M-O} \frac{z}{L} u_*$	22.3 (15.1)	-15.0 (-9.7)	0.80 (0.74)	7.0 (3.3)	0.9 (-1.0)	0.93 (0.82)
$C_{M-O} u_* Pr$	16.5 (12.5)	-8.0 (-6.2)	0.86 (0.78)	6.9 (3.3)	1.7 (0.4)	0.94 (0.81)
(4) C_{SR}	23.8 (28.3)	5.3 (16.1)	0.78 (0.52)	12.1 (11.7)	6.6 (9.0)	0.86 (0.54)
$C_{SR} u_*$	18.7 (10.6)	-11.7 (-2.3)	0.85 (0.80)	6.4 (3.3)	1.3 (1.6)	0.94 (0.86)
$C_{SR} \frac{z}{L}$	18.7 (19.0)	-6.3 (6.2)	0.80 (0.54)	8.9 (7.4)	3.6 (4.7)	0.90 (0.61)
$C_{SR} \frac{z}{L} u_*$	20.8 (12.2)	-13.1 (-2.8)	0.81 (0.73)	6.9 (3.5)	1.0 (1.2)	0.93 (0.82)
(5) C_{kat}	19.5 (17.9)	-4.7 (1.4)	0.78 (0.44)	10.3 (5.2)	4.3 (3.2)	0.87 (0.76)
(6) K_{Int}	39.8 (31.5)	-2.4 (6.8)	0.15 (0.20)	22.4 (13.6)	-6.2 (4.7)	0.74 (0.46)
$K_{Int} Pr$	37.7 (30.6)	2.9 (8.7)	0.26 (0.23)	22.2 (13.6)	-6.2 (5.5)	0.77 (0.45)

low ΔT , Ri_b should be close to zero. On a sloped glacier surface, however, strong winds commonly occur during clear sky conditions with a katabatic flow (Fig. 7). Ri_b close to zero is thus more indicative of strong katabatic flow than neutral stability.

3.3 Analysis of bulk method performance

3.3.1 C-methods

- 5 In the gradient-flux relation, the eddy viscosity is parameterized as a function of z , u_* and M-O stability parameter ($\frac{z}{L}$). Because u_* and $\frac{z}{L}$, in the C-methods, are estimated rather than directly measured, any error in these modeled values can propagate into the flux estimates. Our goal in this section is to investigate the influence of the two variables, u_* and $\frac{z_{v,t}}{L}$, on the bulk method performance. To do so, we estimate the turbulent fluxes from each of the four bulk schemes using the OPEC-derived u_* and Obukhov length (L). Henceforth the notation u_* and/or $\frac{z}{L}$ at the end of each method's name indicates the use of OPEC-derived

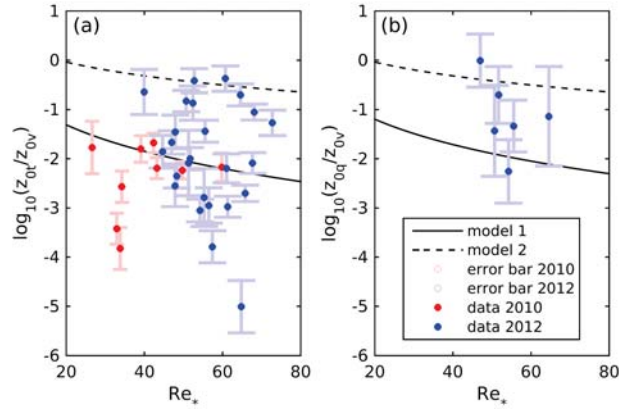


Figure 6. (a) Ratio of roughness lengths for temperature (z_{0t}) and momentum (z_{0v}) versus roughness Reynolds number (Re_*), and (b) ratio of roughness lengths for humidity (z_{0q}) and z_{0v} versus Re_* . Model 1 (solid line) is the theoretical prediction of Andreas (1987), and model 2 (dashed line) is the prediction of Smeets and van den Broeke (2008). Mean log value of z_{0v} specific to each season (Table 1) is used to calculate Re_* .

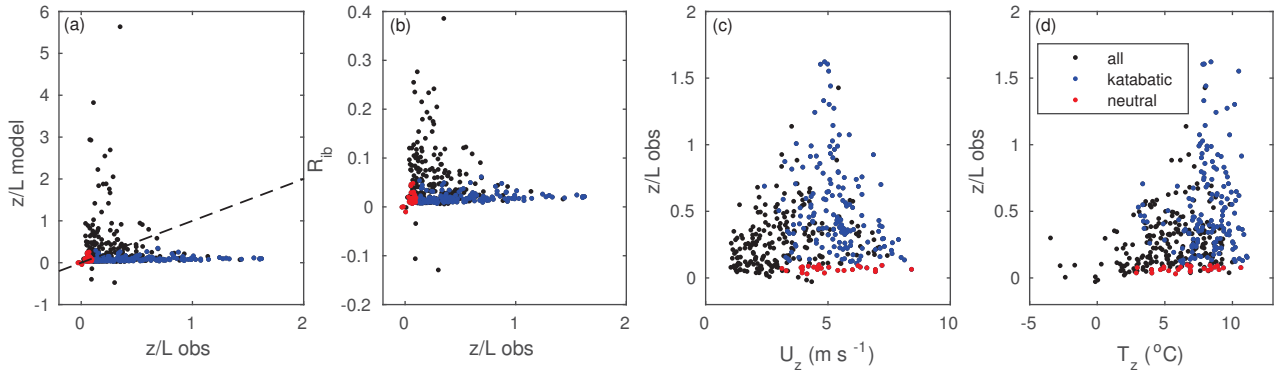


Figure 7. (a) Modeled z/L with the fixed-point iterative scheme in the C_{M-O} method against the OPEC-derived stability parameter (z/L obs), and (b) Bulk Richardson number (Ri_b) against z/L obs. Dashed black line shows 1:1 line. (c) Dependency of z/L obs on the measured wind speed (U_z) and (d) on the near-surface air temperature (T_z). Red (blue) points show values during near-neutral (katabatic) flow conditions.

variables (e.g. $C_{\log u_*}$ method, $C_{M-O} u_* \frac{z}{L}$ method, $C_{SR} \frac{z}{L}$ method). In each scheme we apply mean log roughness lengths (Table 1).

The following results are found for both the 2010 and 2012 seasons: $C_{\log u_*}$ and $C_{SR} u_*$ performed best (lowest RMSE) in simulating the heat fluxes among the C-methods with measured u_* and/or $\frac{z_{v,t}}{L}$ (Table 2). The variance error (scatter of residuals around 1:1 line) in the $C_{\log u_*}$ method is also smaller than in the $C_{M-O} \frac{z}{L}$ method (Fig. 8). Both results suggest that in order to better simulate Q_H , correct estimates of u_* are more important than accurately estimating $\frac{z_v}{L}$. The $C_{\log u_*}$ method

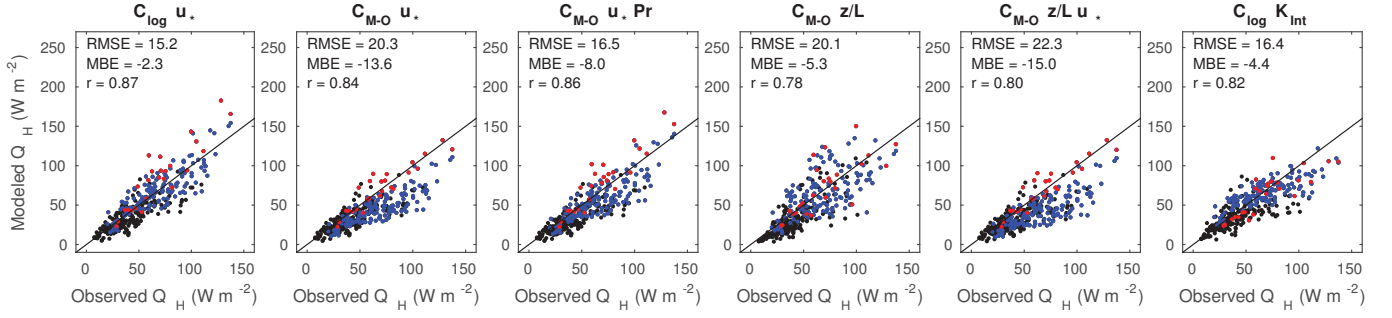


Figure 8. Comparison of 30-min values of observed (OPEC-derived) and modeled sensible heat flux (Q_H) using six different bulk methods: $C_{\log} u_*$, $C_{M-O} u_*$, $C_{M-O} u_* Pr$, $C_{M-O} \frac{z}{L}$, $C_{M-O} \frac{z}{L} u_*$, and $C_{\log} K_{Int}$. Red (blue) points show values during near-neutral (katabatic) flow conditions.

outperforms any C_{M-O} method, even with OPEC-derived u_* and $\frac{z}{L}$. The results for Q_E agree with the results for Q_H . Despite Q_E being less affected by the M-O stability corrections than Q_H , the modeled latent heat fluxes are closer to those observed if the OPEC-derived $\frac{z}{L}$ are used. While the original C-methods overestimate Q_H during the katabatic conditions, the C-methods with stability corrections and measured u_* underestimate the fluxes (Table 2 and Fig. 8).

- 5 Overestimation of Q_H during katabatic conditions has also been shown by Denby and Greuell (2000) and explained by a failure of M-O theory in the presence of a shallow katabatic wind speed maximum. At the wind speed maximum, measured u_* approaches zero, while the C-method assumes constant momentum flux in the surface layer and therefore overestimates u_* . The overestimation is less pronounced for Q_H than for u_* because the reduced turbulence at the wind speed maximum leads to an increase in the air-surface temperature difference, and subsequently an increase in the measured Q_H . When measured u_*
- 10 is used in the C_{M-O} or C_{Rib} method, however, the C-method underestimates Q_H since the air-surface temperature difference alone cannot compensate for the effect of reduced momentum flux. To correct for this bias in Q_H , Pr would need to decrease (i.e. the C-method would need to account for more effective eddy diffusivity than eddy viscosity at the given height). In the absence of wind profile measurements, we can only assume that these effects take place at our site, but we have no observational evidence for the presence of the wind speed maximum. By plotting Pr , derived from Eq. (19) using OPEC-derived Q_H and u_* ,
- 15 against $1/U_z$, we show that $Pr < 1$ during katabatic conditions with high wind speeds (Fig. 9), yielding an average $Pr=0.79$ during the prevailing katabatic flow. Due to a self-correlation between Pr and M-O stability parameter, we do not assess Pr dependence on OPEC-derived $\frac{z}{L}$, however, several studies showed that as the local stability increases Prandtl number decreases, leading to $Pr < 1$ for $\frac{z}{L} > 1$ (Grachev et al., 2007). Setting $Pr=0.79$ in the C_{M-O} method with measured u_* (labeled as $C_{M-O} u_* Pr$) during the katabatic conditions only, improves the performance of the C-method in simulating Q_H (Fig. 8).

20 3.4 C_{kat} method

The optimization of the k parameter yields $k = 4.00 \times 10^{-4}$ and $k = 5.04 \times 10^{-4}$ for the 2010 and 2012 seasons, respectively. When this optimized C_{kat} is used to derive sensible and latent heat fluxes (Eq. (30) and (31)) the modeled fluxes simulate the

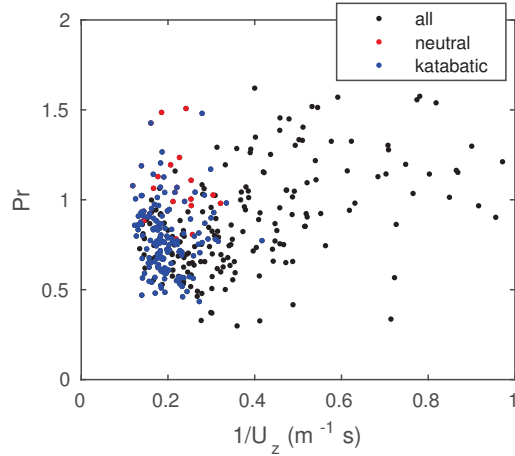


Figure 9. Measured eddy Prandtl number versus the inverse of the wind speed.

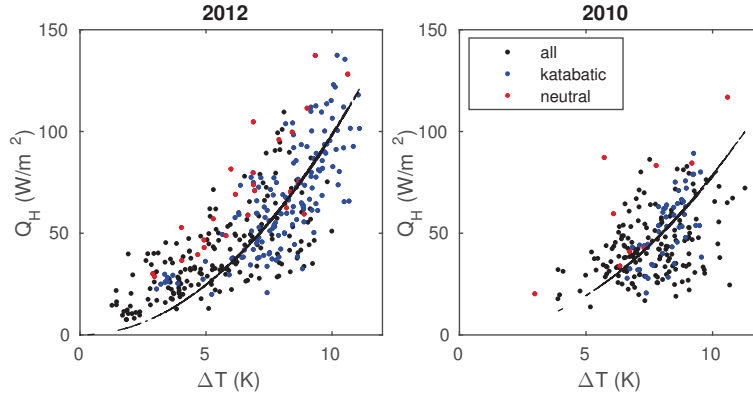


Figure 10. Observed 30-min sensible heat flux (Q_H) versus observed air-surface temperature difference (ΔT), and modeled 30-min Q_H fluxes (black line) according to the C_{kat} method, for the 2012 and 2010 seasons.

observed ones better (smaller RMSE and MBE) than any of the C-methods (1)-(4) (Table 2). There is a quadratic fit between OPEC-derived Q_H and ΔT (Fig. 10), which explains explains 61 % of the variance in the 2012 observations and 19 % of variance in 2010 observations. Our results do not guarantee the validity of Eq. (30), but demonstrate that the simple katabatic model of Oerlemans and Grisogono (2002) reproduces the basic characteristics of katabatic flow at our site. This model, when calibrated, can simulate the turbulent heat exchange more successfully than a common bulk method (C-method).

In the original model (Oerlemans and Grisogono, 2002), C_{kat} depends on the environmental lapse rate, such that C_{kat} decreases as the static stability increases. Our proxy for stability is the difference between on-glacier (AWS_{glac}) and off-glacier temperature (AWS_{up} or AWS_{low}). We assess the standard and log-log correlation between this proxy variable and the 'observed' parameter k , whose values are derived from OPEC-derived Q_H and measured ΔT (Eq. 30) using the same

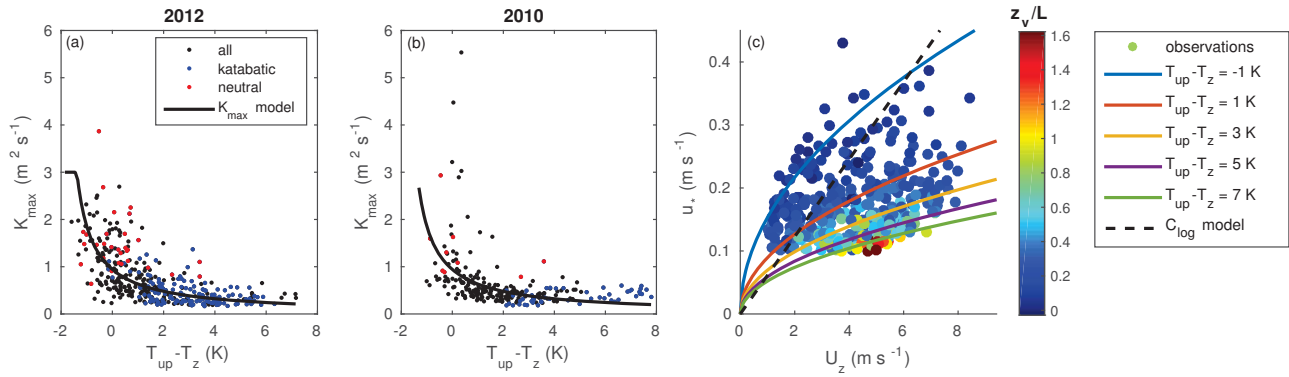


Figure 11. (a-b) K_{max} versus air temperature difference between AWS_{up} and AWS_{glac} , for the 2012 and 2010 seasons. Black (blue) circles represent all (katabatic) observations, and black line is the empirical fit model for K_{max} . (c) OPEC-derived 30-min friction velocity, u_* , versus observed wind speed U_{z_v} , for the 2012 season, where each observation point is colored according to its 30-min value of OPEC-derived $\frac{z_v}{L}$ (colorbar). Solid colored lines are modeled u_* , using the K_{Int} method with $\overline{H}_k=20$ m and optimized K_{max} , for five different stability conditions ($T_{up}-T_z = -1, 1, 3, 5$ and 7 K). Dashed line is modeled u_* using the C_{log} method.

parameter values in Eq. 29 as in the prior optimization method. The correlation analysis, however, has not produced any statistically significant correlations at 95 % confidence level.

3.5 K_{Int} method

The relation between the optimized 30-min K_{max} and the proxy variable is strongly non linear (Fig. 11). The best fitting model (r=0.61, p-value < 0.01) that relates K_{max} to the difference in air temperature at AWS_{up} and AWS_{glac} yields the following power-law relation:

$$K_{max} = 1.86 (T_{up} - T_{zt} + 2)^{-0.98}, \quad (38)$$

where the units for K_{max} are in $m^2 s^{-1}$. Note that this empirical fit is assumed valid within the range of commonly observed values for K_{max} taken from Parmhed et al. (2004): $0.03 m^2 s^{-1} < K_{max} < 3 m^2 s^{-1}$. The power-law model is calibrated on the 2012 data only (Fig. 11), while the 2010 data are used for the model validation. The validation yields statistically significant correlation coefficients between the 30-min modeled and observed K_{max} values (r=0.42, p-value < 0.01). This result indicates that, for our study site, the same empirical model is well applicable to both field seasons (Fig. 11).

The modeled u_* derived from K_{Int} $\frac{z_v}{L}$ method (Eq. (33)) successfully captures two features observed in the data (Fig. 11): (i) a non-linear relation between friction velocity and wind speed; and (ii) a functional dependence of this non-linear relation on the proxy variable for γ , i.e. environmental static stability. For comparison, we also show modeled u_* versus U_{z_v} where the C_{log} method is used to determine the friction velocity (Eq. (16)). For the near-neutral conditions ($|\frac{z_v}{L}| < 0.1$), the C_{log} method performs well because of the near-linear dependence between the OPEC-derived u_* and wind speed. As stability increases, however, the linearity is replaced by a relation that more closely resembles $u_* \propto \sqrt{U_{z_v}}$, where the strength of the

proportionality depends on the environmental static stability, approximated here with the off-glacier and on-glacier temperature difference ($T_{up} - T_z$; Fig. 11).

As already shown (Fig. 4), the K_{Int} method gives the best estimate of the friction velocity and the poorest estimate of Q_H among the bulk methods. This performance pattern indicates that K_M and K_H do not necessarily share the same parametrization. Setting $Pr=0.79$ for katabatic conditions, the K_{Int} method performance in simulating Q_H improves (Table 2). As our final test, we combine the best performing C-method with the K_{Int} method to investigate whether the top performance methods in simulating Q_H and u_* , respectively, when combined, give the best performance overall. This variant of the bulk method calculates the friction velocity from the K_{Int} method (Eq. (33) and (36)), which is then inserted in the C_{log} method's equations for Q_H and Q_E (Eq. (19) and (20)) with $Pr=1$. The results show that this $C_{log}K_{Int}$ 'hybrid' method indeed outperforms all the methods in the study (Table 2 and Fig. 8).

3.6 Error Analysis

We summarize uncertainties between modeled and observed fluxes for the six bulk methods used in the study (four types of C-methods and two types of methods based on the katabatic models) including the 'hybrid' $C_{log}K_{Int}$ method (Fig. 12). Error estimates are shown for the 2012 season only, and agree well with the estimates for the 2010 season. The differences in model versus measured fluxes are presented as a Mean Square Error (MSE, which is equal to $RMSE^2$ from Table 2) decomposed into a squared MBE and a variance error (VE), satisfying $MSE = MBE^2 + VE$. We also show the total errors due to: (1) the uncertainty in the roughness lengths (δQ_{z_0}); (2) the assumption that the surface temperature is at a melting point (δQ_{T_0}); and (3) the systematic error in air temperature due to radiative heating of the temperature sensor ($\delta Q_{T_{bias}}$). The $C_{log}K_{Int}$ hybrid method has the lowest MSE among all bulk methods (Fig. 12). Across the methods, the total error (MSE) is more dominated by the contribution from the variance error (VE) than by the mean bias error. Modeled Q_H with the C_{log} and C_{M-O} method has the largest sensitivity to perturbations in roughness lengths (largest δQ_{z_0}), likely because the uncertainties in both z_{0v} and z_{0t} propagate into the modeled $\frac{z_{v,t}}{L}$ and then, via the fixed-point iterative method, into estimated Q_H . Errors due to perturbations in T_0 (δQ_{T_0}) and bias in T_z ($\delta Q_{T_{bias}}$) are small among all of the methods, except the K_{Int} method. Most importantly, our analysis reveals that the three sources of errors in modeled Q_H (C-methods) are all smaller than the RMSE (Table 2) between modeled and observed values. In other words, the 'internal' model errors are smaller than the bias in the model performance when compared to the measured fluxes. In short, further advances will require improvement to model theory rather than better measurements of input variables.

4 Discussion

We discuss our findings in the order that we introduced uncertainties in the bulk methods, particularly in simulating Q_H on sub-daily scales. Uncertainties originate from (1) assumed rather than measured surface temperature, (2) estimation of roughness lengths, (3) representation of stability corrections in the bulk methods, and (4) an absence of a successful model applicable during very stable conditions and prevailing katabatic flow on sloped glacier surfaces.

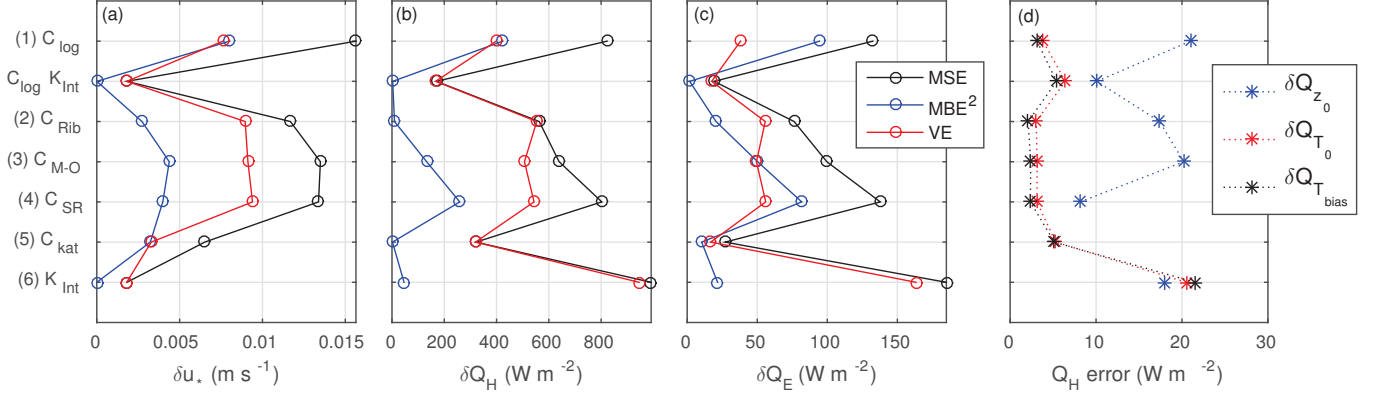


Figure 12. (a-c) Mean Square Error (MSE), squared Mean Bias Error (MBE²) and Variance Error (VE) for the six main bulk methods and the 'hybrid' C_{log}K_{Int} bulk method, for 2012 dataset. Note that MSE = MBE² + VE. (d) Error in Q_H for each bulk method due to: (1) the uncertainty in the roughness lengths (δQ_{z₀}); (2) the assumption that the surface temperature is at a melting point (δQ_{T₀}) and; (3) the systematic error in air temperature due to radiative heating of the temperature sensor (δQ_{T_{bias}}).

1. In the absence of reliable measurements of surface temperature, T₀, we assumed the glacier surface to be at the melting point throughout the observational period. We quantified the uncertainty of this assumption using Monte Carlo sampling. Although significant for the 30-min Q_H estimates, model error (δQ_{T₀}) is negligible over the whole observational period (Fig. 12). This error estimate does not account for any systematic biases in the surface temperature that might occur throughout the observational period (e.g. overnight cooling or refreezing of the surface; changes in surface temperature due to a debris cover or a formation of water channel at the study site). As long as surface temperature fluctuations are small, random, and centered at 0°C, assuming the glacier surface is at the melting point does not cause any substantial error in the simulated fluxes over the entire observational period.
2. To estimate roughness lengths (z_{0v}, z_{0t}, z_{0q}) we used detailed eddy-covariance measurements subjected to a series of corrections and filters. Since the C_{M-O} method is used to derive roughness lengths, it is crucial to assess the roughness lengths during the conditions when the best performance of this method is expected (i.e. during the near-neutral stability conditions when $|\frac{z_{v,t}}{L}| < 0.1$). These conditions rarely occurred in our study, resulting in significantly fewer data. We also assumed the mean log values of z_{0v,0t,0q} are representative of the entire observational period. For both seasons, we obtained z_{0v} that scales to 10⁻³ m, which is characteristic for hummocky ice, while our z_{0t} and z_{0q} estimates turned out to be two orders of magnitude smaller than z_{0v}. These findings are in agreement with the previous studies on glaciers (e.g., Smeets et al., 1998; Conway and Cullen, 2013), while the latter finding is corroborated with the surface renewal theory of Andreas (1987). Similar estimates for z_{0v,0t} from the two different summers at the same site, gives some confidence in our method used to determine roughness lengths.

Taking into account small sample size, the absence of any model for predicting a time-varying roughness lengths, and the lack of any significant changes in the surface properties during the observational period, we used constant values for $z_{0v,0t,0q}$ throughout each season. The uncertainty in the modeled turbulent fluxes due to potentially time-varying roughness lengths was quantified via Monte Carlo sampling (δQ_{z_0}) and was found to be smaller than the RMSE between modeled and observed fluxes. The modeled fluxes are thus poorly simulated due to the poorly defined parameterizations, rather than the poorly constrained roughness lengths. In our Monte Carlo assessment of δQ_{z_0} , we assumed the errors in 30-min $z_{0v,0t,0q}$ to be random and small, rather than having a systematic error due to any potential changes in the actual surface roughness (e.g. snowfall; development of a surface drainage system; inhomogeneous surface ablation). The assumed random errors are attributed to instrumental (measurement) error and to the choice of the threshold stability value for the near-neutral conditions (i.e. $|\frac{z_{v,t}}{L}| < 0.1$). We posit that the large variance error (the scatter in the graphs showing 30-min modeled versus observed turbulent fluxes) arises from the variability in the meteorological mean variables (temperature, wind speed, local stability) rather than the variability in the roughness lengths in time. If, instead of the constant mean log values for $z_{0v,0t,0q}$, we use their observed values specific to each 30-min segment with the near-neutral conditions, the resulting overfit would not improve the performance over all the points because: (i) the overfitted points represent $< 5\%$ of points in the observation period and; (ii) the model performs poorly outside near-neutral conditions.

- When testing the stability corrections in the bulk methods, we assumed that the main predictor of the time-varying bulk exchange coefficient is the time-varying local stability, not the changes in the surface roughness. Using the two common parameterizations to account for the stability corrections (C_{Rib} and C_{M-O} method) we found that neither scheme significantly improves estimates of turbulent fluxes relative to the scheme without the stability corrections (C_{log} method). Our analysis suggests two reasons for this: (i) the empirical stability functions ($\Psi_{v,t,q}$) taken from the literature perform poorly on our data and; (ii) if not directly measured via the eddy-covariance system, $\frac{z_{v,t}}{L}$ metric is impossible to accurately obtain because no functional relationship is found between the metric and the mean meteorological variables (e.g. temperature and wind speed). The latter reason may also explain why measured Rib could not be expressed as a function of OPEC-derived $\frac{z_{v,t}}{L}$. Our findings corroborate previous experimental and theoretical evidence that the M-O theory is poorly applicable over sloping glacier surfaces (Denby and Greuell, 2000). During katabatic flow, the bulk methods that rely on the M-O stability theory strongly overestimate the momentum flux and less strongly overestimate the heat flux. These biases in modeled fluxes are expected in the presence of low-level wind speed maxima that are characteristic during katabatic flow (Denby and Greuell, 2000). We cannot test this expectation since we lack observations of vertical wind profiles for our study, however. The K_{int} method, based on a simple katabatic model, best simulates the friction velocity among all the methods in the study. This method under-performs any other method in simulating Q_H , however, revealing a shortcoming in the assumption that the eddy diffusivity (K_H) and eddy viscosity (K_M) share the same parametrization. One way to improve for this shortcoming, as indicated in our results, would be to introduce a vertically varying eddy Prandtl number, $Pr(z)$.

4. Under stable stratification and in the presence of a low level jet (katabatic flow), intermittent turbulence and gravity waves are present, and steady-state conditions do not exist (e.g., Foken, 2008; Axelsen and van Dop, 2009). We removed the data in our study that failed to satisfy the criteria of stationarity ('stationarity' filter). Assuming that our filtered data sample reflects the steady-state conditions, we found that the K_{Int} method can simulate the 30-min u_* better than the C-methods.

5 Improved performance is due to the parametrization of $K(z)$ which, being independent of u_* , yields the bulk method with $u_* \propto \sqrt{U_z}$. This function $u_*(U_z)$ yields a better fit to the observations than the function $u_* \propto U_z$ characteristic for the C-methods. Despite the absence of vertical profile measurements to adequately test the model for $K(z)$, our derivation of K_{max} as a function of a proxy variable for environmental static stability (i.e. the difference between off-glacier and on-glacier near-surface air temperature), agrees well with the expected dependencies of this parameter on the

10 background potential temperature lapse rate, γ (Parmhed et al., 2004). While our results are promising in terms of the applicability of the K_{Int} -approach to determine the friction velocity, it remains unclear how our static stability variable relates to γ . A possible extension of our work would be to investigate whether a more exact parameterization for K (as a function of z , $\frac{\partial U}{\partial z}$, and $\frac{\partial T}{\partial z}$) in the surface layer can be determined as a solution to the governing equations (heat and momentum balance) for katabatic flow.

15 5 Conclusions

The main objective of the study was to evaluate commonly used bulk methods (C-methods) for simulating turbulent heat fluxes at a sloped glacier surface and compare these with approaches based on a simple katabatic flow model. We investigated the stability components of the bulk methods, and attempted to improve upon these, assuming site-specific roughness length values are available. In addition to the four C-methods (C_{log} , C_{Rib} , $C_{\text{M-O}}$ and C_{SR} method) with different parameterizations

20 for the bulk exchange coefficient (C), we evaluated two types of bulk methods developed from katabatic flow models (C_{kat} and K_{Int} method; Grisogono and Oerlemans, 2001; Oerlemans and Grisogono, 2002). These six bulk schemes, for simulating 30-min turbulent fluxes of momentum, sensible and latent heat, were evaluated against the equivalent fluxes obtained by an open path eddy-covariance (OPEC) method. The evaluation was performed at a point scale of a mountain glacier in BC, using one-level meteorological and OPEC observations over multiple days for two melt seasons. The OPEC data were subjected

25 to a set of quality control corrections and filters prior to analysis. Few 30-min data segments met the criteria for the near-neutral static stability and the steady-state turbulence conditions, revealing a challenge to perform this type of analysis at sites dominated by the stable conditions and drainage (katabatic) flows. Despite the small OPEC data sample available to determine surface roughness lengths ($z_{0v,0t,0q}$) and the high-quality 30-min turbulent fluxes, the evaluation results derived from the two independent field seasons accord. A summary of our main findings include:

30 Bulk exchange coefficients can be derived from the OPEC-derived roughness lengths for neutral stratification, where the mean log values for $z_{0v,0t,0q}$ over the entire period are assumed representative of the actual surface roughness and constant in time. The widely used bulk methods facilitated by the standard meteorological observations on glaciers, provide a good approximation of the OPEC-derived 30-min turbulent fluxes during the neutral stability conditions;

The Monin-Obukhov stability functions widely used in glacier studies perform relatively poorly on our site. The C-methods, with or without the stability corrections, overestimate the sensible heat fluxes (Q_H) over the observational period. This overestimation arises from a positive mean bias in the modeled friction velocity (u_*), and the bias increases with the katabatic wind speed. Without an adequate model for u_* , the use of the stability corrections for Q_H will likely fail. Similar findings derived from a different glacier in this region (Fitzpatrick et al., 2017) suggests the transferability of this finding to other mountain glaciers subject to similar climate;

If OPEC data are not available, $\frac{z_{v,t}}{L}$ cannot be successfully predicted from the mean meteorological observations (e.g. wind speed, air-surface temperature difference). The proposed fixed-point iterative method for predicting $\frac{z_{v,t}}{L}$ suggested by others (Berkowicz and Prahm, 1982; Lee, 1986; Munro, 1989) fails to provide a good approximation of OPEC-derived $\frac{z_{v,t}}{L}$ at our site;

Contrary to the K-theory predictions (Stull, 1988), we found that the relation between the OPEC-derived 30-min u_* and observed wind speed is non linear. Our data reveal $u_* \propto \sqrt{U_z}$, where the constant of proportionality is a nonlinear function of the environmental static stability;

The K_{Int} method outperforms any other bulk scheme in simulating u_* partly because $u_* \propto \sqrt{U_z}$. The K_{Int} method performs poorly in simulating Q_H , however, revealing a shortcoming in the commonly used assumption that eddy viscosity and diffusivity can use the same parametrization. Applying the K_{Int} method to assess u_* , which is then used to assess Q_H in the C_{log} method, yields the best performance across all the bulk methods. The 'hybrid' method, combining a katabatic model to derive the friction velocity and a simple C-method to derive Q_H , works the best in simulating the sensible heat fluxes; and

The bulk exchange coefficient in the K_{Int} method is related to a difference between off-glacier and on-glacier near-surface air temperature, which is a proxy variable for the background potential temperature lapse rate (γ) in the original model of Grisogono and Oerlemans (2001). As expected by the original model and confirmed by our results, the bulk exchange coefficient decreases as the atmospheric stability increases (larger γ in the model or larger temperature difference). Multi-level observations of wind speed and temperature within the boundary layer above a glacier surface are needed to adequately evaluate this model, however.

Author contributions. VR participated in the 2012 field campaign, developed and performed the analysis, and wrote the initial version of the manuscript. BM provided financial and field support and helped prepare and revise the manuscript. JS led the 2010 field campaign and contributed to the manuscript refinement. NF processed the OPEC data and contributed to the manuscript refinement. MAT contributed to the method development. SJD provided logistical support, meteorological data and contributed to the manuscript refinement.

Acknowledgements. Funding supporting this study was provided through the Natural Sciences and Engineering Research Council (NSERC) of Canada (Discovery grants to V. Radić, B. Menounos, S.J. Déry), the Canada Research Chairs Program and Science Horizons. Our eddy covariance system and meteorological equipment were supported by NSERC Research Tools and Instruments grant and Canada Foundation for Innovation grant (S.J. Déry). T. Mlynowski is thanked for the field setup in 2010, and Andrew Duncan for the field support in 2012.

5 Special thanks to Zoran Nesić for all the technical support and training. Branko Grisogono, Christian Schoof, Elisa Mantelli and the two reviewers, Jonathan Conway and Ruzica Dadic, are thanked for discussions and constructive criticism on the initial version of the manuscript.

References

- Anderson, B., Mackintosh, A., Stumm, D., George, L., Kerr, T., Winter-Billington, A., and Fitzsimons, S.: Climate sensitivity of a high-precipitation glacier in New Zealand, *Journal of Glaciology*, 56, 114–128, 2010.
- Andreas, E.: A theory for the scalar roughness and the scalar transfer coefficient over snow and sea ice, *Boundary-Layer Meteorology*, 38, 159–184, doi:10.1007/BF00121562, 1987.
- Andreas, E. L., Persson, P. O. G., Jordan, R. E., Horst, T. W., Guest, P. S., Grachev, A. A., and Fairall, C. W.: Parameterizing Turbulent Exchange over Sea Ice in Winter, *Journal of Hydrometeorology*, 11, 87–104, doi:10.1175/2009JHM1102.1, 2010.
- Arya, S. P.: *Introduction to Micrometeorology*, Academic Press, San Diego, 415 pp, 2001.
- Axelsen, S. L. and van Dop, H.: Large-eddy simulation of katabatic winds. Part 1: Comparison with observations, *Acta Geophysica*, 57, 803–836, doi:10.2478/s11600-009-0041-6, 2009.
- Beedle, M. J., Menounos, B., and Wheate, R.: An evaluation of mass-balance methods applied to Castle Creek Glacier, British Columbia, Canada, *Journal of Glaciology*, 60, 262–276, doi:10.3189/2014JoG13J091, 2014.
- Berkowicz, R. and Prahm, L. P.: Evaluation of the profile method for estimation of surface fluxes of momentum and heat, *Atmos. Environ.*, 16, 2809–2819, 1982.
- Bevington, P. R.: *Data Reduction and Error Analysis for the Physical Sciences*, McGraw-Hill, New York, 1969.
- Bintanja, R. and van den Broeke, M.: Momentum and scalar transfer coefficients over aerodynamically smooth Antarctic surfaces, *Boundary-Layer Meteorology*, pp. 89–111, 1995.
- Braithwaite, R.: Aerodynamic stability and turbulent sensible-heat flux over a melting ice surface, the Greenland ice sheet, *Journal of Glaciology*, 41, 562–571, 1995.
- Braithwaite, R., Konzelmann, T., Marty, C., and Olesen, O.: Reconnaissance study of glacier energy balance in North Greenland, 1993-94, *Journal of Glaciology*, 44, 239–247, 1998.
- Burba, G.: *Eddy Covariance Method for Scientific, Industrial, Agricultural, and Regulatory Applications: A Field Book on Measuring Ecosystem Gas Exchange and Areal Emission Rates*, LI-COR Biosciences, Lincoln, NE, USA, 331 pp, 2013.
- Businger, J., Wyngaard, J., Izumi, Y., and Bradley, E.: Flux-profile relationships in the atmospheric surface layer, *Journal of Atmospheric Sciences*, 28, 181–&, doi:10.1175/1520-0469(1971)028<0181:FPRITA>2.0.CO;2, 1971.
- Clarke, G. K. C., Jarosch, A. H., Anslow, F. S., Radić, V., and Menounos, B.: Projected deglaciation of western Canada in the twenty-first century, *Nature Geoscience*, 8, 372–377, doi:10.1038/NGEO2407, 2015.
- Conway, J. and Cullen, N.: Constraining turbulent heat flux parameterization over a temperate maritime glacier in New Zealand, *Ann. Glaciol.*, 54, 41–51, doi:10.3189/2013AoG63A604, 2013.
- Cullen, N. J., Mölg, T., Kaser, G., Steffen, K., and Hardy, D. R.: Energy-balance model validation on the top of Kilimanjaro, Tanzania, using eddy covariance data, *Annals of Glaciology*, 46, 227–233, doi:10.3189/172756407782871224, 2007.
- Denby, B. and Greuell, W.: The use of bulk and profile methods for determining surface heat fluxes in the presence of glacier winds, *Journal of Glaciology*, 46, 445–452, doi:10.3189/172756500781833124, 2000.
- Déry, S. J., Clifton, A., MacLeod, S., and Beedle, M. J.: Blowing Snow Fluxes in the Cariboo Mountains of British Columbia, Canada, *Arctic Antarctic and Alpine Research*, 42, 188–197, doi:10.1657/1938-4246-42.2.188, 2010.
- Dyer, A.: A review of flux-profile-relationships, *Boundary-Layer Meteorology*, 7, 363–372, 1974.

- Fairall, C., Persson, P., Bradley, E., Payne, R., and Anderson, S.: A new look at calibration and use of Eppley precision infrared radiometers. Part I: Theory and application, *Journal of Atmospheric and Oceanic Technology*, 15, 1229–1242, doi:10.1175/1520-0426(1998)015<1229:ANLACA>2.0.CO;2, 1998.
- Fitzpatrick, N., Radić, V., and Menounos, B.: Surface Energy Balance Closure and Turbulent Flux Parameterization on a Mid-Latitude Mountain Glacier, Purcell Mountains, Canada, *Frontiers in Earth Science*, 5, doi:10.3389/feart.2017.00067, 2017.
- Foken, T.: *Micrometeorology*, Springer, Berlin, Heidelberg, 308 pp, 2008.
- Forrer, J. and Rotach, M.: On the turbulence structure in the stable boundary layer over the Greenland ice sheet, *Boundary-Layer Meteorology*, 85, 111–136, doi:10.1023/A:1000466827210, 1997.
- Gillett, S. and Cullen, N. J.: Atmospheric controls on summer ablation over Brewster Glacier, New Zealand, *International Journal of Climatology*, 31, 2033–2048, doi:10.1002/joc.2216, 2011.
- Grachev, A. A., Andreas, E. L., Fairall, C. W., Guest, P. S., and Persson, P. O. G.: On the turbulent Prandtl number in the stable atmospheric boundary layer, *Boundary-Layer Meteorology*, 125, 329–341, doi:10.1007/s10546-007-9192-7, 2007.
- Greuell, J. W., V. d. B. M. R. K. W. R. C. S. P. and Struijk, I.: PASTEX: A Glacio-Meteorological Experiment on the Pasterze (Austria), in: *Field Report*. Institute for Marine and Atmospheric Research, Utrecht University, p. 34, 1994.
- Greuell, W. and Oerlemans, J.: Energy balance calculations on and near Hintereisferner (Austria) and an estimate of the effect of greenhouse warming on ablation., in: *Glacier fluctuations and climatic change*, edited by Oerlemans, J., vol. 6 of *Glaciology and Quaternary Geology*, pp. 305–323, 1989.
- Grisogono, B. and Oerlemans, J.: Katabatic flow: Analytic solution for gradually varying eddy diffusivities, *Journal of the Atmospheric Sciences*, 58, 3349–3354, doi:10.1175/1520-0469(2001)058<3349:KFASFG>2.0.CO;2, 2001.
- Guo, X., Yang, K., Zhao, L., Yang, W., Li, S., Zhu, M., Yao, T., and Chen, Y.: Critical Evaluation of Scalar Roughness Length Parametrizations Over a Melting Valley Glacier, *Boundary-Layer Meteorology*, 139, 307–332, doi:10.1007/s10546-010-9586-9, 2011.
- Harrison, R.: Natural ventilation effects on temperatures within Stevenson screens, *Q. J. R. Meteorol. Soc.*, 136, 253–259, doi:10.1002/qj.537, 2010.
- Hay, J. and Fitzharris, B.: A comparison of the energy-balance and bulk-aerodynamic approaches for estimating glacier melt, *Journal of Glaciology*, 34, 145–153, 1988.
- Hock, R.: Glacier melt: a review of processes and their modelling, *Progress in physical geography*, 29, 362–391, doi:10.1191/0309133305pp453ra, 2005.
- Hock, R. and Holmgren, B.: Some aspects of energy balance and ablation of Storglaciaren, northern Sweden, *Geografiska Annaler*, 78A, 121–131, doi:10.2307/520974, 1996.
- Hock, R. and Holmgren, B.: A distributed surface energy-balance model for complex topography and its application to Storglaciaren, Sweden, *Journal of Glaciology*, 51, 25–36, doi:10.3189/172756505781829566, 2005.
- Holtslag, A. and de Bruin, H.: Applied modeling of the nighttime surface energy balance over land, *Journal of Applied Meteorology*, 27, 689–704, doi:10.1175/1520-0450(1988)027<0689:AMOTNS>2.0.CO;2, 1988.
- Horst, T. W. and Lenschow, D. H.: Attenuation of Scalar Fluxes Measured with Spatially-displaced Sensors, *Boundary-Layer Meteorology*, 130, 275–300, doi:10.1007/s10546-008-9348-0, 2009.
- Huintjes, E., Neckel, N., Hochschild, V., and Schneider, C.: Surface energy and mass balance at Purogangri ice cap, central Tibetan Plateau, 2001–2011, *Journal of Glaciology*, 61, 1048–1060, doi:10.3189/2015JoG15J056, 2015.

- Hulth, J., Rolstad, C., Trondsen, K., and Rodby, R. W.: Surface mass and energy balance of Sorbreen, Jan Mayen, 2008, *Annals of Glaciology*, 51, 110–119, 2010.
- Huwald, H., Higgins, C. W., Boldi, M.-O., Bou-Zeid, E., Lehning, M., and Parlange, M. B.: Albedo effect on radiative errors in air temperature measurements, *Water Resources Research*, 45, doi:10.1029/2008WR007600, 2009.
- 5 Ibrom, A., Dellwik, E., Flyvbjerg, H., Jensen, N. O., and Pilegaard, K.: Strong low-pass filtering effects on water vapour flux measurements with closed-path eddy correlation systems, *Agricultural and Forest Meteorology*, 147, 140–156, doi:10.1016/j.agrformet.2007.07.007, 2007.
- Jarosch, A. H., Anslow, F., and Shea, J.: A versatile tower platform for glacier instrumentation: GPS and Eddy Covariance Measurements, pp. 52–55, extended abstracts and recommendations from the IASC Workshop on the Use of Automatic Measuring Systems on Glaciers, 10 23–26 March 2011, Pontresina, Switzerland, 2011.
- Klok, E. J., Nolan, M., and Van den Broeke, M. R.: Analysis of meteorological data and the surface energy balance of McCall Glacier, Alaska, USA, *Journal of Glaciology*, 51, 451–461, doi:10.3189/172756505781829241, 2005.
- Konzelmann, T. and Braithwaite, R.: Variations of ablation, albedo and energy balance at the margin of the Greenland ice sheet, Kronprins Christian Land, eastern north Greenland, *Journal of Glaciology*, 41, 174–182, 1995.
- 15 Lee, C. B.: Simple model and climatological aspects of the structure of the convective boundary layer, *Atmos. Environ.*, 20, 705–714, 1986.
- Lettau, H.: *Atmosphärische Turbulenz*, Leipzig: Akademische Verlagsgesellschaft., 1934.
- Li, Z., Lyu, S., Zhao, L., Wen, L., Ao, Y., and Wang, S.: Turbulent transfer coefficient and roughness length in a high-altitude lake, Tibetan Plateau, *Theoretical and Applied Climatology*, 124, 723–735, doi:10.1007/s00704-015-1440-z, 2016.
- MacDougall, A. H. and Flowers, G. E.: Spatial and Temporal Transferability of a Distributed Energy-Balance Glacier Melt Model, *Journal of Climate*, 24, 1480–1498, doi:10.1175/2010JCLI3821.1, 2011.
- 20 Machguth, H., Paul, F., Hoelzle, M., and Haeberli, W.: Distributed glacier mass-balance modelling as an important component of modern multi-level glacier monitoring, *Annals of Glaciology*, 43, 335–343, doi:10.3189/172756406781812285, 2006.
- Mölg, T., Cullen, N. J., Hardy, D. R., Kaser, G., and Klok, L.: Mass balance of a slope glacier on Kilimanjaro and its sensitivity to climate, *International Journal of Climatology*, 28, 881–892, doi:10.1002/joc.1589, 2008.
- 25 Mölg, T., Cullen, N. J., Hardy, D. R., Winkler, M., and Kaser, G.: Quantifying Climate Change in the Tropical Midtroposphere over East Africa from Glacier Shrinkage on Kilimanjaro, *Journal of Climate*, 22, 4162–4181, doi:10.1175/2009JCLI2954.1, 2009.
- Moncrieff, J., Clement, R., Finnigan, J., and Meyers, T.: Averaging, detrending, and filtering of eddy covariance time series, In: *Handbook of Micrometeorology: A guide for Surface Flux Measurement and Analysis* (eds X. Lee, W. Massman, B. Law, X. Lee, W. Massman, and B. Law). Kluwer Academic Publishers, the Netherlands, pp. 7–31, 2004.
- 30 Munro, D.: Surface roughness and bulk heat transfer on a glacier: comparison with eddy correlation, *Journal of Glaciology*, 35, 343–348, 1989.
- Munro, D.: A surface energy exchange model of glacier melt and net mass balance, *International Journal of Climatology*, 11, 689–700, 1991.
- O’Brien, J. J.: A note on the vertical structure of the eddy exchange coefficient in the planetary boundary layer, *J. Atmos. Sci.*, 27, 1213–1215, 1970.
- 35 Oerlemans, J.: The atmospheric boundary layer over melting glaciers, In: *Clear and Cloudy Boundary Layers*, Royal Netherlands Academy of Arts and Sciences, 129–153, 1998.
- Oerlemans, J.: Analysis of a 3 year meteorological record from the ablation zone of Morteratschgletscher, Switzerland: energy and mass balance, *Journal of Glaciology*, 46, 571–579, doi:10.3189/172756500781832657, 2000.

- Oerlemans, J. and Grisogono, B.: Glacier winds and parameterisation of the related surface heat fluxes, *Tellus Series A - Dynamic Meteorology and Oceanography*, 54, 440–452, doi:10.1034/j.1600-0870.2002.201398.x, 2002.
- Oerlemans, J., Bjornsson, H., Kuhn, M., Obleitner, F., Pálsson, F., Smeets, C., Vugts, H., and De Wolde, J.: Glacio-meteorological investigations on Vatnajökull, Iceland, Summer 1996: An overview, *Boundary-Layer Meteorology*, 92, 3–26, doi:10.1023/A:1001856114941, 1999.
- Parmhed, O., Oerlemans, J., and Grisogono, B.: Describing surface fluxes in katabatic flow on Breidamerkurjökull, Iceland, *Quarterly Journal of the Royal Meteorological Society*, 130, 1137–1151, doi:10.1256/qj.03.52, 2004.
- Prandtl, L.: *The mechanics of viscous fluids (Aerodynamic theory)*, Berlin: Durand (ed.), vol. III, division G., 1934.
- Prandtl, L.: *Führer durch die Strömungslehre*, Vieweg und Sohn, 648 pp., 1942.
- 10 Prinz, R., Nicholson, L. I., Mölg, T., Gurgiser, W., and Kaser, G.: Climatic controls and climate proxy potential of Lewis Glacier, Mt. Kenya, *The Cryosphere*, 10, 133–148, doi:10.5194/tc-10-133-2016, 2016.
- Radić, V. and Hock, R.: Glaciers in the Earth’s Hydrological Cycle: Assessments of Glacier Mass and Runoff Changes on Global and Regional Scales, *Surveys in Geophysics*, 35, 813–837, doi:10.1007/s10712-013-9262-y, 2014.
- Radić, V., Bliss, A., Beedlow, A. C., Hock, R., Miles, E., and Cogley, J. G.: Regional and global projections of twenty-first century glacier mass changes in response to climate scenarios from global climate models, *Climate Dynamics*, 42, 37–58, doi:10.1007/s00382-013-1719-7, 2014.
- 15 Reijmer, C. H. and Hock, R.: Internal accumulation on Storglaciären, Sweden, in a multi-layer snow model coupled to a distributed energy- and mass-balance model, *Journal of Glaciology*, 54, 61–72, doi:10.3189/002214308784409161, 2008.
- Scotanus, P., Nieuwstadt, F., and Debruin, H.: Temperature measurement with a sonic anemometer and its application to heat and moisture fluxes, *Boundary-Layer Meteorology*, 26, 81–93, doi:10.1007/BF00164332, 1983.
- 20 Sicart, J., Wagnon, P., and Ribstein, P.: Atmospheric controls of the heat balance of Zongo Glacier (16 degrees S, Bolivia), *Journal of Geophysical Research-Atmospheres*, 110, doi:10.1029/2004JD005732, 2005.
- Sicart, J. E., Hock, R., Ribstein, P., Litt, M., and Ramirez, E.: Analysis of seasonal variations in mass balance and meltwater discharge of the tropical Zongo Glacier by application of a distributed energy balance model, *Journal of Geophysical Research-Atmospheres*, 116, doi:10.1029/2010JD015105, 2011.
- 25 Smeets, C., Duynkerke, P., and Vugts, H.: Turbulence characteristics of the stable boundary layer over a mid-latitude glacier. Part I: A combination of katabatic and large-scale forcing, *Boundary-Layer Meteorology*, 87, 117–145, doi:10.1023/A:1000860406093, 1998.
- Smeets, C. J. P. P. and van den Broeke, M. R.: The parameterisation of scalar transfer over rough ice, *Boundary-Layer Meteorology*, 128, 339–355, doi:10.1007/s10546-008-9292-z, 2008.
- 30 Stull, R.: *An Introduction to Boundary Layer Meteorology*, Kluwer Acad. Publ., Dordrecht, Boston, London, 666 pp., 1988.
- Tanner, B. D., Swiatek, E., and Greene, J. P.: Density fluctuations and use of the krypton hygrometer in surface flux measurements, in: *Management of irrigation and drainage systems: integrated perspectives*, edited by: Allen, R. G., American Society of Civil Engineers, New York, NY, 1993.
- van den Broeke, M.: Characteristics of the lower ablation zone of the west Greenland ice sheet for energy-balance modelling, *Annals of Glaciology*, 23, 160–166, 1996.
- 35 van den Broeke, M., Van As, D., Reijmer, C., and Van De Wal, R.: Sensible heat exchange at the antarctic snow surface: A study with automatic weather stations, *International Journal of Climatology*, 25, 1081–1101, doi:10.1002/joc.1152, 2005.

- van der Avoird, E. and Duynkerke, P.: Turbulence in a katabatic flow - Does it resemble turbulence in stable boundary layers over flat surfaces?, *Boundary-Layer Meteorology*, 92, 39–66, 1999.
- Wagnon, P., Sicart, J., Berthier, E., and Chazarin, J.: Wintertime high-altitude surface energy balance of a Bolivian glacier, Illimani, 6340 m above sea level, *Journal of Geophysical Research-Atmospheres*, 108, doi:10.1029/2002JD002088, 2003.
- 5 Webb, E., Pearman, G., and Leuning, R.: Correction of the flux measurements for density effects due to heat and water vapour transfer, *Quarterly Journal of the Royal Meteorological Society*, 106, 85–100, doi:10.1002/qj.49710644707, 1980.
- Webb, E. K.: Profile relationships: the log-linear range, and extension to strong stability, *Quarterly Journal of the Royal Meteorological Society*, 96, 67–&, doi:10.1002/qj.49709640708, 1970.
- Wilczak, J., Oncley, S., and Stage, S.: Sonic anemometer tilt correction algorithms, *Boundary-Layer Meteorology*, 99, 127–150,
10 doi:10.1023/A:1018966204465, 2001.