



THE UNIVERSITY of EDINBURGH
School of Geosciences

Andreas Vieli
Editor, The Cryosphere

July 19, 2017

Dear Prof. Vieli,

Thank you for considering our manuscript 'Rapidly-changing subglacial hydrology pathways at a tidewater glacier revealed through simultaneous observations of water pressure, supraglacial lakes, meltwater plumes and surface velocities'. We are grateful to the reviewers for providing constructive feedback, which has enabled us to improve the manuscript.

We have made significant changes to our manuscript following the comments we received. Throughout the manuscript we have added suitable terminology and better descriptions where needed. Alternative controls on ice velocity (i.e. marine influences and glacier dynamics) have been proposed in the Interpretation and Discussion sections. A scenario has been included to suggest that the borehole water-pressure record may not represent an active channel system. Figure 5 has been edited to include three additional velocity maps to better show the upglacier-propagation of the early-melt season speed-up event. We also address the concerns regarding the inclusion of the entire borehole pressure record and the associated GPS velocities from the borehole site.

Please find below detailed responses to the main points raised by each of the reviewers, along with a version of our manuscript highlighting the changes we have made to answer the reviewer comments. We felt it was unnecessary to outline all the minor comments raised by the reviewers here. These comments and resulting corrections can be found in the public responses to each of the reviewers. We refer to line numbers in our manuscript throughout our responses outlined here. These are the correct line numbers in the manuscript with the changes incorporated. We have endeavoured to carefully consider and address all concerns and return the manuscript in a publication-ready state.

Sincerely,

Penelope How

Reviewer 1: Shin Sugiyama

This study combined several different observations and numerical analysis to reveal the evolution of glacier hydrology over one summer melt season. This kind of integrated observational data set is available at only a few limited glaciers, thus presented data are valuable to improve our understanding of the hydrology of tidewater glaciers. Text is very well written and nicely organized, which clearly explains relatively complex methodology and observational results. I like the way of interpretation, first in chronological order in Section 6 and then discussion on selected important processes in Section 7. Plots and photographs are carefully prepared. Overall, I find the manuscript is already in a good standard and interesting to many of the journal readers.

The interpretation and discussion on the glacier hydrology are reasonable, but they are based on superficial observations and not much supported by direct evidences. I agree that they are likely scenarios, but other possibilities should be also mentioned. I listed such comments on the authors interpretations followed by relatively minor comments and suggestions, which can be considered for revision.

We would like to thank the Shin Sugiyama for his comments and positive response to our manuscript. Sugiyama's enthusiasm and curiosity for the subject is evident in his feedback, which is very refreshing to read. We have edited our manuscript accordingly, including edits to Figure 2, the inclusion of glacier dynamics as an explanation for the cause of the lake drainage at the beginning of the 2014 melt season, and the inclusion of a scenario where the borehole pressure does not represent basal conditions in the region. Details of our response to the reviewer's three key comments are outlined subsequently.

Major comments

1. I understand the borehole pressure was recorded from September 2013. Why not show all the data from the beginning of the observation period? Water pressure over one year period provides insights into basal conditions as well as the connectivity of the borehole to the subglacial hydrological system. At least, overview of the pressure record over the entire period should be described in the text.

The borehole pressure record covers a 14-month period from September 2013 to December 2014. We understand that this is a very valuable dataset that should be shared with the scientific community as soon as possible. However, it was decided to only focus on the 2014 melt season because of two main reasons:

- We believe that the inclusion of the whole record is beyond the scope of the paper. The inclusion of the whole record may detract from the key aim in this paper, which is to build a detailed theoretical model of the hydrology at the glacier terminus of a tidewater glacier during a single melt season. We believe that the entire dataset is not needed to fulfil this aim.
- The beginning of the record (September 2013–March 2014) is strikingly different from the rest of the record. For instance, basal water-pressure appears to exhibit strong, consistent diurnal variability (roughly between 10–50 kPa) from September 2013–March 2014, whilst the rest of the record does not indicate any diurnal variability. This may be because the sensor took a while to settle and give consistent readings, or basal pressure drastically changed over the monitoring period, or the sensor may have been located on a different part of the bed and was subject to a different pressure/hydrological environment. This in itself is an interesting observation and we are still attempting to understand this. Once we have gained a better understanding (and potentially integrated it with subglacial hydrology modelling), it is intended to publish the borehole dataset in its entirety at a later date in a CRIOS project publication.

For these reasons, the entire borehole record will not be included here. Also, an overview will not be included in the text because we believe that the significant difference in the record from September 2013 to March 2014 does not reflect the subglacial conditions in the 2014 melt season.

2. I wonder if glacier dynamics can be the cause of the lake drainage. When the glacier accelerates near the front, a longitudinally stretching flow regime is enhanced. This causes crevasse opening and increases chance of lake drainage. Assuming that such acceleration initiates near the glacier front and propagates upglacier, the observed lake drainage can be explained by this process.

Section 7.2 (Upward-propagating supraglacial lake drainage) outlines the dynamics of the three lake clusters monitored in this study and compares their dynamics to other observations from the literature. The lakes in Cluster 1 are focused on in particular because of the coincident timing of their drainage in relation to changes in velocity, runoff and plume activity. The nature of their drainage is discussed in relation to hydrology and it is hypothesised that their drainage is related to their connectivity to efficient drainage in the subglacial environment. Glacier dynamics were not discussed here to avoid repetition with Section 7.5 (Implications for subglacial dynamics).

However, the reviewer rightfully points out that glacier dynamics may be the cause of the lake drainage and the reader may gain the impression that the drainage of the lakes in Cluster 1 is exclusively linked to hydraulic connectivity from the original manuscript. Glacier dynamics may also play a key role in their drainage. Longitudinal stretching is likely to be enhanced at the beginning of the season when the glacier begins to accelerate and this could, in turn, promote the likelihood of lake drainage. As suggested by the reviewer, this hypothesis has now been included in section 7.2 to provide a more detailed explanation for the drainage of these lakes. It is suggested that their drainage may be related to glacier dynamics as well as glacier hydrology:

‘The lakes in Cluster 1 are of particular interest because of the coincident timing of their drainage in relation to changes in surface velocities, runoff, and activation of the plume at the beginning of the melt season. This suggests that these lakes are linked to a common channelised system when they drain. The upward-propagating nature of their drainage indicates that channels develop in an upglacier progression as reflected in the timing of their connection to the subglacial environment. The hydraulic potential modelling supports this as it indicates that Cluster 1 may be situated close to a large channel/flow accumulation pathway. Glacier dynamics may also play a key role in the cause of this lake drainage. Longitudinal stretching occurs as the glacier accelerates at the beginning of the season, which facilitates the opening of crevasses and increases the chance of lake drainage. The upward-propagating nature of the drainage may be a result of this early-season acceleration, assuming that it initiates at the glacier front and propagates upglacier.’ (Section 7.2, second paragraph)

3. Throughout the paper, the authors assume the borehole pressure represents the subglacial water pressure over the region. Nevertheless, the lack of short-term pressure variations gives me an impression that the borehole is not well connected to active subglacial drainage system. The pressure drops in September, but it is only 15 m out of 280 water depth. I agree that the authors interpretation is one of likely scenarios, but it is worth mentioning that there is a possibility that the borehole pressure does not represent basal conditions in the region.

Hydraulic potential modelling suggests that the borehole is located close to/within the catchment of an efficient channel system, and thus the record reflects basal water-pressure in a well connected region of the glacier bed. However, the borehole record shows few short-term variations over the entire study period that this manuscript covers (May–September 2014), which suggests that the borehole is isolated from the active subglacial drainage system.

The reviewer is right to point out that there is a possibility that the borehole may not be located in an efficient drainage catchment based on the lack of short-term pressure variations. A paragraph has been added to Section 7.4 (Subglacial drainage of Kronebreen) to address this point:

‘Few short-term pressure variations are observed in the water-pressure record from May–September 2014, apart from the significant drop in pressure at the end of the melt season. It is possible that the borehole is located on an area of the bed that is not well connected to an active, efficient drainage system. However, changes in water-pressure have been observed to coincide with other features in the hydrological system (i.e. plume activity and supraglacial lake drainage), which suggests that the borehole is hydraulically connected to some degree. This is also supported by the modelled hydraulic potential, which indicates that the borehole is located close to, or possibly within, an efficient drainage catchment.’ (Section 7.4, second paragraph)

Reviewer 2

The manuscript presents a useful, multi-faceted dataset, but currently the analysis of the data is simplistic and not fully supported by the evidence presented (for example, suggestions that tides influence the timing of plume pulses). As a result the conclusions are rather vague, and less significant than they could be. Also, it seems as though from the outset that hydrology was identified as the principal control on ice dynamics, and other potential factors have been ignored.

We would like to thank the reviewer for their comments and constructive response to our manuscript. Their attention to detail has been very valuable for addressing the key points outlined. The authors have taken time and care to respond to each of these points.

We have edited our manuscript accordingly, including the proposal of alternative controls on ice velocity, and revisions to Figure 5 and associated descriptions concerning the observed early-melt season speed-up event. Details of our responses to the major comments are outlined below.

Major comments

1. No attempt is made to investigate alternative controls on ice velocity apart from variations in subglacial hydrology. This is especially pertinent for the early season flushing event which causes the up-glacier drainage of the supraglacial lakes.

The main focus of this manuscript is to examine subglacial hydrology at a tidewater glacier, and investigate its influence on glacier dynamics, including ice velocity. The authors felt that investigating alternative controls on ice velocity was beyond the scope of the study, and little data was collected to adequately examine other influences (i.e. calving dynamics and oceanic forcing). However, the reviewer rightfully emphasises throughout their comments that the exploration of other influences is important to presenting a rounded paper that is not weighted towards one set of influences. There is a risk that, in the manuscript’s current state, the reader could misinterpret subglacial hydrology as the sole control on ice velocity.

For this reason, the manuscript has been extensively altered to better represent alternative controls on subglacial hydrology. A large effort has been made to better outline all alternative influences, especially in the interpretation and discussion sections where we begin to introduce explanations and ideas concerning the changes we see at Kronebreen over the 2014 melt season. We hope that this is reflected in the detailed responses to subsequent comments. To summarise here, the following alternative controls on ice velocity have now been included in the manuscript:

- Changes in calving activity
- Tidal influences
- Changes in fjord conditions (e.g. subsurface temperature)

- Basal frictional melting
- Ice thickness and shallowness

In particular, changes in calving activity have been more thoroughly explored as an explanation for the ‘flushing event’ that is observed at the beginning of the melt season.

These alternative controls have been outlined in the interpretation section (Section 6), explored further in the discussion section (Section 7) if needed, and acknowledged in the conclusion section (Section 8). Additional datasets (such as tidal data, calving activity, and fjord temperature) have not been included to examine these alternative controls within this study. The authors argue that too much focus on these aspects will detract away from the main focus of the paper which is to investigate subglacial hydrology and its influence on glacier dynamics. The authors wish to retain one of the main messages of the study – that, in addition to glacier dynamics and marine influences, subglacial hydrology plays a vital role in ice velocity at tidewater glaciers.

2. The borehole water pressure gradually decreases while ice velocity is increasing, which does not tie in with your explanations of ice motion being controlled by the location of efficient/inefficient drainage and the position of regions where water is stored and evacuated from (pg. 1).

Reviewer 1 previously highlighted that the borehole water-pressure record may not have strong connectivity to the active drainage catchment of the glacier, based on similar observations to those made here. A gradual decrease in water-pressure at the borehole whilst ice velocity increases suggests that the borehole is effectively isolated from the main drainage system.

However, small, coinciding changes have been observed between water-pressure and other observed signals for subglacial hydrology – for example, the observed pressure drop in the early-season ‘flushing event’ which coincides with the activation of the main plume and the drainage of the supraglacial lakes. Such changes indicate that the borehole is influenced by changes in pressure within the active drainage catchment. This is supported by the hydraulic potential modelling, which shows that the borehole is likely to be located within, or at least near to, an active channel network.

The manuscript has been changed to better convey these possible scenarios. Also, modifications have been made in Section 6, 7 and 8 (the Interpretation, Discussion and Conclusion sections) where arguments have been supported with evidence from the borehole water-pressure record. These have been made in an attempt to clarify that the borehole record may not be connected to the active drainage system.

3. The description of seasonal variations in ice flow (i.e. that the speedup is constrained to the southerly part of the near-terminus region) does not seem to be supported by the example velocity images shown. It would be useful to produce some plots showing relative changes in ice velocity, so that the reader can see the justification for the discussion.

During the 2014 melt season, sequential velocity maps from TerraSAR-X image pairs show an early-melt season speed-up which initiates at the terminus and propagates upglacier. The fastest velocities are seen in the southern/central region of the glacier tongue ($>2.4 \text{ md}^{-1}$), whilst velocities in the north region generally are less ($<2.4 \text{ md}^{-1}$). The high velocities subside by August. A second speed-up is observed in September, which propagates upglacier in a similar manner. The authors realise that the wording used to describe these events was misleading. High velocities are constrained to the southern/central region of the glacier tongue, not the speed-up itself. This has now been changed throughout the manuscript to better convey this, and hopefully this will make more sense in relation to the velocity maps presented in Figure 5.

It was challenging to convey all the information regarding the velocities in one figure, so three sequential velocity maps were chosen for Figure 5 that best represented the speed-up in the early-melt season. The reviewer’s comment highlights that the images used in Figure 5, along with descriptions of

the velocity event, did not effectively convey this. To rectify this, Figure 5 has been amended to include six sequential velocity maps to better show the nature of the early-melt season event. It is understood that plots showing relative changes in velocity would also convey this, however the authors feel that this is good opportunity to showcase more of the velocity maps produced from the CRIOS project.

4. Assertions made in the discussion should be backed up with data and results. For example the suggestion that tides influence the timing of plume pulses (but there are many other similar examples as detailed in the specific comments below).

Within the discussion section, events observed over the 2014 melt season are summarised and potential processes driving these events are proposed. Hydrological processes are largely discussed because subglacial hydrology is the main focus of the paper, and there is sufficient evidence from the data to suggest that these events are hydrologically driven to some extent. Other processes are also outlined, as recommended by the reviewer, such as oceanic influences and glacier dynamics (see the first comment in this response for more details).

The reviewer suggests that data (calving rate, tidal level, fjord temperature etc.) should be used to support assertions and explore these alternative processes in this study. The authors believe that this is beyond the scope of the study. The inclusion of other datasets would detract from the manuscript's primary focus on examining subglacial hydrology at a tidewater glacier. We intend to write a second paper at a later date which looks more closely at the dynamics of Kronebreen, specifically exploring calving dynamics in relation to oceanic forcing and glacial influences. We hope that the ideas presented here are further explored in this future work.

We recognise that it is valuable to outline these additional influences though, as discussed in the first comment of this response. To address this, alterations have been made to the manuscript to emphasise where assertions have been made and where additional datasets are needed. In addition, each of these instances are stated as good ideas for potential work in the future. Specific changes are detailed in the minor comments, which are included in the public response to Reviewer 2.

Reviewer 3

The study is well written, well organized, and thorough in its analysis. The complementary observations are used to illustrate the dynamics and evolution of the hydrologic system of Kronebreen, which evolves in a number of interesting ways, both spatially and temporally. The evidence is strong for the conclusions that the southern portion of the glacier tongue is more dominated by a distributed, pressurized hydrologic system, whereas the central northern tongue receives more meltwater and has a more stable efficient drainage system. Both the delivery of meltwater to the base of the glacier and the organization of the subglacial drainage system need to be taken into account to explain the observed evolution of plumes and glacier speeds. This study will be a welcome contribution to the growing field of coupled glacier dynamics and hydrology. I have only minor recommendations, questions, and comments on the manuscript.

We would like to thank the reviewer for their comments and positive response to our manuscript. We have edited our manuscript accordingly, including better definition of frequently-used terms and more detailed descriptions in places. We have also addressed the comment on the inclusion of the GPS velocity data. We hope that the reviewer (and the editor) finds that all their comments have been carefully considered and thoroughly addressed. As the reviewer felt it unnecessary to include major corrections, we have included our response to a selection of the reviewer's key comments. These are outlined below.

Major comments

Figure 1: it seems that you could change the aspect ratio of the figure to zoom in more on the study area. Areas to the north and south of Kronebreen arent really necessary to include, other than to make room for your inset panels.

The authors attempted to: 1) change the aspect ratio; 2) move the inset panels; and 3) zoom into Kronebreen. We found that numerous problems occurred when trying to accomplish this. Primarily, the Landsat image becomes pixelated and coarse when we tried to zoom into our field site, which isn't as visually pleasing. It was also difficult to move the inset panels without covering the plume extents or camera positions, even when we had changed the aspect ratio. Equally we felt that it was valuable to include some of the fjord and neighbouring glaciers (Kongsvegen and Kongsbreen) as context for the reader.

For these reasons, the authors have decided not to change Figure 1.

Borehole GPS: it seems surprising (even if true) that the borehole GPS didnt add anything insightful. Why not show this and demonstrate that this is the case? It seems that you could overlay the GPS-derived velocity on Figure 2d to show this.

This point was also noted by Reviewer 1. As stated in their response, the GPS data was not included in this study for three main reasons:

- The GPS velocity record is incomplete. The GPS was offline at the beginning of September 2014, whilst the rest of the dataset record carries on till the end of September 2014. The record duration is therefore mismatched.
- The higher temporal resolution of the GPS velocities does not appear to add anything new to the study. There were difficulties in processing the GPS data and short-term variations cannot be distinguished from the daily positions that we extracted. The dataset generally appears noisy. To resolve this and provide an alternative, velocities were derived from the TerraSAR-X imagery and then a spot velocity was extracted from the borehole site. These appear much less noisy and fit well with the rest of the 2014 record.
- The key findings from the velocity data focus on the spatial variability in velocity over the glacier tongue, rather than changes in velocity over time. These are better addressed with the TerraSAR-X velocities rather than the GPS velocities. The inclusion of the TerraSAR-X velocities from the borehole site are also consistent with the velocities derived from the other ROI's (i.e. from the centreline and the supraglacial lakes).

To better show the noise in the dataset, we have included Figure 2 as supplementary material in the public response with the GPS velocities included in panel F. It is clear from this that the GPS velocities do not add any additional information to the study, and any changes seen in velocities are difficult to associate with the other datasets.

For these reasons, the GPS data will not be included in this paper. The difficulties with integrating the GPS velocities has been clarified in the methods section of the manuscript (Section 4.4, second paragraph):

‘A Topcon Net-G3A GPS unit was installed at the position of the transmitter to track the approximate movement of the sensors. It was decided to use the surface velocities derived from TerraSAR-X images rather than the GPS because the GPS velocity record was incomplete and the higher temporal resolution of the GPS data did not add any further insights to this study. The GPS data appeared noisy due to difficulties in processing the positions.’

Section 5.6: its not clear how you arrived at a value of $k=0.6$ as a sort of threshold for routing of meltwater between the northern and southern sections of the glacier. You state that results suggest this, but dont specifically describe why. Several scenario were considered (line 15), but what do you mean by this? How do you arrive at the conclusion that flow routing changes between a value of $k=0.5$ and 0.6 (line 19)? This seems different than what you describe in line 18 about threshold routing above and below a value of $k=0.6$? I guess Im just a bit confused about this section, perhaps its just a matter of describing more specifically what youve done here.

Subglacial hydraulic potential was calculated primarily based on ice thickness and bed elevation. The crostatic pressure factor (k) is the ratio of water-pressure to ice overburden pressure. Variations in the value of k reflect the degree to which subglacial drainage is pressurised with $k=0$ reflecting open channel flow at atmospheric pressure, and $k=1$ reflecting pressurised flow.

We calculated subglacial hydraulic potential over several iterations, changing the value of k each time. In total, we ran 11 simulations with the value of k between 0.0–1.0 (i.e. hydraulic potential was calculated each time with a k value of 0.0, 0.1, 0.2, 0.3, 0.4, 0.5, 0.6, 0.7, 0.8, 0.9, and 1.0). These are what are referred to in Section 5.6 as the ‘several scenarios’ that we considered.

We found that there is little change in the configuration of the channel network when k is 0.0–0.5. In all these instances, the calculations suggest that a major channel connects Holtedahlfonna to the south region of the glacier tongue. There are significant changes in the channel configuration when k is 0.6 and above (i.e. $k=0.6$ –1.0). The major channel diverts to the north region of the glacier tongue in these scenarios. Therefore there is a significant difference when we consider hydraulic potential with a k value of 0.5 and below, and 0.6 and above. This is what we refer to in the manuscript as the ‘threshold’ as it is apparent that this difference occurs between a k value of 0.5 and 0.6.

The authors appreciate that some of the terms used in this section are not accurate and more appropriate, detailed wording could be used instead. We have changed the section accordingly to make this clearer:

‘Several scenarios were considered in calculating the hydraulic potential at the bed of Kronebreen based on the k value, which represents cryostatic pressure ratio (i.e. the extent to which meltwater routing is dictated by ice-pressure gradients). Subglacial hydraulic potential was calculated over several iterations, changing the value of k each time. In total, we ran 11 simulations with the value of k between 0.0–1.0 (i.e. hydraulic potential was calculated each time with a k value of 0.0, 0.1, 0.2, 0.3, 0.4, 0.5, 0.6, 0.7, 0.8, 0.9, and 1.0).’ (Section 5.6, paragraph 1)

Borehole pressure: the pressure variations you record indeed seem to suggest that you are not actually located to a connecting channel. I would expect more pressure variations if you were. You seem to suggest that you might not be located at a channel, but argue that you are ‘near’ a connecting channel if not connected to a channel that is consistently full of meltwater (in which case I would still expect to see more pressure variations).

The reviewer is correct in stating that we would expect to see more changes in the water-pressure record if the borehole sensor was located in a connecting channel. This is now clearly stated in Section 7.4 (Subglacial drainage of Kronebreen) following similar comments from Reviewer 1.

We suggest that the borehole is possibly located near to an active drainage system based on instances where changes in pressure have coincided with other changes related to subglacial hydrology (e.g. the early-melt season ‘flushing’ event, and the significant pressure drop in September). This is also supported by the hydraulic potential modelling which indicates that the location of the borehole intersects with one of the main channels in the catchment. We propose that the borehole is located within the catchment of an active drainage system based on these arguments. Absolute changes in the water-pressure record suggest differently as noted by the reviewer.

Therefore we have two lines of evidence, with one suggesting that the water-pressure is indicative of an active drainage catchment, and the other suggesting that the record reflects an isolated, consistently

pressurised region of the bed.

A paragraph has been added to better outline these ideas in Section 7.4:

‘Few short-term pressure variations are observed in the water-pressure record from May–September 2014, apart from the significant drop in pressure at the end of the melt season. It is possible that the borehole is located on an area of the bed that is not well connected to an active, efficient drainage system. However, changes in water-pressure have been observed to coincide with other features in the hydrological system (i.e. plume activity and supraglacial lake drainage), which suggests that the borehole is hydraulically connected to some degree. This is also supported by the modelled hydraulic potential, which indicates that the borehole is located close to, or possibly within, an efficient drainage catchment.’ (Section 7.4, second paragraph)

Rapidly-changing subglacial hydrology pathways at a tidewater glacier revealed through simultaneous observations of water pressure, supraglacial lakes, meltwater plumes and surface velocities

Penelope How^{1,2}, Douglas I. Benn³, Nicholas R.J. Hulton^{1,2}, Bryn Hubbard⁴, Adrian Luckman^{5,6}, Heidi Sevestre³, Ward J.J. van Pelt⁷, Katrin Lindbäck⁸, Jack Kohler⁸, and Wim Boot⁹

¹Institute of Geography, School of GeoSciences, University of Edinburgh, Edinburgh, EH8 9XP, UK

²Department of Arctic Geology, University Centre in Svalbard (UNIS), Longyearbyen, PO Box 156, N-9171, Norway

³Department of Geography and Sustainable Development, University of St. Andrews, Fife, KY16 9AJ, UK

⁴Centre for Glaciology, Department of Geography and Earth Sciences, Aberystwyth University, Aberystwyth, SY23 3DB, UK

⁵Department of Geography, College of Science, Swansea University, Swansea, SA2 8PP, UK

⁶Department of Arctic Geophysics, University Centre in Svalbard (UNIS), Longyearbyen, PO Box, 156, N-9171, Norway

⁷Department of Earth Sciences, Uppsala University, Uppsala, PO Box 256, 751 05, Sweden

⁸Norwegian Polar Institute (NPI), Fram Centre, Tromsø, PO Box 6606, NO-9296, Norway

⁹Institute of Marine and Atmospheric Research (IMAU), Utrecht University, Utrecht, 3584 CC, The Netherlands

Correspondence to: Penelope How (p.how@ed.ac.uk)

Abstract. Subglacial hydrological processes at tidewater glaciers remain poorly understood due to the difficulty in obtaining direct measurements and lack of empirical verification for modelling approaches. Here, we investigate the subglacial hydrology of Kronebreen, a fast-flowing tidewater glacier in Svalbard during the 2014 melt season. We combine observations of water pressure, supraglacial lake drainage, surface velocities and plume activity with modelled runoff and water routing to develop a conceptual model that thoroughly encapsulates subglacial drainage at a tidewater glacier. Simultaneous measurements suggest that an early-season episode of subglacial flushing took place during our observation period, and a stable efficient drainage system effectively transported ~~this~~ subglacial water through the north region of the glacier tongue. Drainage pathways through the central/southern region of the glacier tongue were disrupted throughout the following melt season. Periodic plume activity at the terminus seems to be a signal for modulated subglacial pulsing i.e. an internally-driven storage and release of subglacial ~~melt-water~~ meltwater. This storage is a key control on ice flow in the 2014 melt season. Evidence from this work, and previous studies, strongly suggests that long-term changes in ice flow at Kronebreen are controlled by the location of efficient/inefficient drainage and the position of regions where water is stored and evacuated from.

Copyright statement. Copyright, 2017. All rights reserved.

1 Introduction

Subglacial hydrological processes at tidewater glaciers remain poorly understood due to the difficulty in obtaining direct measurements. Borehole data ~~is spatially limited and provides spatially limited information and are~~ often problematic in terms of relating discrete findings to glacier-wide processes. Modelling approaches can approximate the hydrological inputs and routing of subglacial meltwater across the ~~glacial system glacier~~ but lack empirical verification. In recent years, studies have focused on indirect measurements to advance understanding of these processes, most prominently in terms of investigating supraglacial lake levels and the surface expressions of submarine meltwater plumes (e.g., Everett et al., 2016; Slater et al., 2017). However, simultaneous measurements of all these manifestations of the subglacial system are rare (e.g., Kamb et al., 1994; Sugiyama et al., 2011).

In this paper we adopt four complementary approaches to reconstruct the subglacial hydrology of Kronebreen, a fast-flowing tidewater glacier in Svalbard, through the ~~summermelt summer melt~~ season of 2014: (i) borehole data, to document subglacial water-pressure changes ~~in the upper section of the glacier~~; (ii) time-lapse photogrammetry, to record supraglacial water storage and drainage, and marine plume activity at high temporal resolution; (iii) modelled surface melt, runoff and subglacial hydraulic potential to investigate meltwater generation and routing; and (iv) surface velocities from analysis of satellite image pairs to examine subglacial hydrology in relation to glacier dynamics.

2 Background

The presence of subglacial meltwater is understood to govern the ~~pressure environment basal water pressure~~ at the bed of a glacier (Meier et al., 1994; Bartholomew et al., 2010). Measurements of water-pressure via boreholes and moulins reflect complex changes in bed dynamics ~~over time~~. Similarities and differences between borehole pairs have previously been used to diagnose and characterise local bed environments (e.g., Hubbard et al., 1995; Lefeuvre et al., 2015). Temporal variations, such as diurnal oscillations and rapid changes (i.e. changes between 0–12 hours), have been linked to changes in subglacial hydrology such as conduit growth and reorganisation of meltwater pathways (e.g., Murray and Clarke, 1995; Schoof et al., 2014). Consistently high basal water-pressures have also been observed over long periods of the melt season. It has been suggested that this is associated with meltwater storage in distributed regions of the subglacial ~~system, and could also be attributed to glacier systems with inefficient evacuation of meltwater zone. It has also been attributed to basal hydraulic systems which are not operating at atmospheric pressure,~~ such as lake-terminating and tidewater glaciers, ~~and there is an inefficient evacuation of meltwater because the hydraulic gradient is small~~ (e.g., Sugiyama et al., 2011).

Changes in basal water-pressures have been linked to enhanced basal sliding and surface velocities ~~on at~~ land-terminating ~~valley~~ glaciers. Velocities typically increase at the beginning of the melt season, which are associated with an influx of surface meltwater to the subglacial environment (Kamb et al., 1994; Nienow et al., 1998). Ice velocities stabilise or fall later in the melt season in response to subglacial drainage re-organisation ~~and the (i.e. changes in the network of channelised and distributed drainage pathways at the beginning and end of the melt season) and the~~ establishment of efficient channels that reduce water-pressure at the bed (Iken and Truffer, 1997; Hewitt, 2013). ~~Precipitation can disrupt drainage due to the high influx of water~~

~~over a short period of time, in some cases causing speed-ups due to the timing of high-rainfall events in relation to a melt season (e.g., Doyle et al., 2015).~~ However, first-hand investigations of the role of subglacial hydrology at the terminus region of tidewater glaciers remain virtually absent. ~~Ice-velocity records indicate similarities to land-terminating glaciers, yet borehole studies suggest significant differences.~~

5 In recent years, modelling approaches have been adopted to simulate bed dynamics at tidewater glaciers. These are commonly implemented as a two-component structure to initially calculate ice velocity and basal water-pressure separately before linking them together to create a unifying model (e.g., Schoof, 2010; Pimental and Flowers, 2011). This work can adequately represent the evolution of the subglacial hydro-dynamic environment but implementations of the approach are still imperfect as outputs do not always match real-world ice velocities (e.g., Werder et al., 2013). Difficulties lie in simulating water-pressure
10 in response to changing water transport and storage, and in simulating the connection between water-pressure and basal sliding (Bueler and van Pelt, 2015).

As previously outlined, meltwater typically enters the subglacial environment from the glacier surface via surface melt production. The drainage of supraglacial lakes provides an additional meltwater input into the subglacial environment. "Perched" supraglacial lakes form in topographic depressions and are isolated from the influence of subglacial hydrology. These lakes
15 drain when they become connected to the bed by mechanical processes such as hydrofracturing (Van der Veen, 2007). "Subglacially-connected" lakes form when water-pressure at the bed exceeds ice overburden, effectively squeezing subglacial water up to the glacier surface. This water often entrains subglacial sediment, making this type of lake distinguishable by its sediment-laden appearance. The water level in these lakes is a measure of basal water-pressure as they are directly connected to the glacier bed (Danielson and Sharp, 2013).

20 The pattern of supraglacial lake drainage is linked to basal water-pressure and ice velocity. Supraglacial lakes in the interior regions of South-West Greenland typically drain at progressively higher altitudes throughout the melt season (e.g., Sundal et al., 2009; Clason et al., 2015). On the contrary, lakes have also been observed to drain in a down-glacier progression~~(e.g., Everett et al., 2016). Subglacial transient pressure waves are understood to be the cause of both these patterns of drainage, but,~~ albeit such instances are less common (e.g., Everett et al., 2016). However, many of these observations are based
25 on temporally intermittent records (e.g. low repeat-pass satellite imagery). Detailed observations of supraglacial lake drainage events are needed to better understand the differences between ~~terminus-near-terminus~~ and inland lake drainage patterns and gain greater insight into their influence on the subglacial environment in tidewater glacier settings.

~~As meltwater enters the subglacial environment, the~~ The hydraulic routing and residency time of meltwater in the subglacial zone largely depends on properties of the bed (Hubbard and Nienow, 1997). This has largely been studied ~~in-at~~ inland and near-
30 terminus settings. For instance, a rapid input of meltwater has been observed to cause localised uplift of the ice surface, and has also been observed to make a channelized system become more efficient ~~,by~~ effectively enlarging channels to accommodate the extra meltwater (Andrews et al., 2014). This can lead to a reduction in ice velocity over ~~long-significant~~ periods of time (i.e. decadal) as pressure falls in an efficient channelised ~~system-configuration~~ (Tedstone et al., 2015). In other environments, such as below thick ~~25~~ ice in the interior of an ice sheet, channels cannot grow as rapidly or sensitively to point inputs, and
35 water evacuation is less efficient~~,e.g., creating.~~ This has been observed to cause ice to uplift from the bed over short (0–48

hours) time periods (e.g., Stevens et al., 2013), and is likely to form subglacial water pockets or "blisters" with relatively ~~long residence times and the ability to uplift the ice from the bed under high pressure (Stevens et al., 2013; Dow et al., 2015)~~high residence times over longer (days to weeks) periods (e.g., Dow et al., 2015).

Meltwater typically leaves the glacier via large subglacial channels that exit at the glacier terminus. This meltwater flows through proglacial streams at land-terminating glaciers. In ocean-terminating settings, meltwater commonly exits as a fresh (and therefore buoyant) turbulent plume, the dynamics of which are driven by the density contrasts between the cold, fresh glacial water and warmer, saline seawater. A plume can reach neutral buoyancy at depth or rise to the ocean surface depending on the discharge rate, fjord geometry and the density of the adjacent sea water column (Slater et al., 2015). Plumes promote submarine melting at the terminus as they increase the transfer of heat from the ocean to the submarine part of the ice front, drawing in warm water from the fjord (Straneo et al., 2010; Cowton et al., 2015).

The surface expression of plumes has previously been used as an indication of discharge rate and to infer the subglacial drainage network configuration in the near-terminus zone (~~e.g., Bartholomäus et al., 2016; Schild et al., 2016; Slater et al., 2017).~~ ~~Most direct observations of surfacing plumes are from satellite imagery, using the suspended sediment concentration (SSC) to automatically define plume extent (e.g., Darlington, 2015).~~ Surfacing plumes have largely been observed from satellite (e.g., Darlington, 2015; Bartholomäus et al., 2016) and/or time-lapse imagery (e.g., Schild et al., 2016; Slater et al., 2017). However, there are few measurements of the size, number and locations of plume-related channels (Fried et al., 2015). ~~As satellite imagery is~~ Both satellite and time-lapse imagery can be temporally intermittent and given the high variability in discharge and runoff, it is likely that plumes are changeable and much more dynamic than previously considered.

In summary, several studies have investigated tidewater glacier subglacial hydrology from a number of intriguing angles, but our understanding of the system will be incomplete without a more synergistic approach.

3 Study area

Kronebreen is a fast-flowing, tidewater glacier on the west coast of Spitsbergen, Svalbard (78.8°N, 12.7°E) (Fig. 1). The glacier consists of a heavily crevassed tongue fed by two ice fields: Holtedahlfonna and Infantfonna. The total area of the glacier catchment is 295.5 km², with a maximum length of 49.25 km that spans over an elevation range of 1345 m (Kargel et al., 2014). The glacier tongue exhibits consistently high surface velocities, making it one of the fastest non-surging glaciers in Svalbard. Velocities near the terminus are typically 1.5–2 m d⁻¹ through the winter season and peak at 3–4 m d⁻¹ in the summer (Käab et al., 2005; Eiken and Sund, 2012). The seasonal speed-up propagates from the front of the glacier, which is argued to be largely driven by basal lubrication (Schellenberger et al., 2015; Vallot et al., In review). There is a clear contrast in surface velocities between the lower section of the tongue and the upper section, controlled by a marked high-point in the bed topography approximately 4 km from the terminus (Luckman et al., 2015).

Kronebreen discharges in Kongsfjorden, an Arctic fjord affected by the West-Spitsbergen Current (WSC). The WSC drives warm, saline Atlantic water into the interior Arctic, allowing large exchanges of warm ocean water with Kongsfjorden. Calving activity persists throughout the year due to the presence of warm sub-surface ocean water, even in the winter season, although

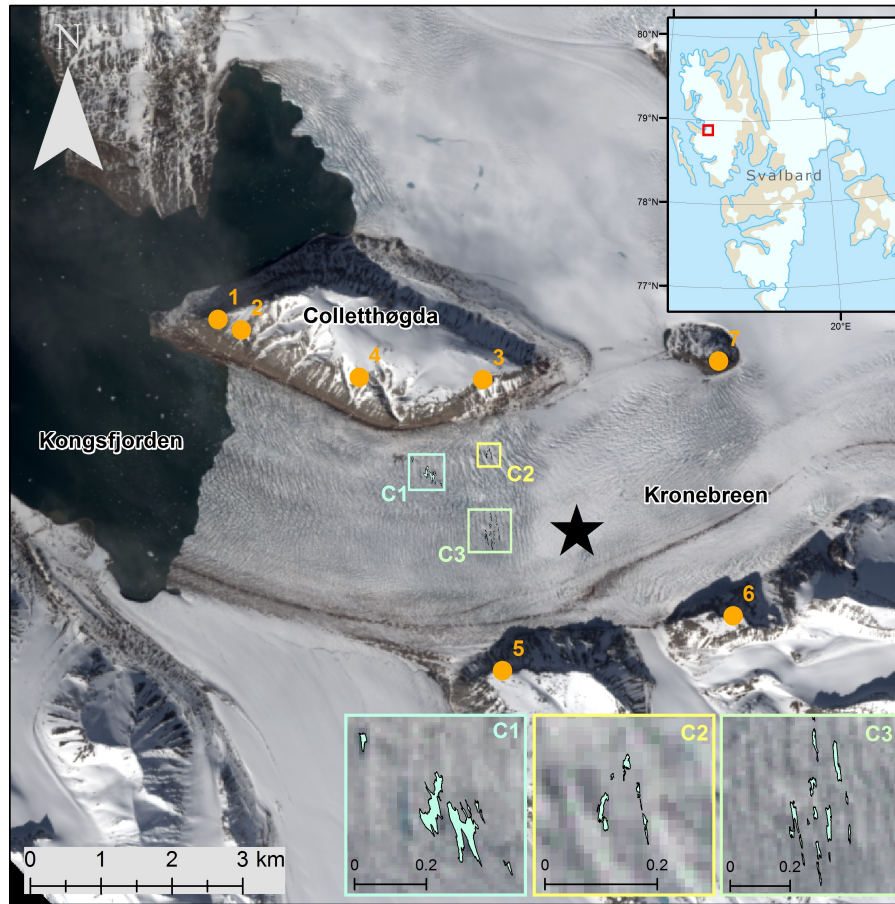


Figure 1. Kronebreen, a tidewater glacier situated in Kongsfjorden, Svalbard. The glacier consists of an 8 km tongue fed by two ice fields, Holtedahlfonna and Infantfonna. Numbered locations refer to the 2014 time-lapse camera sites, the starred location is the position of the borehole drill site, and the coloured boxes refer to the three lake clusters visible from camera sites 3 and 5. Landsat imagery taken on 11 June 2014.

there are large seasonal variations (Luckman et al., 2015). The mean annual calving rate has increased in recent years to $-0.20 \pm 0.05 \text{ km}^3 \text{ yr}^{-1}$ (1905–2007), coinciding with increasingly negative surface mass balance (Köhler et al., 2011; Nuth et al., 2012). ~~Since 2011, Kronebreen has undergone~~ Kronebreen is currently in a period of rapid retreat, ~~with the terminus~~ having retreated $\sim 1 \text{ km}$ between 2011 and 2016. Strong correlation between bulk calving rates and fjord water temperature indicates

5 that this retreat primarily reflects melting of the glacier front beneath the waterline (Köhler et al., 2011; Luckman et al., 2015).

4 Methods

4.1 Time-lapse photogrammetry

A network of time-lapse cameras was installed on two ridges adjacent to Kronebreen (Colletthøgda and Garwoodtoppen) to gain full coverage over the glacier tongue (Fig. 1). Each time-lapse system consisted of a Canon 600D camera body, an EF-S 18-55 mm f/3.5-5.6 IS II zoom lens and a Harbortronics Digisnap 2700 intervalometer, which was powered by a 12 V DC battery and a 10 W solar panel. Each system captured images every 30 minutes from 30th April till 30th September 2014. Of the five cameras that successfully acquired images throughout the season, one trained on the terminus obtained coverage of surfacing meltwater plumes (Site 1, Fig. 1) and two positioned further up-glacier captured surface lake filling and drainage events (Sites 3 and 5, Fig. 1).

Photogrammetric processing was undertaken using PyTrx, a Python-based suite of photogrammetric tools specifically designed for obtaining measurements from time-lapse imagery of glacial environments. PyTrx largely uses processing functions from the OpenCV computer vision toolbox (opencv.org) and georectification tools based on those available in ImGRAFT (imgraft.glaciology.net) (Messerli and Grinsted, 2014). Primarily, the suite can be used to extract real-world velocities, areas and distances from sequential time-lapse imagery, with a particular focus on the extraction of high-frequency interval measurements. This is achieved by projecting features observed in the 2-D camera image onto their equivalent real-world positions based on camera position and pose, camera lens characteristics and a digital elevation model (DEM) of the observed scene. It is intended to make PyTrx publicly available at a later date.

Several additional datasets were collected to translate measurements from the image plane to three-dimensional space. Camera locations were measured using a Trimble GeoXR GPS rover linked to a SPS855 base station located at Ny Ålesund. Positions were differentially post-processed in a kinematic mode over a ~ 15 km baseline using the Trimble Business Centre software to obtain an average horizontal positional accuracy of 1.15 m and an average vertical accuracy of 1.92 m. Ground Control Points (GCPs) were derived from known XYZ locations in the camera field of view. A DEM was obtained from airborne photogrammetric surveying in 2008 by the Norwegian Geodetic Survey, with a 10 m resolution. This DEM was smoothed using a linear interpolation approach ~~in order to project data to reduce discrepancies between the glacier surface in 2008 and in 2014. Data could thus be projected~~ onto a homogenous surface ~~-(i.e. flattened and without abrupt changes/artefacts).~~ In the case of georectifying meltwater plume extents, data were projected onto a horizontal DEM at sea level. Each camera (and focal length) was calibrated using the camera calibration functions in the Matlab Computer Vision Systems Toolbox to obtain lens distortion parameters and intrinsic camera matrices.

4.1.1 Supraglacial lake levels

Three groups of supraglacial lakes were monitored by our time-lapse systems during the 2014 melt season at Kronebreen. Two of these groups were visible from Site 5 on Garwoodtoppen, whilst the other was captured from Site 3 on ~~Colletthøgda. These lakes were automatically detected from images based on the high contrast in pixel intensity between the ice and water surface~~ Colletthøgda (Fig. 1). Changes in lake surface area were used as a proxy for water storage on the glacier surface and

its release into the englacial/subglacial environment. These lakes were automatically detected from images based on the high contrast in pixel intensity between the ice and water surface. This process involved multiple steps to reduce the change of misidentification: (i) the images were masked to quicken processing time; (ii) the images were enhanced to better distinguish blue colours and ensure that ‘lake-like’ objects were distinguished; and (iii) these objects were manually verified in PyTrx to filter out falsely detected lakes such as shadows.

Each group of lakes was detected from images acquired every half-hour to: (i) isolate the effects of changes in illumination, which influence apparent lake surface area; (ii) match the temporal resolution in which other subglacial components are reconstructed in this study; and (iii) overcome the limited temporal resolution associated with ~~satellite-based~~ previous satellite- and photography-based analysis in monitoring lake extent. The lakes were easiest to detect when the contrast between the ice surface and water was largest; hence it was difficult to detect the lakes at the beginning and end of the melt season when the lake surfaces underwent refreezing. Qualitative observations from the time-lapse imagery are relied upon in these instances (and noted in subsequent sections).

4.1.2 Visible meltwater plume extent

Activity from four surfacing plumes was captured from the time-lapse camera situated at Site 1 (Fig. 1), on the north side of the terminus of Kronebreen. Surface areas were calculated for the three plumes on the north side of the terminus. It is assumed that plume surface area is a measure of meltwater discharge from the glacier. Although meltwater plumes can reach neutral buoyancy at depth, this is considered unlikely at Kronebreen due to its shallow depth (~80 m), weak stratification, and simple thermal, salinity and density structure (Cottier et al., 2005).

Plumes were consistently identifiable based on a combination of water colour, fjord water roughness, and the area from which icebergs have been cleared by divergent flow. These characteristics are difficult to define automatically due to variation in illumination. Therefore the plume surface area was defined manually within the plane of each image and then georectified to obtain the surface area of each plume. Plume surface area was digitised from images every hour to capture the commonly rapid variability of surfacing plume extent. In some cases, plume extent was larger than the time-lapse image field of view. Such cases are noted in the subsequent results. For the plume on the south side of the terminus, it was hard to measure surface area accurately due to its distance from the camera. Therefore surface area data for the plume on the south side is not included, and we simply report its presence or absence.

4.2 Surface velocities

Glacier surface velocities were calculated from 11-day repeat, 2 m resolution, TerraSAR-X Synthetic Aperture Radar (SAR) images. SAR images are advantageous over optical imagery because they are unaffected by weather conditions (e.g. cloud cover), polar ~~night~~ nights, or differences in illumination.

Feature tracking was applied to image pairs using a 200×200 pixel correlation window (400×400 m). These displacements were then orthorectified, resulting in a pixel size of 40 m. Uncertainties are estimated to be <0.4 m per day, which results from a co-registration error (± 0.2 pixels) and smoothing of the velocity field over the tracking window (Luckman et al., 2015).

Velocity maps were produced for image pairs every 11 days, producing a sequential record of velocity patterns through the 2014 melt season. Point values from these velocity maps were used to calculate spatially-averaged velocities for the glacier centreline, the location of the supraglacial lakes and the borehole site.

4.3 Melt modelling

- 5 A distributed energy balance model coupled with a snow model was used to compute melt production and runoff for the 2014 melt season. The distributed energy balance model calculates meltwater production at the surface, which is then used as an input for the subsurface model. The subsurface model simulates the subsurface evolution of temperature, density and water content. These are strongly affected by the storage and refreezing of meltwater (Van Pelt et al., 2012, 2016). Climate forcing at sea level is derived from the Ny Ålesund weather station (Norwegian Meteorological Institute; eklima.met.no). Lapse rates for precipitation ($0.13\% \text{ m}^{-1}$) and temperature (-0.0046 K m^{-1}) are used, which provide the best match between the modelled and observed winter and summer balance since 2003 (Van Pelt and Kohler, 2015). A 30-year model spin-up assured initialised subsurface conditions at the start of the simulation in April 2014. [Further details about the model, including model validation and calibration, are outlined in detail in Van Pelt and Kohler \(2015\).](#)

- 15 The model outputs melt and runoff at an hourly resolution. Here, melt is defined as melt production at the surface whereas runoff is melt production and precipitation at the surface which subsequently enters the englacial system. Runoff is assumed to arrive at the glacier front without delay. Spatially-averaged melt and runoff was calculated for the glacier tongue (i.e. not including Holtedahlfonna and the upper part of the glacier catchment) based on elevation bands, with the glacier tongue defined as 0 to 500 m a.s.l. This was undertaken in order to isolate the hydrology of the glacier tongue from hydrological influence in the upper catchment area (i.e. Holtedahlfonna), and better observe direct hydrological effects in the region of interest.

20 4.4 Borehole measurements

- Two wireless pressure sensors were placed at the glacier bed in the upper section of the glacier tongue during September 2013 (78.8719°N , 12.7957°E , location shown in Fig. 1). At this location, the bed elevation is -115 m a.s.l. and the ice surface elevation is 205 m a.s.l., giving an ice thickness of 320 m (± 15 m), which is inferred from the borehole length and surface elevation. The sensors were installed with hot-water drilling and both were placed in the same borehole, one 0.2 m above the bed and the other ~ 2.5 m above the first. The sensors logged in-situ pressure, temperature and tilt every two hours, which was relayed through a transmitter at the glacier surface for remote access. [More details about the specifications of these wireless sensors is presented in Smeets et al. \(2012\).](#)

- 30 A Topcon Net-G3A GPS unit was installed at the position of the transmitter to track the approximate movement of the sensors. It was decided to use the surface velocities derived from TerraSAR-X images rather than the GPS because the GPS velocity record was incomplete and the higher temporal resolution of the GPS data did not add any further insights to this study. [The GPS data appeared noisy due to difficulties in processing the positions.](#)

~~Local bed~~ [Subglacial water](#) pressure was derived from the difference between the sensor reading and atmospheric pressure, which was obtained from the Norwegian Meteorological Institute weather station at Ny Ålesund (data freely available at

eklima.met.no). The sensor directly in contact with the glacier bed collected data between 16th September 2013 and 25 April 2014 before it stopped recording. The upper sensor collected data for 14 months in total (16/09/2013–03/12/2014). Both sensors exhibited abnormal temperature and tilt readings before they went offline, suggesting eventual probe failure from high shear stresses over some days.

5 4.5 Hydraulic potential modelling

Routing of subglacial water was calculated based on the assumption that meltwater flow is governed by gradients in hydraulic potential (Shreve, 1972). Subglacial hydraulic potential (Φ) was calculated according to the approach previously used by Rippin et al. (2003) and Willis et al. (2012):

$$\Phi = k\rho_i g(h - z) + \rho_w g z \quad (1)$$

- 10 Where k is the cryostatic pressure factor, ρ_i is the density of ice (917 kg m^{-3}), g is acceleration due to gravity (9.81 m s^{-2}), h and z are the elevations of the ice surface and bed, respectively (with the difference between them defining the ice thickness) and ρ_w is the density of water (1000 kg m^{-3}). The cryostatic pressure factor is effectively the ratio of water-pressure to ice overburden pressure (P_w/P_i) and accounts for the possibility that water exists in low-pressure channels (Evatt et al., 2006). Variations in the value of k reflect the degree to which subglacial drainage is pressurised, with $k = 1$ reflecting pressurised flow
- 15 driven by the influence of gravity on both the overlying ice and the meltwater itself and $k = 0$ reflecting open channel flow driven only by the influence of gravity. Hydraulic potential gradients change as a consequence of variations in k , leading to changes in the simulated subglacial drainage configuration. This allows us to explore the range of drainage paths that can be present.

- Surface and bed topography digital elevation models were obtained from a series of radar (low-frequency common-offset
- 20 radio-echo sounding) surveys which were conducted in 2009–2010 and 2014–2016. The spatial resolution of these two DEMs is $50 \times 50 \text{ m}$, with a vertical accuracy of $\pm 15 \text{ m}$. The bed DEM was generated by interpolating the measured ice thickness and subtracting it from the surface DEM using the technique referred to in Lindbäck et al. (2014).

5 Results

5.1 Supraglacial lake area

- 25 Three clusters of supraglacial lakes were detected on the time-lapse imagery (shown as C1, C2 and C3 in Fig. 1). Changes in lake surface area are shown in Figure 2EA. Cluster 1 is located close to the glacier's north margin (78.8785°N , 12.7063°E). Cluster 2 is located farther upglacier (78.8814°N , 12.7420°E), also near to the north margin. Cluster 3 is adjacent to Cluster 2 (78.8715°N , 12.7493°E), but ~~more-central-and~~ nearer to the glacier's central flow line. All three groups of lakes occupy crevasses. The lakes in Cluster 1 overspill and coalesce prior to drainage, and occasionally become brown in colour. The lakes
- 30 in Clusters 2 and 3 are much smaller as they remain confined to ~~these~~ crevasses through the melt season and do not coalesce. Their drainage is gradual ~~and~~ (with Cluster 2 draining from 05/07/2014 05:30 and Cluster 3 draining from 16/07/2014 12:30)

and they do not drain entirely, with the remaining water gradually re-freezing over time. The colour of these lakes remains blue through the melt season.

While the lake clusters appear to act independently, the lakes within Cluster 1 fill and drain almost simultaneously, indicating that they are hydrologically linked. A timeline of changes in lake surface area at Cluster 1 is shown in Figure 3. Cluster 1 fills
5 and drains first, beginning to fill from 01/06/2014 14:07:00 (Fig. 3A–D) and initially draining on 27/06/2014 03:00 over 59
hours (Fig. 3E–F), decreasing from a total surface area of 41,374 m² to 2477 m² (see Lake 1 group surface area in Fig. 2A).
The lakes gradually drain after this, leaving them empty by 21/07/2014 14:00:00 (Fig. 3G–J). The drainage of lakes within
this group propagates up glacier, with a 13-hour lag between changes in the lower and upper lakes. ~~A timeline of changes in~~
~~lake surface area at Cluster 1 is shown in Figure 3.~~

10 This upglacier-propagating drainage is also evident at the upper marginal lakes (Cluster 2) and the upper central lakes
(Cluster 3). ~~These two groups continue to fill after the drainage of Cluster 1, with Cluster 2 draining from 05/07/2014 05:30~~
~~and Cluster 3 draining from 16/07/2014 12:30. The lakes in these two groups are much smaller than those in Cluster 1 as~~
~~their surface areas are much more constrained to the crevasse field and do not overflow. Both Cluster 2 and Cluster 3 do not~~
~~fully drain through the season like Cluster 1. After the rapid drainage events, the remaining water in the crevasses eventually~~
15 ~~refreezes and is likely to melt once again at the beginning of the subsequent melt season.~~

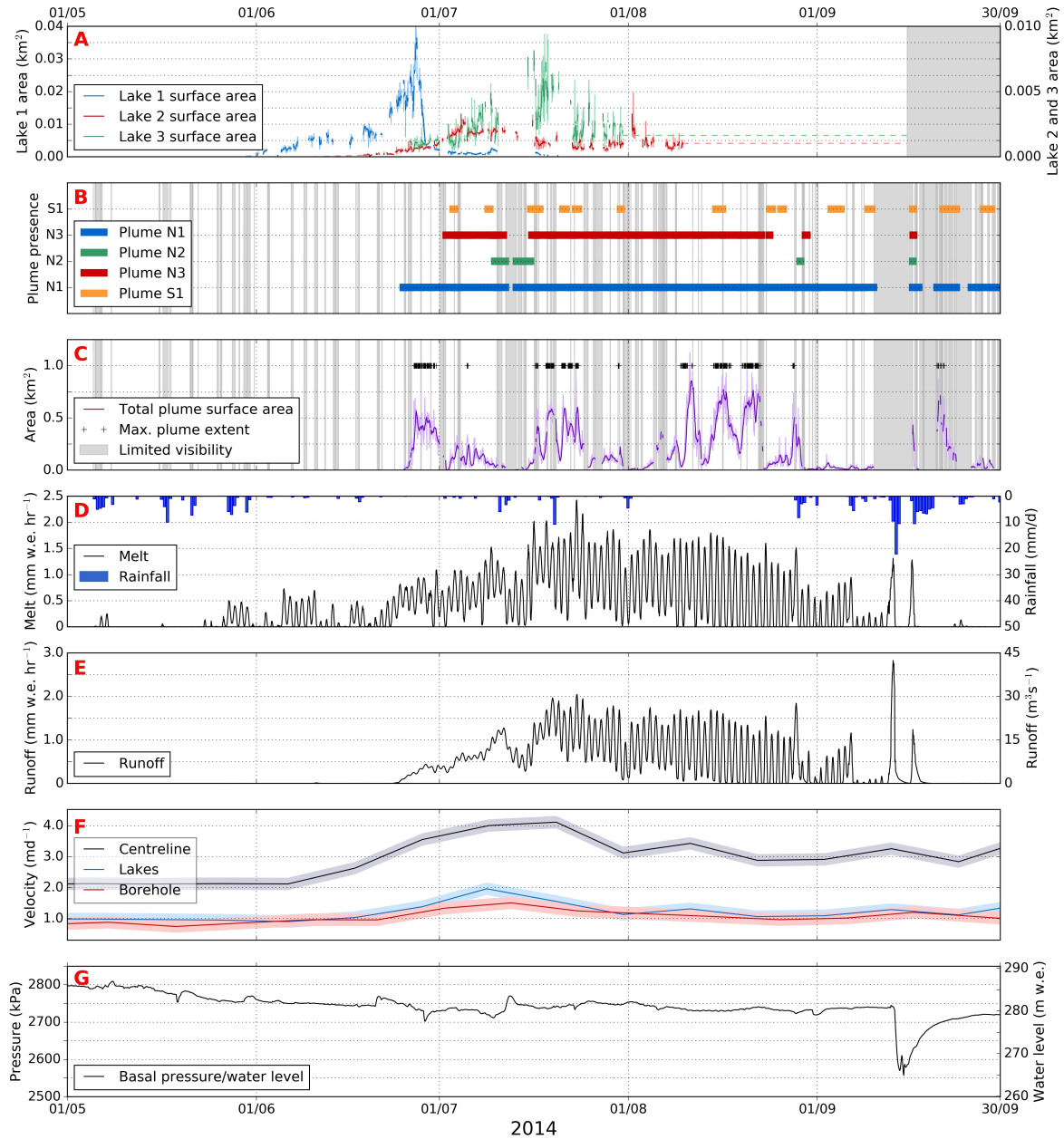


Figure 2. Composite graph showing hydrological results from Kronebreen. A) **Water-pressure and corresponding water-level from the borehole site;** B) **Modelled melt (0–500 m elevation) and precipitation;** C) **Modelled runoff (0–500 m elevation);** D) **Glacier surface velocities, with spatial averages from the glacier centreline (<2 km from the terminus), the region of the supraglacial lakes, and the location of the borehole site;** E) **Surface area of the three visible lake clusters (moving averages included);** **FB)** **Timeline of the appearance of the four plumes, three visible at the north side of the terminus (N1, N2, N3) and one visible from the south side (S1);** **GC)** **Total surface area of Plume N1, N2 and N3 (moving averages included), plus episodes when the plume extent is out of the image frame (noted as "max. plume extent");** D) **Modelled melt (0–500 m elevation) and precipitation;** E) **Modelled runoff (0–500 m elevation);** F) **Glacier surface velocities, with spatial averages from the glacier centreline (<2 km from the terminus), the region of the supraglacial lakes, and the location of the borehole site.** The faint area around each velocity line is the uncertainty range (<0.4 m/day); G) **Water-pressure and corresponding water level from the borehole site.**

5.2 Meltwater plume extent

During the 2014 melt season, three surfacing plumes were visible on the north side of Kronebreen and one on the south side (Fig. 4). The main, central plume in the north (N1) is the most persistent and largest outlet. The two secondary northern plumes (N2 and N3) surface intermittently either side of N1, with N2 to the south and N3 near to the north shoreline. The southern plume, S1, surfaces for brief periods. These four plumes were monitored throughout the melt season (Fig. 2FB). Plume N1 first surfaces at 02:00 on 25 June, approximately 36 hours after the first runoff of the melt season begins, and 84 hours before Lake Cluster 1 fill enough that water is visible in the time-lapse imagery. Plume N3 activates a week later (02 July at 03:00) and is active throughout the monitoring period except for three periods of reduced runoff. Plume N2 is more intermittent, only surfacing for three short periods (10 July at 00:00 – 15 July at 23:00, 29 August at 04:00–22:00 and 16 September at 15:00–17:00), all of which coincide with periods of high runoff and substantial precipitation. Plume S1 is visible on thirteen separate occasions, and is quick to appear and disappear throughout the melt season.

The area of the plume surface expression is calculated as the combined surface area of the three plumes on the north side of the terminus when they are active (Fig. 2GC). Plume S1 could not be included in this total because the coverage of the time-lapse camera was inadequate for distinguishing a precise surface expression. Throughout the melt season, there are three distinct periods when total plume surface area is relatively large and variable (25 June – 08 July, 16–24 July and 08–29 August), and three when the surface area is smaller and relatively constant (08–16 July, 24 July – 08 August and 29 August – 10 September). Plume extent was difficult to distinguish during periods of high rainfall, especially during the highest rainfall event in mid-September when the vast majority of images were obscured.

5.3 Melt and runoff

Spatially-averaged melt and runoff was calculated for the lower catchment of Kronebreen, from 0 to 500 m a.s.l. which covers the entirety of the glacier tongue (Fig. 2B and 2CD and 2E). Surface melt production begins on the 26 May, approximately one month before the onset of runoff is detected. ~~Modelled melt production has a diurnal pattern with a maximum in the day and minimum at night.~~ The highest melt production and the highest diurnal variation in melt production occur in mid-July, with 1.5–2.5 mm w.e. hr⁻¹ during the day and 0.25–0.9 mm w.e. hr⁻¹ during the night. This diurnal signal persists throughout the record until ~~25~~ mid-September when two large precipitation events on the 13 and 16 September appear to dominate and overprint the diurnal pattern.

The model predicts water retention in snow until 08 June. Runoff initially has very low values (0–0.1 m^{3.3} s⁻¹) and then markedly increases from 23 June, coinciding with the drainage of Lake Cluster 1 and the activation of the meltwater plumes. From this point, melt and runoff ~~follow a diurnal regime, with high values in the day and low values at night. This diurnal range is most evident from mid-July until the end of August—runoff~~ regularly reaches 20–26 m^{3.3} s⁻¹ in the day and between ~~0–3 m³–0–3 m³~~ s⁻¹ at night. Towards the end of August, melt and runoff are consistently negligible during the night. Thereafter, melt and runoff steadily decline through September and are very low from 07–13 September, although they spike abruptly on two occasions: a first event where runoff peaks at 44.6 m^{3.3} s⁻¹ on 13 September and a second where runoff peaks at 19.5 m^{3.3}

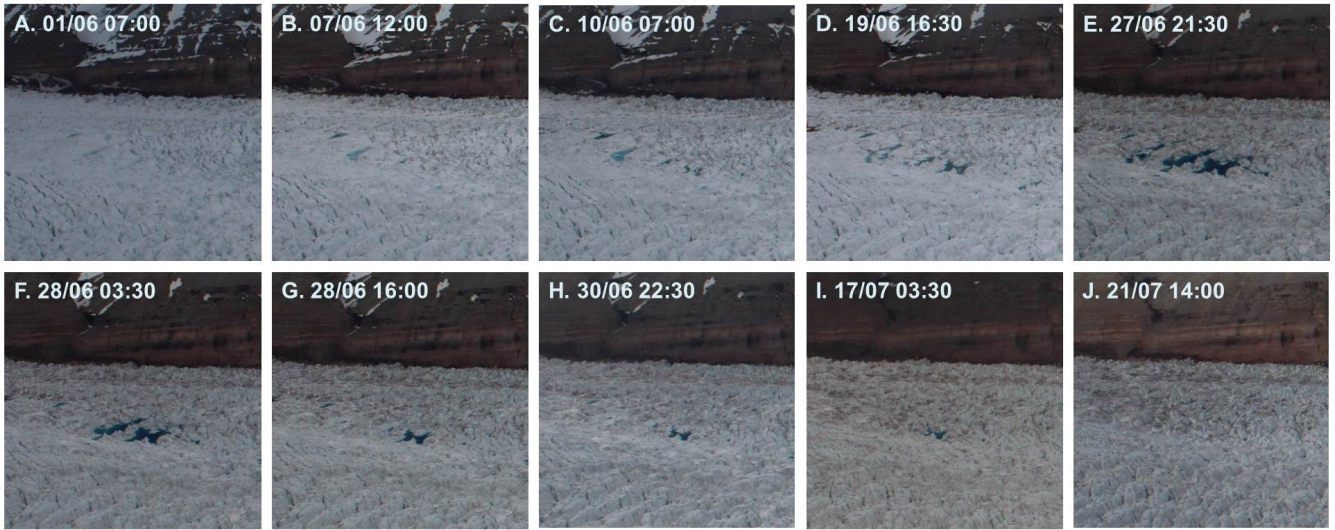


Figure 3. Selected time-lapse imagery showing the filling and drainage of the individual lakes in Lake Cluster 1. The glacier flows from right to left. A) Frozen water presides in crevasses; B) Frozen water thaws and lakes gradually fill; C) Upglacier crevasses begin to fill with water; D) All lakes continue to fill simultaneously; E) Lakes at maximum surface area; F) Downglacier lakes fully drain; G) Upglacier lakes partially drain; H and I) Upglacier lakes continue to drain gradually; J) All lakes are entirely drained by this point.

3 s^{-1} on 16 September. These instances coincide with large precipitation events, the former being the largest recorded in that year.

5.4 Glacier surface velocity

From the TerraSAR-X velocity dataset, spatially averaged velocities were calculated to compare with components of the glacier's hydrology system and velocity maps were created to investigate spatial patterns in surface speed-up and slow-down events. Spatial averages of velocity were demarcated for three regions of interest (ROI's): (i) the near-terminus (0–2 km) centreline, (ii) the area of supraglacial lakes (3 km from the terminus) and (iii) the area of borehole study (5 km from the terminus) (Fig. 2D). Three-F, Six velocity maps are presented in Figure 5 to illustrate the initiation of the 5 to illustrate this seasonal speed-up.

Surface velocities over the lower portion of the glacier tongue are $\sim 1.2 \text{ m d}^{-1}$ throughout May, with higher velocities ($> 2.4 \text{ m d}^{-1}$) situated on the south side of the terminus and lower velocities ($< 1 \text{ m d}^{-1}$) at the glacier margins on account of lateral drag. The near-terminus velocity is the highest of the three ROI's, fluctuating between $2.0\text{--}4.0 \text{ m d}^{-1}$ over the course of the melt season. Velocities from the supraglacial lake areas and the borehole site range between $1.0\text{--}2.0 \text{ m d}^{-1}$.

A speed-up occurs at the beginning of the season from mid-June to the beginning of July. The region of high velocities at the terminus gradually propagates upglacier through June as the rate of melt production increases. Velocities around the supraglacial lakes are above 2.4 m d^{-1} as they drain on 27 June at 03:00. This also coincides with the activation of the

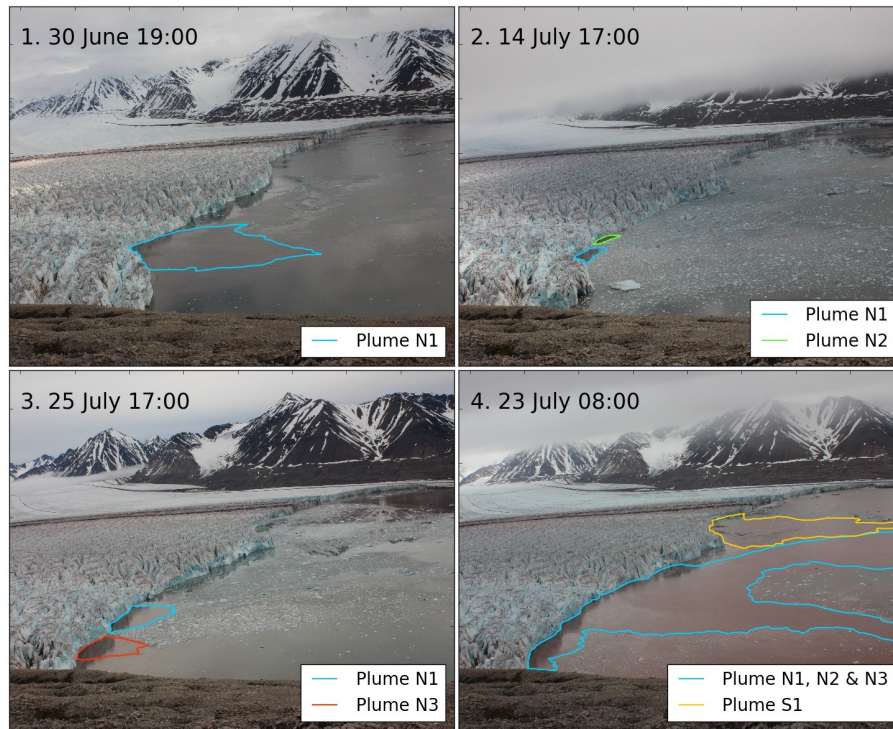


Figure 4. Meltwater plume scenarios from time-lapse imagery at Kronebreen. ~~Clockwise from top-left~~ Top-left to bottom-right: 1) Surfacing meltwater plume from the main source on the north side of the glacier terminus, N1; 2) Sources from Plume N1 and Plume N2; 3) Sources from Plume N1 and Plume N3; 4) Plume N1 and Plume S1, the main source on the south side of the glacier terminus.

meltwater plume and the increase in runoff. Figure 5 shows that the region of high velocities ($>2.4 \text{ m d}^{-1}$) is largest between 7–18 July, and this encomapsses most of the southern and central regions of the near-terminus area. Velocities remain consistent till the end of August, with velocities in the terminus zone ~~consistently~~ around 3.0 m d^{-1} and velocities around the supraglacial lakes and the borehole site between $1.0\text{--}1.5 \text{ m d}^{-1}$. Velocities begin to subside from 25 July, with velocity patterns resuming

5 to pre-melt season values by 16 August.

A second speed-up initiates in September, possibly caused by the two high rainfall events on the 13 and 16 September. ~~High-velocities persist~~ Whilst velocities remain constant at the lake and borehole ROI's through the rest of September, high velocities persist at the centreline ROI and they do not return to pre-melt season conditions.

5.5 Borehole pressure

- 10 Upon reaching the glacier bed at a depth of -115 m a.s.l. when drilling, the water level in the borehole dropped abruptly, indicating an effective connection to the subglacial drainage system. Comparison of the water-pressures recorded by the two pressure sensors reveals very high correlation ($R = 0.999$) and a mean offset of 24.3 kPa , agreeing with the $\sim 2.5 \text{ m}$ difference in installation depth. This close correspondence throughout the period over which both sensors were operating gives us confidence

in assuming that subglacial water-pressure continues to be recorded by the upper sensor after failure of the lower sensor, providing a continuous 14-month record of subglacial water-pressure. Figure 2A-G shows a subset of the entire measurement period (May – September 2014).

The mean water-pressure from the beginning of May until 13 September was ~~27.5-bar~~2750 kPa. This equates to a water level of 280 m, which is close to the point of floatation (~~297-291-293~~ m) based on a local ice thickness of 320 m and an ice density between 910–917 kg m⁻³. The water level fluctuates over a relatively small range of 11 m in this part of the record. A marked fluctuation occurs on 13–14 September, involving a substantial drop of 17 m over a period of 24 hours, followed by a week-long recovery. This coincides with the largest precipitation event of the season (43.6 mm in a 24-hour period), which prompted high runoff after a period of very little surface runoff.

The record is also characterised by several minor, but rapid, pressure changes, most notably during the three events at the beginning of July: 1) An increase of 3 m occurred over a 14 hour period from 20 June at 10:00; 2) a 3 m drop occurred over a 12 hour period from 28 June at 04:00 followed by a subsequent recovery; and 3) an increase of 6 m occurred over a 64 hour period from 09 September at 20:00. These three events coincide with, respectively, 1) initiation of notable runoff, 2) drainage of the largest set of supraglacial lakes (Fig. 2EA), and 3) activation of the main meltwater plume (P1) (Fig. 2FB).

5.6 Hydraulic potential

Several scenarios were considered in calculating the hydraulic potential at the bed of Kronebreen based on the k value, which represents cryostatic pressure ratio (i.e. the extent to which meltwater routing is dictated by ice-pressure gradients). Subglacial hydraulic potential was calculated over several iterations, changing the value of k each time. In total, we ran 11 simulations with the value of k between 0.0–1.0 (i.e. hydraulic potential was calculated each time with a k value of 0.0, 0.1, 0.2, 0.3, 0.4, 0.5, 0.6, 0.7, 0.8, 0.9, and 1.0).

Results suggest that subglacial meltwater is routed along the northern sector of the glacier when it is largely controlled by ice-pressure gradients ($k > 0.6$), and meltwater is channelled to the southern region when bed topography is the greater control ($k < 0.6$). Flow routing changes between a cryostatic pressure ratio of 0.5 and 0.6, with anything less than, or greater than, this value having little effect on the overall drainage configuration. A scenario where hydraulic potential is dictated by ice-pressure gradients (i.e. a k value between 0.6 and 1.0) is more realistic because the borehole record shows that water at the bed is persistently pressurised. The locations of the bed pressure sensor, the supraglacial lakes and the meltwater plumes on the north side of the terminus are hydraulically linked in this scenario (Fig. 6). This being the case, it is probable these are connected throughout the melt season and that simultaneous changes are indicative of the hydraulic regime of the subglacial environment.

6 Interpretation

The data sets that have been previously outlined – supraglacial ~~lakes~~lake area, plume visibility and extent, modelled melt and runoff, surface velocity, and borehole water-pressure – are signals of the subglacial drainage system. The relative timing of

these components can be used to construct a conceptual model to explain the storage and release of subglacial meltwater at Kronebreen. Additional insights into subglacial flow routing are obtained from the modelled hydraulic potential to support the ideas in this model.

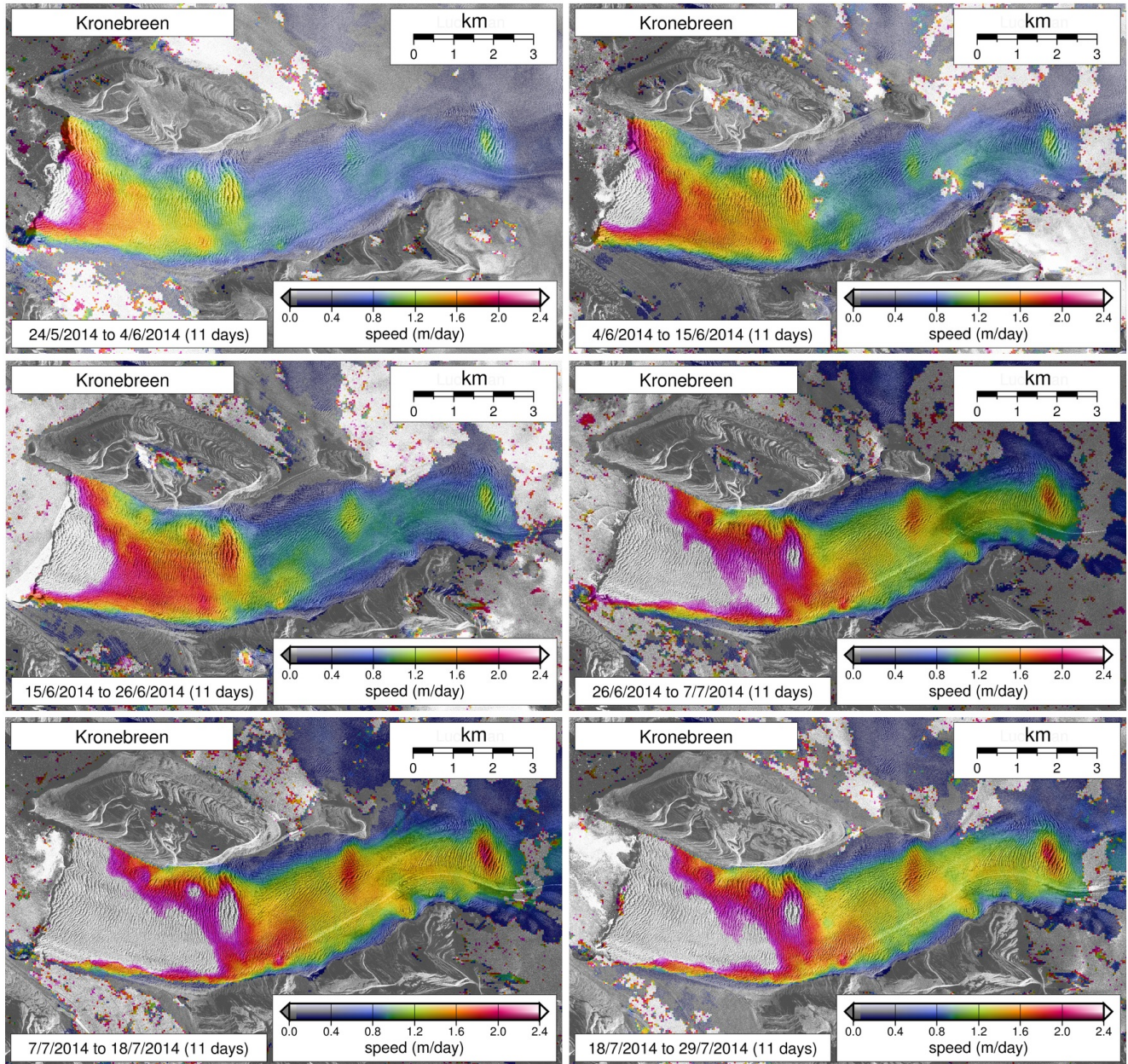


Figure 5. Sequential velocity maps from Kronebreen calculated from feature tracking through TerraSAR-X imagery, spanning 04/24/06/05/2014 to 07/29/07/2014. Maps show a seasonal speed-up from mid-June to the end of May, with a pattern of upwards propagation. This speed-up is The highest velocities are largely isolated to associated with the central and southern region of the glacier tongue. There is also a distinct boundary in the velocity field approx. 3 km up the glacier tongue. This boundary is due to a high in the bed topography.

6.1 Beginning of the melt season (May – June)

A series of key events occur at the beginning of the 2014 melt season (01 May - 30 June):

1. Melt production commences, increasing from ~ 0.25 mm w.e. hr^{-1} in the latter part of May, to 1 mm w.e. hr^{-1} by the end of June (Fig. 2BD).
- 5 2. The supraglacial lakes in Cluster 1 fill from 01–27 June (Fig. 2EA).
3. Surface velocities increase while the lakes in Cluster 1 fill, notably at the centreline from 2 to 3.5 m d^{-1} (Fig. 2DF).
4. Runoff markedly increases (>0.1 $\text{m}^3 \text{s}^{-1}$) from 23 June (Fig. 2EE).
5. The dominant meltwater plume on the north side of the terminus (N1) surfaces in the fjord at 02:00 on 25 June (Fig. 2F and 2GB and 2C).
- 10 6. The supraglacial lakes in Cluster 1 drain from 03:00 on 27 June over a period of 59 hours, decreasing from a total surface area of 41,374 m^2 to 2,477 m^2 (Fig. 2E). They drain in an upglacier-propagating fashion (Fig. 3).
7. The water level in the borehole drops by 3 m over a 12-hour period from 28 June (04:00), followed by a subsequent recovery
8. Surface velocities continue to increase into July, with higher velocities located in the central/southern region of the glacier tongue (Fig. 5). In addition, a second meltwater plume becomes active on the north side of the terminus (N3) and a plume intermittently surfaces on the south side (S1) at the beginning of July (Fig. 2C).
- 15

The surface velocity of the glacier begins to gradually increase from 10 June, based on the velocities from the ROI's – the centreline, the region of the supraglacial lakes, and the borehole site (Fig. 2D). ~~This implies that meltwater is present~~ F). There are several likely reasons for this. Marine influences could play a key role, such as submarine melting and the seasonal increase in fjord temperature, which could be causing changes at the terminus that reduce back-stress further upglacier and enable glacier flow. It is difficult to further explore this with the data available, but could be better examined in future work.

Another influence is the presence of meltwater at the bed and is enhancing basal lubrication. It is likely, which enhances basal lubrication and enables sliding. This is supported because of the coinciding observations of the filling of the supraglacial lakes. This suggests that the subglacial system is gradually filling with meltwater, assuming that these lakes are connected to the bed at this point in time and thus are a measure of hydraulic head. The modelled runoff however, does not suggest this, predicting that meltwater only reaches the bed from 23 June (Fig. 2EE). This meltwater may have originated from higher elevations and/or other glacier catchments, but it is unlikely given that early-season melt production is understood to first originate from the lower elevations of this glacier catchment (Van Pelt and Kohler, 2015). Therefore it is probable that the modelled runoff does not account for all meltwater delivered to the bed.

25 The continuous presence of a plume at the north side of the terminus (N1) ~~suggests~~ indicates that a channel is established here from 25 June (Fig. 2GC). Two additional plumes (N2 and N3) surface in the fjord later in the season. The modelled

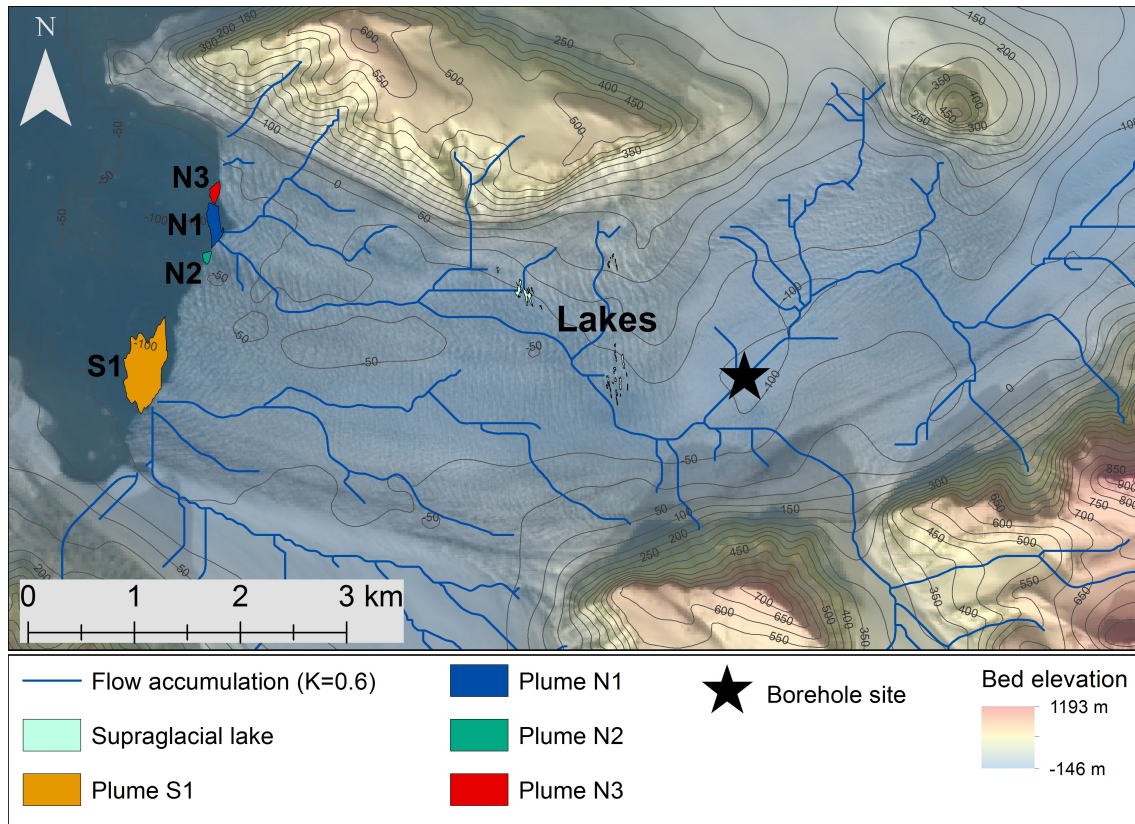


Figure 6. Potential subglacial water pathways at Kronebreen, as calculated from a scenario where hydraulic potential is governed by ice-pressure gradients (i.e. the cryostatic pressure ratio, K , is above 0.6). The [surface expressions for Plume N1 and N2 are taken from 11 July 08:00](#), [Plume N3 is taken from 20 July 2014 10:00](#), and [Plume S1 is taken from 16 September 04:00](#). The expression of Plume S1 is, on average, smaller than the expression shown here. This expression was chosen because it is the most accurate shape of the surface expression that could be acquired during the monitoring period. The base map is a Landsat image (taken on 11 June 2014) overlaid with bed elevation and corresponding contours at 50 m intervals.

hydraulic potential indicates that a channelised system may be present at the north side of the terminus (Fig. 6). The location of the main outlet of this channelised drainage matches the location of the three plumes, further suggesting that these plumes are an outflow of a channelised drainage system. As previously stated, hydraulic potential is more likely to be governed by ice-pressure gradients than bed topography. In this scenario, channels in the north region of the glacier tongue drain a significant area of the glacier catchment, with channels connected to the upper ice field (Holtedahlfonna). It is therefore likely that the plumes on the north side of the catchment represent a large proportion of the glacier's subglacial outflow.

The supraglacial lakes in Cluster 1 drain from 27 June (Fig. 2DF), which occurs after the activation of the main plume on the north side of the terminus on 25 June. The [relative timing of these events suggests that this lake drainage is likely to be the result of the establishment of an efficient drainage system under the north region of the glacier tongue. In addition, these lakes](#)

~~drain in an upward-propagating fashion. The~~ downglacier lakes empty first by 28 June (03:00), the lakes in the middle of the cluster empty by 28 June (16:00), leaving the upglacier lakes partially drained by 30 June (22:30) and these eventually drain completely by 21 July (14:00) (Fig. 3). The water level at the borehole site subsequently drops by 3 m over a 12-hour period from 28 June (Fig. 2AG). ~~The timing of~~ relative timing of these events indicate that these components are hydraulically linked.

5

There are several possibilities for the cause of these events. A change at the glacier terminus (e.g. an increase in calving activity) could have caused the speed-up and consequent longitudinal stretching which initiated the activation of the plume and the drainage of ~~the plume activation, the drainage of Cluster 1 and the change in borehole water-pressure indicates that these components are hydraulically linked and widespread drainage lakes. It is difficult to further investigate this idea given~~ the datasets presented in this study. Another scenario is that this is an indication of widespread drainage that occurs in an upglacier-propagating pattern ~~at the beginning of the melt season~~ (i.e. an early-season "flushing event").

10

This idea is supported by the modelled hydraulic potential, which suggests that the north plume outlet, the supraglacial lakes and the borehole could be linked via a common channelised system (where hydraulic potential is governed by ice-pressure gradients) (Fig. 6). However, the water-pressure in the borehole remains close to ice overburden pressure throughout the melt season. This suggests that either the connecting channel is consistently full of meltwater, or the borehole is located near, not within, a channel system.

15

6.2 Middle of the melt season (July – August)

The months of July and August are distinguished by distinct changes in surface velocities and plume activity. As noted in the previous section, surface velocities gradually increase from the beginning of the melt season and this continues through to a peak in mid-July (Fig. 2DF). This peak coincides with the drainage of the supraglacial lakes in Cluster 2 (05/07/2014 05:30) and Cluster 3 (16/07/2014 12:30) (Fig. 2EA). The sequential velocity maps show that this speed-up propagates ~~upglacier, and appears to be confined to the south region of the glacier tongue (Fig. 5). High velocities ($>2.4 \text{ m d}^{-1}$) originate from the central and southern regions of the terminus, and propagate~~ $\sim 4 \text{ km}$ upglacier between 31 May – 16 August. ~~This area of high velocity remains largely confined to~~ Surface velocities appear to be highest to the central/southern region ~~throughout August, largely isolating of the glacier tongue, with some of~~ the north region ~~from this speed-up, only reaching velocities between $\sim 1.6\text{--}2 \text{ m d}^{-1}$ (Fig. 5).~~

25

Plume activity at the north side of the terminus is persistent throughout August (Fig. 2FB). The main plume (N1) is visible throughout, the secondary plume (N3) is present for most of the month (01–20 August), and the third (N2) is briefly active on 29 August. The total surface area/expression of these plumes ~~has a cyclic pattern from 08 to 29 August (Fig. 2G). This pulsing fluctuates in size on a regular basis. This behaviour is repeated throughout August (08–28 August), and each fluctuation phase (i.e. a period of expansion followed by a reduction in surface area) has a duration of 4 to 5 days, which has no apparent correlation with variations~~ 4–5 days (Fig. 2C). Changes in surface melt ~~or runoff and runoff appear to have little influence on this pulsing.~~ This implies that there are additional controls on subglacial outflow, ~~such as cycles.~~ The source of this cyclicity could be associated with marine influences such as fjord circulation, tidal cycles, and wind direction. However, it is difficult to

30

~~examine these influence here due to the limited datasets. Cycles~~ of internal storage and release in the subglacial environment ~~This behaviour is possibly local and could also be a influence on subglacial outflow, which is possibly~~ confined to the terminus zone because the signal is not evident higher up the glacier tongue in the water-pressure record from the borehole.

Activity from the plume on the south side of the terminus (S1) is intermittent (Fig 2FB). The plume surfaces for short phases (<62 hours) every 5 days on average. This release of water could either be internally driven or could indicate that a dynamic drainage system presides, which can quickly transition between an efficient and distributed system. This differs from the persistent plume activity in the north region, and possibly reflects differences in drainage efficiency across the terminus. Modelled hydraulic potentials indicate that it is likely for meltwater to be routed to the north region throughout the melt season (Fig. 6). This being the case, meltwater is not efficiently evacuated from the central/south region. Meltwater will ~~remain be~~ ~~slow-flowing and/or~~ stored at the bed and enhance basal lubrication. This is a valid explanation for the ~~spatially-confined-nature of the seasonal spatial patterns in velocities seen in the early melt-season~~ speed-up.

6.3 End of the melt season (September)

The end of the 2014 melt season is characterised by five main features:

1. Modelled melt and runoff decrease by the beginning of September and continue to subside till mid-September (Fig. 2B ~~and 2CD and 2E~~). Additionally, plume extent is consistently small (Fig. 2GC) and activity is visible from only one of the outlets (N1) on the north side of the terminus (Fig. 2FB). Intermittent activity is also evident from the plume on the south side of the terminus (S1).
2. A large rainfall event occurs on 13 September, directly influencing runoff and likely also enhancing melt (Fig. 2B ~~and 2CD and 2E~~). This rainfall event is the largest of the season (43.6 mm in a 24-hour period). The water level at the borehole site drops by 17 m over a period of 24 hours that coincides with this rainfall event (Fig. 2AG). The water-pressure at the bed returns to former values by 20 September (i.e. a 7-day return time).
3. A second large rainfall event occurs on 16 September. This promotes a second spike in melt and runoff (Fig. 2B ~~and 2CD and 2E~~). Recovery of the water-pressure in the borehole remains gradual and consistent during this period.
4. Although there is limited visibility of the plumes during these rainfall events, clear conditions from 16 September (15:00) show that all four plumes are active and were possibly active during the storm (Fig. 2FB). Plumes N2 and N3 stop surfacing by 19:00 on 16 September. The two main outlets on the north and south side of the terminus (N1 and S1) continue to surface for the rest of the month (Fig. 2GC).
5. High surface velocities ($>2.4 \text{ m d}^{-1}$) continue through September, largely confined to the central/southern region of the glacier tongue.

It is likely that the presence of meltwater in the subglacial system beneath the north region of the glacier tongue has diminished by the beginning of September. ~~Little-Less~~ water entered or left the system, as indicated by the decreased melt/runoff and

the small plume extent on the north side of the terminus (Fig. 2B, 2C and 2G, 2D and 2E). Surface velocities remain high in the central/southern region of the glacier tongue though, as shown by the velocity record from the centreline ($\sim 3 \text{ m d}^{-1}$, Fig. 2D). Plume activity on the south side of the terminus is intermittent. This suggests that meltwater is not being effectively evacuated from the subglacial environment under the central/southern region of the glacier tongue. It is likely that this meltwater is slow-moving and/or being stored, which would enhance basal lubrication and is a likely reason for high surface velocities in this region at this late stage in the melt season.

The substantial rainfall event on 13 September appears to re-activate melt and runoff which, in turn, is likely to cause a rapid influx of water to the glacier bed (Fig. 2B and 2D and 2E). The coincident timing of the large drop in water-pressure at the borehole site indicates that meltwater is quickly removed from the upper area of the glacier tongue (Fig. 2A). In addition, all four plume sources were active for at least part of the storm, suggesting that channels were present at the glacier terminus (Fig. 2B). These observations support the idea that water was evacuated through a glacier-wide efficient drainage system during this period. This could be evacuated in a similar fashion to the "flushing event" observed at the beginning of the melt season.

However, high surface velocities persist through the remaining part of September. These high velocities are largely confined to the central/southern region of the glacier tongue, similar to the velocity field observed in June/July (Fig. 5). This suggests that meltwater is being retained in the subglacial environment despite the presence of an efficient drainage system. It is likely that water is efficiently evacuated from the north region of the glacier tongue, but not from the south/central region. This hypothesis matches with the hydraulic potential modelling, which indicates that the majority of subglacial meltwater is routed to the north of the glacier tongue, leaving the south/central region hydraulically isolated from the efficient drainage system (Fig. 6).

7 Discussion

7.1 Early melt season meltwater storage

Surface velocities gradually rise at the beginning of the melt season, from mid-June onwards. ~~This water is stored at the bed in a distributed hydrological system with a high residency period. An~~ As previously noted, this is likely to be driven by both changes in glacier dynamics (particularly in relation to conditions at the terminus) and changes in glacier hydrology. Evidence in this study supports the idea that glacier hydrology plays a significant role in this – the lack of plume activity indicates that an efficient channelised system has yet to form, ~~as suggested by the lack of plume activity during this period. It is suggested here~~ and the relative timing of this in relation to observations of the supraglacial lakes filling suggests that meltwater is gradually filling the subglacial system in the early part of the melt season, ~~which~~. This is promoting basal lubrication in the central/southern region of the glacier tongue.

This implies that water is ~~not being stored either~~ being generated at the bed, or it is bypassing storage in the snowpack and firn layer. Basal frictional melting could play a role in the generation of meltwater at the bed, but modelling of Kronebreen's basal properties suggest that surface runoff is more likely to be the key influencing factor (Vallot et al., In review). The lower area of the glacier tongue is a heavily crevassed surface, providing abundant meltwater pathways to the glacier bed. It is ~~likely suggested here~~ that early-season melt production is ~~bypassing storage directly routed to the bed~~ in the lower region of the

glacier tongue via these pathways. Equally, there is a possibility that snow cover is absent in June, and bare ice is already exposed in the early part of the melt season. Van Pelt and Kohler (2015) clarify that the model does not account for small-scale variability in precipitation and snow cover. For this reason, it is possible that water is being delivered to the bed earlier than the model anticipates.

- 5 This meltwater is being delivered to the bed and stored for a significant period of time before it is efficiently evacuated from the subglacial system. The activation of the main plume on the north side of the terminus (N1) suggests that either a sufficient volume of meltwater is being discharged to surface in the fjord, or an efficient system is established to evacuate meltwater on 25 June. ~~Based on the timing of the onset of the speed-up and activation of Plume N1, If the second of these instances is true then~~ meltwater is stored at the bed for ~ 15 days before it is evacuated. ~~It, based on the timing of the onset of the speed-up and~~
- 10 the activation of Plume N1. This being the case, it is likely that it is released either when sufficient pressure has accumulated to force a channel to open, or when subglacial water has sufficiently melted the cavity/conduit wall. Therefore the storage of water at the bed of the glacier could play a vital role in the seasonal speed-up at Kronebreen during the 2014 melt season.

7.2 Upglacier-propagating supraglacial lake drainage

The three groups of supraglacial lakes observed through the 2014 melt season exhibit different filling and draining patterns.

- 15 The lakes in Cluster 1 overspill and coalesce, and drainage is rapid and completely empties all stored water at the surface. The lakes in Clusters 2 and 3 are constrained within individual crevasses as small discontinuous ponds. Drainage of these lakes is rapid, but they do not completely drain. Danielson and Sharp (2013) identified three types of lake drainage events, distinguished by the rate at which the drainage occurs and the volume of water that is drained: 1) Crevasse pond drainage ~~—~~ a region of unconnected lakes form within crevasses which drain asynchronously, suggesting that the crevasses empty from the
- 20 base; 2) Slow lake drainage ~~—~~ supraglacial lakes which drain via overflowing, which commonly leaves a remnant lake in the deepest part of the basin; and 3) Fast lake drainage ~~—~~ complete, rapid drainage of a supraglacial lake via a crevasse or moulin opening within the lake basin. The three lake clusters in this study exhibit the characteristics of two of these typologies. Cluster 1 adheres to the characteristics of fast lake drainage (type 3) and the lakes in Clusters 2 and 3 are similar to the characteristics of crevasse pond drainage (type 1).

- 25 The lakes in Cluster 1 are of particular interest because of the coincident timing of their drainage in relation to changes in surface velocities, runoff, and activation of the plume at the beginning of the melt season. This suggests that ~~the lakes in Cluster these lakes~~ are linked to a common channelised system when they drain. The upglacier-propagating nature of their drainage indicates that channels develop in an upglacier progression as reflected in the timing of their connection to the subglacial environment. The hydraulic potential modelling supports this as it indicates that Cluster 1 may be situated close
- 30 to a large channel/flow accumulation pathway. ~~It is likely that these lakes drained as a result of the formation of an efficient subglacial drainagesystem under the north region of the glacier tongue. This being so, the upward-propagating nature of their drainage reflects the timing of their connection to the subglacial environment. In turn, this could also suggest that channels develop in an upglacier progression at the beginning of the melt season.~~ Glacier dynamics may also play a key role in the cause of this lake drainage. Longitudinal stretching occurs as the glacier accelerates at the beginning of the season, which facilitates

the opening of crevasses and increases the chance of lake drainage. The upglacier-propagating nature of the drainage may also be a result of this early-season acceleration, assuming that it initiates at the glacier front and propagates upglacier. It is difficult to examine this in greater detail with the datasets presented in this study, but could be further explored in future work.

7.3 Controls on meltwater plume activity

5 ~~In our study three~~ Three plumes are visible at the north side of the terminus (N1, N2 and N3) during periods of high rainfall, suggesting that more channels become active when there is a rapid input of meltwater to the bed. The location of these plumes matches the location of a major channel outlet in the hydraulic potential model suggesting that these plumes are the outflow from an efficient drainage system under the north region of the glacier tongue. Observations of increased plume activity during and/or shortly following high rainfall events suggest that more channels become active on the north side of the terminus
10 to accommodate ~~episodes where there is~~ an abnormally high rate of meltwater delivery to the bed. The rate at which these channels switch on and off (indicated by the short lag between precipitation/runoff and plume activity) indicates that the subglacial environment is highly dynamic and able to adapt rapidly ~~—~~ either dormant channels become active or new channels form to accommodate for high rates of meltwater delivery.

In contrast, one plume is visible at the south region of the terminus (S1). The activity of this plume is intermittent and it is
15 unexpectedly absent during periods of high runoff, suggesting that the outflow of meltwater is not channelised and is instead more distributed at the grounding line. The modelled hydraulic potential indicates that only a small proportion of the total drainage is routed here. It is therefore unlikely that a stable channelised drainage system exists in this region, and a distributed system resides in periods of low discharge. It is proposed here that this plume activity is a signal for subglacial hydraulic pulsing. As the water level at the borehole site ~~is unvarying (298–300 m) and runoff follows a diurnal eye~~ varies over only
20 a small range (298–300 m), it is suggested that this pulsing is independent of meltwater inputs and is the result of processes confined to the near-terminus region (i.e. not glacier-wide).

Hydraulic pulsing represents a periodic flushing of meltwater in the local vicinity, which occurs when sufficient pressure has accumulated to force a channel open and/or when subglacial water has sufficiently melted the cavity/conduit wall. The precise timing of each outflow is possibly controlled by marine dynamics such as tidal level. ~~This~~ Although it cannot be further
25 explored here, this could be an interesting focus for future work. This pulsing will have a significant influence on subglacial meltwater storage. For example, storage is evident at the beginning of the season when melt production has begun, supraglacial lakes begin to fill, and velocity gradually increases from 2–4 m d^{-1} (based on velocities from the centreline). The trigger for the release of this water could be related to this hydraulic pulsing. This pulsing could be the cause of short-term changes in glacier dynamics in the near-terminus area, such as basal sliding and localised speed-up events. Although this idea cannot be
30 further explored here, the examination of glacier dynamics in relation to plume presence could be a promising area for future studies.

Plume presence is commonly taken as an expression of the subglacial drainage network near the terminus. For example, Slater et al. (2017) saw no surfacing plume activity in the middle of the summer melt season at Kangiata Nunata Sermia (KNS), Greenland, despite high runoff. They associated this with a distributed drainage system at the bed, producing multiple

outlets that did not surface in the fjord. The activity of the plume at KNS is similar to that observed at Plume S1 at Kronebreen, with plume extent disassociated from runoff. Slater et al. (2017) argue that this disassociation may be indicative of a system that is close to the threshold between a distributed and efficient drainage system. This is likely to also be the case at Kronebreen. ~~A plume activates when a sufficient amount of pressure has accumulated to force a channel open.~~ It is further suggested here that

5 plume activity can be used as a signal for subglacial hydraulic pulsing, specifically the internal storage and release of meltwater at marine-terminating glaciers.

Satellite imagery with long repeat-pass times is unlikely to adequately represent plume activity, even in long-term studies. Plume extent is controlled by multiple processes on different timescales and associating them with glacier hydrology and/or dynamics for a discrete point in time may be misleading. Monitoring plume activity through storms and cloudy conditions is
10 important because plume activity notably changes during such periods and valuable information can be extracted about plume dynamics. Time-lapse photogrammetry has proved vital here in providing high-frequency observations of meltwater plume activity, but alternatives need to be implemented to overcome this pivotal limitation.

7.4 Subglacial drainage of Kronebreen

There is little or no diurnal signal in the water-pressure record and the subglacial system is consistently close to ice overburden
15 at the borehole site. The ~~key difference at Kronebreen, and other tidewater glaciers, is the~~ water-pressure record at Kronebreen reflects a high hydraulic base-level determined by water depth at the terminus. This ensures that the subglacial environment is persistently pressurised where the bed is significantly below sea level. This permits fast flow ~~and likely discourages the development of a stable subglacial,~~ which could preclude the formation of persistent channels.

Few short-term pressure variations are observed in the water-pressure record from May–September 2014, apart from the
20 significant drop in pressure at the end of the melt season. It is possible that the borehole is located on an area of the bed that is not well connected to an active, efficient drainage system. However, changes in water-pressure have been observed to coincide with other features in the hydrological system (i.e. plume activity and supraglacial lake drainage), which suggests that the borehole is hydraulically connected to some degree. This is also supported by the modelled hydraulic potential, which indicates that the borehole is located close to, or possibly within, an efficient drainage catchment.

25 Observations of intermittent plume activity at the south side of the terminus ~~support this idea and~~ suggest that a stable drainage system cannot exist in this region. Meltwater discharge is instead driven by internal hydraulic storage and release ~~as efficient channels briefly form then collapse.~~ However, the persistent presence of plumes at the north side of the terminus indicates that a channelised system ~~is~~ could be active below this part of the glacier for the majority of the melt season. In this area, a stable efficient drainage system is encouraged both by the hydraulic gradient below the glacier, and the relatively low
30 velocity of the ice due to lateral drag at the margin.

The chain of events we recorded at the beginning of the 2014 melt season indicates an upglacier-propagating drainage of the subglacial hydraulic system, notably the activation of the surfacing meltwater plume followed by the drainage of Cluster 1 and the subsequent drop in subglacial water-pressure which occur within 3 days over the lower ~5 km of the glacier tongue. This ~~can be associated with a glacier-wide transient low-pressure wave that~~ is initiated near the terminus ~~and results in the~~

~~drawdown of~~ as the drainage efficiency increases and subglacial water pressure drops. This is likely to be either initiated via the onset of the speed-up which promotes longitudinal stretching, or by the formation of channels near to the glacier front which propagate upglacier and drawdown subglacial meltwater from the ~~adjacent upper catchment~~ upper catchment area (i.e. a "flushing event"). A ~~transient low-pressure wave~~ similar event is possibly also seen at the end of the 2014 melt season, with the pressure drop and re-activation of near-terminus channels (indicated by plume activity) in mid-September.

~~These observations~~ The observations from the borehole water-pressure record are strikingly different from borehole records in Alpine settings which. These usually exhibit a diurnal signal reflecting, which reflects changes in delivery of meltwater to the bed. ~~This and~~ creates transverse hydraulic gradients that make meltwater ~~path-ways~~ pathways highly changeable (e.g., Meier et al., 1994; Hubbard et al., 1995). Consistently high basal water-pressures have been associated with glaciers where the evacuation of meltwater from the subglacial environment is inefficient and the drainage system is unstable (e.g., Sugiyama et al., 2011). The borehole record from Kronebreen supports this idea and further suggests that consistently high basal water-pressure may be exclusively affiliated with lake-terminating and tidewater glaciers. Rapid drainage events have also been observed at other marine-terminating glaciers (e.g., Danielson and Sharp, 2013). The observed upglacier progression of drainage at Kronebreen, however, does not fit the proposed hypothesis that downglacier progression of drainage may be primarily associated with dynamic tidewater glaciers such as Helheim glacier (Everett et al., 2016).

It has previously been argued that changes in discharge at tidewater glaciers are accommodated through changes in conduit size rather than changes in the hydrological network. This idea largely stems from modelling and indirect measurements from large outlet glaciers in Greenland and Alaska (Pimental et al., 2010; Gimbert et al., 2016). Here, we propose that Kronebreen is able to accommodate fluctuations in discharge through changes in the subglacial hydrological network. This is based on the observation of additional plume activity during periods of rapid meltwater inputs to the bed, which are indicative of active channels. It is likely that the subglacial network can reconfigure ~~due to the difference in ice thickness because the ice is shallower and thinner,~~ compared to large ice sheet outlets. ~~This also means that channels can be open for longer because the thinner ice promotes slower creep closure rates.~~ Reconfigurations could have a marked effect on the rate of submarine melting at the ice front beneath the waterline. ~~The rate of submarine melting is argued to be influenced by the number of active channels, with a distributed drainage system promoting the maximum amount of submarine melting (Slater et al., 2015).~~ (e.g., Slater et al., 2015), and it would be interesting to investigate the effect of channel reconfigurations on ice front stability in future work.

7.5 Implications for subglacial dynamics

The seasonal speed-up ~~measured in~~ observed at the beginning of the 2014 ~~is confined to the melt season shows that the highest velocities exhibited are within the~~ central/southern region of the tongue of Kronebreen. ~~The spatially confined nature of the speed-up is the,~~ as presented in the velocity maps in Figure 5. These high velocities are likely to be the result of differences in the efficiency of the drainage beneath the north and central/southern regions of the glacier tongue. Modelled hydraulic potential suggests that meltwater is channelled to the north region, assuming that flow routing is largely governed by ice-pressure gradients. This effectively isolates the central/southern region from an efficient mechanism to evacuate meltwater. It is evident from

observations of plume activity that channels cannot form for sufficiently long periods in this area, which enhances basal lubrication and ~~causes a localised speed-up is a contributing factor to the localised high velocities~~ at the beginning of the melt season. The ~~speed-up propagates~~ localised high velocities propagate upglacier as meltwater ~~continues to accumulate~~ accumulates at the bed.

5 ~~This pattern of~~ The velocity pattern associated with this seasonal speed-up is also evident in previous years at Kronebreen. Luckman et al. (2015) note ~~consistent~~ speed-up events in 2013 and 2014 from TerraSAR-X satellite imagery. Schellenberger et al. (2015) emphasise the importance of basal lubrication based on observed links between velocity and surface water production at Kronebreen from 2007 to 2013. This general trend can be examined in much finer detail here to conclude that variations in the velocity field at Kronebreen are not only influenced by surface water production but also by the specific configuration of
10 the subglacial drainage system which, in turn, is governed by ice-pressure gradients at the bed.

We also argue here that 2014 is ~~actually~~ an abnormal year for the dynamics of Kronebreen, based on the observations of a speed-up at the end of the melt season (Luckman et al., 2015; Vallot et al., In review). ~~Whilst the speed-up at the end of the 2014 melt season was due to unaccommodated water in the subglacial environment, here we propose~~ It is likely that this speed-up was ~~largely~~ caused by an unprecedented high rainfall event ~~-that overwhelmed a subglacial drainage system in a~~
15 late-season phase with low efficiency. Doyle et al. (2015) observed a similar event near to the end of the 2011 melt season at Russell Glacier. They suggest that such speed-ups are amplified due to their late-season timing. It is likely that this is also the case at Kronebreen in this instance. Although the inefficiency of the subglacial system is partly accountable for the ~~difference in velocity between 2013 and 2014, we believe that the sustained speed-up was~~ late-season speed-up, it is also likely that sustained high velocities were caused by the abnormally high rainfall event and the storage of this water in a distributed drainage system
20 that presided under the central/southern region of the glacier front. Changes in velocity are thus controlled by the location of efficient drainage at Kronebreen, and resulting patterns of bed friction.

8 Conclusions

Subglacial hydrology has been examined at a tidewater glacier in Svalbard using direct measurements of the basal pressure environment in conjunction with measurements of hydrological components (supraglacial lake drainage, ~~melt, runoff,~~ meltwater
25 plume presence, and plume surface area), modelled ~~hydraulic potential~~ components (melt, runoff, and hydraulic potential), and surface velocities derived from TerraSAR-X imagery. Two key events ~~5~~ occur at Kronebreen which provide insights into the hydraulic regime during the 2014 melt season: 1) An ~~upward-propagating upglacier-propagating~~ drainage event over a significant region of the glacier tongue, with simultaneous measurements suggesting this was an episode of early-season subglacial flushing which occurred within a 3-day period (25–28 June) over a distance of 5 km; 2) An unprecedented high-rainfall event
30 in mid-September which re-activates the subglacial drainage system and is argued to be the cause of persistent high surface velocities through the winter season (Vallot et al., In review).

The Evidence suggests that the event at the beginning of the melt season ~~can be associated with~~ is linked to a glacier-wide ~~transient low-pressure wave change in subglacial water-pressure~~ that is initiated near the terminus and results in the drawdown

of subglacial meltwater from the adjacent upper catchment. ~~The water level recorded in the borehole indicates that the bed is persistently pressurised, and this is likely to be the case in the nearterminus zone. Subglacial~~ It is likely that subglacial flow routing is ~~thus~~ largely governed by ice-pressure gradients, routing a significant proportion of meltwater to the north region of the glacier tongue (as shown by the presence of plume activity at the north side of the terminus and indicated by hydraulic potential modelling). ~~A stable efficient drainage system can form here as the glacier is not as fast flowing due to lateral drag at the margin.~~

Observations of intermittent plume activity at the south side of the terminus imply that the drainage system for the central/southern region of the glacier tongue is disrupted throughout the melt season. It is likely that a stable system cannot form because a smaller proportion of meltwater is routed to this area (as suggested by hydraulic potential modelling) and there is a high rate of deformation at the bed due to persistent fast velocities through the melt season. Plume activity is disassociated from modelled runoff, which indicates that a distributed drainage system is active through the majority of the melt season (Slater et al., 2017). Periodic presence of a surfacing plume is suggested here to be a signal for internal storage and release of meltwater. ~~Meltwater is released~~ This could be controlled by oceanic influences or driven by basal water-pressure (i.e. when a sufficient amount of pressure has accumulated to force a channel open and/or when subglacial meltwater has sufficiently melted the cavity/conduit wall). In effect, the plume activity is an indicator of modulated subglacial pulsing under the central/southern region of the glacier tongue.

This storage of subglacial water is a key control on ice flow over the 2014 melt season. Surface velocities show that the on-set of the seasonal speed-up is relatively early compared to modelled runoff (i.e. melt production at the surface which enters the englacial zone). This implies that meltwater could be bypassing storage at the surface earlier in the melt season than anticipated. The absence of plume activity early in the season further suggests that this meltwater is not being quickly evacuated from the subglacial zone. Therefore this meltwater is possibly being stored at the bed and enhancing basal lubrication, which facilitates the early on-set of the seasonal speed-up.

The surface velocities also reveal that significantly higher velocities are present in the central/southern region of the glacier tongue. This suggests that meltwater is being retained in the subglacial environment within this region and a local distributed drainage system presides despite the presence of an efficient drainage system in the northern region. This pattern of ~~speedup~~ speed-up has been alluded to in previous years (Luckman et al., 2015; Schellenberger et al., 2015). It is evident that variations in the velocity field at Kronebreen are not only influenced by surface runoff but also by the specific configuration of the subglacial drainage system. The ~~maintained speed-up~~ high velocities observed in the latter part of the 2014 melt season is abnormal due to the unprecedented high-rainfall event and storage of this water in a localised region of the glacier tongue which enhanced basal lubrication. ~~Changes in velocities are thus concluded to be~~ (Doyle et al., 2015). Whilst it is acknowledged that glacier dynamics play a key role in ice velocity, it is argued here that changes in velocities are also controlled by the location of efficient and inefficient drainage, and the regions where water is stored and evacuated.

Code and data availability. It is intended to publicly release the PyTrx photogrammetry toolbox at a later date, along with the photogrammetry datasets used in this research.

Author contributions. PH is the primary author of this paper. In addition she developed the photogrammetric tools in PyTrx and processed the borehole and photogrammetric datasets used here. DIB is the project leader and had an active role in developing the ideas presented in this paper. NRJH designed the time-lapse camera systems, developed the photogrammetric tools in PyTrx and carried out the hydraulic potential calculations. BH led the borehole fieldwork. AL provided velocities from feature tracking through TerraSAR-X satellite imagery. HS assisted on all related fieldwork and aided in data processing. WJJVP provided melt and runoff data. KL provided a bed DEM for the Kronebreen catchment. JK provided a surface DEM, facilitated fieldwork, and gave helpful insight into the ideas presented in this paper. WB designed and installed the pressure sensors which were placed on the glacier bed.

10 *Competing interests.* No competing interests are present.

Acknowledgements. This work was funded by the Conoco Phillips-Lundin Northern Area Program through the CRIOS project (Calving Rates and Impact On Sea level, RiS-ID 6155). P. H. is supported by a NERC PhD studentship. TerraSAR-X data were provided by DLR (project OCE1503). This work would not have been possible without the logistical support provided by Airlift AS, the Norwegian Polar Institute Sverdrup Research Station in Ny Ålesund, and the University Centre in Svalbard (UNIS) Tech and Logistics team. We greatly

15 acknowledge Alex Hart and the GeoSciences Mechanical Workshop at the University of Edinburgh for manufacturing the time-lapse camera enclosures that were used in this study. We would also like to thank Silje Smith-Johnsen for her assistance in the deployment of the time-lapse cameras, Fiona Clubb for her guidance on data visualisation, and Donald Slater for useful comments and feedback on this paper . [Andreas Vieli as the nominated editor of this paper, and the three appointed reviewers which consisted of Shin Sugiyama and two anonymous reviewers.](#)

References

- Andrews, L.C., Catania, G.A., Hoffman, M.J., Gulley, J.D., Lüthi, M.P., Ryser, C., Hawley, R.L. and Neumann, T.A.: Direct observations of evolving subglacial drainage beneath the Greenland Ice Sheet, *Nature*, 514, 80–83, doi:10.1038/nature13796, 2014.
- Bartholomäus, T.C., Stearns, L.A., Sutherland, D.A., Shroyer, E.L., Nash, J.D., Walker, R.T., Catania, G., Felikson, D., Carroll, D., Fried, M.J., Noël, Van Den Broeke, M.R.: Contrasts in the response of adjacent fjords and glaciers to ice-sheet surface melt in West Greenland, *Ann. Glaciol.*, 57, 73, 25–38, doi:10.1017/aog.2016.19, 2016.
- Batholomew, I., Nienow, P., Mair, D., Hubbard, A., King, M.A. and Sole, A.: Seasonal evolution of subglacial drainage and acceleration in a Greenland outlet glacier, *Nat. Geosci.*, 3, 6, 408–411, doi:10.1038/ngeo863, 2010.
- Bueler, E. and van Pelt, W.J.J.: Mass-conserving subglacial hydrology in the Parallel Ice Sheet Model version 0.6, *Geosci. Model Dev.*, 8, 1613–1635, doi:10.5194/gmd-8-1613-2015, 2015.
- Clason, C.C., Mair, D.W.F., Nienow, P., Bartholomew, I.D., Sole, A., Palmer, S. and Schwanghart, W.: Modelling the transfer of supraglacial meltwater to the bed of Leverett Glacier, Southwest Greenland, *The Cryosphere*, 9, 123–138, doi:10.5194/tc-9-123-2015, 2015.
- Cottier, F., Tverberg, V., Inall, M., Svendsen, H., Nilsen, F. and Griffiths, C.: Water mass modification in an Arctic fjord through cross-shelf exchange: The seasonal hydrography of Kongsfjorden, Svalbard, *J. Geophys. Res. Oceans.*, 110, C12005, doi:10.1029/2004JC002757, 2005.
- Cowton, T., Slater, D., Sole, A., Goldberg, D., Nienow, P.: Modeling the impact of glacial runoff on fjord circulation and submarine melt rate using a new subgrid-scale parameterization for glacial plumes, *J. Geophys. Res. Oceans.*, 120, 2, 796–812, doi:10.1002/2014JC010324, 2015.
- Danielson, B. and Sharp, M.: Development and application of a time-lapse photograph analysis method to investigate the link between tidewater glacier flow variation and supraglacial lake drainage events, *J. Glaciol.*, 59, 214, 287–302, doi:10.3189/2013jog12j108, 2013.
- Darlington, E.: Meltwater delivery from the tidewater glacier Kronebreen to Kongsfjorden, Svalbard; insights from in-situ and remote-sensing analyses of sediment plumes, PhD thesis, Loughborough University, 2015.
- Dow, C.F., Kulessa, B., Rutt, I.C., Tsai, V.C., Pimentel, S., Doyle, S.H., As, D., Lindbäck, K., Pettersson, R., Jones, G.A. and Hubbard, A.: Modeling of subglacial hydrological development following rapid supraglacial lake drainage, *J. Geophys. Res. Earth Surf.*, 120, 6, 1127–1147, doi:10.1002/2014JF003333, 2015.
- Doyle, S.H., Hubbard, A., van de Wal, R.S.W., Box, J.E., van As, D., Scherrer, K., Melerbachtol, T.W., Smeets, P.C.J.P., Harper, J., Johansson, E., Mottram, R.H., Mikkelsen, A.B., Willhelms, F., Patton, H., Christoffersen, P. and Hubbard, B.: Amplified melt and flow of the Greenland ice sheet driven by late-summer cyclonic rainfall, *Nat. Geosci.*, 8, 647–653, doi:10.1038/nego2482, 2015.
- Eiken, T. and Sund, M.: Photogrammetric methods applied to Svalbard glaciers: accuracies and challenges, *Polar Res.*, 31, 18671, doi:10.3402/polar.v31i0.18671, 2012.
- Evatt, G.W., Fowler, A.C., Clark, C.D. and Hulton, N.R.J.: Subglacial floods beneath ice sheets, *Phil. Trans. R. Soc. A*, 264, 1769–1794, doi:10.1098/rsta.2006.1798, 2006.
- Everett, A., Murray, T., Selmes, N., Rutt, I.C., Luckman, A., James, T.D., Clason, C., O’Leary, O., Karunarathna, H., Moloney, V. and Reeve, D.E.: Annual down-glacier drainage of lakes and water-filled crevasses at Helheim Glacier, southeast Greenland, *J. Geophys. Res. Earth Surf.*, 121, 1819–1833, doi:10.1002/2016JF003831, 2016.

- Fried, M.J., Catania, G.A., Bartholomaeus, T.C., Duncan, D., Davis, M., Stearns, L.A., Nash, J., Shroyer, E. and Sutherland, D.: Distributed subglacial discharge drives significant submarine melt at a Greenland tidewater glacier, *Geophys. Res. Lett.*, 42, 9328–9336, doi:10.1002/2015GL065806, 2015.
- Gimbert, F., Tsai, V.C., Amundson, J.M., Bartholomaeus, T.C. and Walter, J.I.: Subseasonal changes observed in subglacial channel pressure, size, and sediment transport, *Geophys. Res. Lett.*, 43, 3786–3794, doi:10.1002/2016GL068337, 2016.
- Hewitt, I.J.: Seasonal changes in ice sheet motion due to melt water lubrication, *Earth Planet. Sci. Lett.*, 371–372, 16–25, doi:10.1016/j.epsl.2013.04.022, 2013.
- Hubbard, B. and Nienow, P.: Alpine subglacial hydrology, *Quat. Sci. Rev.*, 16, 9, 939–955, doi:10.1016/s0277-3791(97)00031-0, 1997.
- Hubbard, B.P., Sharp, M.J., Willis, I.C., Nielsen, M.K. and Smart, C.C.: Borehole water-level variations and the structure of the subglacial hydrological system of Haut Glacier d’Arolla, Valais, Switzerland, *J. Glaciol.*, 41, 139, 572–583, doi:10.1016/s0277-3791(97)00031-0, 1995.
- Iken, A. and Truffer, M.: The relationship between subglacial water pressure and velocity of Findelengletscher, Switzerland, during its advance and retreat, *J. Glac.*, 43, 144, 328–338, doi:10.1017/S0022143000003282, 1997.
- Kääb, A., Lefauconnier, B. and Melvold, K.: Flow field of Kronebreen, Svalbard, using repeated Landsat 7 and ASTER data, *Ann. Glaciol.*, 42, 1, 7–13, doi:10.3189/172756405781812916, 2005.
- Kamb, B., Engelhardt, H., Fahnestock, M.A., Humphrey, N., Meier, M. and Stone, D.: Mechanical and hydrologic basis for the rapid motion of a large tidewater glacier: 2. Interpretation, *J. Geophys. Res.*, 99, B8, 15231–15244, doi:10.1029/94JB00467, 1994.
- Kargel, J.S., Leonard, G.J., Bishop, M.P., Kääb, A. and Raup, B.: *Global Land Ice Measurements from Space* (Springer-Praxis), 876 pp., ISBN: 978-3-540-79817-0, doi:10.1007/978-3-540-79818-7, 2014.
- Köhler, A., Chapuis, A., Nuth, C., Kohler, J. and Weidle, C.: Seasonal variations of glacier dynamics at Kronebreen, Svalbard revealed by calving related seismicity, *The Cryosphere Discuss.*, 5, 3291–3321, doi:10.5194/tcd-5-3291-2011, 2011.
- Lefeuvre, P.-M., Jackson, M., Lappégard, G. and Hagen, J.O.: Interannual variability of glacier basal pressure from a 20 year record, *Ann. Glaciol.*, 56, 70, 33–44, doi:10.3189/2015AoG70A019, 2015.
- Lindbäck, K., Pettersson, R., Doyle, S.H., Helanow, C., Jansson, P., Kristensen, S.S., Stenseng, L., Forsberg, R. and Hubbard, A.L.: High-resolution ice thickness and bed topography of a land-terminating section of the Greenland Ice Sheet, *Earth Sys. Sci. Data*, 6, 2, 331–338, doi:10.5194/essd-6-331-2014, 2014.
- Luckman, A., Benn, D.I., Cottier, F., Bevan, S., Nilsen, F. and Inall, M.: Calving rates at tidewater glaciers vary strongly with ocean temperature, *Nat. Commun.*, 6, 8566, doi:10.1038/ncomms9566, 2015.
- Meier, M., Lundstrom, S., Stone, D., Kamb, B., Engelhardt, H., Humphrey, N., Dunlap, W.W., Fahnestock, M., Krimmel, R.M. and Walters, R.: Mechanical and hydrologic basis for the rapid motion of a large tidewater glacier: 1. Observations, *J. Geophys. Res.*, 99, B8, 15219–15229, doi:10.1029/94JB00237, 1994.
- Messerli, A. and Grinsted, A.: Image GeoRectification And Feature Tracking toolbox: ImGRAFT, *Geosci. Instrum. Method. Data Syst. Discuss.*, 4, 491–513, doi:10.519/gid-4-491-2014, 2014.
- Murray, T., and Clarke, G. K. C.: Black-box modeling of the subglacial water system, *J. Geophys. Res.*, 100, B6, 10231–10245, doi:10.1029/95JB00671, 1995.
- Nienow, P., Sharp, M. and Willis, I.: Seasonal changes in the morphology of the subglacial drainage system, Haut Glacier d’Arolla, Switzerland, *Earth Surf. Process. Landforms*, 23, 825–843, doi:10.1002/(SICI)1096-9837(199809)23:9<825::AID-ESP893>3.0.CO;2-2, 1998.

- Nuth, C., Schuler, T.V., Kohler, J., Altena, B. and Hagen, J.O.: Estimating the long-term calving flux of Kronebreen, Svalbard, from geodetic elevation changes and mass-balance modelling, *J. Glaciol.*, 58, 207, 119–133, doi:10.3189/2012JoG11J036, 2012.
- Pimentel, S., Flowers, G.E. and Schoof, C.G.: A hydrologically coupled higher-order flow-band model of ice dynamics with a Coulomb friction sliding law, *J. Geophys. Res. Earth Surf.*, 115, F4, doi:10.1029/2009JF001621, 2010.
- 5 Pimental, S. and Flowers, G.E.: A numerical study of hydrologically driven glacier dynamics and subglacial flooding, *Proc. R. Soc. A.*, 467, 2126, 537–558, doi:10.1098/rspa.2010.0211, 2011.
- Rippin, D., Willis, I., Arnold, N., Hodson, A., Moore, J., Kohler, J. and Björnsson, H.: Changes in geometry and subglacial drainage of Midre Lovénbreen, Svalbard, determined from digital elevation models, *Earth Surf. Process. Landforms*, 28, 273–298, doi:10.1002/esp.485, 2003.
- 10 Schild, K.M., Hawley, R.L. and Morris, B.F.: Subglacial hydrology at Rink Isbræ, West Greenland inferred from sediment plume appearance, *Ann. Glaciol.*, 57, 72, 118–127, doi:10.1017/aog.2016.1, 2016.
- Schellenberger, T., Dunse, T., Käab, A., Kohler, J. and Reijmer, C.H.: Surface speed and frontal ablation of Kronebreen and Kongsbreen, NW Svalbard, from SAR offset tracking, *The Cryosphere*, 9, 2339–2355, doi:10.5194/tc-9-2339-2015, 2015.
- Schoof, C.: Ice-sheet acceleration driven by melt supply variability, *Nature*, 468, 803–806, doi:10.1038/nature09618, 2010.
- 15 Schoof, C., Rada, C.A., Wilson, N.J., Flowers, G.E. and Haseloff, M.: Oscillatory subglacial drainage in the absence of surface melt, *Cryosphere*, 8, 3, 959–976, doi:10.5194/tc-8-959-2014, 2014.
- Shreve, R.L.: Movement of water in glaciers, *J. Glaciol.*, 11, 205–214, 1972.
- Slater, D.A., Nienow, P.W., Cowton, T.R., Goldberg, D.N. and Sole, A.J.: Effect of near-terminus subglacial hydrology on tidewater glacier submarine melt rates, *Geophys. Res. Lett.*, 42, 2861–2868, doi:10.1002/2014GL062494, 2015.
- 20 Slater, D., Nienow, P., Sole, A., Cowton, T., Mottram, R., Langen, P. and Mair, D.: Spatially distributed runoff at the grounding line of a large Greenlandic tidewater glacier inferred from plume modelling, *J. Glaciol.*, 63, 238, 309–323, doi:10.1017/jog.2016.13, 2017.
- Smeets, C.J.P.P., Boot, W., Hubbard, A., Pettersson, R., Wilhelms, F., Van Den Broeke, M.R. and Van De Wal, R.S.W.: A wireless subglacial probe for deep ice applications, *J. Glaciol.*, 58, 211, 841–848, doi:10.3189/2012JoG11J130, 2012.
- Stevens, L.A., Behn, M.D., McGuire, J.J., Das, S.B., Joughin, I., Herring, T., Shean, D.E. and King, M.A.: Greenland supraglacial lake drainages triggered by hydrologically induced basal slip, *Nature*, 522, 73–76, doi:10.1038/nature14480, 2013.
- 25 Straneo, F., Hamilton, G., Sutherland, D.A., Stearns, L.A., Davidson, F., Hammill, M.O., Stenson, G.B. and Rosing-Asvid, A.: Rapid circulation of warm subtropical waters in a major glacial fjord in East Greenland, *Nat. Geosci.*, 3, 3, 36–43, doi:10.1038/nature12854, 2010.
- Sugiyama, S., Skvarca, P., Naito, N., Enomoto, H., Tsutaki, S., Tone, K., Marinsek, S. and Aniya, M.: Ice speed of a calving glacier modulated by small fluctuations in basal water pressure, *Nat. Geosci.*, 4, 597–600, doi:10.1038/ngeo1218, 2011.
- 30 Sundal, A.V., Shepherd, A., Nienow, P., Hanna, E., Palmer, S. and Huybrechts, P.: Evolution of supra-glacial lakes across the Greenland Ice Sheet, *Remote Sens. Environ.*, 113, 10, 2164–2171, doi:10.1016/j.rse.2009.05.018, 2009.
- Tedstone, A., Nienow, P.W., Gourmelen, N., Dehecq, A., Goldberg, D. and Hanna, E.: Decadal slowdown of a land-terminating sector of the Greenland Ice Sheet despite warming, *Nature*, 526, 7575, 692–695, doi:10.1038/nature15722, 2015.
- Van der Veen, C.J.: Fracture propagation as means of rapidly transferring surface meltwater to the base of glaciers, *The Cryosphere*, 34, 1, L01501, doi:10.1029/2006GL028385, 2007.
- 35 Van Pelt, W.J.J., Oerlemans, J., Reikmer, C.H., Pohjola, V.A., Pettersson, R. and van Angelen, J.H.: Simulating melt, runoff and refreezing on Nordenskiöldbreen, Svalbard, using a coupled snow and energy balance model, *The Cryosphere*, 6, 641–659, doi:10.5195/tc-6-641-2012, 2012.

- Van Pelt, W.J.J. and Kohler, J.: Modelling the long-term mass balance and firn evolution of glaciers around Kongsfjorden, Svalbard, *J. Glaciol.*, 61, 228, 731–744, doi:10.3189/2015JoG14J223, 2015.
- Van Pelt, W.J.J., Pohjola, V.A. and Reijmer, C.H.: The changing impact of snow conditions and refreezing on the mass balance of Svalbard glaciers, *Front. Earth Sci.: Cryospheric Sciences*, 4, 102, doi:10.3389/feart.2016.00102, 2016.
- 5 Vallot, D., Pettersson R., Luckman, A., Benn, D.I., Zwinger, T., van Pelt, W.J.J., Kohler, J., Schäfer, M., Claremar, B. and Hulton, N.R.H.: Surface changes influence on spatio-temporal variations of basal properties for Kronebreen, Svalbard, *Geophys. Res. Lett.*, In review.
- Werder, M.A., Hewitt, I.J., Schoof, C.G. and Flowers, G.E.: Modeling channelized and distributed subglacial drainage in two dimensions, *J. Geophys. Res. Earth Surf.*, 118, 4, 2140–2158, doi:10.1002/jgrf.20146, 2013.
- Willis, I.C., Fitzsimmons, C.D., Melvold, K., Andreassen, L.M., Giesen, R.H.: Structure, morphology and water flux of a subglacial drainage
 10 system, Midtdalsbreen, Norway, *Hydrol. Process.*, 26, 3810–3829, doi:10.1002/hyp.8431, 2012.