

# Response letter for reviewer and editor comments

**“The Greater Caucasus Glacier Inventory (Russia/Georgia/Azerbaijan)” by  
L. G. Tielidze and R. D. Wheate**

<http://www.the-cryosphere-discuss.net/tc-2017-48/>  
[doi.org/10.5194/tc-2017-48](https://doi.org/10.5194/tc-2017-48)

Dear referees and editor,

We have took your remaining comments and checked our manuscript very carefully.

We appreciate the support and constructive reviews of editor and both referees.

All correction and change what we did is **yellow**.

Thank you

# The Greater Caucasus Glacier Inventory (Russia/Georgia/Azerbaijan)

Levan G. Tielidze<sup>1,3</sup>, Roger D. Wheate<sup>2</sup>

<sup>1</sup>Department of Geomorphology, Vakhushti Bagrationi Institute of Geography, Ivane Javakhishvili Tbilisi State University, 6 Tamarashvili st., Tbilisi, Georgia, 0177

<sup>2</sup>Natural Resources and Environmental Studies, University of Northern British Columbia, 3333 University Way, Prince George, BC, Canada, V2N 4Z9

<sup>3</sup>Department of Earth Sciences, Georgian National Academy of Sciences, 52 Rustaveli Ave., Tbilisi, Georgia, 0108

*Correspondence to:* Levan G. Tielidze (levan.tielidze@tsu.ge)

## Abstract

There have been numerous studies of glaciers in the Greater Caucasus, but none that have generated a modern glacier database across the whole range. Here, we present an updated and expanded glacier inventory over the three 1960-1986-2014 time periods covering the entire Greater Caucasus. Large scale topographic maps and satellite imagery (Corona, Landsat 5, Landsat 8 and ASTER) were used to conduct a remote sensing survey of glacier change and the 30 m resolution ASTER GDEM to determine the aspect and height distribution of glaciers. Glacier margins were mapped manually and reveal that, in 1960, the mountains contained 2349 glaciers, with a total glacier surface area of  $1674.9 \pm 70.4$  km<sup>2</sup>. By 1986, glacier surface area had decreased to  $1482.1 \pm 64.4$  km<sup>2</sup> (2209 glaciers), and by 2014, to  $1193.2 \pm 54.0$  km<sup>2</sup> (2020 glaciers). This represents a  $28.8 \pm 4.4\%$  ( $481 \pm 21.2$  km<sup>2</sup>) or  $0.53\%$  yr<sup>-1</sup> reduction in total glacier surface area between 1960 and 2014 and an increase in the rate of area loss since 1986 ( $0.69\%$  yr<sup>-1</sup>), compared to 1960-1986 ( $0.44\%$  yr<sup>-1</sup>). This new glacier inventory data will be submitted to GLIMS, and can be used as a basis dataset for future studies.

## 1 Introduction

Glacier inventories provide the basis for further studies on mass balance and volume change, which are relevant for local to regional-scale hydrological studies (Huss, 2012; Fischer et al., 2015), and to global calculation of sea level change (Gardner et al., 2013; Bliss et al., 2014). In addition, glacier inventories are invaluable data sets for revealing the characteristics of glacier distribution and for upscaling measurements from selected locations to entire mountain ranges (Nagai et al., 2016).

In a high mountain system such as the Greater Caucasus, glaciers are an important source of water for agricultural production, and runoff supplies several hydroelectric power stations. Most rivers originate in the mountains and the melting of glaciers/snow are important component inputs in terms of water supply and for recreational opportunities (Tielidze, 2017). However glacier hazards are relatively common in this region leading to major loss of life. On September 20 2002, for example, Kolka Glacier (North Ossetia) initiated a catastrophic ice-debris flow killing over 100 people (Evans et al., 2009), and on May 17 2014, Devdoraki Glacier (Georgia) caused a rock-ice avalanche and glacial mudflow killing nine people (Tielidze, 2017). The Greater Caucasus glaciers also have economic importance as a major tourist attraction e.g. Svaneti, Racha and Kazbegi regions in Georgia, with tens of thousands people visiting each year (Georgian National Tourism Administration, 2017).

The latest GLIMS database (9.02.2017) for the Greater Caucasus identifies in excess of 1295 glaciers with a combined area of 1111.8 km<sup>2</sup> but with some inconsistent registration. It is also worth

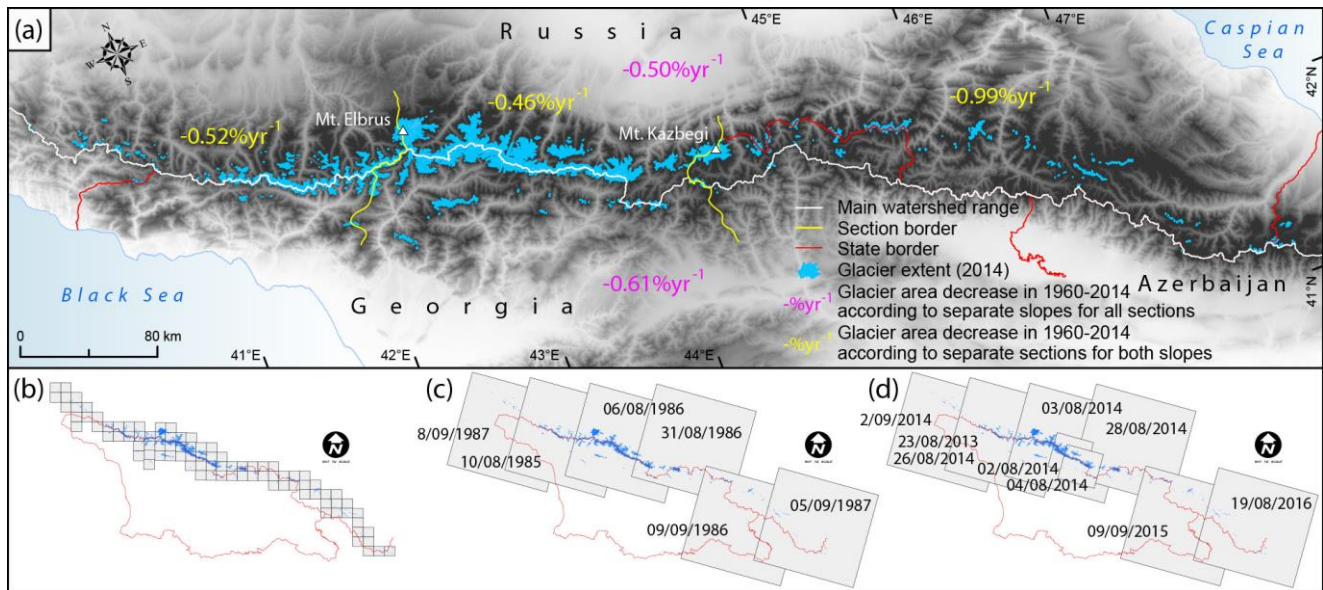
mentioning that GLIMS represents the Caucasus as a Russian glacier region, which should be amended to a separate Caucasus region by individual countries (Russia/Georgia/Azerbaijan), as was done for Turkey or Iran, where glaciers are much smaller. The RGI5 database identifies in excess of 1638 glaciers with a combined area of 1276.9 km<sup>2</sup> and incorporates nominal glaciers as circles in the eastern and western Caucasus sections (i.e. no outline extents) from the WGI-XF (Cogley, 2009); these are omitted from the GLIMS database. Furthermore, there are no entries in the GLIMS book about the Caucasus glaciers (Kargel et al., 2014). Our inventory represents significantly less surface area (-6.5%) than the RGI database and more (+7.3%) than the GLIMS database.

Thus, the objectives of this paper are to construct an updated glacier inventory for the Greater Caucasus region, and especially to fill the gap in the eastern Greater Caucasus.

## 2 Study Area

The Caucasus mountains consist of two separate mountain systems: the Greater Caucasus (the higher and more extensive part) extends for ~1300 km from northwest to southeast between the Black and Caspian seas, while the Lesser Caucasus, approximately 100 km to the south is characterized by relatively lower elevations. The Greater and Lesser Caucasus are connected by the Likhi range, which represents the watershed between the Black and Caspian seas.

The Greater Caucasus can be divided into western, central and eastern sections based on morphology divided by the mountains Elbrus (5642 m) and Kazbegi (5047 m) (Maruashvili, 1981) (Fig. 1). At the same time, the terms Northern and Southern Caucasus are frequently used to refer to the corresponding macroslopes of the Greater Caucasus range (Solomina et al., 2016).



**Figure 1.** (a) Distribution of the Greater Caucasus glaciers, (b) 1960s 1:50 000 scale map sheets (88) are based on aerial photographs 1950-1960. (c) Six Landsat 5 TM satellite scenes 1985-1987. (d) Seven Landsat 8 OLI satellite scenes from 2013 to 2016 and two (smaller) ASTER satellite scenes from 2014.

Glacier retreat started from the Little Ice Age (LIA) maximum positions in the northern Caucasus from the late 1840s, with minor readvances in the 1860s-1880s and readvances or steady states in the 20th century (1910s, 1920s and 1970s-1980s) (Solomina, et al., 2016).

In the Caucasus, supra-glacial debris cover has a smaller extent than in many glacierized regions, especially Asia (Stokes et al., 2007; Shahgedanova et al., 2014). Direct field monitoring reveals evident

debris expansion for some glaciers (e.g. Djankuat) from 2% to 13% between 1968-2010 (Popovnin et al., 2015). Glacier retreat appears to be associated with expansion of supraglacial debris cover and ice-contact/proglacial lakes, which may increase the likelihood of glacier-related hazards and debris flows (Stokes et al., 2007). Debris cover is more common in the north than in the south (Lambrecht et al., 2011).

Analysis of the mass balance of Djankuat Glacier, a benchmark glacier selected by the World Glacier Monitoring Service with continued measurement since 1967, indicates that **mass loss** is being driven by increased summer temperatures, with no compensating increase in winter precipitation (Shahgedanova et al., 2005).

## 2.1 Previous studies

The study of glaciers in the Caucasus began in the first quarter of the 18th century, in the works of Georgian scientist Vakhushti Bagrationi (Tielidze, 2016); subsequently there were many early expeditions and glacier photographs 1875-1906 (Solomina et al., 2016). Studies focused on glacier mapping, began when Podozerskiy (1911) published the first inventory of the Caucasus glaciers, based on large scale military topographical maps (1:42 000) from 1881-1910, identifying 1329 glaciers, with total area 1967.4 km<sup>2</sup> in the Greater Caucasus (Kotlyakov et al., 2015). Detailed analysis of these early data showed some defects in the depicted shape of the glaciers and in particular those in inaccessible valley glaciers (Tielidze, 2016). Reinhardt (1916, 1936) noted Podozerskiy's errors in compiling a new catalog for some glacial basins of the Greater Caucasus region (Tielidze, 2017).

The next inventory of the Caucasus glaciers (Catalog of Glaciers of the USSR, The Caucasus, 1967-1978), assessed glacier parameters from ~1950-1960 aerial photographs. This **includes** some errors as temporary snowfields were misinterpreted as glaciers (Gobejishvili, 1995; Tielidze, 2016) and the catalog datasets contained glacier parameters but not outlines. As the USSR catalog and 1960s large-scale (1:50 000) topographic maps were based on the same aerial photographs, we have used both datasets in this article for a more comprehensive comparison.

Gobejishvili (1995) documented further statistical information about the glaciers of Georgia based on the same 1960s topographic maps, reporting there were 786 **glaciers** with total area 563.7 km<sup>2</sup> in the Georgian Caucasus. The current investigation revealed that he missed some small glaciers, particularly in the Bzipi, Kodori, Rioni, Enguri and Tergi river basins.

Khromova et al. (2009, 2014) used manually digitized results to estimate changes of more than 1200 glaciers in the Caucasus between **three periods - 1911-1957-2000**. They found that glacier area decreased from **1911-1957** by 24.7% (**0.52% yr<sup>-1</sup>**) and from **1957-2000** by 17.7% (**0.41% yr<sup>-1</sup>**). Elbrus glaciers lost 14.8% (**0.31% yr<sup>-1</sup>**) and 6.3% (**0.14% yr<sup>-1</sup>**) respectively for the two time periods. However, there was a difference between north and south slopes of the Caucasus. Glacier area change on the north slope was 30% (**0.63% yr<sup>-1</sup>**) for the first part of **the** 20th century and 17.9% for the second part (**0.41% yr<sup>-1</sup>**). In contrast, the south slope lost 12% (**0.25% yr<sup>-1</sup>**) and 28% respectively (**0.65% yr<sup>-1</sup>**).

Lur'e and Panov (2014) examined northern Caucasus glacier variation for 1895-2011, finding glacier area decreased by 849 km<sup>2</sup> (52.6%). During this period, the average rate of glacier area reduction was **0.45%yr<sup>-1</sup>**, varying from **0.52%yr<sup>-1</sup>** in 1895-1970 to **0.32%yr<sup>-1</sup>** in 1971-2011. The most significant decrease was registered in the basins of Dagestan rivers (eastern Caucasus section); however, they didn't describe **the** data sources for their glacier mapping.

The most recent glacier inventory, based on old topographic maps (1911/1960) and modern **satellite** imagery (Landsat/ASTER, 2014) was published by Tielidze (2016), but compiled only for Georgian Caucasus glaciers, which reduced from 613.6±9.8 km<sup>2</sup> to 355.8±8.3 km<sup>2</sup> (**0.37% yr<sup>-1</sup>**) between 1911-

2014, while glacier numbers increased from 515 to 637. The current investigation has revealed, that some small glaciers were omitted as Tielidze used Gobejishvili's (1995) glacier database.

Other recent published works about the Caucasus, have mainly examined changes in glacier area and length for individual river basins or separate sections. Stokes et al. (2006; 2007) determined that 94% of 113 selected glaciers in the central Caucasus retreated between 1985 and 2000; the largest glaciers ( $>10 \text{ km}^2$ ) had retreated at twice the rate ( $\sim 12 \text{ m yr}^{-1}$ ) as the smallest ( $<1 \text{ km}^2$ ) glaciers ( $\sim 6 \text{ m yr}^{-1}$ ). Shahgedanova et al. (2014) calculated  $4.7 \pm 2.1\%$  or  $0.20\% \text{ yr}^{-1}$  glacier area loss from  $407.3 \pm 5.4 \text{ km}^2$  to  $388.1 \pm 5.2 \text{ km}^2$  in the central and western Greater Caucasus, between 1987-2010.

In this article, we present the percentage and quantitative changes in the number and area of glaciers for the whole Greater Caucasus in the years 1960-1986-2014, by individual slopes, sections, countries and river basins.

### 3 Methods

#### 3.1 Data sources

We utilise increasingly accessible global satellite imagery (Wulder et al., 2012; 2016; Pope et al., 2014) to investigate glacier area and number change in the Greater Caucasus between 1960-1986-2014. Changes in glacier extent in the Greater Caucasus between 1986 and 2014 were determined through analysis of images from Landsat 5 Thematic Mapper (TM), Landsat 8 Operational Land Imager (OLI), and the Advanced Spaceborne Thermal Emission and Reflection Radiometer (ASTER) (Table 1). Georeferenced images were downloaded using the Earthexplorer (<http://earthexplorer.usgs.gov/>) and Reverb/ECHO tools (<http://reverb.echo.nasa.gov/>).

We used the Landsat 8 panchromatic band, along with a color-composite scene for each acquisition date, combining shortwave-infrared, near-infrared, and red for Landsat, and near-infrared, red and green for ASTER images. These false-colour composite images can accurately show glacier termini because meltwater streams display as bright blue and contrast with the snout which casts an obvious shadow (Stokes et al., 2006). This contrast remains apparent even with significant glacier retreat.

All images were acquired at the end of the ablation season, ranging from 2 August to 9 September, when glaciers were mostly free of seasonal snow under cloud-free conditions, but with some glacier margins obscured by shadows from rock faces and glacier cirque walls. In total, six Landsat 5 (TM) scenes were used for 1985/86/87, with seven Landsat 8 (OLI) for 2013/14/15/16 and two ASTER scenes used for 2014 (Fig. 1c, d; Table 1). The latter were used primarily to complete coverage from isolated cloud cover in the Landsat scenes.

Large-scale topographic maps (88 sheets, 1:50 000 scale) with a contour interval of 20 meters from several hundred aerial photographs taken between 1950-1960 were used to evaluate glacier outlines (Fig. 1b). Corona images, dating from 1964 were obtained from the Earthexplorer website (<http://earthexplorer.usgs.gov/>) and two were georectified for comparison with map extents. As the maps were only available in printed form, we scanned at 300 dpi with 5 m ground resolution and with the Corona imagery co-registered using the 3 August 2014 Landsat image as a master (Tielidze, 2016). Offsets between the images and the Corona archival maps were within one pixel (15 m) based on an analysis of common features identifiable in each dataset. We reprojected Corona imagery and maps to Universal Transverse Mercator (UTM), zones 37/38-north on the WGS84 ellipsoid, to facilitate comparison with modern image datasets (ArcGIS 10.2.1). Together with Landsat imagery, these older topographic maps and Corona imagery enabled us to identify changes in the number and area of glaciers over the last half century.



The 30 m resolution ASTER Global DEM (GDEM, 2011) was used to determine the aspect and height distribution of glaciers, downloaded from NASA LPDAAC Collections (<http://earthexplorer.usgs.gov/>).

5 **Table 1.** List of satellite images scenes used in this study.

Date	Type of imagery	Region/Section	Resolution	Scene ID
25/08/1964	Corona	C Greater Caucasus	2 m	DS1115-2154DF071_d
25/08/1964	Corona	E Greater Caucasus	2 m	DS1115-2154DA082_c
10/08/1985	Landsat 5	W and C Greater Caucasus	30 m	LT51720301985222XXX04
06/08/1986	Landsat 5	C Greater Caucasus	30 m	LT51710301986218XXX02
31/08/1986	Landsat 5	C and E Greater Caucasus	30 m	LT51700301986243XXX03
09/09/1986	Landsat 5	E Greater Caucasus	30 m	LT51690311986252XXX03
05/09/1987	Landsat 5	E Greater Caucasus	30 m	LT51680311987248XXX03
08/09/1987	Landsat 5	W Greater Caucasus	30 m	LT51730301987251AAA04
23/08/2013	Landsat 8	W and C Greater Caucasus	15/30 m	LC81720302013235LGN00
03/08/2014	Landsat 8	C Greater Caucasus	15/30 m	LC81710302014215LGN00
26/08/2014	Landsat 8	W and C Greater Caucasus	15/30 m	LC81720302014238LGN00
28/08/2014	Landsat 8	C and E Greater Caucasus	15/30 m	LC81700302014240LGN00
02/09/2014	Landsat 8	W Greater Caucasus	15/30 m	LC81730302014245LGN00
09/09/2015	Landsat 8	E Greater Caucasus	15/30 m	LC81690312015252LGN00
19/08/2016	Landsat 8	E Greater Caucasus	15/30 m	LC81680312016232LGN00
02/08/2014	ASTER	C Greater Caucasus	15 m	AST_L1T_0030802201408131 3_20150622105647_51181
04/08/2014	ASTER	C Greater Caucasus	15 m	AST_L1T_0030804201408010 2_20150622114958_116303

### 3.2 Glacier error assessment

For 1986/2014 imagery we digitised the outlines of both debris-covered and debris-free ice and tested a number of well-known semi-automated techniques (band ratio TM3/TM5 and OLI4/OLI6, ratio thresholds range  $\geq 2.0$ ) (Paul and Kaab, 2005; Andreassen et al., 2008; Bolch et al., 2010) to extract glacier outlines and compare with manually generated outlines (Fig. 2).

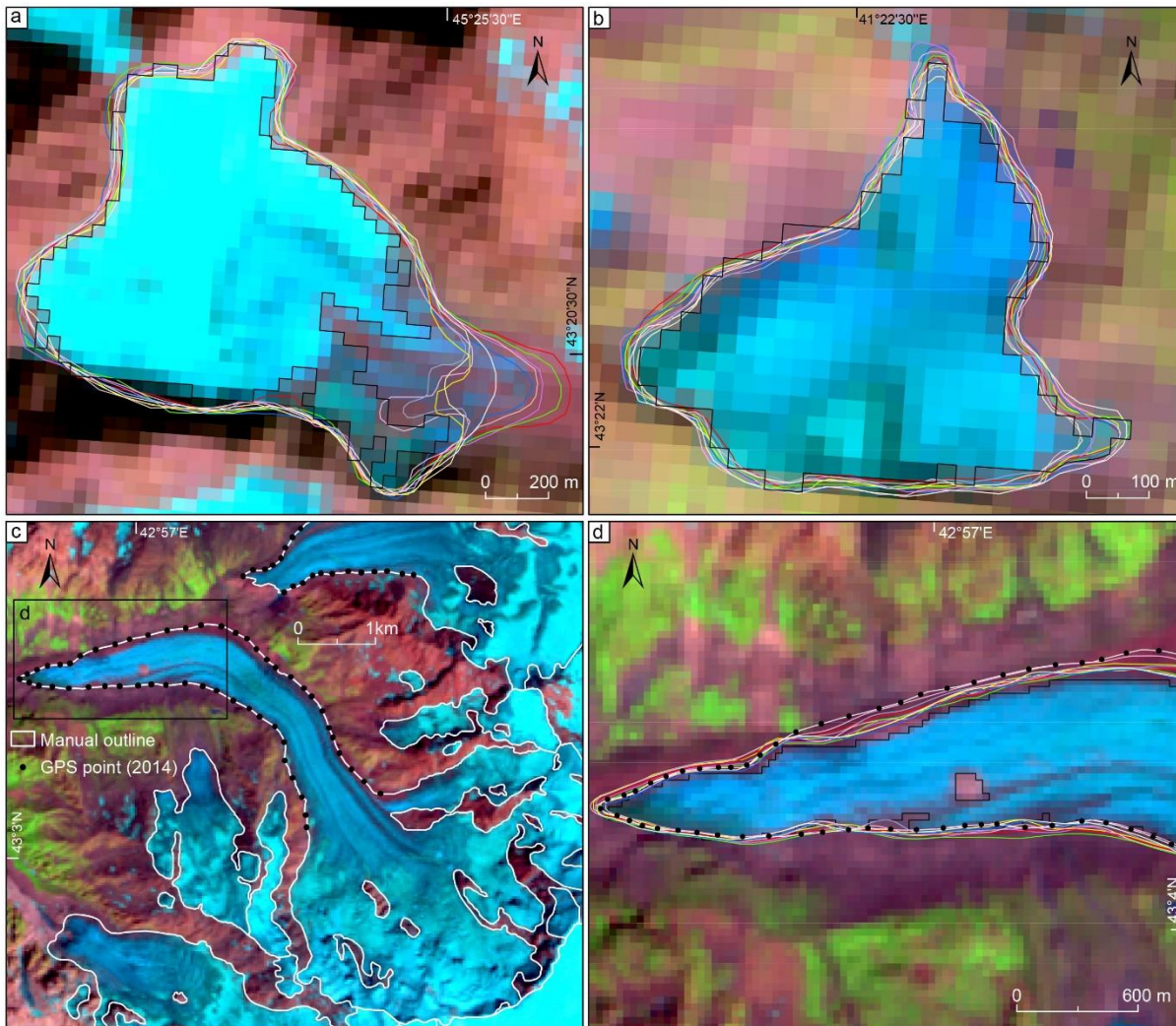
Generally, for debris-free glaciers, automated delineation using the spectral ratio is more consistent and reproducible than manual delineation. These techniques are relatively useful for large sample sizes and/or large glaciers where manual delineation would be time-consuming (e.g. Central Greater Caucasus), but their value can be limited by areas of glacier with supraglacial debris (e.g. Western and Eastern Greater Caucasus) (Paul et al., 2013).

Following Paul et al. (2013) we manually digitized multiple (5) times, fifteen different size glaciers in the western, central and eastern Greater Caucasus to estimate 1986 and 2014 glacier area error. For debris covered glaciers (Fig. 2a), the Normalised Standard Deviation (NSD - based on delineations by multiple digitalization divided by the mean glacier area for all outlines) was 6.9% and the difference between the manually and automatically derived area was 13.41%. For debris-free glaciers (Fig. 2b, c, d) the NSD was 5.7% and difference between the manually and automatically derived area was 4.9%.

To estimate 1960s glacier area error we digitized multiple (3) times three different size glaciers ( $<2\text{km}^2$ ,  $2-5\text{ km}^2$ ,  $>5\text{ km}^2$ ) in the central and eastern Greater Caucasus using topographic maps and two Corona imagery (Fig. 3a-c). For 1960 topographic map glaciers, NSD was 0.4% and for Corona 5.9%. Between the maps and Corona imagery NSD was 4.8%.

Importantly, debris cover is not continuous on the snouts of many glaciers in the Greater Caucasus and most glaciers of Mt. Elbrus (Shahgedanova et al., 2014), but there are some glaciers covered by heavily debris. One of the most debris-covered we digitized in the Caucasus is Skhelda Glacier ( $8.28 \pm 0.65\text{ km}^2$ ) ( $43^\circ 10' \text{N}$ ,  $42^\circ 38' \text{E}$ ), where supra-glacial debris covers approximately 35% (Fig. 3d). To account for the error term due to debris cover, after Frey et al. (2012) we increased the buffer size to two

pixels (30 m) and error of mapping was calculated as  $\pm 7.9\%$  which is the largest error in our database. In addition, for more accuracy assessment we use GPS (GARMIN 62stc) measurement data 2011-2016 for some glaciers (Fig. 2c, d; 3d).



**Figure 2.** Examples from the multiple digitizations of glaciers (bands 654 as RGB) using the OLI scene performed by different analysts (coloured lines). Black outlines refer to the automatically derived extents (4/6 ratio); pixel size is 30 m.

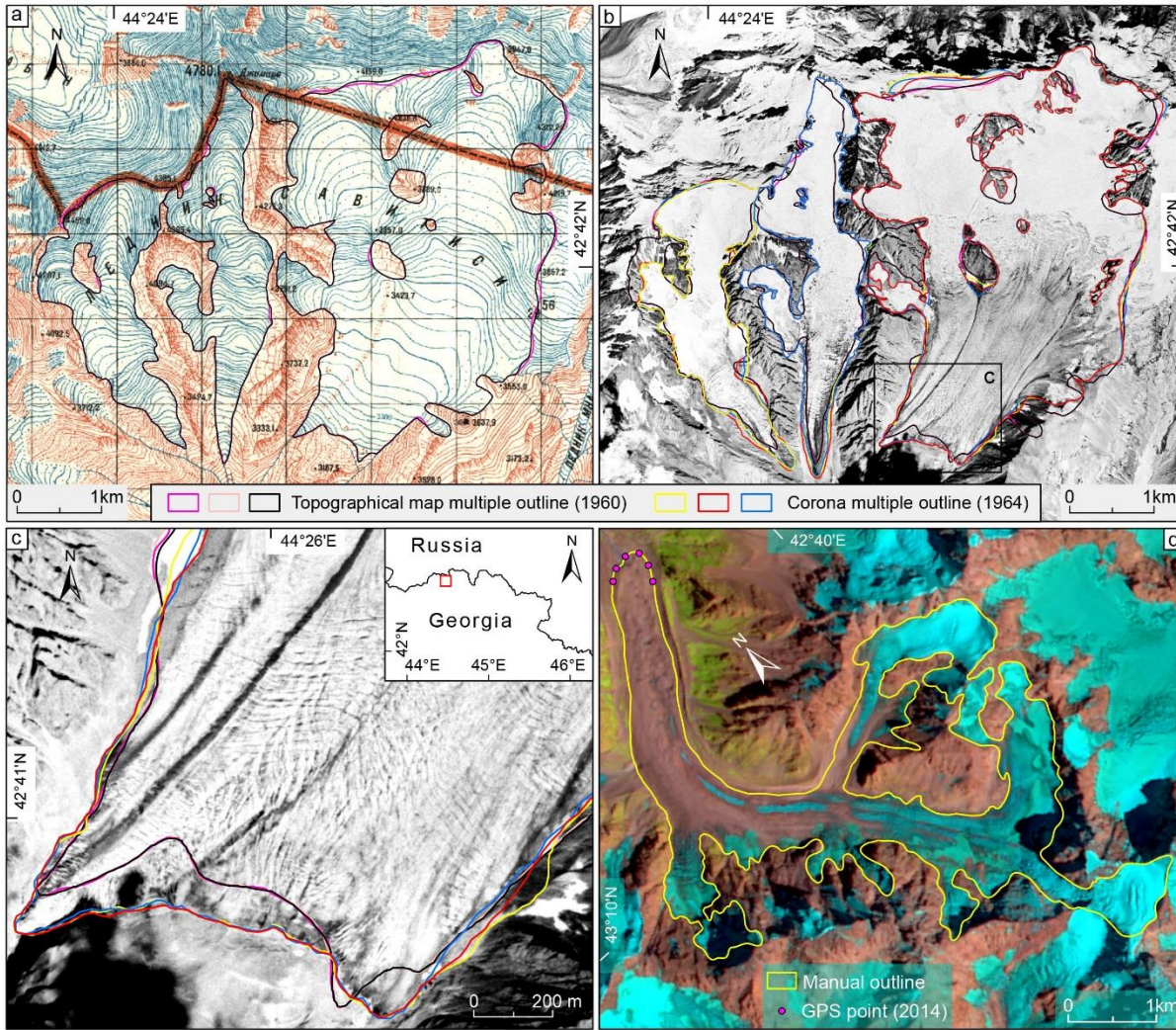
### 3.3 Glacier uncertainty assessment

To estimate uncertainty of glacier area we use a buffer method similar to Granshaw and Fountain (2006) and Bolch et al. (2010) and adopted by Tielidze (2016). The uncertainty term for the 1960 extents is based on a buffer incorporating the root-mean-square error (RMSE<sub>x,y</sub>) of the map rectification (15 m) and the digitizing uncertainty equal to the width of a contour line (15 m).

Uncertainty is introduced by the resolution of the satellite image in terms of what can be seen, and the contrast between the glacier and adjacent terrain (Stokes et al., 2013). For debris-free glacier ice that is not obscured by clouds, DeBeer and Sharp (2007) suggested that line placement uncertainty is unlikely to be larger than the resolution of the imagery, i.e.  $\pm 30$  m for Landsat 5 TM and Landsat 8 OLI. A buffer with a width of one RMSE was created along the glacier outlines and the uncertainty term was calculated as an average ratio between the original glacier areas and the areas with a buffer increment; for the 1986 images we used a buffer equal to the resolution of the data (30m) and a similar buffer for the



2014 glacier extents. This generated an average uncertainty of the mapped glacier area of 4.6% for 2014, 4.4% for 1986 and 4.2% for 1960. Using the buffer method from Granshaw and Fountain (2006), these yield a total potential overall error of  $\pm 4.4\%$ .



**Figure 3.** (a)-(c) Examples from the multiple digitizations of glaciers using the 1960s topographic map and 1964 Corona imagery performed by different analysts (coloured lines). (d) - Shkhelda Glacier, one of the heavily debris covered glaciers in the Greater Caucasus. The 23/08/2014 Landsat 8 image (Table 1) is used as background.

## 4 Results

### 4.1 Area and number change

The total ice area loss between 1960 and 1986 was  $192.8 \pm 8.4 \text{ km}^2$  or  $11.5 \pm 4.4\%$  ( $0.44\% \text{ yr}^{-1}$ ), while the number of glaciers reduced from 2349 to 2209. Between 1986 and 2014, glacier area decreased by  $288.9 \pm 12.8 \text{ km}^2$  or  $19.5 \pm 4.6\%$  ( $0.69\% \text{ yr}^{-1}$ ), and glacier numbers from 2209 to 2020.

Glaciers in the northern Greater Caucasus lost  $131.0 \pm 5.8 \text{ km}^2$  or  $11.0 \pm 4.2\%$  of their area ( $0.42\% \text{ yr}^{-1}$ ) between 1960-1986, while the number of glaciers reduced from 1622 to 1523. Between 1986 and 2014, glacier area decreased by  $189.7 \pm 8.4 \text{ km}^2$  or  $18.0 \pm 4.4\%$  ( $0.64\% \text{ yr}^{-1}$ ) while the number of glaciers reduced from 1523 to 1391.

On the southern macroslope, glacier area decreased by  $61.8 \pm 3.4 \text{ km}^2$  or  $12.7 \pm 5.4\%$  ( $0.48\% \text{ yr}^{-1}$ ) between 1960-1986, while the number of glaciers reduced from 727 to 686. Between 1986 and 2014,



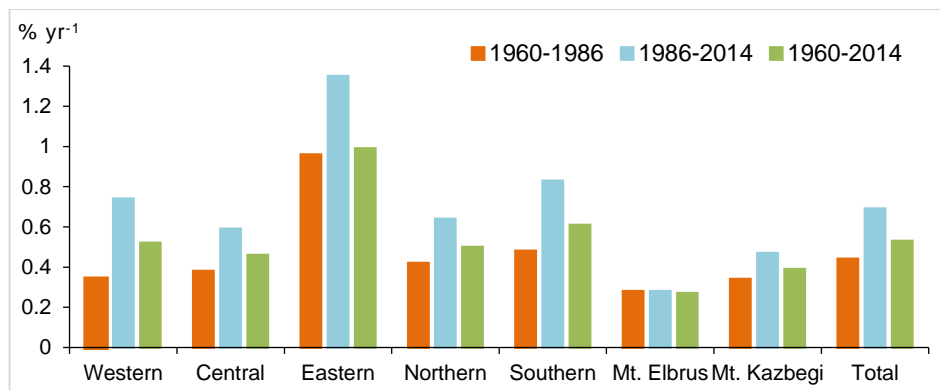
glacier area decreased by  $99.2 \pm 4.6 \text{ km}^2$  or  $23.3 \pm 4.6\%$  of their area ( $0.83\% \text{ yr}^{-1}$ ) while the number of glaciers reduced from 686 to 629.

**Table 2.** The northern and southern Greater Caucasus glacier number and area change in 1960-1986-2014.

Slopes	Topographic maps 1960		Landsat 5, 1985/86/87		Landsat 8, 2013/14/15/16 and ASTER 2014		Decrease 1960-1986	Decrease 1986-2014	Decrease 1960-2014
	Number	Area $\text{km}^2$	Number	Area $\text{km}^2$	Number	Area $\text{km}^2$	% $\text{yr}^{-1}$	% $\text{yr}^{-1}$	% $\text{yr}^{-1}$
Northern	1622	$1186.5 \pm 48.8$	1523	$1055.5 \pm 45.0$	1391	$865.8 \pm 38.4$	0.42	0.64	0.50
Southern	727	$488.4 \pm 29.0$	686	$426.6 \pm 19.4$	629	$327.4 \pm 15.2$	0.48	0.83	0.61

**Table 3.** The western, central and eastern Greater Caucasus glacier number and area change in 1960-1986-2014.

Sections	Topographic maps 1960		Landsat 5, 1985/86/87		Landsat 8, 2013/14/15/16 and ASTER 2014		Decrease 1960-1986	Decrease 1986-2014	Decrease 1960-2014
	Number	Area $\text{km}^2$	Number	Area $\text{km}^2$	Number	Area $\text{km}^2$	% $\text{yr}^{-1}$	% $\text{yr}^{-1}$	% $\text{yr}^{-1}$
Western	713	$330.2 \pm 16.6$	738	$300.3 \pm 16.0$	723	$237.3 \pm 13.8$	0.34	0.74	0.52
Central	1140	$1156.0 \pm 43.2$	1060	$1040.5 \pm 40.0$	1033	$867.8 \pm 35.0$	0.38	0.59	0.46
Eastern	496	$188.7 \pm 10.0$	411	$141.6 \pm 7.8$	264	$88.0 \pm 5.0$	0.96	1.35	0.98



**Figure 4.** Greater Caucasus glacier area decrease by slopes, sections and mountain massifs in 1960-1986-2014.

Overall, the differences between the two macroslopes were small. The greater loss was observed on the southern slope where glaciers lost  $33.0 \pm 5.0\%$  ( $0.61\% \text{ yr}^{-1}$ ) over the last half century, while the northern slope glaciers lost  $27.0 \pm 4.2\%$  ( $0.50\% \text{ yr}^{-1}$ ) (Table 2; Fig. 4).

The eastern Caucasus section (Aragvi, Tergi headwaters, Sunja right (south-east) tributaries - Sulak, Samur, Agrichai and Kusarchai) experienced the highest glacier surface relative change, where the total ice area loss between 1960 and 2014 was  $53.3 \pm 4.4\%$  ( $0.98\% \text{ yr}^{-1}$ ) or  $100.5 \pm 4.4 \text{ km}^2$  (Table 3; Fig. 4). This recession rate suggests the disappearance of most glaciers in the western and eastern Greater Caucasus by the end of the century, according to a moderate scenario of climate change in the Caucasus for 2011-2099 (Lur'e and Panov, 2014). Glacier area and number change by individual river basins and countries are given in the Supplement (Table 1, 2).

#### 4.1.1 Elbrus and Kazbegi-Dzhimara massif

Glaciers located on Mt. Elbrus lost  $9.9 \pm 0.2 \text{ km}^2$  or  $7.3 \pm 2.2\%$  ( $0.28\% \text{ yr}^{-1}$ ) of their combined area between 1960 and 1986 and the same amount from 1986 to 2014. Overall, the relative loss was  $14.7 \pm 2.4\%$  ( $0.27\% \text{ yr}^{-1}$ ) between 1960 and 2014.

Among the large glaciers ( $>10 \text{ km}^2$ ) the Dzhikiugankez Glacier experienced a high rate of reduction, as the most extensive glacier on the Elbrus massif, the relative loss was  $27.2 \pm 1.2\%$  ( $0.50\% \text{ yr}^{-1}$ ) between 1960-2014. The important relative losses for the Dzhikiugankez Glacier can be explained by the role of

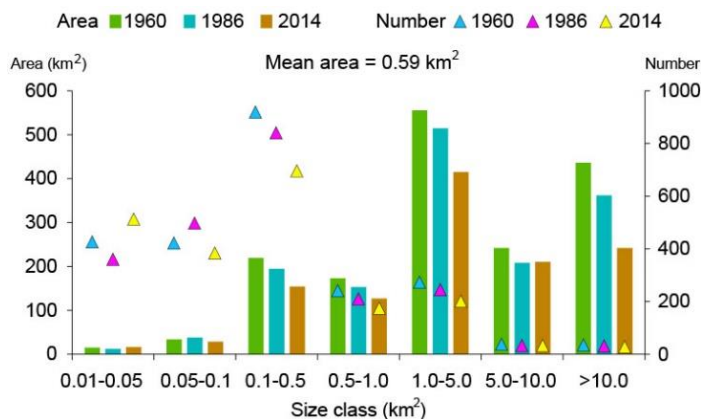
post-volcanic activity, especially the influence of thermal and fluid flows in the north-eastern part of the Elbrus volcano (Masurenkov and Sobisevich, 2012; Holobăcă, 2016).

Unlike the Elbrus, the size of the change varied dramatically from glacier to glacier on the Kazbegi-Dzhimara massif. The total ice area loss between 1960-1986 was  $6.1 \pm 0.2 \text{ km}^2$  or  $9.0 \pm 4.0\%$  ( $0.34\% \text{ yr}^{-1}$ ). From 1986 to 2014 glacier area decreased by  $8.3 \pm 0.4 \text{ km}^2$  or  $13.4 \pm 4.4\%$  ( $0.47\% \text{ yr}^{-1}$ ). Overall, the relative loss was  $21.2 \pm 4.4\%$  ( $0.39\% \text{ yr}^{-1}$ ) between 1960 and 2014 (Fig. 4).

Among glaciers with area 2-5  $\text{km}^2$ , the Devdoraki Glacier experienced a high rate of reduction between 1960-2014, with a relative loss of  $38.8 \pm 2.8\%$  ( $1.4\% \text{ yr}^{-1}$ ). We do not include Kolka Glacier in a statistical analysis, as it was almost removed by its strong rock-ice avalanche in 2002 (Haeberli et al., 2004; Huggel et al., 2005; Petrakov et al., 2008). Elbrus and Kazbegi-Dzhimara glaciers area and number change are given in the Supplement (Table 3-4; Fig. 1-2).

## 4.2 Glacier characteristics

The greatest area is occupied by glaciers in the size class 1.0-5.0  $\text{km}^2$  across all three time periods. (Fig. 5). The largest glaciers are located in the central Greater Caucasus where valley glaciers have individual areas of 5-37  $\text{km}^2$ . The total area of glaciers in the central section is more than triple that in western Caucasus, which in turn is almost triple the glacier area in the eastern section, even though the eastern section is higher than the western (Table 3). For 1960 there were 22 glaciers with individual area  $>10 \text{ km}^2$  and for 2014 there are just 13 in the Central Greater Caucasus. There are no glaciers of  $>10 \text{ km}^2$  area in the eastern and western Greater Caucasus.



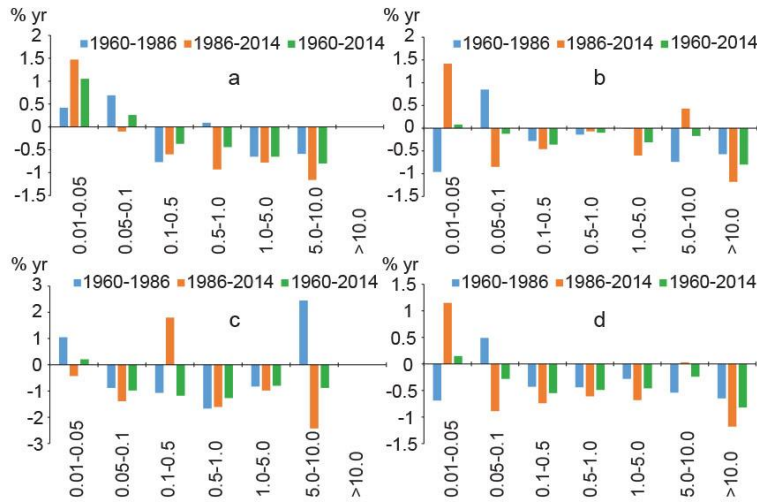
**Figure 5.** Cumulative glacier area and number values for seven size classes in the Greater Caucasus in 1960-1986-2014.

During the 1986-2014 period the number of smallest glaciers ( $0.01-0.05 \text{ km}^2$ ) have increased in the western and central Caucasus ( $1.15\% \text{ yr}^{-1}$ ) at the expense of relatively larger glaciers. Glacier area change by individual sections are shown in Fig. 6a-c.

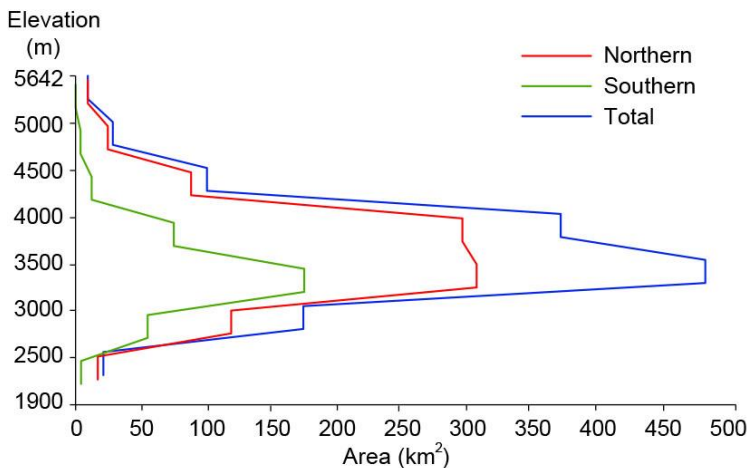
Glacier area reduction varies between the individual sections of the Caucasus, with the highest increase in the number of glaciers in the smallest category ( $<0.05 \text{ km}^2$ ) in the western section, resulting from the retreat of larger glaciers. Glaciers of  $0.1-10.0 \text{ km}^2$  showed the smallest decrease in the central Greater Caucasus, with the largest in the eastern Caucasus. The largest glaciers with  $>10 \text{ km}^2$  area all in the central Caucasus showed the greatest overall loss ( $0.82\% \text{ yr}^{-1}$ ) (Fig. 6d). The Greater Caucasus cumulative glacier area and number values for seven size classes glacier in 1960-1986-2014 by individual sections and slopes are given in the Supplement (Figs. 3-12).

Most of the glacier area in the Greater Caucasus occurs between 3000 m and 4000 m a.s.l. ( $857.6 \text{ km}^2$ ), and glaciers in the northern and southern slopes are distributed mainly in the same altitudinal range. The valley glacier terminus positions are between 1900 and 3200 m., whereas cirque and hanging

glaciers are at higher elevations, between 2800 and 4500 m. The distribution of glacier area with elevation is depicted in figure 7.



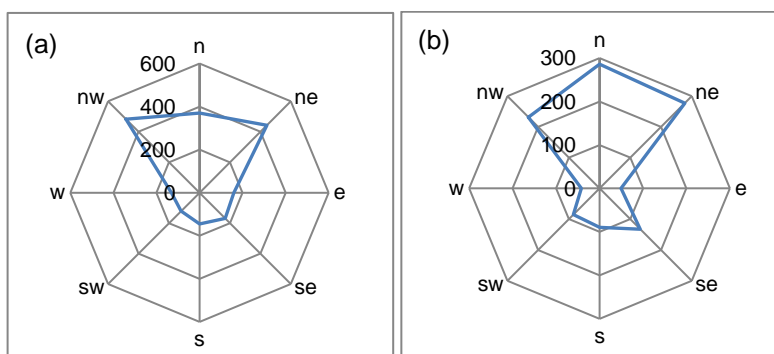
**Figure 6.** Area change for the seven size classes glacier in the western (a), central (b), eastern (c) sections and entire Greater Caucasus (d) in 1960-1986-2014.



**Figure 7.** Distribution of glacier area with elevation for northern, southern and both slopes in the Greater Caucasus.

Glaciers with north, northeast and northwest aspects are the most extensive in the Greater Caucasus, covering  $286.0 \pm 12.2$  km<sup>2</sup> (370 glaciers),  $277.7 \pm 12.0$  km<sup>2</sup> (443 glaciers) and  $231.6 \pm 11.8$  km<sup>2</sup> (483 glaciers) respectively, and combining for 66.7% of all glaciers (Fig. 8a, b). The south, southeast and southwest aspects cover  $89.4 \pm 3.8$  km<sup>2</sup> (145 glaciers),  $132.7 \pm 4.8$  km<sup>2</sup> (169 glaciers) and  $85.0 \pm 3.4$  km<sup>2</sup> (121 glaciers) respectively, and combine for 25.7% of all glaciers. The southern macroslope of the greater Caucasus is relatively shorter and steeper than the northern, providing more favourable conditions for the existence of large size glaciers in the north.





**Figure 8.** Glacier aspect - (a) number and (b) area (km<sup>2</sup>).

### 4.3 Glacier length change

We chose 30 glaciers in four size classes (<1 km<sup>2</sup>; 1-5 km<sup>2</sup>; 5-10 km<sup>2</sup>; >10 km<sup>2</sup>) in the western, central and eastern Caucasus macroslopes for sampling length change. Across the region, length change mostly increased from the 1960-1986 period to 1986-2014. The highest retreat rates of 48.8 m yr<sup>-1</sup> were observed on the Karaugom Glacier northern macroslope in 1986-2014, while the Shkhelda Glacier experienced double the retreat rate between 1960-1986 (36.5 m yr<sup>-1</sup>) than in 1986-2014 (17.1 m yr<sup>-1</sup>). The greatest total retreat was exhibited by the Lekhziri, the largest glacier on the southern macroslope, retreating 1595 m at an average rate of 29.5 m yr<sup>-1</sup> in 1960-2014.

Of the 30 glaciers measured, 29 retreated between 1986 and 2014. Thirteen glaciers showed less change between 1986-2014 than 1960-1986, and one glacier (Midjirgi) advanced. These results correlate well with detailed field measurement of the snout position of Chalaati Glacier (Gobejishvili, 1995; Gobejishvili et al., 2012) and are in agreement with sporadic field measurement and anecdotal evidence from other glaciers (e.g. field investigation confirms that Midjirgi Glacier advanced between 1985 and 2000). The overall advance of Mizhirgi Glacier between 1985 and 2000 was around 110±25 m (Stokes et al., 2006). Microstadial moraines in front of Chalaati Glacier confirm ~20 m glacier advance during 1990-1993 (Gobejishvili, 1995; Gobejishvili et al., 2012), but there is no clear geographical template which characterizes the advancing glaciers.

Overall, the largest glaciers (>10 km<sup>2</sup>) on average retreated ~21.2 m yr<sup>-1</sup> between 1960-2014; glaciers with area 5-10 km<sup>2</sup> retreated ~15.6 m yr<sup>-1</sup>; glaciers between 1-5 km<sup>2</sup> retreated ~12.0 m yr<sup>-1</sup> and glaciers between <1 km<sup>2</sup> - retreated ~7.8 m yr<sup>-1</sup>.

According to this current inventory, the Bezingi Glacier represents the largest single glacier (37.47±0.94 km<sup>2</sup>) in the Greater Caucasus. Characteristics of glaciers used for measuring length change are given in the Supplement (Table 5; Fig. 13, 14).

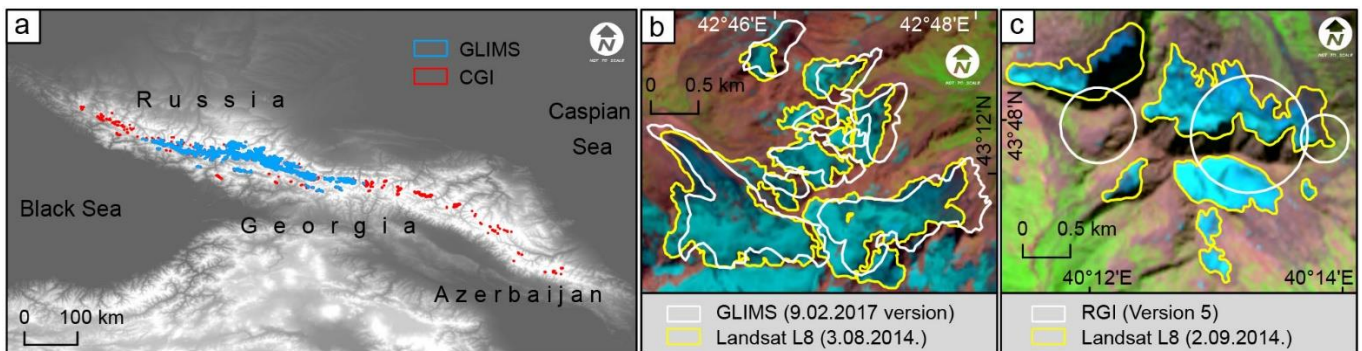
## 5 Discussion

Considering some errors in the 1911 catalog (Tielidze, 2016), we calculate that glacier area decreased from 1677.4 km<sup>2</sup> in 1911 to 1674.9 km<sup>2</sup> in 1960 or 14.9% (0.30% yr<sup>-1</sup>). Overall this was 39.4% (0.34% yr<sup>-1</sup>) between 1911-2014. Thus, we consider that glacier area reduction increased between 1986-2014 in comparison with the 1960-1986 period and between 1960-2014 in comparison with the 1911-1960 period. Therefore, our results contrast with those of Lur'e and Panov (2014) - where the northern Caucasus glacier decrease was faster between 1895-1970 (0.52% yr<sup>-1</sup>) than in 1971-2011 (0.32% yr<sup>-1</sup>) and Khromova et al. (2009) - where the Caucasus glacier decrease was faster between 1911-1957 (0.52% yr<sup>-1</sup>) than in 1957-2000 (0.41% yr<sup>-1</sup>).

Shrinkage rates show an increase from the central to the western and eastern Greater Caucasus. The higher glacier melt in the eastern Caucasus is conditioned by drier climate and relatively small

glaciers, while in the western Caucasus by lower elevation and smaller glaciers. The Elbrus glacier area rate of loss is lower than in the Greater Caucasus main watershed range due to the higher elevation and larger accumulation areas.

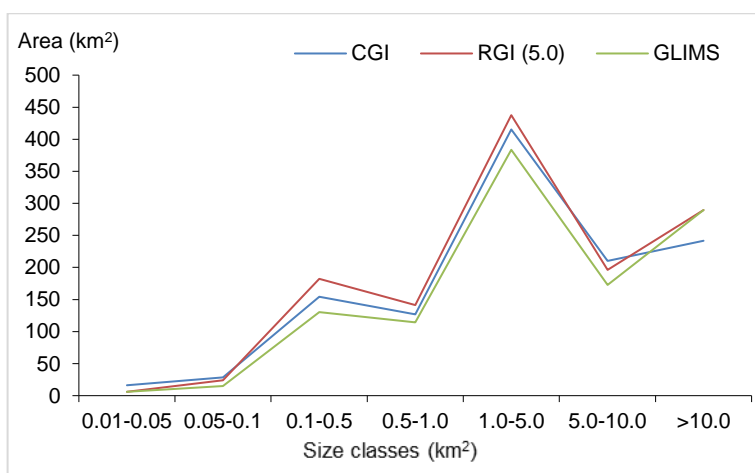
The GLIMS glacier database (9.02.2017 version) contains a number of deficiencies to be remedied after this inventory, for example these river basins do not contain any glacier outlines: Belaya, Malaya Laba, Mzimba in the western Caucasus; Khobistskali in the central Caucasus; Aragvi, Assa, Arghuni, Sharo Argun, Andiyskoye Koysu, Avarskoye Koysu, Samur, Agrichai and Kusarchai in the eastern Caucasus. These constitute more than one half of the territory for the whole Greater Caucasus where modern glaciers are present (Fig. 9). The GLIMS outlines also involve inconsistent registration, which appears to be associated with the use of ASTER imagery (Fig. 9b) (Khromova, 2009).



**Figure 9.** Comparison of the GLIMS with the new Caucasus Glacier Inventory (CGI) (a). The GLIMS outlines inconsistent registration example (b). Glacier outlines from 2014, showing the RGI nominal glaciers (circles) (c).

The RGI 5.0 version database similarly contains errors, especially in the central Caucasus section. For example in the Samegrelo, Lechkhumi and Shoda-Kedela sub-ranges, where the RGI database contains 39 nominal glaciers (circles representing areas), with a total area of 40.2 km<sup>2</sup>, we found an additional 40 glaciers with a total area of 3.5 km<sup>2</sup>. In addition, almost the whole eastern Caucasus section (except the Tergi headwaters) and some parts of the western Caucasus section (Belaya, Malaya Laba and Mzimba river basins) are represented by nominal glaciers (Fig. 9c).

Overall, glacier area difference was 165.1 km<sup>2</sup> between the RGI and GLIMS, 83.6 km<sup>2</sup> between the RGI and new Caucasus Glacier Inventory (CGI) and 81.5 km<sup>2</sup> between the GLIMS and CGI (Fig. 10).



**Figure 10.** Glacier area comparison for seven classes glacier in the Greater Caucasus according to the RGI (5), GLIMS and new Caucasus Glacier Inventory (CGI).

## 6 Conclusions

We present a glacier change analysis including multi-temporal data sets covering the entire Greater Caucasus for the first time. Manual digitisation from 1960s large scale (1:50 000) topographic maps and satellite imagery from 1964 (Corona), 1986 (Landsat 5) and 2014 (Landsat 8, ASTER) were used to map glacier surface area. We expect that this inventory substantially improves existing knowledge for this region.

The main errors occur from data quality. Errors in the 1960s maps included mapped snow patches (especially for small cirque type glaciers) and uncertain glacier extents, which could be verified using available Corona 1964 satellite imagery. Other sources of error for aerial imagery include seasonal snow, shadows, and debris cover, which can impede glacier mapping. Using GPS field data, debris cover error can be resolved for some glaciers; while incorrect identification of seasonal snow generally affects small glaciers more than larger complexes, these do not make up a large percentage of the total area.

The main study findings can be summarised as follows:

a) The Greater Caucasus region experienced glacier area loss at an average annual rate 0.44% yr<sup>-1</sup> between 1960-1986 and 0.69% yr<sup>-1</sup> between 1986-2014. Overall, the glacier loss was 0.53% yr<sup>-1</sup> between 1960-2014.

b) Glacier number and area changes indicate that glaciers in the eastern Greater Caucasus have decreased (0.98% yr<sup>-1</sup>) more than in the central (0.46% yr<sup>-1</sup>) and western (0.52% yr<sup>-1</sup>) sections, and southern glaciers have retreated (0.61% yr<sup>-1</sup>) more than northern (0.50 % yr<sup>-1</sup>) glaciers between 1960-2014. If the rapid decrease in the surface area of glaciers in the eastern Greater Caucasus continues over the 21st century, many will disappear by 2100.

c) Glaciers of the Elbrus and Kazbegi-Dzhimara massifs lost a lower proportion of their area between 1960-2014, compared to glaciers located in the main watershed range, by 0.27% yr<sup>-1</sup> and 0.39% yr<sup>-1</sup> respectively.

The inventory presented here will further enable focus on assessing changes in glaciers, debris cover, mass balance, total volume and hydrological modeling.

## Supplement

This Greater Caucasus Glacier Inventory includes: the number and area change in 1960-1986-2014 by individual river basins and countries (Tables 1-2). Elbrus and Kazbegi-Dzhimara massif glacier number and area change in 1960-1986-2014 (Table 3-4; Fig. 1-2); cumulative glacier area and number values for seven size classes in 1960-1986-2014 for the northern, southern, western, central and eastern Greater Caucasus (Fig. 3-12); characteristics of glaciers used for measuring length change (Table 5).

**Acknowledgements.** We gratefully acknowledge the financial support from the Shota Rustaveli Georgian National Science Foundation “State science grants for outgoing research internship of young scientists 2016” project - The Greater Caucasus glacier inventory (IG/3/1/16).

## References

- Andreassen, L., Paul, F., Kaab, A., and Hausberg, J.: Landsat-derived glacier inventory for Jotunheimen, Norway, and deduced glacier changes since the 1930s. *The Cryosphere*, 2(2), 131-145, 2008.
- Bliss, A., Hock, R. and Radic, V.: Global response of glacier runoff to twenty-first century climate change. *J. Geophys. Res. Earth Surf.*, 119, 717-730, doi: 10.1002/2013JF002931, 2014.
- Bolch, T., Menounos, B., and Wheate, R.: Landsat-based inventory of glaciers in western Canada, 1985–2005, *Remote Sens. Environ.*, 114, 127–137, doi:10.1016/j.rse.2009.08.015, 2010.



- Catalog of Glaciers of the USSR: Katalog Lednitov USSR, vol. 8–9, Gidrometeoizdat, Leningrad, 1967–1978.
- Cogley, J. G.: A more complete version of the World Glacier Inventory, *Ann. Glaciol.*, 50, 32–38, 2009.
- DeBeer, C. M. and Sharp, M. J.: Recent changes in glacier area and volume within the southern Canadian Cordillera, *Ann. Glaciol.*, 46, 215–221, 2007.
- Evans, S. G., Tutubalina, O. V., Drobyshev, V. N., Chernomorets, S. S., McDougall, S., Petrakov, D. A., and Hungr, O.: Catastrophic detachment and high-velocity long-runout flow of Kolka Glacier, Caucasus Mountains, Russia in 2002. *Geomorphology*, 105, 314–321, doi:10.1016/j.geomorph.2008.10.008, 2009.
- Fischer, A., Seiser, B., Stocker Waldhuber, M., Mitterer, C., and Abermann, J.: Tracing glacier changes in Austria from the Little Ice Age to the present using a lidar-based high-resolution glacier inventory in Austria, *The Cryosphere*, 9, 753–766, doi:10.5194/tc-9-753-2015, 2015.
- Frey, H., Paul, F., and Strozzi, T.: Compilation of a glacier inventory for the western Himalayas from satellite data: methods, challenges, and results, *Remote Sens. Environ.*, 124, 832–843, 2012.
- Gardner, A., Moholdt, J., Cogley, G., Wouters, B., Arendt, A., Wahr, J., Berthier, E., Hock, R., Pfeffer, W., Kaser, G., Ligtenberg, S., Bolch, T., Sharp, M., Hagen, J., Van den Broeke, M., and Paul, F.: A reconciled estimate of glacier contributions to sea level rise: 2003 to 2009. *Science*, 340(6134), 852–857, 2013.
- Georgian National Tourism Administration, <http://gnta.ge/> 2017.
- Gobejishvili, R. G.: Saqartvelos tanamedrove mkinvarebi da Evraziis mtebshi gamkinvarebis evolucia gvian Pleistocensa da Holocenshi (Present day glaciers of Georgia and evolution of glaciation in the mountains of Eurasia in late Pleistocene and Holocene), sadoqtoro disertacia, Tbilisi, 320 pp., 1995.
- Gobejishvili, R. G., Tielidze, L. G., Lomidze, N., Javakhishvili A.: Monitoring of Glaciers on the background of Climate change. Monograph, Publ. “Universali” 176 pp., 2012 (in Georgian).
- Granshaw, F. D. and Fountain, A. G.: Glacier change (1958–1998) in the North Cascades National Park Complex, Washington, USA, *J. Glaciol.*, 52, 251–256, doi:10.3189/172756506781828782, 2006.
- Haeberli, W., Huggel, C., Käab, A., Zraggen-Oswald, S., Polkvoj, A., Galushkin, I., Zotikov, I., and Osokin, N.: The Kolka-Karmadon rock / ice slide of 20 September 2002: an extraordinary event of historical dimensions in North Ossetia, Russian Caucasus, *Journal of Glaciology*, Volume 50, Number 171, pp. 533–546 (14), doi.org/10.3189/172756504781829710, 2004.
- Holobacă I. H.: Recent retreat of the Elbrus glacier system, *Journal of Glaciology*. Volume 62. Issue 231, pp. 94–102, doi.org/10.1017/jog.2016.15, 2016.
- Huggel, C., Zraggen-Oswald, S., Haeberli, W., Käab, A., Polkvoj, A., Galushkin, I., and Evans, S. G.: The 2002 rock/ice avalanche at Kolka/Karmadon, Russian Caucasus: assessment of extraordinary avalanche formation and mobility, and application of QuickBird satellite imagery, *Nat. Hazards Earth Syst. Sci.*, 5, 173–187, doi:10.5194/nhess-5-173-2005, 2005.
- Huss, M.: Extrapolating glacier mass balance to the mountain-range scale: the European Alps 1900–2100, *The Cryosphere*, 6, 713–727, doi:10.5194/tc-6-713-2012, 2012.
- Kargel, J.S., G.J. Leonard, M.P. Bishop, A. Kaab, B. Raup (Eds.): *Global Land Ice Measurements from Space* (Springer-Praxis). 33 chapters, 876 pp. doi: 10.1007/978-3-540-79818-7, 2014.
- Khromova, T., Nosenko, G. and Chernova L.: Mapping of glacier extent changes in the mountain regions using space images and glacier inventories, the 24<sup>th</sup> International Cartographic Conference, Santiago, Chile, 2009.
- Khromova, T., Nosenko, G., Kutuzov, S., Muraviev and, A., and Chernova, L.: Glacier area changes in Northern Eurasia, *Environ. Res. Lett.*, 9, 015003, doi:10.1088/1748-9326/9/1/015003, 2014.

- Kotlyakov, V. M., Khromova, T. E., Nosenko, G. A., Popova, V. V., Chernova, L. P., and Murav'ev A. Ya.: New Data on Current Changes in the Mountain Glaciers of Russia, *Doklady Earth Sciences*, Vol. 464, Part 2, pp. 1094–1100. DOI: 10.1134/S1028334X15100207, 2015.
- Lambrecht, A., Mayer, C., Hagg, W., Popovnin, V., Rezepkin, A., Lomidze, N., and Svanadze, D.: A comparison of glacier melt on debris-covered glaciers in the northern and southern Caucasus, *The Cryosphere*, 5, 525-538, doi:10.5194/tc-5-525-2011, 2011.
- Lur'e, P. M. and Panov, V. D.: Variations of Contemporary Glaciation of the Northern Slope of the Greater Caucasus in the 20th Century and the Forecast of Its Degradation in the 21st Century, *Russian Meteorology and Hydrology*, Vol. 39, No. 4, pp. 254–259, doi: 10.3103/S1068373914040062, 2014.
- Maruashvili, L.: Kavkasiis fizikuri geografia (Physical Geography of the Caucasus), Monograph. Publ. "Metsniereba", Tbilisi, 1981 (in Georgian).
- Masurenkov, Yu. P., and Sobisevich, A. L.: Influence of thermal and fluid flows on the dynamics of Elbrus glaciers. *Dokl. Earth Sci.*, 442(1), 144–147, doi:10.1134/S1028334X12010175, 2012.
- Nagai, H., Fujita, K., Sakai, A., Nuimura, T., and Tadono, T.: Comparison of multiple glacier inventories with a new inventory derived from high-resolution ALOS imagery in the Bhutan Himalaya, *The Cryosphere*, 10, 65-85, <https://doi.org/10.5194/tc-10-65-2016>, 2016.
- Paul, F., and Kaab, A.: Perspectives on the production of a glacier inventory from multispectral satellite data in Arctic Canada: Cumberland Peninsula, Baffin Island. *Annals of Glaciology*, 42, 59-66, 2005.
- Paul, F., Barrand, N. E., Baumann, S., Berthier, E., Bolch, T., Casey, K., Frey, H., Joshi, S. P., Konovalov, V., Le Bris, R., Molg, N., Nosenko, G., Nuth, C., Pope, A., Racoviteanu, A., Rastner, P., Raup, B., Scharrer, K., Steffen, S., and Winsvold, S.: On the accuracy of glacier outlines derived from remote-sensing data. *Ann. Glaciol.*, 54(63), 171–182, doi: 10.3189/2013AoG63A296, 2013.
- Paul, F., Barrand, N., Baumann, S., Berthier, E., Bolch, T., Casey, K., Frey, H., Joshi, S., Konovalov, V., Le Bris, R., Molg, N., Nosenko, G., Nuth, C., Pope, A., Racoviteanu, A., Rastner, P., Raup, B., Scharrer, K., Steffen, S., and Winsvold, S.: On the accuracy of glacier outlines derived from remote-sensing data, *Ann. Glaciol.*, 54, 171–182, doi:10.3189/2013AoG63A296, 2013.
- Petrakov, D. A., Chernomorets, S. S., Evans, S. G., and Tutubalina, O. V.: Catastrophic glacial multi-phase mass movements: a special type of glacial hazard, *Adv. Geosci.*, 14, 211-218, doi:10.5194/adgeo-14-211-2008, 2008.
- Podozerskiy, K. I.: Ledniki Kavkazskogo Khrebta (Glaciers of the Caucasus Range): Zapiski Kavkazskogo otdela Russkogo Geograficheskogo Obshchestva, Publ. Zap. KORG.O., Tiflis, 29, 1, 200 pp., 1911.
- Pope, A., Rees, W., G., Fox, A., J., and Fleming, A.: Open access data in polar and cryospheric remote sensing. *Remote Sensing*, 6(7), 6183-6220; doi:10.3390/rs6076183, 2014.
- Popovnin, V. V., Rezepkin, A. A., and Tielidze, L. G.: Superficial moraine expansion on the Djankuat Glacier snout over the direct glaciological monitoring period, *Earth Cryosphere*, vol. XIX, No. 1, pp. 79–87, 2015.
- Reinhardt, A. L.: Snejnaya granica Kavkaze (The snow line in the Caucasus), *Izvestia Kavkazskogo otdela Imperatorskogo Russkogo Geograficheskogo Obshchestva*, T. 24. vol 3, 1916 (in Russian).
- Reinhardt, A. L.: Lednikovii period kavkaza i ego otnoshenie k oledenieniu alp i altai (Ice Age of the Caucasus and its relation to the glaciation of the Alps and the Altai). tr. II. mejd. konf. po izuchenie chetvertichnogo perioda evropi. L-M, bip. 2, 1936 (in Russian).
- Shahgedanova, M., Stokes, C. R., Gurney, S. D. and Popovnin, V.: Interactions between mass balance, atmospheric circulation, and recent climate change on the Djankuat Glacier, Caucasus Mountains, Russia. *Journal of Geophysical Research*, 110, D04108, doi:10.1029/2004JD005213, 2005, 2005.

- Shahgedanova, M., Nosenko, G., Kutuzov, S., Rototaeva, O., and Khromova, T.: Deglaciation of the Caucasus Mountains, Russia/Georgia, in the 21st century observed with ASTER satellite imagery and aerial photography, *The Cryosphere*, 8, 2367–2379, doi:10.5194/tc-8-2367-2014, 2014.
- 5 Solomina, O., Bushueva, I., Dolgova, E., Jomelli, V., Alexandrin, M., Mikhaleiko, V., and Matskovsky, V.: Glacier variations in the Northern Caucasus compared to climatic reconstructions over the past millennium, *Global and Planetary Change.*, 140, 28–58, doi.org/10.1016/j.gloplacha.2016.02.008, 2016.
- Stokes, C. R., Gurney, S. D., Popovnin, V., and Shahgedanova M.: Late-20th-century changes in glacier extent in the Caucasus Mountains, Russia/Georgia, *J. Glaciol.*, 52, 99–109, 2006.
- 10 Stokes, C. R., Popovnin, V. V., Aleynikov, A., and Shahgedanova, M.: Recent glacier retreat in the Caucasus Mountains, Russia, and associated changes in supraglacial debris cover and supra/proglacial lake development, *Ann. Glaciol.*, 46, 196–203, 2007.
- Stokes, C. R., Shahgedanova, M., Evans, I., and Popovnin, V. V.: Accelerated loss of alpine glaciers in the Kodar Mountains, south-eastern Siberia, *Global Planet. Change*, 101, 82–96, 2013.
- 15 Tielidze, L. G.: Glacier change over the last century, Caucasus Mountains, Georgia, observed from old topographical maps, Landsat and ASTER satellite imagery, *The Cryosphere*, 10, 713-725, doi.org/10.5194/tc-10-713-2016, 2016.
- Tielidze, L., Introduction. Chapter in *Glaciers of Georgia*, Springer, *Geography of the Physical Environment*, doi: 10.1007/978-3-319-50571-8\_1, 2017.
- 20 Wulder, M., A, Masek, J., G., Cohen, W., B., Loveland, T., R., and Woodcock, C., E.: Opening the archive: how free data has enabled the science and monitoring promise of Landsat. *Remote Sens. Environ.*, 122, 2-10, doi.org/10.1016/j.rse.2012.01.010, 2012.
- Wulder, M. A., White, J., C., Loveland, T., R., Woodcock, C., E., Belward, A., S., Cohen, W., B., FOSNIGHT, E., A., Shaw, J., Masek, J., G., and Roy, D., P.: The global Landsat archive: status, consolidation, and direction. *Remote Sens. Environ.*, 185, 271-283, doi.org/10.1016/j.rse.2015.11.032, 2016.
- 25



# Supplement

## The Greater Caucasus Glacier Inventory (Russia/Georgia/Azerbaijan)

Levan G. Tielidze<sup>1,3</sup>, Roger D. Wheate<sup>2</sup>

<sup>1</sup>Department of Geomorphology, Vakhushti Bagrationi Institute of Geography, Ivane Javakhishvili Tbilisi State University, 6 Tamarashvili st., Tbilisi, Georgia, 0177

<sup>2</sup>Natural Resources and Environmental Studies, University of Northern British Columbia, 3333 University Way, Prince George, BC, Canada, V2N 4Z9

<sup>3</sup>Department of Earth Sciences, Georgian National Academy of Sciences, 52 Rustaveli Ave., Tbilisi, Georgia, 0108

**Table 1.** The Greater Caucasus glacier number and area in 1960-1986-2014 by individual river basins.

Main river basin	Tributary river basin	USSR Catalog 1967-1978		Topographic maps 1960		Landsat 5, 1985/86/87		Landsat 8, 2013/14/15/16 and ASTER 2014		Area change		
		Number	Area km <sup>2</sup>	Number	Area km <sup>2</sup>	Number	Area km <sup>2</sup>	Number	Area km <sup>2</sup>	1960- 1986	1986- 2014	1960- 2014
										% yr <sup>-1</sup>	% yr <sup>-1</sup>	% yr <sup>-1</sup>
Mzimta		7	1.7	13	2.4±0.2	13	2.3±0.2	13	1.9±0.2	-0.16	-0.62	-0.38
Kuban	Belaya	29	7.6	39	7.6±0.4	45	8.3±0.6	50	6.6±0.4	+0.35	-0.73	-0.24
	Malaya Laba	27	9.4	39	11.2±0.6	45	8.4±0.6	39	7.5±0.6	-0.96	-0.38	-0.61
	Bolshaya Laba	21	5.8	30	7.1±0.4	30	6.7±0.4	29	4.5±0.2	-0.21	-1.17	-0.67
	Bolshoy Zelenchuk	56	30.7	58	32.4±1.6	65	33.8±1.8	74	25.6±1.6	+0.16	-0.86	-0.38
	Maliy Zelenchuk	28	26.3	37	30.3±1.2	41	29.8±1.0	46	24.6±1.2	-0.06	-0.67	-0.34

	Teberda	85	61.0	99	63.6±2.8	103	62.1±2.6	100	53.7±2.6	-0.09	-0.48	-0.28
	Daut	16	5.5	19	7.2±0.4	22	6.1±0.4	24	4.8±0.4	-0.58	-0.76	-0.61
	Uchkulan	58	20.8	64	27.3±1.4	65	22.7±1.4	71	19.2±1.4	-0.64	-0.55	-0.54
	Ullukam	88	52.9	107	65.2±3.2	105	51.0±2.6	95	42.5±2.2	-0.83	-0.59	-0.64
Malka		10	56.5	10	64.0±1.0	11	57.5±0.8	12	52.2±0.8	-0.39	-0.32	-0.34
Baksan		156	132.7	170	187.0±7.0	162	169.8±6.4	156	146.3±6.0	-0.35	-0.49	-0.40
Chegem	Bashil-Auzusu	28	26.9	39	34.6±1.4	31	30.1±1.2	30	25.3±1.0	-0.50	-0.56	-0.49
	Gara-Auzusu	28	28.0	21	30.1±1.0	19	29.3±1.2	17	24.7±1.0	-0.10	-0.56	-0.33
	Bulungu	9	3.2	8	6.6±0.2	10	4.0±0.2	9	2.9±0.2	-1.51	-0.98	-1.03
Cherek	Cherek-Bezingskiy	85	76.3	48	82.4±2.8	40	81.1±2.6	48	73.8±2.6	-0.06	-0.32	-0.19
	Cherek-Balkarskiy	80	107.0	78	115.0±3.8	79	113.0±3.8	86	96.8±3.6	-0.06	-0.51	-0.29
	Psigansy	17	15.0	13	15.2±0.6	12	15.6±0.6	13	12.8±0.6	+0.10	-0.64	-0.29
Uruk	Khanzidon	13	4.7	14	8.5±0.4	15	8.4±0.4	12	6.3±0.4	-0.04	-0.89	-0.47
	Biliagikom	5	2.0	6	2.5±0.1	4	2.1±0.2	5	1.0±0.1	-0.61	-1.87	-1.11
	Uruk headwaters	34	23.0	35	31.1±1.2	33	30.3±1.4	35	25.3±1.2	-0.09	-0.58	-0.34
	Karagom	27	39.6	21	48.4±1.4	23	45.7±1.4	31	41.7±1.4	-0.21	-0.31	-0.25
	Aigamuga	26	13.4	14	24.0±1.0	17	17.4±0.6	20	14.7±0.8	-1.05	-0.55	-0.71
Ardon	Tseyadon	29	15.0	22	21.4±0.8	18	19.2±0.6	20	16.8±0.6	-0.39	-0.44	-0.39
	Sidan	1	0.05	1	0.08±0.01	1	0.07±0.01	1	0.03±0.04	-0.48	-2.04	-1.15
	Vilsa	3	0.6	6	1.1±0.1	5	1.0±0.2	5	0.9±0.08	-0.34	-0.35	-0.33
	Adaikom	5	4.7	9	7.0±0.4	8	5.4±0.2	7	4.6±0.2	-0.87	-0.52	-0.63
	Mamikhdon	14	4.2	18	6.1±0.4	15	4.9±0.4	15	3.7±0.2	-0.75	-0.87	-0.72
	Nar	11	2.9	28	6.5±0.4	15	3.2±0.2	11	1.6±0.08	-1.95	-1.78	-1.39
	Gilvan	1	0.2	3	0.3±0.04	1	0.05±0.08	0	0	-3.20	0	0
	Kasaidon	2	0.19	2	0.5±0.06	2	0.3±0.04	2	0.2±0.02	-1.53	-1.19	-1.11
	Labagkomdon	1	0.04	1	0.1±0.016	1	0.1±0.016	1	0.06±0.008	0.00	-1.42	-0.07
	Baddon	7	3.5	6	4.3±0.2	8	3.5±0.6	8	2.6±0.2	-0.71	-0.91	-0.73
	Arkondon	5	4.1	5	4.2±0.2	4	4.0±0.6	4	3.5±0.2	-0.18	-0.44	-0.30
Fiagdon		31	12.3	33	12.6±0.8	29	8.8±0.6	28	6.2±0.6	-1.15	-1.05	-0.94
Gizeldon		27	34.6	32	33.8±1.2	30	31.0±1.2	25	25.2±1.0	-0.31	-0.66	-0.47
Tergi headwaters		133	74.8	133	71.5±3.2	116	55.6±2.8	94	43.4±3.4	-0.85	-0.78	-0.72
Sunja right	Assa	10	3.8	19	5.9±0.4	17	4.0±0.4	10	2.1±0.2	-1.23	-1.69	-1.19

tributaries	Arghuni	24	6.0	32	9.6±0.6	25	7.3±0.4	20	5.2±0.4	-0.92	-1.02	-0.84
	Sharo Argun	34	17.6	37	24.6±2.4	36	21.1±1.0	32	15.7±0.8	-0.54	-0.91	-0.66
Sulak	Andiyskoye Koysu	47	21.2	66	26.2±1.6	56	18.6±1.2	36	11.8±0.6	-1.11	-1.30	-1.01
	Avarskoye Koysu	88	23.5	105	28.0±1.8	86	18.4±1.4	34	5.9±0.4	-1.31	-2.42	-1.46
Samur		20	9.0	70	15.5±1.0	56	11.3±1.0	21	2.8±0.2	-1.04	-2.68	-1.51
Agrichai	Shinchai	0	0	2	0.1±0.016	1	0.04±0.006	1	0.03±0.004	-2.30	-0.89	-1.29
Kusarchai		8	3.2	24	6.0±0.4	17	4.6±0.2	15	0.8±0.1	-0.89	-2.95	-2.13
Bzipi		16	7.8	26	9.5±0.5	23	6.7±0.6	19	3.2±0.4	-1.13	-1.86	-1.22
Kelasuri		3	1.5	3	1.4±0.1	2	1.2±0.06	2	0.9±0.06	-0.54	-0.89	-0.66
Kodori		141	60.0	179	65.1±3.6	179	61.0±3.8	161	42.2±2.8	-0.24	-1.10	-0.65
Enguri		250	288.3	317	324.7±12.4	306	285.8±11.2	289	225.3±9.2	-0.46	-0.75	-0.56
Khobistkali		7	1.6	20	1.2±0.2	13	0.9±0.08	11	0.6±0.08	-0.96	-1.19	-0.92
Rioni		124	62.9	141	78.3±3.8	134	65.5±4.2	120	50.9±2.6	-0.62	-0.79	-0.64
Liakhvi		22	6.6	19	4.5±0.2	14	2.6±0.2	12	2.0±0.2	-1.62	-0.82	-1.02
Aragvi		5	1.6	8	1.1±0.1	1	0.5±0.08	1	0.3±0.04	-2.09	-1.42	-1.34
Total, Greater Caucasus		2002	1421.78	2349	1674.9±70.4	2209	1482.1±64.4	2020	1193.2±54.0	-0.44	-0.69	-0.53

**Table 2.** The Greater Caucasus glacier number and area change in 1960-1986-2014 by countries.

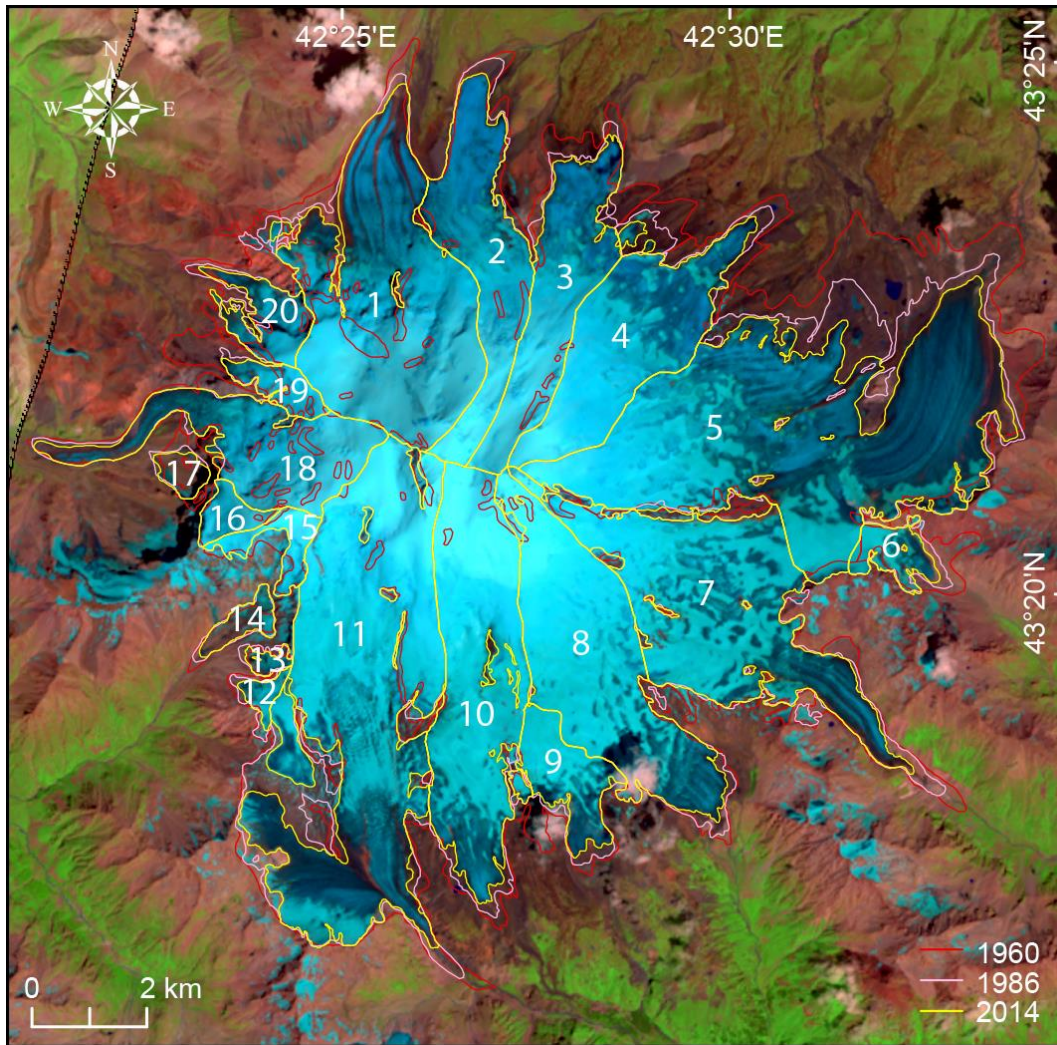
Countries	Topographic maps 1960		Landsat 5, 1985/86/87		Landsat 8, 2013/14/15/16 and ASTER 2014		Decrease 1960-1986 % yr <sup>-1</sup>	Decrease 1986-2014 % yr <sup>-1</sup>	Decrease 1960-2014 % yr <sup>-1</sup>
	Number	Area km <sup>2</sup>	Number	Area km <sup>2</sup>	Number	Area km <sup>2</sup>			
Russia	1417	1099.1±44.2	1367	992.4±41.4	1275	822.2±35.8	0.37	0.61	0.46
Georgia	899	568.5±25.0	817	484.0±22.4	725	369.8±17.4	0.57	0.84	0.64
Azerbaijan	33	7.3±0.6	25	5.7±0.6	20	1.2±0.2	0.84	2.81	1.54

**Table 3.** Elbrus glacier number and area change in 1960-1986-2014. All glaciers are shown in Fig. 1.

Elbrus glaciers			Topographic maps 1960	Landsat 5, 06/08/1986	Landsat 8, 03/08/2014/	Area change		
#	Name	WGI ID	Area km <sup>2</sup>	Area km <sup>2</sup>	Area km <sup>2</sup>	1960-1986 % yr <sup>-1</sup>	1986-2014 % yr <sup>-1</sup>	1960-2014 % yr <sup>-1</sup>
1	Ulluchiran	SU4G08005001	12.87±0.26	13.12±0.16	12.68±0.18	+0.07	-0.11	-0.02
2	Karachaul	SU4G08005002	6.20±0.16	6.22±0.12	5.96±0.14	+0.01	-0.14	-0.07
3	Ullukol	SU4G08005003	6.42±0.16	5.81±0.12	5.45±0.12	-0.36	-0.22	-0.28
4	565a	SU4G08005004	0.97±0.04	0.54±0.04	0.13±0.02	-1.70	-2.71	-1.60
5	Mikelchiran	SU4G08005005	7.74±0.12	7.09±0.12	6.84±0.12	-0.32	-0.12	-0.21
6	Dzhikiugankez	SU4G08005006	28.41±0.24	24.0±0.3	20.68±0.32	-0.59	-0.53	-0.50
7	Irikchat	SU4G08005018	1.56±0.02	1.29±0.06	1.09±0.04	-0.66	-0.55	-0.55
8	Irik	SU4G08005020	12.56±0.28	11.46±0.22	10.95±0.22	-0.33	-0.15	-0.23
9	Terskol	SU4G08005026	9.83±0.32	9.78±0.16	9.45±0.14	-0.01	-0.12	-0.07
10	Garabashi	SU4G08005027	3.13±0.08	2.75±0.08	2.45±0.1	-0.46	-0.38	-0.40
11	Maliy Azau	SU4G08005028	10.08±0.16	10.03±0.14	9.41±0.18	-0.01	-0.22	-0.12
12	Bolshoy Azau	SU4G08005029	21.26±0.34	20.47±0.32	18.20±0.36	-0.14	-0.39	-0.26
13	311	SU4H08004311	0.57±0.04	0.51±0.04	0.37±0.02	-0.40	-0.98	-0.64
14	312	SU4H08004312	0.25±0.02	0.33±0.02	0.26±0.02	+1.23	-0.75	-0.07
15	Ullukam	SU4H08004313	0.56±0.04	0.72±0.04	0.67±0.04	+1.09	-0.24	-0.36
16	313	SU4H08004313	1.08±0.06	0.98±0.06	0.98±0.06	-0.35	0	-0.17
17	317	SU4H08004317	0.74±0.02	0.76±0.04	0.76±0.04	+0.10	0	+0.05
18	Unnamed*	Unknown	0.65±0.04	0.59±0.02	0.52±0.04	-0.35	-0.42	-0.37
19	Kyukyurtlyu	SU4H08004318	5.69±0.2	5.61±0.12	5.54±0.14	-0.05	-0.04	-0.04
20	319	SU4H08004319	1.54±0.06	0.98±0.06	0.94±0.04	-1.39	-0.14	-0.72
21	Bituktyube	SU4H08004320	2.40±0.1	1.74±0.08	1.65±0.06	-1.05	-0.18	-0.57
22	321	SU4H08004321	0.38±0.04	0.21±0.02	0.08±0.012	-1.72	-2.21	-1.46
<b>Total</b>			<b>134.89±2.84</b>	<b>124.99±2.74</b>	<b>115.06±2.68</b>	<b>-0.28</b>	<b>-0.28</b>	<b>-0.27</b>

\* Omitted in WGI database





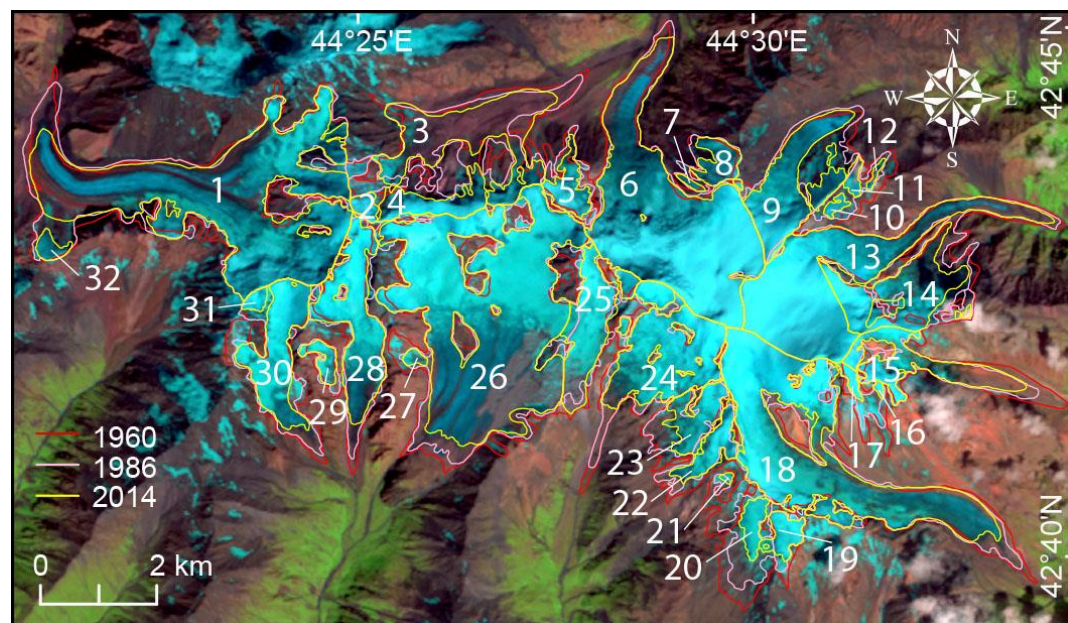
**Figure 1.** Changes in glacierized area of Elbrus between 1960-1986-2014. See Tables 3 for the change statistics of individual glaciers. The 3/08/2014 Landsat 8 images was used as background.

**Table 4.** Kazbegi-Dzhimara massif glacier number and area change in 1960-1986-2014. All glaciers are shown in Fig. 2.

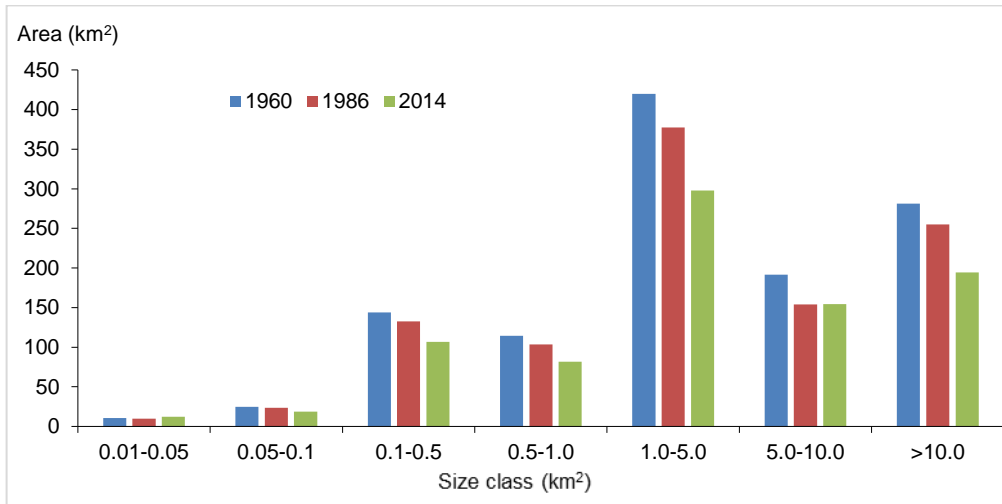
Kazbegi-Dzhimara massif glaciers			Topographic maps 1960	Landsat 5, 06/08/1986	Landsat 8, 28/08/14/	Area change		
#	Name	WGI ID	Area km <sup>2</sup>	Area km <sup>2</sup>	Area km <sup>2</sup>	1960-1986 % yr <sup>-1</sup>	1986-2014 % yr <sup>-1</sup>	1960-2014 % yr <sup>-1</sup>
1	Mydagrabyn	SU4G08010031	9.98±0.22	9.73±0.24	8.16±0.24	-0.09	-0.57	-0.33
2	Unnamed*	Unknown	-	-	0.16±0.02	0	0	0
3	Kolka	SU4G08010039	5.06±0.7	4.28±0.48	2.51±0.44	-0.59	-1.47	-0.91
4	Unnamed	Unknown	-	-	0.75±0.04	0	0	0
5	Unnamed	SU4G08010040	0.79±0.06	0.73±0.04	0.50±0.04	-0.29	-1.12	-0.68
6	Maili	SU4G08010041	7.29±0.14	6.75±0.14	6.57±0.12	-0.28	-0.09	-0.18
7	Unnamed	Unknown	-	-	0.05±0.008	0	0	0
8	Unnamed	SU4G08010042	-	0.67±0.04	0.44±0.02	0	-1.22	0
9	Chachi	SU4G08011046	2.61±0.06	2.57±0.08	1.85±0.08	-0.05	-1.00	-0.53
10	Unnamed	Unknown	-	-	0.08±0.012	0	0	0
11	Unnamed	SU4G08011047	0.86±0.06	0.52±0.04	0.12±0.02	-1.52	-2.74	-1.59
12	Unnamed	Unknown	-	-	0.05±0.008	0	0	0
13	Devdoraki	SU4G08011048	7.19±0.2	6.96±0.2	4.40±0.12	-0.12	-1.31	-0.71
14	Unnamed	Unknown	-	-	1.78±0.08	0	0	0
15	Abano	SU4G08011049	1.96±0.08	1.49±0.08	1.33±0.1	-0.92	-0.38	-0.60
16	Unnamed	Unknown	-	-	0.03±0.004	0	0	0
17	Unnamed	Unknown	0.58±0.04	0.34±0.04	0.1±0.004	-1.59	-2.52	-1.53
18	Gergeti	SU4G08011052	6.82±0.18	6.26±0.2	5.77±0.18	-0.31	-0.27	-0.28
19	None	SU4G08011056	0.49±0.04	0.39±0.02	0.36±0.02	-0.78	-0.27	-0.49
20	Denkara	SU4G08011057	1.33±0.04	0.93±0.04	0.31±0.02	-1.15	-2.38	-1.42
21	Unnamed	Unknown	0.49±0.04	0.06±0.01	0.03±0.004	-3.37	-1.78	-1.73
22	Unnamed	SU4G08011058	0.89±0.06	0.63±0.04	0.53±0.04	-1.12	-0.56	-0.74
23	Unnamed	SU4G08011059	1.12±0.04	0.98±0.06	0.75±0.06	-0.48	-0.83	-0.61
24	Mna	SU4G08011060	3.25±0.1	2.89±0.12	2.59±0.12	-0.42	-0.37	-0.37
25	Unnamed	SU4G08011061	1.57±0.04	1.30±0.06	1.44±0.04	-0.66	+0.38	-0.15

26	Suatisi Eastern	SU4G08011062	10.84±0.2	9.87±0.24	8.89±0.18	-0.34	-0.35	-0.33
27	Unnamed	Unknown	-	-	0.08±0.012	0	0	0
28	Suatisi Central	SU4G08011063	2.62±0.1	2.32±0.08	2.07±0.08	-0.44	-0.38	-0.39
29	Unnamed	Unknown	-	0.29±0.04	0.23±0.02	0	-0.73	0
30	Suatisi Western	SU4G08011064	2.49±0.08	2.16±0.08	1.55±0.06	-0.51	-1.00	-0.70
31	Unnamed	Unknown	-	-	0.12±0.02	0	0	0
32	Unnamed	Unknown	-	-	0.18±0.02	0	0	0
<b>Total</b>			<b>68.23±2.42</b>	<b>62.12±2.72</b>	<b>53.78±2.48</b>	<b>-0.34</b>	<b>-0.47</b>	<b>-0.39</b>

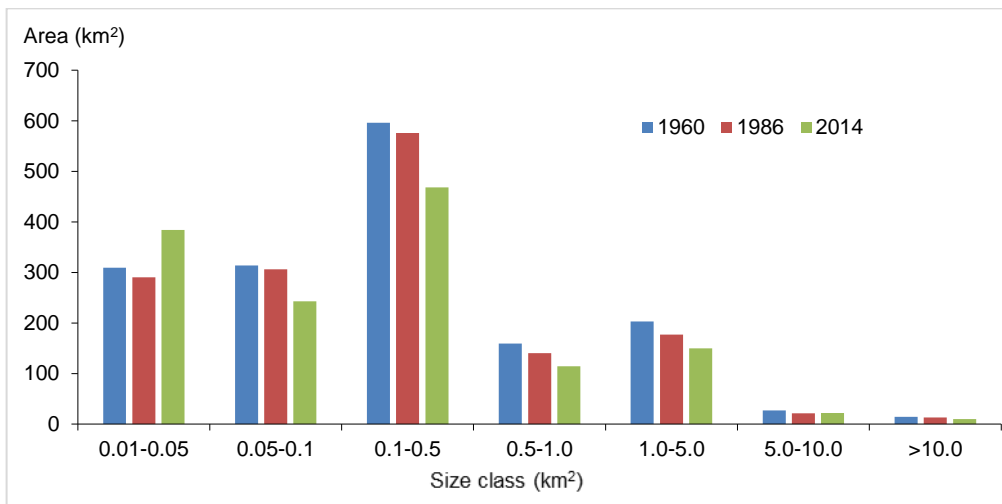
\* Omitted in WGI database



**Figure 2.** Changes in glacierized area of Kazbegi-Dzhimara massifs between 1960-1986-2014. See Tables 4 for the change statistics of individual glaciers. The 28/08/2014 Landsat 8 images was used as background.

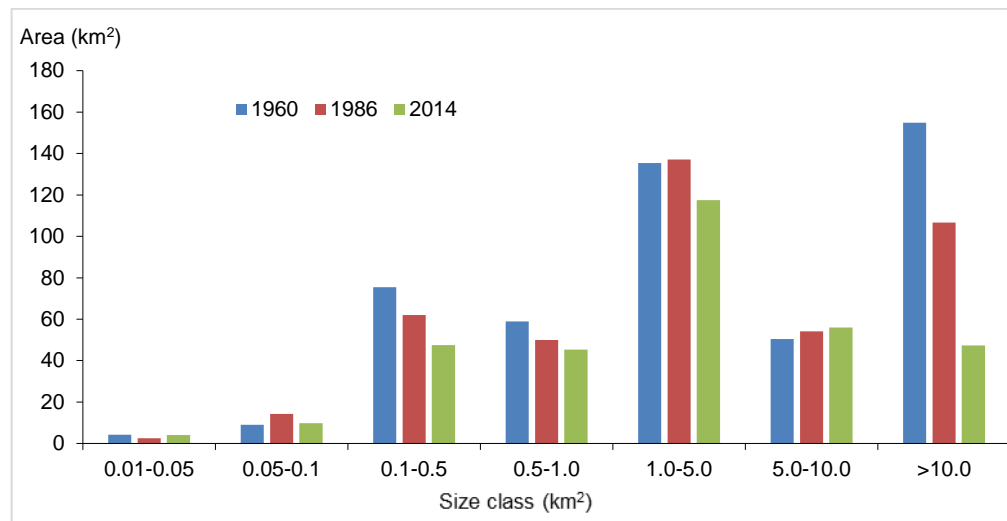


**Figure 3.** Cumulative glacier area values for seven size classes in 1960-1986-2014 for the northern Greater Caucasus.

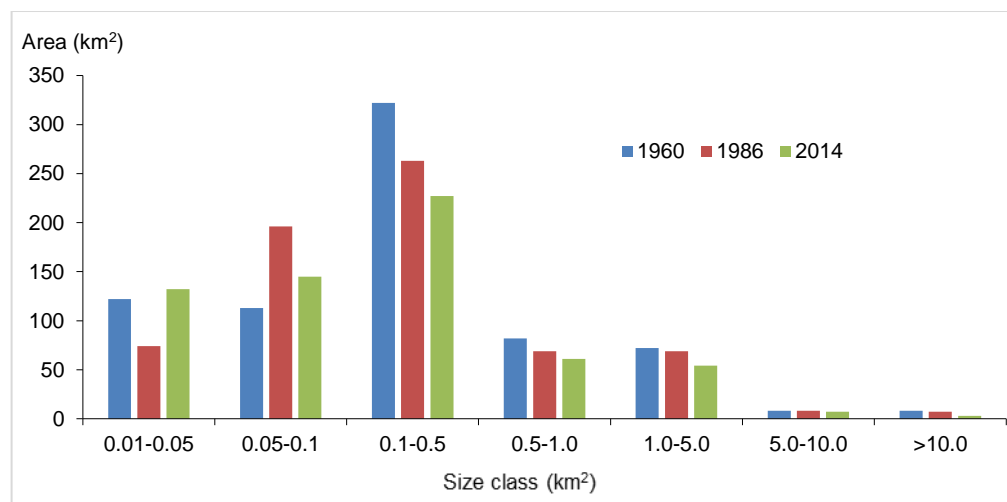


**Figure 4.** Cumulative glacier number values for seven size classes in 1960-1986-2014 for the northern Greater Caucasus.

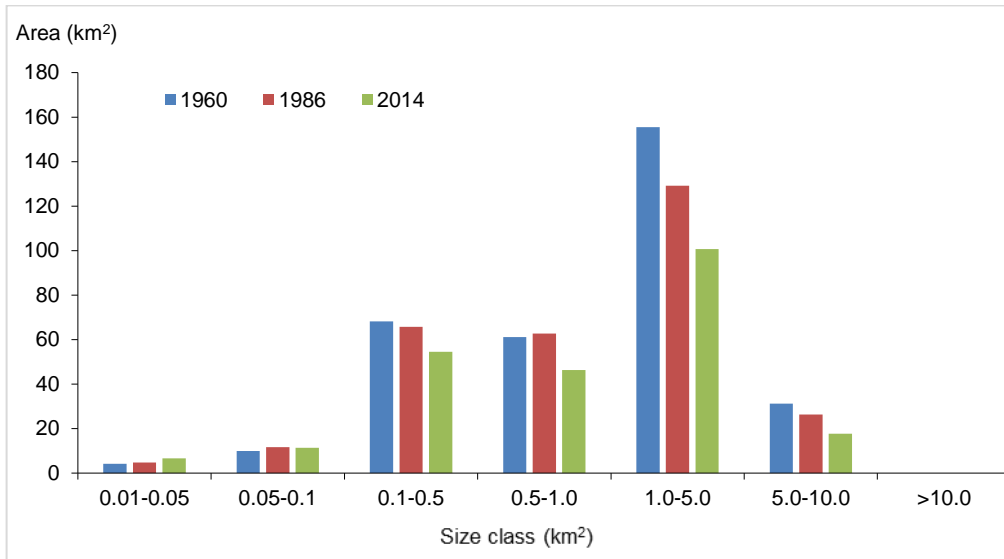




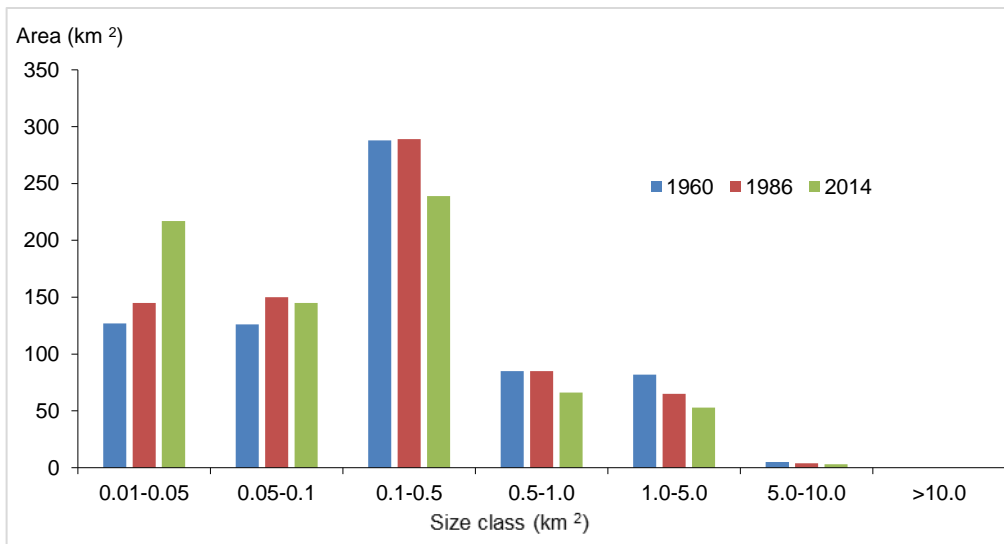
**Figure 5.** Cumulative glacier area values for seven size classes in 1960-1986-2014 for the southern Greater Caucasus.



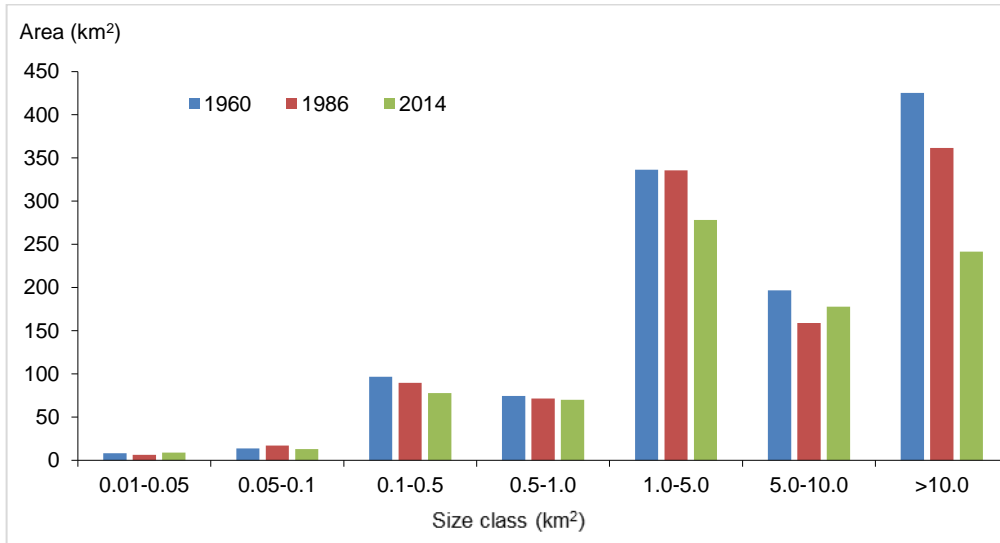
**Figure 6.** Cumulative glacier number values for seven size classes in 1960-1986-2014 for the southern Greater Caucasus.



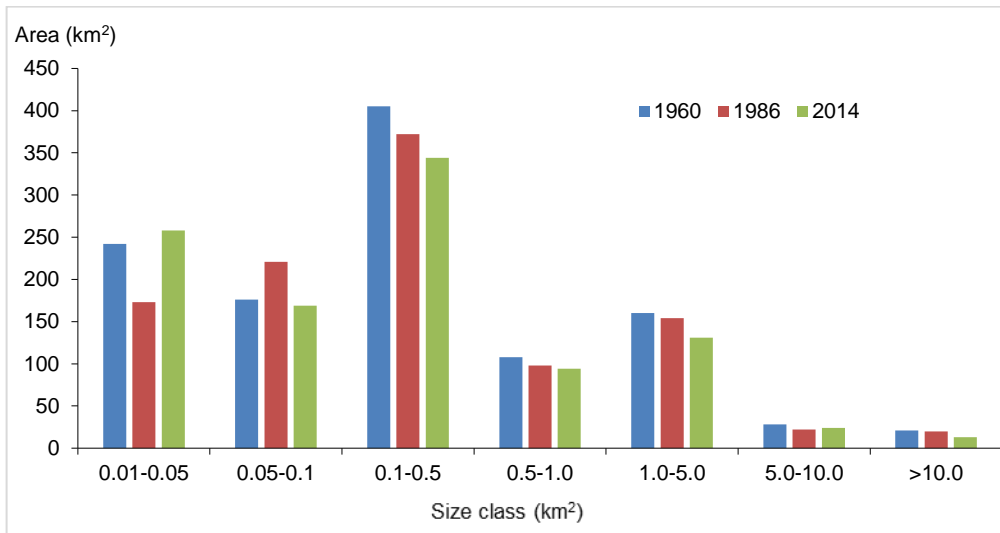
**Figure 7.** Cumulative glacier area values for seven size classes in 1960-1986-2014 for western Greater Caucasus.



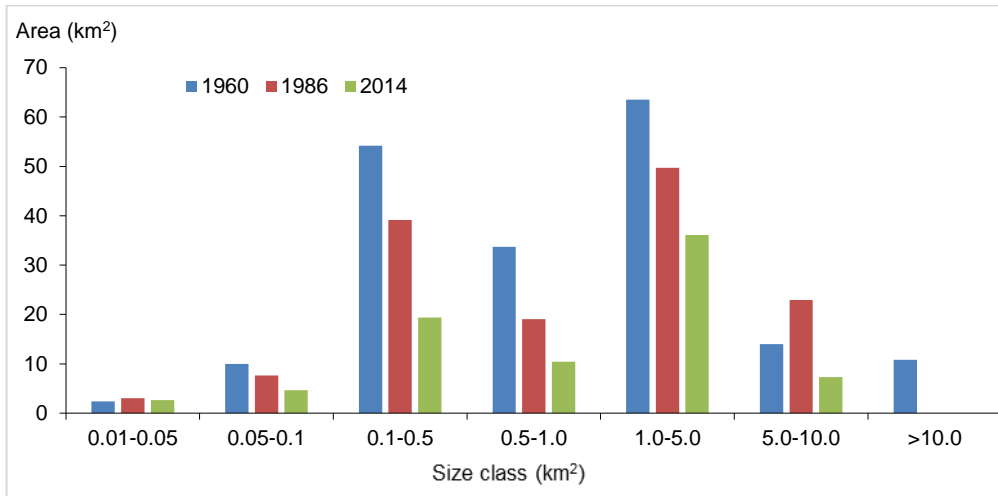
**Figure 8.** Cumulative glacier number values for seven size classes in 1960-1986-2014 for the western Greater Caucasus.



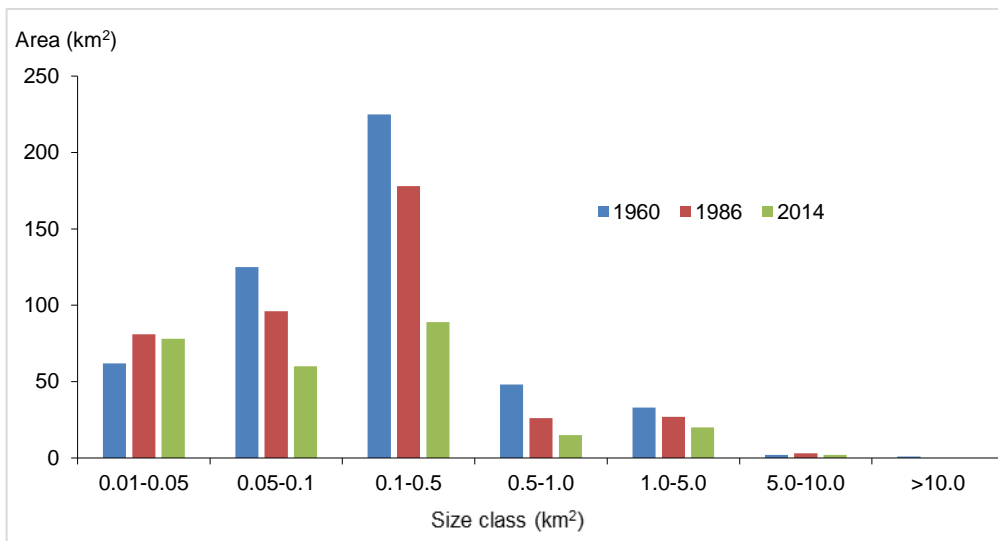
**Figure 9.** Cumulative glacier area values for seven size classes in 1960-1986-2014 for central Greater Caucasus.



**Figure 10.** Cumulative glacier number values for seven size classes in 1960-1986-2014 for the central Greater Caucasus.



**Figure 11.** Cumulative glacier area values for seven size classes in 1960-1986-2014 for eastern Greater Caucasus.



**Figure 12.** Cumulative glacier number values for seven size classes in 1960-1986-2014 for the eastern Greater Caucasus.



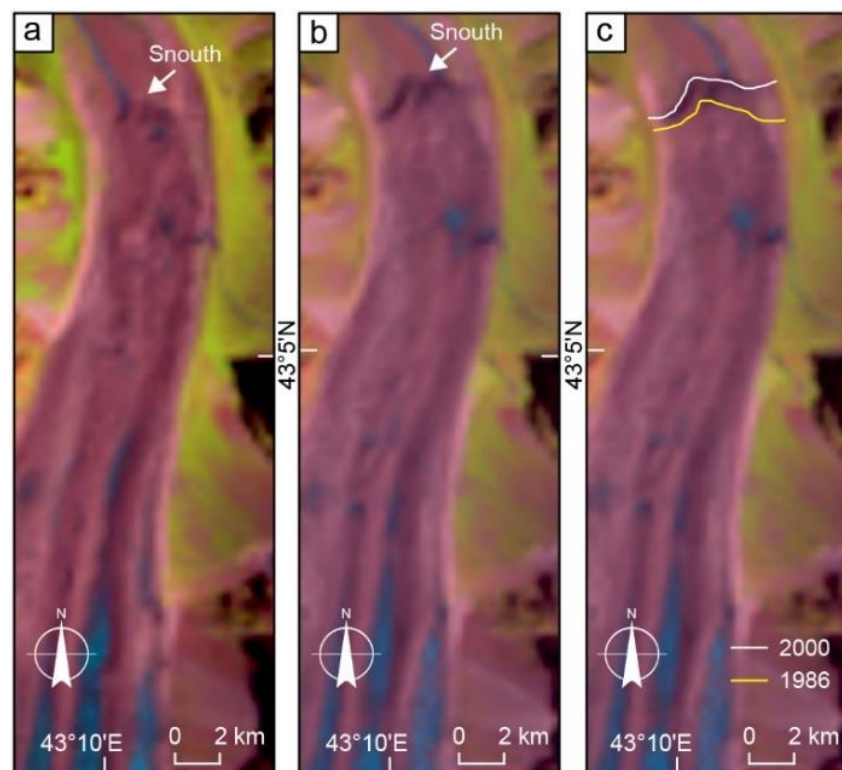
**Table 5.** Characteristics of glaciers used for measuring length change. The average error terms are  $\pm 15$  m.

Name	WGI ID	River basin	Area 1960	Area 1986	Area 2014	1960-1986	1986-2014	1960-2014	Length change		Length change		Length change	
						1986	2014	2014	1960-1986		1986-2014		1960-2014	
						% yr <sup>1</sup>	% yr <sup>1</sup>	% yr <sup>1</sup>	m	m yr <sup>1</sup>	m	m yr <sup>1</sup>	m	m yr <sup>1</sup>
Glaciers with >10 km <sup>2</sup> area														
Bezingi		Cherek-Bezingskiy	40.42±0.98	39.98±0.9	37.47±0.94	-0.04	-0.22	-0.13	-519	-19.7	-374	-13.4	-893	-16.5
Dych-sy-Ailama		Cherek-Balkarskiy	39.49±0.98	34.85±0.94	27.53±0.78	-0.45	-0.75	-0.56	-461	-17.7	-1094	-39.1	-1555	-28.8
Karaugom		Karaugom	29.94±0.6	29.17±0.62	23.99±0.44	-0.09	-0.63	-0.36	-164	-6.3	-1366	-48.8	-1530	-28.3
Lekhziri		Enguri	35.80±0.9	33.95±0.94	23.76±0.72	-0.19	-1.07	-0.62	-859	-33.0	-736	-26.3	-1595	-29.5
Agashtan		Cherek-Balkarskiy	21.35±0.36	20.39±0.32	18.93±0.44	-0.17	-0.25	-0.20	-368	-14.2	-587	-21.0	-955	-17.7
Midjirgi		Cherek-Bezingskiy	13.77±0.5	13.90±0.48	12.71±0.48	+0.03	-0.30	-0.14	-808	-31.1	+40	+1.4	-768	-14.2
Tsaneri southern*		Enguri	28.26±0.52	14.38±0.32	12.31±0.32	-0.21	-0.51	-1.04	-448	-17.2	-781	-27.9	-1229	-22.8
Tseyra		Tseyadon	14.03±0.42	12.83±0.38	11.87±0.36	-0.32	-0.26	-0.28	-295	-11.3	-341	-12.2	-636	-11.8
Tsaneri northern		Enguri	-**	13.30±0.22	11.28±0.22	-0.58	-0.54		-	-	-574	-20.5		
Glaciers with 5-10 km <sup>2</sup> area														
Kvitlodi		Enguri	12.23±0.26	11.65±0.24	9.58±0.2	-0.18	-0.63	-0.40	-598	-23.0	-883	-31.5	-1481	-27.4
Adishi		Enguri	10.48±0.22	10.34±0.2	9.58±0.2	-0.05	-0.26	-0.15	-124	-4.8	-390	-13.9	-514	-9.5
Challaati		Enguri	12.71±0.36	12.36±0.38	9.24±0.28	-0.10	-0.90	-0.50	-460	-17.7	-223	-8.0	-683	-12.6
Khalde		Enguri	11.87±0.38	10.65±0.36	8.59±0.26	-0.39	-0.69	-0.51	-130	-5.0	-130	-4.6	-260	-4.8
Shkhelda		Baksan	13.61±0.48	12.50±0.50	8.28±0.65	-0.31	-1.20	-0.72	-950	-36.5	-480	-17.1	-1430	-26.5
Bashil		Chegem	8.16±0.19	7.91±0.19	7.34±0.19	-0.11	-0.25	-0.18	-230	-8.8	-530	-18.9	-760	-14.1
Dolra		Enguri	7.95±0.21	6.44±0.16	5.36±0.12	-0.73	-0.59	-0.60	-595	-22.9	-160	-5.7	-755	-14.0
Glaciers with 1-5 km <sup>2</sup> area														
Boko		Rioni	5.07±0.12	4.71±0.12	4.62±0.11	-0.27	-0.07	-0.16	-287	-11.0	-436	-15.6	-723	-13.4
Mostotsete		Uruk Headwaters	4.27±0.14	3.58±0.012	3.23±0.13	-0.62	-0.34	-0.45	-105	-4.0	-135	4.8	-240	-4.4
Marukh northern		Malii Zelenchuk	3.25±0.08	3.30±0.08	2.82±0.07	+0.05	-0.51	-0.24	-255	-9.8	-240	-8.6	-495	-9.2
Chungurjar		Ullukam	3.13±0.09	2.11±0.07	1.88±0.07	-1.25	-0.39	-0.74	-490	-18.8	-405	-14.4	-895	-16.6
Tbilisa		Rioni	2.90±0.10	2.21±0.09	1.91±0.08	-0.91	-0.48	-0.63	-186	7.2	-354	-12.6	-540	-10.0
Sakeni		Kodori	2.47±0.07	2.39±0.08	1.99±0.05	-0.12	-0.59	-0.35	-560	-21.5	-275	-9.8	-835	-15.5
Abano		Tergi	1.96±0.09	1.49±0.09	1.33±0.09	-0.92	-0.38	-0.60	-550	-21.2	-240	-8.6	-790	-14.6
Glaciers with <1 km <sup>2</sup> area														

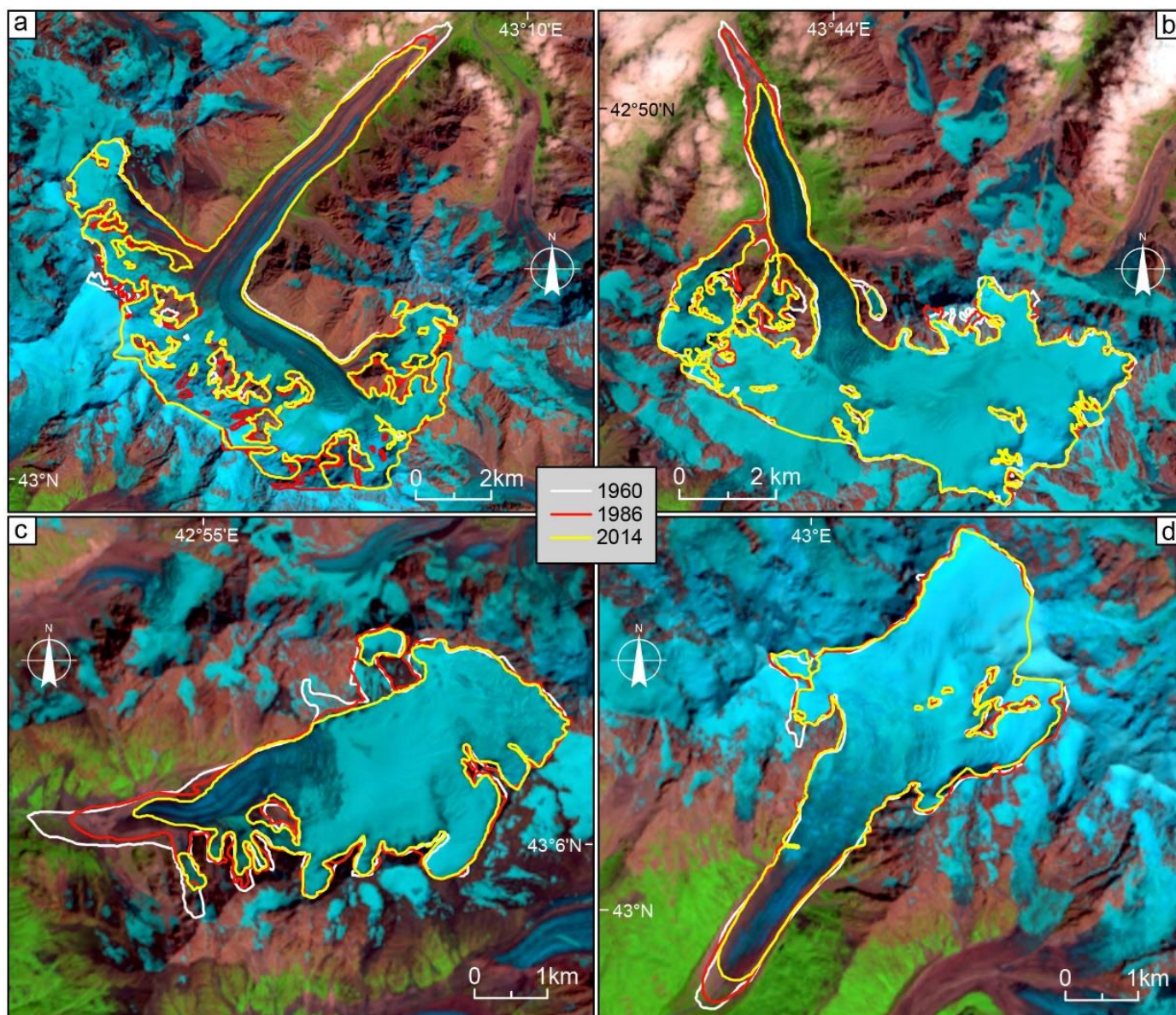
SU5T09106388	Rioni	0.86±0.05	0.73±0.04	0.69±0.03	-0.58	-0.20	-0.36	-360	-13.8	-70	-2.5	-430	-8.0
***	Sharo Argun	0.90±0.05	0.77±0.04	0.55±0.03	-0.55	-1.02	-0.72	-65	-2.5	-270	-9.6	-335	-6.2
SU4G08011072	Tergi	0.62±0.03	0.55±0.03	0.42±0.02	-0.43	-0.84	-0.60	-60	-2.3	-310	-11.1	-370	-6.9
***	Andiiskoe Koisu	0.63±0.04	0.43±0.03	0.29±0.02	-1.22	-1.16	-0.99	-243	-9.3	-245	-8.8	-588	-10.9
SU4G08007139	Cherek-Balkarskiy	0.36±0.03	0.37±0.03	0.26±0.02	+0.10	-1.06	-0.51	-189	-7.3	-210	-7.5	-399	-7.4
SU4G08011083	Tergi	0.99±0.04	0.55±0.03	0.15±0.01	-1.70	-2.59	-1.57	-234	-9.0	-470	-16.8	-704	-13.0
SU5T09105282	Enguri	0.19±0.02	0.13±0.01	0.10±0.005	-1.21	-0.82	-0.87	-60	-2.3	-60	-2.1	-120	-2.2

\*, \*\* Until the 1980s the Southern and Northern Tsaneri were merged as one compound-valley type glacier. Their division likely happened in 1980-1985.

\*\*\* Omitted in WGI database.



**Figure 13.** Midjirgi Glacier advance between 1986-2000. (a) Landsat 5 TM, 6/08/1986. (b) Landsat 5 TM, 12/08/2000. In 1986, the flow of meltwater comes from a different position at the terminus. (c) With the two snout comparison, it is visible that the snout has advanced.



**Figure 14.** (a) Bezingi, (b) Karaugom, (c) Kvitlodi and (d) Adishi glaciers reduction in the years 1960-1986-2014. The 3/08/2014 Landsat 8 image (Table 1) is used as background.