

Response to *Interactive comment on “A Weekly Arctic Sea-Ice Thickness Data Record from merged CryoSat-2 and SMOS Satellite Data” by Robert Ricker et al.*

Anonymous Referee #1

General comments:

In this manuscript the authors utilise the complementary sea ice thickness retrieval characteristics of SMOS and CryoSat-2 to produce a weekly merged thickness product. SMOS and CryoSat-2 sea ice thickness results have been published previously, hence this study concentrates on merging the thickness products and evaluating the result. The provision of weekly data, which are optimised for all ice thicknesses, will provide further insight into how different Arctic sea ice classes are changing and potentially benefit modelling studies. The method is, for the most part, rigorous and sound and the authors should be credited for this. However, I have major issues with a.) the structure of the paper and b.) the level of information provided regarding the limitations of each retrieval method and their associated uncertainties. The latter is particularly crucial, as it forms the justification for the body of work presented in the manuscript

The introduction is erratic and contains a wealth of information that would be better placed in Section 2 – Data and Methods. The introduction should be just that – an introduction only – and should summarise the importance of sea ice observations, introduce the SMOS and CryoSat-2 missions and the idea that they are complementary (due to their method and relative uncertainties which will be expanded on later), and introduce the body of the paper. However, uncertainty maps (Figure 1) should not be included before the development of each product and associated error budgets have been described.

Although the authors introduce the CryoSat-2 and SMOS thickness retrievals in Section 2, they do not efficiently and clearly communicate why CryoSat-2 retrievals are reliable over thicker, MYI but not over thinner, FYI, and why the opposite is true for SMOS retrievals. In addition, a full description is needed as to why CryoSat-2 and SMOS uncertainties are complementary – it is not sufficient justification for the work presented to just state that they are/show maps. Some attempt at justification is made in the introduction, but it lacks structure and needs to be significantly expanded. I suggest streamlining the introduction then dividing Section 2.1.1 and 2.1.2 into sub-sections, or something similar. The sub-sections could be arranged as follows:

First sub-section (2.1.1.1 and 2.1.2.1) – retrieval description

- * Outline the retrieval method for CryoSat-2/SMOS
- * Describe theoretical limitations of the sensor for thin/thick ice retrievals, with a clear explanation of the reasons behind the limitations
- * Quantitative stating of thickness limits, or range of (if condition dependent)

Second sub-section (2.1.1.2 and 2.1.2.2) – uncertainty description

- * Outline the development of the measurement uncertainty budget for CryoSat-2/SMOS
- * Discuss relative contributions of each input parameter
- * Explain why this leads to complementary uncertainty compared with the other sensor

* Currently the authors use statistical uncertainties only for CryoSat-2 to highlight the complementary nature of the two measurement techniques. This is not sufficient. That CryoSat-2 measurements are unreliable over thinner ice, where they are associated with larger uncertainties, forms the major justification of this work. Therefore, the authors need to consider the spatial variations in the actual measurement uncertainty (not just statistical uncertainty) and show that they are larger over thinner ice. Are such uncertainty maps available? If not, can the authors produce them?

Then Figure 1 (measurement error not statistical error) and Figure 2 could be combined, and the reader has all the justification for the work in one place.

We thank the reviewer for these thoughtful and constructive comments. We tried to improve the structure of the paper in order to meet your suggestions. We have streamlined the introduction and shifted the part about the product uncertainties and complementarity to section 2. Now, product uncertainties and complementarity are only described briefly in the introduction, and then in more detail in section 2, where we inserted a new subsection: „2.1.3 Complementarity of CryoSat-2 and SMOS Sea-Ice Thickness Products“. We have chosen this way in order to avoid introducing another subsection level (2.1.1.2 and 2.1.1.1).

Regarding the comment about the statistical uncertainties: we agree that the term “statistical” is misleading here, since it might also mean an uncertainty in the sense of standard deviation of observations or similar. Therefore, we decided to use the term “observational” uncertainty instead, throughout the manuscript. Indeed, CryoSat-2 uncertainties are derived by quantifying different sources of uncertainty in each single measurement, as speckle noise, uncertainty in sea-surface height determination, ice and snow densities, etc.. An observational thickness uncertainty is then found by gaussian error propagation. More details can be found in Ricker et al. (2014). We added a paragraph for further explanation. Therefore, to be more specific, the maps in Figure 1 (original version) are already the requested CryoSat-2 actual measurement uncertainty maps. There are different reasons why uncertainty over thin ice is higher in the CryoSat-2 product:

1. Thinner ice rather occurs in lower latitudes where, due to the CryoSat-2 orbit inclination, the density of measurements is lower than closer to the pole where ice is thicker. This is important as, by gridding, measurement uncertainties are reduced by spatial averaging and the uncertainty reduction depends on the number of available measurements within a grid cell.
2. The relative uncertainty increases over thin ice, as measurement uncertainties do not decrease over thinner ice.
3. In the marginal ice zones, when ice concentration decreases, many openings in the sea ice cover can lead to an underrepresentation of (thin) sea ice.
4. With many openings in the sea ice (as in the marginal ice zones), so called “snagging” leads to increased uncertainties in the range measurements (Armitage and Davidson, 2014)

In the following we briefly list major changes in the document:

- We shifted the discussion about the complementarity of both thickness products from the Introduction to Data and Methods and inserted a new subsection there: **2.1.3 Complementarity of CryoSat-2 and SMOS Sea-Ice Thickness Products**. Therefore, also the order of Figure 1 and Figure 2 has switched.
- Figure 1 has been updated, we accidentally plotted the SMOS relative uncertainty of March also for November. This has been fixed.
- For the background field, we now also included SMOS retrievals from the week after the target week in order to avoid a potential bias. As a consequence, also Figures 5 and 6 have been updated. However, the effect is minimal as shown by the changes of statistics in Tables 2 and 3.
- Figure 12 has been updated, since we found a bug in the plotting routine. Therefore, values have slightly changed.

NOTE: All tracked changes in the manuscript are attached to this response letter.

Specific comments:

P1 L9: The authors and most readers will know that “narrow-swath altimeter” refers to CryoSat-2 data. However, this is not explained in the manuscript so should not be included here. Just refer to “radar altimeter data” or similar.

We deleted “narrow-swath” as suggested.

P1 L17: “Essential climate variable” is somewhat an ESA tag-phrase and adds nothing to the sentence. Suggest simply changing to “Sea ice affects many climate related processes. . .”

We removed “Essential climate variable” as suggested.

P2 L3-4: The authors should quantify what is meant by large uncertainties over thin ice regimes, although with improved manuscript structure they might refer straight to uncertainty maps. They reference a paper by Wingham et al (2006), which I don’t feel adequately supports their statement. Indeed, the Wingham paper highlights the insensitivity of the ERS altimeters to thin sea ice but the actual discussion of errors only mentions a thickness dependent error when considering observation probability, and states that the magnitude and scale of that error are not easy to estimate before improved resolution measurements from SIRAL.

We added a quantification to this statement. Referring to Figure 1 (original version), the relative uncertainties over thin ice (< 1 m) are in the range of 100 % or above. We also added the reference Ricker et al. (2014), since it explicitly discusses uncertainties in the CS2 ice thickness product.

P2 L13: Define statistical uncertainty, formulaically. This is also relevant for P9 L4 and P10 L8 and is needed to justify the use of gridded data as observations.

As above, we agree that the term “statistical uncertainty” is somewhat confusing and replaced it with “observational uncertainty”. We added more explanation and briefly explain the contributions to the “observational uncertainty”.

P6 L5: Please briefly justify why SAR and SIN data need to be processed separately, and how.

We added a short explanation in the manuscript: "...but must be processed separately, as we discard the phase information of SIN waveforms (Kurtz et al. (2014))."

P6 L14: Reference is needed for the theory behind echo separation.

We included a reference to Laxon et al. (2003).

P6 L21: What is the modified Warren snow climatology? A clearer explanation is needed of how the authors modify the climatology.

With "modification", we mean the reduction of snow depth over first-year ice by a factor of 50 %, suggested by Kurtz and Farrell (2011). We changed this sentence for clarification.

P6 L24: What is meant by the "domain of the W99 climatology"? Despite only being constrained by in situ measurements in the central Arctic, the climatology extends to all Arctic latitudes. This needs to be specifically stated.

The W99 climatology is a 2d polynomial fit based on the in situ observations, which is applicable to all latitudes. But the 2d fit will be just extrapolated in regions where no observations are available. Therefore, values in these regions are not reliable. With "domain", we therefore refer to the areas where observations can be used as tie points for the 2d fit. We added a short explanation in the manuscript.

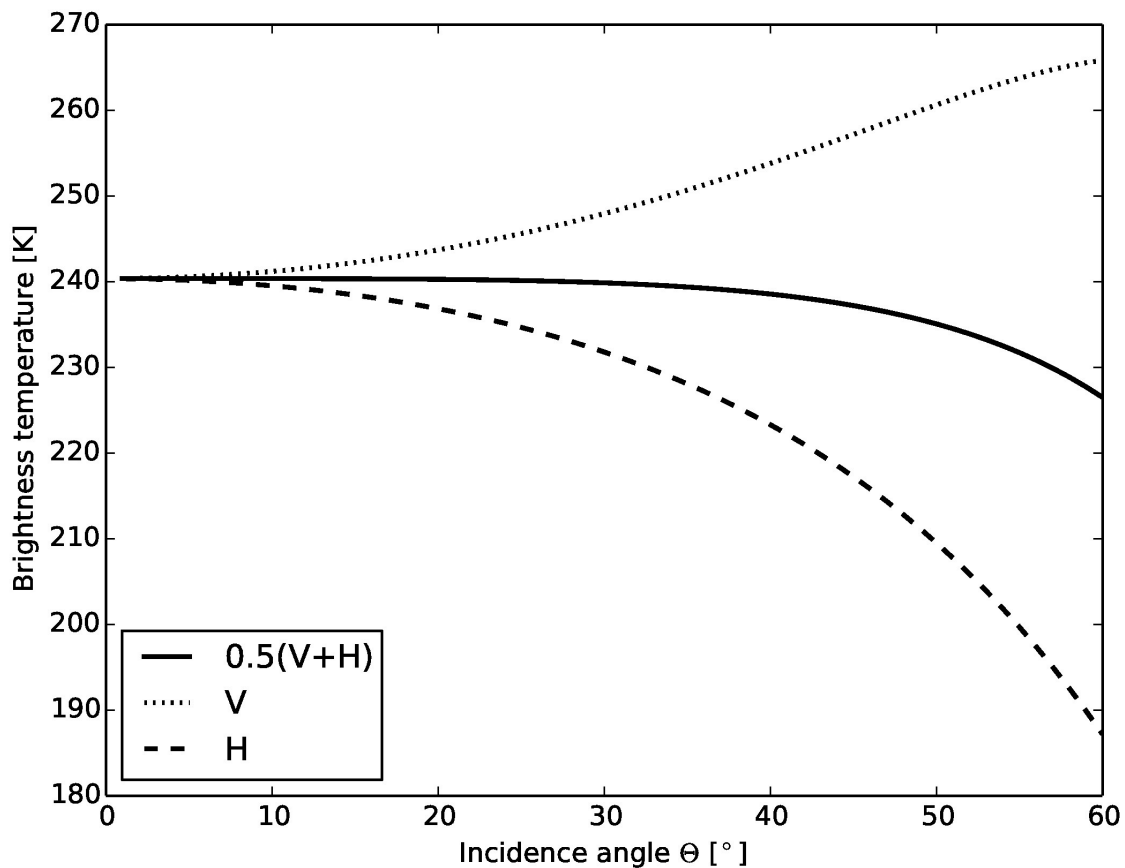


Fig. 1. Vertically (V) and horizontally (H) polarized Tbs and the intensity as a function of incidence angle, calculated using a three-layer model for sea ice with $d_{ice} = 1$ m, a bulk salinity of $S_{ice} = 8$ gkg⁻¹, and a bulk ice temperature of $T_{ice} = -7$ °C.

P7 L9-10: The final two sentences are far too vague. How is the intensity “almost” independent of incidence angle? This paragraph would benefit from further explanation of the angular dependence of brightness temperature intensity over sea ice.

As can be seen in Figure 1 in this document (which is Fig. 3 in Tian-Kunze et al., 2014), the vertically polarized brightness temperature increases with increasing incidence angle, whereas horizontally polarized brightness temperature decreases. This counteract behavior results in that the intensity, which is the average of both polarizations, remains almost constant in the incidence angle range of 0-40 degree.

P8 L4-9: The justification for merging SMOS and Cryosat-2 thicknesses relies on the complementary nature of their uncertainties. Therefore, this paragraph needs expanding.

We added following text to the uncertainty estimation part in the revised version:

„The SMOS uncertainty given in the v3 product is estimated based on the uncertainty in the input parameters in the thermodynamic and radiation model as well as in the thickness distribution function. At present, the estimation was carried out for each parameter - brightness temperature, ice temperature and ice salinity respectively, by keeping the other parameters constant. The uncertainty given in the product is then the sum of uncertainties caused by each parameter. In v3, we also varied the sigma in the lognormal ice thickness distribution function, which is used to convert plane layer ice thickness into heterogenous layer mean ice thickness in the retrieval. This uncertainty is then added to the overall uncertainties caused by the brightness temperature, ice temperature and ice salinity. Errors caused by the assumptions about fluxes and snow thickness have not yet been included.“

In particular, how can a 100% ice coverage assumption cause underestimation of ice thickness if the condition is not met, and by how much?

This is discussed in detail in Tian-Kunze et al., 2014 (see section 4.1). Brightness temperature over ice-sea water mixed areas can be described as

$$TB = TB_{\text{water}} \times (1 - IC) + TB_{\text{ice}} \times IC, \quad (1)$$

where IC is the ice concentration, TB_{water} and TB_{ice} are the brightness temperatures over sea water and sea ice respectively. TB_{ice} is about 100 K higher than TB_{water} , which means that under 100 % ice coverage assumption, we underestimate the TB_{ice} , leading to lower ice thickness. In Tian-Kunze et al., 2014, we showed that by using eq. 1 and the radiation model, the underestimation of ice thickness increases exponentially with decreasing ice concentration. However, a comparison with MODIS-derived ice thickness in the Kara Sea has shown that observational uncertainty of SMOS ice thickness under low ice concentration condition is as low as 10 cm (see SMOS + Sea Ice final report). A more deliberate estimation of SMOS ice thickness bias and uncertainty remains as future work.

The 100% ice coverage assumption is used because the accuracy of the ice concentration product is limited and by using the product ice concentration, one will introduce larger errors than with the 100 % assumption. Moreover, this issue only accounts for a minor area, while during winter, most of the ice covered area in the Arctic has ice concentrations (IC) higher than 90 % (Andersen et al., 2007).

P8 L20: How do OSI SAF define ambiguous?

The OSI SAF ice type is defined “ambiguous” when their Multi sensor ice type analysis approach has problems to differ between FYI and MYI. This is mostly the case in the transition zone between FYI and MYI regime where the ice type is mixed. For more details, we refer to the OSI SAF product manual:

http://osisaf.met.no/docs/osisaf_cdop2_ss2_pum_sea-ice-edge-type.pdf

P9 L11: How does OI minimize the total error of observations? This is a key justification for using the OI method to merge the thickness datasets, so needs further explanation.

The OI provides an estimate of sea ice thickness at a given location using a linear combination of arbitrarily distributed thickness observations. These observations are weighted so that the expected uncertainty of the thickness estimate is a minimum in the least squares sense. With Eq. 8, we calculate the weights K that are needed to minimize error variances. We added a sentence for clarification.

P10 L10-11: The assumption that ice thicknesses remain static through a week is highly simplified and unlikely. Whilst I appreciate the need to make such assumptions, the authors need to be more transparent about the unlikelihood of this, or provide reference to argue otherwise.

For many areas in the Arctic, ice motion during one week will be in the range of one or two grid cells (25-50 km), except Fram Strait and parts of the Beaufort Gyre. Considering the uncertainties of the satellite retrievals, we conclude that this assumption is acceptable, though including ice motion data in the optimal interpolation might still lead to improvements and should be investigated in future.

Section 2.3.1: The development of the background field is the key aspect of the method that I am uncertain about. To ensure sufficient coverage, the authors create a background field from CryoSat-2 data extending two weeks before and after the target week.

They do not deem this necessary for SMOS data due to its improved coverage, so only use data from the previous week. What concerns me here is the lack of consistency in the background field time-frames, and the bias it may introduce in the final, interpolated thickness product. Indeed, the authors admit that their cross validation is impacted by the fact that the SMOS background is out of phase with observations (P19 L5) and I'm unconvinced by the authors claim that the negative bias should not affect the CS2SMOS sea ice thickness retrieval. Why do the authors not create temporally complementary CryoSat-2 and SMOS background fields? Have they investigated the impact on the merged product and its evaluation with airborne data of extending the SMOS background field?

Thank you for pointing on this issue. We are aware of this and now also included the SMOS retrieval from the week after the target week in order to generate the background field (see modified Figure 6). However, the effect is very small (in the range of few cm). We repeated the cross validation and still receive the negative bias. Moreover, we found a bug in the plotting routine of Figure 12. We fixed this, but the main results are the same. Re-considering the negative bias in the cross validation, we found the following explanation: The CS2 and SMOS retrieval domains are not symmetric due to the fact that we have to truncate the SMOS retrieval for thick ice, since the methodical approach does not apply for thick ice. On the other hand, the CS2 retrieval is used over the entire thickness range, but with higher uncertainties over thin ice. Therefore, CS2 thickness over thin ice is mostly reduced by the SMOS retrieval, while in contrast this is barely the case for SMOS data over thick ice, because we truncate the retrieval. Hence, due to the optimal interpolation, there will be always a negative bias when doing the cross validation experiment with the original input data from CS2 and SMOS. We included an explanation to the manuscript.

Section 3.2: What week/month/year is the cross validation carried out for? Why? The date also needs to be stated in the caption for Figure 12.

We thank the reviewer for pointing on this. We added the date to the caption.

P21 L5: It would be interesting to know what fraction of AEM measurements exceed 5 m. It's not possible to tell from Figure 13 as colorbars are capped at 4 m and scatter-plots at 5 m, but just stating in the text would be sufficient.

We capped the ranges in the figures in order to improve the visibility of the differences between the AEM data and the satellite derived products. Indeed, one AEM (gridded) measurement point of 5.6 m ice thickness does not appear in the scatter plot. We added a note in the caption of Figure 13 that the reader is aware.

Table 1: Incorrectly states that CS2 (monthly) coverage is Arctic-wide, as due to climatology constraints, measurements are not produced over the Hudson and Baffin Bays. This needs correcting.

Thanks for pointing on this. Although, CS2 measurements over these areas exist and by using other climatologies or even snow depth products, sea-ice thickness might be available with decent uncertainties in future. However, we added a comment in the "Notes and applicability" -column: "constraints in regions where snow climatologies are unavailable".

Technical comments:

P1 L1: "Sea-ice thickness on **a** global scale. . ."

P2 L16: Should read "Besides the different sensitivities"

P7 L16: "data as **a** boundary condition

P9 L8: **modified** climatological snow depth?

P22 L33: " $r = 0.65-0.73$ " and " $r = -0.35$ " i.e. spaces before and after equals sign

[We included the list of technical comments. Thank you.](#)

Response to *Interactive comment on “A Weekly Arctic Sea-Ice Thickness Data Record from merged CryoSat-2 and SMOS Satellite Data” by Robert Ricker et al.*

Anonymous Referee #2

This is an interesting study which merges two sea ice thickness data sets from CryoSat-2 and SMOS since both provide distinct information on sea ice of different thickness ranges. The study is well organized and described. Some of the main points I suggest to address are listed below.

- A detailed description of uncertainties needs to be included since it is a key component to the weighting of the different data sets. In particular the CryoSat-2 uncertainty is not discussed in the manuscript but should be.

We thank the reviewer for the thoughtful comments, which significantly helped to improve the manuscript. We agree that the information about the CryoSat-2 uncertainties are sparse and since they are crucial for the methodical approach, we added more information in section 2.

In the following we briefly list major changes in the document:

- We shifted the discussion about the complementarity of both thickness products from the Introduction to Data and Methods and inserted a new subsection there: **2.1.3 Complementarity of CryoSat-2 and SMOS Sea-Ice Thickness Products**. Therefore, also the order of Figure 1 and Figure 2 has switched.
- Figure 1 has been updated, we accidentally plotted the SMOS relative uncertainty of March also for November. This has been fixed.
- For the background field, we now also included SMOS retrievals from the week after the target week in order to avoid a potential bias. As a consequence, also Figures 5 and 6 have been updated. However, the effect is minimal as shown by the changes of statistics in Tables 2 and 3.
- Figure 12 has been updated, since we found a bug in the plotting routine. Therefore, values have slightly changed.

NOTE: All tracked changes in the manuscript are attached to this response letter.

- The abstract and conclusion both state that a 0.7 m reduction in RMS deviation in the Barents Sea was observed though it is unclear where this number came from. The data from the Beaufort Sea should be mentioned as well in the abstract if that from the Barents Sea is provided.

This number refers to Table 3, where the difference between $\text{rmsd (AEM-CS2SMOS)}$ and rmsd (AEM-CS2) is about 0.7 m for the mean ice thickness in the Barents Sea. It is true that the 0.7 m reduction in rmsd is not stated explicitly in the text and therefore we added a sentence. Moreover, we now also refer to the results in the Beaufort Sea in the conclusion and the abstract.

- I'm not sure if data exists, but a comparison between the CS2SMOS data and the AEM data would be interesting towards the outer edge of the ice pack where one might expect a

different weighting between CS2 and SMOS than in the comparisons done in the central Arctic.

Unfortunately, AEM measurements mainly exist for the central Arctic. However, for this reason we have chosen Barents Sea and Beaufort Sea as validation sites. The Barents Sea is dominated by the SMOS ice thickness product, while in the Beaufort Sea, we find scattered multiyear ice floes (up to 5 m thickness) within an area of about 1 m thick first-year ice. Such an area with mixed ice types and high drift rates is very challenging but a perfect test case for the data merging, since both data products contribute significantly.

- Some minor grammar mistakes need to be fixed throughout the text.

Thank you for pointing on this. We tried to improve the grammar throughout the manuscript.

P2L3-4: CS-2 has been used to retrieve thickness over first year ice as well, the Wingham reference doesn't necessarily support the exclusion of this as well.

We added a sentence here and now also state that CS2 can be used for retrieving first-year ice thickness, though the uncertainties over thin ice regimes and in the marginal ice zones are considerably high.

Figure 1: How are the uncertainties derived? This needs to be explained in the text.

We added further explanation in section 2. Moreover, we followed the suggestions of reviewer #1 and moved the discussion about uncertainties and product complementarity to section 2.

P6 eqn 3: Is a freeboard correction due to the lower speed of light in snow applied?

Yes, such a correction is applied. We added a short note in the text.

P8L2-3: Given the need for cold temperatures, was a mask applied for this or were certain time periods with the data excluded? P10L15: It is stated that the CS-2 data are used from October/November, but what is the starting date used or does it vary? It is not clear in the text.

The SMOS data product is available from mid October on (October 15). CS-2 data are processed from October on as well. Since we use calendar weeks, the starting date of the merged product will vary but corresponds with the second week of SMOS thickness retrievals (second half of October), since the first week of SMOS thickness retrievals is used for the background field. We corrected the text and now state that the starting date is end of October.

Eqn. 5: If your observation, analysis, and background fields are all ice thickness you shouldn't need the H operator.

The H Operator here only projects (interpolates) the grid cells of the background field thickness onto the locations of the observations, which can be different. For example, the SMOS (observations) are provided on a 12.5 km polarstereographic grid. Finally, H formally just ensures that for each point of the observational vector, we have exactly one (interpolated) point from the background field.

Section 2.3.1: It's not clear to me why you need to construct a spatially continuous background field. If your uncertainties are dependent on distance then you can produce an analysis from the CS-2 and SMOS data at any given point considering the distance between the observations. Presumably this must have been done to fill in the pole hole.

The background field is needed as a "first guess" (see equation 5). For each observational data point, a background value is needed. the pole hole of the background field is filled by an inverse-distance interpolation. In other words, the observations of the target week are used to "update" the background field. The background field is also important for the gaps between orbits in the weekly CS-2 product. Without the background field, they would be just filled by linear interpolation, causing significant biases.

P11L8: It was stated previously that the SMOS algorithm assumes a 100% ice concentration otherwise the measurements are expected to be biased, yet you are using a 15% ice mask in your data. What is the uncertainty introduced by this assumption and how does it impact your retrieval?

This assumption leads to a underestimation of ice thickness in the merged product when ice concentration is low. It is our goal to correct this effect in a future revision of the product, but before, the relationship between low ice concentration and underestimation of SMOS ice thickness needs to be investigated in more detail. Roughly, assuming 10 cm SMOS ice thickness when ice concentration is about 70 %, the true ice thickness is rather 14 cm. However, the uncertainties in the ice concentration products make it difficult to correct for this accordingly.

Eqns 8-9: I don't understand these equations. What is H in this equation? Equation 9 is defined using matrices on the left-hand side but as a single number on the right hand side, it should be re-written to be mathematically correct.

Thank you for pointing on this. Indeed, on the right-hand side we refer to the elements of the matrices on the left-hand side. We corrected this.

P14L18: What is the iterative procedure? Optimal interpolation shouldn't involve an iterative method since the solutions are defined equations.

Thank you for reviewing the equations. Basically, the OI can be accomplished just using matrices but the they would become too large, which would prevent or significantly slowing down computation on a common machine. However, the formal notation here is wrong and we corrected this. The iterative procedure involves the iterative calculation of each analysis grid point, instead of computing it in one step.

P15L31-32: How is the background field constructed over the pole hole since no data is present there?

Here we use an inverse distance interpolation with a weighting power of the distance of 3.

Section 3.1: The mean ice thickness values presented, particularly those in Table 2, are for the entire Arctic domain? It would be interesting to see the numbers presented for just the central Arctic Ocean as well since this would give a basis of comparison for other ice thickness data which are typically done for that region.

Yes, these values are for the entire Arctic domain. We agree that investigating the thickness distributions of different regions would be interesting. This could be done in follow-on

studies. In this study, we want to focus on methodical approach. Moreover, we provide these data on a public server, mean values for the central Arctic or any other regions can be calculated by the user.

A Weekly Arctic Sea-Ice Thickness Data Record from merged CryoSat-2 and SMOS Satellite Data

Robert Ricker^{1,2}, Stefan Hendricks¹, Lars Kaleschke³, Xiangshan Tian-Kunze³, Jennifer King⁴, and Christian Haas^{1,5}

¹Alfred Wegener Institute, Helmholtz Centre for Polar and Marine Research, Bremerhaven, Bussestrasse 24, 27570 Bremerhaven, Germany

²Univ. Brest, CNRS, IRD, Ifremer, Laboratoire d’Oceanographie Physique et Spatiale (LOPS), IUEM, 29280, Brest, France

³Institute of Oceanography, University of Hamburg, Bundesstrasse 53, 20146 Hamburg, Germany

⁴Norwegian Polar Institute, Tromsø, Norway

⁵York University, Toronto, Canada

Correspondence to: Robert Ricker (Robert.Ricker@awi.de)

Abstract. Sea-ice thickness on a global scale is derived from different satellite sensors using independent retrieval methods. Due to the sensor and orbit characteristics, such satellite retrievals differ in spatial and temporal resolution as well as in the sensitivity to certain sea-ice types and thickness ranges. Satellite altimeters, such as CryoSat-2 (CS2), sense the height of the ice surface above the sea level, which can be converted into sea-ice thickness. ~~However, relative~~ Relative uncertainties associated with this method are large over thin ice regimes. Another retrieval ~~strategy is realized by~~ method is based on the evaluation of surface brightness temperature in L-Band microwave frequencies (1.4 GHz) with a thickness-dependent emission model, as measured by the Soil Moisture and Ocean Salinity (SMOS) satellite. While the radiometer based method loses sensitivity for thick sea ice (> 1m), relative uncertainties over thin ice are significantly smaller than for the altimetry-based retrievals. In addition, the SMOS product provides global sea-ice coverage on a daily basis unlike the ~~narrow-swath~~ altimeter data. This study presents the first merged product of complementary weekly Arctic sea-ice thickness data records from the CS2 altimeter and SMOS radiometer. We use two merging approaches: a weighted mean and an optimal interpolation scheme (OI). While the weighted mean leaves gaps between CS2 orbits, OI is used to produce weekly Arctic-wide sea-ice thickness fields. The benefit of the data merging is shown by a comparison with airborne electromagnetic induction sounding measurements. When compared to airborne thickness data in the Barents Sea, the merged ~~products reveal a reduced~~ product has a root mean square deviation (rmsd) of about 0.7 m ~~compared to less than~~ the CS2 ~~retrieval-product~~ and therefore demonstrate the capability to enhance the CS2 ~~retrieval-product~~ in thin ice regimes. However, in mixed first-year/multiyear ice regimes as in the Beaufort Sea, the CS2 retrieval shows the lowest bias.

1 Introduction

Sea ice ~~is an essential climate variable and~~ affects many climate related processes, such as heat transfer between ocean and atmosphere or ocean circulation, but also marine operations (Meier et al., 2014). For decades, the variability and changes of the ice covered region have been routinely observed by satellite remote sensing of sea-ice extent and area. However, the thickness

of sea ice is a crucial parameter for the ice mass balance and is more difficult to observe. Recent satellite altimeter missions such as ICESat or CryoSat-2 (CS2) demonstrated the capability to provide Arctic sea-ice thickness and volume estimates (Kwok et al., 2009; Laxon et al., 2013). They are used to measure freeboard, the height of the ice or snow surface above the water level, which can be converted into sea-ice thickness assuming hydrostatic equilibrium. CS2 was launched in 2010 and was primarily designed to measure the thickness of thick, perennial ice, ~~since-but can also be used to retrieve first-year ice thickness (Laxon et al., 2013). Nonetheless,~~ the retrieval method ~~has large-shows considerable~~ uncertainties over thin ice regimes ~~(Wingham et al., 2006)and certainly in the marginal ice zones (Wingham et al., 2006; Ricker et al., 2014).~~ On the other hand, the Soil Moisture and Ocean Salinity (SMOS) mission, launched in 2009, provides brightness temperature observations at microwave frequencies (L-band), which can be exploited for thin ice thickness retrieval (Kaleschke et al., 2012).

Kaleschke et al. (2010) and Kaleschke et al. (2015) ~~drew-attention-to-demonstrated~~ the complementary nature of the relative uncertainties of CS2 and SMOS ice thickness retrieval methods. ~~Figure 1 shows typical uncertainty maps and the relative uncertainties of CS2 and SMOS monthly mean thickness retrievals from November 2015 and March 2016. While with SMOS The CryoSat-2 thickness sea-ice thickness product relies on accurate measurements of the height of the sea ice surface above the water level and therefore,~~ relative uncertainties are ~~lowest-for-larger over~~ thin ice (< 1 m), ~~CS2 relative thickness uncertainties are smaller over thick ice and rise asymptotically towards thinner ice less than.~~ ~~In contrast, the SMOS sea-ice thickness retrieval relies on the sensitivity of the brightness temperature to sea-ice thickness. While accuracy is high over thin ice, sensitivity gets lost over thick ice (> 1 m thick. This is due to the fact that CS2 thickness estimates over thin ice rely on the retrieval of small surface elevations slightly higher than sea level while freeboard of thicker ice is much larger (Ricker et al., 2014). Note that the CS2 uncertainties shown here represent statistical uncertainties only. Systematic errors as associated with the usage of a snow climatology or due to variable snow penetration will increase the uncertainty of altimetry-based thicknesses (Ricker et al., 2014; Kwok, 2014; Ricker et al., 2015; Armitage and Ridout, 2015).-~~

~~Besides the different sensitivity to different thickness ranges m). Moreover,~~ both sensor concepts have significantly different swath widths and revisit times, and therefore provide different update rates of sea-ice thickness observations. ~~While CS2 grids are usually based on data composites from one month, SMOS-based retrievals provide daily global coverage. Figure 2 compares weekly means of CS2 and SMOS for November 2015 and March 2016. While valid SMOS ice thickness estimates are found mostly in the marginal ice zones, Kaleschke et al. (2015) suggest that due to their different spatiotemporal sampling and resolution, and because of the complementary uncertainty due to the CS2 ice thickness retrieval covers major parts of the Arctic multiyear ice (MYI). In November, during the freeze-up, SMOS retrievals cover major parts of the Beaufort Sea, Chukchi Sea, and East Siberian Sea. Towards spring, due to continued ice growth in these regions, the regions with SMOS retrievals retreat southwards, covering major parts of the Bering Sea and the Sea of Okhotsk (Figure 2b). Figure 3 illustrates the number of valid grid cells of the weekly means as shown in Figure 2. The number of grid cells with co-located SMOS and CS2 estimates is less than 2000, while the number of grid cells that contain thickness estimates from CS2 or SMOS only is about 5000, highlighting the complementary coverage of both sensors fundamental difference of the radiometric and altimetric measurement principle, a combination of both products has the capability to reduce uncertainties in relation to the individual products.~~

The spatial and interannual variability of sea-ice thickness is driven by dynamics and thermodynamics (Zhang et al., 2000; Kwok and Cunningham, 2016). For an accurate description of the Arctic sea-ice thickness distribution, it is necessary that thick and deformed ice as well as thin ice regimes are represented adequately. Moreover, particularly the formation of new thin ice during the freeze-up characterizes a large area of the ice cover in autumn. In order to detect changes and interannual variabilities in such areas, accurate thin ice thickness estimates with high temporal and spatial resolution are required.

Wang et al. (2016) evaluate six different sea-ice thickness products, including SMOS and CS2, and find that all satellite products as well as the Pan-Arctic Ice-Ocean Modeling and Assimilation System (PIOMAS) overestimate the thickness of thin ice compared to airborne laser altimetry retrievals of NASA's Operation IceBridge. The smallest bias of 0.26 m over thin ice has been found when using the SMOS product.

Considering the ~~depicted~~-complementarity of CS2 and SMOS retrievals and the need for a better representation of thin ice regimes in global-scale sea-ice thickness data products, the goal of this study is to provide a merged product of CS2 and SMOS sea-ice thickness retrievals, which has the capability to ~~complete~~-provide Arctic sea-ice thickness distributions over the entire thickness range with reduced uncertainties. We also aim for a weekly update rate of the merged product. This ensures that we obtain a sufficient coverage of CS2 observations over perennial sea ice, while at the same time, we benefit from the daily update rates of SMOS observations in order to capture ice growth rates in thin ice regions during the freeze-up. We apply two different merging schemes. The first is represented by a weighted mean, based on the individual uncertainties, which only provides estimates at grid cells where weekly observations are available. The second approach uses an optimal interpolation scheme (OI) for Arctic-wide estimates. Table 1 summarizes the input thickness products and the merged products, their temporal and spatial resolution, as well as coverage and applicability depending on study purposes. In order to assess the improvement of the merged products, we use airborne sea-ice thickness data ~~to~~-and compare them with co-located data of the merged products.

This paper is outlined as follows: in section 2, we first present the individual sea-ice thickness products derived from CS2 and SMOS measurements, including detailed description of input data and highlighting the complementarity of both thickness products. Then, we present methods to merge both sea-ice thickness data sets, based on a weighted mean and an optimal interpolation approach. In section 3, the merged products are evaluated by a comparison with input products and by a cross validation experiment. In section 4, the merged products are evaluated using airborne electromagnetic thickness sounding measurements. Finally, conclusions are drawn in section 5.

~~a) Typical monthly sea-ice thickness uncertainty maps of the CryoSat-2 and SMOS retrievals from November 2015 and March 2016. The SMOS thickness uncertainty is masked where uncertainty is > 1 m. b) Relative uncertainties from November 2015 and March 2016.~~

~~Example of weekly input data grids for November 2015 and March 2016. a) Gridded weekly CryoSat-2 retrievals. b) Gridded weekly mean SMOS retrievals derived from daily data. SMOS data are rejected over multiyear ice and when uncertainties are more than 1 m. The background fields indicate first-year and multiyear ice coverage.~~

Table 1. Summary of properties of input and output sea-ice thickness products in this study, including CryoSat-2 (CS2), SMOS, the weighted mean (WM) and the OI product (CS2SMOS).

Product	Temporal res.	Spatial res.	Coverage	Notes and applicability
CS2 (monthly)	1 month	25 km	Arctic wide	For studies of multiyear ice and thick first-year ice (> 1 m), high uncertainties for thin ice and in the marginal-ice Zone <u>Marginal Ice Zone, constraints in regions where a snow climatology is inadequate</u>
CS2 (weekly)	1 week	25 km	Gaps between orbits, sparse at lower latitudes	For studies of multiyear ice and thick first-year ice (> 1 m) where measurements are available, high uncertainties for thin ice (< 1 m) and in the marginal-ice Zone <u>Marginal Ice Zone, constraints in regions where a snow climatology is inadequate</u>
SMOS	1 day	12.5 km	Arctic wide	For studies of thin ice (< 1 m)
WM	1 week	25 km	Gaps between CS2 orbits	For studies of multiyear ice and of thin ice, where measurements are available
CS2SMOS	1 week	25 km	Arctic wide	For Arctic-wide studies on the entire thickness range, uses optimal interpolation

2 Data and Methods

This section is structured as follows: first, ~~a description of~~ the input data (~~Section 2.1~~), ~~then merging~~ section 2.1 are presented, then the merging of weekly CS2 and SMOS data by applying a weighted mean based on the individual uncertainties with the product referred to as WM (~~Section 2.2~~), ~~followed by merging is described~~ (section 2.2). Finally, ~~the merging of~~ weekly CS2 and SMOS data by applying an OI scheme with the product referred to as CS2SMOS is explained (section 2.3).

2.1 Input Data

We use the AWI CS2 product (processor version 1.2) (Ricker et al., 2014; Hendricks et al., 2016) and the SMOS sea-ice thickness retrieval from the University of Hamburg (processor version 3.1) (Tian-Kunze et al., 2014; Kaleschke et al., 2016) as

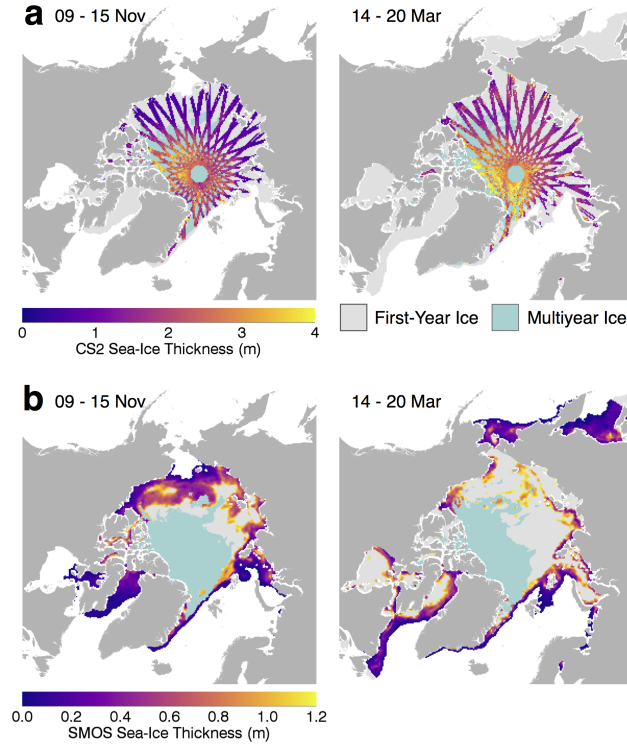


Figure 1. [Example of weekly input data grids for November 2015 and March 2016. a\) Gridded weekly CryoSat-2 retrievals. b\) Gridded weekly mean SMOS retrievals derived from daily data. SMOS data are rejected over multiyear ice and when uncertainties are more than 1 m. The background fields indicate first-year and multiyear ice coverage.](#)

input ice thickness data. Auxiliary data of ice concentration and ice type were obtained from the Ocean and Sea Ice Satellite Application Facility (OSI SAF).

2.1.1 CryoSat-2 Weekly Sea-Ice Thickness Retrieval

In the first step we use CS2 SIRAL Level-1b orbit data files that are provided by ESA. They contain geolocation information and time of the Doppler beam formed radar echoes. SIRAL is operated in two different modes over sea ice. The Synthetic Aperture Radar (SAR) mode covers major parts of the ice covered area, while the Interferometric Mode (SIN) is applied mostly in coastal areas. Both modes serve for retrieving ice thickness, but must be processed separately, [as we discard the phase information of SIN waveforms \(Kurtz et al., 2014\)](#).

The radar echoes (waveforms) are processed for each CS2 orbit according to Hendricks et al. (2016) and Ricker et al. (2014). A 50% threshold-first-maximum retracker (Ricker et al., 2014; Helm et al., 2014) is used to obtain ellipsoidal surface elevations (L), which are corrected for geophysical perturbations like tides and atmospheric effects (Ricker et al., 2016). Geoid undulations and the mean sea-surface height (MSS) are removed by subtracting the Danish Technical University version 2015

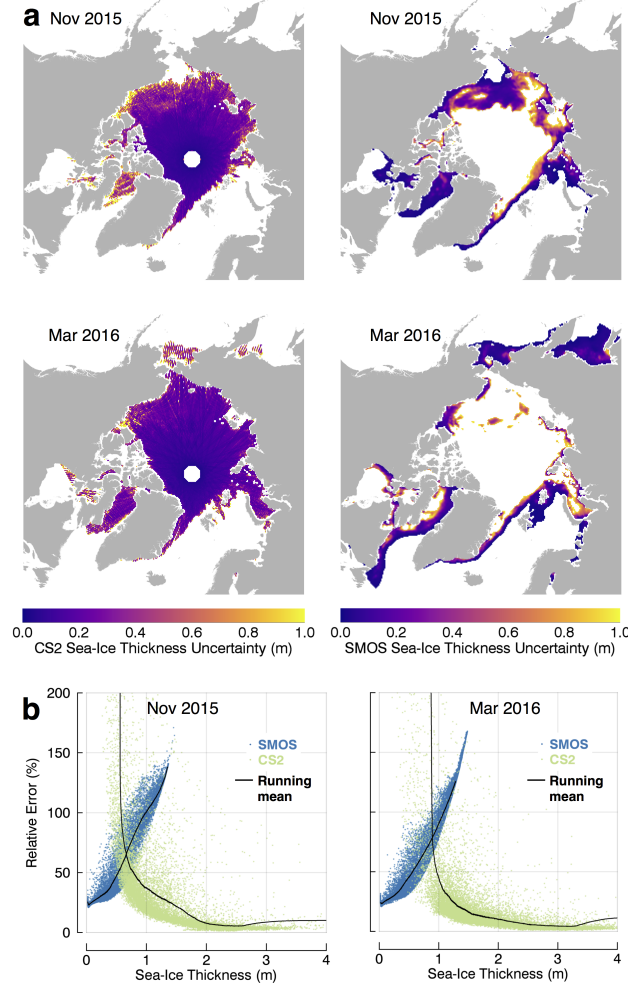


Figure 2. a) Typical monthly sea-ice thickness uncertainty maps of the CryoSat-2 and SMOS retrievals from November 2015 and March 2016. The SMOS thickness uncertainty is masked where uncertainty is > 1 m. b) Relative uncertainties from November 2015 and March 2016.

(DTU15) *MSS* height:

$$L_{MSS} = L - MSS. \quad (1)$$

Ice and water are spatially separated by the pulse peakiness of the CryoSat waveforms. This is based on the fact that radar returns from surfaces that contain open water leads, i.e. openings in the ice pack, appear as specular echoes and can be separated from diffuse echoes that contain reflections from sea ice only (Laxon et al., 2003). The lead elevations are used to derive the instantaneous sea-surface height anomaly (*SSHA*) by interpolation. Finally, the *SSHA* is subtracted from the ice

surface elevations to retrieve the freeboard (Fb):

$$Fb = L_{MSS} - SSHA. \quad (2)$$

Fb is corrected for a lower wave propagation speed inside the snow layer and can be converted into sea-ice thickness (Z) by assuming hydrostatic equilibrium (Laxon et al., 2003):

$$Z_{cs2} = Fb \cdot \frac{\rho_W}{\rho_W - \rho_I} + S \cdot \frac{\rho_S}{\rho_W - \rho_I}, \quad (3)$$

where S is the snow depth and ρ_S , ρ_I , and ρ_W are the densities of snow, sea ice and sea water. S and ρ_S are represented by the modified Warren snow climatology (W99) (Warren et al., 1999). S , meaning that S is reduced by 50 % over FYI-first-year ice (FYI) to accommodate the recent change towards a seasonal Arctic ice cover (Kurtz and Farrell, 2011). FYI and MYI-multiyear ice (MYI) are separated by adopting the daily OSI SAF ice type product (Eastwood, 2012). We exclude CS2 measurements over Hudson Bay and Baffin Bay as they are not located within the domain of the W99 climatology, referred to the area, which is constrained by in-situ measurements from Soviet drifting stations and airborne landings from the 1950's to 1990 (Warren et al., 1999). In areas where no observations are available, the W99 polynomial fit is not reliable, being based only on extrapolation. We use ice densities of 916.7 kg/m³ and 882.0 kg/m³ for FYI and MYI (Alexandrov et al., 2010), and 1024 kg/m³ for the sea water density. Z is calculated for each individual CS2 measurement along each orbit. All these retrievals are averaged on a 25 km EASE2 grid (Brodzik et al., 2012) within one calendar week (Figure 21a).

CS2 sea-ice thickness uncertainties can be separated into observational uncertainties and systematic or bias uncertainties (Ricker et al., 2014). While observational uncertainties of individual measurements can be reduced due to spatial averaging, biases remain. The observational uncertainties of ice thickness retrievals from individual measurements contain uncertainties caused by speckle noise, sea-surface height estimation and densities of ice and snow (Ricker et al., 2014). They can easily reach values of > 1 m, but will be reduced to the range of centimeters by spatial averaging. Figure 2a shows typical CS2 observational uncertainty maps for autumn and spring, mainly ranging between 0.1 m and 1 m. Here, data points are averaged on a 25 km grid. The latitudinal dependency results from the denser orbit coverage towards the pole. In the marginal ice zones, when ice concentration decreases, many openings in the sea ice cover can lead to an underrepresentation of sea ice. Moreover, when the sea ice cover is characterized by many openings, so called *snagging* leads to increased uncertainties in the range measurements (Armitage and Davidson, 2014). Biases mainly occur due to waveform processing, and the lack of representation of interannual variability in the W99 snow climatology (Ricker et al., 2014).

2.1.2 SMOS Weekly Sea-Ice Thickness Retrieval

Thin sea-ice thickness has been retrieved from the 1.4 GHz (L-band) brightness temperatures measured by SMOS for the winter seasons (15 Oct -15 Apr) from 2010 to present (Mecklenburg et al., 2016). The retrieval method consists of a thermodynamic sea-ice model and a one-ice-layer radiative transfer model (Tian-Kunze et al., 2014). The resulting plane layer thickness is multiplied by a correction factor assuming a log-normal thickness distribution. The algorithm has been used for the operational production of a SMOS-based sea-ice thickness data set from 2010 on (Tian-Kunze et al., 2014). In this study we use the most

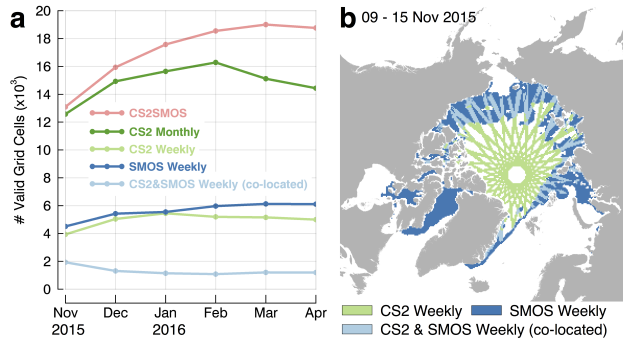


Figure 3. a) Numbers of valid 25 km grid cells each month from November 2015 to April 2016. Here, 'valid' grid cells are grid cells that contain a valid thickness estimate. b) Spatial distribution of valid weekly thickness retrievals by CryoSat-2 and SMOS.

up-to-date version (v3.1) of ice thickness data set, which has been produced operationally since October 2016. The v3.1 data for the previous winter seasons had been reprocessed using the same algorithm.

The v3.1 SMOS ice thickness data are based on v620 L1C brightness temperature data. Brightness temperatures (TB) used in the algorithm are the daily mean intensities averaged over incidence angles from 0° to 40° . The intensity is the average of horizontally and vertically polarized brightness temperatures, equal to $0.5 (TB_h + TB_v)$. Over sea ice, the intensity is almost independent of incidence angle. By using the whole incidence angle range of $0-40^\circ$, we can reduce the brightness temperature uncertainty to about 0.5 K.

SMOS measurements are strongly influenced by Radio Frequency Interference (RFI), especially in the first two years after its launch. In the previous processor RFI contaminated snapshots have been discarded using a threshold value of 300 K, applied either to TB_h or TB_v . The new quality flags given in the v620 L1C data have been implemented to identify the data contaminated by RFI, by sun, or by geometric effects to improve the quality of the radiometric data used for the version 3.1.

To estimate the bulk ice temperature (T_{ice}) and bulk ice salinity (S_{ice}), which are the important input parameters in the radiation model, we need surface air temperature and sea surface salinity (SSS) data as a boundary condition. 2m surface air temperature is extracted from JRA-25 atmospheric reanalysis (Onogi et al., 2007). SSS data used in the retrieval results from an integration of the MIT General Circulation Model (MITgcm) (Marshall et al., 1997), including interannually varying surface forcing. From the daily surface salinity outputs from the model for the years 2002-2009, a weekly climatology was produced (Tian-Kunze et al., 2014).

Brightness temperatures over sea ice are simulated with the sea-ice radiation model adapted from (Menashi et al., 1993; Kaleschke et al., 2010, 2012). The TB depends on the dielectric properties of the ice layer, which are a function of brine volume (Vant et al., 1978). The brine volume is a function of S_{ice} and T_{ice} (Cox and Weeks, 1983). For a thin ice layer, the ice temperature gradient within the ice can be assumed to be linear. The penetration depth of L-band in the sea ice depends on the ice temperature and ice salinity. The retrieval algorithm works only under cold conditions. For the cold and less saline ice, the maximum retrievable ice thickness from SMOS can be up to 1.5 m.

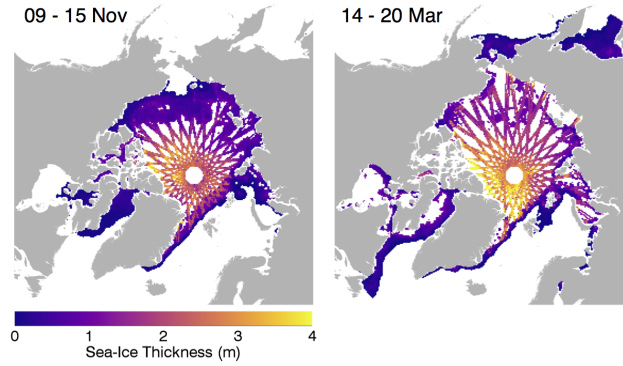


Figure 4. Weighted means of CryoSat-2 and SMOS weekly means during the target week, produced from fields shown in Figure 21.

Ice thickness uncertainties are given pixel-wise each day in the data set. There are several factors that cause uncertainties in the sea-ice thickness retrieval: the uncertainty of the SMOS TB , the uncertainties in the The SMOS uncertainty given in the v3.1 product is estimated based on the uncertainty in the input parameters in the thermodynamic and radiation model as well as in the thickness distribution function (Tian-Kunze et al., 2014). At present, the estimation was carried out for each parameter - brightness temperature, ice temperature and ice salinity, and the assumptions made for the radiation and thermodynamic models (Tian-Kunze et al., 2014) respectively, by keeping the other parameters constant. The uncertainty given in the product is then the sum of uncertainties caused by each parameter. In v3.1, we also consider the uncertainty caused by the varied the sigma in the lognormal ice thickness distribution function, which is used to convert plane layer ice thickness into heterogenous layer mean ice thickness in the retrieval. The average ice thickness uncertainty caused by the distribution function is less than 10 cm. A-This uncertainty is then added to the overall uncertainties caused by the brightness temperature, ice temperature and ice salinity. Errors caused by the assumptions about fluxes and snow thickness have not yet been included. The 100% ice coverage assumption made in the retrieval can cause underestimation of ice thickness if the condition is not met.

For the merging, daily SMOS retrievals are averaged weekly and are projected on an EASE2 25 km grid to be co-located with the CS2 retrievals. Here, we only allow SMOS thickness values with a corresponding uncertainty < 1m which corresponds to a maximum theoretical thickness of about 1.1 m. Furthermore we expect strong biases for the SMOS ice thickness in thicker MYI regimes. Therefore we use the OSI SAF ice type product (Eastwood, 2012) to discard any SMOS grid cells that are indicated as MYI. The weekly composites are shown in Figure 21b.

2.1.3 Complementarity of CryoSat-2 and SMOS Sea-Ice Thickness Products

The two main factors that drive the complementarity between the CryoSat-2 and SMOS sea-ice thickness products are the data coverage on the one hand, and the sea-ice thickness uncertainties on the other hand.

Figure 2 shows typical uncertainty maps and the relative uncertainties of CS2 and SMOS monthly mean thickness retrievals from November 2015 and March 2016. While with SMOS relative uncertainties are lowest for thin ice (< 1 m), CS2 relative

thickness uncertainties are smaller over thick ice and rise asymptotically towards thinner ice less than 1 m thick. This is due to the fact that CS2 thickness estimates over thin ice rely on the retrieval of small surface elevations slightly higher than sea level while freeboard of thicker ice is much larger (Ricker et al., 2014). As a consequence, the relative uncertainty increases over thin ice, as measurement uncertainties do not decrease over thinner ice. Note that the CS2 uncertainties shown here represent observational uncertainties only. Systematic errors as associated with the usage of a snow climatology or due to variable snow penetration will increase the uncertainty of altimetry based thicknesses (Ricker et al., 2014; Kwok, 2014; Ricker et al., 2015; Armitage and

Due to the different update rates of sea-ice thickness observations, CS2 grids are usually based on data composites from one month, while SMOS based retrievals provide daily complete coverage of the ice-covered ocean up to about 85°N. Figure 1 compares weekly means of CS2 and SMOS for November 2015 and March 2016. While valid SMOS ice thickness estimates are found mostly in the marginal ice zones, the CS2 ice thickness retrieval covers major parts of the Arctic MYI. In November, during the freeze-up, SMOS retrievals cover major parts of the Beaufort Sea, Chuckchi Sea, and East Siberian Sea. Towards spring, due to continued ice growth in these regions, the regions with SMOS retrievals retreat southwards, covering major parts of the Bering Sea and the Sea of Okhotsk (Figure 1b).

Figure 3 illustrates the number of valid grid cells of the weekly means as shown in Figure 1. The number of grid cells with co-located SMOS and CS2 estimates is less than 2000, while the number of grid cells that contain thickness estimates from CS2 or SMOS only is about 5000, highlighting the complementary data coverage of both sensors.

2.1.4 OSI SAF Ice Concentration and Type

We use the OSI SAF sea-ice concentration (OSI-401-b) and type (OSI-403-b) products (Eastwood, 2012) in order to identify grid cells that contain ≥ 15 % sea ice and to classify them as ~~first-year (FYI) or multiyear (MYI) sea ice~~ FYI or MYI. The products are delivered daily, projected on a 10 km polar stereographic grid. To combine these data with the CS2 and SMOS thickness grids, we calculate weekly means that are projected on the EASE2 25 km grid (Brodzik et al., 2012) to be co-located with the thickness retrievals. The original ice type product contains grid cells that are flagged as *ambiguous*. We apply an inverse-distance interpolation to those grid cells to obtain FYI or MYI flags for all ice-covered grid cells, because it is needed for further processing steps.

2.2 Weighted Mean

We compute the weighted mean sea-ice thickness \bar{Z} using weekly CS2 and SMOS ice thickness grids during the target week:

$$\bar{Z} = \frac{Z_{cs2}/\sigma_{cs2}^2 + Z_{smos}/\sigma_{smos}^2}{1/\sigma_{cs2}^2 + 1/\sigma_{smos}^2}, \quad (4)$$

where σ represents the ~~statistical~~ observational uncertainty of the individual products. Figure 4 shows the weighted means for weeks in November 2015 and March 2016. In contrast to the OI approach, presented in the next section, the weighted mean only provides thickness estimates where observations are available during the target week, leaving data gaps in the CS2 domain. In the following we refer to the weekly weighted mean product as WM.

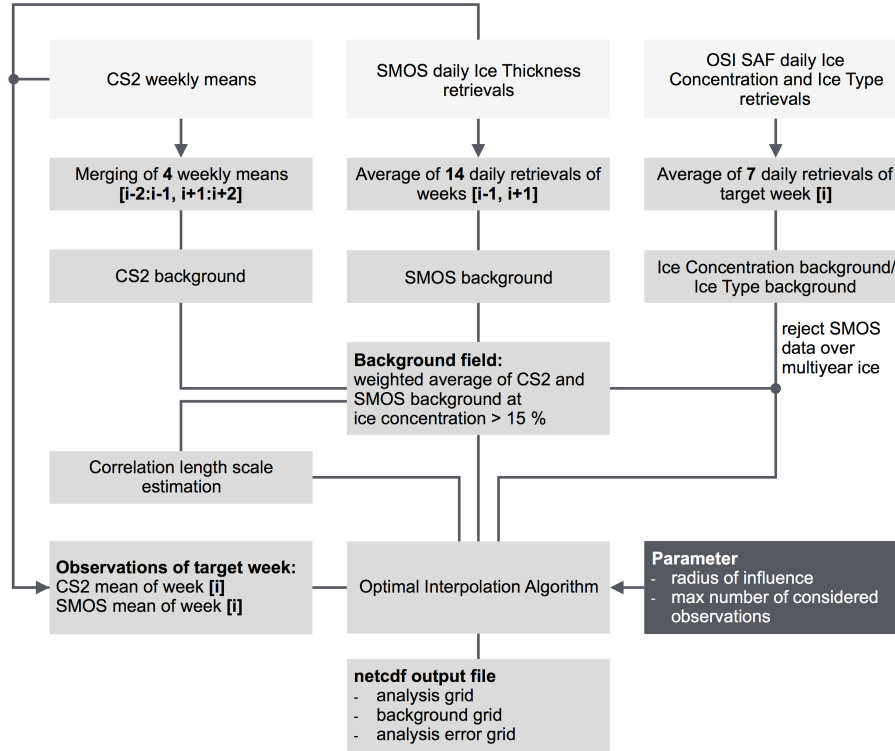


Figure 5. Optimal interpolation processing scheme. Week [i] represents the target week. The cycle is repeated for each week.

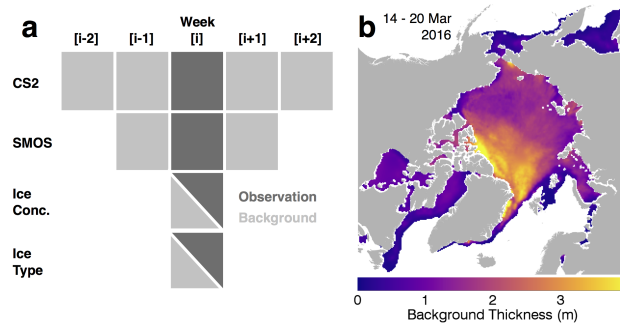


Figure 6. a) The scheme illustrates how the background field and the observation field are generated from weekly input grids. Week [i] represents the target week. b) Interpolated-Typical interpolated and low-pass filtered background field as it is used for the optimal interpolation.

2.3 Optimal Interpolation

To achieve complete spatial coverage, we use an OI scheme similar to Böhme and Send (2005) and McIntosh (1990) that enables the merging of datasets from diverse sources on a predefined, so-called analysis grid. The input data are weighted

based on their individual uncertainties and the modeled spatial covariances. OI minimizes the total error of observations and provides ideal weighting for the observations at each grid cell in the least square sense. In this section we present the processing methods, on which our OI approach is based. Figure 5 shows the processing scheme, which will be described in more detail in the following.

- 5 The OI scheme is used to get an objective estimate of values at observed or unobserved locations. The basic equation is:

$$\mathbf{Z}_a = \mathbf{Z}_b + \mathbf{K}[\mathbf{Z}_o - H(\mathbf{Z}_b)], \quad (5)$$

- where the vector \mathbf{Z}_a is the analysis field, i.e. each element represents a grid cell of the merged CS2SMOS ice thickness retrieval to be produced. \mathbf{Z}_b is a background field vector and \mathbf{Z}_o the vector that contains all SMOS and CS2 observations. Here we use already gridded, weekly mean CS2 and SMOS thickness estimates as observations, as shown in Figure 2-1 and as described above. Using gridded data as observations reduces their statistical-observational uncertainties and provides equally distributed observations, which improves the performance of the OI. In addition, gridding of raw data reduces the number of available observations used for the OI, increasing the efficiency of the OI routine. We assume that the observations are static, i.e. remain temporally coherent within a week and do not change due to ice deformation and motion. Therefore, we neglect any temporal correlations. H is an operator that transforms the background field into the observation space. To be more specific, this is realized by an inverse distance interpolation method. \mathbf{K} represents a weight matrix and is derived from error covariances. We aim to retrieve weekly analysis fields, based on calendar weeks from Monday to Sunday. Wet and warm snow or ice prevent the retrieval of summer sea-ice thickness estimates from CS2 or SMOS. Hence, the CS2SMOS product is limited to the period from October/November-end-of-October to April.

2.3.1 The Background Field

- 20 The weekly CS2 ice thickness composite possesses large gaps resulting from the limited orbital coverage (Figure 2-1a). But for the OI approach, an Arctic-wide coverage is required for the background field. Therefore, we use a composite of retrievals from adjacent weeks, to create a background field with nearly complete coverage for the Central Arctic at a certain target week (Figure 6a). Here we combine data from the two weeks before and after the target week. Therefore, in contrast to CS2 near real-time sea-ice thickness retrievals (Tilling et al., 2016), products can only be released 2 weeks after data acquisition.
- 25 In order to ensure independence between observations and background field, CS2 data from the target week are not included in the background field. For the same reason, we use a SMOS weekly mean from the previous one week before and after the target week. The initial background field is computed by a weighted mean using Eq. (4). Gaps in the weighted average are interpolated by using a nearest neighbor scheme. In order to reduce noise, the background field is low-pass filtered with a smoothing radius of 25 km, before it is applied in the OI algorithm (Figure 6b).
- 30 Since we use CS2 and SMOS retrievals for the background field beyond the target week and because the SMOS composite contains artifacts in coastal regions, we additionally use a weekly mean of the daily OSI SAF ice concentration product to determine the ice coverage during the target week. Here, we apply a threshold of 15 % and only grid cells that exceed this

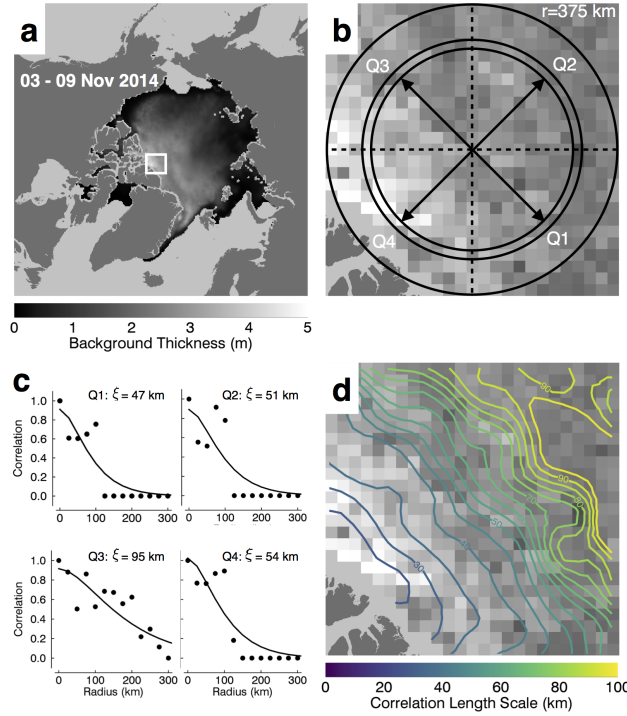


Figure 7. Scheme for the estimation of the correlation length scale ξ for a single grid cell for the target week 3-9 November 2014. a) Background field with indicated area of interest (white box). b) Adjacent ice thickness grid cells within a radius of 375 km are binned into annuli of distance and 4 quadrants. (c) Binned thickness estimates are used to calculate the structure function of each quadrant. ξ is estimated by fitting an exponential function. d) Contour map of estimated correlation length scales for the considered area.

value will be considered as ice covered, which corresponds to the ice extent products provided by OSI SAF and the National Snow and Ice Data Center (NSIDC).

2.3.2 Correlation Length Scale Estimation

The correlation length scale ξ controls the impact of a data point on the analysis grid point depending on their distance. Considering the grid resolution of 25 km, correlation length here is used in the sense of large-scale thickness gradients. For example, the correlation length scale estimate is large in the center of a certain ice type regime with similar ice thickness (i.e. level FYI). On the other hand, we expect a low ξ value at locations with strong thickness gradients, where distant observations are not representative for local conditions. Figure 7 illustrates the estimation of ξ for a certain grid cell Z_0 in the Lincoln Sea during a week in November. In order to estimate ξ , we consider the unfiltered background field Z_b (Figure 7a) and define a structure function ϵ^2 . The structure function can be used to assess the change of ice thickness with distance and is related to

the normalized auto correlation function $R(d, Q)$ as follows (Böhme and Send, 2005):

$$\begin{aligned}\epsilon^2(d, Q) &= \overline{(Z'_0 - Z'_{Q,d})^2} = 2\overline{\sigma_{Z'}^2} - 2\overline{\sigma_{Z'}^2} R(d, Q), \\ R(d, Q) &= 1 - \frac{\epsilon^2(d, Q)}{2\overline{\sigma_{Z'}^2}}.\end{aligned}\tag{6}$$

Quadrants Q are defined to accommodate the anisotropy of the spatial ice thickness distribution (Figure 7b). $\epsilon^2(d, Q)$ represents the square differences between ice thickness of the grid cell and the ice thickness of the grid cells of binned 25 km distances d in a quadrant Q . $Z'_{Q,d}$ is the background thickness, binned according to d and Q . Figure 7b ~~reveals~~ illustrates the annuli of distance and the 4 Quadrants. $\overline{\sigma_{Z'}^2}$ are the corresponding mean variances of a certain quadrant. With Eq. (6) we then obtain the auto correlation function $R(d, Q)$, which is computed up to radius of 750 km (30 bins). In the next step, we fit a function of the form:

$$C(d, \xi) = \left(1 + \frac{d}{\xi}\right) \exp\left(\frac{-d}{\xi}\right)\tag{7}$$

to $R(d, Q)$, using a least squares scheme, and obtain an estimate for ξ . Figure 7c shows the calculated auto correlation function $R(d, Q)$ and the functional fit (Eq. (7)). A stronger decay of $R(d, Q)$ occurs with rising deviation between Z_0 and the thickness at a certain distance in a certain quadrant. $R(d, Q)$ can also become negative if $\epsilon^2(d, Q)/2\overline{\sigma_{Z'}^2}$ becomes >1 . In order to improve the fitting performance, we set $R(d, Q) = 0$ if $R(d, Q)$ becomes < 0 . Furthermore, ξ is rejected if the computation fails. Finally, we average the ξ values from the 4 quadrants, as we do not use anisotropic weighting in the OI. In order to remove outliers and noise, the derived ξ grid is low-pass filtered with a smoothing radius of 25 km. Grid cells with failed computation are interpolated by a nearest neighbor scheme afterwards. Figure 7d shows the spatial correlation length scales ξ for 3-9 November 2014. It highlights the sensitivity to changing thickness gradients as ξ decreases towards the coast of the Canadian Archipelago, where higher sea-ice thickness gradients likely occur due to increased deformation.

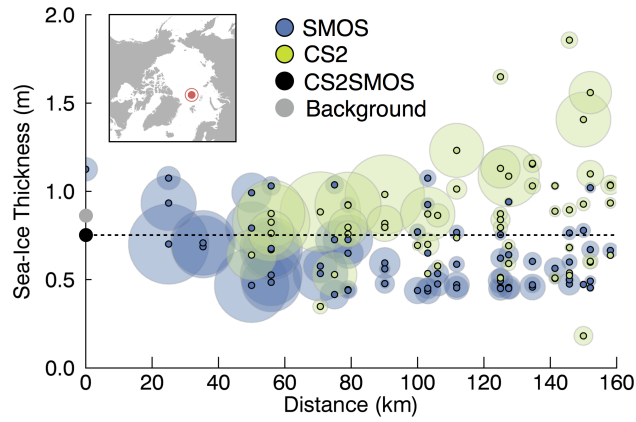


Figure 8. Example for CS2 and SMOS sea-ice thickness observations and their weighting to compose the CS2SMOS thickness estimate based on optimal interpolation at a grid cell in the Central Arctic first-year ice in November 2016. The x-axis represents the distance of observations from the analysis grid cell. Normalized K weights are represented by the area of the circles.

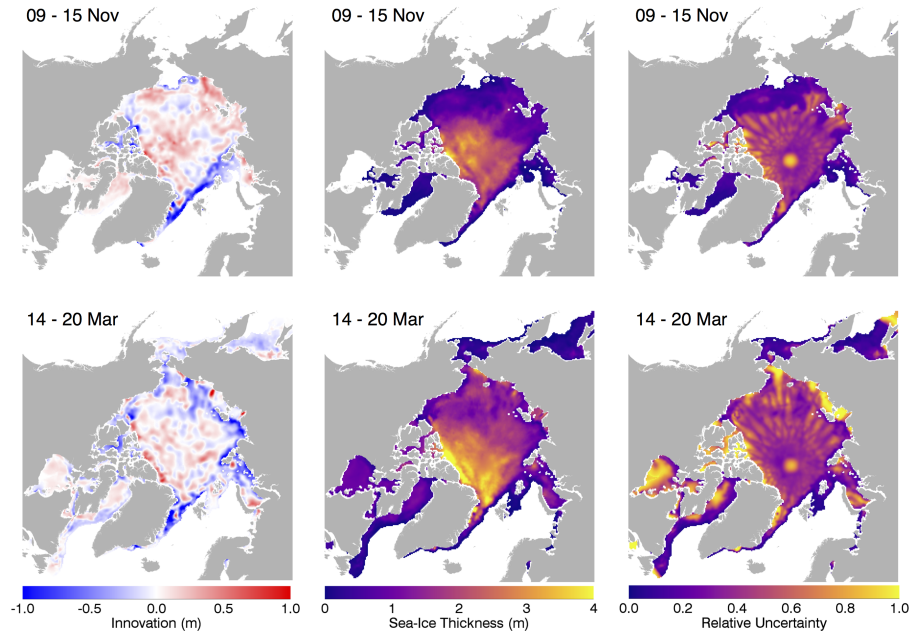


Figure 9. Optimal interpolation output grids for weeks in November 2015 and March 2016: The innovation field (left column) shows the difference between background field and the CS2SMOS ice thickness (center column). The right column shows the relative uncertainty associated with the optimal interpolation.

2.3.3 Retrieving the Analysis Grid

The weight matrix \mathbf{K} , which is needed for the computation of \mathbf{Z}_a , is retrieved by In order to minimize the error covariances, the background error covariance matrix \mathbf{B} in the observation space ~~multiplied by~~ is multiplied with the inverted total error covariance matrix, leading to the optimal weight matrix \mathbf{K} (McIntosh, 1990; Böhme and Send, 2005):

$$5 \quad \mathbf{K} = \mathbf{B}\mathbf{H}^T(\mathbf{R} + \mathbf{H}\mathbf{B}\mathbf{H}^T)^{-1}, \quad (8)$$

where \mathbf{R} is the error covariance matrix of the observations. In order to reduce computation expense we assume the following:

1. We neglect correlations of observation errors which means that \mathbf{R} is a matrix with non-zero elements only on the diagonal. These variances are represented by the respective SMOS and CS2 product uncertainties.
2. We assume that the influence of observations that are located far away from the analysis grid point can be neglected.
10 Therefore, instead of computing the entire covariance matrix, we only consider observations within a radius of influence. This radius is set to 250 km to gather just enough observations in regions with large gaps, for example over MYI between two CS2 orbits where valid SMOS observations are not available.
3. To further reduce computation expense we limit the number of matched observations to 120, meaning that in the case of more matches, only the 120 closest observations are considered.
- 15 4. We generally assume that all observations are unbiased.

~~$\mathbf{B}\mathbf{H}^T$ and $\mathbf{H}\mathbf{B}\mathbf{H}^T$~~ For practical reasons, we apply an iterative computation instead of applying the general matrix formulation in Eq. (5) and Eq. (8). We iteratively calculate each element $z_{a_{m,n}}$ of the analysis field. Vector elements $(bh^T)_i$ and matrix elements $(hbh^T)_{i,j}$ are estimated using the correlation function in Eq. (7):

$$20 \quad \begin{aligned} \mathbf{B}\mathbf{H}^T(bh^T)_i &= \left(1 + \frac{d(x_{o_i}, x_{a_i})}{\xi} \frac{d(x_{o_i}, x_{a_{m,n}})}{\xi_{m,n}} \right) \exp \left(\frac{-d(x_{o_i}, x_{a_i})}{\xi} \frac{-d(x_{o_i}, x_{a_{m,n}})}{\xi_{m,n}} \right), \\ \mathbf{H}\mathbf{B}\mathbf{H}^T(hbh^T)_{i,j} &= \left(1 + \frac{d(x_{o_i}, x_{o_j})}{\xi} \frac{d(x_{o_i}, x_{o_j})}{\xi_{m,n}} \right) \exp \left(\frac{-d(x_{o_i}, x_{o_j})}{\xi} \frac{-d(x_{o_i}, x_{o_j})}{\xi_{m,n}} \right), \end{aligned} \quad (9)$$

with the Euclidian distance function:

$$d(x, y) = \|x - y\| \quad (10)$$

Here, x_{o_i} and ~~x_{a_i}~~ x_{o_j} represent the locations of the ~~observations and the analysis grid points~~ matched observations within the radius of influence. $x_{a_{m,n}}$ refers to the location of the analysis grid cell. As a consequence of Eq. (9), the impact of a data point
25 decreases with increasing distance.

Computing ~~$\mathbf{B}\mathbf{H}^T$ and $\mathbf{H}\mathbf{B}\mathbf{H}^T$~~ $\mathbf{B}\mathbf{H}^T$ and $\mathbf{H}\mathbf{B}\mathbf{H}^T$ allows the computation of the ~~\mathbf{K} weights~~ \mathbf{K} weights that minimize the error covariances. When the analysis field is calculated iteratively, \mathbf{K} will be a vector, containing the corresponding weights for

the matched observations within the radius of influence, while in the general OI formulation, \mathbf{K} is a matrix. Thus, we retrieve the second part of Eq. (5), which is called *innovation*, the difference between the observation field and the background field. This iterative procedure is accomplished for each analysis grid cell, leading to the complete analysis iteratively for each grid cell of the analysis field. The corresponding analysis error covariances are derived by:

$$\sigma_{Z_a}^2 = (\mathbf{I} - \mathbf{KH})\mathbf{B}, \quad (11)$$

where \mathbf{I} is the identity matrix. Since we consider variances exclusively, we only calculate the diagonal elements of $\sigma_{Z_a}^2$. Figure 8 illustrates how the analysis thickness is derived at a certain analysis grid point, considering distant grid cells with ice thickness estimates of CS2 and SMOS. The \mathbf{K} weights decrease with increasing distance to the analysis grid point as a consequence of Eq. (9). In addition, the individual uncertainties affect the weighting according to Eq. (8). The considered grid cell is located at the boundary between the CS2 and SMOS domain. In the following, we use *domain* as the regions where CS2 or SMOS data predominate. SMOS ice thicknesses of about 1 m reveal higher uncertainties than corresponding CS2 estimates (Figure 4) and hence the \mathbf{K} weights of CS2 estimates exceed the SMOS weights for higher ice thicknesses. Figure 9 shows the innovation field, the merged CS2SMOS product and the analysis error field, which is the square root of the error variance (Eq. (11)), for weeks in November 2015 and March 2016. The analysis error is a relative quantity with values between 0 and 1. It increases where the weekly CS2 retrieval leaves gaps and where valid SMOS observations are not available, for example at the North Pole or over MYI. In this case the analysis depends on the accuracy of the background field, leading to increased uncertainties.

3 Evaluation of the Optimal Interpolation

In this section, we aim to evaluate the CS2SMOS product derived from the OI scheme by a comparison with the individual satellite products. In addition, we carry out a cross validation experiment by omission of random data to test the OI method.

3.1 Comparison with Input Products

Figure 10 illustrates the differences between CS2SMOS and the CS2 and SMOS retrievals from November 2015 to April 2016. The difference between CS2SMOS and SMOS weekly grids is shown in Figure 10a, limited to grid cells with SMOS observations in the target week. Positive anomalies of up to 1 m occur mostly in the transition zone between the SMOS and the CS2 domain where the thick ice in the CS2 retrieval leads to an increase of ice thickness in these grid cells with respect to the SMOS data (Figure 10a). However, the general pattern remains the same during the season. Subtracting the CS2 monthly mean sea-ice thickness from the CS2SMOS product, represented by one week within each month, reveals substantial scattering between -1 m and 1 m within the CS2 domain (Figure 10b). This is mainly caused by the fact that the monthly retrieval is compared with the weekly product. During the different time spans, the regional sea-ice thickness distribution is subject to ice drift, convergence and divergence, as well as thermodynamic ice growth. In addition, the OI algorithm evokes a low pass filtering of the spatial thickness distribution due to the impact of distant grid cells, reducing the noise compared to the original

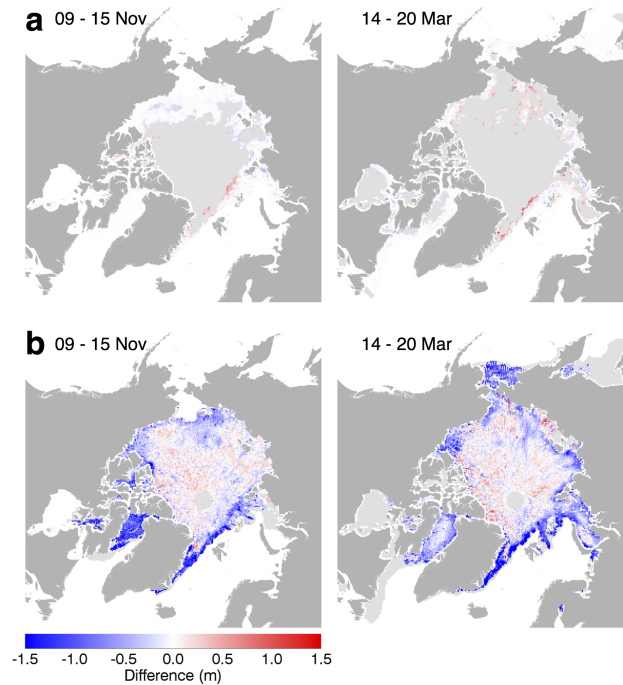


Figure 10. a) Difference between CS2SMOS and weekly SMOS retrieval for weeks in November 2015 and March 2016. b) Difference between CS2SMOS thickness for weeks in November 2015 and March 2016, and the corresponding monthly CryoSat-2 thickness retrieval

CS2 product. Within the SMOS domain we find consistently negative anomalies, indicating a reduction of the CS2 ice thickness representation due to the impact of the coincident SMOS retrieval.

Figure 11a shows ice thickness distributions of monthly means of CS2 and weekly SMOS and CS2SMOS ice thickness retrievals for November 2015 and March 2016, illustrating the different thickness ranges of CS2 and SMOS retrievals. Table 2 presents the corresponding statistics for the entire winter season including the mean and the standard deviation of each month or week respectively. The CS2 retrieval lacks sensitivity for thin ice (< 0.5 m) over the entire season. The gap in this thickness range can be closed by the SMOS retrieval. While the mean thickness of the CS2 retrieval consistently grows from 1.46 m in November to 1.90 m in April, the SMOS thickness mean remains at about 0.5 m after an increase from November to December. Due to the increasing uncertainties of the SMOS product towards thick ice, the distribution frequency steeply drops at about 1 m for each month. Therefore, the SMOS mean thickness is mostly affected by the boundary condition at about 1 m in conjunction with thermodynamic ice growth and the newly formed ice (< 0.1 m). The thickness distributions show the capability of the CS2SMOS product to combine the complementary ice thickness ranges. As a consequence, the standard deviation of the merged product ranges between 0.8 m (December) and 0.99 m (April), and therefore ~~exceed~~exceeds the standard deviations of the individual products that reach maximum values of 0.78 (CS2) and 0.38 (SMOS) in April. The scatter diagrams in Figure 11b illustrate the thickness differences between CS2SMOS and the two individual products, with respect to the maps shown in Figure 10. Using the SMOS data reduces the thickness in the CS2SMOS product below 1m compared to the

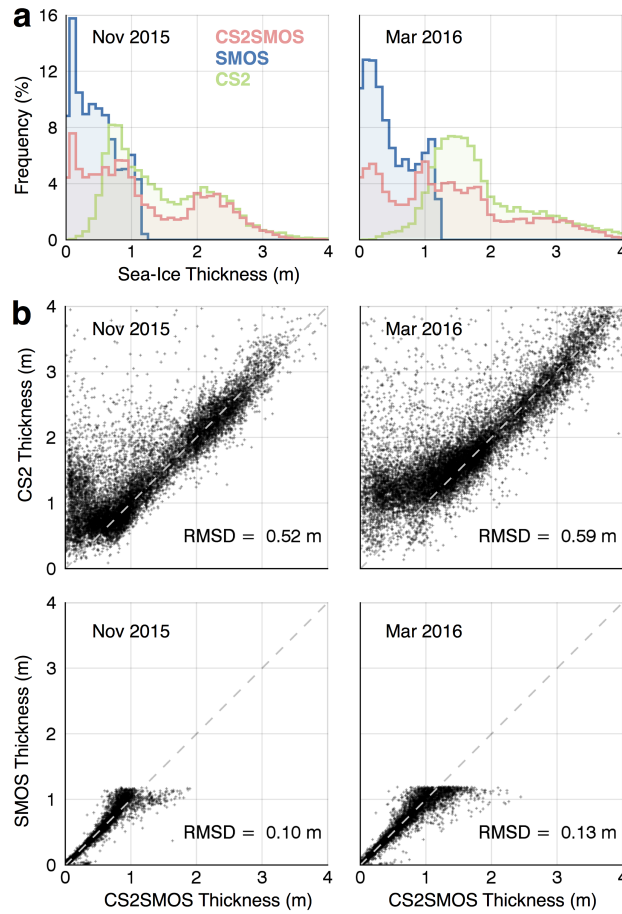


Figure 11. a) Sea-ice thickness distributions of CryoSat-2, SMOS, and CS2SMOS retrievals for November 2015 and March 2016. CS2SMOS is represented by one week in the middle of a month, while the CryoSat-2 and SMOS retrievals are monthly means. b) Scatter diagrams illustrating the ice thickness differences between CS2SMOS and the individual satellite retrievals of CS2 and SMOS, for November 2015 and March 2016.

CS2 retrieval. The comparison between CS2SMOS and SMOS shows increasing scattering with rising thickness. As shown in Figure 10, this originates from the transition zone between the CS2 and SMOS domain.

3.2 Cross Validation Experiment

In order to test the robustness of the OI algorithm, we carry out a cross validation. We randomly remove grid cells of obser-
5 vations from the target week (see Figure 5 and 6), with experiments for exclusion of 10% (Figure 12a), 25% (Figure 12b) and 50% (Figure 12c) of both CS2 and SMOS input grid cells. In the fourth case, all data contained in a box in the Western Arctic are withdrawn (Figure 12d). The box intentionally covers both the SMOS and the CS2 domain. After the data omission, the OI algorithm is applied using the reduced target week data set. The maps show the difference between the retrieved CS2SMOS

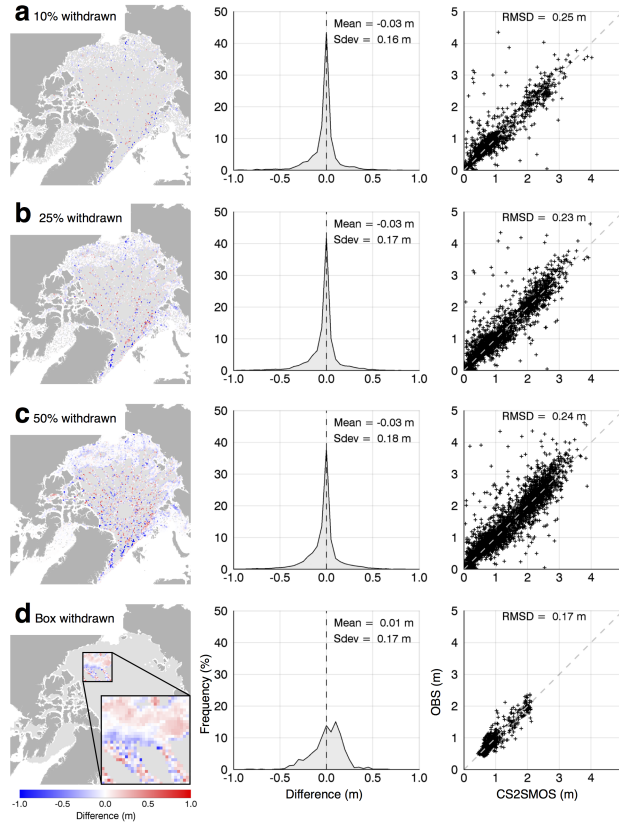


Figure 12. Cross-validation experiment [for November 2015](#), showing the difference between CS2SMOS ice thickness, gridded CryoSat-2 and SMOS observations (OBS) that have been separated in advance as different fractions/areas of withdrawn data: a) 10%, b) 25%, c) 50%, and d) Box. The maps show the withdrawn data subtracted from the CS2SMOS product. The histograms show the differences according to the maps, indicating mean and standard deviation (Sdev) of the differences. Scatter diagrams indicate the root mean square deviation (RMSD).

sea-ice thickness and the withdrawn thickness data for each case. Compared to the SMOS domain, the ice thickness in the CS2 domain in the Central Arctic (Figure 21) reveals a higher level of noise with deviations of up to 1 m. On the other hand, the SMOS domain shows a slightly negative shift of up to 10 cm in some areas. [This can be explained by the different data coverages. We truncate the SMOS retrieval over thick ice, since the method does not apply for thick ice. On the other hand, the CS2 retrieval is used over the entire thickness range, but with higher uncertainties over thin ice. Therefore, CS2 thickness over thin ice is mostly reduced by the SMOS retrieval, while in contrast, this is barely the case for SMOS data over thick ice, since it is cropped there. Hence, due to the optimal interpolation, there will be always a negative bias in the SMOS domain when doing the cross validation experiment with the original input data from CS2 and SMOS.](#)

The general pattern remains the same in all cases, independent of the fraction of data that are withdrawn in advance. The shape of the histograms of the differences indicates a normal distribution with similar standard deviations between 14 and 17

Table 2. Arctic-wide mean and standard deviation (sdev) of the merged product (CS2SMOS), the individual CryoSat-2 (CS2) and Soil Moisture and Ocean Salinity (SMOS) retrievals for the winter season 2015/16.

Mean (m)	Nov	Dec	Jan	Feb	Mar	Apr
CS2SMOS	1.16	1.19	1.22 <u>1.23</u>	1.29	1.36 1.34	<u>1.35</u>
CS2	1.46	1.53	1.65	1.66	1.83	1.90
SMOS	0.45	0.58	0.51	0.49	0.48	0.47
Sdev (m)						
CS2SMOS	0.88	0.8 <u>0.81</u>	0.81	0.92	0.96 <u>0.97</u>	0.99
CS2	0.76	0.76	0.72	0.73	0.75	0.78
SMOS	0.33	0.36	0.38	0.37	0.36	0.38

18 cm. The mean differences are ~~between -2 and -3 cm~~, which can mostly be attributed to the SMOS domain indicated by the difference maps. The reason is likely the fact that the SMOS background is one week out of phase with the observations (Figure 6), which could cause a small negative bias due to the advancing ice growth. However, in contrast to CS2, the weekly SMOS data coverage during the target week is complete and therefore, this negative bias should not affect the CS2SMOS sea-ice thickness retrieval. ~~for the first three cases where data points have been withdrawn randomly, and 1 cm where a box has been separated.~~ The root mean square deviation (rmsd) is ~~22-24~~ 23-25 cm for the first ~~3 cases and 14~~ three cases and 17 cm for the last case ~~where we separated a box. The~~. Here, the smaller rmsd is likely caused by the lack of thicker ice in the chosen box, which does not contain sea ice thicker than about 2 m. This experiment demonstrates the performance of the applied algorithm. In particular, it shows that the background field mostly conserves the mean values even when co-located observations are missing.

4 Validation of the merged products with Airborne EM

For validation of WM and CS2SMOS, we use sea-ice thickness measurements obtained during the SMOS-ice 2014 campaign east of the Spitsbergen Archipelago and during the Canadian Arctic Sea Ice Mass Balance Observatory campaign in the Beaufort Sea in April 2016. Surveys have been carried out with an airborne electromagnetic induction thickness sounding device (EM-Bird) (Pfaffling et al., 2007; Haas et al., 2009; Hendricks, 2009) and are projected and averaged on a 25 km EASE2 grid as given by the satellite products. In addition to the mean AEM thickness in each grid cell, we also calculated the modal AEM thickness. The AEM data set represents total thickness, comprising snow + sea-ice thickness. Therefore, we add the climatological snow depth (modified W99) to the satellite products. Figure 13 shows the comparison between AEM ice thickness measurements and 4 satellite products at the two validation sites, Beaufort Sea (Figure 13a) and Barents Sea (Figure 13b). The 4 satellite products are represented by CS2SMOS, WM, SMOS, and CS2. The scatter diagrams illustrate

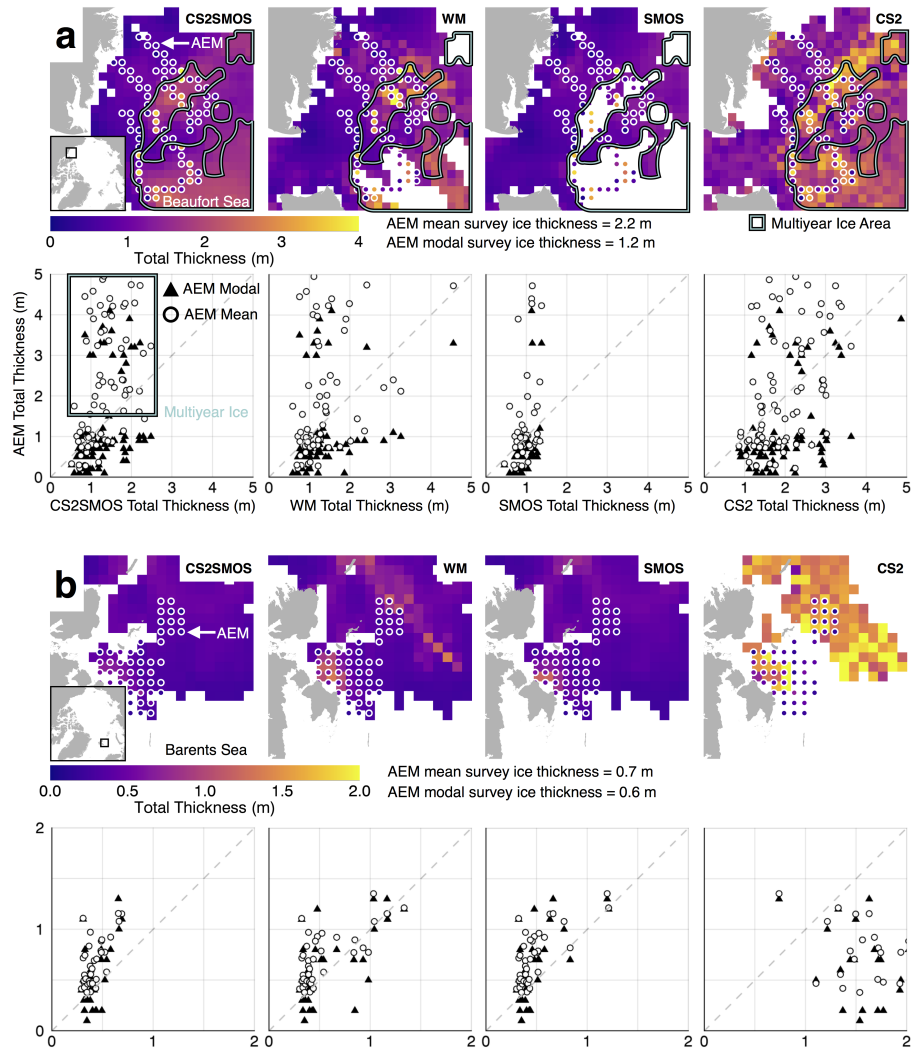


Figure 13. Comparison of satellite retrievals with airborne EM thickness measurements (AEM) over a mixed first-year/multiyear ice regime in the Beaufort Sea in April 2016 (a) and over thin ice in the Barents Sea east of Spitsbergen in March 2014 (b). AEM data are compared with optimal interpolation product (CS2SMOS), the weighted mean (WM), the SMOS retrieval, and the monthly CryoSat-2 thickness retrieval (CS2). AEM measurements are averaged on the 25 km EASE2 grid, providing mean and modal total thickness within a grid cell. [AEM measurements in the scatter plots are capped at 5 m, while in \(a\), one mean AEM grid value exceeds the limit.](#)

the difference between the satellite products and the corresponding mean and modal AEM thickness. Statistics resulting from Figure 13 are given in Table 3.

Table 3. Statistics of the comparison of satellite retrievals with airborne EM thickness measurements (AEM), corresponding to Figure 13. For each case we consider both the AEM modal thickness (AEM mode) and the AEM mean thickness (AEM mean). For the mean bias, AEM measurements are subtracted from the satellite retrievals. rmsd represents the root mean square deviation and r the Pearson correlation coefficient.

Beaufort Sea		rmsd	mean bias	r
		(m)	(m)	
CS2SMOS	AEM mean	1.56 1.57	-0.86	0.48
	AEM mode	1.03	0.11	0.36
WM	AEM mean	1.49	-0.57	0.35
	AEM mode	1.13	0.30	0.26
SMOS	AEM mean	1.16	-0.38	0.37
	AEM mode	0.75	0.19	0.46
CS2	AEM mean	1.27	-0.17	0.52
	AEM mode	1.33	0.80	0.39
Barents Sea		rmsd	mean bias	r
CS2SMOS	AEM mean	0.30 0.31	-0.25	0.65 0.61
	AEM mode	0.26 0.27	-0.11	0.60 0.56
WM	AEM mean	0.27	-0.17	0.73
	AEM mode	0.27	-0.05	0.63
SMOS	AEM mean	0.30	-0.24	0.7
	AEM mode	0.27	-0.11	0.67
CS2	AEM mean	0.97	0.82	-0.35
	AEM mode	1.11	0.95	-0.35

4.1 Beaufort Sea, April 2016

On April 9 and 10, 2 AEM flights were carried out with a fixed wing DC3-T aircraft (Figure 13a). The AEM measurements indicate high mean ice thickness variability ranging between 0.2 m and more than 5 m. Comparing the mean (2.2 m) and modal thickness (1.2 m) of the entire data set indicates substantial deformation. Thickness distribution and OSI SAF ice type data suggest two ice types. First-year ice, reaching a modal thickness of up to 1 m, and multiyear ice with a modal thickness ranging between 2 m and 4 m. The presence of two ice types and the drift along the Beaufort Gyre (Petty et al., 2016) make this region challenging for satellite observations, which are limited in spatial and temporal resolution. Especially scattered thick multiyear ice floes that drift along the Gyre might not be captured by the OSI SAF ice type product, allowing for SMOS thickness estimates in MYI. Therefore, CS2SMOS, WM and SMOS underestimate the mean ice thickness by up to 0.86 m (CS2SMOS).

On the other hand, the modal ice thickness is slightly overestimated by up to 0.3 m (WM). It is important to note that WM

and SMOS do not provide a full data coverage. The SMOS data, for example, usually only cover first-year ice. This is also the reason why SMOS exhibits the smallest rmsd for mean and modal thickness (1.16 m and 0.75 m). However, scatter diagrams show good agreement of AEM data and CS2SMOS, WM and SMOS retrievals within the first-year ice, up to about 1.2 m thick ~~ice~~ (Figure 13). CS2 shows the lowest bias (-0.17 m) for the mean ice thickness, but the highest for the modal thickness. The scatter diagrams also indicate that CS2 is not able to capture high thickness gradients due to the presence of scattered heavily deformed multiyear ice, which is transported along with the Beaufort Gyre. As discussed above, the usage of SMOS data in CS2SMOS and WM leads to a stronger underestimation of mean ice thickness of deformed multiyear sea ice, compared to CS2. But it substantially improves the representation of first-year ice thickness. The comparison between WM and CS2SMOS shows that in areas where weekly observations are available, both retrievals show similar agreement with AEM measurements.

4.2 Barents Sea, March 2014

Between March 19-26, 8 AEM flights were carried out by a helicopter based on the Norwegian research vessel Lance ~~(King et al., 2016)~~ (King et al., 2017) (Figure 13b). In contrast to the Beaufort Sea data, these data contain first-year ice only. Moreover, the degree of deformation is lower, indicated by only 0.1 m difference between mean and modal thickness of the entire data set. For CS2, the rmsd is 0.97 m for the AEM mean thickness and 1.11 m for the AEM modal thickness, indicating a slightly better representation of the mean thickness in the CS2 product. However, scattering is high and the mean bias of 0.82 m with respect to the mean AEM thickness suggests a strong bias towards thicker ice. Such errors might originate from erroneous sea-surface height interpolation along the CS2 orbits as well as from off-nadir lead ranging and retracker limitations (Ricker et al., 2014). The SMOS and CS2SMOS retrievals are almost identical for that region, which is caused in part by the better coverage of the SMOS retrieval in that region. In addition, this area is dominated by thin ice, leading to a higher weighting of the SMOS retrieval due to the lower uncertainties (Figure 12). The scatter diagrams reveal a significantly better agreement of the AEM mean thickness measurements with the CS2SMOS, WM and SMOS retrievals (rmsd = 0.27-~~0.30~~-0.31 m, $r = 0.65$ 0.61-0.73) than with the CS2 retrieval (rmsd = 0.97, $r = -0.35$). Hence, the reduction in rmsd considering CS2SMOS or WM compared to CS2 is roughly 0.7 m. The observed bias with respect to the mean AEM thickness is -0.25 m for CS2SMOS, -0.17 for WM, and -0.24 m for SMOS, suggesting a bias towards thinner ice. The maps and scatter diagrams indicate that the CS2SMOS, WM and SMOS retrievals capture small thickness gradients visible in the AEM thickness data. This comparison provides evidence that using SMOS data in areas with a thin ice regime will reduce the rmsd and the mean bias when compared to the CS2 product.

5 Conclusions

We presented methods to carry out the first joint data merging of CryoSat-2 (CS2) sea-ice thickness fields and thin ice thickness estimates obtained from the L-Band radiometer onboard the Soil Moisture and Ocean Salinity (SMOS) satellite. While CS2 lacks the capability to observe thin ice, SMOS is restricted to ice regimes thinner than about 1 m. We used two approaches for merging CS2 and SMOS ice thickness data: a weighted mean and an optimal interpolation scheme (OI) based on weekly CS2

and SMOS ice thickness grids. While the weighted mean product (WM) only provides estimates at grid cells where observations are available, the OI product (CS2SMOS) provides weekly Arctic-wide sea-ice thickness estimates with corresponding uncertainty estimates. We have shown that the merged products have the capability to allow for weekly thickness estimates that are sensitive to the entire thickness range, using the complementary sensitivity of the individual products to different thickness regimes. Moreover, the weekly merged products benefit from increased coverage at lower latitudes in conjunction with higher temporal resolution compared to the CS2 retrieval, which is important for observing ice growth during the freeze-up. In particular, the usage of the combined product will improve thickness retrievals in all areas with thin ice, which we have demonstrated using case studies from the Barents Sea during spring 2014 and Beaufort Sea during spring 2016. Comparisons with airborne electromagnetic thickness measurements (AEM) reveal a ~~reduced~~reduction in root mean square deviation of about 0.7 m for CS2SMOS and WM, compared to the CS2 thickness retrieval in the Barents Sea. Moreover, the comparison shows that retrievals that use SMOS data seem to capture small thickness gradients in thin ice regimes, whereas the CS2 retrieval is very noisy. In the Barents Sea, the CS2 retrieval overestimates mean thin ice thickness by 0.8 m, while CS2SMOS, WM and SMOS underestimate by about 0.2 m. The comparison with the AEM data has also revealed that WM represents a good estimate in regions where weekly data of SMOS and CS2 are available. For the observation of thicker multiyear ice (> 1 m) ~~and mixed~~ice regimes as in the Beaufort Sea 2016, ~~the CS2 provides the best estimates~~product has the lowest bias, although limitations in capturing high thickness gradients due to heavily deformed ice exist. CS2SMOS, however, exclusively provides weekly ice thickness estimates covering the entire Arctic and combining CS2 and SMOS data. The OI approach used in this study can be adopted to merge sea-ice thickness or freeboard data sets derived from other satellite missions, such as the recently launched European Space Agency mission Sentinel-3, which carries a Ku-band radar altimeter similar to SIRAL onboard CS2.

6 Data availability

The weekly updated CS2SMOS product, including the weighted means (WM), and the monthly updated CryoSat-2 product are provided at <http://www.meereisportal.de>. The SMOS ice thickness data are provided at <http://icdc.cen.uni-hamburg.de>. Sea-ice concentration and Sea-ice type data are provided by OSISAF via <http://osisaf.met.no/p/ice/>. Barents Sea AEM data are available via doi.org/10.21334/npolar.2016.ee8f4f8d.

Author contributions. Robert Ricker developed the optimal interpolation algorithm and conducted the processing. Stefan Hendricks processed the CryoSat-2 orbit files. Lars Kaleschke and Xiangshan Tian-Kunze were responsible for the SMOS processing. Jennifer King processed the AEM data in the Barents Sea. Christian Haas processed the AEM data in the Beaufort Sea. Robert Ricker wrote the paper and all Co-authors contributed to the discussion and gave input for writing.

Competing interests. The authors declare no conflict of interest.

Acknowledgements. This work has been conducted in the framework of the European Space Agency project SMOS+ Sea Ice (contracts 4000101476/10/NL/CT and 4000112022/14/I-AM). Lars Kaleschke was responsible for the coordination and design of the SMOS+ Sea Ice project. Many thanks go to Matthias Drusch and the entire SMOS+ Sea Ice Team. Moreover, this study is associated with the Deutsche Forschungsgemeinschaft (DFG EXC177) and the German Federal Ministry of Economics and Technology (Grant 50EE1008). CryoSat-2/SMOS data from 2010-2016 are provided by <http://www.meereisportal.de> (Grant REKLIM-2013-04). J. King was funded by the Norwegian research council project 'CORESAT' (NFR project number 222681). The helicopter work in the Barents Sea was supported by the Norwegian Polar Institute (NPI). Thanks also to the crews of RV Lance and Airlift helicopter, and the engineer Marius Bratrein for their help collecting this data.

References

- Alexandrov, V., Sandven, S., Wahlin, J., and Johannessen, O. M.: The relation between sea ice thickness and freeboard in the Arctic, *The Cryosphere*, 4, 373–380, doi:10.5194/tc-4-373-2010, <http://www.the-cryosphere.net/4/373/2010/>, 2010.
- Armitage, T. and Davidson, M.: Using the Interferometric Capabilities of the ESA CryoSat-2 Mission to Improve the Accuracy of Sea Ice Freeboard Retrievals, *Geoscience and Remote Sensing, IEEE Transactions on*, 52, 529–536, doi:10.1109/TGRS.2013.2242082, 2014.
- Armitage, T. W. K. and Ridout, A. L.: Arctic sea ice freeboard from AltiKa and comparison with CryoSat-2 and Operation IceBridge, *Geophysical Research Letters*, 42, 6724–6731, doi:10.1002/2015GL064823, <http://dx.doi.org/10.1002/2015GL064823>, 2015GL064823, 2015.
- Böhme, L. and Send, U.: Objective analyses of hydrographic data for referencing profiling float salinities in highly variable environments, *Deep Sea Research Part II: Topical Studies in Oceanography*, 52, 651–664, 2005.
- Brodzik, M. J., Billingsley, B., Haran, T., Raup, B., and Savoie, M. H.: EASE-Grid 2.0: Incremental but Significant Improvements for Earth-Gridded Data Sets, *ISPRS International Journal of Geo-Information*, 1, 32–45, doi:10.3390/ijgi1010032, <http://www.mdpi.com/2220-9964/1/1/32>, 2012.
- Cox, G. F. and Weeks, W. F.: Equations for determining the gas and brine volumes in sea-ice samples, *Journal of Glaciology*, 29, 306–316, 1983.
- Eastwood, S.: OSI SAF Sea Ice Product Manual, v3.8 edn., <http://osisaf.met.no>, 2012.
- Haas, C., Lobach, J., Hendricks, S., Rabenstein, L., and Pfaffling, A.: Helicopter-borne measurements of sea ice thickness, using a small and lightweight, digital {EM} system, *Journal of Applied Geophysics*, 67, 234 – 241, doi:<http://dx.doi.org/10.1016/j.jappgeo.2008.05.005>, <http://www.sciencedirect.com/science/article/pii/S0926985108000682>, *airborne Geophysics*, 2009.
- Helm, V., Humbert, A., and Miller, H.: Elevation and elevation change of Greenland and Antarctica derived from CryoSat-2, *The Cryosphere*, 8, 1539–1559, doi:10.5194/tc-8-1539-2014, <http://www.the-cryosphere.net/8/1539/2014/>, 2014.
- Hendricks, S.: Validierung von altimetrischen Meereisdickenmessungen mit einem helikopter-basierten elektronischen Induktionsverfahren, Ph.D. thesis, Universität Bremen, 2009.
- Hendricks, S., Ricker, R., and Helm, V.: User Guide - AWI CryoSat-2 Sea Ice Thickness Data Product (v1.2), 2016.
- Kaleschke, L., Maaß, N., Haas, C., Hendricks, S., Heygster, G., and Tonboe, R.: A sea-ice thickness retrieval model for 1.4 GHz radiometry and application to airborne measurements over low salinity sea-ice, *The Cryosphere*, 4, 583–592, 2010.
- Kaleschke, L., Tian-Kunze, X., Maaß, N., Mäkynen, M., and Drusch, M.: Sea ice thickness retrieval from SMOS brightness temperatures during the Arctic freeze-up period, *Geophysical Research Letters*, 39, 2012.
- Kaleschke, L., Tian-Kunze, X., Maas, N., Ricker, R., Hendricks, S., and Drusch, M.: Improved retrieval of sea ice thickness from SMOS and CryoSat-2, in: *Geoscience and Remote Sensing Symposium (IGARSS), 2015 IEEE International*, pp. 5232–5235, IEEE, 2015.
- Kaleschke, L., Tian-Kunze, X., Maaß, N., Beitsch, A., Wernecke, A., Miernecki, M., Müller, G., Fock, B. H., Gierisch, A. M., Schlünzen, K. H., Pohlmann, T., Dobrynin, M., Hendricks, S., Asseng, J., Gerdes, R., Jochmann, P., Reimer, N., Holfort, J., Melsheimer, C., Heygster, G., Spreen, G., Gerland, S., King, J., Skou, N., Søbjaerg, S. S., Haas, C., Richter, F., and Casal, T.: {SMOS} sea ice product: Operational application and validation in the Barents Sea marginal ice zone, *Remote Sensing of Environment*, 180, 264 – 273, doi:<http://dx.doi.org/10.1016/j.rse.2016.03.009>, <http://www.sciencedirect.com/science/article/pii/S003442571630102X>, special Issue: ESA's Soil Moisture and Ocean Salinity Mission - Achievements and Applications, 2016.

- King, J., Gerland, S., Spreen, G., and Bratrein, M.: Helicopter-borne sea-ice thickness measurements from the 2014 IRO2 /ESA SMOSice campaign cruise in the Barents Sea region, doi:10.21334/npolar.2016.ee8f4f8d, <https://doi.org/10.21334/npolar.2016.ee8f4f8d>, 2016.
- King, J., Spreen, G., Gerland, S., Haas, C., Hendricks, S., Kaleschke, L., and Wang, C.: Sea-ice thickness from field measurements in the northwestern Barents Sea, *Journal of Geophysical Research: Oceans*, 122, 1497–1512, doi:10.1002/2016JC012199, <http://dx.doi.org/10.1002/2016JC012199>, 2017.
- Kurtz, N. T. and Farrell, S. L.: Large-scale surveys of snow depth on Arctic sea ice from Operation IceBridge, *Geophysical Research Letters*, 38, L20 505, <http://dx.doi.org/10.1029/2011GL049216>, 2011.
- Kurtz, N. T., Galin, N., and Studinger, M.: An improved CryoSat-2 sea ice freeboard retrieval algorithm through the use of waveform fitting, *The Cryosphere*, 8, 1217–1237, doi:10.5194/tc-8-1217-2014, <http://www.the-cryosphere.net/8/1217/2014/>, 2014.
- 10 Kwok, R.: Simulated effects of a snow layer on retrieval of CryoSat-2 sea ice freeboard, *Geophysical Research Letters*, 41, 5014–5020, doi:10.1002/2014GL060993, <http://dx.doi.org/10.1002/2014GL060993>, 2014.
- Kwok, R. and Cunningham, G. F.: Contributions of growth and deformation to monthly variability in sea ice thickness north of the coasts of Greenland and the Canadian Arctic Archipelago, *Geophysical Research Letters*, doi:10.1002/2016GL069333, <http://dx.doi.org/10.1002/2016GL069333>, 2016.
- 15 Kwok, R., Cunningham, G. F., Wensnahan, M., Rigor, I., Zwally, H. J., and Yi, D.: Thinning and volume loss of the Arctic Ocean sea ice cover: 2003–2008, *J. Geophys. Res.*, 114, doi:10.1029/2009JC005312, 2009.
- Laxon, S., Peacock, N., and Smith, D.: High interannual variability of sea ice thickness in the Arctic region, *Nature*, 425, 947–950, 2003.
- Laxon, S. W., Giles, K. A., Ridout, A. L., Wingham, D. J., Willatt, R., Cullen, R., Kwok, R., Schweiger, A., Zhang, J., Haas, C., Hendricks, S., Krishfield, R., Kurtz, N., Farrell, S., and Davidson, M.: CryoSat-2 estimates of Arctic sea ice thickness and volume, *Geophysical Research Letters*, 40, 732–737, doi:10.1002/grl.50193, <http://dx.doi.org/10.1002/grl.50193>, 2013.
- 20 Marshall, J., Adcroft, A., Hill, C., Perelman, L., and Heisey, C.: A finite-volume, incompressible Navier Stokes model for studies of the ocean on parallel computers, *Journal of Geophysical Research: Oceans*, 102, 5753–5766, doi:10.1029/96JC02775, <http://dx.doi.org/10.1029/96JC02775>, 1997.
- McIntosh, P. C.: Oceanographic data interpolation: Objective analysis and splines, *Journal of Geophysical Research: Oceans* (1978–2012), 25 95, 13 529–13 541, 1990.
- Mecklenburg, S., Drusch, M., Kaleschke, L., Rodriguez-Fernandez, N., Reul, N., Kerr, Y., Font, J., Martin-Neira, M., Oliva, R., Daganzo-Eusebio, E., Grant, J., Sabia, R., Macelloni, G., Rautiainen, K., Fauste, J., de Rosnay, P., Munoz-Sabater, J., Verhoest, N., Lievens, H., Delwart, S., Crapolicchio, R., de la Fuente, A., and Kornberg, M.: ESA’s Soil Moisture and Ocean Salinity mission: From science to operational applications, *Remote Sensing of Environment*, 180, 3 – 18, doi:<http://dx.doi.org/10.1016/j.rse.2015.12.025>, <http://www.sciencedirect.com/science/article/pii/S0034425715302467>, special Issue: ESA’s Soil Moisture and Ocean Salinity Mission - Achievements and Applications, 2016.
- 30 Meier, W. N., Hovelsrud, G. K., van Oort, B. E., Key, J. R., Kovacs, K. M., Michel, C., Haas, C., Granskog, M. A., Gerland, S., Perovich, D. K., Makshtas, A., and Reist, J. D.: Arctic sea ice in transformation: A review of recent observed changes and impacts on biology and human activity, *Reviews of Geophysics*, 52, 185–217, doi:10.1002/2013RG000431, <http://dx.doi.org/10.1002/2013RG000431>, 2014.
- 35 Menashi, J. D., St. Germain, K. M., Swift, C. T., Comiso, J. C., and Lohanick, A. W.: Low-frequency passive-microwave observations of sea ice in the Weddell Sea, *Journal of Geophysical Research: Oceans*, 98, 22 569–22 577, doi:10.1029/93JC02058, <http://dx.doi.org/10.1029/93JC02058>, 1993.

- Onogi, K., Tsutsui, J., Koide, H., Sakamoto, M., Kobayashi, S., Hatsushika, H., Matsumoto, T., Yamazaki, N., Kamahori, H., Takahashi, K., et al.: The JRA-25 reanalysis, *Journal of the Meteorological Society of Japan*, 85, 369–432, 2007.
- Petty, A. A., Hutchings, J. K., Richter-Menge, J. A., and Tschudi, M. A.: Sea ice circulation around the Beaufort Gyre: The changing role of wind forcing and the sea ice state, *Journal of Geophysical Research: Oceans*, 121, 3278–3296, doi:10.1002/2015JC010903, <http://dx.doi.org/10.1002/2015JC010903>, 2016.
- Pfaffling, A., Haas, C., and Reid, J. E.: Direct helicopter EM — Sea-ice thickness inversion assessed with synthetic and field data, *Geophysics*, 72, F127–F137, doi:10.1190/1.2732551, <http://geophysics.geoscienceworld.org/content/72/4/F127.abstract>, 2007.
- Ricker, R., Hendricks, S., Helm, V., Skourup, H., and Davidson, M.: Sensitivity of CryoSat-2 Arctic sea-ice freeboard and thickness on radar-waveform interpretation, *The Cryosphere*, 8, 1607–1622, doi:10.5194/tc-8-1607-2014, <http://www.the-cryosphere.net/8/1607/2014/>, 2014.
- Ricker, R., Hendricks, S., Perovich, D. K., Helm, V., and Gerdes, R.: Impact of snow accumulation on CryoSat-2 range retrievals over Arctic sea ice: An observational approach with buoy data, *Geophysical Research Letters*, 42, 4447–4455, doi:10.1002/2015GL064081, <http://dx.doi.org/10.1002/2015GL064081>, 2015GL064081, 2015.
- Ricker, R., Hendricks, S., and Beckers, J. F.: The Impact of Geophysical Corrections on Sea-Ice Freeboard Retrieved from Satellite Altimetry, *Remote Sensing*, 8, 317, doi:10.3390/rs8040317, <http://www.mdpi.com/2072-4292/8/4/317>, 2016.
- Tian-Kunze, X., Kaleschke, L., Maaß, N., Mäkynen, M., Serra, N., Drusch, M., and Krumpen, T.: SMOS-derived thin sea ice thickness: algorithm baseline, product specifications and initial verification, *The Cryosphere*, 8, 997–1018, doi:10.5194/tc-8-997-2014, <http://www.the-cryosphere.net/8/997/2014/>, 2014.
- Tilling, R. L., Ridout, A., and Shepherd, A.: Near-real-time Arctic sea ice thickness and volume from CryoSat-2, *The Cryosphere*, 10, 2003–2012, doi:10.5194/tc-10-2003-2016, <http://www.the-cryosphere.net/10/2003/2016/>, 2016.
- Vant, M., Ramseier, R., and Makios, V.: The complex-dielectric constant of sea ice at frequencies in the range 0.1–40 GHz, *Journal of Applied Physics*, 49, 1264–1280, 1978.
- Wang, X., Key, J., Kwok, R., and Zhang, J.: Comparison of Arctic Sea Ice Thickness from Satellites, Aircraft, and PIOMAS Data, *Remote Sensing*, 8, 713, doi:10.3390/rs8090713, <http://www.mdpi.com/2072-4292/8/9/713>, 2016.
- Warren, S. G., Rigor, I. G., Untersteiner, N., Radionov, V. F., Bryazgin, N. N., Aleksandrov, Y. I., and Colony, R.: Snow depth on Arctic sea ice, *Journal of Climate*, 12, 1814–1829, 1999.
- Wingham, D., Francis, C., Baker, S., Bouzinac, C., Brockley, D., Cullen, R., de Chateau-Thierry, P., Laxon, S., Mallow, U., Mavrocordatos, C., Phalippou, L., Ratier, G., Rey, L., Rostan, F., Viau, P., and Wallis, D.: CryoSat: A mission to determine the fluctuations in Earth’s land and marine ice fields, *Advances in Space Research*, 37, 841 – 871, doi:10.1016/j.asr.2005.07.027, 2006.
- Zhang, J., Rothrock, D., and Steele, M.: Recent Changes in Arctic Sea Ice: The Interplay between Ice Dynamics and Thermodynamics, *Journal of Climate*, 13, 3099–3114, doi:10.1175/1520-0442(2000)013<3099:RCIASI>2.0.CO;2, [http://dx.doi.org/10.1175/1520-0442\(2000\)013<3099:RCIASI>2.0.CO;2](http://dx.doi.org/10.1175/1520-0442(2000)013<3099:RCIASI>2.0.CO;2), 2000.