

1 Response to reviewers comments

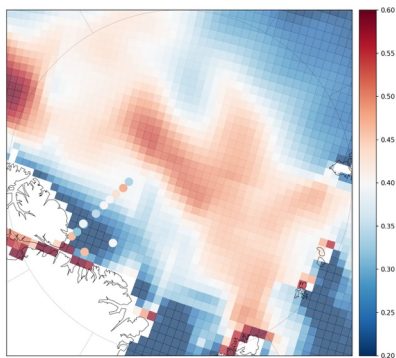
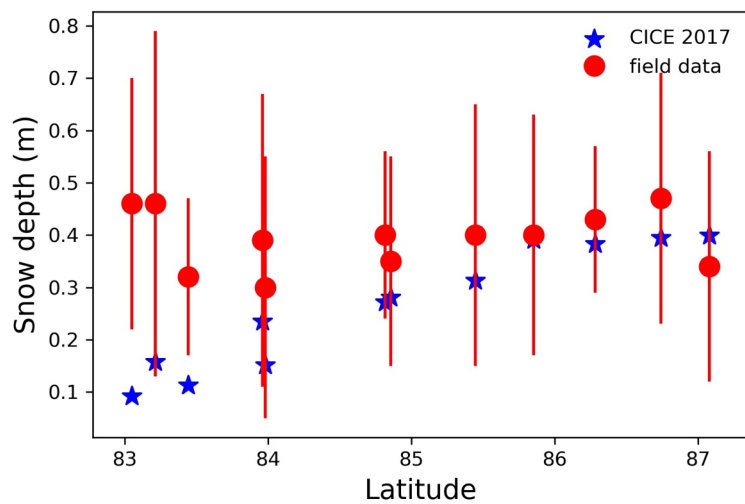
2 Reviewer 1

3 General Comments

4 The authors have nicely responded to my concerns on ice dynamics but I still have a concern
5 about the snow thickness role in 2017. While I agree that snowfall will vary year to year, it is
6 puzzling the authors do not even make reference to actual in situ measurements of snow
7 thickness in their region of interest. In Figure 7 (2017 panel), I see no reason why the CICE snow
8 anomalies should not be compared to actual in situ measurements made during that time by Haas
9 et al., (2017). Those measurements will provide some regional insight into how representative
10 CICE April 2017 snow anomalies actually are and in turn give stronger (or weaker) support for
11 the role of snow thickness in April 2017 ice thickness anomalies. Reliance on reanalysis data
12 should not take precedence over in situ observations if they are available.

13 We appreciate the reviewers comments, yet doing the comparison within the paper is somewhat
14 problematic as it would invite a systematic comparison of CICE snow depth with all available in
15 situ data, something outside the scope of this paper. In addition, we are working with monthly
16 CICE output whereas the in situ data was collected over a week period, and as we know, a single
17 in situ observation is unlikely to represent the larger CICE grid cell. Nevertheless, we have
18 looked at the mean snow depth for each site collected (i.e. average of all transects at each site)
19 during the Lincoln Sea field campaign and compared that with the mean monthly CICE data for
20 April 2017. We find that in general the monthly mean value of April snow depth from CICE is
21 less than the snow depths measured for days during April in the Lincoln Sea, though the standard
22 deviations are high in the in situ data (about half the mean). We added a statement to that effect
23 in the text Lines . “While it is difficult to ascertain the accuracy of the CICE snow depths,
24 comparison with snow depths collected by Haas et al. (2017) in the Lincoln Sea showed CICE
25 snow depths were underestimated on average by 10cm (not shown). Thus, the overall impact on
26 overall ice thickness may be less than computed here.”
27

Deleted: ”



Specific Comments:

Line 62-62

Ricker et al. [2017a] is initially referenced and then Ricker et al. [2017b]. Suggest putting them both at the beginning or end.

The reason for putting the first one at the start and the second at the end is that the second paper pertains to blending the CS2 data with SMOS, whereas the first reference pertains to the study where they used the data to examine thickness changes. Thus, we have left it unchanged, but can

40 change if the editor prefers.

41

42 Line 360

43 Reference to the very recent (and timely) Moore et al. 2018, GRL paper should be made here
44 about the collapse of the Beaufort High.

45 Done.

46

47 Line 375

48 CAA not CCA

49 Done

50

51 References

52 Moore, G. W. K., Schweiger, A., Zhang, J. & Steele, M. (2018). Collapse of the 2017 winter
53 Beaufort High: A response to thinning sea ice?. Geophysical Research Letters, 45.

54 <https://doi.org/10.1002/2017GL076446>

55

56 Reviewer 2

57 The authors have mostly addressed my concerns. The readability of the figures is improved and
58 clarifications have been made in the text.

59

60 I only have one minor concern left. I am still not fully convinced of how the model simulations
61 are discussed in the paper. I understand that you only consider the Arctic Basin and that for this
62 area, the mean monthly ice growth rates match the satellite observations very well. And I think
63 for most parts of the paper, this works out, when you consider Arctic Basin wide ice growth
64 rates. But I have the feeling that sometimes the model simulations are considered as the
65 “reference”. To be more specific, for example, after discussing differences in regional patterns
66 between the products (L301-331), in L332-334: “While the discrepancy in this region is
67 puzzling, the bias between the CICE-ini simulations and the CS2 products may in part reflect the
68 use of a snow climatology in the CS2 thickness retrievals”. Surely, this can be a reason, but it
69 could be also due to the model forcing, no? My point is that the presented evaluation of the
70 model simulations only shows that the mean monthly thickness of an Arctic sub-region matches
71 the satellite observations. Therefore, I would like to see a clear statement about the
72 limitations/uncertainties of the model simulations in the paper, when differences as in L301-331
73 are discussed.

74

75 Again, I think the paper is well written and interesting, and deserves publication in TC.

76

77 We appreciate the reviewer’s comments. We agree with the reviewer that the model simulations
78 are not the reference and biases between the CICE simulations and CS2 may also be from model
79 biases. However, snow cover can also be one of the reasons and unfortunately none of the
80 CryoSat-2 algorithms can currently differentiate between anomalous snow coverage and
81 anomalous sea-ice thickness. Since the other reviewer also raised the concern about the snow
82 depth in CICE, we looked at our 2017 snow depths relative to the in situ data collected in the
83 Lincoln Sea and found they are generally underestimated, yet this is not a very robust assessment
84 since we looked at monthly CICE data and compared with daily data collected in April.

Formatted: Font color: Red

Formatted: Font: (Default) +Headings CS (Times New Roman), 12 pt, Complex Script Font: +Headings CS (Times New Roman), 12 pt

It is further important to note that it is impossible to derive precise error estimates for simulated ice thickness at each grid cell. We add this sentence on lines 284-286 to address the uncertainties “While the thermodynamic ice growth can be regarded as quite accurate (error of April ice thickness around 10-20cm), uncertainty caused by dynamics (divergence, ridging) can be larger under certain conditions.”

Formatted: Font: Times New Roman, 12 pt, Complex Script
Font: 12 pt

Warm Winter, Thin Ice?

Julienne Stroeve^{1,2}, David Schroder³, Michel Tsamados¹, Daniel Feltham³

¹Centre for Polar Observation and Modelling, Earth Sciences, University College London, London, UK

²National Snow and Ice Data Center, University of Colorado, Boulder, CO, USA

³Centre for Polar Observation and Modelling, Department of Meteorology, University of Reading, Reading, UK

Abstract

Winter 2016/2017 saw record warmth over the Arctic Ocean, leading to the least amount of freezing degree days north of 70°N since at least 1979. The impact of this warmth was evaluated using model simulations from the Los Alamos sea-ice model (CICE) and CryoSat-2 thickness estimates from three different data providers. While CICE simulations show a broad region of anomalously thin ice in April 2017 relative to the 2011-2017 mean, analysis of three CryoSat-2 products show more limited regions with thin ice and do not always agree with each other, both in magnitude and direction of thickness anomalies. CICE is further used to diagnose feedback processes driving the observed anomalies, showing 11-13 cm reduced thermodynamic ice growth over the Arctic domain used in this study compared to the 2011-2017 mean, and dynamical contributions of +1 to +4 cm. Finally, CICE model simulations from 1985-2017 indicate the negative feedback relationship between ice growth and winter air temperatures may be starting to weaken, showing decreased winter ice growth since 2012 as winter air temperatures have increased and the freeze-up has been further delayed.

Introduction

It is well known that Arctic air temperatures are rising faster than the global average [e.g. Bekryaev *et al.*, 2010; Serreze and Barry, 2011]. The thinning and shrinking of the summer sea ice cover have played a role in this amplified warming, which is most prominent during the autumn and winter months as the heat gained by the ocean mixed layer during ice-free summer periods is released back to the atmosphere during ice formation [e.g. Serreze *et al.*, 2009; Screen and Simmonds, 2010]. However, Arctic amplification has been found in climate models without changes in the sea ice cover [Pithan and Mauritsen, 2014]. Increased latent energy transport [Graversen and Burtu, 2016], the lapse rate feedback [Pithan and Mauritsen, 2014; Graversen, 2006] and changes in ocean circulation [Polyakov *et al.*, 2005] have also contributed. Furthermore, cyclones are effective means of bringing warm and moist air into the Arctic during winter [e.g. Boisvert *et al.*, 2016].

Winter 2015/2016 was previously reported as the warmest Arctic winter recorded since records began in 1950 [Cullather *et al.*, 2016]. Warming was Arctic-wide, with temperature anomalies reaching +5°C [Overland and Wang, 2016] and temperatures near the North Pole hitting 0°C [Boisvert *et al.*, 2016]. Part of the unusual warming was linked to a strong cyclone that entered the Arctic in December 2015 [Boisvert *et al.*, 2016], resulting in reduced thermodynamic ice growth and thinning within the Kara and Barents seas [Ricker *et al.*, 2017; Boisvert *et al.*, 2016]. This was one of several cyclones to enter the Arctic that winter as a result of a split tropospheric vortex that brought warm and moist air from the Atlantic Ocean towards the pole [Overland and Wang, 2016]. Winter 2016/2017 once again saw temperatures near the North Pole reach 0°C in December 2016 and February 2017 [Graham *et al.*, 2017]. These warming events were similarly associated with large storms entering the Arctic [Cohen *et al.*, 2017]. It has been suggested that the recent warm winters represent a trend towards increased duration and intensity of winter warming events within the central Arctic [Graham *et al.*, 2017].

In general, warm winters, combined with increased ocean mixed layer temperatures from summer sea ice loss, delay freeze-up, impacting the length of the ice growth season and the period for snow accumulation on the sea ice. Stroeve *et al.* [2014] previously evaluated changes in the melt onset and freeze-up, showing large delays in freeze-up within the Chukchi, East Siberian, Laptev and Barents seas, with delays increasing on the order of +10 days per decade. Later freeze-up has a non-trivial influence on basin-wide sea ice thickness: ice grows thermodynamically faster for thin ice than for thick ice [Bitz and Roe, 2004]. More subtle effects involving the timing of ice growth relative to major snow precipitation events in fall have been shown to also control the growth rate of sea ice thickness; ice grows faster for a thinner snow pack [Merkouriadi *et al.*, 2017]. Nevertheless, the maximum winter sea ice extent in 2017 set a new record low for the 3rd year in a row. Have the recent warm winters played a role in these record low winter maxima by reducing winter ice formation?

Ricker *et al.* [2017a] previously evaluated the impact of the 2015/2016 warm winter on ice growth using sea ice thickness derived from blending CryoSat-2 (CS2) radar altimetry with those from Soil Moisture and Ocean Salinity (SMOS) radiometry [Ricker *et al.*, 2017b]. They found anomalous freezing degree days (FDDs) between November 2015 and March 2016 within the Barents Sea of 1000 degree days coincided with a thinning of approximately 10 cm in March compared to the 6-year mean. While near-surface air temperatures largely control thermodynamic ice growth, other processes also impact ice growth, including ocean circulation, sensible and latent heat exchanges. Furthermore, winter ice thickness is not only a result of thermodynamic ice growth, but rather the combined effects of thermodynamic and dynamic processes. A thinner ice cover is more prone to ridging and rafting, as well as ice divergence, leading to new ice formation within leads/cracks within the ice pack. This however was not evaluated by Ricker *et al.* [2017a].

In this study we evaluate the impact of the 2016/2017 anomalously warm winter on Arctic sea ice thickness using the Los Alamos sea-ice model (CICE) [Hunke *et al.*, 2015] and satellite-derived CS2 thickness data from three different sources: Centre for Polar Observation and Modeling (CPOM) [Tilling *et al.*, 2017], Alfred Wegener Institute (AWI) [Hendricks *et al.*, 2016], and NASA [Kurtz and Harbeck, 2017]. CICE is initialized with CPOM CS2 sub-grid scale ice thickness distribution (ITD) fields in November and run forward with NCEP Reanalysis-2 (NCEP2) atmospheric reanalysis data [Kanamitsu *et al.*, 2002, updated 2017]. The model run is subsequently compared over the winter growth season to CS2 thickness from the three different data providers and contributions of thermodynamics vs. dynamics to the thickness

anomalies are evaluated. While the focus is on the 2016/2017 ice growth season, a secondary aim is to compare existing CS2 products to inform the community on uncertainties in these estimates and inform on model limitations. Thus, results are also presented for other years during the CS2 time-period for comparison. To our knowledge, this is the first study to compare different CS2 data products over the lifetime of the mission.

Methods

Ice Thickness Distribution (ITD) from Cryosat-2

The CryoSat-2 radar altimetry mission was launched April 2010, providing estimates of ice thickness during the ice growth season. CS2 provides freeboard estimates, or the height of the ice surface above the local sea surface, which when combined with information on snow depth, snow density and ice density can be converted to ice thickness assuming hydrostatic equilibrium [e.g. *Laxon et al.*, 2013]. Here we evaluate ice thickness fields provided by three different data providers in order to assess robustness of the observed thickness anomalies. Thickness is retrieved from ice freeboard by processing CS2 Level 1B data, with a footprint of 300m by 1700m, and assuming snow density and snow depth from the *Warren et al.* [1999] climatology (hereafter *W99*), modified for the distribution of multiyear versus first-year ice (i.e. snow depth is halved over first-year ice) [see *Laxon et al.*, 2013 and *Tilling et al.*, 2017 for data processing details].

While the three data providers rely on *W99* for snow depth and density, each institution processes the radar returns differently. In general, the range to the main scattering horizon of the radar return is obtained using a retracker algorithm. This can be based on a threshold [e.g. *Laxon et al.*, 2013; *Ricker et al.*, 2014; *Hendricks et al.*, 2016], or a physical retracker [*Kurtz et al.*, 2014]. While the CPOM and AWI products use a leading edge 70% threshold retracker, *Kurtz and Harbeck* [2017] rely on a physical model to best fit each CryoSat-2 waveform. This will lead to ice thickness differences based on different thresholds applied: *Kurtz et al.* [2014] found a 12 cm mean difference between using a 50% threshold and a waveform fitting method.

We note that several factors contribute to CS2-derived sea ice thickness uncertainties, including the assumption that the radar return is from the snow/ice interface [*Willat et al.*, 2011], snow depth departures from climatology and the use of fixed snow and ice densities. In this study we initialize the CICE model simulations described below with the CPOM sea ice thickness fields. Accuracy of the CPOM product has been evaluated in several studies, suggesting mean biases between thickness observations in 2011 and 2012 of 6.6 cm when compared with airborne EM data [*Laxon et al.*, 2013; *Tilling et al.*, 2015]. For April 2017, the CPOM near-real-time product [*Tilling et al.*, 2016] was used in place of the archived product, with a mean thickness bias of 0.9 cm between these products.

In this study, individual thickness point measurements are binned into 5 CICE thickness categories (1: < 0.6m, 2: 0.6-1.4m, 3: 1.4-2.6m, 4: 2.6-3.6m, 5: > 3.6m) on a rectangular 50km grid for each month. The mean area fraction and mean thickness is derived for each thickness category and these values are interpolated on the tripolar 1 degree CICE grid (~40km grid resolution). Grid points with less than 100 individual measurements and a mean SIT < 0.5 m are not included. Otherwise, all individual observations are included. For November, this effectively limits the area of the Arctic to the region shown in Figure 1(c). Negative thickness values that are retained in the CS2 processing to prevent statistical positive bias of the thinner ice are added to category 1. The novel approach of initializing the CICE model with the full ITD rather than the

mean sea ice thickness provides an additional control on the repartition of the ice among different thickness categories. This in turn allows a more accurate representation of ice growth and ice melt processes [Tsamados *et al.*, 2015] compared to initializing with the mean grid-cell SIT and deriving the fractions for each ice category assuming a parabolic distribution. Ice growth and melt strongly depend on SIT: using a real distribution can have a big impact, especially for thin ice.

CICE Simulations

CICE is a dynamic-thermodynamic sea-ice model designed for inclusion within a global climate model. The advantages of using CICE for this study is that we can more readily separate thickness anomalies into their thermodynamic and dynamical contributions, examine inter-annual variability and perform longer simulations. For this study, we performed two different CICE simulations. The first is a multiyear simulation from 1985 to 2017 (referred to as CICE-free). The second is a stand-alone sea-ice simulation for the pan-Arctic region starting in mid-November and running until the end of April of the following year for the last 7 winter periods from 2010/2011 to 2016/2017. This results in seven 1-year long simulations (referred to as CICE-ini), in which the initial thickness and concentration for each of the 5 ice categories is updated from the CS2 ITD using the CPOM CS2 November thickness fields. For grid points without CS2 data, and for all other variables (e.g. temperature profiles, snow volume), results from the free CICE simulation with the same configuration started in 1985 are applied. In this way, CICE simulations cover the pan-Arctic region, but in regions where no CS2 are available, we restart SIT values from the free CICE model run. While this approach would be problematic in a coupled model, in a stand-alone sea ice simulation the model adjustment to the new conditions is smooth and the impact of using the vertical temperature profile from the free simulation only affects sea ice thickness on the order of millimeters.

Snow accumulation can depart strongly from the *W99* climatology for individual years. Thus, we make the assumption that the deviation of the mean *annual* cycle of snow depth over the last 7 years from the *W99* climatology is small and assume mean winter ice growth to be determined accurately from CS2, and tuned CICE-ini accordingly to match the observed CS2 mean winter ice growth from the CPOM product in the central Arctic [Figure 1]. The excellent agreement for both CICE-ini and CICE-free with CS2 increases the confidence of our model results. Our approach therefore allows us to study inter-annual variability from 2 model configurations with different sources of errors, in addition to the 3 CS2-based products.

For both CICE simulations, NCEP-2 provides the atmospheric forcing. We use NCEP-2 2m air temperatures because they have been shown to be more realistic for the Arctic Ocean than those from ERA-Interim [Jakobshavn *et al.*, 2012]. The setup is the same as described in Schröder *et al.* [2014] including a simple ocean-mixed layer model, a prognostic melt pond model [Flocco *et al.*, 2012] and an elastic anisotropic-plastic rheology [Tsamados *et al.*, 2013], with the following improvements: we apply an updated CICE version 5.1.2 with variable atmospheric and oceanic form drag parameterization [Tsamados *et al.* 2014], we increase the thermal conductivity of fresh ice from 2.03 W/m/k to 2.63 W/m/K, snow from 0.3 W/m/K to 0.5 W/m/K and the emissivity of snow and ice from 0.95 to 0.976. While the default conductivity values are at the lower end of the observed range, the new values are at the upper end and have been applied in previous climate simulations [e.g. Rae *et al.*, 2014].

Below, all CS2-derived sea ice thickness anomalies are computed relative to the CS2 time-period: November anomalies are relative to 2010-2016, and for April they are relative to 2011-

2017. Results for November and April are only shown for all grid cells which have a minimum thickness of 50 cm and a minimum of 100 individual measurements for each of the seven years. For the month of November, this corresponds to all colored area shown in Figure 1(c). For April, this region represents the area in red shown in Figure 1(d). The larger region shown in Figure 1(d) also corresponds to the region over which the amount of thermodynamic ice growth and dynamical ice growth between November and April are assessed from the CICE simulations. For comparison with CS2, we present the mean thickness of the ice-covered area. In winter, the sea ice concentration in the model generally ranges between 0.98 and 0.995% apart from locations close to the ice edge. Further note that area-averaged values for November and April are only given for regions shown in Figure 1(c) and Figure 1(d), respectively.

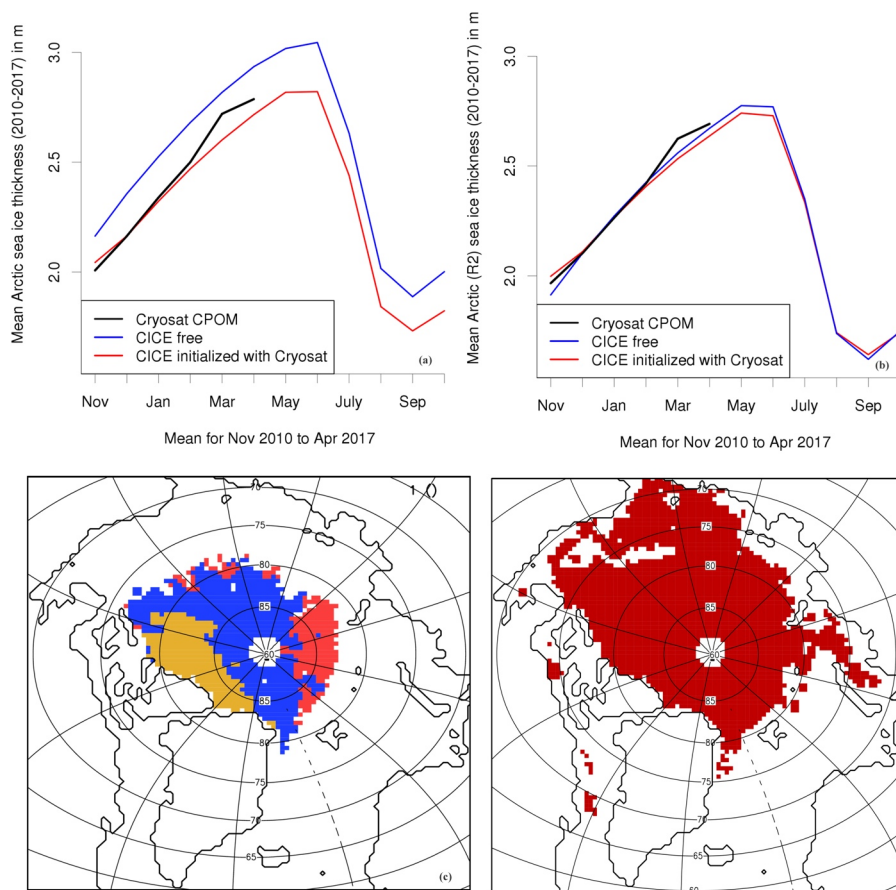


Figure 1. Comparison of CPOM CryoSat-2 mean seasonal sea ice thickness (black) with CICE free (blue) and CICE initialized with Cryosat-2 in November (red). Figure 1(a) shows results for mean thickness averaged over all the colored areas shown Figure 1(c), representing the total region for which Cryosat-2 data exist in November (only grid

points included with > 100 measurements per month and mean thickness > 0.5m) and (b) mean thickness averaged over the sub-region shown in blue with medium thick ice in January (between 1.5 and 2.5m). Blue areas in Figure 1(c) show regions between November and January where CryoSat-2 thickness are between 1.5 and 2.5 m in all years; red for thin ice (< 1.5) and orange for thick ice (> 2.5m). Figure 1(d) is the region over which the April thickness anomalies and results are presented.

Results

Air temperature and freezing anomalies

The growing season air temperatures anomalies (i.e. mid-November 2016 to mid-April 2017 relative to 1981-2010) were positive throughout the Arctic, leading to large reductions in the number of FDDs, computed as the cumulative daily 2 m NCEP-2 air temperatures below -1.8°C, similar to *Ricker et al.* [2016]. FDDs computed this way reflect both the number of days with air temperatures below freezing, and the magnitude of below freezing air temperatures over the specified period. Spatially, FDD anomalies show widespread reductions over most of the Arctic Ocean, with the largest reductions in the Barents and Kara seas, stretching across the pole towards the Beaufort and Chukchi seas [Figure 2b]. In contrast, during winter 2015/2016, FDDs were most notably anomalous within the Barents and Kara seas [Figure 2a], in agreement with *Ricker et al.* [2017a]. Overall, as averaged from 70-90°N, this past winter witnessed the least amount of cumulative FDDs since at least 1979 [Figure 2c].

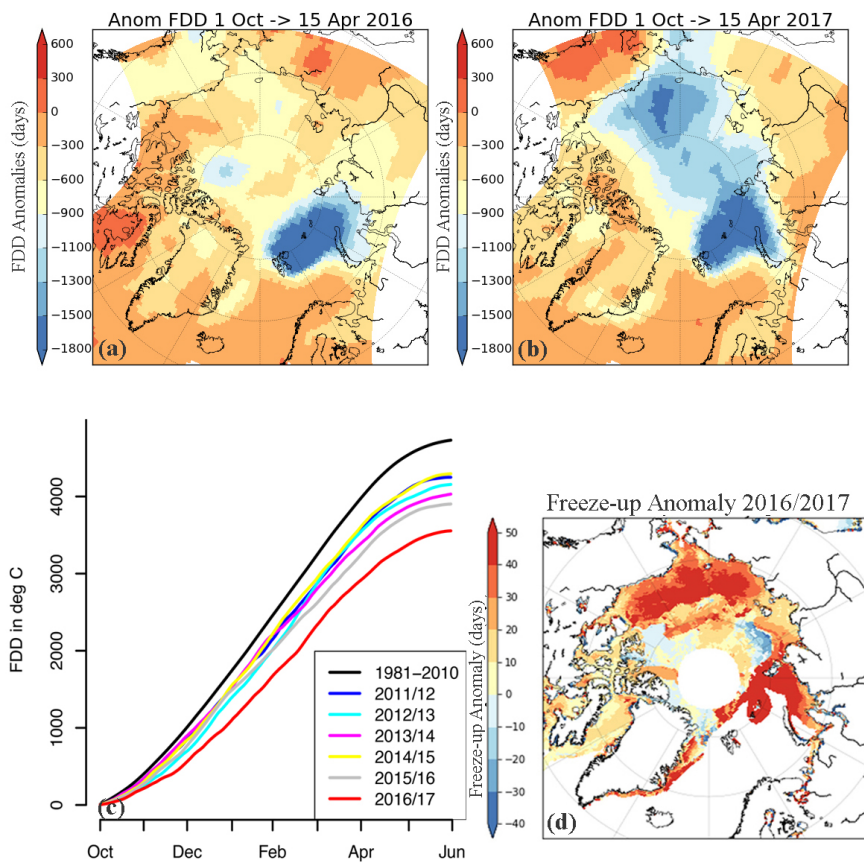


Figure 2. Top panel shows the freezing degree anomalies (FDD) computed as the number of days with NCEP2 2m air temperature below -1.8°C from mid-November to mid-April in winter 2016 (a) and winter 2017 (b) computed relative to the 1981-2010 climatology. Bottom left image shows the cumulative freezing degree days (FDDs) averaged over region shown in Figure 3 inset (c), and bottom right image shows freeze-up anomalies for 2016/2017 relative to 1981-2010 (d). Areas in white are either missing (pole hole) or no sea ice in winter 2016/2017.

While ice forms quickly within the central Arctic once air temperatures drop below freezing, this year saw large delays in freeze-up throughout the Arctic. Updating results previously reported in *Stroeve et al.* [2014], freeze-up was delayed by 20 days for the Arctic as a whole, with regions like the Bering, Beaufort, Chukchi, East Siberian and Kara seas delayed by three to four weeks [Figure 2d]. Within the Barents Sea, the regionally averaged freeze-up was delayed by 60 days. In recent years, the trend towards later freeze-up has increased, with the Barents and Chukchi seas showing the largest trends on the order of +14 days per decade through 2017, followed by the Kara and East Siberian seas with delays on the order of +10 to +12 days per decade. Within the Beaufort Sea, freeze-up is now happening later by +9 days per decade [Table 1].

November ice thickness anomalies

Before analyzing how the reduced number of freezing degree days impacted winter ice growth during 2016/2017, it is useful to first inter-compare the different CryoSat-2 thickness estimates. We start with a comparison of November thickness from the three CS2 data sets from November 2010 to 2016 [Figure 3]. It is encouraging to find that year-to-year variability in the spatial patterns of positive and negative thickness anomalies are generally consistent between the three products despite differences in waveform processing. The AWI and CPOM data sets are in better agreement with each other than with the NASA product, which is expected as they use a similar retracker. Furthermore, all three data sets show widespread thinner ice in November 2011, and widespread thicker ice in November 2013. This is further supported by analysis of regional mean thickness and anomalies computed over the region shown in Figure 1(c) [Table 2]. For comparison, we also list results from the CICE-free model simulation. In November 2011, the different CS2 data products are in agreement that the ice was anomalously thin (-32 to -46 cm), the thinnest in the CS2 data record. Similarly, in November 2013, all three CS2 products show overall thicker ice on the order of +23 to +38 cm. The CICE-free simulations also show anomalously thinner and thicker ice during these years, but larger anomalies were simulated in 2012 and 2014.

While the overall pattern of years with anomalously thin or thick ice is broadly similar between the three CS2 products, this is not true in 2016. Both the CPOM and AWI thickness estimates suggest slightly thicker ice than average (+4 cm and +9 cm, respectively), while the NASA product suggests the icepack was overall slightly thinner (-1 cm). The CICE-free run is in agreement with the NASA data set for the 2016 anomaly. Turning back to Figure 3, we find that in 2016 the CPOM data set shows +20 to +60 cm thicker ice north of the Canadian Archipelago (CAA) and Greenland, -20 to -60 cm thinner ice on the Pacific side of the pole, and +10 to +30 cm thicker ice north of the Laptev Sea. These spatial patterns of November 2016 SIT anomalies are broadly similar with those from AWI but less so with NASA. However, despite similar patterns of positive and negative thickness anomalies, AWI shows between +20 and +30 cm thicker ice over much of the central Arctic Ocean, and even thicker ice (up to +60 cm) north of the CAA and Greenland in November 2016 than the CPOM product. NASA on the other hand shows larger negative anomalies on the Pacific side of the north pole of up to -70 cm and larger positive anomalies directly north of the CAA between +10 and +20 cm.

Since we use CPOM CS2 thickness fields to initialize our CICE model runs, this comparison is useful in determining whether or not the 2016 November thickness anomalies are robust in other CS2 processing streams and provides a measure of CS2 sea ice thickness uncertainty. However, since we do not have the AWI and NASA ITDs we cannot quantify the impact of using a different thickness data set on our simulations. However, as a result of the negative

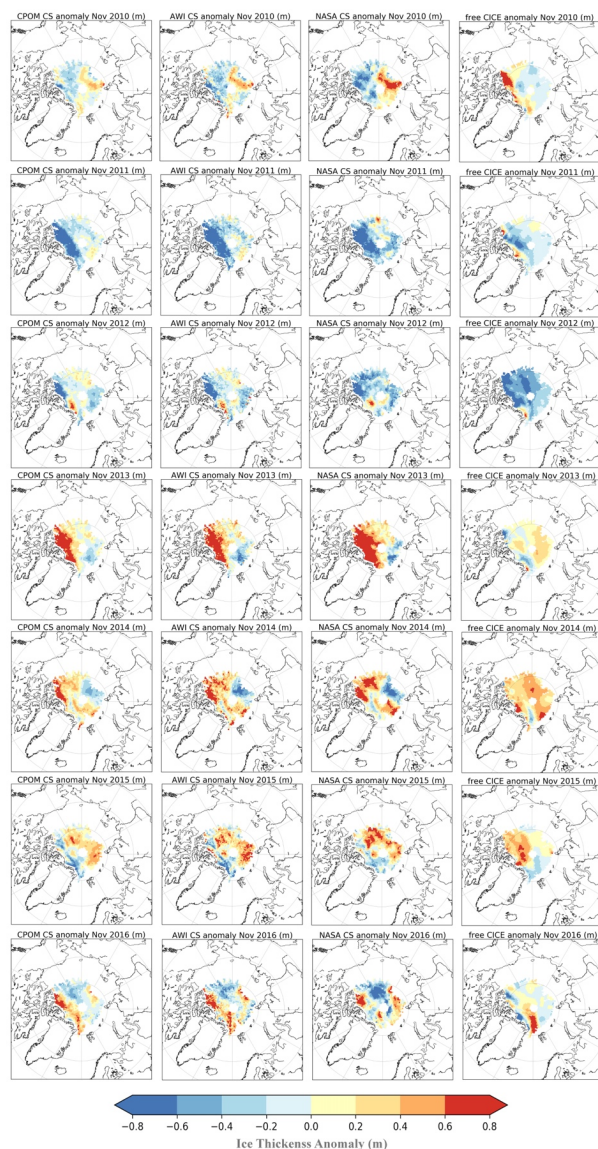


Figure 3. November ice thickness anomaly relative to 2010-2016 in cm based on CryoSat-2 data from UCL CPOM (left), Alfred Wegener Institute (AWI) (middle) and NASA (right). Grid points with less than 100 individual measurements and a mean sea ice thickness of less than 0.5 m are not included. CICE-free thickness anomalies are also shown in the left right column.

winter ice growth feedback (discussed below), differences due to model initialization in November will be attenuated until April.

Sea Ice growth from November to April

For a more robust analysis of winter ice growth during the record warm winter of 2016/2017, we now include April thickness estimates from CS2 (CPOM, AWI and NASA), the free CICE simulation and the CICE simulations initialized with CPOM CS2 November SIT in **Figure 4**. Corresponding values for all other years are shown in **Figure 5** (CS2) and **Figure 6** (CICE). **Table 3** summarizes associated mean April thickness and anomalies since 2011, together with contributions from thermodynamics (ice growth) and dynamics (ice transport and ridging) based on the CICE model simulations. The area for which these estimates are provided corresponds to the area shown in Figure 1(d).

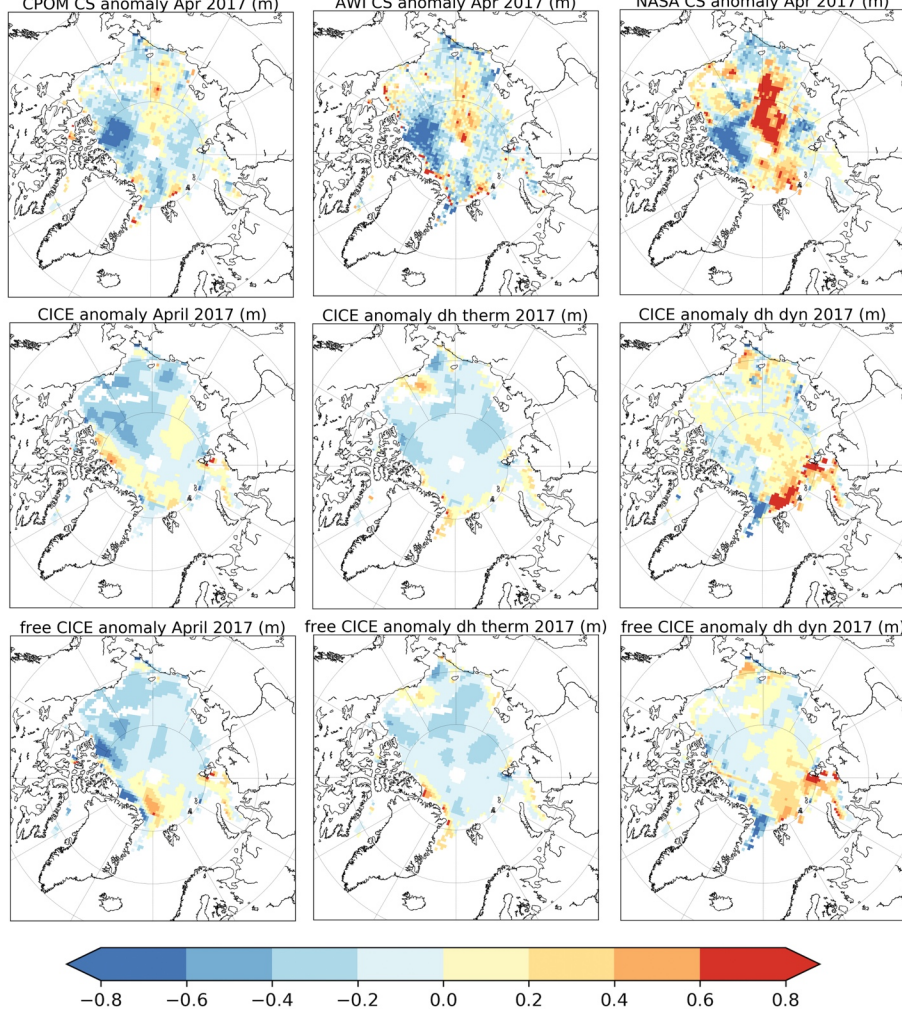
We first note that all 5 estimates have different strengths and weaknesses: while the mean annual cycle of sea ice thickness *should* be more accurate from CS2 than modeled estimates, robust analysis of winter ice growth from CS2 is in part limited due to the impact of climatological snow depth assumptions, which may differ from one year to the next, and differences in waveform processing between CS2 data providers, which may result in inconsistencies in the magnitude and direction of the observed thickness anomalies. In the free CICE simulation, November sea ice thickness is less certain due to error accumulation during the model run. In the initialized CICE simulation, both these error sources are reduced but inherent model biases remain. *While the thermodynamic ice growth can be regarded as quite accurate in CICE (error of April ice thickness around 10-20cm), uncertainty caused by dynamics (divergence, ridging) can be larger under certain conditions.* Below, we discuss some of the regional differences below, *but* we are most confident in the model simulations on the Arctic Basin-wide scale over which CICE has been tuned to agree with CS2 winter ice growth.

Despite these limitations, all five approaches show good agreement in most years regarding the direction of the thickness anomalies (i.e. positive or negative) even if they disagree on absolute magnitude. For example, Arctic Ocean mean thickness anomalies are negative in all 3 CS2 products for April 2013 (ranging from -3 to -25 cm), whereas in April 2014 and 2015 all approaches give positive mean thickness anomalies, ranging from +5 to +20 cm in 2014 and +11 to +22 cm in 2015 [**Table 3**]. In some years, the CICE-free simulation better matches the observed April thickness anomalies (e.g. 2013, 2015), whereas in other years CICE-ini performs better (e.g. 2012, 2014). On the other hand, in 2011 and 2017 we find disagreement among the three CS2 data sets. In April 2011, both the CPOM and NASA product have overall negative thickness anomalies for the Arctic Basin (-4 and -8 cm, respectively), whereas they are positive in the AWI product (+7 cm). In April 2017, both the CPOM and AWI are in close agreement that the ice cover was overall thinner (-13 and -12 cm, respectively), as are the CICE-free and CICE-ini simulations (negative thickness anomalies of -13 cm), whereas NASA shows a weak positive anomaly (+3cm).

Focusing more on April 2017, the 3 CS2 products suggest widespread thinner ice in April 2017 north of Ellesmere Island (up to -80 cm thinner) relative to the 2011-2017 mean [**Figure 4(top)**]. Thinner ice is also found within the Chukchi and East Siberian seas (on average -10 to -35 cm thinner) despite a mix of positive and negative anomalies. CICE simulations on the other hand show more widespread thinning throughout the western Arctic, including the Beaufort Sea and positive thickness anomalies north of Ellesmere Island [**Figure 4(middle and bottom)**]. In the Beaufort Sea, there is general disagreement among the 3 CS2 products as well as with the

Deleted: While

405 CS2 results and the CICE simulations: regional mean anomaly of -5 cm (CPOM), 0 cm (AWI),
 406 +20 cm (NASA), -25 cm (CICE-ini) and -30 cm (CICE-free). North of Ellesmere Island, CICE-CPOM CS anomaly Apr 2017 (m)



407 **Figure 4.** CryoSat-2 and CICE simulated thickness anomalies in April 2017 relative to the 2011-2017 mean. Top
 408 images show the total ice thickness anomalies from CryoSat-2 for CPOM (left), AWI (middle) and NASA (right).
 409 The middle left image shows April 2017 thickness anomalies from CICE initialized with CPOM November CS2
 410 thickness together with the contributions from thermodynamics (middle) and dynamics (left) and bottom show the
 411 corresponding results from the CICE free simulations. Grid points with less than 100 individual measurements and a
 412 mean sea ice thickness of less than 0.5 m are not included.
 413

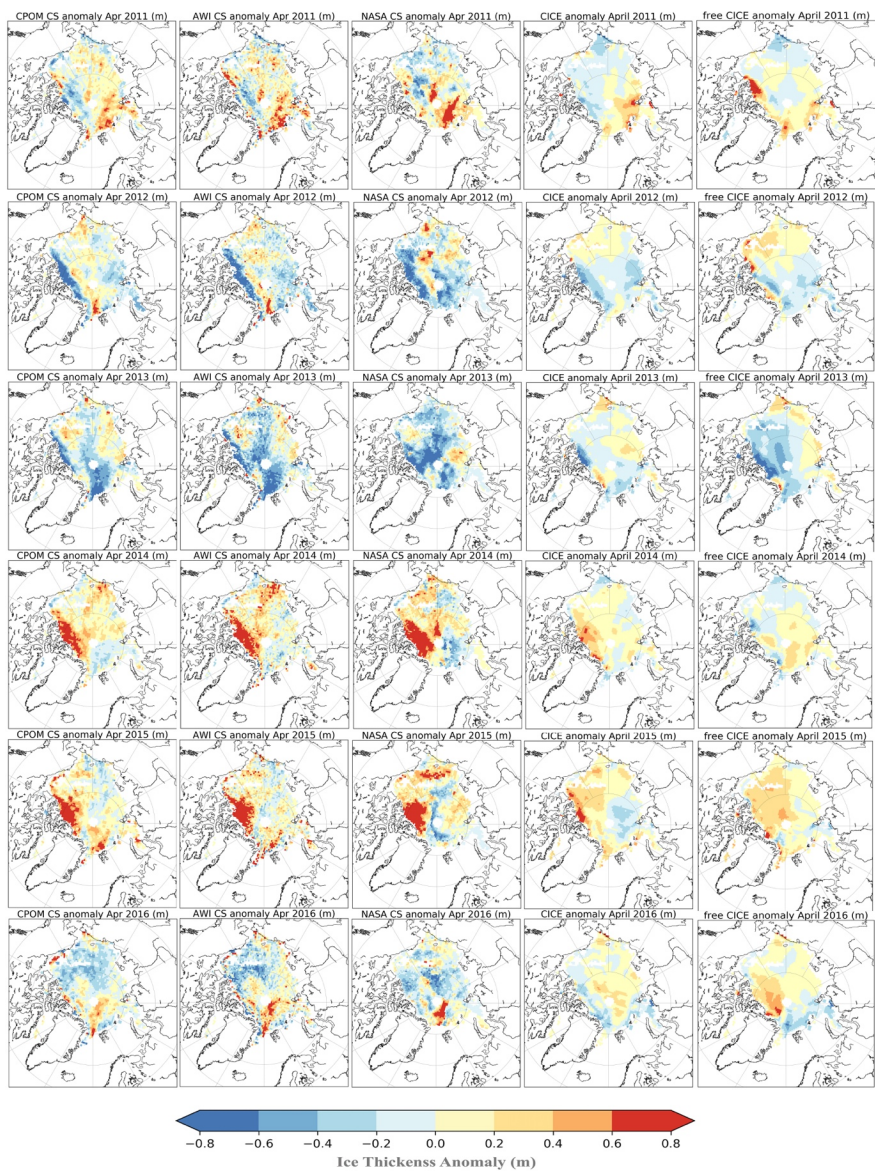


Figure 5. Anomaly of April ice thickness from 2011 to 2016 in m relative to the 2011 to 2017 mean from CryoSat-2 CPOM (far left), AWI (second left), NASA (middle), CICE simulations initialized with November CPOM CryoSat-2 thickness fields (2nd right), and CICE simulations not initialized with CryoSat-2 thickness (right). Grid points with less than 100 individual measurements and a mean sea ice thickness of less than 0.5 m are not included.

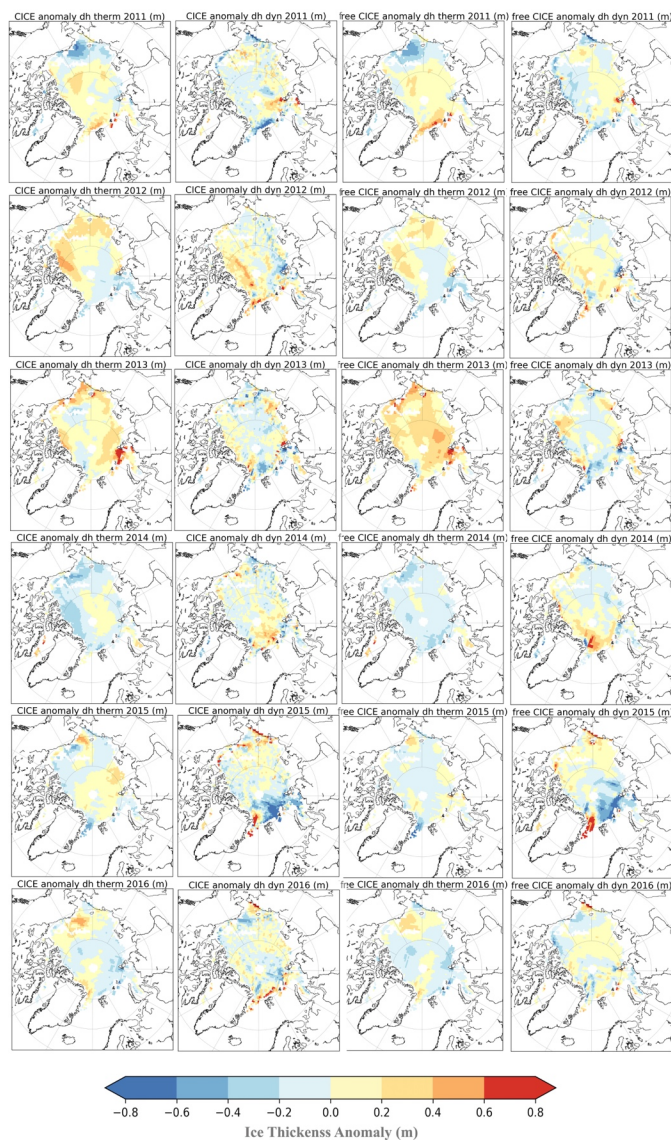


Figure 6. Anomalies of CICE simulated thermodynamic ice growth and dynamical thickness changes in m relative to the 2011 to 2017 mean from the CICE simulations initialized with November CPOM CryoSat-2 thickness fields (left), and CICE simulations not initialized with CryoSat-2 thickness (right). The year in title reflects the end month over which ice growth occurs (e.g. from November to April).

ini indicates positive thickness anomalies (up to +50 cm), whereas all 3 CS2 products show negative thickness anomalies (up to -80 cm). In this region, the CICE-free simulation also shows mostly negative thickness anomalies (-20 to -80 cm), with a small positive area (up to +25 cm).

While the discrepancy in this region is puzzling, the bias between the CICE-ini simulations and the CS2 products may in part reflect the use of a snow climatology in the CS2 thickness retrievals. As discussed earlier, a positive sea ice thickness anomaly was found in the November 2016 CS2 thickness retrievals north of CAA and Greenland. Yet this positive thickness anomaly is not preserved through April in both the CPOM and AWI CS2 products. **Figure 7** shows CICE simulated snow depth anomalies in November 2016 and April 2017. In November, small positive snow depth anomalies occur throughout the Arctic, especially north of the Queen Elizabeth Islands where the anomaly locally increases to 20 cm. By April, the anomalies cover a broader region and increase in magnitude. A positive April snow depth anomaly of 15 to 20 cm relative to *W99* would result in an underestimation of the CS2-retrieved April ice thickness (SIT) by 88 to 115 cm using the following equation:

$$SIT = \frac{\rho_{snow}H_{snow} + \rho_{water}F_c}{(\rho_{water} - \rho_{ice})}$$

where F_c is the corrected radar freeboard (F_b) for the reduced propagation of the speed of light through the snow cover ($F_c = F_b + 0.25H_{snow}$) [Tilling *et al.*, 2017], and using a snow density (ρ_{snow}) of 320 kg/m³ [Warren *et al.*, 1999], ice density (ρ_{ice}) of 915 kg/m³, water density of (ρ_{water}) 1024 kg/m³. CICE-ini, which relies on the CPOM CS2 November thickness, maintains this positive thickness anomaly through April despite reduced thermodynamic ice growth. While it is difficult to ascertain the accuracy of the CICE snow depths, comparison with snow depths collected by Haas *et al.* (2017) in the Lincoln Sea showed CICE snow depths were underestimated on average by 10cm (not shown). Thus, the overall impact on overall ice thickness may be less than computed here. The CICE-free simulation on the other hand started with negative thickness anomalies in November within this region, and maintains them through April.

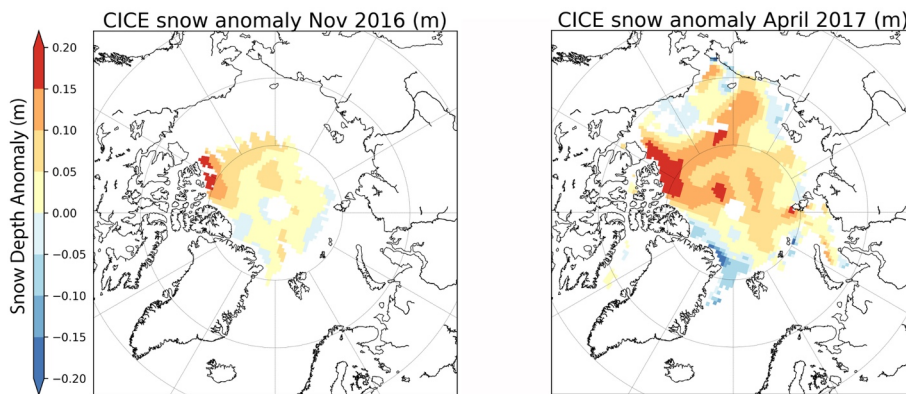


Figure 7. Snow depth anomaly for November 2016 (relative to 2010-2016) and April 2017 (relative to 2011-2017) from CICE.

On the other hand, thickness is also strongly influenced by dynamics, such as convergence against the CAA and Greenland which leads to thicker ice in this region [Kwok *et al.*, 2015]. During winter 2017 however, the Beaufort High largely collapsed [Moore *et al.*, 2018], reducing convergence against the northern CAA and Greenland [Figure 8]. One advantage of using CICE, is that we can more readily diagnose thermodynamic vs. dynamical contributions to the observed thickness anomalies. For the region directly north of Ellesmere Island, both the CICE-ini and CICE-free simulations support reduced sea ice convergence, leading to thinner ice from dynamical contributions. At the same time, this region also exhibited reduced thermodynamic ice growth in both CICE simulations. One would expect thermodynamic ice growth to be reduced in regions of enhanced snow depth and thicker November ice. Positive snow depth anomalies extended from this region through the northern Beaufort Sea, in agreement with extended regions reductions in thermodynamic ice growth in both CICE-free and CICE-ini. At the same time, regions of positive 2016 November thickness anomalies are also associated with regions of reduced CICE thermodynamic ice growth.

Overall, the largest reductions in thermodynamic ice growth during winter 2016/2017 occurred within the Chukchi Sea and north of the CAA, extending through the northern Beaufort Sea (on the order of -40 cm). While snow depth and thickness anomalies influenced thermodynamic ice growth north of the CAA, within the Chukchi Sea the negative ice growth anomalies was a result of late ice formation: ice formed a month later than the 1981-2010 mean within the Chukchi Sea. This seems to have been more important than increases in ice thickness from dynamics. Dynamical thickness changes simulated by CICE show an overall thickening of the ice in winter 2016/2017 within the Chukchi and Bering seas (up to 50 cm). Anomalous ridging in this region is in agreement with observed high amounts of deformation along the shore fast ice zone within the Chukchi Sea as a result of persistent west winds from December to March (<http://arcus.org/sipn/sea-ice-outlook/2017/june>).

An exception to reduced thermodynamic ice growth occurs directly north of Utqiagvik, Alaska (formerly Barrow), with positive thermodynamic ice growth anomalies of 30 to 40 cm. This enhanced ice growth was offset by ice divergence, leading to overall thinner ice in the CICE simulations. *In situ* observations of level first-year ice thickness off the coast of Utqiagvik ranged between 1.35 and 1.40m during May (<http://arcus.org/sipn/sea-ice-outlook/2017/june>) and appear to be in better agreement with the CICE simulations, as well as the CPOM and AWI CS2 thickness estimates, while the NASA CS2 product shows positive thickness anomalies in that region. Positive thermodynamic ice growth anomalies are also found for small regions north of Greenland and within Fram Strait, as well as within some scattered coastal regions of the Chukchi, East Siberian, Laptev and Kara seas.

Finally, large dynamical thickening was found within the Kara and northern Barents seas (up to 1.2 m) and to a lesser extent over the southern and western Greenland Sea, Baffin Bay and the Labrador Sea (not shown). The CICE-simulated dynamical thickening in the Barents and Kara seas is more anomalous than seen during previous CS2 years [Figure 6], and likely reflects the influence of the positive Arctic Oscillation (AO) on ice motion [Figure 8]. The AO was positive from December through March, a pattern which results in offshore ice advection from Siberia and enhanced ice advection through Fram Strait [Rigor *et al.*, 2002]. This pattern leads to development of thin ice in newly formed open water areas, increasing thermodynamic ice growth in the Laptev Sea, whereas increased ice advection from thick ice regions north of Greenland

Formatted: Font: Italic, Complex Script Font: Italic

Deleted: CCA

504 towards Fram Strait, combined with changes in internal ice stress as the ice cover has thinned,
505 leads to more deformation. Interestingly, while the CICE model runs confirm overall slightly
506

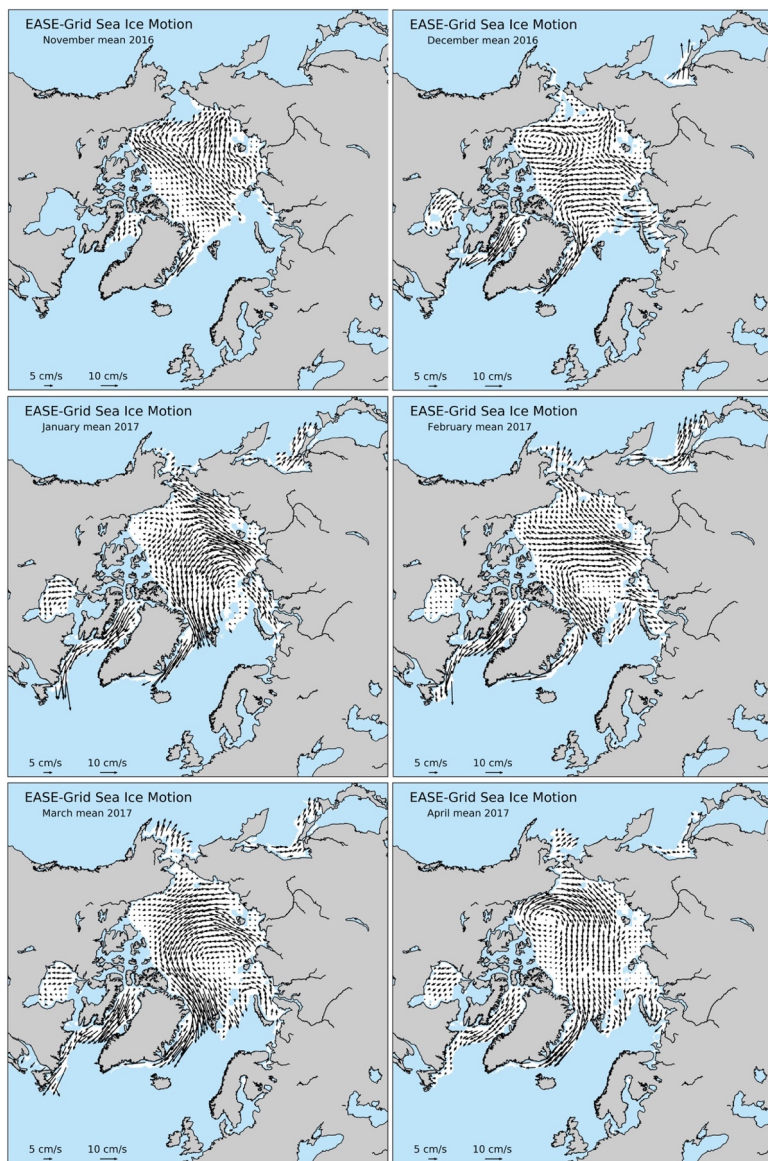


Figure 8. Mean monthly sea ice motion from the NSIDC Polar Pathfinder Data Set. Preliminary data provided by Scott Stewart, NSIDC.

thinner ice within the Barents Sea in April 2016, consistent with the studies by *Ricker et al.* [2017a] and *Boisvert et al.* [2016], the thinning from reduced thermodynamic ice growth was largely offset by thickening from dynamical effects [Figures 5 and 6].

Overall, for the Arctic Basin as a whole, CICE simulations suggest the overall thinner ice observed in April 2017 is largely result of reduced thermodynamic ice growth (-11 to -13 cm), with dynamics adding +1 to +4 cm [Table 3].

Negative feedbacks

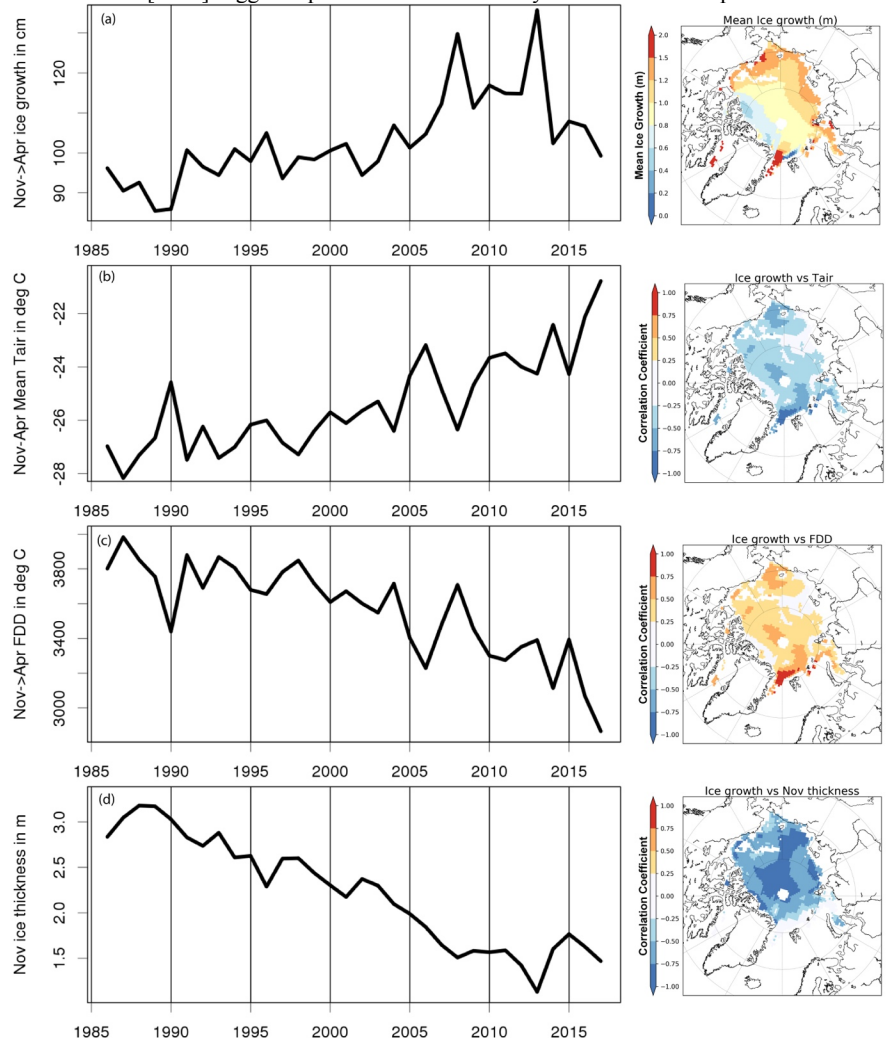
Ice growth after the September minima is a result of turbulent heat flux exchanges between the relatively warm ocean mixed layer and the cold autumn and winter air through the snow-covered sea ice. Progressively, as the ice grows to about 1.5 to 2 m thick, the ocean becomes well insulated from the atmosphere and ice growth is slowed. Thus, it is not surprising that we see less thermodynamic ice growth in regions of relatively thick (> 2.5 m) November ice. A case in point is seen in winter 2013/2014 when thermodynamic ice growth was reduced by 9 to 10 cm, despite an overall colder winter.

On the other hand, thinner ice regions generally exhibit more vigorous ice growth. For example, during winter 2012/2013, CICE-free, and to a lesser extent CICE-ini simulated thermodynamic ice growth increased throughout much of the Arctic Ocean in areas where the ice retreated in September 2012 [Figure 6] and where the November 2012 thickness anomalies were negative [Figure 3]. This process of rapid winter ice growth over thin ice regions represents a negative feedback, allowing for ice to form quickly over large parts of the Arctic Ocean following summers with reduced ice cover and thinner November ice.

Thus, while summer sea ice is rapidly declining, several studies have indicated negative feedbacks over winter continue to dominate [e.g. *Notz and Marotzke*, 2012; *Stroeve and Notz*, 2015], allowing for recovery following summers with anomalously low sea ice extent, such as those observed in 2007 and 2012. This is further supported in the CICE-free simulations which show the least amount of winter ice growth for the Arctic Basin in 1989, and peak ice growth following the 2007 and 2012 record minimum sea ice extent [Figure 9]. As a result, mean ice growth from November to April in CICE simulations from 1985 to 2017 shows a positive trend that is weakly correlated to winter air temperatures or FDDs ($R=0.49$). On the other hand, we find a strong inverse correlation ($R=-0.82$) between November sea ice thickness and winter ice growth. Thus, because thin ice grows faster than thick ice, there is an overall stabilizing effect that suggests as long as air temperatures remain below freezing, even if they are anomalously warm, the ice can recover during winter. This stabilizing feedback over winter means that major departures of the September sea ice extent from the long-term trend caused by summer atmospheric variability generally does not persist for more than a few years [*Serreze and Stroeve*, 2015].

However, since 2012, overall ice growth has declined as winter air temperatures have increased further. This not surprising in that there was a lot of new ice to form in the open waters left after the 2012 record minima. However, 2016 tied with 2007 for the second lowest Arctic sea ice minimum and overall thermodynamic ice growth was significantly less. The correlation from 1985 to 2012 is smaller than over the full record ($R=0.34$), suggesting a growing influence of warmer winter air temperatures though the difference in correlation is not statistically significant. While there remains a large amount of inter-annual variability in winter warming events,

555 *Graham et al. [2017]* suggest a positive trend in not only the maximum temperature of these



556
557 **Figure 9.** Time-series from 1985 to 2017 of mean winter ice growth (mid-November to mid-April) in the free CICE
558 simulation (a), mean 2m NCEP-2 air temperature (b), cumulative freezing degree days (FDDs) (c) and November ice
559 thickness (d). All time-series results are averaged over the areas shown in Figure S1(c). Corresponding images to
560 the left of each time-series plots show: mean ice growth from November to April as averaged from 1985/1986 to
561 2016/2017; correlation coefficient between ice growth and 2m NCEP-2 air temperature; correlation coefficient
562 between ice growth and FDDs; and correlation coefficient between ice growth and November ice thickness,
563 respectively. All correlation values are given for linear regression of de-trended time series.

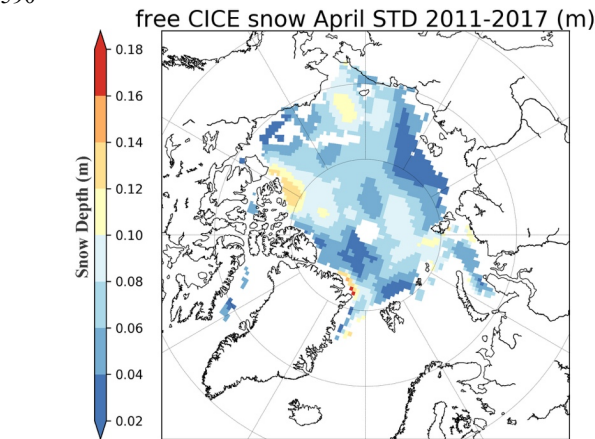
564 warming events, but also in their duration. Interestingly, there is a modest correlation between
565 detrended FDDs and the winter maxima sea ice extent ($R=0.30$); not removing the trend results
566 in a correlation of $R=0.83$. Thus, recent reductions in overall FDDs may have played a role in the
567 last three years of record low maxima extents.
568

569 **Discussion**

570 The CICE-simulations and CS2 thickness retrievals from CPOM and AWI show consistency
571 that the Arctic Basin sea ice cover in April 2017 was on average 13 cm thinner than the 2011-
572 2017 mean. However, it may not have been the thinnest during the CS2 data record. Thickness
573 retrievals from the different CS2 data sets showed larger negative thickness anomalies in April
574 2013, ranging from -13 to -25 cm, whereas the CICE simulations showed smaller anomalies (-3
575 to -12 cm). While we expect retrievals from satellite to be more accurate than those from model
576 simulations, whether or not a year is anomalously low relative to another year will depend in part
577 on the inter-annual variability in the snow cover. All three CS2 products rely on the *W99* snow
578 depth climatology. While *Haas et al. (2017)* found snow depth within the Lincoln Sea in 2017
579 was similar to *W99*, evaluation of reanalysis data shows considerable variability in total
580 precipitation from year to year [*Barrett et al.*, submitted]. In the CICE-free simulations, snow
581 depth is modeled using precipitation from NCEP-2. Inter-annual variability from April 2011 to
582 April 2017 (calculated as standard deviation between the 7 monthly April means) is shown in
583 **Figure 10**. North of the CAA, standard deviations in snow depth are on the order of 12 to 14 cm,
584 whereas other regions are on the order of 2 to 12 cm. From the *W99* climatology, inter-annual
585 variability in snow depth during the winter months was estimated to be only 4 to 6 cm,
586 significantly less than what is exhibited here. Since ice thickness increases approximately 6 times
587 the snow depth uncertainty, a 12 to 14 cm uncertainty would lead to 72 to 83 cm **change** in CS2-
588 derived ice thickness. If we average for the area shown in Figure 1(d), snow depth anomalies
589 ranged from -6 cm to +6 cm, with a corresponding impact of -41 to +41 cm on thickness.

Formatted: Font: Italic, Complex Script Font: Italic
Formatted: Font: Italic, Complex Script Font: Italic

Deleted: increase



591
592 **Figure 10.** Standard deviation of CICE-simulated snow depth using NCEP-2 reanalysis for the month of April from
593 2011 to 2017.
594

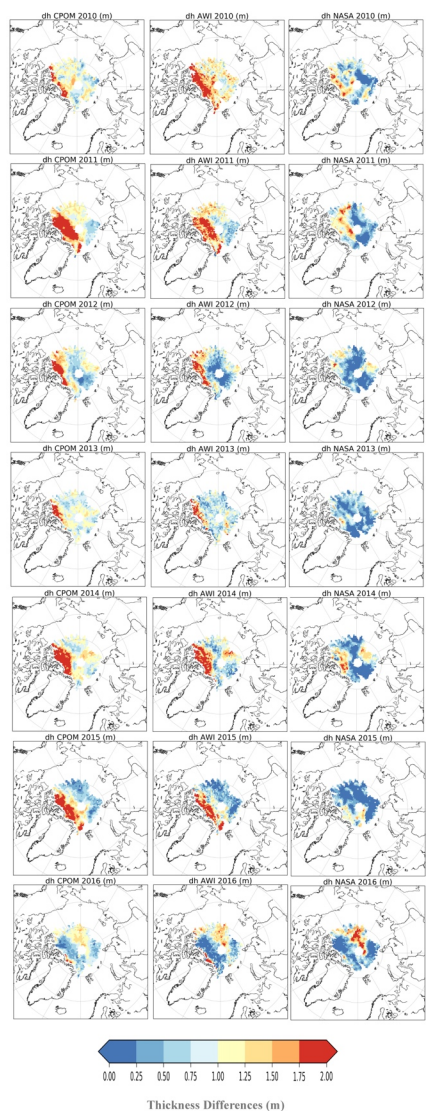


Figure 11. Comparison between ice growth (April minus November) in the UCL CPOM CryoSat-2 thickness retrievals (left) and those from the Alfred Wegener Institute (AWI) (middle) and NASA (right). The year shown corresponds to the November months, such that 2016 refers to ice thickness differences between April 2017 and November 2016. Results are only shown for the area shown in Figure 1(c), which represents grid points that had more than 100 individual measurements and a mean sea ice thickness greater than 0.5 m during the November months.

Besides not accounting for inter-annual variability in snow depth, which makes assessing thickness anomalies from one year to the next less certain, differences in waveform processing between the three different CS2 products adds further uncertainty. The fact that the NASA CS2 product is a general outlier compared to the AWI and CPOM products is further highlighted in **Figure 11**. Across the area considered (e.g. areas in color shown in Figure 1(c)), the difference between April and the previous November ice thickness is shown for each CryoSat-2 year. The AWI and CPOM products tend to exhibit positive ice growth over winter, focused north of Greenland and the CAA and sometimes also across the pole. The NASA product on the other hand generally shows less ice growth between November and April in most years, and even no ice growth in some regions. The reasons for this are unclear, yet interestingly in winter 2016/2017, all three products show more agreement in regards to thickness decreases that span a broad region north of Greenland and the CAA, combined with positive increases south of the pole towards the East Siberian and Laptev seas.

Finally, how important were the April thickness anomalies in the evolution of the summer ice cover in summer 2017? Several studies have discussed how thin winter ice may precondition the Arctic for less sea ice at the end of the melt season as thinner ice melts and open water areas form more readily in summer, enhancing the ice albedo feedback [e.g. *Stroeve et al.*, 2012; *Perovich et al.*, 2008], and sea ice thickness has been used as a predictor for the September sea ice extent [Kimura et al., 2013]. Thus, we may have expected 2017 to be among the lowest recorded sea ice extents as the ice cover was likely thinner than average and the winter extent was the lowest in the satellite record. Nevertheless, the minimum extent ended up as the 8th lowest in the satellite data record. This highlights the continuing importance of summer weather patterns in driving the September minimum. Spring and summer 2017 were dominated by several cold core cyclones, leading to near average air temperatures and ice divergence [see <http://nsidc.org/arcticseaicenews/> for a discussion of this summer's weather patterns]. Overall, the correlation between detrended winter sea ice thickness anomalies and September sea ice extent remains low [Stroeve and Notz, 2015]. Other factors such as melt pond formation in spring [Schröder et al., 2014] and summer weather patterns still largely govern the evolution of the summer ice pack at current thickness levels [e.g. *Holland and Stroeve*, 2011]. Interestingly, predictions of the monthly mean September 2017 sea ice extent based on spring melt pond fraction in May gave a value of 5.0 ± 0.5 million km², whereas the observed value was 4.80 million km² [See arcus.org/sipn/sea-ice-outlook/2017/june].

Conclusions

In this study we examined sea ice thickness anomalies derived from three different CS2 data products and that simulated using CICE. Overall freezing degree days were much reduced in winter 2016/2017, and subsequent sea ice thickness estimates from CryoSat-2 in April 2017 suggest the ice was thinner over large parts of the Arctic Ocean. These results are complimented with CICE model simulations, both with and without initializing with November ice thickness distributions from CS2. While CICE simulations suggest the mean thickness within the Arctic Basin in April 2017 was the thinnest over the CryoSat-2 data record, corresponding CS2-derived sea ice thickness from the three different data providers put this into question. However, the use of CS2-derived freeboards with a snow depth climatology remains problematic because it fails to capture inter-annual snow accumulation variability. Differences in processing of the radar waveform, values of snow and ice density, delineation of first-year vs. multiyear ice, and sea

surface height retrieval also contribute to differences among available data sets, making it challenging to robustly assess inter-annual variability of ice thickness from CryoSat-2. Despite these challenges it is encouraging that in most years, the interannual variability in positive and negative anomalies is consistent between the 3 CS2 data sets.

Finally, CICE-free simulations from 1985 to 2017 reveal the correlation between winter ice growth and November ice thickness ($R=-0.82$) is stronger than between growth and FDDs ($R=0.49$), highlighting the importance of the negative winter growth feedback mechanism. This supports previous studies that the long-term sea ice reduction in the Arctic Basin is mainly driven by summer atmospheric conditions. However, this correlation has become weaker since 2012, indicating that higher winter air temperatures and further delays in autumn/winter freeze-up due to warmer mixed-layer ocean temperatures prohibit a complete recovery of winter ice thickness in spite of the negative feedback mechanism. This is highlighted by the fact that overall thermodynamic ice growth for winter 2016/2017 was just under 1m despite 2016 reaching the second lowest minimum extent recorded during the satellite record.

Acknowledgements

This work was in part funded under NASA grant NNX16AJ92G (Stroeve). Sea ice simulations and CryoSat-2 satellite data processing performed under NERC funding of the Centre for Polar Observation and Modeling (CPOM). CryoSat-2 thickness fields courtesy of A. Ridout at CPOM. Processing of the AWI CryoSat-2 (PARAMETER) is funded by the German Ministry of Economics Affairs and Energy (grant: 50EE1008) and data from November 2010 to April 2017 obtained from <http://www.meereisportal.de> (grant: REKLIM-2013-04). NASA CryoSat-2 data provided courtesy of Nathan Kurtz. NCEP2 data obtained from NOAA Earth System Research Laboratory (<http://www.esrl.noaa.gov/psd/data/gridded/data.ncep.reanalysis2.gaussian.html>). Freeze-up data are available at <https://neptune.gsfc.nasa.gov/csb/index.php?section=54>. CICE model output data available upon request.

References

- Bekryaev, R.V., I.V. Polyakov and V.A. Alexeev (2010), Role of polar amplification in long-term surface air temperature variations and modern Arctic warming, *J. Clim.*, 23, 3888-3906.
- Bitz, C.M. and G.H. Roe (2004), A mechanism for the high rate of sea ice thinning in the Arctic Ocean, *J. Clim.*, 17, 2623-2632, doi:10.1175/1520-0442(2004)017<3623:AMFTHR>2.0.CO;2.
- Boisvert, L.N., A.A. Petty, and J. Stroeve (2016), The Impact of the Extreme Winter 2015/16 Arctic Cyclone on the Barents–Kara Seas, *Bull. Amer. Met. Soc.*, doi:10.1175/MWR-D-16-0234.1.
- Cohen, L., S. R. Hudson, V. P. Walden, R. M. Graham, M. A. Granskog (2017), Meteorological conditions in a thinner Arctic sea ice regime from winter through early summer during the 388 Norwegian young sea ICE expedition (N-ICE2015), *J. Geophys. Res. Atmos.*, doi:10.1002/2016JD026034.
- Cullather, R. I., Y. Lim, L. N. Boisvert, L. Brucker, J. N. Lee, and S. M. J. Nowicki (2016), Analysis of the 426 warmest Arctic winter, 2015-2016, *Geophys. Res. Lett.*, 808–816, doi:10.1002/2016GL071228.
- Dee, D. P. et al. (2011), The ERA-Interim reanalysis: Configuration and performance of the data 428 assimilation system, *Q. J. R. Meteorol. Soc.*, 137(656), 553–597, doi:10.1002/qj.828.
- Flocco, D., D. Schröder, D. L. Feltham, and E. C. Hunke (2012), Impact of melt ponds on Arctic sea ice simulations from 1990 to 2007, *J. Geophys. Res.*, doi:10.1029/2012JC008195.

Deleted: Data policy:

696 Graham, R.M., L. Cohen, A.A. Petty, L.N. Boisvert, A. Rinke, S.R. Hudson, M. Nicolaus and
697 M.A. Granskog, (2017), increasing frequency and duration of Arctic winter warming events,
698 *Geophys. Res. Lett.*, 16, 6974-6983, doi:10.1002/2017GL073395.

699 Graversen, R.G. and M. Burtu (2016), Arctic amplification enhanced by latent energy transport
700 of atmospheric planetary waves, *Quart. Royal Meteor. Soc.*, doi:10.1002/qj.2802.

701 Graversen R.G. 2006. Do changes in midlatitude circulation have any impact on the Arctic
702 surface air temperature trend? *J. Clim.* 19: 5422–5438.

703 Haas, C., Beckers, J., King, J., Silis, A., Stroeve, J., Wilkinson, J., Notenboom, B., Schweiger,
704 A., & Hendricks, S. (2017). Ice and snow thickness variability and change in the high Arctic
705 Ocean observed by in situ measurements. *Geophys. Res. Lett.*, 44, 10,462–10,469,
706 doi:10.1002/2017GL075434.

707 Hendricks, S., R. Ricker and V. Helm (2016), User Guide - AWI CryoSat-2 Sea Ice Thickness
708 Data Product (v1.2).

709 Holland, M.M. and J.C. Stroeve (2011), Changing seasonal sea ice predictor relationships in a
710 changing Arctic climate, *Geophys. Res. Lett.*, doi:10.1029/2011GL049303.

711 Hunke, E. C., W. H. Lipscomb, A. K. Turner, N. Jeffery, and S. Elliott (2015), CICE: the Los
712 Alamos Sea Ice Model Documentation and Software User's Manual Version 5.1.

713 Jakobshavn, E., T. Vihma, T. Palo, L. Jakobson, H. Keernik and J. Jaagus (2012), validation of
714 atmospheric reanalysis over the central Arctic Ocean, *Geophys. Res. Lett.*, 39, L10802,
715 doi:10.1029/2012GL051591.

716 Kanamitsu, M., W. Ebisuzaki, J. Woollen, S-K Yang, J.J. Hnilo, M. Fiorino, and G. L. Potter
717 (2002, updated 2017), NCEP-DOE AMIP-II Reanalysis (R-2): 1631-1643, *Bull. Amer. Met.*
718 *Soc.*

719 Kimura, N., A. Nishimura, Y. Tanaka and H. Yamaguchi (2013), Influence of winter sea-ice
720 motion on summer ice cover in the Arctic, *Polar Research*, 32,
721 doi:10.3402/polar.v32i0.20193.

722 Kurtz, N. and J. Harbeck. 2017. *CryoSat-2 Level 4 Sea Ice Elevation, Freeboard, and Thickness,*
723 *Version 1*. [Indicate subset used]. Boulder, Colorado USA. NASA National Snow and Ice
724 Data Center Distributed Active Archive Center. [Date Accessed].

725 Kurtz, N.T., N. Galin and M. Studinger (2014), An improved CryoSat-2 sea ice freeboard
726 retrieval algorithm through the use of a waveform fitting, *The Cryosphere*, 8, 1217-1237,
727 doi:10.5194/tc-802017-2014.

728 Kwok, R. (2015), Sea ice convergence along the Arctic coasts of Greenland and the Canadian
729 Arctic Archipelago: Variability and extremes (1992–2014), *Geophys. Res. Lett.*, 42, 7598–
730 7605, doi:10.1002/2015GL065462.

731 Laxon, S. W., K.A. Giles, A.L. Ridout, D.J. Wingham, R. Willatt, R. Cullen, R. Kwok, A.
732 Schweiger, J. Zhang, C. Haas, S. Hendricks, R. Krishfield, N. Kurtz, S. Farrell, and M.
733 Davidson, (2013), CryoSat-2 estimates of Arctic sea ice thickness and volume, *Geophys. Res.*
734 *Lett.*, 40, 732–737, doi:10.1002/grl.50193.

735 Markus, T., J. C. Stroeve, and J. Miller, (2009). Recent changes in Arctic sea ice melt onset,
736 freeze-up, and melt season length, *J. Geophys. Res.*, doi:10.1029/2009JC005436.

737 Merkouriadi, I., B. Cheng, R.M. Graham, A. Rosel and M.A. Granskog (2017), Critical role of
738 snow on sea ice growth in the Atlantic sector of the Arctic Ocean, *Geophysical Research*
739 *Letters*, 44, 10-479-10,485, doi:10.1002/2017GL075494.

740 Moore, G. W. K. (2016), The December 2015 North Pole Warming Event and the Increasing
741 Occurrence of Such Events, *Sci. Rep.*, 6(November), 39084, doi:10.1038/srep39084.

Formatted: Norwegian Bokmål

Formatted: Indent: Before: 0", Hanging: 0.2"

742 [Moore, G. W. K., Schweiger, A., Zhang, J. & Steele, M. \(2018\), Collapse of the 2017 winter](#)
 743 [Beaufort High: A response to thinning sea ice?, *Geophys. Res. Lett.*, 45,](#)
 744 [Doi:10.1002/2017GL076446,](#)
 745 Notz, D. and J. Marotzke (2012), Observations reveal external driver for Arctic sea ice retreat,
 746 *Geophys. Res. Lett.*, doi:10.1029/2012GL051094.
 747 Overland, J. E., and M. Wang (2016), Recent extreme arctic temperatures are due to a split polar
 748 vortex, *J. Clim.*, 29(15), 5609–5616, doi:10.1175/JCLI-D-16-0320.1.
 749 Perovich, D.K., J.A. Richter-Menge, K.F. Jones and B. Light (2008), Sunlight, water and ice:
 750 Extreme Arctic sea ice melt during the summer of 2007, *Geophys. Res. Lett.*,
 751 doi:10.1029/2008GL034007.
 752 Pithan, F. and T. Mauritsen (2014), Arctic amplification dominated by temperature feedbacks in
 753 contemporary climate models, *Nature Geoscience*, 7, 181–184, doi:10.1038/ngeo2017.
 754 Polyakov I.V., A. Beszczynska, E.C. Carmack, I.A. Dmitrenko, E. Fahrbach, I.E. Frolov, R.
 755 Gerdes, E. Hansen, J. Holfort, V.V. Ivanov, M.A. Johnson, M. Karcher, F. Kauker, J.
 756 Morison, K.A. Orvik, U. Schauer, H.L. Simmons, A. Skagseth, V.T. Sokolov, M. Steele, L.A.
 757 Timokhov, D. Walsh and J.E. Walsh (2005), One more step towards a warmer
 758 Arctic, *Geophys. Res. Lett.* 32, L17605, doi: 10.1029/2005GL023740.
 759 Rae, J.G.L., H.T. Hewitt, A.B. Keen, J.K. Ridley, J.M. Edwards, and C.M. Harris (2014), A
 760 sensitivity study of the sea ice simulation in HadGEM3, *Ocean Model.* 74, 60–76,
 761 doi:10.1016/j.ocemod.2013.12.003.
 762 Ricker, R., S. Hendricks, F. Girard-Ardhuin, L. Kaleschke, C. Lique, X. Tian-Kunze, M.
 763 Nicolaus, and T. Krumpen (2017a), Satellite observed drop of Arctic sea ice growth in winter
 764 2015–2015, *Geophys. Res. Lett.*, doi:10.1002/2016GL072244.
 765 Ricker, R., S. Hendricks, L. Kaleschke, X. Tian-Kunze, J. King and C. Haas (2017b), A weekly
 766 arctic sea-ice thickness data record from merged cryosat-2 and SMOS satellite data, *The*
 767 *Cryosphere*, 1–27, doi:10.5194/tc-2017-4.
 768 Ricker, R., S. Hendricks, V. Helm, H. Skourup, and M. Davidson (2014a), Sensitivity of
 769 CryoSat-2 Arctic sea-ice freeboard and thickness on radar-waveform interpretation, *The*
 770 *Cryosphere*, 8 (4), 1607–1622, doi:10.5194/tc-8-1607-2014.
 771 Rigor, I.G., J.M. Wallace and R.L. Colony (2002), Response of sea ice to the Arctic Oscillation,
 772 *J. Clim.*, doi:10.1175/1520-0442(2002)015<2648:ROSITT>2.0.CO;2.
 773 Schröder D., D. L. Feltham, D. Flocco, M. Tsamados (2014), September Arctic sea-ice minimum
 774 predicted by spring melt-pond fraction. *Nature Clim. Change*, doi 10.1038/NCLIMATE2203.
 775 Screen, J.A and I. Simmonds (2010), The central role of diminishing sea ice in recent Arctic
 776 temperature amplification, *Nature*, 464, 1334–1337.
 777 Serreze, M.C., A.P. Barrett, J.C. Stroeve, D.M. Kindig, M.M. Holland (2009), The emergence of
 778 surface-based Arctic amplification, *The Cryosphere*, 3, pp. 11–19.
 779 Stroeve, J. and D. Notz (2015), Insights on past and future sea-ice evolution from combining
 780 observations and models, *Global and Planetary Change*, doi:10.1016/gloplacha.2015.10.011.
 781 Stroeve, J.C., T. Markus, L. Boisvert, J. Miller and A. Barrett (2014), Changes in Arctic Melt
 782 Season and Implications for Sea Ice Loss. *Geophysical Research Letters*,
 783 doi:10.1002/2013GL058951.
 784 Stroeve, J.C., M.C. Serreze, J.E. Kay, M.M. Holland, W.N. Meier and A.P. Barrett, (2012). The
 785 Arctic’s rapidly shrinking sea ice cover: A research synthesis, *Clim. Change*, doi:
 786 10.1007/s10584-011-0101-1.
 787 Tilling, R. L., A. Ridout, A. Shepherd, and D. J. Wingham (2015), Increased arctic sea 454 ice

Formatted: Font: (Default) +Headings CS (Times New Roman), 12 pt, Complex Script Font: +Headings CS (Times New Roman), 12 pt

Formatted: Font: (Default) +Headings CS (Times New Roman), 12 pt, Complex Script Font: +Headings CS (Times New Roman), 12 pt, English (US)

Formatted: Font: (Default) +Headings CS (Times New Roman), 12 pt, Complex Script Font: +Headings CS (Times New Roman), 12 pt

Formatted: Font: (Default) +Headings CS (Times New Roman), 12 pt, Italic, Complex Script Font: +Headings CS (Times New Roman), 12 pt, Italic

Formatted: Font: (Default) +Headings CS (Times New Roman), 12 pt, Complex Script Font: +Headings CS (Times New Roman), 12 pt

Formatted: Font: (Default) +Headings CS (Times New Roman), Complex Script Font: +Headings CS (Times New Roman)

volume after anomalously low melting in 2013, *Nature Geoscience*, 8 (8), 643–646.
 Tilling, R. L., A. Ridout and A. Shepherd (2016), Tilling, R. L., A. Ridout, and A. Shepherd,
 Near-real-time Arctic sea ice thickness and volume from CryoSat-2, *The Cryosphere*, 10,
 doi:10.5194/tc-10-2003-2016.
 Tilling, R.L., A. Ridout, and A. Shepherd (2017), Estimating Arctic sea ice thickness and volume
 using CryoSat-2 radar altimeter data, *Advances in Space Research*,
 doi:10.1016/j.asr.2017.10.051.
 Tsamados M., D. L. Feltham, D. Schröder, D. Flocco, S. Farrell, N. Kurtz, S.Laxon, and S.
 Bacon (2014), Impact of variable atmospheric and oceanic form drag on simulations of Arctic
 sea ice. *J. Phys. Oceanogr.* 44 (1329-1353), doi:10.1175/JPO-D-13-0215.1.
 Tsamados, M., D. Feltham, A. Petty, D. Schröder and D. Flocco (2015), Processes controlling
 surface, bottom and lateral melt of Arctic sea ice in a state of the art sea ice model, *Phil.*
Trans. R. Soc. A 373.2052, doi:10.1098/rsta.2014.0167.
 Warren, S.G., I.G. Rigor, N. Untersteiner, V.F. Radionov, N.N. Bryazgin, Y.I. Aleksandrov and
 R. Barry (1999), Snow depth on Arctic sea ice, *J. Clim.*, 12, 1814-1829.
 Willatt, R., S. Laxon, K. Giles, R. Cullen, C. Haas, and V. Helm (2011), Ku-band radar
 penetration into snow cover Arctic sea ice using airborne data, *Ann. Glaciol.*, **52**(57), 197–
 205.

Table 1. Regional trends in freeze-up, 2017 freeze-up date and anomaly (relative to 1981-2010 mean). Freeze-up is computed following Markus et al. (2009).

Region	Freeze-up Trend (days per decade)	2017 Mean Freeze-up (day of year)	2017 Freeze-up Anomaly (days)
Sea of Okhotsk	9.1	304	0.8
Bering Sea	6.7	338	25.2
Hudson Bay	7.9	333	16.9
Baffin Bay	8.0	312	13.2
E. Greenland Sea	5.6	267	2.7
Barents Sea	13.6	347	60.3
Kara Sea	10.7	314	36.6
Laptev Sea	9.0	272	10.7
E. Siberian Sea	11.8	286	27.1
Chukchi Sea	14.1	314	31.0
Beaufort Sea	8.9	279	23.4
Canadian Archipelago	4.9	268	12.7
Central Arctic	3.1	255	16.8
Pan-Arctic	7.5	288	19.6

Table 2. Mean November ice thickness and anomaly with respect to the 2011-2017 mean (in parenthesis) from CS2 derived from CPOM, AWI and NASA. Spatial mean is over Arctic Basin, defined as the area for which CS-data were available continuously for all 7 winter periods November to April 2010/2011 to 2016/17. This region corresponds to all three regions shown in Figure 1(c).

	November SIT CS2 CPOM (cm)	November SIT CS2 AWI (cm)	November SIT CS2 NASA (cm)	November SIT CICE-free (cm)
2010	183 (-6)	208 (-8)	198 (-7)	206 (+6)
2011	157 (-32)	174 (-42)	170 (-35)	185 (-15)
2012	173 (-16)	192 (-24)	177 (-28)	152 (-48)
2013	212 (+23)	246 (+29)	243 (+38)	208 (+08)
2014	207 (+18)	239 (+23)	226 (+21)	231 (+31)
2015	196 (+7)	229 (+13)	217 (+12)	219 (+19)
2016	193 (+4)	225 (+9)	204 (-1)	199 (-1)
2010-2016 mean	189	216	205	200

Formatted: Danish

Table 3. Mean April sea ice thickness (SIT) and anomaly with respect to the 2011-2017 mean (in parenthesis) from three CS2 products (CPOM, AWI and NASA), and the CICE (free run 1985-2017) and CICE runs initialized with CS2 ice thickness in November. The amount of thermodynamic ice growth and dynamical ice change from the CICE model runs is also given. Spatial mean is over Arctic Basin, defined as the area shown in Figure 1(d).

	CryoSat-2 Results			CICE Simulations					
	April SIT CPOM (cm)	April SIT AWI (cm)	April SIT (NASA) (cm)	April SIT CICE free (cm)	April SIT CICE ini (cm)	Therm growth CICE free (cm)	Therm growth CICE ini (cm)	Dyn change CICE free (cm)	Dyn change CICE ini (cm)
1990-2017 Mean	n/a	n/a	n/a	283	n/a	107	n/a	-18	n/a
2010-2017 Mean	243	230	235	246	240	112	103	-15	-17
2011	239 (-4)	237 (+7)	227 (-8)	242 (-4)	241 (+1)	115 (+3)	104 (+1)	-18 (-3)	-20 (-3)
2012	235 (-8)	219 (-11)	218 (-17)	247 (+1)	233 (-7)	115 (+3)	110 (+7)	-9 (+6)	-12 (+5)
2013	230 (-13)	208 (-22)	210 (-25)	234 (-12)	237 (-3)	136 (+24)	117 (+14)	-16 (+1)	-19 (-2)
2014	261 (+18)	250 (+20)	254 (+19)	251 (+5)	249 (+9)	102 (-10)	94 (-9)	-12 (+3)	-17 (+0)
2015	264 (+21)	252 (+22)	254 (+19)	264 (+18)	255 (+11)	108 (-4)	103 (-0)	-18 (-3)	-22 (-5)
2016	239 (-4)	227 (-3)	228 (-7)	254 (+8)	241 (+1)	107 (-5)	101 (-2)	-15 (-0)	-17 (+0)
2017	230 (-13)	218 (-12)	238 (+3)	233 (-13)	227 (-13)	99 (-13)	92 (-11)	-14 (+1)	-13 (+4)

Formatted: Danish

Formatted: French