

Supplementary material: Assessment of the Greenland ice sheet - atmosphere feedbacks for the next century with a regional atmospheric model fully coupled to an ice sheet model

Sebastien Le clec'h et al. (2017)

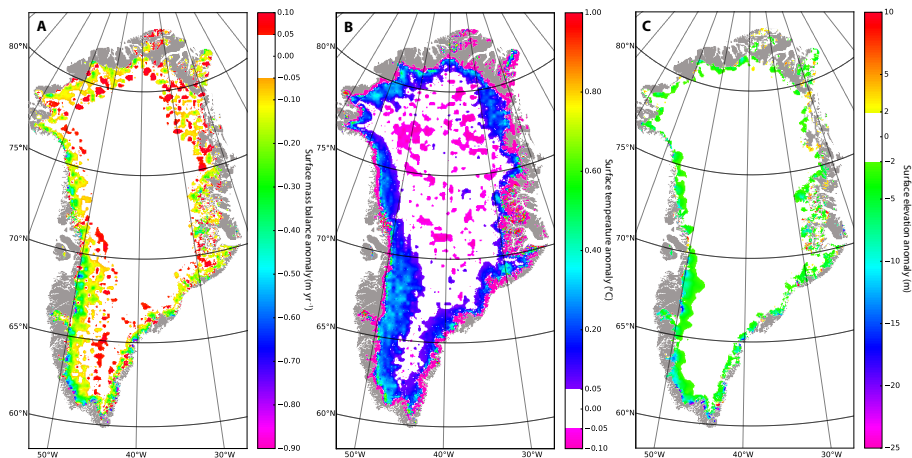


Figure S1. Mean anomalies between 2095-2100 of the 2-W experiments and the same years of the NC experiments: (a) Surface mass balance anomalies in Gt yr^{-1} ; (b) Surface temperature anomalies in $^{\circ}\text{C}$; (c) Surface elevation anomalies in m.

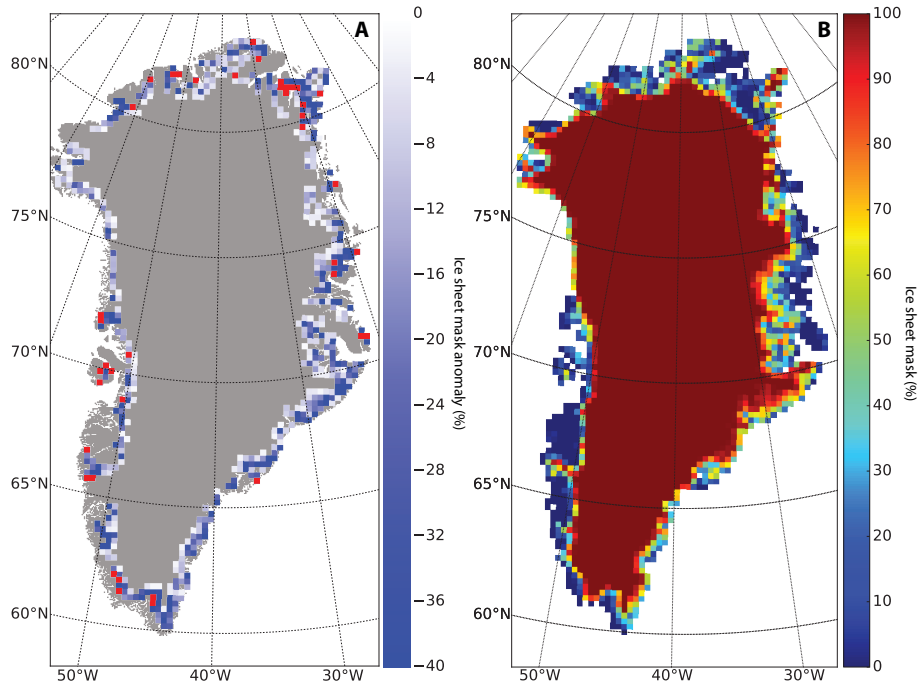


Figure S2. (a) Ice sheet mask anomalies (in %) between the last five years (2145-2150) of the 2-W experiment and ice sheet mask of the NC experiment seen by MAR. Red colors indicate pixels losing 100 % of the ice sheet coverage. (a) Mean ice sheet mask over the last five years (2145-2150) of the 2-W experiments. Values represent % of the grid cell covered by ice.