

We thank both reviewers for their insightful and constructive feedback. In the response below we have copied the original comments of reviewers followed by our response in **bold**, original text in grey and changes made to the manuscript in red. Page/line numbers refer to the original manuscript under review at <https://doi.org/10.5194/tc-2017-214>.

Reviewer 1: Anders Damsgaard

General comments

This paper presents highly valuable results of measurements of subglacial topography evolution, performed by repeat radar measurements on Pine Island Glacier (I am not qualified to evaluate the instrumental procedure and data processing). As outlined in the manuscript, this type of data set only exists for a few locations, and is useful for our understanding of subglacial bed dynamics under changing ice-flow conditions.

The manuscript is well written, and the aim and results are presented in a concise and comprehensible manner. The manuscript clearly deserves publication in *The Cryosphere*.

We thank the reviewer for his thorough consideration and interest in the manuscript. These comments have helped to improve the manuscript, particularly with regards to implications for till properties and sediment flux, and raising our attention to a number of further interesting manuscripts, many of which we have now referenced in the revised manuscript.

Before publication, I would appreciate if the authors consider the following points:

Highly relevant to the study area of this manuscript, Sergienko and Hindmarsh (2013) demonstrated large spatial variability in subglacial shear stress inferred from surface velocity inversion. I would find it very interesting if it was possible to put these results into context of the locations of the proposed “high-shear-stress ribs”. I would expect subglacial sediment transport to be low in the areas where stress inversions shows low subglacial friction, regardless of assumed till rheology. Unfortunately it appears that the study area of Sergienko and Hindmarsh (2013) is closer to the grounding line than the site that is investigated here—is that correct? In any case, do your findings present arguments for or against the prior results of localized traction?

Unfortunately our study area does not overlap with these inversions. However we agree that our findings are worth considering in the context of this work.

P6 L39 text added as follows: ‘Surface velocity inversions along PIG’s main trunk suggest that most of its bed is subjected to low basal shear stress, except for some discrete “ribs” of high basal traction spanning the trunk downstream from our measurements (Sergienko and Hindmarsh, 2013). We suggest therefore that low sediment transport rates might be expected over much of PIG’s bed as a consequence of the generally low basal shear stresses at all of our repeat measurement sites, and that future investigation of bed variation needs to be targeted towards an area of high inferred basal traction..’

The paper makes several references to changes in ice-surface elevation. If there is any change in bed conditions (bed topography or basal traction), this change should be expressed by a change in surface topography. Opposite, if the bed doesn’t change, it should not result in a surface expression. I think it would be very interesting if you could plot surface-elevation profiles at the same points as you have data for the subglacial topography. In case internal reflectors are identifiable and comparable between surveys, a study of these would also bolster the grounds for interpretation.

We have now added plots of surface elevation profiles for surveys R1 and R2. Unfortunately due to problems with the recording of differential GPS surface elevation data for survey R3 in 2010/11 are not available.

Strain distribution in deforming beds is a very important and highly controversial topic, tightly connected to the discussion of till rheology. Our understanding of subglacial till fluxes is still lacking, but of primary importance to ice-stream stability, landform development, and glacier physics (Blankenship et al., 1986; Boulton and Hindmarsh, 1987; Alley, 1989; Jenson et al., 1995; Engelhardt and Kamb, 1998; Iverson et al., 1998; Truffer et al., 2000; Iverson and Iverson, 2001; Nygård et al., 2007; Damsgaard et al., 2013; Damsgaard et al., 2016). In till-transport models subglacial sediment flux is dependent on stress and sliding velocity. By coupling sediment transport with a formulation of mass balance (e.g. Exner equation, Exner (1925), Paola and Voller (2005), Fowler (2010), and Kyrke-Smith and Fowler (2014)), ice acceleration by itself will cause a net erosion of the subglacial bed. The nature of subglacial till advection is highly relevant, for example, for theories of drumlin formation (Hindmarsh, 1998; Fowler, 2000; Schoof, 2007; Fowler, 2010). I would find it useful if the results presented in this manuscript are further discussed with relation to implications for till rheology and subglacial advection. I have further elaborated in specific comment 12 below.

These are all excellent points and we have added the following to the introduction and discussion.

P2 L1-4 text added as follows: 'Furthermore, knowledge of till flux and associated till properties is key to an improved understanding of glacier physics and ice-stream stability (Blankenship et al., 1986; Boulton and Hindmarsh, 1987; Alley, 1989; Jenson et al., 1995; Engelhardt and Kamb, 1998; Truffer et al., 2000; Iverson and Iverson, 2001; Nygård et al., 2007; Damsgaard et al., 2013; Damsgaard et al., 2016).'

P7 L28-46 text added as follows: 'The apparent stability of the bed we observe is also worth considering in the context of debate concerning strain distribution in deforming beds and associated till rheology. The resolution of our data limit the scope of any firm conclusions but may contribute to further discussion on this issue. Field observations and models have argued for viscous (Boulton and Hindmarsh, 1987; Alley et al., 1987; Hindmarsh, 1998) and plastic (Kamb, 1991; Tulaczyk et al., 2000; Iverson, 2010) deformation of subglacial sediments. Subglacial till transport models invoking either viscous or plastic rheology demonstrate that deformation depth increases with effective pressure. Uneven terrains on an ice stream bed would therefore translate into variable effective pressures and till fluxes, which might facilitate positive feedbacks over bumps and therefore the growth of bedforms (e.g. Hindmarsh, 1998; Fowler, 2000; Schoof, 2007). However, it remains unclear how rapidly bedforms can evolve, as although some studies have suggested rapid growth (Smith et al., 2007; Dowling et al., 2016) these might represent exceptions and a comprehensive analysis is missing. Such pressure-dependent growth will ultimately be controlled by the depth of deformation. It is also unclear whether bedform growth is always limited: they are typically characterised by a relatively well-defined size-frequency distribution, albeit positively skewed (e.g. Fowler et al., 2013; Hillier et al. 2016; Ely et al., 2018;). In our study area, one would expect that the uneven terrain of the bed would translate into variable effective pressure and till fluxes and that topography would therefore evolve. The lack of morphological change that we have observed at the ice-stream bed could therefore be interpreted as evidence of very shallow deforming sediment, which might translate to a very low pace of bedform growth, not detectable within the relatively short interval of our repeat surveys. Alternatively, it might indicate that the ice-bed system has reached a point of "maturity" where bedform growth is inhibited by other physical factors.'

It is even possible that the entire PIG system is now experiencing net erosion due to its recent acceleration, yet the rate of such erosion must be very low for us not to be able to detect a lowering of the topography within the six year interval of our observations..’

I have further comments below, tied to specific page and line numbers. Further referencing, as suggested, may be beneficial to readers less familiar with the topic.

Specific comments

1. P1L13: How are you doing on the abstract word count relative to journal limits? If you have space, I suggest adding further motivation with something along the lines of: “*An especially poorly observed parameter is sub-decadal stability of ice-stream beds, **which may be important for subglacial traction, till continuity, and landform development.***”

We may be pushing the word limit but have included the text.

P1 L13-14 modified as follows ‘An especially poorly observed parameter is sub-decadal stability of ice-stream beds, **which may be important for subglacial traction, till continuity, and landform development.**”

2. P1L37: It might be worth mentioning previous studies that hypothesize that large subglacial till fluxes can cause fast build-up of grounding-line wedges, potentially stabilizing ice streams against sea-level rise (e.g. Alley et al., 1989; Alley et al., 2007).

P1 L38-40 text added as follows: ‘**For example, previous studies have theorised that high subglacial till fluxes can lead to the rapid formation of grounding-zone wedges, potentially stabilising ice streams against sea-level rise (e.g. Alley et al, 1989; Alley et al., 2003; Alley et al., 2007).**’

3. P1L40: I suggest also citing Cuffey and Alley (1996) and Alley (2000) which discuss till generation, transport, and associated effects on subglacial beds.

P2 L3 modified as follows: Monitoring the beds of ice streams is also important for understanding processes of erosion and sediment transport that can provide information on landscape evolution (e.g., Jamieson et al., 2010, Herman et al., 2011), basal processes (**Cuffey and Alley, 1996; Alley et al., 1997; Alley, 2000**)...’

4. P2L1–6: I think it would be helpful to distinguish between soft and hard-bed processes in this paragraph. The cited studies with larger fluxes (e.g. Motyka et al., 2006) discuss reworking of soft beds, while studies with smaller rates (e.g. Hallet et al., 1996) discuss hard-bed erosion. This may not be immediately clear to an outside reader.

P2 L8-11 modified as follows: ‘A review of previously published erosion rates **for hard-bedded glaciers** (Hallet et al., 1996) indicates low erosion rates in polar settings (0.01 mm a⁻¹) contrasting with relatively high rates beneath temperate alpine glaciers (10-100 mm a⁻¹). However, more recent studies have identified far more rapid erosion rates of 4.8 mm a⁻¹ in Greenland (Cowton et al., 2012) and as much as 1000 mm a⁻¹ or more **in soft-bedded glaciers** in Alaska (Motyka et al., 2006) and Antarctica (Smith et al., 2007; 2012).’

5. P2L8–14: Along the lines of my point in “General comments” above, maybe cite and discuss the subglacial stress inversion by Sergienko and Hindmarsh (2013) here.

See response to general comments

6. P2L36–39, Table 1, P5L23–24: In several places the text suggests that surface-lowering data is present in Table 1, but the table only includes surface velocities. Is it possible to include the surface-elevation changes in the table?

We have added mean surface elevation change data for surveys R1 and R2. For the same reason as we provided in response to the general comment regarding surface elevation profiles, data are not available for survey R3.

7. P3L34–P4L2: (I'm a non-expert in glacial radar). Do the same reasons make it impossible to interpret changes in basal reflectivity? As far as I know, changes in the reflectivity have the potential to be an indicator for changes in water content at the ice-bed interface.

In addition to the differences in the radar system configuration between years outlined in the methods section, we have found that reflectivity (or bed returned power) can be affected by the system battery power. For these reasons we are not confident over the intervals concerned of interpreting any changes in bed returned power to represent changes in water content at the basal interface.

8. P5L6–7 and P5L20–21: You previously mentioned that the applied methodology does not make it possible to constrain *absolute* changes in bed elevation, just changes in roughness relative to the mean topography. To me it seems highly unlikely that the bed should have undergone uniform erosion or deposition, but you might want to mention this caveat when presenting the results nonetheless.

We are of the view that the possibility of uniform erosion and deposition along a cumulative 60 km of survey line is so unlikely that it renders the inclusion of such a caveat unnecessary.

9. P6L7–10: Thick porous sediment layers are not necessarily associated with deep active deformation (Damsgaard et al., 2016). See also discrepancy between Blankenship et al. (1986) and Engelhardt et al. (1990).

We agree that this distinction is important with regards to sediment properties. We have changed the wording to avoid the inference that the thick, dilated sediments are necessarily deforming.

P6 L16-19 modified as follows: ‘...immediately below the ice pervasively consists of **dilated** sediments, which are at least several metres thick (Smith et al., 2013; Brisbourne et al., 2017). Along seismic profile S12007 potential-field data indicate that a transition from sedimentary to crystalline bedrock lies beneath the cap of **deformable** sediments...’

10. P6L25–27: Minchew et al. (2017) (previously cited in the manuscript) suggests that variations in basal water pressure are likely less important than variations in ice internal stresses, due to relatively weak rigidity of the RIS ice-stream shear margins. This finding contrasts with the interpretation by Thompson et al. (2014) and Rosier et al. (2015).

P6 L36-38 modified as follows: ‘However, Minchew et al. (2017) suggest that **weak shear margins are a more dominant factor in the propagation of tidally-induced horizontal ice-flow variability compared to fluctuations in basal water pressure.**’

11. P6L34–36: It is not immediately clear to me how a dynamic hydrological system would increase sediment transport or erosion. Are you talking about ice-contact subglacial sediment transport or fluvial sediment transport in subglacial sheets or channels (e.g. Alley et al., 2003; Fowler, 2010; Kyrke-Smith and Fowler, 2014)?

We were referring to fluvial sediment transport but we agree this is not clear from the text.

P7 L2-5 modified as follows: ‘In the absence of a dynamic hydrological system, sediment mobility **facilitated by fluvial transport in subglacial sheets or channels (cf. Weertman, 1972; Walder and Fowler, 1994; Fowler 2010, Kyrke-Smith and Fowler, 2014)** may be restricted, thereby limiting the rate of erosion and sediment transport detectable within the precision of repeat geophysical measurements.

12. P7L8–11: Viscous till models and their pressure-dependent fluxes imply that there is no steady-state bed topography if the bed is not planar, as sediment transport would always be larger on the stoss side of bed bumps than on the lee side (Hindmarsh, 1998; Fowler, 2000; Schoof, 2007). Modeling studies indicate similar pressure dependence of till flux for Coulomb-plastic materials (Damsgaard et al., 2013). If there is such a pressure dependence, where increasing normal stress on the bed increases deformational depth, this bed-altering process excludes interpretation (3), “...*subglacial till flux is in a steady state wherein sediment transport is active but is not altering the shape of the bed.*”.

Because all our repeat surveys are oriented transverse to flow we are unable to assess stoss/lee variability in bedform morphology. We do not discount pressure dependent sediment flux. We are referring to the cross-sectional morphology only. We have included additional text to acknowledge

P7 L28-30 text added as follows: ‘**The last of these would contradict modelling studies with pressure-dependent till flux that dictate that there can be no steady-state till flux on an uneven basal interface (Hindmarsh, 1998; Fowler, 2000; Schoof, 2007).**’

13. P7L23–28: It might be worth mentioning that the site of Alaska is very unusual and that the reported erosion rates by Motyka et al. (2006) are not likely to occur for long. The dynamics of this setting have been further analyzed in Brinkerhoff et al. (2017).

P8 L1-4 modified as follows: ‘**However, this setting is unique and these exceptional erosion rates occurred during short episodes of glacier advance over glaciomarine and outwash sediments driven by ice-sediment dynamics (Motyka et al., 2006; Brinkerhoff et al., 2017). Indeed, erosion rates in southern Alaska are the highest reported for any region.**’

14. P7L40–42, Figure 5: To the untrained eye, it also appears like there has been localized erosion at a distance of 7.6 to 8.0 km. Does this change fall within the bounds of uncertainty? If not, I think it would make sense to discuss it together with the changes between distances 8.5 to 9.1 km.

We are not confident that the changes we discuss in the results are genuine alterations of bed morphology. Additional caveats to our ability to detect changes at the bed given the differences in the radar systems have been included in response to comments from reviewer 2. We have also include additional text in the results section:

P5 L18-20 modified as follows: ‘**However, it is possible that this change is caused by the aforementioned differences in frequency of the radar systems between surveys. We are**

therefore cautious to interpret this as a genuine change in bed morphology resulting from erosion and deposition.'

15. Figure 1: It took me a moment to realize that the contour lines in panel b are the "dashed lines" referred to in the caption, as the dashes are too small to be apparent on screen and in print. Is it possible to make the dashes and the spacing between them longer?

We have changed the figure caption to describe velocity contours as "grey lines".

Reviewer 2: Huw J. Horgan

Davies et al use repeat radio echo sounding profiles to investigate how the shape of the bed of Pine Island Glacier has changed (or has not changed) over an interval during which the glacier has accelerated and thinned significantly. This study is notable for several reasons. First, Pine Island and the neighboring Thwaites Glacier have experienced substantial mass loss over recent decades and will continue to form a major component of Antarctica's mass balance for the foreseeable future. Second, ground based geophysical observations from this region are rare and provide important constraints on bed structure and properties that influence ice flow. Third, repeat geophysical observation are extremely rare, and are the most practical way of assessing changes at the bed.

This study is topical, well conceived, and generally well presented. The comments I make in the following are intended to support and clarify the manuscript.

We are grateful to the reviewer for his comments and for enabling us to improve the clarity of the technical aspects relating to the radar systems.

Comparing repeat geophysical surveys. Comparing different frequencies of RES is tricky due to the dependence of resolution on frequency. Considering the commonly used resolution limits illustrates the problem. In theory, for a circular wavefront, bed features with a horizontal extent less than $\sqrt{2d\lambda + \frac{\lambda^2}{4}}$ will appear as point diffractors. At these depths ($d \sim 2070$ m), a 1.2 MHz wavelet will image features smaller than 1025 m as point diffractors, and a 3 MHz wave will do the same for features smaller than 645 m. This is not to say that these features will not be resolved at all, but the bed will appear different at different frequencies depending on how rough it is. Vertical resolution is also frequency dependent. Vertically, layers thinner than $\lambda/30$ will not be resolved (8.3 m at 1.2 MHz, 3.3 m at 3 MHz). This is perhaps not important when considering an abrupt change in dielectric properties at the base of the ice sheet but a layered or gradual bed will resolve differently.

The main conclusion of this paper is, however, that the bed has not changed along the profiles beyond the resolution limits. With a little additional wording regarding the different resolution of the two vintages I have no issue with this conclusion and the resulting interpretation. The reader is, however, drawn to the one location where a change is shown. Resolution differences should be considered here. Also, as pointed out in the manuscript, navigation is a concern. The cross over analysis is useful, but I don't think the method used (mean of the standard deviation of for available intersecting lines) does provide 'the maximum variability in bed elevation'. To add confidence in the interpretation a simple subplot showing minimum distance between the two profiles along the profile would be helpful. This would make it clear to the reader that the region where the bed is different does not correspond to a region of large navigation mismatch.

Based on the above, we have expanded on the caveats with regards to the differences in the frequency of the radar systems in the section 2.3.

P4 L31-37 modified as follows: ‘As we are unable to recover absolute elevation change, in this study the horizontal resolution is more important than the vertical range precision. Differences in the morphology of the basal reflector need to be considered along with consideration of the different frequencies used in repeat surveys (1.2 and 3 MHz). This is best illustrated using commonly adopted resolution limits. For a circular wavefront, features at the bed with a width less than $\sqrt{2d\lambda + \frac{\lambda^2}{4}}$ will appear as point diffractors. For a bed at a depth of 2000 m, a 1.2 MHz ($\lambda_{ice}=250$ m) wavelet will image features with a width <1008 m and a 3 MHz ($\lambda_{ice}=100$ m) will image features with a width <634 m. These differences may affect the appearance of the basal reflector depending on the roughness of the bed. For these reasons we express caution when considering subtle changes in basal morphology.’

With regards to comments concerning navigational divergence, we have removed the crossover analysis from the table and text and added profiles showing the minimum distance between survey profiles alongside plots of bed elevation and bed pick correlation in Figs. 2 and 3.

P5 L1-5 removed the following text: “We assessed the variability in bed topography by analysing nine additional intersecting radar lines driven orthogonal to repeat survey lines (three per repeat survey line). We calculated a mean of the standard deviation of bed elevation for available intersecting lines within 50 m, east and west of repeat survey lines (Table 2). From this analysis we find that the maximum variability in bed elevation within the range of navigational divergence between repeat surveys is just over a metre (Table 2).”

P5 L1 added the following text: “In order to visually assess whether navigational divergence affects observed bed change we have provided plots of minimum distance between repeat surveys alongside plots alongside bed elevation profiles in Figs. 2 and 3.”

One last note on the differences between the two data vintages. The 2013/14 data (Fig5c) show more spatial variability in the picks than the 2007/08 data. This may be due simply to signal to noise ratio being lower in the higher frequency 2013/14 data but it would be nice to see a right hand panel showing representative wiggle traces for each of the data vintages. That way the reader could be assured that similar waveforms are being compared.

We have added inset plots of representative wiggle traces of 2007/08 and 2013/14 data to figure 5b and c.

Subglacial deformation. Would we expect a change in bed morphology to result from a change in ice surface elevation and ice velocity?

Estimates of subglacial sediment transport vary widely with the thickness of mobile till and the velocity profile within the till both poorly known. What is accepted is that the till velocity is a function of the overriding ice velocity. Simplistically, a uniform change in ice velocity will result in a uniform change in sediment transport, with no resulting change in bed morphology. If sediment deformation is occurring, as indicated by active source seismic constraints, the total transported through the profile must however have changed and some change in the bed morphology must be taking place upstream and downstream. To address this some discussion of sediment deformation would be useful as would some comment on how uniform the changes in surface elevation and velocity have been.

We have responded on similar points that were raised by Reviewer #1 – see our responses to the last “General Comments” from Reviewer #1 above.

Minor Points

Pg 3 L 28. '5 m intervals' Ambiguous, change to 5 m horizontal intervals

This change is incorporated into the next point.

Pg 3 L 29. Please define automation method (e.g. cross correlation).

P3 L35–37 modified as follows: ‘The onset time of the bed reflector was determined at 5 m horizontal intervals at the peak in the amplitude of the bed reflector using a semi-automated “phase follower” picking procedure that allows automatic assignment of picks to a selected phase. These picks were checked and edited using manual picking where necessary.’

Pg 3 L 30. 'of 0.168 m ns⁻¹' and no additional firm correction.

Done

Pg 3 L 33-37. I can appreciate that the differences in firm composition, and triggering could result in a static shift between the two systems. To clarify this, you should state here that the difference is a constant shift as you don't expect the firm to have varied spatially.

P4 L5-7 modified as follows: ‘Firstly, we do not have the data to assess whether firm properties, that impact upon radar wave speed, changed over the periods between repeat surveys. However we do not expect firm properties to have varied spatially on the scale of our surveys.’

Pg 4 L 1-2. Again, I understand what you have done, but as worded it doesn't as quantitative as it is. You have static corrected both surveys to a common bed-datum, allowing direct comparison.

P4 L10-11 modified as follows: ‘Therefore we compare relative bed profiles by applying a static correction to a common bed datum (0 m) for both surveys.’

Pg 4. L 21. '±3 m' Worth a note here that this is not the same as repeatability or resolution. This also depends on what part of the wavelet is being picked. When picking the peak amplitude the wavelet shape will matter. Showing typical wavelets will help with this.

We have addressed this comment by adding subplots of wiggle traces to address the previous general comment.

Pg 6. L 22. High temporal resolution

Done

Pg 6. L35. In the absence of a dynamic hydrological system sediment mobility is also likely to be more stable over time.

P7 L16-17 modified as follows: ‘may be restricted and likely be more stable over time, thereby limiting...’

Pg 7. L 10. 'erosion/deposition' erosion and deposition.

Done.

Pg 7. L 19-21. Here's it's probably worth having caveats regarding navigation and the differing resolutions of the two vintages of RES.

We have addressed this comment by adding more text to the methods section to clarify challenges with comparing different frequencies and added wiggle trace plots to Fig. 5.

Pg 8. L 1. `.`.

Pg 8. L5 `an' a.

Pg 8. L 31. 'seismic survey' seismic surveying.

All done.

Figures

Figure 1. Is there a good reason to have Antarctica oriented in this direction. We have enough issues with 180 degree ips causing confusion.

Our figures are oriented to have true north pointing vertically upwards over PIG, following a convention typical in many maps. This orientation is also used in several other papers concerned with the Amundsen Sea Embayment.

Caption: `dashed lines' can't tell they are dashed at this resolution, perhaps gray contours?

Figure caption modified as suggested.

Figure 2d should have the same x-axis as b,c,e, and f.

Figure axis modified to the same labelling format.

Figure 3. Caption `2km' 2 km

Changed.

Figure 5a. If it doesn't clutter the figure, can you show the bed prior to smoothing?

We feel this will clutter to the figure so would prefer to leave this as shown.

Figure 5b 5c, show characteristic traces so we can assess waveform similarity and peak amplitude picking suitability.

Done.

In closing, I thank the authors for their well considered and presented study.

Sincerely, Huw Horgan

How dynamic are ice-stream beds?

Damon Davies¹, Robert G. Bingham¹, Edward C. King², Andrew M. Smith², Alex M. Brisbourne², Matteo Spagnolo³, Alastair G.C. Graham⁴, Anna E. Hogg⁵ and David G. Vaughan²

¹ School of GeoSciences, University of Edinburgh, Edinburgh, EH8 9XP, UK.

² NERC British Antarctic Survey, Madingley Road, Cambridge, CB3 0ET, UK.

³ School of Geosciences, University of Aberdeen, Aberdeen, AB24 3UF.

⁴ College of Life and Environmental Sciences, University of Exeter, Exeter, EX4 4RJ.

⁵ Centre for Polar Observation and Modelling, School of Earth and Environment, University of Leeds, Leeds, UK.

Correspondence to: Damon Davies (D.Davies@ed.ac.uk)

10 Abstract

Projections of sea-level rise contributions from West Antarctica's dynamically thinning ice streams contain high uncertainty because some of the key processes involved are extremely challenging to observe. An especially poorly observed parameter is sub-decadal stability of ice-stream beds, [which may be important for subglacial traction, till continuity, and landform development](#). Only two previous studies have made repeated geophysical measurements of ice-stream beds at the same locations in different years, but both studies were limited in spatial extent. Here, we present the results from repeat radar measurements of the bed of Pine Island Glacier, West Antarctica, conducted 3-6 years apart, along a cumulative ~60 km of profiles. Analysis of the correlation of bed picks between repeat surveys show that 90% of the bed displays no significant change despite the glacier increasing in speed by up to 40% over the last decade. We attribute the negligible detection of morphological change at the bed of Pine Island Glacier to the ubiquitous presence of a deforming till layer, wherein sediment transport is in steady state, such that sediment is transported along the basal interface without inducing morphological change to the radar-sounded basal interface. Given the precision of our measurements, the upper limit of subglacial erosion observed here is 500 mm a⁻¹, far exceeding erosion rates reported for glacial settings from proglacial sediment yields, but substantially below subglacial erosion rates of 1.0 m a⁻¹ previously reported from repeat geophysical surveys in West Antarctica.

1. Introduction

25 Glaciological studies over the past three decades have revealed that the West Antarctic Ice Sheet (WAIS) is losing mass at an accelerating rate, raising concerns over its potential future contribution to global sea-level (Shepherd et al., 2012, DeConto and Pollard, 2016). Between 2010 and 2013, around 33% of the ice sheet's net mass loss came from Pine Island Glacier (hereafter PIG), a major ice stream draining to the Amundsen Sea Embayment (McMillan et al., 2014). There, from satellite-altimetry observations, mass loss was first expressed at the grounding zone in the mid-1990s, and has now propagated all the way up to the divides (McMillan et al., 2014) by a set of processes broadly termed dynamic thinning (Shepherd et al., 2001; Pritchard et al., 2009). At PIG the dynamic thinning has incorporated an upstream expansion of regions both of accelerating ice (e.g. Scott et al., 2009; Mougnot et al., 2014) and ice-surface lowering (e.g., Konrad et al., 2017), and upstream migration, by several 10s of km, of the grounding line (e.g. Park et al., 2013; Rignot et al., 2014), prompting suggestions that PIG is in runaway retreat (Joughin et al., 2014). However, the detailed processes by which dynamic thinning works, especially upstream from the grounding zone, are not well constrained. Particularly unclear is how the coupling between basal ice and the bed may evolve or vary over time and whether this needs to be accounted for in models projecting future ice response. [For example, previous studies have theorised that high subglacial till fluxes can lead to the rapid formation of grounding-zone wedges, potentially stabilising ice streams against sea-level rise \(e.g. Alley et al. 1989; Alley et al., 2003; Alley et al., 2007\).](#)

Monitoring the beds of ice streams is also important for understanding processes of erosion and sediment transport that can provide information on landscape evolution (e.g., Jamieson et al., 2010, Herman et al., 2011), basal processes (Cuffey and Alley, 1996; Alley et al., 1997; Alley, 2000) and the supply of nutrients to polar oceans (Raiswell et al., 2006). Furthermore, knowledge of till flux and associated till properties is key to an improved understanding of glacier physics and ice-stream stability (Blankenship et al., 1986; Boulton and Hindmarsh, 1987; Alley, 1989; Jenson et al., 1995; Engelhardt and Kamb, 1998; Truffer et al., 2000; Iverson and Iverson, 2001; Nygård et al., 2007; Damsgaard et al., 2013; Damsgaard et al., 2016). A review of previously published erosion rates for hard-bedded glaciers (Hallet et al., 1996) indicates low erosion rates in polar settings (0.01 mm a⁻¹) contrasting with relatively high rates beneath temperate alpine glaciers (10-100 mm a⁻¹). However, more recent studies have identified far more rapid erosion rates of 4.8 mm a⁻¹ in Greenland (Cowton et al., 2012) and as much as 1 m a⁻¹ or more in soft-bedded glaciers in Alaska (Motyka et al., 2006) and Antarctica (Smith et al., 2007; 2012). Critically, measurements of erosion rates in Antarctica are limited both temporally and spatially, making it difficult to assess whether such high rates of erosion are typical or exceptional.

A significant difficulty in assessing temporal changes to the beds of WAIS ice streams is lack of access to the bed. Theoretical and geophysical constraints have shown that ice streams typically achieve fast flow by overriding dilated till that provides low basal drag (Alley et al., 1986; Bentley et al., 1998). It has been inferred that even relatively small fluctuations to hydrological conditions in these locations can induce significant changes to basal drag, in the most extreme circumstances causing ice streams to switch on or off (e.g. Anandakrishnan and Alley, 1997; Conway et al., 2002; Vaughan et al., 2008). However, to our knowledge, only two studies have attempted directly to capture temporal changes to ice-stream bed conditions over decadal to sub-decadal timescales commensurate with available satellite records of surface elevation and velocity change. The first was a single-location repeat measurement of ice thickness and surface elevation on PIG (location, Fig. 1) made firstly in 1960 and re-measured in 2009 (Smith et al., 2012). That study found surface lowering with no significant change in ice thickness, suggesting that mean erosion of the ice-stream bed of up to 1 m a⁻¹ took place during the study period (Smith et al., 2012). This rate is well above the range reported elsewhere (Hallet et al., 1996). The second, more detailed study, consisted of three repeat-seismic surveys of the bed of Rutford Ice Stream (hereafter RIS; Fig. 1c) obtained in 1991, 1997 and 2004 (Smith et al., 2007). There, across a ~0.5 km width of the bed, 6 m of sediment were removed from the ice bed between 1991 and 1997 followed by the appearance of a drumlin 10 m high and 100 m wide between 1997 and 2004. Both of the studies from West Antarctica therefore implied that active sediment erosion or deposition at rates ~1-1.4 m a⁻¹, and landform evolution, are possible beneath ice streams on decadal to sub-decadal timescales.

In this paper, we present and analyse results from three repeat surveys of the bed of PIG, whereby we geophysically surveyed co-located profiles of PIG's bed in different years along a cumulative ~60 km of traverses. Our principal aim was to ascertain whether erosion or deposition, and any morphological changes, were detectable at the bed of PIG over intervals of 3-7 years, periods over which PIG (from satellite monitoring) has undergone considerable ice-surface lowering and ice acceleration (McMillan et al., 2014, Mouginit et al., 2014).

2. Methods

Our data consist of three repeat radar surveys of PIG's bed acquired with a low-frequency ice-penetrating radar system in austral seasons 2007/08 and 2013/14 (two profiles of 18 km and 16 km long separated by ~6 years) and 2010/11 and 2013/14 (one 25 km profile separated by ~3 years) (Figs. 1a,b). The 18 km profile, R1, was acquired 3 km downstream and parallel to an 18 km seismic survey acquired in austral season 2007/08 (Smith et al., 2013), 5 km of which was resurveyed in austral season 2014/15 (Brisbourne et al., 2017) (profiles S1₂₀₀₇ and S1₂₀₁₄ on Fig. 1b respectively). Each of the repeat-survey locations

on PIG experienced significant ice-surface lowering and acceleration over the encompassing period (Table 1). In our analysis we consider our findings from PIG against the results from Smith et al.'s (2007) repeat-seismic surveys of the bed of RIS (profile C1 in Fig. 1c), where ice flow has remained relatively stable over decadal timescales and negligible surface lowering has been observed (Table 1).

5

2.1 Data acquisition

All radar profiles were acquired with the British Antarctic Survey's "DELORES" (Deep-Look Radio-Echo Sounder) system, a skidoo-towed monopulse array (see King et al., 2016, for general specifications). During the 2007/08 field season, the system operated using 40 m half-dipole antennae, resulting in a centre frequency of 1.2 MHz. In 2010/11 and 2013/14, 20 m half-dipole antennae were used, giving a centre frequency of 3 MHz. Along-track traces were sampled at <1 m intervals, stacked for noise reduction to produce datapoints at ~5 m spacing, and georeferenced with dual-frequency differential GPS mounted on the radar system.

10

The repeat-radar surveys on PIG were each acquired approximately orthogonal to ice flow at sites 150, 120 and 115 km upstream from the 2011 grounding line (Park et al., 2013) (R1, R2 and R3 respectively in Fig. 1b), in each case close to, or forming part of, more extensive radar surveys of patches of the ice bed conducted in the three field seasons (Bingham et al., 2017). Repeat-radar profile R1 comprises a traverse ~18 km in length, first surveyed in January 2008 and then again in December 2013. The January 2008 profile also represents the most downstream traverse of a more extensive set of radar profiles used to image a 108 km² patch of PIG's bed in January 2008 surrounding the 18 km seismic profile acquired in the same season (patch 2007t1 and seismic profile S1₂₀₀₇ in Fig. 1b). Profile R2 is derived from a 16 km traverse first driven in December 2007 and then again in December 2013; this profile lies ~2 km downstream of an extensive survey of 150 km² of PIG's bed also surveyed in December 2013 (patch iSTART1 in Fig. 1b). Profile R3, ~25 km in length, was first surveyed in January 2011 as the upstream profile of multiple transects used to image a 425 km² patch of PIG's bed (patch 2010tr in Fig. 1b), and then again in December 2013 to yield a survey gap of ~3 years.

20

25

Table 1: Mean velocities for each repeat radar survey profile 2007-2017.

| Survey | Velocity (m a ⁻¹) 2007-2009 (MEaSURES) | Velocity (m a ⁻¹) 2017* | Velocity change (m a ⁻¹) | Mean surface elevation change (m)** |
|----------|--|-------------------------------------|--------------------------------------|-------------------------------------|
| C1 (RIS) | 370 | 407 | 37 | = |
| R1 (PIG) | 287 | 361 | 74 | -8.2 |
| R2 (PIG) | 384 | 523 | 139 | -8.0 |
| R3 (PIG) | 435 | 609 | 174 | = |

*Velocities derived from Sentinel-1 image pairs obtained in April 2017. Details of processing methodology are provided in Hogg et al., 2017).

**Surface elevation change derived from differential GPS measurements. No data were available for surveys C1 and R3.

30

2.2 Data processing

Radar data were processed using ReflexW seismic processing software (Sandmeier Scientific Software). A data processing flow was applied which included a gain function to improve the strength of reflections at greater depth, and bandpass and 2D median filters to reduce data noise. Finite-difference (FD) migration was used to contract diffraction hyperbolae and to recover the correct locations of individual reflectors. The onset time of the bed reflector was determined at 5 m horizontal intervals at the peak in the amplitude of the bed reflector using a semi-automated "phase follower" picking procedure that allows automatic

35

Formatted Table

assignment of picks to a selected phase. These picks were checked and edited using manual picking where necessary. Bed picks were then converted to depth using a radar wave speed of 0.168 m ns^{-1} and no additional firm correction. We smoothed bed picks by applying a moving average over a 50 m window to all bed picks to remove high-frequency noise.

Deleted: .

5 To assess changes at the bed, we focus on comparing the morphological character of the picked bed along repeat profiles rather than deriving changes in absolute bed elevation between surveys. This is for two reasons. Firstly, we do not have the data to assess whether firm properties, that impact upon radar wave speed, changed over the periods between repeat surveys. However we do not expect firm properties to have varied spatially on the scale of our surveys. For this reason we make no firm correction to our derived ice thicknesses. Secondly, differences in the triggering mechanism of the radar system between survey years meant that we could not match directly the onset waveforms between repeat surveys. In both cases, the effects preclude recovery of absolute ice thickness or bed elevation. Therefore we compare relative bed profiles by applying a static correction to a common bed datum (0 m) for both surveys.

Deleted: elevation, but allow capture of relative bed profile morphology per survey.

15 The seismic surveys S1₂₀₀₇ and S1₂₀₁₄ in the vicinity of R1 were processed and analysed by Smith et al. (2013; 2007/08 profile only) and Brisbourne et al. (2017; both profiles). Brisbourne et al. (2017) primarily report on the calculation of acoustic impedance at the bed from both profiles, which we will consider in our discussion below. For this paper, we also investigated the possibility of directly picking the bed for the repeated 5 km section in an analogous manner to the radar picking described above. However, low signal-noise ratios along large parts of the bed, resulting from the similarity of ice and bed acoustic impedance (Brisbourne et al., 2017), precluded the recovery of results with sufficiently low picking errors to have confidence in identifying any change or lack thereof.

2.3 Errors

25 For each profile R1-R3, the ability to detect changes in bed morphology is largely determined by the precision with which the bed reflector can be picked, and the degree to which the second radar profile of a repeat survey follows or diverges slightly from the path driven by the first profile.

30 The signal-to-noise ratio in all our radar profiles is high and the strength of the basal reflector produces a clearly discernible, high-amplitude wavelet (e.g. radargrams in Figs. 2-5) that requires little user interaction during the semi-automatic picking procedure. With such clear data, the uncertainty with which the bed reflection can be picked is determined primarily by the system rise-time of 250 V ns^{-1} , the recording-system bandwidth of 50 MHz, and the digitisation interval of 10 ns. Considering also the uncertainty in our GPS-derived elevations, we estimate that our radar data have a vertical range precision of $\pm 3 \text{ m}$.

35 As we are unable to recover absolute elevation change, in this study the horizontal resolution is more important than the vertical range precision. Differences in the morphology of the basal reflector need to be considered along with consideration of the different frequencies used in repeat surveys (1.2 and 3 MHz). This is best illustrated using commonly adopted resolution limits.

For a circular wavefront, features at the bed with a width less than $\sqrt{2d\lambda + \frac{\lambda^2}{4}}$ will appear as point diffractors. For a bed at a depth of 2000 m, a 1.2 MHz ($\lambda_{\text{ice}}=250 \text{ m}$) wavelet will image features with a width $<1008 \text{ m}$ and a 3 MHz ($\lambda_{\text{ice}}=100 \text{ m}$) will image features with a width $<634 \text{ m}$. These differences may affect the appearance of the basal reflector depending on the roughness of the bed. For these reasons we express caution when considering subtle changes in basal morphology.

40 Survey lines were repeated by following a route programmed into a dashboard GPS unit mounted on the radar skidoo. Due to the higher accuracy and precision of the dual-frequency GPS compared to the dashboard units, and the challenges of navigating

in featureless terrain, navigational divergences were registered. These divergences were mostly < 50 m (Table 2), however, where bed topography is rough, even small navigational divergences may lead to incorrect interpretation of bed change. [In order to visually assess whether navigational divergence affects observed bed change we have provided plots of minimum distance between repeat surveys alongside bed elevation profiles in Figs. 2 and 3.](#)

Deleted: alongside plots

Deleted: We assessed the variability in bed topography by analysing nine additional intersecting radar lines driven orthogonal to repeat survey lines (three per repeat survey line). We calculated a mean of the standard deviation of bed elevation for available intersecting lines within 50 m east and west of repeat survey lines (Table 2). From this analysis we find that the maximum variability in bed elevation within the range of navigational divergence between repeat surveys is just over a metre (Table 2).

Table 2. Analysis of navigational divergence and associated variability in bed elevation.

| Repeat survey line | R1 | R2 | R3 |
|-------------------------------------|-------|-------|------|
| Repeat survey divergence (m) | | | |
| Maximum | 45.1 | 54.0 | 35.0 |
| Mean | 23.7 | 13.7 | 20.0 |
| Standard Deviation | ±10.3 | ±12.0 | ±8.0 |

Formatted Table

Deleted: Bed variability (m)*

Deleted: ±1.1

Deleted: ±1.0

Deleted: ±0.2

Deleted: *Mean of the standard deviation of bed elevation ¶

3. Results

Bed picks for the repeat-geophysical surveys from PIG are shown in Figures 2 and 3 alongside associated geophysical images. A visual inspection of the radar/seismic images and bed picks (Figs. 2 and 3) shows that there is remarkable consistency in the morphology of the bed at all three of the repeat-survey sites. This qualitative impression is confirmed by calculating the Pearson correlation coefficient (r) of each repeat profile's bed picks across 500 m moving windows (Figs. 2 and 3). For 90% of the repeat radar tracks $r > 0.9$, underscoring that there has been negligible morphological change for much of the surveys. For context, we performed the same correlation routine for the bed picks of repeat-seismic survey data acquired in 1991, 1997 and 2004 along the 3.5 km profile C1 of RIS previously reported by Smith et al. (2007): these results are shown in Fig. 4e. At C1, the ~0.5 km section of track for which Smith et al. (2007) reported basal erosion between 1991 and 1997 yields $r \sim 0.5$, and the ~100 m length of profile interpreted as hosting the growth of a drumlin between 1997 and 2004 returns $r \sim -0.2$.

There is only one location on PIG where r is considerably lower than 0.9; this occurs between 8.5 and 9 km along profile R1 where r spikes around a value of -0.2 (Fig 2). Closer inspection of this location reveals a subtle change in the morphology of the bed picks between 2007/08 and 2013/14 (Fig. 5). At this site two bumps of ~1-2 m height in 2007/08 are replaced in 2013/14 by a central ridge with two troughs ~3 m in depth. [However, it is possible that this change is caused by the aforementioned differences in horizontal resolution of the radar systems between surveys. We are therefore cautious to interpret this as a genuine change in bed morphology resulting from erosion and deposition.](#)

4. Discussion

The prevailing picture that emerges from our 58 km of repeat surveys of PIG's bed is one of little measurable change having been effected to the ice stream's basal topography and morphology over the 3-7 year timescale. This is in spite of significant changes occurring to ice-flow speeds and ice-surface elevations over the same periods (Table 1), and the observations of active erosion and deposition made over similar timescales at RIS (Fig. 4), where ice has experienced little to no dynamic thinning and ice flow is essentially stable (Table 1). In the following discussion we firstly consider how these apparently different behaviours between the ice beds of PIG and RIS can be reconciled (Section 4.1). We then turn to the implications of our results

for the understanding of processes of sediment erosion, transport and deposition beneath ice streams and implications for future monitoring of the bed (Section 4.2).

4.1 Are ice-stream beds dynamic?

5 The only precedent for the measurements obtained here from PIG in terms of repeat geophysical survey over comparable timescales is that from RIS where erosion and deposition on the order of $\sim 1 \text{ m a}^{-1}$ were observed in association with morphological changes at the bed (Smith et al., 2007). Here we assess whether the lack of comparable changes observed at PIG can be explained by contrasting glaciological, hydrological and basal characteristics to the RIS survey site, and whether either is likely to be more representative of wider changes occurring at the beds of Antarctic ice streams.

10

The first notable difference between PIG and RIS is the broad subglacial topography. Each of the repeat surveys on PIG was conducted across the 30-km-wide, $\sim 2000 \text{ m}$ deep, main ice-stream trunk where, at the multi-km wavelength, the bed is largely flat along and across flow (Vaughan et al., 2006). By contrast, the repeat-survey location on RIS, though also traversing the ice-stream trunk, overlies a notable topographic ridge (“Central low ridge”) that abuts $\sim 350 \text{ m}$ vertically upwards into the central $\sim 5 \text{ km}$ width of the $\sim 30 \text{ km}$ -wide, $\sim 2000 \text{ m}$ deep ice-stream trunk (Fig. 4a). There is, therefore, a clear contrast in the gross topographic shape of the cross-sectional bed profile between the PIG and RIS repeat-survey sites; and we note that the flat-bedded trough of PIG is more characteristic of the majority of ice streams in West Antarctica (Fretwell et al., 2013). Turning to the finer, sub-km morphological character of each site, detailed ground-based radar surveys of PIG’s trunk (Figs 2 and 3, and see further imagery in Bingham et al., 2017) have depicted ubiquitous mega-scale glacial lineations (MSGSL) across all regions of PIG’s trunk, indicative of the widespread presence of deforming sediment (Clark, 1993, Stokes and Clark 2001; Spagnolo et al., 2016). MSGSL with mean amplitudes $\sim 10 \text{ m}$ and a mode spacing of $300\text{--}400 \text{ m}$ are also pervasive surrounding the RIS repeat-survey site (Fig. 4a) but, unlike PIG, within the MSGSL themselves linear features with much higher amplitudes (up to 70 m) are observed; King et al. (2016) termed these features “tapering drumlins”.

25

The physical properties of the bed between PIG and RIS also differ. Seismic reflection surveying of several sites along PIG’s trunk, including upstream and downstream of our repeat-survey sites, has confirmed that the bed immediately below the ice pervasively consists of dilated sediments, which are at least several metres thick (Smith et al., 2013; Brisbourne et al., 2017). Along seismic profile S1₂₀₀₇ potential-field data indicate that a transition from sedimentary to crystalline bedrock lies beneath the cap of deformable sediments (at position 9 km on Fig. 2d) (Smith et al., 2013), but the repeat survey of S1 in 2014/15 (S1₂₀₁₄) exhibited no change to acoustic impedance anywhere along this profile (Brisbourne et al., 2017), reinforcing the notion of a relatively stable basal environment despite the transition in geology below the deforming till layer. By contrast, the bed around RIS profile site C1 is characterised by a “patchwork” of soft, deforming sediments contrasting with regions of basal sliding indicative of more consolidated sediments (Smith and Murray, 2009; Smith et al., 2015). Notably, the areas of deforming sediment coincide with topographic highs such as the feature known as “The Bump” (Smith, 1997) (Fig. 4c). Changes in acoustic impedance were detected for parts of the RIS repeat-profile between 1997 and 2004, and were interpreted as changes in hydrological conditions within subglacial sediments affecting till porosity (Smith et al., 2007).

40

A third key difference between the PIG and RIS repeat-survey sites is the degree to which the survey sites are affected by tidal influences, and the potential effects this can have on subglacial hydrology. High-temporal-resolution GPS monitoring of ice motion at RIS site C1, 10 km upstream of the grounding line, has shown that horizontal ice velocity varies by $\sim 20\%$ on fortnightly timescales in response to tidally-modulated vertical displacement of Filchner-Ronne Ice Shelf (Gudmundsson, 2006, 2007; Murray et al., 2007; Minchew et al., 2017). In addition passive, seismic monitoring has demonstrated increased seismic activity during tidal cycles (Adalgeirsdóttir et al., 2008). Numerical modelling studies have suggested that the velocity

Deleted: deforming

Deleted: deforming

Formatted: Not Superscript/ Subscript

oscillations are transmitted by tidally-forced fluctuations in basal water pressure, that alter the pore pressure of basal sediments and thus effective pressure at the bed (Thompson et al., 2014; Rosier et al., 2015). These observations suggest that the hydrological system beneath the RIS survey site is prone to significant dynamism and reorganisation over short timescales.

However, Minchew et al. (2017) suggest that weak shear margins are a more dominant factor in the propagation of tidally-

5 induced horizontal ice-flow variability compared to fluctuations in basal water pressure.

High-resolution GPS monitoring at several sites along PIG's main trunk showed no tidal signal in ice motion even 55 km upstream from the grounding line (Scott et al., 2009), which lies well downstream of our repeat radar sites R1-R3. The ubiquitous dilated till layer that overlies a relatively flat bed at each of the PIG survey sites provides suitable conditions for a

10 stable, distributed drainage system (Weertman, 1972; Alley, 1989; Engelhardt et al., 1990, Engelhardt and Kamb, 1997) potentially in the form of a canal network as suggested in the upstream catchment of neighbouring Thwaites Glacier (Schroeder et al., 2013), upstream RIS (King et al., 2004) and Whillans Ice Stream (Engelhardt and Kamb, 1997). In the absence of a dynamic hydrological system, sediment mobility facilitated by fluvial transport in subglacial sheets or channels (cf. Weertman, 1972; Walder and Fowler, 1994; Fowler 2010, Kyrke-Smith and Fowler, 2014) may be restricted and likely be more stable

15 over time, thereby limiting the rate of erosion and sediment transport detectable within the precision of repeat geophysical measurements.

We therefore consider the possibility that rapid erosion and bed reorganisation on the scale observed beneath RIS is an exception rather than the rule. Surface velocity inversions along PIG's main trunk suggest that most of its bed is subjected to

20 low basal shear stress, except for some discrete "ribs" of high basal traction spanning the trunk downstream from our measurements (Sergienko and Hindmarsh, 2013). We suggest therefore that low sediment transport rates might be expected over much of PIG's bed as a consequence of the generally low basal shear stresses at all of our repeat measurement sites, and that future investigation of bed variation needs to be targeted towards an area of high inferred basal traction.

The apparent stability of the bed we observe is also worth considering in the context of debate concerning strain distribution in deforming beds and associated till rheology. The resolution of our data limit the scope of any firm conclusions but may contribute to further discussion on this issue. Field observations and models have argued for viscous (Boulton and Hindmarsh, 1987; Alley et al., 1987; Hindmarsh, 1998) and plastic (Kamb, 1991; Tulaczyk et al., 2000; Iverson, 2010) deformation of subglacial sediments. Subglacial till transport models invoking either viscous or plastic rheology demonstrate that deformation

30 depth increases with effective pressure. Uneven terrains on an ice stream bed would therefore translate into variable effective pressures and till fluxes, which might facilitate positive feedbacks over bumps and therefore the growth of bedforms (e.g. Hindmarsh, 1998; Fowler, 2000; Schoof, 2007). However, it remains unclear how rapidly bedforms can evolve, as although some studies have suggested rapid growth (Smith et al., 2007; Dowling et al., 2016) these might represent exceptions and a comprehensive analysis is missing. Such pressure-dependent growth will ultimately be controlled by the depth of deformation.

35 It is also unclear whether bedform growth is always limited: they are typically characterised by a relatively well-defined size-frequency distribution, albeit positively skewed (e.g. Fowler et al., 2013; Hillier et al. 2016; Ely et al., 2018). In our study area, one would expect that the uneven terrain of the bed would translate into variable effective pressure and till fluxes and that topography would therefore evolve. The lack of morphological change that we have observed at the ice-stream bed could therefore be interpreted as evidence of very shallow deforming sediment, which might translate to a very low pace of bedform

40 growth, not detectable within the relatively short interval of our repeat surveys. Alternatively, it might indicate that the ice-bed system has reached a point of "maturity" where bedform growth is inhibited by other physical factors. It is even possible that the entire PIG system is now experiencing net erosion due to its recent acceleration, yet the rate of such erosion must be very low for us not to be able to detect a lowering of the topography within the six year interval of our observations.

Deleted: combine to

Deleted: By contrast, h

Geophysical surveys of other West Antarctic ice streams (Alley et al., 1986; Blankenship et al., 1986; Peters et al., 2006) have revealed shallow bed gradients and widespread deforming till similar to the surveyed sites on PIG. These characteristics are also evident in offshore records of palaeo-ice stream beds on the outer continental shelf of West Antarctica, where ice streams occupied shallow troughs in sedimentary basement (Lowe and Anderson, 2002; Wellner et al., 2006; Larter et al., 2009; Graham et al., 2010). These offshore regions are characterised by ubiquitous MSGSL (Spagnolo et al., 2014) that are also observed in the more extensive grid surveys surrounding our repeat surveys (Fig. 2a,3a,b) (Bingham et al., 2017). The uniformity of these bedforms may reflect stable, self-organised bed conditions (c.f., Spagnolo et al., 2017).

Deleted: f

4.2 Implications for subglacial sediment transport and future surveys

The absence of detectable morphological change to the bed over the majority of the ~60 km of bed profiles on PIG could be interpreted in three ways: (1) that no sediment erosion/transport/deposition is occurring at the measured sites; (2) that erosion/deposition is occurring but at rates too low to be detected within the vertical range resolution of the radar; or (3) that the subglacial till flux is in a steady state wherein sediment transport is active but is not altering the shape of the bed. The last of these would contradict modelling studies that suggest that pressure-dependant till flux dictate that there can be no steady-state till flux on an uneven basal interface (Hindmarsh, 1998; Fowler, 2000; Schoof, 2007).

Prior to this study the few repeat geophysical surveys of the ice-bed interface in Alaska and Antarctica yielded subglacial erosion rates of 1.0 - 3.9 m a⁻¹ (Motyka et al., 2006; Smith et al., 2007, 2012), far exceeding the 0.01 - 100 mm a⁻¹ range traditionally reported as characteristic of glacial settings using proglacial sediment yields (Hallet et al., 1996; Koppes and Hallet, 2006; Koppes & Montgomery, 2009; Cowton et al., 2012; Herman et al., 2015) (Fig. 6). Consequently, there has been growing consensus that subglacial erosion and transport is likely to be high, i.e. of the order of m a⁻¹, beneath thick, warm-based ice as manifested by polar ice streams. Observations of substantial till deposition at the grounding lines of contemporary and palaeo West Antarctic ice streams support this view (Anandakrishnan et al., 2007; Batchelor and Dowdeswell, 2015). The precision of our measurements, essentially defined by the vertical range resolution of the radar, means that the maximum possible erosion rate that could go undetected along our profiles is 500 mm a⁻¹.

Aside from the repeat geophysical studies conducted in Antarctica by Smith et al. (2007, 2012), the only other location where this method has been used is southeast Alaska where Motyka et al., (2006) found exceptionally high erosion rates of up to 3.9 ± 0.8 m a⁻¹ over a period of 14 years (Fig. 6). However, this setting is unique and these exceptional erosion rates occurred during short episodes of glacier advance over glaciomarine and outwash sediments driven by ice-sediment dynamics (Motyka et al., 2006; Brinkerhoff et al., 2017). Indeed, erosion rates in southern Alaska are the highest reported for any region. These high erosion rates are associated with high precipitation rates, active tectonic uplift and glaciofluvial evacuation of unlithified sediments (Hallet et al., 1996; Motyka et al., 2006). The equally rapid erosion observed by Smith et al. (2007, 2012) therefore evokes a glaciofluvial mechanism. Emerging evidence of subglacial hydrology from West Antarctica shows that meltwater can be stored and released over short-timescales through interconnected subglacial lakes and channels (Wingham et al., 2006; Fricker et al., 2007; Fricker and Scambos, 2009; Smith et al., 2017). In our survey area there is no evidence from radar (Bingham et al., 2017) or seismic data (Brisbourne et al., 2017) that indicates the presence of subglacial lakes or concentrated meltwater channels. However, in Smith et al.'s (2012) repeat seismic measurement over ~50 years, rapid erosion of 1 m a⁻¹ was detected ~25 km downstream of survey R3 (EHT31 in Fig. 1b). At this location the bed is also smooth and there is no indication from satellite or geophysical data of rapid meltwater drainage events or channelised meltwater flow (Smith et al., 2012). A possible explanation for the discrepancy between erosion observed at this location and the results of this study is a

Deleted: This erosion took place during an advance of Taku Glacier over glaciomarine and outwash sediments. Erosion

timescale bias (Ganti et al., 2016). Smith et al.'s (2012) study may have captured intermittent episodes of erosion not captured by our 3-6 year survey intervals.

In Section 3, we showed that while the majority of the repeat-radar profiles evince negligible morphological change, there is one ~0.5 km section of profile R1 where a possible reorganisation of the bed is expressed as a morphological change in the basal reflector (Fig. 5). This region of the bed broadly coincides with a transition from thin (≤ 10 m) sediment overlying a crystalline basement to a deep sedimentary basin imaged in seismic and potential field surveys (Smith et al., 2013). A change in basal drag and ice velocity is also associated with this boundary. It is likely that such boundaries influence subglacial hydrological pathways and, hence, basal ice motion. This exemplifies the importance of the sampling location and periods of measurement to any study attempting to capture subglacial sedimentary processes. For example, the location where Smith et al. (2007) monitored deposition (drumlin formation) on RIS between 1997-2004 is positioned at the end of a drumlin tail subsequently imaged in a wider radar survey of the region (King et al., 2009; 2016) (Fig. 4b). These repeat measurements may have been fortuitously timed to capture the extension of the drumlin tail. The anisotropic morphology of tapering drumlins and MSGL present beneath RIS (King et al., 2016) may not lend itself well to the detection of change from 2-D surveys driven orthogonal to ice flow. Dynamic change in these bedforms may be expressed as downstream migration of a propagating sediment front that would be difficult to detect without more extensive and/or higher-density coverage of repeat surveys over longer timescales.

5.0 Conclusions

We have analysed ~60 km of repeat radar surveys acquired from Pine Island Glacier, West Antarctica, between austral seasons 2007/08 and 2013/14. The results showed that little morphological change occurred at the bed over this period. The absence of large signals of erosion or deposition contrasts with erosion/deposition measured on nearby Rutford Ice Stream between 1991 and 2004 (Smith et al., 2007), and with inferred erosion of $\sim 1 \text{ m a}^{-1}$ at Pine Island Glacier over a half-century (1960-2009; Smith et al., 2012). We attribute the negligible detection of morphological change at the bed of Pine Island Glacier on the sub-decadal timescale to the ubiquitous presence of a deforming till layer, wherein sediment transport is in steady state such that sediment is transported along the basal interface without inducing measurable vertical displacement to the radar-sounded basal interface. Moreover, none of the survey sites on Pine Island Glacier has experienced short-term variations in ice velocity (Scott et al., 2009) diagnostic of active hydrological systems capable of mobilising sediment (Thompson et al., 2014; Rosier et al., 2015). By comparison, the high subglacial erosion and deposition rates reported from Rutford Ice Stream occurred where the ice is overriding a topographic rise 350 m high, there are sharp contrasts in subglacial sediment properties, and the subglacial system likely experiences short-term variability influenced by tidal oscillations (Aðalgeirsdóttir et al., 2008; Thompson et al., 2014; Rosier et al., 2015).

The surveys presented in this study have increased the length, by an order or magnitude, of the available records of repeat measurements of Antarctic ice-stream beds. However, these environments remain poorly sampled. The surveys of Pine Island Glacier and Rutford Ice Stream have shown that improved understanding of the dynamism of the ice-sheet bed may best be gained from a multi-method survey approach, involving: (1) high-density radar grid surveying to image the subglacial landscape and provide spatial context, (2) seismic survey to discern the physical properties of the basal interface, and (3) repeated seismic and/or radar profiles at the same site undertaken over subdecadal to decadal timescales. Our findings also show the importance of the physical properties of the bed at each site to the sediment erosion and deposition that could be detected, underscoring the requirement to sample sites that, as a whole, capture a representative range of basal conditions. Models of basal drag inverted from satellite-imaged surface properties (e.g. Joughin et al., 2009; Arthern et al., 2015) offer the best opportunities to guide site selection.

Author contributions

Radar and seismic data from 2007/08 were acquired by RGB; radar data from 2010/11 by ECK; radar data from 2013/14 by DD, RGB, AMS and DGV; and seismic data from 2014/15 by AMB, AMS and DD. Radar data were processed by DD, RGB and ECK and seismic data by AMB and AMS. Sentinel-1 velocity estimates for each geophysical site were produced by AEH. DD analysed the data and wrote the paper. All authors contributed edits to the final manuscript.

Acknowledgements

DD was supported by NERC Training Grant NE/K011189/1 to RGB. All fieldwork was supported by funding from the UK Natural Environment Research Council (NERC) iSTAR Programme Grants NE/J005665 (RGB/ECK/AMS/AMB/DGV) and NE/J005681 (AEH), NERC grants NE/B502287 (ECK/AMS) and NE/J004766 (MS), and the British Antarctic Survey (BAS) *Polar Science for Planet Earth* Programme. We would like to thank all members of the iSTAR traverses of Pine Island Glacier for assistance with field-data acquisition in 2013/14 and 2014/15; M. Baird, T. Gee, J. Wake and J. Yates for field-operational support during iSTAR; F. Buckley, C. Griffiths and J. Scott for field assistance in 2007/08 and D. Routledge for field assistance in 2010/11. We are especially grateful for the dedicated and professional support of BAS Operations and Logistics without whom this study would not have been possible.

References

- Adalgeirsdóttir, G., Smith, A.M., Murray, T., King, M.A., Makinson, K., Nicholls, K.W., Behar, A.E. Tidal influence on Rutford Ice Stream, West Antarctica: observations of surface flow and basal processes from closely spaced GPS and passive seismic stations, *Journal of Glaciology*, 54(187), 715-724, 2008.
- Alley, R.B., Continuity comes first: recent progress in understanding subglacial deformation. Geological Society, London, Special Publications, 176(1), pp.171-179. 2000.
- Alley, R.B., Blankenship, D.D., Bentley, C.R. and Rooney, S.T. Deformation of till beneath ice stream B, West Antarctica, *Nature*, 322, 57–59, 1986.
- Alley, R.B., Blankenship, D.D., Rooney, S.T. and Bentley, C.R., Till beneath ice stream B: 4. A coupled ice-till flow model. *Journal of Geophysical Research: Solid Earth*, 92(B9), pp.8931-8940. 1987.
- Alley, R., Water-pressure coupling of sliding and bed deformation: I. Water system, *Journal of Glaciology*, 35(119), 108–118, 1989.
- Alley, R.B., Blankenship, D.D., Rooney, S.T. and Bentley, C.R., Sedimentation beneath ice shelves—the view from ice stream B. *Marine Geology*, 85(2-4), pp.101-120. 1989.
- Alley, R., Cuffey, K. Evenson, E., Strasser, J., Lawson, D., and Larson, G., How glaciers entrain and transport basal sediment: physical constraints, *Quat. Sci. Rev.*, 16, 1017 – 1038, 1997.
- Alley, R.B., Lawson, D.E., Larson, G.J., Evenson, E.B. and Baker, G.S., Stabilizing feedbacks in glacier-bed erosion. *Nature*, 424(6950), p.758. 2003.
- Alley, R.B., Anandakrishnan, S., Dupont, T.K., Parizek, B.R. and Pollard, D., Effect of sedimentation on ice-sheet grounding-line stability. *Science*, 315(5820), pp.1838-1841. 2007.
- Anandakrishnan, S., and Alley, R., Stagnation of Ice Stream C, West Antarctica by water piracy, *Geophysical Research Letters*, 24(3), 265–268, doi:10.1029/96GL04016, 1997.
- Anandakrishnan, S., Catania, G.A., Alley, R.B., and Horgan, H.J., Discovery of till deposition at the grounding line of Whillans Ice Stream., *Science*, 315(5820), 1835–1838, doi:10.1126/science.1138393, 2007.

- Arthern, R.J., Hindmarsh, R.C.A. and Williams, C.R., Flow speed within the Antarctic ice sheet and its controls inferred from satellite observations. *J. Geophys. Res.* 120, 1171-88, 2015.
- Batchelor, C. L., and Dowdeswell, J.A., Ice-sheet grounding-zone wedges (GZWs) on high-latitude continental margins, *Marine Geology*, 363, 65–92, doi:10.1016/j.margeo.2015.02.001, 2015.
- 5 Bentley, C., Lord, N. and Liu, C., Radar reflections reveal a wet bed beneath stagnant Ice Stream. C and a frozen bed beneath ridge BC, West Antarctica, *Journal of Glaciology*, 44(146), 149–156, 1998.
- Bingham, R.B., Vaughan, D.G., King, E.C., Davies, D., Cornford, S.L., Smith, A.M., Arthern, R.J., Brisbourne, A.M., De Rydt, J., Graham, A.G.C., Spagnolo, M., Marsh, O.J., Shean, D.E., Diverse landscapes beneath Pine Island Glacier influence ice flow, *Nature Communications*. 2017.
- 10 Blankenship, D. D., Bentley, C.R., Rooney, S.T. and Alley, R.B., Seismic measurements reveal a saturated porous layer beneath an active Antarctic ice stream, *Nature*, 322, 54–57, 1986.
- Boulton, G.S. and Hindmarsh, R.C.A., Sediment deformation beneath glaciers: rheology and geological consequences. *Journal of Geophysical Research: Solid Earth*, 92(B9), pp.9059-9082. 1987
- Brinkerhoff, D., Truffer, M. and Aschwanden, A., Sediment transport drives tidewater glacier periodicity. *Nature*
15 *communications*, 8(1), p.90. 2017.
- Brisbourne, A. M., Smith, A. M., Vaughan, D. G., King, E. C., Davies, D., Bingham, R. G., Smith, E. C., Nias, I. J. and Rosier, S. H. R., Bed conditions of Pine Island Glacier, West Antarctica, *Journal of Geophysical Research: Earth Surface*, 122(1), 419–433, doi:10.1002/2016JF004033, 2016JF004033, 2017.
- Clark, C. D., Mega-scale glacial lineations and cross-cutting ice-flow landforms, *Earth Surface Processes and Landforms*,
20 18(1), 1–29, doi:10.1002/esp.3290180102, 1993.
- Conway, H., Catania, G. , Raymond, C. F., Gades, A. M., Scambos, T. A. and Engelhardt, H., Switch of flow direction in an Antarctic ice stream, *Nature*, 419(6906), 465–467. 2002.
- Cowton, T., Nienow, P., Bartholomew, I., Sole, A., and Mair, D., Rapid erosion beneath the Greenland ice sheet, *Geology*, 40, 343–346, 2012.
- 25 Cuffey, K. and Alley, R.B., Is erosion by deforming subglacial sediments significant? (Toward till continuity). *Annals of Glaciology*, 22, pp.17-24. 1996.
- Damsgaard, A., Egholm, D.L., Piotrowski, J.A., Tulaczyk, S., Larsen, N.K. and Tylmann, K., Discrete element modelling of subglacial sediment deformation. *Journal of Geophysical Research: Earth Surface*, 118(4), pp.2230-2242. 2013.
- Damsgaard, A., Egholm, D.L., Beem, L.H., Tulaczyk, S., Larsen, N.K., Piotrowski, J.A. and Siegfried, M.R., Ice flow
30 dynamics forced by water pressure variations in subglacial granular beds. *Geophysical Research Letters*, 43(23). 2016.
- DeConto, R.M., and Pollard, D. Contribution of Antarctica to past and future sea-level rise, *Nature*, 531, 591-597, 2016.
- [Dowling, T.P.F., Moller, P., Spagnolo, M., Rapid sub-glacial streamlined bedform formation at a calving bay margin. *Journal of Quaternary Science*, 31, 879-892. 10.1002/jqs.2912, 2016.](#)
- Engelhardt, H. and Kamb, B., Basal hydraulic system of a West Antarctic ice stream: constraints from borehole
35 observations, *Journal of Glaciology*, 43(144), 207-229, 1997.
- Ely, J.C., Clark, C.D., Ng, F., Spagnolo, M., Hughes, A.L.C., Stokes, C.R. Using the size and position of drumlins to understand how they grow, interact and evolve. *Earth Surface Processes and Landforms*, accepted, online. 10.1002/esp.4241, 2018.
- Engelhardt, H., Humphrey, N., Kamb, B. and Fahnestock, M., Physical conditions at the base of a fast moving Antarctic ice
40 stream, *Science*, 248(4951), pp. 57–59, 1990.
- Fowler, A.C., The formation of subglacial streams and mega-scale glacial lineations. In *Proceedings of the Royal Society of London A: Mathematical, Physical and Engineering Sciences*, 466, 3181-3201, 2010.

- Fowler, A.C., Spagnolo, M., Clark, C.D., Stokes, C.R., Hughes, A.L.C., Dunlop, P. (2013). On the size and shape of drumlins. *International Journal on Geomathematics*, 4, 155-165.
- Fretwell, P., Pritchard, H. D., Vaughan, D. G., Bamber, J. L., Barrand, N. E., Bell, R., Bianchi, C., Bingham, R. G., Blankenship, D. D., Casassa, G., Catania, G., Callens, D., Conway, H., Cook, A. J., Corr, H. F. J., Damaske, D., Damm, V., Ferraccioli, F., Forsberg, R., Fujita, S., Gim, Y., Gogineni, P., Griggs, J. A., Hindmarsh, R. C. A., Holmlund, P., Holt, J. W., Jacobel, R. W., Jenkins, A., Jokat, W., Jordan, T., King, E. C., Kohler, J., Krabill, W., Riger-Kusk, M., Langley, K. A., Leitchenkov, G., Leuschen, C., Luyendyk, B. P., Matsuoka, K., Mouginot, J., Nitsche, F. O., Nogi, Y., Nost, O. A., Popov, S. V., Rignot, E., Rippon, D. M., Rivera, A., Roberts, J., Ross, N., Siegert, M. J., Smith, A. M., Steinhage, D., Studinger, M., Sun, B., Tinto, B. K., Welch, B. C., Wilson, D., Young, D. A., Xiangbin, C., and Zirizzotti, A.: Bedmap2: improved ice bed, surface and thickness datasets for Antarctica, *The Cryosphere*, 7, 375–393, doi:10.5194/tc-7-375-2013, 2013.
- Fricker, H. A., and Scambos, T., Connected subglacial lake activity on lower Mercer and Whillans ice streams, West Antarctica, 2003-2008, *Journal of Glaciology*, 55(190), 303–315, 2009.
- Fricker, H. A., Scambos, T., Bindschadler, R. and Padman, L., An active subglacial water system in West Antarctica mapped from space, *Science*, 315(5818), 1544–1548, doi:10.1126/science.1136897, 2007.
- Ganti, V., Hagke, C.V., Scherler, D., Lamb, M.P., Fischer, W.W. and Avouac J.-P., Time scale bias in erosion rates of glaciated landscapes, *Science Advances*, 2(10), doi:10.1126/sciadv.1600204, 2016.
- Graham, A. G. C., Larter, R. D., Gohl, K., Dowdeswell, J.A., Hillenbrand, C-D., Smith, J.A., Evans, J., Kuhn, G. and Deen, T., Flow and retreat of the Late Quaternary Pine Island-Thwaites palaeo-ice stream, West Antarctica, *Journal of Geophysical Research*, 115(F3), 2010.
- Gudmundsson, G. H., Fortnightly variations in the flow velocity of Rutford Ice Stream, West Antarctica, *Nature*, 444(7122), 1063–1064, 2006.
- Gudmundsson, G. H., Tides and the flow of Rutford Ice Stream, West Antarctica, *Journal of Geophysical Research: Earth Surface*, 112(4), 1063–1064, doi:10.1029/2006JF000731, 2007.
- Hallet, B., Hunter, L., and Bogen, J., Rates of erosion and sediment evacuation by glaciers: A review of field data and their implications, *Global Planet. Change*, 12, 213 – 235, 1996.
- Herman, F., Beaud, F. Champagnac, J-D. Lemieux, J-M., and Sternai, P., Glacial hydrology and erosion patterns: a mechanism for carving glacial valleys, *Earth Planet. Sci. Lett.*, 310, 498 – 508, 2011.
- Herman, F., Beyssac, O., Brughelli, M., Lane, S.N., Leprince, S., Adatte, T., Lin, J.Y.Y., Avouac, J.-P. and Cox, S.C., Erosion by an alpine glacier, *Science*, 350(6257), 193–195, doi:10.1126/science.aab2386, 2015.
- Hermann, E. and Barclay, K., Basal sliding of ice stream B, West Antarctica. *Journal of Glaciology*, 44(147), pp.223-230. 1998.
- Hindmarsh, R.C., The stability of a viscous till sheet coupled with ice flow, considered at wavelengths less than the ice thickness. *Journal of Glaciology*, 44(147), pp.285-292. 1998.
- Hillier, J.K., Kougioumtzoglou, I.A., Stokes, C.R., Smith, M.J., Clark, C.D., Spagnolo, M. (2016). Exploring explanations of subglacial bedform sizes using statistical models. *PLoS ONE*, 11(7): e0159489, doi: 10.1371/journal.pone.0159489.
- Iverson, N.R. and Iverson, R.M., Distributed shear of subglacial till due to Coulomb slip. *Journal of Glaciology*, 47(158), pp.481-488. 2001.
- Iverson, N. R., Shear resistance and continuity of subglacial till: hydrology rules. *Journal of Glaciology*, 56(200), 1104-1114. 2010.
- Hogg, A., Shepherd, A., Cornford, S.L., Briggs, K.H., Gourmelen, N., Graham, J.A., Joughin, I., Mouginot, J., Nagler, T., Payne, A.J., Rignot, E., Wuite, J., Increased ice flow in Western Palmer Land linked to ocean melting, *Geophysical Research Letters*, 9, 4159–4167. 2017.

Deleted: ¶
¶

- Jamieson, S.S.R., Sugden, D.E., and Hulton, N.R.J., The evolution of the subglacial landscape of Antarctica, *Earth Planet. Sci. Lett.*, 293, 1–27, 2010.
- Jenson, J.W., Clark, P.U., MacAyeal, D.R., Ho, C. and Vela, J.C., Numerical modelling of advective transport of saturated deforming sediment beneath the Lake Michigan Lobe, Laurentide Ice Sheet. *Geomorphology*, 14(2), pp.157-166. 1995.
- 5 Joughin, I., Tulaczyk, S., Bamber, J.L., Blankenship, D., Holt, J.W., Scambos, T. and Vaughan, D.G., Basal conditions for Pine Island and Thwaites Glaciers, West Antarctica, determined using satellite and airborne data, *Journal of Glaciology*, 55(190), 245–257, 2009.
- Joughin, I., Smith, B.E., and Medley, B. Marine ice sheet collapse potentially under way for the Thwaites Glacier basin, West Antarctica, *Science*, 344, 735–738, 2014.
- 10 Kamb, B., Rheological nonlinearity and flow instability in the deforming bed mechanism of ice stream motion. *Journal of Geophysical Research: Solid Earth*, 96(B10), pp.16585-16595. 1991.
- King, E. C., Woodward, J. and Smith, A.M., Seismic evidence for a water-filled canal in deforming till beneath Rutford Ice Stream, West Antarctica, *Geophysical Research Letters*, 31(20), doi:10.1029/2004GL020379, 2004.
- King, E.C., Hindmarsh R.C.A. and Stokes, C.R. Formation of mega-scale glacial lineations observed beneath a West
15 Antarctic ice stream, *Nature Geoscience*, DOI:10.1038/NGEO581, 2009.
- King, E.C., Pritchard H.D. and Smith, A.M., Subglacial landforms beneath Rutford ice stream, Antarctica: detailed bed topography from ice-penetrating radar, *Earth System Science Data*, 8, 913–934, doi:10.5194/essd-8-913-2015, 2016.
- Konrad, H., Gilbert, L., Cornford, S.L., Payne, A., Hogg, A., Muir, A., and Shepherd, A., Uneven onset and pace of ice-dynamical imbalance in the Amundsen Sea Embayment, West Antarctica, *Geophys. Res. Lett.*, 44, 910–918, 2017.
- 20 Koppes, M. N., and Hallet, B., Influence of rapid glacial retreat on the rate of erosion by tidewater glaciers, *Geology*, 30(1), 47–50, doi:10.1130/0091-7613(2002)030<0047:IORGRO>2.0.CO;2, 2002.
- Koppes, M. N., and Montgomery, D.R., The relative efficacy of fluvial and glacial erosion over modern to orogenic timescales, *Nature Geoscience*, 2(9), 644–647, 2009.
- Kyrke-Smith, T.M. and Fowler, A.C., November. Subglacial swamps. In *Proceedings of the Royal Society of London A: Mathematical, Physical and Engineering Sciences* (Vol. 470, No. 2171, p. 20140340). The Royal Society. 2014.
- 25 Larter, R. D., Graham, A. G. C., Gohl, K., Kuhn, G., Hillenbrand, C.D., Smith, J.A., Deen, T.J., Livermore, R.A., and Schenke, H.W., Subglacial bedforms reveal complex basal regime in a zone of paleo-ice stream convergence, Amundsen Sea embayment, West Antarctica, *Geology*, 37(5), 411–414, 2009.
- Lowe, A. L., and Anderson, J.B., Reconstruction of the West Antarctic Ice Sheet in Pine Island Bay during the Last Glacial
30 Maximum and its subsequent retreat history, *Quaternary Science Reviews*, 21(1617), 1879 – 1897, 2002.
- McMillan, M., Shepherd, A., Sundal, A., Briggs, K., Muir, A., Ridout, A., Hogg, A., and Wingham, D., Increased ice losses from Antarctica detected by CryoSat-2, *Geophys. Res. Lett.*, 41, 3899–3905, 2014.
- Minchew, B., Simons, M., Riel, B., and Milillo, P., Tidally induced variations in vertical and horizontal motion on Rutford Ice Stream, West Antarctica, inferred from remotely sensed observations, *Journal of Geophysical Research: Earth Surface*,
35 122(1), 167–190, 2017.
- Motyka, R.J., Truffer, M., Kuriger, E.M., and Bucki, A.K., Rapid erosion of soft sediments by tidewater glacier advance: Taku Glacier, Alaska, USA, *Geophysical Research Letters*, 33, L24504, 2006.
- Mouginot, J., Rignot, E., and Scheuchl, B., Sustained increase in ice discharge from the Amundsen Sea Embayment, West Antarctica, from 1973 to 2013, *Geophys. Res. Lett.*, 41, 1576–1584, 2014.
- 40 Murray, T., Smith, A.M., King, M.A., and Weedon, G.P., Ice flow modulated by tides at up to annual periods at Rutford Ice Stream, West Antarctica, *Geophysical Research Letters*, 34(18), 2007.
- Nygård, A., Sejrup, H.P., Haflidason, H., Lekens, W.A.H., Clark, C.D. and Bigg, G.R., Extreme sediment and ice discharge from marine-based ice streams: New evidence from the North Sea. *Geology*, 35(5), pp.395-398. 2007.

- Park, J.W., Gourmelen, N., Shepherd, A., Kim, S.W., Vaughan, D.G., and Wingham, D.J., Sustained retreat of the Pine Island Glacier, *Geophys. Res. Lett.*, 40, 2137–2142, 2013.
- Peters, L.E., Anandakrishnan, S., Alley, R.B., Winberry, J.P., Voigt, D.E., Smith, A.M., Morse, D.L., Subglacial sediments as a control on the onset and location of two Siple Coast ice streams, West Antarctica, *JGR-Solid Earth*, 111, B01302, doi:10.1029/2005JB003766, 2006.
- Pritchard, H.D., Arthern, R.J., Vaughan, D.G., and Edwards, L.A., Extensive dynamic thinning on the margins of the Greenland and Antarctic ice sheets, *Nature*, 461, 971–5, 2009.
- Raiswell, R., Tranter, M., Benning, L.G., Siegert, M., De'Ath, R., Huybrechts, P., and Payne, T., Contributions from glacially derived sediment to the global iron (oxyhydr)oxide cycle: implications for iron delivery to the oceans, *Geochim. Cosmochim. Acta*, 70, 2765 – 2780, 2006.
- Rignot, E., Mouginot, J. and Scheuchl, B., Ice flow of the Antarctic Ice Sheet. *Science*, 333(6048), 1427-1430. 2011.
- Rignot, E., Mouginot, J., Morlighem, M., Seroussi, H., and Scheuchl, B., Widespread, rapid grounding line retreat of Pine Island, Thwaites, Smith, and Kohler glaciers, West Antarctica, from 1992 to 2011, *Geophys. Res. Lett.*, 41, 3502–3509, 2014.
- Rosier, S. H., Gudmundsson, G.H., and Green, J.M., Temporal variations in the flow of a large Antarctic ice stream controlled by tidally induced changes in the subglacial water system, *The Cryosphere*, 9(4), 1649–1661, 2015.
- Schroeder, D. M., Blankenship, D. D. and Young, D.A., Evidence for a water system transition beneath Thwaites Glacier, West Antarctica, *Proceedings of the National Academy of Sciences*, 110(30), 12,225–12,228, 2013.
- Scott, J.B.T., Gudmundsson, G.H., Smith, A.M., Bingham, R.G., Pritchard, H.D., and Vaughan, D.G., Increased rate of acceleration on Pine Island Glacier strongly coupled to changes in gravitational driving stress, *Cryosphere*, 3, 125–131, 2009.
- Shepherd, A., Ivins, E.R. *et al.*, A reconciled estimate of ice-sheet mass balance, *Science*, 338, 1183-1189, 2012.
- Shepherd, A., Wingham, D.J., Mansley, J.A.D., and Corr, H.F.J., Inland thinning of Pine Island Glacier, West Antarctica, *Science*, 291, 862-864, 2001.
- Smith, A.M., Basal conditions on Rutford Ice Stream, West Antarctica, from seismic observations, *Journal of Geophysical Research: Solid Earth*, 102(B1), 543–552, 1997.
- Smith, A. M., and Murray, T., Bedform topography and basal conditions beneath a fast-flowing West Antarctic ice stream, *Quaternary Science Reviews*, 28(7-8), 584–596, 2009.
- Smith, A.M., Murray, T., Nicholls, K.W., Makinson, K., Aðalgeirsdóttir, G., Behar, A.E., and Vaughan, D.G., Rapid erosion, drumlin formation, and changing hydrology beneath an Antarctic ice stream, *Geology*, 35, 127-130, 2007.
- Smith, A.M., Bentley, C.R., Bingham, R.G., and Jordan, T.A., Rapid subglacial erosion beneath Pine Island Glacier, West Antarctica, *Geophys. Res. Lett.*, 39, L12501, 2012.
- Smith, A. M., Jordan, T. A., Ferraccioli, F. and Bingham, R. G., Influence of subglacial conditions on ice stream dynamics: Seismic and potential field data from Pine Island Glacier, West Antarctica, *Journal of Geophysical Research: Solid Earth*, 118(4), 1471–1482, 2013.
- Smith, B. E., Gourmelen, N., Huth, A. and Joughin, I., Connected subglacial lake drainage beneath Thwaites Glacier, West Antarctica, *The Cryosphere*, 11(1), 451–467, doi:10.5194/tc-11-451-2017, 2017.
- Smith, E. A., Smith, A.M., White, R.S., Brisbourne, A.M., and Pritchard, H.D., Mapping the ice-bed interface characteristics of Rutford Ice Stream, West Antarctica, using microseismicity, *Journal of Geophysical Research: Earth Surface*, 120(9), 1881–1894. 2015.
- Spagnolo M., Clark C. D., Ely J. C., Stokes C. R., Anderson J. B., Andreassen K., Graham A. G. C. and King E. C., Size, shape and spatial arrangement of mega-scale glacial lineations from a large and diverse dataset, *Earth Surface Processes and Landforms*, 39, pages 1432–1448, doi: 10.1002/esp.3532, 2014.

- Spagnolo, M., Bartholomaeus, T.C., Clark, C.D., Stokes, C.R., Atkinson, N., Dowdeswell, J.A., Ely, J.C., Graham, A.G.C., Hogan, K.A., King, E.C., Larter, R.D., Livingstone, S.J. and Pritchard, H.D., The periodic topography of ice stream beds: Insights from the Fourier spectra of mega-scale glacial lineations, *Journal of Geophysical Research*, 122, 1355–1373, 2017.
- 5 Spagnolo, M., Phillips, E., Piotrowski, J., Rea, B.R., Clark, C.D., Stokes, C.R., Carr, S., Ely, J.C., Ribolini, A., Wysota, W. and Szuman, I., Ice stream motion facilitated by a shallow-deforming and accreting bed. *Nature Communications*, 7, Article number: 10723, doi:10.1038/ncomms10723, 2016.
- Stokes, C., and Clark, C., Palaeo-ice streams, *Quaternary Science Reviews*, 20(13), 1437 – 1457. 2001.
- Thompson, J., Simons, M., and Tsai, V.C., Modeling the elastic transmission of tidal stresses to great distances inland in channelized ice streams, *Cryosphere*, 8(6), 2007–2029, 2014.
- 10 Truffer, M., Harrison, W. D., and Echelmeyer, K. A., Glacier motion dominated by processes deep in underlying till. *Journal of Glaciology*, 46.153, 213–221. doi: 10.3189/172756500781832909.6
- Tulaczyk, S., Kamb, W.B. and Engelhardt, H.F., Basal mechanics of ice stream B, West Antarctica: 1. Till mechanics. *Journal of Geophysical Research: Solid Earth*, 105(B1), pp.463–481. 2000.
- 15 Vaughan, D. G., Corr, H. F. J., Ferraccioli, F., Frearson, N. O’Hare, A., Mach, D., Holt, J. W., Blankenship, D. D., Morse, D. L., and Young, D. A., New boundary conditions for the West Antarctic ice sheet: Subglacial topography beneath Pine Island Glacier, *Geophysical Research Letters*, 33(9), 2006.
- Vaughan, D. G., Corr, H. F., Smith, A. M., Pritchard, H. D. and Shepherd, A., Flow switching and water piracy between Rutford ice stream and Carlson inlet, West Antarctica, *Journal of Glaciology*, 54(184), 41–48, doi:10.3189/002214308784409125, 2008.
- 20 Walder, J.S. and Fowler, A., Channelized subglacial drainage over a deformable bed. *Journal of Glaciology*, 40(134), pp.3-15. 1994.
- Weertman, J., General theory of water flow at the base of a glacier or ice sheet, *Reviews of Geophysics*, 10(1), 287-333, 1972.
- Wellner, J., Heroy, D. and Anderson, J., The death mask of the Antarctic ice sheet: Comparison of glacial geomorphic features across the continental shelf, *Geomorphology*, 75(12), 157 – 171, doi:http://dx.doi.org/10.1016/j.geomorph.2005.05.015, 2006.
- 25 Wingham, D.J., Siegert, M.J., Shepherd, A., and Muir, A.S. Rapid discharge connects Antarctic subglacial lakes, *Nature*, 440, 1033-1036, 2006.
- Zwally, H. J., Giovinetto, M., Beckley, B.A. and Saba, J.L., Antarctic and Greenland drainage systems, GSFC Cryospheric Sciences Laboratory, 2012.
- 30

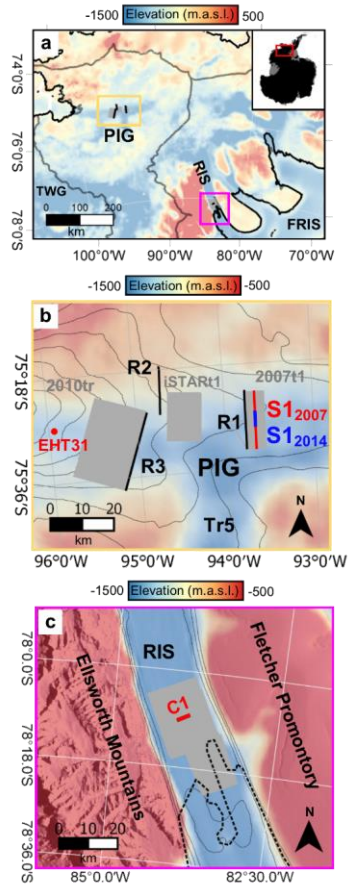


Figure 1. Location maps of the study area. Colourscale shows BEDMAP2 bed elevation (Fretwell et al., 2013). (a) Map of the Pine Island Glacier (PIG) and Rutford Ice Stream (RIS) catchments. Grey lines show drainage boundaries (Zwally et al., 2012). (b) Location of PIG surveys. Grey contours are 100 m a^{-1} ice surface velocity contours (Rignot et al., 2011). Grey shaded boxes show the locations of radar grid DEMs in Fig 2a, 3a.f., black lines are repeat radar surveys. S1₂₀₀₇ is a seismic survey presented in Smith et al., (2013) and S1₂₀₁₄ is a section of this profile resurveyed in 2014 (presented in Brisbourne et al., 2017). EHT31 is a single point repeat survey presented in Smith et al., (2012). (c) Location of RIS surveys. Thick dashed line represents the MODIS grounding line. Grey contours are 100 m a^{-1} velocity contours (Rignot et al., 2011). Grey shaded box is the area of the radar grid DEM in Fig. 5a.

Deleted: Dashed

Deleted: lines

Deleted: Thin dashed

Deleted: lines

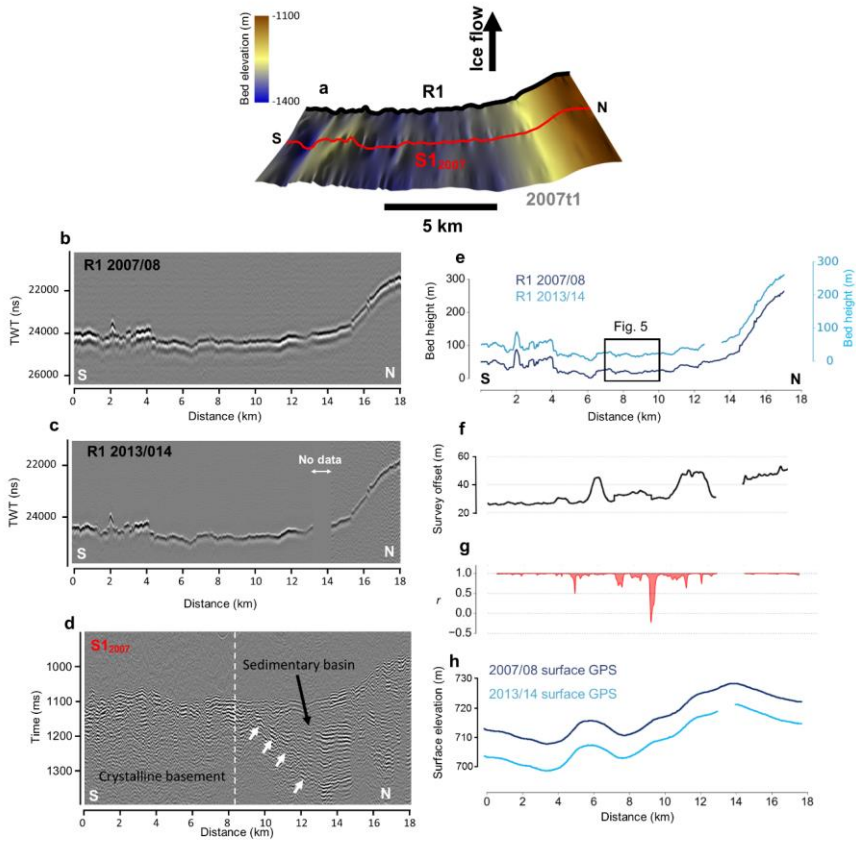


Figure 2: Geophysical data and bed picks from PIG. (a) Radar derived DEM from PIG showing the location of radar (black line) and seismic survey (red line). (b, c), processed radargrams of repeat radar surveys. (d) Processed seismic section of S1 (Smith et al., 2013). White arrows denote a dipping reflector demarcating a sedimentary basin. (e) Bed picks from repeat radar survey R1. (f) [Plot showing the survey divergence between radar profiles in 2007/08 and 2013/14.](#) (g) [Correlation coefficient of repeat bed picks between 2008/09 and 2013/14 across a 500 m moving window.](#) (h) [Plot of surface elevation profiles derived from differential GPS measurements.](#)

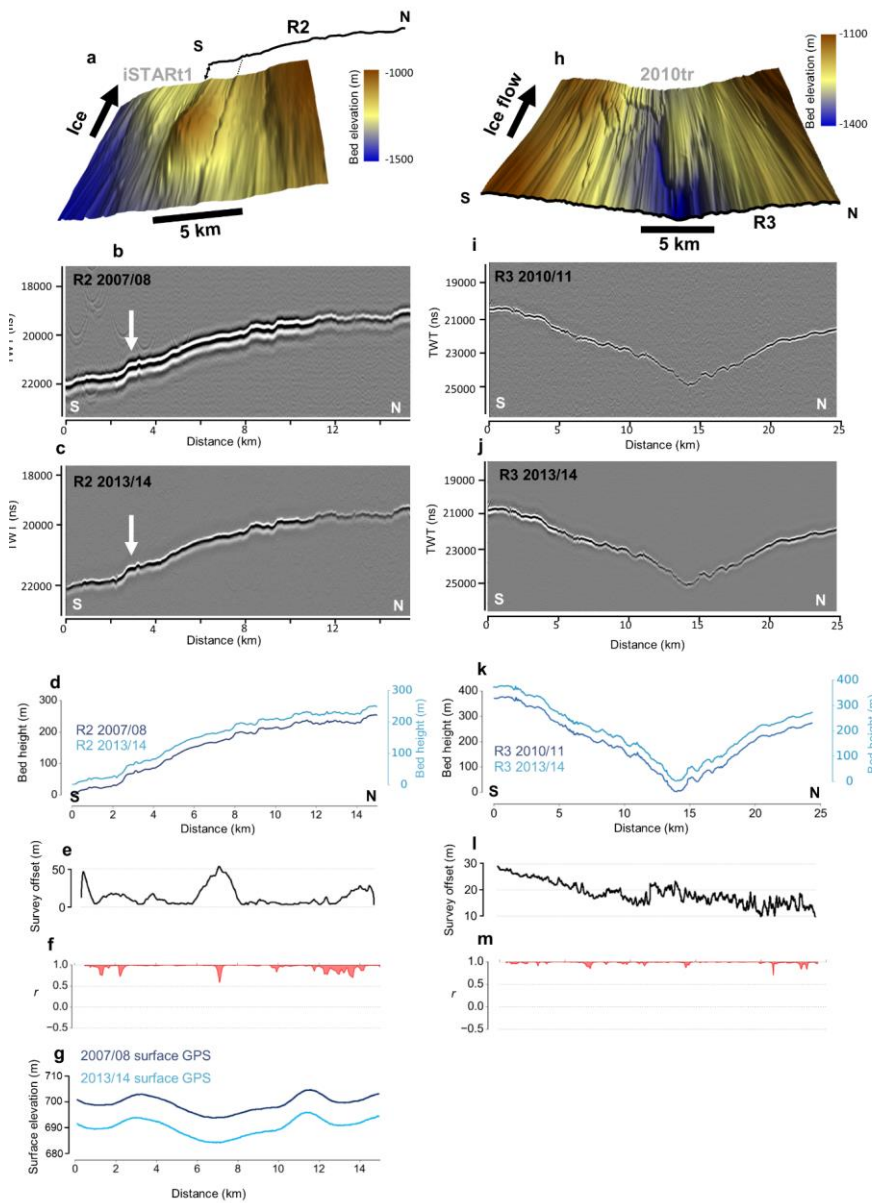
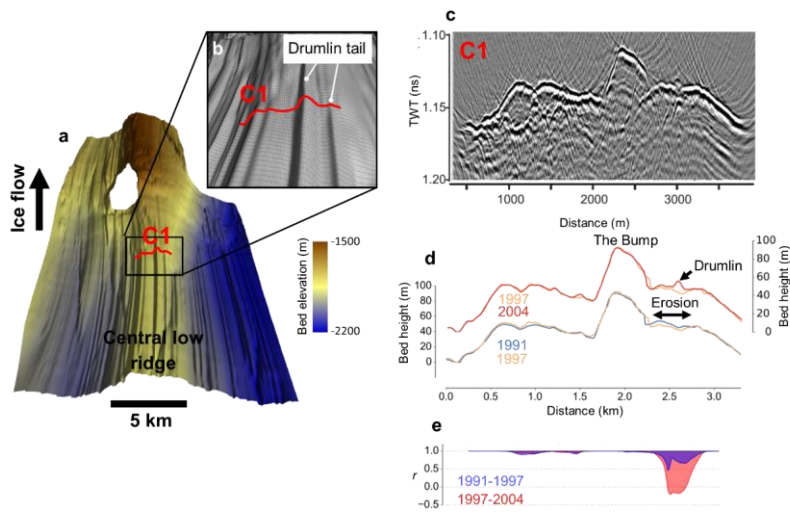


Figure 3: Geophysical data and bed picks from PIG. (a) radar derived bed DEM (Bingham et al., 2017) showing the location of survey R2 2 km downstream. (b, c) processed radargrams of repeat radar surveys. (d) bed picks from repeat radar survey R2. (e) Plot showing the survey divergence between radar profiles in 2007/08 and 2013/14. (f) Correlation coefficient of repeat bed picks between 2008/09 and 2013/14 across a 500 m moving window. (g) Plot of surface elevation profiles derived from differential GPS measurements. (h) radar derived bed DEM (Bingham et al., 2017) showing the location of survey R3 at the upstream limit of the radar grid. (i, j) processed radargrams of repeat radar surveys. (k) bed picks from repeat radar survey R3. (l) Plot showing the survey divergence between radar profiles in 2007/08 and 2013/14. (m) Correlation coefficient of repeat bed picks between 2010/11 and 2013/14 across a 500 m moving window.

5

- Deleted: f
- Deleted: g
- Deleted: h
- Deleted: i
- Deleted: j

10



10 **Figure 4:** Geophysical data and bed picks from RIS (a) radar derived bed DEM for RIS (King et al., 2016) showing geomorphology of the bed and the location of survey C1. (b) close-up of the location of survey C1 showing the 3-dimensional character of the bed. (c) Processed seismic section of survey C1. (d) bed picks from repeat seismic surveys showing erosion and drumlin formation between 1991 and 2004 (Smith et al., 2007). (e) Correlation coefficient of repeat bed picks between 1991 and 2004 across a 500 m moving window

Formatted: Left

Deleted: .

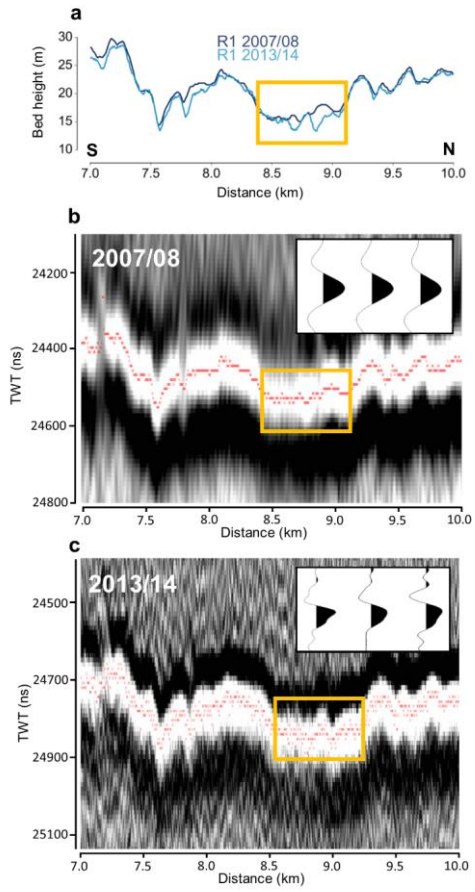
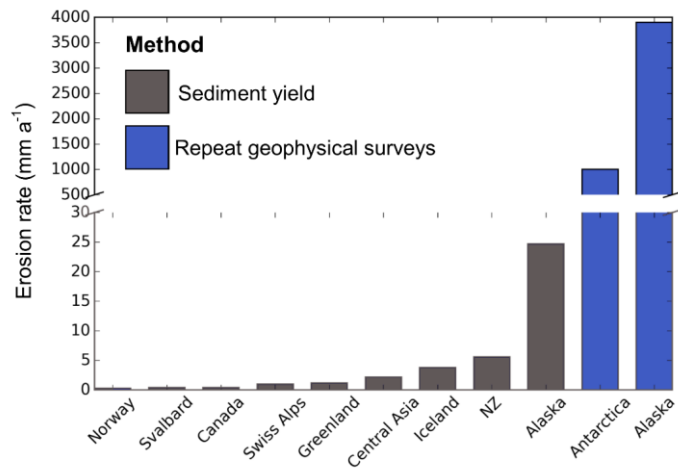


Figure 5: Close-up view of change in bed morphology between 2007/08 and 2013/14 identified in survey R1. Yellow boxes outline the area of change identified as having a low correlation ($r = -0.2$) (a) smoothed bed picks from radar data. (b, c) raw bed picks (red dots) of the basal reflector in 2007/08 and 2013/14. Inset plots show representative traces sampled from the bed reflector.

5

10



5

Figure 6: Mean erosion rates from previously published literature in a range of locations. Data taken from Hallet et al., (1996 and references therein), Koppes and Hallet (2006), Motyka et al., (2006), Cowton et al., (2012) and Smith et al., (2007,2012).

Formatted: Left