

Response to the review of “Brief Communication: Mapping river ice using drones and structure from motion”.

The authors wish to thank the reviewers for their constructive comments and corrections to the discussion paper. In the following we have responded to each of the comments from each reviewer. The comment from the reviewer is in *italic font* while the response is in **blue normal font**.

First a general comment to all reviewers. From a comment from Mark Loewen on the description of the number of images used in the assessment in the Haga bru case, we noticed that we had used a dataset with a lower image quality threshold for the construction of the DEM. The results in the discussion papers are correct given the data used, but the Haga bru case is not done with the same level of image selection as the Sokna case and it does not follow the correct procedure according to the description in the paper. We therefore re-ran the Haga bru analysis to make the cases comparable. This led to minor changes in Table 1, to Figure 1 and 2 and to the computed size of the ice jam on page 5, lines 5 – 10. We thank the reviewer for pointing us in the direction of this and we are sorry for overlooking this mistake in preparing the discussion paper.

RC1: Responses to Karl-Erich Lindenschmidt

This communique highlights the application of drones in river ice work. Such applications are becoming more and more essential as advances in river ice research are requiring more detailed descriptions of the characteristics and geomorphological settings of ice, hence this note is timely. It introduces a method to other river ice researchers seeking an inexpensive and safe alternative for ice cover mapping.

Before this communique is accepted for publication, some amendments and revisions are required:

Limitations of the photography are extensively elucidated (particularly on Page 6), however little is said about the limitations of using UAVs themselves. Examples may include: - additional qualifications and registration required of the UAV operator, - operations feasible only on wind-calm days, - only short flights are possible (also through regulations) and - UAVs cover smaller aerial extents compared to other methods. Perhaps these can be listed in the Introduction so that the reader can assess if these limitations would hinder their particular case studies.

We agree with the reviewer that this is important information for those that might be interested in employing a drone for assessment of ice. We have added a sentence in the introduction about limitations, and a more detailed paragraph in the discussion with some more information on regulations, flight time, flight distance and other factors related to the operation of a small drone.

In the introduction we added: “A possible drawback with the small drones as employed here is limits to flight distances (typically 1000-1300 meters) and battery life time in cold conditions.”

In the discussion: “There are limitations to the application of the small drones in focus here. From experience, we expect practical flight range of about 1000 – 1300 meters in open terrain when flying in non-autonomous mode. This limit the application in large rivers, and makes it necessary to fly from several locations to cover longer reaches. The application of the small drone is also influenced by wind, and calm days are recommended both due to operation and for the best possible image quality. Another issue is related to battery life time in cold weather. The flight time is around 20 minutes, and it is necessary to pay attention to the battery status to avoid sudden loss of voltage in cold batteries. For sustained operation in cold climate several batteries are recommended, and spare batteries should be kept as warm as possible. A last issue to consider is operational constraints set by federal aviation regulations. In Europe, systems with a take-off weight of less than 2 kilos have less restrictions than larger systems but this must be checked with local regulations in each case”

The section of consolidated ice shown in Figure 1 is labelled ‘ice jam’. This may not be quite correct since ice jams usually extend across the river width to cause backwater staging. Perhaps labelling this section as ‘consolidated ice’ or ‘ice-jam remnant’ is be more accurate.

The ice left on the bank is a part of an ice jam that covered the entire river for a period, but a part of it was removed by high water. We have updated the text to “ice-jam remnant” which we agree is a better description.

Line 27 on Page 5 refers to “free water”. I’m not sure what is meant here. “Open water” doesn’t quite fit either since how can river ice have open water. Please restructure the sentence to clarify its meaning.

We refer to an ice cover with sections of open water, so “free water” is replaced with “open water sections”

Some minor, editorial revisions include:

Page 1, Line 23: replace “difficult and potentially dangerous” to “difficulties and dangers”

We have removed “wrought with” as suggested by the second reviewer and “difficult and potentially dangerous” should therefore be ok.

Page 1, Line 30: “ice processes dynamics” should read “ice process dynamics” or “the dynamics of ice processes”.

Updated

Page 2, Line 33: perhaps replace “built” with “constructed”

Updated

Page 3, Line 30: “were”, not “was”

Updated

Page 5, Line 17: “where”, not “were”

Updated

RC2: Response to Mark Loewen

This is a timely and interesting paper describing an efficient and economical method for using inexpensive aerial drones to map river ice. I am quite certain that this method will prove to be a valuable new tool for river ice researchers. The method does not appear to be novel but its application to mapping of river ice is new and innovative. Accurate estimates of the aerial extent of various ice types can be made and under the right circumstances estimates of ice volumes are possible. The authors point out that the method allows for repetitive measurements to be made of the same reach because data can be acquired quickly and relatively easily. This will allow researchers to study the evolution of ice covers and the associated processes in much more detail than was previously possible.

The authors could consider discussing the following questions: How does the limited range of these inexpensive drones impact the applicability of this method to large rivers? I have deployed a similar drone on the Peace River, Canada and the width of the river exceeded the range in some places.

We added a paragraph in the discussion on limitations using the small drone (also requested by the 1st reviewer). The practical flight distance of the drone when flying under control is an issue in larger rivers, and fixed wing drones may be a better option here.

For updates to the text, see the response to the first reviewer.

In extremely cold weather battery life can drop by 50%. Did the authors encounter any difficulties because of this effect?

This is an issue we have experienced when operating in cold weather, and care must be taken to avoid problems with a sudden drop in voltage. We added some text on this in the discussion and recommends careful attention to battery levels and to have several spare batteries stored as warm as possible when operating in cold climate.

In the discussion: "The flight time is around 20 minutes, and it is necessary to pay attention to the battery status to avoid sudden loss of voltage in cold batteries. For sustained operation in cold climate several batteries are recommended, and spare batteries should be kept as warm as possible"

Would a higher resolution camera improve the accuracy of this method?

Well yes there will be improvement. The important thing is the sensor size for the resolution and the capability of handling low light conditions. The resolution impacts the SfM workflow in principally two ways: 1) Feature matching between two cameras depends on multiscale image regions common to two images. Therefore, when the resolution is increased, the quality and quantity of features tends to increase. This improves the camera position and orientation estimates of the modelled regions. 2) Depth maps are needed to create the dense point cloud reconstruction. These maps are derived from ray-tracing based on the original images. If the images have higher spatial resolution, the quality of the depth maps, and therefore the dense clouds also tend to increase. Some text is added to the discussion on camera quality.

Updated paragraph in the discussion: “New versions of drones are appearing regularly, and improved sensor technology and light handling will improve picture quality and thereby the feature matching between cameras and the ability to generate better quality depth maps. This will increase the accuracy of the SfM generated DEM and orthophoto mosaics.”

The paper is well written and the topic will be of interest to readers of the journal. I recommend publication after the authors have addressed the minor revisions suggested below.

Specific Comments:

Page 1-Line 23: Delete “wrought with”.

Done.

Page 2- Line 29: “. . .and show examples of output of the method.” Awkward wording. The last part of the sentence is removed.

Section 2.1: Please provide more complete descriptions of the study reaches e.g. widths, slopes, geomorphology etc.

We have added some more information on the river reaches.

Added text: “The site in Gaula is about 75 meters wide and flows mainly over a bed of coarse gravel and smaller cobbles. At the site where the ice jam formed, the river narrows and the flow changes from a section with fast riffles to a deeper pool area. The Sokna site is steep (1/100) and consist of large cobbles and boulders and the river is characterised by short pools interspersed with drops and fast riffles/rapids. The width of the reach is around 18 meters.”

Page 3-Lines 21-23: Unclear - there is only one camera on the drone so increasing the number of cameras is clearly done in the software. Please explain this more fully.

We agree that this was a somewhat confusing statement. We have upgraded this to rather explain how many pictures that was taken in total compared to the pictures we used in the SfM analysis. In doing this, we discovered that the reported data from Gaula was not the dataset prepared using the 0.8 image quality threshold. This is now upgraded and it led to a small adjustment of the results presented in table 1, figure 1 and figure 2 in addition to the computed volumes and ice depths. This slipped through the quality check in the original manuscript and we thank the reviewer for leading us on to this problem. We have added a comment to all reviewers at the start of the document to point to this change in the manuscript.

Changed text: “Of these, 82 pictures was used in the SfM analysis for Gaula (38%) and 68 pictures in Sokna (13%).”

Page 3-Lines 28-29: Are the 9 points referred to here called Control Points in Table 1? This is unclear.

Yes, they are now referred to as control points both in the text and in the table.

Page 4-Line 1: Should this read “. . . index greater than 0.8. . .”. Seems odd that when a quality index is greater than 0.8 that images were excluded. If space permits a brief explanation of how this quality index is computed would be helpful.

We have clarified this in the text. It is not perfectly clear from the Agisoft documentation how the quality index is measured, but experiences we have is that the contrast distribution in the image is the variable measured in the quality index.

Added text: "The quality index is computed by Agisoft Photoscan, and even if the documentation is not very clear on this issue, experience shows that it is related to the spatial distribution of contrast in the images."

Page 4-Lines 18-21: The authors write that "...the digital elevation model is considered good. . .". They are referring to the errors listed in Table 1 but a brief discussion of how they arrived at this conclusion would be helpful to readers who are not familiar with DEM's. The text is upgraded to state that ice features can be found with high precision given the deviations found in the GCP and control point measurements.

Page 4-Line 33: Delete "varied from".
Corrected

Page 5-Line 1: Change to "...were 1.12...".
Corrected

Page 5-Lines 2-5: The meaning of "outermost" and "outer part" are a bit unclear. We have tried to make this clearer by stating that it is from 25 meter

Page 5-Line 22-23: Why was access to the Sokna reach difficult or impossible? Is it difficult to get to the stream or is it the ice conditions that make it unsafe?
It was due to the ice conditions. The text is updated to state this.

Page 5-Lines 30-33 & Page 6-Lines 1-3: It is not clear to me how determining the open water elevation helps to assess the thickness of anchor ice dams. Anchor ice dams are anchored either to the bed or large rocks so how is their thickness related to the open water elevation? Perhaps I am missing something here but the middle section of this paragraph confused me. At the study site, we could see the rocks that held the remnants of the broken anchor ice dams, and from these observations we could see that using the water surface as a basis for the computation of the thickness of the anchor ice dams would be reasonable. We do agree with the reviewer that this is not a generally applicable method and have updated the text to state this more clearly.

Adjusted text: "At the study site in Sokna, we could see that the open water would give a reasonable assessment of the thickness of the dams, but this do require field observations to confirm the method. In general, using the visible water surface has its limitations due to the turbulent surface of the water, and because the rocks and outcroppings known to be important for anchor ice dam formation may not be visible in the images captured after the ice is formed."

Page 7=Lines 1-6: Much of this is repetitive. Perhaps it could be deleted?
We do think that the comparison to other methods are relevant, and we are therefore a bit reluctant to remove this entirely. We have tried to rewrite the first part to make it less repetitive.

Page 7-Lines 14-15: This is unclear, “. . .could benefit process understanding and model development and also the calibration and validation process.” Please clarify.

The sentence is reworded and improved.

Figure 1: Unclear, is camera position the location of the drone when a single image was taken? What is the red arrow in the lower left corner? If it is flow direction, please relocate it and label it or refer to it in the caption. Note that flow direction should be indicated in all figures.

The camera positions are the location of the drone for each picture, and the red arrow is the flood direction. The figure and caption is updated

Figure 2: Label the plots A, B and C. Where are the last 10 m in the plots? Or perhaps the last sentence of the caption can be deleted since I think this information should be in the text.

This is explained in the text and the sentence is deleted from the caption.

Figure 3: The last sentence in the caption has some grammatical errors.

The sentence is updated

RC3: Response to Shawn Clark

The authors have presented an interesting paper regarding the use of unmanned aerial vehicles to map river ice extent and ice properties such as ice thickness and volume. It has also been our group's experience that UAVs can be very helpful for this purpose, as well as to quantify surface ice concentration and ice pan velocities. Their methodology should be useful for many other researchers in the field as well. I have a few minor comments, followed by some grammatical suggestions. It would have been helpful to have additional detail regarding the specifics of what constitutes a high quality image vs a low quality image, and how one might be more likely to achieve the former. Any practical tips for a successful flight would be appreciated by the readers.

We have added a paragraph in the discussion (as also requested by the other reviewers) with some information on flight times, battery issues, flight distances and flight regulations. We have also added some more information on picture quality and issues related to light which is important for good quality in images and the following SfM analysis.

We have added some more info on this in the discussion, see response to the first reviewer for the specific text.

It also would have been nice to see whether the chosen number of control points was actually necessary. Is it a coincidence that the number of points only varied between 9 and 11? Would the error have been significantly increased if only 5 control points had been used? Are there any suggestions for the placement of these points? For instance, had the opposite bank been easily accessible, would it have been better to have the control points more evenly spaced throughout the measurement domain?

The number of points are mainly based on experience from previous applications of the SfM method. Goldstein et al. (2015) shows that quality of the georeferencing increases when points are increased up to 10, but adding more points above 10 give little improvement. We will add a comment on this in the manuscript.

It is important to spread the control points in the x and y direction and to avoid to have them in a “straight” line. For Sokna it would have been good to have points on both sides of the river, but the opposite bank was out of reach at the day of measurement.

Addition to text: “The number of GCPs is based on previous experience, and the number corresponds with the findings of Goldstein et al. (2015) who showed increased quality when the number of GCPs were increased up to 10 and little improvement when more points were added.”

Goldstein, EB, Oliver, AR, deVries, E, Moore, LJ and Jass, T. (2015) Ground control point requirements for structure-from-motion derived topography in low- slope coastal environments. PeerJ PrePrints | <https://dx.doi.org/10.7287/peerj.preprints.1444v1>

Specific Comments:

Pg. 1, Line 23 – Difficulty rather than difficult

The sentence is updated (also commented by the two other reviewers)

Pg 2, L8 – “area covered by imaged area” could be reworded.

This is reworded

Pg. 2, L21 – be consistent with either ‘freeze-up’ or ‘freeze up’.

Updated

Pg. 2, L24 – control, rather than controls

Updated

Pg. 2, L32 – unnecessary comma

Updated

Pg. 3, L8 – Clarify the meaning of annual mean annual flow.

This was an error, now updated to “28% of the mean annual flow”

Pg. 3, L21 – increase the number of images, rather than cameras?

This is also pointed out by reviewer2, and the sentence is reworded to be clearer and to remove a possible misunderstanding between images and cameras. See comment to all reviewers at the start of the response document.

Pg. 4, L1 – I’d like to know more about what constitutes a quality index of 0.8.

It is not perfectly clear from the Agisoft documentation how the quality index is measured, but experiences we have is that the contrast distribution in the image is the variable measured in the quality index. We have added some info in the text.

Pg. 4, L5 – 14 – There are four instances where the word ‘are’ or ‘was’ should be replaced with ‘were’.

Updated

Pg. 4, L27 - . . .mechanisms that form . . .

Updated

Pg. 4, L32 – delete the word ‘were’

Sentence is updated

Pg. 5, L1 – the shear wall heights were . . .

Updated

Pg. 5, L5 – Figure rather than figure

Updated

Pg. 6, L12 – snow cover develops

Updated

Pg. 7, L7 – Though rather than thought

Updated

Table 1 caption – control rather than Control.

Updated

Caption Figure 3 – “shows and the two sections” should be reworded.

Updated

Brief Communication: Mapping river ice using drones and structure from motion

Knut Alfredsen¹, Christian Haas², Jeffrey A. Tuhtan³, Peggy Zinke¹

¹Department of Civil and Environmental Engineering, Norwegian University of Science and Technology, 7491 Trondheim, Norway

²1 AM HYDRO GmbH, Märtishofweg 2, 78112 St. Georgen, Germany

³Centre for Biorobotics, Tallinn University of Technology, Estonia

Correspondence to: Knut Alfredsen (knut.alfredsen@ntnu.no)

Abstract. In cold climate regions, the formation and break-up of river ice is important for river morphology, winter water supply, riparian and instream ecology as well as for hydraulic engineering. Data on river ice is therefore significant, both to understand river ice processes directly and to assess ice effects on other systems. Ice measurement is complicated due to difficult site access, the inherent complexity of ice formations and the potential danger involved in carrying out on-ice measurements. Remote sensing methods are therefore highly useful, and satellite imagery, data from satellite-based radars as increasingly aerial and terrestrial imagery are currently applied. Access to low cost drone systems with quality cameras and Structure from Motion software opens up a new possibility for mapping complex ice formations. Through this method, a georeferenced DEM can be built and data on ice thickness, spatial distribution and volume can be extracted without accessing the ice and with considerable less measurement efforts compared to traditional surveying methods. The methodology applied to ice mapping is outlined here, and examples are shown on how to successfully apply the method to derive data on ice processes.

1 Introduction

River ice is a critical part of the cryosphere (Brooks et al., 2013), and ice formation has implications for river geomorphology, instream and riparian ecology, winter water supplies and for hydraulic engineering in cold climates. Physical monitoring and mapping ice is methodologically challenging, as access to river ice is difficult and potentially dangerous. Therefore, remote sensing methods are applied to assess ice in rivers and a number of examples of this exist in literature. Chu and Lindenschmidt (2016) integrated satellite images (MODIS) with radar data (RADARSAT-2) to assess freeze-up, break-up and ice types in the Slave River, Canada. They also evaluated the dataset with aerial- and terrestrial imagery to evaluate the satellite data, and found good agreement on break-up and freeze-up dates. Mermoz et al. (2014) demonstrated how ice thickness could be derived from RADARSAT-2 data for three rivers in Canada. Beltaos and Käab (2014) used successive satellite imagery to assess the flow velocity and discharge during ice break-up, illustrating the ability of using remote sensing to study ice process dynamics. Ansari et al. (2017) developed algorithms to automatically derive ice phenology data from bankside photography, and produced

Deleted: wrought with

Deleted: es

time series of these ice data for the lower Nelson River, Canada. Most satellite-based approaches described in the existing literature are applied to large rivers and may not be applicable to smaller rivers and streams due to the resolution of the satellite imagery. Methods are therefore needed to monitor ice formation in smaller rivers. Further work is also needed to move from a qualitative evaluation of ice (focussing on ice types and presence or non-presence of ice) towards a quantification of ice volumes and the spatial distribution of ice.

These gaps may be filled by use of inexpensive aerial drones. Such drones increasingly have camera systems of sufficient quality, and the resultant aerial imagery can be processed using the Structure from Motion (SfM) method (Westoby et al. 2012) into a three-dimensional surface representation of the area covered by aerial photography. Combined with ground control points, surface models can be georeferenced and combined with other spatial data for analysis. Based on the georeferenced point cloud and aerial images, digital elevation models of high accuracy and resolution can be developed. Additionally, derived surface texture can be overlaid onto surface models and imagery can be undistorted and reprojected as georeferenced orthophoto mosaics to provide an accurate aerial image of the study object. SfM has shown a large potential within geosciences where detailed digital models are often needed (Westoby et al., 2012; Smith et al., 2016), where the method has been applied, for example, to studies on river habitat and hydromorphology (Woodget et al., 2017), erosion and sedimentation studies (Smith and Vericat, 2015) and for grain size classification (Vasquez-Tarrio et al., 2017; Arif et al., 2016). Within the cryospheric sciences, the method has been used in the study of glaciers e.g (Ryan et al., 2015) and in the study of snow accumulation (Nolan et al., 2015).

Combining a drone with SfM may be an efficient tool for mapping ice in rivers of various sizes, with the added advantage of also being able to cover small streams. This approach may enable detection of ice jams forming during ice runs and anchor ice dams forming during freeze-up. These dynamic ice forms are difficult and time consuming (sometimes impossible) to map using traditional methods, but are important to many ice assessments. Ice break-up and associated jams can cause erosion and flooding and thereby severe damage to infrastructure and the riverine flora and fauna (Beltaos, 1995; Prowse and Culp, 2003).

Anchor ice dams control the freeze-up process in small rivers and streams, and are thereby important for understanding winter conditions in such streams (Stickler et al., 2010; Turcotte and Morse, 2011). A possible drawback with the small drones as employed here is limits to flight distances (typically 1000-1300 meters) and battery life time in cold conditions.

In this brief communication, we outline the process of mapping river ice with a common, consumer-grade drone combined with commercial SfM software. Furthermore, we use the method to map the remnant of a stranded ice jam and a river section with anchor ice dams. Cross sections and volume of the ice run are computed from the mapped data, and the location and size of the anchor ice dams are estimated. Since these quantitative data are not commonly produced due to the difficulties associated with traditional field measurements, the application of the method presented has the potential to increase the amount and quality of data available and further improve our understanding of ice processes that form the foundation for modelling and practical assessments of ice impacts to constructed and natural environments.

Deleted:

Deleted: imaged area

Deleted:

Deleted: s

Deleted: a

Deleted: and show examples of output of the method

Deleted: ,

Deleted: built

2 Materials and methods

2.1 Study site

Our two study sites are located at the river Gaula (63.06°N, 10.29°E) and the tributary Sokna (62.98°N, 10.22°E) south of Trondheim, Norway. We mapped a stranded part of an ice run that took place in December 2016 at the Gaula site close to Haga bru and at the Sokna site we mapped a section of the river with several broken anchor ice dams. The drone flight was carried out in February of 2017 under sparsely cloudy conditions with low wind velocities. The length of the reaches mapped are 350 m and 200 m for Gaula and Sokna respectively. During the measurements, the discharge in Gaula (at gauge Gaulfoss) was approximately $20 \text{ m}^3 \text{ s}^{-1}$ and in Sokna (at gauge Hugdal bru) approximately $3.5 \text{ m}^3 \text{ s}^{-1}$. This correspond to 28% of the mean annual flow. The site in Gaula is about 75 meters wide and flows mainly over a bed of coarse gravel and smaller cobbles. At the site where the ice jam formed, the river narrows and the flow changes from a section with fast riffles to a deeper pool area. The Sokna site is steep (1/100) and consist of large cobbles and boulders and the river is characterised by short pools interspersed with drops and fast riffles/rapids. The width of the reach is around 18 meters.

Deleted: annual

2.2 Data collection and processing

At the two sites we acquired aerial images using a DJI Phantom3 Professional drone (www.dji.com), and surveyed ground control points (GCPs). The drone has a GPS/GLONASS assisted hover function and the 12 megapixel, on-board camera has a f/2.8 94-degree field of view and is mounted with a three-axis gimbal. The flight level was set to 30 m above the ground, but the level varies during the flight due to wind, pressure changes and the automated hover function. Most pictures were taken in plan view, but some oblique pictures were taken to better capture vertical features of the ice formations. A minimal image overlap of 20% was used to ensure good picture alignment in the SfM analysis. For both sites, the drone was manually controlled from the ground using the DJI remote controller and an Apple iPad with the DJI Go application for flight control. Though capable of autonomous operation according to a pre-planned flight plan with the DJI GS Pro application, the drone was controlled manually due to the size of the study area and regulations on UAV operation. Each picture taken is stored on board the drone with its associated Exif image information and the GPS position. A total of 215 and 517 pictures were taken of the Gaula and Sokna sites, respectively. Of these, 82 pictures was used in the SfM analysis for Gaula (38%) and 68 pictures in Sokna (13%). The time spent in Gaula was about 15 minutes for rigging and then 17 minutes for acquiring the imagery. At the Sokna site, the drone was already rigged and 10 minutes was used for the flight. All GCPs and post-processing control points were measured during the drone flights. The GCPs and post-processing control points were surveyed using a Leica Viva RTK-GPS (spatial accuracy of 1-2 cm), and they were identified using custom-made numbered markers (25x25 cm) made of heavy red tarpaulin that were clearly visible on the drone images. At the Gaula site eleven ground control points (GCPs) were measured on the ice surface for georeferencing, and another 9 control points were measured to provide a simple

Deleted: 68

Deleted: However more frames were taken to increase the number of cameras as input for post processing as light conditions were poor on both sites because of cloud cover and low sun altitude in combination with steep valleys

Deleted: imaged

control of accuracy of the DEM after processing. At the Sokna site, 9 GCPs were measured on the river bank since it was not possible to access the ice surface for safety reasons. The number of GCPs is based on previous experience, and the number corresponds with the findings of Goldstein et al. (2015) who showed increased quality when the number of GCPs were increased up to 10 and little improvement when more points were added. The captured images and GCPs were processed using Agisoft Photoscan Pro version 1.3.0 (www.agisoft.com) into a georeferenced point cloud using the SfM workflow described by the following steps:

Deleted: as

1. Photos were aligned and images with a quality index greater than 0.8 were included in the point cloud generation. The quality index is computed by Agisoft Photoscan, and even if the documentation is not very clear on this issue, experience shows that it is related to the spatial distribution of contrast in the images. The camera models were optimized and points with a RMS re-projection error of less than 0.2 were deleted from the cloud. Afterwards, the modelled camera positions and orientations were optimized again to improve the initial camera alignments, which were estimated by the software based on common features between pairs of images.

Deleted: less

Deleted: not

2. GCPs and control points were imported to Photoscan and markers were manually identified and linked to the GCP. Each marker were identified on a minimum of three images before the georeferencing parameters were recalculated. In the Sokna case, one of the GCP showed an error that was considered too large, and this point was removed. The camera models were optimized once more and georeferenced clouds were generated.

Deleted: are

Deleted: as

3. The georeferenced point clouds were densified and the ground points were classified to create meshes. The meshes were then used to build DEMs and generate orthophoto mosaics.

Deleted: are

Deleted: are

Figure 1 shows the locations of the camera positions and the GCPs, the generated point cloud, the DEM and an orthophoto mosaic for the Gaula site. To extract cross sections and analyse the DEM generated in Photoscan, data was exported to ArcMap 10.5 (www.esri.com), and the tools in the 3D analyst package was used to extract data from the DEM. The ground elevation under the ice jam in Gaula were taken from the 1 meter Norwegian DEM provided by the Norwegian mapping agency (www.hoydedata.no).

3 Results

The quality of the georeferencing and post-processing control points was assessed using the Root Mean Square Error (RMSE) of the combined x,y,z coordinates computed in Photoscan, and the results are shown in Table 1. The accuracy of the digital elevation model is considered good considering the errors in table 1, and ice features can be derived with high precision. A further comparison of the georeferenced images with features on the digital map of the area show good correspondence between the features georeferenced in the images and the same features on the digital maps.

Deleted: , and

Deleted: a

Figure 1(d) shows the orthophoto mosaic of the Gaula site, and the extent of the ice jam and the directional stacking of the ice floes accumulated in the jam. The formation of the ice cover on the river section outside the ice jam is also visible, and the

pattern with retrograde build-up of ice with the leading edge is clearly identifiable in the lower left edge of the picture. Furthermore, cracking and some shoving of the ice cover outside the ice jam can be seen, giving a clear indication of the mechanisms that form the ice cover on this reach of the river.

Deleted: s

5 As shown in Figure 2, cross-sections of ice jams were extracted from a combination of the SfM- derived DEM and ground elevation data from the 1 m resolution Norwegian national DEM. Based on visual observations after the ice event and from observations in the field the jam was assumed to be grounded for most of its area. At the Gaula site, the mean thicknesses of the ice layers were 1.82, 2.09 and 2.29 m for cross sections A, B and C, respectively, and the sheer wall heights were 1.12, 0.86 and 1.60 m in cross sections A, B and C, respectively. The mean thickness of the jam was 2.19 m and the maximum thickness was 3.56 m. The ice jam volume was computed to be 6786 m³, covering a surface area of 3223 m². This is most likely a minimum volume since it is difficult to determine if the outermost meters of the DEM describing the ground is the actual ground level or the water surface of the river. The DEM used does not cover terrain under water, and it is not clear if we see the bottom or the water surface in the outer part of the ground level plot on Figure 2.

Deleted: were varied from

Deleted: 2.34, 2.07 and 1.80

Deleted: as

Deleted: 92

Deleted: 74

Deleted: 2

Deleted: 55

Deleted: 6805

Deleted: 3014

Deleted: most

Deleted:

Deleted: figure

Deleted: This forms

15 Figure 3 shows a number of broken anchor ice dams at the Sokna site. Dam locations and computed elevations and sizes can be used to derive how the ice cover will develop in the reach. This form the foundation of understanding the hydraulic impacts of ice in steep rivers, and results can be combined with measured hydraulic variables for further evaluation. As an example, Figure 3 shows two vertical profiles of a broken anchor ice dam where the elevations of dam crests over the water surface is measured to 0.8 and 1 meter respectively indicating the elevated water level in the reach when the dams were complete.

20 4 Discussion and conclusion

An example of using a simple drone combined with SfM to map river ice is shown for two important types of ice, an ice jam and anchor ice dams. The method outlined allows mapping of larger areas in small streams which is typically very difficult to achieve with other remote sensing tools, and often impossible using lower-resolution satellite data products. The approach presented here using the drone is also significantly easier and more cost effective than using a fixed wing aircraft or a helicopter.

25 Furthermore, the drone is also a more viable method where vegetation or valley size makes other aerial platforms difficult to use. Using a relatively small number of GPS measured ground points the point cloud was georeferenced, and a digital elevation model and a georeferenced orthophoto mosaic developed. Based on the georeferenced models, data on ice thickness, volume and spatial distribution was extracted. Compared to previous measurements using GPS or total stations for mapping detailed spatial ice formations (e.g. Timalina (2014)), the approach presented here removes the need to access the ice which in the
30 Sokna case would have been difficult or impossible due to the ice conditions. Even if access to the ice was possible our new approach provides an amount and quality of data that cannot be matched by difficult and time consuming collection of manual measurements.

A challenge with remote sensing is to assess ice thickness over flowing water, and this is also the case using the drone and SfM method. As is in the case with the Gaula ice jam, it is relatively simple to compute ice volumes and derive ice cross sections for ice grounded on a surface with known ice-free geometry. In cases where river ice has open water sections, the problem is more complicated, as is illustrated by considering the conditions shown in the Sokna case (Figure 3). Anchor ice dam positions and their widths and heights can be derived from the picture and the DEM, but unlike the Gaula case, no ice-free geometry of the river is available to assess the volume of ice. A possible approach as we show is to derive the elevation of the level of the open water from the SfM generated DEM and then use this to assess the thickness of the anchor ice dams seen in the picture. At the study site in Sokna, we could see that the open water would give a reasonable assessment of the thickness of the dams, but this do require field observations to confirm the method. In general, using the visible water surface has its limitations due to the turbulent surface of the water, and because the rocks and outcroppings known to be important for anchor ice dam formation may not be visible in the images captured after the ice is formed. To facilitate this approach, a flight during ice free conditions or some other kind of measurement campaign is needed to capture the size and position of large boulders and other morphological conditions that control placement of anchor ice dams. Together with the dam positioning methodology described herein, this approach could be used to accurately determine the favourable conditions for development of anchor ice dams and the size of the dams. The formation of anchor ice in Sokna and other similar small rivers is crucial for the formation of an ice cover and for the in-stream flow conditions (Stickler et al., 2010), therefore understanding the mechanisms for formation and the location of the ice would make analysis of winter conditions more precise and would improve the ability to predict dam positions.

Deleted: free

Deleted: This

Deleted: method

Deleted: are not shown

Our experience suggests that the ice cover was better detected and represented under snow free conditions than from a comparable surface with an undisturbed snow cover. It is therefore advisable to fly the reach as soon as possible after an ice event has occurred and preferably before a snow cover develops.

Deleted: s

In general, the DJI Phantom 3 Professional is limited in poor lighting conditions due to the small 6.17/55 mm sensor (www.dji.com)- Compared to bigger sensors, the influence of lighting conditions can be drastic as shutter speed is decreased, with a commensurate increase of the aperture. Because of this, the camera system is more sensitive to the influence of vibrations and movement of the UAV caused by wind. Further, bright light with dark shadows can result in poor picture quality as the camera sensor can overload by bright reflections from unshaded areas, whereas shaded areas may lack suitable information for SfM applications. Therefore, we recommend manual camera settings on the Phantom 3 Professional to ensure sufficient image quality for post processing. Automatic waypoint navigation (e.g. in this case with the DJI GS Pro application) can help to create a dataset with good coverage of the site and sufficient image overlapping. However, all autonomous navigation and auto camera settings increase the risk of poor picture quality, especially under less than optimal lighting conditions. Regardless of the approach used, data quality must be checked in the field to prevent data gaps caused by poor

image acquisition. New versions of drones are appearing regularly, and improved sensor technology and light handling will improve picture quality and thereby the feature matching between cameras and the ability to generate better quality depth maps. This will increase the accuracy of the SfM generated DEM and orthophoto mosaics.

5 Labelled regions were manually extracted for corresponding physical features (e.g. “cracks”, “anchor ice”) following generation of the orthophoto mosaic. However, processing algorithms for advanced pixel and object-based image classification have been used by the remote sensing community for decades, and geoscience practitioners have already begun to develop new methods specifically tailored to 3D point clouds derived from SfM models (Brostow et al., 2008). Once workflows for the identification and classification of physical features specific to ice processes and types have been established, such as
10 presented herein, it can reasonably be expected that machine learning may be applied to more efficiently classify large quantities of orthophoto imagery.

Compared to other methods, using a drone and SfM for river ice assessment is an efficient method particularly suitable for small and medium sized rivers. Using satellites is difficult in smaller watersheds due to the small size of the rivers compared
15 to satellite pixels, and the data can be costly. Using SfM with other aerial platforms like planes or helicopters is more expensive to operate, and are also not as versatile as a drone in narrow valleys and at sites with heavy bankside vegetation. Manual measurements take far more time if similar detail is needed (and may not be possible in practise), and can be difficult due to necessary safety restrictions related to work on ice covered rivers. Though, no photographic images are produced, the use of a terrestrial laser scanner is a possible bankside remote sensing alternative (Wall et al., 2017) For larger or longer reaches, the
20 number of scan positions occupied may lead to a more extensive field campaign, and further processing and integration of point clouds from many positions may also consume time and effort.

There are limitations to the application of the small drones in focus here. From experience, we expect practical flight range of about 1000 – 1300 meters in open terrain when flying in non-autonomous mode. This limit the application in large rivers, and
25 makes it necessary to fly from several locations to cover longer reaches. The application of the small drone is also influenced by wind, and calm days are recommended both due to operation and for the best possible image quality. Another issue is related to battery life time in cold weather. The flight time is around 20 minutes, and it is necessary to pay attention to the battery status to avoid sudden loss of voltage in cold batteries. For sustained operation in cold climate several batteries are recommended, and spare batteries should be kept as warm as possible. A last issue to consider is operational constraints set by
30 federal aviation regulations. In Europe, systems with a take-off weight of less than 2 kilos have less restrictions than larger systems but this must be checked with local regulations in each case.

The approach presented here is applicable to several issues in river ice research, modelling and management. As seen in Figure 1 (d), the mechanisms of ice formation can be derived from the pictures, and since the method is not very time consuming,

- Deleted:** Assessment of river ice
- Deleted:** low cost and
- Deleted:** that is
- Deleted:** and streams stands out as an attractive option compared to other methods.
- Deleted:** t

repeating measurements over a short time is viable and could provide detailed data of the freeze-up process. When combined with measurements of climate and hydraulic variables ~~the DEM and orthphoto mosaic from the SfM processed drone imagery~~ could benefit process understanding and model development. ~~Data can also be used in the calibration and validation of ice models.~~ Mapping of ice jams could provide a basis for the assessment of ice volumes and the configuration of floes and ice elements that make up the jam. These data are critical for understanding the river ice breakup processes and may aid in assessing potential damages that can result.

Deleted: ,
Deleted: this
Deleted: approach
Deleted: and
Deleted: process

Author contributions

All authors contributed to the design of the field work based on previous measurements by KA. All authors participated in the field work, and CH flew the drone and acquired the images. KA did the analysis supported by JAT and CH, and PZ provided the ice-free geometry data. KA wrote the manuscript with input from all co-authors.

Acknowledgements

JAT and CH participated in the field work as part of the Workshop on data processing from images gained by Unmanned Aircraft Systems that was funded by the European Economic Area (EEA) Grant "Restoration of the aquatic and terrestrial ecosystems at Fundu Mare Island" (Project Number RO02-0008) with financial contributions from Norway and Romania. ~~The authors wish to thank the three reviewers who provided very useful input to the manuscript.~~

References

- Ansari, S., Rennie, C., Seidou, O., Malenchak, J., and Zare, S.: Automated monitoring of river ice processes using shore-based imagery, *Cold Regions Science and Technology*, 142, 1-16, 10.1016/j.coldregions.2017.06.011, 2017.
- Arif, M., Gülch, E., Tuhtan, J., Thumser, P., and Haas, C.: An investigation of image processing techniques for substrate classification based on dominant grain size using RGB images from UAV, *International Journal of Remote Sensing*, 38, 2639-2661, 10.1080/01431161.2016.1249309, 2016.
- Beltaos, S.: River ice jams, Water Resources Publishers LLC, Highlands Ranch, Colorado, 1995.
- Beltaos, S., and Kääh, A.: Estimating river discharge during ice breakup from near-simultaneous satellite imagery, *Cold Regions Science and Technology*, 98, 35-46, 2014.
- Brooks, R. N., Prowse, T., and O'Connel, I. J.: Quantifying Northern Hemisphere freshwater ice, *Geophysical Research Letters*, 40, 1128-1131, doi:10.1002/grl.50238, 2013.
- Brostow, G., Shotton, J., Fauqueur, J., and Cipolla, R.: Segmentation and recognition using structure from motion point clouds, European conference on computer vision, Marseille, France, 2008.
- Chu, T., and Lindenschmidt, K.-E.: Integration of space-borne and air-borne data in monitoring river ice processes in the Slave River, Canada, *Remote Sensing of Environment*, 181, 65-81, doi:10.1016/j.rse.2016.03.041, 2016.
- Goldstein, E., Oliver, A., deVries, E., Moore, L., and Jass, T.: Ground control point requirements for structure-from-motion derived topography in low- slope coastal environments, *PeerJ Preprints*, 9, 10.7287/peerj.preprints.1444v1, 2015.
- Mermoz, S., Allain-Bailhache, Bernier, M., Pottier, E., Van Der Sanden, J., and Chokmani, K.: Retrieval of River Ice Thickness From C-Band PolSAR Data, *IEEE Transactions on Geoscience and Remote Sensing*, 52, 3052-3062, doi:10.1109/TGRS.2013.2269014, 2014.
- Nolan, M., Larsen, C., and Sturm, M.: Mapping snow depth from manned aircraft on landscape scales at centimeter resolution using structure-from-motion photogrammetry, *The Cryosphere*, 9, 1445-1463, 10.5194/tc-9-1445-2015, 2015.
- Prowse, T., and Culp, J.: Ice breakup: a neglected factor in river ecology, *Canadian Journal of Civil Engineering*, 30, 128-144, 2003.

- Ryan, J., Hubbard, A., Box, J., Todd, J., Christoffersen, P., Carr, J., Holt, T., and Snooke, N.: UAV photogrammetry and structure from motion to assess calving dynamics at Store Glacier, a large outlet draining the Greenland ice sheet, *The Cryosphere*, 9, 1-11, 10.5194/tc-9-1-2015, 2015.
- 5 Smith, M., and Vericat, D.: From experimental plots to experimental landscapes: topography, erosion and deposition in sub-humid badlands from Structure-from-Motion photogrammetry, *Earth Surface Processes and Landforms*, 40, 1656-1671, 10.1002/esp.3747, 2015.
- Smith, M., Carrivick, J., and Quincey, D.: Structure from motion photogrammetry in physical geography, *Progress in Physical Geography*, 40, 247-275, 10.1177/0309133315615805, 2016.
- Stickler, M., Alfredsen, K., Linnansaari, T., and Fjeldstad, H.-P.: The influence of dynamic ice formation on hydraulic heterogeneity in steep streams., *River research and applications*, 26, 1187-1197, 2010.
- 10 Timalsina, N. P.: Ice conditions in Norwegian rivers regulated for hydropower: An assessment in the current and future climate, PhD, Department of Hydraulic and Environmental Engineering, Norwegian University of Science and Technology, Trondheim, 2014.
- Turcotte, B., and Morse, B.: Ice processes in a steep river basin, *Cold Regions Science and Technology*, 67, 146-156, 2011.
- Vasquez-Tarrio, D., Borgniet, L., Liebault, F., and Recking, A.: Using UAS optical imagery and SfM photogrammetry to characterize the surface grain size of gravel bars in a braided river (Vénéon River, French Alps), *Geomorphology*, 10.1016/j.geomorph.2017.01.039, 2017.
- 15 Wall, A., Wazney, L., and Clark, S.: Case Study: Use of Terrestrial Laser Scanner and GNSS survey technologies for determination of ice thickness and roughness of an ice jam on the Dauphin River, Manitoba., *CRIPE 2017*, Whitehorse, Canada, 2017.
- Westoby, M., Brasington, J., Glasser, N., Hambrey, M., and Reynolds, J.: 'Structure-from-Motion' photogrammetry: A low-cost, effective tool for geoscience applications, *Geomorphology*, 179, 300-314, 10.1016/j.geomorph.2012.08.021, 2012.
- 20 Woodget, A., Austrums, R., Maddock, I., and Habit, E.: Drones and digital photogrammetry: from classifications to continuums for monitoring river habitat and hydromorphology, *WIRES Water*, e1222, 1-20, 10.1002/wat2.1222, 2017.

Table 1 Root Mean Square Error computed from GCP and control points. The error is reported for the combination of x, y, z and error for each coordinate.

Measurement	# of points	Mean RMS	Min RMSE	Max RMS	Lon	Lat	Alt
		Combined (m)	Combined (m)	Combined (m)	(m)	(m)	(m)
Gaula GCP	11	0.071	0.027	0.098	0.048	0.051	0.013
Gaula Control	9	0.102	0.008	0.224	0.067	0.051	0.070
Sokna GCP	9	0.06	0.012	0.102	0.047	0.031	0.022

Deleted: c

Deleted: 72

Deleted: 3

Deleted: 050

Deleted: 050

Deleted: 099

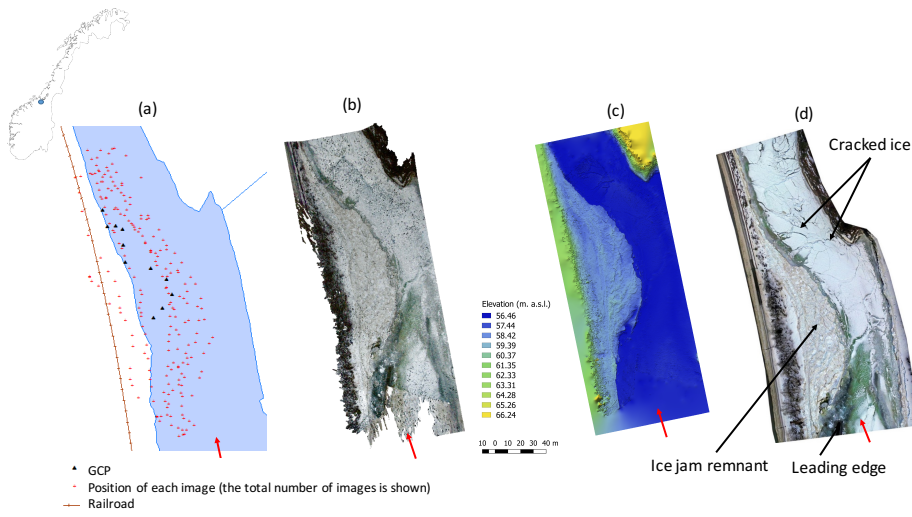
Deleted: 7

Deleted: 2

Deleted: 049

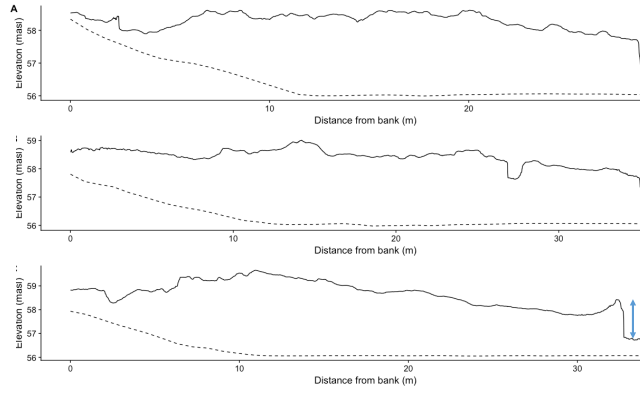
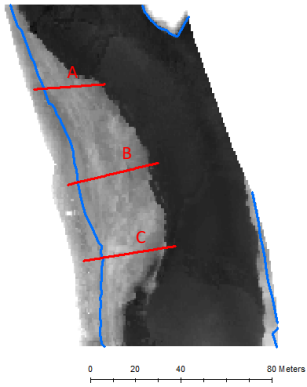
Deleted: 056

Deleted: 065



5 Figure 1 Stages of the process of mapping the Gaula site. Panel (a) shows the position of the drone for each image (crosses) and the ground control points (triangles) overlaid on a digital map of the river section. Panel (b) shows the dense point cloud for the same reach after processing the aerial imagery. Panel (c) shows the georeferenced digital elevation model based on the point cloud. Panel (d) shows an orthophoto mosaic of the reach, showing both the ice jam to the left and an ice cover at different stages of formation. The red arrow shows the flow direction.

Deleted: camera positions



5 Figure 2 Cross sections through the Gaula ice jam at three different locations marked A, B and C. The height of the shear wall of the ice jam is marked with an arrow in each cross section. The dashed line indicates the ground level from the 1 meter resolution Norwegian DEM.

Deleted: Most of the jam is assumed to be grounded, but for the last 10 m it is uncertain if the DEM record the water level or the ground level.

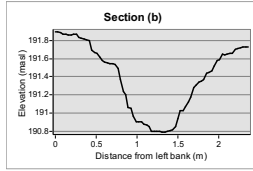
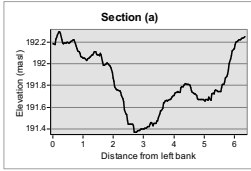


Figure 3 Partly broken anchor ice dams in the Sokna reach. The upper picture shows an orthophoto mosaic of the reach, the lower graphs shows the two sections (a) and (b) marked on the picture and the picture shows the area in the red rectangle as seen from downstream.

Deleted: pictures
Deleted: and