

Supplementary Information for "The Arctic sea ice cover of 2016: A year of record low highs and higher than expected lows"

Alek A. Petty^{1,2}, Julianne C. Stroeve^{3,4}, Paul R. Holland⁵, Linette N. Boisvert^{1,2}, Angela C. Bliss^{1,2}, Noriaki Kimura⁶, Walter N. Meier⁴

5 ¹Earth System Science Interdisciplinary Center, University of Maryland, College Park, MD, USA

²Cryospheric Sciences Laboratory, NASA Goddard Space Flight Center, Greenbelt, MD, USA

³Center for Polar Observation & Modelling, University College London, London, UK

⁴National Snow and Ice Data Center, Cooperative Institute for Research in Environmental Sciences, University of Colorado, Boulder, Colorado, USA

10 ⁵British Antarctic Survey, Cambridge, UK

⁶Atmosphere and Ocean Research Institute, The University of Tokyo, Tokyo, Japan

Correspondence to: Alek A. Petty (alek.a.petty@nasa.gov)

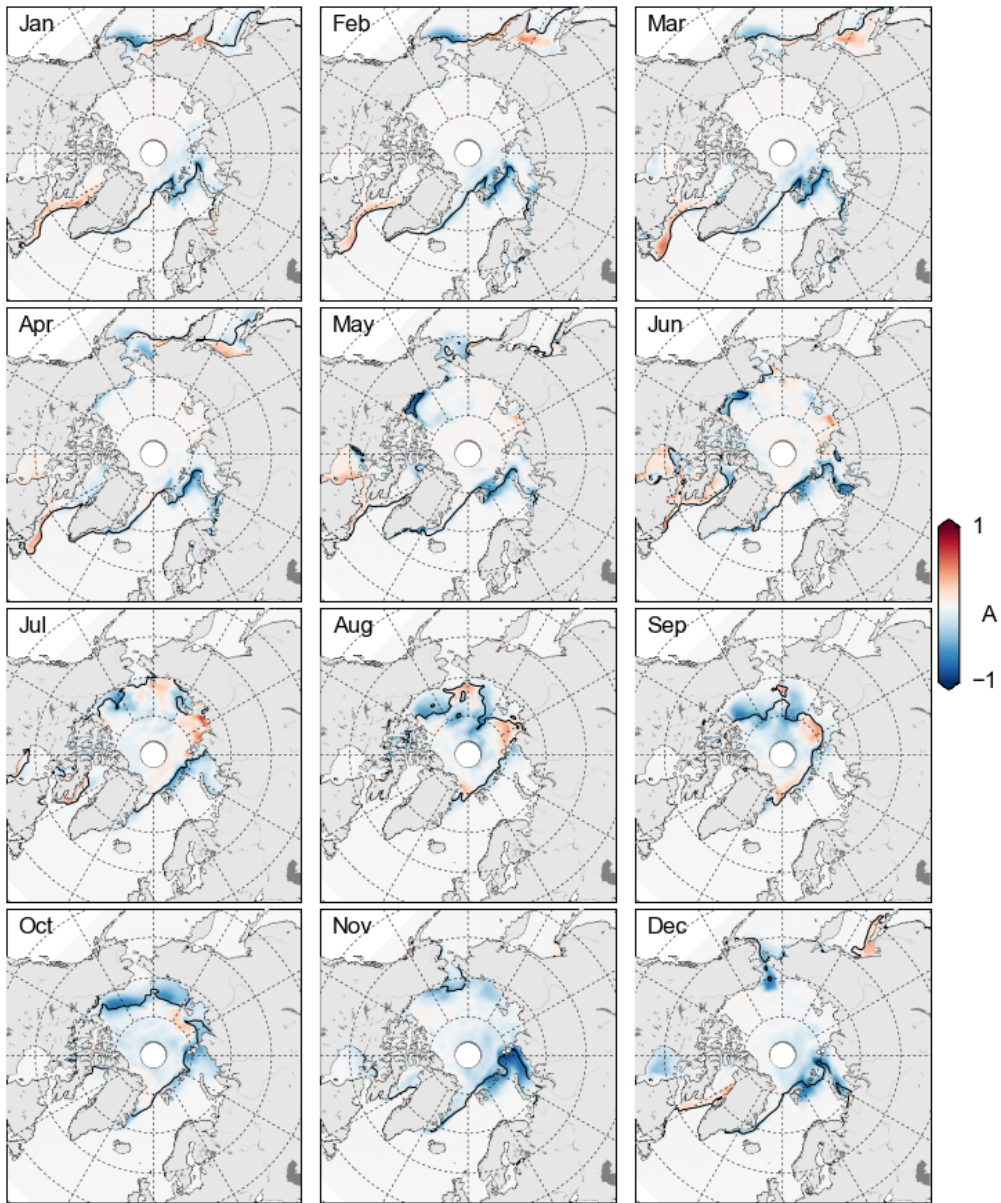


Figure S1: Monthly 2016 sea ice concentration anomalies, relative to the 2000-2015 mean, as in Figure 2 but using NASA Team ice concentration data.

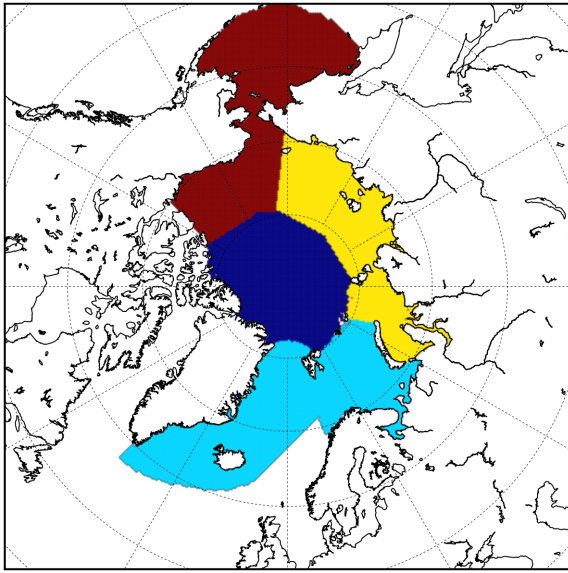


Figure S2: The regions used in the melt/freeze onset analysis, which include the: Central Arctic (CA, dark blue); North Atlantic (NA, light blue), which includes the Barents and Greenland seas; Eastern Arctic (EA, yellow), which includes the Laptev, Kara, East Siberian seas and the Alaskan (AL, red), which includes the Bering, Beaufort and Chukchi seas. The

5 specific regions were taken from the NSIDC region mask.

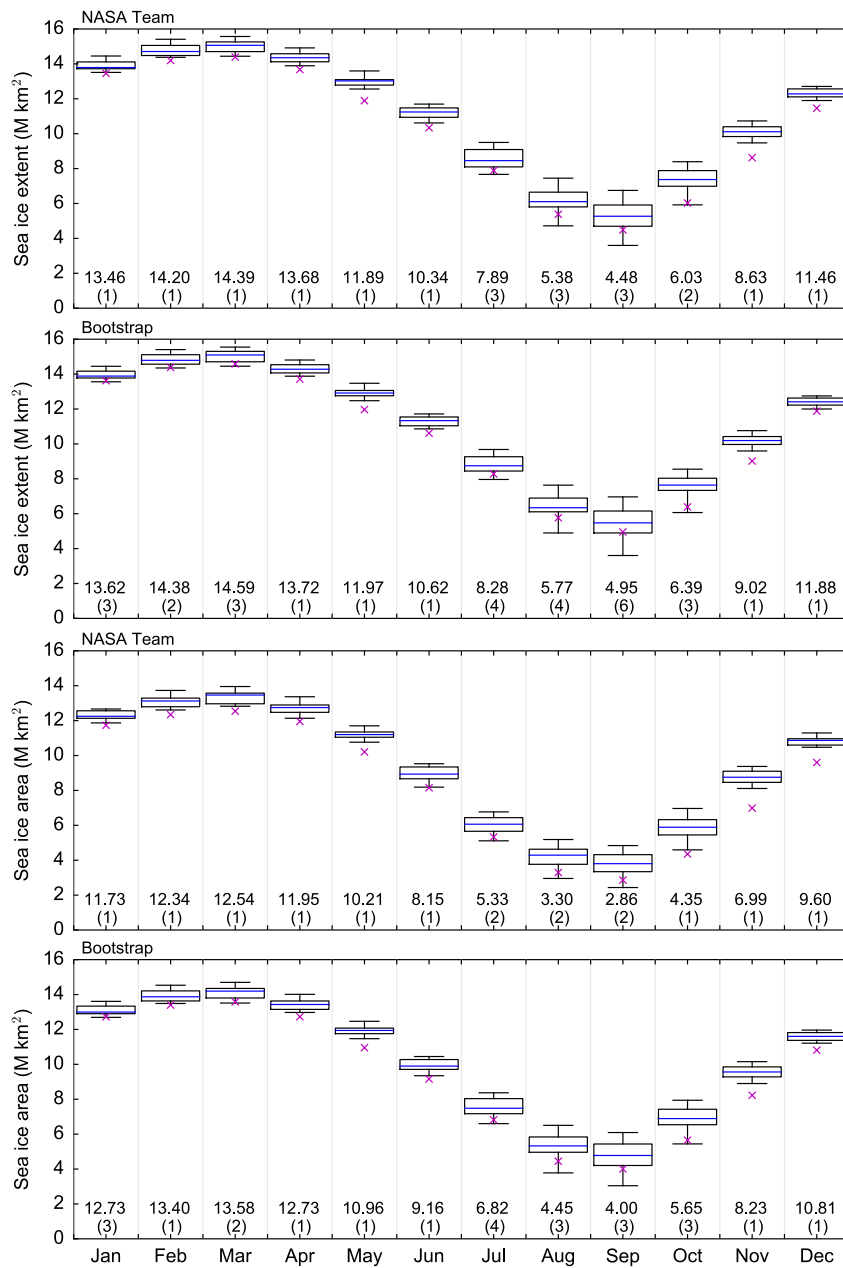


Figure S3: As in Figure 1 but for SIA and SIE calculated as the monthly mean of the daily SIA or SIA values compared to the use of monthly ice concentration data, as shown in Figure 3.

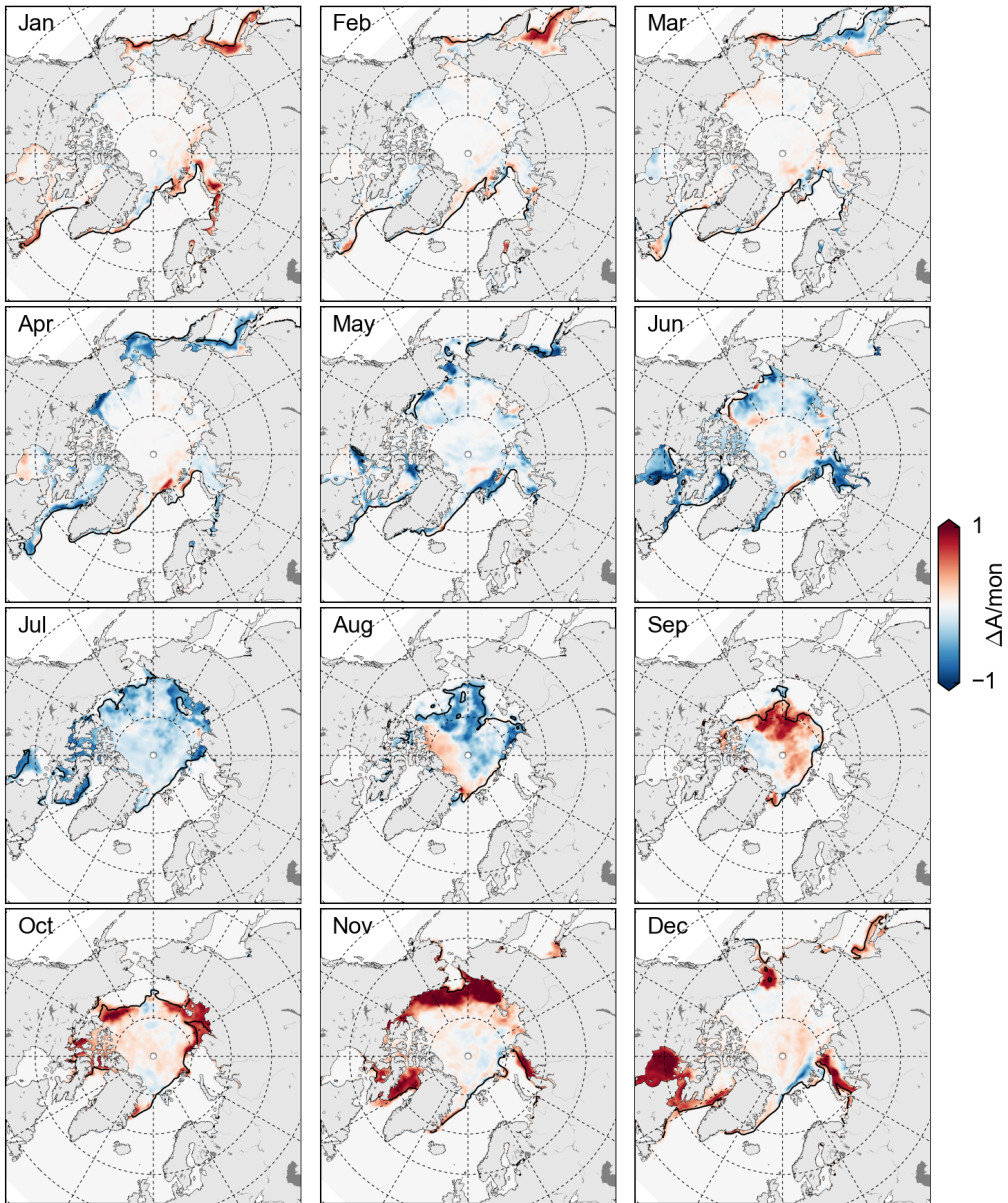


Figure S4: Monthly 2016 Arctic sea ice intensification estimates, as in Figure 5 but using NASA Team ice concentration data.

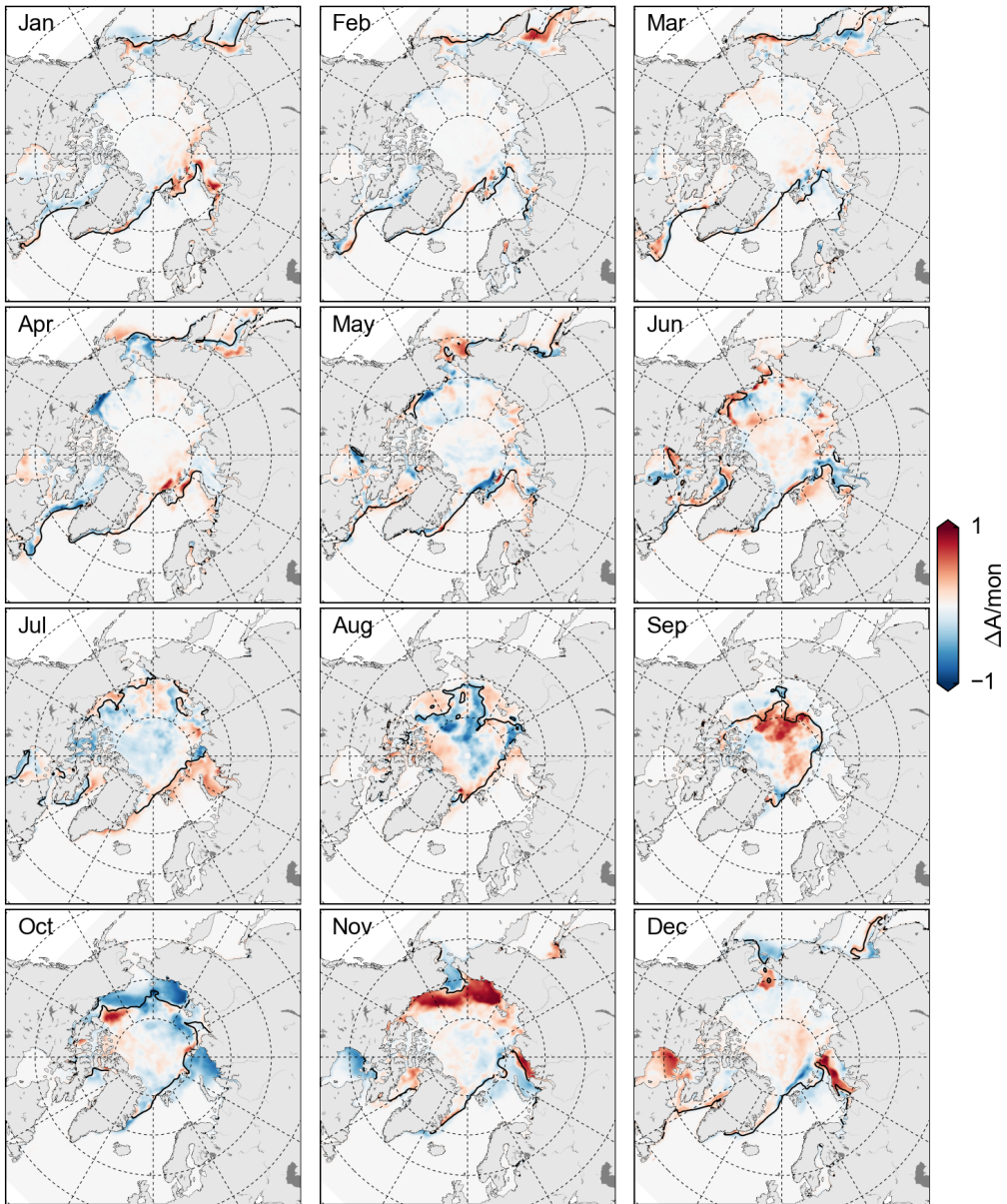
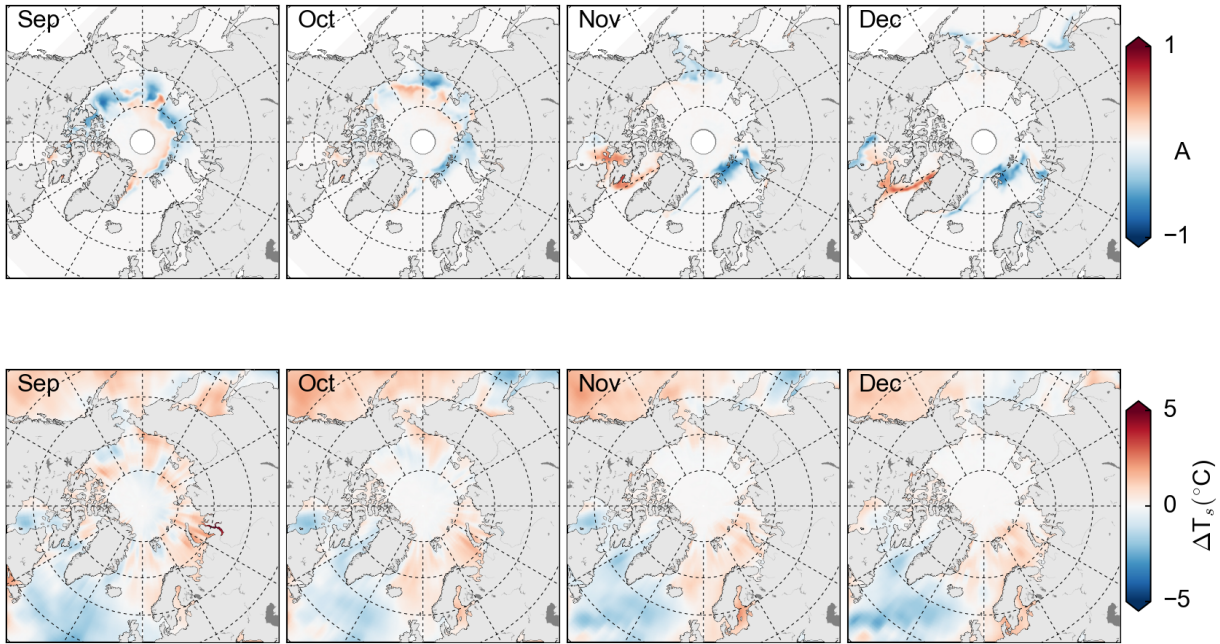


Figure S5: Monthly 2016 ice intensification anomalies, as in Figure 6 but using the NASA Team ice concentration data.



5

Figure S6: 2015 September to December anomalies, relative to the 2000-2015 mean, of Bootstrap sea ice concentration (top row) and sea surface temperature (bottom row).

10