

Response to the Editor's comments regarding Herreid and Pellicciotti: "Automated detection of ice cliffs within supraglacial debris cover"

<https://doi.org/10.5194/tc-2017-151>

April 12, 2018

Comments from Tobias Bolch (Editor)

Thank you, Tobias, for your thorough read of the manuscript and very constructive comments. All of your comments were adopted into the manuscript with a few small exceptions. Each comment is addressed in detail, point by point, below. Page and line numbers used are referenced to the same document that you reference in your comments (track change version from prior submission).

In a strict sense you are using a digital surface model (DSM) of the glacier (surface). This term should at least be mentioned in the beginning. More and more higher resolution DEMs are becoming available, but for many parts of the Earth there is no DEM with a resolution of 5m or better available and I would also not (yet) see these high resolution as "conventional". If available for free, these DEMs with relatively high resolutions provide often a merge of several scenes and only one snapshot in time. However, cliffs are changing. In addition, they can contain significant errors as the data is processed for large areas automatically. This should be clarified and the term "conventional" avoided for the DEMs needed. You may also mention the new HMA DEM with a resolution of 8m (Shean, 2017) and also the TanDEM-X DEM with 12m resolution.

To address this comment, we have (1) added to P4L18: "(specifically for the examples presented here, a digital surface model)"; (2) removed the term "conventional" throughout the manuscript in regard to input DEMs; and (3) expanded on P5L16-19 to now read: "DEM data that meet this criteria are not freely available for all glacierized regions on Earth at the present time. However, recent advances such as (1) the Interagency Arctic Research Policy Committee which has released Arctic DEM (<http://ArcticDEM.org>), a freely available 2 to 8 m resolution DEM for all landmass above 60° latitude and the entire State of Alaska; (2) a freely available 8 m resolution DEM for high mountain Asia (<https://nsidc.org/data/highmountainasia>); and (3) 12 m resolution TanDEM-X DEM data which may be freely available per a scientific data acquisition request (<https://tandemx-science.dlr.de/>) all show promise that high resolution DEM data in glacierized areas may soon be available globally."

Specific comments

P4L7: <1 m should be written in brackets

Changed as suggested.

P4L13: You cannot start a sentence with ‘<1’. Reformulate

Sentence changed to: “Visible imagery with a spatial resolution of less than 1 m was collected in the Alaska Range and used to assess the abundance of “thin” debris cover on ice cliff faces.”

P4L18: What is .17ex 5 m resolution? Should be clarified. In addition, you should clarify here that one does not need a DEM with a resolution of 5m, but that the method works also for lower resolution DEMs.

Apologies, this is a snippet of LaTeX code used to draw a tilde without the use of additional packages. This was incidentally printed while compiling the track change version but is absent in the non-track change versions.

L20: But they should also not be too different in time. Debris-cover is changing.

We think the Editor’s comment is addressed in the following sentence L20-21: “However, debris-covered area and glacier margins should be assessed to ensure they have not changed significantly over the time span of the data used.” But are happy to revise this sentence if it is insufficiently explicit.

P5L4f: Be specific; which sensor with which resolution did you use? Mention the advantage of S2 (10m res. multispectral vs. 30m (15m pan)).

We added further details to this sentence which now reads: “Data from the NASA/USGS Landsat program (used in this study, NIR: OLI Band 5 (30 m); SWIR: OLI Band 6 (30 m)) and ESA Sentinel-2(NIR: Band 8 (10 m); SWIR: Band 11 (20 m)) are two data sources that meet the input spectral and resolution requirements to map debris cover and are freely available.”

L12: “‘Structure from Motion’ is a method not data. Clarify to which data you refer to.

Changed to: “This can simplify data processing if the input DEM is derived using structure from motion photogrammetry.” We were uncertain about whether it is appropriate to capitalize ‘structure’ and ‘motion’. Since we only use the term twice in the article we thought it would be easier to read without an acronym but then is less clear how to capitalize. If there is preference or convention we are of course happy to comply.

L15: I agree but you do not need high absolute height accuracy with respect to the geoid.

Language corrected.

L17ff: Provide a reference or URL for the Arctic DEM and mention here also the new HMA DEM and other suitable DEM sources which might be available for free for scientific purposes (such as the TanDEM-X DEM)

Changed as suggested and described in the main comment response above.

P7L12 “was” identified. Write here which sensor was used (OLI?)

Both changed as suggested.

P8L24: “Eq. ??” ?

Apologies again, this is an artifact from the LaTeX diff track changes version and is not present in the final, non-track changes version.

P15L12f. (and also elsewhere): I do not like sentences like “Table 3 shows...” as this is a bit waste of space as Table/Figure captions are often similar. Write the most important finding and then refer to the table in brackets. However, this is a matter of style and my personal view, so feel free to leave these sentences as they are.

We have corrected this as suggested throughout the manuscript with two exceptions: we thought P14L33 and P18L11, which both discuss fairly complex figures, were best described with this style of language.

P17L10 “2x” -> two times

Changed as suggested.

L12ff: See my comment P15L12f, but more important: I find the comparison of the results based on different resolutions very relevant and interesting. This should be extended a bit more. If you could compare also to freely available DEMs for the same glacier(s) (HMA DEM vs. TanDEM-X, SRTM1, National DEMs etc. depending on coverage) for the same glacier to show the differences would from my point of view clearly increase the impact of the paper.

We are not sure what else we could say at P17L12-18 to extend this, but we added in the Conclusion section “The DEMs used in this study had a spatial resolution of 5 m but, for

future applications of this method with different input DEM sources, we derived a relation between coarsening DEM resolution and method performance which can help guide anticipated outcomes.” to further highlight this aspect of the study. We completely agree that a study of sensor error would improve the discussion of repeatability and the circumstances under which methods like this one can be used with confidence, but we think this deviates from the main goal of an ice cliff mapping method and deserves a more detailed investigation than what we would be able to do quickly now (e.g. even determining a maximum span of time between data acquisitions that is acceptable for such a study to be built on). A (planned) follow up study looking at wide-scale temporal evolution of ice cliffs would be a logical place to look for data with sufficiently close acquisition dates and derive sensor deviation/error.

P18L3 ‘‘geomorphic’’

Changed as suggested.

P20L13: ‘‘Kääb’’

Changed as suggested.

Table and Figure captions: The captions are partly very long. It is again a matter of style but from my point of view long captions distract from reading the main text and with clear Figures (incl. legends) and Tables (incl. clear headings for the columns) long captions are not needed. Baseline information from the main text is also not needed (e.g. DEM resolution for this study was 5m).

Thank you for this good comment. We have added column headings to the tables which helped cut caption length substantially. We also applied this framework to the brand new Figure 1. We did not however, make very many changes to the remaining captions.

Tables 2 and 3 could be shown in one. There is enough space as the letters of the tables are even large than of the text.

We have shrunk the table text to “footnotesize” in LaTeX and still we were unable to squeeze the two tables together. Perhaps if the typesetter engages at this level of detail they could help with a clever solution? Due to this we have left it as two tables (now with smaller letters) but only because we could not get it to work without making a sideways table which is probably less desirable.

Figure 1: I find it hard to read. I would clearly prefer a usual map projection (maybe centred in eastern China or Japan). I cannot identify the location of the both glaciers on the map. I find also the oblique view not well done and the black lines hard to identify. I would use nadir view and do not cut most of the upper glacier part. The sentence ‘‘In the oblique inset maps, orange lines are the glacier extent and the black polygons define the spatial domains used in this study’’ can fully be avoided when including a legend.

Figure 1 has been completely redone with nadir view plots and a legend allowing a major reduction in the caption length.

Figure 2: The letters are too large { waste of space and visually not really nice. Show the area of the subsets in Fig. 1.

Figure 2 has been shrunk so the text is not too large and so the figure can easily fit in a single column. Subset areas added to Fig. 1.

Figure 3: What is the source of the optical data used?

Imagery source added.

Fig. 4: In line with Rev. 1 I' also show Le on the other side.

Changed as suggested.

Figure 5: In line with the reviewer I ask to flip the colour coding for the temperature. It needs to be consistent with the other figures and cold should be blue. In case you want a similar look you may flip the ice cliff probability.

Changed as suggested.

Automated detection of ice cliffs within supraglacial debris cover

Sam Herreid and Francesca Pellicciotti

Department of Geography, Faculty of Engineering and Environment, Northumbria University, Newcastle upon Tyne, UK

Correspondence to: Sam Herreid (samherreid@gmail.com)

Abstract. Ice cliffs within a supraglacial debris cover have been identified as a source for high ablation relative to the surrounding debris-covered area. Due to their small relative size and steep orientation, ice cliffs are difficult to detect using nadir-looking space borne sensors. The method presented here uses surface slopes calculated from digital elevation model (DEM) data to map ice cliff geometry and produce an ice cliff probability map. Surface slope thresholds, which can be sensitive to geographic location and/or data quality, are selected automatically. The method also attempts to include area at the (often narrowing) ends of ice cliffs which could otherwise be neglected due to signal saturation in surface slope data. The method was calibrated in the Eastern Alaska Range, Alaska, USA, against a control ice cliff dataset derived from high resolution visible and thermal data. Using the same input parameter set that performed best in Alaska, the method was tested against ice cliffs manually mapped in the Khumbu Himal, Nepal. Our results suggest the method can accommodate different glaciological settings and different DEM data sources without a data intensive (high resolution, multi-data source) re-calibration.

1 Introduction

Ice cliffs are steep, bare-ice surface features that can develop within a debris-covered portion of a glacier. The direct atmosphere-ice interface can result in significantly higher ablation rates relative to the surrounding debris-covered area and are therefore areas of interest when solving for glacier melt in heavily debris-covered regions (Buri et al., 2016b; Thompson et al., 2016; Brun et al., 2016). The mechanism(s) of ice cliff formation, the controls of ice cliff migration patterns and ice cliff residence time on a glacier are gaining research attention but are still poorly understood processes, in part, due to a lack of base data (Reid and Brock, 2014; Watson et al., 2017). Melt and surface energy fluxes at specific ice cliffs have been studied in detail (Sakai et al., 1998; Han et al., 2010; Sakai et al., 2002; Reid and Brock, 2014; Buri et al., 2016a) and digital elevation model (DEM) differencing has shown the spatial trends of enhanced glacier melt relative to surrounding debris cover and ice cliff evolution at the scale of several cliffs or a single glacier tongue (Thompson et al., 2016; Brun et al., 2016). All of the studies mentioned suggest that ice cliffs, if present on a debris-covered glacier, need to be accounted for in order to adequately model glacier mass ~~change~~loss and response to climate. A wide range of ice cliff abundance within a debris-covered area is possible, from no ice cliffs to an abundance capable of possibly negating, or even reversing, the net melt reducing effect of the surrounding debris cover (Kääb et al., 2012; Basnett et al., 2013; Gardelle et al., 2013).

To the knowledge of the authors, five methods have been used to map ice cliffs: (1) field mapping (e.g. Steiner et al., 2015); (2) manual digitization from remote sensing data (e.g. Sakai et al., 1998; Han et al., 2010; Thompson et al., 2016; Watson

et al., 2017); (3) automatically, using a surface slope threshold (e.g. Reid and Brock, 2014); (4) automatically by a principal component analysis using visible near infrared and shortwave infrared satellite bands (Racoviteanu and Williams, 2012); and (5) automatically by a object based image analysis of unmanned aerial vehicle data (Kraaijenbrink et al., 2016). None of the remote sensing studies listed offer a confidence metric based on independent data for their ice cliff map products and field mapping is not realistic for large-scale ~~analysis~~analyses.

The objective of this paper is to present a new approach to automate the detection of ice cliffs. The method (1) requires input data that ~~currently~~ are, or are starting to become, freely available globally (~~hereafter referred to as ‘conventional’ data~~); (2) automatically selects threshold values that can accommodate ~~varying surface textures (e.g. glacier area with a characteristically smooth debris cover or a characteristically rough/hummocky debris cover)~~ different geographic locations and variable physical characteristics; and (3) is assessed for quality against additional high resolution visible and thermal data.

1.1 Formulation of the problem

The importance of ice cliffs has become increasingly clear (Sakai et al., 1998; Han et al., 2010; Sakai et al., 2002; Watson et al., 2017), but the mapping of these features remains a challenge, especially at spatial scales beyond a few glaciers. The map-view surface expression of an ice cliff is often a crescent, circular or linear swath of steep, bare (or thinly debris covered) glacier ice surrounded by a debris layer. Steep glacier ice not completely surrounded by debris cover might exhibit melt and evolution patterns similar to ice cliffs, but the lack of a bounding debris cover makes these areas characteristically distinct from ice cliffs and are thus excluded ~~in from~~ this study. It is unclear at the present time if a small area of low angle (i.e. not cliff) bare glacier ice located within a debris-covered portion of a glacier or a narrow swath of ice constrained by debris cover (e.g. a narrowing gap between two widening medial moraines) should be considered similar to ice cliffs with respect to relative melt rates in a debris-covered environment, but for this study we maintain a focus on identifying only steep features.

Watson et al. (2017) report that most ice cliffs within a subset of glaciers in the Central Himalaya are 200 m or less in length with a length of 20-40 m being the most frequent. Thompson et al. (2016) report a mean ice cliff height of 15.5 m at Ngozumpa Glacier in Nepal with notable outliers up to ~45 m. No current literature suggest other glacierized regions on Earth have ice cliffs with dimensions that deviate wildly from these localized findings. Due to this relatively small size and the high slope angle of an ice cliff, a nadir looking sensor will capture the width of an ice cliff in map-view as, D , a distance that under represents the true distance from the bottom debris-ice interface to the top debris-ice interface by a reduction factor of $\int_0^D \cos(\beta) dx$, where β is surface slope along ~~the an~~ ice cliff transect ~~;-~~ oriented parallel to the x -axis (to simplify ~~this example formulation~~the formulation of this example). This (likely) narrow map-view area means that even in an ideal ~~situation (for mapping)~~ setting where there is no debris on an ice cliff face, the optically sharp boundary between rock and ice could be saturated or completely muted in remote sensing data where ice cliff area does not occupy a sufficient fraction of a data pixel. A DEM-derived surface slope expression of an ice cliff is not encumbered by debris cover on the ice cliff face, yet the ‘true’ steep slopes of an ice cliff can also be saturated or completely muted if the spatial resolution of the computed slopes are coarse to a point where no slope value is calculated solely from pixels located within an ice cliff face. For both visible and DEM data,

in the common case where an ice cliff narrows gradually at the cliff ends, ice cliff edge defining signal saturation is likely to increase towards the narrow ends and could cause a systematic underestimation of ice cliff area if left unaccounted for.

If cloud free, ablation season visible spectrum imagery is used to map ice cliffs, cliff aspect, surrounding topography and sun position at the time of data acquisition control whether the surface will be shaded or illuminated. North and south facing ice cliffs present in a single image will likely appear either dark (shaded bare ice) or light (illuminated bare ice) relative to unshaded surrounding debris cover. Crescent to circular ice cliffs will likely exhibit a spectrum of shade and illumination. Automated or manual ice cliff mapping techniques using cloud free visible spectrum imagery would likely need to mitigate this factor and also discriminate between shaded ice cliff area and shaded debris-covered area.

A factor that may be abundant in some regions and add to the complexity of identifying and mapping ice cliffs is the presence of thin or sparse debris cover on an ice cliff face (hereafter referred to as a “thin” debris cover, but still describing sparse debris cover that could include large clasts or boulders). A “thin” debris layer is undetectable from DEM data (with the exception of data with a spatial resolution that is sufficiently below the size of the rock clasts/fragments). With data at a sufficient resolution (dependent on clast size and abundance), “thin” debris can be detected by visible spectrum or thermal sensors which can both facilitate mapping this quantity but also possibly introduce ambiguities when defining ice cliff area. For example, if the same ice cliff is mapped from thermal data twice in the same (summertime) day, once at night (where, for this example, the “thin” debris is $< 0^{\circ}\text{C}$, in thermal equilibrium with the neighboring bare ice and is thus undetectable) and again midday (where the “thin” debris is the same, $> 0^{\circ}\text{C}$, temperature as the debris cover surrounding the ice cliff and classified as such), a single scientist might generate two very different maps of an ice cliff area that, in reality, experienced no significant change.

The “thin” debris covering an ice cliff face during the melt season can vary with the deposition and/or removal of rock fragments. This process could be a slow evolution (e.g. coupled with melt, neighboring sediment distributions and englacial debris concentration) or a near instantaneous result from a local storm (e.g. windblown silt accumulations on wet, rough ice cliff surfaces). These processes lead to an ambiguity in defining an ice cliff where time may need to be considered. For example, if an image of a cliff shows that 30% of the surface area within the cliff face is comprised of large rocks caught on narrow ice ledges, should this area be excluded from what is called an ice cliff or can it be assumed this debris cover is transient and superfluous to consider? At large scales, a time consideration of debris cover within ice cliff faces is unrealistic, yet a 30% error could have a large and compounding impact on, for example, a study calculating energy fluxes. Furthering this example to the case where over time a cliff face is 100% debris covered, there are two classification possibilities: the cessation of being an ice cliff or, if the cliff exhibits some unique signature (e.g. a thermal anomaly and/or fine sediment/clast size distribution relative to the surrounding debris cover), it could still be considered an ice cliff.

Considering the cessation case where ice cliff area transitions to steep debris-covered area, it is not unrealistic that the true distributions of a population of ice cliff surface slopes and a population of debris-covered area surface slopes will have some overlap. If true, this implies that a simple surface slope threshold alone cannot cleanly identify ice cliff area.

A highly successful automated or manual ice cliff mapping technique will likely require a combination of multiple input datasets (e.g. visible and thermal data or visible and elevation data) yet still, ambiguities with defining what is and is not an ice cliff will likely remain regardless of approach.

While very high ~~<(less than 1 m)~~ spatial resolution data capable of not only resolving ice cliff faces but clasts of surrounding debris would be ideal for mapping confidence, data at this resolution are neither freely available or available at large scales (e.g. for a whole mountain range). Considering this, we attempted to balance ice cliff identification success rate with input data that is ~~conventional-and-becoming~~ starting to become freely available at wide spatial scales. The automated method presented here
5 uses 5 m digital elevation data alone to identify ice cliffs. The method includes a procedure to identify ice cliff area at the ends of ice cliffs that have a narrowing end geometry. ~~<Visible imagery with a spatial resolution of less than 1 m~~ ~~resolution-visible imagery-was~~ collected in the Alaska Range ~~are-and~~ used to assess the abundance of “thin” debris cover on ice cliff faces.

2 Data

2.1 Input data

10 There are three required datasets for this method: (1) the glacier area over which the method is applied; (2) multispectral satellite imagery; and (3) a DEM ~~with-17ex~~ (specifically for the examples presented here, a digital surface model) with around 5 m spatial resolution. Since the DEM alone is used to identify ice cliffs (the likely most temporally transient feature present in the data), it is not crucial that all three ~~data-sets-datasets~~ be coincident in time. However, debris-covered area and glacier margins should be assessed to ensure they have not changed significantly over the time span of the data used.

15 2.1.1 Glacier area

The spatial domain over which ice cliffs are detected is bound by a user defined polygon. The perimeter can outline a portion of a glacier, a whole glacier or many glaciers and can be a mix of debris covered and debris free glacier area. A subset of the Randolph Glacier Inventory (Pfeffer et al., 2014) is a suitable input but should be assessed for accuracy to avoid any erroneous inclusion of ~~off-glacier-off-glacier~~ slopes which could be misidentified as ice cliff area and skew computed statistics.
20 Computational cost might become a factor for typical desktop or laptop computers if solving over a large domain. This issue is addressed in Sect. 3.3.

2.1.2 Satellite imagery

Multispectral satellite imagery is only used in this method to map debris cover. The ratio of a near infrared (NIR) band and a shortwave infrared (SWIR) band is used to empirically remove radiance value variance from topographic illumination angles
25 and, to some degree, cast shadows (Vincent, 1973). Data from the NASA/USGS Landsat program (used in this study) ~~-~~ NIR: OLI band 5 (30 m); SWIR: OLI band 6 (30 m) and ESA Sentinel-2 (NIR: band 8 (10 m); SWIR: band 11 (20 m)) are two data sources that meet the input spectral and resolution requirements to map debris cover and are both freely available.

2.1.3 DEM

Elevation data are key ~~in~~for both identifying the location of ice cliffs and also defining their area. For the results of ~~the~~this method to be meaningful, an input DEM must have sufficient resolution and precision to resolve topography below or near the size of most ice cliffs within an area of interest. Because ice cliff locations are not being identified as the residual of DEM differencing, a high ~~vertical accuracy relative~~absolute height accuracy with respect to the geoid is not critical (while relative vertical accuracy is decisive). This can simplify data processing if ~~structure from motion data are used to derive~~ the input DEM is derived using structure from motion photogrammetry. Photogrammetric methods are often successful at resolving relative topography and image correlation methods simplify geolocation in x, y , ~~but~~yet a high vertical accuracy with respect to the geoid (i.e. true elevation) requires a suitable ground control point network (Westoby et al., 2012).

DEM data that meet this criteria are not freely available for all glacierized regions on Earth at the present time. However, ~~initiatives such as recent advances such as~~ (1) the Interagency Arctic Research Policy Committee (~~IARPC~~) ~~Arctic DEM~~, ~~which is releasing~~ which has released Arctic DEM (<http://ArcticDEM.org>), a freely available 2 to 8 m resolution DEM for all landmass above 60° latitude and the entire State of Alaska; (2) a freely available 8 m resolution DEM for high mountain Asia (<https://nsidc.org/data/highmountainasia>); and (3) 12 m resolution TanDEM-X DEM data which may be freely available per a scientific data acquisition request (<https://tandemx-science.dlr.de/>) all show promise that high resolution DEM data in glacierized areas may soon be available globally.

2.2 Calibration and validation data

The parameters of this method were calibrated using manually derived ice cliff outlines based on high resolution visible (~8 cm) and thermal (80 cm) data that cover a portion of ~~the~~ Canwell Glacier in the Eastern Alaska Range, Alaska, USA. To test transferability, the same parameter set was applied to a portion of Ngozumpa Glacier in the Khumbu Himal, Nepal with an independent validation dataset previously published in Thompson et al. (2016).

2.2.1 Canwell Glacier

Canwell Glacier (Fig. 1, 2a) is a 60 km², northwest flowing glacier in the eastern Alaska Range (63° 19.8'N, 145° 32'W). Canwell Glacier was selected for this study because several different surface types exist in close proximity: an expansive ice cliff network in debris cover that transitions, orthogonal to flow, to bare glacier ice and a medial moraine.

On the 29th of July, 2016 between 11:00 and 11:16 local Alaska Time, nadir (or near-nadir) looking visible and thermal infrared images were collected from a helicopter over 1.74 km² of the Canwell Glacier capturing all of the different surface types listed above (Fig. 3a). The images were collected below a high overcast ceiling. This caused subtle cloud effect to be captured by varying light penetration of the cloud layer, however, this also removed the likely more negative effect of shading discussed in Sect. 1.1. 250 visible spectrum images were collected with a Canon EOS 70D camera at an altitude range of about 133-615 m above the glacier surface. Overlap between these images, in conjunction with 9 ground control points, were used to generate a ~8 cm resolution orthomosaic and a 1 m resolution (resampled to 5 m to match a spatial resolution more common

from space borne sensors) DEM using the proprietary software Agisoft PhotoScan Professional Edition. 34 (suitable for use) thermal images were collected with a FLIR T620 camera and processed using the proprietary software FLIR Tools. Emissivity was held constant at 0.95, atmospheric temperature and relative humidity were measured from the helicopter during image acquisition using a Kestrel 4000 Weather Meter and distance from the sensor to the glacier surface was estimated using camera locations derived by Agisoft Photoscan. The thermal images were manually georeferenced to match the orthomosaic image described above and ~~has a uniform, resampled~~ resampled to a uniform spatial resolution of 80 cm.

A nearly cloud-free Landsat 8 image was acquired over the Canwell Glacier (path/row: 67/16) on the 31st of August, 2016. Debris cover extent and glacier margins were found to be effectively static over the 33 day interval between the acquisition of ~~helicopter-borne~~ the helicopter borne and Landsat 8 data.

2.2.2 Ngozumpa Glacier

Ngozumpa Glacier (Fig. 1, 2b) is a 60 km² south flowing glacier in Khumbu Himal (27° 57'N, 85° 42'E). Ngozumpa Glacier was selected to be used in this study for two reasons. First, it is located in a geographical region that is different from the Alaska Range with respect to latitude, longitude, continentality, climate and orogeny. These factors and others establish a setting where exposure to the sun, the overall debris cover (e.g. debris extent, clast sizes, thickness) and glacier dynamics at Ngozumpa Glacier is notably different from Canwell Glacier. Fig. 3 illustrates some differences between Canwell and Ngozumpa glaciers including rock/boulder size, ice cliff size, amount of “thin” debris cover on ice cliff faces and overall hummocky nature of the debris-covered area. The debris on Ngozumpa Glacier is thick (1-3 m towards the terminus (Nicholson, 2005)) and covers the full width of the glacier continuously for nearly the entire ablation zone.

The shift between the two ice cliff slope distributions shown in the two inset histograms of Fig. 3 suggest that even if overlooking overlap errors, a simple surface slope threshold deemed suitable to define ice cliffs at one location may capture a different portion of the distribution in other regions on Earth. The second reason Ngozumpa Glacier was selected is that an automated ice cliff map can be assessed against the manually generated ice cliff map from Thompson et al. (2016), allowing the removal of some potential manual delineation bias in this study.

Thompson et al. (2016) provided their GeoEye-1 orthoimage acquired on the 23th of December, 2012, the corresponding stereo image derived DEM (1 m resolution, resampled to 5 m for this study) and their ice cliff map generated manually using both the orthoimage and DEM. Additionally, Thompson et al. (2016) generated and provided a mask of area where surface elevation was poorly resolved. The method Thompson et al. (2016) used to map ice cliffs was to define a line along the top edge of each ice cliff based on optical characteristics and steep surface slopes calculated from the DEM. In order to conduct a quality assessment between the top edge lines defined by Thompson et al. (2016) and the automated ice cliff polygons identified using the method presented here, the ice cliff top edges from Thompson et al. (2016) were manually adjusted to polygons incorporating the area of each ice cliff using the December 23rd, 2012 visible GeoEye-1 imagery. Some smaller ice cliff additions were also made.

A nearly cloud-free Landsat 8 image was acquired over Ngozumpa Glacier (path/row: 140/41) on the 30th of November, 2014. Because the portion of Ngozumpa Glacier considered in this study is 100% debris covered, a debris extent map generated

with a 2 year gap does not alter the spatial domain. The glacier margin was mapped from the December 23rd, 2012 GeoEye-1 imagery.

3 Methods

3.1 Isolation of debris-covered area

- 5 The spatial domain is refined from total glacierized area, including bare ice and accumulation zone area, to only debris-covered glacier area. Debris-free area ~~is-was~~ identified and removed using the ~~band~~-ratio of NIR and SWIR satellite bands ([Landsat 8: OLI band 5 / OLI band 6](#)) with a user defined threshold (Paul et al., 2004)(Table 1). To prevent the removal of bare ice pixels that are part of an ice cliff, closed shapes identified as bare ice within the debris-covered area ~~are-were~~ filled (reclassified as debris-covered area) if below a user defined threshold area (Table 1). This is possible where an ice cliff is debris-free and big
10 enough to cause one or more satellite image pixels to fall below the NIR/SWIR ratio threshold.

3.2 Ice cliff identification

3.2.1 Iterative ice cliff detection

- Within debris-covered area, surface slope, β , is calculated as the maximum elevation difference for each DEM pixel value relative to its 8 neighbor values. A threshold slope value, β_i , isolates steeper area from which statistics and further threshold
15 values are derived. This area, and all subsequent areas derived in the mapping method, are simplified as a shape in two dimensions (2D). Only final results of the mapping method are converted to 3D surfaces (~~Sect. 4 and 5.3~~, method described in Sect. 3.4 ~~used synonymously with and referred to synonymously as~~ ‘true surface area’ and ‘area considering slope’). The method is run iteratively, varying β_i over the full range of possible surface slopes (below over-vertical), from 0 to 90° in n ~~number of~~
iterations (i).

- 20 For each i , two areas are defined that will, together, define area with a high likelihood of being an ice cliff: (1) an initial ice cliff area (A_i) from which statistics are computed, further geometries are derived and the base shape of the final ice cliff area is defined; and (2) A_{ei} , an area slightly more encompassing than A_i from which lengthwise ends of the final ice cliff geometries are extracted (subscript ‘e’ for ‘end’).

- A_i is defined as $area(\beta > \beta^*_i)$ where $\beta^*_i = mean(\beta > \beta_i)$ (Fig. 4a). Using β^*_i rather than simply β_i speeds up computa-
25 tion by discarding the case where ice cliffs occupy an overwhelming percentage ($>>50\%$) of the debris-covered area. If ice cliffs did occupy one half or more of a debris-covered area (in map-view), its classification as a debris-covered portion of a glacier could be questioned.

- Ice cliff centerlines are computed by creating a Voronoi cell for each vertex in the outline of A_i converted to a dense set of vertices. The bounding edges of each Voronoi cell is removed except for the edge in the center of a shape in A_i . A point
30 removal line simplification is applied to smooth extraneous bends, particularly at centerline ends. The centerline ends are then extended by a user defined distance, L_e (Fig. 4b), with the topological restriction that centerline extensions can intersect, but

not cross one another. The extended centerlines are then transformed to an area, B_{ei} , by a buffer distance, α , applied outward in all directions (Fig. 4b). C_{ei} is the intersection of B_{ei} and A_{ei} , where A_{ei} is area with a surface slope greater than β^*_i relaxed by a user defined factor, β_e (Fig. 4c). C_{ei} is intended to identify area that is part of an ice cliff but expressed by surface slopes less than β^*_i due, possibly, to narrowing ice cliff ends where DEM data and subsequent surface slope calculations saturate a true, steep surface slope signal. Area with a high likelihood of being an ice cliff, A_{cliff_i} , is defined as the union of C_{ei} and A_i where a user defined minimum shape area threshold, A_{min} is exceeded (Fig. 4d).

A_{cliff_i} is the definitive ice cliff area used for the error analysis in Sect. 3.5 after optimization described in Sect. 3.2.2, but for some applications of this method, a distributed probability map might be a more useful product. With β_i as a lower limit and β_u , where $\beta_u = \beta^*_i + std(\beta > \beta_i)$, as an upper limit, the probability that a pixel, x , is part of an ice cliff can be estimated

10 where

$$p(x = Ice\ cliff \mid \beta, \omega) = \begin{cases} 0, & \beta < \beta_i, \omega = \{1, 0\} \\ \frac{\beta + \beta_i}{\beta_u - \beta_i}, & \beta_i \leq \beta \leq \beta_u, \omega = 1 \\ \frac{\varphi(\beta + \beta_i)}{\beta_u - \beta_i}, & \beta_i \leq \beta \leq \beta_u, \omega = 0 \\ \varphi, & \beta > \beta_u, \omega = 0 \\ 1, & \beta > \beta_u, \omega = 1 \end{cases} \quad (1)$$

From Eq. 1, ice cliff probability is assigned given surface slope, β , and ω , where ω is a binary classification $\{1, 0\}$ for pixels falling within A_{cliff_i} , 1, and outside A_{cliff_i} , 0. For pixels where $\omega = 0$, ice cliff likelihood is reduced by a user defined factor, φ . $\varphi = 0$ implies the iterative process will have zero error, $\varphi = 1$ discards the entire iterative process and $\varphi = 0.5$ (for example) means that a surface slope $> \beta_u$ but not bound by a high likelihood ice cliff shape (A_{cliff_i}) will be assigned a $p(x = Ice\ cliff \mid \beta, \omega)$ value of 0.5. With this use of $\varphi = 0.5$ as a reduction factor, area iteratively identified as ice cliff will be assigned a $p(x = Ice\ cliff \mid \beta, \omega)$ that is a factor of 0.5 greater than any other area but no steep surface slope will be completely rejected as having $p(x = Ice\ cliff \mid \beta, \omega) = 0$.

The result of this iterative process is $90/n$ gridded ice cliff probability maps and vector ice cliff shapes (A_{cliff_i}) for the entire spatial domain.

3.2.2 Heuristic selection of β_{opt} : a best β_i

The $90/n$ ice cliff probability maps are constrained by two conditions: where the spatial domain is unrealistically dense with ice cliff and where there is zero ice cliff area. Using the resulting ice cliff area (A_{cliff_i}), ice cliff fraction, y_i , is calculated as $A_{cliff_i}/area(spatial\ domain)$. To derive a continuous, functional form of ice cliff fraction, the equation

$$25 \quad y(\beta) = a \exp\left(-\left(\frac{\beta - b}{c}\right)^2\right) \quad (2)$$

is fit to y_i and β_i using non-linear least squares where a , b and c are fitting parameters. The curve expresses unrealistically high $y(\beta)$ with low values of β because the threshold slope for ice cliff classification is well below slopes from surface roughness/undulations common for a debris-covered portion of a glacier. If there are ice cliffs within the spatial domain, the increase in β towards 90° causes the threshold to become too stringent, excluding even true ice cliff area. Steep ice cliff faces (and possibly erroneous DEM data) will cause iterations to run through high values of β with minor reductions in $y(\beta)$ causing the slope of $y(\beta)$, $y'(\beta)$, to gradually approach 0 as β approaches 90° . If there are no ice cliffs within the spatial domain, the iterative process will end as soon as $A_{cliff_i} = 0$, which will likely occur at a lower β relative to a spatial domain with ice cliffs because debris cover can only be maintained on a subset distribution of surface slopes (see inset histograms in Fig. 3). This truncation is likely the key distinction of areas with no ice cliffs relative to ice cliff abundant domains (see Sect. 5.2).

10 If there are ice cliffs within the spatial domain, some value of β_i will optimize a match with the true ice cliff fraction. The method uses a heuristic approach to select this β_i , termed β_{opt} , which might provide the most accurate final A_{cliff} and coupled $p(x = Ice\ cliff \mid \beta, \omega)$ map.

Where β is low and $y(\beta)$ is unrealistically high, all ice cliffs will likely be included (high *true positive rate* [defined in Sect. 3.5]) yet will be accompanied by a large amount of non-ice cliff area (low *precision* [defined in Sect. 3.5]). Conversely, as β approaches 90° , or $max(\beta)$ if $max(\beta) < 90^\circ$, the small areas within $y(\beta)$ will very likely be ice cliff area (high *precision*), but widely under resolve the true ice cliff area (*low true positive rate*). In the absence of validation data to explicitly optimize *true positive rate* and *precision*, the ‘mid-point-or-elbow’ of the curve as $y(\beta)$ shifts from a steep slope, high $y'(\beta)$, to $y'(\beta)$ approaching 0, is hypothesized to correspond to the optimized maximum of both *true positive rate* and *precision* (Fig. 6). The hypothesis is that as β_i increases and less sloped debris-covered area (e.g. from strain and differential melt) is included as mapped ice cliff, true ice cliffs will begin to comprise the majority of the mapped ice cliff fraction (y_i). We hypothesize this to have a stabilizing effect (ice cliffs are a small, consistently steep area), lowering the rate of loss of mapped ice cliff area and slope of the curve as β_i continues towards 90° . We hypothesize that this so-called ‘mid-point-or-elbow’ point will thereby identify a β_{opt} that reflects a surface slope characteristic common to the small spatial domain the method is applied to, but possibly unique to a geographical region or latitude. This point, (β_{opt}, y_{opt}) is defined as

$$25 \quad (\beta_{opt}, y_{opt}) = (\beta, y(\beta)) \text{ where } (\beta, y(\beta)) \cap max(d), \quad (3)$$

where

$$d = distance(P_1, P_2, (\beta, y(\beta))) = \frac{|(y_2 - y_1)\beta_i - (\beta_2 - \beta_1)y + \beta_2 y_1 - y_2 \beta_1|}{\sqrt{(y_2 - y_1)^2 + (\beta_2 - \beta_1)^2}}. \quad (4)$$

d is the orthogonal distance from a line defined by points P_1 and P_2 to the function $y(\beta)$ (Eq. (2)), where

$$\begin{aligned}
 P_1 &= (\beta_1, y_1) \\
 \beta_1 &= \beta \text{ where } y'(\beta) = \gamma \\
 y_1 &= y(\beta_1)
 \end{aligned}
 \tag{5}$$

and

$$\begin{aligned}
 P_2 &= (\beta_2, y_2) \\
 \beta_2 &= \beta \text{ where } y(\beta) = \max(y(\beta)) \\
 y_2 &= y(\beta_2).
 \end{aligned}
 \tag{6}$$

- 5 γ is an input parameter with a near zero value (Table 1) defining the limit when $y'(\beta)$ is effectively 0. Since the function asymptotically approaches 0, without γ , β_1 would always be 90° and this geometric approach would likely fail to identify the so called ‘mid’ point or ‘elbow’ of the curve. Additionally, DEM errors can sometimes have vertical or near vertical slopes (e.g. a raised artifact). These errors will be identified as ice cliff area but will not impede the calculation of (β_{opt}, y_{opt}) because very steep area causes a vertical translation of the function $y(\beta)$, thus not affecting $y'(\beta)$. An alternative approach could use
 10 higher order derivatives to identify (β_{opt}, y_{opt}) thus eliminating the parameter γ , but this approach might be unreliable due to numerical instability.

A final application of the model where $\beta_i = \beta_{opt}$ produces a final automated ice cliff probability map. If visual inspection suggests large errors, all of the ice cliff probability maps and resulting ice cliff area shapefiles generated from the earlier set of iterations are retained and can be manually assessed to establish if a more adequate β_i value should be considered optimal.

- 15 Future applications of this method that produce large errors might indicate that a fixed γ value is not suitable for all regions or that the surface slope distributions of ~~debris-covered area~~ debris-covered and ice cliff area have too much overlap to use surface slope alone as a deterministic attribute.

3.3 Domain segmentation for large areas

Using this method over large spatial domains might be computationally demanding on typical desktop or laptop computers. To
 20 address this, a precursory function segments large domains (considering only debris-covered area) into less computationally taxing tiles. Because the ice cliff mapping depends on statistics calculated across the entire area considered, it is critical that segments are large enough so that meaningful statistics can be computed. A target/maximum spatial domain is defined by the user as the length of an edge of a square, L_t . If the ~~debris-covered~~ debris-covered area of interest is below L_t^2 , no segmentation

will be applied. If the debris covered area is greater than L_t^2 , the debris covered area is subdivided by a square grid with side length L_t . The function finds the area of debris cover occupying each grid cell and attempts to merge neighboring cells one at a time until their fractional debris-covered area sum to 1. A look distance factor in number of $L_t \times L_t$ cells, n_c , controls if and how far the method will look beyond empty space or cells where an unsuccessful match (summed fraction > 1) occurred and still be considered as ‘neighboring’ cells. When a cell or set of previously merged cells have (1) exhausted the set of possible neighboring cells within the look distance, and (2) all have returned a summed debris cover fraction greater than 1, the cell or set of cells are defined as a closed tile that will become an input spatial domain to the iterative and heuristic optimization scheme. The method automatically identifies and individually processes each tile and a final merged product of both gridded $p(x = Ice\ cliff \mid \beta, \omega)$ and a vector shapefile corresponding A_{cliff} are generated.

10 3.4 Derivation of a calibration dataset for Canwell Glacier

To calibrate a method that automatically maps ice cliff area, a sufficiently accurate ‘truth’ dataset is needed. For this study, ice cliff outlines generated from the high resolution visible and thermal data described in Sect. 2.2.1 were considered to be true. Elevation data described in Sect. 2.2.1 were not explicitly used to digitize from but were used in a 3D viewer with draped visible and thermal layers to assess generated ice cliff outline quality. Area that was clearly ice cliff in visible and thermal data but not apparent in elevation data (possibly due to errors in the DEM) was still mapped as ice cliff area. Given the ambiguities described in Sect. 1.1 regarding “thin” debris cover, ice cliffs were liberally outlined, including, for example, cliffs that were nearly 100% covered by debris, yet had a unique thermal signature relative to the surrounding debris cover indicating thinner debris. No minimum size was considered, thus ice cliffs below the resolution of the method input data are penalized in quality assessment metrics, if missed. While we made an effort to manually map ice cliffs based on consistent criteria, there is subjective interpretation within this ‘truth’ dataset. We did not quantify the uncertainty associated with this subjectivity.

True surface area (area considering slope, as opposed to map view surface area) was calculated to present final results (Sect. 4 and 5.3) by multiplying DEM pixel area by a factor correcting for constant-sloped terrain ($\cos(\beta)^{-1}$, the secant of slope angle) for each pixel and finding the sum of slope corrected area for all ice cliff pixels or pixels within the entire spatial domain.

25 3.5 Statistical measures of performance

A suite of statistical measures of performance are needed to isolate and illustrate performance trade-offs and rank success between parameter sets and alternative, less complex methods. All performance metrics are calculated using the final output ice cliff area A_{cliff} rather than distributed $p(x = Ice\ cliff \mid \beta, \omega)$. True positive (TP) is defined as area where the ice cliff mapping technique output intersect-intersects true ice cliff area. True negative (TN) is defined as area where the method did not identify ice cliffs that intersects true correctly identified non-ice cliff area (debris-cover area). False positive (FP) and false negative (FN) are defined as area identified as ice cliff that is not included in the manually defined ‘true’ ice cliff map in the

'true' dataset and ice cliff area present in the ~~manual map~~ 'true' dataset but absent in the automated output, respectively. Using these quantities, the following common metrics (e.g. Fawcett, 2006) are defined:

$$\text{true positive rate} = \frac{TP}{TP + FN} \quad (7)$$

$$\text{precision} = \frac{TP}{TP + FP} \quad (8)$$

$$5 \quad \text{accuracy} = \frac{TP + TN}{TP + FP + FN + TN}. \quad (9)$$

True positive rate (also called recall) is the ratio of successful classification over total true ice cliff area and *precision* measures the probability that area identified as ice cliff is in fact ice cliff. Ideally, these metrics should be equal to each other and, if the cliff mapping is perfect, both equal 1. *Accuracy* is the proportion of true results, but because ice cliffs will most often occupy a small fraction of a debris-covered area and *accuracy* accounts for *TN* as well as *TP*, it becomes a less informative
 10 metric. For example, if 1% of a debris-covered portion of a glacier is ice cliff, not mapping ice cliffs at all will yield an ice cliff mapping *accuracy* of 99%. We therefore introduce two additional metrics, outside of the standard suite of statistical measures of performance, that are independent of *TN* and thus help evaluate ice cliff mapping success:

$$\text{error distribution} = \frac{FP}{FN} \quad (10)$$

$$\text{error magnitude} = \frac{FP + FN}{TP + FN}. \quad (11)$$

15 *Error distribution* provides a measure of balance between *FP* and *FN* errors. An *error distribution* > 1 means there is more debris-covered area mapped erroneously as ice cliff than ice cliff area erroneously mapped as debris-covered and vice versa. Ideally, *error distribution* is 1. *Error magnitude* is a ratio of the total erroneously mapped area, both *FP* and *FN*, over the manual 'true' ice cliff area (which is equal to the sum of *TP* and ~~FP~~ FN). If *Error magnitude* is 0 ice cliffs are perfectly mapped, if *error magnitude* is, for example, 2, then error is a factor of 2 greater in spatial extent than the true ice
 20 cliff area.

3.6 Calibration

The method presented here requires five key input parameters to map ice cliffs: L_e , α , β_e , A_{min} and γ (Table 1, described in Sect. 3.2.1, bold font quantities in Fig. 4). A matrix of different parameter sets were tested using Canwell Glacier data. The

success of each parameter set was quantified against the manually generated ice cliff outlines described in Sect. 3.4 using the statistical measures of performance derived in Sect. 3.5.

3.7 Quantification of “thin” debris cover on ice cliffs

As described in Sect. 1.1, ice cliffs can be considerably covered by rock fragments. The automated method presented here uses elevation data alone and therefore depends on the assumption that steep terrain within a debris cover is ice cliff. Because the validation data described in Sect. 3.4 is in part visible data, assessment of “thin” debris cover on ice cliffs can be made and used to further interpret automated ice cliff mapping results. Here, the word “thin” is used colloquially under the premise that an ice surface able to retain large clasts and/or a debris cover equal or greater in thickness (and surface temperature) to the surrounding debris-covered area is not an ice cliff, leaving dust to small clasts to constitute “thin” debris covering on ice cliff faces. The optical orthomosaic was converted to greyscale and a pixel value threshold was selected manually that discriminated between debris-free and debris-covered area. We did not quantify the sensitivity of this threshold parameter and relied on visual assessment (e.g. comparing panels b and c to panels d and e in Fig. 7) to determine a single values that minimized errors (e.g. due to varying lithology) and maximize success. This process is similar to the satellite data based method described in Sect. 3.1 to identify debris-covered area, but without a band ratio correction and at a much higher spatial resolution of ~ 8 cm. The results provide an estimate of the distribution and fraction of debris cover on ice cliffs ~~and is shown~~ (Fig. 7).

4 Results

4.1 Canwell Glacier

The manually generated, ‘true’ ice cliff dataset shows 4.9% of the 1.74 km^2 Canwell Glacier study area is ice cliff in map view (not considering slope). Ice cliff map view area ($84,630 \text{ m}^2$) under represents true ice cliff surface area ($104,920 \text{ m}^2$, considering slope) by 19%. Considering the true surface area of the Canwell Glacier study area, map view under represents true surface area (1.86 km^2) by 6%. Considering both true surface area of ice cliffs and the Canwell Glacier study area, the fraction of ice cliff area is 5.7%.

~~Table Running the automated method 24 times with the same input data while varying the input parameters over a series of different parameter sets (Table 2 shows the automated mapping method parameter set matrix described in Sect. 3.6. The results summarized in Table 2) produced two main results. The varying parameter set results~~ (1) suggest that the method is stable and robust because no parameter set produced exceptionally poor results (e.g. computed *error magnitude* across all parameters sets in Table 2 fall within a range of 0.94 to 1.06); and (2) allow the selection of a ‘best’ parameter set, selected with an emphasis on high and equal values of *true positive rate* and *precision*: $L_e = 10 \text{ m}$, $\alpha = 3.54 \text{ m}$, $\beta_e = 3^\circ$ and $A_{min} = 250 \text{ m}^2$. γ is excluded from Table 2 because after testing different values of γ , a value of 0.0001 consistently returned results where *true positive rate* and *precision* are close to equal. Calibration results in Table 2 are shown alongside the same statistical measures of performance applied to a range of simple surface slope thresholds used to identify ice cliffs. This

comparison shows that a carefully selected slope threshold can provide an ice cliff map comparable in statistical measure to the more complex method presented here. However, simple slope threshold results are shown to be sensitive with respect to the slope value used and would require additional data, similar in quality to those described in Sect. 3.4, to validate the threshold selection and subsequent results.

- 5 Using the parameter set [$L_e = 10$ m, $\alpha = 3.54$ m, $\beta_e = 3^\circ$, $A_{min} = 250$ m² and $\gamma = 0.0001$] as input, Fig. 6 shows the heuristic approach for selecting β_{opt} , ~~a best β_i~~ . β_{opt} is calibrated so that there is close coincidence between β_{opt} and β where *true positive rate* and *precision* intersect (Fig. 6). *Error magnitude* deviated only slightly from a value of 1 in all of the parameter set tests. This indicates the best results of this method are incurring errors equal in area to the true area of ice cliffs. This is a non-trivial error but likely an unavoidable trade off for a method designed for wide scales and modest data input. It is
- 10 important to note that comparing only percent ice cliff area values between manually mapped ice cliffs ~~(4.9%)~~, and modeled (5.3%) would give a misleading perception of very low error, 0.4% ~~when the~~. The true error is closer to 5% ($1 - accuracy$) if considering the entire domain or higher if considering only ice cliff area error (*true positive rate* and *precision*). For most tests, errors are fairly distributed between ~~FP and FNs~~ FP and FNs and shown by *error distribution* having a proximity to 1. As described in Sect. 3.5, *accuracy* is a poor indicator of success mapping a feature that occupies a small fraction of a total
- 15 area, favoring a setting of higher *precision* over *true positive rate*, but it is the only metric used in this study that rewards *TN* area and quantifies overall performance.

Results using the best parameter set for Canwell Glacier have an *accuracy* of 0.952, where *FP* and *FN* errors are close to evenly distributed with an *error distribution* = 1.14 and an *error magnitude* = 0.98, which is slightly below the mean for all tested parameter sets (0.99). *True positive rate* and *accuracy* are higher (0.54 and 0.51, respectively) than those achieved

20 by the best simple slope threshold, 27° (0.49 and 0.50, respectively). These results suggest that the method presented here can achieve results that are slightly more accurate than the best simple slope threshold and is far more robust: sensitivity to changing parameters is low while different simple slope threshold values produce wider variance in statistical measures of performance (Table 2) and are thus more sensitive.

4.1.1 Mapping success in the context of ice cliff characteristics

- 25 Figure 7 shows mean surface slope, map view surface area and the percentage of “thin” debris covering every manually mapped ice cliff. These characteristics are shown in the context of *true positive rate* (Eq. (7)) now calculated for every ice cliff (*true positive rate* mentioned in all instances prior was calculated for all ice cliffs together), and *FP* ice cliffs, which we define as isolated shapes that are solely *FP* area and do not share a boundary with a shape in the manually mapped ‘true’ ice cliff area. The figure shows a clear *true positive rate* dependence on slope, illustrating the limitations of this method to
- 30 detect ice cliffs where steep surface slopes were not sufficiently resolved in the data. The figure shows that, in this portion of Canwell Glacier, most of the “cleanest” ice cliffs are still covered by a non-trivial (>50%) amount of debris. The percentage of “thin” debris cover on ice cliff faces appears continuous above 50%, such that there is no clear boundary in the data that could define what is and is not an ice cliff if the percentage of “thin” debris cover was the main deterministic variable.

4.2 Ngozumpa Glacier

~~Table 3 shows the performance of the~~ Applying the best parameter set found for Canwell Glacier ~~applied to the lower ab-~~ lation zone of Ngozumpa Glacier (4.8 km²) ~~There is produced~~ a decrease in performance ~~for (Table 3).~~ For example, *true positive rate*, *precision* and *error magnitude* for Canwell Glacier are 0.54, 0.51 and 0.98, respectively, and 0.53
5 (−1%), 0.32 (−19%) and 1.58 (+0.6), respectively, for Ngozumpa Glacier. The imbalance between *true positive rate* and *precision* indicates the automatically selected β_{opt} does not coincide with the ideal β_i where *true positive rate* and *precision* are optimized. However, in the context of the simple slope threshold results shown in Table 3, the best possible threshold is 39° and the statistical measures of performance from the automated method are closest to a simple slope threshold of 37°. This suggests that the automated method missed selecting optimum threshold(s) by about 2°. Considering that not a single alter-
10 ation was made to the method and input parameter values used for Canwell Glacier, the method mitigated the many physical differences between Canwell and Ngozumpa glaciers (described in Sect. 2.2.2 and shown in Fig. 3) as well as different DEM generation methods (satellite based rather than airborne structure from motion). This ability to accommodate different physical characteristics enables the method to outperform a simple slope threshold found at one location, e.g. at Canwell Glacier, and assume that it is transferable to other places on Earth, e.g. Ngozumpa Glacier (Tables 2 and 3). The ~~debris-covered~~ debris-covered
15 area considered on Ngozumpa Glacier was broken into three processing tiles where β_{opt} found for each tile was 30.8°, 32.5°, and 33.5°, while β_{opt} for Canwell Glacier was 23.5°. The ~10° difference between β_{opt} for both glaciers is significant but appropriate for each location as shown in Fig. 3 or observed by comparing the statistical measures of performance for the range of simple slope threshold values shown in the far right column of Tables 2 and 3. Taking the best simple slope threshold of 27° found for Canwell Glacier and applying it to Ngozumpa Glacier would result in an ice cliff map with a *precision* of 0.10
20 (−41% relative to Canwell Glacier results) and area mapped incorrectly a factor of 7.91 (+6.93) times greater than the true ice cliff surface area (Table 3). Using the method presented here and the parameters from Canwell Glacier, *true positive rate* and *precision* are closer to balanced and erroneously mapped area is only a factor of 1.58 greater than the true ice cliff area, comparable in magnitude (+0.6) to the best results for Canwell Glacier.

The results shown in Table 3 were generated without removing area identified in Thompson et al. (2016) as having poorly
25 resolved surface elevation. Poorly resolved on-glacier area was predominantly at locations that were shaded by cast shadows and thus often concurrent with steep terrain and ice cliffs. Visual inspection of the data suggested that while the computed *precision* might be low, the well resolved area above and below steep terrain combined with the absence of extreme outliers resulted in steep terrain still being resolved as steep. Acknowledging the uncertainties within this context, we also tested the method with poorly resolved elevation locations removed from both the DEM and the manually generated ‘true’ ice cliff area.
30 These results produced a reduction in *true positive rate* (0.44) yet more in balance with *precision* (0.38) and a comparable *error magnitude* (1.62).

5 Discussion

This method attempts to resolve two key components in DEM-based automated ice cliff mapping that are apparent in the histogram in Fig. 3: (1) selecting a threshold that discriminates between ice cliff and ~~debris-covered~~ debris-covered area; and (2) adding/removing the correct area that is within the surface slope overlap between ice cliff and debris-covered areas. The method presented here attempts to add low slope ice cliff area by looking beyond the ends of ~~the ice cliffs and rejects an ice cliff~~ while at the same time rejecting area with the same (low) slope that is not neighboring ~~the ends of an ice cliff~~ end. Rejecting area that is steep but not truly ice cliff is difficult using elevation data alone. The only mechanism to remove this area within this method is eliminating mapped ice cliff area below a minimum area threshold; however, this is a delicate balance between reducing errors and reducing resolution to which the method can resolve ice cliffs. The abundance of small ice cliffs with a very low *true positive rate* shown in Fig. 7 ~~indicate~~ indicates that improvements to automated ice cliff detection will need to, in part, focus on small ice cliffs where the elevation difference between pixels might be dominated by the more flat surrounding debris-covered area and cause ~~a dampening~~ dampening/saturation of the steep ice cliff signal.

5.1 Alternative approach

Alternative methods were tested before selecting the presented method as best. One alternative approach used optical satellite data to accept or reject potential ice cliff area. A main objective in this approach was identifying and removing the *FP* ice cliffs clustered at the top of Fig. 7. The Landsat 15 m panchromatic band was corrected for illumination variance from topography using the Minnaret method (Smith et al., 1980). Bright and dark regions of the image were then identified ~~as area~~ $mean(L_H) \pm std(L_H)m$ by isolating area that fell at both ends of the radiance distribution, $L_H > mean(L_H) + std(L_H)m$ and $L_H < mean(L_H) - std(L_H)m$, where L_H is Minnaret corrected radiance values and m is a model parameter. These regions were established with the assumption that ice cliffs with an aspect that is illuminated by the sun would be optically bright relative to surrounding debris cover and ice cliffs with an aspect that is in cast shadow would be optically dark relative to surrounding debris cover. A buffer sequence was then applied to separate shapes (e.g. A_i , defined in Sect. 3.2.1) that were narrowly attached (e.g. hourglass shaped): shapes were uniformly shrunk and expanded by a user defined distance. A shape that contained $area > 0$ of both a steep, seed slope area (e.g. $area > \beta_u$ (β_u is defined in Sect. 3.2.1))) and optically bright or dark area would be assigned a high ice cliff likelihood. However, this method failed to perform better than a method using surface slopes alone because of two linked factors: data resolution and “thin” debris covering true ice cliffs. Figure 7 shows that even the “cleanest” ice cliffs are still around 50% debris covered. A 15 m optical pixel perfectly centered on an ice cliff with 50% debris cover should have a distinguishable signal, but this is a best case in both pixel/ice cliff location coincidence and fraction of “thin” debris cover. It is clear to see how using 15 m resolution data will quickly fail to resolve smaller and more debris-covered ice cliffs. The buffer sequence to separate narrowly attached shapes had the positive (intended) result of detaching narrowly joined debris-covered area and ice cliff area, allowing ice cliff area to be considered separately and positively identified as an ice cliff while rejecting the ~~debris-covered~~ debris-covered area. However, the shrinking step had the

negative (and more frequent) effect of completely removing shapes that where, in at least one dimension, equal to or less than 2 ~~times~~ the user defined buffer distance.

5.2 Wider application

The testing of this method at two locations on opposite sides of the Earth with the same input parameters suggests the method can be applied/transferred elsewhere with little loss of performance. Figure 8 shows repeat runs for Canwell Glacier with all parameters held constant while resampling the DEM to different resolutions. With a coarsening of DEM resolution, larger ice cliffs were still correctly identified but with a loss of precision in ice cliff geometry and smaller ice cliffs dropped below the detection limit. This offers a first order estimate of how performance will decline with coarsening DEM data resolution (e.g. if using 12 m TanDEM-X data); however, it is possible that a recalibration of the input parameters could improve results when using data at lower resolutions.

To examine how this method performs for a debris-covered area with no ice cliffs, TP and FP area was removed from the Canwell Glacier spatial domain. Because FP area is already identified as area where the method fails, we removed this area also so that all remaining area is ice cliff free with maximum confidence. ~~Figure 9 shows the resulting plot for selecting β_{opt} . The method~~ Applying the method to this ice cliff free domain still produced a resulting map of ice cliffs; however, the shape of $y(\beta)$ abruptly terminates rather than slowly approaching zero (Fig. 9). While there is likely a range of slopes where debris-covered area and ice cliff area will both exists (inset histograms in Fig. 3), ice cliffs, by definition, are steep features that will carry iterations towards 90° . If this ice cliff component is not present, the iterations will terminate as soon as there is no longer area with a slope above the slope threshold for a given iteration. This termination is a key characteristic that could indicate there are no ice cliffs within the spatial domain (Fig. 9). Due to the abrupt termination of the curve derived where no ice cliffs are present in reality, a high measure of linear correlation, e.g. Pearson correlation coefficient (r), between β_i and y_i might offer an automated binary classification of whether a spatial domain does or does not contain ice cliffs. Further testing would be required to derive a threshold value that could be confidently applied to other ~~data~~regions, but the data shown in Fig. 9 supports this hypothesis where $r = -0.98$ for a spatial domain with no ice cliffs and $r = -0.91$ for a spatial domain with ice cliffs.

5.3 What are ice cliffs and how should glaciologists map them?

Throughout this paper the ambiguity of what is an ice cliff has been mentioned. Figure 10 shows an example of an area possibly in the process of becoming an ice cliff. The relief of this medial moraine has facilitated a setting where (~~geomprohieg~~geomorphic) mass wasting exceeded englacial debris exhumation and accumulation. The area remains evenly and largely debris-covered, but does appear distinct both in visible and thermal imagery. However, if this is considered sufficient criteria to be defined as an ice cliff, there is no clear edge where ice cliff ends and debris cover begins. We had a difficult time deciding if this feature should be included in the ‘true’ ice cliff dataset, ultimately deciding to include it (and similarly ambiguous features), but also with the caveat in Sect. 3.4 stating that “ice cliffs were liberally outlined”. The slope of the feature identified in Fig. 10 was sufficient to be identified by the automated method as an ice cliff while the surrounding slopes of the medial moraine were not.

Figure 11 shows a second example where an ice cliff could be mapped in detail excluding bands of debris within the ice cliff face (Fig. 11d) or could be mapped more broadly including the debris bands (Fig. 11c). This is a setting where time could be considered when defining an ice cliff as described in Sect. 1.1. If these debris bands are long term fixtures and there are sufficient data to resolve the individual ice cliff faces, then possibly the detailed mapping is correct. However, if the clasts within the debris bands are transported to the ice cliff margins and not resupplied, the more broad/coarse mapping approach would be appropriate. For this study, we delineated ice cliff(s) 1 from Fig. 11 using the more coarse mapping approach.

While higher resolution data capturing a suite of properties (e.g. visible and surface temperature data) can further resolve what is truly present, it will likely not resolve classification ambiguities (e.g. Fig. 10 and 11), and at the present time these data are not available at large scales. Focus should therefore be more targeted towards mapping consistency. This is best met when automated methods can be applied with sufficient levels of confidence, eliminating technician bias and error.

For both automated and manual mapping methods used in this study, we ~~map~~-mapped ice cliffs as a 2D area (or converted to a 3D surface). An alternative method to map ice cliffs is to define a line along the ice cliff top edge (e.g. Thompson et al., 2016; Watson et al., 2017). Figure 11 provides a comparison of all three methods (3D surface area, 2D map view surface area and 1D top edge line) and shows that when mapping ice cliffs as a 2- or 3D area, refined detail leads to a refined (smaller/more accurate) area, while refined detail leads to an expansion of ice cliff top edge length when mapping ice cliffs in 1D. This suggests that 2- or 3D area is a more reliable measure and likely more communicative if drawing a comparison with other areas or regions or studies.

6 Conclusions

This study presents a new automated method for mapping ice cliffs within supraglacial debris cover. The method uses glacier outlines and satellite imagery to isolate debris-covered area where ice cliffs might exist and then uses DEM data alone to map ice cliff area. The DEMs used in this study had a spatial resolution of 5 m but, for future applications of this method with different input DEM sources, we derived a relation between coarsening DEM resolution and method performance which can help guide anticipated outcomes. The method is designed to accommodate regional variability in ice cliff characteristics by selecting unique surface slope threshold values automatically. The method also attempts to improve performance by explicitly considering the often narrowing ends of ice cliffs. The method was calibrated using data from Canwell Glacier in Alaska, USA, and validated using data from Ngozumpa Glacier in Nepal. The best parameter set for Canwell Glacier produced an ice cliff map with essentially equivalent success to a carefully selected simple surface slope threshold, which itself carried a degree of error with *true positive rate* and *precision* both around 0.5. While the application of a simple surface slope threshold is a much easier mapping technique, the selection of a sufficient threshold requires supplemental, high resolution data due to the rapid increase in error with less ideal threshold selections. The method presented here attempts to automatically mitigate this instability and offer a confident ice cliff map when supplemental data are not available. With no parameter alteration, the method was applied on the other side of the world. Results from Ngozumpa Glacier show a decrease in performance relative to Canwell Glacier where *true positive rate* is similar, but *precision* is 19% less. This is still however, an ice cliff map with

more success than if the carefully selected simple surface slope threshold for Canwell Glacier was assumed to be transferable to Ngozumpa Glacier. Under this assumption, *precision* is 41% less and the ice cliff area mapped incorrectly is a factor of 6.93 more than the results for Canwell Glacier. We therefore conclude that simple surface slope thresholds (1) carry a non trivial degree of error even if carefully selected; and (2) cannot be considered to be transferable to other regions. In this study
5 we have quantified (1) and presented a method to mitigate (2).

While we only consider two locations, these results offer an idea of how well the method might perform in other regions without supplemental validation data and opens the possibility for deriving ice cliff area at large scales. With a DEM of adequate spatial resolution, which we show is best if around 5 m, and sufficient computational capacity, this method could be applied to all glacierized area on Earth. Additionally, applying the method to temporal data will produce a time-lapse evolution
10 of ice cliff formation, cessation, melt patterns and motion through the glacier flow regime. Further validation of this method using ice cliff maps from high resolution visible, thermal or other data in other regions will help to either support or discredit our claim of wide applicability. Ambiguities defining what is an ice cliff are likely to persist in any technique used to map ice cliffs, but map variance from these ambiguities will become less of a factor if a consistent methodology is used.

7 Code availability

15 Code from this study is available within the Python/ArcPy(ArcGIS) ensemble Debris Cover Tools, which is open-source and available at <https://github.com/samherreid>.

Acknowledgements. This work was supported by a studentship from Northumbria University. The Technology Advisory Board at the University of Alaska Fairbanks provided funding for the FLIR thermal camera and the Canon camera was provided on loan by the University of Alaska Fairbanks Rasmuson Library. We thank Rebekah Tsigonis for her help in the field, Alex Shapiro at Alaska Land Exploration, LLC
20 for saving us from having to bike all of the science gear into the Alaska Range, Sarah Roeske for letting us helicopter hitchhike alongside her fieldwork, Sarah Thompson for sharing her data and ice cliff map from Ngozumpa Glacier, Jed Brown and Markus Holzner for their help with mathematics and Ben Brock for his support early in the project. [We also thank the Editor Tobias Bolch, David Rounce and an anonymous reviewer whose comments greatly improved this manuscript.](#)

References

- Basnett, S., Kulkarni, A. V., and Bolch, T.: The influence of debris cover and glacial lakes on the recession of glaciers in Sikkim Himalaya, India, *Journal of Glaciology*, 59, 1035–1046, 2013.
- Brun, F., Buri, P., Miles, E. S., Wagnon, P., Steiner, J., Berthier, E., Ragetti, S., Kraaijenbrink, P., Immerzeel, W. W., and Pellicciotti, F.: Quantifying volume loss from ice cliffs on debris-covered glaciers using high-resolution terrestrial and aerial photogrammetry, *Journal of Glaciology*, 62, 684–695, 2016.
- Buri, P., Miles, E. S., Steiner, J. F., Immerzeel, W. W., Wagnon, P., and Pellicciotti, F.: A physically based 3-D model of ice cliff evolution over debris-covered glaciers, *Journal of Geophysical Research: Earth Surface*, 2016a.
- Buri, P., Pellicciotti, F., Steiner, J. F., Miles, E. S., and Immerzeel, W. W.: A grid-based model of backwasting of supraglacial ice cliffs over debris-covered glaciers, *Annals of glaciology*, 57, 199–211, 2016b.
- Citterio, M. and Ahlstrøm, A.: The aerophotogrammetric map of Greenland ice masses, *The Cryosphere*, 7, 445, 2013.
- Fawcett, T.: An introduction to ROC analysis, *Pattern recognition letters*, 27, 861–874, 2006.
- Gardelle, J., Berthier, E., Arnaud, Y., and Kääb, A.: Region-wide glacier mass balances over the Pamir-Karakoram-Himalaya during 1999–2011 (vol 7, pg 1263, 2013), *Cryosphere*, 7, 1885–1886, 2013.
- Han, H., Wang, J., Wei, J., and Liu, S.: Backwasting rate on debris-covered Koxkar glacier, Tuomuer mountain, China, *Journal of Glaciology*, 56, 287–296, 2010.
- Kääb, A., Berthier, E., Nuth, C., Gardelle, J., and Arnaud, Y.: Contrasting patterns of early twenty-first-century glacier mass change in the Himalayas, *Nature*, 488, 495–498, 2012.
- Kraaijenbrink, P., Shea, J., Pellicciotti, F., de Jong, S., and Immerzeel, W.: Object-based analysis of unmanned aerial vehicle imagery to map and characterise surface features on a debris-covered glacier, *Remote Sensing of Environment*, 186, 581–595, 2016.
- Nicholson, L.: Modelling melt beneath supraglacial debris: implications for the climatic response of debris-covered glaciers, Ph.D. thesis, University of St Andrews, UK, 2005.
- Paul, F., Huggel, C., and Kääb, A.: Combining satellite multispectral image data and a digital elevation model for mapping debris-covered glaciers, *Remote sensing of Environment*, 89, 510–518, 2004.
- Pfeffer, W. T., Arendt, A. A., Bliss, A., Bolch, T., Cogley, J. G., Gardner, A. S., Hagen, J.-O., Hock, R., Kaser, G., Kienholz, C., et al.: The Randolph Glacier Inventory: a globally complete inventory of glaciers, *Journal of Glaciology*, 60, 537–552, 2014.
- Racoviteanu, A. and Williams, M. W.: Decision tree and texture analysis for mapping debris-covered glaciers in the Kangchenjunga area, Eastern Himalaya, *Remote Sensing*, 4, 3078–3109, 2012.
- Reid, T. and Brock, B.: Assessing ice-cliff backwasting and its contribution to total ablation of debris-covered Miage glacier, Mont Blanc massif, Italy, *Journal of Glaciology*, 60, 3–13, 2014.
- Sakai, A., Nakawo, M., and Fujita, K.: Melt rate of ice cliffs on the Lirung Glacier, Nepal Himalayas, 1996, *Bull. Glacier Res*, 16, 57–66, 1998.
- Sakai, A., Nakawo, M., and Fujita, K.: Distribution characteristics and energy balance of ice cliffs on debris-covered glaciers, Nepal Himalaya, Arctic, Antarctic, and Alpine Research, pp. 12–19, 2002.
- Smith, J., Lin, T. L., Ranson, K., et al.: The Lambertian assumption and Landsat data, *Photogrammetric Engineering and Remote Sensing*, 46, 1183–1189, 1980.

- Steiner, J. F., Pellicciotti, F., Buri, P., Miles, E. S., Immerzeel, W. W., and Reid, T. D.: Modelling ice-cliff backwasting on a debris-covered glacier in the Nepalese Himalaya, *Journal of Glaciology*, 61, 889–907, 2015.
- Thompson, S., Benn, D. I., Mertes, J., and Luckman, A.: Stagnation and mass loss on a Himalayan debris-covered glacier: processes, patterns and rates, *Journal of Glaciology*, pp. 1–19, 2016.
- 5 Vincent, R. K.: Spectral ratio imaging methods for geological remote sensing from aircraft and satellites, *Proceedings of Symposium on Managment and Utilization of Remotely Sensed Data*, American Society of Photogrammetry, Sioux Falls, SD, October, pp. 377–397, 1973.
- Watson, C. S., Quincey, D. J., Carrivick, J. L., and Smith, M. W.: Ice cliff dynamics in the Everest region of the Central Himalaya, *Geomorphology*, 278, 238–251, 2017.
- 10 Westoby, M., Brasington, J., Glasser, N., Hambrey, M., and Reynolds, J.: ‘Structure-from-Motion’ photogrammetry: A low-cost, effective tool for geoscience applications, *Geomorphology*, 179, 300–314, 2012.

Table 1. Model parameters. Where β_i^* is the surface slope threshold that defines the ~~basic-base~~ ice cliff shape (A_i) for each iteration, A_{e_i} is the same as A_i but with a slightly lower surface slope threshold ~~-, and~~ $p(x = Ice\ cliff \mid \beta, \omega)$ is ice cliff probability given surface slope and overlap with A_{cliff} (Sect. 3.2.1), ~~and $y(\beta)$ is the fraction of ice cliffs within the spatial domain as a function of surface slope.~~ Look distance is the number of $L_t \times L_t$ cells the routine will look beyond and still consider as ‘neighboring’ during segmentation of a spatial domain greater than L_t^2 .

Symbol	Description	Value used in this study
	NIR/SWIR threshold for debris mapping (for this study: Landsat 8 OLI5/OLI6)	1.2
	Threshold area for bare ice area reclassified as debris-covered area	2700 m ²
n	Number of iterations	36 (2.5° increments over 90°)
L_e	Ice cliff centerline extension length	see Table 2
α	Centerline buffer distance	see Table 2
β_e	Degrees by which β_i^* is reduced to define A_{e_i}	see Table 2
A_{min}	Minimum ice cliff area threshold	see Table 2
φ	$p(x = Ice\ cliff \mid \beta, \omega)$ reduction factor	0.5
γ	Limit where $y'(\beta)$ (derivative of Eq. (2)) is effectively 0	0.0001
L_t	Target/maximum domain processing square tile side length	1500 m (area: 2.25 km ²)
n_c	Look distance for domain segmentation	1

Table 2. Model parameter calibration at Canwell Glacier using statistical measures of performance derived in Sect. 3.5. ~~The set of two boxes on the left describe what values are presented throughout the table and their ideal values.~~ True positive rate is abbreviated here as *TP* rate. A well performing parameter set will have values of *true positive rate* and *precision* that are as close to 1 as possible and balanced. ~~The middle set Variation of boxes show performance for varying parameter sets. DEM resolution for this study was 5 m, thus variation of A_{min} was tested at 0, 5 and 10 DEM pixels; L_e at $2\times$ and $4\times$ pixel length; and α at $(\text{pixel length} * \sqrt{2})/2$ and $\text{pixel length} * \sqrt{2}$.~~ ~~The set of boxes on the right show performance of simple surface slope threshold mapping of ice cliffs.~~ Values in bold font are the highest ranking parameter sets for both the method described in this paper and the simple surface slope threshold method. ~~Values values in blue and red are the best and worst values, respectively, for all boxes in the table.~~

Method performance with different parameter sets					Simple slope threshold	
	$A_{min} = 0 \text{ m}^2$	$A_{min} = 125 \text{ m}^2$	$A_{min} = 250 \text{ m}^2$			
$L_e = 10 \text{ m}$	0.52 0.53	0.53 0.52	0.51 0.51			
$\alpha = 3.54 \text{ m}$	0.954	0.954	0.953			
$\beta_e = 3^\circ$	0.94	1.02	0.98			
	0.94	0.95	0.97			
$L_e = 20 \text{ m}$	0.52 0.53	0.51 0.53	0.51 0.50			
$\alpha = 3.54 \text{ m}$	0.954	0.954	0.951			
$\beta_e = 3^\circ$	0.98	0.91	1.06			
	0.95	0.94	1.01			
$L_e = 10 \text{ m}$	0.54 0.50	0.53 0.51	0.54 0.51			
$\alpha = 7.07 \text{ m}$	0.952	0.952	0.952			
$\beta_e = 3^\circ$	1.14	1.10	1.14			
	0.99	0.98	0.98			
$L_e = 20 \text{ m}$	0.54 0.50	0.54 0.50	0.54 0.50			
$\alpha = 7.07 \text{ m}$	0.951	0.951	0.951			
$\beta_e = 3^\circ$	1.22	1.16	1.21			
	1.01	1.00	1.01			
$L_e = 10 \text{ m}$	0.53 0.51	0.52 0.52	0.51 0.53			
$\alpha = 3.54 \text{ m}$	0.953	0.953	0.954			
$\beta_e = 5^\circ$	1.08	1.02	0.93			
	0.98	0.96	0.94			
$L_e = 20 \text{ m}$	0.51 0.51	0.53 0.51	0.50 0.51			
$\alpha = 3.54 \text{ m}$	0.952	0.952	0.953			
$\beta_e = 5^\circ$	1.01	1.11	0.95			
	0.98	0.99	0.97			
$L_e = 10 \text{ m}$	0.56 0.49	0.55 0.49	0.54 0.50			
$\alpha = 7.07 \text{ m}$	0.950	0.950	0.951			
$\beta_e = 5^\circ$	1.32	1.29	1.16			
	1.03	1.02	1.00			
$L_e = 20 \text{ m}$	0.56 0.47	0.56 0.48	0.55 0.48			
$\alpha = 7.07 \text{ m}$	0.948	0.949	0.950			
$\beta_e = 5^\circ$	1.43	1.40	1.29			
	1.06	1.06	1.03			
					20°	0.79 0.24 0.866 12.20 2.76
					25°	0.60 0.41 0.938 2.22 1.28
					27°	0.49 0.50 0.952 0.97 0.99
					30°	0.34 0.66 0.960 0.26 0.83
					35°	0.03 0.75 0.956 0.04 0.91
					40°	0.03 0.75 0.952 0.01 0.98

Legend and ideal values

TP rate	Precision
Accuracy	
Error distribution	
Error magnitude	
1.00	1.00
1.000	
1.00	
0.00	

Table 3. Statistical measures of performance for Ngozumpa Glacier. The value-arrangement is the same as of metrics in Table 2. The lone each box on the left is the bold parameter set from Table 2 applied to Ngozumpa Glacier. The set of boxes on the right show performance of simple surface slope threshold mapping of ice cliffs (at an interval of 5° with additional thresholds of interest (Sect. 4.2). Values in bold font are the highest ranking parameter sets for both the method described in this paper and the simple surface slope threshold method. Values in blue and red coloration are the best and worst values, respectively, for all boxes same as in the table. The performance of a simple surface slope threshold at 27° is shown to discredit the possible assumption that the best threshold from Canwell Glacier (Table 2) could have wider applicability to other glaciers.

Best parameter set from Table 2		Simple slope threshold	
	$A_{min} = 250 \text{ m}^2$		
$L_e = 10 \text{ m}$	0.53 0.32	20°	0.94 0.05 0.596 264.34 16.21
$\alpha = 7.07 \text{ m}$	0.980	25°	0.89 0.08 0.749 88.50 10.07
$\beta_e = 3^\circ$	2.38	27°	0.85 0.10 0.803 53.41 7.91
	1.58	30°	0.79 0.14 0.873 23.15 5.12
		35°	0.61 0.27 0.949 4.20 2.03
		37°	0.52 0.35 0.964 1.98 1.43
		39°	0.44 0.45 0.973 0.95 1.10
		40°	0.40 0.50 0.975 0.67 1.00
		45°	0.26 0.70 0.979 0.15 0.85
		50°	0.16 0.77 0.978 0.06 0.89

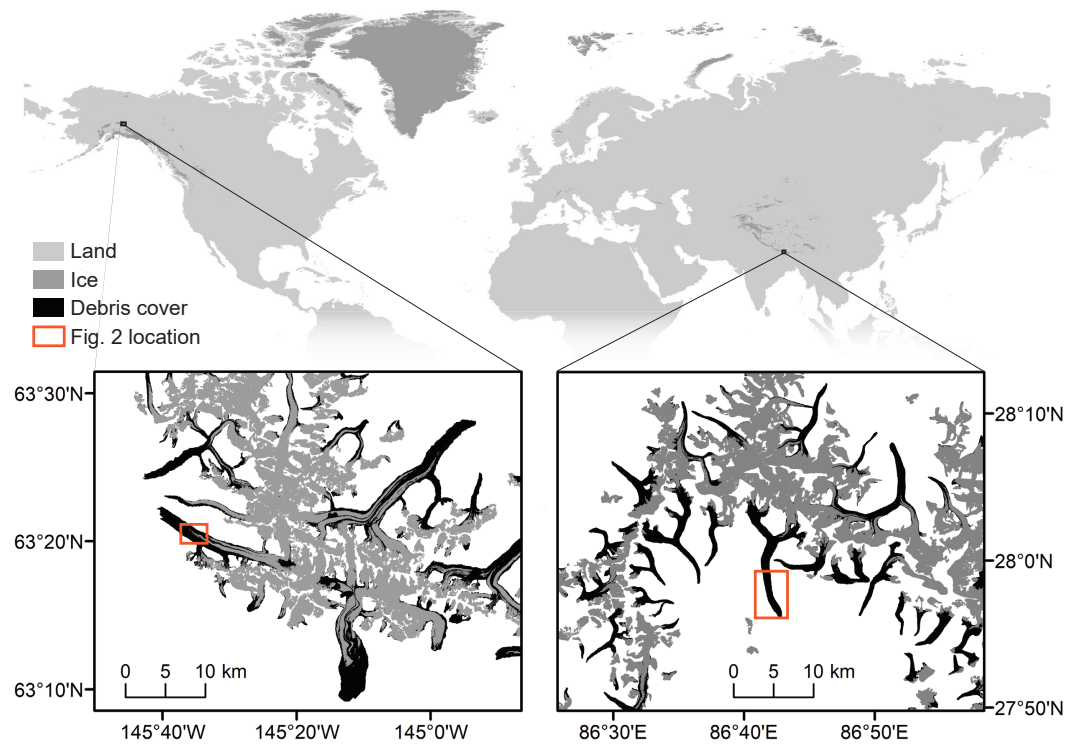


Figure 1. Location of Ngozumpa Glacier in the Khumbu Himal, Nepal (left) and Canwell Glacier in the Eastern Alaska Range, Alaska, USA (right). Global ice cover (Pfeffer et al., 2014; Citterio and Ahlström, 2013) is shown and Ngozumpa Glacier in orange. In the oblique inset maps Khumbu Himal, orange lines are the glacier extent and the black polygons define the spatial domains used in this study Nepal. Ngozumpa Glacier Ice area and base DEM are is from Thompson et al. (2016) displayed on a Landsat8 image (path/row: 140/41, acquired on 30 November 2014) Pfeffer et al. (2014) and Citterio and Ahlström (2013). Canwell Glacier data Scale and area shown in the two inset plots are from this study displayed on a Landsat7 image (path/row: 67/16, acquired on the 24 September 2010) draped over a 2010 DEM derived from airborne interferometric synthetic aperture radar (Geographic Information Network of Alaska, GINA; <http://ifsar.same.gina.alaska.edu/>).

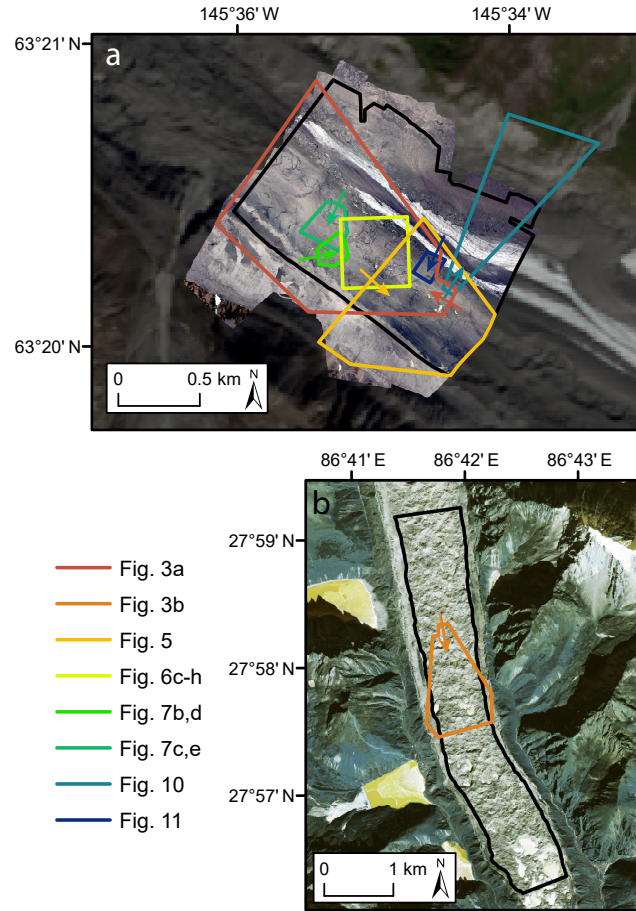


Figure 2. Study area ~~location~~ on Canwell Glacier (a) and Ngozumpa Glacier (b). The spatial domains over which the ice cliff mapping method was applied are shown in black. The ~~location~~footprint of subsequent map-based figures within this paper are shown. Arrows show the look direction of figures that have an oblique orientation. The ~~base image~~underlying imagery shown in (a) is the orthomosaic collected on 29 July ~~1016~~2016 (Sect. 2.2.1) overlain on a Landsat8 image (path/row: 67/16) acquired on 31 August 2016; and (b) the GeoEye-1 image acquired on 23 December 2012 (Sect. 2.2.2).

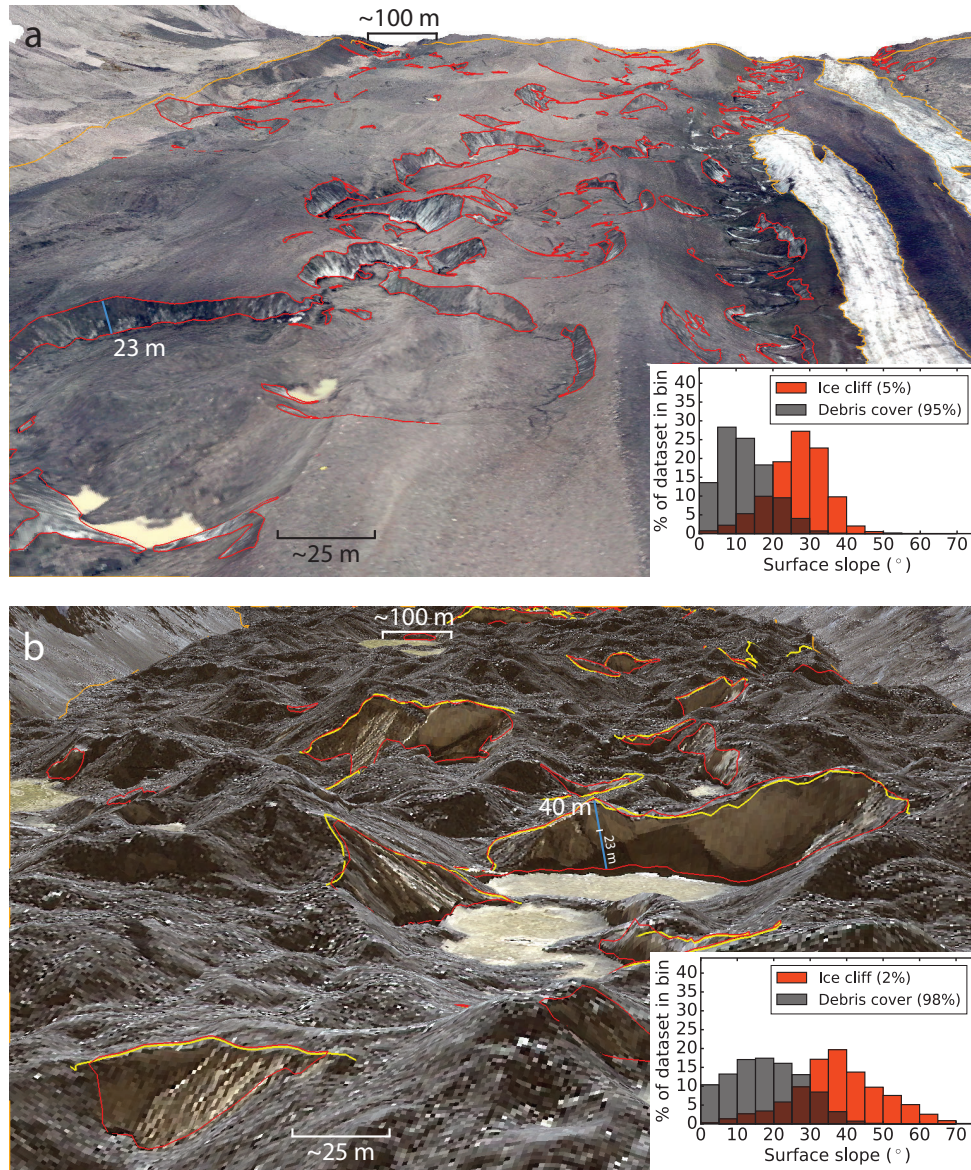


Figure 3. (a): portion of Canwell Glacier, Alaska, USA, looking down glacier a distance of ~1.4 km. Manually generated debris-covered area outlines and ice cliff outlines are shown in orange and red, respectively. The underlying image is an orthomosaic of visible imagery collected above Canwell Glacier on 29 July 2016, draped over a DEM derived from the same images. The inset histogram shows the normalized populations of surface slopes present in the pictured debris-covered area and ice cliff area. The grey/orange region of overlap illustrates the difficulty of using surface slope alone to identify ice cliffs. Percentages give the fraction of the total area occupied by both classes (in map view). (b): same as panel (a) but for Ngozumpa Glacier, Nepal, also looking down glacier a distance of ~1.4 km. The scale in panels (a) and (b) are the same. Yellow lines are ice cliff top edges mapped by Thompson et al. (2016) which were manually expanded to ice cliff area (red) with minor additions. Location The underlying image and DEM are from GeoEye-1 acquired on 23 December 2012 (Sect. 2.2.2). Locations shown in Fig. 2.

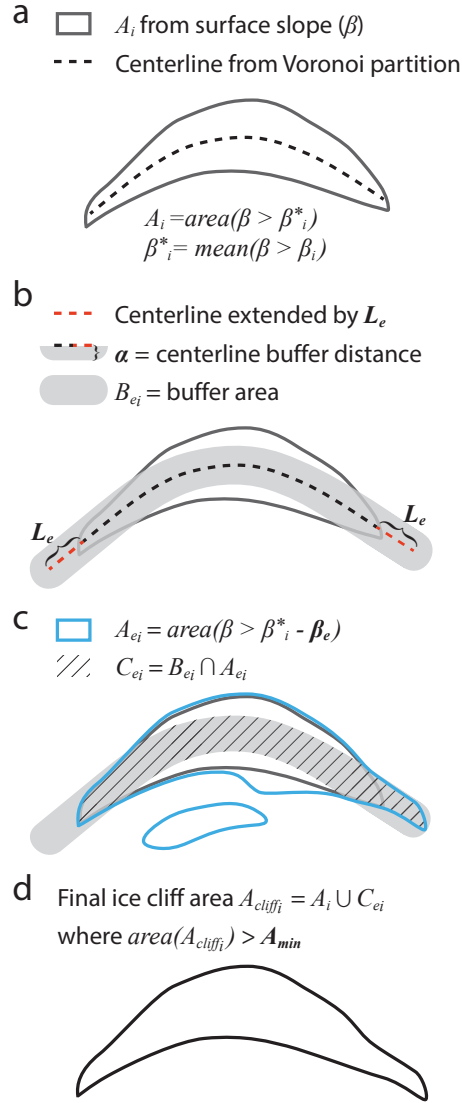


Figure 4. Method used to define ice cliff area, A_{cliff_i} for each iteration, i , and a final, optimized iteration, subscript opt . Surface slope threshold β_i is applied over the range $0-90^\circ$ from which the subsequent quantities shown in steps a-d are calculated. Quantities in bold font are fixed scalar model parameters that do not vary over the iterative process. (a) shows how the area A_i is defined by β^*_i , the mean surface slope of values constrained by β_i . A procedure using a Voronoi partition defines a centerline within A_i . (b) shows this centerline extended by a distance of L_e , and transformed into an area, B_{ei} , by an outward buffer distance, α , applied in all (x, y) directions. (c) shows the definition of A_{ei} , an area defined by a surface slope threshold lower than β^*_i , where β^*_i is reduced by β_e . The intersection of A_{ei} and the buffer area, B_{ei} , defines C_{ei} . C_{ei} allows the identification of ice cliff end area that has a surface slope below β^*_i but above A_{ei} while rejecting area that falls within this same surface slope interval but is not located at the ends of an ice cliff. The intersection of A_i and C_{ei} , with areas below a threshold, A_{min} , removed defines the final ice cliff area, A_{cliff_i} , for that i (d).

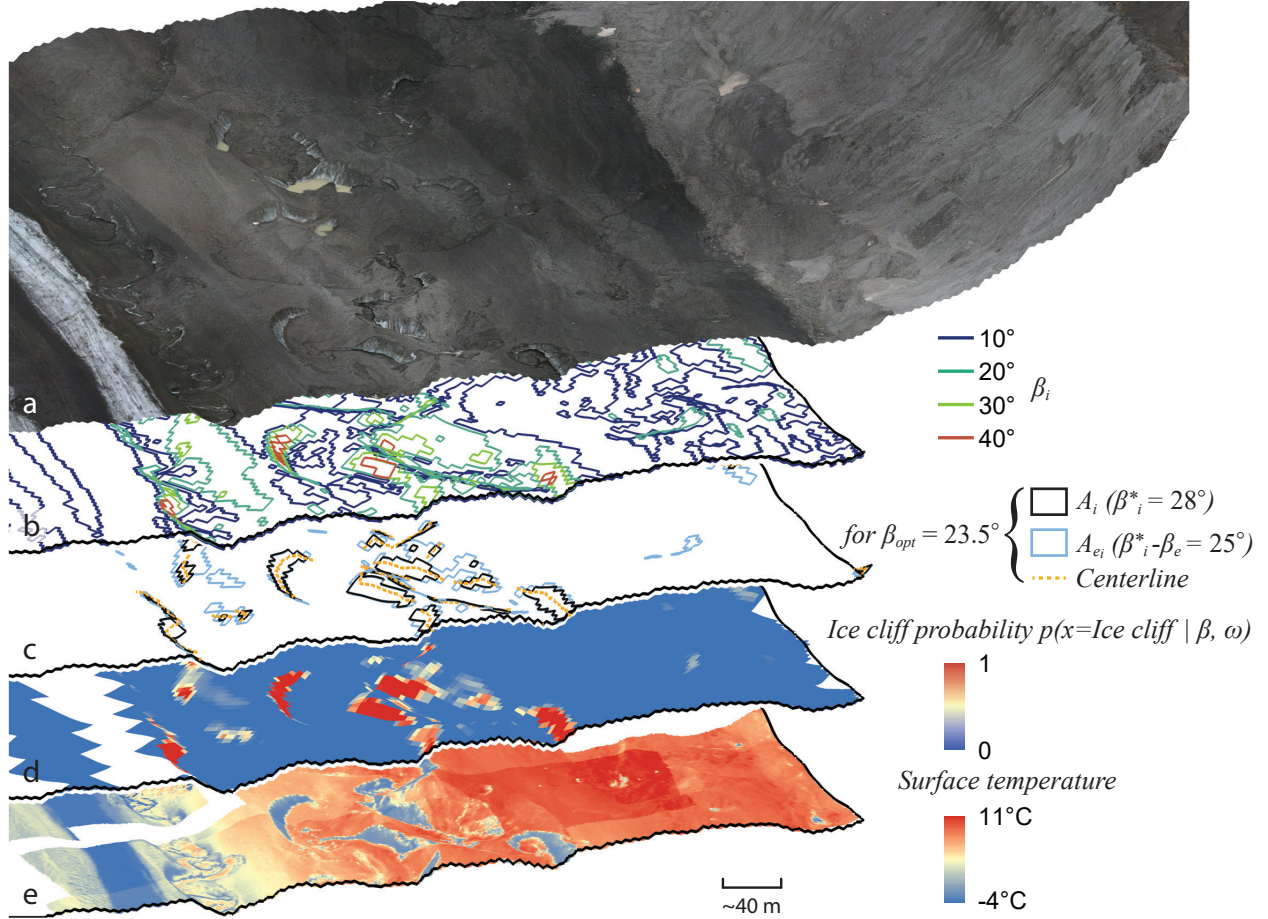


Figure 5. (a) orthomosaic of visible imagery collected above Canwell Glacier on 29 July 2016, draped over a DEM derived from the same images. (b) shows the area enclosed for select surface slope thresholds, β_i , during the iterative process. (c) shows intermediate quantities calculated during the final iteration using β_{opt} , the optimized β_i . The area enclosed by A_{ei} and the ice cliff centerlines are used to add low angle area at the ends of ice cliffs to the area A_i , the main ice cliff shape defined from β_i^* . (d) shows the final distributed map of $p(x = Ice\ cliff \mid \beta, \omega)$, the computed probability that a given pixel will fall within true ice cliff area, assigned as a function of surface slope, β , and ω , the overlap with the final vector ice cliff shape, A_{cliff} , generated from the quantities shown in (c). (e) orthomosaic of thermal imagery collected on 29 July 2016, draped over the same DEM from (a). ~~The color gradient is flipped so that cold ice cliffs easily stand out as red can be easily compared with (d).~~ Location shown in Fig. 2.

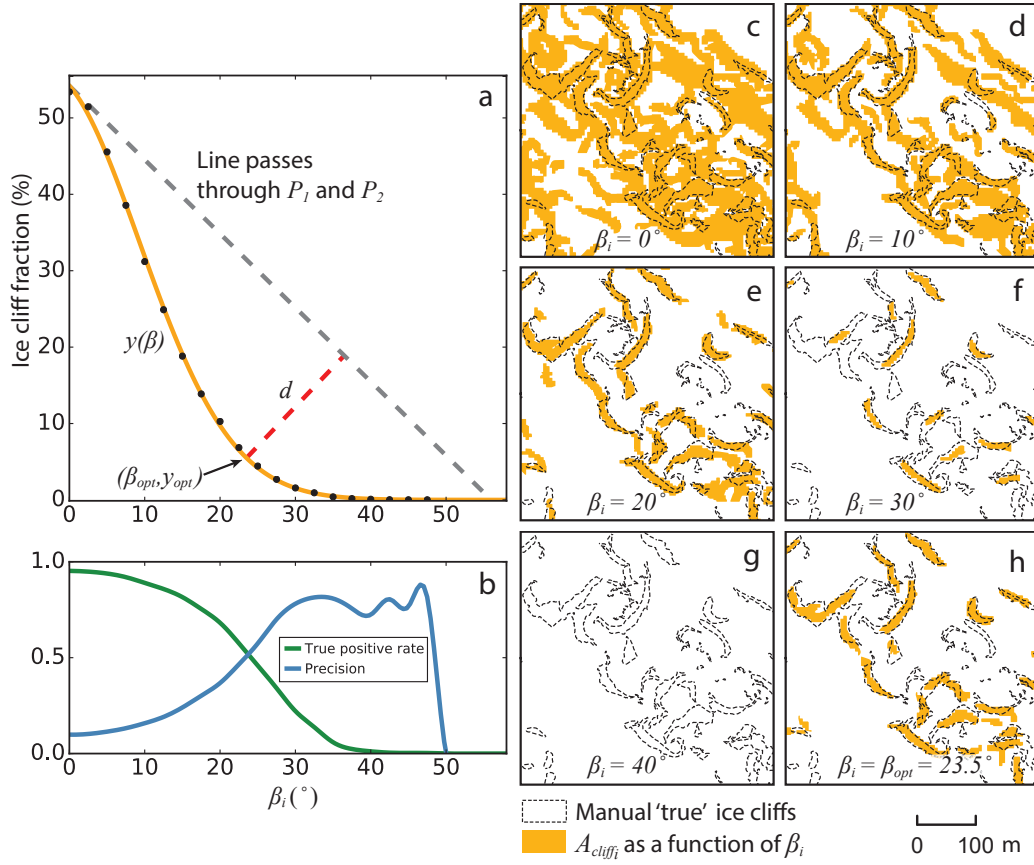


Figure 6. (a) shows the heuristic method for selecting β_{opt} . Black dots are computed values of the fraction of area ice cliffs occupy within the spatial domain for each β_i in n number of iterations (i). The orange curve, $y(\beta)$, is a function fit to these points (Eq. (2)). β_{opt} is found by finding the longest distance, d , between $y(\beta)$ and a line passing through points P_1 and P_2 (Eq. (5) and Eq. (6)). β_{opt} is hypothesized to be coincident with the intersection of *true positive rate* and *precision*, the optimized, best possible balance of errors. (b) *true positive rate* and *precision* (derived in Sect. 3.5) comparing method results for each β_i to ‘true’ ice cliff area mapped from high resolution optical and thermal data (Sect. 2.2.1). (c-g) show the respective ice cliff maps (A_{cliff_i}) for x -axis ticks in (a) and (b) up to $\beta_i = 40^{\circ}$, with ‘true’ ice cliff area overlain for reference. (h) shows the iterative method run a final time where $\beta_i = \beta_{opt}$ and defines the automatically selected best ice cliff map. Location of Panels c-h shown in Fig. 2.

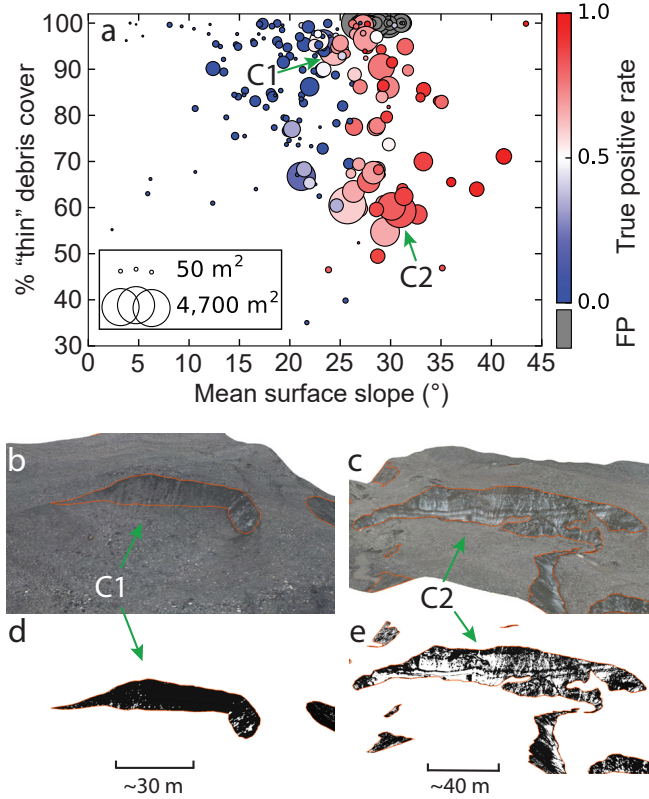


Figure 7. (a) each ‘true’ manually mapped ice cliff on Canwell Glacier is shown as a circle sized proportionally to map view surface area and plotted against mean ice cliff surface slope and the percentage of “thin” debris cover on the ice cliff face. The color scale shows *true positive rate* from the automated ice cliff mapping method derived for each ice cliff. *FP* ice cliffs, defined as isolated shapes that are solely *FP* area and do not share a boundary with a ‘true’ ice cliff, are colored grey and abbreviated as ~~FP~~*FP* on the axis label. Two ice cliffs (C1 and C2) are shown to illustrate how “thin” debris cover was mapped and provide context to the data presented in (a). (b) and (c) are oblique views of the 29 July 2016 Canwell Glacier orthomosaic with manually generated ice cliff outlines shown in orange. (d) and (e) are the same views with the orthomosaic processed to identify only debris cover on ice cliff faces. C1 is nearly 100% debris covered which could draw into question its classification as an ice cliff. C2 is one of the more “clean” ice cliffs within the Canwell Glacier study area but is still covered by a non-trivial amount, >50%, of debris. C1 shows linear englacial debris bands that contribute to the ice cliff face debris accumulation. Location shown in Fig. 2.

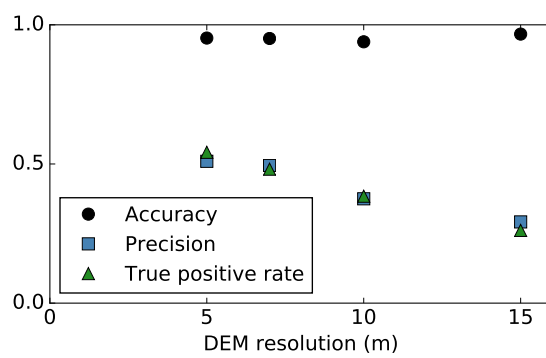


Figure 8. Method performance as a function of input DEM resolution.

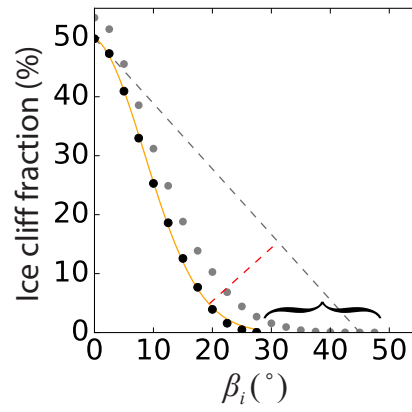


Figure 9. Identical to Fig. 6a, except with *TP* and *FP* area removed from the Canwell Glacier spatial domain to test the method on an area that has definitively no ice cliffs. For comparison, dots shown in grey are the black dots in Fig. 6a where *TP* and *FP* area are not removed. The curly bracket shows the extension of the curve that is indicative of the presence of steep surface slope areas characteristic of ice cliffs. While the method still identified area (erroneously) as ice cliff, the abrupt termination of the curve with *TP* and *FP* area removed is an indication that there are in fact no ice cliffs present.

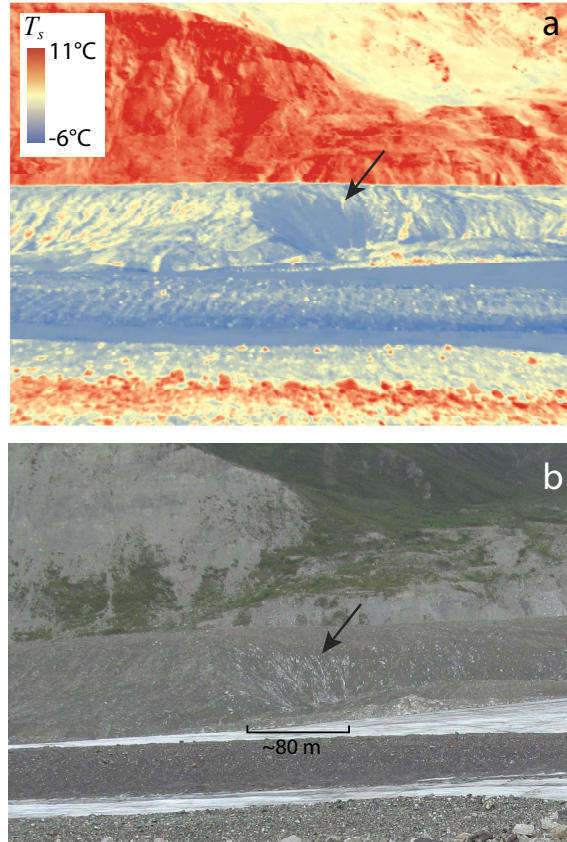


Figure 10. The side of a medial moraine on Canwell Glacier, possibly at an intermediate stage between being classified as an ice cliff or debris-covered area (black arrow in (a) and (b)). (a) oblique image of surface temperature (T_s). The sharp boundary between blue and red in the middle of the image separates the top of the medial moraine and the off-glacier valley wall. (b) oblique visible image of the same feature. Location shown in Fig. 2. Bare ice T_s values below 0°C are likely due to camera calibration error and/or assuming a constant emissivity for the entire image.

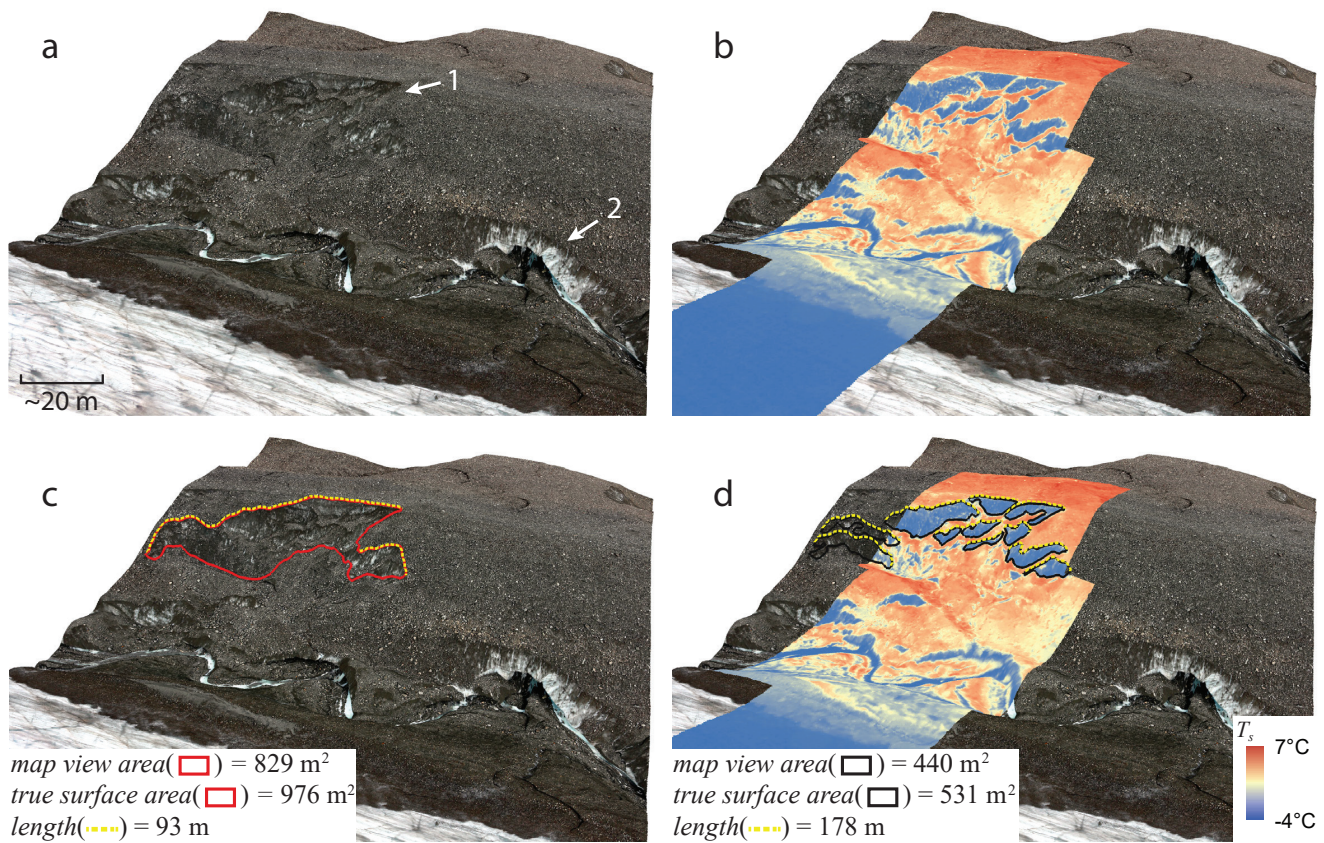


Figure 11. 1 and 2 in (a) show a less obvious and a very obvious ice cliff, respectively. When high resolution surface temperature (T_s) data is draped over ice cliff 1 in panel b, it becomes very apparent. (c) and (d) demonstrate two common methods for mapping ice cliffs: by area and by tracing the top edge. Bare ice T_s values below 0°C are likely due to [camera calibration error and/or](#) assuming a constant emissivity for the entire image.