

All responses below refer to the marked up version of the manuscript contained at the end of this document (highlighted changes in red).

Response to Reviewer 1:

L29: You use at least four different expressions for annual maximum SWE throughout the paper. I don't like peak pre-melt SWE, since melt can also happen before maximum SWE. I suggest using always the same expression.

The expression annual maximum SWE, which we abbreviate as SWE_{max}, is now used throughout the paper.

L 38: I would like to see some references, which demonstrate “the critical importance of snow/sea ice to Canada’s natural environment, ecosystems, and economy.”

Text has been added at line 36.

L 99-104: Please write some sentences about the percentage of affected pixels and which regions are mainly impacted.

We have added additional information at line 106.

L 111-119: For consistency and understandability please introduce here somewhere the investigated sea ice variables, similarly as it has been done in the former chapter for snow. L 116: As a non sea ice specialist, I would like to see short hint saying that sea ice concentration is a similar measure as snow cover fraction and is therefore also expressed in percentage.

We have added additional text at lines 121 and 134.

L 136: Please provide some information about the spatial resolution of the used CMIP5 output.

Additional information has been provided at lines 155 and 171.

L148-149: “...branch off from five different historical simulation...” I don't understand this sentence, please elaborate.

The wording has been changed in lines 163-166. For the purpose of this paper it is only relevant that the ensemble is an initial condition ensemble. [Other ensembles of this sort have been constructed so that all realizations evolve under identical radiative forcings and using identical model parametrizations from small perturbations to a single climate state (for example, the NCAR initial condition ensemble). In the case of the CanESM2 initial condition ensemble, 5 interchangeable initial climate states were used. The initial states differed in that their exact climate tracks — their oceans in particular — had been allowed to diverge from one another over approximately 100 years. However, they are interchangeable because each was itself produced using identical radiative forcings and identical model settings. As such

they differ from one another only due to natural variability. Each of these 5 climate states was perturbed 10 times for a total of 50 realizations.]

L 159: The acronym “SIE” is not used anymore in the following text, so please delete.

Thank you. Removed.

L 179-180: What is the reason you define the seasons different from the usual meteorological definition? Maybe, add a corresponding sentence in the methods chapter.

Text added at line 195.

L 205: “...region with positive SCF trends is slightly more extensive.” It would be helpful if you could at least write some sentences about the observed precipitation variability.

We now include an additional figure (figure 5) showing estimated annual snowfall trends and provide discussion starting at line 252.

L 275: “modal thickness”?

We have rephrased this sentence at line 303.

L 283-284: The multi-model projected mean changes in surface temperature are positive in all seasons, hence only reductions in ensemble mean SCF and SIC are evident in Figure 8.

Changed.

L 310: “...balances projected increases in snowfall.” It’s the first and only time you write about projected increases in snowfall. Could you please elaborate.

Because we don’t have projections for snowfall we are unable to elaborate here, but we have rephrased the sentence to make clear this is speculative (line 340).

L 311: “snow mass”, I guess you mean SWE, which would be a more familiar term and consistent with what you used already.

We intended the term to distinguish the integrated quantity of snow water (its total volume or equivalently its mass) across a given area or region, which strictly speaking is not SWE. We have provided brief definitions for this term and snow cover extent which is defined similarly (line 343).

L 329: Is it not 1981-2015 for the present and 2020-2050 for the projection?

We have corrected the years for the historical period. The years included in the future period differ slightly from those used in the majority of the paper and are correct. We have removed the references in the title to specific time periods because along with minor differences in the future projections commented on here, some of the sea ice trends presented extend back to 1968.

L 330: Why using a new variable Ts and not TAS?

This section was unclear. Ts did not represent TAS as shown in Figure 2, it is a diagnostic temperature. We have revised the description at (lines 362-374) and relabeled the quantity as Td. Hopefully this will make the section clearer.

L 349:...shows the observed record of annual sea ice extent...

Changed.

L 377: MYI losses

Changed.

L 413-418: This paragraph seems kind of odd at the first sight, because alpine snow has only been mentioned once at the beginning. Please link this important content to the corresponding analysis.

We have tried to link this point more closely to the analysis contained in the paper (lines 457-461). The 2018 reference that we added has been (recently) accepted and has been cited using its assigned DOI.

L 427: FYI has not been introduced so far.

Clarified.

L 445: (Laliberté et al, 2016) "Resolving the dates...has important implications for climates studies" Please elaborate.

This was rephrased. We meant only to say that knowledge of when the CAA will become ice free will facilitate adaptation (line 490).

L622: Not in press anymore...

Thanks!

L 664-665: Please elaborate more clearly what's the difference between the region with single hatching and crossed hatching. The text in chapter 3.1 should also reflect these differences.

We agree that the false discovery rate significance was unclear. We have decided that standard calculations of significance are sufficient. Captions and images for Figures 1, 2, 4, 9, 10 have been altered to reflect this change.

L 685: I suggest to put the $\times 10^3$ in the axis label for figure 6 a-d.

Good point. Changed.

L 705: Replace snow water mass with snow water equivalent.

Snow water mass has now been defined in the corresponding text.

L 711: Please explain "Tsd" and mention that Tth is -5°C , since the scale of the legend bar is not linear. Also elaborate what Tth actually controls, i.e. that the bluish colored regions are mainly controlled by precipitation.

The text added in the manuscript should help clarify these points. Please note that Tsd was a typo for the original variable label, Ts. We have renamed this variable Td in the revised manuscript for "diagnostic temperature." The caption now lists the value of Tth and describes the different drivers of SWE variability in the different regions as requested.

All responses below refer to the marked up version of the manuscript contained at the end of this document (highlighted changes in red).

Response to Reviewer 2:

Specific comments

1) Several of the figures were provided at rather low resolution, for example Figure 6. Please provide high-resolution figures in the end.

Yes, these will be provided.

2) Line 35: If possible, you might consider providing the information about CANSISE in the acknowledgments rather than in the introduction; it is not of scientific interest perse.

Moved.

3) Line 42: A more relevant reference for CMIP6 is Eyring et al., GMD 2016: <https://www.geosci-model-dev.net/9/1937/2016/>

Reference changed.

4) Line 79: “future projections”: climate projections are always for the future, I think. “climate projections” might be better

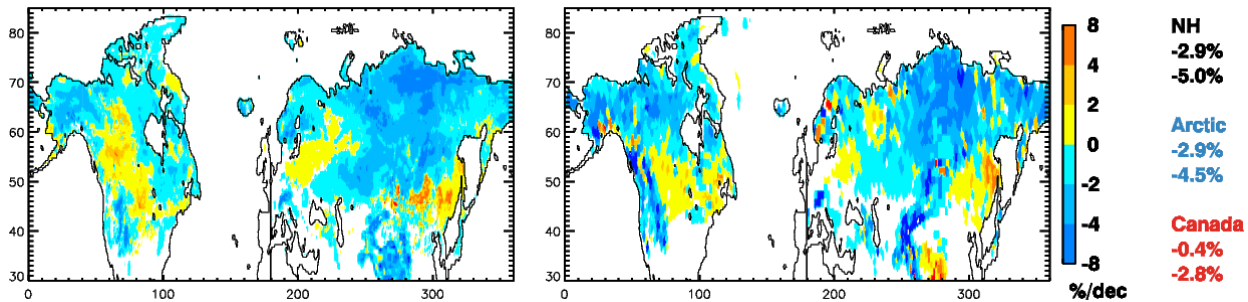
Agreed (-> line 87).

5) Line 159: “Laliberte” -> “Laliberté”

Changed.

6) Line 187: “This difference may stem from...”: It should be possible to evaluate how much of the discrepancy is due to not using the NOAA record. This might be an interesting information.

The plot below illustrates both points during the spring (AMJ): 1) Arctic snow cover trends over Eurasia are stronger in both data sets than over North America; 2) the trend over the NH as a whole and over the NH Arctic region is about 50% stronger in the NOAA dataset than the multiple-source dataset used in our analysis. Both of these issues are discussed in detail in the Mudryk et al 2017 citation listed on line 209.



Caption: AMJ SCF trends in multi-source dataset (left) and NOAA dataset for 1981-2015 period. Pairs of numbers on the far right indicate the average trend over the entire NH (black), NH Arctic (blue) and Canada (red) for the multisource dataset (top) and the NOAA dataset (bottom).

7) Line 205: “The reduced warming and cooling over northwestern Canada...” This sentence is a bit cryptic. Can you be a bit more explicit, e.g. explain what the Mudryk et al 2014 paper says?

We have added text at lines 224-229.

8) Line 211-217: It is unclear to me why subtracting a mean value should change the correlation – which means that I certainly haven’t understood your explanation of centered and uncentered spatial correlations. Please consider giving some more detail on the method. What does an uncentered correlation mean physically?

The Pearson’s correlation coefficient that is typically calculated *is* a centered correlation (the mean field value is subtracted before the fields are multiplied). For an uncentered correlation, the mean value is not removed. This metric measures the average behavior of the fields (whether they are both positive on average, both negative on average, of opposite sign on average, or unrelated on average). Because spatial patterns of SIC and SCF trends may fluctuate in response to multiple drivers other than TAS, the uncentered correlation provides confirmation that overall, both fields are decreasing in response to increasing surface temperature (as expected), however, there may be differences resulting from other drivers.

9) Line 224: “...ice (...) is more difficult to melt than snow...” OK, one understands this of course, but the formulation sounds a bit strange.

Wording clarified on line 245.

10) Line 239 “the summer is ice season”: delete “is”

Thanks.

11) Line 281: Relative impact of natural variability, scenario uncertainty and model uncertainty: Can you quantify this a bit better in this particular context?

We have changed the citation to Hawkins and Sutton, 2009 and 2011 which allows us to cite their estimates of the fraction of uncertainty due to forcing scenario at a lead time appropriate for mid-century projections (lines 310-313).

12) Line 287: Typo (“reigon”)

I couldn't find this typo. Perhaps it got changed at some point.

13) Line 302: OK, but SCF should also depend on precipitation rate, and probably more so than SIC does.

As part of the response to reviewer 1, we have included additional analysis on snowfall trends (new Figure 5) and new text at lines: 252-263.

14) Line 324: Missing full stop at the end of the sentence. This result (that a large portion of the inter-model spread is associated with internal variability) is striking and might be emphasized/elaborated on a bit more.

We have added an additional reference at line 356.

15) Line 356: Full description in Laliberté et al., 2016: OK but can you give a very short description of the method here?

Included (lines 394-399).

16) Line 361: “...will be sea ice free in September.” Add, for clarity, “by 2050”; please indicate whether this concerns decadal averages, 30-year averages, extreme years,....

Added “by 2050”. The additional description referenced above (lines 394-399) should address the latter portion of the comment.

17) Line 388: “precipitation availability”: sounds strange to me. Precipitation either occurs or not, it is not “available” for somebody to buy it.

This was a typo. We have rephrased the sentence (line 430).

Canadian Snow and Sea Ice: **Historical Trends and Projections**

Lawrence Mudryk¹, Chris Derksen¹, Stephen Howell¹, Fred Laliberté¹, Chad Thackeray², Reinel Sospedra-Alfonso³, Vincent Vionnet⁴, Paul Kushner⁵, and Ross Brown⁶

¹Climate Research Division, Environment and Climate Change Canada, Toronto, Canada

5 ²Department of Geography and Environmental Management, University of Waterloo, Canada

³Climate Research Division, Environment and Climate Change Canada, Victoria, Canada

⁴Centre National de Recherches Météorologiques, Centre d'Etudes de la Neige, Grenoble, France

⁵Department of Physics, University of Toronto, Toronto, Canada

⁶Climate Research Division, Environment and Climate Change Canada, Montreal, Canada

10 *Correspondence to:* Lawrence Mudryk (lawrence.mudryk@canada.ca)

Abstract. The Canadian Sea Ice and Snow Evolution Network (CanSISE) is a climate research network focused on developing and applying state of the art observational data to advance dynamical prediction, projections, and understanding of seasonal snow cover and sea ice in Canada and the circumpolar Arctic. Here, we present an assessment from the CanSISE network on trends in the historical record of snow cover (fraction, water equivalent) and sea ice (area, concentration, type, and thickness) across Canada. We also assess projected changes in snow cover and sea ice likely to occur by mid-century, as simulated by the Coupled Model Intercomparison Project Phase 5 (CMIP5) suite of earth system models. The historical datasets show that the fraction of Canadian land and marine areas covered by snow and ice is decreasing over time, with seasonal and regional variability in the trends consistent with regional differences in surface temperature trends. In particular, summer sea ice cover has decreased significantly across nearly all Canadian marine regions, and the rate of multi-year ice loss in the Beaufort Sea and Canadian Arctic Archipelago has nearly doubled over the last eight years. The multi-model consensus over the 2020-2050 period shows reductions in fall and spring snow cover fraction and sea ice concentration of 5-10% per decade (or 15-30% in total), with similar reductions in winter sea ice concentration in both Hudson Bay and eastern Canadian waters. Peak pre-melt terrestrial snow water equivalent reductions of up to 10% per decade (30% in total) are projected across southern Canada.

15
20
25

25 **1 Introduction**

Seasonal terrestrial snow and sea ice influence short term weather and longer term climate by altering the surface energy budget, modifying both the surface reflectivity and thermal conductivity (Serreze et al., 2007; Flanner et al., 2011; Gouttevin et al., 2012). Snow also influences freshwater storage through soil moisture recharge and surface runoff (Barnett et al., 2005). Understanding historical and projected changes to snow and ice is essential both to assess the importance of physical changes to the climate system, and to thus assess their consequent impacts and risks. A previous assessment of the Canadian cryosphere (snow, sea ice, freshwater ice, land ice, frozen ground) was compiled as part of the International Polar Year (IPY) in 2007-2008, and is described in Derksen et al. (2012). The current study updates the IPY analysis pertaining to

30

35 terrestrial snow and sea ice by adding nearly a decade of data and including climate model projections of changes over the
next 30 to 40 years. This study is focused on Canadian territory, which is nearly completely covered by snow and sea ice for
parts of each year with near-continuous coverage over high latitude and high elevation regions. Snow and sea ice are
40 recognized as critical components of Canada's natural environment, ecosystems, and economy. With respect to snow cover,
real-time information on the amount of snow on the ground (i.e. depth and water equivalent) is used in operational decision
making for water resource planning (Turcotte et al. 2007), snow clearing, evaluation of avalanche risk (Conlan and
Jamieson, 2017) and for initialization of Canada's global weather forecast system (Brasnett, 1999). Historical snow cover
45 data are used in a wide range of applications including ecological studies (Luus et al. 2013), water resources (Kang et al.
2014), forest management (Hanewinkel et al. 2008), estimation of snow loads for infrastructure design (Hong and Ye, 2014),
impacts on ground frost penetration (Zhang et al. 2008), and for evaluation of climate and hydrological models (Verseghy et
al. 2017; Ganji et al. 2017). Snow also makes a significant direct contribution to the Canadian economy through winter
recreation (Archambault et al. 2003). With respect to sea ice, knowledge of both historical and future sea ice conditions in
50 Canadian Waters is important for operational ship navigation to ensure economic and safe shipping, particularly in the
Northwest Passage. In addition, information on sea ice (e.g. coverage, type and thickness) is required for the initialization
and verification of seasonal prediction models (Lindsay et al., 2012; Sigmond et al., 2013). While acknowledging the
Canadian focus, much of the applied approach will be extended to other regions of interest through upcoming Coupled
Model Intercomparison Project Phase 6 (CMIP6) experiments (Eyring et al., 2016).

50 Previous studies have shown that warming temperatures, which are amplified at higher latitudes as a natural response to
increasing greenhouse gases (Serreze et al., 2009; Pithan and Mauritsen, 2014), reduce the spatial extent and mass of snow
and ice (for example, see Derksen et al., 2012). In reality, the linkage between warming temperatures and snow/sea ice
reduction is more nuanced due to:

- 55
- *regional and seasonal climate variability*: for example, surface temperature warming across Canadian land and
ocean areas is not uniform in space and time, but contains regional and seasonal variability driven by natural
climatic processes such as the El Niño Southern Oscillation (ENSO) and other oceanic teleconnections, and inter-
seasonal and inter-annual changes in the preferred modes of atmospheric circulation (Vincent et al., 2015). The
60 impact of warm temperature departures on the cryosphere vary with season: during spring they are directly linked to
the timing and magnitude of melt onset; during fall warm temperatures can be associated with delayed snow cover
onset and ice formation, the impacts of which may not become apparent for many months.
 - *the selection of cryospheric variables*: the onset, accumulation/growth and melt of snow and sea ice are influenced
by many factors. Different metrics are relevant for assessing different impacts on the environment and ecosystems,
and these metrics do not always vary coherently with each other (Bokhorst et al., 2016). Changes in snow can be
65 reflected in the timing of snow onset in the fall and melt in the spring, the annual maximum accumulation of snow
mass, or the extent of snow covered area. For sea ice, not only are changes in the fractional ice cover important, but

also the type of sea ice present, specifically whether it is thin first-year ice or thicker multi-year ice (Maslanik et al., 2011).

- *other process drivers*: while surface temperature plays a major role in influencing snow and ice, there are other important drivers of change. For instance, increased precipitation in sufficiently cold regions may offset shorter snow seasons (Brown and Mote, 2009). Sea ice dynamics (driven by wind and ocean currents) can play a major role in regional sea ice conditions independent of surface temperature (Howell et al., 2013a).
- *snow/ice forcing of climate anomalies*: variations in snow and ice cover may also generate feedbacks to the atmosphere/ocean circulation that influence climate on seasonal to decadal scales (Cohen et al. 2007, Smith et al. 2010, Scaife et al. 2014), although there is no clear consensus on how changes in Arctic sea ice and snow cover influence midlatitude climate (Francis and Vavrus, 2012; 2015; Francis et al., 2017; Barnes, 2013; Screen et al., 2015).

The first objective of this paper is to provide an overview of observed changes to seasonal terrestrial snow and sea ice across Canadian territory using the longest available time series of validated gridded datasets. We use a multi-data set approach, averaging multiple estimates of terrestrial snow variables together for more robust trends, and using an integrated, multi-source dataset for analysis of sea ice change. The second objective is to compare these recent historical changes to projected changes of snow and sea ice over a similar length of time from the near future out to the middle of the 21st century (2020-2050). We use simulations from state of the art climate models with confidence levels that account for uncertainty in the regional temperature response (note that the focus of this study is not model evaluation – that analysis is described in Kushner et al., 2017). Results are presented in two sub-sections, separated by the observational analysis period (Section 3.1) and the **climate** projections (Section 3.2). Details on the datasets and methodology are provided in Section 2. We summarize our key findings in Section 4 and present remaining points of discussion in Section 5.

2 Data

2.1 Historical Datasets

2.1.1 Terrestrial Snow Data

Following Mudryk et al. (2015), we took a multi-dataset approach to analyze observed snow cover change in order to account for observational uncertainty. We calculated monthly snow cover fraction (SCF) and **annual maximum snow water equivalent (SWE_{max})** using daily SWE data taken from the following four sources over the 35 year period from 1981-2015.

1) The Modern-Era Retrospective Analysis for Research and Applications version 2 (MERRA-2), (Reichle et al., 2017, updated from Rienecker et al. 2011), is a National Aeronautics and Space Administration (NASA) atmospheric reanalysis product generated with the Goddard Earth Observing System Model, version 5.2.0 (GEOS-5) atmospheric general

circulation model and atmospheric data assimilation system (ADAS). 2) The temperature index model described by Brown et al. (2003) reconstructs daily SWE using 6-hourly temperature field and 12-hourly precipitation field inputs from ERA-interim reanalysis. This simplified index model includes most of the temperature dependent processes included in the snow component of numerical land surface schemes (e.g., partitioning of precipitation into solid and liquid fractions, melt from rain-on-snow events, specification of new snowfall density, snow aging, and snowmelt). 3) The physical snowpack model Crocus simulates daily SWE using meteorology from ERA-Interim (Brun et al. 2013). 4) The European Space Agency GlobSnow product (version 2; www.globsnow.info) is a gridded product derived through a combination of satellite passive microwave data, forward snow emission model simulations, and climate station observations for non-alpine regions of the northern hemisphere (Takala et al. 2011). **The GlobSnow product is masked over regions of complex topography, defined using a high resolution topographic map (5 arcminutes) as regions in which the standard deviation in elevation is larger than 200m. This criterion affects approximately 20% of the NH land surface (principally alpine regions) and a similar percentage of the Canadian land surface. We replaced grid cells containing complex topography** with a blend of the GlobSnow data and the mean value from the other three data sources. The weighting for the blend was determined by the fraction of the grid cell area containing complex topography. For grid cells with no complex topography, unaltered GlobSnow data are used. As the fraction of complex topography increases, the weight applied to the GlobSnow data is linearly reduced, reaching zero for grid cells containing only complex topography.

For a given dataset of daily SWE, we interpolated the data to a regular 0.25 degree grid over Canada and applied a 4 mm threshold to produce a daily binary snow cover field. We averaged this daily field over each month to produce a monthly snow cover fraction. **Annual maximum SWE fields** were calculated as the maximum value of daily SWE attained at each grid location over a given snow season. For both SCF and SWE_{max}, we computed trends separately for each of the four datasets and then averaged these together into a final trend representing the mean across the observational ensemble.

2.1.2 Sea Ice Data

For our analysis of changes in sea ice we examined monthly and seasonal changes in sea ice concentration (SIC) and sea ice thickness. SIC is analogous to our SCF derivation, in that it represents the fraction of the surface that is covered by sea ice but can also be interpreted as the fraction of time over which the surface is fully ice-covered. We extracted total and multi-year ice (MYI) area within Canadian Arctic waters from the Canadian Ice Service Digital Archive (CISDA), which is an integration of a variety of data sets including: satellite observations, surface observations, airborne and ship reports, operational model results and the expertise of ice analysts (see Canadian Ice Service, 2007 and Tivy et al., 2011a for complete details). We selected the CISDA record instead of satellite passive microwave data because 1) the CISDA was found to be more accurate in the shoulder seasons during which passive microwave retrievals can underestimate sea ice concentration by as much as 44% (Agnew and Howell, 2003) and 2) the CISDA sea ice record provides homogeneous data back to 1968 for regions of the Canadian Arctic (Tivy et al., 2011a), almost 10 years earlier than coverage by satellite

passive microwave observations. The CISDA data was analyzed over two historical periods, the 1981-2015 period consistent with available snow data and a longer 1968-2016 period.

135 Analogous to SWE, which provides a metric for the total amount of snow, we also analyzed maximum landfast sea ice thickness. We used the Canadian Ice Service record of in situ landfast ice thickness measurements, made regularly at coastal Arctic stations since the early 1950's (Howell et al. 2016b). In general, thickness measurements are available at weekly frequency, starting after freeze-up when the ice is safe to walk on and continuing until breakup or when the ice becomes unsafe. Details of this dataset are provided by Brown and Cote (1992) and are available on the Canadian Ice Service Web site at <http://iceglaces.ec.gc.ca>.

140 2.1.3 Surface Temperature

In light of documented differences in gridded temperature datasets over Canada (Rapaic et al., 2015), surface temperature trends were derived from a blend of six reanalysis products: the European Centre for Mid-Range Weather Forecasting (ECMWF) Reanalysis (ERA-Interim, Dee et al., 2011), the Japanese 55-year and 25-year Reanalyses (JRA-55, Kobayashi et al., 2015; JRA-25, Onogi et al., 2007), the Modern-Era Retrospective analysis for Research and Applications version 1 and 2 (MERRA-1, Reinecker et al., 2011; MERRA-2, Reinecker et al., 2017), and the Climate Forecast System Reanalysis (CFSR, Saha et al., 2010). The average trend was determined by first computing the average of JRA-55 and JRA-25 (resulting in a single JRA trend), and the average of MERRA-1 and MERRA-2 (resulting in a single MERRA trend). The multi-reanalysis mean trend was computed by averaging (ERA-Interim, CFSR, JRA, and MERRA). Reanalysis was used instead of point station data in order to produce spatially continuous trends over both terrestrial and marine areas.

150 2.2 Model Simulations

2.2.1 Terrestrial Snow

We used monthly mean output from the suite of historical and future simulations from the CMIP5 archive (Taylor et al. 2012; <http://cmip-pcmdi.llnl.gov/cmip5/>) to evaluate SCF (denoted as 'snc' in CMIP5 output) and SWE (denoted as 'snw' in CMIP5 output). The models utilized for snow analysis are listed in **Table 1**; note that no model selection was performed – all models with archived snow data were utilized. The resolution of available atmospheric/land model output ranges from approximately 1.3°x0.9° to 2.8°x2.8° longitude and latitude. Snow projections were selected from the Representative Concentration Pathway (RCP) 8.5 projected forcing scenario because it most closely resembles the observed emissions pathway over the past decade (Peters et al. 2013). We then computed individual trends for each realization and then took the inter-realization average across each model to calculate individual model ensemble means. These values were averaged to determine the CMIP5 multi-model mean values. If only a single realization was available, that was used directly as input to the multi-model mean calculation. SWE and SCF output were also taken from a large initial condition ensemble (50

realizations) of the Second Generation Canadian Earth System Model (CanESM2; Arora et al., 2011), a global earth system model from the Canadian Centre for Climate Modelling and Analysis. Each of the realizations of this ensemble evolves over the 1950-2100 period under identical historical radiative forcings in accordance with CMIP5 from 1950-2005 and the RCP8.5 scenario from 2006-2100 (see Thackeray et al, 2016 for more details). As such, differences among realizations result only from differences in the initial climate state and are due to natural variability alone). This ensemble was used to characterize the role of internal climate variability on projected snow cover changes over Canada.

2.2.2 Sea Ice

Monthly mean sea ice concentration (denoted as 'sic' in CMIP5 output) and the land-sea mask (denoted as 'sftlof' in CMIP5 output) were also retrieved as available from CMIP5 output resulting in a sea ice ensemble that comprises 42 models and a combined total of 91 simulations (Table 2). The resolution of ocean/ice model grids are generally equal to or finer than corresponding atmospheric grids ranging from approximately $0.4^{\circ} \times 0.4^{\circ}$ to $1.0^{\circ} \times 1.0^{\circ}$ longitude and latitude. The sea ice concentration was projected to the EASE grid using the same procedure as in Laliberté et al. (2016). For projections of sea ice-free conditions over the four Canadian marine subregions (Baffin Bay, Beaufort Sea, Canadian Arctic Archipelago, and Hudson Bay), we excluded models that do not capture at least 75% of the region's observed ocean area (resulting in about half of the models rejected in the Canadian Arctic Archipelago) and compute sea ice extent as in Laliberté et al. (2016).

2.3 Evaluation of Trend Significance

In order to make comparable significance calculations for the observed and projected trends, we use a Monte Carlo method following Swart et al. (2015) and applied in Howell et al. (2016b). The method ensures that spread due to internal variability is comparable for all CMIP5 models, even those that only include a single realization in their archived output. This is achieved by adding simulated noise representing internal variability to those models with only a single realization. The added noise is calculated from the collection of models with multiple realizations under the assumption that the spread due to internal variability is the same across all models. A trend is significantly different from zero if it is distinguishable from the combined spread due to interannual variability (using a t-distribution for each simulation), internal variability (with noise added as described), and model spread.

We use an analogous approach to compute significance for the various observation-based dataset trends. We assume that differences in the trends arise from differences in retrieval performance and reanalysis methodologies but not from sampling of internal variability. Thus, a trend is significantly different from zero if it is distinguishable from the combined spread due to interannual variability (using a t-distribution for the dataset mean) and the added spread due to differences in the trends among the different data sets.

3 Results

3.1 Observed Trends in Terrestrial Snow and Sea Ice

195 Seasonally averaged trends in terrestrial snow cover fraction (SCF) and sea ice concentration (SIC) over the 1981-2015 time period are shown in Fig. 1 (the dashed line denotes limit of Canadian marine territory). **Throughout the paper, we present seasonal trends for permuted months in order to more closely match the mid-season peaks of SCF (January), SWE (February-March) and SIC and sea ice thickness (March).** Positive trends in SCF (more snow cover) are evident over a small region of the southern prairies in winter (January/February/March, JFM) and more extensively over western Canada in spring (April/May/June, AMJ). Trends in all remaining regions and seasons are negative, notably over eastern Canada in 200 spring and most of the Canadian land area in the fall (October/November/December, OND). The predominantly negative trends in snow cover are consistent with previous studies (Brown and Braaten, 1998; Vincent et al. 2015) but with evidence of a shift to stronger snow cover reductions in the snow onset period over eastern Canada in response to enhanced OND warming shown in Fig. 2 (discussed below). The observed rates of snow cover change are also consistent with the recent Snow, Water, Ice, Permafrost in the Arctic (SWIPA) assessment (Brown et al. 2017) that documented annual SCD changes 205 over Arctic land areas of -2 to 4 days/decade (~ -1 to -2% per decade assuming 250 days mean snow cover). Other studies focused on Arctic snow cover (i.e. Derksen and Brown, 2012; Derksen et al., 2016) have identified spring snow cover losses that are stronger than those in Fig. 1. This difference may stem from stronger spring trends in the NOAA snow chart data record (the NOAA dataset was not used in this study due to known deficiencies in the fall period; Brown and Derksen, 2013) compared to other snow products (Mudryk et al., 2017), and stronger trends across the Eurasian Arctic compared to North 210 America (Derksen et al., 2016).

SIC trends over Canadian waters for this period are almost exclusively negative in all seasons. Regions with the strongest SIC declines are eastern Canadian waters in winter and spring, and the Canadian Arctic Archipelago and Hudson Bay in summer and fall consistent with the warming patterns shown in Fig. 2. The SCF and SIC trends can be viewed collectively 215 as changes in the timing and extent to which highly reflective snow and ice cover the Earth's surface, with important implications for the surface energy budget. There are no sharp boundaries in trends across adjacent land and ocean regions. This provides confidence in the consistency of the snow and ice datasets, as well as evidence of a coherent response of snow and ice to temperature forcing across terrestrial and marine regions.

220 Figure 2 shows seasonal surface air temperature (TAS) trends over the 1981-2015 period computed from a blend of six atmospheric reanalysis datasets (see Section 2.1.3). TAS trends are generally positive, although no trends are seen throughout the northwestern portion of the country during winter and spring, and there is significant cooling over the Canadian prairies in spring. Land areas with cooling trends are co-located with positive SCF trends in Fig. 1, although the region with positive SCF trends is slightly more extensive. **The winter and spring season cooling over northwestern and**

225 central Canada is consistent with the influence of North Pacific oceanic variability over the last 35 years (Mudryk et al.,
2014). Climate in this region (including temperature and precipitation, and hence snow cover) is strongly influenced by the
Pacific Decadal Oscillation (a pattern of sea surface temperatures and associated sea level pressure changes in the North
Pacific); observed sea surface temperature trends have been negative over the last 35 years consistent with reduced warming
and increased snow evident in the SCF trend patterns presented here. The reanalysis TAS trends are also seasonally and
230 spatially consistent with the analysis of Rapaic et al. (2015, Fig. 13) based on blended data from both homogenized station
observations and multiple reanalyses. In both reanalysis and in situ data, Arctic trends are strongest in the fall and winter,
with an increase in the magnitude of warming from the southwest to northeast regions of the country apparent in all seasons.

To examine the role of air temperature trends in driving the observed snow and ice cover trends, spatial correlations
235 (centered and uncentered) were calculated to quantify the pattern relationship between SCF, SIC, and TAS trends (Fig. 3).
The centered (uncentered) statistic measures the similarity of the two patterns after (without) removal of the domain mean. A
large negative uncentered correlation indicates that the correlation between the two fields is negative on average, but does
not require that the field patterns are congruent. A large negative centered correlation does require spatial similarity in the
field patterns. Both SCF and SIC trend show large uncentered correlations for all seasons indicative of the general
240 relationship between increasing temperatures and decreasing SCF and SIC. During JFM and AMJ, the large centered
correlations between SCF and TAS indicate that the spatial patterns are also similar, and hence there is a strong association
between SCF and TAS trends at the local scale during these seasons, with reduced connections during JAS and OND
(consistent with Mudryk et al, 2017). SIC trend patterns are more closely associated with warming patterns during ice
onset/growth (OND and JFM), however overall there is less co-variability of SIC trends with TAS trends than for SCF
245 trends. This difference may stem from the fact that ice (especially MYI) melts more slowly than snow, and the additional
influence of dynamical effects (such as wind-driven redistribution of sea ice) weakens the thermodynamically driven spatial
association between SIC and TAS trends.

Trends in SWEmax, which indicates water resource and streamflow potential just before spring melt, are shown in Fig. 4.
250 The figure represents averages from the same datasets used to generate the SCF trends in Fig. 1. Trends are negative over
much of Canada, indicating a reduction over time in SWEmax at the onset of the melt season each spring. Because SWE
varies with the amount of accumulated snowfall, we may expect a weaker relationship to surface temperature and a stronger
connection to precipitation trends. Figure 5 shows trends in annual snowfall estimated from the CANGRD dataset (Milewska
et al., 2005) based on interpolated adjusted station data from Mekis and Vincent (2011) and monthly rain/snow fraction
255 obtained from ERA-interim 6-hourly 2m air temperature data assuming a 0°C threshold for rain/snow separation. The
changes in snowfall are broadly consistent with the changes in SWE over much of Canada. Notable exceptions include the
band of increased snowfall over the Northwest Territories and western Nunavut (which shows negligible or decreasing SWE
trends) and the southern portion of Ontario/Québec which shows strongly decreasing SWE trends; however, both of these

regions have experienced stronger warming trends over the full snow season than the western provinces. While the changes in snowfall are generally consistent with the observed changes in SWE, it is unclear to what extent regional snowfall changes are themselves correlated with local temperature changes, either due to increased melt during winter thaw events or long term trends in the solid fraction of precipitation (for the latter see Vincent et al., 2015). We return to this discussion point at the end of Section 3 and again in the discussion of Section 4.

The longer period of consistent summer sea ice information in Canadian waters from the CISDA allows consideration of additional years not covered by the 1981-2015 trends in Fig. 1. To be consistent with Tivy et al. (2011a) and Derksen et al., (2012) the summer ice season is defined as average sea ice area from June 25 to October 15 for the Beaufort Sea, CAA, and Baffin Bay regions, and from June 18 to November 19 for Hudson Bay, Hudson Strait, Davis Strait and Labrador Sea. Between 1968 and 2016, sea ice area averaged over the summer period has experienced significant decreases in almost every region of the Canadian Arctic, up to 20% per decade in some regions (e.g. the Hudson Strait and Labrador Sea; Fig. 6). Compared to previous trends reported by Tivy et al. (2011a) over the period of 1968-2008 and Derksen et al., (2012) for 1968-2010, more regions are now experiencing significant decreases and the rate of decline is stronger in all regions except Hudson Bay (Fig. 7e). For MYI, there are more regions across the Canadian Arctic, particularly in the western CAA, that are now experiencing significant declines compared to previous studies (e.g. Tivy et al., 2011a; Derksen et al., 2012; Fig. 6). The largest declines in MYI occurred in the CAA and Beaufort Sea, both of which almost doubled their rate of decline for 1968-2016 when compared to the trend for 1968-2008 (Fig. 7e).

A stepwise reduction in Hudson Bay sea ice area occurred in the mid-1990s (Fig. 7d; Tivy et al., 2011b; Hochheim and Barber, 2014) and Baffin Bay has experienced consistently low sea ice area since 1999 (Fig. 7c); whereas, considerably more interannual variability is apparent in the Beaufort Sea and CAA (Figs. 7a and 7b). Of note, the Beaufort Sea experienced a record low sea ice area in 2012, becoming virtually ice-free near the end of the melt season (Babb et al., 2016). This was nearly repeated in 2016. As previously reported, the CAA eclipsed the previous and long standing record low ice year of 1998 in both 2011 and 2012 (Howell et al., 2013b). A contributing factor to the decline of sea ice across the Canadian Arctic is increasing spring air temperature (see Fig. 2) coupled with longer melt seasons resulting in the absorption of more solar radiation and increased ice melt (Howell et al., 2009; Tivy et al., 2011a; Stroeve et al., 2014; Parkinson, 2014).

Arctic sea ice thickness has declined in recent years (e.g. Kwok and Rothrock, 2009; Haas et al., 2010; Laxon et al., 2013; Richter-Menge and Farrell, 2013; Kwok and Cunningham, 2015; Tilling et al., 2015). These studies indicate thickness declines are greater in the Beaufort Sea compared to the north facing coast of the CAA, which still contains some of the thickest sea ice in the world. Unfortunately, the spaceborne sensors used to obtain sea ice thickness information are not of sufficient spatial resolution to provide reasonable thickness estimates within the CAA. However, the Canadian Ice Service record of in situ landfast ice thickness measurements represents one of the longest datasets in the Arctic, and spans over 5

decades (Howell et al., 2016b). However, the seasonal behaviour of landfast ice thickness can provide useful information for understanding the interannual variability because ice growth is almost entirely due to thermodynamic forcing. Significant declines in maximum ice thickness have occurred at 3 sites in the CAA (Cambridge Bay, Eureka, and Alert) with decreases ranging between -3.6 to -5.1 cm per decade over the period from the late 1950s to 2016 (Fig. 8). No significant trend was found at Resolute but an early study from Brown and Cote (1992) reported a significant increase in maximum ice thickness at Resolute over the period from 1950-1989.

Although systematic measurements at other regions within the CAA are unavailable or contain too much uncertainty, surveys in 2011 and 2014 of ice thickness from airborne electromagnetic induction (AEM) described by Haas and Howell (2015) indicated the ice is still **reasonably thick: the mode of the measured thickness distribution was 1.8-2.0 m, and sea ice between 3-4 m in mean thickness was found in the MYI regions throughout the CAA.**

3.2 Projected Changes in Terrestrial Snow and Sea Ice

Projected trends in SCF and SIC for the 2020-2050 time period across Canadian territory are shown in Fig. 9. These projections are the multi-model mean from the ensemble of CMIP-5 climate models, using the RCP8.5 forcing scenario (which assumes 'business as usual' continued growth of greenhouse gas emissions through the 21st century). While other scenarios exist, projections to the mid-century are primarily dependent on natural variability and model dependent uncertainties rather than the choice of forcing scenario. **For example, Figs. 4 from Hawkins and Sutton (2009, 2011) suggest that scenario uncertainty contributes less than 10% of the total uncertainty (natural variability, model uncertainty and scenario uncertainty) for regional-scale, decadal mean temperature at a lead time of thirty years, and substantially less than 10% for regional-scale precipitation.** The multi-model projected mean changes in surface temperature are positive in all seasons, hence only reductions in ensemble mean SCF and SIC are evident in Fig. 9. Seasonal differences and varying sensitivity of snow and ice to temperature forcing drives the spatial variability seen in Fig. 9. During winter, projected snow cover reductions are greatest along the southern margins of Canada, where temperature increases directly result in less snow. Temperatures remain sufficiently cold at higher latitudes (despite projected warming) so there is no projected response in this region in JFM SCF. During spring, the region of snow sensitivity to temperature forcing shifts north, across the boreal forest, subarctic, and Arctic tundra, which leads to the negative SCF trends projected across these regions during AMJ. Ensemble-mean reductions projected for SIC are very strong and focused on the ice melt (summer) and ice formation (fall) seasons, with the exception of Hudson Bay and eastern Canadian waters which also have projected winter season loss of sea ice cover.

While natural decadal-scale climate variability resulted in cooling trends (and hence positive SCF and SWEmax trends) for some regions and seasons during the 1981-2015 period (see Figs. 1, 2 and 4), over the longer 1948-2012 period observed surface temperature trends over Canada are almost exclusively positive (Vincent et al., 2015). Similarly, we expect there

could be short term, localized fluctuations in trend direction and magnitude from the projections shown in Fig. 9. These localized fluctuations exist in individual realizations of the model projections (not shown) and act to increase the spread in the TAS, SCF, and SIC responses. This spread reduces the significance of the ensemble-mean response for a given confidence level; for this reason only the coastal regions in British Columbia show significant SCF decreases at the 90% confidence level, whereas projections show widespread reductions in SIC at the 90% confidence level. The differences between SCF and SIC in the significance of their projected responses may result from varying sensitivity to temperature forcing if SCF depends more strongly on the local temperature response than SIC.

Figure 10 shows trends in SWEmax also derived from the CMIP-5 multi-model ensemble. The ensemble mean shows that SWEmax loss will be extensive (5-10% per decade through 2050, or a cumulative 15-30% reduction over the entire 2020-2050 period) over much of Alberta and British Columbia, and similarly in Southern Ontario and the Maritime provinces (note that the greatest near-future loss in the CMIP5 ensemble occurs just south of the Canadian border, not shown in Fig. 10). While positive Arctic SWEmax trends start to emerge by mid-century in the Eurasian Arctic (not shown; see Brown et al., 2017) minimal change is projected across high latitude land areas of Canada. This may result because increasing temperature (which shortens the snow accumulation season) balances projected increases in snowfall.

Month by month projected changes in Canadian snow cover extent (total area of snow cover summed over the Canadian land region) and snow mass (determined by multiplying the density of water by the total volume of SWE summed over the Canadian land region) for the CMIP5 multi-model ensemble, and the large initial condition ensemble from the second generation Canadian Earth System Model (CanESM2) are shown in Fig. 11. The two ensembles agree that the greatest near-future snow loss (as a percentage of climatological snow) is projected to occur in the shoulder seasons (Oct-Nov, May-Jun). During mid-winter there is minimal percentage change in snow cover extent projections because winter temperatures over northern regions of Canada will remain cold enough to sustain snow cover and there is greater climatological snow extent in winter, which results in smaller percentage changes reflected in Fig. 11. The projected trends from CMIP5 are similar in magnitude to the rate of change during the historical period considered in this study, while trends from CanESM2 are slightly stronger due to greater warming in CanESM2 compared to the CMIP5 multi-model mean (Thackeray et al., 2016). Because the CMIP5 ensemble includes many different models, there is a greater spread in most months than the CanESM2-LE, which represents multiple climate realizations generated from a single model. Nonetheless, it's striking that the interquartile range of the CanESM Large Ensemble is quite comparable to that of the CMIP model ensemble. This likely indicates that a large portion of the CMIP5 inter-model spread is associated with internal variability, a similar result to Mudryk et al., (2017).

Sospedra-Alfonso and Merryfield (2017) showed that the interannual variability in monthly SWE between January and April can be skillfully estimated with a multiple linear regression model based on precipitation and temperature predictors. This

360 statistical model suggests coherent relationships that provide context to the character of the changes to terrestrial snow cover
and SWE that are being considered here. An important aspect of their analysis is that mutual correlations between
precipitation and temperature variability are accounted for when analyzing their effects on SWE variability. One of their key
results was that regimes where SWE variability is dominated by temperature variability and those where it is dominated by
precipitation variability can be estimated using a diagnostic temperature metric. This diagnostic temperature (T_d) is
365 illustrated for the month of March in Fig. 12 for both present-day (1981-2015) and mid-century projections (2016-2050).
The diagnostic temperature is approximated by the average near surface air temperature averaged over the consecutive
months from snow onset up to the month under consideration. A temperature threshold, T_{th} , divides March SWE into two
regions characterized by their sensitivity to precipitation and temperature variability; the region where $T_d < T_{th}$ has March
snowpack variability driven mainly by precipitation, whereas the region where $T_d > T_{th}$ has temperature-driven March
370 snowpack variability. The division between these two regions differs depending on the month under consideration (for
example, the extent of the precipitation dominated region decreases during spring when the diagnostic temperature isotherms
shift northward), and the temperature threshold varies slightly depending on the time period under consideration but is
generally found between $T_{th} = -5 \pm 1^\circ\text{C}$. See Sospedra Alfonso and Merryfield (2017) for further details.

375 In 1981-2015, regions with temperature-dominated March snowpack ($T_d \gtrsim -5^\circ\text{C}$) include coastal British Columbia, southern
Alberta, southwest Saskatchewan, southern margins of the St. Lawrence River and the Great Lakes, the Maritime provinces
and Newfoundland. Because of the projected warming, the seasonal isotherms shift northward and toward higher elevations
extending the portion of the snow cover that is more sensitive to temperature variations. By 2016–2050, regions with
temperature-driven snowpack also include most of southern Canada, the interior of British Columbia, and more extensive
380 portions of the Prairies provinces, Ontario and Québec. In these regions, March SWE is expected to decrease during
anomalously warm years. The portion of the snow cover with $T_d < -20^\circ\text{C}$, which is largely unaffected by temperature
variability (Sospedra-Alfonso and Merryfield, 2017) and encompasses areas of the Northwest Territories and most of
Nunavut in present-day climate, is projected to recede to the Canadian Archipelago by mid-century.

385 Turning to projected changes in sea ice, Fig. 13 shows the observed record of September sea ice extent (sea ice concentration
>15%) across Canadian marine regions, compared to the CMIP-5 multi-model ensemble. While the observed and simulated
trends are similar, only those years with strong observed negative departures from the long term trend (e.g. 1998 and 2012)
reach the mean simulated ice extent. During the historical record, the models have a large spread (gray histogram, right side
of Fig. 13), with most models within the range of observations. After 2050, the large spread persists, but most models are
390 ~10% below the historical sea ice extent (yellow histogram, right side of Fig. 13).

The probability of sea ice free conditions by 2050 for regions of the Canadian Arctic calculated from the CMIP-5 multi-
model ensemble are shown in Fig. 14. SIC from each model realization is rescaled to account for differences in relative land

and ocean fraction in a given region. For a given month, model and ice area threshold, a particular region is considered sea ice free if more than 94% of its component grid cells have SIC below the ice area threshold for five out of the six years following 2050. The value of 94% is equivalent to the criterion established in Kirtman et al. (2013) to denote sea ice free conditions for the Arctic as a whole (less than 1×10^6 km² of sea ice in the Arctic ocean). Probabilities are calculated as the fraction of total realizations with ice-free conditions for a given region (see Laliberté et al., 2016, for a full description of the sea ice free probability methodology). Use of two ice area thresholds, 5% and 30%, applied to each grid cell, indicates the sensitivity in timing to the definition of minimum ice area. Under a 5% ice area scenario, there is a greater than 50% probability that all Canadian regions will be sea ice free in September by the year 2050. Ice free probabilities are similar for August, but lower for October and November. Hudson Bay, which is already largely ice free in August and September, has a high probability of being ice free for 4 consecutive months. With a more relaxed threshold of 30% ice area, probabilities are (by definition) greater for all regions and months. By mid-century, Baffin Bay is projected to be ice free for August through October, and 2 months of ice free conditions in the Beaufort Sea and the CAA are a possibility.

4 Key Findings

This assessment of observed historical changes in terrestrial snow cover and sea ice over Canada, together with projected changes to the middle of the 21st century, has produced the following key findings:

410 *Historical datasets show the fraction of Canadian land and marine areas covered by snow and ice is decreasing.*

Observations show decreased SIC in all seasons and decreased terrestrial SCF in fall (delayed snow cover onset) and spring (earlier snow melt). There is regional and seasonal variability in the direction and strength of the trends (for example, some increases in spring snow cover across boreal western Canada) due to seasonal and spatial variability in surface temperature trends resulting from natural climate variability. There is evidence of decreasing annual maximum SWE (reflective of shallower snow depth) consistent with the study of Mudryk et al. (2015) and trends of annual maximum snow depth reported in Vincent et al. (2015). There is only regional evidence (western CAA) of increasing winter season snow accumulation and hence higher SWE across Arctic Canada. Summer season total ice cover is decreasing significantly across nearly all Canadian marine regions. MYI losses are greatest in the Beaufort Sea and the western CAA. In just 8 years, the rate of MYI loss nearly doubled over the 1968-2016 period, compared to a previous assessment over 1968-2008. 60 year long records of in situ landfast ice thickness show evidence of thinning ice in the CAA that was not evident in an earlier study by Brown and Cote (1992), which covered the late 1950s to 1989.

Canadians should anticipate further reductions in snow and sea ice cover by the middle of the 21st century.

Averaging projections across many climate model simulations provides evidence that SCF, SWE_{max}, and SIC will continue to decrease across Canadian land and marine areas through the middle of the 21st century. However, this decrease need not

be spatially uniform and regions of negligible decrease or even increase are possible in the near future due to climate variability competing with anthropogenic forcing at the decadal and multi-decadal time scale. For the highly populated regions of southern Canada, there is evidence of a shift in the primary control on inter-annual variability in snow cover from a regime dominated by precipitation to one dominated by surface temperature. While the thickest sea ice in the world will continue to be present in the CAA and along its northern coast, climate models suggest that Canadian Arctic marine regions which are currently ice covered could be sea ice-free in the summer by 2050.

5 Discussion

Snow cover is a defining characteristic of the Canadian landscape for a few months each winter along the southern margins of the country and up to 9 or 10 months each year in the high Arctic, evolving from nearly complete snow cover over the entire country in the winter to a near total loss of snow cover by the summer. Highly reflective snow cover acts to cool the climate system, effectively insulates the underlying soil, and stores and redistributes water in solid form through the accumulation season before spring melt. Sea ice insulates the ocean from the atmosphere; provides an essential habitat for northern mammals, influences navigation and access to the north, and is of high importance to the traditional lifestyle of northern communities. This assessment of observed and projected changes in seasonal terrestrial snow and sea ice is focused on Canadian territory, but a number of cross-cutting issues with broader implications for understanding interactions between the cryosphere and climate system were identified through this analysis:

1. The majority of previous assessments of snow cover trends (i.e. Derksen and Brown, 2012; Hernandez-Henriquez et al., 2015; Derksen et al., 2016; Kunkel et al., 2016) were based on the NOAA snow chart climate data record (NOAA-CDR; Estilow et al., 2015) selected on the basis of the longest available record. The reliance on individual datasets such as the NOAA-CDR, however, makes trends prone to uncertainty due to the inherent uncertainties in an individual dataset (for instance, see Brown and Derksen, 2013 and Mudryk et al., 2017 for issues related to the NOAA-CDR). It is clear that consideration of multiple datasets either as a means of showing the range of trends from individual datasets (Mudryk et al., 2017), for calculating confidence intervals around an individual dataset (Brown and Robinson, 2011), or to benchmark other datasets (Brown et al., 2010; Hori et al., 2017) is a more robust approach. However, in this case, we acknowledge that the availability and use of multiple datasets came at the sacrifice of time series length (the NOAA record extends back to 1967, whereas passive microwave satellite data and reanalyses such as ERA-interim only begin in 1979).

2. Alpine snow poses a unique challenge to trend analysis because the coarse spatial resolution of gridded products used for climate analysis cannot resolve the high degree of spatial variability (driven by land cover variability and steep topographic gradients) in alpine regions. Wrzesien et al. (2018) have shown that blended gridded products like the one used in this analysis may significantly underestimate SWE in alpine regions. Because alpine snow trends vary with elevation in a

complex manner (Sospedra-Alfonso et al., 2015; Hamlet et al., 2005), trends from coarse resolution products like the one used in our analysis are comparatively more uncertain in alpine areas compared to other regions. It is imperative that we address and improve our ability to characterize variability and change in alpine snow because it is these regions that are both extremely sensitive to climate induced changes in snow accumulation (i.e. elevation dependent changes in rainfall versus snowfall ratios) and impactful with respect to water resources (Fyfe et al., 2017; Berg and Hall, 2017; Sospedra-Alfonso et al., 2015; Scalzitti et al., 2016).

3. Changes in sea ice are driven by warming temperatures, but also by changes in atmospheric circulation. The Beaufort Sea was once a region where ice would thicken and age before being transported to the Chukchi Sea and re-circulated in the Arctic (Tucker et al., 2001; Rigor et al., 2002) but now the region has become a considerable contributor to the Arctic's MYI loss (Kwok and Cunningham, 2010; Maslanik et al., 2011; Krishfield et al., 2014; Galley et al., 2016). Ice is still being sequestered from the Canadian Basin and transported through the Beaufort Sea during the summer months but the ice is now younger and thinner and unable survive the melt season en route to the Chukchi Sea (Howell et al., 2016a). The CAA was also a region with historically heavy MYI conditions present throughout the melt season but ice conditions have become lighter in recent years (see Fig. 7b). The replenishment of CAA MYI via first year ice aging and MYI inflow from the Arctic Ocean has decreased in recent years because of increased temperature and changes in atmospheric circulation (Howell et al., 2015).

4. There is a strong association between the magnitude of warming and snow and ice loss both in observational datasets and climate model simulations, with projected declines in snow and sea ice cover proportional to the amount of future warming (Thackeray et al., 2016; Mudryk et al., 2017; Notz and Stroeve, 2016). The multi-model mean projections indicate decreasing snow and ice cover because the multi-model mean projects a warmer climate by mid-century. Within this multi-model mean, however, individual climate model realizations contain regions and seasons with cooling trends (see Mudryk et al., 2014). It is important to remember, therefore, that we live in a single climate realization, while models produce dozens of potential realizations of a future climate. The multi-model mean warming trend (with associated reductions in snow and ice cover) is indicative of a high likelihood of a warmer future, but there will be decadal-scale natural variability, particularly at regional scales, projected onto this overall trend.

The objective of this paper was to provide a physical climate assessment of observed and projected changes in snow and ice across Canada. While not the focus of this study, these changes will have profound impacts on terrestrial and marine ecosystems, and many sectors of the Canadian economy. This includes risks related to freshwater supply from snow (Sturm et al, 2017) and other impacts of changing snow on the Canadian landscape and economy (Sturm et al., 2016). Accurately estimating dates of summer sea ice-free conditions in Canadian regions (Laliberté et al. (2016) has important implication for climate studies, but also for determining impact and mitigation strategies. For example, the decreases in MYI within the

Beaufort Sea and the CAA illustrated in Fig. 6 were found to be statistically linked to an increase in shipping activity, pointing out the potential implications of continued sea ice declines in these regions (Pizzolato et al., 2016).

495 **Data Availability**

Environment and Climate Change Canada's Canadian Centre for Climate Modelling and Analysis executed and made publically available the CanESM2 Large Ensemble simulations used in this study. Eric Brun provided data from the Crocus snowpack model, and Ross Brown provided the Brown data set. These data are available from the paper's authors upon request. Other observation-based data sets are available for download from their respective data centers or upon request from the authors.

Acknowledgements

505 This work is a core contribution of the Canadian Sea Ice and Snow Evolution Network (CanSISE), a climate research network focused on developing and applying state of the art observational data to advance dynamical prediction, projections, and understanding of seasonal snow cover and sea ice. We acknowledge funding from the Natural Sciences and Engineering Research Council of Canada's Climate Change and Atmospheric Research Initiative via the CanSISE Network. The original manuscript was improved thanks to comments from C. Marty and one anonymous reviewer.

510 **References**

Agnew, T., and Howell, S.: The use of operational ice charts for evaluating passive microwave ice concentration data, *Atmos.-Ocean*, 41, 317–331, doi:10.3137/ao.410405, 2003.

Archambault, M., Audet, A. and Morin, J.: *The 2002–2003 Economic Analysis of the Québec Ski Industry*. Association of Québec Ski Areas, Anjou, Québec (cited in Scott et al. 2007), 2003.

515 Arora, V. K., Scinocca, J. F., Boer, G. J., Christian, J. R., Denman, K. L., Flato, G. M., Kharin, V. V., Lee, W. G., and Merryfield, W. J.: Carbon emission limits required to satisfy future representative concentration pathways of greenhouse gases, *Geophys. Res. Lett.*, 38, 3–8, doi:10.1029/2010GL046270, 2011.

Babb, D. G., Galley, R. J., Barber, D. G., and Rysgaard, S.: Physical processes contributing to an ice free Beaufort Sea during September 2012, *J. Geophys. Res.* 121, 267–283, doi:10.1002/2015JC010756, 2016.

520 Barnes, E.: Revisiting the evidence linking Arctic amplification to extreme weather in midlatitudes, *Geophys. Res. Lett.*, 40, 4734–4739, doi:10.1002/grl.50880, 2013.

- Barnett, T., Adam, J., and Lettenmaier, D.: Potential impacts of a warming climate on water availability in snow-dominated regions. *Nature*. 438, 303-309, doi:10.1038/nature04141, 2005.
- 525 Berg, N., and Hall, A.: Anthropogenic warming impacts on California snowpack during drought, *Geophys. Res. Lett.*, 44, 2511-2518, doi:10.1002/2016GL072104, 2017.
- Bokhorst, S., et al.: Changing Arctic snow cover: A review of recent developments and assessment of future needs for observations, modelling, and impacts, *Ambio*, DOI 10.1007/s13280-016-0770-0, 2016.
- Brasnett, B.: A global analysis of snow depth for numerical weather prediction. *Journal of Applied Meteorology*, 38, 726-740, 1999.**
- 530 Brown, R. and Cote, P.: Interannual variability of landfast ice thickness in the Canadian high arctic, 1950–89, *Arctic*, 45, 273–284, 1992.
- Brown, R. D., and Braaten, R. O.: Spatial and temporal variability of Canadian monthly snow depths, 1946-1995. *Atmos.-Ocean*, 36, 37-45, 1998.
- 535 Brown, R., and Mote, P.: The response of Northern Hemisphere snow cover to a changing climate, *J. Clim.*, 22, 2124-2145, 2009.
- Brown, R., and Robinson, D.: Northern Hemisphere spring snow cover variability and change over 1922–2010 including an assessment of uncertainty. *Cryosphere*, 5, 219–229, doi:10.5194/tc-5-219-2011, 2011.
- Brown, R., and Derksen, C.: Is Eurasian October snow cover extent increasing? *Env. Res. Lett.*, 8, 024006 doi:10.1088/1748-9326/8/2/024006, 2013.
- 540 Brown, R., Brasnett, B., and Robinson, D.: Gridded North American monthly snow depth and snow water equivalent for GCM evaluation, *Atmos.-Ocean*. 41, 1-14, 2003.
- Brown, R., Derksen, C., and Wang, L.: A multi-dataset analysis of variability and change in Arctic spring snow cover extent, 1967-2008. *J. Geophys. Res.*, 115, D16111, doi:10.1029/2010JD013975, 2010.
- 545 Brown, R., Schuler, D., Bulygina, O., Derksen, C., Luojus, K., Mudryk, L., Wang, L., and Yang, D.: Arctic terrestrial snow. In *Snow, Water, Ice and Permafrost in the Arctic (SWIPA)*. Arctic Monitoring and Assessment Program, 2017.
- Brun, E., Vionnet, V., Boone, A., Decharme, B., Peings, Y., Valette, R., Karbou, F., and Morin, S.: Simulation of Northern Eurasian local snow depth, mass, and density using a detailed snowpack model and meteorological reanalyses, *J. Hydrometeorol.*, 14, 203–219, doi:10.1175/JHM-D-12-012.1, 2013.
- 550 Canadian Ice Service: Regional charts: History, accuracy, and caveats, Arch. Doc. Ser. 1, Ottawa. [Available at http://ice.ec.gc.ca/IA_DOC/cisads_no_001_e.pdf.], 2007.

- Cohen, J., Barlow, M., Kushner, P.J. and Saito, K.: Stratosphere–Troposphere Coupling and Links with Eurasian Land Surface Variability. *J. Climate*, **20**, 5335–5343, doi:10.1175/2007JCLI1725.1, 2007.
- Dee, D. P., Uppala, S. M., Simmons, A. J., Berrisford, P., Poli, P., Kobayashi, S., Andrae, U., Balmaseda, M. A., Balsamo, G., Bauer, P., Bechtold, P., Beljaars, A. C. M., van de Berg, L., Bidlot, J., Bormann, N., Delsol, C., Dragani, R., Fuentes, M., 555 Geer, A. J., Haimberger, L., Healy, S. B., Hersbach, H., Hólm, E. V., Isaksen, L., Kållberg, P., Köhler, M., Matricardi, M., McNally, A. P., Monge-Sanz, B. M., Morcrette, J.-J., Park, B.-K., Peubey, C., de Rosnay, P., Tavolato, C., Thépaut, J.-N. and Vitart, F.: The ERA-Interim reanalysis: configuration and performance of the data assimilation system. *Q.J.R. Meteorol. Soc.*, **137**: 553–597, doi:10.1002/qj.828, 2011.
- Derksen, C., et al.: Variability and change in the Canadian Cryosphere, *Clim. Change*, **115**, 59–88, 2012.
- 560 Derksen, C., Brown, R., Mudryk, L., and Luoju, K.: Terrestrial Snow (Arctic). In *State of the Climate in 2015*, *Bull. Am. Met. Soc.*, **97**, S145-S147, 2016.
- Eyring, V., Bony, S., Meehl, G. A., Senior, C. A., Stevens, B., Stouffer, R. J., and Taylor, K. E.: Overview of the Coupled Model Intercomparison Project Phase 6 (CMIP6) experimental design and organization, *Geosci. Model Dev.*, **9**, 1937-1958, doi: 10.5194/gmd-9-1937-2016, 2016.
- 565 Estilow, T. W., Young, A. H., and Robinson, D. A.: A long-term Northern Hemisphere snow cover extent data record for climate studies and monitoring, *Earth Sys. Sci. Data*, **7.1**, 137-142, 2015.
- Flanner, M., Shell, K., Barlage, M., Perovich, D., and Tschudi, M.: Radiative forcing and albedo feedback from the Northern Hemisphere cryosphere between 1979 and 2008. *Nature Geosci.*, **4**, 151–155, doi:10.1038/ngeo1062, 2011.
- Francis, J., and Vavrus, S.: Evidence linking Arctic amplification to extreme weather in mid-latitudes. *Geophys. Res. Lett.*, 570 **39**, L06801, doi:10.1029/2012GL051000, 2012.
- Francis, J., and Vavrus, S.: Evidence for a wavier jet stream in response to rapid Arctic warming. *Env. Res. Lett.*, **10**, doi:10.1088/1748-9326/10/1/014005, 2015.
- Francis, J., Vavrus, S., and Cohen J.: Amplified Arctic warming and mid-latitude weather: new perspectives on emerging connections. *WIREs Clim. Change*, e474, doi: 10.1002/wcc.474, 2017.
- 575 Fyfe, J., Derksen, C., Mudryk, L., Flato, G., Santer, B., Swart, N., Molotch, N., Zhang, X., Wan, H. Arora, V., Scinocca, J., and Jiao, Y: Large near-term projected snowpack loss over the western United States, *Nature Comms.*, **10.1038/NCOMMS14996**, 2017.
- Galley, R. J., Babb, D., Ogi, M., Else, B. G. T., Geilfus, N.-X., Crabeck, O., Barber, D. G. and Rysgaard, S.: Replacement of multiyear sea ice and changes in the open water season duration in the Beaufort Sea since 2004, *J. Geophys. Res. Oceans*, 580 **121**, 1806–1823, doi:10.1002/2015JC011583, 2016.

- Ganji, A., Sushama, L., Verseghy, D. and Harvey, R.: On improving cold region hydrological processes in the Canadian Land Surface Scheme. *Theoretical and Applied Climatology*, 127, 45-59, 2017.
- Gouttevin, I., Menegoz, M., Dominé, F., Krinner, G., Koven, C., Ciais, P., Tarnocai, C., and Boike, J.: How the insulating properties of snow affect soil carbon distribution in the continental pan-Arctic area, *J. Geophys. Res.*, 117, G02020, doi:10.1029/2011JG001916, 2012.
- 585
- Haas, C., Hendricks, S., Eicken, H., and Herber, A.: Synoptic airborne thickness surveys reveal state of Arctic sea ice cover, *Geophys. Res. Lett.*, 37, L09501, doi:10.1029/2010GL042652, 2010.
- Haas, C., and Howell, S.—E.—L.: Ice thickness in the Northwest Passage, *Geophys. Res. Lett.*, 42, 7673–7680, doi:10.1002/2015GL065704, 2015.
- 595
- Hamlet, A., Mote, P., Clark, M. and Lettenmeier, D.: Effects of temperature and precipitation variability on snowpack trends in the western United States. *J. Clim.* 18: 4545-4561, 2005.
- Hanewinkel, M., Breidenbach, J. Neeff, T. and Kublin, E.: Seventy-seven years of natural disturbances in a mountain forest area—the influence of storm, snow, and insect damage analysed with a long-term time series. *Can. J. Forest Res.* 38, 2249-2261, 2008.
- 595
- Hawkins, E. and Sutton, R.: The Potential to Narrow Uncertainty in Regional Climate Predictions. *Bull. Amer. Meteor. Soc.*, 90, 1095–1107, doi:10.1175/2009BAMS2607.1, 2009.
- Hawkins, E. and Sutton, R.: The potential to narrow uncertainty in projections of regional precipitation change. *Clim. Dyn.*, 37, 407–481. doi:10.1007/s00382-010-0810-6, 2011.
- Hernández-Henríquez, M., Déry, S., and Derksen, C.: Polar amplification and elevation-dependence in trends of Northern Hemisphere snow cover extent, 1971-2014, *Env. Res. Lett.*, 10, doi:10.1088/1748-9326/10/4/044010, 2015.
- 600
- Hochheim, K. P., and Barber, D. G.: An update on the ice climatology of the Hudson Bay system, *Arct. Antarct. Alp. Res.*, 46, 66–83, doi:10.1657/1938-4246-46.1.66, 2014.
- Hong, H.P. and W. Ye: Analysis of extreme ground snow loads for Canada using snow depth records. *Nat. Hazards*, 73(2), 355-371, 2014.
- 605
- Hori, M., Sugiura, K., Kobayashi, K., Aoki, T., Tanikawa, T., Kuchiki, K., Niwano, M., and Enomoto, H.: A 38-year (1978–2015) Northern Hemisphere daily snow cover extent product derived using consistent objective criteria from satellite-borne optical sensors. *Proc. SPIE.*, 191, 402–418, doi:10.1016/j.rse.2017.01.023, 2017.
- Howell, S. E. L., Duguay, C. R., and Markus, T.: Sea ice conditions and melt season duration variability within the Canadian Arctic Archipelago: 1979–2008, *Geophys. Res. Lett.*, 36, L10502, doi:10.1029/2009GL037681, 2009.

- 610 Howell, S. E. L., Wohleben, T., Dabboor, M., Derksen, C., Komarov, A., and Pizzolato, L.: Recent changes in the exchange of sea ice between the Arctic Ocean and the Canadian Arctic Archipelago, *J. Geophys. Res.*, 118, 3595–3607, doi:10.1002/jgrc.20265, 2013a.
- Howell, S. E. L., Wohleben, T., Komarov A., Pizzolato L., and Derksen, C.: Recent extreme light sea ice years in the Canadian Arctic Archipelago: 2011 and 2012 eclipse 1998 and 2007, *Cryosphere*, 7(6), 1753–1768, doi:10.5194/tc-7-1753-615 2013, 2013b.
- Howell, S. E. L., Derksen, C., Pizzolato, L., and Brady, M.: Multiyear ice replenishment in the Canadian Arctic Archipelago: 1997–2013, *J. Geophys. Res.*, 120, 1623–1637, doi:10.1002/2015JC010696, 2015.
- Howell, S. E. L., Brady, M., Derksen, C., and Kelly, R. E. J.: Recent changes in sea ice area flux through the Beaufort Sea during the summer, *J. Geophys. Res. Oceans*, 121, 2659–2672, doi:10.1002/2015JC011464, 2016a.
- 620 Howell, S.E.L., Laliberté, F., Kwok, R., Derksen, C., and King, J.: Landfast ice thickness in the Canadian Arctic Archipelago from Observations and Models, *The Cryosphere*, 10, doi:10.5194/tc-10-1463-2016, 2016b.
- Kang, D.H., Shi, X., Gao, H. and Déry, S. J.: On the changing contribution of snow to the hydrology of the Fraser River Basin, Canada. *J. Hydrometeorol.*, 1, 1344-1365, 2014.**
- Kobayashi, S., Ota, Y., Harada, Y., Ebata, A., Moriya, M., Onoda, H., Onogi, K., Kamahori, H., Kobayashi, C., Endo, H., 625 Miyaoka, K. and Takahashi, K.: The JRA-55 Reanalysis: General specifications and basic characteristics. *J. Meteor. Soc. Japan*, 93, 5-48, doi:10.2151/jmsj.2015-001, 2015.
- Krishfield, R. A., Proshutinsky, A., Tateyama, K., Williams, W. J., Carmack, E. C., McLaughlin, F. A. and Timmermans, M.-L.: Deterioration of perennial sea ice in the Beaufort Gyre from 2003 to 2012 and its impact on the oceanic freshwater cycle, *J. Geophys. Res.*, 119, 1271–1305, doi:10.1002/2013JC008999, 2014.
- 630 Kunkel, K., Robinson, D., Champion, S., Yin, X., Estilow, T., and Frankson, R.: Trends and Extremes in Northern Hemisphere Snow Characteristics, *Curr. Clim. Change Rep.*, 2, 65–73, doi: 10.1007/s40641-016-0036-8, 2017.
- Kushner, P. J., Mudryk, L. R., Merryfield, W., Ambadan, J. T., Berg, A., Bichet, A., Brown, R., Derksen, C. P., Déry, S. J., Dirkson, A., Flato, G., Fletcher, C. G., Fyfe, J. C., Gillett, N., Haas, C., Howell, S., Laliberté, F., McCusker, K., Sigmond, M., Sosprea-Alfonso, R., Tandon, N. F., Thackeray, C., Tremblay, B., and Zwiers, F. W.: Assessment of snow, sea ice, and 635 related climate processes in Canada's Earth-System Model and Climate Prediction System, *The Cryosphere Discuss.*, <https://doi.org/10.5194/tc-2017-157>, in review, 2017.
- Kwok, R., and Rothrock, D. A.: Decline in Arctic sea ice thickness from submarine and ICESat records: 1958 – 2008, *Geophys. Res. Lett.*, 36, L15501, doi:10.1029/2009GL039035, 2009.

- 640 Kwok, R., and Cunningham, G. F.: Contribution of melt in the Beaufort Sea to the decline in Arctic multiyear sea ice coverage: 1993–2009, *Geophys. Res. Lett.*, 37, L20501, doi:10.1029/2010GL044678, 2010.
- Kwok, R., and Cunningham, G. F.: Variability of Arctic sea ice thickness and volume from CryoSat-2, *Philos. Trans. R. Soc., A*, 373,20140157, doi:10.1098/rsta.2014.0157, 2015.
- Laliberté, F., Howell, S. E. L., and Kushner, P.J.: Regional variability of a projected sea ice-free Arctic during the summer months, *Geophys. Res. Lett.*, 43, doi:10.1002/2015GL066855, 2016.
- 645 Laxon S. W., Giles, K. A., Ridout, A. L., Wingham, D. J., Willatt, R., Cullen, R., Kwok, R., Schweiger, A., Zhang, J., Haas, C., Hendricks, S. Krishfield, R., Kurtz, N., Farrell, S., and Davidson, M.: CryoSat-2 estimates of Arctic sea ice thickness and volume, *Geophys. Res. Lett.*, 40, 732–737, doi:10.1002/grl.50193, 2013.
- Lindsay, R., Haas, C., Hendricks, A., Hunkeler, P., Kurtz, N., Paden, J., Panzer, B., Sonntag, J., Yungel, J. and Zhang, J.: Seasonal forecasts of Arctic sea ice initialized with observations of ice thickness, *Geophys. Res. Lett.*, 39, L21502, doi:10.1029/2012GL053576, 2012.
- 650 Luus, K.A., Kelly, R. E. J., Lin, J. C., Humphreys, E. R., Lafleur P. M. and Oechel, W. C.: Modeling the influence of snow cover on low Arctic net ecosystem exchange. *Env. Res. Lett.*, 8, 035045, 2013.
- Maslanik, J., Stroeve, J., Fowler, C., and Emery, W.: Distribution and trends in Arctic sea ice age through spring 2011, *Geophys. Res. Lett.*, 38, L13502, doi:10.1029/2011GL047735, 2011.
- 655 Mekis, É., and Vincent, L. A.: An overview of the second generation adjusted daily precipitation dataset for trend analysis in Canada. *Atmos.-Ocean*, 49, 163–177. doi:10.1080/07055900.2011.583910, 2011.
- Milewska, E., Hopkinson, R. F. and Niitsoo, A.: Evaluation of georeferenced grids of 1961–1990 Canadian temperature and precipitation normals. *Atmos.-Ocean*, 43, 49–75, 2005.
- Mudryk, L., Kushner, P., and Derksen, C.: Interpreting observed Northern Hemisphere snow trends with large ensembles of climate simulations, *Clim. Dyn.*, 43, 345–359, DOI 10.1007/s00382-013-1954-y, 2014.
- Mudryk, L., Derksen, C., Kushner, P., and Brown, R.: Characterization of Northern Hemisphere snow water equivalent datasets, 1981–2010, *J. Clim.*, 28, 8037-8051, 2015.
- Mudryk, L. R., Kushner, P. J., Derksen, C., and Thackeray, C.: Snow cover response to temperature in observational and climate model ensembles, *Geophys. Res. Lett.*, 44, doi:10.1002/2016GL071789, 2017.
- 665 Notz, D., and Stroeve, J.: Observed Arctic sea-ice loss directly follows anthropogenic CO₂ emission, *Science*, 10.1126/science.aag2345, 2016.

- Onogi, K., Tsutsui, J., Koide, H., Sakamoto, M., Kobayashi, S. Hatsushika, H., Matsumoto, T., Yamazaki, N., Kamahori, H., Takahashi, K., Kadokura, A., Wada, K., Kato, K., Oyama, R., Ose, T., Mannoji, N. and Taira, R.: The JRA-25 Reanalysis. *J. Meteor. Soc. Japan*, 85, 369-432, 2007.
- 670 Parkinson, C. L.: Spatially mapped reductions in the length of the Arctic sea ice season, *Geophys. Res. Lett.*, 41, 4316–4322, doi:10.1002/2014GL060434, 2014.
- Peters, G. P., Andrew, R.M., Boden, T., Canadell, J. G., Ciais, P., Quéré, C. L., Marland, G., Raupach, M. R., and Wilson, C.: The challenge to keep global warming below 2 °C. *Nat. Clim. Chang.*, 3, 4–6, doi:10.1038/nclimate1783, 2012.
- Pithan, F., and Mauritsen, T.: Arctic amplification dominated by temperature feedbacks in contemporary climate models. *Nature Geoscience*, 7, 181-184, doi:10.1038/ngeo2071, 2014.
- 675 Pizzolato, L., Howell, S. E. L., Dawson, J., Laliberté, F., and Copland, L.: The influence of declining sea ice on shipping activity in the Canadian Arctic, *Geophys. Res. Lett.*, 43, doi:10.1002/2016GL071489, 2016.
- Quadrelli, R., and Wallace, J.: Dependence of the structure of the Northern Hemisphere annular mode on the polarity of ENSO, *Geophys. Res. Lett.*, 29, 2132-2135, doi:10.1029/2002GL015807, 2002.
- 680 Raisanen, J.: Warmer climate: less or more snow? *Clim. Dyn.*, 30, 307-319, 2008.
- Rapaic, M., Brown, R., Markovic M., and Chaumont, D.: An evaluation of temperature and precipitation surface-based and reanalysis datasets for the Canadian Arctic, 1950-2010. *Atmos.-Ocean*, 53, 283-303, doi:10.1080/07055900.2015.1045825, 2015.
- Reichle, R., Draper, C., Liu, Q., Girotto, M., Mahanama, S., Koster, R., and De Lannoy, G.: Assessment of MERRA-2 land surface hydrology estimates, *J. Clim.*, 30, DOI: 10.1175/JCLI-D-16-0720.1, 2017.
- 685 Richter-Menge, J. A., and Farrell S. L.: Arctic sea ice conditions in spring 2009-2013 prior to melt, *Geophys. Res. Lett.*, 40, 5888–5893, doi:10.1002/2013GL058011, 2013.
- Rienecker, M.M., Suarez, M.J., Gelaro, R., Todling, R., Bacmeister, J., Liu, E., Bosilovich, M.G., Schubert, S.D., Takacs, L., Kim, G., Bloom, S., Chen, J., Collins, D., Conaty, A., da Silva, A., Gu, W., Joiner, J., Koster, R.D., Lucchesi, R., Molod, A., Owens, T., Pawson, S., Pegion, P., Redder, C.R., Reichle, R., Robertson, F.R., Ruddick, A.G., Sienkiewicz, M. and Woollen, J.: MERRA: NASA’s Modern-Era Retrospective Analysis for Research and Applications. *J. Clim.*, 24, 3624–3648, <https://doi.org/10.1175/JCLI-D-11-00015.1>, 2011
- 690 Rigor, I. G., Wallace, J. M., and Colony, R. L.: Response of sea ice to the Arctic oscillation, *J. Clim.*, 15, 2648–2663, doi:10.1175/1520-0442(2002)015<2648:ROSITT>2.0.CO;2, 2002.
- 695 **Scott, D., McBoyle, G. and Minogue, A.: Climate change and Québec's ski industry. *Global Environmental Change*, 17, 181-190, 2007.**

- 700 Saha, S., Moorthi, S., Pan, H., Wu, X., Wang, J., Nadiga, A., Tripp, P., Kistler, R., Woollen, J., Behringer, D., Liu, H., Stokes, D., Grumbine, R., Gayno, G., Wang, J., Hou, Y., Chuang, H., Juang, H.H., Sela, J., Iredell, M., Treadon, R., Kleist, D., Van Delst, P., Keyser, D., Derber, J., Ek, M., Meng, J., Wei, H., Yang, R., Lord, S., van den Dool, H., Kumar, A., Wang, W., Long, C., Chelliah, M., Xue, Y., Huang, B., Schemm, J., Ebisuzaki, W., Lin, R., Xie, P., Chen, M., Zhou, S., Higgins, W., Zou, C., Liu, Q., Chen, Y., Han, Y., Cucurull, L., Reynolds, R.W., Rutledge, G. and Goldberg, M.: The NCEP Climate Forecast System Reanalysis. *Bull. Amer. Meteor. Soc.*, 91, 1015–1058, <https://doi.org/10.1175/2010BAMS3001.1>, 2010.
- Scalzitti, J., Strong, C., and Kochanski, A.: Climate change impact on the roles of temperature and precipitation in western U.S. snowpack variability, *Geophys. Res. Lett.*, 43, 5361—5369, 2016.
- 705 Scaife, A. A., Copesey, D., Gordon, C., Harris, C., Hinton, T., Keeley, S., O'Neill, A. Roberts, M. and Williams, K.: Improved Atlantic winter blocking in a climate model, *Geophys. Res. Lett.*, 38, L23703, doi:[10.1029/2011GL049573](https://doi.org/10.1029/2011GL049573), 2011.
- Screen, J., Deser, C., and Sun, L.: Reduced risk of North American cold extremes due to continued Arctic sea ice loss, *Bull. Am. Met. Soc.*, DOI:[10.1175/BAMS-D-14-00185.1](https://doi.org/10.1175/BAMS-D-14-00185.1), 2015.
- 710 Serreze, M., Barrett, A., Slater, A., Steele, M., Zhang, J., and Trenberth, K. The large-scale energy budget of the Arctic. *J. Geophys. Res.*, 112: D11122, doi:[10.1029/2006JD008230](https://doi.org/10.1029/2006JD008230), 2007.
- Serreze, M., Barrett, A., Stroeve, J., Kindig, D., and Holland, M.: The emergence of surface-based Arctic amplification, *Cryosphere*, 3, 11–19, 2009.
- Sigmond, M., Fyfe, J. C., Flato, G. M., Kharin, V. V. and Merryfield, W. J.: Seasonal forecast skill of Arctic sea ice area in a dynamical forecast system, *Geophys. Res. Lett.*, 40, doi:[10.1002/grl.50129](https://doi.org/10.1002/grl.50129), 2013.**
- 715 Smith, K.L., Fletcher, C.G. and Kushner, P.J.: The Role of Linear Interference in the Annular Mode Response to Extratropical Surface Forcing, *J. Clim.*, 23, 6036–6050, doi:[10.1175/2010JCLI3606.1](https://doi.org/10.1175/2010JCLI3606.1), 2010.
- Sospedra-Alfonso R., Melton J., and Merryfield, W.: Effects of temperature and precipitation on snowpack variability in the central Rocky Mountains as a function of elevation, *Geophys. Res. Lett.*, 42, 4429–4438, 2015.
- Sospedra-Alfonso, R. and Merryfield, W.J.: Influences of Temperature and Precipitation on Historical and Future Snowpack Variability over the Northern Hemisphere in the Second Generation Canadian Earth System Model. *J. Climate*, 30, 4633–4656, doi:[10.1175/JCLI-D-16-0612.1](https://doi.org/10.1175/JCLI-D-16-0612.1), 2017.**
- 720 Stroeve, J. C., Markus, T., Boisvert, L., Miller, J., and Barrett, A.: Changes in Arctic melt season and implications for sea ice loss, *Geophys. Res. Lett.*, 41(4), 1216–1225, doi:[10.1002/2013GL058951](https://doi.org/10.1002/2013GL058951), 2014.
- 725 Sturm, M., Goldstein, M., Huntington, H., and Douglas, T.: Using an option pricing approach to evaluate strategic decisions in a rapidly changing climate: Black–Scholes and climate change. *Clim. Change*, doi: [10.1007/s10584-016-1860-5](https://doi.org/10.1007/s10584-016-1860-5), 2016.

- Sturm, M., Goldstein, M. A., and Parr, C.: Water and life from snow: A trillion dollar science question, *Water Resour. Res.*, 53, doi:10.1002/2017WR020840, 2017.
- 730 Takala, M., Luojus, K., Pulliainen, J., Derksen, C., Lemmetyinen, J., Kärnä, J-P, and Koskinen, J.: Estimating northern hemisphere snow water equivalent for climate research through assimilation of space-borne radiometer data and ground-based measurements, *Proc. SPIE.*, 115, 3517–3529, doi:10.1016/j.rse.2011.08.014, 2011.
- Thackeray, C.W., Fletcher, C.G., Mudryk, L.R., and Derksen, C.: Quantifying the uncertainty in historical and future simulations of Northern Hemisphere spring snow cover, *J. Clim.*, 29, 8647–8663, doi:10.1175/JCLI-D-16-0341.1, 2016.
- Tucker, W. B., III, Weatherly, J. W., Eppler, D. T., Farmer, L. D., and Bentley, D. L., Evidence for rapid thinning of sea ice in the western Arctic Ocean at the end of the 1980s, *Geophys. Res. Lett.*, 28, 2851–2854, doi:10.1029/2001GL012967, 2001.
- 735 Turcotte, R., Fortin, L. G., Fortin, V. Fortin, J. P. and Villeneuve, J.P.: Operational analysis of the spatial distribution and the temporal evolution of the snowpack water equivalent in southern Québec, Canada, *Hydrol. Res.*, 38, 211-234, 2007.
- Tilling, R. L., Ridout, A., Shepherd, A., and Wingham, D. J.: Increased Arctic sea ice volume after anomalously low melting in 2013, *Nat. Geosci.*, 8(8), 643–646, doi:10.1038/ngeo2489, 2015.
- 740 Tivy, A., Howell, S. E. L., Alt, B., McCourt, S., Chagnon, R., Crocker, G., Carrieres, T., and Yackel, J.: Trends and variability in summer sea ice cover in the Canadian Arctic based on the Canadian Ice Service Digital Archive, 1960–2008 and 1968–2008, *J. Geophys. Res.*, 116, C03007, doi:10.1029/2009JC005855, 2011a.
- Tivy, A., Howell, S.E., Alt, B., Yackel, J.J. and Carrieres, T.: Origins and Levels of Seasonal Forecast Skill for Sea Ice in Hudson Bay Using Canonical Correlation Analysis. *J. Climate*, 24, 1378–1395, <https://doi.org/10.1175/2010JCLI3527.1>, 2011b.
- 745 Vincent, L. Zhang, X., Brown, R., Feng, Y., Mekis, E. Milewska, E., Wan, H., and Wang, X.: Observed trends in Canada’s climate and influence of low-frequency variability modes, *J. Clim.*, 28, 4545-4560, 2015.
- Wrzesien, M. L., Durand, M. T., Pavelsky, T. M., Kapnick, S., Zhang, Y., Guo, J. & Shum, C. K.: A new estimate of North American mountain snow accumulation from regional climate model simulations, *Geophys. Res. Lett.*, 45, doi:10.1002/2017GL076664, 2018.
- 750 Zhang, Y., Chen, W. and Riseborough, D.W.: Modeling the long-term dynamics of snow and their impacts on permafrost in Canada. In *Ninth International Conference on Permafrost*, 2008.

Table 1: List of CMIP5 models (with number of realizations) used for terrestrial snow analysis of both historical and future periods.

Model	No.
BCC-CSM1.1	1
BNU-ESM	1
CanESM2	5
CCSM4	6
CNRM-CM5	5
CSIRO-Mk3.6.0	10
FGOALS-g2	1
GISS-E2-R	1
INM-CM4	1
MIROC5	3
MIROC-ESM	1
MPI-ESM-LR	3
MRI-CGCM3	1
NorESM1-ME	1
NorESM1-M	1

Table 2: List of CMIP5 models (with number of realizations) used for sea ice analysis of both historical and future periods.

Model	No.	Model	No.
BCC-CSM1-1	1	MIROC5	3
BCC-CSM-1-m	1	HadGEM2-CC	1
BNU-ESM	1	HadGEM2-ES	4
CanESM2	5	MPI-ESM-LR	3
CMCC-CESM	1	MPI-ESM-MR	1
CMCC-CM	1	MRI-CGCM3	1
CMCC-CMS	1	MRI-ESM1	1
CNRM-CM5	5	GISS-E2-H	1
ACCESS1.0	1	GISS-E2-H-CC	1
ACCESS1.3	1	GISS-E2-R	5
CSIRO-Mk3.6.0	10	GISS-E2-R-CC	1
FIO-ESM	1	CCSM4	6
EC-EARTH	11	NorESM1-M	1
inmcm4	1	NorESM1-ME	1
IPSL-CM5A-LR	4	HadGEM2-AO	1
IPSL-CM5A-MR	1	GFDL-CM3	1
IPSL-CM5B-LR	1	GFDL-ESM2G	1
FGOALS-g2	1	GFDL-ESM2M	1
FGOALS-s2	1	CESM1(BGC)	1
MIROC-ESM	1	CESM1(CAM5)	3
MIROC-ESM-CHEM	1	CESM1-CAM5-1-FV2	1

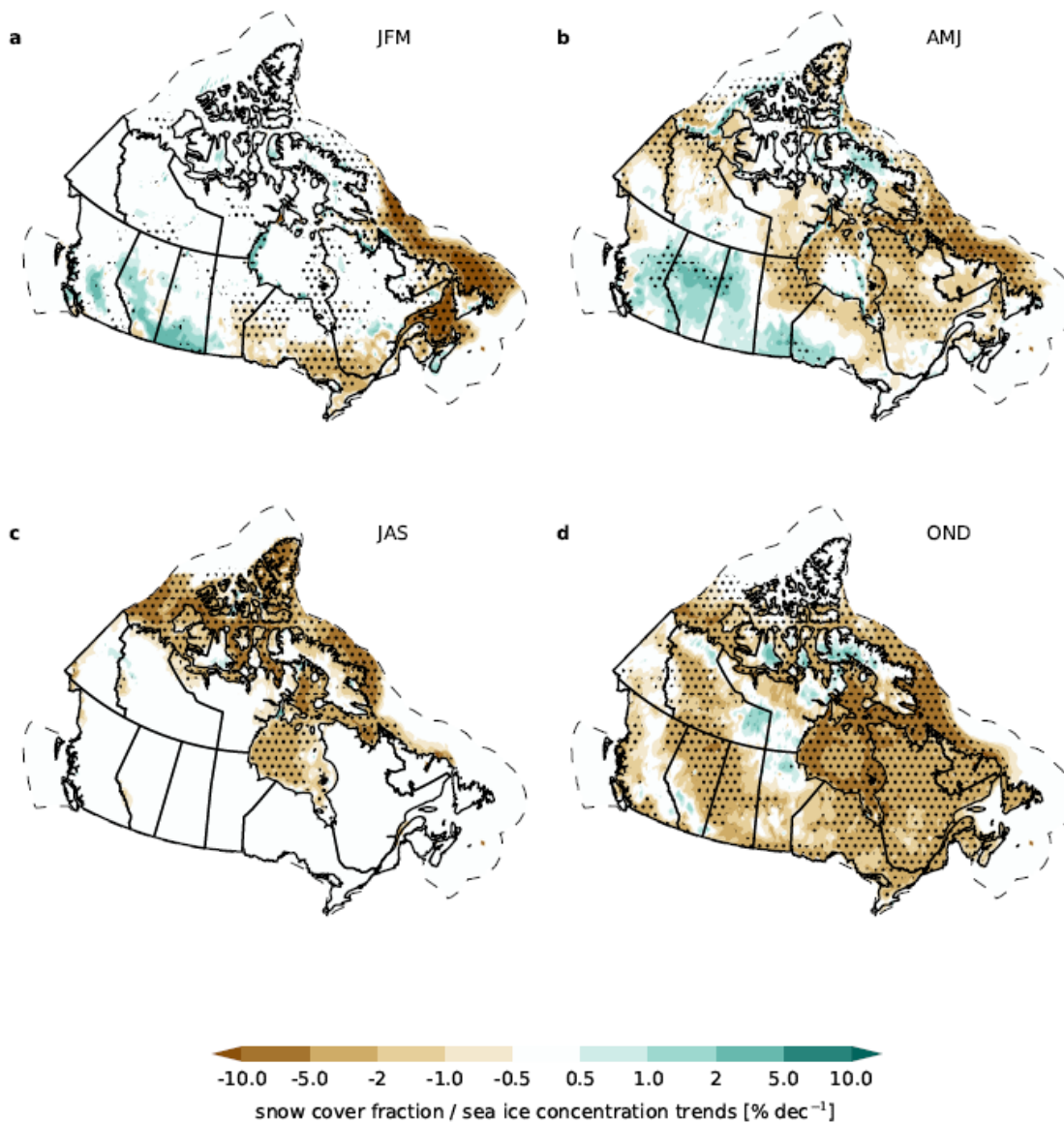
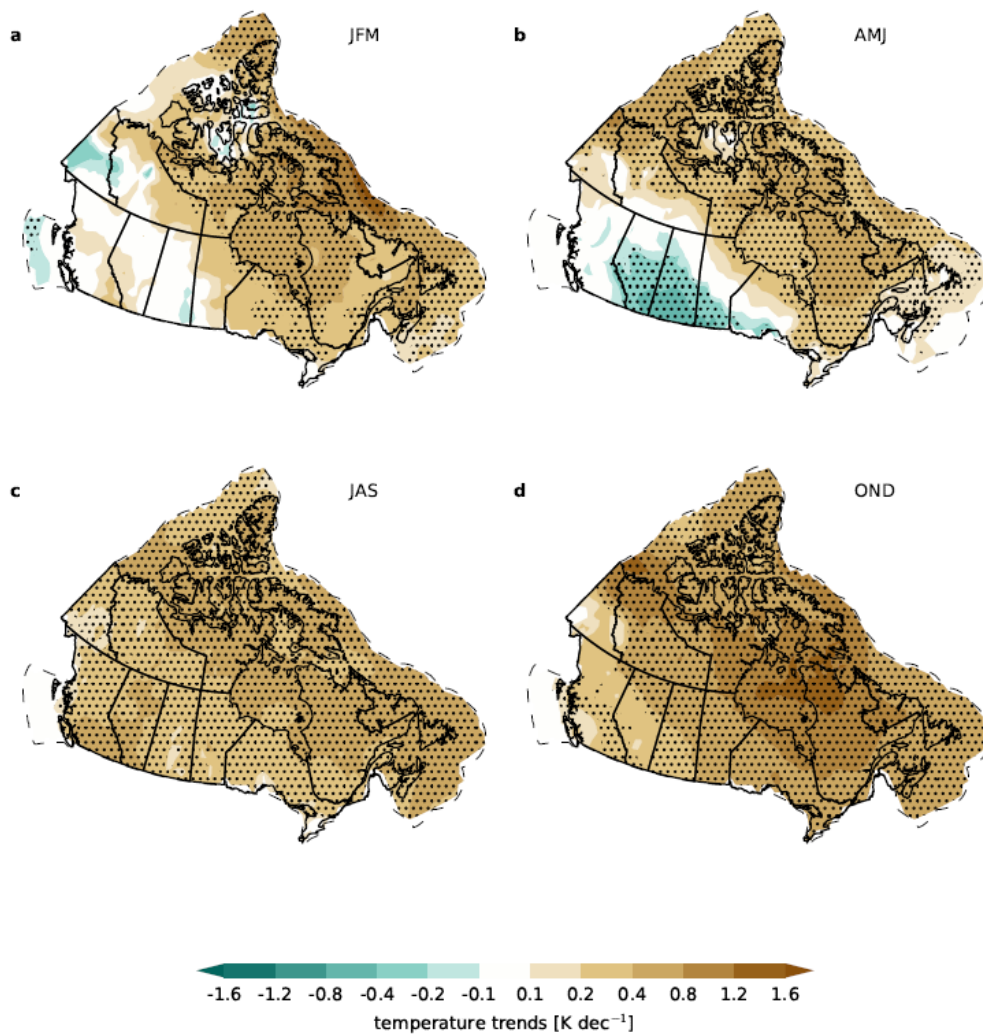


Figure 1: Terrestrial snow cover fraction and sea ice concentration trends for 1981-2015. Datasets are described in Section 2.1. **Stippling indicates pointwise significance at the 90th percentile.** Dashed line denotes limit of Canadian marine territory.

765



770 | Figure 2: Trends in surface temperature, 1981-2015, from a blend of ERA-Interim, JRA-55, JRA-25, MERRA1, MERRA2, and CFSR reanalysis products. Stippling indicates pointwise significance at the 90th percentile.

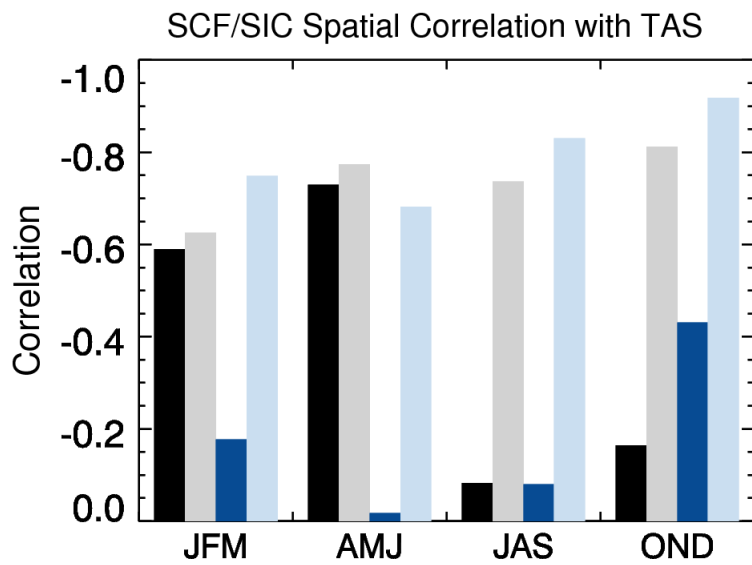


Figure 3: Centered (dark) or uncentered (light) pattern correlation between seasonal TAS trends and seasonal SCF (black) or SIC (blue) trends.

775

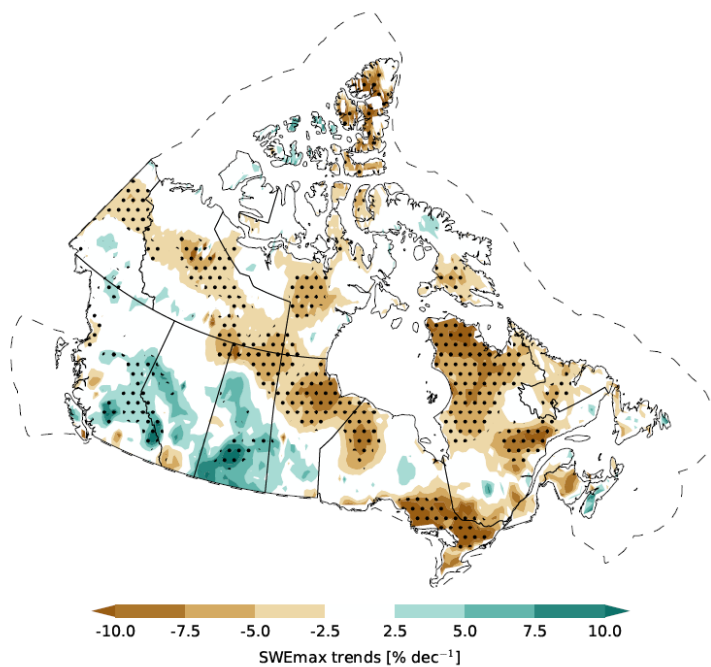
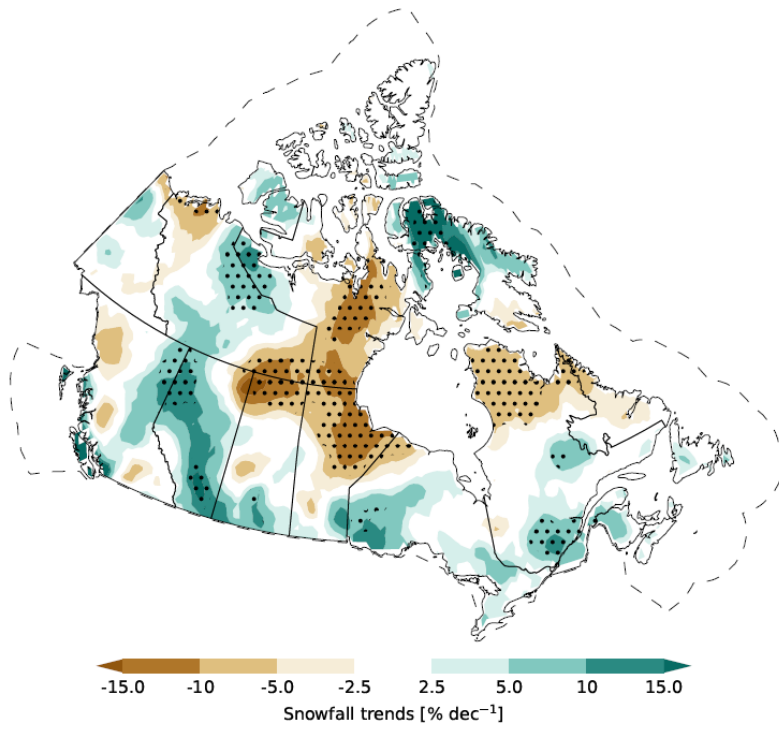


Figure 4: SWEmax trends for 1981-2015. Stippling indicates pointwise significance at the 90th percentile.



780

Figure 5: Snowfall trends estimated from CANGRD data. Stippling indicates pointwise significance at the 90th percentile.

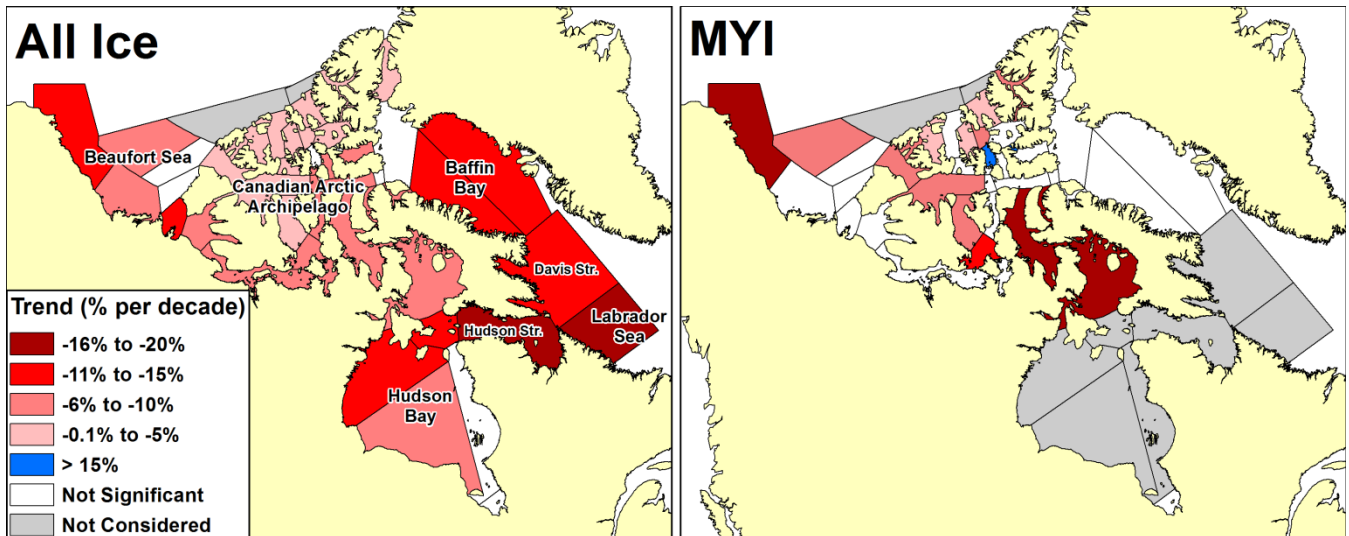


Figure 6: Trends in summer all ice (left) and multi-year ice (right) area from 1968 to 2016 from the CISDA. Only trends significant to the 95% confidence level are shown.

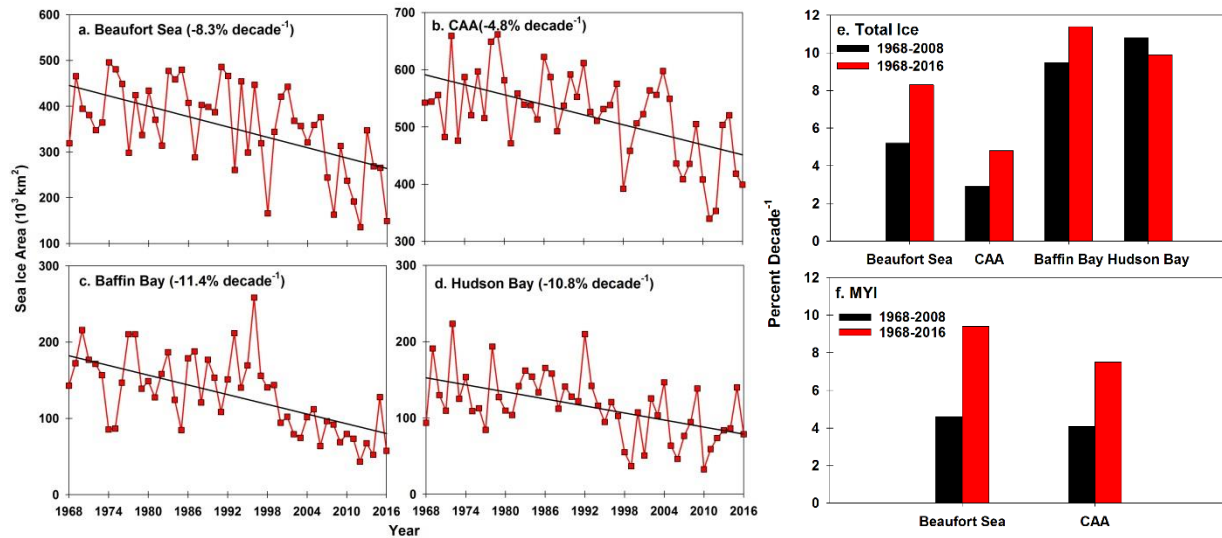


Figure 7: Time series of summer total sea ice area for the (a) Beaufort Sea, (b) Canadian Arctic Archipelago (CAA), (c) Baffin Bay and (d) Hudson Bay regions from 1968 to 2016. Comparison of trends between 1968-2008 and 1968-2016 for all ice (e) and multi-year ice (MYI) (f) for selected regions in the Canadian Arctic.

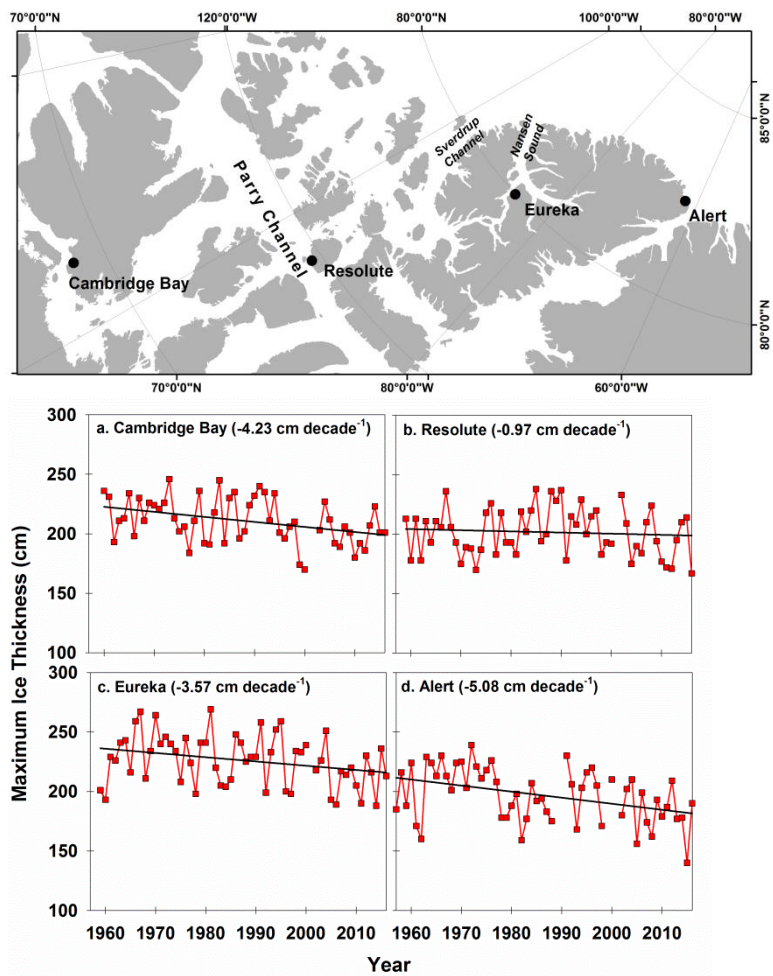


Figure 8: Time series and trend of observed maximum ice thickness at (a) Cambridge Bay, (b) Resolute, (c) Eureka and (d) Alert locations in the Canadian Arctic.

795

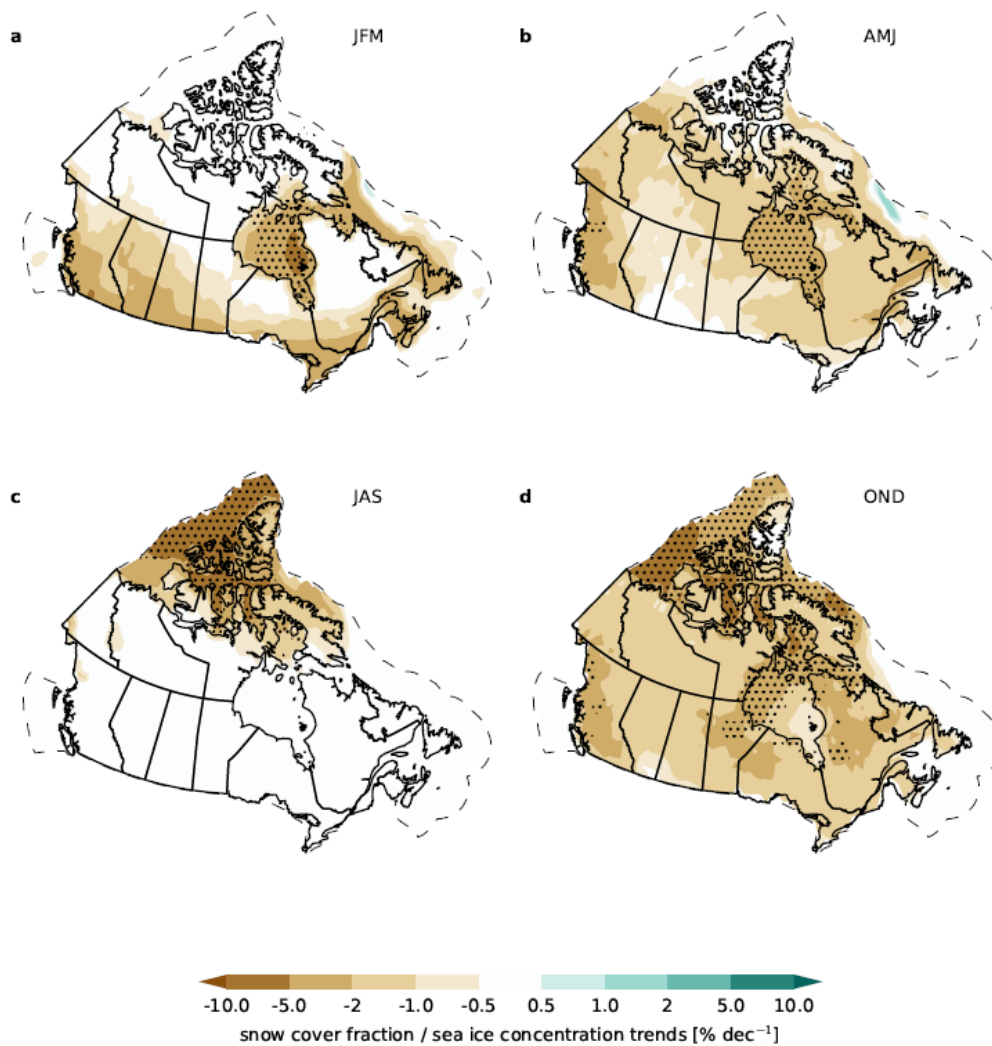


Figure 9: Projected terrestrial snow cover fraction and sea ice concentration trends for 2020-2050. Model simulations are described in Section 2.2. **Stippling indicates pointwise significance at the 90th percentile.**

800

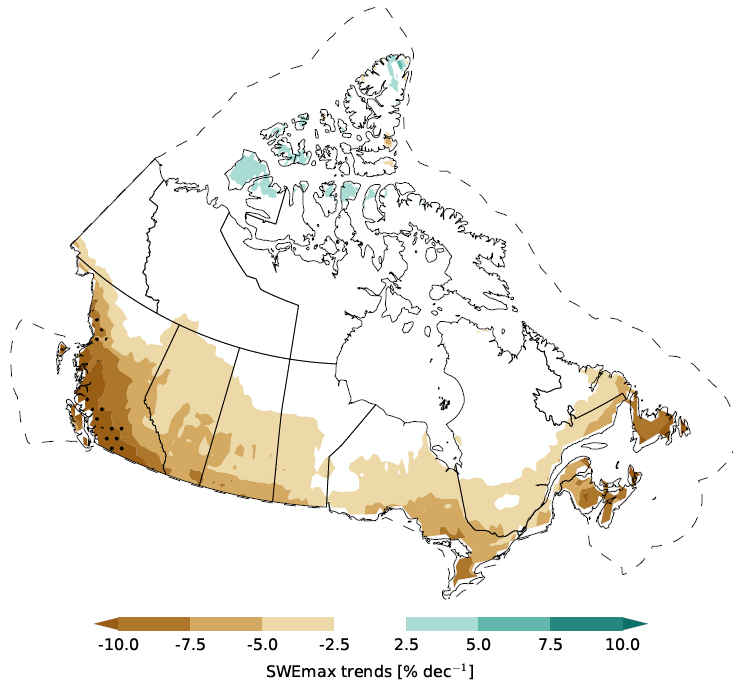


Figure 10: 2020-2050 trends in SWE_{max} from the CMIP5 ensemble. Stippling indicates pointwise significance at the 90th percentile. We show percent change relative to the climatological (1981-2015) mean because there is large variability in SWE_{max} across the country (high SWE in western cordillera; low SWE in the Prairies).

805

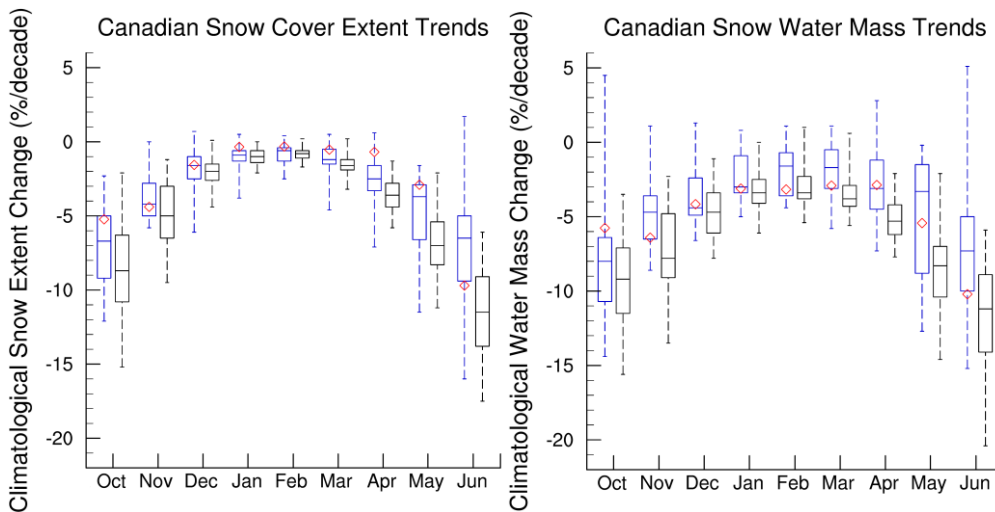
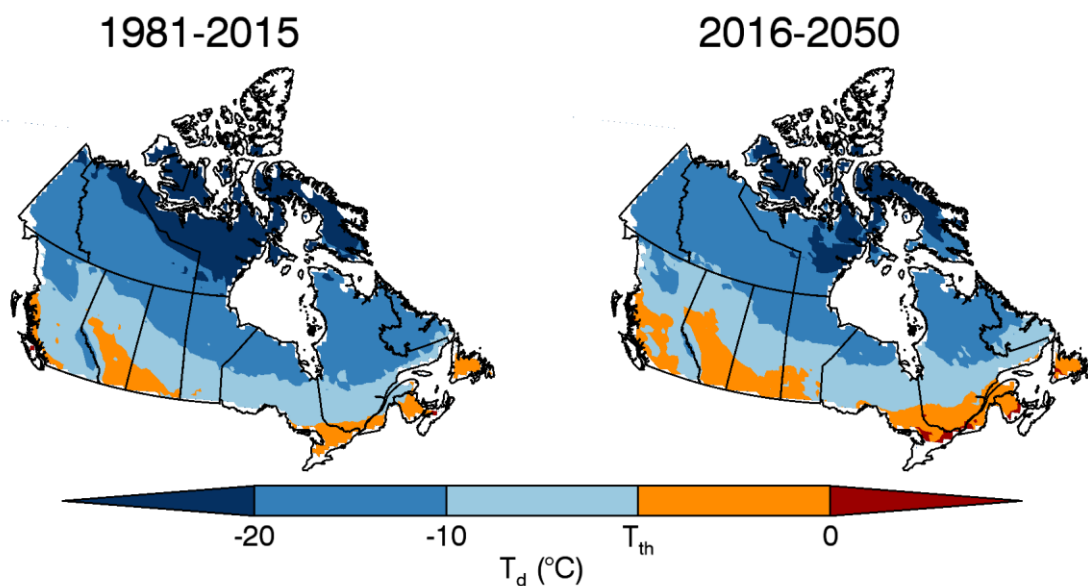


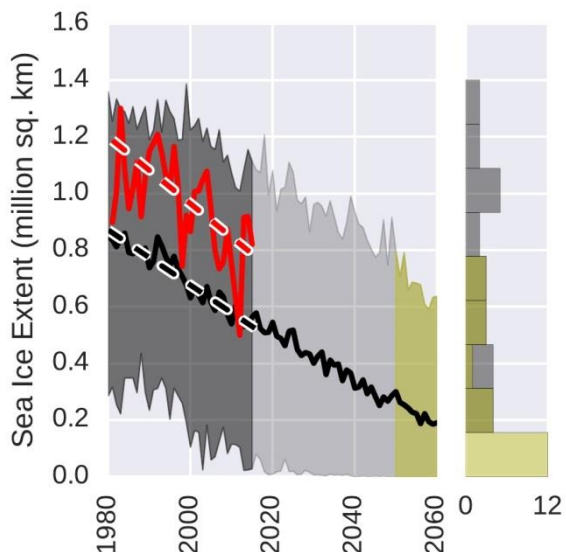
Figure 11: 2020-2050 monthly trends in Canadian snow cover extent (left) and snow water mass (right) from the CMIP5 multimodel ensemble (blue) and CanESM large initial condition ensemble (black). Monthly mean observational trends (1981-2015) from the snow dataset used in Section 2 are shown in red. For each box the enclosed region shows the 25th-75th percentile range, the horizontal line shows the median, and the dashed whiskers illustrate the minimum and maximum.

810



815

Figure 12: Temperature and precipitation controls on March snow water equivalent for historical period (left) and projections to 2050 (right). For the data presented here $T_{th} = -5.4^{\circ}\text{C}$ (more generally $T_{th} = -5 \pm 1^{\circ}\text{C}$). Regions with $T_d < T_{th}$ (blue) have March SWE dominated by precipitation variability while regions with $T_d > T_{th}$ (orange) have March SWE dominated by temperature variability.



820

Figure 13: Observed (red line) September sea ice extent over Canadian marine regions ($\text{SIC} > 0.15$); CMIP-5 multi-model mean (black line) and spread (shading). Histogram on the right shows the model distribution for 1980-2015 in black and for 2050-2060 in yellow.

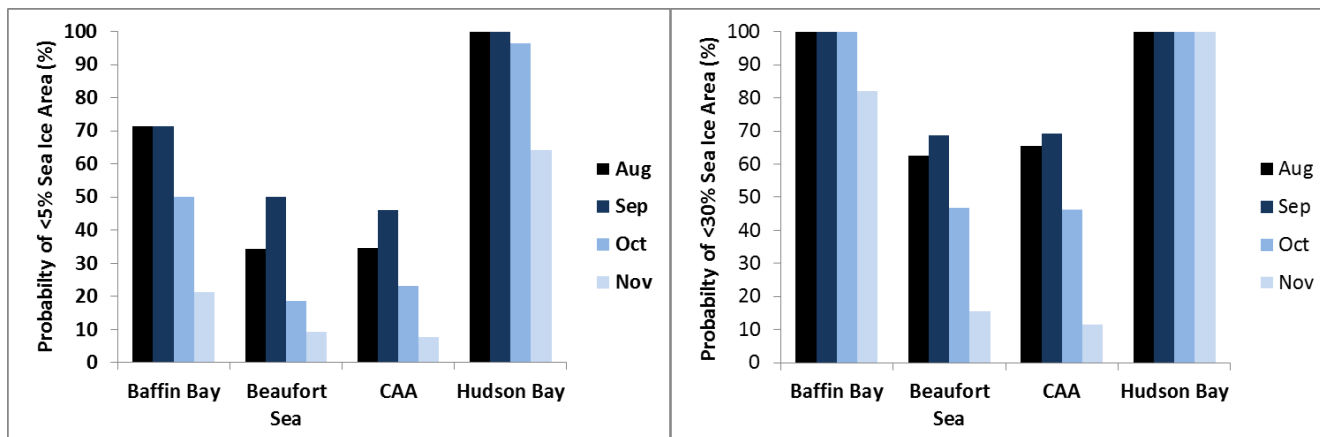


Figure 14: Probability of sea ice free conditions by 2050 from the CMIP5 multi-model mean using a 5% (left) and 30% (right) sea ice area threshold.