
Response to Reviewer 1

General comment: Thank you for the feedback on this paper and the suggestions, which led to an improved manuscript. The major change suggested was to include more information on the snow cover extent (climatology), and we have accordingly revised Figure 3 to include observed and simulated SCE. A general point we will mention is that this overview of the system's performance was kept concise to establish a baseline for future model versions.

Specific comments/replies:

RC: This is a well-written and useful record of how well snow and sea ice are simulated in an earth-system model and a related seasonal prediction system, albeit with rather brief discussions for the large number of figures shown.

Reply: Thank you for the kind feedback. We attempted to keep the discussion concise with the aim of establishing a baseline record of this system's performance.

RC: There should at least be references to how the land surface components of CanSIPS and CanESM2 represent snow, and any differences between them.

Reply: Thank you for this suggestion. This is addressed in the revised text, where we have provided more detail on the component models in CanESM2, CanCM4, and CanCM3.

Changes to the manuscript: component models of CanESM2, CanCM4, and CanCM3 are listed and relevant citations included.

RC: Without a figure showing annual cycles in snow cover extent, it is hard to judge how (physically) significant the trends in Figure 4 are. It would also be nice to see some time series of modelled and observed SCE to judge the trends and variability.

Reply: Thank you for pointing this out. We have added two rows to Figure 3 showing the seasonal cycle of SCE and used this to calculate the relative size of the observed changes in SCE in the discussion of Figure 4. We decided not to add additional time series of SCE since these trends are discussed extensively in Mudryk et al. (2017) and Mudryk et al. (in review, <https://www.the-cryosphere-discuss.net/tc-2017-198>).

Changes to manuscript: Figure 3 expanded to include changes in snow cover extent (SCE) and description of Figure 4 discusses magnitude of changes relative to climatology.

RC: A reference could be added in the conclusions for the design of LS3MIP (<https://www.geosci-model-dev.net/9/2809/2016/>).

Reply: Thank you, added.

Change to manuscript: Reference added.

RC: Figure 5: information that the IQR of observations is based on 5 datasets is repeated twice. Colour is redundant in this figure.

Reply: Thank you, corrected. We chose the coloring to distinguish the observations from the models.

Change to manuscript: Figure caption corrected.

RC: Figure 6: information that spatial means of trends have not been removed is repeated twice.

Reply: Thank you corrected.

Change to manuscript: Figure caption corrected.

RC: Figure 8: the latitude numbers could be rotated to be upright. Stating that the ORCA1 grid will be used without explanation or reference is not helpful.

Reply: Thank you, change to figure made and caption corrected.

Change to manuscript: Figure slightly modified and caption corrected.

RC: Figures 11 and 14: contours are labelled, but colour bars would be helpful.

Reply: Thank you, however in our view, the colors are intended to help distinguish features, but since contours are labelled and described in the caption we decided not to include a colorbar.

Changes to manuscript: none.

Response to Reviewer 2

General comment: We thank the reviewer for the detailed review and helpful comments. In revising the ms we have made several changes that we hope address the overall issue of readability and other shortcomings identified. The most important change we have made is to revise the methodological description in Section 2 to make it easier to follow; we thank the reviewer for pointing out this particular shortcoming.

Before continuing, we wish to make two general points. First, snow and sea ice analysis were kept in the same paper to reflect work within the CanSISE project. Second, although there is some review material in this study to provide background, and one figure included in the ms has been previously published, this assessment is not, in our view, a review paper. We thus did not feel it warranted to make this paper a 'one-stop shop' for information on the

Canadian modelling systems and the observational work carried out previously, which would have increased the length and would have made the paper less readable. We'll return to these points below.

Specific comments and replies:

RC: This draft is a review of studies carried out by the network of researchers within the project CanSISE. It deals with the quality of land snow and sea ice simulations in the CanESM2 earth system models, as well as the predictive capabilities of CanSIPS in land snow and sea ice predictions, with a focus on Canada and Canadian sector of the Arctic Ocean.

The draft is well written, and addresses a number of scientific studies, as well as methodological topics related to model assessment. It will be an interesting and very useful reference for the Canadian ESM and its predictive capacities. I recommend this draft for publication. However, I did not find it easy to read and review, and I would like to raise a few points that, according to me, would improve the manuscript.

(i) I find the paper a bit unbalanced, the 'snow' discussion being more developed than the 'sea ice' one. Both discussions are also mostly unrelated. To me, it could question the usefulness of having both snow and sea ice discussed in a single paper. I think the authors should make an effort in harmonizing the presentation. It is obvious that the same parameters drive both snow and sea ice biases in CanESM, but it should be clearer. Additionally, the paper would be a bit clearer if sections 3 and 4 were structured with subsection on sea ice and snow (3a, 3b, 3c...).

Reply: As mentioned in the general comment above, the decision to keep snow and sea ice analysis in the same paper reflected the status of observational, modeling, and seasonal forecast work with this model and the CanSISE project. We placed more emphasis on the quality of the terrestrial snow simulation, and trend analysis with the snow simulation, for two reasons: first, most of the observational work completed within the lifetime of CanSISE has focused on terrestrial snow; second, and a related point, is the fact that the sea ice simulation had well established shortcomings that simply can't be addressed with this version of the model which the project was tasked with analyzing. Despite differences in simulation quality of the free running model, both snow and sea ice seasonal prediction development has occurred within the scope of the CanSISE project, and we thought it was worth documenting both aspects within the current paper. As such, we have tried to establish a baseline for future assessment of the model.

The reviewer also suggests that it is obvious that the same parameters drive both snow and sea ice biases, but a single source of these biases are not obvious to us. For example, the most unrealistic feature of the snow mass is a positive bias in spring, and the most unrealistic feature of the sea ice is a negative bias in summer.

We agree that the sections needed to be better demarcated and hope that the current section headings make the presentation clearer.

Changes to ms: We have added subsections demarcating separate focuses on snow climatology and trends, and sea ice, in section 3. In the revision we have pointed out the differences in quality between the snow and sea ice simulation, which suggests that more focus should be placed on the snow simulation than the sea ice simulation. We have provided more background on which results are better established from previous papers and which are original to this paper.

RC: (ii) Like other review papers, there is a need to find the optimal level of details. To me, there is a lot of references to past studies in this draft, which sometimes is not selfexplanatory.

Although it really makes me want to read papers written by CanSISE's partners, I would find it useful to have more details in a reference paper as a 'one-stop shop'. For instance, provide more details on datasets included in the Blended-5 SWE; remind the readers on some technical details: the components of CanESM/CanCM, ensemble generation in the large ensemble, in CanSIPS, the definition of the assessment regions. . . Tables could be used. Another related point is that the paper contains a large number of figures, which are not always well-discussed in the main text, and possibly too much in the captions.

Reply: We thank the reviewer for this comment and the suggestions. In the revision, we agree about the need for more details in the text regarding the makeup of CanCM3, CanCM4, and CanESM2. We have also tried to improve the description of the method for generating the large ensemble.

Beyond this, however, it does not seem like the best idea for us to repeat with tables etc. the many details that are found in previous papers. Although there is merit in the reviewer's suggestions, there is something of a judgement call to be made here regarding whether this paper should provide a 'one-stop shop' of the Canadian modelling systems as the reviewer requests.

This brings us to the reviewer's point about whether this study should be characterized as a 'review' or an 'assessment'. The ms, to us, reflects a record of where this particular modelling system sits in the context of its applications for climate prediction and projection, rather than a typical review paper.

Regarding the level of details of figure descriptions: We opted to keep the description of the figures concise but we have in this revision tried to add details where the text was unclear. We have in the case of Figures 5-6 moved some of the detail to the main text and in the case of Figure 3 and Figure 7 improved the description. Our general approach has been to put details in the caption that would be used to point out features to the reader that would have interrupted the flow of the main text.

Changes to the ms: We have added more details of the component model descriptions and methodological details. We have adjust the level of detail in the text and the captions to make the paper more readable.

RC: (iii) Finally, as a non-Canadian (nearly) anonymous reviewer, I find the paper a bit too Canadian-centered. I am not surprised since it is a review paper from a Canadian project, and I acknowledge the major contribution of the CanSISE network to the field of snow and sea ice predictions. Though, the authors may wish to refer more to others' works. . .

Reply: We thank the reviewer for this suggestion. We agree that the work needed to be placed in better context and have added some reference to previous work - the original ms did indeed leave out explicit mention of work going on in seasonal sea ice prediction starting from 2011. Our focus on Canada and the Canadian Arctic did to some extent reflect the focus of research within this project and less of a broad assessment on the US and Eurasian cryosphere. We believe that the focus is similar to other regionally focused literature in this and other international journals, and reflects the regional focus of individual research programs. In addition, the seasonal prediction system results need to be focused on Canadian regions where products have been developed and assessed (e.g. the seasonal snow depth product in Fig. 14). Thus we have opted not to change the focus.

Changes to ms: Citations and references to previous work have been added, including reviewer's suggestions and others we thought suitable.

RC:
Minor comments

The abstract is clear and well-written

P2, L12, 'leading earth system': this is true, but a bit subjective. I would stay neutral and write 'global' earth system.

Reply: Thank you, language adjusted.

Changes to ms: Text has been changed.

RC:
P2, L16, 'this study': this paper is more a review than a study.

Reply:
Thank you, as we mentioned above, we are not in full agreement with the reviewer about the characterization of this work, but we have reworded this.

Change to ms: Text has been changed to say "The purpose of this paper is to evaluate the ability ..."

RC:
P3, L1, 'related climate parameters': these parameters should be defined once in the draft: surface temperature, snow precipitation, sea surface temperature. . .

Reply:

Thank you, language adjusted, we now say "This study focuses on snow, sea ice and related climate parameters and processes...". Please note that information related to surface winds (Figure 10), soil moisture content (Fig. 12), and sea level pressure (implicit in the work generating Fig. 16) is involved in the analysis here, but we didn't want to include a long list at this point.

Changes to ms: Text has been changed.

RC:

P3, L5, 'a more complete a characterization': too many a's.

P3, L5, 'observational uncertainty'.

Reply: Thank you, corrected.

Changes to ms: corrections made.

RC:

2. Models and data used

This section should be a bit re-written. I would start by a description of the component of the coupled atmosphere-ocean-sea ice-land model, then describe the Earth System Model (ie with Carbon cycle), and finally explain what is CanSIPS. It is more in line with the order used to discuss the results in sections 3 and 4. And it seems to me more logical to describe the components, before describing the initialization method...

Reply: We have revised the order of the description according to the reviewer's suggestions, and thank the reviewer for this suggestion to improve the text. We opted not to include a lot of detail as mentioned above, but have been more explicit about CanESM2, CanCM3, CanCM4, and why we did not carry out a thorough analysis of CanCM4 in this paper.

Changes made to ms: Section 2 has been largely rewritten to reflect the reviewers comments and provide a clearer path to the subsequent analysis.

RC:

P3, L11-12: Merryfield et al. (2013a) refer to the multi-system sea ice predictions combining CanSIPS and CFSR. The reference should be Merryfield et al (2013b). Although there is an inversion of both references in the main text. . . which is the impression I have after reading the full draft...

P3, L16: what is 'it'?

Reply: Thank you, both points corrected.

Changes made to ms: References and text corrected.

RC:

P3, L19: It is not clear to me what (3) does exactly. Is it about calibration? It could be interesting to have an example.

Reply: This point was to make the broad point that it is an operation product that is used for a variety of purposes - a couple of illustrative examples are included.

Changes made to ms: a reference to a figure in the paper the CanSIPS web site have been added.

RC:

P3, L23-29: Is it possible to provide any reference on the benefit of having an ESM? Is there any impact (positive or negative) of carbon cycle components on the state of the physical components?

Reply:

It is true that Merryfield et al. 2013a included a limited assessment of CanCM3 and CanCM4, which in principle could have been carried out in the areas of snow and sea ice for this paper. However, the Earth System Model CanESM2 is the only ECCO model used in CMIP5, that is forced with historical and projected forcings. Thus, the relevant runs of CanCM3 and CanCM4 under CMIP5 forcing protocols are not available for a clean comparison of the kind suggested by the reviewer. In the absence of consistently forced simulations, it would be difficult to attribute specific changes to the carbon cycle or to other differences. We have added more background explaining this in the text.

In addition, the reviewer's comment did remind us of a salient point that springtime positive biases in SWE were also found in the CanSIPS CanCM3 and CanCM4, whether or not they were constrained by observed meteorological data, in Sospedra-Alfonso et al. (2016b). A point to this effect has been added in Section 3.1

Changes made to ms: The reasons for the focus on CanESM2 has been clarified, and more details have been provided to explain the relationships between the different model systems.

RC:

P4, L1: CanESM alone includes a prognostic carbon cycle, isn't it?

Reply: Thank you, the revised text has corrected this.

Changes to ms: this has been corrected in the revision as part of the larger rewrite of section 2.

RC:

P4, L3-6: Could the authors provide a bit more details on the reasons of improvements in CanCM4 relative to CanCM3? Is there any change in the model physics? Resolution?

Reply: Thank you for the suggestion, we mention the changes but leave the details to the

description in Merryfield et al. (2013a).

Changes to ms: We have added some more information about CanCM3 and CanCM4 in the larger rewrite of section 2.

RC:

P4, L19: compared to many other CMIP5 models and operational seasonal prediction systems (e.g. MetOffice is 1/4°
, MeteoFrance is 1°
...).

P4, L19-23: it would be interesting to have somewhere information about the size of ensembles run for seasonal predictions.

P4, L24-25, 'much higher resolution': what resolution?

Reply: Thank you, the suggested changes have been made.

Changes made to ms: several changes.

RC:

P5, L7: what perturbations are used to generate the ensemble?

Reply: As described in Merryfield et al. 2013, each ensemble member, assimilates the same data but originates from different initial conditions. Thank you for the suggestion, but we opted not to include this level of detail in the current paper, since it requires explaining more about the initialization with details that are documented in the Merryfield paper.

RC:

To me, in this section 2, a discussion on 'methodology' is missing. What is the motivation behind using the 'Large ensemble'? Maybe the words 'detection and attribution' should be written somewhere. How do the authors define the regions over which the assessment will be conducted? It would be useful at this stage, and will enable a discussion on the resolution of the land-sea mask for instance...

Reply: Several modifications to the text were made, although the land-sea mask is not referred to in this section.

Changes made to ms: text changed to clarify motivation of using large ensemble and attribution of observed trends to externally forced signals.

RC:

P5, L15: is 'temperature' surface temperature? 2m-air temperature?

Reply: Thank you, this corrected to land-surface temperature throughout ms (as per documentation of HadCRUT4 dataset).

Changes made to ms: "temperature" changed to land-surface temperature in most places.

RC:

P5, L16: see above about the differences between CanCM4 and CanESM.

Reply: This has been changed in the rewrite of Section 2.

RC:

P5, L24: what about the orography in the (low resolution) model?

Reply: We are not sure what the reviewer means by this. The orography is resolved as per the resolution of the grid. Moving to higher resolution would potentially improve some details over the Western Cordillera. But note that the precipitation bias in Figure 1 is widespread and not confined to the Western Cordillera only.

RC:

P7, L34 and sq: shouldn't it be the same for sea ice? See comment (i).

Reply: The reviewer is likely correct, but the point in response to (i) is that a detailed regional look at sea ice trends for this model is problematic because of the pronounced biases in the sea ice climatology.

RC:

P8, L25: in terms of climatology

P9, L7-8: what is 'recently'? The review paper by Guémas and coauthors (see below) is never cited and provides a useful state-of-the-art of seasonal prediction of the Arctic sea ice.

Reply: thank you, corrections, clarification, and additional references were carried out.

Changes to the ms: minor corrections carried out.

RC:

P9, L26 and sq: the paragraph deals with land surface initialization, while it starts with reference to 'process representation of land surface'.

Reply: Added the words "and initialization" here. But we feel that the term 'process' should still be used. The point is that although no process sensitivity studies were carried out, distinctively initializing different components of the land surface model and looking at the related potential predictability provides insight into processes relevant to the prediction problem.

Changes made to ms: minor corrections.

RC:

P10, L27: referring to Guémas et al (2016) would be fine here too.

P11, L4: a reference to Chevallier and Salas-Mélia (2012) seems relevant here.

P12, L9-13: does it mean that future developments of CanESM/CanSIPS include increase of resolution of the global model?

Reply: Thank you, references added. We did not want to comment on future releases of the model beyond the points made in the ms.

Changes made to ms: references added.

RC:

P12, L23: reference to Lindsay et al. (2012) not in reference list. . . Is it really a viable solution?

Reply: Thanks for pointing this out. Thickness initialization is more of an aspiration, so we added a qualifier and another reference.

Changes made to ms: minor changes on this line.

P12, L33-34: references for LS3MIP and ESM-SnowMIP?

Reply: Thank you, added.

Changes made to ms: reference added.

RC:

Figure 1: what is 'temperature'?

Figure 3: definition of the regions considered (if I don't want to download Mudryk et al...)?

Figure 8: information on ORCA1o (not defined: reference?) seems not relevant here, or should be discussed in the main text (e.g. while presenting the components or their possible evolutions).

Reply: Thank you, all these changes have been made.

Changes made to ms: Figure captions changed.

RC:

References

Chevallier, M., and Salas Y Mélia, D., 2012. The role of sea ice thickness distribution in the Arctic sea ice potential predictability: a diagnostic approach with a coupled GCM. *Journal of Climate*, 25, 3025-3038, doi:10.1175/JCLI-D-11-00209.1

Guémas, V., Blanchard-Wrigglesworth, E., Chevallier, M., Day, J., Déqué, M., DoblasReyes, F., Fuckar, N., Germe, A., Hawkins, E., Keeley, S., Koenigk, T., Salas y Mélia, D., Tietsche, S., 2016. A review on Arctic sea ice predictability and prediction on seasonal-to-decadal timescales. *Quarterly Journal of the Royal Meteorological Society*, 142, 546–561. doi:10.1002/qj.2401.

Van den Hurk, B., Kim, H., Krinner, G., Seneviratne, S. I., Derksen, C., Oki, T., ... Viovy, N. (2016). LS3MIP (v1. 0) contribution to CMIP6: the Land Surface, Snow and Soil moisture Model Intercomparison Project—aims, setup and expected outcome, *Geosci. Model Dev.*, 9, 2809–2832.

Reply: Thank you for these references.

Changes made to ms: citations and references added.

To the editor: additional changes made to the ms.

Most of the Figures were changed slightly in the revised version.

Assessment of Snow, Sea Ice, and Related Climate Processes in Canada's Earth-System Model and Climate Prediction System

Paul J. Kushner¹, Lawrence R. Mudryk², William Merryfield², Jaison T. Ambadan³, Aaron Berg³, Adéline Bichet⁴, Ross Brown², Christopher P. Derksen², Stephen J. Déry⁵, Arlan Dirkson⁶, Greg Flato²,
5 Christopher G. Fletcher⁷, John C. Fyfe², Nathan Gillett², Christian Haas^{8,9}, Stephen Howell², Frédéric Laliberté², Kelly McCusker¹⁰, Michael Sigmond², Reinel Sospedra-Alfonso², Neil F. Tandon², Chad Thackeray⁷, Bruno Tremblay¹¹, Francis W. Zwiers¹²

¹Department of Physics, University of Toronto, M5S 1A7, Canada

²Climate Research Division, Environment and Climate Change Canada, M3H 5T4, Canada

10 ³Department of Geography, University of Guelph, N1G 2W1, Canada

⁴CNRS-LGGE/MEOM, 38041 Grenoble, France

⁵Department of Environmental Science, University of Northern British Columbia, V2N 4Z9, Canada

⁶School of Earth and Ocean Sciences, University of Victoria, V8W 2Y2, Canada

⁷Department of Geography and Environmental Management, University of Waterloo, N2L 3G1, Canada

15 ⁸Department of Earth and Space Science and Engineering, York University, M3J 1P3, Canada

⁹Climate Sciences Division, Alfred Wegener Institute, 27570, Germany

¹⁰Department of Atmospheric Sciences, University of Washington, 98195-1640, United States

¹¹Department of Atmospheric and Oceanic Sciences, McGill University, H3A 0B9, Canada

¹²Pacific Climate Impacts Consortium, University of Victoria, V8P 5C2, Canada

20 *Correspondence to:* Paul J. Kushner (paul.kushner@utoronto.ca)

Abstract. This study assesses the ability of the Canadian Earth-system Model 2 (CanESM2) and the Canadian Seasonal to Interannual Prediction System (CanSIPS) to simulate and predict snow and sea ice from seasonal to multi-decadal timescales, with a focus on the Canadian sector. To account for observational uncertainty, model structural uncertainty, and internal climate variability, the analysis uses multi-source observations, multiple Earth-System Models (ESMs) in Phase 5 of the
25 Coupled Model Intercomparison Project (CMIP5), and large initial condition ensembles of CanESM2 and other models. It is found that the ability of the CanESM2 simulation to capture snow-related climate parameters, such as cold-region surface temperature and precipitation, lies within the range of currently available international models. Accounting for the considerable disagreement among satellite-era observational datasets on the distribution of snow water equivalent, CanESM2 has too much
springtime snow mass over the Canada, reflecting a broader Northern Hemisphere positive bias. Biases in seasonal snow cover
30 extent are generally less pronounced. CanESM2 also exhibits retreat of springtime snow generally greater than observational estimates, after accounting for observational uncertainty and internal variability. Sea ice is biased low in the Canadian Arctic, which makes it difficult to assess the realism of long-term sea-ice trends there. The strengths and weaknesses of the modeling system need to be understood as a practical tradeoff: the Canadian models are relatively inexpensive computationally because
of their moderate resolution, thus enabling their use in operational seasonal prediction and for generating large ensembles of
35 multidecadal simulations. Improvements in climate prediction systems like CanSIPS rely not just on simulation quality but

Deleted: Canadian Seasonal to Interannual Prediction System (CanSIPS) and the

Deleted: and simulate

Deleted: archive

Deleted: cover

Deleted: ian land mass

Deleted: It

also on using novel observational constraints and the ready transfer of research to an operational setting. Improvements in seasonal forecasting practice arising from recent research include accurate initialization of snow and frozen soil, accounting for observational uncertainty in forecast verification, and sea-ice thickness initialization using statistical predictors available in real time.

5 1 Introduction

Seasonal snow cover and sea ice are integral to the cultural identity, history, and economy of northern nations like Canada. They also exert an enormous physical influence on the earth system, ranging from local interactions with winds and temperatures in the Arctic and snow-covered regions, to larger-scale interactions with weather systems and ocean circulation, to global-scale influences on the Earth's energy balance. In recent decades, dramatic changes in Canada's snow cover and sea ice have been witnessed and documented (Derksen et al., 2012; Najafi et al., 2015). This has driven the need to better understand and predict these fields for the coming seasons, years and decades. To address this need, Canada has helped lead the global effort to better observe and model snow, sea ice, and related climate parameters (such as northern high latitude land-surface temperature and precipitation). This effort includes Canadian contributions to the International Polar Year (e.g. Kulkarni et al., 2012), to the development of earth system model and climate prediction systems (Merryfield et al., 2013a; Sigmond et al., 2013; van den Hurk et al., 2016), and to leadership of ongoing field and remote sensing efforts (King et al., 2015).

As part of Canada's larger effort in snow and sea-ice research, the focus here is on seasonal and longer timescale prediction of terrestrial snow, sea-ice cover, and related climate variability. The purpose of this paper is to evaluate the ability of Canada's current earth system model (ESM) and climate prediction system to carry out this kind of prediction in the context of the development of new observational products. This work was undertaken by the Canadian Sea Ice and Snow Evolution Network (CanSISE), a core project of the Climate Change and Atmospheric Research Program of the Natural Sciences and Engineering Research Council of Canada (CCAR/NSERC)¹. Model evaluation, which typically compares a model to observations, needs to account for several sources of uncertainty, including impacts of spatial and temporal sampling in the presence of internal climate variability and observational uncertainty (whether instrumental error or errors related to data processing and retrieval

Deleted: leading

Deleted: this study is focused

Deleted: the

Deleted: study

Deleted: Initiative

¹ The CanSISE Network was funded for five years starting in 2013. It is a partnership between several Canadian Universities (Toronto, British Columbia, Guelph, McGill, Northern British Columbia, Victoria, Waterloo, and York); Environment and Climate Change Canada [ECCC; research groups include the Canadian Centre for Climate Modelling and Analysis (CCCma) and the Climate Processes Section, both in the Climate Research Division; and the Canadian Ice Service (CIS)], and the Pacific Climate Impacts Consortium (PCIC).

systems). Our evaluation of Canadian models is helped by ready access and comparison with output from internationally available models, to provide a suitable scientific context.

This study focuses on snow, sea ice and related climate parameters and processes relevant to the Canadian land mass and the pan-Arctic region. The Canadian ESM and climate prediction system has been studied in a variety of related settings (e.g. Arora et al. 2011; Merryfield et al. 2013a, b; Gillet et al. 2012; Sigmond et al. 2013, Kirtman et al. 2013; Flato et al. 2013). We here seek to more fully assess simulation and prediction of seasonal snow cover and regional sea-ice variability accompanied by a more complete characterization of observational uncertainty, model structural uncertainty, and internal climate variability. After reviewing the current generation Canadian Seasonal to Interannual Prediction System and Canadian Earth-System Model 2 (CanSIPS and CanESM2; section 2), we characterize climatological behavior and trends for snow and sea ice in these systems (section 3), provide an overview of recent developments in seasonal snow and sea-ice prediction (section 4), and conclude (section 5) with a summary and discussion of new directions for prediction system development.

Deleted: parameters

Deleted: a

Deleted:

2 Models and data used

In section 3, our analysis will focus on CanESM2 (Arora et al., 2011; Scinocca et al., 2016). This is the earth-system model used by the Canadian Centre for Climate Modeling and Analysis (CCCma) of Environment and Climate Change Canada (ECCC) for its contribution to Phase 5 of the Coupled Model Intercomparison Project (CMIP5). CanESM2 combines atmosphere, ocean, land-surface (including snow), sea-ice, and carbon-cycle components in a coupled framework in which all model components interact. The system can simulate the past and projected state of global temperature, circulation, carbon dioxide concentrations, etc. under the influence of external forcing, but independently of assimilated ocean and atmospheric initialization data. As summarized in Arora et al. (2011), the atmospheric and oceanic components are the fourth generation atmospheric and oceanic general circulation models CanAM4 and CanOM4, the prognostic carbon-cycle components are the Canadian Model of Ocean Carbon (CMOC) and the Canadian Terrestrial Ecosystem Model (CTEM), the land-surface component (including the snow scheme) is version 3 of the Canadian Land Surface Scheme (CLASS), and the sea-ice component is the Flato and Hibler (1992) cavitating fluid scheme. As with most other models participating in CMIP5, CanESM2 does not use flux adjustments that artificially constrain the climate system to be in a state of energy and water balance. Following CMIP5 protocols, the model includes concentrations and emissions of greenhouse gases, aerosol and aerosol-precursor emissions, and prescriptions for land-cover change (Arora et al. 2011).

CanESM2 has moderate spatial resolution compared to other CMIP5 models (approximately 2.8° horizontal grid spacing and up to 35 vertical levels in the atmosphere; approximately 100 km horizontal grid spacing and up to 40 levels in the ocean). This resolution accounts for constraints on available computing resources. It sufficiently resolves salient features of the global atmosphere-ocean circulation while still permitting the execution of large initial condition ensembles of model simulations to

adequately sample internal variability under different external forcings. We note that ECCC has also made a complementary multi-year investment in regional climate modelling (Scinocca et al., 2016) to provide higher resolution over North America (with versions at 50 km and at 25 km grid resolution) to address the shortcomings of coarse resolution.

5 In section 4, we consider the application over Canada of CanSIPS (Merryfield et al. 2013a), the operational prediction system of the Canadian Meteorological Centre (CMC) for climate variability on seasonal to interannual (several-month to multiple-year) timescales. Like CanESM2, CanSIPS is also a multi-component interactive system. However, unlike CanESM2, when operating as a prediction system CanSIPS starts from an initial state that approximates the real-world state at a given initial time. CanSIPS includes 1) a data assimilation system that estimates realistic initial states of the atmosphere, ocean, land, and sea ice to start the forecasts; 2) two separate coupled climate models (the earlier generation Canadian Coupled Model 3 [CanCM3] and the later generation Canadian Coupled Model [CanCM4]) that advance the simulated system from this initial condition (using an ensemble size of 10 for each model); and 3) diagnostic systems to analyze the output and generate useful forecasts for operational use within ECCC's Meteorological Service of Canada (e.g. Fig. 14 below and the probabilistic seasonal forecast at https://weather.gc.ca/saisons/prob_e.html). Evaluations of CanSIPS need to consider all three parts of the seasonal prediction system. CanCM4 has the same atmosphere, ocean, land, and sea ice components as CanESM2, but does not include CanESM2's carbon cycle components. CanCM3 has the previous-generation atmosphere and ocean components relative to CanCM4 and CanESM2, but the same land-surface and sea-ice components as CanCM4 and CanESM2 (Merryfield et al. 2013a).

20 Merryfield et al. (2013a) summarize the performance of CanCM3 and CanCM4 when the models are run independently of assimilated data. CanCM4 reduces the global mean absolute error of ocean surface temperatures compared to CanCM3, indicating an overall improvement in the coupled ocean atmosphere state that results from improved physical parameterizations and finer resolution. Relative to CanCM3 and observations, CanCM4 tends to warm more rapidly under the effects of anthropogenic radiative forcing over the 1970-2009 period. In CanCM3, the simulation is characterized by excessive pan-
25 Arctic sea-ice cover in summer and winter and a small rate of sea-ice loss compared to observations. In CanCM4, while there is still excessive sea-ice cover in winter, there is too little sea ice in summer (see section 3 below). The rate of sea-ice loss in CanCM4 is more in line with recent observations than that in CanCM3 (Stroeve et al., 2012); however, caution is required to interpret recent sea-ice loss rates in light of the large amount of multidecadal variability expected in these trends (e.g. Notz, 2012; Swart et al., 2015). Because CMIP5 simulations were carried out with CanESM2 but not CanCM4, the simulations
30 required to do a clean comparison of CanCM4 and CanESM2, and thus gauge the impact of carbon-cycle processes on simulation quality, are not available.

When run as a prediction system, CanSIPS, combining CanCM3 and CanCM4, is able to show multi-month skill in seasonal forecasts of detrended sea-ice area anomalies, comparable to that obtained in other modelling systems (Merryfield et al.,

Deleted: and its component models

Deleted: provide Environment and Climate Change Canada's (ECCC

Deleted:)

Deleted: current

Deleted: forecast

Deleted: s

Deleted: (Merryfield et al. 2013a) combines a dynamical ocean model (that simulates three-dimensional ocean circulation and heat and salinity transport) with atmosphere, land surface (including snow) and sea-ice component models in a coupled framework in which all model components interact

Deleted: The system's surface energy and water budgets are in sufficient balance to avoid climate state drift over the course of longer simulations.

Deleted: It

Deleted: CanCM3 has a very small annual mean sea surface temperature bias, and C

Deleted: captured in the latest generation model (Merryfield et al., 2013a).

Deleted: climate

Deleted: change

Deleted: This characteristic is relevant to snow and sea-ice variability and trends and variability in CanESM2 (section 3).

Deleted:

2013b), and generally enhanced skill relative to a statistical persistence forecast (Sigmond et al., 2013). The assessed skill depends on the verification dataset (Sigmond et al. 2013), especially for total (non-detrended) anomalies. Such issues will be revisited in this study.

Our assessment of CanSIPS/CanESM2 is enhanced by two recent research products arising from CanSISE: the Blended-5 snow water equivalent (SWE) dataset of Mudryk et al. (2015) and the CanESM2 Large Ensemble of simulations from CanESM2. The Blended-5 dataset addresses the need for a SWE verification dataset, and, potentially, for initialization of snow-related parameters in CanSIPS and other prediction systems. Blended-5 builds on long-term work of ECCC (e.g. Brown et al., 2010; Derksen and Brown, 2012; Brown and Derksen, 2013) and consists of an ensemble of gridded SWE datasets over 1981-2010 from a variety of sources including remote sensing, land surface assimilation systems, and reanalysis driven snow models. The papers of Mudryk et al. (2015, 2017) detail the components, quality assessment, and characteristics of the Blended-5 dataset.

The use of large initial condition ensembles has afforded a renewed assessment of the impacts of natural climate variability on recent and projected climatic variability and trends (e.g. Deser et al. 2012, Kay et al. 2015). The CanSISE project team designed the CanESM2 Large Ensemble (e.g. Sigmond and Fyfe, 2016), which consists of four sets of 50 simulations each of CanESM2 that examine the impact of natural and anthropogenic forcings over the period 1950-2100 in the presence of internal climate variability. For each of the five realizations run by CCCma for CMIP5, a new set of ten simulations is generated by slightly perturbing the atmospheric state at the beginning of 1950, with ten different perturbations. These 50 realizations are then integrated forward until 2005 with CMIP5 historical forcings (Taylor et al., 2012); from 2006-2100, the RCP8.5 CMIP5 scenario is used. The first ensemble set, which applies all available external forcings, will be the one used here. Additional sets of attribution integrations not analyzed here include just historic natural external forcings (solar and volcanic), just historic anthropogenic aerosol forcings, and just stratospheric ozone forcing. Each realization in each set is identical apart from its initial conditions. Thus, the ensemble mean of a given 50 member set is characterized by about a factor seven less internal variability than a single realization, and therefore provides a relatively robust estimate of that set's externally forced signal. The distinctively forced ensembles permit attribution of observed climate signals to different external forcings. The CanESM2 Large Ensemble has been used in several current and ongoing studies (Sigmond and Fyfe, 2016; McKusker et al., 2016; Gagné et al., 2016; Fyfe et al., 2016; Mudryk et al., 2017; Kirchmeier-Young et al., 2016). We also use similar initial condition ensembles of the National Center for Atmospheric Research Community Earth-System Model 1 (NCAR CESM1; Kay et al., 2015) and the NCAR Community Climate System Model 4 (CCSM4; Mudryk et al., 2013). Other observational sources and modelling results used in this study will be described in the text and figure captions. In what follows, our primary focus is on Canada and the pan-Arctic, placed in the context of Northern Hemisphere climate.

Deleted: The coupled climate models and ESMs can also be run independently of the data assimilation system. Run in this way, the same modelling system can be used to project long-term climate behavior under the influence of greenhouse gas emissions and other anthropogenic and natural forcings, but independently of particular initial conditions in the atmosphere and ocean. ECCC's Canadian Centre for Climate Modeling and Analysis (CCCma) uses an extension of CanCM4 called the Canadian Earth-System Model 2 (CanESM2; Arora et al., 2011; Scinocca et al., 2016), which includes interactive land and ocean carbon cycle components to project the future state of global temperature, circulation, carbon dioxide concentrations, etc. under the influence of external forcing.

As with most other models participating in CMIP5, CanESM2 does not use flux adjustments that artificially constrain the climate system to be in a state of energy and water balance; CanCM4 and CanESM2 use time varying volcanic forcing, and include a prognostic (interactive) carbon cycle that uses biological models to simulate carbon cycling in the coupled atmosphere/land/ocean/biosphere system. These systems compare well to other earth system models and climate prediction systems (Merryfield et al., 2013a and other citations in the introduction).

Deleted: CanCM3 has a very small annual mean sea surface temperature bias, and CanCM4 reduces the global mean absolute error of ocean surface temperatures compared to CanCM3, indicating an overall improvement in the coupled ocean atmosphere state captured in the latest generation model (Merryfield et al., 2013a). Relative to CanCM3 and observations, CanCM4 tends to warm more rapidly under the effects of anthropogenic climate change over the 1970-2009 period. This characteristic is relevant to snow and sea-ice variability and trends and variability in CanESM2 (section 3). In CanCM3, the simulation is characterized by excessive pan-Arctic sea-ice cover in summer and winter and a small rate of sea-ice loss compared to observations. In CanCM4, while there is still excessive sea-ice cover in winter, there is too little sea ice in summer (section 3). The rate of sea-ice loss in CanCM4 is more in line with recent observations than that in CanCM3 (Stroeve et al., 2012); however, caution is required to interpret recent sea-ice loss rates in light of the large amount of multidecadal variability expected in these trends (e.g. Notz, 2012; Swart et al., 2015). CanSIPS, combining CanCM3 and CanCM4, is able to show multi-month skill in seasonal forecasts of detrended sea-ice area anomalies, comparable to that obtained in other modelling systems (Merryfield et al., 2013b), and generally enhanced skill relative to a statistical persistence forecast (Sigmond et al., 2011).

Deleted:

The CanSIPS and CanESM2 systems have moderate spatial resolution compared to many other CMIP5 models (approximately 2.8° horizontal grid spacing and up to 35 vertical levels in the atmosphere; approximately 100 km horizontal grid spacing and up to 40 levels in the ocean). This resolution accounts for constraints on

Deleted:

Deleted: T

Deleted: 1

Deleted: During the period 1951-2005, the large ensemble is run using

Deleted: affords a more thorough assessment of the uncertainty connected to internal climate variability than is possible in past analysis efforts and

3 CanESM2 climatology and trends

3.1 Observed and simulated terrestrial snow climatology

5 We first evaluate the climatological characteristics of CanESM2's land-surface temperature, precipitation, and snow water equivalent (SWE) for the Canadian land mass. In winter and spring, the distribution of land-surface temperature over Canada is well reproduced in CanESM2, although a warm bias is evident in both seasons (left and central panels of the top rows of Figs. 1-2). The Taylor (2001) diagram for land-surface temperature (top row, right panels of Figs. 1-2) shows that CanESM2 compares well to other CMIP5 models (the same models and realizations are used in Mudryk et al., 2017) in capturing the spatial pattern and correlation with observations, although the spatial gradients are somewhat stronger than observed for winter (as shown by the distance of the CanESM2 point from the origin in the Taylor diagram), associated with a stronger south-to-
10 north temperature gradient than observed. In JFM precipitation (central row of Figs. 1-2), the general pattern and spatial gradient strength are captured in the model, but there is excessive wintertime precipitation over most of Canada, including the Western Cordillera, sub-Arctic and Arctic, in both seasons. This excessive precipitation contributes towards a bias of excessive SWE over much of Western Canada and the Canadian Sub-Arctic that is particularly pronounced in spring (lower row of Figs.
15 1-2). CanESM2 SWE has greater spatial variance than the Blended-5 SWE ensemble mean and most of the individual component datasets of the Blended 5 (lower right panel of Figs. 1-2). Generally speaking, the Taylor diagrams in Figs. 1-2 suggest that CanESM2 is well within the state of the art of current models for the climate parameters related to seasonal snow cover.

20 Observed SWE climatology, variability and trends are relatively non-robust compared to variables such as land-surface temperature (Mudryk et al., 2015, 2017) and for this reason we assess some aspects of the spread across the Blended-5 SWE datasets. Individual observational datasets contributing to Blended-5 also show stronger spatial gradients than the Blended-5 mean (circles filled with light brown in the Taylor diagram in the lower right panels of Figs. 1-2). This is in part expected because the observational mean will cancel random errors. However, this also suggests that there is considerable uncertainty
25 in the spatial variance, and so it is difficult to assess how realistically spatial variance is captured in CanESM2 and the other CMIP5 models. This observational uncertainty is also evident in the seasonal cycle of total snow mass aggregated for Canada and the Northern Hemisphere, as well as geographic subregions (top two rows of Fig. 3, gray shading). For example, for the Northern Hemisphere (second row, first column), the range in Blended-5 estimates of peak snow mass in February is over 50% of the average, and is driven mainly by uncertainty in Arctic (second row, third column) and alpine regions (second row,
30 fourth column). The individual datasets in the Blended-5 product are not shown in Fig. 3, but their characteristics are discussed in Mudryk et al. 2015. The NASA Global Land Data Assimilation System (GLDAS) provides, an estimate well below the

Formatted: Normal

Deleted: , taking CanESM2 to be representative of the physical coupled model CanCM4, which is one of the component models of CanSIPS

Deleted: strongly

Deleted: There is a large spread in the snow products for total snow mass for most regions (gray shading)

Deleted: , with th

Deleted: ing

multi-dataset mean, the MERRA reanalysis dataset typically provides a central estimate, and the maximum estimate varies with region among the remaining three datasets.

Deleted: providing

Deleted: varying

Deleted: (individual datasets not shown here but are discussed in Mudryk et al. 2015).

Deleted: While

Deleted: there is

Deleted: SWE

After accounting for the considerable observational uncertainty in total snow mass, it is nevertheless possible to assess the realism of CanESM2's simulation. The CanESM2 snow mass over Canada is plotted as originally available on the model's land grid (light teal points, shown only in the first row and first column of Fig. 3) and as adjusted to reflect the observational mask which is on a finer scale (dark teal points). The adjustment is downward because some of the model's snow mass is located in grid cells that, in reality, are only partially covered by land. The positive bias of CanESM2 relative to the observational mean (Figs. 1-2) is evident in the seasonal cycle in snow mass over Canada (first row of Fig. 3), especially in spring in midlatitudes, and reflects a broader Northern Hemisphere positive bias (second row of Fig. 3). Sospedra-Alfonso et al. (2016b) also find that CanCM4 model that contribute to CanSIPS features a positive springtime SWE bias. For comparison, the CMIP5 multi-model mean over Canada (red x symbols) does not feature as pronounced a bias. The CMIP5 model range (not shown) spans from the lowest observational estimate to above the CanESM2, but CanESM2 is on the high end, especially during spring in the midlatitudes. Our assessment is that, especially in midlatitudes, CanESM2 simulates excessive springtime snow associated with excessive wintertime precipitation building up throughout winter and into spring (middle rows of Figs. 1-2).

Deleted: bottom

Deleted: top

Deleted: The CanESM2 snow climatology is plotted as originally available on the model's land grid (dark teal points in Fig. 3) and as adjusted to reflect the observational mask which is on a finer scale (light teal points). The adjustment is downward because some of the model's snow mass is located in grid cells that, in reality, are only partially covered by land.

Deleted: CanESM2's SWE is generally within the observational range but is above that range in springtime. This springtime positive bias is exacerbated over Canada in particular (bottom row), especially outside the Arctic.

Deleted: (shown, for Canada only, in the bottom row)

Deleted: such

The seasonal cycle of snow-cover extent (SCE) is shown in the third and fourth rows of Fig. 3. Here, observed SCE is derived from the Blended-5 dataset by converting SWE to SCE using a threshold of 4 mm; this threshold was tested in Mudryk et al. 2017. For the observational products in the Blended-5 dataset, the relative uncertainty in SCE is generally less than for snow mass. For example, the observational range in peak Northern Hemisphere SCE in January is about 15%, and is dominated by uncertainty in midlatitude and Arctic regions. A modest positive springtime excess of SCE is evident for CanESM2 for Canada and the Northern Hemisphere. On the whole, observed SCE is better constrained than observed snow mass, and simulated SCE is generally more realistic than simulated snow mass for CanESM2, as well as for the average over the CMIP5 models.

Deleted:

Formatted: Font: Not Bold, No underline

Formatted: No underline, English (UK)

Deleted: snow

Deleted: -cover extent trends

3.2 Observed and simulated trends in terrestrial snow

A standard target for snow process analysis in climate models is trends of SCE, which are strongly temperature controlled (e.g. Brutel-Vuilmet et al., 2013; Mudryk et al., 2017). Assessing the ability of models to capture these trends needs to account for natural variability, forced variability, observational uncertainty, and intermodel differences. We show in Fig. 4 the trends in snow cover extent (SCE) derived from the Blended-5 dataset for the Northern Hemisphere in January-March and April-June. In both seasons, there is a spread of observed seasonal snow cover reduction estimates from 0.0 to -0.5 million km² per decade in winter (based on a simple interquartile range for this small number of observational datasets), and from -0.1 to -0.6 million km² in spring. The red horizontal line in the box plot represents the median over the Blended-5 datasets. Over the 25 year observational period, the trends correspond to an approximate snow loss that is at most 4% of JFM SCE and in the range of 5-

Deleted: (by converting SWE to SCE using a threshold of 4 mm; this threshold was tested in Mudryk et al., 2017)

Deleted: 2

40% of AMJ SCE. The range of trends from the CanESM2 Large Ensemble, NCAR CESM1, and NCAR CCSM4 suggests that internal variability alone provides an uncertainty range of about 0.5 million km² per decade. Assuming internal variability is realistic in the models, this is the limit of precision we can expect in assessing recent trends. CanESM2 consistently produces greater snow loss than NCAR CCSM4 and CESM1, especially in AMJ. We conclude that all the models displayed fall within wintertime snow retreat estimates, that NCAR CCSM4 and CESM1 overlap with estimates of observed snow retreat in spring, but that CanESM2 exhibits more spring snow retreat than our best estimate of the observations. This excessive snow retreat is associated in part with excessive global warming in the model mentioned in section 2 (Mudryk et al., 2017).

Deleted: The red horizontal line in the box plot represents the median over the Blended-5 datasets.

Deleted: well

Deleted: represented

A more challenging target for the purpose of simulation and attribution of climate change on a regional scale is the spatial pattern of observed climate fluctuations in recent decades. Acknowledging the overall biases noted above, we concentrate our analysis on the response patterns with spatial means removed. We first show the wintertime 1981-2005 land-surface temperature trend pattern with the spatial mean removed in the upper left panel of Fig. 5. This represents a predominantly positive meridional gradient of land-surface temperature change from southern to northern Canada, reflecting wintertime Arctic amplification of warming. The same field in individual realizations of CESM1 and CanESM2 has a spatial correlation in the range of -0.6 to +0.6 (Taylor diagram in lower left panel of Fig. 5), suggesting that these patterns are affected by significant internal variability (Deser et al., 2012). There are more realizations with positive than negative spatial correlation in winter land-surface temperature trend patterns, which is consistent with the anticipated effect of anthropogenic forcing. Wintertime land-surface temperature trends systematically show greater spatial variance than the estimated warming pattern from the single observational land-surface temperature dataset employed here. This could be related to stronger (more negative) meridional gradients in land-surface temperature and its trends in the models compared to the observational dataset. Spring time land-surface temperature trend patterns (top left panel of Fig. 6) feature anomalously negative changes in the Canadian prairie regions and positive changes around the coastal regions. It is harder to find realizations in the spring that correspond to the observed pattern (left Taylor diagram in bottom row of Fig. 6), and spatial variance of the land-surface temperature trends appear to be biased high as in winter. For precipitation, there is little evidence of consistent pattern matching between the observations and individual realizations, for winter or spring (middle column, top and bottom panels of Figs. 5-6). For SWE spatial patterns (right column, top and bottom panels of Figs. 5-6), the structural details of the trend maps are also not readily found in the models compared to the mean of the Blended-5 SWE. Compared to the ensemble mean of the Blended-5 observations, the simulations show greater spatial variance in SWE trends, but this is partially owing to smoothing of spatial structure in observational errors, as is shown by the scatter of SWE trends by individual contributors to the Blended-5 dataset (light brown circles in Taylor diagrams).

Deleted: The

Deleted: anomalous

Deleted: (i.e. the trend with the spatial mean removed,

Deleted:)

Deleted: hemispheric

Deleted: polar

Deleted: temperature

Deleted: time season

It is possible to find individual realizations in the CanESM2 large ensemble that either match fairly well or fairly poorly with observed trends. In the second row of Figs. 5 and 6, we show for the two seasons of JFM and AMJ respectively the land-surface temperature, precipitation, and SWE trends for the best all-round match realization, which is a single realization having

Deleted: , by one measure,

Deleted: (

Formatted: Font: Italic

Formatted: Font: Italic

the greatest average pattern correlation across the three fields (land-surface temperature, precipitation, and SWE) and the two seasons of JFM and AMJ. The spatial pattern correlation coefficient of each field with its observational counterpart is labelled. Plotted in the third row of Figs. 5 and 6 is the worst all-round match realization, which is the single realization having the least (most negative) pattern correlation. The best-match realization exhibits tradeoffs across fields, for example in the ability to represent the structured pattern of springtime precipitation change ($r=0.38$ for the middle panel of the second row of Fig. 6) versus wintertime land-surface temperature change ($r=0.01$ for the left panel of the second row of Fig. 5). The worst-match case exhibits a similar range of correlations, on the negative side, and generally looks quite different from the best-match case. This preliminary analysis of intraensemble variability suggests limits on how much regional-scale information about changes for snow cover and related climate variables can be extracted from ESMs. The key point is that caution is needed in judging a model on its ability to reproduce spatial patterns of trends in SWE and related climate parameters, even on these multidecadal timescales.

Deleted: and third rows of Figs. 5-6).

Deleted: (second row of Figs. 5-6)

Deleted: (third row of Figs. 5-6)

Deleted: is reflects the basic point t

The spatial pattern of CanESM2 land-surface temperature and precipitation trends is generally representative of that found in individual realizations of the CMIP5 datasets, in the sense that the individual realizations of CanESM2 and other CMIP5 models have positive pattern correlations with the CMIP5 multi-model mean (Taylor diagrams not shown). Consistently, the CMIP5 multimodel mean of the land-surface temperature and precipitation trends are generally similar to the CanESM2 ensemble mean (winter example shown in the top two rows of Fig. 7; note that in Fig. 7 the spatial mean of the patterns is not removed in order to allow comparison of the overall responses in CanESM2 to CMIP5). However, for SWE, we find CanESM2's pattern is typically opposite that of individual realizations from other models in CMIP5 (not shown) as is also evident in the ensemble mean (bottom row of Fig. 7). In particular, CanESM2 shows a strong positive trend in the Western Cordillera and a weaker positive trend in Southern Ontario and eastern Canada in both winter (Fig. 7) and spring (not shown), whereas a reduction of SWE is found in these regions and seasons in CMIP5.

Deleted:).

3.2 Arctic sea ice in CanESM2

Turning to sea ice, we recall that it is well established that summertime Arctic sea-ice area or extent is biased low in CanESM2 (Stroeve et al., 2012; Merryfield et al. 2013a; Laliberté et al. 2016). We thus focus a limited amount of additional analysis on sea ice in the Canadian sector. The established low bias is borne out in the Canadian Arctic sector (top two panels of Fig. 8), where CanESM2 has less than half of the observed sea-ice coverage in the Beaufort Sea-Arctic Ocean sector. Further limiting the utility of regional sea-ice analysis with this model is the moderate spatial resolution of the model and its associated land-sea distribution, particularly in the Canadian Arctic Archipelago (central panel of Fig. 8). The summertime sea-ice extent is among the lowest of all CMIP5 models in the Canadian Arctic as a whole. In Canadian Arctic regions, summertime sea-ice extent is biased low in the Beaufort Sea and is practically zero in Hudson Bay and Baffin Bay (Fig. 9, left column). This bias contributes to the outcome that the sea ice reaches nominally ice-free summertime conditions at times comparable to present-day in CanESM2. The bias is evident throughout the seasonal cycle in most regions (Fig. 9, right column), with the exception

Deleted: s

Deleted: , which

of Baffin Bay, although not as extreme relative to other models in other seasons as it is in summer. In this respect, the quality of simulation in CanESM2 is not as good as that of other ESMs such as NCAR CESM1 (lower panel of Fig. 8), which provide a better baseline for regional sea-ice studies both in terms of climatology and land-sea distribution.

5 Process investigations of sea ice by CanSISE include a focus on the relationship between sea-ice drift and Arctic winds, since realistic sea-ice dynamics are crucial for accurate representation of sea ice (Notz, 2012). International Arctic Buoy (IABP) Programme measurements (Tschudi et al., 2016) show that sea-ice drift speed peaks in September, when sea ice is thinnest (lower panel of Fig. 10), and not at the time of peak wind speed in December. However, in CanESM2, the peak sea-ice drift speed occurs in November and is more in phase with the seasonal cycle of near-surface wind speed. Other models in the CMIP5
10 archive that have more modern sea-ice components are able to reproduce more closely the observed seasonal cycle of sea-ice drift speed (Tandon et al., submitted manuscript). These results provide strong motivation to transition to a modeling system with improved sea-ice and related processes in the Arctic.

Deleted:

4 Snow and sea-ice related forecast performance and development of CanSIPS

Operational seasonal forecasts based on coupled global ocean-atmosphere models have been produced for about two decades
15 internationally (Stockdale et al., 1998) and in Canada (by CanSIPS) since 2011. Over this period the main emphasis has been on predicting seasonal meteorological variables describing near-surface temperature, atmospheric circulation and precipitation, as well as sea-surface temperatures, since these are a major driver of seasonal climate variations. Potential has also existed for such systems to usefully predict additional variables, including snow and sea ice, particularly as the sophistication of the models and the methods used to initialize them have increased. With respect to the cryosphere, however, such capabilities have
20 received little attention until relatively recently compared to other areas of focus in seasonal prediction (e.g. Blanchard-Wrigglesworth et al. 2011, Sigmond et al. 2013, Guémas et al. 2016).

Deleted: ¶

Formatted: English (UK)

Deleted: which

4.1 Characteristics of CanSIPS related to seasonal forecasts of terrestrial snow

Research carried out under CanSISE examined the ability of CanSIPS both to realistically initialize SWE and to predict future
25 SWE variations (Sospedra-Alfonso et al., 2016a, b, c). This was the first study of snow in an operational seasonal forecast system. Regarding seasonal prediction of snow by CanSIPS, anomaly correlation skill for wintertime SWE is high at short lead times, and remains statistically significant (greater than 0.3) at lead times of at least 6 months for certain regions (Fig. 11), which suggests potential for practical utilization of such forecasts. Two primary sources of potential predictability (PP, defined as the ratio of ‘signal’ variance describing interannual variability of ensemble means to total variance consisting of the
30 sum of ‘signal’ and ‘noise’ components) and skill in CanSIPS forecasts of SWE have been identified (Sospedra-Alfonso et al., 2016b, c). The first, which is most important at short lead times, is the demonstrated ability of CanSIPS to provide realistic initial values for SWE (Sospedra-Alfonso et al., 2016a), combined with the natural tendency for SWE anomalies to persist

Formatted: Font: Bold, English (UK)

throughout the snow season in regions where winter [land-surface](#) temperatures remain below freezing, so that the snowpack accumulates until the onset of spring melt. The second main source of PP and skill, which becomes increasingly prevalent at longer lead times, is the ability of CanSIPS to predict future climatic conditions such as [land-surface](#) temperature and precipitation anomalies which influence snow accumulation and melt. A large part of this type of predictability and skill arises from ENSO, which strongly influences winter climate in North America and is skillfully forecast by CanSIPS up to a year in advance.

The value of skillful seasonal forecasting of snow in turn depends on process representation [and initialization](#) at the land-surface. For example, Ambadan et al. (2015) have investigated the impact of initialization of SWE, soil liquid water, and soil frozen water on potential predictability of springtime surface air temperature in the CanSIPS system (Fig. 12). Realistic initialization of these variables enhances potential predictability by as much as 30% in terms of variance explained within the potential predictability framework. This shows that it is important to regard snow initialization in the broader setting of [land-surface initialization](#), and that there is evidence for quantitative improvement in regional predictability as more observational information on the state of the land surface is brought into the prediction system. Current operational practice in CanSIPS uses observed atmospheric forcing to bring the land surface (including soil moisture and snow cover) into a realistic state. Although this procedure performs reasonably well for snow (within observational uncertainty), potential remains for improving the initialization and forecasting of snow and other land variables by assimilating observation-based land data directly in real time.

Blending different sources of data from highly uncertain observations has led to improved characterization of the forecast skill of the CanSIPS system. Fig. 13 shows the degree of agreement between SWE forecasts from CanSIPS and several SWE products over Canada (similar results are found for other regions). The degree of agreement is measured as the anomaly correlation coefficient for a one-month forecast (with lead 0 from initialization). The five datasets are the Blended-5 dataset (blue) and four individual datasets including two components of the Blended-5 dataset. Even though all observational datasets are being compared to the same forecast, it is the Blended-5 dataset, capturing the mean of several observational datasets, that agrees best with the forecast. It is clear that improving verification datasets through blending, which can be reasonably expected to lead to cancellation of independent errors in observational estimates, impacts assessed agreement with the forecast. To reiterate, in this case, improved calculated skill is derived from an apparent improvement in the quality of the verification data and not an improvement of the forecast (Sospedra-Alfonso et al., 2016b). Whether or not such improved consistency might be found for the prediction of other quantities, the broader point is that there is a need to ensure that verification data is continually updated in order to fairly compare predictions to the best available data (Massonet et al., 2016).

Recent research in snow analysis and observational datasets is expected to support operational improvements in CanSIPS and hence in ECCC's operational prediction capacity. For example, CanSISE work has led to new efforts to develop an operational real-time snow amount forecast for the coming months, which could be used in several impacted sectors such as outdoor

Deleted:

recreation, water resource planning, and agriculture (Fig. 14, snow amount forecast shown as above and below normal SWE amounts). In this successful proof of concept, we note satisfactory general agreement with the MERRA analysis, which is independent of CanSIPS and is itself subject to some uncertainty. This indicates promise for this new forecast product, while highlighting issues of observational uncertainty addressed in part by our recent research.

4.2 Sea-ice forecasting with CanSIPS

Much as for snow, the ability of global climate model-based seasonal forecasting systems to predict sea ice has also received little attention until recently, although such assessments have now been carried out for several systems (Guémas et al. 2016). In the area of sea-ice prediction, CanSIPS hindcasts, despite some of the simulation deficiencies described above, have demonstrated skill in seasonal predictions of sea ice (e.g. Sigmond et al., 2013; Merryfield et al., 2013b). While these prior studies have focused on forecast skill of area-integrated quantities such as sea-ice area, recent work (Sigmond et al., 2016) has also shown significant forecast skill of more user relevant sea-ice metrics such as the first calendar date that sea ice melts (retreat date; Figs. 15a-c) or freezes up (advance date; Figs. 15d-f). Advance dates are skillfully predicted at lead times of 5 months on average (3.3 months for detrended anomalies), and retreat dates at lead times of 3 months (2.2 months for detrended anomalies). For retreat dates, the main source of forecast skill is persistence, while advance date predictions benefit from predictable ocean temperatures.

Sea ice predictability is also assisted by persistence of sea-ice thickness (e.g. Chevallier and Salas Y Mélia, 2014), but CanSIPS does not take advantage of this in that it currently employs an initialization method that uses only climatological sea-ice thickness (SIT) information. Since real time SIT observations are limited, Dirkson et al. (2015, 2017) have developed several statistical models of varying complexity for initializing SIT in operational predictions. These are based on predictors available in real time together with historical SIT values represented by the pan-Arctic Ice and Ocean Modelling System, or PIOMAS (Zhang and Rothrock, 2003), which is frequently used as a reference dataset for SIT due to the sparseness of historical SIT observations. The first such model (known as “SMv1”), described in Dirkson et al. (2015), uses a statistical approach to find an optimal combination of sea ice concentration and sea level pressure information to provide useful sea ice thickness information. While this model reduces temporal- and spatial- mean absolute errors in the SIT initial conditions by 48% relative to the original CanSIPS initialization (when validated against PIOMAS SIT values), and shows consistent skill estimating ice volume in all months, much of this improvement in skill emerges from a more accurate representation of local negative trends in SIT. Two additional statistical models, “SMv2” and “SMv3”, that improve on SMv1 with respect to interannual variations in SIT anomalies are described in Dirkson et al. (2017), and seasonal sea ice volume from SMv3 is compared to that from CanSIPS initial conditions in Fig. 16. Seasonal forecasting experiments using these SIT initial conditions demonstrate general improvement forecasting both pan-Arctic sea-ice extent and local sea-ice concentration compared to the current operational system, with most significant improvements afforded by initializing with either SMv2 or SMv3 (Dirkson et al., 2017).

Deleted: .

Deleted: SIT)

Deleted: SIT

5 Conclusion

We have assessed characteristics of snow, sea ice, and related climate parameters in Environment and Climate Change Canada's (ECCC) earth system model (ESM) CanESM2 and seasonal to interannual climate prediction system CanSIPS, with a focus on the Canadian sector of the Northern Hemisphere. This assessment is intended to provide a baseline for future versions of the models with respect to these important societally-relevant climate parameters. It has highlighted the application of the Blended-5 multisource snow water equivalent (SWE) (Mudryk et al., 2015) and the CanESM2 Large Ensemble of climate simulations. In addition, it has highlighted new developments in sea ice, snow, and related climate parameter prediction on seasonal timescales. We summarize our key findings:

- The CanESM2 simulation of climate parameters over the Canadian land mass closely tied to snow – land surface temperature and precipitation on land in cold regions – lies well within the range of currently available international models. There is considerable disagreement among observational datasets on the amount and geographical structure of snow water equivalent (SWE) in the satellite era. The CanESM2 simulation of SWE performs as well as available international models in this area. Even accounting for this observational uncertainty, however, there is a bias towards excessive seasonal snow cover and unrealistic spatial distribution of SWE in the spring over the Canadian land mass and over the Northern Hemisphere as a whole. Excessive precipitation over the Canadian land mass contributes to this bias.
- Accounting for observational uncertainty, CanESM2 simulates a greater retreat of springtime snow over the satellite era than most of the available observations assessed here and other models that include large initial condition ensembles. The spatial pattern of the observed temperature, precipitation, and SWE trends is strongly influenced by internal variability. This makes it difficult to assess the model-simulated patterns of change in the variables we have examined. Nevertheless, Western Cordillera trends in SWE in CanESM2 represent a recent increase that is opposite to those found in typical CMIP5 models.
- Previously identified biases towards low Arctic sea ice extent are also reflected in regional biases: in Hudson's Bay and the Canadian Beaufort Sea sector, the sea ice extent is biased low and this undermines projections of when regional sectors of the Arctic will be ice free. In the current system, there are tradeoffs related to the resolution of geographical features in the CanESM and CanSIPS systems that impact both the snow and sea ice simulations. This provides an urgent area of improvement for future model development.
- Recent work suggests promising potential for seasonal forecasting of snow, sea ice and related climate parameters using CanSIPS. For example, accurate initialization of frozen and liquid soil water, in addition to improved SWE representation, might lead to significantly improved seasonal temperature forecasts. Furthermore, the Blended-5 example shows that accounting for observational uncertainty can lead to better understanding of forecast quality. This result suggests initialization could also be improved in this manner. This and related work has stimulated the development of ECCC's first experimental seasonal snow amount forecast product.

- Despite biases in the sea ice simulation, it is possible to develop potentially useful new seasonal forecast products for sea ice advance and retreat. In addition, implementing sea ice thickness initialization using indirect statistical predictors of thickness can improve sea ice forecasts compared to the current methodology. Motivated by the promising research results, improved sea ice thickness initialization (as initially explored by Lindsay et al., 2012 and Day et al. 2014) is being considered for implementation in the CanSIPS system.

Further improvements in the CanSIPS and CanESM climate prediction and projection capacity for snow, sea ice and related climate variables also hinge on assessing model process representation in more depth. For example, critical to capture accurately is the snow albedo feedback process, which governs the seasonality of snow cover and land surface temperature and hydroclimatic responses to climate change (Qu and Hall, 2007, 2014; Hall et al., 2008; Thackeray et al., 2015; Thackeray and Fletcher, 2016). Thackeray et al. (2015) show that CanESM2 places among the best CMIP5 models for all regions in terms of the overall simulation of snow cover fraction and snow-covered surface albedo. Further progress in this kind of process representation will be achieved in part through internationally coordinated inter-comparison efforts associated with CMIP6, including the Land Surface, Snow and Soil moisture Model Intercomparison Program (LS3MIP; van den Hurk et al 2016) and the Earth System Model Snow Inter-comparison Project (ESM-SnowMIP). Besides ongoing work on sea-ice mechanics and its relationship, through wind driving, to sea ice drift, CanSISE research is also currently characterizing snow cover on sea ice in models and observations, which also serves as a potential source of model error in the timing and amplitude of sea-ice growth and melt.

CanSISE demonstrates the utility of entraining a network of researchers bridging observational and modelling communities to focus on a related set of processes in evaluation of earth system models and climate prediction systems. The results suggest that there can be several benefits to updated multi-source observational datasets for climate prediction, monitoring, and assessment. Our focus in this paper has been on recently produced multi-source snow observational datasets, but our results suggest that there are benefits of multi-source temperature, precipitation, and sea ice datasets that follow a similar approach.

We have articulated the tradeoffs involved in constraints on CanESM2's resolution in light of limitations of available advanced computing resources. Running the model at two degrees latitude/longitude permits the creation of the CanESM2 Large Ensemble set, but can entail under-resolution of key features of interest in applications, such as the Canadian Arctic Archipelago's channels and islands. We suggest that similar large ensembles be considered based on future model versions, accounting for these tradeoffs, and being complemented by ECCO regional climate model simulations (e.g. Scinocca et al., 2016).

Deleted: strongly

Deleted: s the

Deleted: following

References

- Ambadan, J. T., Berg, A. and Merryfield, W. J.: Influence of snow and soil moisture initialization on sub-seasonal predictability and forecast skill in boreal spring, *Climate Dynamics*, 1–17, doi:10.1007/s00382-015-2821-9, 2015.
- Arora, V. K., Scinocca, J. F., Boer, G. J., Christian, J. R., Denman, K. L., Flato, G. M., Kharin, V. V., Lee, W. G. and Merryfield, W. J.: Carbon emission limits required to satisfy future representative concentration pathways of greenhouse gases, *Geophys. Res. Lett.*, 38(5), doi:10.1029/2010GL046270, 2011.
- Blanchard-Wrigglesworth, E., Armour, K.C., Bitz, C.M., and DeWeaver, E.: Persistence and Inherent Predictability of Arctic Sea Ice in a GCM Ensemble and Observations. *J. Climate*, 24, 231–250, doi:10.1175/2010JCLI3775.1, 2011.
- Blazey, B. A., Holland, M. M. and Hunke, E. C.: Arctic Ocean sea ice snow depth evaluation and bias sensitivity in CCSM, *The Cryosphere*, 7(6), 1887–1900, doi:10.5194/tc-7-1887-2013, 2013.
- Brown, R. and Derksen, C.: Is Eurasian October snow cover extent increasing?, *Environmental Research Letters*, 8(2), 024006, 2013.
- Brown, R., Derksen, C. and Wang, L.: A multi-data set analysis of variability and change in Arctic spring snow cover extent, 1967–2008, *J. Geophys. Res.*, 115(D16), doi:10.1029/2010JD013975, 2010.
- Brutel-Vuilmet, C., Ménégoz, M. and Krinner, G.: An analysis of present and future seasonal Northern Hemisphere land snow cover simulated by CMIP5 coupled climate models, *The Cryosphere*, 7(1), 67–80, doi:10.5194/tc-7-67-2013, 2013.
- Chevallier, M., and Salas Y Méliá, D.: The role of sea ice thickness distribution in the Arctic sea ice potential predictability: a diagnostic approach with a coupled GCM. *J. Climate*, 25, 3025-3038, doi:10.1175/JCLI-D-11-00209.1, 2014.
- Day, J. J., Hawkins, E., and Tietsche, S.: Will Arctic sea ice thickness initialization improve seasonal forecast skill?. *Geophys. Res. Lett.*, 41, 7566–7575, doi:10.1002/2014GL061694, 2014.
- Derksen, C. and Brown, R.: Spring snow cover extent reductions in the 2008–2012 period exceeding climate model projections, *Geophys. Res. Lett.*, 39(19), doi:10.1029/2012GL053387, 2012.
- Derksen, C., Smith, S. L., Sharp, M., Brown, L., Howell, S., Copland, L., Mueller, D. R., Gauthier, Y., Fletcher, C. G., Tivy, A., Bernier, M., Bourgeois, J., Brown, R., Burn, C. R., Duguay, C., Kushner, P., Langlois, A., Lewkowicz, A. G., Royer, A. and Walker, A.: Variability and change in the Canadian cryosphere, *Climatic Change*, 115(1), 59–88, doi:10.1007/s10584-012-0470-0, 2012.
- Déry, S., Knudsvig, H., Hernández-Henríquez, M. and Coxson, D.: Net Snowpack Accumulation and Ablation Characteristics in the Inland Temperate Rainforest of the Upper Fraser River Basin, Canada, *Hydrology*, 1(1), 1–19, doi:10.3390/hydrology1010001, 2014.
- Deser, C., Knutti, R., Solomon, S. and Phillips, A. S.: Communication of the role of natural variability in future North American climate, *Nature Clim. Change*, 2(11), 775–779, doi:10.1038/nclimate1562, 2012.
- Dirkson, A., Merryfield, W. J. and Monahan, A.: Real-time estimation of Arctic sea ice thickness through maximum covariance analysis: Statistical sea ice thickness, *Geophysical Research Letters*, 42(12), 4869–4877, doi:10.1002/2015GL063930, 2015.

Formatted: Font: Not Italic

Formatted: Font: Not Bold

- Dirkson, A., Merryfield, W. J. and Monahan, A.: Impacts of Sea Ice Thickness Initialization on Seasonal Arctic Sea Ice Predictions, *J. Climate*, 30(3), 1001–1017, doi:10.1175/JCLI-D-16-0437.1, 2016.
- Flato, G., Marotzke, J., Abiodun, B., Braconnot, P., Chou, S. C., Collins, W., Cox, P., Driouech, S., Emori, S., Eyring, V., Forest, C., Gleckler, E., Guilyardi, E., Jakob, C., Kattsov, V., Reason, C. and Rummukainen, M.: Evaluation of Climate Models, in: *Climate Change 2013: The Physical Science Basis, Contribution of Working Group I to the Fifth Assessment Report of the Intergovernmental Panel on Climate Change*, Stocker et al., Cambridge University Press, 741–866, 2013.
- Fletcher, C. G., Kushner, P. J., Hall, A. and Qu, X.: Circulation responses to snow albedo feedback in climate change, *Geophys. Res. Lett.*, 36(9), doi:10.1029/2009GL038011, 2009.
- Fyfe, J. C. and Flato, G. M.: Enhanced Climate Change and Its Detection over the Rocky Mountains, *J. Climate*, 12(1), 230–243, doi:10.1175/1520-0442(1999)012<0230:ECCAID>2.0.CO;2, 1999.
- Fyfe, J. C., Derksen, C., Mudryk, L., Flato, G. M., Santer, B. D., Swart, N. C., Molotch, N. P., Zhang, X., Wan, H., Arora, V. K., Scinocca, J. and Jiao, Y.: Large near-term projected snowpack loss over the western United States, *Nature Communications*, 8, 14996, doi:10.1038/ncomms14996, 2017.
- Gagné, M.-È., Fyfe, J. C., Gillett, N. P., Polyakov, I. V. and Flato, G. M.: Aerosol-driven increase in Arctic sea ice over the middle of the 20th Century, *Geophys. Res. Lett.*, doi:10.1002/2016GL071941, 2017a.
- Gagné, M.-È., Kirchmeier-Young, M. C., Gillett, N. P. and Fyfe, J. C.: Arctic sea ice response to the eruptions of Agung, El Chichón and Pinatubo, *J. Geophys. Res. Atmos.*, doi:10.1002/2017JD027038, 2017b.
- Gillett, N. P., Arora, V. K., Flato, G. M., Scinocca, J. F. and von Salzen, K.: Improved constraints on 21st-century warming derived using 160 years of temperature observations, *Geophys. Res. Lett.*, 39(1), doi:10.1029/2011GL050226, 2012.
- Hall, A., Qu, X. and Neelin, J. D.: Improving predictions of summer climate change in the United States, *Geophys. Res. Lett.*, 35(1), doi:10.1029/2007GL032012, 2008.
- [Guémas, V., Blanchard-Wrigglesworth, E., Chevallier, M., Day, J., Déqué, M., Doblus-Reyes, F., Fuckar, N., Germe, A., Hawkins, E., Keeley, S., Koenigk, T., Salas y Mélia, D., Tietsche, S.: A review on Arctic sea ice predictability and prediction on seasonal-to-decadal timescales. *Q. J. Royal Meteorol. Soc.*, 142, 546–561. doi:10.1002/qj.2401, 2016.](#)
- Hernández-Henríquez, M. A., Déry, S. J. and Derksen, C.: Polar amplification and elevation-dependence in trends of Northern Hemisphere snow cover extent, 1971–2014, *Environmental Research Letters*, 10(4), 044010, doi:10.1088/1748-9326/10/4/044010, 2015.
- Hori, M., Sugiura, K., Kobayashi, K., Aoki, T., Tanikawa, T., Kuchiki, K., Niwano, M. and Enomoto, H.: A 38-year (1978–2015) Northern Hemisphere daily snow cover extent product derived using consistent objective criteria from satellite-borne optical sensors, *Remote Sensing of Environment*, 191, 402–418, doi:10.1016/j.rse.2017.01.023, 2017.
- Howell, S. E. L., Laliberté, F., Kwok, R., Derksen, C. and King, J.: Landfast ice thickness in the Canadian Arctic Archipelago from Observations and Models, *The Cryosphere Discuss.*, 2016, 1–39, doi:10.5194/tc-2016-71, 2016.
- van den Hurk, B., Kim, H., Krinner, G., Seneviratne, S. I., Derksen, C., Oki, T., Douville, H., Colin, J., Ducharme, A., Cheruy, F., Viovy, N., Puma, M. J., Wada, Y., Li, W., Jia, B., Alessandri, A., Lawrence, D. M., Weedon, G. P., Ellis, R., Hagemann,

- S., Mao, J., Flanner, M. G., Zampieri, M., Matera, S., Law, R. M. and Sheffield, J.: LS3MIP (v1.0) contribution to CMIP6: the Land Surface, Snow and Soil moisture Model Intercomparison Project – aims, setup and expected outcome, *Geosci. Model Dev.*, 9(8), 2809–2832, doi:10.5194/gmd-9-2809-2016, 2016.
- Kay, J. E., Deser, C., Phillips, A., Mai, A., Hannay, C., Strand, G., Arblaster, J. M., Bates, S. C., Danabasoglu, G., Edwards, J., Holland, M., Kushner, P., Lamarque, J.-F., Lawrence, D., Lindsay, K., Middleton, A., Munoz, E., Neale, R., Oleson, K., Polvani, L. and Vertenstein, M.: The Community Earth System Model (CESM) Large Ensemble Project: A Community Resource for Studying Climate Change in the Presence of Internal Climate Variability, *Bull. Amer. Meteor. Soc.*, 96(8), 1333–1349, doi:10.1175/BAMS-D-13-00255.1, 2014.
- Kharin, V. V., Zwiers, F. W., Teng, Q., Boer, G. J., Derome, J. and Fontecilla, J.: Skill assessment of seasonal hindcasts from the Canadian historical forecast project, *Atmosphere-Ocean*, 47(3), 204–223, doi:10.3137/AO1101.2009, 2009.
- King, J., Howell, S., Derksen, C., Rutter, N., Toose, P., Beckers, J. F., Haas, C., Kurtz, N. and Richter-Menge, J.: Evaluation of Operation IceBridge quick-look snow depth estimates on sea ice, *Geophys. Res. Lett.*, 42(21), 9302–9310, doi:10.1002/2015GL066389, 2015.
- Kirchmeier-Young, M., Zwiers, F. and Gillett, N. P.: Attribution of Extreme Events in Arctic Sea Ice Extent, *J. Climate*, 30(2), 553–571, doi:10.1175/JCLI-D-16-0412.1, 2016.
- Kirtman, B., Power, B. and coauthors: Near-term Climate Change: Projections and Predictability, in: *Climate Change 2013: The Physical Science Basis, Contribution of Working Group I to the Fifth Assessment Report of the Intergovernmental Panel on Climate Change*, Stocker et al., Cambridge University Press, 953–1028, 2013.
- Kulkarni, T., Watkins, J. M., Nickels, S. and Lemmen, D. S.: Canadian International Polar Year (2007–2008): an introduction, *Climatic Change*, 115(1), 1–11, doi:10.1007/s10584-012-0583-5, 2012.
- Laliberté, F., Howell, S. E. L. and Kushner, P. J.: Regional variability of a projected sea ice-free Arctic during the summer months, *Geophys. Res. Lett.*, 43(1), 2015GL066855, doi:10.1002/2015GL066855, 2016.
- Lindsay, R., Haas, C., Hendricks, S., Hunkeler, P., Kurtz, N., Paden, J., Panzer, B., Sonntag, J., Yungel, J., and Zhang, J.: Seasonal forecasts of Arctic sea ice initialized with observations of ice thickness, *Geophys. Res. Lett.*, 39, L21502, 2012.
- Massonnet, F., Bellprat, O., Guemas, V. and Doblas-Reyes, F. J.: Using climate models to estimate the quality of global observational data sets, *Science*, 354(6311), 452, doi:10.1126/science.aaf6369, 2016.
- McCusker, K. E., Fyfe, J. C. and Sigmond, M.: Twenty-five winters of unexpected Eurasian cooling unlikely due to Arctic sea-ice loss, *Nature Geosci.* 9(11), 838–842, 2016.
- Merryfield, W. J., Lee, W.-S., Boer, G. J., Kharin, V. V., Scinocca, J. F., Flato, G. M., Ajayamohan, R. S., Fyfe, J. C., Tang, Y. and Polavarapu, S.: The Canadian Seasonal to Interannual Prediction System. Part I: Models and Initialization, *Mon. Wea. Rev.*, 141(8), 2910–2945, doi:10.1175/MWR-D-12-00216.1, 2013a.
- Merryfield, W. J., Lee, W.-S., Wang, W., Chen, M. and Kumar, A.: Multi-system seasonal predictions of Arctic sea ice, *Geophys. Res. Lett.*, 40(8), 1551–1556, doi:10.1002/grl.50317, 2013b.

Deleted: b

Deleted: a

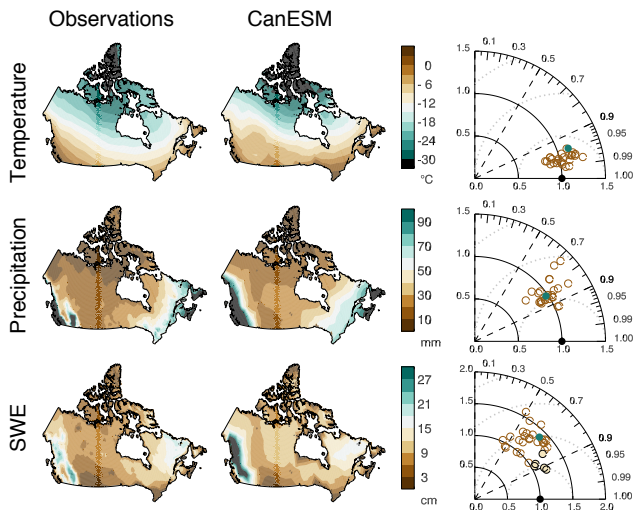
- Mudryk, L. R., Kushner, P. J. and Derksen, C.: Interpreting observed northern hemisphere snow trends with large ensembles of climate simulations, *Climate Dynamics*, 43(1), 345–359, doi:10.1007/s00382-013-1954-y, 2013.
- Mudryk, L. R., Derksen, C., Kushner, P. J. and Brown, R.: Characterization of Northern Hemisphere Snow Water Equivalent Datasets, 1981–2010, *J. Climate*, 28(20), 8037–8051, doi:10.1175/JCLI-D-15-0229.1, 2015.
- 5 Mudryk, L. R., Kushner, P. J., Derksen, C. and Thackeray, C.: Snow cover response to temperature in observational and climate model ensembles, *Geophys. Res. Lett.*, 44(2), 919–926, doi:10.1002/2016GL071789, 2017.
- Najafi, M. R., Zwiers, F. and Gillett, N. P.: Attribution of the spring snow cover extent decline in the Northern Hemisphere, Eurasia and North America to anthropogenic influence, *Climatic Change*, 1–16, doi:10.1007/s10584-016-1632-2, 2016.
- Notz, D.: Challenges in simulating sea ice in Earth System Models, *WIREs Clim Change*, 3(6), 509–526, doi:10.1002/wcc.189,
10 2012.
- Qu, X. and Hall, A.: What Controls the Strength of Snow-Albedo Feedback?, *J. Climate*, 20(15), 3971–3981, doi:10.1175/JCLI4186.1, 2007.
- Qu, X. and Hall, A.: On the persistent spread in snow-albedo feedback, *Climate Dynamics*, 42(1), 69–81, doi:10.1007/s00382-013-1774-0, 2013.
- 15 Scinocca, J. F., Kharin, V. V., Jiao, Y., Qian, M. W., Lazare, M., Solheim, L., Flato, G. M., Biner, S., Desgagne, M. and Dugas, B.: Coordinated Global and Regional Climate Modeling, *J. Climate*, 29(1), 17–35, doi:10.1175/JCLI-D-15-0161.1, 2015.
- Sigmond, M. and Fyfe, J. C.: Tropical Pacific impacts on cooling North American winters, *Nature Clim. Change*, 6(10), 970–974, doi:10.1038/nclimate3069, 2016.
- Sigmond, M., Fyfe, J. C., Flato, G. M., Kharin, V. V. and Merryfield, W. J.: Seasonal forecast skill of Arctic sea ice area in a
20 dynamical forecast system, *Geophys. Res. Lett.*, 40(3), 529–534, doi:10.1002/grl.50129, 2013.
- Sigmond, M., Reader, M. C., Flato, G. M., Merryfield, W. J. and Tivy, A.: Skillful seasonal forecasts of Arctic sea ice retreat and advance dates in a dynamical forecast system, *Geophys. Res. Lett.*, 43(24), 12,457–12,465, doi:10.1002/2016GL071396, 2016.
- Sospedra-Alfonso, R. and Merryfield, W. J.: Potential and actual predictability of snow water equivalent in historical forecasts
25 of the Canadian Fourth Generation Coupled Climate Model (CanCM4), in *Climate Prediction S&T Digest*, 2016a.
- Sospedra-Alfonso, R., Mudryk, L., Merryfield, W. and Derksen, C.: Representation of snow in the Canadian Seasonal to Interannual Prediction System: Part I. Initialization, *J. Hydrometeor.*, doi:10.1175/JHM-D-14-0223.1, 2016b.
- Sospedra-Alfonso, R., Merryfield, W. J. and Kharin, V. V.: Representation of Snow in the Canadian Seasonal to Interannual Prediction System. Part II: Potential Predictability and Hindcast Skill, *J. Hydrometeor.*, 17(9), 2511–2535, doi:10.1175/JHM-
30 D-16-0027.1, 2016c.
- Stockdale, T. N., Anderson, D. L. T., Alves, J. O. S. and Balmaseda, M. A.: Global seasonal rainfall forecasts using a coupled ocean-atmosphere model, *Nature*, 392(6674), 370–373, doi:10.1038/32861, 1998.
- Stroeve, J. C., Kattsov, V., Barrett, A., Serreze, M., Pavlova, T., Holland, M. and Meier, W. N.: Trends in Arctic sea ice extent from CMIP5, CMIP3 and observations, *Geophys. Res. Lett.*, 39(16), doi:10.1029/2012GL052676, 2012.

Deleted: Merryfield, W. J., Lee, W.-S., Boer, G. J., Kharin, V. V., Scinocca, J. F., Flato, G. M., Ajayamohan, R. S., Fyfe, J. C., Tang, Y. and Polavarapu, S.: The Canadian Seasonal to Interannual Prediction System. Part I: Models and Initialization, *Mon. Wea. Rev.*, 141(8), 2910–2945, doi:10.1175/MWR-D-12-00216.1, 2013b.

Deleted: 4

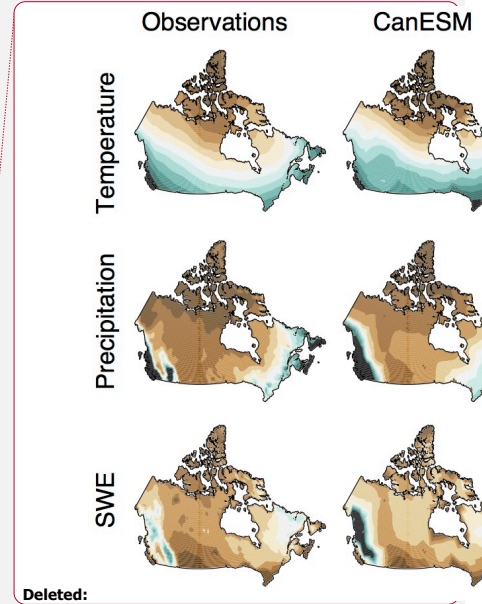
Deleted: 5

- Swart, N. C., Fyfe, J. C., Hawkins, E., Kay, J. E. and Jahn, A.: Influence of internal variability on Arctic sea-ice trends, *Nature Clim. Change*, 5(2), 86–89, doi:10.1038/nclimate2483, 2015.
- Taylor, K. E.: Summarizing multiple aspects of model performance in a single diagram, *J. Geophys. Res.*, 106(D7), 7183–7192, doi:10.1029/2000JD900719, 2001.
- 5 Taylor, K. E., Stouffer, R. J. and Meehl, G. A.: An Overview of CMIP5 and the Experiment Design, *Bull. Amer. Meteor. Soc.*, 93(4), 485–498, doi:10.1175/BAMS-D-11-00094.1, 2011.
- Thackeray, C. W. and Fletcher, C. G.: Snow albedo feedback: Current knowledge, importance, outstanding issues and future directions, *Progress in Physical Geography*, 1–17, doi:10.1177/0309133315620999, 2016.
- Thackeray, C. W., Fletcher, C. G. and Derksen, C.: Quantifying the skill of CMIP5 models in simulating seasonal albedo and snow cover evolution: CMIP5-simulated albedo and SCF skill, *Journal of Geophysical Research: Atmospheres*, 120(12), 5831–5849, doi:10.1002/2015JD023325, 2015.
- 10 Tschudi, M., Fowler, C., Maslanik, J., Stewart, J. and Asher, W.: Polar Pathfinder Daily 25 km EASE-Grid Sea Ice Motion Vectors, Version 3, NASA National Snow and Ice Data Center Distributed Active Archive Center, Boulder, Colorado USA., doi:10.5067/O57VAIT2AYYY, 2016.
- 15 [van den Hurk, B., Kim, H., Krinner, G., Seneviratne, S. I., Derksen, C., Oki, T., Douville, H., Colin, J., Duchame, A., Cheruy, F., Viovy, N., Puma, M. J., Wada, Y., Li, W., Jia, B., Alessandri, A., Lawrence, D. M., Weedon, G. P., Ellis, R., Hagemann, S., Mao, J., Flanner, M. G., Zampieri, M., Matera, S., Law, R. M., and Sheffield, J.: LS3MIP \(v1.0\) contribution to CMIP6: the Land Surface, Snow and Soil moisture Model Intercomparison Project – aims, setup and expected outcome, *Geosci. Model Dev.*, 9, 2809–2832, <https://doi.org/10.5194/gmd-9-2809-2016>, 2016.](#)
- 20 Warren, S. G., Rigor, I. G., Untersteiner, N., Radionov, V. F., Bryazgin, N. N., Aleksandrov, Y. I. and Colony, R.: Snow Depth on Arctic Sea Ice, *J. Climate*, 12(6), 1814–1829, doi:10.1175/1520-0442(1999)012<1814:SDOASI>2.0.CO;2, 1999.
- Zhang, J. and Rothrock, D. A.: Modeling Global Sea Ice with a Thickness and Enthalpy Distribution Model in Generalized Curvilinear Coordinates, *Mon. Wea. Rev.*, 131(5), 845–861, doi:10.1175/1520-0493(2003)131<0845:MGSIIWA>2.0.CO;2, 2003.



5 Figure 1: Comparison of simulated Canadian climate in CanESM2 with observations and other climate models for 1981-2005. The left column shows observed January-March (JFM) mean land-surface temperature (top, HadCRUT4), precipitation (centre, CRU TS3.21) and snow water equivalent (bottom, Blended 5 data). The central column shows the same fields as simulated by the ensemble mean of the CanESM2 Large Ensemble. Observations and the CanESM2 output have been mapped to a common grid that represents the model grid spacing. The right column plots Taylor (2001) diagrams showing the correlation (related to the polar angle) and standard deviation relative to observations (distance from origin) of the patterns of these variables in observations (black dot), CanESM2 (green dot) and other CMIP5 climate models (brown circles). Models that are closer to the black dot representing the observations have smaller errors (standard error represented by dotted semicircles at intervals of 0.5). In the SWE Taylor diagram (bottom row), the filled light brown dots compare the individual Blended-5 datasets to the Blended-5 mean.

10



Deleted:

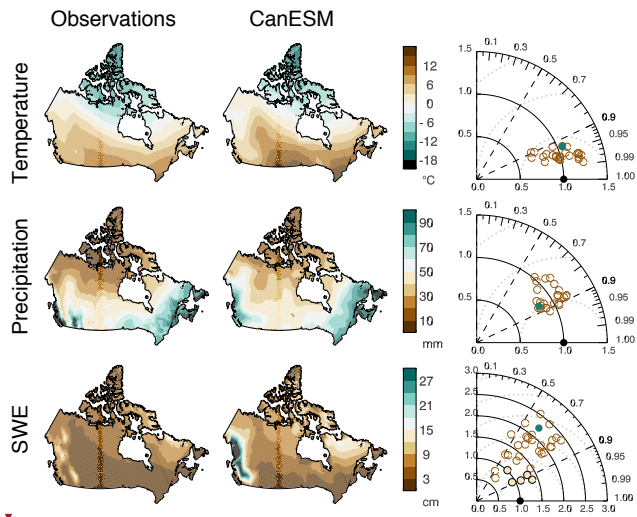
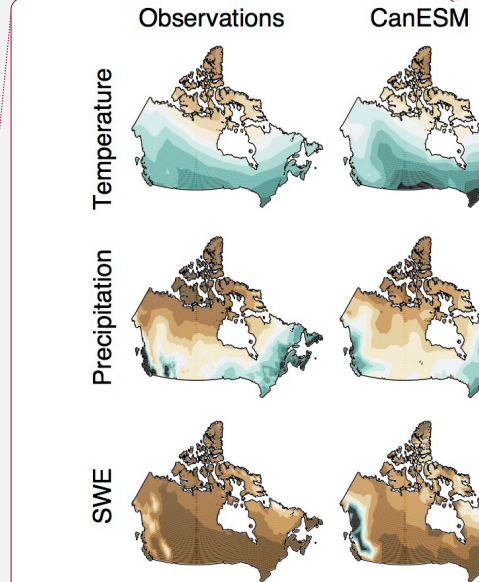
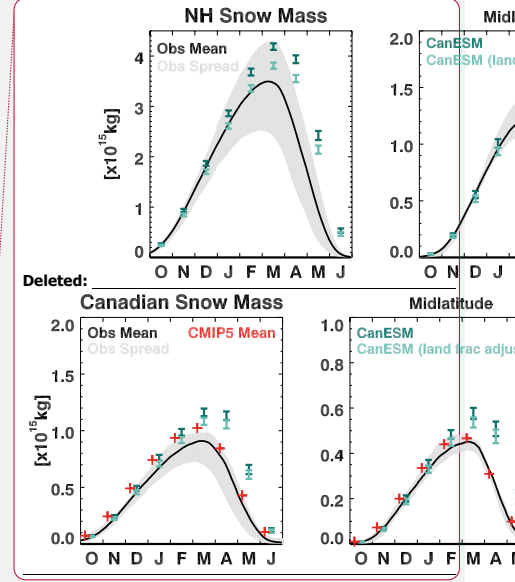
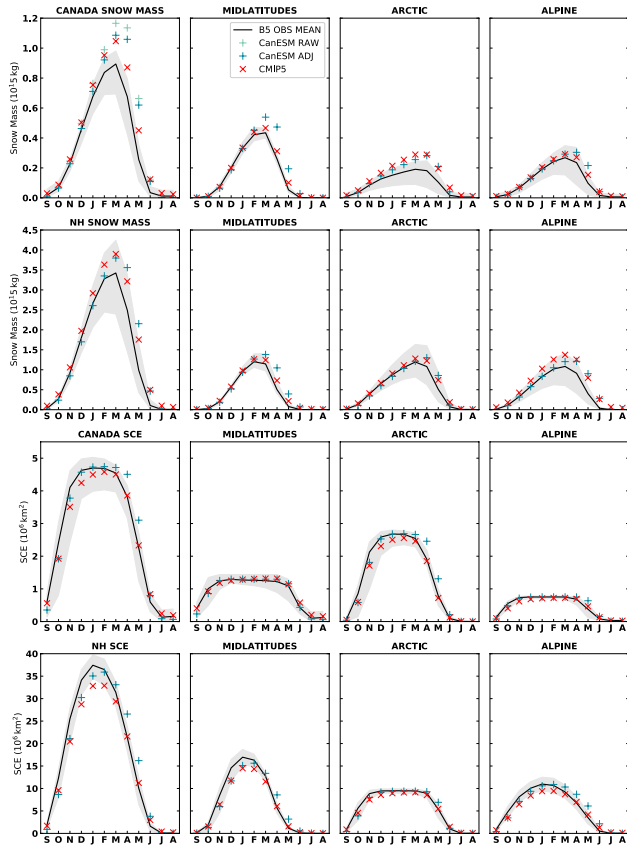


Figure 2: As in Fig. 1, for April-June (AMJ).



Deleted:



- Deleted: Top
- Formatted: Font: Not Bold, Superscript
- Deleted: the NH, midlatitude, Arctic, and alpine regions. R
- Formatted: Caption
- Deleted: are
- Deleted: as
- Formatted: Superscript
- Deleted: .
- Deleted: dark
- Deleted: light
- Deleted: Bottom
- Deleted: , with CMIP5 model mean added in red
- Formatted: Font: Not Bold, Superscript
- Formatted: Font: Not Bold, Superscript
- Formatted: Font: Not Bold, Not Superscript/ Subscript
- Deleted: ¶

Figure 3: First row: seasonal cycle of Northern Hemisphere 1981-2005 snow mass (in 10^{15} kg) for regions defined in Mudryk et al. 2015: midlatitudes – Northern Hemisphere nonalpine land regions south of 60° N, Arctic - nonalpine land regions north of 60° N, and alpine. Gray shading represents the range of Blended-5 datasets, the black curve represents the Blended-5 mean, the light teal points (in the first column of the first row only) mark the ensemble mean of CanESM2 using its land mask, and the dark teal points mark CanESM2 adjusted to represent the same land fractions as the observational mask from the Blended-5 dataset. The CMIP5 multi-model mean, adjusted to the observational mask, is shown with red x symbols. The legend in the second column top row applies to the figure as a whole. Second row: as in top row, but for Canadian land mass only. Third and fourth rows are similar to the first and second rows, but for snow cover extent in 10^6 km². The estimate of observed snow cover extent is derived from the Blended-5 SWE dataset using the approach of Mudryk et al. 2017, and is based on a 4 mm SWE threshold for the presence of snow cover; the simulated snow cover extent is based on snow cover fraction directly produced by the models.

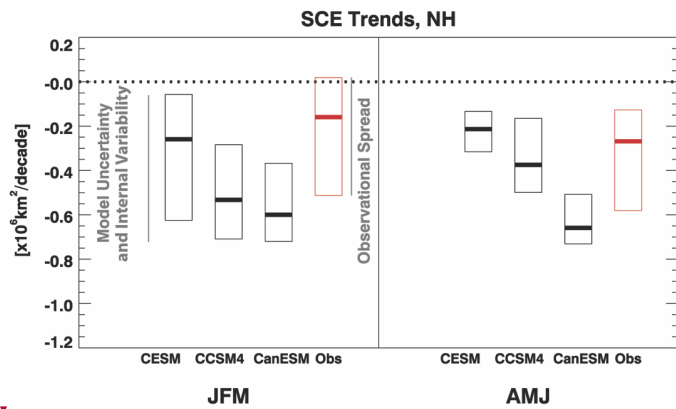
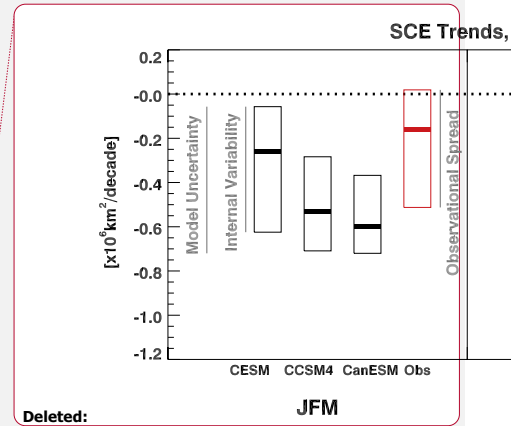


Figure 4: Horizontal bars and boxes show the median and interquartile range of Northern Hemisphere snow cover extent trends calculated over 1981-2005 period for January-March (left) and April-June (right). Black boxes are used for trends calculated from models (large initial condition ensembles of NCAR CCSM4, NCAR CESM1 and CanESM2 as labelled), and red boxes are used for trends derived from the Blended-5 SWE dataset (Mudryk et al. 2017). For the models, the boxes indicate the interquartile range (IQR) of trends captured in individual realizations of the ensembles. For the observations, the boxes indicate the IQR of observed trend estimates. Unlike the observational uncertainty, the uncertainty represented for the models is the impact of internal variability on estimated trends. In addition, the IQR of the observations is obtained from only five datasets, which represents a less robust estimate of uncertainty than that from the 30-50 simulated realizations in the large ensembles. Spread from these distinctive sources of uncertainty are indicated schematically by the extent of the vertical grey lines.



Deleted:

Deleted: (Note that the IQR of the observations is estimated from only five datasets; the IQR is much more robustly estimated by the 30-50 simulated realizations in the large ensembles, which we note involves only five datasets over the historical record).

Deleted: each of

Deleted: two

Deleted: along with additional spread due to model differences

Deleted: Note that the IQR of the observations is estimated from only five datasets; the IQR is much more robustly estimated by the 30-50 simulated realizations in the large ensembles.

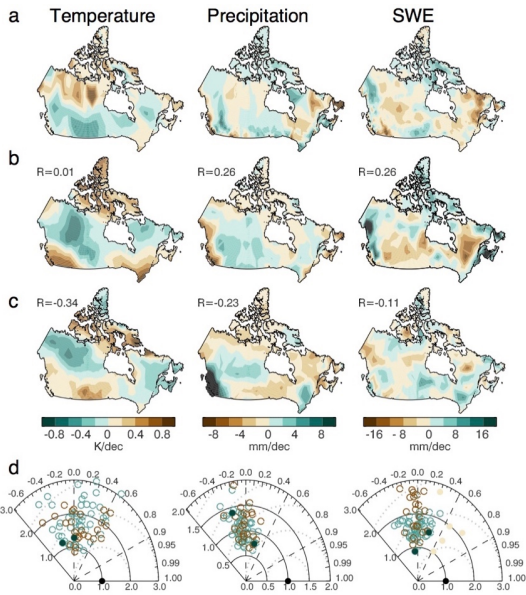


Figure 5: The top row shows the observed 1981-2005 trend over Canada in JFM land-surface temperature, precipitation, and SWE, with the spatial mean of the trend, removed, based on the same observational datasets represented in Figs. 1-2. The bottom row shows the Taylor diagram of individual realizations of CanESM2 (teal) and CMIP5 (brown). The Taylor diagram for SWE also includes individual Blended-5 observations (light brown). The second and third rows show the land-surface temperature, precipitation, and SWE trends for the best match and worst match realizations as defined in the text. The best and worst match realizations are shown as filled circles in the Taylor diagrams. Note that the realizations represented are the same in this figure and in Fig. 6.

~~Deleted:~~ over Canada

~~Deleted:~~ s

~~Formatted:~~ Font: Italic

~~Deleted:~~ a *best all-round match* case: a single realization having the greatest average pattern correlation across the three fields (temperature, precipitation, and SWE) and the two seasons of JFM and AMJ. The spatial pattern correlation coefficient of each field with its observational counterpart is labelled. The third row is the same as the second row but for a *worst all-round match* case: the single realization having the least (most negative) pattern correlation.

~~Formatted:~~ Font: Italic

~~Deleted:~~ cases

~~Deleted:~~ green

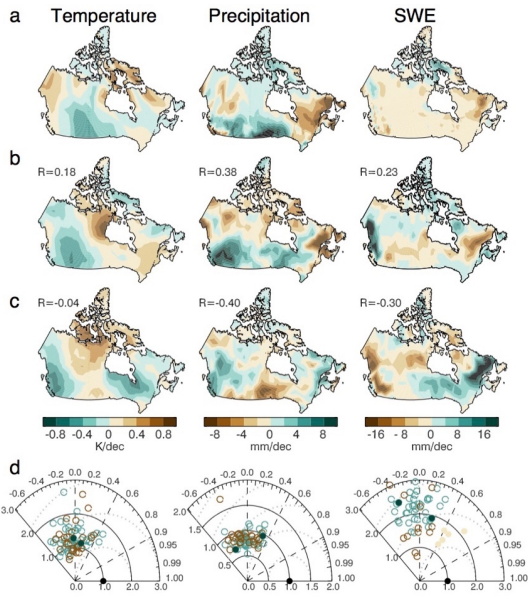


Figure 6: A similar analysis to Fig. 5 but for AMJ. Left column and right column represent AMJ trends, and second and third columns represent the same best-match and worst-match realizations from Fig. 5, but with AMJ trends displayed.

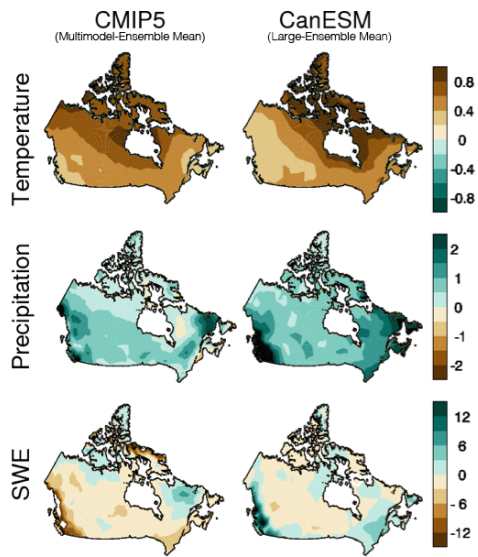


Figure 7: The left column shows the multimodel mean of CMIP5 trends, over the 1981-2005 historical period for JFM **land-surface** temperature, precipitation, and SWE. The right-hand column shows the corresponding multi-realization mean for the CanESM2 **Large Ensemble**. Unlike Figs. 5-6, the spatial mean of the trend has not been removed.

Deleted: ¶

Deleted: (without spatial mean removed)

Deleted: ¶

Deleted: e

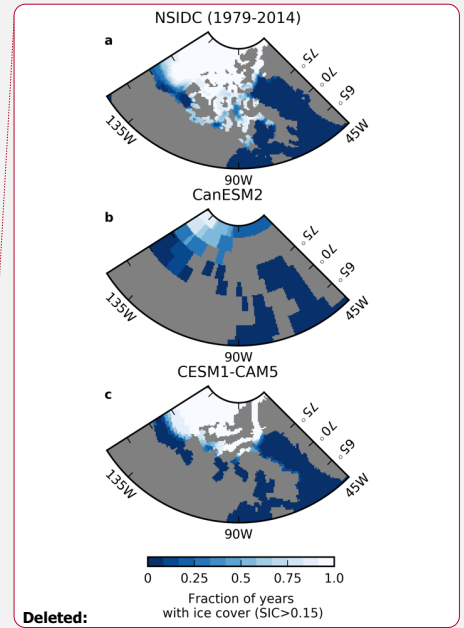
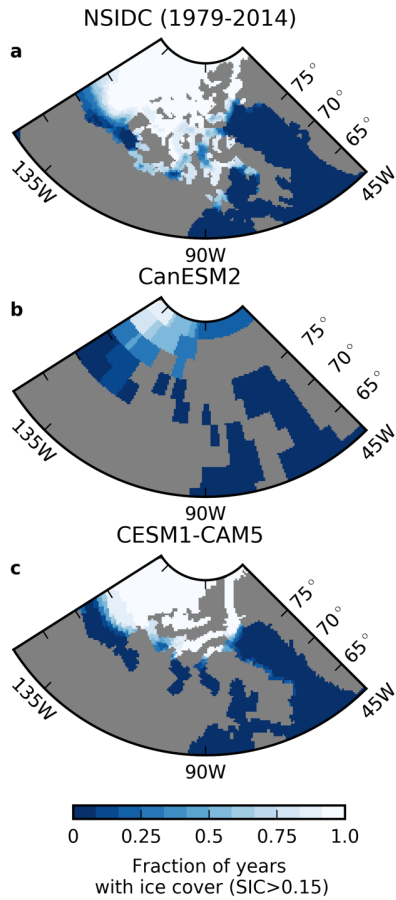


Figure 8: a) Fraction of years (1979-2014) with September sea ice cover (sea ice concentration > 0.15) for the NSIDC passive microwave product on an EASE 25km grid. b) As in a) but for the CanESM2 model, remapped using a nearest neighbour remapping. c) As in b) but for the CESM1-CAM5 model. The grey shading indicates the land-sea mask for each dataset. The NCAR CESM1 CICE grid provide a rough indication of how geographical features of the Canadian Arctic, such as the Canadian Arctic Archipelago, might be resolved in future configurations of CanESM2. Also evident is the low September sea ice extent bias in CanESM2.

Deleted: Note, however, that it is the ORCA1 grid that will be employed in the new CanESM2.

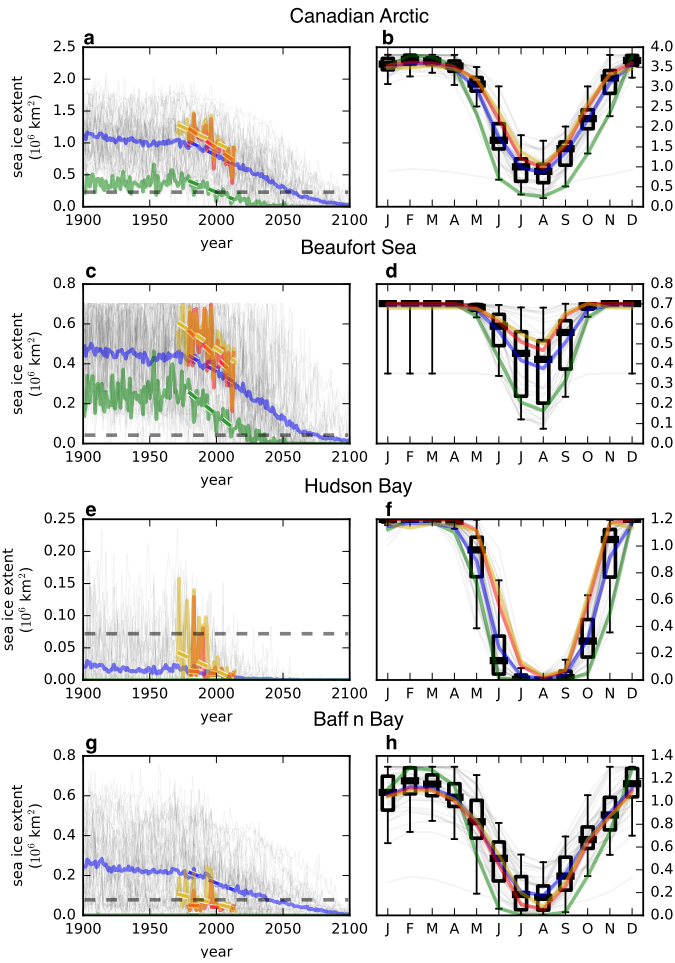
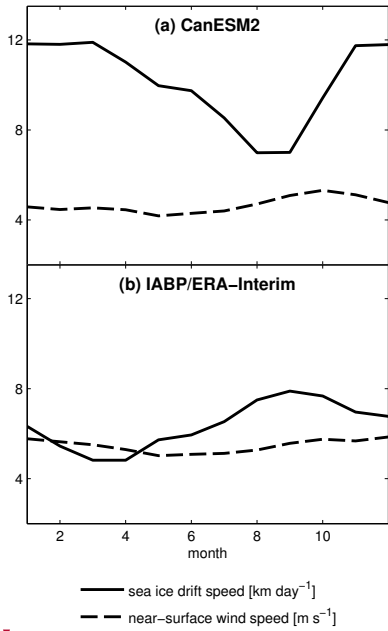
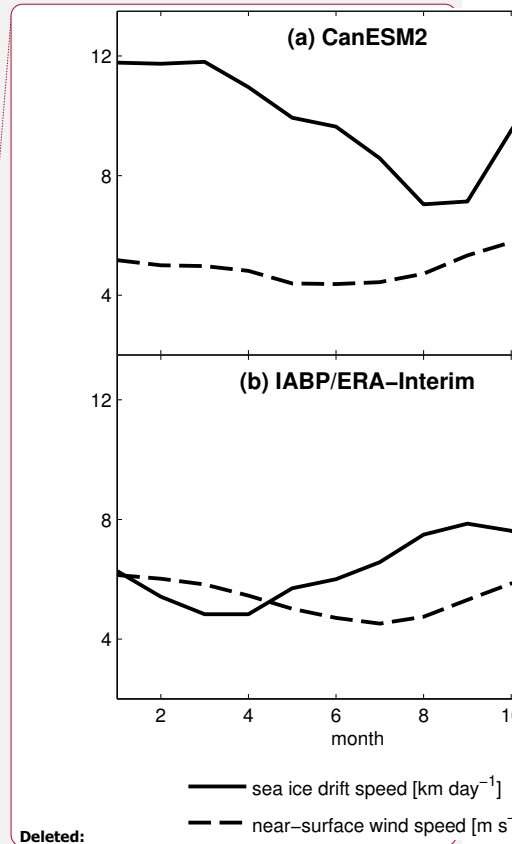


Figure 9: a): September sea ice extent (sea ice concentration larger than 0.15) for the Canadian Arctic [defined by the Canadian Ice Service Data Archive (CISDA) domain]. The CanESM2 model (green), CISDA (yellow), National Snow and Ice Data Center (NSIDC, red) and the multi-model mean (blue) are shown with their 1979-2013 trends. Individual models are shown in light gray. b): The Canadian Arctic seasonal cycle for 1979-2013. Box plots were added to describe the inter model spread (whiskers are 5th and 9th percentiles). c-d, e-f, g-h: same as a, b but for the Beaufort Sea, Baffin Bay and Hudson Bay, respectively. In panels e and g, the CanESM2 curve is close to zero. Sea ice amounts are scaled to account for the fraction of ocean present in the CanESM2 land sea mask (Laliberté et al. 2016).

5



5 **Figure 10:** (a) Seasonal cycle of Arctic average sea ice drift speed (solid, in units of km day⁻¹) and near-surface wind speed (dashed, in units of m s⁻¹) from a historical run of CanESM2 averaged over 1979-2005. The spatial domain used for the calculation is the region north of 68°N for longitudes east of 103°E and west of 124°W and north of 79°N at all other longitudes, excluding gridpoints within 150 km of a coastline. This focuses on regions of year-round drifting ice, and excludes landfast ice. (b) As in (a) but using non-gridded drift speed measurements from the International Arctic Buoy Programme (solid; Tschudi et al., 2016) and near-surface wind data from ERA-Interim (dashed; Dee et al., 2011).



Deleted:

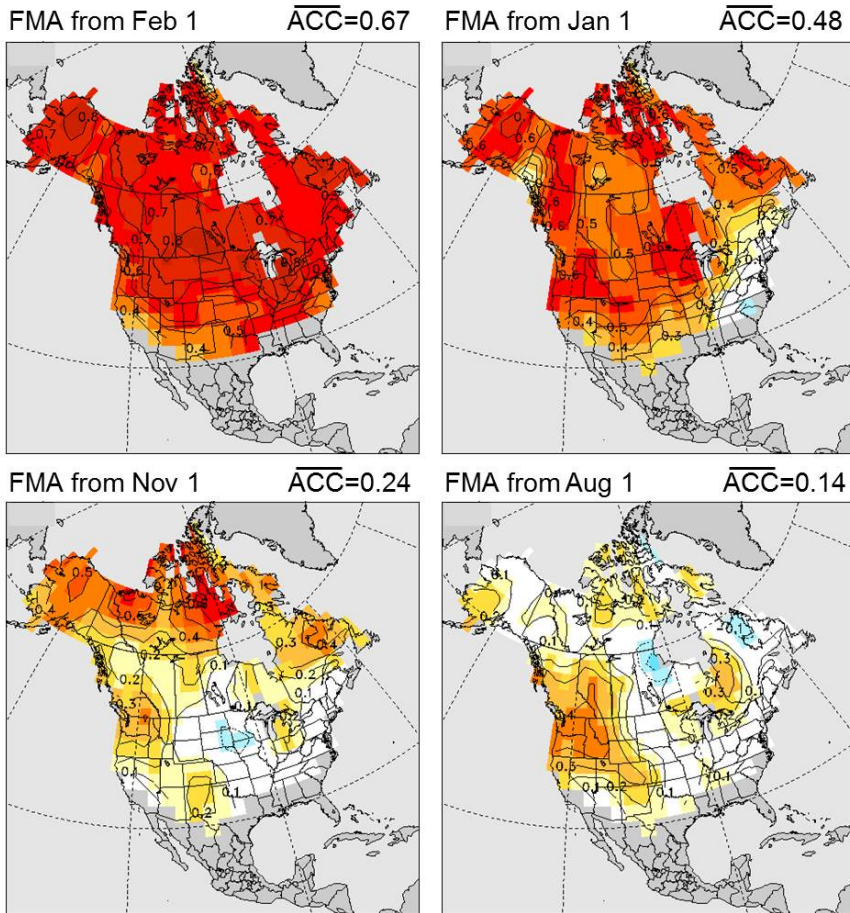


Figure 11: Anomaly correlation coefficient (ACC) skill for February-April (FMA) SWE of 1981-2010 CanSIPS hindcasts initialized at the start of February and the preceding January, November and August (lead times of 0, 1, 3 and 6 months respectively). The Blended-5 dataset of Mudryk et al. (2015) is used for observational verification. Contour interval 0.1, and the overbars denote spatial averages of ACC over areas of North America having seasonal snow cover.

5

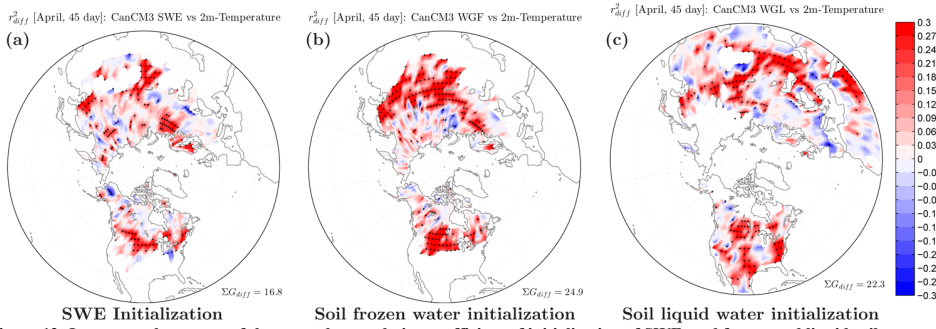


Figure 12: Impact on the square of the anomaly correlation coefficient of initialization of SWE, and frozen and liquid soil water on springtime forecasts of land-surface temperature at 45 day lead. Red colours indicate increase and blue colours decrease of the potential predictability (an idealized model based estimate of potential forecast skill). Based on Ambadan et al. 2015.

Deleted: surface air

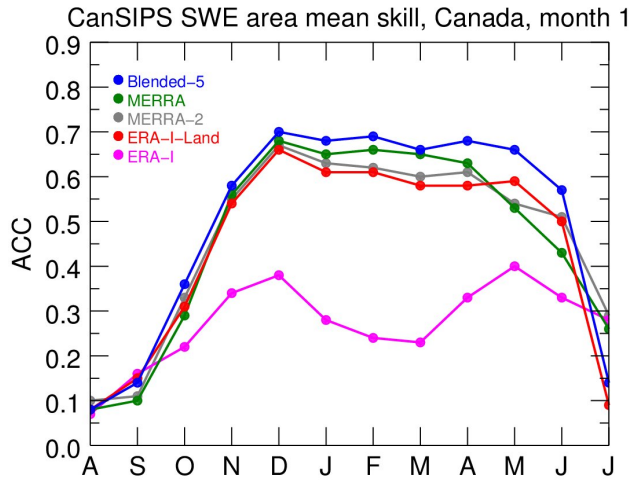


Figure 13: Anomaly correlation coefficient (ACC) averaged over Canada for first-month CanSIPS forecasts of SWE, verified against several observation-based datasets including Blended-5 (blue), MERRA (green), MERRA-2 (grey), ERA-Interim Land (red), and ERA-Interim (magenta); the MERRA and ERA-Interim Land are components of Blended-5. Blended-5 shows the best agreement with the forecast, suggesting a strong influence of observational dataset on evaluation of forecast performance.

5

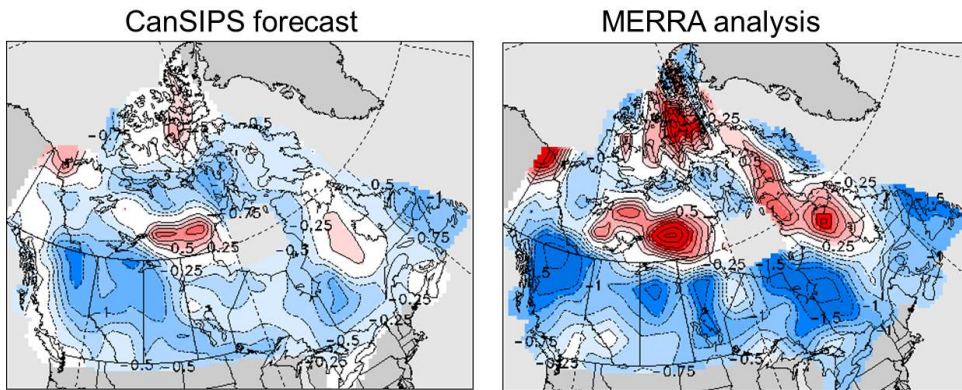


Figure 14: Real time CanSIPS forecast of standardized anomalies of monthly-mean SWE for January 2016 (left), initialized at the end of the preceding month, compared to the MERRA analysis for the same period (right). Contour interval is 0.25, and anomalies are relative to a 1981-2010 base period.

5

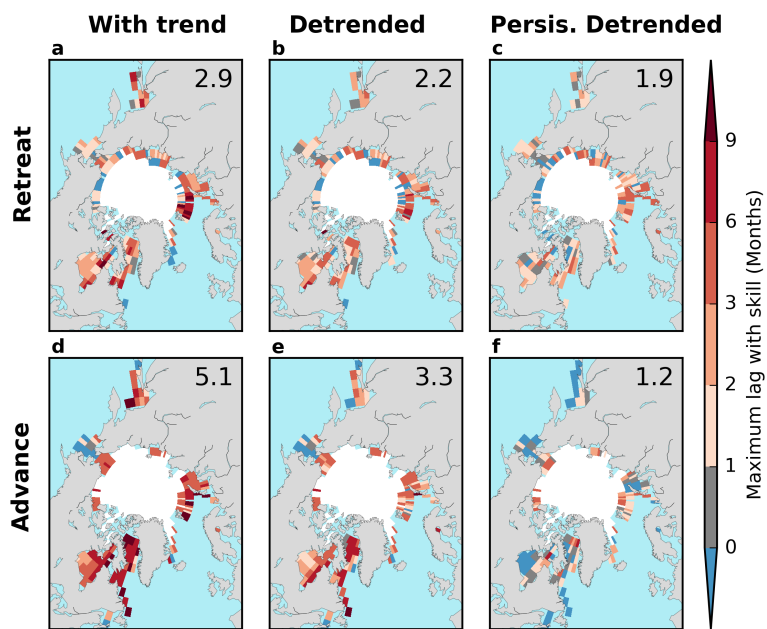
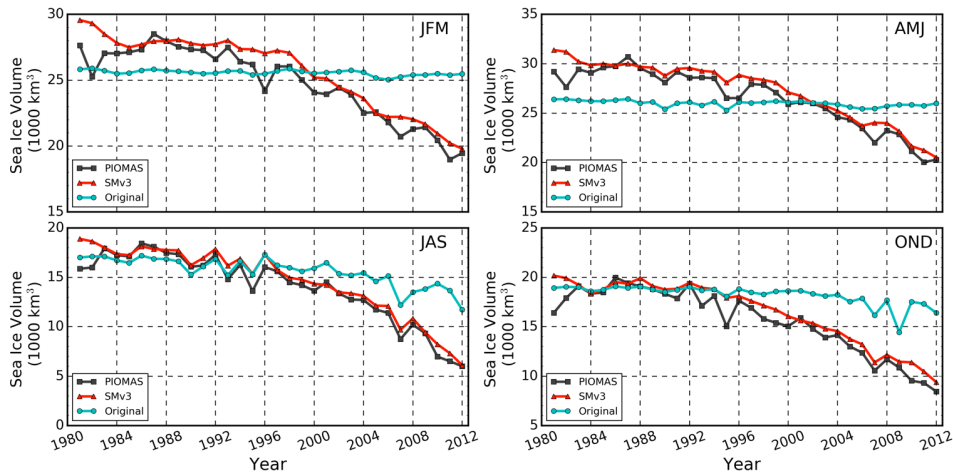


Figure 15: Maximum lead time at which CanSIPS skillfully predicts retreat/advance dates (defined as the calendar date at which sea ice concentration first drops below/exceeds 50%), for total anomalies (first column), detrended anomalies (second column), and for a detrended persistence forecast based on persisting the observed initial sea-ice concentration anomaly. The numbers in the top right corner of each panel indicate the Arctic average maximum lead time (in months). From Sigmond et al. (2016).

5



5 **Figure 16:** Time series of seasonally averaged sea ice volume over the period 1981–2012, in units of 10^3 km^3 for the PIOMAS sea ice thickness analysis (which assimilates observations) (black), the SMv3 statistical model of Dirkson et al. (2017) (red), and CanSIPS initial conditions (cyan). The CanSIPS system as originally configured incorporates no information about recent sea ice thinning and thus misses the recent downward trends of sea ice volume.

CanCM3 has a very small annual mean sea surface temperature bias, and CanCM4 reduces the global mean absolute error of ocean surface temperatures compared to CanCM3, indicating an overall improvement in the coupled ocean atmosphere state captured in the latest generation model (Merryfield et al., 2013a). Relative to CanCM3 and observations, CanCM4 tends to warm more rapidly under the effects of anthropogenic climate change over the 1970-2009 period. This characteristic is relevant to snow and sea-ice variability and trends and variability in CanESM2 (section 3). In CanCM3, the simulation is characterized by excessive pan-Arctic sea-ice cover in summer and winter and a small rate of sea-ice loss compared to observations. In CanCM4, while there is still excessive sea-ice cover in winter, there is too little sea ice in summer (section 3). The rate of sea-ice loss in CanCM4 is more in line with recent observations than that in CanCM3 (Stroeve et al., 2012); however, caution is required to interpret recent sea-ice loss rates in light of the large amount of multidecadal variability expected in these trends (e.g. Notz, 2012; Swart et al., 2015). CanSIPS, combining CanCM3 and CanCM4, is able to show multi-month skill in seasonal forecasts of detrended sea-ice area anomalies, comparable to that obtained in other modelling systems (Merryfield et al., 2013b), and generally enhanced skill relative to a statistical persistence forecast (Sigmond et al., 2013). The assessed skill depends on the verification dataset (Sigmond et al. 2013), especially for total (non-detrended) anomalies. Such issues will be revisited in this study.

The CanSIPS and CanESM2 systems have moderate spatial resolution compared to many other CMIP5 models (approximately 2.8° horizontal grid spacing and up to 35 vertical levels in the atmosphere; approximately 100 km horizontal grid spacing and up to 40 levels in the ocean). This resolution accounts for constraints on advanced computing resources, sufficiently resolving salient features of the global atmosphere-ocean circulation, while still permitting the execution of large ensembles of model simulations to adequately sample internal variability under different external forcings. ECCC has also made a complementary multi-year investment in regional climate modelling (Scinocca et al., 2016) to provide much higher resolution over Canada to address the shortcomings of coarse resolution.