

Met Office,
FitzRoy Road,
Exeter,
EX1 3PB,
United Kingdom.

7th November, 2017

Dear Professor Tison,

We thank both you and the reviewers for your comments on our paper *How much should we believe correlations between Arctic cyclones and sea ice extent?*. We have already uploaded a short response to the concerns expressed by Reviewer #1, but give a more detailed rebuttal below.

As Reviewer #1 points out, a number of previous papers have studied correlations between Arctic cyclones and sea ice extent in observations and reanalyses. Indeed, we cited some of these studies in our paper. However, the fact that these studies used observations/reanalyses, rather than output from a coupled GCM, meant that they were restricted to the ~30 years of available satellite observations of sea ice extent. In addition, they used only one resolution and one tracking variable. These studies found apparent correlations/links between summer cyclones and September ice extent.

In contrast, in our paper we use long (100-year) runs of a coupled climate model, at two different resolutions, analysed with two different tracking variables. In doing so, we show that such correlations are likely to be dependent on resolution, tracking variable, spatial domain, and time period used, and conclude that they are therefore not robust. This lack of robustness, and its implications for the correlations apparently found by other authors, is the key result of our paper, and our main conclusion is that this should be taken into account when interpreting the results of those previous studies. **Our analysis of the dependence of correlation on resolution, tracking variable, spatial domain, and time period used is original. In addition, the conclusion that this dependence has implications for studies of correlation (including those published previously), and that previous studies may have reached unreliable conclusions based on a limited set of results, is also new and important.** It appears that we did not express this clearly enough in the original manuscript, and we have now made some changes to the paper to try to resolve this problem.

As far as we can see, the comments of Reviewer #2 were generally positive, and did not include any concerns about the originality of the work. When Reviewer #2 mentions studies “previously presented in the literature”, we understand this to be a reference to the conclusion we reach in our paper that the results of such studies should be treated with caution, and not an expression of concern about the originality of our work.

We hope that the comments above, and the changes we have made to the manuscript, clear up any confusion regarding the aims of the paper, its conclusions and their originality. We attach detailed responses to the comments of both reviewers, and a marked-up manuscript showing the changes we have made as a result of those comments.

Yours sincerely,

Jamie Rae, Alex Todd, Ed Blockley and Jeff Ridley

Responses to anonymous reviewers' comments on *How much should we believe correlations between Arctic cyclones and sea ice extent?* by J.G.L. Rae et al.

We thank the reviewers for their comments, and give our responses in blue text below.

Reviewer #1:

This paper has tried to correlate the sea ice anomalies with the summer cyclonic activity in Arctic and found that the correlations are highly sensitive to the model and resolution used for tracking the cyclonic activity.

While we were indeed looking for correlations between September ice extent and summer Arctic cyclone activity, we went further than this in that we also analysed the robustness or otherwise of such correlations. The sensitivity to model, resolution, and spatial and temporal sampling was the key conclusion of the paper – that the cyclone-ice correlations found by previous authors are not robust because they are sensitive to all these factors.

While the paper is generally well written and the authors explain well their methodology, I do not recommend to accept this paper for publication in TC because this subject has already been discussed in many papers (as well presented by the authors) and that this paper only shows that the variability of sea ice extent is definitely NOT driven by the summer cyclonic activity!

The papers mentioned by the reviewer, which we do indeed cite in our paper, studied such correlations in observations/reanalyses, not in a long coupled GCM run as we did. This meant that they were restricted to the ~30 years of available satellite observations of sea ice extent (as opposed to the 100 years of model output we used). In addition, they were restricted to one resolution and one tracking variable. Those studies found apparent correlations/links between summer cyclones and September ice extent, i.e. they appeared to show that the variability of sea ice extent was driven by the summer cyclone activity. We showed that these correlations are dependent on model, resolution, tracking variable, spatial domain, and time period used, and that they are therefore not robust. Our main conclusion was that the results of those previous studies should be treated with caution for this reason.

The correlations found (< 0.44) are not enough relevant to justify a paper in TC and obviously explains why the results are very sensitive to the model and resolution used.

As we explained in the paper, the correlations presented are all significant at least at the 90% level, and often at the 95% level.

If the correlations would be scientifically robust, the sign of the correlations should be for example every time the same which is not the case here. Correlating sea ice extent with summer T850 will give likely better correlations but it is out of the scope of this paper.

This is exactly the point we were trying to make in the paper – that the correlations depend on a range of different factors, and are therefore not robust. Therefore, the correlations which were found in the other studies we cited may also not be robust, and those studies may have drawn misguided conclusions from a limited set of results.

As we mentioned in our previous short response to Reviewer #1, we now believe we did not make the aims of the paper clear enough, leading to a misunderstanding of what those aims were. We have therefore re-worded the abstract and part of the final paragraph of the introduction, and added an extra sentence in the conclusions section. We hope that these changes make the aims of the paper clearer.

Reviewer #2:

This paper investigates correlative relationships between Arctic cyclones and September sea ice extent using two different cyclone tracking variables from three different sources (output from two climate model runs and from one reanalysis dataset). The results show that different tracking variables, model resolution and space/time comparisons can show contrasting cyclone/ice relationships, thereby emphasizing that caution is required when analyzing and interpreting such comparisons (e.g., as previously presented in the literature). This caution is noteworthy and helpful. Thus, this paper is deemed appropriate for TC after considering a few minor suggested revisions as listed below.

P2, L9, Suggest changing 'main ice pack' to 'main pack ice'.

Changed.

P3, L3, Consider starting a new paragraph here.

Done.

P3, L12, Consider rephrasing the following: 'aim of studying correlations between cyclones and Arctic sea ice extent' given Reviewer #1's comment. In other words, specifically state the overall aim of this paper, which is to show how correlations (between cyclones and sea ice extent) depend on sea ice extent, tracking variable, model resolution, and time/space windows used to make the comparison (i.e., what is then stated further down on L15-16).

We have changed this, so that it now reads: "aim of investigating the dependence of cyclone-ice correlations on spatial resolution, tracking variable, and spatial and temporal sampling".

P5, after L4, Consider adding another short paragraph here describing the statistics used to test differences and compute correlations.

We have now added such a paragraph, in new a section (Section 2.4).

P5, L15, Since the first reference to a figure is here, consider moving Fig 5 to Fig 1 and adjust the others accordingly.

Figs 1 to 4 are actually mentioned in the previous sentence ("...track densities and mean intensities (Figs. 1 to 4), as well as the frequency distributions..."), so the figures are already in the correct order.

P5, L30-31, This seems like a general statement summarizing all model/reanalysis comparisons, but then it differs from the last two statements in that paragraph. Reword the first statement to clearly distinguish it from the other points being made (and/or create a table listing these results).

We agree that the description of the results of the Kolmogorov-Smirnov test in the original paper was confusing. We have therefore included a table summarising the results, as suggested by the reviewer, and re-worded the text to try to make it clearer. We have also simplified the discussion by removing the distinction between the 95%, 99% and 99.9% confidence levels, and now simply state whether the frequency distributions can be said to be different with at least 95% confidence.

P6, L14, Consider starting new paragraph here.

Done.

P8, L4, fix typo: 'thesefindings'

Corrected.

Figs 1-4, it would be helpful and of interest to see the difference maps between GC2-N96 and GC2-N216. (This would also be helpful for interpreting the contrasting results between the 2 model runs as presented in Fig 7.)

We have added an extra panel in each of Figs 1-4, and updated the captions accordingly. We have also taken this opportunity to select more-appropriate ranges for the colour scales on the difference plots in those figures. We have added a couple of sentences in Section 3.1 describing what is seen in the new difference maps. Also, because the new maps show GC2-N216 minus GC2-N96, rather than GC2-N96 minus GC2-N216, we have changed the sentence “The track densities and mean intensities in GC2-N96 are significantly lower than those in GC2-N216...” in Section 4.2 to “The track densities and mean intensities in GC2-N216 are significantly higher than those in GC2-N96...”.

How much should we believe correlations between Arctic cyclones and sea ice extent?

Jamie G. L. Rae¹, Alexander D. Todd^{1,2}, Edward W. Blockley¹, and Jeff K. Ridley¹

¹Met Office, FitzRoy Road, Exeter, EX1 3PB, United Kingdom

²College of Engineering, Mathematics and Physical Sciences, University of Exeter, Exeter, EX4 4QF, United Kingdom

Correspondence to: J.G.L. Rae (jamie.rae@metoffice.gov.uk)

Abstract. This paper presents an investigation of the robustness of correlations between characteristics of Arctic summer cyclones and September Arctic sea ice extent. A cyclone identification and tracking algorithm is run for output from 100-year coupled climate model simulations at two resolutions, and for 30 years of reanalysis data, using two different tracking variables (mean sea-level pressure and 850 hPa vorticity) for identification of the cyclones. The influence of the tracking variable, the spatial resolution of the model, and spatial and temporal sampling, on the correlations is then explored. We conclude that the correlations obtained depend on all of these factors, and that care should be taken when interpreting the results of such analyses. Previous studies of this type have used around 30 years of reanalysis and observational data, analysed with a single tracking variable. Our results therefore cast some doubt on the conclusions drawn in those studies.

Copyright statement. UK Crown Copyright, Met Office

1 Introduction

Sea ice is an important part of the climate system due to the key role it plays in the energy balance of the polar regions. In summer its high albedo reduces ocean warming, while in winter its low thermal conductivity acts to insulate the cold atmosphere from the warmer ocean below. In addition, ice melting and growth impacts the ocean temperature through heat exchange, and ocean stratification is affected through salinity changes. Arctic sea ice has undergone substantial changes since satellite-based passive microwave observations first became available nearly four decades ago. Between 1979 and 2012, the annual mean ice extent decreased on average by 3.5 to 4.1% per decade, while ice extent at the minimum of the annual cycle in September decreased by 9.4 to 13.6% per decade over the same period (Vaughan et al., 2013). The Arctic sea ice extent reached record lows in 2007 and 2012. In both years, preconditioning through thinning over several decades had made the ice more susceptible to dramatic reductions (Zhang et al., 2008; Parkinson and Comiso, 2013; Babb et al., 2016).

As well as the long-term negative trend in September Arctic sea ice extent, there is also considerable interannual variability, due to the complex interactions between a variety of physical processes acting on the ice. The September minimum Arctic sea ice extent in any given year will be influenced by seasonal and shorter-term effects, including dynamical and thermodynamic

processes in both the atmosphere and the ocean, as well as longer-term trends. Various effects are thought to have contributed to the summer 2007 record minimum, including: preconditioning (Zhang et al., 2008); large-scale atmospheric transport of heat into the Arctic (Graversen et al., 2011); anomalous oceanic heat flux through the Bering Strait (Woodgate et al., 2010); changes in cloud cover leading to increased surface and basal melting (Kay et al., 2008); and anomalous atmospheric circulation patterns leading to increased ice motion, transpolar drift and ice flux out of the Arctic through the Fram Strait (Zhang et al., 2008).

A low ice extent also occurred in 2012, when the National Snow and Ice Data Center reported that a new record low sea ice extent was reached on 26th August. Prior to this, a strong cyclone had entered the Pacific sector of the Arctic in early August (Simmonds and Rudeva, 2012), where it had an immediate impact on the sea ice. An area of ice in the region of the Chukchi Sea and Bering Strait, measuring about $0.4 \times 10^6 \text{ km}^2$, broke away from the main pack ice. This exposed more of the ocean surface, leading to increased absorption of solar radiation and consequently more ice melt, and also made more of the ice vulnerable to breakup by waves, including those resulting from the storm (Parkinson and Comiso, 2013). However, without preconditioning making the ice more vulnerable to the effects of storms it is unlikely that the 2012 storm would have had the impact it did. Furthermore, the storm was not necessarily crucial to the reaching of a new record minimum: the model study of (Zhang et al., 2013) suggested that in the absence of the storm the ice extent would still have reached a new minimum in that year. Storms are therefore not thought to have played a crucial role in the record Arctic sea ice minima of 2007 and 2012.

Nevertheless, cyclones are thought to have a direct impact on the ice (Kriegsmann and Brümmer, 2014). Crawford and Serreze (2016) analysed cyclones in the Modern-Era Retrospective Analysis for Research and Applications (MERRA; Rienecker et al., 2011), and found that the number of cyclones over the central Arctic peaked in summer, with many originating over Siberia. Cyclones will affect cloud cover, which will in turn have an impact on sea ice through changes to radiation and precipitation (e.g., Eastman and Warren, 2010). Meanwhile, the surface winds associated with the cyclone are likely to affect sea ice dynamics (e.g., Ogi et al., 2010), which could cause ice to break up or be advected, leading to exposure of open water, and resulting in ocean warming and further melting in summer, or freeze-up and additional ice formation in winter. In addition, several recent studies have found apparent connections between cyclones in the Arctic during the summer and sea ice extent in September. Simmonds and Keay (2009) used the University of Melbourne cyclone identification and tracking algorithm (Simmonds et al., 2003) with mean sea-level pressure (MSLP) fields from the JRA-25 atmospheric reanalysis (Onogi et al., 2007), and looked for correlations between the characteristics (number, depth and radius) of cyclones entering the Arctic in September (i.e. at the end of the Arctic sea ice melt season) and the September sea ice extent from the passive microwave data from the National Snow and Ice Data Center over the period 1979-2008. They considered only cyclones passing over ocean or ice points, rather than land. While they found no significant correlations of September ice extent with cyclone number, they did find significant strong negative correlations with cyclone depth and radius, suggesting that deeper, larger cyclones later in the melt season lead to more removal of sea ice.

Screen et al. (2011) used the same algorithm and the MSLP fields from the same atmospheric reanalysis as Simmonds and Keay (2009), with sea ice concentrations from the HadISST dataset (Rayner et al., 2003). For the period 1979-2009, they found that in years in which the ice extent was at least one standard deviation less than that of the previous year (which they termed “ice loss years”), there were fewer cyclones in the Arctic in the early part of the melt season (May-July). They suggested various

plausible mechanisms for this apparent relationship, including cloud processes, and changes in atmospheric circulation having an impact on ice drift, leading to less removal of ice during the melt season. The result was less robust when the extent was at least one standard deviation greater than the previous year's ("ice gain years").

As noted above, Simmonds and Keay (2009) and Screen et al. (2011) both used the same identification and tracking algorithm and the same reanalysis. It is likely that the cyclone track characteristics, such as track density and mean cyclone intensity, found for a given atmospheric dataset will depend on the specific details of the algorithm used (see, e.g., Neu et al., 2013; Rudeva et al., 2014), as well as on the variable used for tracking (for example, 850 hPa vorticity or mean sea-level pressure - see Hodges et al., 2003). On the other hand, Hodges et al. (2003) applied a single algorithm to several different atmospheric reanalyses, and found that in the Northern Hemisphere the results were comparable at the synoptic scale, but different for smaller-scale features. They also suggested that in some cases the results may depend on the spatial resolution of the reanalysis.

Here, we use a single cyclone identification and tracking algorithm with two different tracking variables to analyse Arctic cyclones for two model simulations and a reanalysis dataset, with the aim of **investigating the dependence of cyclone-ice correlations on spatial resolution, tracking variable, and spatial and temporal sampling**. In Sect. 2, we give details of the reanalysis, sea ice datasets and model simulations used, as well as the tracking algorithm. We then present our results for the cyclone characteristics and their correlations with sea ice extent in Sect. 3. In Sect. 4, we discuss the results in the context of the sensitivity of cyclone characteristics, and their correlations with sea ice extent, to tracking variable, model resolution, and spatial and temporal sampling. We conclude in Sect. 5 by discussing the implications for studies of cyclone-ice correlations, and making some suggestions for future investigations.

2 Models, data and methods

2.1 Model output

We use output from the GC2 configuration (Williams et al., 2015) of the HadGEM3 coupled climate model (Hewitt et al., 2011). This consists of: an atmosphere component, the Met Office Unified Model (UM, Cullen and Davies, 1991; Davies et al., 2005); a land-surface component, based on the Joint UK Land Environment Simulator (JULES, Best et al., 2011); an ocean component based on a version of the Nucleus for European Modelling of the Ocean (NEMO, Madec, 2008); and a sea ice component based on a version of the Los Alamos CICE model (Hunke and Lipscomb, 2010). These communicate with each other via the OASIS3 coupler (Valcke, 2006). The GC2 configuration incorporates Global Atmosphere configuration GA6 (Walters et al., 2017), Global Land configuration GL6 (Walters et al., 2017), Global Ocean configuration GO5 (Megann et al., 2014) and Global Sea Ice configuration GSI6 (Rae et al., 2015).

We use output from simulations at two model resolutions, which we denote by GC2-N96 and GC2-N216. GC2-N96 has an atmospheric horizontal resolution of 1.875° in longitude and 1.25° in latitude, while the atmospheric resolution of GC2-N216 is 0.833° in longitude and 0.556° in latitude. Both have 85 vertical levels in the atmosphere, and use the ORCA025 tripolar grid (which avoids a singularity at the north pole, and is nominally 0.25° resolution) in the sea-ice and ocean components, with

75 vertical levels in the ocean. Both are equilibrium simulations with greenhouse gas and aerosol forcings appropriate for the year 2000, as described by Williams et al. (2015), with the aerosol forcings varying seasonally. The CICE model configuration is based on the zero-layer approximation of Semtner (1976), and has five ice thickness categories, as described by Hewitt et al. (2011) in their Appendix D. For each of GC2-N96 and GC2-N216, we analyse the last 100 years of a 150-year simulation to avoid transient effects during spin-up.

We perform cyclone tracking with two variables using 6-hourly fields of mean sea-level pressure (MSLP) and 850 hPa vorticity from the atmosphere component of the model, with the vorticities being calculated from the 850 hPa wind fields. For the analysis of potential correlations between cyclone characteristics and sea ice, we also use the September monthly mean sea ice extents from the sea ice component.

2.2 Reanalysis and observations

With the aim of assessing the cyclones in the climate model simulations against an atmospheric reanalysis, we identify and track cyclones in 6-hourly fields of MSLP and 850 hPa vorticity from the ERA-Interim reanalysis (Dee et al., 2011). While this is also model-dependent, it has been shown to compare favourably with observations (see, e.g., Screen and Simmonds, 2011; Lindsay et al., 2014). Again, the vorticity fields are calculated from the corresponding winds. We also use sea ice from the HadISST1.2 dataset (Rayner et al., 2003), which is derived from passive microwave satellite observations. For comparison with the sea ice fields calculated by the climate model, we first regrid the HadISST1.2 data from its original 1° resolution to the climate model ORCA025 grid. However, for the correlations with ERA-Interim cyclones we use September ice extents calculated directly from the HadISST ice concentration fields at 1° resolution. Because the model was run with forcings appropriate for the year 2000, we use ERA-Interim and HadISST data for the period 1990-2009 (i.e. 20 years centred on 2000) for comparison with the model. To calculate the correlations, we then use data for the 30-year period 1982-2011, which is similar (though not identical) to those used by Simmonds and Keay (2009) and Screen et al. (2011).

2.3 Cyclone identification and tracking algorithm

We use the TRACK objective cyclone identification and tracking algorithm (Hodges, 1999). The climate model output and reanalysis data are first preprocessed: they are converted to spherical harmonics, a “background field” (all wavenumbers below T5) is removed, and they are truncated via the removal of all wavenumbers above a certain threshold. The spherical harmonic fields are then all interpolated onto the same $2.5^\circ \times 2.5^\circ$ grid; these interpolated fields are used for input into TRACK. The algorithm then identifies and tracks either positive maxima or negative minima in the interpolated, truncated fields. At each 6-hour time point, the algorithm identifies all the maxima or minima above a certain threshold in the field. In the present study, we use thresholds of 10^{-5} s^{-1} for vorticity and 1 hPa for MSLP. These thresholds are appropriate where smaller spatial scales have been removed by spectral filtering (as in this case), and allow the full life-cycle of a cyclone to be captured; they have been used in previous studies (e.g., Hoskins and Hodges, 2002; Bengtsson et al., 2006). The cyclones thus identified at different time points are then linked together to form tracks. This study focuses on cyclones (as opposed to anticyclones), which correspond to positive maxima in the vorticity anomaly fields, or negative minima in the MSLP anomaly fields.

TRACK outputs details of all cyclones with a lifetime of at least two days in one hemisphere (in this case the northern hemisphere). This work focuses on cyclones passing over non-land points in the Arctic (where the Arctic is defined here as all points north of 65°N). Thus, cyclone tracks satisfying this condition were extracted, and all others discarded. For cyclones that originate outside the Arctic, then pass into the Arctic, or vice versa, or for cyclones which pass over both land and non-land points, only the points on the track over Arctic non-land points were considered. In addition, tracks with a lifetime shorter than two days over Arctic non-land points were discarded.

2.4 Statistical methods

To determine the geographical locations where multiannual mean cyclone characteristics in the two model simulations and in the reanalysis differ significantly from each other, we use a Welch t-test, after interpolation to the $2.5^{\circ} \times 2.5^{\circ}$ grid, to test whether the differences in each gridcell are significant at the 95% level. We also use a Kolmogorov-Smirnov test to compare frequency distributions of Arctic-wide monthly cyclone characteristics, and to determine whether they are different at the 95% confidence level. We then determine Pearson correlation coefficients between the Arctic-wide monthly cyclone characteristics and the September mean ice extent, along with the associated p -values. The p -value is obtained by permuting the pairs of data used in the correlation calculation many times, recalculating the correlation coefficient in each case. The p -value is the probability that the correlation coefficient calculated in this way is greater than or equal to that calculated for the original data. The confidence in the value of the correlation coefficient is then $1 - p$.

3 Results

3.1 Cyclone characteristics

We assess cyclones by comparing cyclone characteristics (track count, track density and mean intensity) obtained from TRACK for modelled MSLP and 850 hPa vorticities in GC2-N96, GC2-N216 and ERA-Interim. The track count in a particular month is the total number of cyclone tracks in the domain of interest (all non-land points north of 65°N) in that month. The intensity of a cyclone at a given point on its track is taken to be the 850 hPa vorticity or central MSLP (with the background field removed as described in Sect. 2.3). The mean cyclone intensity in a gridbox for a given month is the mean intensity of all cyclones in that gridbox; the mean intensity for the whole domain is defined similarly. We consider the spatial distributions of multiannual-mean (over the 100 years of GC2 output and 30 years of reanalysis data) track densities and mean intensities (Figs. 1 to 4), as well as the frequency distributions, over the same period, of whole-domain track count and mean intensity. The frequency distributions for ERA-Interim often cover a narrower range of values than those for GC2, possibly because of the shorter time period of ERA-Interim (see Fig. 5 for an example).

The track densities from the vorticity-based analysis (Fig. 1) are generally higher than those from the MSLP-based analysis (Fig. 2), and the cyclones in the latter are mainly restricted to the peripheral seas in the eastern Arctic. The halo seen around Greenland in Fig. 1 occurs because the surface pressure over much of Greenland is lower than 850 hPa (due to the high

orography), so there is no 850 hPa vorticity there; we therefore treat the results in this region with caution. Cyclone track densities obtained from both vorticity and MSLP are significantly lower in GC2-N96 than in ERA-Interim (Figs. 1 and 2; hatching denotes areas where a Welch t-test showed the difference to be significant at the 95% level). In the case of vorticity, this is the case mainly over the East Siberian and Laptev Seas (notably so in June - results for individual months not shown here); we ignore the apparently-significant differences in the Davis Strait and Baffin Bay because of the orography-related issues with the 850 hPa vorticity field over Greenland. Differences between GC2-N216 and ERA-Interim are mostly insignificant for both tracking variables - GC2-N216 generally gives a similar representation of cyclone track density to ERA-Interim (except over the East Siberian and Laptev Seas in June in the case of vorticity). **Consistent with these results, the track density was found to be significantly greater in GC2-N216 than in GC2-N96 in many locations.**

To explore similarities and differences between the **cyclone characteristics obtained for the two tracking variables** for ERA-Interim, GC2-N96 and GC2-N216, we use a two-sample Kolmogorov-Smirnov test to determine whether the frequency distributions of track counts and intensities from each can be said to be different **with at least 95% confidence. The frequency distributions of whole-domain track count from the vorticity-based and MSLP-based analyses were found to be different (Table 1); this result holds in all months, as well as for both models and the reanalysis.** For both tracking variables, the Kolmogorov-Smirnov test suggested that the track count distribution **in GC2-N96 differs from that in GC2-N216.** The same was true **when GC2-N96 and ERA-Interim were compared, except for vorticity-based tracking in August where the possibility that the distributions may be the same could not be rejected.** However, we cannot say with 95% confidence that the track count distributions from GC2-N216 and ERA-Interim are different; this is the case for both tracking variables, and is consistent with the results in Figs. 1 and 2, where the differences between ERA-Interim and GC2-N216 were seen to be mainly insignificant.

While the vorticity associated with an individual cyclone is related to the MSLP at its centre, there is no simple way to relate Arctic-wide mean MSLP-based and vorticity-based intensities. Additionally, the MSLP-based tracking method is biased towards large spatial scales, and the vorticity-based method towards smaller scales (Hoskins and Hodges, 2002); the two methods thus tend to identify different systems. It is therefore difficult to compare directly mean intensities from one method with those from the other, and we do not attempt to do so. We can, however, compare the intensities obtained from the three models. The mean cyclone intensities from both tracking variables are significantly less in GC2-N96 than in ERA-Interim almost everywhere (Figs. 3 and 4). In the case of vorticity this is true in all months between May and September, while in the case of MSLP the differences are smaller towards the end of the melt season (not shown). For both vorticity and MSLP, the mean intensity in GC2-N216 is also less than in ERA-Interim, but the differences are smaller, and are significant over a smaller area, than in GC2-N96. **The mean intensity was found to be significantly greater in GC2-N216 than in GC2-N96 across all non-land points in the Arctic.**

The results of the Kolmogorov-Smirnov test for the frequency distributions of mean intensity were similar to those of track count. For both tracking variables, the test suggested that the distributions of mean intensity from GC2-N96 and GC2-N216 are different, as are those from GC2-N96 and ERA-Interim; **the exception in both cases is for vorticity-based tracking in August where we cannot reject the possibility that the distributions may be the same.** For MSLP-based tracking, we cannot say with 95% confidence that the mean intensity distributions from GC2-N216 and ERA-Interim are different. For vorticity-

based tracking, the distributions of mean intensity from GC2-N216 and ERA-Interim were found to be different in June and August; however, in May, July and September we cannot reject the possibility that the distributions may be the same. Thus, the two climate model simulations (GC2-N96 and GC2-N216), identical except for spatial resolution, generate different cyclone characteristics, while two independent models (GC2-N216 and ERA-Interim) with different resolutions can produce similar cyclones.

3.2 Sea ice

Before considering the impact of cyclones on Arctic sea ice, it is important that we assess the sea ice extent in the model. In this section, we compare modelled sea ice extent against that from the HadISST1.2 observationally-based dataset (Rayner et al., 2003). GC2-N96 reproduces the observed Arctic ice extent well in most months, although GC2-N216 performs better in August and September (Fig. 6). At both atmospheric resolutions, the model underestimates September mean sea-ice concentration in the Atlantic sector of the Arctic, while there are some regions of overestimation in the Pacific sector, which are more extensive at lower atmospheric resolution (not shown here). There is less ice off the coast of Siberia at higher atmospheric resolution than at lower resolution. These differences were found to be significant at the 95% level. A more detailed evaluation of the sea ice in GC2-N96 and GC2-N216 was presented by Rae et al. (2015).

3.3 Cyclone-ice correlations

To explore possible links between cyclones and sea ice, we calculated Pearson correlation coefficients, and the associated p-values, between track count in each month between May and September, and September mean Arctic sea ice extent. In Fig. 7, we give the correlation coefficients for GC2-N96 and GC2-N216, and for ERA-Interim cyclones and HadISST1.2 sea ice. Results are shown only where the confidence level was at least 90% (i.e. $p \leq 0.1$). We found a positive correlation between ERA-Interim vorticity-based track count in the early part of the melt season (May-June) and September mean HadISST1.2 ice extent (suggesting that more cyclones in May-June result in a larger ice extent in September). However, the equivalent correlation for MSLP-based track count was not significant. In addition, in GC2-N216, there was a negative correlation between June MSLP-based track count and September mean ice extent (linking more cyclones in June with a smaller ice extent in September). Meanwhile, in August, towards the end of the melt season, when cyclones may be expected to play a role in breaking up the ice, and where we may expect to see a negative correlation of track count with September ice extent, we found positive correlations in both ERA-Interim/HadISST1.2 and GC2-N216, for MSLP-based cyclones.

In the later part of the melt season, we found negative correlations for mean cyclone intensities in September (GC2-N96 vorticity-based cyclones, and ERA-Interim MSLP-based cyclones), in August (GC2-N216 MSLP-based cyclones), and in July (GC2-N96 MSLP-based cyclones). However, we also found a strong and significant positive correlation between August mean ERA-Interim vorticity-based intensity and September HadISST1.2 ice extent. Earlier in the melt season, there is a positive correlation found between ERA-Interim MSLP-based intensity in May and September HadISST1.2 ice extent, and a similar positive correlation for the ERA-Interim vorticity-based intensity in June. However, in GC2-N96 there is a correlation of the opposite sign (i.e. negative) between May vorticity-based intensity and September mean ice extent.

4 Discussion

4.1 Consideration of cyclone-ice correlations in the context of previous studies

While some of the correlations we found between cyclone characteristics and September ice extent are consistent with results published by other authors (Simmonds and Keay, 2009; Screen et al., 2011), there are others that cannot be explained in relation to those studies. In addition, in some cases where based on previous work one would expect to see correlations, no such significant correlations were found, or the correlations had the opposite sign to that expected. For example, the lack of correlation between ERA-Interim MSLP-based track count in the early part of the melt season and September mean HadISST1.2 ice extent contradicts the results of Screen et al. (2011), despite the strong, positive correlation seen for the equivalent vorticity-based track count. The negative correlations seen in some cases between cyclone intensity later in the melt season (in July, August and September) and September ice extent are consistent with the results of Simmonds and Keay (2009), who found a strong and significant correlation between mean cyclone depth in September and mean September ice extent, where they defined cyclone depth as the pressure difference between the centre and edge of the cyclone. This is contradicted by the positive correlation seen for August mean intensity in ERA-Interim. Additionally, the negative correlation between May vorticity-based intensity and September mean ice extent in GC2-N96 tends to contradict the results of Screen et al. (2011). On the other hand, the positive correlation found between ERA-Interim MSLP-based intensity in May, and September HadISST1.2 ice extent could be consistent with the findings of Screen et al. (2011), although their focus was on track count rather than cyclone intensity. In the rest of this section, we attempt to explain these findings, and our results in general, by considering the impact of differences in the model simulation, choice of tracking variable, and spatial and temporal sampling, on the correlations obtained.

4.2 Dependence on model and resolution

For a given tracking variable (vorticity or MSLP), we saw wide variations in cyclone-ice correlations between the models. The track densities and mean intensities in GC2-N216 are significantly higher than those in GC2-N96, suggesting that these are strongly resolution-dependent, as the model setups for those simulations were identical apart from the resolution. These differences in cyclone characteristics may lead to differences in the interactions between cyclones and sea ice, and thus to the different correlations that we saw in those simulations. Meanwhile, despite the cyclone characteristics in GC2-N216 being similar to those in ERA-Interim, the correlations with September ice extent are different. This is likely to be because outputs are from different models: the ERA-Interim data are from an atmosphere-surface-wave model that assimilates observations (Dee et al., 2011), whereas GC2-N216 is a fully-coupled climate model without data assimilation. In addition, ERA-Interim and HadISST1.2 include the effects of climate change, whereas GC2-N96 and GC2-N216 are equilibrium climate model runs. It is thus likely that other factors are having an influence. Model resolution, and other model properties, can therefore play a potentially-crucial role in determining the correlations seen.

As mentioned in Sect. 2.3, the mean cyclone intensities presented in Fig. 3 have had the background field (wavenumbers < 5) removed, and can thus be thought of as anomalies. To evaluate the effect of the removal of the background field, we also plotted

maps of absolute intensity (not shown here). For the vorticity-based analysis, the intensity obtained from the ERA-Interim data was intermediate between those from GC2-N96 and GC2-N216, suggesting that resolution may be more important when absolute values are considered (the 1° resolution of ERA-Interim is intermediate between those of the other two simulations). In the MSLP-based analysis, however, the absolute intensities from ERA-Interim do not lie between those of the two GC2 simulations, implying that the situation is more complicated than simple dependence on resolution. The differences between geographical distributions of absolute intensities and intensity anomalies, and their dependence on resolution and tracking variable, is also reflected in differences in cyclone-ice correlation depending on whether absolute values or anomalies are used. We have presented correlations only for intensity anomalies, as we believe the departure of the intensity from the background field to be a more meaningful predictor of the possible impact of the cyclone on the sea ice.

4.3 Dependence on tracking algorithm and variable

A number of differences were seen between the cyclone-ice correlations for vorticity-based and MSLP-based track counts. For example, we found a positive correlation between HadISST September ice extent and track count early in the melt season (May and June) for vorticity-based cyclones in ERA-Interim, but no similar correlation with the MSLP-based track count. This is in contrast to Screen et al. (2011), who used MSLP from the JRA-25 reanalysis as their tracking variable and found apparent links between early-melt-season track count and September ice extent. However, as well as a different reanalysis dataset, Screen et al. (2011) used the University of Melbourne cyclone finding and tracking algorithm (Simmonds et al., 2003), rather than the TRACK algorithm (Hodges, 1999) applied here. Neu et al. (2013) applied several different tracking algorithms to the same atmospheric reanalysis and examined a variety of cyclone characteristics, including track count and cyclone intensity. They found wide variations in track count between the algorithms, depending on such factors as: the threshold for detection; the minimum distance between two cyclones; and whether the input data were preprocessed by smoothing (which has the same effect as reducing the resolution, leading to fewer cyclones being detected). These variations have in some previous studies been found to be substantial enough that two different algorithms give opposite signs for the trends in cyclone characteristics in particular regions under climate change (Raible et al., 2008). Thus, the lack of consistency with the results of Screen et al. (2011) may not be surprising, and this provides a good illustration of the potential for different algorithms to give different results.

In the present study, tracking performed on the MSLP field yielded fewer cyclone tracks than that on the vorticity field, although the dependence on resolution was similar for both variables. Some of the algorithms in the study of Neu et al. (2013) used vorticity as the tracking variable, some used MSLP, some used a combination of the two, while some used other variables, such as 850 hPa geopotential height. Neu et al. (2013) did not draw conclusions about the impact of tracking variable on cyclone characteristics; they emphasised the difficulty of attributing differences in cyclone characteristics to specific aspects of the algorithms, due to multiple differences between the algorithms, which are likely to combine non-linearly. Rudeva et al. (2014) did investigate sensitivity of cyclone characteristics to particular aspects of the algorithms, but not to the variable used. However, Hodges et al. (2003) used the identification and tracking algorithm of Hodges (1999) to analyse cyclone tracks in several reanalysis datasets using both vorticity and MSLP as tracking variables. As in the present study, they detected fewer

cyclones with MSLP than with vorticity, which they attributed to the fact that MSLP-based analyses tend to pick up larger-scale features than vorticity-based analyses, leading to fewer detections in regions where smaller-scale features dominate. In addition, we found that MSLP-based cyclones were concentrated in the eastern Arctic to a greater extent than vorticity-based cyclones (compare Figs. 1 and 2), which is also consistent with the results found by Hodges et al. (2003) for winter (see their Fig. 1). Given these differences in the number of cyclone tracks and their geographical distribution between the two tracking variables, it is perhaps not surprising that we also see such differences in the correlations with September ice extent. This underlines the possibility for the same algorithm to give different results depending on the variable used.

There are also differences in the intensity-ice correlations for the two tracking variables. There is a negative correlation between MSLP-based mean intensity from ERA-Interim late in the melt season (September) and HadISST1.2 September ice extent, consistent with Simmonds and Keay (2009), but no such correlation for the vorticity-based intensity. We also found negative correlations between September ice extent and MSLP-based cyclone intensity in August for GC2-N216 and in July for GC2-N96, and vorticity-based intensity in GC2-N96 in May and September. However, for the reasons given in Section 3.1 we were unable to compare directly the mean intensities from the two methods.

4.4 Impact of domain choice

In the preceding analysis, we followed Simmonds and Keay (2009) in considering only cyclones passing over non-land points north of 65°N . However, other authors (e.g., Screen et al., 2011) have included all points (land, ocean and ice) in that region. We therefore examined the impact of this spatial sampling by recalculating the correlations, between September ice extent and cyclone characteristics in preceding months, using all cyclones north of 65°N (not shown here). Some correlations are significant in both domains. For example, for the ERA-Interim data, the correlations for the track count from the vorticity-based analysis in May, and the intensities from the MSLP-based analysis in May and the vorticity-based analysis in June, are strong and significant for both domains. Similarly, for GC2-N96, the correlations for vorticity-based intensities in May and September, and MSLP-based intensity in July, are significant in both domains. Finally, for GC2-N216, the correlations for track count and intensity in August are significant in both domains. However, other correlations were found to be significant in only one of the domains, suggesting that the results are at least partly domain-dependent.

4.5 Impact of temporal sampling

In the preceding analysis, we used 30 years of data for ERA-Interim/HadISST1.2 but 100 years for GC2-N96 and GC2-N216. We now investigate the effect of shorter temporal sampling by calculating the correlations, over non-land points north of 65°N , for different, discontinuous, 30-year periods (the first, middle and last 30 years) within the 100 years of GC2-N96 and GC2-N216 output. Fig. 8 shows these, and compares them with the correlations over the whole 100 years. None of the correlations are significant at the 90% level in all of the 30-year periods. Most of the correlations that are significant at either 90% or 95% confidence over the full 100-year period are significant in only one of the 30-year subsets; meanwhile, some significant correlations seen in one of the 30-year periods are found not to be significant over the whole 100 years. The correlation for vorticity-based mean intensity in September in GC2-N96, found to be significant at the 90% level over the whole 100 years,

is not significant in any of the 30-year subsets. For GC2-N96, significant positive correlations of August track count with September ice extent were found for two of the 30-year periods (95% confidence in the second; 90% in the third), and for the whole 100-year period (95% confidence).

The potential for identification of spurious correlations is illustrated by the May intensity from the MSLP-based analysis of GC2-N216 model output. In this case, the correlation with September sea ice extent was positive in the first 30-year period (95% confidence), and negative in the third (90% confidence), while over the whole 100 years there was no correlation significant at 90% confidence or above. Thus, different, discontinuous, 30-year periods of a 100-year time series can produce a significant positive correlation, a significant negative correlation, or no significant correlation at all, highlighting the dependence of the results on temporal sampling.

Studies using reanalyses for cyclone tracking, and satellite-based observations for sea ice concentration are necessarily limited by the availability of satellite data to the period since 1979. So, for example, Simmonds and Keay (2009) therefore considered the period 1979-2008, Screen et al. (2011) considered 1979-2009, and we have considered 1982-2011 in our analysis of the ERA-Interim data in the present paper. However, the results presented here suggest that the correlations obtained in such analyses may be dependent on the period selected.

5 Summary and conclusions

We have used a single cyclone identification and tracking algorithm with two different tracking variables (850 hPa vorticity and MSLP), and three model simulations (ERA-Interim reanalysis, and two simulations with the same climate model at different atmospheric resolutions) to study the number of cyclones in the Arctic during the summer sea ice melt season, and their mean intensity. We also studied the correlations between these cyclone characteristics and the September mean Arctic sea ice extent.

We found some correlations between September sea ice extent and cyclone characteristics that are consistent with previous studies, and others that are not.

Crucially, the correlations were found to be dependent on various aspects of the model, such as resolution, as well as on the variable used for tracking, and on spatial and temporal sampling. One key result for the correlation between MSLP-based mean cyclone intensity in May, and sea ice extent in September, showed significant positive and negative correlations for discontinuous 30-year subsets of the same 100 years of output from a particular model simulation, while over the full 100 years the correlation was not significant. For this reason, we suggest that caution should be exercised when performing studies such as this, especially where data are only available for a limited period. **Previous studies published in the literature, which were limited to approximately 30 years for which satellite observations of sea ice extent were available, and which used only one tracking variable and one resolution, may therefore have drawn unreliable conclusions from a limited set of results.** The interaction between cyclones and sea ice is clearly complicated, involving many competing physical processes, and further investigations, focused on developing a better understanding of these processes, would be beneficial.

Code and data availability. For details of how to obtain code for the GC2 configuration of HadGEM3, please see Williams et al. (2015). Details of the TRACK algorithm and how to obtain it can be found at <http://www.nerc-essc.ac.uk/kih/TRACK/Track.html>. Information about the ERA-Interim reanalysis dataset and how to obtain it is given by Dee et al. (2011). The HadISST sea ice data are available at <http://www.metoffice.gov.uk/hadobs/hadisst/>.

5 *Competing interests.* The authors declare no competing interests

Acknowledgements. We are grateful to Kevin Hodges of the Department of Meteorology, University of Reading, and Ruth McDonald and Claudio Sanchez of the Met Office, for advice and assistance on running the TRACK algorithm. **We thank the anonymous reviewers for their comments, which have led to improvements in the presentation and explanation of the results and their implications.** This work was supported by the Joint UK BEIS/Defra Met Office Hadley Centre Climate Programme (GA01101)

References

- Babb, D. G., Galley, R. J., Barber, D. G., and Rysgaard, S.: Physical processes contributing to an ice free Beaufort Sea during September 2012, *J. Geophys. Res. Oceans*, 121, 267–283, doi:10.1002/2015JC010756, 2016.
- Bengtsson, L., Hodges, K. I., and Roeckner, E.: Storm Tracks and Climate Change, *Journal of Climate*, 19, 3518–3543, doi:10.1175/JCLI3815.1, 2006.
- Best, M. J., Pryor, M., Clark, D. B., Rooney, G. G., Essery, R. L. H., Ménard, C. B., Edwards, J. M., Hendry, M. A., Porson, A., Gedney, N., Mercado, L. M., Sitch, S., Blyth, E., Boucher, O., Cox, P. M., Grimmond, C. S. B., and Harding, R. J.: The Joint UK Land Environment Simulator (JULES), model description – Part 1: Energy and water fluxes, *Geosci. Model Dev.*, 4, 1–23, 2011.
- Crawford, A. D. and Serreze, M. C.: Does the Summer Arctic Frontal Zone Influence Arctic Ocean Cyclone Activity?, *J. Climate*, 29, 4977–4993, doi:10.1175/JCLI-D-15-0755.1, 2016.
- Cullen, M. J. P. and Davies, T.: A conservative split-explicit integration scheme with fourth-order horizontal advection, *Q. J. Roy. Meteorol. Soc.*, 117, 993–1002, 1991.
- Davies, T., Cullen, M. J. P., Malcolm, A. J., Mawson, M. H., Staniforth, A., White, A. A., and Wood, N.: A new dynamical core for the Met Office’s global and regional modelling of the atmosphere, *Q. J. Roy. Meteorol. Soc.*, 131, 1759–1782, 2005.
- Dee, D. P., Uppala, S. M., Simmons, A. J., Berrisford, P., Poli, P., Kobayashi, S., Andrae, U., Balmaseda, M. A., Balsamo, G., Bauer, P., Bechtold, P., Beljaars, A. C. M., van de Berg, L., Bidlot, J., Bormann, N., Delsol, C., Dragani, R., Fuentes, M., Geer, A. J., Haimberger, L., Healy, S. B., Hersbach, H., Hólm, E. V., Isaksen, L., Kållberg, P., Köhler, M., Matricardi, M., McNally, A. P., Monge-Sanz, B. M., Morcrette, J.-J., Park, B.-K., Peubey, C., de Rosnay, P., Tavolato, C., Thépaut, J.-N., and Vitart, F.: The ERA-Interim reanalysis: configuration and performance of the data assimilation system, *Q. J. R. Meteorol. Soc.*, 137, 553–597, doi:10.1002/qj.828, <http://dx.doi.org/10.1002/qj.828>, 2011.
- Eastman, R. and Warren, S. G.: Interannual variations of Arctic cloud types in relation to sea ice, *J. Climate*, 23, 4216–4232, doi:10.1175/2010JCLI3492.1, 2010.
- Graversen, R. G., Mauritsen, T., Drijfhout, S., Tjernstrom, M., and Martensson, S.: Warm winds from the Pacific caused extensive Arctic sea-ice melt in summer 2007, *Clim. Dyn.*, 36, 2103–2112, doi:10.1007/s00382-010-0809-z, 2011.
- Hewitt, H. T., Copsey, D., Culverwell, I. D., Harris, C. M., Hill, R. S. R., Keen, A. B., McLaren, A. J., , and Hunke, E. C.: Design and implementation of the infrastructure of HadGEM3: the next-generation Met Office climate modelling system, *Geosci. Model Dev.*, 4, 223–253, doi:10.5194/gmd-4-223-2011, 2011.
- Hodges, K. I.: Adaptive constraints for feature tracking, *Mon. Wea. Rev.*, 127, 1362–1373, 1999.
- Hodges, K. I., Hoskins, B. J., Boyle, J., and Thorncroft, C.: A Comparison of Recent Reanalysis Datasets Using Objective Feature Tracking: Storm Tracks and Tropical Easterly Waves, *Mon. Wea. Rev.*, 131, 2012–2037, 2003.
- Hoskins, B. J. and Hodges, K. I.: New perspectives on the Northern Hemisphere winter storm tracks, *J. Atmos. Sci.*, 59, 1041–1061, 2002.
- Hunke, E. C. and Lipscomb, W. H.: CICE: the Los Alamos sea ice model documentation and software users’ manual, Version 4.1, LA-CC-06-012, 2010.
- Kay, J. E., L’Ecuyer, T., Gettelman, A., Stephens, G., and O’Dell, C.: The contribution of cloud and radiation anomalies to the 2007 Arctic sea ice extent minimum, *Geophys. Res. Lett.*, 35, doi:10.1029/2008GL033451, 2008.
- Kriegsmann, A. and Brümmer, B.: Cyclone impact on sea ice in the central Arctic Ocean: a statistical study, *Cryosphere*, 8, 303–317, doi:10.5194/tc-8-303-2014, 2014.

- Lindsay, R., Wensnahan, M., Schweiger, A., and Zhang, J.: Evaluation of Seven Different Atmospheric Reanalysis Products in the Arctic, *J. Climate*, 27, 2588–2606, doi:10.1175/JCLI-D-13-00014.1, 2014.
- Madec, G.: NEMO Ocean Engine, Note du Pole de Modélisatio, 2008.
- Megann, A., Storkey, D., Aksenov, Y., Alderson, S., Calvert, D., Graham, T., Hyder, P., Siddorn, J., and Sinha, B.: GO5.0: the joint
5 NERC–Met Office NEMO global ocean model for use in coupled and forced applications, *Geosci. Model Dev.*, 7, 1069–1092, doi:10.5194/gmd-7-1069-2014, 2014.
- Neu, U., Akperov, M. G., Bellenbaum, N., Benestad, R., Blender, R., Caballero, R., Coccozza, A., Dacre, H. F., Feng, Y., Fraedrich, K., Grieger, J., Gulev, S., Hanley, J., Hewson, T., Inatsu, M., Keay, K., Kew, S. F., Kindem, I., Leckebusch, G. C., Liberato, M. L. R., Lionello, P., Mokhov, I. I., Pinto, J. G., Raible, C. C., Reale, M., Rudeva, I., Schuster, M., Simmonds, S., Sinclair, M., Sprenger, M., Tilinina, N. D.,
10 Trigo, I. F., Ulbrich, S., Ulbrich, U., L. Wang, X. L., and Wernli, H.: IMILAST - A Community Effort to Intercompare Extratropical Cyclone Detection and Tracking Algorithms, *Bull. Am. Meteorol. Soc.*, 94, 529–547, doi:10.1175/BAMS-D-11-00154.1, 2013.
- Ogi, M., Yamazaki, K., and Wallace, J. M.: Influence of winter and summer surface wind anomalies on summer Arctic sea ice extent, *Geophys. Res. Lett.*, 37, doi:10.1029/2009GL042356, 2010.
- Onogi, K., Junichi Tsutsui, J., Koide, H., Sakamoto, M., Kobayashi, S., Hatsushika, H., Matsumoto, T., Yamazaki, N., Kamahori, H., Taka-
15 hashi, K., Kadokura, S., Wada, K., Kato, K., Oyama, R., Ose, T., Mannoji, N., and Taira, R.: The JRA-25 Reanalysis, *J. Meteorol. Soc. Jpn.*, 85, 369–432, doi:10.2151/jmsj.85.369, 2007.
- Parkinson, C. L. and Comiso, J. C.: On the 2012 record low Arctic sea ice cover: Combined impact of preconditioning and an August storm, *Geophys. Res. Lett.*, 40, 1356–1361, doi:10.1002/grl.50349, 2013.
- Rae, J. G. L., Hewitt, H. T., Keen, A. B., Ridley, J. K., West, A. E., Harris, C. M., Hunke, E. C., and Walters, D. N.: Development
20 of Global Sea Ice 5.0 and 6.0 CICE configurations for the Met Office Global Coupled Model, *Geosci. Model Dev.*, 8, 2221–2230, doi:10.5194/gmd-8-2221-2015, 2015.
- Raible, C. C., Della-Marta, P. M., Schwierz, C., Wernli, H., and Blender, R.: Northern Hemisphere extratropical cyclones: A comparison of detection and tracking methods and different reanalyses, *Mon. Wea. Rev.*, 136, 880–897, doi:10.1175/2007MWR2143.1, 2008.
- Rayner, N. A., Parker, D. E., Horton, E. B., Folland, C. K., Alexander, L. V., Rowell, D. P., Kent, E. C., and Kaplan, A.: Global analyses
25 of sea surface temperature, sea ice, and night marine air temperature since the late nineteenth century, *J. Geophys. Res.*, 108, 4407, doi:10.1029/2002JD002670, 2003.
- Rienecker, M. M., Suarez, M. J., Gelaro, R., Todling, R., Bacmeister, J., Liu, E., Bosilovich, M. G., Schubert, S. D., Takacs, L., Kim, G.-K., Bloom, S., Chen, J., Collins, D., Conaty, A., da Silva, A., Gu, W., Joiner, J., Koster, R. D., Lucchesi, R., Molod, A., Owens, T., Pawson, S., Pegion, P., Redder, C. R., Reichle, R., Robertson, F. R., Ruddick, A. G., Sienkiewicz, M., and Woollen, J.: MERRA: NASA’s Modern-Era
30 Retrospective Analysis for Research and Applications, *Journal of Climate*, 24, 3624–3648, doi:10.1175/JCLI-D-11-00015.1, 2011.
- Rudeva, I., Gulev, S. K., Simmonds, I., and Tilinina, N.: The sensitivity of characteristics of cyclone activity to identification procedures in tracking algorithms, *Tellus A*, 66, doi:10.3402/tellusa.v66.24961, 2014.
- Screen, J. A. and Simmonds, I.: Erroneous Arctic Temperature Trends in the ERA-40 Reanalysis: A Closer Look, *J. Climate*, 24, 2620–2627, doi:10.1175/2010JCLI4054.1, 2011.
- 35 Screen, J. A., Simmonds, I., and Keay, K.: Dramatic interannual changes of perennial Arctic sea ice linked to abnormal summer storm activity., *J. Geophys. Res.*, 116, D15 105, doi:10.1029/2011JD015847, 2011.
- Semtner, A. J.: A model for the thermodynamic growth of sea ice in numerical investigations of climate, *J. Phys. Oceanog.*, 6, 379–389, 1976.

- Simmonds, I. and Keay, K.: Extraordinary September Arctic sea ice reductions and their relationships with storm behavior over 1979–2008, *Geophys. Res. Lett.*, 36, L19715, doi:10.1029/2009GL039810, 2009.
- Simmonds, I. and Rudeva, I.: The great Arctic cyclone of August 2012, *Geophys. Res. Lett.*, 39, doi:10.1029/2012GL054259, 2012.
- Simmonds, I., Keay, K., and Lim, E. P.: Synoptic activity in the seas around Antarctica, *Mon. Weather Rev.*, 131, 272–288, doi:10.1175/1520-0493(2003)131<0272:SAITSA>2.0.CO;2, 2003.
- 5 Valcke, S.: OASIS3 User Guide (prism_2-5). PRISM Support Initiative No 3, p. 68 pp, 2006.
- Vaughan, D. G., Comiso, J. C., Allison, I., Carrasco, J., Kaser, G., Kwok, R., Mote, P., Murray, T., Paul, F., Ren, J., Rignot, E., Solomina, O., K., S., and Zhang, T.: Observations: Cryosphere. In: *Climate Change 2013: The Physical Science Basis. Contribution of Working Group I to the Fifth Assessment Report of the Intergovernmental Panel on Climate Change* [Stocker, T.F., D. Qin, G.-K. Plattner, M. Tignor, S.K. Allen, J. Boschung, A. Nauels, Y. Xia, V. Bex and P.M. Midgley (eds.)], 2013.
- 10 Walters, D., Boutle, I., Brooks, M., Melvin, T., Stratton, R., Vosper, S., Wells, H., Williams, K., Wood, N., Allen, T., Bushell, A., Copsey, D., Earnshaw, P., Edwards, J., Gross, M., Hardiman, S., Harris, C., Heming, J., Klingaman, N., Levine, R., Manners, J., Martin, G., Milton, S., Mittermaier, M., Morcrette, C., Riddick, T., Roberts, M., Sanchez, C., Selwood, P., Stirling, A., Smith, C., Suri, D., Tennant, W., Vidale, P. L., Wilkinson, J., Willett, M., Woolnough, S., and Xavier, P.: The Met Office Unified Model Global Atmosphere 6.0/6.1 and JULES Global Land 6.0/6.1 configurations, *Geosci. Model Dev.*, 10, 1487–1520, doi:10.5194/gmd-10-1487-2017, 2017.
- 15 Williams, K. D., Harris, C. M., Bodas-Salcedo, A., Camp, J., Comer, R. E., Copsey, D., Fereday, D., Graham, T., Hill, R., Hinton, T., Hyder, P., Ineson, S., Masato, G., Milton, S. F., Roberts, M. J., Rowell, D. P., Sanchez, C., Shelly, A., Sinha, B., Walters, D. N., West, A., Woollings, T., and Xavier, P. K.: The Met Office Global Coupled model 2.0 (GC2) configuration, *Geosci. Model Dev.*, 8, 1509–1524, doi:10.5194/gmd-8-1509-2015, 2015.
- 20 Woodgate, R. A., Weingartner, T., and Lindsay, R.: The 2007 Bering Strait oceanic heat flux and anomalous Arctic sea-ice retreat, *Geophys. Res. Lett.*, 37, doi:10.1029/2009GL041621, 2010.
- Zhang, J., Lindsay, R., Steele, M., and Schweiger, A.: What drove the dramatic retreat of arctic sea ice during summer 2007?, *Geophys. Res. Lett.*, 35, doi:10.1029/2008GL034005, 2008.
- Zhang, J., Lindsay, R., Schweiger, A., and Steele, M.: The impact of an intense summer cyclone on 2012 Arctic sea ice retreat, *Geophys. Res. Lett.*, 40, 720–726, doi:10.1002/grl.50190, 2013.
- 25

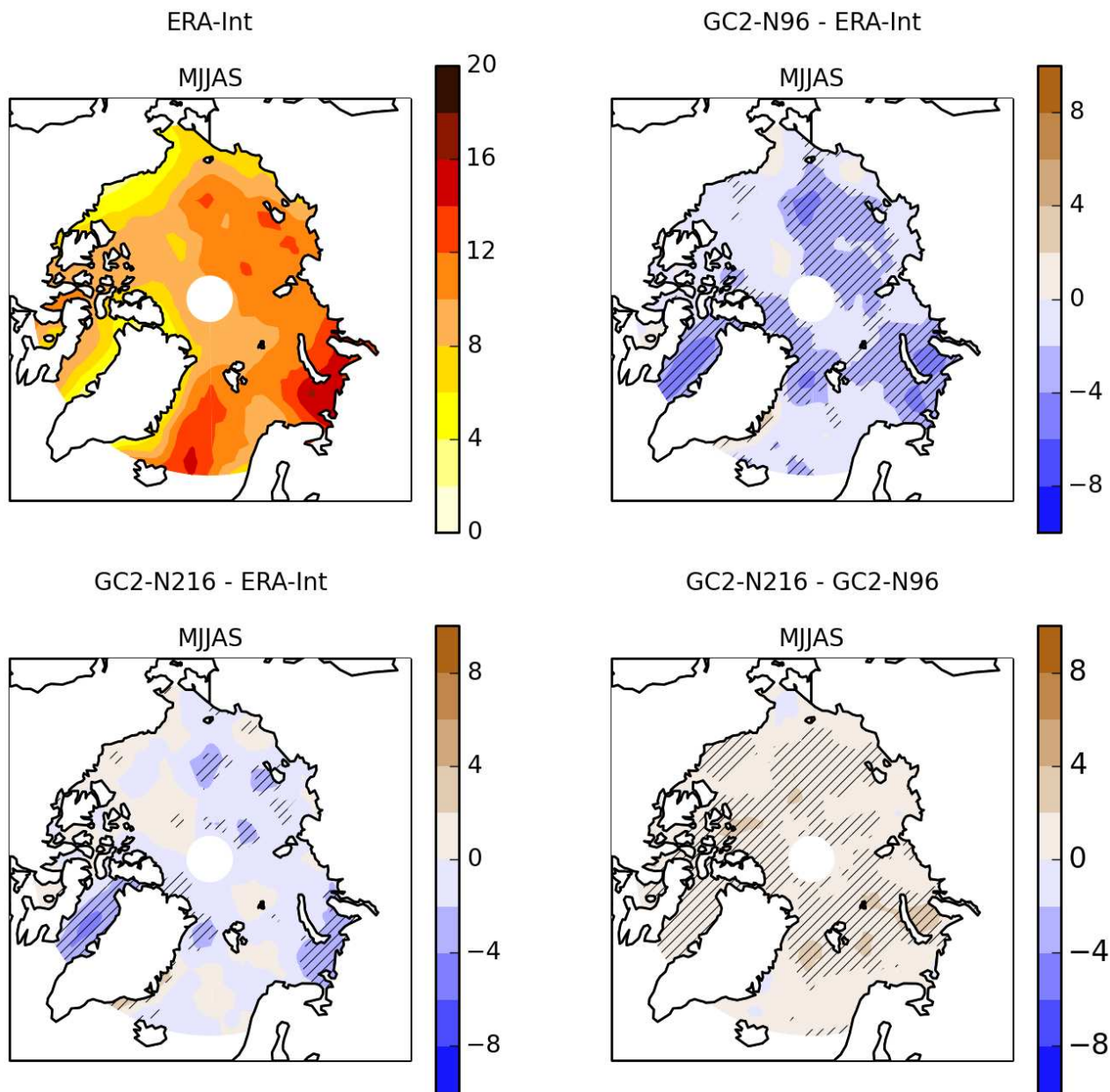


Figure 1. Vorticity-based tracking – **multiannual** MJJAS mean cyclone track density ($10^{-6} \text{ km}^{-2} \text{ month}^{-1}$): ERA-Interim, GC2-N96 minus ERA-Interim, GC2-N216 minus ERA-Interim, and GC2-N216 minus GC2-N96. ERA-Interim uses 1990-2009 MJJAS mean, while GC2-N96 and GC2-N216 use MJJAS mean over last 100 years of a 150-year run. Hatching indicates that the difference is shown by a Welch t-test to be statistically significant at the 95% level.

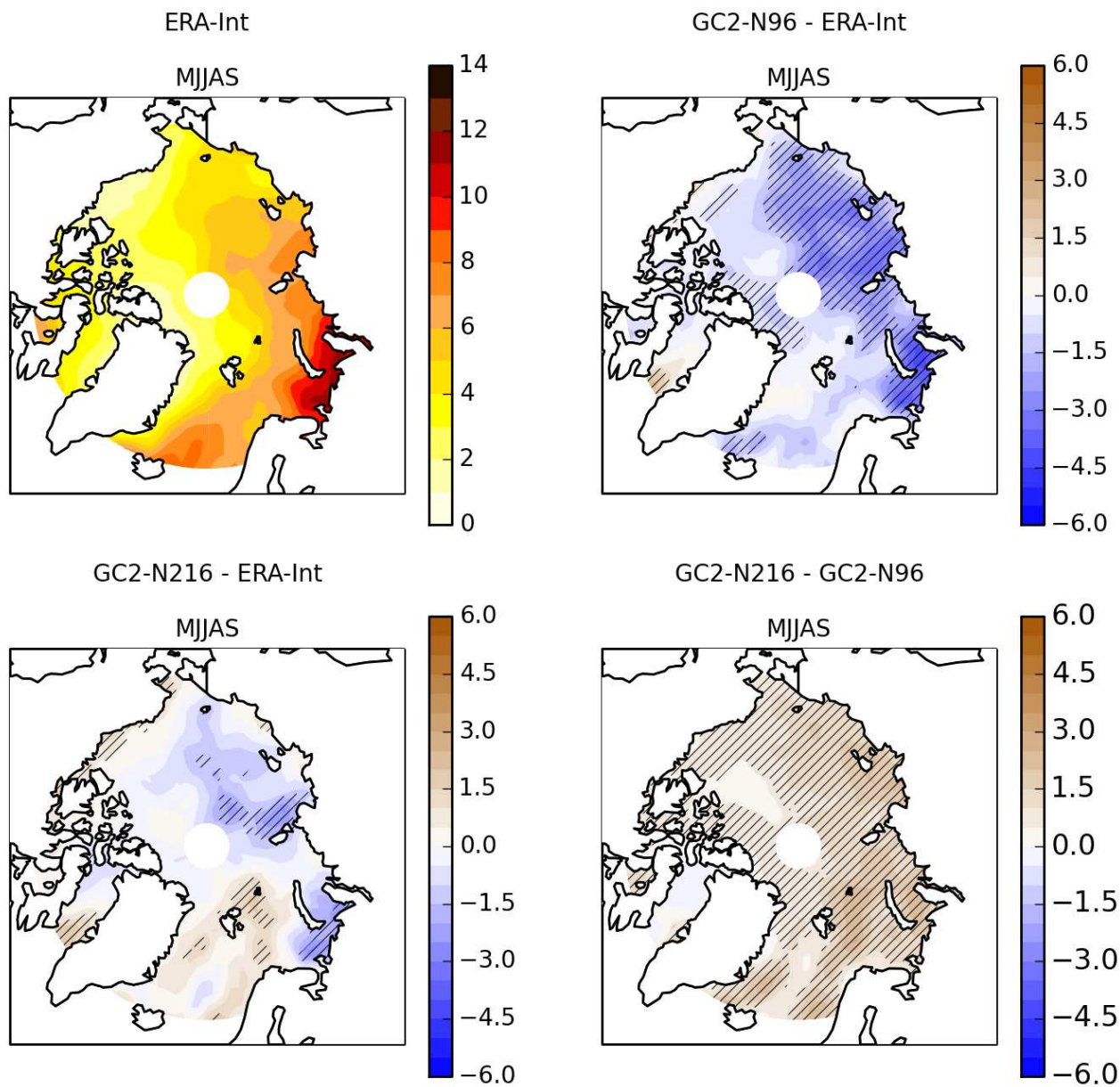


Figure 2. MSLP-based tracking – multiannual MJJAS mean cyclone track density ($10^{-6} \text{ km}^{-2} \text{ month}^{-1}$): ERA-Interim, GC2-N96 minus ERA-Interim, GC2-N216 minus ERA-Interim, and GC2-N216 minus GC2-N96. ERA-Interim uses 1990-2009 MJJAS mean, while GC2-N96 and GC2-N216 use MJJAS mean over last 100 years of a 150-year run. Hatching indicates that the difference is shown by a Welch t-test to be statistically significant at the 95% level.

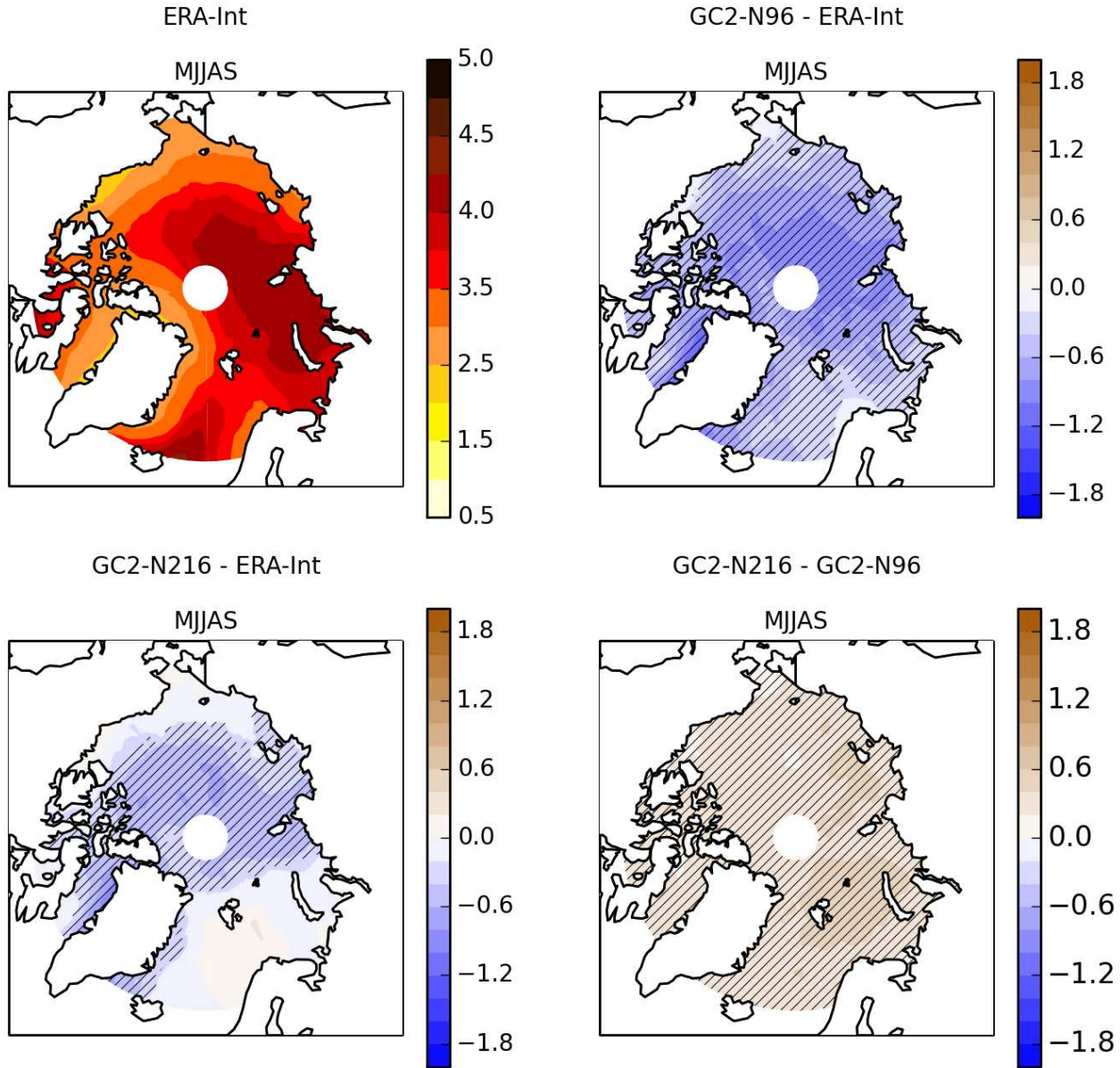


Figure 3. Vorticity-based tracking – **multiannual** MJJAS mean cyclone intensity with background field removed (10^{-5} s^{-1}): **ERA-Interim**, **GC2-N96 minus ERA-Interim**, **GC2-N216 minus ERA-Interim**, and **GC2-N216 minus GC2-N96**. ERA-Interim uses 1990-2009 MJJAS mean, while GC2-N96 and GC2-N216 use MJJAS mean over last 100 years of a 150-year run. Hatching indicates that the difference is shown by a Welch t-test to be statistically significant at the 95% level.

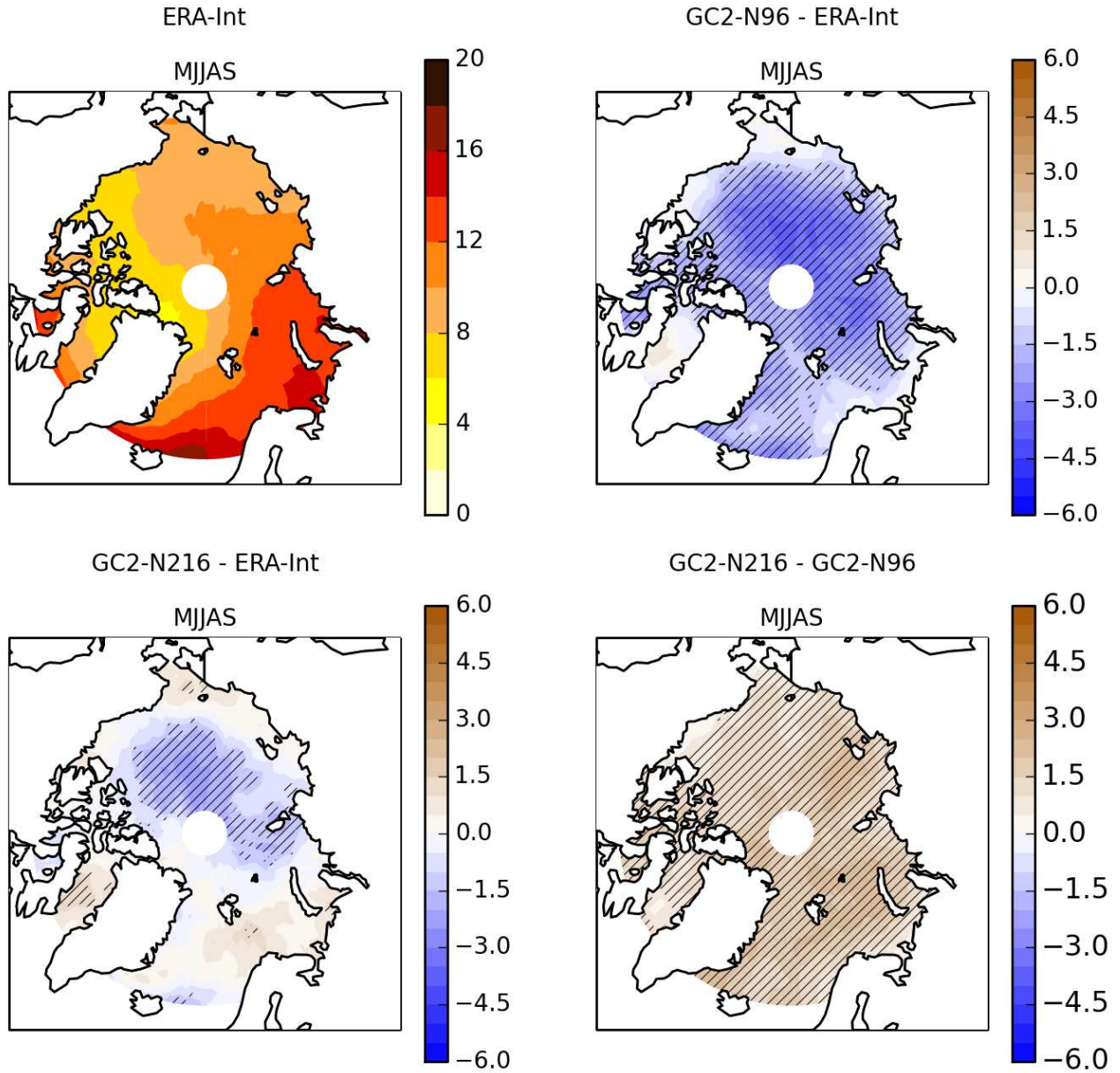


Figure 4. MSLP-based tracking – **multiannual** MJJAS mean cyclone intensity with background field removed (hPa): **ERA-Interim**, **GC2-N96** minus **ERA-Interim**, **GC2-N216** minus **ERA-Interim**, and **GC2-N216** minus **GC2-N96**. **ERA-Interim** uses 1990-2009 MJJAS mean, while **GC2-N96** and **GC2-N216** use MJJAS mean over last 100 years of a 150-year run. Hatching indicates that the difference is shown by a Welch t-test to be statistically significant at the 95% level.

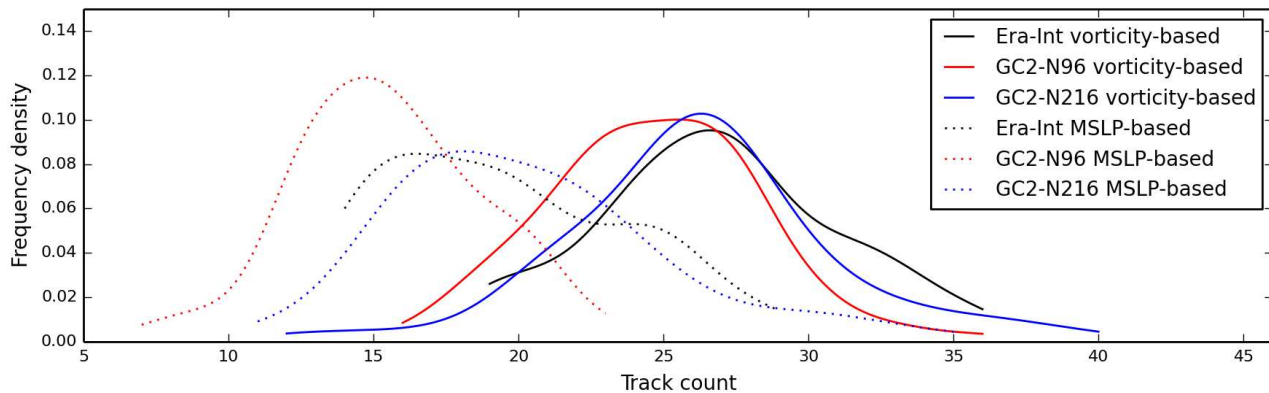


Figure 5. Frequency distributions of August cyclone track count. Use of the MSLP field in the tracking algorithm gives fewer cyclones than use of the vorticity field. The GC2-N216 climate model run is seen to give a similar number of cyclones to the ERA-Interim reanalysis (supported by a two-sample Kolmogorov-Smirnov test), while the lower-resolution GC2-N96 model run gives fewer cyclones.

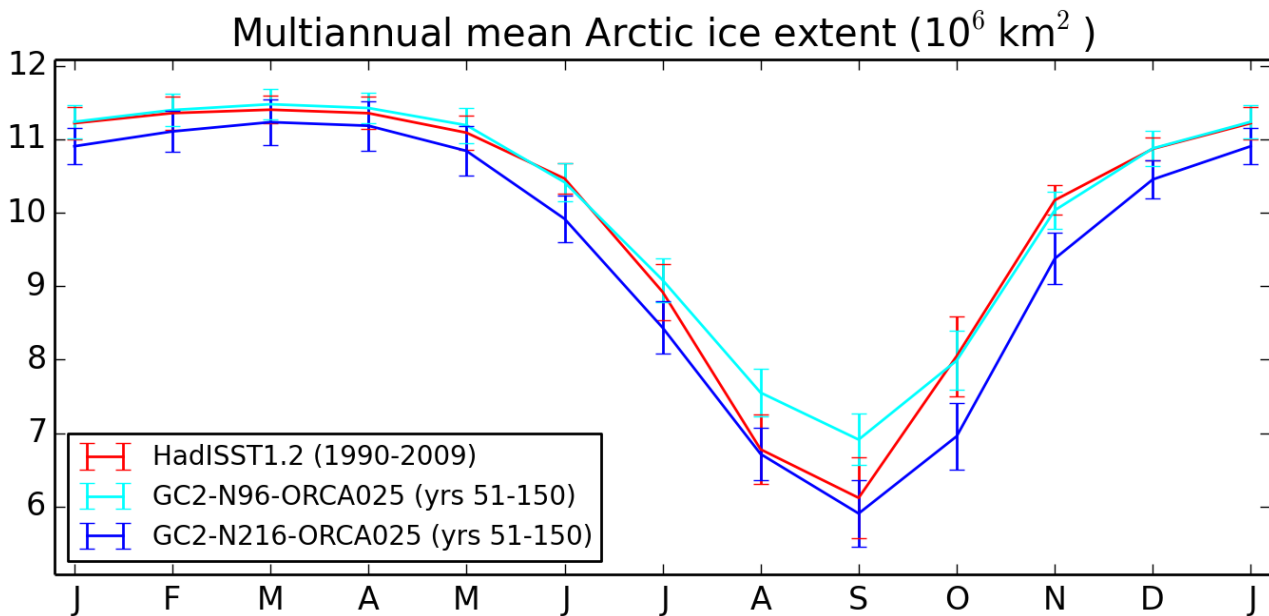


Figure 6. Sea ice extent multiannual-mean seasonal cycles from HadISST1.2 observational dataset, and GC2-N96 and GC2-N216 climate model runs. Error bars represent standard deviations on the multiannual means for each month, calculated over the same years as the means themselves. The ice extents in GC2-N216 and HadISST1.2 are seen generally to be within one standard deviation of each other.

		May	Jun	Jul	Aug	Sep
Track count	Vorticity	ERA–Int	0.40	0.32		
		GC2–N96				
		GC2–N216				
	MSLP	ERA–Int			0.33	
		GC2–N96				
		GC2–N216		–0.21	0.21	
Intensity	Vorticity	ERA–Int		0.41	0.44	
		GC2–N96	–0.24			–0.18
		GC2–N216				
	MSLP	ERA–Int	0.39			–0.33
		GC2–N96		–0.21		
		GC2–N216			–0.21	

Figure 7. Pearson correlation coefficients between May–September cyclone characteristics (over ocean and ice points only) and September mean sea ice extent. Dark red squares denote positive correlations significant at 95% confidence level; light red squares denote positive correlations significant at 90% confidence level; dark blue squares denote negative correlations significant at 95% confidence level; and light blue squares denote negative correlations significant at 90% confidence level. Correlation coefficients are not shown where the confidence level is less than 90%.

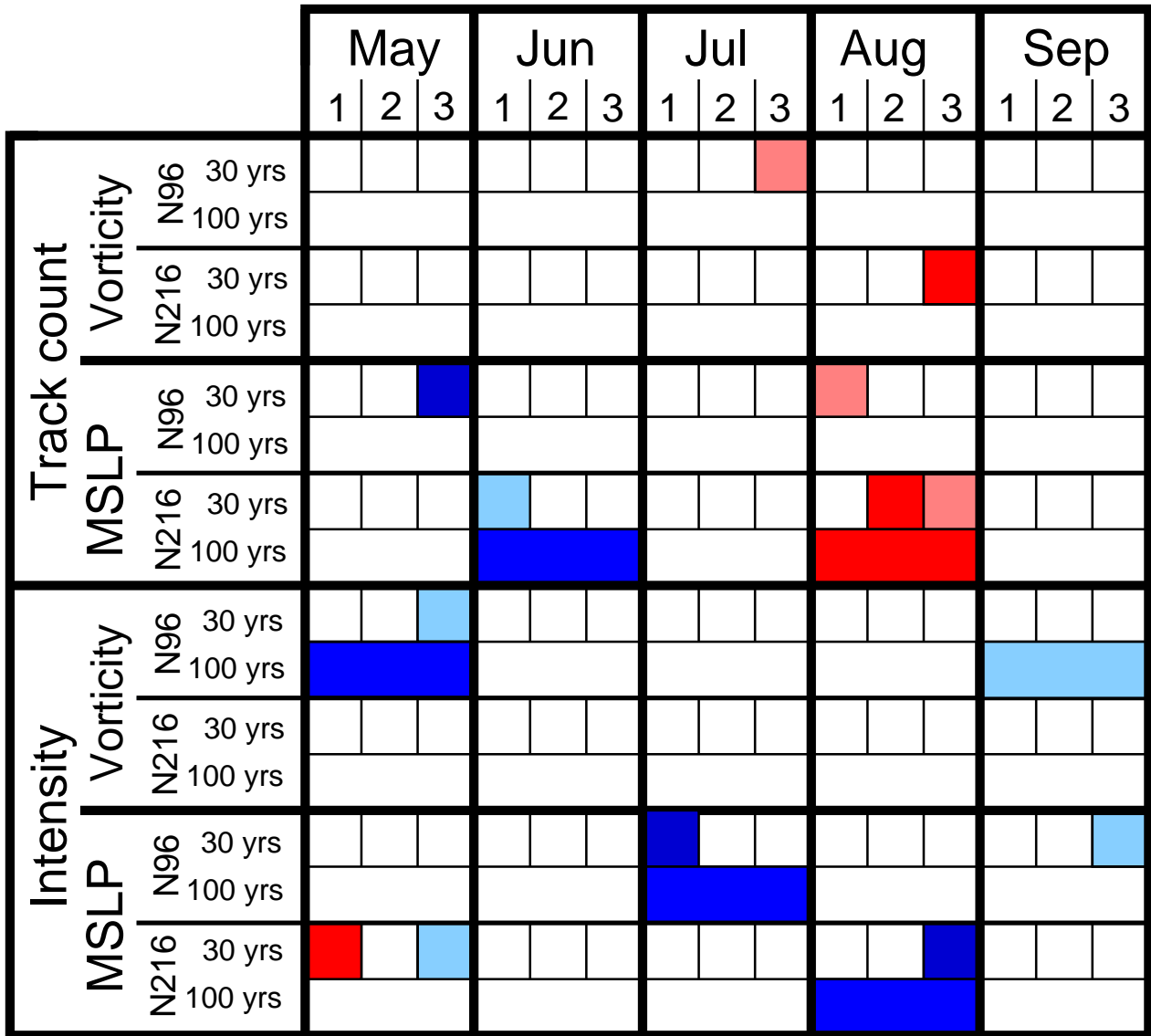


Figure 8. Impact of temporal sampling, demonstrated by correlations over 100-year period and different, discontinuous, 30-year subsets of output from GC2-N96 and GC2-N216 runs. Colours denote sign of, and confidence in, Pearson correlation coefficients between May-September cyclone characteristics (over Arctic non-land points) and September mean sea ice extent. Dark red squares denote positive correlations significant at 95% confidence level; light red squares denote positive correlations significant at 90% confidence level; dark blue squares denote negative correlations significant at 95% confidence level; and light blue squares denote negative correlations significant at 90% confidence level. White squares indicate correlation is not significant at 90% confidence or higher. Columns marked '1': first 30 years of 100-year period. Columns marked '2': middle 30 years of 100-year period. Columns marked '3': last 30 years of 100-year period.

Table 1. Results of two-sample Kolmogorov-Smirnov test for comparison of frequency distributions of monthly whole-Arctic cyclone track count and mean cyclone intensity. Results are given for comparison of frequency distributions for vorticity- and MSLP-based tracking for each of ERA-Interim, GC2-N96 and GC2-N216. For each of the two tracking methods, results are also given for comparison of different pairs of ERA-Interim, GC2-N96 and GC2-N216. Circles (●) denote pairs of distributions which can be said to be different with at least 95% confidence, while dashes (-) mean the distributions cannot be said to be different at this confidence level. As discussed in the text, it was not possible to compare directly the frequency distributions of mean cyclone intensity from the two tracking methods; hence, these are marked “N/A” here.

Month	Vorticity versus MSLP			ERA-Int versus GC2-N96		ERA-Int versus GC2-N216		GC2-N96 versus GC2-N216	
	ERA-Int	GC2-N96	GC2-N216	Vorticity	MSLP	Vorticity	MSLP	Vorticity	MSLP
Track count									
May	●	●	●	●	●	-	-	●	●
June	●	●	●	●	●	-	-	●	●
July	●	●	●	●	●	-	-	●	●
August	●	●	●	-	●	-	-	●	●
September	●	●	●	●	●	-	-	●	●
Mean cyclone intensity									
May	N/A	N/A	N/A	●	●	-	-	●	●
June	N/A	N/A	N/A	●	●	●	-	●	●
July	N/A	N/A	N/A	●	●	-	-	●	●
August	N/A	N/A	N/A	●	-	●	-	●	-
September	N/A	N/A	N/A	●	●	-	-	●	●