

5 Using SAR satellite data time-series for regional glacier mapping

Solveig H. Winsvold, Andreas Kääb, Christopher Nuth, Liss M. Andreassen, Ward J.J. van Pelt, and Thomas Schellenberger

10

Final Response to Referee Comments (Interactive Discussion)

- 15 This is our response to the two referee comments published at TCD. In this letter, we reply to the referee comments on the points where a reply is requested (Authors answers in bullets). For the smaller corrections, such as spelling corrections, we state that we have done these by writing “**DONE**”. A marked-up manuscript version (track changes in Word) is attached as a supplement in the response to referee comments.
- 20 Most important, we want to thank the two anonymous referees for their valuable, constructive and detailed comments. The comments will certainly improve the manuscript and are greatly acknowledged.

Comments by Anonymous Referee #1:

- 25 “The authors illustrate an enriched characterization of glacier properties at the catchment scale resulting from the improved spatial and temporal resolution of SAR satellite data, and present an interesting comparison of SAR backscatter data time-series with modeled firn air and moisture levels, which is not entirely convincing without ground validation.”
- 30 - We include a sentence and references about this under section 5.3: “*Validation of modeled subsurface density against shallow firn core observations on Kongsvegen and Holtedahlfonna has been discussed in Van Pelt and Kohler (2015), showing good agreement. There is no real validation for subsurface temperature and water content for these glaciers. But the model performed well in simulating vertical temperatures at the top of Lomonosovfonna, as shown in Van Pelt et al. (2014).*”
- 35 “Overall, the manuscript is well organized, but it requires some attention is specific areas to improve writing, phrasing, and organization in order to facilitate reader understanding and comprehension.»
- 40 - The text has been corrected and rewritten accordingly. In the revised manuscript changes are marked with track changes.

General Comments

- 45 The authors make very good use of the data. Plots are informative with necessary explanatory support. In the absence of in situ snow/firn data, all possible influences on radar energy must be addressed or explained with reference to relevant previous studies; authors should augment interpretations accordingly.

- Agreed. We have had this in mind when correcting the manuscript, and some more references were added in line with the reviewers' feedback. See answers below.

Targeted Comments

5 P1 L11: Suggest rephrasing “. . .used descriptive methods for outlining the possibilities. . .”

- Agreed. The sentence has been rephrased to: *“On Sentinel-1A and Radarsat-2 backscatter time-series images over mainland Norway and Svalbard, we outline how to map glaciers using descriptive methods.”*

10

P1 L20: Eliminate “Finally” – **DONE**.

P1 L23-25: This final statement of the abstract should be re-written to be more specific to this study. In its current form it can apply to nearly all glacier remote sensing studies.

15 Also, “semi-automatically” is probably more appropriate at this stage.

- Agreed. We decided to remove the last sentence in the abstract as this is mentioned in the introduction and conclusion.

20 P2 L27: Suggest adding the descriptive modifier “high-resolution” to “. . .dense SAR satellite image time-series. . .” as this reinforces the case that this is “new potential” – **DONE**.

P4 L4: Given the specific applications of the data from these sensors, it would be helpful to remind the reader of the wavelength. ”

25

- Agreed. It has been changed to: *“(center frequency of 5.405 GHz and wavelength of 5.5 cm)”*.

P5 L23: Consider describing the process of “multi-looked” rather than using it as a verb in this sentence.

30

- Agreed. We changed this sentence to: *“However, a multi-look algorithm was applied to reduce noise using spatial averaging.”*

P6 L5: Change to “. . .outdated, coarser. . .). – **DONE**.

35

P7 L20: Readers would likely benefit from a reminder that QuikSCAT is a Ku-band sensor.

- Agreed. Changed to: *“This has until now been mostly studied using QuikSCAT data (a Ku-band sensor). . .”*

40

P7 L24: Re-phrase the first sentence of this paragraph as the statement in its current form is untrue or partially correct.

- Agreed. We have clarified this by changing the sentence to: *“The TSL migration up-glacier is often correlated with temperature rise and topography” (e.g. Hall et al., 2000, corresponding to no.7 in Fig. 2).”*

45

P8 L3: This is an interesting result, which adds credence to the use of dense, high resolution SAR satellite data for this type of analysis. Other sensors used for this purpose would not have provided this level of detail in the melt patterns that are controlled

50

by terrain parameters. It would be worth highlighting this.

- 5
- Thank you for pointing this out. We have included a sentence: *“On such glaciers, satellite sensors other than Sentinel-1A and B and their according dense time-series are not able to reveal the same level of temporal detail in melt patterns.”*

P8 L6-7: Sentence should be re-written for clarity. Also, consider depth of snow as this can scale inversely with backscatter. Do you see this influence here?

- 10
- We believe that the wet snow absorbs much of the backscatter in this example, and little volume scattering can occur. The sentence is rewritten: *“In the melt season with warm and wet conditions, the backscatter signal after snow events might be reduced on the glacier. Firstly, they can cause a smoother surface compared to the underlying rougher ice surface, and, secondly, high absorption and forward scatter of the radar waves as the snow is wet (Rott, 1984).”*

15

P8 L10-14: This section of text needs to be re-written to achieve clarity.

- 20
- Agreed. Rewrote the section: *“In addition, another example from Kongsvegen showed a snow event causing disagreement between the Landsat 8 image and Sentinel-1 images (see outlier in Fig. 4c and Table A5). This snow event must have happened between the acquisition dates of the optical and SAR satellite images compared (i.e., between 7-9 September 2015, DOY 250 to 252, respectively).”*

P8 L17: Were the SMB gradients not determined through in situ measurements?

- 25
- Yes, that is correct. But the ELA is typically determined from the mass balance curves and not directly observed (e.g. measurements can be carried out after the first winter snow). There were also some in situ measurements of the TSL from field work. We changed the sentence to: *“EOSS positions from SAR backscatter data correlated well with ELA calculated from the SMB-curves that were derived from the in-situ measurements, in addition to direct in situ measurements of the EOSS.”*

30

P8 L20: Hyphenate “. . .optical-derived” – **DONE.**

P8 L22-23: This sentence needs clarification as the current writing is ambiguous.

35

- Agreed. We have changed to: *“The same applies to optical satellite images as it is challenging to derive the TSL when superimposed ice is present (e.g. Winther, 1993; Kundu and Chakraborty, 2015).”*

40

P8 L28: List should be written in a consistent manner according to “valuable for” in the leading sentence. Consider colon usage and proper listing format.

- Agreed. These points are now listed.

45

P8 L28: More appropriately written as “Refining spatial variations in the melt pattern of well-studied. . .” – **DONE.**

P9 L2 : Should be “SAR backscatter imagery can be used to. . .” – **DONE.**

P9 L2: Second use of SAR is redundant.

50

- Agreed. Removed.

P9 L2: There is inconsistent use of SAR glacier zones and glacier facies throughout the paper. Define these and strive for consistency in usage as it will be difficult

- 5 for the readers if this isn't addressed. It will be important to start with a clarification about what is being classified and what is interpreted from these classifications. For example, "SAR backscatter imagery can be used to identify distinct zones of consistent backscatter levels that correspond to glacier facies. . ." Is there ambiguity in the classifications? Do SAR glacier zones directly relate to glacier facies? If so, the two terms
10 should be treated separately, if not, they should be referred to as glacier facies.

- We see that this is challenging, and we have rewritten the four first paragraphs in section 5.2 to clarify the used terms:

15 *"SAR backscatter imagery can be used to identify distinct zones of consistent backscatter that corresponds to glacier facies (Fahnestock et al., 1993; Brown et al., 1999; Rau et al., 2000; König et al., 2002; Engeset et al., 2002; Jaenicke et al., 2006; Langley et al., 2008). This is because the SAR backscatter is influenced by physical properties of ice and snow, albeit weather conditions and surface texture (e.g. Smith et al., 1997; Rau et al., 2000). Nonetheless, it is challenging to directly connect glacier facies to SAR classified
20 glacier zones, as backscatter is a complex composite signal reflected from a surface volume, the material properties of which often vary temporally with external atmospheric forcings e.g. with winter rain events (Sect. 5.5). The term glacier facies are defined as properties on a glacier dividing one part of the glacier from others, often connected with mass balance processes (i.e. ablation and accumulation area), and glacier facies are equalized with the term glacier zones (Cogley et al., 2011). Here we use the term glacier
25 facies for snow and ice ground properties, and the term SAR glacier zones for the interpretations and classifications from SAR satellite imagery. SAR glacier zones often have an annual frequency, but also vary seasonally as backscatter changes from being sensitive to surface properties in the melt season to volume properties in the cold season (Fig. 2). We define the following SAR glacier zones (corresponding to no.5 in Fig. 2): 1) percolation zone (firn zone), 2) wet-snow zone, 3) ice zone, 4) the superimposed ice
30 (SI zone) (e.g. Rau et al., 2000; Cuffey and Paterson, 2010). The firn and SI zones are part of the accumulation area, and the ice zone is part of the ablation area. The wet-snow zone represents wet snow and firn in the melt season (Sect. 5.1), but also rain events during the cold season (Sect. 5.5), and occurs in both ablation and accumulation areas.*

35 *In this application scenario, we present a time-series of SAR glacier zones from 2009-2016 including Radarsat-2 (24-day repeat) and Sentinel-1A (12-day repeat) images in northwest Svalbard. Previous studies have correlated distinct glacier facies with SAR glacier zones on Kongsvegen (Engeset et al., 2002; König et al., 2004; Brandt et al., 2008; Langley et al., 2008), and these facies also correspond to previous interpretations in literature (Benson, 1962; Rau et al., 2000; Cuffey and Paterson, 2010). The dry-snow glacier facies is absent on both Kongsvegen and Holtedahlfonna as melting occurs over the entire surface,
40 (Engeset et al., 2002; Langley et al., 2007) which agrees with our interpretation of the SAR backscatter time-series (Fig. 2). The firn line does not vary much from year to year, however several years of negative mass balance will eventually migrate the firn line up-glacier, and vice versa with positive mass balance years (e.g. König et al., 2004; Brown, 2012).*

45 *Wet snow typically has the lowest backscatter values, followed by wet and dry ice (here, these show similar values, Fig. 2), dry superimposed ice and dry snow/firn (Fahnestock et al., 1993). A dry snow pack has low dielectric contrast, and SAR microwaves are volume scattered. In the firn area, ice lenses, pipes and layers act as randomly oriented dielectric cylinders, responsible for the high scattering of microwave signal back
50 to the SAR sensor. We consider snow and firn to be Rayleigh scatterers when the particle size is lower*

5 than 10% of the wavelength ($\lambda = 5.5$ cm) or 0.55 cm, and Mie scatterers up to 10 times the wavelength, or 55 cm (Woodhouse, 2006). The backscatter response of superimposed ice is dependent on air bubble content and size, where high frequency of bubbles typically causes higher backscatter values (e.g. König et al., 2002, Langley et al., 2009). Thus, during the cold season, the superimposed ice zone has typically lower backscatter compared to firn, but higher than glacier ice (e.g. Langley et al., 2009). During the melt season, high backscatter on ice surfaces is caused by surface roughness rather than volume scattering (Shi and Dozier, 1995; Hall et al., 2000).”

10 P9 L7-8: Consider re-phrasing to clarify. “Zones” don’t correspond to previous literature, rather to previous interpretations found in the literature.

- Agreed. We have changed the sentence to: “...and these facies also correspond to previous interpretations in the literature”.

15 P9 L17: How do you know this?

- We are sorry that references were missing. We now refer to “(e.g. König et al., 2002, Langley et al., 2009)”.

20 P9 L8: Just a clarification: The dry-snow glacier facies is absent here and the interpretation of the SAR backscatter data are consistent with this repeated observation.

25 Agreed. We have clarified the sentence: “The dry-snow glacier facies is absent on both Kongsvegen and Holtedahlfonna as melting occurs over the entire surface, (Engeset et al., 2002; Langley et al., 2007) which agrees with our interpretation of the SAR backscatter time-series (Fig. 2).”

P9 L18-20: Should be re-written to make the message clearer. Also, be careful not to present conflicting information about the winter glacier-ice zone.

30 Agreed. See previous answer under P9 L2 (last paragraph).

-

P9 L22 : Should be “. . . we found the following. . .” – **DONE.**

P9 L 23: Delete “frozen.” – **DONE.**

35

P9 L 24: Why isn’t superimposed ice part of the list in the previous sentence? How do you know it isn’t a saturation facies within the firn zone?

40 - Agreed. The SI-zone is now included in the list. We refer to SI based on previous literature (Engeset et al., 2002; König et al., 2004; Brandt et al., 2008; Langley et al., 2008).

P9 L 27: Why not keep the reader directed at Fig. 2 instead of Fig. 6a?

45 - Agreed. This has been changed.

P9 L 28-29: This might be best explained/defined at the beginning of this section as mentioned above.

50 - Agreed. We have rewritten the first part of section 5.2 to be more clear about SAR glacier zones and glacier facies.

P9 L29: Perhaps this is a better lead sentence for this paragraph.

- Agreed. This sentence is now first in this paragraph.

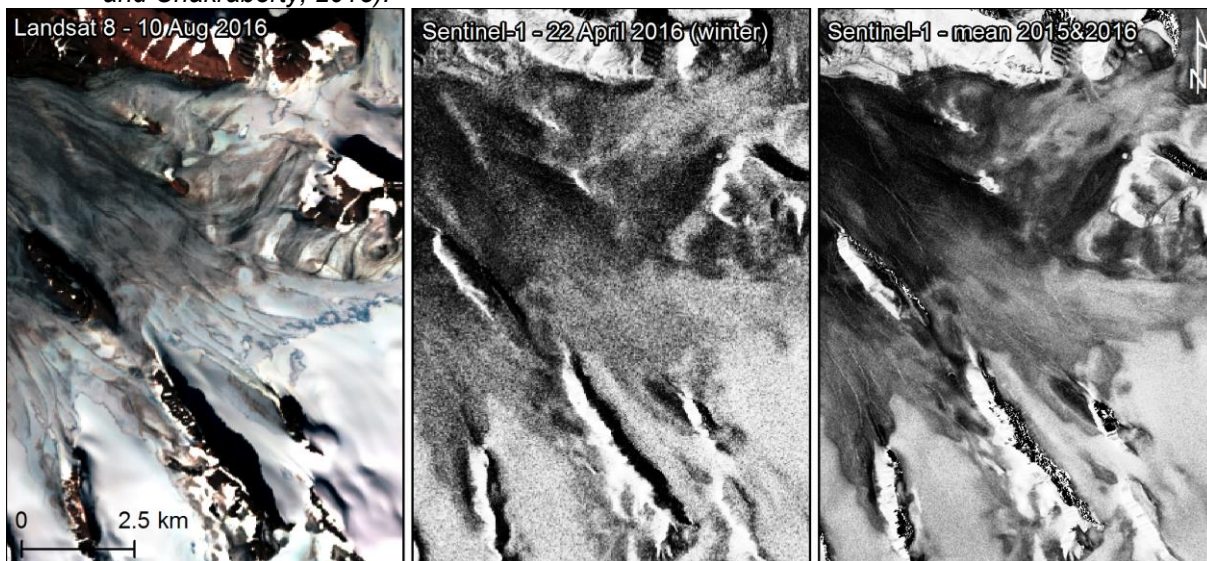
5

P9 L33: Is this image combination available to add as a figure? If so, this would provide useful evidence for the chosen facies interpretation.

- We've decided not to include a figure because it will not add much to the conclusion of section 5.2 about glacier facies. A figure showing the difference between SAR glacier zones on an optical and SAR image on Kongsvegen is found below. One needs to have a trained eye to see where the superimposed ice zone is in the optical image. With winter SAR image time-series it is possible to observe how the facies stabilizes in time (e.g. Fig. 2 and 5 in manuscript). This is more challenging to follow with optical imagery due to clouds and the spectral response of only the surface. We have chosen to modify the sentence about this to: *"The winter SAR images are useful for identifying the superimposed ice zone since with optical satellite imagery it can be challenging to separate this zone from the bare ice zone (e.g. Kundu and Chakraborty, 2015)."*

10

15



20 Figure 1: The figure shows comparison of glacier facies on Kongsvegen – Ice, superimposed ice and firn in the upper part. 1) An optical Landsat 8 image (enhanced histogram) and 2) a winter Sentinel-1 SAR image, in addition to 3) a mean backscatter image.

P10 L3-6: Consider re-phrasing this sentence. “. . .changing seasonally in response to changes. . .” Need to qualify or provide some scale for “local melt water streams” relevant to the frequency of the sensor used. Also consider the drying effect of melt water channeling and how that impacts the backscatter.

25

30 Agreed. We have clarified this: *"We suggest that backscatter amplitude from ice surfaces changes seasonally due to surface roughness variations, as melting creates a rougher ice surface due to changes in local topography on the ice surface e.g. micro water evacuation streams (Shi and Dozier, 1995; Hall et al., 2000) (Fig. 6a, see yellow to orange colors on ice in the melt season, compared to the light blue color in the cold season). According to the modified Rayleigh criterion a surface is considered rough in the C-*

band SAR (using an incidence angle of 38 degrees) when the root-mean-square (rms) surface height variation is more than 1.3 cm, and considered a smooth surface when the rms height variation is less than 0.2 cm (e.g. Lillesand et al., 2004). Drying of melt water channels do not cause the backscatter to be higher in the cold season compared to the melt season because they cover only a very small percentage of the SAR pixels, therefore we believe the ablation effect (caused by melting and water on the ice surface) is responsible for a rougher surface and higher backscatter.”

P10 L23: Updated from what to what?

Agreed. This has been rewritten: “The model has previously been used to simulate the long-term (1961-2012) mass balance and firn evolution of Kongsvegen and Holtedahlfonna, as described in Van Pelt and Kohler (2015). For the experiment in this paper the model is forced with weather station data from the Ny-Ålesund weather station (provided by the Norwegian Meteorological Institute), which provided time-series at sea-level for temperature, precipitation, relative humidity, cloud cover and air pressure.”

15 P10 L25: Delete “elevation” – **DONE.**

P10 L26-27: Please reword for clarification. Optimized – not “against.” I’m assuming you mean “for”? – **DONE.**

20 P10 L32: Please clarify “Several modeled outputs are directly or indirectly related to wetness.” How does this relate to the previous sentence?

- We have removed this sentence since it is not important for describing the data we use in this work.

25 P11 L1: How is firn air content a direct measure of anything if it is a model simulation product?

- We have removed “direct” from this sentence.

30 P11 L3: delete “where” – **DONE.**

P11 L6: This introductory sentence needs to be rewritten for clarity.

35 - Agreed. Changed to: “In the start of the cold season, the ice surface was covered by seasonal snow had low firn air-content (e.g. at 7 September 2015, DOY 250 in Fig. 6b). During the cold season the firn air-content increased through time and moving up-glacier, as fresh snow accumulated (e.g. at 23 April 2016, DOY 113 in Fig. 6b).”

40 P11 L17-34: Good discussion. It would be worth including in the discussion, the size definition of a target that is considered transparent, compared to those considered good specular or diffuse reflectors at the c-band frequency.

45 - Good point. We have added a sentence under section 5.2 (third paragraph) to clarify this: “We consider snow and firn to be Rayleigh scatterers when the particle size is lower than 10% of the wavelength ($\lambda = 5.5$ cm) or 0.55 cm, and Mie scatterers up to 10 times the wavelength, or 55 cm (Woodhouse, 2006).” And additionally a sentence to clarify this under the above comment P10 L3-6: “According to the modified

Rayleigh criterion a surface is considered rough in the C-band SAR (using an incidence angle of 38 degrees) when the root-mean-square (rms) surface height variation is more than 1.3 cm, and considered a smooth surface when the rms height variation is less than 0.2 cm (e.g. Lillesand et al., 2004).”

5 P11 L21: Re-word: A perennial firn aquifer was found containing liquid water.

- We corrected to: *“Christianson and others (2015) found a perennial firn aquifer containing liquid water in the upper part of the firn area on Holtedahlfonna.”*

10 P11 L22: Clarification required. Is the firn aquifer depth 3.5-15 m, or is it located below the surface 3.5-15 m?

- This has been clarified: *“, and they argued that the firn aquifer had a depth below the surface of approximately 3.5 - 15 meters.”*

15 P12 L1: Backscatter values can't be absorbed, please reword/rephrase.

- Agreed. We changed the sentence to: *“It is likely that absorption with limited volume scattering of radar waves in wet snow and firn can give an indication of how deep the Sentinel-1A SAR C-band can penetrate due to a strong sensitivity to wet conditions.”*

20 P12 L1-6: This contradicts the explanatory statements starting at P11 L28. How can you be certain that SAR penetration depth is increasing? This needs to be reconciled, along with an explanation of possible contributing parallel processes occurring in an
25 evolving snowpack exposed to a penetrating winter cold wave.

- Thank you for pointing this out. When looking at the plots 7 d and e one can see that the backscatter values stay high even when the dry-to-wet transition zone gets deeper. We have tried to better explain what we mean and changed the paragraph to: *“Using the model results we were able to estimate the depths of the intersection between the dry and wet zone in the firn pack (Fig. 7b) and compare this to the backscatter data (Fig. 7c-e). Results indicate increased penetration depths over time and then stabilization once the transition exceeds a certain depth where the radar waves do not reach it anymore. Similar trends between the transient modeled dry-to-wet transition depth and the backscatter time-series for the uppermost part of the glacier was found (Fig. 7c). The deeper the dry-to-wet transition zone, the higher SAR backscatter values (Fig. 7e). This correlation can thus be explained by a mix of volume scattering returns and radar waves sensitivity to wet conditions in snow and firn through time until January 2016.”*

30 P12 L7-14: Suggest reorganization of this section to make it easier for the reader to follow. Also, include a transitional/introductory sentence to link the previous paragraph
40 to this.

45 Agreed. We have changed to: *“To investigate the penetration depth further, values from black points in Fig. 7a were selected where the backscatter values stabilized in the firn. Values from the same points of dry-to-wet transition depths (Fig. 7b) gave an indication of the depth of the dry-to-wet zone in the backscatter data. The mean transition depth of the point values from Fig. 7b is 1.7 m when all 9 points were included. When only including the upper 6 points with significant correlation > 920 m (showed in Fig.7c and e), a mean transition depth of 2.0 m was found. We speculate that backscatter intensity cannot reflect small*

changes in snow depth during the dry wintertime due to high volume scattering thus suggesting deeper and temporally constant penetration of the radar waves.

In this example, modeled data were used to help interpret time-series of backscatter intensity data. This might be inverted in the future, as SAR backscatter data will be further understood and can potentially be used as refined modeling input. Such information is valuable in remote regions in the high Arctic that are lacking meteorological stations and where it is costly to do field observations.”

P12 L10: Modify. “. . . intensity can not ‘be used to’ identify. . .”

- Agreed. Use “reflect” in stead of “identify”

P12 L25: Change last word to ‘surfaces’– **DONE.**

P13 L23: Explain why an increase in pore space is occurred.

- Changed “pore space” to “air-content”.

P13 L24: Delete ‘with’– **DONE.**

P13 L28: Case change ‘p’– **DONE.**

P13 L29: Rephrase sentence, change ‘deeper snow depth’

- Agreed. Changed to: *“In the upper zone of the ablation area and before the rain event more snow was present compared to lower elevations.”*

P13 L29-32: This section needs a better explanation of the processes involved to support the conclusions. Why ‘higher permittivity’? Could there be another explanation for a sharp increase in backscatter? Snow saturation and superimposed ice is common with these events – are these identifiable?

- Agreed. We have changed to: *“Ice lenses and pipes might thus have been created from this penetration of water in the snow after the rain event, resulting in snow saturation giving stronger permittivity contrast as shown by increasing backscatter values (indicated by yellow color in Fig. 6a. Present around the 400 m elevation line from 17 January to 4 May 2016, DOY 17 to DOY 125).”*

P15 L17: Rearrange wording – ‘glaciers with high spatial resolution’

- Agreed. We have changed to: *“Additionally, high spatial resolution Sentinel-1 time-series can be used to measure snow melt parameters on glaciers and with 6-days temporal resolution.”*

P15 L21: ‘SAR-zones’ should be ‘glacier facies’

- Agreed: Changed to: *“Time-series from 2009-2016 using Radarsat-2 and Sentinel-1A SAR backscatter data, showed relatively stable SAR glacier zones on Kongsvegen and Holtedahlfonna. Dense SAR time-series have a potential for more accurate delineation of glacier facies, compared to using only one acquisition as in previous studies.”*

P15 L27-28: Rearrange/rephrase for reader clarity.

- Agreed. We have rephrased to: *“Our findings are important to further understand glaciological processes, and we have shown the potential of combining results from modeled snow/firn evolution with high-resolution SAR backscatter time-series data.”*

5 P17 L5: Rephrase

- Agreed. Changed to: *“After the rain event, but during the same weather situation, the precipitation might have turned into snow on the glacier”.*

10 P29: Minor - Consider switching the color blocks for ‘Cold season’ and ‘Warm season’ to reflect customary warm and cool color designations.

- This is a good point, and we have discussed this extensively before initial submission. We have decided to keep the colors like this, because now the red color reflect high backscatter values, and blue colors reflects low backscatter colors. When interpreting SAR backscatter values this representation make more sense in terms of retrieved energy level at the satellite sensor. Wet conditions are now related to blue color (=water), because wetness is strongly affecting the backscatter signal.

20 **Comments by Anonymous Referee #2:**

4. Are the scientific methods and assumptions valid and clearly outlined? -> Yes, well written and supported by prior literature. My only question is the use of parametric statistics, particularly the Spearman r correlation, for what might be a non-normal and probably not-independent sample (eg. Figure 6c). I believe the authors need to justify this.

- As the reviewer mentions, we cannot assume a normal-distribution (and do not assume a linear relationship between the backscatter and the firn air-content), and therefore avoid using parametric statistics such as the Pearson correlation method. This is the reason why we use the nonparametric Spearman correlation coefficient in e.g. Figure 6c. We have clarified this in the main text: *“To avoid assumptions of a linear relationship between air-content and backscatter, we used the nonparametric Spearman's rank correlation coefficient.”* (Page 12, second paragraph). Similarly, we do not assume a linear relationship between the snow/firn wetness (represented as the dry-to-wet transition zone) and backscatter.

6. Is the description of experiments and calculations sufficiently complete and precise to allow their reproduction by fellow scientists (traceability of results)? -> There is a great deal of analysis bound in this work and I have not traced all of the background references and their references. I believe that the literature cited will allow appropriate traceability.

- Experiments and calculations are described and can be traced in literature or in the paper

8. Does the title clearly reflect the contents of the paper? -> The title is short and could benefit from the mention of the five scenarios which is a major contribution.

- We will keep the title as it is. It is short and has a strong message that summarizes the key content of the manuscript.

11. Is the language fluent and precise? -> Some suggested corrections are provided
5 below.

- We agreed with all of the language issues and changed the manuscript accordingly

Page 2, line 21, “. . .1980’s have been. . .” - **DONE**

10 Page 7, line 24, “The TSL migration up-glacier is dependent. . .” - **DONE**

Page 8, line 8, “. . .in the ablation area of, for example, on. . .” - **DONE**

Page 8, line 10, “On addition, in a different example from. . .” (suggestion as ‘yet’ does not convey anything here) – **DONE, changed to “In addition, a different example from. . .”**

15 Page 8, line 19: I suggest that “3% lower altitude” does not mean much as a percentage will change with absolute altitude. 3% of x scale or an absolute change of height would provide more clarity. – **Agreed. Changed to “...show a mean of 21 m lower altitude compared to optical derived TSLs (not taking the outlier into consideration).”**

Page 10: Section 5.3 is a particularly strong contribution, in my opinion.

20 - Thank you!

Page 14, line 20 “. . .at the days and time-of-day of SAR. . .” is awkward syntax. There may be a better construction. – **Agreed. Changed to “...have been low in some of the SAR acquisitions”.**

Page 14, line27, “. . . but be of help. . .” perhaps should be “. . .but can be of help. . .”? - **DONE**

25 Page 15, line 29, I suggest that the authors mean “Winter rain events” as opposed to “Winter weather events” of which there are many in the Arctic and includes a wide range of precipitation types. – **DONE**

30

35

40

45

Using SAR satellite data time-series for regional glacier mapping

Solveig H. Winsvold¹, Andreas Kääb¹, Christopher Nuth¹, Liss M. Andreassen², Ward [J.J. van Pelt](#)³, and Thomas Schellenberger¹

¹ Department of Geosciences, University of Oslo, P.O. Box 1047 Blindern, 0316 Oslo, Norway

5 ² Section for Glaciers, Ice and Snow, Hydrology Department, Norwegian Water Resources and Energy Directorate, P.O. Box 5091 Majorstua, 0301 Oslo, Norway

³ Department of Earth Sciences, Uppsala University, Villav. 16, 752 36 Uppsala, Sweden

Correspondence to: Solveig H. Winsvold (sohw@nve.no, h.winsvold@geo.uio.no)

Abstract

10 With dense SAR satellite data time-series it is possible to map surface and subsurface glacier properties that vary in time. On Sentinel-1A and Radarsat-2 backscatter [time-series](#) images over mainland Norway and Svalbard, we [outline how to map glaciers using descriptive methods](#)~~have used descriptive methods for outlining the possibilities of using SAR time-series for mapping glaciers~~. We present five application scenarios, where the first shows potential for tracking transient snow lines with SAR backscatter time-series, and correlates with both optical satellite images (Sentinel-2A and Landsat 8) and equilibrium
15 line altitudes derived from *in situ* surface mass balance data. In the second application scenario, time-series representation of glacier facies corresponding to SAR glacier zones shows potential for a more accurate delineation of the zones and how they change in time. The third application scenario investigates the firn evolution using dense SAR backscatter time-series together with a coupled energy balance and multi-layer firn model. We find strong correlation between backscatter signals with both the modeled firn air-content and modeled wetness in the firn. In the fourth application scenario, we highlight how winter rain
20 events can be detected in SAR time-series, revealing important information about the area extent of internal accumulation. ~~Finally, in~~ the last application scenario, averaged summer SAR images were found to have potential in assisting the process of mapping glaciers outlines, especially in the presence of seasonal snow. Altogether we present examples of how to map glaciers and to further understand glaciological processes using the existing and future massive amount of multi-sensor time-series data. ~~Our results reveal the potential of satellite imagery for automatically derived products as important input in modeling assessments and glacier change analysis.~~
25 [modeling assessments and glacier change analysis.](#)

1 Introduction

Glacier change is an important measure of the climate (Vaughan et al., 2013), and glaciers are therefore considered an essential climate variable (GCOS, 2003). Equable baseline datasets are fundamental for parametrization of models and in change analysis (e.g. Fontana et al., 2010; Winsvold et al., 2014; Huss and Hock, 2015), and are essential to better understand the state
30 of glaciers, especially in regions with scarce *in situ* observations.

Optical and synthetic aperture radar (SAR) satellite systems for Earth observation have different advantages and disadvantages for glacier observation. Many of the measured variables included in glacier change studies are often mapped using optical imagery (e.g. Racoviteanu et al., 2009). However, the amount of images is limited in mountain, maritime and high latitude regions due to cloud cover and the polar night. SAR instrument on the other hand, are largely insensitive to weather and, as active instruments, operate independent of solar radiation penetrating clouds. Using SAR and optical imagery in combination should be of high value for understanding processes and for adding information for further advances in glacier remote sensing applications (Kääb et al., 2014).

Glacier mapping is not limited to the detection of glacier outlines, but involves any observation of glacial features and characteristics using remote sensing sources. New methods to map glaciers are needed in view of the higher revisit times of free and open accessible SAR (Sentinel-1A and B) and optical (Landsat 8, Sentinel-2A and B) satellite sensors (Torres et al., 2012; Drusch et al., 2012; Roy et al., 2014). Together, these satellite sensors will enable new multi-sensor time-series applications for mapping glaciers. In this work, we present continuous time-series of Sentinel-1A SAR data (12-day repeat cycle) covering glaciers in Svalbard and mainland Norway. From autumn 2016 two SAR-sensors have been in orbit (Sentinel-1A and B), providing dense temporal sampling availability (6-day repeat).

Backscatter time-series can detect changes in snow and ice conditions, which is related to the amount and variation of ice, air and water in the measured target (e.g. Forster et al., 1996). The received signals at the sensor reflects multiple scattering events dependent on the SAR instrument frequencies, polarization, and imaging geometry, and further the physical characteristics [and dielectric properties](#) of snow and ice (e.g. [dependent on roughness](#)), water content, [grain size, temperature and impurities](#), [dielectric properties, and volume scattering](#) (Shi and Dozier, 1995; Lillesand et al., 2004, Woodhouse, 2006). Backscatter signals do not only show surface reflectivity, but also signals from below the surface ([volume scattering](#)), allowing for differentiating between [SAR](#) glacier zones (e.g. Fahnestock et al., 1993; Rau et al., 2000). Studies back to the 1980's have [been](#) used to investigate snow and ice, and especially using summer SAR images for exploring and tracking transient snow lines (TSL) (Rott, 1984; Bindschadler et al., 1987; Hall et al., 2000; Shi and Dozier, 1994; Rees et al., 1995; Adam et al., 1997; Brown et al., 1999, Casey and Kelly, 2010; Huang et al., 2013; Kundu and Chakraborty, 2015; Callegari et al., 2016). Synergistic use of SAR and optical satellite imagery for mapping snow and ice has been evolving since the 1990s (Rott and Strobl, 1992; Rott, 1994, Shi et al., 1994; Sephton et al., 1995). However, none of these studies use dense continuous Sentinel-1A and B SAR backscatter time-series.

In this paper, we present five application scenarios describing new potential for mapping glaciers with dense [high-resolution](#) SAR satellite image time-series based on robust methods. The chronological order of the imagery, or calculated stack statistics of individual pixels or points (Winsvold et al., 2016), has been analyzed. (1) In the first application scenario, we have tracked the transient snow line (TSL) using SAR time-series data, and we describe the possible connection between TSL's from combined SAR/optical time-series and equilibrium line altitudes (ELA) from *in situ* surface mass balance measurements. (2) Second, we show the stability of winter backscatter values, and a potential of observing glacier facies from 2009-2016 using both Sentinel-1A and Radarsat-2 SAR-data. (3) Third, SAR time-series of surface and subsurface

observations have been compared with a surface mass balance and firn evolution model (Van Pelt and Kohler, 2015) using glacier centerlines profiles. (4) Fourth, we show the potential to map winter rain events over glaciers using high temporal resolution SAR backscatter data. (5) Fifth, we have investigated patterns in summer SAR backscatter signals on- and off-glacier and their potential in glacier outline mapping. For each individual application scenario, a brief introduction, background and method part is given, and results are presented and discussed.

2 Study areas

In this paper, we have studied two glaciers near Ny-Ålesund on Svalbard (78.8°N, 12.7°E), and five glaciers in southern Norway (61-62°N, 7-8.6°E, Fig. 1 and Table 1). Annual mean temperature for Ny-Ålesund is -5.7 °C, and mean winter and summer temperatures are -12.9 °C and 3.7 °C, respectively (Normal period 1971-2000, Isaksen et al., 2016). Glaciers on Svalbard are maritime and often have a superimposed ice zone (Hagen et al., 2003). Superimposed ice forms from meltwater or rain that refreezes at the surface of the ice (Cogley et al., 2011). Kongsvegen (108 km²) surged in 1948 (Melvold and Hagen, 1998) and is currently in its quiescent phase with low flow velocities (Nuth et al., 2012). Kronebreen (108 km²), the lower part of Holtedahlfonna (295 km²), is a fast-flowing tidewater glacier with maximum ice velocity of 3.2 m d⁻¹ at the calving front (Schellenberger et al., 2015).

Table 1: Basic glacier information from Nuth and others, 2013 and Andreassen and others, 2012.

| Region | Glacier name | Glacier Ids | | Area (km ²) | Aspect | Centerlines | | |
|----------|----------------|-------------|----------------|-------------------------|------------|-------------|--------------|--------------|
| | | Local | GLIMS | | | Length (km) | Min.elev (m) | Max.elev (m) |
| Svalbard | Kongsvegen | 15510.1 | G013044E78792N | 108 | North-west | 26 | 0 | 740 |
| | Holtedahlfonna | 15511.2 | G013542E78988N | 295 | South-west | 47 | 0 | 1155 |
| Norway | Nigardsbreen | 2297 | G007099E61715N | 42 | South-east | 10.5 | 345 | 1946 |
| | Austdalsbreen | 2478 | G007335E61826N | 10 | South-east | 6 | 1222 | 1755 |
| | Hellstugubreen | 2768 | G008441E61556N | 3 | North-east | 3.4 | 1494 | 2212 |
| | Storbreen | 2636 | G008132E61573N | 5 | North-east | 2.8 | 1398 | 2079 |
| | Gråsubreen | 2743 | G008600E61657N | 2 | North-east | 3 | 1860 | 2399 |

In southern Norway, the five studied glaciers form a maritime-continental transect and represent diverse glacier characteristics. Nigardsbreen (42 km²) and Austdalsbreen (10 km²) are outlet glaciers from the ice cap Jostedalbreen. Storbreen (5 km²), Hellstugubreen (3 km²) and Gråsubreen (2 km²) are smaller valley glaciers located in the high mountain area of Jotunheimen. Due to the elevation and more eastward location, these glaciers are more continental than Nigardsbreen and Austdalsbreen. For Norwegian glaciers, the superimposed ice zone is usually absent, even though it may be present on

some glaciers (e.g. Brown et al., 2005). The glaciers on mainland Norway all have surface mass balance (SMB) programs measured by the Norwegian Water Resources and Energy Directorate (Kjøllmoen et al., 2016; [Kjøllmoen et al., 2017](#)).

3 Satellite data

Time-series from two synthetic aperture radar (SAR) sensor types were used in this study, namely Sentinel-1A and B (Interferometric wide swath mode, IW) and Radarsat-2 (Wide, Wide Fine and ScanSAR-Wide modes) (Table 2). Both SAR-sensor types acquire in C-band (center frequency of 5.405 GHz [and wavelength of 5.5 cm](#)), and images are single polarized SAR data (HH for Svalbard and VV for mainland Norway). Sentinel-1A and B orbits for both Norway and Svalbard are ascending and right looking. Some data gaps exist due to missing images in the download archive (Sentinel-1A) or due to limitations of the data quota and priority (Radarsat-2).

Sentinel-1A and B IW GRD images have a swath of 250 km and a grid-spacing of 10 m, while Radarsat-2 Wide Fine mode has a 150 km swath and a grid-spacing of 8 m. For improved interpretation of a specific 8-day period (in Sect. 5.4) we have also explored Radarsat-2 ScanSAR Wide mode data of 500 km swath with a grid-spacing of 100 m. The images were acquired from different incidence angles and either ascending or descending paths.

Optical satellite data have been included for validation purposes, though with lower temporal resolution mostly due to extended cloud cover in the maritime study regions. Medium resolution optical satellite imagery, Landsat 8 OLI (level-1 Terrain) and Sentinel-2 MSI (level-1C), were both available with radiometrical corrected and ortho-rectified products (Dursch et al., 2012; Roy et al., 2014). These were used for comparison with SAR imagery in the snowline tracking application from Hellstugubreen and Kongsvegen (Sect. 5.1 and Table A5). High mountain areas in Norway are often highly affected by cloud cover, and only seven images were usable for comparison with SAR (three in 2015 and four in 2016). For Kongsvegen on Svalbard, nine optical images were used (five in 2015 and four in 2016). The dates of the optical imagery correlated with the SAR acquisitions by ± 3 days, with two exceptions having a 6-day gap (Table A5). In addition, a Landsat 8 image from 11 September 2015, corresponding to day of year (DOY) 254, was used in the glacier outline mapping (Sect. 5.5).

3.1 Additional data

Interpretation of SAR backscatter images for glacier mapping purposes can be challenging since several factors and processes on and within the subsurface affect the phase and magnitude of the SAR signals. The snow, firn and ice are dependent on external and surface conditions, and can result in similar backscatter values. Therefore, additional data, or comparison datasets were used to check the quality and reliability of the SAR time-series. Meteorological data, temperature and precipitation, were downloaded from the Norwegian Meteorological Institute (eKlima.no, 2016) for the Ny-Ålesund meteorological station (Svalbard) and Juvvasshøe meteorological station (mainland Norway) (Fig. A1 and A2). Both stations are located close to the three glaciers used for detailed analysis of the backscatter time-series, namely Hellstugubreen (within ~12 km and station is located 1894 m a.s.l.), Kongsvegen and Holtedahlfonna (within ~20 km and station is located 8 m a.s.l.). We have used existing

glacier outlines from both Svalbard (Nuth et al., 2013) and mainland Norway (Andreassen et al., 2008; Paul et al., 2011) as verification and in support of the analysis. Updated glacier outlines for the Norwegian glaciers are available (Andreassen et al., 2016). The discrepancy between new and old outlines are minor and do not influence the results presented in this paper.

5 **Table 2:** Overview of Sentinel-1A and B and Radarsat-2 data. * Radarsat-2 images are in Wide (2009-2013) and Wide Fine (2014-2015). The ScanSAR Wide mode is not listed here, as only five images within 8 days was used as ancillary data. ** GRD: Ground range detected images have been detected, multi-looked and projected to ground range coordinates using an ellipsoid (WGS84). *** Sentinel-1B images were available in Norway since 3 October 2016 (DOY 277). Some Sentinel-1A acquisitions were not possible to retrieve from the Sentinels Scientific Data Hub and have caused acquisition gaps in the time-series. For Radarsat-2 the time gaps are due to limitations of the data quota and priority. (Abbreviations: θ_i = Incident angle, Pol.=Polarization, Temp.res. = Temporal resolution, Rel. path = Relative path, Data prod. = Data product).

| Glacier region | Radarsat-2 * | | | | | | Sentinel-1A and B | | | | | | |
|----------------|--------------|------|------------|------------|-------------|------------|-------------------|------|-----------|-------------|-------------|--------------|------------------|
| | # | Pol. | θ_i | Start date | End date | Temp. res. | # | Pol. | Rel. path | Start date | End date | Data prod ** | Temp. res.*** |
| Svalbard | 63 | HH | 37.8° | 8 Feb 2009 | 17 Dec 2015 | 24-days | 37 | HH | 14 | 22 Jan 2015 | 13 Sep 2016 | GRD | 12-days |
| Norway | - | - | - | - | - | - | 51 | VV | 44 | 20 Oct 2014 | 15 Oct 2016 | GRD | 12-days (6-days) |

4 Processing of SAR imagery

Sentinel-1A and B time-series were processed and geocoded using the open source software SNAP (Sentinel-1 toolbox) distributed by ESA (ESA, 2016), and Radarsat-2 Wide and Wide Fine images were processed and geocoded using the
 15 GAMMA remote sensing software (Werner et al., 2000). The Sentinel-1A and B GRD images were in slant range coordinates projected to an ellipsoid, and Radarsat-2 single look complex (SLC) images were in radar geometry. The Sentinel-1 images in SNAP were converted to radiometrically calibrated backscatter in sigma nought (σ^0) and then filtered using a 3x3 median speckle filter. Furthermore, we applied backscatter terrain correction using a digital elevation model (DEM) and converted linear backscatter values to decibels (dB). The radar backscatter coefficient (σ_{dB}^0) is hereafter referred to as backscatter. To
 20 examine the backscatter results produced in SNAP, we tested the difference between GAMMA and SNAP processed Sentinel-1A GRD images for two winter dates over the glaciers of interest. In GAMMA, the radiometric calibration corrects for two effects: 1) the varying incidence angle on the returned backscatter, and 2) the differing pixel illumination that depends upon the incidence angles (resulting in gamma nought, γ^0). A speckle filter was not applied on the Sentinel-1 and Radarsat-2 images in GAMMA. However, [a multi-look algorithm was applied to reduce noise they were multi-looked](#) using spatial averaging. In
 25 north western Svalbard, we used an improved ASTER GDEM (60m) (Nuth et. al., 2013) for geocoding in both software solutions. For scenes covering Norway the SAR images were geocoded using the national 20 m DEM from the Norwegian

Mapping Authority (Kartverket, 2016). In Norway and Svalbard, the difference between SNAP and GAMMA processing resulted in a mean bias of 2.7 dB and 2.4 dB, respectively. We suspect that the bias is a result of the lack of correction in the varying pixel area with incidence angle within the SNAP processing (CCRS, 2002; GAMMA, 2009; step forum, 2016). This correction is normally not needed when the radar backscatter coefficient from one sensor type is analyzed (e.g. Sentinel-1A and B). In addition, the Sentinel-1A scene over north western Svalbard was also processed using a higher resolution IDEM based on TanDEM-X data. The use of an outdated, ~~coarser-coarser~~ DEM (ASTER GDEM) resulted in very little difference in compared to using a more updated and higher resolution DEM (IDEM from TanDEM-X) over the glacier surfaces. This was as expected given the low slope nature of most glacier surfaces in Svalbard. In addition to the fact that we use repeat paths for the time-series of images, the ASTER GDEM is shown to be more than sufficient for terrain correction. Generally, geometric distortions due to layover, foreshortening and shadowing effects will degrade the SAR images in certain regions, especially in slopes facing towards the satellite sensor (Woodhouse, 2006).

We assessed combinations of optical and SAR data to analyze image time-series using 1) chronological gap-fill; i.e using SAR data to supplement optical time-series that suffer from heavy cloud cover or missing data due to the dark season. 2) Stack statistics: For a certain time period, SAR pixels are merged by calculating statistics of the time-stack of co-registered pixels (e.g. mean) (Winsvold et al., 2016). A sufficient geocoding and co-registration ensures that the pixels can be compared in time.

A dense satellite image time-series provides the opportunity to recover a large statistical sample of backscatter values. Heatplots were used for visual inspection of the temporal signature of the glaciers: 1) along the centerline, profile points were selected every 300 m for the Svalbard glaciers (Fig. 2), and 2) the mean of backscatter for elevation zones of 25 m for the study glaciers in mainland Norway (Fig. 34a). Backscattering intensity values are normally very noisy, and the data from the profiles were smoothed using the mean of 7 x 7 pixel values (30 m pixel size). Representing SAR backscatter data in such a way, we present eleven different mapping variables from the SAR time-series illustrated by numbers on the Kongsvegen profile in Fig. 2.

5 Application scenarios

In this section we present application scenarios where we exemplify Sentinel-1 SAR time-series data for glacier mapping and at the same time discuss the results.

5.1 Seasonal melt patterns

The end of summer snowline (EOSS) is an approximation of the equilibrium line altitude (Østrem, 1975; Rabatel et al., 2013). [It can also be lower than the ELA in years when there was a low ELA in the previous year.](#) In regions with a significant superimposed ice zone, the EOSS will often be above the ELA (Cogley et al., 2011). In this application scenario, SAR backscatter data from Kongsvegen were used to map glacier surface melt, and to track TSLs on Hellstugubreen in Norway.

Optical satellite data, *in situ* observations [of ELA](#) and ELA derived from surface mass balance measurements have been used for validation. The EOSS can be used to reconstruct annual mass balance series regionally, due to the strong relationship between the EOSS and ELA (e.g. Demuth and Pietroniro, 1999; Pelto, 2001). EOSS and TSLs have been used to determine glacier mass balance using modeling assessments (e.g. Rabatel et al., 2005; Huss et al., 2013; Hulth et al., 2013). The amount of usable images for reconstruction of annual mass balance based on EOSS is more predictable with SAR imagery compared to using optical satellite data, due to a reliable repeat passes of the Sentinel-1 satellites and transparent clouds.

Wet snow absorbs most of the microwave signal, returning little energy back to the sensor (Stiles and Ulaby, 1980). The roughness of snow/ice and incidence angle of the SAR satellite sensor also affects the backscatter signal strength (Shi and Dozier, 1995, [Fig. 4](#)). In both the Sentinel-1A and Radarsat-2 backscatter time-series an abrupt seasonal change was found, from warm and wet conditions in the end of the melt season to the onset of the cold season with dry and cold conditions (corresponding to no.1 in Fig. 2). These backscatter differences are present due to a change in weather conditions between 26 August 2015 (DOY 238) and 7 September 2015 (DOY 250) causing an increase of ~ -20 dB to ~ -7 dB (Fig. 2). A temperature record from the closest weather station in Ny-Ålesund (8 m a.s.l.) shows lower temperature in the period between the images, indicating even colder temperatures on the glaciers since they are located on higher elevation (Fig. A2). In addition, an optical image from 9 September 2015 (DOY 252) over Kongsvegen shows significant precipitation as snow (Table A5), that also indicates conditions < 0 degrees $^{\circ}\text{C}$ on the glacier. The snowline, where the onset of cold season starts, corresponds to number 8 in Fig. 2, representing the EOSS. The onset of surface melt is characterized by a rapid decrease in backscatter values (corresponding to no. 6 in Fig. 2, Stiles and Ulaby, 1980; Smith et al., 1997; Wolken et al., 2009), most likely introduced by warm and wet weather conditions (Rotschky et al., 2011). The lowest backscatter values in the ablation zone are found when wet snow covers the glacier (corresponding to no. 9, the blue color in Fig. 2), which also reflects the length of the melt season. This has until now been mostly studied using QuikSCAT data ([a Ku-band sensor](#)) with daily temporal resolution, but low spatial resolution (e.g. Rotschky et al., 2011). It is difficult to define the melt season accurately in time from Radarsat-2 images due to the low repeat time of 24-days (Fig. 5). Sentinel-1 provides 6-days repeat time with two satellite sensors, and can be used to study the length of the melt season more accurately in terms of spatio-temporal resolution.

The TSL migrations up-glacier [is often correlated with temperature rise and topography dependent on elevation](#) (e.g. [Hall et al., 2000](#), corresponding to no.7 in Fig. 2). It is also possible to track the wetness in the snow up-glacier with the surface dry-to-wet seasonal snow line (corresponding to no. 10 in Fig. 2), but here we have focused on the TSL. During the melt season, seasonal snow melts away exposing a rough ice or firn surface, thus creating a sharp contrast to the smooth and wet snow. Based on similar observations by Hall and others (2000), we believe this can be observed from SAR backscatter, due to different roughness lengths between the two targets causing higher scattering of the ice surface (Fig. [43](#)). We have used this difference in roughness to track the TSL within the melt season. When tracking the TSLs within a melt season, the few optical images available can be gap-filled with SAR-data (Fig. [34ab](#)). TSLs from optical and SAR images acquired almost at the same day were manually selected from the glaciers (Table A5). Heatplots, a DEM, SAR backscatter and optical satellite images were used for visual inspection of the TSL positions in the analysis (see also temperature plot in Fig. A1). Using mean

backscatter in elevation zones of 25 m, gives a location of the TSL representing the width of the glacier, compared to using a centerline representing one point on the glacier. The same visual interpretation was used to retrieve the EOSS from SAR acquisitions on four of the glaciers in 2015 and 2016 (Hellstugubreen, Storbreen, Nigardsbreen and Austdalsbreen). On Gråsbreen we detected a melt regime which did not correlate with elevation, as the snow melt was first apparent in the convex areas higher up on the glacier, and not in the lower part where the snow accumulates (most likely due to the local topography and wind patterns). [On such glaciers, satellite sensors other than Sentinel-1A and B and their according dense time-series are not able to reveal the same level of temporal detail in melt patterns.](#)

Strong correlation was found between TSLs from Sentinel-2 and Landsat 8 satellite images and TSLs from Sentinel-1 images (Fig. 34abc). [In the melt season with warm and wet conditions, the backscatter signal after snow events might be reduced on the glacier. Firstly, they can cause a smoother surface compared to the underlying rougher ice surface, and, secondly, high absorption and forward scatter of the radar waves as the snow is wet \(Rott, 1984\). Snow events lower the backscatter values significantly during the melt season, due to a smoother surface and high absorption of radar waves as the snow is wet \(Rott, 1984\).](#) An example of this was when lower backscatter values were observed in the ablation area of, for example, on Hellstugubreen in 3 October 2016 (DOY 277), most likely due to wet snow lowering the roughness and absorbing microwave energy (Fig. 34a). Snow was observed in an optical image on 6 October 2016 (DOY 280) on Hellstugubreen (not shown). [In addition, another example from Kongsvegen showed a snow event causing disagreement between the Landsat 8 image and Sentinel-1 images \(see outlier in Fig. 4c and Table A5\). This snow event must have happened between the acquisition dates of the optical and SAR satellite images compared \(i.e., between 7-9 September 2015, DOY 250 to 252, respectively\). In addition, yet a different example from Kongsvegen, a snow event caused an outlier on this glacier, which happened between the acquisition dates of the compared optical and SAR satellite images \(7-9 September 2015, DOY 250 to 252, respectively\), see outlier in fig. 4c\). The TSL elevation was 475 m on the SAR image \(acquired 2 days before the optical image\) and 100 m on the optical image due to new snow on the glacier tongue.](#)

The EOSS and ELA in Fig. 34d reflects the maritime-continental transect of glaciers in southern Norway, as the most continental glaciers have the highest ELA. [EOSS positions from SAR backscatter data correlated well with ELA calculated from the SMB-curves that were derived from the in-situ measurements, in addition to direct in situ measurements of the EOSS.](#) ~~EOSS positions from SAR backscatter data correlated well with ELA calculated from the SMB gradients, in addition to in situ measurements~~ (Fig. 34d). This indicates that EOSS derived from Sentinel-1A and B SAR data may be used as input when reconstructing annual mass balance series.

In both study regions, we found a discrepancy between the datasets in that the TSLs from SAR generally show [a mean of a 3-21 m](#) lower altitude compared to optical-derived TSLs [\(not taking the outlier into consideration\)](#). On Kongsvegen, as the snowline retreats up into the superimposed ice or firn area, the roughness difference is less as compared with glacier ice, making it more difficult to retrieve a correct TSL (Fig. 5 and 6a). [Generally, TSLs are visually more apparent on optical images than on SAR backscatter images, but it may still be](#) [The same applies to optical satellite images as it is](#) challenging to derive the TSL when superimposed ice is present (e.g. Winther, 1993; Kundu and Chakraborty, 2015).

The glacier geometry, elevation, size, sun exposure, and local snow accumulation influences the melt pattern of seasonal snow on glaciers, and thus the EOSS. If the glacier spans a small elevation range, the TSL could be more difficult to trace, the TSL may be either above or below the elevation range that the glacier cover. In addition, interaction between snow lines and crevassed areas, especially in ice falls, can be a challenge on larger glaciers (e.g. Chinn, 1995). Extracting TSLs and

5 EOSS using SAR backscatter data can be valuable ~~for for three purposes:~~

1) ~~Refining spatial variations in the melt pattern~~ ~~Studying the melt regime~~ of well-studied glaciers with already existing surface mass balance programs.

2) Including many glaciers in the analysis, if the purpose is to derive the TSL and EOSS from SAR-imagery to reconstruct annual mass balance series regionally and retrieve a statistical robust result.

10 3) To use TSLs and EOSS for calibration and validation of mass balance models (e.g. Hulth et al., 2013).

5.2 Identifying glacier facies

SAR backscatter imagery can ~~be used to~~ identify ~~SAR-distinct glacier~~ zones ~~of consistent backscatter that~~ correspond~~ing~~ to glacier facies (Fahnestock et al., 1993; Brown et al., 1999; Rau et al., 2000; König et al., 2002; Engeset et al., 2002; Jaenicke et al., 2006; Langley et al., 2008). ~~This is~~ because the SAR backscatter is influenced by physical properties
15 of ice and snow, ~~albeit despite~~ weather conditions and surface texture (e.g. Smith et al., 1997; Rau et al., 2000). ~~Nonetheless,~~ ~~it is challenging to directly connect glacier facies to SAR classified glacier zones, as backscatter is a complex composite signal reflected from a surface volume, the material properties of which often vary temporally with external atmospheric forcings e.g. with winter rain events (Sect. 5.5). The term glacier facies are defined as properties on a glacier dividing one part of the glacier from others, often connected with mass balance processes (i.e. ablation and accumulation area), and glacier facies are~~
20 ~~equalized with the term glacier zones (Cogley et. al., 2011). Here we use the term glacier facies for snow and ice ground properties, and the term SAR glacier zones for the interpretations and classifications from SAR satellite imagery. SAR glacier zones often have an annual frequency, but also vary seasonally as backscatter changes from being sensitive to surface properties in the melt season to volume properties in the cold season (Fig. 2). We define the following SAR glacier zones (corresponding to no.5 in Fig. 2): 1) percolation zone (firn zone), 2) wet-snow zone, 3) ice zone, 4) the superimposed ice (SI zone) (e.g. Rau~~
25 ~~et al., 2000; Cuffey and Paterson, 2010). The firn and SI zones are part of the accumulation area, and the ice zone is part of the ablation area. The wet-snow zone represents wet snow and firn in the melt season (Sect. 5.1), but also rain events during the cold season (Sect. 5.5), and occurs in both ablation and accumulation areas.~~

In this application scenario, we ~~present a time-series of have observed SAR~~ glacier ~~facies-zones~~ from 2009-2016 including ~~time-series of both~~ Radarsat-2 (24-day repeat) and Sentinel-1A (12-day repeat) ~~images in northwest Svalbard.~~
30 Previous studies have ~~found correlated~~ distinct glacier ~~facies zones with SAR glacier zones~~ on Kongsvegen (Engeset et al., 2002; König et al., 2004; Brandt et al., 2008; Langley et al., 2008), and these ~~facies zones~~ also corresponds to previous ~~interpretations in~~ literature (Benson, 1962; Rau et al., 2000; Cuffey and Paterson, 2010). ~~The dry-snow glacier facies is absent on both Kongsvegen and Holtedahlfonna as melting occurs over the entire surface. The dry snow SAR zone is absent on~~

~~Kongsvegen and Holtedahlfonna~~ (Engeset et al., 2002; Langley et al., 2007) which agrees with our interpretation of the SAR backscatter time-series (Fig. 2). The firn line does not vary much from year to year, however several years of negative mass balance will eventually migrate the firn line up-glacier, and vice versa with positive mass balance years (e.g. König et al., 2004; Brown, 2012). ~~Here, we have examined glacier facies using SAR backscatter time-series on Kongsvegen and Holtedahlfonna.~~

Wet snow typically has the lowest backscatter values, followed by wet and dry ice (here, these show similar values, Fig. 2), dry superimposed ice and dry snow/firn (Fahnestock et al., 1993). A dry snow pack has low dielectric contrast, and SAR microwaves are volume scattered. In the firn area, ice lenses, pipes and layers ~~are acting~~ as randomly oriented dielectric cylinders, ~~and are~~ responsible for the high scattering of microwave signal back to the SAR sensor ~~(Woodhouse, 2006)~~. We consider snow and firn to be Rayleigh scatterers when the particle size is lower than 10% of the wavelength ($\lambda = 5.5$ cm) or 0.55 cm, and Mie scatterers up to 10 times the wavelength, or 55 cm (Woodhouse, 2006). The backscatter response of superimposed ice is dependent on air bubble content and size, where high frequency of bubbles typically causes higher backscatter values (e.g. König et al., 2002, Langley et al., 2009). ~~Thus, during the cold season, the superimposed ice zone has typically lower backscatter response compared to the firn in the cold season, but higher backscatter than glacier ice, as the ice transmits much of the microwaves~~ (e.g. Langley et al., 2009). and additionally During the melt season, high backscatter on ice surfaces is caused by surface roughness rather than volume scattering ~~the ice surface are controlled by roughness~~ (Shi and Dozier, 1995; Hall et al., 2000).

~~The SAR zones vary seasonally as backscatter changes from being sensitive to surface properties in the melt season to volume properties in the cold season (Fig. 2). On Kongsvegen we found the SAR glacier zones (corresponding to no.5 in Fig. 2): 1) frozen percolation zone (Firn zone), 2) wet snow zone, 3) ice zone. In addition, we have included a fourth SAR-zone, 4) the superimposed ice (SI zone). The firn and SI zones are part of the accumulation area, and the ice zone is part of the ablation area. The wet snow zone represents wet snow and firn in the melt season, but also rain events during the cold season (Sect. 5.3), and was found in both the ablation and accumulation area.~~

Stabilization of the SAR glacier zones SAR zones between years in the cold season indicates a steady established glacier facies ~~facies area in through time (Fig. 5 and 6a)~~. In Fig. ~~26a~~ we show three distinct SAR-zones on Kongsvegen in the cold season (7 September 2015 to 4 May 2016, DOY 250 to 125), located at elevation bins 0-500 m, 500-700 m and 700-800 m, approximately around the elevations 0-500 m, 500-700 m and 700-800 m in the cold season (7 September 2015 to 4 May 2016, DOY 250 to 125). These SAR glacier zones ~~SAR zones~~ mirror the glacier facies, ice, SI and firn area, respectively (Langley et al., 2009). ~~Stabilization of the SAR zones between years in the cold season indicates established glacier facies in time (Fig. 5 and 6a)~~. Thus, the Radarsat-2 time-series from 2009–2015 on Kongsvegen showed a relatively stable firn line altitude and a superimposed ice altitude (SIA), even though a retreat of SIA can be observed in 2011 and 2012 (Fig. 5). The winter SAR images are useful for identifying the superimposed ice zone since with optical satellite imagery it ~~is hard~~ can be challenging to separate this zone from the bare ice zone (e.g. Kundu and Chakraborty, 2015). Surface snow, lacking large scatterers and dielectric contrasts promotes low backscatter; glacier ice below the surface snow cover promotes surface

scattering at the snow-ice interface and transmission within the ice volume. Together these scattering processes generally result in lower backscatter intensity (light blue to yellow colors in Fig. 6a) in the ablation area. We suggest that the backscatter signal amplitude from the ice surfaces is changing seasonally due to changes in surface roughness variations, as melting water is creating a rougher ice surface due to changes in local topography on the ice surface e.g. micro water evacuation streams melt water streams (Shi and Dozier, 1995; Hall et al., 2000) (Fig. 6a, see yellow to orange colors on ice in the melt season, compared to the light blue color in the cold season). According to the modified Rayleigh criterion a surface is considered rough in the C-band SAR (using an incidence angle of 38 degrees) when the root-mean-square (rms) surface height variation is more than 1.3 cm, and considered a smooth surface when the rms height variation is less than 0.2 cm (Lillesand et al., 2004). Drying of melt water channels do not cause the backscatter to be higher in the cold season compared to the melt season because they cover only a very small percentage of the SAR pixels, therefore we believe the ablation effect (caused by melting and water on the ice surface) is responsible for a rougher surface and higher backscatter.

SAR glacier zones are less clear on Holtedahlfonna, compared with Kongsvegen. Backscatter values were found to be gradually increasing between 570 m and 775 m, but no clear separation between zones was found on Holtedahlfonna (Fig. 7a). The lower part of Holtedahlfonna, Kronebreen, had several stripes of high backscatter (below 570 m in the heatplot in Fig. 7a) of high backscatter, indicating highly crevassed areas due to double-bounce scattering of the physical corner reflector (Woodhouse, 2016). Although such corner reflectors probably blurred the seasonal signal, there was still seasonal variability with low backscatter values (blue colors) in early spring 2016 (around 28 May, DOY 149) indicating the onset of melt season (Fig. 7a).

Previously, one satellite image was used when mapping SAR glacier zones from SAR imagery. Here, we examined glacier zones on Kongsvegen and Holtedahlfonna thoroughly through time, using consecutive and dense time-series of SAR imagery, which therefore improves. This time-series shows in particular that SAR glacier zones vary through time representing the changing surface conditions that ultimately control backscatter return. In this example, we show the potential to detect and study changes in transient glacier facies. The results show here, a stabilization of the SAR glacier zones in the cold season, and one can therefore be more certain improves certainty about the designation of glacier facies.

5.3 Firn evolution and internal processes

For the first time, we present a comparison of Sentinel-1A backscatter time-series with results from a surface mass balance and firn pack evolution model. A coupled energy balance – multi-layer firn model was used to simulate the evolution of temperature, density and water content in snow and firn. The model has previously been used to simulate the long-term (1961-2012) mass balance and firn evolution of Kongsvegen and Holtedahlfonna, as described in Van Pelt and Kohler (2015). For the experiment in this paper the model is forced with weather station data from the Ny-Ålesund weather station (provided by the Norwegian Meteorological Institute), which provided time-series at sea-level for temperature, precipitation, relative humidity, cloud cover and air pressure. The model results were based on Van Pelt and Kohler (2015), in which the mass balance and firn evolution of Kongsvegen and Holtedahlfonna are studied. Van Pelt and Kohler (2015) used downscaled

~~HIRLAM regional climate model output. In this work, the climate forcing was updated, since the Ny-Ålesund weather station data were used as sea level forcing for temperature, relative humidity, cloud cover, precipitation and air pressure.~~ Elevation lapse rates for temperature and precipitation were optimized to remove biases between modeled and observed seasonal mass balance. The precipitation lapse rate was optimized against winter balance data, and the temperature lapse rate was optimized against summer balance data. Lapse rates were determined individually for Kongsvegen and Holtedahlfonna, which is mainly relevant for precipitation, which is known to increase much faster with elevation on Kongsvegen than on Holtedahlfonna (Nuth et al., 2012). Validation of modeled subsurface density against shallow firn core observations on Kongsvegen and Holtedahlfonna has been discussed in Van Pelt and Kohler (2015), showing good agreement. There is no real validation for subsurface temperature and water content for these glaciers. But the model performed well in simulating vertical temperatures at the top of Lomonosovfonna, as shown in Van Pelt et al. (2014). Model output contains daily, depth-dependent fields with a 300 m horizontal spacing along centerline profiles on the glaciers. The sub-surface grid contains a total of 100 layers with layer thickness increasing with depth and ranging between 10 and 40 cm. ~~Several modeled outputs are directly or indirectly related to wetness.~~ Here, firn air-content and the subsurface water content were compared with the SAR backscatter time-series. Firn air-content (m) ~~is a measure of~~ represents the amount of empty pore-space in a vertical column (in this study we used a 2 m column). Since ice has zero pore-space, the firn air-content is a ~~direct~~ measure of snow/firn depth and density (Fig. 6b). The subsurface water content (kg m^{-3}) represents irreducible water at a specified depth. From the subsurface water content variable in the snow/firn, we have calculated depth (in meter) of ~~where~~ the transition between wet (water content > 0) and dry snow/firn (water content = 0), indicating which depth has a water content above zero (Fig. 7b). This result was correlated with the SAR backscatter data.

In the ~~start of the~~ cold season, the ice surface ~~was~~ covered ~~with by~~ seasonal snow had low firn air-content ~~in the beginning of this period~~ (e.g. at 7 September 2015, DOY 250 in Fig. 6b), ~~and~~ During the cold season the firn air-content increasing ~~increased through~~ in time and moving towards the firn area up glacier, as ~~the presence of fresh~~ snow accumulated es up glacier (e.g. at 23 April 2016, DOY 113 in Fig. 6b). We observed high backscatter values (Fig. 6a) when firn air-content was high (Fig. 6b), as the dry and cold conditions were found to enhance volume scattering. For each Sentinel-1A acquisition, we found a positive significant correlation between firn air-content and backscatter in the cold season, and negative significant correlation in the melt season (Fig. 6c). To avoid assumptions of a linear relationship between firn air-content and backscatter, we used the nonparametric Spearman's rank correlation coefficient. The reason for the negative correlation is the change of surface properties affecting the backscatter signal, as the volume scattering in the cold season is exchanged with the SAR sensitivity to wet snow and higher surface roughness in the melt season. The point in Fig. 6c on 1 September 2016 (DOY 245) showed no correlation, because it is located in the transition zone between the melt season and cold season, where multiple melt end freeze events happen within short time spans. The snow line was identified in the modeled data (Fig. 6b), as well as in the observed backscatter data (Sect. 5.1).

In the beginning of the cold season when the surface refreezes, backscatter values are sensitive to subsurface melt in the snow and firn pack (Ashcraft and Long, 2006; Rotschky et al., 2011). A spatio-temporal refreeze signal from the Sentinel-

1A time-series was observed in the firn area of; both ~~on~~ Kongsvegen and Holtedahlfonna (corresponding to no. 2 in Fig. 2). This was also observed as a weaker signal in the Radarsat-2 time-series just after the melt season each year (Fig. 5 and Fig. A3). Christianson and others (2015) found a perennial water-firn aquifer containing liquid water in the upper part of the firn accumulation area on Holtedahlfonna, and they argued that the firn aquifer had a depth below the surface of approximately 3.5 ~~to~~ 15 meters. We found stabilizing backscatter intensity values in time during the winter period (Fig. 6a and 7a) and speculate that C-band SAR backscatter data does not receive backscatter responses from firn that deep as presented by Christianson and others (2015). An aquifer, or wet conditions in the firn, causes absorption limiting backscatter response from the depth of the firn volume (e.g. Ashcraft and Long, 2006). In the firn zone of the glaciers (> 650 m on Kongsvegen and > 775 m on Holtedahlfonna), we found a gradual increasing backscatter signal during the cold season from 7 September to 12 December 2015 (DOY 250 to 346) (Fig. 6a and 7a, ~ -10 dB to ~ -4 dB). This is most likely due to multiple scattering events, from volume scattering in the snow and firn, in addition to wetness in the firn that gradually refreezes due to the winter cold wave. This can reflect stored and percolated water in the firn from melt and rain events that refreeze over time, also releasing latent heat possibly slowing down the process. Backscatter eventually stabilized (12 December 2015, DOY 346, in Fig. 7a) and showed similar high values throughout the rest of the cold season. The backscatter measured at the sensor antenna is the sum of multiple scattering occurrences throughout the firn volume. The ~~radar waves~~ penetration depth of radar waves varies over time and contributes to the backscatter, and the backscatter intensity is therefore not constant in time and represents the integral of depth through time. Using the modeled data, we were able to explore the penetration of SAR backscatter in snow and firn. ~~Due to~~ It is likely that absorption with limited volume scattering of radar backscatter waves values in wet snow and firn ~~conditions can give an indication of how deep the Sentinel-1A SAR C-band can penetrate due to a strong sensitivity to wet conditions.~~ Using the model results we were able to estimate the depths of the intersection between the dry and wet zone in the firn pack (Fig. 7b) and compare this to the backscatter data (Fig. 7c-e). Results indicate increased penetration depths over time and then stabilization once the transition exceeds a certain depth where the radar waves do not reach it anymore. Similar trends between as a significant correlation between the the transient modeled dry-to-wet transition depth of the subsurface dry to wet transition zone and the backscatter values time-series for the uppermost part of the glacier was found (Fig. 7c). The deeper the dry-to-wet transition zone, the higher SAR backscatter values ~~The deeper the dry to wet transition zone, the higher SAR backscatter values indicating a potential linear relationship~~ (Fig. 7e). This correlation can thus be explained by a mix of volume scattering returns and radar waves sensitivity to wet conditions in snow and firn through time until January 2016.

To investigate the penetration depth further, The values from black points in Fig. 7a were selected where the along ~~the low to high~~ backscatter values stabilized transition in the firn. Values from the same points of dry-to-wet transition depths (Fig. 7b) gave an indication of the depth of the dry-to-wet zone in the backscatter data (as explained above). The mean transition depth of the point values from Fig. 7b is 1.7 m when all 9 points were included. When only including the upper 6 points with significant correlation > 920 m (~~as~~ showed in Fig. 7c and e), a mean transition depth of 2.0 m was found. We

speculate that backscatter intensity can-not ~~identify-reflect~~ small changes in snow ~~depth during the when conditions are dry~~ ~~during~~ wintertime due to high volume scattering ~~thus suggesting deeper and temporally constant penetration of the radar waves.~~

~~In this example, m~~Modeled data were ~~here~~ used to ~~help interpret/explain backscatter~~ time-series ~~of backscatter intensity~~ data. This might be inverted in the future, as SAR backscatter data will be further understood ~~and can potentially be~~ ~~used as refined modeling input~~. Such information is valuable in remote regions in the high Arctic that are lacking meteorological stations and where it is costly to do field observations.

5.4 Weather events on glaciers in the cold season

High Arctic regions like Svalbard, have encountered substantial warming the last decades, especially in the winter season with a temperature increase of 3.8 °C from the measured period 2001–2015 to the reference period 1971–2000 (Isaksen et al., 2016).

10 Frequent warm winter weather events are occurring especially related to increasing numbers of melt and precipitation days in the mid-winter (Vikhamar-Schuler et al., 2016). Winter rain events are important to map in a glaciological context as it can be a substantial component to internal accumulation as it refreezes in the snow pack (e.g. Jansson et al., 2003; Van Pelt and Kohler, 2015, Van Pelt et al., 2016). The SAR backscatter contrast of ice and snow is directly dependent on the meteorological conditions before and at the time of acquisition of the satellite image. Rain on an ice surface gives stable backscatter values
15 similar to dry ice, since glacier ice is still rough even when wet. Consequently, roughness is considered as a highly important scattering variable (e.g. Hall et al., 2000). Wet snow absorbs SAR-waves, and little energy is transmitted back to the SAR sensor in comparison to a dry snow and firn surface (Rott, 1984). During dry snow conditions, the radar signals depend on the underlying firn or ice conditions (e.g. Brown et al., 2005). In this application scenario, we have examined a rain event on Kongsvegen and Holtedahlfonna from dense Sentinel-1A images during the cold season (corresponding to no. 3 in Fig. 2).
20 Radarsat-2 ScanSAR satellite images were used to investigate the extent of the rain event.

On 5 January 2016 (DOY 5), Sentinel-1A acquired an image over the Kongsfjorden region indicating wet conditions on the upper part of Kongsvegen and its surroundings (corresponding to no. 3 in Fig. 2). The temperature and precipitation data from Ny-Ålesund showed a warm and wet weather event from 29 December 2015 (DOY 363) to 4 January 2016 (DOY 4) (Fig. A2 and Table A4). Fig. 8a and b shows backscatter images before and after the rain event, and Fig. 8c, which shows
25 the difference between the two, indicates an area of wet conditions (blue color). Presumably, the extent of the rain event covered the entire surface of Kongsvegen. However, on the lower part on the glacier (the ice facies) this was hard to observe due to little snow and rough surface. A clearer signal was found further up-glacier with present seasonal snow on firn (white circle in Fig. 8b).

Wet conditions in a SAR image (indicated by low backscatter values in Fig. 8b) do not necessary mirror the weather
30 conditions at the time of acquisition of the satellite image, but may instead reflect the previous consecutive days, since rainwater percolates through the snow and firn pack creating prolonged wet conditions. In Radarsat-2 ScanSAR data (Fig. 9) and meteorological data (Fig. A2 and Table A4), colder conditions were measured on January 4 DOY 2016 (DOY 4, one day before the Sentinel-1A acquisition). As stable low backscatter values were observed on 4-5 January 2016 (DOY 4 to 5) (Fig.

9 and Table A4), we suggest that capillary water in the snow and firn, which was not yet frozen, were detected by the Sentinel-1 image on 5 January 2016 (DOY 5). This could be related to the isolation capability of snow and release of latent heat when water refreezes.

The same wet snow conditions were not found on Holtedahlfonna (Fig.7a and 8c). We observed a rain event on 5 Holtedahlfonna on 30 December 2015 (white arrow on DOY 364 in Fig. 9), corresponding to 26.5 mm rain in Ny-Ålesund (Table A4). In the following days, Holtedahlfonna had gradually higher SAR backscatter values, while Kongsvegen remained dark (low backscatter). Precipitation either fell as snow on Holtedahlfonna between 3-5 January 2016 (DOY 3 to 5), or conditions were cold with no snowfall. Thus, the Radarsat-2 ScanSAR images revealed different local weather conditions in the Kongsfjorden region. Colder conditions are in general present on Holtedahlfonna as it has a more continental climate compared to Kongsvegen, indicating that the rain water in the snow and firn pack froze faster than on Kongsvegen.

Directly after the winter rain event, we observed a changing backscatter pattern in the ablation zone and lower part of the superimposed ice zone indicating change in snow and ice properties on Kongsvegen (corresponding to no. 4 in Fig. 2). A change was also apparent from the modeled firn air-content in Fig. 6b, and reflects an increase in ~~pore space~~air-content in the snow and firn pack after a rain event. Backscatter values increased ~~with~~ > 2 dB after the winter rain event between 300 – 15 600 m, and the border between the superimposed ice and ablation zone became unclear (Fig. 6a). We know from *in situ* observations on Kongsvegen that glacier ice in the ablation area was covered with little snow in the spring 2016. The lower zone of the ablation area might have had little snow cover already before the rain event since the backscatter was continuously low during winter (indicated by light blue color in Fig. 6a. ~~p~~Present around the 200 m elevation line from 17 January to 4 May 2016, ~~(~~DOY 17 to DOY 125). In the upper zone of the ablation area ~~and before the rain event~~, ~~deeper-more~~ snow ~~depth~~ was 20 present ~~compared to lower elevations before the rain event~~. Ice lenses and pipes might thus have been created from this penetration of water in the snow after the rain event, resulting in ~~snow saturation giving stronger~~ ~~higher~~ permittivity ~~contrast of the SAR signals~~ ~~as~~ shown ~~ed~~ by increasing backscatter values (indicated by yellow color in Fig. 6a. Present around the 400 m elevation line from 17 January to 4 May 2016, DOY 17 to DOY 125).

Detection of winter rain events from SAR time-series might be used to refine modeling inputs, especially in regions 25 where meteorological data are scarce.

5.5 Assistance by SAR data in glacier outline mapping

It is well known that glacier ice is mapped more efficiently with optical satellite imagery than with SAR satellite data (e.g. Shi et al., 1994). However, when using the multispectral band ratio method on a single optical image for deriving glacier outlines (e.g. Paul and Kääb, 2005), it can be difficult to separate seasonal snow from glacier and perennial snow patches (e.g. 30 Andreassen et al., 2012; Winsvold et al., 2016). Local differences in weather conditions within a single optical satellite scene are common in high mountain regions. Mapping conditions in a single optical image might not be ideal due to cloud cover, seasonal snow around the glacier perimeter, and thin layers of newly fallen snow. Interferometric coherence images have been used for deriving glacier outlines (e.g. Atwood et al., 2010; Falk et al., 2016). In maritime regions such as south-western

Norway it can be challenging to use SAR coherence images, due to rapid coherence loss between the time of acquisitions often caused by precipitation, melt and wind. SAR backscatter information can be a valuable replacement. Wet snow and ice surfaces have lower backscatter values than a snow-free surface outside the glacier (Rott, 1984; Strozzi et al., 1997). In this application scenario, we investigate how averaged summer SAR images from glaciers in southern Norway can be used to assist in glacier outline mapping (e.g. corresponding to no. 11 in Fig. 2).

In 2015, seasonal snow remained throughout the ablation season in our study area (Fig. 10d, e and f). A SAR composite consisting of the mean of 6 summer SAR-images might assist the mapping process of glacier outlines and perennial snow patches (Fig. 10a, b and c). This is possible as the seasonal snow was less visible in the summer SAR images, compared with the optical image (Fig. 10b and e, and c and f). Most likely, some SAR wave penetration in the seasonal snow is possible despite the potentially wet conditions. Thin snow that contaminates the optical mapping scene might become largely transparent in the SAR stack. In addition, we speculate that water content in the seasonal snow might have been low ~~at the days and time of day~~ in some of the SAR acquisitions. The Sentinel-1 scenes used here are taken in the afternoon at time 15:45. Finally, water might drain easier from snow patches than on the glacier surface due to often higher slopes, which results in a clearer signal from on-glacier pixels since the signal is consistently low.

For our example, it is possible to retrieve a good estimate of the glacier outlines when summer SAR images are averaged. Although the backscatter images were affected by some radar distortions, we found good agreement with the existing glacier outlines (Andreassen et al., 2008) and the Landsat 8 image (Fig. 10a and d). The potential of the stacked SAR image can be further improved with double revisit time of Sentinel-1A and B. Clearly, the SAR image stack used cannot fully replace optical scenes for glacier mapping, but can be of help as an additional layer to discriminate glacier areas from seasonal snow.

20 **6 Concluding remarks**

In this paper, we have analyzed temporal trends and stack statistics from SAR backscatter time-series over glaciers using Sentinel-1A and B and Radarsat-2 images. Sentinel-1 provides free and open data of higher nominal revisit time than any SAR instrument earlier. The time-series is consistent, making it possible to retrieve detailed information about the glacier surface and subsurface in time. We have focused on the variable pattern of backscatter values on glaciers, and not the absolute values. Further work is needed for developing standardized semi-automatic or automatic methods, where the backscatter coefficient gamma nought should be used as input, for a complete geometric and radiometric processing of the SAR images. Still, standardized threshold values on the backscatter coefficients might be difficult to apply due to difference in glacier dynamics and climate, and difference in polarization, incidence angle, ascending or descending paths, and the applied processing algorithm. On a regional basis, well-known classification regimes can be used to outline the glacier mapping variables from SAR data (e.g. Käab et al., 2014).

Using five application scenarios, we presented new insights on how to exploit dense SAR data for glacier mapping purposes. We validated and compared our results with model data, meteorological data, existing glacier outlines from optical data, surface mass balance data, and remote sensing data (Radarsat-2 ScanSAR, Sentinel-2 and Landsat 8).

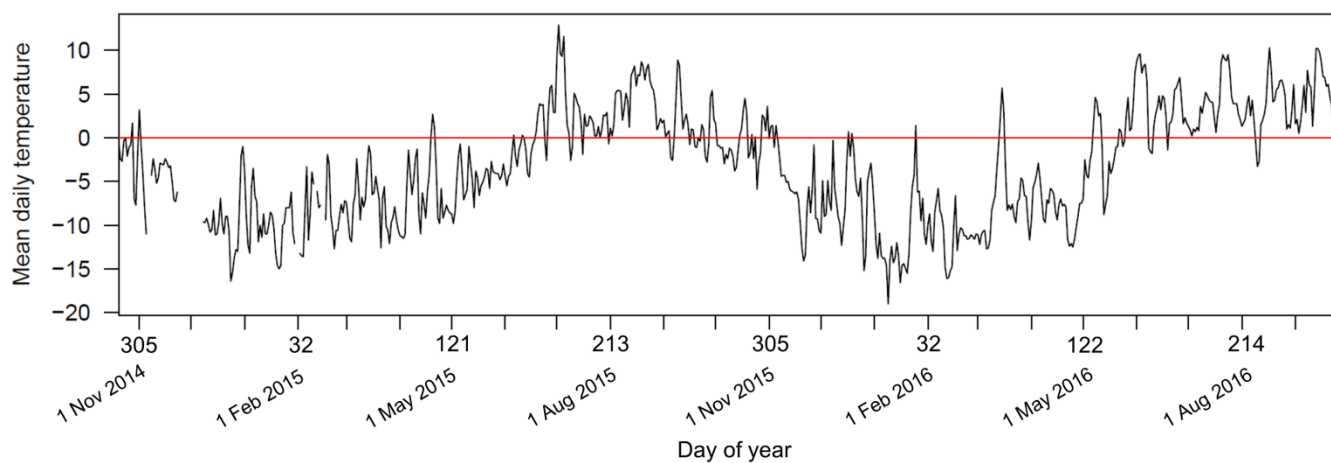
- 5 • We have demonstrated the possibility of tracking TSLs during the melt season and deriving the EOSS from Sentinel-1A and B backscatter time-series. TSL data were found to be valuable for regionally extrapolating and estimating annual mass balance in areas without *in situ* measurements. Even though the temporal resolution of optical imagery ~~will increase has~~
10 ~~been increased~~ with the sister satellite Sentinel-2B in orbit, maritime regions will remain cloudy and hinder dense time-series of high- to medium resolution optical imagery, and SAR time-series can therefore act as a data gap-filler. Additionally, ~~high spatial resolution~~ Sentinel-1 time-series can be used to measure snow melt parameters on glaciers ~~with~~
15 ~~high spatial resolution~~ and with 6-days temporal resolution (i.e. dry-to-wet snow line, onset of melt season and length of the melt season).
- ~~SAR glacier zones~~ ~~Glacier SAR zones~~ corresponding to glacier facies were observed from the backscatter time-series. Time-series from 2009-2016 using Radarsat-2 and Sentinel-1A SAR backscatter data, showed relatively stable ~~glacier~~
20 ~~facies~~ ~~SAR glacier zones~~ on Kongsvegen and Holtedahlfonna. Dense SAR time-series have a potential for more accurate delineation of ~~SAR zones~~ ~~glacier facies~~, compared to using only one acquisition as in previous studies.
- We presented a descriptive comparison of modeled surface and firn evolution patterns with SAR backscatter time-series. The penetration depths of Sentinel-1A backscatter values in the firn are not constant in time, and resembled modeled results. Strong correlation exist between the modeled firn air-content and SAR backscatter values throughout the whole
25 year. Strong correlation was also found between the modeled depth of the subsurface dry-to-wet conditions in the firn pack and winter SAR backscatter values. Our findings are important to ~~further~~ understand glaciological processes, and we have shown the potential ~~of~~ ~~combining~~ ~~results from~~ modeled snow/firn evolution ~~and~~ ~~with~~ ~~high-resolution~~ SAR backscatter ~~time-series data~~ ~~data match each other~~.
- Winter ~~rain-weather~~ events are predicted to be more frequent in the Arctic in the future. If rain water from winter weather events refreezes in the firn area, it will contribute to internal accumulation of the glacier. In dense Sentinel-1A backscatter
30 time-series, it was possible to detect such winter rain events in the accumulation areas of glaciers, even when the rain event happened before the satellite acquisition.
- It can be challenging to map glacier outlines from the multi-spectral band ratio method when a thin layer of new snow or much seasonal snow is present in the optical mapping scene. With averaged summer SAR backscatter images, we showed a potential for assisting the glacier mapping process.

With 6-day repeat cycles (Sentinel-1A and B) even more variability of glacier conditions will be captured, e.g. detecting winter rain events more thoroughly, or tracking the end of summer snowline more precisely. Even though optical imagery often is preferred for many glacier mapping approaches because it measures in similar wavelengths as our eyes, SAR

backscatter has the potential for being increasingly applied to map glaciers. SAR backscatter time-series can be used as a refined modelling input, especially in regions where surface mass balance and meteorological data are scarce. However, more investigations are needed for deriving robust end products.

5

Appendices



10 **Fig. A1:** Temperature record from Juvvasshøe meteorological station (ID 15270, 1894 m a.s.l.) from October 2014 to October 2016 (downloaded from eKlima.no, 2016).

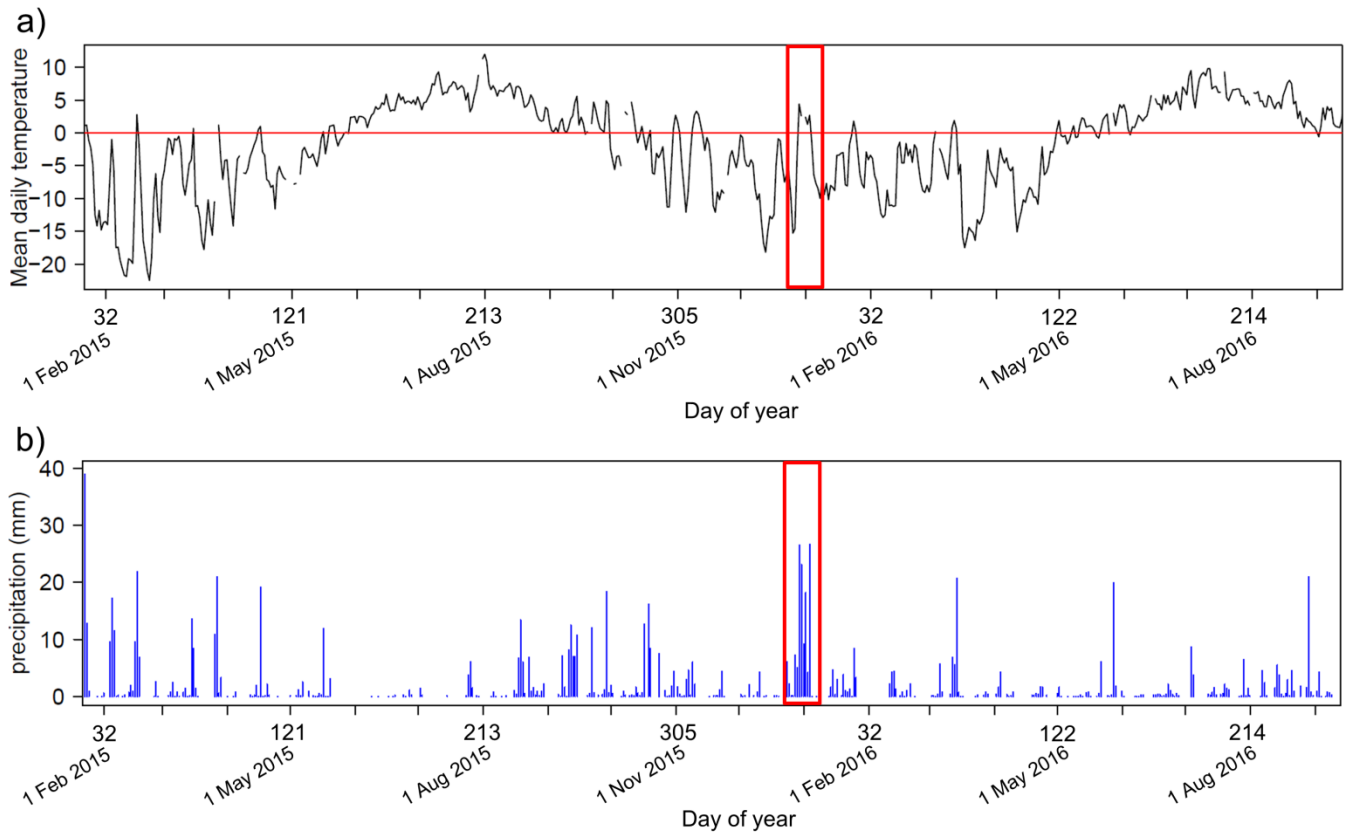


Fig. A2: (a) Temperature, and (b) precipitation record from the meteorological station at Ny-Ålesund (ID 99910, 8 m a.s.l.) from 22 January 2015 to 13 September 2016 (DOY 22 2015 to 257 2016). The red box indicates the time of the winter rain event with wet and warm conditions, triggering low backscatter intensity of the snow and firn in upper parts of Kongsvegen on the 5 January 2016 SAR image. After the rain event, but during the same weather situation, -the precipitation# might have been turned into snow-fall on the glacier (downloaded from eKlima.no, 2016).

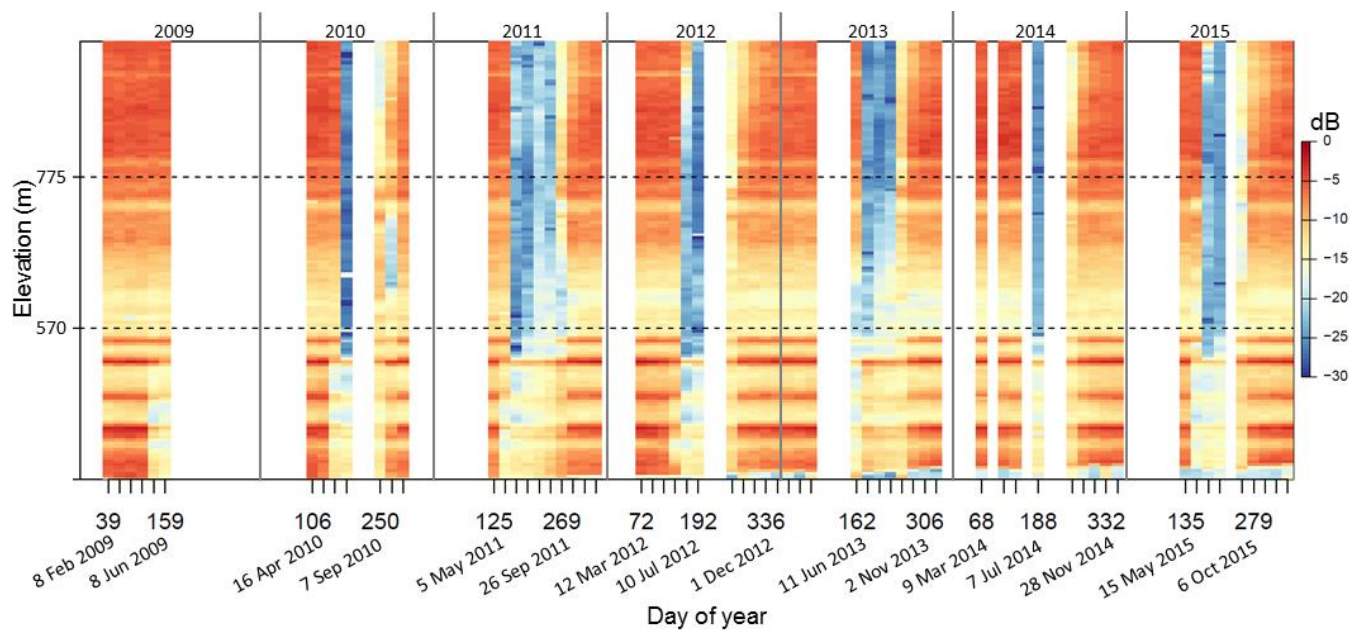


Fig. A3: Radarsat-2 time-series of SAR backscatter values (dB) along a centerline profile on Høltedahlfonna from 2009 to 2015. The Radarsat-2 time-series has a lower temporal resolution than the Sentinel-1A time-series (24-day vs. 12-day repeat cycles, respectively). Despite the time gaps in the Radarsat-2 time-series, the refreezing signal in the upper part of the firn area/zone, is similar to the Sentinel-1 time-series (Fig.7a). This is shown by a gradual increase in backscatter in the firn zone right after the melt season, when the winter cold wave penetrates the firn and stabilizes it. Time is plotted as Julian days on the x-axis (day of year).

10

15

20

Table A4: Measured temperature (TAM=mean, TAN=minimum, TAX=maximum), precipitation (mm) (RR) and snow depth (cm) (SA) from the Ny-Ålesund meteorological station, in the period between two acquisitions of Sentinel-1A data (24 December 2015 to 5 January 2016). Precipitation and maximum temperature marked in blue and red might have contributed to wet and warm conditions on the glaciers. (x = No Data).

5

| Date | DOY | TAM | TAN | TAX | RR | SA |
|-------------|-----|-------|-------|-------|------|----|
| 24 Dec 2015 | 258 | -5.8 | -6.9 | -4.7 | 6 | 20 |
| 25 Dec 2015 | 259 | -9.5 | -11.2 | -5.3 | 2.2 | 20 |
| 26 Dec 2015 | 260 | -15.3 | -16.4 | -11 | 0.1 | 9 |
| 27 Dec 2015 | 261 | -14.6 | -17 | -14.2 | 0.1 | 13 |
| 28 Dec 2015 | 262 | -3.7 | -14.5 | -2.8 | 7.2 | 18 |
| 29 Dec 2015 | 263 | 4.4 | -3.2 | 6.2 | 5 | 12 |
| 30 Dec 2015 | 264 | 2.6 | -0.1 | 7.2 | 26.5 | 5 |
| 31 Dec 2015 | 265 | x | 1.2 | 7.4 | 23.1 | x |
| 1 Jan 2016 | 1 | 2.4 | -0.1 | 5.2 | 9.2 | x |
| 2 Jan 2016 | 2 | 1.3 | -0.4 | 3.5 | 18.2 | 4 |
| 3 Jan 2016 | 3 | 2.7 | 0.6 | 5.6 | 4.2 | x |
| 4 Jan 2016 | 4 | -1.4 | -2.9 | 1.2 | 26.7 | x |
| 5 Jan 2016 | 5 | -6.4 | -8.1 | -2.7 | 0 | x |

Table A5: Transient snow lines at Hellstugubreen and Kongsvegen derived from Sentinel-2A, Sentinel-2A (S2A in orange), Landsat 8 (L8 in green) and Sentinel-1A (S1A in black). Gray shade indicates images from 2016.

10

| | Optical (S2A and L8) | | | SAR (S1A) | | |
|-----------------------|----------------------|-----|---------|-------------|-----|---------|
| | DATE | DOY | TSL (m) | DATE | DOY | TSL (m) |
| Hellstugubreen | 17 Aug 2015 | 229 | 1600 | 16 Aug 2015 | 228 | 1575 |
| | 18 Aug 2015 | 230 | 1600 | 16 Aug 2015 | 228 | 1575 |
| | 11 Sep 2015 | 254 | 1750 | 9 Sep 2015 | 252 | 1800 |
| | 19 Aug 2016 | 232 | 1775 | 22 Aug 2016 | 235 | 1800 |
| | 4 Sep 2016 | 248 | 1800 | 3 Sep 2016 | 247 | 1825 |
| | 20 Sep 2016 | 264 | 1875 | 15 Sep 2016 | 259 | 1875 |
| Kongsvegen | 1 Aug 2015 | 213 | 500 | 2 Aug 2015 | 214 | 475 |
| | 13 Aug 2015 | 225 | 575 | 14 Aug 2015 | 226 | 525 |
| | 22 Aug 2015 | 234 | 600 | 26 Aug 2015 | 238 | 575 |
| | 9 Sep 2015 | 252 | 100 | 7 Sep 2015 | 250 | 475 |
| | 18 Sep 2015 | 261 | 625 | 19 Sep 2015 | 262 | NA |
| | 2 Jul 2016 | 184 | 400 | 3 Jul 2016 | 185 | 375 |
| | 9 Jul 2016 | 191 | 475 | 15 Jul 2016 | 197 | 475 |
| | 2 Aug 2016 | 215 | 675 | 27 Jul 2016 | 209 | 575 |
| | 10 Aug 2016 | 223 | 700 | 8 Aug 2016 | 221 | 650 |

Author contributions

S.H.Winsvold developed the concepts of the study together with A.Kääb. and C.Nuth. The Sentinel-1 and 2 and Landsat data were geoprocessed and analysed by S.H.Winsvold. W.V.Pelt modelled the firn air content and water content on Holtedahlsfonna and Kongsvegen in Svalbard. T.Schellenberger processed the Radarsat-2 data, and C. Nuth processed Sentinel-1 for comparison tests, both using GAMMA. L.M. Andreassen provided surface mass balance data from NVE and helped with result interpretations. S.H.Winsvold prepared all figures and tables, and wrote the manuscript. All authors contributed on editing the paper.

Competing interests

The authors declare that they have no conflict of interest

10 *Acknowledgement*

The study was in parts funded by the European Research Council under the European Union's Seventh Framework Programme (FP/2007–2013)/ERC grant agreement No. 320816, the ESA project Glaciers_cci (4000109873/14/I-NB) and by the Norwegian Space Centre contract NIT.06.15.5. We are very grateful to ESA for provision of the Copernicus Sentinel-1 and Sentinel-2 data. Radarsat-2 Wide Fine Mode data were provided by NSC/KSAT under the Norwegian-Canadian Radarsat agreements 2007–2015. Landsat imagery were provided by the U.S. Geological Survey through Earth Explorer. The Tandem Intermediate DEM was produced and provided by the German Space Agency (DLR) under proposal # IDEM_GLAC0425. [Thanks to t](#)The Norwegian mapping agency for provision of their DEM. ASTER GDEM [v2] is a product of NASA and METI. [The weather station data from Svalbard and mainland Norway are provided through the eKlima portal of the Norwegian Meteorological Institute.](#) Thanks to I. Brown and S. Wunderle for their comments on the manuscript when being opponents on Winsvold's PhD-defence. Furthermore, thanks to K. Langley, T. Dunse and B. Altena for helpful discussions, and finally thanks to P.M. Lefeuvre and R. McNabb [for helping](#) with R-coding and batch scripting, respectively.

References

- Adam, S., Pietroniro, A. and Brugman, M. M.: Glacier snow line mapping using ERS-1 SAR imagery, *Remote Sens. Environ.*, 61(1), 46–54, doi:10.1016/S0034-4257(96)00239-8, 1997.
- 25 Andreassen, L. M., Paul, F., Kääb, A. and Hausberg, J. E.: Landsat-derived glacier inventory for Jotunheimen, Norway, and deduced glacier changes since the 1930s, *The Cryosphere*, 2(2), 131–145, doi:10.5194/tc-2-131-2008, 2008.
- Andreassen, L. M., Winsvold, S. H. (Eds.), Paul, F., and Hausberg, J. E.: *Inventory of Norwegian Glaciers*. NVE report 38, 236pp, 2012.

- Andreassen, L. M., Elvehøy, H., Kjøllmoen, B. and Engeset, R. V.: Reanalysis of long-term series of glaciological and geodetic mass balance for 10 Norwegian glaciers, *The Cryosphere*, 10(2), 535–552, 2016.
- 5 Ashcraft, I. S. and Long, D. G.: Comparison of methods for melt detection over Greenland using active and passive microwave measurements, *Int. J. Remote Sens.*, 27(12), 2469–2488, doi:10.1080/01431160500534465, 2006.
- Atwood, D. K., Meyer, F. and Arendt, A.: Using L-band SAR coherence to delineate glacier extent, *Can. J. Remote Sens.*, 36(sup1), S186–S195, doi:10.5589/m10-014, 2010.
- 10 Benson, C. S.: Stratigraphic studies in the snow and firn of the Greenland ice sheet, Cold regions research and engineering Lab, Hanover. Report 70, 1962.
- Bindschadler, R. A., Jezek, K. C. and Crawford, J.: Glaciological Investigations Using the Synthetic Aperture Radar Imaging System, *Ann. Glaciol.*, 9(1), 11–19, 1987.
- 15 Brandt, O., Kohler, J. and Lüthje, M.: Spatial mapping of multi-year superimposed ice on the glacier Kongsvegen, Svalbard, *J. Glaciol.*, 54(184), 73–80, 2008.
- 20 Brown, I. A., Kirkbride, M. P. and Vaughan, R. A.: Find the firn line! The suitability of ERS-1 and ERS-2 SAR data for the analysis of glacier facies on Icelandic icecaps, *Int. J. Remote Sens.*, 20(15-16), 3217–3230, doi:10.1080/014311699211714, 1999.
- Brown, I. A., Klingbjer, P. and Dean, A.: Problems with the retrieval of glacier net surface balance from SAR imagery, *Ann. Glaciol.*, 42(1), 209–216, doi:10.3189/172756405781812736, 2005.
- 25 Brown, I. A.: Synthetic Aperture Radar Measurements of a Retreating Firn Line on a Temperate Icecap, *IEEE Journal of Selected Topics in Applied Earth Observations and Remote Sensing*, 5(1), 153–160, doi:10.1109/JSTARS.2011.2167601, 2012.
- Callegari, M., Carturan, L., Marin, C., Notarnicola, C., Rastner, P., Seppi, R. and Zucca, F.: A Pol-SAR Analysis for Alpine Glacier Classification and Snowline Altitude Retrieval, *IEEE Journal of Selected Topics in Applied Earth Observations and Remote Sensing*, 9(7), 3106–3121, doi:10.1109/JSTARS.2016.2587819, 2016.
- 30 Casey, J. A. and Kelly, R. E. J.: Estimating the equilibrium line of Devon Ice Cap, Nunavut, from RADARSAT-1 ScanSAR wide imagery, *Can. J. Remote Sens.*, 36(sup1), S41–S55, doi:10.5589/m10-013, 2010.
- 35 CCRS. Image Quality and Calibration - Educational Resources for Radar Remote Sensing. Canada Centre for Remote Sensing GlobeSAR Program. <http://www.ida.liu.se/~746A27/Literature/Radar%20Remote%20Sensing.pdf>, last access: 9 March 2017, 2002.

- Chinn, T. J. H.: Glacier Fluctuations in the Southern Alps of New Zealand Determined from Snowline Elevations, *Arct. Alp. Res.*, 27(2), 187–198, doi:10.2307/1551901, 1995.
- 5 Cogley, J. G., Hock, R., Rasmussen, L. A., Arendt, A. A., Bauder, A., Braithwaite, R. J., Jansson, P., Kaser, G., Möller, M., Nicholson, L. and Zemp, M.: Glossary of glacier mass balance and related terms, IHP-VII Technical Documents in Hydrology, IACS Contribution No. 2, UNESCO-IHP, Paris, 86, 2011.
- Cuffey, K. M. and Paterson, W. S. B.: *The Physics of Glaciers*, Academic Press Elsevier, Inc. 4th edition, 704 pp., 2010.
- 10 Demuth, M. and Pietroniro, A.: Inferring Glacier Mass Balance Using Radarsat: Results From Peyto Glacier, Canada, *Geogr. Ann. Ser. A. Phys. Geogr.*, 81(4), 521–540, doi:10.1111/1468-0459.00081, 1999.
- de Ruyter de Wildt, M. S., Oerlemans, J. and Björnsson, H.: A method for monitoring glacier mass balance using satellite albedo
15 measurements: application to Vatnajökull, Iceland, *J. Glaciol.*, 48(161), 267–278, 2002.
- Drusch, M., Del Bello, U., Carlier, S., Colin, O., Fernandez, V., Gascon, F., Hoersch, B., Isola, C., Laberinti, P., Martimort, P., Meygret, A., Spoto, F., Sy, O., Marchese, F. and Bargellini, P.: Sentinel-2: ESA's Optical High-Resolution Mission for GMES Operational Services, *Remote Sens. Environ.*, 120(0), 25–36, doi:10.1016/j.rse.2011.11.026, 2012.
- 20 eKlima. Norwegian Meteorological Institute. www.eklima.met.no, last access: 8 November 2016, 2016.
- Engeset, R. V., Kohler, J., Melvold, K. and Lundén, B.: Change detection and monitoring of glacier mass balance and facies using ERS SAR winter images over Svalbard, *Int. J. Remote Sens.*, 23(10), 2023–2050, doi:10.1080/01431160110075550, 2002.
- 25 ESA. SNAP Sentinel-1 toolbox. Retrieved from: <http://step.esa.int/main/download/> on 15 March 2017, 2016.
- Fahnestock, M., Bindschadler, R., Kwok, R. and Jezek, K.: Greenland Ice Sheet Surface Properties and Ice Dynamics from ERS-1 SAR Imagery, *Science*, 262(5139), 1530–1534, doi:10.1126/science.262.5139.1530, 1993.
- 30 Falk, U., Gieseke, H., Kotzur, F. and Braun, M.: Monitoring snow and ice surfaces on King George Island, Antarctic Peninsula, with high-resolution TerraSAR-X time series, *Antarct. Sci.*, 28(02), 135–149, doi:10.1017/S0954102015000577, 2016.
- Fontana, F. M. A., Trishchenko, A. P., Luo, Y., Khlopenkov, K. V., Nussbaumer, S. U. and Wunderle, S.: Perennial snow and ice variations
35 (2000–2008) in the Arctic circumpolar land area from satellite observations, *J. Geophys. Res.*, 115(F4), F04020, doi:10.1029/2010JF001664, 2010.

- Forster, R. R., Isacks, B. L. and Das, S. B.: Shuttle imaging radar (SIR-C/X-SAR) reveals near-surface properties of the South Patagonian Icefield, *Journal of Geophysical Research: Planets*, 101(E10), 23169–23180, 1996.
- 5 GAMMA. Documentation – User’s Guide. Land Application Tools – LAT. Version 1.0. Gamma remote sensing, November 2009, 2009
- GCOS: The Second Report on the Adequacy of the Global Observing Systems for Climate in Support of the UNFCCC, Global Climate Observing System, World Meteorological Organisation, GCOS-82, WMO/TD 1143, 2003.
- Hagen, J. O., Melvold, K., Pinglot, F. and Dowdeswell, J. A.: On the Net Mass Balance of the Glaciers and Ice Caps in Svalbard, Norwegian Arctic, *Arct. Antarct. Alp. Res.*, 35(2), 264–270, doi:10.1657/1523-0430(2003)035[0264:OTNMBO]2.0.CO;2, 2003.
- 10 Hall, D. K., Williams, R. S., Barton, J. S., Sigurdsson, O., Smith, L. C. and Garvin, J. B.: Evaluation of remote-sensing techniques to measure decadal-scale changes of Hofsjökull ice cap, Iceland, *J. Glaciol.*, 46(154), 375–388, doi:10.3189/172756500781833061, 2000.
- 15 Huang, L., Li, Z., Tian, B.-S., Chen, Q. and Zhou, J.-M.: Monitoring glacier zones and snow/firn line changes in the Qinghai–Tibetan Plateau using C-band SAR imagery, *Remote Sens. Environ.*, 137, 17–30, doi:10.1016/j.rse.2013.05.016, 2013.
- Hulth, J., Rolstad Denby, C. and Hock, R.: Estimating glacier snow accumulation from backward calculation of melt and snowline tracking, *Ann. Glaciol.*, 54(62), 1–7, doi:10.3189/172756413807342965, 2013.
- 20 Huss, M., Sold, L., Hoelzle, M., Stokvis, M., Salzmann, N., Farinotti, D. and Zemp, M.: Towards remote monitoring of sub-seasonal glacier mass balance, *Ann. Glaciol.*, 54(63), 75–83, doi:10.3189/2013AoG63A427, 2013.
- Huss, M. and Hock, R.: A new model for global glacier change and sea-level rise, *Front. Earth Sci.*, 3, doi:10.3389/feart.2015.00054, 2015.
- 25 Isaksen, K., Nordli, Ø., Førland, E. J., Łupikasza, E., Eastwood, S. and Niedźwiedz, T.: Recent warming on Spitsbergen—Influence of atmospheric circulation and sea ice cover, *J. Geophys. Res. D: Atmos.*, 121(20), doi:10.1002/2016JD025606, 2016.
- Jaenicke, J., Mayer, C., Scharrer, K., Münzer, U. and Gudmundsson, Á.: The use of remote-sensing data for mass-balance studies at Mýrdalsjökull ice cap, Iceland, *J. Glaciol.*, 52(179), 565–573, 2006.
- 30 Jansson, P., Hock, R. and Schneider, T.: The concept of glacier storage: a review, *J. Hydrol.*, 282(1–4), 116–129, doi:10.1016/S0022-1694(03)00258-0, 2003.
- 35 Kartverket. Norwegian digital terrain model. <http://www.kartverket.no/data/Kartdata/Terrengmodeller/>, last access: 10 March 2017, 2016.

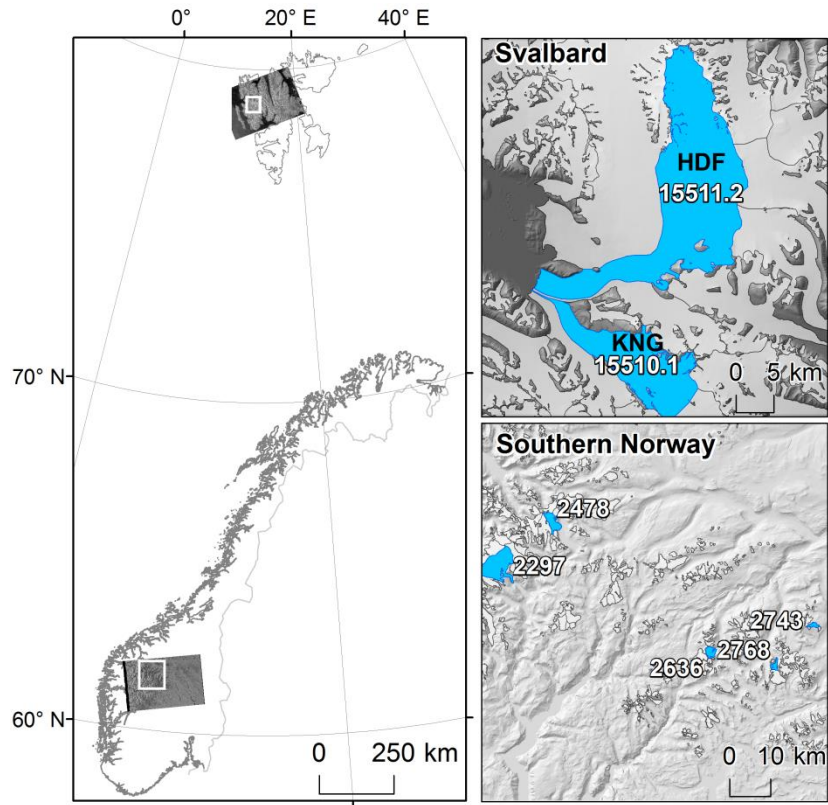
- Kääb, A., Bolch, T., Casey, K., Heid, T., Kargel, J. S., Leonard, G. J., Paul, F. and Raup, B. H.: Glacier Mapping and Monitoring Using Multispectral Data, in *Global Land Ice Measurements from Space*, edited by J. S. Kargel, G. J. Leonard, M. P. Bishop, A. Kääb, and B. H. Raup, pp. 75–112, Springer Berlin Heidelberg, 2014.
- 5 Kjøllmoen, B., L. M. Andreassen, H. Elvehøy, M. Jackson & Giesen, R. H.: Glaciological investigations in Norway 2011-2015. NVE Report 88, 171 pp, 2016.
- [Kjøllmoen, B., L. M. Andreassen, H. Elvehøy, M. Jackson & Melvold, K.: Glaciological investigations in Norway 2016. NVE Report 76, 95 pp. 2017.](#)
- 10 Kundu, S. and Chakraborty, M.: Delineation of glacial zones of Gangotri and other glaciers of Central Himalaya using RISAT-1 C-band dual-pol SAR, *Int. J. Remote Sens.*, 36(6), 1529–1550, doi:10.1080/01431161.2015.1014972, 2015.
- König, M., Wadham, J., Winther, J.-G., Kohler, J. and Nuttall, A.-M.: Detection of superimposed ice on the glaciers Kongsvegen and midre Lovénbreen, Svalbard, using SAR satellite imagery, *Ann. Glaciol.*, 34(1), 335–342, 2002.
- 15 König, M., Winther, J.-G., Kohler, J. and König, F.: Two methods for firn-area and mass-balance monitoring of Svalbard glaciers with SAR satellite images, *J. Glaciol.*, 50(168), 116–128, 2004.
- 20 Langley, K., Hamran, S. E., Hogda, K. A., Sturvold, R., Brandt, O., Hagen, J. O. and Kohler, J.: Use of C-Band Ground Penetrating Radar to Determine Backscatter Sources Within Glaciers, *IEEE Trans. Geosci. Remote Sens.*, 45(5), 1236–1246, doi:10.1109/TGRS.2007.892600, 2007.
- Langley, K., Hamran, S.-E., Hogda, K. A., Sturvold, R., Brandt, O., Kohler, J., & Hagen, J. O.: From Glacier Facies to SAR Backscatter Zones via GPR. *IEEE Transactions on Geoscience and Remote Sensing: A Publication of the IEEE Geoscience and Remote Sensing Society*, 46(9), 2506–2516. doi: <https://doi.org/10.1109/TGRS.2008.918648>, 2008.
- 25 Langley, K., Lacroix, P., Hamran, S.-E. and Brandt, O.: Sources of backscatter at 5.3 GHz from a superimposed ice and firn area revealed by multi-frequency GPR and cores, *J. Glaciol.*, 55(190), 373–383, doi:10.3189/002214309788608660, 2009.
- 30 Lillesand, T. M., Kiefer, R. W., & Chipman, J.: *Remote sensing and image analysis*. John Wiley and Sons, New York. 763 pp., 2004.
- Melvold, K. & Hagen, J.: Evolution of a surge-type glacier in its quiescent phase: Kongsvegen, Spitsbergen, 1964-95. *J. Glaciol.*, 44, 394-404, 1998.
- 35 Nuth, C., Schuler, T. V., Kohler, J., Altena, B. and Hagen, J. O.: Estimating the long-term calving flux of Kronebreen, Svalbard, from geodetic elevation changes and mass-balance modelling, *J. Glaciol.*, 58(207), 119–133, 2012.

- Nuth, C., Kohler, J., König, M., Deschwanden, A. von, Hagen, J. O., Kääb, A., Moholdt, G. and Pettersson, R.: Decadal changes from a multi-temporal glacier inventory of Svalbard, *The Cryosphere*, 7(5), 1603–1621, doi:10.5194/tc-7-1603-2013, 2013.
- 5 Østrem, G.: ERTS data in glaciology -- an effort to monitor glacier mass balance from satellite imagery, *J. Glaciol.*, 15, 403–415, 1975.
- Paul, F. and Kääb, A.: Perspectives on the production of a glacier inventory from multispectral satellite data in Arctic Canada: Cumberland Peninsula, Baffin Island, *Ann. Glaciol.*, 42(1), 59–66, doi:10.3189/172756405781813087, 2005.
- Paul, F., Andreassen, L. M. and Winsvold, S. H.: A new glacier inventory for the Jostedalbreen region, Norway, from Landsat TM scenes
10 of 2006 and changes since 1966, *Ann. Glaciol.*, 52(59), 153–162, doi:10.3189/172756411799096169, 2011.
- Pelto, M.: Utility of late summer transient snowline migration rate on Taku Glacier, Alaska, *The Cryosphere*, 5(4), 1127–1133, 2011.
- Rabatel, A., Dedieu, J.-P. and Vincent, C.: Using remote-sensing data to determine equilibrium-line altitude and mass-balance time series:
15 validation on three French glaciers, 1994–2002, *J. Glaciol.*, 51(175), 539–546, doi:10.3189/172756505781829106, 2005.
- Rabatel, A., Letréguilly, A., Dedieu, J. P. and Eckert, N.: Changes in glacier equilibrium-line altitude in the western Alps from 1984 to 2010: evaluation by remote sensing and modeling of the morpho-topographic and climate controls, *Cryosphere*, 7(5), 1455-1471, 2013.
- 20 Racoviteanu, A. E., Paul, F., Raup, B., Khalsa, S. J. S. and Armstrong, R.: Challenges and recommendations in mapping of glacier parameters from space: results of the 2008 Global Land Ice Measurements from Space (GLIMS) workshop, Boulder, Colorado, USA, *Ann. Glaciol.*, 50(53), 53–69, doi:10.3189/172756410790595804, 2009.
- Rau, F., Braun, M., Saurer, H., Goßmann, H., Kothe, G., Weber, F., Ebel, M. and Beppler, D.: Monitoring multi-year snow cover dynamics
25 on the Antarctic Peninsula using SAR imagery, *Polarforschung*, 67(1/2), 27–40, 2000.
- Rees, W. G., Dowdeswell, J. A. and Diament, A. D.: Analysis of ERS-1 Synthetic Aperture Radar data from Nordaustlandet, Svalbard, *Int. J. Remote Sens.*, 16(5), 905–924, doi:10.1080/01431169508954451, 1995.
- 30 Rotschky, G., Schuler, T. V., Haarpaintner, J., Kohler, J. and Isaksson, E.: Spatio-temporal variability of snowmelt across Svalbard during the period 2000-08 derived from QuikSCAT/SeaWinds scatterometry, *Polar Res.*, 30(0), doi:10.3402/polar.v30i0.5963, 2011.
- Rott, H.: Synthetic aperture radar capabilities for snow and glacier monitoring, *Adv. Space Res.*, 4(11), 241–246, doi:10.1016/0273-1177(84)90418-6, 1984.
- 35 Rott, H. and Strobl, D.: Synergism of SAR and Landsat TM imagery for thematic investigations in complex terrain, *Adv. Space Res.*, 12(7), 425–431, doi:10.1016/0273-1177(92)90249-W, 1992.

- Rott, H.: Thematic studies in alpine areas by means of polarimetric SAR and optical imagery, *Adv. Space Res.*, 14(3), 217–226, doi:10.1016/0273-1177(94)90218-6, 1994.
- Roy, D. P., Wulder, M. A., Loveland, T. R., C.E., W., Allen, R. G., Anderson, M. C., Helder, D., Irons, J. R., Johnson, D. M., Kennedy, R., Scambos, T. A., Schaaf, C. B., Schott, J. R., Sheng, Y., Vermote, E. F., Belward, A. S., Bindschadler, R., Cohen, W. B., Gao, F., Hipple, J. D., Hostert, P., Huntington, J., Justice, C. O., Kilic, A., Kovalskyy, V., Lee, Z. P., Lymburner, L., Masek, J. G., McCorkel, J., Shuai, Y., Trezza, R., Vogelmann, J., Wynne, R. H. and Zhu, Z.: Landsat-8: Science and product vision for terrestrial global change research, *Remote Sens. Environ.*, 145(0), 154–172, doi:10.1016/j.rse.2014.02.001, 2014.
- 10 Schellenberger, T., Dunse, T., Kääh, A., Kohler, J. and Reijmer, C. H.: Surface speed and frontal ablation of Kronebreen and Kongsbreen, NW Svalbard, from SAR offset tracking, *The Cryosphere*, 9(6), 2339–2355, doi:10.5194/tc-9-2339-2015, 2015.
- Sephton, A. J., Partington, K. C., Meadows, P. J., Rott, H., Howes, S., Whitelaw, A., Bamber, J. and Rast, M.: Simultaneous implementation of a synthetic aperture radar and a high resolution optical imager, in *Geoscience and Remote Sensing Symposium, 1995. IGARSS '95. "Quantitative Remote Sensing for Science and Applications"*, International, vol. 3, pp. 1797–1799 vol.3., 1995.
- 15 Shi, J., Dozier, J. and Rott, H.: Snow mapping in alpine regions with synthetic aperture radar, *IEEE Trans. Geosci. Remote Sens.*, 32(1), 152–158, doi:10.1109/36.285197, 1994.
- 20 Shi, J. and Dozier, J.: Inferring snow wetness using C-band data from SIR-C's polarimetric synthetic aperture radar, *IEEE Trans. Geosci. Remote Sens.*, 33(4), 905–914, doi:10.1109/36.406676, 1995.
- Smith, L. C., Forster, R. R., Isacks, B. L. and Hall, D. K.: Seasonal climatic forcing of alpine glaciers revealed with orbital synthetic aperture radar, *J. Glaciol.*, 43(145), 480–488, 1997.
- 25 Stiles, W. H. and Ulaby, F. T.: The active and passive microwave response to snow parameters: 1. Wetness, *J. Geophys. Res.*, 85(C2), 1037–1044, doi:10.1029/JC085iC02p01037, 1980.
- step forum. S1tbx: Radiometric normalization not available. <http://forum.step.esa.int/t/radiometric-normalization-not-available/3296>, last access: 9 March 2017, 2016.
- 30 Strozzi, T., Wiesmann, A. and Mätzler, C.: Active microwave signatures of snow covers at 5.3 and 35 GHz, *Radio Sci.*, 32(2), 479–495, doi:10.1029/96RS03777, 1997.
- 35 Torres, R., Snoeij, P., Geudtner, D., Bibby, D., Davidson, M., Attema, E., Potin, P., Rommen, B., Floury, N., Brown, M., Traver, I. N., Deghaye, P., Duesmann, B., Rosich, B., Miranda, N., Bruno, C., L'Abbate, M., Croci, R., Pietropaolo, A., Huchler, M. and Rostan, F.: GMES Sentinel-1 mission, *Remote Sens. Environ.*, 120, 9–24, doi:10.1016/j.rse.2011.05.028, 2012.

[Van Pelt, W.J.J., Pettersson, R., Pohjola, V. A., Marchenko, S., Claremar, B. and Oerlemans, J.: Inverse estimation of snow accumulation along a radar transect on Nordenskiöldbreen, Svalbard. *J. Geophys. Res. Earth Surf.*, 119\(4\), 816–835, doi:10.1002/2013JF003040, 2014.](#)

- 5 Van Pelt, W. J. J. and Kohler, J.: Modelling the long-term mass balance and firn evolution of glaciers around Kongsfjorden, Svalbard, *J. Glaciol.*, 61(228), 731–744, doi:10.3189/2015JG14J223, 2015.
- Van Pelt, W. J. J., Pohjola, V. A. and Reijmer, C. H.: The Changing Impact of Snow Conditions and Refreezing on the Mass Balance of an Idealized Svalbard Glacier, *Front. Earth Sci.*, 4, doi:10.3389/feart.2016.00102, 2016.
- 10 Vaughan, D. G., Comiso, J. C., Allison, I., Carrasco, J., Kaser, G., Kwok, R., Mote, P., Murray, T., Paul, F., Ren, J., Rignot, E., Solomina, O., Steffen, K., and Zhang, T.: Observations: Cryosphere. In: *Climate Change 2013: The Physical Science Basis. Contribution of Working Group I to the Fifth Assessment Report of the Intergovernmental Panel on Climate Change*, edited by: Stocker, T. F., Qin, D., Plattner, G. K., Tignor, M., Allen, S. K., Boschung, J., Nauels, A., Xia, Y., Bex, V., and Midgley, P. M., Cambridge University Press, Cambridge, United Kingdom and New York, NY, USA, 317–382, 2013.
- 15 Vikhamar-Schuler, D., Isaksen, K., Haugen, J. E., Tømmervik, H., Luks, B., Schuler, T. V. and Bjerke, J. W.: Changes in Winter Warming Events in the Nordic Arctic Region, *J. Clim.*, 29(17), 6223–6244, doi:10.1175/JCLI-D-15-0763.1, 2016.
- Werner, C., Wegmüller, U., Strozzi, T. and Wiesmann, A.: Gamma SAR and interferometric processing software, in *Proceedings of the ERS-Envisat symposium, gothenburg, Sweden, Gothenburg, Sweden, 16–20 October, 2000.*
- 20 Winsvold, S. H., Andreassen, L. M. and Kienholz, C.: Glacier area and length changes in Norway from repeat inventories, *The Cryosphere*, 8, 1885–1903, 2014.
- 25 Winsvold, S. H., Kääb, A. and Nuth, C.: Regional Glacier Mapping Using Optical Satellite Data Time Series, *IEEE Journal of Selected Topics in Applied Earth Observations and Remote Sensing*, 9(8), 3698–3711, doi:10.1109/JSTARS.2016.2527063, 2016.
- Winther, J.-G.: Landsat TM derived and in situ summer reflectance of glaciers in Svalbard, *Polar Res.*, 12(1), 37–55, doi:10.1111/j.1751-8369.1993.tb00421.x, 1993.
- 30 Wolken, G. J., Sharp, M. and Wang, L.: Snow and ice facies variability and ice layer formation on Canadian Arctic ice caps, 1999–2005, *J. Geophys. Res.*, 114(F3), F03011, doi:10.1029/2008JF001173, 2009.
- Woodhouse, I. H.: *Introduction to Microwave Remote Sensing*, Taylor and Francis Group, CRC Press. 370 pp., 2006.
- 35



5

Figure 1: Study area in Svalbard (Local IDs: 15511.2=Holtedahlfonna and 15510.1=Kongsvegen) and southern Norway (Local IDs: 2478=Austdalsbreen, 2297=Nigardsbreen, 2636=Storbreen, 2768=Hellstugubreen, and 2743=Gråsubreen) (Glacier outlines from Nuth et al., 2013, Andreassen et al., 2008 and Paul et al., 2011).

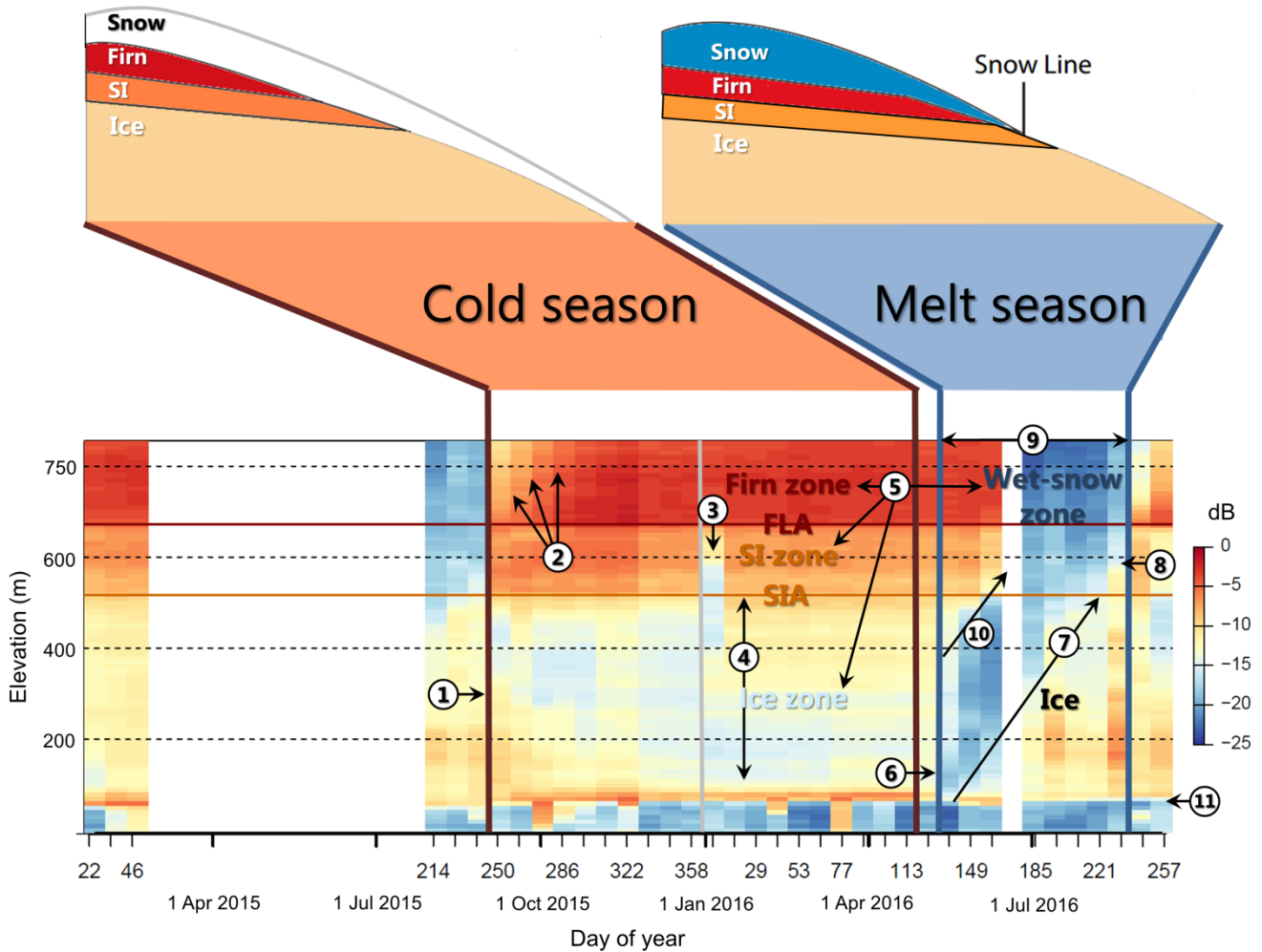


Figure 2: A heatplot of Sentinel-1A backscatter (dB) time-series from 22 January 2015 to 13 September 2016 (DOY 22 2015 to 257 2016, along a profile on Kongsvegen, Svalbard. Time is shown as Julian days on the x-axis (day of year), with 12-days between each acquisition. The numbers represent 11 possible glacier mapping variables that can be detected from the SAR time-series, 1) onset of cold season, 2) freeze-up and evolution of the firn area as the winter cold wave penetrates the snow and firn, 3) winter rain event, 4) change of surface properties after winter rain event, 5) glacier facies (based on definitions from Rau et al., 2000; Cuffey and Paterson, 2010), separated by firn line altitude (FLA) and superimposed ice altitude (SIA) (SI=superimposed ice), 6) onset of melt season, 7) transient snow lines (TSL) illustrated by the difference between ice and wet snow, 8) end of summer snowline (EOSS), an estimation of the equilibrium line altitude (ELA), 9) length of melt season, 10) surface dry-to-wet snow line, 11) glacier outline or calving front. The two sketches above the heatplot represent the SAR-zones in the cold season (winter with dry and cold conditions; snowpack in white due to high volume scattering) and in the melt season (summer with warm and wet conditions), together representing a full mass balance year. (Illustration insets above the heatplot are modified based on de Ruyter de Wildt, 2002).

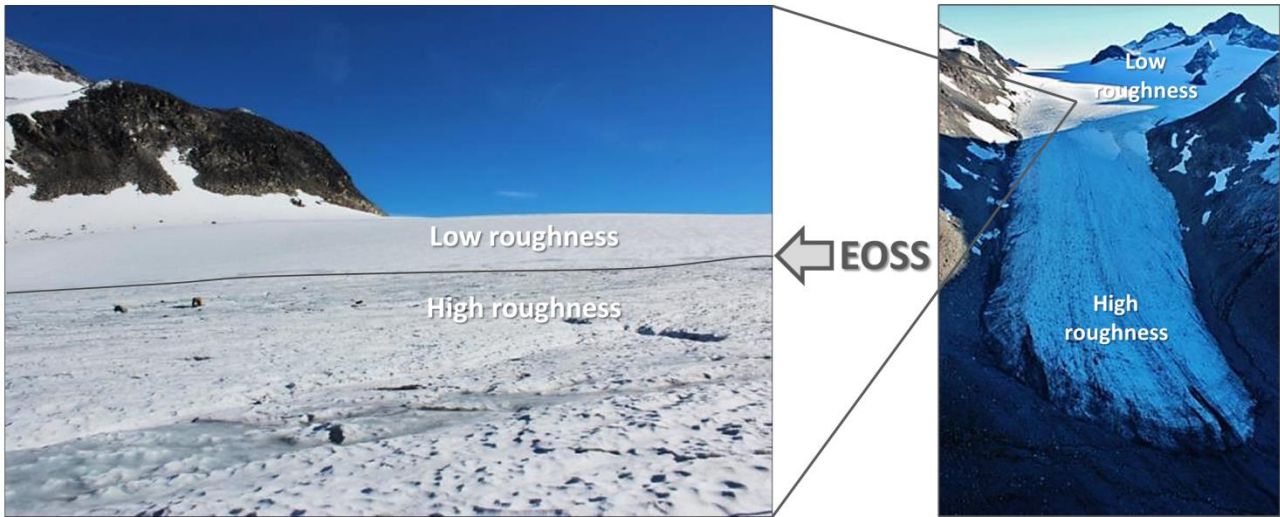


Figure 3: Photos illustrating roughness differences between ice/firn and seasonal snow. The images of Hellstugubreen were acquired on 12 September 2016 (DOY 256), when the end of summer snow line can be observed, often corresponding to the ELA (corresponding to no. 8 in Fig. 2). Photos: Liss M. Andreassen, NVE.

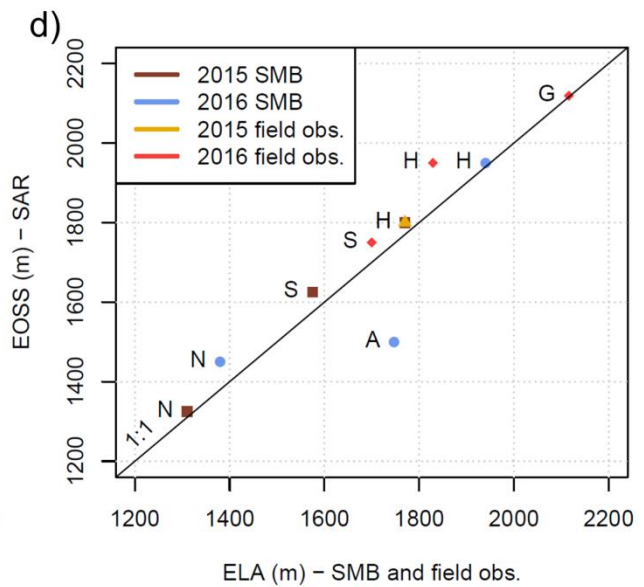
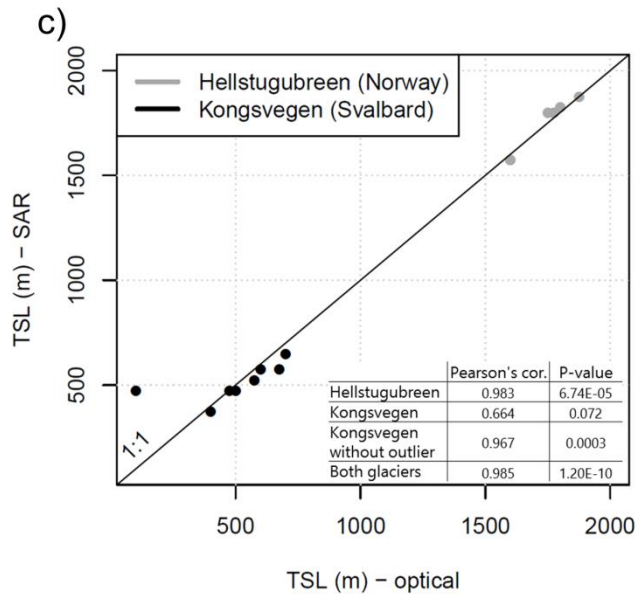
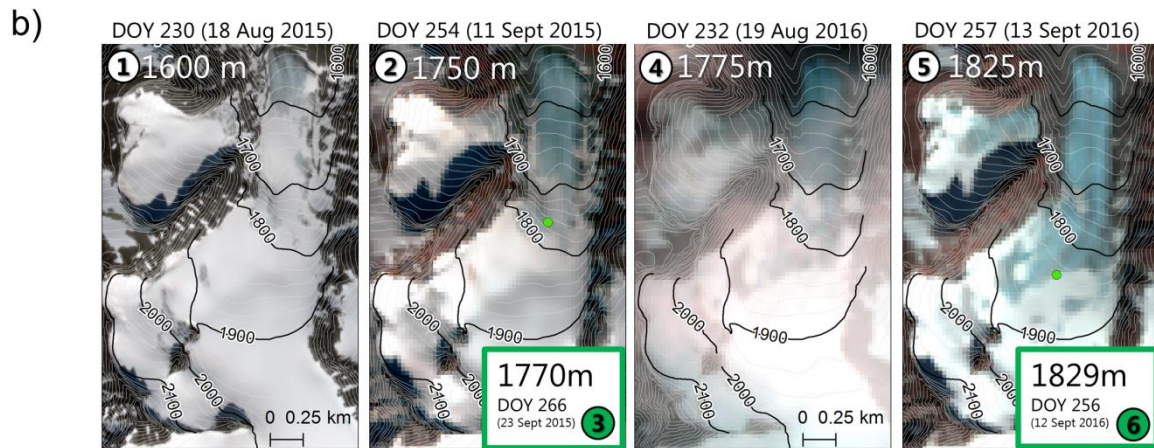
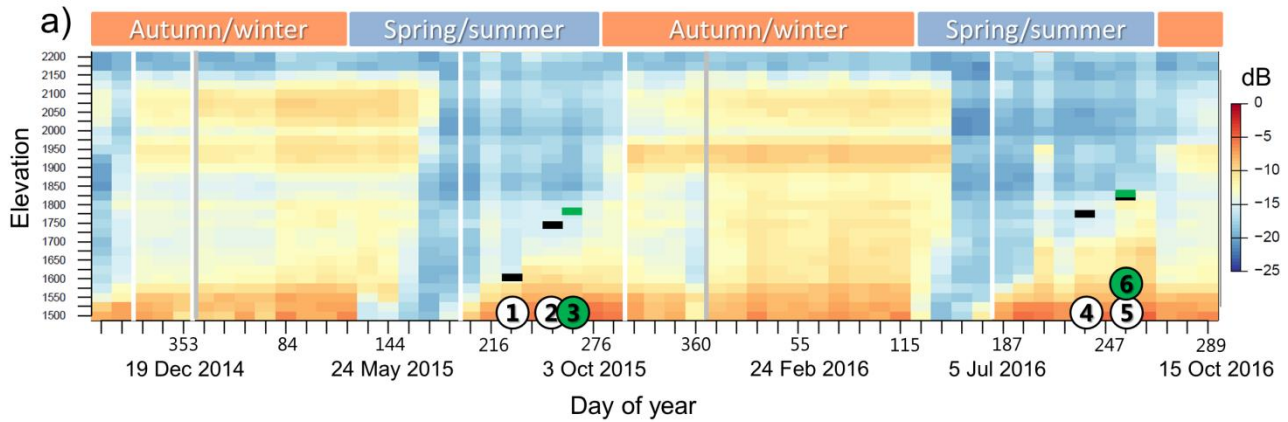


Figure 34: (a) Time-series of Sentinel-1A and B backscatter images where mean dB-values have been calculated for elevation zones of 25 m (y-axis). Numbers on x-axis are the dates (month and day, MMDD). White lines indicate missing Sentinel-1A scenes. Grey lines separate between years. The stripe of low backscatter data in the upper part is due to areas in the radar shadow. Note: 3-15 October 2016 (DOY 277 to 289 are Sentinel-1B acquisitions with 6-days repeat time (b) Elevation of TSL from optical satellite imagery, corresponding to the numbers in a). Sentinel-2A on 18 August 2015 (DOY 230), the rest is Landsat 8 images. Green points and boxes are *in situ* EOSS derived from hand held GPS. (c) Manually picked TSLs from optical and SAR images acquired almost at the same day (Table A5). The maximum difference in acquisition dates between sensors is ± 6 days. (d) Plot of EOSS from SAR and ELA from the surface mass balance (SMB) gradients and EOSS from field observations (Pearson's correlation coefficient: 0.92, p-value: 0.00015). We believe Austdalsbreen (A) is an outlier and that the signal we get in the Sentinel-1 image (~ 1500 m a.s.l.) is related to the firn line from the previous year (ELA from SMB in 2015 was 1371 m a.s.l.), as little seasonal snow was left in 2016 and ELA was "above" the glacier (ELA from SMB in 2016 was >1747). Austdalsbreen (A) is an outlier most likely due to new snow causing uncertainties in the measured SMB, since no stakes were found at higher elevation. The maximum discrepancy between a field observation and a SAR acquisition were 21 days (SAR acquisition 3 October 2016 (DOY 277) and *in situ* 12 September 2016 (DOY 256) on Hellstugubreen). Abbreviations: S = Storbreen, H = Hellstugubreen, G = Gråsubreen and N = Nigardsbreen.

15

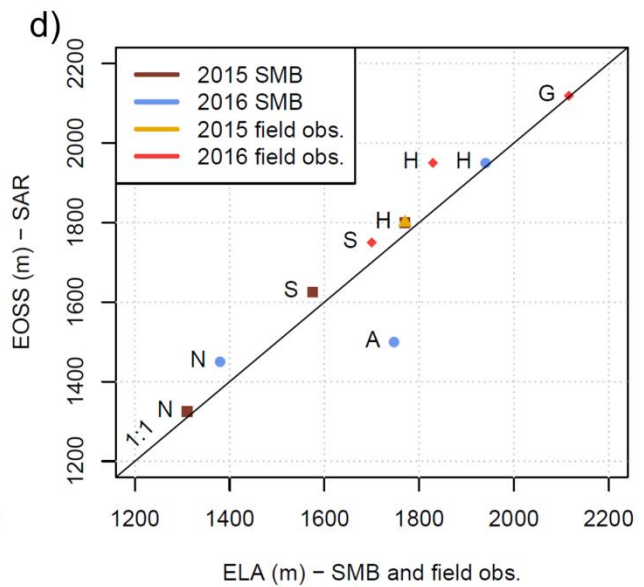
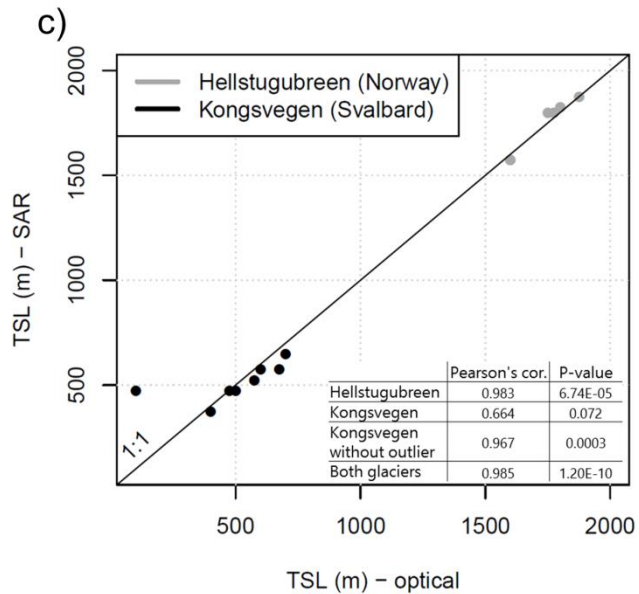
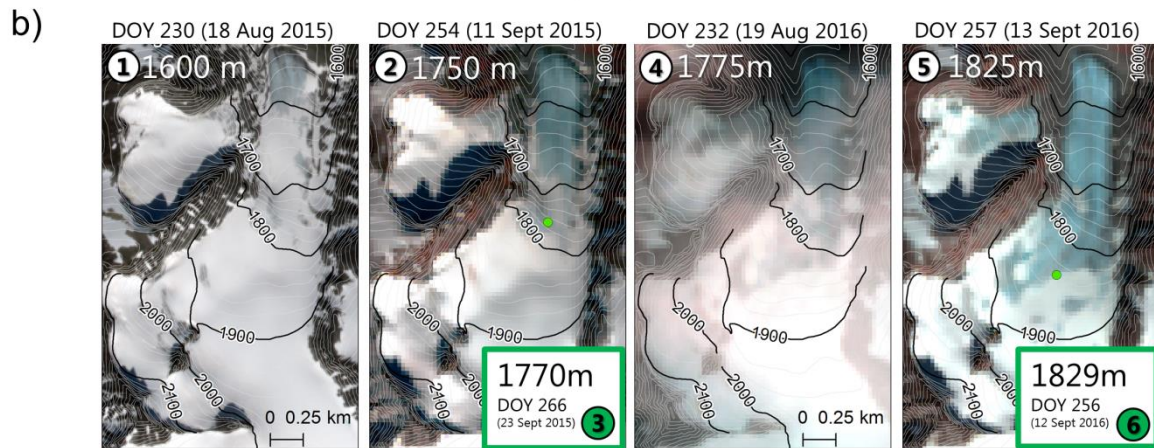
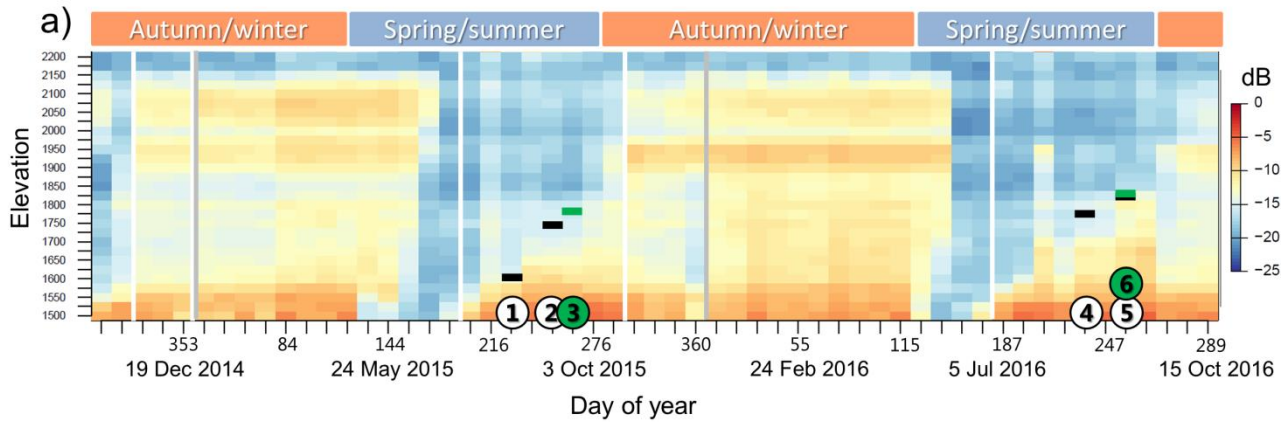


Figure 4: (a) Time series of Sentinel 1A and B backscatter images where mean dB values have been calculated for elevation zones of 25 m (y-axis). Numbers on x-axis are the dates (month and day, MMDD). White lines indicate missing Sentinel 1A scenes. Grey lines separate between years. The stripe of low backscatter data in the upper part is due to areas in the radar shadow. Note: 3-15 October 2016 (DOY 277 to 289) are Sentinel 1B acquisitions with 6 days repeat time (b) Elevation of TSL from optical satellite imagery, corresponding to the numbers in a). Sentinel 2A on 18 August 2015 (DOY 230), the rest is Landsat 8 images. Green points and boxes are *in situ* EOSS derived from hand held GPS. (c) Manually picked TSLs from optical and SAR images acquired almost at the same day (Table A5). The maximum difference in acquisition dates between sensors is ± 6 days. (d) Plot of EOSS from SAR and ELA from the surface mass balance (SMB) gradients and field observations (Pearson's correlation coefficient: 0.92, p value: 0.00015). Austdalsbreen (A) is an outlier most likely due to new snow causing uncertainties in the measured SMB, since no stakes were found at higher elevation. The maximum discrepancy between a field observation and a SAR acquisition were 21 days (SAR acquisition 3 October 2016 (DOY 277) and *in situ* 12 September 2016 (DOY 256) on Hellstugubreen). Abbreviations: S = Storbreen, H = Hellstugubreen, G = Gråsubreen and N = Nigardsbreen.

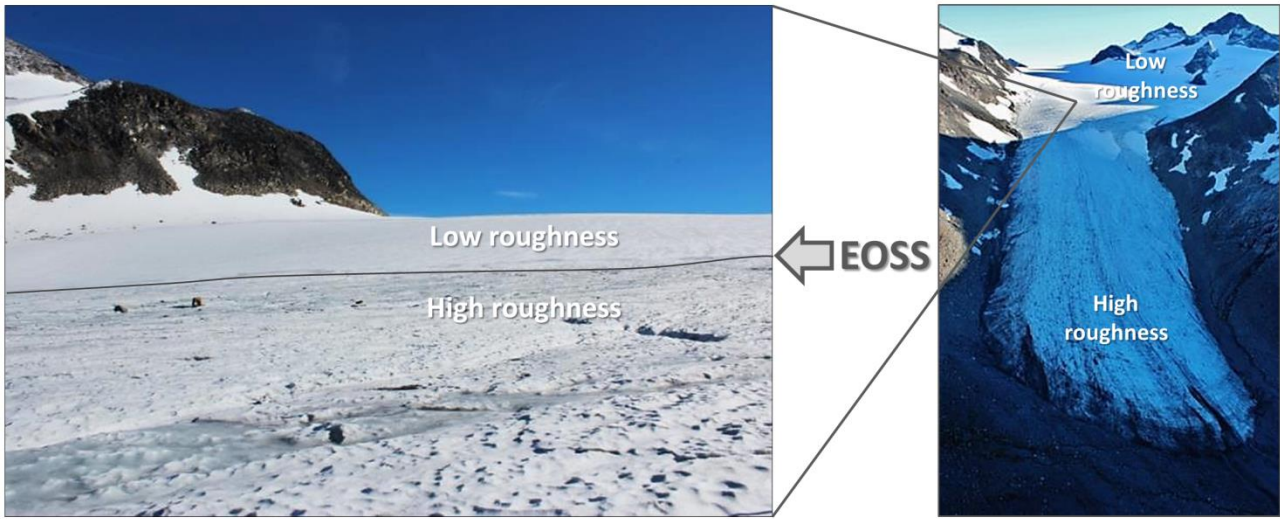


Figure 43: Photos illustrating roughness differences between ice/firn and seasonal snow. The images of Hellstugubreen were acquired on 12 September 2016 (DOY 256), when the end of summer snow line can be observed, often corresponding to the ELA (corresponding to no.8 in Fig. 2). Photos: Liss M. Andreassen, NVE

20

25

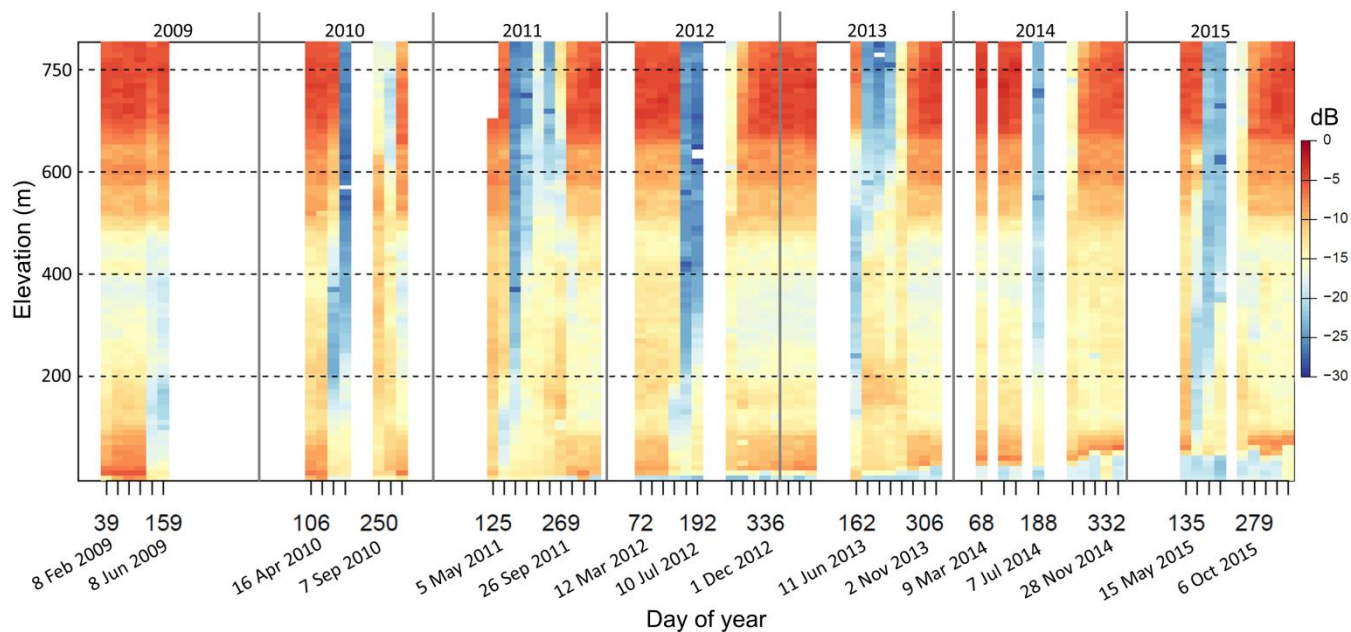


Figure 5: Radarsat-2 time-series of SAR backscatter values (dB) along a centerline profile on Kongsvegen from 2009 to 2015. An abrupt change in the start and end of melting season (e.g. in year 2012 and 2013) was observed. The Radarsat-2 time-series has a lower temporal resolution than the Sentinel-1A time-series (24-day vs. 12-day repeat cycles, respectively, see Fig. 6a). The backscattering values are in decibel (dB). Time is shown as Julian days on the x-axis (day of year), and dates are plotted for assistance.

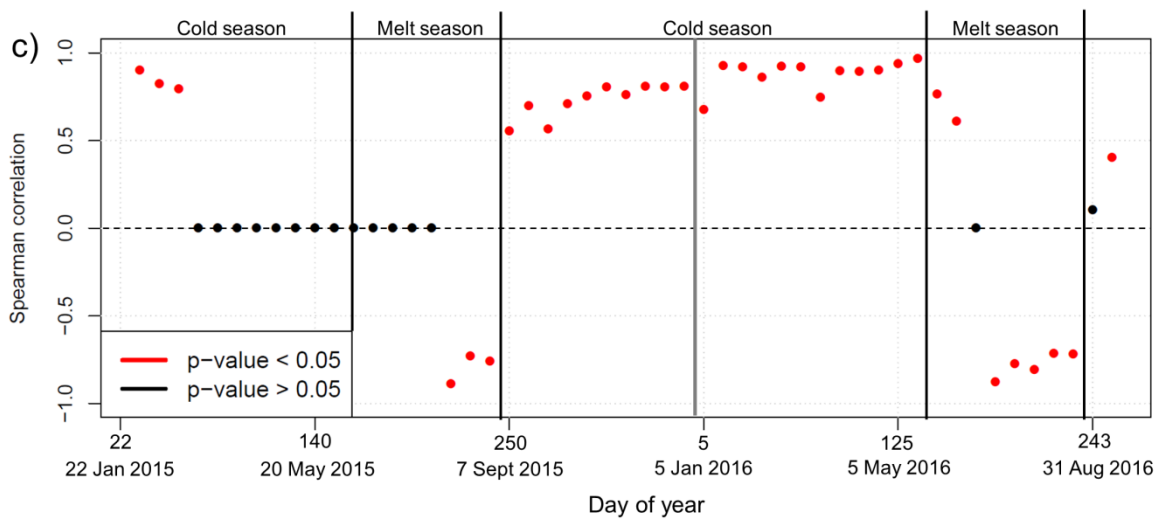
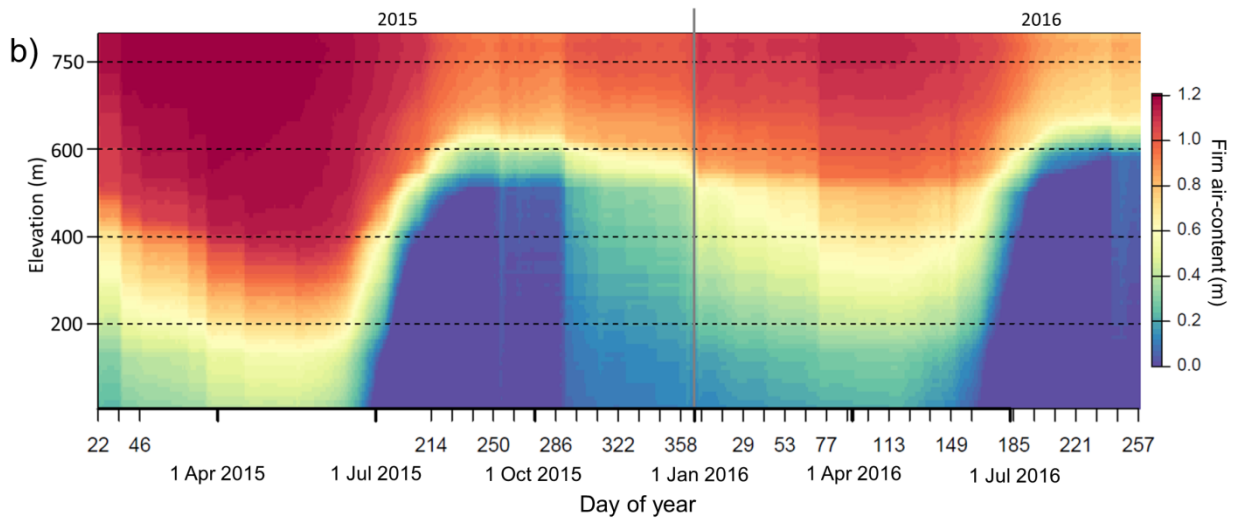
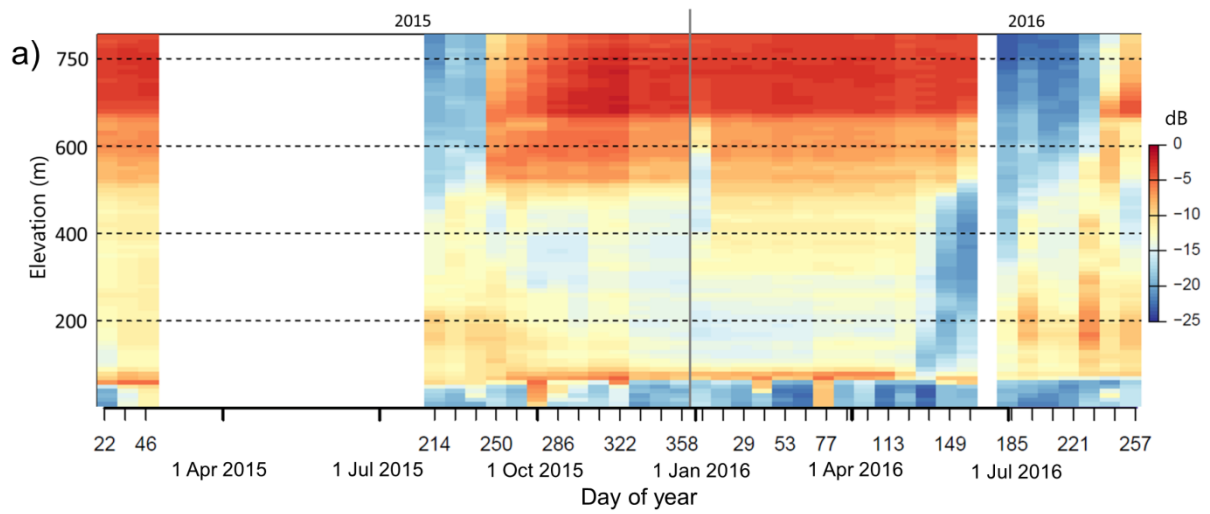


Figure 6: Observed backscatter and modeled values along the Kongsvegen centerline profile. **(a)** Sentinel-1A backscatter (dB) time-series from 22 January 2015 to 13 September 2016 (DOY 22 2015 to 257 2016). **(b)** Modeled firn air-content in a vertical column of 2 m (The colorbar is in m w.e.), **(c)** Spearman correlation between the firn air-content (in b) and backscatter values (in a) along the centerline for each Sentinel-1A acquisition time (each 300 m point). Significant correlation values (after Bonferroni multiple testing correction) are shown in red. Points on the black stippled line corresponds to missing data (white areas in figure a). For a) and b) time is shown as Julian days on the x-axis (day of year), and dates are plotted for assistance.

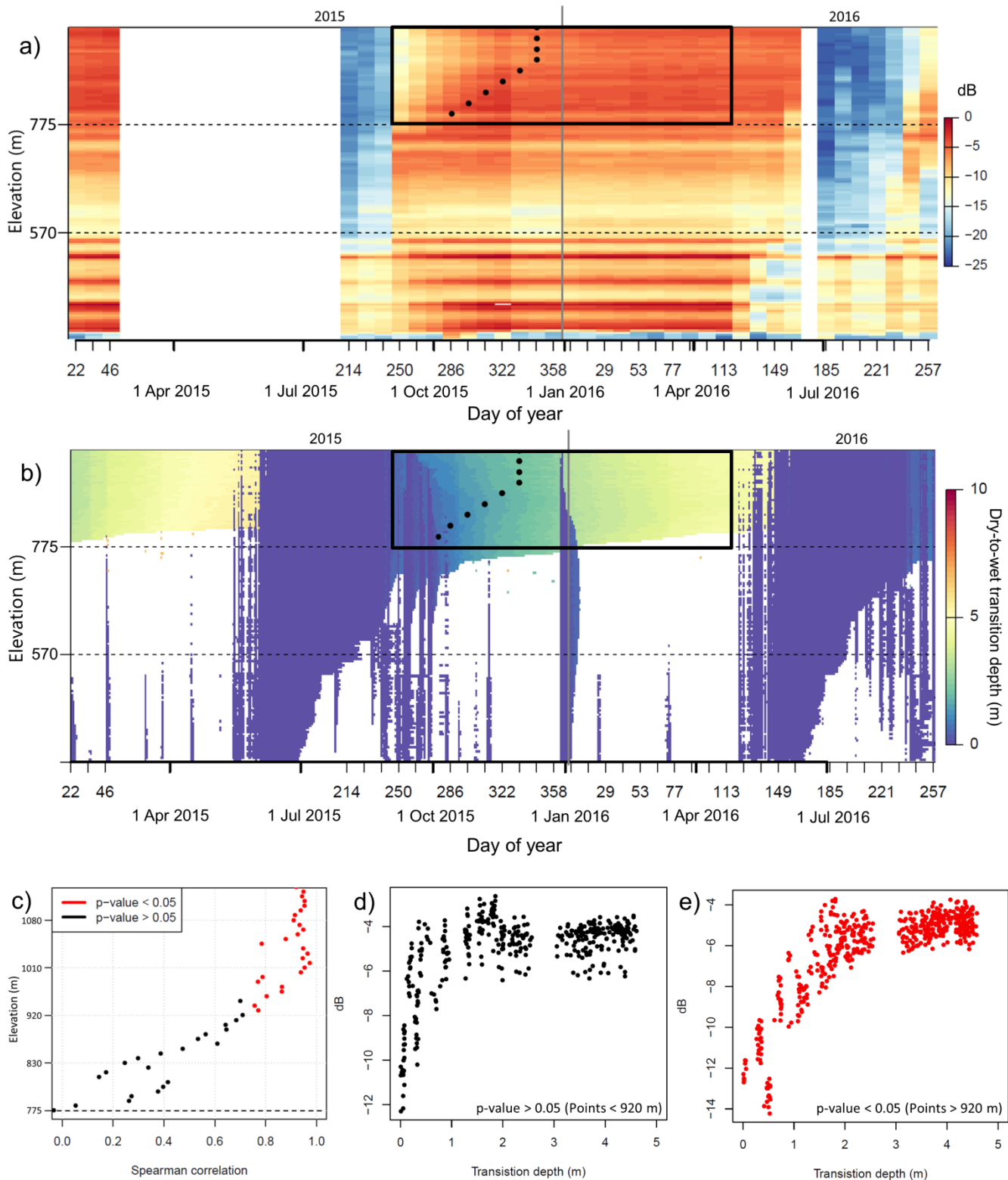


Figure 7 The figures show results from Holtedahlfonna **(a)** Sentinel-1A SAR backscatter (dB) time-series from 22 January 2015 to 13 September 2016 (DOY 22 2015 to 257 2016). Black points indicate where the backscatter stabilizes in the cold season. **(b)** Daily modeled water content for each 300 m point along a centerline profile and the transition depth (in m) between wet snow/firn (Water content > 0) and dry snow/firn (Water content = 0). The white regions in the plot indicates no water since it is glacier ice with no snow in the summer, or with dry snow conditions in the winter. Transition depth of 0 m indicates wet snow conditions on the surface. **(c)** Spearman correlation between depth of dry-to-wet transition zone and backscatter values plotted with elevation (y-axis) in firn area above 775 m. We used a time period with stable conditions: 7 September 2015 to 22 April 2016 (DOY 250 2015 to 113 2016. Black box in a and b). Significant correlation values (after Bonferroni multiple testing correction) are plotted in red. **(d)** Plot of backscatter values (dB) vs. dry-to-wet transition depth (layer) for points in c) with p-value > 0.05 (Points under ~920 m, using the same time period 7 September 2015 to 22 April 2016, DOY 250 2015 to 113 2016). The correlation coefficients are 0.266 (Pearson's correlation coefficient) and 0.3 (Spearman rho). **(e)** Plot of backscatter values (dB) vs. dry-to-wet transition depth (layer) for points in c) with p-value < 0.05 (Points above ~920 m, using the same time period as in c) and d)). The correlation coefficients are 0.834 (Pearson's correlation coefficient) and 0.725 (Spearman rho). For a) and b) time is shown as Julian days on the x-axis (day of year), and dates are plotted for assistance.

15

DOY: 358 (24 Dec 2015)

DOY: 5 (5 Jan 2016)

Diff. DOY 5 - DOY 358

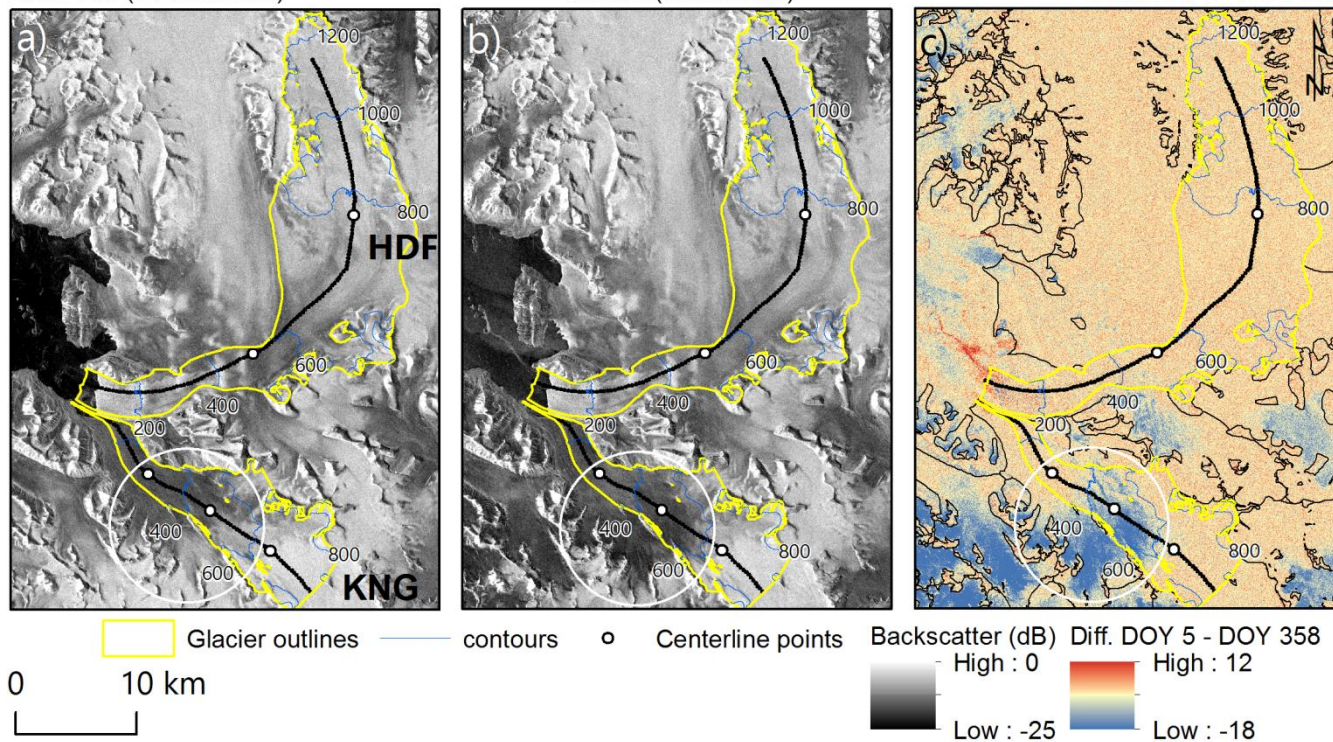


Figure 8: (a) Sentinel-1A backscatter (dB) image from 24 December 2015 (DOY 358), and (b) the following Sentinel-1A backscatter image from 5 January 2016 (DOY 5) showing remnants of the rain event. (c) The difference between 5 January 2016 (DOY 5) and 24 December 2015 (DOY 358) SAR intensity images. Blue color indicates a lowering of backscatter values between the images, showing wetter conditions in the upper firm of Kongsvegen (white circles). Glacier outlines from 2007 (Nuth et al., 2013).

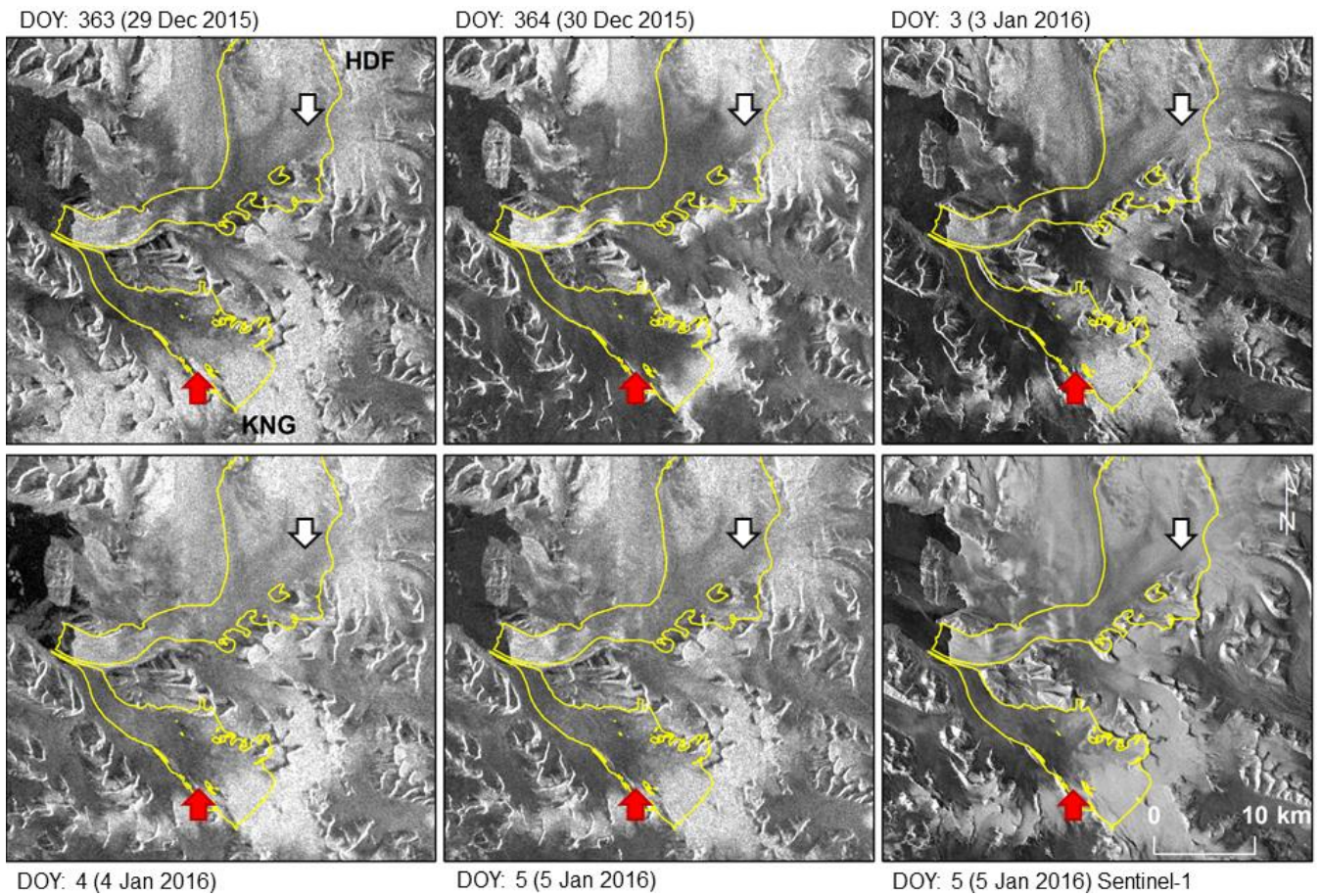


Figure 9: Radarsat-2 ScanSAR mode backscatter (dB) images from 29-30 December 2015 (DOY 363 and 364) and 3-5 January 2016 (DOY 3 to 5). We use Radarsat-2 ScanSAR to explain the extent of the winter [weather-rain](#) event. Conditions on Holtedahlfonna were wet on 30 December (see white arrows), but were dry and cold again on 3-5 January 2016 (DOY 3 to 5) (higher backscatter than on 30 December 2015 (DOY 364)). Low backscatter values were found on Kongsvegen from 3-5 January 2016 (DOY 3 to 5. See red arrows), indicating wetter conditions and more rainfall in this period compared to Holtedahlfonna.

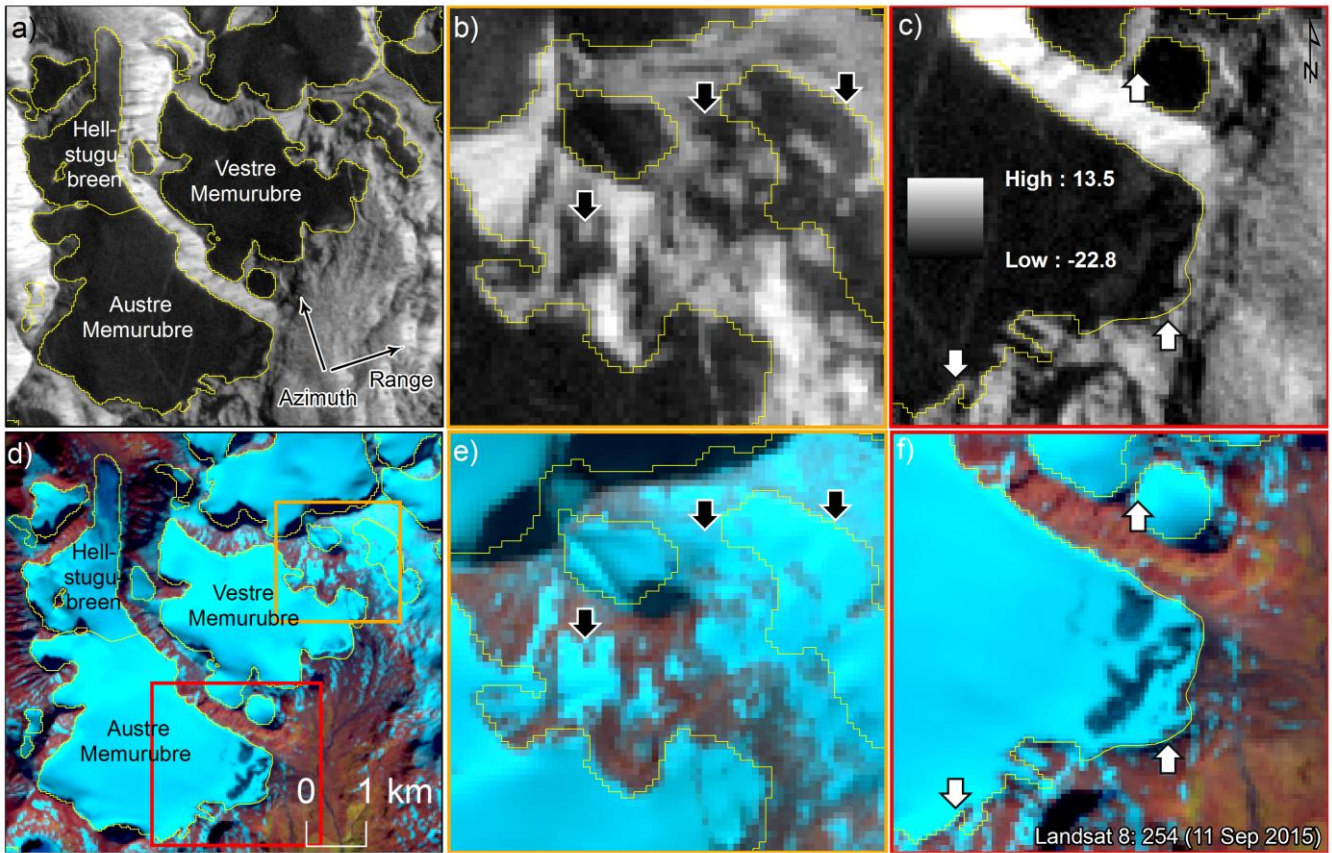


Figure 10: Glacier outline mapping for glaciers around Hellstugubreen. The inset shows zoom in on Austre Memurubre (a) Mean of 6 SAR backscatter (dB) images in the melt season from 23 July to 21 September 2015 (DOY 204 to 264). (b)(c) subsets of a) as indicated by the yellow and red rectangle in d). Azimuth angle = -18,3 degrees. (d)(e)(f) Landsat 8 OLI image 11 September 2015 (DOY 254) and subsets with poor glacier mapping conditions, since seasonal snow persisted around the glacier perimeters, and a thin layer of new snow as in b) and e). Black arrows in b) and e) and white c) and f), indicate places where a backscatter composite image can assist optical image when mapping glacier and perennial snow patches. Glacier outlines from 2003 (Andreassen et al., 2008), and therefore it is some discrepancy between the imagery presented here.