



Design and results of the ice sheet model initialisation experiments **initMIP-Greenland: an ISMIP6 intercomparison**

Heiko Goelzer 1,2, Sophie Nowicki 3, Tamsin Edwards 4, Matthew Beckley 3, Ayako Abe-Ouchi 5,
5 Andy Aschwanden 6, Reinhard Calov 7, Olivier Gagliardini 8, Fabien Gillet-Chaulet 8, Nicholas R.
Golledge 9, Jonathan Gregory 10,11, Ralf Greve 12, Angelika Humbert 13,14, Philippe Huybrechts 15,
Joseph H. Kennedy 16,17, Eric Larour 18, William H. Lipscomb 19,20, Sébastien Le clec'h 21,
Victoria Lee 22, Mathieu Morlighem 23, Frank Pattyn 2, Antony J. Payne 22, Christian Rodehacke
24,13, Martin Rückamp 13, Fuyuki Saito 25, Nicole Schlegel 18, Helene Seroussi 18, Andrew Shepherd
10 26, Sainan Sun 2, Roderik van de Wal 1, Florian A. Ziemann 27

- (1) Utrecht University, Institute for Marine and Atmospheric Research (IMAU), Utrecht, Netherlands
(2) Laboratoire de Glaciologie, Université Libre de Bruxelles, Brussels, Belgium
(3) NASA GSFC, Cryospheric Sciences Branch, Greenbelt, USA
15 (4) School of Environment, Earth & Ecosystem Sciences, The Open University, Milton Keynes, United Kingdom
(5) Atmosphere Ocean Research Institute, University of Tokyo, Kashiwa, Japan
(6) Geophysical Institute, University of Alaska Fairbanks, USA
(7) Potsdam Institute for Climate Impact Research, Potsdam, Germany
(8) Univ. Grenoble Alpes, CNRS, IRD, Grenoble INP, IGE, F-38000 Grenoble, France
20 (9) Antarctic Research Centre, Victoria University of Wellington, Wellington, New Zealand
(10) Department of Meteorology, University of Reading, Reading, United Kingdom
(11) Met Office Hadley Center, Exeter, United Kingdom
(12) Institute of Low Temperature Science, Hokkaido University, Sapporo, Japan
(13) Alfred Wegener Institute for Polar and Marine Research, Bremerhaven, Germany
25 (14) University of Bremen, Bremen, Germany
(15) Vrije Universiteit Brussel, Brussels, Belgium
(16) Climate Change Science Institute, Oak Ridge National Laboratory, Oak Ridge, USA
(17) Computational Sciences and Engineering Division, Oak Ridge National Laboratory, Oak Ridge, USA
(18) Caltech's Jet Propulsion Laboratory, Pasadena, USA
30 (19) Los Alamos National Laboratory, Los Alamos, USA
(20) National Center for Atmospheric Research, Boulder, USA
(21) LSCE/IPSL, Laboratoire des Sciences du Climat et de l'Environnement, CEA-CNRS-UVSQ, Gif-sur-Yvette, France
(22) University of Bristol, Bristol, United Kingdom
(23) University of California Irvine, Irvine, USA
35 (24) Danish Meteorological Institute, Copenhagen, Denmark
(25) Japan Agency for Marine-Earth Science and Technology, Yokohama, Japan
(26) School of Earth and Environment, University of Leeds, United Kingdom
(27) Max Planck Institute for Meteorology, Hamburg, Germany

Correspondence to: Heiko Goelzer (h.goelzer@uu.nl)



Abstract.

Earlier large-scale Greenland ice sheet sea-level projections (e.g., those run during the ice2sea and SeaRISE initiatives) have shown that ice sheet initial conditions can have a large effect on the projections and give rise to important uncertainties. The goal of the initMIP-Greenland intercomparison exercise is to compare, evaluate and improve the initialisation techniques used in the ice sheet modelling community and to estimate the associated uncertainties. initMIP-Greenland is the first in a series of ice sheet model intercomparison activities within ISMIP6 (the Ice Sheet Model Intercomparison Project for CMIP6). Two experiments for the large-scale Greenland ice sheet have been designed to allow intercomparison between participating models of 1) the initial present-day state of the ice sheet and 2) the response in two schematic forward experiments. The forward experiments serve to evaluate the initialisation in terms of model drift (forward run without additional forcing) and in response to a large perturbation (prescribed surface mass balance anomaly), and should not be interpreted as sea-level projections. We present and discuss results that highlight the wide diversity of data sets, boundary conditions and initialisation techniques used in the community to generate initial states of the Greenland ice sheet. We find good agreement across the ensemble for the dynamic response to SMB changes in areas where the simulated ice sheets overlap, but in general differences arise due to the initial size of the ice sheet. The spread in model drift is reduced compared to earlier intercomparison exercises.

1 Introduction

Ice sheet model intercomparison exercises have a long history, going back to the advent of large-scale ice sheet models in the early 1990s. The first intercomparison project (EISMINT, the European Ice Sheet Modelling INiTiative; Huybrechts et al., 1996) defined three levels of possible comparisons that could be distinguished. These include (1) schematic experiments with identical model setup and boundary conditions between models (e.g., Huybrechts et al., 1996; Pattyn et al., 2008; Pattyn et al., 2012; Pattyn et al., 2013), (2) experiments allowing individual modelling decisions (e.g., Payne et al., 2000; Calov et al., 2010; Asay-Davis et al., 2016), and (3) experiments of models applied to real ice sheets (e.g., Shannon et al., 2012; Edwards et al., 2014b; Bindschadler et al., 2013, Nowicki et al., 2013a, b). In this genealogy, the present intercomparison is a type 3 experiment with ice sheets models applied to simulate the large-scale present-day Greenland ice sheet. The role of this study is to assess the impact of initialisation on model behaviour; it is a precursor to ice-sheet mass budget projections made using CMIP6-derived climate forcing for the atmosphere and ocean. The initMIP-Greenland project is the first intercomparison within ISMIP6, the Ice Sheet Model Intercomparison Project for CMIP6 (Nowicki et al., 2016). ISMIP6 is the first ice sheet model intercomparison that is fully integrated within CMIP. This is an improvement to earlier initiatives like ice2sea (Gillet-Chaulet et al., 2012; Shannon et al., 2013; Goelzer et al., 2013; Edwards et al., 2014a; b) and SeaRISE (Sea-level Response to Ice Sheet Evolution; Bindschadler et al., 2013; Nowicki et al., 2013a, b) that were lagging one iteration behind in terms of applied climate forcing. More information on ISMIP6 can be found in the description paper (Nowicki et al., 2016) and on the Climate and Cryosphere (CliC) hosted webpage: (<http://www.climate-cryosphere.org/activities/targeted/ismip6>).



The initialisation of an ice sheet model forms the basis for any prognostic model simulation and encapsulates most of the modelling decisions that distinguish different approaches. It consists of defining both the initial physical state of the ice sheet and model parameter values. In the context of
5 initMIP-Greenland, we focus on initialisation to the present day as a starting point for centennial time-
scale future sea-level change projections (Nowicki et al., 2016). The need for physical ice flow models
for such projections lies in the dynamic and highly nonlinear response of ice sheet flow to changes in
climatic forcing at the atmospheric and oceanic boundaries. The surface mass balance (SMB) of the ice
sheet is governed by the amount of precipitation falling on the surface and by meltwater runoff
10 removing mass at the margins. Mass is also lost by melting at surfaces in contact with ocean water and
by calving of icebergs from marine-terminating outlet glaciers. Changes in ice sheet geometry generally
cause changes in atmospheric conditions over the ice sheet, and hence changes in SMB. The most
important effect is the height-SMB feedback, which causes decreasing SMB with decreasing ice surface
elevation and vice versa (e.g., Helsen et al., 2012; Franco et al., 2012; Edwards et al., 2014a; b). An
15 important consequence of the relation between SMB and ice flow is that negative SMB removes ice
before it can reach the marine margins and thereby reduces the calving flux (e.g., Gillet-Chaulet et al.,
2012; Goelzer et al., 2013; Fürst et al., 2015). An estimate for the recent balance of processes indicates
that changes in SMB were responsible for two-thirds of the increasing GrIS mass loss in the period
2009-2012, with changes in ice discharge from marine-terminating outlet glaciers accounting for the
20 remaining third (Enderlin et al., 2014). While the relative importance of outlet glacier dynamics for total
GrIS mass loss has decreased since 2001 (Enderlin et al., 2014) and is expected to decrease further in
the future (e.g., Goelzer et al., 2013; Fürst et al., 2015), it remains an important aspect for projecting
future sea-level contributions from the ice sheet on the centennial time scale.

25 Observations of ice sheet geometry and surface velocity, which ultimately form the target for any
initialisation to the present-day state, exist only since the advent of the satellite era for the last ~25 years
(e.g., Mouginot et al., 2015). This is a very short period compared to the longer response times of the
ice sheet, which can be up to several thousand years (Drewry et al., 1992). While detailed observations
mainly cover the ice surface properties, information for the ice interior and bed conditions is limited to a
30 handful of deep ice core drilling sites.

Projections of ice sheet response on decadal to centennial timescales are strongly influenced by the
initial state of the ice sheet model (e.g., Arthern and Gudmundsson, 2010; Nowicki et al., 2013b;
Adalgeirsdottir et al., 2014; Saito et al., 2016). The prognostic variables and parameters that need to be
35 defined for the initial state of an ice sheet model at the present day depend to some extent on the
complexity of the modelling approach, but typically consist of ice temperature (due to its impact on
both ice rheology and basal slip), ice sheet geometry, and boundary conditions at the base of the ice
sheet.

40 Models used for long-term and paleoclimate simulations typically use 'spin-up' procedures to determine
the initial state, where the ice sheet model is run forward in time with (changing) reconstructed or
modelled climatic boundary conditions (e.g., Huybrechts and de Wolde, 1999; Saito and Greve, 2012;



Aschwanden et al., 2013). This implies that at any time during the simulation (except at the beginning where arbitrary conditions are set), the model's state is internally consistent. Imperfections due to applied physical approximations, limited spatial resolution, and uncertainty in physical parameters and climatic boundary conditions can result in a considerable mismatch between the spun-up state and present-day observations.

The main alternative to the spin-up approach is to use data assimilation techniques, which leverage high-resolution observations of geometry and velocity to initialise ice sheet models to the present-day state (e.g., Gillet-Chaulet et al., 2012; Seroussi et al., 2013; Arthern et al., 2015). They typically infer poorly constrained basal conditions by inversion to match observed surface velocities for a given geometry (e.g., Morlighem et al., 2010). This implies that basal conditions remain constant throughout the simulation, which is limited to the centennial time scale where this is approximately the case. Data assimilation techniques produce an initial state as consistent as possible with observational data, but are affected by internal inconsistencies (e.g., ice temperature not in equilibrium with the stress regime) and by limitations in observations (e.g., inconsistencies between observational datasets (Seroussi et al., 2011)). As data assimilations are designed to best fit observations, errors arising from choices in ice parameters, physical processes, model resolution or observational data sets are transferred to basal conditions or other parameters obtained by inversion. An intermediate approach is assimilation of the geometry of the ice sheet, by finding basal conditions that reduce the mismatch with the observed ice sheet surface (Pollard and DeConto, 2012b). This method is typically applied during forward integration of the model and implies a physically consistent model state in terms of the ice flow, though with a degree of compromise over matching observations.

The goal of initMIP-Greenland is to document, compare and improve the techniques used by different groups to initialise their state-of-the-art whole-ice-sheet models to the present day as a starting point for centennial time-scale future sea-level change projections. A related goal is to highlight and understand how much of the spread in simulated ice sheet evolution is related to the choices made in the initialisation. All three methods currently used for initialisation of ice sheet models (spin-up, assimilation of velocity, and assimilation of surface elevation) and variations thereof are represented in our ensemble. We first describe our approach and experimental setup in Section 2, and present the participating models in Section 3. Section 4 concentrates on the results, with the ice sheet model initial state explored in Section 4.1, and the impact of initialization on ice sheet evolutions analysed in Section 4.2. Discussion and conclusions follow in Section 5.

2 Approach and Experimental setup

In initMIP-Greenland we focus on standalone ice sheet models, i.e., models not coupled to climate models. Although some participating models have the capability to produce their own SMB forcing, this is not a requirement in the present study. We have chosen to leave most of the modelling decisions to the discretion of the participants, which serves to document the current state of the initialisation techniques used in the ice sheet modelling community. Conversely, this implies a relatively



heterogeneous ensemble with only incidental overlap of modelling choices between different submissions.

5 Experiments for the large-scale Greenland ice sheet have been designed to allow intercomparison of the modelled initial present-day states and of the model responses to a large perturbation (Table 1).
 10 Modellers were asked to initialise their model to the present day with the method of their choice (*init*) and then run two forward experiments to evaluate the initialisation in terms of model drift: a control run without any change in the forcing (*ctrl*) and a perturbed run with a large prescribed surface mass balance anomaly (*asmb*). The prescribed SMB anomaly in experiment *asmb* (Appendix A) implies a
 15 strongly negative SMB forcing, in line with what may be expected from upper-end climate change scenarios. Nevertheless, the sea-level contribution from these experiments should not be interpreted as a projection, but rather as a diagnostic to evaluate model differences.

20 Note that the time of initialisation was not strictly defined (in the range 1950-2016), as modellers assign different dates to their initial state according to the data sets used. The participants were also largely free in other modelling decisions, with only the imposed constraint for the forward experiments that all boundary conditions remain constant in time. In particular, the SMB is not allowed to change (e.g., with surface elevation) other than by the prescribed SMB anomaly. All information and documentation concerning the ISMIP6 initMIP-Greenland experiments can be found on the ISMIP6 wiki
 25 (<http://www.climate-cryosphere.org/wiki/index.php?title=InitMIP-Greenland>).

30 While modellers were free to use a native model grid of their choice, model output was submitted on a common grid to support a consistent analysis (see Appendix C). This implies that results had to first be interpolated from the native model grid to the output grid, which for state variables has in most cases been done using conservative interpolation (Jones, 1999). In the following we present all results on the output grid with a horizontal resolution of 5x5 km. Furthermore, all ice sheet results have been masked to exclude ice on Ellesmere Island and Iceland.

Table 1 Summary of the ISMIP6-initMIP-Greenland experiments

| Experiment Title | Experiment label | CMIP6 Label (experiment_id) | Experiment Description | Duration of the simulation | Major Purposes |
|------------------|------------------|-----------------------------|---------------------------------|----------------------------|----------------|
| Initialisation | <i>init</i> | <i>ism-init-std</i> | initialisation to present day | n/a | Evaluation |
| Control | <i>ctrl</i> | <i>ism-ctrl-std</i> | unforced control experiment | 100 yr | Evaluation |
| SMB anomaly | <i>asmb</i> | <i>ism-asmb-std</i> | schematic change of SMB forcing | 100 yr | Evaluation |

30



3 Participating groups and models

Participants in initMIP-Greenland from 17 groups and collaborations (Table 2) have provided 35 model submissions. These submissions cover a wide spectrum of model resolutions, applied physical approximations, boundary conditions and initialisation techniques, which makes for a heterogeneous ensemble. In some cases, the same group has used two or more different model versions or different initialisation techniques, with several groups running their models at varying horizontal grid resolution. In the following we will refer to each separate submission as a ‘model’, identified by the model ID in the table of general model characteristics (Table 3). A detailed description of the individual models and initialisation techniques can be found in Appendix B.

Table 2 Participants, ice sheet models and modelling groups in ISMIP6-initMIP-Greenland

| Contributors | Model | Group ID | Group |
|---|-----------|----------|--|
| Victoria Lee, Stephen L. Cornford, Antony J. Payne, Daniel F. Martin | BISICLES | BGC | Centre for Polar Observation and Modelling, School of Geographical Sciences, University of Bristol, Bristol, UK / Department of Geography, College of Science, Swansea University, Swansea, UK / Computational Research Division, Lawrence Berkeley National Laboratory, Berkeley, California, USA |
| William H. Lipscomb, Joseph H. Kennedy | CISM | LANL | Los Alamos National Laboratory, Los Alamos, USA / National Center for Atmospheric Research, Boulder, USA / Climate Change Science Institute, Oak Ridge National Laboratory, Oak Ridge, USA / Computational Sciences and Engineering Division, Oak Ridge National Laboratory, Oak Ridge, USA |
| Fabien Gillet-Chaulet, Olivier Gagliardini | Elmer | IGE | Institut des Géosciences de L'Environnement, Univ. Grenoble Alpes, CNRS, IRD, Grenoble INP, IGE, F-38000 Grenoble, FR |
| Sainan Sun, Frank Pattyn | FETISH | ULB | Laboratoire de Glaciologie, Université Libre de Bruxelles, Brussels, BE |
| Philippe Huybrechts, Heiko Goelzer | GISM | VUB | Vrije Universiteit Brussel, Brussels, BE |
| Sébastien Le clec'h | GRISLI | LSCE | LSCE/IPSL, Laboratoire des Sciences du Climat et de l'Environnement, CEA-CNRS-UVSQ, Gif-sur-Yvette, FR |
| Fuyuki Saito, Ayako Abe-Ouchi | IcIES | MIROC | Japan Agency for Marine-Earth Science and Technology, JP / The University of Tokyo, Tokyo, JP |
| Heiko Goelzer, Roderik van de Wal | IMAUCE | IMAU | Utrecht University, Institute for Marine and Atmospheric Research (IMAU), Utrecht, NL |
| Helene Seroussi, Nicole Schlegel | ISSM | JPL | Caltech's Jet Propulsion Laboratory, Pasadena, USA |
| Helene Seroussi, Mathieu Morlighem | ISSM | UCI_JPL | Caltech's Jet Propulsion Laboratory, Pasadena, USA / University of California Irvine, USA |
| Martin Rückamp, Angelika Humbert | ISSM | AWI | Alfred Wegener Institute for Polar and Marine Research, DE / University of Bremen, DE |
| Andy Aschwanden | PISM | UAF | Geophysical Institute, University of Alaska Fairbanks, USA |
| Nicholas R. Golledge | PISM | ARC | Antarctic Research Centre, Victoria University of Wellington, NZ |
| Christian Rodehacke | PISM | DMI | Danish Meteorological Institute, DK / Alfred Wegener Institute for Polar and Marine Research, DE |
| Florian A. Ziemann | PISM | MPIM | Max Planck Institute for Meteorology, DE |
| Ralf Greve | SICOPOLIS | ILTS | Institute of Low Temperature Science, Hokkaido University, Sapporo, JP |



| | | | |
|-------------------------------|-----------|----------|--|
| Ralf Greve, Reinhard Calov | SICOPOLIS | ILTS_PIK | Institute of Low Temperature Science, Hokkaido University, Sapporo, JP / Potsdam Institute for Climate Impact Research, Potsdam, DE |
|-------------------------------|-----------|----------|--|

Despite the diversity in modelling approaches (Table 3) and the overlap between different methods, it is useful to distinguish the three main classes of initialisation techniques described before: first, those using a form of data assimilation (DA) to match observed velocities (DA_v); second, those that rely solely on model spin-up (SP), and third, the intermediate case of transient assimilation to match surface elevation (DAs). However, even DA_v is typically preceded by some form of spin-up (with the same model or a different one) to produce the internal temperature of the ice sheet, and may also be followed by a relaxation run to make the velocities and geometry more consistent. The represented cases of DA infer a spatially varying basal drag coefficient to minimise the mismatch with observations of velocity or geometry. Models using SP use physical parameters and processes to define the basal conditions.

Modelling choices also differ based on model purpose and typical application. Many of the SP models have been built and used for paleo applications for time periods when possible DA targets are very limited and SMB boundary conditions differ from the present. This makes it necessary in those models to parameterise SMB, e.g., by using positive-degree-day (PDD) models (e.g., Huybrechts et al., 1991). In two groups (DMI, MPIM), the ice sheet models and SMB forcing are set up in a similar way as they would be for coupled ice sheet-climate simulations. In contrast, the DA_v models are built specifically for centennial time-scale future projections, while DAs again represents an intermediate case of models typically used for long-term simulations, but specifically initialised for the present day. These fundamental differences in modelling approaches have to be kept in mind when comparing the models. The SMB boundary condition in many cases is taken from regional climate model (RCM) simulations, but arises in some cases from parameterisations based on the modelled ice sheet geometry applying traditional PDD methods.

25 **Table 3** Model characteristics

Numerical method: FD= Finite difference, FE= Finite element, FV= Finite Volume with adaptive mesh refinement
 Ice flow: SIA= Shallow ice approximation, SSA= Shallow shelf approximation, HO= Higher order, HYB= SIA and SSA combined
 Initialisation method: DA_v= Data Assimilation of velocity, DAs= Data Assimilation of surface elevation, SP= Spin up
 Initial SMB: RA1= RACMO2.1, RA3= RACMO2.3, HIR= HIRHAM5, MAR= MAR, BOX= BOX reconstruction (synthesis of simulation and data), PDD= Positive Degree Day Model, EBM= Energy Balance Model (EBM)
 Velocity: RM= Rignot and Mouginot, J= Joughin et al.
 Bed and surface: M= Morlighem et al., B= Bamber et al., H= Herzfeld et al.
 Geothermal Heat Flux (GHF): SR= Shapiro and Ritzwoller, G= Greve, P= Purucker, FM= Fox Maule et al., CST= Constant
 Model resolution (Res) in km. In case of heterogeneous grid resolution, the minimum and maximum resolution are given.

| Model ID | Numerics | Ice flow | Initialisation | Initial year(s) | Initial SMB | Velocity | Bed | Surface | GHF | Res min | Res max |
|------------------------|----------|----------|-----------------|-----------------|-------------|----------|-----|---------|-----|---------|---------|
| ARC-PISM | FD | HYB | SP | 2000 | RA1 | | B | | SR | 5 | 5 |
| AWI-ISSM1 | FE | HO | DA _v | 2000 | RA3 | RM | M | | SR | 2.5 | 35 |
| AWI-ISSM2 [*] | FE | HO | DA _v | 2000 | RA3 | RM | M | | SR | 2.5 | 35 |
| BGC-BISICLES1 | FV | SSA | DA _v | 1997 - 2006 | HIR | RM | M | | | 1.2 | 4.8 |
| BGC-BISICLES2 | FV | SSA | DA _v | 1997 - 2006 | HIR | RM | M | | | 2.4 | 4.8 |
| BGC-BISICLES3 | FV | SSA | DA _v | 1997 - 2006 | HIR | RM | M | | | 4.8 | 4.8 |
| DMI-PISM1 | FD | HYB | SP | 2000 | PDD | | B | | SR | 5 | 5 |
| DMI-PISM2 | FD | HYB | SP | 2000 | PDD | | B | | SR | 5 | 5 |



| | | | | | | | | | | | |
|-------------------|----|-----|-----------------|-------------|-----|----|---|---|-----|-----|-----|
| DMI-PISM3 | FD | HYB | SP | 2000 | PDD | | B | | SR | 5 | 5 |
| DMI-PISM4 | FD | HYB | SP | 2000 | PDD | | B | | SR | 5 | 5 |
| DMI-PISM5 | FD | HYB | SP | 2000 | PDD | | B | | SR | 5 | 5 |
| IGE-ELMER1 | FE | SSA | DA _v | 2000 - 2010 | MAR | J | M | | | 1.5 | 45 |
| IGE-ELMER2 | FE | SSA | DA _v | 2000 - 2010 | MAR | J | M | | | 1 | 5 |
| ILTS-SICOPOLIS | FD | SIA | SP | 1990 | PDD | | B | | P | 5 | 5 |
| ILTSPIK-SICOPOLIS | FD | SIA | SP | 1990 | PDD | | H | | G | 5 | 5 |
| IMAU-IMAUICE1 | FD | SIA | SP | 1990 | RA3 | | B | | SR | 5 | 5 |
| IMAU-IMAUICE2 | FD | SIA | SP | 1990 | RA3 | | B | | SR | 10 | 10 |
| IMAU-IMAUICE3 | FD | SIA | SP | 1990 | RA3 | | B | | SR | 20 | 20 |
| JPL-ISSM | FE | SSA | DA _v | 2012 | BOX | RM | M | | SR | 1 | 15 |
| LANL-CISM | FE | HO | SP | 1961 - 1990 | RA1 | | M | | CST | 4 | 4 |
| LSCE-GRISLI | FD | HYB | DA _v | 2000 | MAR | J | B | | FM | 5 | 5 |
| MIROC-ICIES1 | FD | SIA | DA _s | 2004 | RA1 | | B | B | | 10 | 10 |
| MIROC-ICIES2 | FD | SIA | SP | 2004 | PDD | | B | | | 10 | 10 |
| MPIM-PISM | FD | HYB | SP | 2006 | EBM | | B | | SR | 5 | 5 |
| UAF-PISM1 | FD | HYB | SP | 2007 | RA1 | | M | | SR | 1.5 | 1.5 |
| UAF-PISM2 | FD | HYB | SP | 2007 | RA1 | | M | | SR | 3 | 3 |
| UAF-PISM3 | FD | HYB | SP | 2007 | RA1 | | M | | SR | 4.5 | 4.5 |
| UAF-PISM4 | FD | HYB | SP | 2007 | RA1 | | M | | SR | 1.5 | 1.5 |
| UAF-PISM5 | FD | HYB | SP | 2007 | RA1 | | M | | SR | 3 | 3 |
| UAF-PISM6 | FD | HYB | SP | 2007 | RA1 | | M | | SR | 4.5 | 4.5 |
| UCIJPL-ISSM | FE | HO | DA _v | 2007 | RA1 | RM | M | | SR | 0.5 | 30 |
| ULB-FETISH1 | FD | SIA | DA _s | 1979 - 2006 | MAR | | B | B | FM | 10 | 10 |
| ULB-FETISH2 | FD | HYB | DA _s | 1979 - 2006 | MAR | | B | B | FM | 10 | 10 |
| VUB-GISM1 | FD | HO | SP | 2005 | PDD | | B | | SR | 5 | 5 |
| VUB-GISM2 | FD | SIA | SP | 2005 | PDD | | B | | SR | 5 | 5 |

*Differs from AWI-ISSM1 in the climatic forcing used during temperature spin-up.

4 Results

In this section, we first present results of the *init* experiment, designed to compare the present-day initial state between participating models and against observations. These or similar initial model states would serve as a starting point for physically-based projections of the Greenland ice sheet contribution to future sea-level changes (Nowicki et al., 2016). We then present results for the two forward experiments that serve to further evaluate the initial states in response to schematic forcing (*ctrl*, *asmb*).

4.1 Evaluation of the initial state

Because initialisation techniques generally differ in the observational data used as model input, boundary condition and assimilation target, we did not prescribe the year(s) of initialisation. The initialisation times in the ensemble (Table 3) therefore represent the time frame(s) of the observations that are used for data assimilation (in case DA) and the simulated SMB used as boundary condition for the individual models. For the comparative analysis, we did not attempt to correct the differences arising from different initialisation times. Compared to the range of modelling uncertainties, this assumption probably holds for the geometry of the ice sheet, but is more questionable for velocity. However, the sparseness and limited temporal resolution of available observations excludes analysing models in their individual reference time frame. Where available, we have used a range of observational data sets to compare against.



The modelled present-day ice extent (Figure 1) exhibits a large spread among models and ranges from the extent of the observed ice sheet proper (excluding connected glaciers and ice caps) to nearly filling the entire land above sea level (see also supplementary Figure S2 for individual model results). This diversity in the ensemble is representative of the large range of modelling choices and initialisation techniques. For example, the assumption of what should be modelled (only the ice sheet, or including outlying glaciers and ice caps) differs from group to group. Also, models may simulate ice in places where no ice is observed. While some models prescribe a fixed (observed) ice mask, most models simulate ice margins that are free to evolve according to the balance of ice flow and SMB. In some cases, modellers have controlled the extent where ice sheets are allowed to grow, e.g., by prescribing a negative SMB over observed ice-free regions.

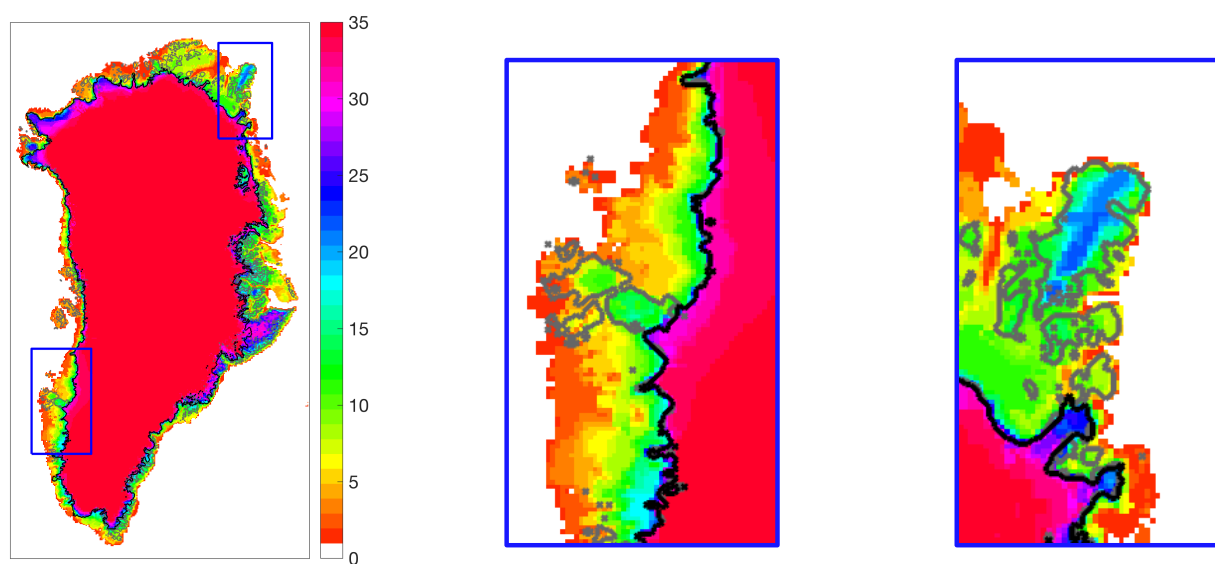
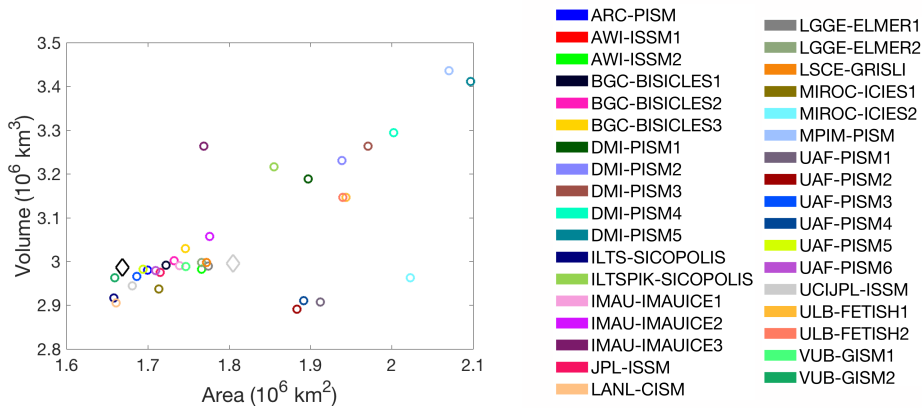


Figure 1 Common ice mask of the ensemble of models in the intercomparison. The colour code indicates the number of models (out of 35 in total) that simulate ice at a given location. Outlines of the observed ice sheet proper (Rastner et al., 2012) and all ice-covered regions (i.e. main ice sheet plus small ice caps and glaciers; Morlighem et al. 2014) are given as black and grey contour lines, respectively. A complete set of figures displaying individual model results are given in the supplementary material to this publication.

The diversity of modelling choices equally leads to a large spread in the simulated total ice area and volume at the present day (Figure 2, see supplementary Table S1 for the numbers). In comparison with observations (Morlighem et al., 2014), the initial ice sheet area (horizontal axis in Figure 2) of many models is ‘bracketed’ by the observed extent (cf. Figure 1) of the ice sheet proper (black diamond) and the extent of the entire ice-covered areas (grey diamond). Differences in observed volume (vertical axis in Figure 2) between these two defined areas are small compared to the ensemble spread, i.e. the proportional change from including ice caps and glaciers surrounding the Greenland ice sheet to volume



is much smaller than to area. An alternative data set (Bamber et al., 2013) provides very similar numbers for observed volume and area (not shown). Overestimation of ice sheet area (by up to 15%) is common, and overestimation of volume (up to 15%) is more prevalent than underestimation.



5

Figure 2 Grounded ice area and grounded volume for all models (circles). Observed values (Morlighem et al. 2014) are given for the entire ice covered region (grey diamond) and for the region of the ice sheet proper (black diamond) according to the mask of Rastner et al. (2012) shown in Figure 1.

- 10 As an important boundary condition for the ice sheet simulations, we evaluate the implemented SMB of
 the different models. Figure 3 shows the typical applied present-day SMB for three of the models, while
 an overview of all models is given in supplementary Figure S2. In the three cases shown, one model
 applied SMB from a RCM with no modification (AWI-ISSM2), another (MIROC-ICIES) used a PDD
 method and the last (MPIM-PISM) obtains the SMB from an energy balance model (EBM) designed for
 15 coupling of the ice sheet model to a climate model.

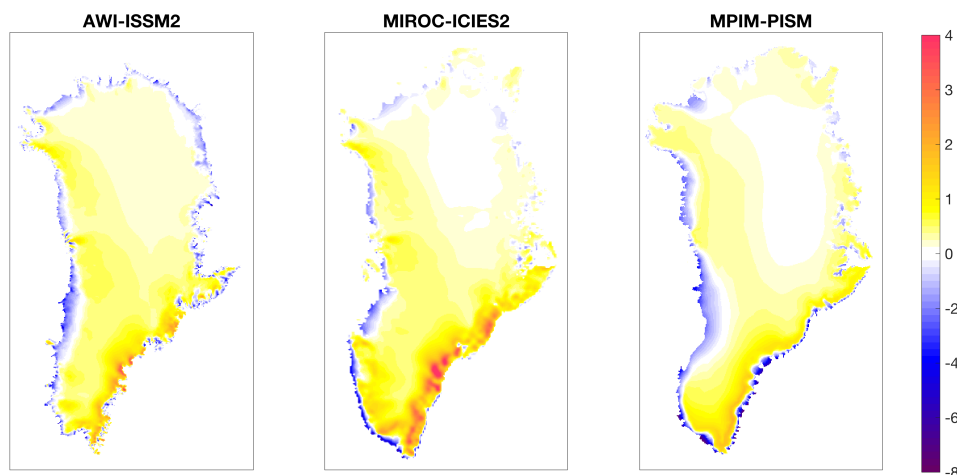


Figure 3 Typical surface mass balance for the initial state for three different models. Note the unequal scaling for positive and negative values.

5 Because we generally cannot distinguish individual accumulation and ablation processes for the SMB
prescribed during initialisation, we separate the assumed SMB into negative and positive regions (i.e.,
ablation and accumulation zones) for further analysis. Partitioning of mass change processes between
SMB and dynamic changes (e.g., van den Broeke et al., 2009; Enderlin et al., 2014) would also be an
important diagnostic to analyse. However, the participating models have not incorporated the required
10 mechanisms, and we also lack the necessary forcing, to generate fast dynamical response due to outlet
glacier changes in the current experiments. Displaying the SMB magnitude for accumulation and
ablation regimes allows us to identify some important outliers (Figure 4a) and frame the model input
compared to estimates of total SMB from a range of RCMs (Figure 4b). Apparent outliers are models
with very small ablation zones and large positive SMB (far right in Figure 4a) and those with a large
15 ablation area (top in Figure 4a). Several of the remaining models cluster around RCM estimates (van
Angelen et al., 2014; Fettweis et al., 2017; Noël et al., 2016) for the SMB partitioning, again
considering either all ice-covered regions or only the ice sheet proper. This is mostly the case because
the models use these or similar products. However, an additional condition required for close agreement
with RCM estimates is that the modelled ice sheet is close to the observed extent. Models that lie further
20 from RCM estimates (in Figure 4b) typically have larger ablation zones and consequently larger
negative SMB.

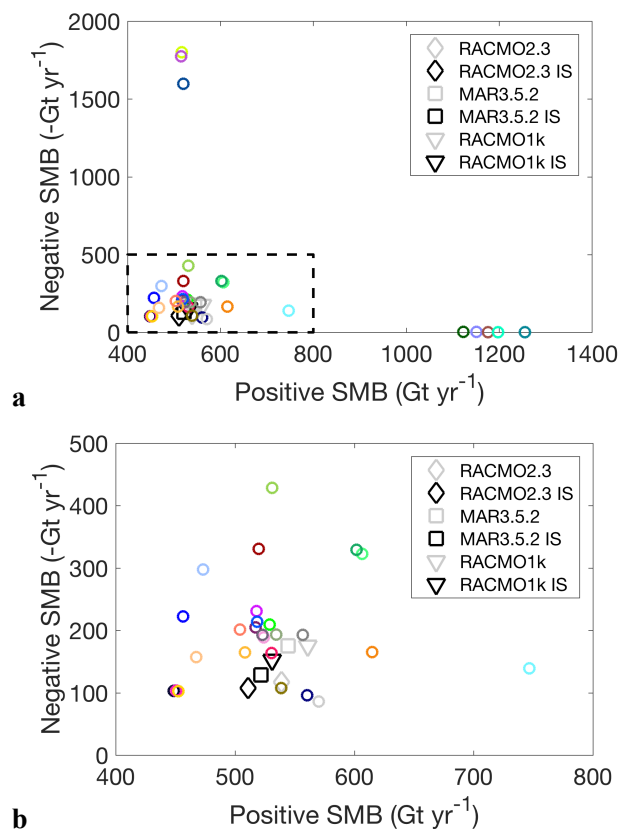


Figure 4 Negative and positive SMB of all models (a) and for the marked inset excluding outliers (b). Diamonds, squares and triangles in (b) give partitioning from average 1979-2000 regional climate model simulations (van Angelen et al., 2014; Fettweis et al., 2017, Noël et al., 2016) with masking to the ice-covered region (grey) and to the ice sheet proper (IS, black) according to the mask of Rastner et al. (2012). Compare symbol colour to identify individual models with Figures 3-5. Data are available in supplementary Table S1.

We further evaluate the prescribed SMB in comparison to point observations (Figure 5). Available SMB observations (Machguth et al., 2015; Bales et al., 2009) are sparse, especially in the centre of the ice sheet, and have heterogeneous temporal coverage. However, comparison against those observations allows for a first-order evaluation of the SMB inputs chosen or produced by the modellers. Overall, positive SMB is better represented in the chosen SMB datasets than negative SMB. The order-of-magnitude difference in RMSE between the two measures is partly explained by the relatively low accumulation over a large area in the centre of the ice sheet, compared to relatively high ablation over a narrow marginal zone, which is easily misrepresented in models with too large an ice extent. While the best match with observations in both regions is produced by models using SMB derived from RCMs, good agreement with the observed can also be found for some models using PDD. Again, a good match with the observed ice extent is more important than the SMB model itself.

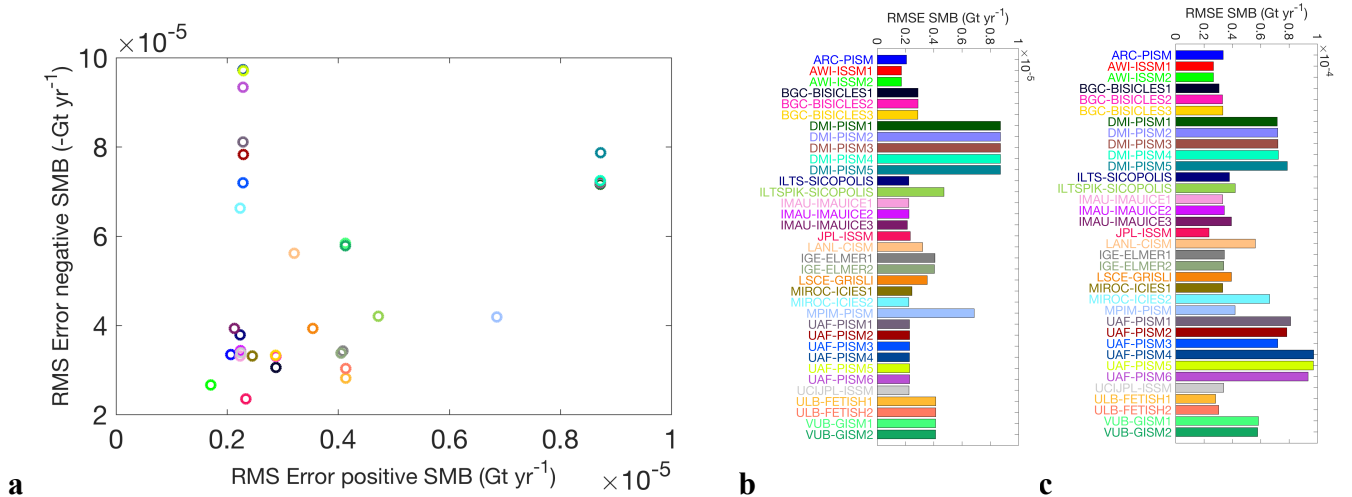


Figure 5 Root mean square difference of initial modelled surface mass balance compared to observations for the accumulation zone (b and abscissa in a) and the ablation zone (c and ordinate a). The observational data sets are from Bales et al. (2009) for the accumulation zone and Machguth et al. (2015) for the ablation zone.

5

The match of the initial ice sheets with observed geometry (Morlighem et al., 2014) is evaluated as the root mean square (RMS) difference between modelled and observed ice thickness (Figure 6).

10 Interpretation of the diagnostics requires distinction between the different initialisation techniques, because the geometry is a prognostic variable in some cases of SP, but a given constraint during initialisation for DA. In some cases of SP, the ice sheet area is effectively confined to the observed, which represents an intermediate case. For models covering a range of horizontal resolutions, accuracy generally decreases with coarser horizontal grid resolution (BISICLES, IMAUCE, ELMER), except for UAF_PISM, where the trend is not clear. Using a different observational data set (Bamber et al., 2013) to calculate the diagnostic gives overall similar results (not shown). However, it is noticeable that 15 DA models that have been initialised with one data set show lower errors when comparing with that specific set of observations. This point requires attention, should this diagnostic be used to formally evaluate and score the models at some stage.

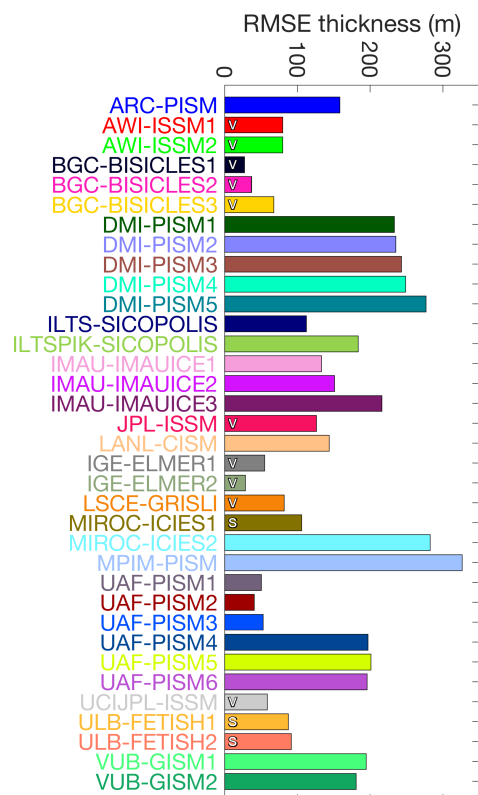


Figure 6 Root mean square difference of initial modelled ice thickness compared to observations (Morlighem et al. 2014). The diagnostic has been calculated for subsampled data to reduce spatial correlation, and we show median values for different offsets. Letters in the bars denote assimilation targets for methods DAv and DAs and are left empty for SP.

5

To evaluate the match of the models with observed surface ice velocities, we have computed the RMS between the modelled and observed (Joughin et al., 2016) velocity magnitude (Figure 7a). Calculating the RMS based on the log of the velocities instead (Figure 7b) results in a slightly different picture, because errors in high velocities typically occurring at the margins of the ice sheet are weighted less.

10

We note that an alternative choice of metric would be one that accounts for spatial variation in observational uncertainty, such as standardised Euclidean distance. Distinction between models using DAv and the rest is again useful, since velocity is not an independent variable in cases where it enters the inversion calculations. Models using observed velocities in the DAv procedure could in principle be compared with each other to evaluate the success of the inversion technique. However, the comparison

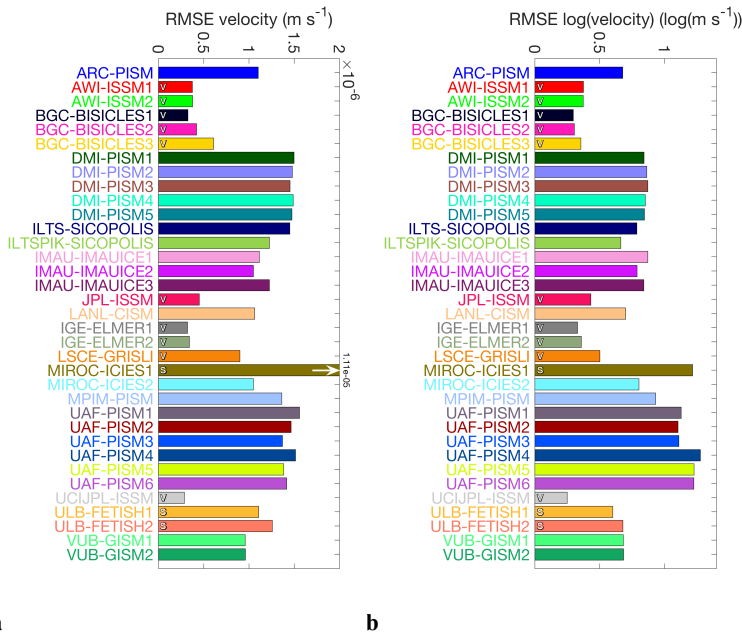
15

would have to take into account that some groups use relaxation after the DAv step to get a better consistency between the ice geometry and velocity. This modifies the results depending on the relaxation time. Better internal consistency for a model can be achieved with longer relaxation time, at



the expense of a larger discrepancy with the observed geometry. In any case, not every group uses the same velocity dataset (e.g., Rignot and Mouginot, 2012; Joughin et al., 2016).

5 It is interesting to note that DAs techniques using only surface elevation as inversion target can have quite low errors in simulated velocities, which implies an overall consistency between geometry and velocity structure of the modelled ice sheets. Although this consistency is expected based on mass conservation, the results confirm that the basic assumptions (e.g., approximation to the force balance and rheology structure) are generally close enough to reality. This is particularly important considering that DAV techniques can match observed velocities well for almost any given rheology.



10 **a** **b**
Figure 7 Root mean square difference of the horizontal velocity magnitude (a) and the log of the horizontal velocity magnitude (b) compared to observations (Joughin et al., 2016). The diagnostics have been calculated for grid cells subsampled regularly in space to reduce spatial correlation; we show median values for different possible offsets of this sampling.

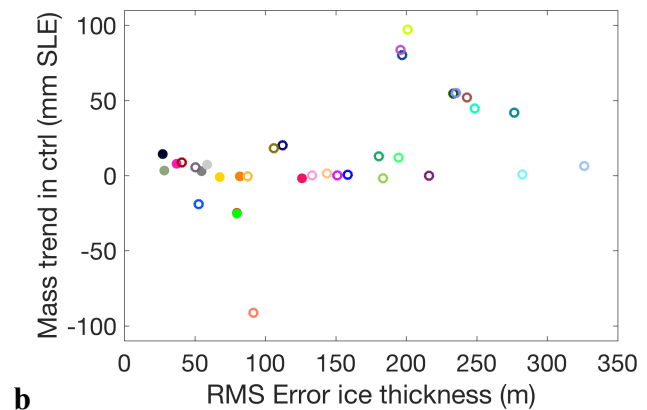
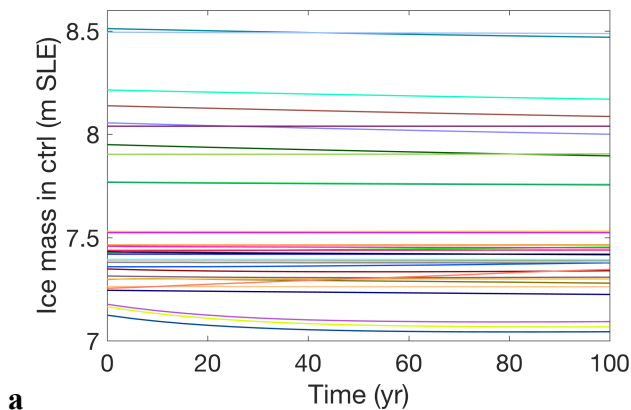
15 **4.2 Results of the forward experiments**

The two experiments *ctrl* and *asmb* have been performed to further test the modelled initial states in terms of their behaviour in typical forward simulations. This is needed to expose model response to changing constraints that were present during initialisation. Furthermore, we evaluate the influence of the initial state and of modelling decisions pertaining to the initialisation on the results of the forward experiments, i.e., the projected ice thickness change and sea-level contribution.

20 The experiment *ctrl* serves to evaluate the model response in the absence of additional forcing and is an important step to understand the consequence of modelling choices for forward experiments. Since we



- have not specified any assumption on the imbalance between SMB and ice flow at the initial state, the ice sheet would ideally exhibit an imbalance that matches observations for a given time interval. Recent mass trends (e.g., Velicogna et al., 2014) or thickness changes could then in principle be evaluated with existing observational data sets of limited time coverage. Reproducing recent changes seen by GRACE
- 5 (mass change) and altimetry (thickness change), however, is hampered by not knowing the ice sheet bedrock and surface elevation well at the time that the satellite started to observe, and would also assess the accuracy of the SMB input (i.e., for many models, a separate RCM). Furthermore, this would require that the experiments aimed for realistic outlet glacier dynamics and ocean forcing (e.g., Nick et al., 2013), which is currently not available (Alexander et al., 2016; Schlegel et al., 2016) and has
- 10 deliberately not been included in the present experiments. Approaches to validate models using hindcasting techniques (Aschwanden et al., 2013; Larour et al., 2014; 2016; Price et al., 2017) currently suffer the same limitations of observational data sets with short time coverage, uncertainty in external forcing, and limited knowledge of processes responsible for dynamic outlet glacier response.
- 15 The simulated ice mass evolution in *ctrl* (Figure 8a) reflects the wide spread of initial ice mass among the models and a relatively small mass change for most of them over the course of the 100-year experiment. This is because a common approach is to attempt initialisation to a steady state with a given SMB forcing, possibly followed by relaxation or by a run with recent SMB forcing. Total mass changes in experiment *ctrl* (Figure 8b) range from ~ -25 to $+20$ mm sea-level equivalent (SLE) when nine
- 20 obvious outliers are ignored. In some cases of the ensemble, the modelled background trend arises from transient forcing of SMB and temperature over the past, but more often it is due to inconsistencies introduced during initialisation.



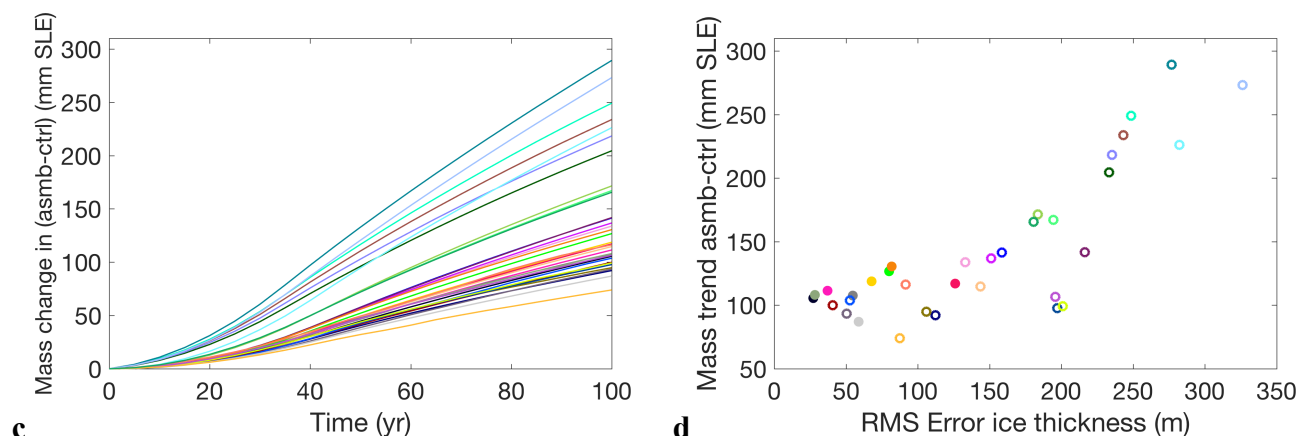


Figure 8 Ice mass evolution in *ctrl* (a) and ice mass difference from *asmb-ctrl* (c). Mass change after 100 years in experiment *ctrl* (b) and from *asmb-ctrl* (d) related to error in initial ice thickness. Ice volume changes have been converted to sea-level equivalent (SLE) assuming an ocean area of $361.8 \cdot 10^6 \text{ km}^2$ and the specific ice density from the individual ice sheet models. Filled symbols in (b) and (d) represent DAV models. Data in (b) and (d) is available in supplementary Table S1.

5

For DAV models (filled symbols in Figure 8b), the mass trend in experiment *ctrl* represents an important diagnostic to complement the measured accuracy of matching the observed geometry, because it will also reflect any inconsistencies between ice velocity and geometry datasets (Seroussi et al., 2011). This can be illustrated by considering a forward model run that is started from an exactly specified geometry as initial state, which typically exhibits a large model drift. Conversely, ice sheet models can be relaxed to a steady state when constraints on the target geometry are loosened completely. Match with the observed geometry in the initial state and model drift in the forward experiment are therefore complementary measures that should be considered together. While this is evident for any single model, we only find tentative confirmation amongst the DAV models in our ensemble (filled symbols in Figure 8b), with increasing mass trend for decreasing ice thickness error.

10

15

The simulated sea-level contribution of the models, calculated from the difference in mass change between *asmb* and *ctrl*, shows a large spread of 75 to 290 mm SLE (Figure 8c, d), indicative of the wide range of modelled ice sheet extent (and therefore ice thickness error). This relation arises because the prescribed SMB anomaly has been optimized for the observed geometry, but has not been limited to the observed ice sheet extent. The typical SMB field at the end of experiment *asmb* (illustrated for three different models in Figure 9) is strongly negative along the ice sheet margin and extends several hundred kilometres inland in the southwest and northeast of Greenland. For models with (unrealistically) large initial (present-day) surface areas, the ablation zones are considerably larger (Figure 9b, c), which implies dramatic mass loss. The too large ice sheet area is related to the definition of the ice sheet with respect to outlying glaciers and, more importantly, due to modelled initial conditions further from the present-day.

20

25

30

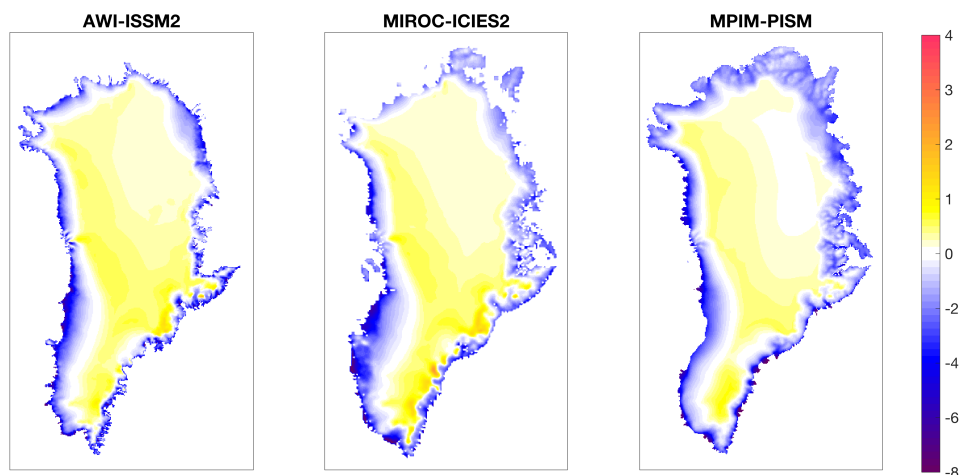


Figure 9 Typical surface mass balance after 100 years in experiment *asmb* for the three models in Figure 3. Note the unequal scaling for positive and negative values.

5 Because the thickness change in experiment *ctrl* in our ensemble (Figure 10a, b, c and Figure S5) is mostly due to unwanted model drift, we have calculated the mass evolution (Figure 8c) and sea-level contribution (Figure 8d) from ice thickness change differences between *asmb* and *ctrl* (Figure 10d, e, f and Figure S6). This is a common workaround to facilitate model comparison, but it also neglects the contribution of any prognostic imbalance and present-day ice sheet evolution in the resulting figures. In
10 the centre of the ice sheet, the modelled thickness change (Figure 10d, e, f) is dominated by the prescribed SMB anomaly and therefore similar between all models (Figure S6), while marginal changes show again much larger differences.

15 In contrast to the large differences in modelled ice volume changes, which may largely be explained by differences in initial ice sheet extent, we find that models are similar in the dynamic response within the region of overlap, i.e., within most of the observed ice mask. For this analysis, we have calculated the difference between modelled ice thickness changes (*asmb-ctrl*) and the time-integrated SMB anomaly for each individual model (see Figure 10g, h and i for three examples and Figure S7 for all models). This diagnostic, first shown and discussed by Huybrechts et al., (2002), represents ice thickness changes
20 due to the flow of the ice in response to changes in SMB: in other words, the extra information gained by using ice dynamic models over projections of SMB changes alone.

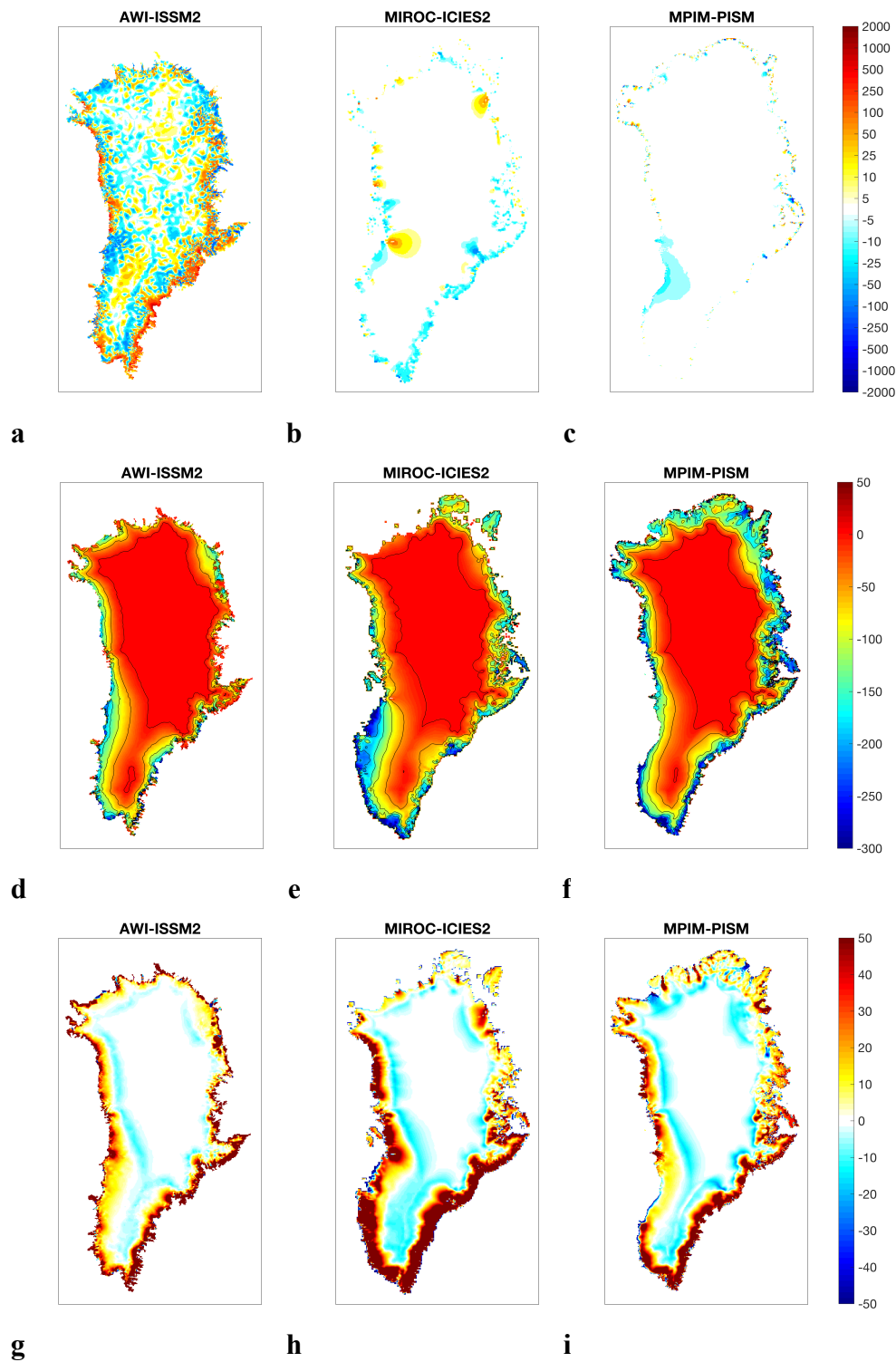




Figure 10 Ice thickness change in *ctrl* after 100 years (top), difference of ice thickness change (*asmb-ctrl*) after 100 years (middle) and dynamic contribution (bottom) for the three models in Figure 3 and Figure 9. Note the nonlinear contour intervals in the top row.

Dynamic thickening happens in regions of steep gradients in negative SMB anomalies around the margins of the ice sheet. Dynamic thinning occurs across the line separating positive and negative SMB anomalies, close to the equilibrium line. This pattern of dynamic response is reproduced by all models (see Figure S7), and shows strong similarities for the region of overlap across the entire ensemble. In other words, the models agree well at the purpose for which they were developed.

5 Discussion and conclusion

We have compared different initialisation techniques used in the ice sheet modelling community across a wide spectrum of approaches. While long-term processes and adjustment of internal variables (e.g., ice temperature and rheology) can be incorporated with SP methods, this occurs at the expense of a better match with observations of present-day ice sheet geometry and velocity and hence, the initial dynamic state of the ice sheet. Conversely, the initial states produced by the DAV approach exhibit a much better match with observations, at the expense of long-term continuity. The DAs method and other approaches to incorporate DA elements in SP models form an intermediate group. At present, none of the methods is capable of combining both aspects (good match with observations and long-term continuity) sufficiently well that it would render other methods obsolete for all applications.

DAV is the method of choice for short-term projections, as far as long-term dynamical interactions (e.g., arising from interaction with the basal conditions, the bedrock or from thermo-mechanical coupling) can be neglected. For long-term projections of ice sheet behaviour, where these interactions become important, SP and DAs methods are needed. The range of time-scales where this is the case is not well-defined and may lie anywhere between several decades and several centuries. For the standalone ice sheet projections planned for CMIP6 within ISMIP6 (100 to 200-year time scale), all methods may be required to simulate the response of the Greenland ice sheet to future climate change.

The present ‘come-as-you-are’ approach is well suited to produce an overview of initialisation techniques in the community and to compare individual models against observations. However, we have encountered difficulties in comparing models because of the wide variety of approaches. Differences in the initial ice sheet extent have rendered the locally identical SMB anomaly forcing to be different on the global scale. Additional problems arise from the use of different grids (unstructured and structured) with potential artefacts introduced during interpolation. We have found that estimating mass changes consistently across all models becomes a non-trivial undertaking, considering different projection errors, interpolations and differences in model ice density.

The mismatch between observed and modelled ice sheet extent also needs an urgent solution in view of constructing an ensemble of sea-level change projections based on CMIP6 climate model data. The large ensemble spread in sea-level contribution in the *asmb* experiment is mostly due to the “extra” ice



5 in the initial ice sheet geometry. At this stage, it is not clear how to minimize the contribution to sea level change due to this bias introduced solely by the experimental setup. Letting each model estimate its own SMB anomaly relative to the individual ice sheet geometry would likely reduce this problem, but it would complicate any further comparison by removing the constraint of locally identical SMB for all models.

10 Compared with earlier ice sheet model intercomparison exercises that have initialised ice sheet models for future projections (Bindschadler et al. 2013; Nowicki et al. 2013b), we find considerably less spread in the drift of the control experiments. We attribute this improvement to more attention of modellers on ice sheet initialisation and to an improved understanding of what is needed to achieve that goal, including the development of improved bedrock topography datasets (Morlighem et al., 2014). If this trend continues, it is reasonable to expect that the uncertainty in simulated ice sheet model evolution due to initialisation can be reduced for upcoming projections of the future.

15 The comparison shows that, despite all the differences, the ice sheet models that took part in this intercomparison agree well in their dynamic response to the SMB forcing for the region of overlap. This is an encouraging sign, given the large diversity of approaches. However, while this good agreement means that all models are able to accurately simulate changes in driving stress, other dynamic forcings (e.g., changes at the marine-terminating glaciers) were not included in the present set of experiments and may lead to a wider variety of responses. To achieve progress in this direction, we need a more complete understanding of the forcings and mechanisms that drive observed ice sheet changes. Aside from SMB, the important questions of how much surface melt water is reaching the bed, how the basal drainage system evolves and, most importantly, how the marine-terminating glaciers interact with the ocean in fjord systems are under active research.

25 The current 'ensemble of opportunity' approach, just as for GCMs, makes interpretation challenging: in other words, it is difficult to assess which choices in method and which uncertain model inputs have most influence on the results. Ideally, we would have liked to draw firmer conclusions about the influence of modelling choices on the quality of the initialisation and the uncertainty in modelled sea-level contribution. At the present stage, however, the sample size for a given modelling choice is often not sufficient and, more importantly, different model characteristics are not independent from each other. Similar difficulties have been discussed for the CMIP multi-model ensemble and may have led to the IPCC to resort to (slightly arbitrary) expert judgments for some interpretations. Improving the uncertainty analysis and enabling a more rigorous intercomparison and evaluation would require an experimental design that is more controlled and prescriptive. Ice sheet models are well-placed to be used in such a design, being far less computationally expensive than e.g. GCMs, and with far fewer inputs to choose and outputs to evaluate. The effects of changing model structure (such as physics laws and approximations, and resolution) on initialisations and projections is also far easier to evaluate. We therefore envision a second stage of the initMIP-Greenland experiments that performs multiple specific perturbations of the initial states of several models that can be interpreted in a statistically more meaningful way.



Data availability

The model output from the simulations described in this paper will initially be distributed via ftp server and at a later stage be included in the CMIP6 archive through the Earth System Grid Federation (ESGF) with digital object identifiers (DOIs) assigned. In order to document CMIP6's scientific impact and enable ongoing support of CMIP, users are obligated to acknowledge CMIP6, the participating modelling groups, and the ESGF centres (see details on the CMIP Panel website at <http://www.wcrp-climate.org/index.php/wgcm-cmip/about-cmip>). The forcing datasets are equally initially available through the initMIP-Greenland wiki and in the future through the ESGF with version control and DOIs assigned.

Acknowledgements.

We acknowledge the Climate and Cryosphere (CliC) Project and the World Climate Research Programme (WCRP) for their guidance, support and sponsorship. We would like to thank Brice Noël for help with the SMB validation data and Xavier Fettweis, Miren Vizcaino and Vincent Cabot for providing SMB data.

AA, EL, SN and HS were supported by grants from NASA Cryospheric Science Program and Modeling Analysis and Prediction Programs. HG has received funding from the program of the Netherlands Earth System Science Centre (NESSC), financially supported by the Dutch Ministry of Education, Culture and Science (OCW) under Grantnr. 024.002.001. NRG is supported by Royal Society of New Zealand Rutherford Discovery Fellowship 15-VUW-004. PH acknowledges support from the iceMOD project funded by the Research Foundation-Flanders (FWO-Vlaanderen). WHL and JHK were supported by the Regional and Global Climate Modeling and Earth System Modeling programs of the U.S. Department of Energy's Office of Science. The National Center for Atmospheric Research is sponsored by the National Science Foundation. VL, SLC and AJP carried out work as part of the UKESM contribution for CMIP6. MM was supported by the National Aeronautics and Space Administration, Cryospheric Sciences Program (#NNX15AD55G), and the National Science Foundation's ARCSS program (#1504230). CR (DMI) has received funding from the European Research Council under the European Community's Seventh Framework Programme (FP7/2007-2013) / ERC grant agreement 610055 as part of the Ice2Ice project as well as the Nordic Center of Excellence eSTICC (eScience Tool for Investigating Climate Change in northern high latitudes) funded by Nordforsk (grant 57001). FAZ was supported by the BMBF project PALMOD. Computational resources for MPI-PISM were made available by DKRZ through support from BMBF.

6 Appendix A: SMB anomaly forcing

For the schematic forward experiment that serves to evaluate the initialisation, we have used a parameterisation of SMB anomalies ($dSMB$) as a function of surface elevation and latitude based on the following goals:

- to capture the first order pattern of the SMB changes that can be expected from the climate models that will be used in ISMIP6 projections
- to provide an idealized forcing, independent of one particular model or modelling choice
- to avoid masking problems by generating a forcing applicable to the whole model domain



The parameterisation has the form $dSMB = f(\text{sur}, \text{lat})$:

$$dSMB = \min[p_3 * (h - p_2) + p_4 * (\phi - \phi_0), p_1]$$

where $dSMB$ is the SMB anomaly, h is the surface elevation, ϕ is the latitude and ϕ_0 the reference latitude in degrees. The parameters are the constant SMB anomaly in the accumulation area (p_1), the surface elevation of zero SMB anomaly (p_2), the gradient of SMB anomaly with elevation change (p_3), and the SMB anomaly change per degree latitude (p_4).

- 5 The target $dSMB$ is calculated from differences in SMB between the periods 2080-99 AD and 1980-99 AD. We have fitted the parameters independently to output of three models of different complexity (Table 4), one RCM (Fettweis et al., 2017), one general circulation model with elevation classes (GCM, Vizcaino et al., 2015) and one positive-degree-day model in combination with output from an Earth system model of intermediate complexity (EMIC-PDD, Goelzer et al., 2012).
- 10

Table 4 Parameters with the best fit to the modelled data for SMB models of different complexity.

| Parameter | p_1 (m yr ⁻¹) | p_2 (m) | p_3 (m yr ⁻¹ m ⁻¹) | p_4 (m yr ⁻¹ deg ⁻¹) |
|-----------|-----------------------------|-----------|---|---|
| RCM | 0.0720 | 2248.4 | 0.0016 | 0.1011 |
| GCM | 0.0549 | 2438.1 | 0.0007 | 0.0568 |
| EMIC-PDD | 0.0292 | 1642.1 | 0.0023 | 0.0462 |

- 15 The sensitivity of $dSMB$ to elevation changes is around a factor 2 lower in the GCM compared to the RCM and is the highest in EMIC-PDD as can be seen by comparing p_3 in Table 4. We have used the parameter set of medium sensitivity (RCM) for the experiments.

- 20 Results for the RCM are shown in Figure 11 with the $dSMB$ from the model (a) and from the parameterisation (b) in comparison. While the parameterisation allows for calculating $dSMB$ everywhere on the grid, results are masked to the same extent as the modelled data, to facilitate comparison. These results show that the first order pattern is well captured by the parameterisation. The parameterisation works equally well for the two other climate models when proper masking is applied to limit the calculation to ice covered regions (not shown).

25

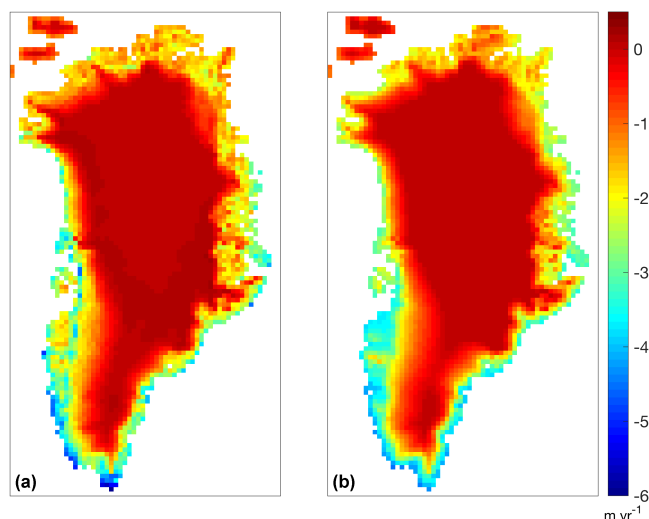


Figure 11: SMB anomaly from a model (a) and reproduced by the parameterisation (b).

5 For the final ISMIP6 forcing data, the parameterisation was applied to the observed geometry (Bamber et al., 2013) smoothed by a two-dimensional averaging filter (21x21 points). This step serves to produce a smooth forcing field for the range of expected model resolutions. The resulting dSMB on 1 km resolution was used to generate the forcing for other grids and resolutions by conservative interpolation.

10 For experiment *asmb*, the amplitude of the SMB anomaly was implemented as a time-dependent function, which increases stepwise every full year to 100 % at year 40. The amplitude is then held constant ($t > 40$ yrs) for prolongation of the experiment until year 100. The forcing is therefore independent of the time step in the individual models.

$$SMB(t) = SMB_{init} + dSMB * (\text{floor}(t) / 40); \quad 0 \leq t \leq 40$$

$$SMB(t) = SMB_{init} + dSMB * 1.0; \quad t \geq 40$$

15 where SMB_{init} is the SMB used for the initialisation in each individual model and $dSMB$ is the provided SMB anomaly, which is identical for all models. The units of the $dSMB$ in the provided data files are (meter ice equivalent/year) with an assumed density of 910 kg/m^3 and $31556926 \text{ s yr}^{-1}$. Note that for models assuming a different ice density, the input data have to be converted accordingly.

7 Appendix B: Detailed model description

The models and initialisation methods of the individual models are documented in this section.

20 7.1 ARC-PISM

A similar approach to that used for previous Antarctic simulations is followed (e.g., Golleger et al., 2014, 2015), but the length of the runs is modified on the basis that GrIS achieves thermal equilibrium faster than e.g. the EAIS. Based on raw input data (Bamber et al., 2001) a 'shallow-ice' only run of 5



years is performed to reduce any spurious steep surface gradients in the data. From the output of this run, a 50 kyr fixed-geometry run is performed, in which the ice sheet is allowed to come into thermal equilibrium with the imposed (present-day) climate. The output from this run is then used for a 15,000 year spinup simulation, in which full model physics are employed, i.e. all model boundaries are allowed to evolve. To minimize drift in this spinup run an initial exploration of parameter space is undertaken to find an optimal combination of values. Parameter tuning is focused on 6 key controls: enhancement factors for the SIA and SSA, maximum and minimum till friction angles, pseudo-plastic exponent 'q', and the fraction of overburden pressure supported by the till. These parameters have been found to exert the primary controls on location and magnitude of sliding and ice flow by deformation, and in doing so most effectively control simulated ice-sheet geometry and volume. To identify an optimal configuration, an initial ensemble of paired parameter simulations is performed, in which the variance between each pair is assessed and all other variables are held constant. Simulations are run at 5 km resolution for 500 years under unforced climatic conditions (i.e. present-day) but with freely-evolving boundaries. Each run is assessed for degree of drift from initialisation. Subsetting from these experiments, a further ensemble of 64 experiments is run, combining all combinations of 2 possible values for each of the 6 parameters. The 'optimal' configuration is chosen based on 1) the lowest deviation from present-day sea-level-equivalent ice volume and 2) the smallest domain-averaged thickness mismatch at the end of the run compared to initialisation. For the latter metric, the standard deviation of the mismatch was assessed, but differences between runs are minimal. These short runs identify the relative control exerted by each parameter over 500 years. To achieve a much longer spinup that deviates least from the starting conditions, a further seven experiments are undertaken until the optimum parameter configuration is found. The final state of the spinup run is then used as the starting point for the prognostic (*ctrl* and *asmb*) experiments.

7.2 AWI-ISSM

The thermo-mechanical coupled Ice Sheet System Model (ISSM, Larour et al., 2012) is used to create an initial condition. For the initialization, a hybrid procedure that combines assimilation and a temperature spin-up over longer periods is setup. The present-day ice sheet geometry (Morlighem et al., 2016) is used and the observed horizontal surface velocities (Rignot and Mouginot., 2012) are assimilated to infer the basal friction coefficient. After an initial relaxation of the ice sheet geometry for 50 years to avoid spurious noise (with no sliding and a constant temperature field), the temperature spin-up is performed on a fixed topography with two different climatic forcings: AWI-ISSM1) present-day climatic and AWI-ISSM2) paleo-climatic conditions. During the inversion, the ice viscosity is kept constant using the enthalpy field from the end of the temperature spin-up. As the higher-order approximation to the Stokes flow is employed, grid refinements are made during the whole initialization procedure (grid sequence 1: $h_{min}=15$ km, $h_{max}=50$ km; grid sequence 2: $h_{min}=5$ km, $h_{max}=50$ km, grid sequence 3: $h_{min}=2.5$ km, $h_{max}=35$ km. In the vertical 17 layers refined to the base are used. AWI-ISSM1 is run for 20 kyr, 40 kyr and 5 kyr in each grid sequence while AWI-ISSM2 is run for 125 kyr, 125 kyr and 25 kyr). Geothermal flux, present day surface temperature and paleo surface temperature anomaly is taken from the SeaRISE webpage



(http://websrv.cs.umt.edu/isis/index.php/Present_Day_Greenland). Surface mass balance is an annual mean for the period 1979-2014 from the downscaled RACMO2.3 model (Noël et al., 2016).

7.3 BGC-BISICLES

The initial state is found using data assimilation of velocity followed by relaxation of the surface elevation subject to a constant-in-time SMB (Lee et al, 2015). Merged surface ice velocity from Rignot and Mouginot (2012), is used to infer a 2-D basal traction coefficient and a 2-D stiffening factor multiplying the effective viscosity by solving an inverse problem with fixed ice sheet geometry from Morlighem et al. (2014). The ice surface is evolved by forcing the model using the 2-D parameters with a 1997-2006 mean SMB from HIRHAM5 (Lucas-Picher et al., 2012), subject to fixed calving front boundary conditions. The surface is relaxed in this way for 120 years, which is sufficient for the absolute value of the instantaneous rate of change ice thickness to fall below 0.5 m a⁻¹ in 99 percent of the total area of GrIS. This initialization uses a 3-D, steady-state temperature field generated by a high-order thermomechanical model by Price et al., 2011. For the *ctrl* and *asmb* experiments the fixed calving front is replaced by a calving model (Taylor 2016), where ice calves if water-filled, surface crevasses reach a depth equal to the height of the ice above sea level. A basal melt rate varying between 0 and 4 times ice thickness is also applied in regions where ice is close to fracture.

7.4 DMI-PISM

Spinup over one full glacial cycle (125 kyr BP to present) with the following guidelines: freely evolving run that inherits the climate memory of the last glacial-interglacial cycle and shall represent the currently observed ice sheet state for the contemporary "year of assignment". Since we at DMI focus on coupled climate model-ice sheet model simulations, we value a free run that is consistent with the applied forcing higher than a perfect representation of the current observed Greenlandic ice sheet state, such as ice sheet geometry. We have found that this procedure is necessary to avoid strong unnatural drifts in the ice sheet model component after the full coupling between climate model and the ice sheet model is established (Svendsen et al., 2015). The spinup first goes through one complete glacial-interglacial cycle using as base the Era-Interim reanalysis of the period 1979-2012 to determine the surface mass balance (SMB) via positive degree days (PDD). The scaling of the datasets is determined based on the Greenland temperature index in the SeaRise Greenland Dataset (based on ice core data; source SeaRise Reference data set: Greenland_SeaRise_dev1.2.nc). Temporal evolution of the sea level is also taken from the same SeaRise Greenland dataset. The ensemble of runs (PISM1, PISM2, PISM3, PISM4, PISM5) differ in the forcing applied to the Greenland Ice Sheet (GIS). In all cases the forcing source is based on the Era-Interim reanalysis covering the period 1979-2012. The only differences are the applied PDD factors for the determination of the surface mass balance (SMB) via positive degree days (PDD). The following enumeration lists the applied different PDD factors. PISM0:
PDD_snow=0.012 m/°C day, PDD_ice=0.018 m/°C day; PISM1: PDD_snow=0.010 m/°C day, PDD_ice=0.016 m/°C day; PISM2: PDD_snow=0.009 m/°C day, PDD_ice=0.014 m/°C day; PISM3: PDD_snow=0.008 m/°C day, PDD_ice=0.012 m/°C day; PISM4 PDD_snow=0.004 m/°C day, PDD_ice=0.008 m/°C day.



7.5 IGE-ELMER

The model is initialised using a control inverse method as in Gillet-Chaulet et al. (2012). For the momentum equations, we solve the Shelfy-Stream Approximation (SSA). The vertically-averaged viscosity is constant in all simulations and is initialised using the temperature field coming from a paleo spin-up (125ky) of the SICOPOLIS model. The limit of the model domain is fixed and corresponds to the boundary with the ocean: calving front positions are fixed and the calving rate is computed as the opposite of the ice flux through the boundary; land-terminated parts can freely retreat or advance up to the domain limit. The ice-sheet topography is initialised using the IceBridge BedMachine Greenland V1 dataset (Morlighem et al., 2014) where missing values for the bathymetry around Greenland have been filled using data from Bamber et al. (2013). We use a linear basal friction law. The basal friction coefficient is constant in all transient simulations and is initialised with the control method so that the mismatch between observed and modelled velocities is minimum. As observations, we use a composite from the MEaSUREs Greenland Ice Sheet Velocity Map (V1) (Joughin et al., 2010). The ice sheet model is then relaxed for 20 years using a 1989-2008 mean SMB from the regional climate MAR forced with ERA-Interim. The only difference between IGE-ELMER1 and IGE-ELMER2 is the mesh resolution as given in Table 3.

7.6 ILTS-SICOPOLIS

The model is SICOPOLIS version 3.3-dev in SIA mode and with the melting-CTS enthalpy method (ENTM) for ice thermodynamics by Greve and Blatter (2016). The present-day surface temperature parameterization is by Fausto et al. (2009), the present-day precipitation is by Ettema et al. (2009) and the geothermal heat flux is by Greve and Herzfeld (2013) (slightly modified version of the heat flux map by Greve (2005)). A spin-up over the last glacial-interglacial period (125,000 years) is carried out. Except for initial and final 100-year phases with freely evolving surface and bedrock topography, the topography is kept fixed during the spin-up, whereas the temperature evolves freely. This is essentially the method that was used for the SeaRISE experiments (documented in detail by Greve and Herzfeld, 2013). The time-dependent forcing for the spin-up is the GRIP $\delta^{18}\text{O}$ record (Dansgaard et al., 1993; Johnsen et al., 1997) converted to a purely time-dependent surface temperature anomaly ΔT by the conversion factor $2.4^\circ\text{C}/\text{‰}$ (Huybrechts, 2002).

7.7 ILTSPIK-SICOPOLIS

The model version, thermodynamics solver and present-day surface temperature parameterization are the same as listed in Section 7.5. The present-day precipitation is by Robinson et al. (2010) and the geothermal heat flux is produced by Purucker (https://core2.gsfc.nasa.gov/research/purucker/heatflux_updates.html) following the technique described in Fox Maule et al. (2005). The ice discharge parameterization by Calov et al. (2015), Eq. (3) therein with the discharge parameter $c = 370 \text{ m}^3 \text{ s}^{-1}$, is applied. A spin-up over the last glacial-interglacial period (135,000 years) with free evolution of all fields (including the ice sheet topography) is carried out. The time-dependent forcing for the spin-up is the GRIP $\delta^{18}\text{O}$ record (Dansgaard et al., 1993; Johnsen et al., 1997) on the GICC05 time scale (Svensson et al., 2008), converted to a purely



time-dependent surface temperature anomaly ΔT by the conversion factor $2.4^{\circ}\text{C}/\%$, and further a 7.3% gain of the precipitation rate for every 1°C increase of ΔT (Huybrechts, 2002).

7.8 IMAU-IMAUICE

The model (de Boer et al., 2014) is initialised to a thermo-dynamically coupled steady state with
5 constant, present-day boundary conditions for 200 kyr using the average 1960-1990 surface temperature
and SMB from RACMO2.3 (van Angelen et al., 2014), extended to outside of the observed ice sheet
mask using the SMB gradient method (Helsen et al., 2012). Bedrock data is from Bamber et al. (2013)
and geothermal heat flux from Shapiro and Ritzwoller (2004). The model is run in SIA mode with ice
sheet margins evolving freely within the observed coast mask, outside of which ice thickness is set to
10 zero.

7.9 JPL-ISSM

The ice sheet configuration is set up using data assimilation of present-day conditions and historical
spin-up similar to the study of Schlegel et al. (2013). SSA is used over the entire domain with a
resolution varying between 1 km in the fast-flowing areas and along the coast and 15 km in the interior.
15 Grounding line migration is based on hydrostatic equilibrium and a sub-element scheme (Seroussi et al.,
2014). Observed surface velocities (Rignot and Mouginot, 2012) are first used to infer unknown basal
friction at the base of the ice sheet (Morlighem et al., 2010). Ice temperature is modeled assuming the
ice sheet to be in a steady-state thermal equilibrium (Seroussi et al., 2013). A spin up of 50,000 years is
then done to relax the ice sheet model (Larour et al., 2012) and reduce the initial unphysical transient
20 behavior due to errors and biases in the datasets (Schlegel et al., 2016) using mean surface mass balance
from 1979-1988 (Box, 2013). A historical spin up is then done from 1840 to 2012 using reconstructions
of surface mass balance for this period (Box, 2013). Bedrock topography is interpolated from the
BedMachine dataset (Morlighem et al., 2014), that combines a mass conservation algorithm for the fast-
flowing ice streams and krigging in the interior of the ice sheet. Initial ice thickness is from the GIMP
25 dataset (Howat et al., 2014). Geothermal flux is from Shapiro and Ritzwoller (2004), air temperature
from RACMO2 (van Angelen et al., 2014). SMB from a mass balance reconstruction (Box, 2013)
averaged over the 2000-2012 period is used in the *ctrl* experiment.

7.10 LANL-CISM

The ice sheet was initialised with present-day geometry and an idealized temperature profile, then spun
30 up for 20,000 years using pre-1990 climatological surface mass balance and surface air temperature
from RACMO2. No glacial data were used. The model was spun up for 20,000 years to equilibrate the
temperature and geometry with the forcing. The model was initialised (prior to spin-up) with present-
day topography and thickness based on the mass-conserving bed method of Morlighem et al. (2011).
The surface mass balance (SMB) over the ice sheet was a 1961-1990 climatology from RACMO2. In
35 grid cells where RACMO2 did not provide an SMB, the SMB was set arbitrarily to -2 m/yr. Surface air
temperatures were also from a 20th century RACMO2 climatology (Ettema et al. 2009). The
geothermal flux was set spatially uniform to 0.05 W/m².



7.11 LSCE-GRISLI

The GRISLI spin-up procedure is based on an iterative data assimilation method to infer the basal drag from the observed surface velocities. The first step consists in a 30 kyr equilibrium simulation of the internal temperature with prescribed ice sheet topography (Bamber et al., 2013), 1979-2005 averaged near surface air temperature (Fettweis et al., 2013), geothermal heat flux (Fox Maule et al. 2009), surface velocities (Joughin et al., 2013) and spatially varying basal drag coefficient from a previous GRISLI experiment (Edwards et al., 2014b). From the resulting internal fields, the 1979-2005 mean SMB and near-surface air temperature (Fettweis et al., 2013) is used to run a succession of eight 220-yr simulations. During the first 20 years, the basal drag coefficient is corrected to limit the deviation from prescribed velocities, and then the basal drag is kept constant for 200 years of surface relaxation. At each iteration, we update the basal drag coefficient with the value computed at the previous iteration. The prescribed velocities are the observed velocities corrected for thickness differences at the end of the 220 years in order to keep the ice flux in GRISLI identical to the observed one. Then, a second temperature equilibrium is run for consistency between the temperature field and the inferred basal drag coefficient. From this, an additional 220-yr simulation is run to optimise the final basal drag coefficient. This basal drag coefficient and associated final ice-sheet conditions are used as initial conditions for all the initMIP GRISLI experiments.

7.12 MIROC-ICIES1

The initialization method as well as other configuration follows Experiment E's:e1:vm that is presented in Appendix A of Saito et al (2016). The field of basal sliding coefficients are relaxed such that the simulated ice-sheet topography mostly matches the observed geometry using Pollard and Deconto (2012b) method. Using the deduced basal sliding coefficients field, a steady-state spin-up under present-day climate condition with the fixed geometry is performed again.

7.13 MIROC-ICIES2

The initialization method as well as other configuration follows Experiment B':v2 presented in Saito et al. (2016). A free spin-up over 125,000 years is performed following the SeaRISE configuration.

7.14 MPIM-PISM

Spinup over one full glacial cycle (135 kyr BP to present), changed parameters at 20 kyr BP (simply faster starting from a pre-spun up state at 20 kyr BP than re-running the full glacial cycle for each parameter change). The spinup first goes through one complete glacial cycle using a linear combination of MPI-ESM output. The scaling of the two datasets is determined based on the Greenland temperature index in the SeaRise Greenland Dataset (based on GRIP data). Sea level changes are also taken from the SeaRise Greenland Dataset.



7.15 UAF-PISM

Spin-up over a glacial cycle combined with a short relaxation run. To define the energy state, a “standard” glacial cycle run is performed where the surface can evolve freely, similar to Aschwanden et al. (2013) and Aschwanden et al. (2016). The spin-up starts at 125 kyr BP with the present-day topography from Howat et al. (2014) using a horizontal grid resolution of 9 km. The grid is refined to 6 km, 4.5 km, and 3 km at 25 kyr BP, 20 kyr BP and 15 kyr BP, respectively. We use a positive degree-day scheme to compute the climatic mass balance from surface temperature (Fausto et al., 2009) and model-constrained precipitation (Ettema et al., 2009). The degree-day factors are the same as in Huybrechts (1999). Second, we account for paleo-climatic variations by applying a scalar anomaly term derived from the GRIP ice core oxygen isotope record (Dansgaard et al., 1993) to the temperature field (Huybrechts, 2002). Then we adjust mean annual precipitation in proportion to the mean annual air temperature change (Huybrechts, 2002). Finally, sea level forcing, which determines the land area available for glaciation, is derived from the SPECMAP marine $\delta^{18}\text{O}$ record (Imbrie et al., 1992). At the end of the spin-up, the computed surface elevation differs from the observed surface elevation. From here we perform two sets of 60-year relaxation simulations using the RACMO 1960-1990 averaged climatic mass balance. In one set (UAF-PISM4-6), we regrid the spun-up state from the 3-km simulation to 1.5 km (UAF-PISM4), 3 km (UAF-PISM5) and 4.5 km (UAF-PISM6) and run a relaxation where the ice sheet is free to evolve. At the end of this relatively short relaxation, the computed surface elevation continues to differ substantially from present-day observation and the model states exhibit a large artificial drift. To reduce the mismatch between observed and simulated surface elevations, we perform a second set, UAF-PISM1-3. Here we regrid the energy state in the ice and in the bedrock from the spun-up state from the 3-km simulation to 1.5 km (UAF-PISM1), 3 km (UAF-PISM2) and 4.5 km (UAF-PISM3) and combine those fields with the present-day topography from Howat et al. (2014) to again run a relaxation where the ice sheet is free to evolve.

7.16 UCIJPL-ISSM

The ice sheet configuration is set up using data assimilation of present-day conditions (Morlighem et al., 2010). A relaxation of 50 years is then performed to reduce the initial unphysical transient behavior due to errors and biases in the datasets (Seroussi et al., 2011), using mean surface mass balance from 1961-1990 (van Angelen et al., 2014). A Higher-Order model (HO) is used for the entire domain, with 14 vertical layers and a horizontal resolution varying between 0.5 km along the coast and 30 km inland. We perform the inversion of basal friction assuming that the ice is in thermomechanical steady state. The ice temperature is updated as the basal friction changes and the ice viscosity is changed accordingly. At the end of the inversion, basal friction, ice temperature and stresses are all consistent. After the data assimilation, the model is relaxed for 50 years using the mean surface mass balance of 1961-1990 from RACMO (van Angelen et al., 2014), while keeping the temperature constant. Bed topography is interpolated from the BedMachine Greenland dataset (Morlighem et al., 2014), that combines a mass conservation algorithm for the fast-flowing ice streams and kriging in the interior of the ice sheet. Initial ice surface topography is from the GIMP dataset (Howat et al., 2014). For the thermal model, surface temperatures from Fausto et al. (2009) and geothermal heat flux from Shapiro



and Ritzwoller (2004) are used. Mean surface mass balance of 1961-1990 from RACMO (van Angelen et al., 2014) is used in the *ctrl* experiment.

7.17 ULB-FETISH

Model initialisation is based on the method by Pollard and DeConto (2012b) by optimizing basal sliding coefficients for the grounded ice sheet in an iterative way through minimizing the misfit between observed and modelled surface topography. A regularization term is introduced to smooth high-frequency noise in the basal sliding coefficients (Pattyn, 2017). Initial ice sheet surface and bedrock elevation are taken from Bamber et al. (2013) and geothermal heat flux stems from Fox Maule et al. (2009). The initialisation runs over a period of 50,000 years forced by a constant surface mass balance (Fettweis et al., 2007) and surface temperature (Fausto et al., 2009). During this time, the marine boundaries are kept fixed in space. For the control and forcing runs, the grounded ice margin and grounding line is allowed to move freely, starting from the initialized state. Two model setups were considered: FETISH1 is according to SIA; FETISH2 is a hybrid model (superimposed SSA-SIA) with a flux condition at the grounding line according to Schoof (2007) and Pollard and DeConto (2012a).

7.18 VUB-GISM

The model is initialised with a glacial spin-up over the last two glacial cycles and recent climate forcing data up to the year 2005 (Fürst et al., 2015). For the spin-up, a synthesized temperature record is used based on ice-core data from Dome C, NGRIP, GRIP, and GISP2 (Barker et al., 2011; Andersen et al., 2004; Dansgaard et al., 1993; Kobashi et al., 2011) and precipitation is scaled by 5% per °C. For the period 1958 to 2005, the atmospheric forcing comes from a combination of ECMWF ERA-meteorological reanalysis and ECMWF operational analysis data. Use is made of monthly temperature anomalies and yearly precipitation ratios. The ocean forcing from 1958 to 2005 derives from a CMIP5 model providing temperature anomalies at mid-depth (300-800 m) in 5 surrounding ocean basins with respect to the 1960-1990 period. After the year 2005, atmospheric and oceanic forcings are reset to their 1960-1990 averages in the unforced state. Bedrock elevation and coast mask are based on Bamber et al. (2013), the pattern of surface accumulation for the period 1950-2000 is based on Bales et al. (2009). The higher-order model (GISM1) is initialised with an SIA model (GISM2) to 3 kyr BP. Switching at 3 kyr BP appeared to be sufficiently early to resolve the main effects of including horizontal stress gradients by the present day.

8 Appendix C: Data request

The requested variables (Table 5) serve to evaluate and compare the different models and initialisation techniques.

All 2D data were requested on a regular grid with the following description: Polar stereographic projection with standard parallel at 71° N and a central meridian of 39° W (321° E) on datum WGS84. The lower left corner is at (-800000 m, -3400000 m) and the upper right at (700000 m, -600000 m).



This is the same grid (Bamber et al., 2001) as used to provide the SMB anomaly forcing. The output was submitted on a resolution adapted to the resolution of the model and was 10 km or 5 km. The data were conservatively interpolated to 5 km resolution for diagnostic processing.

- 5 If interpolation was required in order to transform the SMB forcing (1 km, same as Bamber et al., 2013) to the native model grid, and transform model output to the initMIP output grid (20 km, 10 km, 5 km, 1 km, Bamber et al., 2001), it was requested that conservative interpolation was used. The motivation for using a common method for all models is to minimize model-to-model differences due to the choice of interpolation methods. In most cases this has been followed by the modellers.

10

We distinguish between state variables (e.g., ice thickness, temperatures and velocities) and flux variables (e.g., SMB). State variables were requested as snapshot information at the end of one-year (scalars) and five-year periods (2D), while flux variables were averaged over the respective periods. For calculation of scalar diagnostics (e.g., total ice mass or ice covered area), it is necessary to correct for the area distortions implicit for a given projection (e.g., Snyder, 1987). Some of the variables may not be applicable for each model, in which case they were omitted.

15

Table 5 Data request for participation in initMIP-Greenland.

Type: FL= Flux variable, ST= State variable, CST= Constant

20

| Variable name | Units | Type | Standard Name (CF) |
|--|------------------------------------|------|---|
| Ice Sheet Altitude | m | ST | surface_altitude |
| Ice Sheet Thickness | m | ST | land_ice_thickness |
| Bedrock Altitude | m | ST | bedrock_altitude |
| Bedrock Geothermal Heat Flux | W m ⁻² | CST | upward_geothermal_heat_flux_at_ground_level |
| Surface mass balance flux | kg m ⁻² s ⁻¹ | FL | land_ice_surface_specific_mass_balance_flux |
| Basal mass balance flux | kg m ⁻² s ⁻¹ | FL | land_ice_basal_specific_mass_balance_flux |
| Land ice calving flux | kg m ⁻² s ⁻¹ | FL | land_ice_specific_mass_flux_due_to_calving |
| Ice thickness imbalance | m s ⁻¹ | FL | tendency_of_land_ice_thickness |
| X-component of land ice surface velocity | m s ⁻¹ | ST | land_ice_surface_x_velocity |
| Y-component of land ice surface velocity | m s ⁻¹ | ST | land_ice_surface_y_velocity |
| Z-component of land ice surface velocity | m s ⁻¹ | ST | land_ice_surface_upward_velocity |
| X-component of land ice basal velocity | m s ⁻¹ | ST | land_ice_basal_x_velocity |



| | | | |
|--|--------------------|----|---|
| Y-component of land ice basal velocity | m s^{-1} | ST | land_ice_basal_y_velocity |
| Z-component of land ice basal velocity | m s^{-1} | ST | land_ice_basal_upward_velocity |
| X-component of land ice vertical mean velocity | m s^{-1} | ST | land_ice_vertical_mean_x_velocity |
| Y-component of land ice vertical mean velocity | m s^{-1} | ST | land_ice_vertical_mean_y_velocity |
| Surface Temperature of Ice Sheet | K | ST | temperature_at_ground_level_in_snow_or_firn |
| Basal Temperature of Ice Sheet | K | ST | land_ice_basal_temperature |
| Basal drag | Pa | ST | magnitude_of_land_ice_basal_drag |
| Land ice area fraction | 1 | ST | land_ice_area_fraction |
| Grounded ice area fraction | 1 | ST | grounded_ice_sheet_area_fraction |
| Floating ice sheet area fraction | 1 | ST | floating_ice_sheet_area_fraction |
| Ice Mass | kg | ST | land_ice_mass |
| Ice Mass not displacing sea water | kg | ST | land_ice_mass_not_displacing_sea_water |
| Area covered by grounded ice | m^2 | ST | grounded_land_ice_area |
| Area covered by floating ice | m^2 | ST | floating_ice_shelf_area |
| Total SMB flux | kg s^{-1} | FL | tendency_of_land_ice_mass_due_to_surface_mass_balance |
| Total BMB flux | kg s^{-1} | FL | tendency_of_land_ice_mass_due_to_basal_mass_balance |
| Total calving flux | kg s^{-1} | FL | tendency_of_land_ice_mass_due_to_calving |

9 References

- Adalgeirsdottir, G., Aschwanden, A., Khroulev, C., Boberg, F., Mottram, R., Lucas-Picher, P., and Christensen, J. H.: Role of model initialization for projections of 21st-century Greenland ice sheet mass loss, *J. Glaciol.*, 60, 782-794, doi:10.3189/2014JoG13J202, 2014.
- Alexander, P. M., Tedesco, M., Schlegel, N. J., Luthcke, S. B., Fettweis, X., and Larour, E.: Greenland Ice Sheet seasonal and spatial mass variability from model simulations and GRACE (2003–2012), *The Cryosphere*, 10, 1259-1277, doi:10.5194/tc-10-1259-2016, 2016.
- Andersen, K., Azuma, N., Barnola, J., Bigler, M., Biscaye, P., Caillon, N., Chappellaz, J., Clausen, H., Dahl-Jensen, D., Fischer, H., Fluckiger, J., Fritzsche, D., Fujii, Y., Goto-Azuma, K., Gronvold, K.,



- Gundestrup, N., Hansson, M., Huber, C., Hvidberg, C., Johnsen, S., Jonsell, U., Jouzel, J., Kipfstuhl, S., Landais, A., Leuenberger, M., Lorrain, R., Masson-Delmotte, V., Miller, H., Motoyama, H., Narita, H., Popp, T., Rasmussen, S., Raynaud, D., Rothlisberger, R., Ruth, U., Samyn, D., Schwander, J., Shoji, H., Siggard-Andersen, M., Steffensen, J., Stocker, T., Sveinbjornsdottir, A., Svensson, A., Takata, M., Tison, J., Thorsteinsson, T., Watanabe, O., Wilhelms, F., White, J., and Project, N. G. I. C.: High-resolution record of Northern Hemisphere climate extending into the last interglacial period, *Nature*, 431, 147-151, doi:10.1038/nature02805, 2004.
- Arthern, R., and Gudmundsson, G.: Initialization of ice-sheet forecasts viewed as an inverse Robin problem, *J. Glaciol.*, 56, 527-533, 2010.
- 10 Arthern, R. J., Hindmarsh, R. C. A., and Williams, C. R.: Flow speed within the Antarctic ice sheet and its controls inferred from satellite observations, *Journal of Geophysical Research: Earth Surface*, 120, 2014JF003239, doi:10.1002/2014JF003239, 2015.
- Asay-Davis, X. S., Cornford, S. L., Durand, G., Galton-Fenzi, B. K., Gladstone, R. M., Gudmundsson, G. H., Hattermann, T., Holland, D. M., Holland, D., Holland, P. R., Martin, D. F., Mathiot, P., Pattyn, F., and Seroussi, H.: Experimental design for three interrelated marine ice sheet and ocean model intercomparison projects: MISMIP v. 3 (MISMIP +), ISOMIP v. 2 (ISOMIP +) and MISOMIP v. 1 (MISOMIP1), *Geosci. Model Dev.*, 9, 2471-2497, doi:10.5194/gmd-9-2471-2016, 2016.
- 15 Aschwanden, A., Aðalgeirsdóttir, G., and Khroulev, C.: Hindcasting to measure ice sheet model sensitivity to initial states, *The Cryosphere*, 7, 1083-1093, doi:10.5194/tc-7-1083-2013, 2013.
- 20 Aschwanden, A., Bueler, E., Khroulev, C., and Blatter, H.: An enthalpy formulation for glaciers and ice sheets, *J. Glaciol.*, 58, 441-457, doi:10.3189/2012JoG11J088, 2012.
- Aschwanden, A., Fahnestock, M. A., and Truffer, M.: Complex Greenland outlet glacier flow captured, *Nature Communications*, 7, 10524, doi:10.1038/ncomms10524, 2016.
- Bales, R. C., Guo, Q., Shen, D., McConnell, J. R., Du, G., Burkhart, J. F., Spikes, V. B., Hanna, E., and Cappelenn, J.: Annual accumulation for Greenland updated using ice core data developed during 2000–2006 and analysis of daily coastal meteorological data, *J. Geophys. Res.*, 114, doi:10.1029/2008JD011208, 2009.
- Bales, R. C., McConnell, J. R., Mosley-Thompson, E., and Lamorey, G. W.: Accumulation map for the Greenland ice sheet: 1971-1990, *Geophys. Res. Lett.*, 28, 2967-2970, doi:10.1029/2000GL012052, 2001.
- 30 Bamber, J. L., Ekholm, S., and Krabill, W. B.: A new, high-resolution digital elevation model of Greenland fully validated with airborne laser altimeter data, *J. Geophys. Res.*, 106, 6733-6745, 2001.
- Bamber, J. L., Griggs, J. A., Hurkmans, R. T. W. L., Dowdeswell, J. A., Gogineni, S. P., Howat, I., Mouginot, J., Paden, J., Palmer, S., Rignot, E., and Steinhage, D.: A new bed elevation dataset for Greenland, *Cryosphere*, 7, 499-510, doi:10.5194/tc-7-499-2013, 2013.
- 35



- Barker, S., Knorr, G., Edwards, R. L., Parrenin, F., Putnam, A. E., Skinner, L. C., Wolff, E., and Ziegler, M.: 800,000 Years of Abrupt Climate Variability, *Science*, 334, 347-351, doi:10.1126/science.1203580, 2011.
- 5 Bindschadler, R. A., Nowicki, S., Abe-Ouchi, A., Aschwanden, A., Choi, H., Fastook, J., Granzow, G., Greve, R., Gutowski, G., Herzfeld, U., Jackson, C., Johnson, J., Khroulev, C., Levermann, A., Lipscomb, W. H., Martin, M. A., Morlighem, M., Parizek, B. R., Pollard, D., Price, S. F., Ren, D., Saito, F., Sato, T., Seddik, H., Seroussi, H., Takahashi, K., Walker, R., and Wang, W. L.: Ice-sheet model sensitivities to environmental forcing and their use in projecting future sea level (the SeaRISE project), *J. Glaciol.*, 59, 195-224, doi:10.3189/2013JoG12J125, 2013.
- 10 Box, J.: Greenland Ice Sheet Mass Balance Reconstruction. Part II: Surface Mass Balance (1840–2010), *J. Clim.*, 26, 6974-6989, doi:10.1175/jcli-d-12-00518.1, 2013.
- Bueler, E., and Brown, J.: Shallow shelf approximation as a “sliding law” in a thermomechanically coupled ice sheet model, *J. Geophys. Res.*, 114, F03008, doi:10.1029/2008JF001179, 2009.
- 15 Calov, R., Greve, R., Abe-Ouchi, A., Bueler, E., Huybrechts, P., Johnson, J., Pattyn, F., Pollard, D., Ritz, C., Saito, F., and Tarasov, L.: Results from the Ice-Sheet Model Intercomparison Project–Heinrich Event INtercOmparison (ISMIP HEINO), *J. Glaciol.*, 56, 371-383, 2010.
- Calov, R., Robinson, A., Perrette, M., and Ganopolski, A.: Simulating the Greenland ice sheet under present-day and palaeo constraints including a new discharge parameterization, *The Cryosphere*, 9, 179-196, doi:10.5194/tc-9-179-2015, 2015.
- 20 Dansgaard, W., Johnsen, S. J., Clausen, H. B., Dahl-Jensen, D., Gundestrup, N. S., Hammer, C. U., Hvidberg, C. S., Steffensen, J. P., Sveinbjornsdottir, A. E., Jouzel, J., and Bond, G. C.: Evidence for general instability of past climate from a 250-kyr ice-core record, *Nature*, 364, 218-220, 1993.
- de Boer, B., Stocchi, P., and van de Wal, R. S. W.: A fully coupled 3-D ice-sheet-sea-level model: algorithm and applications, *Geosci. Model Dev.*, 7, 2141-2156, doi:10.5194/gmd-7-2141-2014, 2014.
- 25 Drewry, D. J., Morris, E. M., Robin, G. D. Q., and Weller, G.: The Response of Large Ice Sheets to Climatic Change, *Philosophical Transactions of the Royal Society of London. Series B: Biological Sciences*, 338, 235-242, doi:10.1098/rstb.1992.0143, 1992.
- Edwards, T. L., Fettweis, X., Gagliardini, O., Gillet-Chaulet, F., Goelzer, H., Gregory, J. M., Hoffman, M., Huybrechts, P., Payne, A. J., Perego, M., Price, S., Quiquet, A., and Ritz, C.: Probabilistic
30 parameterisation of the surface mass balance–elevation feedback in regional climate model simulations of the Greenland ice sheet, *The Cryosphere*, 8, 181-194, doi:10.5194/tc-8-181-2014, 2014a.
- Edwards, T. L., Fettweis, X., Gagliardini, O., Gillet-Chaulet, F., Goelzer, H., Gregory, J. M., Hoffman, M., Huybrechts, P., Payne, A. J., Perego, M., Price, S., Quiquet, A., and Ritz, C.: Effect of uncertainty
35 in surface mass balance–elevation feedback on projections of the future sea level contribution of the Greenland ice sheet, *The Cryosphere*, 8, 195-208, doi:10.5194/tc-8-195-2014, 2014b.
- Enderlin, E. M., Howat, I. M., Jeong, S., Noh, M.-J., van Angelen, J. H., and van den Broeke, M. R.: An improved mass budget for the Greenland ice sheet, *Geophys. Res. Lett.*, 41, 2013GL059010, doi:10.1002/2013GL059010, 2014.



- Ettema, J., Van Den Broeke, M. R., Van Meijgaard, E., Van De Berg, W. J., Bamber, J. L., Box, J. E., and Bales, R. C.: Higher surface mass balance of the Greenland ice sheet revealed by high-resolution climate modeling, *Geophys. Res. Lett.*, 36, L12501, doi:10.1029/2009GL038110, 2009.
- 5 Fausto, R. S., Ahlstrøm, A. P., Van As, D., Bøggild, C. E., and Johnsen, S. J.: A new present-day temperature parameterization for Greenland, *J. Glaciol.*, 55, 95-105, doi:10.3189/002214309788608985, 2009.
- Fettweis, X.: Reconstruction of the 1979-2006 Greenland ice sheet surface mass balance using the regional climate model MAR, *The Cryosphere*, 1, 21-40, doi:10.5194/tc-1-21-2007, 2007.
- 10 Fettweis, X., Box, J. E., Agosta, C., Amory, C., Kittel, C., Lang, C., van As, D., Machguth, H., and Gallée, H.: Reconstructions of the 1900–2015 Greenland ice sheet surface mass balance using the regional climate MAR model, *The Cryosphere*, 11, 1015-1033, doi:10.5194/tc-11-1015-2017, 2017.
- Fox Maule, C., Purucker, M. E., Olsen, N., and Mosegaard, K.: Heat flux anomalies in Antarctica revealed by satellite magnetic data, *Science*, 309, 464-467, 2005.
- 15 Franco, B., Fettweis, X., Lang, C., and Erpicum, M.: Impact of spatial resolution on the modelling of the Greenland ice sheet surface mass balance between 1990–2010, using the regional climate model MAR, *The Cryosphere*, 6, 695-711, doi:10.5194/tc-6-695-2012, 2012.
- Fürst, J. J., Goelzer, H., and Huybrechts, P.: Ice-dynamic projections of the Greenland ice sheet in response to atmospheric and oceanic warming, *The Cryosphere*, 9, 1039-1062, doi:10.5194/tc-9-1039-2015, 2015.
- 20 Gillet-Chaulet, F., Gagliardini, O., Seddik, H., Nodet, M., Durand, G., Ritz, C., Zwinger, T., Greve, R., and Vaughan, D. G.: Greenland ice sheet contribution to sea-level rise from a new-generation ice-sheet model, *The Cryosphere*, 6, 1561-1576, doi:10.5194/tc-6-1561-2012, 2012.
- Goelzer, H., Huybrechts, P., Fürst, J. J., Andersen, M. L., Edwards, T. L., Fettweis, X., Nick, F. M., Payne, A. J., and Shannon, S. R.: Sensitivity of Greenland ice sheet projections to model formulations, *J. Glaciol.*, 59, 733–749, doi:10.3189/2013JoG12J182, 2013.
- 25 Goelzer, H., Huybrechts, P., Raper, S. C. B., Loutre, M.-F., Goosse, H., and Fichet, T.: Millennial total sea-level commitments projected with the Earth system model of intermediate complexity LOVECLIM, *Environ. Res. Lett.*, 7, 1-9, doi:10.1088/1748-9326/7/4/045401, 2012.
- Golledge, N. R., Kowalewski, D. E., Naish, T. R., Levy, R. H., Fogwill, C. J., and Gasson, E. G. W.: 30 The multi-millennial Antarctic commitment to future sea-level rise, *Nature*, 526, 421-425, doi:10.1038/nature15706, 2015.
- Golledge, N. R., Menviel, L., Carter, L., Fogwill, C. J., England, M. H., Cortese, G., and Levy, R. H.: Antarctic contribution to meltwater pulse 1A from reduced Southern Ocean overturning, *Nature Communications*, 5, doi:10.1038/ncomms6107, 2014.
- 35 Greve, R.: Relation of measured basal temperatures and the spatial distribution of the geothermal heat flux for the Greenland ice sheet, *Ann. Glaciol.*, 42, 424–432, doi:10.3189/172756405781812510, 2005.



- Greve, R., and Blatter, H.: Comparison of thermodynamics solvers in the polythermal ice sheet model SICOPOLIS, *Polar Science*, 10, 11-23, doi:10.1016/j.polar.2015.12.004, 2016.
- Greve, R., and Herzfeld, U. C.: Resolution of ice streams and outlet glaciers in large-scale simulations of the Greenland ice sheet, *Ann. Glaciol.*, 54, 209–220, doi:10.3189/2013AoG63A085, 2013.
- 5 Greve, R., Saito, F., and Abe-Ouchi, A.: Initial results of the SeaRISE numerical experiments with the models SICOPOLIS and Icies for the Greenland ice sheet, *Ann. Glaciol.*, 52, 23-30, 2011.
- Helsen, M. M., van de Wal, R. S. W., van den Broeke, M. R., van de Berg, W. J., and Oerlemans, J.: Coupling of climate models and ice sheet models by surface mass balance gradients: application to the Greenland Ice Sheet, *The Cryosphere*, 6, 255-272, doi:10.5194/tc-6-255-2012, 2012.
- 10 Herzfeld, U. C., McDonald, B. W., Wallin, B. F., Chen, P. A., Mayer, H., Paden, J., and Leuschen, C. J.: The trough-system algorithm and its application to spatial modeling of Greenland subglacial topography, *Ann. Glaciol.*, 55, 115-126, doi:10.3189/2014AoG67A001, 2014.
- Howat, I. M., Negrete, A., and Smith, B. E.: The Greenland Ice Mapping Project (GIMP) land classification and surface elevation data sets, *The Cryosphere*, 8, 1509-1518, doi:10.5194/tc-8-1509-2014, 2014.
- 15 Huybrechts, P.: Sea-level changes at the LGM from ice-dynamic reconstructions of the Greenland and Antarctic ice sheets during the glacial cycles, *Quat. Sci. Rev.*, 21, 203-231, doi:10.1016/S0277-3791(01)00082-8, 2002.
- Huybrechts, P., Janssens, I., Poncin, C., and Fichet, T.: The response of the Greenland ice sheet to climate changes in the 21st century by interactive coupling of an AOGCM with a thermomechanical ice-sheet model, *Ann. Glaciol.*, 35, 409-415, 2002.
- 20 Huybrechts, P., and de Wolde, J.: The dynamic response of the Greenland and Antarctic ice sheets to multiple-century climatic warming, *J. Clim.*, 12, 2169-2188, doi:10.1175/1520-0442(1999)012<2169:TDROTG>2.0.CO;2 1999.
- 25 Huybrechts, P., Letréguilly, A., and Reeh, N.: The Greenland ice sheet and greenhouse warming, *Global Planet. Change*, 3, 399-412, 1991.
- Huybrechts, P., Payne, A. J., and Group, E. I.: The EISMINT benchmarks for testing ice-sheet models, *Ann. Glaciol.*, 23, 1-12, 1996.
- 30 Imbrie, J., Boyle, E. A., Clemens, S. C., Duffy, A., Howard, W. R., Kukla, G., Kutzbach, J., Martinson, D. G., McIntyre, A., Mix, A. C., Molino, B., Morley, J. J., Peterson, L. C., Pisias, N. G., Prell, W. L., Raymo, M. E., Shackleton, N. J., and Toggweiler, J. R.: On the Structure and Origin of Major Glaciation Cycles 1. Linear Responses to Milankovitch Forcing, *Paleoceanography*, 7, 701-738, doi:10.1029/92PA02253, 1992.
- 35 Johnsen, S. J., Clausen, H. B., Dansgaard, W., Gundestrup, N. S., Hammer, C. U., Andersen, U., Andersen, K. K., Hvidberg, C. S., Dahl-Jensen, D., Steffensen, J. P., Shoji, H., Sveinbjörnsdóttir, Á. E., White, J., Jouzel, J., and Fisher, D.: The $\delta^{18}\text{O}$ record along the Greenland Ice Core Project deep ice



- core and the problem of possible Eemian climatic instability, *Journal of Geophysical Research: Oceans*, 102, 26397-26410, doi:10.1029/97JC00167, 1997.
- Jones, P. W.: First- and Second-Order Conservative Remapping Schemes for Grids in Spherical Coordinates, *Monthly Weather Review*, 127, 2204-2210, doi:10.1175/1520-0493(1999)127<2204:fasocr>2.0.co;2, 1999.
- Joughin, I., Smith, B., Howat, I., and Scambos, T.: MEaSUREs Greenland Ice Sheet Velocity Map from InSAR Data, Version 1., Boulder, Colorado USA, NASA National Snow and Ice Data Center Distributed Active Archive Center, doi:10.5067/MEASURES/CRYOSPHERE/nsidc-0478.001, 2010.
- Joughin, I., Smith, B., Howat, I., and Scambos, T.: MEaSUREs Multi-year Greenland Ice Sheet Velocity Mosaic, Version 1., Boulder, Colorado USA, NASA National Snow and Ice Data Center Distributed Active Archive Center, doi:10.5067/QUA5Q9SVMSJG, 2016.
- Joughin, I., Smith, B., Howat, I. M., Scambos, T., and Moon, T.: Greenland flow variability from ice-sheet-wide velocity mapping, *J. Glaciol.*, 56, 2010.
- Kobashi, T., Kawamura, K., Severinghaus, J. P., Barnola, J.-M., Nakaegawa, T., Vinther, B. M., Johnsen, S. J., and Box, J. E.: High variability of Greenland surface temperature over the past 4000 years estimated from trapped air in an ice core, *Geophys. Res. Lett.*, 38, n/a-n/a, doi:10.1029/2011GL049444, 2011.
- Larour, E., Seroussi, H., Morlighem, M., and Rignot, E.: Continental scale, high order, high spatial resolution, ice sheet modeling using the Ice Sheet System Model (ISSM), *J. Geophys. Res.*, 117, doi:10.1029/2011JF002140, 2012.
- Larour, E., Utke, J., Bovin, A., Morlighem, M., and Perez, G.: An approach to computing discrete adjoints for MPI-parallelized models applied to Ice Sheet System Model 4.11, *Geosci. Model Dev.*, 9, 3907-3918, doi:10.5194/gmd-9-3907-2016, 2016.
- Larour, E., Utke, J., Csatho, B., Schenk, A., Seroussi, H., Morlighem, M., Rignot, E., Schlegel, N., and Khazendar, A.: Inferred basal friction and surface mass balance of the Northeast Greenland Ice Stream using data assimilation of ICESat (Ice Cloud and land Elevation Satellite) surface altimetry and ISSM (Ice Sheet System Model), *The Cryosphere*, 8, 2335-2351, doi:10.5194/tc-8-2335-2014, 2014.
- Lee, V., Cornford, S. L., and Payne, A. J.: Initialization of an ice-sheet model for present-day Greenland, *Ann. Glaciol.*, 56, 129-140, doi:10.3189/2015AoG70A121, 2015.
- Levermann, A., Albrecht, T., Winkelmann, R., Martin, M. A., Haseloff, M., and Joughin, I.: Kinematic first-order calving law implies potential for abrupt ice-shelf retreat, *The Cryosphere*, 6, 273-286, doi:10.5194/tc-6-273-2012, 2012.
- Lucas-Picher, P., Wulff-Nielsen, M., Christensen, J. H., Aðalgeirsdóttir, G., Mottram, R., and Simonsen, S. B.: Very high resolution regional climate model simulations over Greenland: Identifying added value, *Journal of Geophysical Research: Atmospheres*, 117, n/a-n/a, doi:10.1029/2011JD016267, 2012.
- Machguth, H., Thomsen, H. H., Weidick, A., Ahlstrøm, A. P., Abermann, J., Andersen, M. L., Andersen, S. B., Bjørk, A. A., Box, J. E., Braithwaite, R. J., Bøggild, C. E., Citterio, M., Clement, P.,



- Colgan, W., Fausto, R. S., Gleie, K., Gubler, S., Hasholt, B., Hynek, B., Knudsen, N. T., Larsen, S. H., Mernild, S. H., Oerlemans, J., Oerter, H., Olesen, O. B., Smeets, C. J. P. P., Steffen, K., Stober, M., Sugiyama, S., Van As, D., Van Den Broeke, M. R., and Van De Wal, R. S. W.: Greenland surface mass-balance observations from the ice-sheet ablation area and local glaciers, *J. Glaciol.*, 62, 861-887, doi:10.1017/jog.2016.75, 2016.
- 5
- Morlighem, M., Rignot, E., Mouginot, J., Seroussi, H., and Larour, E.: Deeply incised submarine glacial valleys beneath the Greenland ice sheet, *Nature Geosci.*, 7, 418-422, doi:10.1038/ngeo2167, 2014.
- Morlighem, M., Rignot, E., Mouginot, J., Seroussi, H., and Larour, E.: IceBridge BedMachine Greenland, Version 2., Boulder, Colorado USA, NASA National Snow and Ice Data Center Distributed Active Archive Center, doi:10.5067/AD7B0HQNSJ29, 2015.
- 10
- Morlighem, M., Rignot, E., Seroussi, H., Larour, E., Ben Dhia, H., and Aubry, D.: Spatial patterns of basal drag inferred using control methods from a full-Stokes and simpler models for Pine Island Glacier, West Antarctica, *Geophys. Res. Lett.*, 37, L14502, doi:10.1029/2010GL043853, 2010.
- Morlighem, M., Rignot, E., Seroussi, H., Larour, E., Ben Dhia, H., and Aubry, D.: A mass conservation approach for mapping glacier ice thickness, *Geophys. Res. Lett.*, 38, doi:10.1029/2011GL048659, 2011.
- 15
- Mouginot, J., Rignot, E., Scheuchl, B., Fenty, I., Khazendar, A., Morlighem, M., Buzzi, A., and Paden, J.: Fast retreat of Zachariæ Isstrøm, northeast Greenland, *Science*, doi:10.1126/science.aac7111, 2015.
- Nick, F. M., Vieli, A., Andersen, M. L., Joughin, I., Payne, A., Edwards, T. L., Pattyn, F., and van de Wal, R. S. W.: Future sea-level rise from Greenland's main outlet glaciers in a warming climate, *Nature*, 20 497, 235-238, doi:10.1038/nature12068, 2013.
- Noël, B., van de Berg, W. J., Machguth, H., Lhermitte, S., Howat, I., Fettweis, X., and van den Broeke, M. R.: A daily, 1 km resolution data set of downscaled Greenland ice sheet surface mass balance (1958–2015), *The Cryosphere*, 10, 2361-2377, doi:10.5194/tc-10-2361-2016, 2016.
- Nowicki, S., Bindschadler, R. A., Abe-Ouchi, A., Aschwanden, A., Bueler, E., Choi, H., Fastook, J., Granzow, G., Greve, R., Gutowski, G., Herzfeld, U., Jackson, C., Johnson, J., Khroulev, C., Larour, E., Levermann, A., Lipscomb, W. H., Martin, M. A., Morlighem, M., Parizek, B. R., Pollard, D., Price, S. F., Ren, D., Rignot, E., Saito, F., Sato, T., Seddik, H., Seroussi, H., Takahashi, K., Walker, R., and Wang, W. L.: Insights into spatial sensitivities of ice mass response to environmental change from the SeaRISE ice sheet modeling project II: Greenland, *Journal of Geophysical Research: Earth Surface*, 118, 25 1025-1044, doi:10.1002/jgrf.20076, 2013.
- Nowicki, S., Bindschadler, R. A., Abe-Ouchi, A., Aschwanden, A., Bueler, E., Choi, H., Fastook, J., Granzow, G., Greve, R., Gutowski, G., Herzfeld, U., Jackson, C., Johnson, J., Khroulev, C., Larour, E., Levermann, A., Lipscomb, W. H., Martin, M. A., Morlighem, M., Parizek, B. R., Pollard, D., Price, S. F., Ren, D., Rignot, E., Saito, F., Sato, T., Seddik, H., Seroussi, H., Takahashi, K., Walker, R., and Wang, W. L.: Insights into spatial sensitivities of ice mass response to environmental change from the SeaRISE ice sheet modeling project I: Antarctica, *Journal of Geophysical Research: Earth Surface*, 118, 35 1002-1024, doi:10.1002/jgrf.20081, 2013.



- Nowicki, S. M. J., Payne, A., Larour, E., Seroussi, H., Goelzer, H., Lipscomb, W., Gregory, J., Abe-Ouchi, A., and Shepherd, A.: Ice Sheet Model Intercomparison Project (ISMIP6) contribution to CMIP6, *Geosci. Model Dev.*, 9, 4521-4545, doi:10.5194/gmd-9-4521-2016, 2016.
- 5 Pattyn, F.: Sea-level response to melting of Antarctic ice shelves on multi-centennial time scales with the fast Elementary Thermomechanical Ice Sheet model (f.ETISh v1.0), *The Cryosphere Discuss.*, 2017, 1-52, doi:10.5194/tc-2017-8, 2017.
- Pattyn, F., Perichon, L., Aschwanden, A., Breuer, B., de Smedt, B., Gagliardini, O., Gudmundsson, G. H., Hindmarsh, R. C. A., Hubbard, A., Johnson, J. V., Kleiner, T., Kononov, Y., Martin, C., Payne, A. J., Pollard, D., Price, S., Rückamp, M., Saito, F., Souček, O., Zwinger, T., and Sugiyama, S.:
10 Benchmark experiments for higher-order and full-Stokes ice sheet models (ISMIP-HOM), *The Cryosphere*, 2, 95-108, 2008.
- Pattyn, F., Perichon, L., Durand, G., Favier, L., Gagliardini, O., Hindmarsh, R. C. A., Zwinger, T., Albrecht, T., Cornford, S., Docquier, D., Fürst, J. J., Goldberg, D., Gudmundsson, G. H., Humbert, A., Hütten, M., Huybrechts, P., Jouvét, G., Kleiner, T., Larour, E., Martin, D., Morlighem, M., Payne, A. J.,
15 Pollard, D., Rückamp, M., Rybak, O., Seroussi, H., Thoma, M., and Wilkens, N.: Grounding-line migration in plan-view marine ice-sheet models: results of the ice2sea MISIP3d intercomparison, *J. Glaciol.*, 59, 410-422, doi:10.3189/2013JoG12J129, 2013.
- Pattyn, F., Schoof, C., Perichon, L., Hindmarsh, R. C. A., Bueler, E., de Fleurian, B., Durand, G., Gagliardini, O., Gladstone, R., Goldberg, D., Gudmundsson, G. H., Huybrechts, P., Lee, V., Nick, F. M.,
20 Payne, A. J., Pollard, D., Rybak, O., Saito, F., and Vieli, A.: Results of the Marine Ice Sheet Model Intercomparison Project, MISIP, *The Cryosphere*, 6, 573-588, doi:10.5194/tc-6-573-2012, 2012.
- Payne, A. J., Huybrechts, P., Abe-Ouchi, A., Calov, R., Fastook, J. L., Greve, R., Marshall, S. J., Marsiat, I., Ritz, C., Tarasov, L., and Thomassen, M. P. A.: Results from the EISMINT Phase 2 simplified geometry experiments: the effects of thermomechanical coupling, *J. Glaciol.*, 46, 227-238,
25 2000.
- Pollard, D., and DeConto, R. M.: Description of a hybrid ice sheet-shelf model, and application to Antarctica, *Geosci. Model Dev.*, 5, 1273-1295, doi:10.5194/gmd-5-1273-2012, 2012.
- Pollard, D., and DeConto, R. M.: A simple inverse method for the distribution of basal sliding coefficients under ice sheets, applied to Antarctica, *The Cryosphere*, 6, 953-971, doi:10.5194/tc-6-953-
30 2012, 2012.
- Price, S. F., Hoffman, M. J., Bonin, J. A., Howat, I. M., Neumann, T., Saba, J., Tezaur, I., Guerber, J., Chambers, D. P., Evans, K. J., Kennedy, J. H., Lenaerts, J., Lipscomb, W. H., Perego, M., Salinger, A. G., Tuminaro, R. S., van den Broeke, M. R., and Nowicki, S. M. J.: An ice sheet model validation framework for the Greenland ice sheet, *Geosci. Model Dev.*, 10, 255-270, doi:10.5194/gmd-10-255-
35 2017, 2017.
- Price, S. F., Payne, A. J., Howat, I. M., and Smith, B. E.: Committed sea-level rise for the next century from Greenland ice sheet dynamics during the past decade, *Proc. Nat. Acad. Sci. U.S.A.*, 108, 8978-8983, doi:10.1073/pnas.1017313108, 2011.



- Rastner, P., Bolch, T., Mölg, N., Machguth, H., Le Bris, R., and Paul, F.: The first complete inventory of the local glaciers and ice caps on Greenland, *The Cryosphere*, 6, 1483-1495, doi:10.5194/tc-6-1483-2012, 2012.
- Rignot, E., and Mouginot, J.: Ice flow in Greenland for the International Polar Year 2008–2009, *Geophys. Res. Lett.*, 39, doi:10.1029/2012GL051634, 2012.
- Robinson, A., Calov, R., and Ganopolski, A.: An efficient regional energy-moisture balance model for simulation of the Greenland Ice Sheet response to climate change, *The Cryosphere*, 4, 129-144, 2010.
- Saito, F., Abe-Ouchi, A., Takahashi, K., and Blatter, H.: SeaRISE experiments revisited: potential sources of spread in multi-model projections of the Greenland ice sheet, *The Cryosphere*, 10, 43-63, doi:10.5194/tc-10-43-2016, 2016.
- Schlegel, N. J., Larour, E., Seroussi, H., Morlighem, M., and Box, J. E.: Decadal-scale sensitivity of Northeast Greenland ice flow to errors in surface mass balance using ISSM, *Journal of Geophysical Research: Earth Surface*, 118, 667-680, doi:10.1002/jgrf.20062, 2013.
- Schlegel, N. J., Wiese, D. N., Larour, E. Y., Watkins, M. M., Box, J. E., Fettweis, X., and van den Broeke, M. R.: Application of GRACE to the assessment of model-based estimates of monthly Greenland Ice Sheet mass balance (2003–2012), *The Cryosphere*, 10, 1965-1989, doi:10.5194/tc-10-1965-2016, 2016.
- Schoof, C.: Ice sheet grounding line dynamics: Steady states, stability, and hysteresis, *J. Geophys. Res.*, 112, 19 pp., doi:10.1029/2006JF000664, 2007.
- Seroussi, H., Morlighem, M., Rignot, E., Larour, E., Aubry, D., Ben Dhia, H., and Kristensen, S. S.: Ice flux divergence anomalies on 79north Glacier, Greenland, *Geophys. Res. Lett.*, 38, L09501, doi:10.1029/2011GL047338, 2011.
- Seroussi, H., Morlighem, M., Larour, E., Rignot, E., and Khazendar, A.: Hydrostatic grounding line parameterization in ice sheet models, *The Cryosphere*, 8, 2075-2087, doi:10.5194/tc-8-2075-2014, 2014.
- Shannon, S. R., Payne, A. J., Bartholomew, I. D., van den Broeke, M. R., Edwards, T. L., Fettweis, X., Gagliardini, O., Gillet-Chaulet, F., Goelzer, H., Hoffman, M. J., Huybrechts, P., Mair, D., Nienow, P., Perego, M., Price, S. F., Smeets, C. J. P. P., Sole, A. J., van de Wal, R. S. W., and Zwinger, T.: Enhanced basal lubrication and the contribution of the Greenland ice sheet to future sea level rise, *Proc. Nat. Acad. Sci. U.S.A.*, 110, 14156–14161, doi:10.1073/pnas.1212647110, 2013.
- Shapiro, N. M., and Ritzwoller, M. H.: Inferring surface heat flux distributions guided by a global seismic model: particular application to Antarctica, *Earth Planet. Sci. Lett.*, 223, 213-224, doi:10.1016/j.epsl.2004.04.011, 2004.
- Snyder, J.: *Map projections – a working manual* (USGS Professional Paper 1395)., United States Government Printing Office, Washington, USA., 1987.
- Svendsen, S. H., Madsen, M. S., Yang, S., Rodehacke, C., and Adalgeirsdottir, G.: *An Introduction to the Coupled EC-Earth-PISM Model System*, Danish Meteorological Institute, Copenhagen, Denmark. 2015.



- Svensson, A., Andersen, K. K., Bigler, M., Clausen, H. B., Dahl-Jensen, D., Davies, S. M., Johnsen, S. J., Muscheler, R., Parrenin, F., Rasmussen, S. O., Röthlisberger, R., Seierstad, I., Steffensen, J. P., and Vinther, B. M.: A 60 000 year Greenland stratigraphic ice core chronology, *Clim. Past*, 4, 47-57, doi:10.5194/cp-4-47-2008, 2008.
- 5 Taylor, A. D.: A model of iceberg calving in Greenland, PhD Thesis, University of Bristol, Bristol, U.K., 271 pp., 2016.
- Tedesco, M., Fettweis, X., van den Broeke, M. R., van de Wal, R. S. W., Smeets, C. J. P. P., van De Berg, W. J., Serreze, M. C., and Box, J.: The role of albedo and accumulation in the 2010 melting record in Greenland, *Environ. Res. Lett.*, 6, 014005, doi:10.1088/1748-9326/6/1/014005, 2011.
- 10 van Angelen, J. H., van den Broeke, M. R., Wouters, B., and Lenaerts, J. T. M.: Contemporary (1960–2012) Evolution of the Climate and Surface Mass Balance of the Greenland Ice Sheet, *Surv. Geophys.*, 35, 1155-1174, doi:10.1007/s10712-013-9261-z, 2014.
- van den Broeke, M., Bamber, J., Ettema, J., Rignot, E., Schrama, E., van de Berg, W. J., van Meijgaard, E., Velicogna, I., and Wouters, B.: Partitioning Recent Greenland Mass Loss, *Science*, 326, 984-986, doi:10.1126/science.1178176, 2009.
- 15 Velicogna, I., Sutterley, T. C., and van den Broeke, M. R.: Regional acceleration in ice mass loss from Greenland and Antarctica using GRACE time-variable gravity data, *Geophys. Res. Lett.*, 41, 8130-8137, doi:10.1002/2014GL061052, 2014.
- Vizcaíno, M., Mikolajewicz, U., Jungclaus, J., and Schurgers, G.: Climate modification by future ice sheet changes and consequences for ice sheet mass balance, *Clim. Dyn.*, 34, 301-324, doi:10.1007/s00382-009-0591-y, 2010.
- 20 Vizcaino, M., Mikolajewicz, U., Ziemann, F., Rodehacke, C. B., Greve, R., and van den Broeke, M. R.: Coupled simulations of Greenland Ice Sheet and climate change up to A.D. 2300, *Geophys. Res. Lett.*, 42, 3927-3935, doi:10.1002/2014GL061142, 2015.
- 25 Winkelmann, R., Martin, M. A., Haseloff, M., Albrecht, T., Bueler, E., Khroulev, C., and Levermann, A.: The Potsdam Parallel Ice Sheet Model (PISM-PIK) – Part 1: Model description, *The Cryosphere*, 5, 715-726, doi:10.5194/tc-5-715-2011, 2011.