

Response to the Editor: Estimation of Degree of Sea Ice Ridging Based on Dual-Polarized C-band SAR Data by Alexandru Gegiuc et al.

Editor Decision: Publish subject to minor revisions (review by editor) (21 Nov 2017) by Jennifer Hutchings Comments to the Author:

Dear Alexander Gegiuc and co-authors,

Thank you for your response to the reviewers, which has greatly improved the paper. I have some comments that I hope you can address. These are mostly related to readability and explaining the interest of your results for the general readership of The Cryosphere.

Please have an English speaker proof read the paper. Some examples of grammatical errors are provided below. Line numbers refer to the manuscript with marked up edits.

page 1, line 3: "daily in manually prepared ice charts"

Corrected

page 1, line 6: "of the degree of ice ridging"

Corrected

page 1, line9: either "using the Random Forest classification method" or "using Random Forest classification".

Replaced with: "using the Random Forest classification method".

page 1, line 14: Consider rephrasing. Is the word "studied" appropriate here. Perhaps clearer to say "The correspondence between the degree of ridging in ice charts and the actual ridge density was validated with data collected during and field campaign in March 2011". I removed "extensive" because this is a word that places a judgemental value on the work, without providing context. I think it is personal choice if you want to keep "extensive".

Replaced the sentence with: "The correspondence between the degree of ice ridging reported in the ice charts and the actual ridge density was validated with data collected during a field campaign in March 2011".

page 2, line 2: a comma in front of "which"

Done.

page 2, line 11: comma needed before "the expertise"

Done.

page 2, first paragraph: Perhaps it would help the reader to identify why you talk about particular features, such as salinity, in the context of making ice charts. I think you only need a sentence in the paragraph explaining that the parameters you describe affect interpretation of remotely sensed data in classi-

fication of ice type.

We have added the following sentence at the end of the mentioned paragraph: "The low salinity level affects the radar signal response from satellite imagery, resulting in more volume and less surface scattering of the incident signal." The SAR signal response from Baltic sea ice, including the effect of salinity is discussed in more detailed in Section 2.1.

page 2, line 27: Not usual to start a sentence with "Because". This sentence needs to be rephrased also.

We replaced the sentence with a new paragraph: "Typically, the ice situation changes little from one day to the next. Hence, when drawing a new ice chart, the ice analysts are using the latest chart as the basis for the new one, and only adjusting the polygon contours and their assigned DIR values to match the new ice situation. This procedure speeds up the process of ice charting but may also introduce a bias if old polygons are used. The quality of the displayed SAR features of sea ice (e.g. magnitude of contrast/intensity, amount of radar noise), the analyst's experience and their style of drawing (more detailed or less detailed) can contribute further to inconsistencies in the finalized ice chart."

page 2, line 29: remove "th"

Done.

page 2, line 33: "certian amounts of"

Corrected

The last sentence of this paragraph is overly complicated. Simplify if possible.

We have replaced the last two sentences in this paragraph, with the following text: "This would allow the icebreakers and non-icebreaker vessels to benefit from it in advance route planning and optimization, by taking advantage of the sea ice passages within ridged ice areas. Manual ice charting should also benefit from a more detailed and automated DIR map which can serve as basis layer for the final ice chart."

page 3, line 6 & 7: Reconsider if "to" is appropriate in this sentence in two locations.

Removed both "to" from this sentence.

page 3, line 11: again "to" not needed here.

Removed "to" from this sentence.

page 3, line 10 to end of section: Perhaps a subsection is appropriate for this detailed information, in section 2.1? With line 9 being the end of the introduction. It is traditional for the paragraph at the end of the introduction to be a map for reading the paper.

Agreed. We have moved the discussion related to the behaviour of σ^o of Baltic sea ice in the newly formed Section 2.1.

page 4, line 13: missing space "13 was".
Corrected.

page 4, line 15: "weather remained similar"
Corrected.

page 4, line 19: "The 15th of March ice extent reached"
Corrected.

page 4, line 21: consider using the word "further" rather than "any more".
Replaced "any more" with "further".

page 5, line 2: "means" not an appropriate word here. A period can not mean! "the test period includes the 13 SAR mosaics"
Corrected.

page 5, line 17: Specify that the -28db floor is nadir (is this correct?)
The specified value (noise floor) is not and cannot be for nadir, since the SAR antenna does not measure at nadir. The specified nominal value for noise floor, is applicable for the whole incidence angle range, according to the SAR specifications.

page 5, line 32: check italicisation of "where".
Corrected.

page 6, line 6 and elsewhere: remove space in front of '.'
Corrected.

page 6, line 7: "in the resolution" → "at the resolution"
Corrected.

page 6, line 15: rephrase " DIR 5 indicades brash ice " I am not sure what you mean by "barrier" and while is not an appropriate conjunction to use in this sentence.

It would be very helpful to discuss here what a DIR of 2, 3 and 4 actually means. How are the catagories discriminated?

We have replaced the text describing the DIR categories and how they are assigned in the ice charts and in our classification, in a more detailed manner. The new text is below.

"The six DIR categories used in the operational ice charting in the Baltic Sea, relate to the ridge density variation in an area. The categories are visually identified through changes both in the σ^o response as well as in textural characteristics in SAR imagery. Their interpretation is validated through field measurements provided by the several operating icebreakers. The task of assigning a DIR value to each ice chart polygon is a complex process requiring a good understanding of the history of the current winter season, i.e. monitoring of changes in the pack ice zone and utilizing the continuous reports on ice conditions provided by the icebreakers. In our study, we only de-

fine four DIR categories by combining the brash ice barriers (WMO, 2010) and the heavily ridged ice category. The brash ice barriers covered a very small fraction of the sea ice area, so that they couldn't have been treated as a distinct category for classification. The very heavily ridged ice field category was not present in our dataset. The four DIR categories used in this study are defined as follows:

The level-ice area is indicated as DIR 1 which usually looks homogenous and smooth in the SAR imagery with low σ^o response. This category includes also slightly rafted ice. The slightly ridged ice category including heavily rafted ice areas is marked as DIR 2. The ridged and heavily ridged ice areas corresponding to the DIR 3 and 4, respectively, are recognized by the changes in surface roughness at a larger scale resulting in higher σ^o values. As their formation depends on ice pressure, knowledge of the earlier ice and weather conditions is required. The DIR 4 category in our data set included the few occurrences of brash ice barriers.

page 6, line 26: Something is missing in front of "does not make any sense". Or just delete these words.
Sentence removed completely.

page 6, line 29: "also" not needed in this sentence. I am not sure what this is "also" to!
Corrected.

page 7, line 17: Is there any affect of water pockets in the ridge on decreasing keel depth estimates? I think there was some work by Stefan Hendriks attempting to model this phenomena. Asking you check for completeness, and to provide the most up-to-date understanding of the accuracy of ridge measurements with HEM.

We have updated the text, so that it includes the most up-to-date information. The new text is below.

"The main dataset is from the March 2011 campaign with approximately 600 km of measurement lines by a helicopterborne electromagnetic (HEM) sensor which combines laser surface profiling and inductive distance measurement to the ice-water interface. The measurement system was similar to that described by Haas et al. (2009). The HEM measurements give as comprehensive understanding on ridging as is obtainable from linear profiles (see Fig. 2). The two profiles provide the total thickness, and the surface laser profile resolves ridge sails. The measurement spacing of the HEM instrument is 3–4 m while the measurement response is obtained from a footprint which is typically 50 m. Standard inversion of the EM response assumes that the ice has uniform thickness and zero conductivity under the footprint. Neither holds for the roughly triangular ridge keels as their porous lower parts are permeable to electric currents. This results into underestimation of keel depths with 50 % or even more (Pfaffhuber et al. 2012) and also to underestimation of the total volume of ice."

page 7, line 17-18. This sentence is a little awkward. How about: "Mid-basin in the Bay of Bothnia, the level ice thickness reached 60 cm with somewhat decreased ridging compared to the average winter with similar wind conditions."
Agreed. Replaced the old sentence with the suggested one: "In mid-basin of the Bay of Bothnia, the level ice thickness reached 60 cm with somewhat decreased ridging compared to the average winter with similar wind conditions."

page 7, line 24: "surface profiles"
Corrected.

page 7, line 25: "with the Rayleigh criterion"
Corrected.

page 7, line 29: Might be clearer if you write out "per kilometer".
Corrected as suggested.

Regarding the lidar data collected in previous years: Is this data collected in similar locations and ice type classifications from year to year? Where the field campaigns at the same time of year?

"To provide interannual variation for the HEM campaign based results of Section 4.1, we use data from the 1988 campaign and from three other campaigns in 1993, 1994 and 1997, summarized in Lensu (2003). The 1993 campaign was made in February and the others in March. They measured in total 1600 km of surface profiles. The 1988 campaign covers the whole Bay of Bothnia, the 1994 campaign covers it in the S-N direction while the 1993 and 1997 campaigns cover the NE quadrant of the basin."

The above paragraph is added also in Section 2.4.

page 8, line 7: "To the densities". Rephrase this sentence. "The densities are mostly affected by the windiness of the season" What do you mean by windiness? How do you quantify this?

We replaced the sentence with: "The densities are affected mostly by the number of days with strong winds during the earlier stages of the season, when ice is less resistant to the deformation. The threshold wind speed for the onset of deformation is usually 14–16 m/s."

page 8, line 15: It is not easy on the reader to say "0.2 m above cutoff". Perhaps state "the average sail height, for sails above 0.4m, is 0.6m in the Bay of Bothnia."

Replaced the sentence with: "However, as a first approximation, the average height of sails exceeding 0.4 m can be assumed to be 0.6 m in the Bay of Bothnia."

page 9, line 9: "typically consisting of optical sensors". You do not need two "or" in this sentence.

Corrected.

page 9, line 11: I don't think you need to mention DIR 5 here, as it was

introduced earlier and then you can mention it is not included in the analysis.
True. We have removed that part of sentence.

page 9, line 11: "does not" → "do not"
Corrected.

page 9, line 13: Does disregarding ice charts that do not agree with coincident SAR analysis bias your study? Were you always sure that the disagreement was due to different information going into the manual analysis? Please clarify that you are only rejecting data for which you have evidence that the manual classification is wrong.

The SAR - chart data pairs in disagreement were found on random days, thus their rejection should not create a systematic bias in the classification result. Regarding the selection of the coincident SAR - chart data, we have only rejected those pairs that contained "visually" at least one DIR class assigned differently to a similar region from other days.

page 9, line 25: "there were still a few cases"
Corrected.

page 9, line 26: "These differences ". This sentence is awkward. Rephrase.

Below is the new text: "In some other cases, the disagreements were clearly visible. If the DIR values assigned in the ice chart for a specific SAR texture region were consistent on multiple occasions, the exception pair was eliminated being considered inadequate for the classification."

page 9, line 32: "over the Bay of Bothnia"
Corrected.

page 10, top paragraph: Can you comment on whether it was the acquisition of visual observations, for example, that improved the DIR classification in these two examples? Also, proofread this paragraph for awkward grammar.

Only visual DIR classification was used here. The change in the visually assigned DIR values may be because of a different ice analyst interpreting the SAR image content or due to some additional messages from the icebreakers.

We replaced P 10 L 5-8 with the following text: "For ship navigation, the low ice ridging classes (DIR 1 and 2) do not likely pose any real concern. Therefore, if they are assigned differently in different days, the shipping is not affected much. On the other hand, for the automatic classifier this is a confusing case, that leads to a decrease in discrimination power between the two ridging categories."

page 10, line 19-20: What is a feature vector? Either state this is described later, or briefly explain.

Added text prior Section 3.1: "Then for each segment is computed a set of SAR texture features which are related to the ice ridging

information. Their definitions are given below in Section 3.1. The vector with features as its components is called a feature vector."

page 10, line 35: should there be an "and" rather than a semicolon between the citations?
Corrected.

page 11, line 2: "The Markov Random Field (MRF) approach ..."
Corrected.

page 11, line 19: "algorithm", one too many ifs
page 12, line 19: Corrected.

page 11, line 24: remove "the" from "the Fig. 4".
page 12, line 24: Corrected.

page 11, section 3.2, first paragraph: It is unclear what "SAR features" are when they are first mentioned. Perhaps you can say "Twelve features are extracted for each segment from the SAR backscatter data. These are referred to as SAR features from here on."
page 12, The concept of a SAR feature was defined in P 12 L 25 just prior the Section 3.2.

page 14, line 8: "which fragments we assume" → "which we assume"
Corrected.

page 14, line 10: Kurtosis repeated. Remove one.
Corrected.

page 14, line 13: "In Fig. 5"
Corrected.

page 14, line 17: " we found that", remove "out"
Corrected.

page 14, line 21: is "also" needed here?
Removed "also".

page 14, line 28: "and the notations used in this algorithm"
Corrected.

page 15, line 26: "prevents the same features from dominating every tree"
Corrected.

page 16, table at top, item 1(b): "to the bootstrapped data" should "to" be "with"?
Yes. Corrected.

page 16, line 21: "from the computed 13 features introduced in Section 3.2."
Corrected.

page 17, line 34: "In summary ..."
"In" was there, at Page 17, line 25.

page 17, line 35: missing "and" before "iii)".
Corrected.

page 19, line 28: "We concentrated our analysis on the areas ..."
Corrected.

page 19, line 29: "... can impact the backscattering statistics ..."
Corrected.

page 21, line 32: " Data of all three months ..."
Corrected.

page 21, line 18: " In none of the months was DIR 2 successfully detected due ..."
Corrected.

page 21, line 22: "were usually identified except". "well found" is nonsensical.
Corrected.

Check that the figures are referenced in order. I think fig. 12 is discussed before fig. 11 for example.
Fig. 11 was mentioned earlier in the context of the segmentation in P 12 L 24. The logical order of the figures is that the SAR mosaic (Fig. 11) precedes the classification result (Fig. 12).

page 21: Can you comment on the fact that the autonomous algorithm misclassifies ice edges from cracks and leads and ridges. Or am I missinterpreting this?
Ice edges are identified using the sea ice concentration information. We have not noticed any particular problems in their classification. E.g. if leads and cracks are large enough, then they form segments of their own which were usually well detected. It may be that we did not understand well the point in your question.

page 22, line 22: "... better segmentation accuracy ..."
Corrected.

page 23, line 29: what is "importance value". I think this statement is suffering from grammatical problems.
The importance measure is explained in P 16 L 10-12 in Section 3.3.2. We add there a new sentence. "The value of the importance measure is called an importance value." Now the lines read: "Because an ensemble of trees was used in RF and a large amount of features were utilized, the results were hard to interpret. To analyse the impact of different features on the class estimation the importance measure was

used. The value of the importance measure is called an importance value. This measure is implemented as follows:" The sentence in P 23 L 29 is corrected to: "The selection of the eight features in Section 3.3.2 was based on their importance value (see Section 3.3.2).

Check the order Tables are addressed in the text. I think Table 1 is first mentioned after tables 2 and 3, on page 23.

Table 1 is relabelled as Table 3 and tables 2 and 3 as tables 1 and 2.

page 23, line 5: remove the from "the feature reduction"
Corrected.

page 23, line 7: "In none of the cases did the classification accuracy improve"
Corrected.

page 23, line 8: "... decreased by just a few ..."
Corrected.

page 24, line 17: "... a smaller DIR value is often assigned ..."
Corrected.

page 24, line 19: "This is especially true for DIR 2."
Corrected.

page 24, line 20: Surely it is a problem for automatically generated charts that SAR imagery might not have been provided to the FIS in time for daily charts to be produced? Rephrase the last sentence in this paragraph, it is a littel awkward.

We have removed the last sentence from this paragraph. We consider that it is not an important addition to the discussion in this paragraph.

page 24, line 23/24: "from the easier navigatable ones"
Corrected.

page 24, line 24: "... relies on SAR image ..."
Corrected.

Based on your finding of the inconsistency in classifying DIR 2, would you say this is a useful classification band to keep in the DIR scheme?

The inconsistency of DIR 2 (slightly ridged ice) between the automated classification and the FIS charts is usually a result of the subjective assessment of an ice analyst as indicated in P 24 L 19. Hence we do not regard the high misclassification rate for DIR 2 alarming. If DIR 2 would not exist, then only two different ridging categories would appear. An ice analyst would probably assign the current DIR 2 polygons to level ice and in doing so would confuse further the separation between level ice and ridged ice. This would affect the accuracy of the automatic classification because it would be harder to

discriminate reliably between level and ridged ice. This information would therefore be lost. Therefore, we think that our classification benefits from the inclusion of the DIR 2 category. We also believe that the existence of the DIR 2 category is important in the Arctic application

page 24, line 31: "between ridged areas" ???
page 25, line 31: Corrected.

page 25, line 33: "The area of level ice always exceeded ..."
Corrected.

page 25, line 20: "seams" is a very subjective word to use here. It is also used twice in the same sentence.

Rephrased: "Our approach works best in the Baltic Sea when the evolution of winter has passed the freezing phase and a significant amount of ridging has occurred."

Can tables 3-7 be combined into a single table? Perhaps with multiple panels?

We merged tables 4-7 into one. Table 3 has a different layout than the others, so was left unchanged.

Figure 3 caption: degree of ice ridging is capitalised throughout the manuscript text.

Corrected.

The readership of The Cryosphere is more general than this articles intended audience. I believe that the analysis you have presented in useful for extracting information about surface roughness from SAR C-band imagery. As such your article may be of wider interest than the operational ice charting community. Would you be able to provide some additional context in the introduction and/or conclusion sections to demonstrate the wider applicability of your results? For example, can your methods be extended to investigate changes in surface roughness, ridging throughout the Arctic? Are there any impediments to this?

Finally, while you state that the method could be applied to the Arctic Ocean as a whole, how do you know that your methodology is not dependent on the relatively fresh and thin (therefore smaller block size in ridges) nature of the ice in the Baltic? Can the method identify weathered ridges that have survived a summer? I agree that the methodology will be useful for other ice services to impliment, in seasonal ice zones. I would like the paper to be more accessible to the general readership of the cryosphere who may be interested in variability of ridging in the seasonal ice zone.

We have plans to extend our algorithm to the Arctic Ocean, where there is a high demand for reliable ice information for independently navigating merchant vessels. Harsh ice conditions, as those in March 2013 in this study, prevail much longer in the Arctic seasonal ice regime than in the Baltic. The consistent availability of DIR charts in Arctic would enable the monitoring of areal evolution of different

ridging intensity categories. An automated DIR chart utilizing fine resolution SAR data and classifying the suitability of different areas for navigation would benefit all Arctic shipping.

The ice ridging and its backscattering mechanisms are similar in the Baltic and Arctic. In general, Arctic sea ice is thicker and ridges can be larger than in the Baltic. However, the backscattering increases as a function of the surface roughness in both areas. We have visually inspected SAR imagery over seasonal sea ice in Barents and Kara seas and they look similar to corresponding imagery over the Baltic. This builds confidence that our algorithm, with possible minor adjustments, should be applicable to the Arctic first year ice. Nevertheless, the possible applicability of the method to the multi-year ice areas must be studied separately.

Estimation of Degree of Sea Ice Ridging Based on Dual-Polarized C-band SAR Data

Alexandru Gegiuc, Markku Similä, Juha Karvonen, Mikko Lensu, Marko Mäkynen, and Jouni Vainio

Finnish Meteorological Institute(FMI), Marine Research, Erik Palménin aukio 1, 00560 Helsinki, Finland

Correspondence to: Alexandru Gegiuc (alexandru.gegiuc@fmi.fi)

Abstract.

For ~~navigation in~~ ship navigation in the Baltic Sea ice ~~during winter season~~, parameters such as ice edge, ice concentration, ice thickness, ~~ice drift~~ and degree of ridging are usually reported daily in ~~the manually prepared Ice Charts, which provide icebreakers essential~~ manually prepared ice charts. These charts provide icebreakers essential information for route optimization and fuel calculations. However, manual ice charting requires long analysis times and detailed analysis ~~is not possible for large-scale maps of large areas~~ (e.g. Arctic Ocean) is not feasible. Here, we propose a method for automatic estimation of ~~degree of ridging density~~ the degree of ice ridging in the Baltic Sea region, based on RADARSAT-2 C-band dual-polarized (HH/HV channels) SAR texture features and ~~the~~ sea ice concentration information extracted from the Finnish ~~Ice Charts~~ ice charts. The SAR images were first segmented and then several texture features were extracted for each segment. Using the Random Forest classification method, we classified them into four classes of ridging intensity and compared them to the reference data extracted from the digitized ~~Ice Charts~~ ice charts. The overall agreement between the ice chart based degree of ice ridging (~~DIR~~) and the automated results varied monthly, being 83 %, 63 % and 81 % in January, February and March 2013, respectively. The correspondence between the degree of ice ~~ridging of the manual Ice Charts~~ ridging reported in the ice charts and the actual ridge density was ~~good when this issue was studied based on an extensive field campaign data validated with data collected during a field campaign~~ in March 2011. In principle the method can be applicable to the seasonal sea ice regime in the Arctic Ocean.

1 Introduction

Navigation in sea ice is ~~naturally~~ hampered by rapid changes in the ~~environmental~~ sea ice conditions. Thus, it is essential for winter time shipping and off-shore operations to get reliable and up-to-date information on the prevailing ice conditions. The most important sea ice ~~related information parameters~~ are the location of the ~~sea~~ ice edge, ~~sea~~ ice types, ~~sea thickness and concentration and sea ice deformation~~ ice thickness, concentration and the amount of ridged ice. Without detailed sea ice information, navigating through heavily ridged sea ice is ~~very difficult and time-consuming~~ difficult or even impossible.

The Baltic Sea is a semi-enclosed brackish sea water basin in the Northern Europe. The ice cover in the Baltic Sea usually begins to form in November, and has its largest extent between January and March, ~~Seinä and Peltola (1991)~~ (Seinä and Peltola, 1991). The normal ~~ice break-up~~ melting season starts in April, and the ice melts completely by the beginning of June. The maximum

annual ice ~~cover extent~~ ranges from 12% to 100% of the whole Baltic Sea area ~~, and the average is with an average of 40%~~
~~, Seinä and Palosuo (1996)~~~~(Seinä and Palosuo, 1996)~~. During the last decades ~~there has prevailed~~ a clear decreasing trend ~~can~~
~~be seen~~ in the maximum ice extent although the trend has not ~~yet~~ been a subject for a detailed investigation. The sea ice in
the Baltic Sea can be divided into fast ice and drift ice. Fast ice appears in the coastal and archipelago areas. Drift ice has
5 a dynamic nature due to forcing by winds and currents. ~~The motion of drift ice,~~ ~~which~~ results in an uneven ~~and~~ broken ice
field with distinct floes ~~up to several kilometers in diameter~~, leads and cracks, brash ice barriers, rafted ice and ice ridges. The
upper limit for thermodynamically grown ice ~~in the drift ice zone~~ is 70 cm or less during most winters ~~, Palosuo et al. (1982).~~
~~The thickness~~ ~~(Palosuo et al., 1982)~~ while the keel depth of ice ridges is typically 5 to 15m, ~~Leppäranta and Hakala (1992) m~~
~~(Leppäranta and Hakala, 1992)~~. The salinity of the Baltic Sea ice is typically ~~only~~ from 0.2 to 2‰ depending on the location,
10 time, and weather history ~~, Hallikainen (1992).~~ ~~(Hallikainen, 1992)~~. ~~The low salinity level affects the radar signal response~~
~~from satellite imagery, resulting in more volume and less surface scattering of the incident signal.~~

Synthetic Aperture Radar (SAR) satellites such as RADARSAT-2 (RS-2) and Sentinel-1 (S-1) play a major role in opera-
tionally monitoring the ice conditions in ~~Baltic Sea every winter~~ ~~the Baltic Sea~~. SAR imaging is practically independent of the
atmosphere conditions (e.g. cloud cover) and solar illumination ~~, and thus, can be used in continuous automated and therefore~~
15 ~~suitable for operative~~ sea ice monitoring. However, ~~radar as~~ backscatter information in the SAR imagery cannot easily be
~~directly~~ linked to the different ice types ~~or ice properties at a given location, and,~~ the expertise of an trained ice analyst is ~~then~~
~~usually~~ required.

In the Baltic Sea, daily ice charts prepared by the Finnish Ice Service (FIS) analysts ~~in winter time~~ provide a daily source of
information upon the ice conditions ~~by assigning a classification of ice types and other ice properties to the ice chart polygons~~
20 ~~described by well-defined symbols and coloring of the polygons. They are.~~ ~~The charts divide the ice cover into polygons for~~
~~which ice types and properties are assigned. The analysis is~~ based on visual interpretation of the SAR imagery as the principal
source of ice information. Currently, RS-2 and S-1 ~~C-band~~ SAR imagery with a wide coverage (e.g. RS-2 ScanSAR Wide
Mode with 500 by 500 km image size) are used. The SAR imagery is complemented by visible and thermal infrared imagery
from ~~e.g.~~ Moderate Resolution Imaging Spectroradiometer (MODIS), in-situ observations, sea ice information messages from
25 icebreakers, and data from sea ice models. ~~The ice chart polygons are defined by the ice analysts and they represent uniform~~
~~represent~~ ice areas with similar ice ~~parameters~~ ~~characteristics~~. Parameters assigned for each polygon are ice concentration,
~~average~~ level ice thickness ~~range and average, maximum and minimum level ice thickness~~, and the the degree of ice ridging
(DIR) ~~which is a numeral classifying the ice into five categories, as explained in the section 2.2~~. The FIS ice analysts estimate
the DIR ~~category mainly using the values mainly using~~ SAR imagery, and with additional information on the ice drift based on
30 successive SAR images and results of sea ice models ~~(Figure 1)~~. The main criteria for the visual DIR estimation from the SAR
imagery are the SAR backscattering and its visible patterns (SAR texture) ~~(see Fig. 1)~~.

~~Typically, the ice situation changes little from one day to the next. Hence, when drawing a new ice chart, the ice analysts are~~
~~using the latest chart as the basis for the new one, and only adjusting the polygon contours and their assigned DIR values to~~
~~match the new ice situation. This procedure speeds up the process of ice charting but may also introduce a bias if old polygons~~
~~are used. The quality of the displayed SAR features of sea ice (e.g. magnitude of contrast/intensity, amount of radar noise),~~

the analyst's experience and their style of drawing (more detailed or less detailed) can contribute further to inconsistencies in the finalized ice chart. ~~Because the visual interpretation is so essential in the manual ice charting process, a certain amount of subjectivity and inconsistency by different ice analysts is inevitable.~~

5 In this paper we propose ~~an automation of a method to automatize~~ the DIR estimation process based on ~~RadarSat-2 RS-2~~ dual-polarized (HH/HV) ~~C-band SAR data using data SAR data~~ acquired under cold conditions ~~during the winter season 2012-2013~~ and using the FIS ~~Ice Charts ice charts~~ as reference data. ~~In Section 2.1 we will discuss on~~ The results are then evaluated together with the ice analysts. We don't expect a perfect match between the automatic chart and the manual one. The polygons in the manual charts suppress variation for the small-scale features and merge them into one DIR category.
10 Here we aim to produce a more detailed DIR chart, which closely follows the SAR texture features of sea ice ridges, edges, cracks and leads. This would allow the icebreakers and non-icebreaker vessels to benefit from it in advance route planning and optimization, by taking advantage of the sea ice passages within ridged ice areas. Manual ice charting should also benefit from a more detailed and automated DIR map which can serve as basis layer for the final ice chart.

In section 2.2 we will describe the different DIR categories used by FIS. As a tool in the DIR classification we use the
15 Random Forest (RF) algorithm which will be explained in detail in Section 3.3. Using the automated classification procedure we target ~~to~~ an efficient exploitation of the RS-2 SAR data and, by means of increased spatial and temporal resolutions, an improved quality (pixel level accuracy and consistency between different analysts) of the ice charts, ~~by means of increased spatial and temporal resolutions.~~

2 Data Sets and Processing

20 Our study area in the Baltic Sea is northward from the latitude of 61° N, covering the entire Bay of Bothnia and most of the Sea of Bothnia. The time period is the ice season 2012-2013. The most severe ice conditions in 2012-2013 in the Baltic Sea occurred in our study area. The ice season 2012-2013 was average but the turning point of the winter was late. The weather began to cool during the first week of January and the ice extent increased. In the last week of January the strong winds moved the ice fields and the mild weather melted ice. In the beginning of February the weather remained similar – at night new ice
25 was formed and then broken by winds during the day. Towards the end of February the weather cooled down and new ice was formed also in the Gulf of Finland. In the beginning of March cold arctic air started to flow to Scandinavia and the extent of ice began to grow. The whole March was extremely cold. The 15th of March ice extent reached 177 000 km², which was the maximum of the season. From then on, the cold nights formed new ice but sunny days melted it, and the ice extent did not increase further.

30 2.1 σ^o of the Baltic Sea ice

In the following we discuss how in general the C-band backscattering coefficient (σ^o) of the Baltic Sea ice is related to the sea ice properties, and especially sea ice ridging. Under cold weather conditions when the snow cover on sea ice is dry the ice surface scattering has been observed to be the dominant component in the total co-polarized ~~backscattering measured by radars~~

operating at C-band with σ^o at incidence angles below 45° ; [Dierking et al. \(1999\)](#) ([Carlström and Ulander, 1993](#); [Dierking et al., 1999](#))

5 . If the ice surface is very smooth and salinity < 0.5 psu, which typically is the case for level fast ice in the Baltic Sea, and [then](#) the backscattering from ice-water interface and ice volume is significant. The surface backscattering from level ice is controlled by the statistics of the small-scale roughness as well as the salinity of the ice surface. If sea ice is [deformed/ridged](#), the large-scale surface roughness alters the geometry of the surface and, hence, also modifies [the backscattering \$\sigma^o\$](#) . Empirical measurements of the Baltic Sea [ice C-band SAR ice backscattering coefficient \(\$\sigma^o\$ \)](#) have shown that the variation in the large-scale surface roughness mostly modulates σ^o and image texture although changes in the small-scale roughness are also significant ; [Dierking et al. \(1999\)](#); [Mäkynen and Hallikainen \(2004\)](#) ([Carlström and Ulander, 1993](#); [Dierking et al., 1999](#); [Mäkynen and Hallikainen,](#)

10 . The σ^o contrast between level ice and [deformed/ridged](#) ice is on average larger at C-band cross-polarization than at copolarization ; [Mäkynen and Hallikainen \(2004\)](#) ([Mäkynen and Hallikainen, 2004](#)). The standard deviation of σ^o was observed to be larger for [deformed/ridged](#) ice types (mixtures of level ice, ice ridges, rubble) than for level ice types and brash ice in [Mäkynen and Hallikainen \(2004\)](#). [Radar backscatter in The C-band SAR imagery \$\sigma^o\$](#) is not directly related to the sea ice thickness, but at least in the Baltic Sea it is possible to estimate the thickness of [deformed/ridged](#) ice under dry snow conditions through a statistical relationship between ice freeboard, level ice thickness and σ^o ; [Similä et al. \(2010\)](#) ([Similä et al., 2010](#)). The variance of the mean freeboard, i.e. large scale surface roughness, increases with increasing average freeboard, and as the surface roughness increases σ^o also typically increases. In general, these previous studies on sea ice σ^o signatures [have shown show](#) that there is a relation between C-band σ^o and DIR, but further studies are needed to better quantify this relation.

20 [Many Next, different approaches for SAR based sea ice classification are briefly reviewed. Many SAR imagery based](#) sea ice classification systems just perform classification to open water and different ice types, such as new ice, first-year-ice, multiyear-ice, but DIR is not explicitly estimated in more detail. Classification schemes utilizing σ^o and SAR texture have been presented e.g. in [Soh et al. \(2004\)](#); [Sandven et al. \(2012\)](#); [Barber and LeDrew \(1991\)](#); [Clausi \(2001\)](#). [A progressive scheme presented e.g. in Soh et al. \(2004\) utilizes segmentation and multiple segment-wise features, including texture](#) [Soh et al. \(2004\)](#); [Sandven et al. \(2012\)](#); [Barber and LeDrew \(1991\)](#); [Clausi \(2001\)](#). [Classification of ice types based on single-polarization C-band SAR backscattering has been studied e.g. in Karvonen \(2004\); Shokr \(2009\). In Soh and Tsatsoulis \(1999\) the performance of texture measures based on Gray Level Co-Occurrence Matrices \(GLCM's\) were studied for sea ice classification into seven classes, which were based on human visual inspection. Karvonen \(2004\) and Shokr \(2009\). Sea ice SAR classification using the world meteorological organization \(WMO\) ice categories \(stage of development\) WMO \(2010\) \(WMO, 2010\) has been studied e.g. in Clausi \(2001\); Deng and Clausi \(2005\); Clausi \(2001\); Deng and Clausi \(2005\); Maillard et al. \(2005\); Yu and Clausi \(2007\); Clausi et al. \(2010\); Ochilov and Clausi \(2012\)](#) . These approaches are based on [the](#) SAR segmentation and different SAR features, including texture ones. Some of the methods also combine the ice analyst analysis and an automated analysis. A system capable of a semi-automated segmentation and enhanced classification with a digitized ice chart as an input is presented in [Clausi et al. \(2010\)](#). [The It is noted that the](#) ice categories in these studies do not either explicitly or uniquely include DIR classification.

3 Data Sets and Processing

The Baltic Sea ice season 2012

5 2.1 RADARSAT-2 SAR imagery

The SAR imagery used in this study is RADARSAT-2 ScanSAR Wide (SCWA) dual-polarized imagery with the HH/~~2013 was average but the turning point of the winter was late. The weather began to cool off at the end of the first week of January~~ HV polarization combination. The nominal size of an RS-2 SCWA image is around 500 by 500 km, and the pixel size is 50 m. The spatial resolution is around 73-163 m by 100 m (range by azimuth). The incidence angle (θ_0) varies from 20 to 49 degrees. The equivalent number of looks (ENL) is larger than six. The nominal noise floor equivalent σ° at both HH- and HV-polarization is around -28 ± 2.5 dB and the absolute accuracy of σ° is better than 1 dB (MDA, 2014).

The acquired RS-2 SAR imagery covered the whole Baltic Sea. The number of SAR images used in the daily SAR mosaic over the test area varied from one to three SAR frames per day from January to March in 2013. On some days the SAR mosaic was updated twice. We selected from these SAR mosaics the training and the test data using the rule that the time gap between a training and a test mosaic must be at least three days to avoid situations where a same SAR scene would appear both in the test and the training data set. Hence the training data consisted of 5 mosaics from January, 4 mosaics from February and 4 mosaics from March. The test data consisted of 4 mosaics from January, 6 mosaics from February and 3 mosaics from March. Some mosaics were not used due to the time constraint. The monthly training and test data refers to the mosaics gathered during the same month. We selected these three months for the development and the test work because then the SAR images were mostly acquired under dry snow conditions. Hence, the dominant backscattering source was the sea ice surface and we could expect a statistical relationship between σ° and DIR as reported in Carlström and Ulander (1995); Dierking et al. (1999); Similä et al. (2001); Mäky

The preprocessing of the RS-2 SCWA images consisted of calibration (calculation of σ_{HH}° and σ_{HV}°), georectification, calculation of the incidence angle θ_0 , and land masking. First the data were rectified into the Mercator projection with 100 m pixel size. This georectification is compatible with the FIS ice charts and the navigation system of the Finnish and Swedish icebreakers. In this Mercator projection the reference latitude is $61^\circ 40'$ N.

As the SAR σ° is dependent on θ_0 , an incidence angle correction is necessary before the classification of the ~~extent of ice increased. In the last week of January~~ SAR images with wide θ_0 range, such as RS-2 SCWA images. For the HH-polarization images, an incidence angle correction method described in Mäkynen et al. (2002) was applied. This incidence angle correction maps the σ° values using a linear dependence for the σ° in dB-scale to a predefined θ_0 value θ_0^R . In this case, the fixed θ_0^R of 30° was used.

At the HV-polarization the SAR σ° values are close to the instrument noise floor (around -28 dB for RS-2 SCWA mode), and the noise floor (noise equivalent σ°) varies along the across-track direction. The noise floor modulates the (low) HV channel signal leading to clearly visible stripes (artifacts) in the HV imagery. These stripes complicate both the visual and automated interpretation of the SAR imagery. The HV channel incidence angle dependence and varying noise floor in the range direction

are corrected based on a statistical incidence angle dependence computed for a large number (65) of RS-2 ScanSAR wide images. Then the incidence angle range is quantized into N bins of 0.01 degrees ($\theta_1, \dots, \theta_N$) covering the whole incidence angle range. We average the σ° values from all the 65 images for each θ_i . We denote this average as $\bar{\sigma}^\circ(\theta)$. Together these average values create a σ° curve $Z(\theta)$ as a function of the incidence angle over the whole incidence angle range. We consider that each $\bar{\sigma}^\circ(\theta)$ consists of the sum of the average σ° , the associated noise floor and the σ° decay as a function of the incidence angle. As we average a large number of values representing different targets for each theta bin, we assume the σ° average to be similar for each bin (i.e. constant over the whole incidence angle range), and then $Z(\theta)$ also presents a sum of the constant value, the noise floor as a function of theta and σ° decay as a function of theta. To minimize the effect of the ~~strong winds moved the ice fields and the mild weather melted ice~~. In the beginning of February the weather continued similar—at night new ice was formed which the winds then broke during the day. Towards the end of February the weather cooled down and new ice was formed also in the Gulf of Finland. In the beginning of March cold arctic air started to flow to Scandinavia and the extent of ice began to grow. The whole March was extremely cold. In the 15th of March the extent of ice reached 177 000 km², which was the maximum of the ice winter. From then on the cold nights formed new ice but sunny days melted them and the extent of the sea ice did not increase any more. constant value on the correction we then take the mean of all $Z(\theta)$ values over the whole range of theta. We denote this mean as \bar{Z} . Then the whole $Z(\theta)$ curve is made a zero mean signal by subtracting \bar{Z} from $Z(\theta)$, this zero mean function is denoted by $\tilde{Z}(\theta)$. The incidence angle corrected backscattering coefficient $\sigma_{HV}^{\circ, corrected}(r, c)$ is now obtained from each calibrated pixel at $\sigma^\circ(r, c)$ value: $\sigma_{HV}^{\circ, corrected}(r, c) = \sigma^\circ(r, c) - \tilde{Z}(\theta(r, c))$, where (r, c) are the row and column coordinates of the image grid and $\theta(r, c)$ is the corresponding incidence angle. This correction was proposed in (Karvonen, 2015).

The equivalent number of looks (ENL), noise equivalent σ° and autocorrelation between neighboring pixels in the rectified images were studied using homogeneous areas of size 3.1x3.1 km visually selected from the images over open water areas with a weak texture. The ENL was around 9.5 for the whole θ_o range. Thus, the radiometric resolution was around 1.2 dB and the standard deviation (std) of fading was 1.4 dB. The autocorrelation coefficient between the adjacent 100 m pixels was on the average only 0.18. The land masking was based on the GSHHG (Global Self-Consistent Hierarchical, High-resolution Geography database from the National Oceanic and Atmospheric Administration, NOAA) coastline data (Wessel and Smith, 1996)

Next, the SAR images were segmented, and the segmentwise features were calculated at the resolution of 100 m, for details see Sections 3.1 and 3.2. Due to the large size of the SAR images and also the feature images they were downsampled into 500 m resolution. Finally, the daily SAR image and features mosaics were constructed by overlaying all of the SAR data available for each day, i.e. the latest data is shown in the mosaic. The study area was typically fully covered by RS-2 SAR imagery every 1 to 2 days.

2.2 Ice charts and degree of ridging

Our reference data set consists of the daily FMI-FIS manual ice charts over the Baltic Sea. In the ice charts the degree of ice ridging (DIR) is used to ~~ategorise ice types~~ classify sea ice in a way that is relevant for the difficulty of navigation. DIR is

manually assigned as a qualitative numeral, ranging from 1 to 56, to each ice chart polygon. ~~DIR value~~ The six DIR categories used in the operational ice charting in the Baltic Sea, relate to the ridge density variation in an area. The categories are visually identified through changes both in the σ^o response as well as in textural characteristics in SAR imagery. Their interpretation is validated through field measurements provided by the several operating icebreakers. The task of assigning a DIR value to each ice chart polygon is a complex process requiring a good understanding of the history of the current winter season, i.e. monitoring of changes in the pack ice zone and utilizing the continuous reports on ice conditions provided by the icebreakers. In our study, we only define four DIR categories by combining the brash ice barriers (WMO, 2010) and the heavily ridged ice category. The brash ice barriers covered a very small fraction of the sea ice area, so that they couldn't have been treated as a distinct category for classification. The very heavily ridged ice field category was not present in our dataset. The four DIR categories used in this study are defined as follows:

The level-ice area is indicated as DIR 1 ~~refers to level ice or rafted ice. Small ridged areas in the middle of level ice are also included into DIR1. Values 2 and~~ which usually looks homogenous and smooth in the SAR imagery with low σ^o response. This category includes also slightly rafted ice. The slightly ridged ice category including heavily rafted ice areas is marked as DIR 2. The ridged and heavily ridged ice areas corresponding to the DIR 3 ~~represent lightly ridged ice and ridged ice, respectively. The most heavily ridged ice is assigned DIR value 4. DIR 5 indicates brash barrier while this particular category was not present~~ 4, respectively, are recognized by the changes in surface roughness at a larger scale resulting in higher σ^o values. As their formation depends on ice pressure, knowledge of the earlier ice and weather conditions is required. The DIR 4 category in our data set ~~included the few occurrences of brash ice barriers.~~

By visual inspection of the RS-2 and S-1 SAR wide swath imagery with a spatial resolution of approximately ~~100m resolution~~ 100 m it is not possible to describe the ridging intensity quantitatively. However, it is feasible to assign categories of ridged ice for extended areas for which the actual ridging intensities differ. For ~~some~~ justification of the meaningfulness of the areal DIR values see our comparison with the 2011 field campaign data set in Section 4.1.

The ~~DIR information in the FIS ice charts is typically reported for rather large areas (hundreds of square kilometers) with usually incomplete spatial and temporal accuracy as the ice charts are issued only once daily in the afternoon and are based on the information gathered since the previous afternoon. Consequently, fresh SAR imagery with updated sea ice conditions can often be disregarded if acquired soon after the ice chart has been released for a particular day, and thus the ice chart may become outdated compared to SAR imagery.~~

~~The ice charts are also~~ ice charts are saved as numerical grids from the ice charting software ~~. For the gridded product they are digitized into grids~~ with a resolution of approximately 1 nautical mile (NM). In the grid format the ice thickness, ice concentration and DIR value assigned to each ice chart polygon are included. ~~Additionally~~ The size of a polygon is usually several hundreds of square kilometers. Additionally, the sea surface ~~open water surface~~ temperature is included in the ice chart grids. This practice slightly differs from the ice classes defined by the ice charting guidelines in Canadian Ice Service, MANICE (2005), where the ice is classified based on the stage of development and indicated by the so-called WMO egg codes ~~, WMO (2010)~~ (WMO, 2010).

2.3 Surface and thickness profile data on ridged ice

No long-term studies between ice chart ~~degrees of ice ridging~~ DIR and the actual ridging statistics have been ~~carried out~~ published, although field campaigns to measure ridging in the Bay of Bothnia started ~~already in in the~~ late 1970's ~~by~~. First
5 campaigns used shipborne laser profilers and the first extensive airborne laser profiler campaign was conducted in 1988 ~~, see~~
Lewis et al. (1993). ~~Results from three other campaigns in the 1993, 1994 and 1997 are summarised in Lensu (2003)~~. The
campaign results discussed in this paper are from a campaign on 2-7 (Lewis et al., 1993). To compare DIR categories in the
FIS charts with actual ridging we utilize data collected during helicopterborne profiling campaigns in the Bay of Bothnia. The
main dataset is from the March 2011 campaign with approximately 600 km of measurement lines ~~. Then the measurements~~
10 ~~were collected~~ by a helicopterborne electromagnetic (HEM) ~~device~~ sensor which combines laser surface profiling and induc-
tive distance measurement to the ice-water interface. ~~Hence, the~~ The measurement system was similar to that described by
Haas et al. (2009). The HEM measurements give a as comprehensive understanding on ridging as is obtainable from linear
profiles ~~. They~~ (see Fig. 2). The two profiles provide the total thickness ~~and the horizontal resolution of the EM instrument is~~
~~also sufficient for resolving ridge keels~~, Haas et al. (2009), ~~and the surface laser profile resolves ridge sails. The measurement~~
15 spacing of the HEM instrument is 3–4 m while the measurement response is obtained from a footprint which is typically 50 m.
Standard inversion of the EM response assumes that the ice has uniform thickness and zero conductivity under the footprint.
Neither holds for the roughly triangular ridge keels as their porous lower parts are permeable to electric currents. This results
into underestimation of keel depths with 50 % or even more (Pfaffhuber et al., 2012) and also to underestimation of the total
volume of ice.

20 The ice season ~~2010-2011~~ 2010–2011 was severe, with a maximum ice extent of 309 000 km². In mid-basin of the Bay of
Bothnia ~~mid-basin pack~~, the level ice ~~thicknesses~~ thickness reached 60 ~~cm which~~ cm with somewhat decreased ridging ~~from~~
~~what would have been expected during an~~ compared to the average winter with similar wind conditions. ~~The ridging generally~~
~~intensified towards the northwestern part of the~~

To provide interannual variation for the HEM campaign based results of Section 4.1, we use data from the 1988 campaign
25 and from three other campaigns in 1993, 1994 and 1997, summarized in Lensu (2003). The 1993 campaign was made in
February and the others in March. They measured in total 1600 km of surface profiles. The 1988 campaign covers the whole
Bay of Bothnia ~~and towards fast ice edge~~, the 1994 campaign covers it in the S-N direction while the 1993 and 1997 campaigns
cover the NE quadrant of the basin. From the profile data ridge sails are selected with the Rayleigh criterion: to include the
shallower one of two adjacent sails its height must be at least twice the minimum elevation between the sails. In addition, cutoff
30 height is imposed. From the sail data the variation in ridge density, or the number of ridge sails per kilometer, and sail height
can be determined. The ridge densities were 6.4, 7.3, 5.3 and ~~there were coastal rubble fields generated by the closing of flaw~~
~~leads covered by thinner ice.~~

2.4 SAR image mosaics

The SAR imagery used in this study were RADARSAT-2 ScanSAR wide Wide (SCWA) dual-polarized imagery with the HH26.7 per kilometer for the 88, 93, 94 and 97 campaigns respectively. The the sail height shows less variation, from 0.58 m to 0.66 m. The densities are affected mostly by the number of days with strong winds during the earlier stages of the season when ice is less resistant to the deformation. The threshold wind speed for the onset of deformation is usually 14–16 m/HV polarization combination. The nominal size of an RS-2 SCWA image is around 500 by 500 km, and the pixel size is 50 m. The spatial resolution is around 73–163 m-by-s. The average values obscure the large regional variance in ridge density. It typically increases when moving towards north and east. Coastal ridge fields are often created by the closing of refrozen coastal leads and can be continuous rubble fields with densities up to 100 m (range by azimuth). The incidence angle (θ°) varies from 20 to 49 degrees. The equivalent number of looks (ENL) is some larger than six. The noise equivalent σ° at both HH and HV-polarisation is around -28 ± 2.5 dB and the absolute accuracy of σ° is better than 1 dB-MDA (2014).

The acquired RS-2 SAR imagery covered the whole Baltic Sea ice season in 2012-2013, with a total number of 538 SAR images between December 7 2012 and April 16 2013. The amount of SAR images during the test period from January to March was 342, i. e. on average over three SAR scenes per day. For our test period we selected the months during which the SAR images were mostly acquired under dry snow conditions. Hence the dominant backscattering source was the sea ice surface and we could expect a statistical relationship between σ° and DIR as reported in Carlström and Ulander (1995); Dierking et al. (1999); Similä et al. (2002). Because the ice conditions in the northern parts of the Baltic Sea were the most severe, we restricted our study area to northward from the latitude of 61°N, covering the entire per kilometer. Sail height depends on the average ice thickness of the basin. Also the presence of snow reduces the heights in the profile data with a value equaling to the snow thickness. However, as a first approximation, the average height of sails exceeding 0.4 m can be assumed to be 0.6 m in the Bay of Bothnia and largely the Sea of Bothnia.

The preprocessing of the RS-2 SCWA images consisted of calibration (calculation of σ_{HH}° and σ_{HV}°), georectification, calculation of the incidence angle θ° , and land masking. First the data were rectified into Mercator projection in 100 m resolution. This georectification is compatible with the navigation system of the Finnish and Swedish icebreakers. In this Mercator projection the reference latitude is 61 degrees 40 min (N). profile data it must be taken into account that a considerable fraction of ridges fall below the cutoff. Moreover, the sail heights are sampled from random crossings and include also shallower sections of the sails. In situ field measurements usually select the highest point of the sail and the observed heights are typically 1–3 m and drilled keel depths 5–15 m (Kankaanpää, 1997).

As the SAR σ° is dependent on θ° , an incidence angle correction is necessary before the

2.4 Correspondence between ice charts and SAR mosaics

For a correct classification of the SAR images with wide θ° range, such as RS-2 SCWA images. For the HH-polarization images, an incidence angle correction method described in Mäkynen et al. (2002) was applied. This incidence angle correction maps the σ° values using a linear dependence for the σ° in dB-scale to a predefined θ° value θ_R^0 . In this case, the fixed θ_R^0 of 30° was used. At the HV-band the SAR backscattering coefficient values are close to the instrument noise floor (around -28 dB for RS-2 ScanSAR Wide mode), and the noise floor (noise equivalent σ°) varies along the across-track direction. The noise

floor modulates the (low)HV channel signal leading to clearly visible stripes (artifacts) at HV band. These stripes complicate both the visual and automated interpretation of the SAR data. We applied a statistical noise reduction procedure at the RS-2 HV channel. The procedure is described in detail in Karvonen (2015).

The rectified and incidence angle corrected images were land masked. The land masking was based on the GSHHG (Global Self-Consistent Hierarchical, High-resolution Geography database from the National Oceanic and Atmospheric Administration, NOAA) coastline data, Wessel and Smith (1996).

Then the texture features of sea ice, they need to be consistent with the degree of ridging values assigned for each class in the ice chart for the whole training data set. This consistency however cannot be assured by the current ice charting process, because of two main reasons. Firstly, the SAR images were segmented and the segmentwise features were calculated in the resolution of 100 m, for details see Sections 3.1 and 3.2. Due to data scenes are not always acquired over the area of interest in time for the large size of SAR images the HH and HV images and also the feature images were downsampled into 500 m resolution. The daily SAR mosaics were constructed after receiving the morning RS-2 image acquisitions such that the most recent imagery is overlaid the older imagery. The test area was typically covered by RS-2 every 1 to 2 days. Delays up to two days are possible, however, usually the delays in the test area are one day or less. The SAR mosaics always represented the latest SAR information at each location. ice charting (Rinne and Similä, 2016). This results in the ice analysts requirement for extracting ice information from other available sources, typically consisting in optical sensors (e.g. MODIS), in-situ measurements or observations (e.g. icebreakers). Secondly, the degree of ice ridging is divided into four severity classes. These ridging categories do not always have a clear separation between each other, thus in many cases they can be mixed.

The equivalent number of looks (ENL), noise equivalent σ^0 and autocorrelation between neighboring pixels in the rectified images were studied using homogeneous areas of size 3.1x3.1 km visually selected from the images over open water areas with a weak texture. The ENL was around 9.5 for the whole θ^0 range as the resolution 100 m. Thus, the radiometric resolution was around 1.2 dB and To minimize the subjective bias and maximize the consistency between the texture features present in the daily SAR mosaics and the allocated ridging class in the corresponding ice charts, we used only those SAR - chart pairs which agree with each other on a daily basis to a decent degree and rejected all others. This was performed by examining every DIR chart during the whole test period from 1st January 2013 to 31st March 2013 and compare it visually to the corresponding SAR mosaic. To visually compare the sea ice texture features in SAR imagery and evaluate their correspondence to the correct ice class in the FIS charts is not a straightforward task when performed by a non-trained analyst. However, after inspecting several pairs visually and discussing with the ice analysts, the standard deviation (std) of fading was 1.4 dB. The autocorrelation coefficient between the adjacent 100 m pixels was on average only 0.18.

2.5 Correspondence between ice charts and SAR mosaics

We found that often the ice charts did not correspond to the SAR mosaics of the same day. This has occurred because some part of comparison was much easier and there were several cases when at least one major disagreement was found. Some of these disagreements arose and were confirmed to have appeared from the lack of fresh SAR imagery at the time of ice charting. In some other cases, the daily SAR mosaic was a few of days old or because the SAR mosaic was updated after the preparation

of the manual ice chart. We note that FIS also uses MODIS data when producing a new ice chart. Due to the inconsistencies between ice charts and SAR data we examined every DIR chart during the whole test period from the disagreements were clearly visible. If the DIR values assigned in the ice chart for a specific SAR texture region were consistent on multiple occasions, the exception pair was eliminated being considered inadequate for the classification. An example of the data selection procedure is presented in Fig. 3, where we show two SAR - chart pairs from 9th and 12th March 2013 over the Bay of Bothnia and northern part of the Bothnian Sea. Here, the two daily SAR mosaics show visually similar texture features with very small differences. In spite of that, the corresponding DIR charts show a change in class from slightly ridged ice of class 2 on 9th March to level-ice of class 1 ~~January to 31 March and compared them visually to the corresponding SAR mosaic.~~ on 12th March, along the west coast near the fast ice region. For ship navigation, the low ice ridging classes (DIR 1 and 2) do not likely pose any real concern. Therefore, if they are assigned differently in different days, the shipping is not affected much. On the other hand, for the automatic classifier this is a confusing case, that leads to a decrease in discrimination power between the two ridging categories. A similar effect can be seen in the more central to southern part of Bay of Bothnia, where the heavily ridged ice of class 4 on 9th March has changed to class 2 on 12th March. In this case, we have accepted only the data pair from 12th March as good pair, because this was found more consistent with the classification from multiple days (i.e. 13th, 14th March). In this case, the navigation in those areas might suffer.

~~This process resulted in the rejection of many of the ice charts during the test period. In our analysis we included only those days in which the DIR charts appeared to be in overall agreement with the corresponding SAR mosaics. There were 10 such ice charts in~~ In the end, our selection of daily SAR mosaics and FIS DIR charts pairs resulted in a total of 11 pairs in January, 15 in February and ~~12~~ only 8 in March. All other data was rejected from the classification due to inconsistencies in at least one DIR class assigned to the corresponding SAR mosaic region or the time gap restriction (see Section 2.2).

3 Methodology for estimation of the degree of ice ridging

Our classification procedure consists of two stages. First, we segment the SAR imagery. The primary goal in the segmentation is that the resulting segments would mainly be composed of one DIR category. Then for each segment we compute a set of SAR texture features which are related to the ice ridging information. Their definitions are given below in Section 3.1. The vector with the computed features as its components is called a feature vector. The second stage is to classify every segment based on the feature vector and assign one DIR category label to each segment. Hence, a successful classification requires that the segmentation succeeds, the features are meaningful and the feature based classification is efficient.

3.1 SAR Image segmentation

In order to perform the segmentation we combined the HH- and HV-polarized RS-2 SCWA images ~~data~~ using the Principal Component Analysis (PCA) technique. PCA is a statistical procedure that uses an orthogonal transformation to convert an image of possibly correlated pixel values into an image of linearly uncorrelated pixels. The values of these pixels are called principal component scores. We selected the first PCA image (corresponding to the largest PCA eigenvalue) for the

segmentation because it explains most of the variation contained in the HH- and HV-images. This allowed us to speed up the segmentation process which for large SAR data sets requires a considerable amount of time and computing resources.

For the data segmentation, there are many algorithms available, but very few that can work well with SAR imagery because of the small dynamic σ^0 ~~range, -22, -7 dB is typical HHI SAR C-band images and -28, -24 dB for HV images. There does not exist a σ^o range.~~ A clear separation between different sea ice types based on the magnitude of σ^0 ~~does not exist~~, and the presence of the speckle complicates the segmentation task further. ~~In the segmentation we truncated the HH range to -22, -8 dB. Here, the first PCA image from the HH- and HV-polarization SAR imagery was segmented with~~ Here we have used a Markov Random Field approach ~~, Rue and Held (2005), (Rue and Held, 2005),~~ and optimized with an Modified Metropolis Dynamics algorithm, similar as in ~~Kato et al. (1992); Kato (1994); Berthod et al. (1996)~~ Kato et al. (1992); Kato (1994) and Berthod et al. (1996). This stochastic method has been demonstrated to provide a better segmentation than a deterministic one, e.g. Iterated Conditional Mode (ICM) by Besag (1974); ~~for typical, for~~ for sea ice SAR imagery ~~, Ochilov and Clausi (2012); Deng and Clausi (2012); (Ochilov and Clausi, 2012; Deng and Clausi, 2004, 2005).~~ The Markov Random Field (MRF) approach relies less on the initial segmentation than ICM, and also takes into account the global and local statistics of a pixel. This guarantees that pixels with similar intensities would not be treated in the same way in different regions of an image I , if the local spatial interactions differ in the two regions.

For example, to select the best new label \hat{L} for a group of neighborhood pixels (cliques) in a site s , is equivalent to maximize the probability distribution of labels in ~~site~~ the site, conditioned by the a-priori label (L) (Besag, 1974). In other words, $\hat{L}_{MAP} = \underset{L \in \Omega}{\operatorname{argmax}} P(L|F = f)$, where Ω is the set of labels, $(F = f)$ $F = f$ is feature vector, ~~(L)~~ L is the segmented result conditioned by the feature vector. For each s , the cliques potential depends on the local configuration and type (size, shape, and possibly orientation). For simple cliques (formed by the closest neighbored pixels) in S , their potential function V_c can be reduced to only two states:

$$V_c(L) = \beta \delta(L_i, L_j) = \underline{+1 \text{ if } L_i = L_j; -1 \text{ if } L_i \neq L_j}, \quad (1)$$

where

$$V_c(L) = \begin{cases} +1 & \text{if } L_i = L_j; \\ -1 & \text{if } L_i \neq L_j. \end{cases} \quad (2)$$

and the homogeneity of the region is controlled by the β parameter.

The site's energy would simply be the sum of all cliques potential:

$$U(L) = \sum_{c \in C} V_c(L). \quad (3)$$

For more complex cliques (higher order neighbours), their potential would depend on the computed local mean (μ_{L_s}) and variance ($\sigma_{L_s}^2$). The labels (classes) would then be represented by Gaussian distributions:

$$P(f_s | L_s) = \frac{1}{\sqrt{2\pi\sigma_{L_s}}} \exp\left(\frac{-(f_s - \mu_{L_s})^2}{2\sigma_{L_s}^2}\right) \quad (4)$$

If we consider the probability distribution of labels in S a Markov Random Field with $P(L|F = f) > 0$, we can also treat it as a Gibbs form [Besag \(1974\)](#) ([Besag, 1974](#)):

$$P(L) = \frac{1}{Z} \exp\left(-\sum_{c \in C} V_c(L)\right), \quad (5)$$

where Z is the normalization constant and $V_c(L)$ is the clique's potential for the current label state.

10 For this example the (logarithmic) energy is

$$U(L) = \sum_S \left(\log((2\pi)^{1/2} \sigma_{L_s}) + \frac{(f_s - \mu_{L_s})^2}{2\sigma_{L_s}^2} + \sum_{s,r} \beta \delta(w_s, w_r) \right). \quad (6)$$

~~where the homogeneity of the region is controlled by the β parameter and~~ [Then the best new label for each site \$S\$ is determined by the minimization of its computed energy:](#)

$$P(L|F = f) = \frac{1}{Z} \exp(-U(L)) \rightarrow \hat{L}_{MAP} = \operatorname{argmax}_L P(L|F = f) = \operatorname{argmin}_L U(L). \quad (7)$$

15 These kind of functions can ~~then~~ be optimized by various methods, one being the simulated annealing method [Kirkpatrick et al. \(1983\)](#) ~~;~~ [Cerny \(1985\)](#); ([Kirkpatrick et al., 1983](#)) ([Cerny, 1985](#)), where a slow decrease in the probability of accepting worse solutions occurs as the algorithm searches the solution space. The method used here is an adaptation of the Metropolis-Hastings algorithm introduced in Metropolis et al. (1953) or shortly Metropolis algorithm which was created as a Monte Carlo method to generate sample states of a thermodynamic system. In the algorithm the labeling is also dependent on the control variable
20 called temperature T . If the energy function $U(L)$ value increases, the label is changed with a probability dependent on T and increase of $U(L)$ ($\exp(-\Delta U/T)$).

To perform the MRF segmentation, we first need to initialize the Gaussian parameters for the labels and also the number of labels. This is performed automatically for each SAR image separately. First the histogram of the SAR image is computed, and then the Expectation-Maximization (EM) ~~;~~ [Dempster et al. \(1977\)](#); ([Dempster et al., 1977](#)), algorithm is applied to decompose
25 the histogram into a Gaussian decomposition. The number of Gaussians in the decomposition is initialized to a small minimum value, e.g. two, and then iteratively increased until the EM decomposition and the histogram are similar enough with each other. We measure the similarity by the coefficient of correlation r . We stop the EM-algorithm if ~~either~~ r exceeds ± 0.97 ~~or if we have more than nine labels in the image.~~ [The output number of classes possible for each image should also be limited. In our case we limit it to nine maximum allowed classes.](#) We initially label the image pixels based on the EM classification, i.e. we
30 assign the label with highest probability of the N different Gaussian distributions $G_k(x)$ for a pixel. After this labeling scheme we can run the MRF segmentation.

[Here, we have applied the segmentation on the first PCA component image.](#) An example of segmentation result for the Bay of Bothnia [region](#) is shown in [Fig. 4](#) and [Fig. 11](#) together with the original HH and HV SAR mosaics.

The next step in the SAR analysis ~~was~~ [is](#) to compute several SAR ~~quantities~~ [statistics \(features\)](#) for the obtained segments.

5 3.2 SAR image features

Using the ~~We studied the classification of DIR categories using the~~ computed SAR features and the DIR values from FMI ice charts ~~we studied the classification of DIR categories for our test period~~. The following SAR features were computed ~~from the SAR images with 100 m pixel size~~, and their efficiency in ~~the~~ DIR classification was studied. Each feature value is a median value of the feature computed over a single segment. ~~Their abbreviations are inside the brackets:-~~

- 10 1. ~~HH-band~~ ~~HH polarization~~ SAR backscattering coefficient (σ_{HH}^o), with incidence angle correction applied.
2. ~~HV-band~~ ~~HV polarization~~ SAR backscattering coefficient (σ_{HV}^o), with incidence angle correction and noise level equalization applied.
3. ~~HH-band~~ ~~HH~~ entropy (E_{HH}), computed ~~for the full-resolution SAR (100m)~~ in windows with a radius of 5 pixels.
4. ~~HV-band~~ ~~HV~~ entropy (E_{HV}), computed ~~for the full-resolution SAR (100m)~~ in windows with a radius of 5 pixels.
- 15 5. ~~HH-band~~ ~~HH~~ autocorrelation (AC_{HH}), computed ~~for the full-resolution SAR (100m)~~ in windows with a radius of 5 pixels.
6. HV autocorrelation (AC_{HV}), computed ~~for the full-resolution SAR (100m)~~ in windows with a radius of 5 pixels.
7. HH ~~channel~~-coefficient of variation (CV_{HH}), computed in ~~full-resolution for~~ windows with a radius of 5 pixels).
8. HV ~~channel~~-coefficient of variation (CV_{HV}), computed in ~~full-resolution for~~ windows with a radius of 5 pixels.
- 20 9. Edge density for HH ~~channel-image~~ (ED_{HH}), ~~scaling: $1000 * N_e / A$ (N_e is the number of edge pixels and A is the segment area)~~.
10. Edge density for HV ~~channel-image~~ (ED_{HV}), ~~scaling: $1000 * N_e / A$ (N_e is the number of edge pixels and A is the segment area)~~.
11. Segment size (SSZ).
- 25 12. ~~HH-channel~~ ~~HH~~ kurtosis (K_{HH}), computed in ~~a window with windows with a~~ radius of 5 pixels ~~in the full SAR resolution~~.
13. ~~HV-channel~~ ~~HV~~ kurtosis (K_{HV}), computed in ~~a window with windows with a~~ radius of 5 pixels ~~in the full SAR resolution~~.

Additionally we extracted the segment mean of sea ice concentration (SIC) from the FMI ice charts.

Coefficient of variation was computed separately ~~for HH and HV channels~~ as

$$C^V = \frac{\sigma}{\mu}, \quad (8)$$

where σ is the standard deviation ~~over a data window~~ and μ is the mean over the window. Kurtosis is computed as the fourth

5 moment within ~~a the~~ data window.

Entropy E ~~Shannon (1948) was computed separately for HH and HV channels~~ (Shannon, 1948) was computed as

$$E = - \sum_{k=0}^{255} p_k \log^2 p_k, \quad (9)$$

where p_k 's are the proportions of each gray tone k within ~~each computation a~~ window. Auto-correlation, ~~see Similä (1994); Karvonen et al. (~~ AC (Similä, 1994; Karvonen et al., 2005), was computed as

$$10 \quad C^A(k, l) = \frac{\sum_{ij \in B} (I(i-k, j-l) - \mu_B)(I(i, j) - \mu_B)}{|B|\sigma_B^2}, \quad (10)$$

where $I(k, l)$ is the pixel value at location (k, l) . Mean over the directions horizontal, vertical and diagonal directions i.e. $(k, l) = (0, 1)$, $(k, l) = (1, 0)$, $(k, l) = (1, 1)$ and $(k, l) = (1, -1)$ was used to accomplish directional isotropy. The computation window is denoted by B .

Edge density D was computed for each segment (separately ~~for at the~~ HH and HV channels ~~polarizations~~) after an edge
15 detection by the Canny algorithm ~~Canny (1986) (Canny, 1986)~~ as

$$D = N_e / N, \quad (11)$$

where N_e is the number of edge pixels with a segment and N is the segment size in pixels. ~~The edges can often be regarded as fragments of an ridged area, when the imprints of the individual ridges disappear in the coarse SAR resolution.~~

Most of the features have a straightforward interpretation. Entropy describes how uniformly the HH/HV values are distributed.
20 Edge density is a measure for edge fragments present in the segment which we assume to be related to ridging. Coefficient of variation (CV) describes how fast the standard deviation increases with the mean. We expect that in the ridged areas CV is larger than in the homogeneous areas. Kurtosis describes the peakiness of the σ^o distribution. With the aid of the spatial autocorrelation we can quantify how structured the ice field in question is in the SAR imagery. We expect that more structural elements appear in the ridged ice than in the level ice where the spatial σ^o variation is more random.

25 In Fig. ~~5- 5~~ the computed features for an ~~selected area in area in the~~ central Bay of Bothnia on 15th March 2013 are shown. ~~In the selected area highly~~ Moderately and heavily ridged areas ~~are present~~ were present here.

3.3 Random forest classification method

After trying several classification methods (local regression, logistic regression, General Additive Regression Model) we found
~~out~~ that the random forest (RF) ~~, Breiman (2001), (Breiman, 2001)~~ approach produced good enough results to be of practical
30 use. Random forest is an ensemble learning method which can be applied to classification and regression. In RF we artificially generate several training sets from a single training set at our disposal using bootstrapping, grow a classification tree for each individual training set, perform classification for each tree and then aggregate the results. The bootstrap aggregation is called ~~also~~ bagging. This technique is efficient to reduce variance in high-variance predictions in the same manner ~~than as~~ taking an average of samples ~~is, in~~ Breiman (2001).

For the classification of the daily [sea ice data](#) we divided our data ~~of 37 days, see Section 2.4,~~ into the training and the test data sets. ~~At least a time gap of three days was required between test and training data to avoid situations where the same SAR scene and the associated features could be present in both the training data and the test data. (see Section 2.1).~~

In our computations we have used the routines included in the commercial software Matlab.

3.3.1 Description of the algorithm

We outline ~~the RF algorithm and the used notations~~ [here the RF classification method and the notations used in this algorithm.](#)

The classes are denoted by $C = \{1, \dots, C\}$. We have a training set $X = \{x_1, \dots, x_N\}$ where each sample x_i consists of a feature vector f_i and the corresponding class. When we take a bootstrap sample from X , we denote it Z^* . Our bootstrap sample Z^* is of the same size as the original sample, so on average the fraction 63% of the original samples of X belong to it, the rest being duplicates. ~~Efron and Tibshirani (1993)~~ [\(Efron and Tibshirani, 1993\)](#). The samples of X left out from Z^* (about 37% of the samples) are called out-of-bag (OOB) samples.

The classification tree is denoted $T_b(\Theta_b)$ with $b \in \{1, \dots, B\}$ and it uses Z^* as its training data. Each end node n of $T_b(\Theta_b)$ has a class label which is the most frequent class in that node. The parameter Θ_b characterizes the b th random forest tree in terms of split variables, split points at each node, and terminal node class label. The class label given by $T_b(\Theta_b)$ depends on the feature vector f_i which is used as input for the tree. ~~We denote it~~ [It is denoted as \$\hat{C}_b\(f_i, \Theta_b\)\$.](#) We generate B bootstrapped training sets and relying on every training set we grow a classification tree $T_b(\Theta_b)$. A classification tree often achieves a rather low bias if it is grown deep with many nodes without pruning. ~~Hastie et al. (2011)~~ [\(Hastie et al., 2011\)](#).

The impurity measure is the Gini index G ,

$$G = 1 - \sum_{c=1}^C p(c|n)^2$$

where $p(c|n)$ is the proportion of the samples that belong to class c at a particular node n . G indicates how dominant the class c is in the subtree after the split. A small Gini index value indicates that the subtree contains predominantly observations from a single class. In the split the feature component of the vector f_i with the smallest Gini index is utilised. ~~Ripley (1996)~~ [\(Ripley, 1996\)](#).

In classification we record the classes predicted by the ensemble of B trees for a specific feature vector, and take a majority vote. The most common class is the class predicted by the ensemble. Then the selected class has a smaller uncertainty than a single classification tree. ~~Hastie et al. (2011)~~, [\(Hastie et al., 2011\)](#), because an average has a smaller variance than a single variable. This is true also for the correlated variables. If B is large enough [then](#) the random forest algorithm avoids the tendency of over fitting the model which often occurs in the context of the decision trees.

The problem with bagging is that the grown trees are correlated. To reduce this correlation the RF has a randomisation step. When building trees, each time a split in a tree is considered, a random sample of m predictors is chosen as split candidates from the full set of p predictors ($m = 4$ and $p = 8$ here). A new sample of m predictors is taken at each split. This step prevents the same features ~~to dominate~~ [from dominating](#) every tree.

The flow of the random forest algorithm is described below.

Random forest algorithm for classification

1. For $b = 1$ to B :

(a) Draw a bootstrap sample Z^* of size N from the training data.

(b) Grow a random-forest tree $T_b(\Theta_b)$ ~~to~~ with the bootstrapped data, by recursively repeating the following steps for each terminal node of the tree, until the minimum node size is reached.

i. Select m variables at random from the p variables.

20 ii. Determine the best variable and split-point among the m variables using the Gini index.

iii. Split the node into two daughter nodes.

2. Output the ensemble of trees $\{T_b(\Theta_b)\}_1^B$.

To classify a new feature vector f_n :

Classification: Let $\hat{C}_b(f_n, \Theta_b)$ be the class prediction of the b th random-forest tree. Then $\hat{C}_{rf}^B(f_n) = \text{majority vote } \{\hat{C}_b(f_n, \Theta_b)\}_1^B$.

3.3.2 Selection of the features

Because an ensemble of trees was used in RF and a large amount of features were utilized, the results were hard to interpret. To analyse the impact of different features on the class estimation the importance measure was used. The value of the importance measure is called an importance value. This measure is implemented as follows:-:

25 For each tree, the classification error on the OOB portion of the data is computed. This gives the baseline error rate for the tree. Then in the OOB set we randomly permute one feature of the feature vector f_i and simultaneously keep fixed the other features in f_i . We note that the marginal sampling distribution of the picked feature remains the same during the permutation. ~~Then~~ Next, we recalculate the classification error in the OOB set. This classification error is compared to the baseline error. Usually it is larger than the baseline error. The procedure is repeated for every feature separately. The decrease in classification

30 rate as a result of this permuting is averaged over all trees, and is used as a measure of the importance of the chosen feature.

To select the features we run the RF algorithm for several feature combinations and for several different training data sets. The importance of the features as well as the classification accuracy was monitored. This empirical approach lead to the choice of eight ~~8~~ features from the computed 13 features ~~, see Section 3.2 . We ended up using the following eight features in determining degree of ice ridging classes: HH-band autocorrelation (AC_{HH}), ice concentration (IC), edge density~~

for HH-channel (ED_{HH}), HH-band entropy (E_{HH}), HH-channel kurtosis (K_{HH}), (σ_{HH}^o), HH-channel coefficient of variation
5 (CV_{HH}) and σ_{HV}^o introduced in Section 3.2 including the additional SIC feature.

In Fig. ?? is shown the relative importance of the different features as measured by their impact on the correct classification
of the out-of-bag samples when the training data covered the whole test period. The importance order of features in this data
set is: ice concentration, HH-channel kurtosis, σ_{HH}^o , HH-channel edge density, HH-channel autocorrelation, HH-channel
entropy, HH-channel coefficient of variation and σ_{HV}^o . If the training data of just one month was used the relative importance
10 order of features varied to some extent. One feature, ice concentration, remained however the most influential single feature in
every case. This is comprehensible because when IC was between 80 % and 90 %, it was almost always assigned to the level
ice category (DIR=1). The weak importance of σ_{HV}^o is probably due to the relative narrow range of the σ_{HV}^o values.

We conclude the RF section with a short summary on the major advantages of the RF algorithm summary we found that the
RF classification presents the following advantages: i) RF has the ability to describe complex, nonlinear statistical relationships
15 among variables, ii) RF reduces the uncertainty of the obtained estimate, and iii) RF reduces the possibility of over fitting.

The greatest weakness in RF is its relatively weak extrapolation property, ~~Hastie et al. (2011)~~ (Hastie et al., 2011). This
property can be seen from the behaviour of the error rates. The RF classifier has a very low training error rate but the error rates
increases increase significantly for the test set.

4 Results

20 4.1 Ice chart ridging categories vs. measurements surface and thickness profile data

~~To give us a perspective on~~ We use the March 2011 HEM campaign data to study how well the ridging DIR categories in the
FIS charts describe the actual ridging ~~we here present the field campaign results. The campaigns in 1993. As the variation is
much larger for ridge density than for sail height,~~ 1994 and 1997 summarised in Lensu (2003) measured surface profile only
while the the fourth campaign during the period from 2 to 7 March 2011 profiled as also ice thickness. From surface profile
25 data ridge sails are identified by cutoff height and Rayleigh criterion according to which the shallower of two adjacent
is counted only when separated by a trough extending below half its height. Choosing a joint ridge sail height cutoff of 0.4
m a large interannual variation is found for the four campaigns consisting of totally 1600 km of measurement line profile.
Ridge densities vary from 5.3/km to 26.7/km, while the sail height shows less variation, from 0.58 m to 0.66 m. To the densities
affect mostly the windiness of the season, especially during the early stages with thinner icetypes are less resistant against
30 deformation. There are regional differences, the densities increasing with the wind fetch towards the NE corner of the basin,
and also the coastal ridge fields often have the character of rubble fields with densities up to 100/km. Sail height depends on
average thickness characteristics of the basin, and also the presence of snow cover reduces the heights with a value equalling to
the snow thickness. However, as a first approximation the sail height for the Bay of Bothnia can be assumed to be 0.2 m above
cutoff. In the interpretation of profile data it must be considered that a considerable fraction of ridges fall below the cutoff
35 and that the sail heights may become sampled from shallower sections of the sails. In field campaigns that typically select the
highest point of the sail the observed heights are typically 1-3 m and drilled keel depths 5-15 m, Kankaanpää (1997).

ridging is parameterized here by density only. The other parameter considered is the total thickness of ridged ice. This is a navigationally relevant parameter that can be used to calculate icegoing speed of ships. To establish compatibility with the ice chart and ice model data, which employ, which employs a 1x1 nautical mile (NM) grid, the ridging parameters from the helicopterborne electromagnetic (HEM) sail density and ridged ice thickness from the March 2011 data were calculated as averages for the cells of the grid. Here the comparison is made. There are two different aspects of comparison involved. The first is the relationship between ridge density and total thickness from HEM data and DIR in the ice chart data. The other is the relationship between ridge density and ridged ice thickness which is in general relevant to the question how well surface data can represent the total thickness of ice. Thus, the comparison is made between ridge density and DIR and, on the other hand, the degree of ice ridging (DIR) of ice chart data between ridged ice thickness and DIR. Although somewhat qualitative the DIR indices are estimates made by sea ice specialists and refer to the Lagrangian ice chart regions corresponding to various formation and deformation phases of the ice cover. The reliability or their boundaries is usually high. The DIR value 1, corresponding level and rafted ice categories, had very small coverage in the data, while DIR 2, the category of slightly ridged ice, was not found at all. The comparison is therefore made for the DIR values 3 and 4, or moderately and severely heavily ridged ice. The sail height retrieved by HEM from the profile data was equal for these categories while a clear difference was found for the ridge densities and total ridged ice thicknesses, see Table 1. This indicates that such a rough a rough but reliable quantification of ridging can be done based on the indices.

based on DIR values only. A more detailed picture can be obtained from comparisons of Figure 6 between degree of ice ridging Fig. 6 between DIR and, on the other hand, ridge sail density and total ice thickness from the HEM campaign. For March 2011 data. For the ridge density the colorbar range is chosen to be from 12.7 to 21.5 or which are the average densities corresponding to indices DIR 3 and 4 in Table 6. Thickness Fig. 6. Ice thickness colorbar was scaled similarly. Thus, all values below the lower averages averages corresponding to DIR 3 are blue and all values above higher averages green averages corresponding to DIR 4 are pink. Above and below the colorbar range the ridge density has still a wide range of variation as is seen from the histogram of Figure. The in Figure 6. However, the basic regional characteristics can be seen are similarly visible in all three datasets, however. The spatial distribution for the degree of ice ridging. In spite of the uttermost simplicity of DIR it was in a reasonably good agreement with the HEM-retrieved quantities considering the uttermost simplicity of the former both ridge density and total thickness. The agreement with DIR was somewhat better for the total ice thickness was somewhat better than agreement than for the ridge density, which. This may be related to the fact that a large fraction of ridging does not show in the density due to the cutoff. The correspondence of sail but affects the SAR-based and visual estimates behind DIR values. The generally good agreement between DIR, ridge density and total thickness was still good however, as is expected from the fact that the ridge size, as measured by sail height, and ridge density show no clear correlation. This indicates that it is possible to derive relevant data on deformed ice thickness from spatially distributed, surface observable density-like ridging characteristics together with climatologically typical values for ridge size. If ridging is close to isotropicity, the length per square km of ridge sail above cutoff is estimable as $\pi/2$ times ridge density, and further estimates on the fractional area covered by sail rubble are obtained from average sail width. means that DIR values estimated from SAR can be translated to navigationally relevant ridging or thickness parameters. The largest differences between the degree of ice ridging ridging and

HEM quantities were found in the coastal ridge field extending from ~~64°N 23°E to SW~~, 64° N 23° E towards SW (see Fig. 2). Both ridge density and average sail height were lower for this part in comparison with the extension of the same ridge field ~~to~~
5 towards NE from the said location. These values were also similar to those found in the mid basin, so the missing separation of this coastal ridge field into two categories apparent from the HEM data is clearly a shortcoming of the ice chart DIR data.

4.2 Monthly backscattering statistics

We concentrated ~~in our analysis in our analysis on~~ the areas with ~~IC SIC~~ over 80 %. ~~The~~ In areas with ice concentration varying from 80 % to 90 %, the amount of open water can impact the backscattering statistics significantly, particularly during high winds. This SIC limitation excluded the marginal ice zone (MIZ) which is defined to consist of ice areas with ~~IC SIC~~ from 15 % to 80 %, see e.g. Strong (2012). ~~In areas with IC 80–90 % the amount of open water area is rather high and it affects the backscattering statistics in a complicated manner depending on wind conditions and the spatial distribution of ice floes.~~
10 from our analysis. Almost all areas with ~~IC in this range~~ SIC from 80 % to 90 % belonged to level ice polygons in our data set. ~~The~~ In total the level ice category (~~DIR = DIR 1~~) covered well over 50 % of all the ice areas during our test period. ~~Because~~
15 ~~the resolution in~~

According to earlier studies the effect of incidence angle on σ^o for level ice and ridged ice is rather similar. In Mäkynen et al. (2002) it was found that the incidence angle dependence of σ_{HH}^o in logarithmic scale (dB) can be described by a linear model, with slopes -0.21 dB/degree for ridged ice and -0.25 dB/degree for level ice. It seems that using a slope of -0.23 for all the data is adequate for automated classification, and the ridged areas and level ice can be distinguished both at near and far range.
20 Also a more sophisticated approach, iteratively applying different slopes for level ice and ridged ice has been studied in Karvonen et al. (2002), but the effect on sea ice classification was minor. When inspecting the SAR mosaics visually most of the SAR frame boundaries were not visible or were hardly visible, indicating successful σ_{HH}^o incidence angle correction. For open water the correction may not work properly as for open water σ^o signatures depend heavily on wind speed and swell (i.e., surface roughness).

25 For HV channel, the combined incidence angle and noise floor correction is essential. Without this correction the HV backscattering and texture features derived from it can not be used in classification as the effect of the SAR mosaics were 500 m, the averaging of SAR pixels suppressed the fine scale (100 m) variation present especially in the ridged zones varying noise floor is so high (up to about 3 dB) and will cause a significant amount of misclassifications. However, after correction the HV channel data can be used in classification and we have not by visual inspection observed any significant differences in
30 near-range and far-range σ_{HV}^o for either open water, level ice or ridged ice classes.

We first looked at how the σ_{HH}^o distribution ~~changed~~ changes monthly from January to March in the 2013 in two main ice categories: level ice (~~DIR = DIR 1~~) and ridged ice (~~DIR > 1~~), DIR > 1 (see Fig 7). In the beginning of January level ice appeared mainly near the coast of the Sea of Bothnia, and the dominance of mostly thin ice in the Sea of Bothnia continued up to the middle of February whereas in the Bay of Bothnia appeared ~~also~~ ridged ice areas throughout the
35 whole test period. A significant fraction of the level ice pixels had σ_{HH}^o value below -18 dB indicating thin smooth ice. It is well-known that backscattering from thin ice can also generate large For thin ice relatively high σ_{HH}^o values (over -18 dB)

have also been observed (Mäkynen and Hallikainen, 2004). Also, the presence of the level ice areas with a relatively low SIC (80—90%) meant that open water patches affected the level ice backscattering statistics generating σ_{HH}^o yielding both high and low σ_{HH}^o values. The values of level ice σ_{HH}^o values above -18 dB were rather evenly distributed in January. The backscattering from ridged ice areas had a large σ_{HH}^o peak at -16.5 dB and most of the remaining pixel values ranged from -16 dB to -12 dB.

In February level ice σ_{HH}^o there still was present still had a sharp peak around -20 dB in the level ice area indicating indicating presence of very thin ice, but most of σ_{HH}^o values had spread between -16 dB and -11 dB. In the ridged areas a majority of σ_{HH}^o values were in the range between -17 dB and -12 dB. The mean and median values of σ_{HH}^o for level ice areas and ridged areas were almost identical in January and February. In March the backscattering σ_{HH}^o statistics for level and ridged areas showed a clearer here a clear discrepancy. The level ice σ_{HH}^o values were distributed rather evenly from -20 dB to -10 dB whereas the σ_{HH}^o values from ridged areas were concentrated in the range from -15 dB to -11 dB. The average σ_{HH}^o value from the ridged areas was over 2 dB higher than that of the level ice areas unlike in the previous months. There was a significant increase in the magnitude of σ_{HH}^o from ridged areas whereas this was not the case for the level ice σ^o value distribution σ_{HH}^o .

Based on Fig. 7 it was obvious that the magnitude of σ_{HH}^o alone could not be an efficient predictor in the estimation of the DIR value in January and February. We reached the same conclusion also in Section 3.3.2 when using the importance of feature measure in the connection with the RF classifier.

We assume that the small separation in the σ_{HH}^o values originating from level ice and deformed ridged ice during the first two test months was due to two major following two main reasons. As mentioned earlier the level ice areas had mostly IC less than 90% SIC less than 90%. So the backscattering from open water had a significant role in the case of level ice contribution to the level ice σ_{HH}^o . In addition, the level ice area ($DIR = 1$) had significant uncertainties in the FMI charts. The ice analysts responsible for the charts told us that in several cases it was difficult, nearly impossible, to discriminate reliably between level ice and slightly ridged ice ($DIR = 2$). In these cases they usually chose the level ice category if the icebreaker reports did not indicate any difficulties for merchant ships. If this kind of difficulties were taking place, a these had been reported, a slightly ridged ice category ($DIR = 2$) was chosen.

Considering the σ_{HH}^o contrast between level and ridged ice areas, the situation changed gradually in February and March towards a more distinct separation between these ice types. We shall analyze analyze the DIR charts separately for the period of strong thermodynamic growth (January, February) ice growth (January–February) and more stable winter conditions (March) in Section 4.3.

The examination of the monthly HV σ_{HV}^o distributions, see Fig. 8, confirms our findings for the HH σ_{HH}^o distribution. In January and February the values of σ_{HV}^o from level ice areas were close to the noise floor (-28 dB) and, hence, too hence uninformative for a meaningful analysis. In the ridged areas σ_{HV}^o were 2—3 dB higher but still in general rather low indicating a low sea ice surface roughness. In March the HV σ_{HV}^o distributions both in level ice areas and ridged areas were on average about 1—2 dB higher than in the previous months. Also the contrast in the backscattering σ_{HV}^o between ridged and level ice was more significant. As a consequence in consequence, the σ_{HV}^o values affected the classification result in March but were not useful in the earlier months.

4.3 Classification results for several ridging categories

There was a fundamental imbalance between the sample sizes representing level ice and ~~deformed-ridged~~ ice classes. The samples from all the ~~deformed-ridged~~ ice classes formed about 40 % of ~~the-ice-all~~ samples. If we had required that all the classes were of equal size in the training data, the amount of observations per ice category would have been low, e.g. less than 20 % of the level ice samples would have been utilized. When assessing the results we will keep in our mind the highly different sizes of the ice classes.

We run all our random forest classifications with the same set of tuning parameters for routine TreeBagger ~~Matlab-(2016)~~ ~~(Matlab, 2016)~~. From the set of eight ($p = 8$) features we randomly chose $m = 4$ features to be used in a split. Often the value $m = \sqrt{p}$, i.e. $m = 3$ here, would have been recommended ~~Hastie et al.-(2011)~~ ~~(Hastie et al., 2011)~~. However, we noted that slightly better results were obtained with $m = 4$ for our data set. Another fixed option was that the minimum number of data points in the end nodes was set to ten. We grew 200 trees during the classification. Results with more decision trees did not yield any significant improvement of the error rates.

In ~~the~~ first phase we investigated the capacity of the RF classifier to separate between level and ~~deformed-ridged~~ ice. Data of all ~~the~~ three months were included in the ~~analyzed-analysed~~ data set. The results are presented in Table 2. The overall classification rate was 82 % for the whole winter.

Next we examined the classification of all the four ridging categories through the ~~three-month~~ ~~three-month~~ period. The training and test data sets had been selected from each month in our data set. The overall classification rate for the test period was 71 %. Looking at the confusion matrix in Table 3 we can observe that the level ice category (93 %) had a very high classification rate. The classification of the three categories for ridged ice was more challenging. The ridged ice ~~category~~ ~~(DIR=3) had a correct mode ice class (category (DIR 3) was classified correctly in 45%) but high misclassification rate (55%) and over 30% % of the cases but over 30 %~~ of the observations were confused with level ice. The slightly ridged ice (~~DIR=2~~ ~~DIR 2~~) was poorly distinguished. Only in the ~~15%~~ ~~15 %~~ of the cases it was detected correctly. Most ~~samples~~ ~~(42%DIR 2 samples (42 %))~~ were assigned to the level ice ~~class-category~~ which in the light of the previous discussion could be expected, i.e. the preference among the FIS ice analysts to use level ice category over slightly ridged ice in the manual ice charts. The ridged ice category with the most accurate classification rate (~~59%~~ ~~59 %~~) was the heavily ridged ice category ~~DIR=4~~ ~~(DIR 4)~~.

To obtain more information on how the adopted approach works in rapidly changing ice conditions and on the other hand in more stable winter conditions we classified all three test months separately so that the training and testing data were collected during the same month. The overall accuracy of the monthly results varied largely being at its lowest in February (63 %), higher in January (83 %) and March (81 %). The corresponding Cohen's kappa figures were 0.60 (substantial agreement), 0.52 (moderate agreement) and 0.68 (substantial agreement). The separation between all ice categories was ~~easiest-to-perform-the~~ ~~best~~ in January (overall accuracy 83 %) where basically ~~just only~~ three DIR categories appeared. An evidence that the definition of different DIR categories were inconsistent with each other in January and February was that in these months the detection rate stayed below 100 % for the training data in the RF classification but it was 100 % for the March training data.

In each month level ice was the dominant ice category being over 50 % of all ice covered area. The DIR₂ category covered from 6 % to 19 % of the ice area depending on the month. In none of the months ~~it was~~ DIR₂ successfully detected due to its ambivalent definition with respect to the DIR₁ category. The DIR₃ category was successfully detected in January when its areal coverage was large (21 %), and in March when the boundaries between different ice categories were best defined during the test period. The heavily ridged ice fields (DIR= 4) were ~~usually wellfound~~ classified well, except in January when such ridged areas were rare (about 1 %). A possible explanation for the lowest accuracy rate in February was that then the boundaries between different DIR regions were often visually rather difficult to discern in the SAR imagery according to our experience. Fig. Figure 9 shows the variation of the detection rate for each DIR category in all the classification results. The most distinct feature in the results is the consistently poor detection rate for DIR₂.

In Fig. 10 we can see the Baltic Sea ice DIR classification result (left) for a ~~dual-pol pair of SAR mosaics from 9th of~~ dual-polarized SAR image mosaic on 9th February 2013 (Fig. 4 top). Also the reference DIR chart is shown for comparison (~~bottom left~~right). The automated DIR ~~charts~~ chart produced agreed well with the FIS ice charts for DIR values 1 and 3. However, the automated chart estimated a large fraction of DIR₂ category ice to DIR~~class 4. The DIR-categories-~~ 4 category. The automated DIR chart contained detailed markings of the cracks and openings in the central Bay of Bothnia which were ~~detected by the SAR chart but not from~~ not present in the FIS chart. We remark that the SAR mosaic ~~from 9th of on~~ 9th February looked very similar to the one ~~from 7th of on~~ 7th February (two days earlier), when the same cracks / openings can be found, but the corresponding FIS ice chart DIR showed ~~DIR=4~~ DIR₄ in the areas to which was now assigned ~~DIR=3.~~ DIR₃. This can be taken as an example of the subjectivity which is inherent to the manual ice charts.

There is a good overall agreement between the FIS chart and our DIR classification in Fig. 12. Most of the differences occur in the Bothnian Sea. There the FIS chart indicates mostly level ice and to some extent slightly ridged ice. On the other hand, the classification assigned to some FIS level ice areas the ridged ice and heavily ridged ice categories. Based on the SAR ~~HH and HV images~~ HH- and HV-polarization mosaics (see Fig. 11) those areas represent broken ice fields although the ridging intensity is hard to assess visually.

The major reason for the success of the classification in March is the better discrimination between the ridged ice and level ice in March than in the previous months as noted earlier in Section 4.2. The better discrimination property between ridging ice categories affects the final results in two ways. First, the segment boundaries of the dual-pol SAR imagery follow better the boundaries of the DIR classes in March (see Fig. 11). Secondly, the segmentwise feature vectors show more variability between different ridging categories in midwinter. The combination of these two factors determine the accuracy of the final classification.

5 Discussion and Conclusions

We studied the success of the segmentation by examining how large fraction of the segments contained practically just one ridging category, i.e. the area of some ridging category covered over 90 % of the segment area. The results were that in January 93 % of the SAR imagery belonged to such segments, in February 80 % and in March 86 %. The high fraction of well defined

segments in January is easy to understand because most of the ice was level ice (72 % of the area), and just three ridging categories appeared (the heavily ridged area covered less than 1 %). In February the fraction of level ice has decreased to 55% of the total area, all four ice categories were present and the total area of well defined segments decreased to 80 %. In March the level ice area covered 59 % of the total area and the area of the well defined segments was 86 %. Hence there was better segmentation accuracy in March than in February. In that month the total area of correctly classified ridging categories was 81 %, five percent points less than the total area of the well defined segments. In February the total area of correctly classified ridging categories was just 63 % which means 17 percent points less than the total area of the well defined segments. This analysis suggests that the main separating factor contributing to the classification accuracy was due to the more versatile feature vectors in March.

~~For navigation in sea ice~~

4.1 Importance of features

The selection of the eight features in Section 3.3.2 was based on their importance value. The features consisted of six HH-polarization based segment-wise features (see Section 3.2) and the segment-wise σ_{HV}^o as well as the SIC value extracted from the FIS ice chart. Their importance order when the training data covered the whole test period is presented in the Table 4. If the training data of just one month was used the importance order of features varied slightly. The importance of one specific feature is relative in the sense that it changes when the combination of the used features changes, i.e. the importance of one feature depends on which other features are included. The feature SIC remained however the most influential feature in every case. This is comprehensible because when SIC was between 80 % and 90 %, the ice area in question represented almost always the level ice category (DIR 1) and the corresponding feature vector was easy to classify correctly. The rather low importance value of σ_{HV}^o is probably due to the relative narrow range of the σ_{HV}^o values.

To gain more insight into how the eight selected features affected the classification accuracy, we studied the possibility of feature reduction using the March data as benchmark. The March data was selected because the diversity of ridging categories was largest then (see Table 3). We systematically eliminated the selected features one by one and reclassified the March test data using the remaining features. In none of the cases did the classification accuracy improve with fewer features. For several removed features (E_{HH} , ~~the Degree of Ice Deformation parameter is one of the most useful parameters, even for the less experienced ship captains, because it is basically indicating if a vessel can pass or not through a block of ice~~ AC_{HH} , ~~by knowing also the ship's characteristics. Subsequently,~~ K_{HH} , σ_{HV}^o) the classification accuracy decreased by just a few percent points (1–3 %). The removal of the ED_{HH} feature did not practically affect the accuracy at all. A significant misclassification rate increase was observed by the reduction of the σ_{HH}^o (-6%), CV_{HH} (-8%) and SIC (-12%). In every case the relative importance of the retained features changed. Hence the importance of the features present in Table 4 is true only in the context of this specific feature combination.

To see more clearly that the features included in the feature vector complement each other and make the classification more robust, we classified the March data using only three basic features ($f_3 = (SIC, \sigma_{HH}^o, \sigma_{HV}^o)$). The overall accuracy was just 64 %. Then we added the feature CV_{HH} to f_3 because CV_{HH} caused a significant drop in the accuracy. The accuracy remained

5 low, only 68 %. Our conclusion is that the information provided by the whole feature set is needed for a good description of
ridged ice field in the SAR imagery. If already a reduction of one feature decreases the classification accuracy, the reduction of
two or more features would degrade the classification further. The only feature which may be unnecessary is ED_{HH} . It was
also the most heuristic one (see Section 3.2). Because it does not decrease the classification accuracy, we kept it in our feature
combination. We also experimented replacing the HH-polarization based features with their HV-polarization counterparts. This
10 lead to degradation of the classification accuracy in all of the studied cases.

5 Discussion and Conclusions

The degree of ice ridging is one of the most useful parameters for ice navigating ships. It basically indicates, together with
ship characteristics, whether a vessel can safely pass through an ice field or not. The DIR also complements the ~~DIR can~~
~~function as a practical approximation for the~~ more general Risk ~~index~~ Index Outcome (RIO) ~~IMO (2016) for vessels operating~~
15 ~~in ice, when the existing ice parameters available are not sufficient (e. g. ice thickness, concentration). We have showed here~~
~~that the DIR parameter can be estimated rather well using the~~, defined by IMO (2016), as this does not address ridging but
~~relies on WMO categories for the stage of development. We have shown that an automated estimation of the DIR from SAR~~
texture features ~~and ice concentration~~, together with an ice concentration estimate, performs well when compared to the values
extracted from the ~~manually prepared manual~~ FIS ice charts. The ~~used features describe versatile~~ applied features describe
20 statistics of σ^o variation in the SAR imagery. ~~The DIR classification~~ DIR estimation is a suitable ~~operation task~~ for a SAR
based approach because the C-band SAR σ^o is sensitive to the large scale surface roughness ~~, i.e. due to~~ ridging.

~~Our first goal was to discriminate between ridged ice areas and level ice. This objective was reached with high accuracy~~
~~(82 %). The more ambitious goal to estimate the different DIR categories succeeded reasonably well. Especially the estimation~~
~~procedure worked well in midwinter when the ice conditions were stable and sea ice at its thickest. The promising results in~~
25 ~~the DIR estimation are important because our field campaign data demonstrated that the FIS DIR numeral serves as an efficient~~
~~indicator between the relative ridge density classes.~~

~~When we consider the purpose of the ice charts one significant factor must be considered. This is that in the ice infested areas~~
~~two types of ships proceed: ships with the assistance of an icebreaker or independently proceeding ships~~ Both independently
operating ships as well as ships relying on icebreaker support operate in ice infested waters. In the Baltic Sea most of the
30 merchant ships need ~~the~~ icebreaker assistance. ~~Ships~~ However, ships of the highest ~~ice class~~ Finnish-Swedish ice class in
the Baltic Sea, 1A Super, which is equivalent to the Polar Class PC 6, are designed to operate in difficult ice conditions
independently. The FIS ice charts are ~~targeted to the ships which advance in difficult ice conditions as a convoy following the~~
~~icebreaker~~ prepared to serve operations where ships follow an icebreaker in a convoy. Based on ~~the~~ discussions with the FIS ice
analysts the following remark ~~can be made: if is made.~~ If the ice conditions in an area do not pose a realistic risk for icebreakers
35 to get stuck, ~~in the FIS ice charts they are a smaller DIR value is~~ often assigned to ~~smaller degree of ice ridging, even if these~~
~~same areas may exhibit a considerable obstacle for independent ships. this area even if the area is difficult for independent~~

navigation of merchant ships. This is especially true for DIR 2. Hence, the availability of the icebreaker assistance ~~affects~~ has an effect on the DIR classifications in the FIS ice charts.

The primary objective of our DIR classification algorithm is to separate the severe ice conditions from the easier ~~ice~~ conditions navigable ones. To reach this goal ~~it relies only on the SAR~~ our DIR classification mainly relies on SAR image statistics. In some cases this may lead to differences between the FIS ice charts and our classification results because the FIS charts take ~~into account~~ the icebreaker factor ~~not seen into account, which is not present~~ in the SAR imagery. Hence, these two data sets can be interpreted from slightly different perspectives. An example of this difference is our earlier discussion related to Fig. 11. ~~As we noticed there were ice areas in the Bothnian Sea areas marked as slightly ridged ice (DIR=2) in the FIS DIR~~ chart, whereas our automated DIR chart showed higher degree of ridging for these areas. Our estimates closely followed the SAR features and the deformed ice areas are indicated in our DIR chart unlike in the FIS chart. The mentioned ridged areas very likely would not be difficult to break by an icebreaker. Thus, they are assigned in the FIS chart to the 10 and Fig. 12. One of the essential advantages of the automated DIR charts is that they include leads and small level ice areas between ridged areas not present in the coarser FIS charts.

We used a two-stage classification system. First, we segmented the dual-pol SAR mosaics. This succeeded slightly differently for different months. The area of level ice always exceeded 50 % of ice cover. In January it was highest, over 70 %. In that month 93 % of the segmented area belonged to the segments dominated by one ice category. In February and March the respective figures were 80 % and 86 %. It should be noted that for January only three DIR categories were present, unlike for the last two months where all four DIR categories appeared. We can conclude that the SAR signatures matched the DIR 2 category. If we consider a weaker vessel trying to pass independently through the same areas, the automated chart would be more informative, showing more accurately the passages which are difficult or easy to navigate. One essential advantage of the automated DIR charts over the FIS charts is that leads and small level ice areas between ridged ice zones are present in these charts but typically not in the FIS charts. boundaries best in March when the amount of ridging in our test period was at its maximum.

In the second phase of the classification we classified the segments using segment-wise feature vectors, classifying each segment to one ridging category. This succeeded best in March (82 %). Then the ridging intensity varied largely in different regions in our test area and the resulting texture of the SAR imagery was more versatile than in the other studied months. It is worth noting that in March the accuracy of the feature based classification was just five percentage points lower than the total area of the well-defined segments, i.e. the feature based classification succeeded with the RF classifier. This result can be regarded as a confirmation that the computed features were well suited to describe the ridging in the SAR imagery. In January the classification accuracy was at the same level as in March (83 %) but the area covered by the well-defined segments was much larger, indicating that the feature based classification did not perform as well as in March. In January and February the ice was thinner and the degree of ridging lower than in March. In these two months the σ_{HH}^o and σ_{HV}^o distributions from level ice and ridged ice overlapped substantively. This weak discrimination between level ice and ridged ice can be partly attributed to the subjective interpretation of the level ice category at FIS as discussed in Section 2.4.

Our approach works best in the Baltic Sea when the evolution of winter has passed the freezing phase and a significant amount of ridging has occurred. Then ridging strongly contributes to the texture of the SAR images.

Before setting up an operational ~~detector for~~ DIR estimation system over the Baltic Sea ~~area~~, we need to test our algorithm with ~~at least two~~ more winters data and ~~optimize to~~ optimise it for the best possible result. In an operational mode we can ~~add to our training data the use the most recent~~ SAR/FIS IC data collected during days before the day FIS prepares its ice chart. ~~The freshest classification result available for FIS is the DIR classification based on the SAR and the FIS IC data from the previous day. This should improve the classification accuracy of the DIR chart. Currently our training data rely on older data.~~ and SIC data for the training. Instead of using the SIC information present in the FIS charts we can also use an automated radiometer or combined radiometer/SAR based SIC data. Currently, the finest resolution in operational SIC products is offered by the Advanced Microwave Scanning Radiometer 2 (AMSR2) based ASI sea ice algorithm (Beitsch et al., 2014). The grid size in the product is 3.125 km. To improve our product during ice forming or melting periods, we can include ice thickness as an additional parameter in the future DIR classifications.

~~Our algorithm can be extended for use in~~ We have plans to extend our algorithm to the Arctic Ocean, where there is a ~~higher~~ high demand for reliable ice information ~~on prevailing for independently navigating merchant vessels. Harsh ice conditions, and icebreaker assistance often not available in a reasonable time. By having an~~ as those in March 2013 in this study, ~~prevail much longer in the Arctic seasonal ice regime than in the Baltic. The consistent availability of DIR charts in Arctic would enable the monitoring of areal evolution of different ridging intensity categories. An automated DIR chart utilizing the fine resolution (100 m or less) fine resolution~~ SAR data and ~~qualitatively presenting classifying~~ the suitability of ~~the ice conditions for navigation~~, would be a remarkable gain for different areas for navigation would benefit all Arctic shipping. ~~E. g. in the Kara Sea year-round shipping will significantly increase in the coming years through the high volume liquefied natural gas (LNG) production in the Yamal Peninsula. For Arctic sea areas, however, the algorithm would be more difficult to validate without having knowledge of the true areal DIR values. The current Russian Ice Charts contain only the general WMO sea ice classes without any indication of degree of ridging. Perhaps the regional sea ice model implemented for the Kara Sea (Dr. Andrea Gierisch, private communication) will be helpful in the development of an automated classifier. One alternative is also to use the Baltic Sea ice data as a first trial to train the algorithm for the Arctic conditions~~

The ice ridging and its backscattering mechanisms are similar in the Baltic and Arctic. In general, Arctic sea ice is thicker and ridges can be larger than in the Baltic. However, the backscattering increases as a function of the surface roughness in both areas. We have visually inspected SAR imagery over seasonal sea ice in Barents and Kara seas and the look similar than corresponding imagery over the Baltic. This builds confidence that our algorithm, with possible minor adjustments, should be applicable to the Arctic first year ice. Nevertheless, the possible applicability of the method to the multi-year ice areas must be studied separately.

Data availability. All data can be obtained by contacting the first author.

15 *Author contributions.* The concept of the study was conceived by AG, JK and MS. The SAR processing was done and reported jointly by JK and AG. MM commented the SAR processing. The statistical analysis was performed and written by MS. ML analyzed and wrote about the 2011 field data. MM and AG wrote the introduction. AG and MS wrote the conclusion section. JV commented the results and the conclusions from the point of view of an ice analyst. All authors contributed to the editing of the text.

Competing interests. The authors declare that they have no competing interest.

20 *Acknowledgements.* Firstly, the authors wish to thank the editor and the reviewers for the constructive comments and suggestions provided, which greatly improved the final version of the paper. We also thank Eero Rinne for proofreading the paper and making valuable comments. The work of Alexandru Geciuc, Juha Karvonen and Marko Mäkynen was supported by Space-borne observations for detecting and forecasting sea ice cover extremes (SPICES) funded by the European Union’s Horizon 2020 Programme (Grant Agreement No. 640161). Markku Similä and Mikko Lensu were supported by the KAMON project funded by Academy of Finland (contract 283034) and the BONUS STORMWINDS project funded jointly by the EU and the Academy of Finland (contract 291683).

25 References

- [Barale, V. and Gade, M. \(Eds.\): Remote Sensing of the European Seas, Springer Science+Business Media B.V., ISBN-13: 978-1402067716, 2008.](#)
- Barber, D. G. and LeDrew, E. F.: SAR sea ice discrimination using texture statistics: A multivariate approach. *Photogr. Eng. and Remote Sensing*, 57, ~~385-395~~[385-395](#), 1991.
- 30 [Beitsch, A., Kaleschke, L. and Kern, S.: Investigating High-Resolution AMSR2 Sea Ice Concentrations during the February 2013 Fracture Event in the Beaufort Sea. *Remote Sensing*, 6, 3841-3856, 2014.](#)
- Berthod, M., Kato, Z., Yu, S., ~~and~~ [Zerubia, J.:](#) Bayesian image classification using Markov random fields, *Image and Vision Computing*, 14, ~~285-295~~[285-295](#), 1996.
- Besag, J.: Spatial ~~Interaction and the Statistical Analysis of Lattice Systems~~[interaction and the statistical analysis of lattice systems](#), J. Royal Statistical Society, Series B, 36, ~~192-236~~[192-236](#), 1974.
- 35 Breiman, L.: Random forests, *Machine Learning*, 24, ~~5-32~~[5-32](#), 2001.
- Canadian Ice Service, MANICE, Manual of Standard Procedures for Observing and Reporting Ice Conditions, Revised Ninth Edition, June 2005.
- Canny, J.: A Computational ~~Approach to Edge Detection~~[approach to edge detection](#), *IEEE Trans. Pattern Analysis and Machine Intelligence*, 8, ~~679-698~~[679-698](#), 1986.
- ~~Carlström~~
- 5 [Calström, A. ~~and~~ Ulander, L. M. H.: Validation of Backscatter Models for Level and Deformed Sea Ice](#)[backscatter models for level and deformed sea ice](#) in ERS-1 SAR ~~Images~~[images](#), *Int. J. Remote Sens.*, 16, ~~3245-3266~~[3245-3266](#), 1995.
- ~~Calström, A. ~~and~~ Ulander, L. M. H.: C-band backscatter signatures of old sea ice in the central Arctic during freeze-up. *IEEE Trans. Geoscience and Remote Sensing*, 31, ~~819-829~~[819-829](#), 1993.~~
- ~~Cerný~~[Cerný](#), V.: Thermodynamical approach to the traveling salesman problem: An efficient simulation algorithm, *J. Optimization Theory and Applications*, 45, ~~41-51~~[41-51](#), 1985.
- 10 ~~Clausi, D. A.: Comparison and fusion of co-occurrence, Gabor, and MRF texture features for classification of SAR sea ice imagery, *Atmos. Ocean*, 39, 183-194, 2001.~~
- ~~Clausi, D. A., Qin, A. K., Chowdhury, M. S., Yu, P. ~~and~~ Maillard, P.: MAGIC: MAp-Guided Ice Classification System, *Can. J. Remote Sensing*, 36, ~~S13-S25~~[S13-S25](#), 2010.~~
- 15 ~~Dempster, A. P., Laird, N. M. ~~and~~ Rubin, D. B.: Maximum Likelihood from Incomplete Data via the EM Algorithm, *J. Royal Statistical Society Series*, 39, pp. ~~1-38~~[1-38](#), 1977.~~
- ~~Deng, H. ~~and~~ Clausi, D. A.: Gaussian MRF ~~rotation-invariant~~[rotation-invariant](#) features for image classification, *IEEE Trans. Pattern Analysis and Machine Intelligence*, 26, 7, ~~951-955~~[951-955](#), 2004.~~
- ~~Deng, H. ~~and~~ Clausi, D. A.: Unsupervised segmentation of synthetic aperture radar sea ice imagery using a novel Markov random field model, *IEEE Trans. Geoscience and Remote Sensing*, 43, ~~528-538~~[528-538](#), 2005.~~
- 20 ~~Dierking, W., Pettersson, M. I. ~~and~~ Askne, J.: Multifrequency scatterometer measurements of Baltic Sea ice during EMAC-95, *Int. J. Remote Sens.*, 20, ~~349-372~~[349-372](#), 1999.~~
- ~~Efron, B. and Tibshirani, R. ~~J.:~~ An Introduction to the Bootstrap, Chapman ~~and Hall, London, 1993.~~ [& Hall/CRC Monographs on Statistics & Applied Probability, CRC Press, 1994.](#)~~

- 25 Haas, C., Lobach, J., Hendricks, S., Rabenstein, L. ~~and~~ Pfaffling, A.: Helicopter-borne measurements of sea ice thickness, using a small and lightweight, digital EM system, *J. Applied Geophysics*, 67, ~~234-241~~234-241, 2009.
- Hallikainen, M.: Microwave remote sensing of low-salinity sea ice., In F. Carsey (Ed.), *Microwave Remote Sensing of Sea Ice*(~~pp.361-373~~), 361-373. Washington D.C.: AGU, 1992.
- Hastie, T., Tibshirani, R. ~~and~~ Friedman, J.: *The Elements of Statistical Learning*, 2nd ed., Springer, New York, 2011.
- 30 International Maritime Organisation (IMO), Guidance on methodologies for assessing operational capabilities and limitations in ice, MSC.1/Circ.1519, June, 2016.
- Lindsay, R. W., Zhang, J. ~~and~~ Rothrock, D. A.: Sea-ice deformation rates from satellite measurements and in a model, *Atmos. Ocean*, 41, ~~1-21~~35-47, 2003.
- ~~Karvonen, J.: Baltic Sea Ice SAR Segmentation and Classification Using Modified Pulse-Coupled Neural Networks, IEEE Trans. Geoscience and Remote Sensing, 42, 1566-1574, 2004.~~
- 35 Karvonen, J.: Evaluation of the operational SAR based Baltic Sea ice concentration products-, *Adv. Space Res.* 56, ~~119-132~~119-132, 2015.
- Karvonen, J., Vainio, J., Marnela, M., Eriksson, P. and Niskanen, T., A Comparison Between High-Resolution EO-Based and Ice Analyst-Assigned Sea Ice Concentrations, IEEE Journal of Selected Topics in Applied Earth Observations and Remote Sensing, v. 8, n. 4, pp. 1799-1807, 2015.
- Karvonen, J., Similä, M. ~~and~~ Mäkyne, M.: Open Water Detection from Baltic Sea Ice Radarsat-1 SAR Imagery, *IEEE Geoscience and Remote Sensing Letters*, 2, ~~275-279~~275-279, 2005.
- 5 Karvonen, J.: Baltic Sea ice SAR segmentation and classification using modified pulse-coupled neural networks, IEEE Trans. Geoscience and Remote Sensing, 42, 1566-1574, 2004.
- Karvonen, J., Similä, M. and Mäkyne, M.: An Iterative Incidence Angle Normalization Algorithm for Sea Ice SAR Images, Proc IEEE International Geoscience and Remote Sensing Symposium (IGARSS'02), v.3, pp. 1524-1527, 2002.
- Kirkpatrick, S., Gelatt Jr., C. D. ~~and~~ Vecchi, M. P.: Optimization by Simulated Annealing, Science, 220, 671-680, 1983.
- 10 ~~Kankaanpää~~
- Kankaanpää, P., Distribution, morphology and structure of sea ice pressure ridges in the Baltic Sea-, Fennia-International Journal of Geography, 175, ~~139-240~~,139-240, 2013.
- Kato, Z.: Multi-scale Markovian Modelisation in Computer Vision with Applications to SPOT Image Segmentation, PhD thesis, INRIA Sophia Antipolis, France, 1994.
- 15 Kato, Z., Zerubia, J. ~~and~~ Berthod, M.: Satellite image classification using a modified Metropolis dynamics, *Proc. IEEE International Conf. on Acoust., Speech and Sig. Proc.*, 3, ~~573-576~~573-576, San Francisco, CA, March ~~23-26~~23-26, 1992.
- Leigh, S., Wang, Z. ~~and~~ Clausi, D.: Automated Ice-Water Classification Using Dual Polarization SAR Satellite Imagery, *IEEE Trans. Geoscience and Remote Sensing*, 52, ~~5529-5539~~,2014,5529-5539, 2013.
- Lensu, M.: The evolution of ridged ice fields. Helsinki University of Technology, Ship ~~Laboratory report series M-280~~.Laboratory report series M, 280, 140, 2003.
- 20 Leppäranta, M. ~~and~~ Hakala, R.: The structure and strength of first-year ice ridges in the Baltic Sea., *Cold Reg. Sci. Tech.*, 20, ~~295-311~~295-311, 1992.
- Lewis, J. E., Leppäranta, M., and Granberg, H. B.: Statistical properties of sea ice surface topography in the Baltic Sea. *Tellus A*, 45, ~~127-142~~127-142, 1993.

- 25 Maillard, P., Clausi, D. A. ~~and~~ Deng, H.: Map-guided sea ice segmentation and classification using SAR imagery and a MRF segmentation scheme, *IEEE Trans. Geoscience and Remote Sensing*, 43, ~~2940-2951~~2940–2951, 2005.
- MATLAB and Statistics Toolbox Release 2016a, The MathWorks, Inc., Natick, Massachusetts, United States.
- MDA (MacDonald, Dettwiler and Associates, Ltd.), Radarsat-2 product description, Tech. Rep. RN-SP-52-1238, Issue 1/11, MDA, BC, Canada, pp. 84., May 5, 2014.
- 30 Mäkynen, M. and Hallikainen, M.: Investigation of C- and X-band backscattering signatures of the Baltic Sea ice., *Int. J. Remote Sens.*, 25, 2061–2086, 2004.
- Mäkynen, M., Manninen, ~~TA~~, Similä, M., Karvonen, J. ~~and~~ Hallikainen, M.: Incidence Angle ~~Dependence of the Statistical Properties~~ dependence of the statistical properties of the C-Band ~~HH-Polarization Backscattering Signatures~~ HH-polarization backscattering signatures of the Baltic ~~Sea Ice, IEEE Trans~~ sea ice, IEEE Trans. *Geoscience and Remote Sensing*, 40, ~~2593-2605~~2593–2605, 2002.
- 35 Mäkynen M., Manninen T., Similä, M., Karvonen, J. and Hallikainen, M.: Investigation of C- and X-band Incidence angle dependence of the mean C-band HH-polarization backscattering signatures of the Baltic Sea ice., *Int. J. Remote Sens.*, 25, 2061–2086, 2004. *Proc. IEEE International Geoscience and Remote Sensing Symposium (IGARSS'02)*, v. III, pp. 1518-1520, 2002.
- Metropolis, N., Rosenbluth, A. W., Rosenbluth, M. N., Teller, A. H. ~~and~~ Teller, E.: Equation of State Calculations by Fast Computing Machines, *J. Chemical Physics*, 21, 1087, 1953.
- ~~Ochilov, S.~~
- 5 Moen, M. A. N., Doulgeris, A. P., Anfinson, S. N., Renner, A. H. H., Hughes, N., Gerland, S. and Eltoft, T.: Comparison of feature based segmentation of full polarimetric SAR satellite sea ice images with manually drawn ice charts, *The Cryosphere*, 7, 1693-1705, <https://doi.org/10.5194/tc-7-1693-2013>, 2013.
- Ochilov, S. and Clausi, D. A.: Operational SAR Sea-Ice Image Classification, *IEEE Trans. Geoscience and Remote Sensing*, 50, 11, 4397–4408, 2012.
- Palosuo, E., Leppäranta, M. ~~and~~ Seinä, A.: Formation, thickness and ~~stability~~ stability of fast ice along the Finnish coast., Res. Rep. 36, Winter Navig. Res. Board, Helsinki, Finland, 1982.
- Pfaffhuber, A. A., Hendricks, S. and Kvistedal, Y. A.: Progressing from 1D to 2D and 3D near-surface airborne electromagnetic mapping with a multisensor, airborne sea-ice explorer, *Geophysics*, 2012.
- Rao, C. R.: The utilization of multiple measurements in problems of biological classification, *J. Royal Statistical Society, Series B*, 10, ~~159–203~~159–203, 1948.
- 15 Rinne, E. and Similä, M.: Utilisation of CryoSat-2 SAR altimeter in operational ice charting, *The Cryosphere*, 10, 121-131, 2016.
- Ripley, B. D.: *Pattern Recognition and Neural Networks*, Cambridge University Press, 1996.
- Rue, H. ~~and~~ Held, L.: *Gaussian Markov Random Fields: Theory and Applications*, Chapman & Hall/CRC Press, 2005.
- Sandven, S., Alexandrov, V., Zakhvatkina, N. ~~and~~ Babiker, M.: Sea ice classification using Radarsat-2 dual-polarisation data, *Proc ESA SeaSAR 2012*, SP-709, 2012.
- 20 ~~A. Seinä~~
- Seinä, A. ~~and~~ Palosuo, E.: The classification of the maximum annual extent of ice cover in the Baltic Sea ~~1720-1995~~1720–1995., Meri Report No. 27, 79-91, Finnish Institute of Marine Research, Finland, 1996.
- Seinä, A. ~~and~~ Peltola, J.: Duration of ice season and statistics of fast ice thickness along the Finnish coast ~~1961-1990~~1961–1990., Finnish Marine Research Report 258, ~~1-46~~1–46, Finnish Institute of Marine Research, Finland, 1991.

- Shannon, C. E.: A Mathematical Theory of Communication, The Bell System Technical Journal, 27, ~~379–423~~, ~~623–656~~379–423, 623–656, 1948.
- Similä, M.: SAR image segmentation by a two-scale contextual classifier, Proc. SPIE Conf. Image and Signal Proc. for Remote Sensing, v. 5 2315, Ed. J. Desachy, ~~434–443~~434–443, 1994.
- Similä, M., Arjas, E., Mäkynen, M. ~~and~~ Hallikainen, M. T.: A Bayesian classification model for sea ice roughness from scatterometer data, IEEE Trans. Geoscience and Remote Sensing, 39, 7, ~~1586–1595~~1586–1595, 2001.
- Similä, M., Mäkynen, M. ~~and~~ Heiler, I.: Comparison between C band synthetic aperture radar and 3-D laser scanner statistics for the Baltic Sea ice, J. Geophys. Res. Oceans, 115, C10056, 2010.
- 10 Shokr, M.: Compilation of a radar backscatter database of sea ice types and open water using operational analysis of heterogeneous ice regimes, Can. J. Remote Sensing, 35, ~~369–384~~369–384, 2009.
- Soh, L. ~~K.~~, K. and Tsatsoulis, C.: Texture analysis of SAR sea ice imagery using gray level co-occurrence matrices, IEEE Trans. Geoscience and Remote Sensing, 37, ~~780–795~~780–795, 1999.
- Soh, L. K., Tsatsoulis, C., Gineris, D. ~~and~~ Bertoia, C.: ARKTOS: an intelligent system for SAR sea ice image classification, IEEE Trans. 15 Geoscience and Remote Sensing, 42, ~~229–248~~229–248, 2004.
- Souyris, J. ~~C.~~, Imbo, P., Fjortoft, R., Mingot, S. ~~and~~ Lee, J. ~~S.~~: Compact polarimetry based on symmetry properties of geophysical media: the $\pi/4$ mode, IEEE Trans. on Geoscience and Remote Sensing, 43, 3, ~~634–646~~634–46, 2005.
- Strong, C.: Atmospheric influence on Arctic marginal ice zone position and width in the Atlantic sector, ~~February–April~~ February–April ~~1979–2010~~1979–2010, Clim. Dynam., 39, 12, ~~3091–3102~~3091–3102, 2012.
- 20 Wessel, P. and Smith W. H. F.: A global self-consistent, hierarchical, high-resolution shoreline database. J. Geophys. Res., 101, ~~8741–8743~~8741–8743, 1996.
- WMO *Sea ice Nomenclature*, WMO n. 259 (rev, 2010), 2010.
- Yu, Q. ~~and~~ Clausi, D. A.: SAR sea-ice image analysis based on iterative region growing using semantics, IEEE Trans. Geoscience and Remote Sensing, 45, 3919–3931, 2007.

Table 1. Comparison of ice ridge statistical parameters derived from the HEM data with ice chart degrees of ice ridging.

DIR	3	4
Number of cells km^2	590	1079
Ridge sail height [m]	0.61	0.61
Ridge density [1/km]	12.7	21.5
Total thickness [m]	0.76	1.08

Table 2. Confusion matrix for the level ice vs. ridged ice (categories DIR 2 to 4) in the RF classification for the whole test period.

<u>FMFIS</u>	Sample size	Ice category	
Ice category	N	level	ridged
level	59 %	87 %	13 %
ridged	41 %	24 %	76 %

Table 3. Confusion matrix for all ridged ice categories in the RF classification ~~for the test period.~~

FMI DIR-	sample-size N- DIR-	FIS DIR	Sample size N	RF classes			
				1	2	3	4
whole period	1		59 %	93 %	1 %	4 %	2 %
	2		14 %	42 %	15 %	28 %	15 %
	3		15 %	32 %	5 %	45 %	18 %
	4		12 %	18 %	3 %	20 %	59 %
Confusion matrix for the RF classification in January FMI January 2013	sample-size DIR N-1		2-3-4-1-72 %	94 %	2 %	4 %	0 %
	2		6 %	48 %	15 %	36 %	0 %
	3		21 %	35 %	1 %	64 %	0 %
	4		1 %	47 %	0 %	21 %	32 %
Confusion matrix for the RF classification in February height FMI February 2013	sample-size DIR N-1		2-3-4-1-55 %	92 %	1 %	5 %	2 %
	2		19 %	46 %	13 %	21 %	20 %
	3		17 %	21 %	6 %	29 %	44 %
	4		9 %	18 %	16 %	16 %	51 %
Confusion matrix for the RF classification in March FMI March 2013	sample-size DIR N-1		2-3-4-1-59 %	92 %	4 %	2 %	2 %
	2		9 %	16 %	32 %	21 %	31 %
	3		10 %	44 %	4 %	51 %	1 %
	4		22 %	4 %	2 %	6 %	88 %

Table 4. The importance of different features when the training data covered the whole test period.

<u>feature</u>	<u>SIC</u>	<u>K_{HH}</u>	<u>σ_{HH}^2</u>	<u>ED_{HH}</u>	<u>AC_{HH}</u>	<u>E_{HH}</u>	<u>CV_{HH}</u>	<u>σ_{HV}^2</u>
<u>importance (%)</u>	<u>13.9</u>	<u>11.9</u>	<u>11.7</u>	<u>11.3</u>	<u>8.1</u>	<u>7.2</u>	<u>7.2</u>	<u>6.9</u>

25 Figure Captions

Figure 1. Example of RS-2 dual polarized SAR image mosaic (left: HH, middle HV) over the Baltic Sea on 15th March 2013 and the corresponding DIR chart (right) showing the manually drawn polygons of different degrees of ice ridging, including the marginal ice zone detection mask based on the ice concentration values between 25 % and 80 % and open-water mask based on the ice concentration values smaller than 25 %.

30 Figure 2. ~~Example of RS2 SAR data from~~ A 20 km section of combined surface laser profile and EM thickness profile, and the corresponding ice thickness histogram for the 2011 field campain data. The laser profile resolves all ridge sails while the EM profile averages thickness over an altitude dependent footprint, typically 50 m.

Figure 3. Example of RS-2 SAR data mosaic in HH and HV polarization and the corresponding DIR chart with values extracted from the digitized Finnish ice charts, for 9th of March 2013 in the upper panel and 12th March in the lower panel. In both days the SAR shows similar ice situation, albeit the two DIR charts show changes in the ridging classes: in the NW of the Bay of Bothnia, from slightly ridged ice (DIR 2) to level-ice (DIR 1) and in the central to southern part of the Bay of Bothnia, from heavily ridged ice (DIR 4) to slightly ridged ice (DIR 2). In this case, the data from 9th March 2013 was removed from
5 the classification.

Figure 4. Example of RS2 SAR data from 9th February 2013 in HH (top left) and HV (top right) polarizations together with the segmentation result (bottom left) and the ~~Ice Concentration Chart~~ SIC chart (bottom right).

Figure 3-5. Example of SAR features computed for central BOB part of the Bay of Bothnia. a-b) original SAR in 500m HH and HV in 500 m resolution; c) Segmentation result of the first principal component of the original HH and HV SAR channels; d) FIS-SIC (1-100%); e) FIS DIR (1-4); f-g) segment means; h) AC_{HH} ; i) AC_{HV} ; j) E_{HH} ; k) E_{HV} ; l) CV_{HH} ; m) CV_{HV} ; n) ED_{HH} ; o) ED_{HV} ; p) K_{HH} ; q) K_{HV} .

Figure 4. ~~The importance of different features when the training data covered the whole test period. The order of the features~~
1025 ~~is: AC_{HH} , IC, ED_{HH} , E_{HH} , K_{HH} , σ_{HH}^o , CV_{HH} , σ_{HV}^o , see text for explanations.~~

Figure 5-6. Ridge density variation in the test area (upper panel, left), HEM thickness measurements (upper panel, right), DIR indices (lower panel, left), ~~ridge density histogram in~~ histogram of ridge densities determined for one 1x1 NM cell (lower panel, right).

Figure 6. ~~The monthly HH~~ 7. The monthly HH-polarization backscattering coefficient distribution for level (dashed line) and ridged (solid line) ice areas. The results are for January (left), February (middle) ~~and~~ and March (right) ~~in~~ 2013.
1030

Figure 7. ~~The monthly HV~~ 8. The monthly HV-polarization backscattering coefficient distribution for level (dashed line) and ridged (solid line) ice areas. The results are for January (left), February (middle) ~~and~~ and March (right) ~~in~~ 2013.

Figure 8-9. The detection rates for the different DIR categories in all the classification.

Figure 9. ~~Degree of Ice Ridging~~ 10. Degree of ice ridging extracted from the digitized Finnish Ice Charts (~~bottom on 9th February 2013~~) (left) and the result of estimated DIR based on our RF approach (right). The DIR charts includes the marginal ice zones (25 % < IC < 80 %) extracted from the ~~Ice Concentration~~ ice concentration charts (see Fig. 4).
1035

Figure ~~10-11~~. Example of RS2 SAR data ~~from on~~ 15th ~~of~~ March 2013 in HH (top left) and HV (top right) polarizations. Middle left: MRF MMD ~~Segmentation segmentation~~ result for the HH-HV ~~first~~ PCA component. Middle right: ~~Ice Concentration Chart ice concentration chart~~ extracted from the Finnish ~~Ice Chart ice chart~~.

1040 Figure ~~11-12~~. ~~Degree of Ice Ridging-12. Degree of ice ridging~~ extracted from the digitized Finnish ~~Ice Charts Bottom-right: ice charts on 15th March 2013 (left);~~ Result of Estimated DIR based on our RF approach (~~right~~). The DIR charts includes the marginal ice zones ($25\% < IC < 80\%$) extracted from the ~~Ice Concentration ice concentration~~ charts (see Fig. 11).

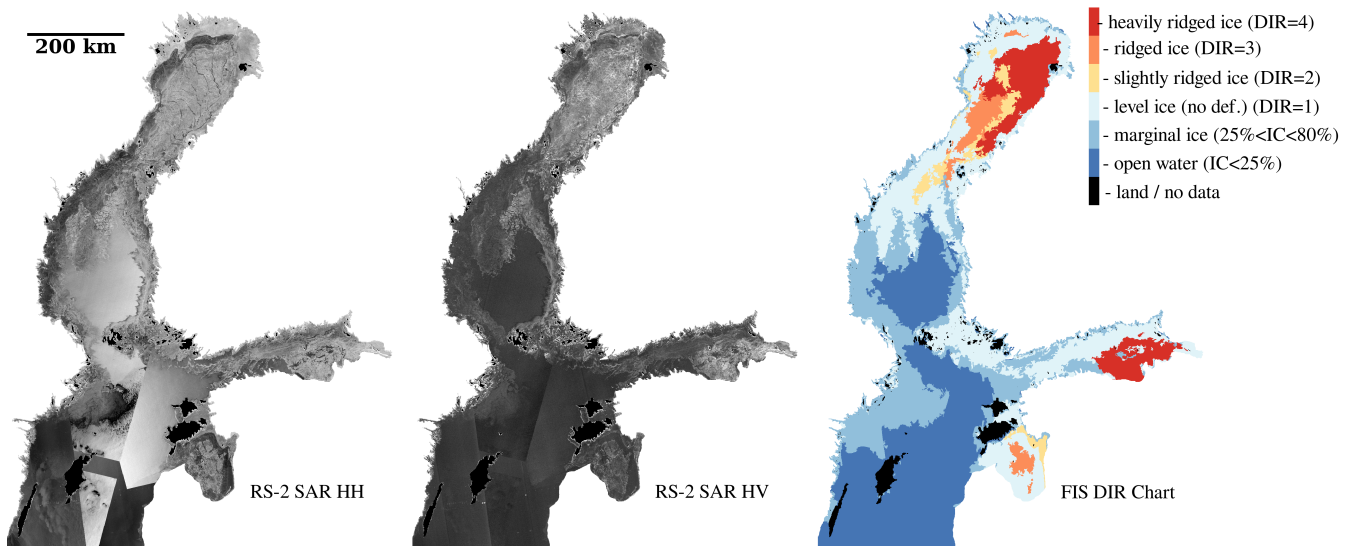


Figure 1. Example of RS-2 dual polarized SAR image mosaic (left: HH, middle HV) over the Baltic Sea on 15th March 2013 and the corresponding DIR chart (right) showing the manually drawn polygons of different degrees of ice ridging, including the marginal ice zone detection mask based on the ice concentration values between 25 % and 80 % and open-water mask based on the ice concentration values smaller than 25 %.

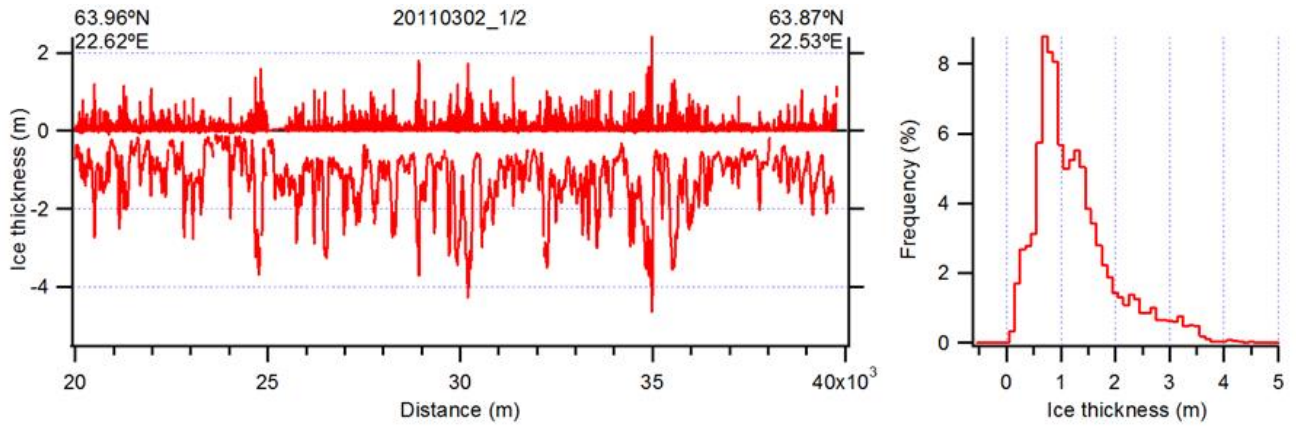


Figure 2. A 20 km section of combined surface laser profile and EM thickness profile, and the corresponding ice thickness histogram for the 2011 field campaign data. The laser profile resolves all ridge sails while the EM profile averages thickness over an altitude dependent footprint, typically 50 m.

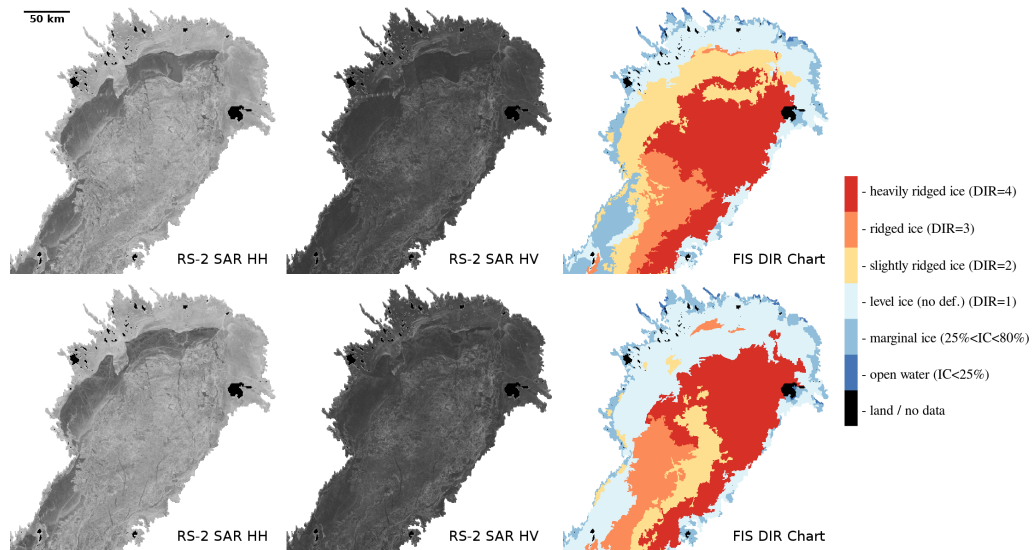


Figure 3. Example of RS2-RS-2 SAR data mosaic in HH and HV polarization and the corresponding DIR chart with values extracted from the digitized Finnish ice charts, for 9th February-March 2013 in HH the upper panel and 12th March in the lower panel. In both days the SAR shows similar ice situation, albeit the two DIR charts show changes in the ridging classes: in the NW of the Bay of Bothnia, from slightly ridged ice (top-left DIR 2) and HV to level-ice (top-right DIR 1) polarizations together with and in the segmentation result central to southern part of the Bay of Bothnia, from heavily ridged ice (bottom-left DIR 4) and to slightly ridged ice (DIR 2). In this case, the Ice-Concentration Chart data from 9th March 2013 was removed from the classification.

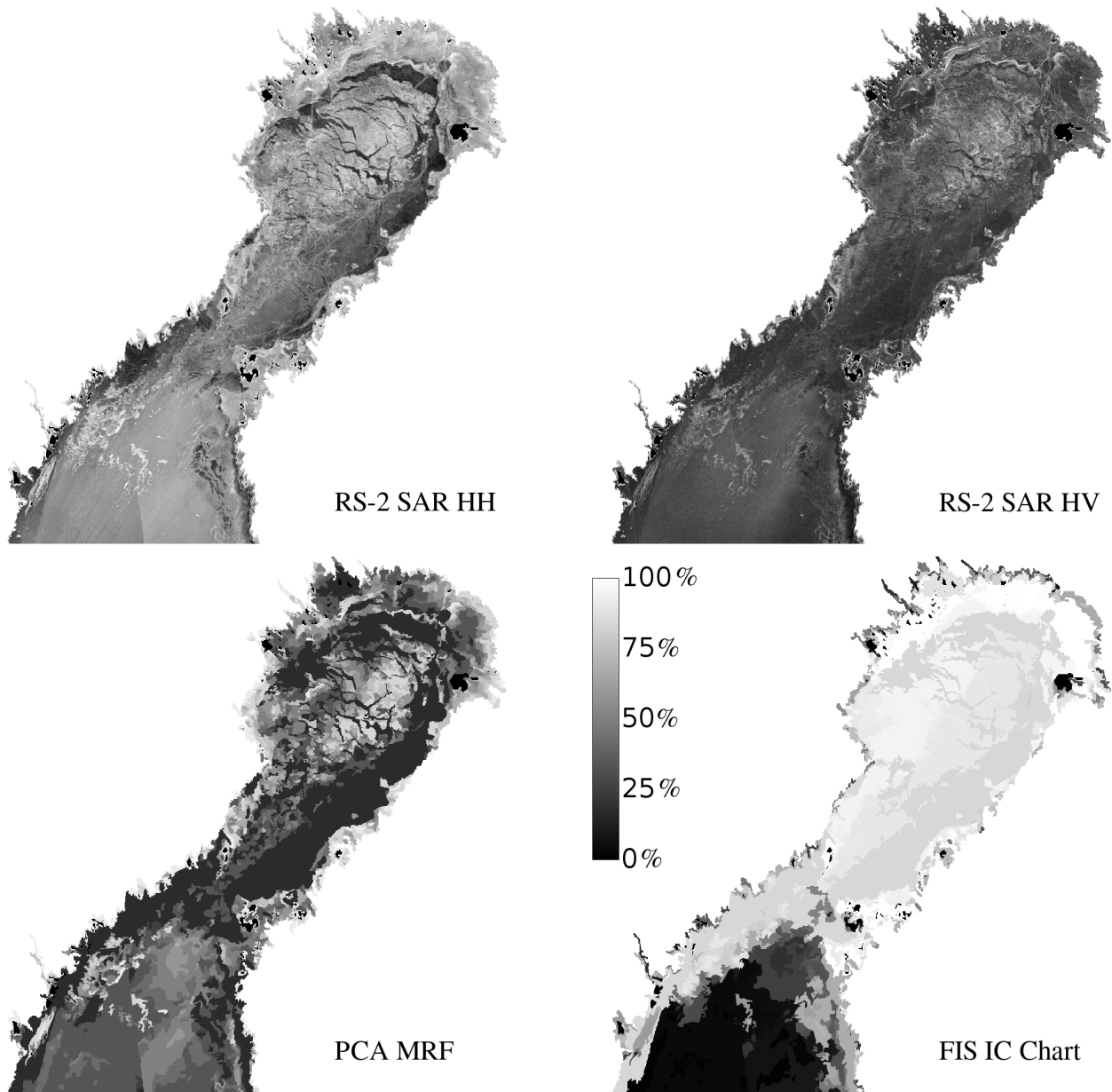


Figure 4. Example of RS2 SAR data from 9th February 2013 in HH (top left) and HV (top right) polarizations together with the segmentation result (bottom left) and the SIC chart (bottom right).

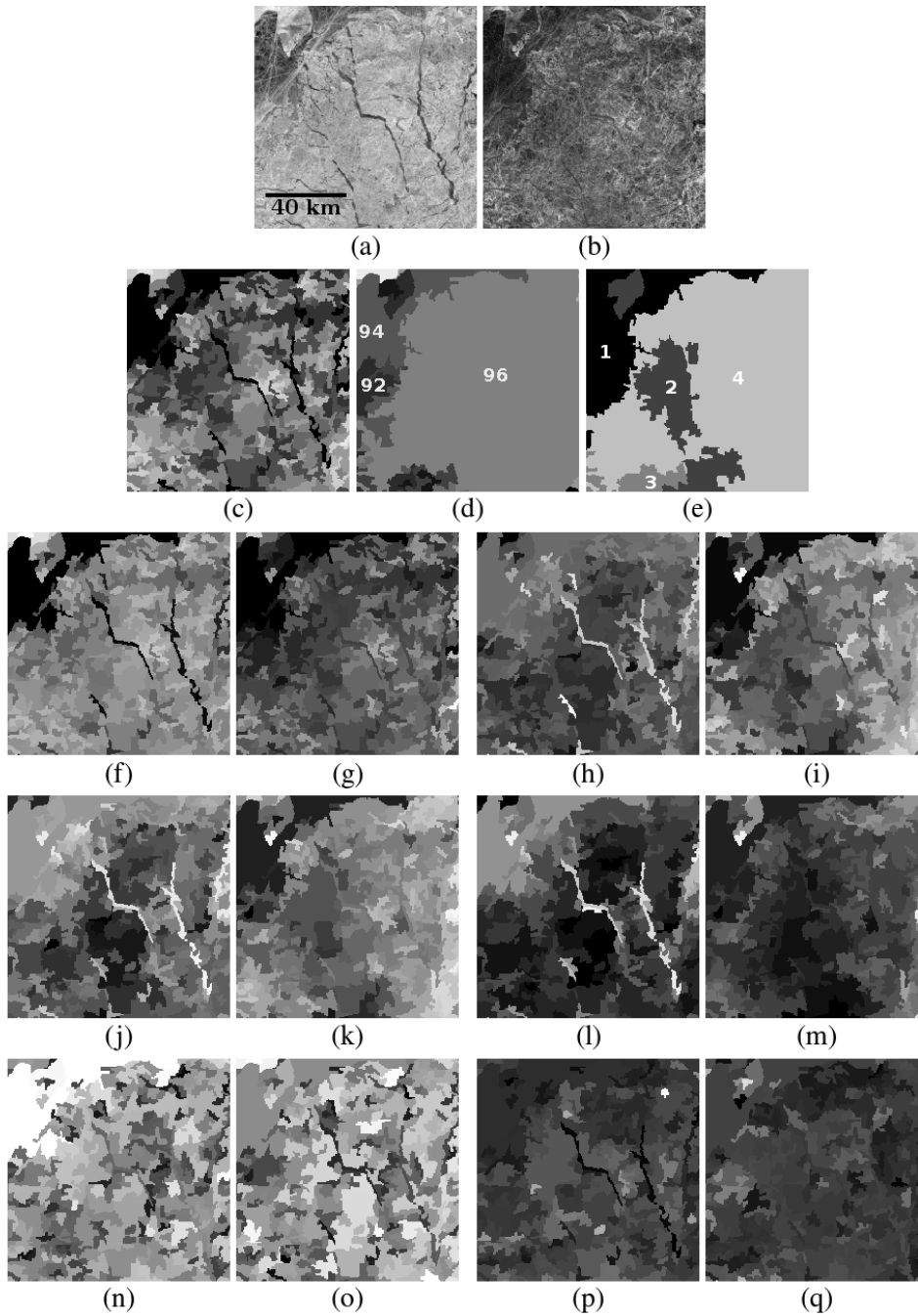


Figure 5. Example of SAR features computed for central BOB part of the Bay of Bothnia. a-b) original SAR HH and HV in 500m-500 m resolution; c) Segmentation result of the first principal component of the original HH and HV SAR channels; d) FIS-SIC (1-100%); e) FIS DIR (1-4); f-g) segment means; h) AC_{HH} ; i) AC_{HV} ; j) E_{HH} ; k) E_{HV} ; l) CV_{HH} ; m) CV_{HV} ; n) ED_{HH} ; o) ED_{HV} ; p) K_{HH} ; q) K_{HV} .

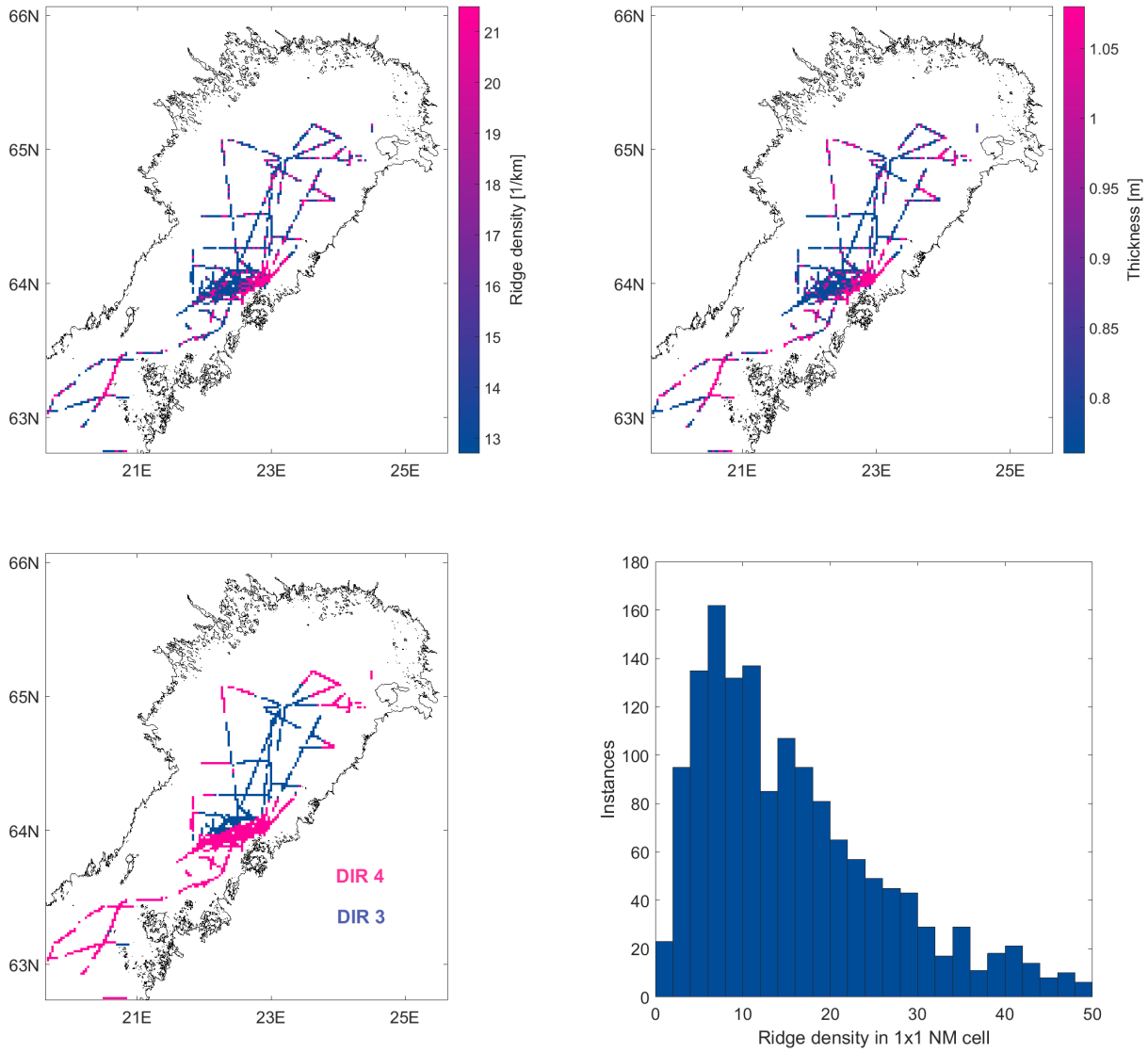


Figure 6. Ridge density variation in the test area (upper panel, left), HEM thickness measurements (upper panel, right), DIR indices (lower panel, left), ridge density histogram in of ridge densities determined for one 1x1 NM cell (lower panel, right).

The importance of different features when the training data covered the whole test period. The order of the features is: AC_{HH} , IC , ED_{HH} , E_{HH} , K_{HH} , σ_{HH}^o , CV_{HH} , σ_{HV}^o , see text for explanations.

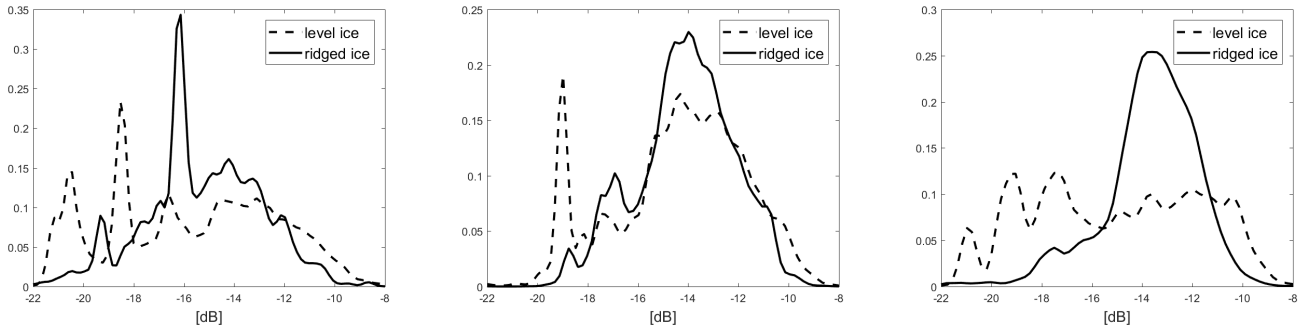


Figure 7. The monthly HH-polarization backscattering coefficient distribution for level (dashed line) and ridged (solid line) ice areas. The results are for January (left), February (middle) and March (right) in 2013.

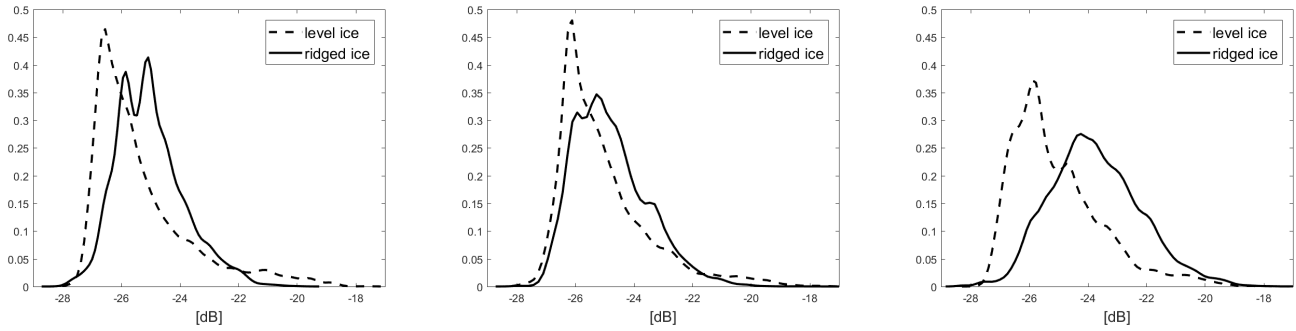


Figure 8. The monthly HV-HV-polarization backscattering coefficient distribution for level (dashed line) and ridged (solid line) ice areas. The results are for January (left), February (middle) and March (right) in 2013.

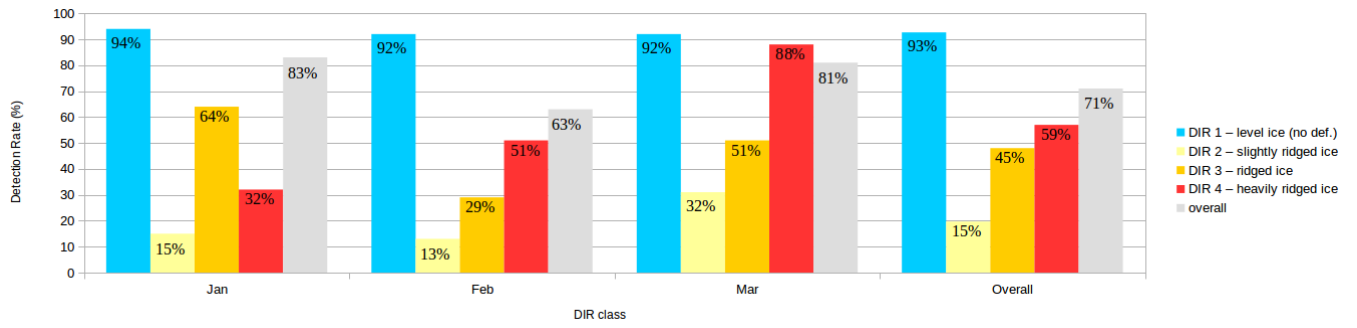


Figure 9. The detection rates for the different DIR categories in all the classification.

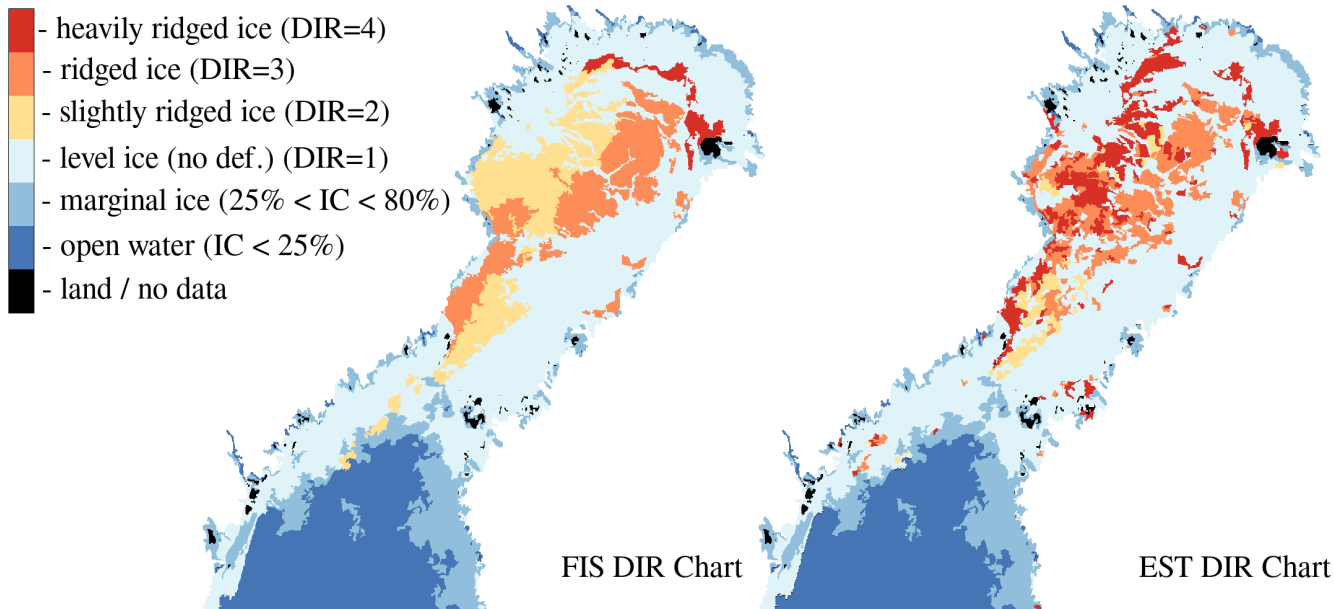


Figure 10. Degree of Ice-Ridging-ice ridging extracted from the digitized Finnish Ice-Charts-ice charts on 9th February 2013 (left) and the result of estimated DIR based on our RF approach (right). The DIR charts includes-include the marginal ice zones (25 % < IC < 80 %) extracted from the Ice-Concentration-ice concentration charts (see Fig. 4).

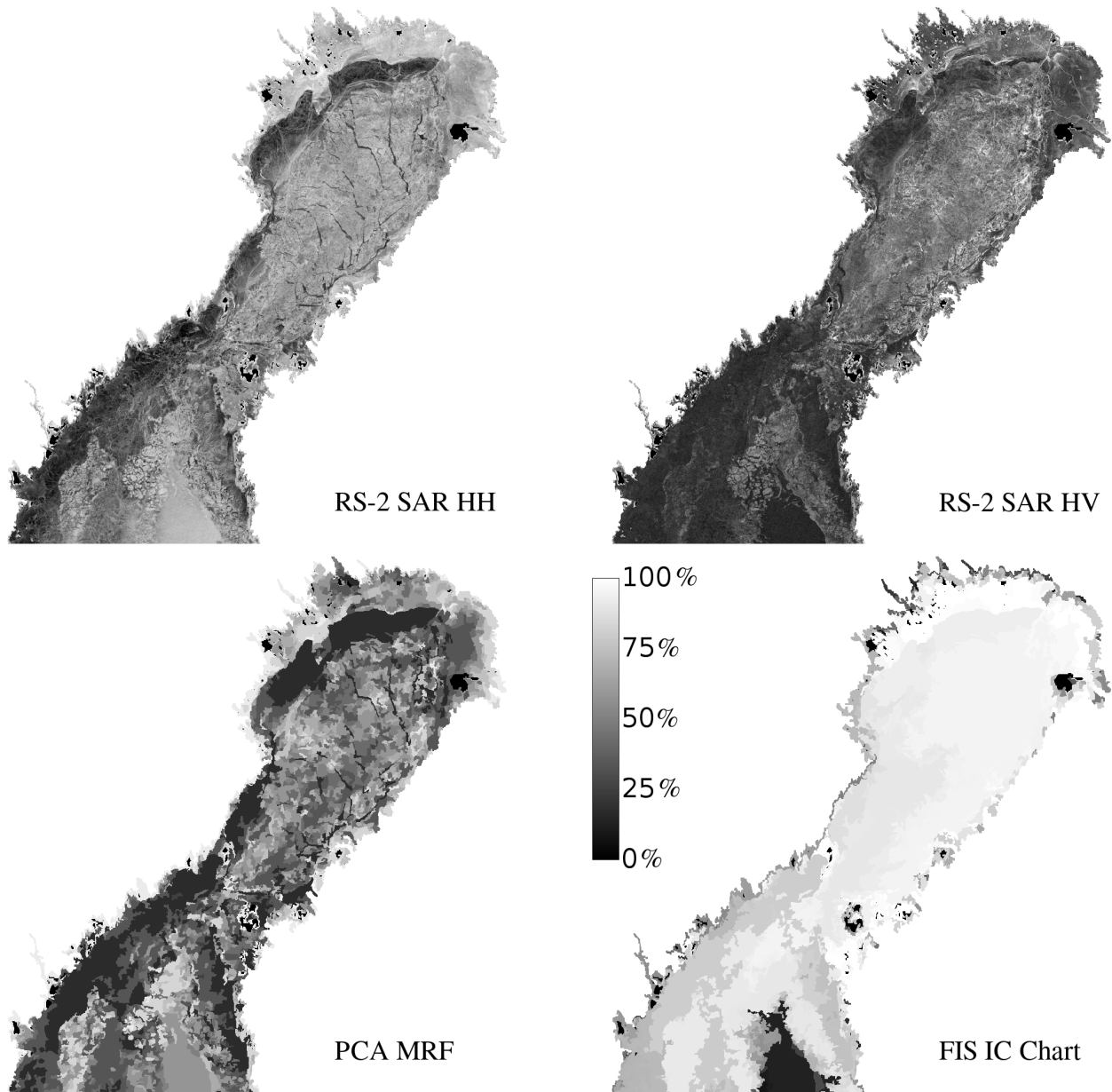


Figure 11. Example of RS2 SAR data on 15th March 2013 in HH (top left) and HV (top right) polarizations. Middle left: MRF MMD ~~Segmentation~~segmentation result for the HH-HV first PCA component. Middle right: ~~Ice Concentration Chart~~ice concentration chart extracted from the Finnish ~~Ice Chart~~ice chart.

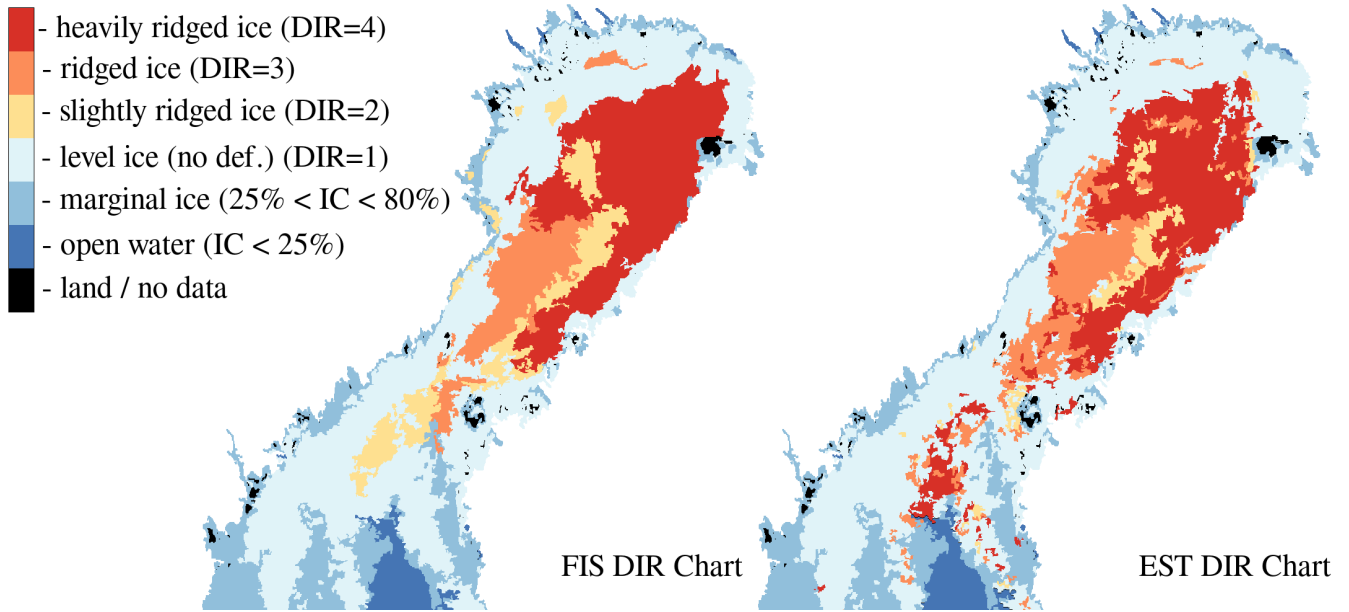


Figure 12. Degree of [Ice Ridging-ice ridging](#) extracted from the digitized Finnish [Ice Charts-ice charts](#) on 15th March 2013 (left); Result of Estimated DIR based on our RF approach (right). The DIR charts includes the marginal ice zones (25 %<IC<80 %) extracted from the [Ice Concentration-ice concentration](#) charts (see Fig. 11).