

Response to referee 1: Estimation of Degree of Sea Ice Ridging Based on Dual-Polarized C-band SAR Data by Alexandru Gegiuc et al.

Received and published: 15 September 2017

This is a good paper. The importance of navigation charts in ice infested seas is undeniable and ridging ice is an important parameter for navigation. The paper would benefit from a good proof reading.

We thank the reviewer for the appreciation given to the topic discussed here. We have carefully improved the readability of the paper.

I put comments below that I consider should need attention:

P1. Line 17: change se thickness to ice thickness

Done.

P1line 21 and 23: change Seina and Peltola (1991). to (Seina and Peltola, 1991). All text: references are wrongly cited (might be LaTeX-based problem)
Corrected.

P2. L18 I wouldnt say that these egg code polygon represent uniform ice areas but uniform areas with up to 3 ice types (normally)

In the daily ice charts provided by the Finnish Ice Service is not used the egg code for the polygons. The sentence is corrected to:

”The ice chart polygons defined by the ice analysts represent ice areas with similar ice characteristics.”

P3. L26-34 I think this could be simplified to half of that.

In the context of the discussed topic of sea ice ridging and its importance for navigation, we consider that the proposed (full length) paragraph describing the Baltic Sea ice conditions for the selected data set is relevant and needed for a better understanding and interpretation of the obtained classification results. Therefore we propose to keep the paragraph unshortened.

P4. L 8 100 m (use \sim between 100 and m)

Done.

P4. L 23 delete ”already”

Done.

P5 L 5 delete ”some”

Done.

P5 L 11 correct "CarlstrÅlöm"
Done.

P5 L 16 using \sim between 100 and m will prevent its separation
Corrected.

P5 L 18 use N 61° 40'
Done.

P6 L 9-16 you should offer some evidence of this problem, otherwise it seems a bit arbitrary.

We agree and we have added a figure (also below as Fig. 1) with an example of an accepted and rejected SAR - chart pair in the data selection process, in the Section 2.4 (in the previous version 2.3).

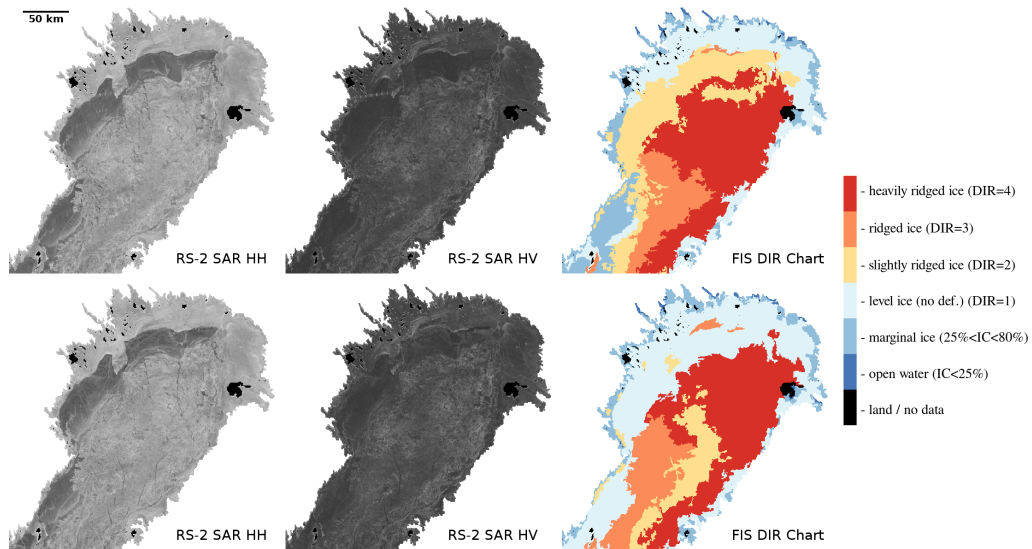


Figure 1: Example of RS-2 SAR data mosaic in HH (left) and HV (middle) polarizations and the corresponding degree of ice ridging chart (right) with values extracted from the digitized Finnish ice charts, for 9th March 2013 in the upper panel and 12th March in the lower panel. In both days the SAR shows similar ice situation, albeit the two DIR charts show changes in the ridging classes: in the NW of Bay of Bothnia, from slightly deformed ice (DIR=2) to level-ice (DIR=1) and in the central to southern part of Bay of Bothnia, from heavily ridged ice (DIR=4) to slightly ridged ice (DIR=2). In this case, the data from 9th March 2013 was removed from the classification.

The example is discussed in detail in the Section 2.4 (in the previous version 2.3).

P7 L 11 eq. 1 should be in multiple lines... very confusing this way
Done.

P12 L 4-7 This information would be better presented in a table.
We have replaced the figure with a table (see Table 1).

Table 1: The importance of different features when the training data covered the whole test period.

feature	FIS SIC	K_{HH}	σ_{HH}^0	ED_{HH}	AC_{HH}	E_{HH}	CV_{HH}	σ_{HV}^0
importance (%)	13.9	11.9	11.7	11.3	8.1	7.2	7.2	6.9

P12 L 11 In summary we found that the RF classification presents the following advantages:

We have added the following paragraph at the end of the Section 3.3.2 which summarizes advantages and disadvantages for the RF classifier in the DIR estimation.

”In summary we found that the RF classification presents the following advantages : i) RF has the ability to describe complex, nonlinear statistical relationships among variables, ii) RF reduces the uncertainty of the obtained estimate, iii) RF reduces the possibility of over fitting. The greatest weakness in RF is its relatively weak extrapolation property (Hastie et. al., 2011). This property can be seen from the behavior of the error rates. The RF classifier has a very low training error rate but the error rates increases significantly for the test set.”

P12 section 4.1 it would greatly add value if we could see some of the field data campaign

Based on the Reviewer’s recommendation, we have added a figure (see Fig. 2) with the sea ice field campaign data into the Section 2.3 (in the previous version 2.1) entitled now ”Surface and thickness profile data on ridged ice”, where this data is discussed.

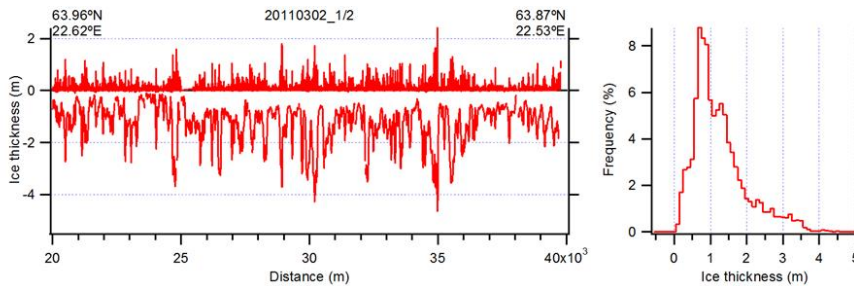


Figure 2: A 20 km section of combined surface laser profile and EM thickness profile, and the corresponding ice thickness histogram for the 2011 field campaign data. The laser profile resolves all ridge sails while the EM profile averages thickness over a altitude dependent footprint, typically 50 m.

P13 L 11 the 2 top figures of figure 5 appear to be the same.

The ridge density figure and the measured thickness values figure resembles each other very much, but a careful examination of the two figures reveals some small differences between the two. The very similarity between the two results from the high correlation between the measured thickness and the computed ridge density. More details are discussed in Section 4.1.

P13 L 9 and L 13 first you mention Table 1 and then Table 5 is this right? There was an error. In both cases we referenced to the Table 2 (previously Table 1).

P13 L 15 histogram of Figure ?

Corrected. The reference is to the Fig. 6 (previously Fig. 4).

P13 L 25 64N 23E to SW → 64°N 23°E to SW???

Corrected to : 64°N 23°E towards SW

P14 L 8 values ?

A reference was missing which generated the question mark. The sentence is now as follows: *For thin ice rather high σ_{HH}^0 (over -18 dB) have also been observed (Mäkynen et al., 2004).*

P 14 even though a correction for incidence angle has been applied, there is still influence of the incidence angle on the response, especially for rough ridging ice this should also be part of the discussion on dB values: one should expect differences between near range and far range.

Based on the incidence angle correction methods studied in Mäkynen et al. (2002) and Karvonen (2002), the effect of the incidence angle on the level ice and ridged ice is minor for the σ_{HH}^0 . For the σ_{HV}^0 , after the incidence angle correction has been applied together with the noise floor correction in the range direction as in Karvonen (2015), there was not found any significant difference in the near-range and far-range values for either open-water, level ice or ridged ice classes, when visually inspecting the SAR images.

We agree that the incidence correction effect on the detection of level ice and ridged ice should be mentioned along with the backscattering statistics presented in Section 4.2. Therefore, we have added the following paragraphs in the Section 4.2:

”According to earlier studies the effect of incidence angle on σ^o for level ice and ridged ice is rather similar. In Mäkynen et al. (2002) it was found that the incidence angle dependence of σ_{HH}^o in logarithmic scale (dB) can be described by a linear model, with slopes -0.21 dB/degree for ridged ice and -0.25 dB/degree for level ice. It seems that using a slope of -0.23 for all the data is adequate for automated classification, and the ridged areas and level ice can be distinguished both at near and far range. Also a more sophisticated approach, iteratively applying different slopes for level ice and ridged ice has been studied in Karvonen (2002), but the effect on sea ice clas-

sification was minor. When inspecting the SAR mosaics visually most of the SAR frame boundaries were not visible or were hardly visible, indicating successful σ_{HH}^o incidence angle correction. For open water the correction may not work properly as for open water σ^o signatures depend heavily on wind speed and swell (i.e., surface roughness).

For HV channel, the combined incidence angle and noise floor correction is essential. Without this correction the HV backscattering and texture features derived from it can not be used in classification as the effect of the varying noise floor is so high (up to about 3 dB) and will cause a significant amount of misclassifications. However, after correction the HV channel data can be used in classification and we have not by visual inspection observed any significant differences in near-range and far-range σ_{HV}^o for either open water, level ice or ridged ice classes.”

P15 L 23 what's a "had a correct mode ice class" ?

Sentence corrected to: "The ridged ice category (DIR 3) was correctly classified in 45 % of the cases but over 30 % of the observations were confused with level ice."

P 17 L 15-25 a bit of wishful thinking in this section

We are not certain which part of the text is considered by the Reviewer 1 as "wishful thinking". We admit that our current algorithm may not be mature enough for operational use yet. This will require more testing with more data.

Conclusions: this part appears to be more badly written than the rest.

Also the Reviewer 2 had some concerns on this Section. Therefore, we have rewritten it partly and tried to focus the discussion and conclusions in a more clear and focused manner. The new text is included below.

"The Degree of Ice Ridging is one of the most useful parameters for ice navigating ships. It basically indicates, together with ship characteristics, whether a vessel can safely pass through an ice field. The DIR also complements the more general Risk Index Outcome (RIO), defined by IMO (2016), as this does not address ridging but relies on WMO categories for the stage of development (age). We have shown here that an automated estimation of the DIR from SAR texture features, together with an ice concentration estimate, performs rather well when compared to the values extracted from the manual FIS ice charts. The applied features describe statistics of σ^o variation in the SAR imagery. DIR estimation is a suitable task for a SAR based approach because the C-band σ^o is sensitive to the large scale surface roughness due to ice ridging.

When we consider the purpose of the ice charts the fact that in the ice infested areas there operate both ships assisted by an icebreaker and independently navigating ships needs to be taken into account. In the Baltic Sea most of the merchant ships need icebreaker assistance. However, ships of the highest Finnish-Swedish ice class in the Baltic Sea, 1A Super, which is equivalent to the Polar Class PC 6, are

designed to operate in difficult ice conditions independently. The FIS ice charts are principally prepared to serve operations where ships follow an icebreaker in a convoy. Based on discussions with the FIS ice analysts the following remark is made. If the ice conditions in some area do not pose a realistic risk for icebreakers to get stuck, then in the FIS ice charts a smaller DIR values are often assigned to this area even when difficult for independent navigation by merchant ships. Especially this is true for DIR 2. Hence, the availability of the icebreaker assistance has some effect on the DIR classifications in the FIS ice charts. In addition the ice analysts cannot include all the details as the time for creating the daily ice charts is limited.

The primary objective of our DIR classification algorithm is to separate the severe ice conditions from the easier ones. To reach this goal our DIR classification mainly relies on the SAR image statistics. In some cases this may lead to differences between the FIS ice charts and our classification results because the FIS charts take into account the icebreaker factor not present in the SAR imagery. Hence, these two data sets can be interpreted from slightly different perspectives. An example of this difference is our earlier discussion related to Fig. 10 and Fig. 12. One essential advantage of the automated DIR charts is that they include leads and small level ice areas between ridged not present in the coarser FIS charts.

We used a two-stage classification system. First, we segmented the dual-pol SAR mosaics. This succeeded slightly differently for different months. The area by level ice always exceeded 50 % of ice cover. In January it was highest, over 70 %. In that month 93 % of the segmented area belonged to the segments dominated by one ice category. In February and March the respective figures were 80 % and 86 %. It should be noted that for January only three DIR categories were present, unlike for the last two months where all four DIR categories appeared. We can conclude that the SAR signatures matched the DIR boundaries best in March when the amount of ridging in our test period was at its maximum.

In the second phase of the classification we classified the segments using segment-wise feature vectors, classifying each segment to one ridging category. This succeeded best in March (82 %). Then the ridging intensity varied largely in different regions in our test area and the resulting texture of the SAR imagery was more versatile than in the other studied months. It is worth noting that in March the accuracy of the feature based classification was just five percentage points lower than the total area of the well-defined segments, i.e. the feature based classification succeeded with the RF classifier. This result can be regarded as a confirmation that the computed features were well suited to describe the ridging in the SAR imagery. In January the classification accuracy was at the same level as in March (83 %) but the area covered by the well-defined segments was much larger, indicating that the feature based classification did not perform as well as in March. In January and February the ice cover was rather thin and the degree of ridging lower than in March. Actually in these two months the σ_{HH}^o and σ_{HV}^o distributions from level ice and

ridged ice overlapped substantively. Partly this weak discrimination between level ice and ridged ice can be attributed to the subjective interpretation of the level ice category at FIS as discussed earlier in the Section 2.4.

Considering our classification results it seems that at C-band the proposed approach seems to work best in the Baltic Sea when the evolution of the winter has passed the freezing phase and a significant amount of ridging has occurred. Then ridging very strongly contributes to the texture of the SAR images.

Before setting up an operational DIR estimation system over the Baltic Sea, we still need to test our algorithm with more winters and to optimize it for the best possible result. In an operational mode we can use the most recent SAR/FIS and IC data for the training. Instead of using the SIC present in the FIS charts we can also use an automated radiometer or combined radiometer/SAR based SIC. Currently, the finest resolution in operational SIC products is offered by the Advanced Microwave Scanning Radiometer 2 (AMSR2) based ASI sea ice algorithm (Beitsch et al., 2014). The grid size in the product is 3.125 km. To improve our product during ice forming or melting periods, we can include ice thickness as an additional parameter in the future DIR classifications.

Our algorithm can be extended for use in the Arctic Ocean, where there is a higher demand for reliable ice information for independently navigating merchant vessels. Also, as harsh ice conditions as our March 2013 data prevail a much longer time period in the seasonal ice regime. An automated DIR chart utilizing the fine resolution (100 m or higher) SAR data and classifying the suitability of different areas for navigation would significantly benefit all Arctic shipping. For example, in the coming years Kara Sea year-round shipping will significantly increase because of the high volume liquefied natural gas (LNG) production and transport in the Yamal Peninsula. For Arctic sea areas, however, the algorithm would be more difficult to validate without knowledge of the true areal DIR values. The current Russian AARI ice charts only contain the general WMO sea ice categories without any indication of DIR. It is expected that our high resolution sea ice model to be implemented for the Kara Sea (Dr. Andrea Gierisch, FMI, personal communication) will be helpful in the development of an automated classifier. One alternative would also be to use the Baltic Sea ice data as a first trial to train the algorithm for the Arctic conditions.”

References: I saw quite a few errors including in some of the titles, authors names. One has to be careful while copying and pasting references taken as is on the Internet; they are not always reliable.

We have corrected the errors found in the References section; we hope that there will not be any more errors left uncorrected.

References

- Barber, D. G. and LeDrew, E. F.: SAR sea ice discrimination using texture statistics: A multivariate approach. *Photogr. Eng. and Remote Sensing*, 57, 385–395, 1991.
- Beitsch, A.; Kaleschke, L.; Kern, S. Investigating High-Resolution AMSR2 Sea Ice Concentrations during the February 2013 Fracture Event in the Beaufort Sea. *Remote Sensing*, 6, 3841–3856, 2014.
- Canadian Ice Service, MANICE, Manual of Standard Procedures for Observing and Reporting Ice Conditions, Revised Ninth Edition, June 2005.
- Clausi, D. A., Qin, A. K., Chowdhury, M. S., Yu, P., Maillard, P.: MAGIC: MAP-Guided Ice Classification System, *Can. J. Remote Sensing*, 36, S13–S25, 2010.
- Clausi, D. A.: Comparison and fusion of co-occurrence, Gabor, and MRF texture features for classification of SAR sea ice imagery, *Atmos. Ocean*, 39, 183–194, 2001.
- Hastie, T., Tibshirani, R., Friedman, J. , *The Elements of Statistical Learning*, 2nd ed., Springer, New York, 2011.
- International Maritime Organisation (IMO), Guidance on methodologies for assessing operational capabilities and limitations in ice, MSC.1/Circ.1519, June, 2016.
- Mäkynen, M., Hallikainen, M.: Investigation of C- and X-band backscattering signatures of the Baltic Sea ice., *Int. J. Remote Sens.*, 25, 2061–2086, 2004.
- Karvonen, J.: Evaluation of the operational SAR based Baltic Sea ice concentration products. *Adv. Space Res.* 56, 119–132, 2015.
- Karvonen, J.: Baltic Sea ice SAR segmentation and classification using modified pulse-coupled neural networks, *IEEE Trans. Geoscience and Remote Sensing*, 42, 1566–1574, 2004.
- Karvonen, J., Similä, M., Mäkynen, M.: An Iterative Incidence Angle Normalization Algorithm for Sea Ice SAR Images, *Proc IEEE International Geoscience and Remote Sensing Symposium (IGARSS'02)*, v.3, pp. 1524-1527, 2002.
- Mäkynen, M., Manninen, A., Similä, M., Karvonen, J., Hallikainen, M.: Incidence Angle dependence of the statistical properties of the C-Band HH-polarization backscattering signatures of the Baltic sea ice, *IEEE Trans. Geoscience and Remote Sensing*, 40, 2593–2605, 2002.
- Ochilov, S., Clausi, D. A.: Operational SAR Sea-Ice Image Classification, *IEEE Trans. Geoscience and Remote Sensing*, 50, 11, 4397–4408, 2012.
- Shokr, M.: Compilation of a radar backscatter database of sea ice types and open water using operational analysis of heterogeneous ice regimes, *Can. J. Remote Sensing*, 35, 369–384, 2009.

Soh, L. K., Tsatsoulis, C., Gineris, D., Bertoia, C.: ARKTOS: an intelligent system for SAR sea ice image classification, *IEEE Trans. Geoscience and Remote Sensing*, 42, 229–248, 2004.

Sandven, S., Alexandrov, V., Zakhvatkina, N., Babiker, M.: Sea ice classification using Radarsat-2 dual-polarisation data, *Proc ESA SeaSAR 2012*, SP-709, 2012.

WMO Sea ice Nomenclature, WMO n. 259 (rev, 2010), 2010.

Response to referee 2: Estimation of Degree of Sea Ice Ridging Based on Dual-Polarized C-band SAR Data by Alexandru Gegiuc et al.

Received and published: 17 October 2017

Summary. This paper examines radar backscatter and texture parameters derived from Radarsat2 dual polarization imagery to determine ridge density in the Baltic Sea. A classification algorithm is described that derives several levels of ridge density, a useful parameter for shipping. Helicopter electromagnetic induction and manually derived ice charts are used for comparisons. The paper described the concept, approach and methods adequately and was satisfactorily written, albeit some grammatical editing is needed.

Many parts of the text have been edited to increase the readability, including some grammatical and spelling errors.

My primary suggestions are the following:

1) A final summary/set of conclusions of the basic findings is needed to be added. The discussion speaks in generalities about the need differences in the ice charts for both icebreakers and non-ice breakers in the Baltic plus shipping issues elsewhere in the Arctic.

The Discussion and Conclusions section has been partly rewritten, taking into account the remarks of both the reviewers. Please, see the edited section included in our response to the Reviewer 1.

It seems like a key result is that the results are much better in March than January and February. Please include a statement as to why you think this is the case.

”The major reason for the success of the classification in March is the better discrimination between the ridged ice and level ice in March than in the previous months as noted earlier in Section 4.2. The better discrimination property between ridging ice categories affects the final results in two ways. First, the segment boundaries of the dual-pol SAR imagery follow better the boundaries of the DIR classes in March (see Fig. 11). Secondly, the segmentwise feature vectors show more variability between different ridging categories in midwinter. The combination of these two factors determine the accuracy of the final classification.

We studied the success of the segmentation by examining how large fraction of the segments contained practically just one ridging category. i.e. the area of some ridging category covered over 90 % of the segment area. The results were that in January 93 % of the SAR imagery belonged to such segments, in February 80 % and in March 86 %. The high fraction of well defined segments in January is easy to understand because most of the ice was level ice (72 % of the area), and just three ridging categories appeared (the heavily

ridged area covered less than 1 %). In February the fraction of level ice has decreased to 55% of the total area, all four ice categories were present and the total area of well defined segments decreased to 80 %. In March the level ice area covered 59 % of the total area and the area of the well defined segments was 86 %. Hence there was better the segmentation accuracy in March than in February. In that month the total area of correctly classified ridging categories was 81 %, five percent points less than the total area of the well defined segments. In February the total area of correctly classified ridging categories was just 63 % which means 17 percent points less than the total area of the well defined segments. This analysis suggests that the main separating factor contributing to the classification accuracy was due to the more versatile feature vectors in March.”

We added the above paragraphs inside the quotation marks at the end of Section 4.3.

Also these differences in interpretation of the ice charts for the two types of ships seems important enough to include earlier in the paper, as it impacts final comparison results.

We agree. We have mentioned this issue in the Introduction section as follows:

”In this paper we propose a method to automatize the DIR estimation process based on th RS-2 dual-polarized (HH/HV) SAR data acquired under cold conditions and using the FIS ice charts as reference data. The results are then evaluated together with the ice analysts. We don’t expect a perfect match between the automatic chart and the manual one. The polygons in the manual charts typically suppress certain amount of variation for the small-scale features and merge them into one DIR category. Here we aim to produce a more detailed DIR chart, which follows closely the SAR texture features of sea ice ridges, edges, cracks and leads. This allows the icebreakers and the non-icebreaker vessels to benefit from it in advance route planning and optimization. Ultimately, the goal is to facilitate independent sea ice navigation of non-icebreaker ships, where a finer scale DIR map can offer more sea ice passages with lower degrees of ice ridging, instead of a large polygon which either allows or denies the navigation in a specific area.”

2) I suggest a final section be added in Section 4 that describes value of each polarization, with the HV of seemingly little to marginal value except as was pointed out perhaps in March, and the other texture parameters, in terms of what were the most important parameters in deriving ridge statistics. Could the algorithm be successful with fewer parameters? What parameters were really needed to identify ridges?? I am suggesting a further evaluation of Figure 4 basically.

The first correction we made was the addition of the following paragraph at the end of the Section 3.2. to justify, partly intuitively, why we have chosen the computed features.

”Most of the features have a rather straightforward interpretation. Entropy describes how uniformly the HH/HV values are distributed.

Edge density is a measure for edge fragments present in the segment which fragments we assume to be related to ridging. Coefficient of variation (CV) describes how fast the standard deviation increases with the mean. We expect that in the ridged areas CV is larger than in the homogeneous areas. Kurtosis describes the peakness of the σ^o distribution. With the aid of the spatial autocorrelation we can quantify how structured the ice field in question is in the SAR imagery. We expect that more structural elements appear in the ridged ice than in the level ice where the spatial σ^o variation is more random.”

Our procedure to compute the importance of the feature is explained in Section 3.3.2. It is based on the out-of-bag (OOB) samples of the data. We also considered how well different feature combinations classified the data. To clarify the nature of the importance of the feature based on the OOB data we added the following to the added subsection 4.4 (i.e. Importance of features) in the Results section:

”The selection the eight features in Section 3.3.2 was based on their importance value. The features consisted of six HH-polarization based segment-wise features (see Section 3.2) and the segment-wise σ_{HV}^o as well as the IC value extracted from the FIS ice chart. Their importance order when the training data covered the whole test period is presented in the Table 1. If the training data of just one month was used the importance order of features varied slightly. The importance of one specific feature is relative in the sense that it changes when the combination of the used features changes, i.e. the importance of one feature depends on which other features are included. The feature IC remained however the most influential feature in every case. This is comprehensible because when IC was between 80 % and 90 %, the ice area in question represented almost always the level ice category (DIR 1) and the corresponding feature vector was easy to classify correctly. The rather low importance value of σ_{HV}^o is probably due to the relative narrow range of the σ_{HV}^o values.

To gain more insight into how the eight selected features affected the classification accuracy, we studied the possibility of the feature reduction using the March data as benchmark. The March data was selected because the diversity of ridging categories was largest then (see Table 7). We eliminated systematically one by one the selected features and reclassified the March test data using the remaining features. In none of the cases the classification accuracy improved with fewer features. For several removed features (E_{HH} , AC_{HH} , K_{HH} , σ_{HV}^o) the classification accuracy decreased with just a few percent points (1–3 %). The removal of the ED_{HH} feature did not practically affect the accuracy at all. A significant misclassification rate increase was observed by the reduction of the σ_{HH}^o (-6%), CV_{HH} (-8%) and IC (-12%). In every case the relative importance of the retained features changed. Hence the importance of the features present in Table 1 is true only in the context of this specific feature combination.

To see more clearly that the features included in the feature vector complement each other and make the classification more robust, we classified the March data using only three basic features ($f_3 =$

($IC, \sigma_{HH}^o, \sigma_{HV}^o$). The overall accuracy was just 64%. Then we added the feature CV_{HH} to f_3 because CV_{HH} caused a significant drop in the accuracy. The accuracy remained low, only 68 %. Our conclusion of the performed analysis is that the information provided by the whole feature set is needed for a good description of ridged ice field in the SAR imagery. If already a reduction of one feature decreases the classification accuracy, the reduction of two or more features would degrade the classification further. The only feature which is perhaps unnecessary is ED_{HH} . It was also the most heuristic one (see Section 3.2). Because it does not decrease the classification accuracy, we have kept it in the selected feature combination. We also experimented by replacing the HH-polarization based features with their HV-polarization counterparts. This lead in all of the studied cases to the degradation of the classification accuracy.”

These indicates that all of the features (perhaps except ED_{HH}) are needed in a successful classification.

Detailed comments.

1. Page 13, line 14 mentions green in Figure 5 which I assume should be red/pink.

We agree. We have replaced "green" with "pink".

Line 15 left off Figure number, which I assume to be 5.

We agree. Corrected.

2. Page 13, line 25. to SW I assume this means towards the SW.

Yes, we have corrected the text.

3. Page 13, lines 30-31. The sentence In areas with IC 80 – 90 % the amount of open water is rather high... I think they may mean that in a relatively high ice concentration area, the relatively low amount of open water can still have a strong impact on the overall backscatter, particularly during high winds. Please rewrite.

Corrected to the form:

"In areas with ice concentration varying from 80 % to 90 %, the amount of open water area can impact on the backscattering statistics significantly, particularly during high winds."

4. Page 14. Line 8. A question mark appears in text without any apparent meaning.

The reference was missing. Now it has been added. The sentence was corrected to:

For thin ice rather high σ_{HH}^o (over -18 dB) have also been observed (Mäkynen et al., 2004).

References

Mäkynen, M., Hallikainen, M.: Investigation of C- and X-band backscattering signatures of the Baltic Sea ice., Int. J. Remote Sens., 25, 2061–2086, 2004.

Estimation of Degree of Sea Ice Ridging Based on Dual-Polarized C-band SAR Data

Alexandru Gegiuc, Markku Similä, Juha Karvonen, Mikko Lensu, Marko Mäkynen, and Jouni Vainio
Finnish Meteorological Institute(FMI), Marine Research, Erik Palménin aukio 1, 00560 Helsinki, Finland
Correspondence to: Alexandru Gegiuc (alexandru.gegiuc@fmi.fi)

Abstract.

For ~~navigation in~~ ship navigation in the Baltic Sea ice ~~during winter season~~, parameters such as ice edge, ice concentration, ice thickness, ice drift and degree of ridging are usually reported daily in the manually prepared ~~Ice Charts~~ ice charts, which provide icebreakers ~~essentail~~ essential information for route optimization and fuel calculations. However, manual ice charting requires long analysis times and detailed analysis is not possible for large scale maps (e.g. Arctic Ocean). Here, we propose a method for automatic estimation of degree of ~~ridging density~~ ice ridging in the Baltic Sea region, based on RADARSAT-2 C-band dual-polarized (HH/HV channels) SAR texture features and ~~the~~ sea ice concentration information extracted from the Finnish ~~Ice Charts~~ ice charts. The SAR images were first segmented and then several texture features were extracted for each segment. Using the Random Forest classification, we classified them into four classes of ridging intensity and compared them to the reference data extracted from the digitized Ice Charts. The overall agreement between the ice chart based degree of ice ridging (~~DIR~~) and the automated results varied monthly, being 83 %, 63 % and 81 % in January, February and March 2013, respectively. The correspondence between the degree of ice ~~riding of the manual Ice Charts~~ ridging of the ice charts and the actual ridge density was good when this issue was studied based on an extensive field campaign data in March 2011.

1 Introduction

Navigation in sea ice is ~~naturally~~ hampered by rapid changes in the ~~environmental~~ sea ice conditions. Thus, it is essential for winter time shipping and off-shore operations to get reliable and up-to-date information on the prevailing ice conditions. The most important sea ice ~~related information parameters~~ are the location of the ~~sea~~ ice edge, ~~sea~~ ice types, ~~sea thickness and concentration and sea ice deformation~~ ice thickness, concentration and the amount of ridged ice. Without detailed sea ice information, navigating through heavily ridged sea ice is ~~very difficult and~~ time consuming or even impossible.

The Baltic Sea is a semi-enclosed brackish sea water basin in the Northern Europe. The ice cover in the Baltic Sea usually begins to form in November, and has its largest extent between January and March ~~;~~ Seinä and Peltola (1991) (Seinä and Peltola, 1991). The normal ~~ice break-up melting season~~ starts in April, and the ice melts completely by the beginning of June. The maximum annual ice ~~cover extent~~ ranges from 12% to 100% of the whole Baltic Sea area, and the average is 40% ~~;~~ Seinä and Palosuo (1996) (Seinä and Palosuo, 1996). During the last decades there has prevailed a clear decreasing trend in the maximum ice extent although the trend has not yet been a subject for a detailed investigation. The sea ice in the Baltic Sea can be divided into fast

ice and drift ice. Fast ice appears in the coastal and archipelago areas. Drift ice has a dynamic nature due to forcing by winds and currents. ~~The motion of drift ice which~~ results in an uneven and broken ice field with distinct floes ~~up to several kilometers in diameter~~, leads and cracks, brash ice barriers, rafted ice and ice ridges. The upper limit for thermodynamically grown ice ~~in the drift ice zone~~ is 70 cm or less during most winters, ~~Palosuo et al. (1982)~~. ~~The thickness (Palosuo et al., 1982) while the~~ ~~keel depth~~ of ice ridges is typically 5 to 15 m, ~~Leppäranta and Hakala (1992)~~ (Leppäranta and Hakala, 1992). The salinity of the Baltic Sea ice is typically ~~only~~ from 0.2 to 2 ‰ depending on the location, time, and weather history, ~~Hallikainen (1992)~~ (Hallikainen, 1992). Synthetic Aperture Radar (SAR) satellites such as RADARSAT-2 (RS-2) and Sentinel-1 (S-1) play a major role in operationally monitoring the ice conditions in ~~Baltic Sea every winter~~ ~~the Baltic Sea~~. SAR imaging is practically independent of the atmosphere conditions (e.g. cloud cover) and solar illumination, ~~and thus, can be used in continuous~~ ~~automated and therefore suitable for operative~~ sea ice monitoring. However, ~~radar as~~ backscatter information in the SAR imagery cannot easily be directly linked to the different ice types ~~or ice properties at a given location, and~~ the expertise of an trained ice analyst is ~~then usually~~ required.

In the Baltic Sea, daily ice charts prepared by the Finnish Ice Service (FIS) analysts ~~in winter time~~ provide a daily source of information upon the ice conditions ~~by assigning a classification of ice~~. ~~The charts divide the ice cover into polygons which are assigned ice~~ types and other ice properties ~~to the ice chart polygons described by well defined~~ ~~presented in terms of~~ symbols and coloring ~~of the polygons~~. They are based on visual interpretation of the SAR imagery as the principal source of ice information. Currently, RS-2 and S-1 ~~C-band~~ SAR imagery with a wide coverage (e.g. RS-2 ScanSAR Wide Mode with 500 by 500 km image size) are used. The SAR imagery is complemented by visible and thermal infrared imagery from ~~e.g.~~ Moderate Resolution Imaging Spectroradiometer (MODIS), in-situ observations, sea ice information messages from icebreakers, and data from sea ice models. ~~The ice chart polygons are defined by the ice analysts and they represent uniform~~ ~~represent~~ ice areas with similar ice ~~parameters characteristics~~. Parameters assigned for each polygon are ice concentration, ~~average~~ level ice thickness ~~range and average~~, ~~maximum and minimum level ice thickness~~, and the the degree of ice ridging (DIR) ~~which is a numeral classifying the ice into five categories, as explained in the section 2.2~~. The FIS ice analysts estimate the DIR ~~category value~~ mainly using the SAR imagery, and with additional information on the ice drift based on successive SAR images and results of sea ice models (~~Figure 1~~). The main criteria for the visual DIR estimation from the SAR imagery are the SAR backscattering and its visible patterns (SAR texture) ~~(see Fig. 1)~~. Because the visual interpretation ~~is so essential in the manual ice charting process, central in the ice charting is being done by several analysts~~ a certain amount of ~~subjectivity and inconsistency by different ice analysts~~ ~~inconsistency~~ is inevitable.

In this paper we propose ~~an automation of a method to automatize~~ the DIR estimation process based on ~~RadarSat 2 th~~ ~~RS-2~~ dual-polarized (HH/HV) ~~C-band SAR data using data SAR data~~ acquired under cold conditions ~~during the winter season 2012-2013~~ and using the FIS ~~Ice Charts ice charts~~ as reference data. ~~In Section 2.1 we will discuss on~~ ~~The results are then evaluated together with the ice analysts. We don't expect a perfect match between the automatic chart and the manual one. The polygons in the manual charts typically suppress certain amount of variation for the small-scale features and merge them into one DIR category. Here we aim to produce a more detailed DIR chart, which follows closely the SAR texture features of sea ice ridges, edges, cracks and leads. This allows the icebreakers and the non-icebreaker vessels to benefit from it in advance route~~

planning and optimization. Ultimately, the goal is to facilitate independent sea ice navigation of non-icebreaker ships, where a finer scale DIR map can offer more sea ice passages with lower degrees of ice ridging, instead of a large polygon which either allows or denies the navigation in a specific area.

- 5 In section 2.2 we will describe the different DIR categories used by FIS. As a tool in the DIR classification we use the Random Forest (RF) algorithm which will be explained in detail in Section 3.3. Using the automated classification procedure we target to an efficient exploitation of the RS-2 SAR data and, by means of increased spatial and temporal resolutions, to an improved quality (pixel level accuracy and consistency between different analysts) of the ice charts, ~~by means of increased spatial and temporal resolutions.~~
- 10 In the following we discuss how in general the C-band backscattering coefficient (σ^o) of the Baltic Sea ice is related to the sea ice properties, and especially to sea ice ridging. Under cold weather conditions when the snow cover on sea ice is dry the ice surface scattering has been observed to be the dominant component in the total co-polarized ~~backscattering measured by radars operating at C-band with σ^o at~~ incidence angles below 45° , ~~Carlström and Ulander (1995); Dierking et al. (1999)~~ (Carlström and Ulander, 1995; Dierking et al., 1999). If the ice surface is very smooth and salinity < 0.5 psu, which typically
- 15 is the case for level fast ice in the Baltic Sea, ~~and the then~~ backscattering from ice-water interface and ice volume is significant. The surface backscattering from level ice is controlled by the statistics of the small-scale roughness as well as the salinity of the ice surface. If sea ice is ~~deformed~~ridged, the large-scale surface roughness alters the geometry of the surface and, hence, also modifies ~~the backscattering σ^o~~ . Empirical measurements of the Baltic Sea ice C-band SAR ice backscattering coefficient (σ^o) have shown that the variation in the large-scale surface roughness mostly modulates σ^o and image texture although changes in
- 20 the small-scale roughness are also significant, ~~Carlström and Ulander (1995); Dierking et al. (1999); Mäkynen and Hallikainen (2004)~~ (Carlström and Ulander, 1995; Dierking et al., 1999; Mäkynen and Hallikainen, 2004).

The σ^o contrast between level ice and ~~deformed~~ridged ice is on average larger at C-band cross-polarization than at co-polarization, ~~Mäkynen and Hallikainen (2004)~~ (Mäkynen and Hallikainen, 2004). The standard deviation of σ^o was observed to be larger for ~~deformed~~ridged ice types (mixtures of level ice, ice ridges, rubble) than for level ice types and brash ice

25 in Mäkynen and Hallikainen (2004). ~~Radar backscatter in~~ The C-band SAR imagery σ^o is not directly related to the sea ice thickness, but at least in the Baltic Sea it is possible to estimate the thickness of ~~deformed~~ridged ice under dry snow conditions through a statistical relationship between ice freeboard, level ice thickness and σ^o , ~~Similä et al. (2010)~~ (Similä et al., 2010). The variance of the mean freeboard, i.e. large scale surface roughness, increases with increasing average freeboard, and as the surface roughness increases σ^o also typically increases. In general, these previous studies on sea ice σ^o signatures ~~have shown~~

30 show that there is a relation between C-band σ^o and DIR, but further studies are needed to better quantify this relation.

Many Next, different approaches for SAR based sea ice classification are briefly reviewed. Many SAR imagery based sea ice classification systems just perform classification to open water and different ice types, such as new ice, first-year-ice, multiyear-ice, but DIR is not explicitly estimated in more detail. Classification schemes utilizing σ^o and SAR texture have been presented e.g. in Soh (2004); Sandven et al. (2012); Barber et al. (1991); Clausi (2001). ~~A progressive scheme presented e.g. in Soh (2004) utilizes segmentation and multiple segment-wise features, including texture.~~ Classification of ice

35 types based on single-polarization C-band SAR backscattering has been studied e.g. in Karvonen (2004); Shokr (2009). ~~In~~

~~Soh (1999) the performance of texture measures based on Gray Level Co-Occurrence Matrices (GLCM's) were studied for sea ice classification into seven classes, which were based on human visual inspection.~~ Sea ice SAR classification using the world meteorological organization (WMO) ice categories (stage of development) ~~WMO (2010)~~ (WMO, 2010) has been studied e.g. in Clausi (2001); Deng and Clausi (2005); Maillard et al. (2005); Yu and Clausi. (2007); Clausi (2010); Ochilov et al. (2012). These approaches are based on the SAR segmentation and different SAR features, including texture ones. Some of the methods also combine the ice analyst analysis and an automated analysis. A system capable of a semi-automated segmentation and enhanced classification with a digitized ice chart as an input is presented in Clausi (2010). ~~The~~ It is noted that the ice categories in these studies do not either explicitly or uniquely include DIR classification.

10 2 Data Sets and Processing

~~The Baltic Sea ice season 2012/2013 was~~ Our study area in the Baltic Sea is northward from the latitude of 61°N, covering the entire Bay of Bothnia and largely the Sea of Bothnia (see Fig. 1) and the time period is the ice season 2012-2013. The most severe ice conditions in 2012-13 in the Baltic Sea occurred in this study area. This ice season 2012-13 was average but the turning point of the winter was late. The weather began to cool off at the end of the first week of January and the ~~extent of~~ ice-ice extent increased. In the last week of January the strong winds moved the ice fields and the mild weather melted ice. In the beginning of February the weather continued similar – at night new ice was formed which ~~the winds then broke then broke~~ by winds during the day. Towards the end of February the weather cooled down and new ice was formed also in the Gulf of Finland. In the beginning of March cold arctic air started to flow to Scandinavia and the extent of ice began to grow. The whole March was extremely cold. In the ~~15th of 15th~~ 15th of 15th March the extent of ice reached 177 000 km², which was the maximum of the ~~ice winter season.~~ ice winter season. From then on the cold nights formed new ice but sunny days melted ~~them and the extent of the sea ice it, and~~ the ice extent did not increase any more.

2.1 RADARSAT-2 SAR imagery

The SAR imagery used in this study were RADARSAT-2 ScanSAR wide Wide (SCWA) dual-polarized imagery with the HH/HV polarization combination. The nominal size of an RS-2 SCWA image is around 500 by 500 km, and the pixel size is 50 m. The spatial resolution is around 73-163 m by 100 m (range by azimuth). The incidence angle (θ_0) varies from 20 to 49 degrees. The equivalent number of looks (ENL) is larger than six. The noise equivalent σ^0 at both HH- and HV-polarization is around -28 ± 2.5 dB and the absolute accuracy of σ^0 is better than 1 dB (MDA, 2014).

The acquired RS-2 SAR imagery covered the whole Baltic Sea. The number of SAR images used in the daily SAR mosaic over the test area varied from one to three SAR frames per day from January to March in 2013. On some days the SAR mosaic was updated twice. We selected from these SAR mosaics the training and the test data using the rule that the time gap between a training and a test mosaic must be at least three days to avoid situations where a same SAR scene would appear both in the test and the training set. Hence the training data consisted of 5 mosaics from January, 4 mosaics from February and 4 mosaics from March. The test data consisted of 4 mosaics from January, 6 mosaics from February and 3 mosaics from March. Some mosaics

were not used due to the time constraint. When we refer to the training data, it means the 13 SAR mosaics gathered during the three months period. Similarly, the test period means the 13 SAR mosaics collected from January to March. The monthly training and test data refers to the mosaics gathered in the same month. We selected these three months for the development and the test work because then the SAR images were mostly acquired under dry snow conditions. Hence, the dominant backscattering source was the sea ice surface and we could expect a statistical relationship between σ^o and DIR as reported in Carlström and Ulander (1995); Dierking et al. (1999); Similä et al. (2001); Mäkynen and Hallikainen (2004); Similä et al. (2010)

The preprocessing of the RS-2 SCWA images consisted of calibration (calculation of σ_{HH}^o and σ_{HV}^o), georectification, calculation of the incidence angle θ_0 , and land masking. First the data were rectified into the Mercator projection with 100 m pixel size. This georectification is compatible with the FIS ice charts and the navigation system of the Finnish and Swedish icebreakers. In this Mercator projection the reference latitude is $61^{\circ}40' N$.

As the SAR σ^o is dependent on θ_0 , an incidence angle correction is necessary before the classification of the SAR images with wide θ_0 range, such as RS-2 SCWA images. For the HH-polarization images, an incidence angle correction method described in Mäkynen et al. (2002) was applied. This incidence angle correction maps the σ^o values using a linear dependence for the σ^o in dB-scale to a predefined θ_0 value θ_0^R . In this case, the fixed θ_0^R of 30° was used.

At the HV-polarization the SAR σ^o values are close to the instrument noise floor (around -28 dB for RS-2 ScanSAR Wide mode), and the noise floor (noise equivalent σ^o) varies along the across-track direction. The noise floor modulates the (low) HV channel signal leading to clearly visible stripes (artifacts) in the HV imagery. These stripes complicate both the visual and automated interpretation of the SAR imagery. The HV channel incidence angle dependence and varying noise floor in the range direction are corrected based on a statistical incidence angle dependence computed for a large number (65) of RS-2 ScanSAR wide images. Then the incidence angle range is quantized into N bins of 0.01 degrees ($\theta_1, \dots, \theta_N$) covering the whole incidence angle range. We average the σ^o values from all the 65 images for each θ_i . We denote this average as $\bar{\sigma}^o(\theta)$. Together these average values create a σ^o curve $Z(\theta)$ as a function of the incidence angle over the whole incidence angle range. We consider that each $\bar{\sigma}^o(\theta)$ consists of the sum of the average σ^o , the associated noise floor and the σ^o decay as a function of the incidence angle. As we average a large number of values representing different targets for each theta bin, we assume the σ^o average to be similar for each bin (i.e. constant over the whole incidence angle range), and then $Z(\theta)$ also presents a sum of the constant value, the noise floor as a function of theta and σ^o decay as a function of theta. To minimize the effect of the constant value on the correction we then take the mean of all $Z(\theta)$ values over the whole range of theta. We denote this mean as \bar{Z} . Then the whole $Z(\theta)$ curve is made a zero mean signal by subtracting \bar{Z} from $Z(\theta)$, this zero mean function is denoted by $\bar{Z}(\theta)$. The incidence angle corrected backscattering coefficient $\sigma_{HV,corrected}^o(r,c)$ is now obtained from each calibrated pixel at $\sigma^o(r,c)$ value: $\sigma_{HV,corrected}^o(r,c) = \sigma^o(r,c) - \bar{Z}(\theta(r,c))$, where (r,c) are the row and column coordinates of the image grid and $\theta(r,c)$ is the corresponding incidence angle. This correction was proposed in (Karvonen, 2015).

The equivalent number of looks (ENL), noise equivalent σ^o and autocorrelation between neighboring pixels in the rectified images were studied using homogeneous areas of size 3.1x3.1 km visually selected from the images over open water areas with a weak texture. The ENL was around 9.5 for the whole θ_0 range. Thus, the radiometric resolution was around 1.2 dB

and the standard deviation (std) of fading was 1.4 dB. The autocorrelation coefficient between the adjacent 100 m pixels was on the average only 0.18. The land masking was based on the GSHHG (Global Self-Consistent Hierarchical, High-resolution Geography database from the National Oceanic and Atmospheric Administration, NOAA) coastline data (Wessel and Smith, 1996)

Next, the SAR images were segmented, and the segmentwise features were calculated in the resolution of 100 m, for details see Sections 3.1 and 3.2. Due to the large size of the SAR images and also the feature images they were downsampled into 500 m resolution. Finally, the daily SAR image and features mosaics were constructed by overlaying all of the SAR data available for each day, i.e. the latest data is shown in the mosaic. The study area was typically fully covered by RS-2 SAR imagery every 1 to 2 days.

2.2 Ice charts and degree of ridging

Our reference data set consists of the daily FMI-FIS manual ice charts over the Baltic Sea. In the ice charts the degree of ice ridging (DIR) is used to ~~categorise ice types~~ classify sea ice in a way that is relevant for the difficulty of navigation. DIR is assigned as a qualitative numeral, ranging from 1 to 5, to each ice chart polygon. DIR value 1 refers to level ice or rafted ice. Small ridged areas in the middle of level ice are also included into DIR 1. Values 2 and 3 represent lightly ridged ice and ridged ice, respectively. The most heavily ridged ice is assigned DIR value 4. DIR 5 indicates brash ice barrier while this particular category was not present in our data set. By visual inspection of the RS-2 and S-1 SAR wide swath imagery with a spatial resolution of approximately ~~100m resolution~~ 100 m it is not possible to describe the ridging intensity quantitatively. However, it is feasible to assign categories of ridged ice for extended areas for which the actual ridging intensities differ. For some justification of the meaningfulness of the areal DIR values see our comparison with the 2011 field campaign data set in Section 4.1.

The DIR information in the FIS ice charts is typically reported for rather large areas (hundreds of square kilometers) with usually incomplete spatial and temporal accuracy as the ice charts are issued only once daily in the afternoon and are based on the information gathered since the previous afternoon. ~~Consequently, fresh SAR imagery with updated sea ice conditions can often be disregarded if acquired soon~~ Does not make any sense, SAR imagery acquired after the ice chart has been released for a particular day, and thus the ice chart may become outdated compared to SAR imagery release is naturally not included in the chart.

The ice charts are also saved as numerical grids from the ice charting software ~~For the gridded product they are digitized into grids~~ with a resolution of approximately 1 nautical mile (NM). In the grid format the ice thickness, ice concentration and DIR value assigned to each ice chart polygon are included. Additionally, the sea surface ~~open water surface~~ temperature is included in the ice chart grids. This practice slightly differs from the ice classes defined by the ice charting guidelines in Canadian Ice Service, MANICE (2005), where the ice is classified based on the stage of development and indicated by the so-called WMO egg codes ~~WMO (2010)~~ (WMO, 2010).

2.3 Surface and thickness profile data on ridged ice

No long-term studies between ice chart ~~degrees of ice ridging~~ DIR and the actual ridging statistics have been carried out although field campaigns to measure ridging in the Bay of Bothnia started ~~already in in the~~ late 1970's by shipborne laser profilers and the first extensive airborne laser profiler campaign was conducted in 1988, see Lewis et al. (1993). ~~Results from three other campaigns in the 1993, 1994 and 1997 are summarised in Lensu (2003). The campaign results discussed in this paper are from a campaign on 2-7~~ To compare DIR categories in the FIS charts with actual ridging we utilize results from helicopterborne profiling campaigns to the Bay of Bothnia, the northernmost basin of the Baltic Sea. The main dataset is from the March 2011 campaign with approximately 600 km of measurement lines. ~~Then the measurements were collected~~ by a helicopterborne electromagnetic (HEM) ~~device sensor~~ which combines laser surface profiling and inductive distance measurement to the ice-water interface. Hence, the The HEM measurements give a ~~as comprehensive understanding on ridging as is obtainable from linear profiles.~~ They (see Fig. 2). The two profiles provide the total thickness ~~and the horizontal resolution of the EM instrument is also sufficient for resolving ridge keels,~~ Haas et al. (2009), and the surface laser profile resolves ridge sails. The measurement spacing of the HEM instrument is 3 – 4 m while the measurements average the thickness over a footprint that is 3.7 times the instrument altitude and typically 50 m. This is sufficient to resolve ridge keels although the keel depths are decreased by the averaging (Haas et al., 2009). The ice season ~~2010-2011~~ 2010 – 2011 was severe, with a maximum ice extent of 309 000 km². In the Bay of Bothnia ~~mid-basin pack~~ mid-basin the level ice thicknesses reached 60 cm which somewhat decreased ridging from what would have been expected during an average winter with similar wind conditions. ~~The ridging generally intensified towards the northwestern part of the Bay of Bothnia and towards fast ice edge, and there were coastal rubble fields generated by the closing of flaw leads covered by thinner ice.~~

2.4 SAR image mosaics

~~The SAR imagery used in this study were RADARSAT-2 ScanSAR wide Wide (SCWA) dual-polarized imagery with the HH~~ To provide interannual variation for sail statistics, data from three other campaigns in 1993, 1994 and 1997, summarized in Lensu (2003), is also used. These measured surface profile only. All four campaigns comprise 1600 km surface profile in total. ~~From the profile data ridge sails are selected with Rayleigh criterion: to include the shallower one of two adjacent sails its height must be at least twice the minimum elevation between the sails. In addition, cutoff height is imposed. From the sail data the variation in ridge density, or the number of ridge sails per kilometer, and sail height can be determined. Choosing a joint ridge sail height cutoff of 0.4 m a large interannual variation is found for ridge density, from 5.3/HV polarization combination. The nominal size of an RS-2 SCWA image is around 500 by 500 km to 26.7/km, and the pixel size is 50 m. The spatial resolution is around 73-163 m by 100 m (range by azimuth). The incidence angle (θ^o) varies from 20 to 49 degrees. The equivalent number of looks (ENL) is some larger than six. The noise equivalent σ^o at both HH- and HV-polarisation is around -28 ± 2.5 dB and the absolute accuracy of σ^o is better than 1 dB MDA (2014).~~

~~The acquired RS-2 SAR imagery covered the whole Baltic Sea ice season in 2012-2013, with a total number of 538 SAR images between December 7 2012 and April 16 2013. The amount of SAR images during the test period from January to March~~

was 342, i. e. on average over three SAR scenes per day. For our test period we selected the months during which the SAR images were mostly acquired under dry snow conditions. Hence the dominant backscattering source was the sea ice surface and we could expect a statistical relationship between σ^0 and DIR as reported in Carlström and Ulander (1995); Dierking et al. (1999); Similä et al. (2015). Because the ice conditions in the northern parts of the Baltic Sea were the most severe, we restricted our study area to northward from the latitude of 61°N , covering the entire Bay of Bothnia and largely the Sea of Bothnia.

The preprocessing of the RS-2 SCWA images consisted of calibration (calculation of σ_{HH}^0 and σ_{HV}^0), georectification, calculation of θ^0 , and land masking. First the data were rectified into Mercator projection in basin. The coastal ridge fields are often created by the closing of refrozen coastal leads and can have the character of continuous rubble fields with densities up to 100m-resolution. This georectification is compatible with the navigation system of the Finnish and Swedish icebreakers. In this Mercator projection the reference latitude is 61 degrees 40 min (N). Sail height depends on the average ice thickness characteristics of the basin, and also the presence of snow cover reduces the heights in the profile data with a value equaling to the snow thickness. However, as a first approximation the average sail height for the Bay of Bothnia can be assumed to be 0.2 m above cutoff. In the interpretation of the profile data it must be taken into account that a considerable fraction of ridges fall below the cutoff. Moreover, the sail heights are sampled from random crossings and include also shallower sections of the sails. In situ field measurements usually select the highest point of the sail and the observed heights are typically 1-3 m and drilled keel depths 5 – 15 m (Kankaanpää, 1997).

As the SAR σ^0 is dependent on θ^0 , an incidence angle correction is necessary before the

2.4 Correspondence between ice charts and SAR mosaics

For a correct classification of the SAR images with wide θ^0 range, such as RS-2 SCWA images. For the HH-polarization images, an incidence angle correction method described in Mäkynen et al. (2002) was applied. This incidence angle correction maps the σ^0 values using a linear dependence for the σ^0 in dB-scale to a predefined θ^0 value θ_R^0 . In this case, the fixed θ_R^0 of 30° was used. At the HV-band the SAR backscattering coefficient values are close to the instrument noise floor (around -28 dB for RS-2 ScanSAR Wide mode), and the noise floor (noise equivalent σ^0) varies along the across-track direction. The noise floor modulates the (low)HV channel signal leading to clearly visible stripes (artifacts) at HV band. These stripes complicate both the visual and automated interpretation of the SAR data. We applied a statistical noise reduction procedure at the RS-2 HV channel. The procedure is described in detail in Karvonen (2015).

The rectified and incidence angle corrected images were land masked. The land masking was based on the GSHHG (Global Self-Consistent Hierarchical, High-resolution Geography database from the National Oceanic and Atmospheric Administration; NOAA) coastline data, Wessel and Smith (1996).

Then the texture features of sea ice, they need to be consistent with the degree of ridging values assigned for each class in the ice chart for the whole training data set. This consistency however cannot be assured by the current ice charting process.

because of two main reasons. Firstly, the SAR images were segmented and the segmentwise features were calculated in the resolution of 100 m, for details see Sections 3.1 and 3.2. Due to data scenes are not always acquired over the area of interest in time for the large size of SAR images the HH and HV images and also the feature images were downsampled into 500 m resolution. The daily SAR mosaics were constructed after receiving the morning RS-2 image acquisitions such that the most recent imagery is overlaid the older imagery. The test area was typically covered by RS-2 every 1 to 2 days. Delays up to two days are possible, however, usually the delays in the test area are one day or less. The SAR mosaics always represented the latest SAR information at each location. ice charting. This results in the ice analysts requirement for extracting ice information from other available sources, typically consisting in optical sensors (e.g. MODIS), or in-situ measurements or observations (e.g. icebreakers). Secondly, the degree of ridging is only divided in 4 severity classes, with a 5th class denoting the brash ice barrier which is rarely present in the Baltic Sea. The four ridging classes does not always have a clear separation between each other, thus in many cases they can be mixed.

The equivalent number of looks (ENL), noise equivalent σ^2 and autocorrelation between neighboring pixels in the rectified images were studied using homogeneous areas of size 3.1x3.1 km visually selected from the images over open water areas with a weak texture. The ENL was around 9.5 for the whole θ^2 range as the resolution 100 m. Thus, To minimize the aforementioned subjective bias and maximize the consistency between the texture features present in the daily SAR mosaics and the allocated ridging class in the corresponding ice charts, we have selected for our study only those SAR - chart pairs which agree with each other on a daily basis to a decent degree and rejected all others found in disagreement. This was performed by examining every DIR chart during the whole test period from 1st January 2013 to 31st March 2013 and compare it visually to the corresponding SAR mosaic. To visually compare the sea ice texture features in SAR imagery and evaluate their correspondence to the correct ice class in the FIS charts is not a straightforward task when performed by a non-trained analyst. However, after inspecting several pairs visually and discussing with the ice analysts, the radiometric resolution was around 1.2 dB and comparison was much easier and there were many cases when at least one major disagreement was found in a pair. Some of these disagreements arose and were confirmed to have appeared from the lack of fresh SAR imagery at the time of ice charting. After eliminating these data pairs, there were still few cases when the SAR mosaic content and its corresponding level of ridging in the FIS chart did not match perfectly, as discussed in the begining of this subsection. These differences could not be noticed (established) independently in respect to all of the standard deviation (std) of fading was 1.4 dB. The autocorrelation coefficient between the adjacent 100 m pixels was on average only 0.18. evaluated data pairs but rather noticed after familiarizing the analyst's eye to the specific SAR texture features correlative to the 4 degrees of ridging classes assigned in the chart during multiple days.

2.5 Correspondence between ice charts and SAR mosaics

We found that often the ice charts did not correspond to the SAR mosaics of the same day. This has occurred because some We show in the Fig. 3 two SAR - chart pairs from 9th and 12th March 2013 over Bay of Bothnia and northern part of the daily SAR mosaic was a few of days old or because the SAR mosaic was updated after the preparation of the manual ice chart. We note that FIS also uses MODIS data when producing a new ice chart. Due to the inconsistencies between ice charts and SAR data we examined every DIR chart during the whole test period from the Bothnian Sea, where the two daily SAR mosaics show

visually similar texture features with very small differences. In spite of that, the corresponding DIR charts show a change in class from slightly ridged ice of class 2 on 9th March to level-ice of class 1 ~~January to 31 March and compared them visually to the corresponding SAR mosaic.~~ on 12th March, along the west coast near the fast ice region. Granting that for the ship navigation the low ridging class shift does not pose any real concern, for the automatic classifier can have an adverse effect leading to a decrease in discrimination power between the two low ridging classes 1 and 2. A similar effect is present for the more central to southern part of Bay of Bothnia, where the heavily ridged ice of class 4 on 9th March has changed to class 2 on 12th March. In this case, we have rejected the data pair from 9th March and accepted the data pair from 12th March as good pair, because the latter was found more consistent with the classification from multiple days.

~~This process resulted in the rejection of many of the ice charts during the test period. In our analysis we included only those days in which the DIR charts appeared to be in overall agreement with the corresponding SAR mosaics. There were 10 such ice charts in~~ In the end, our selection of daily SAR mosaics and FIS DIR charts pairs resulted in a total of 11 pairs in January, 15 in February and ~~12~~ only 8 in March.

3 Methodology for estimation of the degree of ice ridging

Our classification procedure consists of two stages. First, we segment the SAR imagery. The primary goal in the segmentation is that the resulting segments would mainly be composed of one DIR category. Then for each segment is computed a set of features which are related to the ice ridging information. The second stage is to classify every segment based on the feature vector and assign one DIR category label to each segment. Hence, a successful classification requires that the segmentation succeeds, the features are meaningful and the feature based classification is efficient.

3.1 SAR Image segmentation

In order to perform the segmentation we combined the HH- and HV-polarized RS-2 SCWA images ~~data~~ using the Principal Component Analysis (PCA) technique. PCA is a statistical procedure that uses an orthogonal transformation to convert an image of possibly correlated pixel values into an image of linearly uncorrelated pixels. The values of these pixels are called principal component scores. We selected the first PCA image (corresponding to the largest PCA eigenvalue) for the segmentation because it explains most of the variation contained in the HH- and HV-images. This allowed us to speed up the segmentation process which for large SAR data sets requires a considerable amount of time and computing resources.

For the data segmentation, there are many algorithms available, but very few that can work well with SAR imagery because of the small dynamic σ^0 range, ~~-22, -7 dB is typical HHI SAR C-band images and -28, -24 dB for HV images~~ σ^0 range. There does not exist a clear separation between different sea ice types based on the magnitude of σ^0 ~~σ^0~~ , and the presence of the speckle complicates the segmentation task further. ~~In the segmentation we truncated the HH range to -22, -8 dB. Here, the first PCA image from the HH- and HV-polarization SAR imagery was segmented with~~ Here we have used a Markov Random Field approach, ~~Rue et al. (2005), (Rue et al., 2005),~~ and optimized with an Modified Metropolis Dynamics algorithm, similar as in Kato et al. (1992, 1994); Berthod et al. (1996). This stochastic method has been demonstrated to provide a better seg-

mentation than a deterministic one, e.g. Iterated Conditional Mode (ICM) by Besag (1974)), for ~~typical~~ sea ice SAR imagery ~~(Ochilov et al. (2012); Deng and Clausi (2004, 2005))~~ (Ochilov et al., 2012; Deng and Clausi, 2004, 2005). Markov Random Field (MRF) approach relies less on the initial segmentation, and also takes into account the global and local statistics of a pixel. This guarantees that pixels with similar intensities would not be treated in the same way in different regions of an image I , if the local spatial interactions differ in the two regions.

For example, to select the best new label \hat{L} for a group of neighborhood pixels (cliques) in a site s , is equivalent to maximize the probability distribution of labels in site s , conditioned by the a-priori label (L) (Besag, 1974). In other words, $\hat{L}_{MAP} = \underset{L \in \Omega}{\operatorname{argmax}} P(L|F = f)$, where Ω is the set of labels, $(F=f)$ $F=f$ is feature vector, (L) L is the segmented result conditioned by the feature vector. For each s , the cliques potential depends on the local configuration and type (size, shape, and possibly orientation). For simple cliques (formed by the closest neighbored pixels), their potential function V_c can be reduced to only two states:

$$V_c(L) = \beta \delta(L_i, L_j) = \begin{cases} +1 & \text{if } L_i = L_j; \\ -1 & \text{if } L_i \neq L_j; \end{cases} \quad (1)$$

15 where

$$V_c(L) = \begin{cases} +1 & \text{if } L_i = L_j; \\ -1 & \text{if } L_i \neq L_j. \end{cases} \quad (2)$$

and the homogeneity of the region is controlled by the β parameter.

The site's energy would simply be the sum of all cliques potential:

$$U(L) = \sum_{c \in C} V_c(L). \quad (3)$$

20 For more complex cliques (higher order neighbours), their potential would depend on the computed local mean (μ_{L_s}) and variance ($\sigma_{L_s}^2$). The labels (classes) would then be represented by Gaussian distributions:

$$P(f_s | L_s) = \frac{1}{\sqrt{2\pi}\sigma_{L_s}} \exp\left(-\frac{(f_s - \mu_{L_s})^2}{2\sigma_{L_s}^2}\right) \quad (4)$$

If we consider the probability distribution of labels in ~~s~~ S a Markov Random Field with $P(L|F = f) > 0$, we can also treat it as a Gibbs form ~~Besag (1974)~~ (Besag, 1974):

$$P(L) = \frac{1}{Z} \exp\left(-\sum_{c \in C} V_c(L)\right), \quad (5)$$

where Z is the normalization constant and $V_c(L)$ is the clique's potential for the current label state.

For this example the (logarithmic) energy is

$$U(L) = \sum_S (\log((2\pi)^{1/2}\sigma_{L_s}) + \frac{(f_s - \mu_{L_s})^2}{2\sigma_{L_s}^2}) + \sum_{s,r} \beta \delta(w_s, w_r), \quad (6)$$

5 ~~where the homogeneity of the region is controlled by the β parameter. and~~

$$P(L|F = f) = \frac{1}{Z} \exp(-U(L)) \rightarrow \hat{L}_{MAP} = \operatorname{argmax}_L P(L|F = f) = \operatorname{argmin}_L U(L). \quad (7)$$

These kind of functions can then be optimized by various methods, one being the simulated annealing method ~~Kirkpatrick (1983)~~, ~~Cerny (1985)~~, ~~(Kirkpatrick, 1983)~~ ~~(Cerny, 1985)~~, where a slow decrease in the probability of accepting worse solutions occurs as the algorithm searches the solution space. The method used here is an adaptation of the Metropolis-Hastings algorithm introduced in Metropolis et al. (1953) or shortly Metropolis algorithm which was created as a Monte Carlo method to generate sample states of a thermodynamic system. In the algorithm the labeling is also dependent on the control variable called temperature T . If the energy function $U(L)$ value increases, the label is changed with a probability dependent on T and increase of $U(L)$ ($\exp(-\Delta U/T)$).

To perform the MRF segmentation, we first need to initialize the Gaussian parameters for the labels and also the number of labels. This is performed automatically for each SAR image separately. First the histogram of the SAR image is computed, and then the Expectation-Maximization (EM) ~~, Dempster et al. (1977)~~, ~~(Dempster et al., 1977)~~, algorithm is applied to decompose the histogram into a Gaussian decomposition. The number of Gaussians in the decomposition is initialized to a small minimum value, e.g. two, and then iteratively increased until the EM decomposition and the histogram are similar enough with each other. We measure the similarity by the coefficient of correlation r . We stop the EM-algorithm if either ~~if~~ r exceeds ~~t~~ 0.97, or if we have more than nine labels in the image. We initially label the image pixels based on the EM classification, i.e. we assign the label with highest probability of the N different Gaussian distributions $G_k(x)$ for a pixel. After this labeling scheme we can run the MRF segmentation.

Here, we have applied the segmentation on the first PCA component image. An example of segmentation result for the Bay of Bothnia region is shown in ~~Fig. 4~~ the Fig. 4 and the Fig. 11 together with the original HH and HV SAR mosaics.

25 The next step in the SAR analysis ~~was is~~ to compute several SAR ~~quantities~~ statistics (features) for the obtained segments.

3.2 SAR image features

Using the computed SAR features and the DIR values from FMI ice charts we studied the classification of DIR categories ~~for our test period~~. The following SAR features were computed from the SAR images with 100 m pixel size, and their efficiency in the DIR classification was studied. Each feature value is a median value of the feature computed over a single segment. Their abbreviations are inside the brackets:

1. ~~HH-band~~ HH polarization SAR backscattering coefficient (σ_{HH}^o), with incidence angle correction applied.
2. ~~HV-band~~ HV polarization SAR backscattering coefficient (σ_{HV}^o), with incidence angle correction and noise level equalization applied.
3. ~~HH-band~~ HH entropy (E_{HH}), computed ~~for the full-resolution SAR (100m)~~ in windows with a radius of 5 pixels.

- 5 4. ~~HV-band~~ HV entropy (E_{HV}), computed ~~for the full-resolution SAR (100m)~~ in windows with a radius of 5 pixels.
5. ~~HH-band~~ HH autocorrelation (AC_{HH}), computed ~~for the full-resolution SAR (100m)~~ in windows with a radius of 5 pixels.
6. HV autocorrelation (AC_{HV}), computed ~~for the full-resolution SAR (100m)~~ in windows with a radius of 5 pixels.
7. HH ~~channel~~ coefficient of variation (CV_{HH}), computed in ~~full resolution for~~ windows with a radius of 5 pixels).
- 10 8. HV ~~channel~~ coefficient of variation (CV_{HV}), computed in ~~full resolution for~~ windows with a radius of 5 pixels.
9. Edge density for HH ~~channel image~~ (ED_{HH}), scaling: $1000 * N_e / A$ (N_e is the number of edge pixels and A is the segment area).
10. Edge density for HV ~~channel image~~ (ED_{HV}), scaling: $1000 * N_e / A$ (N_e is the number of edge pixels and A is the segment area).
- 15 11. Segment size (SSZ).
12. ~~HH-channel~~ HH kurtosis (K_{HH}), computed in ~~a window with~~ windows with a radius of 5 pixels ~~in the full SAR resolution.~~
13. ~~HV-channel~~ HV kurtosis (K_{HV}), computed in ~~a window with~~ windows with a radius of 5 pixels ~~in the full SAR resolution.~~

Additionally we extracted the segment mean of sea ice concentration (SIC) from the FMI ice charts.

- 20 Coefficient of variation was computed separately ~~for HH and HV channels~~ as

$$C^V = \frac{\sigma}{\mu}, \quad (8)$$

where σ is the standard deviation ~~over a data window~~ and μ is the mean over the window. Kurtosis is computed as the fourth moment within ~~a the~~ data window.

Entropy E ~~Shannon (1948) was computed separately for HH and HV channels~~ (Shannon, 1948) was computed as

$$25 \quad E = - \sum_{k=0}^{255} p_k \log^2 p_k, \quad (9)$$

where p_k 's are the proportions of each gray tone k within ~~each computation a~~ window. Auto-correlation, ~~ae~~ Similä (1994); Karvonen et al. (2005), was computed as

$$C^A(k, l) = \frac{\sum_{i,j \in B} (I(i-k, j-l) - \mu_B)(I(i, j) - \mu_B)}{|B| \sigma_B^2}, \quad (10)$$

- where $I(k, l)$ is the pixel value at location (k, l) . Mean over the directions horizontal, vertical and diagonal directions i.e. $(k, l) = (0, 1)$, $(k, l) = (1, 0)$, $(k, l) = (1, 1)$ and $(k, l) = (1, -1)$ was used to accomplish directional isotropy. The computation window is denoted by B .

Edge density D was computed for each segment (separately ~~for at the~~ HH and HV ~~channels~~ polarizations) after an edge detection by the Canny algorithm ~~Canny (1986)~~ (Canny, 1986) as

$$D = N_e/N, \quad (11)$$

5 where N_e is the number of edge pixels with a segment and N is the segment size in pixels. ~~The edges can often be regarded as fragments of an ridged area, when the imprints of the individual ridges disappear in the coarse SAR resolution.~~

Most of the features have a rather straightforward interpretation. Entropy describes how uniformly the HH/HV values are distributed. Edge density is a measure for edge fragments present in the segment which fragments we assume to be related to ridging. Coefficient of variation (CV) describes how fast the standard deviation increases with the mean. We expect that in the
10 ridged areas CV is larger than in the homogeneous areas. Kurtosis describes the peakness of the σ^o distribution. With the aid of the spatial autocorrelation we can quantify how structured the ice field in question is in the SAR imagery. We expect that more structural elements appear in the ridged ice than in the level ice where the spatial σ^o variation is more random.

In ~~Fig. 5~~ the Fig. 5 the computed features for an selected area in the central Bay of Bothnia on 15th March 2013 are shown. In the selected area highly moderately and heavily ridged areas ~~are~~ were present.

15 3.3 Random forest classification method

After trying several classification methods (local regression, logistic regression, General Additive Regression Model) we found out that the random forest (RF) ~~, Breiman (2001), (Breiman, 2001)~~ approach produced good enough results to be of practical use. Random forest is an ensemble learning method which can be applied to classification and regression. In RF we artificially generate several training sets from a single training set at our disposal using bootstrapping, grow a classification tree for each
20 individual training set, perform classification for each tree and then aggregate the results. The bootstrap aggregation is called also bagging. This technique is efficient to reduce variance in high-variance predictions in the same manner ~~than as~~ taking an average of samples ~~is, in~~ Breiman (2001).

For the classification of the daily ~~sea~~ ice data we divided our data ~~of 37 days, see Section 2.4,~~ into the training and the test data sets. ~~At least a time gap of three days was required between test and training data to avoid situations where the same SAR scene and the associated features could be present in both the training data and the test data., see Section 2.4~~
25 ~~, see Section 2.4~~

In our computations we have used the routines included in the commercial software Matlab.

3.3.1 Description of the algorithm

We outline ~~here~~ the RF algorithm and the used notations. The classes are denoted by $C = \{1, \dots, C\}$ We have a training set $X = \{x_1, \dots, x_N\}$ where each sample x_i consists of a feature vector f_i and the corresponding class. When we take a
30 bootstrap sample from X , we denote it Z^* . Our bootstrap sample Z^* is of the same size as the original sample, so on average the fraction 63-% of the original samples of X belong to it, the rest being duplicates ~~, Efron and Tibshirani (1993)~~ (Efron and Tibshirani, 1993). The samples of X left out from Z^* (about 37% of the samples) are called out-of-bag (OOB) samples.

The classification tree is denoted $T_b(\Theta_b)$ with $b \in \{1, \dots, B\}$ and it uses Z^* as its training data. Each end node n of $T_b(\Theta_b)$ has a class label which is the most frequent class in that node. The parameter Θ_b characterizes the b th random forest tree in terms of split variables, split points at each node, and terminal node class label. The class label given by $T_b(\Theta_b)$ depends on the feature vector f_i which is used as input for the tree. ~~We denote it~~ It is denoted as $\hat{C}_b(f_i, \Theta_b)$. We generate B bootstrapped training sets and relying on every training set we grow a classification tree $T_b(\Theta_b)$. A classification tree often achieves a rather low bias if it is grown deep with many nodes without pruning ~~;~~ Hastie et. al. (2011) (Hastie et. al., 2011).

The impurity measure is the Gini index G ,

$$G = 1 - \sum_{c=1}^C p(c|n)^2$$

10 where $p(c|n)$ is the proportion of the samples that belong to class c at a particular node n . G indicates how dominant the class c is in the subtree after the split. A small Gini index value indicates that the subtree contains predominantly observations from a single class. In the split the feature component of the vector f_i with the smallest Gini index is utilised ~~Ripley. (1996)~~ (Ripley., 1996).

15 In classification we record the classes predicted by the ensemble of B trees for a specific feature vector, and take a majority vote. The most common class is the class predicted by the ensemble. Then the selected class has a smaller uncertainty than a single classification tree ~~;~~ Hastie et. al. (2011) (Hastie et. al., 2011), because an average has a smaller variance than a single variable. This is true also for the correlated variables. If B is large enough then the random forest algorithm avoids the tendency of over fitting the model which often occurs in the context of the decision trees.

The problem with bagging is that the grown trees are correlated. To reduce this correlation the RF has a randomisation step. When building trees, each time a split in a tree is considered, a random sample of m predictors is chosen as split candidates 5 from the full set of p predictors ($m = 4$ and $p = 8$ here). A new sample of m predictors is taken at each split. This step prevents the same features to dominate every tree.

The flow of the random forest algorithm is described below.

Random forest algorithm for classification

1. For $b = 1$ to B :
 - (a) Draw a bootstrap sample Z^* of size N from the training data.
 - (b) Grow a random-forest tree $T_b(\Theta_b)$ to the bootstrapped data, by recursively repeating the following steps for each terminal node of the tree, until the minimum node size is reached.
 - i. Select m variables at random from the p variables.
 - ii. Determine the best variable and split-point among the m variables using the Gini index.
 - iii. Split the node into two daughter nodes.
2. Output the ensemble of trees $\{T_b(\Theta_b)\}_1^B$.

To classify a new feature vector f_n :

Classification: Let $\hat{C}_b(f_n, \Theta_b)$ be the class prediction of the b th random-forest tree. Then $\hat{C}_{rf}^B(f_n) = \text{majority vote } \{\hat{C}_b(f_n, \Theta_b)\}_1^B$.

3.3.2 Selection of the features

- 10 Because an ensemble of trees was used in RF and a large amount of features were utilized, the results were hard to interpret. To analyse the impact of different features on the class estimation the importance measure was used. This measure is implemented as follows. For each tree, the classification error on the OOB portion of the data is computed. This gives the baseline error rate for the tree. Then in the OOB set we randomly permute one feature of the feature vector f_i and simultaneously keep fixed the other features in f_i . We note that the marginal sampling distribution of the picked feature remains the same during the
- 15 permutation. ~~Then-Next,~~ we recalculate the classification error in the OOB set. This classification error is compared to the baseline error. Usually it is larger than the baseline error. The procedure is repeated for every feature separately. The decrease in classification rate as a result of this permuting is averaged over all trees, and is used as a measure of the importance of the chosen feature.

- To select the features we run the RF algorithm for several feature combinations and for several different training data sets.
- 20 The importance of the features as well as the classification accuracy was monitored. This empirical approach lead to the choice of ~~eight 8~~ features from the computed 13 features, see Section 3.2. ~~We ended up using the following eight features in determining degree of ice ridging classes: HH-band autocorrelation (AC_{HH}), ice concentration (IC), edge density for~~

HH-channel (ED_{HH}), HH-band entropy (E_{HH}), HH-channel kurtosis (K_{HH}), (σ_{HH}^o), HH-channel coefficient of variation (CV_{HH}) and σ_{HV}^o .

25 In Fig. ?? is shown the relative importance of the different features as measured by their impact on the correct classification of the out-of-bag samples when the training data covered the whole test period. The importance order of features in this data set is: ice concentration, HH-channel kurtosis, σ_{HH}^o , HH-channel edge density, HH-channel autocorrelation, HH-channel entropy, HH-channel coefficient of variation and σ_{HV}^o . If the training data of just one month was used the relative importance order of features varied to some extent. One feature, ice concentration, remained however the most influential single feature in every case. This is comprehensible because when IC was between 80 % and 90 %, it was almost always assigned to the level ice category (DIR=1). The weak importance of σ_{HV}^o is probably due to the relative narrow range of the σ_{HV}^o values.

30 We conclude the RF section with a short summary on the major advantages of the RF algorithm summary we found that the RF classification presents the following advantages: i) RF has the ability to describe complex, nonlinear statistical relationships among variables, ii) RF reduces the uncertainty of the obtained estimate, iii) RF reduces the possibility of over fitting.

The greatest weakness in RF is its relatively weak extrapolation property, Hastie et. al. (2011) (Hastie et. al., 2011). This property can be seen from the behaviour of the error rates. The RF classifier has a very low training error rate but the error rates increases significantly for the test set.

5 4 Results

4.1 Ice chart ridging categories vs. measurements surface and thickness profile data

To give us a perspective on We use the March 2011 HEM campaign data to study how well the ridging DIR categories in the FIS charts describe the actual ridging we here present the field campaign results. The campaigns in 1993. As the variation is much larger for ridge density than for sail height, 1994 and 1997 summarised in Lensu (2003) measured surface profile only while the the fourth campaign during the period from 2 to 7 March 2011 profiled as also ice thickness. From surface profile data ridge sails are identified by cutoff height and Rayleigh criterion according to which the shallower of two adjacent sails is counted only when separated by a trough extending below half its height. Choosing a joint ridge sail height cutoff of 0.4 m a large interannual variation is found for the four campaigns consisting of totally 1600 km of measurement line profile. Ridge densities vary from 5.3/km to 26.7/km, while the sail height shows less variation, from 0.58 m to 0.66 m. To the densities affect mostly the windiness of the season, especially during the early stages with thinner icetypes are less resistant against deformation. There are regional differences, the densities increasing with the wind fetch towards the NE corner of the basin, and also the coastal ridge fields often have the character of rubble fields with densities up to 100/km. Sail height depends on average thickness characteristics of the basin, and also the presence of snow cover reduces the heights with a value equalling to the snow thickness. However, as a first approximation the sail height for the Bay of Bothnia can be assumed to be 0.2 m above cutoff. In the interpretation of profile data it must be considered that a considerable fraction of ridges fall below the cutoff and that the sail heights may become sampled from shallower sections of the sails. In field campaigns that typically select the highest point of the sail the observed heights are typically 1-3 m and drilled keel depths 5-15 m, Kankaanpää (1997).

ridging is parameterized here by density only. The other parameter considered is the total thickness of ridged ice. This is a navigationally relevant parameter that can be used to calculate icegoing speed of ships. To establish compatibility with the ice chart and ice model data, which employ, which employs a 1x1 nautical mile (NM) grid, the ridging parameters from the helicopterborne electromagnetic (HEM) sail density and ridged ice thickness from the March 2011 data were calculated as averages for the cells of the grid. Here the comparison is made. There are two different aspects of comparison involved. The first is the relationship between ridge density and total thickness from HEM data and DIR in the ice chart data. The other is the relationship between ridge density and ridged ice thickness which is in general relevant to the question how well surface data can represent the total thickness of ice. Thus, the comparison is made between ridge density and DIR and, on the other hand, the degree of ice ridging (DIR) of ice chart data between ridged ice thickness and DIR. Although somewhat qualitative the DIR indices are estimates made by sea ice specialists and refer to the Lagrangian ice chart regions corresponding to various formation and deformation phases of the ice cover. The reliability of their boundaries is usually high. The DIR value 1, corresponding level and rafted ice categories, had very small coverage in the data, while DIR 2, the category of slightly ridged ice, was not found at all. The comparison is therefore made for the DIR values 3 and 4, or moderately and severely heavily ridged ice. The sail height retrieved by HEM from the profile data was equal for these categories while a clear difference was found for the ridge densities and total ridged ice thicknesses, see Table 2. This indicates that such a rough a rough but reliable quantification of ridging can be done based on the indices.

based on DIR values only. A more detailed picture can be obtained from comparisons of Figure 6 between degree of ice ridging DIR and, on the other hand, ridge sail density and total ice thickness from the HEM campaign. For March 2011 data. For the ridge density the colorbar range is chosen to be from 12.7 to 21.5 or which are the average densities corresponding to indices DIR 3 and 4 in Table 6. Thickness Ice thickness colorbar was scaled similarly. Thus, all values below the lower averages averages corresponding to DIR 3 are blue and all values above higher averages green averages corresponding to DIR 4 are pink. Above and below the colorbar range the ridge density has still a wide range of variation as is seen from the histogram of Figure 6. The basic regional characteristics can be seen are similarly visible in all three datasets, however. The spatial distribution for the degree of ice ridging. In spite of the uttermost simplicity of DIR it was in a reasonably good agreement with the HEM-retrieved quantities considering the uttermost simplicity of the former both ridge density and total thickness. The agreement with DIR was somewhat better for the total ice thickness was somewhat better than agreement than for the ridge density, which. This may be related to the fact that a large fraction of ridging does not show in the density due to the cutoff. The correspondence of sail but affects the SAR-based and visual estimates behind DIR values. The generally good agreement between DIR, ridge density and total thickness was still good however, as is expected from the fact that the ridge size, as measured by sail height, and ridge density show no clear correlation. This indicates that it is possible to derive relevant data on deformed ice thickness from spatially distributed, surface observable density-like ridging characteristics together with climatologically typical values for ridge size. If ridging is close to isotropicity, the length per square km of ridge sail above cutoff is estimable as $\pi/2$ times ridge density, and further estimates on the fractional area covered by sail rubble are obtained from average sail width. means that DIR values estimated from SAR can be translated to navigationally relevant ridging or thickness parameters. The largest differences between the degree of ice ridging and HEM quantities were found in the

coastal ridge field extending from ~~64N-23E to SW~~ 64° N 23° E towards SW (see Fig. 2). Both ridge density and average sail height were lower for this part in comparison with the extension of the same ridge field ~~to towards~~ NE from the said location.

25 These values were also similar to those found in the mid basin, so the missing separation of this coastal ridge field into two categories apparent from the HEM data is clearly a shortcoming of the ice chart DIR data.

4.2 Monthly backscattering statistics

We concentrated in our analysis in the areas with IC over 80. ~~In areas with ice concentration varying from 80 %~~ to 90 %, ~~the amount of open water area can impact on the backscattering statistics significantly, particularly during high winds. This~~ IC limitation excluded the marginal ice zone (MIZ) which is defined to consist of ice areas with IC from 15 % to 80 %, see

30 e.g. Strong (2012). ~~In areas with IC 80–90 % the amount of open water area is rather high and it affects the backscattering statistics in a complicated manner depending on wind conditions and the spatial distribution of ice floes~~, from our analysis. Almost all areas with IC ~~in this range from 80 % to 90 %~~ belonged to level ice polygons in our data set. ~~The~~ In total the level ice category (~~DIR=DIR 1~~) covered well over 50 % of all the ice areas during our test period. ~~Because the resolution in~~

According to earlier studies the effect of incidence angle on σ^o for level ice and ridged ice is rather similar. In Mäkynen et al. (2002) it was found that the incidence angle dependence of σ_{HH}^o in logarithmic scale (dB) can be described by a linear model, with slopes -0.21 dB/degree for ridged ice and -0.25 dB/degree for level ice. It seems that using a slope of -0.23 for all the data is adequate for automated classification, and the ridged areas and level ice can be distinguished both at near and far range.

5 Also a more sophisticated approach, iteratively applying different slopes for level ice and ridged ice has been studied in Karvonen (2002), but the effect on sea ice classification was minor. When inspecting the SAR mosaics visually most of the SAR frame boundaries were not visible or were hardly visible, indicating successful σ_{HH}^o incidence angle correction. For open water the correction may not work properly as for open water σ^o signatures depend heavily on wind speed and swell (i.e., surface roughness).

10 For HV channel, the combined incidence angle and noise floor correction is essential. Without this correction the HV backscattering and texture features derived from it can not be used in classification as the effect of the SAR mosaics were 500 m, the averaging of SAR pixels suppressed the fine scale (100 m) variation present especially in the ridged zones varying noise floor is so high (up to about 3 dB) and will cause a significant amount of misclassifications. However, after correction the HV channel data can be used in classification and we have not by visual inspection observed any significant differences in

15 near-range and far-range σ_{HV}^o for either open water, level ice or ridged ice classes.

We first looked at how the σ_{HH}^o distribution ~~changed~~ changes monthly from January to March ~~in the 2013~~ in two main ice categories: level ice (~~DIR=1~~ DIR 1) and ridged ice ($DIR > 1$), see Fig 7. In the beginning of January level ice appeared mainly near the coast of the Sea of Bothnia, and the dominance of mostly thin ice in the Sea of Bothnia continued up to the middle of February whereas in the Bay of Bothnia there appeared also ridged ice areas throughout the whole test period.

20 A significant fraction of the level ice pixels had σ_{HH}^o value below -18 dB indicating thin smooth ice. ~~It is well-known that backscattering from thin ice can also generate large~~ For thin ice rather high σ_{HH}^o values ?(over -18 dB) have also been observed (Mäkynen and Hallikainen, 2004). Also, the presence of the level ice areas with a relatively low SIC (80 – 90 %) meant that

open water patches affected the level ice ~~backscattering statistics generating σ_{HH}^o yielding~~ both high and low σ_{HH}^o values. The ~~values of level ice σ_{HH}^o values~~ above -18 dB were rather evenly distributed in January. ~~The backscattering from ridged~~ Ridged ice areas had a large σ_{HH}^o peak at -16.5 dB and most of the remaining pixel values ranged from -16 dB to -12 dB.

In February level ice σ_{HH}^o ~~there still was present still had~~ a sharp peak around -20 dB ~~in the level ice area indicating~~ indicating presence of very thin ice, but most of σ_{HH}^o values had spread between -16 dB and -11 dB. In the ridged areas a majority of σ_{HH}^o values were in the range between -17 dB and -12 dB. The mean and median values of σ_{HH}^o for level ice areas and ridged areas were almost identical in January and February. In March the ~~backscattering σ_{HH}^o~~ statistics for level and ridged areas showed a clearer discrepancy. The level ice σ_{HH}^o values were distributed rather evenly from -20 dB to -10 dB whereas the σ_{HH}^o values from ridged areas were concentrated in the range from -15 dB to -11 dB. The average σ_{HH}^o value from the ridged areas was over 2 dB higher than that of the level ice areas unlike in ~~the~~ previous months. There was a significant increase in the magnitude of σ_{HH}^o from ridged areas whereas this was not the case for the level ice σ^o ~~value distribution~~.

Based on Fig. 7 it was obvious that the magnitude of σ_{HH}^o alone could not be an efficient predictor in the estimation of the *DIR* value in January and February. ~~We reached the same conclusion also in Section 3.3.2 when using the importance of feature measure in the connection with the RF classifier.~~

We assume that the small separation in the σ_{HH}^o values originating from level ice and ~~deformed ridged~~ ice during the first two test months was due to following two major reasons. As mentioned earlier the level ice areas had mostly IC less than ~~90%~~ 90%. So the backscattering from open water had a significant ~~role in the case of level ice~~ contribution to the level ice σ_{HH}^o . In addition the level ice area (~~*DIR* = 1~~ *DIR* 1) had significant uncertainties in the FMI charts. The ice analysts responsible for the charts told us that in several cases it was difficult, nearly impossible, to discriminate reliably between level ice and slightly ridged ice (~~*DIR* = 2~~ *DIR* 2). In these cases they usually chose the level ice category if the icebreaker reports did not indicate any difficulties for merchant ships. If this kind of difficulties were taking place, a slightly ridged ice category (*DIR* 2) was chosen.

Considering the σ_{HH}^o contrast between level and ridged ice areas the situation changed gradually in February and March towards a more distinct separation between these ice types. We shall analyze the *DIR* charts separately for the period of strong thermodynamic ~~growth (January, ice growth (January-~~ February) and more stable winter conditions (March) in Section 4.3.

The examination of the monthly ~~*HV* σ_{HV}^o~~ distributions, see Fig. 8, confirms our findings for the ~~*HH* σ_{HH}^o~~ distribution. In January and February the values of σ_{HV}^o from level ice areas were close to the noise floor (-28 dB) and, hence, too uninformative for a meaningful analysis. In the ridged areas σ_{HV}^o were 2–3 dB higher but still in general rather low indicating a low sea ice surface roughness. In March the ~~*HV* σ_{HV}^o~~ distributions both in level ice areas and ridged areas were on average about 1–2 dB higher than in the previous months. Also the contrast in the ~~backscattering σ_{HV}^o~~ between ridged and level ice was more significant. As a consequence the σ_{HV}^o values affected the classification result in March but were not useful in the earlier months.

4.3 Classification results for several ridging categories

There was a fundamental imbalance between the sample sizes representing level ice and ~~deformed ridged~~ ice classes. The samples from all the ~~deformed ridged~~ ice classes formed about 40 % of ~~the ice all~~ samples. If we had required that all the

classes were of equal size in the training data, the amount of observations per ice category would have been low, e.g. less than 20 % of the level ice samples would have been utilized. When assessing the results we will keep in our mind the highly different sizes of the ice classes.

25 We run all our random forest classifications with the same set of tuning parameters for routine TreeBagger [Matlab \(2016\)](#) ([Matlab, 2016](#)). From the set of eight ($p = 8$) features we randomly chose $m = 4$ features to be used in a split. Often the value $m = \sqrt{p}$, i.e. $m = 3$ here, would have been recommended [Hastie et. al. \(2014\)](#) ([Hastie et. al., 2011](#)). However, we noted that slightly better results were obtained with $m = 4$ for our data set. Another fixed option was that the minimum number of data points in the end nodes was set to ten. We grew 200 trees during the classification. Results with more decision trees did not
30 yield any significant improvement of the error rates.

In first phase we investigated the capacity of the RF classifier to separate between level and [deformed-ridged](#) ice. Data of all the three months were included in the analyzed data set. The results are presented in Table 3. The overall classification rate was 82 % for the whole winter.

Next we examined the classification of all the four ridging categories through the ~~three-month~~ [three-month](#) period. The training and test data sets had been selected from each month in our data set. The overall classification rate for the test period was 71 %. Looking at the confusion matrix in Table 4 we can observe that the level ice category (93 %) had a very high classification rate. The classification of the three categories for ridged ice was more challenging. The ridged ice ~~category~~ [category \(DIR = 3\) had a correct mode ice class \(category \(DIR 3\) was classified correctly in 45%\) but high misclassification rate](#)
5 [\(55%\) and % of the cases but](#) over 30% of the observations were confused with level ice. The slightly ridged ice (~~DIR = 2~~ [DIR 2](#)) was poorly distinguished. Only in the ~~15%~~ [15%](#) of the cases is was detected correctly. Most ~~samples (42%~~ [DIR 2 samples \(42%\)](#) were assigned to the level ice ~~class-category~~ which in the light of the previous discussion could be expected, i.e. the preference among the FIS ice analysts to use level ice category over slightly ridged ice in the manual ice charts. The ridged ice category with the most accurate classification rate (~~59%~~ [59%](#)) was the heavily ridged ice category ~~DIR = 4~~ ([DIR 4](#)).

10 To obtain more information on how the adopted approach works in rapidly changing ice conditions and on the other hand in more stable winter conditions we classified all three test months separately so that the training and testing data were collected during the same month. The overall accuracy of the monthly results varied largely being at its lowest in February (63 %), higher in January (83 %) and March (81 %). The corresponding Cohen's kappa figures were 0.60 (substantial agreement), 0.52 (moderate agreement) and 0.68 (substantial agreement). The separation between all ice categories was ~~easiest to perform~~
15 [the best](#) in January (overall accuracy 83 %) where basically just three DIR categories appeared. An evidence that the definition of different DIR categories were inconsistent with each other in January and February was that in these months the detection rate stayed below 100 % for the training data in the RF classification but it was 100 % for the March training data.

In each month level ice was the dominant ice category being over 50 % of all ice covered area. The DIR 2 category covered from 6 % to 19 % of the ice area depending on the month. In none of the months it was successfully detected due to its
20 ambivalent definition with respect to the DIR 1 category. The DIR 3 category was successfully detected in January when its areal coverage was large (21 %), and in March when the boundaries between different ice categories were best defined during the test period. The heavily ridged ice fields (DIR =4) were usually well found except in January when such ridged areas were

rare (about 1 %). A possible explanation for the lowest accuracy rate in February was that then the boundaries between different DIR regions were often visually rather difficult to discern in the SAR imagery according to our experience. Fig. Figure 9 shows the variation of the detection rate for each DIR category in all the classification results. The most distinct feature in the results is the consistently poor detection rate for DIR 2.

In Fig. 10 we can see the Baltic Sea ice DIR classification result (left) for a dual-pol pair of SAR mosaics from 9th of dual-polarized SAR image mosaic on 9th February 2013 (Fig. 4 top). Also the reference DIR chart is shown for comparison (bottom left). The automated DIR charts chart produced agreed well with the FIS ice charts for DIR values 1 and 3. However, the automated chart estimated a large fraction of DIR 2 category ice to DIR class 4. The DIR categories 4 category. The automated DIR chart contained detailed markings of the cracks and openings in the central Bay of Bothnia which were detected by the SAR chart but not from not present in the FIS chart. We remark that the SAR mosaic from 9th of on 9th February looked very similar to the one from 7th of on 7th February (two days earlier), when the same cracks / openings can be found, but the corresponding FIS ice chart DIR showed DIR=4 DIR 4 in the areas to which was now assigned DIR=3. DIR 3. This can be taken as an example of the subjectivity which is inherent to the manual ice charts.

There is a good overall agreement between the FIS chart and our DIR classification in Fig. 12. Most of the differences occur in the Bothnian Sea. There the FIS chart indicates mostly level ice and to some extent slightly ridged ice. On the other hand, the classification assigned to some FIS level ice areas the ridged ice and heavily ridged ice categories. Based on the SAR HH and HV images HH- and HV-polarization mosaics (see Fig. 11) those areas represent broken ice fields although the ridging intensity is hard to assess visually.

The major reason for the success of the classification in March is the better discrimination between the ridged ice and level ice in March than in the previous months as noted earlier in Section 4.2. The better discrimination property between ridging ice categories affects the final results in two ways. First, the segment boundaries of the dual-pol SAR imagery follow better the boundaries of the DIR classes in March (see Fig. 11). Secondly, the segmentwise feature vectors show more variability between different ridging categories in midwinter. The combination of these two factors determine the accuracy of the final classification.

5 Discussion and Conclusions

We studied the success of the segmentation by examining how large fraction of the segments contained practically just one ridging category. i.e. the area of some ridging category covered over 90 % of the segment area. The results were that in January 93 % of the SAR imagery belonged to such segments, in February 80 % and in March 86 %. The high fraction of well defined segments in January is easy to understand because most of the ice was level ice (72 % of the area), and just three ridging categories appeared (the heavily ridged area covered less than 1 %). In February the fraction of level ice has decreased to 55% of the total area, all four ice categories were present and the total area of well defined segments decreased to 80 %. In March the level ice area covered 59 % of the total area and the area of the well defined segments was 86 %. Hence there was better the segmentation accuracy in March than in February. In that month the total area of correctly classified ridging categories

was 81 %, five percent points less than the total area of the well defined segments. In February the total area of correctly classified ridging categories was just 63 % which means 17 percent points less than the total area of the well defined segments.

25 This analysis suggests that the main separating factor contributing to the classification accuracy was due to the more versatile feature vectors in March.

~~For navigation in sea ice~~

4.1 Importance of features

The selection the eight features in Section 3.3.2 was based on their importance value. The features consisted of six HH-polarization based segment-wise features (see Section 3.2) and the segment-wise σ_{HV}^o as well as the IC value extracted from the FIS ice chart. Their importance order when the training data covered the whole test period is presented in the Table 1. If the training data of just one month was used the importance order of features varied slightly. The importance of one specific feature is relative in the sense that it changes when the combination of the used features changes, i.e. the importance of one feature depends on which other features are included. The feature IC remained however the most influential feature in every case. This is comprehensible because when IC was between 80 % and 90 %, the ice area in question represented almost always the level ice category (DIR 1) and the corresponding feature vector was easy to classify correctly. The rather low importance value of σ_{HV}^o is probably due to the relative narrow range of the σ_{HV}^o values.

30

To gain more insight into how the eight selected features affected the classification accuracy, we studied the possibility of the feature reduction using the March data as benchmark. The March data was selected because the diversity of ridging categories was largest then (see Table 7). We eliminated systematically one by one the selected features and reclassified the March test data using the remaining features. In none of the cases the classification accuracy improved with fewer features. For several removed features (E_{HH} , ~~the~~ AC_{HH} , K_{HH} , σ_{HV}^o) the classification accuracy decreased with just a few percent points (1 – 3 %). The removal of the ED_{HH} feature did not practically affect the accuracy at all. A significant misclassification rate increase was observed by the reduction of the σ_{HH}^o (-6%), CV_{HH} (-8%) and IC (-12%). In every case the relative importance of the retained features changed. Hence the importance of the features present in Table 1 is true only in the context of this specific feature combination.

5

10

To see more clearly that the features included in the feature vector complement each other and make the classification more robust, we classified the March data using only three basic features ($f_3 = (IC, \sigma_{HH}^o, \sigma_{HV}^o)$). The overall accuracy was just 64%. Then we added the feature CV_{HH} to f_3 because CV_{HH} caused a significant drop in the accuracy. The accuracy remained low, only 68 %. Our conclusion of the performed analysis is that the information provided by the whole feature set is needed for a good description of ridged ice field in the SAR imagery. If already a reduction of one feature decreases the classification accuracy, the reduction of two or more features would degrade the classification further. The only feature which is perhaps unnecessary is ED_{HH} . It was also the most heuristic one (see Section 3.2). Because it does not decrease the classification accuracy, we have kept it in the selected feature combination. We also experimented by replacing the HH-polarization based features with their HV-polarization counterparts. This lead in all of the studied cases to the degradation of the classification accuracy.

15

20

5 Discussion and Conclusions

The Degree of Ice Deformation parameter Ridging is one of the most useful parameters, even for the less experienced ship captains, because it is basically indicating if for ice navigating ships. It basically indicates, together with ship characteristics, whether a vessel can pass or not through a block of ice, by knowing also the ship's characteristics. Subsequently, the DIR can function as a practical approximation for safely pass through an ice field. The DIR also complements the more general Risk index Index Outcome (RIO) IMO (2016) for vessels operating in ice, when the existing ice parameters available are not sufficient (e.g. ice thickness, concentration, defined by IMO (2016), as this does not address ridging but relies on WMO categories for the stage of development (age). We have showed here that the DIR parameter can be estimated rather well using the shown here that an automated estimation of the DIR from SAR texture features and ice concentration, together with an ice concentration estimate, performs rather well when compared to the values extracted from the manually prepared manual FIS ice charts. The used features describe versatile applied features describe statistics of σ^0 variation in the SAR imagery. The DIR classification DIR estimation is a suitable operation-task for a SAR based approach because the C-band SAR σ^0 is sensitive to the large scale surface roughness, i.e. ridging, due to ice ridging.

Our first goal was to discriminate between ridged ice areas and level ice. This objective was reached with high accuracy (82%). The more ambitious goal to estimate the different DIR categories succeeded reasonably well. Especially the estimation procedure worked well in midwinter when the ice conditions were stable and sea ice at its thickest. The promising results in the DIR estimation are important because our field campaign data demonstrated that the FIS DIR numeral serves as an efficient indicator between the relative ridge density classes.

When we consider the purpose of the ice charts one significant factor must be considered. This is the fact that in the ice infested areas two types of ships proceed: ships with the assistance of an icebreaker or independently proceeding ships there operate both ships assisted by an icebreaker and independently navigating ships needs to be taken into account. In the Baltic Sea most of the merchant ships need the icebreaker assistance. Ships However, ships of the highest ice class Finnish-Swedish ice class in the Baltic Sea, 1A Super, which is equivalent to the Polar Class PC 6, are designed to operate in difficult ice conditions independently. The FIS ice charts are targeted to the ships which advance in difficult ice conditions as a convoy following the icebreaker principally prepared to serve operations where ships follow an icebreaker in a convoy. Based on the discussions with the FIS ice analysts the following remark can be made: if is made. If the ice conditions in some area do not pose a realistic risk for icebreakers to get stuck, then in the FIS ice charts they a smaller DIR values are often assigned to smaller degree of ice ridging, even if these same areas may exhibit a considerable obstacle for independent ships. this area even when difficult for independent navigation by merchant ships. Especially this is true for DIR 2. Hence, the availability of the icebreaker assistance affects has some effect on the DIR classifications in the FIS ice charts. In addition the ice analysts cannot include all the details as the time for creating the daily ice charts is limited.

The primary objective of our DIR classification algorithm is to separate the severe ice conditions from the easier ice conditions ones. To reach this goal it relies only our DIR classification mainly relies on the SAR image statistics. In some cases this may lead to differences between the FIS ice charts and our classification results because the FIS charts take into

25 account the icebreaker factor not ~~seen~~ present in the SAR imagery. Hence, these two data sets can be interpreted from slightly different perspectives. An example of this difference is our earlier discussion related to Fig. 11. ~~As we noticed there were ice areas in the Bothnian Sea areas marked as slightly ridged ice (DIR=2) in the FIS DIR chart, whereas our automated DIR chart showed higher degree of ridging for these areas. Our estimates closely followed the SAR features and the deformed ice areas are indicated in our DIR chart unlike in the FIS chart. The mentioned ridged areas very likely would not be difficult to break by an icebreaker. Thus, they are assigned in the FIS chart to the~~ 10 and Fig. 12. One essential advantage of the automated DIR charts is that they include leads and small level ice areas between ridged not present in the coarser FIS charts.

We used a two-stage classification system. First, we segmented the dual-pol SAR mosaics. This succeeded slightly differently for different months. The area by level ice always exceeded 50 % of ice cover. In January it was highest, over 70 %. In that month 93 % of the segmented area belonged to the segments dominated by one ice category. In February and March the respective figures were 80 % and 86 %. It should be noted that for January only three DIR categories were present, unlike for the last two months where all four DIR categories appeared. We can conclude that the SAR signatures matched the DIR 2 category. If we consider a weaker vessel trying to pass independently through the same areas, the automated chart would be more informative, showing more accurately the passages which are difficult or easy to navigate. One essential advantage of the automated DIR charts over the FIS charts is that leads and small level ice areas between ridged ice zones are present in these charts but typically not in the FIS charts. boundaries best in March when the amount of ridging in our test period was at its maximum.

In the second phase of the classification we classified the segments using segment-wise feature vectors, classifying each segment to one ridging category. This succeeded best in March (82 %). Then the ridging intensity varied largely in different regions in our test area and the resulting texture of the SAR imagery was more versatile than in the other studied months. It is worth noting that in March the accuracy of the feature based classification was just five percentage points lower than the total area of the well-defined segments, i.e. the feature based classification succeeded with the RF classifier. This result can be regarded as a confirmation that the computed features were well suited to describe the ridging in the SAR imagery. In January the classification accuracy was at the same level as in March (83 %) but the area covered by the well-defined segments was much larger, indicating that the feature based classification did not perform as well as in March. In January and February the ice cover was rather thin and the degree of ridging lower than in March. Actually in these two months the σ_{HH}^0 and σ_{HV}^0 distributions from level ice and ridged ice overlapped substantively. Partly this weak discrimination between level ice and ridged ice can be attributed to the subjective interpretation of the level ice category at FIS as discussed earlier in the Section 2.4.

20 Considering our classification results it seems that at C-band the proposed approach seems to work best in the Baltic Sea when the evolution of the winter has passed the freezing phase and a significant amount of ridging has occurred. Then ridging very strongly contributes to the texture of the SAR images.

Before setting up an operational ~~detector for DIR estimation system over the Baltic Sea area, we~~, we still need to test our algorithm with ~~at least two more winters data and more winters and to~~ optimize it for the best possible result. In an operational mode we can ~~add to our training data the use the most recent SAR/FIS IC data collected during days before the day FIS~~

prepares its ice chart. The freshest classification result available for FIS is the DIR classification based on the SAR and the FIS IC data from the previous day. This should improve the classification accuracy of the DIR chart. Currently our training data rely on older data, and IC data for the training. Instead of using the SIC present in the FIS charts we can also use an automated radiometer or combined radiometer/SAR based SIC. Currently, the finest resolution in operational SIC products is offered by the Advanced Microwave Scanning Radiometer 2 (AMSR2) based ASI sea ice algorithm (Beitsch et al., 2014). The grid size in the product is 3.125 km. To improve our product during ice forming or melting periods, we can include ice thickness as an additional parameter in the future DIR classifications.

Our algorithm can be extended for use in the Arctic Ocean, where there is a higher demand for reliable ice information on prevailing ice conditions, and icebreaker assistance often not available in a reasonable time. By having an for independently navigating merchant vessels. Also, as harsh ice conditions as our March 2013 data prevail a much longer time period in the seasonal ice regime. An automated DIR chart utilizing the fine resolution (100 m or less higher) SAR data and qualitatively presenting classifying the suitability of the ice conditions for navigation, would be a remarkable gain for different areas for navigation would significantly benefit all Arctic shipping. E.g. in the For example, in the coming years Kara Sea year-round shipping will significantly increase in the coming years through the because of the high volume liquefied natural gas (LNG) production and transport in the Yamal Peninsula. For Arctic sea areas, however, the algorithm would be more difficult to validate without having knowledge of the true areal DIR values. The current Russian Ice Charts contain only AARI ice charts only contain the general WMO sea ice classes categories without any indication of degree of ridging. Perhaps the regional DIR. It is expected that our high resolution sea ice model to be implemented for the Kara Sea (Dr. Andrea Gierisch, private FMI, personal communication) will be helpful in the development of an automated classifier. One alternative is also would also be to use the Baltic Sea ice data as a first trial to train the algorithm for the Arctic conditions.

10 *Data availability.* All data can be obtained by contacting the first author.

Author contributions. The concept of the study was conceived by AG, JK and MS. The SAR processing was done and reported jointly by JK and AG. MM commented the SAR processing. The statistical analysis was performed and written by MS. ML analyzed and wrote about the 2011 field data. MM and AG wrote the introduction. AG and MS wrote the conclusion section. JV commented the results and the conclusions from the point of view of an ice analyst. All authors contributed to the editing of the text.

15 *Competing interests.* The authors declare that they have no competing interest.

Acknowledgements. The work of Alexandru Gegiuc, Juha Karvonen and Marko Mäkynen was supported by Space-borne observations for detecting and forecasting sea ice cover extremes (SPICES) funded by the European Union's Horizon 2020 Programme (Grant Agreement

No. 640161). Markku Similä and Mikko Lensu were supported by the KAMON project funded by Academy of Finland (contract 283034) and the BONUS STORMWINDS project funded jointly by the EU and the Academy of Finland (contract 291683).

20 References

- Barber, D. G. and LeDrew, E. F.: SAR sea ice discrimination using texture statistics: A multivariate approach. *Photogr. Eng. and Remote Sensing*, 57, ~~385-395~~385-395, 1991.
- Beitsch, A.; Kaleschke, L.; Kern, S. Investigating High-Resolution AMSR2 Sea Ice Concentrations during the February 2013 Fracture Event in the Beaufort Sea. *Remote Sensing*, 6, 3841-3856, 2014.
- 25 Berthod, M., Kato, Z., Yu, S., Zerubia, J.: Bayesian image classification using Markov random fields, *Image and Vision Computing*, 14, ~~285-295~~285-295, 1996.
- Besag, J.: Spatial ~~Interaction and the Statistical Analysis of Lattice Systems~~interaction and the statistical analysis of lattice systems, J. Royal Statistical Society, Series B, 36, ~~192-236~~192-236, 1974.
- Breiman, L.: Random forests, *Machine Learning*, ~~24, 5-32~~245, 5-32, 2001.
- 30 Canadian Ice Service, MANICE, Manual of Standard Procedures for Observing and Reporting Ice Conditions, Revised Ninth Edition, June 2005.
- Canny, J.: A Computational ~~Approach to Edge Detection~~approach to edge detection, *IEEE Trans. Pattern Analysis and Machine Intelligence*, 8, ~~679-698~~679-698, 1986.
- ~~Carlström~~
- 35 Calström, A., Ulander, L. M. H.: Validation of Backscatter Models for Level and Deformed Sea Ice backscatter models for level and deformed sea ice in ERS-1 SAR Images images, *Int. J. Remote Sens.*, 16, 3245-32663245-3266, 1995.
- Calström, A., Ulander, L. M. H.: C-band backscatter signatures of old sea ice in the central Arctic during freeze-up. *IEEE Trans. Geoscience and Remote Sensing*, 31, ~~819-829, 1995.~~ 819-829, 1993.
- ~~Cerny~~Cerný, V.: Thermodynamical approach to the traveling salesman problem: An efficient simulation algorithm, *J. Optimization Theory and Applications*, 45, ~~41-51~~41-51, 1985.
- Clausi, D. A.: Comparison and fusion of co-occurrence, Gabor, and MRF texture features for classification of SAR sea ice imagery, *Atmos. Ocean*, 39, 183-194, 2001.
- 5 Clausi, D. A., Qin, A. K., Chowdhury, M. S., Yu, P., Maillard, P.: MAGIC: MAP-Guided Ice Classification System, *Can. J. Remote Sensing*, 36, ~~S13-S25~~S13-S25, 2010.
- Dempster, A. P., Laird, N. M., Rubin, D. B.: Maximum Likelihood from Incomplete Data via the EM Algorithm, *J. Royal Statistical Society Series*, 39, pp. ~~1-38~~1-38, 1977.
- 10 Deng, H., Clausi, D. A.: Gaussian MRF rotation- invariant features for image classification, *IEEE Trans. Pattern Analysis and Machine Intelligence*, 26, 7, ~~951-955~~951-955, 2004.
- Deng, H., Clausi, D. A.: Unsupervised segmentation of synthetic aperture radar sea ice imagery using a novel Markov random field model, *IEEE Trans. Geoscience and Remote Sensing*, 43, ~~528-538~~528-538, 2005.
- Dierking, W., Pettersson, M. I., Askne, J.: Multifrequency scatterometer measurements of Baltic Sea ice during EMAC-95, *Int. J. Remote Sens.*, 20, ~~349-372~~349-372, 1999.
- 15 Efron, B. and Tibshirani, R., J. An Introduction to the Bootstrap, Chapman and Hall, London, 1993. & Hall/CRC Monographs on Statistics & Applied Probability, CRC Press, 1994.
- Haas, C., Lobach, J., Hendricks, S., Rabenstein, L., Pfaffling, A.: Helicopter-borne measurements of sea ice thickness, using a small and lightweight, digital EM system, *J. Applied Geophysics*, 67, ~~234-241~~234-241, 2009.

- 20 Hallikainen, M.: Microwave remote sensing of low-salinity sea ice., In F. Carsey (Ed.), *Microwave Remote Sensing of Sea Ice* (pp. 361-373), 361-373. Washington D.C.: AGU, 1992.
- Hastie, T., Tibshirani, R., Friedman, J. , *The Elements of Statistical Learning*, 2nd ed., Springer, New York, 2011.
- International Maritime Organisation (IMO), [Guidance on methodologies for assessing operational capabilities and limitations in ice](#), MSC.1/Circ.1519, June, 2016.
- 25 Lindsay, R. W., Zhang, J., Rothrock, D. A.: Sea-ice deformation rates from satellite measurements and in a model, *Atmos. Ocean*, 41, 1-2135-47, 2003.
- ~~Karvonen, J.: Baltic Sea Ice SAR Segmentation and Classification Using Modified Pulse-Coupled Neural Networks, IEEE Trans. Geoscience and Remote Sensing, 42, 1566-1574, 2004.~~
- Karvonen, J.: Evaluation of the operational SAR based Baltic Sea ice concentration products. *Adv. Space Res.* 56, 119-132119-132, 2015.
- 30 [Karvonen, J., Vainio, J., Marnela, M., Eriksson, P., Niskanen, T., A Comparison Between High-Resolution EO-Based and Ice Analyst-Assigned Sea Ice Concentrations, IEEE Journal of Selected Topics in Applied Earth Observations and Remote Sensing, v. 8, n. 4, pp. 1799-1807, 2015.](#)
- Karvonen, J., Similä, M., Mäkynen, M.: Open Water Detection from Baltic Sea Ice Radarsat-1 SAR Imagery, *IEEE Geoscience and Remote Sensing Letters*, 2, 275-279275-279, 2005.
- 35 [Karvonen, J.: Baltic Sea ice SAR segmentation and classification using modified pulse-coupled neural networks, IEEE Trans. Geoscience and Remote Sensing, 42, 1566-1574, 2004.](#)
- [Karvonen, J., Similä, M., Mäkynen, M.: An Iterative Incidence Angle Normalization Algorithm for Sea Ice SAR Images, Proc IEEE International Geoscience and Remote Sensing Symposium \(IGARSS'02\), v.3, pp. 1524-1527, 2002.](#)
- Kirkpatrick, S., Gelatt Jr, C. D., Vecchi, M. P.: Optimization by Simulated [Annealing, Science](#), 220, 671-680, 1983.
- Kankaanpää, P., Distribution, morphology and structure of sea ice pressure ridges in the Baltic Sea. *Fennia-International Journal of Geography*, 175, 139-240, 1997. 139-240, 2013.
- 5 Kato, Z.: Multi-scale Markovian Modelisation in Computer Vision with Applications to SPOT Image Segmentation, PhD thesis, INRIA Sophia Antipolis, France, 1994.
- Kato, Z., Zerubia, J., Berthod, M.: Satellite image classification using a modified Metropolis dynamics, *Proc. IEEE International Conf. on Acoust., Speech and Sig. Proc.*, 3, 573-576573-576, San Francisco, CA, March 23-2623-26, 1992.
- Leigh, S., Wang, Z., Clausi, D.: Automated Ice-Water Classification Using Dual Polarization SAR Satellite Imagery, *IEEE Trans. Geoscience and Remote Sensing*, 52, 5529-5539, 2014. 5529-5539, 2013.
- 10 Lensu, M.: The evolution of ridged ice fields. Helsinki University of Technology, Ship ~~Laboratory report series M-280.~~ [Laboratory report series M, 280, 140, 2003.](#)
- Leppäranta, M., Hakala, R.: The structure and strength of first-year ice ridges in the Baltic Sea., *Cold Reg. Sci. Tech.*, 20, 295-311295-311, 1992.
- 15 Lewis, J. E., Leppäranta, M., and Granberg, H. B.: Statistical properties of sea ice surface topography in the Baltic Sea. *Tellus A*, 45, 127-142127-142, 1993.
- Maillard, P., Clausi, D. A., Deng, H.: Map-guided sea ice segmentation and classification using SAR imagery and a MRF segmentation scheme, *IEEE Trans. Geoscience and Remote Sensing*, 43, 2940-29512940-2951, 2005.
- MATLAB and Statistics Toolbox Release 2016a, The MathWorks, Inc., Natick, Massachusetts, United States.

- 20 MDA (MacDonald, Dettwiler and Associates, Ltd.), Radarsat-2 product description, Tech. Rep. RN-SP-52-1238, Issue 1/11, MDA, BC, Canada, pp. 84., May 5, 2014.
- [Mäkynen, M., Hallikainen, M.: Investigation of C- and X-band backscattering signatures of the Baltic Sea ice., Int. J. Remote Sens., 25, 2061–2086, 2004.](#)
- Mäkynen, M., Manninen, ~~FA.~~, Similä, M., Karvonen, J., Hallikainen, M.: Incidence Angle ~~Dependence of the Statistical Properties~~ [dependence of the statistical properties](#) of the C-Band ~~HH-Polarization Backscattering Signatures~~ [HH-polarization backscattering signatures](#) of the Baltic ~~Sea-Ice, IEEE Tans~~[sea ice, IEEE Trans. Geoscience and Remote Sensing, 40, 2593–2605](#)2593–2605, 2002.
- 25 Mäkynen [M., Manninen T., Similä, M., Karvonen, J., Hallikainen, M.: Investigation of C- and X-band Incidence angle dependence of the mean C-band HH-polarization](#) backscattering signatures of the Baltic Sea ice., [Int. J. Remote Sens., 25, 2061–2086, 2004. Proc. IEEE International Geoscience and Remote Sensing Symposium \(IGARSS'02\), v. III, pp. 1518-1520, 2002.](#)
- 30 Metropolis, N., Rosenbluth, A. W., Rosenbluth, M. N., Teller, A. H., Teller, E.: Equation of State Calculations by Fast Computing Machines, J. Chemical Physics, 21, 1087, 1953.
- Ochilov, S., Clausi, D. A.: Operational SAR Sea-Ice [Image](#) Classification, IEEE Trans. Geoscience and Remote Sensing, 50, 11, 4397–4408, 2012.
- Palosuo, E., Leppäranta, M., Seinä, A.: Formation, thickness and ~~stability~~[stability](#) of fast ice along the Finnish coast., Res. Rep. 36, Winter
- 35 Navig. Res. Board, Helsinki, Finland, 1982.
- Rao, C. R.: The utilization of multiple measurements in problems of biological classification, J. Royal Statistical Society, Series B, 10, ~~159–203~~[159–203](#), 1948.
- Ripley, B. D.: Pattern Recognition and Neural Networks, Cambridge University Press, 1996.
- Rue, H., Held, L.: Gaussian Markov Random Fields: Theory and Applications, CRC Press, 2005.
- Sandven, S., Alexandrov, V., Zakhvatkina, N., Babiker, M.: Sea ice classification using Radarsat-2 dual-polarisation data, Proc ESA SeaSAR 2012, SP-709, 2012.
- A. Seinä, A., Palosuo, E.: The classification of the maximum annual extent of ice cover in the Baltic Sea ~~1720–1995~~[1720–1995](#)., Meri Report
- 5 No. 27, 79-91, Finnish Institute of Marine Research, Finland, 1996.
- Seinä, A., Peltola, J.: Duration of ice season and statistics of fast ice thickness along the Finnish coast ~~1961–1990~~[1961–1990](#)., Finnish Marine Research Report 258, ~~1–46~~[1–46](#), Finnish Institute of Marine Research, Finland, 1991.
- Shannon, C.E.: A Mathematical Theory of Communication, The Bell System Technical Journal, 27, ~~379–423, 623–656~~[379–423, 623–656](#), 1948.
- 10 Similä, M.: SAR image segmentation by a two-scale contextual classifier, Proc. SPIE Conf. Image and Signal Proc. for Remote Sensing, v. 2315, Ed. J. Desachy, ~~434–443~~[434–443](#), 1994.
- Similä, M., Arjas, E., Mäkynen, M., Hallikainen, M. T.: A Bayesian classification model for sea ice roughness from scatterometer data, IEEE Trans. Geoscience and Remote Sensing, 39, 7, ~~1586–1595~~[1586–1595](#), 2001.
- Similä, M., Mäkynen, M., Heiler, I.: Comparison between C band synthetic aperture radar and 3-D laser scanner statistics for the Baltic Sea ice., J. Geophys. Res. Oceans, 115, C10056, 2010.
- 5 Shokr, M.: Compilation of a radar backscatter database of sea ice types and open water using operational analysis of heterogeneous ice regimes, Can. J. Remote Sensing, 35, ~~369–384~~[369–384](#), 2009.
- Soh, L.-K., Tsatsoulis, C.: Texture analysis of SAR sea ice imagery using gray level co-occurrence matrices, IEEE Trans. Geoscience and Remote Sensing, 37, ~~780–795~~[780–795](#), 1999.

- Soh, L. K., Tsatsoulis, C., Gineris, D., Bertoia, C.: ARKTOS: an intelligent system for SAR sea ice image classification, IEEE Trans. Geoscience and Remote Sensing, 42, ~~229-248~~229-248, 2004.
- 10 Souyris, J.-C., Imbo, P., Fjortoft, R., Mingot, S., Lee, J.-S.: Compact polarimetry based on symmetry properties of geophysical media: the $\pi/4$ mode, IEEE Trans. on Geoscience and Remote Sensing, 43, 3, ~~634-646~~634-46, 2005.
- Strong, C.: Atmospheric influence on Arctic marginal ice zone position and width in the Atlantic sector, ~~February-April 1979-2010~~February-April 1979-2010, Clim. Dynam., 39, 12, ~~3091-3102~~3091-3102, 2012.
- 15 Wessel, P. and Smith W.H.F.: A global self-consistent, hierarchical, high-resolution shoreline database. J. Geophys. Res., 101, ~~8741-8743~~8741-8743, 1996.
- WMO Sea ice Nomenclature*, WMO n. 259 (rev, 2010), 2010.
- Yu, Q., Clausi, D. A.: SAR sea-ice image analysis based on iterative region growing using semantics, IEEE Trans. Geoscience and Remote Sensing, 45, 3919-3931, 2007.

Table 1. The importance of different features when the training data covered the whole test period.

<u>feature</u>	<u>FIS SIC</u>	<u>K_{HH}</u>	<u>σ_{HH}°</u>	<u>ED_{HH}</u>	<u>AC_{HH}</u>	<u>E_{HH}</u>	<u>CV_{HH}</u>	<u>σ_{HV}°</u>
<u>importance (%)</u>	<u>13.9</u>	<u>11.9</u>	<u>11.7</u>	<u>11.3</u>	<u>8.1</u>	<u>7.2</u>	<u>7.2</u>	<u>6.9</u>

Table 2. Comparison of ice ridge statistical parameters derived from the HEM data with ice chart degrees of ice ridging.

DIR	3	4
Number of cells km^2	590	1079
Ridge sail height [m]	0.61	0.61
Ridge density [1/km]	12.7	21.5
Total thickness [m]	0.76	1.08

Table 3. Confusion matrix for the level ice vs. ridged ice (categories DIR 2 to 4) in the RF classification for the whole test period.

<u>FMFIS</u>	Sample size	Ice category	
Ice category	N	level	ridged
level	59 %	87 %	13 %
ridged	41 %	24 %	76 %

Table 4. Confusion matrix for all ridged ice categories in the RF classification for the whole test period.

FMFIS	sample size	RF classes			
DIR	N	1	2	3	4
1	59 %	93 %	1 %	4 %	2 %
2	14 %	42 %	15 %	28 %	15 %
3	15 %	32 %	5 %	45 %	18 %
4	12 %	18 %	3 %	20 %	59 %

Table 5. Confusion matrix for all ridged ice categories in the RF classification in January 2013

FMFIS	sample size	RF classes			
DIR	N	1	2	3	4
1	72 %	94 %	2 %	4 %	0 %
2	6 %	48 %	15 %	36 %	0 %
3	21 %	35 %	1 %	64 %	0 %
4	1 %	47 %	0 %	21 %	32%

Table 6. Confusion matrix for [all ridged ice categories in](#) the RF classification in February [2013](#)

FMIFIS	sample size	RF classes			
DIR	N	1	2	3	4
1	55 %	92 %	1 %	5 %	2 %
2	19 %	46 %	13 %	21 %	20 %
3	17 %	21 %	6 %	29 %	44 %
4	9 %	18 %	16 %	16 %	51 %

Table 7. Confusion matrix for [all ridged ice categories in](#) the RF classification in March [2013](#)

FMIFIS	sample size	RF classes			
DIR	N	1	2	3	4
1	59 %	92 %	4 %	2 %	2 %
2	9 %	16 %	32 %	21 %	31 %
3	10 %	44 %	4 %	51 %	1 %
4	22 %	4 %	2 %	6 %	88 %

20 Figure Captions

Figure 1. Example of RS-2 dual polarized SAR image mosaic (left: HH, middle HV) over the Baltic Sea on 15th March 2013 and the corresponding DIR chart (right) showing the manually drawn polygons of different degrees of ice ridging, including the marginal ice zone detection mask based on the ice concentration values between 25 % and 80 % and open-water mask based on the ice concentration values smaller than 25 %.

25 Figure 2. ~~Example of RS2 SAR data from~~ A 20 km section of combined surface laser profile and EM thickness profile, and the corresponding ice thickness histogram for the 2011 field campain data. The laser profile resolves all ridge sails while the EM profile averages thickness over an altitude dependent footprint, typically 50 m.

30 Figure 3. Example of RS-2 SAR data mosaic in HH and HV polarization and the corresponding degree of ice ridging chart with values extracted from the digitized Finnish ice charts, for 9th of March 2013 in the upper panel and 12th March in the lower panel. In both days the SAR shows similar ice situation, albeit the two DIR charts show changes in the ridging classes: in the NW of Bay of Bothnia, from slightly deformed ice (DIR 2) to level-ice (DIR 1) and in the central to southern part of Bay of Bothnia, from heavily ridged ice (DIR 4) to slightly ridged ice (DIR 2). In this case, the data from 9th March 2013 was removed from the classification.

Figure 4. Example of RS2 SAR data from 9th February 2013 in HH (top left) and HV (top right) polarizations together with the segmentation result (bottom left) and the Ice Concentration Chart.

Figure ~~3-5~~. Example of SAR features computed for central BOB part of Bay of Bothnia. a-b) original SAR in 500m-HH and HV in 500 m resolution; c) Segmentation result of the first principal component of the original HH and HV SAR channels; d) FIS-SIC (1-100%); e) FIS DIR (1-4); f-g) segment means; h) AC_{HH} ; i) AC_{HV} ; j) E_{HH} ; k) E_{HV} ; l) CV_{HH} ; m) CV_{HV} ; n) ED_{HH} ; o) ED_{HV} ; p) K_{HH} ; q) K_{HV} .

~~Figure 4. The importance of different features when the training data covered the whole test period. The order of the features is: AC_{HH} , IC, ED_{HH} , E_{HH} , K_{HH} , σ_{HH}^o , CV_{HH} , σ_{HV}^o , see text for explanations.~~

~~Figure 5-6.~~ Ridge density variation in the test area (upper panel, left), HEM thickness measurements (upper panel, right), DIR indices (lower panel, left), ~~ridge density histogram in~~ histogram of ridge densities determined for one 1x1 NM cell (lower panel, right).

965 ~~Figure 6. The monthly HH-7. The monthly HH-polarization backscattering coefficient~~ distribution for level (dashed line) and ridged (solid line) ice areas. The results are for January (left), February (middle), March (right) in 2013.

~~Figure 7. The monthly HV-8. The monthly HV-polarization backscattering coefficient~~ distribution for level (dashed line) and ridged (solid line) ice areas. The results are for January (left), February (middle), March (right) in 2013.

~~Figure 8-9.~~ The detection rates for the different DIR categories in all the classification.

970 ~~Figure 9-10.~~ Degree of Ice Ridging extracted from the digitized Finnish Ice Charts (~~bottom on 9th February 2013~~ (left) and the result of estimated DIR based on our RF approach (right). The DIR charts includes the marginal ice zones (25 % < IC < 80 %) extracted from the Ice Concentration charts (see Fig. 4).

Figure ~~10-~~11. Example of RS2 SAR data ~~from-on~~ 15th of March 2013 in HH (top left) and HV (top right) polarizations. Middle left: MRF MMD Segmentation result for the HH-HV PCA component. Middle right: Ice Concentration Chart extracted from the Finnish Ice Chart.

Figure ~~11-~~12. Degree of Ice Ridging extracted from the digitized Finnish Ice Charts ~~Bottom-right:~~ on 15th March 2013 (left); Result of Estimated DIR based on our RF approach (right). The DIR charts includes the marginal ice zones ($25\% < IC < 80\%$) extracted from the Ice Concentration charts (see Fig. 11).

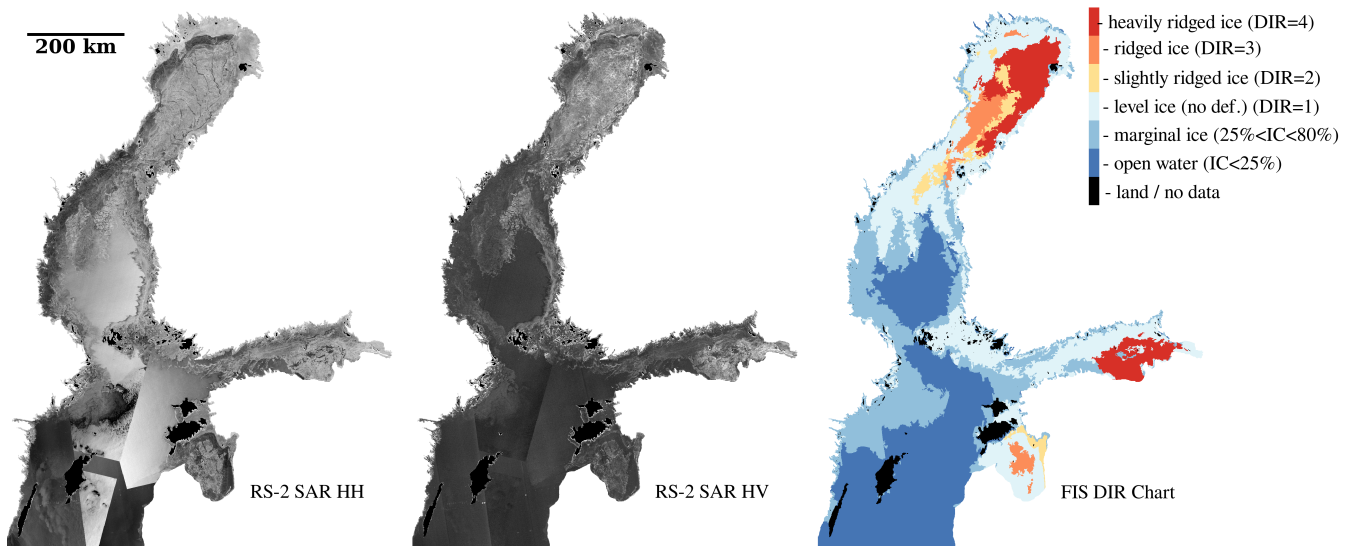


Figure 1. Example of RS-2 dual polarized SAR image mosaic (left: HH, middle HV) over the Baltic Sea on 15th March 2013 and the corresponding DIR chart (right) showing the manually drawn polygons of different degrees of ice ridging, including the marginal ice zone detection mask based on the ice concentration values between 25 % and 80 % and open-water mask based on the ice concentration values smaller than 25 %.

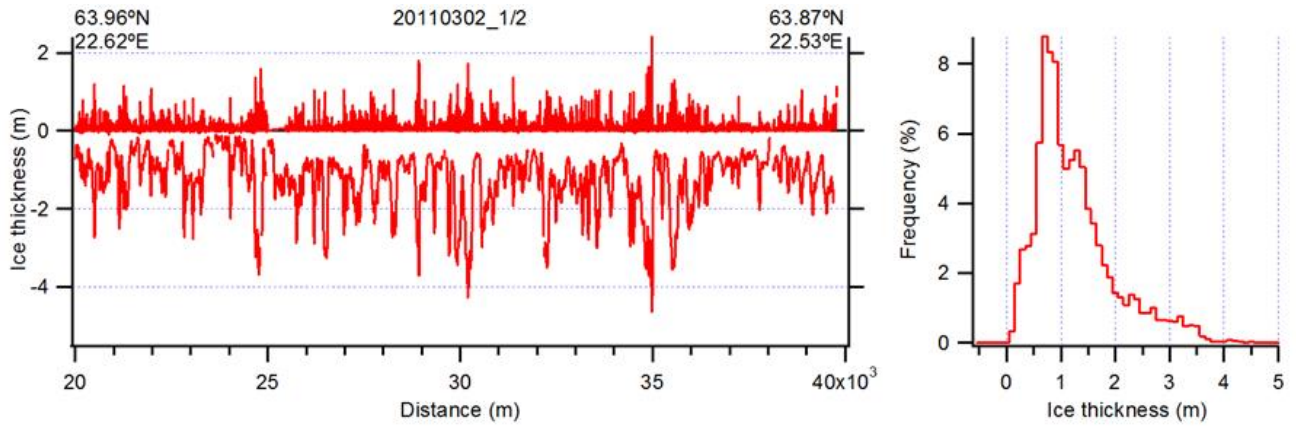


Figure 2. A 20 km section of combined surface laser profile and EM thickness profile, and the corresponding ice thickness histogram for the 2011 field campaign data. The laser profile resolves all ridge sails while the EM profile averages thickness over an altitude dependent footprint, typically 50 m.

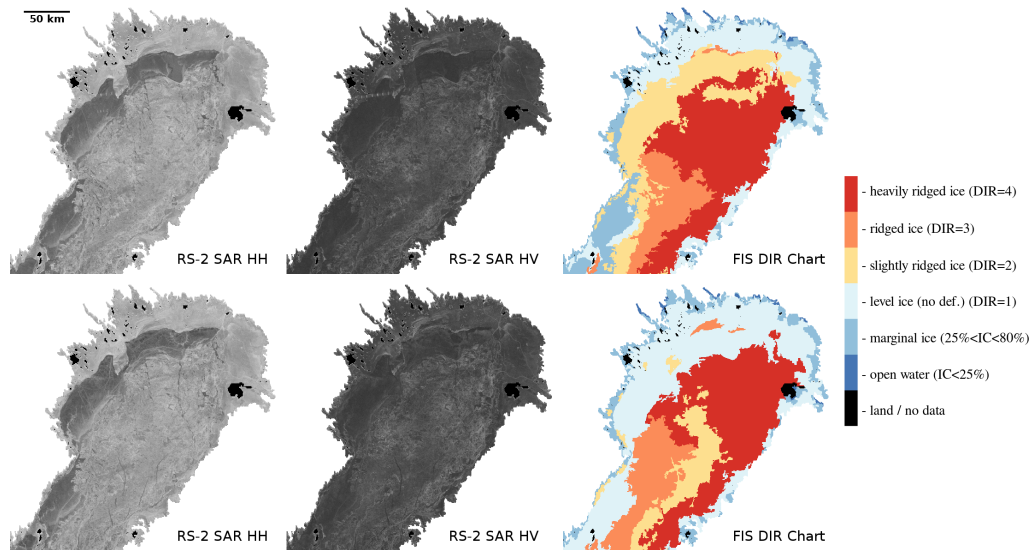


Figure 3. Example of RS-2 SAR data mosaic in HH and HV polarization and the corresponding degree of ice ridging chart with values extracted from the digitized Finnish ice charts, for 9th February–March 2013 in HH–the upper panel and 12th March in the lower panel. In both days the SAR shows similar ice situation, albeit the two DIR charts show changes in the ridging classes: in the NW of Bay of Bothnia, from slightly deformed ice (top-left DIR 2) and HV to level-ice (top-right DIR 1) polarizations together with and in the segmentation result central to southern part of Bay of Bothnia, from heavily ridged ice (bottom-left DIR 4) and to slightly ridged ice (DIR 2). In this case, the Ice Concentration Chart data from 9th March 2013 was removed from the classification.

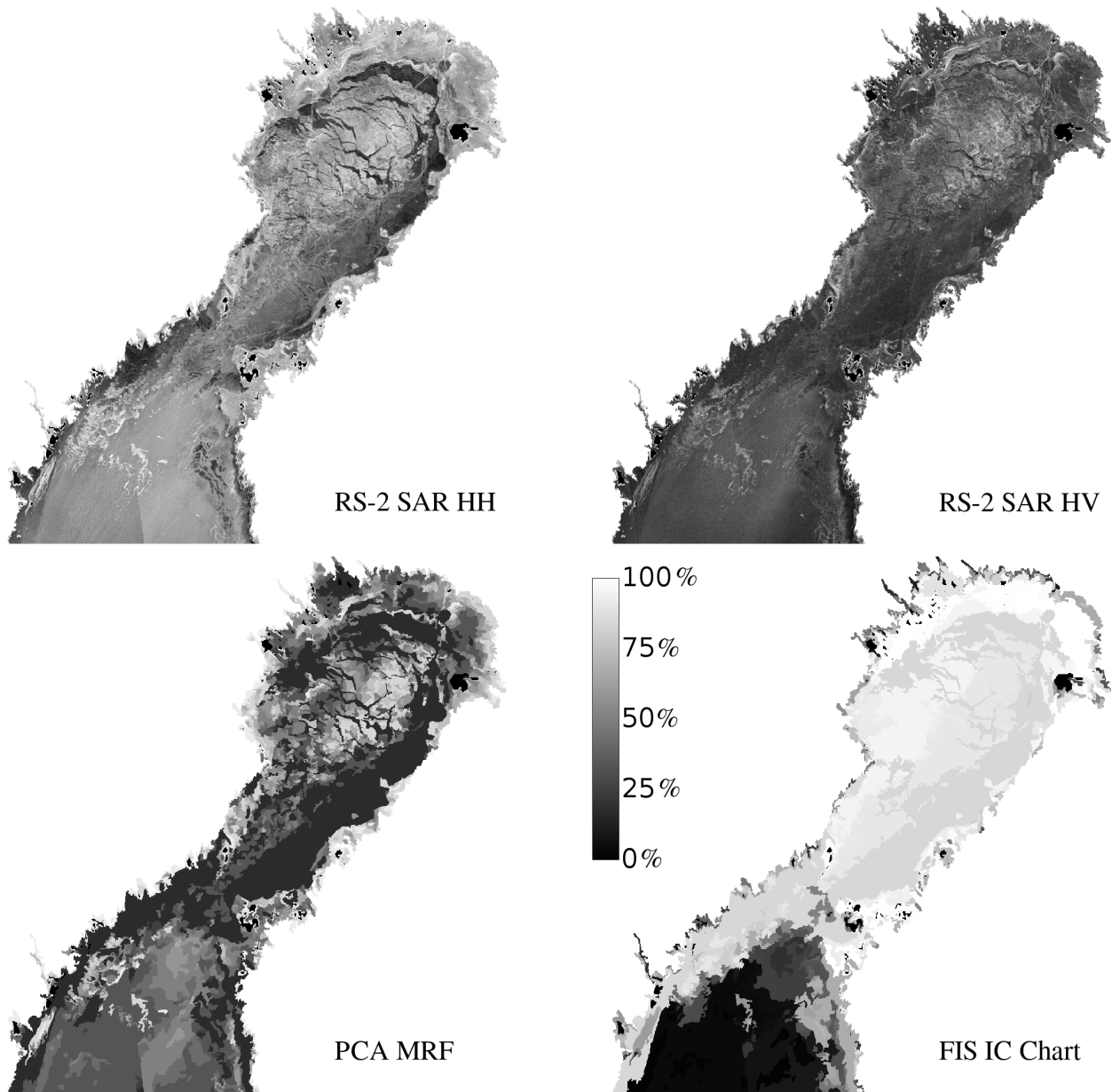


Figure 4. Example of RS2 SAR data from 9th February 2013 in HH (top left) and HV (top right) polarizations together with the segmentation result (bottom left) and the Ice Concentration Chart.

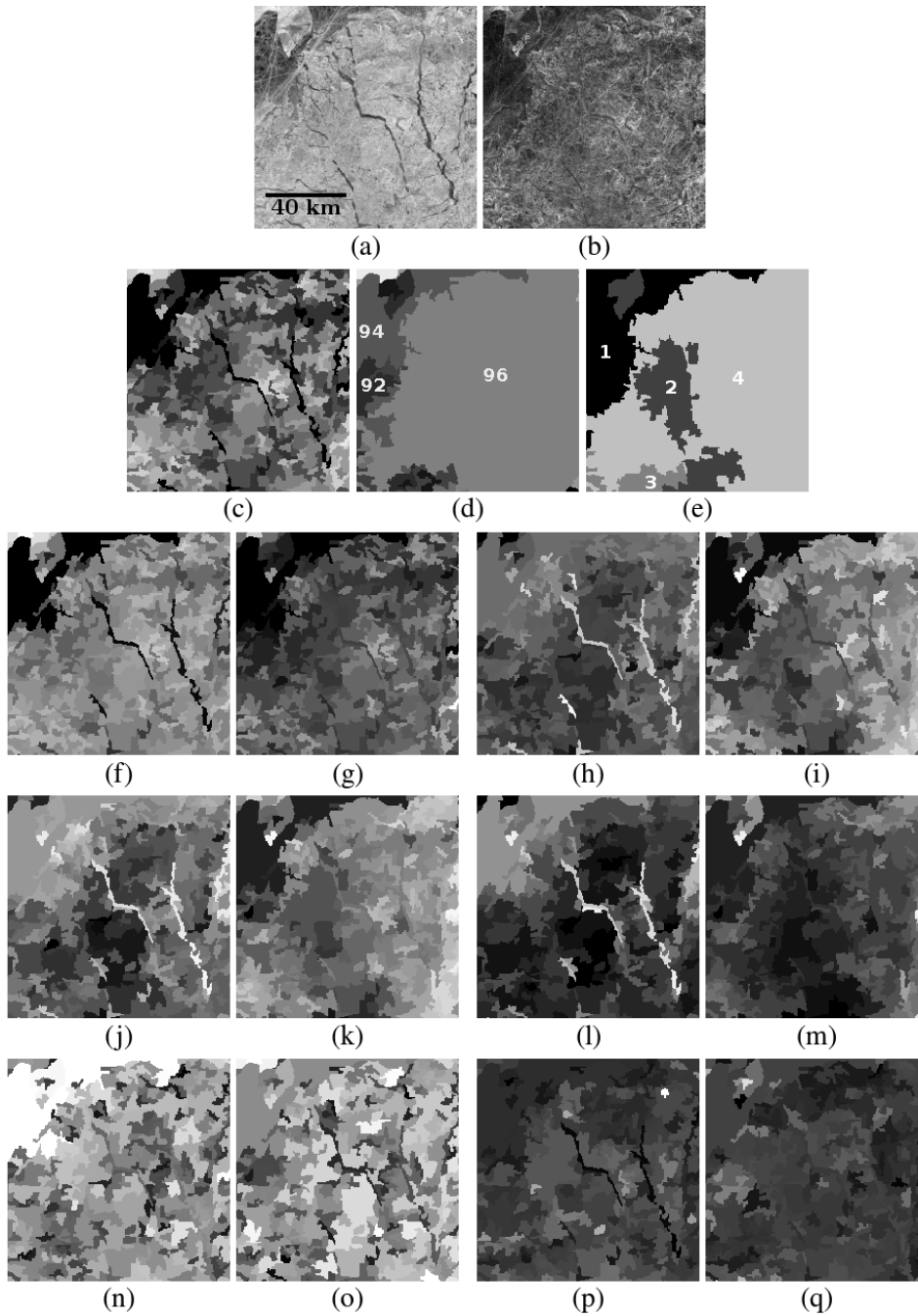


Figure 5. Example of SAR features computed for central BOB part of Bay of Bothnia. a-b) original SAR HH and HV in 500m-500 m resolution; c) Segmentation result of the first principal component of the original HH and HV SAR channels; d) FIS-SIC (1-100%); e) FIS DIR (1-4); f-g) segment means; h) AC_{HH} ; i) AC_{HV} ; j) E_{HH} ; k) E_{HV} ; l) CV_{HH} ; m) CV_{HV} ; n) ED_{HH} ; o) ED_{HV} ; p) K_{HH} ; q) K_{HV} .

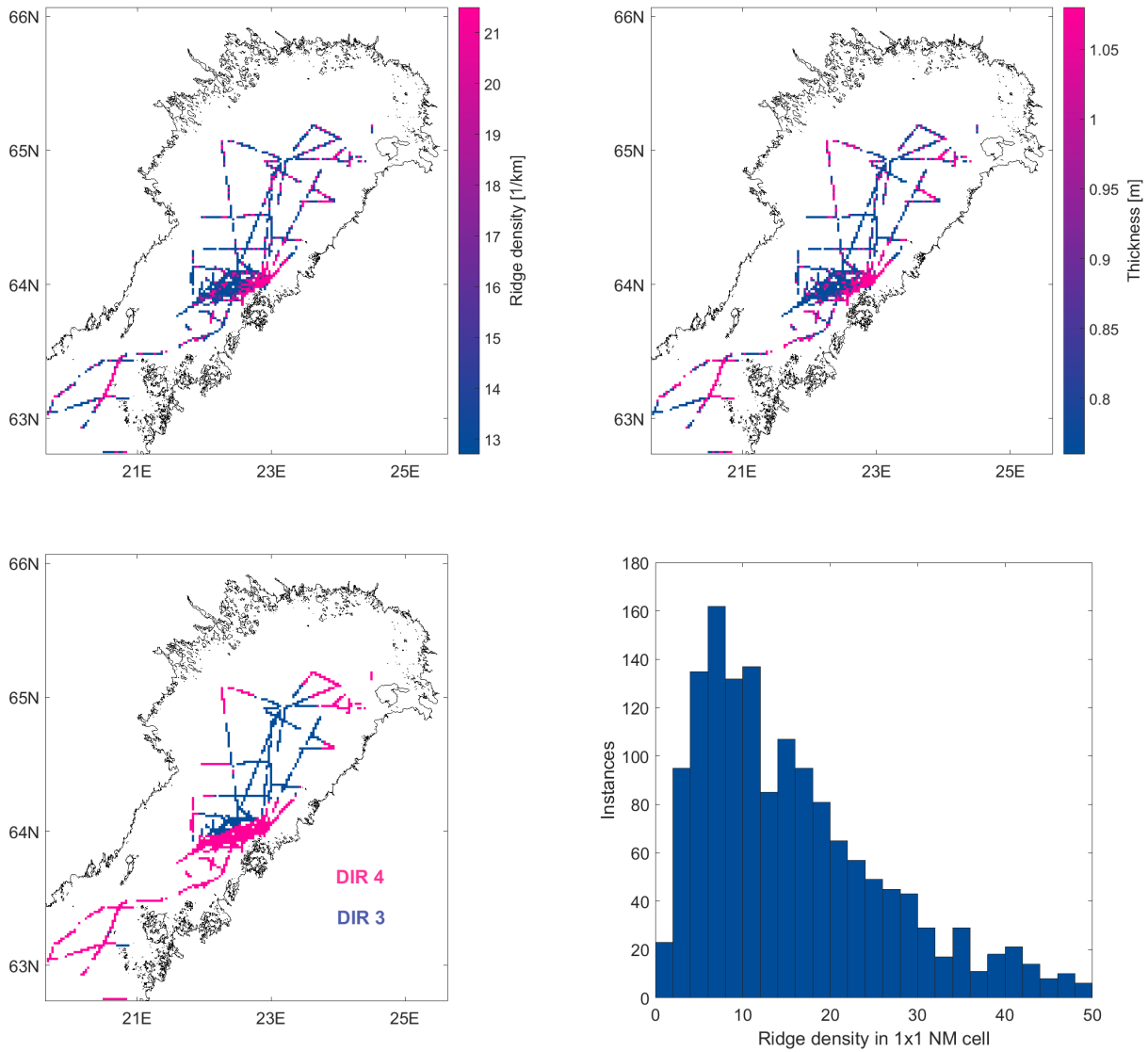


Figure 6. Ridge density variation in the test area (upper panel, left), HEM thickness measurements (upper panel, right), DIR indices (lower panel, left), ridge density histogram in of ridge densities determined for one 1x1 NM cell (lower panel, right).

The importance of different features when the training data covered the whole test period. The order of the features is:
 980 $AC_{HH}, IC, ED_{HH}, E_{HH}, K_{HH}, \sigma_{HH}^o, CV_{HH}, \sigma_{HV}^o$, see text for explanations.

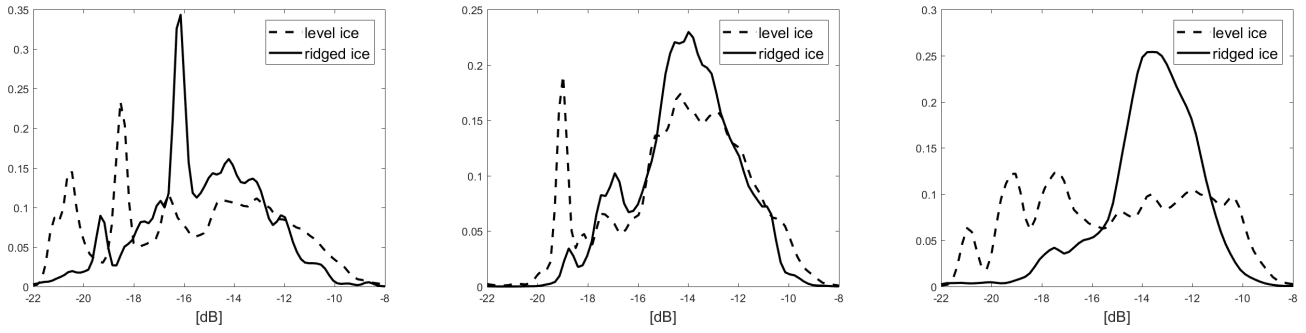


Figure 7. The monthly HH-polarization backscattering coefficient distribution for level (dashed line) and ridged (solid line) ice areas. The results are for January (left), February (middle), March (right) in 2013.

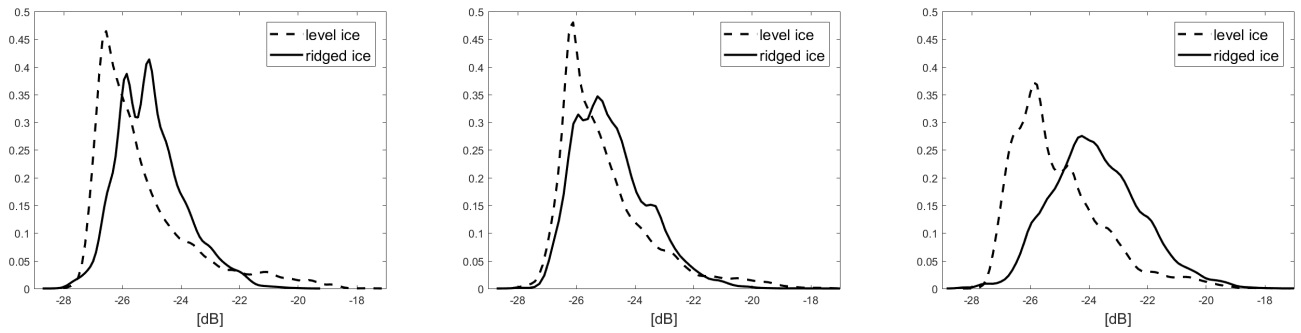


Figure 8. The monthly HV-HV-polarization backscattering coefficient distribution for level (dashed line) and ridged (solid line) ice areas. The results are for January (left), February (middle), March (right) in 2013.

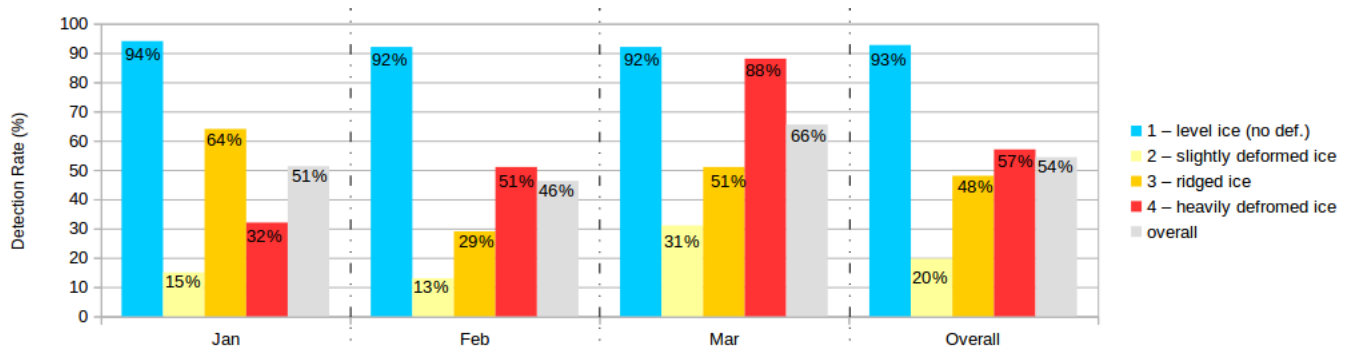


Figure 9. The detection rates for the different DIR categories in all the classification.

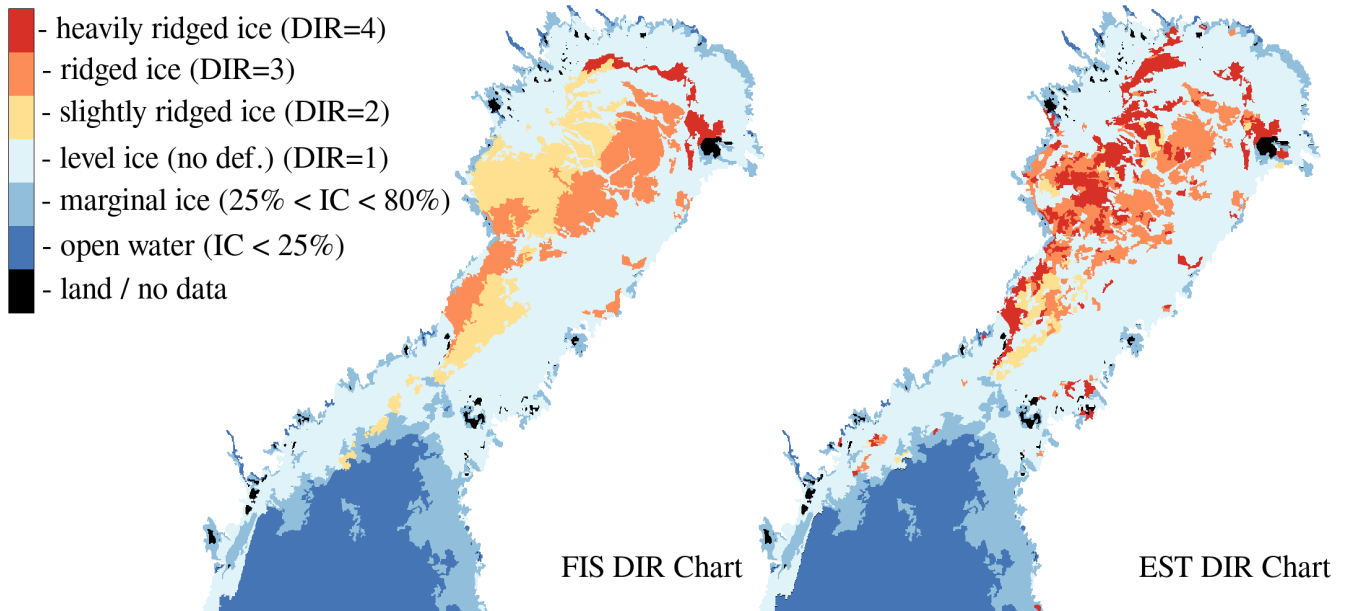


Figure 10. Degree of Ice Ridging extracted from the digitized Finnish Ice Charts on 9th February 2013 (left) and the result of estimated DIR based on our RF approach (right). The DIR charts includes the marginal ice zones (25% < IC < 80%) extracted from the Ice Concentration charts (see Fig. 4).

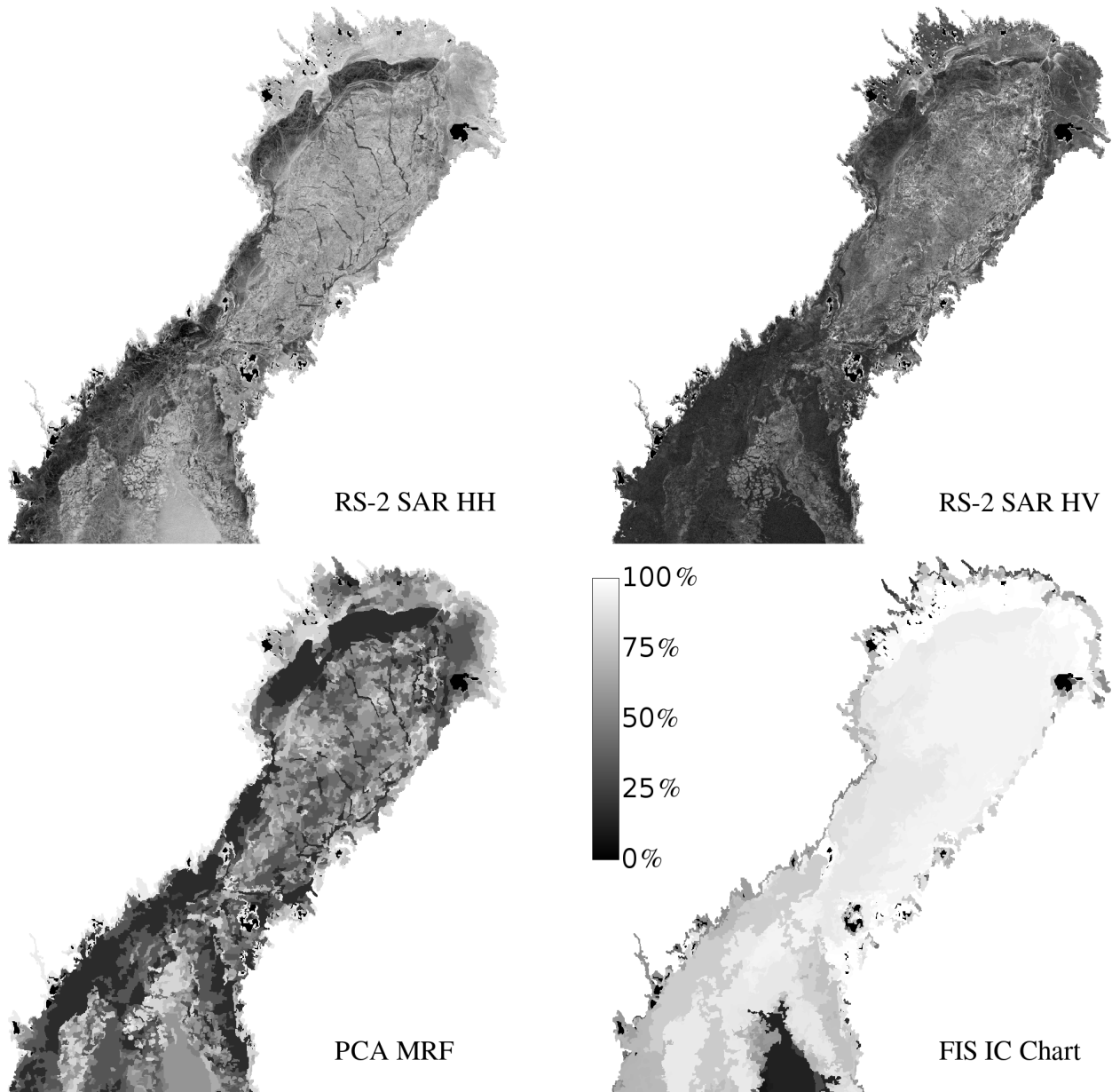


Figure 11. Example of RS2 SAR data on 15th March 2013 in HH (top left) and HV (top right) polarizations. Middle left: MRF MMD Segmentation result for the HH-HV PCA component. Middle right: Ice Concentration Chart extracted from the Finnish Ice Chart.

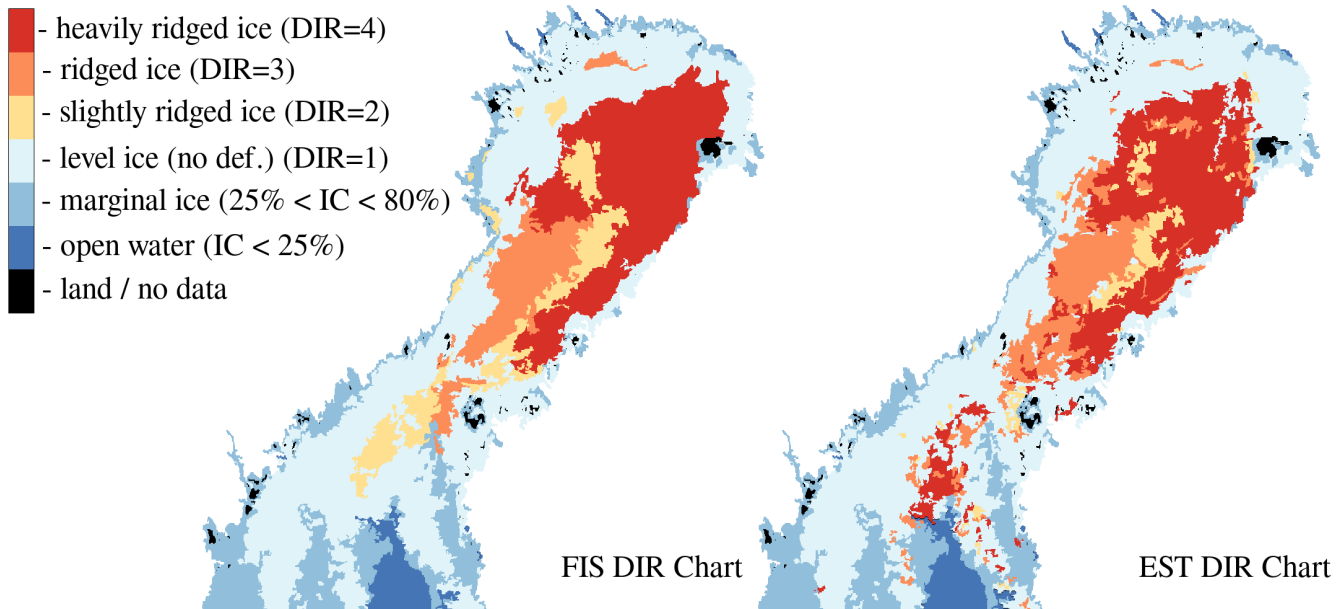


Figure 12. Degree of Ice Ridging extracted from the digitized Finnish Ice Charts on 15th March 2013 (left); Result of Estimated DIR based on our RF approach (right). The DIR charts includes the marginal ice zones ($25\% < IC < 80\%$) extracted from the Ice Concentration charts (see Fig. 11).