

Dear Editors,

Thank you for your time in reviewing the manuscript entitled “Hydrologic Flowpath Development Varies by Aspect during Spring Snowmelt in Complex Subalpine Terrain” (MS No: tc-2017-12). We have strongly considered all points made by both reviewers and have edited the manuscript accordingly. Please find below our responses to each of the reviewers comments in *red italics*, including the changes made in the manuscript. I have also added as supplementary material a copy of the manuscript with all changes tracked to assist in the review of edits. Again, thank you.

Sincerely,

Ryan Webb

Reviewer 1:

In this paper, authors measured temporal changes of soil water content and snow water equivalent to estimate the influences of surrounding topography. This study is important to estimate lateral flow in the snowpack and at the snow soil interface. It is expected that this study estimate the amount of lateral flow under the provided topography, snow and meteorological conditions. In my opinion, analysis and discussion in this paper remains qualitative discussion without quantitative estimation. Perhaps, quantitative analysis is performed in another paper referred in the manuscript as Webb et al. (in review). If so, division of the paper reduces the impact of this paper. Even so, quantitative analyses from the observation results are necessary. For example, if the ratio of water for lateral flow and infiltration into the soil is added in Fig. 6 based on the result of observation, this paper can provide scientific valuable information. In this paper, lateral flow is considered to be main cause of the increase of SWE at the toe. However, I think the authority of this consideration is not sufficient. If there are other evidence of large lateral flow (e.g. water saturated layer observed by snow pit observation), it should be shown.

Response:

The other paper that is in review is a study at a different location and dataset with relevant results. However, we will certainly expand our citations to include other papers. We agree that further quantification is justified and we addressed this by adding an estimated ratio of lateral flow vs. infiltration to enhance this paper. We conducted an energy balance estimate of melt rates and accumulation along the hillslope required to produce the observed increases in SWE.

minor comments

In introduction, one of the objectives is to investigate if preferential flowpath in snow can be observed in P3 L24. So observation of preferential flow should be described in detail in the body text.

Response:

Thank you for pointing this out. We have clarified this objective to say “evidence” of lateral flow can be observed at the hill slope scale since it is rarely investigated at this scale.

P4 L25 According to this sentence, authors measured snow pit. Did authors measure not only SWE but also profiles of snow density and grain size? Depending on grain size and density

profile, capillary barriers formed at the boundary of snow layers and provides lateral flow in the snowpack. Ice layers also provide lateral flow. If snow profiles are measured, observed result should be shown and used in the discussion of the lateral flow. Also, measuring method of SWE should be described. In this manuscript, lateral flow at snow-soil interface is considered main cause of the increase in SWE. So I guess the snowpack at the toe includes large water saturated layer. But water saturated layer make accurate SWE measurement more difficult. Therefore, more detailed description for observation is necessary.

Response:

Snow profiles of density and grain size were not measured at all locations due to time constraints of an individual surveyor collecting data at all locations (often more than 10) within a single day. We did, however, collect these data at a single locations during some of the survey dates and have now included these data. We understand that capillary barriers as well as permeability barriers can cause lateral flow and have observations of ice lenses and saturated snow zones that have been added and discussed further for clarity, though the wet snow layer is mentioned in the original manuscript on P7 L8. The measuring method of SWE is also described in the original manuscript on P4 L31.

P7L6 Ice veins were not observed in 2015. Is there a significant difference between 2014 and 2015? Comparison between 2014 and 2015 may suggest the influence of ice vein for lateral flow.

Response:

The main difference between 2014 and 2015 was the timing of peak SWE and higher temperature in 2015. In 2015 no increases in SWE downslope were observed. We have further discussed this point in the revisions.

P8 L33-36 The last, “where observations of ice veins were made at the SSI.”. Do authors think that the cause of lower water content at 20 cm depth in north facing slope is the existence of ice vein? But ice veins were not observed in 2015 according to P7 L6. I think that the slope affects water content. Lateral flow in soil prevents deep infiltration and leads to small water content at the depth area in north aspect slope.

Response:

We agree with this point. The presence of ice veins shows evidence that lateral flow above the SSI is occurring. We agree that lateral flow in the top layer of soil is also contributing to the lateral flow downslope. We have revised the text throughout the document to say flow “near the SSI” to clarify this point.

P9 L14 Is Fig 4 a reference mistake of Fig 3? In the body text, Fig. 4 is sometimes referred in unnatural context (e.g. P10L3).

Response:

You are correct. We apologize for this mistake and have corrected it.

P9 L20-22 Is this discussion for only in 2014 or both in 2014 and 2015?

Response:

This is discussion that combines observations from all years to form the conceptual model in Fig. 7.

P9 L25 Fig. 4 is just a photo of ice vein. Do authors mean that this ice vein produces lateral flow? If so, it should be written in the caption of Fig. 4.

Response:

Language has been added to the caption. However, no we do not believe that the ice vein produces lateral flow, but is rather evidence of lateral flow occurring.

P9 L28-31 As this sentence show, increasing snow depth with SWE means less certainty of lateral flow. So figures of snow depth and discussion with snow depth are necessary. Also, if the snow profile was observed by pit observation, details of snow density profile should be shown.

Response:

This was the only location that depth also increased. We have now included the depth data to figure 4 to help clarify this. Though snow profiles at all pit locations were not collected on each survey date, observations of snow depth are discussed throughout.

P9 L32-34 Is this less stratified snowpack due to strong radiation in south facing slope confirmed by pit observation?

Response:

It is confirmed through observations of ice lenses but not through detailed profile measurements. Additionally, data from other studies show North aspect slopes to have more stratified snowpacks as a result of solar radiation loading in this region.

P9 L34-35 In author's opinion, which is the main reason of large lateral flow in north facing slope, ice vein, stratified snowpack or small hydraulic conductivity of soil?

Response:

It is a combination, but the main reason would be the north facing slope and low hydraulic conductivity of the soil. Just to be clear, the ice veins are a result of lateral flow, not the cause. This has been clarified in lines P10.

P10 L20 Increase of 250 mm in SWE is too large to consider caused by lateral flow. Change in snow depth should be also shown to discuss.

Response:

Snow depth decreased at this location as is now shown in figure 4. Furthermore our new energy balance analysis estimates this is the result of only 4% of meltwater being redirected laterally and remaining in the snowpack. It is also a result of the rising of the water table as discussed in the original manuscript on P11 L7.

P10 L32 Did the author observed preferential flow visually? In this paper, preferential flow formed in early snowmelt season on north facing slope and south facing slope displayed matrix flow in this time. However, preferential flow may form on south facing slope in earlier period before this observation. Snowmelt starts earlier on south facing slope than on north facing slope.

Response:

This is true. It is possible that preferential flow occurred during a time that observations were not being made. Here, we are comparing results to the Hinckley et al., 2014 study that is mentioned in the previous sentence. We are also making the argument based on the physics of flow

through porous media. This has been further clarified and discussion of the possibility of pref. flow occurring on the S-Aspect earlier in the season added.

P11 L1-7 In this paragraph, cause of increase in SWE is considered lateral flow. But the authority of this seems insufficient. Especially, increase of 250 mm in 2014 is too large even if the effect of rising water table is considered. I wonder this discussion is based on the confirmation by snow pit observing large water ponding layer. Therefore, discussion about the reason why the cause of SWE increase is lateral flow is necessary. Description of “Wind is not likely causing increased deposition on any particular part of a hillslope since winds run perpendicular to slopes.” is not sufficient to determine lateral flow as cause. Explanation of confirmed fact by observation and authority of the cause are necessary.

Response:

As mentioned in previous comments, we have provided more of the available data to further clarify these points. We also made a point to not measure locations that formed snow drifts behind trees, etc. and snow depth decreased as well as a deep saturated layers were observed. Text further explaining these observations are now in the document.

P11 L12 Is Fig.4 reference mistake of Fig. 3?

Response:

Yes, this is a mistake. Thank you for noticing this.

Again, I would like to reiterate our appreciation of the reviewer’s constructive comments. Addressing these concerns has certainly improved the quality of this manuscript.

Reviewer 2:

In the present paper, the authors study the influence of preferential flowpaths in a deep snowpack on soil moisture at the hillslope scale and investigate notably its spatial variability. They perform a qualitative analysis of the SWE and soil moisture evolution between surveys and a statistical analysis (pearson’s correlation coefficient) of near surface soil volumetric water content and topographical (aspect, slope), hydrological (peak SWE, date of peak SWE) variables. One of their main results is the increase in SWE observed at the beginning of the melt season at the toe of the north aspect hillslope. According to the authors, this increase is due to lateral flow in the snowpack. Even if this hypothesis is probable, the arguments provided in this study remains qualitative (observed ice veins at the snow-soil interface) and are not robust enough for such a scientific publication.

Response:

We agree that only observations of ice veins would not be robust enough for publication in this journal. Points are made from multiple observations in the text and combined in the discussion based upon not only increases in SWE at both locations on the hillslope and at the toe of the hillslope (Fig. 3) in

combination with the frozen “ice veins”, but also less infiltration to 12.5 cm and 20 cm depths on the slope (Fig. 5), similarities in soil moisture between snowmelt and overland flow rain events, and the observations of snow density and saturated layers in the snow increasing downslope. In our revisions we have additionally shown the lateral flow necessary to produce our observations is only 4% of melt.

The introduction is well written and documented even if it is sometimes difficult to see where the authors want to go. In my opinion, some of the observations presented in the methods are the first weakness of this study: the authors present (and measured?) only the total SWE for each snow pit. A detailed profile with snow density and depth would be very useful in order to support the results (lateral flow as the main cause of SWE increase). Indeed, an in-depth comparison of snow layers could be very useful.

Response:

We agree that a detailed snow density profile at all locations would be useful. However, due to constraints of an individual surveyor making observations at more than ten locations in a single day this was not feasible. The objective of this study was to gather more information spatially rather than at only a few points. However, we have added the depth observations to figures to help clarify. Furthermore, detailed profiles that were collected have been included and further discussion of specific observations at locations.

The Results part is very difficult to read as it is essentially a description of figures: there is no underlying theme and the different paragraphs have few connections.

Response:

We apologize for this section being difficult to read. This was a writing style choice that the authors made where we are presenting only the results in the “results” section and produce the underlying theme and storytelling in the “discussion” section of the paper. We have revised the “results” section and hope it reads better to you now.

The discussion is pretty good but does not bring any new argument.

Response:

We believe that we do bring new arguments. No studies that we know of have combined snow observations with soil moisture observations at this scale and in this type of environment. Furthermore, our development of the conceptual model showing that water flow through snow is more important on the north aspect slope vs. south facing slopes as a result of snow and soil parameters has not been argued for in the literature to our knowledge. In particular, at a site that does not have frozen soil.

Finally, the authors are citing throughout the document their own paper currently under review (Webb et al., in review) but as a reviewer, the significance of this reference remains hard to assess.

Response:

We agree with this point entirely and have added citations of fully published papers to support these points.

Again, thank you for your comments. We believe that your comments have helped us to improve upon the manuscript greatly.

Hydrologic Flowpath Development Varies by Aspect during Spring Snowmelt in Complex Subalpine Terrain

Ryan W. Webb¹, Steven R. Fassnacht², Michael N. Gooseff¹

¹Institute of Arctic and Alpine Research, University of Colorado, Boulder, CO, 80309, United States

²Department of Ecosystem Science and Sustainability, Colorado State University, Fort Collins, CO, 80523, United States

Correspondence to: Ryan W. Webb (ryan.w.webb@colorado.edu)

Abstract. In many mountainous regions around the world, snow and soil moisture are key components of the hydrologic cycle. Preferential flowpaths of snowmelt water through snow have been known to occur for years with few studies observing the effect on soil moisture. In this study, statistical analysis of the topographical and hydrological controls on the spatio-temporal variability of snow water equivalent and soil moisture during snowmelt was undertaken at a subalpine forested setting with north, south, and flat aspects as a seasonally persistent snowpack melts. We investigated if evidence of preferential flowpaths in snow can be observed and the effect on soil moisture through measurements of snow water equivalent and near surface soil moisture, ~~in addition to~~ observing how SWE and near surface soil moisture vary on hillslopes relative to the toes of hillslopes and flat areas. We then compared snowmelt infiltration beyond the near surface soil between flat and sloping terrain during the entire snowmelt season using soil moisture sensor profiles. This study was conducted during varying snowmelt seasons representing above normal, relatively normal, and below normal snow seasons in northern Colorado. Evidence is presented of preferential meltwater flowpaths at the snow-soil interface on the north facing slope ~~with the effects observed in causing changes~~ increases in SWE downslope and less infiltration into the soil at 20 cm depth; less association is observed in the near surface soil moisture (top 7 cm). We present a conceptualization of the meltwater flowpaths that develop based on slope aspect and soil properties. The resulting flowpaths are shown to divert at least 4% of snowmelt laterally, accumulating along the length of the slope, to increase the snow water equivalent by as much as 170% at the base of a north facing hillslope. Results from this study show that snow acts as an extension of the vadose zone during spring snowmelt and future hydrologic investigations will benefit from studying the snow and soil together.

1 Introduction

In many mountainous headwater catchments snow and soil moisture are key components of the hydrologic cycle, providing valuable information pertaining to the dynamic processes that occur during spring runoff. This has justified large data collection efforts to further understand the distribution of snow and soil moisture across landscapes during the winter and spring seasons (Elder et al., 2009). During spring, much of snowmelt will infiltrate into the soil with a noticeable change in soil moisture prior to recharging groundwater storage, producing streamflow, or contributing to evapotranspiration (Bales et al., 2011; Kampf et al., 2015; Webb et al., 2015). The relative saturation in the vadose zone controls the stream connectivity and release of water and nutrients from subsurface storage into stream systems (McNamara et al., 2005; Williams et al., 2009b). Soil moisture during this time is driven by snowmelt that can impact the water availability for plant production (Molotch et al., 2009; Harpold et al., 2015) as well as the ionic signature of

soil moisture and stream flow (Harrington and Bales, 1998). For these reasons the connections between snowmelt and soil moisture are critical in understanding the hydrologic cycle in snow dominated headwater systems (Jencso et al., 2009), particularly in the face of a changing climate that will alter the snowmelt season and resulting hydrological dynamics (Adam et al., 2009; Clow, 2010; Clilverd et al., 2011; Harpold et al., 2012; Rasmussen et al., 2014; Fassnacht et al., 2016).

Processes within headwater catchments such as snow accumulation and persistence are known to vary at multiple scales of interest. From a basin scale perspective, elevation has been shown to influence the depth and persistence of a snowpack (Richer et al., 2013; Molotch and Meromy, 2014; Sexstone and Fassnacht, 2014) while at finer resolutions the spatial variability of both accumulation and melt may be controlled by aspect (Williams et al., 2009a; López-Moreno et al., 2013; Hinckley et al., 2014) and snow in forested areas are affected by interception during accumulation, shortwave radiation shading, and longwave radiation influences prior to and during melt (Storck et al., 2002; Musselman et al., 2008; Molotch et al., 2009; Adams et al., 2011; Webb, [in-review2017](#)). However, far less is known about the variability that snowmelt has on soil moisture and flowpaths during snowmelt at the hillslope scale, in large part due to the difficulty of observing soil moisture beneath a deep snowpack at high spatial resolution. Snowmelt is important to soil moisture storage and resulting streamflow (McNamara et al., 2005; Williams et al., 2009a; Bales et al., 2011; Hunsaker et al., 2012; Kormos et al., 2014). Stream connectivity to the surrounding landscape follows seasonal trends with the highest connectivity during spring snowmelt based on factors such as topography (McNamara et al., 2005; Jencso et al., 2009; Jencso and McGlynn, 2011). The aspect of a hillslope will additionally increase soil water storage and retention on north aspect slopes (Geroy et al., 2011) that can alter runoff processes and result in spatially variable soil moisture beneath a melting snowpack.

The ability to observe soil moisture throughout the water year has seen recent advancements for capturing high resolution data at both spatial and temporal scales (e.g. Bales et al., 2011). Similar advances have occurred for observing variables such as the liquid water content of a snowpack (Mitterer et al., 2011; Techel and Pielmeier, 2011; Koch et al., 2014; Heilig et al., 2015). This has allowed for further understanding of hydrological systems and dynamic processes that are vulnerable to climate change (Bales et al., 2006). However, observations of the relative saturation of soil beneath a snowpack has been limited to an array of discrete points with sufficient instrumentation, and few studies have investigated spring snowmelt soil moisture at the similar scale as the snow above it has been measured. The few studies that have observed these process have shown microtopography to influence infiltration across the snow-soil-interface (SSI) (French and Binley, 2004) and that wetter areas tend to remain wetter with slope and aspect being important factors at a low elevation site (Williams et al. 2009a). In high elevation alpine environments topography and wind shielding influences soil moisture distribution though there is less association to these parameters in low snow years (Litaor et al., 2008). These studies, limited to high alpine and low rain-snow transition zones, suggest that topographic influences on soil moisture are strong but more investigations during varying snow accumulation, melt dynamics, and environments are important, particularly with variable regional and environmental snowpack responses to climate variability (Harpold et al., 2012), to connect the distribution of soil moisture across a landscape to runoff processes.

The relative saturation of the vadose zone determines runoff processes during spring snowmelt (McNamara et al., 2005). Runoff processes have been shown to change during spring snowmelt compared to summer rain events (Eiriksson et al., 2013; Williams et al., 2015). During snowmelt, soil moisture is influenced most in the top 10 cm of soil (Blankinship et al., 2014) with pulses of water that reach further depths varying widely at both the hillslope and catchment scale (Webb et al., 2015). At the catchment scale a south aspect hillslope may display matrix flow during snowmelt as the north aspect displays evidence of preferential flow through the soil (Hinckley et al., 2014). Preferential flowpaths have been shown to occur both in the soil beneath a snowpack (French and Binley, 2004) and above the ground surface within the snowpack (Marsh and Woo, 1985; Kattelman and Dozier, 1999; Williams et al., 2000; Liu et al., 2004; Williams et al., 2010). Preferential flow within a snowpack can form as the result of ice lenses (Colbeck, 1979) or differences in grain size and density (Avanzi et al., 2016; Webb et al., in review). Each of these can alter the flow of water through snow and resulting infiltration into the soil from the centimeter scale (Williams et al., 2010) up to tens of meters (Eiriksson et al., 2013; Webb et al., in review). Preferential flowpaths within a snowpack will create spatially variable snowmelt patterns across a landscape depending on the variable metamorphism that occurs within the snowpack (Yamaguchi et al., 2010; Adams et al., 2011; Domine et al., 2013; Katsushima et al., 2013), which increases during melt (Marsh, 1987). These melt patterns have been shown to have correlation lengths of five to seven meters in relatively flat alpine terrain (Sommerfeld et al., 1994; Williams et al., 1999) and lesser correlation lengths of two to four meters in subalpine terrain (Webb, in review 2017). Preferential flowpaths within a snowpack will alter soil moisture and resulting runoff processes at the hillslope and catchment scales.

To our knowledge there has not been a study investigating snow and soil moisture interactions specifically to investigate hydrologic flowpath development in a sub-alpine environment beneath a deep (2 m) seasonally persistent snowpack. The goal of this study is to gain further understanding through observations of flowpath development in a snowmelt dominated subalpine headwater catchment. Observations of near surface soil volumetric water content (VWC) were compared to topographical parameters (e.g. slope, aspect, etc.) and hydrological variables (e.g. temperature, date of peak SWE, etc.). Statistical analysis of the topographical and hydrological controls on the spatio-temporal variability of snow and soil moisture during snowmelt was undertaken at a subalpine forested setting with north, south, and flat aspects as a seasonally persistent snowpack melts through the following objectives: 1) investigate if evidence preferential flowpaths in snow can be observed and the effect on soil moisture through measurements of snow water equivalent (SWE) and near surface soil moisture, 2) observe how SWE and near surface soil moisture vary on hillslopes relative to the toes of hillslopes and flat areas, and 3) compare snowmelt infiltration beyond the near surface soil between flat and sloping terrain during the entire snowmelt season.

2 Methods

To understand flowpath development during snowmelt and the resulting distribution of soil moisture, observations of SWE and near surface soil moisture were correlated to test the influence of topography and snow on soil moisture using Pearson's correlation coefficient, r , and a level of significance determined at p -values of 0.05 and 0.01. Near surface soil volumetric water content (VWC) was compared to SWE at the same location on the date of observations, SWE on the first survey date (representative of peak SWE), the change in SWE between survey dates prior to

measurement, near surface VWC on the first survey date, and topographic slope, elevation, and northness as calculated from the a 10 m digital elevation model (DEM) (USGS, 2015). Northness is defined as the product of the cosine of aspect and the sine of slope (Molotch et al., 2005; Sexton and Fassnacht, 2014).

2.1 Study Site

Data were collected over a 0.2 km² area near Dry Lake in Routt National Forest, approximately 6.5 km northeast of Steamboat Springs, Colorado (Fig. 1b). The elevation of measurement locations ranged from 2500 m to 2600 m with slope angles from 1° to 30° as determined from a 10 m DEM (USGS, 2015). The site has a mix of deciduous (aspen, populus tremuloides) and evergreen forest (subalpine fir, Abies lasiocarpa and engelmann spruce, Picea engelmannii) with a majority of the vegetation growing near the small stream and offering large areas of open canopy conditions (Fig. 1a) on each of the two predominant hillslopes (one south-southeast facing, and one north-northwest facing). The soils are primarily loams with very cobbly loam dominating the south aspect slope, cobbly sandy loam on the north aspect, and loam on the flatter aspects with observations of highly organic soils in the flat northeastern section of the area at the base of the north aspect hillslope (Table 1). Depth to bedrock was estimated using a one meter long hand auger at 16 locations within the study site along a transect from the top of the south aspect slope to the top of the north aspect slope (Fig. 1b), resulting in soil depths ranging from 12 cm to greater than one meter at a single location. Soil depths tend to decrease with increasing elevation with a mean depth to bedrock of 40 cm and a median of 38 cm calculated from the 15 depths less than one meter (Fig. 1c). Sieve analyses were also conducted on six different volumetric samples of approximately 200 cm³ for near surface soil collected from four locations (two locations sampled twice) (Table 1).

For this study, regions were defined to compare observations on varying aspects and at the toes of hillslopes. Regions were defined as middle of the south aspect slope (SM), toe of the south aspect slope (ST), flat aspect (FA), toe of the north aspect slope (NT), low on the north aspect slope (NL), and high on the north aspect slope (NH) (Fig. 1c).

2.2 Spatial Surveys

Spatial surveys were conducted in 2013, 2014, and 2015. In 2013 two surveys were conducted four weeks apart while in 2014 and 2015 four surveys were conducted at two week intervals. All survey periods began during the first week of April (April 6, 2013; April 4, 2014; April 3, 2015). Surveys consisted of a series of snow pits for collecting near surface soil moisture, snow depth, and bulk SWE data. At each pit location, the first measurements taken were near surface soil moisture using a handheld time domain reflectometer (TDR) (FieldScout TDR 100; Spectrum Technologies, Inc.) to measure the VWC using seven centimeter long prongs inserted vertically into the soil. A total of five TDR measurements were averaged across the bottom of each snow pit (approximately one meter across, measurements ~20 cm apart). Volumetric soil samples (~40 cm³) were collected at three of the same point locations as TDR measurements in each snow pit for laboratory confirmation of VWC during surveys in 2013 and 2014. Bulk SWE measurements were collected using a plastic tube with an inner diameter of 68 mm and a length of 1.8 m. A core was collected for the full depth of the snowpack when possible, and in no more than two segments when the depth of the snowpack was greater than the length of the tube. Snow cores were placed in a plastic bucket and mass measured

using a digital scale with 10 g precision. Two cores were averaged per snow pit with additional measurements if the first two showed greater than ten percent mass difference (a rare occurrence). When locations were returned to a new pit was dug within one to two meters with care to avoid previously disturbed snow. Additionally, snow density profile data were collected near a Snow Telemetry (SNOTEL) site on March 20, 2013; April 7, 2013; and February 20, 2015.

On April 6, 2013, 15 snow pits were measured and six were returned to and measured again on May 4, 2013 to capture the changes at the SM, ST, FA, NL, and NH regions (Webb and Fassnacht, 2016a). The 2014 and 2015 surveys collected data along approximate north-to-south transects perpendicular to topographic contours collecting multiple measurements in the six regions of interest. In 2014 a total of 25 snow pits were measured on April 4 and nine of these pits were returned to in two week intervals through May 17; eight of the nine pits were measured on April 19 (Webb and Fassnacht, 2016b). The 2015 surveys made observations at 47 snow pits on April 3 and 23 of these pits were returned to on two week intervals through May 16 (Webb and Fassnacht, 2016c). Snow pit measurements were then averaged at each of the regions (SM, ST, FA, NL, and NH) for each day of observations.

2.3 Time Series Data

At the study site, there are two stations that measure meteorological variables including air temperature, relative humidity, precipitation, wind speed and direction, and solar radiation. The Dry Lake Remote Automated Weather Station (RAWS station coCDRY and National Weather Service ID 050207, <raws.dri.edu>) is along an exposed ridge at the top of the south aspect slope at approximately 2540 m elevation and has been operated by the United States Forest Service since 1985 (Fig. 1a and 1b). Additionally, hourly dewpoint and wet bulb temperature, snow depth, and SWE are measured at the Dry Lake ~~Snow Telemetry (SNOTEL)~~ (station 457 <wcc.nrcs.usda.gov>) station located approximately 120 m to the south-southwest of the RAWS at a lower elevation of 2510 m with light canopy shading (Fig. 1a) and has been operated by the Natural Resources Conservation Service since 1980 measuring SWE and precipitation. Since 2003, this SNOTEL station has additionally measured soil moisture and temperature at three depths (5 cm, 20 cm, and 50 cm). The RAWS and SNOTEL data provide meteorological data at two elevations and different canopy conditions within the relatively small area of interest of this study.

Snowmelt infiltration observed by the SNOTEL station is for a relatively flat location, and thus was compared to additional soil moisture and temperature instruments that were installed ~~at a single location~~ on the north aspect slope on December 27, 2013 at depths of 5 cm, 12.5 cm, and 20 cm. The top and bottom depths match two of the SNOTEL soil moisture depths; the 12.5 cm depth sensor was added at mid-depth between the other sensors. Instruments installed were Decagon Devices, Inc. 5TM temperature and moisture sensors connected to a Decagon Em50 data logger. Installation in December 2013 required disturbing the snowpack and soil, thus the snowpack and soil moisture were allowed to return to near undisturbed conditions after installation and data prior to March 15, 2014 was not included in analysis. The soil moisture sensors and data logger were calibrated prior to installation using approximately 1500 cm³ of soil collected from the study site and tamped around a sensor to a density of 1.0 g cm⁻³, similar to measured conditions in the field. The calibration occurred at a constant temperature of 0.5°C and additions of seven to ten percent VWC every four days. The container mass was recorded to confirm mass of soil, sensor, and water as well as

the sensor reading of temperature and VWC prior to the addition of water each time. All mass recordings were at a precision of 1.0 g (volumetric water precision of 0.06%) and VWC sensor recordings to 0.1%.

3 Results

3.1 Time Series Snow and Meteorological Data

The three spring snowmelt seasons studied represent varying melt conditions. Average peak SWE occurs at the Dry Lake SNOTEL station on April 5 with a 35 year median peak of 570 mm and a mean of 590 mm (Fig. 2a). Peak SWE values recorded at the SNOTEL station were 495 mm, 715 mm, and 415 mm for 2013, 2014, and 2015, respectively, representing 87%, 125%, and 73% of the station long term median. Peak SWE timing ranged from March 9 in 2015, preceding first survey by nearly one month, to April 25 in 2013, 19 days after the first survey (Fig. 2a). The number of days from peak SWE to no snow recorded at the SNOTEL station ranged from 22 days in 2013 to 52 days in 2015, with each year having ~~of~~ incremental snowfall during the melt period (Fig. 2b). Precipitation at the SNOTEL station during the survey periods was 130 mm for 2013, 100 mm for 2014, and 2015 accumulated 115 mm from the date of the first survey to the last survey (Fig. 2b). The precipitation that fell during the melt period in 2015 likely included a number of rain-on-snow events due to the regular warmer than freezing temperatures in late April and May (Fig. 2d), ~~but though~~ snow can fall at several degrees warmer than zero (Fassnacht et al., 2013). On March 1st, the snow accumulation was the same in 2013 and 2015, with approximately 40% more in 2014; the subsequent spring snowpack variability between years was a result of varying meteorological forcing conditions during March, April, and May (Fig. 2). The SNOTEL station data show air temperature during these months warmer than freezing 62%, 64%, and 77% of the time and cumulative solar radiation totaled 355 kW, 380 kW, and 400 kW in 2013, 2014, and 2015, respectively (Fig. 2c). Wind directions remained consistent each year during the spring months, generally from the southwest and northeast alternating diurnally between directions (Fig. 2e). The RAWS site showed slightly larger diurnal temperature fluctuations, greater cumulative solar radiation, and less precipitation during the spring snowmelt seasons relative to the SNOTEL station, though generally similar conditions were observed when comparing the two stations (Fig. 2).

These conditions resulted in snow density profiles that display indicators of melt-freeze crusts and ice lense formation (Fig. 3). It should be noted that the location of these snow pits near the SNOTEL station contains a lot of buried vegetation and large rocks causing difficulties in obtaining density measurements near the ground surface. The 2013 melt season observed the development of a higher density layer near 70 cm above ground that deteriorated in the time between observations, though a higher density layer formed at ~80 cm above ground, likely as the result of melt-freeze cycles. The February, 2015 density profile observed a similar high density layer near 70 cm above ground, though additional higher density snow is observed closer to the ground (Fig. 3). These density profiles provide observations of density profiles near peak SWE for 2013 and 2015 with average densities between 350 and 370kg/m³ during the varying meteorological conditions each year, respectively.

3.2 Spatial Surveys

~~The variable meteorological influences on the snowpack and soil moisture was observed through the spatial surveys.~~

Spatial surveys conducted in 2013 and 2014 occurred while a measureable snowpack was still observed at the SNOTEL station for all survey dates whereas in 2015 the SNOTEL station measured zero snow for the final two of the four surveys resulting in variable conditions for SWE and VWC measurements each year. In 2013 all north aspect locations increased in SWE between surveys with the largest increase occurring at the toe of the north aspect slope (NT, 160 mm) and the smallest increase high on the slope (NH, 20 mm) (Fig. 3Fig. 4bi). SWE also increased at the toe of the south aspect slope (ST, 90 mm) and decreased in the middle of the south facing slope (SM) (Fig. 3Fig. 4bi). In 2014 a similar pattern was observed of increases in SWE at the toes of each slope (ST and NT) and lesser increases on the north facing hillslope (Fig. 3Fig. 4biii), though low on the slope one pit location decreased in SWE and another remained the same (Fig. 3Fig. 4aiii). Increases in SWE occurred early in the melt period for 2013 and 2014 whereas the early melt period was not observed in 2015 due to the early peak accumulation. After the initial increase in SWE for some locations during the first melt period observed (MP-1), all locations decreased in SWE for the two following melt periods observed (Fig. 3Fig. 4b). In 2015, SWE did not change during MP-1 at NT and ST regions, while it decreased at the four other locations (Fig. 3Fig. 4bv). This is less of a decline in regions that increased for 2013 and 2014. At the toes of each slope in 2014, the increase in SWE during the first melt period was larger than the decrease in the following two melt periods combined (Fig. 3Fig. 4iii). In 2015, only two measurement locations had snow during the final survey (May 16) and precipitation influenced observations (discussed later).

Also observed during manual surveys in 2013 and 2014 were ~~the presence of evidence of lateral flow in the form of~~ frozen ice “veins” immediately above the snow-soil interface (SSI) ~~were observed (Fig. 4Fig. 5)~~. These were observed on the north aspect (NL and NH) and at the toe of the north aspect slope (NT) only and appeared to be continuous. The occurrence of this phenomenon was in the direction of the hillslope fall line and on ground that was not super-saturated. These ice “veins” were not observed in 2015. Also qualitatively observed was the relative density of snow in each pit in 2014. ~~Observed ice lenses in the snow stratigraphy were only observed on the north hill slope and in only about one-third of the observed locations on the hillslope. Additionally On the north aspect slope, snow density tended to decrease with height above the SSI, with heavy wetter snow remaining in the bottom of the snowpack and the thickness of the in the form of higher-density saturated snow at the bottom of each snow-pit-increasing downslope. These saturated snow layers increased in depth downslope and were only observed at the bottom of the snowpack directly above the SSI.~~

The near surface soil VWC during all surveys varied from mean values of 15% to 85% (Fig. 3Fig. 4). The maximum soil moisture consistently occurred at the toe of the north aspect hillslope (NT) in the highly organic soil. The soil at this location was also observed to be super-saturated during a single survey on April 19, 2014 (resulting in the 85% VWC, Fig. 3Fig. 4bii). The near surface soil VWC showed variable observations of increasing and decreasing soil moisture beneath a melting snowpack with relatively larger decreases immediately following snow disappearance (Fig. 3Fig. 4a).

The 2015 surveys resulted in the largest variability of measurements each survey for both SWE and near surface VWC (Fig. 3Fig. 4c). The early peak accumulation resulted in only two measurement locations with snow for all four survey

dates. However, as with previous years, near surface VWC decreased noticeably after the disappearance of snow for all locations with some increases due to rain events (Fig. 3 Fig. 4cii).

3.3 Spatial Correlation

The topographic parameters of elevation, slope, and northness showed mostly low correlations to near surface VWC during observations and little significance at the 0.05 level (Table 2). The only topographic parameter that resulted in a Pearson's r value of magnitude larger than 0.5 was slope, occurring later in the 2014 observation period. The only topographic parameter that showed any significance was northness on May 16, 2015, when soil had been exposed to the atmosphere from loss of snow for 93% of measurement locations.

Measurement locations were also tested for The hydrologic variables tested for correlation of hydrologic variables to near surface VWC that included SWE, Δ SWE, first measured SWE, and first measured VWC. These variables showed higher correlations and more occurrences of significance at the 0.05 and 0.01 level relative to topographic parameters (Table 2). The highest Pearson's r values of all variables to near surface VWC was the first measured near surface VWC that are positive and all but one correlation being significant at the 0.01 level. Pearson's r values tend to decrease in magnitude for this variable as time from the first survey increases (Table 2).

The correlation of SWE variables to near surface VWC were inconsistent in strength, direction, and significance with a lot of variability each survey. The mostly negative correlations for near surface VWC to Δ SWE indicate that in 2013 and 2014 locations with lesser changes in SWE had higher near surface VWC, though this was significant at the 0.05 level on April 19, 2014 only (Table 2). The similar negative correlation and magnitudes of near surface VWC to first measured SWE show that in 2013 and 2014 areas that had less SWE during the first survey tended to have higher measured VWC, significant at the 0.05 level on April 19, 2014, and at the 0.01 level on May 3, 2014 (Table 2).

3.4 VWC Time Series Data

Soil moisture and temperature sensors clearly show the diurnal fluctuation of VWC from snowmelt infiltration across the SSI and the fluctuation in soil temperature as snow disappears (Fig. 5 Fig. 6 Fig. 6). Soil temperatures at 5 cm depth remain between 0°C and 1°C through winter and temperatures begin to fluctuate in the soil at approximately the same time of snow disappearance (Fig. 5 Fig. 6 Fig. 6). This temporal pattern occurs at both the SNOTEL station and on the north aspect slope. These locations also show the relatively quick drying after snow disappearance in 2014 and slower drying as a result of rain in 2015. However, there is more drying between rain events on the flat aspect (Fig. 5 Fig. 6 Fig. 6bi) compared to the north aspect slope (Fig. 5 Fig. 6 Fig. 6bii). At the flat aspect SNOTEL station the VWC sensors at 5 cm and 20 cm depths follow a similar temporal pattern remaining within 5% of each other the entire winter season indicating snowmelt infiltrating and wetting the soil at 20 cm depths and a higher relative saturation in entire vadose zone (Fig. 5 Fig. 6bi). Beneath the snowpack and during melt, the north aspect hillslope VWC sensors show a difference of approximately 15-20% with more similar VWC observed during summer and fall rain events (Fig. 5 Fig. 6bii). The 12.5 cm deep sensors on the north aspect slope also displays a more similar VWC value to the 20 cm sensor with values drier than the 5 cm sensor indicating less snowmelt infiltrating and wetting the soil at 12.5

cm and 20 cm depths, and a lesser relative saturation in the vadose zone on the north facing slope (~~Fig-5~~Fig. 6bii) compared to flat terrain (~~Fig-5~~Fig. 6bi).

Rain events that occurred prior to soil moisture drying in May, 2015 resulted in infiltration excess overland flow due to high intensity precipitation. These events occurred prior to new vegetation becoming established on the hillslope.

5 Evidence of overland flow was observed during the May 16, 2015 survey when most of the snow had disappeared on all hill slopes and the dead grasses from the previous summer were lying flat on the ground and vegetation litter piled up in the downslope direction; this was not the observed state of the dead grasses and litter in snow free areas during the previous survey on May 2. During the overland flow event(s), differences in VWC measurements at 5 cm, 12.5 cm, and 20 cm deep sensors on the north aspect slope are similar to what is observed during the snowmelt season and
10 not what is observed during rain events during the summer and fall (~~Fig-5~~Fig. 6bii). However, the flat aspect VWC sensors displayed similar patterns during nearly all rainfall or snowmelt events (~~Fig-5~~Fig. 6bi). These observations indicate that less snowmelt infiltrates to the 20 cm depth on the north facing slope relative to the flat aspect (~~Fig-5~~Fig. 6b) and that snowmelt water is flowing downslope nearat the SSI (~~Fig-4~~Fig. 5).

4 Discussion

15 The multiple years of observation at a subalpine location with a deep seasonally persistent snowpack offers analysis of SWE and near surface VWC patterns that have previously been limited to lower elevations near the rain-snow transition zone (Williams et al., 2009a) and higher elevations in an alpine environment (Litaor et al., 2008). In this study, the only topographic parameter that displayed any significance on the near surface soil moisture at the 0.05 level was northness and this appeared to increase in significance and strength with time indicating that it is likely more
20 related to the presence or absence of snow and influences from rain (Table 2). However, infiltration of snowmelt beneath the near surface to 12.5 cm or 20 cm depth was influenced by slope with more infiltration wetting the soils at 20 cm depth on the flat aspect and lesser wetting at this depth on the north aspect (~~Fig-5~~Fig. 6b) where observations of ice “veins” and saturated layers of snow were made at the SSI (~~Fig-4~~Fig. 5). The soils on the south aspect slope are generally coarser than the north or flat aspects (Table 1), suggesting that soil water retention is higher on north
25 aspects (Geroy et al., 2011). This was reflected with the north aspect soils having higher water contents than south aspect soils, both with and without the presence of a snowpack (~~Fig-3~~Fig. 4). Near surface soil moisture approached relative equilibrium with a persistent snowpack rather than varying through time (~~Fig-3~~Fig. 4, ~~Fig-5~~Fig. 6b). As the snowpack melts the shallow subsurface VWC displays clear diurnal fluctuations (~~Fig-5~~Fig. 6b). The locations that were wet relative to the other locations during the first survey remained as such for all following surveys when snow
30 persistently covered the study area comparing well to the study by Williams et al. (2009a) at a smaller scale and beneath a shallower snowpack near the rain-snow transition zone at a lower elevation. However, in contrast to Williams et al. (2009a), near surface VWC showed a negative correlation to the first measured SWE (representative of peak) in 2013 and 2014 resulting from locations with deeper snowpacks having lesser near surface VWC and shallower snowpacks having greater near surface VWC. This is the result of the shallower snowpacks during the first survey being near the bottom of the slopes and in the flat terrain influenced by canopy interception (Fig. 1a) that yields
35 a lower peak SWE followed by melt flowing downslope at the SSI towards these locations and increasing both SWE

and near surface VWC (Fig. Fig. 44). Though in 2015, a relatively low snow year, results agreed with Williams et al. (2009a) of higher near surface VWC at locations that accumulated more snow indicating the amount of snowfall is also important to these processes. During low snow years, areas where snow persists longer will result in a longer influence on near surface soil moisture. Near surface VWC will additionally depend on variability in soil parameters such as soil water retention, with higher moisture retention from finer soil particles, similar to the north aspect slope, will affect the infiltration or lateral flow of meltwater at the SSI when on a slope.

Meltwater flowing downslope ~~at near~~ the SSI on the north aspect hillslope is shown by the increases in SWE at locations on and at the toe of the hillslope (Fig. 3 Fig. 4), the frozen “ice veins” observed (Fig. 4 Fig. 5), less infiltration to 12.5 cm and 20 cm depth on the slope (Fig. 5 Fig. 6), similarities in soil moisture between snowmelt and overland flow rain events, and the ~~qualitative~~ observations of snow density and wetness increasing with depth downslope in each north aspect snow pit. The movement of water across layer interfaces has been shown within a snowpack (Williams et al., 2000; Liu et al., 2004; Williams et al., 2010) and at the SSI (Eiriksson et al., 2013), with evidence of the latter being observed in this study (Fig. 4 Fig. 5). This phenomenon will depend on soil parameters, snowpack layer characteristics, slope angle, and the rate that meltwater is percolating through the snowpack. These factors will determine if an interface acts as a permeability barrier, similar to a soil drain, or a capillary barrier (Avanzi et al., 2016; Webb, 1997; Webb et al., in review). Evidence of Fflow at the SSI was not observed on the south facing slope. on the south slope though SWE did increase at the toe (ST, Fig. 3 Fig. 4). However, here there is much local terrain variability, and snow depth also increased with SWE at the toe of the slope (ST) resulting in less certainty in meltwater flow near the SSI as the cause of SWE increase. Furthermore, this This hillslope has coarser soil and different meteorological forcing on snowmelt that increases the rate of water percolation due to higher solar radiation loading (Fig. 2c). This increased radiation loading will also increase the rate of equilibrium snowpack metamorphism (to rounded grains) causing the snowpack to be less stratified relative to the flat or north aspect snowpacks. Results of this study suggest that meltwater is flowing at the SSI and downslope through the snowpack on the north aspect hillslope but not on the south aspect hillslope. The primary reasons for lateral flow through the snowpack at this location is a result of the slower melt rates on the north aspect slope and smaller hydraulic conductivity of the soil. It is also possible for lateral flow to be caused by barriers within a layered snowpack, though the large saturated layer of snow was observed only at the SSI in all north aspect snow pits shows that this is where the bulk of the lateral flow occurs.

The north aspect slope has preferential flowpaths during snowmelt that are similar to an alpine catchment with water flowing through the snowpack downslope (Liu et al., 2004, Williams et al., 2000), during rain on snow events at lower elevation sites (Eiriksson et al., 2013), and observations in a coastal climate (Kattelman and Dozier, 1999). The soil, snow, topographic characteristics, and rate of snowmelt create an environment on the north aspect slope that separates vertically percolating meltwater into flowpaths that travel across the SSI and downslope (Fig. 4 Fig. 5) increasing SWE at ~~the toe of the down~~-slope (Fig. 3 Fig. 4) and allowing some water to infiltrate across the SSI similar to a permeability barrier (Fig. 5 Fig. 6bii) (Webb et al., in review). The south aspect slope ~~has~~ coarser soil, less stratified snow, and higher rates of snowmelt due to increased solar radiation that produce less observed flow laterally at the SSI, and more infiltration into the soil. These processes can be combined into a conceptualization of the northern aspect slope having

meltwater flowpaths near the SSI downslope and the southern aspect slope having more infiltration into the soil (~~Fig. 6~~Fig. 7). Coarse soil can also divert water in the form of a capillary barrier as observed by Eirikkson et al. (2015) at the rain-snow transition zone, though this was not observed in our study. The slope of the hill will also affect this phenomena (~~Webb, 1997~~; Webb et al., in review) and in this study the north aspect slope is steeper than the south aspect (Fig. 1) though further testing is necessary at multiple slope angles to investigate how slope controls this process, since both north and south slopes are steep enough to produce hydraulic barriers (~~Webb, 1997~~; Webb et al., in review).

As hydraulic barriers form and promote flowpaths to develop within the snowpack such as on the north aspect slope, the timing of runoff at the hillslope scale can change dramatically. Snow has been shown to have a hydraulic conductivity orders of magnitude greater than common soils (Yamaguchi et al., 2010; Domine et al., 2013) and will thus be important for hydrologic modeling and flood prediction from snowmelt runoff. From a groundwater recharge perspective, much of the hydraulic gradients driving subsurface flow will be occurring at the base of the north aspect hillslope in this study area due to the lateral flow of water through the snowpack and soil moisture sensors on the slope will only account for a fraction of the total meltwater as flowpaths bypass sensor profiles. Also, at the base of the hillslope (NT) the snowpack can increase in bulk SWE by up to 250 mm (from 146 mm to 396 mm, ~~Fig. 3~~Fig. 4c) displaying the increasing-increased the storage capacity of a location by the snow and resulting in areas of focused recharge and variable infiltration in the subsurface as observed in other subalpine regions (Webb et al., 2015). However, hillslopes can still display a more classical conceptualization of snowmelt infiltration uniformly and travelling across the soil-bedrock interface to recharge groundwater resources and generate streamflow as on the south aspect slope (~~Fig. 6~~Fig. 7) and later in the summer on the north aspect slope (~~Fig. 5~~Fig. 6bii).

In order to estimate the ratio of lateral flow vs. infiltration on the north aspect slope an energy budget calculation was conducted. The energy budget was calculated assuming an isothermal snowpack on the date of peak SWE observed at the SNOTEL station and utilizing the SNOTEL measured air temperature, relative humidity, wind speed, precipitation, and short wave radiation. Fraction of cloud cover was estimated from comparing clear sky expected shortwave radiation based on latitude and time of year to observed solar radiation at the RAWS location based on Fassnacht et al. (2001). This estimated energy budget was calibrated through adjustments to the longwave radiation component to match average SWE losses at the SNOTEL station. The north aspect energy budget was then estimated through altering the shortwave radiation component only by a factor of 0.7 based on average slope and aspect for the month of April. This resulted in an approximated average melt rate on the north facing hillslope of 0.6 that of the SNOTEL station. Given the observed increases in SWE along the ~250 m long north facing hillslope this results in a minimum of 4% of melt traveling laterally above the SSI to produce the observed increases in SWE. The 4% is water that flows downslope above the SSI and remains in the snowpack. Therefore, the percentage may be larger when considering drainage from the snowpack after flowing laterally. Though 4% of melt flowing downslope within a snowpack is a low number it accumulates along a ~250 m hillslope to increase the SWE at the toe of the slope by 170% as observed in 2014 (Fig. 4). Estimating SWE from depth measurements alone in this location will be inaccurate when not considering the effect of preferential flowpaths within the snowpack and the resulting effects on snow density.

Preferential flowpaths and aspect controls during snowmelt ~~has~~have been observed at lower elevations. At a different site in Colorado, near the rain-snow transition zone, the intermittent snowpack on south aspects displayed matrix flow whereas north aspects displayed preferential flowpaths through the soil (Hinckley et al., 2014). These results are similar to those observed in ~~this~~the present study during the 2015 snowmelt while the 2013 and 2014 seasons displayed what can be interpreted as lesser melt rates on the north versus south slopes due to temperature and radiation differences (Fig 2c and d) that result in the preferential flowpaths ~~at~~near the SSI. In this study, the north aspect slope displays preferential flowpaths early in the snowmelt season similar to alpine regions (Liu et al., 2004; Williams et al., 2015) that can transport a large amount of water relative to the following melt periods (~~Fig. 3~~Fig. 4ai and bi). Flowpaths then transition to more uniform melting and less preferential flow as the melt season progresses. The south aspect slope is similar to slopes at lower elevations near the rain-snow transition zone (Eiriksson et al., 2013; Hinckley et al., 2014) that display uniform melt and matrix type of flow with small amounts of water diversion at the SSI. In 2013 the increase in SWE at the toe of the north facing slope was 30 mm greater than the amount of precipitation that was recorded (~~Fig. 3~~Fig. 4a). The increase in ~~ASWE~~ downslope is occurring from the accumulation of meltwater flowing across the SSI (~~Fig. 6~~Fig. 7). Wind is not likely causing increased deposition on any particular part of a hillslope since winds run perpendicular to slopes (Fig. 2) ~~and depth decreased~~ (Fig. 4). Though snow drifts may still occur, care was taken during measurements to avoid areas with noticeable wind drifts, or where drifts would likely occur due to the predominant wind directions. In 2014, the large increase in SWE at the toe of the north aspect slope (NT) is from the lateral flow of water in snow and the rising of the water table above the soil surface (~~Fig. 3~~Fig. 4bi) ~~as evidenced through observations of a deep saturated layer at the bottom of the snowpack and saturated soils~~. This is a result of snowmelt primarily influencing the top 10 cm of soil on the slope (Blankinship et al., 2014) and water flowing downslope ~~at~~near the SSI decreasing the travel time of water on the hillslope and increasing connectivity at the toe of the hillslope and water table similar to observations in the northern Rocky Mountains (Jencso et al., 2009). Some locations on the north aspect slope in 2014 remained consistent in the amount of bulk SWE as other locations on the hillslope decreased in SWE due to preferential flowpaths causing non-uniform flow across the hillslope (~~Fig. 4~~Fig. 53). The final 2015 survey shows similar increases in SWE between surveys that are the result of rain-on-snow events occurring that are known to produce lateral flow within snowpacks (Eiriksson et al., 2013). The major difference of 2015 is earlier peak SWE and melt season along with increased solar radiation and warmer temperatures (Fig. 2). It is also difficult to determine if this would be isolated to the north aspect hillslope in 2015 since there is a lack of snow on the south facing slope during the rain-on-snow events. It is possible that preferential flowpaths caused more lateral diversions earlier in the season, however no evidence of this was observed. In flat terrain, snowmelt patterns are known to have correlation lengths of five to seven meters in alpine environments (Sommerfeld et al., 1994; Williams et al., 1999) and two to four meters in a subalpine environment (Webb, ~~in~~ review2017). These correlation lengths are less than the distances between measurement locations in this study. However, these correlation lengths are explained by flow across snow layer interfaces and snow topography in flat terrain (Sommerfeld et al., 1994; Williams et al., 1999; Williams et al., 2010). Increasing the topographic slope will thus increase the correlation lengths as the snow layer interfaces tilt with the slope of the ground (Webb, 1997; Webb

et al., in review). This study shows that the resulting correlation lengths in complex terrain with steep slopes can increase towards the scale of the terrain variability and result in increases in SWE at the toes of hillslopes. Further investigations are necessary to determine the scale that water may flow through snow or at the SSI on steep slopes. Future studies will benefit from the use of numerous soil moisture sensors to obtain time-series data of soil VWC at multiple locations within a watershed to observe the variable infiltration characteristics during snowmelt that is difficult to detect from the near surface soil moisture alone.

When considering dynamic hydrologic processes that occur during spring snowmelt in subalpine headwater catchments, it is important to consider the variable flowpaths that develop based on factors such as slope, aspect, soil parameters, and snowpack characteristics to move beyond single point measurements and one-dimensional assumptions. The toe of a hillslope is an important location to observe and estimate the amount of hillslope runoff occurring near or above the SSI relative to flow through the soil in future investigations. Future studies will benefit from considering the snowpack as an extension of the vadose zone during spring snowmelt due to the variable saturated flow that occurs.

5 Conclusions

The observations of this study occurred during above normal, relatively normal, and below normal snow seasons capturing bulk SWE and soil VWC variability in space and time during spring snowmelt with varying meteorological forcing conditions, including rain-on-snow events in 2015. Evidence was presented of preferential meltwater flowpaths at the snow-soil interface on the north aspect hillslope during early snowmelt. The effect of these preferential flowpaths were observed in changes in SWE and infiltration in the shallow subsurface at 20 cm depth, but not observed in the near surface soil moisture. Near surface soil moisture is correlated the strongest to soil moisture measured during the first survey than to other topographic parameters or hydrologic variables. Infiltration beyond the near surface occurred more on flat terrain when compared to sloped conditions during the entire snowmelt season, resulting in greater relative saturation in the shallow subsurface in the flat area.

The snowpack is a porous medium that is an extension of the vadose zone and increases the water storage capacity of a region within a watershed. Water flowing downslope at-near the snow-soil-interface increased SWE at the toe of the north aspect hillslope by as much as 250 mm (170 %) that additionally effects the soil moisture at the toe of the slope.

This is a result of a minimum of 4% meltwater being directed downslope through the snowpack rather than infiltrating.

The south aspect hillslope did not display evidence of this phenomenon. The differences in flowpath development on the two opposite facing hillslopes is due to differences in soil, snowpack characteristics, slope and aspect, and snowmelt rates as a result of meteorological forcing variability. The formation of a-hydraulic barriers at the snow-soil interface will be dependent upon both-the snow characteristics, and soil characteristics-parameters, and meteorological conditions during melt. During 2015 when a relatively low peak SWE occurred early and rain-on-snow events were observed, the variability of snow and soil moisture increased displaying the connection and interactions between snow and soil moisture. Results from this study show that the snow acts as an extension of the vadose zone during spring snowmelt and future investigations will benefit from studying both the snow and soil together.

6 Acknowledgements

The authors would like to acknowledge multiple people that assisted with the work that is presented in this manuscript. The Colorado Ground Water Association provided financial assistance through the Harlan Erker Memorial Scholarship that was used to purchase the soil moisture and temperature sensors and datalogger. The Colorado State University snow hydrology field methods course (WR575) provided an abundance of field work assistance with additional volunteers from the Fassnacht snow laboratory and Sarah Schmeer was a helpful field assistant on a number of surveys. The Routt National Forest United States Forest Service was very helpful and provided valuable assistance for the research permitting process. Additionally, Dr. Jorge Ramirez and Dr. Jeffrey Niemann provided feedback on an earlier version of this manuscript that greatly improved the quality of this work. The authors express great appreciation for all those involved in the presented work.

References

- Adam, J. C., Hamlet, A. F., and Lettenmaier, D. P.: Implications of global climate change for snowmelt hydrology in the twenty-first century, *Hydrological Processes*, 23(7), 962-972, doi:10.1002/hyp.7201, 2009.
- Adams, E., Slaughter, A., McKittrick, L., and Miller, D.: Local terrain-topography and thermal-properties influence on energy and mass balance of a snow cover, *Annals of Glaciology*, 52(58), 169-175, 2011.
- Avanzi, F., Hirashima, H., Yamaguchi, S., Katsushima, T., and De Michele, C.: Observations of capillary barriers and preferential flow in layered snow during cold laboratory experiments, *The Cryosphere*, 10, 2013-2026, doi: 10.5194/tc-10-2013-2016, 2016.
- Bales, R. C., Hopmans, J. W., O'Geen, A. T., M. Meadows, P. C. Hartsough, P. Kirchner, C. T. Hunsaker, and D. Beaudette (2011): Soil Moisture Response to Snowmelt and Rainfall in a Sierra Nevada Mixed-Conifer Forest, *Vadose Zone Journal*, 10(3), 786, doi: 10.2136/vzj2011.0001, 2011.
- Blankinship, J. C., Meadows, M. W., Lucas, R. G., and Hart, S. C.: Snowmelt timing alters shallow but not deep soil moisture in the Sierra Nevada, *Water Resources Research*, 50(2), 1448-1456, doi: 10.1002/2013wr014541, 2014.
- Clilverd, H. M., White, D. M., Tidwell, A. C., and Rawlins, M. A.: Sensitivity of Northern Groundwater Recharge to Climate Change: A Case Study in Northwest Alaska, *Journal of the American Water Resources Association*, 47(6), 1228-1240, doi: 10.1111/j.1752-1688.2011.00569.x, 2011.
- Clow, D. W.: Changes in the Timing of Snowmelt and Streamflow in Colorado: A Response to Recent Warming, *Journal of Climate*, 23(9), 2293-2306, doi: 10.1175/2009jcli2951.1, 2010.
- Colbeck, S.: Water-flow through heterogeneous snow, *Cold Regions Science and Technology*, 1(1), 37-45, doi: 10.1016/0165-232X(79)90017-X, 1979.
- Domine, F., Morin, S., Brun, E., Lafaysse, M., and Carmagnola, C. M.: Seasonal evolution of snow permeability under equi-temperature and temperature-gradient conditions, *The Cryosphere*, 7(6), 1915-1929, doi: 10.5194/tc-7-1915-2013, 2013.

Eiriksson, D., Whitson, M., Luce, C. H., Marshall, H. P., Bradford, J., Benner, S. G., Black, T., Hetrick, H., and McNamara, J. P.: An evaluation of the hydrologic relevance of lateral flow in snow at hillslope and catchment scales, *Hydrological Processes*, 27(5), 640-654, doi: 10.1002/hyp.9666, 2013.

Elder, K., Cline, D., Liston, G. E., and Armstrong, R.: NASA Cold Land Processes Experiment (CLPX 2002/03): Field Measurements of Snowpack Properties and Soil Moisture, *Journal of Hydrometeorology*, 10(1), 320-329, doi: 10.1175/2008jhm877.1, 2009.

Fassnacht, S. R., Snelgrove, K. R., and Soulis, E. D.: Daytime long-wave radiation approximation for physical hydrological modelling of snowmelt: a case study of southwestern Ontario, Proceedings of the Sixth IAHS Scientific Assembly at Maastricht, Netherlands, 2001.

Fassnacht, S. R., Venable, N.B.H., Khishgibayer, J., and Cherry, M. L.: The Probability of Precipitation as Snow Derived from Daily Air Temperature for High Elevation Areas of Colorado, United States, Cold and Mountain Region Hydrological Systems Under Climate Change: Towards Improved Projections, Proceedings of symposium H02, IAHS-IAPSO-IASPEI Assembly, Gothenburg, Sweden, July 2013, IAHS, 360, 65-70, 2013.

French, H. and Binley, A.: Snowmelt infiltration: monitoring temporal and spatial variability using time-lapse electrical resistivity, *Journal of Hydrology*, 297(1-4), 174-186, doi: 10.1016/j.jhydrol.2004.04.005, 2004.

Geroy, I. J., Gribb, M. M., Marshall, H. P., Chandler, D. G., Benner, S. G., and McNamara, J. P.: Aspect influences on soil water retention and storage, *Hydrological Processes*, 25, 3836-3842, doi: 10.1002/hyp.8281, 2011.

Harpold, A., Brooks, P., Rajagopal, S., Heidbuchel, I., Jardine, A., and Stielstra, C.: Changes in snowpack accumulation and ablation in the intermountain west, *Water Resources Research*, 48(11), n/a-n/a, doi: 10.1029/2012wr011949, 2012.

Harpold, A. A., Molotch, N. P., Musselman, K. N., Bales, R. C., Kirchner, P. B., Litvak, M., and Brooks, P. D.: Soil moisture response to snowmelt timing in mixed-conifer subalpine forests, *Hydrological Processes*, 29(12), 2782-2798, doi: 10.1002/hyp.10400, 2015.

Harrington, R. and Bales, R. C.: Interannual, seasonal, and spatial patterns of meltwater and solute fluxes in a seasonal snowpack, *Water Resources Research*, 34(4), 823-831, doi: 10.1029/97wr03469, 1998.

Heilig, A., Mitterer, C., Schmid, L., Wever, N., Schweizer, J., Marshall, H. P., and Eisen, O.: Seasonal and diurnal cycles of liquid water in snow-Measurements and modeling, *Journal of Geophysical Research: Earth Surface*, 120, doi: 10.1002/2015JF003593, 2015.

Hinckley, E.-L. S., Ebel, B. A., Barnes, R. T., Anderson, R. S., Williams, M. W., and Anderson, S. P.: Aspect control of water movement on hillslopes near the rain-snow transition of the Colorado Front Range, *Hydrological Processes*, 28(1), 74-85, doi: 10.1002/hyp.9549, 2014.

Hunsaker, C. T., Whitaker, T. W. and Bales, R. C.: Snowmelt Runoff and Water Yield Along Elevation and Temperature Gradients in California's Southern Sierra Nevada, *JAWRA Journal of the American Water Resources Association*, 48(4), 667-678, doi: 10.1111/j.1752-1688.2012.00641.x, 2012.

Jencso, K., McGlynn, B., Gooseff, M., Wondzell, S., Bencala, K., and Marshall, L.: Hydrologic connectivity between landscapes and streams: Transferring reach-and plot-scale understanding to the catchment scale, *Water Resources Research*, 45, doi: 10.1029/2008WR007225, 2009.

Jencso, K. G. and McGlynn, B. L.: Hierarchical controls on runoff generation: Topographically driven hydrologic connectivity, geology, and vegetation, *Water Resources Research*, 47(11), n/a-n/a, doi: 10.1029/2011wr010666, 2011.

Kampf, S., Markus, J., Heath, J., and Moore, C.: Snowmelt runoff and soil moisture dynamics on steep subalpine hillslopes, *Hydrological Processes*, 29(5), 712-723, doi: 10.1002/hyp.10179, 2015.

Katsushima, T., Yamaguchi, S., Kumakura, T., and Sato, A.: Experimental analysis of preferential flow in dry snowpack, *Cold Regions Science and Technology*, 85, 206-216, doi: 10.1016/j.coldregions.2012.09.012, 2013.

Kattelmann, R. and Dozier, J.: Observations of snowpack ripening in the Sierra Nevada, California, USA, *Journal of Glaciology*, 45(151), 409-416, 1999.

Koch, F., Prash, M., Schmid, L., Schweizer, J., and Mauser, W.: Measuring Snow Liquid Water Content with Low-Cost GPS Receivers, *Sensors*, 14(11), 20975-20999, doi: 10.3390/s141120975, 2014.

Kormos, P., Marks, D., McNamara, J., Marshall, H., Winstral, A., and Flores, A.: Snow distribution, melt and surface water inputs to the soil in the mountain rain-snow transition zone, *Journal of Hydrology*, 519, 190-204, doi: 10.1016/j.jhydrol.2014.06.051, 2014.

Litaor, M. I., Williams, M., and Seastedt, T. R.: Topographic controls on snow distribution, soil moisture, and species diversity of herbaceous alpine vegetation, Niwot Ridge, Colorado, *Journal of Geophysical Research*, 113(G2), doi: 10.1029/2007jg000419, 2008.

Liu, F., Williams, M. W., and Caine, N.: Source waters and flow paths in an alpine catchment, Colorado Front Range, United States, *Water Resources Research*, 40(9), n/a-n/a, doi: 10.1029/2004wr003076, 2004.

López-Moreno, J. I., Revuelto, J., Gilaberte, M., Morán-Tejeda, E., Pons, M., Jover, E., Esteban, P., García, C., and Pomeroy, J. W.: The effect of slope aspect on the response of snowpack to climate warming in the Pyrenees, *Theoretical and Applied Climatology*, 117(1-2), 207-219, doi: 10.1007/s00704-013-0991-0, 2013.

Marsh, P.: Grain growth in a wet arctic snow cover, *Cold Regions Science and Technology*, 14, 23-31, 1987.

Marsh, P. and Woo, M.-K.: Meltwater movement in natural heterogeneous snow covers, *Water Resources Research*, 21(11), 1710-1716, 1985.

McNamara, J. P., Chandler, D., Seyfried, M., and Achet, S.: Soil moisture states, lateral flow, and streamflow generation in a semi-arid, snowmelt-driven catchment, *Hydrological Processes*, 19(20), 4023-4038, doi: 10.1002/hyp.5869, 2005.

Mitterer, C., Heilig, A., Sweizer, J., and Eisen, O.: Upward-looking ground-penetrating radar for measuring wet-snow properties, *Cold Regions Science and Technology*, 69, 129-138, doi: 10.1016/j.coldregions.2011.06.003, 2011.

Molotch, N. P. and Meromy, L.: Physiographic and climatic controls on snow cover persistence in the Sierra Nevada Mountains, *Hydrological Processes*, 28(16), 4573-4586, doi: 10.1002/hyp.10254, 2014.

- Molotch, N. P., Colee, M. T., Bales, R. C., and Dozier, J.: Estimating the spatial distribution of snow water equivalent in an alpine basin using binary regression tree models: The impact of digital elevation data and independent variable selection, *Hydrological Processes*, 19, 1459-1479, 2005.
- Molotch, N. P., Brooks, P. D., Burns, S. P., Litvak, M., Monson, R. K., McConnell, J. R., and Musselman, K.: Ecohydrological controls on snowmelt partitioning in mixed-conifer sub-alpine forests, *Ecohydrology*, 2(2), 129-142, doi: 10.1002/eco.48, 2009.
- Musselman, K. N., Molotch, N. P., and Brooks, P. D.: Effects of vegetation on snow accumulation and ablation in a mid-latitude sub-alpine forest, *Hydrological Processes*, 22(15), 2767-2776, doi: 10.1002/hyp.7050, 2008.
- Rasmussen, R., Ikeda, K., Liu, C., Gochis, D., Clark, M., Dai, A., Gutmann, E., Dudhia, J., Chen, F., Barlage, M., Yates, D., Zhang, G.: Climate Change Impacts on the Water Balance of the Colorado Headwaters: High-Resolution Regional Climate Model Simulations, *Journal of Hydrometeorology*, 15(3), 1091-1116, doi: 10.1175/jhm-d-13-0118.1, 2014.
- Richer, E. E., Kampf, S. K., Fassnacht, S. R., and Moore, C. C.: Spatiotemporal index for analyzing controls on snow climatology: application in the Colorado Front Range, *Physical Geography*, 34(2), 85-107, 2013.
- Sextstone, G. A. and Fassnacht, S. R.: What drives basin scale spatial variability of snowpack properties in northern Colorado?, *The Cryosphere*, 8(2), 329-344, doi: 10.5194/tc-8-329-2014, 2014.
- Sommerfeld, R., Bales, R., and Mast, A.: Spatial statistics of snowmelt flow – Data from lysimeters and aerial photos, *Geophysical Research Letters*, 21(25), 2821-2824, doi: 10.1029/94GL02493, 1994.
- Storck, P., Lettenmaier, D. P., and Bolton, S. M.: Measurement of snow interception and canopy effects on snow accumulation and melt in a mountainous maritime climate, Oregon, United States, *Water Resources Research*, 38(11), 5-1-5-16, doi: 10.1029/2002wr001281, 2002.
- Techel, F. and Pielmeier, C.: Point observations of liquid water content in wet snow - investigating methodical, spatial and temporal aspects, *The Cryosphere*, 5(2), 405-418, doi: 10.5194/tc-5-405-2011, 2011.
- USGS: 3DEP products and services: The national Map, 3D Elevation Program Web page, accessed [November, 2015], edited, http://nationalmap.gov/3dep_prodserv.html, 2015.
- Webb, R. W.: Using Ground Penetrating Radar to Assess the Variability of Snow Water Equivalent and Melt in a Mixed Canopy Forest, Northern Colorado, *Frontiers of Earth Science*, doi: 10.1007/s11707-017-0645-0, 2017#
review.
- Webb, R. W. and Fassnacht, S. R.: Snow density, snow depth, and soil moisture at Dry Lake study site in northern Colorado, 2013, Colorado State University, doi: 10.1594/PANGAEA.864253, 2016a.
- Webb, R. W. and Fassnacht, S. R.: Snow density, snow depth, and soil moisture at Dry Lake study site in northern Colorado, 2014, Colorado State University, doi: 10.1594/PANGAEA.864254, 2016b.
- Webb, R. W. and Fassnacht, S. R.: Snow density, snow depth, and soil moisture at Dry Lake study site in northern Colorado, 2015, Colorado State University, doi: 10.1594/PANGAEA.864255, 2016c.
- Webb, R. W., Fassnacht, S. R., and Gooseff, M. N.: Wetting and Drying Variability of the Shallow Subsurface Beneath a Snowpack in California's Southern Sierra Nevada, *Vadose Zone Journal*, 14(8), 0, doi: 10.2136/vzj2014.12.0182, 2015.

Webb, R. W., Fassnacht, S. R., Gooseff, M. N., and Webb, S. W.: The Presence of Hydraulic Barriers in Layered Snowpacks: TOUGH2 Simulations and Diversion Length Estimates, *Transport in Porous Media*, in review.

[Webb, S. W.: Generalization of Ross' tilted capillary barrier diversion formula for different two-phase characteristic curves, *Water Resources Research*, 33\(8\), 1855-1859, 1997.](#)

- 5 Williams, C. J., McNamara, J. P., and Chandler, D. G.: Controls on the temporal and spatial variability of soil moisture in a mountainous landscape: the signature of snow and complex terrain, *Hydrology and Earth System Sciences*, 13, 1325-1336, 2009a.
Williams, M. W., Sommerfeld, R., Massman, S., and Rikers M.: Correlation lengths of meltwater flow through ripe snowpacks, Colorado Front Range, USA, *Hydrological Processes*, 13(1807-1826), 1999.
- 10 Williams, M. W., Rikers, M., and Pfeffer, W. T.: Ice columns and frozen rills in a warm snowpack, Green Lakes Valley, Colorado, USA, *Nordic Hydrology*, 31(3), 169-186, 2000.
Williams, M. W., Seibold, C., and Chowanski, K.: Storage and release of solutes from a subalpine seasonal snowpack: soil and stream water response, Niwot Ridge, Colorado, *Biogeochemistry*, 95(1), 77-94, doi: 10.1007/s10533-009-9288-x, 2009b.
- 15 Williams, M. W., Erickson, T. A., and Petzelka, J. L.: Visualizing meltwater flow through snow at the centimetre-to-metre scale using a snow guillotine, *Hydrological Processes*, 24, 2098-2110, doi: 10.1002/hyp.7630, 2010.
Williams, M. W., Hood, E., Molotch, N. P., Caine, N., Cowie, R., and Liu, F.: The 'teflon basin' myth: hydrology and hydrochemistry of a seasonally snow-covered catchment, *Plant Ecology & Diversity*, 8:5-6, 639-661, doi: 10.1080/17550874.2015.1123318, 2015.
- 20 Yamaguchi, S., Katsushima, T., Sato, A., and Kumakura, T.: Water retention curve of snow with different grain sizes, *Cold Regions Science and Technology*, 64(2), 87-93, doi: 10.1016/j.coldregions.2010.05.008, 2010.

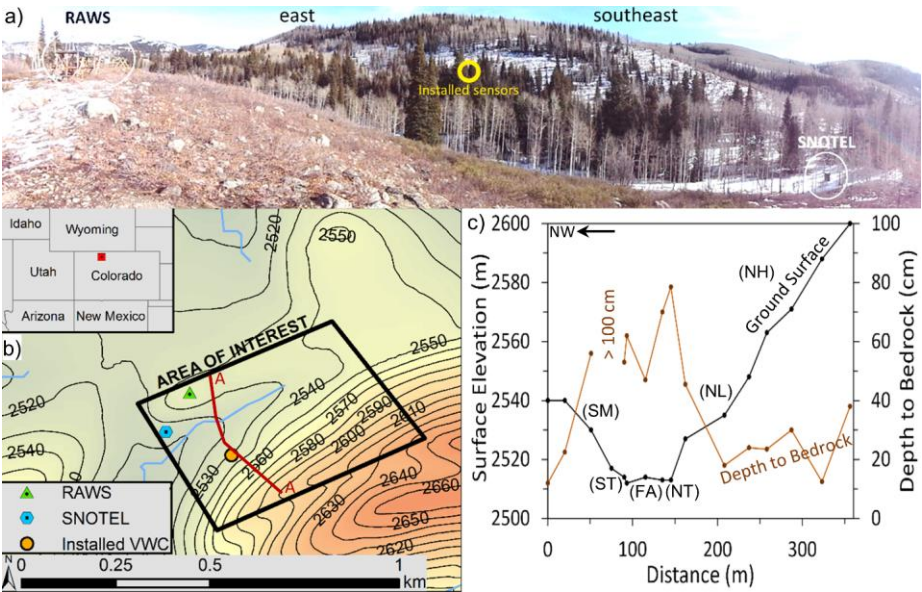


Figure 1: a) Panoramic picture of the study area facing east to southeast. Location of photo taken to the west of RAWS location in map (b). Locations of the Remote Automated Weather Station (RAWS), SNOTEL station, and installed soil moisture sensors are circled and labeled. b) Map of the study site and area of interest in this investigation. 10 m contours are shown. c) Cross section A-A from panel (b) showing the elevation of the ground surface and depth to bedrock using a 100 cm long hand auger. Regions of interest are identified as middle of the south aspect hillslope (SM), toe of the south aspect slope (ST), flat aspect (FA), toe of the north aspect slope (NT), low on the north aspect slope (NL), and high on the north aspect slope (NH). All ground surface data are 10 m resolution digital elevation model (USGS, 2015).

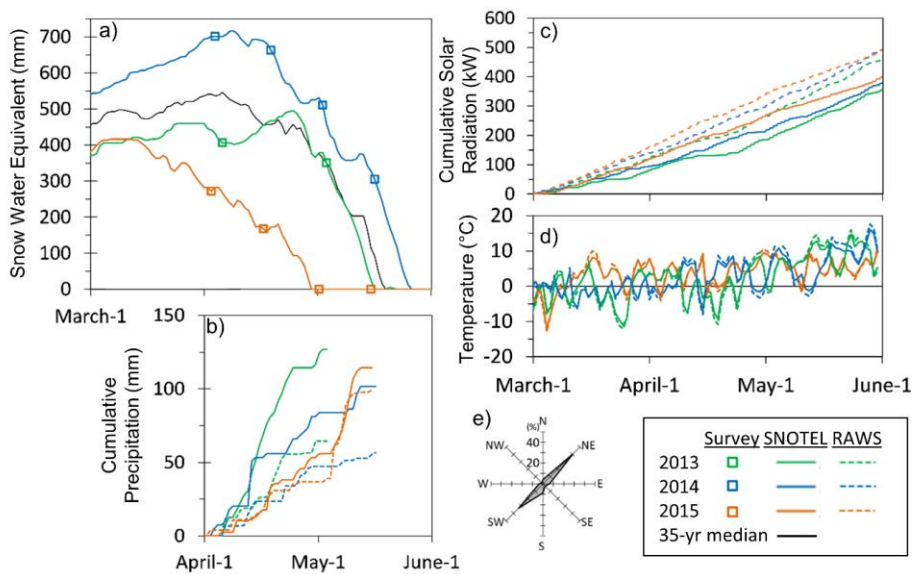


Figure 2: a) Daily Snow Water Equivalent (SWE) measured at the SNOTEL station each spring of the study period and the 35 year median of the station measurements, b) cumulative precipitation occurring during the spring survey study periods of April and May as measured at the SNOTEL and RAWS site, c) cumulative solar radiation at the SNOTEL and RAWS sites during spring, d) mean daily temperature at the SNOTEL and RAWS sites during spring, and e) wind rose of spring data for the three years studied at the SNOTEL site.

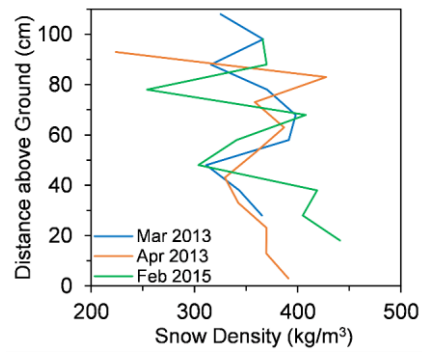


Figure 3: Observations snow density profiles on March 20, 2013; April 7, 2013; and February 20, 2015.

Formatted: Font: Bold

Formatted: Left

Formatted: Font: Bold

Formatted: Font: Bold

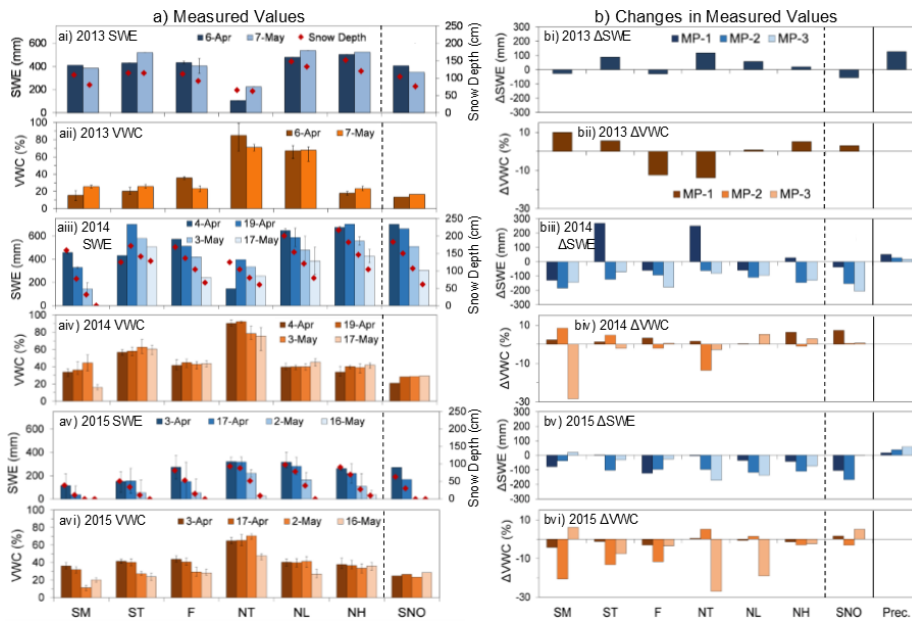


Figure 34: Observations of a) measured values for snow water equivalent (SWE) and near surface soil volumetric water content (VWC) and b) changes in measured values between survey dates for regions of interest: middle of the south aspect hillslope (SM), toe of the south aspect slope (ST), flat aspect (FA), toe of the north aspect slope (NT), low on the north aspect slope (NL), and high on the north aspect slope (NH). Also included are observed values at the SNOTEL site (SNO) that include SWE and precipitation (Precip.). Figure panels display i) 2013 SWE, ii) 2013 VWC, iii) 2014 SWE, iv) 2014 VWC, v) 2015 SWE, and vi) 2015 VWC. Changes are shown for melt period 1 (MP-1) between the first two surveys, melt period 2 (MP-2) between the second and third surveys, and melt period 3 (MP-3) between the third and fourth surveys. Each melt period is 14-15 days with the exception of 2013 that was 28 days. Error bars indicate total range of measurements at locations.



Figure 45: Picture of frozen ice “vein” observed at the snow-soil-interface (SSI) providing evidence of lateral flow of meltwater occurring within the snowpack with foot shown for scale. Foot shown for scale.

5

10

15

20

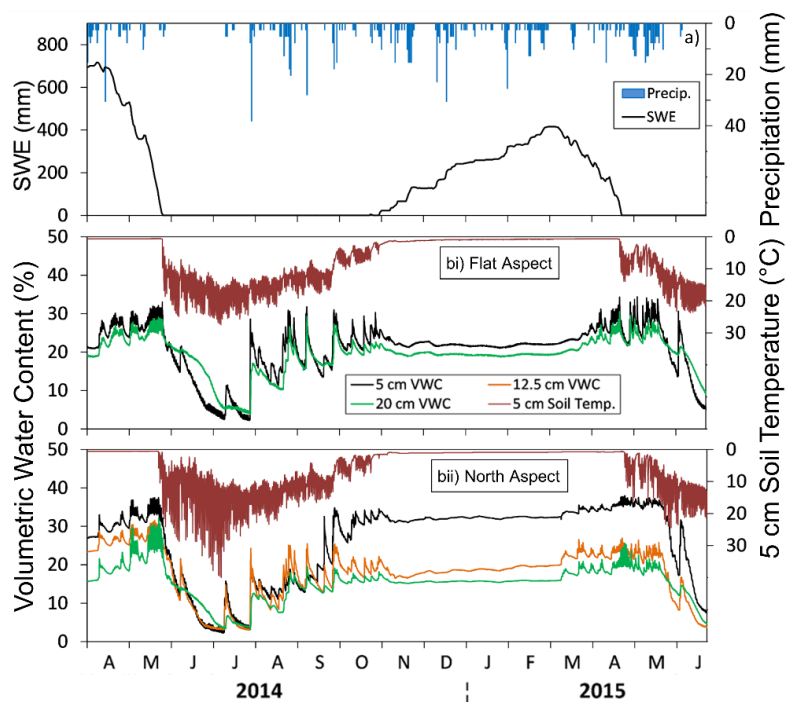


Figure 56: a) Daily snow water equivalent (SWE) and precipitation recorded at the Dry Lake SNOTEL station and b) the hourly soil volumetric water content (VWC) and 5 cm deep temperature at bi) the flat SNOTEL site and bii) the installed sensors on the north aspect slope.

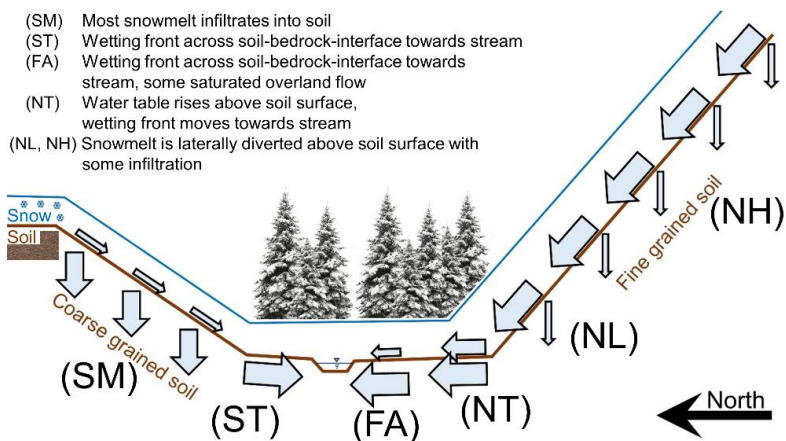


Figure 67: Conceptual model of flowpaths that develop during early spring snowmelt at the south aspect hillslope (SM), toe of south aspect slope (ST), flat aspect (FA), toe of north aspect slope (NT), low on the north aspect hillslope (NL), and high on the north aspect hillslope (NH).

5

10 **Table 1: Percent of grain sizes by mass determined from sieve analysis of samples collected using a ~200 cm³ sample at locations in the middle of the south aspect slope (SM), the toe of the south aspect slope (ST), flat aspect (FA), and low on the north aspect slope (NL). Fines are considered less than 0.074 mm, sand is larger than fines and less than 4.75 mm.**

	SM	ST	FA	NL
Percent Fines	21	25	29	29
Percent Sand	46	61	64	58
Percent Larger	33	14	7	13

15

20

25

30

35

Table 2: Results of pattern analysis of near surface soil moisture measurements based on slope angle, northness (north.), elevation (elev.), Snow Water Equivalent (SWE), change in SWE (Δ SWE), SWE on first survey of the year, and near surface soil moisture (VWC) on first survey of the year. Significance is shown with table cell shading and bold text representing a p-value less than 0.05 and underlined text a p-value less than 0.01.

		slope	north.	elev.	SWE	Δ SWE	1 st SWE	1 st VWC
2013	6-Apr	0.19	0.327	0.02	0.52	----	----	----
	4-May	0.12	0.090	0.12	-0.25	-0.68	-0.57	<u>0.92</u>
2014	4-Apr	-0.21	0.006	-0.12	-0.36	----	----	----
	19-Apr	-0.40	0.070	0.03	-0.08	-0.82	-0.83	<u>0.99</u>
	3-May	-0.63	0.410	-0.02	0.30	-0.38	<u>-0.89</u>	<u>0.95</u>
	17-May	0.57	0.494	-0.40	0.62	-0.48	-0.39	<u>0.82</u>
2015	3-Apr	-0.18	0.181	-0.22	0.12	----	----	----
	17-Apr	-0.08	0.262	-0.01	<u>0.56</u>	-0.09	0.47	<u>0.95</u>
	2-May	0.11	0.015	0.26	<u>0.87</u>	0.36	<u>0.56</u>	<u>0.80</u>
	16-May	0.06	<u>0.417</u>	0.26	0.46	0.50	0.15	0.48