

Dear Editor

Please find attached our revised manuscript following the comments from the third reviewer.

5 - Rev Comment 2 : "The biggest obstacle to inferring temporal accumulation rate variability at these low rates (21-25mm w.e/yr) is the underdetermined firn density profiles along the radar route. Hence, I think that the section 6.2 Time-dependency of accumulation is overly speculative. The temporal rate of change is either at the limit of detectability or below it, depending upon the cumulative errors in its determination."

10 -> We agree on the speculative aspect of our derived time trend. In that respect, we reconsidered the error budget pertaining to these time trends by removing the time-independent biases (as explained in the new text) and most importantly, added corresponding error bars on figure 9 which now makes much more sense. It becomes now clearer that it is difficult to unambiguously derive significant trends. As a consequence, all text dealing with the time dependency has been rewritten  
15 accordingly (abstract, introduction, section 6.2 and conclusion). Section 6.2 is maintained (recall that reviewer 3 did not ask for it to be deleted) but significantly reconsidered according to the new version of the figure and the fact that we have to be more cautious in the interpretation. We kept some references to previous work in the area to show that our results remain compatible within the limitations imposed by the error bars. Although a bit frustrating, this remains an information that we  
20 feel it is important to pass.

- Rev Comment 2 "6.3 detracts from the paper in that it is using speculation to justify an accumulation trend that may or may not be there. To investigate this, the results need to be evaluated together with the variability in the large scale atmospheric circulation, which is beyond the scope of  
25 this already large paper."

-> The section has been entirely removed.

- Rev Comment 3 " It is inappropriate at line 979 onwards to talk about rewriting the Antarctic ice sheet's negative sea-level contribution."

30 -> also removed.

- Rev Comment 1 : "The physical mechanisms that produce radar isochrones (internal reflection horizons, IRH's) are still unknown, yet thought to be linked to acidity and perhaps volcanic fallout horizons. In this paper, the dating of the ice cores has been well constrained by volcanic sulphate horizons. However, the isochrones shown in Figure 2 and so crucial to the papers eventual conclusions are not located at depths where volcanic sulphate horizons occur. So the question remains as to whether they are also the smoothing product of postdepositional processes that concatenate IRH's at a similar depth interval."

35 -> This is a problem inherent to the radar physics which is not specific to our paper. Interpretation of radar reflectors has so far remained mostly heuristic and implicitly considered as such in all of the literature about radar data. We just give some justifications (last but one paragraph of Section 2.1) and I do not really see what else we could do in the frame of such a paper. The fact that the isochrones result from post-depositional smoothing process is probable. Considering the associated error as implicitly accounted in the error due to the representativeness of single ice cores (see Section 4.3) does not seem unrealistic as we did and which led us to propose the corresponding 8 yr  
45 uncertainty. Again, we insist on the fact that this study is amongst the only one that proposes such a detailed error budget analysis on radar data. We feel that as rigorous as possible the way we have followed constitutes a significant progress in this so-far neglected issue.

50

Here is the list of the attached files :

55 Correction-1col-sub3.tex : Tex file for the 3rd version (one column)  
Correction-1col-sub3.pdf : corresponding .pdf file  
Correction-2col-sub3.pdf : the 2-column version pdf file  
diff.pdf : pdf difference file showing the changes since the previous submission

60

Sincerely,

65

Emmanuel Le Meur

# Spatial and temporal distributions of surface mass balance between Concordia and Vostok stations, Antarctica from combined radar and ice core data : First results and detailed error analysis.

Le Meur Emmanuel<sup>1</sup>, Magand Olivier<sup>1</sup>, Arnaud Laurent<sup>1</sup>, Fily Michel<sup>1</sup>, Frezzotti Massimo<sup>2</sup>, Cavitte Marie<sup>3</sup>, Mulvaney Robert<sup>4</sup>, and Urbini Stefano<sup>5</sup>

<sup>1</sup>University Grenoble Alpes, CNRS, IGE, Grenoble, France

<sup>2</sup>ENEA, Agenzia Nazionale per le nuove tecnologie, l'energia e lo sviluppo sostenibile, Rome, Italy

<sup>3</sup>Institute for Geophysics, University of Texas at Austin, Texas, USA

<sup>4</sup>British Antarctic Survey, Cambridge, UK

<sup>5</sup>Istituto Nazionale di Geofisica e Vulcanologia, Rome, Italy

*Correspondence to:* Le Meur Emmanuel (emmanuel.lemeur@univ-grenoble-alpes.fr)

**Abstract.** Results from Ground Penetrating Radar (GPR) measurements and shallow ice cores carried out during a scientific traverse between Dome Concordia (DC) and Vostok stations are presented in order to infer both spatial and temporal characteristics of snow accumulation over the East Antarctic plateau. Spatially continuous accumulation rates along the traverse are computed from the identification of three equally spaced radar reflections spanning about the last 600 yr. Accurate dating of these Internal Reflection Horizons (IRHs) is obtained from a depth-age relationship derived from volcanic horizons and bomb testing fallouts on a DC ice core and shows a very good consistency when tested against extra ice cores drilled along the radar profile. Accumulation rates are then inferred by accounting for density profiles down to each IRH. For this latter purpose, a careful error analysis showed that using a single and more accurate density profile along a DC core provided more reliable results than trying to include the potential spatial variability in density from extra (but less accurate) ice cores distributed along the profile.

The most striking feature is an accumulation pattern that remains constant through time with persistent gradients such as a marked decrease from 26 mm w.e.yr<sup>-1</sup> at DC to 20 mm w.e.yr<sup>-1</sup> at the South West end of the profile over the last 234-yr average (with a similar decrease from 25 mm w.e.yr<sup>-1</sup> to 19 mm w.e.yr<sup>-1</sup> over the last 592 yr). ~~Insights into the time-dependency reveal a steady increase of accumulation on the East Antarctic plateau during the last 600-yr and more particularly since about 200-yr as already suggested by previous studies relying on GPR and/or time markers in ice cores. Maximum~~ As for the time dependency, despite an overall consistency with similar measurements carried out along the main East Antarctic divides, interpreting possible trends

remains difficult. Indeed, error bars in our measurements are still too large for unambiguously infer an apparent time increase in accumulation rate.

For the proposed absolute values, maximum margins of error are in the range 4 mm w.e.yr<sup>-1</sup> (last 234 yr) to 2 mm w.e.yr<sup>-1</sup> (last 592 yr), a decrease with depth mainly resulting from the time-  
25 averaging when computing accumulation rates. ~~The gradients proposed in this study remain however significant since only the reduced non-systematic component (with regard to space or time) of these error terms has to be considered when interpreting spatial or temporal trends.~~

## 1 Introduction

The surface mass balance (SMB) over the Antarctic ice sheet is of primary interest for many pur-  
30 poses. The mass budget of the Antarctic ice sheet can be seen as the difference between all mass exchange with the atmosphere over all the ice sheet surface (i.e the SMB) minus the calving of icebergs and basal melting under ice shelves at the coast. The first term is globally positive as it represents snow accumulation over most parts of the ice sheet with the exception of blue ice and wind crust areas with negative SMB due to wind scouring and/or sublimation (Bintanja, 1999; Scambos  
35 et al., 2012). The second is negative despite the possibility of marine ice accretion under some parts of the shelves. Although current changes in the mass budget of Antarctic ice are believed to result mainly from recent dynamical effects leading to an enhanced flow of ice through outlet glaciers and ice streams (e.g., Rignot and Kanagaratnam, 2006), changes in surface mass balance should not be disregarded since they potentially operate over large areas. Numerical predictions by Krinner et al.  
40 (2006) suggest that advection of warmer saturated air masses (hence containing more moisture) could lead to a 32 mm water equivalent per year increase for the Antarctic future SMB in the next century corresponding to a negative sea level contribution of 1.2 mm.yr<sup>-1</sup> by the end of the 21st century. The SMB of the grounded Antarctic Ice sheet (AIS) is approximately 2100 Gt.yr<sup>-1</sup>, with a large interannual variability. Those changes can be as large as 300 Gt.yr<sup>-1</sup> and represent approxi-  
45 mately 6% of the 1989-2009 average (Van den Broeke et al., 2011). Moreover, the SMB uncertainty is estimated to be more than 10% (equivalent to nearly 0.6 mm.yr<sup>-1</sup> of sea level rise ), which is at least equal to the ice discharge uncertainty (Frezzotti et al., 2007; Magand et al., 2007).

Measuring the SMB over ice sheets therefore represents a challenge which addresses a wide number of scientific glaciological and environmental issues. It first allows for a direct assessment of the  
50 SMB pattern and specific features with regard to time as well as spatial variability. Spatial variability of SMB operates over various scales ranging from less than a meter to several hundreds of km (see for instance a detailed description in Eisen et al. (2008)). Using SMB measurements for inferring mass budgets whether over a single drainage basin or all over the continent therefore requires some sampling and interpolation strategies. Unfortunately, these approaches remain approximate and suffer  
55 from the sparsity of data especially over the Antarctic plateau. Remote sensing can be an alternative,

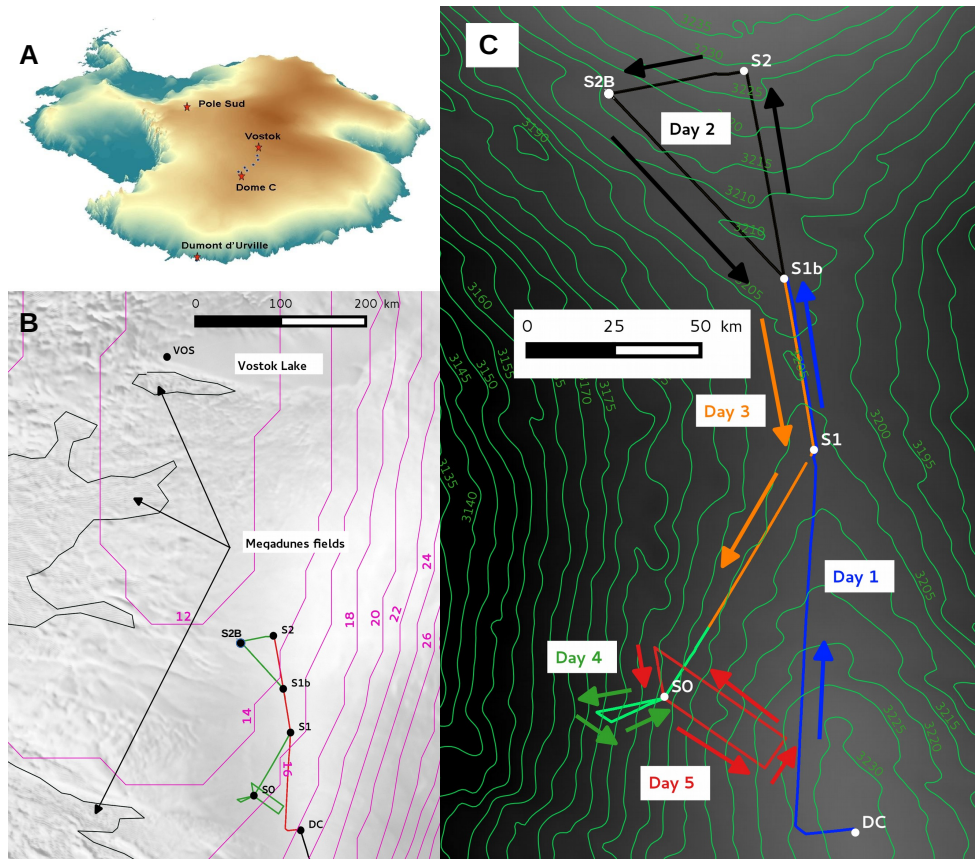
but measured quantities are not always a reliable proxy for SMB, making ground truthing still necessary. Modeling is also a possibility but similarly requires control from field ground measurements and the more of these control points, the more accurate the results obtained. Persisting discrepancies between spatially interpolated measured data (Arthern et al., 2006) and modelling results (e.g.,  
60 van den Broeke et al., 2006) also tend to call for denser field measurements.

Accessing the temporal variability of SMB is also of major interest. As pointed by Eisen et al. (2008) knowing past and present conditions of SMB is necessary for predicting its behaviour under future climatic conditions. Moreover, independent measurements of past SMB are of importance for interpreting ice cores. Last but not least, SMB is one of the main factors driving ice dynamics and  
65 as such, represents the principal boundary condition for ice sheet models. If past SMB is obviously required for modeling past ice sheet dynamics, it appears also necessary for assessing the current dynamical state of the ice sheet given the fact that the corresponding characteristic time response makes the present-day ice sheets still react to SMB changes that occurred for the past centuries or even millennia.

70 The proposed study aims to document both spatial and temporal variability of the SMB over a so-far unexplored region of the Antarctic plateau. Corresponding field work took place during a scientific traverse between the French-Italian Concordia station ( $75,10^{\circ} S$ ,  $123.33^{\circ} E$ ) and the Russian Vostok station ( $78,49^{\circ} S$ ,  $106.65^{\circ} E$ ) during the 2011/2012 austral summer (See Fig. 1). This traverse is one component of IPY lead project TASTE-IDEA (Trans-Antarctic Scientific Traverses Expeditions Ice Divide of East Antarctica ) and is also linked to the international SCAR project ITASE  
75 (Mayewski et al., 2005). The measurement technique is based on the complementary approaches of snow radar (GPR) and ice core analysis. The former provides a continuous mapping of isochronous layers leading to a spatialization of snow accumulation over long distances. On the other hand, ice cores yield a much more local information, but nevertheless necessary as a means of providing both  
80 time markers for dating radar horizons and density vertical profiles from which snow quantities accumulated over the different IRHs can be assessed. The complementarity also comes from the fact that local accumulation as revealed by ice cores has a limited representativeness due to the small scale variability of some processes leading to the net accumulation (wind driven sublimation, wind scouring, see for instance (Frezzotti et al., 2007)).

85 In the present study, data acquisition is first described with the radar data summarized under a merged profile whose post processing allowed the identification of three equally spaced IRHs covering the last 592 yr. Special attention was paid to the vertical density distribution contained in the different ice cores of the project and used for computing the cumulative mass deposited above each of the three IRHs. Then follows a detailed error budget on the final computed accumulation rates  
90 which accounts for the three main sources of error stemming from the uncertainties in (i) density profiles, (ii) age and (iii) depth of the IRHs. Finally, spatial and temporal variations of the accumu-

lation rates along the measured profile are presented, discussed and compared (when possible) with results from previous studies.



**Figure 1.** Map of the route followed by the 2011/12 TASTE-IDEA traverse over the east Antarctic plateau between the Dome Concordia (DC) and Vostok stations. (A) locations of departure and destination base stations on the plateau. (B) the portion of the traverse along which radar profiles have been acquired. (C) zoom detailing the five days of GPR profiling as well as the drilling sites of DC plus the locations of the firn cores retrieved during the traverse (S1, S2, S2B, S0) and used for dating the isochrones and deriving density profiles (see Sects. 3 and 4). The pink contours in (B) represent iso-values of the precipitation rate as computed by the ERA 40 model of the European Center for Medium-Range Weather Forecasts (Simmons et al., 2007). Although the observed spatial and temporal variability is correctly reproduced, the precipitation is systematically underestimated (Genthon et al., 2015) and results require a systematic multiplying factor of about 1.5 to become realistic (Libois et al., 2014). Processes like sublimation and snow redistribution are omitted in the physics of the model and also explain the discrepancy with accumulation rate data.

## 2 Ground Penetrating Radar (GPR) data

### 95 2.1 Technical background and functional principle of GPR

The principle of GPR consists of measuring the two-way travel times of parts of an electromagnetic pulse emitted toward the ground that are reflected on discontinuities within the observed medium. When pulses are emitted at points along a profile, lateral continuity of the physico-chemical transitions within the medium yields wiggles of similar travel time (hence depth) along the resulting radar trace. Once put side by side, these wiggles express under the form of horizons also called IRHs (Internal Reflection Horizons) visible on the recorded radargram. In this respect, GPR is analogous to seismic reflection but with an electromagnetic wave instead of an acoustic wave.

Discontinuities responsible for these partial reflections result in changes in the complex dielectric constant  $\epsilon^*$  of the medium. For the snow pack, essentially two main factors can be responsible for these changes as explained in Eisen et al. (2008) and references therein. The first concerns the real part, namely the permittivity, which varies with density whereas the second acts on the imaginary part which is sensitive to the conductivity of the medium. As a result, radar horizons within the first few hundreds meter of firn and ice are essentially due to changes in density and acidity from volcanic deposits.

The huge advantage of the IRHs comes from their isochronous nature, although this has not been rigorously (physically) demonstrated, only heuristically by connecting ice core chemistry analysis of different drill sites (e.g., Eisen et al., 2004; Frezzotti et al., 2005) or by comparing accumulation rates obtained from both IRH depths and stake lines (Vaughan et al., 2004). This isochronicity is however understandable as it results from processes operating at the surface at the same time, such as acidic atmospheric deposits or density changes from the metamorphism of snow (at least the one initiated by surface interaction with the atmosphere like radiation crusts, wind redistribution). However, the physical processes leading to these IRHs still remain poorly known. For instance, as pointed by Eisen et al. (2008), annual layers are still visible with radar wavelengths much larger than the annual thickness (a typical 100 – MHz wave in the cold dry snow of the plateau has a wavelength of 2 m much larger than the 10 cm annual snow thickness at DC for instance) which contradicts the theory unless constructive interferences are considered as suggested by Palli et al. (2002) for instance.

Assuming isochronicity, the spatial variations of snow accumulation can be obtained from the varying depth of the IRHs. It thus implies transforming the two-way travel times of the reflected waves into actual depths. This is only possible if the wave velocity within the medium is known all the way from the surface down to the specific IRH and the time radargram is properly migrated (see Sect. 2.3). Inferring accumulation rates then requires the association of an age to the IRHs from independent means such as correct recognition of fallouts from identified volcanic and/or bomb testing events along firn/ice cores for instance (see Sect. 4).

## 130 2.2 GPR set up

For the present project, GPR data were acquired with a MALÅ<sup>®</sup> ProEx GPR equipment fitted with a 100 MHz 'Rough Terrain Antenna (RTA)' towed behind one of the tractors used during the traverse with a constant separation of 2.2 m between the emitter and receiver parts. The apparatus, operating frequency and set up are very similar to those used on a similar traverse between base stations  
135 of Dumont d'Urville and DC during the 2008/2009 austral summer (Verfaillie et al., 2012). The triggering was set to 1 s meaning a radar trace every 4 m or so given an average speed of 14 km.h<sup>-1</sup> for the convoy. The time window was set to 1 μs (allowing for an investigation depth of some 100 m) and was sampled at 1.1 MHz leading to roughly 1100 samples per trace. During acquisition a first improvement of the signal-to-noise ratio was obtained by an up to 64-fold stacking (which, given  
140 the time window of 1 μs, remained compatible with acquisitions made every second). Moreover, the system was connected to a GPS receiver mounted on the vehicle and recording the geographic position of every single trace along the profiles.

## 2.3 Resulting GPR radargrams

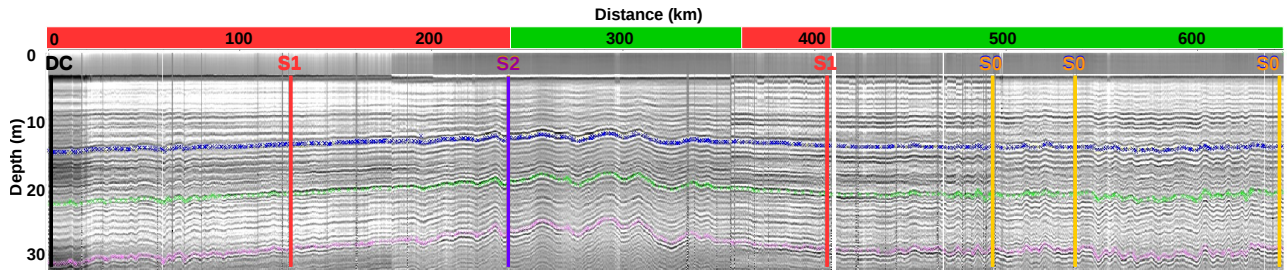
Profiles outlined in Fig 1 represent five days of measurements between 13/01/2012 and 17/01/2012  
145 and led to an almost continuous record of 630 km. The corresponding post-processed and concatenated radargram is shown in Fig 2. The post processing sequence consisted of time zero corrections, a zero-phase low-cut filter (devow) to remove direct continuous currents, and an 'Energy decay' gain to compensate for the volumetric spreading signal attenuation. Band pass filtering reduced to a low-pass filter under the form of a spatial averaging over 50 traces which, given the huge number of  
150 traces (164 000 altogether), appeared more efficient than traditional Finite Impulse Response (FIR) filters. Time to depth conversion was obtained by migrating the radargrams with the help of a vertical velocity profile for the radar wave. By investigating a similar region with similar firn properties, we followed the approach of Verfaillie et al. (2012) which consisted of only considering the effect of the firn density on the electromagnetic wave velocity as a result of a dry and clean snow over  
155 the Antarctic plateau. From the empirical relation of Kovacs et al. (1995) relating permittivity and density, the wave velocity  $c$  is obtained according to :

$$c = \frac{c_v}{1. + 0.845 \times \rho} \quad (1)$$

with  $c_v$  the wave velocity in vacuum and  $\rho$  the firn density (relative to water density). The density profile comes from a recent core drilled at DC (Leduc-Leballeur et al., 2015) where high resolution  
160 measurements allowed for a detailed profile (see Sect. 5.2). The true restitution of dipping reflectors theoretically requires a topographic migration, but this latter appears only necessary where the topographic variations are of the same order as the reflector depths. Given the extreme flatness of the investigated area of less than 2 m.km<sup>-1</sup> (topography of the upper surface and hence that of the IRHs) no such correction has been applied here. Last, ice sheet dynamics potentially changing the



165 IRHs geometry has to be accounted for, except in the upper part of the ice/firn column, especially over areas of slow motion such as over the Antarctic plateau as in the present case (Eisen et al., 2008).



**Figure 2.** Continuous post-processed radargram corresponding to the merged profiles as outlined in Fig. 1. The numerous observable IRHs result from as many reflections within the snow pack and are each characterized by a laterally varying depth and a specific age. The coloured (blue, green and pink) aligned dots emphasize the three most evident and continuous IRHs that are used in the present study. The radargram as depicted here (restricted to the first 35 m of firn) has undergone a time migration (see Sect. 2.3) meaning that the vertical axis represents true depths instead of two-way travel times. The apparently shifted vertical scale results from the time-zero correction. The horizontal axis is the cumulated distance along the profile as given by the GPS data. The white vertical stripe is due to a breakdown of the GPR leading to a gap of less than 2 km in the data. Also represented are the crossing points with the ice/firn cores DC, S1, S2 and S0 where the intersecting depths with the three selected IRHs have been inferred for checking their isochronicity (see Sect. 4). The red and green upper banner refers to the position with respect to the topographic divide and correspond to the color convention of the bottom right of Fig. 1 (red for 'divide' and green for 'off divide' locations).

### 3 Ice core data

170 The 102-m deep VOLSOL-1 ice core (VOLSOL program (Gautier et al., 2016)) is here used to time calibrate the IRHs observed with ground-penetrating radar. Owing to less reliable time-depth relationships, the three shallow ice cores (S0, S1 and S2, around 20-m deep each) retrieved along the TASTE-IDEA traverse will only serve as cross-over points for assessing estimates of the age dispersion (see appendix C). Details of sample preparation and analysis are presented in appendix A.

#### 175 3.1 Identification of volcanic eruption signals and volcanic chronology

Although sulfate in Antarctic snow comes from sea-salt spray and to a lesser degree from crustal erosion (Maupetit and Delmas, 1992; Cole-Dai et al., 2000), and principally from atmospheric oxidation of biogenic dimethylsulphide (DMS) emitted by oceanic phytoplanktonic activity (Saltzman, 1995;

Prospero et al., 1991), volcanic eruptions are also major sources of  $SO_4^{2-}$  during active eruptions. To identify volcanic signals in ice cores, it is then necessary to calculate the non-sea-salt sulfate (nss $SO_4^{2-}$ ) corresponding to total sulfate minus sea-salt sulfate, and set a threshold above which spikes can be attributed to volcanic deposition. Over the East Antarctic plateau areas, part of the sulfate background that could be related to continuous emissions from non-explosive volcanic activity, seems to be minor (Patris et al., 2000; Cole-Dai et al., 2000; Castellano et al., 2004). The sea-salt sulfate contribution to total sulfate budget, evaluated using  $Na^+$  as a specific marker (Palmer et al., 2001; Röthlisberger, 2002), is less than 10%. The Holocene crustal contribution, calculated by non-sea-salt  $Ca^{2+}$  as a continental dust marker (Röthlisberger, 2002; Castellano et al., 2004; Plummer et al., 2012), is even lower ( $< 0.05\%$ ). Since these contributions are of the same order of measurement reproducibility, we did not correct sulfate concentrations and will not distinguish between total sulfate and non-sea-salt sulfate in the following discussion. However, particular attention was paid to develop a reliable method for distinguishing volcanic signals from non-volcanic sulfate background and an outline of the method used is described in Cole-Dai et al. (1997, 2000); Stenni (2002); Castellano et al. (2004) and Igarashi et al. (2011). The procedure employed to identify candidate signals of volcanic eruptions in the sulfate profiles of the different cores follows that of Gautier et al. (2016).

Between five and eight volcanic events were identified in each TASTE-IDEA firn cores and ten events were detected in the VOLSOL-1 ice core from the surface to 20 and 30 m, respectively, through the application of the above described procedures (see summary in Table-1). In the considered depths for shallow TASTE-IDEA cores and the VOLSOL-1 ice core, the main volcanic events in the 1601 – 2012 CE period are Pinatubo (Philippines, 1992 CE), Agung (Indonesia, 1964 CE), Krakatau (Indonesia, 1885 CE), Coseguina (Nicaragua, 1836 CE), Tambora (Indonesia, 1816 CE), Unknown (1809 CE), Jorullo-Taal (Philippines, 1758 CE), Serua (Indonesia, 1695 CE), Gomkonora (Indonesia, 1676, CE) and Huyanaputina (Peru, 1601 CE). The sulfate deposition of Kuwae eruption (Vanuatu, 1457 – 1458 CE (Salzer and Hughes, 2007; Sigl et al., 2013, 2014, 2015)) could be actually dated as 1459 CE, i.e., 5 to 6 years later than previously assumed (Gao et al., 2006, 2008).

The temporal duration of volcanic signals in the ice has been evaluated by several studies (Cole-Dai et al., 2000; Palmer et al., 2001; Castellano et al., 2004) and general temporal durations range from 1 to 3 years. In this work, the temporal duration of volcanic signals lagged between 1.2 (3 consecutive samples) and 6 years (15 consecutive samples).

### 3.2 Artificial radionuclides deposition over Antarctica and associated chronology

Artificial radioisotopes resulting from atmospheric thermonuclear tests carried out between 1953 and 1980 were deposited in Antarctica after transport in the upper atmosphere and stratosphere, creating distinct radioactive reference levels in the snow. The dates of arrival and deposition in this polar region are well known and therefore provide a means to estimate Antarctic snow accumulation rates or describe air mass circulation patterns (Pourchet et al. (2003); Magand (2009) and references

**Table 1.** Depths of the dating events along the mentioned cores from known volcanoes as well as thermo-nuclear bomb testing.

Event name	Date of emission	Date of deposition	DC <sup>(a)</sup> VOLSOL-1	S0	Explore <sup>(b)</sup>	S1	S2
Pinatubo	1991	1992 ±1	1.51 (0.08)	- <sup>(c)</sup>	-	-	1.45
'1965 Bomb Tests'	1962-64	1965 ±1	4.20 <sup>(d)</sup>	3.67	-	3.37	2.75
Agung	1963	1964 ±1	3.81 (0.08)	-	-	-	-
'1955 Bomb Tests'	1952-54	1955 ±1	4.60 <sup>(d)</sup>	4.26	-	4.00	3.36
Krakatau	1883	1885 ±2	8.81 (0.07)	-	-	-	-
Coseguina	1835	1836 ±1	11.99 (0.07)	11.34	10.48 (?) <sup>(e)</sup>	11.31	10.04
Tambora	1815	1816 ±1	12.91 (0.07)	12.44	10.48 (?) <sup>(e)</sup>	12.37	10.98
Unknown	?	1809 ±3	13.33 (0.07)	12.72	-	12.83	11.30
Jorullo-Taal	1754	1758 ±1	15.99 (0.06)	15.02	-	-	13.72
Serua	1694	1695 ±1	19.29 (0.06)	18.14	-	18.15	16.48
Gamkonora	1673	1676 ±3	-	19.12	-	19.39	17.26
Huaynaputina	1600	1601 ±2	-	-	-	-	20.20
Unknown	?	1646 ±3	21.92 (0.06)	-	21.65	-	-
Kuwae	1457	1459 ±3	30.19 (0.05)	-	27.35/27.61 <sup>(f)</sup>	-	-
Unknown	?	1259 ±3	-	-	34.94	-	-

<sup>(a)</sup> The value in parenthesis represents the depth shift to apply as the core was extracted a year earlier than radar measurements (see Sec. 4.2); <sup>(b)</sup> Time markers of the S0 and Explore cores have been merged to produce an hybrid depth relationship (see Appendix C); <sup>(c)</sup> An hyphen indicates an undetected volcano or an unmeasured nuclear fallout; <sup>(d)</sup> These two bomb test fallouts were actually measured on a nearby shallow core close to the VOLSOL-1 one in 2011/12 and served in the determination of its age/depth relationship; <sup>(e)</sup> Not accounted for in the resulting age curve since it was not clear to which volcano this sulfate peak should be attributed to.; <sup>(f)</sup> These two peaks respectively dated CE 1453 and 1460 have actually been measured in the Explore core and attributed to the Kuwae volcano (Mulvaney, personal communication).

215 therein). The 1955 and 1965 CE radioactivity peaks provide two very convenient horizons for dating  
snow and firn layers and thus measuring accumulation. Special techniques have been developed  
over the last 40 years to detect and measure artificial and natural radionuclides present in the ice  
sheets (Pourchet et al. (2003); Magand (2009) and references therein). In Antarctica, <sup>90</sup>Sr, <sup>241</sup>Pu  
(deduced from <sup>241</sup>Am analysis) and <sup>137</sup>Cs radionuclides constitute the well-known debris products  
220 of atmospheric thermonuclear tests between CE 1953 and 1980 that we could still use to identify the  
two well-known reference layers in snow (1955 CE and 1965 CE peaks), corresponding to the arrival  
and deposition of artificial radionuclides in this region. Total beta counting and gamma spectrometry  
remain the most frequent radioactivity measurement device systems used to clearly detect artificial  
radionuclides and unambiguously determine the 1955 CE and 1965 CE peaks depths in the cores.  
225 The 1955 ± 1 CE and 1965 ± 1 CE peaks were both identified in each TASTE-IDEA firn core and in  
an extra shallow core close to the VOLSOL-1 one (see Table-1).

## 4 IRH dating

### 4.1 Identification of major IRHs

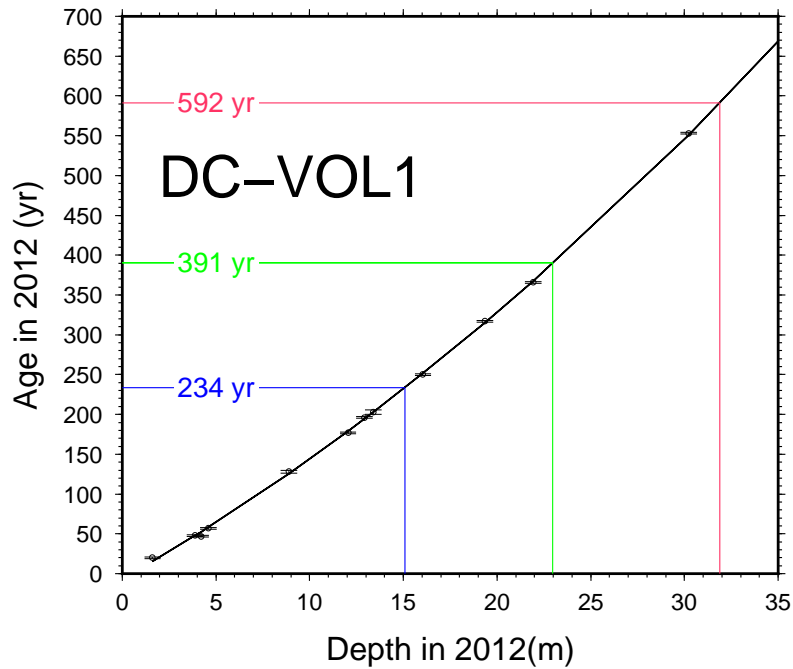
Interpretation of radar data first consisted of identifying contrasting IRHs whose continuity could be tracked all along the entire merged profile. Three equally spaced IRHs were selected within the first 35 m of firn (no sufficiently clear reflectors could be used any deeper) and are emphasized with associated colors in Fig. 2. In order to properly capture the spatial variability, picking of these reflectors was made every km or so yielding each time a depth and the corresponding geographical position depicted as a colored dot on the figure (the resulting number of dots leading to an almost continuous horizon). Of interest is the phasing of these three IRHs which is characteristic of a stationary accumulation spatial pattern. It comes from the fact that local extrema in accumulation keep the same positions through time, allowing for cumulative effects with time which amplify IRH undulations with depth (Verfaillie et al., 2012).

### 4.2 Methodology for dating the IRHs

Dating is achieved by detecting the depths at which the reflectors intercept (or pass very close to) an ice/firn core where a depth/age relationship has been obtained (see Sect. 3). In the present case, as can be seen from Figs 1 and 2, each of the three reflectors passes over several ice core locations and sometimes several times over the same one, thereby offering redundant dating possibilities. Due to its reliable dating curve including time/depth markers regularly spaced down to about 30 m the DC-VOLSOL-1 core was selected as the reference and served for proposing an age *ab initio* for each of the three IRHs. The choice for the DC core is also justified by the numerous available ice core dating schemes for the site which gives a good level of confidence in the proposed age/depth relationships (Parrenin et al., 2007).

As for the other cores of the project, the dating is less reliable as the result of shallower depths making the resulting fits questionable for the 2 deepest IRHs. A longer record has been artificially derived from the shallow S0 core supplemented by the nearby (70 m) 110-m deep Explore core from the companion Explore program. Because of an ambiguity with a sulfate peak at 10.48 m, only the extra deepest points of the Explore core have been used to supplement the S0 age/depth relationship (see Fig. 11) used for estimating the age dispersion as described in Appendix C.

Having been extracted during the VOLSOL program (2010/11 field season) the DC-VOLSOL-1 core is a year older than the radar measurements. As a consequence, a depth correction has been applied to each IRH volcanic depth in the form of a downward shift of 8 cm (modern snow-equivalent accumulation for DC) weighted by the density ratio between the relevant depth and the surface (i.e. 8 cm for the surface reducing to 4.53 cm for the Kuwae volcano at the depth of 31.20 m, see Table 1).



**Figure 3.** Identified and dated deposits placed in an age/depth representation according to their depths within the DC-VOLSOL-1 ice core. Volcanic horizons have been here completed by the integration of the two 1955 and 1965 thermonuclear horizons (depths of 4.20 m and 4.60 m) from dedicated measurements along an extra core drilled at DC in 2012 during the scientific traverse. A degree-2 polynomial fit (black line,  $r^2 > 0.99$ ) has then been used as a continuous dating curve permitting to date any intermediary depth.

### 4.3 Age results and the isochronous character of the IRHs

As can be seen from Fig. 3, IRH depths of 15.08 m, 22.97 m and 31.89 m at the VOLSOL-1 core location respectively give ages of 233.74 yr, 390.54 yr and 591.71 yr (later rounded to 234 yr, 391 yr and 592 yr).

265 The two main factors that can potentially alter the isochronous character of the picked IRHs are (i) errors in age-depth relationship at each coring site and (ii) errors in the depth estimates of the IRHs at these same sites deduced from the radargrams. As for the first, owing to the short-scale changes in snow deposition and erosion as expressed by the surface roughness, the archiving process can sometimes be significantly different for neighbouring cores thereby raising the problem of the correct  
 270 representativeness of a single core. For several volcanoes Gautier et al. (2016) found differences in the depths of the corresponding sulfate peaks by as much as  $\pm 20\text{cm}$  from one core to the other among a set of five different cores all separated by a meter. As a consequence, on top of errors in the correct depth measurements of the chemical peaks, surface processes lead to an uncertainty in the core-derived age-depth relationships. Fig. 10 in appendix B reports the time markers along the  
 275 five cores from the study of Gautier et al. (2016). From quadratic fits along each core, five different

ages are computed for our IRH depths of 15.08 m, 22.97 m and 31.89 m yielding respective RMS deviations of 6 yr, 7 yr and 7 yr with respect to our reference ages of 234 yr, 391 yr and 592 yr. These deviations can be considered as good estimates of the uncertainty in the correct representativeness of the single core of our study. The residency time of volcanic aerosols in the stratosphere (from 2 to 4 yr) is variable from one volcanic event to the other and therefore also contributes to some uncertainty in the depth-age relationship which makes an overall uncertainty of 8yr on the age for a given depth, a result very similar to that of Eisen et al. (2004).

As for the depth accuracy of the picked IRHs, it mainly results from the physics of radar and the chosen frequency for the electromagnetic wave. Eisen et al. (2004) gives a review of all possible resultant sources of errors and their results are applicable to our case because of the use of the same commercial radar set from MALÅ<sup>®</sup> Geoscience Sweden, with the only difference that they use 200 and 250 MHz frequencies instead of our 100 MHz. One first source of uncertainty lies in the thickness the 100 MHz-wave can resolve. Although it theoretically amounts to  $\lambda/4$ , one fourth of the wavelength in the firm,  $\lambda/2$  is usually considered as more realistic which in our present case gives 1 m. Additionally, the pulse width also matters (length of the energetic part of the source wavelet) and was determined by Common Mid Point (CMP) analysis to be 12 ns with our system (Verfaillie et al., 2012) leading to a tracking accuracy of half this duration, which in the firm gives a shift of some 1.2 m. Since these two errors do not systematically add up, one generally considers the worse of the two. Finally, interpreting radargrams and picking reflectors is partly subjective and operator dependent which leads us to estimate the overall uncertainty on the IRH depth to be 1.5 m at the worse. Given a relatively constant slope of  $20 \text{ yr.m}^{-1}$  of the age-depth relationships (see fig. 3), this depth uncertainty maps into an age uncertainty of about 30 yr. This uncertainty in the depth positioning nevertheless has a strong systematic component (in other words the error in depth positioning remains mainly the same along a given IRH) and therefore only partly alters the isochronous character of the reflectors. The same can be said for depth errors resulting from a wrong assessment of the vertical velocity profile. Only lateral variations not properly accounted for would contribute, but it is well known that the plateau firm only undergoes minor lateral variations in its depth distribution of density (Muller et al., 2010) and hence velocity at the scale of a couple of hundred km. As a result, one can reasonably argue that a true isochronous IRH can theoretically deviate by 10 to 15 yr. Appendix C presents the different inferred ages when reporting our IRH depths along the other cores of the project (S1,S2 and S0-Explore). From the RMS dispersions of respectively 3 yr, 6 yr and 13 yr for IRHs 1 to 3 at the cross-over points as revealed by Fig. 11 we come to the conclusion that our three IRHs can be considered as isochronous. We nevertheless have to keep in mind that the absolute error on the age (to be used in the budget error for mass balance computation, see Sect. 5.6) remains potentially higher than these 10 to 15 yr by integrating the biases from systematic incorrect positioning and errors from time to depth conversion in the radargrams.

## 5 Snow accumulation along the GPR profile

### 5.1 Accumulation computation

Assuming an IRH at a given depth  $H$ , the total mass  $M$  of the unit surface (1 m by 1 m) firn column  
315 above it can be expressed as :

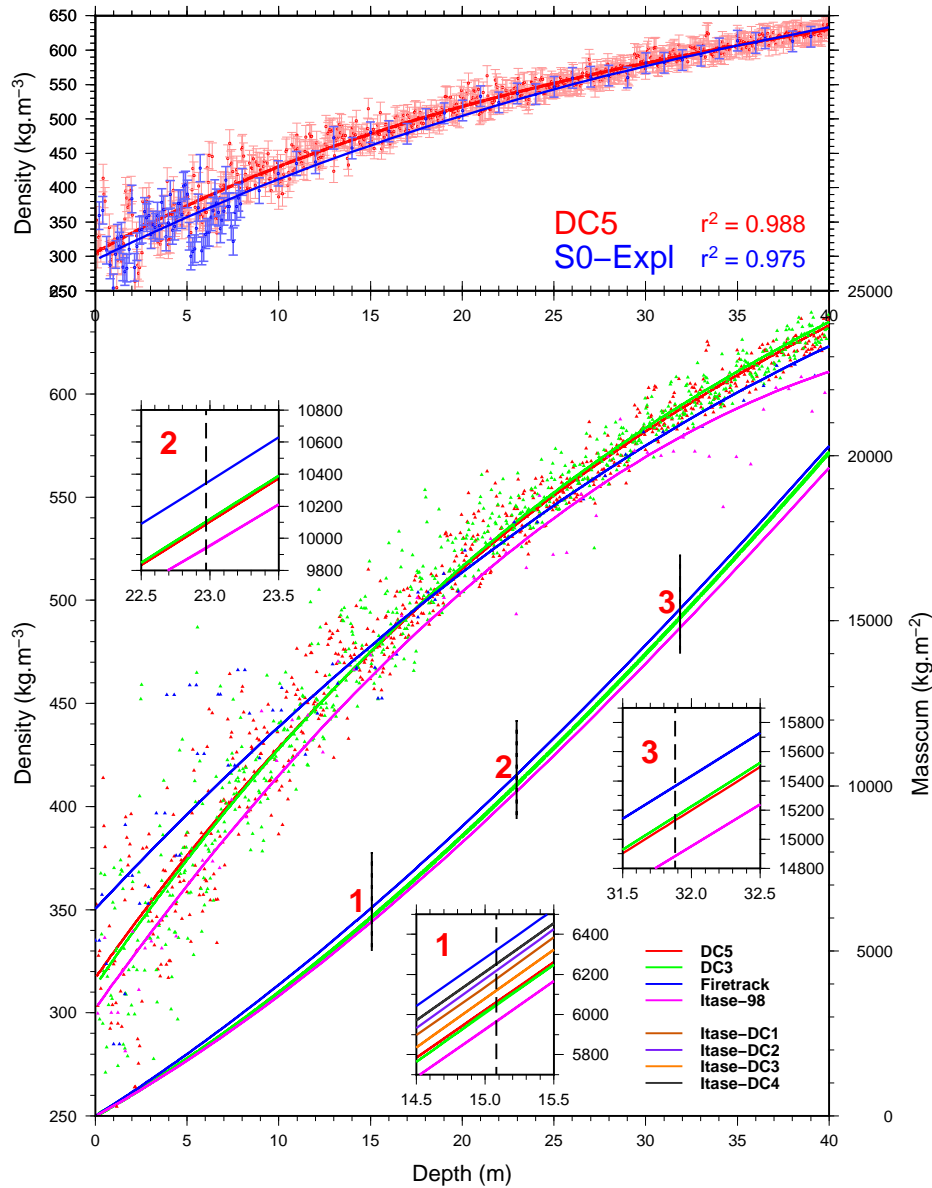
$$M = \int_0^H \rho(z) dz \quad (2)$$

where  $M$  can be considered as a mass flux per  $m^2$  because of the implicit unit surface. It therefore  
expresses as  $kg.m^{-2}$  which, given the density of water, also represents millimeter water equivalent  
(mm w.e.). The average accumulation rate over the period since the deposition of the IRH is finally  
320 obtained by dividing by the age of the IRH leading to a final result in  $mm.w.e.yr^{-1}$ .

### 5.2 Firn density profiles for accumulation rate computations

Similarly to the depth and age, proper estimation of the density profile down to a given IRH is crucial  
for a good assessment of the corresponding accumulation rate. If spatial variations of accumulation  
mainly result from differences in snow cumulative heights as revealed by undulating reflectors, one  
325 can reasonably wonder to which extent geographical changes in density may also impact. Unfor-  
tunately, over the Antarctic plateau, density profiles are usually concentrated at limited sites with  
almost no reliable data in between. In the present case, density profiles from deep ice cores are only  
available at the two 'extremities' of the radar line (DC and S0). Some extra shallow cores were also  
drilled along the radar profile (S1, S2, S2B) but their maximum depths (about 20 m) are limit-  
330 ing at least for interpreting the two deepest IRHs. However, owing to the fact that over the plateau  
meteorological parameters controlling the densification process (e.g. air temperature, wind activity,  
solar radiation..) exhibit small gradients at the regional scale, a relative uniformity in firn density  
profiles can be first assumed over distances of the order of 100 km as can be anticipated from the  
small divergence between the DC and S0 density profiles (see Fig. 4). The limited variability was  
335 confirmed by Fujita et al. (2011) from pits and surface snow measurements during the JASE traverse  
and more specifically the resulting small impact on accumulation rates was demonstrated by Ruth  
et al. (2007) when comparing water equivalent depth profiles between Dome Fuji and EPICA DML.  
This led us in a first instance to consider only deep ice cores from the DC site along which precise  
and high resolution density profiles have been performed (e.g., Leduc-Leballeur et al., 2015). A later  
340 sensitivity test is proposed (see Sect. 5.4) consisting of assessing changes in accumulation to expect  
from integrating the contribution of density profiles from different locations. These changes are then  
compared to the uncertainties solely arising from the degree of representativeness (due to the small  
scale variability) and measurements errors in density when using a single density depth profile for  
computing the accumulation rate all along the radar line (see Sect. 5.5).

345 5.3 Density profiles at DC



**Figure 4.** Density profiles (left scale) as mentioned in the text and detailed in table 2. Also shown in the bottom part is the corresponding cumulative mass with depth (right scale). For the sake of clarity, only cores (and associated cumulative masses) exceeding 20 m are fully represented (DC5, DC3, Firetrack and Itase-98 ice cores). Insets correspond to enlargements around the depths of IRHs 1 2 and 3 where all mass curves are depicted and allow for an estimation of the dispersion in cumulative masses and in the resulting accumulation rates (to be used later in Sect.5.5). The upper panel shows a comparison of the DC5 and S0 (Explore) density profiles with estimated measurement error bars that only served for the computation of the uncertainty in the wave velocity profile (See Table 3).



**Table 2.** Density cores at DC along with the characteristics of their quadratic fits. Cumulative masses ( $\text{kg}\cdot\text{m}^{-2}$ ) down to each of the three IRHs at respective depths of 15.08, 22.97 and 31.88  $m$  are computed from the raw data as well as from the fitted curves.

Core name	Depth (m)	$r^2$	RMSE ( $\text{kg}\cdot\text{m}^{-3}$ )	cum. raw 1 15.08 $m^{(a)}$	cum. fit 1 15.08 $m^{(a)}$	cum. raw 2 22.97 $m^{(a)}$	cum. fit 2 22.97 $m^{(a)}$	cum. raw 3 31.88 $m^{(a)}$	cum. fit 3 31.88 $m^{(a)}$
DC5 <sup>(b)</sup>	81.01	0.988	13.51	6060	6054	10087	10058	15129	15101
DC3	81.32	0.987	13.88	6050	6033	10103	10045	15154	15101
Firetracc	50.06	0.939	24.76	6352	6321	10350	10343	15361	15362
Itase-98	44.17	0.973	17.39	5963	5894	9937	9832	14884	14788
Itase-DC1	17.47	0.905	19.95	6176	6171	- <sup>(c)</sup>	-	-	-
Itase-DC2	17.90	0.976	9.48	6218	6217	-	-	-	-
Itase-DC3	19.27	0.901	20.52	6119	6062	-	-	-	-
Itase-DC4	18.15	0.948	13.68	6250	6264	-	-	-	-

<sup>(a)</sup> in  $\text{kg}\cdot\text{m}^{-2}$ ; <sup>(b)</sup> (Leduc-Leballeur et al., 2015); <sup>(c)</sup> depth not reached by the core

In the framework of the EPICA project (Augustin et al., 2004), along with the main core, several extra shallower drilling projects have yielded as many density profiles over at least the first 50 m for the DC area (see Table 2 and Fig. 4). A first question as to which of these cores to use for computing accumulation rates arises, or in other words, what can be the sensitivity of the results to the choice between different nearby cores at a given site like DC. The lower part of Fig. 4 shows the depth density profiles for each of the cores listed in the table along with the corresponding cumulative mass with depth (right scale in the figure). The cumulative masses have been computed either from the raw data or from the quadratic fits (see corresponding results at the three IRH depths in the table). Despite a pronounced scatter in the individual data points around their respective fits (see Fig. 4 and associated RMSE in the table), considering raw or fitted data does not significantly change the depth-cumulative mass with differences not exceeding 1.15% at the most (ITASE-98 at the depth of IRH1). This illustrates a random scatter of data points above and below the fit which leads to an almost exact compensation when summing up the cumulative mass. As a consequence, fitted density curves will hereafter be considered in the computations of accumulation rates. The second result comes from the limited dispersion in the cumulative mass from one core to the other as can be easily seen from the figure. The maximum discrepancy is to be found between the Itase-98 and Firetracc ice cores with relative differences of 7%, 5% and 4% at the depths of respective IRHs 1, 2 and 3. Of interest is the almost perfect overlap of the DC3 and DC5 curves which come from the same project and have been measured according to the same protocol by the same operator. These results tend to show that

(a) Most of the difference between different cores results from measurement errors

- (b) The variability of the density expressing at the scale of the typical distance between these cores (from  $m$  to  $km$  scale) is of stochastic type (Libois et al., 2014) and is therefore rapidly canceled out by the depth averaging process of cumulative mass computation leading to accumulation rates. Indeed the DC3 and DC5 cores are separated by 1.5 km but still show remarkable consistency in their quadratic fits or in their associated cumulative mass distribution with depth.
- (c) Provided that systematic error measurements can be minimized, a single density profile should then be considered as representative of the local accumulation rate.

The very good similarity of the DC3 and DC5 cores attests to the quality of density measurements as confirmed by the novelty and strictness in the measurement protocols (Leduc-Leballeur et al., 2015). This led us to choose the DC5 as the reference for our accumulation rate computations.

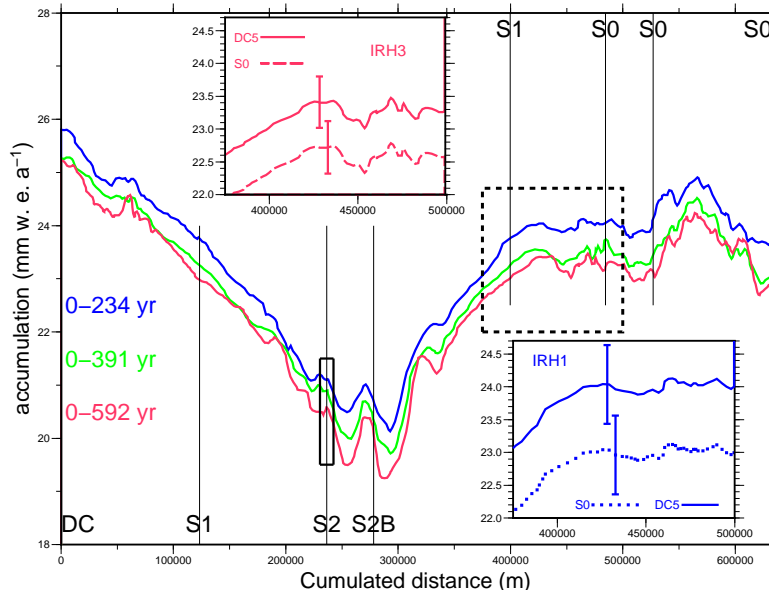
#### 5.4 Sensitivity of the accumulation rate to geographically different density profiles

Fig. 5 shows the three accumulation rates derived along each of the three IRHs along the radar line from the density profile provided by the DC-5 reference core. Since the computation uses a single density profile, no lateral changes in density are accounted for and the stationary accumulation pattern therefore expresses under shifted IRHs of the same shape. Of importance is the pronounced gradient when following the ridge going from DC towards S2 (see map on Fig. 1) with a more than 20% loss within 250km.

In order to test the sensitivity to the use of density profiles originating from different distant places, accumulation rates are here separately computed from both the reference DC5 density profile and the Explore one (this latter being the only reliable and deep enough density profile at our disposal). The difference expresses under the form of a uniform shift along a given IRH (as can be seen from the insets) but with a decreasing sensitivity with the depth of the IRH. The difference in accumulation rates from the use of the DC and S0 (Explore) densities amounts to  $1 \text{ mm w.e.yr}^{-1}$  for the 234-yr IRH1 (lower inset) and reduces to about half of it when considering the 592-yr reflector (upper inset). The explanation is to be found in the rapidly converging fits of the DC and S0 density curves with depth (top of Fig. 4). Indeed, the increasing cumulative difference in mass is more than counterbalanced when dividing by the age of the IRH in the accumulation rate computation process. Using the less reliable S1, S2 and S2B (not represented) did not lead to a significantly higher sensitivity. As a consequence, a maximum deviation of the order of  $1 \text{ mm w.e.yr}^{-1}$  is to be expected from accounting for the geographical changes in density along the profile.

#### 5.5 Proper choice of the density core to use

Assessing the uncertainty on the accumulation rates solely arising from measurement errors in the density profile used is not straightforward since part of these errors are random and certainly compensate with depth, a least partially. Moreover, small-scale accumulation variability that influences



**Figure 5.** Computed accumulation rates since the deposition of the three IRHs according to the polynomial fit of the DC-5 density profile. The lower inset represents an enlargement over the dotted square and shows the sensitivity of the accumulation rate at the uppermost IRH to the use of the DC-5 and S0 (Explore) cores whereas the upper one does the same but for the lowermost IRH. Error bars represent the estimated uncertainty resulting from the density combined error measurements and small scale spatial variations. These error bars (see Sect. 5.5) are only depicted once since they are uniform all along the profile. Ranges for the accumulation rate at S2 inferred from the SR50 sensor (see Sect. 6.1) are represented by the black box along the S2 vertical line.

the representativeness of a single core for a given location also potentially contributes to accumulation uncertainty, even if limited in amplitude as was shown in Sect. 5.3. Because they result from different projects implying different measurements protocols, the numerous cores drilled in the DC area provide a means of estimating the order of magnitude of the combined effect of these two  
405 terms. In particular, the dispersion between all these cores should implicitly include the most of the measurement errors and would only miss a systematic component (i.e an identical error for all measurements) which in any case must remain small. Computation of the cumulative mass down to IRH1 for these 8 cores listed in Table 2 gives an average of  $6127 \text{ kg.m}^{-3}$  with a standard deviation of  $141 \text{ kg.m}^{-3}$ . When dividing by the age of IRH1 (234 yr) one obtains  $26.18 \pm 0.60 \text{ kg.m}^{-3}\text{yr}^{-1}$  or  
410  $26.18 \pm 0.60 \text{ mm w.e.yr}^{-1}$ . Similar computations down to the two deepest IRHs (but only concerning the first four cores) respectively give  $25.75 \pm 0.54 \text{ mm w.e.yr}^{-1}$  and  $25.49 \pm 0.40 \text{ mm w.e.yr}^{-1}$  for IRHs 2 and 3.

The resulting dispersion is then considered as representative of the total error due to the use of a local density curve and has been represented under the form of the error bars in the insets  
415 of Fig. 5. The same error bars have been applied to the accumulation profiles from the Explore

core at S0, but they probably represent an underestimation due to a less stringent density protocol in the density measurement. From the systematic overlap and the fact that the Explore error bars represent lower bounds, we come to the conclusion that accounting for the available geographical spatial variability of density does not bring significant changes in the accumulation rates. In fact, properly accounting for the geographical distribution of density would normally require integration of all available density profiles evenly distributed along the radar line according to their respective distances (inverse distance weighting). However, the S1, S2 and S2B cores are of limited use because of a maximum depth of 20 m. Moreover, including the effects of density at S0 (potentially different from that at DC) according to an inverse distance weighting would not make much sense when considering the position of the S0 profile with respect to the entire radar profile (the DC-S0 gradient being perpendicular to the major axis of the radar line, see Fig 1). As a consequence, our strategy thus consists in relying on a single but reliable density profile (DC5) rather than trying to integrate the non significant geographical effects from limited or not-so-relevant extra data sets.

## 5.6 Overall error budget for surface accumulation rates

From the expression of snow accumulation rate  $\dot{A} = \frac{\bar{\rho} H}{T}$ , the three error sources contributing to the overall uncertainty originate from (i)  $\Delta H$  the error in the depth of the IRH, (ii)  $\Delta T$  the error in its age, and finally (iii)  $\Delta \bar{\rho}$  the density error resulting from the use of the selected density profile. All the resulting components are summarized in Table 3. The first error term ( $\Delta \dot{A}_1$ ) due to density implicitly includes the uncertainty resulting from the degree of representativeness and the measurements errors of the selected core (DC5). It has already been assessed from the dispersion in accumulation rates of the numerous available density profiles at DC (see sec. 5.5) and directly expresses as an accumulation rate uncertainty (0.6, 0.54 and 0.4 mm w.e.yr<sup>-1</sup> for respectively IRHs 1, 2 and 3). As for the error due to the neglect of the geographical changes ( $\Delta \dot{A}_2$ ), it can be estimated to be around the average along the radar line of the difference in accumulation rate when using the DC5 and the S0 core (Sect. 5.4), namely 0.98, 0.85 and 0.68 mm w.e.yr<sup>-1</sup> for respectively IRHs 1, 2 and 3. The overall error due to density is finally proposed as the RMS of these 2 terms (see Table 3).

For the age, the two independent terms arising from (i) the relevance and associated uncertainty of the age-depth relationship of the used core  $\Delta T_c$  (8 yr) and from (ii) the positioning error due to radar resolution  $\Delta T_p$  (30 yr, see Sect. 4.3) give a quasi systematic RMS remaining around 30 yr. This time error thus transforms into accumulation rate uncertainties of respectively 3.01, 2.06 and 1.39 mm w.e.yr<sup>-1</sup> for IRHs 1 to 3.

Finally, errors in the depth ( $H$ ) of the IRHs stems from the 1.5 m radar positioning accuracy as determined in Sect. 4.3 plus a systematic component due to the time-depth conversion of the two-way travel time. Proper derivation of Eq. 1, with an average error of 18 kg.m<sup>-3</sup> on density measurements (deduced from the estimated density measurement errors represented by the error bars of the DC5 density profile in Fig. 4) gives a relative error of less than 1.5% for the average wave

velocity. It leads to the resulting depth error  $\Delta H_v$  as a function of the IRH depth as given by the Table. RMS combination of these two terms finally gives an error component for the accumulation rate of respectively 2.54, 1.68 and 1.23 mm w.e.yr<sup>-1</sup> for IRHs 1, 2 and 3.

**Table 3.** Different source terms in the overall error budget for accumulation rate

IRH	Depth-averaged density ( $\bar{\rho}$ )			IRH age (T)				IRH depth (H)			
	$\Delta A_1$ (a) mmw.e.yr <sup>-1</sup>	$\Delta A_2$ (b) mmw.e.yr <sup>-1</sup>	RMS <sup>(a,b)</sup> mmw.e.yr <sup>-1</sup>	$\Delta T_c$ (c) yr	$\Delta T_p$ (d) yr	RMS <sup>(c,d)</sup> yr	$\frac{\bar{H}}{T^2}$ RMS <sup>(1)</sup> mmw.e.yr <sup>-1</sup>	$\Delta H_r$ (e) m	$\Delta H_v$ (f) m	RMS <sup>(e,f)</sup> m	$\frac{\bar{\rho}}{T}$ RMS mmw.e.yr <sup>-1</sup>
1	0.60	0.98	1.15	8	30	≈ 30	3.01	1.5	0.22	1.52	2.57
2	0.54	0.85	1.01	8	30	≈ 30	2.06	1.5	0.34	1.54	1.96
3	0.40	0.68	0.79	8	30	≈ 30	1.39	1.5	0.48	1.57	1.47

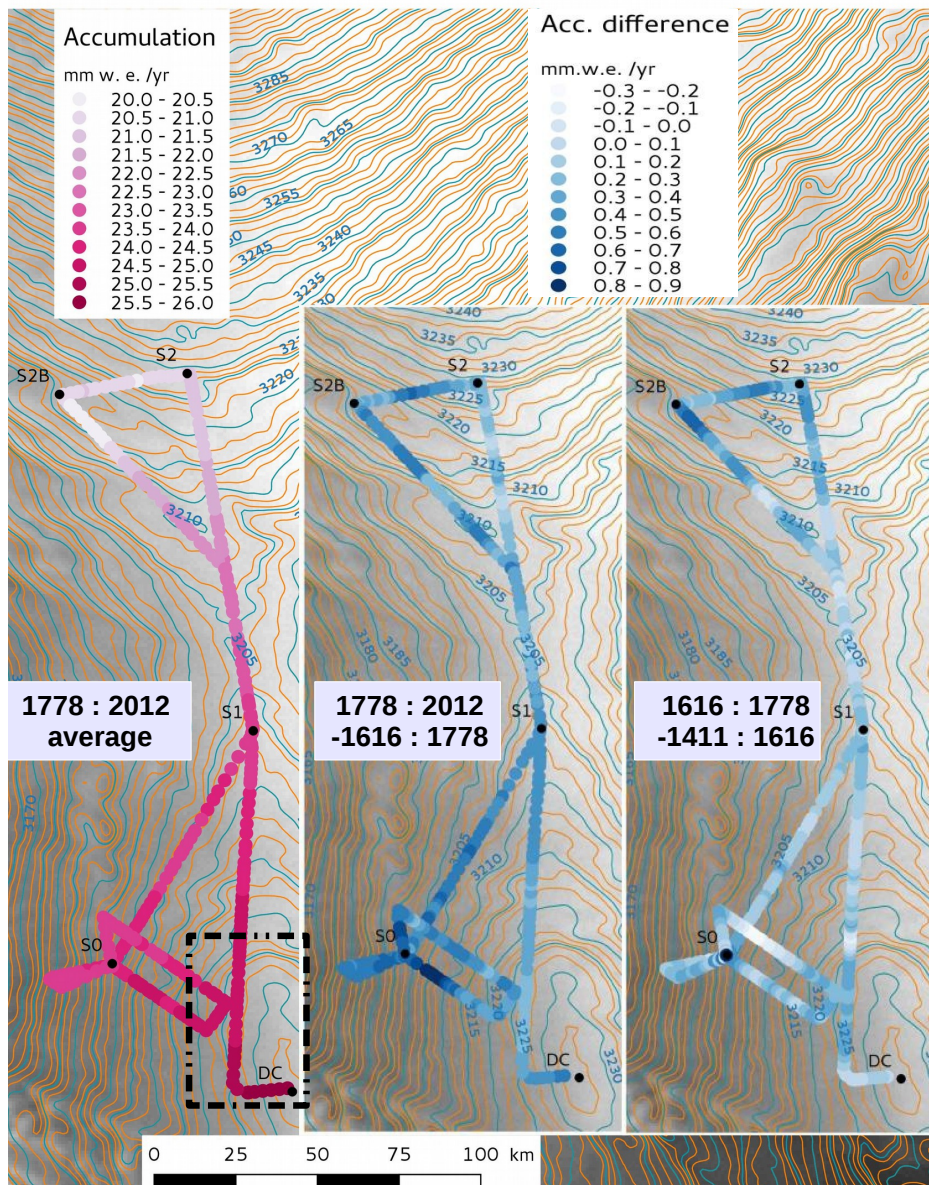
(1) Computed with averaged depths of respectively 13.87, 21.09 and 29.43 m and corresponding averaged densities of respectively 397, 498 and 553 kg.m<sup>-3</sup> for IRHs 1 to 3

455 Following Muller et al. (2010), the cumulative uncertainty is finally proposed as the RMS of these three main contributors ( $\Delta\bar{\rho}$ ,  $\Delta T$  and  $\Delta H$ ) which gives global maximum uncertainties of 4.12, 3.02 and 2.17 mm w.e.yr<sup>-1</sup> for IRHs 1, 2 and 3 respectively, later rounded to 4, 3 and 2 mm w.e.yr<sup>-1</sup>. The noticeable feature is a strong decrease with IRH depth, in contrast to Muller et al. (2010) where an increasing error with depth seems to result from a rapid degradation of the signal-to-noise ratio  
460 due to the weak penetration depth and high sensitivity to water content of their high frequency (2.3 GHz) system. It should also be noticed that the proposed uncertainties here pertain to the absolute errors on the accumulation rates and implicitly comprise a significant systematic part that does not come into play when interpreting spatial or time-dependent gradients as in the following section.

## 6 Accumulation space and time distribution

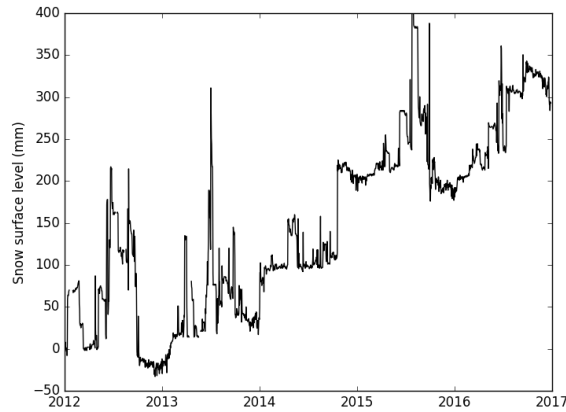
### 465 6.1 Spatial distribution

A geographical representation of averaged accumulation rates (and differences between the fields) over the three periods characteristic of the selected three IRHs is represented in Fig. 6 where significant trends can be observed. The relatively good phasing between the three IRHs already noticed on the radargram is observable from the difference in the represented fields (blue scale) not exceeding 1.2 mm w.e.yr<sup>-1</sup>. It is also consistent with the computed SMB of Fig. 5 and confirms a quasi  
470 stationary accumulation pattern over the past 600 yr. In particular, an overall decrease in accumulation of some 20% from DC to the South West (towards S2) similarly appears for the three IRHs. More specifically, traversing towards the South East leads to the minimum value between 19 and 20 mm w.e.yr<sup>-1</sup> (depending on the averaging period) at a place close to the S2B core site in the  
475 direction of a nearby megadune field (see Fig. 1).



**Figure 6.** Geographical (polar stereographic,  $71^{\circ}S$ ) distribution of net accumulation rates according to the ages of the three IRHs. The left panel is the average over the last 234 yr (CE 1778-2012) whereas the middle one represent this latter field minus the CE 1616-1778 average. Last, the right panel stands for the difference between the CE 1616-1778 and the CE 1411-1616 periods. Globally positive values in these differences confirm a steady overall increase through time as revealed by Fig. 9. Background is a Radarsat image of the prospected area revealing some topographic features emphasized by the contour line of the surface DEM (Bamber et al., 2009).

It should be noted that the 2011/12 TASTE-IDEA traverse was the opportunity for the deployment of an ultrasonic range sensor (SR50, Campbell scientific) allowing for a continuous monitoring of the

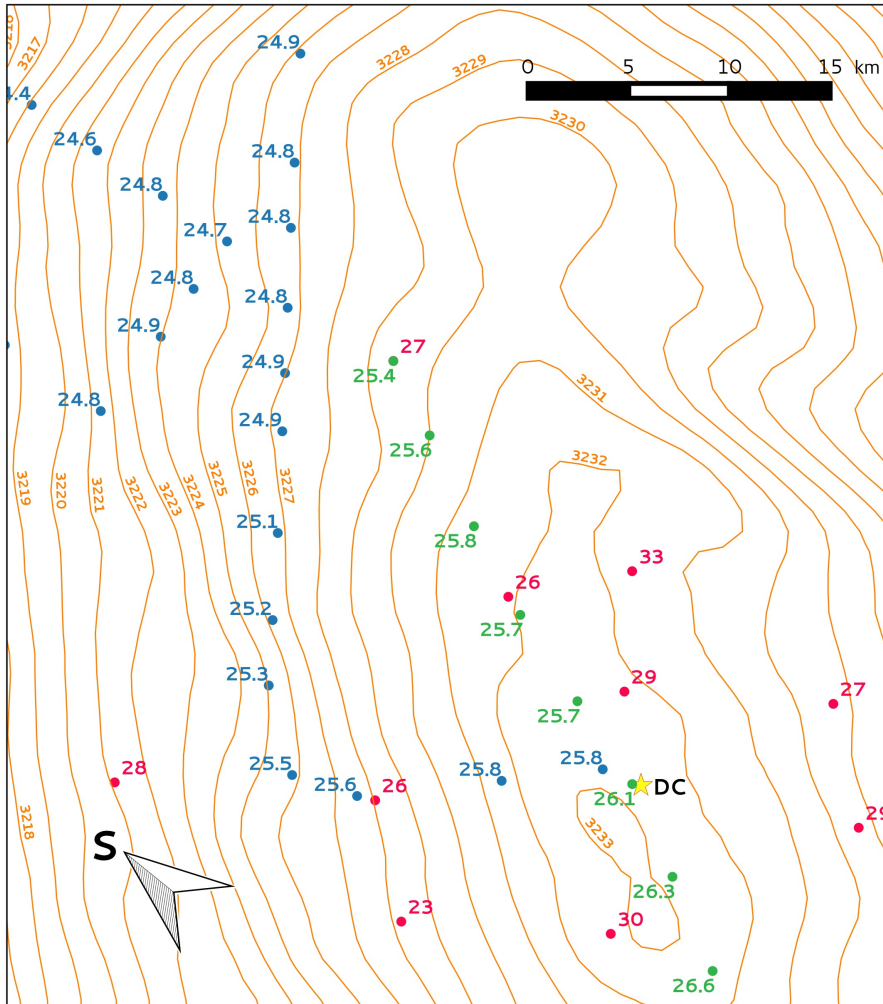


**Figure 7.** Snow surface level in mm above the reference level of the 1<sup>st</sup> of January 2012 obtained from acoustic distance measurements. Presented daily mean values were calculated from measurements recorded every 30 minutes and corrected for air temperature.

surface height for more than 5 yr at the S2 point. Corresponding surface heights since January 2012 are depicted on Fig. 7 where short term variations revealing both precipitation and/or strong snow redistribution events are clearly visible. Despite these rapid changes which eventually contribute to the meter-scale variability in surface accumulation (Libois et al., 2014), a significant trend emerges over these 5 yr of measurements. When considering surface densities between  $300 \text{ kg m}^{-3}$  and  $330 \text{ kg m}^{-3}$  (Fig. 4), this trend maps into accumulation rates between  $19.5$  and  $21.5 \text{ mm w.e.yr}^{-1}$  which appear to be fully consistent with our computed accumulation rate for the S2 point over the last 234 yr as represented by the black box on Fig. 5.

Previous measurements of GPR-derived accumulation rates in the vicinity of Concordia Station were carried out in 2005 (Urbini et al., 2008). A radar profile through the station revealed an almost north-to-south gradient of  $-0.02 \pm 0.01 \text{ mm w.e.yr}^{-1}.\text{km}^{-1}$  in its southern part (see Fig. 6 in Urbini et al. (2008) and Fig. 8 where corresponding data have been summarized). Despite limited areas over which they overlap, and a slightly different averaging period (the last 266 yr against our last 234-yr average) these data remain however relatively consistent with ours as can be seen from the figure. Moreover, from our data, starting from around DC and considering the upper left blue points of the figure, a difference of about  $1 \text{ mm w.e.yr}^{-1}$  can be derived over a distance of some 30 km leading to a gradient of  $-0.033 \text{ mm w.e.yr}^{-1}.\text{km}^{-1}$  close to that of Urbini et al. (2008) along a similar direction. When assessing an uncertainty on our proposed gradient, only the non-systematic terms have to be considered, such as the effects of a laterally varying density which in the present case should be insignificant because of the distance of only 30 km. Errors in positioning or age along IRH1 should also remain small. Indeed, as can be seen from the limited dispersion in both ages and depths at crossing points S1 and S0 (see Table 2) the spatial variations in positioning or in

500 the age along a given IRH are minor (maximum differences of 18 cm and 3 yr for IRH1, leading to a RMS uncertainty of  $0.43 \text{ mm w.e.yr}^{-1}$  according to the error budget of Table 3. It leads to an uncertainty of  $0.014 \text{ mm w.e.yr}^{-1}.\text{km}^{-1}$  on the proposed gradient and makes the comparison still relevant. It should be noted that this gradient has also been observed by Genthon et al. (2015)



**Figure 8.** Comparison of our accumulation rates with those in Urbini et al. (2008) in the vicinity of Concordia Station over the area featured by the dashed inset of Fig. 6. Blue dots represent the rates as represented in Fig. 6 for the last 234 yr whereas the green ones are those from the radar transect of Urbini et al. (2008) after being equally sampled (5 km) and averaged over five measuring points. Also shown by red dots are accumulation rates inferred from an analysis of firn cores based on tritium/ $\beta$  markers for the 1965-2000 period (Urbini et al., 2008, an references therein) and for which an uncertainty of 10% has been derived. Contours are altitude a.s.l. as given by Bamber et al. (2009).The Concordia Station is featured with a yellow star.

505 from snow accumulation at two stake networks 50 km apart along a north south direction centred on the Concordia station. Despite a high uncertainty for the uppermost snow density which limits



the derivation of absolute values of accumulation rate, the use of a uniform snow density along the 50-km long section revealed a significant gradient similar to that of Urbini et al. (2008) and of the present study. Their study also shows that despite an overall underestimation of snow accumulation, meteorological analyses from the European Center for Medium-range Weather Forecasts confirm this tendency (see the modeled precipitation field on Fig. 1). Moreover, from a careful observation of precipitation events and analysis of air mass back trajectory pathways Genthon et al. (2015) show that the core of snow fall results from relatively warm (and hence humid) air masses intrusions from the north. When passing over the Concordia dome on their way to the south they undergo a significant temperature-driven depletion in moisture which is fully consistent with the observed gradients.

## 515 6.2 Time-dependency of accumulation

Because of the limited number of IRHs being analysed in this study, only a coarse characterization of the time-dependent accumulation can be proposed as is the case in Urbini et al. (2008) for instance. This limitation comes from the stringent requirements for a reflector to be considered as properly isochronous (showing ~~the~~ continuity over large distances) and assigned a relevant age (by passing through a coring site where an depth/age relationship can be independently derived). As for recent accumulation rates, it should be noticed that the multiple direct reflections in the air between the emitter and receiver parts of the antenna ~~leads~~ lead to a saturated signal screening potential sub-surface reflectors. The last decades of surface mass balance from GPR are therefore often missing which prevents proper comparisons with 'modern' accumulation values as derived from stakes farms for example (only operational since the late 1990ies for the DC area).

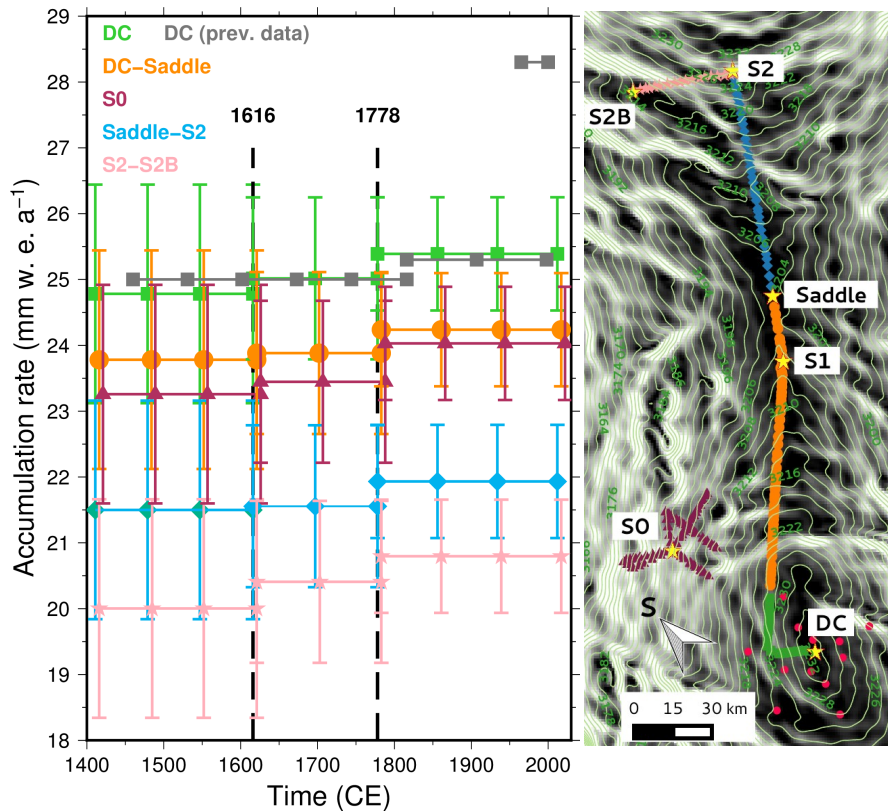
We therefore propose three periods over which mean accumulation rates can be derived (1411-1616, 1616-1778 and 1778-2012 CE) as can be seen from Fig. 9. Data were spatially averaged over five main sectors whose respective extensions are reported on the figure with appropriate symbols. ~~Time-dependent evolution of the accumulation rates spatially averaged over five sectors along the radar profile. The first sector corresponds to the DC vicinity (green squares on the map) within the firn core network as in Urbini et al. (2008) and featured by the red spots on Fig. 8. The second sector more or less follows the ridge from the end of the DC sector down to a topographic saddle (orange circles). The third (blue diamonds) continues along the ridge and climbs up to the S2 point. The fourth (purple stars) follows the perpendicular S2-S2B transect whereas the fifth (brown triangles) comprises the vicinity of the S0 point. The time frames for the time-averaging (left of the figure) correspond to the age difference from each of the three IRHs to the next above or to the surface, namely 1415-1616, 1616-1778 and 1778-2012 CE. Also presented with grey symbols are the accumulation rates as reported by Frezzotti et al. (2005) and Urbini et al. (2008) over the DC area (see text). Surface topography with 2-m contours is that of Bamber et al. (2009). The results first confirm the stationary character in the spatial pattern of accumulation rates as was already found from inspection of Figs. 5 and 6 for example. Indeed, the trend in the time-dependent increase~~

over the three proposed periods is remarkably similar from one sector to the other. Similarly to As  
for the associated uncertainties (depicted under the form of the above mentioned spatial patterns;  
only the non-systematic parts in the associated errors (with regard to time) have to be considered for  
545 interpreting these time trends. Therefore, the potential deviation in the isochronous character of the  
IRHs around 10 yr, as estimated in Sect. 4.3 essentially comes to play. It leads to a potential margin  
of error ranging from 1 proposed error bars on the figure), amongst the various terms of Table 3,  
only the non systematic components have been kept. For instance error due to density now restricts  
to the  $\Delta \dot{A}_1$  term since  $\Delta \dot{A}_2$  results from potentially non accounted geographical changes in density.  
550 It leads to respective accumulation rates uncertainties of 0.6, 0.54 and 0.4 mm w.e.yr<sup>-1</sup> for IRHs 1  
to 0.45 mm w.e.yr<sup>-1</sup> for respectively 3. For the age uncertainty, we considered  $\Delta T_c$  (error of 8 yr  
resulting from the age-depth relationship) and the effects of a reduced positioning uncertainty  $\Delta T_p$  of  
0.5 m (since most of it is time-independent) leading to an age uncertainty of 10 yr. Considering the  
555 average slope in the age/depth relationship, the global RMS age error (13 yr) maps into respective  
uncertainties of 1.3, 0.9 and 0.6 mm w.e.yr<sup>-1</sup>. Finally, for the error solely due to positioning and  
its effect on the cumulative mass, we restricted to the above mentioned 0.5 m and neglected errors  
stemming from the uncertainty on the velocity profile. It thus leads to accumulation uncertainties of  
respectively 0.85, 0.64 and 0.47 mm w.e.yr<sup>-1</sup> for IRHs 1 to 3. The corresponding total errors finally  
560 result from the RMS of these 3 which would theoretically hamper the significance of the computed  
trends. However, the fact that these data represent averages over entire sectors and the remarkably  
similar evolution terms yielding the  $\pm 1.66$ ,  $\pm 1.23$  and  $\pm 0.86$  mm w.e.yr<sup>-1</sup> error bars reported on  
the figure.

The figure shows an overall accumulation increase which appears consistent from one sector to  
the other gives some credit and suggest a regularly increasing accumulation rate for this sector of the  
565 Antarctic plateau over the last 600 yr.

Our results also. Such a uniform increase is in line with the stationary character in the spatial  
distribution as already observed on Figs. 5 and 6 for example. Our results compare well with  
those mentioned in Urbini et al. (2008) and references therein over the DC area (depicted in grey  
in the figure). More specifically, from  $nssSO_4^{2-}$  volcanic spikes along the EPICA EDC96 core,  
570 an average accumulation rate of slightly less than 25 mm w.e.yr<sup>-1</sup> for the 1460 (Kuwae)-1816  
(Tambora) period was proposed (Castellano et al., 2004). Then follows the 1816-1998 AD pe-  
riod with a 25.3 mm w.e.yr<sup>-1</sup> accumulation rate followed overlapped by a marked increase up to  
28.3 mm w.e.yr<sup>-1</sup> between 1965 and 2000 deduced from nuclear test horizons along the firm cores  
represented by the red circles on the figure (Frezzotti et al., 2005). Fig. 8 (Frezzotti et al., 2005).  
575 Unfortunately, these last results also suffer uncertainties (estimated to 10% of their value) which  
casts some doubts on the reliability of possible deduced time trends.

Results Accumulation rates from farm stakes are also proposed by Frezzotti et al. (2005) with  
32 mmw.e.yr<sup>-1</sup> for the 2004-07 period and up to 39 mmw.e.yr<sup>-1</sup> between 1996 and 1999, but



**Figure 9.** Time-dependent evolution of the accumulation rates spatially averaged over five sectors along the radar profile. The first sector corresponds to the DC vicinity (green squares on the map) within the firn core network as in Urbini et al. (2008) and featured by the red spots on Fig. 8. The second sector more or less follows the ridge from the end of the DC sector down to a topographic saddle (orange circles). The third (blue diamonds) continues along the ridge and climbs up to the S2 point. The fourth (purple stars) follows the perpendicular S2-S2B transect whereas the fifth (brown triangles) comprises the vicinity of the S0 point. The time frames for the time-averaging (left of the figure) correspond to the age difference from each of the three IRHs to the next above or to the surface, namely 1415-1616, 1616-1778 and 1778-2012 CE. Also presented with grey symbols are the accumulation rates as reported by Frezzotti et al. (2005) and Urbini et al. (2008) over the DC area (see text) and for which error bars of  $\pm 10\%$  occur (not shown for clarity). Surface topography with 2-m contours is that of Bamber et al. (2009).

their relevance is also questionable because (i) the measuring period is extremely short with respect  
 580 to a very high inter-annual variability (ii) the derived accumulation rate requires proper knowledge  
 of the sub-surface density which is highly variable and difficult to accurately measure and (iii) the  
 intrinsically strong spatial variability in snow thickness at the scale of a farm stake also requires long  
 integration periods to gain in significance. This is confirmed by the associated standard deviation of

14 mmw.e.yr<sup>-1</sup> for the 1996-99 stake results. In any case, no comparison with radar data is possible  
585 because of corresponding reflectors too close to the upper surface –

### 6.3 Interpretation in the frame of remote studied areas

Several past studies (e.g., Fujita et al., 2011; Frezzotti et al., 2004, 2005) have proposed explanations  
for the spatial distribution of the accumulation rate on the Antarctic plateau as a function of the  
environment. They globally come to the same conclusion according to which surface mass balance  
590 results from a large scale synoptic precipitation pattern and generally smaller scale ablation/redistribution  
processes mainly driven by the combination of the wind and the surface slope (SPWD, Slope along  
the Prevailing Wind Direction). From data in the Dome F-Dronning Maud Land sector, Fujita et al. (2011) show  
that a significant amount of the total precipitation deep inland comes from the synoptic scale advection  
of moisture laden and warm air masses from low latitude usually characterized by rather strong  
595 associated winds as was also demonstrated by Genthon et al. (2015) for the DC area. Most of the  
moist is released during the orographic climb towards the plateau or on the windward side of  
any major ridge. Conversely, in the case of a ridge, on the leeward side, an adiabatic warming of  
the descending air masses reduces the condensation potential even more leading to the concept  
of 'rain shadow'. According to the major air mass trajectory pathways as described in Fig. 5 of  
600 Genthon et al. (2015) and more specifically the three paths from the east accounting for 55% of the  
total precipitation, a variation in the large scale precipitation field is expected across the Vostok-DC  
ridge as confirmed by our data, at least in the vicinity of DC and towards S0. As for the large scale  
gradient along the radar line, a similar analysis would require a detailed picture of the circulation  
pattern which is beyond the scope of this paper. Still, a continental effect as noticed by Fujita et al. (2011) in  
605 the Dome Fuji-Dronning Maud Land sector seems plausible and is in line with the commonly accepted  
accumulation gradient along the ridge between DC and Vostok. Finally, the lowest measured accumulation  
values around the S2B point are clearly situated off divide. Although it is difficult to assert whether  
they result from a corresponding low in the synoptic accumulation pattern or from smaller scale  
redistribution, the less regular surface topography probably contributes to more local erosion/deposition  
610 processes resulting in more pronounced gradients than along the main divide.–

Again, comparing the time dependency of our results with those from other studies suffers from the  
lack of correspondence between the averaged periods. Osipov et al. (2014) and Fujita et al. (2011) give  
a detailed overview of the time evolution of the accumulation rate over several sites on the Antarctic  
plateau during the last millennium. More specifically, a correlation between climate and accumulation  
615 changes seems to emerge from most studies cited in Osipov et al. (2014) and according to which  
the slightly decreased temperatures during the Little Ice Age led to a corresponding decrease in  
accumulation rate. However, not only is the timing significantly different from one location to the  
other, but some places have undergone inverse trends such as Siple or Vostok where, for example,  
the CE 1261-1601 lower accumulation period (-12% compared to the CE 1260-2010 average) was

620 followed by a 13% increase between CE 1661 and 1815. The authors attribute this positive anomaly to a high sensitivity of the large-scale circulation pattern which undergoes shifts in the stream pathways. Strong latitudinal gradients in the accumulation rate in the Vostok area are confirmed by Ekaykin et al. (2012) who stresses this sensitivity but also invokes possibly strong snow redistribution along the Dome B-Vostok ridge due to the combination of wind and surface slope. The time dependency of our data would have matched that of Vostok should our intermediary period (CE 1616-1778) have undergone a similar anomaly. Given the sensitivity of these low accumulation rate areas to the above mentioned processes, this partial mismatch probably illustrates the stochastic aspect of the accumulation changes there and does not constitute an inconsistency. Last, a recent positive trend in accumulation over the last decades and more generally since the middle of the 19th century emerges from most studies on different locations on the Antarctic plateau (e.g., Mosley-Thompson et al., 1993; Fujita et al., 2011; Frezzotti et al., 2013; Osipov et al., 2014) especially in the DC area (see Sect. 6.1). Although they result from measurements over short periods (for instance from the Pinatubo volcanic horizon or from recent stake farms) and are therefore suffering larger uncertainties, they remain compatible with the recent observed warming in most places in Antarctica. If such a recent trend cannot be observed from our data (see Sect. 6.2), it can still be implicitly included in our last 234-yr average and contribute to the associated increase in accumulation rate depicted in Fig. 9. The figure gives a rather steady and uniform accumulation increase over our investigated area of some  $0.6 \text{ mm} \cdot \text{w.e.} \cdot \text{yr}^{-1}$  over 600 yr thus representing a yearly increase of about  $10^{-3} \text{ mm} \cdot \text{w.e.} \cdot \text{yr}^{-1}$ . Assuming a similar increase over most of the Antarctic ice sheet would correspond to a negative contribution to worldwide sea level of  $3.75 \cdot 10^{-5} \text{ mm} \cdot \text{w.e.} \cdot \text{yr}^{-1}$ , a contribution much smaller than the plausible  $1.2 \text{ mm} \cdot \text{w.e.} \cdot \text{yr}^{-1}$  suggested by Krinner et al. (2006) by the end of the 21st century to be detected. More generally, other studies along the East Antarctica Ice Divide (Dome C, Vostok and Dome Fuji) suggest similar increases of surface mass balance during the last century (Urbini et al., 2008; Fujita et al., 2011; Frezzotti et al., 2013; Osipov et al., 2014). If the results proposed here appear consistent with these studies, their associated uncertainties unfortunately remain too large (even after being diminished by the time-independent biases) to conclude for an incontrovertible evidence for a significant time increase in the accumulation rates.

## 7 Conclusions

Relative depths of three IRHs from a 630-km long GPR profile have been combined with time markers as well as density profiles along ice core data to provide surface accumulation estimates between the DC and Vostok stations on the Antarctic plateau. Results show a remarkably persistent accumulation pattern, whatever the investigated time period (1411-1616, 1616-1778 and 1778-2012 CE). More specifically, over the last 600-yr, the average accumulation rate exhibits a significant NE-SW gradient from  $25 \pm 2 \text{ mm w.e.} \cdot \text{yr}^{-1}$  at DC to  $19 \pm 2 \text{ mm w.e.} \cdot \text{yr}^{-1}$  at the other extremity of the profile which appears to be consistent with previous radar data available over the 25 km from in

655 the vicinity of DC. As for the time dependency, a despite an observable steady increase of about  
3 – 4% ~~is also detectable~~ over the last 600 yr and which partially matches that from similar radar  
data. ~~A~~, unbiased errors still prevent from reliably inferring a positive time trend in accumulation.  
The careful error analysis ~~is proposed that that is proposed~~ accounts for all possible intervening  
terms and provides depth dependent maximum margins of error ~~from 4 mm w.e.yr<sup>-1</sup> (234-yr for~~  
660 the accumulation absolute values ranging from 2 mm w.e.yr<sup>-1</sup> (592-yr average) to 2 mm w.e.yr<sup>-1</sup>  
~~(592-yr 4 mm w.e.yr<sup>-1</sup> (234-yr average))~~. It also shows that despite the proven isochronous character  
of the proposed IRHs, the main source of error is to be found in the uncertainty in the determination  
the IRH depth. Not only does this 1.5 m error change the depth over which the mass is accumulated,  
but it also leads to a 30 yr in the IRH age determination and eventually contributes to the most of  
665 the total uncertainty on the accumulation rates. The error budget also shows that in our case, the  
uncertainty in terms of density resulting from both the representativeness and measurement errors of  
a single core is of the same order as the changes expected from incorporating the potential geograph-  
ical variability in density from extra (but less reliable) cores along the radar line. In other words, it  
proved better to exclusively rely on a single reliable and accurate density core at one extremity of  
670 the profile, rather than trying to incorporate doubtful spatial changes from less reliable or even non  
exploitable intermediate density cores.

Measuring surface mass balance over Antarctica remains a challenge and amongst the different  
available methods, combined radar and ice core data provide a robust means of properly assessing  
large scale spatial patterns ~~as well as and to a lesser degree~~ long-term temporal changes of snow  
675 accumulation. This is fundamental for addressing the overall mass budget of the ice sheet, especially  
in the context of global warming when increased accumulation from more moisture-laden ocean  
air masses compete with enhanced ice flow through outlet glaciers which casts some doubts on  
the future contribution of the ice sheet to future sea level. Knowing surface mass balance space  
and time distribution is also fundamental for interpreting and dating the ice core climatic signal.  
680 In this respect, the DC-Vostok area is of prime interest for the retrieval of long climate records by  
combining large ice thicknesses and low accumulation rates. This area therefore becomes the focus  
for the quest of new coring sites where an ice archive potentially older than a million year could be  
exploited (project 'Beyond EPICA Oldest Ice'). Surface mass balance maps thus constitute a major  
input for selecting the coring site (e.g., Fischer et al., 2013). However, despite the large possibilities  
685 of the proposed method for providing large scale accumulation fields, a comprehensive and high  
resolution coverage of the entire Antarctic ice sheet is not realistic. Surface mass balance results  
from a subtle interplay between the regional accumulation pattern and more local parameters such as  
the surface topography and the wind field. Outputs from global circulation models associated with  
the local specific environment should allow for relevant surface mass balance computations. This  
690 requires deriving accurate parameterizations describing the influence of the association of surface  
topography and the wind field (such as the Slope along the Prevailing Wind Direction, SPWD, see

for example (Frezzotti et al., 2007)). Radar data as proposed in this study are intended to be used for constraining/validating such relationships leading to a forthcoming paper.

## **Appendix A: Ice core sampling and analysis**

695 The ice cores were collected using two different electromechanical drilling systems (10-cm diameter for VOLSOL program and 5.8-cm diameter for TASTE-IDEA). The recovered core pieces were sealed in polyethylene bags in the field and stored in clean isothermal boxes before treatment. The VOLSOL-1 ice core was treated at DC using the laboratory facilities for chemical studies whereas the TASTE-IDEA shallow firn cores were transported in frozen state to the cold-room facilities of  
700 the Laboratory of Glaciology (IGE) in Grenoble, France, for radiochemical and chemical studies. At DC, the ice core was cut in cleaned conditions and samples were sealed in precleaned tubes before ion chromatography analysis. In Grenoble, sample preparation was also performed under clean-room laboratory conditions. After stratigraphic observations and measurements of bulk density, the four firn cores were divided into two half cores. One half was dedicated to radioactivity measurements,  
705 and the other half was analysed by ion chromatography. Due to the lack of seasonal variations of any chemical or physical parameters in snow between DC and Vostok stations, year-by-year dating of the snow layers is impossible. Only specific reference horizons can be used. In our study, the chronology of IRHs was established with the aid of sulfate spikes concentrations from past volcanic events coupled with the identification of recent thermonuclear bomb testing marker levels of CE  
710 1955 and 1965.

Samples for chemical and radiochemical analysis were prepared with a time resolution of about 0.3–0.4 yr (2-cm length) and 1.5–2.0 yr (10 cm), respectively, which is necessary for the detection of volcanic eruptions and radioactive levels. The samples were prepared and analysed using stringent contamination control procedures.

715 For the VOLSOL-1 ice core treatment at DC, only sulfate concentrations were determined. They were measured (more than 5000 samples) on a Metrohm 850 Professional IC system coupled with a Seal XY-2 Sampler. A Thermo Scientific Dionex IonPac AS11-HS (4-mm diameter, 50-mm long) anion separation column was used. Such a short column allowed us to develop a fast (2 mn per sample) isocratic method using a 7 mM NaOH solution as eluent. Measured concentrations were  
720 calibrated in the 10 – 1000 ng.g<sup>-1</sup> range using dilutions of a commercial 1000 µg.g<sup>-1</sup> sulfate standard solution.

For the TASTE-IDEA firn cores treated at IGE, one half core was treated to measure major and organic chemical species from the surface down to 20 m deep (more than 5000 samples for all cores). Chemical analysis were performed using two different systems, enabling cross-checking of possible  
725 contamination processes and also validate the sulfate concentrations results. Indeed, the first measurements series were done using the same device system as the one used at DC for the VOLSOL-1

ice core treatment (sulfate concentrations measurements only) and the second series (same samples) was analysed with a Dionex© ICS3000 dual ion chromatography system. This last chromatography system was setup for the analysis of cations ( $Li^+$ ,  $Na^+$ ,  $NH_4^+$ ,  $K^+$ ,  $Mg^{2+}$ ,  $Mn^{2+}$ ,  $Ca^{2+}$ ,  $Sr^{2+}$ ) and anions ( $F^-$ ,  $Cl^-$ ,  $MSA^-$ ,  $NO_3^-$ , and  $SO_4^{2-}$ ) down to sub-ppb level and high level accuracy (6 standards calibration, relative standard deviation < 2%). The two different chemical analysis systems found no contamination and were reliable for sulfate concentration determinations. The results of test series consequently allowed use of only the first system with short sample run analysis (1.5 mn versus 22 mn) to provide complete and rapid sulfate profiles as needed.

The second half of the TASTE-IDEA firm cores were processed for artificial radioactivity measurements ( $^{90}Sr$ ,  $^{137}Cs$ , and to a lesser degree  $^{241}Am$ , daughter of  $^{241}Pu$ ) by a Berthold© B770 low-level beta counting and Canberra© very-low background BEGe gamma spectrometry device. Analysis were performed with a continuous sampling every 10 cm from the surface down to 6 m, i.e. the necessary depths to detect radioactive reference horizons from 1950s to 1980s atmospheric thermonuclear bomb tests. Details of the sampling and measurements procedures are given in Magand (2009), Loaiza et al. (2011) and Verfaillie et al. (2012).

## Appendix B: Ice core Representativeness

The age-depth relationships of the 5 studied cores in Gautier et al. (2016) are represented in the following figure from which the age differences at our 3 IRH depths can be inferred.

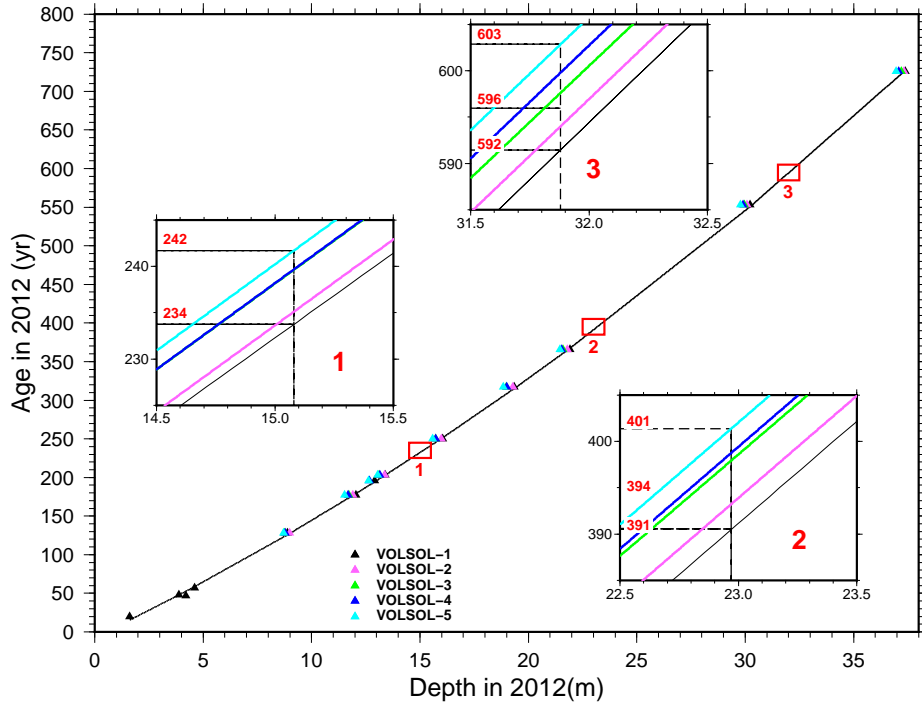
## Appendix C: Age dispersion along the radar line

The consistency as well as the dispersion for the ages of each of our 3 IRHs have been assessed by inferring the IRH depths when passing at the various core locations along the radar line. These depths were reported in the corresponding age/depth relationships for the DC-VOLSOL1, S1, S2 and the hybrid S0-Explore cores (see Fig. 11).

As can be seen, ages for each IRH remain consistent along the entire radar profile with a limited scatter at the various crossings (either between cores or when passing several times at the same core site). For instance, the uppermost blue IRH varies by only 3% among all crossing points and has a maximum discrepancy of only 6 yr (2.5%) with the DC reference age (see detailed figures in Table 4).

As for the second IRH (green), the scatter is 16 yr (4%) with a maximum deviation of 9 yr from the DC age of 391 yr. Lastly, the deepest one (pink) has a maximum deviation of 3.75% (22 yr) with the reference age which also corresponds to its total dispersion. The only noticeable discrepancy is to be found with the deepest IRH when passing the S0 site where crossing depths lead to systematically older ages. One explanation could lie in the loss of continuity for this deepest IRH towards the end of the profile where it sometimes becomes very faint (see bottom right of Fig.



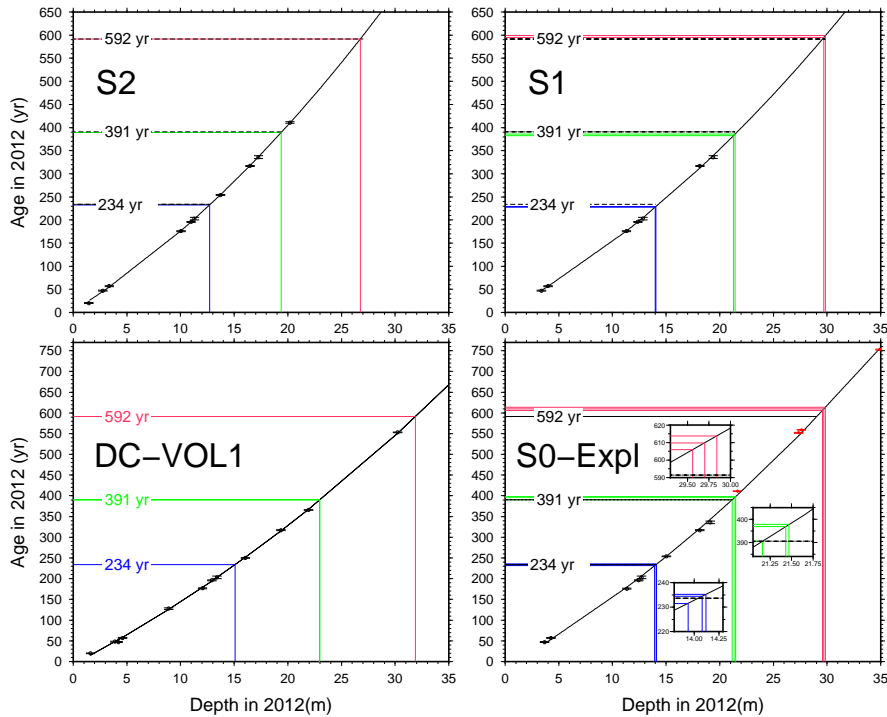


**Figure 10.** Time markers along the five cores as studied in Gautier et al. (2016). The reference core is VOLSOL-1 (see Section 4.2) for which the quadratic fit is entirely represented in black, whereas insets represent enlargements where all quadratic fits allow for an assessment of the age dispersion around the reference at the depths of our three IRHs.

2). The other possibility could result from the hybrid depth-age relationship obtained at S0 from two different cores. Because of the short-scale variability of surface snow post-deposition processes (Eisen et al., 2008), the distance of 70 m between the two cores may explain such discrepancies as

**Table 4.** Depth, corresponding age and deviation with respect to the DC -VOLSOL-1 reference age for the three IRHs whenever they intersect the DC-VOL-1, S0-Expl, S1 and S2 cores

	DC	S0-1	S0-2	S0-3	S1-1	S1-2	S2
IRH1 depth	15.08	14.08	13.94	14.12	13.97	14.05	12.70
IRH1 age	234	234	232	235	228	229	233
IRH1 error	-	0%	1%	0.5%	2.5%	2.25%	0.5%
IRH2 depth	22.97	21.47	21.43	21.16	21.43	21.27	19.38
IRH2 age	391	398	397	391	386	382	390
IRH2 error	-	1.75%	1.5%	0%	1.25%	2.25%	0.25%
IRH3 depth	31.88	29.56	29.70	29.84	29.84	29.70	26.76
IRH3 age	592	606	610	614	599	595	592
IRH3 error	-	2.25%	3%	3.75%	1.25%	0.5%	0%



**Figure 11.** Same as Fig. 3 but now including the TASTE IDEA cores S1, S2 and the hybrid S0-Explore core. For this latter, extra points issued from the Explore core at larger depths are represented in red.

was observed by Gautier et al. (2016) who found depth shifts of the order of 20cm between five  
 765 cores only separated by 1 m at the DC site. They also come to the conclusion that logging errors and  
 analysing procedures may play a role, especially if different coring and analysing teams are involved  
 as was the case for the S0 and Explore cores. Although it can be criticised, the construction of such  
 an hybrid age-depth relationship makes some sense in our case since we only considered the extra  
 Explore markers at depths where no other volcanoes were available in the initial S0 core (> 20 m).  
 770 The resulting quadratic fit still yields  $r^2$  greater than 0.99.

*Acknowledgements.* We would like to thank the French Research National Agency (Project ANR-07-VULN-  
 013 VANISH) who provided a significant financial support to the TASTE-IDEA 2010-11 traverse from which  
 data of the present study originate. The French Polar Institute (IPEV) was crucial in the success of this traverse  
 by mastering all the logistical aspects, providing the necessary staff, material and consumables. Technical staff  
 775 (IGE: E. Lefebvre, G. Teste and IPEV: A. Vende, A. Leluc, D. Colin) is also heartily thanked for its invaluable  
 expertise. The Russian Arctic and Antarctic Expeditions (AARI, Vostok base) are also thanked by having  
 welcomed the traverse at the Vostok station. Project ANR-06-VULN-016-01 'DACOTA' also contributed by  
 funding part of the GPR used in the present study.

## References

- 780 Arthern, R. J., Winebrenner, D. P., and Vaughan, D. G.: Antarctic snow accumulation mapped using polarization of 4.3-cm wavelength microwave emission, *Journal of Geophysical Research*, 111, doi:10.1029/2004JD005667, 2006.
- Augustin, L., Barbante, C., Barnes, P. R., Barnola, J. M., Bigler, M., Castellano, E., Cattani, O., Chappellaz, J., Dahl-Jensen, D., Delmonte, B., et al.: Eight glacial cycles from an Antarctic ice core, *Nature*, 429, 623–628, 2004.
- 785 Bamber, J. L., Gomez-Dans, J. L., and Griggs, J. A.: A new 1 km digital elevation model of the Antarctic derived from combined satellite radar and laser data—Part 1: Data and methods, *The Cryosphere*, 3, 101–111, 2009.
- Bintanja, R.: On the glaciological, meteorological, and climatological significance of Antarctic blue ice areas, *Reviews of Geophysics*, 37, 337–359, doi:10.1029/1999RG900007, 1999.
- 790 Castellano, E., Becagli, S., Jouzel, J., Migliori, A., Severi, M., Steffensen, J., Traversi, R., and Udisti, R.: Volcanic eruption frequency over the last 45 ky as recorded in Epica-Dome C ice core (East Antarctica) and its relationship with climatic changes, *Global and Planetary Change*, 42, 195–205, doi:10.1016/j.gloplacha.2003.11.007, 2004.
- 795 Cole-Dai, J., Mosley-Thompson, E., and Thompson, L. G.: Annually resolved southern hemisphere volcanic history from two Antarctic ice cores, *Journal of Geophysical Research: Atmospheres*, 102, 16 761–16 771, doi:10.1029/97JD01394, 1997.
- Cole-Dai, J., Mosley-Thompson, E., Wight, S. P., and Thompson, L. G.: A 4100-year record of explosive volcanism from an East Antarctica ice core, *Journal of Geophysical Research: Atmospheres*, 105, 24 431–24 441, doi:10.1029/2000JD900254, 2000.
- 800 Eisen, O., Nixdorf, U., Wilhelms, F., and Miller, H.: Age estimates of isochronous reflection horizons by combining ice core, survey, and synthetic radar data, *Journal of Geophysical Research*, 109, doi:10.1029/2003JB002858, 2004.
- Eisen, O., Frezzotti, M., Genthon, C., Isaksson, E., Magand, O., van den Broeke, M. R., Dixon, D. A., Ekaykin, A., Holmlund, P., Kameda, T., Karlöf, L., Kaspari, S., Lipenkov, V. Y., Oerter, H., Takahashi, S., and Vaughan, D. G.: Ground-based measurements of spatial and temporal variability of snow accumulation in East Antarctica, *Reviews of Geophysics*, 46, doi:10.1029/2006RG000218, 2008.
- 805 Ekaykin, A. A., Lipenkov, V. Y., and Shibaev, Y. A.: Spatial distribution of the snow accumulation rate along the ice flow lines between Ridge B and Lake Vostok, *Ice and snow*, p. 122–128, 2012.
- 810 Fischer, H., Severinghaus, J., Brook, E., Wolff, E., Albert, M., Alemany, O., Arthern, R., Bentley, C., Blanken-ship, D., Chappellaz, J., Creyts, T., Dahl-Jensen, D., Dinn, M., Frezzotti, M., Fujita, S., Gallee, H., Hind-marsh, R., Hudspeth, D., Jugie, G., Kawamura, K., Lipenkov, V., Miller, H., Mulvaney, R., Parrenin, F., Pat-tyn, F., Ritz, C., Schwander, J., Steinhage, D., van Ommen, T., and Wilhelms, F.: Where to find 1.5 million yr old ice for the IPICS "Oldest-Ice" ice core, *Climate of the Past*, 9, 2489–2505, doi:10.5194/cp-9-2489-2013, 2013.
- 815 Frezzotti, M., Pouchet, M., Flora, O., Gandolfi, S., Gay, M., Urbini, S., Vincent, C., Becagli, S., Gragnani, R., Proposito, M., Severi, M., Traversi, R., Udisti, R., and Fily, M.: New estimations of precipitation and surface

- sublimation in East Antarctica from snow accumulation measurements, *Climate Dynamics*, 23, 803–813, doi:10.1007/s00382-004-0462-5, 2004.
- 820 Frezzotti, M., Pourchet, M., Flora, O., Gandolfi, S., Gay, M., Urbini, S., Vincent, C., Becagli, S., Gragnani, R., and Proposito, M.: Spatial and temporal variability of snow accumulation in East Antarctica from traverse data, *Journal of Glaciology*, 51, 113–124, 2005.
- Frezzotti, M., Urbini, S., Proposito, M., Scarchilli, C., and Gandolfi, S.: Spatial and temporal variability of surface mass balance near Talos Dome, East Antarctica, *Journal of Geophysical Research*, 112, 825 doi:10.1029/2006JF000638, 2007.
- Frezzotti, M., Scarchilli, C., Becagli, S., Proposito, M., and Urbini, S.: A synthesis of the Antarctic surface mass balance during the last 800 yr, *The Cryosphere*, 7, 303–319, doi:10.5194/tc-7-303-2013, 2013.
- Fujita, S., Holmlund, P., Andersson, I., Brown, I., Enomoto, H., Fujii, Y., Fujita, K., Fukui, K., Furukawa, T., Hansson, M., Hara, K., Hoshina, Y., Igarashi, M., Iizuka, Y., Imura, S., Ingvander, S., Karlin, T., Motoyama, 830 H., Nakazawa, F., Oerter, H., Sjöberg, L. E., Sugiyama, S., Surdyk, S., Ström, J., Uemura, R., and Wilhelms, F.: Spatial and temporal variability of snow accumulation rate on the East Antarctic ice divide between Dome Fuji and EPICA DML, *The Cryosphere*, 5, 1057–1081, doi:10.5194/tc-5-1057-2011, 2011.
- Gao, C., Robock, A., Self, S., Witter, J. B., Steffenson, J. P., Clausen, H. B., Siggaard-Andersen, M., Johnsen, S., Mayewski, P. A., and Ammann, C.: The 1452 or 1453 A.D. Kuwae eruption signal derived from multiple 835 ice core records: Greatest volcanic sulfate event of the past 700 years, *Journal of Geophysical Research*, 111, doi:10.1029/2005JD006710, 2006.
- Gao, C., Robock, A., and Ammann, C.: Volcanic forcing of climate over the past 1500 years: An improved ice core-based index for climate models, *Journal of Geophysical Research: Atmospheres*, 113, D23 111, doi:10.1029/2008JD010239, 2008.
- 840 Gautier, E., Savarino, J., Erbland, J., Lanciki, A., and Possenti, P.: Variability of sulfate signal in ice core records based on five replicate cores, *Climate of the Past*, 12, 103–113, doi:10.5194/cp-12-103-2016, 2016.
- Genthon, C., Six, D., Scarchilli, C., Ciardini, V., and Frezzotti, M.: Meteorological and snow accumulation gradients across Dome C, East Antarctic plateau, *International Journal of Climatology*, pp. n/a–n/a, doi:10.1002/joc.4362, 2015.
- 845 Igarashi, M., Nakai, Y., Motizuki, Y., Takahashi, K., Motoyama, H., and Makishima, K.: Dating of the Dome Fuji shallow ice core based on a record of volcanic eruptions from AD 1260 to AD 2001, *Polar Science*, 5, 411–420, doi:10.1016/j.polar.2011.08.001, 2011.
- Kovacs, A., Gow, A. J., and Morey, R. M.: The in-situ dielectric constant of polar firn revisited, *Cold Regions Science and Technology*, 23, 245–256, 1995.
- 850 Krinner, G., Magand, O., Simmonds, I., Genthon, C., and Dufresne, J. L.: Simulated Antarctic precipitation and surface mass balance at the end of the twentieth and twenty-first centuries, *Climate Dynamics*, 28, 215–230, doi:10.1007/s00382-006-0177-x, 2006.
- Leduc-Leballeur, Picard, G., Mialon, A., Arnaud, L., Lefebvre, E., Possenti, P., and Kerr, Y.: Modeling L-band brightness temperature at Dome C, Antarctica and comparison with SMOS observations, *IEEE Transactions on Geoscience and Remote Sensing*, doi:DOI: 10.1109/TGRS.2015.2388790, 2015.
- 855

- Libois, Q., Picard, G., Arnaud, L., Morin, S., and Brun, E.: Modeling the impact of snow drift on the decameter-scale variability of snow properties on the Antarctic Plateau, *Journal of Geophysical Research: Atmospheres*, 119, 11,662–11,681, doi:10.1002/2014JD022361, 2014.
- Loaiza, P., Chassaing, C., Hubert, P., Nachab, A., Perrot, F., Reyss, J., and Warot, G.: Low background germanium planar detector for gamma-ray spectrometry, *Nuclear Instruments and Methods in Physics Research Section A: Accelerators, Spectrometers, Detectors and Associated Equipment*, 634, 64–70, doi:10.1016/j.nima.2011.01.017, 2011.
- Magand, O.: Bilan de masse de surface Antarctique: techniques de mesure et analyse critique, Ph.D. thesis, Citeseer, 2009.
- 865 Magand, O., Genthon, C., Fily, M., Krinner, G., Picard, G., Frezzotti, M., and Ekaykin, A. A.: An up-to-date quality-controlled surface mass balance data set for the 90°–180°E Antarctica sector and 1950–2005 period, *Journal of Geophysical Research: Atmospheres*, 112, D12 106, doi:10.1029/2006JD007691, 2007.
- Maupetit, F. and Delmas, R. J.: Chemical composition of falling snow at Dumont d’Urville, Antarctica, *Journal of atmospheric chemistry*, 14, 31–42, 1992.
- 870 Mayewski, P. A., Frezzotti, M., Bertler, N., Van Ommen, T., Hamilton, G., Jacka, T. H., Welch, B., Frey, M., Dahe, Q., and Jiawen, R.: The international trans-antarctic scientific expedition (ITASE): an overview, *Annals of Glaciology*, 41, 180–185, 2005.
- Mosley-Thompson, E., Thompson, L. G., Dai, J., Davis, M., and Lin, P. N.: Climate of the last 500 years: High resolution ice core records, *Quaternary Science Reviews*, 12, 419–430, doi:10.1016/S0277-3791(05)80006-X, 1993.
- 875 Muller, K., Sinisalo, A., Anschutz, H., Hamran, S., Hagen, J., McConnell, J. R., and Pasteris, D. R.: An 860 km surface mass-balance profile on the East Antarctic plateau derived by GPR, *Annals of Glaciology*, 51, 1–8, 2010.
- Osipov, E. Y., Khodzher, T. V., Golobokova, L. P., Onischuk, N. A., Lipenkov, V. Y., Ekaykin, A. A., Shibaev, Y. A., and Osipova, O. P.: High-resolution 900 year volcanic and climatic record from the Vostok area, East Antarctica, *The Cryosphere*, 8, 843–851, doi:10.5194/tc-8-843-2014, 2014.
- 880 Palli, A., Kohler, J. C., Isaksson, E., Moore, J. C., Pinglot, J. F., Pohjola, V. A., and Samuelsson, H.: Spatial and temporal variability of snow accumulation using ground-penetrating radar and ice cores on a Svalbard glacier, *Journal of Glaciology*, 48, 417–424, 2002.
- 885 Palmer, A. S., van Ommen, T. D., Curran, M. A. J., Morgan, V., Souney, J. M., and Mayewski, P. A.: High-precision dating of volcanic events (A.D. 1301–1995) using ice cores from Law Dome, Antarctica, *Journal of Geophysical Research: Atmospheres*, 106, 28 089–28 095, doi:10.1029/2001JD000330, 2001.
- Parrenin, F., Barnola, J., Beer, J., Blunier, T., Castellano, E., Chappellaz, J., Dreyfus, G., Fischer, H., Fujita, S., Jouzel, J., et al.: The EDC3 chronology for the EPICA Dome C ice core, *Climate of the Past*, 3, 485–497, 2007.
- 890 Patris, N., Delmas, R. J., and Jouzel, J.: Isotopic signatures of sulfur in shallow Antarctic ice cores, *Journal of Geophysical Research: Atmospheres* (1984–2012), 105, 7071–7078, 2000.
- Plummer, C. T., Curran, M. A. J., van Ommen, T. D., Rasmussen, S. O., Moy, A. D., Vance, T. R., Clausen, H. B., Vinther, B. M., and Mayewski, P. A.: An independently dated 2000-yr volcanic record from Law Dome, East

- 895 Antarctica, including a new perspective on the dating of the 1450s CE eruption of Kuwae, Vanuatu, *Climate of the Past*, 8, 1929–1940, doi:10.5194/cp-8-1929-2012, 2012.
- Pourchet, M., Magand, O., Frezzotti, M., Ekaykin, A., and Winther, J.: Radionuclides deposition over Antarctica, *Journal of Environmental Radioactivity*, 68, 137–158, doi:10.1016/S0265-931X(03)00055-9, 2003.
- Prospero, J. M., Savoie, D. L., Saltzman, E. S., and Larsen, R.: Impact of oceanic sources of biogenic sulphur on sulphate aerosol concentrations at Mawson, Antarctica, , Published online: 21 March 1991; |  
900 doi:10.1038/350221a0, 350, 221–223, doi:10.1038/350221a0, 1991.
- Rignot, E. and Kanagaratnam, P.: Changes in the Velocity Structure of the Greenland Ice Sheet, *Science*, 311, 986–990, doi:10.1126/science.1121381, 2006.
- Röthlisberger, R.: Dust and sea salt variability in central East Antarctica (Dome C) over the last  
905 45 kyrs and its implications for southern high-latitude climate, *Geophysical Research Letters*, 29, doi:10.1029/2002GL015186, 2002.
- Ruth, U., Barnola, J., Beer, J., Bigler, M., Blunier, T., Castellano, E., Fischer, H., Fundel, F., Huybrechts, P., Kaufmann, P., et al.: " EDML1": a chronology for the EPICA deep ice core from Dronning Maud Land, Antarctica, over the last 150 000 years, *Climate of the Past Discussions*, 3, 549–574, 2007.
- 910 Saltzman, E. S.: Ocean/Atmosphere Cycling of Dimethylsulfide, in: *Ice Core Studies of Global Biogeochemical Cycles*, edited by Delmas, R. J., no. 30 in NATO ASI Series, pp. 65–89, Springer Berlin Heidelberg, 1995.
- Salzer, M. W. and Hughes, M. K.: Bristlecone pine tree rings and volcanic eruptions over the last 5000 yr, *Quaternary Research*, 67, 57–68, doi:10.1016/j.yqres.2006.07.004, 2007.
- Scambos, T., Frezzotti, M., Haran, T., Bohlander, J., Lenaerts, J., Van Den Broeke, M., Jezek, K., Long, D.,  
915 Urbini, S., Farness, K., Neumann, T., Albert, M., and Winther, J.: Extent of low-accumulation 'wind glaze' areas on the East Antarctic plateau: implications for continental ice mass balance, *Journal of Glaciology*, 58, 633–647, doi:10.3189/2012JoG11J232, 2012.
- Sigl, M., McConnell, J. R., Layman, L., Maselli, O., McGwire, K., Pasteris, D., Dahl-Jensen, D., Steffensen, J. P., Vinther, B., Edwards, R., Mulvaney, R., and Kipfstuhl, S.: A new bipolar ice core record of volcanism from WAIS Divide and NEEM and implications for climate forcing of the last 2000 years, *Journal of  
920 Geophysical Research: Atmospheres*, 118, 1151–1169, doi:10.1029/2012JD018603, 2013.
- Sigl, M., McConnell, J. R., Toohey, M., Curran, M., Das, S. B., Edwards, R., Isaksson, E., Kawamura, K., Kipfstuhl, S., Krüger, K., Layman, L., Maselli, O. J., Motizuki, Y., Motoyama, H., Pasteris, D. R., and Severi, M.: Insights from Antarctica on volcanic forcing during the Common Era, *Nature Climate Change*,  
925 4, 693–697, doi:10.1038/nclimate2293, 2014.
- Sigl, M., Winstrup, M., McConnell, J. R., Welten, K. C., Plunkett, G., Ludlow, F., Büntgen, U., Caffee, M., Chellman, N., Dahl-Jensen, D., Fischer, H., Kipfstuhl, S., Kostick, C., Maselli, O. J., Mekhaldi, F., Mulvaney, R., Muscheler, R., Pasteris, D. R., Pilcher, J. R., Salzer, M., Schüpbach, S., Steffensen, J. P., Vinther, B. M., and Woodruff, T. E.: Timing and climate forcing of volcanic eruptions for the past 2,500 years, *Nature*, 523,  
930 543–549, doi:10.1038/nature14565, 2015.
- Simmons, A., Uppala, S., Dee, D., and Kobayashi, S.: ERA-Interim: New ECMWF reanalysis products from 1989 onwards, *ECMWF newsletter*, 110, 25–35, 2007.
- Stenni, B.: Eight centuries of volcanic signal and climate change at Talos Dome (East Antarctica), *Journal of Geophysical Research*, 107, doi:10.1029/2000JD000317, 2002.

- 935 Urbini, S., Frezzotti, M., Gandolfi, S., Vincent, C., Scarchilli, C., Vittuari, L., and Fily, M.: Historical behaviour of Dome C and Talos Dome (East Antarctica) as investigated by snow accumulation and ice velocity measurements, *Global and Planetary Change*, 60, 576–588, doi:10.1016/j.gloplacha.2007.08.002, 2008.
- van den Broeke, M., van de Berg, W. J., and van Meijgaard, E.: Snowfall in coastal West Antarctica much greater than previously assumed, *Geophysical Research Letters*, 33, doi:10.1029/2005GL025239, 2006.
- 940 Van den Broeke, M. R., Bamber, J., Lenaerts, J., and Rignot, E.: Ice Sheets and Sea Level: Thinking Outside the Box, *Surveys in Geophysics*, 32, 495–505, doi:10.1007/s10712-011-9137-z, 2011.
- Vaughan, D. G., Anderson, P. S., King, J. C., Mann, G. W., Mobbs, S. D., and Ladkin, R. S.: Imaging of firn isochrones across an Antarctic ice rise and implications for patterns of snow accumulation rate, *Journal of Glaciology*, 50, 413–418, 2004.
- 945 Verfaillie, D., Fily, M., Le Meur, E., Magand, O., Jourdain, B., Arnaud, L., and Favier, V.: Snow accumulation variability derived from radar and firn core data along a 600 km transect in Adelie Land, East Antarctic plateau, *The Cryosphere*, 6, 1345–1358, 2012.