

We would like to thank the Editor and two reviewers for their constructive comments, which definitely helped to improve our paper.

Review 1:

Dear authors,

thanks for considering the requested changes in the manuscript and by updating it. I think the paper is close to be ready for publication. I just have one comment left that should be addressed and changed before.

Generally, I'm missing references in the introduction and methodology part. Especially references that are less related to the authors and their work.

For example, several other research groups work since years on joined and coupled inversion approaches maybe not in the permafrost area but in terms of hydrology and geophysics using similar approaches as used in this manuscript. Also several publications are available of coupled hydrological inversion using different geophysics methods. Please add references and honor also the work of other research groups more.

Reply: Based on suggestion of the reviewer, several coupled hydrogeophysical studies below were added to the reference. (lines 7-9 page 4)

- 1. Busch, S., Weihermüller, L., Huisman, J. A., Steelman, C. M., Endres, A. L., Vereecken, H., & Kruk, J. (2013). Coupled hydrogeophysical inversion of time-lapse surface GPR data to estimate hydraulic properties of a layered subsurface. *Water Resources Research*, 49(12), 8480-8494.*
- 2. Camporese, M., Cassiani, G., Deiana, R., Salandin, P., & Binley, A. (2015). Coupled and uncoupled hydrogeophysical inversions using ensemble Kalman filter assimilation of ERT-monitored tracer test data. *Water Resources Research*, 51(5), 3277-3291.*
- 3. Herckenrath, D., Fiandaca, G., Auken, E., & Bauer-Gottwein, P. (2013). Sequential and joint hydrogeophysical inversion using a field-scale groundwater model with ERT and TDEM data. *Hydrology and Earth System Sciences*, 17(10), 4043-4060.*
- 4. Huisman, J. A., Rings, J., Vrugt, J. A., Sorg, J., & Vereecken, H. (2010). Hydraulic properties of a model dike from coupled Bayesian and multi-criteria hydrogeophysical inversion. *Journal of Hydrology*, 380(1), 62-73.*
- 5. Irving, J., & Singha, K. (2010). Stochastic inversion of tracer test and electrical geophysical data to estimate hydraulic conductivities. *Water Resources Research*, 46(11).*
- 6. Pollock, D., & Cirpka, O. A. (2012). Fully coupled hydrogeophysical inversion of a laboratory salt tracer experiment monitored by electrical resistivity tomography. *Water Resources Research*, 48(1).*

Reviewer 2

I have also reviewed the first version of the manuscript and the authors have revised most of my comments.

I have still some reservations regarding some parts of the manuscript where the authors are urgently requested to be formally correct in their wording: As the authors state clearly in their response to my first review, there is no direct relationship between OC and electrical resistivity. In their conclusions of the revised version, they again state (P. 22, L 16-17) „we concentrated on the impact of OC content on the soil electrical resistivity via its hydrological-thermal properties“. Formally and physically correct, only properties or states that influence electrical conduction can influence measured electrical resistivity. The most important ones are clay content, dissolved ions in the water phase in combination with the continuity of the water phase which allows electrical conduction, and temperature. Most other properties only have indirect effects on electrical resistivity as they are mostly (often non-linearly) related to one (or even some at the same time) of the properties stated above. I know that there are many hydrogeophysical applications that follow a similar approach, however, it is important to stick to the physical basis of the processes. Consequently, the wording needs to be carefully revised in this respect.

Reply: The foundation behind the applications of hydrogeophysical inversion is that ions are dissolved in water and move with water. Therefore, geophysical techniques that measure soil electrical conductivity can be used to track the water dynamics. In addition, with the same amount of ions in water, if water reduces for some reasons (for example, by freezing), the ion concentration (and correlated water electrical conductivity) will increase. By contrast, when soil temperature reduces, ion mobility reduces, which decreases water conductivity. Because OC influences the dynamics of both temperature and soil moisture, it influences the water electrical conductivity. We agree with the reviewer that OC indirectly influences soil electrical conductivity. To emphasize the indirect impact of OC on water electrical conductivity via soil water and temperature, we modified the sentence in P22, L16-17 as below:

In this study, we concentrated on the indirect impact of the OC content on water electrical resistivity via soil water and temperature. (Line 16-17 page 22)

Besides all the challenges at unfrozen conditions, this is particularly important as soon as the soil becomes frozen and, hence, the water phase becomes discontinuous causing the characteristic drop in electrical resistivity during freezing. This effect is not considered by the empirical Archie's Law. I did a quick literature scan myself and found some work by Hauck and collaborators who did some nice work employing ERT in periglacial and glacial environments. So the authors may take a look at these publications. For this manuscript, it should be ok to include a review about application of Archie's Law in permafrost research which also mentions the difficulty with using this equation and

discusses the limits of the approach followed in this study. Formalizing this process correctly, which would mean finding a better equation than Archie's Law, could be one grand challenge in future research to really establish ERT for quantitatively investigating freeze/thaw and related processes

Reply: Thank to reviewer for referring the research of Hauk and collaborators. Regarding petrophysical relationship in cold region, Hauk et al. (2011) developed a 4-phase soil model (consist of soil matrix, ice, liquid and air) and used it to estimate ice and liquid content from combined ERT and seismic measurements. Similar to our study, they used Archie's model to link soil water liquid with soil electrical resistivity, which is obtained from ERT measurement. The other components (ice, soil matrix and air) were linked to P-wave velocity, which is obtained from seismic measurement. This is an interesting approach to jointly combine ERT and seismic data for estimating ice and water liquid. A review about the works of Christian Hauk was added to the introduction part as below:

Hauck et al. (2011) developed a 4-phase model of soil matrix, ice, liquid and air and used it to estimate soil liquid and ice content from combined ERT and seismic measurements in the Swiss Alps. (lines 25-27, page 3)

Different from Hauk's studies, we used multiple time-lapse ERT measurements but we did not have seismic data in this study. So we cannot use 4-phase model. We will explore the possibility to integrate Hauk's petrophysical model into our coupled hydrogeophysical inversion when both electrical resistivity and seismic (or GPR) measurements are available. It is worth noting that in 4-phase soil model of Hauk, he assumed that the soil porosity and Archie's model parameters are known. In hydrogeophysical inversion, we can set them as unknown parameters and estimate them (like we did in this study). In addition, in Hauk's study, they only used single ERT and seismic measurements at a time instant. In hydrogeophysical inversion, we will use multiple time-lapse measurements. As a result, the inversion is potentially better constrained. We added the following sentences to the revised manuscript:

Hauck et al. (2011) indicated that combination of ERT and seismic measurements can improve the estimation of ice and water liquid. We will integrate this approach into coupled hydrogeophysical inversion to better constrain the inversion and reduce the nonuniqueness of parameter estimation. (lines 24-26 page 22).

Coupled Land Surface-Subsurface Hydrogeophysical Inverse Modeling to Estimate Soil Organic Carbon Content and explore associated Hydrological and Thermal Dynamics in an Arctic Tundra

Anh Phuong Tran¹, Baptiste Dafflon¹, Susan S. Hubbard¹

5 ¹Climate & Ecosystems Division, Earth and Environmental Sciences Area, Lawrence National Berkeley Lab, Berkeley, California, CA 94720, USA

Correspondence to: Anh Phuong Tran (aptran@lbl.gov)

Abstract: Quantitative characterization of soil organic carbon (OC) content is essential due to its
10 significant impacts on surface–subsurface hydrological-thermal processes and microbial decomposition of OC, which both in turn are important for predicting carbon-climate feedbacks. While such quantification is particularly important in the vulnerable organic-rich Arctic region, it is challenging to achieve due to the general limitations of conventional core sampling and analysis methods, and to the extremely dynamic nature of hydrological-thermal processes associated with
15 annual freeze-thaw events. In this study, we develop and test an inversion scheme that can flexibly use single or multiple datasets, including soil liquid water content, temperature and electrical resistivity tomography (ERT) data, to estimate the vertical distribution of OC content. Our approach relies on the fact that OC content strongly influences soil hydrological-thermal parameters, and therefore, indirectly controls the spatiotemporal dynamics of soil liquid water
20 content, temperature and their correlated electrical resistivity. We employ the Community Land Model to simulate nonisothermal surface-subsurface hydrological dynamics from the bedrock to the top of canopy, with consideration of land surface processes (e.g., solar radiation balance, evapotranspiration, snow accumulation and melting) and ice/liquid water phase transitions. For inversion, we combine a deterministic and an adaptive Markov chain Monte Carlo (MCMC)
25 optimization algorithm to estimate posterior distributions of desired model parameters. For hydrological-thermal to geophysical variable transformation, the simulated subsurface temperature, liquid water content and ice content are explicitly linked to soil electrical resistivity via petrophysical and geophysical models. We validate the developed scheme using different numerical experiments and evaluate the influence of measurement errors and benefit of joint
30 inversion on the estimation of OC and other parameters. We also quantified the propagation of uncertainty from the estimated parameters to prediction of hydrological-thermal responses. We find that compared to inversion of single dataset (either temperature or liquid water content or

apparent resistivity), joint inversion of these datasets significantly reduces parameter uncertainty. We find that the joint inversion approach is able to estimate OC and sand content within the shallow active layer (top 0.3 m of soil) with high reliability. Due to the small variations of temperature and moisture within the shallow permafrost (here at about 0.6 m depth), the approach is unable to estimate OC with confidence. However, if the soil porosity is functionally related to the OC and mineral content, which is often observed in organic rich Arctic soil, the uncertainty of OC estimate at this depth remarkably decreases. Our study documents the value of the new surface-subsurface, deterministic-stochastic inversion approach, as well as the benefit of including multiple types of data to estimate OC and associated hydrological-thermal dynamics.

1. Introduction

Soil organic carbon (OC) and its influence on terrestrial ecosystem feedbacks to global warming in permafrost regions is particularly important for the calculation of global carbon budget and prediction of future climate variation. Warmer air temperature leads to permafrost degradation, which is expected to enhance decomposition of huge pools of previously-frozen OC, releasing carbon dioxide and methane to the atmosphere, and enhancing global warming (Koven et al., 2011; Schaphoff et al., 2013; Schuur et al., 2015). In that context, accurate estimation of OC content stored in both active layer and permafrost is crucial for investigation of carbon stocks exposing for microbial decomposition.

Predictive understanding of ecosystem feedbacks to climate in permafrost regions requires quantitative knowledge of surface-subsurface hydrological-thermal dynamics, which in turn are strongly governed by the hydrological-thermal properties of soil OC (Jafarov and Schaefer, 2016). In particular, there are dramatic differences between thermal and hydraulic properties of OC and mineral soil, both of which typically co-exist in shallow permafrost systems. OC's thermal conductivity (e.g., $\lambda_{OC,dry} = 0.05$ W/mK) is significantly lower than that of mineral soil (e.g., $\lambda_{sand} = 8.4$ W/mK) (Farouki, 1981). By contrast, its heat capacity is higher than mineral soil. Considering hydrological properties, the hydraulic conductivity of OC is higher and its capillary pressure is smaller than mineral soil (Lawrence and Slater, 2008). In addition, while mineral soil porosity typically ranges from 0.4 to 0.6, the porosity of OC soil is usually greater than 0.8. Due to its low thermal conductivity, a top OC layer can behave as an insulator that reduces the magnitude of heat and energy exchange between the atmosphere and deeper soil (e.g., Hinzman et al., 1991; Rinke et al., 2008). Nicolsky et al. (2007) and Jafarov and Schaefer (2016) reported that inclusion

of vertical OC content profile into a land surface model can considerably improve prediction of subsurface moisture, temperature and carbon dynamics. However, our ability to measure or estimate the distribution of OC is currently challenging, which inhibits accurate model prediction.

- 5 OC content is usually measured from core samples, which are collected from field sites and then analyzed in the laboratory (e.g., Kern, 1994). While this method is relatively accurate, it is labor intensive and typically limited in spatial coverage. Because OC and mineral content largely influence hydrological-thermal parameters (i.e., thermal conductivity, heat capacity, hydraulic conductivity and retention curve; see Appendix A), they are the main soil properties that control
- 10 the subsurface hydrological-thermal dynamics. As a result, OC and mineral content can be potentially obtained by inverting observations of hydrological-thermal state variables (i.e., soil liquid water content and soil temperature) and their correlated observables (e.g., electrical resistivity). However, so far there has been no effort using this approach to indirectly estimate these soil properties.

15

Geophysical methods hold potential for characterizing the subsurface in permafrost regions as well as their associated physical, hydrological and thermal processes. Geophysical techniques offer an advantage over conventional point measurement techniques because they provide spatially extensive information in a minimally invasive manner (e.g., Hubbard and Rubin, 2005). For

20 example, Arcone et al. (1998) and Chen et al. (2016) used GPR to characterize the depth of permafrost table. Hinkel et al. (2001) used GPR to estimate thaw depth, to recognize ice wedges and ice lenses, and to locate the organic-mineral soil interface. Schwamborn et al. (2002) combined seismic and GPR to investigate the stratigraphy of both frozen and unfrozen parts of Lake Nikolay. Lewkowicz et al. (2011) and You et al. (2013) employed ERT, ground temperature

25 monitoring, frost table probing and coring to detect the permafrost depth. Hauck et al. (2011) developed a 4-phase model of soil matrix, ice, liquid and air and used it to estimate soil liquid and ice content from combined ERT and seismic measurements in the Swiss Alps. Hubbard et al. (2013) combined Lidar data with multiple geophysical (ERT, GPR, electromagnetic) and point measurements to characterize active-layer thickness and permafrost variability in a large area.

30

In spite of the potential benefits offered by geophysical data for characterizing permafrost systems, geophysical inversion approaches typically suffer from several challenges. First, inversion

methods are often ill-posed due to the fact that geophysical observables are sensitive to different soil properties. Secondly, inversion approaches often typically require petrophysical models to link the geophysical observables with the property of interest. Finally, there are differences between the geophysical support scale and the scale of the imaging target (Hubbard and Linde, 2011). In order to take advantage of information inherent in geophysical signatures and minimize the non-uniqueness challenges described above, many recent studies have explored the value of coupled hydrogeophysical inversion frameworks for estimating soil properties (e.g., Johnson et al., 2009; Huisman et al., 2010; Irving and Singha, 2010; Kowalsky et al., 2011; Pollock and Cirpka, 2012; Busch et al., 2013; Herckenrath et al., 2013; Camporese et al., 2015; Tran et al., 2016). In these studies, the hydrological and geophysical models are coupled together so that geophysical data are used to estimate soil properties that control the subsurface hydrological-thermal dynamics. Of the geophysical techniques commonly used for monitoring the shallow subsurface, ERT is increasingly common because it can autonomously provide 2- or 3-D time-lapse measurements with a relatively high spatial resolution, is sensitive to properties influencing hydrological-thermal dynamics, and is particularly suitable for field deployment over a long period of time. As a result, we use ERT data in this study.

Most of coupled hydrogeophysical inversion approaches developed to date are not adequate for investigating permafrost systems due to several gaps. Developed methods have only been applied to terrestrial systems without consideration of the significant dynamics associated with the freeze-thaw transition. Developed coupled hydrogeophysical inversion approaches have also not yet incorporated surface-subsurface interactions (e.g., evapotranspiration, energy balance, plant water uptake). Finally, while a few studies have used Soil Vegetation Atmospheric Transfer (SVAT) models to qualitatively interpret geophysical data (e.g., McClymont et al., 2013), to date, no study has coupled SVAT and geophysical models and data to improve property estimation.

Building on recent advances in the use of electrical methods in the permafrost (e.g., Minsley et al., 2016; Dafflon et al., 2017) as well as coupled hydrogeophysical inversion approaches described above, this study focuses on the development of an inverse approach that uses single or multiple datasets (soil liquid water content, soil temperature and electrical resistivity) to estimate OC content, which is a main factor that governs the subsurface hydrological-thermal dynamics. Our approach advances and couples several algorithms. We use a SVAT model known as Community

Land Model (CLM4.5, Oleson et al., 2013) to simulate water, heat and energy exchange from the bedrock to the top of canopy. The model considers most of the land surface processes, ice/liquid phase change and surface-subsurface hydrological-thermal dynamics. For parameter estimation, we combined deterministic and stochastic optimization algorithms to concurrently obtain the best parameter estimates and their associated uncertainties. The deterministic optimization algorithm is employed to estimate the initial parameter set and covariance matrix of the proposal distribution. For the stochastic optimization, we used an advanced MCMC method known as Delayed Rejection Adaptive Metropolis (DRAM, Haario et al., 2006). With this implementation of this adaptive MCMC algorithm, we expect to obtain the posterior probability distributions (*pdfs*) of the desired model parameters more quickly than the traditional MCMC technique. For hydrological-thermal to geophysical transformation, we explicitly consider the dependence of the soil electrical resistivity on the soil ice/liquid water content and soil temperature via petrophysical and forward geophysical models.

This study advances capabilities to estimate and understand the controls of OC on hydrological and thermal properties through developing a hydrological-thermal-geophysical inversion scheme and through exploring its potential to estimate the vertical distribution of OC and mineral content at several depths within a representative synthetic Arctic soil column. Herein, we use synthetic studies to: 1) evaluate the relationship between the measurement error and uncertainties of parameter estimates, 2) examine the improvement in parameter estimation offered by including various datasets in the inversion, including apparent resistivity data, 3) investigate how OC estimation changes if the mineral and petrophysical parameters are unknown, 4) explore how parameter estimation changes when soil porosity functionally correlates with the OC and mineral content, and 5) investigate the uncertainty propagation from the OC and mineral content to the hydrological-thermal prediction.

The paper is organized as follows. Section 2 describes the development of the hydrological-thermal-geophysical inversion scheme. Section 3 analyzes and discusses the results of different synthetic experiments. Summary and concluding remarks are provided in Section 4.

2. Methodology

Generally, the joint hydrological-thermal-geophysical inversion scheme developed in this study (Figure 1) includes two main components: 1) A forward coupled hydrological-thermal-geophysical model that generates the subsurface state variables (i.e., ice/liquid water content and temperature), and then uses these variables to infer the apparent resistivity using a set of petrophysical formulas and a forward electrical resistivity model (Figure 1a); 2) A combined deterministic-stochastic optimization algorithm to estimate the *pdfs* of desired model parameters (\mathbb{p}), which include the soil OC content vertical profile (scenarios from 1 to 9), sand content vertical profile (scenarios 8-9) and petrophysical parameters (scenarios 8-9) (see Table 2) by minimizing the misfit between measured and simulated data. It is worth noting that the scheme is developed so that single (e.g., soil temperature or liquid water content or apparent resistivity) or multiple datasets can be used for inversion.

2.1. Hydrological-thermal model

In this study, we employed CLM4.5 model (hereafter referred to as ‘CLM’), which can effectively simulate different land surface energy balance and surface-subsurface hydrological-thermal processes (Oleson et al., 2013). CLM represents horizontal heterogeneity using multiple parallel soil/snow columns having different land use and plant function types. The lateral flow between the soil columns is not accounted for in CLM. The model simulates the freeze-thaw dynamics by considering two phases of water: liquid and ice. The rate of phase change depends on the energy excess (for the ice to liquid transition) or deficit (for the liquid to ice transition) from the soil temperature to the freezing temperature. Given CLM’s ability to simulate different hydrological-thermal processes in cold regions, we found it suitable for Arctic soil column simulations. The minimum requirements for the top boundary conditions in CLM include precipitation, incident solar, air temperature and wind speed. The land use and plant type information can be provided by users or extracted from the available model database.

CLM assumes that soil is a mixture of three soil types, namely, OC, sand and clay. It calculates the soil hydrological-thermal parameters based on the content (fraction) of these soil types and their corresponding hydrological-thermal properties (see Appendix A for more detailed information on these relationships). In CLM, the soil OC content (%OC) is defined as $\%OC = \rho_{oc} / \rho_{oc}^{max}$ in which ρ_{oc} is the soil OC density (kg/m^3) and ρ_{oc}^{max} is the maximum soil OC density ($\rho_{oc}^{max} = 130 \text{ kg/m}^3$), which is the standard bulk density of peat (Oleson et al., 2013). The mineral

content is determined as $\%Mineral = 100 - \%OC$. CLM further assumes that mineral includes only sand and clay. As a result, in the inversion scheme, we only need to estimate the soil OC content and sand content in mineral (hereafter referred to as the sand content). The clay content is obtained by subtracting the sand content from the mineral content.

5

For more detailed exploration of the vertical variability of subsurface properties and associated hydrological-thermal dynamics, we increased the default number of soil layers in the CLM from 15 to 32 layers, and defined the depth of layer i^{th} (z_i) as:

$$z_i = 0.025(e^{0.17(i-0.2)} - 1). \quad (1)$$

10 Of these 32 layers, CLM assumes that the 5 bottom layers are bedrock layers. Hydrological dynamics is simulated only in the top 27 soil layers, while thermal dynamics is simulated in all 32 layers. Equation 1 was used to ensure that the layer thicknesses near soil surface are thinner than those near the bottom (as shown in Figure 3) in order to capture the important hydrological and thermal dynamics in the topsoil active layers.

15

Moreover, in order to explore how the soil porosity influences the estimation of soil OC and sand content, we modified the CLM to consider two cases 1) the soil porosity profile was fixed and independent from the soil OC and sand content (see scenarios from 1 to 8 in Table 1), and 2) the soil porosity was calculated from the OC and sand content as default in the CLM (see scenario 9 in Table 1) as below (Lawrence and Slater, 2008):

20

$$\Phi = \frac{(100 - \%OC)\Phi_{min} + \%OC\Phi_{OC}}{100}, \quad (2)$$

in which Φ is the soil porosity; Φ_{min} and Φ_{OC} are, the porosity of mineral and OC, respectively. In the CLM, the OC porosity is given as $\Phi_{OC} = 0.9$ and the mineral porosity is calculated from sand fraction as

25

$$\Phi_{min} = 0.489 - 0.00126(\%sand), \quad (3)$$

The dependencies of soil thermal conductivity, heat capacity and thermal diffusivity on liquid water saturation, OC and sand content are shown in Figure 2. This figure was obtained from calculations using equations in Appendix A in which the soil porosity was considered in two cases: 1) fixing at 0.7 (Figures a, b, c), and 2) calculating from the OC and sand content (Figures

30

d, e, f). The figure shows that the variation of soil thermal properties with respect to the OC content, sand content and liquid water saturation is similar for both cases. When the OC fraction increases from 0 to 100%, the soil thermal conductivity decreases and the soil heat capacity slightly increases. By contrast, higher sand fraction leads to higher thermal conductivity and slightly lower heat capacity. These relationships are expected, given that OC has a considerably smaller thermal conductivity and a slightly higher heat capacity compared to sand. The figure also shows that both soil thermal conductivity and heat capacity significantly increase with increasing liquid water saturation. This is also reasonable, as the thermal conductivity and heat capacity of liquid water are much higher than that of air. The thermal diffusivity is defined as the ratio between the thermal conductivity and heat capacity. The figure indicates that the diffusivity increases when the OC decreases and sand content increases.

Comparing the two cases shows that when the soil porosity depends on OC and sand content, the soil thermal properties change in larger ranges with the variation of OC content, sand content and liquid water saturation. It is because while the soil porosity is fixed at 0.7 in the first case (Figure a, b, c), it varies from 0.36 (when soil is 100% sand) to 0.9 (when soil is 100% OC) in the second case (Figure d, e, f). Because soil thermal properties strongly depends on soil porosity (see Equations A2 and A8 in Appendix A), together with the OC and sand content, the variation of porosity in the second case leads to rapid change of the soil thermal properties, and therefore, the subsurface hydrological-thermal dynamics.

2.2. Petrophysical and geophysical transformation

In our inverse scheme, we link the output of the hydrological-thermal simulation described above (soil ice/liquid water saturation and temperature) to soil electrical conductivity using the Archie's law (Archie, 1942):

$$\sigma = \phi^m (S_w^n \sigma_w + (\phi^{-m} - 1) \sigma_s), \quad (4)$$

in which ϕ is the porosity; S_w is the liquid water saturation in the pore space; m and n are the cementation and saturation indexes, respectively, and σ_s is the soil electrical conduction, which was fixed at $\sigma_s=0.005$ S/m in this study (Table 1). It is worth noting that the reduction of porosity due to ice content in this study was not considered. How ice content influences the Archie's equation will be considered in the future research.

The water electrical conductivity (σ_w) is calculated from the concentration of all ions in water as (Minsley et al., 2015):

$$\sigma_w = \sum_{i=1}^{i=n_{ion}} F_c \beta_i |z_i| C_i, \quad (5)$$

5 in which β_i , and z_i are the ionic mobility and valence of the i^{th} ion, respectively. Similar to Minsley et al. (2015), we assumed that Na^+ and Cl^- are two main ions in this synthetic study. F_c is Faraday's constant. C_i is the concentration of the i^{th} ion, which depends on the ice/liquid water fraction as:

$$C_i = C_{i(S_{fi}=0)} S_{fw}^{-\alpha}, \quad (6)$$

10 in which S_{fi} and S_{fw} are, respectively, the fraction of ice and liquid in ice-liquid water ($S_{fi}+S_{fw}=1$); α varies from 0 to 1 which is the coefficient accounting for the reduction of soil water salinity when liquid water saturation decreases. A larger α implies a larger increasing rate of ion concentration with decreasing liquid water fraction. The concentrations of ions in the ice-free water ($C_{i(S_{fi}=0)}$) can be obtained from samples in the summer season. The values of m , n , σ_s , ϕ ,
15 F_c , β_i , C_i and α used in this synthetic study are presented in Table 1. Except for m , n and σ_s , the other parameters were taken from Minsley et al. (2015). Of these parameters, α and m are two most important parameters that control the relationship between geophysical and hydrological-thermal variables. We estimated them by inverting soil moisture, temperature and geophysical data in scenarios 8 and 9 (see Table 2).

20

The effect of soil temperature (T) on the soil electrical conductivity is formulated as (Hayley et al., 2007):

$$\sigma_T = \sigma(0.018 * (T - 25) + 1). \quad (7)$$

The linkage between soil electrical conductivity and the apparent resistivity is established by the
25 electrical forward model. In this study, we used the forward model of the Boundless Electrical Resistivity Tomography (BERT) package, developed by Rücker et al. (2006), which numerically solves Poisson's equation using the finite element method in a three-dimensional arbitrary topography. For more detailed information on this model, we refer to Rücker et al. (2006).

30 2.3. Stochastic and deterministic parameter estimation

In this section, we present a combination approach of deterministic and stochastic optimization algorithms to estimate the model parameters \mathbb{p} and their uncertainties. The stochastic optimization algorithm relies on the Bayesian inference and DRAM MCMC technique. The deterministic optimization algorithm was used to approximate the initial set of model parameters and initial covariance matrix of the proposal distribution for stochastic optimization. Consequently, the estimated parameters are more rapidly obtained than only using a single stochastic algorithm with arbitrary initial parameters. Moreover, the use of DRAM stochastic optimization algorithm allows us to sequentially update the proposal covariance matrix and perform multiple tries to improve the acceptance rate. This algorithm has been proved to be more efficient than the commonly-used MCMC Metropolis-Hasting method.

2.3.1. Bayesian inference

In the stochastic parameter estimation, the objective is to find the posterior probability distribution $P(\mathbb{p}|Y)$ of parameters \mathbb{p} conditioned on the measurements Y from which we can extract the best-estimated parameters and their uncertainties. Based on Bayesian rule, this posterior distribution is formulated as follows:

$$p(\mathbb{p}|Y) \propto p(\mathbb{p})p(Y|\mathbb{p}), \quad (8)$$

in which $p(\mathbb{p})$ is priori parameter distribution of parameter \mathbb{p} and $p(Y|\mathbb{p})$ is the likelihood function. Assuming that the error residuals are uncorrelated, the likelihood function can be written as:

$$p(Y|\mathbb{p}) = \prod_{i=1}^n f_{y_i}(y_i|\mathbb{p}), \quad (9)$$

where $f_{y_i}(y_i|\mathbb{p})$ denotes the probability density function (*pdf*) of measurement y_i at time t_i given the model parameters \mathbb{p} . If we further assume the error residuals (difference between modeling and measurement) to be normally distributed, then $f_{y_i}(y_i|\mathbb{p})$ can be written as:

$$f_{y_i}(y_i|\mathbb{p}) = \frac{1}{\sqrt{2\pi}\sigma_i^2} \exp \left[-\frac{1}{2} \left(\frac{\hat{y}_i - y_i(\mathbb{p})}{\sigma_i^2} \right)^2 \right], \quad (10)$$

and Equation 9 becomes:

$$p(Y|\mathbb{p}) \propto p(\mathbb{p}) \left(\frac{1}{\sqrt{2\pi}} \right)^n \prod_{i=1}^n \frac{1}{\sigma_i^2} \exp \left[-\frac{1}{2} \left(\frac{\hat{y}_i - y_i(\mathbb{p})}{\sigma_i^2} \right)^2 \right], \quad (11)$$

in which $y_i(\mathbb{p})$ is the model response at time t_i ; σ_i^2 is the variance of measurement error at time t_i . Intuitively, σ_i^2 works as an inverse weighted factor of contribution of measurement \hat{y}_i to the posterior distribution $p(Y|\mathbb{p})$. A measurement with a higher variance of measurement error has a smaller contribution to construct the parameter posterior distribution. In addition, for joint inversion, σ_i^2 helps to removes the influence of measurement units of different data types.

2.3.2. Delayed rejection adaptive Metropolis (DRAM) Markov Chain Monte Carlo method

Once posterior density distribution $p(\mathbb{p}|Y)$ of the model parameters is defined, we need to determine its statistical properties (e.g., mean, covariance). However, due to the nonlinearity of the dynamic model, it is usually difficult to analytically obtain these properties. In that respect, the Monte Carlo methods can be used to generate samples from this posterior distribution and then calculate these properties. We employed the DRAM method that was improved from the Metropolis-Hasting MCMC method for this purpose. Basically, this method is a combination of the adaptive Metropolis and delayed rejection algorithm and briefly presented as follows:

Metropolis-Hasting: Given the current parameter set \mathbb{p}_k at iteration k^{th} , the candidate for the next move (\mathbb{p}'_{k+1}) from the current value is generated from a proposal distribution $q_1(\mathbb{p}_k, \mathbb{p}'_{k+1})$. The acceptance ratio is calculated as below:

$$\alpha_1(\mathbb{p}'_{k+1}, \mathbb{p}_k) = \min \left(1, \frac{\pi(\mathbb{p}'_{k+1})q_1(\mathbb{p}'_{k+1}, \mathbb{p}_k)}{\pi(\mathbb{p}_k)q_1(\mathbb{p}_k, \mathbb{p}'_{k+1})} \right), \quad (12)$$

where $\pi(\mathbb{p})$ is the target distribution needed to approximate ($p(\mathbb{p}|Y)$). The next sample moves to the candidate \mathbb{p}'_{k+1} , $\mathbb{p}_{k+1} = \mathbb{p}'_{k+1}$ if $\alpha > u$ with u as a random variable generated from uniform distribution $U(0,1)$. Otherwise, the candidate is rejected and the next sample stays at the current location, $\mathbb{p}_{k+1} = \mathbb{p}_k$.

Delayed rejection: In delayed rejection, once the candidate is rejected, instead of staying at the current sample, a second (\mathbb{p}''_{k+1}) try is proposed. The acceptance ratio for this try is:

$$\alpha_2(\mathbb{p}''_{k+1}, \mathbb{p}'_{k+1}, \mathbb{p}_k) = \min \left(1, \frac{\pi(\mathbb{p}'_{k+1})q_1(\mathbb{p}'_{k+1}, \mathbb{p}_k)q_2(\mathbb{p}'_{k+1}, \mathbb{p}'_{k+1}, \mathbb{p}_k)(1-\alpha_1(\mathbb{p}'_{k+1}, \mathbb{p}_k))}{\pi(\mathbb{p}_k)q_1(\mathbb{p}_k, \mathbb{p}'_{k+1})q_2(\mathbb{p}_k, \mathbb{p}'_{k+1}, \mathbb{p}'_{k+1})(1-\alpha_1(\mathbb{p}_k, \mathbb{p}'_{k+1}))} \right), \quad (13)$$

If the second try is rejected, the third try can be generated and so on. The number of tries is

specified by users.

Adaptation: One of the key limitations of the MCMC technique is the selection of the proposal distribution model. In adaptive Metropolis, the proposal distribution is assumed to be Gaussian centered at the current sample $N(\mathbb{p}_k, C_k)$ with the covariance matrix C_k adapted from the previous samples as:

$$C_k = s_d \text{cov}(\mathbb{p}_0, \dots, \mathbb{p}_k) + s_d \varepsilon I_d. \quad (14)$$

In Equation 14, s_d is the scaling parameter that depends on the length (d) of the estimated parameter vector \mathbb{p} , which is set to $s_d = 2.4^2/d$; $\varepsilon > 0$ is a very small constant to inhibit C_k from becoming singular; and I_d signifies the d -dimensional identity matrix.

The assessment of convergence of the MCMC chain is analyzed by Geweke's criterion, which compares the means and variances of the beginning and end segments of the chain as below:

$$G_i = \frac{\overline{\mathbb{p}_{i,a}} - \overline{\mathbb{p}_{i,b}}}{\sqrt{\frac{s_{i,a}^2}{n_a} + \frac{s_{i,b}^2}{n_b}}}, \quad (15)$$

where a denotes the beginning interval, which was selected as the first 10% of the chain, and where b denotes the end interval, which was selected as the last 50% of the chain. $\overline{\mathbb{p}_{i,a}}$, $\overline{\mathbb{p}_{i,b}}$ are, respectively, the mean of parameters i^{th} of segments a and b ; n_a , n_b are the number of samples in a and b segments; and $s_{i,a}$ and $s_{i,b}$ are their corresponding consistent spectral density estimates at zero frequency. The chain is considered to be converged if the G_i score is within the 95% interval of the standard Gaussian distribution ($-1.96 \leq z_i \leq 1.96$).

2.3.3. Deterministic optimization for approximating starting parameters and proposal distribution

The speed of convergence of the MCMC optimization algorithm strongly depends on the initial model parameter \mathbb{p}_0 and initial proposal distribution q_1 . In order to reduce the number of iterations needed to obtain the posterior distribution of model parameters, we used the local optimization Nelder-Mead Simplex Method to approximate the starting model parameter and initial covariance matrix of the proposal distribution. The starting point of the DRAM is the best-estimated set of model parameters obtained by the Nelder-Mead method. The covariance matrix of the proposal

distribution is assumed to be similar to that of the model parameters, which are locally calculated at the optimal solution obtained by the Nelder-Mead method as below:

$$\mathbf{C}_q^0 = \frac{1}{n-m} (\mathbf{J}' \mathbf{J})^{-1} \sum_{i=1}^n \left(\frac{\hat{y}_i - y_i(\mathbb{P})}{\sigma_i^2} \right)^2, \quad (16)$$

in which \mathbf{C}_q^0 denotes the initial covariance matrix of the proposal distribution q_1 and \mathbf{J} is the Jacobian matrix, which is defined as below:

$$\mathbf{J} = \begin{bmatrix} \frac{\partial y_1(\mathbb{P})}{\partial \mathbb{P}_1} & \dots & \frac{\partial y_1(\mathbb{P})}{\partial \mathbb{P}_m} \\ \vdots & \ddots & \vdots \\ \frac{\partial y_n(\mathbb{P})}{\partial \mathbb{P}_1} & \dots & \frac{\partial y_n(\mathbb{P})}{\partial \mathbb{P}_m} \end{bmatrix}. \quad (17)$$

The partial derivatives $\frac{\partial y_i(\mathbb{P})}{\partial \mathbb{P}_j}$ ($i=1, 2, \dots, m; j=1, 2, \dots, n$) are calculated at the optimal solution of the Nelder-Mead Simplex Method. Because these derivatives cannot be solved using analytical methods, we approximated them using:

$$\frac{\partial y_i(\mathbb{P})}{\partial \mathbb{P}_j} \approx \frac{y_i(\mathbb{P}_1, \dots, \mathbb{P}_j + \Delta \mathbb{P}_j, \dots, \mathbb{P}_m) - y_i(\mathbb{P}_1, \dots, \mathbb{P}_j, \dots, \mathbb{P}_m)}{\Delta \mathbb{P}_j}, \quad (18)$$

in which $\Delta \mathbb{P}_j$ was set at 5% of the parameter \mathbb{P}_j .

3. Results and discussion

3.1. Synthetic soil column description and boundary conditions

To test the value of the developed joint inversion approach under a range of conditions and assumptions, we performed several synthetic case studies using the numerical soil column illustrated in Figure 3. The synthetic column was developed to mimic typical soil and petrophysical properties associated with a high-centered polygon at an intensive study transect (NGEE-Artic, Barrow, Alaska) (Figure 4). The transect is 35 m in length and covers three typical topography types in Barrow, namely, high-centered (HCP), flat-centered (FCP) and low-centered polygon (LCP). The thawing occurs during the growing season that lasts from the beginning of June to the end of September. In the growing season while the LCP is fully saturated, the HCP is relatively dry and unsaturated. The bottom of the thaw layer at the end of the growing season is located at about 0.3 and 0.5 m depth at the center of HCP and LCP, respectively. ERT measurements were performed along the transect daily using Wenner-Schlumberger configuration with an electrode spacing of 0.5 m. Other measurements and conditions useful for our synthetic studies, including soil temperature, soil moisture, thaw depth, snow dynamics, and climate conditions were also measured (Dafflon et al., 2017). These data have been used here to develop conceptual models and synthetic columns, while they will be used for real application of the joint inversion scheme in a subsequent study.

Soil properties and petrophysical information used for the synthetic studies are provided in Table 1. The “true” soil properties are based on the core sample analysis at the Barrow, AK site (Dafflon, personal communication) and the “true” petrophysical parameters were obtained from Minsley et al. (2015). It is worth noting that soil is represented in the CLM as a mixture of OC, sand and clay. As such, in order to estimate the soil mixture, it was sufficient for us to consider OC and sand content (in sand-clay mineral mixture) only.

We assumed that the vertical profiles of soil properties (porosity, OC and sand content) were constructed by interpolating their corresponding values at 4 depths $z_k=0.15, 0.3, 0.6$ and 1 m as below:

$$f_z = \begin{cases} f_1 & \text{if } z \leq z_1 \\ f_{k-1} + \frac{z-z_{k-1}}{z_k-z_{k-1}}(f_k - f_{k-1}) & \text{if } z_{k-1} \leq z \leq z_k \ (k = 2,3,4) \\ f_4 & \text{if } z \geq z_4 \end{cases} \quad (19)$$

where f_z are the soil properties at depth z and f_k are the soil properties at the corresponding depth $z_k=0.15, 0.3, 0.6$ and 1 m. These depths were chosen to represent the vertical variations of OC

content and soil porosity in the core samples collected at the NGEE-Arctic Barrow Alaska site.

We synthetically explored 9 scenarios using the newly developed inversion procedure (Table 2). The purposes of these scenarios are as follows:

- 5 1. *Scenarios 1 and 2*: Evaluate the effect of measurement errors on uncertainties of soil OC estimates (using electrical resistivity data as an example).
2. *Scenarios 2, 3, 4, 5, 6 and 7*: Investigate the improvement in OC estimation gained by joint inversion of multiple hydrological, thermal and geophysical datasets compared with inversion of each single dataset.
- 10 3. *Scenarios 7 and 8*: Study how the parameter estimates and their associated uncertainties change if, in addition to OC content, sand content and petrophysical parameters are unknown.
4. *Scenario 8 and 9*: Explore the effect of soil porosity on the parameter estimation by comparing two cases: 1) Soil porosity profile is fixed and independent from the soil OC and sand content and 2) soil porosity is defined as a function of OC and sand content.
- 15 5. *Scenario 8*: Analyze the uncertainties, non-uniqueness, correlation and convergence of the inverse problem as well as evaluate the impact of parameter uncertainty on prediction of hydrological-thermal dynamics.

- 20 For all scenarios, we used daily time step meteorological forcing data (including air temperature, wind speed, short-wave and long-wave radiation and precipitation) collected at the Barrow site over a year period from 01/01/2013 to 31/12/2013, which includes a time period over which some of the soil and electrical datasets were also collected at the NGEE-Arctic site. The plant functional type information was obtained from the CLM database for the Arctic region. The general approach
- 25 that we followed to perform all synthetic scenarios is presented in Figure 5.

In order to account for the measurement errors, we assumed that the error distribution was Gaussian, and added error to synthetic data to obtain “noisy” synthetic data (hereafter referred to as observation data) (Table 2). We set the standard deviation of ERT measurement error to 2% of synthetic data for scenario 1 (low measurement error) and to 5% for the other scenarios. We used a standard deviation of measurement errors of 0.5°C for soil temperature and 0.08 for soil liquid water content. The standard deviation of liquid water content was set to be relatively high because

we observed that the associated error measurements for this variable at Barrow were quite high. The standard deviation of temperature measurement was set higher than what is generally expected for such measurements while it also includes some error associated with relating measurements to precise depths. Observation data for inversion includes: 1) apparent resistivity data at 7 most important time points during the year, which includes events such as thawing (day 163), summer growing season (days 185, 199 and 234), freeze-up (day 266) and frozen winter (days 292 and 312); 2) Soil temperature data at $z=0.004, 0.16, 0.8, 1$ and 2.4 m from day 49 to 365, which are most varying; 3) Liquid water content at depths $0.004, 0.05, 0.11, 0.2$ m during the summer growing season (days 159 to 259). Liquid water in winter season was not considered because it approximately equals to zero, and therefore, does not contain any information for inversion. Meanwhile, soil temperature in winter season still exhibits a large spatiotemporal variation so we used the temperature data both in winter and summer season for inversion.

For inversion, ranges were provided for unknown soil and petrophysical parameters based on Hubbard et al. (2013) and Dafflon et al. (2017) (Table 2). To minimize non-uniqueness in the inversion procedure, we ignored the small OC content at 1 m and the small sand content at 0.1 m. For scenarios from 1 to 7, we estimated OC content at $z=0.1, 0.3$ and 0.6 m (3 parameters). For scenarios 8 and 9, we estimated OC content at $z=0.1, 0.3, 0.6$ m, sand content at $z=0.3, 0.6$ and 1 m and petrophysical parameters m and α (8 parameters). We assumed that there is no prior information on the estimated parameters. As a result, the prior distributions of OC and sand content were uniformly distributed within their parameter ranges.

3.2. Simulation results

In order to estimate the posterior *pdf* of OC and sand content as well as petrophysical parameters, we generate 8000 samples for scenarios from 1 to 7 and 15000 samples for scenarios 8 and 9. The number of samples in scenarios 8 and 9 is larger because there is more number of estimated parameters in these scenarios. We selected the last 5000 samples having a Geweke's score less than 0.4 to construct the *pdfs* of these parameters. Their best estimates and associated uncertainties are, respectively, represented by the means and standard deviations of the samples and summarized in Table 2. Discussion and comparison of the scenarios are presented below.

3.2.1. Effect of measurement error on parameter uncertainty

The influence of measurement error on the parameter uncertainties was considered by comparing scenario 1 and 2 using apparent resistivity as an example. Scenario 1 assumed that the standard deviation of measurement error is 2% of synthetic apparent resistivity data (small measurement error), while this value for scenario 2 is 5% (large measurement error). For these two scenarios, we estimated the OC content at $z=0.1, 0.3$ and 0.6 m. Figure 6 shows the probability functions of the OC at these depths. The figures indicate that the uncertainties of the estimated OC content at $z=0.1$ and 0.3 m are considerably higher when the measurement error is larger. As shown in Table 2, when the measurement error of apparent resistivity increases from 2% to 5%, the standard deviation of the posterior OC samples increases three times from 0.2 to 0.6 at $z=0.1$ m and more than two times from 2.6 to 5.5 at $z=0.2$ m. At $z=0.6$ m, the OC content cannot be reliably obtained by both scenarios.

In order to investigate the non-uniqueness problem and the correlation between parameters, we estimated the misfit (sum of square of absolute differences) between the synthetic and sampled apparent resistivity data as a function of the OC content at $z=0.1, 0.3$ and 0.6 m for scenario 2 (Figure 7). While the OC at $z=0.1$ m is well identified, the misfit negligibly changes when the OC content at $z=0.6$ m varies from 20 to 50%. This indicates that the apparent resistivity data is insensitive to OC content at $z=0.6$ m. This is reasonable, because this depth is within the permafrost (see Figure 13), where temperature insignificantly changes over time. Results could be different if the permafrost was deeper. Indeed, OC content at depths inside the active layer where a freeze-thaw process occurs are expected to be better resolved because of the stronger temporal changes in properties used in the inversion. Figure 7 also shows that there is a negative correlation between the OC content at $z=0.3$ and 0.6 m, which increases the uncertainties of OC estimates at both depths.

3.2.2. Influence of joint inversion of multiple data on parameter uncertainty

The effectiveness of the joint inversion of multiple datasets on the OC content estimation (at $z=0.1, 0.3$ and 0.6 m) was investigated by comparing results obtained from 6 scenarios that used 1) single apparent resistivity (scenario 2); 2) single temperature (scenario 3); 3) single liquid water content (scenario 4); 4) temperature and apparent resistivity data (scenario 5); 5) liquid water content and apparent resistivity (scenario 6); and 6) liquid water content, temperature and apparent resistivity data (scenario 7). Joint inversion of apparent resistivity with either temperature and/or

liquid water content data significantly reduces the uncertainties of OC content at $z=0.1$ and 0.3 m (Figure 8). For example, compared to using single temperature dataset, the uncertainty of OC content (the standard deviation of final Markov chain of OC content) reduces from 0.4 to 0.2 at $z=0.1$ m, and from 4.6 to 1.9 at $z=0.3$ m when jointly using temperature, liquid water content and apparent resistivity datasets. Finally, we found that even when all “observation” data are used, there is no improvement in the OC content estimate at $z=0.6$ m. These synthetic experiments suggest that given this depth is located within the permafrost (see Figure 13), the apparent resistivity, liquid water content and temperature data are insensitive to OC content. This is because within the permafrost, the soil temperature and ice/liquid water content exhibit much smaller variations than in active layer, in both time and space.

3.2.3. Effect of mineral content and petrophysical parameters

In scenario 8, in addition to the OC content, we assumed that the sand content and petrophysical parameters m and α are unknown and estimated these parameters using the apparent resistivity, temperature and liquid water content data. Similar to the previous scenarios, the OC content at $z=0.1$ and 0.3 m were obtained with small uncertainties ($\sigma_{OC}(z=0.1 \text{ m})=0.3$, $\sigma_{OC}(z=0.3 \text{ m})=2$) (Figure 9). The sand content at $z=0.3$ and 1 m were also well estimated with uncertainties of 2.4 and 2, respectively. It is worth noting that regardless of deep location, the sand content at 1 m is relatively well determined because at this depth the sand-clay mineral (92%) dominates the OC content (8%), and therefore, the hydrological-thermal data are relatively sensitive to this parameter. By contrast, the OC and sand content at $z=0.6$ m are unidentifiable with uncertainties up to 6.5 and 8.2, respectively. Finally, both of the petrophysical parameters m and α are well estimated while parameter α has lower uncertainty. This implies that α is more sensitive to the apparent resistivity than to m .

The pairwise relationships between estimated parameters (Figure 10) indicate that the OC content at 0.1 m and petrophysical parameter α are the most reliably-estimated parameters, followed by the OC content at $z=0.3$ m, sand content at $z=0.3$ and 1 m, and cementation index m . As for the correlation between parameters, the figure reveals that there is a strong positive correlation between the sand and OC content at $z=0.6$ m with a correlation coefficient of 0.86. This correlation and the insensitivity of the observations with their variations are two main reasons for the non-uniqueness of these two parameters. The pairs of m - α and the $OC_{z=0.1 \text{ m}}$ - $Sand_{z=0.3 \text{ m}}$ are

also highly correlated, with correlation coefficients of 0.84 and 0.70, respectively.

3.2.4. Effect of porosity dependence on OC and mineral content

5 In this section, we evaluate how the parameter uncertainties change when the porosity is determined as a function of the OC and mineral content by comparing scenarios 8 and 9. While the soil porosity in scenario 8 was fixed and independent from the OC and sand content, it was calculated from the OC and sand content in scenario 9 as shown in Equations 2 and 3.

10 Compared to scenario 8, all uncertainties of sand and OC content in scenario 9 are smaller (Figure 11). Especially, the uncertainties of these parameters at $z=0.6$ m significantly decrease from 6.5 to 3.8 (for OC content) and from 8.2 to 1.8 (for sand content). This can be explained by the fact that, in addition to thermal parameters (thermal conductivity and heat capacity), the OC and sand content in scenario 9 controls the soil porosity, which also influences the subsurface hydrological-thermal dynamics (see Figure 2). As a result, the temperature, liquid water and apparent resistivity data in this scenario are more sensitive to variations of OC and sand content than those in scenario 15 8. Consequently, these parameters are more identifiable. By contrast, the uncertainty of petrophysical parameters α and m considerably increases from 0.002 to 0.022 (for α) and from 0.042 to 0.066 (for m). This is because while it was fixed in scenario 8, the soil porosity depends on the OC and sand content in scenario 9. Therefore, the soil porosity in scenario 9 is also 20 uncertain due to the uncertainties of the OC and sand content. Because the soil porosity, α and m are closely correlated (see Equation 4), the uncertainty of soil porosity causes higher uncertainties of α and m .

25 3.2.5. Uncertainty propagation from parameters to the hydrological-thermal and thaw layer thickness prediction

In this section, we evaluate the impact of parameter uncertainties on the prediction of hydrological-thermal dynamics. Posterior samples of the OC, sand content and petrophysical parameters m and α of scenario 8 were used for this analysis. The synthetic and estimated the soil temperature at $z=0.004, 0.16, 0.99$ m and the liquid water content at $z=0.004, 0.05$ and 0.11 m are 30 compared (Figure 12). The uncertainties of these predictions are represented by grey color regions with a confidence interval of 95%. The figure indicates that the synthetic and estimated soil

temperature and liquid water content agree well with each other. However, the uncertainty of the soil temperature prediction is much smaller than that of the liquid water content prediction. The average confidence intervals over the simulation period of the soil temperature prediction at $z=0.004, 0.16, 0.99$ m are 2.3, 2.3 and 1.7% of the “observation” respectively, while these values for the soil liquid water content prediction at $z=0.004, 0.05$ and 0.11 m are 28.7, 16.1 and 12.9%, respectively. These differences can be explained by the high sensitivity to the OC and sand content and the larger measurement errors of liquid water content compared to soil temperature.

The synthetic and estimated thaw depth using results obtained from scenario 8 (Figure 13) show that soil water thaws around middle of June and freezes again around the middle of September. The thaw depth varies from 0.2 m to 0.42 m. These results are compatible with our field survey data in Barrow (Dafflon et al., 2017), indicating that although this is a synthetic study, its simulation is relatively compatible with the Arctic tundra field measurements. As for the influence of parameter uncertainties on the thaw depth estimation, we observed that the parameter uncertainties only cause thaw depth variations during warmest period of the year (beginning of August to middle of September). During other times of the year, the thaw depths corresponding to different sets of parameters are quite similar.

The comparison between synthetic and predicted apparent resistivity data (Figure 14) shows that there is a very good agreement between them with no bias, which implies that our inversion scheme converges to the lowest misfit region. The confidence ranges corresponding to a level of 95% vary from 1.4 to 9.4% of the “observation” resistivity, which is suitable with the relative measurement error of 5%.

4. Summary and Conclusions

In this study, we developed and tested a surface-subsurface coupled hydrogeophysical inversion approach to estimate OC content and its influence on hydrological-thermal behavior under Arctic freeze-thaw conditions. In our inversion scheme, the CLM model serves as a forward model to simulate the land-surface energy balance and surface-subsurface hydrological-thermal processes. The new scheme can jointly use different types of data for the inversion, including electrical resistivity data. The dependence of soil electrical resistivity on temperature and ice/liquid water content are explicitly accounted for within the inversion.

We developed an advanced optimization technique that combines the deterministic and stochastic optimization algorithms to obtain soil and petrophysical parameters and their associated uncertainties. The stochastic optimization estimated the posterior distribution of model parameters by using the Bayesian inference and adaptive MCMC algorithm-DRAM. Meanwhile, the deterministic optimization algorithm was used to approximate the starting set of model parameters and the initial covariance matrix of the proposal distribution for the stochastic optimization, which helps to more quickly converge to the parameter posterior distribution.

We tested the inversion scheme using multiple synthetic experiments in a 1-D soil column representative of the Arctic tundra, where surface–subsurface hydrological and thermal regimes co-interact and are influenced by soil OC and mineral content. The obtained results show that the new inversion approach well reproduced the synthetic data in all experiments. The shallow (upper 0.3 m) active layer OC and sand content and the petrophysical parameters can be reliably obtained using soil temperature, soil liquid/ice water content and ERT data. When the soil porosity is fixed, the uncertainties of OC and sand content are very high in the permafrost section (0.6 m), even when soil temperature, liquid water saturation and apparent resistivity data were jointly used in the estimation procedure. This suggests that when the porosity is fixed, the inversion approach is unable to significantly improve the estimation of OC within the permafrost, due to the small magnitude of temporal variation of both temperature and soil moisture in that section. However, if the soil porosity is considered as a function of OC and sand content, the permafrost parameters can be reliably obtained because the variation of porosity with OC and sand content increases the sensitivity to ice/liquid water and temperature. Examining the relationship between measurement errors and parameter uncertainties, we found that the uncertainties of estimated parameters increases with increasing measurement error. We also explored the improvement in parameter estimation when jointly using multiple data for the inversion. Compared to single dataset inversion (either temperature or soil moisture or electrical resistivity), joint inversion significantly reduces the uncertainties of estimated parameters, especially at 0.3 m depth. Finally, we quantified the influence of parameter uncertainties on the prediction of hydrological-thermal and thaw depth dynamics. The obtained results show that the soil liquid water content prediction is more uncertain than the soil temperature and apparent resistivity predictions, due to its large measurement error. The uncertainties in OC and sand content have an impact on the thaw depth estimation only during the warmest months of the year (August and September).

This study developed and tested a novel approach to estimate soil OC content using inverse modeling that can incorporate diverse hydrological, thermal and ERT datasets. In addition, the study also permitted exploration of surface-subsurface hydrological-thermal dynamics and spatiotemporal variations associated with free-thaw transitions. Given the importance of characterizing OC as part of ecosystem and climate studies, the typical challenges associated with collecting and analyzing ‘sufficient’ core data to characterize the vertical and horizontal variability of OC associated with a field study site, and the increasing use of electrical resistivity data to characterize vertical, horizontal and temporal variability in shallow systems, the new inversion approach offers significant potential for improved characterization of OC over field-relevant conditions and scales. It also offers significant potential for improving our understanding of hydrological-thermal behavior of naturally heterogeneous permafrost systems. The successful validation of this approach using 1-D synthetic studies provides a foundation for extending it to 2-D and applying it to real field data, which is currently underway.

In this study, we concentrated on the indirect impact of the OC content on water electrical resistivity via soil water and temperature. Recent studies indicated that the soil OC content largely influences ionic mobility, and therefore, changes the polarization and relaxation time of soil response to the applied current, which can be measured by spectral induced polarization (SIP) (e.g., Schwartz & Furman, 2015). As a result, our future study will explore the possibility to integrate SIP measurements into our coupled hydrological-thermal-geophysical inversion scheme. In that case, the OC content is linked to SIP measurements both by its hydrological-thermal and electrical polarization properties. Hauck et al. (2011) indicated that combination of ERT and seismic measurements can improve the estimation of ice and water liquid. We will integrate this approach into coupled hydrogeophysical inversion to better constrain the inversion and reduce the nonuniqueness of parameter estimation.

With advancements in data acquisition, the surface-subsurface hydrological-thermal dynamics now can be monitored in real-time with a high temporal resolution using multiple above- and below-ground measurements including geophysical techniques. Our next stage is to expand the inversion scheme so that it can assimilate these data into hydrological-thermal models to improve the model prediction in real-time.

Acknowledgments

The Next-Generation Ecosystem Experiments (NGEE Arctic) project is supported by the Office of Biological and Environmental Research in the DOE Office of Science. This NGEE-Arctic research is supported through contract number DE-AC02-05CH11231 to Lawrence Berkeley
5 National Laboratory. The authors would like to thank NGEE-Arctic PI Stan Wulfscheleger (ORNL) for support and Dr. Thomas Günther for providing the BERT codes.

References

1. Archie, G. E. (1942). The electrical resistivity log as an aid in determining some reservoir
10 characteristics, *Petroleum Transactions of AIME*, 146, 54–62.
2. Arcone, S. A., D. E. Lawson, A. J. Delaney, J. C. Strasser, and J. D. Strasser (1998), Ground-penetrating radar reflection profiling of groundwater and bedrock in an area of discontinuous permafrost, *Geophysics*, 63 (5), 1573-1584.
3. Busch, S., Weihermüller, L., Huisman, J. A., Steelman, C. M., Endres, A. L., Vereecken, H.,
15 & Kruk, J. (2013). Coupled hydrogeophysical inversion of time-lapse surface GPR data to estimate hydraulic properties of a layered subsurface. *Water Resources Research*, 49(12), 8480-8494.
4. Camporese, M., Cassiani, G., Deiana, R., Salandin, P., & Binley, A. (2015). Coupled and
20 uncoupled hydrogeophysical inversions using ensemble Kalman filter assimilation of ERT-monitored tracer test data. *Water Resources Research*, 51(5), 3277-3291.
5. Chen, A., A. D. Parsekian, K. Schaefer, E. Jafarov, S. Panda, L. Liu, T. Zhang, and H. Zebker (2016), Ground-penetrating radar-derived measurements of active-layer thickness on the landscape scale with sparse calibration at Toolik and Happy Valley, Alaska, *Geophysics*, 81 (2), H9-H19.
- 25 6. Dafflon, B., R. Oktem, J. Peterson, C. Ulrich, A.P. Tran, V. Romanovsky & S. Hubbard (2017). Coincident above- and below-ground autonomous monitoring strategy: Development and use to monitor Arctic ecosystem freeze-thaw dynamics. *Journal of Geophysical Research – Biogeosciences*, In press, doi: 10.1002/2016JG003724.
7. Farouki, O.T. 1981. The thermal properties of soils in cold regions. *Cold Regions Science and Technology* 5:67-75.
30
8. Jiang, Y., Zhuang, Q., & O'Donnell, J. A. (2012). Modeling thermal dynamics of active layer soils and near - surface permafrost using a fully coupled water and heat transport model. *Journal of Geophysical Research: Atmospheres*, 117(D11).

9. Haario, H., Laine, M., Mira, A., & Saksman, E. (2006). DRAM: efficient adaptive MCMC. *Statistics and Computing*, 16(4), 339-354.
10. Hauck, C., Böttcher, M., & Maurer, H. (2011). A new model for estimating subsurface ice content based on combined electrical and seismic data sets. *The Cryosphere*, 5(2), 453-468.
- 5 11. Hayley, K., L. R. Bentley, M. Gharibi, and M. Nightingale (2007). Low temperature dependence of electrical resistivity: Implications for near surface geophysical monitoring, *Geophysical Research Letters*, 34(18), L18,402, doi:10.1029/2007GL031124.
12. Herckenrath, D., Fiandaca, G., Auken, E., & Bauer-Gottwein, P. (2013). Sequential and joint hydrogeophysical inversion using a field-scale groundwater model with ERT and TDEM data. *Hydrology and Earth System Sciences*, 17(10), 4043-4060.
- 10 13. Hinkel, K., J. Doolittle, J. Bockheim, F. Nelson, R. Paetzold, J. Kimble, and R. Travis (2001), Detection of subsurface permafrost features with ground-penetrating radar, Barrow, Alaska, *Permafrost and Periglacial Processes*, 12 (2), 179-190.
14. Hinzman, L.D., Kane, D.L., Gieck, R.E. and Everett, K.R., 1991. Hydrologic and thermal properties of the active layer in the Alaskan Arctic. *Cold Regions Science and Technology*, 19(2), 95-110. doi:10.1016/0165-232X(91)90001-W
- 15 15. Hubbard, S.S., Gangodagamage, C., Dafflon, B., Wainwright, H., Peterson, J., Gusmeroli, A., Ulrich, C., Wu, Y., Wilson, C., Rowland, J. and Tweedie, C., 2013. Quantifying and relating land-surface and subsurface variability in permafrost environments using LiDAR and surface geophysical datasets. *Hydrogeology Journal*, 21(1), 149-169.
- 20 16. Huisman, J. A., Rings, J., Vrugt, J. A., Sorg, J., & Vereecken, H. (2010). Hydraulic properties of a model dike from coupled Bayesian and multi-criteria hydrogeophysical inversion. *Journal of Hydrology*, 380(1), 62-73.
- 25 17. Irving, J., & Singha, K. (2010). Stochastic inversion of tracer test and electrical geophysical data to estimate hydraulic conductivities. *Water Resources Research*, 46(11).
18. Jafarov, E. and K. Schaefer, 2016. The importance of a surface organic layer in simulating permafrost thermal and carbon dynamics. *The Cryosphere*, 10(1), pp.465-475.
19. Johnson, T. C., R. J. Versteeg, H. Huang, and P. S. Routh (2009), Data-domain correlation approach for joint hydrogeologic inversion of time-lapse hydrogeologic and geophysical data, *Geophysics*, 74 (6), F127-F140.
- 30 20. Kern, J. S. 1994. Spatial Patterns of Soil Organic Carbon in the Contiguous United States. *Soil Sci. Soc. Am. J.* 58:439-455.
21. Koven, C. D., B. Ringeval, P. Friedlingstein, P. Ciais, P. Cadule, D. Khvorostyanov, G. Krinner, and C. Tarnocai (2011), Permafrost carbon-climate feedbacks accelerate global

warming, Proceedings of the National Academy of Sciences, 108 (36), 14,769-14,774.

22. Kowalsky, M. B., E. Gasperikova, S. Finsterle, D. Watson, G. Baker, and S. S. Hubbard (2011), Coupled modeling of hydrogeochemical and electrical resistivity data for exploring the impact of recharge on subsurface contamination, *Water Resources Research*, 47 (2), W02,509, doi:10.1029/2009WR008947.
23. Lawrence, D. M., and A. G. Slater (2008), Incorporating organic soil into a global climate model, *Climate Dynamics*, 30 (2-3), 145-160.
24. Lewkowicz, A. G., B. Etzelmuller, and S. L. Smith (2011), Characteristics of discontinuous permafrost based on ground temperature measurements and electrical resistivity tomography, southern Yukon, Canada, *Permafrost and Periglacial Processes*, 22 (4), 320-342.
25. McClymont, A. F., M. Hayashi, L. R. Bentley, and B. S. Christensen (2013), Geophysical imaging and thermal modeling of subsurface morphology and thaw evolution of discontinuous permafrost, *Journal of Geophysical Research: Earth Surface*, 118 (3), 1826-1837.
26. Minsley, B., T. Wellman, M. Walvoord, and A. Revil (2015), Sensitivity of airborne geophysical data to sublacustrine and near-surface permafrost thaw, *The Cryosphere*, 9 (2), 781-794.
27. Nicolsky, D. J., V. E. Romanovsky, V. A. Alexeev, and D. M. Lawrence (2007), Improved modeling of permafrost dynamics in a GCM land-surface scheme, *Geophysical Research Letter*, 34, L08501, doi:10.1029/2007GL029525.
28. Oleson, K., et al. (2013), Technical description of version 4.5 of the Community Land Model (CLM), 420 pp., NCAR Technical Note NCAR/TN-503+STR, doi: 10.5065/D6RR1W7M.
29. Pollock, D., & Cirpka, O. A. (2012). Fully coupled hydrogeophysical inversion of a laboratory salt tracer experiment monitored by electrical resistivity tomography. *Water Resources Research*, 48(1).
30. Rücker, C., T. Günther, and K. Spitzer (2006), Three-dimensional modelling and inversion of DC resistivity data incorporating topography - I. modelling, *Geophysical Journal International*, 166 (2), 495-505, doi:10.1111/j.1365-246X.2006.03010.x.
31. Schaphoff, S., Heyder, U., Ostberg, S., Gerten, D., Heinke, J., & Lucht, W. (2013). Contribution of permafrost soils to the global carbon budget. *Environmental Research Letters*, 8(1), 014026.
32. Schuur, E., et al. (2015), Climate change and the permafrost carbon feedback, *Nature*, 520 (7546), 171-179.

33. Schwamborn, G. J., Dix, J. K., Bull, J. M., & Rachold, V. (2002). High - resolution seismic and ground penetrating radar–geophysical profiling of a thermokarst lake in the western Lena Delta, Northern Siberia. *Permafrost and Periglacial Processes*, 13(4), 259-269.
34. Schwartz, N., & Furman, A. (2015). On the spectral induced polarization signature of soil organic matter. *Geophysical Journal International*, 200(1), 589-595.
35. Tran, A. P., Dafflon, B., Hubbard, S. S., Kowalsky, M. B., Philip, L., Tokunaga, T. K., & Williams, K. H. (2016). Quantifying Shallow Subsurface Water and Heat Dynamics using Coupled Hydrological-Thermal-Geophysical Inversion, *Hydrology and Earth System Sciences*, 20, 3477-3491, 2016.
36. Wainwright, H.M., Dafflon, B., Smith, L.J., Hahn, M.S., Curtis, J.B., Wu, Y., Ulrich, C., Peterson, J.E., Torn, M.S. and Hubbard, S.S., 2015. Identifying multiscale zonation and assessing the relative importance of polygon geomorphology on carbon fluxes in an Arctic tundra ecosystem. *Journal of Geophysical Research: Biogeosciences*, 120(4), 788-808.
37. You, Y., Q. Yu, X. Pan, X. Wang, and L. Guo (2013), Application of electrical resistivity tomography in investigating depth of permafrost base and permafrost structure in tibetan plateau, *Cold Regions Science and Technology*, 87, 19-26, doi: 10.1016/j.coldregions.2012.11.004.

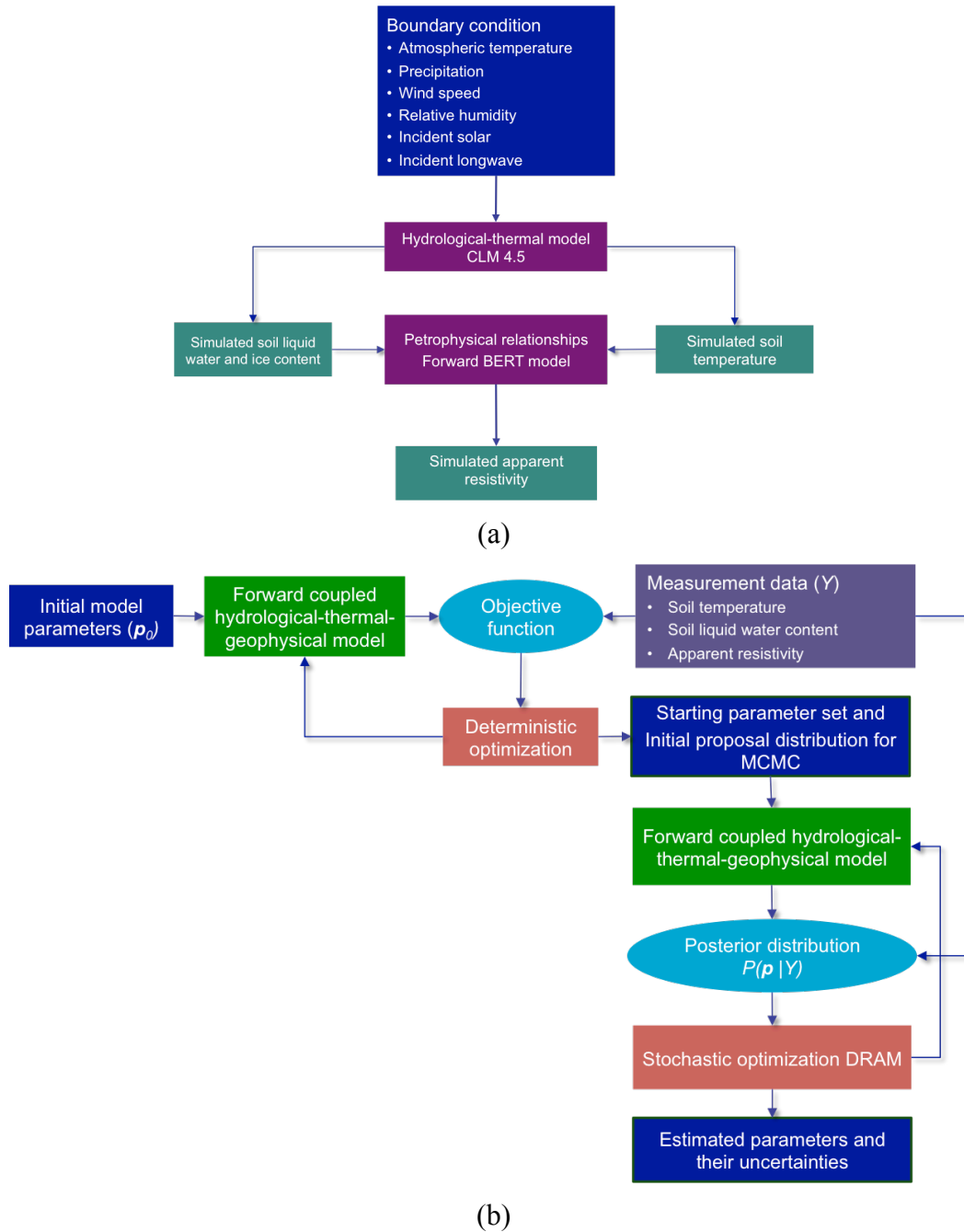
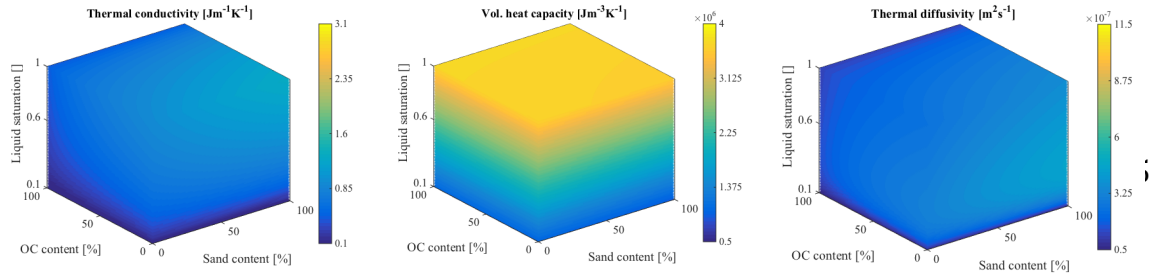
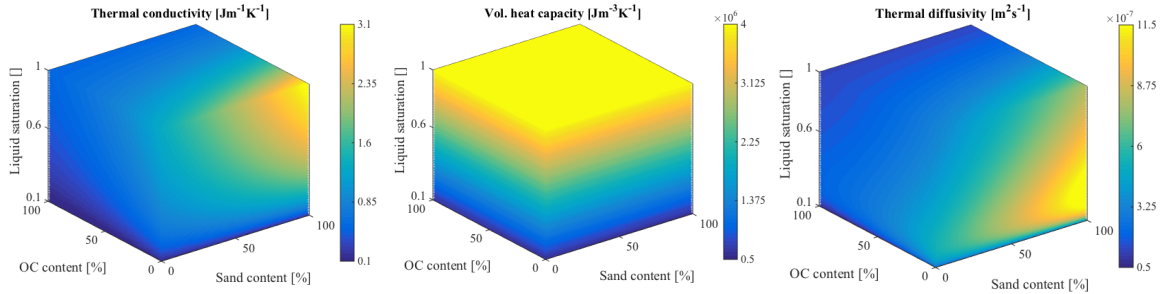


Figure 1: (a) Forward coupled hydrological-thermal-geophysical model that considers soil liquid/ice water content, temperature and apparent resistivity. (b) The two-stage inversion scheme combines deterministic and stochastic optimization algorithms to estimate the *pdfs* of desired model parameters (p), which include the OC content (scenarios from 1 to 9), sand content (scenarios 8-9) and petrophysical parameters (scenarios 8-9) (see Table 2). The scheme permits to flexibly use single or multiple types of data for inversion. The forward coupled hydrological-thermal-geophysical model (a) is iteratively executed in both deterministic and stochastic inversion stages.



(a) Thermal conductivity, porosity $\phi = 0.7$ (b) Volumetric heat capacity, porosity $\phi = 0.7$ (c) Thermal diffusivity, porosity $\phi = 0.7$



(d) Thermal conductivity, porosity is a function of OC and sand content (e) Volumetric heat capacity, porosity is a function of OC and sand content (f) Thermal diffusivity, porosity is a function of OC and sand content

Figure 2: Soil thermal conductivity (a, d), heat capacity (b, e) and thermal diffusivity (c, f) as a function of the liquid water saturation, OC and sand content. The calculation for this figure was based on equations presented in Appendix A. The soil porosity was fixed at 0.7 for the top figures (a, b, c) and determined as a function of OC and sand content (Equations 2 and 3) for the bottom figures (d, e, f).

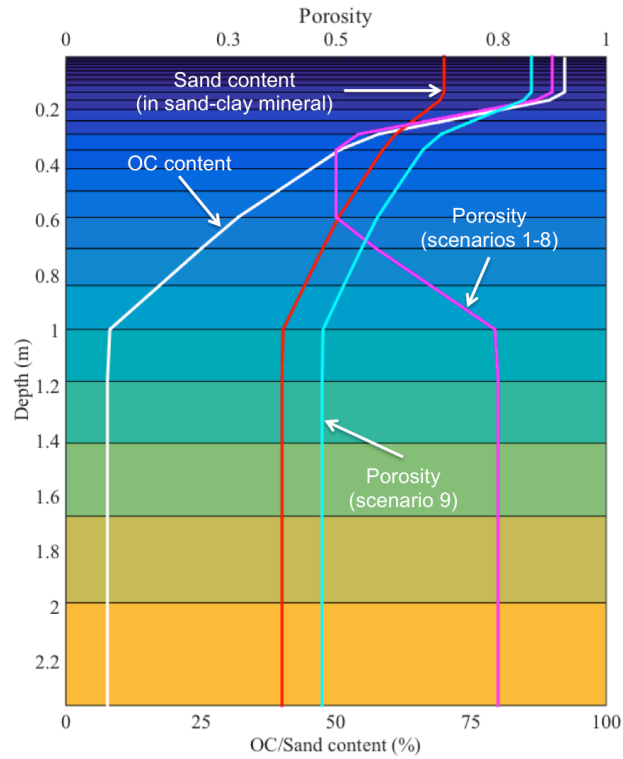


Figure 3: 27 synthetic soil layers and soil properties (OC, sand content and porosity) for simulating hydrological and thermal dynamics. The 5 bottom bedrock layers are not shown in this figure. We assumed that the vertical profiles of soil properties are constructed by interpolating their corresponding values at $z=0.1, 0.3, 0.6$ and 1 m. For scenarios from 1 to 8, the soil porosity was fixed ($\Phi=0.9, 0.5, 0.5$, and 0.8 for $z=0.1, 0.3, 0.6$ and 1 m). For scenario 9, the soil porosity was calculated from the OC and sand content ($\Phi=0.86, 0.67, 0.57$, and 0.47 for $z=0.1, 0.3, 0.6$ and 1 m).

10

15

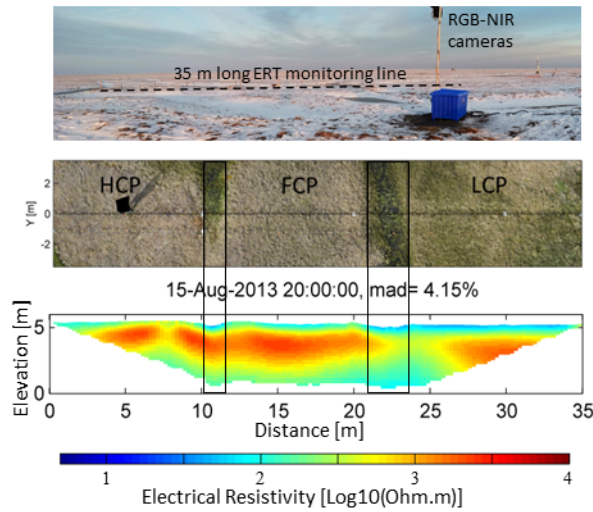


Figure 4: (Top panel) Image of the intensive ERT transect (dash line) and pole-mounted cameras, which monitor the land surface variability of the whole transect. (Middle panel)

5 Aerial view of the ERT transect (dashed line), which covers different types of polygons, namely, high-centered polygon (HCP), flat-centered polygon (FCP) and low-centered polygon (LCP). (Bottom panel) An example of inversion of ERT data measured in August 2013. The top layer with low resistivity represents the active layer. The middle layer with high resistivity and the underlying less resistive layer correspond to permafrost and saline permafrost, respectively (see Dafflon et al., 2017 for more details).

10

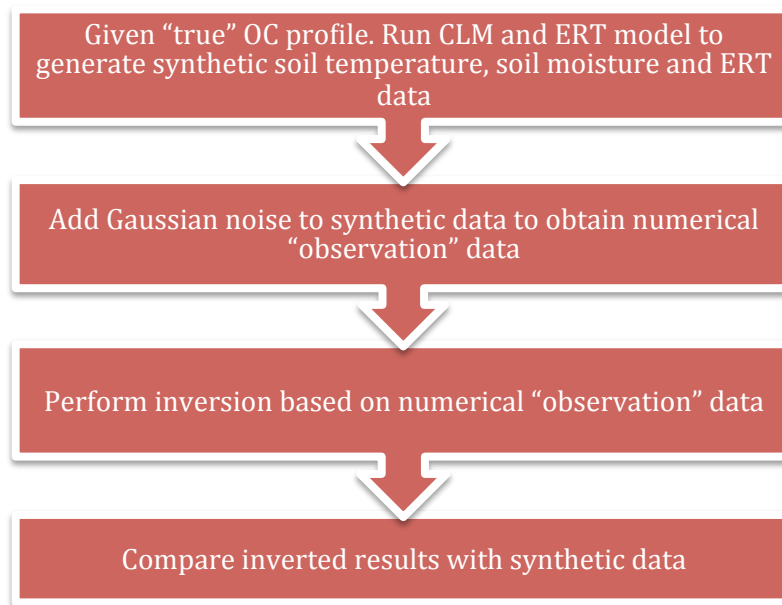
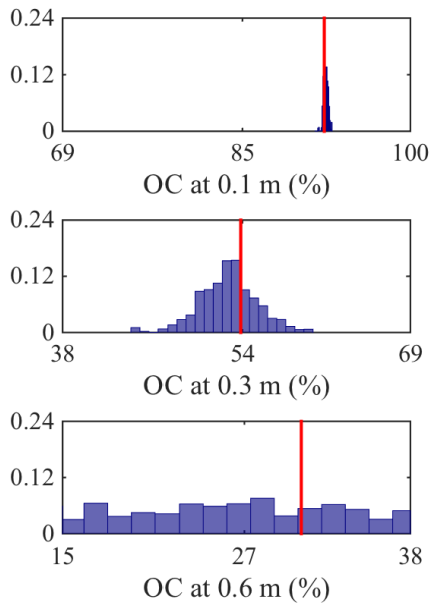
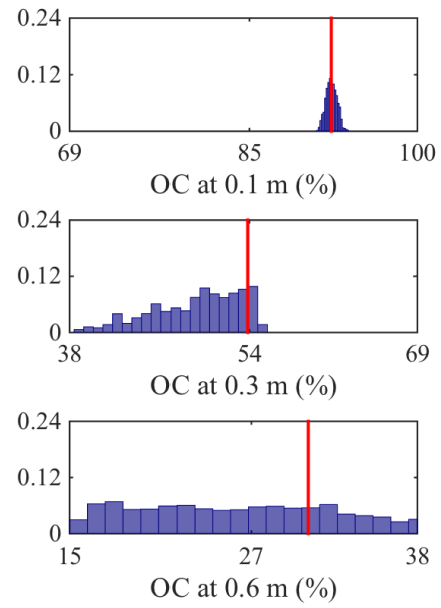


Figure 5: General procedure used to perform the synthetic case studies.



a) Scenario 1: ERT - 2 % error



b) Scenario 2: ERT - 5% Error

Figure 6: The posterior probability of the soil OC content at $z = 0.1, 0.3$ and 0.6 m obtained by inverting apparent resistivity data with relative measurement error of 2% (a) and 5% (b). The red lines represent the “true” OC content.

5

10

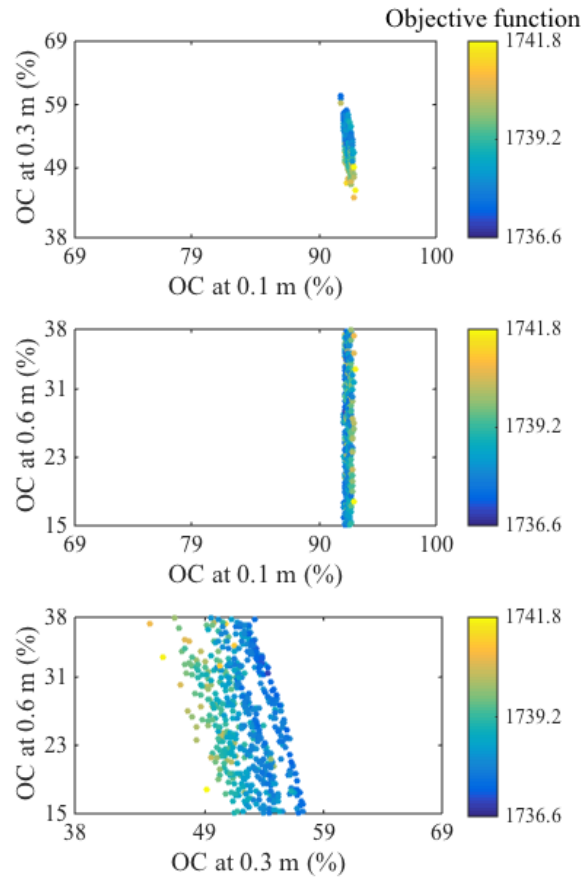


Figure 7: Misfit (sum of square of absolute difference) between synthetic observations and MCMC sampling apparent resistivity data as a function of soil OC content at $z=0.1, 0.3$ and 0.6 m for scenario 2.

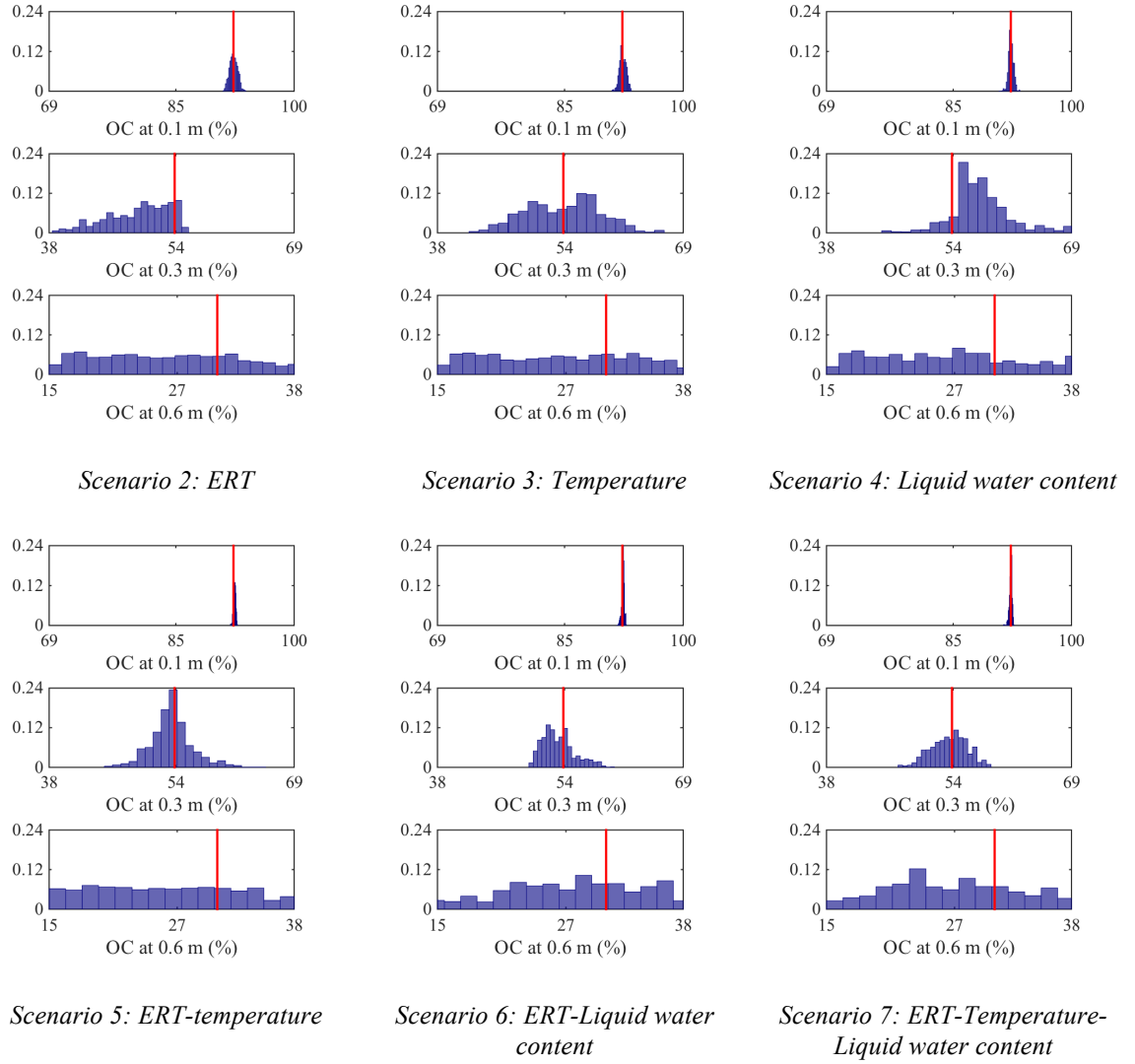


Figure 8: The posterior probability of the soil OC content at $z=0.1, 0.3$ and 0.6 m. These probability functions were constructed from 5000 MCMC samples. Measurement errors of apparent resistivity, temperature and liquid water content data are 5%, 0.5 °C and 0.08, respectively. The red lines represent the “true” soil OC content.

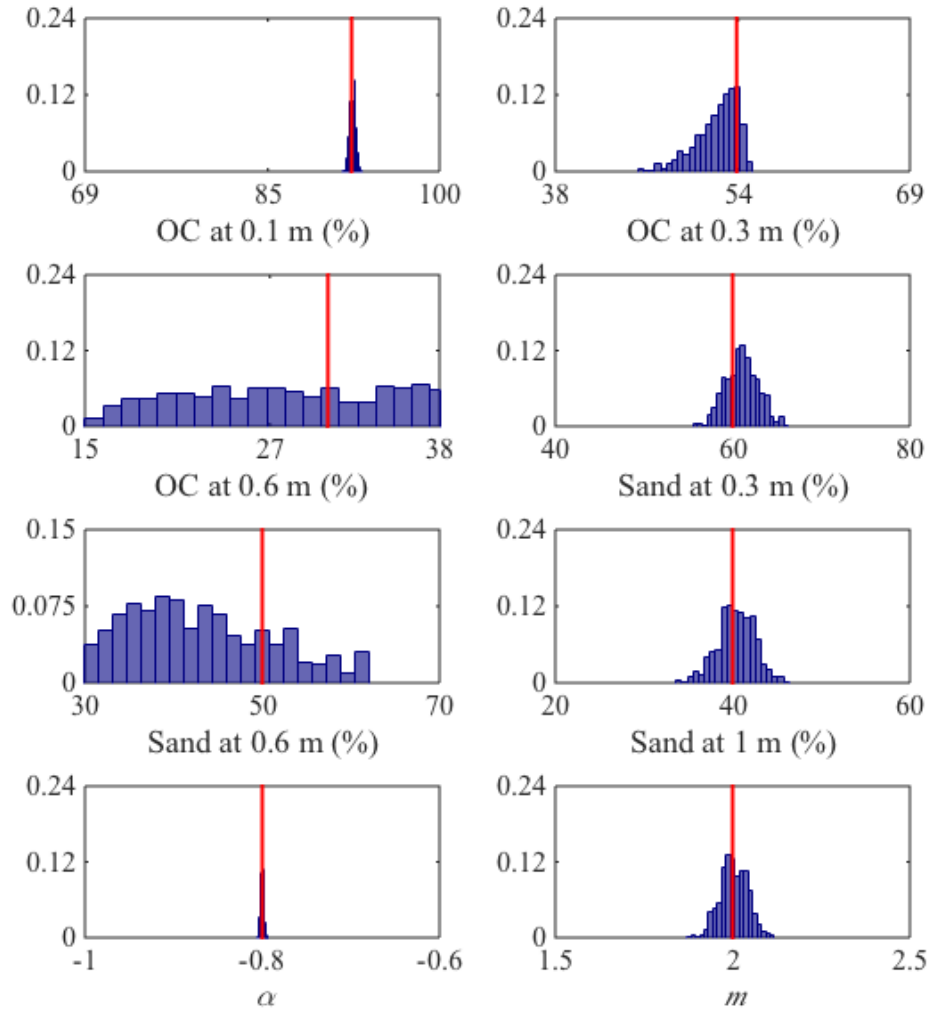


Figure 9: Posterior probability of soil OC content at $z=0.1, 0.3, 0.6$ m, sand content at $z=0.3, 0.6, 1$ m and petrophysical parameters m and α for scenario 8. The sand content is the fraction of sand in the sand-clay mineral mixture. Soil porosity is fixed and independent from the OC and sand content. The red line represents the “true” parameter values.

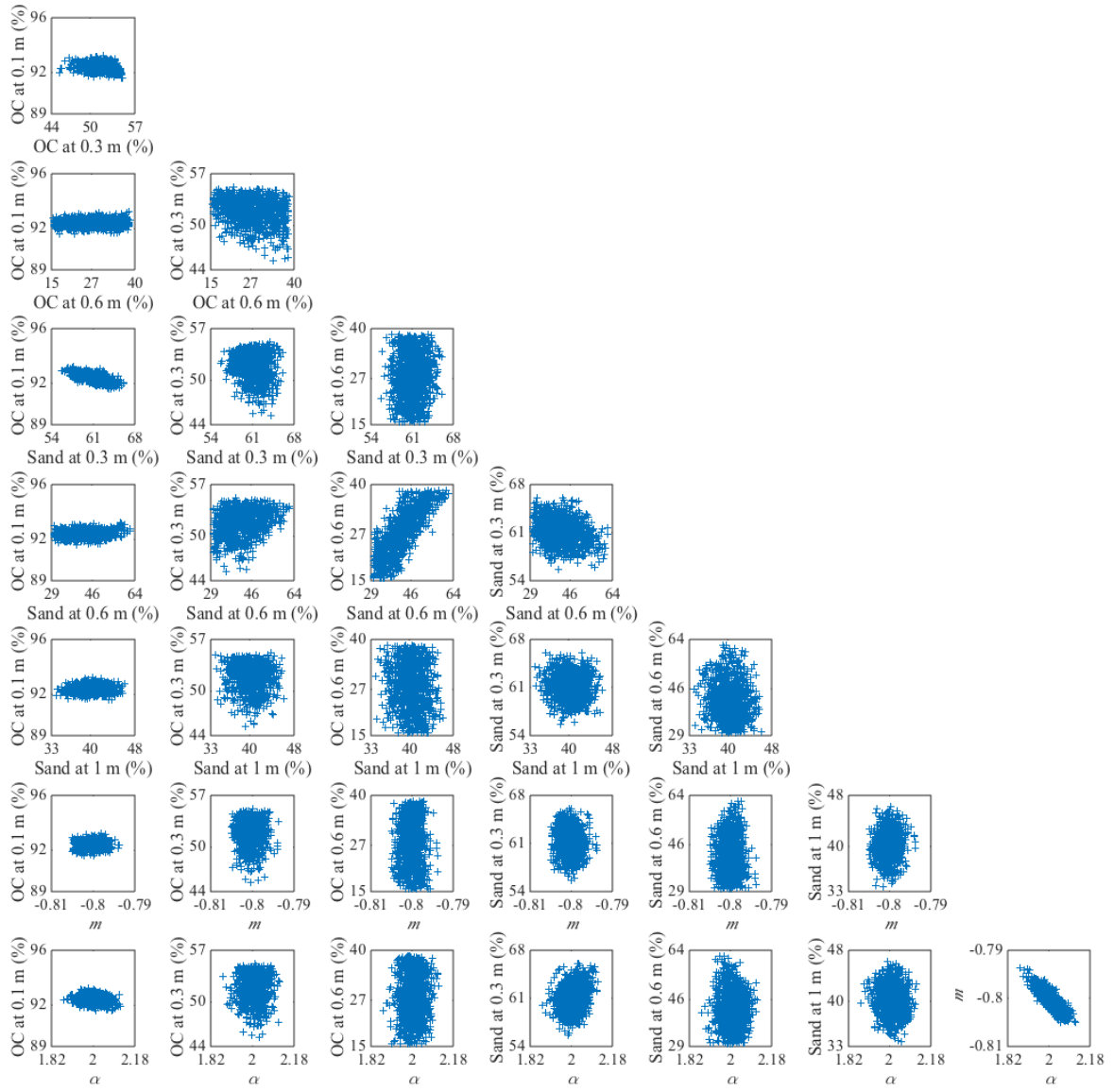


Figure 10: Pairwise relationships between estimated parameters. The calculation was based on 3000 MCMC samples of scenario 8.

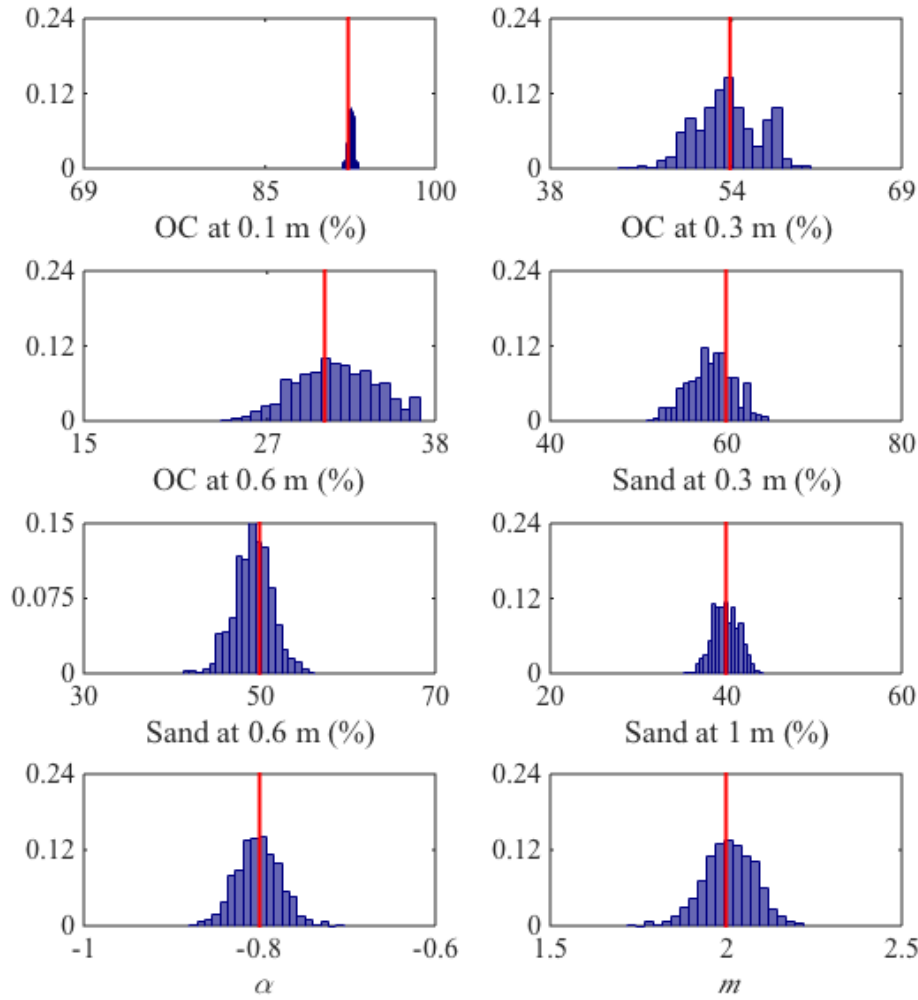


Figure 11: Posterior probability of soil OC content at $z=0.1, 0.3, 0.6$ m, sand content at $z=0.3, 0.6, 1$ m and petrophysical parameters m and α for scenario 9. The sand content is the fraction of sand in the sand-clay mineral mixture. Soil porosity is determined as a function of soil OC and sand content in the CLM. The red line represents the “true” parameter values.

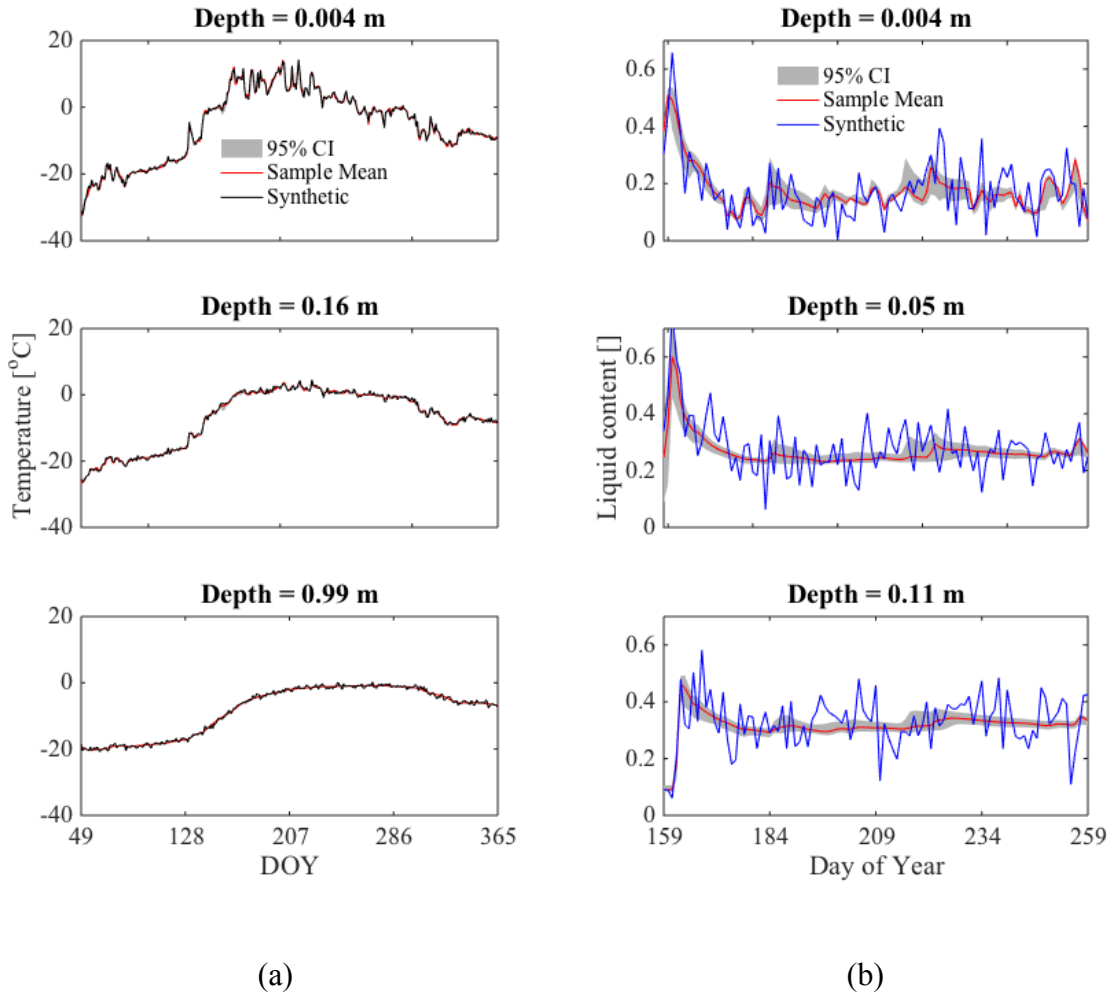


Figure 12: Comparison of “observation” and predicted soil temperature at $z=0.004$, 0.16 and 0.99 m (a) and liquid water content at $z=0.004$, 0.05 and 0.11 m (b). The blue line denotes the synthetic data. The grey region represents the 95% confidence interval calculated from the posterior MCMC samples of scenario 8. The red line represents the mean of samples.

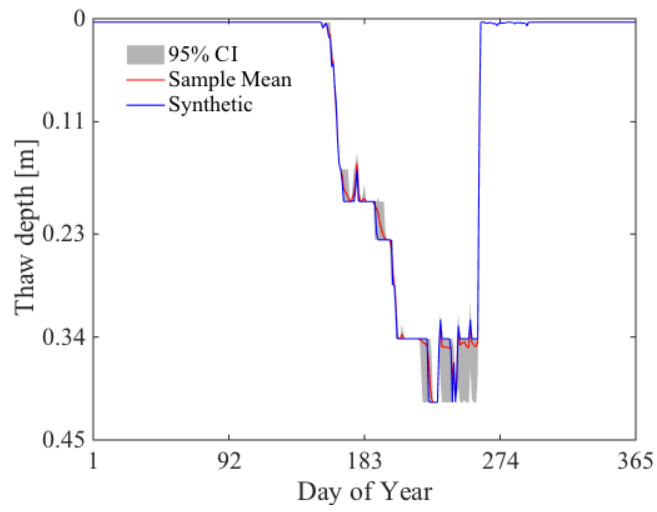


Figure 13: Comparison between estimated and synthetic thaw depth over a year for scenario 8. The blue and red lines, respectively, represent the synthetic and estimated thaw depth. The grey region shows the confidence interval with a level of 95%.

5

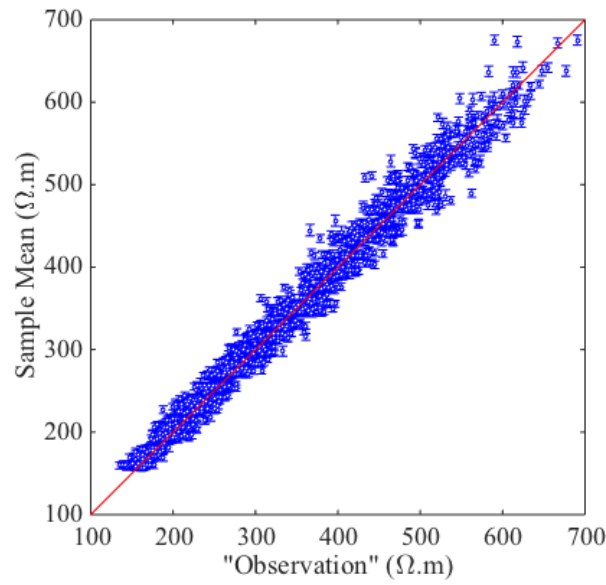


Figure 14: Comparison between “observation” and predicted apparent resistivity. The red line demotes the 1:1 line. The vertical error bar on the blue symbols represents the confidence interval of the predicted apparent resistivity with a confidence level of 95%. The comparison was based on posterior samples of scenario 8.

Table 1: Petrophysical parameters and soil properties information used for synthetic simulation. Petrophysical parameters F_c , C_{Na}^+ , C_{Cl}^- , β_{Na}^+ , β_{Cl}^- are obtained from Minsley et al. (2015). Soil OC and sand content are based on the core sample analysis at the site near Barrow, AK. The sand content is the percentage of sand in the mineral mixture, which is calculated as 100-OC content. The soil porosity is independent from soil OC and sand content for scenarios from 1 to 8, while it is calculated from these properties in scenario 9.

Petrophysical parameter		Soil properties				
m	2	Depth (m)	ϕ (Scenarios 1-8)	ϕ (Scenario 9, calculated from OC and sand content)	Soil OC content (%)	Sand content (in mineral mixture) (%)
n	1.3					
σ_s (Sm ⁻¹)	0.005					
F_c (Cmol ⁻¹)	9.6487×10^4					
$C_{Na}^+ = C_{Cl}^-$ (mol.m ⁻³)	4.28	0.1	0.9	0.86	92.3	70.0
β_{Na}^+ (m ² V ⁻¹ s ⁻¹)	5.8×10^{-8}	0.3	0.5	0.67	53.8	60.0
β_{Cl}^- (m ² V ⁻¹ s ⁻¹)	7.9×10^{-8}	0.6	0.5	0.57	30.8	50.0
α	-0.8	1	0.8	0.47	7.7	40.0

Table 2: Information on parameter, “observation” data and inversion results for 9 scenarios. For scenarios from 1 to 7, the soil OC content (three parameters) at $z=0.1, 0.3$ and 0.6 m were estimated. For scenarios 8 and 9, the OC content at $z=0.1, 0.3, 0.6$ m, the sand content in the mineral mixture at $z=0.3, 0.6$ and 1 m and the petrophysical parameters m and α were estimated (8 parameters). The best estimated parameters and their uncertainties are represented by the mean and standard deviation of the MCMC samples.

Scenario	1	2	3	4	5	6	7	8	9
Data for inversion	Resistivity	Resistivity	Temperature	Liquid water content	Resistivity and temperature	Resistivity and liquid content	Resistivity, temperature and liquid water content	Resistivity, temperature and liquid water content	
Measurement error	Resistivity: 2%	Resistivity: 5%	Temperature: 0.5°C	Liquid water content: 0.08	Resistivity: 5% Temperature: 0.5°C	Resistivity: 5% Liquid water content: 0.08	Resistivity: 5% Temperature: 0.5°C Liquid water content: 0.08	Resistivity: 5% Temperature: 0.5°C Liquid water content: 0.08	
Porosity	Fixed (Value in Table 1)							Fixed (Values in Table 1)	Function of OC, sand and clay content
Parameters	OC content at 0.1, 0.3 and 0.6 m							OC content at 0.1, 0.3, 0.6 m Sand content at 0.3, 0.6 and 1 m Petrophysical parameters m and α	
True value and Range for estimation	OC 0.1 m: <i>True value</i> : 92.3, <i>Range</i> : [69, 100] OC 0.3 m: <i>True value</i> : 53.8, <i>Range</i> : [38, 69] OC 0.6 m: <i>True value</i> : 30.8, <i>Range</i> : [15, 46]							OC 0.1 m: <i>True value</i> : 92.3, <i>Range</i> : [69, 100] OC 0.3 m: <i>True value</i> : 53.8, <i>Range</i> : [38, 69] OC 0.6 m: <i>True value</i> : 30.8, <i>Range</i> : [15, 46] Sand 0.3 m: <i>True value</i> : 60, <i>Range</i> : [40, 80] Sand 0.6 m: <i>True value</i> : 50, <i>Range</i> : [30, 70] Sand 1.0 m: <i>True value</i> : 40, <i>Range</i> : [20, 50] α : <i>True value</i> : -0.8, <i>Range</i> : [-1, -0.5] m : <i>True value</i> : 2, <i>Range</i> : [1.5, 2.5]	
Estimated OC content (%)	0.1 m: 92.4±0.2 0.3 m: 52.8±2.6 0.6 m: 23±8.8	0.1 m: 92.1±0.6 0.3 m: 53.7±5.5 0.6 m: 26.9±6.5	0.1 m: 92.4±0.4 0.3 m: 53.8±4.6 0.6 m: 26.4±6.4	0.1 m: 92.3±0.3 0.3 m: 57.4±3.7 0.6 m: 26.1±6.4	0.1 m: 92.4±0.2 0.3 m: 53.5±2.6 0.6 m: 27.7±7.8	0.1 m: 92.3±0.2 0.3 m: 53.4±2.2 0.6 m: 28.0±6.9	0.1 m: 92.3±0.2 0.3 m: 53.4±1.9 0.6 m: 26.4±6.3	0.1 m: 92.3±0.3 0.3 m: 52.6±2.0 0.6 m: 31±6.5	0.1 m: 92.3±0.2 0.3 m: 53.9±1.9 0.6 m: 30.4 ±3.2
Estimated sand content (%)	Not estimated							0.3 m: 60.4±2.4 0.6 m: 43.3±8.2 1 m: 40.2±2.0	0.3 m: 60.1±1.8 0.6 m: 49.5±1.8 1 m: 39.5±0.9
Estimated petrophysical parameters	Not estimated							α : -0.801±0.002 m : 2.02±0.042	α : -0.806±0.022 m : 2.01±0.066

Appendix A: Relationship between soil hydrological and thermal parameters and OC and mineral content

Soil thermal conductivity (λ) is calculated as:

$$\lambda = \begin{cases} K_e \lambda_{sat} + (1 - K_e) \lambda_{dry} & S_r > 1 \times 10^{-7} \\ \lambda_{dry} & S_r \leq 1 \times 10^{-7} \end{cases} \quad (A1)$$

$$5 \quad \lambda_{sat} = \lambda_s^{1-\theta_{sat}} \lambda_{liq}^{\frac{\theta_{liq}}{\theta_{liq}+\theta_{ice}} \theta_{sat}} \lambda_{ice}^{\left(1-\frac{\theta_{liq}}{\theta_{liq}+\theta_{ice}}\right) \theta_{sat}}, \quad (A2)$$

$$\lambda_{dry} = \lambda_{dry,om} f_{om} + \lambda_{dry,min} (1 - f_{om}), \quad (A3)$$

$$K_e = \begin{cases} \frac{\theta_{liq}+\theta_{ice}}{\theta_{sat}} & \text{for frozen soil} \\ \log\left(\frac{\theta_{liq}+\theta_{ice}}{\theta_{sat}}\right) + 1 & \text{for unfrozen soil} \end{cases} \quad (A4)$$

in which K_e is the Kersten number; S_r is the wetness of the soil with respect to saturation; λ_{sat} and λ_{dry} are, respectively, the saturated and dry thermal conductivity; $\lambda_{s,om} = 0.25$ and $\lambda_{dry,om} = 0.05 \text{ Wm}^{-1}\text{K}^{-1}$ are the saturated and dry thermal conductivities of OC; θ_{liq} and θ_{ice} are the liquid water and ice content; θ_{sat} is the soil porosity.

λ_s is the thermal conductivity of soil matrix, which is calculated from OC and mineral content as:

$$\lambda_s = \lambda_{s,om} f_{om} + \lambda_{s,min} (1 - f_{om}), \quad (A5)$$

15 in which; f_{om} is the OC fraction (i.e., OC content in this study) in soil matrix. The saturated ($\lambda_{s,min}$) and dry thermal conductivity ($\lambda_{dry,min}$) of minerals are calculated as:

$$\lambda_{s,min} = \frac{8.8(\%sand) + 2.92(\%clay)}{\%sand + \%clay}, \quad (A6)$$

$$\lambda_{dry,min} = \frac{0.135\rho_d + 64.7}{2700 - 0.947\rho_d}, \quad (A7)$$

where $\rho_d = 2700(1 - \theta_{sat,min})$ is the bulk density of minerals.

20 The volumetric heat capacity (c) is defined as:

$$c = c_s(1 - \theta_{sat}) + \frac{w_{ice}}{\Delta Z} C_{ice} + \frac{w_{liq}}{\Delta Z} C_{liq}, \quad (A8)$$

with

$$c_s = (1 - f_{om})c_{s,min} + f_{om}c_{s,om}, \quad (A9)$$

$$c_{s,min} = \frac{2.128(\%sand) + 2.385(\%clay)}{\%sand + \%clay} \times 10^6 \text{ and } c_{s,om} = 2.5 \times 10^6 \text{ Jm}^{-3}\text{K}^{-1}$$

in which c_s is the heat capacity of soil matrix; Δz is the soil layer thickness; w_{ice} and w_{liq} are the weight of ice and liquid water in the layer; C_{ice} and C_{liq} are the specific heat capacities ($\text{J kg}^{-1} \text{K}^{-1}$) of ice and liquid water; $c_{s,min}$ and $c_{s,om}$ are the heat capacity of mineral and OC, respectively.

5

As for soil hydrological characteristics, soil matric potential (ψ) and hydraulic conductivity (k_i) are determined as:

$$\psi = \psi_{sat} \left(\frac{\theta}{\theta_{sat}} \right)^{-B} , \quad (\text{A10})$$

$$k_i = \begin{cases} \Theta k_{sat,i} \left[\frac{0.5(\theta_i + \theta_{i+1})}{0.5(\theta_{i,sat} + \theta_{i+1,sat})} \right]^{2B_i+3} \\ \Theta k_{sat,i} \left(\frac{\theta_i}{\theta_{i,sat}} \right)^{2B_i+3} \end{cases} , \quad (\text{A11})$$

10 where $k_{sat,i}$ is the saturated hydraulic conductivity; Θ is the ice impedance factor; θ_i, θ_{i+1} are the liquid water content at layer i^{th} and $i+1^{th}$. The saturated matrix potential (ψ_{sat}) is calculated as:

$$\psi_{sat} = (1 - f_{om})\psi_{sat,min} + f_{om}\psi_{sat,om} , \quad (\text{A12})$$

in which the saturated matrix potential of organic matter ($\psi_{sat,om}$ is set at -10.3 mm and the saturated mineral matrix potential ($\psi_{sat,min}$) is calculated as:

$$15 \quad \psi_{sat,min} = -10 \times 10^{1.88 - 0.0131(\%sand)} , \quad (\text{A13})$$

The exponent coefficient (B_i) is calculated from OC and mineral content as:

$$B_i = (1 - f_{om,i})B_{min,i} + f_{om,i}B_{om,i} , \quad (\text{A14})$$

with $B_{om,i} = 2.7$ and $B_{min,i} = 2.91 + 0.159\%clay_i$

20