

Reviewer 1:

In general, the manuscript has been largely improved with including the new data and expanding the data analysis part; total volume is nearly the twice as the previous one at this stage. On the other hand, I have got a feeling that it became too wordy. I hope the authors eliminate the repetitions and the redundant part, and make the manuscript more compact.

The authors have compacted the writing style in all sections, and removed repetition that arose between results-discussion-conclusion sections. However, following suggestions from this and the other reviewer, explanations have been expanded in several sections.

Further, I am still concerned about the surface topography. In fact, 5 mm rise over 130 mm is not enormous and is inevitable in nature, I understand. However, as you may see, particle motions are very sensitive on the surface feature. Thus, I am afraid that the particle speed in Fig. 6 and the horizontal flux in Fig.7 are strongly affected, even though the terrain-following coordinates are adapted. Such as, the particle located at $x=60$ mm and $z=10$ mm has a history which passed over the snow surface at $x=0$ mm where the snow surface is 5 mm lower. It should be carefully taken into account in the analysis.

We agree, surface topography is incredibly difficult to account for, especially with the limited frame height available in these recordings. A similar example to what you are describing was described on page 6, line 25 in this version. We have further detailed the advantages terrain following coordinates, and issues with near surface flux profiles in nature. (page 6 line 15 – page 7 line 7)

Although it is not shown in revised version, in Fig. 3 (g) of the previous manuscript, particle flux showed the maximum at 2 to 7 mm high. This is presumably caused by the effect of topography change.

Yes. We have expanded the explanation of terrain following coordinates on Page 6 to include mention of the 7 mm height flux maximum in immersed boundary coordinates and the difficulty identifying locations of particle flux maximums in natural conditions.

Bagnold (1941) used the term ‘creep’ to describe grains rolling and jostling along the surface. Thus I do have slightly an aversion to call the particle motion less than 4mm as creep. Probably “reputation” that means “move slowly” introduced by Ungar and Haff (1987) is more suitable. At any rate, 4 mm is several tens times larger than the mean particle diameter and, needless to say, large number of saltation particles are involved there.

We agree with this statement and have revised the literature, especially figure 8 and the section containing Creep momentum balances to explicitly detail that the particles below 2-5 mm (now replacing 4 mm threshold) are comprised of both high and low-energy populations. Those slow moving grains that exist solely below these heights are referred to collectively as near-surface grains or surface residuals, noting that creep is contained

in this area. The concept of creep is still used to connect with the existing literature. Ungar and Haff (1987) use reptating and creeping grains interchangeably (page 294, 1st paragraph).

Further, although it is not related to the evaluation of the contents directly, the authors need to reply to the reviewer's comment line by line. 'Refer to the response to other reviewer' is not an appropriate attitude.

This will not happen again.

As a whole, I do believe this manuscript is approaching to the publishing stage. However, I am glad if the authors can clarify and improve some of the points listed below before the publication.

Specific comments are listed below.

Page 4, line 23: I do not see where the potential for adapting the continuum model to the blowing snow phenomena is discussed in the manuscript.

The combination of all results found in this manuscript support the improvement of the physical accuracy of blowing snow models if a continuum model of transport is adopted, with preliminary trends relating continuous velocity and concentration profiles with wind conditions (Section 3.2 and Discussion). Thus with further observations, adapting a continuum model could be possible and beneficial: Page 12 line 21, Page 15 1st and 2nd paragraph, Page 18 line 17, Page 22 line 5, Page 23 last paragraph, Page 26 1st paragraph.

Figure 5: (a) to (c) are not shown in the figure. The scale of the vertical of upper two figures needs to be set equal.

Thank you. The figures have been rescaled. The labels (a) to (c) were previously in the bottom left of the plots and have been made more obvious.

Page 9, line 4: We cannot expect the steady-wind condition in nature, except for the specific situation like in Antarctica.

Agreed. This may be a simple statement, but the authors believe this fundamental sentiment is currently lacking in the blowing snow literature, especially when modelers attempt to adapt steady state equations to complex terrain. This is also why we used the less-strict steady state test of Foken and Wichura (1996), which can be satisfied in nature, such as throughout the FLUXNET network (Baldocchi et al. 2001).

Page 10, line 6: Why don't you say "the focal point was not recognized in this study"?

This has been adapted. Thank you.

Figure 6: Please check the figure caption. d) - f) are for the particle velocity gradient and

g) – i) are for the particle slip velocity.

Done. Thank you.

Page 15, line 18: I don't see how you can expect the dense surface flow with profiles in Figs. 6 and 7. The particle number flux increases with approaching the bed surface, but no specific layers with maximum flux are recognized. In actual, as pointed previously, in Fig. 3 (g) of the previous manuscript, particle flux showed the maximum at 2 to 7 mm high. However, this is presumably induced by the topography change.

The maximum is at a height of zero for all plots in Figure 7 (which includes the previous Figure 3(g) on a log-linear plot with y-values being terrain following coordinates) and is the maximum for the fitted equation of fractional number flux (page 14 line 5). The effect of topography on concentration peak was noted in both the previous manuscript as “microtopography” in Figure 3g, page 4 line 2, page 6 line 27, and page 8 line 2. This has been addressed in the present manuscript in the justification of terrain following coordinates page 6 line 15 – page 7 line 7. The terrain following coordinates have essentially removed the mellow gradient from left to right seen previously, as well as small peaks, though with changes in particle orientation. Additionally, the F_z plots are now complimented with the proportion of total momentum found in the surface residual, the dense surface flow that does not rise above 2-5 mm, page 16 2nd paragraph.

Figure 8: In the figure caption, no explanation that this is for just “descending particles” is shown.

Corrected. Thank you.

Page 17, line 11: Shear stress due to the wind can be estimated from the ultra sonic anemometer data. Thus, it will be informative to compare with the particle momentum near the surface quantitatively.

Friction velocity values have been calculated using shear stress estimates from the ultra sonic data, thus they are an analog to the mean shear stress (often referred to as Reynolds stress to indicate use of $u'w'$). A discussion has been added comparing shear stress and the amount of momentum present in the “surface residual.” A comparison of friction velocity and surface residual momentum can be found on Page 22 last paragraph, bottom left - figure 8.

Page 17, line 23: The definition of three height bands should be defined earlier, when the data of near-surface and high bands were introduced.

The three height bands are independent of the two-region near-surface and upper-region momentum analysis earlier in the text. As well, the previous “upper and lower region” has been modified to a moving threshold instead of the strict 3 or 4 mm used previously, and thus does not line up with the three height bands.

Page 24, line 27: Descriptions of the article number concentrations will be useful to discuss whether it will be comparable with the ordinary fluidized-bed and be applicable the physical properties of the bed.

Particle number concentrations directly from PTV would be misrepresentative because particles are only counted if they can be accurately tracked. This is why we stayed consistent with representing profiles as percentages of flux of particle counts (Section 3.2). As noted elsewhere (Creysse et al., 2009), obtaining perfect tracking at the surface is currently nearly impossible. Discussions about current improvement in PTV software have indicated that analysis techniques are being developed to improve PTV in incredibly dense flows. Other avenues of individual particle counts in dense surface flows are also being pursued for future research.

Baldocchi, D. et al. (2001), FLUXNET: A new tool to study the temporal and spatial variability of ecosystem-scale carbon dioxide, water vapor, and energy flux densities, *Bull. Am. Meteorol. Soc.*, 82(11), 2415–2434, doi:10.1175/1520-0477(2001)082<2415:FANTTS>2.3.CO;2.

Ungar, J. E., and P. K. Haff (1987), Steady state saltation in air, *Sedimentology*, 34(2), 289–299, doi:10.1111/j.1365-3091.1987.tb00778.x.

Reviewer 2:

The reviewer really appreciates efforts made by the authors to improve the manuscript by adding new references, new graphs and data allowing generalization of the results. The main points raised have been answered.

Discussions concerning wind characteristics and more particularly the quadrant hole analysis are a prime example: conclusions are now convincing but lead to new comments. Why did the authors choose a fifteen-minute average to calculate the mean wind speed and the friction velocity and what influence does this choice have on the quadrant hole analysis (Figure 4).

Both fifteen minute and recording specific values are included for turbulence characteristics surrounding all recordings in table 2. To be clear, Figure 4 was not generated using 15-minute values, and this is further emphasized page 10 line 18. The difference between 15-minute and recording specific turbulence characteristics is outlined on page 10 1st paragraph, and page 20 1st paragraph, with new expansion on turbulence intensity. The discussion of 15-minute values in the previous paragraph was used to discuss the nature of the wind over the entire nights of recording, and comparing to a nearby study site.

My main other comments are still in regard to the limit between creep and saltation. The authors cannot hide behind the arguments: “the arbitrary height is not a threshold, it was chosen to illuminate the subtle difference in particle transport and the continuum of motion...”. This argument can be admitted for 3.3 Turbulent flow and Figures 9.

Thank you. This comment is limited to Section 3.3 and Figure 9. Page 17, line 27.

But in order to calculate the ratio of the sum of momentum in the creeping population to that lost to the surface from impacting high-energy particles capable of splash, the authors need to be very precise as to the method used and to explain as clearly and in as much details as possible the reasons leading to the values 3 and 4 mm.

The surface momentum has been further analyzed in the manuscript. Values of 3 and 4 mm implicitly defined an upper boundary of creep, and this was not the intention of the authors. The comparison between a “surface residual” and upper-region grain momentum has been introduced, with varying heights from 2 – 5 mm based on the capabilities of the camera and PTV software (page 15 line 25, page 16 line 10). We no longer calculate a creep momentum.

In such a way, similar experiments with different hardness can be conducted in the future and compared with the results presented in this paper. P28 it is written that this choice is made according the high and low-energy saltating grain populations theory proposed by Ho et al, 2014.

It has been clarified that the separation at varying heights supports the concept of two

populations existing at the near surface region, and is not driven by Ho's methods. We do not use z_f (page 10 line 10, page 15 line 16).

I would like to recall the conclusions drawn by Ho et al., 2014:

As a result, two different populations can be identified but using a criterion that differs from that of Bagnold:

- (i) the low energetic saltating particles lying below $2z_f$ and hardly influenced by change of the flow strength
- (ii) the highly energetic ones saltating above $2z_f$ sensitive to increase of the flow intensity.

The similarities and difference of response of low-energy surface grains to changes in flow strength with respect to Ho et al. 2014 are mentioned in the discussion. Page 21 1st paragraph, page 22 2nd paragraph.

On what figures or z_f values do the authors base the choice of the threshold 3 or 4 mm ?

This has been changed to 2-5 mm and is explained to be limitations of the PTV and camera setup (page 10 line 10, page 15 line 16)

Moreover the method used for calculating Crp/Spl is a little ambiguous for the reader and need to be clarified. The low-energy population at the surface is identified as the difference of the two collections of particles vector (P 29 line 5). As far I understand, this implies that the high-energy population (particles capable of splash) is identified to be twice of particles vector for upper region height bands. If not the total impacting high-energy snow grain momentum will be wrong.

But later (p35 line 24) the authors wrote « the momentum present in the slow surface transport was often larger than that found in the upper region high energy grains as can be seen by $crp/Spl > 4$.” It is really confusing because it seems in this sentence that only particles in the upper region have been taken into account.

For clarity it will be helpful to give an example showing a horizontal particle velocity histogram for near surface and upper regions and the corresponding histogram for creeping population and particles capable of splash.

This has explanation has been expanded (Page 15 line 15 to Page 16 line 25). Moreover, the suggested histogram has been added to Figure 8.

Near-Surface Snow Particle Dynamics from Particle Tracking Velocimetry and Turbulence Measurements during Alpine Blowing Snow Storms

Nikolas O. Aksamit¹, John W. Pomeroy

¹Centre for Hydrology, University of Saskatchewan, Saskatoon, S7N 5C8, Canada

Correspondence to: Nikolas O. Aksamit (n.aksamit@usask.ca)

Abstract. Many blowing snow conceptual and predictive models have been based on simplified two-phase flow dynamics derived from time-averaged observations of bulk flow conditions in blowing snow storms. Measurements from the first outdoor application of Particle Tracking Velocimetry (PTV) of near-surface blowing snow yields new information on mechanisms for blowing snow initiation, entrainment, and rebound, whilst also confirming some findings from wind tunnel observations. Blowing snow particle movement is influenced by complex surface flow dynamics, including saltation development from creep that has not previously been measured for snow. Comparisons with 3D atmospheric turbulence measurements show that blowing snow particle motion immediately above the snow surface responds strongly to high frequency turbulent motions. Momentum exchange from wind to the dense near-surface particle-laden flow appears significant and makes an important contribution to blowing snow mass flux and saltation initiation dynamics. The more complete and accurate description of near-surface snow particle motions observable using PTV may prove useful for improving blowing snow model realism and accuracy.

1 Introduction

Wind transport of snow influences the variability of alpine summer runoff (*Pomeroy et al.*, 2012; *Winstral et al.*, 2013), is a large contributor to the growth or ablation of small mountain glaciers (*Dyunin and Kotlyakov*, 1980), and can contribute snow loading to avalanche prone areas (*Schweizer et al.*, 2003). Time-averaged blowing snow field measurements often present an oversimplified view of a highly variable and unsteady natural phenomenon. Physical snow trap mechanisms only provide mass flux averages over prolonged collection periods (*Budd et al.*, 1966). Snow particle counters only

recently began providing point measurements of particle speed (*Nishimura et al.*, 2014) along with particle size and number flux values (*Schmidt*, 1984; *Brown and Pomeroy*, 1989; *Kinar and Pomeroy*, 2015). Snow traps and particle counters can neither measure the mechanisms of transport initiation nor provide continuous vertical profiles of particle concentration or transport. Yet, most current blowing snow model development has been informed from time-averaged measurements from such devices. Accordingly, simplified models of blowing snow persist in the literature that do not contain self-consistent wind-snow momentum balances, as demonstrated by *Andreotti* (2004) for sand. As well, there is a current lack of detailed measurements of particle-surface interactions in natural conditions.

Recent progress in blowing snow research has been accelerated by novel applications of high-speed imaging systems. *Kobayashi* (1972) pioneered blowing snow recordings with outdoor, 1/8-second shutter speed images. This was the first visual evidence of particle mechanics in the snow saltation layer and was extremely informative in the development of saltation theory (*Pomeroy and Gray*, 1995), but the photographs consisted of blurred snow particle streaks or were saturated with particles, disguising individual particle motions. More recently, *Gordon and Taylor* (2009) designed a novel and effective halogen backlit camera system to effectively obtain particle size and shape parameters in the Arctic, but were limited to an imaging area on the order of 9 mm². In a further study, *Gordon et al.* (2009) modified this technique to image an area of 124 mm x 101 mm with a black and white binarization algorithm to obtain continuous particle density profiles. Unfortunately, particle velocity measurements were unavailable from either study.

In laboratories, several wind tunnel studies have examined drifting snow with Particle Image Velocimetry (PIV) (*Lu et al.*, 2012; *Tominaga et al.*, 2012), shadowgraphy (*Gromke et al.*, 2014) and shadowgraphic Particle Tracking Velocimetry (PTV) (*Groot Zwaafink et al.*, 2014; *Paterna et al.*, 2016), providing valuable insights into saltating snow velocity distributions, average relative wind and saltating snow velocities, particle size distributions, qualitative comparisons to Large Eddy Simulation driven transport, and equilibrium wind-blowing snow decoupling. Blowing snow transport model development continues to address small-scale variability (e.g. *Nemoto and Nishimura*, 2004; *Groot Zwaafink et al.*, 2014), and requires advanced measurement techniques to understand the physics

driving such multi-scale heterogeneities as well as evaluate the uncertainties and assumptions inherent in proposed models.

Of the multitude of blowing snow models that have been developed, many implement components of earlier aeolian saltation or initiation models, e.g. the work of *Bagnold* (1941), *Owen* (1964), *Schmidt* (1980), *Pomeroy and Gray* (1990), and *Nishimura and Hunt* (2000). In what follows, effort has been made to refer only to the original work containing the model component or measurement campaign under discussion, but comments generally apply to all derivatives. Following the work of *Bagnold* (1941), current theory often represents blowing snow in two layers, saltation and suspension, with a neglected and poorly understood creep mechanism at the lower boundary of saltation (*Pomeroy and Gray*, 1990; *Nishimura and Hunt*, 2000; *Doorschot and Lehning*, 2002). Once the wind surpasses a transport threshold velocity, saltating particles follow ballistic trajectories, and rebound off the surface, rising no higher than 10 cm. As wind speeds increase, saltating particles become suspended by turbulence and disperse upwards. Closely following wind streamlines, suspended particles rarely encounter the ground (*Pomeroy and Male*, 1992; *Bintanja*, 2000).

The two most commonly modeled modes of saltation initiation are *aerodynamic lift*, the direct drag induced ejections of grains, and *splash*, the ejection of grains by rebounding saltating particles (*Doorschot and Lehning*, 2002, *McElwaine et al.*, 2004). However, there are substantial disagreements about these mechanisms; *Schmidt* (1986) calculated that direct aerodynamic lift was not possible under average flow conditions over a level snow surface due to strong snow particle bonding. *Doorschot et al.* (2004) argued the fragile dendritic snow in their study resulted in aerodynamic lift dominance. It is likely that both mechanisms are possible and that the prevalent mechanism depends on the wind conditions and snow surface structure and cohesion. There is a growing pool of blowing snow models parameterizing these two initiation mechanisms, including the work of *Doorschot and Lehning* (2002), *Nemoto and Nishimura* (2004) and *Groot Zwaafink et al.* (2014), all adapting the blowing sand initiation model of *Anderson and Haff* (1991) through wind tunnel measurements.

In contrast to representing saltation as a layer of particles moving with uniform trajectories (e.g. *Owen*, 1964) as is common in snow saltation studies (*Pomeroy and Gray*, 1990; *Tabler*, 1991; *Doorschot and Lehning*, 2002), recent wind tunnel studies and numerical simulations of wind transport of sand have

shown the benefit of representing saltation with continuous grain velocity distribution functions (Creysells *et al.*, 2009; Ho *et al.*, 2012, 2014). From these observations, two populations of saltating particles are distinguishable by kinetic energy rather than by physical properties such as grain size. High-energy particles have higher and longer trajectories that are influenced by changes in wind strength. However, these particles only constitute the long tails of velocity distribution functions (Ho *et al.*, 2012). The bulk of sand saltation observed in these studies consists of low-energy splashed ‘ejecta’ and tractating (bed transport) grains undergoing very short hops. These grains generate the majority of mass flux and govern the mean properties of equilibrium saltation (Ho *et al.*, 2014).

As saltation develops, transport mechanics evolve. For instance, in sand, saltation and creep transport modes are often coupled when saltation begins (Willets *et al.*, 1991): as low-energy surface particles accelerate, they begin feeding upper regions of saltation. Allowing variability of motion in blowing snow saltation models permits consideration of additional mechanisms of saltation initiation and momentum transfer to the snow surface.

It remains unknown how well recent advances in conceptualization of blowing sand transport can improve descriptions of blowing snow because detailed observations of outdoor blowing snow particle transport processes near the snow surface have not been conducted. Perhaps due to this, current theories of snow saltation are inconsistent with each other and conceptualize a limited range of snow motions and initiation mechanisms. To improve the physical theory of blowing snow initiation and transport, this study demonstrates PTV as a tool for measuring short timescale blowing snow surface motions in an outdoor environment. The objectives of this study are to examine the mechanics of snow particle motion initiation, the detailed interactions between wind speed fluctuations and snow particle dynamics, and the role of turbulent burst mechanisms that are common in mountain environments in generating shear stress to modify snow saltation. In doing so, the potential for adapting a continuum sand transport model for describing snow saltation particle motions is assessed.

2 Methods

Fieldwork was conducted during blowing snow events in March 2015 and February-March 2016 at the Fortress Mountain Snow Laboratory (FMSL), Kananaskis Valley, Alberta, Canada. FMSL receives at

least 800 mm water equivalent of snowfall each winter, can sustain wind speeds exceeding 35 m s^{-1} and is home to several well-instrumented high-altitude, wind-swept observation sites. The blowing snow site (2000 m.a.s.l.) was located in an open base area of the Fortress Mountain ski area (Fig. 1). The area was lightly used, allowing for a 350 m upwind fetch of undisturbed open snowfield, with the foot of a moderate ridge flanking the west 200 m away. The ground was snow-covered and shrub vegetation buried for the duration of the experiment with snow depths fluctuating from 60 to 120 cm. Two Campbell Scientific CSAT3 three-dimensional ultrasonic anemometers positioned at varying heights depending on snow depth on a single mast (10-40 cm and 140-200 cm) measured wind speed at 50 Hz in three axes.

10 | A unique aspect of this experiment was the implementation of laser-illuminated high-speed videography for outdoor nighttime snow particle tracking observations. A portable rigid frame equipped with a Megaspeed MS85K high-speed camera and a 445 nm wavelength 1.5 W continuous-wave laser was situated on the snow surface less than 1 m downwind from the anemometer mast (March 23, 2015) or 33 cm away perpendicular to the flow (February 3, March 3, 2016). *Dennis and Nickels* (2008) suggest reasonable application of Taylor's hypothesis up to downstream distances of up to six times the boundary layer depth δ . While there are no measurements of δ for the present data set, it is safe to assume an extreme value of 1 m is less than 6δ which is often $\mathcal{O}(10 - 100 \text{ m})$ in the Atmospheric Surface Layer (ASL). Thus, using Taylor's frozen turbulence hypothesis and mean wind speed of the two anemometers as a surrogate for convection velocity, the effect of the downwind separation on the representativeness of anemometer mast turbulence statistics for the actual location of snow transport is assumed negligible with lag times $< 0.25 \text{ s}$. Similarly, for the crosswind orientation, the size of energy containing eddies (discussed in Section 3), even over short recordings, are large compared to the separation. Lags between instantaneous wind and particle velocities are mentioned in the Section 4.

25 | The frame was positioned on the snow surface allowing the camera a perpendicular 30 x 140 mm view of the flow of saltating snow. Laser light was projected through a cylindrical lens to create a 2 mm wide plane orthogonal to both the snow surface and the view of the camera (Fig. 1). The light plane illuminated a 2D projection of saltating snow particles. This allowed recordings in the lowest 5 cm of the atmosphere, with minimal foreground shadowing and no background reflection. Particle Tracking

Nik Aksamit 11/14/2016 11:32 AM
Deleted: The

Velocimetry (PTV) measurements were calculated by DaVis 8 (LaVision) software and estimated individual snow particle velocities using tracking algorithms that match discrete particles in subsequent frames imaged by the high-speed camera. Particle velocimetry techniques are normally used for wind tunnel studies (e.g. *Zhang et al.*, 2007; *Creyssels et al.*, 2009; *Ho et al.*, 2011, 2012; *Lu et al.*, 2012; *Tominaga et al.*, 2012; *Groot-Zwaafink et al.*, 2014; *Paterna et al.*, 2016), with few applications, in any discipline, in an outdoor setting (e.g. *Morris et al.*, 2007; *Zhu et al.*, 2007; *Rosi et al.*, 2014; *Toloui et al.*, 2014). This is the first known application of PTV for boundary-layer blowing snow studies in a natural environment.

The high-speed saltation recordings provided a great degree of visual distinction of surface particle motion and the use of 2D laser illumination minimized particle overlap (e.g. *Kobayashi*, 1972). As the camera was focused close to the snow surface, hundreds of thousands of rebound and splash events were recorded over the winter field seasons. In addition to PTV, videos were later reviewed with playback reduced 40-70 times, providing qualitative insight to the mechanics of near-surface saltating particle motion and bed interactions.

Figure 2 displays an example of velocity vectors calculated from 1 second of 23 March 2015 (recording #3). The stationary snow surface was masked out. The dashed black line indicates the height (h_0) of the upper limit of particles whose velocities were heavily influenced by surface microtopography and contributed uncharacteristic velocity [and concentration](#) profile statistics. In order to account for gradual changes in surface topography, an orthogonal terrain following coordinate system such that $y = 0$ is always at the snow surface and the y -direction is parallel to gravity was adopted to calculate vertical profiles of mean projected horizontal particle velocity u_p , and particle number flux concentrations F_z

$$F_z = \frac{n(z) \cdot u_p(z)}{\sum_z (n(z) \cdot u_p(z))}, \quad (1)$$

where $n(z)$ is the number of particles identified at height z . This allowed a consistent reference frame along subtle inclines like that found in Fig. 2. Immersed boundary coordinates based on the camera frame (x_f, y_f) are not representative of height above the complex surface, (e.g. $(x_f, y_f) = (5, 100)$ is below the surface whereas $(x_f, y_f) = (1, 5)$ is above the snow) and caused statistical values to become increasingly dubious as one approaches the roughness layer. This can result in misrepresenting surface

fluxes. [For example, immersed boundary coordinates indicate a flux maximum of 7 mm for Figure 2 because of the lack of vectors present below this height on the right side of the frame.](#) Additionally, the height of surface microtopography varied as recordings were made over hours of active erosion and deposition, changing the surface structure, and subsequently the relative height of measurements with an immersed coordinate system. Terrain-following coordinates allowed observations to be made over a natural snowpack, crucial for improving the realism of blowing snow measurements, while still accurately defining the near-surface region.

The improved realism afforded by PTV over a natural snowpack in the ASL was counterbalanced by increased difficulty in obtaining valuable data from this methodology and from sonic anemometry during blowing snow storms. Ultrasonic wind speed measurements sometimes included spikes, “NaN” readings or were flagged for skewness/kurtosis (*Vickers and Marht, 1997*); these concurrent video recordings were used only for qualitative comparison. Spanwise fluctuations in wind caused snow particles to travel transverse to the plane of light, and the streamwise wind direction usually varied at the blowing snow site over the course of an evening’s observations. PTV relies on particles to remain in the plane of light for illumination and tracking through multiple frames. While the frame could be adjusted for slow variations in wind direction, directional variations during wind gusts were a significant complication. To reduce particle mismatch errors and improve velocity calculation accuracy, initial visual quality controls were implemented, discarding video that contained particles obviously moving transverse to the plane of light.

Post-processing required individual particles to be evident in at least five subsequent frames and limitations were imposed on velocity vector tracks to discard physically unrealistic acceleration or direction change from one frame to the next. The camera depth of field and light plane thickness limited out-of-plane particle velocity components to $\pm 0.5 \text{ m s}^{-1}$. Further uncertainty derives from the limited ability of PTV software to match individual snow particles at high wind speeds ($> 9 \text{ m s}^{-1}$ at 40 cm height). The particle matching interrogation area becomes larger as wind speeds increase and particles travel further from one frame to the next. This exponentially increases the number of particles that may be incorrectly matched.

To verify particle enumeration, a dual-threshold black and white binarization technique adapted from Otsu (1979) was used to estimate particle concentration in each frame. This complimentary method of particle identification used algorithms that, unlike PTV, are not affected by transverse particle motion or particle matching limitations in gusty conditions. Binarization estimates of blowing snow concentration profiles were in sufficient agreement with concentration profiles generated by PTV, lending confidence to the measurements of particle trajectories. Additionally, with the binary image and PTV time series, it was possible to use a flood-fill algorithm to identify the connected components of blowing snow particles. Making an assumption of grain sphericity and constant density (917 kg m^{-3}) and using instantaneous mean particle velocities, the equivalent diameters of the particles were used to estimate blowing snow volume fractions and instantaneous density flux Q_s ($\text{kg m}^{-2} \text{ s}^{-1}$). Particle diameter measurements generated gamma-distributions of particle size (Fig. 3) consistent with other blowing snow literature (Budd, 1966; Schmidt, 1982).

PTV measurements in exceptionally high wind speeds ($> 10 \text{ m s}^{-1}$) were not possible because the laser light became blocked by particles. Therefore the dataset used in this analysis is focused on observations taken during relatively low mean wind speeds for blowing snow (mean $4 - 7 \text{ m s}^{-1}$, Table 2); these sometimes included periods of intermittent turbulent bursts and intermittent snow transport. After all post-processing, three nights of recording satisfied all quality controls requirements. This included twelve recordings spanning 266 seconds of raw video and 470,000 frames.

3 Results

Examination of data calculated from 23 March, 2015, 3 February and 3 March, 2016 demonstrated the value of PTV measurements over varying wind speeds during periods of natural variation in saltating grain shape, type, and size. Descriptions of the snowpacks following the designations of the International Classification for Seasonal Snow on the Ground (Fierz *et al.*, 2009) for each night can be found in Table 1, with particle size gamma distributions for each recording in Fig. 3. Sample videos from each night can also be found in the document supplement. During all three nights, transport was highly intermittent, implying wind speeds were near threshold conditions. This was a necessary

Nik Aksamit 11/14/2016 11:32 AM
Formatted: Font color: Auto

condition for accurate particle tracking in aeolian systems as images can become easily saturated (*Ho et al.*, 2014).

3.1 Wind Characteristics

- 5 Near-neutral (slightly stable) stability conditions were found during all nights using flux and gradient based methods (document supplement Fig. 1-3), however, steady-state wind conditions ($\frac{\partial u}{\partial t} = 0$) did not occur during the field campaign. The less strict steady-state requirements of *Foken and Wichura* (1996) were also tested to further confirm steady-state conditions were not evident. Recording and wind characteristics encompassing the three nights are displayed in Table 2. Fifteen minute and recording time period mean wind speed \bar{u} , friction velocity $u_*^2 = [\overline{u'w'^2} + \overline{v'w'^2}]^{1/2}$ (*Stull*, 1988), and
- 10 covariance based roughness length $z_0 = z e^{-0.4\bar{u}/u_*}$ are shown for both anemometer measurements as they are the parameters most often used in blowing snow models. Additional values of turbulence intensity $I = \sqrt{\overline{u'^2} + \overline{v'^2} + \overline{w'^2}} / \sqrt{\overline{u^2} + \overline{v^2} + \overline{w^2}}$; and Shields number $S = \rho_{air} u_*^2 / \rho_{ice} g d$ (based on mean particle size for each video) over both time periods are provided, as well as mean blowing snow flux (Q_s $kg\ m^{-2}s^{-1}$) for the recordings.
- 15 If wind measurements are close to the surface, such as during the 3 March 2016 recordings, the physical path length of the sonic anemometers can result in losses of high frequency turbulence. Following the guidelines of *van Boxel et al.*, (2004), the Nyquist frequency (25 Hz) is a limiting factor for mean wind speeds greater than $3\ m\ s^{-1}$, and may also contribute to some discrepancy of low and upper anemometer turbulence measurements. Additionally, the lower anemometer measurements during
- 20 Recording #2 on March 23, 2015 appears to have been contaminated as there is a significant change in covariance derived u_* and z_0 values between the two heights.

The ASL fit a Prandtl-von Kármán logarithmic-law profile poorly during the storms, most likely due to violations of horizontal-homogeneous-flat (HHF) terrain and stationarity requirements. Recording period log-law based roughness lengths $z_0 = e^{\frac{u_1 \ln(z_2) - u_2 \ln(z_1)}{u_1 - u_2}}$ and friction velocities $u_* = \frac{\kappa \bar{u}(z)}{\ln(z/z_0)}$ were

Nik Aksamit 11/14/2016 11:32 AM

Deleted: the entirety of the three

Nik Aksamit 11/14/2016 11:32 AM

Deleted: of recording

loosely comparable to lower anemometer fluctuation-based measurements with z_0 errors less than $\pm 100\%$ (except March 3 #9), and u_* errors less than $\pm 70\%$, often slightly underestimating.

The 15-minute roughness lengths that were generated by covariance methods resulted in inaccurate log-linear wind profiles that indicated a zero velocity zone for the wind well above the snow saltation layer

and often at extremes values of tens to hundreds of mm (Table 2). High roughness lengths appear characteristic of this mountain region. At a nearby site 14 km northeast and 600 m lower in elevation, Helgason and Pomeroy (2005) attributed similar large covariance derived z_0 values at varying heights to the effects of surrounding topography and the non-stationary and non-steady state nature of the wind.

The modified “focal-point” log-linear wind profile proposed by Bagnold (1941) for aeolian transport

was not recognized in this study, with estimates of focal lengths fluctuating from several mm up to 6 m. The wind was characterized by brief moments of intense gusting separated by periods of relatively calm conditions as also noted at the Helgason and Pomeroy (2005) research site. 15-minute turbulence

intensity ranged from 26 to 113%, consistently higher than the recording period values where short time series preclude larger fluctuations around mean values. As a result, values of \bar{u} , u_* , and z_0 consistently

differ between video recording-averaged (7.3 to 28 s) and 15-minute averaged values. Turbulent gust-driven snow transport events dominated the nights. 11 out of 12 fifteen-minute averages present lower wind speeds than the recording period with the long averages often below thresholds of transport.

Figure 4 shows varying Reynolds Stress ($RS = u'w'$) generation during recording specific periods following the language of quadrant hole analysis (Willmarth and Lu, 1971). Sweep and ejection events

(Q2 and Q4) often contributed the majority of RS at both anemometers, with a more pronounced role closer to the ground, indicating changes in the snow surface influence on wind mechanics. Q2 and Q4 stress also occupied a disproportionately small amount of time near the surface, as can be seen in the impact factors inset in the bar graphs ($IF = (\% \text{ Reynolds Stress})/(\% \text{ Time})$) that are greater than

unity. Therefore, when strong events are captured during the recordings, RS values can be much larger than long time averages. The presence of a single pronounced sweep event in Recording #3, March 23

(discussed in Section 3.3) contributed to a high recording period turbulence intensity (40-45%), and a much higher recording friction velocity than the 15-minute values (0.48 m/s and 0.24 m/s respectively)

and will be discussed in detail in Section 3.3.

Nik Aksamit 11/14/2016 11:32 AM

Deleted: did

Nik Aksamit 11/14/2016 11:32 AM

Deleted: show any improvements

Nik Aksamit 11/14/2016 11:32 AM

Deleted: describing

Nik Aksamit 11/14/2016 11:32 AM

Deleted: , providing

Nik Aksamit 11/14/2016 11:32 AM

Deleted: varying

Nik Aksamit 11/14/2016 11:32 AM

Deleted: %.

Nik Aksamit 11/14/2016 11:32 AM

Formatted: Font color: Auto

Nik Aksamit 11/14/2016 11:32 AM

Deleted: each

Nik Aksamit 11/14/2016 11:32 AM

Deleted: more

Nik Aksamit 11/14/2016 11:32 AM

Deleted: fifteen

Understanding the changes in [the](#) quadrants generating RS helps illuminate the differences in u_* values at the two measurement heights over these short recording timescales. The [recordings](#) with the largest discrepancy in u_* (besides March 23 #2 where low height wind measurements are questionable) are February 3 #3 ($u_* = \{0.30, 0.45\} m s^{-1}$) and March 3 #2 ($u_* = \{0.26, 0.43\} m s^{-1}$). This was the result of a significant decrease in the magnitude of mean RS at the lower measurements (0.27 vs 0.11 $m^2 s^{-2}$ and 0.22 vs 0.09 $m^2 s^{-2}$, February 3 and March 3, respectively), while the turbulence intensity remained nearly constant (Table 2). The reduced presence of Q1 and Q3 at the lower heights, and increased impact factor of Q2 and Q4 (Fig. 4) indicated a complex shift in boundary layer dynamics towards the snow [surface](#) that is beyond the scope of this [manuscript](#). Other recordings exhibited much closer friction velocity and roughness length values at the two anemometers, indicating similar turbulent motions were captured.

As also seen by *Bauer et al.* (1998), sweeps and ejections did not immediately follow one another, rather there were prolonged clusters of sweeps and ejections with gaps in between (Fig. 5a). The gaps may be a result of point measurements' inability to capture a full 3D motion (*Bauer et al.*, 1998), but nevertheless the measurements showed significantly different RS generation than that typically found in wind tunnels. For example, Fig. 5 a-b compares RS values in a recent blowing snow wind tunnel experiment of *Paterna et al.* (2016) with RS found on 3 February 2016 at FMSL at [similar friction velocities](#) ($0.25 m s^{-1}$ and $0.27 m s^{-1}$, respectively). A sweep signal of magnitude greater than one standard deviation of RS is indicated above the given RS time series by a blue triangle, while similar ejections are marked by brown triangles. Visually, there is a noticeable shift toward clustered sweep and ejection events at FMSL (Fig. 5a), in which clustered pockets of sweeps alternated with ejections, while the sweep/ejection cycle and turbulent energy occurred at much a higher frequency in wind tunnel-based measurements by *Paterna et al.* (2016) (Fig. 5b). This is further confirmed in the power spectral density plots of streamwise wind speed (Fig. 5c), and in the discussion by *Paterna et al.* (2016). Reconciling these differences between motions in atmospheric boundary layers [and wind tunnel flows](#) is [challenging](#) (*Hutchins et al.*, 2012) and [the substantial differences in Reynolds number](#) must be kept in mind when comparing blowing snow studies in [wind tunnel](#) and outdoor [environments](#).

Nik Aksamit 11/14/2016 11:32 AM

Deleted: events

Nik Aksamit 11/14/2016 11:32 AM

Deleted: paper

Nik Aksamit 11/14/2016 11:32 AM

Deleted: a

Nik Aksamit 11/14/2016 11:32 AM

Deleted: velocity

Nik Aksamit 11/14/2016 11:32 AM

Deleted: and laboratory

Nik Aksamit 11/14/2016 11:32 AM

Deleted: an open field of research

Nik Aksamit 11/14/2016 11:32 AM

Deleted: indoor

Nik Aksamit 11/14/2016 11:32 AM

Deleted: environment, especially of radically different Reynolds number

3.2 Vertical PTV Profiles

Figure 6 shows profiles of ascending particle horizontal velocity for the three nights of recording with linear regressions based on the lower 10 mm. Profiles were designated by their recording-specific low anemometer u_* values, except for 23 March where the lower wind measurements for recording #2 were contaminated. Thus, [all](#) 23 March recordings were compared by 2 m wind.

Particle motions [begin](#) with an initial ejection velocity at the surface and then accelerate due to fluid drag in the wind. Therefore the height of an ascending saltating particle should be a function of the time spent accelerating. The profiles of horizontal velocities of ascending particles confirmed this acceleration in Fig. 6. The average momentum transfer from wind to grain was estimated from the inverse slope of the plots and indicated the ability of the wind to entrain and accelerate particles. For all three nights there is a near constant particle velocity gradient immediately above the surface, $\left(\frac{\partial u_p}{\partial z} = \gamma, \gamma \in \mathbb{R}^+\right)$. Above ~8-12 mm, depending on the night, mean particle velocities [deviate](#) from the linear profile as seen in Fig. 6 and confirmed by normalized root mean square error (NRMSE) changes from the order of 0.01 to 0.1 above and below 10 mm, respectively. It must be noted, this did not indicate a discrete transition height from creep to saltation but is rather evidence of a continuous spectrum of particle velocities (*Anderson, 1987; Ho et al., 2012*) transitioning to a higher energy population away from the surface. As these recordings captured intermittent transport, saltation is in constant readjustment to the turbulent wind, with particles falling in and out of the higher levels of saltation (discussed further in Section 3.3). This prevented a consistent adherence to the linear profile as seen by *Ho et al. (2011)*, though both studies found linear profiles overestimate particle velocity at greater heights.

The velocity gradient (shear rate) γ , was estimated by linear regression and varied from $35 - 98 \text{ s}^{-1}$. Variations in wind speed and Q_s during each recording period indicate blowing snow transport never attained equilibrium. However, γ values are comparable to wind tunnel PTV sand velocity gradients ($39.0 - 150 \text{ s}^{-1}$) measured below 30 mm by *Zhang et al. (2007)*, and the range $20 - 60 \text{ s}^{-1}$ found by *Ho et al. (2011)*. For each night, γ increases with increasing friction velocity (Fig. 6d-f). The *Ho et al. (2011)* rigid bed experiments were conducted at comparable Shields numbers to the high HHI, wind-

Nik Aksamit 11/14/2016 11:32 AM

Deleted: began

Nik Aksamit 11/14/2016 11:32 AM

Deleted: meander

hardened February 3 experiments (Ho [et al.](#): [0.013, 0.043], Aksamit and Pomeroy: [0.026, 0.061]) and shared several trends discussed here and below. For example, as for *Ho et al.* (2011) the night of February 3 had on average the lowest γ values (mean 44 s^{-1} versus 69 s^{-1} for the erodible beds) and the least variation in γ though transport occurred during comparable friction velocities, and higher Shields parameters than many March 23 and March 3 recordings (Table 2). The erodible bed studies were performed at consistently higher Shields parameters for the Ho experiments (Ho [et al.](#): [0.07, 0.14], Aksamit and Pomeroy: [0.01, 0.12]), yet both studies also found increases in γ with friction velocity for the erodible beds. *Ho et al.* (2011) found less variance in γ over all friction velocities as could be expected from consistent equilibrium conditions.

As with wind tunnel sand studies (*Zhang et al.*, 2007; *Creyssels et al.*, 2009; *Ho et al.*, 2011), large non-zero particle slip velocities were observed. The influence of surface microtopography and density of the flow prevented an exact measurement of particle slip velocity u_0 , because it becomes difficult to enumerate all grains at the surface (*Creyssels et al.* 2009). However, extrapolating the linear regression plots of constant shear rate $du_p/dz = \gamma$ one can estimate u_0 . As found in the same Ho study, our February 3 “rigid bed” experiments exhibited a nearly linear increase in u_0 with u_* (Fig. 6h). While our u_0 measurements had a larger range for the “erodible bed” nights of March 23 and March 3 (Fig. 6g, 6i) than that of *Ho et al.* (2011) and *Creyssels et al.* (2009) who found a near constant slip velocity, no definitive trend with u_* could be identified either. A purely constant slip velocity over erodible beds most likely depends on equilibrium transport conditions as has been theoretically explained by *Ungar and Haff* (1987) and may explain the ambiguity in [these](#) results.

Figure 7 shows the vertical profile of the normalized particle number flux calculated as Eq. (1). A normalized number flux profile was chosen instead of the volume fraction (e.g. *Ho et al.*, 2011) or mass flux density profile (*Creyssels et al.*, 2009) because of computational limitations of the PTV package in DaVis 8, and because of the non-equilibrium transport during the recordings. Since it is impossible to control the rate of transport in nature, and volume fractions will change with rates of transport, wind fluctuations and snow surface conditions, it was informative to compare number flux concentrations between periods of diverse mass transport to determine differing transport mechanics over varying snow and wind conditions. As the study was focused on the dynamic role of surface transport, and not

Nik Aksamit 11/14/2016 11:32 AM
Deleted: :

Nik Aksamit 11/14/2016 11:32 AM
Deleted: significantly

Nik Aksamit 11/14/2016 11:32 AM
Deleted: values

Nik Aksamit 11/14/2016 11:32 AM
Deleted: :

Nik Aksamit 11/14/2016 11:32 AM
Deleted: 11

Nik Aksamit 11/14/2016 11:32 AM
Deleted: our

Nik Aksamit 11/14/2016 11:32 AM

Deleted: we thus renormalized

Nik Aksamit 11/14/2016 11:32 AM

Deleted: v_0

Nik Aksamit 11/14/2016 11:32 AM

Deleted: -

measuring mass flux, each concentration profile was renormalized by the amount of flux that occurred during a recording to compare what proportion of total particle transport is occurring at each height at suggested by *Ellis et al.* (2009) for aeolian transport profiles in nature. This allowed observation of changes in the relative importance of regions of transport.

- 5 The fractional number flux fits an exponential decrease of the form $v(z) = v_0 \exp(-z/l_v)$ with increasing accuracy as one approaches the densest flow at the surface, similar to sand and snow saltation profiles seen elsewhere (e.g. *Maeno et al.*, 1980; *Nishimura and Hunt*, 2000; *Creysse et al.*, 2009; *Ellis et al.*, 2009; *Ho et al.*, 2011; *Lü et al.*, 2012), with v_0 and l_v being fitted parameters, the latter referred to as the decay length. The number flux decay length l_v indicated how quickly the
- 10 number flux concentration approached zero (Fig. 7d-f), but because there were large variations in the surface concentration v_0 in the present study, more consistent trends can be observed with the momentum deficit height h_v , the height below which 75% of particle flux occurred. As seen in the right inset of Fig. 7, there is a non-linear increasing relationship between friction velocity and h_v for the February 3 and March 3 recordings. After disregarding March 23, (discussed below), values of h_v
- 15 followed an approximate power law relationship ($au_*^b + c, R^2 = 0.77$) with asymptotic-like behaviour towards the top of the region of interest (~11 mm). At low friction velocities, near-surface saltation was dominated by transport below 7 mm, with transport becoming gradually more uniform as h_v approached the top of the camera frame at higher friction velocities.

March 23 exhibited very little change in h_v and v_0 with only a slight decrease in l_v . Thus, concentration

20 was largely invariant with wind strength. This is remarkably similar to the erodible bed findings of *Ho et al.* (2011). Only one recording had comparable Shields numbers to Ho, but the non-cohesive graupel bed, and spherical snow grains most similarly represented sand grains and an erodible sand bed out of the three nights.

The near surface location of the maximum of F_z found over all recordings in Fig. 7 is in disagreement

25 with models using Bagnold's focal height (*Bagnold*, 1941) to predict a peak mass flux at some distinct height above the surface (e.g. *Pomeroy and Gray*, 1990). This stemmed from the earlier lack of high resolution measurements of near snow surface processes outdoors, as results were in agreement with later wind tunnel observations (*Sugiura et al.*, 1998; *Nishimura and Hunt*, 2000) and numerical studies

(Nemoto and Nishimura, 2004) of snow flux profiles as well as the recently measured blowing snow density profiles Gordon and Taylor (2009) and Gordon et al. (2009) found over natural snowcovers in Churchill and Franklin Bay, Canada, respectively.

For the time series investigated, mean particle diameters had small temporal variance over any given recording (0.01 mm on Mar 23, 0.05 mm on Feb 3, and 0.02 mm on Mar 3). For a given time step, mean particle diameters tended to decrease with height in the field of view, typical of saltating snow studies (e.g. Sugiura et al., 1998; Gromke et al., 2014), with the most extreme variations on the order of 60 μm . From this it can be inferred that particle number concentrations were closely related to particle volume fractions through mean diameters, and one can neglect variations in particle size with wind speed changes while admittedly underestimating the relative volume concentration close to the surface.

Particles moving in the densest region of the flow, immediately above the surface, are in a zone where particle tracking by opto-electronic snow particle counters becomes impossible but PTV provides new information. Close to the surface, it is possible to observe the whole spectrum of saltating particle velocities including those considered to be moving via creep.

Similar to the high and low-energy saltating grain populations theory of Ho et al., (2014), terrain following height bands were chosen such that two end-case populations could be delimited. Unique descending particles were separated into upper and lower regions according to a variable boundary (2 to 5 mm) so that they appear at most once in each region. Then, particles were binned into 20 equivalent size horizontal velocity bins. Figure 8 shows one example of histograms generated by these bins for a given height separation (3 mm for Mar 23 and Mar 3, 4 mm for February 3). Assuming that most descending particles tracked in the lowest 30 mm (frame size) will impact the surface, then most descending grains in the upper region will also be present in the lower region. This behaviour appears in Figure 8 where the upper region population is a subset of the lower region population, showing high and low-energy populations coexist as part of a continuous spectrum of motion at the surface. This is indicative of an inherent coupling of the creep and saltating grain motions. There is sensitivity to the selection of upper and lower regions. With a separation threshold below 2 mm, numbers of high velocity low-region particles are underestimated because tracking is increasingly difficult. With the separation threshold above 5 mm, the low density of particles and sensitivity to out of plane wind

- Nik Aksamit 11/14/2016 11:32 AM
Deleted: under investigation
- Nik Aksamit 11/14/2016 11:32 AM
Deleted: Following
- Nik Aksamit 11/14/2016 11:32 AM
Deleted: a
- Nik Aksamit 11/14/2016 11:32 AM
Deleted: Using
- Nik Aksamit 11/14/2016 11:32 AM
Formatted: Font:Times, English (UK)
- Nik Aksamit 11/14/2016 11:32 AM
Formatted: Font:Times, English (UK)
- Nik Aksamit 11/14/2016 11:32 AM
Deleted: of
- Nik Aksamit 11/14/2016 11:32 AM
Formatted: Font:Times, English (UK)
- Nik Aksamit 11/14/2016 11:32 AM
Deleted: three low wind speed recordings (
- Nik Aksamit 11/14/2016 11:32 AM
Formatted: Font:Times, English (UK)
- Nik Aksamit 11/14/2016 11:32 AM
Deleted: March #2 and 3 March #1 & 4)
- Nik Aksamit 11/14/2016 11:32 AM
Formatted: Font:Times, English (UK)
- Nik Aksamit 11/14/2016 11:32 AM
Deleted: 4 mm for all others, Fig. 8 displays horizontal velocity histograms
- Nik Aksamit 11/14/2016 11:32 AM
Formatted: Font:Times, English (UK)
- Nik Aksamit 11/14/2016 11:32 AM
Deleted: descending snow
- Nik Aksamit 11/14/2016 11:32 AM
Formatted: Font:Times, English (UK)
- Nik Aksamit 11/14/2016 11:32 AM
Deleted: above
- Nik Aksamit 11/14/2016 11:32 AM
Formatted: Font:Times, English (UK)
- Nik Aksamit 11/14/2016 11:32 AM
Formatted: Font:Times, English (UK)
- Nik Aksamit 11/14/2016 11:32 AM
Deleted: these designations.

fluctuations made measurements of representative fluxes inaccurate. Thus, the separation threshold was restricted to the 2-5 mm range.

For every recording and each separation threshold chosen, there was a denser surface flow whose mean statistics are dominated by slow moving particles. This is to be expected from the particle velocity and number flux profiles in Fig. 6 and 7. The upper region histograms show saltating particles starting to transition towards higher energy trajectories, with transport dynamics dominated by larger horizontal velocities. The increasing proportion of high-energy particles with distance from the surface is likely due to the need for a greater velocity to reach greater heights on a ballistic trajectory from the surface and the subjection to higher wind speeds with increasing distance above the surface.

Subtracting the upper region particle bin numbers from the lower region bins permits an estimate of the number of particles at given velocities present solely in the lower region, hereon termed the surface residual. The sensitivity analysis showed that for nearly every separation threshold at least as many high velocity particles existed in the upper region as in the lower. This allows conceptualization of the surface residual as the slower moving surface grains, though not necessarily creep. An example of this is shown in histograms of descending lower-region, upper-region, and surface residual particle horizontal velocities for March 3 recording #5 in Figure 8.

Assuming a fixed particle diameter for all particles in each recording as the mean from Figure 3, spherical snow grains and a grain density of 917 kg m^{-3} , snow transport momentum for each region could be estimated as the sum of momentum of particles in each velocity bin. Varying upper and lower region separation thresholds from 2 to 5 mm, the surface residual constituted between 2 – 82 %, 0.07 – 35 %, and 5 – 49 % of total transport momentum below 30 mm, on March 23, Feb 3, and March 3, respectively. Ranges of momentum contribution for individual recordings are indicated on the respective histograms in Figure 8 as “Surf Res,” and are plotted in the bottom left panel. Surface residual momentum values compliment the profiles of F_z (Fig. 7) as near surface F_z values also include high velocity particles that impact the surface.

In the near-surface region, the ability of the snowpack to redistribute impact momentum was estimated from PTV data derived from each recording. Mean snow particle rebound efficiency varied from night to night, and was quantified by the restitution coefficient, $\bar{e}_{xz} = \overline{\|s_r\|/\|s_i\|}$, where $\|s_r\|$ and $\|s_i\|$ are

Nik Aksamit 11/14/2016 11:32 AM

Formatted: Font:Times, English (UK)

Nik Aksamit 11/14/2016 11:32 AM

Formatted: Space After: 0 pt, Add space between paragraphs of the same style, Widow/Orphan control, Adjust space between Latin and Asian text, Adjust space between Asian text and numbers

Nik Aksamit 11/14/2016 11:32 AM

Deleted: night

Nik Aksamit 11/14/2016 11:32 AM

Deleted: Transitioning away from the densest flow, the

Nik Aksamit 11/14/2016 11:32 AM

Deleted: have already begun

Nik Aksamit 11/14/2016 11:32 AM

Deleted: a

Nik Aksamit 11/14/2016 11:32 AM

Deleted: population

Nik Aksamit 11/14/2016 11:32 AM

Deleted: centred around

Nik Aksamit 11/14/2016 11:32 AM

Deleted: resulting in a higher mean.

Nik Aksamit 11/14/2016 11:32 AM

Deleted: was

Nik Aksamit 11/14/2016 11:32 AM

Deleted: stronger winds

Nik Aksamit 11/14/2016 11:32 AM

Deleted: What is of most interest here is that a separating height was chosen such that for each recording the two histograms begin to agree for the highest energy grains (Fig. 8). That is, the highest energy population of descending particles present in the upper band can also be identified in the surface flow and that high and low-energy populations coexisted as part of a continuous spectrum of motion at the surface. This was indicative of an inherent coupling of the creep and saltating grains. Working with the assumption that the surface histograms contain contributions from both the high and low-energy populations of grains, whereas the upper band histogram consists only of high-energy grains, we can then identify the low-energy population at the surface as the difference of the two collections of particle vectors. With this, we can begin to quantify the role that creep plays in surface impact and wind momentum balance. Note, identifying creep particles is only possible when using both the particle velocity and location because high-energy grains were also impacting surface. The difference of surface and upper region populations showed a low-energy ... (1)

Nik Aksamit 11/14/2016 11:32 AM

Deleted: Snow

mean ejection and impact speeds of particles, respectively, at $6 \text{ mm} \pm 2 \text{ mm}$ such that the lower bound of the measurement band corresponds with the upper bound of the surface band generating Fig. 8 histograms. Because of the density of the particle flow, and transverse components of travel, a bulk statistical approach must be used to quantify momentum redistribution into the particle bed. Therefore

5 particle ejection speeds of both the rebounding grains and the splashed grains that reach ~ 20 particle diameters above the surface were averaged. Over the course of the campaign, $\overline{e_{xz}}$ varied from 0.58 to 0.84, within the bounds of the previous wind tunnel blowing snow study of *Sugiura and Maeno* (2000) who used a complimentary particle by particle approach, separating individual rebounding and splashed grains. The mean restitution coefficient was 0.69 for the graupel grains on March 23, 0.79 for fresh

10 snow on March 3, and 0.73 for old snow on February 3. This suggests rebound efficiency was dependent on time-sensitive saltating snow crystal and bed mechanical/material properties, as also noted in a blowing snow wind tunnel study by *McElwaine et al.* (2004).

3.3 Turbulent Event Transport

The initiation mechanisms observed at the surface during the onset of transport events differ from those

15 proposed in single threshold velocity models (e.g. *Schmidt*, 1980), suggesting multiple thresholds with the dense surface flow playing a crucial role. All three transport thresholds recognized during video playback were crossed during 23 March recording #3 (Fig. 9) where an isolated gust was captured with minimal antecedent transport. Thus, it will be used as an example for further discussion. Concurrent

20 streamwise wind measurements at 200 and 40 cm are plotted in Fig. 9a showing penetration of a turbulent sweep to the surface that is responsible for snow transport. In Fig. 9a, filled circles indicate sweep events with RS exceeding one standard deviation of total RS (colors corresponding to measurement heights), while triangles indicate similar moments of strong ejections. Fig. 9b and 9c show time series of spatially averaged particle velocities, and total particles tracked, respectively, in three height bands, $1 < z < 4 \text{ mm}$ (Near-Surface), $4 \leq z < 8 \text{ mm}$ (Mid), and $8 \leq z < 30 \text{ mm}$ (High).

25 These three heights were chosen to demonstrate the subtle differences in particle transport and the continuum of motion as grains began motion and began bouncing to greater heights as wind speeds increased. These are not hard thresholds of “creep” versus “saltation” regimes. Fig. 9d shows the time

Nik Aksamit 11/14/2016 11:32 AM

Deleted: Using $\overline{e_{xz}}$ from each recording and assuming a constant mean grain diameter, it was then possible to sum the total impacting high-energy snow grain momentum and to estimate how much momentum was lost to the snow bed through surface bond breaking, particle shattering or particle ejection. Similarly, one can determine the amount of momentum present in the low-energy surface population. Consistently, there was a large residual in the momentum balance, with up to 10 times the momentum in the low-energy surface particles than that which was available from particle impacts. This ratio of the sum of momentum in the creeping population to that lost to the surface from impacting high-energy particles capable of splash is indicated on each recording histogram in Fig. 8 as “Crp/Spl”. All coefficients greater than one indicate a creep layer with total momentum greater than that which was possibly gained through saltating particle impacts. The creep layer was not merely a region of splashed grains that balances the momentum lost from saltating particles, but also behaves as a sink of wind momentum as well, further complicating the lower boundary layer condition for wind models.

Nik Aksamit 11/14/2016 11:32 AM

Deleted: are

series of instantaneous blowing snow flux Q_s in $kg\ m^{-2}s^{-1}$. These binarization based flux measurements compliment PTV calculations in intense gusting when enumerating all particles through tracking became difficult.

At the end of a strong ejection event (2.5-4.5 s) at wind speeds near $4\ m\ s^{-1}$, snow particle motion began with tumbling surface movement where aerodynamic drag was barely able to directly break weak surface crystal bonds and initiate rolling (5 s in Figs. 9b-d). Particle-bed collisions were concurrently responsible for breaking surface snowpack matrix structures at these wind speeds, though were not yet able to initiate a splash regime. The supplementary video for March 23 begins at 5 seconds in this time series. The bonds broken by low-energy grains at low wind speeds enabled more grains to be freely available for entrainment. During this time, horizontal particle velocities remained low and in the near surface region (Fig. 9b), with no particles being tracked above 4 mm (Fig. 9c), and total mass transport remaining low (Fig. 9d). At this stage, the only particles in motion were those classically termed creep.

As the wind speed increased ($> 6\ s$), another threshold was crossed ($\sim 4.5 - 5\ m\ s^{-1}$) above which tumbling near-surface particles were sufficiently accelerated so that they could regularly bounce off the uneven surface and out of the creep layer. This initiated what is classically described as saltation, evidenced by the increasing presence of particles tracked in the “Mid” and “High” regions in Fig. 9c (above 4 mm), though snow mass flux remained moderate at this time (Fig. 9d). A continuum of motion is evidenced here as all mean particle velocities increased and velocities steadily increased away from the surface.

At 8 s, a strong sweep is present at 2 m that penetrates to the surface by 8.5 s when the last critical wind velocity threshold was crossed ($\sim 6\ m\ s^{-1}$); that at which saltating particles were sufficiently accelerated to initiate an active splash regime upon rebounding. At this point snow mass flux increased exponentially (Fig. 9d), abruptly saturating the recording frame with snow particles and limiting illumination for successful PTV (discussed below). Similar exponential increases of sand flux during gust onset and splash commencement have been documented (*Willets et al.*, 1991). The increased snow mass flux (Fig. 9d) persisted for the duration of the gust, (until 10 s) after which both high and low streamwise velocities decreased. From 11 s onwards, the decreasing wind speed was no longer able to sustain the mass transport and particle counts dropped in the “Mid” and “High” regions of flow. A

combination of inertia and wind drag prolonged transport in the creep layer, maintaining rolling crystals that continued breaking surface bonds and were available for transport during the next gust.

High region particle velocity spikes occurred with some delay after 8.5 s due to the intense snow particle density blocked the laser light illumination, making particle tracking difficult. At 9 s, the number of particles tracked in the upper region increased as particles tracked near the surface decreased. This is likely a measurement error due to the dense granular flow attenuating light penetration to the snow surface. As the gust began to subside after 9 s, PTV-observed velocities and particle numbers increased because tracking became more successful. Then, as wind speed decreased further, observed velocities and particle numbers decreased as expected. The *Otsu* (1979) binarization thresholds were determined over short sub-periods (0.085 s) of recording #3 (Fig. 9d), allowing the thresholding technique to adapt to different levels of illumination and overcome these saturation issues.

Particle impact dynamics evolved as snowpack surface conditions varied during the season with multiple melt-freeze cycles, periods of wind hardening and the appearance of mixed grain types. Warm (Air Temp: +1°C) February 2015 snowstorms precipitated enormous aggregate and rimed crystals that expanded the role of near-surface particle dynamics. Large (4 mm diameter) tumbleweed-like aggregate grains termed here “tumblons”, eroded many smaller crystals from the surface or shattered themselves and immediately became saltating grains, depending on impact velocity. Overlain PTV vectors can be seen in Supplementary Video – Tumblon PTV, where an impacting tumblon shatters at the surface at seven seconds, with an impact velocity of approximately $(u, v) = (2.46, -0.43) \text{ m s}^{-1}$. At 35 seconds in the PTV video, a comparably sized tumblon with velocity $(u, v) = (0.6, 0.1) \text{ m s}^{-1}$ tumbles across the screen without collapse. This type of particle motion has not been described before and would seem to be a distinctive feature of blowing snow during or shortly after snowfall of large dendritic flakes in relatively warm conditions. Uniquely large grains can also be found in the March 3 supplementary video, though shattering dynamics do not appear prevalent on that night as large grains resulted from riming and not wet grain aggregation. Decomposing and aggregate grains of extreme size have not been reported for saltating sand. This may limit the application of sand bed momentum balances and wind tunnel studies where there are no contributions of falling snow to saltation.

4 Discussion

Choosing the appropriate timescale to characterize turbulent energy for snow transport is vital. From Table 2 and Fig. 6 & 7, it is clear that recording specific particle velocity gradients $\frac{\partial u_p}{\partial z}$ and flux concentration profiles did not scale with 15-minute u_* or z_0 values as is assumed on average for many existing snow saltation models (*Pomeroy and Gray*, 1990). Part of this lack of concurrence was due to intermittent transport and large-scale atmospheric motions generating high shear over short periods (Fig. 4). Also, the limited Reynolds numbers possible in wind tunnel blowing snow experiments cannot replicate the complex eddy structure of the ASL. Thus kinetic energy is contributed to mass transport at much higher frequencies in wind tunnels (*Paterna et al.*, 2016) and the full spectrum of motion can be measured over shorter time scales. Moreover, with the influence of surrounding topography, capturing the relevant range of energy containing eddies to predict snow transport in the alpine is less straightforward. The 15-minute mean wind speeds were often below any snow transport thresholds reported in the literature (*Li and Pomeroy*, 1997). The significant errors arising when applying time-averaged values in a u_* driven transport model (i.e. *Bagnold*, 1941) in intermittent winds have been well examined for sand (*Sorenson*, 1997) and equally apply for snow saltation. *Pomeroy and Li* (2000) accounted for the inapplicability of steady-state theory in near threshold conditions by using a probability of occurrence function to reduce transport fluxes at lower mean wind speeds, but it is unclear whether this empirical correction can account for the complex interaction of turbulence and particle flux near the threshold. Disagreements between u_* and z_0 values at the two measurement heights, large 15-minute z_0 values, and disagreement between log-law based and covariance generated u_* values reinforces the notion that all required assumptions must be met before log-law profiles should be applied for blowing snow models (*George*, 2007), especially in complex terrain.

Blowing snow PTV transport profiles were clearly more related to recording-specific u_* than 15-minute values because of the non-steady state nature of the wind. As found in several wind tunnel sand studies (*Creysse et al.*, 2009; *Ho et al.*, 2011), particle velocity gradients adhered to linear profiles below ~8-12 mm depending on the night. The low-energy near surface population of particles were less affected by fluctuations in wind strength (*Ho et al.*, 2014), which resulted in more temporally consistent periods of near surface low-energy transport and lower NRMSE values. Recent blowing snow wind tunnel

Nik Aksamit 11/14/2016 11:32 AM

Deleted: $\frac{\partial u_p}{\partial z}$

Nik Aksamit 11/14/2016 11:32 AM

Deleted: creep

Nik Aksamit 11/14/2016 11:32 AM

Deleted: near the surface

experiments found log-linearity present in the horizontal velocity profile (Tominaga *et al.*, 2013), though this was not observed in the present study because of a lack of presence of a log-law for the wind.

For all recordings, the velocity gradients γ increased with increasing friction velocity estimates (Fig. 6d-f). Thus even in the dense low-energy population of grains, there was noticeable adaptation to changing wind speeds. However the role of low-energy grains diminished as surface grains became less available with increasing surface hardness. As with the rigid bed experiments from Ho *et al.*, (2011) at similar Shields parameters, there was a much smaller variability in γ for the wind-hardened bed on February 3 than for the two nights with lower HHI, and lower overall γ values. The momentum deficit height h_v was also highest for February 3 (Fig. 7 inset) with relatively low Shields numbers (0.026-0.061), indicating a muted role of creep and a more uniform saltation layer.

On the same night, a linear increase in particle slip velocity u_0 was observed for wind-hardened beds, similar to the findings over rigid beds by Ho *et al.*, (2011) for sand. This showed a general acceleration of all grains in saltation when there are fewer new grains to be entrained in the flow. In comparison, there was much less variability for slip velocity for March 23 and March 3 over a wider range of Shields parameters and no clear increasing or decreasing trend. A constant slip velocity is characteristic of erodible beds in equilibrium sand transport experiments (Creyssels *et al.*, 2009, Ho *et al.*, 2011). Presumably, as increasing concentration compensates for increasing friction velocity, u_0 returns to mean values over time. Snow transport observed to be in constant readjustment to changes in wind speed, and equilibrium was never reached in the experiments, though reduced variation in u_0 may be indicative of early stages of the equilibrium process as theorized by Ungar and Haff (1987).

Particle number flux concentration profiles fit an exponential decrease model with increasing accuracy as height decreased and flow density increased, as predicted in many other sand and snow studies (Maeno *et al.*, 1980; Nishimura and Hunt, 2000; Creyssels *et al.*, 2009; Ellis *et al.*, 2009; Ho *et al.*, 2011; Lü *et al.*, 2012). A direct comparison of decay length (l_v) between recordings and other experiments was impractical because large variations in surface concentration (v_0) skewed the decay length, making it a poor analogue for saltation height. Instead, it was found that the momentum deficit height h_v increased for most recordings with increasing friction velocity. Lower h_v values require more

Nik Aksamit 11/14/2016 11:32 AM

Deleted: , with

Nik Aksamit 11/14/2016 11:32 AM

Deleted: over all

Nik Aksamit 11/14/2016 11:32 AM

Deleted: further mimicking some of

Nik Aksamit 11/14/2016 11:32 AM

Deleted: of

Nik Aksamit 11/14/2016 11:32 AM

Deleted: for

Nik Aksamit 11/14/2016 11:32 AM

Deleted:).

Nik Aksamit 11/14/2016 11:32 AM

Deleted: The snow

Nik Aksamit 11/14/2016 11:32 AM

Deleted: was

Nik Aksamit 11/14/2016 11:32 AM

Deleted: smaller changes

Nik Aksamit 11/14/2016 11:32 AM

Deleted: were

Nik Aksamit 11/14/2016 11:32 AM

Deleted: to

Nik Aksamit 11/14/2016 11:32 AM

Deleted: one approached the consistent dense

Nik Aksamit 11/14/2016 11:32 AM

Deleted: at the surface

Nik Aksamit 11/14/2016 11:32 AM

Deleted: as an analog

Nik Aksamit 11/14/2016 11:32 AM

Deleted: Low

Nik Aksamit 11/14/2016 11:32 AM

Deleted: imply the majority of

particle transport momentum nearer the surface. The presence of low-energy near-surface particles at low friction velocities served as a reservoir for the transition to saltation with subsequent increases in wind speed. As the wind speed accelerates, more particles are accelerated and transported to greater heights where they are further accelerated, resulting in a more uniform vertical distribution of mass flux.

5 This occurs gradually with increasing wind speed, rather than involving discrete transport threshold velocity values for separate modes of transport.

The notable exception for this trend in h_v were the events of March 23 (Fig. 7, inset – red dots) where h_v , l_v , and v_0 values remained constant as was predicted by *Ho et al.* (2011) for erodible beds. This difference in behaviour can be physically justified as spherical graupel grains over a non-cohesive bed

10 are the conditions most closely resembling sand, and so the number flux profiles behaved more similarly to sand than for the other two nights of blowing snow.

Histograms of horizontal velocity further supported the relevant and dynamic role of the low-energy surface population of blowing snow (Fig. 8), and the decreasing importance of near-surface mass flux with increasing surface hardness. The bottom left plot in Figure 8 shows that for the nights with erodible beds and lower HHI (March 23 and March 3), the ratio of surface residual to total momentum is largest for low friction velocity. This is not sensitive to the separation threshold height chosen. During low wind speeds, particle transport for the erodible beds was largely confined to the lower region with few high-energy surface impacts. The ratio of surface residual to total momentum, and therefore number flux, was much higher over erodible beds than over the wind-hardened rigid bed recordings on February 3 (Fig. 7 & 8).

15 This complimented the fact that the low-energy surface transport on February 3 had the smallest contribution to total number flux. Thus particle type and snow bed properties played a significant role in the surface momentum balance, changing the uniformity of saltation profiles and wind momentum lost to surface transport. Mean particle diameters remained relatively similar over all recordings and thus snow transport models need to account for snow bed

20 hardness or erodibility as there is a connection to a variable near surface transport momentum sink.

Analyzing the instantaneous wind speeds in Fig. 9a helps to explain the short timescale roles of gusts, high friction velocity and turbulence intensity for snow transport in recording #3. The turbulent sweep event ($u' > 0$, $w' < 0$) from 8 to 9 s generated considerable RS; this turbulent structure is widely

- Nik Aksamit 11/14/2016 11:32 AM
Deleted: is present near...earer the surface... [2]
- Nik Aksamit 11/14/2016 11:32 AM
Deleted: was...ere the night... [3]
- Nik Aksamit 11/14/2016 11:32 AM
Deleted: for ...pherical graupel grains over... [4]
- Nik Aksamit 11/14/2016 11:32 AM
Formatted: Space After: 12 pt, Don't add space between paragraphs of the same style, No widow/orphan control, Don't adjust space between Latin and Asian text, Don't adjust space between Asian
Nik Aksamit 11/14/2016 11:32 AM
Deleted: Uniformly, there is an imbalance of
Nik Aksamit 11/14/2016 11:32 AM
Formatted: Font:Times, English (UK)
Nik Aksamit 11/14/2016 11:32 AM
Deleted: lost by impacting
Nik Aksamit 11/14/2016 11:32 AM
Formatted: Font:Times, English (UK)
Nik Aksamit 11/14/2016 11:32 AM
Deleted: grains and that found in the creep layer. This created a requisite wind to creep momentum transfer that is much more substantial over erodible beds.
Nik Aksamit 11/14/2016 11:32 AM
Formatted: Font:Times, English (UK)
Nik Aksamit 11/14/2016 11:32 AM
Deleted: particle
Nik Aksamit 11/14/2016 11:32 AM
Formatted: Font:Times, English (UK)
Nik Aksamit 11/14/2016 11:32 AM
Deleted: in creep to that which... and there... [5]

reported to be involved in initiating aeolian sediment transport (Grass, 1971; Jackson, 1976; Sterk et al. 1998; Chapman et al., 2012). The 1 s sweep accounted for 29% and 25% of total absolute RS at 40 and 200 cm, respectively, and contributed 56% of total snow particle flux below 30 mm, but occupied only 8% of the time. Turbulent ejections ($u' < 0, w' > 0$) generated 39% of total absolute shear stress during the recording and contributed the same direction of RS values to friction velocity calculations but only resulted in 3% of total snow particle flux. Varying the lag time between wind and snow measurements from 0 to 1 second to determine the resultant snow flux had no significant effect on these calculations.

In this gusty alpine environment, periodic turbulent gusts generated the majority of momentum flux as seen by impact factors greater than unity at the surface for Q2 and Q4, and small contributions from Q1 and Q3 (Fig. 4). More importantly, recording #3 showed that the sweep event with strong positive u' fluctuation resulted in particle entrainment and transport, whereas the large ejection event was ineffective at generating snow transport. As suggested by Sterk et al. (1998), instantaneous wind speed is a potentially better predictor of snow transport than friction velocity. However, during each night, the mass flux for scaled with increasing friction velocity (Table 2). This resiliency may help explain some of the robustness of u_* -based time-averaged uniform trajectory blowing snow models, but requires further investigation. The role of sweep events such as this for initiating snow saltation is potentially important for developing models that couple turbulence to snow erosion, entrainment and mass flux and may help resolve current uncertainty in estimating threshold conditions for transport. The importance of understanding snow response to instantaneous wind speed is further increased in complex terrain where the 300 m of clear upwind fetch or 60 s of constant wind suggested by Takeuchi (1980) for saltation to fully develop is not always available. For a more general application, this requires further investigation of turbulent snow transport over longer time series and other snow conditions.

Designating creep as distinct from saltation as originally done by Bagnold (1941) is not only unnecessary but also physically inaccurate as snow transport displays a continuous spectrum of motions, similar to that proposed for sand by Anderson (1987), and individual particles can easily transition from one form of motion to another over their trajectories. However, two populations of motion in this spectrum could be identified in the analysis of Fig. 6-9. While undergoing wind speed

Nik Aksamit 11/14/2016 11:32 AM
Deleted: This

Nik Aksamit 11/14/2016 11:32 AM
Deleted: Impact Factors

Nik Aksamit 11/14/2016 11:32 AM
Deleted: blowing

Nik Aksamit 11/14/2016 11:32 AM
Deleted: each recording

Nik Aksamit 11/14/2016 11:32 AM
Deleted: are

Nik Aksamit 11/14/2016 11:32 AM
Deleted: were

Nik Aksamit 11/14/2016 11:32 AM
Deleted: windspeed

fluctuations, the region of near-surface flux has the most temporally consistent transport (Fig. 9). This was also the region of [largest](#) velocity variance (Fig. 8), yet the consistent presence of the slow particle flow allowed the best fit of particle number flux and mean particle velocity to profiles suggested in the equilibrium sand transport literature. The worst fit of both gradients always occurred at the upper

5 | [regions](#) dominated by high-energy particles (Fig. 8). These high-energy particles constituted the population of fast moving grains that was most susceptible to changes in wind speed (*Ho et al.* 2014) and most temporally intermittent (Fig. 9).

The lower boundary condition for momentum transfer is complex due to creep and dependent on instantaneous wind speed and turbulent motions near the surface. As a result, equilibrium conditions

10 | were never [found in the field observations reported here](#). Non-equilibrium saltation-wind interactions cannot be described with simple uniform trajectories. The majority of particle trajectories in saltation consist of short hop lengths and times, resulting in high frequencies of particle collisions that break surface bond structures, and create dense quasi-fluidized bed characteristics. The complexity of conservation of mass, momentum, and kinetic energy in blowing snow in natural environments, such as

15 | measured here, cannot be understated, especially when the large rimed, aggregate tumblons were present. In the alpine snowpacks investigated, variable particle restitution coefficients contributed to this complexity. While high HHI wind-hardened surfaces exhibited similar behaviour of slip velocity and particle velocity gradients as rigid bed sand studies, complexities over a natural snowpack prevented conclusive bimodal “erodible” versus “non-erodible” scale relations that appear to be viable

20 | for sand (*Ho et al.*, 2011). [Blowing snow is a distinctive two-phase flow](#). Despite arguments to the contrary for other materials (e.g. *Sterk et al.*, 1998), saltating snow models relate mass flux to surface shear stress [estimated from air motions well above the surface](#). These estimates are often based on a momentum deficit derived from the total number of particles in transport, neglecting the vertical heterogeneity of particle concentration [and momentum](#) within the snow saltation

25 | layer (*Doorschot and Lehning*, 2002). As all panels in Fig. 6 and 7 show, uniform descriptions of surface shear stress calculations based on concentration and flux measurements above 10 mm overlook the [substantial](#) wind momentum transferred into the creep layer (i.e. *Zhang et al.*, 2007, *Creysse et al.*, 2009; *Ho et al.*, 2011, 2012, 2014). Disregarding this flux prevents calculation of [the full](#) momentum

Nik Aksamit 11/14/2016 11:32 AM

Deleted: highest

Nik Aksamit 11/14/2016 11:32 AM

Deleted: parts of the video frame, the region

Nik Aksamit 11/14/2016 11:32 AM

Deleted: In previous work, a 10-20 mm transition in flux dynamics was exhibited by a change in particle blowing snow density formulae (*Gordon et al.*, 2009) and blowing sand mechanics. Utilizing simultaneous PIV and PTV to obtain two-phase (sand-wind) wind tunnel velocity measurements, *Zhang et al.* (2007) also found a comparable, extremely dense surface flow below this height. Of note, the wind was significantly modified below 15-20 mm for *Zhang et al.* (2007) in the presence of saltating particles with a shallower convex wind velocity gradient, due to particle momentum extraction in the near-surface region as predicted by Bagnold's focus height (*Bagnold*, 1941). The role of creep in this wind momentum deficit appeared significant and temporally variable. . . . [6]

Nik Aksamit 11/14/2016 11:32 AM

Deleted: achieved.

Nik Aksamit 11/14/2016 11:32 AM

Deleted: estimated airborne

Nik Aksamit 11/14/2016 11:32 AM

Deleted: solely

Nik Aksamit 11/14/2016 11:32 AM

Deleted: immense

Nik Aksamit 11/14/2016 11:32 AM

Deleted: an accurate

balance. Accounting for variability in saltation trajectories would also allow for a dense surface flow to be represented that can feed upper regions (e.g. *Nemoto and Nishimura*, 2004) and create a self-consistent momentum balance. *Andreotti* (2004) wrote a further discussion of self-consistency errors of wind feedback in single trajectory saltation models.

- 5 The wide variety of snow saltation initiation mechanisms observed in this experiment is in contrast to classic initiation models that assume that a temporally-constant fraction of saltating grains begin motion through either aerodynamic entrainment or splash (e.g. *Pomeroy and Gray*, 1990). As seen in Fig. 9 [and the supplementary video](#), in intermittent conditions this variability is magnified, as splash regimes themselves are intermittent, [and depend](#) on sufficient wind speed for adequate particle acceleration upon
10 ejection from the snow surface.

5 Conclusion

This is the first investigation to measure outdoor snow particle flux and velocity immediately above the snow surface. It provides an opportunity to test certain observations of saltating particle flux trajectories measured in wind tunnels. Though observations were restricted to moderate wind speeds and
15 intermittent transport, they show the importance of creep to [the initiation of](#) blowing snow transport [and the](#) transition to full saltation. Being able to relate high frequency turbulent wind speed to snow transport (e.g. *Guala et al.*, 2008) is critical in the alpine environment (*Naaim-Bouvet et al.*, 2011) and this study makes a contribution to understanding these dynamics.

PTV has proven to be a viable avenue for exploring complex wind-snow interactions at millisecond
20 timescales in natural, non-steady state, high Reynolds number wind conditions. These results support the need for further conceptual advancement of models of snow [particle movement, including](#) initiation, rebound, [multiple types of motion and the interaction of turbulent sweeps with](#) particle erosion and entrainment. Over short timescales, snow particle [motion](#) is influenced by complex wind speed dependent initiation and rebound dynamics, including a [dense near-surface flow whose presence and](#)
25 [variation cannot be described by](#) scalar aerodynamic entrainment and splash parameterizations. [Wind-](#) to-snow and snow-to-snow momentum transfer in the first few mm above the surface is critical for

Nik Aksamit 11/14/2016 11:32 AM

Deleted: depending

Nik Aksamit 11/14/2016 11:32 AM

Deleted: initiation

Nik Aksamit 11/14/2016 11:32 AM

Deleted: saltation,

Nik Aksamit 11/14/2016 11:32 AM

Deleted: and

Nik Aksamit 11/14/2016 11:32 AM

Deleted: including

Nik Aksamit 11/14/2016 11:32 AM

Deleted: on

Nik Aksamit 11/14/2016 11:32 AM

Deleted: behaviour

Nik Aksamit 11/14/2016 11:32 AM

Deleted: variable

Nik Aksamit 11/14/2016 11:32 AM

Deleted: that is beyond the scope of

Nik Aksamit 11/14/2016 11:32 AM

Deleted: The wind

driving mechanisms of transport initiation and providing lower boundary conditions for two-phase atmospheric flows.

Nik Aksamit 11/14/2016 11:32 AM

Deleted: both ...riving mechanisms of tran... [7]

The results show a wide spectrum of particle motions exist with near-surface and upper level snow particle transport intrinsically linked through momentum and mass balances. The relative contributions of near-surface and upper level transport depend on wind strength and snowpack properties. Sand saltation velocity distribution models do not comprehensively describe transport of complex snow crystal structures such as the previously undescribed tumblon motions or snow particle shattering and sintering. Low-energy near-surface particles contributed significantly to snow transport as high near-surface particle concentrations compensated for reduced particle speeds, and sustained a layer of peak particle momentum and mass flux. The low-energy grains also contributed considerably to saltation by being a reservoir of particles bouncing into saltation and by breaking snow bed matrix bonds, thus making particles more available by reducing the wind drag required for splash and entrainment.

Nik Aksamit 11/14/2016 11:32 AM

Deleted: combination of all ...results suppo... [8]

The ability of the snowpack surface to absorb wind and particle momentum in the dense near-surface region of particle transport appears variable and substantial. The role that low-energy near-surface particles play in the wind-snow momentum balance and mass flux appeared dependent on snow surface hardness. Wind-hardened surfaces shared several trends similar to that of rigid sand-beds, though not all wind-tunnel observations could be replicated. As saltation dynamics are dependent upon creep particle motions, which mediate exchange between the snow surface and blowing snow, creep dynamics changes over varying surface hardnesses also result in changes in saltation, such as changes in velocity gradients, particle concentration, and rebound dynamics. Therefore the near-surface snow transport has far more intricate dynamics and greater flux relevance than previously described.

Nik Aksamit 11/14/2016 11:32 AM

Deleted: saltation ...article transport appea... [9]

In the present study, the near-surface particle velocities reflected instantaneous wind speed fluctuations and never achieved equilibrium. As the snow transport was in constant readjustment to changes in wind velocity, and short time scale turbulence characteristics did not scale with long time averages, further characterizations of the time scale of relevance or relevant turbulence scaling relations in alpine terrain need to be performed before a steady-state equilibrium type saltation model (e.g. *Pomeroy and Gray*, 1990; *Doorschot and Lehning*, 2002) can be deemed appropriate for these situations. Furthermore, as contributions of shear stress from different RS quadrants are spatially and temporally variable and the

Nik Aksamit 11/14/2016 11:32 AM

Deleted: is...ransport was in constant read... [10]

mechanics of transport vary during gusts as seen in Section 3.3, the need to account for variable shear stress in high-resolution modeling (Doorschot et al., 2004; Groot Zwaafink et al., 2014) is reinforced.

It could be very useful to compare modeled entrainment and splash ratios with PTV datasets, however longer recording times over a larger variety of snow types would be necessary to obtain statistically significant comparisons. Specifically, whether longer time-averaged statistics can account for periods of varying initiation during intermittent saltation, or can only apply in more nearly steady-state environments would be a useful finding for high temporal resolution applications (e.g. Groot Zwaafink et al., 2014). PTV shows potential to answer many open questions in blowing snow research through quantification of momentum redistribution in very near-surface particle motions. The use of high temporal-resolution outdoor PTV measurements may prove useful in future work for understanding how turbulence influences blowing snow processes in natural settings.

6. ACKNOWLEDGEMENTS

The authors acknowledge funding from the Canadian Foundation for Innovation, the Natural Sciences and Engineering Research Council of Canada, the Changing Cold Regions Network, Canada Research Chairs, the Global Institute for Water Security and Alberta Agriculture and Forestry. The assistance of Nicolas Leroux and the Fortress Mountain Resort in logistics is gratefully noted, as are the suggestions from Florence Naaïm-Bouvet to improve the manuscript. Data is available upon request directly from the authors, john.pomeroy@usask.ca.

References

- Anderson, R. S. and Haff, P. K.: Simulation of eolian saltation, Science, 241(4867), 820–3, doi:10.1126/science.241.4867.820, 1988.
- Anderson, R. S.: Eolian sediment transport as a stochastic process: The effects of a fluctuating wind on particle trajectories, J. Geol., 95(4), 497–512, doi:10.1086/629145, 1987.
- Andreotti, B.: A two species model of aeolian sand transport, J. Fluid Mech., 510, 47–70, 2004.

Nik Aksamit 11/14/2016 11:32 AM

Deleted: long

Nik Aksamit 11/14/2016 11:32 AM

Deleted: average

Nik Aksamit 11/14/2016 11:32 AM

Deleted: can

Nik Aksamit 11/14/2016 11:32 AM

Deleted: -

Nik Aksamit 11/14/2016 11:32 AM

Deleted: motion

Nik Aksamit 11/14/2016 11:32 AM

Deleted: the turbulent

Nik Aksamit 11/14/2016 11:32 AM

Deleted: on intermittent

Nik Aksamit 11/14/2016 11:32 AM

Deleted: and allows comparison with and evaluation of wind tunnel PTV data

Nik Aksamit 11/14/2016 11:32 AM

Deleted: .

- Bagnold, R. A.: The physics of blown sand and desert dunes, 1st ed., Methuen & Co. Limited, London., 1941.
- Bintanja, R.: Snowdrift suspension and atmospheric turbulence. Part I: Theoretical background and model description, *Boundary-layer Meteorol.*, 95, 343–368, 2000.
- 5 Brown, T. and Pomeroy, J.: A blowing snow particle detector, *Cold Reg. Sci. Technol.*, 16, 167–174, 1989.
- Budd, W. F.: The drifting of non-uniform snow particles, in *Studies in Antarctic Meteorology, Antarctic Research Series 9*, edited by M. J. Rubin, pp. 59–70, American Geophysical Union, Washington D.C., 1966.
- 10 Budd, W. F., Dingle, W. R. J. and Radok, U.: The Byrd snow drift project: Outline and basic results, in *Studies in Antarctic Meteorology, Antarctic Research Series 9* edited by M. J. Rubin, pp. 59–70, American Geophysical Union, Washington D.C., 1966.
- Chapman, C. A., Walker, I. J., Hesp, P. A., Bauer, B. O. and Davidson-Arnott, R. G. D.: Turbulent Reynolds stress and quadrant event activity in wind flow over a coastal foredune, *Geomorphology*, 151-152, 1–12, doi:10.1016/j.geomorph.2011.11.015, 2012.
- 15 Creyssels, M., Dupont, P., El Moutar, a. O., Valance, A., Cantat, I., Jenkins, J. T., Pasini, J. M. and Rasmussen, K. R.: Saltating particles in a turbulent boundary layer: experiment and theory, *J. Fluid Mech.*, 625, 47–74, doi:10.1017/S0022112008005491, 2009.
- Dennis, D. J. C., and Nickels, T. B.: On the limitations of Taylor’s hypothesis in constructing long structures in a turbulent boundary layer, *J. Fluid Mech.*, 614, 197, doi:10.1017/S0022112008003352, 2008.
- 20 Doorschot, J., Lehning, M. and Vrouwe, A.: Field measurements of snow-drift threshold and mass fluxes, and related model simulations, *Boundary-Layer Meteorol.*, 347–368, 2004.
- Doorschot, J. and Lehning, M.: Equilibrium saltation: mass fluxes, aerodynamic entrainment, and dependence on grain properties, *Boundary-layer Meteorol.*, 104, 111–130, 2002.
- 25 Dyunin, A. K. and Kotlyakov, V.: Redistribution of snow in the mountains under the effect of heavy snow-storms, *Cold Reg. Sci. Technol.*, 3, 287–294, 1980.

- Ellis, J. T., Li, B., Farrell, E. J., and Sherman, D. J., Protocols for characterizing aeolian mass-flux profiles, *Aeolian Res.*, 1(1-2), 19–26, doi:10.1016/j.aeolia.2009.02.001, 2009.
- Fierz, C., Armstrong, R., Durand, Y., Etchevers, P., Greene, E., McClung, D. M., Nishimura, K., Satyawali, P. K. and Sokratov, S. A.: The international classification for seasonal snow on the ground, International Association of Cryospheric Sciences, 2009.
- 5 Foken, T.: *Micrometeorology*. Berlin: Springer, 2008. Print.
- Foken, T. and Wichura, B.: Tools for quality assessment of surface-based flux measurements, *Agric. For. Meteorol.*, 78, 83–105, doi:10.1016/0168-1923(95)02248-1, 1996.
- Gauer, P.: Blowing and drifting snow in alpine terrain: A physically-based numerical model and related field measurements, Swiss Federal Institute of Technology Zurich, 1999.
- 10 George, W. K.: Is there a universal log law for turbulent wall-bounded flows?, *Philos. Trans. A. Math. Phys. Eng. Sci.*, 365(1852), 789–806, doi:10.1098/rsta.2006.1941, 2007.
- Gordon, M., Savelyev, S. and Taylor, P. A.: Measurements of blowing snow, part II: Mass and number density profiles and saltation height at Franklin Bay, NWT, Canada, *Cold Reg. Sci. Technol.*, 55(1), 75–85, doi:10.1016/j.coldregions.2008.07.001, 2009.
- 15 Gordon, M. and Taylor, P. A.: Measurements of blowing snow, Part I: Particle shape, size distribution, velocity, and number flux at Churchill, Manitoba, Canada, *Cold Reg. Sci. Technol.*, 55(1), 63–74, doi:10.1016/j.coldregions.2008.05.001, 2009.
- Gromke, C., Horender, S., Walter, B. and Lehning, M.: Snow particle characteristics in the saltation layer, *J. Glaciol.*, 60(221), 431–439, doi:10.3189/2014JoG13J079, 2014.
- 20 Groot Zwaafink, C. D., Diebold, M., Horender, S., Overney, J., Lieberherr, G., Parlange, M. B. and Lehning, M.: Modelling small-scale drifting snow with a lagrangian stochastic model based on large-eddy simulations, *Boundary-Layer Meteorol.*, doi:10.1007/s10546-014-9934-2, 2014.
- Guala, M., Manes, C., Clifton, A. and Lehning, M.: On the saltation of fresh snow in a wind tunnel: Profile characterization and single particle statistics, *J. Geophys. Res. Earth Surf.*, 113(3), 1–13, doi:10.1029/2007JF000975, 2008.
- 25 Helgason, W. and Pomeroy, J.: Uncertainties in estimating turbulent fluxes to melting snow in a mountain clearing, in *Proc. 62nd Eastern Snow Conf.*, 129–142, 2005.

- Ho, T. D., Dupont, P., Ould El Mactar, A. and Valance, A.: Particle velocity distribution in saltation transport, *Phys. Rev. E - Stat. Nonlinear, Soft Matter Phys.*, 85(5), 1–5, doi:10.1103/PhysRevE.85.052301, 2012.
- Ho, T. D., Valance, A., Dupont, P. and Ould El Mactar, A.: Aeolian sand transport: Length and height
5 distributions of saltation trajectories, *Aeolian Res.*, 12, 65–74, doi:10.1016/j.aeolia.2013.11.004, 2014.
- Ho, T. D., Valance, A., Dupont, P. and Ould El Mactar, A.: Scaling laws in aeolian sand transport, *Phys. Rev. Lett.*, 106(9), 4–7, doi:10.1103/PhysRevLett.106.094501, 2011.
- Hutchins, N., Chauhan, K., Marusic, I., Monty, J., and Klewicki, J., Towards reconciling the large-scale structure of turbulent boundary layers in the atmosphere and laboratory, *Boundary-Layer Meteorol.*,
10 *145*(2), 273–306, doi:10.1007/s10546-012-9735-4, 2012.
- Jackson, R. G.: Sedimentological and fluid-dynamic implications of the turbulent bursting phenomenon in geophysical flows, *J. Fluid Mech.*, 77(03), 531, doi:10.1017/S0022112076002243, 1976.
- Kinar, N. J. and Pomeroy, J. W.: Measurement of the physical properties of the snowpack, *Rev. Geophys.*, 53, doi:10.1002/2015RG000481.Received, 2015.
- 15 Kobayashi, D.: Studies of snow transport in low-level drifting snow, Sapporo, Hokkaido, Japan., 1972.
- Li, B. and McKenna Neuman, C.: Boundary-layer turbulence characteristics during aeolian saltation, *Geophys. Res. Lett.*, 39(11), 1–6, doi:10.1029/2012GL052234, 2012.
- Li, L. and Pomeroy, J. W.: Estimates of threshold wind speeds for snow transport using meteorological data, *J. Appl. Meteorol.*, 36, 205–213, 1997.
- 20 Lü, X., Huang, N. and Tong, D.: Wind tunnel experiments on natural snow drift, *Sci. China Technol. Sci.*, 55(4), 927–938, doi:10.1007/s11431-011-4731-3, 2012.
- Maeno, N., Araoka, K., and Nishimura, K.: Physical aspects of the wind-snow interaction in blowing snow, *J. Fac. Sci. Hokkaido Univ.*, 6(1), 127–141, 1980.
- Mcelwaine, J. N., Maeno, N. and Sugiura, K.: The splash function for snow from wind-tunnel
25 measurements, *Ann. Glaciol.*, 38, 71–78, 2004.
- Morris, S. C., Stolpa, S. R., Slaboch, P. E. and Klewicki, J. C.: Near-surface particle image velocimetry measurements in a transitionally rough-wall atmospheric boundary layer, *J. Fluid Mech.*, 580, 319–338, doi:10.1017/S0022112007005435, 2007.

- Naaïm-Bouvet, F., Naaïm, M., Bellot, H. and Nishimura, K.: Wind and drifting-snow gust factor in an Alpine context, *Ann. Glaciol.*, 52(58), 223–230, doi:10.3189/172756411797252112, 2011.
- Nemoto, M. and Nishimura, K.: Numerical simulation of snow saltation and suspension in a turbulent boundary layer, *J. Geophys. Res.*, 109(D18), –, doi:10.1029/2004JD004657, 2004.
- 5 Nishimura, K. and Hunt, J. C. R.: Saltation and incipient suspension above a flat particle bed below a turbulent boundary layer, *J. Fluid Mech.*, 417, 77–102, doi:10.1017/S0022112000001014, 2000.
- Nishimura, K., Yokoyama, C., Ito, Y., Nemoto, M., Naaïm-Bouvet, F., Bellot, H., Fujita, K., Yokoyama, C., Ito, Y., Nemoto, M., Naaïm-bouvet, F., Bellot, H. and Fujita, K.: Snow particle speeds in drifting snow, *J. Geophys. Res. Atmos.*, 119, 9901–9913, doi:10.1002/2014JD021686, 2014.
- 10 Otsu, N.: A threshold selection method from gray-level histograms, *IEEE Trans. Syst. Man. Cybern.*, SMC-9(1), 62–66, 1979.
- Owen, P. R.: Saltation of uniform grains in air, *J. Fluid Mech.*, 20(02), 225, doi:10.1017/S0022112064001173, 1964.
- Paterna, E., Crivelli, P. and Lehning, M.: Decoupling of mass flux and turbulent wind fluctuations in drifting snow, *Geophys. Res. Lett.*, 1–7, doi:10.1002/2016GL068171, 2016.
- 15 Pomeroy, J. and Gray, D.: Saltation of snow, *Water Resour. Res.*, 26(7), 1583–1594, 1990.
- Pomeroy, J. W. and Male, D. H.: Steady-state suspension of snow, *J. Hydrol.*, 136(1-4), 275–301, doi:10.1016/0022-1694(92)90015-N, 1992.
- Pomeroy, J. W. and Gray, D. M.: *Snowcover: Accumulation, relocation, and management*, Saskatoon, SK., 1995. Print.
- 20 Pomeroy, J. and Li, L.: Prairie and Arctic areal snow cover mass balance using a blowing snow model, *J. Geophys. Res.*, 105(D21), 26619–26634, 2000.
- Pomeroy, J., Fang, X. and Ellis, C.: Sensitivity of snowmelt hydrology in Marmot Creek, Alberta, to forest cover disturbance, *Hydrol. Process.*, 26(12), 1891–1904, doi:10.1002/hyp.9248, 2012.
- 25 Rosi, G. A., Sherry, M., Kinzel, M. and Rival, D. E.: Characterizing the lower log region of the atmospheric surface layer via large-scale particle tracking velocimetry, *Exp. Fluids*, 55(5), 10, doi:10.1007/s00348-014-1736-2, 2014.

- Schmidt, R.A.: Threshold wind-speeds and elastic impact in snow transport, *J. Glaciol.*, 26(94), 453–467, 1980.
- Schmidt, R. A. Vertical profiles of wind speed, snow concentration, and humidity in blowing snow, *Boundary-Layer Meteorol.*, 23, 223–246, doi:10.1016/j.soncn.2013.06.001, 1982.
- 5 Schmidt, R.A.: Measuring particle size and snowfall intensity in drifting snow, *Cold Reg. Sci. Technol.*, 9, 121–129, 1984.
- Schweizer, J., Jamieson, B. and Schneebeli, M.: Snow avalanche formation, *Rev. Geophys.*, 41(4), doi:10.1029/2002RG000123, 2003.
- Sørensen, M.: On the effect of time variability of the wind on rates of aeolian sand transport, *Aarhus*
- 10 *Geosci.*, 7, 73–77, 1997.
- Sterk, G., Jacobs, a. F. G. and Van Boxel, J. H.: The effect of turbulent flow structures on saltation sand transport in the atmospheric boundary layer, *Earth Surf. Process. Landforms*, 23(10), 877–887, doi:10.1002/(SICI)1096-9837(199810)23:10<877::AID-ESP905>3.0.CO;2-R, 1998.
- Stull, R.: An introduction to boundary layer meteorology, Kluwer Academic Publisher, Dordrecht, The
- 15 Netherlands, 1988.
- Sugiura, K. and Maeno, N.: Wind-tunnel measurements of restitution coefficients and ejection number of snow particles in drifting snow: determination of splash functions, *Boundary-Layer Meteorol.*, 95(1), 123–143, 2000.
- Sugiura, K., Nishimura, K., Maeno, N. and Kimura, T.: Measurements of snow mass flux and transport
- 20 rate at different particle diameters in drifting snow, *Cold Reg. Sci. Technol.*, 27(2), 83–89, doi:10.1016/S0165-232X(98)00002-0, 1998.
- Tabler, R. D.: Snow transport as a function of wind speed and height, in *Proceedings, Cold Regions Sixth International Specialty Conference TCCP/ASCE*, pp. 729–738, Cold Regions Engineering, West Lebanon, NH., 1991.
- 25 Takeuchi, M.: Vertical profile and horizontal increase of drift-snow transport, *J. Glaciol.*, 26(94), 481–492, 1980.

- Toloui, M., Riley, S., Hong, J., Howard, K., Chamorro, L. P., Guala, M. and Tucker, J.: Measurement of atmospheric boundary layer based on super-large-scale particle image velocimetry using natural snowfall, *Exp. Fluids*, 55(5), 14, doi:10.1007/s00348-014-1737-1, 2014.
- 5 Tominaga, Y., Okaze, T., Mochida, A., Sasaki, Y., Nemoto, M. and Sato, T.: PIV measurements of saltating snow particle velocity in a boundary layer developed in a wind tunnel, *J. Vis.*, 16(2), 95–98, doi:10.1007/s12650-012-0156-8, 2012.
- Ungar, J. E. and Haff, P. K.: Steady state saltation in air, *Sedimentology*, 34(2), 289–299, doi:10.1111/j.1365-3091.1987.tb00778.x, 1987.
- van Boxel, J., Sterk, G. and Arens, S.: Sonic anemometers in aeolian sediment transport research, *Geomorphology*, 59(1-4), 131–147, doi:10.1016/j.geomorph.2003.09.011, 2004.
- 10 Vickers, D. and Mahrt, L.: Quality control and flux sampling problems for tower and aircraft data, *J. Atmos. Ocean. Technol.*, 14(3), 512–526, doi:10.1175/1520-0426(1997)014<0512:QCAFSP>2.0.CO;2, 1997.
- Willetts, B. B., McEwan, J. and Rice, M. A.: Initiation of motion of quartz sand grains, *Acta Mech.*, 1, 123–134, 1991.
- 15 Willmarth, W. W. and Lu, S. S.: Structure of the Reynolds stress near the wall, *J. Fluid Mech.*, 55(1), 65–92, doi:10.1017/S002211207200165X, 1972.
- Winstral, A., Marks, D. and Gurney, R.: Simulating wind-affected snow accumulations at catchment to basin scales, *Adv. Water Resour.*, 55, 64–79, doi:10.1016/j.advwatres.2012.08.011, 2013.
- 20 Zhang, W., Wang, Y. and Lee, S. J.: Two-phase measurements of wind and saltating sand in an atmospheric boundary layer, *Geomorphology*, 88(1-2), 109–119, doi:10.1016/j.geomorph.2006.10.017, 2007.
- Zhu, W., van Hout, R. and Katz, J.: PIV measurements in the atmospheric boundary layer within and above a mature corn canopy. Part II: Quadrant-hole analysis, *J. Atmos. Sci.*, 64(8), 2825–2838, doi:10.1175/JAS3990.1, 2007.
- 25

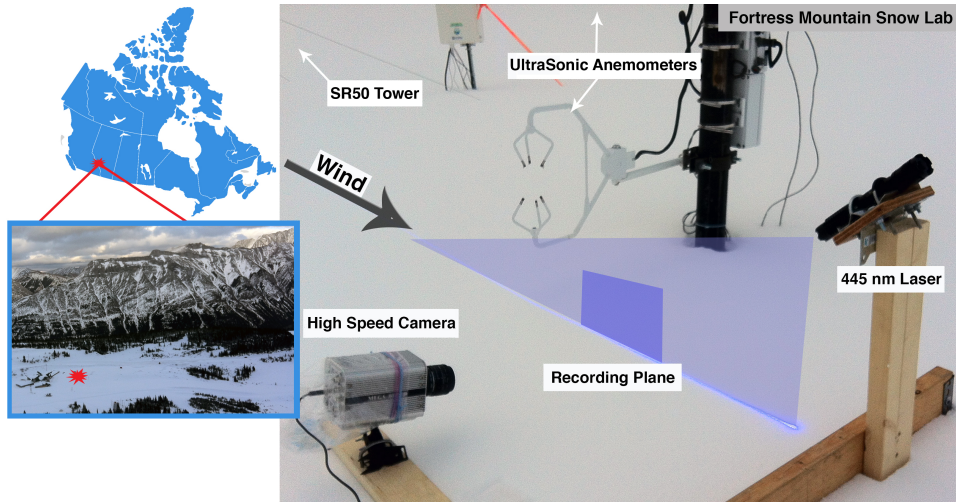


Figure 1: Blowing snow instrument setup and location of field site, Fortress Mountain Snow Laboratory, Alberta, Canada

5

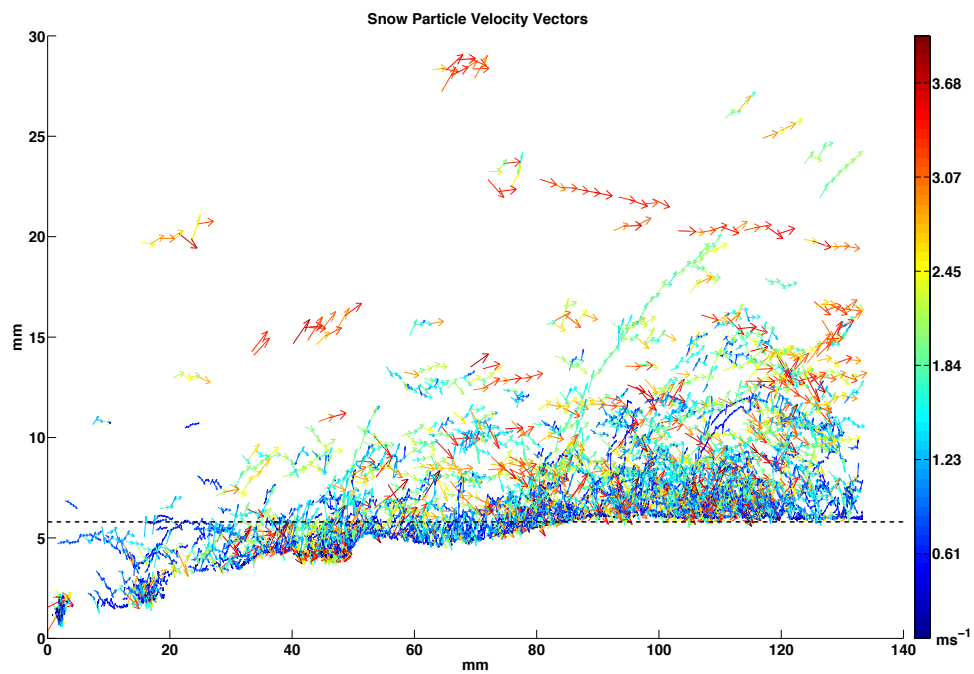


Figure 2: Sparse snow particle velocity vector field during one second of recording on 23 March, vector colors scaled according to total particle speed. The dashed line shows reference below which particles are influenced by microtopography.

5

10

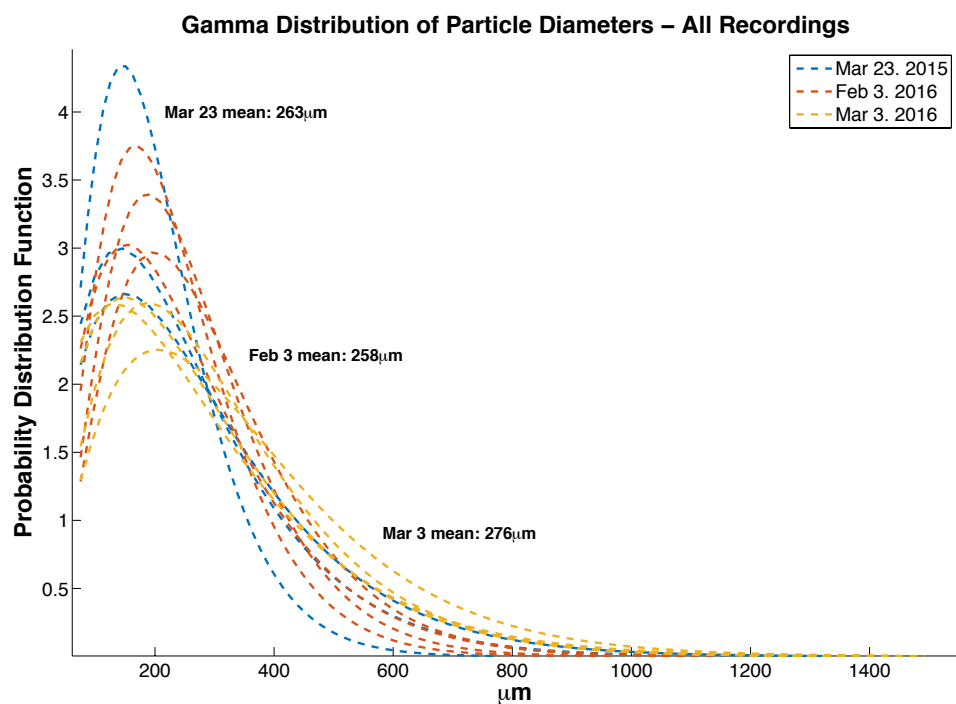


Figure 3: Two parameter Gamma distributions of particle diameters from each recording. Diameter measurements were obtained through black and white video binarization and equivalent diameter calculations of flood-fill identified connected components.

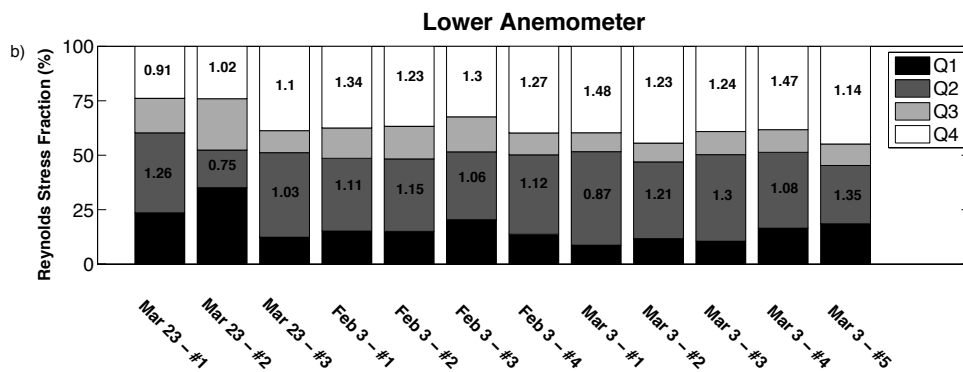
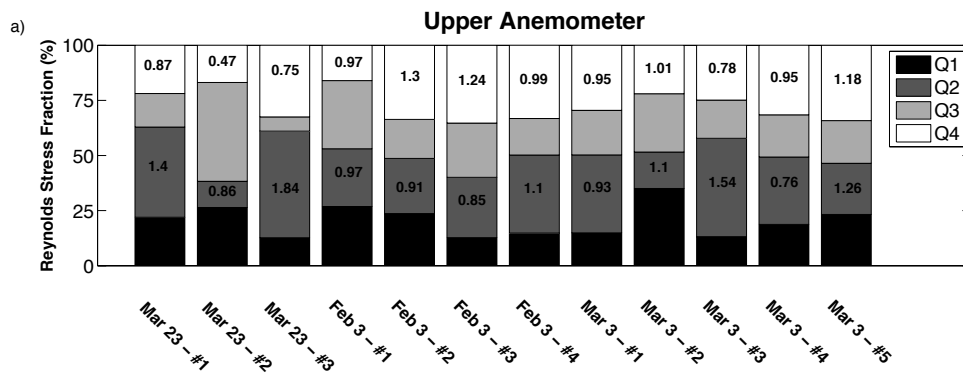


Figure 4: Percentage of Reynolds Stress distributed by Quadrants Analysis during 12 Blowing Snow Recordings with impact factor (% Stress/% Time) inset in Q2 and Q4 events. Note dominance of Q2 and Q4 generated stress. Mar 23 - #2 Low anemometer measurement contaminated.

Nik Aksamit 11/14/2016 11:32 AM
Deleted: for

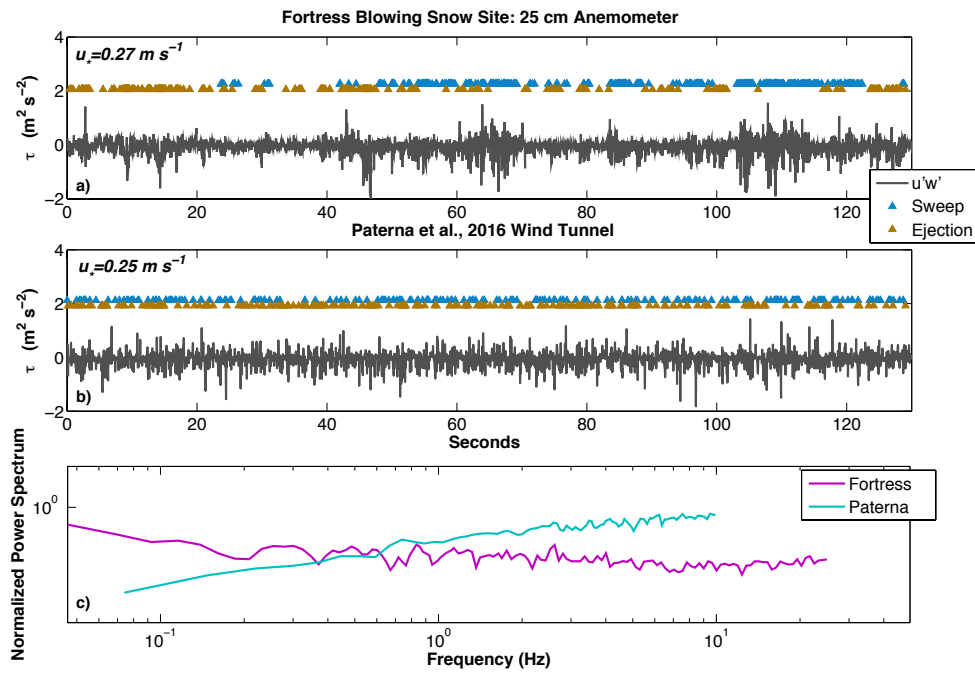
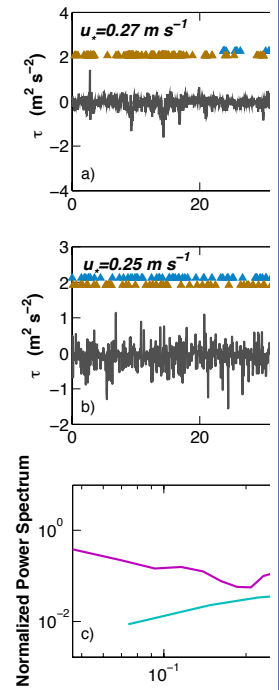


Figure 5: Plots a & b compare Reynolds Shear Stress signals from 3 February 2016 and Paterna et al. (2016) wind tunnel blowing snow studies. Triangles indicated Sweep and Ejection events larger than one standard deviation of Reynolds Stress. C) Normalized Power Spectral Density for streamwise velocity for the two time series.



Deleted:

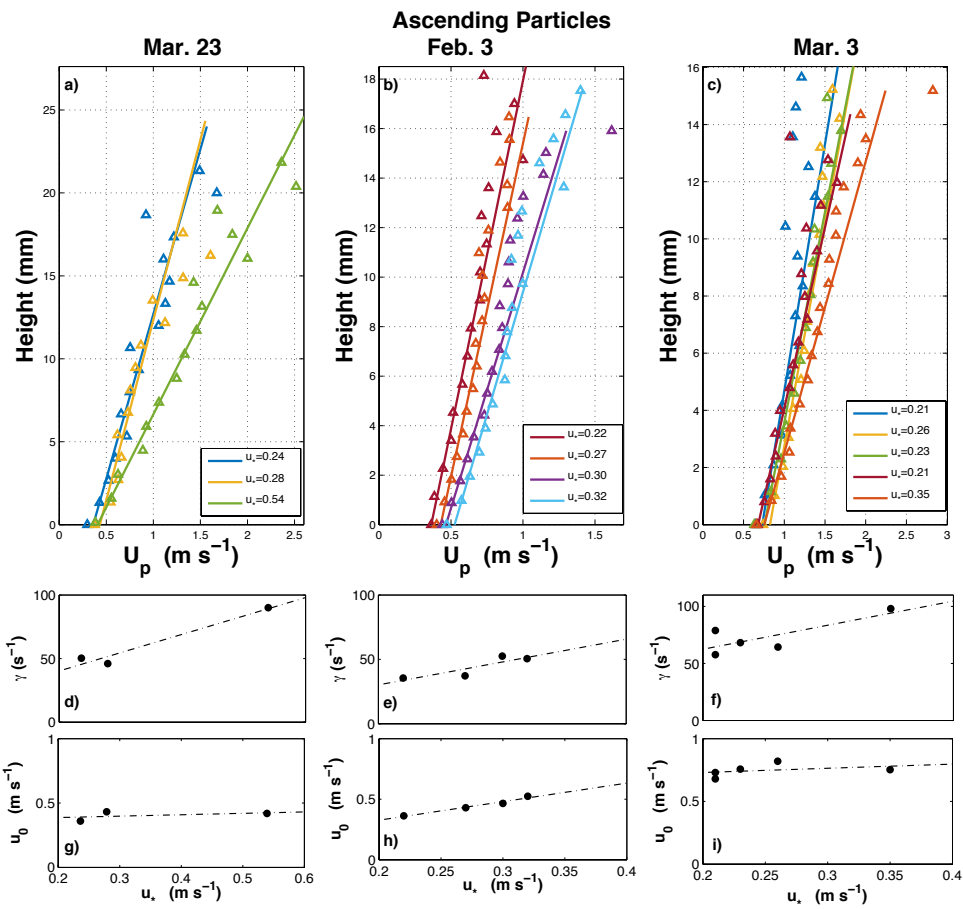


Figure 6: a-c) Average ascending snow particle horizontal velocities in lower saltation layer (triangles) with best fit linear profile for first 10 mm. u_* values are calculated from 200 cm, 25 cm, and 10 cm for Mar 23, Feb 3, and Mar 3, respectively. d-f) Friction velocity versus particle velocity gradient (γ) for each recording. g-i) Friction velocity versus particle slip velocity (u_0) for each recording.

Nik Aksamit 11/14/2016 11:32 AM
Deleted: slip
Nik Aksamit 11/14/2016 11:32 AM
Deleted: (u_0)
Nik Aksamit 11/14/2016 11:32 AM
Deleted: gradient (γ)

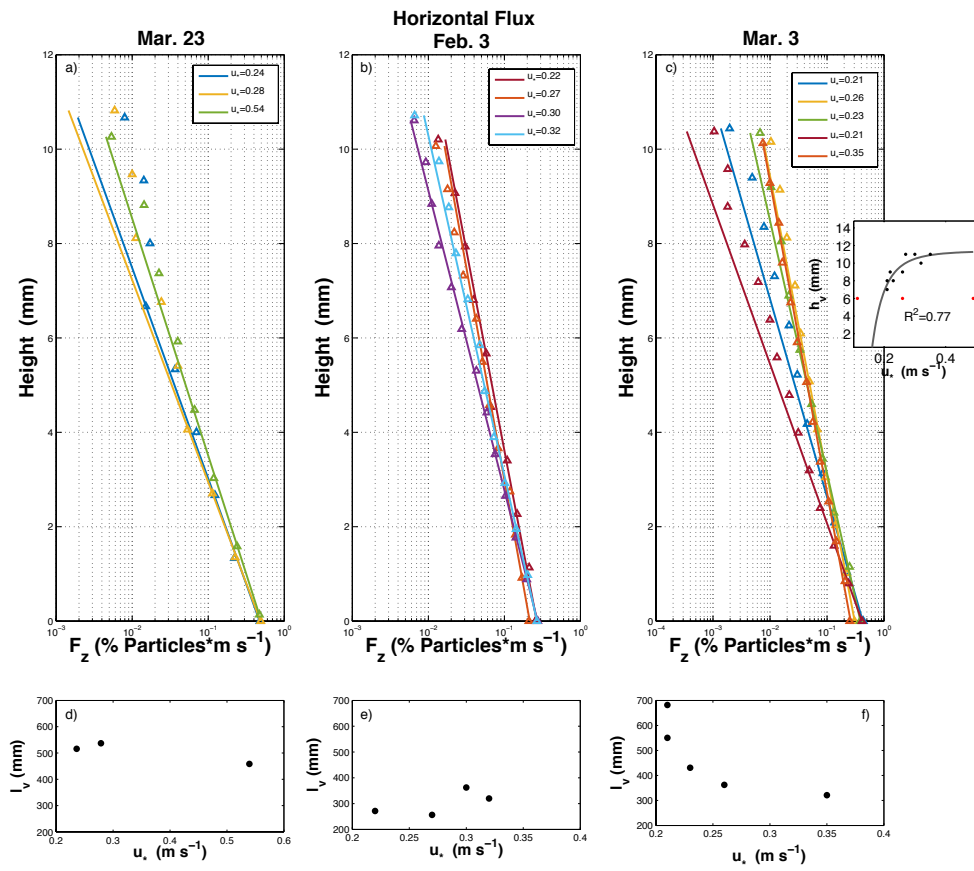


Figure 7: Plots a-c are mean horizontal flux measurements (F_z) and best fit exponential decay. Plots d-f are friction velocity versus decay length for each night. Friction velocity versus h_v (height below which 75% number flux occurred) for all nights with power law curve fitting is seen in the right inset. Values of h_v from 23 March 2015 are marked in red.

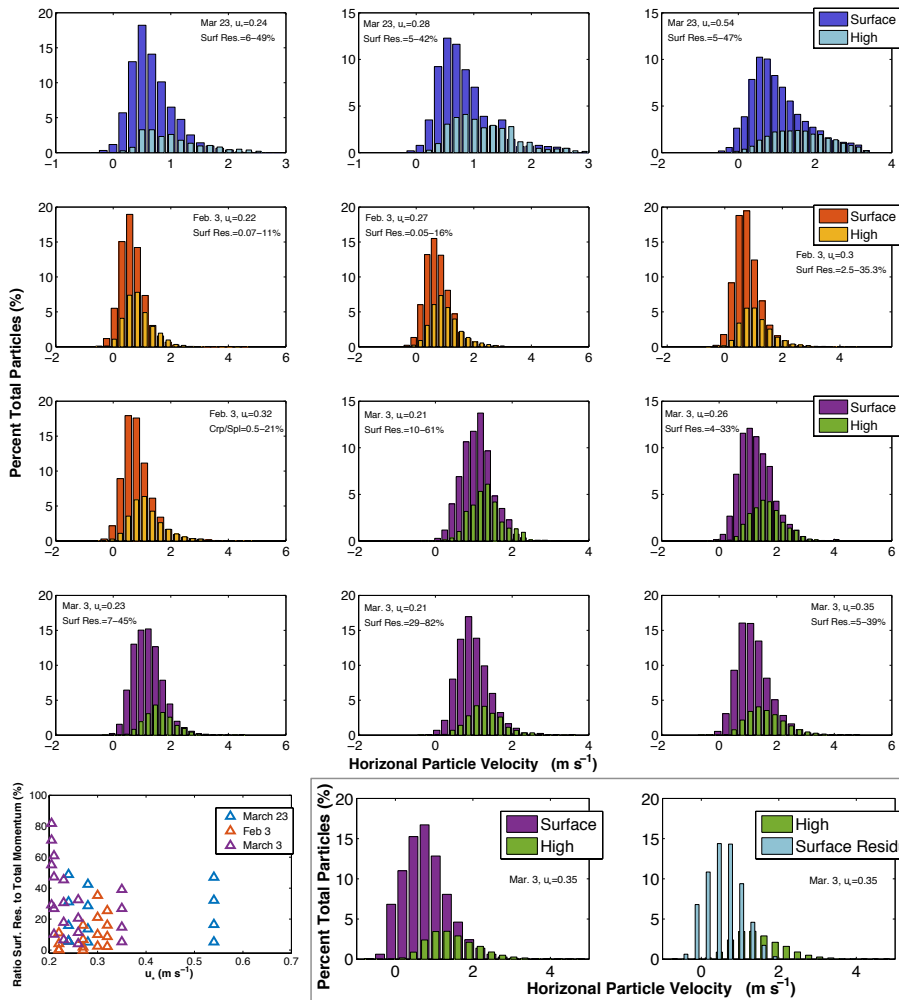


Figure 8: Horizontal particle velocity histograms for near-surface and upper region descending particles for each recording over the three nights (each colored differently). Near-surface residual highlighted for Mar 3 #5. The two-region delineation was set at 3 mm for Mar 23 and Mar 3, and 4 mm for Feb 3. Bottom Left: Surface residual to total momentum ratios for each recording.

Nik Aksamit 11/14/2016 11:32 AM

Mar 23, $u_s=0.24$
Surf Res.=6-49%

Mar 23, $u_s=0.28$
Surf Res.=5-42%

Mar 23, $u_s=0.54$
Surf Res.=4-47%

Mar 23, $u_s=0.22$
Surf Res.=0.07-11%

Mar 23, $u_s=0.27$
Surf Res.=0.05-16%

Mar 23, $u_s=0.3$
Surf Res.=2.5-35.3%

Mar 23, $u_s=0.32$
Crp/Spl=0.5-21%

Mar 23, $u_s=0.21$
Surf Res.=10-61%

Mar 23, $u_s=0.26$
Surf Res.=4-33%

Mar 23, $u_s=0.23$
Surf Res.=7-45%

Mar 23, $u_s=0.21$
Surf Res.=29-82%

Mar 23, $u_s=0.35$
Surf Res.=5-39%

Mar 23, $u_s=0.23$
Crp/Spl=8.89

Deleted:

Nik Aksamit 11/14/2016 11:32 AM

Deleted:

Nik Aksamit 11/14/2016 11:32 AM

Deleted: height bands

Nik Aksamit 11/14/2016 11:32 AM

Deleted: Crp/Spl values indicate ratio of creep layer particle

Nik Aksamit 11/14/2016 11:32 AM

Deleted: to the contribution from saltating particle impacts

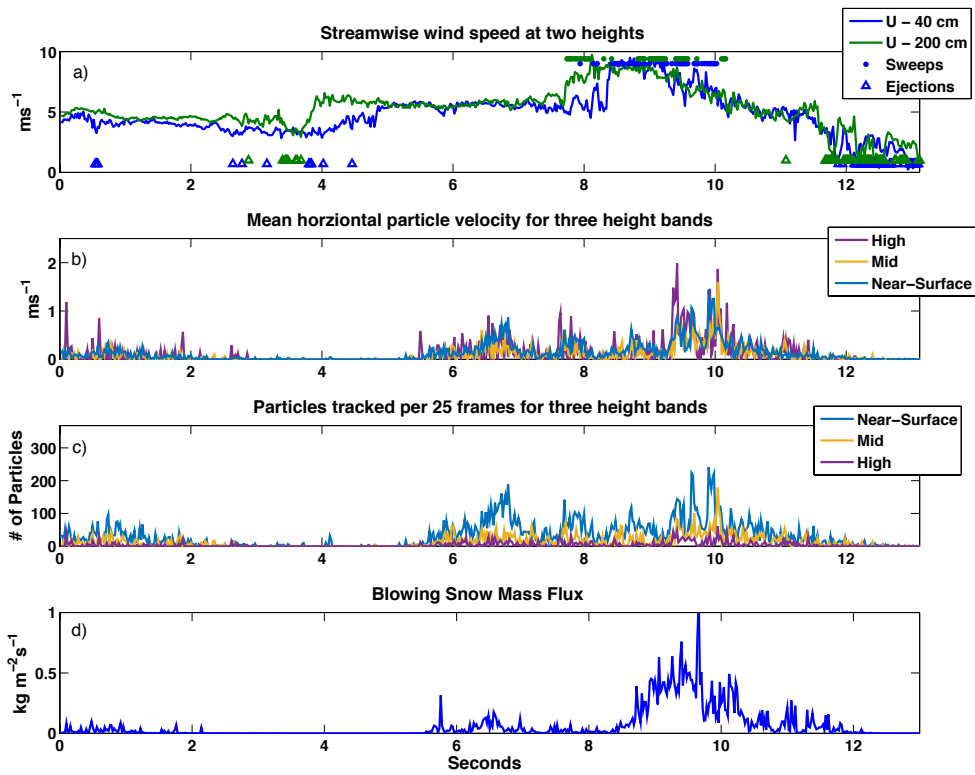


Figure 9: 23 March, recording #3 time series. a) 50 Hz streamwise wind speed at 40 and 200 cm above snow surface. b) 50 Hz Snow particle velocities obtained by binning particle vectors in three height bands ($1 < z < 4 \text{ mm}$ (Near-Surface), $4 < z < 8 \text{ mm}$ (Mid), $8 < z < 30 \text{ mm}$ (High)), then temporally averaged over 25 frames. c) Number of tracked particles in same height bands per 25 frames, d) Instantaneous blowing snow flux rates Q_s ($\text{kg/m}^2\text{s}$) (1250 Hz).

5

Date	Snow surface conditions and weather	Density of loose surface grains	2 m Air/Snow Surface Temp	Surface Hardness (HHI)	Blowing Snow Grain Size (μm)
Mar. 23	5 cm graupel over old snow with light flurries	$\sim 350^*$ (kg m^{-3})	-1C/(-)*	Fist over Melt-Freeze Crust (1 - 4)	263 (Max: 1200)
Feb. 3	Fine decomposing grains on windslab/sastrugi. No precip.	228 (kg m^{-3})	-10C/-10C	1 Finger-Pencil (3 - 4)	258 (Max: 850)
Mar. 3	Fresh snow. No precip.	156 (kg m^{-3})	-2C/-5C	Fist (1)	276 (Max: 2500)

Table 1: Descriptions of the snowpack for each night of recording including a description of the condition of the snow surface and concurrent precipitation, bulk density of the top 5 cm of grains, mean air temperature at the upper anemometer, snow surface temperature, hand surface hardness and HHI values following *Fierz et al. (2009)*, as well as snow grain size as determined from the blowing snow video. *Density and Snow Surface temperature not available on March 23 with density estimated from *Pruppacher and Klett (1997)*.

10

Recording	Duration/Frames	\bar{u} m s ⁻¹	u_* m s ⁻¹	z_0 mm	I %	S (non-dim)	Q_s kg m ⁻² s ⁻¹
23/3/15 #1	7.3 s/9147						0.0146
200 cm		1.2 (5.5)	0.61 (0.23)	910.1 (0.1)	1.10 (0.22)	0.169 (0.028)	
40 cm		1.1 (4.7)	0.46 (0.26)	126.9 (0.3)	1.13 (0.27)	0.096 (0.034)	
23/3/15 #2	11.4 s/14299						2.54e-4
200 cm		1.9 (4.3)	0.48 (0.22)	410.6 (0.8)	1.04 (0.24)	0.139 (0.039)	
40 cm		1.7 (4.2)	0.40 (0.08)	69.9 (1.3 e-4)	1.04 (0.16)	0.096 (0.007)	
23/3/15 #3	13.1 s/16404						0.0237
200 cm		1.4 (5.3)	0.28 (0.55)	312.2 (42.4)	0.80 (0.40)	0.037 (0.148)	
40 cm		1.3 (4.8)	0.24 (0.57)	116.5 (8.0)	0.79 (0.45)	0.027 (0.122)	
3/2/16 #1	27.8 s/ 43075						0.0179
155 cm		4.67 (5.78)	0.27 (0.26)	1.7 (0.3)	0.39 (0.22)	0.038 (0.036)	
25 cm		3.96 (4.9)	0.29(0.22)	1.6 (0.06)	0.41 (0.21)	0.044 (0.026)	
3/2/16 #2	28.0 s/ 57487						0.0375
155 cm		3.91 (5.35)	0.22 (0.23)	1.8 (0.4)	0.45 (0.23)	0.025 (0.027)	
25 cm		3.33 (4.54)	0.22 (0.27)	1.0 (0.2)	0.46 (0.25)	0.025 (0.037)	
3/2/16 #3	28.1 s/ 57528						0.0547
155 cm		4.3 (5.7)	0.34 (0.45)	12.2 (12.5)	0.44 (0.27)	0.054 (0.106)	
25 cm		3.67 (4.7)	0.27 (0.3)	1.7 (0.7)	0.44 (0.27)	0.034 (0.045)	
3/2/16 #4	28.0 s/ 57409						0.044
155 cm		3.1 (6.94)	0.31 (0.33)	35.4 (0.4)	0.83 (0.17)	0.056 (0.055)	
25 cm		2.6 (5.66)	0.31 (0.33)	14.7 (0.4)	0.84 (0.2)	0.056 (0.055)	
3/3/16 #1	27.9 s/ 43182						0.0046
140 cm		5.33 (4.58)	0.30 (0.16)	1.7 (0.03)	0.28 (0.16)	0.035 (0.013)	
10 cm		4.3 (3.75)	0.23(0.21)	0.2 (0.3)	0.29 (0.19)	0.021 (0.021)	
3/3/16 #2	27.9 s/ 43182						0.1474
140 cm		4.33 (5.47)	0.25 (0.42)	1.8 (10)	0.3 (0.23)	0.030 (0.084)	
10 cm		3.57 (4.33)	0.20 (0.26)	0.3 (0.1)	0.3 (0.23)	0.019 (0.033)	
3/3/16 #3	27.9 s/ 43182						0.1561
140 cm		4.7 (5.5)	0.27 (0.23)	2 (0.04)	0.26 (0.16)	0.035 (0.02)	
10 cm		3.85 (4.6)	0.22 (0.20)	0.4 (0.1)	0.27 (0.18)	0.023 (0.026)	
3/3/16 #4	28.1 s/ 57528						0.0542
140 cm		4.6 (5.54)	0.58 (0.24)	82 (0.2)	0.53 (0.17)	0.149 (0.028)	
10 cm		3.7 (4.35)	0.45 (0.21)	15 (0.9)	0.54 (0.2)	0.09 (0.021)	
3/3/16 #5	28.1 s/ 57528						0.3467
140 cm		4.3 (6.06)	0.50 (0.31)	63 (0.8)	0.61 (0.36)	0.131 (0.046)	
10 cm		3.5 (4.73)	0.42 (0.35)	14 (2)	0.63 (0.4)	0.092 (0.06)	

5 Table 2: Wind characteristics: mean wind speed \bar{u} , friction velocity u_* , aerodynamic roughness height z_0 , turbulence intensity I , and Shields Parameter S for recordings on Mar. 23, 2015, Feb. 3 and Mar. 3, 2016. Average values from the 15 minutes surrounding each recording (and recording-only period in parentheses) are shown for the two measurement heights. Estimates of blowing snow flux Q_s in $kg\ m^{-2}\ s^{-1}$ are included for recording only periods.

What is of most interest here is that a separating height was chosen such that for each recording the two histograms begin to agree for the highest energy grains (Fig. 8). That is, the highest energy population of descending particles present in the upper band can also be identified in the surface flow and that high and low-energy populations coexisted as part of a continuous spectrum of motion at the surface. This was indicative of an inherent coupling of the creep and saltating grains. Working with the assumption that the surface histograms contain contributions from both the high and low-energy populations of grains, whereas the upper band histogram consists only of high-energy grains, we can then identify the low-energy population at the surface as the difference of the two collections of particle vectors. With this, we can begin to quantify the role that creep plays in surface impact and wind momentum balance. Note, identifying creep particles is only possible when using both the particle velocity and location because high-energy grains were also impacting surface. The difference of surface and upper region populations showed a low-energy near-surface population that constituted 44-52%, 21-29% and 37-61% of the number flux on March 23, February 3, and March 3 respectively. Thus the slow moving low-energy creep grains were a considerable contribution to total particle flux below 20 mm over all snow types and wind conditions observed.

is present near

is present near

is present near

is present near

is present near

is present near

Page 22: [2] Deleted	Nik Aksamit	11/14/16 11:32 AM
-----------------------------	--------------------	--------------------------

is present near

Page 22: [2] Deleted	Nik Aksamit	11/14/16 11:32 AM
-----------------------------	--------------------	--------------------------

is present near

Page 22: [3] Deleted	Nik Aksamit	11/14/16 11:32 AM
-----------------------------	--------------------	--------------------------

was

Page 22: [3] Deleted	Nik Aksamit	11/14/16 11:32 AM
-----------------------------	--------------------	--------------------------

was

Page 22: [4] Deleted	Nik Aksamit	11/14/16 11:32 AM
-----------------------------	--------------------	--------------------------

for

Page 22: [4] Deleted	Nik Aksamit	11/14/16 11:32 AM
-----------------------------	--------------------	--------------------------

for

Page 22: [4] Deleted	Nik Aksamit	11/14/16 11:32 AM
-----------------------------	--------------------	--------------------------

for

Page 22: [5] Deleted	Nik Aksamit	11/14/16 11:32 AM
-----------------------------	--------------------	--------------------------

in creep to that which

Page 22: [5] Deleted	Nik Aksamit	11/14/16 11:32 AM
-----------------------------	--------------------	--------------------------

in creep to that which

Page 22: [5] Deleted	Nik Aksamit	11/14/16 11:32 AM
-----------------------------	--------------------	--------------------------

in creep to that which

Page 22: [5] Deleted	Nik Aksamit	11/14/16 11:32 AM
-----------------------------	--------------------	--------------------------

in creep to that which

Page 22: [5] Deleted	Nik Aksamit	11/14/16 11:32 AM
-----------------------------	--------------------	--------------------------

in creep to that which

Page 22: [5] Deleted	Nik Aksamit	11/14/16 11:32 AM
-----------------------------	--------------------	--------------------------

in creep to that which

Page 22: [5] Deleted	Nik Aksamit	11/14/16 11:32 AM
-----------------------------	--------------------	--------------------------

in creep to that which

Page 22: [5] Deleted	Nik Aksamit	11/14/16 11:32 AM
-----------------------------	--------------------	--------------------------

in creep to that which

Page 22: [5] Deleted	Nik Aksamit	11/14/16 11:32 AM
----------------------	-------------	-------------------

in creep to that which

Page 22: [5] Deleted	Nik Aksamit	11/14/16 11:32 AM
----------------------	-------------	-------------------

in creep to that which

Page 22: [5] Deleted	Nik Aksamit	11/14/16 11:32 AM
----------------------	-------------	-------------------

in creep to that which

Page 22: [5] Deleted	Nik Aksamit	11/14/16 11:32 AM
----------------------	-------------	-------------------

in creep to that which

Page 24: [6] Deleted	Nik Aksamit	11/14/16 11:32 AM
----------------------	-------------	-------------------

In previous work, a 10-20 mm transition in flux dynamics was exhibited by a change in particle blowing snow density formulae (*Gordon et al.*, 2009) and blowing sand mechanics. Utilizing simultaneous PIV and PTV to obtain two-phase (sand-wind) wind tunnel velocity measurements, *Zhang et al.* (2007) also found a comparable, extremely dense surface flow below this height. Of note, the wind was significantly modified below 15-20 mm for *Zhang et al.* (2007) in the presence of saltating particles with a shallower convex wind velocity gradient, due to particle momentum extraction in the near-surface region as predicted by Bagnold's focus height (*Bagnold*, 1941). The role of creep in this wind momentum deficit appeared significant and temporally variable.

The creep layer has proven to be a critical and readily available reservoir of tumbling particles during the onset of saltation.

Page 26: [7] Deleted	Nik Aksamit	11/14/16 11:32 AM
----------------------	-------------	-------------------

both

Page 26: [7] Deleted	Nik Aksamit	11/14/16 11:32 AM
----------------------	-------------	-------------------

both

Page 26: [8] Deleted	Nik Aksamit	11/14/16 11:32 AM
----------------------	-------------	-------------------

combination of all

Page 26: [8] Deleted	Nik Aksamit	11/14/16 11:32 AM
----------------------	-------------	-------------------

combination of all

Page 26: [8] Deleted	Nik Aksamit	11/14/16 11:32 AM
----------------------	-------------	-------------------

combination of all

Page 26: [8] Deleted	Nik Aksamit	11/14/16 11:32 AM
-----------------------------	--------------------	--------------------------

combination of all

Page 26: [8] Deleted	Nik Aksamit	11/14/16 11:32 AM
-----------------------------	--------------------	--------------------------

combination of all

Page 26: [8] Deleted	Nik Aksamit	11/14/16 11:32 AM
-----------------------------	--------------------	--------------------------

combination of all

Page 26: [8] Deleted	Nik Aksamit	11/14/16 11:32 AM
-----------------------------	--------------------	--------------------------

combination of all

Page 26: [8] Deleted	Nik Aksamit	11/14/16 11:32 AM
-----------------------------	--------------------	--------------------------

combination of all

Page 26: [8] Deleted	Nik Aksamit	11/14/16 11:32 AM
-----------------------------	--------------------	--------------------------

combination of all

Page 26: [8] Deleted	Nik Aksamit	11/14/16 11:32 AM
-----------------------------	--------------------	--------------------------

combination of all

Page 26: [8] Deleted	Nik Aksamit	11/14/16 11:32 AM
-----------------------------	--------------------	--------------------------

combination of all

Page 26: [8] Deleted	Nik Aksamit	11/14/16 11:32 AM
-----------------------------	--------------------	--------------------------

combination of all

Page 26: [9] Deleted	Nik Aksamit	11/14/16 11:32 AM
-----------------------------	--------------------	--------------------------

saltation

Page 26: [9] Deleted	Nik Aksamit	11/14/16 11:32 AM
-----------------------------	--------------------	--------------------------

saltation

Page 26: [9] Deleted	Nik Aksamit	11/14/16 11:32 AM
-----------------------------	--------------------	--------------------------

saltation

Page 26: [9] Deleted	Nik Aksamit	11/14/16 11:32 AM
-----------------------------	--------------------	--------------------------

saltation

Page 26: [9] Deleted	Nik Aksamit	11/14/16 11:32 AM
-----------------------------	--------------------	--------------------------

saltation

Page 26: [9] Deleted	Nik Aksamit	11/14/16 11:32 AM
-----------------------------	--------------------	--------------------------

saltation

Page 26: [9] Deleted	Nik Aksamit	11/14/16 11:32 AM
saltation		
Page 26: [9] Deleted	Nik Aksamit	11/14/16 11:32 AM
saltation		
Page 26: [10] Deleted	Nik Aksamit	11/14/16 11:32 AM
is		
Page 26: [10] Deleted	Nik Aksamit	11/14/16 11:32 AM
is		
Page 27: [11] Deleted	Nik Aksamit	11/14/16 11:32 AM

Snow saltation velocities, heights, and particle concentrations responded on scales of < 1 s to turbulent wind speed fluctuations. Analysis of a turbulent sweep event has shown that snow transport is sensitive to different generators of RS.