

## Response to reviewers: **Estimating the extent of Antarctic summer sea ice during the Heroic Age of Exploration**

*We would like to thank the reviewers for taking the time to carefully read and comment on this manuscript and for their encouraging and positive comments on the paper. In the following we outline our response to their specific comments and describe all changes. In addition to the suggestions by the reviewer we have also made two changes to the text based on comments received from Holly Titchener, to clarify the description of the methods in Section 2.*

### **Reviewer 1:**

Page 5 line 7: "...15% threshold in sea ice concentration..." Not entirely clear how the actual threshold concentration was estimated, is it based on a frequency of sea ice occurrence for a specific pixel or a mean concentration over the period of satellite observations for a specific day of year?

*It is the latter, so 15% concentration in the mean sea ice concentration field for a given day of the year averaged over the period 1989-2014, which we have calculated for all days of the year. We have adjusted the text to make this clearer.*

Page 6 line 14: ... "corresponding contour whose coordinates have been shifted by the calculated change in latitude to give an approximate estimate of the ice edge during..." Again, the procedure is somewhat unclear. Did the authors apply a radial scaling (with respect to latitude) fitting the modern pan-Antarctic SIE for a particular day of year to local sea ice observations available for that day? Such extrapolation should be supported by estimates, for example using the EOF analysis, demonstrating that most of the variance for this day (or period of the season) is represented by a single principal component.

*We did indeed apply a simple radial scaling method to estimate a pan-Antarctic mean extent for the period. We have adjusted the text to make the method used clearer. We are not asserting that all variability lies in a single principal component but there is simply not enough data to do anything more sophisticated in terms of estimating extent. The procedure and the scarcity of data used to approximate this means that there is an imprecision to our estimates that certainly warrants further investigation. We fully acknowledge these limitations and discuss these in the revised text. However, we do believe that putting our findings, regarding latitudinal variations of the ice edge, into the context of other estimates of areal extent during this period, such as HadISST, is important for the interpretation of these results.*

Table 2: Line "Variance of difference" I wonder how symmetric the derived distributions are and if using a normal pdf (and hence sample variance) is adequate?

*The distributions are not normal, which is why we used a non-parametric statistical test. However, we state the variance here as a useful measure for the reader to gauge the variability.*

### **Reviewer 2:**

Page 4 lines 21-36: Fortunately, the Worby and Comiso study quantifies average differences in where a human observer would note the ice pack beginning on a voyage south, and where satellite data would put it. The Heroic Age did not have the “trained observers” of the Worby and Comiso study, and the study was only for one sector of the Antarctic, but given the other sources of error and imprecision when comparing satellite extent with that from logbooks, these are minor issues.

*This is a good point, which we now mention at Page 6, line 20 of the revised manuscript.*

This section includes “They argue that during this time of year, saturated bands of ice and floes, particularly at the edges of the pack ice, may be very localised, resulting in ice concentration below the 15% threshold when averaged over the 25km footprint of the PM instrument. “

The use of “footprint” is incorrect here. The algorithm uses brightness temperature from 37GHz, 22Gz, and 19GHz channels, and for these the field of view is larger. For the 19GHz frequency, it is about 70x45km. Simply replacing “footprint” with “grid cell size” works here though. (Substituting “grid cell” for “pixel” throughout would be more correct.)

*We have replaced ‘footprint’ with ‘pixel’ as suggested.*

Page 5 lines 3 and 4: The actual data set the authors used needs to be cited properly. This is probably the right one to use:

Comiso, J. C. 2000, updated 2015. Bootstrap Sea Ice Concentrations from Nimbus-7 SMMR and DMSP SSM/I-SSMIS, Version 2. [Indicate subset used]. Boulder, Colorado USA. NASA National Snow and Ice Data Center Distributed Active Archive Center. doi: <http://dx.doi.org/10.5067/J6JQLS9EJ5HU>. [Date Accessed].

*We used the Bootstrap algorithm distributed as part of the NSIDC merged dataset. We have added the correct dataset citation.*

Page 5 lines 5 and 6: I’ll just note that this way of constructing a mean ice edge for one day may not be optimal, because if the ice edge in some sector occupied a low latitude just a few times, and a high latitude most of the time, say, then the average concentration field from that day’s 26 instances might easily have values >15% and place the average edge for that day in a place north of where it is likely to be seen. There are other ways to do it (e.g. the median edge used by the Sea Ice Index, described in [https://nsidc.org/data/docs/noaa/g02135\\_seaice\\_index/#processing\\_overview](https://nsidc.org/data/docs/noaa/g02135_seaice_index/#processing_overview)), but for the purposes of this paper I don’t think it makes much difference.

*We acknowledge this comment by the reviewer. However, because we agree with their assessment that it is unlikely to affect the results, we do not modify the analysis.*

Page 6 line 24: missing a “by”

*Added as suggested:*

Supplementary material:

Figure S2, Scatter Max is not the same as figure S2 within Supplementary Material (later lacks a trend line)

*This figure has been replaced.*

*In addition to changes made in response to reviewers comments, we have made a number of changes to the manuscript following feedback from Holly Titchener, developer of HadISST at the Met Office:*

*Page 4 line 24: We used ship logbooks with data recorded at frequent time intervals and not fixed regular time intervals.*

*Page 5 line 25: Clarification about the ice edge points used depending on the direction of travel of the ship.*

*Figure 4: We have updated our HadISST2.1.0.0 curve to the latest version, HadISST2.2.0.0. We also found that the NSIDC Bootstrap and Heroic Age estimates had been plotted incorrectly and have corrected this. We have also added the NASA Team algorithm sea ice extent.*

# Estimating the extent of Antarctic summer sea ice during the Heroic Age of Exploration

Tom Edinburgh<sup>1\*</sup>, Jonathan J. Day<sup>1</sup>

<sup>1</sup>Department of Meteorology, University of Reading, Reading, United Kingdom

5 \*Currently: Department of Applied Mathematics and Theoretical Physics, University of Cambridge, United Kingdom

*Correspondence to:* J.J. Day (j.j.day@reading.ac.uk)

**Abstract.** In stark contrast to the sharp decline in Arctic sea ice, there has been a steady increase in ice extent around Antarctica during the last three decades, especially in the Weddell and Ross Seas. In general, climate models do not capture this trend and a lack of information about sea ice coverage in the pre-satellite period limits our ability to quantify the sensitivity of sea ice to climate change and robustly validate climate models. However, evidence of the presence and nature of sea ice was often recorded during early Antarctic exploration, though these sources have not previously been explored or exploited until now. We have analysed observations of the summer sea ice edge from the ship logbooks of explorers such as Robert Falcon Scott, Ernest Shackleton and their contemporaries during the Heroic Age of Exploration (1897-1917) and in this study, we compare these to satellite observations from the period 1989-2014, offering insight into the ice conditions of this period, from direct observations, for the first time. This comparison shows that the summer sea ice edge was between 1.0° and 1.7° further north in the Weddell Sea during this period but that ice conditions were surprisingly comparable to the present day in other sectors.

## 1 Introduction

Understanding the interactions between polar sea ice trends and global climate change is of key importance in climate science. Amplified Arctic warming is closely associated with the dramatic reduction in Arctic summer sea ice, predominately through ice-albedo feedback effects (Manabe and Stouffer, 1980; Serreze and Barry, 2011). However the reasons for the unexpected positive trend in

Antarctic sea ice extent since the 1970s are not yet well understood (Parkinson and Cavalieri, 2012; Turner and Overland, 2009), and the climate models submitted to the Fifth Climate Model Inter-comparison Project do not reproduce this circumpolar satellite-era increase (Maksym et al., 2012; Turner et al., 2013). This has led the Intergovernmental Panel on Climate Change to assign *low confidence* to future projections of Antarctic sea ice extent in its latest assessment report (Stocker et al., 2013).

This increase in pan-Antarctic sea ice extent is a sum of opposing regional trends, with large increases in the Indian Ocean, Weddell and in particular Ross Seas dominating over decreases in the Bellinghousen and Amundsen Sea (Parkinson and Cavalieri, 2012). Both mechanical and thermodynamic forcing by the atmosphere (Holland and Kwok, 2012) and changes to the Southern Ocean (Gille, 2002; Jacobs, 2002) are thought to play a role in these overall trends. It has been suggested that anthropogenically driven changes such as ozone depletion (Ferreira et al., 2015; Sigmond and Fyfe, 2010; Turner et al., 2009), and responses to greenhouse gasses via negative sea-ice/ocean feedback (Zhang, 2007), and ice sheet runoff (Bintanja et al., 2013; Swart and Fyfe, 2013) all play a role. However, the relative importance of each of these processes is not well quantified (e.g. Turner et al., 2015). It is also likely that internal climate variability has played a part in the observed changes (Polvani and Smith, 2013), with a positive trend in the Southern Annular Mode thought to be a contributing factor (Lefebvre et al., 2004; Thompson and Solomon, 2002). Both a lack of sea ice data from the pre-satellite era and a lack of credibility in climate models restricts analysis of these processes (Abram et al., 2013). A longer term context may give some insight into our understanding of the dominant mechanisms.

Recent years have seen significant efforts in the recovery of historical meteorological records from ships logbooks (Brohan et al., 2009, 2010). Many of these logbooks contain detailed descriptions of the sea ice state at regular intervals and provide an invaluable source of sea ice edge information, but require careful interpretation (Ayre et al., 2015). Such data are available from the earliest Antarctic voyages in the 19th century - of Cook, Bellinghousen, Ross and others (Wilkinson, 2014) - but data from this early period are too temporally and spatially restricted for any firm conclusions to be made (Parkinson, 1990). It is not until the *Heroic Age of Exploration* that a sufficient level of data was collected to make concrete interpretations about the sea ice cover.

The period known as the *Heroic Age of Exploration* began with the Belgian Antarctic Expedition of 1897-99 and ended in 1917 with the conclusion of Shackleton's British Imperial Trans-Antarctic Expedition. This period saw an expansion of exploration around the continent (Fig. 1), allowing perhaps the earliest window for pan-Antarctic climate analysis using observed records. It is worth noting that the difficulty in travelling through heavy pack ice, much more of a problem during this period than in the current day, undoubtedly had a large influence on the expedition routes. For this reason, the sub-expedition voyages were undertaken mainly in the summer months (Nov-Mar), with some notable multi-year exceptions (such as the *Aurora* and *Endurance*, during the 1914-1917 Imperial Trans Antarctic Expedition), during which ships drifted, frozen into the pack ice, throughout the Antarctic winter.

10 Until now, evidence of Antarctic sea ice conditions during this period has only been available from proxy sources, such as those derived from ice cores. Chemical tracers within cores, such as sea salt and methane sulphonic acid (Curran et al., 2003), are known to co-vary with the latitude of the sea ice edge. These interactions are well understood in the Weddell Sea sector, where the century-long record of ice freeze and thaw dates at South Orkney Island (Murphy et al., 2014) has enabled such proxies to be well

15 calibrated, showing a long term decline in both spring and autumn ice cover in this region (Abram et al., 2007). Nevertheless, it is currently unclear how generalizable these methods are to other regions of Antarctica, due to a limited set of directly observed sea ice data (Abram et al., 2013). The results of the present work will provide additional reference points for such studies.

20<sup>th</sup> century variations in sea ice cover have been inferred from whale catch positions, which provide a substantially more abundant, albeit less reliable and indirect, source of sea ice information (Vaughan, 2000). Previous studies, using these catch positions as a proxy record for the ice edge, suggested a 2.8° southward shift in the mean latitude of the summer sea ice edge, equating to a 25% decline sea ice extent between 1931-1961 and 1971-1987 (Cotté and Guinet, 2007; de la Mare, 1997). However, there is some disagreement over the magnitude and spatial nature of results inferred from these records (Ackley et al.,

25 2003; de la Mare, 2009), in part due to the accuracy of the satellite-derived ice during the summer melt season (Worby and Comiso, 2004) but also due to the evolution of whaling practices in the Southern Ocean (Vaughan, 2000). However, the ice decline documented by de la Mare is consistent with a significant warming of the Southern Ocean between 1950-1978 documented recently by Fan et al. (2014).

Whale catch records from earlier periods, in particular the *Heroic Age*, have not yet been used in sea ice analysis.

In this study, we use sea ice edge positions recorded in the ship logbooks during the *Heroic Age* to estimate the mean summer ice edge latitude, both regionally and for the whole Antarctic, during the period 1897-1917. We compare these with modern satellite data in order to determine whether Antarctic summer sea ice extent was different to the present day and identify and quantify the possible changes.

## 2 Method

We use data collected during eleven expeditions of the *Heroic Age* for which frequent observations on the composition and nature of the sea ice were recorded (Table 1). Many of these logbooks had already been digitised recently as part of the International Comprehensive Ocean-Atmosphere Data Set (COADS) initiative (Woodruff et al., 2011). Others needed to be digitised specifically for this study, either from photographic images of the original logbook or in person from the original logbook itself. These were combined to create a dataset of 191 observed ice edge positions (included in Supplementary Material) providing an almost circumpolar picture of the Antarctic summer sea ice edge (Fig. 2).

Logbooks from this period typically include meteorological observations taken at frequent intervals throughout each day. Details of the sea ice cover were recorded along with a descriptive summary of the sea state and meteorology in the time period between the quantitative meteorological observations. Sometimes sea ice remarks were recorded in a specific column of the logbook describing the ice state, but more often included under a general observation heading that also encompassed additional comments regarding weather, sea state and other notable features, including wildlife. In some cases, the time of certain observations or events, such as when the ship passed from a region of consolidated ice cover into open water, were noted specifically. These observations provide a clear picture of the presence and composition of the ice throughout the expeditions. We have only used expeditions for which a summary of the sea ice conditions was recorded at ~~frequent~~regular time intervals, ~~discarding expeditions which only provide a daily summary for reasons of precision, either hourly or every four hours~~ and have included a full list of terms used to describe the ice conditions in Table S1. We have assumed that the time the observations were recorded against reflects the time zone that the ship was operating in. Whilst this was

certainly the practice in Royal Navy logbooks of the time, it may not be true for all non-British expeditions (Scott Woodruff, personal communication). Logbook times were all converted into UTC prior to comparison with the PM satellite data. In most logbooks, the position of each ship was recorded only at midday. Geo-locating remarks about the ice at other times of day required linear interpolation between  
5 the midday positions of consecutive days based on the time associated with the ice information.

In order to identify the sea ice edge for the period, we used these remarks about the sea ice to estimate points in space and time where the ships were traversing or travelling along the sea ice edge. The aim, and therefore the route, of an expedition had a significant impact on the number of ice edge points that can be determined for each particular log and there is a clear distinction in the type of exploration (see  
10 Supplementary Videos).

Some expeditions, such as the *Terra Nova* expeditions to the Ross Sea, were primarily concerned with land exploration or the race to the South Pole and therefore the voyage of the ship was mostly a means of transport to the continent. In this scenario, it is common that the ship only crossed the ice edge on the journey south to and the return north from the continent; in which case, the position of the first and last  
15 observations of sea ice on the respective journeys are taken as the ice edge. However, the focus of other expeditions, such as the Australasian 1911-1914 expedition to the Western Pacific sector, on the *Aurora*, was to explore undocumented coastlines by ship. Hence, the ship was often travelling along the sea ice edge for long periods, passing in and out of areas of sea ice frequently, and the ice edge is often unambiguously recorded in the logbooks using terms such as 'skirting pack ice'.

20 Interactions with the ice edge, in particular the navigation between open water and regions of ice cover, can sometimes be complicated by an ambiguity in the exact time that the ship encountered the ice edge. As an example, consecutive remarks in the log of the Scotia expedition of 1903-04, made on the 1<sup>st</sup> March at 1100UTC and 16 hours later on the following day at 500UTC, observe 'steaming through loose pack' and 'no ice in sight' respectively. In cases such as this, this ambiguity makes it difficult to objectively  
25 identify the position of the ice edge, so we have taken the approach of trying to define a northern bound for the ice edge. We believe that a sensible approach is to utilise the entries recording the transition between these regions, [using only the northernmost point within this pair of entries if the ship is travelling in a north-south axis and both entries if, as in the example above, the ship is travelling in an east-west](#)



~~axis. In such situations, which points are used depends on the direction of travel, if ships are traveling in a north-south axis, we use the marking as the ice edge, the northernmost point within such a pair of entries as the ice edge. If the direction of travel is in an east-west axis, as in the example above, we have used both points. This approach thereby increases~~ our set of observations and ~~reduces~~ the level of

5 subjectivity in the inference of the ice edge from the terms used in the logs.

Before describing how we performed this comparison, it is useful to consider the relationship between these point data and satellite observed concentration. In satellite sea ice concentration products, a threshold of 15% is generally used to define the location of the ice edge. A detailed study by Worby and Comiso (2004) compared the sea ice edge as recorded by onboard trained human observers, during

10 expeditions between 1989 and 2000 in the Western Pacific sector, with the 15% contour in PM satellite imagery for the same day. They showed a high level of agreement during the Mar-Oct ice growth season but noted that during the summer melt season (Nov-Feb), the sea ice edge was systematically further north than the 15% contour in both the NASA TEAM (Cavalieri et al., 1984) and Bootstrap (Comiso, 1986)

15 this time of year, saturated bands of ice and floes, particularly at the edges of the pack ice, may be very localised, resulting in ice concentration below the 15% threshold when averaged over the 25km

~~pixel footprint size~~ of the PM ~~dataset~~ instrument. In addition, these bands often comprise mostly brash ice, the PM signature of which can be almost indistinguishable from seawater. They estimate the offset between the observed ice edge and ice edge derived using the Bootstrap algorithm to be  $0.75 \pm 0.61^\circ$

20 during the melt season. However, it should be noted that their analysis has not been extended to other sectors, so we do not know how representative it is of the ice conditions outside of the Western Pacific,

~~and also that the observers on-board ship during the Heroic Age were not trained sea ice observers. It is also worth noting that the observers on-board ship during the Heroic Age were not trained sea ice observers. Nevertheless, it~~ is important to take ~~their findings~~ into account in the following analysis,

25 since an apparent southward shift in the ice edge between the *Heroic Age* points and the present day Bootstrap derived ice edge may overestimate the actual change, and should therefore best be considered as an upper bound.

Formatted: Font: Italic

As there is greater consistency with the in situ ice edge observations, we have chosen to use the Bootstrap algorithm daily sea ice concentration from the National Snow and Ice Data Centre (NSIDC) to estimate the present day sea ice edge, rather than NASA TEAM algorithm (Meier et al., 2013a; Peng et al., 2013). From this, we calculated a daily mean sea ice concentration for the period 1989-2014, during which daily NSIDC data was available. Using this field, we have defined the daily satellite-observed mean ice edge as the contour joining the midpoints of the northernmost 25km pixels that do not exceed ~~the 15% threshold in~~ sea ice concentration of 15%. Then, for each ice edge observation from the logbooks, we computed the distance from the ship-observed position to each point on the contour for that particular calendar day using the Haversine formula and spherical law of cosines, and selected the latitude of the point on the contour with the minimum distance to the ship-observed position for the paired analysis. These differences were then averaged to calculate estimates for the mean change in the ice edge latitude for each sector and for the whole of Antarctica.

We believe the offset between the ice edge recorded by human observers and the satellite-derived ice edge to be the largest source of uncertainty in this analysis. Therefore, we use the Worby and Comiso value of 0.75° in the discussion of our results in order to address this source of uncertainty.

### 3 Results

The most dramatic change between the *Heroic Age* and the present day is in the Weddell Sea, where we have found that the ice edge was 1.71° further north during the *Heroic Age* and 0.96° further north with the inclusion of the Worby and Comiso offset, with both values significant at the 5% level (Table 2). This change agrees well with the observed decrease in land-fast ice at South Orkney Island during the last century (Murphy et al., 2014).

However, observations in the Weddell Sea are clustered into a small number of years (1903, 1904 and 1914), and as such may be influenced by natural year-to-year variability in the sea ice extent. Indeed, the ice edge observed by the crew of the *Scotia* in 1903 is particularly far north, even compared to observations from by the same crew the following year, and the greater ice extent in this region during the *Heroic Age* may be an exaggeration of the actual change between these two periods as a result. El Niño events often result in negative surface air temperature and positive sea ice anomalies in the Weddell

Sea (Yuan, 2004) and it is possible that the large El Niño of 1902/03 may have had some influence in these anomalies. Nevertheless, our results indicate that many of the recorded ice edge positions lie further north than has been seen in any year since 1989 (Fig. 3, Supplementary Fig. 2, Supplementary Video 1). The differences in other sectors appear to be much smaller. We observe statistically significant but small differences of  $0.21^\circ$  in latitude in the Bellinghousen and Amundsen Sea and  $0.62^\circ$  the Ross Sea, but no evidence of a significant difference in latitude in the Western Pacific and Indian Ocean region, which we have merged due to the limited data available in the Indian Ocean sector (Table 2, Fig. 3). However, as stated in the previous section, this is an upper bound for the observed change and if we take into account the observed offset to the satellite data, the ice edge may actually have been further south in all of these areas (Table 2).

By averaging over all points, we also find the mean circumpolar change in the location of the ice edge. This pan-Antarctic shift of up to  $0.41^\circ$  southwards since the *Heroic Age* implies at most a 10.0% decrease in Antarctic sea ice extent between then and the present day (Fig. 4). This is much smaller than the 25% decrease between the 1950s and 1980s that was inferred by de la Mare (1997) from whaling records and suggests that, if we accept the results inferred from the whaling records, the sea ice was less extensive during the period 1897-1917) then it was during the period (1931-1961).

Although ice edge latitude is a convenient measure in which to analyse the data, it is more common in climate change assessment reports, such as the IPCC-AR5, to assess hemispheric sea ice variability and change using sea ice extent, rather than ice edge latitude (Vaughan et al., 2013). We do not have estimates of the ice edge position for all longitudes and therefore cannot calculate the ice extent during the *Heroic Age* from the logbook data alone. However, we were able to form estimates using the shape of the satellite sea ice climatology for each day within the DJFM period, by computing the number of 25km square grid cells/pixels within region enclosed by two contours: the 15% ice concentration contour defined above and a contour radially shifted with respect to the calculated latitude change for that particular day. satellite-derived 15% contour and the corresponding contour whose coordinates have been shifted by the calculated change in latitude to give We then averaged this over the DJFM period and added the output to the mean ~~NASASIDC~~ Bootstrap sea ice extent for the period 1989-2016, to give a loosely approximated estimate of the ice edge extent during the *Heroic Age*. ~~for that day. We then averaged this~~

~~over the DJFM period.~~ This calculation also included regions enclosed by these two contours at polynya ice edges. [We acknowledge the imprecision of these estimates that arise from calculating this pan-Antarctic sea ice extent using only limited individual ice edge position data and suggest that further research could be done in this using an expanded dataset if possible.](#)

5 Our estimate of the mean DJFM sea ice extent, based on the mean ice edge latitude, is ~~7.410.45~~ $\times 10^6 \text{km}^2$  (or ~~5.38.37~~ $\times 10^6 \text{km}^2$ , using the Worby and Comiso offset). Comparing our DJFM sea ice extent estimate to the Met Office Hadley Centre sea ice HadISST2.24 dataset (Titchner and Rayner, 2014), we find that our values are ~~at least 4.31.59~~ $\times 10^6 \text{km}^2$  lower (Fig. 4). During this period HadISST2.24 is based on a climatology for the period 1929-1939, derived from German Atlas charts (Deutsches Hydrographic  
10 Institute, 1950). Data from 185 whaling expeditions (mostly Norwegian but some from English whaling log books) were used as its basis (Titchner, H.; personal communication).

#### 4 Summary and Discussion

In this study, we have used logbook data recorded explorers during the *Heroic Age of Exploration* to estimate an upper bound for the change between the summer sea ice edge during that period and the  
15 present day. To summarise our conclusions:

- We estimate that the DJFM sea ice edge was at most  $0.41^\circ$  further south between 1989-2014 than it was during the *Heroic Age* (1897-1917), implying a reduction of 10.0% in pan-Antarctic extent.
- This change is most dramatic and statistically robust in the Weddell Sea, where the ice edge has shifted [by](#)  $1.71^\circ$  southward between the two periods.
- Our estimate of the change in extent between the *Heroic Age* and the present day is small relative  
20 to estimates of the change between the 1950s and 1970s, based on whale catch data (Cotté and Guinet, 2007; de la Mare, 1997; Titchner and Rayner, 2014). This suggests the possibility that the sea ice was significantly more extensive during the period 1931-1961 than during the *Heroic Age*.

Outside the Weddell Sea, the mean change in ice edge latitude is small compared to the known summer  
25 offset between in situ and satellite ice edges. It is therefore plausible that the sea ice extent in these regions has in fact experienced a small increase. Either way, the climate was much more similar to the present conditions than one might expect based on climate model simulations of the early 19<sup>th</sup> Century (e.g.

Turner et al., 2013). These ice edge data, which we make available in the supplementary material of this paper, could be used by climate model developers as a tuning target for pre-Industrial Antarctic sea ice cover.

It has been suggested that the use of whale catch positions for estimating the sea ice edge will overestimate any changes (Ackley et al., 2003); this may be responsible for the disparity between our results and those  
5 investigating the whaling data. However, it is also plausible that the Antarctic ice edge exhibits significant decadal and multi-decadal variability (Latif et al., 2013), as has been observed in the Arctic (Day et al., 2012; Divine and Dick, 2006; Miles et al., 2014). If so, it is possible that there was an increase in sea ice extent between the *Heroic Age* and the 1930s, followed by the decrease between 1961 and 1971,  
10 suggested by de la Mare (1997). The MSA record from Law Dome, East Antarctica (Curran et al., 2003) and extensive sea ice in early 1960s Nimbus Satellite data (Gagné et al., 2015; Meier et al., 2013b), seem to support this hypothesis.

We have excluded some of the expedition logbooks available to us because of the lack of ice condition observations, including the *Southern Cross* expedition of 1898-1900, which only recorded ~~a only an~~  
15 ~~infrequent~~ daily summary of the sea ice, and the *Hertha* and *Jason* expeditions of 1893-1894, neither of which recorded a summary of the sea ice. However, there are a few logbooks from this period, including those from the Norwegian expedition on the *Fram* (1910-1912), the Japanese expeditions on the *Kainan Maru* (1910-1912) and the German Expedition on the *Deutschland* (1911-1912), that have not yet been  
20 imaged and digitised and could potentially increase our knowledge of the sea ice conditions during this period. Similarly, although whaling records for the *Heroic Age* are less complete than during the later period studied by de la Mare (1997, 2009), whaling records from the *Heroic Age* could provide additional validation of our findings.

Further analysis into the processes driving the long-term variations in Antarctic sea ice described in this study will be an important next step. In particular, expanding our source of Southern Ocean climatological  
25 data by increasing efforts to digitise ship logbooks from this data sparse region may be key to both our understanding recent Antarctic sea ice behaviour and improving climate model performance.

## Acknowledgements

Tom Edinburgh was funded by a NERC-SCENARIO funded [summer](#) studentship. Jonathan Day was funded by an AXA Post-Doctoral Research Fellowship and [a grant from the by the](#) Walker Institute, University of Reading. We would like to thank Clive Wilkinson at the Climatic Research Unit, University of East Anglia, for his advice on logbook sources and for access to digitised logbook data, [Holly Titchener \(Met Office\) and reviewers Dmitry Divine and Florence Fetterer for their useful comments and recommendations regarding the manuscript](#). Thanks also to the Royal Geographical Society Foyle Reading Room, for access to original logbooks from the Discovery 1901-04 and Terra Nova 1903-04 expeditions.

10

## References

- Abram, N. J., Mulvaney, R., Wolff, E. W. and Mudelsee, M.: Ice core records as sea ice proxies: An evaluation from the Weddell Sea region of Antarctica, *J. Geophys. Res.*, 112(D15), doi:10.1029/2006JD008139, 2007.
- 15 Abram, N. J., Wolff, E. W. and Curran, M. A. J.: A review of sea ice proxy information from polar ice cores, *Quat. Sci. Rev.*, 79, 168–183, doi:10.1016/j.quascirev.2013.01.011, 2013.
- Ackley, S., Wadhams, P., Comiso, J. C. and Worby, A. P.: Decadal decrease of Antarctic sea ice extent inferred from whaling records revisited on the basis of historical and modern sea ice records, *Polar Res.*, 22(1), 19–25, doi:10.1111/j.1751-8369.2003.tb00091.x, 2003.
- 20 Arctowski, H.: Les observations météorologiques de l'expédition du Gauss, *Bull. Soc. Belge Astron.*, 9, 13–17, 1904.
- Ayre, M., Nicholls, J., Ward, C. and Wheeler, D.: Ships' logbooks from the Arctic in the pre-instrumental period, *Geosci. Data J.*, in press, doi:10.1002/gdj3.27, 2015.
- 25 Bintanja, R., van Oldenborgh, G. J., Drijfhout, S. S., Wouters, B. and Katsman, C. A.: Important role for ocean warming and increased ice-shelf melt in Antarctic sea-ice expansion, *Nat. Geosci.*, 6(5), 376–379, doi:10.1038/ngeo1767, 2013.

- Brohan, P., Allan, R., Freeman, J. E., Waple, A. M., Wheeler, D., Wilkinson, C. and Woodruff, S.: Marine Observations of Old Weather, *Bull. Am. Meteorol. Soc.*, 90(2), 219–230, doi:10.1175/2008BAMS2522.1, 2009.
- Brohan, P., Ward, C., Willetts, G., Wilkinson, C., Allan, R. and Wheeler, D.: Arctic marine climate of the early nineteenth century, *Clim. Past*, 6(3), 315–324, doi:10.5194/cp-6-315-2010, 2010.
- 5 Cavalieri, D. J., Gloersen, P. and Campbell, W. J.: Determination of sea ice parameters with the Nimbus 7 SMMR, *J. Geophys. Res. Atmospheres* 1984–2012, 89(D4), 5355–5369, 1984.
- Comiso, J. C.: Characteristics of Arctic winter sea ice from satellite multispectral microwave observations, *J. Geophys. Res. Oceans* 1978–2012, 91(C1), 975–994, 1986.
- 10 Cotté, C. and Guinet, C.: Historical whaling records reveal major regional retreat of Antarctic sea ice, *Deep Sea Res. Part Oceanogr. Res. Pap.*, 54(2), 243–252, doi:10.1016/j.dsr.2006.11.001, 2007.
- Curran, M. A. J., Ommen, T. D. van, Morgan, V. I., Phillips, K. L. and Palmer, A. S.: Ice Core Evidence for Antarctic Sea Ice Decline Since the 1950s, *Science*, 302(5648), 1203–1206, doi:10.1126/science.1087888, 2003.
- 15 Day, J. J., Hargreaves, J. C., Annan, J. D. and Abe-Ouchi, A.: Sources of multi-decadal variability in Arctic sea ice extent, *Environ. Res. Lett.*, 7(3), 034011, doi:10.1088/1748-9326/7/3/034011, 2012.
- Divine, D. V. and Dick, C.: Historical variability of sea ice edge position in the Nordic Seas, *J. Geophys. Res.-Oceans*, 111(C01001), 2006.
- Fan, T., Deser, C. and Schneider, D. P.: Recent Antarctic sea ice trends in the context of Southern Ocean surface climate variations since 1950, *Geophys. Res. Lett.*, 41(7), 2014GL059239, doi:10.1002/2014GL059239, 2014.
- 20 Ferreira, D., Marshall, J., Bitz, C. M., Solomon, S. and Plumb, A.: Antarctic Ocean and Sea Ice Response to Ozone Depletion: A Two-Time-Scale Problem, *J. Clim.*, 28(3), 1206–1226, doi:10.1175/JCLI-D-14-00313.1, 2015.
- 25 Gagné, M.-è., Gillett, N. P. and Fyfe, J. C.: Observed and simulated changes in Antarctic sea ice extent over the past 50 years, *Geophys. Res. Lett.*, 42(1), 90–95, doi:10.1002/2014GL062231, 2015.
- Gille, S. T.: Warming of the Southern Ocean since the 1950s, *Science*, 295(5558), 1275–1277, 2002.

- Holland, P. R. and Kwok, R.: Wind-driven trends in Antarctic sea-ice drift, *Nat. Geosci.*, 5(12), 872–875, doi:10.1038/ngeo1627, 2012.
- Jacobs, S. S.: Freshening of the Ross Sea During the Late 20th Century, *Science*, 297(5580), 386–389, doi:10.1126/science.1069574, 2002.
- 5 Kidson, E.: British Antarctic Expedition, 1907-1909, under the command of Sir E. H. Shackleton. Reports on the scientific investigations. Meteorology, Government Printer, South Africa., 1930.
- Latif, M., Martin, T. and Park, W.: Southern Ocean Sector Centennial Climate Variability and Recent Decadal Trends, *J. Clim.*, 26(19), 7767–7782, doi:10.1175/JCLI-D-12-00281.1, 2013.
- Lefebvre, W., Goosse, H., Timmermann, R. and Fichefet, T.: Influence of the Southern Annular Mode on  
10 the sea ice–ocean system, *J. Geophys. Res.*, 109(C9), doi:10.1029/2004JC002403, 2004.
- Maksym, T., Stammerjohn, S., Ackley, S. and Massom, R.: Antarctic Sea Ice—A Polar Opposite?, *Oceanography*, 25(3), 140–151, doi:10.5670/oceanog.2012.88, 2012.
- Manabe, S. and Stouffer, R. J.: SENSITIVITY OF A GLOBAL CLIMATE MODEL TO AN INCREASE OF CO<sub>2</sub> CONCENTRATION IN THE ATMOSPHERE, *J. Geophys. Res.-Oceans Atmospheres*,  
15 85(NC10), 5529–5554, 1980.
- de la Mare, W. K.: Abrupt mid-twentieth-century decline in Antarctic sea-ice extent from whaling records, *Nature*, 389(6646), 57–60, doi:10.1038/37956, 1997.
- de la Mare, W. K.: Changes in Antarctic sea-ice extent from direct historical observations and whaling records, *Clim. Change*, 92(3-4), 461–493, doi:10.1007/s10584-008-9473-2, 2009.
- 20 Mawson, D.: Part 2: Meteorological Log of the S. Y. “Aurora,” in Australasian Antarctic Expedition 1911-14: Meteorology, Thomas Henry Tennant, Sydney., 1939.
- [Meier, W., Fetterer, M., Savoie, S., Mallory, R., Duerr, and J. Stroeve. 2013a, updated 2015. NOAA/NSIDC Climate Data Record of Passive Microwave Sea Ice Concentration, Version 2. Boulder, Colorado USA: National Snow and Ice Data Center. <http://dx.doi.org/10.7265/N55M63M1>](#)
- 25 Meier, W. N., Gallaher, D. and Campbell, G. G.: New estimates of Arctic and Antarctic sea ice extent during September 1964 from recovered Nimbus I satellite imagery, *The Cryosphere*, 7(2), 699–705, doi:10.5194/tc-7-699-2013, 2013**b**.



- Miles, M. W., Divine, D. V., Furevik, T., Jansen, E., Moros, M. and Ogilvie, A. E. J.: A signal of persistent Atlantic multidecadal variability in Arctic sea ice, *Geophys. Res. Lett.*, 41(2), 463–469, doi:10.1002/2013GL058084, 2014.
- Mossman, R. C.: Meteorological Results of the Scottish National Antarctic Expedition, in Report of the scientific results of the voyage of S Y “Scotia,” vol. 2, Scottish Oceanographical Laboratory, Edinburgh., 1907.
- Murphy, E. J., Clarke, A., Abram, N. J. and Turner, J.: Variability of sea-ice in the northern Weddell Sea during the 20th century, *J. Geophys. Res. Oceans*, n/a–n/a, doi:10.1002/2013JC009511, 2014.
- Parkinson, C. L.: Search for the Little Ice Age in Southern Ocean sea-ice records, *Ann. Glaciol.*, 14, 221–225, 1990.
- Parkinson, C. L. and Cavalieri, D. J.: Antarctic sea ice variability and trends, 1979–2010, *The Cryosphere*, 6(4), 871–880, doi:10.5194/tc-6-871-2012, 2012.
- Peng, G., W. Meier, D. Scott, and M. Savoie. 2013. A long-term and reproducible passive microwave sea ice concentration data record for climate studies and monitoring. *Earth Syst. Sci. Data*. 5. 311–318. <http://dx.doi.org/10.5194/essd-5-311-2013>.
- Polvani, L. M. and Smith, K. L.: Can natural variability explain observed Antarctic sea ice trends? New modeling evidence from CMIP5, *Geophys. Res. Lett.*, 40(12), 3195–3199, doi:10.1002/grl.50578, 2013.
- Rouch, J.: Deuxieme Expedition Antarctique Francaise (1908–10): Oceanographie Physique, Masson et Cie., Editeurs (Imaged by NOAA), Paris., 1914.
- Serreze, M. C. and Barry, R. G.: Processes and impacts of Arctic amplification: A research synthesis, *Glob. Planet. Change*, 77(1–2), 85–96, doi:10.1016/j.gloplacha.2011.03.004, 2011.
- Sigmond, M. and Fyfe, J. C.: Has the ozone hole contributed to increased Antarctic sea ice extent?, *Geophys. Res. Lett.*, 37(18), n/a–n/a, doi:10.1029/2010GL044301, 2010.
- Stocker, T. F., Qin, D., Plattner, G. K., Tignor, M., Allen, S. K., Boschung, J., Nauels, A., Xia, Y., Bex, V. and Midgley, P. M.: IPCC, 2013: Summary for Policy makers. In *Climate Change 2013: The Physical Science Basis*, Contrib. Work. Group Fifth Assess. Rep. Intergov. Panel Clim. Chang. Univ Press Camb. UK 2013, 2013.

Formatted: Default Paragraph Font

- Swart, N. C. and Fyfe, J. C.: The influence of recent Antarctic ice sheet retreat on simulated sea ice area trends, *Geophys. Res. Lett.*, 40(16), 4328–4332, doi:10.1002/grl.50820, 2013.
- Thompson, D. W. J. and Solomon, S.: Interpretation of Recent Southern Hemisphere Climate Change, *Science*, 296(5569), 895–899, doi:10.1126/science.1069270, 2002.
- 5 Titchner, H. A. and Rayner, N. A.: The Met Office Hadley Centre sea ice and sea surface temperature data set, version 2: 1. Sea ice concentrations, *J. Geophys. Res. Atmospheres*, 119(6), 2013JD020316, doi:10.1002/2013JD020316, 2014.
- Turner, J. and Overland, J.: Contrasting climate change in the two polar regions, *Polar Res.*, 28(2), 146–164, doi:10.1111/j.1751-8369.2009.00128.x, 2009.
- 10 Turner, J., Comiso, J. C., Marshall, G. J., Lachlan-Cope, T. A., Bracegirdle, T., Maksym, T., Meredith, M. P., Wang, Z. and Orr, A.: Non-annular atmospheric circulation change induced by stratospheric ozone depletion and its role in the recent increase of Antarctic sea ice extent, *Geophys. Res. Lett.*, 36(8), doi:10.1029/2009GL037524, 2009.
- Turner, J., Bracegirdle, T. J., Phillips, T., Marshall, G. J. and Hosking, J. S.: An Initial Assessment of Antarctic Sea Ice Extent in the CMIP5 Models, *J. Clim.*, 26(5), 1473–1484, doi:10.1175/JCLI-D-12-00068.1, 2013.
- 15 Turner, J., Hosking, J. S., Bracegirdle, T. J., Marshall, G. J. and Phillips, T.: Recent changes in Antarctic Sea Ice, *Philos. Trans. R. Soc. Math. Phys. Eng. Sci.*, 373(2045), 20140163, doi:10.1098/rsta.2014.0163, 2015.
- 20 Vaughan, D. G., Comiso, J. C., Allison, I., Carrasco, J., Kaser, G., Kwok, R., Mote, P., Murray, T., Paul, F., Ren, J. and others: Observations: cryosphere. In *Climate Change 2013: The Physical Science Basis*, *Clim. Change 2013 Phys. Sci. Basis*, 317–382, 2013.
- Vaughan, S.: Can Antarctic sea-ice extent be determined from whaling records?, *Polar Rec.*, 36(199), 345–347, doi:10.1017/S0032247400016831, 2000.
- 25 Wilkinson, C.: Sources of Historic Sea-Ice Observations for the Southern Hemisphere, *Recovery of Logbooks and International Marine Data RECLAIM Project – 2012 (revised and updated 2014)*, 2014.
- Woodruff, S. D., Worley, S. J., Lubker, S. J., Ji, Z., Eric Freeman, J., Berry, D. I., Brohan, P., Kent, E. C., Reynolds, R. W., Smith, S. R. and Wilkinson, C.: ICOADS Release 2.5: extensions and enhancements

to the surface marine meteorological archive, *Int. J. Climatol.*, 31(7), 951–967, doi:10.1002/joc.2103, 2011.

Worby, A. P. and Comiso, J. C.: Studies of the Antarctic sea ice edge and ice extent from satellite and ship observations, *Remote Sens. Environ.*, 92(1), 98–111, doi:10.1016/j.rse.2004.05.007, 2004.

5 Yuan, X.: ENSO-related impacts on Antarctic sea ice: a synthesis of phenomenon and mechanisms, *Antarct. Sci.*, 16(4), 415–425, doi:10.1017/S0954102004002238, 2004.

Zhang, J.: Increasing Antarctic Sea Ice under Warming Atmospheric and Oceanic Conditions, *J. Clim.*, 20(11), 2515–2529, doi:10.1175/JCLI4136.1, 2007.

10

15

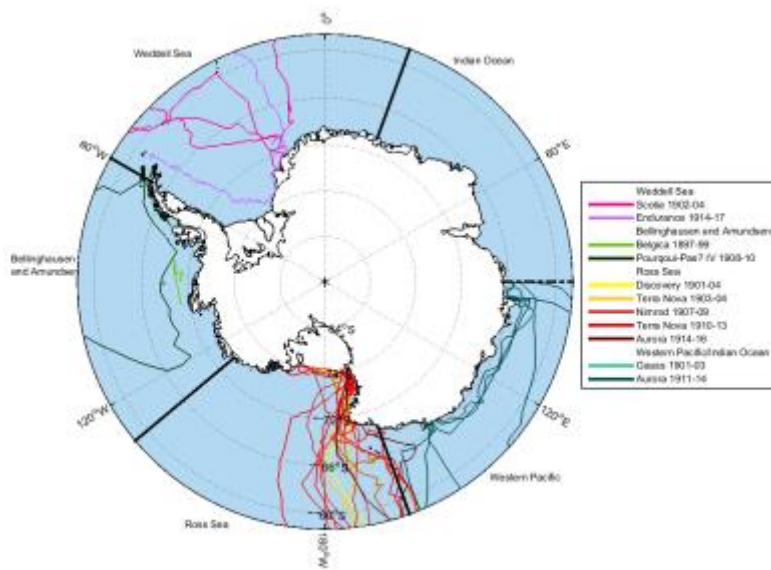


Figure 1: Map of expedition routes taken by ships used in this study. We only have coordinates for entry and departure of the pack ice for the 1901-03 Gauss Expedition (Indian Ocean).

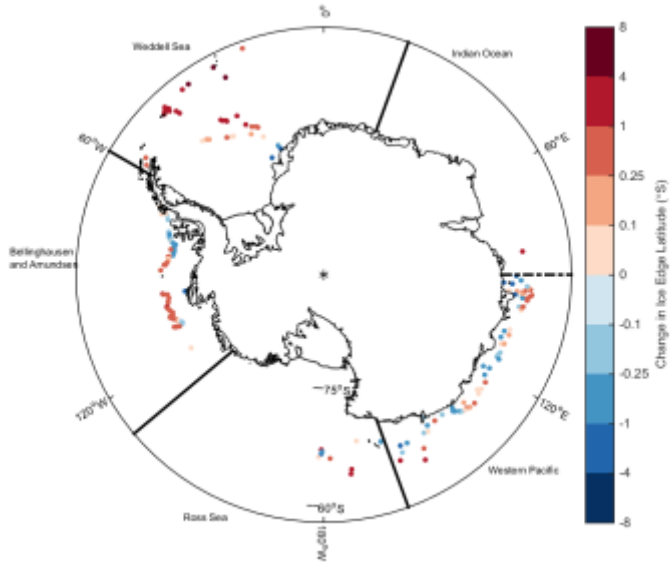


Figure 2: Anomaly between ship-observed ice edge and the 1989-2014 mean PM-B bootstrap algorithm derived ice edge position for the appropriate calendar day. Anomalies are plotted at logbook position.

5

10

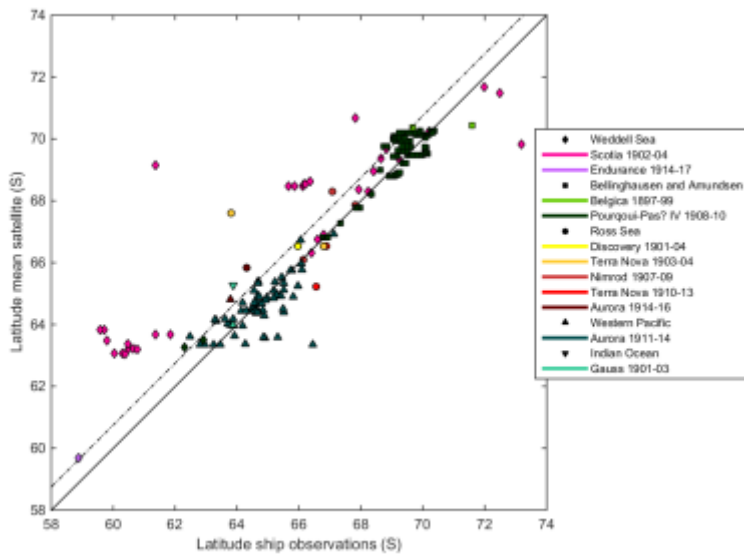


Figure 3: Comparison of ship-observed and satellite-derived ice edge latitude, including a one-to-one line, which indicates no change in position. The dashed line provides an estimate of the southward offset one would expect when comparing the satellite-derived ice edge to in-situ ship observations, as calculated by Worby and Comiso (2004).

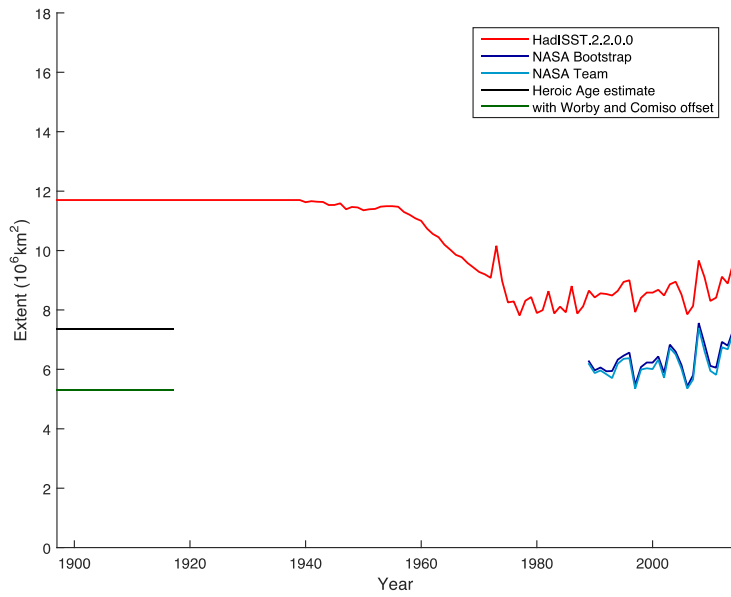


Figure 4: The estimated DJFM Antarctic sea ice extent climatology for the period 1897-1917, with and without the inclusion of the Worby and Comiso offset, is plotted alongside time series of DJFM mean sea ice extent calculated from HadISST2.2, NASA Team and NASA SISC-PM Bootstrap sea ice concentration datasets.

Date	Ship	Expedition	Expedition Leader	Sector	Source
1897-99	Belgica	Belgian Antarctic Expedition	Adrien de Gerlache	Bellinghousen and Amundsen	Arctowski (1904)
1901-03	Gauss	First German Antarctic Expedition	Erich von Drygalski	Indian Ocean	Arctowski (1904)
1901-04	Discovery	National Antarctic Expedition 1901	Robert Falcon Scott	Ross Sea	Deck Logbook (Royal Geographical Society (AJP Collection) item no.: AA/21/1 to AA/21/6)
1902-04	Scotia	Scottish National Antarctic Expedition	William Speirs Bruce	Weddell Sea	ICOADS (Mossman, 1907)
1903-04	Terra Nova	National Antarctic Expedition 1901	Robert Falcon Scott	Ross Sea	Deck Log book (Royal Geographical Society (AJP Collection))
1907-09	Nimrod	British Antarctic Expedition 1907	Ernest Shackleton	Ross Sea	ICOADS (Kidson, 1930)
1908-10	Pourquoi-Pas? IV	Fourth French Antarctic Expedition	Jean-Baptiste Charcot	Bellinghousen and Amundsen	Roach (1914)



1910-13	Terra Nova	British Antarctic Expedition 1910	Robert Falcon Scott	Ross Sea	ICOADS
1911-14	Aurora	Australasian Antarctic Expedition	Douglas Mawson	Western Pacific	ICOADS (Mawson, 1939)
1914-16	Aurora	Imperial Trans-Antarctic Expedition	Aeneas Mackintosh	Ross Sea	ICOADS
1914-17	Endurance	Imperial Trans-Antarctic Expedition	Ernest Shackleton	Weddell Sea	ICOADS

**Table 1: Expedition information and source materials used in this study. For items not digitised by ICOADS (Woodruff et al., 2011), the source material and archive are listed.**

5

10

15

	Pan-Antarctic	Weddell Sea	Bellinghausen and Amundsen Seas	Ross Sea	Western Pacific and Indian Ocean
Mean difference	0.41 (-0.34)	1.71 (0.96)	0.21 (-0.54)	0.62 (-0.13)	-0.08 (-0.83)
Variance of difference	1.44	3.76	0.25	1.97	0.47
Sample size	191	35	80	10	66
Wilcoxon SR test					
Approximate z value	-4.41 (6.21)	-4.17 (-2.85)	-3.31 (6.66)	-1.04 (0.74)	0.46 (6.73)
p value	<0.001 (<0.001)	<0.001 (0.022)	<0.001 (<0.001)	0.099 (0.39)	0.33 (<0.001)
Significance	significant	significant	significant	significant (not)	not (significant)

**Table 2: Mean differences in ice edge latitude between the ship-observed and daily mean satellite-derived ice edge position by Antarctic sector. Positive differences indicate where the ship-observed ice edge is north of the mean satellite-derived ice edge. Bracketed quantities refer to the same difference, but with the Worby and Comiso offset subtracted.**