

We would like to thank the reviewers for taking the time to provide feedback on the manuscript. The feedback provided has helped significantly improve the structure and flow of the manuscript.

5 Changes are indicated in the latexdiff that follows. All line numbers quoted here refer to the latexdiff document in the form "page.line". The reviewers comments follow in bold.

## Response to Editor's comments

10 **thank you for the revisions of your manuscript. As the reviewers had wished to see it again, I will send it to them for further review. However, in the meantime, I would be glad if you would consider to also include the figures from your reply (at least Figure 2) in the actual manuscript, to support some of your conclusions.**

Figure 2 has been added.

15 **Also, I find the captions of Figures 5 and 6 confusing. Could you please clarify/structure better.**

Captions have been edited.

20 **Why are the ACFs in Figure 7 asymmetric?**

We assume you refer to figure 4 here as figure 7 does not contain ACFs. Splitting the data into low, medium and high wind speeds results in a data set that is not continuous. This sampling issue allows differences to occur between positive and negative lag. These differences are larger for ERA-Interim due to the lower temporal resolution of this data set. Changed sentence at 9.16.

## 25 Response to Reviewer 1

**I am satisfied with the revisions. I would like to request one revision in the abstract: The following statement is particularly jarring and should be reworded: "...This suggests that the production of new sea ice occurs through thermodynamic rather than dynamic processes..." Perhaps I'm being picky but isn't new ice production always thermodynamically forced and never dynamically forced?**

30 This sentence was also found troublesome by Reviewer 3, the sentence has been edited (1.19).

## Response to Reviewer 3

35 **Recommendations: This study addresses an important and relevant issue and is in principal suitable for publication in The Cryosphere. While the methodology, analysis, and conclusions seem mostly robust, I have some concerns regarding the presentation and structure of the manuscript. I found it very difficult to read and to follow the line of thought, which should be improved alongside some other concerns listed below before I would recommend the publication of the manuscript. A general advice would be to organize and use paragraphs in a more structured sense, i.e., to have one topic**

per paragraph with the principal idea of the paragraph expressed in the first sentence and the concluding statement in the last sentence. Moreover, it would be easier to read if the paragraphs would neither be only 2-3 sentences long nor a full page. I think in some places (see below) the text could be a bit more focused and concise and certainly there are still quite some typographical errors that require a careful check (due to temporal constraints I cannot list them here, please check).

The editor asked specifically whether I thought that the concerns by Referees #1 and #2 were sufficiently addressed. I think the authors did address these issues sufficiently in most cases. I listed some remaining issues and some additional concerns that should be addressed in a revision below.

#### Major issues:

##### 10 Introduction:

- Large parts of the introduction deal with the increase of Antarctic sea ice over recent decades, but I do not really see how this study contributes to this question. It might well be that polynya production and export in the Ross Sea changed in concert with the observed ice expansion in the Ross Sea (e.g. Drucker et al., 2011 and Haumann et al., 2016), but the causal link between the ice edge variation and the polynya variation is less well established. This study does neither study variations of the sea ice extent nor long-term trends. So, I would recommend to focus the on the more important aspects, which are local aspects and temporal variability. One of the aspects is e.g. the effect on deep water formation (e.g. Ohshima et al. 2013) or ecology.

A large section of the introduction discussing global SIE trends has been removed (3.8-14). A small section discussing the effects of the RSP and deep water formation has been added at 2.24-27. A relevant sentence has also been added to 3.32.

- The introduction could be better structured. Right now the reader is being put back and forth between sea-ice trends and polynya processes. It might be helpful to point out more clearly the gap of knowledge, which is the effect of the local wind system on the polynya processes that cannot be resolved by models and end on the contribution of this study.

The Introduction has been significantly restructured, see previous comment.

##### Data and methods:

- It is not fully clear to me which years are used in the end for the analysis. The authors list a number of different time periods over which the different data sets are available, but ultimately I guess the analysis period is constrained by the availability of the AWS data, which only existed after 2000. So, all data sets, analysis, figures should consistently build on this period and has to be mentioned somewhere.

The 2000-2014 period used is more clearly stated (6.29).

- Was the data de-trended and de-seasonalized before performing the analysis? I think it would change the results much, but it should be done when using a correlation analysis.

The data was not de-seasonalised and de-trended before performing this analysis. As discussed in 5.27-29 the SIC during the period analysed is very constant and has no strong seasonal trend so we believe the correlation analysis done is still valid. This is supported by the CCF's decaying towards zero at large lag periods. If the correlations found were a result of a seasonal

effect this would not be the case.

5 - **The drift vectors are calculated over multiple grid boxes that have a size of 25 km and one vector is obtained from differencing multiple grid boxes. Therefore, a resolution of 25 km for the final motion product seems not adequate as the actual resolution is coarser than that. Ideal would be to provide the vectors at their actual resolution or describe this caveat.**

10 The drift vectors were calculated from 12.5 km SSMI grid boxes (4.33). Following the differencing the velocities found were then smoothed to 25 km resolution (5.8) to minimise oversampling. Furthermore the vectors plotted in figures 6 and 7 are smoothed further and plotted at 100 km resolution, while the colourmap remains at 25 km resolution. 100 km resolution stated in figure caption.

15 - **Throughout the manuscript the authors use sea-ice concentration (SIC) in the text but Figure 2 actually shows sea-ice area while the text says it would show SIC. It needs to be clarified what quantity is used when and why.**

20 Because we are considering a fixed region there is a direct proportionality between SIC and SIA. However, we agree that the use of SIA on Fig 2 is needlessly confusing therefore Figure 2 has been modified to use a SIC scale instead of sea ice area.

25 - **Lines 4.24-25: Please describe how you actually calculated the ice velocity from the cross-correlation field or provide a reference.**

Section describing this method has been edited for clarity (5.5-14) The referenced works (Emery et al., 1997; Heil et al., 2006; Holland and Kwok, 2012) also describe this method.

## Results:

30 - **The splitting of the results section as suggested by one of the earlier reviewers definitely helped to improve the readability. However, some more structuring would be helpful. The first paragraph of section 3.3 should be split and restructured. I honestly have difficulties to follow and I think that some parts might be cut. For example, I found the explanation of lines 6.3-6 regarding the wind stress more confusing than helpful at this point.**

35 6.26-29 was moved to the discussion (12.1-3) where we feel it fits better. Section 3.3 has been separated into several paragraphs to improve readability.

40 - **Section 3.4 is supposed to be about ERA-Interim data (title) but in fact half of it is about the AWS data, which I found confusing. Please restructure to resolve this issue. Also I think the information in this section could be more confined and the second paragraph should be shortened, split or restructured for clarity.**

Title of section changed to "Comparison of ERA-Interim and AWS CCFs" which better reflects the content. lines 8.24-26 have also been removed.

45 - **I do not understand Figure 4 a. It shows a negative correlation between the wind speed and SIC at low wind speeds. However, figure 5, the text, abstract and conclusions say that at low wind speeds the ice concentration is higher. There-**

**fore, I would expect a positive correlation here. To me this seems inconsistent. Could you explain?**

5 The author team is not sure if we follow your logic here. A negative correlation between SIC and wind speed implies that during periods of low wind speed SIC will be higher than normal. This remains true even when we consider a subset of the data.

#### **Discussion:**

10 **- Lines 10.33-11.1: To me this formulation does not make sense. How could sea-ice drift form ice. It could only advect ice into this region, which would be the reversal of the opening process. However, this seems unlikely. On the other hand, the statement that “wind-driven processes” are not responsible for the recovery, seems unsupported to me as well. As there would be no recovery phase without the prior wind-driven off-shore advection.**

15 SIC recovery and sea ice formation are not necessarily the same. Sea ice recovery in the RSP can either occur through formation of new ice within the RSP or by southward advection of existing sea ice. Southward advection is unlikely as it opposes the dominant prevailing wind in the region. Sea Ice anomalies are found to persist beyond the autocorrelation period of winds so the SIC recovery cannot be directly driven by wind rather indirectly through sea ice production. Lines 11.26-27 have been reformulated for clarity.

20

#### **All figures:**

**Currently many of the labels, legends, and arrows are rather small. Please enlarge them for readability.**

Figures have been edited.

25

#### **Some further suggestions:**

30 **Lines 1.2-3: Delete or reformulate “and possible consequences for sea ice production”. Sea ice production is not “investigated” in this study. I agree that the study has implications for the sea ice production but there is no related analysis.**

1.1-5 has been reformulated using sea ice formation in place of production which implies a process rather than a product.

35 **Lines 1.18-19: “This suggests ...”. I think that this sentence is slightly problematic, since the thermodynamic ice production mostly occurs because the ice was dynamically removed previously. So, it is not a pure thermodynamic process that leads to the polynya ice production. I agree that the ultimate new ice formation occurs due to thermodynamics, but isn’t that the case by definition? Or in other words how could new ice be produced dynamically. Please reformulate.**

Change has been made at 1.19.

40 **Line 1.22: “growth” -> “expansion”**

Change has been made at 1.23.

**Lines 2.20-23: I do not see the link between the ice extent or these processes to this study or what was discussed in**



**this paragraph.**

Changed ice extent to SIC at line 2.34. These processes strongly influence the SIC within a polynya, the large number of processes that are controlled by various systems is the reason why polynyas are difficult to understand.

5 **Line 2.25: "... wind stress." This statement requires in my view a reference.**

Added reference to Holland and Kwok (2012). (2.17)

10 **Lines 2.29-31: SIE is not used in this study, please reformulate or remove.**

Lines (3.8-13) have been removed.

15 **Lines 3.7-17: Please be more precise on what you actually do in this study and remove or replace the rest for helping the reader what to expect from this study. Please take out the ice production, as this study does not analyze ice production.**

Changed to sea ice formation at line 3.30.

20 **Line 3.22: I think the record starts in "1978". Anyway, please only indicate the time period that you actually used and remove the information on the rest of the record.**

'1977' typo has been fixed at line 4.5.

25 **Lines 4.5-10: This seems to belong rather to the results section than Data and Methods.**

Section (4.22-26) has been moved to 6.4-8.

30 **Line 5.23: "Scale factor" -> Do you mean "slope of the regression line"?**

We agree that this wording is better than the way we described this factor and we have thus changed the corresponding text at 11.5

35 **Lines 6.14-15: Please be more specific on "dynamic" or "thermodynamic process", i.e. "northward advection", "ice formation", etc..**

The suggested changes were made at lines 7.8-9.

40 **Lines 6.24-28: As the sea ice is divergent in this situation, I doubt that ridging and rafting processes are responsible for the delay. I would think that it is rather the ice internal stress that might cause the delay in the ice response.**

45 The significance ridging and rafting was overemphasised in the previous manuscript. 7.20 has been changed to indicate the greater importance of internal stresses.

**Lines 7.8-11: I do not understand why there would be a warm anomaly if the southerly winds increase. I would expect the opposite, i.e. a cold anomaly as the air coming from the ice shelf is much colder.**

5 This counter-intuitive temperature anomaly linked to southerly winds is due to changes in low-level stratification. For example, during periods of low winds a layer of cool, dense air is observed near the surface, while during higher wind speeds the warmer overlying layer is mixed down toward the surface. Adiabatic warming linked to air traversing the TAM also contributes to this temperature anomaly. A similar description was added to the text at line 8.2-5.

10 **Lines 10.24-25: The 10 m wind speed in ERA-Interim should probably be given in the Methods section as well. More importantly here you state the AWS measures wind speed at a height of 2-3 m, which is inconsistent with lines 3.23, where you state that it measures wind speed at 10 m. Please correct either value and give a precise height.**

15 Corrected line 4.6, added ERA-Interim height to Methods section (5.18). Precise height for AWS is not possible due to snow accumulation on the RIS. The height of individual AWS will vary and is unable to be measured regularly.

**Line 13.11: SIC -> sea ice**

20 Change has been made at 14.11.

**Line 13.14: “reanalysis” -> “coarse resolution atmospheric reanalysis data”**

25 Suggested change has been made at 14.14

30 **Figure 1: Specify that grey lines show topography. Please add reference to source of topography. Also here the standard deviation should be calculated from the de-trended and de-seasonalized fields and only the period that is actually analyzed in the paper should be used for consistency. Please add that the red box is also the area used for Figure 2. Please add a legend for the wind rose.**

35 Figure 1 caption has been edited with reference added. If the April - October period is used here large variance is observed in northern regions due to summer sea ice break out. Even when de-seasonalised data is used increased variance is seen as the time breakout occurs varies by periods similar to the breakout period. For this reason the 20th April - 1st November period is used here.

**Figure 2: delete “dotted” for me these look like solid lines. “grey” -> “black”**

40 Figure has been edited.

**Figure 5 and 7: I guess these are composites. Please indicate this and the time period (years) over which the composite is formed.**

Period has been stated in text.

# Atmospheric forcing of sea ice anomalies in the Ross Sea Polynya region

Ethan R. Dale<sup>1,2</sup>, Adrian J. McDonald<sup>1</sup>, Jack H.J. Coggins<sup>1</sup>, and Wolfgang Rack<sup>2</sup>

<sup>1</sup>Department of Physics and Astronomy, University of Canterbury, Christchurch, New Zealand.

<sup>2</sup>Gateway Antarctica, University of Canterbury, Christchurch, New Zealand.

*Correspondence to:* Ethan Dale (ethan.dale@pg.canterbury.ac.nz)

## Abstract.

~~The We investigate the~~ impacts of strong wind events on the [sea ice concentration within the](#) Ross Sea Polynya (RSP) ~~and its sea ice concentration and possible consequences for sea ice production are investigated. We utilised bootstrap, which may~~  
5 [have consequences on sea ice formation. Bootstrap](#) sea ice concentration (SIC) measurements derived from satellite SSM/I brightness temperatures ~~and compared these are correlated~~ with surface winds and temperatures from [Ross Ice Shelf](#) automatic weather stations (AWS) and weather models (ERA-Interim). Daily data in the austral winter period were used to classify characteristic weather regimes based on the percentiles of wind speed. For each regime a composite of a SIC anomaly was  
10 associated with positive SIC anomalies in the Ross Sea Polynya and vice versa. By analysing sea ice motion vectors derived from the SSM/I brightness temperatures we find during strong wind events significant sea ice motion anomalies throughout the Ross Sea which persist for several days after a strong wind event has ended. Strong, negative correlations are found between SIC and AWS wind speed within the RSP indicating that strong winds cause significant advection of sea ice in the region. We were able to partially recreate these correlations using co-located modelled ERA-Interim wind speeds. However, large  
15 AWS and model differences are observed in the vicinity of Ross Island, where ERA-Interim underestimates wind speeds by a factor of 1.7 resulting in a significant misrepresentation of RSP processes in this area based on model data. Thus, the cross correlation functions produced by compositing based on ERA-Interim wind speeds differed significantly from those produced with AWS wind speeds. In general the rapid decrease in SIC during a strong wind event is followed by a more gradual recovery in SIC. The SIC recovery continues over a time period greater than the average persistence of strong wind events as well as  
20 the persistence of sea ice motion anomalies. This suggests that ~~the production of new sea ice~~ [sea ice recovery](#) occurs through thermodynamic rather than dynamic processes.

## 1 Introduction

Throughout the satellite observation era the total winter sea ice cover in the Southern Ocean has followed a well established increasing trend, a process which is mainly driven by significant sea ice ~~growth~~ [expansion](#) in the Ross Sea (Comiso and Nishio, 2008; Turner et al., 2009; Holland, 2014; Turner et al., 2015). However, there is still uncertainty about the mechanisms which

have driven this change. The central aim of this work is to study how the variability of strong southerly winds over the western Ross Ice Shelf impacts sea ice ~~production and transport~~ concentration (SIC) in the region near the Ross Sea Polynya (RSP). A polynya is an area of open water or decreased ~~sea ice concentration (SIC)~~ SIC surrounded by either concentrated sea ice or land ice. Due to the ~~potential for~~ increased ocean to atmosphere heat ~~transfer~~ flux within these regions, polynyas are areas of high sea ice production (Tamura et al., 2008). The Ross Sea Polynya is a large polynya that regularly forms near the northwestern edge of the Ross Ice Shelf as a result of persistent offshore winds.

This work builds on previous studies, such as by Bromwich et al. (1998), Kwok et al. (2007), Reddy et al. (2007), Comiso et al. (2011), Drucker et al. (2011), Holland and Kwok (2012) and Turner et al. (2015), who have shown that the Ross Sea Polynya and the related atmospheric forcing plays an important role in sea ice production. For example, Drucker et al. (2011) estimates that 20-50% of the sea ice production in the Ross Sea occurs in the RSP and that the increase in sea ice extent in the Ross Sea region is related to the changes in the wind forcing. Bromwich et al. (1998) compare AWS wind speeds and temperatures with SIC derived from Special Sensor Microwave/Imager (SSM/I) data within the RSP. Bromwich et al. (1998) find that 25% of polynya ~~fluctuation~~ SIC variance within the RSP can be explained by wind and temperature variations observed at Ferrell AWS.

Coastal polynyas, such as the RSP, are driven by sea ice export from the coast with sea ice drift being controlled by both oceanographic and atmospheric forcings. Ice in free drift will have a velocity equal to that of the local ocean current plus some component due to the effect of wind stress (Holland and Kwok, 2012). This wind component will fall to the left of the wind vector in the Southern Hemisphere, and has a magnitude up to about 2% of the local wind speed (Brümmer et al., 2008). In consolidated ice internal stresses will oppose the geostrophic wind and therefore decrease ice drift velocity (Brümmer and Hoerber, 1999). Holland and Kwok (2012) used sea ice motion data and reanalysis wind fields to show that wind-driven changes in ice advection are the dominant drivers of SIC trends around much of West Antarctica. Also, wind-driven thermodynamic changes play a large role in coastal regions of the Atlantic sector (Kong Håkon VII Hav Sea) where autumn SIC trends oppose the near-surface wind variations.

As sea ice production occurs within the RSP brine rejection occurs forming negatively buoyant dense water. This leads to the formation of Antarctic bottom water (AABW) (Whitworth and Orsi, 2006). AABW formation is suggested as a major sink for CO<sub>2</sub> and heat and is a driver of global ocean circulations (Ohshima et al., 2013). A Change in the rate of sea ice production within the RSP and therefore the rate of AABW production could have significant effect on the global ocean circulation.

Previous studies have been constrained by a lack of detailed meteorological measurements. The weather patterns over the Ross Sea contain many small scale features that are governed by the topography of the area. Thus, current models such as the Antarctic Mesoscale Prediction System (AMPS - Powers et al. 2012) are unable to resolve many of these features (Coggins et al., 2013; Jolly et al., 2016). This means that understanding ~~of~~ the direct influence of strong winds on the formation of the RSP, a region of major sea ice production, has been limited. The analysis of the seasonal patterns of Antarctic sea ice growth and decline and its inter-annual variability is complicated by the fact that they depend on a number of atmospheric and oceanic forcings which occur at a wide range of time scales. In particular, ~~the extent of sea ice~~ SIC is influenced by both atmospheric

and oceanic factors, including the strength of the near-surface winds, air temperature, ocean currents, ocean temperature and salinity of the ocean (Bintanja et al., 2013; Holland and Kwok, 2012; Holland, 2014; Turner et al., 2015).

Coastal polynyas, such as the RSP, are triggered by sea ice export from the coast with sea ice drift being controlled by both oceanographic and atmospheric forcings. Ice in free drift will have a velocity equal to that of the local ocean current plus some component due to the effect of wind stress. In the Southern Hemisphere this wind component will fall to the left of the wind vector and has a magnitude up to about 20% of the local wind speed (Brümmer et al., 2008). In consolidated ice internal stresses will oppose the geostrophic wind and therefore decrease ice drift velocity (Brümmer and Hoeber, 1999).

Sea ice concentration (SIC) is defined as the percentage of the ocean covered by sea ice for a given area. In this study, sea ice extent (SIE) is defined as the integral of all pixels where SIC is greater than 15. While Arctic sea ice extent and areal coverage has displayed a clear decreasing trend over the satellite period, observations in the Antarctic show the opposite tendency (Turner et al., 2007). Changes in the area of the Antarctic sea ice have been less dynamic with a small, but statistically significant overall increase in both ice extent and area throughout the year, although this general increase masks larger opposing regional trends (Comiso and Nishio, 2008; Maksym et al., 2012).

The primary synoptic-scale atmospheric variations affecting sea ice include the overall magnitude of the geostrophic wind (Sen Gupta and England, 2006), the localised zonal and meridional wind anomalies (Stammerjohn et al., 2008; Kwok and Comiso, 2002; Sen Gupta and England, 2006; Turner et al., 2009; Holland and Kwok, 2012), surface air temperature anomalies (Sen Gupta and England, 2006; Kwok and Comiso, 2002) and variations in energy fluxes between the atmosphere-ocean-sea ice systems. Geostrophic winds are also central to describing the variations in localised Ekman transport patterns within the ocean. Specifically, Stammerjohn et al. (2008) identify identified that enhanced Westerlies throughout the 1990s in the western Ross Sea caused a more persistent northward Ekman sea ice drift, which affected the seasonal ice extent of the region by causing earlier ice advance and later ice retreat.

This work therefore has a wider relevance given that atmospheric circulation changes in the Ross Sea may explain a significant portion of the climate variation in the region and particularly increases in sea ice extent and the northward drift of sea ice (Holland and Kwok, 2012; Nicolas and Bromwich, 2014). Holland and Kwok (2012) used sea ice motion data and reanalysis wind fields to show that wind-driven changes in ice advection are the dominant driver of SIC trends around much of West Antarctica. By contrast, wind-driven thermodynamic changes play a large role in coastal regions of the Atlantic sector (Kong Håkon VII Hav Sea) where autumn SIE trends oppose the near-surface wind variations.

In this study, we investigate winter in-situ measurements from weather stations directly upwind of the Ross Sea Polynya in relation to satellite measurements of sea ice cover in order to better understand the time scales over which surface wind impacts on sea ice drift and sea ice production potential sea ice formation. We do this in comparison with winds from a low resolution reanalysis model (ERA-Interim (Dee et al., 2011)) in order to find out to what extent simulated wind fields in the region can reproduce the statistical relationship and dependence between weather and sea ice anomalies. This work therefore has a wider relevance given that atmospheric circulation changes in the Ross Sea may explain a significant portion of the climate variation in the region and particularly increases in sea ice extent and the northward drift of sea ice (Holland and Kwok, 2012; Nicolas and Bromwich, 2012).

## 2 Data and Methods

We utilise both Basic Bootstrap Algorithm and AMSR-E Bootstrap Algorithm sea ice concentration (SIC) data (henceforth Bootstrap collectively) provided by the National Snow and Ice Data Center (NSIDC) (Comiso, 2000; Maslanik and Stroeve, 5 2004). Bootstrap SIC is available on a daily basis sampled onto a 25 km by 25 km grid since 1987 and every other day prior to this date (starting in ~~1977~~1978). Daily averages of SIC swath data is provided by NSIDC, these were assumed to be centred around midday with measurement spread 12 hours before and after the reported time. We obtain ~~10-2~~ m wind speed and 2 m temperature data measured at the Laurie II automatic weather station (AWS), located at 77.52° S 170.81° E provided by the University of Wisconsin-Madison Automatic Weather Station Program detailed in Lazzara et al. (2012). The Laurie II station 10 has been providing data at 10 minute temporal resolution since February 2000. In this study we focus on output from the Laurie II station, because of its long continuous record and proximity to the RSP. The analysis presented has also been completed for a number of other stations, including Vito, Emilia and Ferrell stations, and these results remain rather similar.

Fig. 1 shows the standard deviation of SIC. ~~This is defined as,~~ calculated from the daily variation from the inter-annual-long term winter mean of Bootstrap SIC data over the period ~~7~~20th April until the 1st of November for years 1979 until 2014. This 15 period was chosen to exclude the annual break out of sea ice which would add to minimise variability not associated with day to day polynya activity. Coastal pixels often display a large variability and a prominent area of variability is located between, for example the area longitude 170° E and 180° E extending several hundred kilometres offshore. The orientation of this area corresponds well with both the dominant wind directions observed at the Laurie II AWS site and the location of the RSP as identified in Nakata et al. (2015) amongst others. Large deviations from the mean are due to the high variability in SIC within 20 the polynya as displayed in Fig. 2.

For our analysis we define a region comprised of pixels adjacent to the Bootstrap land mask and 10° wide in longitude, centred on the Laurie II AWS site, identified in red in Fig 1. This gives a 25 km by 250 km region close to the Ross Ice Shelf and Ross Island co-located within the area where the Ross Sea Polynya can be observed. The wind roses in Fig. 1 display the distribution of wind vectors observed at various AWS sites (Margaret, Vito and Laurie II). ~~Inspection of the wind rose closest~~ 25 ~~to Ross Island (Laurie II) shows that the wind in this region is dominated by southerly flows with a third of the observations linked to high ( $> 7.5 \text{ m s}^{-1}$ ) wind speeds. These strong southerly flows are also an important feature of the wind distribution at the other AWS sites displayed in Fig. 1, but are not observed as frequently. However, as identified previously the results presented do not change appreciably if data from other AWS sites in the northwestern corner of the Ross Ice Shelf is utilized.~~

We derive sea ice motion vectors from the National Snow and Ice Data Centre's 12.5 km resolution polar stereographic 30 gridded brightness temperatures, retrieved from the Special Sensor Microwave/Imager and Special Sensor Microwave Imager/Sounder (SSMIS) instruments (Maslanik and Stroeve, 2004). Daily averages are available from July 1987 to December 2015. We employ utilize the vertical and horizontal polarisations of the 85.5 GHz channel from 1987 to 2009 and the 91.7 GHz channel from 2010 onwards.

Following multiple authors (Emery et al., 1997; Heil et al., 2006; Holland and Kwok, 2012), we estimate ice motion via a maximum cross-correlation method. We track  $9 \times 9$  grids of stereographic cells ( $112.5 \times 112.5$  km) over a radius of 8 grid

cells (100 km). The search radius provides an upper limit of ice velocity of approximately  $1.2 \text{ ms}^{-1}$ , defining a physically plausible range (Heil et al., 2006).

The cross-correlation method proceeds by comparing consecutive daily averages of brightness temperature data. For each day, brightness temperatures in a particular grid are correlated against those in the surrounding grids on the subsequent day. The sea ice is assumed to have moved to the grid with the highest correlation ~~is then designated as the grid to which the motion has occurred. A~~. A correlation threshold of 0.7 ~~is placed on the correlations was chosen~~ to limit erroneous designations. Our method uses the maximum correlation from both the horizontal and vertical polarisations. From the ~~consequent estimate of displacement, an estimate of ice velocity in the intervening period can be attained~~ resulting displacement and time period the ice velocity was estimated. We subsequently ~~smooth~~ smoothed the gridded velocities to a 25 km stereographic grid.

~~It is important to note that there are some motions which will not be apparent using this method. For instance, Using this simple method~~ fast small-scale motions ~~are below the resolution of the grid and will not be captured. Small scale as well as~~ rotations and divergence of the ice pack ~~will not be observed as the cross-correlation method does not account for these types of drift~~ are not resolved. Further, motion in coastal areas is likely to be ~~inaccurate~~ less accurate due to the difficulties in applying the method to incomplete grids.

Brightness temperature derived motions are considered inaccurate outside of the winter season due to surface melt and high levels of atmospheric water vapour (Emery et al., 1997; Holland and Kwok, 2012). Hence, we restrict our analysis of sea ice motions to the ~~Antarctic~~ cold months of April to October.

We compare winds observed at the AWS sites with 10 m winds of the ERA-interim meteorological reanalysis model (Dee et al., 2011). The model output is available on a  $0.75^\circ \times 0.75^\circ$  grid at a 6 hour temporal resolution running from late 1979 until present. Although AMPS provides higher resolution weather data, ERA-Interim was used due to its temporal consistency and data set spanning the AWS period. ERA-interim does not assimilate wind speed measurements over land (including ice shelves) and is therefore independent from AWS measurements. For comparison of AWS and ERA-interim wind data virtual AWS stations were created by interpolating the wind speed from the ERA-Interim grid to the location of the AWS sites using a bilinear interpolation.

### 3 Results

#### 3.1 SIC within the Ross Sea Polynya

Figure 2a shows the mean SIC within the coastal area identified in Figure 1 averaged over the period 1988 to 2014. Throughout the winter period, defined between the 1st of April to the 1st of November in this study, the total SIC within this area is relatively constant. Outside this period we observe a gradual decrease from November in SIC until a minimum is reached in mid-February followed by a more rapid increase in SIC as the sun sets in early March. For the remainder of this analysis we will only consider the period from the April to October to remove the effects of summer melt and to avoid periods with low SIC and large gradients in SIC. Figure 2b shows the daily SIC for the same area derived from data in 2013 to show the high degree of variability in the SIC in this region, these results resemble previous analysis reported in Bromwich et al. (1998). The large

day to day variability between April and October (Fig 2b) are likely to be associated with polynya processes. The sawtooth features observed in this specific year, for example around 1st May, are common features and illustrate that decreases in SIC generally occur more rapidly than the following increases in SIC, a point that will be supported by later analysis.

### 5 3.2 Intercomparison of AWS and ERA-Interim wind speeds

The wind climatology of the region, derived from AWS data is represented by wind roses in Figure 1. Wind roses are angular histograms indicating prevailing winds, the colours indicate the distribution of wind speed in each angular sector. Inspection of the wind rose closest to Ross Island (Laurie II) shows that the wind in this region is dominated by strong southerly flows. These strong southerly flows are also an important feature of the wind distribution at the other AWS sites displayed in Fig. 1, but are not observed as frequently. However, as identified previously the results presented do not change appreciably if data from other AWS sites in the northwestern corner of the Ross Ice Shelf is utilized.

The wind speeds measured at four AWS, Laurie II, Ferrell, Emilia, and Vito were compared to the virtual sites interpolated from the ERA-Interim model grid. Scalar wind speeds at Laurie II, Ferrell and Emilia correlated well with  $R^2 > 0.75$  while Vito was found to have a weaker correlation of  $R^2 = 0.55$ . Inspection of ERA-Interim and AWS wind roses revealed no significant directional bias between the two data sets. However when linear least squares fits between the model and the Laurie and Ferrell AWS winds were applied, slopes of 1.70 and 1.52, respectively, were found, indicating that at these sites ERA-Interim generates significantly weaker wind speeds than measured by the AWS. Scale factors measured at Emilia and Vito were 1.06 and 0.96 respectively, indicating a better agreement between the AWS and ERA-Interim wind speeds at these sites. Laurie and Ferrell are located 36 and 57 km from Cape Crozier (at the eastern end of Ross Island), while Emilia and Vito lie 140 and 223 km east of Ross Island. Thus, the differences observed are likely linked to the local topography that is not well represented in the ERA-Interim reanalysis. Recent work by Jolly et al. (2016) comparing AWS observations with the Antarctic Mesoscale Prediction System output (a much higher resolution atmospheric model) also identifies that the effect of topography in the region can not be reproduced by the model (Powers et al., 2012). It should also be noted that ERA-Interim does not assimilate wind speed measurements over land and so the two datasets are independent (Dee et al., 2011). (Dee et al., 2011).

### 25 3.3 Correlations between SIC and AWS measurements

Cross correlations functions (CCF) between the time series of SIC within the region in Fig 1 and both wind speeds and temperatures measured at the Laurie II AWS site were calculated. ~~The wind stress on sea ice depends on the square of the wind speed. This does not, however result in a linear relationship between SIC and the square of the wind speed because wind stress only defines the force causing the advection. For this reason wind speed was correlated with SIC rather than the square of wind speed. For for the 2000-2014 period.~~ For comparison with daily Bootstrap SIC data 24 hour running means of the 10 minute AWS measurements were used. Although SIC was only available on a 24 hour resolution, wind data was available at a 10 minute resolution. By varying the time lag between these two time series and calculating the Pearson correlation coefficient for each lag, CCFs were able to be calculated at a 10 minute time resolution. The Bootstrap SIC is derived from 24 hour binned brightness temperatures and we compared these with 24 hour rolling mean of AWS data the resulting correlation functions



will be blurred over a 24 hour period. The CCF between the time series of SIC and both scalar wind speeds and temperatures measured at the Laurie II AWS site are shown in figure 4.

In figure 4 (a) we find a strong negative correlation between SIC and wind speed with the maximum magnitude correlation occurring after a 12 hour time lag. The minimum is preceded by a rapid decrease and followed by a more gradual increase in correlation with respective e-folding times of -48 hours and 100 hours. This indicates that during high wind events the SIC in the RSP-area is generally low. The difference in the decrease and increase e-folding times suggests that the two changes are controlled by different processes. For example we expect that the decrease in SIC is dominated by more rapid ~~dynamic processes~~ northward advection while the increase in SIC during sea ice formation is dominated by slower ~~thermodynamic processes~~ ice formation. This interpretation is supported by the recent analysis detailed in Nakata et al. (2015) which used a simplified model to understand polynya changes.

Laurie II is located about 50 km south of the region used for the SIC analysis. A change of predominantly southerly winds (Parish and Bromwich, 2007) is first observed upwind at Laurie II before the signal propagates to the RSP downwind. Wind blowing at  $5 \text{ ms}^{-1}$  ~~wind~~ would take about 3 hours to travel the distance so the 12 hour delay observed cannot be entirely explained by this process. Another contributing factor is that the region used for calculating the SIC is not directly adjacent to the northern edge of the RIS and an area of sea ice ~~will~~ may exist south of the studied polynya area. If a northward advection of sea ice occurs the ice advected from the region will be replaced by ice in the unobserved region between the Ross Ice Shelf and the region specified in Fig. 1. This could allow advection of sea ice to occur for a short period of time without a decrease in SIC occurring, causing the minimum in sea ice to occur several hours after a significant increase in wind speed. In addition, as a strong wind event progresses the sea ice will ridge and raft upon itself, causing the surface roughness of the ice to increase ~~making the ice~~, we speculate that this will make the ice slightly more susceptible to the wind stress (Mårtensson et al., 2012). As the SIC decreases, internal stresses prohibiting motion will decrease allowing advection to become more significant. These effects will cause the minimum SIC to occur slightly after the time of maximum wind speed and are likely causes for the location of the minimum correlation between SIC and wind occurring at approximately 12 hours delay, though the collection of swath data also introduces some uncertainty in this exact timing. Wind speeds in the area autocorrelate with an e-folding time of 36 hours (Fig 4a), which explains the significant correlations in the CCF between AWS wind speed, ~~SIC CCF and SIC~~ at negative delay. The e-folding time for the decrease in this CCF is -48 hours and the extrema occurs at delay of 12 hours corresponding with the 36 hour e-folding time for AWS wind speeds.

The ~~temperature versus SIC CCF~~ CCF of temperature versus sea ice concentration also shows a significant negative correlation with the minimum occurring at 0 hours delay (Fig 4b). The e-folding times for this curve are -120 hours and 170 hours for the decreasing and increasing periods, respectively. These values are both similar to the autocorrelation e-folding time for temperatures measured at Laurie II of 150 hrs. As a strong wind event progresses and SIC decreases, the heat flux from the ocean to the atmosphere will increase causing production of new sea ice through freezing. The rate of freezing of open water will depend on the temperature differential between the ocean and the atmosphere. ~~Thus~~, potentially explaining the significant correlations observed. ~~However, significant~~ Significant positive correlations can also be found between the temperature and wind speeds measured at Laurie II station (Fig 4b), which we interpret as at least partially the cause of the correlation between

temperature and SIC. In addition, work detailed in Coggins et al. (2014) also suggests that strong wind events, particularly Ross Ice Shelf Air Stream (RAS) events (Parish et al., 2006), are related to warm surface temperature anomalies. This is due to changes in low-level stratification. During periods of low winds a layer of cool, dense air is observed near the surface, while during higher wind speeds the warmer overlying layer is mixed down toward the surface. Adiabatic warming linked to air traversing the Transantarctic Mountains also contributes to this temperature anomaly. However, given that the correlation between temperature and wind speed at Laurie II is 0.5 at zero hours and the correlation between temperature and SIC is -0.65 there must be some other causal link between temperature and SIC. We suggest that this is likely due to a more gradual rate of freezing of open water during periods of higher air temperatures (effectively a smaller temperature differential between ocean and air temperatures impacting the sensible heat flux).

### 3.4 ~~Correlations between SIC and Comparison of ERA-Interim measurements and AWS CCFs~~

CCFs were also produced using the ERA-Interim virtual AWS stations in the same manner although at a 6 hour temporal resolution dictated by the temporal resolution of the ERA-Interim output. We found that both the wind speed, SIC and wind speed autocorrelation were very similar to that found using the AWS wind speeds (Fig 2a). This is not surprising as the ERA-Interim wind speeds correlate well with that of AWS at Laurie. The temperature versus SIC CCF, temperature versus wind speed CCF and the temperature autocorrelation from the ERA-Interim output have similar forms to the relationships derived using AWS data, but are generally smoother and the magnitude of the largest correlations are generally smaller. The temperature autocorrelation curve shows that ERA-interim predicts more persistent temperatures than the Laurie II AWS measures. This likely indicates that high frequency temperature fluctuations are not accurately modelled within ERA-interim. The ERA-Interim wind speed versus temperature CCF shows weaker correlation for delays less than 24 hours with the difference becoming negligible around -72 hours. This probably indicates that the warming of the air due to mixing, suggested in Coggins et al. (2013) and other studies, caused by strong winds is underestimated in ERA-interim. These effects likely cause the small differences between the ERA-interim temperature and SIC correlations and that of Laurie II AWS.

Cross correlation curves for SIC and wind speed measured at Laurie II AWS site and wind speed hindcast by the ERA-Interim virtual station ~~for low, medium and high wind classes defined using thresholds calculated from the AWS data~~ are now examined ~~in figure 5((Fig 5 a-c). We will begin by discussing the AWS results and then follow with a comparison of these results with those found using the ERA-interim virtual station.~~ The daily mean wind speeds measured at Laurie II were categorised into low, medium and high wind events based on 33rd and 66th percentile AWS wind speeds measured at Laurie II ( $3.5 \text{ ms}^{-1}$  and  $7.6 \text{ ms}^{-1}$  respectively). Wind direction was not considered in this classification because of the predominance of southerly flows at that site. CCF's for SIC with wind speed were calculated only for periods when the mean wind speed during a -12hrs to +12hrs period was within one of the three categories (Fig 5). Autocorrelation curves for the wind in each of these three cases were also calculated to allow the persistence of each of the three strengths of wind speed events to be identified. The AWS medium wind case autocorrelation curve (Fig 5b) shows considerably lower persistence than either of the extreme cases, indicating that this is a transition state that occurs frequently for short periods. The high wind case (Fig. 5c) shows a CCF very similar to that of all cases (Fig 4b) excluding the period from -36 hours to +12 hours delay. ~~If we assume the relationship~~

~~between wind speed and SIC is linear, splitting the data in this manner will result in lower correlations in each individual state when compared to the total. Effectively, a smaller range of wind speeds is sampled, while the variability of the SIC remains constant therefore increasing the uncertainty and reducing the correlation. However, the~~

5 The force exerted on sea ice is proportional to the wind stress, which is proportional to the square of the wind speed, ~~which means that~~. This will cause the winds within the high wind case ~~will to~~ have a greater impact on sea ice motion than those of the lower cases. All cases show negative correlations between SIC and wind speed. With the exception of a short period in the medium case, spanning -30 hours to 6 hours when weak positive correlations are observed. ~~With the exception of a short period in the medium case, spanning -30 hours to 6 hours where weak positive correlations are observed.~~ The medium case  
10 has a correlation extrema of -0.5 at 30 hours while the extrema for the low case is -0.4 at 50 hours between AWS and SIC data. Both these values are significantly weaker and later than that of both the high and total cases. This could be because weaker wind speeds will not have as significant effect on sea ice causing any advection of sea ice and subsequent sea ice break up to occur much less rapidly than the high wind case. Another possible cause is that the higher wind speeds within each class are more likely to increase to stronger cases after the classified period, causing a decrease in SIC at a large delay. Due to the  
15 autocorrelation for both medium and low cases being very low at their respective times of extrema the former explanation seems unlikely as there would be little coherence between wind speed at 0 hours and wind at the extrema.

The categorised autocorrelation curves found using the ERA-interim virtual station are not as perfectly symmetrical as those for the AWS data. This is due to ~~errors~~ sampling issues that occur at the beginnings and ends of the broken time series obtained because of the wind speed classifications used. These ~~errors~~ sampling issues are also present in the AWS autocorrelation  
20 curves, but are of greater significance when using the low temporal resolution ERA-interim data. The medium ERA-interim wind speed autocorrelation curve shows persistence similar to that of the low and high cases differing from that of AWS which showed a much shorter persistence in the medium case. The low case wind, wind speed versus SIC CCF derived from ERA-interim output is very similar to that found using AWS. In contrast the ERA-interim CCF's in the medium and high wind speed cases differ significantly from that of AWS. In particular, the ERA-interim medium case displays stronger negative correlations  
25 than that of the AWS between -24 and 24 hours after which the two are very similar. The high wind regime for ERA-Interim displays significantly weaker correlations between -12 and 72 hours than the corresponding pattern derived using AWS data. The latter point likely reflects the fact that the ERA-Interim data is generally poor at representing the strength of the wind in the strong wind speed periods for this region, this being supported by the large gradient derived (1.70) when applying a linear least squares regression to the ERA-Interim and AWS wind speeds.

### 30 **3.5 SIC anomalies during extreme wind events**

To gain a greater understanding of the influence of winds on SIC in the region, we now consider the spatial structure of the SIC anomalies for the high and low wind classes previously identified for different periods relative to the onset of those classes. For both low and high wind classes, the April to October mean Bootstrap SIC anomaly for each pixel in the Ross Sea region was calculated over the 2001-2014 period (defined by Laurie II AWS coverage) (Fig 6). Composites for several days of delay before and after the wind event onset were then derived to highlight how the sea ice anomaly varies spatially prior to and following

these wind classes. Histograms are also shown to indicate how the distribution of each wind class changes throughout the period examined. On day 0 all cases are either 100% high or low winds, but on following days the winds are not classified, this allows the persistence of these wind events to be observed. We find significant, positive anomalies within the Ross Sea Polynya during low winds and negative anomalies during high winds in general (Fig. 6). No significant anomalies were found during the medium wind cases and these are therefore not displayed. All significant anomalies found occur within known polynyas, this is likely because sea ice is generally thinner and has a lower concentration within polynyas. Significant anomalies are observed 2 days before the measured wind and remain until 5 days after, an imbalance in the proportions of the three wind classes (indicated by the inset histograms) also remains for a similar period. The SIC versus wind speed CCF displayed increase and decrease e-folding times of -48 and 100 hours (Fig. 4). Thus during a high wind event the period where SIC is decreasing seems to be significantly impacted by advection.

### 3.6 Sea ice motion anomalies during extreme wind events

~~To further our understanding of the role of sea ice advection, sea ice motion vectors were derived from 85 and 91 GHz band brightness temperatures.~~ The mean sea ice motion vectors for the April to October period from 2001 until 2014 ~~are shown in Figure 7. Figure 7 shows~~ [\(Fig 7 show](#) northward flow throughout the Ross Sea with an easterly component occurring to the east of Cape Adare. This highlights the net export of sea ice from the north facing coasts of the Ross Sea throughout this period (Comiso et al., 2011). Composites of sea ice motion anomalies related to high and low wind states at delays varying from -2 days to 3 days from the wind event are displayed in Fig. 8. During periods of low wind speed at Laurie II, anticyclonic anomalies occur throughout the Ross Sea (Fig. 8(a-f)). Conversely cyclonic anomalies are found during periods of high winds at Laurie II (Fig. 8(g-l)). These anomalies are largest at ~~the time that the wind state is identified~~ [zero lag](#), but persist for 24 hours after the wind event with weak anomalies being found in both low and high states 48 hours after the wind event. It is also noticeable that no coherent pattern in the sea ice anomalies associated with the medium wind state are observed (not shown). The cyclonic anomalies during strong wind events and anticyclonic anomalies during low wind events highlight the critical influence of atmospheric near-surface winds on sea ice motion in the region.

## 4 Discussion

Bromwich et al. (1998) found annual correlations between SIC in the RSP and wind speed at Ferrell AWS for 1988-1991 ranging from -0.3 to -0.52. We find the multi-year correlation for SIC in the RSP and wind speed at Ferrell AWS from 2001 to 2014 to be -0.67. ~~The disagreement between these values is to be expected as~~ Bromwich et al. (1998) uses a RSP area that extends significantly further from the shore than the one used in our analysis. Winds over ~~their the Bromwich~~ [RSP area](#) are not as well represented by the Ferrell AWS ~~as the area used within our analysis justifying the weaker correlation observed~~ [explaining the weaker correlations](#). We find a minimum correlation between Ferrell wind speed and SIC to be -0.72 at 10 hours delay, Bromwich et al. (1998) did not calculate correlations at varying delay so comparison with this value is not possible. Bromwich et al. (1998) also find correlations between SIC and inverse temperature ranging between 0.44 and 0.55. We found a SIC  $\tau$

versus inverse temperature correlation of ~~0.639-0.64~~; this difference is due to the different RSP ~~areas-area and time periods~~ used.

ERA-Interim was able to generate wind speeds that correlated well with that of several AWS sites, indicating that the relative wind speeds within ERA-Interim were consistent with the AWS measurements. However, at AWS sites near significant topography ERA-Interim was found to predict wind speeds significantly weaker than the winds measured by the AWS with ~~scale factors of slopes of the regression lines of~~ 1.70 and 1.52 (implying that the ERA-Interim values are this factor smaller than the AWS measurement) at the Laurie II and Ferrell sites, respectively (Fig 3). This is likely because ERA-Interim is unable to accurately model the mesoscale barrier affect of Ross Island and the resulting flow convergence. ~~A hypothesis that~~ This hypothesis is supported by recent comparisons between AWS data and mesoscale model output in the region (Jolly et al., 2016). The wind speed versus SIC CCF produced using the virtual Laurie station was very similar to that found using the Laurie AWS data. However, when the data was separated into low, medium and high wind regimes, based on a categorisation derived from the AWS data, significant differences were found between the ERA-Interim and AWS CCFs. This suggests that the ERA-Interim output provides a good representation of the occurrence of the different wind states, but the magnitudes from the ERA-Interim underestimate the values observed by AWS. This indicates that ERA-Interim output would not be a reliable way to identify relevant wind thresholds used in models simulating polynya dynamics. This factor makes the usage of ERA-Interim problematic for polynya studies as they generally form on coastlines near topography in Antarctica. ERA-Interim provides 10 m wind speeds while the AWS Wind speeds are measured at 2-3 m (Lazzara et al., 2012; Dee et al., 2011). This would suggest that a scale factor would exist between the two data sets, an effect that was not corrected. While this will not affect the correlation comparisons preformed it may explain the scale factors observed. However this small height difference is not able to explain the large scale factors found indicating that topography must have a significant effect.

Sea ice motion vector anomaly composites indicate that wind driven sea ice drift is significant 12 hours before through to 36 hours after strong wind events peak. This coincides with the peak cross correlation between SIC and wind speed, indicating that during a strong wind event, SIC within the RSP is at a minimum during the period where wind driven sea ice drift is found to be significant. Following strong wind events, significant negative SIC anomalies are also found and persist for up to 5 days after the event. This period is longer than the persistence of most strong wind events (see autocorrelation in figure 4 and 5), it therefore seems unlikely that the SIC recovery following strong wind events is controlled by wind driven ~~proecesses such as sea ice drift~~advection of sea ice. Thus, the recovery of sea ice is likely dominated by ~~thermodynamic proecesses rather than dynamic proecesses, an idea also~~ formation of new sea ice within the RSP rather than advection of existing sea ice, an assumption supported by recent analysis detailed in Nakata et al. (2015). During periods of high wind, negative SIC anomalies were found within the Ross Sea Polynya. Similarly positive anomalies were found during periods of low wind. The significant anomalies were also only found within areas of known polynyas, likely due to thinner, less concentrated sea ice being present within ~~the RSP~~these polynyas. Correlations between wind speed and SIC were significantly stronger for the high wind class than the two weaker classes (Fig. 5), indicating that the wind driven polynya mechanism is driven by the strongest wind speeds and moderate winds have a less significant effect. ~~This is likely due to the force applied to the sea ice being proportional to the wind stress or the wind speed squared theoretically.~~

5 The wind stress on sea ice depends on the square of the wind speed. This does not, however result in a linear relationship between SIC and the square of the wind speed because wind stress only defines the force causing the advection. For this reason wind speed was correlated with SIC rather than the square of wind speed. Only wind speed was considered in this study, so northerly winds were not distinguished from southerly winds. Even though they would have a vastly different effect on polynyas. Coggins et al. (2014) finds that majority of wind measurements in the north western RIS fall within the south-western quadrant due to the dominance of katabatic fed drainage and barrier flows related to the Trans-Antarctic Mountains and a semi-persistent low pressure system east of the Ross Sea. This was also identified in detail analysis around the Laurie II region presented in Jolly et al. (2016) . This directional bias becomes even stronger when only the largest wind speeds are considered. This means that errors due to northerly winds are minimal in our analysis.

10 Only the results obtained from weather data taken at Laurie II are presented in this study because of its proximity to the RSP. However, a similar set of analyses were performed for the Vito, Emilia, and Ferrell AWS sites. These each produced similar results, with the only significant difference being that weaker correlations were found at these sites when compared to those with Laurie II. This is hypothesised to be because these sites are based further inland, and are therefore more distant from the centre of the RSP than Laurie II. This would mean that the winds at these locations would be less representative than those at Laurie II.

20 ~~Only wind speed was considered in this study, so northerly winds were not distinguished from southerly winds. Even though they would have a vastly different effect on polynyas. Due to the lack of topography on the Ross Ice Shelf, the dominance of katabatic fed drainage and barrier flows related to the Trans-Antarctic Mountains and a semi-persistent low pressure system east of the Ross Sea (Coggins et al., 2014) the vast majority of wind measurements in the north western RIS fall within the south-western quadrant (demonstrated by the wind roses in figure 1). This was also identified in detail analysis around the Laurie II region presented in Jolly et al. (2016). This directional bias becomes even stronger when only the largest wind speeds are considered. This means that the effect of northerly winds on polynyas is minimal, and would not change our conclusions significantly.~~

25 ~~Due to lack of~~ Due to lack of weather data available within the RSP, AWS data from sites on the nearby Ross Ice Shelf was assumed to be representative of that over the RSP. A multitude of effects will cause the actual winds and temperatures over the RSP differ somewhat from that measured at the Laurie II AWS site, these effects will be inhomogeneous across the RSP. Proximity to topography, particularly Ross Island, differs between the RSP and Laurie II. Southerly katabatic drainage flows will accelerate around Ross Island, causing stronger winds to be observed within the RSP. Meanwhile other areas of the RSP north of Ross Island will be somewhat sheltered from many of the predominant southerly winds. Due to the relatively warm ocean an upward heat flux will occur within the RSP when open water or thin ice is present. This will cause an increase in surface air temperatures over the RSP. This effect will not occur at Laurie II due to the insulation of the thick ice shelf. Due to the lack of measurements within the RSP the net result of these effects is unable to be identified.

35 The ~~When within 50 km of the coastline the~~ sea ice motion vectors used in this study ~~were not able to be derived accurately within 50 km of the coastline~~ are biased. This coastal area coincides with the majority of polynya activity and therefore the dynamic effects of changing wind speeds was not able to be observed directly within the RSP. The assumption is made that



offshore sea ice drift will be representative of drift ~~within in~~ coastal polynyas. Although ~~derived~~ sea ice motion is coherent throughout the Ross Sea the motion within coastal polynyas may ~~differ from offshore motion~~ be different as thinner, less concentrated ice exists within coastal polynyas.

5 The Bootstrap SIC data used throughout this study uses passive microwave measurements to calculate SIC. The microwave signature for a thin sheet of ice can be identical to that of scattered thick ice. For sea ice thickness less than 10 cm the Bootstrap sea ice concentration is a function of sea ice thickness ~~Kwok et al. (2007)~~ (Kwok et al., 2007). During periods of low wind speed, Bootstrap SIC within the RSP often reaches 100% indicating a continuous covering sheet of sea ice with thickness greater than 10 cm. During a strong wind event, the SIC decreases via dynamic processes leaving areas of open water with scattered, likely thick ice. As freezing of the open water occurs a layer of thin ice will form, causing a gradual increase in the Bootstrap SIC. As this sea ice thickens the heat flux between the warmer ocean and the cooler atmosphere will decrease, causing the rate of freezing to also decrease. Because both Bootstrap SIC and the rate of freezing within a polynya depend on the thermal conductivity of the sea ice, the Bootstrap SIC may actually provide a more meaningful measure of sea ice production within polynyas than true SIC values.

15 ~~Although Bootstrap SIC covers a vast period of time,~~ Despite the length of the Bootstrap SIC time series we were unable to identify any significant trends in polynya activity. This ~~is may be~~ due to changing polynya structure as ~~icebergs calve from the northern edge of the~~ a result of calving from the Ross Ice Shelf and the ~~shelf gradually moves ice shelf gradually advancing~~ northward. As the coastline evolves, so does the RSP, this causes issues as the land mask for Bootstrap SIC data does not change with time. Over long periods a changing amount of the RSP is visible in the Bootstrap SIC data, causing biases in any metric for polynya activity. This effect was particularly obvious in 2005 when iceberg B15 calved from the Ross Ice Shelf, moving a 300 km long section of the northern coastline 40 km further south.

## 5 Conclusions

During the austral winter, strong negative correlations were found between AWS wind speeds and SIC in the RSP. In contrast to previous studies, we examined these correlations as a function of lag and found they persisted for several days and exceeded the persistence of the wind speed autocorrelation. When the data was split into low, medium and high wind cases and correlations were calculated from the separate data sets the high wind states displayed stronger correlations than the other two states indicating that stronger winds had the most significant impact on sea ice within the RSP. This analysis was repeated using a virtual AWS site interpolated from ERA-Interim reanalysis wind fields. It was found that although strong correlations existed between the AWS and ERA-Interim wind speeds, a linear scale factor, significantly greater than 1 was present at AWS sites in close proximity to topography. Wind speeds measured at the Laurie II AWS correlated strongly with co-located ERA-Interim wind speeds, but a scale factor of 1.70 (indicating AWS wind speeds were 1.70 times faster than ERA-Interim wind speeds) was found. The ERA-Interim wind speeds were used to calculate a wind speed against SIC CCF that agreed with the CCF formed using AWS wind speeds. However, when the data set was categorised into low, medium and high wind cases and individual CCF's were calculated, significant differences from the AWS CCF's were found in the high wind state. Likely due to the effects

of nearby small scale topography, ERA-Interim wind speeds were unable to reproduce the relationships found between AWS wind speeds and SIC in the RSP. This difference has implications for interpreting sea ice anomalies using ERA-Interim winds in regions close to complex topography.

5 For low, medium and high wind states measured at Laurie II AWS composites of SIC were made. During periods of low wind speed ( $< 3.5 \text{ m s}^{-1}$ ), significant positive SIC anomalies that persisted for 5 days after the wind event were found within the RSP. Conversely, significant negative SIC anomalies that persisted for 5 days after the wind event were found within the RSP during periods of high wind speed ( $> 7.5 \text{ m s}^{-1}$ ). No significant anomalies were found during medium wind speed periods. Significant SIC anomalies were only found to occur in coastal areas where polynyas are known to occur. Composites of sea  
10 ice motion vectors were also calculated for these wind states. During periods of high wind cyclonic motion anomalies were found throughout the Ross Sea, while anticyclonic anomalies were found during periods of low wind. These sea ice motion anomalies were found to persist for 48 hours after the wind event. SIC anomalies persisted several days longer than sea ice motion anomalies suggesting that following a strong wind event polynyas reform ~~SIC~~ sea ice through thermodynamic, rather than advective processes, resulting in increased sea ice production within polynyas following strong wind events. This implies  
15 that changes of winds in this region would have significant impacts on polynya processes, potentially strongly impacting coastal sea ice production. This study shows that ~~reanalysis~~ coarse resolution atmospheric reanalysis data would not capture the correct magnitude of this effect.

*Acknowledgements.* We would like to thank the support of the University of Wisconsin-Madison Automatic Weather Station Program for the AWS observational dataset (NSF grant numbers ANT-0944018, ANT-1245663, ANT-0943952, and ANT-1245737). We would also  
20 like to acknowledge the NSIDC for the provision of the SSM/I dataset. This work was partially funded by a grant from the New Zealand Antarctic Research Institute, scholarships from both the Department of Physics and Astronomy at the University of Canterbury and NZ Post (administered by Antarctica New Zealand).

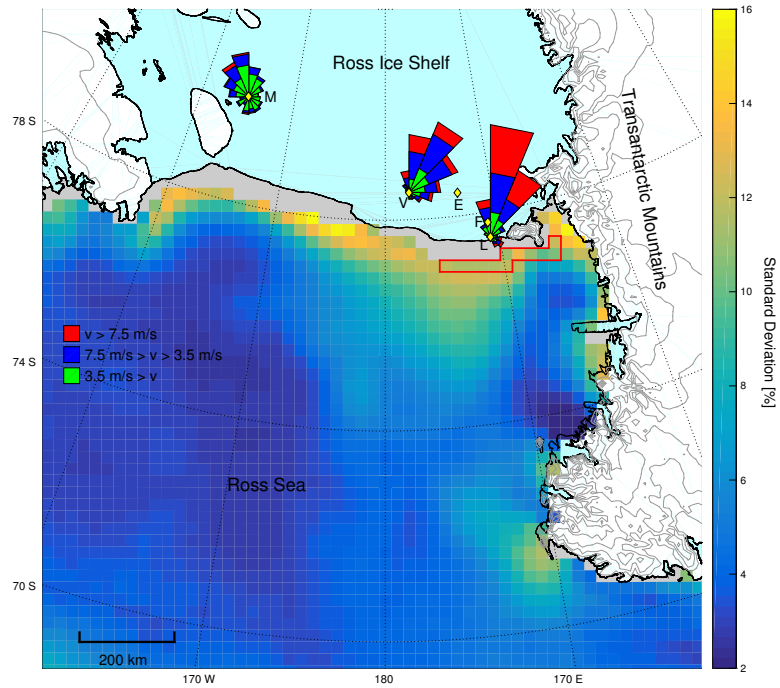


## References

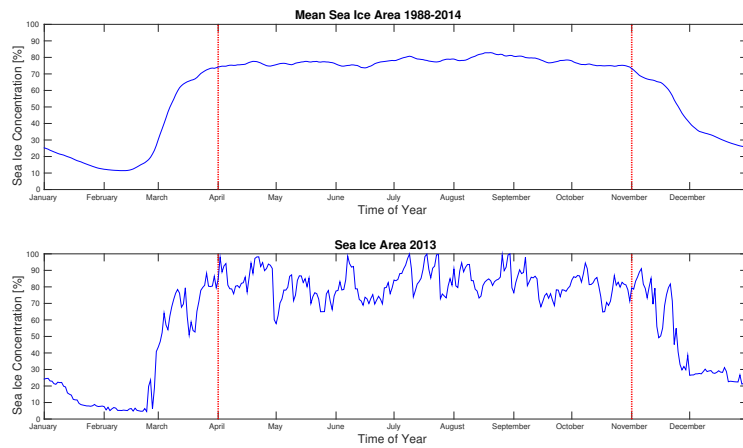
- Bintanja, R., van Oldenborgh, G. J., Drijfhout, S. S., Wouters, B., and Katsman, C. A.: Important role for ocean warming and increased ice-shelf melt in Antarctic sea-ice expansion, *Nat. Geosci.*, 6, 376–379, doi:10.1038/ngeo1767, <http://www.nature.com/doi/10.1038/ngeo1767>, 2013.
- Bromwich, D., Liu, Z., Rogers, A. N., and Van Woert, M. L.: Winter atmospheric forcing of the Ross Sea Polynya, in: *Ocean. ICE, Atmos. Interact. Antarct. Cont. MARGIN*, vol. 75, pp. 101–133, American Geophysical Union, doi:10.1029/AR075p0101, <http://www.agu.org/books/ar/v075/AR075p0101/AR075p0101.shtml>, 1998.
- Brümmer, B. and Hoeber, H.: A mesoscale cyclone over the Fram Strait and its effects on sea ice, *J. Geophys. Res. Atmos.*, 104, 19 085–19 098, doi:10.1029/1999JD900259, <http://doi.wiley.com/10.1029/1999JD900259>, 1999.
- Brümmer, B., Schröder, D., Müller, G., Spreen, G., Jahnke-Bornemann, A., and Launiainen, J.: Impact of a Fram Strait cyclone on ice edge, drift, divergence, and concentration: Possibilities and limits of an observational analysis, *J. Geophys. Res.*, 113, C12 003, doi:10.1029/2007JC004149, <http://doi.wiley.com/10.1029/2007JC004149>, 2008.
- Coggins, J., McDonald, A. J., Plank, G., Pannell, M., Jolly, B., Parsons, S., and Delany, T.: SNOW-WEB: a new technology for Antarctic meteorological monitoring, *Antarct. Sci.*, 25, 583–599, doi:10.1017/S0954102013000011, [http://journals.cambridge.org/article/\\_S0954102013000011](http://journals.cambridge.org/article/_S0954102013000011) [http://www.journals.cambridge.org/abstract/\\_S0954102013000011](http://www.journals.cambridge.org/abstract/_S0954102013000011), 2013.
- Coggins, J. H. J., McDonald, A. J., and Jolly, B.: Synoptic climatology of the Ross Ice Shelf and Ross Sea region of Antarctica: k -means clustering and validation, *Int. J. Climatol.*, 34, 2330–2348, doi:10.1002/joc.3842, <http://doi.wiley.com/10.1002/joc.3842>, 2014.
- Comiso, J. C.: Bootstrap Sea Ice Concentrations from Nimbus-7 SMMR and DMSP SSM/I-SSMIS, Version 2., Boulder, Color. USA. NASA Natl. Snow Ice Data Cent. Distrib. Act. Arch. Center., doi:<http://dx.doi.org/10.5067/J6JQLS9EJ5HU>, 2000.
- Comiso, J. C. and Nishio, F.: Trends in the sea ice cover using enhanced and compatible AMSR-E, SSM/I, and SMMR data, *J. Geophys. Res.*, 113, C02S07, doi:10.1029/2007JC004257, <http://doi.wiley.com/10.1029/2007JC004257>, 2008.
- Comiso, J. C., Kwok, R., Martin, S., and Gordon, A. L.: Variability and trends in sea ice extent and ice production in the Ross Sea, *J. Geophys. Res.*, 116, C04 021, doi:10.1029/2010JC006391, <http://doi.wiley.com/10.1029/2010JC006391>, 2011.
- Dee, D. P., Uppala, S. M., Simmons, A. J., Berrisford, P., Poli, P., Kobayashi, S., Andrae, U., Balmaseda, M. A., Balsamo, G., Bauer, P., Bechtold, P., Beljaars, A. C. M., van de Berg, L., Bidlot, J., Bormann, N., Delsol, C., Dragani, R., Fuentes, M., Geer, A. J., Haimberger, L., Healy, S. B., Hersbach, H., Hólm, E. V., Isaksen, L., Kållberg, P., Köhler, M., Matricardi, M., McNally, A. P., Monge-Sanz, B. M., Morcrette, J.-J., Park, B.-K., Peubey, C., de Rosnay, P., Tavolato, C., Thépaut, J.-N., and Vitart, F.: The ERA-Interim reanalysis: configuration and performance of the data assimilation system, *Q. J. R. Meteorol. Soc.*, 137, 553–597, doi:10.1002/qj.828, <http://doi.wiley.com/10.1002/qj.828>, 2011.
- Drucker, R., Martin, S., and Kwok, R.: Sea ice production and export from coastal polynyas in the Weddell and Ross Seas, *Geophys. Res. Lett.*, 38, doi:10.1029/2011GL048668, <http://doi.wiley.com/10.1029/2011GL048668>, 2011.
- Emery, W. J., Fowler, C. W., and Maslanik, J. A.: Satellite-derived maps of Arctic and Antarctic sea ice motion: 1988 to 1994, *Geophys. Res. Lett.*, 24, 897–900, <http://dx.doi.org/10.1029/97GL00755>, 1997.
- Heil, P., Fowler, C., and Lake, S.: Antarctic sea-ice velocity as derived from SSM/I imagery, *Ann. Glaciol.*, 44, 361–366, doi:10.3189/172756406781811682, <http://www.ingentaconnect.com/content/igsoc/agl/2006/00000044/00000001/art00057> <http://openurl.ingenta.com/content/xref?genre=article{&}issn=0260-3055{&}volume=44{&}issue=1{&}spage=361>, 2006.

- Holland, P. R.: The seasonality of Antarctic sea ice trends, *Geophys. Res. Lett.*, 41, 4230–4237, doi:10.1002/2014GL060172, <http://doi.wiley.com/10.1002/2014GL060172>, 2014.
- Holland, P. R. and Kwok, R.: Wind-driven trends in Antarctic sea-ice drift, *Nat. Geosci.*, 5, 1–8, doi:10.1038/ngeo1627, <http://www.nature.com/ngeo/journal/v5/n12/full/ngeo1627.html>, 2012.
- 5 Jolly, B., McDonald, A. J., Coggins, J. H. J., Cassano, J., Lazzara, M., Zawar-Reza, P., Graham, G., Plank, G., Petterson, O., and Dale, E.: A validation of the Antarctic Mesoscale Prediction System using Self-Organizing Maps and high density observations from SNOWWEB, *Mon. Weather Rev.*, 144, 3181–3200, doi:10.1175/MWR-D-15-0447.1, 2016.
- Kwok, R. and Comiso, J. C.: Spatial patterns of variability in Antarctic surface temperature: Connections to the Southern Hemisphere Annular Mode and the Southern Oscillation, *Geophys. Res. Lett.*, 29, 50–1–50–4, doi:10.1029/2002GL015415, <http://doi.wiley.com/10.1029/2002GL015415>, 2002.
- 10 Kwok, R., Comiso, J. C., Martin, S., and Drucker, R.: Ross Sea polynyas: Response of ice concentration retrievals to large areas of thin ice, *J. Geophys. Res.*, 112, C12012, doi:10.1029/2006JC003967, <http://doi.wiley.com/10.1029/2006JC003967>, 2007.
- Lazzara, M. a., Weidner, G. a., Keller, L. M., Thom, J. E., and Cassano, J. J.: Antarctic Automatic Weather Station Program: 30 Years of Polar Observation, *Bull. Am. Meteorol. Soc.*, 93, 1519–1537, doi:10.1175/BAMS-D-11-00015.1, <http://journals.ametsoc.org/doi/abs/10.1175/BAMS-D-11-00015.1>, 2012.
- 15 Liu, H., Jezek, K., Li, B., and Zhao, Z.: Radarsat Antarctic Mapping Project Digital Elevation Model, Version 2., Boulder, Color. USA. NASA Natl. Snow Ice Data Cent. Distrib. Act. Arch. Center., 2001.
- Maksym, T., Stammerjohn, S., Ackley, S., and Massom, R.: Antarctic Sea Ice—A Polar Opposite?, doi:10.5670/oceanog.2012.88, 2012.
- 20 Mårtensson, S., Meier, H. E. M., Pemberton, P., and Haapala, J.: Ridged sea ice characteristics in the Arctic from a coupled multicategory sea ice model, *J. Geophys. Res. Ocean.*, 117, n/a–n/a, doi:10.1029/2010JC006936, <http://doi.wiley.com/10.1029/2010JC006936>, 2012.
- Maslanik, J. and Stroeve, J.: DMSP SSM/I-SSMIS Daily Polar Gridded Brightness Temperatures, Version 4., Boulder, Colorado USA. NASA National Snow and Ice Data Center Distributed Active Archive Center, doi:<http://dx.doi.org/10.5067/AN9AI8EO7PX0>, 2004.
- Nakata, K., Ohshima, K. I., Nihashi, S., Kimura, N., and Tamura, T.: Variability and ice production budget in the Ross Ice Shelf Polynya based on a simplified polynya model and satellite observations, *J. Geophys. Res. Ocean.*, 120, 6234–6252, doi:10.1002/2015JC010894, <http://doi.wiley.com/10.1002/2015JC010894>, 2015.
- 25 Nicolas, J. P. and Bromwich, D. H.: New Reconstruction of Antarctic Near-Surface Temperatures: Multidecadal Trends and Reliability of Global Reanalyses\* ,+, *J. Clim.*, 27, 8070–8093, doi:10.1175/JCLI-D-13-00733.1, <http://journals.ametsoc.org/doi/abs/10.1175/JCLI-D-13-00733.1>, 2014.
- 30 Ohshima, K. I., Fukamachi, Y., Williams, G. D., Nihashi, S., Roquet, F., Kitade, Y., Tamura, T., Hirano, D., Herraiz-Borreguero, L., Field, I., Hindell, M., Aoki, S., and Wakatsuchi, M.: Antarctic Bottom Water production by intense sea-ice formation in the Cape Darnley polynya, *Nat. Geosci.*, 6, 235–240, doi:10.1038/ngeo1738, <http://www.nature.com/doi/abs/10.1038/ngeo1738>, 2013.
- Parish, T. R. and Bromwich, D. H.: Reexamination of the Near-Surface Airflow over the Antarctic Continent and Implications on Atmospheric Circulations at High Southern Latitudes\*, *Mon. Weather Rev.*, 135, 1961–1973, doi:10.1175/MWR3374.1, 2007.
- 35 Parish, T. R., Cassano, J. J., and Seefeldt, M. W.: Characteristics of the Ross Ice Shelf air stream as depicted in Antarctic Mesoscale Prediction System simulations, *J. Geophys. Res.*, 111, D12 109, doi:10.1029/2005JD006185, <http://doi.wiley.com/10.1029/2005JD006185>, 2006.
- Powers, J. G., Manning, K. W., Bromwich, D. H., Cassano, J. J., and Cayette, A. M.: A Decade of Antarctic Science Support Through Amps, *Bull. Am. Meteorol. Soc.*, 93, 1699–1712, doi:10.1175/BAMS-D-11-00186.1, <http://journals.ametsoc.org/doi/abs/10.1175/BAMS-D-11-00186.1>, 2012.

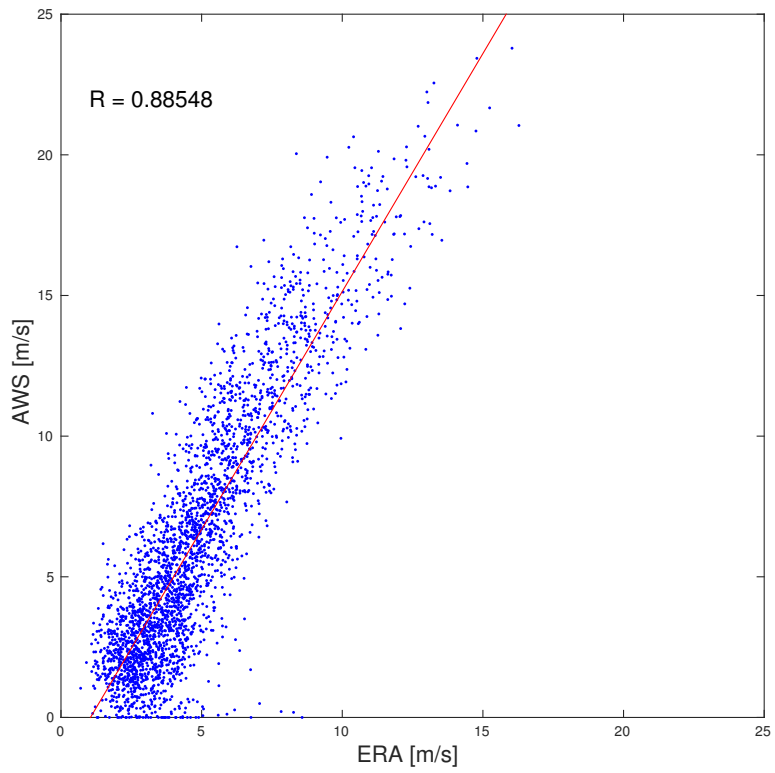
- Reddy, T. E., Arrigo, K. R., and Holland, D. M.: The role of thermal and mechanical processes in the formation of the Ross Sea summer polynya, *J. Geophys. Res.*, 112, C07 027, doi:10.1029/2006JC003874, <http://doi.wiley.com/10.1029/2006JC003874>, 2007.
- Sen Gupta, A. and England, M. H.: Coupled Ocean–Atmosphere–Ice Response to Variations in the Southern Annular Mode, *J. Clim.*, 19, 4457–4486, doi:10.1175/JCLI3843.1, <http://journals.ametsoc.org/doi/abs/10.1175/JCLI3843.1>, 2006.
- Stammerjohn, S. E., Martinson, D. G., Smith, R. C., Yuan, X., and Rind, D.: Trends in Antarctic annual sea ice retreat and advance and their relation to El Niño–Southern Oscillation and Southern Annular Mode variability, *J. Geophys. Res.*, 113, C03S90, doi:10.1029/2007JC004269, <http://doi.wiley.com/10.1029/2007JC004269>, 2008.
- Tamura, T., Ohshima, K. I., and Nishihashi, S.: Mapping of sea ice production for Antarctic coastal polynyas, *Geophys. Res. Lett.*, 35, doi:10.1029/2007GL032903, <http://doi.wiley.com/10.1029/2007GL032903>, 2008.
- Turner, J., Overland, J. E., and Walsh, J. E.: An Arctic and antarctic perspective on recent climate change, *Int. J. Climatol.*, 27, 277–293, doi:10.1002/joc.1406, <http://cdiac.esd.ornl.gov/oceans/GLODAP/glodap{ }pdfs/Thermohaline.web.pdf><http://doi.wiley.com/10.1002/joc.1406>, 2007.
- Turner, J., Comiso, J. C., Marshall, G. J., Lachlan Cope, T. A., Bracegirdle, T., Maksym, T., Meredith, M. P., Wang, Z., and Orr, A.: Non annular atmospheric circulation change induced by stratospheric ozone depletion and its role in the recent increase of Antarctic sea ice extent, *Geophys. Res. Lett.*, 36, doi:10.1029/2009GL037524, <http://doi.wiley.com/10.1029/2009GL037524>, 2009.
- Turner, J., Hosking, J. S., Bracegirdle, T. J., Marshall, G. J., and Phillips, T.: Recent changes in Antarctic Sea Ice, *Philos. Trans. R. Soc. A Math. Phys. Eng. Sci.*, 373, 20140 163, doi:10.1098/rsta.2014.0163, <http://rsta.royalsocietypublishing.org/lookup/doi/10.1098/rsta.2014.0163>, 2015.
- Whitworth, I. and Orsi, A. H.: Antarctic Bottom Water production and export by tides in the Ross Sea, *Geophys. Res. Lett.*, 33, 1–4, doi:10.1029/2006GL026357, 2006.



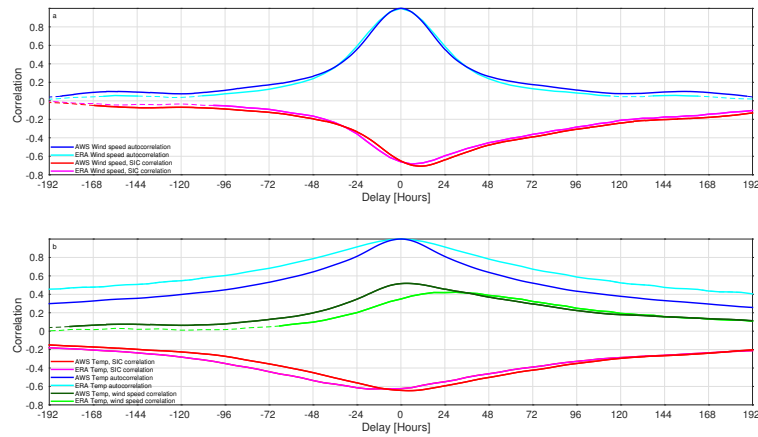
**Figure 1.** Map of Ross Sea Region, grey contour lines are spaced indicate topography at 500 meters intervals (Liu et al., 2001). The colour scale indicates the standard deviation of Bootstrap SIC for 20th April - 1st November, 1979 - 2014. Yellow diamonds indicate the positions of Margaret, Vito, Emilia, Ferrel and Laurie II AWS sites, labelled M, V, E, F and L respectively. Wind roses for Margaret, Vito and Laurie II are included, the green, blue and red colours indicate the low medium and high wind speeds based on the 33rd and 66th percentile wind speeds ( $3.5$  and  $7.5 \text{ m s}^{-1}$ ) as measured at Laurie II. The red line outline indicates the region discussed in Section 2.



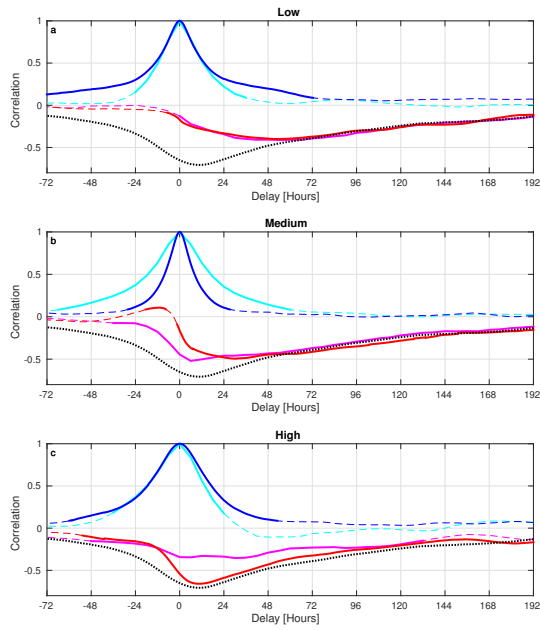
**Figure 2.** (a) Mean sea-ice-area-SIC within region-RSP north of Laurie AWS station from region identified in figure 1. (b) Sea-ice-area-SIC during 2013, highlighting day to day variability. Red dotted lines identify the period April to October used in this study, ~~the grey dashed line indicates the maximum sea-ice area possible within the region defined in Figure 1.~~



**Figure 3.** Scatter plot of 24 hr mean wind speed for winter 2000-2014, measured by Laurie II AWS against that of ERA-Interim. The red line indicates the linear least squares fit.

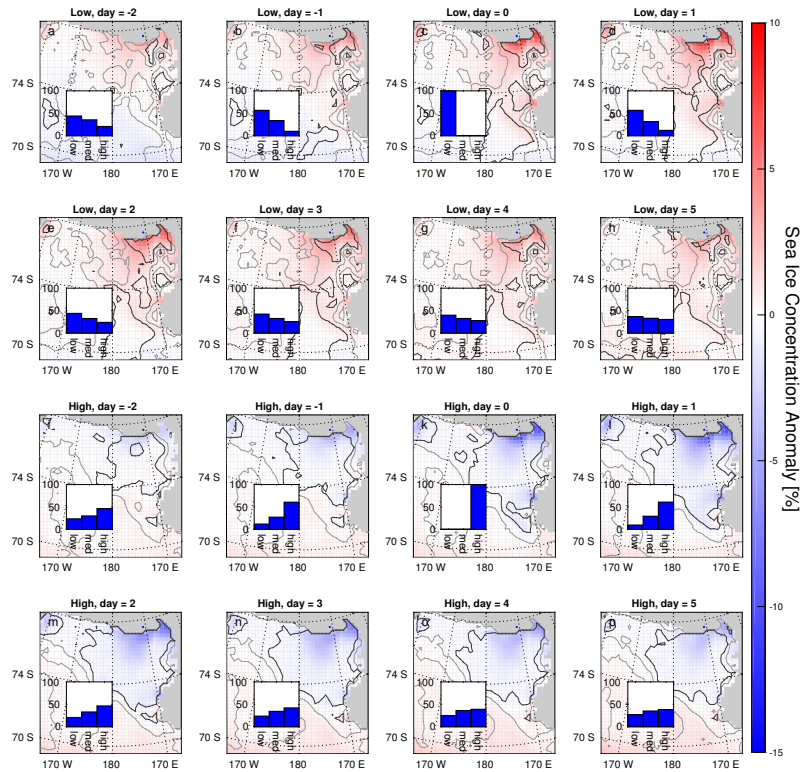


**Figure 4.** (a) Cross correlation curve for sea ice concentration and AWS (red) and ERA-Interim (magenta), wind speeds and autocorrelation curve for wind speed at Laurie II AWS (blue) and ERA-Interim (cyan). (b) Cross correlation curve for sea ice concentration and temperature for AWS (red) and ERA-Interim (magenta), autocorrelation curve for wind speed at Laurie II AWS site (blue) and ERA-Interim (cyan) [are also shown](#). Cross correlation for wind speed and temperature measured at Laurie II AWS (dark green) and ERA-Interim (light green). Dashed lines indicate significance  $p > 0.01$ . The delay is defined such that positive indicates meteorology measures leading SIC.

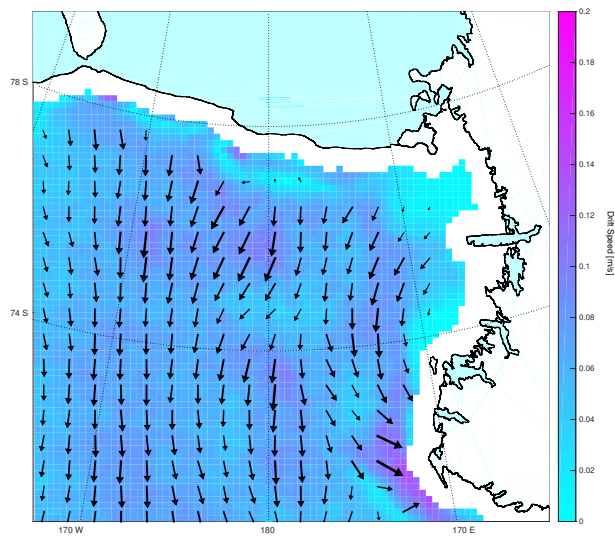


**Figure 5.** Cross correlation curves for SIC and AWS (red) and ERA-Interim (magenta) wind speeds at Laurie II AWS site for periods of low (a), medium (b) and high (c) wind cases winds. Autocorrelation Wind autocorrelation curves for low medium and high wind cases from AWS (blue) and ERA-Interim (cyan). Dashed lines indicate significance  $p > 0.01$ . The dotted, black line represents the cross correlation curve for the total of all wind cases for comparison.

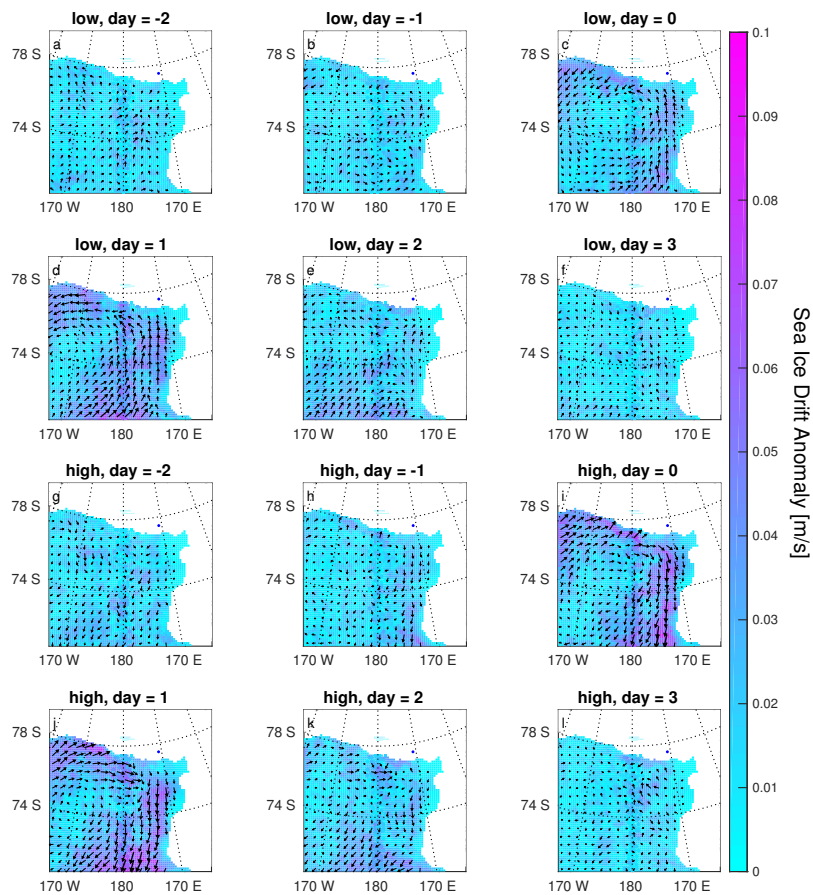




**Figure 6.** Sea-Composites of 2000-2014 sea ice concentration anomalies-anomaly at varying delay for low wind cases (a-h) and high wind cases (i-p). The grey and black contours indicate indicate 80% and 99% significance respectively. The inset histograms indicate the percentage of the three wind cases that occur at the respective delay.



**Figure 7.** Mean sea ice motion vectors in the Ross Sea region. Arrows indicate the mean sea ice drift vector over a 100 x 100 km region. The colour scale indicates the magnitude of this vector field.



**Figure 8.** (a-f) Sea ice motion anomalies for days -2 to 3 for low wind events. (g-l) Sea ice motion anomalies for days -2 to 3 for high wind events. Composites are formed over the 2000-2014 period.