

## 1 Response to Referee 1

We thank the reviewer for taking the time to provide constructive comments on our manuscript. We feel the comments provided have allowed us to significantly improve the clarity and structure of our text. Response to specific comments follow, with reviewers comments quoted in bold.

5

**Abstract. This would be more effective if shortened in length. The first paragraph seems out of place in an abstract.**

The Abstract has been edited, it now reads:

10 "The impacts of strong wind events on the Ross Sea Polynya (RSP) and its sea ice concentration and possible consequences  
for sea ice production are investigated. We utilised bootstrap sea ice concentration (SIC) measurements derived from satellite SSM/I brightness temperatures and compared these with surface winds and temperatures from automatic weather stations (AWS) and weather models (ERA-Interim). Daily data in the austral winter period were used to classify characteristic weather regimes based on the percentiles of wind speed. For each regime a composite of a SIC anomaly was formed for the entire Ross Sea region and we found that persistent weak winds near the edge of the Ross Ice Shelf are generally associated with positive  
15 SIC anomalies in the Ross Sea Polynya and vice versa. By analysing sea ice motion vectors derived from the SSM/I brightness temperatures we find during strong wind events significant sea ice motion anomalies throughout the Ross Sea which persist for several days after a strong wind event has ended. Strong, negative correlations are found between SIC and AWS wind speed within the RSP indicating that strong winds cause significant advection of sea ice in the region. We were able to partially recreate these correlations using co-located modelled ERA-Interim wind speeds. However, large AWS and model differences  
20 are observed in the vicinity of Ross Island, where ERA-Interim underestimates wind speeds by a factor of 1.7 resulting in a significant misrepresentation of RSP processes in this area based on model data. Thus, the cross correlation functions produced by compositing based on ERA-Interim wind speeds differed significantly from those produced with AWS wind speeds. In general the rapid decrease in SIC during a strong wind event is followed by a more gradual recovery in SIC. The SIC recovery continues over a time period greater than the average persistence of strong wind events as well as the persistence of sea ice motion anomalies. This suggests that the production of new sea ice occurs through thermodynamic rather than dynamic processes."

25

**Fig. 1 Please define the red polygon/region in the caption, as you have described in text (or refer the reader to the text).**

Added "The red line outline indicates the region discussed in Section 2." to the caption.

30

**4.25 I have to ask: Even though different investigators have derived ice motion from the passive microwave data set using similar methodology, their quality varies. How have you assessed your derived ice motion estimates?**

35 No validation was made, however we used a standard technique (Emery et al. 1997, Heil et al. 2006, Holland and Kwok 2012). The results show a mean value comparable to other authors (Emery et al. 1997, Heil et al. 2006, Holland and Kwok 2012) and Figures 6 and 7 show physically interpretable signatures this supports the measures used.

**Fig. 3 caption: (b) red is the AWS and magenta is ERA-Interim.**

40

This error has been corrected.

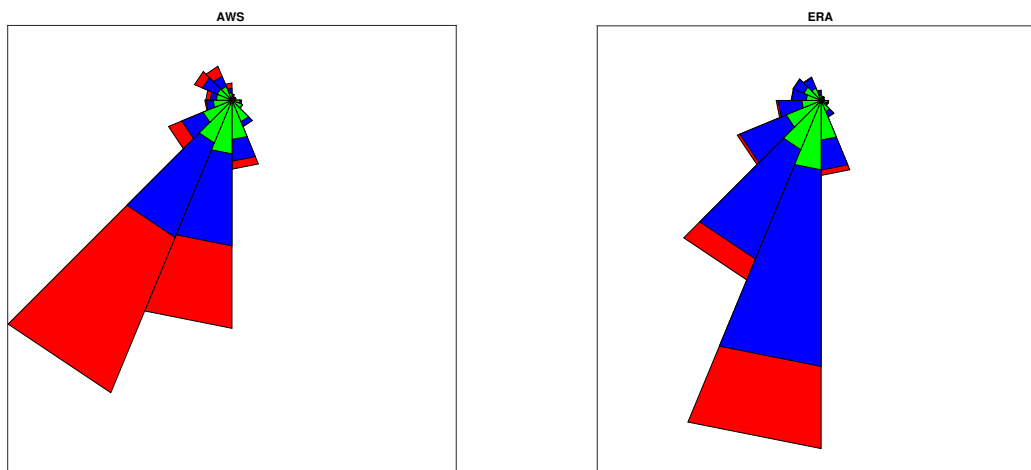
**5.25 I assume 2-meter winds are used in these analyses. Otherwise, there would be a scale factor. Also of interest is whether the ERA-I winds are directionally biased.**

45 Scale factors have not been used, We are primarily interested in correlations which will remain unaffected. For the inter-comparison this will cause a small difference in the observed gradient between the two datasets. AWS heights are consistently set to 2m or 3m (Lazzara et al., 2012) while ERA-I winds are 10m and this difference cannot explain the large variation in the gradients found. The following was added to the discussion:

"ERA-Interim provides 10 m wind speeds while the AWS Wind speeds are measured at 2-3 m (Lazzara et al., 2012, Dee et al. 2011). This would suggest that a scale factor would exist between the two data sets, an effect that was not corrected. While this will not affect the correlation comparisons preformed it may explain the scale factors observed. However this small height difference is not able to explain the large scale factors found indicating that topography must have a significant effect."

5 Inspection of the wind roses for both AWS and ERA-I winds at Laurie II show no obvious directional bias (Fig 1). Sentence has been added.

"Inspection of ERA-Interim and AWS wind roses revealed no significant directional bias between the two data sets."



**Figure 1.** Wind roses for winds at Laurie II for AWS (*left*) and ERA-I (*right*) winds. The green indicates wind speed less than  $3.5\text{ms}^{-1}$ , blue between  $3.5\text{ms}^{-1}$  and  $7.5\text{ms}^{-1}$  and red greater than  $7.5\text{ms}^{-1}$ .

10 **6.10 The Bootstrap algorithm is based on binned TBs over a day, so there is a blur- ring of events (polynya openings) over a 24-hour period. Please clarify the sentence re:varying time lag in 6.5.**

15 The blurring due to the temporal resolution of Bootstrap is a limitation of our analysis. CCF's were produced from daily bootstrap measurements and 24 hour rolling means of 10 min resolution AWS data. This allowed CCF's to be produced at 10 min resolution. The CCF's produced in this manner will be subject to blurring from both the Bootstrap algorithm and the 24 hour means of wind speed used, and are therefore oversampled. The original manuscript justifies the significant correlation at negative delay between AWS wind speeds and SIC as the AWS wind speed autocorrelation has a similar e-folding time to that of the CCF (6.30). The e-folding time for both the CCF and the autocorrelation is limited by this blurring. The sentence "The Bootstrap SIC is derived from 24 hour binned brightness temperatures and we compared these with 24 hour rolling mean of AWS data the resulting correlation functions will be blurred over a 24 hour period." was added to the results section to

acknowledge this limitation.

**6.15 Isn't this also dependent on the response of the Bootstrap retrievals to changes in observed brightness temperature?**

The decay rate here is impacted by temporal resolution of bootstrap data, but the decay rate of the autocorrelation is greater than the 24 hour blurring period so other factors must contribute.

**6.18 There is lag between the changes in wind direction observed at Laurie and at the RSP?**

We have not focussed on wind direction changes which are beyond the scope of the analysis because of the lack of data within the RSP. Also wind direction is rather persistent and therefore likely has less impact.

**6.28 Your arguments re:lag seem reasonable, but I'm still not quite comfortable as to whether the 24-hr sampling of the SIC fields would support your attribution statements. Perhaps I still don't quite clear about your remarks in 6.5.**

See previous clarification regarding 6.10.

**6.29 You mean the wind speeds autocorrelation has e-folding time of 36 hours. If you included direction, it may be different.**

This error has been corrected.

**7.10 You should also note that this also depends on the response of the bootstrap algorithm to thin ice growth. The algorithm designates thin ice as open water until the ice reaches a thickness of about 20 cm. So, that may explain some of the asymmetry in the responses.**

Kwok et. al. 2007, compares Nasa Team 2 and bootstrap SIC retrievals with AMSR-E derived sea ice thickness. Kwok et al. (2007) identified: "From the monthly analyses an ice thickness of 10cm corresponds to  $83 \pm 3\%$  and  $91 \pm 2\%$  ice concentration in the ABA [Bootstrap] and NT2 [Nasa Team 2] estimates." The effect of this is discussed in the original manuscript at 10.32.

**8.0 At this point, I recommend that the results section should be broken into subsections. As is, there are five pages of text.**

This change has been made.

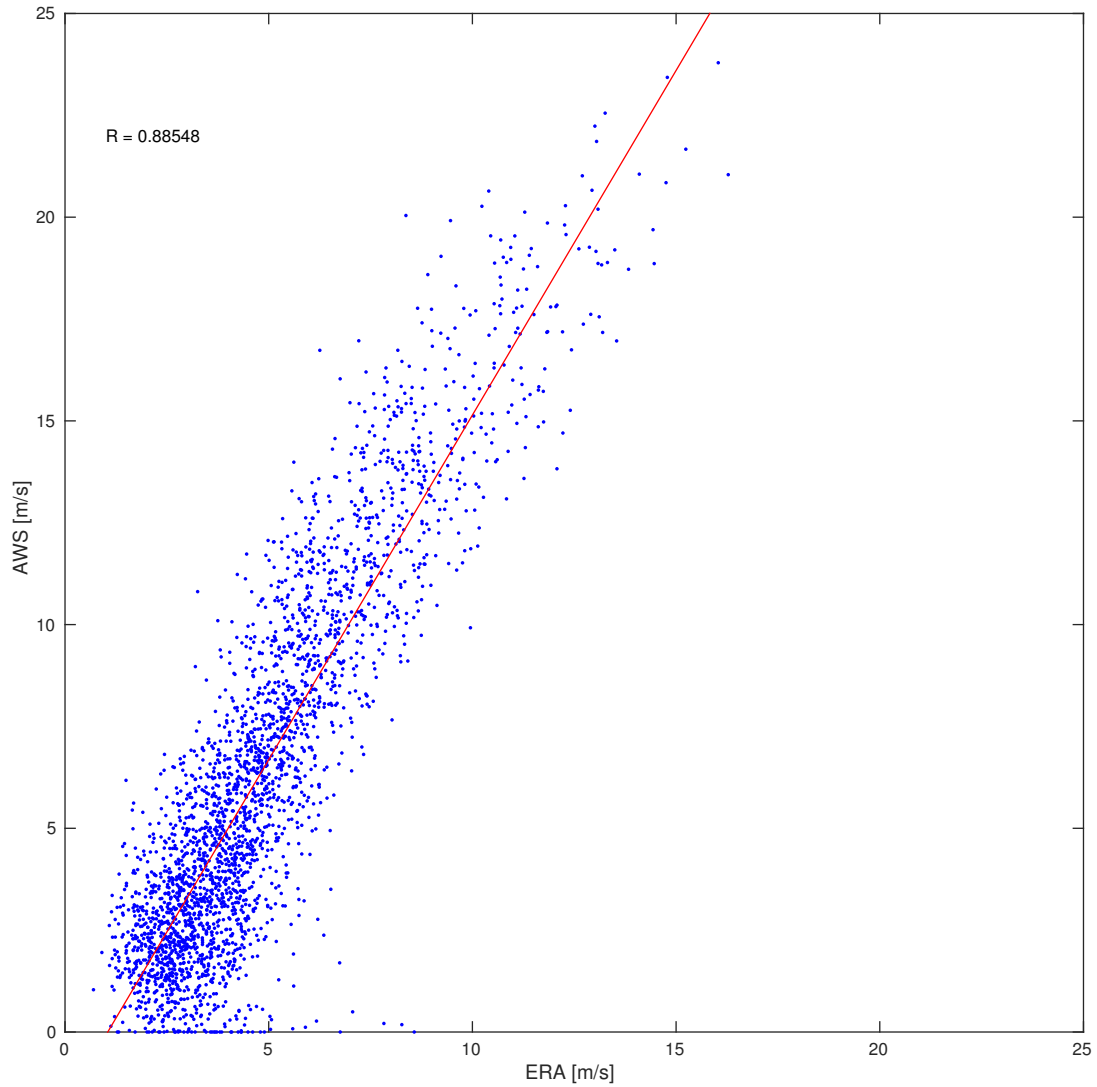
**8.15 A general question: Are there larger differences between the AWS and ERA-I winds when the winds are strong (e.g., katabatics).**

Figure 2 indicates a linear relationship between AWS and ERA-I wind speeds with slope of 1.70 as discussed at 5.24 of the original manuscript. Larger absolute differences between AWS and ERA-I are observed at high wind speeds, although the relationship is linear.

**9.6 OK, these anomalies are interesting. I guess this is presented as just a remark on the results?**

We agree with the reviewer, but have left this as is based on discussion between co-authors.

**11.10 I thought Bootstrap accounted for the changing coastline.**



**Figure 2.** Scatter plot of winds at Laurie II for AWS and ERA-I wind speeds. The red line indicates the linear fit.

The NSIDC product uses a fixed land mask. Comiso et al. (2011) discuss the difficulties producing a dynamic land mask. We do not consider trends over the time period and this will therefore not impact our results.



## 2 Response to Referee 2

We would like to thank the reviewer for providing useful comments on the text. These have allowed us to strengthen our manuscript and increase the clarity of our discussions. Response to specific comments follow, with reviewers comments quoted in bold.

**1. An explicit discussion should be provided as to how the wind and temperature observations at Laurie AWS are expected to differ from those over the Ross Sea polynya to the north. This should be based on topography, roughness length, and stability differences.**

Due to lack of weather data available within the RSP, AWS data from sites on the nearby Ross Ice Shelf was assumed to be representative of that over the RSP. A multitude of effects will cause the actual winds and temperatures over the RSP differ somewhat from that measured at the Laurie II AWS site, these effects will be inhomogeneous across the RSP. Proximity to topography, particularly Ross Island differs between the RSP and Laurie II. The majority of the RSP is more distant to Ross Island than Laurie II, but some areas of the polynya will be closer as it reaches the northern coastline of Ross Island. Southerly katabatic drainage flows will accelerate around Ross Island, so the net result of Ross Island on these winds at Laurie II will be to cause greater wind speeds. This effect will be present in some areas of the RSP but others will be too distant for this to be significant. Areas of the RSP north of Ross Island will be somewhat sheltered from many of the predominant southerly winds. The surface roughness of the Ross ice shelf, beneath Laurie II AWS will differ to that within the RSP. This will depend on the current state of the RSP. This difference will cause the winds within the boundary layer to differ between these locations. Due to the relatively warm ocean an upward heat flux will occur within the RSP when open water or thin ice is present. This will cause an increase in surface air temperatures over the RSP. This effect will not occur at Laurie II due to the insulation of the thick ice shelf. Due to the lack of measurements within the RSP the magnitude of these effects is unable to be identified.

A shortened summary of this has been added to the discussion:

"Due to lack of weather data available within the RSP, AWS data from sites on the nearby Ross Ice Shelf was assumed to be representative of that over the RSP. A multitude of effects will cause the actual winds and temperatures over the RSP differ somewhat from that measured at the Laurie II AWS site, these effects will be inhomogeneous across the RSP. Proximity to topography, particularly Ross Island differs between the RSP and Laurie II. Southerly katabatic drainage flows will accelerate around Ross Island, causing stronger winds to be observed within the RSP. Meanwhile other areas of the RSP north of Ross Island will be somewhat sheltered from many of the predominant southerly winds. Due to the relatively warm ocean an upward heat flux will occur within the RSP when open water or thin ice is present. This will cause an increase in surface air temperatures over the RSP. This effect will not occur at Laurie II due to the insulation of the thick ice shelf. Due to the lack of measurements within the RSP the net result of these effects is unable to be identified."

**2. At several locations in the manuscript (e.g., pages 2 and 5) reference is made to the unavailable Jolly et al. (2015) manuscript to claim that the Antarctic Mesoscale Prediction System is unable to resolve the main topographically forced winds of relevance to the behavior of the Ross Sea polynya, therefore implicitly justifying the use of ERA-Interim instead. Given model grid spacings for the Ross Island region as fine as 1.1 km and the generally favorable AMPS validation studies (e.g., Bromwich et al. 2005, Monthly Weather Review), this claim is quite surprising and requires expanded discussion and substantiation.**

This paper is now available at <http://journals.ametsoc.org/doi/abs/10.1175/MWR-D-15-0447.1>. We did not use ERA over AMPS because of the issues highlighted in Jolly, but rather because of the temporal consistency of the ERA dataset. AMPS is not a consistent product, since it is operational, making it difficult to use for a longer term climatological study. AMPS also began in 2002 which would cause issues with its usage in this application. A sentence justifying the use of ERA over AMPS has been added:

"Although AMPS provides higher resolution weather data, ERA-Interim was used due to its temporal consistency and data set spanning the AWS period."

**3. Given the rather similar analysis by Bromwich et al. (1998), much more consideration and contrasting its results with those here is required.**

We feel that our results add to the Bromwich et al. (1998) work significantly, for example the usage of lags to probe physical processes. However, we have added the following material comparing this work with those previous results.

"Bromwich et al. (1998) found annual correlations between SIC in the RSP and wind speed at Ferrell AWS for 1988-1991 ranging from -0.3 to -0.52. We find the multi-year correlation for SIC in the RSP and wind speed at Ferrell AWS from 2001 to 2014 to be -0.67. The disagreement between these values is to be expected as Bromwich et al. (1998) uses a RSP area that extends significantly further from the shore than the one used in our analysis. Winds over their RSP area are not as well represented by the Ferrell AWS as the area used within our analysis justifying the weaker correlation observed. We find a minimum correlation between Ferrell wind speed and SIC to be -0.72 at 10 hours delay, Bromwich et al. (1998) did not calculate correlations at varying delay so comparison with this value is not possible. Bromwich et al. (1998) also find correlations between SIC and inverse temperature ranging between 0.44 and 0.55. We found a SIC, inverse temperature correlation of 0.639 this difference is due to the different RSP areas used."

**4. In the conclusions section, a major effort should be made to compare and contrast the present findings with those from earlier work, i.e., to address the issue of "what new aspects have been revealed by the present effort"?**

This is covered by point 3.

**5. How is the standard deviation of SIC shown in Fig. 1 actually calculated? Is this based on the daily variation from the interannual mean of SIC for the same day? Why start on April 20 rather than April 1?**

The standard deviations are the daily variations from interannual mean SIC for the entire winter (in this case 20 April-1 November). The 20th of April was used as the start of the winter here as winter sea ice had not formed in the northern areas of the map until this time. Using the first of April results in high standard deviation values in northern areas of the map. These high standard deviations are due to the seasonal cycle not polynya activity so the beginning of April was removed to make the result clearer for the reader. The first of April was used elsewhere to maximise the size of the data set as all other analysis was performed near the edge of the ice shelf, where sea ice forms early in the season. The definition of the standard deviation has been made clearer and an explanation of the varying time periods used has been added. The beginning of paragraph 2 of data and methods section now reads;

"Fig. 1 shows the standard deviation of SIC. This is defined as the daily variation from the inter-annual winter mean of Bootstrap SIC over the period, 20th April until the 1st of November for years 1979 until 2014. This period was chosen to exclude the annual break out of sea ice which would add variability not associated with day to day polynya activity"

**6. Reference is made to the "winter" being April – November. It is more accurate to give the period as April-October.**

Agreed, this error has been corrected.

**7. It would be helpful to keep reminding the reader why you are using the 2001-2014 period, probably because of Laurie AWS data availability.**

Your assumption is correct a reminder has been added at Page 9 Line 5.

**8. Fig. 1: An inset map is needed showing the Ross Island topography and the locations of Laurie, Ferrell, and Emilia AWS.**

Room for an inset within this figure is scarce, and the figure already contains a lot of information. The co-author group did not feel that a standalone figure was justified.

**9. Fig. 2: Why is the maximum sea ice area exceeded in 2013?**

This appears to be a graphical error due to the thickness of the line, the centre of the line never crosses 100%. The line thickness's have been modified to minimise this effect

**10. Fig. 3: Specify how positive and negative delays are defined, i.e., which variable leads?**

Added definition of delay to caption;

"The delay is defined such that positive indicates meteorology measures leading SIC."

**11. Fig. 5: I didn't understand the construction and meaning attached to the histograms.**

Added line in text to clarify histograms;

"Histograms are also shown to indicate how the distribution of each wind class changes throughout the period examined. On day 0 all cases are either 100% high or low winds, but on following days the winds are not classified, this allows the persistence of these wind events to be observed."

**12. Page 8, lines 5-7: This sentence needs to be more carefully formulated for accuracy and understandability.**

Text was changed;

"All cases show negative correlations between SIC and wind speed. With the exception of a short period in the medium case, spanning -30 hours to 6 hours when weak positive correlations are observed."

**13. Page 9, lines 14-16: How do incoherent motions demonstrate the critical influence of surface winds on sea ice motion?**

This has been changed to:

"It is also noticeable that no coherent pattern in the sea ice anomalies associated with the medium wind state are observed (not shown). The cyclonic anomalies during strong wind events and anticyclonic anomalies during low wind events highlight the critical influence of atmospheric near-surface winds on sea ice motion in the region."

**14. Page 11, lines 32-33: This sentence is backwards – high winds are associated with cyclonic motion anomalies.**

This error has been corrected.

**Technical Issues: 1. Page 4, line 10: "Margaret" – typo. 2. Page 5, line 2: "water vapor"? Line 30: "System" - typo. 3. Page 6, lines 29-32: Rewrite this sentence for clarity. 4. Fig. 5 caption: "indicate" – typo.**

These errors have been corrected.

# Atmospheric forcing of sea ice anomalies in the Ross Sea Polynya region

Ethan R. Dale<sup>1, 2</sup>, Adrian J. McDonald<sup>1</sup>, Jack H.J. Coggins<sup>1</sup>, and Wolfgang Rack<sup>2</sup>

<sup>1</sup>Department of Physics and Astronomy, University of Canterbury, Christchurch, New Zealand.

<sup>2</sup>Gateway Antarctica, University of Canterbury, Christchurch, New Zealand.

*Correspondence to:* Ethan Dale (ethan.dale@pg.canterbury.ac.nz)

**Abstract.** ~~Despite warming trends in global temperatures, sea ice extent in the Southern Hemisphere has shown an increasing trend over recent decades. Wind-driven sea ice export from coastal polynyas is an important source of sea ice production. Areas of major polynyas in the Ross Sea, the region with largest increase in sea ice extent, have been suggested to produce a vast amount of the sea ice in the region. We investigate the-~~

The impacts of strong wind events on the Ross Sea ~~Polynyas~~ Polynya (RSP) and its sea ice concentration and possible consequences ~~on for~~ sea ice production :-

~~We utilise Bootstrap~~ are investigated. We utilised bootstrap sea ice concentration (SIC) measurements derived from satellite based, ~~Special Sensor Microwave Imager (SSM/I ) brightness temperatures . We~~ brightness temperatures and compared these with surface winds and temperatures from automatic weather stations (AWS) ~~of the University of Wisconsin-Madison Antarctic Meteorology Program. Our analysis focusses on and~~ weather models (ERA-Interim). Daily data in the austral winter period ~~defined as 1st April to 1st November in this study. Daily data~~ were used to ~~classified into characteristic~~ classify characteristic weather regimes based on the percentiles of wind speed. For each regime , a composite of a SIC anomaly was formed for the entire Ross Sea region . ~~We and we~~ found that persistent weak winds near the edge of the Ross Ice Shelf are generally associated with positive SIC anomalies in the Ross Sea Polynya ~~(RSP). Conversely we found negative SIC anomalies in this area during persistent strong winds, and vice versa.~~ By analysing sea ice motion vectors derived from the SSM/I ~~and SSMIS brightness temperatures , we find~~ brightness temperatures we find during strong wind events significant sea ice motion anomalies throughout the Ross Sea ~~during strong wind events. These anomalies which~~ persist for several days after ~~the a~~ strong wind event :-

has ended. Strong, negative correlations are found between SIC and AWS wind speed within the RSP indicating that strong winds cause significant advection of sea ice in the region. We were able to partially recreate these correlations using co-located modelled ERA-Interim wind speeds. However ~~when only days of a certain percentile based wind speed classification were used,~~ large AWS and model differences are observed in the vicinity of Ross Island, where ERA-Interim underestimates wind speeds by a factor of 1.7 resulting in a significant misrepresentation of RSP processes in this area based on model data. Thus, the cross correlation functions produced by compositing based on ERA-Interim wind speeds differed significantly from those produced ~~using with~~ AWS wind speeds. ~~The In general the~~ rapid decrease in SIC during a strong wind event is followed by a more gradual

recovery in SIC. ~~This increase occurs on a more gradual time scale. The SIC recovery continues over a time period greater than the average persistence of a strong wind event and the resulting strong wind events as well as the persistence of sea ice motion anomalies, highlighting. This suggests that the production of new sea ice through thermodynamic processes. In the vicinity of Ross Island, ERA-Interim underestimates wind speeds by a factor of 1.7, which results in a significant misrepresentation of the impact of winds on polynya processes.~~ occurs through thermodynamic rather than dynamic processes.

## 4 Introduction

Throughout the satellite observation era the total winter sea ice cover in the Southern Ocean has followed a well established increasing trend, a process which is mainly driven by significant sea ice growth in the Ross Sea (Comiso and Nishio, 2008; Turner et al., 2009; Holland, 2014; Turner et al., 2015). However, there is still uncertainty about the mechanisms which have driven this change. The central aim of this work is to study how the variability of strong southerly winds over the western Ross Ice Shelf impacts sea ice production and transport in the region near the Ross Sea Polynya (RSP). A polynya is an area of open water or decreased sea ice concentration (SIC) surrounded by either concentrated sea ice or land ice. Due to the potential for increased ocean to atmosphere heat transfer within these regions, polynyas are areas of high sea ice production (Tamura et al., 2008). The Ross Sea Polynya is a large polynya that regularly forms near the northwestern edge of the Ross Ice Shelf as a result of persistent offshore winds.

This work builds on previous studies, such as by Bromwich et al. (1998), Kwok et al. (2007), Reddy et al. (2007), Comiso et al. (2011), Drucker et al. (2011), Holland and Kwok (2012) and Turner et al. (2015), who have shown that the Ross Sea Polynya and the related atmospheric forcing plays an important role in sea ice production. For example, Drucker et al. (2011) estimates that 20-50% of the sea ice production in the Ross Sea occurs in the RSP and that the increase in sea ice extent in the Ross Sea region is related to the changes in the wind forcing. Bromwich et al. (1998) compare AWS wind speeds and temperatures with SIC derived from Special Sensor Microwave/Imager (SSM/I) data within the RSP. Bromwich et al. (1998) find that 25% of polynya fluctuation variance within the RSP can be explained by wind and temperature variations observed at Ferrell AWS.

Previous studies have been constrained by a lack of detailed measurements. The weather patterns over the Ross Sea contain many small scale features that are governed by the topography of the area. Thus, current models such as the Antarctic Mesoscale Prediction System (AMPS - Powers et al. 2012) are unable to resolve many of these features (Coggins et al., 2013; ?) (Coggins et al., 2013; This means that understanding of the direct influence of strong winds on the formation of the RSP, a region of major sea ice production has been limited. The analysis of the seasonal patterns of Antarctic sea ice growth and decline and its inter-annual variability is complicated by the fact that they depend on a number of atmospheric and oceanic forcings which occur at a wide range of time scales. In particular, the extent of sea ice is influenced by both atmospheric and oceanic factors, including the strength of the near-surface winds, air temperature, ocean currents, ocean temperature and salinity of the ocean (Bintanja et al., 2013; Holland and Kwok, 2012; Holland, 2014; Turner et al., 2015).

Coastal polynyas, such as the RSP, are triggered by sea ice export from the coast with sea ice drift being controlled by both oceanographic and atmospheric forcings. Ice in free drift will have a velocity equal to that of the local ocean current plus some

component due to the effect of wind stress. In the Southern Hemisphere this wind component will fall to the left of the wind vector and has a magnitude up to about 2% of the local wind speed (Brümmer et al., 2008). In consolidated ice internal stresses will oppose the geostrophic wind and therefore decrease ice drift velocity (Brümmer and Hoeber, 1999).

Sea ice concentration (SIC) is defined as the percentage of the ocean covered by sea ice for a given area. In this study, sea ice extent (SIE) is defined as the integral of all pixels where SIC is greater than 15%. While Arctic sea ice extent and areal coverage has displayed a clear decreasing trend over the satellite period, observations in the Antarctic show the opposite tendency (Turner et al., 2007). Changes in the area of the Antarctic sea ice have been less dynamic with a small, but statistically significant overall increase in both ice extent and area throughout the year, although this general increase masks larger opposing regional trends (Comiso and Nishio, 2008; Maksym et al., 2012).

The primary synoptic-scale atmospheric variations affecting sea ice include the overall magnitude of the geostrophic wind (Sen Gupta and England, 2006), the localised zonal and meridional wind anomalies (Stammerjohn et al., 2008; Kwok and Comiso, 2002; Sen Gupta and England, 2006; Turner et al., 2009; Holland and Kwok, 2012), surface air temperature anomalies (Sen Gupta and England, 2006; Kwok and Comiso, 2002) and variations in energy fluxes between the atmosphere-ocean-sea ice systems. Geostrophic winds are also central to describing the variations in localised Ekman transport patterns within the ocean. Specifically, Stammerjohn et al. (2008) identify that enhanced Westerlies throughout the 1990s in the western Ross Sea caused a more persistent northward Ekman sea ice drift, which affected the seasonal ice extent of the region by causing earlier ice advance and later ice retreat.

This work therefore has a wider relevance given that atmospheric circulation changes in the Ross Sea may explain a significant portion of the climate variation in the region and particularly increases in sea ice extent and the northward drift of sea ice (Holland and Kwok, 2012; Nicolas and Bromwich, 2014). Holland and Kwok (2012) used sea ice motion data and reanalysis wind fields to show that wind-driven changes in ice advection are the dominant driver of SIC trends around much of West Antarctica. By contrast, wind-driven thermodynamic changes play a large role in coastal regions of the Atlantic sector (Kong Håkon VII Hav Sea) where autumn SIE trends oppose the near-surface wind variations.

In this study, we investigate winter in-situ measurements from weather stations directly upwind of the Ross Sea Polynya in relation to satellite measurements of sea ice cover in order to better understand the time scales over which surface wind impacts on sea ice drift and sea ice production. We do this in comparison with winds from a low resolution reanalysis model (ERA-Interim (Dee et al., 2011)) in order to find out to what extent simulated wind fields in the region can reproduce the statistical relationship and dependence between weather and sea ice anomalies.

## 5 Data and Methods

We utilise both Basic Bootstrap Algorithm and AMSR-E Bootstrap Algorithm sea ice concentration (SIC) data (henceforth Bootstrap collectively) provided by the National Snow and Ice Data Center (NSIDC) (Comiso, 2000; Maslanik and Stroeve, 2004). Bootstrap SIC is available on a daily basis sampled onto a 25 km by 25 km grid since 1987 and every other day prior to this date (starting in 1977). Daily averages of SIC swath data is provided by NSIDC, these were assumed to be centred

around midday with measurement spread 12 hours before and after the reported time. We obtain 10 m wind speed and 2 m temperature data measured at the Laurie II automatic weather station (AWS), located at 77.52° S 170.81° E provided by the University of Wisconsin-Madison Automatic Weather Station Program detailed in Lazzara et al. (2012). The Laurie II station has been providing data at 10 minute temporal resolution since February 2000. In this study we focus on output from the Laurie II station, because of its long continuous record and proximity to the RSP. The analysis presented has also been completed for a number of other stations, including Vito, Emilia and Ferrell stations, and these results remain rather similar.

~~The standard deviation derived~~ Fig. 3 shows the standard deviation of SIC. This is defined as the daily variation ~~around from~~ the inter-annual ~~winter~~ mean of Bootstrap SIC ~~from the over the period~~, 20th April until the 1st of November for years 1979 until ~~2014 is presented in Fig. 3.~~ 2014. This period was chosen to exclude the annual break out of sea ice which would add variability not associated with day to day polynya activity. Coastal pixels often display a large variability and a prominent area of variability is located between longitude 170° E and 180° extending several hundred kilometres offshore. The orientation of this area corresponds well with both the dominant wind directions observed at the Laurie II AWS site and the location of the RSP as identified in Nakata et al. (2015) amongst others. Large deviations from the mean are due to the high variability in SIC within the polynya displayed in Fig. 4.

For our analysis we define a region comprised of pixels adjacent to the Bootstrap land mask and 10° wide in longitude, centred on the Laurie II AWS site, identified in red in Fig 3. This gives a 25 km by 250 km region close to the Ross Ice Shelf and Ross Island co-located within the area where the Ross Sea Polynya can be observed. The wind roses in Fig. 3 display the distribution of wind vectors observed at various AWS sites (~~Margret~~ Margaret, Vito and Laurie II). Inspection of the wind rose closest to Ross Island (Laurie II) shows that the wind in this region is dominated by southerly flows with a third of the observations linked to high ( $> 7.5 \text{ m s}^{-1}$ ) wind speeds. These strong southerly flows are also an important feature of the wind distribution at the other AWS sites displayed in Fig. 3, but are not observed as frequently. However, as identified previously the results presented do not change appreciably if data from other AWS sites in the northwestern corner of the Ross Ice Shelf is utilized.

We derive sea ice motion vectors from the National Snow and Ice Data Centre's 12.5 km resolution polar stereographic gridded brightness temperatures, retrieved from the Special Sensor Microwave/Imager (~~SSM/I~~) and Special Sensor Microwave Imager/Sounder (SSMIS) instruments (Maslanik and Stroeve, 2004). Daily averages are available from July 1987 to December 2015. We employ the vertical and horizontal polarisations of the 85.5 GHz channel from 1987 to 2009 and the 91.7 GHz channel from 2010 onwards.

Following multiple authors (Emery et al., 1997; Heil et al., 2006; Holland and Kwok, 2012), we estimate ice motion via a maximum cross-correlation method. We track  $9 \times 9$  grids of stereographic cells ( $112.5 \times 112.5$  km) over a radius of 8 grid cells (100 km). The search radius provides an upper limit of ice velocity of approximately  $1.2 \text{ ms}^{-1}$ , defining a physically plausible range (Heil et al., 2006).

The cross-correlation method proceeds by comparing consecutive daily averages of brightness temperature data. For each day, brightness temperatures in a particular grid are correlated against those in the surrounding grids on the subsequent day. The grid with the highest correlation is then designated as the grid to which the motion has occurred. A threshold of 0.7 is

placed on the correlations to limit erroneous designations. Our method uses the maximum correlation from both the horizontal and vertical polarisations. From the consequent estimate of displacement, an estimate of ice velocity in the intervening period can be attained. We subsequently smooth the gridded velocities to a 25 km stereographic grid.

It is important to note that there are some motions which will not be apparent using this method. For instance, fast small-scale motions are below the resolution of the grid and will not be captured. Small scale rotations and divergence of the ice pack will not be observed as the cross-correlation method does not account for these types of drift. Further, motion in coastal areas is likely to be inaccurate due to the difficulties in applying the method to incomplete grids.

Brightness temperature derived motions are considered inaccurate outside of the winter season due to surface melt and high levels of atmospheric water vapour (Emery et al., 1997; Holland and Kwok, 2012). Hence, we restrict analysis of sea ice motions to the Antarctic cold months of April to ~~November~~October.

We compare winds observed at the AWS sites with the ERA-interim meteorological reanalysis model (Dee et al., 2011). The model output is available on a  $0.75^\circ \times 0.75^\circ$  grid at a 6 hour temporal resolution running from late 1979 until present. Although AMPS provides higher resolution weather data, ERA-Interim was used due to its temporal consistency and data set spanning the AWS period. ERA-interim does not assimilate wind speed measurements over land (including ice shelves) and is therefore independent from AWS measurements. For comparison of AWS and ERA-interim wind data virtual AWS stations were created by interpolating the wind speed from the ERA-Interim grid to the location of the AWS sites using a bilinear interpolation.

## 6 Results

### 6.1 SIC within the Ross Sea Polynya

Figure 4a shows the mean SIC within the coastal area identified in Figure 3 averaged over the period 1988 to 2014. Throughout the winter period, defined between the ~~first-1st~~ of April to the ~~first-1st~~ of November in this study, the total SIC within this area is relatively constant. Outside this period we observe a gradual decrease from November in SIC until a minimum is reached in mid-February followed by a more rapid increase in SIC as the sun sets in early March. For the remainder of this analysis we will only consider the period from the ~~first-of-April-to-the-first-of-November~~ April to October to remove the effects of summer melt and to avoid periods with low SIC and large gradients in SIC. Figure 4b shows the daily SIC for the same area derived from data in 2013 to show the high degree of variability in the SIC in this region, these results resemble previous analysis reported in Bromwich et al. (1998). The large day to day variability between April and ~~November~~October (Fig 4b) are likely to be associated with polynya processes. The sawtooth features observed in this specific year, for example around 1st May, are common features and illustrate that decreases in SIC generally occur more rapidly than the following increases in SIC, a point that will be supported by later analysis.



## 6.2 Intercomparion of AWS and ERA-Interim wind speeds

The wind speeds measured at four AWS, Laurie II, Ferrell, Emilia, and Vito were compared to the virtual sites interpolated from the ERA-Interim model grid. Scalar wind speeds at Laurie II, Ferrell and Emilia correlated well with  $R^2 > 0.75$  while Vito was found to have a weaker correlation of  $R^2 = 0.55$ . Inspection of ERA-Interim and AWS wind roses revealed no significant  
5 directional bias between the two data sets. However when linear least squares fits between the model and the Laurie and Ferrell AWS winds were applied, slopes of 1.70 and 1.52, respectively, were found, indicating that at these sites ~~ERA-Interim~~  
ERA-Interim generates significantly weaker wind speeds than measured by the AWS. Scale factors measured at Emilia and Vito were 1.06 and 0.96 respectively, indicating a better agreement between the AWS and ERA-Interim wind speeds at these sites. Laurie and Ferrell lie 36 and 57 km from Cape Crozier (at the eastern end of Ross Island), while Emilia and Vito lie 140 and 223  
10 km east of Ross Island. Thus, the differences observed are likely linked to the local topography that is not well represented in the ERA-Interim reanalysis. Recent work by Jolly et al. (2016) comparing AWS observations with the Antarctic Mesoscale Prediction ~~system~~-System output (a much higher resolution atmospheric model) also identifies that the effect of topography in the region can not be reproduced by the model (Powers et al., 2012) . It should also be noted that ERA-Interim does not assimilate wind speed measurements over land and so the two datasets are independent Dee et al. (2011).

## 15 6.3 Correlations between SIC and AWS measurements

Cross correlations functions (CCF) between the time series of SIC within the region in Fig 3 and both wind speeds and temperatures measured at the Laurie II AWS site were calculated. The wind stress on sea ice depends on the square of the wind speed. This does not, however result in a linear relationship between SIC and the square of the wind speed because wind stress only defines the force causing the advection. For this reason wind speed was correlated with SIC rather than the square of  
20 wind speed. For comparison with daily Bootstrap SIC data 24 hour running means of the 10 minute AWS measurements were used. Although SIC was only available on a 24 hour resolution, wind data was available at a 10 minute resolution. By varying the time lag between these two time series and calculating the Pearson correlation coefficient for each lag, CCFs were able to be calculated at a 10 minute time resolution. The Bootstrap SIC is derived from 24 hour binned brightness temperatures and we compared these with 24 hour rolling mean of AWS data the resulting correlation functions will be blurred over a 24 hour  
25 period. The CCF between the time series of SIC and both scalar wind speeds and temperatures measured at the Laurie II AWS site are shown in figure 5. In figure 5 (a) we find a strong negative correlation between SIC and wind speed with the maximum magnitude correlation occurring after a 12 hour time lag. The minimum is preceded by a rapid decrease and followed by a more gradual increase in correlation with respective e-folding times of -48 hours and 100 hours. This indicates that during high wind events the SIC in the RSP-area is generally low. The difference in the decrease and increase e-folding times suggests that the  
30 two changes are controlled by different processes. For example we expect that the decrease in SIC is dominated by more rapid dynamic processes while the increase in SIC during sea ice formation is dominated by slower thermodynamic processes. This interpretation is supported by the recent analysis detailed in Nakata et al. (2015) which used a simplified model to understand polynya changes. Laurie II is located about 50 km south of the region used for the SIC analysis. A change of predominantly

southerly winds (Parish and Bromwich, 2007) is first observed upwind at Laurie II before the signal propagates to the RSP downwind. Wind blowing at  $5 \text{ ms}^{-1}$  wind would take about 3 hours to travel the distance so the 12 hour delay observed cannot be entirely explained by this process. Another contributing factor is that the region used for calculating the SIC is not directly adjacent to the northern edge of the RIS and an area of sea ice will exist south of the studied polynya area. If a northward

5 advection of sea ice occurs the ice advected from the region will be replaced by ice in the unobserved region between the Ross Ice Shelf and the region specified in Fig. 3. This could allow advection of sea ice to occur for a short period of time without a decrease in SIC occurring, causing the minimum in sea ice to occur several hours after a significant increase in wind speed. In addition, as a strong wind event progresses the sea ice will ridge and raft upon itself, causing the surface roughness of the ice to increase making the ice more susceptible to the wind stress (Mårtensson et al., 2012). As the SIC decreases, internal stresses

10 prohibiting motion will decrease allowing advection to become more significant. These effects will cause the minimum SIC to occur slightly after the time of maximum wind speed and are likely causes for the location of the minimum correlation between SIC and wind occurring at approximately 12 hours delay, though the collection of swath data also introduces some uncertainty in this exact timing. ~~Winds~~ Wind speeds in the area autocorrelate with an e-folding time of 36 hours (Fig 5a), which explains the significant correlations in the AWS wind speed, SIC CCF at negative delay, ~~as the~~ The e-folding time for the decrease ~~of~~

15 ~~the wind, the SIC cross-correlation function is observed to minimise at 48 in this CCF is -48~~ hours and the extrema occurs at delay of 12 hours ~~delay~~ corresponding with the 36 hour e-folding time for AWS wind speeds.

The temperature versus SIC CCF also shows a significant negative correlation with the minimum occurring at 0 hours delay (Fig 5b). The e-folding times for this curve are -120 hours and 170 hours for the decreasing and increasing periods, respectively. These values are both similar to the autocorrelation e-folding time for temperatures measured at Laurie II of 150

20 hrs. As a strong wind event progresses and SIC decreases, the heat flux from the ocean to the atmosphere will increase causing production of new sea ice through freezing. The rate of freezing of open water will depend on the temperature differential between the ocean and the atmosphere. Thus, potentially explaining the significant correlations observed. However, significant positive correlations can also be found between the temperature and wind speeds measured at Laurie II station (Fig 5b), which we interpret as at least partially the cause of the correlation between temperature and SIC. In addition, work detailed in Coggins

25 et al. (2014) also suggests that strong wind events, particularly Ross Ice Shelf Air Stream (RAS) events (Parish et al., 2006), are related to warm surface temperature anomalies. However, given that the correlation between temperature and wind speed at Laurie II is 0.5 at zero hours and the correlation between temperature and SIC is -0.65 there must be some other causal link between temperature and SIC. We suggest that this is likely due to a more gradual rate of freezing of open water during periods of higher air temperatures (effectively a smaller temperature differential between ocean and air temperatures impacting

30 the sensible heat flux).

#### 6.4 Correlations between SIC and ERA-Interim measurements

CCFs were also produced using the ~~ERA-Interim~~ ERA-Interim virtual AWS stations in the same manner although at a 6 hour temporal resolution dictated by the temporal resolution of the ERA-Interim output. We found that both the wind speed, SIC and wind speed autocorrelation were very similar to that found using the AWS wind speeds (Fig 4a). This is not surprising as

the ERA-Interim wind speeds correlate well with that of AWS at Laurie. The temperature versus SIC CCF, temperature versus wind speed CCF and the temperature autocorrelation from the ERA-Interim output have similar forms to the relationships derived using AWS data, but are generally smoother and the magnitude of the largest correlations are generally smaller. The temperature autocorrelation curve shows that ERA-interim predicts more persistent temperatures than the Laurie II AWS mea-  
5 sures. This likely indicates that high frequency temperature fluctuations are not accurately modelled within ERA-interim. The ERA-Interim wind speed versus temperature CCF shows weaker correlation for delays less than 24 hours with the difference becoming negligible around -72 hours. This probably indicates that the warming of the air due to mixing, suggested in Coggins et al. (2013) and other studies, caused by strong winds is underestimated in ERA-interim. These effects likely cause the small differences between the ERA-interim temperature and SIC correlations and that of Laurie II AWS.

10 Cross correlation curves for SIC and wind speed measured at Laurie II AWS site and wind speed hindcast by the ERA-Interim virtual station for low, medium and high wind classes defined using thresholds calculated from the AWS data are now examined in figure 6(a-c). We will begin by discussing the AWS results and then follow with a comparison of these results with those found using the ERA-interim virtual station. The daily mean wind speeds measured at Laurie II were categorised into low, medium and high wind events based on 33rd and 66th percentile AWS wind speeds measured at Laurie II ( $3.5 \text{ ms}^{-1}$   
15 and  $7.6 \text{ ms}^{-1}$  respectively). Wind direction was not considered in this classification because of the predominance of southerly flows at that site. CCF's for SIC with wind speed were calculated only for periods when the mean wind speed during a -12hrs to +12hrs period was within one of the three categories (Fig 6). Autocorrelation curves for the wind in each of these three cases were also calculated to allow the persistence of each of the three strengths of wind speed events to be identified. The AWS medium wind case autocorrelation curve (Fig 6b) shows considerably lower persistence than either of the extreme cases,  
20 indicating that this is a transition state that occurs frequently for short periods. The high wind case (Fig. 6c) shows a CCF very similar to that of all cases (Fig 5b) excluding the period from -36 hours to +12 hours delay. If we assume the relationship between wind speed and SIC is linear, splitting the data in this manner will result in lower correlations in each individual state when compared to the total. Effectively, a smaller range of wind speeds is sampled, while the variability of the SIC remains constant therefore increasing the uncertainty and reducing the correlation. However, the force exerted on sea ice is proportional  
25 to the wind stress, which is proportional to the square of the wind speed, which means that the winds within the high wind case will have a greater impact on sea ice motion than those of the lower cases. ~~The low and medium cases both~~ All cases show negative correlations between SIC and wind speed, except for. With the exception of a short period in the medium case, spanning -30 hours to 6 hours when weak positive correlations are observed. With the exception of a short period in the medium case, spanning -30 hours until to 6 hours where weak positive correlations are observed. The medium case has a correlation  
30 extrema of -0.5 at 30 hours while the extrema for the low case is -0.4 at 50 hours between AWS and SIC data. Both these values are significantly weaker and later than that of both the high and total cases. This could be because weaker wind speeds will not have as significant effect on sea ice causing any advection of sea ice and subsequent sea ice break up to occur much less rapidly than the high wind case. Another possible cause is that the higher wind speeds within each class are more likely to increase to stronger cases after the classified period, causing a decrease in SIC at a large delay. Due to the autocorrelation for

both medium and low cases being very low at their respective times of extrema the former explanation seems unlikely as there would be little coherence between wind speed at 0 hours and wind at the extrema.

The categorised autocorrelation curves found using the ~~ERA-interim~~ ERA-interim virtual station are not as perfectly symmetrical as those for the AWS data. This is due to errors that occur at the beginnings and ends of the broken time series obtained because of the wind speed classifications used. These errors are also present in the AWS autocorrelation curves, but are of greater significance when using the low temporal resolution ERA-interim data. The medium ERA-interim wind speed autocorrelation curve shows persistence similar to that of the low and high cases differing from that of AWS which showed a much shorter persistence in the medium case. The low case wind, wind speed versus SIC CCF derived from ERA-interim output is very similar to that found using AWS. In contrast the ERA-interim CCF's in the medium and high wind speed cases differ significantly from that of AWS. In particular, the ERA-interim medium case displays stronger negative correlations than that of the AWS between -24 and 24 hours after which the two are very similar. The high wind regime for ERA-Interim displays significantly weaker correlations between -12 and 72 hours than the corresponding pattern derived using AWS data. The latter point likely reflects the fact that the ERA-Interim data is generally poor at representing the strength of the wind in the strong wind speed periods for this region, this being supported by the large gradient derived (1.70) when applying a linear least squares regression to the ERA-Interim and AWS wind speeds.

## 6.5 SIC anomalies during extreme wind events

To gain a greater understanding of the influence of winds on SIC in the region, we now consider the spatial structure of the SIC anomalies for the high and low wind classes previously identified for different periods relative to the onset of those classes. For ~~each of the both~~ low and high wind classes, the ~~1st April to 1st November~~ April to October mean Bootstrap SIC anomaly for each pixel in the Ross Sea region was calculated over the 2001-2014 period (defined by Laurie II AWS coverage) (Fig 7). Composites for several days of delay before and after the wind event onset were then derived to highlight how the sea ice anomaly varies spatially prior to and following these wind classes. Histograms are also shown to indicate how the distribution of each wind class changes throughout the period examined. On day 0 all cases are either 100% high or low winds, but on following days the winds are not classified, this allows the persistence of these wind events to be observed. We find significant, positive anomalies within the Ross Sea Polynya during low winds and negative anomalies during high winds in general (Fig. 7). No significant anomalies were found during the medium wind cases and these are therefore not displayed. All significant anomalies found occur within known polynyas, this is likely because sea ice is generally thinner and has a lower concentration within polynyas. Significant anomalies are observed 2 days before the measured wind and remain until 5 days after, an imbalance in the proportions of the three wind classes (indicated by the inset histograms) also remains for a similar period. The SIC versus wind speed CCF displayed increase and decrease e-folding times of -48 and 100 hours (Fig. 5). Thus during a high wind event the period where SIC is decreasing seems to be significantly impacted by advection.

## 6.6 Sea ice motion anomalies during extreme wind events

To further our understanding of the role of sea ice advection, sea ice motion vectors were derived from 85 and 91 GHz band brightness temperatures. The mean sea ice motion vectors for the ~~1st April to 1st November~~ April to October period from 2001 until 2014 are shown in Figure 8. Figure 8 shows northward flow throughout the Ross Sea with an easterly component occurring to the east of Cape Adare. This highlights the net export of sea ice from the north facing coasts of the Ross Sea throughout this period (Comiso et al., 2011). Composites of sea ice motion anomalies related to high and low wind states at delays varying from -2 days to 3 days from the wind event are displayed in Fig. 9. During periods of low wind speed at Laurie II, anticyclonic anomalies occur throughout the Ross Sea (Fig. 9(a-f)). Conversely cyclonic anomalies are found during periods of high winds at Laurie II (Fig. 9(g-l)). These anomalies are largest at the time that the wind state is identified, but persist for 24 hours after the wind event with weak anomalies being found in both low and high states 48 hours after the wind event. It is also noticeable that no coherent pattern in the sea ice anomalies associated with the medium wind state are observed (not shown), ~~highlighting~~. The cyclonic anomalies during strong wind events and anticyclonic anomalies during low wind events highlight the critical influence of atmospheric near-surface winds on sea ice motion in the region.

## 7 Discussion

Bromwich et al. (1998) found annual correlations between SIC in the RSP and wind speed at Ferrell AWS for 1988-1991 ranging from -0.3 to -0.52. We find the multi-year correlation for SIC in the RSP and wind speed at Ferrell AWS from 2001 to 2014 to be -0.67. The disagreement between these values is to be expected as Bromwich et al. (1998) uses a RSP area that extends significantly further from the shore than the one used in our analysis. Winds over their RSP area are not as well represented by the Ferrell AWS as the area used within our analysis justifying the weaker correlation observed. We find a minimum correlation between Ferrell wind speed and SIC to be -0.72 at 10 hours delay, Bromwich et al. (1998) did not calculate correlations at varying delay so comparison with this value is not possible. Bromwich et al. (1998) also find correlations between SIC and inverse temperature ranging between 0.44 and 0.55. We found a SIC, inverse temperature correlation of 0.639 this difference is due to the different RSP areas used.

ERA-Interim was able to generate wind speeds that correlated well with that of several AWS sites, indicating that the relative wind speeds within ERA-Interim were consistent with the AWS measurements. However, at AWS sites near significant topography ERA-Interim was found to predict wind speeds significantly weaker than the winds measured by the AWS with scale factors of 1.70 and 1.52 (implying that the ERA-Interim values are this factor smaller than the AWS measurement) at the Laurie II and Ferrell sites, respectively. This is likely because ERA-Interim is unable to accurately model the mesoscale barrier affect of Ross Island and the resulting flow convergence. A hypothesis that is supported by recent comparisons between AWS data and mesoscale model output in the region ~~(?)~~ (Jolly et al., 2016). The wind speed versus SIC CCF produced using the virtual Laurie station was very similar to that found using the Laurie AWS data. However, when the data was separated into low, medium and high wind regimes, based on a categorisation derived from the AWS data, significant differences were found between the ERA-Interim and AWS CCFs. This suggests that the ERA-Interim output provides a good representation

of the occurrence of the different wind states, but the magnitudes from the ERA-Interim underestimate the values observed by AWS. This indicates that ERA-Interim output would not be a reliable way to identify relevant wind thresholds used in models simulating polynya dynamics. This factor makes the usage of ERA-Interim problematic for polynya studies as they generally form on coastlines near topography in Antarctica. [ERA-Interim provides 10 m wind speeds while the AWS Wind speeds are measured at 2-3 m \(Lazzara et al., 2012; Dee et al., 2011\)](#) . This would suggest that a scale factor would exist between the two data sets, an effect that was not corrected. While this will not affect the correlation comparisons performed it may explain the scale factors observed. However this small height difference is not able to explain the large scale factors found indicating that topography must have a significant effect.

Sea ice motion vector anomaly composites indicate that wind driven sea ice drift is significant 12 hours before through to 36 hours after strong wind events peak. This coincides with the peak cross correlation between SIC and wind speed, indicating that during a strong wind event, SIC within the RSP is at a minimum during the period where wind driven sea ice drift is found to be significant. Following strong wind events, significant negative SIC anomalies are also found and persist for up to 5 days after the event. This period is longer than the persistence of most strong wind events (see autocorrelation in figure 5 and 6), it therefore seems unlikely that the SIC recovery following strong wind events is controlled by wind driven processes such as sea ice drift. Thus, the recovery of sea ice is likely dominated by thermodynamic processes rather than dynamic processes, an idea also supported by recent analysis detailed in Nakata et al. (2015). During periods of high wind, negative SIC anomalies were found within the Ross Sea Polynya. Similarly positive anomalies were found during periods of low wind. The significant anomalies were also only found within areas of known polynyas, likely due to thinner, less concentrated sea ice being present within the RSP. Correlations between wind speed and SIC were significantly stronger for the high wind class than the two weaker classes (Fig. 6), indicating that the wind driven polynya mechanism is driven by the strongest wind speeds and moderate winds have a less significant effect. This is likely due to the force applied to the sea ice being proportional to the wind stress or the wind speed squared theoretically.

Only the results obtained from weather data taken at Laurie II are presented in this study because of its proximity to the RSP. However, a similar set of analyses were performed for the Vito, Emilia, and Ferrell AWS sites. These each produced similar results, with the only significant difference being that weaker correlations were found at these sites when compared to those with Laurie II. This is hypothesised to be because these sites are based further inland, and are therefore more distant from the centre of the RSP than Laurie II. This would mean that the winds at these locations would be less representative than those at Laurie II.

Only wind speed was considered in this study, so northerly winds were not distinguished from southerly winds. Even though they would have a vastly different effect on polynyas. Due to the lack of topography on the Ross Ice Shelf, the dominance of katabatic fed drainage and barrier flows related to the Trans-Antarctic Mountains and a semi-persistent low pressure system east of the Ross Sea (Coggins et al., 2014) the vast majority of wind measurements in the north western RIS fall within the south-western quadrant (demonstrated by the wind roses in figure 3). This was also identified in detail analysis around the Laurie II region presented in [Jolly et al. \(2016\)](#) . This directional bias becomes even stronger when only the largest wind speeds

are considered. This means that the effect of northerly winds on polynyas is minimal, and would not change our conclusions significantly.

Due to lack of weather data available within the RSP, AWS data from sites on the nearby Ross Ice Shelf was assumed to be representative of that over the RSP. A multitude of effects will cause the actual winds and temperatures over the RSP differ somewhat from that measured at the Laurie II AWS site, these effects will be inhomogeneous across the RSP. Proximity to topography, particularly Ross Island differs between the RSP and Laurie II. Southerly katabatic drainage flows will accelerate around Ross Island, causing stronger winds to be observed within the RSP. Meanwhile other areas of the RSP north of Ross Island will be somewhat sheltered from many of the predominant southerly winds. Due to the relatively warm ocean an upward heat flux will occur within the RSP when open water or thin ice is present. This will cause an increase in surface air temperatures over the RSP. This effect will not occur at Laurie II due to the insulation of the thick ice shelf. Due to the lack of measurements within the RSP the net result of these effects is unable to be identified.

The sea ice motion vectors used in this study were not able to be derived accurately within 50 km of the coastline. This coastal area coincides with the majority of polynya activity and therefore the dynamic effects of changing wind speeds was not able to be observed directly within the RSP. The assumption is made that offshore sea ice drift will be representative of drift within coastal polynyas. Although sea ice motion is coherent throughout the Ross Sea the motion within coastal polynyas may differ from offshore motion as thinner, less concentrated ice exists within coastal polynyas.

The Bootstrap SIC data used throughout this study uses passive microwave measurements to calculate SIC. The microwave signature for a thin sheet of ice can be identical to that of scattered thick ice. For sea ice thickness less than 10 cm the Bootstrap sea ice concentration is a function of sea ice thickness Kwok et al. (2007). During periods of low wind speed, Bootstrap SIC within the RSP often reaches 100% indicating a continuous covering sheet of sea ice with thickness greater than 10 cm. During a strong wind event, the SIC decreases via dynamic processes leaving areas of open water with scattered, likely thick ice. As freezing of the open water occurs a layer of thin ice will form, causing a gradual increase in the Bootstrap SIC. As this sea ice thickens the heat flux between the warmer ocean and the cooler atmosphere will decrease, causing the rate of freezing to also decrease. Because both Bootstrap SIC and the rate of freezing within a polynya depend on the thermal conductivity of the sea ice, the Bootstrap SIC may actually provide a more meaningful measure of sea ice production within polynyas than true SIC values.

Although Bootstrap SIC covers a vast period of time, we were unable to identify any significant trends in polynya activity. This is due to changing polynya structure as icebergs calve from the northern edge of the Ross Ice Shelf and the shelf gradually moves northward. As the coastline evolves, so does the RSP, this causes issues as the land mask for Bootstrap SIC data does not change with time. Over long periods a changing amount of the RSP is visible in the Bootstrap SIC data, causing biases in any metric for polynya activity. This effect was particularly obvious in 2005 when iceberg B15 calved from the Ross Ice Shelf, moving a 300 km long section of the northern coastline 40 km further south.



## 8 Conclusions

During the austral winter, strong negative correlations were found between AWS wind speeds and SIC in the RSP. ~~These correlations~~In contrast to previous studies, we examined these correlations as a function of lag and found they persisted for several days and exceeded the persistence of the wind speed autocorrelation. When the data was split into low, medium and high wind cases and correlations were calculated from the separate data sets the high wind states displayed stronger correlations than the other two states indicating that stronger winds had the most significant impact on sea ice within the RSP. This analysis was repeated using a virtual AWS site interpolated from ERA-Interim reanalysis wind fields. It was found that although strong correlations existed between the AWS and ERA-Interim wind speeds, a linear scale factor, significantly greater than 1 was present at AWS sites in close proximity to topography. Wind speeds measured at the Laurie II AWS correlated strongly with co-located ERA-Interim wind speeds, but a scale factor of 1.70 (indicating AWS wind speeds were 1.70 times faster than ERA-Interim wind speeds) was found. The ERA-Interim wind speeds were used to calculate a wind speed ~~against~~against SIC CCF that agreed with the CCF formed using AWS wind speeds. However, when the data set was categorised into low, medium and high wind cases and individual CCF's were calculated, significant differences from the AWS CCF's were found in the high wind state. ~~Due~~Likely due to the effects of nearby small scale topography, ERA-Interim wind speeds were unable to reproduce the relationships found between AWS wind speeds and SIC in the RSP. This difference has implications for interpreting sea ice anomalies using ERA-Interim winds in regions close to complex topography.

For low, medium and high wind states measured at Laurie II AWS composites of SIC were made. During periods of low wind speed ( $< 3.5 \text{ ms}^{-1}$ ), significant ~~positive~~positive SIC anomalies that persisted for 5 days after the wind event were found within the RSP. Conversely, significant negative SIC anomalies that persisted for 5 days after the wind event were found within the RSP during periods of high wind speed ( $> 7.5 \text{ ms}^{-1}$ ). No significant anomalies were found during medium wind speed periods. Significant SIC anomalies were only found to occur in coastal areas where polynya are known to occur. Composites of sea ice motion vectors were also calculated for these wind states. During periods of high wind ~~anticyclonic~~anticyclonic motion anomalies were found throughout the Ross Sea, while ~~cyclonic~~cyclonic anomalies were found during periods of low wind. These sea ice motion anomalies were found to persist for 48 hours after the wind event. SIC anomalies persisted several days longer than sea ice motion anomalies suggesting that following a strong wind event polynyas reform SIC through thermodynamic, rather than advective processes, resulting in increased sea ice production within polynyas following strong wind events. This implies that changes of winds in this region would have significant impacts on polynya processes, potentially strongly impacting coastal sea ice production. This study shows that reanalysis would not capture the correct magnitude of this effect.

*Acknowledgements.* We would like to thank the support of the University of Wisconsin-Madison Automatic Weather Station Program for the AWS observational dataset (NSF grant numbers ANT-0944018, ANT-1245663, ANT-0943952, and ANT-1245737). We would also like to acknowledge the NSIDC for the provision of the SSM/I dataset. This work was partially funded by a grant from the New Zealand Antarctic Research Institute, scholarships from both the Department of Physics and Astronomy at the University of Canterbury and NZ Post (administered by Antarctica New Zealand).

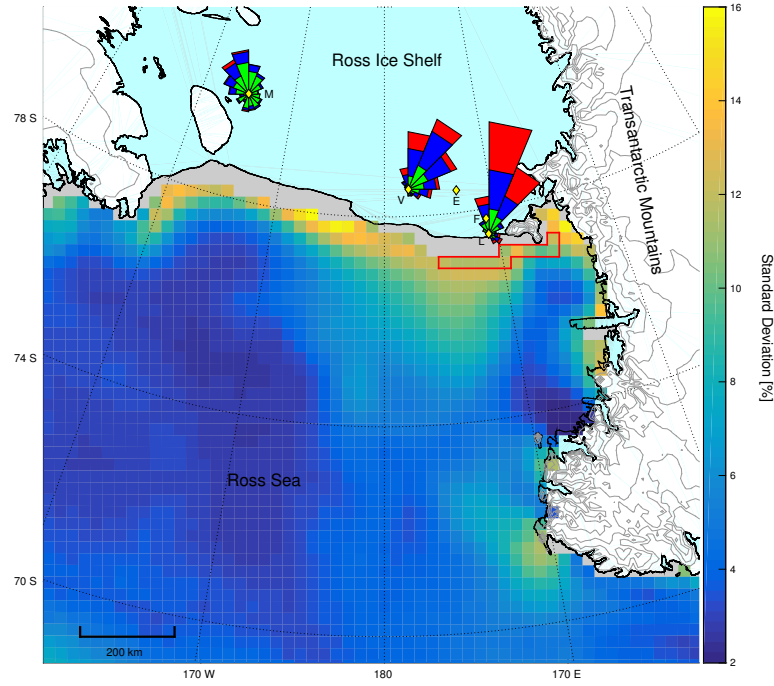


## References

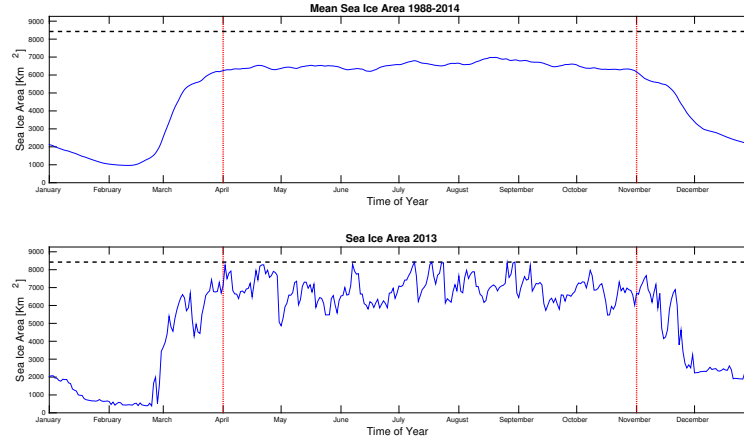
- Bintanja, R., van Oldenborgh, G. J., Drijfhout, S. S., Wouters, B., and Katsman, C. A.: Important role for ocean warming and increased ice-shelf melt in Antarctic sea-ice expansion, *Nat. Geosci.*, 6, 376–379, doi:10.1038/ngeo1767, <http://www.nature.com/doi/10.1038/ngeo1767>, 2013.
- 5 Bromwich, D., Liu, Z., Rogers, A. N., and Van Woert, M. L.: Winter atmospheric forcing of the Ross Sea Polynya, in: *Ocean. ICE, Atmos. Interact. Antarct. Cont. MARGIN*, vol. 75, pp. 101–133, American Geophysical Union, doi:10.1029/AR075p0101, <http://www.agu.org/books/ar/v075/AR075p0101/AR075p0101.shtml>, 1998.
- Brümmer, B. and Hoeber, H.: A mesoscale cyclone over the Fram Strait and its effects on sea ice, *J. Geophys. Res. Atmos.*, 104, 19 085–19 098, doi:10.1029/1999JD900259, <http://doi.wiley.com/10.1029/1999JD900259>, 1999.
- 10 Brümmer, B., Schröder, D., Müller, G., Spreen, G., Jahnke-Bornemann, A., and Launiainen, J.: Impact of a Fram Strait cyclone on ice edge, drift, divergence, and concentration: Possibilities and limits of an observational analysis, *J. Geophys. Res.*, 113, C12003, doi:10.1029/2007JC004149, <http://doi.wiley.com/10.1029/2007JC004149>, 2008.
- Coggins, J., McDonald, A. J., Plank, G., Pannell, M., Jolly, B., Parsons, S., and Delany, T.: SNOW-WEB: a new technology for Antarctic meteorological monitoring, *Antarct. Sci.*, 25, 583–599, doi:10.1017/S0954102013000011, [http://journals.cambridge.org/article/\\_/S0954102013000011](http://journals.cambridge.org/article/_/S0954102013000011)[http://www.journals.cambridge.org/abstract/\\_/S0954102013000011](http://www.journals.cambridge.org/abstract/_/S0954102013000011), 2013.
- 15 Coggins, J. H. J., McDonald, A. J., and Jolly, B.: Synoptic climatology of the Ross Ice Shelf and Ross Sea region of Antarctica: k -means clustering and validation, *Int. J. Climatol.*, 34, 2330–2348, doi:10.1002/joc.3842, <http://doi.wiley.com/10.1002/joc.3842>, 2014.
- Comiso, J. C.: Bootstrap Sea Ice Concentrations from Nimbus-7 SMMR and DMSP SSM/I-SSMIS, Version 2., Boulder, Color. USA. NASA Natl. Snow Ice Data Cent. Distrib. Act. Arch. Center., doi:<http://dx.doi.org/10.5067/J6JQLS9EJ5HU>, 2000.
- 20 Comiso, J. C. and Nishio, F.: Trends in the sea ice cover using enhanced and compatible AMSR-E, SSM/I, and SMMR data, *J. Geophys. Res.*, 113, C02S07, doi:10.1029/2007JC004257, <http://doi.wiley.com/10.1029/2007JC004257>, 2008.
- Comiso, J. C., Kwok, R., Martin, S., and Gordon, A. L.: Variability and trends in sea ice extent and ice production in the Ross Sea, *J. Geophys. Res.*, 116, C04021, doi:10.1029/2010JC006391, <http://doi.wiley.com/10.1029/2010JC006391>, 2011.
- Dee, D. P., Uppala, S. M., Simmons, A. J., Berrisford, P., Poli, P., Kobayashi, S., Andrae, U., Balmaseda, M. A., Balsamo, G., Bauer, P., Bechtold, P., Beljaars, A. C. M., van de Berg, L., Bidlot, J., Bormann, N., Delsol, C., Dragani, R., Fuentes, M., Geer, A. J., Haimberger, L., Healy, S. B., Hersbach, H., Hólm, E. V., Isaksen, L., Kållberg, P., Köhler, M., Matricardi, M., McNally, A. P., Monge-Sanz, B. M., Morcrette, J.-J., Park, B.-K., Peubey, C., de Rosnay, P., Tavolato, C., Thépaut, J.-N., and Vitart, F.: The ERA-Interim reanalysis: configuration and performance of the data assimilation system, *Q. J. R. Meteorol. Soc.*, 137, 553–597, doi:10.1002/qj.828, <http://doi.wiley.com/10.1002/qj.828>, 2011.
- 25 Drucker, R., Martin, S., and Kwok, R.: Sea ice production and export from coastal polynyas in the Weddell and Ross Seas, *Geophys. Res. Lett.*, 38, doi:10.1029/2011GL048668, <http://doi.wiley.com/10.1029/2011GL048668>, 2011.
- Emery, W. J., Fowler, C. W., and Maslanik, J. A.: Satellite-derived maps of Arctic and Antarctic sea ice motion: 1988 to 1994, *Geophys. Res. Lett.*, 24, 897–900, <http://dx.doi.org/10.1029/97GL00755>, 1997.
- Heil, P., Fowler, C., and Lake, S.: Antarctic sea-ice velocity as derived from SSM/I imagery, *Ann. Glaciol.*, 44, 361–366, doi:10.3189/172756406781811682, <http://www.ingentaconnect.com/content/igsoc/agl/2006/00000044/00000001/art00057><http://openurl.ingenta.com/content/xref?genre=article{&}issn=0260-3055{&}volume=44{&}issue=1{&}spage=361>, 2006.
- 35

- Holland, P. R.: The seasonality of Antarctic sea ice trends, *Geophys. Res. Lett.*, 41, 4230–4237, doi:10.1002/2014GL060172, <http://doi.wiley.com/10.1002/2014GL060172>, 2014.
- Holland, P. R. and Kwok, R.: Wind-driven trends in Antarctic sea-ice drift, *Nat. Geosci.*, 5, 1–8, doi:10.1038/ngeo1627, <http://www.nature.com/ngeo/journal/v5/n12/full/ngeo1627.html>, 2012.
- 5 Jolly, B., McDonald, A. J., Coggins, J. H. J., Cassano, J., Lazzara, M., Zawar-Reza, P., Graham, G., Plank, G., Petterson, O., and Dale, E.: A validation of the Antarctic Mesoscale Prediction System using Self-Organizing Maps and high density observations from SNOWWEB, *Mon. Weather Rev.*, doi:10.1175/MWR-D-15-0447.1, 2016.
- Kwok, R. and Comiso, J. C.: Spatial patterns of variability in Antarctic surface temperature: Connections to the Southern Hemisphere Annular Mode and the Southern Oscillation, *Geophys. Res. Lett.*, 29, 50–1–50–4, doi:10.1029/2002GL015415, <http://doi.wiley.com/10.1029/2002GL015415>, 2002.
- 10 Kwok, R., Comiso, J. C., Martin, S., and Drucker, R.: Ross Sea polynyas: Response of ice concentration retrievals to large areas of thin ice, *J. Geophys. Res.*, 112, C12012, doi:10.1029/2006JC003967, <http://doi.wiley.com/10.1029/2006JC003967>, 2007.
- Lazzara, M. a., Weidner, G. a., Keller, L. M., Thom, J. E., and Cassano, J. J.: Antarctic Automatic Weather Station Program: 30 Years of Polar Observation, *Bull. Am. Meteorol. Soc.*, 93, 1519–1537, doi:10.1175/BAMS-D-11-00015.1, <http://journals.ametsoc.org/doi/abs/10.1175/BAMS-D-11-00015.1>, 2012.
- 15 Maksym, T., Stammerjohn, S., Ackley, S., and Massom, R.: Antarctic Sea Ice—A Polar Opposite?, doi:10.5670/oceanog.2012.88, 2012.
- Mårtensson, S., Meier, H. E. M., Pemberton, P., and Haapala, J.: Ridged sea ice characteristics in the Arctic from a coupled multicategory sea ice model, *J. Geophys. Res. Ocean.*, 117, n/a–n/a, doi:10.1029/2010JC006936, <http://doi.wiley.com/10.1029/2010JC006936>, 2012.
- Maslanik, J. and Stroeve, J.: DMSP SSM/I-SSMIS Daily Polar Gridded Brightness Temperatures, Version 4., Boulder, Colorado USA. NASA National Snow and Ice Data Center Distributed Active Archive Center, doi:<http://dx.doi.org/10.5067/AN9AI8EO7PX0>, 2004.
- 20 Nakata, K., Ohshima, K. I., Nihashi, S., Kimura, N., and Tamura, T.: Variability and ice production budget in the Ross Ice Shelf Polynya based on a simplified polynya model and satellite observations, *J. Geophys. Res. Ocean.*, 120, 6234–6252, doi:10.1002/2015JC010894, <http://doi.wiley.com/10.1002/2015JC010894>, 2015.
- Nicolas, J. P. and Bromwich, D. H.: New Reconstruction of Antarctic Near-Surface Temperatures: Multidecadal Trends and Reliability of Global Reanalyses\*, *J. Clim.*, 27, 8070–8093, doi:10.1175/JCLI-D-13-00733.1, <http://journals.ametsoc.org/doi/abs/10.1175/JCLI-D-13-00733.1>, 2014.
- 25 Parish, T. R. and Bromwich, D. H.: Reexamination of the Near-Surface Airflow over the Antarctic Continent and Implications on Atmospheric Circulations at High Southern Latitudes\*, *Mon. Weather Rev.*, 135, 1961–1973, doi:10.1175/MWR3374.1, 2007.
- Parish, T. R., Cassano, J. J., and Seefeldt, M. W.: Characteristics of the Ross Ice Shelf air stream as depicted in Antarctic Mesoscale Prediction System simulations, *J. Geophys. Res.*, 111, D12 109, doi:10.1029/2005JD006185, <http://doi.wiley.com/10.1029/2005JD006185>, 2006.
- 30 Powers, J. G., Manning, K. W., Bromwich, D. H., Cassano, J. J., and Cayette, A. M.: A Decade of Antarctic Science Support Through Amps, *Bull. Am. Meteorol. Soc.*, 93, 1699–1712, doi:10.1175/BAMS-D-11-00186.1, <http://journals.ametsoc.org/doi/abs/10.1175/BAMS-D-11-00186.1>, 2012.
- Reddy, T. E., Arrigo, K. R., and Holland, D. M.: The role of thermal and mechanical processes in the formation of the Ross Sea summer polynya, *J. Geophys. Res.*, 112, C07 027, doi:10.1029/2006JC003874, <http://doi.wiley.com/10.1029/2006JC003874>, 2007.
- 35 Sen Gupta, A. and England, M. H.: Coupled Ocean–Atmosphere–Ice Response to Variations in the Southern Annular Mode, *J. Clim.*, 19, 4457–4486, doi:10.1175/JCLI3843.1, <http://journals.ametsoc.org/doi/abs/10.1175/JCLI3843.1>, 2006.

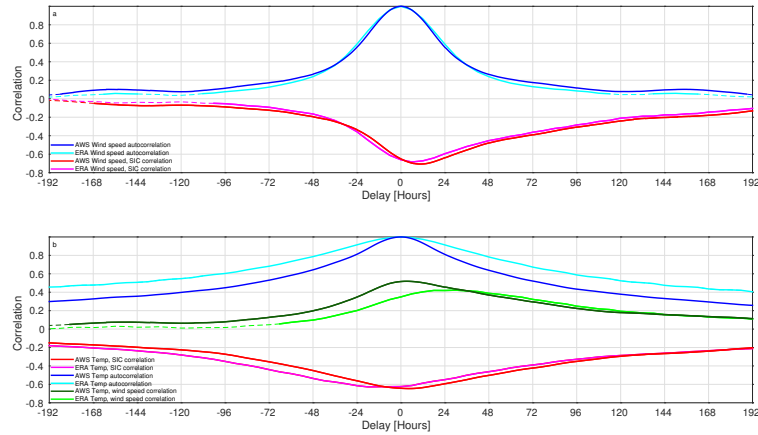
- Stammerjohn, S. E., Martinson, D. G., Smith, R. C., Yuan, X., and Rind, D.: Trends in Antarctic annual sea ice retreat and advance and their relation to El Niño–Southern Oscillation and Southern Annular Mode variability, *J. Geophys. Res.*, 113, C03S90, doi:10.1029/2007JC004269, <http://doi.wiley.com/10.1029/2007JC004269>, 2008.
- 5 Tamura, T., Ohshima, K. I., and Nihashi, S.: Mapping of sea ice production for Antarctic coastal polynyas, *Geophys. Res. Lett.*, 35, doi:10.1029/2007GL032903, <http://doi.wiley.com/10.1029/2007GL032903>, 2008.
- Turner, J., Overland, J. E., and Walsh, J. E.: An Arctic and antarctic perspective on recent climate change, *Int. J. Climatol.*, 27, 277–293, doi:10.1002/joc.1406, <http://cdiac.esd.ornl.gov/oceans/GLODAP/glodap{ }pdfs/Thermohaline.web.pdf><http://doi.wiley.com/10.1002/joc.1406>, 2007.
- 10 Turner, J., Comiso, J. C., Marshall, G. J., Lachlan Cope, T. A., Bracegirdle, T., Maksym, T., Meredith, M. P., Wang, Z., and Orr, A.: Non annular atmospheric circulation change induced by stratospheric ozone depletion and its role in the recent increase of Antarctic sea ice extent, *Geophys. Res. Lett.*, 36, doi:10.1029/2009GL037524, <http://doi.wiley.com/10.1029/2009GL037524>, 2009.
- Turner, J., Hosking, J. S., Bracegirdle, T. J., Marshall, G. J., and Phillips, T.: Recent changes in Antarctic Sea Ice, *Philos. Trans. R. Soc. A Math. Phys. Eng. Sci.*, 373, 20140 163, doi:10.1098/rsta.2014.0163, <http://rsta.royalsocietypublishing.org/lookup/doi/10.1098/rsta.2014.0163>, 2015.



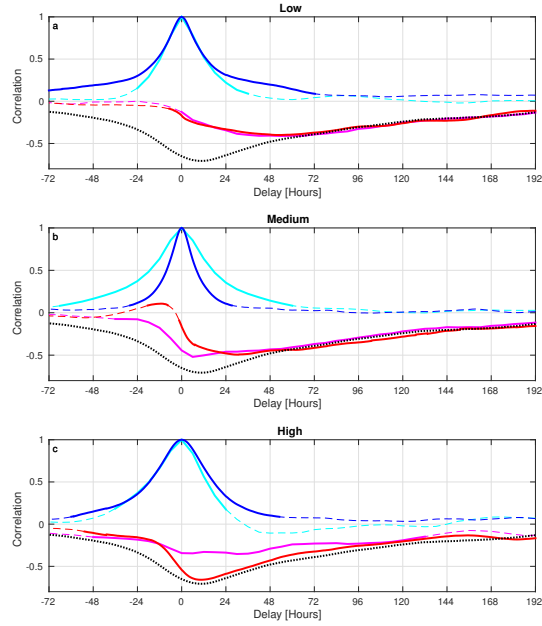
**Figure 3.** Map of Ross Sea Region, grey contour lines are spaced at 500 meters. The colour scale indicates the standard deviation of Bootstrap SIC for 20th April - 1st November, 1979 - 2014. ~~Wind roses for~~ Yellow diamonds indicate the positions of Margaret, Vito, Emilia, Ferrel and Laurie II AWS sites, ~~labeled~~ labelled M, V, E, F and L respectively. ~~Wind roses for Margaret, Vito and Laurie II are included.~~ The, the green, blue and red colours indicate the low medium and high wind speeds based on the 33rd and 66th percentile wind speeds ( $3.5$  and  $7.5 \text{ ms}^{-1}$ ) as measured at Laurie II. The red line outline indicates the region discussed in Section 2.



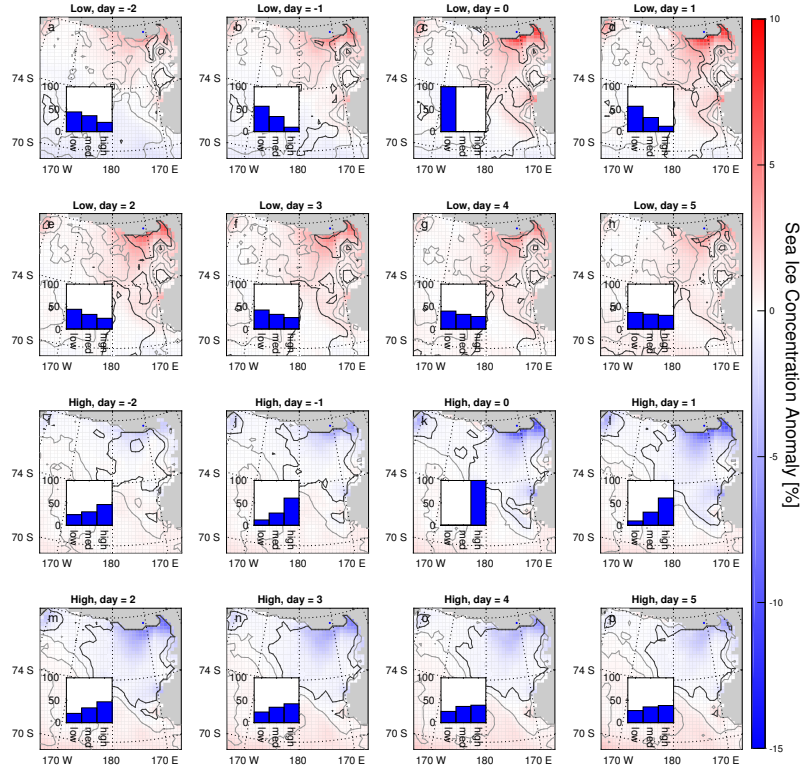
**Figure 4.** (a) Mean sea ice area within region north of Laurie AWS station. (b) Sea ice area during 2013, highlighting day to day variability. Red dotted lines identify the period between 1st April and 1st November to October used in this study, the grey dashed line indicates the maximum sea ice area possible within the region defined in Figure 3.



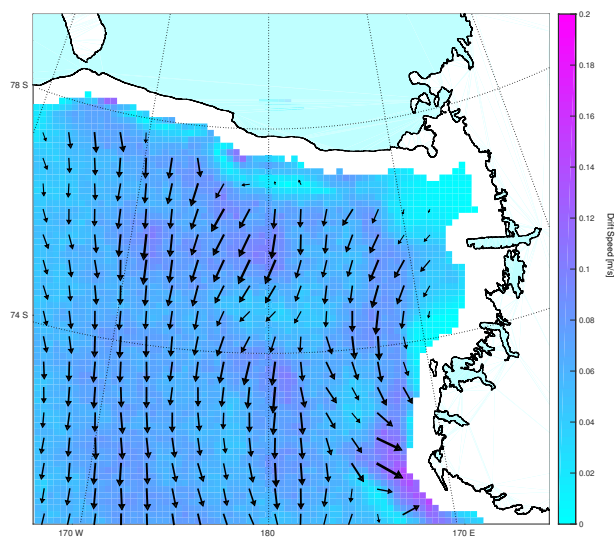
**Figure 5.** (a) Cross correlation curve for sea ice concentration and AWS (red) and ERA-Interim (magenta), wind speeds and autocorrelation curve for wind speed at Laurie II AWS (blue) and ERA-Interim (cyan). (b) Cross correlation curve for sea ice concentration and temperature for AWS (red) and ERA-Interim (magenta), autocorrelation curve for wind speed at Laurie II AWS site (blue) and ERA-Interim (cyan). Cross correlation for wind speed and temperature measured at Laurie II AWS (dark green) and ERA-Interim (light green). Dashed lines indicate significance  $p > 0.01$ . The delay is defined such that positive indicates meteorology measures leading SIC.



**Figure 6.** Cross correlation curves for SIC and AWS (red) and ERA-Interim (magenta) wind speeds at Laurie II AWS site for low (a), medium (b) and high (c) wind cases. Autocorrelation curves for low medium and high wind cases from AWS (blue) and ERA-Interim (cyan). Dashed lines indicate significance  $p > 0.01$ . The dotted, black line represents the cross correlation curve for the total of all wind cases for comparison.

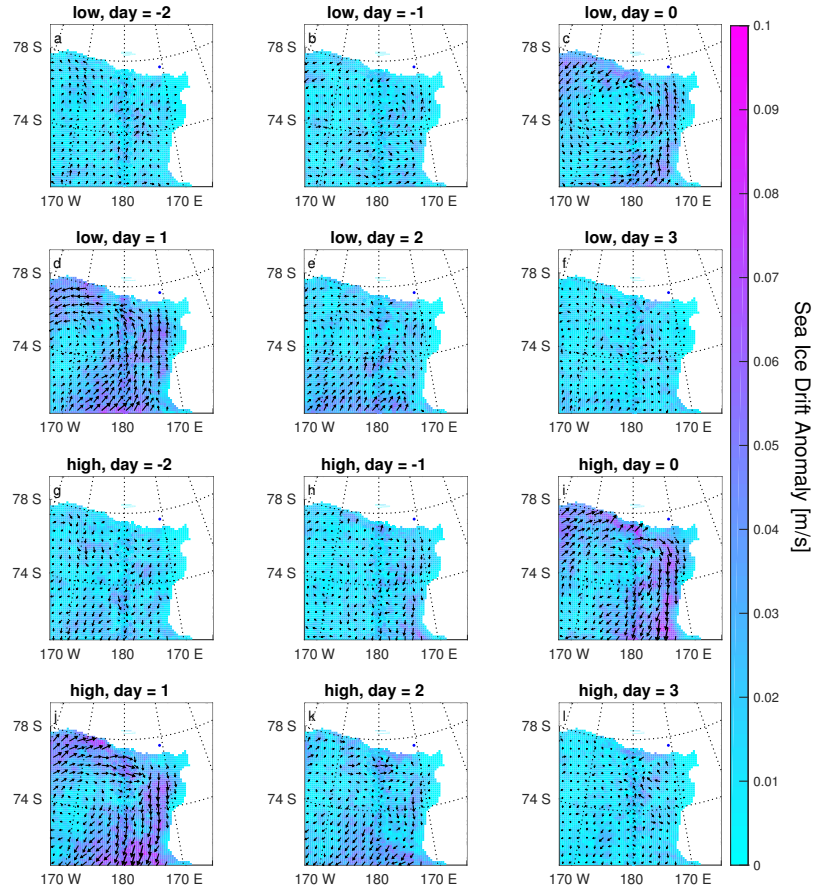


**Figure 7.** Sea ice concentration anomalies at varying delay for low wind cases (a-h) and high wind cases (i-p). The grey and black contours indicate 80% and 99% significance respectively. Inset The inset histograms indicate the percentage of the three wind cases that occur at that the respective delay.



**Figure 8.** Mean sea ice motion vectors in the Ross Sea region.





**Figure 9.** (a-f) Sea ice motion anomalies for days -2 to 3 for low wind events. (g-l) Sea ice motion anomalies for days -2 to 3 for high wind events.