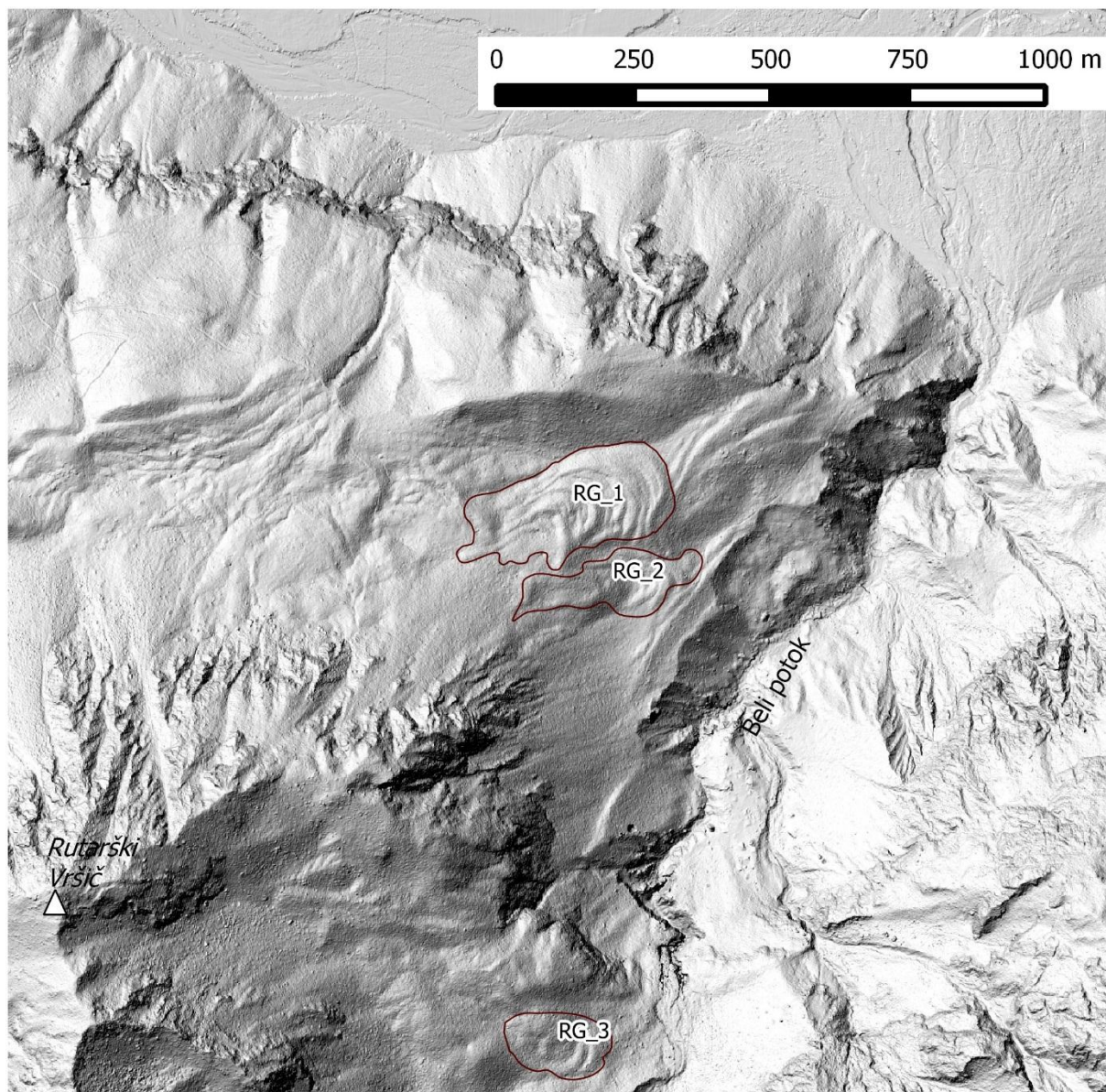


Supplement

S1 Potential rock glaciers



5 **Figure S1.** Rock glaciers no. RG_1, RG_2, RG_3.

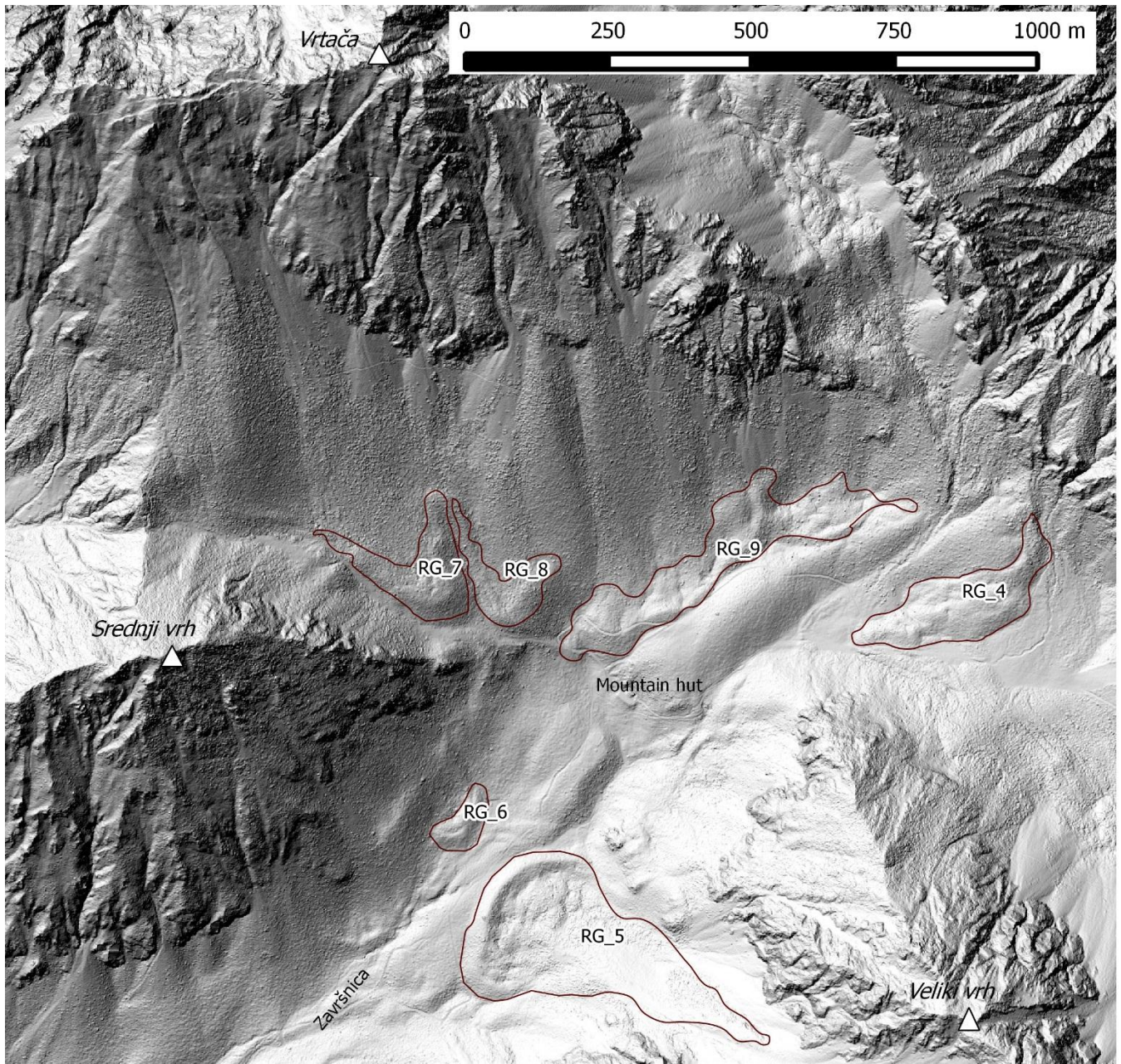


Figure S2. Rock glacier no. RG_4, RG_5, RG_6, RG_7, RG_8, RG_9.

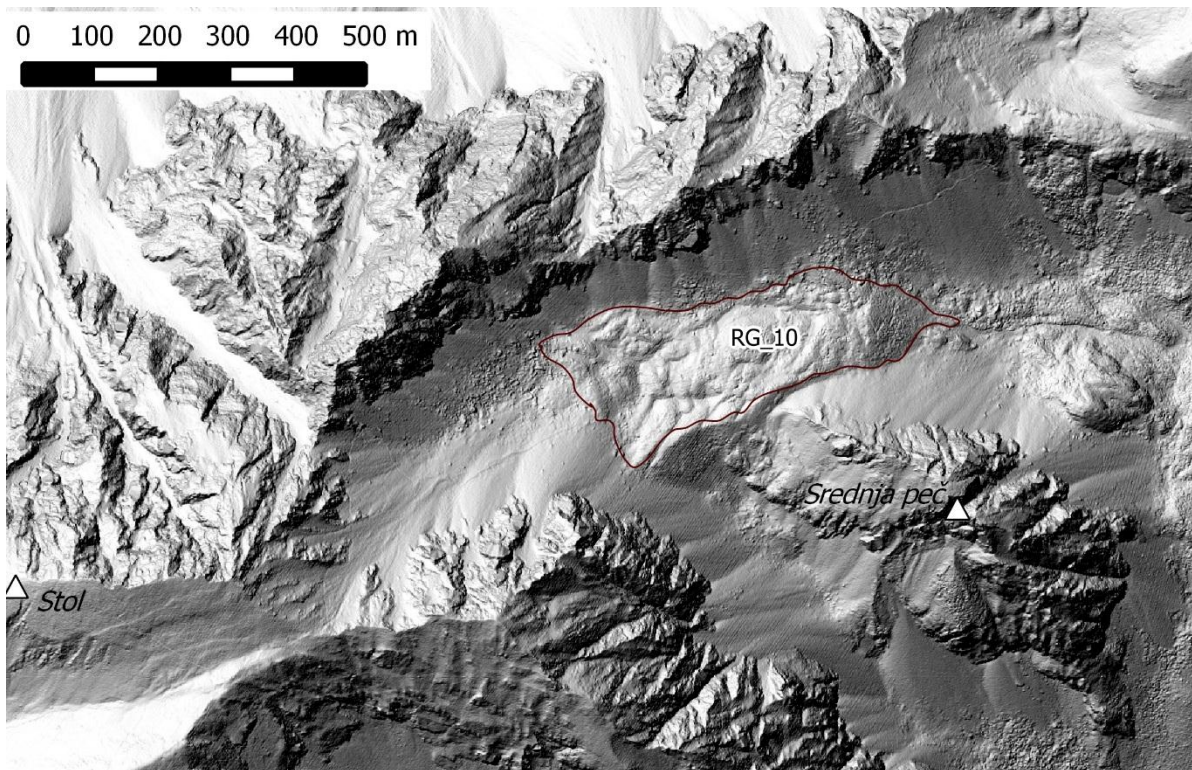


Figure S3. Rock glacier no. RG_10.

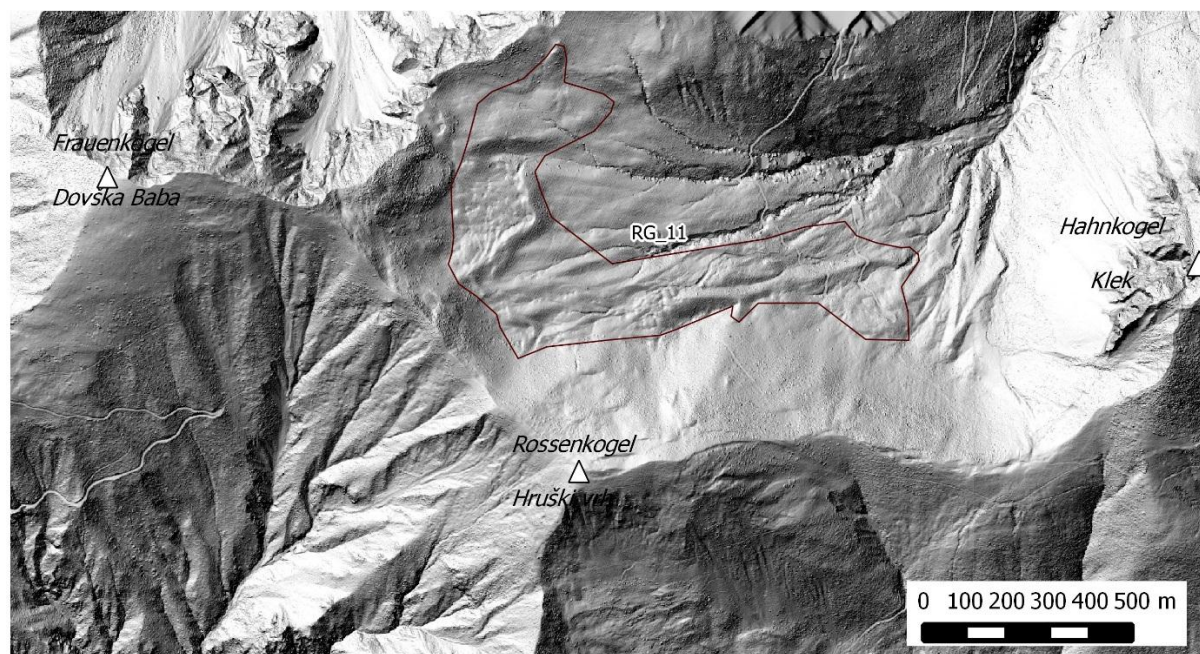


Figure S4. Rock glacier no. RG_11.

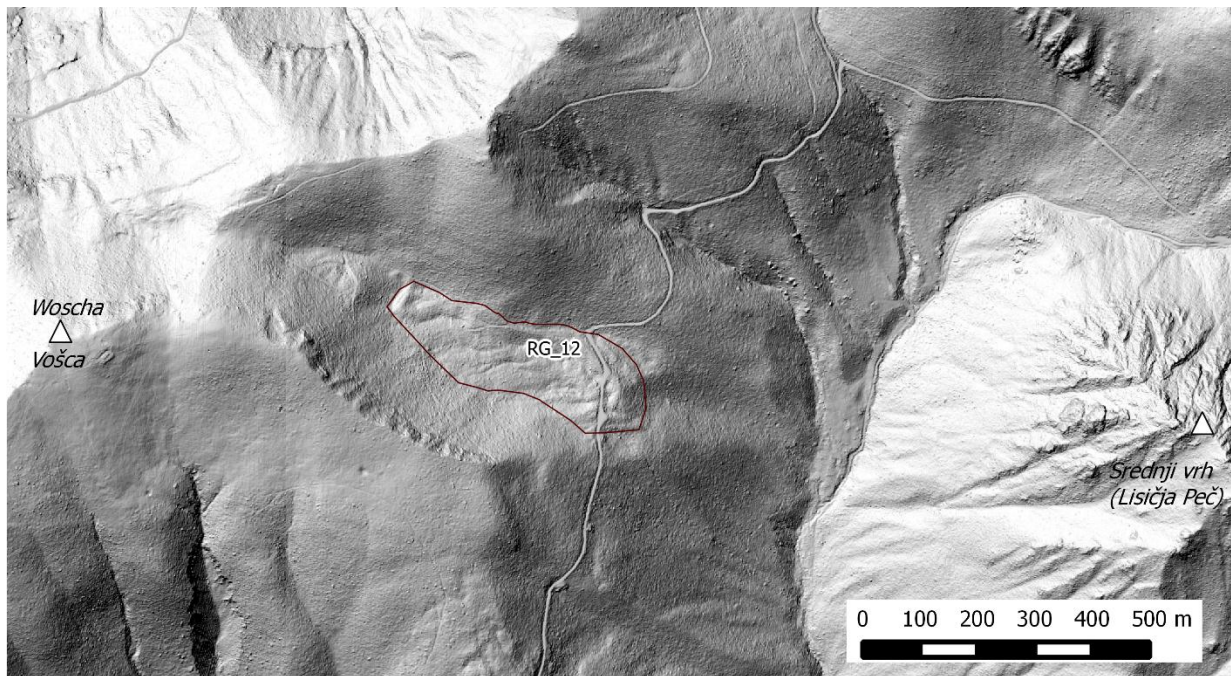


Figure S5. Rock glacier no. RG_12.

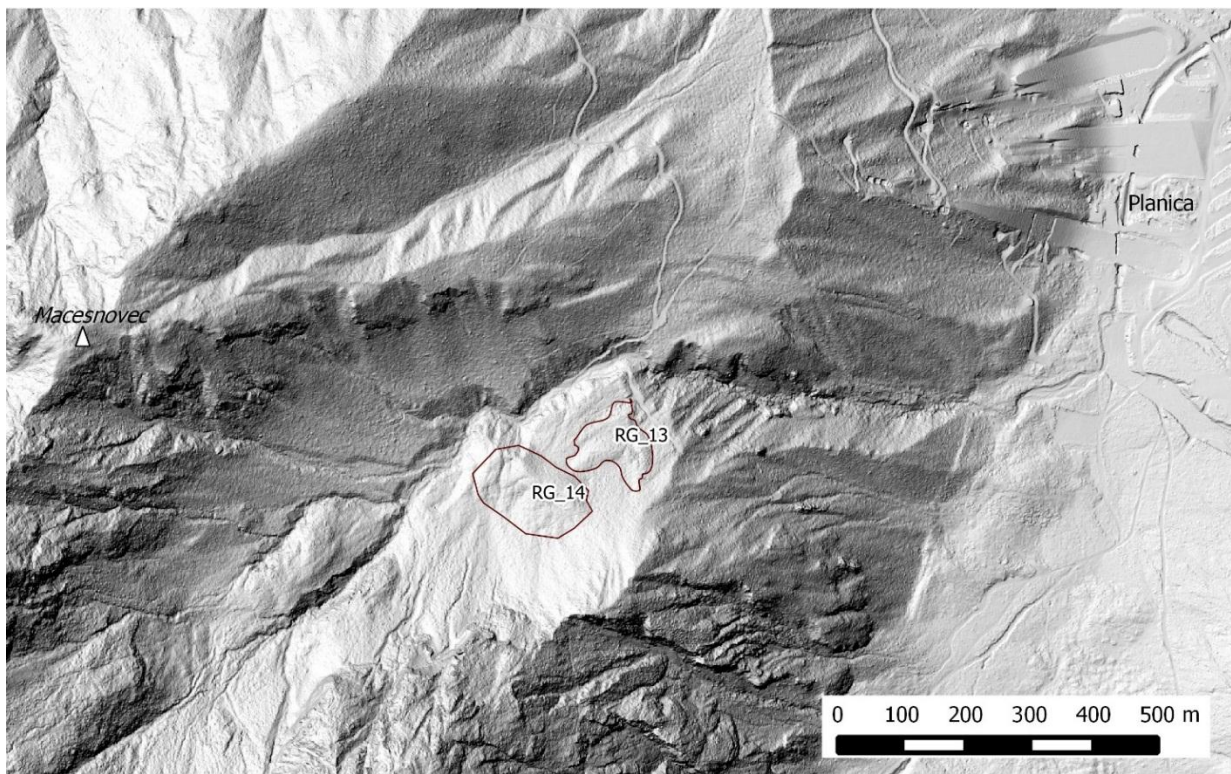


Figure S6. Rock glacier no. RG_13 and RG_14.

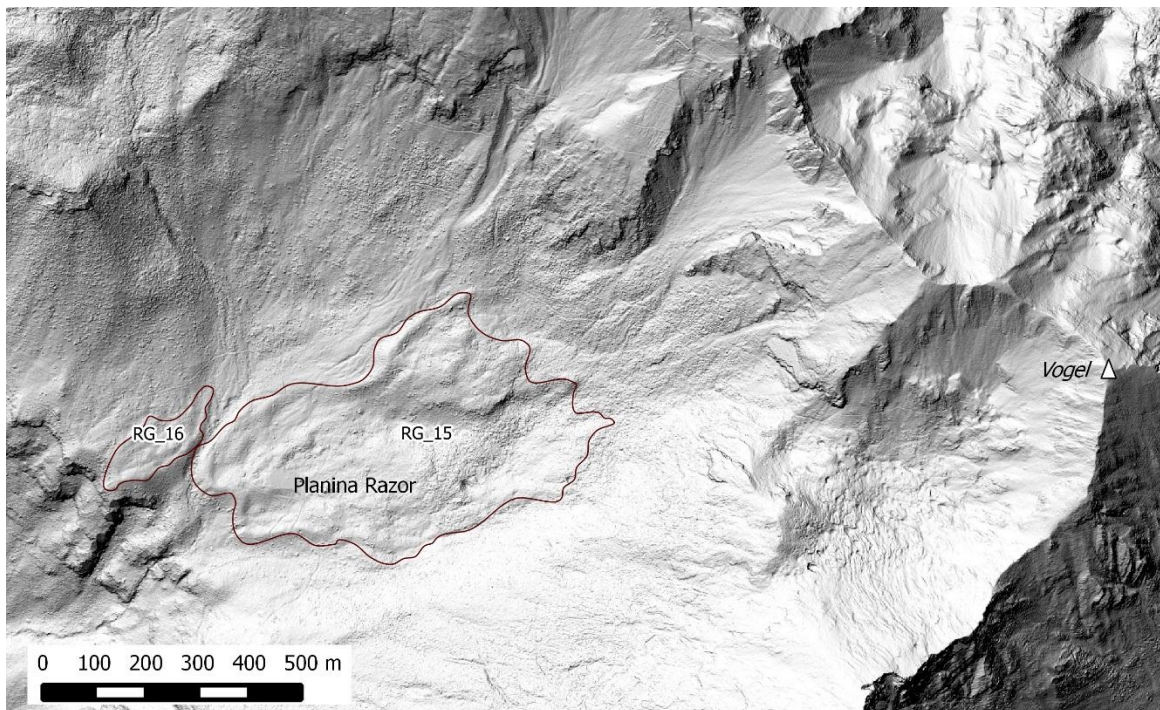


Figure S7. Rock glacier no. RG_15 and RG_16.

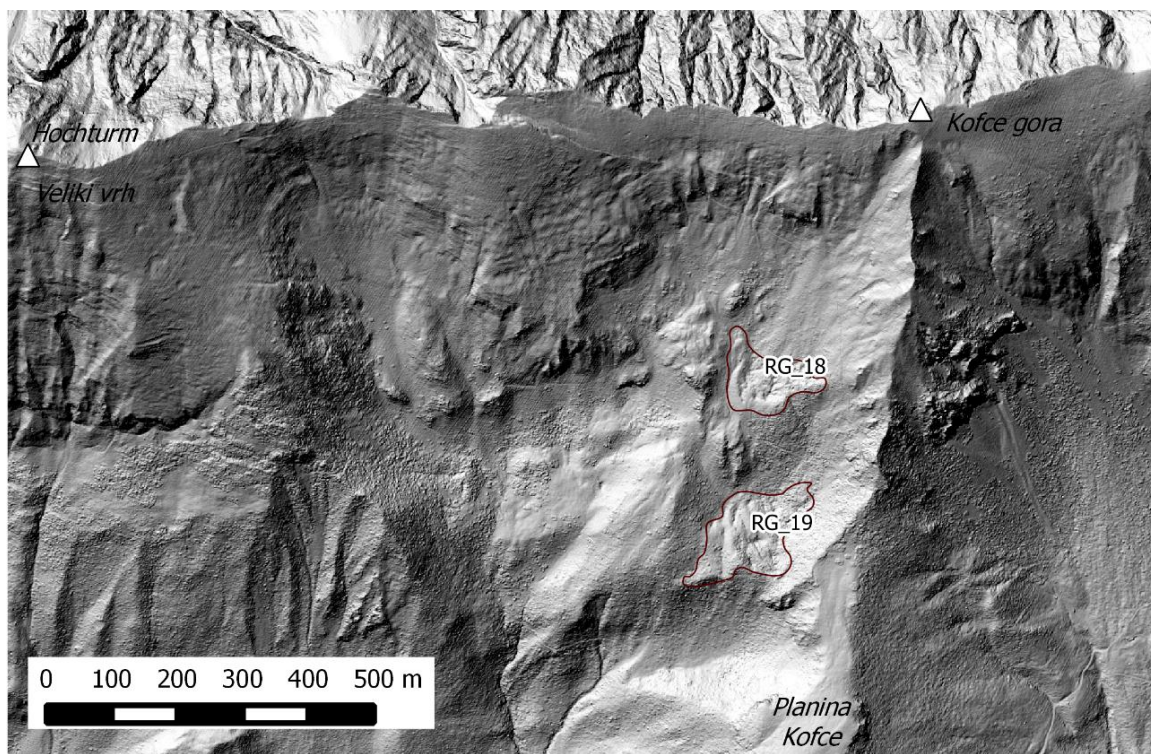


Figure S8. Rock glacier no. RG_18 and RG_19.

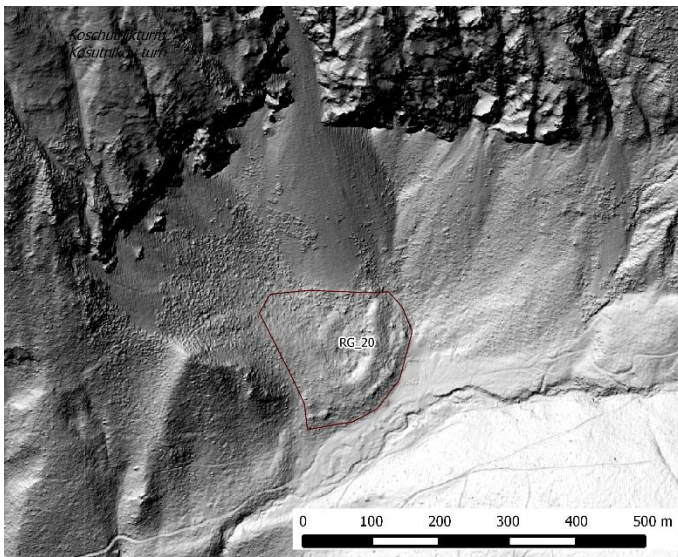


Figure S9. Rock glacier no. RG_20.

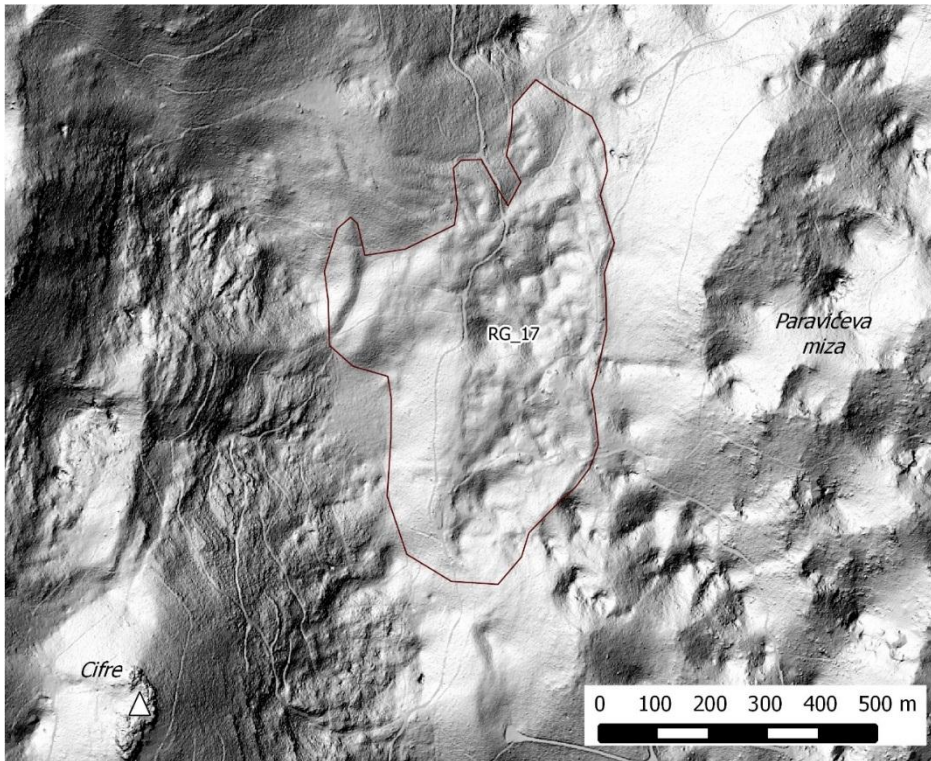


Figure S10. Rock glacier no. RG_17.

S2 Potential rotalus ramparts

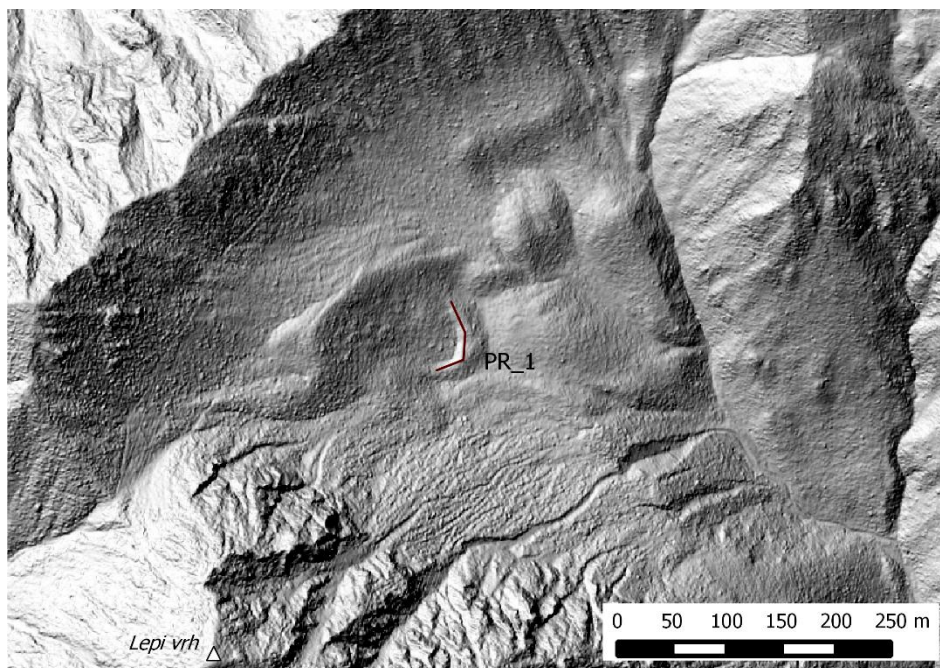
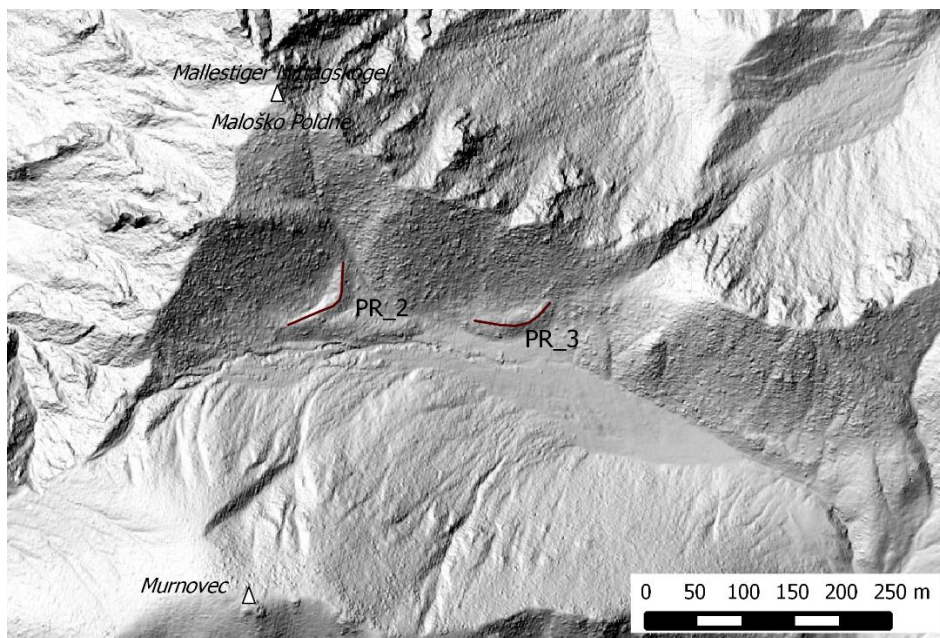


Figure S11. Protalus rampart no. PR_1.



5 **Figure S12.** Protalus rampart no. PR_2 and PR_3.

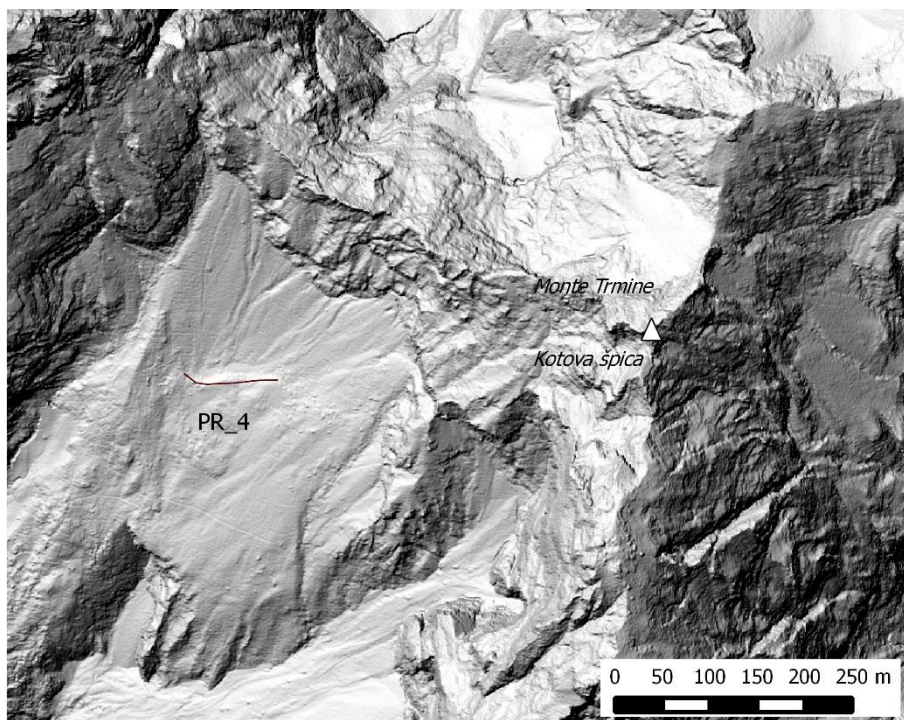


Figure S13. Protalus rampart no. PR_4.

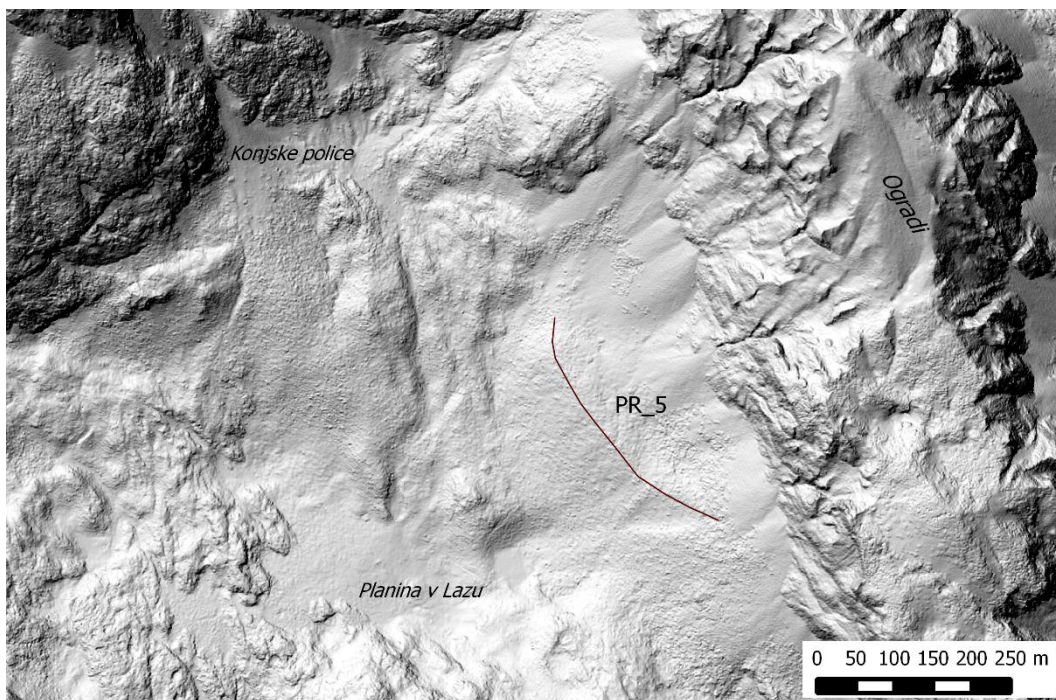


Figure S14. Protalus rampart no. PR_5.

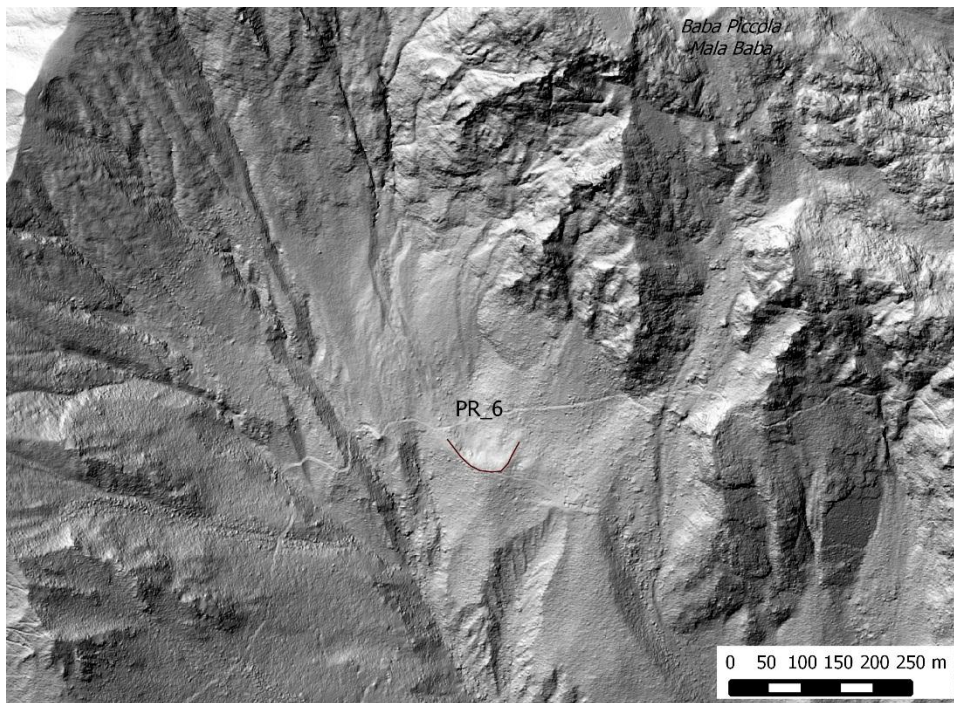


Figure S15. Protalus rampart no. PR_6.

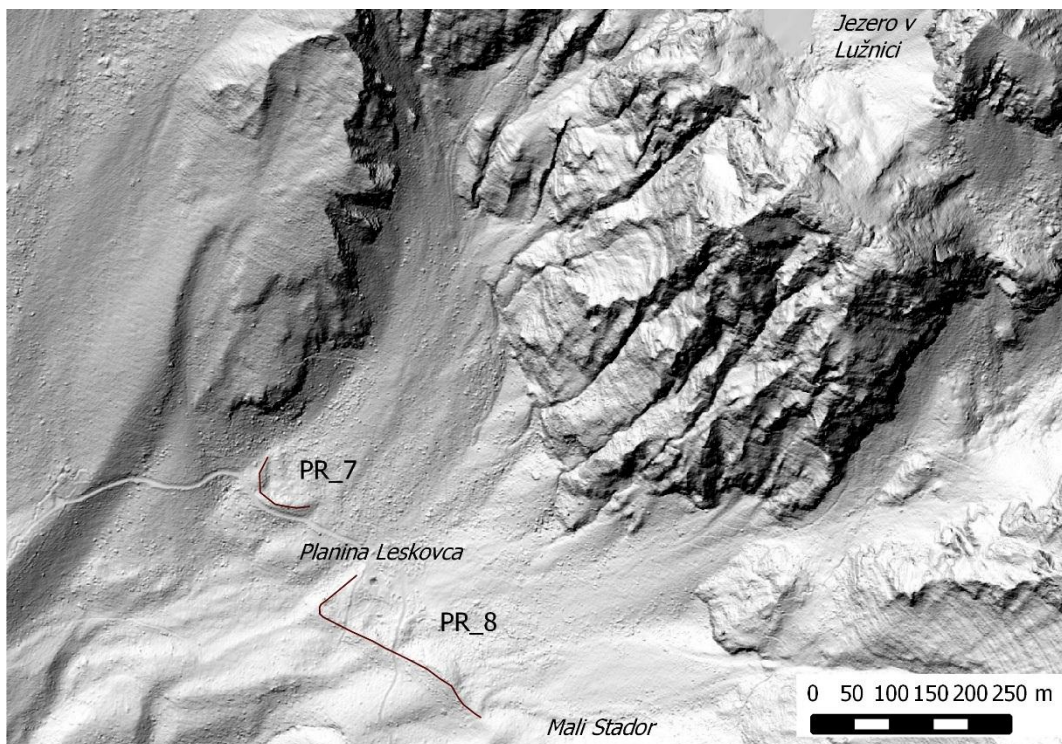


Figure S16. Protalus rampart no. PR_7 and PR_8.