

Interactive comment on “A Two-Station Seismic Method to Localize Glacier Calving” by M. J. Mei et al.

M. J. Mei

mjmei@mit.edu

Received and published: 5 July 2016

The gridsearch gives similar results to the hyperbolas. Only two of the events have grid search critical points outside of the hyperbolas in our method (though, as per my previous response, if we set a particular v_{surface} then this may go away). For both the points, if I plot the top 100 results instead of just the top 1 (given my gridsearch has ~ 7 million points) result then they are inside the hyperbolas.

Interactive comment on The Cryosphere Discuss., doi:10.5194/tc-2016-85, 2016.

Printer-friendly version

Discussion paper



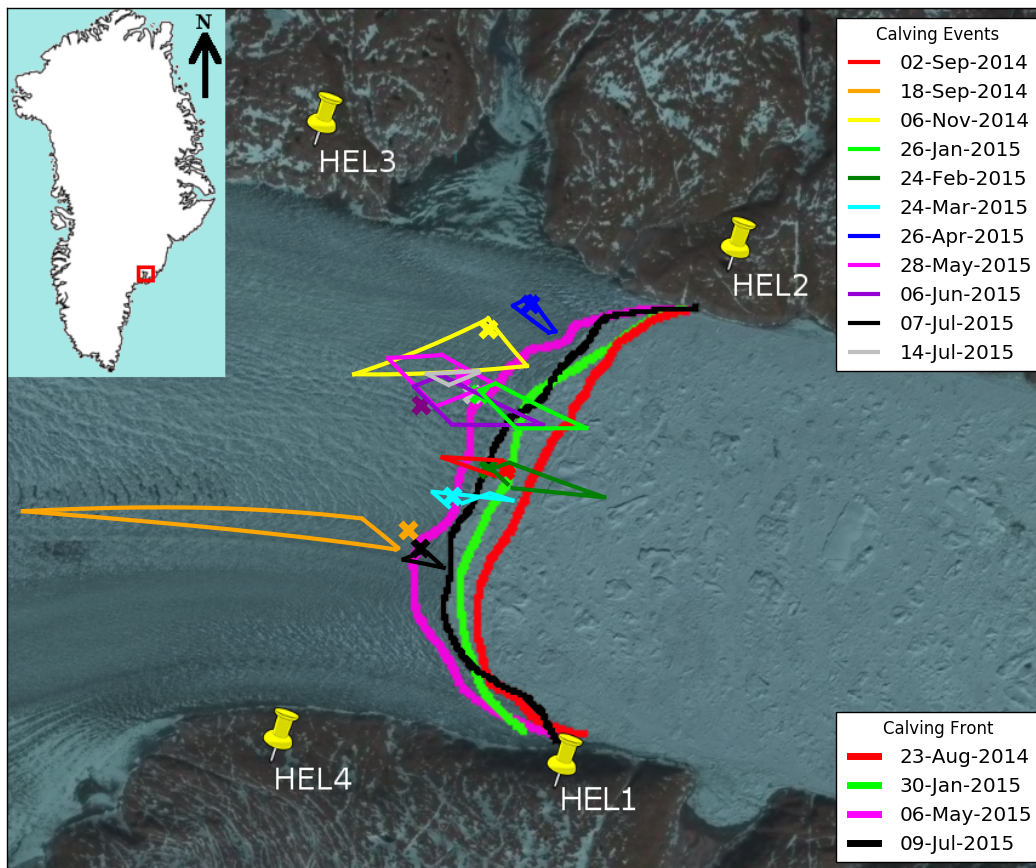


Fig. 1. Calving events with 'x' indicating the gridsearch result and the hyperbolas as before.

[Printer-friendly version](#)[Discussion paper](#)