

Interactive comment on “A Two-Station Seismic Method to Localize Glacier Calving” by M. J. Mei et al.

M. J. Mei et al.

mjmei@mit.edu

Received and published: 5 July 2016

Thank you for your helpful review! Please find our response attached.

Please also note the supplement to this comment:

<http://www.the-cryosphere-discuss.net/tc-2016-85/tc-2016-85-AC2-supplement.pdf>

Interactive comment on The Cryosphere Discuss., doi:10.5194/tc-2016-85, 2016.

Printer-friendly version

Discussion paper



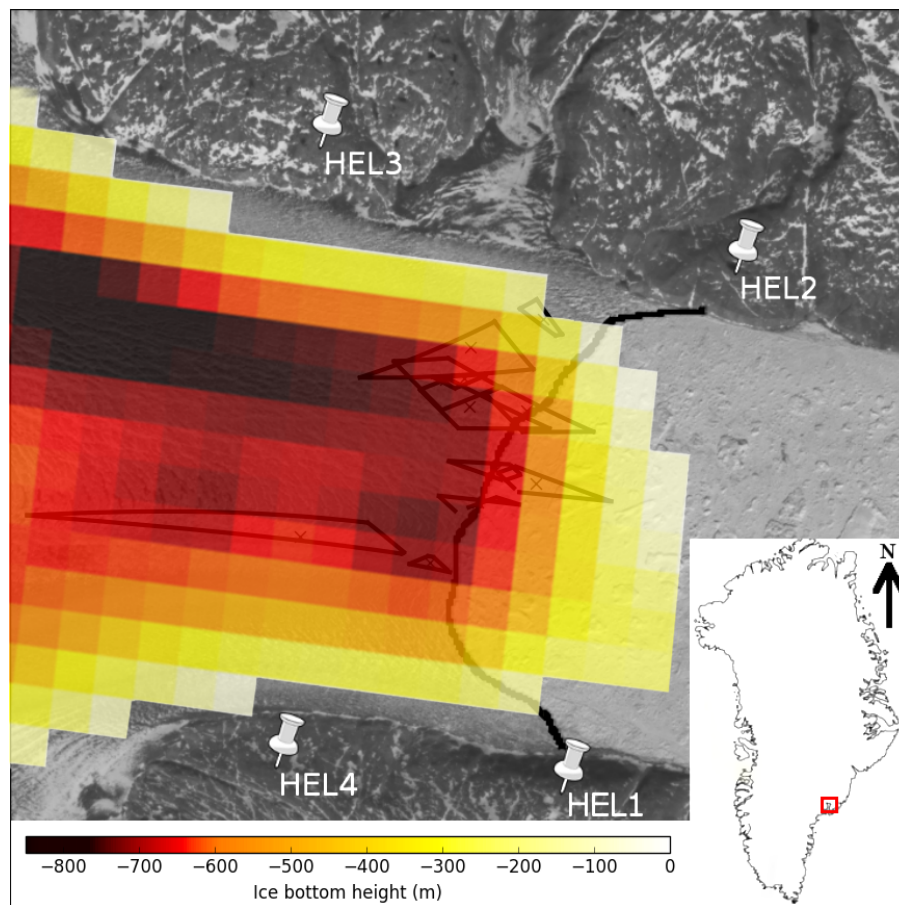


Fig. 1. Fig A1. Topography of the rock below Helheim Glacier, taken from NSIDC McORDS flights collated between 2008-2012.

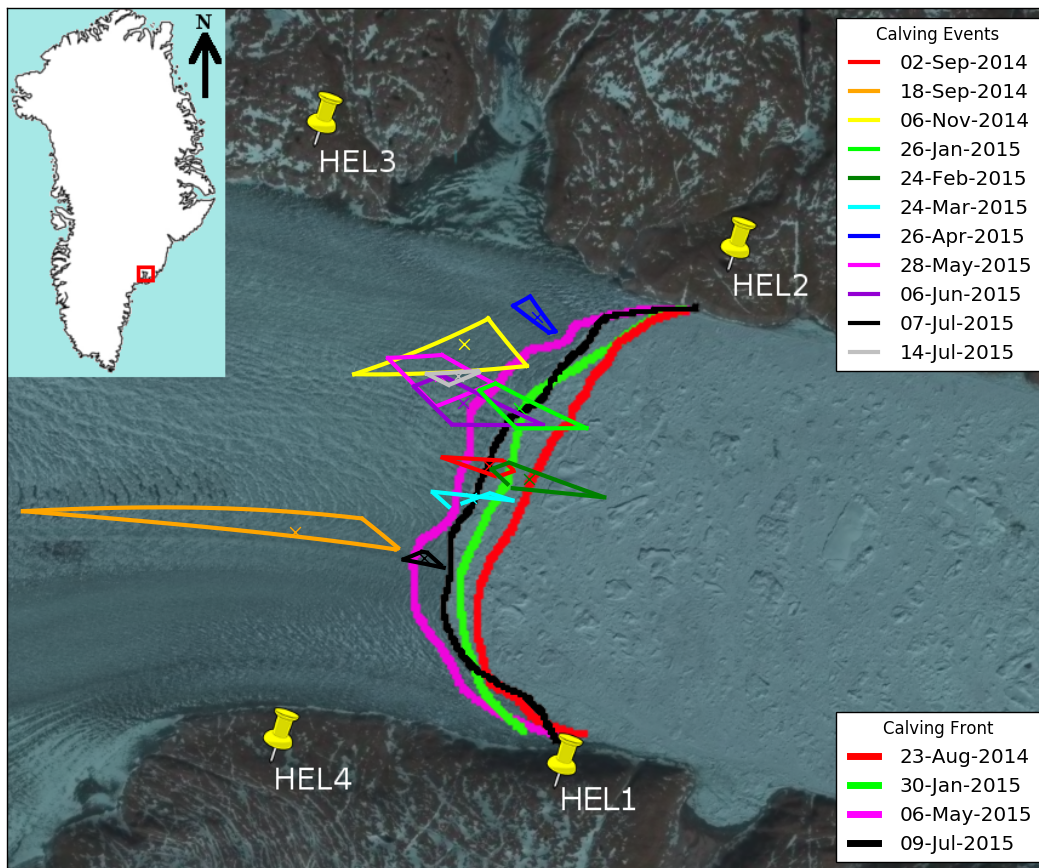


Fig. 2. Fig. A2. Updated calving catalog showing locations and the movement of the calving front.

[Printer-friendly version](#)[Discussion paper](#)

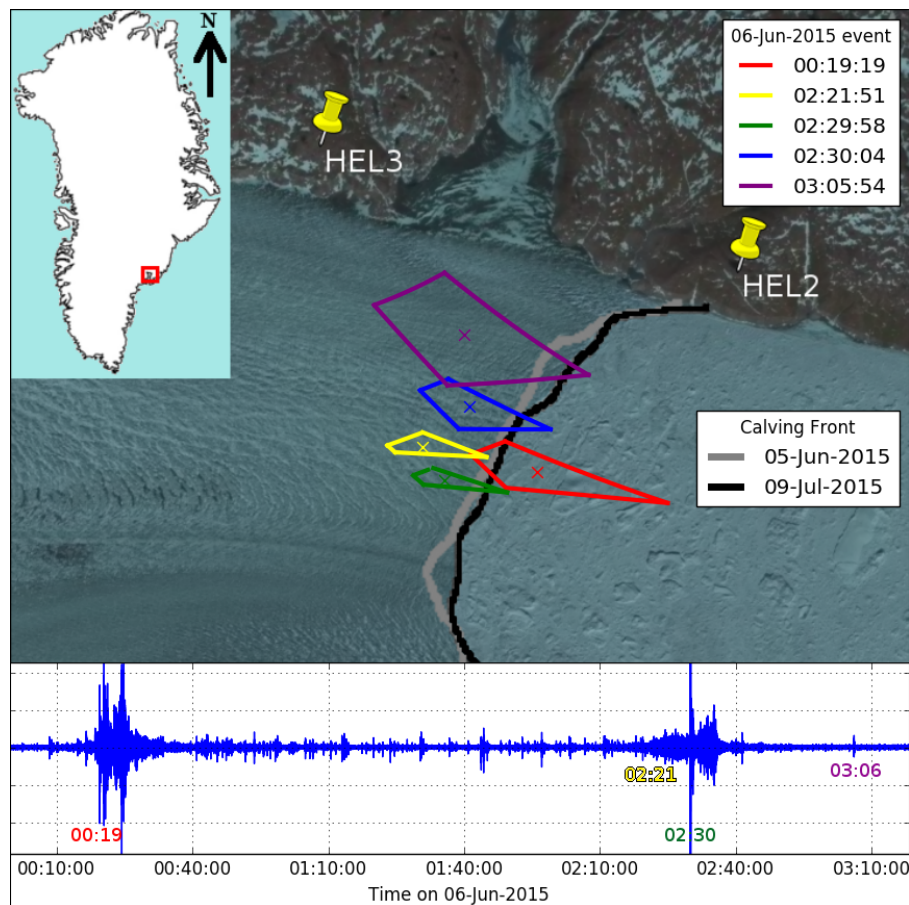


Fig. 3. Fig A3. Multiple-iceberg calving event on June 6 2015.

[Printer-friendly version](#)[Discussion paper](#)