

Interactive comment on “Sensitivity of ice production estimates in Laptev Sea polynyas to the parameterization of subgrid-scale sea-ice inhomogeneities in COSMO-CLM” by O. Gutjahr et al.

O. Gutjahr et al.

gutjahr@uni-trier.de

Received and published: 29 August 2016

Appendix to our previous post:

In wintertime, only a very small percentage of a polynya is ice-free, as it was shown by many studies and is illustrated by the following two figures from satellite data and airborne in-situ observations (from Willmes et al. 2010).

Interactive comment on The Cryosphere Discuss., doi:10.5194/tc-2016-83, 2016.

Printer-friendly version

Discussion paper



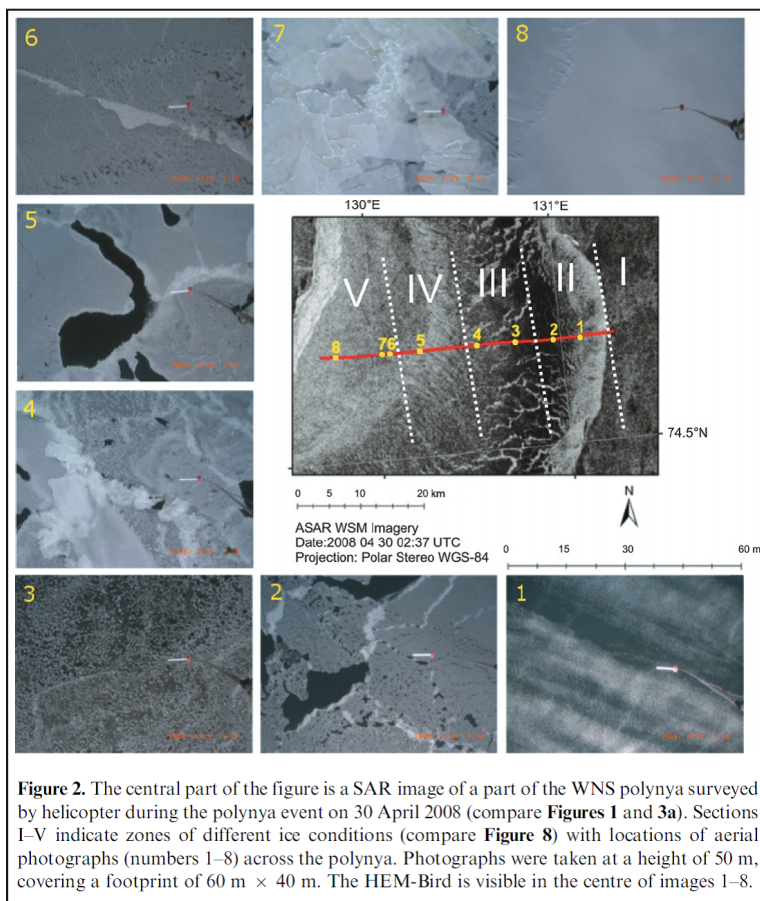


Figure 2. The central part of the figure is a SAR image of a part of the WNS polynya surveyed by helicopter during the polynya event on 30 April 2008 (compare **Figures 1** and **3a**). Sections I–V indicate zones of different ice conditions (compare **Figure 8**) with locations of aerial photographs (numbers 1–8) across the polynya. Photographs were taken at a height of 50 m, covering a footprint of 60 m × 40 m. The HEM-Bird is visible in the centre of images 1–8.

Fig. 1. Ice-free polynyas in the Laptev Sea (from Willmes et al. 2010).

Printer-friendly version

Discussion paper

