

Interactive comment on “Sensitivity of ice production estimates in Laptev Sea polynyas to the parameterization of subgrid-scale sea-ice inhomogeneities in COSMO-CLM” by O. Gutjahr et al.

O. Gutjahr et al.

gutjahr@uni-trier.de

Received and published: 29 August 2016

Appendix to our previous post:

In wintertime, only a very small percentage of a polynya is ice-free, as it was shown by many studies and is illustrated by the following two figures from satellite data and airborne in-situ observations (from Willmes et al. 2010).

Interactive comment on The Cryosphere Discuss., doi:10.5194/tc-2016-83, 2016.

C1

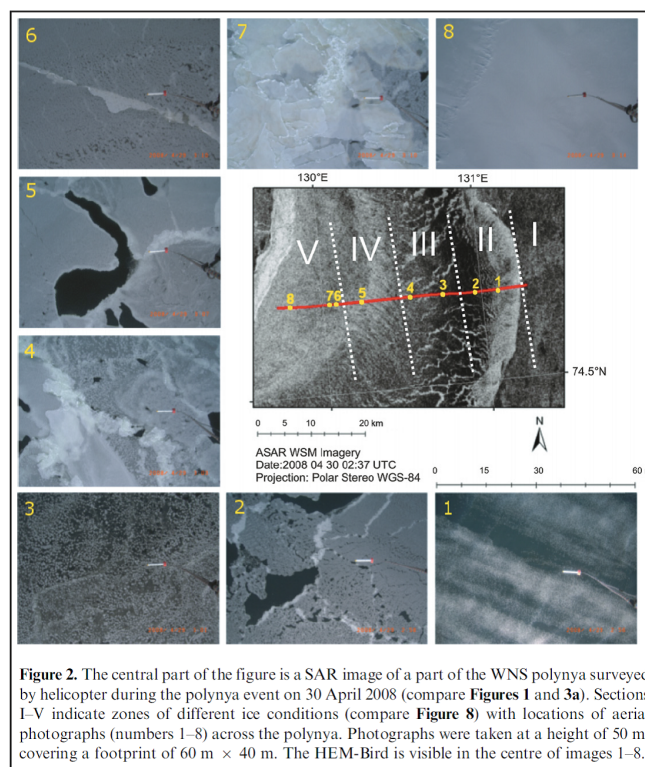


Fig. 1. Ice-free polynyas in the Laptev Sea (from Willmes et al. 2010).

C2