

Anonymous Referee #1

Received and published: 20 May 2016

5

As the Authors point out there is still considerable uncertainty as to the actual impact of a range of possible processes which could contribute to the so-called Arctic Amplification of the temperature trends. This paper potentially clarifies a number of these issues. The investigation reveals many interesting aspects of relevant feedbacks and the timescales of these. Valuable also is their insightful analysis of the different regional responses and why, e.g., the relative importance of these processes in the Barents and Kara Seas differs significantly from that in the Beaufort Sea. The paper could potentially make a valuable contribution in TC. However I have identified places where the explanations need to be more accessible and some additional relevant literature be incorporated into the discussion.

10

Comment1(C1): PAGE 2, LINE 5 - ‘Serreeze’ should be ‘Serreze’

15

Response1(R1): Corrected. [P2 L5]

C2: PAGE 3, LINES 24-25 – The use of CSEOF is very interesting in this study, and it would be worth presenting a few more words of justification and explanation. I would suggest explicitly referring here to Kim et al. (2015) as it presents possibly a more approachable explanation of CSEOF and illustrates this with useful examples.

20

R2: The reference was added in the revised manuscript. [P4 L8]

We also revised the “method of analysis” section significantly so that the discussion therein is easier to understand. [P4 L7 – P6 L13]

25

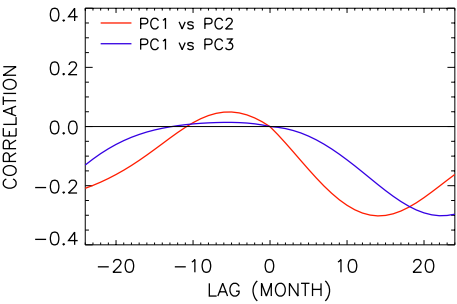
C3: PAGE 4, LINE 7 – ‘physically related’ is perhaps a more accurate expression than ‘physically consistent’

R3: The two loading vectors  $\{B_n(r, t)\}$  and  $\{C_n(r, t)\}$  are physically consistent in the context of the governing equation connecting the two variables. In other words,  $\{B_n(r, t)\}$  and  $\{C_n(r, t)\}$  satisfy the governing equation. Thus, the loading vectors are more than “physically related”. Please let us keep the expression “physically consistent”.

30

C4: PAGE 5, LINE 15 - Do the authors mean ‘well separated statistically’ rather than ‘well separated dynamically? Also, we need a quantitative backup for this statement. What test was used to establish independence (eg the North test)?

R4: The first CSEOF mode represents Arctic Amplification, whereas the second CSEOF mode represents Arctic Oscillation [Kim, K.-Y. and Son, S.-W.: Physical characteristics of Eurasian winter temperature variability, Environ. Res. Lett., 11, 044009, 2016.]. There is no such test as “North’s rule of thumb” in CSEOF analysis. The Arctic warming mode is nearly independent with the second and third leading modes as can be seen in



**Figure R1.** Cross-correlation of the first PC time series against the second (red) and third (blue) PC time series for the lag range of (-24,24).

Figure R1; two time series are independent if correlation is zero for any lag. As can be seen in Figure R1, correlation is sufficiently low (in terms of  $R^2$  value, it is less than 0.1). In other words, we cannot explain the first PC time series reasonably by lagging either the second PC time series or the third PC time series. Thus, the Arctic warming mode is (nearly) independent of the next two CSEOF modes. We added the reference Kim and Son (2016). [P7 L17: ... averaged AO index (Kim and Son, 2016).]

C5: PAGE 6, LINES 18-20 - Another important aspect of this issue (involving another subtle positive feedback) which should also be mentioned here is that due to warming more Arctic precipitation is now falling as rain and less as snow, with strong implications for surface albedo. Refer here to analysis of Screen et al., 2012: Declining summer snowfall in the Arctic: Causes, impacts and feedbacks. Climate Dyn., 38, 2243-2256.

R5: The reference was added in the text. [P8 L24, reference added]

C6: PAGE 9, LINES 7-12 - Also refer here to the recent new insights of Årthun, M., and T. Eldevik, 2016: On anomalous ocean heat transport toward the Arctic and associated climate predictability. Journal of Climate, 29, 689-704, doi: 10.1175/jcli-d-15-0448.1.

R6: The reference was added in the text. [P11 L10, reference added]

5 C7: PAGE 12, LINE 15 – Perhaps the authors have not fully appreciated the interpretation of the results in Vladimir Alexeev’s paper. Central to their study is the presence of AA in an aquaplanet model without sea ice feedbacks. This key result pertaining to the origins of AA should be mentioned much earlier in the paper.

R7: Correct. We made a mistake. We removed this discussion.

10 C8: PAGE 12, LINES 19-21 – The authors are making an excellent point here in connection with the role of synoptic systems in the Arctic region and their relationship with trends. Very valuable here to also reference Simmonds et al. 2008: Arctic climate change as manifest in cyclone behavior. J. Clim., 21, 5777-5796.

R8: Thank you for your suggestion. We added the reference. [P14 L19]

15 C9: Need for correction in References . . . PAGE 13 – Year of publication of Alexeev et al. paper is 2005, not 2015

R9: The reference was removed as mentioned in comment #7.

20 C10: PAGE 15 – Last reference. Please note correct spelling of author name Sorteberg, A., and Walsh, J. E.

R10: Author’s name has been corrected. [reference]

Anonymous Referee #2

Received and published: 30 May 2016

5

This study applies a novel technique (Cyclostationary empirical orthogonal function analysis) to ERA-interim reanalysis to examine physical processes behind Arctic sea ice reductions and Arctic amplification. While the study is unique and has the potential to yield insight on causal mechanisms, a number of issues should be addressed before publication.

- 10 Comment1(C1): The CSEOF technique requires a more broad-based description, including how the approach differs from standard EOF analysis, interpretation of the results in Table 1, how the spatial and temporal components of Figure 2 were derived, and the impact of mode 1 explaining only 15% of the total variability.

- Response1(R1): We modified the “method of analysis” section significantly in order to address what the reviewer requested including the definition and interpretation of  $R^2$  value. This section should be much clearer now. [P4 L7- P6 L13]

The spatial patterns and temporal components of Figure 2 are the result of CSEOF analysis. They are  $B_1(r, t)$  and  $T_1(t)$  of 2m air temperature.

- 20 The leading mode explains ~15% of the total variability of 2 m air temperature. In other words, 85% of the variance of surface air temperature variability derives from other mechanisms. This is something that we cannot control; it is the nature of our climate system. Since temperature variability associated with Arctic amplification explains only ~15% of the total variability, it is all the more important to separate it from other mechanisms of variability. Otherwise, temperature variability associated with Arctic amplification will be obscured seriously by variability from other sources, and an accurate physical and statistical inference of Arctic Amplification would be difficult. We also want to say that this mode is well separated from the second CSEOF mode (Arctic oscillation; Kim, K.-Y. and Son, S.-W.: Physical characteristics of Eurasian winter temperature variability, Environ. Res. Lett., 11, 044009, 2016.).

- 30 C2: Throughout the manuscript, the term ‘sea ice melting’ is used to describe what are essentially negative winter (DJF) sea ice concentration anomalies in the Kara/Barents sea with a maximum value of -10% (Figure 3). I’m not convinced this is the correct terminology to use. The negative ice concentration anomalies in this region are impacted in some combination by the timing of sea ice formation and temperature anomalies during the ice growth season (thermodynamics) and potential changes in ice motion and advection during the winter (dynamics). This may be semantics, but to refer to winter season negative ice concentration anomalies as ‘ice melting’ does not seem appropriate to me.



R2: We used the terminology ‘sea ice melting’ in order to address sea ice loss from the perspective of Arctic amplification. As you mentioned, however, melting is not the only means of sea ice reduction. Therefore, we changed ‘sea ice melting’ to ‘sea ice loss’ or ‘sea ice reduction’ except when we really meant ‘melting’. [correction scatted in the manuscript]

5

C3: Related to the point above, all of the analysis is based on ERA-interim reanalysis, including sea ice concentration. This raises some questions: -how is ERA-interim sea ice concentration derived? Has it been validated? How does it compare to the more widely used passive microwave sea ice concentration data records? -how sensitive is this analysis to the choice of sea ice information? Do the results differ if sea ice information independent of the ERA-interim atmospheric fields is used?

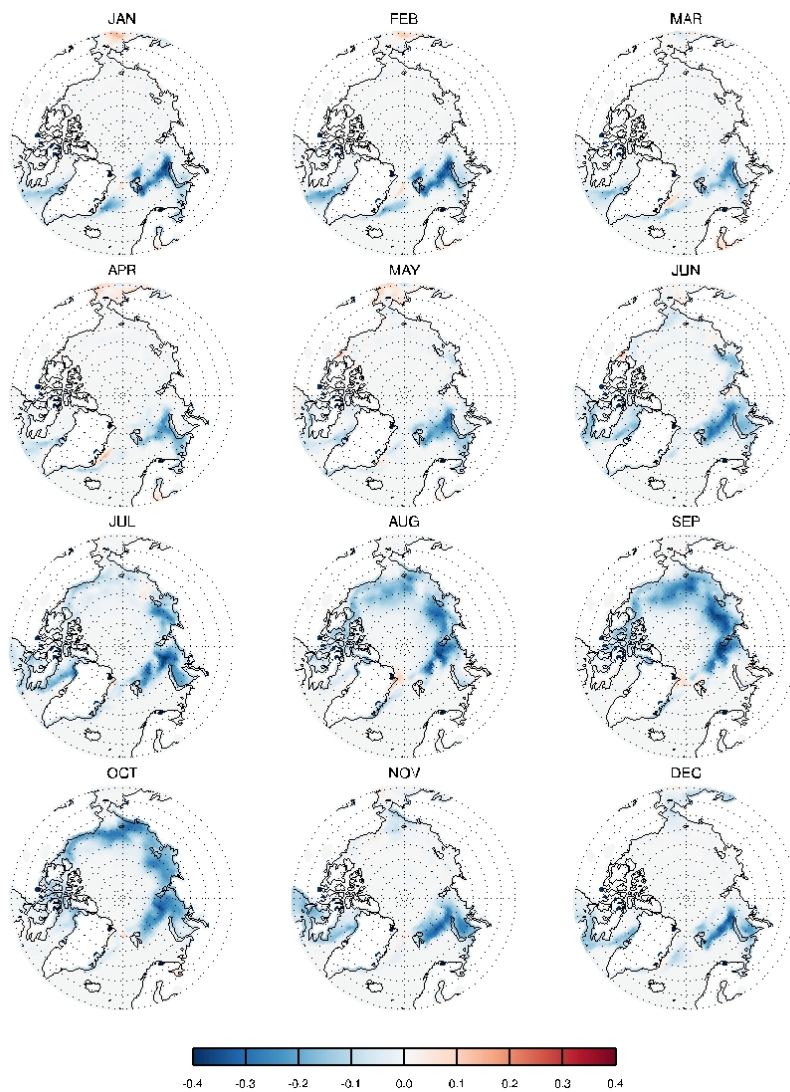
10

R3: Sea ice concentration (SIC) in the ERA-Interim data is an estimate from other operational products such as operational NCEP product and sea surface temperature and sea ice analysis (OSTIA). These products are based on passive microwave satellite measurements (Donlon et al.: The Operational Sea Surface Temperature and Sea Ice Analysis (OSTIA) system, Remote Sens. Environ., 116, 140-158, 2012). In order to confirm that the results in the present study are not sensitive to the sea ice concentration dataset, CSEOF analysis was conducted on a different sea ice concentration dataset acquired from National Snow & Ice Data Center (NSIDC at nsidc.org). The specific dataset used is “sea ice concentration from Nimbus-7 SSMR and DMSP SSM/I-SSMIS Passive Microwave data”, which is generated from brightness temperature data. The data are provided in the polar stereographic projection at a grid cell size of 25 x 25 km. We used the data in 1990-2014, since there are a large number of missing points in earlier data.

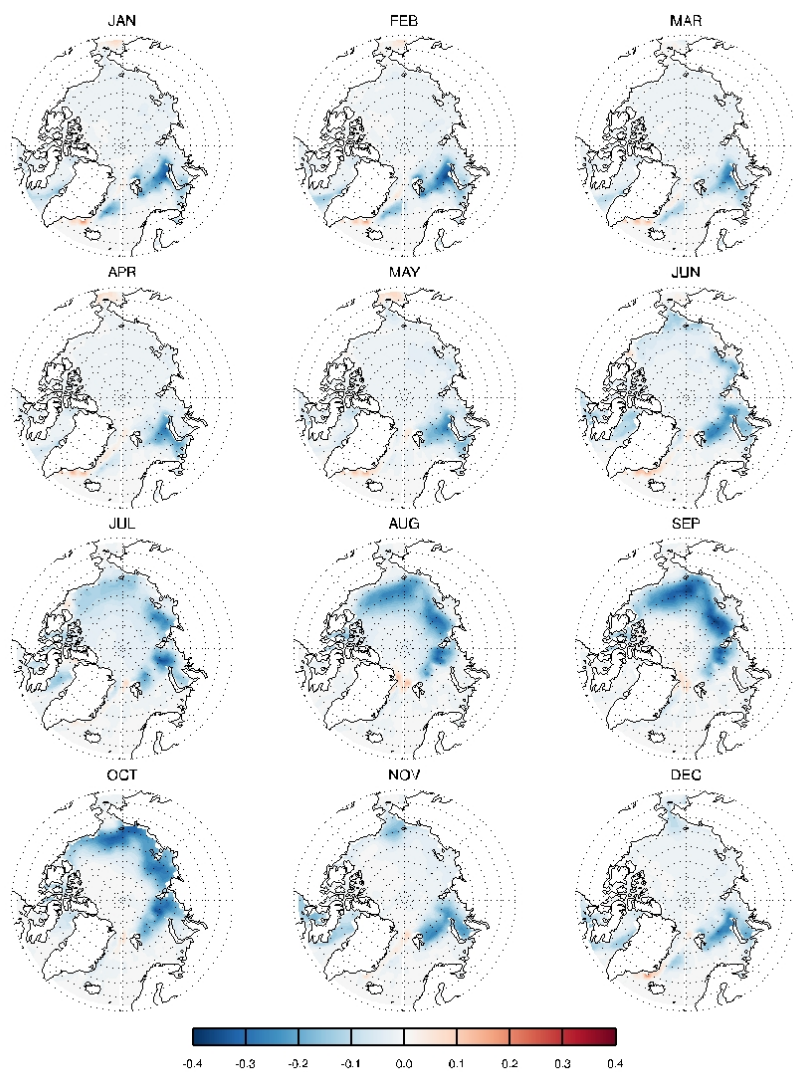
20

Figure R1 is the regressed patterns of sea ice concentration for the first (Arctic Amplification) CSEOF mode derived from the NSIDC dataset in comparison with that derived from the ERA-Interim data. As can be seen in the figure, there is no serious discrepancy between the two datasets. Both the spatial pattern and magnitude of variation in sea ice concentration in conjunction with the Arctic Amplification mode is quite similar between the two. The  $R^2$  value of regression is 0.97 for the first CSEOF mode, suggesting that the amplitude of variation of the sea ice patterns in Figure R1 is physically consistent with the Arctic warming patterns in Figure 2 in the manuscript. [no corrective action]

25



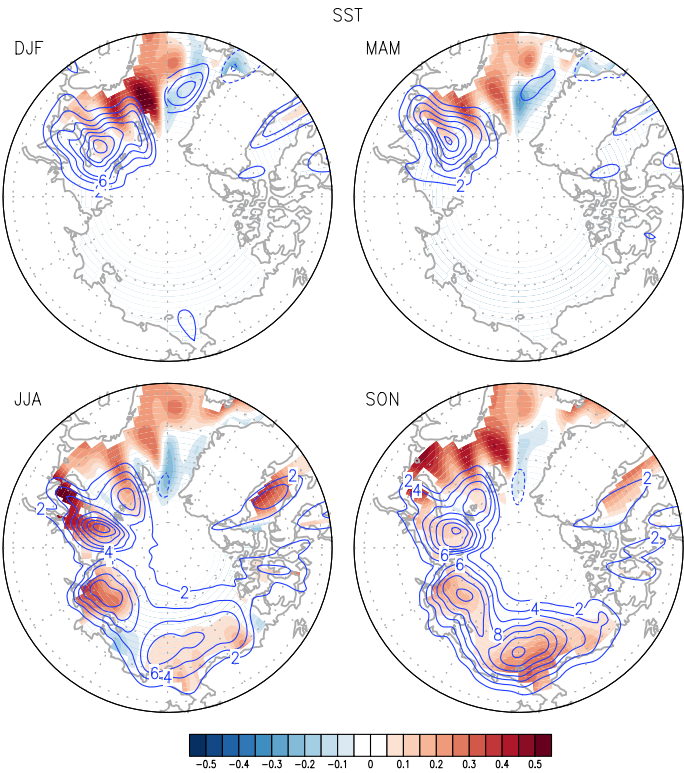
**Figure R1.** The Arctic Amplification mode of NSIDC sea ice concentration



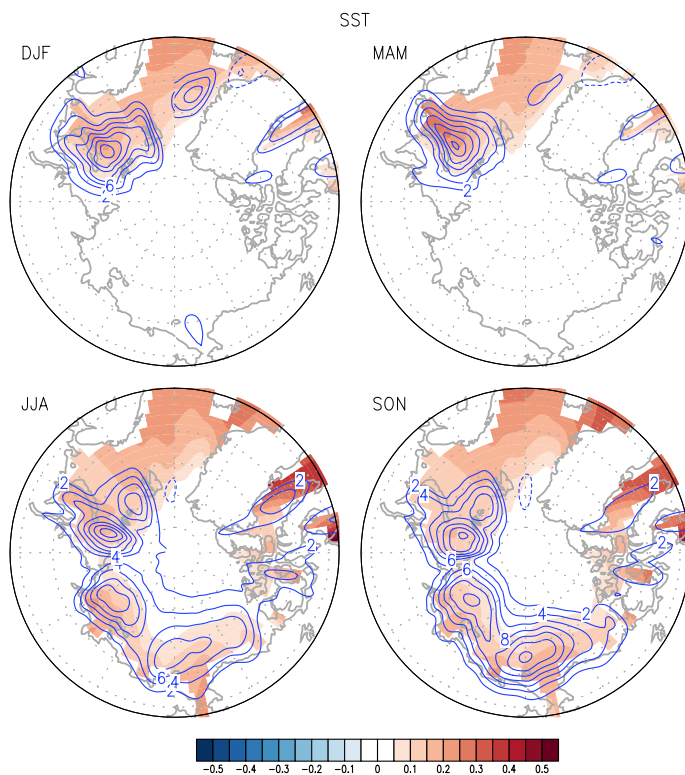
**Figure R2.** The Arctic Amplification mode of ERA-Interim sea ice concentration

C4: What is the source of the sea surface temperature data?

5 R4: Sea surface temperature of ERA-Interim reanalysis data has been used in the present study. As a comparison between Figures R3 and R4 shows, the SSTA patterns derived from the ERSST data are not much different from those of ERA-Interim reanalysis data in terms of the key features. We used the ERA-Interim SST in order to maintain physical consistency among the variables analyzed in the present study. [no corrective action]



**Figure R3.** The regressed seasonal patterns of ERA-Interim sea surface temperature (shading; 0.05 K) and the reduction of sea ice concentration (contours; 2 %) in the Arctic region (64.5°-90° N).



**Figure R4.** The regressed seasonal patterns of ERSST (shading; 0.05 K) and the reduction of sea ice concentration (contours; 2 %) in the Arctic region (64.5°-90° N).

5

C5: I understand the general idea behind calculating the ‘sea ice melting mechanism’ (Figure 9) in terms of feedbacks associated with a given sea ice concentration change. A 1% sea ice concentration change, however, is not really physically relevant. This is well within the error of ice concentration datasets, and sea ice doesn’t really change in this manner. This feedback totally discounts the role of ice dynamics – ice doesn’t simply sit in one place and respond to temperature anomalies with an increase or decrease in ice concentration.

10

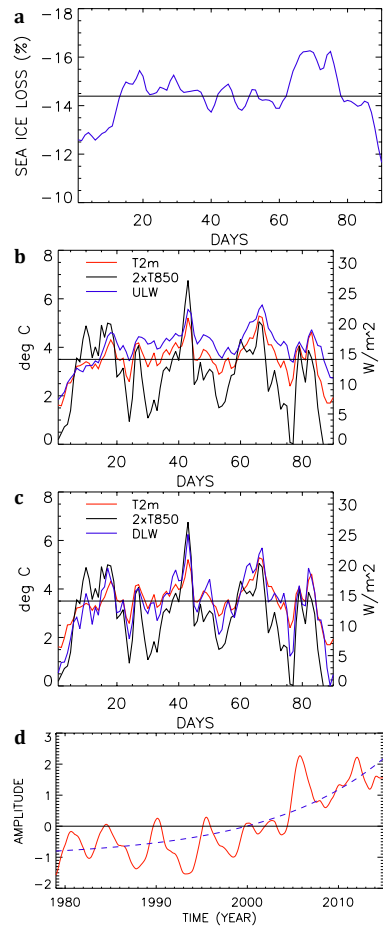
R5: As the reviewer pointed out, sea ice loss is not entirely due to melting and ice dynamics certainly was not accounted for in this discussion. What we are referring to is an average picture of physical change due to sea ice loss. As explained in the method section, regression in CSEOF space allows us to write data in the form:

$$Data(r, t) = \sum_n \{B_n(r, t), C_n^{(r)}(r, t), D_n^{(r)}(r, t), E_n^{(r)}(r, t), \dots\} T_n(t),$$

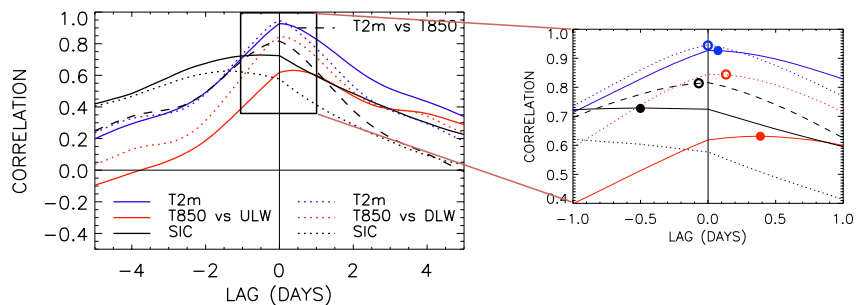
5 where the terms in curly braces for each  $n$  represents a physical process as reflected in different variables (say, temperature, sea ice concentration, 850 hPa air temperature, upward longwave radiation, etc.). The terms in curly braces are physically consistent with each other. For example, Figure R5 below shows the daily evolution associated with the Arctic Amplification mode. CSEOF analysis was conducted on the daily ERA-Interim data during winter (Dec. 1-Feb. 28), and the first CSEOF mode represents Arctic Amplification as in the present analysis. Shown in Figure R5 are the terms in curly  
10 braces for five different variables averaged over the Barents-Kara Seas [21°-79.5°E × 75°-79.5°N]. As can be seen in the figure, loss of sea ice is reflected in the positive values of anomalous 2 m air temperature, 850 hPa temperature, upward longwave radiation, and downward longwave radiation. Daily variations of atmospheric variables are highly correlated with each other, suggesting that they have a common cause (see Figure R6). Specifically, the impact of synoptic disturbance is conspicuous with significant fluctuations on synoptic time scales.

15 Further, CSEOF analysis indicates that these variations are amplifying in time as reflected in the PC time series in Figure R5(d). The mechanism described in Figure 9 is the winter average picture of the mechanism shown in Figure R5. We can average the CSLVs in Figure R5 during winter to estimate the relative magnitude of change in heat flux or atmospheric variables as sea ice loss continues. Whatever the cause of sea ice reduction is, a 1% loss of sea ice results in the changes in  
20 other variables as described in Figure 9. Further, the lagged correlation analysis among these variables indicates that turbulent heat flux precedes 850 hPa warming, which, in turn, is followed by increased downward longwave radiation (see Figure R6). Ultimately, surface air temperature increases due to increased downward longwave radiation.

On the other hand, the mechanism addressed above cannot be demonstrated in CSEOF analysis of monthly data. The cause-  
25 and-effect relationship among the variables in Figure R5 can only be appreciated when we analyze 3-hourly data. Therefore, we remove the entire discussion associated with Figure 9. Hopefully, we will address this mechanism in a new paper where 3-hourly data is employed for CSEOF analysis. [Removed the text associated with Figure 9.]



**Figure R5.** Daily patterns of variability over the region of sea ice loss (21°-79.5°E × 75°-79.5°N): (a) sea ice concentration, (b) 2 m air temperature (red), 850 hPa air temperature × 2 (black), and upward longwave radiation (blue), and (c) same as (b) except for the regressed downward longwave radiation (blue). Correlation of upward and downward longwave radiations with 2 m air temperature is respectively 0.90 and 0.95, whereas with 850 hPa air temperature is 0.60 and 0.86. (d) Corresponding PC time series.



**Figure R6.** Correlation of upward (solid lines) and downward (dotted lines) longwave radiations with 2 m air temperature (blue), 850 hPa temperature (red), and sea ice concentration (black). Longwave radiation lags the other variable for a positive lag. Lagged correlation between 2 m air temperature and 850 hPa air temperature (black dashed line); 2 m air temperature leads 850 hPa temperature for a positive lag.



Anonymous Referee #3

Received and published: 15 June 2016

5

The authors have examined the mechanisms by which declining sea ice in the Arctic is contributing to Arctic amplification of climate change. They focused on the differential changes in the Barents-Kara, Laptev and Chukchi seas and identified a unique pattern of change in the Barents and Kara seas associated with turbulent transport of heat from open water in the winter. The authors make a useful contribution to our understanding of the surface energy budget under conditions of

10 reduced sea ice in the Arctic.

I have a few general recommendations and some specific edits recommended:

#### General comments

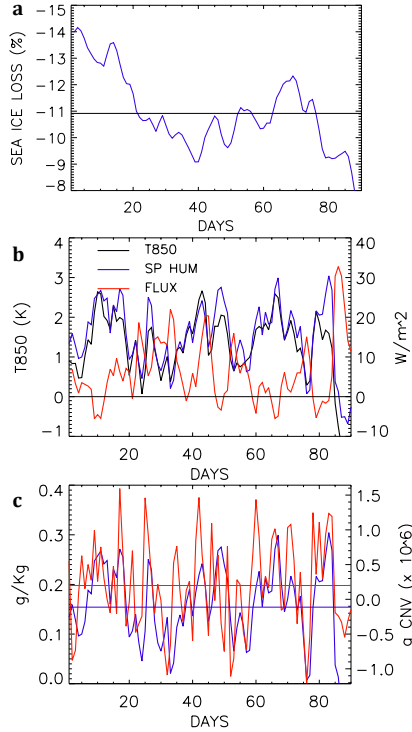
15 Comment1(C1): The authors often talk about sea ice “melt” when they are referring to the trend toward reduced sea ice concentration. In some cases, “melt” may be the appropriate term, but in most cases it would be better to refer to reduced sea ice concentration and/or extent.

Response1(R1): Thank you for pointing this. We replaced “sea ice melting” by “sea ice loss” or “sea ice reduction” except  
20 when we really meant “melting”. [Corrections are scattered throughout the manuscript.]

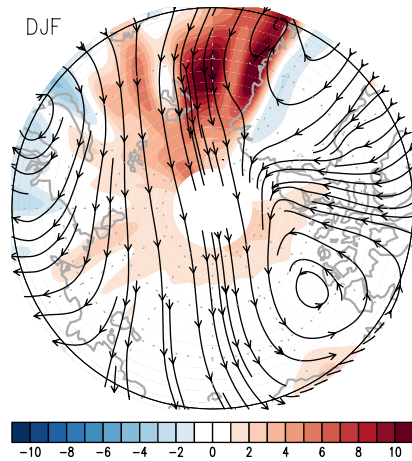
C2: The authors discuss the increase in 850hPa temperatures over the Barents and Kara seas of less than 0.1K, which they indicate leads to a  $-1 \text{ W/m}^2$  in downwelling longwave, which leads to two questions (see p. 8, l. 25-34). a. How can the authors be certain that the change in 850hPa temperature is due to the reduced sea ice concentration? b. I did some back of  
25 the envelope calculations, and it appears the magnitude of the downwelling longwave change is too large to be fully explained by the 850hPa temperature increase. Perhaps increased atmospheric moisture is playing a role in the increased downwelling longwave? The authors briefly discuss (p. 9, l. 20- 23) and cite the recent Park et al. paper (p. 12, l. 21-23), but perhaps this issue should be further explored/discussed.

30 R2a: As can be seen in Figure 10 (new Figure 9), the anomaly pattern of sea ice loss and those of turbulent heat flux, 2 m air temperature, upward longwave radiation, downward longwave radiation, and 850 hPa air temperature have common centers of action. These patterns share the same PC time series (Figure 2b). It seems reasonable to assume that these patterns share an identical source of variability. Figure R1 shows the loading vectors of the Arctic warming mode derived from the daily ERA-Interim data in winter (Dec. 1-Feb. 28; 90 days); the loading vectors are averaged over the Barents-Kara Seas. As can

be seen in the figure, sea ice reduction is clearly seen throughout the winter (Figure R1a). The loading vector of turbulent heat flux has a positive mean and is generally positive throughout the winter because of the sea ice reduction in the area (Figure R1b; red curve). The 850 hPa air temperature anomaly is also positive with a mean value of  $\sim 1.26$  K (Figure R1b; black curve). Finally, the loading vector of specific humidity has a mean value of  $\sim 0.15$  g kg<sup>-1</sup>, and is highly correlated with the 850 hPa air temperature; correlation is 0.91 (Figure R1b; blue curve). The specific humidity is moderately correlated with moisture convergence (corr = 0.54). Turbulent heat flux is negatively correlated with 850 hPa air temperature and specific humidity. This negative correlation seems to indicate that turbulent heat flux decreases as air temperature increases and specific humidity increases and reflects the bulk formulas for latent and sensible heat flux. It should be noted that all the variables have significant positive means. This positive mean is due to sea ice reduction throughout the winter. On top of the increased turbulent



**Figure R1.** The Daily patterns of variability over the region of sea ice loss (21°-79.5°E × 75°-79.5°N): (a) sea ice concentration, (b) 850 hPa air temperature (black), turbulent flux (red), and specific humidity (blue) ×10, and (c) specific humidity (blue) and moisture convergence (red).



**Figure R2.** The winter average pattern of moisture transport and convergence for the Arctic warming mode. This pattern is  
 5 obtained by averaging daily patterns over DJF.

heat flux through the open surface of the ocean, the release of the turbulent heat flux is affected by the atmospheric condition  
 (such as air temperature and humidity) as well as horizontal moisture transport.

10

Figure R2 shows the winter average pattern of moisture transport and convergence for the Arctic warming mode. This  
 pattern is similar to Figure 5 in Park et al. (2015). There is a sign of moisture convergence in the Barents-Kara Seas. On the  
 other hand, the daily time series over the Barents-Kara Seas (Figure R1c) indicates that the sign of moisture convergence  
 fluctuates around zero. Thus, it is difficult to explain the non-zero mean of specific humidity in Figure R1b in terms of the

15

moisture transport and convergence.

Thus, we think that the loss of sea ice leads to increased turbulent heat flux, which not only warms the atmospheric column  
 but also increases specific humidity. Saturation specific humidity also increases as the atmospheric column warms up. The  
 increased air temperature and specific humidity both contribute to the increased downward longwave radiation. This  
 discussion is difficult to include in the revision, since it requires new analysis based on daily ERA-Interim reanalysis data.

20

[no corrective action]

R2b: According to the first law of thermodynamics, we have

$$\rho c_p \frac{\partial T}{\partial t} = -\nabla \cdot \vec{F} \quad , \quad (1)$$

where  $\rho$  is the density of air,  $c_p$  is specific heat at constant pressure,  $T$  is temperature, and  $\vec{F}$  is heat flux. In a one-dimensional column model, (1) can be rewritten as

$$5 \quad \rho c_p \frac{\partial T}{\partial t} = -\frac{\partial}{\partial z} (F_{up} - F_{down}) = -\frac{\partial}{\partial z} (F_{net}) \quad . \quad (2)$$

By integrating (2) with respect  $z$  from level  $z_1$  to  $z_2$ , we have

$$\rho c_p \frac{\partial}{\partial t} \left( \int_{z_1}^{z_2} T dz \right) = -F_{net}(z_2) + F_{net}(z_1) \quad . \quad (3)$$

Let  $z_1 = \varepsilon$  is the level at which radiative transfer is zero (say, slightly below the surface). Then, we can show that

$$\rho c_p \frac{\partial}{\partial t} \left( \int_{\varepsilon}^{z_2} T dz \right) = -F_{net}(z_2) = F_{down}(z_2) - F_{up}(z_2) \quad . \quad (4)$$

- 10 If  $z_2$  represents a vertical level slightly above the surface, the temperature near the surface is determined by downward and upward flux at level  $z = z_2$ . According to Figure 9, downward flux is larger than upward flux at the surface. Henceforth, surface temperature should increase. Likewise, we can let  $z_2$  be the 850 hPa level and determine net heat flux for a temperature change integrated from 850 hPa to surface. Nonetheless, we cannot calculate upward flux and downward flux separately; we can only calculate net flux. Therefore, we cannot show what the downward flux from the 850 hPa level. In
- 15 short, it is not the downward flux but the net flux that is related to the temperature change at the 850 hPa level (0.07 K). Of course, we do not have flux information at all vertical levels and we cannot verify theoretically that the downward flux  $0.97 \text{ W m}^{-2}$  is due to temperature change. [We eliminated Figure 9 together with the text associated with it.]

C3: I appreciated that the authors added a schematic to explain the processes involved in the Barents and Kara seas (Fig. 9).

- 20 Unfortunately, I was still left somewhat confused by the figure. For example, the “Increase T 0.07K” does not indicate at what level. The arrows leave me wondering if this is all happening concurrently or if there is a time associated with each process. I think this schematic is a good idea but could benefit from some additional thought.

R3: As explained in the method section, regression in CSEOF space allows us to write data in the form:

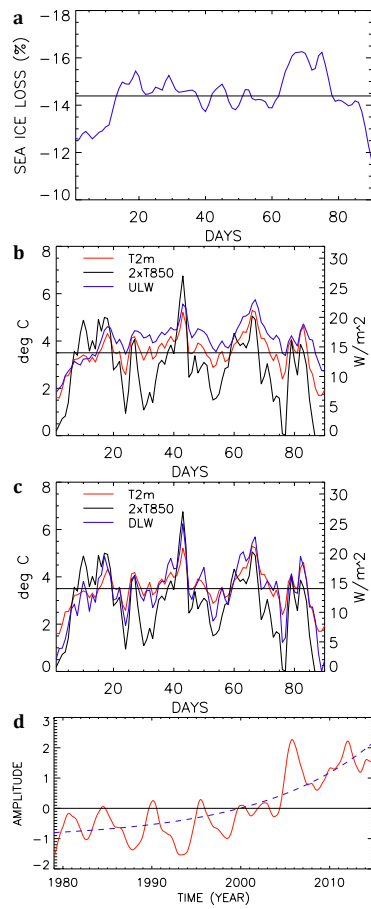
$$25 \quad Data(r, t) = \sum_n \left\{ B_n(r, t), C_n^{(r)}(r, t), D_n^{(r)}(r, t), E_n^{(r)}(r, t), \dots \right\} T_n(t),$$

where the terms in curly braces for each  $n$  represents a physical process as reflected in different variables (say, temperature, sea ice concentration, 850 hPa air temperature, upward longwave radiation, etc.). The terms in curly braces are physically consistent with each other. For example, Figure R3 below shows the daily evolution associated with the Arctic Amplification mode. CSEOF analysis was conducted on the daily ERA-Interim data during winter (Dec. 1-Feb. 28), and the

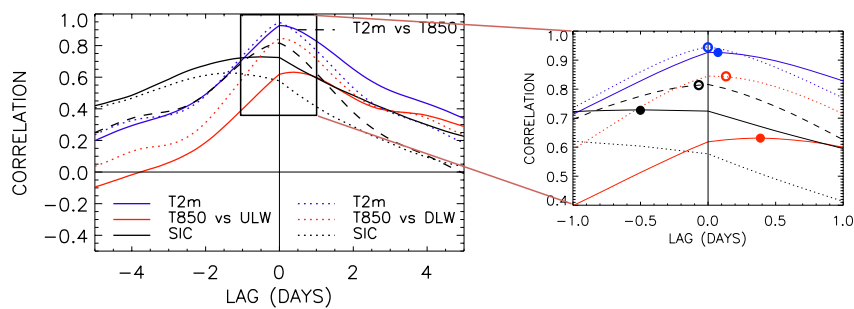
first CSEOF mode represents Arctic Amplification as in the present analysis. Shown in Figure R3 are the terms in curly braces for five different variables averaged over the Barents-Kara Seas [21°-79.5°E × 75°-79.5°N]. As can be seen in the figure, loss of sea ice is reflected in the positive values of anomalous 2 m air temperature, 850 hPa temperature, upward longwave radiation, and downward longwave radiation. Daily variations of atmospheric variables are highly correlated with each other, suggesting that they have a common cause (see Figure R4). Specifically, the impact of synoptic disturbance is conspicuous with significant fluctuations on synoptic time scales.

Further, CSEOF analysis indicates that these variations are amplifying in time as reflected in the PC time series. The mechanism described in Figure 9 (old) is the winter average picture of the mechanism which is similar to that shown in Figure R3. We can average the CSLVs during winter to estimate the relative magnitude of change in heat flux or atmospheric variables as sea ice loss continues. Whatever the cause of sea ice reduction is, a 1% loss of sea ice results in the changes in other variables as described in Figure 9. Further, the lagged correlation analysis among these variables indicates that turbulent heat flux precedes 850 hPa warming, which, in turn, is followed by increased downward longwave radiation (see Figure R4). Ultimately, surface air temperature increases due to increased downward longwave radiation.

On the other hand, the mechanism addressed above cannot be demonstrated in CSEOF analysis of monthly data. The cause-and-effect relationship among the variables in Figure R4 can only be appreciated when we analyze 3-hourly data. Therefore, we remove the entire discussion associated with Figure 9. Hopefully, we will address this mechanism in a new paper where 3-hourly data is employed for CSEOF analysis. [Removed the text associated with Figure 9.]



**Figure R3.** Daily patterns of variability over the region of sea ice loss (21°-79.5°E × 75°-79.5°N): (a) sea ice concentration, (b) 2 m air temperature (red), 850 hPa air temperature × 2 (black), and upward longwave radiation (blue), and (c) same as (b) except for the regressed downward longwave radiation (blue). Correlation of upward and downward longwave radiations with 2 m air temperature is respectively 0.90 and 0.95, whereas with 850 hPa air temperature is 0.60 and 0.86. (d) Corresponding PC time series.



**Figure R4.** Correlation of upward (solid lines) and downward (dotted lines) longwave radiations with 2 m air temperature (blue), 850 hPa temperature (red), and sea ice concentration (black). Longwave radiation lags the other variable for a positive lag. Lagged correlation between 2 m air temperature and 850 hPa air temperature (black dashed line); 2 m air temperature leads 850 hPa temperature for a positive lag.

#### Minor comments

C1: p. 1, l. 10: “Arctic” misspelled, article missing

R1: Thank you. Corrected. [P1 L10]

C2: p. 1, l. 14: remove “to be”

R2: Corrected. [P1 L14]

C3: p. 2, l. 4: “Serreze” misspelled

R3: Corrected. [P2 L5]

C4: p. 2, l. 7: “in the earlier period” please be specific

R4: The cited references differ in terms of “earlier” and “later” periods. Therefore, we cannot be specific about the definition of earlier period. [no corrective action]

C5: p. 2, l. 29: “remains to be melted” is awkward

R5: We rephrased it as “**sea surface remains to be ice free**”. [P2 L29]

5 C6: p. 2, l. 32: “While summer sea ice melting is clearly seen. . .” Does this mean decreased summer sea ice concentrations?  
P. 3, l. 2: “winter sea ice melting” Is sea ice really melting during the winter? Please see general comment #1 above.

R6: We would like to keep the wording “sea ice melting” here, since it is sea ice melting. In winter, however, it is not “melting” but “reduction”. Therefore, we changed it to “**sea ice loss** in winter”. [P3 L1]

10 C7: p. 3, l. 12-13: “each term in the feedback” is repeated

R7: We changed the sentence as follows: “... in order to clarify **their relative importance** in the feedback.” [P3 L13]

15 C8: p. 3, l. 22: add “and” before “2 m temperature”

R8: Thank you. Complied. [P4 L4]

C9: p. 5, l. 4: “extract physically meaningful consistent evolutions from these variables” I was confused by this statement,  
20 perhaps because of the use of the word “evolutions”

R9: We used the word “evolution”, since we are dealing with temporal variation of spatial patterns. We changed the wording as follows: “... extract physically consistent **space-time evolution patterns** from these variables.” [P7 L5]

We also changed the “method of analysis” section significantly so that the concept of CSEOF analysis can be more easily  
25 conveyed.

C10: p. 5, l. 9: “volatile” is not the word choice I would have expected

C10: We changed the word to “sensitive”. [P7 L10]

30 C11: p. 6, l. 2: should be “increases” (agr)

R11: Thank you. Corrected. [P8 L5]



C12: p. 7, l. 21-22: “It is noted that” and “It is also worthy of remark that” are not necessary

R12: Complied. [P9 L26-28: Both the downward and upward radiation at the surface is maximized in winter (specifically February) with very small values in summer (Fig. 7b). Turbulent heat flux is maximized when 850 hPa temperature is minimum in March and November (Fig. 7c).]

C13: p. 8, l. 2: “is maintaining sea ice stay melted” is confusing

R13: We changed it as follows: “delayed warming is not so effective in sustaining the ice-free condition in winter in the ...”

C14: p. 9, l. 21: “trapping” is not a good description of this process

R14: We changed “trapping” to “absorbing”. [P11 L21]

C15: Figure 3 (and others): Some of the contours are difficult to follow, particularly on the JJA panel. If you chose not to label some of the contours, you may want to indicate the contour interval in the captions.

R15: We modified the contouring intervals to make the map readable. [See Figures 3-5 and Figure captions.]

# Mechanism of Seasonal Arctic Sea Ice Evolution and Arctic Amplification

Kwang-Yul Kim<sup>1\*</sup>, Benjamin D. Hamlington<sup>2</sup>, Hanna Na<sup>3</sup>, and Jinju Kim<sup>1</sup>

<sup>1</sup>School of Earth and Environmental Sciences, Seoul National University, Seoul 151-742, Republic of Korea

<sup>2</sup>Department of Ocean, Earth and Atmospheric Sciences, Old Dominion University, Norfolk, Virginia 23529, United States of America

<sup>3</sup>Ocean Circulation and Climate Research Center, Korea Institute of Ocean Science and Technology, Ansan, 15627, Republic of Korea

Correspondence to: Kwang-Yul Kim (kwang56@snu.ac.kr)

**Abstract.** Sea ice ~~loss~~ is proposed as a primary reason for the ~~Arctic~~ amplification, although physical mechanism of the Arctic amplification and its connection with sea ice melting is still in debate. In the present study, monthly ERA-interim reanalysis data are analyzed via cyclostationary empirical orthogonal function analysis to understand the seasonal mechanism of sea ice ~~loss~~ in the Arctic Ocean and the Arctic amplification. While sea ice ~~loss~~ is widespread over much of the perimeter of the Arctic Ocean in summer, sea ice remains ~~thin~~ in winter only in the Barents-Kara Seas. Excessive turbulent heat flux through the sea surface exposed to air due to sea ice ~~reduction~~ warms the atmospheric column. Warmer air increases the downward longwave radiation and subsequently surface air temperature, which facilitates sea surface remains to be ~~free of ice~~. This positive feedback mechanism is not clearly observed in the Laptev, East Siberian, Chukchi, and Beaufort Seas, since sea ice refreezes in late fall (November) before excessive turbulent heat flux is available for warming the atmospheric column in winter. A detailed seasonal heat budget is presented in order to understand specific differences between the Barents-Kara Seas and Laptev, East Siberian, Chukchi, and Beaufort Seas.

Jinju Kim 6/22/2016 11:12 AM

**Deleted:** melting

Jinju Kim 6/22/2016 11:13 AM

**Deleted:** Artic

Jinju Kim 6/22/2016 11:13 AM

**Deleted:** melting

Jinju Kim 6/22/2016 11:13 AM

**Deleted:** melting

Jinju Kim 6/27/2016 2:44 PM

**Deleted:** to be

Jinju Kim 6/22/2016 11:13 AM

**Deleted:** melting

Kwang Yul Kim 6/27/2016 9:39 AM

**Deleted:** loss

Jinju Kim 6/27/2016 4:00 PM

**Deleted:** ice

Kwang Yul Kim 6/27/2016 9:39 AM

**Deleted:** A 1% reduction in sea ice concentration in winter leads to ~0.76 W m<sup>-2</sup> increase in upward heat flux, ~0.07 K increase in 850 hPa air temperature, ~0.97 W m<sup>-2</sup> increase in downward longwave radiation, and ~0.26 K increase in surface air temperature.

1. Introduction

Warming over the Arctic Ocean is observed to accelerate in recent decades. The rate of warming in the Arctic is more than twice the rate of globally averaged warming. This warming and subsequent acceleration is referred to as Arctic amplification (Screen and Simmonds, 2010a, 2010b; Serreze and Barry, 2011). Reduction of sea ice in the Arctic Ocean is suggested to have contributed to the accelerated warming in the lower troposphere (Holland and Bitz, 2003; Serreze et al., 2009; Kumar et al., 2010; Screen and Simmonds, 2010a, 2010b). The rate of sea ice loss in the Barents and Kara Seas appears to have increased significantly over the last two decades in comparison with that in the earlier period (Stroeve et al., 2007; Comiso et al., 2008; Serreze et al., 2009; Cavalieri and Parkinson, 2012). As should be expected, the accelerated loss of sea ice in the Arctic Ocean has a profound implication on the heat energy budget, sea ice stability, carbon cycle feedback, and atmospheric and oceanic circulation locally and remotely (IPCC 2013, Serreze and Barry, 2011).

Several physical mechanisms are proposed to explain the accelerated loss of sea ice and warming of lower troposphere. One widely accepted mechanism is the “albedo feedback” (Curry et al., 1995; Screen and Simmonds, 2010a, 2010b; Flanner et al., 2011; Serreze and Barry, 2011). As sea ice melts in the Arctic Ocean, albedo decreases and, as a result, absorption of solar radiation is increased. This certainly is the case in summer when the Arctic sea ice concentration is low and the solar radiation is highest (Comiso et al., 2008). Also, the nature of air-sea interaction is altered significantly, since sea ice serves as a barrier between the atmosphere and the ocean (Simmonds, 2015). Arctic amplification, on the other hand, is most conspicuous in winter not in summer. Thus, this albedo feedback is considered an indirect cause of sea ice loss and subsequent Arctic amplification in winter.

Another mechanism proposed is the water vapor feedback (Francis and Hunter, 2006; Sedlar et al., 2011; Park et al., 2015). As warming increases, water vapor content in the atmospheric column increases, leading to an amplified greenhouse effect. Longwave radiation is trapped more in the atmospheric column, resulting in warming of the atmospheric column. In a similar sense, the increased cloudiness due to increased amount of water vapor leaving sea surface may result in an amplification of lower tropospheric warming (Francis and Hunter, 2007).

The most widely accepted mechanism for Arctic amplification is the “insulation feedback”. When sea surface remains to be free of ice in winter, turbulent heat flux is released from the open ocean surface, which is instrumental for warming the lower troposphere (Francis et al., 2009; Serreze et al., 2009; Screen and Simmonds, 2010a, 2010b; Deser et al., 2010; Overland et al., 2011; Serreze and Barry, 2011; Cohen et al., 2014; Screen et al., 2014). According to this hypothesis, increased reception of insolation through the sea surface exposed to air in summer keeps the sea surface warmer and is released in fall and early winter, making the atmosphere warmer. Through this so-called “delayed warming”, sea surface remains to be ice free in fall and winter, and excessive turbulent heat flux becomes available through the open sea surface in winter.

It is not clear, however, why such a mechanism is readily seen only in the Barents and Kara Seas but not in other areas of the Arctic (Petoukhov and Semenov, 2010; Screen and Simmonds, 2010b). While summer sea ice melting is clearly seen in areas other than the Barents and Kara Seas, Arctic amplification is observed only in the latter area in winter. Further, the role and

Jinju Kim 6/22/2016 11:13 AM

Deleted: Melting

Jinju Kim 6/22/2016 12:47 PM

Deleted: e

Jinju Kim 6/22/2016 11:13 AM

Deleted: melting

Jinju Kim 6/22/2016 11:13 AM

Deleted: melting

Jinju Kim 6/22/2016 11:14 AM

Deleted: melting

Jinju Kim 6/22/2016 11:14 AM

Deleted: melting

Jinju Kim 6/27/2016 4:01 PM

Deleted: ice

Jinju Kim 6/27/2016 4:01 PM

Deleted: melted

Jinju Kim 6/27/2016 4:01 PM

Deleted: increases

Jinju Kim 6/28/2016 9:43 AM

Deleted: Deser

Jinju Kim 6/22/2016 11:16 AM

Deleted: ice remains to be melted

Jinju Kim 6/27/2016 4:01 PM

Deleted: melted sea ice

contribution of increased absorption of insolation in summer for increased sea ice ~~↓~~loss in winter is not clear, primarily because the region of winter sea ice ~~↓~~reduction and that of increased insolation reception do not match closely. Thus, it is necessary to understand each term of the feedback process not only from a physical perspective but also in a quantitative one. An accurate quantitative estimation of each term of the feedback process may provide a clearer insight and yield a more convincing physical mechanism for the feedback process and a reasonable explanation for the regional difference in the Arctic Ocean. Considering the importance of sea ice ~~↓~~loss in the overall energy budget and atmospheric and oceanic circulation in the Arctic region, it is also crucial to understand how fast Arctic amplification progresses.

One key issue to be dealt with in the present study is the accurate mechanism of Arctic amplification. Cylindrical empirical orthogonal function (CSEOF) analysis is carried out to identify detailed and physically consistent seasonal evolution patterns of physical variables associated with sea ice loss in the Arctic Ocean. Specifically, the physical mechanism of sea ice ~~↓~~reduction and Arctic amplification is investigated from both a spatial and temporal standpoint, so that any delayed response can be explicitly considered. Quantification of each term in the feedback process is attempted in order to clarify ~~↓~~their relative importance in the feedback. Further, the role of water vapor and cloud in the feedback process is assessed. Another key issue to be addressed is why and how sea ice ~~↓~~loss in winter develops in the Barents and Kara Seas but not in the Laptev and Chukchi Seas. This issue is important in order to understand the key components of and reduce uncertainty in the feedback process. Also, it is pivotal to determine how fast the Arctic amplification progresses. The rate of acceleration of the Arctic amplification is estimated based on CSEOF analysis.

Jinju Kim 6/22/2016 11:17 AM  
**Deleted:** melting

Jinju Kim 6/27/2016 3:08 PM  
**Deleted:** melting

Jinju Kim 6/22/2016 11:17 AM  
**Deleted:** melting

Jinju Kim 6/22/2016 11:17 AM  
**Deleted:** melting

Jinju Kim 6/22/2016 11:18 AM  
**Deleted:** the

Jinju Kim 6/22/2016 11:18 AM  
**Deleted:** of each term

Jinju Kim 6/22/2016 11:17 AM  
**Deleted:** melting

## 2. Data and Method of Analysis

The dataset used in the present study is the ERA-interim 1.5°×1.5° monthly reanalysis (Dee et al., 2011) from 1979-2014. Surface variables analyzed in the present study include sea surface temperature, sea ice concentration, latent and sensible heat fluxes, upward and downward longwave and shortwave radiations, and 2 m air temperature. Pressure-level variables analyzed include air temperature, geopotential, zonal wind, meridional wind, and specific humidity. Low-level and total cloud fractions are also analyzed.

The analysis tool employed in this study is the cyclostationary EOF (CSEOF) technique (Kim et al., 1996; Kim and North, 1997; Kim et al., 2015). In CSEOF analysis, data  $T(r, t)$  are decomposed in the form

$$T(r, t) = \sum_n B_n(r, t) T_n(t), \quad (1)$$

where  $B_n(r, t)$  are mutually orthogonal CSEOF loading vectors (CSLV) and  $T_n(t)$  are mutually uncorrelated principal component (PC) time series of variable  $T(r, t)$ . As in EOF analysis, a main motivation of CSEOF analysis is to decompose variability into uncorrelated and orthogonal components in order to understand major constituents of variability in  $T(r, t)$ . Unlike EOF loading vector which is a spatial pattern, CSLV is a function of space and time describing temporal evolution pertaining to a physical process in  $T(r, t)$ . Further, CSLV is periodic in time

$$B_n(r, t) = B_n(r, t + d), \quad (2)$$

where the periodicity  $d$  is called the nested period. This periodicity derives from the cyclostationarity assumption that the statistics of  $T(r, t)$  is periodic. For example, space-time covariance function of  $T(r, t)$  is defined by

$$C(r, t; r', t') = \langle T(r, t) T(r', t') \rangle = C(r, t + d; r', t' + d). \quad (3)$$

CSEOF loading vectors are derived as eigenvectors of periodic space-time covariance function by solving

$$C(r, t; r', t') \cdot B_n(r', t') = \lambda_n B_n(r, t), \quad (4)$$

where  $B_n(r, t)$  are eigenvectors and  $\lambda_n$  are eigenvalues of space-time covariance function  $C(r, t; r', t')$ . Because of the periodicity of space-time covariance function, corresponding eigenvectors are also periodic with the same periodicity. Detailed solution procedures for CSEOF loading vectors are beyond the scope of this paper and can be found in Kim et al. (1996) and Kim and North (1997).

As in EOF analysis, CSLVs are mutually orthogonal and PC time series are uncorrelated. That is,

$$(B_m(r, t) \cdot B_n(r, t)) = \frac{1}{Nd} \sum_{r=1}^N \sum_{t=1}^d B_m(r, t) B_n(r, t) = \delta_{nm}, \quad (5)$$

and

$$(T_m(t) \cdot T_n(t)) = \frac{1}{M} \sum_{t=1}^M T_m(t) T_n(t) = \lambda_n \delta_{nm}. \quad (6)$$

Here  $(A \cdot B)$  denotes dot (inner) product between  $A$  and  $B$ ,  $N$  is the number of spatial points,  $M$  is the number of temporal points, and  $\lambda_n$ , called eigenvalues, represents the variance of PC time series  $T_n(t)$ . Thus, CSLVs are interpreted as mutually orthogonal space-time evolution in the data, of which the amplitude (PC) time series are mutually uncorrelated. In fact, EOF analysis is a special case of CSEOF analysis with the nested period  $d = 1$ . Thus, each loading vector consists of one spatial pattern can be found from a spatial covariance function. Sometimes, a different normalization convention is used, i.e.,

$$(B_m(r, t) \cdot B_n(r, t)) = \lambda_n \delta_{nm}, \quad (7)$$

and

$$(T_m(t) \cdot T_n(t)) = \delta_{nm}. \quad (8)$$

This normalization convention is used in the present study.

It is often important to examine several variables to understand the details of a physical process. A second variable  $P(r, t)$  is similarly decomposed into

$$P(r, t) = \sum_n C_n(r, t) P_n(t), \quad (9)$$

In general, there is no one-to-one correspondence between  $\{T_n(t)\}$  and  $\{P_n(t)\}$ . This means that  $\{B_n(r, t)\}$  and  $\{C_n(r, t)\}$  are not physically consistent. In order to make physical evolutions derived from two variables to be consistent,  $P(r, t)$  should be written as

$$P(r, t) = \sum_n C_n^{(r)}(r, t) T_n(t), \quad (10)$$

where  $C_n^{(r)}(r, t)$  is a new set of loading vectors with corresponding PC time series  $\{T_n(t)\}$ . In other words, two sets of loading vectors,  $\{B_n(r, t), C_n^{(r)}(r, t)\}$ , are governed by identical PC time series. The loading vectors  $B_n(r, t)$  and  $C_n^{(r)}(r, t)$  represent an identical physical process manifested in two different variables.

The new set of loading vectors can be determined via the so-called regression analysis in CSEOF space (Kim et al., 2015). It is a two-step process:

$$T_n(t) = \sum_{m=1}^M \alpha_m^{(n)} P_m(t) + \varepsilon^{(n)}(t), \quad (11)$$

and

$$C_n^{(r)}(r, t) = \sum_{m=1}^M \alpha_m^{(n)} C_m(r, t), \quad n = 1, 2, \dots, \quad (12)$$

where  $M$  is the number of PC time series used for multivariate regression and  $\varepsilon^{(n)}(t)$  is regression error time series. In this study, 20 PC time series are used for regression ( $M = 20$ ). The variable  $T(r, t)$  is called the target variable and is

5

10

determined in such a way that the physical process under investigation is clearly identified and separated as a single CSEOF mode. The  $R^2$  value measures the accuracy of regression in (11). Namely,

$$R^2 = 1 - (\text{var}(\varepsilon_n(t))/\text{var}(T_n(t))). \tag{13}$$

Thus,  $R^2$  value close to unity implies that variance of regression error time series is very small compared to that of the target PC time series. As a result of regression analysis in CSEOF space, entire data (variables) can be written as

$$Data(r, t) = \sum_n \{ B_n(r, t), C_n^{(r)}(r, t), D_n^{(r)}(r, t), E_n^{(r)}(r, t), \dots \} T_n(t), \tag{14}$$

where the terms in curly braces represent physically consistent evolutions derived from different variables. As should be clear from (14), a primary motivation of regression analysis in CSEOF analysis is to understand details of physical processes by extracting evolutions from various atmospheric and oceanic variables in a physically consistent manner.

The nested period is set to one year in the present study. Therefore, each CSLV consists of 12 spatial patterns for each month of the year. As shown in (1), amplitude of each CSLV is governed by corresponding PC time series. Thus, the strength of evolution as depicted in curly braces in (14) varies on temporal scales longer than the nested period.

Jinju Kim 6/22/2016 11:18 AM

**Deleted:** The analysis tool employed in this study is the cyclostationary EOF (CSEOF) technique (Kim et al., 1996; Kim and North, 1997). In CSEOF analysis, data  $T(r, t)$  are decomposed in the f... [1]

3. Results and Discussion

Northern Hemispheric (30°-90° N) 2 m air temperature is used as the target variable, since polar amplification in the Northern Hemisphere is clearly identified as the leading mode in 2 m air temperature aside from the seasonal cycle. Then, CSEOF analysis followed by regression analysis is conducted on all other (predictor) variables to extract physically consistent space-time evolution patterns from these variables. Table 1 shows the R<sup>2</sup> values of regression for different variables.

Jinju Kim 6/22/2016 11:23 AM

Deleted: evolutions

3.1 Seasonal patterns of sea ice concentration

Figure 1 shows the average seasonal patterns of sea ice concentration in the Arctic Ocean. The sea ice boundary in the Atlantic sector appears to be most sensitive throughout the year. In the Russian and Canadian sectors of the Arctic Ocean, the ice boundary abuts the continents in winter and spring, but retreats to the north in summer and fall. During the melting season, sea ice concentration decreases significantly in the Laptev, East Siberian, Chukchi and Beaufort Seas.

Jinju Kim 6/22/2016 11:23 AM

Deleted: volatile

3.2 The warming mode and associated anomalous patterns

Figure 2 shows the first CSEOF mode of surface (2 m) air temperature (SAT); it explains ~15 % of the total variability. This mode is well separated dynamically from the second CSEOF mode, which represents Arctic oscillation; its PC time series is correlated at 0.67 with the ±12-month moving averaged AO index (Kim and Son, 2016). For the sake of brevity, seasonally averaged patterns of the CSLV are presented instead of monthly patterns. Both the CSLV and the corresponding PC time series clearly show that this mode represents warming in the Northern Hemisphere. In particular, the PC time series shows a conspicuous trend during the study period, indicating a persistent increase in SAT. Seasonal variation of the pattern and magnitude of warming is clear with significant warming in winter and weak warming in summer. Other striking features include pronounced warming over the Barents-Kara Seas in winter and weak cooling in East Asian mid-latitudes (see also Fig. S2). According to the PC time series, an acceleration of warming is obvious in the Arctic region, particularly over the Barents-Kara Seas. In particular, 2006/07 warming in winter seems to have been unprecedented (Stroeve et al., 2008; Kumar et al., 2010).

Figure 3 shows the regressed seasonal patterns of sea ice concentration and radiation anomalies corresponding to the warming mode shown in Fig. 2. The anomalous pattern of sea ice concentration in winter looks similar to that in spring. On the other hand, the summer pattern looks similar to that in fall. In winter and spring, conspicuous decrease in sea ice concentration is primarily in the Barents-Kara Seas, whereas sea ice melting is widespread in the Laptev, East Siberian, Chukchi, and Beaufort Seas in summer and fall.

Jinju Kim 6/22/2016 11:23 AM

Deleted: melting

Jinju Kim 6/27/2016 4:02 PM

Deleted: of



In winter, when insolation is weak, net longwave radiation is upward over the region of sea ice ~~loss~~, while it is downward over much of the Arctic Ocean, particularly in the Atlantic sector. As sea ice ~~decreases~~, warmer sea surface is exposed to air yielding increased upward longwave radiation in the Barents-Kara Seas. In the North Atlantic Ocean, where sea ice concentration is already low (Fig. 1), net longwave radiation is downward, suggesting that increase in atmospheric temperature is larger than that of sea surface temperature. In late spring (May), downward shortwave radiation increases significantly over the region of sea ice loss. The increase in shortwave radiation is much larger than the net longwave radiation, thereby resulting in net downward radiation flux over the region of sea ice loss. In summer, sea ice melting expands into the Laptev, Chukchi, and Beaufort Seas. There is little change in net longwave radiation, but downward shortwave radiation increases significantly over the region of sea ice loss. This marked increase in downward shortwave radiation in spring and summer is associated with the decreased albedo as ~~open sea surface is exposed~~. In fall, the anomalous pattern of sea ice concentration is similar to that in summer, but the change in net longwave and shortwave radiation is small.

Figure 4 shows the seasonal patterns of anomalous sensible and latent heat fluxes. In winter, sensible heat flux and, to a lesser extent, latent heat flux increases over the Barents and Kara Seas. Over the North Atlantic the anomalous surface flux is downward, primarily because of the increased atmospheric temperature; heat flux is reduced, since the difference between sea surface temperature and air temperature is reduced due to atmospheric warming. In spring, a similar increase in turbulent heat flux is clearly seen over the Barents-Kara Seas. In summer, there is little change in turbulent heat flux although the area of sea ice melting is much expanded (Simmonds and Rudeva, 2012); note that there is little change in air temperature in summer (Fig. 2c). In fall, turbulent heat flux is increased primarily in the Kara and Chukchi Seas because a wider area of sea surface is exposed to colder air above.

Figure 5 shows the seasonal patterns of anomalous net radiation and turbulent heat flux. In spring, net downward radiation and upward heat flux are similar in magnitude. In summer, there is net downward radiation, which derives primarily from the increased absorption of solar radiation owing to decreased albedo (Serreze and Francis, 2006; Serreze et al., 2009; Screen and Simmonds, 2010a; [Screen et al., 2012](#)). In fall heat flux is increased over the region of sea ice loss, but the amount of heat flux released is much less than the increased amount of shortwave radiation absorbed in summer. In winter, a significant increase in turbulent heat flux is observed over the Barents-Kara Seas and a reduction of turbulent heat flux in the North Atlantic.

### 3.3 Seasonal patterns of sea surface temperature

While sea surface temperature is observed to increase over the region of sea ice loss in summer and fall, anomalous sea surface temperature vanishes in the Laptev, East Siberian, Chukchi, and Beaufort Seas as sea ice recovers over the area (Fig. 6). It should be pointed out that the increased net downward radiation in summer, and henceforth the increased sea surface

Jinju Kim 6/22/2016 11:23 AM

**Deleted:** melting

Jinju Kim 6/22/2016 11:24 AM

**Deleted:** melts

Jinju Kim 6/27/2016 4:03 PM

**Deleted:** sea ice melts

temperature in summer and fall, does not lead to a pronounced thinning of sea ice in winter (see Fig. 6a). Instead, sea ice loss is confined to the Barents-Kara Seas in winter, where turbulent heat flux is significantly increased. It seems that the increased solar radiation as a result of albedo feedback is responsible for the sea ice loss and sea surface warming in summer, except for the western part of the Barents Sea, where sea surface warming seems associated with oceanic heat transport. The increased energy, however, does not seem connected, at least directly, with the increased turbulent heat flux in winter. Note that the region of sea surface warming in summer does not match well with the region of sea ice loss in winter (Fig. 6).

### 3.4 Mechanism of sea ice loss

While significant loss is observed only during summer and fall over the Laptev and Chukchi Seas, sea ice loss continues throughout the year over the Barents-Kara Seas (see different regions of conspicuous sea ice loss in Fig. 5). In order to understand why sea ice distribution differs markedly over the Barents and Kara Seas, the monthly energy budget is computed in Fig. 7a. In April-June, absorption of shortwave radiation increases dramatically over the region; this excessive incoming energy explains the bulk of the total energy budget. During the rest of the year, net radiation change is fairly small ( $< 3 \text{ W m}^{-2}$ ). On the other hand, turbulent energy is released mainly during January-April in addition to November when air temperature becomes much colder than sea surface temperature. The total incoming energy seems to be nearly in balance with the total outgoing energy.

As shown in Fig. 7b, the variation of the SAT over the Barents-Kara Seas is highly consistent with those of the downward longwave radiation (corr=0.965) and the upward longwave radiation (corr=0.991). Figure 7c shows that the monthly variation of the 850 hPa air temperature is more strongly correlated with the downward longwave radiation (corr=0.856) than the upward longwave radiation (corr=0.707). It appears that the lower tropospheric temperature essentially determines the strength of the downward longwave radiation. The upward longwave radiation is determined primarily by the SAT. It should be noted that the net longwave radiation is upward in late fall-early spring (Nov-May). It is, then, immediately obvious that SAT cannot increase continuously in the absence of any other energy flux. As a result, this process cannot be sustained without any additional source of energy.

Both the downward and upward radiation at the surface is maximized in winter (specifically February) with very small values in summer (Fig. 7b). Turbulent heat flux is maximized when 850 hPa temperature is minimum in March and November (Fig. 7c). The energy budget in the Barents and Kara Seas indicates that the release of turbulent flux through the sea surface exposed to air is a major component of energy source in winter (Fig. 7a). It appears that sea ice loss condition persists in winter, so that turbulent heat flux released from the surface of the ocean reaches a maximum in March.

This physical relationship between temperature and longwave radiation differs significantly in the Laptev or Chukchi Seas, where net upward longwave radiation is maximized in October (Figs. 8a and 8b). Further, the energy budget exhibits substantially different seasonal patterns with a significant upward energy flux only briefly in October. Both the net radiation

Jinju Kim 6/22/2016 11:24 AM

Deleted: melting

Jinju Kim 6/22/2016 11:24 AM

Deleted: melting

Jinju Kim 6/22/2016 11:25 AM

Deleted: melting

Jinju Kim 6/22/2016 11:25 AM

Deleted: melting

Jinju Kim 6/22/2016 11:25 AM

Deleted: melting

Jinju Kim 6/22/2016 11:25 AM

**Deleted:** It is noted that both the downward and upward radiation at the surface is maximized in winter (specifically February) with very small values in summer (Fig. 7b). It is also worthy of remark that turbulent heat flux is maximized when 850 hPa temperature is minimum in March and November (Fig. 7c).

Jinju Kim 6/22/2016 11:25 AM

Deleted: melting

and turbulent heat flux contribute to this net upward energy flux in October, which is smaller in magnitude than that in the Barents-Kara Seas. The most striking difference is the magnitude of turbulent heat flux in January-April. Turbulent heat flux in January-April is much smaller in the Laptev and Chukchi Seas than in the Barents and Kara Seas. Thus, it seems that the increased absorption of shortwave via ice-albedo feedback in summer and the resulting delayed warming is not so effective in sustaining the ice-free condition in winter in the Laptev and Chukchi Seas.

It is noted that the magnitude of the net longwave radiation in late fall (October or November) is generally smaller than that of net turbulent heat flux in all three sea-ice loss regions studied here (Deser et al., 2010; Screen et al., 2013). This result is not entirely consistent with the conclusion in earlier studies (see Serreze et al., 2009) that heat energy stored in summer is released in the form of longwave radiation in cold seasons. It is clear that the magnitude of “delayed warming” (delayed release of energy from the ocean to the atmosphere) is much less than the increased absorption of insolation at sea surface during summer (Figs. 8a and 8b). It is not clear based on data analysis alone whether this excessive energy is transported to other regions in the Arctic Ocean or is sequestered into the depth of the ocean.

Such a distinct behavior can be understood in terms of the distinct evolution of sea ice concentration in the three regions. Figure 8c shows that sea ice loss is maximized in July-October in the Laptev or Chukchi Seas. By November, sea ice refreezes and sea ice concentration becomes nearly normal. Therefore, the release of turbulent heat flux through the exposed sea surface quickly diminishes to zero. Further, relatively warm air in August-October prevents vigorous release of turbulent heat flux through the exposed sea surface. On the other hand, sea ice loss remains significant throughout late fall and winter in the Barents and Kara Seas, which provides a favorable condition for releasing turbulent heat flux through the exposed sea surface.

20

### 3.5 Arctic Amplification

While net longwave radiation is generally small compared to other energy terms throughout the year, it is an essential ingredient for sea ice reduction and subsequent atmospheric warming. Although the net longwave radiation is less than  $3 \text{ W m}^{-2}$  (Fig. 7a), upward and downward component of longwave radiation individually reach maximum values of  $\sim 15 \text{ W m}^{-2}$  in February (Fig. 7b), which is larger than the maximum turbulent flux in March. On the other hand, the upward longwave radiation is, in general, larger than the downward longwave radiation, resulting in a net deficit of longwave radiation at surface, which is not a favorable condition for maintaining ice-free condition; sea ice loss due to increased downward longwave radiation is followed by sea ice gain due to increased upward longwave radiation. Therefore, longwave radiation, by itself, cannot explain the winter loss of sea ice in the Barents-Kara Seas unless other mechanisms are invoked. It is the release of turbulent heat flux through the exposed sea surface, which facilitates the open sea surface to survive cold winter without refreezing. The turbulent heat flux warms the lower troposphere and increases the downward longwave radiation.

This mechanism, in principle, is essentially identical with that proposed by Screen and Simmonds (2010a, 2010b) and Serreze et al. (2009). It should be noted, however, that excessive absorption of insolation during summer is not a necessary

Jinju Kim 6/22/2016 11:26 AM

Deleted: maintaining sea ice stay melted

Jinju Kim 6/22/2016 11:26 AM

Deleted: melting

Jinju Kim 6/22/2016 11:26 AM

Deleted: melting

Jinju Kim 6/22/2016 11:26 AM

Deleted: melting

Jinju Kim 6/22/2016 11:27 AM

Deleted: melting

Kwang Yul Kim 6/27/2016 9:40 AM

Deleted: Figure 9 shows the schematic of the arctic amplification feedback process and the budgetary numbers derived from the January-March average pattern of the loading vector. A 1 % reduction in sea ice concentration leads to  $\sim 0.76 \text{ W m}^{-2}$  increase in upward heat flux, which in turn increases 850 hPa temperatures by  $\sim 0.07 \text{ K}$  (see upper panels of Fig. S2). Tropospheric warming leads to an increase in downward longwave radiation by  $\sim 0.97 \text{ W m}^{-2}$ , which yields  $\sim 0.26 \text{ K}$  increase in 2 m temperature.

and sufficient condition for the positive feedback process. While sea ice melting is significant and absorption of insolation is clearly reflected in the warming of sea surface in summer (Figs. 5 and 6), and, as a result, atmospheric temperature is warmer in autumn (Fig. 2), no feedback process is developed in winter over the Laptev or Chukchi Seas; sea ice refreezes in fall as atmospheric temperature drops much below freezing. In the Barents-Kara Seas, shortwave radiation absorbed during summer may help facilitate the feedback process discussed here. On the other hand, absorbed shortwave radiation in summer may not necessarily be a unique contributor to the feedback process. For example, heat transport by the warm Norwegian current may prevent ~~sea surface~~ from refreezing in fall and winter (Chylek et al., 2009; Årthun et al., 2012; Onarheim et al., 2015). Årthun et al. (2012), Årthun and Eldevik (2016), Smedsrud et al. (2013), and Onarheim et al. (2015) showed that there is a substantial link between the ocean heat transport into the western Barents Sea and the sea ice variability in the Barents-Kara Seas. The DJF (December-January-February) pattern of sea surface temperature anomaly in Fig. 6 supports their analysis. It is clear, however, that oceanic heat transport alone cannot explain all the major features of sea ice reduction in the Barents-Kara Seas. It should be pointed out that the magnitude of sea surface warming is much smaller than that of atmospheric warming (see Figures 2 and 6).

As shown in Fig. 9, the anomalous patterns of surface air temperature, longwave radiation, and turbulent flux are closely related to that of sea ice reduction. The winter pattern of specific humidity (see also supplementary Fig. S1) is also highly correlated with that of 850 hPa temperature (pattern corr=0.88) and of downward longwave radiation (pattern corr=0.81). In the Barents and Kara Seas, the magnitude of winter specific humidity increases by 0.037 g kg<sup>-1</sup> per 1 % reduction in sea ice concentration. It appears that the increased atmospheric temperature is responsible for the increased specific humidity. In turn, the increased specific humidity may have contributed to an increase in atmospheric temperature by ~~absorbing~~ more longwave radiation (Francis and Hunter, 2007; Screen and Simmonds, 2010a). Thus, the increase in specific humidity together with the increase in atmospheric temperature may result in increased downward longwave radiation. The winter pattern of total cloud cover, however, is not significantly correlated with that of downward longwave radiation (see Fig. S1). Thus, it does not seem likely that change in cloud cover is responsible for the increased downward longwave radiation (Screen and Simmonds, 2010b) in the Barents and Kara Seas; this finding is somewhat different from that of Schweiger et al. (2008).

According to the PC time series in Fig. 2b, this positive feedback process is accelerating in time. The rate of acceleration can be estimated from the PC time series. Let us consider an exponential fit to the PC time series in the form

$$T(t) = a \exp(\gamma t) + b = a(e^\gamma)^t + b \triangleq a(1 + \gamma)^t + b, \quad (8)$$

where  $t$  is time in years since 1979. A least square fit yields  $a = 0.2$ ,  $b = -1.0$ , and  $\gamma = 0.08$  (see blue dashed curve in Fig. 2b). Thus, sea ice ~~loss~~ accelerates at the rate of ~8 % annually. Since the present winter sea ice concentration in the Barents-Kara Seas is ~40 %, sea ice ~~loss~~ will increase by ~4.8 % (=60 % × 0.08) next year. This sea-ice reduction rate is higher than other studies, which predict sea ice disappearance by mid-to-end of this century (Stroeve et al., 2007; Serreze et al., 2007; Boé et al., 2009a; Wang and Overland, 2009). Earlier studies, however, are not specific about the sea ice in the

Jinju Kim 6/27/2016 4:14 PM

Deleted: melted sea ice

Kwang Yul Kim 6/27/2016 9:40 AM

Deleted: 10

Jinju Kim 6/22/2016 11:27 AM

Deleted: trapping

Jinju Kim 6/27/2016 11:03 AM

Formatted: Justified, Line spacing: 1.5

Jinju Kim 6/22/2016 11:27 AM

Deleted: melting

Jinju Kim 6/22/2016 11:28 AM

Deleted: melting

Barents-Kara Seas. Also, uncertainty is inherent in model projections, since most climate models do not accurately simulate the complex Arctic feedbacks (Boé et al., 2009b; English et al., 2015). Uncertainty is obvious in our estimate, since it is based on the exponential curve fitting, which is an important caveat; the result should be understood accordingly.

4. Concluding Remarks

CSEOF analysis was conducted to investigate the physical mechanism of sea ice ~~loss~~ in the Arctic Ocean and the Arctic amplification. The Arctic warming mode was extracted from Northern Hemispheric (30°-90° N) surface (2 m) air temperature, which clearly depicts the amplification pattern in the Arctic. Then, regression in CSEOF space was conducted on all other variables to understand the concerted variation of various climate variables involved in the physical mechanism of sea ice ~~loss~~ and Arctic amplification.

While sea ice reduction occurs over much of the perimeter of the Arctic Ocean, ice-free condition persists in winter only in the Barents-Kara Seas. The primary reason is that the release of turbulent heat flux from the exposed sea surface in winter is currently possible only over the Barents-Kara Seas (see Fig. 9e). Over the other ocean basins including the Laptev and Chukchi Seas, sea ~~surface~~ refreezes quickly in late fall and closes up the exposed sea surface; as a result, excessive turbulent heat flux is not available in winter in these ocean basins.

Our analysis confirms that the temporal pattern of sea ice variation indeed differs significantly between the Barents-Kara Seas and the Laptev and Chukchi Seas. Sea ice refreezes and the sea surface exposed to air is closed up in late fall in the Laptev and Chukchi Seas. As a result, significant absorption of solar radiation in summer does not lead to increased turbulent heat flux in winter. On the other hand, sea surface does not freeze up completely in the Barents-Kara Seas. Consequently, turbulent heat flux becomes available in winter in the Barents-Kara Seas for heating the atmospheric column (Fig. 9f), which in turn increases downward longwave radiation (Fig. 9d). The delayed warming from summer energy absorption via albedo feedback (Screen and Simmonds, 2010a; Serreze and Barry, 2011) does not appear to be a necessary and sufficient condition for the feedback process; it appears that the delayed warming is not uniquely responsible for prolonged sea ice melting in the Barents-Kara Seas; for example, increased ocean heat transport into the western Barents Sea may have provided a favorable condition for the sustenance of ice-free sea surface in winter. Wind may also be partially responsible for sea ice reduction (Ogi and Wallace, 2012).

The increased insolation in spring and summer decreases sea ice concentration along the perimeter of the Arctic Ocean. This thinning of sea ice, in turn, increases the absorption of solar radiation at the exposed ocean surface. There is, however, no direct indication that the absorbed insolation is later used to keep the sea surface remain ice free in winter, although the warmer sea surface may have delayed sea ice refreezing. In the Laptev, East Siberian, and Chukchi Seas, upward longwave radiation and heat flux increase briefly in October, and sea ice refreezes in November, suggesting that sea surface warming in summer and fall has not sufficiently delayed sea ice refreezing. Therefore, the increased absorption of insolation does not contribute, at least directly, to the ~~loss~~ of sea ice in winter in these ocean basins. In the Barents-Kara Seas, upward radiation and heat flux increase briefly in November, and then decrease in December. Unlike the other areas, however, sea surface remains to be exposed to cold air and turbulent heat flux increases significantly in January-March in the Barents-Kara Seas (Fig. 9a). Again, there is no concrete evidence that the absorbed insolation in summer is used directly in the ~~loss~~ of sea ice in winter.

Jinju Kim 6/27/2016 11:02 AM

Deleted: -

... [2]

Jinju Kim 6/22/2016 11:28 AM

Deleted: melting

Jinju Kim 6/22/2016 11:28 AM

Deleted: melting

Kwang Yul Kim 6/27/2016 9:40 AM

Deleted: 10

Jinju Kim 6/27/2016 4:14 PM

Deleted: ice

Kwang Yul Kim 6/27/2016 9:40 AM

Deleted: 10f

Kwang Yul Kim 6/27/2016 9:40 AM

Deleted: 10d

Jinju Kim 6/22/2016 11:28 AM

Deleted: melting

Kwang Yul Kim 6/27/2016 9:41 AM

Deleted: 10

Jinju Kim 6/22/2016 11:28 AM

Deleted: melting

In the Barents and Kara Seas, upward heat flux is increased due to the reduction in sea ice concentration in winter. This flux may be used to warm the lower troposphere, which, in turn, increases downward longwave radiation. As a result, surface air temperature may increase, which helps maintain the ice-free condition (see also Fig. 9). Such a mechanism persists throughout the winter, since sea ice does not refreeze, at least completely, until turbulent heat flux is sufficiently increased during cold winter. Specific humidity increases as atmospheric temperature increases; the anomalous patterns of the two are highly correlated. Thus, it appears that the increased specific humidity may have also contributed to the increase in downward longwave radiation. The anomalous pattern of cloud cover, however, is not significantly correlated with that of atmospheric temperature, suggesting that change in cloud cover has not significantly contributed to the Arctic amplification.

The physical process of sea ice loss and increased air temperature appears to have been accelerating. According to a simple exponential fitting to the PC time series of the warming mode, the strength of this positive feedback process increases by ~8 % every year. At this rate, surface air temperature (850 hPa temperature) may increase by ~10 K (~3 K) over the Barents and Kara Seas with respect to the 1979 winter mean value as sea ice completely disappears (see also IPCC, 2013).

It should be pointed out that several different mechanisms have been invoked to explain Arctic amplification. For example, Hall (2004), Graversen and Wang (2009), and Graversen et al. (2014) showed based on model experiments that surface albedo feedback explains a large fraction of polar temperature amplification. Pithan and Mauritsen (2014) and Graversen et al. (2014) demonstrated that lapse-rate feedback also contributes to polar amplification using climate models. Finally, it should be pointed out that there are different mechanisms by which atmospheric moisture can be transported to the Barents and Kara Seas. For example, Sorteberg and Walsh (2008) demonstrated that moisture transport into the Arctic has increased due to increased seasonal cyclonic activity. Simmonds and Keay (2009) and Simmonds et al. (2008) showed that the trends and variability in September ice coverage is related to the mean cyclone characteristics. Park et al. (2015) showed that downward infrared radiation in the Arctic is driven by horizontal atmospheric water flux and warm air advection into the Arctic. Simmonds and Govekar (2014) also argued that sea ice reduction in the Arctic may be due to the advection of warm and humid air into the Arctic. In light of different views on sea ice loss and temperature amplification in the Arctic, the present study should be understood as a contrasting and complementary view on the mechanism of sea ice loss and temperature amplification in the Arctic.

*Data and code Availability:* All the results of analysis and the programs used in the present paper are freely available by contacting the corresponding author.

*Acknowledgments:* This research was supported by SNU-Yonsei Research Cooperation Program through Seoul National University in 2015.

- Kwang Yul Kim 6/27/2016 9:45 AM

Deleted: a 1 %
- Kwang Yul Kim 6/27/2016 9:47 AM

Deleted: leads to ~0.76 W m<sup>-2</sup> increase in upward heat flux
- Jinju Kim 6/27/2016 4:15 PM

Deleted: excessive
- Kwang Yul Kim 6/27/2016 9:48 AM

Deleted: is
- Kwang Yul Kim 6/27/2016 9:48 AM

Deleted: ; 850 hPa air temperature increases by ~0.07 K. The raised air temperature
- Kwang Yul Kim 6/27/2016 9:48 AM

Deleted: by ~0.97 W m<sup>-2</sup>
- Kwang Yul Kim 6/27/2016 9:50 AM

Deleted: s by ~0.26 K
- Kwang Yul Kim 6/27/2016 9:41 AM

Deleted: 10
- Jinju Kim 6/22/2016 11:28 AM

Deleted: melting
- Jinju Kim 6/22/2016 11:28 AM

Deleted: melts
- Jinju Kim 6/22/2016 11:29 AM

Deleted: Alexeev et al. (2005),
- Jinju Kim 6/27/2016 10:58 AM

Deleted: -

References

5 | Årthun, M., Eldevik, T., Smedsrud, L. H., Skagseth, Ø., and Ingvaldsen, R. B.: Quantifying the Influence of Atlantic Heat on Barents Sea Ice Variability and Retreat, *J. Climate*, 25, 4736-4743, 2012.

5 | Årthun, M. and Eldevik, T.: On Anomalous Ocean Heat Transport toward the Arctic and Associated Climate Predictability, *J. Climate*, 29, 689-704, doi: <http://dx.doi.org/10.1175/JCLI-D-15-0448.1>, 2016

Boé, J., Hall, A., and Qu, X.: September sea-ice cover in the Arctic Ocean projected to vanish by 2100, *Nat. Geosci.*, 2, 341-343, 2009a.

Boé, J., Hall, A., and Qu, X.: Current GCMs' unrealistic negative feedback in the Arctic, *J. Climate*, 22, 4682-4695, 2009b.

10 | Cavaleri, D. J. and Parkinson, C. L.: Arctic sea ice variability and trends, 1979-2010, *The Cryosphere*, 6, 881-889, 2012.

10 | Chylek, P., Folland, C. K., Lesins, G., Dubey, M. K., and Wang, M.: Arctic air temperature change amplification and the Atlantic multidecadal oscillation, *Geophys. Res. Lett.*, 36, L14801, doi: 10.1029/2009GL038777, 2009.

Cohen, J., Screen, J. A., Furtado, J. C., Barlow, M., Whittleston, D., Coumou, D., Francis J., Dethloff, K., Entekhabi, D., Overland, J., and Jones, J.: Recent Arctic amplification and extreme mid-latitude weather. *Nat. Geosci.*, 7, 627-637, 2014.

15 | Comiso, J. C., Parkinson C. L., Gersten R., and Stock L.: Accelerated decline in the Arctic sea ice cover, *Geophys. Res. Lett.* 35, L01703, doi:10.1029/2007GL031972, 2008.

Curry, J. A., Schramm, J. L., and Ebert, E. E.: Sea ice-albedo feedback mechanism, *J. Climate*, 8, 240-247, 1995.

Dee, D., Uppala, S., Simmons, A., Berrisford, P., Poli, P., Kobayashi, S., Andrae, U., Balmaseda, M., Balsamo, G., Bauer, P., Bechtold, P., Beljaars, A. C. M., van de Berg, L., Bidlot, J., Bormann, N., Delsol, C., Dragani, R., Fuentes, M., Geer, A. J., Haimberger, L., Healy, S. B., Hersbach, H., Hólm, E. V., Isaksen, L., Kållberg, P., Köhler, M., Matricardi, M., McNally, A. P., Monge-Sanz, B. M., Morcrette, J. J., Park, B. K., Peubey, C., de Rosnay, P., Tavolato, C., Thépaut, J. N., and Vitart, F.: The ERA-Interim reanalysis: Configuration and performance of the data assimilation system, *Q. J. Roy. Meteor. Soc.*, 137, 553-597, 2011.

20 | Deser, C., Tomas, R., Alexander, M., and Lawrence, D.: The Seasonal Atmospheric Response to Projected Arctic Sea Ice Loss in the Late Twenty-First Century, *J. Climate*, 23, 333-351, 2010.

25 | English, J. M., Gettelman, A., and Henderson, G. R.: Arctic radiative fluxes: Present-day biases and future projections in CMIP5 models, *J. Climate*, 28, 6019-6038, 2015.

Flanner, M. G., Shell K. M., Barlage, M., Perovich, D. K., and Tschudi M. A.: Radiative forcing and albedo feedback from the Northern Hemisphere cryosphere between 1979 and 2008, *Nat. Geosci.*, 4, 151-155, 2011.

30 | Francis, J. A. and Hunter, E.: New insight into the disappearing Arctic sea ice, *EOS, Trans. Am. Geophys. Union*, 87, 509-511, 2006.

Francis, J. A. and Hunter, E.: Changes in the fabric of the Arctic's greenhouse blanket, *Environ. Res. Lett.*, 2, 045011, doi:10.1088/1748-9326/2/4/045011, 2007.

Jinju Kim 6/22/2016 11:29 AM

**Deleted:** Alexeev, V. A., Langen P. L., and Bates J. R.: Polar amplification of surface warming on an aquaplanet in "ghost forcing" experiments without sea ice feedbacks, *Clim. Dynam.*, 24, 655-666, 2015. .

Jinju Kim 6/27/2016 6:48 PM

**Deleted:** e

Jinju Kim 6/27/2016 6:45 PM

**Deleted:** 2010

Jinju Kim 6/27/2016 6:44 PM

**Deleted:** . Y

Jinju Kim 6/27/2016 6:40 PM

**Deleted:** ts

Jinju Kim 6/28/2016 9:13 AM

**Deleted:** -



Francis, J. A., Chan, W., Leathers, D. J., Miller, J. R., and Veron, D. E.: Winter Northern Hemispheric weather patterns remember summer Arctic sea ice extent, *Geophys. Res. Lett.*, 36, L07503, doi: 10.1029/2009GL037274, 2009.

Graversen, R. G. and Wang, M.: Polar amplification in a coupled climate model with locked albedo, *Clim. Dynam.*, 33, 629-643, 2009.

5 Graversen, R. G., Langen, P. L., and Mauritsen, T.: Polar amplification in CCSM4: Contributions from the lapse rate and surface albedo feedbacks, *J. Climate*, 27, 4433-4449, 2014.

Hall, A.: The role of surface albedo feedback in climate, *J. Climate*, 17, 1550-1568, 2004.

Holland, M. M. and Bitz, C. M.: Polar amplification of climate change in coupled models, *Clim. Dynam.*, 21, 221-232, 2003.

IPCC, Climate change 2013: The physical science basis. Contribution of Working Group I to the Fifth Assessment Report of the Intergovernmental Panel on Climate Change, edited by: Stocker, T.F., Qin, D., Plattner, G.-K., Tignor, M., Allen, S.K., Boschung, J., Nauels, A., Xia, Y., Bex, V., and Midgley, P. M., Cambridge University Press, Cambridge, United Kingdom and New York, NY, USA, 2013.

10 Kim, K.-Y. and North, G. R.: EOFs of harmonizable cyclostationary processes, *J. Atmos. Sci.*, 54, 2416-2427, 1997.

Kim, K.-Y., North, G. R., and Huang, J.: EOFs of one-dimensional cyclostationary time series: Computations, examples, and stochastic modeling, *J. Atmos. Sci.*, 53, 1007-1017, 1996.

15 Kim, K.-Y., Hamlington, B. D., and Na, H.: Theoretical foundation of cyclostationary EOF analysis for geophysical and climatic variables: Concepts and examples, *Earth-Sci. Rev.*, 150, 201-218, doi:10.1016/j.earscirev.2015.06.003, 2015.

Kim, K.-Y. and Son, S.-W.: Physical characteristics of Eurasian winter temperature variability, *Environ. Res. Lett.*, 11, 044009, 2016.

20 Kumar, A., Perlwitz, J., Eischeid, J., Quan, X., Xu, T., Zhang, T., Hoerling, M., Jha, B., and Wang, W.: Contribution of sea ice loss to Arctic amplification, *Geophys. Res. Lett.*, 37, L21701, doi: 10.1029/2010GL045022, 2010.

Ogi, M. and Wallace, J. M.: The role of summer surface wind anomalies in the summer Arctic sea ice extent in 2010 and 2011, *Geophys. Res. Lett.*, 39, L09704, 2012.

25 Onarheim, I. H., Eldevik, T., Årthun, M., Ingvaldsen, R. B., and Smedsrud, L. H.: Skillful prediction of Barents Sea ice cover, *Geophys. Res. Lett.*, 42, 5364-5371, 2015.

Overland, J. E., Wood, K. R., and Wang, M.: Warm Arctic-cold continents: climate impacts of the newly open Arctic Sea, *Polar Res.*, 30, 15787, 2011.

Park, D. S., Lee, S., and Feldstein, S. B.: Attribution of the recent winter sea ice decline over the Atlantic sector of the Arctic Ocean, *J. Climate*, 28, 4027-4033, 2015.

30 Petoukhov, V. and Semenov, V.: A link between reduced Barents-Kara sea ice and cold winter extremes over northern continents, *J. Geophys. Res.*, 115, D21111, doi:10.1029/2009jd013568, 2010.

Pithan, F. and Mauritsen, T.: Arctic amplification dominated by temperature feedbacks in contemporary climate models, *Nat. Geosci.*, 7, 181-184, 2014.

Jinju Kim 6/28/2016 9:55 AM

**Deleted:** Graversen, R. G., Mauritsen, T., Tjernström, M., Källén, E., and Svensson, G.: Vertical structure of recent Arctic warming, *Nature*, 451, 53-56, 2008. .

Jinju Kim 6/28/2016 10:04 AM

**Deleted:** Kapsch, M.-L., Graversen, R. G., and Tjernström, M.: Springtime atmospheric energy transport and the control of Arctic summer sea-ice extent, *Nat. Clim. Change*, 3, 744-748, 2013. .

Jinju Kim 6/27/2016 6:19 PM

**Deleted:** :

Jinju Kim 6/27/2016 6:15 PM

**Deleted:** ,

Jinju Kim 6/27/2016 6:13 PM

**Deleted:** , R.

Schweiger, A. J., Lindsay, R. W., Vavrus, S., and Francis, J. A.: Relationships between Arctic sea ice and clouds during autumn, *J. Climate*, 21, 4799-4810, 2008.

Screen, J. A. and Simmonds, I.: The central role of diminishing sea ice in recent Arctic temperature amplification, *Nature*, 464, 1334-1337, doi:10.1038/nature09051, 2010a.

5 Screen, J. A. and Simmonds, I.: Increasing fall-winter energy loss from the Arctic Ocean and its role in Arctic temperature amplification, *Geophys. Res. Lett.*, 37, L16707, doi:10.1029/2010GL044136, 2010b.

Screen, J. A. and Simmonds, I.: Declining summer snowfall in the Arctic: causes, impacts and feedbacks, *Clim. Dynam.*, 38, 2243-2256, 2012

Screen, J. A., Simmonds, I., Deser, C., and Tomas, R.: The atmospheric response to three decades of observed Arctic sea ice loss, *J. Climate*, 26, 1230-1248, 2013.

10 Screen, J. A., Deser, C., Simmonds, I., and Tomas, R.: Atmospheric impacts of Arctic sea-ice loss, 1979-2009: separating forced change from atmospheric internal variability, *Clim. Dynam.*, 43, 333-344, 2014.

Sedlar, J., Tjernström, M., Mauritsen, T., Shupe, M. D., Brooks, I. M., Persson, P. Ola G., Birch, C. E., Leck, C., Sirevaag, A., and Nicolaus, M.: A transitioning Arctic surface energy budget: the impacts of solar zenith angle, surface albedo and cloud radiative forcing, *Clim. Dynam.*, 37, 1643-1660, 2011.

15 Serreze, M. C. and Barry, R. G.: Processes and impacts of Arctic amplification: A research synthesis, *Global Planet Change*, 77, 85-96, 2011.

Serreze, M. C. and Francis, J. A.: The Arctic amplification debate, *Climatic Change*, 76, 241-264, 2006.

Serreze, M. C., Holland, M. M., and Stroeve, J.: Perspectives on the Arctic's Shrinking Sea-Ice Cover, *Science*, 315, 1533-1536, 2007.

20 Serreze, M. C., Barrett, A. P., Stroeve, J. C., Kindig, D. N., and Holland, M. M.: The emergence of surface-based Arctic amplification, *The Cryosphere*, 3, 11-19, 2009.

Simmonds, I.: Comparing and contrasting the behavior of Arctic and Antarctic sea ice over the 35 year period 1979-2013, *Ann. Glaciol.*, 56, 18-28, 2015.

25 Simmonds, I. and Govekar, P. D.: What are the physical links between Arctic sea ice loss and Eurasian winter climate?, *Environ. Res. Lett.*, 9, 101003, doi:10.1088/1748-9326/9/10/101003, 2014.

Simmonds, I. and Keay, K.: Extraordinary September Arctic sea ice reductions and their relationship with storm behavior over 1979-2008, *Geophys. Res. Lett.*, 36, L19715, doi:10.1029/2009GL039810, 2009.

Simmonds, I. and Rudeva, I.: The Great Arctic cyclone of August 2012, *Geophys. Res. Lett.*, 39, L23709, 2012.

30 Simmonds, I., Burke, C., and Keay, K.: Arctic climate change as manifest in cyclone behavior. *J. Climate*, 21, 5777-5796, 2008.

Smedsrud, L. H., Esau, I., Ingvaldsen, R. B., Eldevik, T., Haugan, P. M., Li, C., Lien, V. S., Olsen, A., Omar, A. M., Otterå, O. H., Risebrobakken, B., Sandø, A. B., Semenov, V. A., and Sorokina, S. V.: The role of the Barents Sea in the Arctic climate system, *Rev. Geophys.*, 51, 415-449, 2013.

Jinju Kim 6/27/2016 6:09 PM

Deleted: a

Jinju Kim 6/27/2016 5:44 PM

Deleted: o

Jinju Kim 6/27/2016 5:38 PM

Deleted: n

Jinju Kim 6/27/2016 6:16 PM

Deleted: as

Jinju Kim 6/27/2016 5:30 PM

Deleted: 15

| Sorteberg , A. and Walsh, J. E.: Seasonal cyclone variability at 70°N and its impact on moisture transport into the Arctic, Tellus, 60A, 570-586, 2008.

| Stroeve, J., Holland, M. M., Meier, W., Scambos, T., and Serreze, M.: Arctic sea ice decline: faster than forecast, Geophys. Res. Lett., 34, L09501, doi.10/1029/2007GL029703, 2007.

5 | Stroeve, J., Serreze, M., Drobot, S., Gearheard, S., Holland, M., Maslanik, J., Meier, W., and Scambos, T.: Arctic sea ice extent plummets in 2007, EOS, Trans. Am. Geophys. Union, 89, 13-14, 2008.

Jinju Kim 6/22/2016 11:30 AM  
Deleted: v

Jinju Kim 6/27/2016 4:15 PM  
Formatted: Justified, Indent: Left: 0 cm, Hanging: 1.27 cm, Line spacing: 1.5 lines

Jinju Kim 6/27/2016 4:15 PM  
Deleted: -

Table Captions

**Table 1.** Variables used in the present study with units and  $R^2$  values of regression. The target variable for regression is 2 m air temperature.

Figure Captions

**Figure 1.** Geography of the Arctic Ocean (69°-90° N) and the seasonal patterns of average sea ice concentration (%) based on 1979-2014 ERA interim data.

**Figure 2.** The seasonal patterns of the Northern Hemispheric (30°-90° N) warming mode (upper panel; 0.3 K) and the corresponding amplitude time series (lower panel). The dashed curve is an exponential fit (see Eq. (8)) to the PC time series.

**Figure 3.** The regressed seasonal patterns of sea ice concentration (shading; 1 %), net shortwave radiation (red contours;  $\pm 1, 2, 4, 6, 8, 10 \text{ W m}^{-2}$ ), and net longwave radiation (black contours;  $\pm 0.5, 1, 2, 3, 4, 5 \text{ W m}^{-2}$ ) in the Arctic region (64.5°-90° N). Net upward longwave radiation and net downward shortwave radiation are defined as positive. Solid contours represent positive values and dotted contours represent negative values.

**Figure 4.** The regressed seasonal patterns of sea ice concentration (shading; 1 %), sensible heat flux (red contours;  $\pm 1, 3, 5, 7, 10 \text{ W m}^{-2}$ ), and latent heat flux (black contours;  $\pm 0.2, 0.4, 0.6, 0.8, 1 \text{ W m}^{-2}$ ) in the Arctic region (64.5°-90° N). Net upward heat flux is defined as positive.

**Figure 5.** The regressed seasonal patterns of sea ice concentration (shading; 1 %) and net surface radiation (black contours;  $\pm 2, 4, 6, 8, 10 \text{ W m}^{-2}$ ), and turbulent heat flux (red contours;  $\pm 2, 4, 8, 12, 16, 20 \text{ W m}^{-2}$ ) in the Arctic region (64.5°-90° N). Positive values represent upward radiations and heat fluxes. The three green boxes represent the regions of significant change in sea ice concentration: Barents and Kara Seas [21°-79.5° E  $\times$  75°-79.5° N], Laptev Sea [105°-154.5° E  $\times$  76.5°-81° N], and Chukchi Sea [165°-210° E  $\times$  72°-76.5° N].

**Figure 6.** The regressed seasonal patterns of sea surface temperature (shading; 0.05 K) and the reduction of sea ice concentration (contours; 2 %) in the Arctic region (64.5°-90° N).

**Figure 7.** (a) Monthly values of total energy flux (black), net longwave radiation (red dotted), net shortwave radiation (red dashed), net radiation (red solid), latent heat flux (blue dotted), sensible heat flux (blue dashed), and turbulent heat flux (blue solid) in the Barents-Kara Seas (21°-79.5° E  $\times$  75°-79.5° N). (b) Monthly plot of 2 m air temperature (black), downward longwave radiation (red), and upward longwave radiation (blue). (c) Monthly plot of 850 hPa air temperature (black), downward longwave radiation (red), and upward longwave radiation (blue).

**Figure 8.** Monthly values of total energy flux (black), net longwave radiation (red dotted), net shortwave radiation (red dashed), net radiation (red solid), latent heat flux (blue dotted), sensible heat flux (blue dashed), and turbulent heat flux (blue solid) in the (a) Laptev Sea [105°-154.5° E  $\times$  76.5°-81° N], and (b) Chukchi Sea [165°-210° E  $\times$  72°-76.5° N]. (c) Monthly sea ice concentration change in the Barents-Kara Seas (red), Laptev Sea (blue), and Chukchi Sea (black).

Jinju Kim 6/27/2016 11:00 AM

**Deleted:** Figure 3. The regressed seasonal patterns of sea ice concentration (shading; 1 %), net shortwave radiation (red contours;  $1 \text{ W m}^{-2}$ ), and net longwave radiation (black contours;  $0.5 \text{ W m}^{-2}$ ) in the Arctic region (64.5°-90° N). Net upward longwave radiation and net downward shortwave radiation are defined as positive. ... [3]

**Figure 9.** The regressed DJF patterns of (a) sea ice (shading) and 2 m air temperature (contour), (b) 900 hPa specific humidity, (c) upward longwave radiation at surface, (d) downward longwave radiation at surface, (e) turbulent (sensible + latent) heat flux, and (f) 850 hPa air temperature. The green contours in (b)-(f) represent sea ice concentration in (a).

Kwang Yul Kim 6/27/2016 9:41 AM

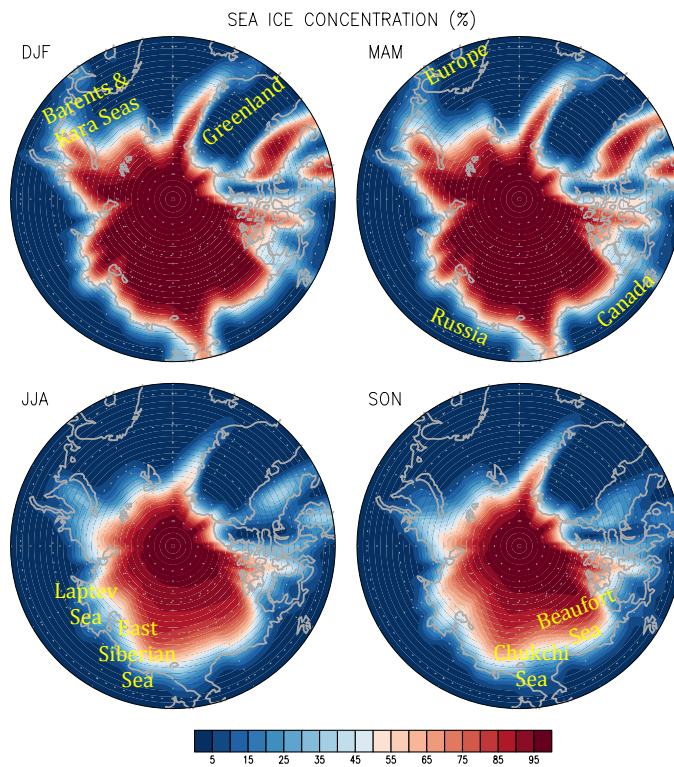
**Deleted:** **Figure 9.** Sea ice melting mechanism in the Barents and Kara Seas. The numbers represent the magnitude of change at each step for a 1 % reduction in sea ice concentration and are based on the January-March averaged loading vector of the warming mode. -

Kwang Yul Kim 6/27/2016 9:41 AM

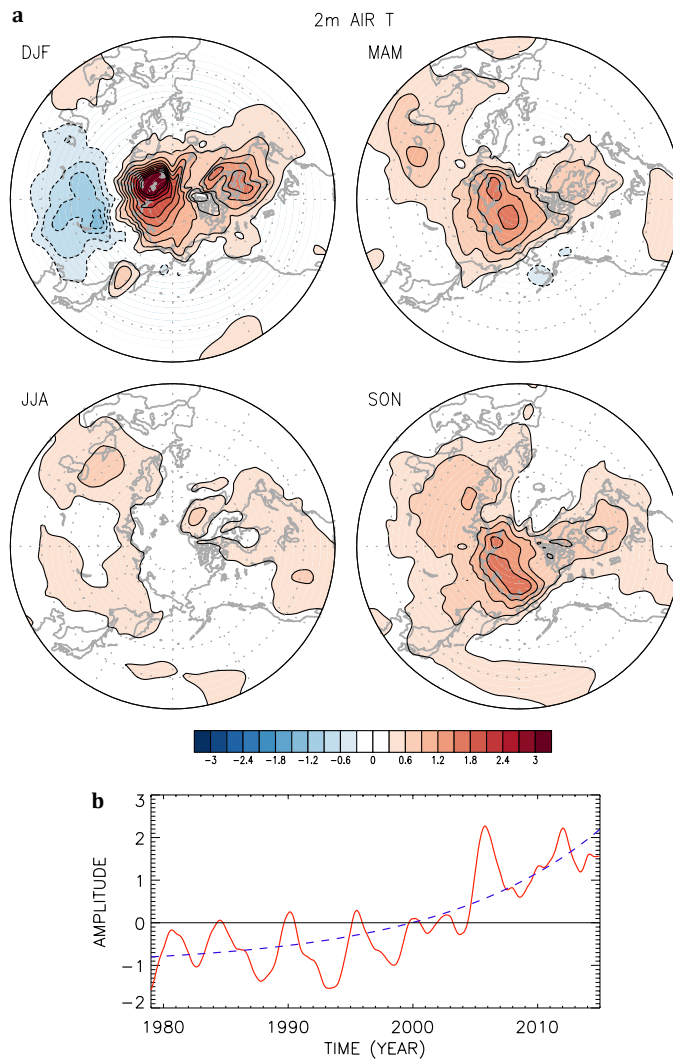
**Deleted:** 10

**Table 1.** Variables used in the present study with units and  $R^2$  values of regression. The target variable for regression is 2 m air temperature.

Variable	$R^2$ value
sea ice (fraction)	0.960
sea surface temperature (°C)	0.937
downward longwave radiation ( $\text{W m}^{-2}$ )	0.995
upward longwave radiation ( $\text{W m}^{-2}$ )	0.999
net shortwave radiation ( $\text{W m}^{-2}$ )	0.907
sensible heat flux ( $\text{W m}^{-2}$ )	0.968
latent heat flux ( $\text{W m}^{-2}$ )	0.954
low cloud cover (fraction)	0.947
total cloud cover (fraction)	0.921
specific humidity ( $\text{g kg}^{-1}$ )	0.945
air temperature (1000-850 hPa; °C)	0.962
geopotential (1000-850 hPa; $\text{m}^2 \text{s}^{-2}$ )	0.772
wind (1000-850 hPa; $\text{m s}^{-1}$ )	0.844

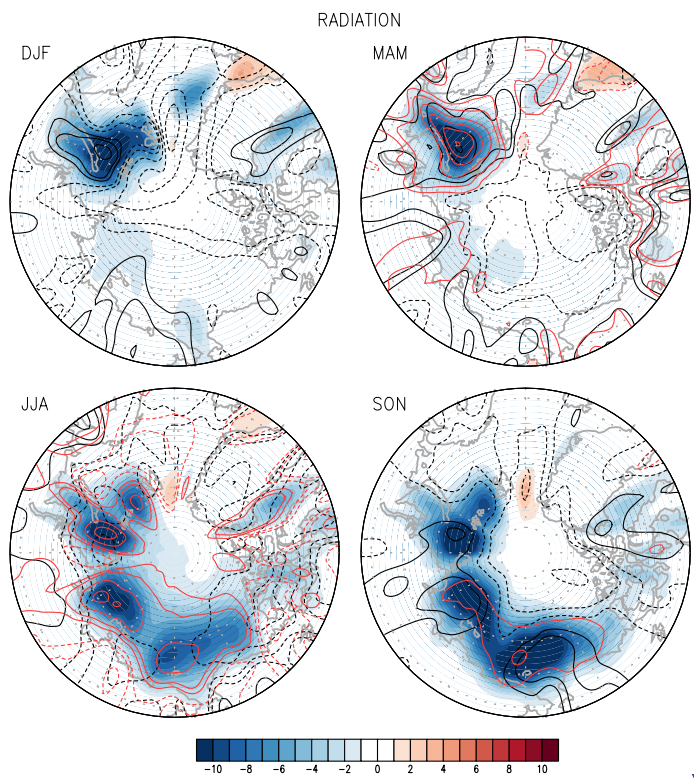


**Figure 1.** Geography of the Arctic Ocean (69°-90° N) and the seasonal patterns of average sea ice concentration (%) based on 1979-2014 ERA interim data.



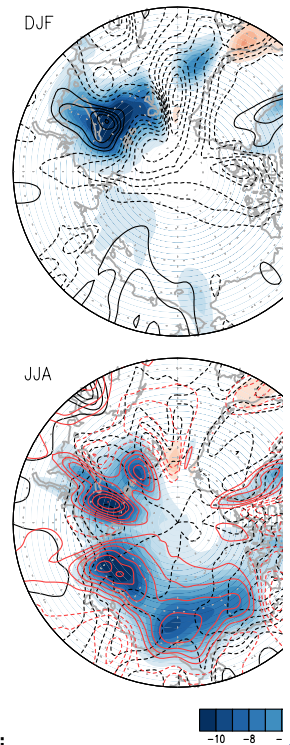
**Figure 2.** The seasonal patterns of the Northern Hemispheric ( $30^{\circ}$ - $90^{\circ}$  N) warming mode (upper panel; 0.3 K) and the corresponding amplitude time series (lower panel). The dashed curve is an exponential fit (see Eq. (8)) to the PC time series.



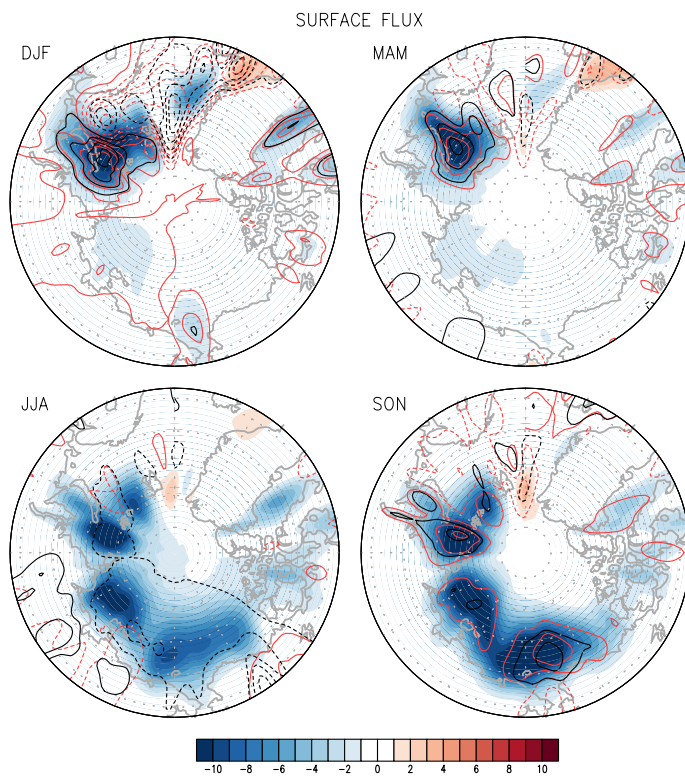


**Figure 3.** The regressed seasonal patterns of sea ice concentration (shading; 1 %), net shortwave radiation (red contours;  $\pm 1, 2, 4, 6, 8, 10 \text{ W m}^{-2}$ ), and net longwave radiation (black contours;  $\pm 0.5, 1, 2, 3, 4, 5 \text{ W m}^{-2}$ ) in the Arctic region ( $64.5^{\circ}$ - $90^{\circ}$  N). Net upward longwave radiation and net downward shortwave radiation are defined as positive. Solid contours represent positive values and dotted contours represent negative values.

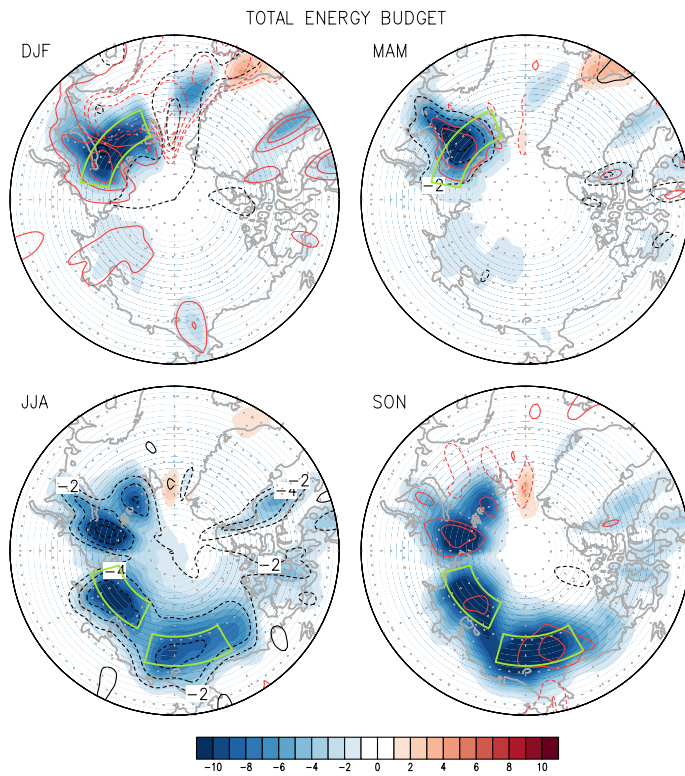
Kwang Yul Kim 6/27/2016 10:28 AM



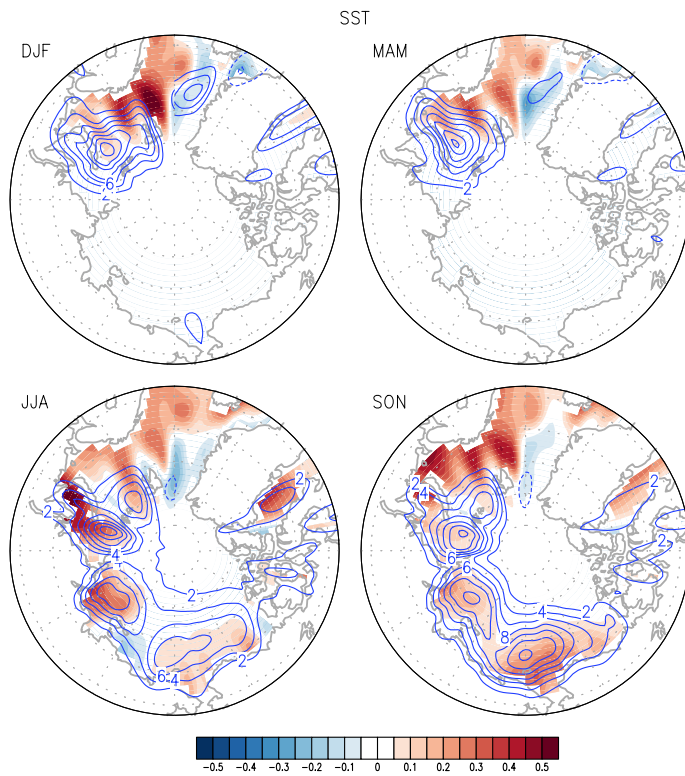
Deleted:



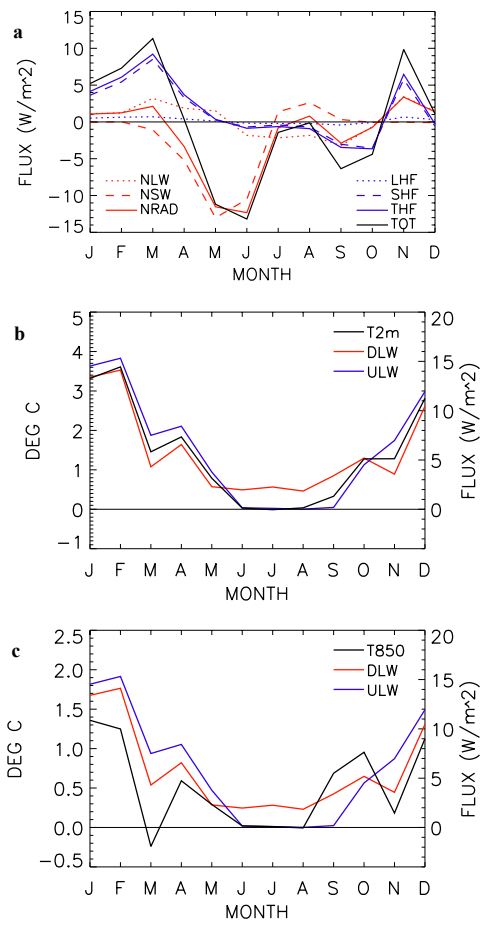
**Figure 4.** The regressed seasonal patterns of sea ice concentration (shading; 1 %), sensible heat flux (red contours;  $\pm 1, 3, 5, 7, 10$  W m<sup>-2</sup>), and latent heat flux (black contours;  $\pm 0.2, 0.4, 0.6, 0.8, 1$  W m<sup>-2</sup>) in the Arctic region (64.5°-90° N). Net upward heat flux is defined as positive.



**Figure 5.** The regressed seasonal patterns of sea ice concentration (shading; 1 %) and net surface radiation (black contours;  $\pm 2, 4, 6, 8, 10 \text{ W m}^{-2}$ ), and turbulent heat flux (red contours;  $\pm 2, 4, 8, 12, 16, 20 \text{ W m}^{-2}$ ) in the Arctic region ( $64.5^{\circ}$ - $90^{\circ}$  N). Positive values represent upward radiations and heat fluxes. The three green boxes represent the regions of significant change in sea ice concentration: Barents and Kara Seas [ $21^{\circ}$ - $79.5^{\circ}$  E  $\times$   $75^{\circ}$ - $79.5^{\circ}$  N], Laptev Sea [ $105^{\circ}$ - $154.5^{\circ}$  E  $\times$   $76.5^{\circ}$ - $81^{\circ}$  N], and Chukchi Sea [ $165^{\circ}$ - $210^{\circ}$  E  $\times$   $72^{\circ}$ - $76.5^{\circ}$  N].



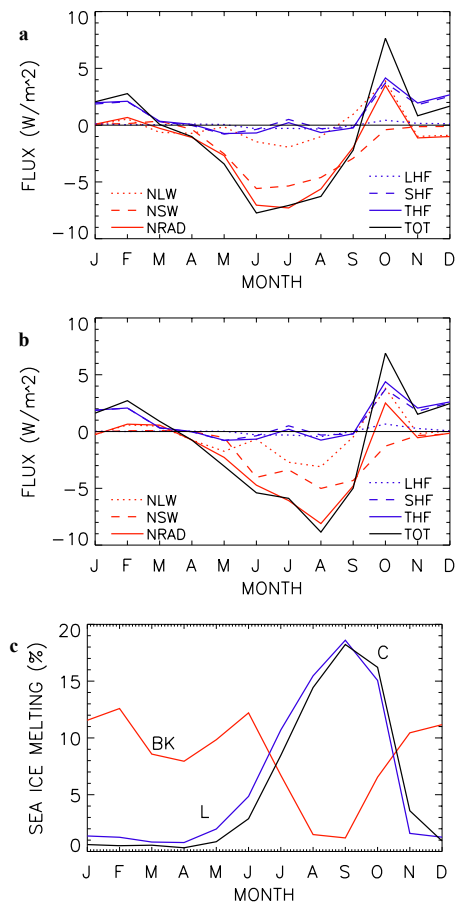
**Figure 6.** The regressed seasonal patterns of sea surface temperature (shading; 0.05 K) and the reduction of sea ice concentration (contours; 2 %) in the Arctic region (64.5°-90° N).



5

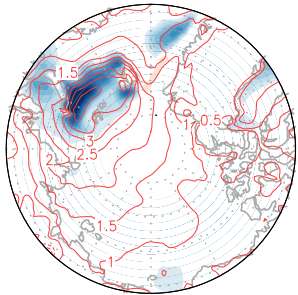
10

**Figure 7.** (a) Monthly values of total energy flux (black), net longwave radiation (red dotted), net shortwave radiation (red dashed), net radiation (red solid), latent heat flux (blue dotted), sensible heat flux (blue dashed), and turbulent heat flux (blue solid) in the Barents-Kara Seas (21°-79.5° E × 75°-79.5° N). (b) Monthly plot of 2 m air temperature (black), downward longwave radiation (red), and upward longwave radiation (blue). (c) Monthly plot of 850 hPa air temperature (black), downward longwave radiation (red), and upward longwave radiation (blue).

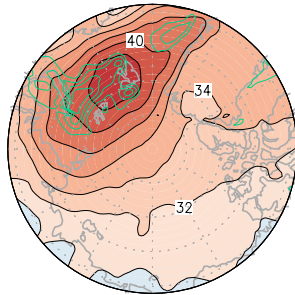


**Figure 8.** Monthly values of total energy flux (black), net longwave radiation (red dotted), net shortwave radiation (red dashed), net radiation (red solid), latent heat flux (blue dotted), sensible heat flux (blue dashed), and turbulent heat flux (blue solid) in the (a) Laptev Sea [105°-154.5° E × 76.5°-81° N], and (b) Chukchi Sea [165°-210° E × 72°-76.5° N]. (c) Monthly sea ice concentration change in the Barents-Kara Seas (red), Laptev Sea (blue), and Chukchi Sea (black).

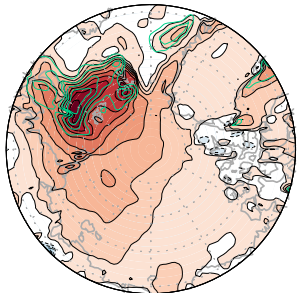
**a** SIC (2%) & 2m AIR T (0.5 C)



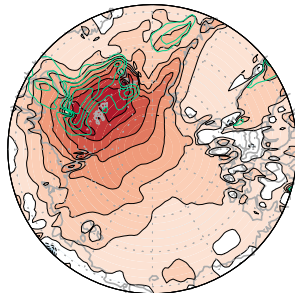
**b** SPEC HUM (0.01 g/kg)



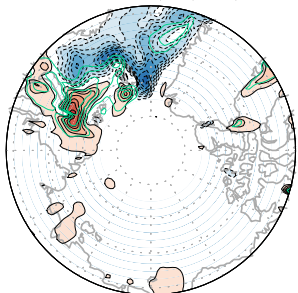
**c** ULW at SFC (2 W/m<sup>2</sup>)



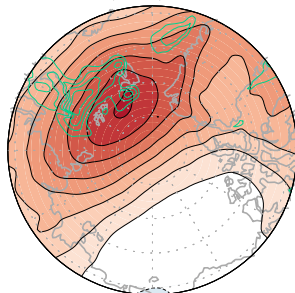
**d** DLW at SFC (2 W/m<sup>2</sup>)



**e** TURBULENT FLUX (3 W/m<sup>2</sup>)

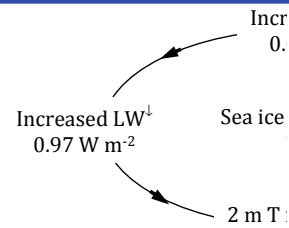


**f** 850 hPa T (0.2 C)



**Figure 2.** The regressed DJF patterns of (a) sea ice (shading) and 2 m air temperature (contour), (b) 900 hPa specific humidity, (c) upward longwave radiation at surface, (d) downward longwave radiation at surface, (e) turbulent (sensible + latent) heat flux, and (f) 850 hPa air temperature. The green contours in (b)-(f) represent sea ice concentration in (a).

Kwang Yul Kim 6/27/2016 9:41 AM



Deleted:

...[4]

Kwang Yul Kim 6/27/2016 9:42 AM

Deleted: 10