



## The European mountain cryosphere: A review of past, current and future issues

5 Martin Beniston<sup>1,2</sup>, Daniel Farinotti<sup>3,4</sup>, Markus Stoffel<sup>1,5</sup>, Liss M. Andreassen<sup>6</sup>, Erika Coppola<sup>7</sup>, Nicolas Eckert<sup>8</sup>, Adriano Fantini<sup>7</sup>, Florie Giacona<sup>9</sup>, Christian Hauck<sup>10</sup>, Matthias Huss<sup>10</sup>, Hendrik Huwald<sup>11</sup>, Michael Lehning<sup>11,12</sup>, Juan-Ignacio López-Moreno<sup>13</sup>, Jan Magnusson<sup>6</sup>, Christoph Marty<sup>12</sup>, Enrique Moran-Tejeda<sup>14</sup>, Samuel Morin<sup>15</sup>, Mohammed Naaim<sup>8</sup>, Antonello Provenzale<sup>16</sup>, Antoine Rabatel<sup>17</sup>, Delphine Six<sup>17</sup>, Johann Stötter<sup>18</sup>, Ulrich Strasser<sup>18</sup>, Silvia Terzago<sup>19</sup>, Christian Vincent<sup>17</sup>

10 <sup>1</sup>Institute for Environmental Sciences, The University of Geneva, Switzerland

<sup>2</sup>Department of Physics, The University of Geneva, Switzerland

<sup>3</sup>Laboratory of Hydraulics, Hydrology and Glaciology (VAW), ETH Zurich, Zurich, Switzerland

<sup>4</sup>Swiss Federal Institute for Forest, Snow and Landscape Research (WSL), Birmensdorf, Switzerland

<sup>5</sup>Department of Earth and Environmental Sciences, The University of Geneva, Switzerland

15 <sup>6</sup>Norwegian Water Resources and Energy Directorate, Oslo, Norway

<sup>7</sup>Abdus Salaam International Centre for Theoretical Physics, Trieste, Italy

<sup>8</sup>Inst. National de Rech. sur les Technologies pour l'Environnement et l'Agriculture (IRSTEA), Saint Martin d'Hères, France

<sup>9</sup>Université de Haute Alsace, Mulhouse, France

<sup>10</sup>University of Fribourg, Department of Geosciences, Fribourg, Switzerland

20 <sup>11</sup>Ecole Polytechnique Fédérale de Lausanne, Laboratory for Cryospheric Sciences, Lausanne, Switzerland

<sup>12</sup>Swiss Federal Institute for Avalanche Research (SLF), Davos, Switzerland

<sup>13</sup>Institute for Pyrenean Ecology (IPE-CSIC), Zaragoza, Spain

<sup>14</sup>University of the Balearic Islands, Palma-de-Mallorca, Spain

<sup>15</sup>Météo France, Centre d'Etudes de la Neige, Saint Martin d'Hères, France

25 <sup>16</sup>CNR, Institute of Geosciences and Earth Resources, Pisa, Italy

<sup>17</sup>University of Grenoble, Laboratory of Glaciology, Saint Martin d'Hères, France

<sup>18</sup>University of Innsbruck, Institute of Geography, Innsbruck, Austria

<sup>19</sup>CNR, Institute of Atmospheric Sciences and Climate (ISAC-CNR), Turin, Italy

*Correspondence to:* Martin Beniston (Martin.Beniston@unige.ch)

30 **Abstract.** The mountain cryosphere is recognized to have important impacts on a range of environmental processes. This paper reviews current knowledge on snow, glacier, and permafrost processes, as well as their past, current and future



5 evolution in mountain regions in mainland Europe. We provide a comprehensive assessment of the current state of cryosphere research in Europe and point to the different domains requiring further research to improve our understanding of climate-cryosphere interactions, cryosphere controls on physical and biological mountain systems, as well as related impacts. We highlight advances in the modeling of the cryosphere, and identify inherent uncertainties in our capability of projecting changes in the context of a warming global climate.

## 1 Introduction

Ongoing climate change and the importance of its anthropogenic component have gained wide recognition (IPCC, 2013). Some regions are more vulnerable than others, to both the expected physical changes and the consequences for ways of life. Mountains are one such system particularly subject to rapid and sustained environmental change (Gobiet et al., 2014), and the cryosphere is the physical compartment that demonstrates the most prominent and visible changes. Changes in mountain snow, glaciers, and permafrost, moreover, have resulted in significant downstream impacts in terms of the quantity, seasonality, and quality of water (Beniston et al., 2011). This is particularly true for areas where snow- and ice-melt represent a large component of stream flow. Countless studies have reported glacier retreat, permafrost reduction, and snowfall decrease across mountain regions in Europe and elsewhere, with implications for stream flow regimes, water availability, or natural hazards. These can in turn negatively impact hydropower, agriculture, forestry, tourism or aquatic ecosystems. As a consequence, downstream communities will also be under pressure. Both political and scientific programs are calling for better preparedness, and for the development of strategies for averting conflicts of interest that can arise, for example, between economic goals and environmental protection.

20 In the following, we provide an overview of the current knowledge on European mountain permafrost, ice, and snow, and the observed changes in these elements of the cryosphere. We focus on mainland Europe, in particular the European Alps and Scandinavia, but also address the Pyrenees and other mid-latitude European mountains undergoing large and rapid change. An assessment of the challenges that need to be addressed in cryosphere research is provided, and we identify areas where further progress is required to improve our understanding of climate-cryosphere interactions. We argue that such improved understanding is the key for better predicting changes and impacts of a cryosphere responding to rapidly changing climatic conditions, and for appropriate adaptation measures to be developed.



## 2. Current and future trends in European mountain cryosphere and their impacts

### 2.1 Changes in snow

Snow is an important component of the hydrology, and plays a key role for sustaining ecology and society in European mountains. Ongoing climatic change is significantly affecting the snow cover through different processes. Snow observations are important for understanding these processes, and for providing more reliable assessments of future changes.

#### 2.1.1 Observed changes in snow cover

Most studies show negative trends in snow depth and snow duration over the past decades. The negative trends are well documented in the Alps owing to the abundance of long-term observations. The changes are typically elevation dependent, with more (less) pronounced changes at low (high) elevations (Marty, 2008; Durand et al., 2009; Terzago et al., 2013). Spring snow water equivalent (SWE) is clearly decreasing in the Alps (Bocchiola and Diolaiuti, 2010; Marty and Meister, 2012) as well as at low elevations in Norway (Skaugen et al., 2012). Only in the higher and colder regions of Scandinavia, trends in snow depth and SWE are positive (Kohler et al., 2006; Skaugen et al., 2012; Dyrørdal et al., 2013). In the Pyrenees, a significant reduction of the snowpack is reported after the 1950s (López-Moreno et al., 2007). In other European mountains, observations are less abundant, but declines in snowpack for mountains in Romania (Birsan and Dumitrescu, 2014; Micu, 2009), Bulgaria (Brown and Petkova, 2007), Poland (Falarz, 2008) and Croatia (Gajić-Čapka, 2011) are reported.

The observed changes in snow depth and snow duration are mainly caused by a shift from solid to liquid precipitation (Serquet et al., 2011; Nikolova et al., 2013) and by more frequent and more intense melt conditions (Klein et al., 2016), both resulting from higher winter and spring temperatures. In addition to a general warming trend, large-scale atmospheric circulation patterns such as the North Atlantic Oscillation (NAO) have been shown to influence the snow cover in Europe (Henderson and Leathers, 2010; Bednorz, 2011; Skaugen et al., 2012; Birsan and Dumitrescu, 2014; Buisan et al., 2015). For the Alps, 50% of the snow pack variability seems to be related to the establishment of blocking patterns over Europe, although in this case the correlation between the annual snow pack variability and the NAO is small and limited to low elevations (Scherrer and Appenzeller, 2006; Durand et al., 2009). The NAO influence can be detected at higher elevations through a ‘cascade’ of consequences that include the NAO influence on pressure fields, and the influence of pressure fields on precipitation. Together with temperature, this determines snowfall. In recent decades, this cascade of consequences has led to an increased number of winter days with warm and dry conditions, which is unfavorable for snow accumulation (Beniston et al., 2011).

The observed changes in snow amount are often abrupt in time, as a result of the interplay between cold temperatures and precipitation, both influenced by large-scale weather patterns. Several studies have reported a step-like change occurring in



the late 1980s for snow depth (Marty, 2008; Durand et al., 2009; Valt and Cianfarra, 2010), for snow-covered areas of the Northern Hemisphere (Choi et al., 2010), but also for other biophysical systems (Reid et al., 2016). In contrast to snow depths and SWE, the snow-covered area has not decreased further in the Alps after the 1990s (Hüsler et al., 2014). This development is mostly the result of winter temperatures that have not risen further, neither in large areas in the Northern Hemisphere (Cohen et al., 2012) nor for the Swiss Alps (Scherrer et al., 2013). Atmospheric internal variability (Li et al., 2015), as well as increasing Eurasian snow cover or shrinking sea-ice extends (Cohen et al., 2012) have been invoked as possible explanations.

Studies analyzing high-magnitude snowfall and maximal winter snow depths are rare, but there are indications that extreme snow depths have decreased in Europe (Blanchet et al., 2009; Kunkel et al., 2016), with the exception of higher and colder sites in Norway (Dyrrdal et al., 2013). The decreasing pattern for extreme snow fall rates is less clear than for extreme snow depth, except for low elevations where the influence of increasing temperatures is predominant (Marty and Blanchet, 2012). In addition, there exist few studies related to past changes in snow avalanche activity. Over the last decades, observations indicate that (a) the number of days with prerequisites for avalanche in forests decreased (Teich et al., 2012), (b) the proportion of wet snow avalanches increased (Pielmeier et al., 2013), and (c) large avalanches retreated upslope (Eckert et al., 2010, 2013; Corona et al., 2013) as a direct consequence of changes in snow cover characteristics (Castebrunet et al., 2012).

### 2.1.2 Future changes in snow cover

The projected increase in temperature for coming decades is accompanied by high uncertainties in winter precipitation changes. Ensemble means show no clear precipitation change until about the 2050s, but slightly increasing winter precipitation thereafter. Projected changes in snow cover are thus highly dependent on the considered greenhouse gas emission scenario and the addressed period. Under a SRES A2 scenario, regional climate model simulations show a dramatic decrease in both the snow cover duration and SWE for Europe by the end of the 21<sup>st</sup> century (Jylhä et al., 2008).

For the Alps and at an elevation of 1500 m a.s.l., recent simulations project a reduction in SWE of 80-90% by the end of the century (Rousselot et al., 2012; Steger et al., 2013; Schmucki et al., 2015). The snow season at that altitude is projected to start 2-4 weeks later and to end 5-10 weeks earlier than today (1992-2012), which is roughly equivalent to an elevation shift of about 700 m (Marty et al., 2016). For elevations above 3000 m a.s.l., even the largest projected precipitation increase results in a decline in SWE of at least 10% by the end of the century. Future climate will most probably not see a permanent snow cover during summer even at the highest elevations, with obvious implications for glacier evolution (Magnusson et al., 2010; Bavay et al., 2013) and thermal conditions of the ground.



Projections for Scandinavia show clear decreases for snow amount and duration for all latitudes. An exception is given by the highest mountains in the north, where strongly increasing precipitation seems to compensate for temperature rise, thus resulting in marginal changes only (Räisänen and Eklund, 2012). Simulations for the Pyrenees indicate declines of the snow cover similar to those found for the Alps (López-Moreno et al., 2009). Again, the dependency on future greenhouse gas emissions has to be noted: Under a high emission scenarios (RCP8.5), SWE decreases by 78% at the end of the 21<sup>st</sup> century at 1500 m a.s.l. elevation, whereas a lower emission scenario (RCP6.0) shows a decline of 44%.

Regarding extremes, model results suggest a smaller reduction in daily maximum snowfalls than in mean snowfalls over many regions of the Northern Hemisphere by the end of the 21<sup>st</sup> century (O’Gorman, 2014). An investigation for the Pyrenees (López-Moreno et al., 2011), however, finds a marked decrease in the frequency and intensity of heavy snowfall events below 1000 m a.s.l., but no change in heavier snowfalls for higher elevations. The ongoing evolution towards more wet than dry snow avalanches will continue, although the overall avalanche activity will decrease, especially in spring and at low elevations (Martin et al., 2001; Castebrunet et al., 2014). In contrast, an increase in avalanche activity is expected in winter at high elevations due to more favorable conditions for wet-snow avalanches earlier in the season (Castebrunet et al., 2014). The reduction of the snow season length will have large consequences for winter tourism (Uhlmann et al., 2008; Steiger and Abegg, 2013; Schmuki et al., 2015b), water management (Laghari et al., 2012; Clarvis et al., 2014; Gaudard et al., 2014; Köplin et al., 2014) and ecology (Hu et al., 2010; Martz et al., 2016).

## a. 2.2 Changes in glaciers

Mountain glaciers are important for water resources as they modulate the water cycle at different temporal and spatial scales, affecting irrigation, hydropower production, and tourism. Evaluating the retreat of mountain glaciers in response to climate change is not only crucial to estimate impacts on water resources (Kaser et al., 2010), but also to assess their contribution to future sea-level rise (Radić et al., 2014), and to anticipate natural hazards related to glacier retreat (Werder et al., 2010; Gilbert et al., 2012; Stoffel and Huggel, 2012).

### 2.2.1 Glacier observations in Europe

Long-term data series allow evaluating the response of glaciers to changes in climate. Europe has a rich record of glaciological observations, with long records based on photography, paintings and other artwork that allow documenting glacier changes in earlier centuries (Zumbühl et al., 2008), as well as length-change records starting in the 19<sup>th</sup> century (Zemp et al., 2015). Europe also has numerous direct mass balance observations including some of the earliest (Rhône Glacier, 1884-1910) and the longest (e.g., Clariden since 1914; Silvretta since 1918; Storglaciaren since 1946; Sarennes and Storbreen since 1949) series in the world. Glacier surface mass balance is an essential variable in support of climate and cryosphere research (Bojinski et al., 2014) and several glaciers are densely measured with long-term *in-situ* monitoring of accumulation and ablation. *In-situ* data allow understanding the climate variables that control glacier mass balance at



seasonal to decadal scales, as well as characterizing the spatial and temporal variability of processes at the glacier scale (Vincent et al., 2004), together with a more detailed monitoring of micro-meteorology and ice dynamics (Oerlemans et al., 2009; Berthier and Vincent, 2012). Glacier monitoring is also essential for the calibration and validation of models that allow for extrapolation to areas with less comprehensive measurements. In addition to *in-situ* data, repeated mapping of surface elevations allow documenting glacier volume changes back to the early 20<sup>th</sup> century, and are useful for homogenizing and reanalyzing the series (Thibert et al., 2008; Andreassen et al., 2016).

### 2.2.2 Historical trends over the 20<sup>th</sup> and 21<sup>st</sup> centuries

Glaciers in mainland Europe cover an area of nearly 5,000 km<sup>2</sup> (Table 1). These glaciers have undergone substantial mass loss throughout the 20<sup>th</sup> century (Fig. 1) and the pace of mass loss has been increasing (Zemp et al., 2015). A loss of 49% in the volume of ice was estimated for the European Alps for the period 1900-2011 (Huss, 2012). Repeated inventories showed a reduction in glacier area of 11% in Norway between 1960 and the 2000s (Winsvold et al., 2014) and 28% in Switzerland between 1973 and 2010 (Fischer et al., 2014). Periods with positive mass balance, however, have occurred, notably from the 1960s to the mid-1980s in the Alps, and in the 1990s and 2000s for maritime glaciers in Norway.

15

Country	Area (km <sup>2</sup> )	Year	Reference
Norway	2692	1999-2006	Andreassen et al., 2012
Sweden	262	2002	Brown and Hansson, 2004
Switzerland	943	2008-2011	Fischer et al., 2014
Austria	415	2006	Abermann et al., 2009
Italy	370	2005-2011	Smiraglia and Diolaiuti, 2015
France (Alps)	275	2006-2009	Gardent et al., 2014
France-Spain Pyrenees	3	2011	Marti et al., 2015
<b>TOTAL</b>	<b>4960</b>		

**Table 1: Distribution of glacier surface area (km<sup>2</sup>) in continental Europe and mainland Scandinavia, and the respective years of reference.**

20

### 2.2.3 Sensitivity of glaciers to climate drivers

Glacier surface mass balance is governed by accumulation and ablation processes, directly linked to solid precipitation and energy exchanges at the surface. Changes in climate variables are driven by different factors, ranging from large-scale synoptic weather patterns to regional and local effects enhanced by topography. The latter influences the distribution of



precipitation, solar radiation, and wind, among others. Several studies have shown that the NAO influences glacier mass balance, in particular in southwestern Norway. The recent glacier advance in Scandinavia during 1989-1995, for example, is attributed to increased winter precipitation linked to the positive NAO index during this period (Rasmussen and Conway, 2005). In contrast, in the European Alps the relationship between the NAO and glacier mass balance is less pronounced  
5 (Marzeion and Nesje, 2012).

Glacier retreat during the 20<sup>th</sup> century has been mainly attributed to changes in atmospheric energy fluxes, which translate to air temperature in a non-linear manner. However, good correlations between air temperature and melt exist, making long-term air-temperature time series the favorite option to explain 20<sup>th</sup> century glacier retreat (Haeberli and Beniston, 1998). It  
10 has been shown that changes in solar radiation could partly explain high melt rates in the 1940s (Huss et al., 2009).

Understanding the factors governing glacier sensitivity to changes in climatic forcing requires analyses of point mass balance data at seasonal resolution. Snow and ice ablation sensitivities to climate variables have been assessed using a variety of models ranging from empirical degree-day approaches to physical energy balance considerations, depending on the  
15 availability of meteorological data (Oerlemans et al., 2009; Six and Vincent, 2014; Engelhardt et al., 2015). The studies emphasize the importance of the albedo feedback, as surface albedo governs the shortwave radiation budget at the glacier surface, which is the dominant energy source for melting. Monitoring, reconstructing, or modelling the surface albedo on glaciers is challenging (Brock et al., 2000) as its spatial and temporal evolution is linked to changes in surface properties (e.g., snow grain size) and to the deposition of impurities on the ice. Albedo changes are also determined by snow deposition  
20 (amount and spatial distribution), making the annual mass balance highly sensitive to snow accumulation (Réveillet et al., 2016). Properly quantifying the amount and distribution of accumulation over glaciers is therefore a key to better assess glacier mass balance sensitivity to changes in climate, and to simulate its future evolution (Sold et al., 2013).

### 2.3 Changes in permafrost

25 Permafrost is defined as lithospheric material with temperatures continuously below 0°C, and covers approximately  $20 \times 10^6$  km<sup>2</sup> of the Earth, with a fourth of it being located in mountainous terrain (Gruber, 2012). In the past decades, permafrost in European mountains has undergone major changes, including increased permafrost temperatures and an increase of seasonal thaw layer (active layer) depths (Noetzli et al., 2016; Fig. 2). This was partly accompanied by degradation phenomena such as ground ice loss, rock glacier instabilities, and rockfall activity (cf. Section 3f). Although the understanding of the thermal state of permafrost has increased significantly within the recent past (Harris et al., 2003), knowledge gaps still exist regarding the volume of ice stored in European permafrost, its potential impact on future water resources, and its effect on slope stability, including processes leading to permafrost degradation and talik formation (Harris et al., 2009; Etzelmüller, 2013). Joint efforts are therefore needed, especially concerning a European permafrost monitoring strategy and database.



First efforts have been promoted (Cremonese et al., 2011; Mair et al., 2011), but so far monitoring networks exist only at the national level: PERMOS in Switzerland (PERMOS, 2016), PermaFrance in France (Schoeneich et al., 2010), permAT in Austria (Kellerer-Pirklbauer et al., 2015), NORPERM in Norway (Juliussen et al., 2010), and the global permafrost borehole data base GTN-P (Biskaborn et al., 2015).

5

Borehole temperatures are monitored in many European mountain ranges (GTN-P database, Biskaborn et al., 2015), several of the sites being accompanied by meteorological stations and ground surface temperature measurements (Gisnas et al., 2014; Staub et al., 2016). However, as mountain permafrost is often invisible from the surface (Merz et al., 2015a, b), various indirect methods need to be employed to detect, characterize and monitor permafrost occurrences. These usually include surface-based geophysical measurements to determine the physical properties of the subsurface, including water and ice content distributions (Kneisel et al., 2008; Hauck, 2013), and geodetic and kinematic measurements to detect permafrost thaw and related subsidence, creep and slope instabilities (Kääb, 2008; Lugon and Stoffel, 2010; Strozzi et al., 2010; Kaufmann, 2012; Kenner et al., 2014).

### 15 2.3.1 Thermal state of permafrost in European mountain regions

The longest time series of borehole temperatures in Europe started in 1987 on rock glacier Murtèl-Corvatsch in the Swiss Alps (Haeberli et al., 1988; Fig. 2). Permafrost has been warming since the beginning of the measurements (Romanovsky et al., 2010; Noetzli et al., 2016; Fig 2). This was accompanied by an increase of active layer thickness (Noetzli et al., 2016). The changes can be linked to variations in the snow cover, as a reduction in snow cover thickness reduces thermal insulation, thus increasing year-to-year variability.

20

### 2.3.2 Permafrost degradation and slope instabilities

The increasing trend in permafrost temperatures and especially the deepening of the active layer has been hypothesized to lead to an increased frequency of slope instabilities in mountain ranges, including rock falls and debris flows (Gruber and Haeberli, 2007; Harris et al., 2009; Bommer et al., 2010; Fischer et al., 2012; Etzelmüller, 2013; see also Section 3f). The triggering mechanisms of slope instabilities can be diverse, and depend on subsurface material (e.g., unconsolidated sediments versus bedrock), its characteristics (fractures and fissures, ice and water content, slope angle, geological layering), and changes of these properties with time (Hasler et al., 2012; Krautblatter et al., 2013; Ravelin et al., 2013; Phillips et al., 2016). Water infiltration into newly thawed parts of permafrost is often mentioned as a possible triggering mechanism (Hasler et al., 2012), but only few observational data are available.

30





Permafrost bodies and rock glaciers are water reservoirs affecting runoff regimes and water availability. Data on the ice volume stored in such features, however, are scarce. To date, hydrologically oriented permafrost studies have been based on remote sensing and meteorological data for larger areas, or have had a locally constrained scope (e.g., the Andes, Schrott, 1996; Brenning, 2005; Arenson and Jacob, 2010; Rangecroft et al., 2015; the Sierra Nevada, Millar et al., 2013; and Central Asia, Sorg et al., 2015; Gao et al., 2016).

Permafrost also affects hydrology through interactions with the snow cover, and by influencing infiltration, and subsurface runoff and drainage (Arenson et al., 2010; Scherler et al., 2010; Langston et al., 2011; Zhou et al., 2015; Duguay et al., 2015; Evans et al., 2015). These processes are understood to play a role in the acceleration of rock glacier creep, the triggering of slope instabilities, and other degradation phenomena (e.g., Harris et al., 2009; Hasler et al., 2012; Krautblatter et al., 2012; Streletskyi et al., 2014).

### 2.3.3 Changes in rock glacier flow velocities and volume

Because of its complexity, permafrost evolution cannot be assessed by thermal monitoring and modelling alone. Kinematic and geophysical techniques are required for detailed process studies. Whereas methods based on remote sensing allow for kinematic analyses over large scales (Barboux et al., 2014, 2015; Necsoiu et al., 2016) and the compilation of rock glacier inventories (e.g., Schmid et al., 2016), ground-based and airborne methods focus on localized regions and on the detection of permafrost degradation over longer time-scales (Kaufmann, 2012; Klug et al., 2012; Barboux et al., 2014; Müller et al., 2014, Kenner et al., 2014, 2016). High-resolution methods also allow for process-based analyses, for the setup of models addressing rock glacier movement (using e.g. ground-based GPS monitoring; Wirz et al., 2014, 2016), and for the estimation of sediment transfer rates between rock wall and creeping permafrost bodies (Müller et al., 2014). These monitoring methods are, however, restricted to rock glaciers, rockfalls and subsidence (e.g., Deline et al., 2015, Phillips et al., 2016). Remote sensing has so far not enabled thermal changes in permafrost to be assessed. Long-term monitoring of creeping permafrost bodies show an acceleration in recent years, possibly related to increasing ground temperatures and higher internal water content (Delaloye et al., 2008; Ikeda et al., 2008; Permos, 2013).

Geophysical methods can detect permafrost, and characterize its subsurface ice and water contents (Kneisel et al., 2008; Hauck, 2013). They also provide structural information such as active-layer and bedrock depths. In recent years, repeated geo-electrical surveys have been applied to determine ice and water content changes, thus complementing temperature monitoring in boreholes (Hilbich et al., 2008a; Pellet et al., 2016). Results from Electrical Resistivity Tomography (ERT) show that permafrost thaw in mountainous terrain is often accompanied by a drying of the subsurface, as the water from the melted permafrost often leaves the system downslope, and is not always substituted in the following summer (Hilbich et al., 2008a; Isaksen et al., 2011). A 15-year ERT time series from Schilthorn, Swiss Alps, shows for example a clear decreasing



trend of electrical resistivity, corresponding to ice melt, throughout the entire profile (Fig. 3). The corresponding temperature at 10 m depth (Figure 2a) is at the freezing point, and shows no clear trend. ERT is increasingly used in operational permafrost monitoring networks to determine long-term changes in permafrost ice content (Hilbich et al., 2008b, 2011; Supper et al., 2014; Doetsch et al., 2015; Pogliotti et al., 2015). Certain geophysical surveys such as Ground-Penetrating Radar (GPR) (Minsley et al., 2015) can also be conducted from airborne platforms (Merz et al., 2015b), enhancing the speed and spatial extent of the measurements.

#### 2.3.4 Modelling

Physically-based models of varying complexity are employed for process studies of permafrost (for a review see Riseborough et al., 2008; Etzelmüller, 2013). These models should not be confused with permafrost distribution models (Boeckli et al., 2012), which are mostly statistical and usually based on permafrost evidences such as rock glacier inventories or climatic variables such as potential incoming solar radiation or mean annual air temperature. Similar to land-surface schemes used for hemispheric permafrost modeling (e.g., Ekici et al., 2015; Chadburn et al., 2015; Peng et al., 2016), physically-based site-level models are used in combination with Regional Climate Models (RCM) for studies of long-term permafrost evolution (Farbrot et al., 2013; Scherler et al., 2013; Westermann et al., 2013; Marmy et al., 2016). Such models are also used to explain the existence of specific permafrost phenomena in the European mountains (Scherler et al., 2014; Fiddes et al., 2015; Zhou et al., 2015; Haberkorn et al., 2016; Lüthi et al. 2016.). Simulations for different mountain ranges in Europe suggest an overall permafrost warming and a deepening of the active layer until the end of the century (see Fig. 4 for four examples from the Swiss Alps; similar simulations from Scandinavia are found in Hipp et al., 2012; Westermann et al., 2013, 2015; Farbrot et al., 2013). Permafrost in European mountains is often as thick as 100 m, and a complete degradation is therefore unlikely within the next century.

#### 2.4 Changes in hydrology

In spring, summer, and autumn, seasonal snow and glacier ice are released as meltwater into the headwaters of the alpine water systems. The Alps, in particular, are the water source for important rivers that flow into the North Sea (Rhine), the Black Sea (Danube) and the Mediterranean Sea (Rhône and Po); a comprehensive overview of the major alpine water systems is given in EEA (2009). Because of the significant surplus of precipitation compared to the forelands and the seasonal release of previously stored water as snow and ice, mountains have often been referred to as “water towers” (Mountain Agenda, 1998; Viviroli et al., 2007).

30

The melt of snow is the most important seasonal runoff signal in the Alps (Beniston, 2012). This is because the precipitation distribution is fairly even throughout the year, and because the amount of water retained in and released from reservoirs and



lakes is only a small fraction of the total (Schaeffli et al., 2007; López-Moreno et al., 2014). In general, temperature-induced changes in stream flow (rain-to-snow fraction, seasonal shift of snowmelt, glacier runoff contribution) can be regarded as much better understood than the ones caused by changing precipitation (Blaschke et al., 2011). Nevertheless, understanding long-term trends in runoff require an accurate estimate of the amount and distribution of snow accumulation during winter  
5 (Magnusson et al., 2011; Huss et al., 2014). The response of snow melt to changes in temperature and precipitation is influenced by the complex interactions between climatic conditions, topography and wind redistribution of snow (e.g., López-Moreno et al., 2012; Lafaysse et al., 2014).

Several national assessments have addressed the hydrologic changes in alpine river water systems, highlighting important regional differences (e.g., FOEN, 2012; APCC, 2014); these review reports contain a wealth of specific literature. Regional peculiarities are due to spatial differences in temperature and precipitation changes, although other factors such as local land-use changes or river corrections may play a role as well (EEA, 2004). With respect to the climatic patterns, the main ridge of the European Alps represents an important divide: In the north, stream flows of the winter half-year have generally increased (SGHL/Chy, 2011; APCC, 2014), mainly due to (a) increasing temperatures resulting in an increased fraction of rainfall, a  
15 rise in mean snowline elevation, and a reduction of the snow-covered area, as well as (b) a shift of precipitation into winter and spring. South of the main ridge, summer stream flows have decreased due to rising temperatures and associated evapotranspiration losses, and decreasing precipitation (FOEN, 2012).

Compared to snowmelt, the total icemelt volume from glaciers in the Alps is minor. At sub-annual scales, however, contributions from glacierized surfaces can be significant not only for headwater catchments close to the glaciers (Hanzer et al., 2016), but also for larger basins with low degrees of glacierization (Huss, 2011). This is particularly true during summer when specific runoff yield from glacierized areas is much higher than from non-glacierized ones (Farinotti et al., 2016). In a warming climate with retreating glaciers it also holds for annual scales, as additional meltwater is released from ice storage that has accumulated over long time periods.  
25

Scenarios of changing stream flows affected by retreating glaciers in a warming climate have been recently conducted in various physically-based, distributed modelling experiments (Weber et al., 2009; Prasch et al., 2011; Hanzer et al., 2016). Figure 5 illustrates future stream flows of a currently highly glacierized catchment (i.e., roughly 30% glacierized surface area) in the Austrian Alps. Even for the moderate RCP4.5 scenario, the glacier melt contribution to runoff becomes very  
30 small by the end of the century, and peak runoff is reduced and shifted from summer to spring. Alpine stream flow will hence undergo a significant regime shift, i.e. the timing of maximum discharge will move from the summer months to spring (Beniston, 2003; Jansson et al., 2003; Collins, 2008; Farinotti et al., 2011; Prasch et al., 2011; ). Locally, this can be superimposed by the effects of hydropower generation. The regimes in Fig. 5 indicate that (a) the effect of warming increases after the mid of the century for both scenarios, (b) this effect is in the same order of magnitude as the one of the



climate model combination choice, and (c) the timing of the maximum contribution of ice melt to streamflow – referred to as “peak water” – either already has passed (both scenarios, right column), or occurs now or in the coming decades (also both scenarios, left and center columns). From the moment of peak water, the effect of declining glacier volume becomes larger than the increasing melt caused by the rising temperatures. Until the mid-21<sup>st</sup> century and for large scales such as for  
5 example the entire Austrian region, the expected decrease of annual streamflow is expected to be small.

By 2100, the glaciers in the Alps may lose up to 90% of their current volume (Beniston, 2012; Pellicciotti et al., 2014), and peak discharge will occur 2-3 months earlier in the year (Horton et al., 2006). In Switzerland, a new type of flow regime (called *pluvial de transition*) was introduced to classify such newly emerging runoff pattern (SGHL/Chy, 2011; FOEN,  
10 2012). Regime shifts have long been recognized and can be interpreted as prolongation of observed time series, the longest one in the Alps being available since 1808 for the Rhine river. Some investigations, however, show that annual runoff totals may change only little, as the overall change resulting from reductions in snow and ice melt, changing precipitation, and increased evapotranspiration is unclear (SGHL/Chy, 2011; Prashch et al., 2011). Other studies, instead, highlight the significance of future regime shifts in headwater catchments (Pellicciotti et al. 2014). Obviously, the complex interplay of  
15 snow- and ice melt contribution to discharge in a changing climate, combined with the other processes determining streamflow regime, and their scale dependencies are not yet fully understood. Consensus exists, however, that only few high-altitude regions of the Alps will display a glacial regime in the long term (FOEN, 2012).

Despite the general trend towards drier summers, a recent review of 21<sup>st</sup> century climate change in the European Alps found  
20 that severe flooding events might become more frequent due to heavy or extended precipitation events in future (Gobiet et al., 2014; Stoffel et al., 2016). Also the magnitude and frequency of winter and spring floods might increase since, in a warmer climate, more frequent rain-on-snow (ROS) events can add to liquid precipitation (Würzer et al., 2016). However, a cutoff beyond which ROS events will decrease with increasing temperatures is expected when the amount of snow reduces significantly in response to higher temperatures (Beniston and Stoffel, 2016). Concerning droughts in the Alpine region, a  
25 clear trend towards increasing occurrence and severity has been highlighted (Gobiet et al., 2014).

## 2.5 Impacts on downstream water management

Sectors that are directly dependent on alpine headwaters will need to adapt to the changes outlined above. Hereby, different scenarios need to be considered, depending on how governance will cope with water-related conflicts that may arise from  
30 changes in water demand (Nelson et al., 2007; Beniston et al., 2011).

### 2.5.1 Agriculture

Shifts in agricultural production are expected with climate change (Jaggard et al., 2010; Gornall et al., 2010). Most studies conducted in the alpine regions project reduced soil water content as a result of increasing evaporation. This will lead to



increased water demand for irrigation (Jasper et al., 2004; Schaldach et al. 2012; Riediger et al. 2014), and will add to the changes in water availability resulting from changing snow and glacier melt (Smith et al., 2014). The effects of more frequent droughts will affect both croplands and grasslands. In Switzerland, the latter cover around 75% of the agricultural land and sustain domestic meat and dairy production (Fuhrer et al., 2006). The majority of crops currently cultivated in the Alps have been shown to be very sensitive to precipitation deficits in the growing season (Fuhrer et al., 2006). High irrigation demands will thus likely put additional pressure on rivers, especially small ones as they suffer more from interannual variability (Smith et al., 2012). Long-term water-management strategies will be important to face these challenges and to ensure that future agricultural water needs can be met (Riediger et al., 2014).

### 10 2.5.2 Hydropower

Climate change is a key driver in power markets, as both electricity production and demand are linked to meteorological variables (Apadula et al., 2012). As a consequence of earlier snow melt and reduced water discharge from glaciers, hydropower production is expected to increase in winter and to reduce in summer (Hauenstein, 2005; Kumar et al., 2011). Currently, energy demand is higher in summer than in winter, but this may change as rising summer temperatures increase energy requirements for the cooling of buildings (López-Moreno et al., 2008, 2011; Gaudard and Romerio, 2014). A study conducted for the Mattmark dam in the Swiss Alps and for the Val d'Aosta, Italy (Gaudard et al., 2014) revealed that peak hydropower production has so far not been affected by climate change. This is possibly the result of the large existing reservoir volumes, which are able to offset seasonal changes (Farinotti et al., 2016). Indeed, it has been suggested that no urgent adaptation of the hydropower infrastructure will be required in Switzerland within the next 25 to 30 years (Haunstein, 2005). Reservoir management, however, will become more challenging as a consequence of higher fluctuations in electricity demands linked to the intermittent production of new renewable energy sources (Gaudard and Romerio, 2014). Also the inter-annual fluctuations in water availability are expected to increase (Gaudard et al., 2014). Run-of-river power plants are expected to be less vulnerable to climate change, as they are usually installed on streamflows with small hydrological fluctuations (Gaudard et al., 2014). Hydropower plants can also be effective in dampening floods (Harrison and Whittington, 2001). Additional safety concerns include the melting of permafrost and the possibility of more frequent heavy rainfall, both resulting in more frequent slope instabilities and potential flood waves that may endanger power plants (Peizhen et al., 2001; Schwanghart et al., 2016). Increased sediment loads from deglaciated surfaces may additionally affect power generation, in particular by affecting the wear of infrastructure or the silting of storage volumes (Beniston, 2003).

### 30 2.5.3 Tourism

Increasing temperatures are anticipated to result in shorter skiing seasons and a shift of the snow line to higher elevations (Abegg et al., 2007; Steiger, 2010). This will likely lead to smaller number of visitors and reduced revenues, and thus have important economic impacts on alpine winter tourism. Generation of artificial snow is designed to buffer the impact of interannual variability of snow conditions, and is increasingly considered as an adaptation measure in alpine ski resorts



(Uhlmann et al., 2009; Steiger, 2010; Gilaberte et al., 2014; Spandre et al., in press). In Switzerland, ski slope areas employing artificial snow-making equipment have tripled (from 10 to 33%) from 2000 to 2010 (Putz et al, 2011). In the French Alps, 32% of the ski slope area was equipped with snow-making facilities in 2014, and this proportion is likely to reach 43% by 2020 (Spandre et al., 2015). In Austria, this share is about 60%, mainly due to the lower average elevations of the Austrian ski areas, and in the Italian Alps, almost 100% of the ski areas are equipped (Rixen et al., 2011). Water consumption for tourism in some Swiss municipalities is high compared to other uses. A study focusing on three tourism destinations in Switzerland, for example, found this consumption to be equivalent to 36% of the drinking water consumption (Rixen et al., 2011). Water and energy demands of ski resorts will increase, which may in turn lead to higher prices for consumers (Gilaberte et al., 2014). Also summer mountain resorts could be affected by water shortages in the future, thus calling for improved water management (Roson and Sartori, 2012).

## 2.6 Cryosphere influence on ecosystem functioning

In high mountains, the interaction between the biotic and abiotic ecosystems components is especially strong. The demanding conditions of high elevations control the physical environment of living beings, which in turn can modify the environment to make it more suitable for their own survival. Increasing temperatures, for example, induce an upward and poleward shift of flora and fauna (Parmesan, 2006). Such modifications can affect mountain biodiversity, especially for endemic species, and species with limited dispersal capacity (Viterbi et al., 2013).

Among the many controlling factors, the state of the cryosphere is crucial. Retreating glaciers open new bare areas for colonization, and changes in snow cover affect ecosystem dynamics in multiple ways. Earlier snowmelt is associated with an anticipation of the blooming season of alpine plants (Pettorelli et al., 2007) which could induce a mismatch between producers (plants) and consumers (herbivores), similar to what is observed in Arctic regions (Post et al. 2009).

Several examples of the controlling role of snow on mountain ecosystems are available. Here, the focus is on the population dynamics of two species that are symbols of high-Alpine environments: the Alpine ibex (*Capra ibex*, Fig. 6), and the Alpine rock ptarmigan (*Lagopus muta*, Fig. 7).

### 2.6.1 Alpine ibex

The population of the Alpine ibex (Fig. 6b) is monitored annually in the Gran Paradiso National Park, Italy since 1956, providing the longest time series of continuous ungulate censuses in the world (Jacobson et al 2004; Figure 6a).



An empirical model relating the ibex population density to climatic variables and the population abundance in the previous year, revealed the crucial role of the average winter snow depth (Jacobson et al., 2004). In particular, the adult ibex population density is limited by the winter snow cover in a much stronger way when the population size is large (Figure 6d).

- 5 The model also correctly captured the significant increase in population resulting from a series of winters with low snow cover after the mid-1980s. After 1995, however, the ibex population displayed a dramatic decrease even if the snow cover continued to remain shallow. Analysis of the behavior of the different age classes could link the decline to a drastic reduction in the survival of newborns to their first winter (Mignatti et al 2012). The cause for this reduction is not fully understood, but it has been suggested that the reduced snow cover and the earlier snowmelt lead to an earlier blooming period of alpine
- 10 grasses. This earlier blooming causes the grasses to be drier and less energetic in late July, which is the period when newborns are fed with milk by their ibex mothers. In this case, snow would have a dual effect: too much winter snow limits adult survival, but too little snow produces a mismatch between grasses and herbivores needs, leading to a negative effect on the population. It has to be noted, however, that the species response cannot be expected by a single mechanism.

### 2.6.2 Alpine Rock Ptarmigan

- 15 Since 1996 the population of the Alpine rock ptarmigan (Fig. 7b) has been annually censused at the Alpe Veglia e Devero natural park, northwestern Italy, revealing a clear decline in its abundance (Fig. 7a).

Analysis of bird counts and meteorological data (temperature, precipitation, snow cover and depth) revealed that the dominant drivers of the population dynamics are the onset date of spring snowmelt, and the starting date of the autumn snow

20 cover (Imperio et al., 2013). Ecosystem models driven by outputs of regional climate models are able to reproduce the observed changes, and project a further population decline. However, the results – that all include the effect of snow cover – can differ considerably depending on how effects of population density are accounted for (see future trajectories in Figs. 8d and 8e). This is true even for models showing similar ability of reproducing past population changes, and indicates the difficulty in identifying the correct interplay of mechanisms controlling ecosystem evolution.

25

## 3 Challenges for cryosphere research in European mountains

### 3.1 Data issues: access, availability, quality, spatial and temporal distribution

- 30 Quality-controlled data with high spatial and temporal resolution are essential for both the detection of past changes and the development and validation of numerical models that project future evolution (Beniston et al., 2012; Quevauviller et al., 2012). The reliability of data used in climate-related research has been questioned in the past, particularly with respect



whether the accuracy and precision of environmental data – including temperature and precipitation, for example – are sufficient for distinguishing long-term trends from interannual variability. In addition to intrinsic accuracy-limitations of measuring equipment, changes of sensors, sensor location or surrounding environment can make the interpretation of non-homogenized time series very challenging (Venema et al., 2012). The methodologies applied for data collection and homogenization often differ as a result of different legislations, competences, practices or priorities. Data quality must thus be assured by rigorous and standardized control. International coordination and standards must be established, and compliance has to be guaranteed.

Existing measurement sites and instruments are not homogeneously distributed. Environmental observations are typically biased towards lowland and mid-elevations, mostly because of the technical and logistical challenges in maintaining high-elevation monitoring sites. There is a clear lack of and demand for adequate environmental information from high elevations. Such information is obviously essential for cryosphere related research, and pivotal for quantifying elevation-dependent warming, precipitation, snowmelt, or river runoff, amongst other. Substantial efforts and new ideas are required to improve the spatial coverage and representativeness of the variables of interest (Orlowsky and Seneviratne, 2014).

Data availability and spatial coverage is often confined by country borders or by limited competence and responsibility of the institutions collecting the data. This is the reason for why, for example, studies on snow changes based on in-situ measurements and covering the entire Alps barely exist. “Administrative-borders effects” often also influence spatially interpolated data, introducing artifacts from artificial domain limits. In the worst case, such artifacts can flaw the findings of entire studies. Rather than adhering to administrative borders, environmental data should sample regions defined on the base of geomorphological, topographical, and climatologic considerations.

To date, many data have restricted ownership. The consequences of such non-open-access policies include lack of data, impossibility of accessing existing data, delays in obtaining them, non-availability of real-time data, and duplication of data-collection efforts. A more liberal and open-data policy would contribute solving part of the problem. The push for open-access data policy of major funding agencies (e.g., EC, ERC, NERC, DFG, SNF) has therefore to be welcomed. To be successful, however, the definition of common standards for different types of environmental data is required. As data acquisition can be related to important investments in terms of both equipment and labor costs, moreover, it is important that adequate mechanisms for rewarding groups and agencies investing in field-data collection are established.

Open-access platforms for cryospheric data are currently underdeveloped, and existing efforts for creating such platforms are often uncoordinated. International coordination, as well as well-defined management, sharing and archiving policies are a key for such efforts to be successful. Platforms should be widely known, easily searchable and citable, contain quality controlled data, and provide standardized metadata to make datasets understandable for end-users. An example for such a





platform is the Global Earth Observation System of Systems (GEOSS), which is a data catalogue of a partnership of more than 100 states and the European Commission. The National Snow and Ice Data Center (NSIDC) and the World Glacier Monitoring Service (WGMS) are two examples for institutions providing successful data portals in the domain of cryospheric data. At the national level, a noteworthy initiative is the Swiss Open Support Platform for Environmental  
5 Research (OSPER), which has set a benchmark in data provision and metadata integration for a large number of environmental datasets. A particular challenge in the centralization and archiving of environmental data is the large data volume generated by modern remote sensing techniques.

National meteorological services have for decades been exchanging observations for real-time forecasts and climate  
10 monitoring. Such data exchanges have been possible through the establishment of data reporting standards and data models, as well as robust exchange mechanisms, both under the umbrella of a global authoritative organization, i.e. the World Meteorological Organization (WMO). The recent establishment of a Global Cryospheric Watch program at WMO makes it possible that cryospheric data exchange benefits from the experience acquired from the exchange of meteorological information. This is anticipated to significantly facilitate mountain cryospheric studies across borders.

### 15 **3.2 Modeling issues: spatial resolution and physical processes in complex terrain**

Snow as a mostly non-permanent interface between the earth's surface and the atmosphere offers a very rich bouquet of small- and large-scale processes, which significantly influence the mass and energy exchange. Small-scale processes include  
20 water transport in snow and firn (Wurzer et al., 2016a), phase changes (i.e., melt, refreeze, sublimation and condensation), drifting and blowing snow, as well as metamorphism (Aoki et al., 2011), for example. While the mechanistic point-scale understanding of these processes is rapidly increasing (Wever et al., 2014), the grand challenge comes from quantifying their effect at larger scales. This is because adequate up-scaling techniques are missing to date. Examples of the interplay between large- and small-scale effects are the altered snow distribution after a storm (Lehning et al., 2008; Schirmer et al., 2009) or  
25 the change in snow albedo after a melt event. Both these effects are insufficiently represented in large-scale weather or climate models, yet would lead to significant changes in model predictions. The spatial distribution of small-scale snow properties is also essential for the correct interpretation of satellite remote sensing signals. For example, ice-lenses or liquid water in snow heavily influence the microwave backscatter (Marshall et al., 2007), which is the basis for many satellite remote-sensing products. The problem of proper up-scaling snow properties is not peculiar to the complex terrain of mountains, but exists also for less complex topography such as Antarctic sea ice (Trujillo et al., 2016) or the Greenland ice  
30 sheet, where it is unknown how much melt water can be stored in snow and firn (Forster et al., 2014).

Three relevant scales can be distinguished for the modeling of mountain snow: (1) The point scale is typically chosen for applications such as snow stability estimates in the context of avalanche warning (Durand et al., 1999) or detailed studies in snow hydrology such as the analysis of rain on snow events (Beniston and Stoffel, 2016; Wurzer et al., 2016b). There are



mainly two models that are used in this context, namely the French CROCUS (Vionnet et al., 2012) and the Swiss SNOWPACK (Lehning et al., 1999). These models have a physical basis, although many processes – including metamorphism and mechanical properties for example – have a high degree of empirical parameterization (Lehning et al., 2002). The main challenge for model development at this smallest scale is the formulation of a consistent theory for snow microstructure (Krol and Lowe, 2016). (2) The catchment scale is mostly used in hydrological applications (Kumar et al., 2013) and snow models of varying complexity are used for that (Essery, 2015; Magnusson et al., 2015). The challenge at this scale is to (a) distinguish between uncertainties introduced by the model structure and uncertainties related to the input data (Schlögl et al., 2016), and (b) develop models that can be used without calibration. The latter point is particularly important for reliable predictions of climate change effects (Bavay et al., 2013) and for model applications to ungauged catchments (Parajka et al., 2013). (3) The large scale is most relevant in weather forecast and climate models. Here, the representation of snow affects the surface energy balance through the high snow albedo and its low thermal conductivity, as well as the water budget (Groisman et al., 1994; Viterbo and Betts, 1999; Immerzeel et al., 2010). Large-scale models use relatively simple, parametric snow schemes, as these require few input variables and are computationally less expensive (Bokhorst et al., 2016). Current numerical weather prediction systems generally use single-layer snow schemes (IFS documentation, 2016; GFS documentation, 2016). Only in some cases do they explicitly represent the liquid water content within the snowpack, or do they incorporate a refined formulation for snow albedo variability (Dutra et al., 2010; Sultana et al., 2014). Climate models generally resolve the diurnal and seasonal variations of surface snow processes (i.e. surface temperature, heat fluxes) while they simplify the treatment of internal snow processes such as liquid water retention, percolation and refreezing within the snowpack (Armstrong and Brun, 2008; Steger et al., 2013). More complex snow schemes, with multiple snow layers and snow-water retention processes have been successfully integrated, for example, in the EC-Earth global climate model (Dutra et al., 2012; Hazeleger et al., 2012). Future research will need to clarify the degree of complexity required in snow schemes when they are integrated in large-scale climate models (van der Hurk et al., 2016). In large-scale modeling frameworks, reliable snowpack simulations are currently limited by the coarse representation of topography. This implies inaccurate representation of altitudinal temperature gradients, and a crude separation of the precipitation phase, since convective processes are inadequately represented or oversimplified (Wilcox and Donner 2007, Chen and Knutson, 2008; Wehner et al., 2010, Sillmann et al., 2013). Lack of reliable, high-resolution observations of snow water equivalent, moreover, hampers the validation of climate model outputs (Mudryk et al., 2015). Future improvements in snow simulations can derive from the increase in horizontal resolution (Boyle and Klein, 2010), and from refinements in the representation of precipitation processes, including convection and cloud microphysics (Kang et al., 2015).

30

The increasingly available field data help to refine our understanding through direct data-based inference (Diggle and Ribeiro, 2007) and assimilation techniques (Leisenring and Moradkhani, 2011). While such approaches are common to various fields of environmental sciences (e.g., Banerjee et al., 2003), the specificities of cryosphere data require an adaptations of the general framework of statistical modelling. Cryosphere-specific difficulties include the existence of



embedded spatial scales (Mott et al., 2011), strong vertical gradients, and the non-linearities linked to rain-snow and water-ice phase transitions (Morán-Tejeda et al., 2013). Taking maximum advantage of data sets of increasing size, variety and quantity also involves proceeding in parallel with the development of adapted and comprehensive statistical models (Gilks et al., 2001; Wickle, 2003; Cappé et al., 2005). The easiest way to address spatio-temporal data is to separate space and time effects (Cressie and Wickle, 2011). However, temporal evolutions at small spatial scales cannot be inferred in this manner. Regional climate change interacting with topography has, for example, resulted in different evolutions of avalanche activity over different parts of the French Alps (Lavigne et al., 2015). On this basis, other applications of non-separable spatio-temporal covariance models (Gneiting et al., 2007; Genton and Kleiber, 2015), have great potential for further research in the alpine cryosphere.

10

### 3.3 Estimating precipitation in complex terrain

Large uncertainties affect the estimates of solid and liquid precipitation at high elevations (Rasmussen et al., 2012). These uncertainties mainly arise from (a) the low density of precipitation gauges at high elevation (only 3% of homogenized stations in Europe are located above 2000 m a.s.l., and less than 1% above 3000 m a.s.l.; Pepin et al., 2015), and (b) the large biases in precipitation observations. Under-catch at high elevations are in the order of 30% (Adams and Lettenmeier, 2003; Yang et al., 2005) and are particularly large for solid precipitation. This is because solid precipitation is particularly influenced by wind, and perturbations due to icing and riming. Efforts are currently ongoing to address these problems (e.g., Solid Precipitation Intercomparison Experiment, WMO), but reliable references for ground truth measurements are still not available.

20

The precise quantification of precipitation and its spatial and temporal distribution is crucial for predicting future water availability. The spatial distribution of precipitation is not only determined by synoptic systems but is also strongly affected by topography (Mott et al., 2010). For snow, post-depositional transport such as creep, saltation, suspension, and avalanching additionally influence the spatial distribution. How these processes may change as a response to future modifications in local and synoptic wind patterns is presently poorly understood.

25

Recently, remote sensing methods such as terrestrial and airborne laser scanning or radar have been successful in quantifying solid and liquid precipitation. Recent progress in measuring snow distribution in mountains (Grunewald et al., 2010; Kirchner et al., 2014) has allowed to better understand typical distribution patterns of Alpine water resources (Grunewald et al., 2014) as well as making a link to precipitation (Scipion et al., 2013; Mott et al., 2014). The results have highlighted that even in highly instrumented mountain ranges such as the Alps, total precipitation is very poorly quantified. The combination of new measurement options with more classical ones such as precipitation radar will lead to a more complete understanding of precipitation amounts in high mountains.

30



### 3.4 Glacier mass changes

#### 3.4.1 From local to regional assessments

The temporal and spatial incompleteness of available glacier mass balance data, limits the estimates of the contribution of glacier melting to sea-level rise, to water resources, and to biodiversity in mountain catchments. For regional assessments of glacier mass balance, combining local studies for selected glaciers with remote sensing for larger regions is a priority. This is also an strategy within the integrative monitoring approach presented by the Global Terrestrial Network for Glaciers.

The increasing number of satellite sensors, together with their improved spatial, radiometric, and temporal resolutions, has made remote sensing essential for the monitoring of glaciers. Computing decadal glacier-volume variations at the regional scale from the differencing of digital elevation data has become a standard technique (Berthier et al., 2014). Retrieving glacier-wide annual or seasonal mass balance is more challenging but can be assessed by measuring the end-of-summer snow line as a proxy of the equilibrium-line elevation (e.g., Rabatel et al., 2005), or using albedo maps of the glacier surface (Dumont et al., 2012). Recent studies showed that winter and summer balances can be quantified either by integrating the albedo signal over the accumulation or ablation period (Sirguey et al., 2016), or by using seasonal snow maps derived from the SPOT-VGT sensor (Drolon et al., 2016). *In-situ* data are, however, still required to calibrate relationships and validate the methods.

New satellite sensors (e.g., Sentinel-2) provide also the possibilities to complement *in-situ* measurements for glacier surface flow velocities. This has been done for large regions and very short time intervals (5-10 days) (Dehecq et al., 2015; Käab et al., 2016). Such data are crucial to monitor the dynamic state of glaciers, to aid inverse approaches for estimating ice thickness distribution, or for the assessment of glacier-related hazards.

#### 3.4.2 Assessment of future changes

In order to increase the accuracy of future glacier projections and runoff estimates, a number of issues need to be addressed. Ice thickness distribution is an important input for dynamic glacier modeling. As it is impossible to measure ice thickness distributions of all glaciers individually, model applications are necessary. Several existing models have been compared within the Ice Thickness Models Intercomparison eXperiment (Farinotti et al., 2016), revealing that results largely depend on the quality of the input data (glacier outline, surface elevation, mass balance or velocities). New high-resolution satellite images make such input data available, thus opening the way toward improved future global estimates of glacier thicknesses.

Another challenge in glacier modeling is the use of approaches that explicitly consider ice dynamics for glacier evolution. Jouvett et al. (2009) showed that 3D full-Stokes models representing ice flow without approximation can be applied if the required input data are available (e.g., glacier thickness, surface velocities), but such applications at the regional scale still



require simplifications (Clarke et al., 2015). For estimating future glacier evolution, ice dynamics models need to be coupled to adequate representation of glacier surface mass balance.

A key issue in this respect is the modeling of future surface mass balance at the mountain-range scale. The so-called Glacier Model Intercomparison Project (or Glacier-MIP, [www.climate-cryosphere.org/activities/targeted/glaciermip](http://www.climate-cryosphere.org/activities/targeted/glaciermip)) assesses the performance of regional to global-scale glacier models to foster the improvement of the individual approaches and to reduce uncertainties in future projections. There are uncertainties in future changes of meteorological variables and in their downscaling at a spatial scale compatible with glaciers (Sections 2b, c and g). Some studies use classical degree-day approaches for long-term simulations of glacier-wide mass balance (Réveillet et al., 2016), or also account for potential radiation (Hock, 1999). However, with a shift in energy fluxes at the glacier surface, calibrated degree-day factors might change in the future. Application of process-based models that are able to resolve the full energy balance are thus required (Hanzer et al., 2016), but the accuracy and resolution of the input data need to be improved for that. A focus on modelling winter balance and the spatial distribution of snow accumulation is also needed to improve the modeling of glacier-wide mass balance (Réveillet et al., 2016). Additional studies should also assess the impact of supraglacial debris and related feedbacks on the surface energy balance (Reid and Brock, 2010). This is particularly important as many glacier tongues tend to become increasingly debris covered as they shrink. Feedback effects of black carbon and aerosols deposition on the glacier surface is also subject of further studies (Gabbi et al., 2015). Finally, more research on glacial sediment transport and erosion is needed as glacier retreat exposes large amounts of unconsolidated and erodible sediments that might represent a hazard potential or reduce the efficiency of hydropower plants (Lane et al., 2016).

20

### 3.5 Extreme snow events

Heavy snow events and related phenomena such as avalanches are by definition rare. This makes them much less understood and more difficult to forecast than “average” behaviors. This is reflected in the lack of related baseline data (IPCC, 2012; 2013). Also in mountains, mass movements involving snow often occur at very local scales, making them difficult to relate to climate model outputs, even with downscaling methods (Rousselot et al., 2012; Kotlarski et al., 2014). Snow-related extremes are often the result of a combination of different processes (e.g., wind and snow for drifting snow) making predictions of their future behavior highly uncertain. In contrast, they are among the most severe natural hazards in European mountains where their damage potential impacting upon very local domains often puts people and infrastructures at risk. For example, winter storms often hinder mobility by disrupting rail, road and air traffic. Extreme snowfall can overload buildings and cause them to collapse, and can lead to flooding due to subsequent melting. Deep snow, combined with strong winds and unstable snowpack, contributes to the formation of avalanches, and can cause fatalities and economic loss as a result of damage to property or communication routes.

25  
30

#### 3.5.1 Changes in snow extremes



Whether extreme snowfall and snow depths will decrease or not in European mountains in the future remains an unsolved question for now. This is because of the limited results available, and because of possible compensation mechanisms between warmer temperature, more intense precipitation, and increased climate variability, that all make the future regime of snow storms (i.e. their number, magnitude, and timing) difficult to anticipate. In addition, nearly all available results concern marginal distributions, or make an assumption of stationarity (Blanchet and Davison, 2010; Gaume et al., 2013). Recent results, however, suggest that the dependence structure of extreme snowfalls may be affected by warming (Nicolet et al., 2016). Such information is important for extrapolating outside of observation points and evaluating integrated quantities.

More detailed knowledge about the evolution of extremes in snow properties will be relevant as well. The moisture content or density of snow is needed, for example, when evaluating the probability for a particular infrastructure to collapse under future extreme snow loads (Sadovský and Sykora, 2013). This topic has not yet been addressed, and developments in jointly projecting the evolution of the different variables are required. The same holds true for projections of heavy drifting snow events resulting from wind gusts. To date, the combined evolution of snow amount, type (dry, wet), and density in complex mountain topography remains virtually unknown. More generally, impact models relating socio-economic consequences to extreme snow events (e.g., roof collapse probability as a function of snow mass and roof technology, or risk to road traffic as function of snow storm magnitude) remain oversimplified. Efforts are required to combine snow-climate and vulnerability-assessment expertise (Favier et al., 2014) if realistic future projections are to be made.

### 3.5.2 Changes in snow avalanche activity in relation to snow and ecosystem changes

Even if empirical relations between snow avalanche activity and climate do exist (Mock and Birkeland, 2000), knowledge of long-term responses of avalanche risk to climate change remains largely insufficient. With a few exceptions, studies focused the very recent decades, and only exist for a very restricted number of regions (Corona et al., 2012, 2013; Schläppy et al., 2014, 2016). Direct effects of climate change on the avalanche number, timing, magnitude and type mainly exist in the form of in changes in snow amounts, snowfall succession, density and stratigraphy as a function of elevation. Indirect effects are linked to changes in forest locations, size, and species composition. Notably, the ongoing rise of tree lines may reduce both avalanche frequency and magnitude. This is because of the reduction of potential release areas, the reduction in triggering susceptibility (as a result of the anchoring effect of trees) and the reduction in runout for a given snow amount. However, avalanche-forest interactions remain complex processes, and are not yet fully understood, even under stationary conditions (Bebi et al., 2009). A possible general shift in elevation of avalanche activity may be hypothesized, but this is neither proven, nor generalizable at the very local level. Constituting and investigating long-term series of avalanche events (including historical and paleoarchives in addition to existing records; see Stoffel et al., 2010) will be required to test this hypothesis.

Due to the highly non-linear nature of avalanche triggering response to snow and weather inputs (Schweizer et al., 2003), and to the complex relations between temperature, snow amounts, and avalanche dynamics (Bartelt et al., 2012; Naaim et al.,



2013), investigating how snow-climate controls the physics of snow avalanches remains necessary for realistic projections. In particular, it is unclear whether warmer temperatures always lead to fewer avalanches because of less snow. This is because of potentially higher instability levels in winter linked to larger climate variability (Beniston, 2005). The most destructive avalanches, moreover, mostly involve very cold and dry snow resulting from large snowfall, but may also result from wet snow events whose frequency has increased in the past (Castebrunet et al., 2014). Recent results show that wet-snow avalanches indeed have a high damage potential due to their potentially long runouts and high impact pressures (Sovilla et al., 2010; Ancey, 2015). Hence, specific investigation of the rheology of such flows is required to realistically anticipate future changes in avalanche risk.

### 10 **3.5.3 Other snow contributions to mass movements and cascading processes**

In addition to snow avalanches, snow plays a role in numerous other mass movements and/or cascading processes, and understanding their temporal evolution is important. Until recently, for example, slush-flows – mixtures of water and loose snow (Hestnes, 1998) – were mostly documented in Scandinavian mountains during a rather short spring period only (Schlyter et al., 1993). Local testimonies, however, now report such events over larger areas and longer time periods. This seems to be in relation to changes in snow cover characteristics. Similarly, mixed ice and snow avalanches are expected to become more common due to the retreat of hanging glaciers and the resulting ice falls. This was observed for the Grandes Jorasses (Margreth and Funk, 1998; Vincent et al., 2015) and Tacconnaz cases, for example. Also in relation to permafrost degradation and glacier recession, high snow amounts could play a role (Stoffel et al., 2014b). To which extent ongoing warming will affect the frequency of such processes in European mountains remains to be investigated in greater detail. In order to reduce expected impacts, enhanced efforts are also required to better define adaptation and mitigation strategies. These include the detect of favorable locations for infrastructure, the better prediction of avalanche timing and magnitude, and the design of efficient early warning systems.

### **3.6 Shifts in geomorphic risks as a function of changing cryosphere conditions**

25 Changes in air temperatures and precipitation are likely to affect the frequency and magnitude of mass movements such as shallow landslides, debris flows, rock slope failures, or ice avalanches (Stoffel and Beniston, 2006; Stoffel et al., 2014a, b). So far, however, changes in mass-movement activity can hardly be detected in observational records, making the projection of the future evolution of such phenomena particularly challenging.

30 The largest and most important changes and impacts related to permafrost thawing have yet to occur. In general terms, smaller permafrost bodies with deeper thaw-freeze cycles are expected. Changing air temperatures are obviously controlling such changes, but other factors, such as micro-climate, terrain and soil properties, as well as onset and duration of snow cover can play important roles (Scherler et al., 2014). Understanding the interplays between these mechanism and going beyond temperature-based projections will be a key for increase the reliability of future projections.



Changes in temperatures and precipitation will not only affect permafrost, but are projected to influence the frequency and magnitude of mass wasting processes in mountain environments more in general (IPCC, 2012; Gobiet et al., 2014). This is especially true for processes driven by water, such as debris flows (Stoffel and Huggel, 2012; Borga et al., 2014). A warmer  
5 climate also results in more precipitation to fall in liquid form at high elevations, thus increasing the area contributing effectively to runoff (Beniston, 2005; Stoffel and Beniston, 2006). At the same time, however, increasing air temperatures may allow vegetation to colonize higher elevations, possibly stabilizing loose material (Baroni et al., 2007). To date, this interplay between long-term vegetation evolution and various types of slope instabilities is poorly understood and loosely quantified.

10

The temporal evolution of debris-flow frequencies has been addressed for a series of high-elevation catchments in the Swiss Alps (Stoffel et al., 2011, 2014a, b). Based on statistically downscaled RCM data and an assessment of sediment availability, these studies concluded that the temporal frequency of debris flows is unlikely to change significantly by the mid-21<sup>st</sup>  
15 century, but is likely to decrease during the second part of the century, especially in summer. The magnitude of the events, however, might increase due to larger sediment availability. This is particularly true in summer and fall when the active layer of the permafrost bodies is largest and allows for larger volumes of sediment to be mobilized (Lugon and Stoffel, 2010). The accelerations of rock-glacier bodies might play an additional role (Stoffel and Huggel, 2012). Providing projections for future sediment availability and release for areas that are experiencing permafrost degradation and glacier retreat remains challenging, and significant efforts are required if the associated uncertainty are to be reduced. This is particularly important  
20 in the European Alps, where the exposure of people and infrastructure to hazards related to mass movements is high (Haerberli, 2013).

Several studies have documented recent events of rock slope failures in the Alps (Ravelle et al., 2010; Ravelle and Deline, 2011; Huggel et al., 2012; Allen and Huggel, 2013). Some of these failures seem clearly related to de-glaciation processes  
25 (Fischer et al., 2010; Korup et al., 2012; Strozzi et al., 2010). Extremely warm temperatures have additionally been associated to these processes as the penetration of melt water from snow and ice into cleft systems results in a reduction of shear strength and enhanced slope deformation (Hasler et al., 2012). Considering the multiple factors that affect rock slope stability, however, it is generally difficult to attribute individual events to one single factor (Huggel et al., 2013), and improved integrative assessments are necessary.

30

Further evidence of climatic impacts on high-mountain rock slope stability comes from the analysis of historical events. For the Alps inventories documenting events since 1990 exist (Ravelle and Deline, 2011; Huggel et al., 2012), and indicate a sharp increase in the number of events since 1990. Monitoring and documentation efforts for rock slope failures have been intensified during the past decades, thus introducing a certain bias as compared to the early 20<sup>th</sup> century. This is especially





5 true for small rock-fall events. Although the documentation for large (e.g. >100,000 m<sup>3</sup>) slope failures can be assumed to be reasonably complete, improving the homogeneity of the datasets upon which trend-analyses are build is important if the correct conclusions are to be drawn. In Switzerland, for example, the temporal distribution of rock slope failures resembles the evolution of mean annual temperatures, but it is unclear to which degree this correlation is affected by varying temporal completeness of the underlying datasets. The temperature sensitivity of rock slope stability in high mountains should therefore be further investigated.

### 3.7 Evaluating and communicating uncertainty

10 As outlined throughout the manuscript, predicting the future evolution of cryospheric components is challenging. On the one hand, the challenges stem from the incomplete understanding of the processes leading to given changes, on the other, future predictions are intrinsically affected by uncertainties. Adequately evaluating and communicating such uncertainties is all but a trivial task, and this is both because the interplay between individual systems can be complex, and because end-users of projections are typically uncertainty-adverse. Outside the scientific community, “uncertainty” and “error” are two concept often not sufficiently distinguished. This can lead to important misunderstanding and misinterpretations. Improving the way 15 uncertainties are communicated is especially important when presenting scientific results to policymakers or stakeholders, as this can significantly affect the level of trust assigned to a particular finding.

The key element driving future changes in the cryosphere is, obviously, the evolution of future climate. Uncertainties in future climate projections will, thus, inevitably propagate to any change derived therefrom. Increasing the awareness for 20 what kind of uncertainties affect projections of future climate is therefore of paramount importance. Clearly making a distinction between the concepts of “prediction” (or “forecast”) and “scenarios” (or “projection”) for example, is central: Whilst the first concept refers to the assessment of the likelihood with which a future event will happen given the evidence that is available up to a certain point in time, the second describes the consequences arising if a certain set of assumptions are to become true in the future. As an example: A meteorological forecast aims at telling what weather will occur during the 25 upcoming days by assessing the state of a given set of variables that can be measured at the moment the forecast is issued; a climate change scenario, instead, aims at telling what the mean atmospheric conditions will be in several decades time, if a given change in radiative forcing was to occur.

Another important point to be made is that measurements are affected by uncertainties as well. This may seem trivial at first, 30 but is neglected all too often outside the scientific community, where “measurement” is often interpreted as equivalent to “truth”. Climate model simulations, for example, are often validated against gridded observational datasets. Translating station-based information to gridded data products, however, requires several steps including quality control, homogenization, and interpolation for instance. Differences in grid resolution, station density, interpolation method, and sampling error add additional uncertainties which can, in case of precipitation for example, even be variable in time and



space (Rudolf et al., 1994; Schneider et al., 2014). As an example, Fig. 8 shows the magnitude of the resulting differences by comparing 3 different datasets of “observed” winter and summer precipitation for central Europe. Large differences are particularly evident in the region of complex topography, such as the Alps, Norway, mountainous parts of Italy, the Carpathians, the Pyrenees, or the west coast of the British Isles.

5

Climate models are obviously affected by uncertainties as well, which are related to (1) the expected climate forcing, (2) natural climate variability, and (3) internal model variability (Tebaldi and Knutti, 2007; Hawkins and Sutton, 2009). Whilst natural variability dominates uncertainty at time scales up to a few decades, scenario uncertainty is dominant on longer time scales. Model uncertainty can be important across time scales (Latif, 2011), and is again most prominent for mountains and complex topography (Fig. 9). The reason for this are differences in model resolution and model parameterizations.

10

#### 4 Conclusions

This review has brought together a number of experts in the fields of mountain snow, ice and permafrost in European mountain regions, in order to convey their views on the prospects and challenges for research on the cryosphere as it responds to past, current, and future changes in climate. The paper has addressed the current state of knowledge in terms of the observed evolution of the European mountain cryosphere and associated impacts – notably on water and ecosystem and the services provided by these resources. A catalog of challenges has been identified, focusing on as-yet unresolved issues of data access, high-resolution modeling, quantification of risks and extreme events, and communication of uncertainty. These issues have an obvious effect on our capability of projecting future shifts in the mountain cryosphere, and the impacts that these shifts are likely to generate. The latter will have a bearing on the viability of a number of economic sectors, notably including hydropower, agriculture, and tourism.

20

In this paper, much attention has been devoted to data issues. Indeed, there are numerous limits to data availability, related to spatial and temporal sparseness, and restricted access. Financial and institutional barriers, as well as non-harmonized data policies add to the problem (Quevauviller et al., 2012). Mountain cryosphere research urgently needs data of high quality for both understanding the functioning and evolution of the various elements in specific regions, and assess future changes in snow, ice and permafrost via modelling.

25

Access to state-of-the art models using high spatial and temporal resolution is essential to furthering our understanding of feedbacks between the atmosphere, the hydrosphere and the cryosphere, and the future behavior of cryospheric processes as a function of greenhouse-gas emissions. Global climate models have seen their resolution increase in the past decades, but much of the information still remains too coarse for most mountain cryosphere research. Physically-based, nested global-to-regional modeling techniques can provide adequate data for atmosphere-cryosphere studies. However, such results are

30



highly-dependent on the initial and boundary conditions that drive the according models, and errors in these conditions obviously propagate into the model solutions.

Communicating research results on climate and cryospheric science is a challenge that needs careful consideration. The importance and imminence of climatic changing is generally more convincing to a lay audience when changes become visible. A prominent example is the retreat of mountain glaciers, which can convincingly be brought to the public through photography portraying glacier evolution over time. In this sense, climate-induced changes in the cryosphere enable a unique and convincing form of communication to the public and to policymakers, and more effort should be dedicated to illustrate how these changes can impact water resources, mountain ecosystems, natural hazards, and thus a wide range of economic activities.

By highlighting the impacts of a changing cryosphere as climate evolves, this review has attempted to emphasize the central role of the cryosphere as a key element of environmental change in high mountains. There will clearly be an increasing need for adaptation strategies based on a robust knowledge base in order to respond to the likely changes in climate in coming decades.

## 5 Acknowledgements

Martin Beniston and Markus Stoffel would like to acknowledge the support of the University of Geneva for the international cryosphere workshop “From Process Understanding to Impacts and Adaptation”. This meeting took place in Riederalp (Valais Alps), Switzerland, from March 15-19, 2016. Much of the material presented in this article is inspired from the presentations made at this meeting.

## References

- Abegg, B., Agrawala, S., Crick, F., de Montfalcon, A. (2007). Climate change impacts and adaptation in winter tourism. In: OECD (Organisation for Economic Co-operation and Development). *Climate Change in the European Alps*. Paris, France: OECD, pp 25–60.
- Allen, S., Huggel, C., 2013. Extremely warm temperatures as a potential cause of recent high mountain rockfall. *Glob Planet. Change* 107, 59–69
- Abermann, J., Lambrecht, A., Fischer, A., & Kuhn, M. (2009). Quantifying changes and trends in glacier area and volume in the Austrian Ötztal Alps (1969-1997-2006). *The Cryosphere*, 3(2), 205-215.
- ACQWA Project, 2013: **Beniston, M., Stoffel, M., an Hill, M.** (Editors) – *The EU/FP7 ACQWA Project: Assessing climate impacts on the quantity and quality of water*. University of Geneva, ISBN Nr 978-2-8399-1286-0, 100 pp.
- Adam, J. C., and D. P. Lettenmaier, 2003: Adjustment of global gridded precipitation for systematic bias, *J. Geophys. Res.*,



- 108(D9), 4257, doi:10.1029/2002JD002499.
- Ancey., C., Bain, V. (2015). Dynamics of glide avalanches and snow gliding. *Review in geophysics*. Vol. 53. Pp. 745–784
- Andreassen LM, H Elvehøy, B Kjøllmoen and RV Engeset. 2016. Reanalysis of long-term series of glaciological and geodetic mass balance for 10 Norwegian glaciers. *Cryosphere*, 10, 535-552, doi: 10.5194/tc-10-535-2016
- 5 Andreassen LM, H Elvehøy, B Kjøllmoen, RV Engeset and N Haakensen. 2005. Glacier mass-balance and length variation in Norway. *Ann. Glaciol.*, 42, 317-325.
- Andreassen LM, SH Winsvold (eds.), F Paul and JE Hausberg. 2012. Inventory of Norwegian glaciers. NVE Report 28, 236 pp.
- Aoki, T., K. Kuchiki, M. Niwano, Y. Kodama, M. Hosaka, and T. Tanaka (2011), Physically based snow albedo model for calculating broadband albedos and the solar heating profile in snowpack for general circulation models, *Journal of Geophysical Research-Atmospheres*, 116, doi:Artn D11114 10.1029/2010jd015507.
- Apadula, F., Bassini, A., Elli, A., Scapin, S. (2012). Relationships between meteorological variables and monthly electricity demand. *Applied Energy*, 98, 346–356.
- APCC (2014): Austrian Assessment Report 2014, Österreichischer Sachstandsbericht. Austrian Panel on Climate Change (APCC), 2014.
- 15
- Armstrong RL and Brun E (2008) *Snow and Climate*. Cambridge University press, pp 222.
- Banerjee, S., Carlin, B., Gelfand, A. E. (2003). *Hierarchical Modeling and Analysis for Spatial Data*. Chapman & Hall ed. 472p.
- Barboux, C., Delaloye, R., & Lambiel, C. (2014). Inventorying slope movements in an Alpine environment using DInSAR. *Earth Surface Processes and Landforms*, 39(15), 2087-2099.
- 20
- Barnett, T.P., Adam, J.C. and Lettenmaier, D.P. (2005): Potential impacts of a warming climate on water availability in snow-dominated regions. *Nature*, 438(7066), 303–309.
- Baroni, C., Armiraglio, S., Gentili, R., Carton, A., 2007. Landform–vegetation units for investigating the dynamics and geomorphologic evolution of alpine composite debris cones (Valle dell'Avio, Adamello Group, Italy). *Geomorphology* 84, 59-79.
- 25
- Barry, R. G., 2008, *Mountain weather and climate*, 3<sup>rd</sup> edition, Cambridge.
- Bartelt, P., Bühler, Y., Buser, O., Christen, M., Meier, L. (2012). Modeling mass-dependent flow regime transitions to predict the stopping and depositional behavior of snow avalanches. *Journal of Geophysical Research*, 117, F01015, doi:10.1029/2010JF001957.
- 30
- Bavay, M., T. Grünewald, and M. Lehning (2013), Response of snow cover and runoff to climate change in high Alpine catchments of Eastern Switzerland, *Adv. Water Resour.*, 55, 4–16, doi:10.1016/j.advwatres.2012.12.009.
- Bebi, P., Kulakowski, D., Rixen, C. (2009). Snow avalanche disturbances in forest ecosystems—State of research and implications for management. *Forest Ecology and Management*. Vol. 257, Issue 9, pp 1883-1892.
- Bednorz, E. (2011), Synoptic conditions of the occurrence of snow cover in central European lowlands, *Int. J. Climatol.*,



- 31(8), 1108–1118, doi:10.1002/joc.2130.
- Beniston, M. (2003): Climate Change in Mountain Regions: A Review of Possible Impacts, *Climatic Change*, 59, 5–31.
- Beniston, M. (2005). Warm winter spells in the Swiss Alps: Strong heat waves in a cold season? A study focusing on climate observations at the Saentis high mountain site. *Geophysical Research Letter*. Vol. 32. L01812, doi:10.1029/2004GL021478.
- 5 Beniston, M. (2012): Impacts of climatic change on water and associated economic activities in the Swiss Alps. *J. Hydrol.* 412-413, 291-296, doi:10.1016/j.jhydrol.2010.06.046.
- Beniston, M. and Stoffel, M. (2014): Assessing the impacts of climatic change on mountain water resources. *Sci. Tot. Env.*, 1129-1137, <http://dx.doi.org/10.1016/j.scitotenv.2013.11.122>.
- Beniston, M., 2005: Mountain climates and climatic change: An overview of processes focusing on the European Alps. *Pure*  
10 *Appl. Geophys.* 162, 1587-1606
- Beniston, M., 2013: “Grand Challenges” in Climate Science. *Frontiers in Environmental Science*, DOI: 10.3389/fenvs.2013.00001**
- Beniston, M., and Stoffel, M., 2016: Rain-on-snow events, floods and climate change in the Alps: Events may increase for warming up to 4°C and decrease thereafter. *Science of the Total Environment*, 571, 228-236. (DOI:  
15 10.1016/j.scitotenv.2016.07.146)
- Beniston, M., B. Uhlmann, S. Goyette, and J. I. Lopez-Moreno (2011), Will snow-abundant winters still exist in the Swiss Alps in an enhanced greenhouse climate?, *Int. J. Climatol.*, 31(9), 1257–1263, doi:10.1002/joc.2151.
- Beniston, M., Stoffel, M., Harding, R., Kernan, M., Ludwig, R., Moors, E., Samuels, P., Tockner, K., 2012: Obstacles to data access for research related to climate and water: implications for science and EU policy-making. *Environmental Science*  
20 *and Policy*, 17, 41-48
- Beniston, M., Stoffel, M., Hill, M. (2011). Impacts of climatic change on water and natural hazards in the Alps: Can current water governance cope with future challenges? Examples from the European “ACQWA” project. *Environmental Sciences and Policy*, 14, 7, 734-743.
- Berthier E and C Vincent. 2012. Relative contribution of surface mass balance and ice-flux changes to the accelerated  
25 thinning of Mer de Glace, French Alps, over 1979-2008. *J. Glaciol.*, 58, 501-512. doi: 10.3189/2012JoG11J083
- Berthier E, Y Arnaud, C Vincent and F Rémy. 2006 Biases of SRTM in high-mountain areas: implications for the monitoring of glacier volume changes. *Geophys. Res. Lett.*, 33, L08502. doi: 10.1029/2006GL025862.
- Berthier E, C Vincent, E Magnússon, ÁÞ Gunnlaugsson, P Pitte, E Le Meur, M Masiokas, L Ruiz, F Pálsson, JMC Belart and P Wagnon. 2014 Glacier topography and elevation changes from Pléiades sub-meter stereo images. *Cryosphere*, 8,  
30 2275–2291. doi: 10.5194/tc-8-2275-2014
- Bliss, A., Hock, R., and Radic´, V. (2014): Global response of glacier runoff to twenty-first century climate change, *J. Geophys. Res.-Earth*, 119, 717–730, 2014.
- Birsan, M. V., and A. Dumitrescu (2014), Snow variability in Romania in connection to large-scale atmospheric circulation, *Int. J. Climatol.*, 34(1), 134–144, doi:10.1002/joc.3671.



- Blanchet, J., C. Marty, and M. Lehning (2009), Extreme value statistics of snowfall in the Swiss Alpine region, *Water Resour. Res.*, 45(5), 1–12, doi:10.1029/2009WR007916.
- Blanchet, J., Davison, A. C. (2010) Spatial modelling of extreme snow depth. *Annals of Applied Statistics* 2011, Vol. 5, No. 3, 1699-1725.
- 5 Blaschke, A.P., Merz, R., Parajka, J., Salinas, J. and Blöschl, G. (2011): Auswirkungen des Klimawandels auf das Wasserdargebot von Grund- und Oberflächenwasser. *Österreichische Wasser- und Abfallwirtschaft* 63, 31–41. doi:10.1007/s00506-010-0273-3.
- BIfU (2008): Bayerns Klima im Wandel – erkennen und handeln. ISBN 978-3-940009-73-9, Augsburg.
- BMLFUW (Bundesministerium für Land- und Forstwirtschaft, Umwelt und Wasserwirtschaft, Hrsg.) (2011):  
10 Anpassungsstrategien an den Klimawandel für Österreichs Wasserwirtschaft. Studie der Zentralanstalt für Meteorologie und Geodynamik und der Technischen Universität Wien. Autoren: Schöner, W., Böhm, R., Haslinger, K. (Zentralanstalt für Meteorologie und Geodynamik), Blöschl, G., Kroiß, H., Merz, R., Blaschke, A. P., Viglione, A., Parajka, J., Salinas, J. L., Drabek, U., Laaha, G., Kreuzinger, N. (Technische Universität Wien), S.486, Wien. URL  
15 [https://www.bmlfuw.gv.at/service/publikationen/wasser/anpassungsstrategien\\_an\\_den\\_klimawandel\\_fuer\\_oesterreichs\\_wasserwirtschaft.html](https://www.bmlfuw.gv.at/service/publikationen/wasser/anpassungsstrategien_an_den_klimawandel_fuer_oesterreichs_wasserwirtschaft.html).
- Bocchiola, D., and G. Diolaiuti (2010), Evidence of climate change within the Adamello Glacier of Italy, *Theor. Appl. Climatol.*, 100(3), 351–369, doi:10.1007/s00704-009-0186-x.
- Bokhorst, S., Pedersen, S. H., Brucker, L., Anisimov, O., Bjerke, J. W., Brown, R. D., ... & Johansson, C. (2016). Changing Arctic snow cover: A review of recent developments and assessment of future needs for observations, modelling, and  
20 impacts. *Ambio*, 1-22.
- Bojinski S, and 5 others. 2014. The concept of essential climate variables in support of climate research, applications, and policy. *American Meteorological Society*, Journal online, doi: 10.1175/BAMS-D-13-00047.1
- Borga, M., Stoffel, M., Marchi, L., Marra, F., Jakob, M., 2014. Hydrogeomorphic response to extreme rainfall in headwater systems: flash floods and debris flows. *J. Hydrol.* 518, 194–205.
- 25 Boyle J, Klein SA (2010) Impact of horizontal resolution on climate model forecasts of tropical precipitation and diabatic heating for the TWP-ICE period. *J Geophys Res* 115:1–20
- Braithwaite RJ, Zhang Y (2000) Sensitivity of mass balance of five Swiss glaciers to temperature changes assessed by tuning a degree-day model. *J Glaciol* 46(152):7–14 Brock *et al.*, 2000
- Braithwaite RJ. 1995. Positive degree-day factors for ablation on the Greenland ice sheet studied by energy-balance  
30 modelling. *J. Glaciol.*, 41(137), 153-160.
- Brock BW, Willis IC, and Sharp MJ. 2000. Measurement and parameterization of albedo variations at Haut Glacier d'Arolla, Switzerland. *J. Glaciol.*, 46(155), 675-688.
- Brown I and E Hansson. 2004. Contribution to GLIMS Glacier Database. Boulder, CO. National Snow and Ice Data Center
- Brown, R. D., and N. Petkova (2007), Snow cover variability in Bulgarian mountainous regions, 1931–2000, *Int. J.*



- Climatol.*, 27, 1215–1229, doi:10.1002/joc.1468.
- Buisan, S. T., M. A. Saz, and J. I. López-Moreno (2015), Spatial and temporal variability of winter snow and precipitation days in the western and central Spanish Pyrenees, *Int. J. Climatol.*, 35(2), 259–274, doi:10.1002/joc.3978.
- Cappé, O., Moulines, E., Rydèn, T. (2005). Inference in Hidden Markov Models. Springer ed. 678p.
- 5 Castebrunet, H., Eckert, N., Giraud, G., Durand, Y., Morin, S. (2014). Projected changes of snow conditions and avalanche activity in a warming climate: a case study in the French Alps over the 2020–2050 and 2070–2100 period. *The Cryosphere.*, 8, pp. 1673–1697.
- Castebrunet, H., N. Eckert, and G. Giraud (2012), Snow and weather climatic control on snow avalanche occurrence fluctuations over 50 yr in the French Alps, *Clim. Past*, 8(2), 855–875, doi:10.5194/cp-8-855-2012.
- 10 Castebrunet, H., N. Eckert, G. Giraud, Y. Durand, and S. Morin (2014), Projected changes of snow conditions and avalanche activity in a warming climate: The French Alps over the 2020–2050 and 2070–2100 periods, *Cryosphere*, 8(5), 1673–1697, doi:10.5194/tc-8-1673-2014.
- Chen C-T, Knutson T (2008) On the verification and comparison of extreme rainfall indices from climate models. *J Clim* 21:1605–1621
- 15 Choi, G., D. A. Robinson, and S. Kang (2010), Changing northern hemisphere snow seasons, *J. Clim.*, 23(19), 5305–5310, doi:10.1175/2010JCLI3644.1.
- CIPRA (International Commission for Protection of the Alps). (2004). Künstliche Beschneigung im Alpenraum. Ein Hintergrundbericht. Schaan, Lichtenstein: CIPRA.
- Clarke, G.K., Jarosch, A.H., Anslow, F.S., Radić, V. and Menounos, B. 2015. Projected deglaciation of western Canada in the twenty-first century. *Nature Geosci.*, 8(5), 372–377.
- 20 Clarvis-Hill, M., Fatichi, S., Allan, A.A., Fuhrer, J., Stoffel, M., Romerio, F., Gaudard, L., Burlando, P., **Beniston, M.**, Xoplaki, E., and Toreti, A., 2014: Governing and managing water resources under changing hydro-climatic contexts: The case of the upper Rhone basin, *Environ. Sci. Policy*, 43, 56–67, doi:10.1016/j.envsci.2013.11.005.
- Cohen, J. L., J. C. Furtado, M. a Barlow, V. a Alexeev, and J. E. Cherry (2012), Arctic warming, increasing snow cover and widespread boreal winter cooling, *Environ. Res. Lett.*, 7(1), 14007, doi:10.1088/1748-9326/7/1/014007.
- 25 Collins, D. N. (2008): Climatic warming, glacier recession and runoff from Alpine basins after the Little Ice Age maximum, *Ann. Glaciol.*, 48, 119–124.
- Corona, C., Lopez Saez, J. Stoffel M., Rovéra, G., Edouard, J.-L., Berger, F. (2013). Seven centuries of avalanche activity at Echalp (Queyras massif, southern French Alps) as inferred from tree rings. *Holocene* 23, 292–304.
- 30 Corona, C., Lopez Saez, J., Stoffel, M., Bonnefoy, M., Richard, D., Astrade, L., Berger, F., 2012. How much of the real avalanche activity can be captured with tree rings? An evaluation of classic dendrogeomorphic approaches and comparison with historical archives. *Cold Regions Science and Technology* 74–75: 31–42.



- Cremonese, E., Gruber, S., Phillips, M., Pogliotti, P., Böckli, L., Noetzli, J., Suter, C., Bodin, X., Crepez, A., Kellerer-Pirklbauer, A. and Lang, K., 2011. Brief Communication: " An inventory of permafrost evidence for the European Alps". The Cryosphere, 5(3), pp.651-657.
- Cressie, N., Wickle, C. K. (2011). Statistics for Spatio-Temporal Data. John Wiley & Son, 624p.
- 5 De Wit, H., A. Bryn, A. Hofgaard, J. Karstensen, M. Kvalevåg, and G. Peters (2014), Climate warming feedback from mountain birch forest expansion: Reduced albedo dominates carbon uptake, *Glob. Chang. Biol.*, 20(7), 2344–2355, doi:10.1111/gcb.12483.
- Dehecq A., Gourmelen N., Trouve E. 2015. Deriving large-scale glacier velocities from a complete satellite archive: Application to the Pamir–Karakoram–Himalaya. *Rem. Sens. Environ.*, 162, doi: 10.1016/j.rse.2015.01.031
- 10 Deline, P., Gruber, S., Delaloye, R., Fischer, L., Geertsema, M., Giardino, M., Hasler, A., Kirkbride, M., Krautblatter, M., Magnin, F. and McColl, S., 2015. Ice loss and slope stability in high-mountain regions. Snow and Ice-Related Hazards, Risks, and Disasters, edited by: Haeberli, W., Whiteman, C., and Shroder, JF, Elsevier Science, Saint Louis, pp.521-561.
- Diggle, P. J., Ribeiro, P. J. (2007). Model-Based Geostatistics. Springer ed. 228p.
- Drolon V., Maisongrande P., Berthier E., Swinnen E. and Huss M. 2016. Monitoring of seasonal glacier mass balance over  
15 the European Alps using low resolution optical images. *J. Glaciol.*, doi: 10.1017/jog.2016.78.
- Dumont M, J Gardelle, P Sirguey, A Guillot, D Six, A. Rabatel and Y Arnaud. 2012. Linking glacier annual mass balance and glacier albedo retrieved from MODIS data. *Cryosphere*, 6, 1527-1539. doi: 10.5194/tc-6-1527-2012
- Durand, Y., G. Giraud, E. Brun, L. Merindol, and E. Martin (1999), A computer-based system simulating snowpack structures as a tool for regional avalanche forecasting, *Journal of Glaciology*, 45(151), 469-484.
- 20 Durand, Y., G. Giraud, M. Laternser, P. Etchevers, L. Mérindol, and B. Lesaffre (2009), Reanalysis of 47 years of climate in the French Alps (1958-2005): Climatology and trends for snow cover, *J. Appl. Meteorol. Climatol.*, 48(12), 2487–2512, doi:10.1175/2009JAMC1810.1.
- Dutra, E., Balsamo, G., Viterbo, P., Miranda, P. M., Beljaars, A., Schär, C., & Elder, K. (2010). An improved snow scheme for the ECMWF land surface model: description and offline validation. *Journal of Hydrometeorology*, 11(4), 899-916.
- 25 Dutra, E., Viterbo, P., Miranda, P. M., & Balsamo, G. (2012). Complexity of snow schemes in a climate model and its impact on surface energy and hydrology. *Journal of Hydrometeorology*, 13(2), 521-538.
- Dyrrdal, A. V., T. Saloranta, T. Skaugen, and H. B. Stranden (2013), Changes in snow depth in Norway during the period 1961–2010, *Hydrol. Res.*, 44(1), 169, doi:10.2166/nh.2012.064.
- Eckert, N., C. J. Keylock, H. Castebrunet, A. Lavigne, and M. Naaim (2013), Temporal trends in avalanche activity in the  
30 French Alps and subregions: From occurrences and runout elevations to unsteady return periods, *J. Glaciol.*, 59(213), 93–114, doi:10.3189/2013JoG12J091.
- Eckert, N., H. Baya, and M. Deschatres (2010), Assessing the response of snow avalanche runout elevations to climate fluctuations using hierarchical modeling: Application to 61 winters of data in France, *J. Clim.*, 23(12), 3157–3180, doi:10.1175/2010JCLI3312.1.





- EEA (2004): Impacts of Europe's changing climate. An indicator-based assessment. European Environmental Agency, Report 2/2004.
- EEA (2009): Regional climate change and adaptation. The Alps facing the challenge of changing water resources. European Environmental Agency, Technical report, 9/2009.
- 5 Ekici, A., Chadburn, S., Chaudhary, N., Hajdu, L. H., Marmy, A., Peng, S., Boike, J., Burke, E., Friend, A. D., Hauck, C., Krinner, G., Langer, M., Miller, P. A., and Beer, C. (2015): Site-level model intercomparison of high latitude and high elevation soil thermal dynamics in tundra and barren landscapes, *The Cryosphere*, 9, 1343-1361, doi:10.5194/tc-9-1343-2015, 2015.
- Engelhardt M., Schuler T.V. and Andreassen L.M.. 2015. Sensitivities of glacier mass balance and runoff to climate perturbations in Norway. *Ann. Glaciol.*, 56(70). doi: 10.3189/2015AoG70A004.
- 10 Essery, R., S. Morin, Y. Lejeune, and C. B. Menard (2013), A comparison of 1701 snow models using observations from an alpine site, *Advances in Water Resources*, 55, 131-148, doi:10.1016/j.advwatres.2012.07.013.
- Essery (2015). A Factorial Snowpack Model (FSM 1.0). *Geoscientific Model Development*, 8, 3867-3876, doi:10.5194/gmd-8-3867-2015
- 15 Falarz, M. (2008), Changes in extreme nival conditions in Poland during the second half of the 20th century, *Meteorol. Zeitschrift*, 17(3), 339–344, doi:10.1127/0941-2948/2008/0293.
- Fantini A., Raffaele F., Torma C., Bacer S., Coppola E., Giorgi F., Ahrens B., Dubois C., Sanchez E. (2016). Assessment of multiple daily precipitation statistics in ERA-Interim driven Med-CORDEX and EURO-CORDEX experiments against high resolution observations, accepted to *Climate Dynamics*
- 20 Farinotti, D., Usselman, S., Huss, M., Bauder, A. and Funk, M. (2012): Runoff evolution in the Swiss Alps: projections for selected high-alpine catchments based on ENSEMBLES scenarios, *Hydrol. Process.* 26, 1909–1924, DOI: 10.1002/hyp.8276.
- Farinotti, D., Pistocchi, A and Huss, M. (2016): From dwindling ice to headwater lakes: could dams replace glaciers in the European Alps? *Environ. Res. Lett.* 11 (2016) 054022, doi:10.1088/1748-9326/11/5/054022.
- 25 Farinotti and 20 others. How accurate are estimates of glacier ice thickness? Results from ITMIX, the Ice Thickness Models Intercomparison eXperiment. *Cryosphere Discussions*.
- Favier, P., Bertrand, D., Eckert, N., Naaïm, M. (2014). A reliability assessment of physical vulnerability of reinforced concrete walls loaded by snow avalanches. *Natural Hazards and Earth System Sciences*. 14, pp. 689–704.
- Fischer M, M Huss, C Barboux, and M Hoelzle. 2014. The new Swiss Glacier Inventory SGI2010: relevance of using high-resolution source data in areas dominated by very small glaciers. *Arctic, Antarctic, and Alpine Research*, 46(4), 933-945..
- 30 Fischer, L., Amann, F., Moore, J.R., Huggel, C., 2010. Assessment of periglacial slope stability for the 1988 Tschierwa rock avalanche (Piz Morteratsch, Switzerland. *Eng. Geol.* 116, 32–43.
- FOEN (2012): Effect of Climate Change on Water Resources and Waters. Synthesis report on “Climate Change and Hydrology in Switzerland” (CCHydro project), Federal Office of the Environment, Bern.



- Forster, R. R., et al. (2014), Extensive liquid meltwater storage in firn within the Greenland ice sheet, *Nat Geosci*, 7(2), 95-98, doi:10.1038/Ngeo2043.
- Fuhrer J., Beniston, M., Fischlin, A., Frei, CH., Goyette, S., Jasper, K., Pfister, CH. (2006). Climate risks and their impact on agriculture and forests in Switzerland. *Climatic Change*, 79, 79–102.
- 5 Fuhrer, J., Jasper, K. (2012) Demand and supply of water for agriculture: influence of topography and climate in pre-alpine, mesoscale catchments. *Natural Resources* 3, 145-155.
- Gabbi J, Careno M, Pellicciotti F, Bauder A and Funk M. 2014. A comparison of empirical and physically based glacier surface melt models for long-term simulations of glacier response. *J. Glaciol.*, 60(224), 1140-1154. doi: 10.3189/2014JoG14J011
- 10 Gabbi J., Huss M., Bauder A., Cao F. and Schwikowski M. 2015. The impact of Saharan dust and black carbon on albedo and long-term mass balance of an Alpine glacier. *Cryosphere*, 9(4), 1385-1400.
- Gajić-Čapka, M. (2011), Snow climate baseline conditions and trends in Croatia relevant to winter tourism, *Theor. Appl. Climatol.*, 105(1), 181–191, doi:10.1007/s00704-010-0385-5.
- Gao, T., Zhang, T., Cao, L., Kang, S. and Sillanpää, M., 2016. Reduced winter runoff in a mountainous permafrost region in  
15 the northern Tibetan Plateau. *Cold Regions Science and Technology*, 126, pp.36-43.
- Gardent M., Rabatel A., Dedieu J.P., Deline P. 2014. Multitemporal glacier inventory of the French Alps from the late 1960s to the late 2000s. *Glob. Planet. Change*, 120, doi: 10.1016/j.gloplacha.2014.05.004.
- Gaudard L, Romerio, F. (2014). The future of hydropower in Europe: Interconnecting climate, markets and policies. *Environmental Science & Policy*, 37, 172–181.
- 20 Gaudard, L., Romerio, F., Dalla Valle, F., Gorret, R., Maran, S., Ravazzani, G., Stoffel, M., Volonterio, M. (2014). Climate change impacts on hydropower in the Swiss and Italian Alps. *Science of the Total Environment*, 493, 1211–1221.
- Gaume J., Eckert, N., Chambon G., Eckert N., Naaim M., Bel, L. (2013). Mapping extreme snowfalls in the French Alps using Max-Stable processes. *Water Resources Research*. Volume 49, Issue 2, pp 1079–1098.
- Genton, M., Kleiber, W. (2015). Cross-Covariance Functions for Multivariate Geostatistics. *Statistical Science*. Volume 30,  
25 Number 2, pp. 147-163
- GFS documentation (2016). The Global Forecast System (GFS) - Global Spectral Model (GSM Version 13.0.2). Global Climate & Weather Modeling Branch. (Available at <http://www.emc.ncep.noaa.gov/GFS/doc.php> , updated May 2016)
- Gilaberte, M., Pino, M.R., López, F., López-Moreno, J.I. (2014). Impacts of climate change on ski industry. *Environmental Science and Policy* 44: 51–61.
- 30 Gilbert A, Vincent C, Wagnon P, Thibert E and Rabatel A. 2012. The influence of snow cover thickness on the thermal regime of Tête Rousse Glacier (Mont Blanc range, 3200 m a.s.l.): consequences for outburst flood hazards and glacier response to climate change. *J. Geophys. Res.*, 117, F04018. doi: 10.1029/2011JF002258
- Gilks, W. R., Richardson, S., Spiegelhalter, D. J. (2001). *Markov Chain Monte Carlo in Practice*. Chapman & Hall ed. 486 p.



- Gisnås, K., Westermann, S., Schuler, T.V., Litherland, T., Isaksen, K., Boike, J. and Etzelmüller, B., 2014. A statistical approach to represent small-scale variability of permafrost temperatures due to snow cover. *The Cryosphere*, 8(6), pp.2063-2074.
- Gneiting, T., Genton, M. G. and Guttorp, P. (2007). Geostatistical space-time models, stationarity, separability and full symmetry. In Finkenstadt, B., Held, L. and Isham, V. (eds.), *Statistical Methods for Spatio-Temporal Systems*, Chapman & Hall/CRC, Boca Raton, pp. 151-175.
- Gobiet, A., Kotlarski, S., Beniston, M., Heinrich, G., Rajczak, J. and Stoffel, M. (2013): 21<sup>st</sup> century climate change in the European Alps A review. *Sci. Tot. Env.* 493, 1138-1151, <http://dx.doi.org/10.1016/j.scitotenv.2013.07.050>.
- Gornall, J., Betts, R., Burke, E., Clark, R., Camp, J., Willett, K. Wiltshire, A. (2010). Implications of climate change for agricultural productivity in the early twenty-first century. *Philos. Trans. R. Soc. B Biol. Sci.* 365 (1554): 2973-2989.
- Griffiths, P.G., Webb, R.H., Melis, T.S., 1997. Initiation of debris flows in bedrock canyons of the Colorado River, USA, in: Chen, C. (ed.), *Debris-Flow Hazard Mitigation: mechanics, prediction and assessment*. American Society of Civil Engineering, New York, pp. 12-20.
- Groisman, P. Y., Karl, T. R., Knight, R. W., & Stenchikov, G. L. (1994). Changes of snow cover, temperature, and radiative heat balance over the Northern Hemisphere. *Journal of Climate*, 7(11), 1633-1656.
- Gruber, S., Haeberli, W., 2008. Mountain permafrost. *Permafr. Soils Biol. Ser.* Page 348pp Springer Berlin.
- Haarsma, R. J., Roberts, M., Vidale, P. L., Senior, C. A., Bellucci, A., Bao, Q., ... & von Hardenberg, J. (2016). High Resolution Model Intercomparison Project (HighResMIP), *Geosci. Model Dev. Discuss.*, doi: 10.5194.Haeberli W and Beniston M. 1998. Climate Change and Its Impacts on Glaciers and Permafrost in the Alps. *Ambio*, 27, 4, 258-265.
- Haeberli, W., 2013. Mountain permafrost — research frontiers and a special long-term challenge. *Cold Reg. Sci. Technol.* 96, 71–76.
- Hall, K., Thorn, C., 2011. The historical legacy of spatial scales in freeze-thaw weathering: Misrepresentation and resulting misdirection. *Geomorphology* 130, 83-90.
- Hanzer, F., Helfricht, K., Marke, T. and Strasser, U. (2016): Multi-level spatiotemporal validation of snow/ice mass balance and runoff modeling in glacierized catchments, *The Cryosphere Discuss.*, <http://dx.doi.org/10.5194/tc-2016-58>, 2016.
- Harrison, G.P., Whittington, H.W. (2001). Impact of climatic change on hydropower investment. In: *Proceedings of the Fourth International Conference on Hydropower Development Hydropower, Hydropower in the New Millennium*, pp. 257–261.
- Hasler, A., Gruber, S., Beutel, J., 2012. Kinematics of steep bedrock permafrost. *J. Geophys. Res.* 117, F01016.
- Hawkins E, Sutton R (2010) The potential to narrow uncertainty in projections of regional precipitation change. *Clim Dyn.* doi: 10.1007/s00382-010-0810-6
- Hazeleger, W., Wang, X., Severijns, C., Ștefănescu, S., Bintanja, R., Sterl, A., ... & Van Noije, T. (2012). EC-Earth V2. 2: description and validation of a new seamless earth system prediction model. *Climate Dynamics*, 39(11), 2611-2629.
- Henderson, G. R., and D. J. Leathers (2010), European snow cover extent variability and associations with atmospheric



- forcings, *Int. J. Climatol.*, 30(10), 1440–1451, doi:10.1002/joc.1990.
- Hestnes, E. (1998). Slushflow hazard-where, why and when? 25 years of experience with slushflow consulting and research. *Annals of Glaciology* 26. Pp.370-376.
- Hock R. 1999. A distributed temperature-index ice- and snowmelt model including potential direct solar radiation. *J. Glaciol.*, 45(149), 101–111.
- Holzschläger A., Klein, T., Seppelt R., Fuhrer, J. (2015). Assessing the propagation of uncertainties in multi-objective optimization for agro-ecosystem adaptation to climate change. *Environmental Modelling & Software*, 66, 27-35.
- Horton, P., Schaefli, B., Mezghani, A., Hingray, B., and Musy, A. (2006): Assessment of climate-change impacts on alpine discharge regimes with climate model uncertainty, *Hydrol. Process.*, 20, 2091–2109.
- 10 Hu, J., D. J. P. Moore, S. P. Burns, and R. Monson (2010), Longer growing seasons lead to less carbon sequestration by a subalpine forest, *Glob. Chang. Biol.*, 16(2), 771–783, doi:10.1111/j.1365-2486.2009.01967.x.
- Huffman, G. J., R. F. Adler, M. M. Morrissey, S. Curtis, R. Joyce, B. McGavock, and J. Susskind, 2001: Global precipitation at one-degree daily resolution from multi-satellite observations. *J. Hydrometeorol.*, 2, 36-50.
- Huggel, C., Allen, S., Clague, J.J., Fischer, L., Korup, O., Schneider, D., 2013. Detecting Potential Climate Signals in Large Slope Failures in Cold Mountain Regions, in: Margottini, C., Canuti, P., Sassa, K. (Eds.), *Landslide Science and Practice*. Springer Berlin Heidelberg, pp. 361–367.
- 15 Huggel, C., Allen, S., Deline, P., Fischer, L., Noetzi, J., Ravelin, L., 2012. Ice thawing, mountains falling - Are alpine rock slope failures increasing? *Geol. Today* 28, 102–108.
- van den Hurk, B., Kim, H., Krinner, G., Seneviratne, S. I., Derksen, C., Oki, T., ... & Viovy, N. (2016). The Land Surface, Snow and Soil moisture Model Intercomparison Program (LS3MIP): aims, set-up and expected outcome, *Geosci. Model Dev. Discuss.*, doi: 10.5194.
- Hüsler, F., T. Jonas, M. Riffler, J. P. Musial, and S. Wunderle (2014), A satellite-based snow cover climatology (1985-2011) for the European Alps derived from AVHRR data, *Cryosphere*, 8(1), 73–90, doi:10.5194/tc-8-73-2014.
- Huss M. 2011. Present and future contribution of glaciers to runoff from macroscale drainage basins in Europe. *Water Res. Res.*, 47, W07511. doi: 10.1029/2010WR010299.
- 25 Huss M. 2012. Extrapolating glacier mass balance to the mountain range scale: the European Alps 1900–2100. *Cryosphere*, 6, 713-727, doi:10.5194/tc-6-713-2012
- Huss M. and Hock R. 2015. A new model for global glacier change and sea-level rise. *Front. Earth Sci.*, 3, 54, doi: 10.3389/feart.2015.00054
- 30 Huss M., Dhulst L. and Bauder A. 2015. New long-term mass balance series for the Swiss Alps. *J. Glaciol.*, 61 (227), 551-562.
- Huss M., Funk M. and Ohmura A. (2009): Strong Alpine glacier melt in the 1940s due to enhanced solar radiation. *Geophys. Res. Lett.*, 36, L23501. doi: 10.1029/2009GL040789.



- Huss, M., Zemp, M., Joerg, P. C., and Salzmann, N. (2014): High uncertainty in 21st century runoff projections from glacierized basins, *J. Hydrol.*, 510, 35–48.
- Huss, M. and Hock, R. (2015): A new model for global glacier change and sea-level rise. *Front. Earth Sci.* 3:54. doi: 10.3389/feart.2015.00054.
- 5 IFS documentation (2016), CY41r2, Part IV: Physical Processes, Chapter 8. ECMWF. (Available at <http://www.ecmwf.int/sites/default/files/elibrary/2016/16648-part-iv-physical-processes.pdf>)
- Immerzeel, W. W., Van Beek, L. P., and Bierkens, M. F. (2010). Climate change will affect the Asian water towers. *Science*, 328(5984), 1382-1385.
- Imperio S, Bionda R, Viterbi R, Provenzale A. . PLOS ONE 2013.
- 10 IPCC (2012). Managing the Risks of Extreme Events and Disasters to Advance Climate Change Adaptation. A Special Report of Working Groups I and II of the Intergovernmental Panel on Climate Change (Field, C.B., V. Barros, T.F. Stocker, D. Qin, D.J. Dokken, K.L. Ebi, M.D. Mastrandrea, K.J. Mach, G.-K. Plattner, S.K. Allen, M. Tignor, and P.M. Midgley (eds.)). Cambridge University Press, Cambridge, UK, and New York, NY, USA, 582 pp.
- IPCC (2013). Climate change 2013: The physical science basis. Contribution of Working Group I to the Fifth Assessment Report of the Intergovernmental Panel on Climate Change (Stocker, T.F., D. Qin, G.-K. Plattner, M. Tignor, S.K. Allen, J. Boschung, A. Nauels, Y. Xia, V. Bex and P.M. Midgley (eds.)). Cambridge University Press, Cambridge, United Kingdom and New York, NY, USA, 1535 pp.
- 15 IPCC, 2007: The 4<sup>th</sup> Assessment Report of the Intergovernmental Panel on Climate Change. Cambridge University Press.
- IPCC, 2012. Managing the Risks of Extreme Events and Disasters to Advance Climate Change Adaptation. A Special Report of Working Groups I and II of the Intergovernmental Panel on Climate Change (Field, C.B., V. Barros, T.F. Stocker, D. Qin, D.J. Dokken, K.L. Ebi, M.D. Mastrandrea, K.J. Mach, G.-K. Plattner, S.K. Allen, M. Tignor, and P.M. Midgley (eds.)). Cambridge University Press, Cambridge, UK, and New York, NY, USA.
- 20 IPCC, 2013. Summary for Policymakers. Working Group I Contribution to the IPCC Fifth Assessment Report Climate Change 2013: The Physical Science Basis. Cambridge University Press, Cambridge, UK.
- 25 Jacobson AR, Provenzale A, von Hardenberg A, Bassano B, Festa-Bianchet M. Climate Forcing And Density Dependence In A Mountain Ungulate Population. *Ecology* 2004.
- Jaggard, K.W., Qi, A.M., Ober, E.S. (2010). Possible changes to arable crop yields by 2050. *Philos. Trans. R. Soc. B Biol. Sci.*, 365, 1554, 2835e2851.
- Jansson, P., Hock, R., and Schneider, T. (2003): The concept of glacier storage: a review, *J. Hydrol.*, 282, 116–129.
- 30 Jasper, K., Calanca, P.L., Gyalistras, D., Fuhrer, J. (2004). Differential impacts of climate change on the hydrology of two alpine river basins. *Clim Res* 26, 113–129.
- Jouvet G., Huss M., Blatter H., Picasso M. and Rappaz, J. 2009. Numerical simulation of Rhonegletscher from 1874 to 2100. *J. Comput. Phy.*, 228(17), 6426-6439.



- Juliussen, H., Christiansen, H. H., Strand, G. S., Iversen, S., Midttømme, K., & Rønning, J. S. (2010). NORPERM, the Norwegian Permafrost Database—a TSP NORWAY IPY legacy. *Earth System Science Data*, 2(2), 235-246.
- Jylhä, K., S. Fronzek, H. Tuomenvirta, T. R. Carter, and K. Ruosteenoja (2008), Changes in frost, snow and Baltic sea ice by the end of the twenty-first century based on climate model projections for Europe, *Clim. Change*, 86(3-4), 441–462, doi:10.1007/s10584-007-9310-z.
- 5 Kääb A, Berthier E, Nuth C, Gardelle J and Arnaud Y. 2012. Contrasting patterns of early 21st century glacier mass change in the Himalayas. *Nature*, 488, 495-498. doi: 10.1038/nature11324
- Kääb A., Winsvold S.H., Altena B, Nuth C., Nagler T., Wuite J. 2016. Glacier remote sensing using Sentinel-2. Part I: Radiometric and geometric performance, and application to ice velocity. *Rem. Sens.*, 8(7), 598
- 10 Kang, I. S., Yang, Y. M., & Tao, W. K. (2015). GCMs with implicit and explicit representation of cloud microphysics for simulation of extreme precipitation frequency. *Climate Dynamics*, 45(1-2), 325-335.
- Kaser G., Großhauser M. and Marzeion B. 2010. Contribution potential of glaciers to water availability in different climate regimes. *Proc. Nat. Acad. Sci.*, 107(47), 20223-20227.
- Kaufmann, Viktor. "The evolution of rock glacier monitoring using terrestrial photogrammetry: the example of Äusseres  
15 Hochebenkar rock glacier (Austria)." *Austrian Journal of Earth Sciences* 105.2 (2012): 63-77.
- Kenner, R., Bühler, Y., Delaloye, R., Ginzler, C., & Phillips, M. (2014). Monitoring of high alpine mass movements combining laser scanning with digital airborne photogrammetry. *Geomorphology*, 206, 492-504.
- Kenner, R., Chinellato, G., Iasio, C., Mosna, D., Cuzzo, G., Benedetti, E., Visconti, M.G., Manunta, M., Phillips, M., Mair, V. and Zischg, A., 2016. Integration of space-borne DInSAR data in a multi-method monitoring concept for alpine mass  
20 movements. *Cold Regions Science and Technology*.
- Klein, G., Y. Vitasse, C. Rixen, C. Marty, and M. Rebetz (n.d.), Shorter snow cover duration since 1970 in the Swiss Alps due to earlier snowmelt more than later snow onset, *Clim. Chang.*
- KLIWA (2006): Regionale Klimaszenarien für Süddeutschland. Abschätzung der Auswirkung auf den Wasserhaushalt. KLIWA-Berichte Heft 9. Arbeitskreis KLIWA (LUBW, BfU, DWD).
- 25 KLIWA (2009): Klimawandel im Süden Deutschlands. Ausmaß – Folgen – Strategien. Auswirkungen auf die Wasserwirtschaft. Stuttgart.
- Klug, C., Bollmann, E., Kääb, A., Krainer, K., Sailer, R. and Stötter, J., 2012, June. Monitoring of permafrost creep on two rock glaciers in the Austrian eastern Alps: Combination of aerophotogrammetry and airborne laser scanning. In *Proceedings of the 10th International Conference on Permafrost*. Salekhard (pp. 215-226).
- 30 Kohler, J., O. Brandt, M. Johansson, and T. Callaghan (2006), A long-term Arctic snow depth record from Abisko, northern Sweden, 1913-2004, *Polar Res.*, 25(2), 91–113, doi:10.1111/j.1751-8369.2006.tb00026.x.
- Köplin, N., O. Röbber, B. Schädler, and R. Weingartner (2014), Robust estimates of climate-induced hydrological change in a temperate mountainous region, *Clim. Change*, 122(1-2), 171–184, doi:10.1007/s10584-013-1015-x.



- Korup, O., Görüm, T., Hayakawa, Y., 2012. Without power? Landslide inventories in the face of climate change. *Earth Surf. Process. Landforms* 37, 92–99.
- Kotlarski S, Keuler K, Christensen OB, Colette A, Déqué M, Gobiet A, Goergen K, Jacob D, Lüthi D, van Meijgaard E, Nikulin G, Schär C, Teichmann C, Vautard R, Warrach-Sagi K, Wulfmeyer V (2014) Regional climate modelling on  
5 European scales: A joint standard evaluation of the EURO-CORDEX RCM ensemble. *Geoscientific Model Development*, 7, 1297-1333.
- Kotlarski, S., T. Bosshard, D. Luthi, P. Pall, and C. Schar (2012), Elevation gradients of European climate change in the regional climate model COSMO-CLM, *Climatic Change*, 112(2), 189-215, doi:10.1007/s10584-011-0195-5.
- Krainer, K., Mostler, W., 2002. Hydrology of active rock glaciers: Examples from the Austrian Alps. *Arctic Antarc. Alpine*  
10 *Res.* 34, 142-149.
- Krautblatter, M., Huggel, C., Deline, P. and Hasler, A., 2012. Research Perspectives on Unstable High-alpine Bedrock Permafrost: Measurement, Modelling and Process Understanding. *Permafrost and Periglacial Processes*, 23(1), pp.80-88.
- Krol, Q., and H. Lowe (2016), Analysis of local ice crystal growth in snow, *Journal of Glaciology*, 62(232), 378-390, doi:10.1017/jog.2016.32.
- 15 Kumar, A., Schei, T., Ahenkorah, A., Rodriguez, R.C., Devernay, J.-M., Freitas, M., Hall, D., Killingtveit, A., Liu, Z. (2011). *Hydropower IPCC Special Report on Renewable Energy Sources and Climate Change Mitigation*. Cambridge University Press, Cambridge and New York.
- Kumar, M., D. Marks, J. Dozier, M. Reba, and A. Winstral (2013), Evaluation of distributed hydrologic impacts of temperature-index and energy-based snow models, *Advances in Water Resources*, 56, 77-89,  
20 doi:10.1016/j.advwatres.2013.03.006.
- Kunkel, K. E., D. A. Robinson, S. Champion, X. Yin, T. Estilow, and R. M. Frankson (2016), Trends and Extremes in Northern Hemisphere Snow Characteristics, *Curr. Clim. Chang. Reports*, 2(2), 65–73, doi:10.1007/s40641-016-0036-8.
- Laghari, A. N., D. Vanham, and W. Rauch (2012), To what extent does climate change result in a shift in Alpine hydrology? A case study in the Austrian Alps, *Hydrol. Sci. J.*, 57(1), 103–117, doi:10.1080/02626667.2011.637040.
- 25 Lane S.N., Bakker M., Gabbud C., Micheletti N. and Saugy J.N. 2016. Sediment export, transient landscape response and catchment-scale connectivity following rapid climate warming and Alpine glacier recession. *Geomorphology*, doi: 10.1016/j.geomorph.2016.02.015
- Latif M. (2011) Uncertainty in climate change projections. *Journal of Geochemical Exploration*. doi:10.1016/j.gexplo.2010.09.011
- 30 Lavigne, A., Eckert, N., Bel, L., Parent, E. (2015). Adding expert contribution to the spatio-temporal modeling of avalanche activity under different climatic influences. *Journal of the Royal Statistical Society C (Applied Statistics)*. 64. pp. 651–671.
- Lawrence, D. M., et al. (2011), Parameterization Improvements and Functional and Structural Advances in Version 4 of the Community Land Model, *J Adv Model Earth Sy*, 3, doi:Artn M03001



- Lehning, M., H. Lowe, M. Ryser, and N. Raderschall (2008), Inhomogeneous precipitation distribution and snow transport in steep terrain, *Water Resources Research*, 44(7), doi:W07404 10.1029/2007wr006545.
- Lehning, M., P. Bartelt, B. Brown, C. Fierz, and P. Satyawali (2002), A physical SNOWPACK model for the Swiss avalanche warning Part II: Snow microstructure, *Cold Regions Science and Technology*, 35(3), 147-167, doi:Pii S0165-5 232x(02)00073-3
- Lehning, M., P. Bartelt, B. Brown, T. Russi, U. Stockli, and M. Zimmerli (1999), SNOWPACK model calculations for avalanche warning based upon a new network of weather and snow stations, *Cold Regions Science and Technology*, 30(1-3), 145-157.
- Leisenring, M., Moradkhani, H. (2011). Snow water equivalent prediction using Bayesian data assimilation methods. *Stochastic Environmental Research and Risk Assessment*. 25. pp 253–270.
- Li, C., B. Stevens, and J. Marotzke (2015), Eurasian winter cooling in the warming hiatus of 1998-2012, *Geophys. Res. Lett.*, 42(19), 8131–8139, doi:10.1002/2015GL065327.
- López-Moreno, J. I., and S. M. Vicente-Serrano (2007), Atmospheric circulation influence on the interannual variability of snow pack in the Spanish Pyrenees during the second half of the 20th century, *Nord. Hydrol.*, 38(1), 33, doi:10.2166/nh.2007.030.
- López-Moreno, J. I., S. Goyette, and M. Beniston (2009), Impact of climate change on snowpack in the Pyrenees: Horizontal spatial variability and vertical gradients, *J. Hydrol.*, 374(3-4), 384–396, doi:10.1016/j.jhydrol.2009.06.049.
- López-Moreno, J. I., S. Goyette, S. M. Vicente-Serrano, and M. Beniston (2011), Effects of climate change on the intensity and frequency of heavy snowfall events in the Pyrenees, *Clim. Change*, 105(3-4), 489–508, doi:10.1007/s10584-010-9889-3.
- López-Moreno, J.I., García-Ruiz, J.M., Beniston, M. (2008). Environmental Change and Water Resources in the Pyrenees. Facts and future perspectives for Mediterranean Mountains. *Global and Planetary Change* 61, 3-4, 300-312.
- López-Moreno, J.I., Pomeroy, J.W., Revuelto, J. and Vicente-Serrano, S.M. (2012): Response of snow processes to climate change: spatial variability in a small basin in the Spanish Pyrenees. *Hydrol. Process.*, doi:10.1002/hyp.9408.
- López-Moreno, J.I., Zabalza, J., Vicente-Serrano, S.M., Revuelto, J., Gilaberte, M., Azorin-Molina, C., et al. (2014): Impact of climate and land use change on water availability and reservoir management; Scenarios in the upper Aragón River, Spanish Pyrenees. *Sci Total Environ*.
- Lugon, R., Stoffel, M. (2010), Rock-glacier dynamics and magnitude–frequency relations of debris flows in a high-elevation watershed: Ritigraben, Swiss Alps. *Global and Planetary Change* 73: 202–210.
- Magnusson, J., T. Jonas, I. Lopez-Moreno, and M. Lehning (2010), Snow cover response to climate change in a high alpine and half-glacierized basin in Switzerland, *Hydrol. Res.*, 41(3-4), 230–240, doi:10.2166/nh.2010.115.
- Magnusson, J., Farinotti, D., Jonas, T., and Bavay, M. (2011): Quantitative evaluation of different hydrological modelling approaches in a partly glacierized Swiss watershed, *Hydrol. Process.*, 25, 2071–2084.
- Magnusson, J., N. Wever, R. Essery, N. Helbig, A. Winstral, and T. Jonas (2015), Evaluating snow models with varying process representations for hydrological applications, *Water Resources Research*, 51, 2707–2723,





- doi:10.1002/2014WR016498.
- Margreth, S., Funk, M. (1999). Hazard mapping for ice and combined snow/ice avalanches – two case studies from the Swiss and Italian Alps. *Cold Regions Science and Technologie*. 30. 159-173.
- Marmy, A., Rajczak, J., Delaloye, R., Hilbich, C., Hoelzle, M., Kotlarski, S., Lambiel, C., Noetzi, J., Phillips, M.,  
5 Salzmann, N., Staub, B., and Hauck, C. (2016): Semi-automated calibration method for modelling of mountain permafrost evolution in Switzerland, *The Cryosphere*, 10, 2693-2719, doi:10.5194/tc-10-2693-2016.
- Marshall, H. P., M. Schneebeli, and G. Koh (2007), Snow stratigraphy measurements with high-frequency FMCW radar: Comparison with snow micro-penetrometer, *Cold Regions Science and Technology*, 47(1-2), 108-117, doi:10.1016/j.coldregions.2006.08.008.
- 10 Marti R., Gascoin S., Houet T., Ribière O., Laffly D., Condom T., Monnier S., Schmutz M., Camerlynck C., Tihay J.P., Soubeyroux J.M. and René P. 2015. Evolution of Ossoue Glacier (French Pyrenees) since the end of the Little Ice Age. *Cryosphere*, 9, 1773-1795. doi: 10.5194/tc-9-1773-2015
- Martin, E., G. Giraud, Y. Lejeune, and G. Boudart (2001), Impact of a climate change on avalanche hazard, *Ann. Glaciol.*, 32, 163–167, doi:10.3189/172756401781819292.
- 15 Marty, C. (2008), Regime shift of snow days in Switzerland, *Geophys. Res. Lett.*, 35, L12501, doi:10.1029/2008GL033998
- Marty, C., and R. Meister (2012), Long-term snow and weather observations at Weissfluhjoch and its relation to other high-elevation observatories in the Alps, *Theor. Appl. Climatol.*, 110(4), 573–583, doi:10.1007/s00704-012-0584-3.
- Marty, C., Blanchet, J. (2012). Long-term changes in annual maximum snow depth and snowfall in Switzerland based on extreme value statistics. *Climatic Change* 111 (3) , pp. 705-721.
- 20 Marty, C., Schlögl, S., Bavay, M., and Lehning, L.: How much can we save? Impact of different emission scenarios on future snow cover in the Alps, *The Cryosphere Discuss.*, 2016, 1-28, 10.5194/tc-2016-230, 2016.
- Martz, F., J. Vuosku, A. Ovaskainen, S. Stark, and P. Rautio (2016), The Snow Must Go On: Ground Ice Encasement, Snow Compaction and Absence of Snow Differently Cause Soil Hypoxia, CO<sub>2</sub> Accumulation and Tree Seedling Damage in Boreal Forest, *PLoS One*, 11(6), e0156620, doi:10.1371/journal.pone.0156620.
- 25 Marzeion B. and Nesje A. 2012. Spatial patterns of North Atlantic Oscillation influence on mass balance variability of European glaciers. *Cryosphere*, 6, 661-673. doi: 10.5194/tc-6-661-2012.
- Marzeion, B., Jarosch, A.H. and Hofer, M. (2012): Past and future sea-level change from the surface mass balance of glaciers. *The Cryosphere* 6, 1295–1322. doi:10.5194 / tc-6-1295-2012.
- Matthews J. L, E. Mannshardt, and P. Gremaud (2012). Uncertainty quantification for climate observations. *BAMS*  
30 DOI:10.1175/BAMS-D-12-00042.1
- Merz, K., Maurer, H., Buchli, T., Horstmeyer, H., Green, A.G. and Springman, S.M., 2015b. Evaluation of Ground-Based and Helicopter Ground-Penetrating Radar Data Acquired Across an Alpine Rock Glacier. *Permafrost and Periglacial Processes*, 26(1), pp.13-27.



- Merz, K., Maurer, H., Rabenstein, L., Buchli, T., Springman, S.M. and Zweifel, M., 2015a. Multidisciplinary geophysical investigations over an alpine rock glacier. *Geophysics*, 81(1), pp.WA147-WA157.
- Micu, D. (2009), Snow pack in the Romanian Carpathians under changing climatic conditions, *Meteorol. Atmos. Phys.*, 105(1-2), 1–16, doi:10.1007/s00703-009-0035-6.
- 5 Mignatti A, Casagrandi R, Provenzale A, von Hardenberg A, Gatto M. Sex- and age-structured models for Alpine ibex *Capra ibex ibex* population dynamics. *Wildlife Biology* 2012.
- Millar, C. I., Westfall, R. D., & Delany, D. L. (2013). Thermal and hydrologic attributes of rock glaciers and periglacial talus landforms: Sierra Nevada, California, USA. *Quaternary International*, 310, 169-180.
- Mock, C. J., Birkeland, K. W. (2000). Snow avalanche climatology of the western United States mountain ranges. *Bulletin of the American Meteorological Society*. Vol. 81, N°1. pp 2367-2392.
- 10 Morán-Tejeda, E., López-Moreno, J. I., Beniston, M. (2013). The changing roles of temperature and precipitation on snowpack variability in Switzerland as a function of elevation. *Geophysical Research Letters*. VOL. 40, 1doi:10.1002/grl.50463.
- Morlighem M, Rignot E, Seroussi H, Larour E, Ben Dhia H and Aubry D. 2011. A mass conservation approach for mapping 15 glacier ice thickness. *Geophys. Res. Lett.*, 38, doi: 10.1029/2011GL048659
- Mott, R., Schirmer, M., Bavay, M., Grünewald, T., and Lehning, M., 2010, Understanding snow-transport processes shaping the mountain snow-cover, *The Cryosphere*, 4, 545-559, doi:10.5194/tc-4-545-2010.
- Mott, R., Schirmer, M., Lehning, M. (2011). Scaling properties of wind and snow depth distribution in an Alpine catchment. *Journal of Geophysical Research*, VOL. 116, D06106, doi:10.1029/2010JD014886, 2011.
- 20 Mountain Agenda (1998): Mountains of the World. Water Towers for the 21<sup>st</sup> Century, Prepared for the United Nations Commission on Sustainable Development. Institute of Geography, University of Berne (Centre for Development and Environment and Group for Hydrology) and Swiss Agency for Development and Cooperation. Paul Haupt Publishers, Bern, Switzerland, 32pp.
- Mudryk, L. R., Derksen, C., Kushner, P. J., & Brown, R. (2015). Characterization of northern hemisphere snow water 25 equivalent datasets, 1981–2010. *Journal of Climate*, 28(20), 8037-8051.
- Müller, J., Gärtner-Roer, I., Thee, P. and Ginzler, C., 2014. Accuracy assessment of airborne photogrammetrically derived high-resolution digital elevation models in a high mountain environment. *ISPRS Journal of Photogrammetry and Remote Sensing*, 98, pp.58-69.
- Naaim, M., Durand, Y., Eckert, N., Chambon, G. (2013). Dense avalanche friction coefficients : influence of physical 30 properties of snow. *Journal of Glaciology*. Vol. 59, No. 216. pp 771-782.
- Necsoiu, M., Onaca, A., Wigginton, S. and Urdea, P., 2016. Rock glacier dynamics in Southern Carpathian Mountains from high-resolution optical and multi-temporal SAR satellite imagery. *Remote Sensing of Environment*, 177, pp.21-36.
- Nelson, D.R., Adger, N.W., Brown, K. (2007). Adaptation to environmental change: contributions of a resilience framework. *Annual Review of Environmental Resources*, 32, 395–419.



- Nicolet., G., Eckert, N., Morin, S., Blanchet, J. Decreasing Spatial Dependence in Extreme Snowfall in the French Alps since 1958 under Climate Change. *Geophys. Res. Atmos.*, 121, doi:10.1002/2016JD025427
- Nikolova, N., P. Faško, M. Lapin, and M. Švec (2013), Changes in snowfall/precipitation-day ratio in Slovakia and their linkages with air temperature and precipitation, *Contrib. to Geophys. Geod.*, 43, 141, doi:10.2478/congeo-2013-0009.
- 5 Noetzli, J., Christiansen, H.H., Gugliemin, M., Romanovsky, V. E., Shiklomanov, N. I., Smith, S. L. and Zhao, L. 2016: Permafrost thermal state (in “State of the Climate in 2015”). *Bull. Amer. Meteor. Soc.*, 97 (8), 173–226.
- O’Gorman, P. A. (2014), Contrasting responses of mean and extreme snowfall to climate change, *Nature*, 512(7515), 416–U401, doi:10.1038/nature13625.
- Oerlemans, J., R.H. Giessen and M.R. van den Broeke. 2009. Retreating alpine glaciers: Increased melt rates due to accumulation of dust (Vadret da Morteratsch, Switzerland). *J. Glaciol.*, 55, 729–736, doi: 10.3189/002214309789470969.
- 10 Ohmura A., Bauder A., Müller H. and G. Kappenberger. 2007. Long-term change of mass balance and the role of radiation. *Ann. Glaciol.*, 46(1), 367-374.
- Orlowsky, B. and Seneviratne, S. I., 2014, On the spatial representativeness of temporal dynamics at European weather stations. *Int. J. Climatol.*, 34: 3154–3160. doi:10.1002/joc.3903
- 15 Parajka, J., A. Viglione, M. Rogger, J. L. Salinas, M. Sivapalan, and G. Blöschl (2013), Comparative assessment of predictions in ungauged basins - Part 1: Runoff-hydrograph studies, *Hydrology and Earth System Sciences*, 17(5), 1783-1795, doi:10.5194/hess-17-1783-2013.
- Parmesan, C. 2006. Ecological and Evolutionary Responses to Recent Climate Change. *Annu. Rev. Ecol. Sys.* 37: 637-669.
- Paul F, Kääb A, Maisch M, Kellenberger T. and W. Haeberli. 2004. Rapid disintegration of Alpine glaciers observed with satellite data. *Geophys. Res. Lett.*, 31(21).
- 20 Peizhen, Z., Molnar, P., Downs, W.R. (2001). Increased sedimentation rates and grain sizes 2–4 Myr ago due to the influence of climate change on erosion rates. *Nature*, 410, 891–897.
- Pellicciotti, F., Carenzo, M., Bordoy, R and Stoffel, M. (2014): Changes in glaciers in the Swiss Alps and impact on basin hydrology: Current state of the art and future research. *Sci. Tot. Env.*, 1152-1170,
- 25 <http://dx.doi.org/10.1016/j.scitotenv.2014.04.022>.
- Peng, S., Ciais, P., Krinner, G., Wang, T., Gouttevin, I., McGuire, A. D., Lawrence, D., Burke, E., Chen, X., Decharme, B., Koven, C., MacDougall, A., Rinke, A., Saito, K., Zhang, W., Alkama, R., Bohn, T. J., Delire, C., Hajima, T., Ji, D., Lettenmaier, D. P., Miller, P. A., Moore, J. C., Smith, B., and Sueyoshi, T.: Simulated high-latitude soil thermal dynamics during the past 4 decades, *The Cryosphere*, 10, 179-192, doi:10.5194/tc-10-179-2016, 2016.
- 30 Pepin, N., et al., 2015, Elevation-dependent warming in mountain regions of the world, *Nature Climate Change*, 5, 424-430, doi:10.1038/NCLIMATE2563
- PERMOS, 2016. Permafrost in Switzerland 2010/2011 to 2013/2014. Noetzli, J. , Luethi, R. & Staub, B. (eds.), *Glaciological Report Permafrost No. 12–15 of the Cryospheric Commission of the Swiss Academy of Sciences*, 86pp.



- Pettorelli N, Pelletier F, von Hardenberg A, Festa-Bianchet M, Coteal SD. Early onset of vegetation growth vs. rapid green-up: impacts on juvenile mountain ungulates. *Ecology* 88: 381-390, 2007.
- Pfeffer WT and 19 others. 2014. The Randolph Glacier Inventory: a globally complete inventory of glaciers. *J. Glaciol.*, 60(221), 537-552. doi: 10.3189/2014JoG13J176
- 5 Pielmeier, C., F. Techel, C. Marty, and T. Stucki (2013), Wet snow avalanche activity in the Swiss Alps – trend analysis for mid-winter season, *Int. Snow Sci. Work. Grenoble - Chamonix Mont-Blanc*, (2002), 1240–1246.
- Post E, et al. Ecological Dynamics Across the Arctic Associated with Recent Climate Change. *Science* 2009.
- Prasch, M., Marke, T., Strasser, U. and Mauser, W. (2011) : Large scale integrated hydrological modelling of the impact of climate change on the water balance with DANUBIA. *Adv. Sci. Res.*, 7, 61-70, doi:10.5194/asr-7-61-2011.
- 10 Prein A.F. and A. Gobiet, (2016). Impacts of uncertainties in European gridded precipitation observations on regional climate analysis. *Int. J. Climatol.* DOI: 10.1002/joc.4706
- Pütz, M., Gallati D, Kytzia S, Elsasser H, Lardelli C, Teich M, Waltert F, Rixen C. (2011). Winter Tourism, Climate Change, and Snowmaking in the Swiss Alps: Tourists' Attitudes and Regional Economic Impacts. *Mountain Research and Development*, 31(4), 357-362.
- 15 Quevauviller, P., Barcelo, D., **Beniston, M.**, Djordjevic, S., Froebrich, J., Harding, R. J., Ludwig, R., Navarra, A., Ortega, A. N., Roson, R., Sempere, D., Stoffel, M., van Lanen, H., and Werner, M., 2012: Integration of research advances in modelling and monitoring in support of WFD river basin management planning in the context of climate change. *Science of the Total Environment*, 440, 167-177
- Rabatel A, Dedieu J-P and Vincent C. 2005. Using remote sensing data to determine equilibrium-line elevation and mass-balance time series: validation on three French glaciers, 1994-2002. *J. Glaciol.*, 51(175), 539-546. doi: 10.3189/172756505781829106
- 20 Radić V, Bliss A, Beedlow AC, Hock R, Miles E, and Cogley JG. 2014. Regional and global projections of twenty-first century glacier mass changes in response to climate scenarios from global climate models. *Clim. Dyn.*, 42(1-2), 37-58.
- Räisänen, J., and J. Eklund (2012), 21st Century changes in snow climate in Northern Europe: A high-resolution view from ENSEMBLES regional climate models, *Clim. Dyn.*, 38(11-12), 2575–2591, doi:10.1007/s00382-011-1076-3.
- 25 Rangecroft, S., Harrison, S., & Anderson, K. (2015). Rock glaciers as water stores in the Bolivian Andes: an assessment of their hydrological importance. *Arctic, Antarctic, and Alpine Research*, 47(1), 89-98.
- Rasmussen LA and Conway H. 2005. Influence of upper-air conditions on glaciers in Scandinavia. *Ann. Glaciol.*, 42, 402-408. doi: 10.3189/172756405781812727.
- 30 Rasmussen R., et al, 2012, How well are we measuring snow? The NOAA/FAA/NCAR Winter Precipitation Test Bed, *Bull. Amer. Met. Soc.*, 93, 811-829, doi:10.1175/BAMS-D-11-00052.1
- Ravanel, L., Allignol, F., Deline, P., Gruber, S., Ravello, M., 2010. Rock falls in the Mont Blanc Massif in 2007 and 2008. *Landslides* 7, 493–501.



- Ravanel, L., Deline, P., 2011. Climate influence on rockfalls in high-Alpine steep rockwalls: The north side of the Aiguilles de Chamonix (Mont Blanc massif) since the end of the 'Little Ice Age'. *The Holocene* 21, 357–365.
- Reid TD and Brock BW. 2010. An energy-balance model for debris-covered glaciers including heat conduction through the debris layer. *J. Glaciol.*, 56(199), 903-916.
- 5 Reid, P. C. et al. (2016), Global impacts of the 1980s regime shift, *Glob. Chang. Biol.*, 22(2), 682–703, doi:10.1111/gcb.13106.
- Réveillet M, Rabatel A, Gillet-Chaulet F and Soruco A. 2015. Simulations of changes in Glaciar Zongo, Bolivia (16°S), over the 21st century using a 3D full-Stokes model and CMIP5 climate projections. *Ann. Glaciol.*, 56(70), 89-97. doi: 10.3189/2015AoG70A113
- 10 Réveillet M, Vincent C, Six D and Rabatel A. 2016. Which empirical model is best suited to simulate glacier mass balance? *J. Glaciol.*, doi: 10.1017/jog.2016.110.
- Riediger, J., Breckling, B., Nuske, R.S., Schröder, W. (2014). Will climate change increase irrigation requirements in agriculture of Central Europe? A simulation study for Northern Germany. *Environmental Sciences Europe*, 26 (18), 1-13.
- Rixen, C., Teich, M., Lardelli, C., Gallati, D., Pohl, M., Pütz, M., Bebi, P. (2011). Winter tourism and climate change in the Alps: An assessment of resource consumption, snow reliability and future snowmaking potential. *Mountain Research and Development*, 31(3), 229–236.
- Roson, R., Sartori, M. (2012). Climate Change, Tourism and Water Resources in the Mediterranean: A General Equilibrium Analysis. Centre for Research on Energy and Environment Economics and Policy. Working Paper Series 51, 15pp.
- Rothstein, B., Schroedter-Homscheidt, M., Hafnet, C., Bernhardt, S., Mimler, S. (2008). Impacts of climate change on the electricity sector and possible adaptation measures. In: Hansjurgens, B., Anter, R. (Eds.), *Economics and Management of Climate Change*. Springer, New York, NY.
- 20 Rousselot, M., Durand, Y., Giraud, G., Mérindol, L., Dombrowski-Etchevers, I., Déqué, M. and Castebrunet, H. : Statistical adaptation of ALADIN RCM outputs over the French Alps – application to future climate and snow cover, *The Cryosphere*, 6, 785–805, doi:10.5194/tc-6-785-2012, 2012.
- 25 Rudolf B, Hauschild H, Rueth W, Schneider U. 1994. Terrestrial precipitation analysis: operational method and required density of point measurements. In *Global Precipitations and Climate Change*, Desbois M, Désalmand F (eds). Springer, 173–186.
- Sadovský, Z., Sykora, M. (2013). Snow load models for probabilistic optimization of steel frames. *Cold Regions Science and Technology*. Volume 94, pp. 13–20
- 30 Salzmann, N., Huggel, C., Rohrer, M. and Stoffel, M. (2014): Data and knowledge gaps in glacier, snow and related runoff research – A climate change adaptation perspective. *J. Hydrol.*, 518, 225-234, <http://dx.doi.org/10.1016/j.jhydrol.2014.05.058>.
- Sattler, K., Keiler, M., Zischg, A., Schrott, L., 2011. On the connection between debris-flow activity and permafrost degradation: a case study from the Schnalstal, South Tyrolean Alps, Italy, *Permafrost Periglac. Process.* 22, 254-265.



- Schaepli, B., Hingray, B., Musy, A. (2007): Climate change and hydropower production in the Swiss Alps: quantification of potential impacts and related modelling uncertainties. *Hydrol. Earth Syst. Sci.* 11(3): 1191–1205.
- Schaldach, R., Koch, J., Aus der Beek, T., Kynast, E., Flörke, M. (2012). Current and future irrigation water requirements in pan-Europe: An integrated analysis of socio-economic and climate scenarios. *Global and Planetary Change*, 94–95, 33–45.
- 5 Scherler, M., Schneider, S., Hoelzle, M. & Hauck, C., 2014. A two-sided approach to estimate heat transfer processes within the active layer of the Murtèl–Corvatsch rock glacier, *Earth Surf. Dyn.* 2(1), 141–154, doi:10.5194/esurf-2-141-2014.
- Scherrer, S. C., and C. Appenzeller (2006), Swiss alpine snow pack variability: Major patterns and links to local climate and large-scale flow, *Clim. Res.*, 32(3), 187–199, doi:10.3354/cr032187.
- Scherrer, S. C., C. Wüthrich, M. Croci-Maspoli, R. Weingartner, and C. Appenzeller (2013), Snow variability in the Swiss Alps 1864–2009, *Int. J. Climatol.*, 33(15), 3162–3173, doi:10.1002/joc.3653.
- 10 Schirmer, M., M. Lehning, and J. Schweizer (2009), Statistical forecasting of regional avalanche danger using simulated snow-cover data, *Journal of Glaciology*, 55(193), 761–768.
- Schläppy, R., Jomelli, V., Eckert, N., STOFFEL, M., Grancher, D., Brunstein, D., Corona, C., Deschatres, M., 2016. Can we infer avalanche–climate relations using tree-ring data? Case studies from the French Alps. *Regional Environmental Change*
- 15 **16**: 629–642.
- Schläppy, R., Eckert, N., Jomelli, R. Stoffel, M., Grancher, D., Brunstein, D., Naaim, M., Deschatres, M., 2014. Validation of extreme snow avalanches and related return periods derived from a statistical-dynamical model using tree-ring based techniques. *Cold Regions Science and Technology* **99**, 12–26.
- Schlögl, S., Marty, Ch., Fierz, Ch., and Lehning, M.: Sensitivity of Alpine3D modeled snow cover to modifications in DEM resolution, station coverage and meteorological input quantities, *Environmental Modelling & Software* 83, (2016) 387–396, 2016.
- 20 Schlyter, P., Jönsson, P., Nyberg, R., Persson, P., Rapp, A., Jonasson, C., Rehn, J. (1993). Geomorphic Process Studies Related to Climate Change in Kärkevagge, Northern Sweden. Status of Current Research. *Geografiska Annaler. Series A, Physical Geography*, 75(1/2), pp. 55–60
- 25 Schmucki, E., C. Marty, C. Fierz, and M. Lehning (2015a), Simulations of 21st century snow response to climate change in Switzerland from a set of RCMs, *Int. J. Climatol.*, 35(11), 3262–3273, doi:10.1002/joc.4205.
- Schmucki, E., Marty, C., Fierz, C., Weingartner, R., and Lehning, M. (2015b), Impact of climate change in Switzerland on socioeconomic snow indices, *Theoretical and Applied Climatology*, 1–15, 10.1007/s00704-015-1676-7.
- Schneider U, Becker A, Finger P, Meyer-Christoffer A, Ziese M, Rudolf B. 2014. GPCC’s new land surface precipitation climatolgy based on quality-controlled in situ data and its role in quantifying the global water cycle. *Theor. Appl. Climatol.* 115(1–2): 15–40, doi: 10.1007/s00704-013-0860-x.
- 30 Schöner, W., I. Auer, and R. Böhm (2009), Long term trend of snow depth at Sonnblick (Austrian Alps) and its relation to climate change, in *Hydrological Processes*, vol. 23, pp. 1052–1063.



- Schrott, L. 1996: Some geomorphological-hydrological characteristics of rock glaciers in the Andes, San Juan, Argentina. *Zeitschrift für Geomorphologie, Supplementband 104*: 161–173.
- Schwanghart, W., Worni, R., Huggel, C., Stoffel, M., Korup, O. (2016) Uncertainties at the water-energy nexus - the case of Himalayan hydropower and glacial lake outburst floods. *Environmental Research Letters* 11: 074005.
- 5 Schweizer, J., Jamieson, J. B., Schneebeli, M. (2003). Snow avalanche formation. *Reviews of Geophysics* 41(4): 1016. doi:10.1029/2002RG000123
- Scott, D., McBoyle, G., Minogue, A. (2007). Climate change and Quebec's ski industry. *Global Environmental Change*, 17(2), 181–190.
- Serquet G., C. Marty, M. Rebetez, 2013: Monthly trends and the corresponding altitudinal shift in the snowfall/precipitation day ratio, *Theor. Appl. Climatol.* 114, 437–444, doi:10.1007/s00704-013-0847-7
- 10 Serquet, G., C. Marty, J.-P. Dulex, and M. Rebetez (2011), Seasonal trends and temperature dependence of the snowfall/precipitation-day ratio in Switzerland, *Geophys. Res. Lett.*, 38(7), 14–18, doi:10.1029/2011GL046976.
- SGHL/Chy (Eds., 2011): Auswirkung der Klimaänderung auf die Wasserkraftnutzung – Synthesebericht. Beiträge zur Hydrologie der Schweiz, Nr. 38, 28 S., Bern.
- 15 Sigurdsson O, RS Williams, S Martinis and U Münzer. 2014. Remote sensing of mountain glaciers and ice caps in Iceland. Chapter 18 in: Kargel, J.S., G.J. Leonard, M.P. Bishop, A. Kaab, B. Raup (Eds), 2014, *Global Land Ice Measurements from Space* (Springer-Praxis Books), Springer-Verlag Berlin Heidelberg. doi: 10.1007/978-3-540-79818-7
- Sillmann J, Kharin VV, Zhang X, Zwiers FW, Bronaugh D (2013) Climate extremes indices in the CMIP5 multimodel ensemble: Part 1. Model evaluation in the present climate. *Journal of Geophysical Research: Atmospheres.* 27;118(4):1716-20 33.
- Sirguey P, Still H, Cullen NJ, Dumont M, Arnaud Y and Conway JP. 2016. Reconstructing the mass balance of Brewster Glacier, New Zealand, using MODIS-derived glacier-wide albedo. *Cryosphere*, in press.
- Six D. and Vincent C. 2014. Sensitivity of mass balance and equilibrium line elevation to climate change in the French Alps. *J. Glaciol.*, 60, 223.
- 25 Skaugen, T., H. B. Strandén, and T. Saloranta (2012), Trends in snow water equivalent in Norway (1931–2009), *Hydrol. Res.*, 43(4), 489, doi:10.2166/nh.2012.109.
- Smiraglia C and Diolaiuti G. 2015. *The new Italian glacier Inventory*. EV-K2-CNR, Bergamo Publ., 400 pp.
- Smith, P.C., Calanca, P., Fuhrer, J. (2012) A simple scheme for modelling irrigation water requirements at the regional scale applied to an Alpine river catchment. *Water*, 4, 869-886.
- 30 Smith, P.C., Heinrich, G., Suklitsch, M., Gobiet, A., Stoffel, M., Fuhrer, J. (2014). Station-scale bias correction and uncertainty analysis for the estimation of irrigation water requirements in the Swiss Rhone catchment under climate change. *Climatic Change*, 127, 521–534.
- Sold L, Huss M, Hoelzle M, Andereggen H, Joerg PC and Zemp M. 2013. Methodological approaches to infer end-of-winter snow distribution on alpine glaciers. *J. Glaciol.*, 59(218), 1047-1059. doi: 10.3189/2013JoG13J015



- Sorg A, Kääb A, Roesch A, Bigler C, Stoffel M., 2015: Contrasting responses of Central Asian rock glaciers to global warming. *Scientific Reports*. 2015;5:8228. doi:10.1038/srep08228.
- Sovilla, B., Kern, M., Schaer, M. (2010). Slow drag in wet snow avalanche flow. *Journal of Glaciology*, 56 (198). pp 587-592.
- 5 Spandre P, François H, Morin S, George-Marcelpoil E. (2015). Snowmaking in the French Alps: Climatic context, existing facilities and outlook. *Journal of Alpine Research*, 103, 2.
- Staub, B., Hasler, A., Noetzli, J. and Delaloye, R. (2016): Gap-filling algorithm for ground surface temperature data measured in permafrost and periglacial environments. *Permafrost and Periglacial Processes*. DOI: 10.1002/ppp.1913.
- Steger, C., S. Kotlarski, T. Jonas, C. Schaer, 2013: Alpine snow cover in a changing climate: a regional climate model perspective, *Clim. Dyn.*, 41, 735–754, doi:10.1007/s00382-012-1545-3
- 10 Steiger, R. (2010). The impact of climate change on ski season length and snow- making requirements in Tyrol, Austria. *Climate Research*, 43, 251–262.
- Steiger, R., and B. Abegg (2013), The sensitivity of Austrian ski areas to climate change, *Tour. Plan. Dev.*, 10(4), 480–493, doi:10.1080/21568316.2013.804431.
- 15 StMUG (2009): Bayerische Klima-Anpassungsstrategie (BayKLAS). Bayerisches Staatsministerium für Umwelt und Gesundheit, München.
- Stoffel, M., Beniston, M., 2006. On the incidence of debris flows from the early Little Ice Age to a future greenhouse climate: A case study from the Swiss Alps. *Geophys. Res. Letter* 33, L16404.
- Stoffel, M., Bollschweiler, M., Beniston, M., 2011. Rainfall characteristics for periglacial debris flows in the Swiss Alps: 20 past incidences - potential future evolutions. *Clim. Change* 105, 263-280.
- Stoffel, M., Huggel, C., 2012. Effects of climate change on mass movements in mountain environments. *Progr. Phys. Geogr.* 36, 421–439.
- Stoffel, M., Mendlik, T., Schneuwly-Bollschweiler, M., Gobiet, A., 2014a. Possible impacts of climate change on debris-flow activity in the Swiss Alps. *Clim. Change*, 122, 141–155.
- 25 Stoffel, M., Tiranti, D., Huggel, C., 2014b. Climate change impacts on mass movements – case studies from the European Alps. *Sci. Total Environ.* 493, 1255–1266.
- Stoffel, M., Wyzga, B., Marston, R.A., 2016. Floods in mountain environments. *Geomorphology* 272, 1–9.
- Strasser, U. and Kunstmann, H. (2013): Tackling complexity in modeling mountain hydrology: where do we stand, where do we go?, *IAHS Red Books*, IAHS Publ. 360 (Cold and mountain region hydrological systems under climate change: towards 30 improved projections), 1-10.
- Strozzi, T., Delaloye, R., Kääb, A., Ambrosi, C., Perruchoud, E., Wegmüller, U., 2010. Combined observations of rock mass movements using satellite SAR interferometry, differential GPS, airborne digital photogrammetry, and airborne photography interpretation. *J. Geophys. Res.* 115, F01014.





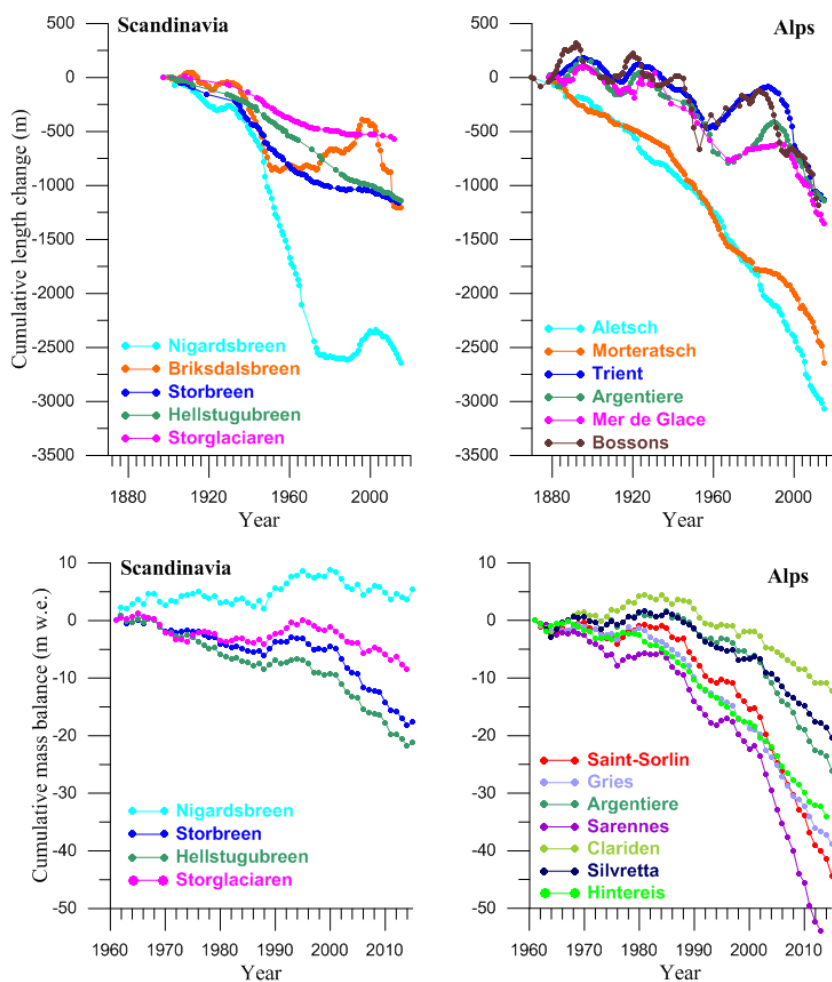
- Sultana, R., Hsu, K. L., Li, J., & Sorooshian, S. (2014). Evaluating the Utah Energy Balance (UEB) snow model in the Noah land-surface model. *Hydrology and Earth System Sciences*, 18(9), 3553-3570.
- Taylor KE, Stouffer RJ, Meehl GA. An overview of CMIP5 and the experiment design. *Bulletin of the American Meteorological Society*. 2012 Apr 1;93(4):485.
- 5 Tebaldi C, Knutti R (2007) The use of the multimodel ensemble in probabilistic climate projections. *Phil Trans R Soc A* 365:2053–2075
- Teich, M., C. Marty, C. Gollut, A. Grêt-Regamey, and P. Bebi (2012), Snow and weather conditions associated with avalanche releases in forests: Rare situations with decreasing trends during the last 41 years, *Cold Reg. Sci. Technol.*, 83-84, 77–88, doi:10.1016/j.coldregions.2012.06.007.
- 10 Terzago, S., S. Fratianni, R. Cremonini, 2013: Winter precipitation in Western Italian Alps (1926–2010), *Meteorol. Atmos. Phys.*, 119, 125–136, doi:10.1007/s00703-012-0231-7
- Thibert E, Blanc R, Vincent C and Eckert N. 2008. Glaciological and volumetric mass-balance measurements: error analysis over 51 years for Glacier de Sarennes, French Alps. *J. Glaciol.*, 54(186), 522-532.
- Thibert E, Eckert N and Vincent C. 2013. Climatic drivers of seasonal glacier mass balances: an analysis of 6 decades at  
15 Glacier de Sarennes (French Alps). *Cryosphere*, 7, 47-66. doi: 10.5194/tc-7-47-2013
- Trujillo, E., Leonard, K., Maksym, T., Lehning, M., 2016. Changes in snow distribution and surface topography following a snowstorm on Antarctic sea ice. *J. Geophys. R.*, submitted.
- Uhlmann, B., Goyette, S., Beniston, M., 2009: Sensitivity analysis of snow patterns in Swiss ski resorts to shifts in temperature, precipitation and humidity under condition of climate change. *International Journal of Climatology*, 29, 1048-  
20 1055.
- Valt, M., and P. Cianfarra (2010), Recent snow cover variability in the Italian Alps, *Cold Reg. Sci. Technol.*, 64(2), 146–157, doi:10.1016/j.coldregions.2010.08.008.
- Venema, V. K. C., et al., 2012, Benchmarking homogenization algorithms for monthly data, *Clim. Past*, 8, 89–115, doi:10.5194/cp-8-89-2012
- 25 Vincent C, Kappenberger G, Valla F, Bauder A, Funk M and Le Meur E. 2004. Ice ablation as evidence of climate change in the Alps over the 20th century. *J. Geophys. Res.*, 109(D10), D10104. doi: 10.1029/2003JD003857
- Vincent, C., Thibert, E., Harter, M., Soruco, A., Gilbert, A. (2015). Volume and frequency of ice avalanches from Taconnaz hanging glacier, French Alps. *Annals of Glaciology* 56(70). pp 17-25.
- Vionnet, V., E. Brun, S. Morin, A. Boone, S. Faroux, P. Le Moigne, E. Martin, and J. M. Willemet (2012), The detailed  
30 snowpack scheme Crocus and its implementation in SURFEX v7.2, *Geosci Model Dev*, 5(3), 773-791, doi:10.5194/gmd-5-773-2012.
- Viterbi R, Cerrato C, Bassano B, Bionda R, von Hardenberg A, Provenzale A, Bogliani G. Patterns of biodiversity in the northwestern Italian Alps: a multi-taxa approach. *Community Ecology* 2013.



- Viterbo, P., & Betts, A. K. (1999). Impact on ECMWF forecasts of changes to the albedo of the boreal forests in the presence of snow. *Journal of Geophysical Research: Atmospheres*, 104(D22), 27803-27810.
- Viviroli, D., Archer, D., Buytaert, W., Fowler, H.J., Greenwood, G.B., Hamlet, A.F., Huang, Y., Koboltschnig, G., Litaor, M.I., López-Moreno, J.I., Lorentz, S., Schädler, B., Schreiner, H., Schwaiger, K., Vuille, M. and Woods, R. (2011): Climate change and mountain water resources: overview and recommendations for research, management and policy. *Hydrol. Earth Syst. Sci.*, 15, 471-504, doi:10.5194/hess-15-471-2011.
- Viviroli, D., Dürr, H.H., Messerli, B., Meybeck, M. and Weingartner, R. (2007): Mountains of the world – water towers for humanity: typology, mapping and global significance. *Wat. Resour. Res.*, 43, W07447, doi:10.1029/2006WR005653.
- Weber, M. and Prash, M. (2009): Einfluss der Gletscher auf das Abflussregime (des Einzugsgebiets der Oberen Donau) in der Vergangenheit und der Zukunft, Kapitel 3.1.4, in: *Global Change Atlas. Einzugsgebiet Obere Donau. GLOWA-Danube-Projekt. München.*
- Wehner MF, Smith RL, Bala G, Duffy P (2010) The effect of horizontal resolution on simulation of very extreme US precipitation events in a global atmosphere model. *Clim Dyn* 34:241–247
- Werder M.A., Bauder A., Funk M. and Keusen H.R. 2010. Hazard assessment investigations in connection with the formation of a lake on the tongue of Unterer Grindelwaldgletscher, Bernese Alps, Switzerland. *Nat. Hazards Earth Syst. Sci.*, 10(2), 227-237.
- Wever, N., C. Fierz, C. Mitterer, H. Hirashima, and M. Lehning, 2014: Solving Richards Equation for snow improves snowpack meltwater runoff estimations in detailed multi-layer snowpack model, *Cryosphere*, 8(1), 257-274, doi:10.5194/tc-8-257-2014.
- Wever, N., Würzer, S., Fierz, C., and Lehning, M., 2016: Simulating ice layer formation under the presence of preferential flow in layered snowpacks, *The Cryosphere Discuss.*, doi:10.5194/tc-2016-185, in review.
- WGMS (2015, and earlier reports). *Global Glacier Change Bulletin No. 1 (2012-2013)*. Zemp M, Gärtner-Roer I, Nussbaumer SU, Hüsler F, Machguth H, Mölg N, Paul F and Hoelzle M (eds.), ICSU(WDS)/ IUGG(IACS)/ UNEP/ UNESCO/ WMO, World Glacier Monitoring Service, Zurich, Switzerland, 230 pp. Publication based on database version: doi: 10.5904/wgms-fog-2015-11
- Wikle, C.K., (2003). Hierarchical models in environmental science. *International Statistical Review*, 71, pp 181-199.
- Wilcox, E. M., & Donner, L. J. (2007). The frequency of extreme rain events in satellite rain-rate estimates and an atmospheric general circulation model. *Journal of Climate*, 20(1), 53-69.
- Winsvold S.H., Andreassen L.M. and Kienholz C. 2014. Glacier area and length changes in Norway from repeat inventories. *Cryosphere*, 8, 1885-1903, doi: 10.5194/tc-8-1885-2014
- Würzer, S., T. Jonas, N. Wever, and M. Lehning (2016), Influence of Initial Snowpack Properties on Runoff Formation during Rain-on-Snow Events, *Journal of Hydrometeorology*, 17(6), 1801-1815, doi:10.1175/Jhm-D-15-0181.1.
- Würzer, S., Wever, N., Juras, R., Lehning, M., and Jonas, T.: Modeling liquid water transport in snow under rain-on-snow conditions – considering preferential flow, *Hydrol. Earth Syst. Sci. Discuss.*, doi:10.5194/hess-2016-351, in review, 2016.

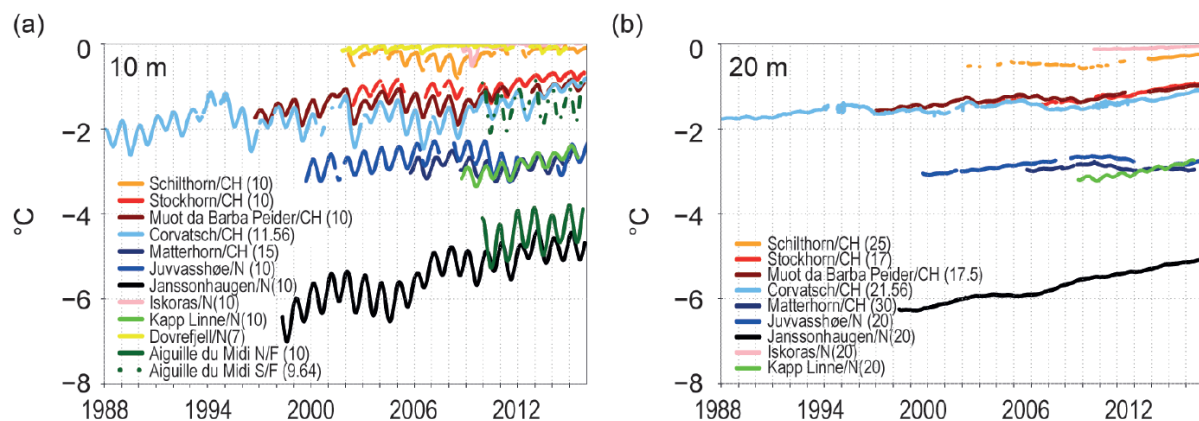


- Yang., D. D. Kane, Z. Zhang., D. Legates, and B. Goodison, 2005: Bias corrections of long-term (1973-2004) daily precipitation data over the northern regions. *Geophysical Research Letters*, 32, L19501. Doi:10.1029/2005GL024057
- Zemp M and 38 others. 2015. Historically unprecedented global glacier decline in the early 21st century. *J. Glaciol.*, 61(228), 745-762. doi: 10.3189/2015JoG15J017
- 5 Zumbühl H.J., Steiner D. and Nussbaumer S.U. 2008. 19<sup>th</sup> century glacier representations and fluctuations in the central and western European Alps: An interdisciplinary approach. *Glob Planet Change*, 60(1), 42-57.



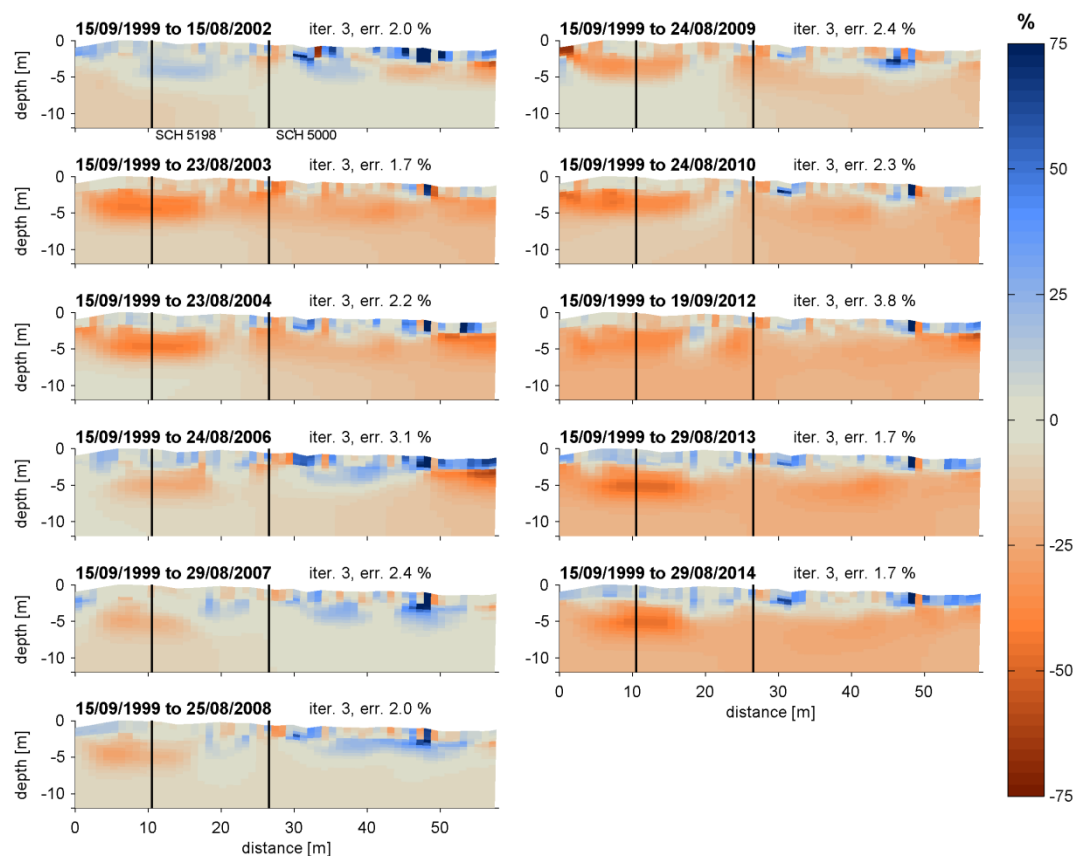
**Figure 1: Length and surface mass balance changes documented with *in-situ* measurements for glaciers in Scandinavia and in the European Alps. Sources: WGMS (2015) and earlier issues with updates (Andreassen et al., 2016).**

5

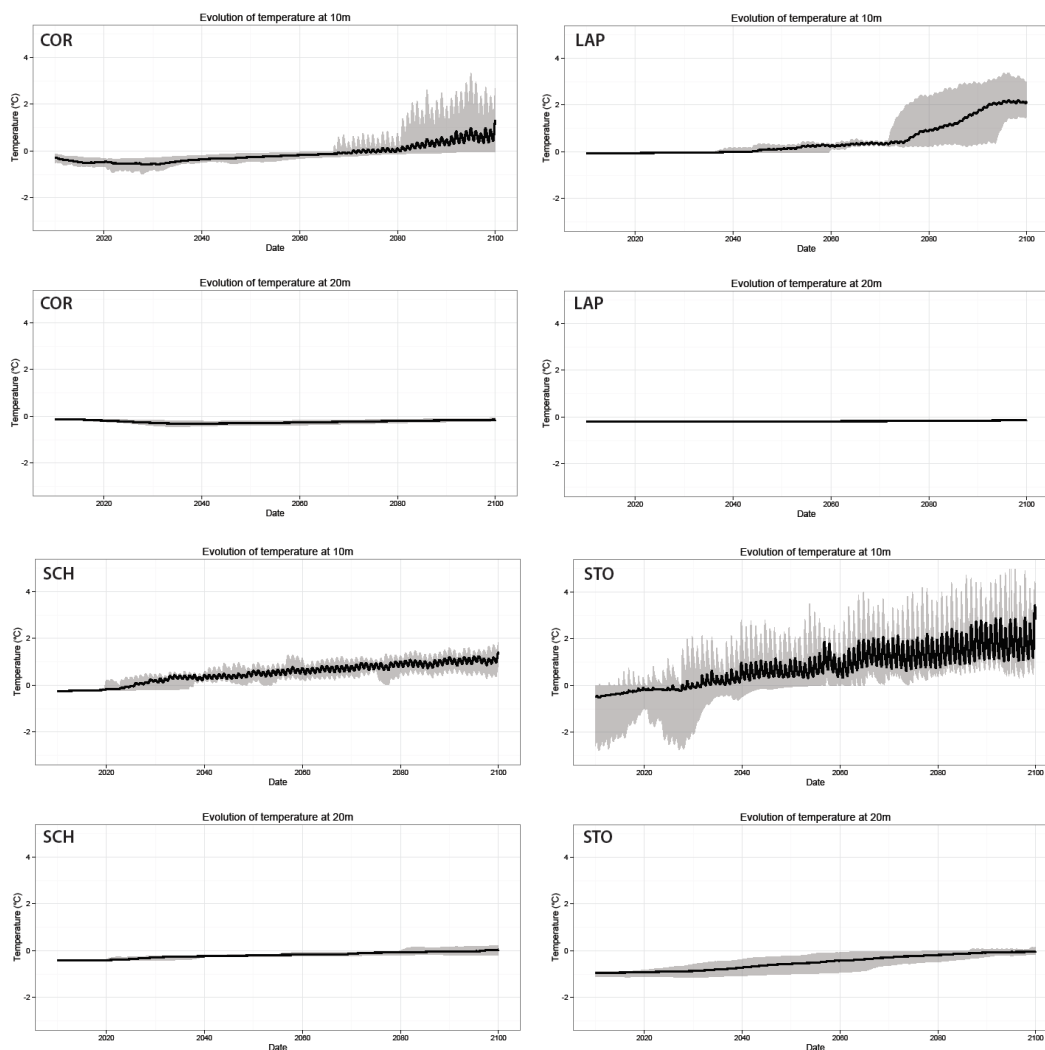


**Figure 2: Temperature evolution of mountain permafrost in Norway (N), France (F), and Switzerland (CH) measured in boreholes at (a) 10m and (b) 20m depth (exact depth given in parenthesis). Figure adapted from Noetzli et al. (2016).**

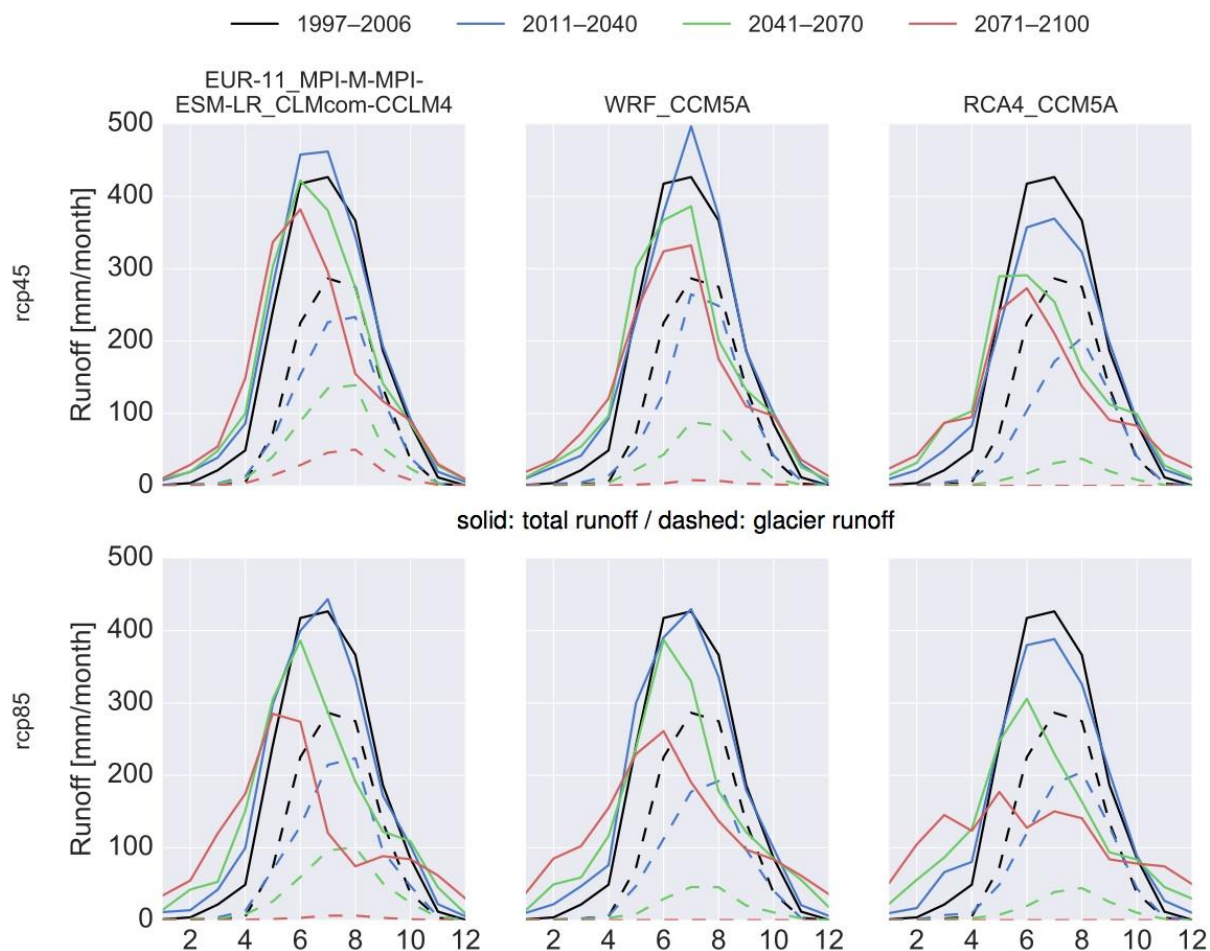
5



5 **Figure 3: 15-year change in specific electrical resistivity (given as % specific resistivity change) along a 2-dimensional Electrical Resistivity Tomography (ERT) profile at Schilthorn, Swiss Alps (2900 m a.s.l.). Red colors denote a resistivity decrease corresponding to loss of ground ice with respect to the initial measurement in 1999 (see Hilbich et al. 2008a, 2011 for more details on ERT monitoring in permafrost). The black vertical lines denote borehole locations.**

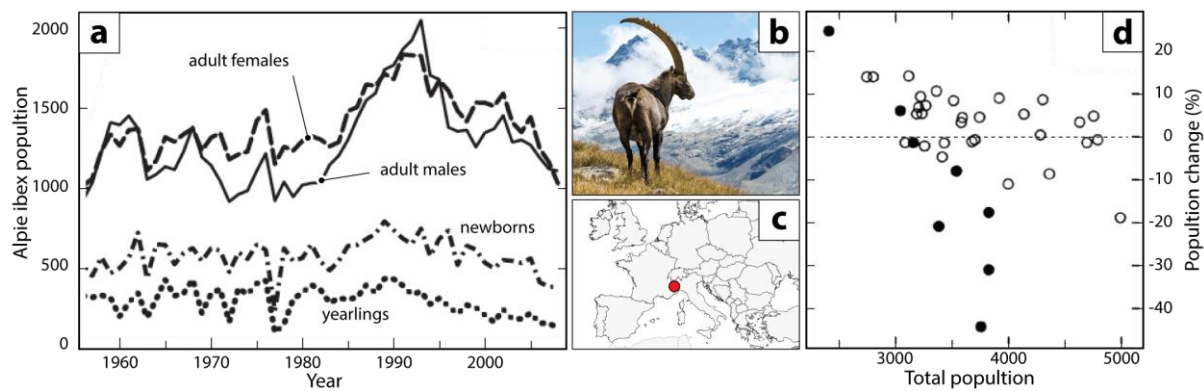


5 **Figure 4: Modelled long-term evolution of ground temperatures at 10 m and 20 m at four different permafrost sites in the Swiss Alps (COR: Murtèl-Corvatsch, LAP: Lapires, SCH: Schilthorn, STO: Stockhorn), as simulated with the COUP model (Marmy et al., 2016). The black lines represent the median scenario and the grey zone the range of the 13 GCM/RCM chains which were used to drive the simulations. Modified after Marmy et al. (2015).**



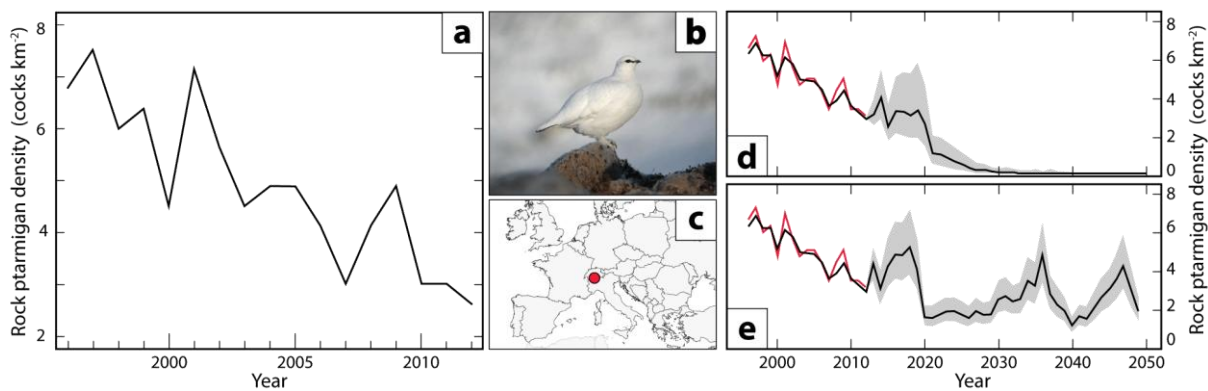
5 **Figure 5: Shifts of stream flow regimes for climate scenarios RCP4.5 (upper row) and RCP8.5 (lower row) for the Rofenache at Vent, Austrian Alps (1891 m a.s.l., 98 km<sup>2</sup>, ca. 35% glacierized). Results are shown for three different EUROCORDEX climate model runs and are simulated with the AMUNDSEN model. Figure adapted from Hanzer et al. (2016).**





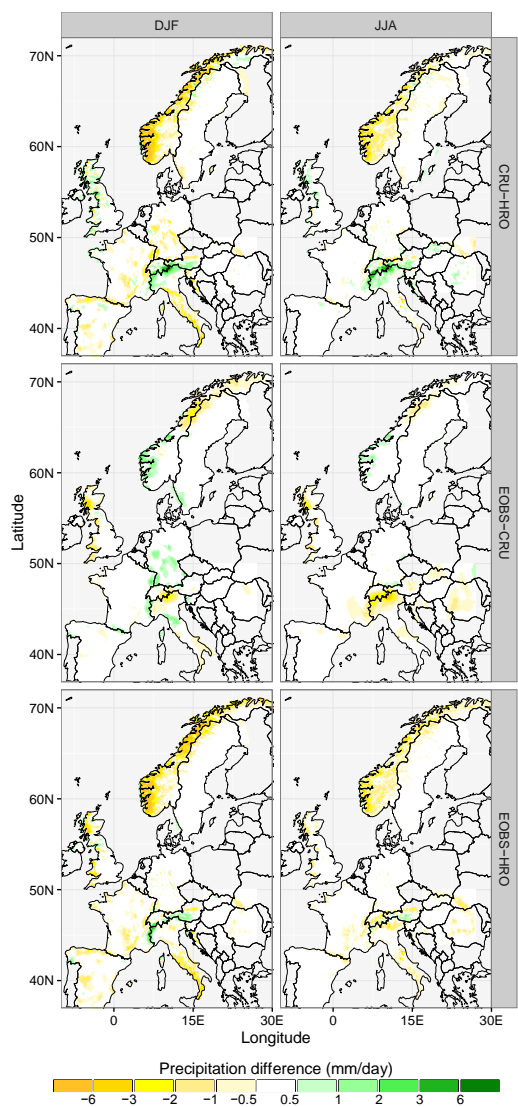
**Figure 6:** (a) Total number of adult Alpine ibex (b) counted at Gran Paradiso National Park, Italy (c). (d) Relative population change against population size. Solid circles indicate that the winter snow depth was more than half a standard deviation above the long-term average. Panels (a) and (b) are after Jacobson et al. (2004).

5

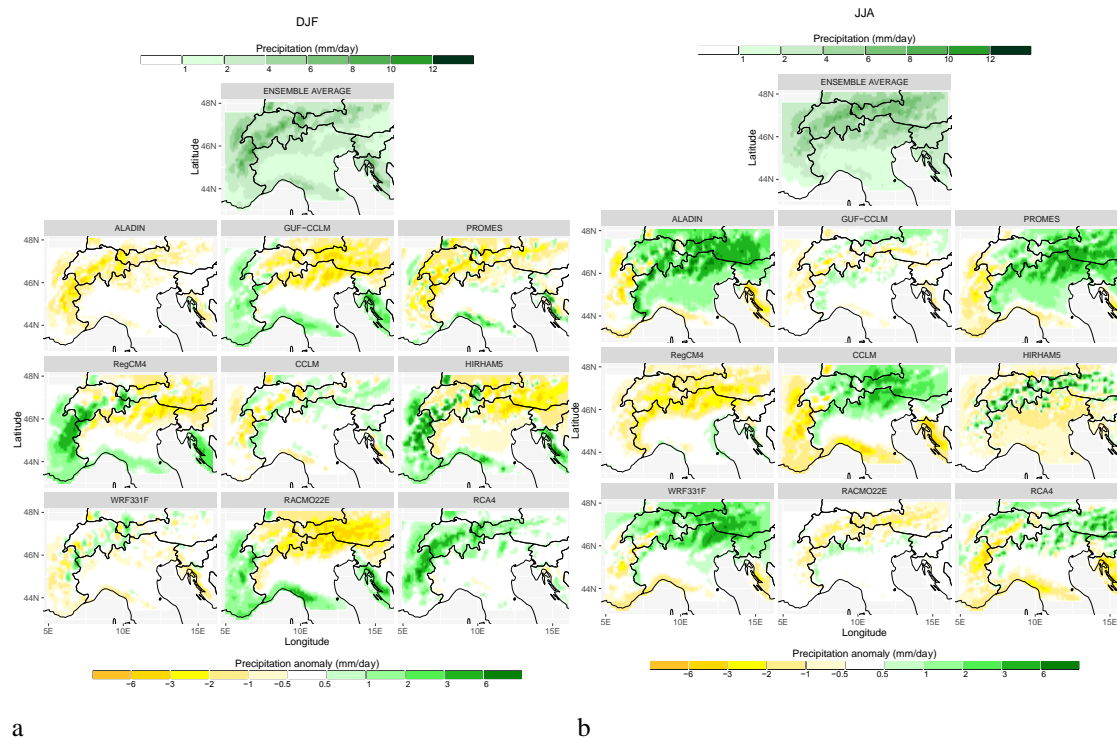


**Figure 7:** (a) Observed density of rock ptarmigan cocks (b) at the Veglia Devero protected area, Italy (c). (d+e) Reconstructed (red) and projected (black) rock ptarmigan density from two population dynamics models including (d) snow drivers only, and (e) snow and delayed density dependence. Panels (a), (d) and (c) are adapted from Imperio et al. (2013)

5



**Figure 8:** Seasonal average precipitation differences for December-January-February (DJF; left) and June-July-August (JJA; right) between CRU and HRO (first row), E-OBS and CRU (second row), and E-OBS and HRO (third row).



5 **Figure 9: DJF (a) and JJA (b) precipitation as derived from 9 regional climate models. The average of the model ensemble is shown in the top panel at the center.**