

# ***In situ* continuous visible and near-infrared spectroscopy of an alpine snowpack**

Marie Dumont<sup>1</sup>, Laurent Arnaud<sup>2</sup>, Ghislain Picard<sup>2</sup>, Quentin Libois<sup>2,4</sup>, Yves Lejeune<sup>1</sup>, Pierre Nabat<sup>3</sup>, Didier Voisin<sup>2</sup>, and Samuel Morin<sup>1</sup>

<sup>1</sup>CNRM UMR 3589, Météo-France/CNRS, Centre d'Études de la Neige, Grenoble, France

<sup>2</sup>UGA / CNRS, Laboratoire de Glaciologie et Géophysique de l'Environnement (LGGE) UMR 5183, Grenoble, 38041, France

<sup>3</sup>CNRM UMR 3589, Météo-France/CNRS, Toulouse, France

<sup>4</sup>now at: Department of Earth and Atmospheric Sciences, Université du Québec à Montréal (UQAM), Montréal, Canada

*Correspondence to:* Marie Dumont (marie.dumont@meteo.fr)

## **Abstract.**

Snow spectral albedo in the visible/near-infrared range has been continuously measured during a winter season at Col de Porte alpine site (French Alps, 45.30°N, 5.77°E, 1325 m a.s.l.). The evolution of such alpine snowpack is complex due to intensive precipitation, rapid melt events and Saharan dust deposition outbreaks. This study highlights that the resulting intricate variations of spectral albedo can be successfully explained by variations of the following snow surface variables : snow specific surface area (SSA), effective light-absorbing impurities content, presence of liquid water and slope. The methodology developed in this study disentangles the effect of these **variables** on snow spectral albedo. The presence of liquid water at the snow surface results in a spectral shift of the albedo from which melt events can be identified with an occurrence of false detection rate lower than 3.5%. Snow SSA mostly impacts spectral albedo in the near-infrared range. Impurity deposition mostly impacts the albedo in the visible range but this impact is very dependent on snow SSA and surface slope. Our work thus demonstrates that the SSA estimation from spectral albedo is affected by large uncertainties for a tilted snow surface and medium to high impurity contents and that the estimation of impurity content is also affected by large uncertainties, especially for low values below 50 ng g<sup>-1</sup> black carbon equivalent. The proposed methodology opens routes for retrieval of SSA, impurity content, melt events and surface slope from spectral albedo. However, an exhaustive accuracy assessment of the snow **properties** retrieval would require more independent *in situ* measurements and is beyond the scope of the present study. Such time series of snow spectral albedo nevertheless already provides a new insight into our understanding of the evolution of snow surface properties.

## **1 Introduction**

Snow is among the most reflective materials on Earth (Dozier et al., 2009) and its albedo exhibits large spectral variations in the solar spectrum (Warren, 1982). Snow albedo is therefore a crucial variable of the Earth energy balance (Imbrie and Imbrie, 1980) through the surface energy budget of snow covered surfaces. Snow spectral albedo varies as a function of many factors such as (i) the spectral and angular characteristics of the solar incident radiation and (ii) the physical and chemical

properties of the snowpack (Warren, 1982; Gardner and Sharp, 2010). Since the absorption of solar energy affects in turn the physical and chemical properties of the snowpack, snow albedo is involved in several feedback loops (e.g. Flanner and Zender, 2006, Doherty et al., 2010) which generally enhance snow metamorphism and melt and are thus of crucial importance for the evolution of snow covered area and more generally for the Earth climate. Measuring, understanding and modelling snow spectral albedo is therefore essential.

The variations of snow spectral albedo with snow microstructure can be well explained using the snow surface specific area (SSA), i.e. the ratio of the surface of the ice-air interface to the mass of ice (e.g. Grenfell and Warren, 1999, Carmagnola et al., 2013). Snow spectral albedo decreases with SSA in the near-infrared so that an increased amount of solar energy is absorbed, that further accelerates snow metamorphism (Picard et al., 2012). Ice crystal habit influences the spectral albedo but this effect is not fully understood yet (e.g. Picard et al., 2009, Libois et al., 2013, Kokhanovsky and Zege, 2004, Malinka, 2014, Liou et al., 2014, He et al., 2014 ).

Light absorbing impurities (LAI) such as mineral dust, soot or algae cause a decrease in snow albedo in the visible wavelengths (Warren, 1982). This impact is enhanced at low SSA, which results in complex interdependencies and gives raise to an additional snow albedo feedback loop (Doherty et al., 2010). LAI also tend to concentrate at the surface during melt, further lowering the albedo (Sterle et al., 2013). Modelling the effect of LAI on snow spectral albedo is challenging since large uncertainties are associated with their nature, refractive indices (e.g. Dang et al., 2015) and physical properties. The size distributions and exact location with respect to the ice matrix of LAI in snow also induce large uncertainties in the simulated spectral albedo (Flanner et al., 2012, Liou et al., 2014, He et al., 2014 ).

Because the contrast between ice and water refractive indices is small, the effect of the presence of liquid water on snow spectral albedo is subtle. Warren (1982) explained that it simply increases the effective optical radius. As detailed in Green et al. (2006), Dozier et al. (2009) and Gallet et al. (2014), the liquid water absorption features are shifted towards shorter wavelengths. Accurately predicting the amplitude of the shift for a given liquid water content (LWC) is somewhat difficult since it would require to know the exact location of the liquid water with respect to the ice matrix (e.g. Gallet et al., 2014). Although the retrieval of LWC from spectral albedo seems challenging, the presence of liquid water in snow can be detected using hyperspectral measurement by searching for absorption features minimum around 1000 nm (Green et al., 2006).

Slope and roughness of the snow surface also largely affect snow spectral albedo. Increased roughness generally leads to a decrease in albedo (e.g. Zhuravleva and Kokhanovsky, 2011). Slope modifies the effective incident zenith angle of solar radiation. The effect on the albedo thus depends on the ratio of diffuse to total incoming radiation (e.g. Wang et al., 2016, Dumont et al., 2011). This implies that the surface slope effect on measured snow spectral albedo varies with the wavelength along with the spectral diffuse to total solar irradiance ratio.

Snow spectral albedo is therefore extremely informative on the state of the snow "surface". Such spectral observations either from *in situ* or airborne sensors are however sparse in time and space. Dozier et al. (2009) provided an overview of the capability offered by hyperspectral remote sensing to study the evolution of optical radius, surface liquid water and light absorbing impurities (LAI) radiative forcing. Painter et al. (2013) and Seidel et al. (2016) developed algorithms to retrieve optical radius (which can be related to SSA via  $r_{\text{opt}} \simeq \frac{3}{\rho_{\text{iceSSA}}}$ , e.g. Gallet et al., 2009), LAI radiative forcing and broadband

albedo from airborne hyperspectral images. These data offered a new insight into spatial and temporal evolution of snow surface parameters over large areas. Carmagnola et al. (2013) and Negi and Kokhanovsky (2011) used *in situ* measured spectral albedo and related its variations to specific surface area (SSA) and LAI content. These studies all focused on spectral measurements sparse in time. More recently, Libois et al. (2015) and Picard et al. (2016a) presented a 3-year time series of spectral albedo acquired at Dome C, Antarctica using an automatic spectral albedometer called Autosolexs. They developed a methodology to correct for the instrument artefacts, assess the measurements uncertainties and retrieve near-surface snow SSA.

Snow surface albedo variations at Dome C are essentially due to SSA variations because the LAI content is too low to significantly affect the albedo (Warren et al., 2006) and the snowpack remains dry throughout the year. On the contrary, in alpine conditions the presence of LAI and liquid water can significantly affect snow albedo (e.g. Di Mauro et al., 2015). This motivates the deployment of a second Autosolexs at the Col de Porte site, French Alps to monitor the evolution of snow spectral albedo during one snow season.

The main goal of the paper is to investigate how alpine snow spectral albedo variations can be attributed to variations of surface and near-surface snow properties, namely SSA, effective impurity content, presence of liquid water and surface slope. We first investigate how an analytical formulation of spectral albedo as a function SSA, effective impurity content and slope can be used to simulate the measured albedo. We then investigate the theoretical uncertainties associated to the optimal snow characteristics. Finally, the consistency of the time-series of optimal SSA, slope, effective impurity content and presence of liquid water with respect to independent snow and meteorological measurements is investigated. Section 2 provides an overview of the study site and instruments. Section 3 describes the method used to analyze albedo variations. Section 4 provides results and discussion.

## 2 Data

The measurements were taken at Col de Porte, which is located at 1325 m altitude in the Chartreuse mountain range, France. An exhaustive description of the study site and the long-term measurement instruments is provided in Morin et al. (2012). The long-term measurements used in this study are 2-m air temperature, surface temperature, direct and diffuse broadband incident shortwave radiations, snow depth and snow water equivalent, snow and rain fall rates.

### 2.1 Spectral albedo measurements

From January to May 2014, the Autosolexs instrument was installed at Col de Porte site (Fig. 1) to automatically measure spectral albedo. This instrument is similar to the one described in Libois et al. (2015) and Picard et al. (2016a), except that it only features one albedo head. The upward (downward) optic is set up 2.4 (2.1) m above bare soil. The height of the albedo heads and consequently, the field of view of the sensor, are thus varying with snow depth. The device acquired an upward and downward spectrum every 12 minutes over the 350-1050 nm range with an effective spectral resolution, i.e. spectral bandwidth, of 3 nm. Two automatic cameras provided qualitative information on the weather, snow and device state during the entire season.

Contrary to Dome C site, Col de Porte site features large snow precipitation events which cover the upward looking channel. Consequently, the device was cleaned up manually after each snowfall [although both the upward and downward looking domes are heated and ventilated](#). The snow surface below the measurements head was not flat due to local topography. Figure 1 indeed shows that there is a slight North facing slope below the measurement head. Note that the tilt of the sensor was recorded during the measurements and remained smaller than  $0.5^\circ$ .

Following Picard et al. (2016a), every acquired spectrum was corrected for (i) dark current and stray light, (ii) integration time scaling, (iii) calibration and (iv) collector angular response. [The correction of the collector angular response was applied in two steps \(i\) cross-calibration of the two entrance optics under the same illumination conditions and \(ii\) cosine response correction on the direct component of the incident radiation as detailed in Picard et al. \(2016a\) \(sections 3.3.3 and 3.3.4\).](#) The corrected spectra are used to compute the bi-hemispherical reflectance (Schaeppman-Strub et al., 2006), simply called spectral albedo in the following.

## 2.2 Additional *in situ* measurements

During this snow season, additional *in situ* measurements were carried out :

- Surface SSA measurements : The surface SSA was measured on 2014-01-22 using the ASSSAP instrument (Arnaud et al., 2011) between 12:00 and 13:00 a few meters away from Autosolexs. The experimental protocol for surface SSA measurements is described in Libois et al. (2015) and Carmagnola et al. (2014).
- Impurity content measurements : Vertical profile of impurity content was measured on 2014-02-11. Refractory BC was measured using a SP2 instrument, following the procedure described in Lim et al. (2014). Insoluble dust measurements were performed using a microparticle counter (Coulter counter©Multisizer III) for particles with a diameter ranging from 1 to  $30\ \mu\text{m}$ , divided in 300 equivalent size channels. The total mass of dust was calculated from the volume size distribution, assuming a density of  $2.5\ \text{g cm}^{-3}$  (Delmonte et al., 2002).
- LWC measurements : Vertical LWC profile was measured for the whole snowpack on a weekly basis at Col de Porte site using a dielectric probe at 13 MHz (Brun et al., 1989). Fifteen measurements were available within the period of observation of the albedo (4 in January, 4 in February, 4 in March and 3 in April).

## 2.3 Atmospheric model outputs

Knowledge of the spectral diffuse to total solar irradiance ratio and of atmospheric aerosol deposition fluxes are crucial to understand the evolution of the measured snow spectral albedo. In this respect, we used outputs from the atmospheric model ALADIN-Climate at Col de Porte site to calculate diffuse and direct spectral solar irradiance and to investigate the temporal evolution of dry and wet aerosols deposition fluxes.

ALADIN-Climate is a regional climate model based on a bi-spectral semi-implicit semi-Lagrangian scheme. The version 5.3 (Nabat et al., 2015) is used in the present study with a 50 km horizontal resolution, 31 vertical levels and the ERA-Interim

reanalysis (Dee et al., 2011) as lateral boundary forcing. This model includes a prognostic aerosol scheme, adapted from the GEMS/MACC aerosol scheme (Morcrette et al., 2009 ; Benedetti et al., 2011 ; Michou et al., 2015). The main aerosol species are represented: dust, sea-salt, sulphate, black carbon and organic particles. Natural aerosols (dust and sea-salt) are emitted from the surface depending on surface wind and soil characteristics, while anthropogenic emissions come from external inventories (Lamarque et al., 2010). The spatial domain of our simulations has been designed to include all the sources generating aerosols that can be transported over the French Alps, such as the Saharan desert and a large part of the Northern Atlantic Ocean. Aerosols coming from longer-range transport (e.g. fires in America) are not considered.

More details about the aerosol scheme, as well as an evaluation showing the performance of the scheme, can be found in Nabat et al. (2015). All these aerosols interact with the shortwave and longwave radiation scheme. Even if ALADIN-Climate is a regional climate model, the model has the ability to reproduce the observed weather chronology thanks to the spectral nudging method (Radu et al., 2008), which enables us to keep large scales atmospheric conditions from the boundary forcing. The accuracy of the chronology of meteorological episodes is indeed essential to correctly represent the chronology of aerosols deposition on the snowpack. In this simulation, surface pressure, wind vorticity and divergence and specific humidity were nudged towards ERA-Interim.

The outputs of the ALADIN-Climate model used in this study are hourly total aerosols optical thickness, total water vapour column and total ozone column and dust and black carbon wet and dry deposition fluxes. In this study, we used the outputs of a single model cell, the closest to Col de Porte site. The horizontal distance of the model cell center to the site is 22.6 km and the grid cell is located 800 m below Col de Porte site.

### 3 Methods

#### 3.1 Estimation of the direct to diffuse solar irradiance ratio

The ratio of diffuse over direct irradiance is required to perform accurate correction of the measured spectrum (e.g. Picard et al., 2016a). The calculation of such ratio requires the knowledge of the atmospheric profiles and of the local cloud optical thickness,  $\tau$  at 550 nm.

We thus estimate this local cloud optical thickness using both the atmospheric profiles from ALADIN-Climate and local meteorological observations at Col de Porte (Morin et al., 2012) to overcome the coarse resolution of ALADIN-Climate. The first step consists in estimating a relationship between  $\tau$  and the broadband direct ( $SW_{dir}$ ) to total ( $SW_{tot}$ ) ratio. For this purpose, the SBDART detailed radiative model (Ricchiazzi et al., 1998) was used to calculate  $SW_{dir}$  over  $SW_{tot}$  from varying cloud optical thicknesses and mean atmospheric conditions at Col de Porte (aerosols optical thickness, total ozone column and total water vapour column). The mean atmospheric conditions were derived from ALADIN-Climate outputs and the measured 2m air temperature average over the measurements period. A regression equation (Eq. 1) was derived from those results.

$$\tau = \mu_s \log \left( \frac{1 + 0.8\mu_s - 1.95\mu_s^2 + 1.67\mu_s^3 - 0.77}{1 - SW_{dir}/SW_{tot}} \right), \quad (1)$$

where  $\mu_s = \cos\theta_s$  is the cosine of the solar zenith angle.

As a second step, Eq. 1 was used to estimate  $\tau$  from  $SW_{\text{dir}}$  over  $SW_{\text{tot}}$  ratio measured at Col de Porte.

Finally, the outputs of the ALADIN-Climate (namely hourly total aerosols optical thickness, total water vapour column and total ozone column) together with measured air temperature and estimated  $\tau$  were used as inputs for the SBDART (Ricchiazzi et al., 1998) model in order to compute the hourly diffuse and direct spectral irradiance. The ratio between these variables is used in our analysis. [Note that the broadband  \$SW\_{\text{dir}}\$  and  \$SW\_{\text{tot}}\$  estimated from Col de Porte measurements and simulated with SBDART agree within  \$\pm 10 \text{ Wm}^{-2}\$ . The accuracy of the simulated spectral direct to diffuse solar irradiance ratio has not been evaluated in absence of measurements. The difference in elevation between the ALADIN-Climate grid cell and Col de Porte site might lead to an overestimation of the diffuse fraction in the visible wavelengths.](#)

### 10 3.2 Spectral albedo dependence on snow SSA and impurity content

In order to relate albedo to snow properties, we use the theoretical formalism of Kokhanovsky and Zege (2004). Several assumptions are made. (i) The snowpack is horizontally and vertically homogeneous, which means only one bulk SSA and impurity content value are used to explain albedo variations. (ii) The surface is flat. (iii) Snow phase function and single scattering albedo are implicitly described by the asymmetry factor,  $g$ , the absorption enhancement parameter,  $B$ , and SSA. (iv) 15 The surface and the sensor are perfectly horizontal. The effect of surface slope is investigated in Section 3.3.

Under these conditions, following Libois et al. (2013) and Picard et al. (2016a), snow albedo can be written as

$$\alpha_{\text{th}}(\lambda, \theta) = r_{\text{diff}}(\lambda, \theta) \alpha_{\text{diff}}(\lambda) + (1 - r_{\text{diff}}(\lambda, \theta)) \alpha_{\text{dir}}(\lambda, \theta) \quad (2)$$

$$\alpha_{\text{diff}}(\lambda) = \exp\left(-\sigma(\lambda, \text{SSA}, c_{\text{imp}})\right) \quad (3)$$

$$\alpha_{\text{dir}}(\lambda, \theta) = \exp\left(-\frac{3}{7}(1 + 2\cos\theta)\sigma(\lambda, \text{SSA}, c_{\text{imp}})\right) \quad (4)$$

$$20 \quad \sigma(\lambda, \text{SSA}, c_{\text{imp}}) = \sqrt{\frac{64\pi}{3\lambda\rho_{\text{ice}}\text{SSA}(1-g)}\left(2n_i(\lambda)B + \frac{3\rho_{\text{ice}}c_{\text{imp}}}{\rho_{\text{imp}}}\mathcal{I}\text{m}\left(\frac{m_{\text{imp}}^2 - 1}{m_{\text{imp}}^2 + 2}\right)\right)} \quad (5)$$

where  $r_{\text{diff}}(\lambda, \theta)$  is the diffuse to total irradiance ratio,  $\rho = 917 \text{ kg m}^{-3}$  is the ice density at  $0^\circ \text{C}$  and  $n_i(\lambda)$  is the imaginary part of the ice refractive index taken either from Warren and Brandt (2008) (default) or from Picard et al. (2016b).  $B=1.6$  and  $g=0.85$  are constant and taken from Libois et al. (2014).  $m_{\text{imp}}$  is the complex refractive index of BC taken from Flanner et al. (2012).  $\rho_{\text{imp}}$  is BC density and is set to  $1270 \text{ kg m}^{-3}$  according to Flanner et al. (2012).  $c_{\text{imp}}$  is the effective impurity mass per 25 unit of snow mass ( $\text{kg kg}^{-1}$ ) where effective stands for BC optically equivalent content.

Following Picard et al. (2016a), we introduce a scaling factor  $A$  to account for several artefacts and shortcomings in the measurement technique. This scaling factor relates the measured albedo,  $\alpha_{\text{meas}}$  and the theoretical albedo obtained from Eq. 2,  $\alpha_{\text{th}}$ .

$$\alpha_{\text{meas}}(\lambda, \theta) = A\alpha_{\text{th}}(\lambda, \theta) \quad (6)$$

### 5 3.3 Effect of the slope on measured albedo

The slope of the snow surface introduces a change in the solar irradiance with respect to the solar radiation incoming on a perfectly horizontal surface. This change is of crucial importance for our application since it is wavelength-dependent. In addition to the change in the effective sun incident angles, the surface slope modifies (i) the solid angle under which the sky is viewed from the surface and thus the incoming amount of diffuse solar radiation and (ii) the total amount of radiation received by the snow surface since it receives some of the radiation reflected by the adjacent slopes. The upward radiation measured by the horizontal sensor is also modified with respect to what would happen if the sensor were parallel to the surface since part of the field of view sees the atmosphere and not the snow surface. In the following, we assume that (i) both diffuse solar radiation and reflected radiation are isotropic and (ii) the surface slope is small and local enough not to modify significantly the solid angles under which the incoming and reflected radiations are measured with respect to what would happen for an horizontal surface, then the slope of the surface only affects the effective sun zenith and azimuth angles and thus the direct solar irradiance (see details in App. A and B). Note that for fully cloudy days, under these assumptions, the slope has consequently no influence on the measured albedo.

Let  $\theta_s$  and  $\phi_s$  be the direction of sun with respect to a perfectly horizontal surface,  $\theta_n$  and  $\phi_n$  being respectively the slope and aspect of the surface and  $\tilde{\theta}_s$  and  $\tilde{\phi}_s$  the effective direction of the sun with respect to the tilted surface (Fig. 2). Then  $\cos \tilde{\theta}_s = K \cos \theta_s$  (e.g. Dumont et al., 2011) where  $K$  is the relative change in the cosine of the sun effective incident angle to the local tilt of the snow surface and writes :

$$K = \cos \theta_n + \tan \theta_s \sin \theta_n \cos(\phi_s - \phi_n) \quad (7)$$

This leads to the following relationship between the measured and the theoretical albedo on an tilted surface (see details in Appendices A and B) :

$$\alpha_{\text{meas}}(\lambda, \theta_s) = A \left( r_{\text{diff}}(\lambda, \theta_s) \alpha_{\text{diff}}(\lambda) + (1 - r_{\text{diff}}(\lambda, \theta_s)) K \alpha_{\text{dir}}(\lambda, \tilde{\theta}_s) \right) \quad (8)$$

The variations of measured spectral albedo with SSA,  $c_{\text{imp}}$  and surface slope are illustrated in Figure 4a. The effect of the anisotropy of diffuse solar radiation is discussed in Bogren et al. (2016) while the effect of the anisotropy of the reflected radiation is discussed in Dumont et al. (2010) and Carmagnola et al. (2013). The anisotropy of the sky diffuse component and of the reflected radiation is second order as long as the cosine response correction is small (Picard et al., 2016a, Carmagnola et al., 2013).

Figure 3 illustrates the raw measured albedo diurnal cycles for a cloudy day (red lines) and for a clear sky day (blue lines). As expected from Eq. 8, the diurnal cycle is more pronounced for the clear sky day, the albedo evolution being non-symmetric with respect to solar noon probably due to both slope and changes in snow properties effects.

### 3.3.1 Albedo variations analysis method

- 5 In order to relate variations of spectral albedo to variations of surface snow properties, we apply the following methodology to the measured albedo. The main idea of the methodology is to use fit Eq. 8 using optimal parameters for each spectrum. Eq. 8 indeed contains 4 unknowns namely  $A$ ,  $SSA$ ,  $c_{imp}$  and  $K$ . For moderate to high amount of impurities in snow, several ( $A$ ,  $c_{imp}$ ,  $SSA$ ) triplets can lead to approximately the same modelled spectrum. For this reason, we chose to first set the scaling factor  $A$  to a constant value for the whole season (*Step 1*). Optimal  $SSA$ ,  $c_{imp}$  and  $K$  are then estimated for each spectrum (*Step 2*). The
- 10 diurnal cycles of parameter  $K$  are then used to estimate a daily value for surface slope and aspect (*Step 3*). Although this step is not required for the estimation of optimal  $SSA$  and  $c_{imp}$ , it provides a further verification of the physical consistency of the methodology. Finally, the measured spectra are analysed with respect to the presence of liquid water (*Step 4*).

#### *Step 1 : Estimate the scaling factor A*

- A seasonal value of  $A$  is estimated using Eq. 8 with  $r_{diff} = 1$  (selected fully cloudy days from visual inspection of the camera
- 15 photographs and  $\theta_s$  smaller than  $65^\circ$ ) and a nonlinear least squares method (provided by Python `scipy.optimize.leastsq` function). To avoid undetermination problem between  $A$  and  $c_{imp}$  in case of moderate to high amount of impurities in snow, only the spectra from the beginning of season were used for this estimation.

Quantiles 25 and 75 of  $A$  distribution are used to propagate uncertainties on the near surface and surface properties predicted from the spectra.

- 20 *Step 2 : Estimate optimal SSA and  $c_{imp}$*

Once the value of  $A$  is set, optimal  $SSA$  and  $\log_{10}(c_{imp})$  values are estimated from the spectrum within 400-1050 nm along with  $K$  using Eq. 8 and the non linear least square optimization method. For cloudy days, the optimization is performed with  $K=1$ . Clear sky days are selected as days with  $\tau < 0.01$ ,  $\tau$  being estimated using Eq. 1. Illustration of *Step 2* is provided for three spectra in Fig. 4b.

- 25 After these steps, spectra are filtered based on the root mean square deviation (RMSD) between the measured spectrum and the optimal spectrum calculated with Eq. 8 with a threshold of 0.022. This filtering ensures that the measurement artefacts are reasonably accounted for in the optimal snow surface properties estimation. The threshold value is higher than the one used in Picard et al. (2016a) and was set to account for the discrepancies between the modelled and measured albedo spectra due among others to the impurity type assumption in the model. Indeed, the model used in this study only includes black carbon.
- 30 Alpine snowpacks are frequently affected by deposition of Saharan dust (e.g. Di Mauro et al., 2015) that has a reddish spectral signature. The presence of red dust in snow can induce discrepancies between the modelled spectrum with black carbon only and the measured spectrum (fig. 4 in Warren and Wiscombe, 1980). This “dusty” pattern is clearly visible on the black measured spectrum of Fig. 4b in the visible wavelengths (400-500 nm).



Note that by using a seasonal A value for every spectra, we assume that the measurement artefacts are the same under cloudy and clear sky conditions and for varying solar zenith angles.

*Step 3 : Estimate daily optimal surface slope and aspect*

Section 3.3 explains how the measured albedo varies with the surface slope and aspect. The slope and aspect below the sensor evolves in time with respect to precipitation, melt and snow transportation by the wind. Unfortunately no measurement of surface slope and aspect is available during this winter season. Consequently, using  $K$  diurnal cycles and Equation 7, we estimate daily optimal values of surface slope angle and aspect for fully clear sky days.

This step is not required for the estimation of optimal SSA and  $c_{imp}$  but it indirectly validates that  $K$  optimization has not compensated for other artefacts than slope. In other words, estimating physically consistent values of daily slope and aspect from  $K$  diurnal cycles further ensures the consistency of the spectra correction.

*Step 4 : Detect if the snow surface is wet or dry*

Taking benefit of the spectral shift of the absorption feature at 1030 nm in presence of liquid water (Green et al., 2006), we apply the following method to distinguish wet from dry snow. The spectra are first averaged using a 20 nm moving window average in order to reduce noise before minimum calculation. We then compute the wavelength of minimum albedo in the 1000-1050 nm range and apply the following criteria to detect liquid water presence :

$$\underset{\lambda \in [1000, 1050] \text{ nm}}{\operatorname{argmin}} (\alpha(\lambda)) < \lambda_{\text{water}} \quad (9)$$

$\lambda_{\text{water}}$  threshold has been set after studying the distribution of  $\operatorname{argmin}(\alpha)$  on the whole spectra dataset.

## 4 Results and discussion

### 4.1 Determination of the experiment specific parameters $A$ , $\theta_n$ , $\phi_n$ and $\lambda_{\text{water}}$

#### 4.1.1 Determination of scaling factor A

Figure 5 describes the distribution of A for fully cloudy days before 2014-03-05. The distribution has a median value 0.943. This value is close to one, which indicates that the actual instrumental response deviates only slightly from the ideal one. The spread of A values is small (quantile 25,  $q_{25}$  : 0.920 and quantile 75,  $q_{75}$  : 0.964). This spread could probably be attributed to residual measurement artefacts such as deposition of precipitation particles on the measurement head, small direct incoming radiation, and reproductibility errors due to the optical switch (Picard et al., 2016a).

In the following, A is set to 0.943. Quantiles 25 and 75 are used to propagate uncertainties of the near surface and surface properties predicted from the spectra, i.e. the optimal parameters.

#### 4.1.2 Determination of slope angle and aspect

Figure 6a illustrates that the optimal parameter  $K$  (green diamonds) follows a diurnal cycle with lower values in the morning and higher values in the afternoon as predicted by Equation 7. It also illustrates the good agreement between the optimal  $K$

and simulated  $K$  (blue crosses, *Step 3*) for March 11<sup>th</sup> (perfectly clear day) and the poorest agreement for March 10<sup>th</sup> where clouds were detected especially in the afternoon.

Figure 6b shows the daily estimates of  $\theta_n$  and  $\phi_n$  obtained after *step 3* over the season. The estimated slope varies from 3 to 10 ° while the aspect mainly ranges between 300 and 360 ° (discarding obvious outlier values). The uncertainty range of estimated  $\theta_n$  is generally lower than 2° while larger uncertainty ranges, up to 50°, are estimated for aspect. The average slope and aspect are in agreement with what can be visually estimated from Figure 1. The seasonal evolution of slope and aspect is related to snow evolution (the red line in Figure 6b shows the measured snow depth). Slope is smaller just after a precipitation event and increases during the melt season.

For comparison, the same method has been applied to the albedo database measured in Dome C and described in Picard et al. (2016a). The snow surface is horizontal at large scale but the surface can be locally rough due to wind-drift effects. The method applied to Dome C data during season 2012-2013 leads to slope angle between  $\pm 2^\circ$  thus providing an insight into the accuracy of the method.

#### 4.1.3 Determination of $\lambda_{\text{water}}$

Figure 7b shows the distribution of the wavelength at which the minimum reflectance value is reached for all the measured spectra with RMSD lower than 0.022 over the 400-1050 nm range. The distribution is bimodal as predicted by Green et al. (2006) and exhibits two peaks, the first one at 1029 nm and the second one at 1034 nm. The first one is likely to correspond to wet snow, while the second is for dry snow.  $\lambda_{\text{water}}$  in Eq. 9 is consequently set to 1032 nm in the following. Figure 7a provides an illustration for two spectra (a wet and a dry one) measured on 2014-03-09.

### 4.2 Theoretical uncertainty and representativeness of the estimated snow parameters

Section 3.3.1 describes the methodology applied in this study to estimate optimal SSA,  $c_{\text{imp}}$  and presence of liquid water from the measured spectra. The uncertainty related to the optimal SSA is discussed in detailed in Picard et al. (2016a) together with the vertical representativeness of the estimated SSA. However our study differs from Picard et al. (2016a) since (i) the snowpack contains larger amount of light absorbing impurities, (ii) the snow surface is not perfectly horizontal and (iii) the snow can be wet. These points might indirectly affect the estimated uncertainty of the optimal SSA and of the other snow parameters, which is investigated in the section below.

Note that the results presented below in Sections 4.2.1 and 4.2.2 have been obtained under clear sky conditions. The methodology applied in this study for cloudy sky intrinsically leads to larger uncertainties for cloudy sky conditions.

#### 4.2.1 Effect of slope on the optimal parameters

Figure 8a shows an example of measured spectrum on 2014-03-10 (grey solid lines) compared to the optimal spectrum predicted with slope (i.e. from *Step 2*, red dotted lines), assuming a perfectly horizontal surface (blue dotted lines) and slightly varying slope zenith (resp. azimuth) angles from +2° (resp. +10°) (green dotted line). It illustrates that the (i) the shape of

the spectrum computed with no slope does not agree with the measured albedo, (ii) the best agreement is obtained for the red dotted line (i.e. with slope) and (iii) a small variation of the slope angles induces a variation of 10% for the optimal SSA and of 13 ng g<sup>-1</sup> for optimal c<sub>imp</sub>.

- More generally, Fig. 6b shows that the spread of A distribution is translated in an uncertainty of typically less than 2° for slope zenith angle and of less than 10° for the aspect. Using the simulated spectrum from Fig. 4 and adding slope and aspect variations within these ranges, we obtain retrieved SSA variations up to 20% for 40 m<sup>2</sup> kg<sup>-1</sup> and up to 10% for 5 m<sup>2</sup> kg<sup>-1</sup>. The larger uncertainty associated with the higher SSA value is because tilt effect is proportional to the albedo value (higher for higher SSA). Optimal c<sub>imp</sub> variations are up to 25 (resp. 40) ng g<sup>-1</sup> for SSA=40 m<sup>2</sup> kg<sup>-1</sup>, c<sub>imp</sub>=0 (resp. 100) ng g<sup>-1</sup>. For lower SSA (5 m<sup>2</sup> kg<sup>-1</sup>), c<sub>imp</sub> variations range from 4 to 40 ng g<sup>-1</sup> for initial impurity content ranging from 0 to 1000 ng g<sup>-1</sup>.
- In addition, the surface slope also affects the value of argmin( $\alpha$ ). Using the spectral albedo from Fig. 4 and slope angle varying between -20 and +20°, we nevertheless found that argmin( $\alpha$ ) does not vary for slope angle lower than 10° and that the maximum variation for steeper slope is less than  $\pm 0.5$  nm.

#### 4.2.2 Coupled effect of SSA and c<sub>imp</sub> on spectral albedo

- Figure 8b shows an example of measured spectrum on 2014-04-03 (grey solid lines) compared to the optimal spectrum predicted with slope (i.e. from *Step* 2, red dotted lines). The blue dotted line corresponds to the optimal albedo obtained while increasing by 50 ng g<sup>-1</sup> the original optimal value of c<sub>imp</sub> and the green dotted line to the optimal albedo obtained while adding +15 % to the original optimal value of SSA. It illustrates that changes in the SSA (resp. c<sub>imp</sub>) induce changes in the optimal values of c<sub>imp</sub> (resp. SSA).

- More generally, using again the simulated spectrum presented in Fig. 4, we first investigate the change in estimated SSA while varying c<sub>imp</sub> by  $\pm 50$  ng g<sup>-1</sup>. The larger variations, up to 15%, are obtained for very low c<sub>imp</sub> (1 ng g<sup>-1</sup>) and small SSA (5 m<sup>2</sup> kg<sup>-1</sup>). As soon as c<sub>imp</sub> is higher than 100 ng g<sup>-1</sup> the SSA variations are smaller than 13 % for SSA=5 m<sup>2</sup> kg<sup>-1</sup> and than 5 % for higher SSA (40 m<sup>2</sup> kg<sup>-1</sup>). Then, we investigate the change in optimal c<sub>imp</sub> while varying SSA by  $\pm 15$  %. It shows that a  $\pm 15$  % uncertainty on SSA leads to a  $\pm 20$  % uncertainty on c<sub>imp</sub>.

#### 4.2.3 Optimal SSA and liquid water

- The presence of liquid water modifies the spectrum. Thus it necessarily affects the value of optimal SSA estimated from the spectrum. Gallet et al. (2014) provides an overview on how it affects the SSA estimated from 1310 nm reflectance. The conclusions is different in our case where the whole spectrum is used. Although a detailed modelling study is beyond the scope of the study, using the relative difference in optimal SSA,  $\Delta SSA = \frac{SSA_{wet} - SSA_{dry}}{SSA_{wet}}$ , between two consecutive spectra (absolute time difference of 12 min), we were able to investigate this effect. The distribution of  $\Delta SSA$  for the whole measurements period is peaked. Quantiles 25 (resp. 50 and 75) are -4.15 % (resp. 0.025 % and 6.99 %). Assuming the change in SSA between the two spectra is only due to refreezing and not to metamorphism, this indicates that the SSA of the wet spectrum is not generally higher or smaller than the SSA of the dry spectrum and that an upperbound of the uncertainty on the optimal SSA due to the presence of liquid water is 7%.

#### 4.2.4 Vertical representativeness of optimal impurity content

Real snowpacks are not vertically homogeneous as assumed in our method and often displays high vertical gradient of SSA or impurity content (e.g. Sterle et al., 2013). However only one bulk SSA and  $c_{\text{imp}}$  values are estimated in order to stabilize the optimization.

- 5 The vertical representativeness of SSA is discussed in Picard et al. (2016a). Using the same methodology, we analyze here the vertical representativeness of  $c_{\text{imp}}$ . We use the two-stream radiative model TARTES (Libois et al., 2013) to compute the albedo of semi-infinite medium with a fixed SSA, density and  $c_{\text{imp}}$ . A layer with variable snow water equivalent  $h$  is added on top of it with a slightly different value of  $c_{\text{imp}}$  ( $c_{\text{imp}} + \delta c$ ). The relative contribution of the uppermost layer to the albedo is then defined as  $(\alpha(h) - \alpha(0)) / (\alpha(\infty) - \alpha(0))$  where  $\alpha(h)$  is the albedo computed with TARTES averaged over 400-1050 nm  
10 for a two layers snowpack with the uppermost layer of swe  $h$ . The value of  $\delta c$  does not change the results as long as it is small (e.g. + 10% in Fig. 9). Thus, the vertical representativeness calculated here is only valid for slightly inhomogenous snowpack.

Figure 9 shows the relative contribution of the uppermost layer as a function of its SWE for two SSA values ( $5 \text{ m}^2 \text{ kg}^{-1}$  plain lines,  $40 \text{ m}^2 \text{ kg}^{-1}$  crosses) and varying values of  $c_{\text{imp}}$  (from 1 to  $500 \text{ ng g}^{-1}$ ). It shows that the higher the SSA and  $c_{\text{imp}}$ , the higher the contribution of the uppermost centimeters of the snowpack to the albedo value. For instance for low SSA ( $5 \text{ m}^2 \text{ kg}^{-1}$ ) and high  $c_{\text{imp}}$  ( $500 \text{ ng g}^{-1}$ ), the top  $10 \text{ kg m}^{-2}$  of the snowpack contributes to more than 80% of the signal. For a  
15  $\text{m}^2 \text{ kg}^{-1}$  and high  $c_{\text{imp}}$  ( $500 \text{ ng g}^{-1}$ ), the top  $10 \text{ kg m}^{-2}$  of the snowpack contributes to more than 80% of the signal. For a density of  $400 \text{ kg m}^{-3}$ , this corresponds to the uppermost 5 cm. For higher SSA ( $40 \text{ m}^2 \text{ kg}^{-1}$ ) and lower  $c_{\text{imp}}$  ( $10 \text{ ng g}^{-1}$ ), the top  $30 \text{ kg m}^{-2}$  of the snowpack contributes to more than 80% of the signal. For a density of  $200 \text{ kg m}^{-3}$ , this corresponds to the uppermost 15 cm. This can be explained since (i) the higher the SSA the lower the light penetration depth in the snowpack and (ii) the presence of impurities shortens the light penetration depth in the snowpack (e.g. Libois et al., 2013).

#### 20 4.3 Time evolution of the optimal SSA

Sections 4.3 and 4.4 focus on of the optimal SSA and effective impurity content time series predicted from the measured spectra and their consistency with snow and meteorological conditions.

##### 4.3.1 Seasonal evolution of "noon" SSA

- Figure 10 a,b presents the seasonal evolution of all the optimal SSA and the optical radius,  $r_{\text{opt}}$  predicted from the measured  
25 spectra between 12:00 and 13:00 each day. Clear sky conditions are represented in blue and cloudy conditions in red. Vertical bars represent the uncertainties derived from  $q_{25}$  and  $q_{75}$  of A distribution. The SSA ranges from more than  $70 \text{ m}^2 \text{ kg}^{-1}$  after snowfall down to  $2 \text{ m}^2 \text{ kg}^{-1}$ . For clear sky days uncertainties are small (typically less than 10 %) whereas cloudy days feature larger uncertainties. The range of variations is consistent with measured values of surface SSA presented in Morin et al. (2013) using the DUFISSS instrument (Gallet et al., 2009) in 2010. The SSA decay is also consistent with current understanding and  
30 parameterizations of SSA evolution (e.g. Carmagnola et al., 2014, Flanner and Zender, 2006, Schleef et al., 2014).

On 2014-01-22, surface SSA was measured between 12:00 and 13:00 with ASSAP at  $44 \pm 4 \text{ m}^2 \text{ kg}^{-1}$ . The sky was partially clear during the day and the sensor was covered by snow in the morning due to recent precipitation leading to valid

spectra only after 13:00. The optimal SSA value at 13:00 is (42.6, 43.1, 43.4)  $\text{m}^2 \text{kg}^{-1}$  ( $q_{25}$ ,  $q_{50}$ ,  $q_{75}$ ) which is only slightly lower than ASSSAP value and within ASSSAP uncertainty range.

Note that the small SSA increase (mostly visible in Fig. 10b) by 2014-04-02 is an artifact induced by the appearance of grass in the field of view of the sensor, leading to higher reflectance in NIR wavelengths and thus higher optimal SSA.

### 5 4.3.2 SSA diurnal cycles

Figure 11a,b shows the diurnal evolution of SSA inferred from albedo variations. Figure 11a zooms on the details of the diurnal cycle from 2014-03-06 to 2014-03-09. The diurnal cycle evolves from higher SSA in the morning to lower SSA in the afternoon in the absence of precipitation which can be explained by snow metamorphism and by the snow intrinsic albedo feedback (Dumont et al., 2014).

- 10 Additionnally Fig. 11c presents the daily SSA decay rate in % per day inferred from the diurnal cycle. The grey area corresponds to the 15 % uncertainty estimated in Picard et al. (2016a) for the optimal SSA retrieval in Antarctica. SSA decay rates are larger after snowfall. Such variations are also described by Seidel et al. (2016) when investigating  $r_{\text{opt}}$  variations from airborne hyperspectral imagery.

### 4.4 Time evolution of the optimal effective impurity content

- 15 Figure 10b describes the evolution of the effective impurity content,  $c_{\text{imp}}$  inferred from spectral albedo values. The values are affected by large uncertainties for cloudy days as already discussed for SSA.  $c_{\text{imp}}$  values range between 0 and 1000  $\text{ng g}^{-1}$ . Values up to 400  $\text{ng g}^{-1}$  are found in January and February. The highest values are found at the end of the season after long periods without precipitation.  $c_{\text{imp}}$  variations range is in agreement with other studies conducted in the Alps (e.g. Di Mauro et al., 2015). Low impurity content (typically smaller than 50  $\text{ng g}^{-1}$ ) are affected by large uncertainties.
- 20 On Februray 11th, the equivalent BC content measured in the first two cm of the snowpack was  $17 \pm 6 \text{ ng g}^{-1}$ . The day was partially cloudy. Only two spectra before 12:00 are valid and measured during clear sky conditions (from the camera images). For these spectra, the optimal SSA values are [22, 23, 24]  $\text{m}^2 \text{kg}^{-1}$  and  $c_{\text{imp}}=[0.5, 2., 6.6] \text{ ng g}^{-1}$  ( $q_{25}$ ,  $q_{50}$ ,  $q_{75}$ ). The measured  $c_{\text{imp}}$  is higher than the optimal one though lying in the range of impurity content values for which the retrieval is highly uncertain.
- 25 Diurnal cycle of  $c_{\text{imp}}$  is not investigated in this study since the uncertainties associated with the  $c_{\text{imp}}$  values are too high with respect to the diurnal variations.

Figure 12b shows the seasonal evolution of  $c_{\text{imp}}$  but distinguishes the prevailing color of impurities (black : black crosses or red: red dots). This distinction is based on the RMSD calculated between the modeled and the measured albedo within the 400-500 nm wavelengths range. If this RMSD in the visible wavelengths (400-500 nm) is larger than the RMSD over the whole spectrum,  $c_{\text{imp}}$  is represented in red. This indeed indicates that the predicted and modelled spectrum agrees well except in the 400-500 nm wavelengths as illustrated by the black spectrum in Fig. 2b and that the prevailing impurities at that date may have a reddish spectral signature. The blue vertical bar represents days for which melt was detected on the SWE measurements

(Fig. 12a). Figure 12c shows the wet and dry deposition predicted by ALADIN-Climate for black carbon and mineral dust at Col de Porte site.

High values of  $c_{\text{imp}}$  in January and February may be related to dust deposition events. Low values are found beginning of March after a precipitation period. From March to mid-April, the exponential increase in  $c_{\text{imp}}$  can be related to melt during which part of the impurities concentrate on the surface (Sterle et al., 2013) and to dust deposition events beginning of April. Note that the coarse resolution of ALADIN-Climate limits the accuracy of the precipitation events. Consequently the wet deposition event predicted on 2014-03-30 has no impact on the snowpack because no precipitation were observed during that day at Col de Porte.

Finally, the uncertainty associated with the imaginary part of the refractive index of ice (e.g. Warren and Brandt, 2008, Carmagnola et al., 2014, Picard et al., 2016b) strongly affects the relationship between spectral albedo and  $c_{\text{imp}}$  (see Eq. 5). Figure 12b shows the values of  $c_{\text{imp}}$  estimated using the values of the ice refractive index proposed in Picard et al. (2016b) instead of Warren and Brandt (2008) (green dots).  $c_{\text{imp}}$  are significantly lower using Picard et al. (2016b) especially for low impurity content.

#### 4.5 Presence of liquid water

Figure 13a shows the comparison between the wavelength of minimum reflectance and the surface LWC measured in the field for 15 snow pits. The agreement between our method of detection and field observations is perfect for these 15 dates.

Figure 13b, c shows the results of the liquid water detection method over the whole season. The detection is in good agreement with measured surface temperature. The accuracy of the measured surface temperature is estimated equal to 1 K. False-detection cases, i.e. when the snow is detected as wet but surface temperature is negative, i.e. less than 272.15 K to account for the measurement accuracy, are less than 3.5 %. False detection cases may originate from measurement artefacts since the signal to noise ratio for the considered wavelengths is high and differences in the field of view of the spectrometer and of the longwave downlooking sensor used to calculate surface temperature. Figure 13c shows that melt-freeze diurnal cycles are well depicted with dry snow in the morning and late afternoon and wet snow around noon.

#### 5 Concluding remarks

This study introduces a continuous data set of spectral albedo acquired from January to May 2014 from 400 to 1050 nm at the Col de Porte alpine site as a follow-up of the study conducted using the same instrument at Dome C in Antarctica during 3 years (Picard et al., 2016a). The alpine snowpack radically differs from inner Antarctica snowpack and the spectral albedo variations cannot be only explained by the evolution of near surface SSA and solar zenith angle. We investigated how the variations of measured spectral albedo can be explained by the evolution of other factors such as effective impurity content, surface slope and aspect and presence of liquid water. For this, we used analytical formulation of spectral albedo as a function of these near surface parameters. Results show that the measured spectra are accurately simulated using this formulation. This formulation disentangles the effect of slope, SSA and effective impurity content on spectral albedo and consequently provides

optimal values of these parameters for each measured spectra. This study also demonstrates that wet and dry snow surfaces can be distinguished taking benefit of the spectral shift between the refractive index of ice and water around 1000 nm.

The uncertainty associated to the optimal SSA was discussed in detail in Picard et al. (2016a) and theoretically estimated to be better than 15%. In our case, in presence of impurities and surface slope, the accuracy is degraded. The detection of wet snow surface (only binary information) at the snow surface is less affected by measurement artefacts and surface tilt. Finally, the estimation of an effective impurity content is subject to large uncertainties making  $c_{\text{imp}}$  values lower than 50 ng g<sup>-1</sup> challenging to estimate as pointed out by Warren (2013). The study emphasizes the need for measuring snow albedo over snow surface as flat as possible in order to be able to infer accurately snow surface variables. [The influence of surface roughness, incident and reflected radiations and of the location of the impurities with respect to the ice matrix deserves future work. Further refinements on the calculation of the spectral direct to total irradiance ratio or simultaneous measurements of this ratio and albedo are required to improve the accuracy of the method.](#) It must be underlined that the detailed study of the accuracy of the estimation of near surface snow parameters from spectral albedo would require more extensive validation measurements than presented in this paper, i.e. micro-tomography evaluation of SSA and systematic measurements of surface impurities content.

However, optimal near-surface SSA predicted from the spectra exhibits strong seasonal and diurnal cycles that can be related to snow and meteorological conditions. Near surface optimal effective impurity content also exhibits strong variations along the season that can be related to surface enrichment process due to melt and Saharan dust deposition events that frequently occur in the French Alps (Di Mauro et al., 2015).

Such time series of spectral albedo are required to understand and quantify the evolution of snow albedo in relationship with snow surface variables such as SSA and surface impurity content. They are also a unique opportunity to better understand the evolution of near-surface SSA and effective impurity content during the snow season. They provide unique dataset to evaluate and refine detailed snowpack model such as Crocus (Vionnet et al., 2012) or SNOWPACK (Bartelt and Lehning, 2002). Furthermore, without the need of a retrieval methodology for snow properties, such measured spectral albedo time-series can be assimilated in snowpack model in order to improve simulation of the snowpack structure (Charrois et al., 2016).

This study hence emphasizes the usefulness of hyperspectral optical observations of snow.

## 6 Data availability

Processed spectral albedo time series will be available through Pangaea database.

*Author contributions.* M. Dumont coordinated the study and developed the retrieval algorithm. G. Picard and L. Arnaud developed and built the automatic albedometer. G. Picard, L. Arnaud, S. Morin and D. Voisin deployed it at Col de Porte. D. Voisin performed the impurity content measurements. P. Nabat provided the ALADIN-Climate simulations and Y. Lejeune provided the snow and meteorological measurements at Col de Porte. M. Dumont prepared the manuscript with contributions from the other authors.

*Acknowledgements.* CNRM/CEN and LGGE are part of Labex OSUG@2020 (investissement d’avenir - ANR10 LABX56). This study was supported by the ANR programs 1-JS56-005-01 MONISNOW and ANR-16-CE01-0006 EBONI and the LEFE programs BON and ASSURANCE. The authors are grateful to the Col de Porte staff for ensuring a proper working of all the instruments, to EDF-DTG for SWE automatic measurements at Col de Porte, to L. Mbemba for the impurity content *in situ* measurements and to V. Vionnet and H. Loewe for helpful discussion on sky view factor.

## Appendix A: Diffuse radiation on a slope

Let  $\theta_s$  and  $\phi_s$  be the direction of sun with respect to a perfectly horizontal surface,  $\theta_n$  and  $\phi_n$  being respectively the slope and aspect of the surface and  $\tilde{\theta}_s$  and  $\tilde{\phi}_s$  the effective direction of the sun with respect to the tilted surface (Fig. 2). Then  $\cos \tilde{\theta}_s = K \cos \theta_s$  (e.g. Dumont et al., 2011) where

$$K = \cos \theta_n + \tan \theta_s \sin \theta_n \cos(\phi_s - \phi_n) \quad (\text{A1})$$

The fraction of diffuse irradiance,  $V$ , which is seen by the tilted surface can be written, in the tilted surface reference frame :

$$V = \frac{1}{\pi} \int_0^\pi \int_0^{H(\phi)} \cos \theta \sin \theta d\theta d\phi \quad (\text{A2})$$

where  $H(\phi)$  is the elevation of the horizon and is equal to  $\frac{\pi}{2}$  for  $\phi \in [\pi, 2\pi]$  and verifies Eq. A3 for  $\phi \in [0, \pi]$ .

$$K = 0, \quad \tan H(\phi) = -\frac{1}{\tan \theta_n \cos(\phi)} \quad (\text{A3})$$

This leads to :

$$V = \frac{1}{2} + \frac{1}{\pi} \int_0^{\frac{\pi}{2}} \frac{1}{\tan^2 \theta_n \cos^2 \phi + 1} d\phi \quad (\text{A4})$$

Finally using  $X = \frac{\tan \phi}{\sqrt{1 + \tan^2 \theta_n}}$  in the integral above leads to :

$$V = \frac{1 + \cos \theta_n}{2} \quad (\text{A5})$$

as in e.g. Wang et al. (2016).

## Appendix B: Effect of slope on measured albedo

The solar total incoming radiation on a perfectly horizontal surface,  $E \downarrow (\lambda, \theta_s)$  can be written as a function of incoming direct radiation,  $E_{\text{direct}}(\lambda)$  and incoming diffuse radiation,  $E_{\text{diffuse}}(\lambda)$  :

$$E \downarrow (\lambda, \theta_s) = E_{\text{direct}}(\lambda) \cos \theta_s + E_{\text{diffuse}}(\lambda) \quad (\text{B1})$$



Let  $r_{\text{diff}}(\lambda, \theta_s)$  be the ratio of diffuse to total irradiance,  $r_{\text{diff}}(\lambda, \theta_s) = \frac{E_{\text{diffuse}}(\lambda)}{E(\lambda, \theta_s)}$ . Under the assumption of perfectly isotropic diffuse irradiance, the solar irradiance on a tilted surface  $\tilde{E} \downarrow(\lambda, \theta_s)$  verifies (e.g. Wang et al. (2016)) :

$$\tilde{E} \downarrow(\lambda, \theta_s) = E_{\text{direct}}(\lambda)K \cos \theta_s + E_{\text{diffuse}}(\lambda)V + (1 - V)\alpha_{\text{true}}(\lambda, \theta_s)\tilde{E} \downarrow(\lambda, \theta_s) \quad (\text{B2})$$

where  $\alpha_{\text{true}}(\lambda, \theta_s)$  is the albedo of the tilted surface and can be written :

The first (resp. second) term of the sum in Eq. B2 corresponds to the incoming direct (resp. diffuse) radiation on the tilted surface. The last term of the sum is the amount of radiation incoming on the surface and reflected by adjacent slope.

$$\alpha_{\text{true}}(\lambda, \theta_s) = K(1 - r_{\text{diff}}(\lambda, \theta_s))(\alpha_{\text{dir}}(\lambda, \tilde{\theta}_s) - \alpha_{\text{diff}}(\lambda)) + \alpha_{\text{diff}}(\lambda) \quad (\text{B3})$$

If we assume that the reflected radiation is also isotropic, the upward radiation measured by the horizontal sensor above the tilted surface is equal to :

$$E_{\text{meas}} \uparrow(\lambda, \theta_s) = \alpha_{\text{true}}(\lambda, \theta_s)V\tilde{E} \downarrow(\lambda, \theta_s) + (1 - V)(\tilde{E} \downarrow(\lambda, \theta_s) - E_{\text{direct}}(\lambda)K \cos \theta_s) \quad (\text{B4})$$

The first term of the sum in Eq. B4 corresponds to the amount of radiation reflected by the snow surface and seen by the sensor. The second term is the amount of diffuse atmospheric radiation seen by the sensor.

The instrument thus measures :

$$\alpha_{\text{meas}}(\lambda, \theta_s) = A \left( K(1 - r_{\text{diff}}(\lambda, \theta_s)) \left( V\alpha_{\text{dir}}(\lambda, \tilde{\theta}_s) + \frac{(1 - V)\alpha_{\text{true}}(\lambda, \theta_s)}{1 - (1 - V)\alpha_{\text{true}}(\lambda, \theta_s)}(1 - V + \alpha_{\text{diff}}(\lambda)) \right) + \frac{Vr_{\text{diff}}(\lambda, \theta_s)}{1 - (1 - V)\alpha_{\text{true}}(\lambda, \theta_s)}(V\alpha_{\text{diff}}(\lambda) + 1 - V) \right) \quad (\text{B5})$$

Let  $\varepsilon^2 = 1 - V$ , when  $\varepsilon$  is small (e.g.  $\theta_n$  is small), Eq. B5 leads to the following expression for  $\alpha_{\text{meas}}(\lambda, \theta_s)$ :

$$\begin{aligned} \frac{\alpha_{\text{meas}}(\lambda, \theta_s)}{A} &= (1 - r_{\text{diff}}(\lambda, \theta_s))\alpha_{\text{dir}}(\lambda, \tilde{\theta}_s) + r_{\text{diff}}(\lambda, \theta_s)\alpha_{\text{diff}}(\lambda) \\ &\quad + 2\varepsilon \tan \theta_s \cos \phi (1 - r_{\text{diff}}(\lambda, \theta_s))\alpha_{\text{dir}}(\lambda, \tilde{\theta}_s) \\ &\quad + \varepsilon^2 \left( (1 - r_{\text{diff}}(\lambda, \theta_s))(\alpha_{\text{diff}}(\lambda) - 3)\alpha_{\text{dir}}(\lambda, \tilde{\theta}_s) + r_{\text{diff}}(\lambda, \theta_s)(1 - \alpha_{\text{diff}}(\lambda))^2 \right) \\ &\quad + o(\varepsilon^2) \\ &= K(1 - r_{\text{diff}}(\lambda, \theta_s))\alpha_{\text{dir}}(\lambda, \tilde{\theta}_s) + r_{\text{diff}}(\lambda, \theta_s)\alpha_{\text{diff}}(\lambda) + \varepsilon^2 P + o(\varepsilon^2) \end{aligned} \quad (\text{B6})$$

where  $P = (1 - \alpha_{\text{diff}}(\lambda))(r_{\text{diff}}(\lambda, \theta_s)(1 - \alpha_{\text{diff}}(\lambda)) - (1 - r_{\text{diff}}(\lambda, \theta_s))\alpha_{\text{dir}}(\lambda, \tilde{\theta}_s))$

Figure 14 shows that  $\varepsilon^2 P$  can be neglected for slope angles lower than  $10^\circ$  which is the case in the study (see Fig. 6).

## References

- Arnaud, L., Picard, G., Champollion, N., Domine, F., Gallet, J.-C., Lefebvre, E., Fily, M., and Barnola, J.-M.: Measurement of vertical profiles of snow specific surface area with a 1 cm resolution using infrared reflectance: instrument description and validation, *J. Glaciol.*, 57, 17–29, doi:10.3189/002214311795306664, 2011.
- Bartelt, P. and Lehning, M.: A physical SNOWPACK model for the Swiss avalanche warning: Part I: numerical model., *Cold Regions Science and Technology*, 3, 123–145, 2002.
- Benedetti, A., Kaiser, J. W., and Morcrette, J. J.: Global Climate, Aerosols in: State of the Climate in 2010., *Bull. Am. Meteorol. Soc.*, 92, S65–S67, 2011.
- Bogren, W. S., Burkhart, J. F., and Kylling, A.: Tilt error in cryospheric surface radiation measurements at high latitudes: a model study, *The Cryosphere*, 10, 613–622, doi:10.5194/tc-10-613-2016, 2016.
- Brun, E., Martin, E., Simon, V., Gendre, C., and Coléou, C.: An energy and mass model of snow cover suitable for operational avalanche forecasting, *J. Glaciol.*, 35, 333 – 342, doi:10.3198/1989JoG35-121-333-342, 1989.
- Carmagnola, C. M., Domine, F., Dumont, M., Wright, P., Strellis, B., Bergin, M., Dibb, J., Picard, G., Libois, Q., Arnaud, L., and Morin, S.: Snow spectral albedo at Summit, Greenland: measurements and numerical simulations based on physical and chemical properties of the snowpack, *The Cryosphere*, 7, 1139–1160, doi:10.5194/tc-7-1139-2013, 2013.
- Carmagnola, C. M., Morin, S., Lafaysse, M., Domine, F., Lesaffre, B., Lejeune, Y., Picard, G., and Arnaud, L.: Implementation and evaluation of prognostic representations of the optical diameter of snow in the SURFEX/ISBA-Crocus detailed snowpack model, *The Cryosphere*, 8, 417–437, doi:10.5194/tc-8-417-2014, 2014.
- Charrois, L., Cosme, E., Dumont, M., Lafaysse, M., Morin, S., Libois, Q., and Picard, G.: On the assimilation of optical reflectances and snow depth observations into a detailed snowpack model, *The Cryosphere*, 10, 1021–1038, doi:10.5194/tc-10-1021-2016, 2016.
- Dang, C., Brandt, R. E., and Warren, S. G.: Parameterizations for narrowband and broadband albedo of pure snow and snow containing mineral dust and black carbon, *Journal of Geophysical Research: Atmospheres*, 120, 5446–5468, doi:10.1002/2014JD022646, 2015.
- Dee, D. P., Uppala, S. M., Simmons, A. J., Berrisford, P., Poli, P., Kobayashi, S., Andrae, U., Balmaseda, M. A., Balsamo, G., Bauer, P., Bechtold, P., Beljaars, A. C. M., van de Berg, L., Bidlot, J., Bormann, N., Delsol, C., Dragani, R., Fuentes, M., Geer, A. J., Haimberger, L., Healy, S. B., Hersbach, H., Hólm, E. V., Isaksen, I., Kållberg, P., Köhler, M., Matricardi, M., McNally, A. P., Monge-Sanz, B. M., Morcrette, J.-J., Park, B.-K., Peubey, C., de Rosnay, P., Tavolato, C., Thépaut, J.-N., and Vitart, F.: The ERA-Interim reanalysis: configuration and performance of the data assimilation system, *Quart. J. Roy. Meteor. Soc.*, 137, 553–597, doi:10.1002/qj.828, 2011.
- Delmonte, B., Petit, J., and Maggi, V.: Glacial to Holocene implications of the new 27000-year dust record from the EPICA Dome C (East Antarctica) ice core, *Climate Dynamics*, 18, 647–660, doi:10.1007/s00382-001-0193-9, 2002.
- Di Mauro, B., Fava, F., Ferrero, L., Garzonio, R., Baccolo, G., Delmonte, B., and Colombo, R.: Mineral dust impact on snow radiative properties in the European Alps combining ground, UAV, and satellite observations, *Journal of Geophysical Research: Atmospheres*, 120, 6080–6097, doi:10.1002/2015JD023287, 2015.
- Doherty, S. J., Warren, S. G., Grenfell, T. C., Clarke, A. D., and Brandt, R. E.: Light-absorbing impurities in Arctic snow, *Atmos. Chem. Phys.*, 10, 11 647–11 680, doi:10.5194/acp-10-11647-2010, 2010.
- Dozier, J., Green, R. O., Nolin, A. W., and Painter, T. H.: Interpretation of snow properties from imaging spectrometry, *Remote Sensing of Environment*, 113, S25–S37, doi:10.1016/j.rse.2007.07.029, 2009.

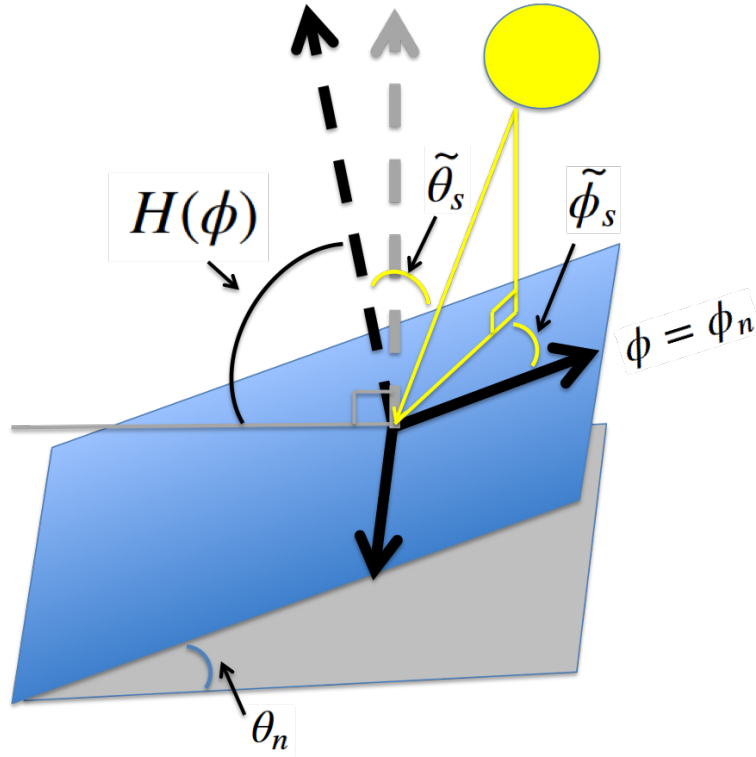
- Dumont, M., Brissaud, O., Picard, G., Schmitt, B., Gallet, J.-C., and Arnaud, Y.: High-accuracy measurements of snow Bidirectional Reflectance Distribution Function at visible and NIR wavelengths – comparison with modelling results, *Atmos. Chem. Phys.*, 10, 2507–2520, doi:10.5194/acp-10-2507-2010, 2010.
- 5 Dumont, M., Sirguey, P., Arnaud, Y., and Six, D.: Monitoring spatial and temporal variations of surface albedo on Saint Sorlin Glacier (French Alps) using terrestrial photography, *The Cryosphere*, 5, 759–771, doi:10.5194/tc-5-759-2011, 2011.
- Dumont, M., Brun, E., Picard, G., Michou, M., Libois, Q., Petit, J., Geyer, M., Morin, S., and Josse, B.: Contribution of light-absorbing impurities in snow to Greenland’s darkening since 2009, *Nature Geoscience*, 7, 509–512, doi:10.1038/ngeo2180, 2014.
- Flanner, M., Liu, X., Zhou, C., and Penner, J.: Enhanced solar energy absorption by internally-mixed black carbon in snow grains, *Atmos.*
- 10 *Chem. Phys.*, 12, 4699–4721, doi:10.5194/acp-12-4699-2012, 2012.
- Flanner, M. G. and Zender, C. S.: Linking snowpack microphysics and albedo evolution, *J. Geophys. Res.*, 111, D12 208, doi:10.1029/2005JD006834, 2006.
- Gallet, J.-C., Domine, F., Zender, C. S., and Picard, G.: Measurement of the specific surface area of snow using infrared reflectance in an integrating sphere at 1310 and 1550 nm, *The Cryosphere*, 3, 167 – 182, doi:10.5194/tc-3-167-2009, 2009.
- 15 Gallet, J.-C., Domine, F., and Dumont, M.: Measuring the specific surface area of wet snow using 1310 nm reflectance, *The Cryosphere*, 8, 1139–1148, doi:10.5194/tc-8-1139-2014, 2014.
- Gardner, A. S. and Sharp, M.: A review of snow and ice albedo and the development of a new physically based broadband albedo parametrization, *J. Geophys. Res.*, 115, F01 009, doi:10.1029/2009JF001444, 2010.
- Green, R., Painter, T., Roberts, D., and Dozier, J.: Measuring the expressed abundance of the three phases of water with an imaging spectrometer over melting snow, *Water Resources Research*, 42, doi:10.1029/2005WR004509, 2006.
- 20 Grenfell, T. and Warren, S.: Representation of a nonspherical ice particle by a collection of independent spheres for scattering and absorption of radiation, *Journal of Geophysical Research*, 104, 31 697–31 709, doi:10.1029/2000JC000414, 1999.
- He, C., Li, Q., Liou, K., Takano, Y., Gu, Y., Qi, L., Mao, Y., and Leung, L. R.: Black carbon radiative forcing over the Tibetan Plateau, *Geophysical Research Letters*, 41, 7806–7813, 2014.
- 25 Imbrie, J. and Imbrie, J. Z.: Modeling the climatic response to orbital variations, *Science*, 207, 943–953, doi:10.1126/science.207.4434.943, 1980.
- Kokhanovsky, A. and Zege, E.: Scattering optics of snow, *Applied Optics*, 43(7), 1589–1602, doi:10.1364/AO.43.0001589, 2004.
- Lamarque, J., Bond, T., Eyring, V., Granier, C., Heil, A., Klimont, Z., Lee, D., Liousse, C., Mieville, A., Owen, B., and Schultz, M.: Historical (1850-2000) gridded anthropogenic and biomass burning emissions of reactive gases and aerosols: methodology and application., *Atmos.*
- 30 *Chem. Phys.*, 10, 7017–7039, doi:10.5194/acp-10-7017-2010, 2010.
- Libois, Q., Picard, G., France, J. L., Arnaud, L., Dumont, D., Carmagnola, C. M., and King, M. D.: Influence of grain shape on light penetration in snow, *The Cryosphere*, 7, 1803–1818, doi:10.5194/tc-7-1803-2013, 2013.
- Libois, Q., Picard, G., Dumont, M., Arnaud, L., Sergent, C., Pougatch, E., Sudul, M., , and Vial, D.: Summertime evolution of snow specific surface area close to the surface on the Antarctic Plateau, *J. Glaciol.*, 60, 714–724, doi:10.5194/tc-9-2383-2015, 2014.
- 35 Libois, Q., Picard, G., Arnaud, L., Dumont, M., Lafaysse, M., Morin, S., and Lefebvre, E.: Summertime evolution of snow specific surface area close to the surface on the Antarctic Plateau, *The Cryosphere*, 9, 2383–2398, doi:10.5194/tc-9-2383-2015, 2015.
- Lim, S., Faïn, X., Zanatta, M., Cozic, J., Jaffrezo, J.-L., Ginot, P., and Laj, P.: Refractory black carbon mass concentrations in snow and ice: method evaluation and inter-comparison with elemental carbon measurement, *Atmospheric Measurement Techniques*, 7, 3307–3324, doi:10.5194/amt-7-3307-2014, 2014.

- Liou, K. N., Takano, Y., He, C., Yang, P., Leung, L. R., Gu, Y., and Lee, W. L.: Stochastic parameterization for light absorption by internally mixed BC/dust in snow grains for application to climate models, *Journal of Geophysical Research: Atmospheres*, 119, 7616–7632, 2014.
- Malinka, A. V.: Light scattering in porous materials: Geometrical optics and stereological approach, *Journal of Quantitative Spectroscopy and Radiative Transfer*, 141, 14–23, doi:10.1016/j.jqsrt.2014.02.022, 2014.
- 5 Michou, M., Nabat, P., and Saint-Martin, D.: Development and basic evaluation of a prognostic aerosol scheme (v1) in the CNRM Climate Model CNRM-CM6., *Geoscientific Model Development*, 8(3), doi:10.5194/gmd-8-501-2015, 2015.
- Morcrette, J., Boucher, O., Jones, L., Salmond, D., Bechtold, P., Beljaars, A., Benedetti, A., Bonet, A., Kaiser, J., Razinger, M., and Schulz, M.: Aerosol analysis and forecast in the European Centre for medium-range weather forecasts integrated forecast system: Forward modeling., *J. Geophys. Res.*, 114, D6, doi:10.1029/2008JD011235, 2009.
- 10 Morin, S., Lejeune, Y., Lesaffre, B., Panel, J.-M., Poncet, D., David, P., and Sudul, M.: A 18-years long (1993 - 2011) snow and meteorological dataset from a mid-altitude mountain site (Col de Porte, France, 1325 m alt.) for driving and evaluating snowpack models, *Earth Syst. Sci. Data*, 4, 13–21, doi:10.5194/essd-4-13-2012, 2012.
- Morin, S., Domine, F., Dufour, A., Lejeune, Y., Lesaffre, B., Willemet, J.-M., Carmagnola, C. M., and Jacobi, H.-W.: Measurements and modeling of the vertical profile of specific surface area of an alpine snowpack, *Advances*, 55, 111–120, doi:10.1016/j.advwatres.2012.01.010, 2013.
- 15 Nabat, P., Somot, S., Mallet, M., Michou, M., Sevault, F., F., D., Meloni, D., Di Sarra, A., Di Biagio, C., Formenti, P., Sicard, M., Léon, J.-F., and Bouin, M.-N.: Dust aerosol radiative effects during summer 2012 simulated with a coupled regional aerosol-atmosphere-ocean model over the Mediterranean region., *Atm. Chem. Phys.*, 15, 3303–3326, doi:10.5194/acp-15-3303-2015, 2015.
- 20 Negi, H. S. and Kokhanovsky, A.: Retrieval of snow albedo and grain size using reflectance measurements in Himalayan basin, *The Cryosphere*, 5, 203–217, doi:10.5194/tc-5-203-2011, 2011.
- Painter, T. H., Seidel, F. C., Bryant, A. C., McKenzie Skiles, S., and Rittger, K.: Imaging spectroscopy of albedo and radiative forcing by light-absorbing impurities in mountain snow, *Journal of Geophysical Research: Atmospheres*, 118, 9511–9523, doi:10.1002/jgrd.50520, 2013.
- 25 Picard, G., Arnaud, L., Domine, F., and Fily, M.: Determining snow specific surface area from near-infrared reflectance measurements: Numerical study of the influence of grain shape, *Cold Reg. Sci. Technol.*, 56, 10 – 17, doi:10.1016/j.coldregions.2008.10.001, 2009.
- Picard, G., Domine, F., Krinner, G., Arnaud, L., and Lefebvre, E.: Inhibition of the positive snow-albedo feedback by precipitation in interior Antarctica, *Nature Climate Change*, 2, 795–798, doi:10.1038/nclimate1590, 2012.
- Picard, G., Libois, Q., Arnaud, L., Verin, G., and Dumont, M.: Development and calibration of an automatic spectral albedometer to estimate near-surface snow SSA time series, *The Cryosphere*, 10, 1297–1316, doi:10.5194/tc-10-1297-2016, 2016a.
- 30 Picard, G., Libois, Q., and Arnaud, L.: Refinement of the ice absorption spectrum in the visible using radiance profile measurements in Antarctic snow, *The Cryosphere Discussions*, pp. 1–36, doi:10.5194/tc-2016-146, 2016b.
- Radu, R., Déqué, M., and Somot, S.: Spectral nudging in a spectral regional climate model, *Tellus A*, 60, 898–910, doi:10.1111/j.1600-0870.2008.00341.x, 2008.
- 35 Ricchiuzzi, P., Yang, S., Gautier, C., and Sowle, D.: SBDART: A research and teaching software tool for plane-parallel radiative transfer in the Earth’s atmosphere., *Bull. Am. Met. Soc.*, 79, 2101–2114, 1998.
- Schaepman-Strub, G., Schaepman, M., Painter, T. H., Dangel, S., and Martonchik, J.: Reflectance quantities in optical remote sensing – definitions and case studies, *Remote Sens. Environ.*, 103, 27–42, doi:10.1016/j.rse.2006.03.002, 2006.

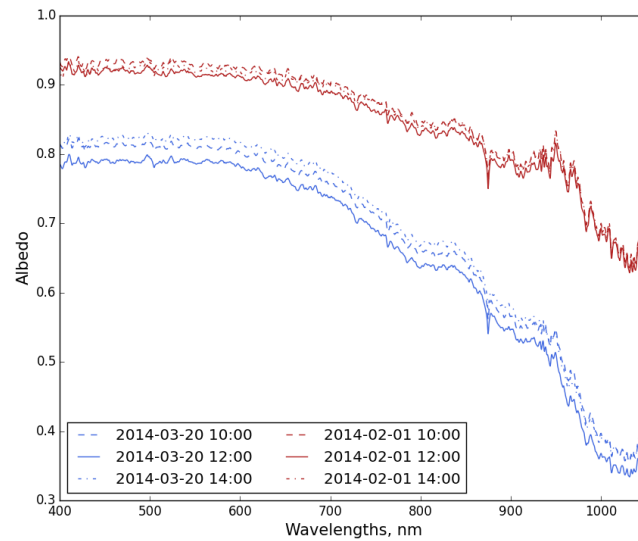
- Schleef, S., Löwe, H., and Schneebeli, M.: Influence of stress, temperature and crystal morphology on isothermal densification and specific surface area decrease of new snow, *The Cryosphere*, 8, 1825–1838, doi:10.5194/tc-8-1825-2014, 2014.
- Seidel, F. C., Rittger, K., Skiles, S. M., Molotch, N. P., and Painter, T. H.: Case study of spatial and temporal variability of snow cover, grain size, albedo and radiative forcing in the Sierra Nevada and Rocky Mountain snowpack derived from imaging spectroscopy, *The Cryosphere*, 10, 1229–1244, doi:10.5194/tc-10-1229-2016, 2016.
- Sterle, K. M., McConnell, J. R., Dozier, J., Edwards, R., and Flanner, M. G.: Retention and radiative forcing of black carbon in eastern Sierra Nevada snow, *The Cryosphere*, 7, 365–374, doi:10.5194/tc-7-365-2013, 2013.
- Vionnet, V., Brun, E., Morin, S., Boone, A., Martin, E., Faroux, S., Moigne, P. L., and Willemet, J.-M.: The detailed snowpack scheme Crocus and its implementation in SURFEX v7.2, *Geosci. Model. Dev.*, 5, 773–791, doi:10.5194/gmd-5-773-2012, 2012.
- Wang, W., Zender, C. S., van As, D., Smeets, P. C. J. P., and van den Broeke, M. R.: A Retrospective, Iterative, Geometry-Based (RIGB) tilt-correction method for radiation observed by automatic weather stations on snow-covered surfaces: application to Greenland, *The Cryosphere*, 10, 727–741, doi:10.5194/tc-10-727-2016, 2016.
- Warren, S.: Optical properties of snow, *Rev. Geophys.*, 20, 67–89, doi:10.1029/RG020i001p00067, 1982.
- Warren, S. and Brandt, R.: Optical constants of ice from the ultraviolet to the microwave: A revised compilation, *J. Geophys. Res.*, 113, D14 220, doi:10.1029/2007JD009744, 2008.
- Warren, S. G.: Can black carbon in snow be detected by remote sensing?, *Journal of Geophysical Research: Atmospheres*, 118, 779–786, doi:10.1029/2012JD018476, 2013.
- Warren, S. G. and Wiscombe, W.: A Model for the Spectral Albedo of Snow. II: Snow Containing Atmospheric Aerosols, *J. Atmos. Sci.*, 37, 2734–2745, 1980.
- Warren, S. G., Brandt, R. E., and Grenfell, T. C.: Visible and near-ultraviolet absorption spectrum of ice from transmission of solar radiation into snow, *Applied optics*, 45, 5320–5334, doi:10.1364/AO.45.005320, 2006.
- Zhuravleva, T. and Kokhanovsky, A.: Influence of surface roughness on the reflective properties of snow, *J. Quant. Spectrosc. Radiat. Transfer.*, 112, 1353–1368, doi:10.1016/j.jqsrt.2011.01.004, 2011.



**Figure 1.** Part of the col de Porte field measurements site on 2014-02-17 14:35. North direction is the left of the picture. The two measurement heads of Autosolexs are circled in blue.

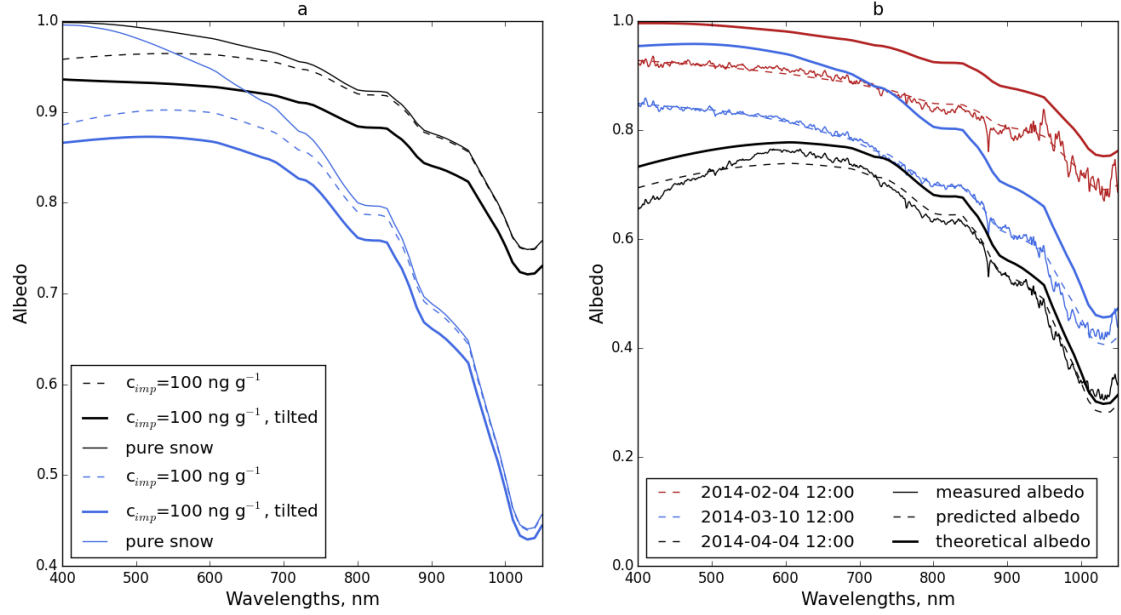


**Figure 2.** Schematic drawing of the tilted snow surface (blue plane) and associated angles. The grey plane corresponds to the horizontal plane. The black reference frame is the one attached to the tilted surface. The grey arrow represents the vertical with respect to the horizontal plane.  $H(\phi)$  is the horizon line in the tilted reference frame.  $\tilde{\theta}_s$  and  $\tilde{\phi}_s$  are the zenith and azimuth sun angles in the tilted reference frame.  $\theta_n$  is the slope elevation and  $\phi_n$  the aspect.

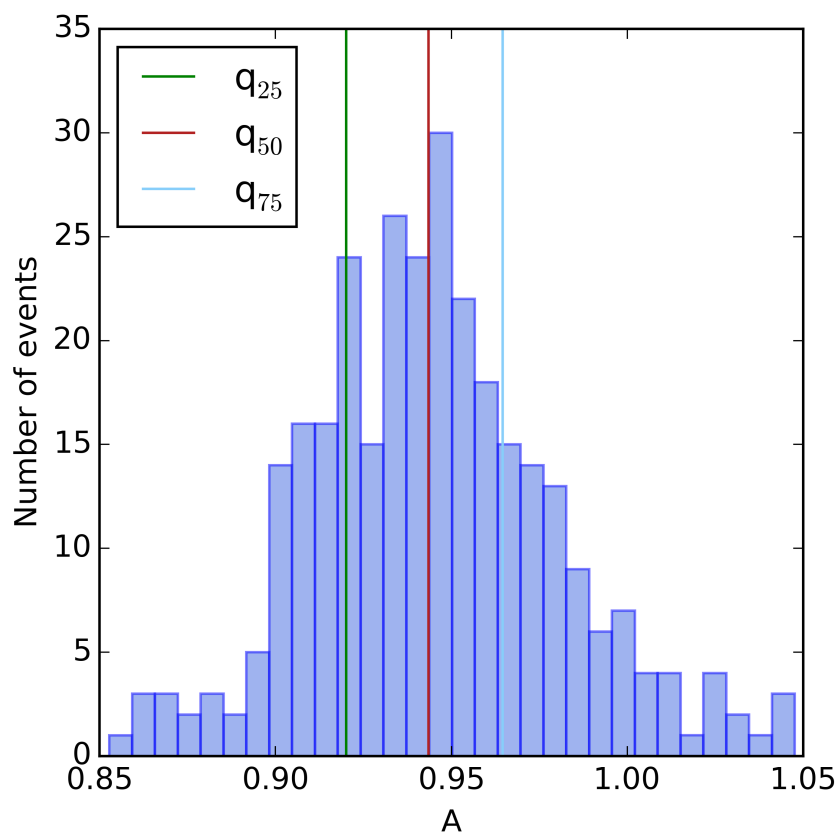


**Figure 3.** Raw measured albedo for a clear sky day (blue lines, 2014-04-03) and for a cloudy day (red lines, 2014-02-01) at 10:00 (dashed lines), 12:00 (solid lines) and 14:00 (dash-dotted lines).

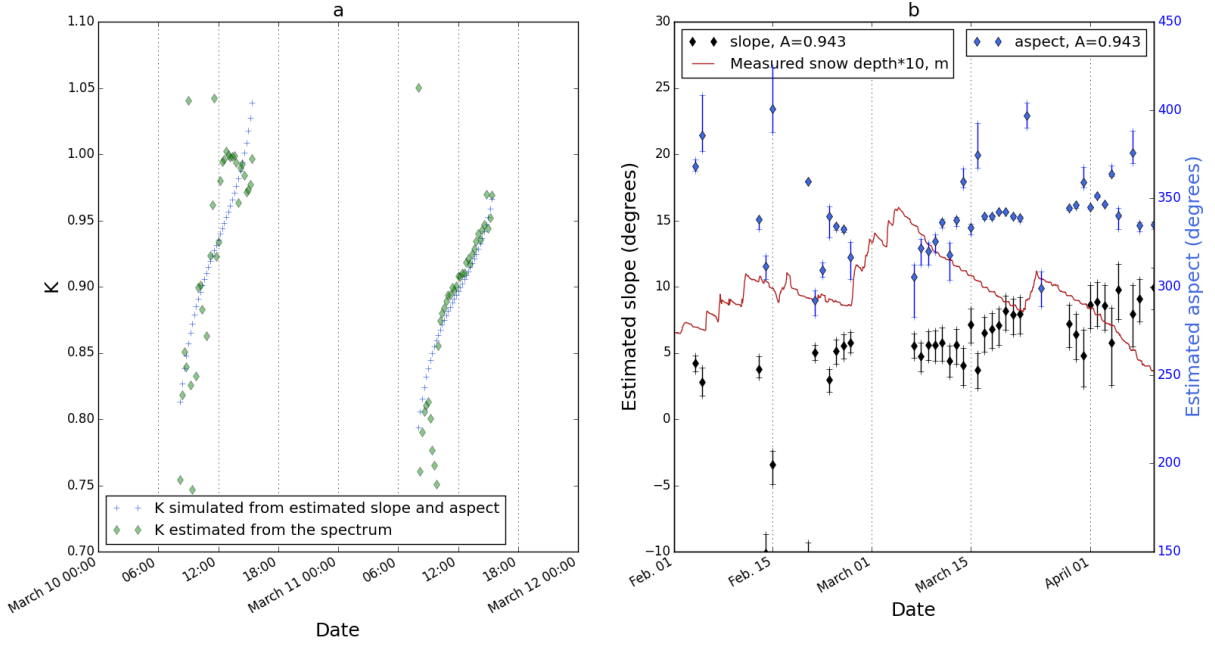




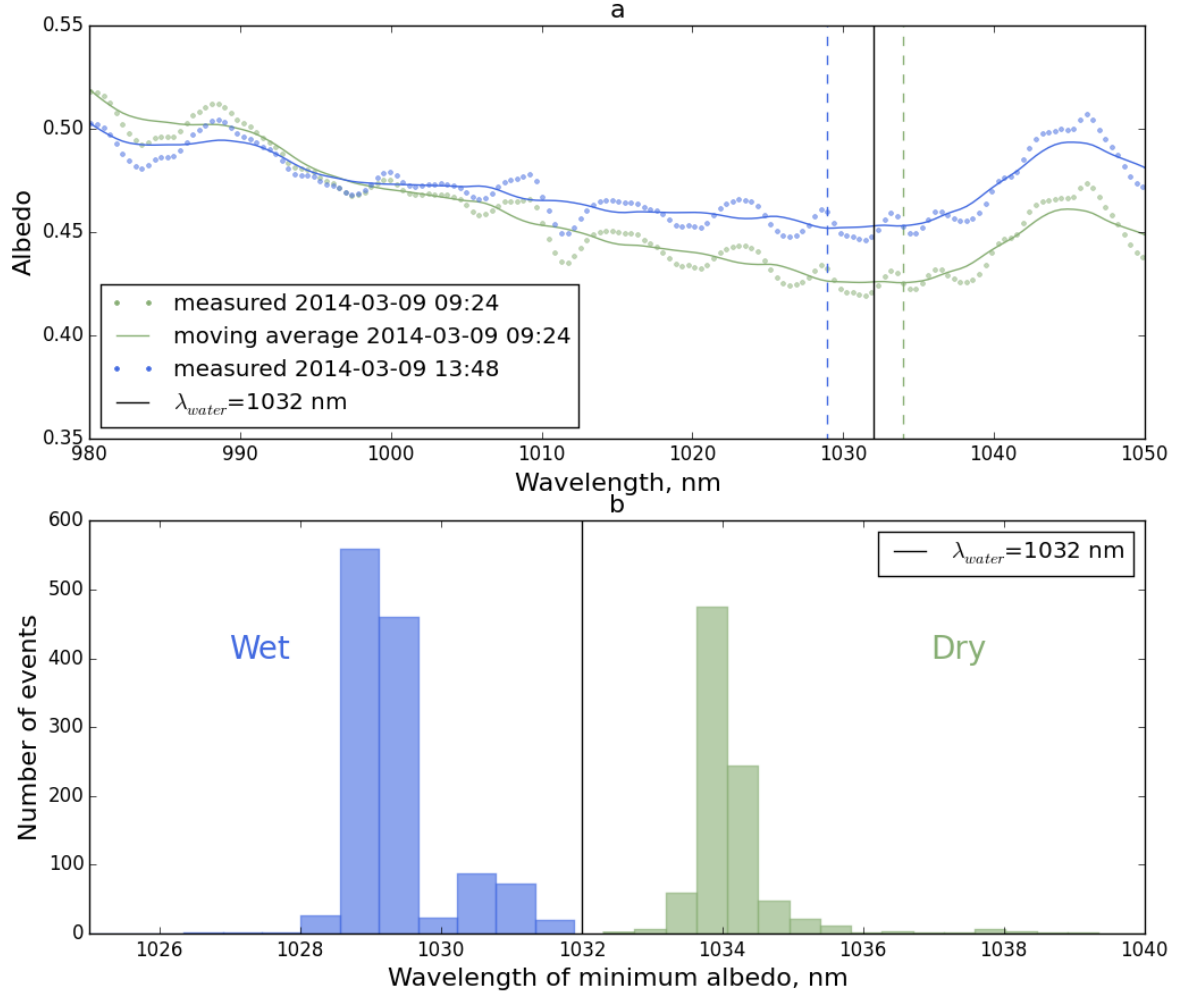
**Figure 4.** (a) Spectral albedo simulated using Eq. 6 for an horizontal surface and Eq. 8 for tilted surface ( $\phi_n=300^\circ$ ,  $\theta_n=5^\circ$ ) using estimated diffuse to total irradiance ratio,  $\phi_s$  and  $\theta_s$  for 2014-03-08 at noon. The black lines correspond to  $SSA=40 \text{ m}^2 \text{ kg}^{-1}$  and the blue lines to  $SSA=5 \text{ m}^2 \text{ kg}^{-1}$ . (b) Example of measured, predicted albedo and theoretical albedo on an horizontal surface for 3 dates in the season. For the red lines (resp. blue and black), optimal  $SSA$  is  $36 \text{ m}^2 \text{ kg}^{-1}$  (resp. 6.6, 2.6) and optimal  $c_{imp}$  is  $0.5 \text{ ng g}^{-1}$  (resp. 15.1, 328).  $A$  is set to 0.943.



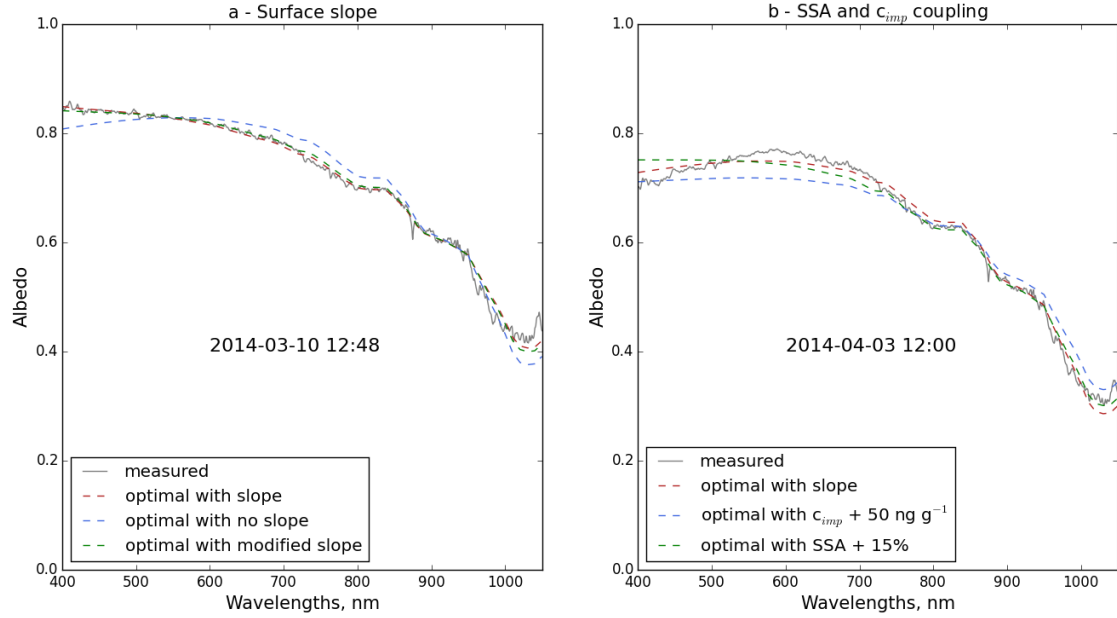
**Figure 5.** Distribution of the scaling factor,  $A$  for overcast days. Spectra used for this analysis corresponds to  $\theta_s$  smaller than  $65^\circ$  and RMSD between predicted and measured spectrum lower than 0.02 over the 400-1050 nm range.



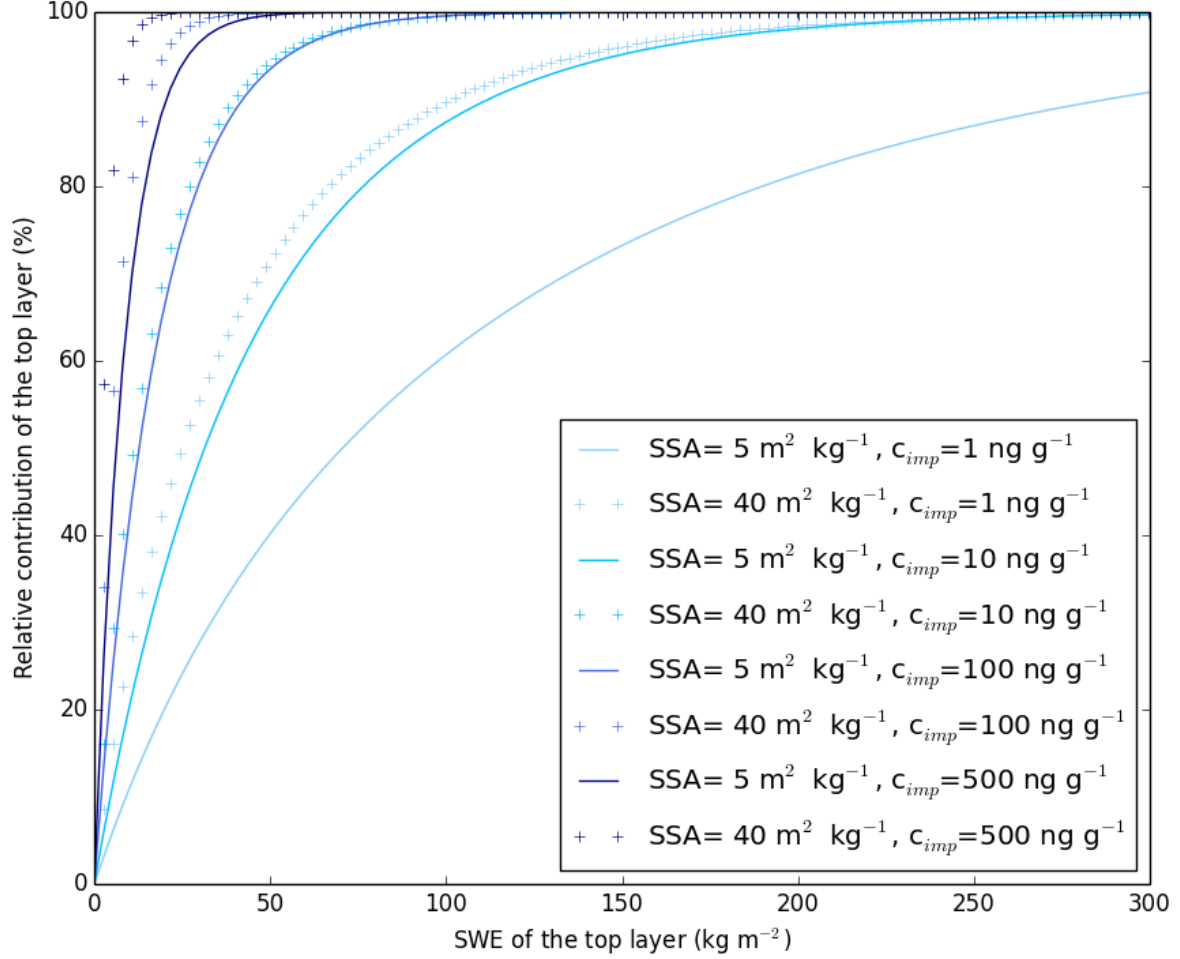
**Figure 6.** (a) Illustration of the determination of slope and aspect (*step 3*) for clear sky days. Green diamonds represent the diurnal cycle of parameter  $K$  retrieved after *step 2* and blue crosses show the simulated  $K$  using the estimated  $\theta_n$  and  $\phi_n$  from *step 3*. The scaling factor was set to  $A=0.943$ . (b) Optimal daily values of  $\theta_n$  (in black) and  $\phi_n$  (in blue) from *step 3*. Vertical error bars are obtained using quantiles 25 and 75 of the distribution of  $A$ . Daily values with range of aspect uncertainty larger than  $80^\circ$  are discarded. Spectra are also discarded if the RMSD between predicted and measured spectrum is lower than 0.022 over the 400-1050 nm range. Measured snow depth is shown in red.



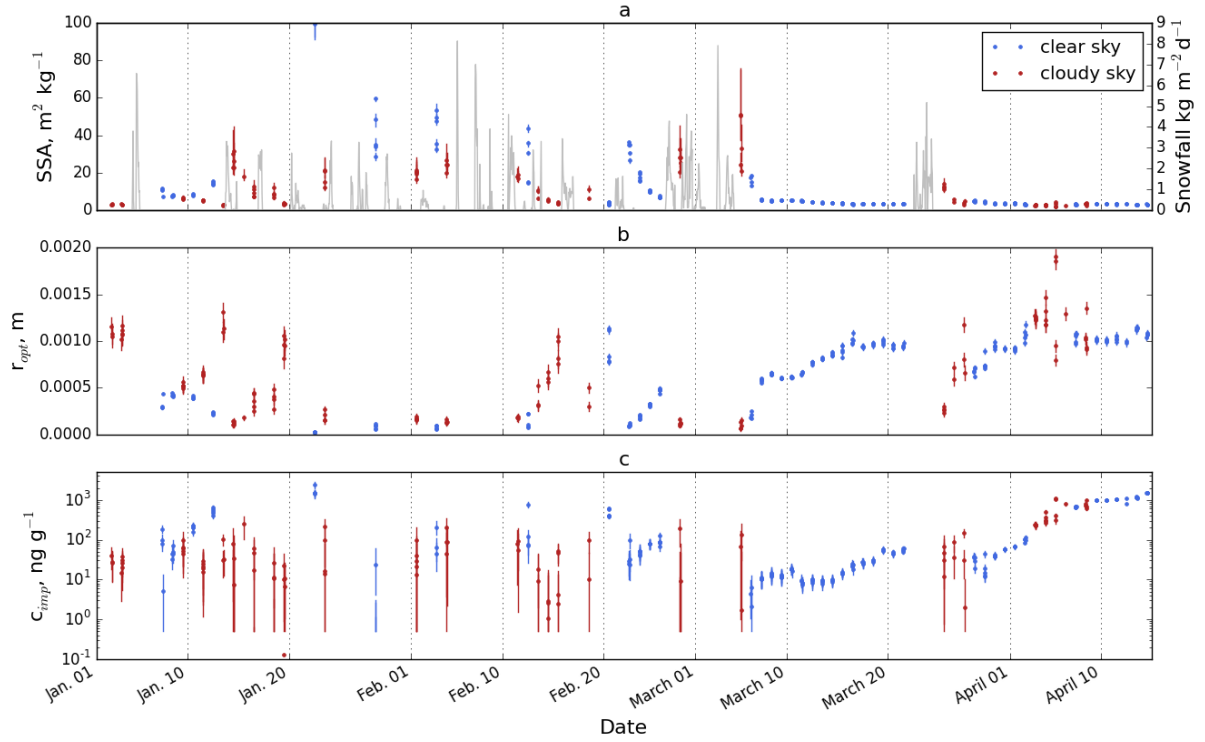
**Figure 7.** Effect of liquid water presence on measured spectra (a) Example of two measured spectra on March 9th at 09:00 in blue and 13:12 in green and the associated wavelength of minimum reflectance represented by the vertical dotted lines. The vertical black line corresponds to  $\lambda_{water}$ . (b) Distribution of wavelength of minimum albedo in Eq. 9. Spectra are discarded if the RMSD between predicted and measured spectra is lower than 0.022 over the 400-1050 nm range.  $\lambda_{water}$  is indicated by the black vertical line.



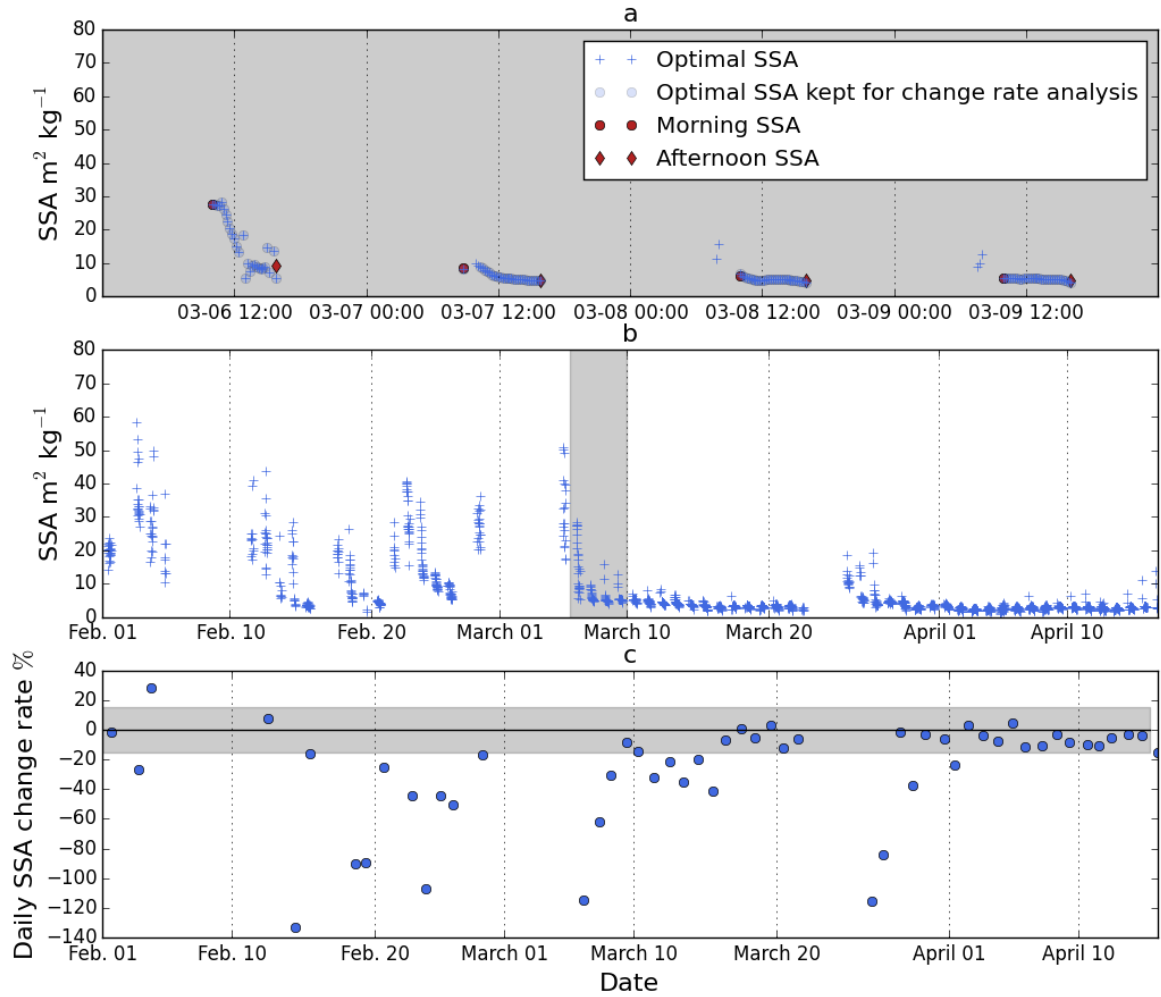
**Figure 8.** (a) Measured (black line) and optimal (dotted lines) spectra for 2014-03-10 12:48. The red line corresponds to *step 2*, optimal SSA (resp.  $c_{imp}$ ) is  $5.4 \text{ m}^2 \text{ kg}^{-1}$  (resp.  $16.2 \text{ ng g}^{-1}$ ). The blue line corresponds to the optimization considering that the surface is perfectly horizontal (SSA =  $3.95 \text{ m}^2 \text{ kg}^{-1}$ ,  $c_{imp} = 129 \text{ ng g}^{-1}$ ). The green line correspond to the optimal spectrum with slope angles from *step 3* +  $2^\circ$  for the zenith angle and  $+10^\circ$  for the azimuth (SSA =  $5.0 \text{ m}^2 \text{ kg}^{-1}$ ,  $c_{imp} = 3.1 \text{ ng g}^{-1}$ ). (b) Measured (black line) and optimal (dotted lines) spectra for 2014-04-03 12:00. The red line corresponds to *step 2*, optimal SSA (resp.  $c_{imp}$ ) is  $2.82 \text{ m}^2 \text{ kg}^{-1}$  (resp.  $197.3 \text{ ng g}^{-1}$ ). The blue line corresponds to the optimization while adding  $50 \text{ ng g}^{-1}$  to the optimal value of  $c_{imp}$  (SSA =  $3.35 \text{ m}^2 \text{ kg}^{-1}$ ,  $c_{imp} = 247.3 \text{ ng g}^{-1}$ ). The green line corresponds to adding 15 % to the optimal value of SSA (SSA =  $3.24 \text{ m}^2 \text{ kg}^{-1}$ ,  $c_{imp} = 181.7 \text{ ng g}^{-1}$ ).



**Figure 9.** Relative contribution of the top layer of a semi-infinite snowpack to albedo averaged over 400-1050 nm as a function of top layer SWE ( $h$ ) for low SSA ( $5 \text{ m}^2 \text{ kg}^{-1}$ , plain lines) and high SSA ( $40 \text{ m}^2 \text{ kg}^{-1}$ , dotted lines). The relative contribution is defined as  $(\alpha(h) - \alpha(0)) / (\alpha(\infty) - \alpha(0))$  where  $h$  is the SWE of the top layer of same SSA and  $c_{\text{imp}}$  modified by +10% with respect to the bottom layer.  $\alpha(h)$  is the albedo of the snowpack constituted of these two layers.

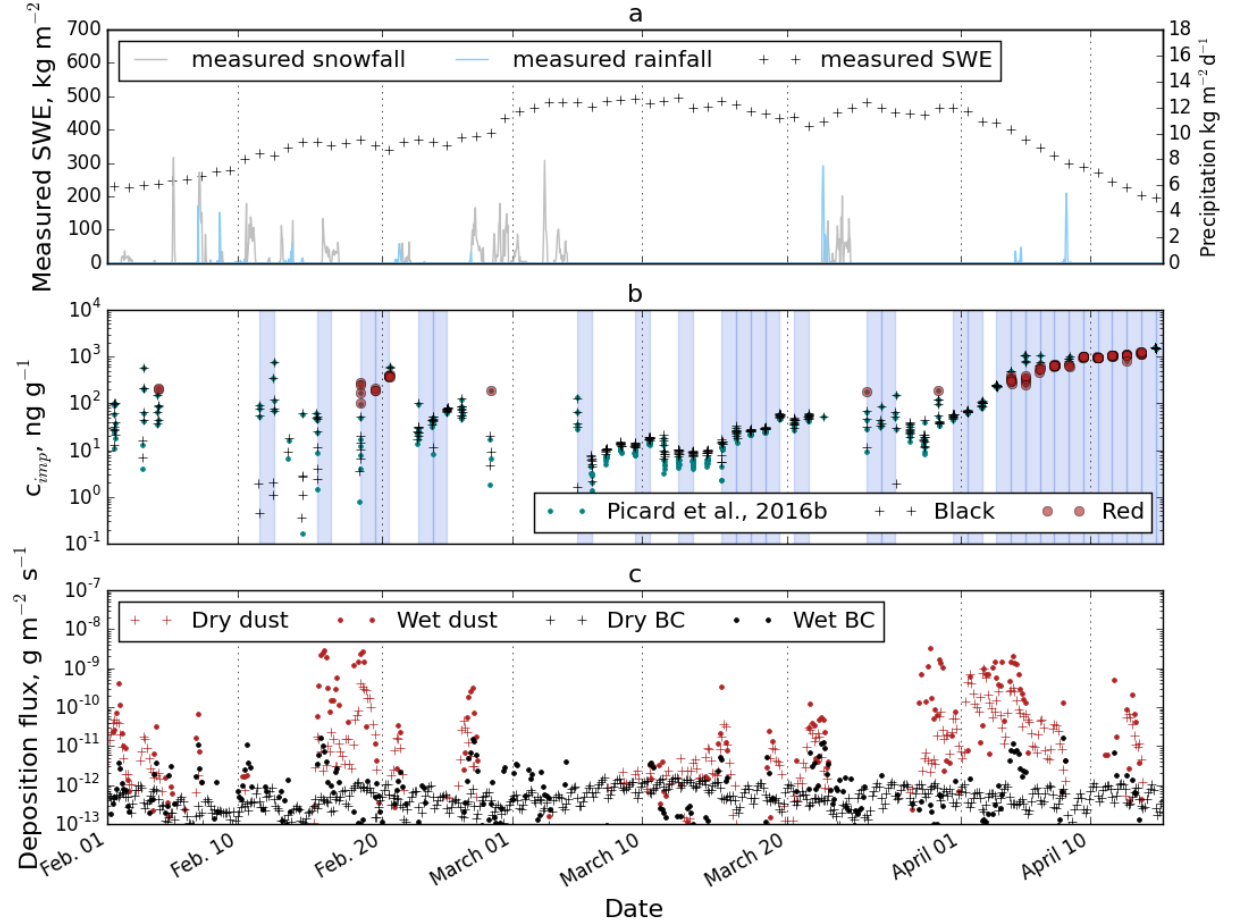


**Figure 10.** Seasonal evolution of near surface SSA (a),  $r_{\text{opt}}$  (b) and  $c_{\text{imp}}$  (c) predicted from measured spectra. Only spectra with RMSD between measured and predicted spectrum lower than 0.022 and measured between 12:00 and 13:00 UTC are indicated. Vertical error bars are obtained using quantiles 25 and 75 of A distribution. Clear sky days are indicated in blue and cloudy days in red. The measured snowfall rates are indicated in gray in panel (a).

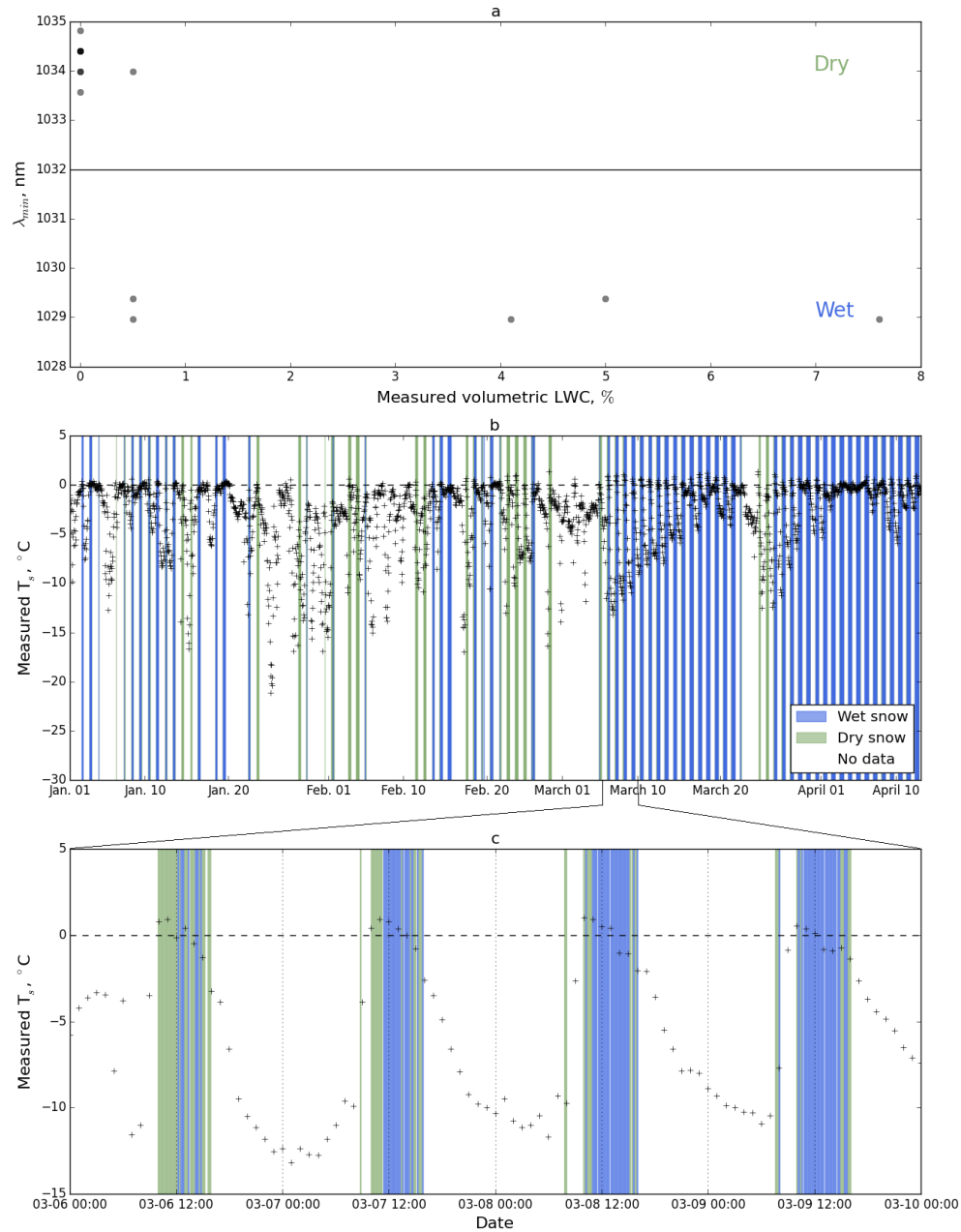


**Figure 11.** (a) Diurnal evolution of estimated near surface SSA between 2014-03-06 and 2014-03-09. Blue circles are the values kept for decay range analysis (panel c). The red circles (resp. blue diamonds) are the estimated morning (resp. afternoon) SSA values used to estimate the daily decay rate (panel c). (b) Seasonal evolution of estimate SSA for every spectra with RMSD lower than 0.022. (c) Estimated daily change rate in % of daily mean SSA values. The grey area corresponds to the 15% accuracy given in Picard et al. (2016a).

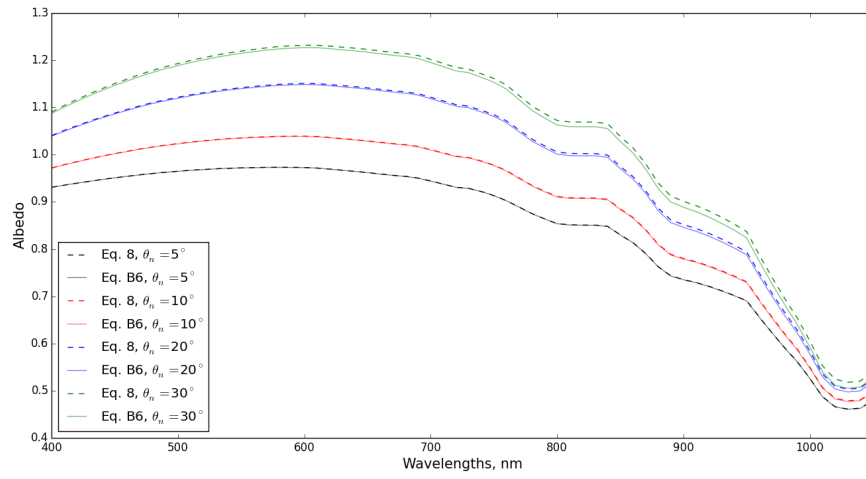




**Figure 12.** (a) Measured snow water equivalent (black cross),  $\text{kg m}^{-2}$  and snow and rainfall rates (gray line)  $\text{kg m}^{-2} \text{d}^{-1}$  (b) near surface  $c_{\text{imp}}$  estimated between 11:00 and 13:00. Red circle corresponds to  $c_{\text{imp}}$  values for which the RMSD within 400-500 nm is larger than RMSD within 400-1050 nm. Only value with RMSD over 400-1050 lower than 0.022 are reported. The vertical blue bars indicated melting days estimated from measured SWE. Green dots are the values of near surface  $c_{\text{imp}}$  estimated using the value of ice refractive index proposed in Picard et al. (2016b) instead of Warren and Brandt (2008). (c) Wet and dry deposition fluxes simulated by ALADIN-climate. Dust is in red and black carbon in black.



**Figure 13.** (a) Wavelength of minimum reflectance as a function of measured volumetric liquid water content (LWC). (b) Measured surface temperature (black crosses). Spectra detected as wet are represented by the vertical blue bars and spectra detected as dry by the vertical yellow bar. Values presented in this figure are only for spectra with RMSD lower than 0.022. (c) Zoom of (b) between 2014-03-06 and 2014-03-09.



**Figure 14.** Comparaison of Eq. 8 (dotted lines) and Eq. B6 (solid lines) for the calculation of measured albedo for varying slope angles. The azimuth is set to  $0^\circ$  and the diffuse to total ratio and solar zenith angle are taken from 2014-03-07 noon data.