

Author Response to Interactive comment on “In situ continuous visible and near-infrared spectroscopy of an alpine snowpack” by Marie Dumont et al.

Anonymous Referee #2

Received and published: 8 January 2017

Authors responses are enlighten in blue. Proposed changes in the manuscript are reported in bold.

General comments

The paper presents continuous snow spectral albedo observations over the range 350-1050 nm from an Alpine area. The dataset is extremely valuable and unique, as very few continuous spectral albedo datasets have been obtained so far in the world. The dataset allowed the examination of the diurnal and seasonal evolution of some snowpack properties that affect the albedo (namely SSA, snow impurity content, surface slope, and presence of liquid water) and that can be retrieved from the albedo data through the inversion of snow albedo schemes. This ambitious goal is of high relevance for remote sensing applications.

The dataset is extremely complex, with uncertainties arising from a large number of sources. The authors have well taken into account this complexity, and have developed an elaborated method to retrieve the snow properties from the albedo spectra. The study is very innovative, and opens the path for a better exploitation of albedo observations. However, in my opinion the presented methodology is not illustrated clearly enough. It is sometimes hard to follow the reasoning behind the proposed method, or even understand what exactly the method does, and consequently it is difficult to interpret the results. In several parts the text is too cryptic and condensed. A better readability of the paper is a necessary condition for the adoption of the proposed methodology by the scientific community.

I therefore recommend the authors to do a major revision, which should mainly consist in reformulating most of the text in the method section to better clarify the content and provide all the necessary details to help the reader to easily follow the reasoning behind the various steps.

The authors are grateful to the referee for this in-depth and useful review of the manuscript. All comments have been accounted for and the manuscript has been modified as detailed below after each referee comment. The methodology description and the writing have been clarified as recommended by the referee. The authors hope that the new version of the manuscript is easier to follow and clearer.

Detailed comments

1 - p.5, line 5 “: : thus impose the observed unfolding of the meteorological conditions that is essential to represent dust event”. This is an example of too cryptic and condensed text. Could you please rewrite to make the content clearer?

Agree. The sentence was reformulated as follows:

“Even if ALADIN-Climate is a regional climate model, the model has the ability to reproduce the observed weather chronology thanks to the spectral nudging method (Radu et al., 2008), which enables us to keep the large scales atmospheric conditions from the boundary forcing. **The accuracy of the chronology of meteorological episodes is indeed essential to correctly represent the chronology of aerosols deposition on the snowpack.**”

2 - p.5 Sect. 3.1. The content of this section should be formulated much more clearly, and with a more strict logic. In my understanding the following steps were done: 1. ALADIN-Climate forced by Era-Interim data was applied to calculate optically relevant atmospheric quantities (aerosol, ozone, water vapor) in the 50x50 km grid cell that includes Col de Porte, for the whole observational period. Did the authors use a single model cell or made some sort of weighted average? The authors write that the model was used to calculate “mean atmospheric conditions at Col de Porte” (line 16). Does this imply some averaging in time or space was done? Please clarify. The atmospheric profiles obtained from the ALADIN-Climate runs were considered representative of Col de Porte. This is not an obvious passage, as in a mountain area the 50x50 km resolution can be too low and strong differences can exist inside the grid. This problem clearly appears in Fig 10, but the authors should discuss this issue already in the methodology, and explain the limitations and benefits of the chosen approach. 2. The obtained atmospheric profiles and the locally measured T2m were fed into SBDART to calculate the ratio between S_{wdir} and S_{wTOT} as a function of the cloud optical thickness τ (for the whole observation period?). These results were used to produce a regression equation of τ vs S_{wdir}/S_{wTOT} . 3. The regression equation was applied to calculate the actual τ from the observed S_{wdir} and S_{wTOT} . 4. SBDART was then applied again to compute hourly direct and diffuse irradiance using the derived τ . Is my interpretation correct? If it is so, please describe these steps in this logical sequence. Also, how well the S_{wdir} and S_{wTOT} modelled with SBDART matched the observations? In other words, what is the uncertainty in Eq 1, and how does it propagate to the calculation of the S_{wdir} and S_{wdiff} spectra?

Thanks a lot for this comment. We agree that the section was not sufficiently logically described and yes the interpretation of the referee is correct. The section was largely rewritten and details were added in section 2.3 as follows:

Page 5 line 8 : “ ... dry deposition fluxes. **In this study, we used the outputs of a single model cell, the closest to Col de Porte site. The horizontal distance of the model cell center to the site is 22.6 km and the grid cell is located 800 m below Col de Porte site.**”

Page 5 line 10 :

“3.1 Estimation of the direct to diffuse solar irradiance ratio

The ratio of diffuse over direct irradiance is required to perform accurate correction of the measured spectrum (e.g. Picard et al., 2016a). **The calculation of such ratio requires the knowledge of the atmospheric profiles and of the local cloud optical thickness, τ .**

We thus estimate this local cloud optical thickness using both the atmospheric profiles from ALADIN-Climate and local meteorological observations at Col de Porte (Morin et al., 2012) to overcome the coarse resolution of ALADIN-Climate. The first step consists in estimating a relationship between τ and the broadband direct (S_{wdir}) to total (S_{wtot}) ratio. For this purpose, the SBDART detailed radiative model (Ricchiazzi et al., 1998) was used to calculate S_{wdir} over S_{wtot} from varying cloud optical thicknesses and mean atmospheric conditions at Col de Porte (aerosols optical thickness, total ozone column and total water vapour column). **The mean atmospheric conditions were derived from ALADIN-Climate outputs and the measured 2m air temperature average over the measurements period.** A regression equation (Eq. 1) was derived from those results.

As a second step, Eq. 1 was used to estimate τ from S_{wdir} over S_{wtot} ratio measured at Col de Porte.”

Finally, the outputs of the ALADIN-Climate analysis. Note that the broadband S_{wdir} and S_{wtot} estimated from Col de Porte measurements and simulated with SBDART agree within $\pm 10 \text{ Wm}^{-2}$. The accuracy of the simulated spectral direct to diffuse solar irradiance ratio has not been

evaluated in absence of measurements. The difference in elevation between the ALADIN-Climate grid cell and Col de Porte site might lead to an overestimation of the diffuse fraction in the visible wavelengths.”

The limitations due to the coarse resolution of ALADIN-Climate have also been underlined in the concluding remarks.

Page 14 line 3

“... future work. **Further refinements on the calculation of the spectral direct to total irradiance ratio or simultaneous measurements of this ratio and albedo are required to improve the accuracy of the method.**”

3 - p.6, lines 19-20 “the surface slope is small and local enough not to modify significantly the solid angles under which the incoming and reflected radiations are measured with respect to what would happen for an horizontal surface” Very tortuous sentence, quite difficult for me to understand. Can it be made clearer?

Agree, the whole paragraph has been modified as follows:

“This change is of crucial importance for our application since it is wavelength-dependant. **In addition to the change in the effective sun incident angles, the surface slope modifies (i) the solid angle under which the sky is viewed from the surface and thus the incoming amount of diffuse solar radiation and (ii) the total amount of radiation received by the snow surface since it receives some of the radiation reflected by the adjacent slopes. The upward radiation measured by the horizontal sensor is also modified with respect to what would happen if the sensor were parallel to the surface since part of the field of view sees the atmosphere and not the snow surface. In the following, we assume that (i)**”

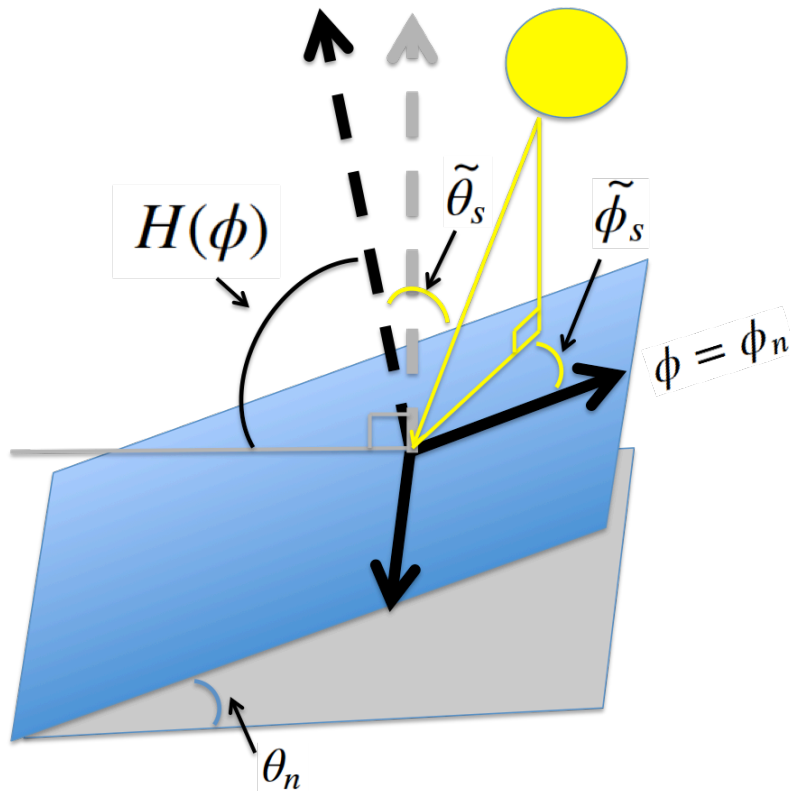
Sect. 3.3 is quite hard to follow. The equations to calculate the effect of slope on diffuse radiation and on measured albedo are presented in Appendices A and B, but without explaining many passages, so it is too laborious for me to check them, and it is difficult for an interested reader to apply them without a full understanding. The authors refer to some literature for the details (Dumont et al, 2011, Wang et al 2016), but they need to report in the paper the key concepts and passages to make the paper self-sufficient. For instance, what is the physical meaning of the parameter “K”? Probably also a schematic drawing of the angles of the tilted and horizontal surface would help to understand the equations.

The parameter K is the relative change in the cosine of the sun effective incident angle due to the local tilt of the snow surface.

This has been added page 7 line 3.

“(e.g. Dumont et al., 2011) where **K is the relative change in the cosine of the sun effective incident angle to the local tilt of the snow surface and writes** »

The schematic drawing below has also been added in the paper so that equations in Appendices A and B can be understood more clearly.



“Figure 2. Schematic drawing of the tilted snow surface (blue plane) and associated angles. The grey plane corresponds to the horizontal plane. The black reference frame is the one attached to the tilted surface. The grey arrow represents the vertical with respect to the horizontal plane. $H(\Phi)$ is the horizon line in the tilted reference frame. $\tilde{\theta}_s$ and $\tilde{\phi}_s$ are the zenith and azimuth sun angles in the tilted reference frame. θ_n is the slope elevation and Φ_n the aspect. “

References to this figure has been added page 7 line 2 and page 15 line 3.

Several details have also been added in Appendix B.

Page 15 line 23 :

“The first (resp. second) term of the sum in Eq. B2 corresponds to the incoming direct (resp. diffuse) radiation on the tilted surface. The last term of the sum is the amount of radiation incoming on the surface and reflected by adjacent slope.”

Page 16 line 3 :

“The first term of the sum in Eq. B4 corresponds to the amount of radiation reflected by the snow surface and seen by the sensor. The second term is the amount of diffuse atmospheric radiation seen by the sensor.”

4 - p. 7, line 5: “: :and an horizontal surface”. Should instead be a “tilted surface”? At the beginning of Sect. 3.3.1. the authors could add a paragraph introducing the strategy applied in the method and the purpose of the various steps.

P7 line 5 has been modified accordingly, thanks for noticing this typo.

For the second part of the comment, please refer to response to comment 6 and the new introductory paragraph of section 3.3.1.

5 - p.7, line 17: "A seasonal value of A is estimated: : :". Why do the authors need to calculate a seasonal value? I can understand it after seeing Fig. 3, but this figure is introduced only in the Result section, so here the authors need to explain why A can vary and why they need to choose a single value. The reader can then better understand the sentence about the propagation of errors (lines 21-22).

Please see response to referee comment 6 below.

6 - p.7, line 19: "To avoid undetermination problem between A and Cimp: : :". This is a too cryptic and compact sentence, please explain.

The authors agree that the whole sentence is not easily understandable. On the contrary to the choice made in Picard et al., 2016a to estimate one value of A for each spectrum, in the study we chose to estimate only one value of A for the whole season. This choice was led by the fact that on the contrary to the snow at Dome Concordia, snow at Col de Porte may contain light absorbing impurities in sufficient concentration to affect the albedo. Eq. 8 contains 4 unknowns in our case, A, SSA, Cimp and K. For moderate to high amount of impurities, several A and Cimp values can lead to approximately the same modelled spectrum. That's why we made the choice to use only one value of scaling factor A for the whole season. We have modified section 3.3.1 as follows:

"In order to relate variations of spectral albedo to variations of surface snow properties, we apply the following methodology to the measured albedo. **The main idea of the methodology is to use fit Eq. 8 using optimal parameters for each spectrum. Eq. 8 indeed contains 4 unknowns namely A, SSA, Cimp and K. For moderate to high amount of impurities in snow, several (A, Cimp, SSA) triplets can lead to approximately the same modelled spectrum. For this reason, we chose to first set the scaling factor A to a constant value for the whole season (Step 1). Optimal SSA, Cimp and K are then estimated for each spectrum (Step 2). The diurnal cycles of parameter K are then used to estimate a daily value for surface slope and aspect (Step 3). Although this step is not required for the estimation of optimal SSA and Cimp, it provides a further verification of the physical consistency of the methodology. Finally, the measured spectra are analysed with respect to the presence of liquid water (Step 4).**

Step 1 : Estimate the scaling factor. (...)"

7 - p. 7, lines 27-30: I don't understand this paragraph. First of all, how the (albedo?) spectra are calculated (line 27)? I suppose using the retrieved SSA and Cimp. And which model was applied? If Cimp is retrieved with the optimization method, why the discrepancy between observed and calculated albedo (using the retrieved optimal parameters?) should be related to Cimp? In my view, the discrepancy can be attributed to a large number of approximations and assumptions in the applied model.

The albedo is calculated using optimal SSA and Cimp and Eq. 8. (predicted albedo in Figure 2b). As explained in Section 3.2 the impurities effect of the albedo is modelled using black carbon only (which has a flat spectral signature). Other impurities such as mineral dust can be found in the snow and in the Alps, mineral dust often has a reddish signature. Consequently, while estimating the optimal spectrum, the reddish signature of the dust in snow could not be modelled, inducing a discrepancy between the modelled and the measured spectrum in the visible wavelengths. The referee is right to say the discrepancy between the modelled and measured spectrum can be attributed to a large number of approximations and assumptions in the model, but one of the assumption that has the most significant impact is to use only one type of impurity. In future study, it should be possible to estimate two effective impurities content one for "black" impurities and one

for “red” impurities but this is beyond the scope of the present study. The authors also agree that the whole paragraph was unclear. Consequently, it was rewritten as follows:

“

(...) estimated using Eq. 1. **Illustration of Step 2 is provided for three spectra in Fig. 2b.**

After these steps, spectra are filtered based on the root mean square deviation (RMSD) between **the measured spectrum and the optimal spectrum calculated with Eq. 8** with a threshold of 0.022. **This filtering ensures that the measurement artefacts are reasonably accounted for in the optimal snow surface properties estimation. The threshold value is higher than the one used in Picard et al., 2016a and was set to account for the discrepancies between the modelled and measured albedo spectra due among others to the impurity type assumption in the model. Indeed, the model used in this study only includes black carbon. Alpine snowpacks are frequently affected by deposition of Saharan dust (e.g. Di Mauro et al., 2015) that has a reddish spectral signature. The presence of red dust in snow can induce discrepancies between the modelled spectrum with black carbon only and the measured spectrum (fig. 4 in Warren and Wiscombe, 1982). This “dusty” pattern is clearly visible on the black measured spectrum of Fig. 2b in the visible wavelengths (400-500 nm).”**

8 - p.8, lines 4-6: I recommend the authors to explain the motivation of Step 3, which looks unnecessary if they know in advance the slope and aspect of the surface. Also, I would explain here why the slope can change (with precipitation and snowdrift).

Thanks for this comment, we agree that the text was too short here.

As explained p8, line 5, step 3 is not strictly necessary but since the slope and aspect evolve during the season and since we have no direct measurements of these parameters, this step enables us to indirectly validate the physical consistency of K estimates.

The text has been consequently modified as follows:

“Step 3 : Estimate daily optimal surface slope and aspect

Section 3.3 explains how the measured albedo varies with the surface slope and aspect. The slope and aspect below the sensor evolves in time with respect to precipitation, melt and snow transportation by the wind. Unfortunately no measurement of surface slope and aspect is available during this winter season. Consequently, using K diurnal cycles and Equation 7, we estimate daily optimal values of surface slope angle and aspect for fully clear sky days. This step is not required for the estimation of optimal SSA and Cimp but it indirectly validates that K optimization has not compensated for other artefacts than slope. In other words, estimating physically consistent values of daily slope and aspect from K diurnal cycles further ensures the consistency of the spectra correction.”

9 - p.8, lines 9-10: How is the filtering of the spectra done? Do the authors remove the spectra that show a specific features in the moving window average?

Sorry the sentence was misleading. There is no filtering of the spectrum expect on the RMSD value as explained in Figure 11 legend.

The sentence has been modified as follows:

“The spectra are first **averaged** using a 20 nm moving window in order to reduce noise before minimum calculation.”

10 - p.8, lines 18: “: : only slightly lower than the ideal value of one”. This is not a correct expression,

as in my understanding $A=1$ is not an “ideal value” of A , but rather it indicates that the instrument had an ideal response. So, the concept would better be expressed by stating that a value of A close to 1 indicates that the measurement apparatus has caused only a small deviation from the ideal response of the instrument.

Agree, the sentence has been changed as follows:

“The distribution has a median value of 0.943. This value is close to one, which indicates that the actual instrumental response deviates only slightly from the ideal one.”

11 - p.8, line 20: please remove “presence of”

Agree, the sentence has been changed accordingly.

12 - p.8, lines 25-26: “: : diurnal cycle with higher values in the morning and lower values in the afternoon”. From Fig 4a I see that K is higher in the afternoon! Please consider redrawing Fig 4a, with just 24 hours in the x-axis to show better the diurnal cycle, and maybe the time series of K in just two selected days, one with good agreement and one will poor agreement.

p.8, lines 25-26 has been modified accordingly. Thanks for noticing the typo.

Fig 4a has also been modified as requested.

We also consequently modified the text p8 lines 25-26 :

“It also illustrates the good agreement between the optimal K and simulated K (blue crosses, step 3) for March 11th (perfectly clear day) and the poorest agreement for March 10th where clouds were detected especially in the afternoon. ”

13 - In Fig. 4b, please replace the symbol “ \hat{U}_e ” with “(degrees)” in the y-labels for slope and aspect.

Agree, Fig. 4b has been changed accordingly.

14 - p. 9, line 2: “The seasonal evolution of slope and aspect seems to be related to snow evolution”. It has to be, what else could cause a change in slope and aspect? So, I would replace “seems to be” with “is”.

Agree, the sentence has been changed accordingly.

15 - p. 9, line 21: “have been done under” should perhaps be “have been obtained under”.

Agree, the sentence has been changed accordingly.

16 - p. 11, lines 14-16: The text is too difficult to follow. The authors need to provide some interpretation, and also explain the applied relationship between SWE and snow density.

Agree the text has been modified as follows:

‘It shows that the higher the SSA and Cimp, the higher the contribution of the uppermost centimeters of the snowpack to the albedo value. For instance for low SSA ($5 \text{ m}^2 \text{ kg}^{-1}$) and high Cimp (500 ng g^{-1}), the top 10 kg m^{-2} of the snowpack contributes to more than 80% of the signal. For a density of 400 kg m^{-3} , this corresponds to the uppermost 5 cm. For higher SSA ($40 \text{ m}^2 \text{ kg}^{-1}$) and lower Cimp (10 ng g^{-1}), the top 30 kg m^{-2} of the snowpack contributes to more than 80% of the signal. For a density of 200 kg m^{-3} , this corresponds to the uppermost 15 cm. This can be explained since (i) the higher the SSA the lower the light penetration depth in the snowpack and (ii) the presence of impurities shortens the light penetration depth in the snowpack (e.g. Libois et al., 2013).’

17 - p. 12, line 1: “2014-04-10” should perhaps be “2014-04-02”?

Agree, the date has been changed accordingly.

18 - p.12, line 8-9: “The grey area corresponds to the 15% uncertainty estimated in Picard et al. (2016a)”. Please clarify what this uncertainty refers to. In Fig 9c it appears as a constant value throughout the observational period rather than a percentage of SSA (which varied in the range 5-60 m²/kg).

We were referring to the estimated uncertainty on the optimal SSA value provided in Picard et al., 2016.

The sentence has been modified as follows :

“The grey area corresponds to the 15% uncertainty estimated in Picard et al. (2016a) **for the optimal SSA retrieval in Antarctica.**”

Note that the y-axis in Fig. 9c is already expressed in % of SSA that’s why we keep a constant value.

19 - p.12, lines 24-29: I did not understand this paragraph. The authors write “If the RMSD is larger than the RMSD over the whole spectrum, Cimp is represented in red”. What is the relevance of this? And what is the reasoning behind the application of this criterion? The message of this paragraph is totally unclear to me.

The authors agree that this was insufficiently explained. See also modifications done in response to comment 7 that provides additional details on that.

The text lines 24-29 was consequently modified as follows:

‘If **this RMSD in the visible wavelengths (400-500 nm)** is larger than the RMSD over the whole spectrum, cimp is represented in red. **This indeed indicates that the predicted and modelled spectrum agrees well except in the 400-500 nm wavelengths as illustrated by the black spectrum in Fig. 2b and that the prevailing impurities at that date may have a reddish spectral signature.**’

20 - Fig 9: In panel (a), I think that morning and afternoon symbols are inverted.

Thanks for noticing this. The figure legend and caption have been modified.