

Response to RC1: UAS-MODIS Reflectances

Burkhart, J. F.^{1,2}, Kylling, A.³, Schaaf, C. B.⁴, Wang, Z.^{5,6}, Bogren, W.⁷, Storvold, R.⁸, Solbø, S.⁸, Pedersen, C. A.⁹, and Gerland, S.⁹

¹Department of Geosciences, University of Oslo, Oslo, Norway

²University of California, Merced, CA, USA

³Norwegian Institute for Air Research, Kjeller, Norway

⁴School for the Environment, University of Massachusetts Boston, Boston, MA, USA

⁵NASA Goddard Space Flight Center, Greenbelt, MD, USA

⁶Earth System Science Interdisciplinary Center, University of Maryland, College Park, MD, USA

⁷U.S. Geological Survey, Flagstaff, AZ, USA

⁸Norut-Northern Research Institute, Tromsø, Norway

⁹Norwegian Polar Institute, Fram Centre, Tromsø, Norway

Correspondence to: John F. Burkhart (john.burkhart@geo.uio.no)

1 General Response

The reviewer provided helpful comments regarding the context and placement of the manuscript, and helped to highlight where some points were felt to be redundant. We appreciate the feedback and have taken it into consideration throughout our revision process.

5 2 Detailed comments:

P3, L8-34: structure confused in places, e.g. on L12-13 you introduce the 210 km track at the end of a paragraph about the novelty of the technique you are using. Move to the following paragraph to given a 1-para summary of your methods. Last para on this page – very wordy, do you need link to the overall project you are part of?

We have tried to rewrite and clean the wording here. We feel mentioning the project is quite relevant as it helps place our work in the context of not only albedo variability, but also the level of accuracy we sought as we attempted to make measurements of relevance to the 'aerosol deposition' story.

General observation: 'complex' appears often, this isn't a very precise word and so should be removed where possible.

Thank you, we've gone through now and adjusted our working accordingly.

P2, L19-25. You mention ground-based measurements – what is being compared to what?

In general, satellite sensor data to ground-based measurements. Further in the text, we describe for the different studies referenced what is being compared. To some degree, this is the point we attempt to make, that many 'albedo' validation studies are comparing the measured blue sky albedos with satellite radiances (and their associated model chains).

P8, Radiative transfer simulations: I'm unclear what these simulations are actually used for?

We hope this is further clarified now in the text. These are used primarily to address sensitivity to the haze layer (Fig.9) as well as our evaluation of the platform sensitivity to orientation (Fig. 3).

5 *P10, L12-19 – discussion about blue-sky albedos needs to be rephrased for clarity, I'm not exactly sure what point you are making here.*

This is now clarified in the text.

P11, L4-11 – 'given this consideration, the correspondence is impressive' – not entirely sure how the consideration (presumably about MODIS but this isn't clear) maps onto the UAS data?

We have adjusted the sentence to clarify the 'correspondence'.

10 *P11, L25-27 – this is essentially the figure caption, remove.*

Good point. Done.

There are too many examples of bad grammar and typesetting for me to list here. I recommend proof-reading by a fluent English speaker. In terms of typesetting, the most glaring problem is that often the references appear as "statement about x Burkhart et al (2016)" when they should appear as "statement about x (Burkhart et al, 2016).

15 Thank you. Hard to swallow, but perhaps I've lived too long within a foreign language environment, that I am now losing my own! Regardless, you are correct. I found these errors now and believe we have addressed them all.

3 Figure Comments:

The figures are generally of good quality.

Thank you.

20 *Fig 1: move away from rainbow colour palette for the different snow grain sizes, this is especially confusing on a plot with wavelength as the x axis. Suggest move to monotone colour palette.*

We've adjusted this now. We recognize the blue,green,red scheme is not optimal for color blind individuals, but the colors reflect the colors of the MODIS bands and are not essential in this context to distinguish from one another, but rather show the general shape of the response functions.

25 *Fig 2: change colourmap of images to something meaningful, i.e. a monotone linear colour ramp. In addition rainbow colourmaps present colourblind readers with significant difficulties and for this reason alone should not be used.*

We've addressed this now.

Figs 5 and 6: the transect direction labels are rather unclear. Can you add section dividers or equivalent to segment the different portions of the flight?

30 This should be more clear now. We've changed Figure 8 and highlighted the direction of the flight as well as adding some further descriptive information in the caption.

Figs 5 and 6: There is insufficient difference in colour between the UAV measurements for band 3 versus MODIS QA=0. Please change.

Done.

Figs 5 and 6: would suggest labelling MODIS QA as 'good' and 'bad', so the reader doesn't have to remember what 0 and 5 I are – to me they are arguably the 'wrong' way around!

We only follow protocols as defined by NASA for their products. We've tried to make this more clear.

Fig 7: the labelling here needs improvement. Label each row with exactly what it is showing (i.e. date, MODIS collection) rather than leaving it to the reader to work out from the caption.

This is corrected.

10 Table 1: the contents of this is essentially shown in Figure 1 and I therefore suggest that this could be dropped to save space.

We have removed Table 1 and placed the reference to the MODIS specifications in the text.

Response to RC2: UAS-MODIS Reflectances

Burkhart, J. F.^{1,2}, Kylling, A.³, Schaaf, C. B.⁴, Wang, Z.^{5,6}, Bogren, W.⁷, Storvold, R.⁸, Solbø, S.⁸, Pedersen, C. A.⁹, and Gerland, S.⁹

¹Department of Geosciences, University of Oslo, Oslo, Norway

²University of California, Merced, CA, USA

³Norwegian Institute for Air Research, Kjeller, Norway

⁴School for the Environment, University of Massachusetts Boston, Boston, MA, USA

⁵NASA Goddard Space Flight Center, Greenbelt, MD, USA

⁶Earth System Science Interdisciplinary Center, University of Maryland, College Park, MD, USA

⁷U.S. Geological Survey, Flagstaff, AZ, USA

⁸Norut-Northern Research Institute, Tromsø, Norway

⁹Norwegian Polar Institute, Fram Centre, Tromsø, Norway

Correspondence to: John F. Burkhart (john.burkhart@geo.uio.no)

1 General Response

We appreciate the reviewers acknowledgement of the contribution this work is making toward MODIS validation and improvements as well as the development of UAS for scientific applications.

2 Specific Comments:

- 5 *In addition, the writing style can occasionally be tightened/ page 1, line 7: rephrase "allowing to integrate directly to".*
Corrected.
p.1, l.7: "The data PROVIDE a unique opportunity to..."
Corrected.
p.2, l.12 should be "INTERGOVERNMENTAL Panel on Climate Change".
- 10 Corrected.
p.3, l.6: "Ryan et al. (2016) HAVE attempted to..."
Corrected.
p.3, l.25: "we discovered THAT the application of UAS..."
Corrected.
- 15 *p.11, l.29: "We note a value of..." (no comma).*
Altered text.
p.13, ll.4 & 5: "the UAS observations are larger overall" AND "the MODIS data may in fact provide values slightly lower than..." – give actual values / differences and say whether these are significant. Addressed.

p.14, l.2: "time scales" -> "timescales".

Corrected.

In addition, I recommend a tabulation of some of the more quantitative aspects of the comparison of nadir reflectance from the two types of platform, that are reported on pages 9 & 10 and in Figures 5 & 6.

- 5 Per RC1 we have replaced Table 1 with a new table tabulating the information discussed in the text.

Interactive comment on “Unmanned Aerial System nadir reflectance and MODIS Nadir BRDF-Adjusted surface Reflectances intercompared over Greenland” by John Faulkner Burkhart et al.

John Faulkner Burkhart et al.

john.burkhart@geo.uio.no

Received and published: 1 April 2017

As a supplement here we include the diff latex document. However, please note that table 1 caused problems when building the diff document. Therefore it is provided as a figure here. Note that subsequently in the diff document, Table 2 is referred to as Table 1.

Please also note the supplement to this comment:

<http://www.the-cryosphere-discuss.net/tc-2016-264/tc-2016-264-AC3-supplement.pdf>

Interactive comment on The Cryosphere Discuss., doi:10.5194/tc-2016-264, 2016.

Printer-friendly version

Discussion paper



Table 1. Mean NBAR values from MODIS and the UAS on 5 and 6 Aug for bands 3, 4, and 1. Percentage differences are calculated based on the mean of the two values.

Band	5 Aug.			6 Aug.		
	UAS	MODIS	%	UAS	MODIS	%
3	0.971	0.967	0.41	0.978	0.965	1.34
4	0.974	0.966	0.83	0.980	0.965	1.54
1	0.956	0.952	0.42	0.967	0.950	1.77

Fig. 1. Table 1

Printer-friendly version

Discussion paper



Unmanned Aerial System nadir reflectance and MODIS Nadir BRDF-Adjusted surface Reflectances intercompared over Greenland

Burkhart, John Faulkner^{1,2}, Kylling, Arve³, Schaaf, Crystal B.⁴, Wang, Zhuosen^{5,6}, Bogren, Wiley⁷, Storbvold, Rune⁸, Solbø, Stian⁸, Pedersen, Christina A.⁹, and Gerland, Sebastian⁹

¹Department of Geosciences, University of Oslo, Oslo, Norway

²University of California, Merced, CA, USA

³Norwegian Institute for Air Research, Kjeller, Norway

⁴School for the Environment, University of Massachusetts Boston, Boston, MA, USA

⁵NASA Goddard Space Flight Center, Greenbelt, MD, USA

⁶Earth System Science Interdisciplinary Center, University of Maryland, College Park, MD, USA

⁷U.S. Geological Survey, Flagstaff, AZ, USA

⁸Norut-Northern Research Institute, Tromsø, Norway

⁹Norwegian Polar Institute, Fram Centre, Tromsø, Norway

Correspondence to: John F. Burkhart (john.burkhart@geo.uio.no)

Abstract. Albedo is a fundamental parameter in earth sciences. ~~Many datasets are developed from~~ and many analyses utilize the MODIS BRDF/Albedo (MCD43) Algorithms. While derivative albedo products have been evaluated over Greenland, we present a novel ~~direct intercomparison~~, direct comparison with nadir surface reflectance collected from an Unmanned Aerial System (UAS). The UAS was flown from Summit, Greenland on ~~200+~~ 210 km transects coincident with the MODIS sensor overpass on board the Aqua and Terra satellites on 5 and 6 August, 2010. Clear sky acquisitions were available from the overpasses within two hours of the UAS flights. The UAS was equipped with upward and downward looking spectrometers (300-920 nm) with a spectral resolution of 10 nm allowing to integrate directly to the MODIS bands 1, 3, and 4. The data ~~provides~~ provide a unique opportunity to directly compare UAS nadir reflectance with the MODIS Nadir BRDF-Adjusted surface Reflectance (NBAR) products. The data show UAS measurements are slightly higher than the MODIS NBARS for all bands, but agree within their stated uncertainties. Differences in variability are observed as expected due to different footprints of the platforms. The UAS data demonstrate potentially large sub-pixel variability of MODIS reflectance products and the potential to explore this variability using the UAS as a platform. It is also found that even at the low elevations flown typically by UAS, reflectance measurements may be influenced by haze if present at and/or below the flight altitude of the UAS. This impact could explain some differences between data from the two platforms, and should be considered in any use of airborne platforms.

1 Introduction

Albedo, the ratio of reflected to incident energy at the surface of the earth, is a fundamental parameter in energy balance computations and therefore any prediction of climate must account for albedo through a parameterization process (Henderson-Sellers and Wilson, 1983). Generally climate models rely on simplified estimations of albedo as ~~single-value~~single-value climatological means of broadband albedo that are a function of seasonal changes in surface characteristics and the presence of snow (Curry and Schramm, 2001). For modeling snow and ice melt processes on the earth's surface, albedo is a critical parameter, providing the most coarse adjustment with respect to available energy to drive melt. Satellite instruments play a ~~critical~~an important role providing a characterization of albedo of the surface of earth that is relevant for climate and earth system modeling.

~~Several~~ Stroeve et al. (2005) and more recently Stroeve et al. (2013) have carefully evaluated the MODIS albedo products over Greenland. Several further studies have evaluated presently available satellite products and compared these products with ground-based observations. ~~Stroeve et al. (2005) and more recently Stroeve et al. (2013) have carefully evaluated the MODIS albedo products over Greenland.~~ This recent body of work has been largely spurred by the ~~recent~~2012 melt events on the Greenland Ice Sheet (GrIS). These events, recorded by MODIS satellite observations, have been linked to albedo feedback stemming from thermodynamic processes (Box et al., 2012). Dumont et al. (2014), Goelles et al. (2015), and Keegan et al. (2014) attribute some of the darkening to deposition of soot from forest fires, pollution~~and dust,~~ and dust; while others have linked the changes predominately to delivery of warm water vapor and low-level clouds (Bennartz et al., 2013; Miller et al., 2015).

Due to the impact on snow and ice albedo, the ~~International~~Intergovernmental Panel on Climate Change (IPCC) identified black carbon on snow as an important process driving changes in the cryospheric energy balance with significant associated uncertainty (Stocker et al., 2013). These findings are based on research that has focused on the theoretical response of snow to black carbon deposition (Warren and Wiscombe, 1980; Hansen and Nazarenko, 2004). Subsequent studies have shown that small changes in snow albedo globally, may have significant impact on the top of atmosphere forcing and could be driving a component of the Arctic warming witnessed today (Flanner et al., 2009). However, presenting a distinct challenge, Warren (2012) suggests that the changes anticipated from this effect are below the present-day measurement capabilities.

~~Ground-based measurements with satellite borne sensors are critical~~ Numerous studies have used ground based measurements to compare and validate satellite sensor data, a necessary process to assess accuracy of the observations, and particularly to understand the variability that may be missed by different sensor footprint scales. A seminal study is that of Salomonson and Marlatt (1971) who conducted an evaluation of surface reflectance conditions for application to retrievals from the Medium Resolution Infrared Radiometer (MRIR) instrument aboard the Nimbus II and III satellites. The study focused on the measurement of bi-directional reflectance distribution function (BRDF) over a variety of terrestrial surfaces. Appreciable anisotropy in all the surfaces was found, leading to the conclusion of the importance of using a BRDF model for satellite retrievals – a standard application today (Schaaf et al., 2002; Jin, 2003; Román et al., 2009; Ju et al., 2010; Wang et al., 2014).

Wright et al. (2014) intercompare ground based spectral observations from an ASD Field Spectrometer at Summit station with both the MODIS C5 and C6 data, and show a marked improvement of the MODIS C6 retrieval. Prior studies relied predominately on existing GrIS fixed station data from the GC-NET network of Automatic Weather Stations (Box et al., 2012; Stroeve et al., 2005, 2006, 2013). ~~Other prior investigations have also used ground-based observations, but to~~ To our knowledge most ~~recent~~ investigations have compared ground based measurements of albedo with satellite albedo products. While this is valuable, one must recognize that albedo products are developed through a processing chain of models and therefore do not represent a direct measurement, making ~~intercomparisons~~ comparisons complicated.

Recently, the advent of relatively low-cost Unmanned Airborne Systems (UAS) has ~~driven~~ created a rush to utilize this novel platform to provide unique datasets otherwise unobtainable without manned flight. Furthermore, UAS provides a unique niche in the ability to characterize cryospheric surfaces in relatively localized regions at higher resolutions than may be possible with traditional aircraft, and certainly offers the potential to extend the observational range of a traditional ground-based campaign ~~Bhardwaj et al. (2016)~~ (Bhardwaj et al., 2016). In one of the first applications of UAS for cryospheric characterization, Hakala et al. (2014) demonstrated the potential for BRDF measurements from a simple quad-copter. Immerzeel et al. (2014) used UAS to characterize glacial dynamics in the Himalaya, while numerous other have recently applied structure from motion photogrammetry to several applications related to snow and ice surfaces ~~Jagt et al. (2015); Ryan et al. (2015); Rippin et al. (2015)~~ (e.g. Jagt et al. (2015); Ryan et al. (2015); Rippin et al. (2015)). Most recently, Ryan et al. (2016) ~~has~~ have attempted to directly measure albedo from a UAS using pyrometers on board a fixed wing platform on the perimeter of Greenland.

Herein we provide a first-of-a-kind, "apples to apples" evaluation of the accuracy of the MODIS Nadir BRDF-Adjusted Reflectance (NBAR) retrievals through intercomparison with reflectance observed from an UAS platform ~~near the summit of the Greenland Ice Sheet over Greenland~~ near the summit of the Greenland Ice Sheet over Greenland. The advent of UAS presents an immense opportunity to spatially assess the accuracy of satellite sensors, versus simple validation against ground point observations, ~~but~~ However, as discussed in this work, ~~has there are~~ a host of complications ~~as well. Our analysis provides data for two transects on separate days covering over 200 km of ground designed to coincide with the near nadir subtrack of the MODIS instrument overpasses that must be considered. We explore those further herein.~~

In this study, spectral reflectance measurements made from a UAS flying in the dry snow region near ~~the summit of the Greenland Ice Sheet Summit, Greenland~~ the summit of the Greenland Ice Sheet Summit, Greenland are used to evaluate sub-pixel scale variability of the MODIS NBAR retrievals. The campaign was conducted in ~~2010. 2010 and provides data for two transects on separate days coincident with the near nadir subtrack of the MODIS instrument overpasses.~~ Due to the pristine nature of the snow ~~pack surface~~ in this area, and the limited influence of aerosols and warm temperatures, albedo and reflectance variability in this region is expected to be less than 10%, and potentially as low as 3% ~~;~~ within the 5% stated accuracy of the MODIS datasets. The standard MODIS products retrieve narrowband reflectance and then use a narrowband-to-broadband algorithm to convert the discrete narrowband measurements into a broadband albedo (Schaaf et al., 2002; Stroeve et al., 2005). ~~For~~ Our approach allows a direct comparison with MODIS, ~~as the UAS observations here are converted into shortwave have a high spectral resolution and therefore may be integrated directly to narrowband reflectance values to coincide with MODIS using the MODIS response functions for bands 1, 3, and 4~~ (see Sect. 5).

The ~~research presented herein was conducted as part of the Norwegian-~~"Variability of Albedo Using Unmanned Aerial Vehicles" (VAUUAV) project. ~~A guiding objective of the research was had a primary objective~~ to evaluate whether present day satellite observations allow the capacity to evaluate the impact of aerosols on albedo variability across a cryospheric landscape and to provide input for validation of theoretical modeling. However, ~~in~~ through our work, we discovered that the application of UAS to obtain ~~a relevant measure data suitable~~ for validation of MODIS datasets is greatly complicated by aspects of the platform that to date have not been addressed, particularly with respect to albedo. Therefore, as we have the capability, we have chosen to conduct the ~~intereomparison comparison~~ with reflectance – providing a ~~more~~ direct evaluation of the platform capabilities. Further we have attempted to address several of the complex issues that result from the UAS in this analysis and otherwise highlight the potential for uncertainty in the observations. In Sect. 2 we present the UAS measurement platform. Section 3 describes radiative transfer calculations ~~that were used in the study~~, while Sect. 4 describes ~~some aspect of~~ the data selection. ~~In~~ and Sect. 5 ~~we describe~~ describes the MODIS data used for this study. A comparison and discussion of the MODIS and UAS data are presented in the Sect. 6. ~~We summarize and conclude our main points in the~~ followed by a summary and conclusion.

2 Surface reflectance measurements from an Unmanned Aerial System (UAS)

25 The Cryowing (see Sect. 2.1) UAS performed several flights during the summer of 2010 in the region of Summit, Greenland at the Greenland Environmental Observatory, Summit (<http://www.geosummit.org>). The flights were designed to measure the downwelling irradiance and the upwelling nadir radiance as discussed further in Sect. 2.2.

Two of the flights were specifically designed to be closely aligned with MODIS overpasses and were flown as close in time as possible to the satellite overpasses. On 5 and 6 August 2010, the UAS completed a flight pattern with coverage over a region which was nearly coincident with the MODIS sensor overpass on board the Aqua and Terra satellites. On both days, clear sky acquisitions are available from overpasses within two hours of the UAS flights. The flight pattern covered 210 km ground distance and was completed autonomously for a duration of over two hours. From the UAS observations we develop a nadir dataset suitable for direct comparison with the MODIS NBAR products with a reduced reliance on a ~~complex~~ model chain.

2.1 The Cryowing UAS

25 The Cryowing UAS is an autonomous fixed-wing airborne sensor platform developed in Norway. It has a maximum takeoff weight of 30 kg, payload capacity of 15 kg including fuel, and a wingspan of 3.8 m. The Cryowing is powered by a two stroke engine, fueled by a petrol-oil mixture. The normal cruising speed is 100–120 km h⁻¹, with a range of up to 500 km or 5 hours flight. The Cryowing has a 2500 m dynamic altitude range, with a 5000 m absolute altitude cap. A dedicated GPS independent from the payload is used for navigation and autopilot control. While the Cryowing is capable of autonomous control for the full period of a flight, in practice a skilled technician is present to control launch and landing via radio control. Once stable flight is achieved, communication with the UAS is maintained for the duration of the flight using radio modem or Iridium satellite modem.

A standard suite of instruments is deployed on the Cryowing. This includes a meteorological package, two inertial measurement units (IMU) and two GPS systems, as well as the computer and communications systems responsible for flight control and ground station contact. The meteorological package measures air pressure, temperature, and humidity; while the flight computer and systems record aircraft position and altitude. Position is recorded as altitude in meters along with latitude and longitude, while attitude is recorded in quaternion form. In this analysis platform attitude was converted to the azimuth and zenith angles for subsequent radiative transfer modeling as discussed in Sect. 3. Position and attitude variables are recorded at a frequency of 100Hz by the IMU.

2.2 UAS-based surface reflectance

~~The in situ observations presented in this study provide the downwelling irradiance ($E(\theta_i)$) and the upwelling radiance $L_r(\theta_i, \phi_i; \theta_r, \phi_r)$ with a field-of-view of 7° in the direction $\theta_r = \pi/2, \phi_r = 0$ for incident zenith (azimuth) angle $\theta_i (\phi_i)$.~~

~~The nadir reflectance measured by the UAS is-~~

$$\rho = \frac{\pi L_r(\theta_i, \phi_i; \pi/2, 0)}{E(\theta_i)}$$

~~which may be directly compared with the Nadir BRDF Adjusted surface Reflectances (NBAR) from MODIS (Schaaf et al., 2002). All wavelength dependence in Eq. 1 has been omitted for clarity.~~

~~Our instrument measures spectral reflectance from 320 nm to 950 nm with 3.3 nm per pixel resolution with a 3 nm oversampling making an effective 10 nm resolution, allowing us to integrate across the MODIS bands 1, 3 and 4 for a direct intercomparison. The spectral response for MODIS bands 1, 3, and 4 are shown in Fig. 1 and the wavelengths covered by these bands are given in Table ??.~~

In the VAUUAV payload configuration, the Cryowing is equipped with two Trios Ramses spectroradiometers to measure reflected and incoming radiation in the visible spectrum. The upward facing sensor, measuring incoming radiation, has a cosine corrected foreoptic made of synthetic fused silica, transparent to 190 nm, to measure full sky hemisphere irradiance. The nadir facing sensor has a Gershun Tube restricted 7° Field Of View (FOV) foreoptic, measuring reflected radiance emanating from a footprint beneath the plane. At a cruise altitude of 250 m the footprint is on the order of 30 m in diameter.

Details of the TriOS sensors and the configuration used can be found in Nicolaus et al. (2010). For completeness, we describe the essential characteristics of the spectral radiometers here. The TriOS RAMSES ACC-2 VIS hyper-spectral radiometers are based on a miniature spectrometer with a wavelength range from 310 to 1100 nm, and spectral resolution and accuracy of 3.3 and 0.3 nm, respectively. TriOS uses the VIS/NIR specification of the spectroradiometers (wavelength range from 360 to 900 nm) to post-calibrate the instruments to a wavelength range from 320 to 950 nm. Software controlling the instruments enables an automatic adjustment of the integration time for each measurement, ranging between 4 and 8192 ms.

There are two versions of the sensors, one containing an inclination and pressure sensor, and one without. For our purposes, these additional components were not required, as a part of the standard suite of measurements aboard the UAS includes highly accurate inclination from the IMU. As the sensors were initially designed for water quality applications, they are built to be water resistant to a depth of 300 m. This creates additional weight due to the robust design of the casing and sealed body of

the sensors. In order to use the sensors in the UAS, modifications from the sensors described in Nicolaus et al. (2010) were required. To reduce the length and weight of the sensors as available from the manufacturer (and described in (Nicolaus et al., 2010)), the solid steel casing was removed and replaced with a light weight aluminum version. This reduced the weight of the sensors significantly from the initial 833 g, to less than 400 g.

5 The *in situ* observations presented in this study provide the downwelling irradiance ($E(\theta_i)$) and the upwelling radiance $L_r(\theta_i, \phi_i; \theta_r, \phi_r)$ with a field-of-view of 7° in the direction $\theta_r = \pi/2, \phi_r = 0$ for incident zenith (azimuth) angle θ_i (ϕ_i).

The nadir reflectance measured by the UAS is

$$\rho = \frac{\pi L_r(\theta_i, \phi_i; \pi/2, 0)}{E(\theta_i)} \quad (1)$$

which may be directly compared with the Nadir BRDF-Adjusted surface Reflectances (NBAR) from MODIS (Schaaf et al., 2002).

10 All wavelength dependence in Eq. 1 has been omitted for clarity.

Our instrument measures spectral reflectance from 320 nm to 950 nm with 3.3 nm per pixel resolution with a 3 nm oversampling making an effective 10 nm resolution, allowing us to integrate across the MODIS bands 1, 3 and 4 for a direct intercomparison. The spectral response for MODIS bands 1, 3, and 4 are shown in Fig. 1. The wavelengths covered by these bands are provided from the MODIS specifications website: <http://modis.gsfc.nasa.gov/about/specifications.php>. For compar-

15 ison with the MODIS NBAR data (see Sect. 5), the UAS spectra were multiplied with the MODIS spectral band functions (Fig. 1) and the respective NBARS calculated according to Eq. 1.

2.3 Radiance offset correction

To establish the relative sensitivity of the radiance and irradiance sensors, measurements were made on the ground with the two UAS sensors co-located together with a reference irradiance sensor looking skyward. The relative sensitivity of the radiance and irradiance sensors was calculated and a third order polynomial was fit to this ratio in the wavelength region relevant for comparison of UAS and MODIS data. All measured radiance spectra were corrected for the wavelength dependent offset using the polynomial fit.

2.4 Cosine error correction

The uplooking sensor measures the irradiance, requiring a detector with a hemispheric cosine response foreoptic. In reality the angular response of cosine detector deviates from a cosine shape. Cosine error corrections have been thoroughly investigated for UV spectrometers (see for example Bais et al. (1998)). The cosine error correction depends on the atmospheric state when the measurements were made. The deviations typically become larger as the incidence angle increases implying that measured irradiance is underestimated compared with an instrument with a perfect angular response. This underestimate may be corrected for providing that the sky conditions during the measurements are known and that the angular response of the instrument is known (Bais et al., 1998).

The TriOS sensors are laboratory certified and have undergone calibration by the manufacturer prior to each field season. For the zenith angles encountered during the flights ($<70^\circ$) we expect the deviation from a perfect cosine response to be less than 2%.

2.5 Angular sensitivity

- 5 The uplooking detector must be properly ~~levelled~~leveled to allow accurate measurements of the downwelling irradiance (Bogren et al., 2016). This may be achieved ~~by for example, for example, by~~ stabilizing the measurement platform ~~Wendisch et al. (2001)~~ (Wendisch et al., 2001) by mounting the instrument with a tilt such that the instrument is ~~levelled~~leveled during flight. The latter approach was adopted with the UAS, however, this requires that the platform is stable during flight. To estimate the effect of angular changes on a fixed detector, radiative transfer simulations were performed as described below in section 3. The roll angle of the aircraft, and
- 10 thus the detector, was changed between 0 and 10° while the yaw angle was changed from from 0 to 360° . The radiation field was simulated for a cloudless sky over a snow covered surface. The response relative to a ~~levelled~~leveled detector is shown in Fig. 3 for a solar zenith angle of 55.66° and azimuth 0° . If the detector has a roll angle of 10.0° and yaw angle 90° with respect to the sun, implying that it is facing away from the sun, the detector will measure only about 80% of the radiation of a leveled detector.
- 15 Similarly, a detector shifted such that it faces the sun will overestimate the radiation compared to a leveled detector. The results presented in Fig. 3 are for a cloudless sky. For an overcast sky, with the aircraft flying below the cloud, the change in angular response is negligible with given azimuth and roll angles ~~Bogren et al. (2016)~~ (Bogren et al., 2016). The effect of roll and yaw angles on the measurements will change with solar zenith angle, surface albedo, sky conditions, and wavelength. As such they are challenging to correct for when the aircraft is moving around due to changes in the flying directions or changing
- 20 wind conditions. For the analysis below, UAS data was screened and selected for stable flight conditions. In addition a tilt correction was applied to the direct portion of the irradiance impinging the upward facing sensor. As presented by Bogren et al. (2016) the response of a sensor tilted θ_t degrees and rotated ϕ degrees relative to the sun is:

$$R^t(\theta_t, \phi) = \cos(\theta_0 - \theta_t \cos(\phi)) \quad (2)$$

- where θ_0 is the solar zenith angle. For a ~~levelled~~leveled sensor $R^l = \cos(\theta_0)$. The tilt error correction is largest for the direct part of the irradiance and negligible for the diffuse part (Bogren et al., 2016). We thus tilt correct the measured downwelling irradiance E_m as follows:

$$E = f E_m R^l / R^t + (1 - f) E_m. \quad (3)$$

- Here the first term on the ~~left~~right side is the tilt correct direct contribution and the second term is the uncorrected diffuse contribution. Furthermore, f is the wavelength dependent direct/global irradiance ratio. It was estimated by the libRadtran
- 30 model, described in section 3, to be 0.98, 0.92 and 0.85 for MODIS bands 1, 4 and 3, respectively.

Due to dismounting and remounting for maintenance, or from the thrust of the catapult at launch, the instrument package may become slightly disoriented. Thus θ_t and ϕ may be offset. During ~~analysis of the data best results were obtained by reducing the analysis it was found that θ_t should be reduced~~ by 0.7° and ~~adding~~ a 10° azimuth offset ~~added~~.

2.6 Atmospheric corrections

- 5 During the flights the altitude of the UAS varied between 270 and 320 meters above the surface. The atmosphere between the surface and the aircraft may influence the aircraft nadir measurements. To estimate the impact of the intervening atmosphere, UAS radiance and irradiance spectra were simulated for noon (solar zenith angle of 55.66°) at Summit for elevations between 270 and 320 m.a.g.l. in steps of 10 meters. The simulated spectra were multiplied with the MODIS band 1, 3, and 4 response functions (Fig. 1) and the corresponding UAS nadir measurements were integrated to the corresponding narrow bandwidths.
- 10 It was found that the atmosphere between the aircraft and surface caused less ~~then~~ than 0.2% changes in the band 1 nadir reflectance and less ~~then~~ than 0.04% difference in the band 3 and 4 nadir reflectance. Thus, the nadir reflectance derived from the UAS were not corrected for the intervening atmosphere.

2.7 Error estimate

- Estimates of the measurement error is inherently difficult to make. Both because they are difficult to do and because they
- 15 require time resources often not available in the field. However, best estimates of the measurement error due to various sources are assumed and used to calculate a total error as summarized below.

- Ideally NBAR measurements should be made over flat surfaces. As shown in (~~Siegfried et al., 2011~~) Siegfried et al. (2011) the region around Summit is sufficiently flat with a slope of less than 2 m km^{-1} in the east-west direction and less than $.5 \text{ m km}^{-1}$ in the north-south orientation. Our flights were further north from Summit than measured by Siegfried et al. (2011), but data from
- 20 available digital elevations maps from the Greenland Ice Mapping Project ~~Howat et al. (2014)~~ (Howat et al., 2014) confirm the area covered by the UAS flights is indeed flat. However, small scale wind-blown snow ~~feature~~ features can not be ruled out. This is potentially the largest source of error in the analysis. Sustruggi structures on the snow surface can cause strong scattering and geometric optical effects. This variability is difficult ~~and complex to resolve and adequately to resolve or explicitly~~ model. However, effects of scattering will be reduced by integrating over the footprint of the measurement. An uncertainty of
- 25 0.5% is assumed due to measurements over non-flat surfaces.

The offset between the up- and down-looking sensors was measured and corrected for as explained in section 2.3. A remaining error of 0.2% is assumed for the offset correction.

The tilt error has been corrected for as described in section 2.5. The attitude is specified to have an uncertainty of 2%. The uncertainty in the data due to remaining tilt error and assumption about the direct/global radiation ratio is thus taken to be 2%.

- 30 According to the manufacturer the cosine error is better than 6-10%, depending on wavelength while for the 7° detector the angular response is better than 6%. The cosine error typically increases with zenith angle in addition to wavelength. The error will thus be largest for large solar zenith angles as found at high latitude. No cosine response measurements were available for a detailed assessment of the cosine error. A 2% cosine error correction has been applied to the uplooking sensor ;

[section 2.4 \(Sect. 2.4\)](#). A 2% cosine error uncertainty is assigned to the measurements. The downlooking sensor is exposed to diffuse radiation and the error in the angular response is of less concern.

For an integration time of 8 s the manufacturer gives a noise equivalent irradiance (NEI) of $0.4 \mu\text{Wm}^{-2}\text{nm}^{-1}$ at 400 and 500 nm, and $0.6 \mu\text{Wm}^{-2}\text{nm}^{-1}$ at 700 nm for the cosine response detector. For the 7° detector the NEI is $0.25 \mu\text{Wm}^{-2}\text{nm}^{-1}$.

5 The integration [times](#) during the flights were shorter, thus a conservative estimate of the NEI during the flights is 0.5%.

We assume that all errors are independent of wavelength. Squaring the errors give a total error in the UAS reflectance of 2.9%.

3 Radiative transfer simulations

As a part of the data reduction and analysis process, [and to assess the sensitivity to atmospheric processes \(Sect. 6\)](#), we
10 conducted radiative transfer simulations. These were performed to test the UAS sensitivity to changes in pitch, roll, and yaw angles (section 2.5 above), and to simulate cloudless shortwave broadband radiation at Summit (section 4 below). The libRadtran radiative transfer package was utilized for these calculations (Mayer and Kylling, 2005; Emde et al., 2016). The molecular absorption was parameterised with the LOWTRAN band model (Pierluissi and Peng, 1985), as adopted from the SBDART code (Ricchiazzi et al., 1998). The C version of the DISORT radiative transfer solver (Stamnes et al., 1988; Buras et al., 2011)
15 was utilized. The snow albedo model [of](#) Wiscombe and Warren (1980) as implemented in the libRadtran software package ~~was~~ used to calculate the spectral surface reflectance as shown in Figure 9. The sub-arctic summer atmosphere (Anderson et al., 1986) was used and the surface altitude set to 3126 m.

4 Measurements selected for analysis

On 5 and 6 August, 2010, the UAS flew a 210 km pattern designed such that one of the flight legs would be centered on the
20 MODIS granule as close in time as possible to the MODIS overpass. The flight pattern flown is shown in Fig. 2. On Aug 5 the sky at Summit was overcast with some blue patches at take-off. The cloud deck thickened during the flight to a uniform diffuse cover. This development is readily visible in the global shortwave measurements recorded at Summit (blue line, Fig. 4). The measured shortwave radiation is clearly below the cloudless simulated shortwave radiation and its behavior indicates the presence of clouds. The wind was blowing from the south-east with speeds around 6-7 m/s (Table 1). On the 6th the sky was
25 mostly clear during most of the flight with some thin layer cirrus forming at the end of the flight. The wind was more gentle on the 6th with speeds increasing from about 1.5 to 3.5 m/s during the flight. At the same time the wind direction changed from south-east to a more [southernly-southerly](#) direction.

The pitch and roll angles of the UAS had non zero offsets indicating that the aircraft was flying in a non-leveled manner due to impact of wind, fuel-load, and placement of the center of mass. The offsets varied between the various flights and are given
30 in Table 1. UAS data that are within $\pm 0.5^\circ$ of the mean pitch and roll angles were included in the analysis. Furthermore, due to the sensitivity of the measurements to the orientation of the uplooking instrument discussed above, only data for which the

yaw angle was stable were included in the analysis. For 5 and 6 Aug the instrument azimuth (blue dots) and the corresponding tilt correction (red dots) are shown in the top panel of Figs. 5 and 6, respectively.

MODIS band 1, 3, and 4 NBARs (see Sect. 5) were extracted from the MODIS pixels that coincide with the Cryowling UAS data points. The blue, green, and red MODIS NBARs are shown in the second, third, and fourth panels respectively, of Figs. 5 and 6. Data that are flagged as high quality are in black, while lower quality flagged MODIS data are in yellow.

5 MODIS Nadir BRDF-Adjusted Surface Reflectance (NBAR) measurements

The MODIS NBAR product from MCD43 Collection 6 is used for intercomparison in this analysis. The MODIS instrument ~~Justice et al. (1998)~~ (Justice et al., 1998) measures a radiance at the top of the atmosphere. These measurements must first be cloud-cleared and atmospherically corrected, following which, multiangle directional reflectances from both the Terra and Aqua MODIS sensors, over a period of 16 days, are accumulated for a location. From these directional reflectances, an appropriate RossThick LiSparse Reciprocal empirical kernel-based bi-directional reflectance distribution function (BRDF) model is estimated. The MODIS BRDF/albedo product is widely used and has been described by Lucht et al. (2000); Schaaf et al. (2002); and Stroeve et al. (2005). The retrieved BRDF is then integrated over all view zenith ~~angle-angles~~ to calculate an intrinsic directional hemispherical reflectance (a black sky albedo) for the seven MODIS land bands. The BRDF model is further integrated over all possible illumination angles to produce a bihemispherical reflectance (or white sky albedo). The latest reprocessed operational Collection 6 MODIS daily BRDF/Albedo/NBAR products improve the temporal aggregation of snow observations (Wang et al., 2012, 2014) by using a daily measurement and triangulated filter to emphasis the nearest-day observations. The snow/non-snow status of day of interest is utilized for retrievals in Collection 6 instead of previous collection 5 strategy of only capturing snow measurements when snow cover represented the majority situation over the 16-day retrieval period. Of the seven available, bands 3, 4, and 1 are used here, ~~see Table ??~~.

6 Discussion

In the following we evaluate differences between the UAS measured nadir reflectance and the MODIS NBAR product. Unless otherwise noted, the data refers to high quality flagged Collection 6 of the MODIS daily NBAR product (MCD43). We include also data from Collection 5 to demonstrate some of the marked improvements as well as evaluate the importance of quality flagging.

The MODIS albedo product has been compared with in situ measurements in Greenland (e.g., Stroeve et al., 2005) and a number of other snow covered locations (Wang et al., 2014). The root mean square error between MODIS and in situ measurements was within ± 0.04 (± 0.07) for high quality (poor quality) flagged MODIS albedos. A high quality flag indicates that sufficient high quality surface reflectances to adequately sampled the full angular hemisphere were acquired, and a high quality full inversion BRDF model was able to be developed ~~and be used~~ to produce NBAR and the intrinsic surface albedo quantities. For poor quality flagged retrievals a BRDF model could not be retrieved and a backup algorithm with a predetermined BRDF

for that location had to be utilized. These intrinsic surface quantities are related to the surface structure and ~~he the~~ albedos represent fully direct and fully diffuse values ~~—therefore these—~~. Critically, the direct and diffuse values need to be combined as a function of optical thickness to simulate the blue-sky albedos routinely captured with albedometers at surface tower locations (Lucht et al., 2000; Schaaf et al., 2002; Román et al., 2010). In order to incorporate the full atmospheric effects, the full multiple scattering of Román et al. (2010) formation needs to be used over snow surfaces. While these analyses have been clearly valuable to the community, ~~they do represent a complex intercomparison~~ the intercomparison is complicated due to the nature of the measurement-model chain required to derive albedo. We reduce, by at least one degree, the required modeling for ~~our intercomparison~~ the comparison by evaluating NBAR which both platforms measure directly, rather than albedo ~~, which neither platform measures directly~~ which must be derived.

In general the agreement between the UAS nadir reflectance and MODIS NBARs are within the measurement uncertainties, Figs. 5 and 6. Systematically, the UAS measurements are ~~slightly higher~~ than the MODIS NBARs. ~~For band 3 (blue) the MODIS NBAR is slightly smaller than the UAS reflectance: 0.967(0.965) versus 0.971 (0.978) for 5 Aug (6 Aug), see Table 1. The MODIS band 2 (green) NBAR is also slightly smaller, 0.966 (0.965) versus 0.974 (0.980) for,~~ though well within three percent of each other. The mean NBAR values for each flight are provided in Table ??. Percentage differences based on the mean value of the platforms shows that on 5 Aug (6 Aug). ~~For the MODIS band~~ the differences between the UAS and MODIS data were within 1 (red) NBAR the UAS reflectance is also slight smaller: 0.952 (0.950) versus 0.956 (0.967) for 5 Aug (%, despite greater variability on this day. On 6 Aug), the differences are greater, while still less than 2 %. As expected from the refractive index of ice and NBAR calculations, Fig. 1, there is little wavelength dependence in the NBARs of bands 3 and 4, whereas there is an expected decrease in NBAR for band 1.

In Table 1 we also include a summary the MODIS Collection 5 data which is only retrieved once every 8 days and not filtered to weight the day of interest. The agreement between the UAS and MODIS version 6 is better than between the UAS and MODIS version 5 for bands 3 and 1. For band 4 there is better agreement between the UAS and MODIS version 5. However, the differences are within the uncertainties, see below. Further, the standard deviation is generally smaller for the version 6 data.

Variability in the measurements ~~accurately~~ reflects the conditions at time of acquisition. Consistently, the standard deviations for all products are slightly larger for the flight on 5 Aug due to the more turbid atmospheric conditions. The variability is a product not only of the cloud cover, but also the wind speed, which potentially increased turbulence for the aircraft. We further see strong support for the quality flagging of the MODIS products. The variations of the MODIS NBARs are larger for the pixels identified as low quality retrievals compared to the good quality retrievals (see standard deviations in parenthesis in Table 1).

The UAS measures the instantaneous up-welling radiance within 7° and the full hemisphere down-welling irradiance; the ratio of the two providing the reflectance. Whereas, the radiances measured by MODIS at the top of the atmosphere are atmospherically corrected to surface reflectance by means of radiative transfer modeling. These directional surface reflectances at a location – time weighted to the day of interest – are gathered over a 16 day period from both Terra and Aqua, and used to derive the BRDF for the full range of solar and viewing angles. The BRDF is then used to calculate an NBAR or an albedo for

the seven MODIS bands. Here we have used the the BRDF to calculate a solar noon, nadir reflectance for comparison with the UAS. Hence, it is important to recognize the MODIS products are not instantaneous nadir reflectance measurements, but rather a calculation guided by data acquisition. Given ~~this consideration~~the difference between the derived MODIS data product and instantaneous UAS measurement, the correspondence is impressive. The standard deviation in the UAS data varies between 0.025 and 0.065. The standard deviation in high (low) quality MODIS data varies from 0.008 (0.009) to 0.015 (0.024). Given the smaller footprint, instabilities in the platform, and uncertainties related to the snow surface roughness, it is expected for the UAS derived reflectances to have higher standard deviation. Further, as these data are instantaneous measurements rather than an integrated model product, one should expect greater variance. This greater variance and sub-pixel variability potentially contributes to the fact that despite more stable flight conditions on 6 Aug, the difference between the two platforms is slightly greater (cf. Table ??).

The footprint of the MODIS reflectance shown in this study is 500 m² at nadir, but has an effective footprint of 833 m x 613 m at the latitudes of this study (Campagnolo et al., 2016). The footprint of the UAS is circular with a diameter of about 30 m. Thus the UAS may be used to investigate MODIS sub-pixel variability. Where several UAS measurements are available within a pixel, there is considerably variability within a MODIS pixels, see data points with error bars in Figs. 5 and 6. However, this variability is within the uncertainty in the UAS data. Given more stable flight conditions, measurement of MODIS sub-pixel variability should be fully feasible with a UAS.

Optical satellite instruments require cloud free conditions to make NBAR estimates. This clearly limits the number of days available for NBAR measurements. The UAS is not limited the a cloud free sky, but may be used measure nadir reflectance also under cloudy conditions. However, as discussed below, the UAS must be below the cloud layer and not in it or a haze layer.

In Fig. 7 we evaluate the differences between Collection 5 and 6 MODIS products. ~~The top two rows of panels are for 5 Aug, while the bottom two rows are for 6 Aug. The first and third row show Collection 5 compared with the UAS data, while the second and fourth rows show Collection 6.~~ Two distinct features stand out. First, there is an improvement in the poorer quality magnitude estimates in Collection 6 as demonstrated by the systematic shift leftward of the data cluster from Collection 5 to 6. Most data fall below a reflectance of 1.0, whereas in Collection 5 several values were greater than 1. We note ~~;~~ a value of greater than 1 is not impossible, and in fact quite apparent for the UAS data, likely resulting from forward scattering driven by the sustruggi and expected at the scale of these measurements (30 m footprint). For the MODIS data, however, covering a km² footprint, one would expect reflectances to be more smoothed and values greater than 1 are expectedly rare. The second feature is a clear decrease in the variability of the data; both in terms of the overall spread, but also for the flagged values. There are fewer poor quality retrievals in Collection 6 resulting from the improved temporal retrieval frequency in the algorithm.

Regarding the quality and no data flagging we find the differences noted between ~~Aug-5~~ and 6 ~~clearly important,~~ Aug clearly important (Fig. 8). The flight conditions were better (less clouds) on ~~Aug-6~~ Aug and more MODIS data points have a good retrieval flag. Nevertheless the data points flagged as low quality have a spatial variation in agreement with the good quality points, compare yellow (low) and black (good) dots in Figs. 5 and 6 and the scatter plots shown in Fig. 7. Particularly for Collection 5, there is larger variation in the low quality MODIS data, yet there is no support for this variation in UAS measurements. Thus overall, the MODIS algorithm appears to correctly discriminate good and low quality data.

We note significantly greater variability in the 5 Aug flight data. This is to be anticipated given the sky conditions, but the data provides a valuable reference for comparison with the MODIS data. Some features stand out from the flight, first being what appears to be a consistent decrease in reflectance from the start of the flight until 17:00 UTC, when the flight initiates the SE leg. Overall the reflectance decreases in this period by almost 10%. The flight on ~~the~~-6 Aug followed the same flight pattern, but no such drop in reflectance is present. There are several plausible explanations for the drop, including: a drop in surface reflectance; ~~measurement error~~; measurement error, or presence of slightly absorbing particles in the atmosphere. As the drop was only seen on ~~the~~-5 Aug and not on the subsequent day, and, further, the drop is not seen in the good quality MODIS data; ~~therefore we~~, we therefore rule out a change in the surface reflectance. The drop could be due to incorrect tilt correction. However we investigated this thoroughly and find no feasible explanation that this error would be introduced on the 5 Aug flight but not on the 6 Aug flight. Additionally, as the drop occurred continuously through multiple legs and is then not seen at the end of the flight, we also rule out this explanation.

From Fig. 4 it is evident that some clouds were present during part of the flight on ~~the~~-5 Aug. While these could have an impact on reflectance due to shadowing, a non-absorbing cloud will not change the surface reflectance as measured by the UAS. On the other hand, if the UAS encountered an optically thin, slightly absorbing haze layer the UAS measured reflectance will drop. To quantify this drop, radiative transfer calculations were made of the UAS reflectance with the UAS being at different flight altitudes. Cloudless and various haze conditions were considered. As shown in Fig. 9 the reflectance on a cloudless day (red line) does not depend on the altitude of the UAS. If an optically thin (optical depth 0.5) and slightly absorbing (single scattering albedo 0.95) haze layer of 1 km vertical thickness is included the UAS measured reflectance will be lower ~~then~~ than the surface reflectance (green line), and the difference will increase with increasing altitude.

The ~~adopted~~-haze layer optical property values used are representative for those reported for Arctic haze ~~see for example Tsay et al. (1989); Hess et al. (1998) and Quinn et al. (2007)~~(cf. Tsay et al., 1989; Hess et al., 1998; Quinn et al., 2007). Increasing the absorption (single scattering albedo 0.9) increases the difference even more (~~blue dash-dot~~ line). The average flight altitude of UAS on ~~the~~-5 Aug is indicated by the horizontal dotted line in Fig. 9. The drop seen in the UAS reflectance on ~~the~~ 5 Aug may thus be explained by the UAS entering an optically thin and slightly absorbing haze layer. However, due to lack of additional measurements (aerosol properties) we can not prove this. But it is noted that during haze conditions reflectance measured by an airborne platform may be affected by the atmosphere between the platform and the surface. An ideal platform for surface reflectance observations would include aerosol observations as those presented in Bates et al. (2013).

Covering the same flight path on ~~the~~-6 Aug, the UAS data and MODIS products agree remarkably well. As mentioned earlier, we note greater variability in the UAS data ~~And in the case of these observations, this variability is likely~~ resulting from several factors. For one, the UAS is measuring a smaller area, and thus there is far less smoothing of the data. Certainly surface roughness and forward scattering play a role, but despite best efforts to select only stable periods of flight, there is likely error introduced to the data from platform stability. Nonetheless, the consistent feature is that the UAS ~~observations are larger overall~~ values were consistently larger (albeit slight) than the MODIS products. Given the nature and temporal smoothing of the MODIS products, we believe this is a real artifact and that the MODIS data may in fact provide values slightly lower

than actual reflectances that would be observed instantaneously. We also note that the UAS platform has immense potential to provide greater insight into the sub-pixel variability of the MODIS products – which is likely significant.

7 Conclusions

During July-August, 2010, several UAS flights were made over Summit, Greenland. Two of the flights were designed to cover the MODIS swath and were made close in time to the MODIS overpass. The UAS measured the up- and down-welling radiation between 320-950 nm with a resolution of 3.3 nm. In this analysis we have made a direct comparison of reflectance as measured by the UAS with the MODIS NBAR product. The main findings are:

- The UAS and MODIS reflectances for band 3, 4 and 1 agree within their uncertainties. However, due to the larger footprint and temporal smoothing of MODIS, the product provides a slightly lower overall reflectance.
- Sub-pixel variability of MODIS reflectance products is potentially significant. Further work should be conducted to evaluate the magnitude and subsequent impacts to modeling of greater variability at the sub-kilometer scale.
- Consistent with theory, the UAS and MODIS reflectance measurement show a decrease between band 3 and 4 and band 1. This wavelength dependence agrees with that expected from the refractive index of ice.
- Even at the low elevations flown typically by UAS, reflectance measurements may be influenced by haze if present at and/or below the flight altitude of the UAS.
- The UAS platform is proven as a capable resource to collect reflectance measurements over an extensive region and provides a reliable resource for evaluating spatial variability of reflectance for Summit, Greenland and the surrounding area.

Of significance in this evaluation, and any intercomparison, is the concept of 'Truth'. Neither of the platforms presented provide a perfect measure of NBAR, but this is a much more direct intercomparison than would be with albedo which would require several further assumptions. MODIS and the UAS platforms attempt to provide an accurate characterization of NBAR and nadir reflectance, respectively. However, MODIS, while collecting direct radiance measurements, requires a **fairly-complex** model and data assimilation chain to provide a product – ultimately produced from a BRDF model. The UAS is challenged due to platform instabilities and expected instrumental errors. The nature of reflectance observations is further challenged by the fact that it is not a simple property of a surface (e.g. snow), but rather a product of a system. The system includes many temporally varying factors such as solar zenith angle and azimuth, but also more **complex-dynamic** processes including atmospheric scattering, surface roughness, and snow conditions. The **time-scales-timescales** of variability of these processes differ and are **complex-not trivial** to represent consistently. Given the importance of this parameter and the general derivation of albedo from these observations, it is critical that we understand well the expected variability. The UAS platform provides a unique opportunity to collect observations that are more representative spatially for applications where point-based measurements are

used; for instance, the validation of satellite-based remotely sensed measurements and 'grid'-based climate and earth system models. This work demonstrates the feasibility of collecting these observations, but also exemplifies the challenges associated with benchmarking different observations. Furthermore, the observations presented herein were collected over a range offering relatively low variability in reflectance. To further increase our current understanding of the reflectance of the cryosphere and its development, more UAS measurement campaigns at other locations and surface conditions are warranted.

8 Data availability

MODIS data are available from <http://modis.gsfc.nasa.gov/>. Surface irradiance data for Summit Greenland are available from <https://nsidc.org/>. The UAS data are available ~~from the authors~~ upon request.

Acknowledgements. This work was conducted within the Norwegian Research Council's NORKLIMA program under the Variability of Albedo Using Unmanned Aerial Vehicles (VAUUAV) project (NFR no. 184724), Hydrologic sensitivity to Cryosphere-Aerosol interaction in Mountain Processes (HyCAMP) project (NFR no. 222195), and with additional support from NFR no. 196204 (RISCC) and NFR no. 195143 (Arctic-EO). [Computational and data storage resources are provided by NOTUR/NORSTORE projects NS9333K and NN9333K.](#) We acknowledge the Greenlandic Home Rule Government for permission to work in Greenland; the 109th NY ANG for unsurpassed air transport; CH2MHill Polar Resources and the on-site science technicians for superb logistical support; the GEOSummit Science Coordination Office (SCO, PLR-1042531) for providing contacts and access to data; and overall the support from the Division of Polar Programs at the National Science Foundation. Konrad Steffen provided the shortwave radiation data from Summit while NOAA-ESRL (Brian Vasel and Tom Mefford) provided wind speed and direction.

References

- Anderson, G., Clough, S. A., and Kneizys, F. X.: AFGL Atmospheric Constituent Profiles (0-120km), 1986.
- Bais, A. F., Kazadzis, S., Balis, D., Zerefos, C. S., and Blumthaler, M.: Correcting Global Solar Ultraviolet Spectra Recorded by a Brewer Spectroradiometer for its Angular Response Error, *Applied Optics*, 37, 6339, doi:10.1364/AO.37.006339, <http://ao.osa.org/abstract.cfm?URI=ao-37-27-6339>, 1998.
- 5 Bates, T. S., Quinn, P. K., Johnson, J. E., Corless, A., Brechtel, F. J., Stalin, S. E., Meinig, C., and Burkhardt, J. F.: Measurements of atmospheric aerosol vertical distributions above Svalbard, Norway, using unmanned aerial systems (UAS), *Atmospheric Measurement Techniques*, 6, 2115–2120, doi:10.5194/amt-6-2115-2013, 2013.
- Bennartz, R., Shupe, M. D., Turner, D. D., Walden, V. P., Steffen, K., Cox, C. J., Kulie, M. S., Miller, N. B., and Pettersen, C.: July 2012 Greenland melt extent enhanced by low-level liquid clouds, *Nature*, 496, 83–86, doi:10.1038/nature12002, 2013.
- 10 Bhardwaj, A., Sam, L., Akanksha, Martín-Torres, F. J., and Kumar, R.: UAVs as remote sensing platform in glaciology: Present applications and future prospects, *Remote Sensing of Environment*, 175, 196–204, doi:10.1016/j.rse.2015.12.029, <http://dx.doi.org/10.1016/j.rse.2015.12.029>, 2016.
- Bogren, W. S., Burkhardt, J. F., and Kylling, A.: Tilt error in cryospheric surface radiation measurements at high latitudes: a model study, *The Cryosphere*, 10, 613–622, doi:10.5194/tc-10-613-2016, <http://www.the-cryosphere.net/10/613/2016/>, 2016.
- 15 Box, J. E., Fettweis, X., Stroeve, J. C., Tedesco, M., Hall, D. K., and Steffen, K.: Greenland ice sheet albedo feedback: thermodynamics and atmospheric drivers, *The Cryosphere*, 6, 821–839, doi:10.5194/tc-6-821-2012, 2012.
- Buras, R., Dowling, T., and Emde, C.: New secondary-scattering correction in DISORT with increased efficiency for forward scattering, *Journal of Quantitative Spectroscopy and Radiative Transfer*, 112, 2028–2034, doi:10.1016/j.jqsrt.2011.03.019, <http://linkinghub.elsevier.com/retrieve/pii/S0022407311001385>, 2011.
- 20 Campagnolo, M. L., Sun, Q., Liu, Y., Schaaf, C., Wang, Z., and Román, M. O.: Estimating the effective spatial resolution of the operational BRDF, albedo, and nadir reflectance products from MODIS and VIIRS, *Remote Sensing of Environment*, 175, 52–64, doi:10.1016/j.rse.2015.12.033, 2016.
- Curry, J. and Schramm, J.: Applications of SHEBA/FIRE data to evaluation of snow/ice albedo parameterizations, *Journal of Geophysical ...*, 106, 345–355, <http://onlinelibrary.wiley.com/DOI/10.1029/2000JD900311/full>, 2001.
- 25 Dumont, M., Brun, E., Picard, G., Michou, M., Libois, Q., Petit, J.-R., Geyer, M., Morin, S., and Josse, B.: Contribution of light-absorbing impurities in snow to Greenland’s darkening since 2009, *Nature Geoscience*, 7, 509–512, doi:10.1038/NCEO2180, 2014.
- Emde, C., Buras-Schnell, R., Kylling, A., Mayer, B., Gasteiger, J., Hamann, U., Kylling, J., Richter, B., Pause, C., Dowling, T., and Bugliaro, L.: The libRadtran software package for radiative transfer calculations (version 2.0.1), *Geoscientific Model Development*, 9, 1647–1672, doi:10.5194/gmd-9-1647-2016, <http://www.geosci-model-dev.net/9/1647/2016/>, 2016.
- 30 Flanner, M. G., Zender, C. S., Hess, P. G., Mahowald, N. M., Painter, T. H., Ramanathan, V., and Rasch, P. J.: Springtime warming and reduced snow cover from carbonaceous particles, *Atmospheric Chemistry and Physics*, 9, 2481–2497, doi:10.5194/acp-9-2481-2009, <http://www.atmos-chem-phys.net/9/2481/2009/>, 2009.
- Goelles, T., Bøggild, C. E., and Greve, R.: Ice sheet mass loss caused by dust and black carbon accumulation, *The Cryosphere*, 9, 1845–1856, doi:10.5194/tc-9-1845-2015, 2015.
- 35

- Hakala, T., Riihelä, A., Lahtinen, P., and Peltoniemi, J. I.: Hemispherical-directional reflectance factor measurements of snow on the Greenland Ice Sheet during the Radiation, Snow Characteristics and Albedo at Summit (RASCALS) campaign, *Journal of Quantitative Spectroscopy and Radiative Transfer*, 146, 280–289, doi:10.1016/j.jqsrt.2014.04.010, 2014.
- Hansen, J. and Nazarenko, L.: Soot climate forcing via snow and ice albedos., *Proceedings of the National Academy of Sciences of the United States of America*, 101, 423–8, doi:10.1073/pnas.2237157100, <http://www.pubmedcentral.nih.gov/articlerender.fcgi?artid=327163&tool=pmcentrez&rendertype=abstract>, 2004.
- Henderson-Sellers, A. and Wilson, M.: Surface Albedo Data for Climatic Modeling, *Reviews of Geophysics and Space Physics*, 21, 1743–1778, doi:10.1029/RG021i008p01743, 1983.
- Hess, M., Koepke, P., and Schult, I.: Optical properties of aerosols and clouds: The software package OPAC, *Bull. Amer. Meteorol. Soc.*, 79, 831–844, 1998.
- Howat, I. M., Negrete, A., and Smith, B. E.: The Greenland Ice Mapping Project (GIMP) land classification and surface elevation data sets, *The Cryosphere*, 8, 1509–1518, doi:10.5194/tc-8-1509-2014, 2014.
- Immerzeel, W., Kraaijenbrink, P., Shea, J., Shrestha, A., Pellicciotti, F., Bierkens, M., and de Jong, S.: High-resolution monitoring of Himalayan glacier dynamics using unmanned aerial vehicles, *Remote Sensing of Environment*, 150, 93–103, doi:10.1016/j.rse.2014.04.025, <http://dx.doi.org/10.1016/j.rse.2014.04.025>, 2014.
- Jagt, B., Lucieer, A., Wallace, L., Turner, D., and Durand, M.: Snow Depth Retrieval with UAS Using Photogrammetric Techniques, *Geosciences*, 5, 264–285, doi:10.3390/geosciences5030264, 2015.
- Jin, Y.: Consistency of MODIS surface bidirectional reflectance distribution function and albedo retrievals: 2. Validation, *Journal of Geophysical Research*, 108, 1–15, doi:10.1029/2002JD002804, <http://www.agu.org/pubs/crossref/2003/2002JD002804.shtml>, 2003.
- Ju, J., Roy, D. P., Shuai, Y., and Schaaf, C.: Remote Sensing of Environment Development of an approach for generation of temporally complete daily nadir MODIS reflectance time series, *Remote Sensing of Environment*, 114, 1–20, doi:10.1016/j.rse.2009.05.022, <http://dx.DOI.org/10.1016/j.rse.2009.05.022>, 2010.
- Justice, C. O., Vermote, E., Townshend, J. R. G., Defries, R., Roy, D. P., Hall, D. K., Salomonson, V. V., Privette, J. L., Riggs, G., Strahler, A., Lucht, W., Myneni, R. B., Knyazikhin, Y., Running, S. W., Nemani, R. R., Wan, Z., Huete, A. R., van Leeuwen, W., Wolfe, R. E., Giglio, L., Muller, J., Lewis, P., and Barnsley, M. J.: The Moderate Resolution Imaging Spectroradiometer (MODIS): land remote sensing for global change research, *IEEE Transactions on Geoscience and Remote Sensing*, 36, 1228–1249, doi:10.1109/36.701075, 1998.
- Keegan, K. M., Albert, M. R., McConnell, J. R., and Baker, I.: Climate change and forest fires synergistically drive widespread melt events of the Greenland Ice Sheet, *Proceedings of the National Academy of Sciences*, 111, 7964–7967, doi:10.1073/pnas.1405397111, 2014.
- Lucht, W., Schaaf, C. B., and Strahler, A. H.: An algorithm for the retrieval of albedo from space using semiempirical BRDF models, *IEEE Transactions on Geoscience and Remote Sensing*, 38, 977–998, doi:10.1109/36.841980, 2000.
- Mayer, B. and Kylling, A.: Technical note : The libRadtran software package for radiative transfer calculations – description and examples of use, *Atmos. Chem. Phys*, pp. 1855–1877, 2005.
- Miller, N. B., Shupe, M. D., Cox, C. J., Walden, V. P., Turner, D. D., and Steffen, K.: Cloud Radiative Forcing at Summit, Greenland, *Journal of Climate*, 28, 6267–6280, doi:10.1175/JCLI-D-15-0076.1, 2015.
- Nicolaus, M., Hudson, S. R., Gerland, S., and Munderloh, K.: A modern concept for autonomous and continuous measurements of spectral albedo and transmittance of sea ice, *Cold Regions Science and Technology*, 62, 14–28, doi:10.1016/j.coldregions.2010.03.001, <http://linkinghub.elsevier.com/retrieve/pii/S0165232X10000406>, 2010.

- Pierluissi, J. H. and Peng, G.-S.: New Molecular Transmission Band Models For LOWTRAN, *Optical Engineering*, 24, 243-251, [http://dx.DOI.org/10.1117/12.7973523](http://dx.doi.org/10.1117/12.7973523), 1985.
- Quinn, P. K., Shaw, G., Andrews, E., Dutton, E. G., Ruoho-Airola, T., and Gong, S. L.: Arctic haze: current trends and knowledge gaps, *Tellus B*, 59, 99–114, doi:10.1111/j.1600-0889.2006.00238.x, <http://dx.DOI.org/10.1111/j.1600-0889.2006.00238.x>, 2007.
- 5 Ricchiuzzi, P., Yang, S., Gautier, C., and Sowle, D.: SBDART : A Research and Teaching Software Tool for Plane-Parallel Radiative Transfer in the Earth ' s Atmosphere, *Bulletin of the American Meteorological Society*, 79, 2101–2114, 1998.
- Rippin, D. M., Pomfret, A., and King, N.: High resolution mapping of supra-glacial drainage pathways reveals link between micro-channel drainage density, surface roughness and surface reflectance, *Earth Surface Processes and Landforms*, 40, 1279–1290, doi:10.1002/esp.3719, <http://dx.doi.org/10.1002/esp.3719>, 2015.
- 10 Román, M. O., Schaaf, C. B., Woodcock, C. E., Strahler, A. H., Yang, X., Braswell, R. H., Curtis, P. S., Davis, K. J., Dragoni, D., Goulden, M. L., Gu, L., Hollinger, D. Y., Kolb, T. E., Meyers, T. P., Munger, J. W., Privette, J. L., Richardson, A. D., Wilson, T. B., and Wofsy, S. C.: Remote Sensing of Environment The MODIS (Collection V005) BRDF / albedo product : Assessment of spatial representativeness over forested landscapes, *Remote Sensing of Environment*, 113, 2476–2498, doi:10.1016/j.rse.2009.07.009, <http://dx.DOI.org/10.1016/j.rse.2009.07.009>, 2009.
- 15 Román, M. O., Schaaf, C. B., Lewis, P., Gao, F., Anderson, G. P., Privette, J. L., Strahler, A. H., Woodcock, C. E., and Barnsley, M.: Assessing the coupling between surface albedo derived from MODIS and the fraction of diffuse skylight over spatially-characterized landscapes, *Remote Sensing of Environment*, 114, 738–760, doi:10.1016/j.rse.2009.11.014, 2010.
- Ryan, J. C., Hubbard, A. L., Box, J. E., Todd, J., Christoffersen, P., Carr, J. R., Holt, T. O., and Snooke, N.: UAV photogrammetry and structure from motion to assess calving dynamics at Store Glacier, a large outlet draining the Greenland ice sheet, *The Cryosphere*, 9, 1–11, doi:10.5194/tc-9-1-2015, 2015.
- 20 Ryan, J. C., Hubbard, A., Stibal, M., Box, J. E., and team, t. D. S. P.: Attribution of Greenland's ablating ice surfaces on ice sheet albedo using unmanned aerial systems, *The Cryosphere Discussions*, pp. 1–23, doi:10.5194/tc-2016-204, 2016.
- Salomonson, V. V. and Marlatt, W.: Airborne Measurements of Reflected Solar Radiation, *Remote Sensing of Environment*, 2, 1971.
- Schaaf, C. B., Gao, F., Strahler, A. H., Lucht, W., Li, X., Tsang, T., Strugnell, N. C., Zhang, X., Jin, Y., Muller, J.-P., Lewis, P., Barnsley, M., 25 Hobson, P., Disney, M., Roberts, G., Dunderdale, M., Doll, C., D'Entremont, R. P., Hu, B., Liang, S., Privette, J. L., and Roy, D.: First operational BRDF, albedo nadir reflectance products from MODIS, *Remote Sensing of Environment*, 83, 135–148, doi:10.1016/S0034-4257(02)00091-3, <http://linkinghub.elsevier.com/retrieve/pii/S0034425702000913>, 2002.
- Siegfried, M., Hawley, R., and Burkhart, J.: High-Resolution Ground-Based GPS Measurements Show Intercampaign Bias in ICESat Elevation Data Near Summit, Greenland, *Geoscience and Remote Sensing, IEEE Transactions on*, 49, 3393–3400, doi:10.1109/TGRS.2011.2127483, 2011.
- 30 Stamnes, K., Tsay, S. C., Wiscombe, W., and Jayaweera, K.: Numerically stable algorithm for discrete-ordinate-method radiative transfer in multiple scattering and emitting layered media., *Applied optics*, 27, 2502–9, <http://www.ncbi.nlm.nih.gov/pubmed/20531783>, 1988.
- Stocker, T. F., Dahe, Q., and Plattner, G.-K.: Climate Change 2013: The Physical Science Basis, Working Group I Contribution to the Fifth Assessment Report of the Intergovernmental Panel on Climate Change. Summary for Policymakers (IPCC, 2013), 2013.
- 35 Stroeve, J., Box, J. E., Wang, Z., Schaaf, C., and Barrett, A.: Re-evaluation of MODIS MCD43 Greenland albedo accuracy and trends, *Remote Sensing of Environment*, 138, 199–214, doi:10.1016/j.rse.2013.07.023, 2013.

- Stroeve, J. C., Box, J. E., Gao, F., Liang, S., Nolin, A., and Schaaf, C.: Accuracy assessment of the MODIS 16-day albedo product for snow: comparisons with Greenland in situ measurements, *Remote Sensing of Environment*, 94, 46–60, doi:10.1016/j.rse.2004.09.001, <http://linkinghub.elsevier.com/retrieve/pii/S0034425704002846>, 2005.
- Stroeve, J. C., Box, J. E., and Haran, T.: Evaluation of the MODIS (MOD10A1) daily snow albedo product over the Greenland ice sheet, *Remote Sensing of Environment*, 105, 155–171, doi:10.1016/j.rse.2006.06.009, <http://linkinghub.elsevier.com/retrieve/pii/S0034425706002392>, 2006.
- Tsay, S.-C., Stamnes, K., and Jayaweera, K.: Radiative energy budget in the cloudy and hazy arctic, *J. Atmos. Sci.*, 46, 1002–1018, 1989.
- Wang, Z., Schaaf, C. B., Chopping, M. J., Strahler, A. H., Wang, J., O.Román, M., Rocha, A. V., Woodcock, C. E., and Shuai, Y.: Evaluation of Moderate-resolution Imaging Spectroradiometer (MODIS) snow albedo product (MCD43A) over tundra, *Remote Sensing of Environment*, 117, 264–280, 2012.
- Wang, Z., Schaaf, C. B., Strahler, A. H., Chopping, M. J., Román, M. O., Shuai, Y., Woodcock, C. E., Hollinger, D. Y., and Fitzjarrald, D. R.: Evaluation of MODIS albedo product (MCD43A) over grassland, agriculture and forest surface types during dormant and snow-covered periods, *Remote Sensing of Environment*, 140, 60–77, doi:10.1016/j.rse.2013.08.025, 2014.
- Warren, S. G.: Can black carbon in snow be detected by remote sensing ?, *Journal of Geophysical Research*, PIP, 2012.
- Warren, S. G. and Wiscombe, W. J.: A Model for the spectral albedo of Snow. II: Snow Containing Atmospheric Aerosols, *Journal of the Atmospheric Sciences*, 37, 1980.
- Wendisch, M., Müller, D., Schell, D., and Heintzenberg, J.: An Airborne Spectral Albedometer with Active Horizontal Stabilization, *Journal of Atmospheric and Oceanic Technology*, 18, 1856–1866, doi:10.1175/1520-0426(2001)018<1856:AASAWA>2.0.CO;2, <http://journals.ametsoc.org/DOI/abs/10.1175/1520-0426%282001%29018%3C1856%3AAASAWA%3E2.0.CO%3B2>, 2001.
- Wiscombe, W. and Warren, S.: A model for the spectral albedo of snow. I: Pure snow, *Journal of the Atmospheric Sciences*, 37, 2712–2733, [http://journals.ametsoc.org/DOI/abs/10.1175/1520-0469\(1980\)037%3C2712%3AAMFTSA%3E2.0.CO%3B2](http://journals.ametsoc.org/DOI/abs/10.1175/1520-0469(1980)037%3C2712%3AAMFTSA%3E2.0.CO%3B2), 1980.
- Wright, P., Bergin, M., Dibb, J., Lefer, B., Domine, F., Carman, T., Carmagnola, C., Dumont, M., Courville, Z., Schaaf, C., and Wang, Z.: Comparing MODIS daily snow albedo to spectral albedo field measurements in Central Greenland, *Remote Sensing of Environment*, 140, 118–129, doi:10.1016/j.rse.2013.08.044, 2014.

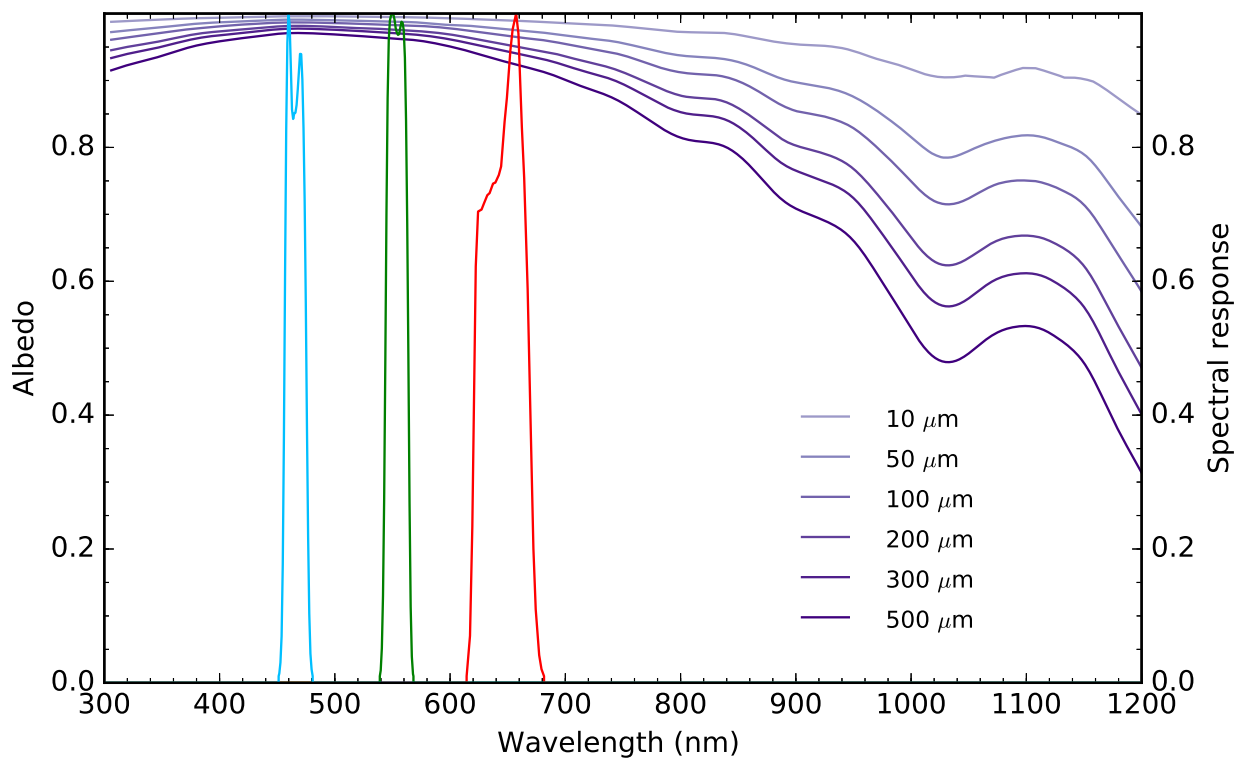


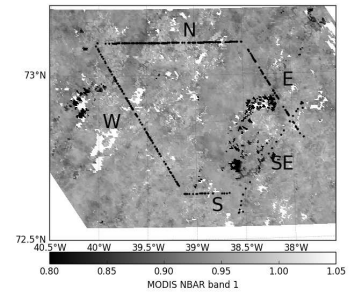
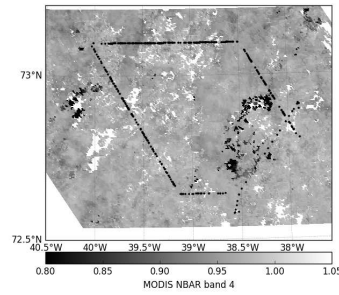
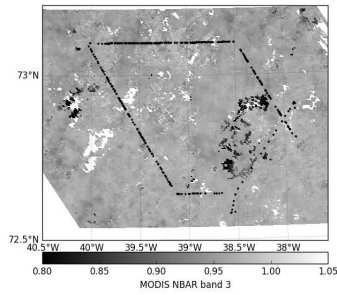
Figure 1. The pure snow albedo as a function of wavelength for snow grain sizes between 10-500 μm . Also shown in the thicker lines are the MODIS spectral response for band 3 (blue), 4 (green), and 1 (red). The spectral response data were obtained from <http://mcst.gsfc.nasa.gov/calibration/parameters>.

MODIS Band:

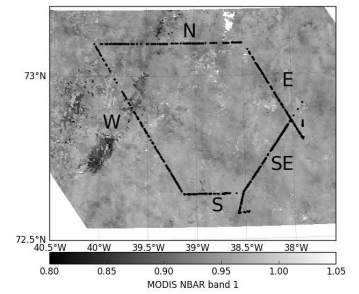
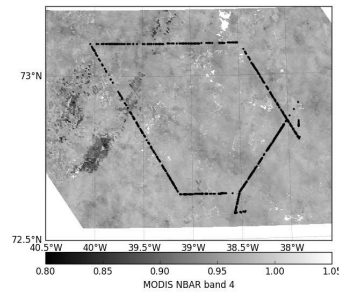
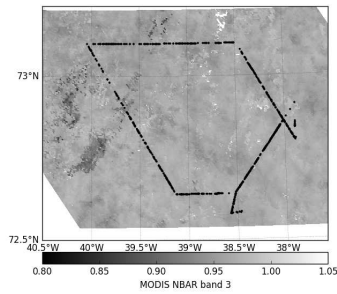
band 3

band 4

band 1



5 Aug.



6 Aug.

(a)

Figure 2. MODIS blue (band 3), green (band 4), and red (band 1) NBARs for [Aug-5 Aug](#) (upper row) and [Aug-6 Aug](#) (lower row), 2010. The black dots represent UAS data which were recorded during stable flight conditions. White areas indicate missing data.

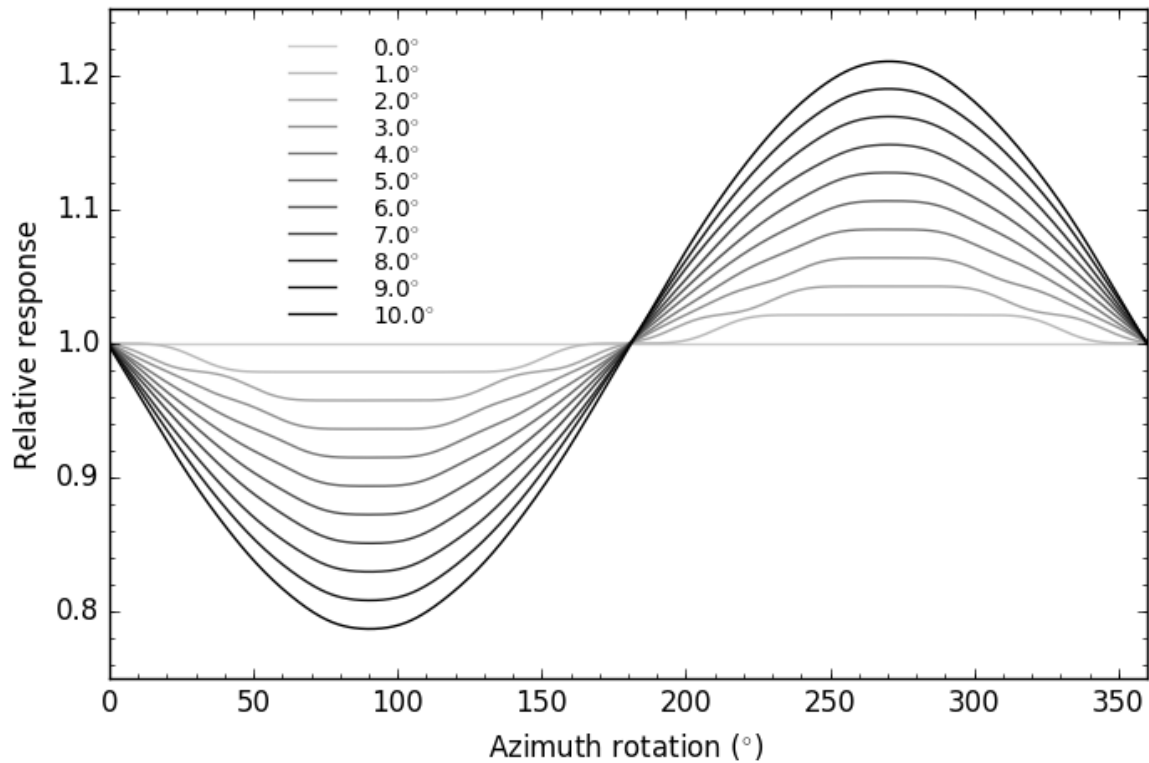


Figure 3. The relative response when tilting (~~various coloured curves~~ from 0° to 10°) and rotating around azimuth an irradiance sensor on-board a platform 300 m above a snow surface. The solar zenith (azimuth) angle is 55.66° (0°). The wavelength is 465 nm.

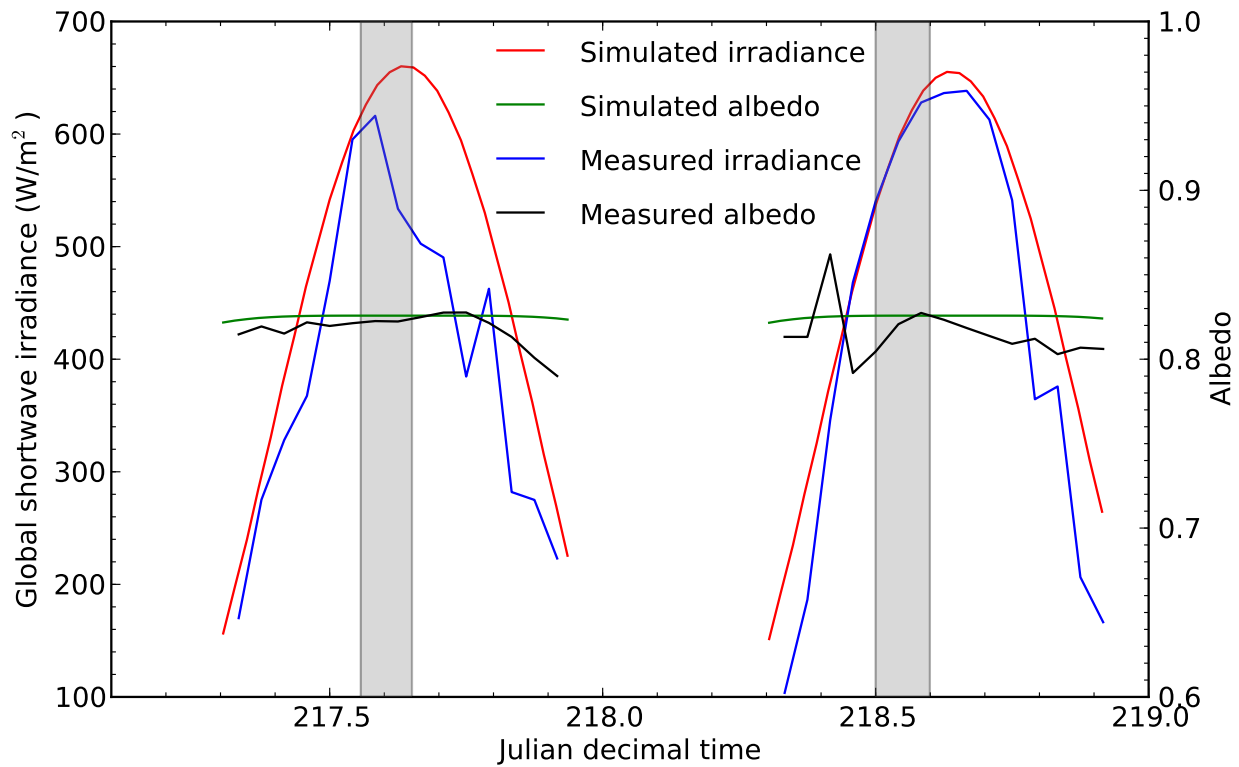


Figure 4. The measured (blue) and the simulated cloudless sky (red) downwelling short wave radiation for Summit, Greenland on [Aug-5 Aug](#) (day 217) and [6 Aug](#) (day 218), 2010. The measured (black) and simulated (green) shortwave broadband albedos are also shown. The grey shaded areas indicate the time when the UAS was flying.

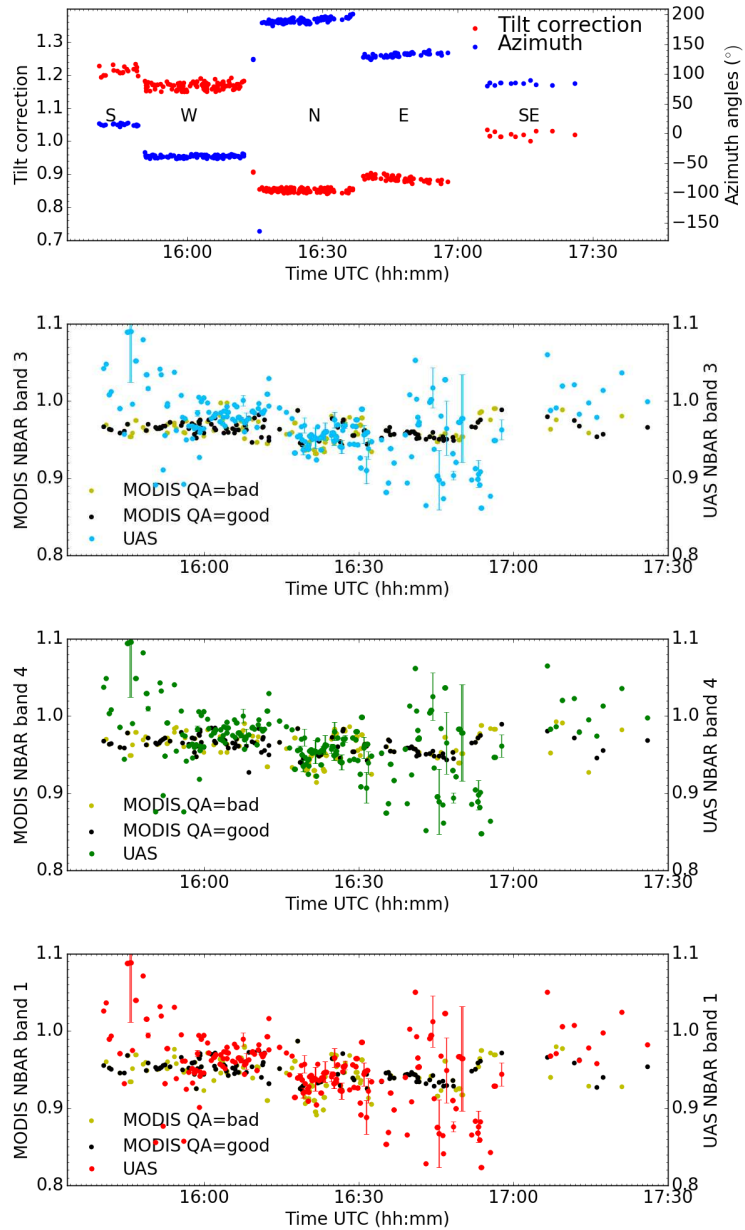


Figure 5. Top panel: The azimuth angle of the UAS (blue dots) and the tilt correction factor R^l/R^t , Eq. 3 (red dots). The various flight track elements are identified by letters and corresponds to the flight tracks in Fig. 2. Second-fourth panels: The MODIS (black=good quality and yellow=low quality dots) and UAS band 3 (blue), 4 (green), and 1 (red) NBARs as a function of time. In the case of several UAS data points within one MODIS pixel, the UAS data have been grouped together and presented as a dot with standard deviation. All data from the flight on [Aug-5 Aug](#), 2010.

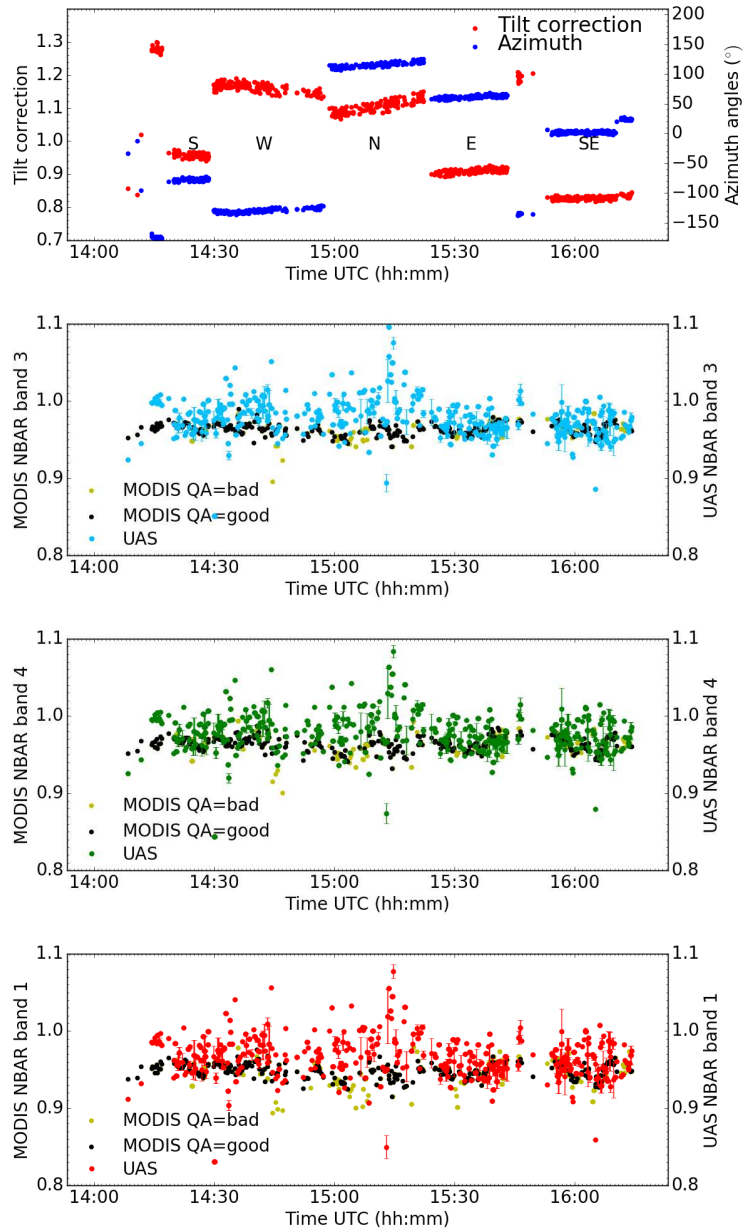


Figure 6. Top panel: The azimuth angle of the UAS (blue dots) and the tilt correction factor R^l/R^t , Eq. 3 (red dots). The various flight track elements are identified by letters and corresponds to the flight tracks in Fig. 2. Second-fourth panels: The MODIS (black=good quality and yellow=low quality dots) and UAS band 3 (blue), 4 (green), and 1 (red) NBARs as a function of time. In the case of several UAS data points within one MODIS pixel, the UAS data have been grouped together and presented as a dot with standard deviation. All data from the flight on [Aug 6 Aug](#), 2010.

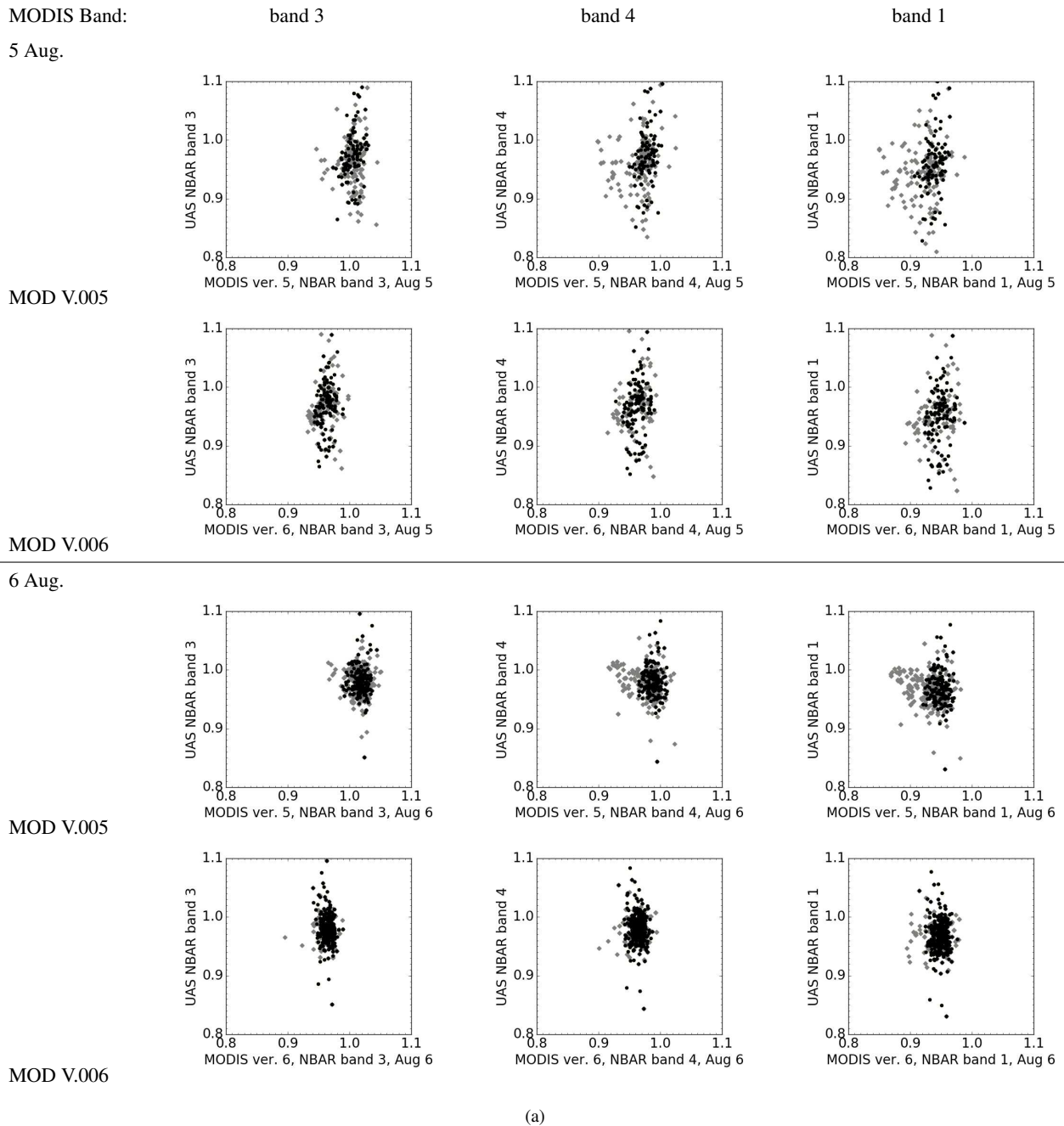


Figure 7. The MODIS (black=high quality and grey=low quality) versus UAS NBAR for bands 3, 4, and 1. Left column is data for band 3, middle column is band 4 data, and right column is data for band 1. Rows 1 and 3 are MODIS version 5 and rows 2 and 4 MODIS version 6. Rows 1-2 (3-4) are data from the flight on Aug-5 (6) Aug.

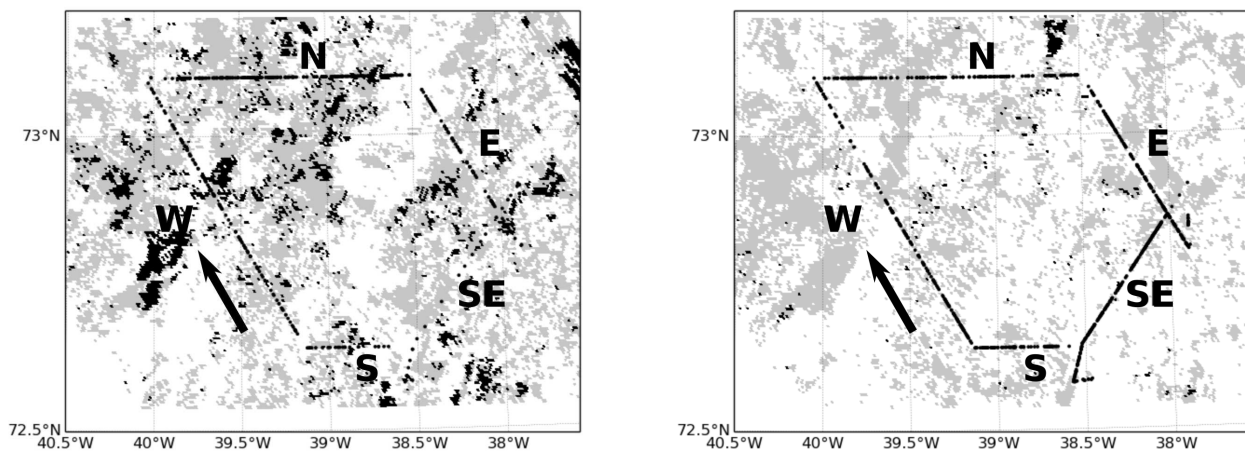


Figure 8. MODIS quality flags for [Aug-5 Aug](#) (left panel) and [Aug-6 Aug](#) (right panel), 2010. Grey color indicates low quality retrieval, black indicates no retrieval. White areas have high quality retrieval flags. [Flight transects are as labeled in in Fig. 5 and Fig. 6. The arrow indicates direction of flight. Flights initiated with the S transect and were flown clockwise.](#)

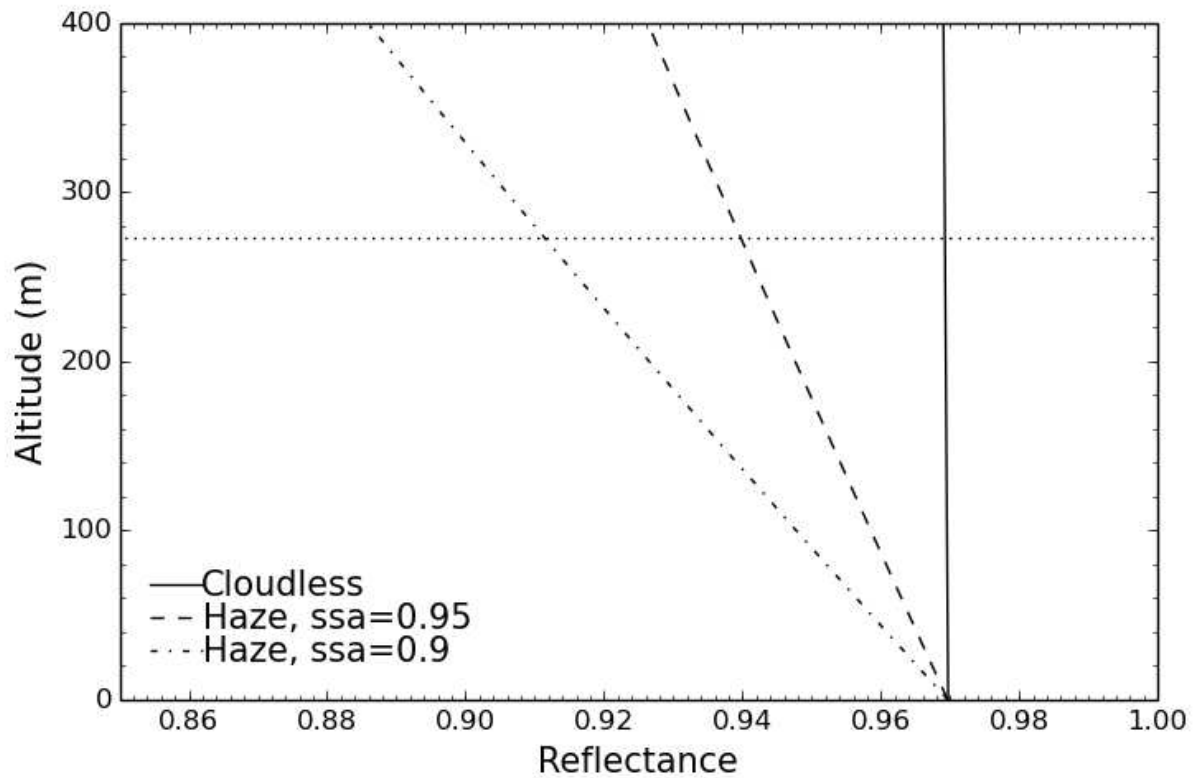


Figure 9. Simulated UAS reflectance for MODIS band 1 as a function of flight altitude for various sky conditions. See text for details. The dotted horizontal line indicates the average flight altitude of the UAS on the 5 Aug. The solar zenith angle is 58° corresponding to the values during the flight on the 5 Aug (see Table 1.)

The minimum (λ_{min}) and maximum (λ_{max}) wavelengths covered by MODIS bands 1, 3, and 4. Bandwidth for MODIS obtained from .Band λ_{min} (nm) λ_{max} (nm) 3 459 4794 545 5651 620 670

Table 1. Information for the two UAS MODIS route overpass flights. For the NBAR values the average value is given together with the standard deviation in parenthesis.

	5 Aug		6 Aug	
Start of flight (hh:mm:ss, UTC)	15:22:55		14:00:28	
End of flight (hh:mm:ss, UTC)	17:37:27		16:23:34	
Mean pitch (std) angle (°)	6.05 (0.55)		7.32 (0.52)	
Mean roll (std) angle (°)	-4.43 (0.48)		5.40 (0.54)	
Weather	Overcast		Mostly cloudless	
Solar zenith angle (°)	60-56		55-58	
Solar azimuth angle (°)	-46- -17		11- -27	
Wind speed (m/s)	6-7		1.5-3.5	
Wind direction (°)	≈135		140-170	
# UAS spectra	497		882	
MODIS quality flag	0 (Good)	1 (Low)	0 (Good)	1 (Low)
MODIS ver 5, NBAR band 3 (blue)	1.005 (0.012)	1.005 (0.015)	1.017 (0.011)	1.017 (0.012)
MODIS ver 6, NBAR band 3 (blue)	0.967 (0.010)	0.965 (0.014)	0.965 (0.008)	0.966 (0.009)
UAS band 3	0.971 (0.056)		0.978 (0.025)	
MODIS ver 5, NBAR band 4 (green)	0.978 (0.011)	0.967 (0.024)	0.988 (0.010)	0.982 (0.019)
MODIS ver 6, NBAR band 4 (green)	0.966 (0.013)	0.964 (0.016)	0.965 (0.009)	0.965 (0.012)
UAS band 4	0.974 (0.064)		0.980 (0.026)	
MODIS ver 5, NBAR band 1 (red)	0.939 (0.0123)	0.956 (0.027)	0.948 (0.011)	0.937 (0.022)
MODIS ver 6, NBAR band 1 (red)	0.952 (0.0146)	0.947 (0.020)	0.950 (0.010)	0.949 (0.014)
UAS band 1	0.956 (0.065)		0.967 (0.028)	