

Mapping and inventorying active rock glaciers in the Northern Tien Shan of China using satellite SAR interferometry

Xiaowen Wang^{1, 2}, Lin Liu¹, Lin Zhao³, Tonghua Wu³, Zhongqin Li³, Guoxiang Liu²

¹ Earth System Science Programme, Faculty of Science, The Chinese University of Hong Kong, Hong Kong, China

² Department of Remote Sensing and Geospatial Information Engineering, Southwest Jiaotong University, Chengdu, China

³ Northwest Institute of Eco-Environment and Resources, Chinese Academy of Sciences, Lanzhou, China

Correspondence to: Lin Liu (liulin@cuhk.edu.hk)

Abstracts: Rock glaciers are widespread in the Tien Shan. However, rock glaciers in the Chinese part of the Tien Shan have not been systematically investigated for more than two decades. In this study, we propose a new method that combines SAR interferometry and optical images from Google Earth to map active rock glaciers (ARGs) in the Northern Tien Shan (NTS) of China. We compiled an inventory that includes 261 ARGs and quantitative information about their locations, geomorphic parameters, and down-slope velocities. Our inventory shows that most of the ARGs are moraine-derived (69 %) and facing north-east (56 %). The altitude distribution of ARGs in the western NTS is significantly different from those located in the eastern part. The down-slope velocities of the ARGs vary significantly in space, with a maximum of about 114 cm yr⁻¹ and a mean of about 37 cm yr⁻¹. Using the ARG locations as a proxy for the extent of alpine permafrost, our inventory suggests that the lowest altitudinal limit for the presence of permafrost in the NTS is about 2500–2800 m, a range determined by the lowest ARG in the entire inventory and by a statistics-based estimation. The successful application of the proposed method would facilitate effective and robust efforts to map rock glaciers over mountain ranges globally. And this study provides an important dataset to improve mapping and modeling permafrost occurrence in vast western China.

Keywords: Rock Glacier, Tien Shan, InSAR, Mountain Permafrost, Remote Sensing

25 **1 Introduction**

Rock glaciers are lobate or tongue-shaped landforms consisting of mixtures of unconsolidated rock debris and ice in an alpine environment. They are commonly regarded as visible expressions of permafrost presence in periglacial areas (Barsch 1996; Humlum, 2000; Haeberli et al., 2006; Brenning et al., 2007; Boeckli et al., 2012). Rock glaciers can take several thousand years to develop, so a knowledge of their
30 distribution can provide valuable information about past incidences of permafrost and related climatological characteristics (Humlum, 1998; Konrad et al., 1999; Millar et al., 2015; Sorg et al., 2015). Additionally, due to the potential melting of internal ice in the runoff season, rock glaciers serve as important freshwater reserves for the downstream water use in semi-arid regions (Brenning, 2005; Janke et al., 2015).

According to their kinematic status and the presence of internal ice, rock glaciers can be classified into three
35 groups: active, inactive, and relict. Active rock glaciers (ARGs) typically creep downslope cohesively under gravity by a few centimeters to a few meters per year (Berger et al., 2004; Kääb et al., 2003; Necsoiu et al., 2016). The downslope movement of ARGs may cause mass waste hazards on steep slopes, threatening the sensible infrastructures in some downhill areas (e.g., Schoeneich et al., 2015).

Vertically distributed within a narrow band just above the lower limit of permafrost, active and inactive rock
40 glaciers (collectively termed as “intact” rock glaciers) are indicators of alpine permafrost. Many studies have used active and inactive rock glaciers to map local-scale indicators of permafrost occurrence in major mountain ranges such as the European Alps, the Rocky Mountains, the Andes, and the Hindu-Kush-Himalayan region (e.g., Barsch 1996; Janke 2005; Brenning and Trombotto, 2006; Boeckli et al., 2012; Bollmann et al., 2015; Schmid et al., 2015). However, it is difficult to assess the kinematic status of rock
45 glaciers directly (either from the field or remote sensing) and therefore challenging to distinguish active and inactive rock glaciers (Onaca et al., 2016; Sattler et al., 2016). If one only uses ARGs, it would be more accurate and robust to infer the permafrost distribution (Sattler et al., 2016).

It is frequent to use geomorphological features to identify ARGs. Rock glacier movements commonly manifest in viscous flow morphologies on the ground surface, such as the presence and development of
50 ridges, furrows, and steep fronts (Clark et al., 1998; Ikeda and Matsuoka, 2006; Berthling, 2011; Janke et al., 2015). Based on the indications of these geomorphological features, one can map ARGs by visual

interpretation through field surveying or aerial/satellite images (Angillieri, 2009; Brenning et al., 2012; Lilleøren et al., 2013; Scotti et al., 2013; Schmid et al., 2015). However, field surveys are usually scarce because most rock glaciers are located in the remote areas and are difficult to access. Because optical images
55 are often affected by clouds and shadows, it is not always feasible to use them to distinguish ARGs from inactive and relict rock glaciers.

In addition to visually interpreting geomorphological features, measuring surface displacements can also be used to identify active rock glaciers. Various terrestrial geodetic techniques such as differential GPS and laser scanning have been used (Lambiel and Delaloye, 2004; Avian et al., 2009; Bollmann et al., 2015).
60 However, these terrestrial techniques are expensive and only offer limited spatial coverage. They have therefore mostly been used in detailed case studies. Multi-temporal optical images have also been used to investigate surface displacements of ARGs through visual interpretation and feature tracking (Gorbunov et al., 1992; Kääb et al. 1997).

In recent years, satellite synthetic aperture radar interferometry (or InSAR) has emerged as a unique
65 technique to investigate the dynamics of rock glaciers (Kenyi and Kaufmann, 2003; Strozzi et al., 2004; Lilleøren et al., 2013; Liu et al., 2013; Barboux et al., 2015; Necsoiu et al., 2016). Compared with optical remote sensing techniques, InSAR provides an all-weather imaging capability for measuring ground surface deformation with centimeter to sub-centimeter precision. Thus, the InSAR measurements can be used to determine the kinematic status of rock glaciers (especially their velocities, the upper and lower boundaries),
70 which complement the limitations of optical images (Kenyi and Kaufmann, 2003; Liu et al., 2013). However, the combined use of InSAR measurements and optical images for mapping ARGs in a vast, regional area is still rare. In this study, we proposed an integrative method to identify and map ARGs with improved accuracy, effectiveness, and efficiency by (1) detecting moving landforms using InSAR and (2) interpreting geomorphic features from optical images in Google Earth.

75 Rock glaciers are abundant in the high mountains of Central Asia and western China, such as the Tien Shan, Hindu Kush Himalayan, Kunlun Shan and Hengduan Shan. More than 1500 rock glaciers have been inventoried in the Kazakh and Kyrgyz Tien Shan (Gorbunov et al., 1992; 1998). Schmid et al. (2015) compiled an inventory with 702 rock glaciers identified from Google Earth images in the vast Hindu Kush Himalayan region. Using these inventories, recent studies have further discussed the rock glaciers-

80 permafrost interactions (Bolch and Gorbunov, 2014; Schmid et al., 2015). However, rock glaciers in western
China have not been systematically investigated except for a small number of studies conducted more than
two decades ago. Based on the interpretation of aerial photos and field surveys, Cui and Zhu (1989) and Zhu
(1992a) identified hundreds of rock glaciers in the NTS of China, while Cui (1984) and Li and Yao (1987)
identified dozens of them in the Kunlun Shan and the Hengduan Shan, respectively.

85 The previous studies of rock glaciers in western China mainly focused on their shapes, classification, and
topo-climatic conditions. The studies on surface velocities of rock glaciers are very limited except for the
field surveys at several specific sites conducted by Cui and Zhu (1989) and Zhu (1992a). Additionally, there
has not been any discussion on the permafrost distribution for these high mountains in western China based
on locations of rock glaciers. In this study, we applied the new integrative method to identify and map the
90 ARGs in the Northern Tien Shan (NTS) region in western China as an example study area. We determined
the geographical locations of ARGs based on the proposed method. Then, we systematically summarized
their geomorphic and climatic attributes, as well as their surface velocities. Finally, we inferred the lower
limit of permafrost in the NTS from the inventoried ARGs, offering a modern, comprehensive, and rigorous
update from the previous field-based estimates by Qiu et al. (1983). We also compared our inventory with
95 the previous studies and existing permafrost maps.

2 Study area

The Tien Shan is a major mountain system in Central Asia, with a mean altitude of more than 4000 m above
sea level. The Tien Shan extends 2500 km by 250–300 km, spanning regions of Uzbekistan, Kyrgyzstan,
southeastern Kazakhstan, and the Xinjiang province of China. The Chinese portion of Tien Shan divides
100 Xinjiang into two large basins, the Tarim Basin in the south and the Junggar Basin in the north, with the
Gurbantunggut and the Taklamakan Deserts lying in hinterland basins (Fig.1). Due to its geographical
location and rugged topography, Tien Shan possesses the ideal climatic conditions for the creation and
preservation of mountain permafrost. Qiu et al. (1983) estimated that permafrost in the Chinese part of the
Tien Shan covers approximately $6.3 \times 10^4 \text{ km}^2$. In this study, we focus on the Northern Tien Shan (NTS) of
105 China ($82^\circ\text{--}87^\circ \text{ E}$, $42^\circ\text{--}44^\circ \text{ N}$), a large branch of the Tien Shan striking $\text{N}20^\circ\text{W}$ from northwest to southeast
(Fig. 1). We note that some literature also refers to the part of Tien Shan in Kazakhstan and Kyrgyzstan as

“Northern Tien Shan”. If not explicitly stated, ‘NTS’ refers to our study area in China in the remainder of this paper.

The eastern and western parts of the NTS divide along longitude 86° E, and possess distinct climatic characteristics (Zhu et al., 1992b; Zhao et al., 2010). The west is relatively humid and cold. In contrast, the east is dry and cold. There are two long-term meteorological stations in the NTS. The Daxigou meteorological station (86.84° E, 43.11° N) in the eastern part is at about 3540 m above sea level. The Snow-cover and Avalanche Research Station (SARS, 84.40° E, 43.26° N) lies in a valley in the western part of the NTS, at an elevation of about 1776 m. The mean annual air temperature (MAAT) and the mean annual precipitation around the Daxigou station were about −6 °C and 405 mm in 1990–2008, respectively (Sun et al., 2013). The MAAT near the SARS was about 1.3 °C, falling to −9.4 °C at 3580 m. The mean annual precipitation at the SARS was about 830 mm (Shi et al., 2009). The east-west contrast is also evident in the number and size of mountain glaciers. The west hosts more and larger glaciers than the east.

3 Methodology

We identified ARGs and measured their surface velocities by using InSAR and optical images. In this section, we first present the details of the InSAR processing for detecting the moving targets in the interferogram and the rules used to identify ARGs in Google Earth by visually interpreting their geomorphic features (Section 3.1). We then describe the method to derive the down-slope velocities of the ARGs (Section 3.2). Finally, we list and explain the criteria for compiling an inventory that contains the geomorphic and dynamic attributes of the identified ARGs, followed by a description of the uncertainty analysis (Section 3.3).

3.1 Identifying and mapping active rock glaciers

3.1.1 Identifying ground movements using SAR interferometry

The InSAR technique detects the ground movements by exploiting the phase difference between SAR images acquired at different times (Rosen et al., 2000). The phases in the differential interferogram are wrapped within $-\pi$ to π . One phase cycle corresponds to one-half wavelength (e.g., 11.8 cm for L-band) of ground displacements along the line-of-sight direction (Rosen et al., 2000; Wang et al., 2015). We used

135 wrapped interferograms rather than unwrapped displacement maps to detect ARGs because wrapped phases in the interferogram show apparent variations visually even if the ground movements are small, for instance, at centimeter level.

We used seven orbital paths of L-band ALOS PALSAR images acquired from 2007 to 2009 to cover the entire study area. All images were collected at a radar off-nadir angle of 38.7° in HH polarization and have a pixel spacing of 4.7 m in slant range and 3.2 m in azimuth. For each orbital path, we used one image pair to form one interferogram. All the PALSAR images we used, except for the Path 503, were acquired in
140 summer seasons. To achieve high interferometric coherence, we selected the images pairs with temporal spans of either 46 or 92 days and critical perpendicular baselines smaller than 600 m for further processing. Table 1 supplies detailed information on the interferometric pairs. With the availability of PALSAR images, we implemented the interferometric processing by using GAMMA software (Wegmüller et al. 1998). The topographic phases were estimated and removed by using the 1-arc-second SRTM digital elevation model
145 data with a spatial resolution of about 30 m. We applied multi-looking operation (2 looks in range and 5 looks in azimuth) and filtered interferometric phase using the adaptive Goldstein filter with a window size of 8 by 8 pixels. Finally, we obtained the interferogram maps with a spatial resolution of about 15 m.

However, we were unable to map the ARGs solely based on the phase variations in the interferograms. First, the phase variations can be caused by several kinds of error sources in SAR interferograms such as de-
150 correlation noise, residual topography contribution, and atmospheric delay (Liu et al., 2013; Strozzi et al., 2004). The contribution of the topographic error to the interferometric phase is proportional to the perpendicular baseline, the radar slant range, and the radar look angle (Rosen et al., 2000). The maximum perpendicular baseline of the interferograms produced in this study is about 600 m. Adopting the vertical accuracy of the digital elevation model as its nominal value of 16 m (Farr et al., 2004), we estimate that the
155 residual topographic phase in the InSAR measurements would be about 0.92 radians, corresponding to 1.7 cm. The atmospheric (including tropospheric and ionospheric) effects are generally long wavelength (1–10 km) signals (Hanssen, 2001), thus can be assumed nearly constant over a specific rock glacier. By using a local reference point just outside each rock glacier (see Section 3.2), we effectively removed these large-scale atmospheric errors. Second, the moving targets may correspond to other periglacial landforms such as
160 debris flow, solifluction, and protalus lobes (Scotti et al., 2013). Therefore, we decided to overlay the

interferograms on optical satellite images in Google Earth to identify the ARGs by visually interpreting their morphological features.

3.1.2 Identifying active rock glaciers using Google Earth images

The Google Earth images covering our study area were acquired by the SPOT satellite with spatial resolution generally smaller than 5 m (Visser et al., 2014). We selected the images that were cloud free and taken in summer seasons with limited snow cover, which facilitates our visual identification. ARGs are characterized by distinct flow features and structural patterns. Transversal or longitudinal flow features (ridges and furrows) are common on ARGs due to the deformation of internal ice (Clark et al., 1998; Humlum, 2000; Haeberli et al., 2006; Berthling, 2011). Many ARGs also have structural patterns such as the steep frontal slopes and side slopes with swollen bodies. Due to the constant supply of talus or debris, the surface textures of ARGs are usually different from the surrounding slopes, and their surface slopes usually have little or no vegetation. Based on these criteria, we visually examined the landforms in the Google Earth image that correspond to the moving targets in the interferograms and identified the ARGs. We marked the geographical location of each identified ARG and delineated its outline using Google Earth. We distinguished ARGs from debris-covered glaciers based on the de-correlation conditions of interferograms and their different visual features on the Google Earth images. Compared with rock glaciers, debris-covered glaciers generally move much faster (Janke et al., 2015), which results in large areas of de-correlation in our PALSAR interferograms. The surface of a debris-covered glacier is usually characterized by ice cliffs and supra-glacial lakes (Bolch et al., 2007). And the rooting zones of debris-covered glaciers are continuous with clean glacier ice (Davies et al., 2013; Lukas et al., 2007).

Based on the sources of rock materials that input into the surfaces and internal bodies of rock glaciers, we further classified the inventoried ARGs into two categories: moraine-derived active rock glaciers (MARGs) and talus-derived active rock glaciers (TARGs). MARGs develop beneath the end moraines of glaciers and transports mainly reworked glaciogenic materials (Lilleøren et al., 2013; Scotti et al., 2013). TARGs develop below talus slopes in which there is no visible ice upslope of the landform body, and hence transport mainly rock fragments generated from the adjacent rock walls (Lilleøren and Etzelmüller, 2011). For example, Figs. 2a and 2b show a typical MARG and TARG, respectively. In addition, we found some rock glaciers merge

to form a complex, and we classified the sub-branches as different rock glaciers in our inventory based on their different aspect angles.

190 We demonstrate the method described above using the identified ARGs in the zone “Z” (see its location in Fig. 1) which has an area of about 90 km². Fig. 3a shows the wrapped interferometric phase for this zone. The interferogram was made using images taken 46 days apart in 2007, on September 2 and October 18, respectively. This interferogram has good coherence with a mean value of 0.82, which makes it easy to identify the moving targets based on the phase variations. In the zone “Z”, we found ten moving targets. We
195 then visually checked the surface geomorphic features of each of the moving targets on the Google Earth images (Fig. 3b) and identified seven of ten as ARGs. For the other three moving targets, two are artifacts due to phase errors, and the other one is an alluvial fan other than rock glaciers, we grouped all these three as none rock glaciers. For a closer inspection, we zoom into the rock glacier in the northwest corner in Fig. 3a. Fig. 3c shows that outline determined from the variations of interferometric phases. Fig. 3d shows the
200 corresponding Google Earth image.

3.2 Deriving the surface velocity

We further estimated ground displacements using the InSAR measurements. We unwrapped the interferograms using the minimum cost flow method by selecting a reference point in the flat area with high coherence. For any ARG located in the overlapping regions of two adjacent paths, we selected the
205 interferogram with a higher coherence on the ARG to derive the surface velocity. Previous studies indicated that phase unwrapping is a major limiting factor to the use of SAR interferometry for monitoring active rock glaciers (Barboux et al., 2015). Phase unwrapping may fail in the areas where phase gradients are large due to fast slope movements. To minimize the phase unwrapping errors, we applied the phase filtering with a window of 8×8 pixels and masked out the de-correlated areas with a coherence threshold of 0.3 before phase
210 unwrapping. We chose a local reference patch (3×3 pixels) near but outside each ARG to calibrate the unwrapped phase. We then calculated the surface velocities of the ARGs by dividing the displacements by the temporal span of the interferogram. We then converted the InSAR-estimated velocities in the line-of-sight direction (V_{LOS}) into the down-slope direction (V_{slp}) using the following equation (Liu et al., 2013):

$$V_{slp} = \frac{V_{LOS}}{\sin(\alpha - \beta) \sin \theta_{inc} \cos \theta_{slp} + \cos \theta_{inc} \sin \theta_{slp}} \quad (1)$$

215 where α is the flight direction of the SAR satellite measured from the north; θ_{inc} is the local incidence angle which can be calculated based on the SAR looking geometry and local topography (i.e., digital elevation model) data; β and θ_{slp} are the aspect angle and slope angle of the ARG, respectively. Finally, we calculated the mean value of all pixels within each ARG to represent its overall velocity.

3.3 Characterizing the geomorphic and climatic parameters of active rock glaciers

220 To characterize the geomorphic features of the ARGs, we first determined the initial line point (ILP) and front line point (FLP) of each ARG, respectively. According to the definition given by Humlum (1998) and Sattler et al. (2016), the ILP is usually located in the rooting zone of a rock glacier and represents the place where permafrost creep starts. Given that the interferometric phase variations represent ground movements, we can outline an ARG by identifying where interferometric phase starts to vary from the local background.
225 We interpreted the boundary in the rooting zone of an ARG as the initial line where the permafrost starts to creep. If InSAR coherence was low in the rooting zone, we used morphologic features such as ridges and furrows instead to determine the initial line. We then used the central point of the initial line as the ILP for an ARG. The FLP, the lowest place where a rock glacier can reach, could be easily identified from InSAR and Google Earth images. Fig. 4 gives an example showing the determined ILP and FLP for a typical
230 TARG.

We also quantified the geomorphic (including altitude, area, length, shape, slope angle, and aspect angle) and climatic parameters (Mean Annual Air Temperature, MAAT and potential income of solar radiation, PISR) of each ARG. We determined the altitudes of the ILP and FLP from the SRTM digital elevation model. We then calculated the slope distance (L), mean slope angle (θ_{slp}) and the mean aspect angle (β)
235 based on the coordinates of ILP and FLP. Dividing the area by the square of length gives the aspect ratio, which distinguishes tongue-shaped (aspect ratio <1) from lobate-shaped (aspect ratio >1) ARGs. We extracted the MAAT at the FLP from the NCAR-NCEP global climate reanalysis and interpolated station measurements released by Gruber (2012). We calculated the PISR over one year (units: W/m^2) using the method described by Kumar et al. (1997) with the assistance of the digital elevation model.

240 With some assumptions, we performed a simple error analysis about the rock glacier parameters we estimated. First, with the high-resolution interferogram maps and Google Earth images, we estimated that the location of each ARG and FLP/ILP we determined is accurate within 50 m (i.e., three times of the

InSAR spatial resolution). The uncertainties of the FLP and ALP altitudes are 16 m, the nominal vertical accuracy of the SRTM digital elevation model. The uncertainties of the other geometric parameters can be estimated by error propagation. For instance, given a rock glacier with a length of 1000 m, an aspect angle of 80°, and a slope angle of 12°, we estimated that the uncertainties for length as 67.2 m, aspect as 3.8 °, and slope as 1.6 °. We calculated that the mean coherence of each ARG and consequently estimated the uncertainty of the mean InSAR measurements based on the empirical method of Hanssen (2001). We then estimated the uncertainties of surface velocities by using the Equation (1). The uncertainties of other geometric parameters (i.e., area and aspect ratio) are difficult to quantify due to the irregular shapes of the ARGs.

Finally, we compiled a spreadsheet to summarize the characteristics of the inventoried ARGs (see the supplementary files). Our inventory lists the geographical locations (including longitude, latitude, and altitude), the geomorphic attributes (including area, length, aspect ratio, slope angle, and aspect angle), the climatic factors (i.e., PISR and MAAT), and the surface velocity and its associated uncertainty of each rock glacier.

4 Results

We identified and mapped a total of 261 ARGs across the NTS (see Fig.1). Table 1 lists the number of ARGs identified in each satellite path. The number of ARGs we compiled is a conservative estimation of all the ARGs in the NTS due to the following three reasons. First, we may have missed some ARGs due to the geometric distortions such as shadows and layovers in the SAR images. For the PALSAR images used in this study, the rock glaciers facing east with the slope angles larger than 51.3° are in the radar shadows, and the rock glaciers facing west with slope angles larger than 38.7° are in the layover regions. These distortions would result in significantly phase de-correlation and make it difficult to identify rock glaciers in these regions. Second, ARGs facing nearly north or south might also have been missed, as InSAR (using images from all space missions, including ALOS) is not sensitive to ground motions along these directions. Finally, some small ARGs could not be identified as the interferogram maps have a moderate resolution of about 15 m.

270 In the following subsections, we first present some general statistics of the inventory (Section 4.1). We then
characterize the altitude distribution of the ARGs in Section 4.2 and describe of the surface velocities of the
ARGs in Section 4.3.

4.1 General statistics of the inventory

275 Table 2 provides the overall information of the inventoried ARGs in the NTS. Among the 261 ARGs we
mapped, 179 (69 %) are MARGs and 82 (31 %) are TARGs. The MARGs are generally longer, steeper, and
larger than the TARGs. The mean FLP altitudes for three groups, namely, all the ARGs, the MARGs, and
the TARGs, are 3174 m, 3208 m, and 3099 m, respectively. Their mean ILP altitudes are 3486 m, 3516 m,
and 3420 m, respectively. These figures indicate that the favorable altitude for ARGs in the NTS is above
3000 m, which is consistent with the previous reports of Liu et al. (1995) and Zhu et al. (1992b). Most of the
ARGs are tongue-shaped, with a mean aspect ratio of about 0.25. The mean area of the MARGs is nearly
280 twice as large as that of the TARGs. The ARGs cover a total area of about 91.5 km², 85 % of which is
occupied by MARGs.

Taking all ARGs as a single group, their ILP altitudes and FLP altitudes both show nearly norm distribution
(Figs. 5a and 5d). The majority of ARGs have the ILP altitudes higher than about 3300 m (Fig. 5a) and the
FLP altitudes higher than about 3000 m (Fig. 5d). ILPAs and FLP altitudes show different statistic
285 distributions between the MARGs and TARGs. The histogram of ILP altitude for the MARGs shows a sharp
increase at about 3300 m and a sharp decrease at about 3800 m (Fig. 5b). In contrast, the histogram of ILP
altitude for the TARGs shows a nearly even distribution, though with some degree of randomness (Fig. 5c).
The FLP altitudes for MARGs and TARGs both show nearly norm distributions (Figs. 5e–f). The minimum,
median, and maximum FLP altitudes of the MARGs are all higher than those of the TARGs, indicating that
290 the MARGs develop on higher slopes than the TARGs.

In the inventory, 70 % of the ARGs (number: 182) are located on north-facing (defined between NW and
NE) slopes (Fig. 6a), with the NE aspect predominating (56 %), indicating the north-facing slopes are the
most suitable slopes for rock glacier development and formation in the NTS. The number of north-facing
MARGs and TARGs are 134 and 48, respectively, accounting for the 75 % and 59 % of the total numbers of
295 MARGs and TARGs, respectively. The difference is probably because the aspect distribution of the
glaciers, which influence the aspect of MARGs as the evolution of MARGs are controlled by the input

glacier moraines. We also noted that the majority of glaciers in the NTS are north-facing, controlled by topography, climate, and geometric factors (Aizen et al., 1995; Li and Li, 2014). Compared with the MARGs, the TARGs are more evenly distributed across all aspects. This pattern is consistent with that found in rock glaciers in the central Italian Alps and Southern Carpathians (Scotti et al., 2013; Onaca et al., 2016).

The subsurface thermal condition is another major factor controlling the development of ARGs, which is influenced by solar radiation. Fig. 6b shows the variations of PISR with the aspect angles. The mean value of PISR for the north-facing and south-facing slopes are $8.83 \times 10^5 \text{ W/m}^2$ and $10.46 \times 10^5 \text{ W/m}^2$, respectively. The south-facing ARGs typically receive higher PISR than their north-facing counterparts. As most of the ARGs are north-facing, we conclude that slopes with lower PISR favor the presence of ARGs. This is probably because lower PISR helps to preserve ground ice inside ARGs.

4.2 Altitudinal distribution of the active rock glaciers

To explore how the factors would impact the altitude distribution of the ARGs, we calculated the Pearson correlation coefficients between the FLP altitudes and the environmental factors listed in Section 3.3. FLP altitude denotes the lowest altitude that an ARG can reach and is frequently used as the lower boundary for the presence of mountain permafrost locally (Lilleøren et al., 2013; Schmid et al., 2015). For the ARGs in our inventory, the correlation coefficients between the FLP altitudes and the longitude, latitude, MAAT, PISR, slope angle, and aspect angle are 0.47, -0.51, -0.86, 0.29, -0.35, and -0.08, respectively.

The simple correlation analysis confirms the strong influence of the geographical locations on the altitude distribution of the ARGs (Fig. 7a and 7b). The FLP altitudes generally increase from west to east and decrease from south to north. This spatial pattern could be mainly because the NTS lays with a strike of about N20°W extending from northwest to southeast. Along this direction, the air temperature increases with lower latitude, thus increasing the lowest altitude for the development of rock glaciers. Moreover, glaciers would also influence the altitude distribution of ARGs as MARGs generally develop beneath the end moraines of glaciers. The western part of the NTS is relatively more humid. Thus, the larger and longer glaciers would develop and cause the MARGs in the west having lower FLP altitudes than the eastern ones.

325 Additionally, we found different altitude distributions of ARGs in the western and eastern parts (Fig. 7a). The nearly linear pattern in the east is more apparent than that in the west. We performed a T-test on the similarity of the FLP altitude distributions in the two sub-regions. The P-value is smaller than 0.01 at the 95 % confidence level. Therefore, we conclude that the altitude distribution in the western NTS is significantly different from those located in the eastern part. The relatively scattering pattern in the west indicates that the altitude distributions of the ARGs there are not dominantly controlled by the geographical location (i.e., longitudes). There could be other factors influencing the altitude distributions in the west. For instance, Bolch and Gorbunov (2014) revealed that the characteristics of the contributing area (e.g., the area, slope, and elevation range) of rock glaciers would influences their altitude distribution as well.

335 The correlation analysis also reveals the relative importance of various factors to the rock glacier distributions. The highest correlation coefficient is found at the factor “MAAT”. Although the blocky material of the rock glaciers may lower the ground temperature from the air temperature, this high correction implies that the MAAT may influence ground thermal conditions and thus the formation, evolution, and survival of the ARGs. A moderate positive correlation is observed at the factor “PISR”. Receiving a higher PISR, the ground temperature is likely higher and the internal ice is more likely to melt. The correlation between the slope angles and FLP altitudes are associated with the favorable presence of TARGs on the steep slopes. We found no obvious correlation between the aspect angles and FLP altitudes.

340 **4.3 Surface velocities of the active rock glaciers**

We were conservative in conducting statistical analyses on the surface velocities by only including the ARGs with a mean coherence higher than 0.3 and a mean velocity larger than 5 cm yr⁻¹. Finally, the surface velocities of 170 ARGs (including 111 MARGs and 59 TARGs) were documented (Fig. 8). The surface velocities of the 170 ARGs show a spatially heterogeneous pattern over the NTS. Most of ARGs (84 %) 345 have surface velocities lower than 60 cm yr⁻¹. The maximum surface velocities in the eastern and western parts are about 89 and 114 cm yr⁻¹, respectively. The mean velocity and the standard deviation of all ARGs are 37 cm yr⁻¹ and 21 cm yr⁻¹, respectively. The maximum velocity uncertainty is 28.8 cm yr⁻¹, and the mean uncertainty is 7.5 cm yr⁻¹.

We selected two pairs of ARGs to inspect the spatial variations of surface velocities closely (Figs. 8a–b). 350 The two ARGs in each pair are adjacent to each other. Therefore, we assumed that they developed in similar

topo-climatic environments (e.g., similar altitude, MAAT, and precipitation). The surface velocities of ‘ARG1’ show a spatial homogeneity pattern while these of the other three all show a spatially heterogeneous pattern. The fastest moving zones are located near the center, the rooting zone, and the front of ‘ARG2’, ‘ARG3’, and ‘ARG4’, respectively. This significant heterogeneity of surface velocities within ARGs indicates that the kinematics of surface movements are complex. Previous studies have demonstrated that the surface velocities ARGs are not only influenced by topo-climatic factors but also the ice condition and internal structure of ARGs (Haeberli et al., 2006; Serrano et al., 2010; Schoeneich et al., 2015). However, it is difficult to determine and quantify the ground ice conditions or ground thermal conditions of the ARGs in this study. Nevertheless, the spatial variabilities of velocities at both the local and regional scales suggest that the dynamics of ARGs are not controlled by any single factor, but a combination of many factors. In addition, the SAR images we used were acquired at different times, which may also contribute to the spatial heterogeneity of the surface velocities. We used seven pairs of PALSAR images, one from each path, to cover the study area. However, the acquisition times for each image pairs are different (Table 1). Recent studies show that the surface velocity of rock glacier may vary seasonally (Liu et al., 2013; Wirz et al., 2016). Moreover, strong precipitations or snowmelt may also influence the surface velocities. In this study, we simply chose these PALSAR images for the inventory exercise and ignored the temporal dynamics of rock glaciers.

4.4 Lower limit of permafrost occurrence in the Northern Tien Shan

We used the inventoried ARGs as a proxy of permafrost to infer lower limit of permafrost occurrence in the NTS. The previous estimates of the lower limit of permafrost presence in the NTS were mainly based on field surveys near the Urumqi River source region (87.00° E, 43.07° N) in the east and near the Haxilegen Pass (84.45°E, 43.77° N) region in the west (Qiu et al., 1983; Jin et al., 1993; Qiu, 1993). However, these site-based estimations may not be representative of the whole study area. Therefore, the ARGs we inventoried are valuable for re-estimating the permafrost distribution for this region. Permafrost is unlikely to develop below the FLP, and the proportion and extent of permafrost usually increase towards higher altitudes. Because our inventory shows that MARGs generally develop on higher slopes than TARGs (see Section 4.1), here we only used the FLP altitudes of TARGs to estimate the lower limit of permafrost.

We grouped the inventoried TARGs into different categories based on their locations (i.e., east and west of 86°E) and aspect angles (i.e., north-facing and south-facing) to infer the lower limit of permafrost under different environmental conditions. The first row of Table 3 summarizes their altitudinal limits: 2490 m and 2583 m for the north-facing and south-facing slopes in the west, respectively; and 2895 m and 3088 m for the north-facing and south-facing slopes in the east, respectively. Overall, the altitudes of the inventoried ARGs increase from west to east as shown in Fig. 7a.

However, these estimates may not give an entirely accurate picture of the permafrost limit for the whole study area, because they are based on a few specific ARGs that have the lowest FLP altitudes in the inventory. For example, the TARG with the lowest FLP altitude (i.e., 2490 m) is located on a north-facing slope in the western part of the NTS (shown in Fig. 9c, outlined by the blue polygon). We cannot rule out the possibility that this particular ARG may be a local anomaly and therefore cannot fully represent the permafrost presence in the broader NTS. Thus, we adopted an alternative method in a statistical sense, which approximates the lower limit of permafrost by subtracting the standard deviation of all FLP altitudes in the inventory from their mean values. The second row of Table 3 lists these statistics-based estimates: 2772 m and 2828 m for the north-facing and south-facing slopes in the west, respectively; and 3005 m and 3041 m for the north-facing and south-facing slopes in the east, respectively. The largest difference between the statistics-based and lowest-altitude-based is 282 m, indicating that both estimates are consistent, although the statistics-based values are normally higher. Therefore, we suggest the lower limit for the permafrost distribution in the NTS is about 2500–2800 m.

The third row of Table 3 summarizes the field-based estimates of the lowest altitude of permafrost given by Qiu et al. (1983). We note that the results of the field surveys are all higher than these inferred from our lowest-altitude-based estimates. We also note that the field-based results are all lower (and higher) than our statistics-based estimates for the north-facing (and south-facing) slopes. The largest differences between the lowest-altitude-based and the field-based estimates are 467 m and 162 m for the western and eastern parts, respectively. The largest discrepancies between the statistics-based and field-based estimates are 222 m and 209 m, respectively. One possible reason for these discrepancies is that our results based on ARG inventory give regional estimates, while the field surveys give site-specific estimates. Additionally, the ARGs move downslope and the fronts of those low-lying ARGs may reach places free of permafrost. Furthermore, the

permafrost conditions in the NTS may have changed in the past two decades. A recent study shows strong permafrost degradation in the Urumqi River Source region since 1992 (Zhao et al., 2010).

5 Discussion

5.1 Comparisons with the previous studies of rock glaciers in the Tien Shan

410 Previous studies of rock glaciers in the NTS are limited with most of them concentrating in the Urumqi River source region. Interpreting aerial photos acquired in the late 1980s and early 1990s, several researchers (Cui and Zhu, 1989; Zhu, 1992a; Zhu et al., 1992b; Liu et al., 1995) identified hundreds of rock glaciers in the NTS. They found that most of the identified rock glaciers are tongue-shaped, located at altitudes between 3300 m and 3900 m, and facing north. These findings are generally consistent with our
415 inventory. These previous studies also revealed a homogeneity pattern of the ARG surface velocities. Cui and Zhu (1989) and Zhu (1992a) measured the movements of the marked boulders on the front slopes of five rock glaciers near the Urumqi River source region, and estimated that their surface velocities varied from 1 cm yr⁻¹ to 75 cm yr⁻¹. Moreover, they found that one rock glacier (referred to as ‘RG4’ in their study) moved at about 49 cm yr⁻¹ between 1985 and 1986. However, they estimated that its mean velocity was about 6 cm
420 yr⁻¹ from 1960 to 1986. Our measurements show that the largest velocity is located the western part of the NTS, which is also consistent with the findings of Cui and Zhu (1989) and Zhu et al. (1992b). Yet these previous studies did not provide any detailed information such as geographical and geomorphic attributes of the identified rock glaciers. Thus, we cannot compare these field-based estimates with our measurements in further detail.

425 Recent studies of rock glaciers in the Tien Shan have been focusing in two sub-regions: (1) the Djungar Ala Tau in Kazakhstan at about 400 km northwest of our study area and (2) the Ile Alatau and Kungöj Ala-Too mountain ranges (42.5° to 43.5° N, 75° to 79°E) at the border between Kazakhstan and Kyrgyzstan. Gorbunov and Titkov (1992) identified about 850 ARGs in the first region. Comparing their inventory with ours, we find that the rock glaciers in Djungar Ala Tau are at lower altitudes than that in the NTS, which
430 likely results from their more northerly latitude. Gorbunov et al. (1998) inventoried 1034 rock glaciers in the second region, of which at least 851 are identified to be active. Similar to our results, they found that the MARGs occupy a larger area than the TARGs. We also find the altitudinal distributions of the rock glaciers

there are similar to that in the NTS. Studies revealed that the annual displacement rates of the ARGs in these regions range from less than 1 m yr⁻¹ to about 11 m yr⁻¹ (Gorbunov and Titkov, 1992; Bolch and Gorbunov, 2014), faster than the ones we mapped in the NTS.

5.2 Limitations of using active rock glaciers to determine the lower limit of permafrost

The moderate discrepancies between our estimates and the field surveys of the altitudinal limits for permafrost occurrence in the NTS demonstrated the feasibility of our method to infer the permafrost distribution. However, several factors still exist and limit the accuracy of our method for quantifying the lower limit of permafrost. These factors include (1) the ambiguity about the genesis of rock glaciers, (2) the high heterogeneity of ground thermal regime, and (3) the uncertainties in the use of FLP altitudes of the ARGs to infer permafrost limit.

First, it is still debatable to use active rock glaciers as representatives of the exact permafrost boundaries. There are two contradictory viewpoints regarding the genesis of rock glaciers. One holds rock glaciers are permafrost creep features and form in a permafrost environment. The other one holds that rock glaciers form through a continuum of glacial to periglacial processes and thus they may also be related to glaciers in non-permafrost environments (Clark et al., 1998; Berthling, 2011). To avoid this ambiguity, we only used the talus-derived ARGs in this study to infer the lower limit of permafrost in the NTS.

Second, as shown in Section 4.2, the altitudinal distributions of the ARGs in the NTS indicate that the presence of rock glaciers is primarily governed by the ground thermal regime. However, the ground thermal regime in the alpine region can be highly heterogeneous in space. In Transili Alatau Tien Shan, the mean annual temperatures inside the coarse debris could be 2.5–4.0 °C cooler than the MAATs, as the blocky debris favors cooler temperatures allowing rock glaciers to exist at elevations where permafrost is otherwise unlikely (Gorbunov et al., 2004). Thus, individual rock glacier only serves as a local indicator of permafrost occurrence. This is why we estimated the lower limit of permafrost occurrence in the regional scale in lowest-altitude-based and statistics-based perspectives. Nevertheless, the statistics show that the mean MAAT at the TARGs is -5.4 °C, and 83 % of the TARGs have the MAAT lower than -4 °C. This indicates that the TARGs we used for estimating the lower limit of permafrost are located in a cold environment, and thus reinforcing the credibility of our estimates.

460 Lastly, several sources of uncertainty exist in the use of FLP altitudes of ARGs to infer the lowest altitude of permafrost occurrence in the NTS. On one hand, ARGs move downslope and may export permafrost into lower altitudes that are climatically unfavorable for permafrost formation. Thus, our estimates may give a bias towards a lower than the true permafrost limit. On the other hand, we did not identify inactive rock glaciers, which are also indicators of permafrost occurrence. Since inactive rock glaciers generally develop
465 at lower altitudes than active ones (Sollid and Sørbel, 1992), our estimates may bias the permafrost limit towards a higher value. Additionally, we cannot rule the possibility that some extremely low-lying ARGs are not included, which may lower our estimated altitude limits. These three kinds of uncertainties justify the expression of a range of estimations rather than exact values of the altitude limits as given in Section 4.4.

5.3 Comparison with the existing permafrost distribution maps

470 We cross-validated the inferred permafrost distribution by comparing our inventoried ARGs with the existing permafrost distribution maps. We selected three permafrost maps that covers the NTS region: (1) the Map of Snow, Ice and Frozen Ground in China released by Cold and Arid Regions Environmental and Engineering Research Institute, Chinese Academy of Sciences (Shi and Mi, 1988), which we refer to as the CAS map, (2) the Circum-Arctic Map of Permafrost and Ground Ice Conditions released by the International
475 Permafrost Association (Brown et al., 1998), referred to as the IPA map, and (3) the global permafrost zonation Index (PZI) map developed by Gruber (2012). The frozen ground in the CAS map is classified into high-latitude, plateau, and mountain permafrost with a scale of 1:4000000. The IPA map adopts the classes of continuous, discontinuous, sporadic, and isolated patches of permafrost extent with a scale of 1:1000000. The PZI map is generated based on the relationships between permafrost extent and long-term MAAT data
480 with a ground resolution of 1 km. The PZI values range from 0 to 1. Values close to 1 represent permafrost existing in nearly all conditions, while values close to 0 represent permafrost presenting only in the most favorable conditions. The PZI uncertainty is expressed with “fringe of uncertainty”, referring to a conservative or an anti-conservative variant than the “normal” scenario that considers the possibility of <10 % permafrost area as well (Gruber, 2012).

485 Fig. 9 compares the ARGs we inventoried in the NTS with the three permafrost maps described above. The dotted green and black lines in Fig. 9a outline the mountain permafrost extent from the CAS map and the discontinuous permafrost from the IPA map, respectively. The background color map in Fig. 9b shows the

PZI values. Most ARGs are located within the permafrost extents of the CAS and IPA maps (256 out of 261 are within the CAS; 249 are within the IPA). We also found that most of the ARGs have high PZI values. As
490 the PZI map has the highest spatial resolution among these three permafrost maps, we further compared our inventoried ARGs with the PZI map.

We randomly selected two sub-regions ‘Z1’ and ‘Z3’ (see Fig. 9b) in the western and eastern of the NTS, respectively, to examine the distributions of ARGs in the PZI map. It is evident that most of the MARGs are located above the PZI contour line of 0.8 (Figs. 10a and 10c). We selected the zone ‘Z2’ (see Fig.9b) as
495 another example as it contains both the MARG and TARG that have the lowest FLP altitude in their corresponding category. The MARG developing in the narrow valley (location: 84.2957°E, 44.0021°N, outlined by the red polygon in Fig. 10b) has an FLP altitude of 2575 m. The TARG (location: 84.2883°E, 44.0228°N, outlined by the blue polygon in Fig. 10b) has an FLP altitude of 2490 m. The PZI values at the front points of these two ARGs are still higher than 0.2.

500 The PZI value at the FLP of an ARG shows how favorable the lowest altitude that the rock glacier reaches would for permafrost to exist. The statistical distribution of PZI at FLPs shows that most ARGs (73 %) are located in the PZI interval of 0.5 to 0.9 (Fig. 11a). The PZI density peaks at about 0.8 for the MARGs and 0.5 for the TARGs (Figs. 11b–c). The PZI density decreases towards the lower PZI values for the MARGs, while decreases towards both ends of the distribution (Fig. 11c) for the TARGs. This difference in PZI
505 distribution is probably because the TARGs are located at relatively lower altitudes than the MARGs. The PZI values at lower altitudes show a larger variability as the air temperature increases. The mean PZI values at the FLPs are 0.64, 0.67, and 0.58 for all ARGs, MARGs, and TARGs, respectively, indicating the spatial distribution of the ARGs agrees well with the PZI map.

6 Conclusions

510 In this study, we successfully mapped and inventoried 261 active rock glaciers in the Northern Tien Shan of China by combining the use of the SAR interferometry and optical images from Google Earth. Based on the creep boundaries of the active rock glaciers determined by this novel method, we estimated the lower limit of the permafrost presence in the Northern Tien Shan. From the inventory and analyses, we draw the following conclusions:

- 515 (1) Most of the active rock glaciers in the Northern Tien Shan are moraine-derived, tongue-shaped, and
northeast-facing. The moraine-derived active rock glaciers are generally longer, steeper, and larger than
the talus-derived active rock glaciers. The total area of the active rock glaciers is about 91.5 km² and
moraine-derived ones occupy most of this area (85 %).
- 520 (2) The latitude/longitude locations have a strong influence on the altitude distribution the active rock
glaciers. We found the altitudes of active rock glaciers generally increase from west to east and decrease
from south to north. We also found distinct altitude distributions of active rock glaciers in the western
and eastern parts of the Northern Tien Shan (divided by 86°E), probably due to the influence of distinct
climates of these two sub-regions.
- 525 (3) We found that the lower limit of permafrost in the eastern part of the Northern Tien Shan is higher than
in the western part. The lower altitudinal limit for the permafrost distribution throughout the Northern
Tien Shan is about 2500–2800 m.

The study presented here provides the first comprehensive and modern documentation of the characteristics
of the active rock glaciers in the Northern Tien Shan of China. It updates the lower limit of permafrost
occurrence for this vast area. This inventory offers a baseline dataset for the further investigations on
530 permafrost modeling, slope stability, and water resource, etc. The successful application of the proposed
method in the Northern Tien Shan promises that this method can be used to the other high mountains
globally, thus will help to close the gaps in our knowledge of rock glaciers worldwide. This new knowledge
will be useful to infer alpine permafrost occurrence in high mountains.

Data availability

535 The locations and characteristic parameters of the 261 inventoried active rock glaciers for downloading and
visualizing are available in the supplementary files. Both the KMZ file and shapefiles are provided.

List of Acronyms

ALOS: Advanced Land Observing Satellite

ARG: Active Rock Glacier

540 CAS: Chinese Academy of Sciences
 FLP: Front Line Point
 GPS: Global Positioning System
 ILP: Initial Line Point
 InSAR: Synthetic Aperture Radar Interferometry
 545 IPA: International Permafrost Association
 MAAT: Mean Annual Air Temperature
 MARG: Moraine-derived Active Rock Glacier
 NTS: Northern Tien Shan
 PALSAR: The Phased Array type L-band Synthetic Aperture Radar
 550 PISR: Potential Income of Solar Radiation
 PZI: Permafrost Zonation Index
 SRTM: Shuttle Radar Topography Mission
 TARG: Talus-derived Active Rock Glacier

Acknowledgements

555 We thank Tobias Bolch, Gengnian Liu, Tazio Strozzi, and the Editor for their constructive and insightful reviews, which have helped to improve the quality of this paper. The ALOS PALSAR data are copyrighted by the Japan Aerospace Exploration Agency and provided by the Alaska Satellite Facility, University of Alaska Fairbanks. The CAS permafrost map is provided by Environmental and Ecological Science Data Center for West China, National Natural Science Foundation of China (<http://westdc.westgis.ac.cn>). The
 560 IPA permafrost map is provided by the Frozen Ground Data Center at the National Snow and Ice Data Center (NSIDC), Boulder, Colorado, USA (<http://nsidc.org/data/GGD318/versions/2>). The MAAT and permafrost map zonation data are downloaded from http://www.geo.uzh.ch/microsite/cryodata/pf_global/. Some figures in this paper were plotted using the Generic Mapping Tools (Wessel et al., 2013). Work at The Chinese University of Hong Kong was supported by Hong Kong Research Grants Council Grants
 565 CUHK24300414 and CUHK14300815.

References

- Angillieri, M. Y. E.: A preliminary inventory of rock glaciers at 30°S latitude, Cordillera Frontal of San Juan, Argentina, *Quat. Int.*, 195, 151–157, doi:10.1016/j.quaint.2008.06.001, 2009.
- 570 Aizen, V.B., Aizen, E.M. and Melack, J.M.: Climate, snow cover, glaciers, and runoff in the Tien Shan, central Asia, *Journal of the American Water Resources Association*, 31(6), 1113–1129, 1995.
- Avian, M., Kellerer-Pirklbauer, A., and Bauer, A.: LiDAR for monitoring mass movements in permafrost environments at the cirque Hinteres Langtal, Austria, between 2000 and 2008, *Nat. Hazards Earth Syst. Sci.*, 9, 1087–1094, doi:10.5194/nhess-9-1087-2009, 2009.
- 575 Barboux, C., Strozzi, T., Delaloye, R., Wegmüller, U., and Collet, C.: Mapping slope movements in alpine environments using TerraSAR-X interferometric methods, *Int. J. Photogramm. Remote Sens.*, 109, 178–192, doi:10.1016/j.isprsjprs.2015.09.010, 2015.
- Barsch, D.: *Rock Glaciers: Indicators for the Present and Former Geoecology in High Mountain Environments*. Berlin: Springer, 1996.
- 580 Berger, J., Krainer, K., and Mostler, W.: Dynamics of an active rock glacier (Oetztal Alps, Austria), *Quat. Res.*, 62, 233–242, doi:10.1016/j.yqres.2004.07.002, 2004.
- Berthling, I.: Beyond confusion: rock glaciers as cryo-conditioned landforms, *Geomorphology*, 131, 98–106, doi:10.1016/j.geomorph.2011.05.002, 2011.
- Boeckli, L., Brenning, A., Gruber, S., and Noetzli, J.: Permafrost distribution in the European Alps: calculation and evaluation of an index map and summary statistics, *The Cryosphere*, 6, 807–820, doi:10.5194/tc-6-807-2012, 2012.
- 585 Bolch, T., Buchroithner, M. F., Kunert, A., Kamp, U.: Automated delineation of debris-covered glaciers based on ASTER data. In *Geoinformation in Europe (Proc. of 27th EARSel Symposium)*, Bozen, Italy, pp: 403–410, 2007.
- Bolch, T., & Gorbunov, A.P. (2014). Characteristics and Origin of Rock Glaciers in Northern Tien Shan (Kazakhstan/Kyrgyzstan). *Permafrost and Periglacial Processes*, 25, 320–332.
- 590 Bollmann, E., Girmair, A., Mitterer, S., Krainer, K., Sailer, R., and Stotter, J.: A rock glacier activity index based on rock glacier thickness changes and displacement rates derived from airborne laser scanning, *Permafr. Periglac. Proc.*, 26, 347–359, doi:10.1002/ppp.1852, 2015.

- Brenning, A.: Geomorphological, hydrological and climatic significance of rock glaciers in the Andes of Central Chile, *Permafr. Periglac. Proc.*, 16, 231–240, doi:10.1002/ppp.528,, 2005.
- 595 Brenning, A., Grasser, M., and Friend, D. A.: Statistical estimation and generalized additive modeling of rock glacier distribution in the San Juan Mountains, Colorado, United States, *J. Geophys. Res-Earth Surface*, 112, doi:10.1029/2006jf000528, 2007.
- Brenning, A., Long, S. L., and Fieguth, P.: Detecting rock glacier flow structures using Gabor filters and IKONOS imagery, *Remote Sens. Environ.*, 125, 227–237, doi:10.1016/j.rse.2012.07.005, 2012.
- 600 Brenning, A. and Trombotto, D.: Logistic regression modeling of rock glacier and glacier distribution: Topographic and climatic controls in the semi-arid Andes, *Geomorphology*, 81, 141–154, doi:10.1016/j.geomorph.2006.04.003, 2006.
- Brown, J., Ferrians, O., Heginbottom, J. A., and Melnikov, E.: *Circum-Arctic Map of Permafrost and Ground-Ice Conditions*, USA Natl. Snow Ice Data Center, Boulder, Colorado, 1998.
- 605 Clark, D. H., Steig, E.J., Potter, N. Jr and Gillespie, A.R.: Genetic variability of rock glaciers, *Geogr. Ann.*, 80A, 175–182, 1998.
- Cui Z. J.: The discovery of the Kunlunshan-type rock glacier and the latest classification of rock glaciers. *Chin. Sci. Bull.*, 810–813, 1984. (in Chinese)
- Cui, Z. J. and Zhu, C.: The structure pattern of temperature and mechanism of the rock glaciers in Urumqi River region in Tien Shan, *Chin. Sci. Bull.*, 134–137, 1989. (in Chinese)
- 610 Davies, B. J., Glasser, N. F., Carrivick, J. L., Hambrey, M. J., Smellie, J. L., and Nyvlt, D.: Landscape evolution and ice-sheet behaviour in a semi-arid polar environment: Geological Society, London, Special Publications, 381, 353–395, doi:10.1144/Sp381.1, 2013.
- Farr, T. G., Rosen, P. A., Caro, E., Crippen, R., and Duren, R.: The Shuttle Radar Topography Mission, *Rev. Geophys.*, 45, RG2004, doi:10.1029/2005RG000183, 2004.
- 615 Gorbunov, A. P., Marchenko, S. S., and Seversky, E. V.: The thermal environment of blocky materials in the mountains of Central Asia. *Permafrost and Periglacial Processes*, 15(1), 95-98, 2004.

- Gorbunov, A. P., Seversky, E. V., Titkov, S. N., Marchenko, S. S. and Popov, M.: Rock glaciers, Zailiyskiy Range, Kungei Ranges, Tienshan, Kazakhstan. National Snow and Ice Data Center/World Data Center for Glaciology: Boulder, CO. Digital media, 1998.
- 620 Gorbunov, A.P., Titkov, S.N., Polyakov, V.: Dynamics of the Rock Glaciers of the Northern Tien Shan and the Djungar Alatau, Kazakhstan. *Permafrost and Periglacial Processes*, 3, 29–39, 1992.
- Gruber, S.: Derivation and analysis of a high-resolution estimate of global permafrost zonation, *The Cryosphere*, 6, 221–233, doi:10.5194/tc-6-221-2012, 2012.
- Haeberli, W., Hallet, B., Arenson, L., Elconin, R., Humlum, O., Kääb, A., Kaufmann, V., Ladanyi, B., Matsuoka, N.,
625 Springman, S., and Vonder Muhll, D.: Permafrost creep and rock glacier dynamics, *Permafr. Periglac. Proc*, 17, 189–214, doi:10.1002/ppp.561, 2006.
- Hanssen, R. F.: *Radar interferometry: data interpretation and error analysis*, Springer Science & Business Media, 2001.
- Humlum, O.: The climatic significance of rock glaciers, *Permafr. Periglac. Proc*, 9, 375–395, doi:10.1002/(Sici)1099-1530(199810/12)9:4<375::Aid-Ppp301>3.3.Co;2-S, 1998.
- 630 Humlum, O.: The geomorphic significance of rock glaciers: estimates of rock glacier debris volumes and headwall recession rates in West Greenland, *Geomorphology*, 35, 41–67, doi:10.1016/S0169-555x(00)00022-2, 2000.
- Ikeda, A. and Matsuoka, N.: Pebbly versus bouldery rock glaciers: Morphology, structure and processes, *Geomorphology*, 73, 279–296, doi:10.1016/j.geomorph.2005.07.015, 2006.
- Janke, J. R.: The occurrence of alpine permafrost in the Front Range of Colorado, *Geomorphology*, 67, 375–389,
635 doi:10.1016/j.geomorph.2004.11.005, 2005.
- Janke, J. R., Bellisario, A. C., and Ferrando, F. A.: Classification of debris-covered glaciers and rock glaciers in the Andes of central Chile, *Geomorphology*, 241, 98–121, doi:10.1016/j.geomorph.2015.03.034, 2015.
- Jin, H. J., Qiu, G. Q., Zhao, L., Wang, S. J., and Zeng, Z. G.: Thermal Regime of Alpine Permafrost in the Upper Reach of Urumqi River, Tian Shan, *Journal of Glaciology and Geocryology*, 15, 110–114, 1993. (in Chinese)
- 640 Kääb, A., Haeberli, W., and Gudmundsson, G. H.: Analysing the creep of mountain permafrost using high precision aerial photogrammetry: 25 years of monitoring Gruben rock glacier, Swiss Alps, *Permafrost Periglac.*, 8, 409–426, 1997.

- Kääb, A., Kaufmann, V., Ladstadter, R., and Eiken, T.: Rock glacier dynamics: implications from high-resolution measurements of surface velocity fields, In Eighth International Conference on Permafrost, 1, 501–506, 2003.
- 645 Kenyi, L. W. and Kaufmann, V.: Estimation of rock glacier surface deformation using SAR interferometry data, IEEE Trans. Geosci. Remote Sens., 41, 1512–1515, doi:10.1109/Tgrs.2003.811996, 2003.
- Konrad, S. K., Humphrey, N. F., Steig, E. J., Clark, D. H., Potter, N., and Pfeffer, W. T.: Rock glacier dynamics and paleoclimatic implications, *Geology*, 27, 1131–1134, doi:10.1130/0091-7613(1999)027<1131:Rgdapi>2.3.Co;2, 1999.
- Kumar, L., Skidmore, A. K., and Knowles, E.: Modelling topographic variation in solar radiation in a GIS
650 environment, *International Journal of Geographical Information Science*, 11, 475–497, doi:10.1080/136588197242266, 1997.
- Lambiel, C. and Delaloye, R.: Contribution of real-time kinematic GPS in the study of creeping mountain permafrost: Examples from the Western Swiss Alps, *Permafr. Periglac. Proc*, 15, 229–241, doi:10.1002/ppp.496, 2004.
- Li, S. and Yao, H.: Preliminary study of rock glaciers in the Gongga Mt. Area, *Journal of Glaciology and*
655 *Geocryology*, 9, 55–59, 1987. (in Chinese)
- Li, Y. A. and Li, Y. K.: Topographic and geometric controls on glacier changes in the central Tien Shan, China, since the Little Ice Age, *Ann. Glaciol.*, 55, 177–186, doi:10.3189/2014AoG66A031, 2014.
- Lilleøren, K. S. and Etzelmüller, B.: A Regional inventory of rock glaciers and ice-cored moraines in Norway, *Geografiska Annaler Series a-Physical Geography*, 93a, 175–191, doi:10.1111/j.1468-0459.2011.00430.x, 2011.
- 660 Lilleøren, K. S., Etzelmüller, B., Gartner-Roer, I., Kääb, A., Westermann, S., and Gudmundsson, A.: The distribution, thermal characteristics and dynamics of permafrost in Trollaskagi, Northern Iceland, as inferred from the distribution of rock glaciers and ice-cored moraines, *Permafr. Periglac. Proc*, 24, 322–335, doi:10.1002/ppp.1792, 2013.
- Liu, G. N., Xiong, H. G., Cui, Z. J., and Song, C. Q.: The morphological features and environmental condition of rock glaciers in Tianshan mountains, *Scientia Geographica Sinica*, 15, 226–233, 1995. (in Chinese)
- 665 Liu, L., Millar, C. I., Westfall, R. D., and Zebker, H. A.: Surface motion of active rock glaciers in the Sierra Nevada, California, USA: inventory and a case study using InSAR, *The Cryosphere*, 7, 1109–1119, doi:10.5194/tc-7-1109-2013, 2013.

- Lukas, S., Nicholson, L. I., and Humlum, O.: Comment on Lønne and Lysa (2005): “Deglaciation dynamics following the Little Ice Age on Svalbard: Implications for shaping of landscapes at high latitudes”, *Geomorphology*, 84, 145–149, doi:10.1016/j.geomorph.2006.07.003, 2007.
- 670 Millar, C. I., Westfall, R. D., Evenden, A., Holmquist, J. G., Schmidt-Gengenbach, J., Franklin, R. S., Nachlinger, J., and Delany, D. L.: Potential climatic refugia in semi-arid, temperate mountains: Plant and arthropod assemblages associated with rock glaciers, talus slopes, and their forefield wetlands, Sierra Nevada, California, USA, *Quat. Int.*, 387, 106–121, doi:10.1016/j.quaint.2013.11.003, 2015.
- 675 Necsoiu, M., Onaca, A., Wigginton, S., and Urdea, P.: Rock glacier dynamics in Southern Carpathian Mountains from high-resolution optical and multi-temporal SAR satellite imagery, *Remote Sens. Environ.*, 177, 21–36, doi:10.1016/j.rse.2016.02.025, 2016.
- Onaca, A., Ardelean, F., Urdea, P., and Magori, B.: Southern Carpathian rock glaciers: Inventory, distribution and environmental controlling factors, *Geomorphology*, doi: 10.1016/j.geomorph.2016.03.032, 2016.
- 680 Qiu, G. Q.: Development condition of alpine permafrost in the Mt. Tianshan, China, *Journal of Glaciology and Geocryology*, 15, 96-103, 1993. (in Chinese)
- Qiu, G. Q., Huang, Y.Z. and Li, Z.F.: Basic Characteristics of permafrost in Tian Shan, China, *Proceedings of Second National Conference on Permafrost*, Lanzhou, 21–29. 1983. (in Chinese)
- Rosen, P. A., Hensley, S., Joughin, I. R., Li, F. K., Madsen, S. N., Rodriguez, E., and Goldstein, R. M.: Synthetic aperture radar interferometry, *Proceedings of the IEEE*, 88, 333–382, doi:10.1109/5.838084, 2000.
- 685 Sattler, K., Anderson, B., Mackintosh, A., Norton, K., and de Róiste, M.: Estimating permafrost distribution in the Maritime Southern Alps, New Zealand, based on climatic conditions at rock glacier sites, *Frontiers in Earth Science*, 4, doi:10.3389/feart.2016.00004, 2016.
- Schmid, M. O., Baral, P., Gruber, S., Shahi, S., Shrestha, T., Stumm, D., and Wester, P.: Assessment of permafrost distribution maps in the Hindu Kush–Himalayan region using rock glaciers mapped in Google Earth, *The Cryosphere*, 8, 2089–2099, doi:10.5194/tcd-8-5293-2014, 2015.
- 690 Schoeneich, P., Bodin, X., Echelard, T., Kaufmann, V., Kellerer-Pirklbauer, A., Krysiecki, J. M., and Lieb, G. K.: Velocity changes of rock glaciers and induced hazards, *Engineering Geology for Society and Territory*, Vol 1: Climate Change and Engineering Geology, 1, 223–227, doi:10.1007/978-3-319-09300-0_42, 2015.

- 695 Scotti, R., Brardinoni, F., Alberti, S., Frattini, P., and Crosta, G. B.: A regional inventory of rock glaciers and protalus ramparts in the central Italian Alps, *Geomorphology*, 186, 136–149, doi:10.1016/j.geomorph.2012.12.028, 2013.
- Serrano, E., de Sanjose, J. J., and Gonzalez-Trueba, J. J.: Rock glacier dynamics in marginal periglacial environments, *Earth Surf. Processes Landforms*, 35, 1302–1314, doi:10.1002/esp.1972, 2010.
- Shi, Z. W., Xu, J. R., Chen, Z. S., and Li, M. Y.: Analysis on climatic changes under global climatic change: a case
700 study of Tianshan Snow and Avalanche Research Station, *Journal of Mountain Science*, 27, 41–48, 2009. (in Chinese)
- Shi Y.F. and Mi D.S.: Map of Snow, Ice and Frozen Ground in China, SinoMaps Press, Beijing, 1988. (in Chinese)
- Sollid, J. L. and Sørbel, L.: Rock glaciers in Svalbard and Norway, *Permafr. Periglac. Proc.*, 3, 215–220, doi:10.1002/ppp.3430030307, 1992.
- Sorg, A., Kääb, A., Roesch, A., Bigler, C., and Stoffel, M.: Contrasting responses of Central Asian rock glaciers to
705 global warming, *Sci. Rep.*, 5, 8228, doi:10.1038/srep08228, 2015.
- Strozzi, T., Kääb, A., and Frauenfelder, R.: Detecting and quantifying mountain permafrost creep from in situ inventory, space-borne radar interferometry and airborne digital photogrammetry, *Int. J. Remote Sens.*, 25, 2919–2931, doi:10.1080/0143116042000192330, 2004.
- Sun, C., LI, C., Chen, Y., Zhang, M., Nie, Z., and Liu, G.: A long term monitoring of frost heaving in periglacial
710 environment in the Tianshan mountains, *Journal of Glaciology and Geocryology*, 35, 272–279, 2013. (in Chinese)
- Visser, V., Langdon, B., Pauchard, A., Richardson, D. M.: Unlocking the potential of Google Earth as a tool in invasion science. *Biological invasions*, 16(3), 513–2534, 2014.
- Wang, X. W., Liu, G. X., Yu, B., Dai, K. R., Zhang, R., Ma, D. Y., and Li, Z. L.: An integrated method based on DInSAR, MAI and displacement gradient tensor for mapping the 3D coseismic deformation field related to the 2011
715 Tarlay earthquake (Myanmar), *Remote Sens. Environ.*, 170, 388–404, doi:10.1016/j.zse.2015.09.024, 2015.
- Wegmüller, U., Werner, C., and Strozzi, T.: SAR interferometric and differential interferometric processing chain, *International Geoscience and Remote Sensing Symposium*, 2, 1106–1108, doi: 10.1109/IGARSS.1998.699687, 1998.
- Wessel, P., Smith, W. H. F., Scharroo, R., Luis, J. F., and Wobbe, F.: Generic Mapping Tools: improved version released, *Eos Trans. AGU*, 94, 409–410, 2013.

- 720 Wirz, V., Gruber, S., Purves, R.S., Beutel, J., Gärtner-Roer, I., Gubler, S., and Vieli, A.: Short-term velocity variations at three rock glaciers and their relationship with meteorological conditions. *Earth Surf. Dynam.*, 4, 103–123, 2016.
- Zhao, L., Liu, G. Y., Jiao, K. Q., Li, R., Qiao, Y. Q., and Chien, L. P.: Variation of the Permafrost in the Headwaters of the Urumqi River in the Tianshan Mountains Since 1991, *Journal of Glaciology and Geocryology*, 32, 223-230, 2010. (in Chinese)
- 725 Zhu, C.: Research on the feature of rock glaciers on the central Tian Shan Mountain, *ACTA Geographica Sinica*, 47, 233–241, 1992a. (in Chinese)
- Zhu, C, Cui Z. J., Yao Z.: Some problems from the slope periglacio-landform on middle Tian Shan Mountain, *Mountain Research*, 10, 65–64, 1992b. (in Chinese)

Table 1. List of interferograms made from the seven paths of ALOS PALSAR data. Interferogram names are the conjunction of acquisition dates of the two images. The last column gives the number of identified active rock glaciers (ARGs) in each interferogram.

Path/Frame	Interferogram	Time span (days)	Perpendicular baselines (m)	Number of identified ARGs
501/850	20070902-20071018	46	314	55
502/850	20070619-20070919	92	365	20
503/860	20070706-20071006	92	340	3
504/860	20080424-20080609	46	-12	36
505/860	20080209-20080326	46	211	57
506/870	20070711-20070826	46	256	78
507/870	20090802-20090917	46	586	51

Table 2. Statistical summary of the inventoried active rock glaciers. Each column gives the mean values and the standard deviations (the values in brackets) of the parameters.

	Number	FLP altitude (m)	ILP altitude (m)	Length (m)	Aspect Ratio (-)	Slope (°)	Area (km ²)	Total area (km ²)
All ARGs	261	3174 (262)	3486 (208)	1341 (899)	0.25 (0.19)	14 (6)	0.35 (0.33)	91.5
MARGs	179	3208 (264)	3516 (180)	1521 (988)	0.24 (0.14)	11 (4)	0.43 (0.36)	77.4
TARGs	82	3099 (243)	34205 (247)	947 (465)	0.25 (0.18)	19 (4)	0.17 (0.14)	14.1

Table 3. The lower altitudinal limits of permafrost distribution in the NTS inferred from this study using the inventoried TARGs. ‘This study (Min)’ denotes the altitudinal limits inferred from specific TARGs with the lowest FLP altitudes; ‘This study (Stat)’ denotes the altitudinal limits inferred from the statistics-based calculations of FLP altitudes. The limits from ‘Field surveys’ are based on the work of Qiu et al. (1983). The rows ‘Difference (Min)’ and ‘Difference (Stat)’ list the differences between the results inferred from this study and the field surveys, respectively. All the altitudes given by this study are derived from the SRTM digital elevation model data with an uncertainty of about 16 meters.

	West of 86°E		East of 86°E	
	North-facing	South-facing	North-facing	South-facing
This study (Min)	2490 m	2583 m	2895 m	3088 m
This study (Stat)	2772 m	2828 m	3005 m	3041 m
Field surveys	2730 m	3050 m	2900 m	3250 m
Difference (Min)	-240 m	-467 m	-5 m	-162 m
Difference (Stat)	42 m	-222 m	105 m	-209 m

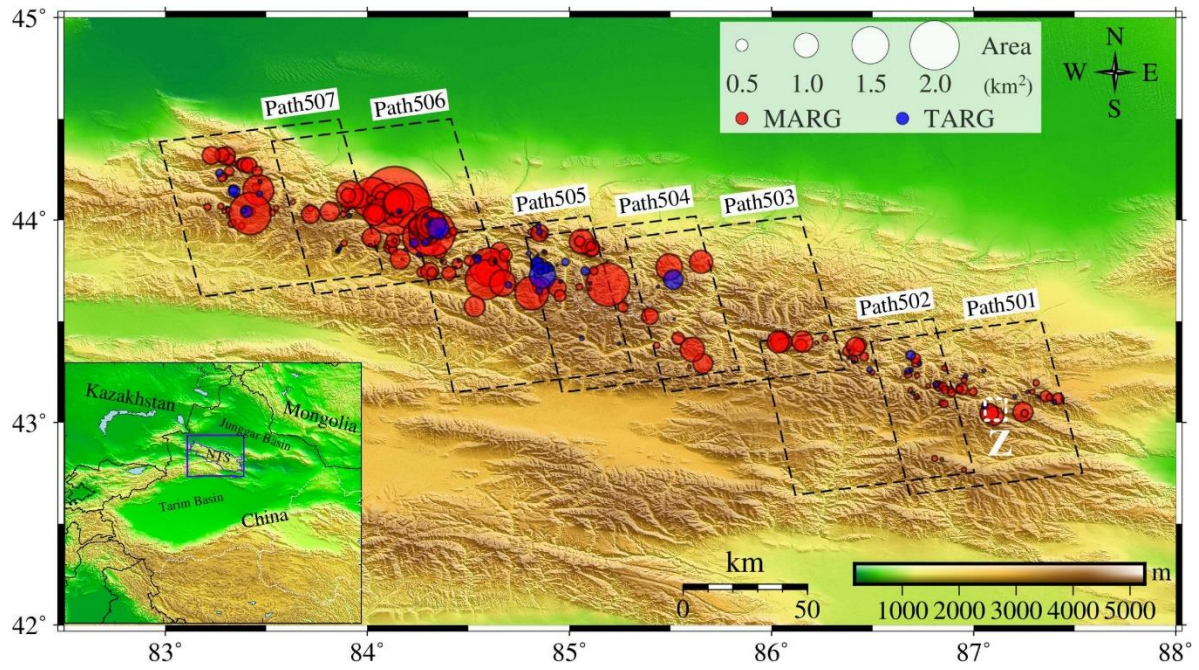


Figure 1. Topography map of the Northern Tien Shan (NTS) of China. The black dashed boxes outline the footprints of seven frames of PALSAR frames along Path 501–507. The red and blue circles represent moraine-derived active rock glaciers (MARGs) and talus-derived active rock glaciers (TARGs), respectively. The circle size represents rock glacier area. The white dashed box (labeled as ‘Z’) is shown in Figs. 3a and 3b.

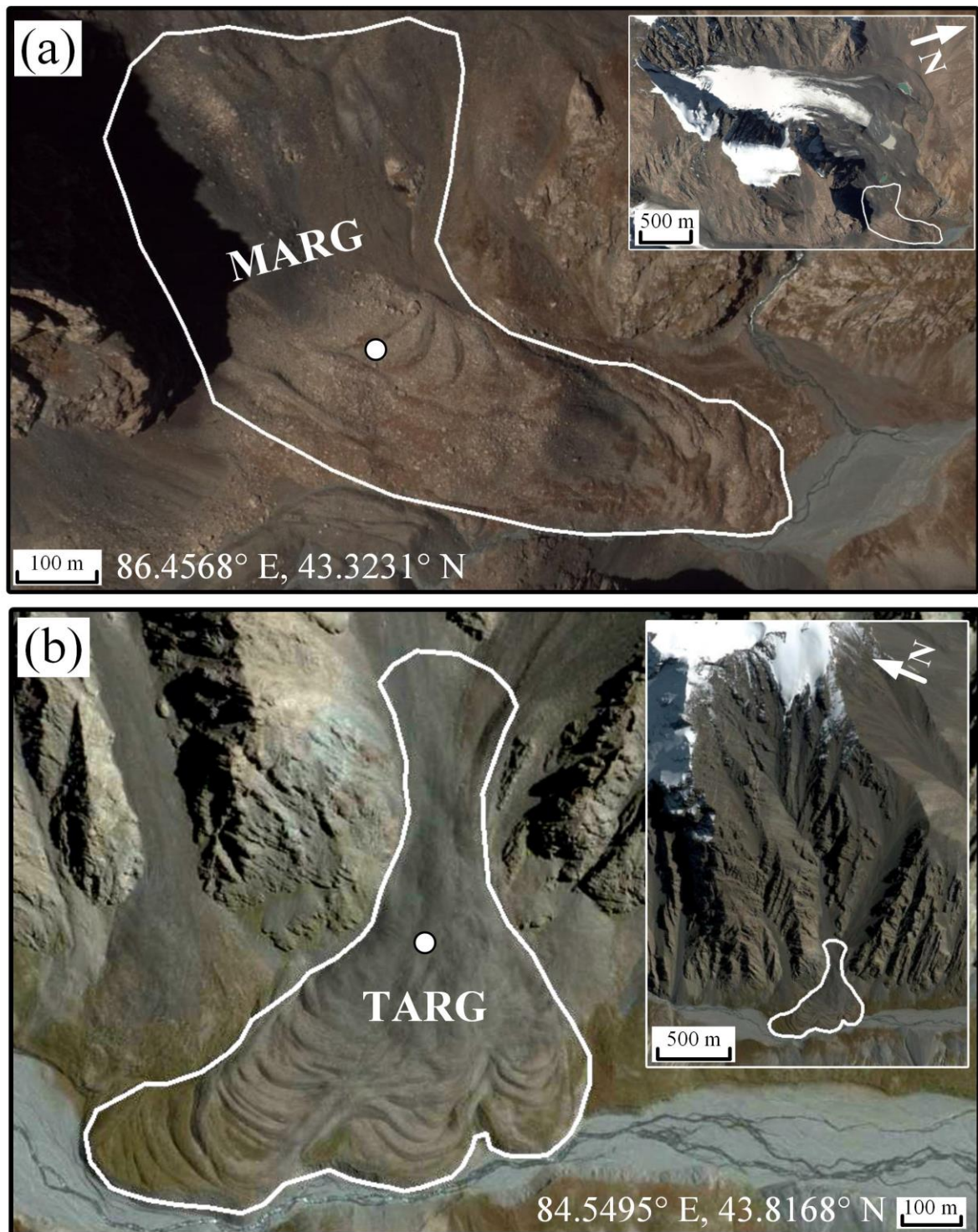


Figure 2. Google Earth images of (a) a typical moraine-derived active rock glacier (MARG) and (b) a talus-derived active rock glacier (TARG). The white dots represent the central location of the ARGs with their longitude and latitude given at the bottom of the figures. The inset images show the topographic and morphologic features surrounding the same rock glaciers.

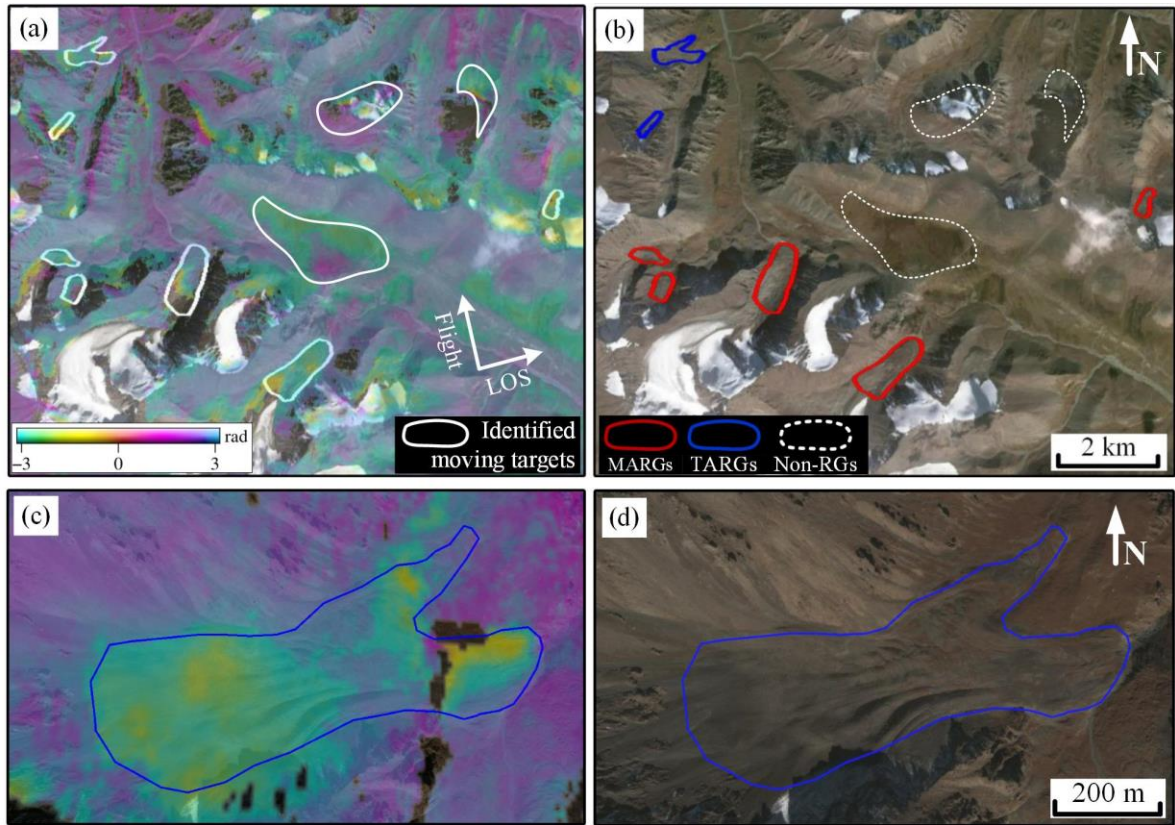


Figure 3. Examples of the identified active rock glaciers in the zones ‘Z’ shown in Fig. 1. (a) shows the wrapped interferometric phase (in radians) for the pair 20070902-20071018 (Path 501). The solid white polygons denote the identified moving targets. (b) shows the corresponding Google Earth image, in which the red and blue polygons denote the identified MARGs and TARGs, respectively. The dashed white polygons denote moving targets that are not rock glaciers (labeled as ‘Non-RGs’). Figs. 3c and 3d show the interferometric phase and optical image for the rock glacier in the northwest corner of Fig. 3a, respectively.

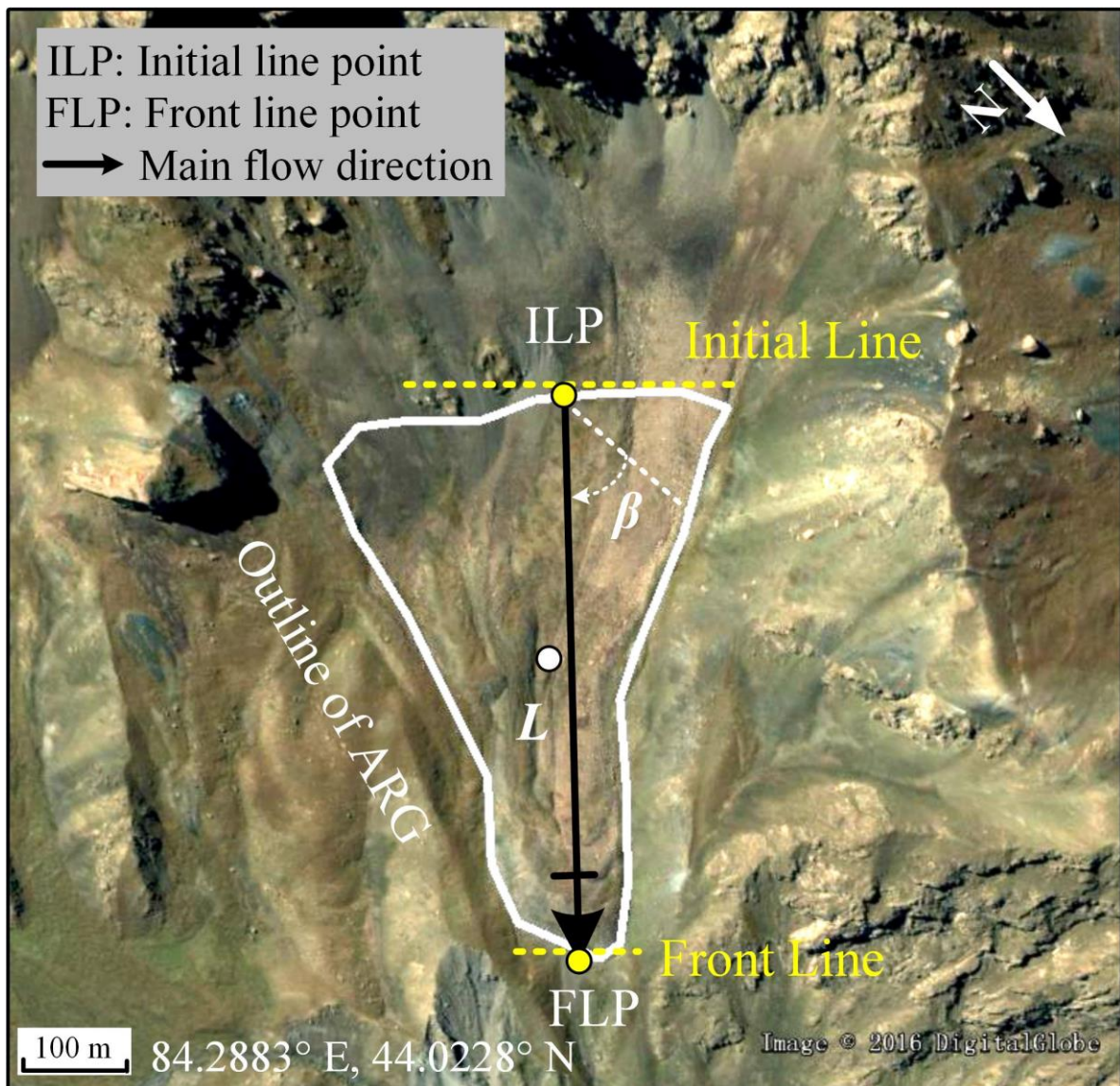


Figure 4. Google Earth image of a rock glacier, with labels showing its initial line point (ILP), front line point (FLP), length (L), and aspect angle (β). The longitude and latitude give the location of the central point (white dot) of the ARG.

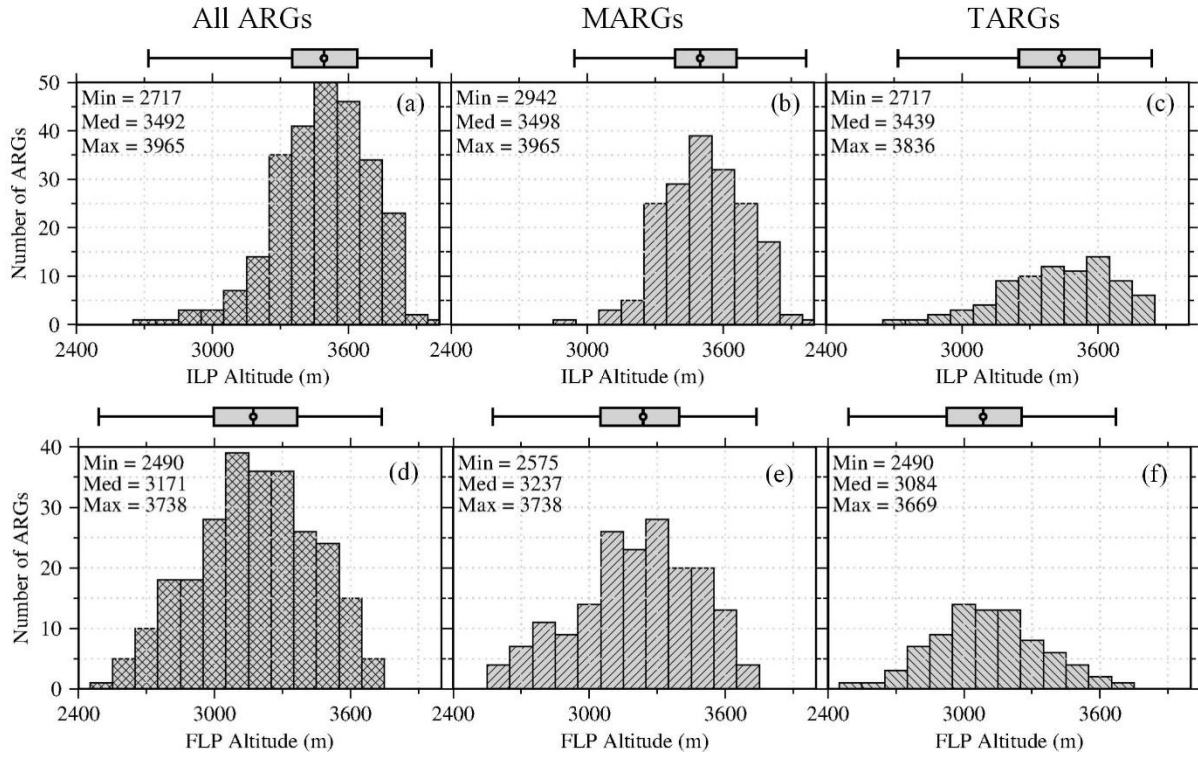


Figure 5. Histograms of the ILP altitudes (a–c) and FLP altitudes (d–f) for all ARGs, MARGs, and TARGs, respectively. The minimum (Min), median (Med), and maximum (Max) values for the ILP altitudes and FLP altitudes are denoted. Their units are meters. The box on the top of each sub-figure denotes the box-and-whisker symbol which gives the locations of minimum, the 25 % quantile, the 50 % quantile, the 75 % quantile, and the maximum values. The altitudes are derived from the SRTM digital elevation model data.

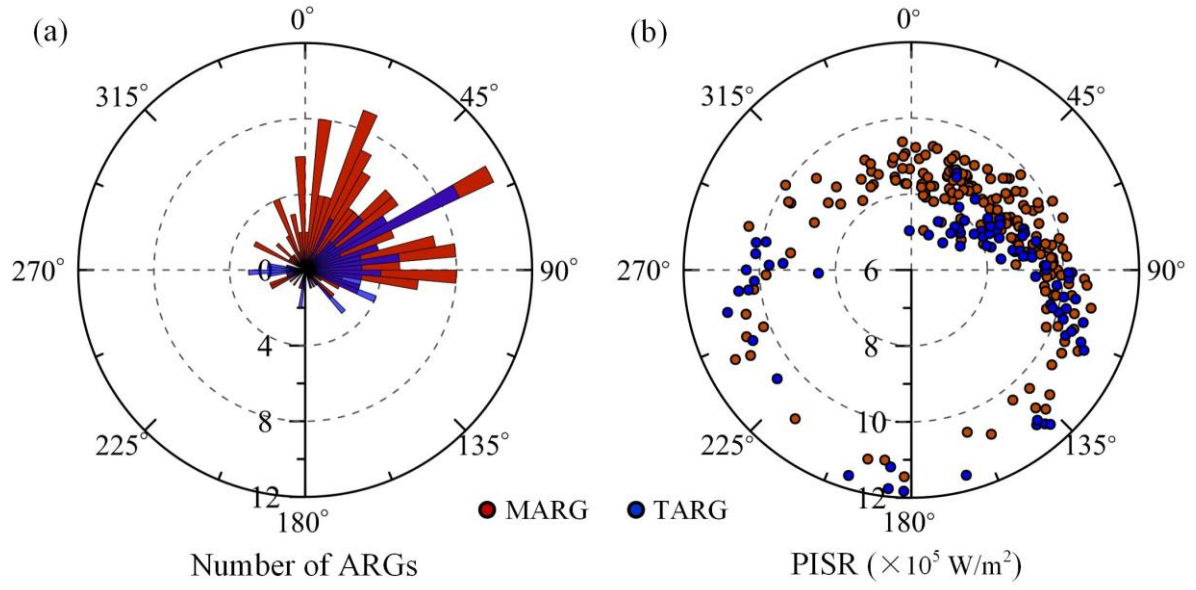


Figure 6. (a) Histogram of the aspect angles for the MARGs (red) and TARGs (blue), respectively. (b) Wind rose plot shows the variations of potential income of solar radiation (PISR) with aspect angles.

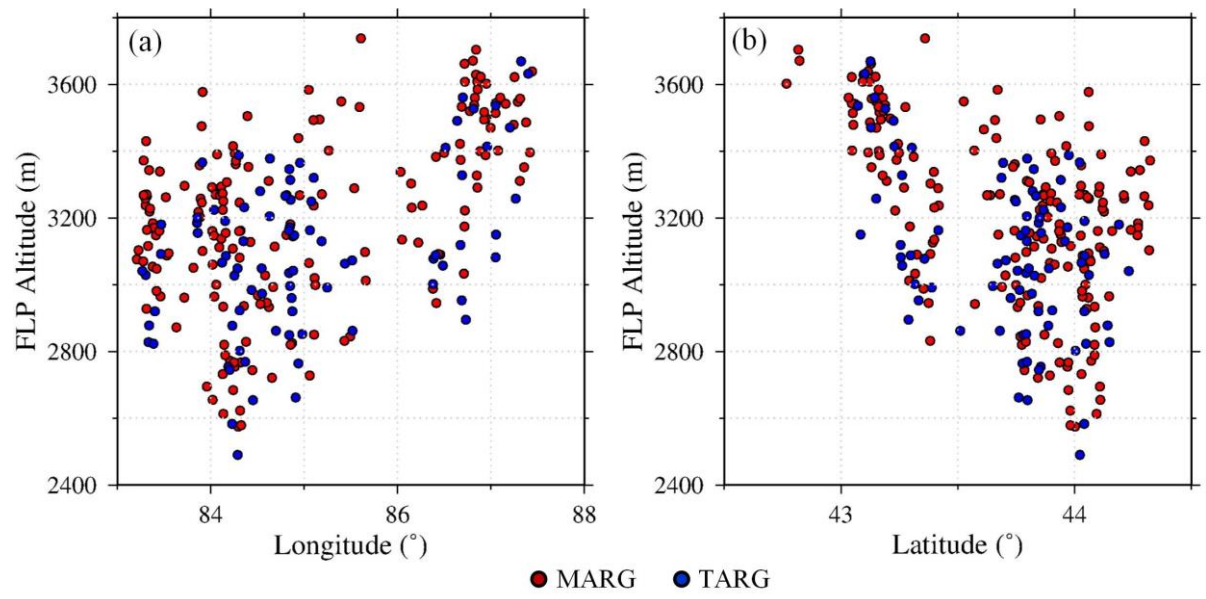


Figure 7. Scatter plots between the FLP altitudes and (a) the longitude, (b) latitude.

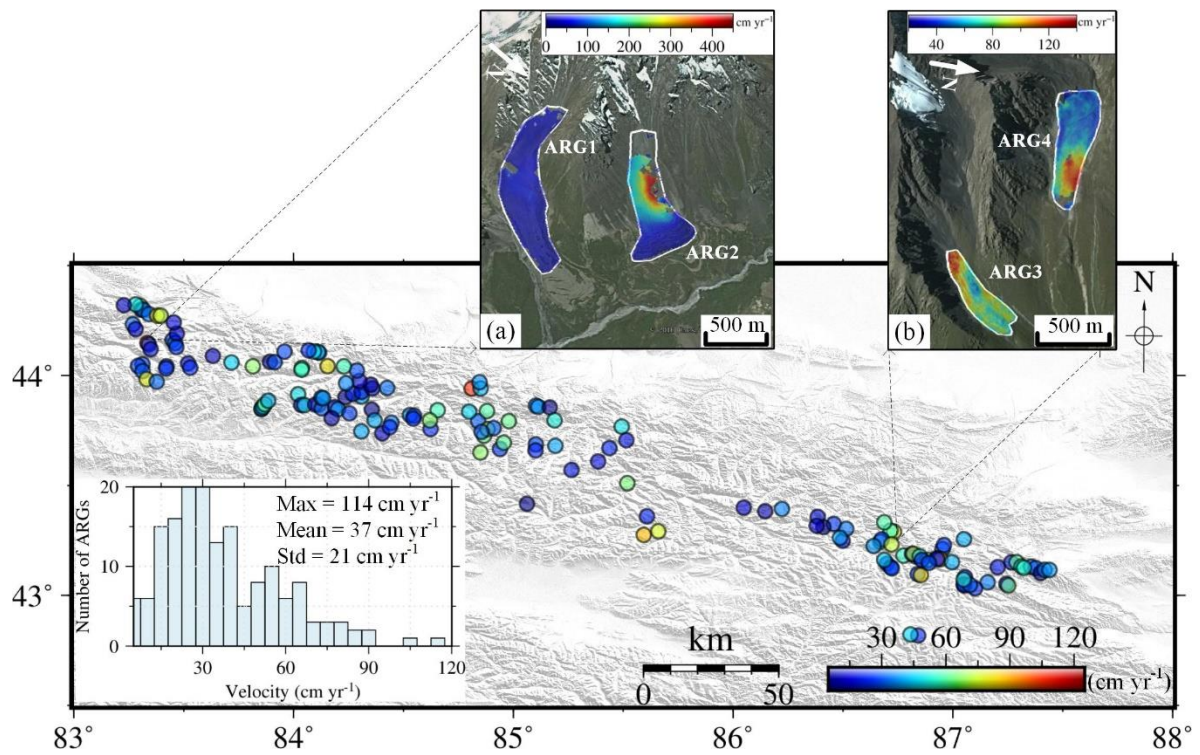


Figure 8. The bottom map shows the down-slope velocities of 170 ARGs measured from SAR interferometry, with the histogram shown in the inset. The top two figures show the down-slope velocities of two pairs of ARGs adjacent to each other. Note that different velocity color bars are used.

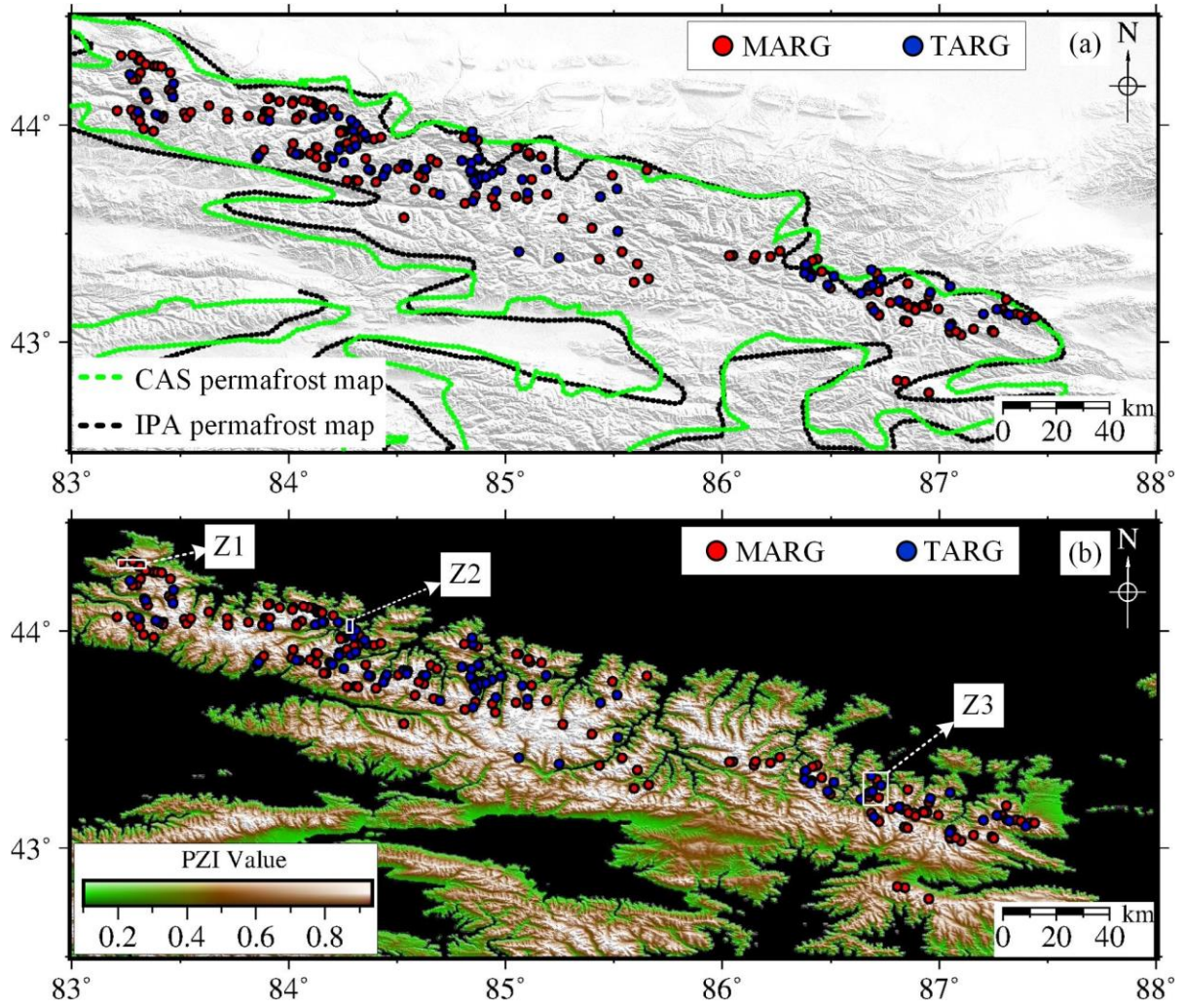


Figure 9. Comparison between the mapped ARGs and existing permafrost maps. The green and black dashed lines in (a) shows the mountain permafrost boundaries of CAS permafrost map and the discontinuous permafrost boundaries of IPA map, respectively. The green-to-white colors in (b) show the global Permafrost Zonation Index (PZI) values. Areas without PZI values are shown in black. The PZI maps for the three selected zones ‘Z1’, ‘Z2’, and ‘Z3’ in (b) are further shown in Fig.10. The red and blue dots mark the locations of MARGs and TARGs, respectively.

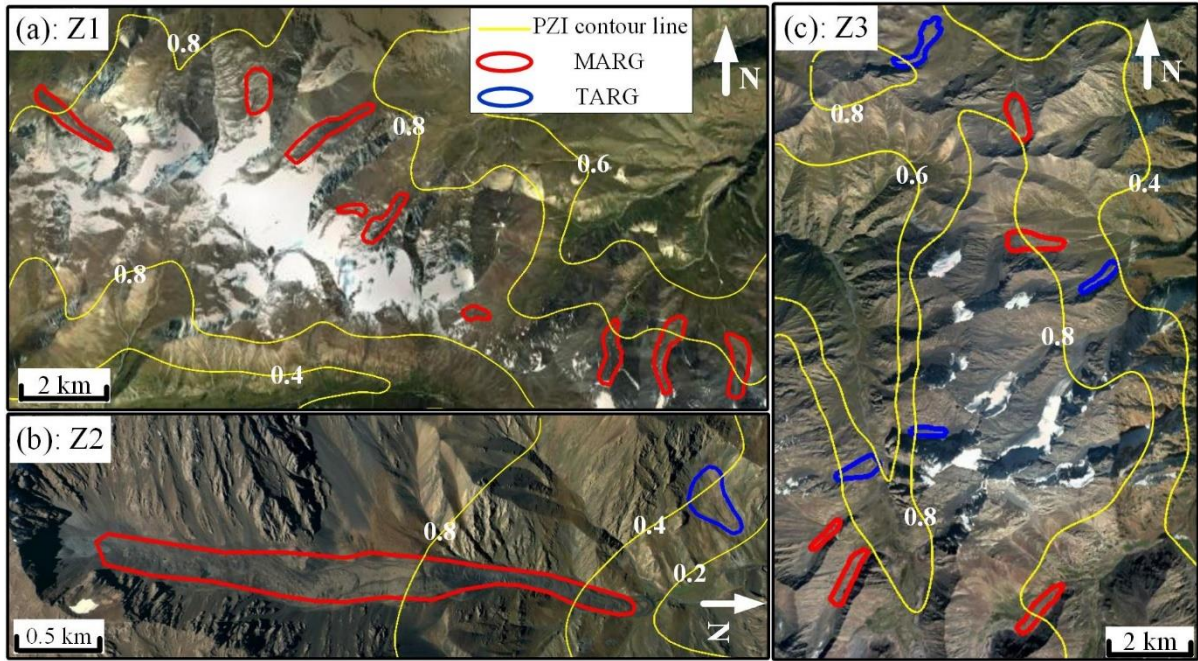


Figure 10. Local PZI maps for the three selected regions ‘Z1’, ‘Z2’ and ‘Z3’ marked in Fig. 9b. (a) and (c) are selected randomly. (b) shows the MARG and TARG with the lowest FLP altitude within the entire study area. The thin yellow lines in (b-d) are contour lines of PZI values. The red and blue polygons outline the MARGs and TARGs, respectively.

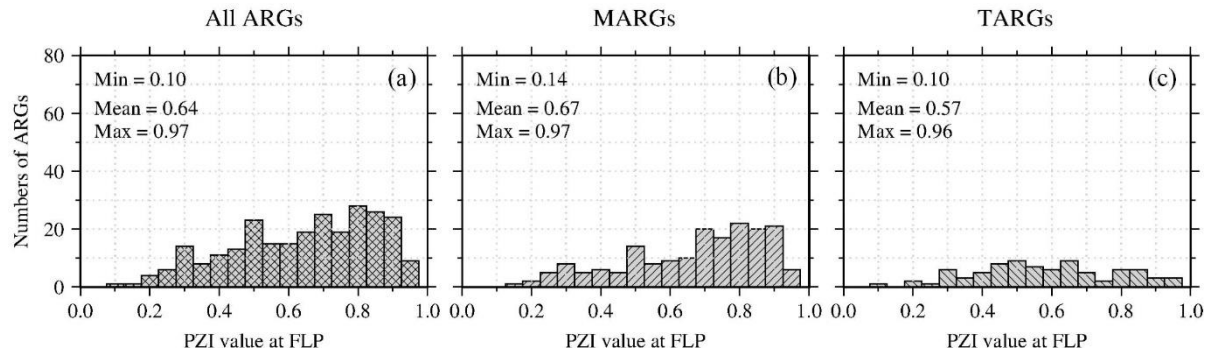


Figure 11. The histograms of the PZI values at the front line point (FLP) for all ARGs (a), MARGs (b), and TARGs (c), respectively.