

# Author response to Editor comments on *Surge Dynamics and lake outbursts of Kyagar Glacier, Karakoram*

Dear Olaf Eisen,

Thank you for assessing and accepting our paper, and for the further suggestions. Here is our response to your comments, followed by the marked up latexdiff showing the changes made to the manuscript.

**HoA vs HA: both are used, inconsistent. Please clarify.**

We corrected the abbreviation for height of ambiguity to HoA (p.6, l.28).

**The statement in second last paragraph of 5.1.3, p13 l85ff ”indicates possible locational influences on surging, for example due to local topographic and climatic conditions (Sevestre and Benn, 2015).” reads somewhat unspecific. Of course local topography influences a glacier. I assume you would like to stress that certain characteristics of glaciers in this mountain range are comparable, such as topography distribution, climate and likely also geology, and that such regional commonalities might be important that several of these glaciers surge. Please rephrase and clarify accordingly.**

Thanks for bringing this up. Yes, we mean the topography distribution (steep accumulation area, relatively flat tongues), underlying sedimentary geology and possibly characteristics of the common climate, and have clarified this a bit better in the current manuscript as follows: *At least three of the five closest downstream neighbouring glaciers have also experienced surging (Mayer et al., 2011; Quincey and Luckman, 2014), and share common topographic and climatic factors possibly contributing to their surge nature. The combination of steep accumulation areas and relatively flat glacier tongues may be conducive to surge development, as may the underlying sedimentary geology or the particular climatic conditions according to the climatic envelope theory of Sevestre and Benn (2015).*

**Acknowledgements: The two referees each provided a thorough review and pointed out several issues published in the literature you were not aware of, but which are important to the overall scope of this paper. I suggest to acknowledge this here.**

Thanks for pointing out this important omission, we have added a note thanking the reviewers as their reviews were very helpful and improved the depth of the paper.

In addition to addressing your comments, we have made a couple of other changes as follows:

1) The velocity time series in Figure 13 has been updated to include six additional velocities from September to December 2016. The supplementary list of acquisitions used was also updated to reflect the additional data, and mention of the temporal range of velocity data is corrected in the manuscript (p.4 l.8, p.7 l.34, p.8 l.12 in diff file).

2) We have made a new observation about a supraglacial lake on the eastern edge of the glacier, near the confluence, which is well visible with TanDEM-X backscatter images. This lake becomes visible about a month before the GLOF in 2015, was present during the GLOF but had disappeared by the day after. In 2016 this lake again appeared, a bit over a month before the first 2016 GLOF and disappeared after the outburst. We see the presence of this small lake as an expression of high englacial water pressure before the GLOFs, at which time glacier velocity was heightened. The disappearance of the small lake after the GLOFs indicates the establishment of more efficient en/subglacial drainage and corresponds with the deceleration of the glacier following the GLOF. We have added a paragraph about this observation in the lake drainage results section 4.4, p.11, a mention in the discussion section 5.1.2 p.13, and Figure 1 below is to be included in the supplementary figures. We hope that you agree this is a valuable addition to the paper, even if it comes rather late in the submission process.

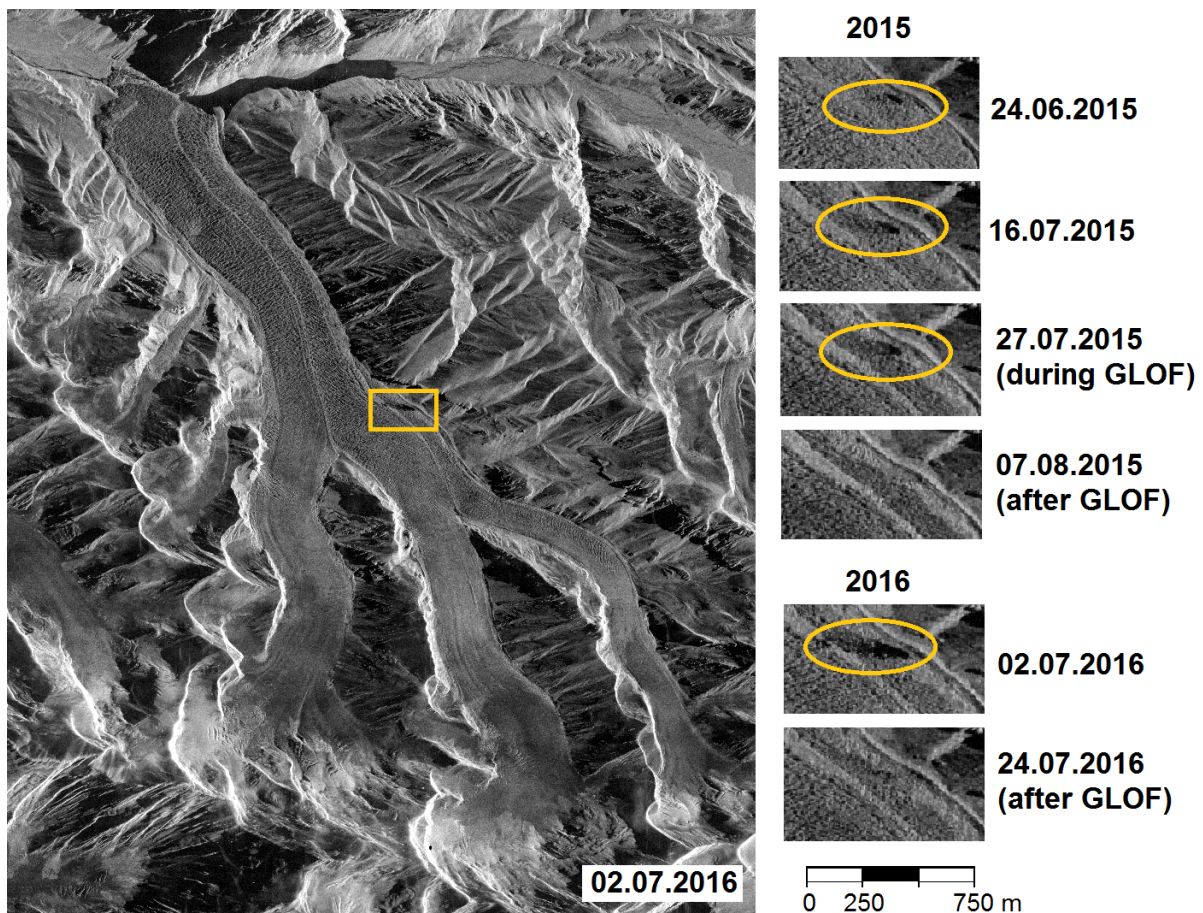


Figure 1: This image is to go in the supplementary figures with the following caption: A series of TanDEM-X backscatter intensity images showing a small lake on the eastern edge of the glacier (indicated by the inset box on the full image) which was present before and absent after the GLOF events in 2015 and 2016. The presence of the supraglacial lake is an expression of high englacial water pressure during the surge and its disappearance after the GLOFs strongly indicates the establishment of more efficient en/subglacial drainage.

Many thanks again, on behalf of the authors,  
 Vanessa Round

# Surge dynamics and lake outbursts of Kyagar Glacier, Karakoram

Vanessa Round<sup>1,2</sup>, Silvan Leinss<sup>3</sup>, Matthias Huss<sup>1,4</sup>, Christoph Haemmig<sup>5</sup>, and Irena Hajnsek<sup>3</sup>

<sup>1</sup>Laboratory of Hydraulics, Hydrology and Glaciology (VAW), ETH Zurich, 8093 Zurich, Switzerland

<sup>2</sup>Swiss Federal Institute for Forest, Snow and Landscape Research (WSL), 8903 Birmensdorf, Switzerland

<sup>3</sup>Institute of Environmental Engineering, ETH Zurich, 8093 Zurich, Switzerland

<sup>4</sup>Department of Geosciences, University of Fribourg, 1700 Fribourg, Switzerland

<sup>5</sup>GEOTEST AG, 3052 Zollikofen, Switzerland

*Correspondence to:* V. Round (vround@hotmail.com) / S. Leinss (leinss@ifu.baug.ethz.ch)

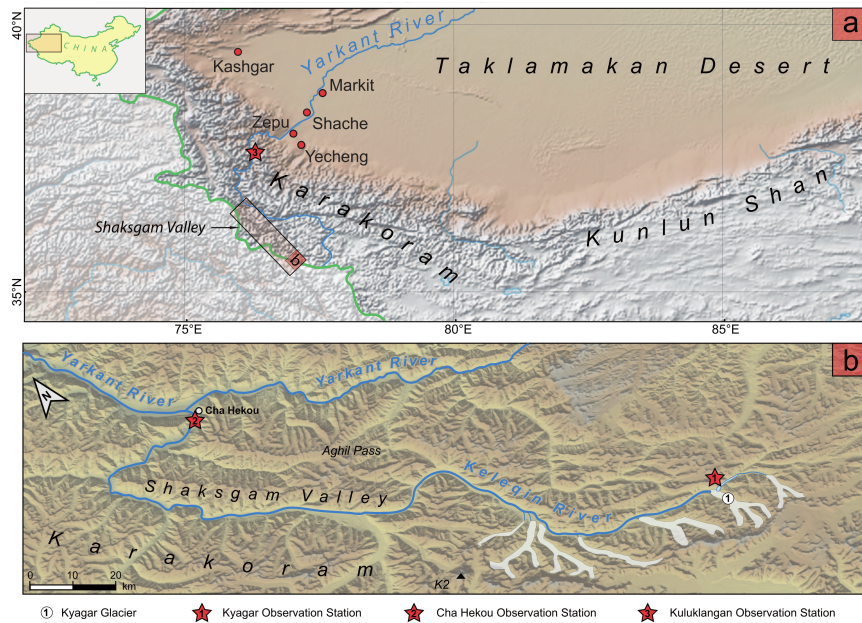
## Abstract.

The recent surge cycle of Kyagar Glacier, in the Chinese Karakoram, caused formation of an ice-dammed lake and subsequent glacial lake outburst floods (GLOFs) exceeding 50 and 40 million m<sup>3</sup> in 2015 and 2016, respectively. GLOFs from Kyagar Glacier reached double this size in 2002 and earlier, but the role of glacier surging in GLOF formation was previously unrecognised. We present an integrative analysis of the glacier surge dynamics from 2011 to 2016, assessing surge mechanisms and evaluating the surge cycle impact on GLOFs. Over 80 glacier surface velocity fields were created from TanDEM-X, Sentinel-1A and Landsat satellite data. Changes in ice thickness distribution were revealed by a time series of TanDEM-X elevation models. The analysis shows that during a quiescence phase lasting at least 14 years, ice mass built up in a reservoir area at the top of the glacier tongue and the terminus thinned by up to 100 m, but in the two years preceding the surge onset this pattern reversed. The surge initiated with the onset of the 2014 melt season, and in the following 15 months velocity evolved in a manner consistent with a hydrologically-controlled surge mechanism. Dramatic accelerations coincided with melt seasons, winter deceleration was accompanied by subglacial drainage, and rapid surge termination occurred following the 2015 GLOF. Rapid basal motion during the surge is seemingly controlled by high water pressure, caused by input of surface water into either an inefficient subglacial drainage system or unstable subglacial till. The potential lake volume increased to more than 70 million m<sup>3</sup> by late 2016, as a result of over 60 m of thickening at the terminus. Lake formation and the evolution of the ice dam height should be carefully monitored through remote sensing to anticipate large GLOFs in the near future.

## 1 Introduction

Glacier surges are dynamic instabilities affecting about 1% of glaciers worldwide (Jiskoot et al., 2000). They consist of periodically alternating long quiescent phases, characterised by years to decades of slow flow, and short active surge phases, characterised by months to years of acceleration and mass transport down the glacier (Meier and Post, 1969). During the active surge phase, the glacier typically experiences dramatic lengthening or thickening at the terminus with potentially hazardous consequences, in particular ice-dammed lake formation (Harrison et al., 2014). While surging glaciers in North America and Svalbard have been investigated in considerable detail, the large concentration of surge-type glaciers existing in the central Asian mountains, including the Karakoram (Copland et al., 2011) are less extensively studied. Improved understanding of surge glacier dynamics in this region can assist anticipation of glacier behaviour and hazard development in the future. The recent unprecedented collapse of two surging glaciers in Tibet (GAPHAZ, 2016) highlights the potentially unexpected nature of glacier instabilities in the region.

Kyagar (Keyajir) Glacier, situated on the northern slopes of the Karakoram Mountains, occasionally causes glacial lake outburst floods (GLOFs) with devastating impacts on downstream communities along the Yarkant River in north-western China (Zhang, 1992; Hewitt and Liu, 2010; Haemmig et al., 2014). The lake forms when ice at the glacier terminus impounds the river in the Upper Shaksgam Valley. Owing to the remote location of Kyagar Glacier, about 450 km upstream of the Yarkant floodplain (Fig. 1), the origin of these floods was poorly understood in the past and they arrived without warning (Zhang, 1992; Hewitt and Liu,



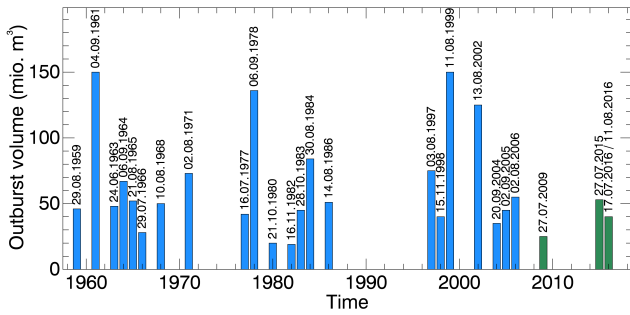
**Figure 1.** Location of (a) the Shaksgam Valley on the north side of the Karakoram Mountains in Western China and (b) Kyagar Glacier in the Upper Shaksgam Valley. Observation stations at Kyagar Glacier, Cha Hekou and Kuluklangan are indicated. The main flood impacts occur after the Yarkant River leaves the mountains near the Kuluklangan station.

2010). An automated monitoring station was placed at Kyagar Glacier in 2012 to assess lake formation (Haemmig et al., 2014), at which time there was no lake as the river flowed through subglacial channels at the terminus. From mid-2014, camera images from the station showed dramatic vertical thickening of the glacier terminus followed by lake formation. This rapid thickening indicated a possible glacier surge and increased the potential ice-dammed lake volume.

Although it was already recognised in the 1990s that Kyagar Glacier sometimes dammed the river in the Upper Shaksgam Valley and that there had been periods of advance or thickening in the late 1920s and 1970s (Zhang, 1992) and 1990s (Hewitt and Liu, 2010), the possibility of Kyagar being a surge-type glacier wasn't realised until recently (Gardelle et al., 2013; Haemmig et al., 2014) and no surge of the glacier has ever been documented. An investigation of historic GLOF occurrences from Kyagar Glacier shows that there have been three main periods of flooding in the last 60 years, with peak volumes larger than 130 million m<sup>3</sup> in 1961, 1978 and 1999 (Fig. 2). At least the latter two of these periods coincide with periods of suspected advance or thickening. Recurring GLOFs linked to periods of glacier surging have also been observed for other surging glaciers (e.g. Hoinkes, 1969).

Surging affects both temperate and polythermal glaciers with a variety of geometries and settings (Clarke et al., 1986; Clarke, 1991; Jiskoot et al., 2000) and on vastly different timescales. The general mechanism is as follows: an unstable profile develops during quiescence, as slow velocities fail to

redistribute accumulated mass from the upper to the lower part of the glacier, causing steepening of the surface and increasing basal shear stresses, to a point at which surging occurs through dramatically accelerated basal sliding (Raymond, 1987). The proposed mechanisms by which the accelerated basal sliding occurs are various and not completely understood, particularly because the subglacial environment is so difficult to observe. A switch in basal thermal conditions has been identified as a surge mechanism for some polythermal glaciers, with surging occurring when cold basal conditions switch to temperate (Clarke et al., 1984; Murray et al., 2000; Fowler et al., 2001). On the other hand, for temperate glaciers and many polythermal glaciers that are already temperate at the base (Sevestre et al., 2015), surging has been explained by a hydrological switch mechanism, by which a surge occurs when the subglacial drainage system becomes inefficient, raising subglacial water pressure and facilitating rapid sliding (Kamb et al., 1985; Björnsson, 1998). Rapid deformation within subglacial till, in response to disturbance of the hydrological system within the till and increased effective water pressure, has also been proposed as an important possible surge mechanism, and is the largest uncertainty in surge understanding (Boulton and Jones, 1979; Truffer et al., 2000; Harrison and Post, 2003). In all cases, a number of positive feedback mechanisms may enhance basal motion during a surge, for instance feedbacks between deformation, frictional heating and subglacial water pressure (Weertman, 1969; Clarke et al., 1984; Sevestre et al., 2015).



**Figure 2.** Historical GLOF volumes from Kyagar Glacier since the 1960s. Volumes from 1959 – 2006 are redrawn after Zhang (1992) and Chen et al. (2010). Volumes from 2006 – 2016 are estimated from lake extent on satellite images.

Glacier surging in the Karakoram region has mainly been studied by satellite remote sensing, due to the difficulty of field access. Glaciers have been classified using visible morphological features (Barrand and Murray, 2006; Copland et al., 2011) and surge dynamics have been observed through surface velocities (Quincey et al., 2011, 2015; Mayer et al., 2011), producing some contradicting conclusions on surge mechanisms. Quincey et al. (2011) interpreted a lack of seasonal control on surge initiation as an indication of thermally controlled surges, whereas Mayer et al. (2011) proposed a hydrological switch mechanism for North Gasherbrum Glacier. Quincey et al. (2015) concluded that Karakoram glacier surging must be quite heterogeneous with a spectrum of surge mechanisms at play, having observed surges exhibiting a surge-front like down-glacier acceleration as well as surges showing simultaneous glacier-wide acceleration. In the nearby West Kunlun Shan, two glacier surges showed a clear seasonal modulation of velocities during the active phase with winter velocities up to 200% higher (Yasuda and Furuya, 2015). The main limitations of these studies were data gaps meaning that various stages of the surge development, such as surge initiation, weren't observed, and changes to ice mass distribution during surging also weren't investigated. For such an investigation, digital elevation models (DEMs) from before and after the surge would be required.

In this study the combination of optical and synthetic aperture radar (SAR) satellite data reveals the lead up, the onset and termination of the surge, as well as velocity modulations in relation to the seasonal cycle during the surge phase. A DEM time series exposes the ice mass distribution changes caused by the surge and allows us to examine the mass build-up which ultimately drives the surge. Our analysis of the most up-to-date available satellite tools provides a synthesis of the dynamics of a Karakoram glacier in unprecedented detail, showing the relationships between surging and external factors such as seasonal melt cycles and lake drainage events.

In addition, we assess the impact of surging on the GLOF hazard posed by Kyagar Glacier in the recent past and into the future. GLOF hazard is largely determined by the lake volume and its drainage rate (Björnsson, 2010). The presented time series of glacier DEMs allows for the estimation of the potential lake volume and projection of potential GLOF volumes in the near future, and high-resolution satellite images reveal the drainage mechanism.

## 2 Study site and data

### 2.1 Study site

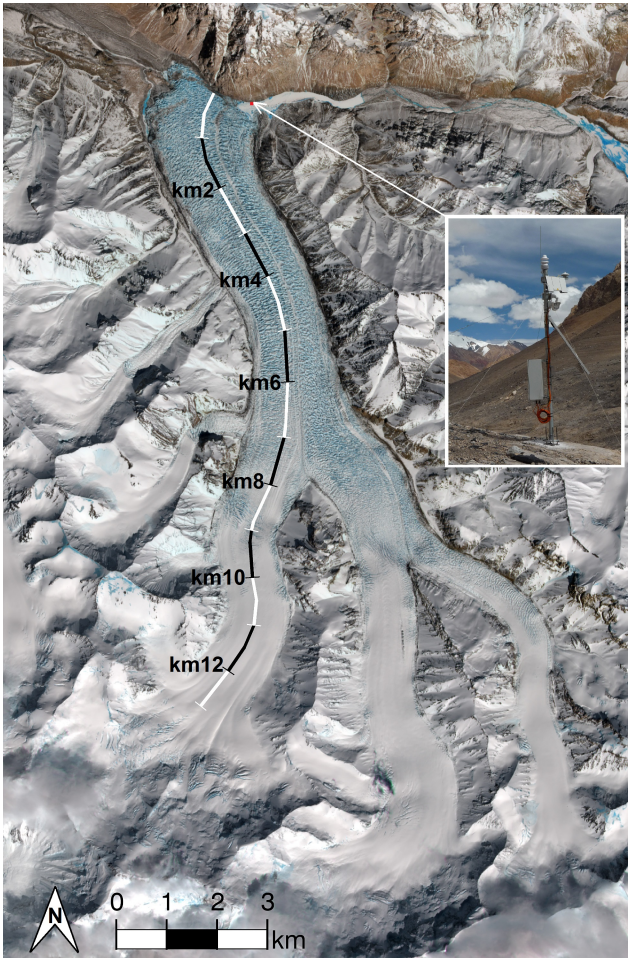
Kyagar Glacier is a polythermal glacier spanning from 4800 to over 7000 m a.s.l., consisting of three upper glacier tributaries 6–10 km in length which converge to form an 8 km long glacier tongue, approximately 1.5 km wide (Fig. 3). The total glacier area is 94 km<sup>2</sup> (Randolph Glacier Inventory Version 5.0, 2015) and the average surface slope is approximately 2° over the tongue and 4.5°–20° over the branches above the confluence. The surface of the glacier tongue is characterised by ice pinnacles (Fig. 4) up to 40 m high and as narrow as 10 m, indicating cold ice and low shear deformation (Haemmig et al., 2014).

The tongue of Kyagar Glacier is most likely carved into the brown/black shales and cherty limestones of the 3 km thick Perminian-Jurassic Shaksgam sedimentary formation, while the mountain range forming the southern margin of the glacier catchment consists of the Aghil formation limestone and perhaps dolomite (Desio et al., 1991). The Shaksgam Valley follows the Shaksgam fault which passes under the terminus of Kyagar Glacier (Searle and Phillips, 2007).

Fieldwork at Kyagar Glacier is limited because of its remoteness and political restriction of access. Since a Sino-Swiss expedition in 2012 (Haemmig et al., 2014), in situ observations became available from an automated monitoring station about 500 m upstream of the Kyagar Glacier terminus (Fig. 3), which operated from 7 September 2012 until being drowned by the growing lake on 29 June 2015. The northern Karakoram is largely influenced by westerly weather patterns and snow accumulation mainly in winter, while rainfall (at lower altitudes) peaks between May and September (Kapnick et al., 2014). Balanced or slightly positive mass balances for Karakoram glaciers between 1999–2011 (Gardelle et al., 2013) contradict global trends of decreasing glacier mass balance in line with global warming, but may be explained by regional increases in winter precipitation (Kapnick et al., 2014).

### 2.2 Data

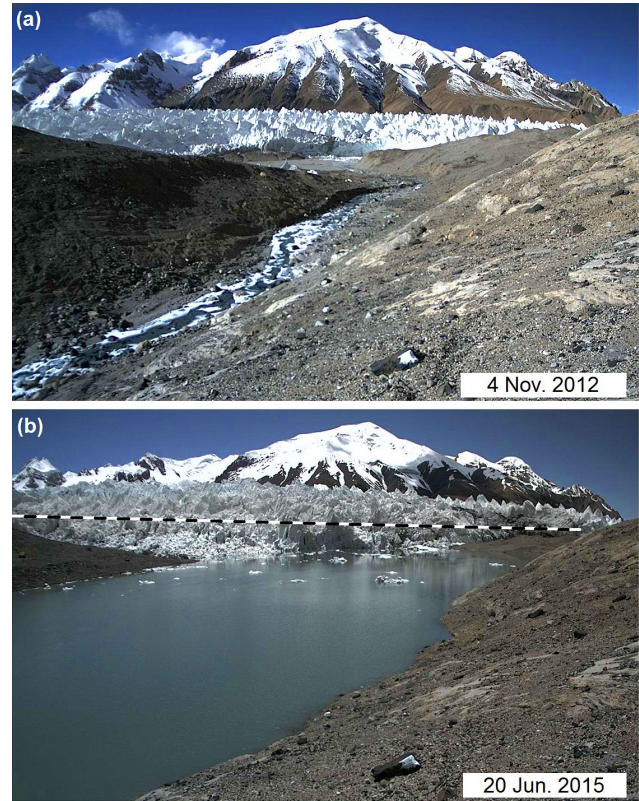
In situ data from the automated observation station included daily camera images of the glacier terminus, showing the upstream face of the ice dam (Fig. 4). Meteorological variables included air temperature and precipitation amount and type,



**Figure 3.** Optical image of Kyagar Glacier on 29.03.2016 from the ESA Sentinel-2A satellite. The glacier-dammed lake of approximately  $5 \text{ million m}^3$  is visible to the east of the glacier terminus. The curved scale bar up the west branch indicates the longitudinal profile used for surface velocity and elevation analysis, and the inset shows the monitoring station located about 500 m upstream of the glacier terminus.

among others, recorded at hourly intervals until the station became submerged on 29 June 2015. Further meteorological data and river water level measurements were available from monitoring stations on the Yarkant River located at Cha Hekou and Kuluklangon, 190 and 500 km downstream from Kyagar Glacier, respectively (Fig. 1).

Three different satellite systems were used to determine surface velocities from the end of 2011 to ~~mid-2016~~ the end of 2016: the SAR systems Sentinel-1A and TanDEM-X and the Landsat-8 optical system. TanDEM-X is a formation of two tandem satellites, TanDEM-X and TerraSAR-X, data from both of which are used for all velocity and elevation analyses. In addition, Sentinel-2 optical images were used for visual assessment of lake formation but not for velocity analysis. Acquisition details of the three main satellite systems



**Figure 4.** Images from the observation station upstream of Kyagar Glacier's terminus from (a) before and (b) during the surge. The glacier, flowing from left to right, blocks the flow of the river and causes lake formation. The dashed line in (b) indicates the ice dam height from 2012 (a), highlighting the dramatic thickening at the terminus. *Images: GEOPRAEVENT AG.*

are presented in Table 1 (for a complete list of acquisitions see supplementary material).

### 3 Methods

#### 3.1 Image co-registration

All satellite scenes were co-registered to a common master scene to allow accurate comparison of images from the same orbit. The master scene for Sentinel-1A and Landsat-8 images was the first available image from each orbit. For TanDEM-X, another co-registration algorithm was used where the master was updated progressively as the average of all previously co-registered scenes in order to temporally smooth out moving features or strongly changing patterns such as snowmelt. The scenes used for image co-registration covered an area of approximately  $30 \times 50 \text{ km}^2$  extending north from Kyagar Glacier, over which local offsets were calculated for patches of  $512 \times 512 \text{ pixel}^2$ . To remove offsets resulting from patches covering moving glaciers, a planar function was fitted to the offset-fields and large outliers

**Table 1.** Summary of data products acquired by the three listed satellite systems used for this study

	<b>TanDEM-X</b>	<b>Sentinel-1A</b>	<b>Landsat-8</b>
<b>Authority</b>	DLR	ESA	USGS
<b>Data access</b>	proposal XTI_GLAC6780	Open online	Open online
<b>First data available</b>	January 2008	October 2014	2013 (1972 older versions)
<b>Spectral band (wavelength <math>\lambda</math>)</b>	X-band (3.1 cm)	C-band (5.4 cm)	visible - IR (0.43 – 12.51 $\mu\text{m}$ )
<b>Processed data product</b>	CoSSC (Level 1b)	GRDH IW (Level 1)	Panchromatic (B8) and NIR (B5)
<b>Sampling resolution (m<sup>2</sup>)</b>	$2.02 \times 2.18$ <sup>1)</sup> (75D <sup>2)</sup> $2.17 \times 2.21$ <sup>1)</sup> (98A <sup>2)</sup> )	$10 \times 10$ <sup>3)</sup>	$15 \times 15$
<b>Orbit height</b>	514.8 km	693 km	705 km
<b>Incidence angle <math>\theta</math></b>	42.2–43.5° (75D) 38.2–39.5° (98A)	32.1–32.3°	90°
<b>Acquisition time (UTC)</b> <sup>5)</sup>	00:54 (75D) 12:46 (98A)	00:57 (descending) 00:49 (descending)	05:29 <sup>4)</sup>
<b>Orbit revisit</b>	11 days	12 days	16 days

1) single look complex (SLC) single-look sampling resolution (range  $\times$  azimuth).

2) 75D: orbit 75 descending (flying north to south), 98A: orbit 98 ascending (flying south to north); both having the view direction to the right.

3) Ground Range Detected (GRD) multi-looked resolution (range  $\times$  azimuth).

4) Orbit: Path 148, Row 35.

5) Local daytime at Kyagar Glacier on 21. June 2016: sunrise: 23:36 UTC; sunset: 14:10 UTC.

**Table 2.** Patch size and patch spacing used for velocity determination.

	Patch size		Patch spacing	
	(pixels)	(meters <sup>2</sup> )	(pixels <sup>2</sup> )	(meters)
TanDEM-X	256 $\times$ 256	512 $\times$ 512	32	70
Sentinel-1A	64 $\times$ 64	640 $\times$ 640	18	180
Landsat	32 $\times$ 32	480 $\times$ 480	12	180

were removed, before again fitting a planar function to the filtered offset fields. The scenes were then resampled according to the final fitted function, resulting in a stack of images with sub-pixel co-registration accuracy.

### 3.2 Glacier surface velocity

Glacier surface velocities were determined using offset tracking, through which the ground offset between corresponding patches of co-registered repeat-pass satellite image pairs is computed (Strozzi et al., 2002; Luckman et al., 2007). Intensity cross-correlation was applied to paired patches from the SAR images, while for Landsat optical data phase cross-correlation was used to better deal with variable illumination conditions (Zitova and Flusser, 2003). The resulting offset field covering the glacier and its surroundings was then converted to surface velocity by dividing by the elapsed time between the paired images and scaling by ground range resolution. Longitudinal velocity profiles were determined along a manually determined central glacier flowline (as shown in Fig. 3) in the velocity offset patch coordinates.

The patch size and spacing are presented in Table 2. Patch sizes were selected to optimise the superior correlation ability of larger patches with the superior spatial resolution of

smaller patches. Larger patches were required for the SAR systems, despite their finer resolution, to compensate for radar speckle. Velocity fields were filtered to remove offsets calculated with low correlation quality, as determined by the height of the correlation-function peak over the noise. Offsets with high divergence from neighbouring values and outliers with velocities 50% larger than the maximum offset over the glacier were also removed.

The accuracy of the offset tracking procedure was assessed by calculating the patch offsets over a  $1 \times 2 \text{ km}^2$  area of stable ground next to the glacier terminus. Since no offsets are expected over stable ground, offsets represent local inaccuracies in the co-registration of images caused by slight changes in imaging geometry and, hence, scene projection, as well as the inherent inaccuracy in the sub-pixel determination of the correlation-function peak. The root-mean-square error for the offsets over stable ground was 0.08 pixels or less for almost all the used image pairs from the three satellite systems, similar to the 0.05 pixel error estimated by Strozzi et al. (2002). The velocity difference from assuming a horizontal surface for velocity calculations was only about 0.06% over the 2° sloping glacier tongue and 0.4% over the 5° slope just above the confluence. Due to the side-looking radar imaging geometry, steep slopes in the range direction result in a different pixel spacing hence biased velocities. However as the glacier is not very steep and flows predominately in the azimuth direction, this is not a problem.

### 3.3 Digital elevation models

Digital elevation models were derived using data from the TanDEM-X satellite formation (Krieger et al., 2007, 2013) using single-pass SAR interferometry. SAR interferometry allows accurate DEM generation if the absolute interferomet-

ric phase can be successfully determined from the wrapped interferometric phase measured between 0 and  $2\pi$ . Determination of the absolute phase requires phase unwrapping algorithms to be applied to the interferogram (e.g. Goldstein et al., 1988; Zebker and Yanping, 1998). The phase unwrapping can be simplified by first subtracting a synthetic interferogram, based on a reference DEM, and adding it back after unwrapping is completed (e.g. Dehecq et al., 2015). This can help minimise phase-wrapping errors which can easily be recognised in the interferograms when an accurate reference DEM is used. If the phase difference to the measured data does not exceed  $2\pi$ , phase unwrapping can even be avoided entirely.

The phase gradient and hence the DEM accuracy depends on the perpendicular interferometric baseline  $B_{\perp}$ , the component of the distance between the two SAR satellites which is perpendicular to both the line-of-sight and the flight direction. Large baselines provide a better height accuracy with phase cycles of  $2\pi$  corresponding to smaller height of ambiguity (HoA, see p. 3320 and Eq. 37 in Krieger et al., 2007), but on the other hand large baselines are more prone to phase unwrapping errors and signal decorrelation due to scattering volumes (Zebker and Villasenor, 1992) and noise contained in the reference DEM.

The reference DEM used for this study was composed from the 30 m resolution Shuttle Radar Topography Mission (SRTM) DEM (global version 3.0, 2015), and the average of eight TanDEM-X DEMs from orbit 75D between 12 Oct. 2015–28 Dec. 2015. Phase unwrapping errors could be avoided due to the very short baselines of 19–29 meters giving large HoAs of 250–400 m. For noise reduction, an adaptive filter was applied to the interferograms (Goldstein and Werner, 1998). After phase unwrapping and conversion to height, the height corrections were averaged and added to the SRTM DEM to form the reference DEM which was downsampled to a resolution of  $8 \times 8 \text{ m}^2$ . DEMs for each acquisition from orbit 75D were created by converting the phase difference against the reference DEM into a height change  $\Delta h$ , which was then added to the reference to obtain an absolute DEM for each acquisition date. The extremely rough glacier surface topography, with ice pinnacles up to 40 m high and 20–40 m apart (estimated from shadow lengths and the observations from Haemmig et al., 2014), caused strong decorrelation and phase wraps within the coherence window of  $15 \times 15 \text{ m}^2$  for large baselines, meaning that DEMs could not be created over the glacier tongue with baselines  $B_{\perp} > 200 \text{ m}$  (HoAs below 20 m).

The generated DEMs contain errors from processing uncertainties as well as from microwave penetration into snow. Processing uncertainties include phase noise due to low correlation in the interferograms, global offsets due to geometric errors, and errors of the SRTM DEM. Errors due to phase noise were estimated from the differences between the eight DEMs used for the reference DEM. The standard deviation was below 4 m. The SRTM DEM is specified with an abso-

lute vertical accuracy of about 10 m (Farr et al., 2007), but for comparison of DEMs systematic vertical shifts or tilts were corrected for by referencing DEMs to a common reference height of flat terrain near the tongue of Kyagar Glacier. The remaining relative error between different DEMs was estimated from four flat valley planes and resulted in a maximum height error of  $\pm 1 \text{ m}$  (standard deviation 0.65 m).

The error due to microwave penetration into dry snow can reach up to 6 m (Dehecq et al., 2015) for a microwave frequency of 9.65 GHz (TanDEM-X), but penetration is negligible over wet snow (more than 1% volumetric water content, Leinss et al., 2015, Fig. 5). Microwave penetration leads to potential underestimation of the actual surface height over dry snow and ice surfaces. For Kyagar Glacier, penetration depths of up to two meters have been estimated by distinguishing between dry and wet snow conditions based on backscatter intensity (Nagler and Rott, 1998; Small, 2012; Nagler et al., 2016), and determining the apparent height difference between DEMs from wet versus dry conditions. Over the tongue of Kyagar Glacier, the backscatter intensity changed little between seasons ( $< 5 \text{ dB}$ ), because infrequent snowfall means that the bare ice surface roughness dominates the backscatter signal from the tongue. Penetration is therefore expected to be negligible over the glacier tongue. In contrast, large seasonal changes in backscatter intensity indicate changing water content and thus varying penetration depths over the accumulation basin. Backscatter decreased by more than 10 dB at the onset of snowmelt in 2015 over the accumulation areas, and an apparent surface height increase of less than 2 m was calculated between two large baseline interferograms from before snowmelt (2015-06-02) and at the onset of snowmelt (2015-06-13). This indicates a TanDEM-X penetration depth of 2 m or less in dry snow conditions over the upper glacier. The relatively small penetration depths in the accumulation area might be a result of strongly-scattering high-density firn with ice inclusions, formed by refreezing after strong melt events extending to over 6000 m a.s.l. in August (Supplementary Fig. 1), a phenomenon also observed by Dehecq et al. (2015). The backscatter intensity changes are shown in Supplementary Figures 1 and 2.

The penetration error in the SRTM DEM should be slightly larger than for the TanDEM-X DEMs, as the SRTM DEM was acquired with a C-band radar with 5.3 GHz (Farr et al., 2007) during winter (Feb. 2000). For C-band radars, expected penetration depths are 1–2 m into exposed ice (Rignot et al., 2001) and 5–10 m into dry snow (Rignot et al., 2001; Fischer et al., 2016). However, because in the accumulation area the penetration for X-band is  $< 2 \text{ m}$ , we estimate a penetration of  $< 4 \text{ m}$  in C-band (cf. Fig. 9 in Fischer et al., 2016), and over the glacier tongue 1–2 m.

In summary, systematic shifts are removed when comparing DEMs but differences in penetration must be considered in particular when comparing the SRTM to the TanDEM-X DEMs or when comparing DEMs from different seasons. Over the glacier tongue, penetration errors are  $< 2 \text{ meters}$  and



over the accumulation area they are estimated to be <4 meters.

### 3.4 Calculation of positive degree days

Positive degree days (PDD) at the glacier terminus were calculated as a proxy for potential melting. Positive air temperature measurements were summed with each measurement weighted by the fraction of a day which it represented (Vaughan, 2006), such that one hourly measurement of  $6^\circ$  would contribute 0.25 PDD. The hourly air temperature data from the station at Kyagar Glacier were used for computing PDDs in 2013 and 2014. Data from the downstream Cha Hekou observation station were used to estimate PDDs at the Kyagar Glacier in 2015 and 2016, to replace data from the Kyagar observation station which had been submerged. PDDs from the downstream station were scaled by using average monthly PDD offsets to the Kyagar Glacier station data from 2013 and 2014.

### 3.5 Lake volume estimation

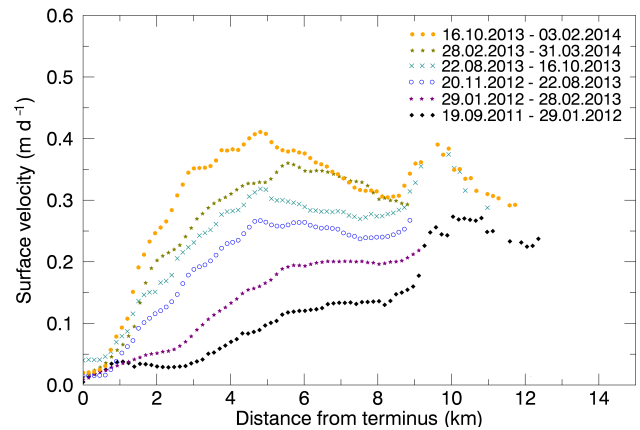
Lake volumes were calculated using the DEM of the empty lake basin from TanDEM-X data acquired on 18 Aug. 2016, together with the lake extent and thus lake surface altitude from optical (Landsat or Sentinel-2) or SAR backscatter images (Sentinel-1A and TanDEM-X). In addition, the initial lake formation during the winter of 2014/15 was observed by the in situ camera, as the small initial volumes were not seen on the satellite images but were important for assessing possible subglacial drainage. Potential lake volumes were estimated by calculating the lake volume which would result if the lake basin would be filled to the 90% of the ice dam height, as determined from the DEM of the glacier terminus.

## 4 Results

### 4.1 Glacier surface velocities

More than 80 surface velocity fields over Kyagar Glacier from September 2011 to August–December 2016 capture 2.5 years building up to the surge, the initiation of the surge in May 2014, and several periods of acceleration and deceleration in the two years following the main surge phase. Pre-surge velocity is represented in Fig. 5, while Figs. 6 and 7 are maps of surface velocity during the surge onset and main development, and Fig. 8 depicts the temporal and spatial velocity profiles over the entire study period in a 2D colour diagram. A complete set of surface velocity maps from all three satellite systems are provided in the supplementary material.

In the 2.5 years before surge onset, a gradual but clear acceleration occurred, greatest over the middle of the glacier tongue (between km 3 and km 6) with an increase in velocity from  $0.1 \text{ m d}^{-1}$  in winter 2011/12 to over  $0.4 \text{ m d}^{-1}$  in winter 2013/14 (Fig. 5). The location of the maximum veloc-

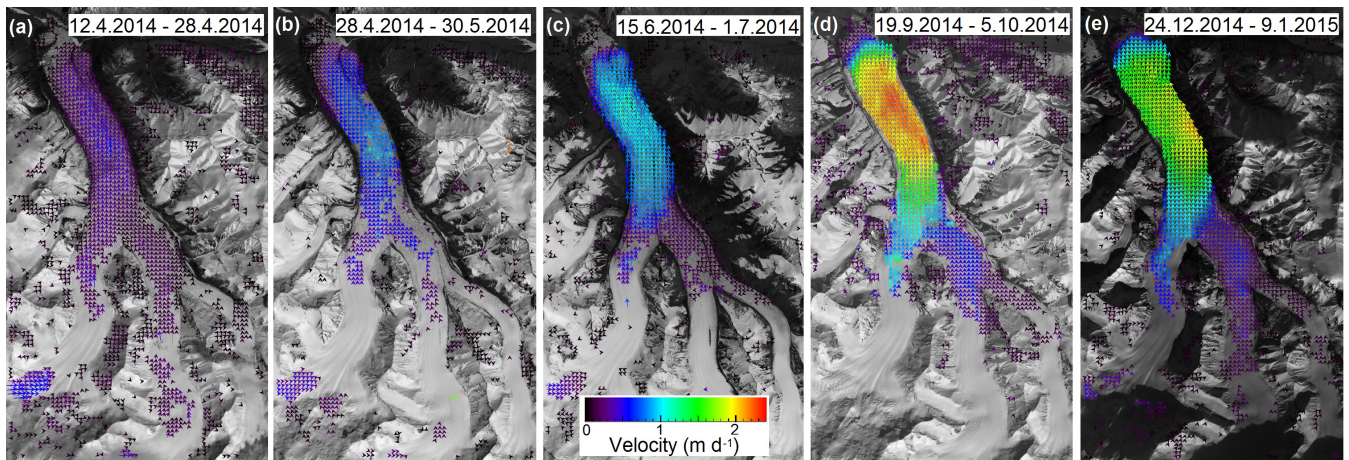


**Figure 5.** Longitudinal surface velocity profiles showing (from bottom to top) the pre-surge acceleration that occurred in the 2.5 years before the main surge onset. The profiles, derived from TanDEM-X data, follow the longitudinal path from Fig. 3. Gaps above km 9 indicate failed velocity calculation owing to the poor surface contrast providing no clear correlation. The labels state the time period over which each velocity calculation was averaged, in this case ranging from 2–13 months.

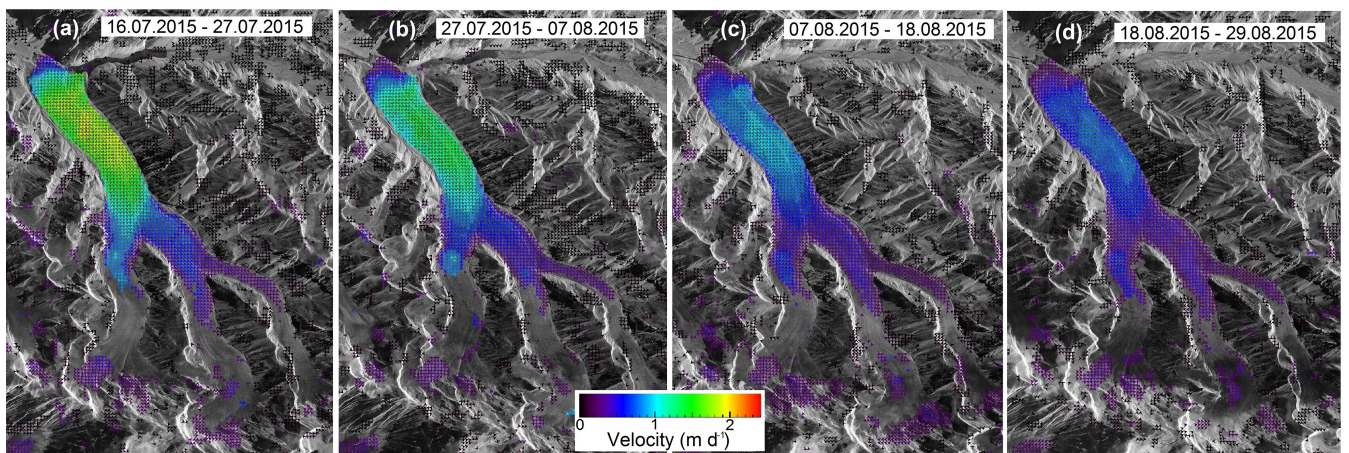
ity moved from above the confluence at km 10 at the end of 2011 to over the glacier tongue at km 5 in 2013/2014. Apart from this early shift, the spatial pattern of acceleration over the glacier tongue was quite uniform with no evidence of a surge front moving down the glacier, as observed for some other Karakoram glaciers (Mayer et al., 2011; Quincey et al., 2015). The presence of seasonal modulation could not be assessed due to the coarse temporal resolution of the six pre-surge acquisitions, but it can be seen that acceleration continued over the winter immediately before surge initiation (Fig. 5, fastest velocity profile, from Oct. 2013–Feb. 2014). This gradual pre-surge acceleration may indeed have already been under way prior to 2011, with acceleration between annual velocities from 2004/2005 to 2010/2011 based on Landsat velocity analysis by Heid and Käab (2012).

The pre-surge acceleration appears insignificant in comparison to the main surge phase, which started at the end of April 2014. Rapid acceleration first became evident between 28 Apr. and 30 May 2014 (Fig. 6a–b), with a doubling of maximum velocity from  $0.5 \text{ m d}^{-1}$  to over  $1 \text{ m d}^{-1}$  within 32 days. Velocities continued increasing steadily (Fig. 6c) to a peak of almost  $2.5 \text{ m d}^{-1}$  (Fig. 6d) between the 19 Sep. and 5 Oct. 2014. The maximum instantaneous velocity is likely to have been higher than the calculated values which are averages over 16-day periods. The surge caused a six-fold acceleration in the five months following May 2014, and more than a 20-fold acceleration since 2011/12.

After the surge peak in Sep. 2014, there was a slight deceleration which continued during winter (Fig. 6e) until maximum velocities had dropped to about  $1.2 \text{ m d}^{-1}$  in April 2015. This was followed by a new phase of acceleration through



**Figure 6.** Velocity fields showing the onset and peak of the surge. Panels (a)–(c) show the initial acceleration between April and July 2014, (d) shows the maximum of the surge in Sep./Oct., followed by deceleration to lower velocities in winter 2014/15 (e). Background image from USGS Landsat 8 satellite data.



**Figure 7.** Velocity fields showing (a) the maximum velocity reached in 2015, followed by (b)–(d) the sudden deceleration from the end of July into August. These velocity fields were calculated from consecutive 11-day periods. Background image from TanDEM-X data provided by DLR.

May–July 2015 to almost  $2 \text{ m d}^{-1}$  in late July, slightly slower than the peak velocity in summer 2014. This acceleration came to an abrupt halt between 27 July and 7 Aug. 2015, causing the most rapid change observed with a halving of velocities over the tongue within 22 days (Fig. 7a–c). This abrupt slow-down was aligned with the lake drainage on 27 July, as indicated by the arrow in Fig. 8.

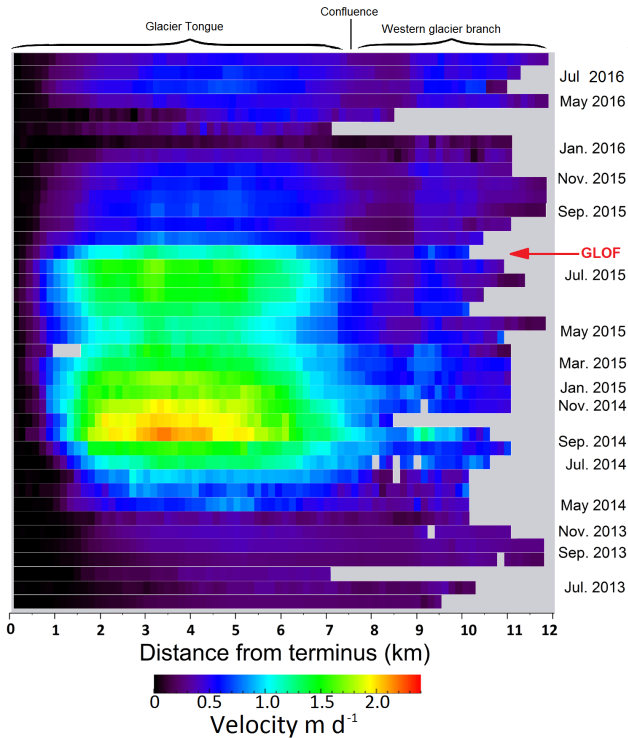
Deceleration continued over autumn 2015 and winter of 2015/16, and velocities almost returned to pre-surge levels with a maximum less than  $0.5 \text{ m d}^{-1}$  in March 2016. There was a slight acceleration after April 2016 but velocities were still significantly below the previous two summers, remaining below  $1 \text{ m d}^{-1}$  and decreasing to below  $0.5 \text{ m d}^{-1}$  by December 2016.

Fig. 8, consisting of a stacked time series of velocity profiles along the glacier, shows that the surge mainly affected

the tongue of the glacier, between km 1 and km 8, while above the confluence ( $> \text{km } 8$ ) the effect of the surge was small.

## 4.2 Glacier surface elevation

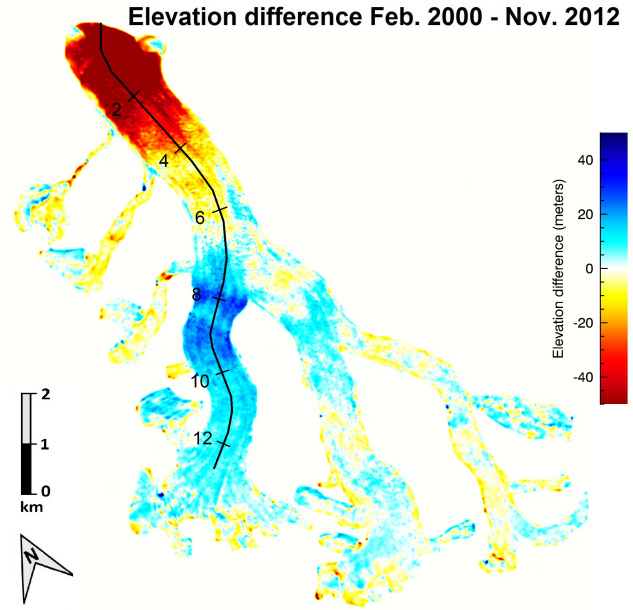
Four DEMs based on TanDEM-X data acquired before the surge (2012–2014) and eight DEMs from after the main part of the surge (Oct.–Dec. 2015) were compared with each other and with the SRTM DEM from 2000, to reveal the dramatic changes in glacier surface elevation and, hence, ice mass distribution over Kyagar Glacier caused by the surge. Maps of elevation change over the glacier during the quiescence and surge periods are shown in Fig. 9 and 10, respectively. Longitudinal profiles of surface elevation are shown in Fig. 11a and the elevation change rates in Fig. 11b.



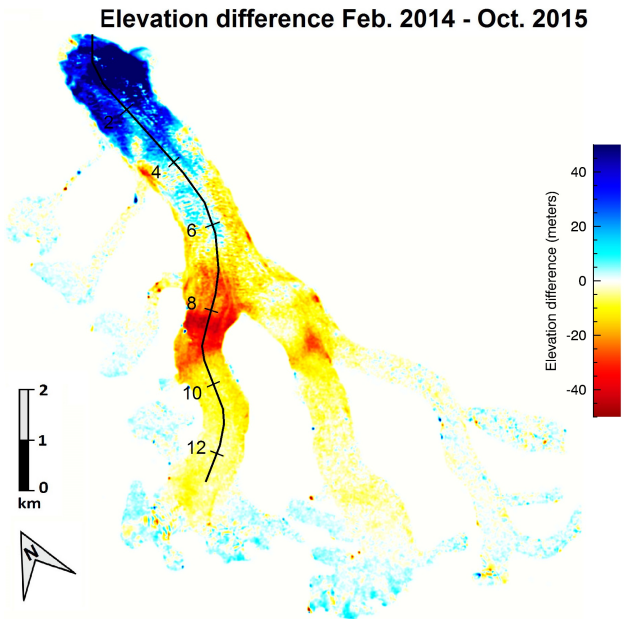
**Figure 8.** Evolution of surface velocity along the longitudinal profile (see Fig. 3) showing the spatial extent of the surge and how it evolved in time. The surge predominately affected the glacier below the confluence at km 8. The red arrow indicates the GLOF on 27 July 2015 and the corresponding abrupt deceleration.

Before the surge, between Feb. 2000 and Nov. 2012, the surface elevation decreased gradually over most of the glacier tongue at a rate of  $5 \text{ m a}^{-1}$  (Fig. 9 and Fig. 11b), resulting in an elevation loss of over 60 meters at the glacier terminus. At the same time, elevation increased over the western branch by up to 30 meters just above the confluence, while over the eastern branches the surface elevation increased more moderately with a maximum gain of 10 meters (Fig. 9). This observed pattern is typical of a surging glacier in the quiescence phase, with downwasting over the glacier tongue and ice build up in a reservoir area, which for Kyagar Glacier forms just above the confluence on the western branch.

Between 2012 and 2014, in the two years preceding the surge, there was already a slight reversal of the quiescence pattern seen in the previous 12 years, with minor elevation loss just above the confluence and mass gain over the tongue (Fig. 11), indicating mass transport down the glacier from the reservoir. During the surge in 2014/15, this mass transport from the reservoir area intensified dramatically with ice surface elevation increasing at a rate of almost  $40 \text{ m a}^{-1}$  over the lowest parts of the glacier tongue, causing thickening in excess of 60 meters at the terminus since Feb. 2014. At the same

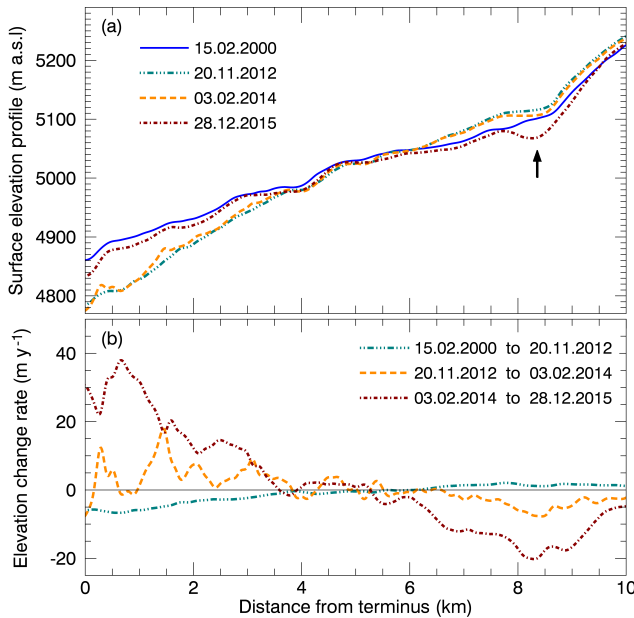


**Figure 9.** Glacier surface elevation changes between Feb. 2000 (SRTM) and Nov. 2012 (TanDEM-X). The elevation change represents 12 years of quiescence preceding the surge. The image is shown in radar coordinates for TanDEM-X data of orbit 75D, accounting for the slightly different orientation to the optical image in Fig. 3.



**Figure 10.** Glacier surface elevation changes during the surge from subtraction of two TanDEM-X DEMs from Feb. 2014 and Oct. 2015. This surface elevation change reverses the change pattern shown in Fig. 9 through only 1.5 years of surging.

time, surface elevation decreased by more than 40 meters just



**Figure 11.** (a) Elevation profiles from 2000, 2012, 2014 and 2015, and (b) the rate of elevation change between the periods 2000–2012, 2012–2014 and 2014–2015. Profiles are taken along the transect indicated in Fig. 9 and 10, and the black arrow indicates the location of the surface hollow remaining after the surge.

above the confluence where the reservoir area formed during the quiescence. The mass transport, typical during a surge phase, essentially reversed the changes which occurred during the quiescence (2000–2012), such that the glacier surface profile at the end of 2015 had almost returned to that of 2000 (brown vs. blue lines in Fig. 11a).

There were significant adjustments to surface slope throughout the course of the surge, particularly over the glacier tongue. In 2000, the average slope over the first eight kilometres of the glacier was about  $1.4^\circ$  and by 2012/2014 it had increased to about  $2.3^\circ$ . By the end of 2015, after the surge, slope had decreased again to about  $1.6^\circ$ .

The post-surge glacier surface in Oct. 2015 showed the presence of a surface hollow, approximately 12 m deep and up to 1 km wide, at the very beginning of the western branch above the confluence just before the slope significantly steepens (Fig. 11a, indicated by arrow). Such a depression is an unusual feature but could have formed as a consequence of the surge transporting ice from the reservoir area faster than the rate of replacement from above, owing to the observed flow disparity between the tongue and the glacier branches.

#### 4.2.1 Mass balance and equilibrium line altitude

Although not directly related to the surge characterisation, we provide a geodetic mass balance estimate for Kyagar Glacier between 2000 and 2015. The average volume difference between the SRTM DEM and eight TanDEM-

X DEMs from between Oct.–Dec. 2015 was calculated and converted to mass change assuming an ice density of  $850 \pm 60 \text{ kg m}^{-3}$  (Huss, 2013). The mass balance was found to be  $-0.24 \pm 0.22 \text{ m w.e a}^{-1}$ . For the uncertainty, the radar penetration difference between the SRTM and the TanDEM-X DEMs dominates and was estimated to be a conservative 3 m systematic error over the whole glacier. As the penetration for the SRTM C-band microwaves is deeper than the TanDEM-X X-band, our calculation may slightly underestimate mass loss. On the other hand, the area used for calculation ( $61 \text{ km}^2$ ) missed some of the steepest portions of the accumulation area due to lack of interferometric coherence affecting DEM creation, possibly leading to an under-representation of the accumulation area and exaggerated mass loss. For comparison, Gardelle et al. (2013) reported an average mass balance of  $+0.11 \pm 0.14 \text{ m w.e a}^{-1}$  for glaciers in the east Karakoram region between 2000 and 2008.

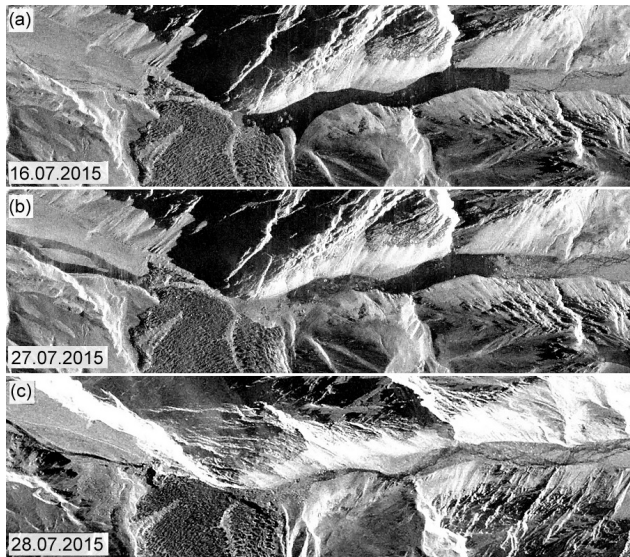
The equilibrium line altitude (ELA) estimated from the location of the snow line at the end of the ablation period observed from Landsat and TanDEM-X images, was  $5350 \pm 80$ ,  $5400 \pm 80$  and  $5510 \pm 80 \text{ m a.s.l.}$  over the western, middle and eastern branches, respectively.

#### 4.3 Meteorological observations

Temperatures remained below  $0^\circ \text{ C}$  between mid-October and late April according to data from the meteorological station at the glacier terminus (at 4800 m a.s.l.). The warmest months, July and August, experienced average daily maximum temperatures of  $4\text{--}7^\circ \text{ C}$  and monthly PDDs exceeding 150 at the glacier terminus. By taking into account the glacier surface elevation and an lapse rate of about  $-0.006^\circ \text{ C m}^{-1}$ , it can be inferred that over the whole glacier tongue, PDDs are positive between May and October, whilst over the bulk of the accumulation area (about 900 m above the terminus) melt potential was only significant from June to August. Evidence of high-altitude melt is also seen in the TanDEM-X backscatter images from August 2015 (Supplementary Fig. 1). Annual PDDs at the glacier terminus were  $647^\circ \text{ C}$ ,  $481^\circ \text{ C}$ ,  $552^\circ \text{ C}$  and  $528^\circ \text{ C}$  in 2013, 2014, 2015 and 2016, respectively. The melt rate at the terminus is estimated to be around  $5 \text{ m a}^{-1}$ , according to the terminus surface elevation decrease during quiescence (Fig. 11) and the melt rate of icebergs left in the empty lake basin after lake drainage in 2009 (Haemig et al., 2014). Combining this melt rate and the annual average of 552 PDDs gives a realistic degree day factor of about  $9 \text{ mm w.e. } ^\circ \text{C}^{-1} \text{ d}^{-1}$ .

#### 4.4 Lake formation and drainage

Images from the monitoring station at Kyagar Glacier showed that a lake initially began forming in the river basin upstream of the glacier terminus in early December 2014. During January and February 2015 the lake appeared to fill



**Figure 12.** Radar backscatter images of the glacier terminus showing (a) the lake 11 days before drainage, (b) just after the start of drainage and (c) after the lake drainage. Lake drainage clearly occurred through subglacial channels, rather than through dam collapse or over topping. Images from TanDEM-X data provided by DLR.

faster, before remaining at a constant size (still less than 1 million m<sup>3</sup>) during March. In April 2015 the lake size increased again in line with the onset of spring melting, continuing more rapidly during the summer until reaching an estimated volume of 53 million m<sup>3</sup> before draining through subglacial channels on the 27 July 2015, as observed by TanDEM-X acquisitions (Fig. 12).

Following the drainage in July, a new lake started forming in September 2015 and remained at a volume of approximately 1.5 million m<sup>3</sup> between Oct. and Dec. 2015. As during the previous winter, the lake size increased between January and February 2016, from approximately 1.5 to 5.0 million m<sup>3</sup>, and again this winter lake filling seemed to stop during March and recommence with the onset of the melting season. The lake rapidly filled during summer 2016 and reached an estimated volume of 40 million m<sup>3</sup> by 13 July before a rapid drainage event occurred on 17 July 2016. Almost immediately after this event, the lake filled again and reached an estimated volume of 37 million m<sup>3</sup> on 4 Aug before a second drainage event on 11 Aug. Lake volumes, as calculated from satellite images and the lake basin DEM, are provided in the supplementary material.

In addition to the large ice-dammed lake at the glacier terminus, a lake approximately 200 m long, situated about 9 km from the terminus on the eastern edge of the glacier, was clearly visible on several consecutive TanDEM-X backscatter images (Supplementary Fig. 4). This lake became visible about one month before the GLOF in 2015 and was still present during the drainage on 27 July but had

disappeared by 28 July after the GLOF. In 2016 the lake appeared again, a bit over a month before the GLOF in July 2016, and disappeared after the GLOF.

## 5 Discussion

Based on the results, we discuss possible surge mechanisms for the observed behaviour of the glacier before and during the main surge phase, and rule out mechanisms which contradict the observed behaviour. The effect of the surge cycle on the GLOF hazard posed by Kyagar Glacier in the past and future is assessed to provide an outlook for its hazard potential.

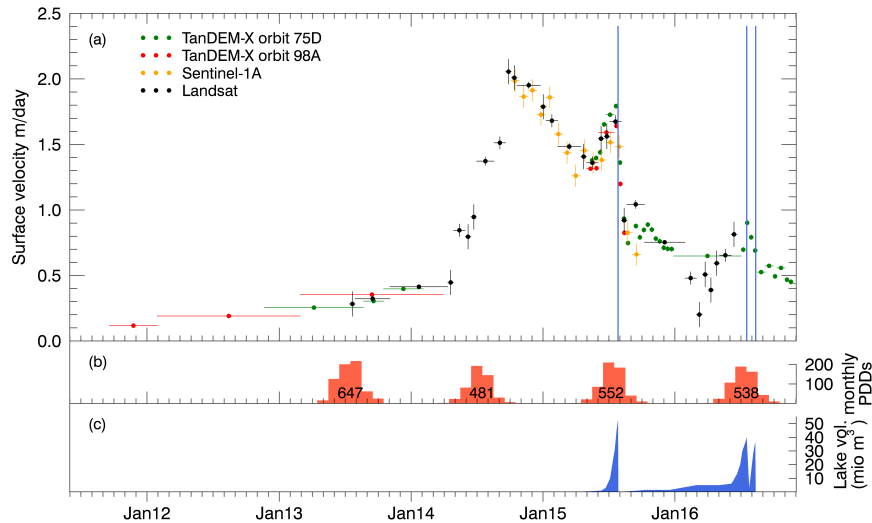
### 5.1 Surge mechanisms for Kyagar Glacier

#### 5.1.1 Pre-surge build up

The observed pre-surge acceleration could have arisen through increased internal ice deformation and/or increased basal sliding, both of which may be expected following the steepening of the glacier tongue between 2000 and 2012 (Fig. 11a). The contribution of internal ice deformation  $u_d$  to surface flow can be estimated with the parallel-sided slab assumption with the plain strain approximation (Greve and Blatter, 2009), as

$$u_d = \frac{2A}{n+1} (\rho g \sin \alpha)^n H^{n+1}, \quad (1)$$

where the strain rate factor  $A = 2.4 \times 10^{-24} \text{ s}^{-1} \text{ Pa}^{-3}$  (for temperate ice, a conservative estimate), ice density  $\rho = 900 \text{ kg m}^{-3}$ , Glen's exponent  $n = 3$ , and gravitational acceleration  $g = 9.8 \text{ m s}^{-2}$ , leaving the key variables surface slope,  $\alpha$ , and ice thickness  $H$  (Cuffey and Paterson, 2010). Assuming a constant glacier thickness of 250 m, an estimation on the high side according to the glacier bed profile presented by Haemmig et al. (2014), the 1.4° surface slope over the glacier tongue in 2000 would result in a surface velocity of 4 mm d<sup>-1</sup>. The increased slope of 2.3° in 2012 would give deformation velocities of around 18 mm d<sup>-1</sup>, approximately one order of magnitude lower than the observed 0.1 m d<sup>-1</sup> between 2011–2012 (Fig. 5). Hence, it seems that basal motion significantly contributed to flow of the glacier tongue already prior to the surge, indicating that the base of the glacier tongue was already temperate and contradicting the thermal mechanism in which a switch from cold to temperate base causes surge onset. Conditions are different above the confluence where the surface slope of around 4.5° in 2012 could cause surface velocities on the order of 0.1 m d<sup>-1</sup> through internal deformation alone, in the same order of magnitude as observed velocities. Pre-surge velocities above the confluence could therefore feasibly occur in a cold-based situation through internal deformation without the contribution of basal motion. However, basal motion upstream of the confluence is not ruled out with this simple calculation.



**Figure 13.** (a) Evolution of surface velocity at the middle of the glacier tongue (4 km from the terminus, Fig. 3) from the end of 2011 until mid-2016, with horizontal bars representing the period over which velocity was calculated and vertical bars showing the velocity uncertainty. The blue vertical lines indicate GLOF events. (b) Monthly PDDs indicated by the bars and yearly PDDs indicated by the numbers. (c) Temporal change in lake volume as calculated from lake extent on satellite images.

The effect of increased surface slope on basal shear stress,  $\tau_b$ , during the quiescence can be estimated from

$$\tau_b = \rho g H \sin \alpha, \quad (2)$$

if the glacier base is assumed to mirror the surface slope (Cuffey and Paterson, 2010). If all variables except the slope are considered constant, the increase from  $1.4^\circ$  to  $2.3^\circ$  between 2000 and 2012 over the glacier tongue would have caused a 64% basal shear stress increase, from about 54 to 88 kPa. The thickness increase over the reservoir area would further increase  $\tau_b$  at the upper part of the glacier tongue. Given the potential sensitivity of the subglacial hydrological drainage system efficiency to basal stress (Eisen et al., 2005), the conditions at the end of the quiescence could favour a switch to an inefficient drainage system.

However, the slope began decreasing between 2012 and 2014 (Fig. 11) while velocity continued to increase. This contradicts the idea that increasing slope alone could have driven the acceleration. Positive feedback mechanisms triggered by increasing basal stress must therefore play a role in the continued acceleration during the late quiescence, and ultimately in bringing the glacier into a critical state before surge initiation. These could include increased frictional heating enhancing melt water production and water pressure at the glacier base (Dunse et al., 2015; Weertman, 1969), or increased basal deformation closing subglacial drainage channels, thus trapping water and increasing water pressure (Clarke et al., 1984; Kamb et al., 1985). Processes within the subglacial till such as a positive feedback between till deformation, consolidation and water pressure (Boulton and Zatzepin, 2006) could also play a role.

The continuation of acceleration during winter 2013/2014 (Fig. 13), rather than another slow-down as observed by Haemmig et al. (2014) during the previous winter, may indicate the presence of an inefficient subglacial drainage system. Such winter acceleration was observed prior to the 1982/83 surge of Variegated Glacier and was attributed to the establishment of an inefficient linked cavity drainage system with higher water pressure, in part due to low water flux allowing drainage channels to close (Kamb et al., 1985).

### 5.1.2 Main surge phase, 2014 to 2016

The rapid spring acceleration observed in May 2014 can be explained by the input of surface meltwater increasing water pressure in an inefficient subglacial drainage system, which was suspected to be present during the preceding winter. Continued acceleration through the summer could reflect increasing subglacial water pressure as meltwater input continued. The deceleration after reaching maximum velocities in Oct. 2014 indicates decreasing subglacial water pressure, perhaps through the gradual evolution of a subglacial drainage system towards the end of summer followed by declining melt water input and possible subglacial drainage. Evidence for the drainage of en- or sub-glacially stored water during wintertime comes from the observed lake formation starting in December 2014, at a time when temperatures consistently well below zero exclude surface water sources. The lake growth and, hence, the drainage of subglacial water, appeared to end in January 2015. This indicates that most subglacial water was already drained or that subglacial drainage channels closed towards the end of the winter. Closing of the subglacial channels would again put the subglacial system

into a state very sensitive to surface water input and allow summer-onset acceleration again in 2015.

The seemingly extremely rapid response of surface velocity to the onset of surface melting indicates an efficient transfer of surface water to the glacier base which was in a critical state before the melt season started. The heavily crevassed surface, as observed during past expeditions (Mason, 1928; Haemmig et al., 2014) and seen on satellite images, may significantly contribute to the efficiency of vertical drainage. We note, however, that on some images supraglacial lakes are present on the glacier surface (Supplementary Fig. 3) ~~This observation and 4). These supraglacial lakes~~ might indicate that surface water is not always connected with the subglacial drainage system despite extensive crevassing. ~~Based on the available evidence, we can however also not rule out the possibility that the supraglacial lakes are, or on the other hand they might be~~ an expression of high englacial water pressures during the surge. ~~The presence of a small lake at the side of the glacier near the confluence (Supplementary Fig. 4) and its disappearance after the GLOFs in 2015 and 2016, indicates that this surface lake is a reflection of the englacial water pressure being high during the surge and low after the GLOF when the subglacial drainage system evolves to a more efficient state.~~

The abrupt deceleration at the end of July 2015, occurring simultaneously with the lake outburst, is ~~a more an~~ extreme example of deceleration occurring in association with subglacial drainage. It seems that the opening of subglacial channels beneath the terminus during the lake outburst triggered the reduction of subglacial water pressure and, hence, velocity beneath the whole glacier tongue within 11 days (Fig. 7). ~~This may have occurred through the sudden formation of an efficient drainage system due to the~~ ~~The disappearance of the supraglacial lake near the confluence also reflects the establishment of a more efficient subglacial drainage system along the entire length of the glacier tongue. This rapid evolution of the drainage system arises from a change in boundary conditions at the terminus of the glacier, particularly, namely~~ the sudden decrease in water pressure as the lake ~~level dropped~~ ~~at the terminus drained.~~

### 5.1.3 Summary of surge mechanism

The various phases of the surge were facilitated by a basal motion mechanism very sensitive to subglacial water pressure, controlled by meltwater input in summer, reduced input and perhaps drainage of most of the subglacial water in early winter, and rapid subglacial drainage during the GLOF in summer 2015. It seems that the surge is well explained by the presence of an inefficient basal drainage system facilitating high subglacial water pressure, corresponding to the mechanism proposed by Kamb et al. (1985). However, the seasonality observed at Kyagar Glacier is different to the often cited winter initiation associated with closure of subglacial channels in the hydrological switch mechanism (Eisen et al.,

2005; Kamb et al., 1985). In the case of Kyagar Glacier, development of an inefficient drainage system in winter does not necessarily facilitate increased subglacial water pressure until the beginning of the melt season, due a lack of liquid water in winter. Surge initiation in winter should not be considered a precondition of hydrologically controlled surges (see eg. Jiskoot and Low (2011)).

We note that the idea of surge initiation through formation of an inefficient drainage system as discussed in Section 5.1.2, could be replaced by that of a layer of subglacial till in which increased water pressure reduces till strength to a deformation threshold (Boulton and Jones, 1979; Cuffey and Paterson, 2010). It is likely that the tongue of Kyagar Glacier is underlain by a permeable till, owing to fine-grained sedimentary rock on which the glacier tongue lies (Desio et al., 1991; Searle and Phillips, 2007). We can not speculate further on the exact nature of the subglacial drainage system as there is no field evidence, but conclude that Kyagar Glacier is a system very sensitive to water in- and outputs during the surge, rather than being purely internally regulated.

The spatial pattern of acceleration and elevation change over Kyagar Glacier provides further information about the nature of the surge, in particular that it was the tongue of the glacier which primarily underwent surging, evidenced by the velocity increase (Fig. 8) and the steepening of the profile over the glacier tongue during quiescence (Fig. 11). The build-up of an ice reservoir at the confluence represents the intersection between the surging tongue and the tributaries, which maintain more steady flow and support the recharge of the ice reservoir during quiescence. We note also that looped moraines do not form at Kyagar Glacier because there is no surging of upper tributaries into a non-surging part of the glacier (see supplementary video). Surging confined mainly to the flatter, lower part of the glacier has been observed for a number other Karakoram surges (Mayer et al., 2011; Quincey et al., 2015).

The distinction between these two parts of the glacier is also reflected in the glacier surface slope with the tongue being much more gently-sloped ( $2^\circ$  vs.  $4.5^\circ$ ). The surge behaviour of Kyagar Glacier likely stems from the characteristics of the lower glacier, in particular its apparent inability to transport mass from the reservoir area down the glacier tongue to the terminus in a regular manner. Basal motion is necessary to transport mass from the reservoir area down the glacier tongue, but some characteristic of the glacier causes this to occur cyclically through periods of surging. Clarke et al. (1986) noted that surging glaciers tended to have greater slope over the accumulation area and lower slope over the ablation area, and Björnsson et al. (2003) summarised that surge-type glaciers in Iceland tended to exhibit small slopes with velocities too slow to remain in balance with the accumulation rate. These factors could also apply to Kyagar Glacier. ~~The fact that at~~ ~~At~~ least three of the five closest downstream neighbouring glaciers have also experienced surging (Copland et al., 2011; Mayer

et al., 2011; Quincey et al., 2015) ~~also indicates possible locational influences on surging, for example due to local, and share common~~ topographic and climatic conditions (Sevestre and Benn, 2015) factors possibly contributing to their surge nature. The combination of steep accumulation areas and relatively flat glacier tongues may be conducive to surge development, as may the underlying sedimentary geology or the particular climatic conditions according to the climatic envelope theory of Sevestre and Benn (2015).

We estimate a surge return period of around 15–20 years for Kyagar Glacier, based on the information that the last major period of advance was in the late 1990s (Hewitt and Liu, 2010) and the similarity between the glacier profile in 2000 and that from after the surge in 2015 (Fig. 11). The historic frequency of lake outburst flooding indicates periods of increased lake formation, and therefore probably surge activity, every 15–20 years (Fig. 2). The surge return periods of other individual Karakoram glaciers have also been similarly estimated at around 15 to 20 years (Mayer et al., 2011; Quincey and Luckman, 2014), although longer return periods are also possible Copland et al. (2011).

## 5.2 Future outlook for Kyagar Glacier and lake formation

The potential volume of the glacier-dammed lake at Kyagar Glacier depends both on the height of the ice dam at the glacier terminus and whether the subglacial channels through which the lake drains are open or closed. Thickening of over 60 m at the glacier terminus caused potential GLOF volume to increase more than 40-fold since early 2014, to over 70 million m<sup>3</sup> according to the August 2016 DEM of the glacier. GLOF hazard potential is expected to remain high for a number of years as the still slightly elevated tongue velocity continues to transport mass to the terminus area, potentially increasing the height of the ice dam until mass transport to the terminus area falls below the ablation rate. The height of the ice dam is expected to decrease at an estimated rate of 5 m a<sup>-1</sup> once mass transport to the terminus ceases, according to the ablation rate of the latest quiescence phase and the estimated melting rate of icebergs left in the empty lake basin after lake drainage in 2009/2010 (Haemmig et al., 2014). Unless the mass balance significantly changes, it would be expected that the next quiescence phase would last until around 2030 based on an estimated 15–20 year return period.

The size of future GLOFs depends largely only on the potential lake volume, the volume reached if the lake filled to 90% of the ice height. However the actual volume reached may be less if the lake drains before the potential volume is reached. Despite the ice dam being about 5 meters higher in 2016 than 2015, the lake volume was less in 2016 as the outburst occurred at about 85% of the ice dam height. This can be explained by subglacial channels from the 2015 lake outburst providing a weaker, preferential pathway for lake drainage and thus earlier outburst in 2016 fol-

lowed by a smaller second outburst. We note that GLOFs > 80 million m<sup>3</sup> have never been followed by a significant drainage event in the next year (Fig. 2), which perhaps indicates that large floods cause formation of subglacial channels large enough to remain open until the following year. Meteorological factors, such as temperature during the GLOF, may also influence the peak flood discharge (Ng et al., 2007).

It is important that the height of the ice dam and the lake evolution is monitored through satellite imagery each summer in the years following the surge, to assess imminent GLOF threat and allow affected communities to be better prepared for flood impacts.

## 6 Conclusion

Our integrative picture of the recent surge of Kyagar Glacier, built from satellite surface velocity maps, terrestrial station images and DEMs, provides an extraordinary insight into glacial surging in connection with surface hydrology and glacier-dammed lake formation and outburst. After gradual surface velocity increase through the last few years of the quiescence, the glacier entered a state highly sensitive to surface water input. Two dramatic acceleration phases occurred in concurrence with the onset of the surface meltwater production in the seasons of 2014 and 2015, indicating a surge mechanism related to the evolution of the basal hydrological system and associated changes in subglacial water pressure, rather than to an internally controlled switch to temperate basal temperatures. Between the acceleration phases, deceleration was accompanied by drainage of subglacial water, evidenced by the filling of the glacier-dammed lake during the winters of 2014/15 and 2015/16. Lake drainage in July 2015 caused instantaneous deceleration over the whole glacier tongue, indicating that a sudden drainage of the subglacial water under a large part of the glacier tongue occurred with the lake outburst event.

Surging of Kyagar Glacier is the main driver of ice-dammed lake formation and GLOFs. The thickening of over 60 m at the glacier terminus during the surge caused potential GLOF size to increase almost 40-fold since early 2014, to over 70 million m<sup>3</sup> at the end of summer 2016. The hazard potential of large GLOFs remains high in the next few years, potentially larger than the 2015 and 2016 GLOFs, but the actual magnitude depends on the timing of lake drainage. Remotely sensed data, in particular from TanDEM-X, is essential to the observation of the surge phenomenon and the assessment of hazard formation. The remote sensing of the glacier should be continued to monitor lake formation and the evolution of the ice dam height.

*Author contributions.* VR wrote major parts of the paper, calculated velocity maps and analysed all data. SL developed the offset tracking algorithms and did the interferometric processing to obtain the DEMs. MH and CH initiated the study and contributed to dis-



discussion of the results throughout. IH provided feedback on a final version. The authors declare that they have no conflict of interest.

*Acknowledgements.* We ~~would like to thank~~ are grateful to the German Space Agency DLR for providing TanDEM-X data through the proposal XTI\_GLAC6780. ~~We greatly appreciate the Landsat data available from, the European Space Agency ESA for Copernicus Sentinel-1A and Sentinel-2 data and the U.S. Geological Survey and the Copernicus Sentinel-1A and Sentinel-2 data from the European Space Agency ESA for provision of Landsat data.~~ Geopraevent AG provided access to data and images from the monitoring stations in China. We thank ETH Zurich for providing the funding for this study and M. Funk for helpful comments on the manuscript. We would like to acknowledge the constructive reviews by M. Truffer and C. Mayer and comments by the scientific editor O. Eisen, that contributed to the final version of this paper.

## References

- Barrand, N. E. and Murray, T.: Multivariate Controls on the Incidence of Glacier Surging in the Karakoram Himalaya, Arctic, Antarctic and Alpine Research, 38, 489–498, 2006.
- Björnsson, H.: Hydrological characteristics of the drainage system beneath a surging glacier, *Nature*, 395, 771–774, 1998.
- Björnsson, H.: Understanding jokulhlaups; from the tale to theory, *Journal of Glaciology*, 56, 1002–1010, 2010.
- Björnsson, H., Pálsson, F., Sigurdsson, O., and Flowers, G. E.: Surges of glaciers in Iceland, *Annals of Glaciology*, 36, 82–90, 2003.
- Boulton, G. S. and Jones, A. S.: Stability of temperate ice caps and ice sheets resting on beds of deformable sediment, *Journal of Glaciology*, 24, 29–43, 1979.
- Boulton, G. S. and Zatsepin, S.: Hydraulic impacts of glacier advance over a sediment bed, *Journal of Glaciology*, 52, 497–527, 2006.
- Chen, Y., Xu, C., Chen, Y., Li, W., and Liu, J.: Response of glacial-lake outburst floods to climate change in the Yarkant River basin on northern slope of Karakoram Mountains, China, *Quaternary International*, 226, 75–81, 2010.
- Clarke, G. K. C.: Length, width and slope influences on glacier surging, *Journal of Glaciology*, 37, 236–246, 1991.
- Clarke, G. K. C., Collins, S. G., and Thompson, D. E.: Flow, thermal structure and subglacial conditions of a surge-type glacier, *Canadian Journal of Earth Sciences*, 21, 232–240, 1984.
- Clarke, G. K. C., Schmock, J., Simon, C., Ommanney, L., and Collins, S. G.: Characteristics of Surge-Type Glaciers, *Journal of Geophysical Research*, 91, 7165–7180, 1986.
- Copland, L., Sylvestre, T., Bishop, M. P., Shroder, J. F., Seong, Y. B., Owens, L. A., Bush, A., and Kamp, U.: Expanded and Recently Increased Glacier Surging in the Karakoram, Arctic, Antarctic and Alpine Research, 43, 503–516, 2011.
- Cuffey, K. M. and Paterson, W. S. B.: *The Physics of Glaciers*, Elsevier, 4 edn., 2010.
- Dehecq, A., Millan, R., Berthier, E., Gourmelen, N., and Trouvé, E.: Elevation changes inferred from TanDEM-X data over the Mont-Blanc area: Impact of the X-band interferometric bias, *IEEE Journal of Selected Topics in Applied Earth Observations and Remote Sensing*, 22–24 July 2015, 2015.
- Desio, A., Caporali, A., Gaettani, M., Gosso, G., Palmieri, F., Pogonante, U., and Rampini, L.: *Geodesy, Geophysics and Geology of the Upper Shaksgam Valley (North-East Karakoram) and South Sinkiang*, Consiglio Nazionale delle Ricerche, 1991.
- Dunse, T., Schnellenberger, T., Hagen, J. O., Kääh, A., Schuler, T. V., and Reijmer, C.: Glacier-surge mechanisms promoted by a hydro-thermodynamic feedback to summer melt, *The Cryosphere*, 9, 197–215, 2015.
- Eisen, O., Harrison, W. D., Raymond, C. F., Echelmeyer, K. A., Bender, G. A., and Gorda, J. L. D.: Variegated Glacier, Alaska, USA: a century of surges, *Journal of Glaciology*, 51, 399–406, 2005.
- Farr, T. G., Rosen, P. A., Caro, E., Crippen, R., Duren, R., Hensley, S., Kobrick, M., Paller, M., Rodriguez, E., Roth, L., Seal, D., Schaffer, S., Shimada, J., Umland, J., Werner, M., Oskin, M., Burbank, D., and Alsdorf, D.: The Shuttle Radar Topography Mission, *Reviews of Geophysics*, 45, 2007.
- Fischer, G., Parrella, G., Papathanassiou, K., and Hajnsek, I.: Interpretation of Pol-InSAR Signatures from Glaciers and Ice Sheets at Different Frequencies, in: *EUSAR 2016*, 2016.
- Fowler, A. C., Murray, T., and Ng, F. S. L.: Thermally controlled glacier surging, *Journal of Glaciology*, 47, 2001.
- GAPHAZ, 2016: 17 July and 21 September 2016 glacier collapses in Tibet, online: <http://gaphaz.org/>, 2016.
- Gardelle, J., Berthier, E., Arnaud, Y., and Kääh, A.: Region-wide glacier mass balances over the Pamir-Karakoram-Himalaya during 1999–2011, *Cryosphere*, 7, 1885–1886, 2013.
- Goldstein, R. M. and Werner, C. L.: Radar interferogram filtering for geophysical applications, *Geophysical Research Letters*, 25, 4035–4038, 1998.
- Goldstein, R. M., Zebker, H. A., and Werner, C. L.: Satellite radar interferometry - Two-dimensional phase unwrapping, *Radio science*, 23, 713–720, 1988.
- Greve, R. and Blatter, H.: *Dynamics of Ice Sheets and Glaciers*, Springer Berlin Heidelberg, 1 edn., 2009.
- Haemmig, C., Huss, M., Keusen, H., Hess, J., Wegmüller, U., Ao, Z., and Kulubayi, W.: Hazard assessment of glacial lake outburst floods from Kyagar glacier, Karakoram Mountains, China, *Annals of Glaciology*, 55, 34–44, doi:10.3189/2014AoG66A001., 2014.
- Harrison, W. D. and Post, A. S.: How much do we really know about glacier surging?, *Annals of Glaciology*, 36, 2003.
- Harrison, W. D., Osipova, G. B., Nosenko, G. A., Espizua, L., Kääh, A., Fischer, L., Huggel, C., Burns, P. A. C., Truffer, M., and Lai, A. W.: Chapter 13 Glacier Surges, in: *Snow and Ice-Related Hazards, Risks and Disasters*, Elsevier, 2014.
- Heid, T. and Kääh, A.: Repeat optical satellite images reveal widespread and long term decrease in land-terminating glacier speeds, *The Cryosphere*, 6, 467–478, 2012.
- Hewitt, H. and Liu, J.: Ice-dammed lakes and outburst floods, Karakoram Himalaya: historical perspectives on emerging threats, *Physical Geography*, 36, 528–551, doi:10.2747/0272-3646.31.6.528, 2010.
- Hoinkes, H. C.: Surge of the Vernagtferner in the Ötztal Alps since 1599, *Canadian Journal of Earth Sciences*, 6, 853–861, doi:10.1139/e69-086, 1969.
- Huss, M.: Density assumptions for converting geodetic glacier volume change to mass change, *The Cryosphere*, 7, 877–887, 2013.

- Jiskoot, H. and Low, R. H.: Is seasonal timing of surge initiation or termination related to surge character and development?, AGU Fall Meeting Abstracts, pp. 503–516, 2011.
- Jiskoot, H., Murray, T., and Boyle, P.: Controls on the distribution of surge-type glaciers in Svalbard, *Journal of Glaciology*, 46, 412–422, 2000.
- Kamb, B., Raymond, C. F., Harrison, W. D., Engelhardt, H., Echelmeyer, K. A., Humphrey, N., Brugman, M. M., and Pfeffer, T.: Glacier Surge Mechanism: 1982–1983 Surge of the Variegated Glacier, Alaska, *Science*, 227, 469–479, 1985.
- Kapnick, S. B., Delworth, T. L., Ashfaq, M., Malyshev, S., and Milly, P. C. D.: Snowfall less sensitive to warming in Karakoram than in Himalayas due to unique seasonal cycle, *Nature Geoscience*, 7, 834–840, 2014.
- Krieger, G., Moreira, A., Fiedler, H., Hajnsek, I., Werner, M., Younis, M., and Zink, M.: TanDEM-X: A Sattelite Formation for High-Resolution SAR Interferometry, *IEEE Transactions on Geoscience and Remote Sensing*, 45, 3317–3341, 2007.
- Krieger, G., Zink, M., Bachmann, M., Bräutigam, B., Schulze, D., Martone, M., Rizzoli, P., Steinbrecher, U., Antony, J. A., Zan, F. D., Hajnsek, I., Papathanassiou, K., Kugler, K., and Cassola, F.: TanDEM-X: A radar interferometer with two formation-flying satellites, *Acta Astronautica*, 89, 83–98, 2013.
- Leinss, S., Wiesmann, A., Lemmetyinen, J., and Hajnsek, I.: Snow Water Equivalent of Dry Snow Measured by Differential Interferometry, *IEEE Journal of Selected Topics in Applied Earth Observations and Remote Sensing*, 8, 3773–3790, 2015.
- Luckman, A., Quincey, D., and Bevan, S.: The potential of satellite radar interferometry and feature tracking for monitoring flow rates of Himalayan glaciers, *Remote sensing of Environment*, 111, 172–181, 2007.
- Mason, K.: Exploration of the Shaksgam Valley and Aghil Ranges, 1926, *Survey of India*, 1928.
- Mayer, C., Fowler, A. C., Lambrecht, A., and Schnarrer, K.: A surge of North Gasherbrun Glacier, Karakoram, China?, *Journal of Glaciology*, 57, 904 – 916, 2011.
- Meier, M. F. and Post, A.: What are glacier surges?, *Canadian Journal of Earth Sciences*, 6, 807–817, 1969.
- Murray, T., Stuart, G. W., Miller, P. J., Woodward, J., Smith, A. M., Porter, P. R., and Jiskoot, H.: Glacier surge propagation by thermal evolution at the bed, *Journal of Geophysical Research*, 105, 134991 – 13507, 2000.
- Nagler, T. and Rott, H.: SAR tools for snowmelt modelling in the project HydAlp, in: *Geoscience and Remote Sensing Symposium Proceedings*, 1998. IGARSS '98. 1998 IEEE International, pp. 1521–1523 vol.3, 1998.
- Nagler, T., Rott, H., Ripper, E., Bippus, G., and Hetzenecker, M.: Advancements for Snowmelt Monitoring by Means of Sentinel-1 SAR, *Remote Sensing*, 8, 2016.
- Ng, F., Liu, S., Mavlyudov, B., and Wang, Y.: Climatic control on the peak discharge of glacier outburst floods, *Geophysical Research Letters*, 34, 2007.
- Quincey, D. J. and Luckman, A.: Brief Communication: On the magnitude and frequency of Khurdopin glacier surge events, *The Cryosphere*, 8, 571–574, 2014.
- Quincey, D. J., Braun, M., Glasser, N. F., Bishop, M. P., and Luckman, A.: Karakoram glacier surge dynamics, *Geophysical Research Letters*, 38, 2011.
- Quincey, D. J., Glasser, N. F., Cook, S. J., and Luckman, A.: Heterogeneity in Karakoram glacier surges, *Journal of Geophysical Research: Earth Science*, 120, 1288–1300, 2015.
- Randolph Glacier Inventory Version 5.0: Global Land Ice Measurements from Space, Boulder Colorado, USA. Digital Media., Tech. rep., <http://www.glims.org/RGI/index.html>, 2015.
- Raymond, C. F.: How Do Glaciers Surge?, *Journal of Geophysical Research*, 92, 9121–9134, 1987.
- Rignot, E., Echelmeyer, K., and Krabill, W.: Penetration depth of interferometric synthetic-aperture radar signals in snow and ice, *Geophysical Research Letters*, 28, 3501–3504, 2001.
- Searle, M. P. and Phillips, R. J.: Relationships between right-lateral shear along the Karakoram Fault and metamorphism, magmatism, exhumation and uplift: evidence from the K2-Gashebrum-Pangong ranges, north Pakistan and Ladakh, *Journal of the Geological Society, London*, 164, 439–450, 2007.
- Sevestre, H. and Benn, D. I.: Climatic and geometric controls on the global distribution of surge-type glaciers: implications for a unifying model of surging, *Journal of Glaciology*, 61, 646–659, 2015.
- Sevestre, H., Benn, D. I., Hulton, N. R. J., and Baelum, K.: Thermal structure of Svalbard glaciers and implications for thermal switch models of glacier surging, *Journal of Geophysical Research*, 120, 2220–2236, 2015.
- Small, D.: SAR backscatter multitemporal compositing via local resolution weighting, in: *Geoscience and Remote Sensing Symposium (IGARSS)*, 2012 IEEE International, pp. 4521–4524, 2012.
- Strozzi, T., Luckman, A., Murray, T., Wegmüller, U., and Werner, C. L.: Glacier Motion Estimation Using SAR Offset-Tracking Procedures, *IEEE Transactions on Geoscience and Remote Sensing*, 40, 2384–2390, 2002.
- Truffer, M., Harrison, W. D., and Echelmeyer, K. A.: Glacier motion dominated by processes deep in underlying till, *Journal of Glaciology*, 46, 213–221, 2000.
- Vaughan, D. G.: Recent Trends in Melting Conditions on the Antarctic Peninsula and Their Implications for Ice-sheet Mass Balance and Sea Level, *Arctic, Antarctic and Alpine Research*, 38, 147–152, 2006.
- Weertman, J.: Water lubrication mechanism of glacier surges, *Canadian Journal of Earth Sciences*, 6, 929–942, 1969.
- Yasuda, T. and Furuya, M.: Dynamics of surge-type glaciers in West Kunlun Shan, Northwestern Tibet, *Journal of Geophysical Research: Earth Surface*, 120, 2015.
- Zebker, H. A. and Villasenor, J.: Decorrelation in interferometric radar echos, *Geoscience and Remote Sensing, IEEE*, 30, 950–959, 1992.
- Zebker, H. A. and Yanping, L.: Phase unwrapping algorithms for radar interferometry: residue-cut, least-squares, and synthesis algorithms, *Journal of the Optical Society of America*, 15, 586–598, 1998.
- Zhang, X.: Investigation of glacier bursts of the Yarkant River in Xinjiang, China, *Annals of Glaciology*, 16, 135–139, 1992.
- Zitova, B. and Flusser, F.: Image registration methods: a survey, *Image and Vision Computing*, 21, 977–1000, 2003.