

Interactive comment on “Terrain changes from images acquired on opportunistic flights by SFM photogrammetry” by Luc Girod et al.

J. M. FRIEDT (Referee)

jmfriedt@femto-st.fr

Received and published: 21 December 2016

as a sequel to yesterday’s comment, I wonder if you could comment on the flight path of the helicopter over the glacier. Indeed, I have myself been attempting to generate DEM from the Lufttransport flight leaving NyAlesund and flying over the glaciers we are interested in, but the linear path of the plane makes the resulting DEM very unstable in terms of rotation around the flight path axis (where GPS error will obviously induce errors that are not compensated for by the next pictures). Your dedicated flight path does not introduce such a limitation.

Interactive comment on The Cryosphere Discuss., doi:10.5194/tc-2016-228, 2016.

Printer-friendly version

Discussion paper



Interactive
comment

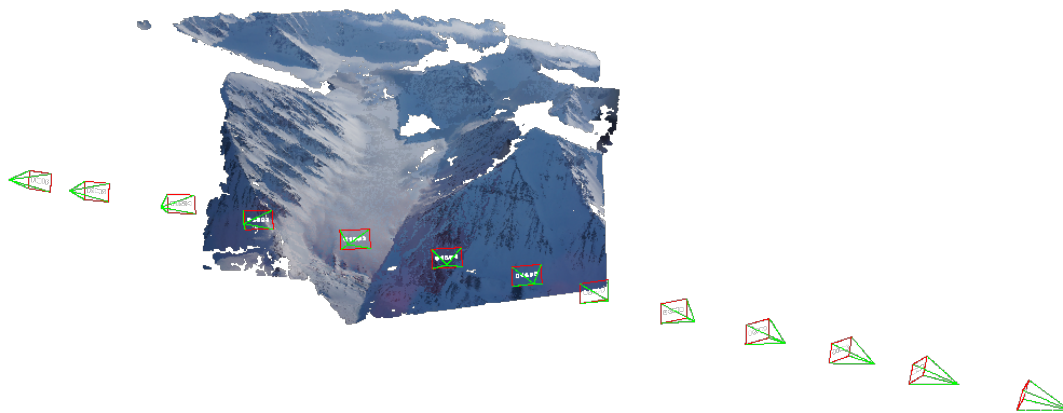


Fig. 1.

Printer-friendly version

Discussion paper



Interactive
comment

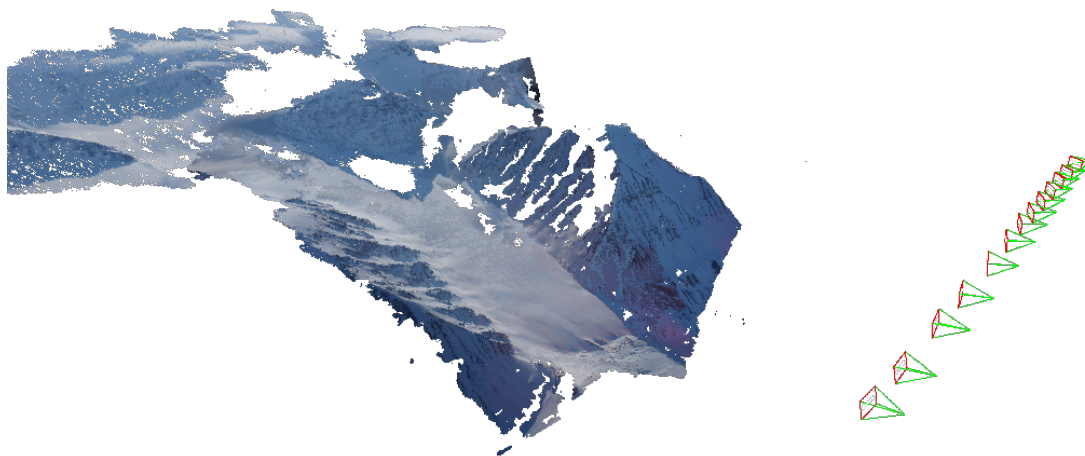


Fig. 2.

Printer-friendly version

Discussion paper

