

Editor, *The Cryosphere*:

January 3, 2017

Responses to the remaining comments and suggestions to the anonymous reviews of manuscript tc-2016-201 *Rapid Wastage of the Hazen Plateau Ice Caps, Northeastern Ellesmere Island, Nunavut, Canada*, follow below. Again, we appreciate the efforts of the reviewers, who clearly spent a great deal of time with this manuscript and as a result have greatly improved it.

**Reviewer #1:** The reviewer caught 3 remaining typos in the manuscript, these have been fixed.

**Reviewer #2:** The reviewer noted that Figure 5 still needed work, including the addition of proper labels, completion of the plot area box and overlapping text. These issues have been addressed. Figure 5 is much better now.

Respectfully,

Mark C. Serreze

A handwritten signature in black ink, appearing to read 'Mark C. Serreze', is positioned above a horizontal line.

Director, NSIDC  
University of Colorado Boulder

1  
2  
3  
4  
5  
6  
7  
8  
9  
10  
11  
12  
13  
14  
15  
16  
17  
18  
19  
20  
21  
22  
23  
24  
25

Rapid Wastage of the Hazen Plateau Ice Caps, Northeastern Ellesmere Island, Nunavut, Canada

Mark C. Serreze<sup>1</sup>, Bruce Raup<sup>2</sup>, Carsten Braun<sup>3</sup>, Douglas R. Hardy<sup>4</sup> and Raymond S. Bradley<sup>4</sup>

<sup>1</sup>Department of Geography, and Cooperative Institute for Research in Environmental Sciences,  
University of Colorado, Boulder Colorado, USA

<sup>2</sup>Cooperative Institute for Research in Environmental Sciences, University of Colorado, Boulder Colorado,  
USA

<sup>3</sup>Geography and Regional Planning / Environmental Science, Westfield State University, Westfield,  
Massachusetts, USA

<sup>4</sup>Department of Geosciences, University of Massachusetts, Amherst Massachusetts, USA

27 Two pairs of small stagnant ice bodies on the Hazen Plateau of northeastern Ellesmere Island, the St.  
28 Patrick Bay ice caps and the Murray and Simmons ice caps, are rapidly shrinking, and the remnants of  
29 the St. Patrick Bay ice caps are likely to disappear entirely within the next five years. Vertical aerial  
30 photographs of these Little Ice Age relics taken during August of 1959 show that the larger of the St.  
31 Patrick Bay ice caps had an area of 7.48 km<sup>2</sup>, and the smaller one 2.93 km<sup>2</sup>; the Murray and Simmons  
32 ice caps covered 4.37 km<sup>2</sup> and 7.45 km<sup>2</sup> respectively. Outlines determined from ASTER satellite data for  
33 July 2016 show that, compared to 1959, the larger and the smaller of the St. Patrick Bay ice caps had  
34 both been reduced to only 5% of their former area, with the Murray and Simmons ice caps faring better  
35 at 39% and 25%, likely reflecting their higher elevation. Consistent with findings from other glaciological  
36 studies in the Queen Elizabeth Islands, ASTER imagery in conjunction with past GPS surveys documents a  
37 strikingly rapid wastage of the St. Patrick Bay ice caps over the last 15 years. These two ice caps shrank  
38 noticeably even between 2014 and 2015, apparently in direct response to the especially warm summer  
39 of 2015 over northeastern Ellesmere Island. The well-documented recession patterns of the Hazen  
40 Plateau ice caps over the last 55+ years offer an opportunity to examine the processes of plant  
41 recolonization of polar landscapes.

42 **Keywords:** Arctic, ice caps, mass balance, Little Ice Age, Hazen Plateau, Ellesmere Island, ASTER

43

44

### 1. Introduction

45 The Hazen Plateau of northeastern Ellesmere Island, Nunavut, Canada, is a rolling upland, with  
46 elevations rising from about 300 meters above sea level near Lake Hazen to over 1000 m along the  
47 northeast coast of the island. The plateau is unglaciated with the exception of two pairs of small  
48 stagnant ice caps - the unofficially-named St. Patrick Bay ice caps, and, 110 km to the southwest, the  
49 Murray and Simmons ice caps (**Figure 1**). They are collectively referred to here as the Hazen Plateau ice  
50 caps. As of 2001, the larger St. Patrick Bay ice cap ranged in elevation between about 880 m and 720 m  
51 above sea level, with the smaller one spanning 820 m to 700 m. The Murray and Simmons ice caps lie in  
52 higher terrain; in 2001, both fell between about 1100 m and 1000 m above sea level. The Hazen Plateau  
53 ice caps are interpreted as forming and attaining their maximum extents during the Little Ice Age (LIA, c.  
54 1600-1850) (Koerner, 1989). Like much of the Queen Elizabeth Islands, the Hazen Plateau is presently a  
55 polar desert; annual precipitation is typically only 150-200 mm, with a late summer and early autumn  
56 maximum (Serreze and Barry, 2014). Summer precipitation may be variously rain or snow. Summers are  
57 very cool but variable; assessed as part of a multiyear glaciological study (Braun et al., 2004), the  
58 average 10 m July air temperature at the Murray ice cap summit (1100 m) measured for the years 1999  
59 through 2001, respectively, was 4.0°C, 0.2°C and 1.6°C.

60 This paper documents the behavior of the Hazen Plateau ice caps over the past 55+ years in the context  
61 of other glaciological studies in the Canadian Arctic. The analysis is based on a combination of past  
62 work using aerial photography, direct mass balance measurements from several field investigations, and  
63 GPS surveys of ice cap areas collected as part of these investigations – along with new information on

64 ice cap areas using data at 15 m resolution from the ASTER (Advanced Spaceborne Thermal Emission  
65 and Reflection Radiometer) instrument. ASTER flies onboard the NASA's Earth Observing System Terra  
66 satellite, launched in December 1999. It provides reflectance at a 15 m resolution and is a key asset of  
67 the international GLIMS initiative (Global Land Ice Measurements from Space) for mapping glacier  
68 outlines (Raup et al., 2007; Kargel et al., 2014).

## 69 **2. Previous Work**

70 Table 1 lists all available direct mass balance estimates of the ice caps (in meters water equivalent, or  
71 w.e.). Table 2 provides all available estimates of ice cap areas (km<sup>2</sup>). The first information on the St.  
72 Patrick Bay ice caps that we are aware of is oblique aerial photographs taken in late July of 1947 as part  
73 of the U.S. Operation Polaris Trimetregon Survey. These photographs show the ice caps standing out  
74 prominently against the snow-free tundra surface. Vertical aerial photographs collected by the Canada  
75 Department of Energy, Mines and Resources followed in August of 1959. These photographs show  
76 prominent, exposed surface dirt layers and stratigraphic layering on the St. Patrick Bay ice caps, and the  
77 Murray and Simmons ice caps are also bare of snow. From digitizing the 1959 photographs and  
78 mapping the ice cap outlines, the larger of the St. Patrick Bay ice caps then had an area of 7.48 km<sup>2</sup>, and  
79 the smaller one 2.94 km<sup>2</sup>. The Murray and Simmons ice caps covered, respectively 4.37 and 7.45 km<sup>2</sup>  
80 (Serreze, 1985; Bradley and Serreze, 1987; Braun et al., 2004). We estimate that these areas are  
81 accurate to within 5%.

82 In July of 1972, Canadian scientists H. Serson and J. A. Morrison surveyed the larger of the two St.  
83 Patrick Bay ice caps. They landed by helicopter in foul weather to find the ice cap totally covered with  
84 snow. They installed eight accumulation stakes along a roughly two kilometer transect partway across  
85 the ice cap. The range in elevation along this transect was about 60 m, which compares to a range for  
86 the entire ice cap of about 160 m. Later that same summer, on August 20-21, the ice cap was visited by  
87 G. Hattersley-Smith and A. Davidson, who noted a "partial cover of winter snow all around the ice  
88 margins for at least a kilometer" (Hattersley-Smith and Serson, 1973), in striking contrast with  
89 conditions depicted in the August 1947 and 1959 aerial photographs. They concluded that while the ice  
90 cap had been in decline (as suggested from the 1947 and 1959 photographs), by the early 1970s it had  
91 returned to good health, "thickening slightly and extending its margins" (icy firn was observed atop the  
92 dirty melt surface and a perennial snow cover extended beyond the ice cap margins). This is consistent  
93 with a known shift towards cooler summers and increased precipitation over the eastern Canadian  
94 Arctic (Bradley and Miller, 1972; Bradley and England, 1978). Hattersley Smith and Serson estimated a  
95 mass balance for the 1971/1972 season of +0.14 m w.e.

96 In 1982 and 1983, the St. Patrick Bay ice caps were the focus of detailed energy and mass balance  
97 investigations (Serreze, 1985; Bradley and Serreze, 1987; Serreze and Bradley, 1987). The stake network  
98 was expanded on the larger St. Patrick Bay ice cap and several stakes were installed on the smaller one.  
99 At the end of the 1982 field season in early August, the entire ice cap was bare ice with a well-developed  
100 cryoconite surface. Assuming that the 1982 melt season had largely ended by early August (all visible  
101 melt had stopped by the time that the field camp had been evacuated), the 1981/1982 mass balance for  
102 the larger ice cap was estimated at -0.14 m w.e.. Given that more melt may have occurred, this is likely

103 a minimum estimate. Based on the stake line installed in 1972, Bradley and Serreze (1987) estimated  
 104 that the overall mass balance for the period 1972-1982 was approximately -1.3 m w.e. ( $-0.14 \text{ a}^{-1}$ ). This  
 105 result finds qualitative support in comparisons between the 1959 aerial photographs and subsequent  
 106 vertical aerial photographs taken on 1 August 1978 showing that the larger and smaller of the ice caps  
 107 had decreased in area by 7% and 11% over that interval. Like the 1959 photographs, the August 1978  
 108 photographs revealed a snow-free plateau and bare ice with a prominent ablation surface. Aerial  
 109 photographs taken four years earlier, on 4 August 1974, showed broadly similar conditions. As part of  
 110 the St. Patrick Bay Project, a network of stakes installed on the Simmons ice cap in 1976 (Bradley and  
 111 England, 1977) was re-surveyed on 11 July 1983. Of the 18 original stakes, only 6 could be located; the  
 112 others were presumed to have melted out. Based on these sparse data, Bradley and Serreze (1987)  
 113 estimated that over the period 1976-1983, the Simmons ice cap experienced a total mass loss of at least  
 114 -0.49 meters w.e. ( $-0.08 \text{ a}^{-1}$ ). Collectively, these observations provided strong evidence that the period  
 115 of recovery inferred by Hattersley-Smith and Serson (1973) was short-lived.

116 However, the summer of 1983 was cool, and the snow never completely melted off the surrounding  
 117 tundra. The 1982/1983 annual mass balance for the larger St. Patrick Bay ice cap was estimated at  
 118 +0.14 m w.e. , and given their higher elevation, it is reasonable to assume that the 1982/1983 balance  
 119 year for the Simmons and Murray ice caps was also positive.

Table 1. Directly measured mass balances (meter water equivalent) of the Hazen Plateau ice caps. Where a value represents a multiyear record, the average annual value is shown in parentheses. Asterisks denote minimum estimates.

Balance year or period	Large St. Patrick Bay	Small St. Patrick Bay	Murray	Simmons
1971/72	+0.14 <sup>1</sup>	-----	-----	-----
1971/72-1981/82	-1.3 <sup>2</sup> (-0.14) <sup>2</sup>	-----	-----	-----
1975/76-1982/83	-----	-----	-----	*-0.49 (-0.08) <sup>2</sup>
1981/82	*-0.14 <sup>2</sup>	-----	-----	-----
1982/83	+0.14 <sup>2</sup>	-----	-----	-----
1983/84-1997/98	-----	-----	-----	*--0.49 (-0.03) <sup>4</sup>
1983/84-1999/00	*-1.01 (-0.06) <sup>3</sup>	*-1.26 <sup>3</sup> (-0.07) <sup>3</sup>	-----	-----
1998/99	-----	-----	-0.49 <sup>3</sup>	-----
1999/00	-----	-----	-0.29 <sup>3</sup>	-0.40 <sup>3</sup>
2000/01	-----	-----	-0.47 <sup>3</sup>	-0.52 <sup>3</sup>
2001/02	-----	-----	-0.29 <sup>3</sup>	-----

Sources: <sup>1</sup>Hattersley-Smith and Serson (1973); <sup>2</sup>Bradley and Serreze (1987); <sup>3</sup>Braun et al. (2004)

120

121 To our knowledge, there were no further visits to the Hazen Plateau ice caps until 1999, when C. Braun,  
 122 D. Hardy and R. Bradley of the University of Massachusetts Amherst established a network of 11  
 123 accumulation stakes on the Murray Ice Cap, which they further expanded in the year 2000. A new  
 124 network of 15 stakes was established on the Simmons ice cap in 2000. Winter snow accumulation was

125 measured on both ice caps in late May of 1999 through 2001, and summer ablation was measured in  
 126 late July and early August from 1999-2002. For the four years analyzed, 1999-2002, annual balances of  
 127 both ice caps were negative in all years, ranging from -0.29 m w.e. (Murray ice cap in 2000) to -0.52 m  
 128 w.e. (Simmons ice cap in 2001). In the summer of 2001, C. Braun and D. Hardy used portable GPS to  
 129 survey the perimeter of all four ice caps. The larger and smaller of the St. Patrick Bay ice caps had shrunk  
 130 to 62% and 59% of their 1959 areas, respectively. The Murray and Simmons ice caps had shrunk to 70%  
 131 and 53% of their 1959 areas. Some of the accumulation stakes inserted into the larger St. Patrick Bay  
 132 ice cap in 1982 and 1983 were located but all had melted out. Knowing how deep they had been  
 133 originally inserted enabled a minimum estimate (-1.01 m w.e.,  $-0.06 \text{ a}^{-1}$ ) of the mass loss between 1984  
 134 and 2000. This is based on the mean remaining depth of stake insertion into the ice in 1983 and an  
 135 assumed ice density of  $900 \text{ kg m}^{-3}$  (Braun et al., 2004). In the late summer of 2003, C. Braun mapped the  
 136 margins of the Murray and Simmons ice caps via portable GPS by holding the device out the window of a  
 137 low-flying helicopter. The same approach was used to assess the ice cap margins in 2006, this time by  
 138 University of Massachusetts graduate student T. Cook.

### 139 3. Updated History, 1959 to 2016

#### 140 3.1 Ice Cap Areas

141 The use of ASTER in conjunction with the air photographs and GPS surveys enables a fairly detailed  
 142 assessment of changes in ice cap areas from 1959 through the present. Clear-sky late summer (July or  
 143 August) scenes of the St. Patrick Bay ice caps showing a strong brightness contrast between the ice and  
 144 the bare, dark plateau surface, enabled manual mapping of the ice cap perimeters from ASTER for the  
 145 years 2005, 2009, 2014, 2015 and 2016. For the Murray and Simmons ice caps, ASTER estimates were  
 146 obtained for 2001, 2007 and 2016. For 2001, areas of the Murray and Simmons were available from  
 147 both ASTER and the surface-based GPS surveys. Considering the GPS surveys for this year as ground  
 148 truth, the ASTER areas for this year are accurate to within 1% for the Murray ice cap and 3% for the  
 149 Simmons ice cap. It is assumed that this is representative of the accuracy of area mapping from ASTER  
 150 for the other years.

151 As of July 2016, and Murray and Simmons ice caps cover 39% and 25% of the areas in 1959 based on the  
 152 aerial photographs. By sharp contrast, both of the St. Patrick Bay ice caps in 2016 cover only 5% of their  
 153 former areas, and have been reduced to ice patches, with the smaller ice body now covering only  $0.15$   
 154  $\text{km}^2$ .

Table 2. Surface areas ( $\text{km}^2$ ) and % areas compared to 1959 aerial photographs

	Larger St. Patrick Bay Ice Cap Area and % of 1959		Smaller St. Patrick Bay Ice Cap Area and % of 1959		Murray Ice Cap Area and % of 1959		Simmons Ice Cap Area and % of 1959	
	1959	7.48 <sup>1</sup>	100%	2.94 <sup>1</sup>	100%	4.37 <sup>1</sup>	100%	7.45 <sup>1</sup>
1978	6.69 <sup>1</sup>	89%	2.74 <sup>1</sup>	93%	-----	-----	-----	-----
1999	-----	-----	-----	-----	3.28 <sup>2</sup>	75%	-----	-----
2000	-----	-----	-----	-----	3.15 <sup>2</sup>	72%	-----	-----

2001	4.61 <sup>2</sup>	62%	1.72 <sup>2</sup>	58%	3.05 <sup>2</sup> (3.08 <sup>4</sup> )	70%	3.94 <sup>2</sup> (3.83 <sup>4</sup> )	53%
2003	-----	-----	-----	-----	2.91 <sup>3</sup>	66%	3.31 <sup>3</sup>	44%
2005	3.68 <sup>4</sup>	49%	1.03 <sup>4</sup>	35%	-----	-----	-----	-----
2006	-----	-----	-----	-----	2.86 <sup>3</sup>	65%	3.19 <sup>3</sup>	43%
2007	-----	-----	-----	-----	2.76 <sup>4</sup>	63%	2.92 <sup>4</sup>	39%
2009	2.54 <sup>4</sup>	34%	0.63 <sup>4</sup>	21%	-----	-----	-----	-----
2014	1.03 <sup>4</sup>	14%	0.29 <sup>4</sup>	10%	-----	-----	-----	-----
2015	0.52 <sup>4</sup>	7%	0.18 <sup>4</sup>	6%	-----	-----	-----	-----
2016	0.35 <sup>4</sup>	5%	0.15 <sup>4</sup>	5%	1.72 <sup>4</sup>	39%	1.84 <sup>4</sup>	25%
<sup>1</sup> Aerial photographs, <sup>2</sup> Surface GPS surveys, <i>Braun et al. (2004)</i> , <sup>3</sup> GPS helicopter surveys, <sup>4</sup> ASTER								

155

156 Outlines of the St. Patrick Bay ice caps for 1959 from aerial photography, for 2001 from GPS surveys, and  
 157 for 2014 and 2015 from ASTER are shown in **Figure 2**. The reductions in ice cap area are striking. Note  
 158 the obvious shrinkage even between the years 2014 and 2015. Shrinkage of the Murray and Simmons  
 159 ice caps is shown in **Figure 3**, based on outlines from 1959, 2001 and 2016. The shrinkage of these two  
 160 ice caps is clearly evident, albeit less pronounced.

161 Using the area estimates through 2002 and extrapolating forward, Braun et al. (2004) suggested that the  
 162 Hazen Plateau ice caps would disappear by the middle of the 21<sup>st</sup> century or soon thereafter, and that,  
 163 given their larger size, the Simmons ice cap and the larger of the two St. Patrick Bay ice caps would be  
 164 the last to go. However, based on data through 2016 and extrapolating forward (**Figure 4**), it now  
 165 appears that both of the St. Patrick Bay ice caps will disappear around the year 2020.

166 From the analyses described above, and results from other glaciological investigations for the Canadian  
 167 Arctic and the Arctic as a whole, the following conclusions are drawn:

- 168 • The Hazen Plateau ice caps are unlikely to be relics of the last glacial maximum, but rather likely  
 169 formed during the Little Ice Age (LIA, c. 1600-1850) (Koerner, 1989). They may have retained  
 170 their LIA extents through the first couple decades of the 20<sup>th</sup> century (Hattersley-Smith, 1969;  
 171 Sharp et al., 2014), but have been in overall decline ever since. Braun et al. (2004) speculate on  
 172 the basis of a mapped lichen trim line that the Murray ice cap may have attained a maximum LIA  
 173 extent of about 9.6 km<sup>2</sup>, over twice the mapped 1959 area of 4.35 km<sup>2</sup>. Similar trim lines were  
 174 observed around the other three ice caps and although not mapped in detail, strongly point to  
 175 much more extensive ice cover during the LIA. To place these findings in a broader context, for  
 176 the Queen Elizabeth Islands as a whole, trim lines based on high-resolution satellite imagery  
 177 point to a 37% reduction in perennial snow and ice extent between the LIA maximum extent and  
 178 the year 1960. Over the lower-lying central and western islands, a complete removal of  
 179 perennial snow and ice occurred by 1960 (Wolken et al., 2008).
- 180 • From the 1960s through part of the 1970s, the ice caps may have experienced a period of  
 181 reduced loss or occasional growth (1971/1972, 1982/1983) in response to cooling. This basic  
 182 pattern likely holds for monitored Canadian Arctic glaciers and ice caps as a whole (Bradley and

183 Miller, 1972; Hattersley-Smith and Serson, 1973; Ommanney, 1977; Bradley and England, 1978;  
184 Braun et al., 2004; Sharp et al., 2014).

185 • Since then, apart from occasional years such as 1982/1983, annual mass balances of the four ice  
186 caps have been persistently negative (Braun et al., 2004). This is in turn consistent with the  
187 broader pattern of reductions in mass and area of Arctic glaciers and ice caps (Dowdeswell et  
188 al., 1997; Dyurgerov and Meier, 1997; Arendt et al., 2002; Koerner, 2005; Sharp et al., 2011;  
189 Fisher et al., 2012; Sharp et al., 2014; Mortimer et al., 2016). It is also consistent with a negative  
190 mass balance of the Greenland Ice Sheet since at least the 1990s (Shepard et al., 2012).

Deleted: , 2014

191 Mass balance summaries for four monitored glaciers and ice caps in the Canadian Arctic (Devon Ice  
192 Cap, Meighan Ice Cap, Melville South Ice Cap and the White Glacier) are provided as part of the  
193 American Meteorological Society (AMS) State of the Climate reports. As assessed over the period  
194 1980 through 2010, all four have had negative average annual mass balances, ranging from -0.15 m  
195 w.e. for the Devon Ice Cap to -0.29 w.e. for the Melville South Ice Cap (AMS, 2016). Cumulative  
196 changes in regional total stored water for the period 2003 through 2015 based on gravimetric data  
197 from the GRACE mission (Gravity Recovery and Climate Experiment) are qualitatively consistent with  
198 these mass balance measurements (AMS, 2016). Based on ice core data, Fisher et al. (2012)  
199 document rapid acceleration of ice cap melt rates of over the last few decades across the entire  
200 Canadian Arctic; the large reductions in area of the Hazen Plateau ice caps, in particular the lower-  
201 elevation St. Patrick Bay ice caps, is consistent with this finding. However, reflecting variable climate  
202 conditions, annual balances are also quite variable. For example, for the 2013/2014 balance year  
203 (the most recent data available), the White Glacier had a strongly negative balance (-0.42 m w.e.)  
204 while the small Meighan Ice Cap actually gained mass (+0.06) (AMS, 2016). Sharp et al. (2014) show  
205 that while the larger ice bodies in the Canadian Arctic have seen the largest losses in mass, the  
206 smaller masses have lost a larger proportion on their areas. This is also consistent with the behavior  
207 of the Hazen Plateau ice caps. Below we examine variability in climate conditions over the Hazen  
208 Plateau, and links to mass balance and area changes.

### 209 3.2 Associated Climate Conditions

210 The annual mass balance of low-accumulation ice caps and glaciers in the Canadian High Arctic is known  
211 to be primarily governed by summer warmth rather than winter accumulation (e.g., Bradley and  
212 England, 1978; Koerner, 2005). To place the behavior of the Hazen Plateau ice caps in a climate context,  
213 use is made of summer-averaged (June through August) 850 hectopascal (hPa) temperature anomalies  
214 from the radiosonde record at Alert, located on the northeast coast of Ellesmere Island (Figure 1) along  
215 with estimated summer temperature anomalies for the LIA. The Alert radiosonde record extends back  
216 to 1957. We use monthly mean records contained in the Integrated Global Radiosonde Archive (IGRA,  
217 Durre et al., 2006), based on daily 00 and 12 UTC soundings. Summer averages (J,J,A) were eliminated if  
218 based on fewer than 70 values. The 850 hPa level is about 1400 m above sea level for a standard  
219 atmosphere, hence roughly 600-700 m above the surface in the vicinity of the St. Patrick Bay ice caps  
220 and 300-400 m above the surface in the vicinity of the Murray and Simmons ice caps. While arguably it  
221 might be better to look at the 925 hPa level as it is closer to the plateau surface, this level has many



223 missing values in the IGRA record. The time series of anomalies, computed with respect to the standard  
224 averaging period 1981-2010, follows in **Figure 5**.

225 Kaufman et al. (2010) took advantage of a variety of proxy sources (e.g., tree rings, ice cores, lake cores)  
226 to assemble a record of Arctic summer surface temperature anomalies that extend back 2000 years.  
227 From their analysis, LIA summer Arctic temperatures anomalies averaged around  $-0.6^{\circ}\text{C}$  with respect to  
228 a 1961-1990 reference period. The 1961-1990 summer mean of  $-3.2^{\circ}\text{C}$  from the radiosonde data  
229 compares to a mean of  $-2.6^{\circ}\text{C}$  for 1981-2000. The latter period is hence about  $0.6^{\circ}\text{C}$  warmer. With the  
230 assumption that (a) temperature anomalies at 850 hPa have been similar to those at the surface  
231 (supported by Sharp et al. (2011) in their analysis of Canadian Arctic ice caps but possibly complicated by  
232 the temperature inversion structure), and (b) LIA conditions over the Hazen Plateau were at least  
233 broadly similar to those for the Arctic as a whole, these results imply that Arctic LIA temperature  
234 anomalies were about  $-1.2^{\circ}\text{C}$  relative to a 1981-2000 baseline. This estimated LIA temperature anomaly  
235 is shown in Figure 5 as a dashed line.

236 If it is also accepted that the ice caps were broadly in equilibrium with average LIA summer  
237 temperatures, Figure 5 suggests generally strong negative annual balances from the beginning of the  
238 record through the early 1960s. This was followed by smaller negative and occasionally positive annual  
239 balances from the middle of the 1960s through about 2000, and a preponderance of strong negative  
240 balances from the beginning of the century through the present. For comparison with the radiosonde  
241 record, we also examined 850 hPa summer temperatures over the Hazen Plateau from the National  
242 Centers for Environmental Prediction/National Center for Atmospheric Research (NCEP/NCAR)  
243 reanalysis (Kalnay et al., 1996) which extend back to 1948. Given that the Alert radiosonde data are  
244 assimilated into the reanalysis, it follows that the radiosonde and NCEP/NCAR time series look similar  
245 for the period of overlap. The NCEP/NCAR records suggest that the period 1948-1956 not covered by  
246 the IGRA record was warm overall with mostly positive anomalies relative to the 1981-2000 baseline.  
247 The cooling between the late 1940s through the middle 1960s broadly corresponds to the cooling over  
248 the eastern Canadian Arctic such as discussed by Bradley and Miller (1972), Bradley and England (1978)  
249 and other studies. The time series of decadal mean summer temperatures at the 700 hPa level for the  
250 major glaciated regions of the Canadian Arctic presented by Sharp et al. (2011) based on the  
251 NCEP/NCAR reanalysis (their Figure 9.3) is also consistent with the pattern shown in Figure 5.

252 An examination of selected individual years is instructive. Based on summer 1957 temperatures, the  
253 1956/1957 annual balance must have been strongly negative. The same can be said for 1959/1960 and  
254 1962/1963. By sharp contrast, the summer of 1972, when Hattersley-Smith and Serson (1973) visited  
255 the ice caps and remarked upon the extensive August snow cover over the plateau and estimated a  
256 positive balance of  $+0.14$  m w.e. (for the 1971/1972 season), was the coldest in the radiosonde record,  
257 and about  $2^{\circ}\text{C}$  below the estimated LIA average. There is also a clear contrast between 1982 (a known  
258 negative annual balance year for the St. Patrick Bay ice caps) and 1983 (a known positive balance year,  
259 with summer 850 hPa temperatures slightly below the LIA average). Given the low temperatures for the  
260 summer of 1992, which followed the 1991 eruption of Mt. Pinatubo, the balance for 1991/1992 was  
261 likely positive. In the sense that summer temperatures were above the estimated LIA average, negative  
262 balances for the Murray ice caps for 1998/1999 through 2001/2002 (Braun et al., 2004) are all

263 consistent with Figure 5. Note however that the largest negative balance of -0.49 m w.e. for 1999/2000  
264 corresponds to the coldest of the four summers, arguing for influences of local effects on summer  
265 temperature or perhaps a low winter accumulation.

266 Regarding the summer of 2013, the obvious exception to the pattern of recent warm years, the ASTER  
267 data and daily images from the Moderate Resolution Imaging Spectroradiometer (MODIS) show  
268 extensive cloud cover through the summer, making it difficult to determine whether the snow cover  
269 ever entirely cleared off the plateau. It is likely, however, that the 2012/2013 balance year was positive  
270 for the Hazen Plateau ice caps - the Devon Ice Cap, Meighen Ice Cap and the White Glacier all gained  
271 mass. Only the Melville South Ice Cap, lying well to the west, had a negative balance (AMS, 2014).

272 Consistent with this view, **Figure 6** shows that summer (J,J,A) averaged 850 hPa temperature anomalies  
273 over the Queen Elizabeth Islands from the NCEP/NCAR reanalysis were about 2°C below the 1981-2010  
274 baseline in the area centered over Axel Heiberg and Ellesmere islands. This reflects the influence of an  
275 unusually-deep circumpolar vortex at the 500 hPa level, centered just south of the Pole along about  
276 90°W longitude. By sharp contrast, the notable area reduction of the St. Patrick Bay ice caps between  
277 August 2014 and 2015 aligns with the very warm summer of 2015, essentially tied with 1957 as the  
278 highest in the record. From **Figure 7**, July 2015 temperatures at the 850 hPa level from the NCEP/NCAR  
279 reanalysis were 3-4°C above the 1981-2010 baseline over most of northeastern Ellesmere Island. Mass  
280 balance estimates for monitored glaciers in the Queen Elizabeth Islands for the 2014/2015 season that  
281 would provide context were not available us at the time that this paper came to press.

#### 282 4. Conclusions

283 Regarding accelerating wastage of the St. Patrick Bay ice caps since the dawn of the 21<sup>st</sup> century, the  
284 outsized warming of the Arctic in recent decades compared to the rest of the Northern Hemisphere  
285 (termed Arctic Amplification), is overall most strongly expressed during the cold season, and is not  
286 nearly as prominent in summer (Serreze and Barry, 2011). Nevertheless, from the NASA Goddard  
287 Institute for Space Sciences (GISS) analysis (<http://data.giss.nasa.gov/gistemp/>), the trend in July surface  
288 air temperatures over Northeastern Ellesmere Island over the period 1960-2015 is about 2°C (expressed  
289 as a total change) which stands out compared to the rest of the Arctic. On the basis of a satellite-  
290 derived record (from MODIS) of summer land surface temperatures, the more recent period of 2000 to  
291 2015 has seen an average warming rate over the Queen Elizabeth Islands of 0.06°C per year, or a total of  
292 nearly 1.0°C, most of this occurring between 2005 and 2012 (Mortimer et al., 2016). They associate this  
293 warming with increasingly negative mass balances for glaciers and ice caps in the region. However,  
294 conditions over the Hazen Plateau are highly variable, and the summers of 1957, 1960 and 1963 were  
295 almost as warm as those seen in 2015, and the summer of 2013 was quite cool, very likely resulting in a  
296 positive balance for 2012/2013.

297 Rapid wastage of the St. Patrick Bay ice caps over the past 15 years likely also reflects a reduction in  
298 summer albedo, as dirt layers become progressively exposed and accumulate at the surface. During the  
299 1982 and 1983 field campaigns, it was observed that summer precipitation over the ice caps was  
300 typically in the form of snow, temporarily increasing the surface albedo and adding some mass. The  
301 frequency of summer snowfall has likely declined in the (generally) sharply warming climate over the

Deleted: a

303 past 15 years. Also, as suggested from the prominent decline in the area of the larger St. Patrick Bay ice  
304 cap between 2014 and 2015, when there is an especially warm summer, the thin collar of ice at the ice  
305 cap margins (a feature evident in field observations) will be prone to completely melting. The less  
306 pronounced area reduction of the Murray and Simmons ice caps must partly be due to their higher  
307 elevation and relatively cooler summer conditions. However, the elevation difference is only about 200-  
308 300 m, which argues that the stronger response of the St. Patrick Bay ice caps to warming may also be  
309 related to ice thickness. Regional differences in the temperature lapse rate (notably the temperature  
310 inversion structure) could also be involved.

311 It is possible that the Hazen Plateau caps could see some temporary recovery given the large natural  
312 variability in the Arctic. However, as noted by Alt (1978) and Bradley and England (1978), for stagnant  
313 ice caps such as these, all it takes is one warm summer to erase any accumulated mass gains of a  
314 previous decade. Assessing variability and trends in Arctic precipitation is notoriously difficult, but as  
315 evaluated over the period 1950-2007, annual precipitation has generally increased across Canada, and  
316 especially across Northern Canada. For example, at station Eureka in central Ellesmere Island (see  
317 Figure 1), annual precipitation appears to have increased by at least 40% (Zhang et al., 2008). Trends  
318 over the plateau are not known, but this suggests that, if anything, precipitation changes are helping to  
319 buffer the ice caps from summer mass loss.

320 Paradoxically, perhaps, loss of the Hazen Plateau ice caps may open new research opportunities. As they  
321 recede, plant remains are exposed that can be dated and used to better understand the past climate  
322 history of the region. From radiocarbon dates on rooted tundra plants exposed by receding cold-based  
323 ice caps on Baffin Island – given that the plants are killed when the snowline drops below the collection  
324 sites – Miller et al. (2013) were able to construct a record of summer temperatures over Arctic Canada  
325 for the past 5000 years. La Farge et al. (2013) discovered that ice loss in Sverdrup Pass, Ellesmere Island,  
326 has exposed nearly intact plant communities for which radiocarbon dates point to entombment during  
327 the LIA. They also found that these recently-exposed, subglacial bryophytes can regenerate, which may  
328 have important implications for recolonization of polar landscapes. The area surrounding the receding  
329 Hazen Plateau ice caps provides a unique opportunity to examine this process of recolonization in the  
330 High Arctic, as the rates of ice recession are now well-documented for the last 55+ years (Table 1).

331 **Author Contribution:** M. Serreze led the overall effort. C. Braun, D. Hardy, and R.S. Bradley provided  
332 GPS data and historical documents. B. Raup analyzed the ASTER data. All authors contributed to the  
333 writing.

334 **Data Availability:** Radiosonde data for station Alert are available at from the Integrated Global  
335 Radiosonde Archive (<ftp://ftp.ncdc.noaa.gov/pub/data/igra/>). ASTER data can be obtained through the  
336 NASA Land Processes DAAC (<https://lpdaac.usgs.gov/>).

337 **Acknowledgements:** This study was supported by the University of Colorado Boulder, the NASA Snow  
338 and Ice DAAC award NNG13HQ033 to the University of Colorado, and NSF Award 9819362 to the  
339 University of Massachusetts.

340 **Competing Interests:** None

- 342 Alt, B.: Synoptic climate controls of mass balance variations on Devon Island Ice Cap, *Arc. Alp. Res.*, 10,  
343 61-80, 1978.
- 344
- 345 American Meteorological Society: State of the Climate in 2014, J.S. Blunden and D.S. Arndt (eds.),  
346 Special Supplement to the Bulletin of the American Meteorological Society, 96, 267 p.
- 347
- 348 American Meteorological Society: State of the Climate in 2015, J.S. Blunden and D.S. Arndt (eds.),  
349 Special Supplement to the Bulletin of the American Meteorological Society, 97, 275 p.
- 350
- 351 Arendt, A. A., Echelmeyer, K. A., Harrison, W. D., et al.: Rapid wastage of Alaska Glaciers and their  
352 contribution to rising sea level, *Science*, 297, 382-385, 2002.
- 353
- 354 Bradley, R. S., and England, J.: The Simmonds Ice Cap, in: R.S. Bradley and J. England, eds., *Past Glacial*  
355 *Activity in the High Arctic*, University of Massachusetts Amherst, Department of Geology and  
356 *Geography*, 177-182, 1977.
- 357 Bradley, R. S., and England, J.: Recent climatic fluctuations of the Canadian High Arctic and their  
358 significance for glaciology, *Arc. Alp. Res.*, 10, 715-731, 1978.
- 359 Bradley, R. J., and Miller, G. H.: Recent climatic change and increased glacierization in the eastern  
360 Canadian Arctic, *Nature*, 237, 385-387, 1972.
- 361 Bradley, R. S., and Serreze, M. C.: Mass balance of two high Arctic plateau ice caps, *J. Glaciol.*, 33, 123-  
362 128, 1987.
- 363 Braun, C., Hardy, D. R., and Bradley, R. S.: Mass balance and area changes of four high Arctic plateau ice  
364 caps, *Geografiska Annaler*, 86A, 43-52, 2004.
- 365 Dowdeswell, J. A., Hagen, J. O., Bjornsson, H., Glazovsky, A. F., Harrison, W. D., Holmlund, P., et al.: The  
366 mass balance of circum-Arctic glaciers and recent climate change, *Quat. Res.*, 48, 1-14, 1997.
- 367 Durre, I., Vose, R. S., and Wuetz, D.B.: Overview of the integrated global radiosonde archive, *J. Clim.*,  
368 19, 53-68, 2006.
- 369 Dyurgerov, M. B., and Meier, M. F.: Year-to-year fluctuation of global mass balance of small glaciers and  
370 their contribution to sea level changes, *Arc. Alp. Res.*, 29, 392-402, 1997.
- 371 Fisher, D., Zheng, J., Burgess, D., Zdanowicz, C., Kinnard, C., Sharp, M., Bourgeois, J.: Recent melt rates of  
372 Canadian arctic ice caps are the highest in four millennia, *Global and Planetary Change*, 84-85,  
373 3-7, doi: 10.1016/j.gloplacha.2011.06.005, 2012.
- 374 Gardner, A. S., Moholdt, G., Wouters, B., Wolken, G. J., Burgess, D. O., Sharp, M. J., Cogley, J. G., Braun,  
375 C., and Labine, C.: Sharp acceleration of mass loss from Canadian Arctic Archipelago glaciers and  
376 ice caps, *Nature*, 473, 357-360, 2011.

- 377 Hattersley-Smith, G.: Glacial features of Tanquary Fiord and adjoining areas of Ellesmere Island, N.W.T.,  
378 J. Glaciol., 8, 23-50, 1969.
- 379 Hattersley-Smith, G., and Serson, H.: Reconnaissance of a small ice cap near St. Patrick Bay, Robeson  
380 Channel, Northern Ellesmere Island, Canada, J. Glaciol., 12, 417-421, 1973.
- 381 Kalnay, E., Kanamitsu, M., Kistler, R., et al.: The NCEP/NCAR 40-year re-analysis project, Bull. Amer. Met.  
382 Soc., 77, 437-471, 1996.
- 383 Kargel, J. S., Leonard, G. J., Bishop, M. P., Kaab, A., and Raup, B. (Eds.): Global Land Ice Measurements  
384 from Space, Springer-Praxis, 33 chapters, 876 pages. ISBN: 978-3-540-79817-0, 2014.
- 385 Kaufman, D. S., Schneider, D. P., McKay, N. P., et al.: Recent warming reverses long-term Arctic cooling,  
386 Science, 325, 1236-1239, doi: 10.1126/science.1173983, 2009.
- 387 Koerner, R. M.: Queen Elizabeth Island Glaciers: In: Fulton, R.J. (ed.), Quaternary Geology of Canada and  
388 Greenland. Geology of Canada (No. 1), Geological Survey of Canada, 464-477, 1989.
- 389 Koerner, R. M.: Mass balance of glaciers in the Queen Elizabeth Islands, Nunavut, Canada, Ann. Glaciol.,  
390 42, 417-423, doi: 10.3189/172756405781813122, 2005.
- 391 La Farge, C., Williams, K. H., and England, J. H.: Regeneration of Little Ice Age bryophytes emerging from  
392 a polar glaciers with implications of totipotency in extreme environments, Proc. Nat. Acad. Sci.,  
393 110, 9839-9844, do: 10. 1072/pnas.1304199110, 2013.
- 394 Miller, G. H., Lehman, S. J., Refsnider, K. A., Southon, J. R., and Zhong, Y.: Unprecedented recent  
395 summer warmth in Arctic Canada, Geophys. Res. Lett., 40, 5745-5751,  
396 doi:10.1002/2013GL0571888, 2013.
- 397 Mortimer, C. A., Sharp, M., and Wouters, B.: Glacier surface temperatures in the Canadian high Arctic,  
398 2000-2015, J. Glaciol., doi: 10.1017/jog.2016.80, 2016.
- 399 Ommanney, C. S. L.: Quadrennial Report to the Permanent Service on the Fluctuations of Glaciers on  
400 Canadian Glacier Variations and Mass Balance Changes, Fisheries and Environment Canada,  
401 Inland Waters Directorate, Glaciology Divisions, Ottawa, 1977.
- 402 Raup, B. H., Racoviteanu, A., Khalsa, S. J. S., Helm, C., Armstrong, R., and Arnaud, Y.: The GLIMS  
403 geospatial glacier database: a new tool for studying glacier change, Glob. Planet. Change, 56,  
404 101-110, doi:10.1016/j.gloplacha.2006.07.018, 2007.
- 405 Sharp, M., Burgess, D.O., Cawkwell, F., et al.: Remote sensing of recent glacier changes in the Canadian  
406 Arctic, Chapter 9 in: J.S. Kargel et al. (eds.), Global Land Ice Measurements from Space, Springer  
407 Praxis Books, 205-228, doi: 10.1007/978-3-540-79818-7\_9, 2014.

408 Sharp, M., Burgess, D. O., Cogley, J. G., Ecclestone, M., Labine, C., and Wolken, G. J.: Extreme melt on  
409 Canada's Arctic ice caps in the 21st century, *Geophys. Res. Lett.*, 38, L11501,  
410 doi:10.1029/2011GL047381, 2011.

411 Serreze, M. C.: Topoclimatic Investigations of a Small, Sub-Polar Ice Cap with Implications for  
412 Glacierization, Masters Thesis, Department of Geology and Geography, University of  
413 Massachusetts, Amherst, 201 p., 1985.

414 Serreze, M. C., and Barry, R. G.: Processes and impacts of Arctic amplification: A research synthesis,  
415 *Glob. Plan. Change*, 77, 85-96, 2011.

416 Serreze, M. C., and Barry, R. G.: The Arctic Climate System, Second Edition, Cambridge University Press,  
417 404 p., 2014.

418 Serreze, M. C., and Bradley, R. S.: Radiation and cloud observations on a high Arctic plateau ice cap, *J.*  
419 *Glaciol.*, 33, 162-168, 1987.

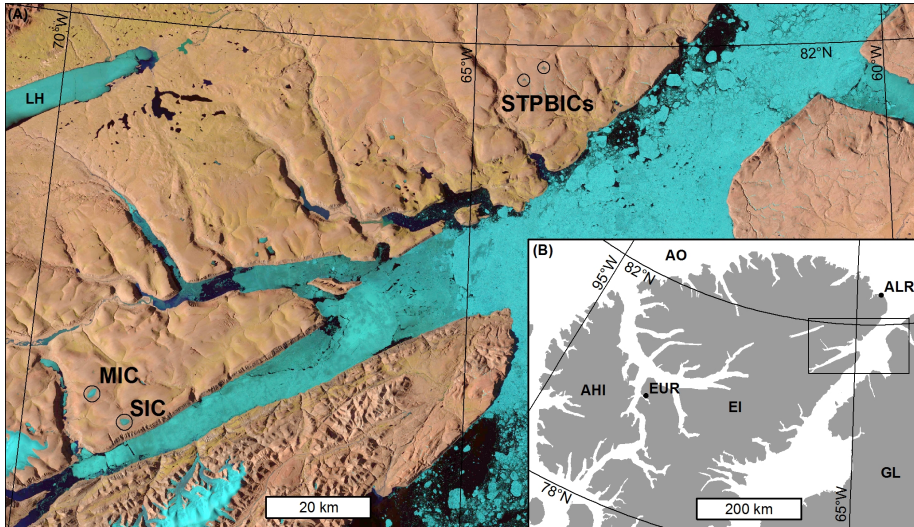
420 Shepherd, A., Ivins, E. R., Valentina, G. A., et al.: A reconciled estimate of ice-sheet mass balance,  
421 *Science*, 338, doi: 10.1126/science.1228102, 2012.

422 Wolken, G.J., Sharp, M.L., and England, J.H.: Changes in late-Neoglacial perennial snow/ice extent and  
423 equilibrium-line altitudes in the Queen Elizabeth Islands, Arctic Canada, *The Holocene*, 18, 615-  
424 627, 2008.

425 Zhang, X., Brown, R., Vincent, L., Skinner, W., Feng, Y., and Mekis, E.: Canadian climate trends, 1950-  
426 2007. Canadian Biodiversity: Ecosystem Status and Trends 2010, Technical Thematic Report No.  
427 5. Canadian Councils of Resource Ministers. Ottawa, ON. iv + 21 p.,  
428 <http://www.biodivcanada.ca/default.asp?lang=En&n=137E1147-0>, 2011.

429

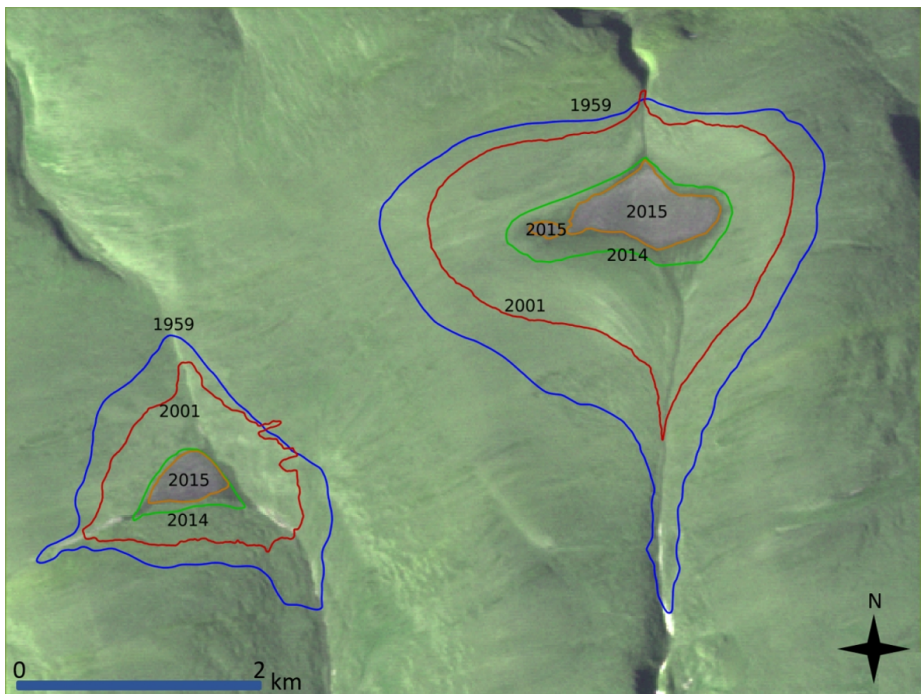
430



431

432 Figure 1. The location of the St. Patrick Bay (STPBIC), Murray (MIC) and Simmons (SIC) ice caps. The  
433 inset map shows Ellesmere Island (EL), Axel Heiberg Island (AHI), Greenland (GL), the Arctic Ocean (AO)  
434 and station Alerts (ALR) and Eureka (EUR). Use is made of 850 hPa temperature data from the Alert  
435 radiosonde record and precipitation records from Eureka.

436

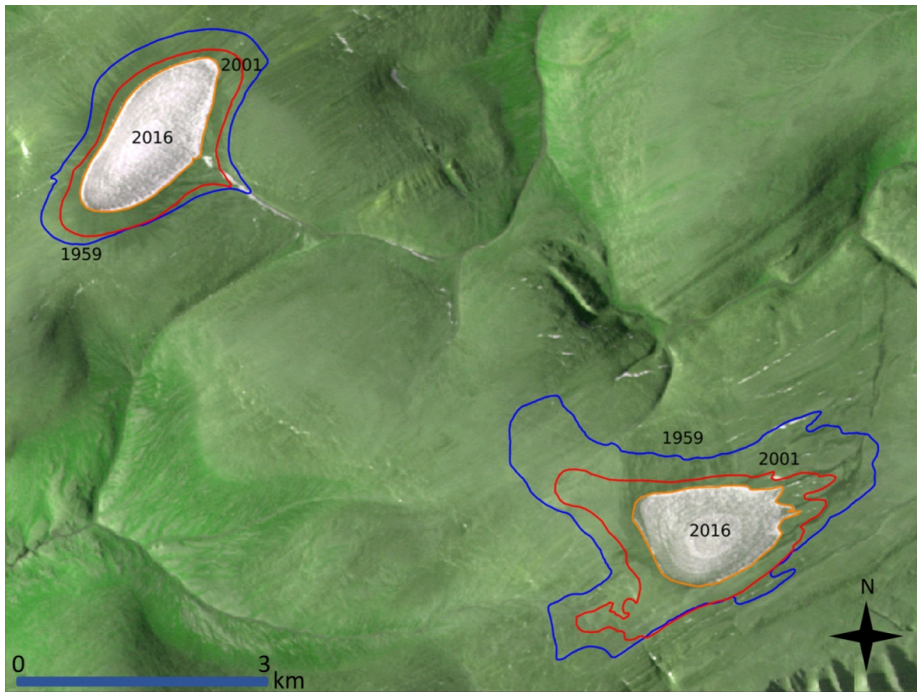


437

438 Figure 2: Outlines of the St. Patrick Bay ice caps based on aerial photography from August 1959, GPS  
439 surveys conducted during August 2001, and for August of 2014 and 2015 from ASTER. The base image is  
440 from August 2015.

441



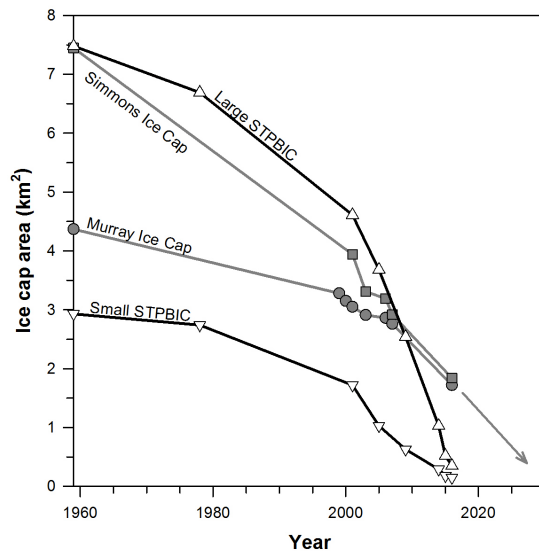


442

443 Figure 3: Outlines of the Murray and Simmons ice caps based on aerial photography from August 1959,  
444 GPS surveys conducted during August 2001, and for July 2016 from ASTER. The base image is from  
445 August 2016.

446

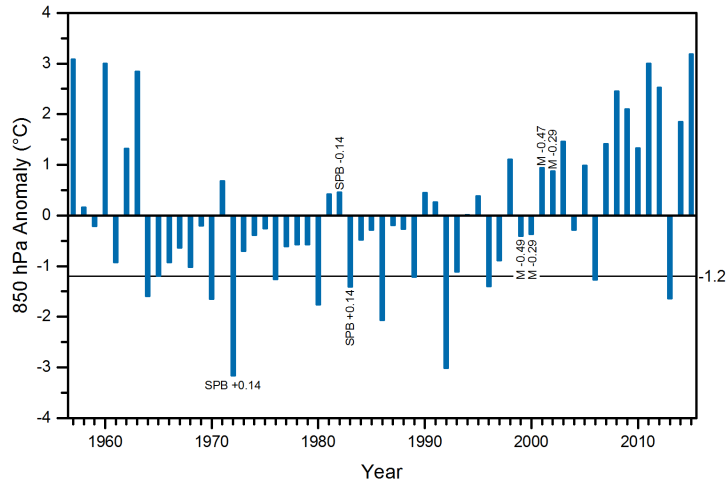
447



449

450 Figure 4. Time history of ice cap areas and projected times of disappearance.

451

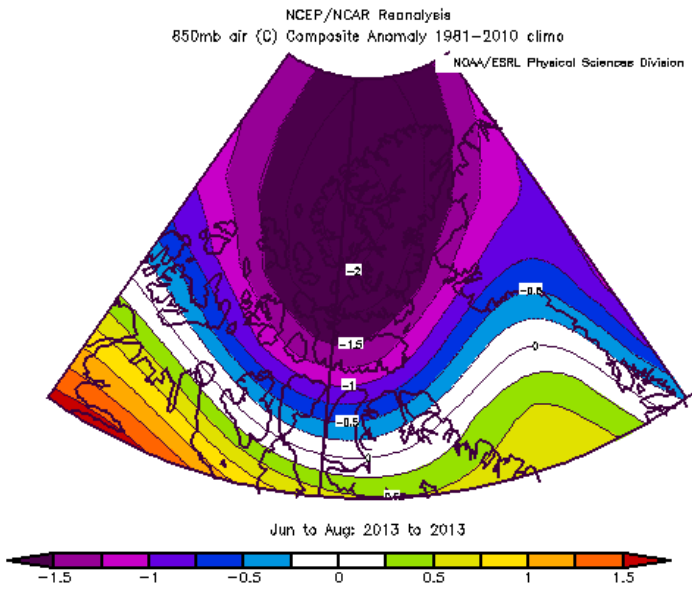


452

453 Figure 5. Temperature anomalies at the 850 hPa level (°C) over the period 1957-2016 (referenced to the  
 454 period 1981-2010) from the Alert radiosonde record. The horizontal black line shows the estimated  
 455 summer average Arctic temperature anomaly for the LIA relative to 1981-2010 (-1.2°C). Also shown are  
 456 the annual mass balance estimates for the larger St. Patrick Bay (SBP) ice cap for the 1981/1982 and  
 457 1982/1983 balance years, and for the Murray Ice Cap (M) for the 1999/2000, 2000/2001, 2001/2002  
 458 and 2002/2003 balance years (in m w.e.).

Deleted: dashed red

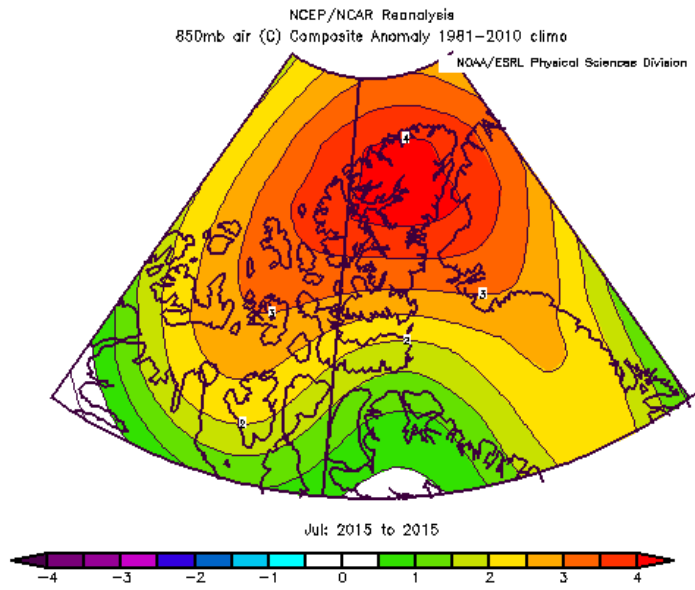
459



461

462

463 Figure 6. Summer (J,J,A) 2013 air temperature anomalies at the 850 hPa level from the NCEP/NCAR  
464 reanalysis relative to a 1981-2010 baseline.



465

466

467 Figure 7. July 2015 air temperature anomalies at the 850 hPa level from the NCEP/NCAR reanalysis  
 468 relative to a 1981-2010 baseline.

469

470

471

472

473