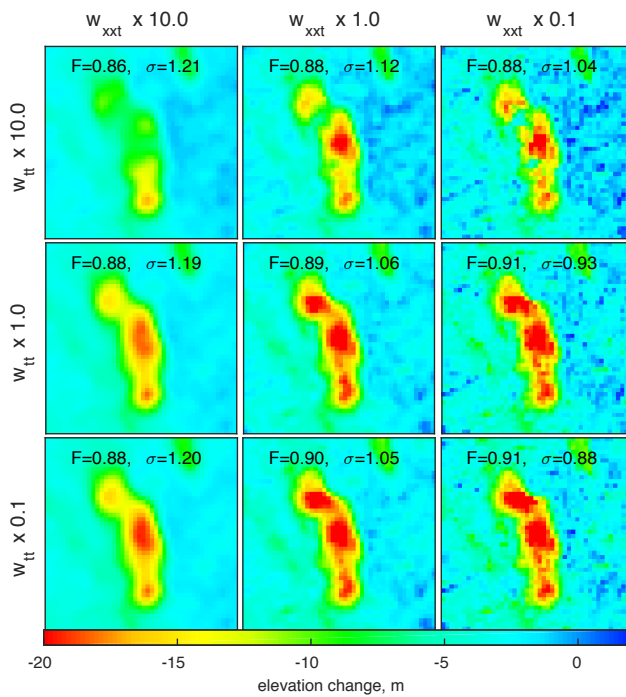


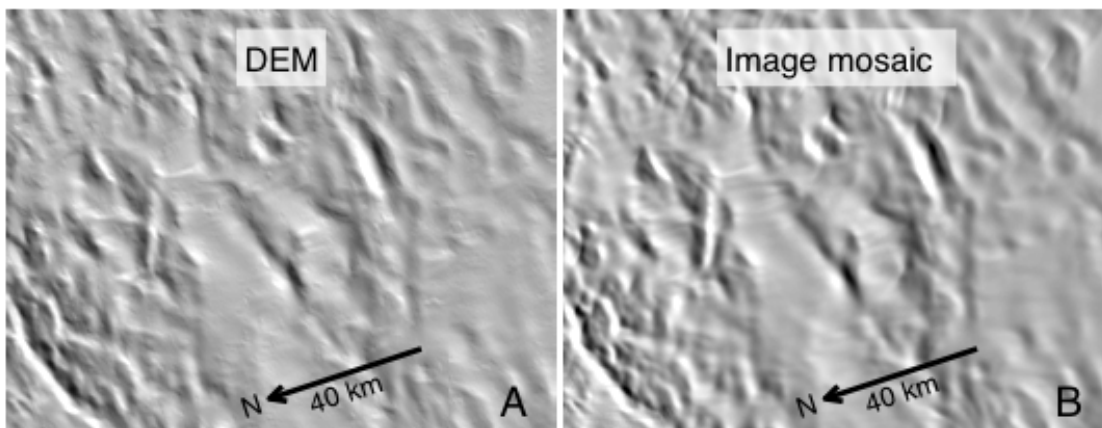
# Supplemental material for: *Connected subglacial lake drainage beneath Thwaites Glacier, West Antarctica*

## Introduction

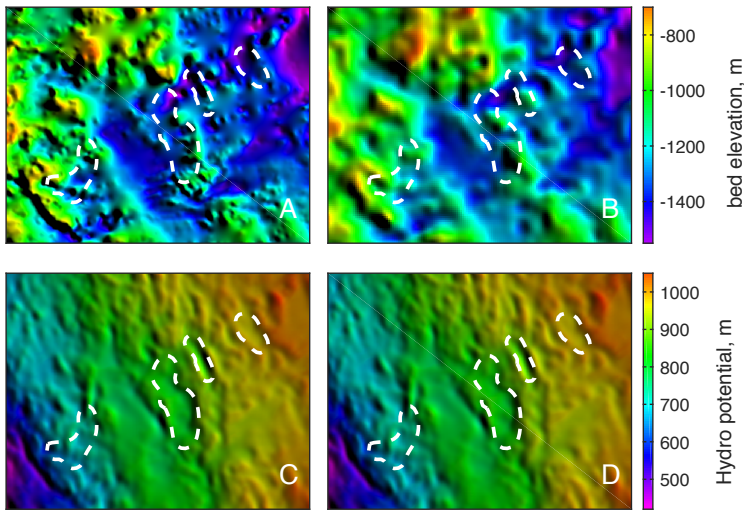
5 This document provides four figures referenced in the main text.



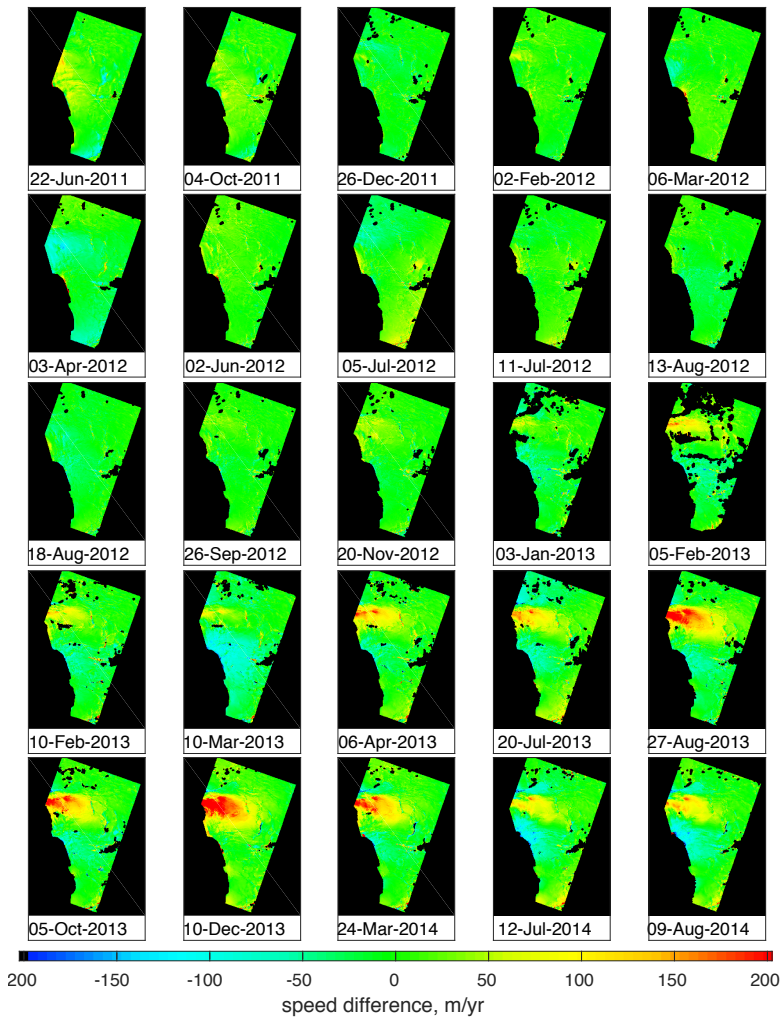
10 Figure S1. Elevation change solutions around Thw<sub>124</sub>, generated for different values of the constraint-equation parameters. The heading on each row and column indicates how each parameter changed relative to the reference case. Text within each panel indicates F, the fraction of points included in the solution, and  $\sigma$ , the standard deviation of the difference between the data and the best-fitting model.



15 Figure S2. A. Shaded-relief map of derived surface height for June 1, 2011 . B. Image mosaic (Scambos and others, 2007) of the same area. The illumination angle for (A) has been adjusted to approximately match the sun angle in (B).



5 **Figure S3. Bed topography and hydropotential.** (A) and (C) show the bed topography and hydropotential derived using recent IceBridge campaigns with the our spline-fitting algorithm, (B) and (D) show Bedmap-2 bed topography and the corresponding hydropotential.



**Figure S4. Time series of speed anomalies relative to the mean speed for June 2011 – December 2012.** Dates give the average of the times of the two images used to derive each map.