

Dear editor,

We thank you for the acceptance of our paper for the publication in the Cryosphere. We also wish you a happy new year 2017.
You will find below answers to your comments and suggestions, and a marked-up version of the manuscript.

5

Reply to the editor’s comments

Dear dr. Goursaud,

10 *thank you for submitting your revised manuscript.*

Pending some technical, linguistic corrections listed below, I am happy to report that your paper is now accepted for publication in The Cryosphere.

15 *All the best for 2017,*

Michiel van den Broeke

20 *Textual corrections*

p. 2, l. 10: Remove ‘data’.
Done.

25 *p. 3, l. 3: please replace ‘Consortium’ by “PAGES 2k Consortium”; here and in reference list.*
Done.

p. 3, l. 5: remain -> remains
Done.

30

p. 3, l. 11: a large -> large
Done.

p. 3, l. 31: thanks to a -> thanks to

Done.

5 *p. 4, l. 1: Stenni et al, 2016). And -> Stenni et al, 2016), and*

Done.

p. 4, l. 5: due to its -> for its

Done.

10

p. 5, l. 5: remove "punctual"

Done.

p. 8, l. 23: were -> was

15 Done.

p. 8, l. 24: Antarctic -> Antarctica

Done.

20 *p. 9, l. 32: None of these -> These*

Done.

p. 11, l. 29: observe -> we observe

Done.

25

p. 12, l. 22: type "outputs in"

Done.

p. 12, l. 23 and throughout the MS: $p=2.2E-2$ -> $p = 0.022$

30 Done.

p. 16, l. 33: 0.63 -> 0.63

Done.

p. 17, l. 7: *twice smaller than -> two times smaller than OR twice as small as*
Done.

5 *Together, Sections 4 and 5 contain too much overlap, are too long and therefore cumbersome to read. Please go through Section 5 carefully and eliminate all text that is not strictly necessary. Avoid repetition.*

In order to shorten the section and be more concise, here are the changes we made:

- 1) p.18 l.12: we removed the periodicities of the records from the SIC1 core.
- 2) p.18 l.16: we do not precise anymore that wind scouring is linked to katabatic winds.
- 10 3) P.18 l.24: we do not stress the implication of the underestimation of the inter-annual variability in ECHAM5-wiso $\delta^{18}\text{O}$ outputs over the simulated $\delta^{18}\text{O}$ -temperature slope anymore.
- 4) p.18 l.26: we do not precise the type of data to compare with the model outputs.
- 5) p19 l.6: here, we do not summarize the use of the ECHAM5-wiso model anymore. We just add what were the other use of the model than detecting the seasonal cycle in precipitation $\delta^{18}\text{O}$ (what was written before in the section).

15

Author's changes in the manuscript

To summary, linguistic mistakes were corrected following the list you made. Also, p-values written in its scientific notation, with ten to the power of minus 2, were written in their decimal notation. Finally, we shortened the fifth section, removing what we considered as not necessary.

20

A sixty year ice-core record of regional climate from Adélie Land, coastal Antarctica

S.Goursaud^{1,2,3}, V. Masson-Delmotte¹, V. Favier^{2,3}, S. Preunkert^{2,3}, M. Fily^{2,3}, H. Gallée^{2,3}, B. Jourdain^{2,3},
5 M. Legrand^{2,3}, O. Magand^{2,3}, B. Minster¹, M. Werner⁴

¹LSCE (UMR CEA-CNRS-UVSQ 8212-IPSL, Université Paris Saclay, Gif-sur-Yvette, France

²Univ. Grenoble Alpes, Laboratoire de Glaciologie et Géophysique de l'Environnement (LGGE), 38041 Grenoble, France

³CNRS, Laboratoire de Glaciologie et Géophysique de l'Environnement (LGGE), 38041 Grenoble, France

⁴Alfred Wegener Institute for Polar and Marine Research (AWI), Bremerhaven, Germany

Correspondence to: Sentia Goursaud (sentia.goursaud@lsce.ipsl.fr)

Abstract. A 22.4 m-long shallow firn core was extracted during the 2006/2007 field season from coastal Adélie Land. Annual layer counting based on sub-annual analyses of $\delta^{18}\text{O}$ and major chemical components was combined with 5 reference years associated with nuclear tests and non-retreat of summer sea ice to build the initial ice core chronology (1946-2006), stressing uncertain counting for 8 years. We focus here on the resulting $\delta^{18}\text{O}$ and accumulation records. With an average value of $21.8 \pm 6.9 \text{ cm w.e. y}^{-1}$, local accumulation shows multi-decadal variations peaking in the 1980s, but no long-term trend. Similar results are obtained for $\delta^{18}\text{O}$, also characterized by a remarkably low and variable amplitude of the seasonal cycle. The ice core records are compared with regional records: temperature, stake area accumulation measurements, and variations in sea ice extent, and outputs from two models nudged to ERA atmospheric reanalyses: the high resolution atmospheric general circulation model (AGCM) including stable water isotopes ECHAM5-wiso and the regional atmospheric model MAR. A significant linear correlation is identified between decadal variations in $\delta^{18}\text{O}$ and regional temperature ~~data~~. No significant relationship appears with regional sea-ice extent. A weak and significant correlation appears with Dumont d'Urville wind speed, increasing after 1979. The model-data comparison highlights the inadequacy of ECHAM5-wiso simulations prior to 1979, possibly due to the lack of data assimilation to constrain atmospheric reanalyses. Systematic biases are identified in the ECHAM5-wiso simulation, such as an over-estimation of the mean accumulation rate and its inter-annual variability, a strong cold bias, and an under-estimation of the mean $\delta^{18}\text{O}$ value and its inter-annual variability. As a result, relationships between simulated $\delta^{18}\text{O}$ and temperature are weaker than observed. Such systematic precipitation and temperature biases are not displayed by MAR, suggesting that the model resolution plays a key role along the Antarctic ice sheet coastal topography. Inter-annual variations in ECHAM5-wiso temperature and precipitation accurately capture signals from meteorological data and stake observations, and are used to refine the initial ice core chronology within 2 years. After this adjustment, remarkable positive (negative) $\delta^{18}\text{O}$ anomalies are identified in the ice core record and the ECHAM5-wiso simulation, respectively in 1986 and 2002 (1998-99). Despite uncertainties associated with post-deposition processes and signal-to-noise issues in one single coastal ice core record, we conclude that the SIC1 core can correctly capture major annual anomalies in $\delta^{18}\text{O}$ as well as multi-decadal variations. These findings highlight the importance of improving the network of coastal high resolution ice core records, and stress the skills and limitations of atmospheric models for accumulation and $\delta^{18}\text{O}$ in coastal Antarctic areas, particularly important for the overall East Antarctic ice sheet mass balance.

Keywords.

Water isotopes, ice sheet mass balance, decadal climate variability, model evaluation

1. Introduction

Deep ice cores from coastal Antarctic areas are crucial to retrieve highly resolved, multi-millennial records, a priority of the International Partnership for Ice Core Science within the Past Global Changes 2k project (PAGES 2k Consortium, 2013). Obtaining highly resolved records spanning the last decades is therefore a pre-requisite to identify the potential of a given site.

Moreover, climate variability of the last decades in Antarctica remains poorly documented and understood (e.g. Jones et al., 2016). This is particularly the case in coastal Antarctic areas, which play a key role for the overall Antarctic mass balance (Agosta et al., 2013; Palerme et al., 2016), with relevance for global sea level (Church et al., 2013). Finally, field data are needed to assess the validity of climate models for multi-decadal variability and change in coastal Antarctic temperature and mass balance (Krinner et al., 2007).

Here, we focus on coastal Adélie Land (Fig. 1), an area where regional climate is marked by the interplay of katabatic winds accelerating downslope from Antarctic interior to the coast (Périard and Pettré, 1993), large seasonal variations in sea-ice extent (König-Langlo et al., 1998; Simmonds and Jacka, 1995) and its proximity to the circumpolar storm track (Jones and Simmonds, 1993). These features lead to dominant southerly (160 plus or minus 20°) intense katabatic winds (Wendler et al., 1997). During summer open sea conditions, a reverse pattern of wind direction can occur, associated with sea breezes. At Dumont d'Urville station (hereafter DDU), Périard and Pettré (1993) reported an average wind speed of 10 m s⁻¹, as well as events when wind speeds exceed 20 m s⁻¹ during several days (with an observed local maximum wind speed at 90 m s⁻¹). The region is therefore marked by sastrugi formed by snow erosion and redeposition. The resulting high spatial variability in accumulation challenges the climatic interpretation of a single ice core record, especially for accumulation rates lower than 20 cm w.e. y⁻¹ (Frezzotti et al., 2007). The knowledge of Adélie Land climate variability therefore requires a spatial network of field data.

Multi-decadal climate variability in this region is documented since 1958 from DDU meteorological measurements, and since 1979 from sea ice remote sensing. Only a few shallow ice cores were drilled near DDU (Masson-Delmotte et al, 2008), and none was dated (Jean Jouzel, personal communication, 2016), preventing any comparison of ice core records with meteorological measurements.

In the framework of the International TASTE-IDEA / VANISH programs (Trans-Antarctic Scientific Traverse Expeditions - Ice Divide of East Antarctica), a 22.4 m-long shallow firn core (named SIC1) was extracted in January 2007 from the Adélie Land sector (67.71 °S, 139.83 °E, 279 m a.s.l.) (Fig. 1). The core was collected close to a stake network which provides records of accumulation spatio-temporal variability from 1971 to 2015 (Favier et al., 2013).

Following the classical approach for other coastal Antarctica areas, the chronology of the SIC1 core is established through the annual layer counting of seasonal cycles in chemical species, water isotopes records and absolute horizons (e.g. Graf et al., 1991; Mulvaney et al., 2002). This task was feasible thanks to multi-year aerosol monitoring at sub-seasonal scale at DDU providing detailed information on the seasonal cycle of aerosols. However, no such monitoring is available for precipitation isotopic composition at this site. Indeed, very few multi-year direct records of snowfall isotopic composition are available

from Antarctica (Fujita and Abe, 2006; Landais et al., 2012; Schlosser et al., 2008; Schlosser et al., 2016; Stenni et al., 2016).
And emerging records of water vapour isotopic composition only span one month (Casado et al., 2016; Ritter et al., 2016). We
therefore investigated seasonal variations in precipitation isotopic composition from a simulation performed with the
isotopically enabled ECHAM5-wiso AGCM (Roeckner et al., 2003; Werner et al., 2011) nudged to ERA40 (Uppala et al.,
5 2005) and ERA-interim atmospheric reanalyses (Dee et al., 2011). This high-resolution model was chosen ~~for~~^{due to} its good
skills with respect to the present-day spatial distribution of water stable isotopes and mass balance in Antarctica (Masson-
Delmotte et al., 2008; Werner et al., 2011). The 50 year long simulation is used to identify uncertainties associated with annual
layer counting based on the seasonal cycle in precipitation $\delta^{18}\text{O}$. Vice-versa, the ice core record and the stake area network
will allow assessing the skills of this simulation in coastal Adélie Land. This model-data was further expanded through
10 investigation of recent mass balance and temperature variations from the regional atmospheric model MAR (Gallée and
Schayes, 1994).

Section 2 describes the material and methods underlying this study, including our new measurements, the methodology for the
annual layer counting, as well as the regional instrumental (near surface air temperature, wind speed and stake area
measurements) and remote sensing (sea-ice extent) datasets, the simulations performed with these two atmospheric models.

15 Section 3 reports our results. In section 4, we discuss our new ice core records, and compare $\delta^{18}\text{O}$ and accumulation records
with local to regional climate information as well as atmospheric model outputs. We summarize our main findings and suggest
future research directions in our conclusions (Section 5).

2. Material and method

Here, we briefly describe the ice core sampling, the chemical and isotopic analyses, the density measurements and the dating
20 methodology. We then introduce the regional climate datasets used for statistical analyses, as well as the atmospheric
simulations used for model-data comparisons.

2.1 Field work and ice core sampling

The field campaign was conducted from the 16th to the 26th of January 2007 in Adélie Land by a French joint LGGE
(Laboratoire de Glaciologie et Géophysique de l'Environnement) and IPEV (Institut Français Polaire Paul-Emile Victor)
25 expedition. Several shallow firn cores were drilled along a transect between the Italian-French Cap Prud'Homme station, at
sea level, and D47 point, located around 1600 m a.s.l. and approximately 100 km from the coast. This round-trip traverse was
part of the ANR-VANISH (*Vulnerability of the Antarctic Ice-Sheet*) and IPEV-TASTE-IDEA (*Trans-Antarctic Scientific
Traverses Expeditions – Ice Divide of East Antarctica*) scientific programs. The scientific aim of the programs was to obtain
new firn core records and ground-penetrating radar measurements to improve the knowledge of coastal East Antarctic
30 accumulation.

The present paper is focused on one ice core drilled at the S1C1 site (66.71 °S, 139.83 °E, 279 m a.s.l.), the closest sampling site to the coast and the French Dumont-D'Urville station (Fig. 1). At this site, the measured temperature of the firm was -13.1 ± 0.5 °C at 10 m-depth. Data obtained during 3 days at 25 cm depth show a mean value of -5.0 °C. At DDU and Dome C, July 2007 temperatures were close to the climatological average conditions from the period 1995-2015. As a result, our ~~punctual~~ measurements from summer 2007 are assumed to be representative of average summer conditions. Such negative near surface air summer temperature ensures preservation of snow signals (e.g. water stable isotopes, chemical species).

A portable solar powered electromechanical drilling system was used to extract the 22.4 m long and 58 mm diameter firm core (Ginot et al., 2002; Lemeur, submitted; Verfaillie et al., 2012). The recovered core pieces were sealed in polyethylene bags in the field, stored in clean isothermal boxes and transported in frozen state to the cold-room facilities of the LGGE in Grenoble, France. Sample preparation for chemical measurements was performed under clean-room laboratory conditions. After stratigraphic observations and measurements of bulk density, the firm core was divided in two half cores. One half was dedicated to radioactivity measurements and the other half was analysed in ion chromatography and mass spectrometry (Section 2.2). Sub-annual resolution sampling and gross beta radioactivity and gamma spectrometry for bomb test markers allowed to build the S1C1 firm core chronology (Section 2.3).

2.2 Measurements

Discrete density values were calculated based on snow sample volume and mass measurements with a 50 cm resolution, from the surface to 22.4 meters depth. The resulting values range from 400 to 700 kg m⁻³ (Table S2 Supplementary Material). Accounting for measurement difficulties due to weak cohesion of snow in the first few meters, and considering measurement errors, the associated uncertainties are ± 20 -25 kg m⁻³ ($\pm 4\%$) from the surface to 7 meters depth, and ± 15 kg m⁻³ ($\pm 2\%$) from 7 to 22.4 meters. Hereafter, density values are used to convert snow depths into water equivalent depths.

Firm core sections were processed for artificial radioactivity measurements by low-level (i) beta counting and (ii) gamma spectrometry, with a continuous sampling every 50 cm from the surface to 22.4 m-depth. Using a method developed by Delmas and Pourchet (1977) and improved by Magand (2009), snow samples (100-200 g) were melted, weighed, acidified and filtered on ion exchange paper, on which radionuclides of interest (⁹⁰Sr, ¹³⁷Cs, ²⁴¹Am – daughter of ²⁴¹Pu) were trapped. All steps were realized in the LGGE clean room laboratory to prevent any contamination. After drying (in an oven at 60 °C), these filters were first analysed by a beta gas-proportional counting system (gross beta measurement) to determine the presence of beta emitters peaks corresponding to nuclear weapons global fallout of the 1950s and the 1960s. In a second step, very low level gamma spectrometry (coaxial germanium detector) measurements were performed on the filters to determine activities of ¹³⁷Cs and ²⁴¹Am. Both 1955 \pm 1 AD and 1965 \pm 1 AD peaks were clearly identified in the S1C1 core, respectively at 19.5-20.0 m and 16.5-17.0 m-depth (red vertical lines, Fig. 2).

Along the S1C1 core, each 5 cm sample was analysed for ionic concentrations and the oxygen isotopic ratio. The firm pieces dedicated to the ion analysis were decontaminated under a clean air bench located in a cold room (-15 °C) using a pre-cleaned electric plane tool on which the ice is slid (Preunkert and Legrand, 2013). A total of 427 subsamples were obtained along the

22.4 m SIC core, with a 5 cm sample resolution. Concentrations of cations (Na^+ and NH_4^+), and anions (Cl^- , NO_3^- , SO_4^{2-} , and methanesulfonate, hereafter MSA), were analysed by ion chromatography (IC) equipped with a CS12 and an AS11 separator column, respectively. Finally, the oxygen isotopic ratio analysis was processed using the $\text{CO}_2/\text{H}_2\text{O}$ equilibration method on a Finnigan MAT252, using two different internal water standards calibrated to SMOW/SLAP international scales. The accuracy of each measurement is $\pm 0.05 \text{ ‰}$ (1σ) (Table S1 Supplementary Material).

2.3 Methodology for layer counting

As shown by Jourdain and Legrand (2002), all ions exhibit a summer maximum at DDU, as also found for different Antarctic coastal stations for nitrate (Wagenbach et al., 1998b), ammonium (Legrand et al., 1998), MSA and sulfate (Minikin et al., 1998). The sodium seasonal pattern at DDU (maximum in summer) is reversed compared to those observed at other coastal Antarctic sites (e.g. Halley and Neumayer), a feature already discussed by Wagenbach et al. (1998a).

The outstanding summer maximum of sea-salt concentrations only detected at DDU is related to its location on a small island, immediately surrounded by open-ocean from December to February. With the aim to use the seasonality of sulfate and MSA produced by oxidation of dimethyl sulfur emitted in summer by marine phytoplankton, we have calculated the non-sea-salt sulfate concentrations in the SIC1 core. Wagenbach et al. (1998a) showed that at the coastal Antarctic sites, sea-salt aerosol exhibits a strong depletion of atmospheric sulfate in winter due to precipitation of mirabilite ($\text{Na}_2\text{SO}_4 \cdot 10\text{H}_2\text{O}$) on the sea-ice surface (Wagenbach et al., 1998a). In order to quantify non-sea-salt (nss) SO_4^{2-} contribution, different sulfate to sodium ratio should be defined for summer (0.25, i.e. the reference seawater value) and winter (0.13 derived by Jourdain and Legrand (2002) for DDU):

$$[\text{nssSO}_4^{2-}]_{\text{summer}} = [\text{SO}_4^{2-}] - 0.25 [\text{Na}^+] \quad (1)$$

$$[\text{nssSO}_4^{2-}]_{\text{winter}} = [\text{SO}_4^{2-}] - 0.13 [\text{Na}^+] \quad (2)$$

Note that the volcanic horizons related to the eruptions of Mt Agung (1963) and Pinatubo (1991) are not detected in the nss SO_4^{2-} profile. Legrand and Wagenbach (1999) explained this feature by the fact that, in coastal Antarctica, the volcanic perturbation remained weak with respect to the year-to-year variability of marine biogenic sulphate. While the relationship between concentrations in snow and in simultaneously sampled air remains poor for all compounds (Wolff et al., 1998), there is a general seasonal coincidence of the maxima. Annual layer counting is therefore based on our assessment of the concurrence of synchronous maximum values for Na^+ , MSA, SO_4^{2-} , NH_4^+ , NO_3^- and $\delta^{18}\text{O}$ to objectively identify summer horizons. The combination of information on annual layer counting as well as absolute age markers used to build the SIC1 age scale is described in Section 3.1 (Results).

2.4 Regional climate records

We extracted DDU monthly near surface air temperature data spanning the period 1958-2006 from the READER dataset (<https://legacy.bas.ac.uk/met/READER/>) (Turner et al., 2004). We also calculated annual mean values of wind speed spanning the period 1950-2006 (with gaps in years 1953-1955) at DDU (P. Pettré, pers. comm.). Finally, we extracted the average sea

ice concentration from the Nimbus-7 SMMR and DMSP SSM/I-SSMIS Passive Microwave Data (<http://nsidc.org/data/nsidc-0051>) and focused on the region situated between 90 °E and 150 °E (Center, 1996). We used these datasets to perform linear regression analysis with the SIC1 $\delta^{18}\text{O}$ and accumulation records.

2.5 Atmospheric simulations

In this manuscript, we refer to two simulations, one by the AGCM ECHAM5-wiso and one by the regional atmospheric model MAR.

ECHAM5 (Roeckner et al., 2003) has been equipped with stable-water isotopes (Werner et al., 2011). This model, named ECHAM5-wiso, leads to realistic simulations when evaluated against observations of isotopic composition in precipitation and water vapour on a global scale. More specifically, the simulated distribution of annual mean precipitation isotopic composition over Antarctica is in good agreement with the spatial isotopic dataset compiled from snow and ice core data (Masson-Delmotte et al., 2008).

In addition to the most common water stable isotope H_2^{16}O , H_2^{18}O and HDO were implemented into the hydrological cycle of ECHAM5-wiso, in an analogous manner than in the previous model releases of ECHAM3 (Hoffmann et al., 1998) and ECHAM4 (Werner et al., 2001). Each water phase (vapour, cloud liquid and cloud ice) being transported independently in ECHAM5-wiso contains its isotopic counterpart, implemented in the model code. Equilibrium and kinetic fractionation processes are taken into account during any phase change of a water mass.

The ECHAM5-wiso model simulation analysed in this study covers the period 1960-2006. ECHAM5-wiso was nudged to atmospheric reanalyses from ERA40 (Uppala et al., 2005) and ERA interim (Dee et al., 2011), which was shown to have good skills for Antarctic precipitation (Wang et al., 2016), surface pressure fields as well as vertical profiles of winds and temperature. The ocean surface boundary conditions (sea-ice included) are prescribed based on ERA40 and ERA interim data. Isotopic values of ocean surface waters are based on a compilation of observational data (Schmidt et al., 2007). The simulation was performed at a T106 resolution (which corresponds to a mean horizontal grid resolution of approx. $1.1^\circ \times 1.1^\circ$). We used the model results at the grid point closest to our site of interest.

The MAR (Modèle Atmosphérique Régional) model is a limited area coupled atmosphere – blowing snow – snow pack model.

Atmospheric dynamics are based on the hydrostatic approximation of the primitive equations (Gallée and Schayes, 1994). The vertical coordinate is the normalized pressure. The parameterisation of turbulence in the surface boundary layer (SBL) takes into account the stabilization effect by the blowing snow flux, as in Gallée et al. (2001). Turbulence above the SBL is parametrized using the local E - ϵ model of (Bintanja, 2000). Prognostic equations are used to describe five water species (Gallée, 1995): specific humidity, cloud droplets and ice crystals, rain drops and snow particles. A sixth equation is added describing the number of ice crystals. Cloud microphysical parameterisations are based on the studies of Kessler (1969), Lin et al. (1983), Meyers et al. (1992) and Levkov et al. (1992). The radiative transfer through the atmosphere is parameterised as in Morcrette (2002). Surface processes in MAR are modelled using the Soil – Ice – Snow – Vegetation – Atmosphere – Transfer (SISVAT) scheme (Gallée et al., 2001). In particular, the snow surface albedo depends on the snow properties (dendricity,

sphericity and size of the snow grains). Finally the blowing snow model is described in Gallée et al. (2013). MAR is set up over Antarctica with a horizontal resolution of 40 km over 200 x 200 grid points. Lateral forcing and sea surface conditions (SST and sea – ice fraction) are taken from ERA-Interim (Dee et al., 2011). There are 33 levels in the vertical with a high vertical resolution in the low troposphere. The first level is situated at 3 m a.g.l. The simulation was performed from January 1st, 1990, to December 31st, 2010.

Hereafter, we use the ECHAM5-wiso simulation to explore the suitability of local precipitation $\delta^{18}\text{O}$ to identify seasonal cycles, as no regional precipitation monitoring data are available. We then compare the ECHAM5-wiso ($\delta^{18}\text{O}$, temperature and accumulation) and MAR (temperature and accumulation) outputs with our ice core records.

3. Results

3.1 Age scale

3.1.1 Information from ECHAM5-wiso on annual $\delta^{18}\text{O}$ cycles

In order to assess whether annual layer counting was possible using a $\delta^{18}\text{O}$ seasonal cycle, we investigate seasonal patterns in ECHAM5-wiso outputs and the timing of the maximum precipitation $\delta^{18}\text{O}$ value for each year. The mean simulated precipitation $\delta^{18}\text{O}$ seasonal cycle over the period 1979-2006 (28 years) shows a maximum in December-January, a minimum in May, and an overall amplitude of 4.5 ‰. The timing of the simulated monthly precipitation $\delta^{18}\text{O}$ maximum fluctuates from year to year. Out of the 29 years, it was simulated at 80 % during local spring-summer: 7 times in December (i.e. 24 %), 8 times in November (i.e. 28 %) and 8 times in January (i.e. 28 % of the time). However, several occurrences were simulated in autumn: 3 times in March (i.e. 10 %), once in February (i.e. 3 %), and in winter: 2 times in August (i.e. 7 %) (Table S3 Supplementary Material). From this analysis, assuming that the ECHAM5wiso model is a perfect representation of reality, peak $\delta^{18}\text{O}$ has a 80% likelihood to occur in December \pm 1 month. If a chronology was purely based on $\delta^{18}\text{O}$, the occurrence of maxima during other seasons may therefore lead to age scale errors of up to 6 months.

3.1.2 Absolute age horizons

Following major nuclear tests in the atmosphere, radioactive debris ~~was~~were injected in the stratosphere in 1953-54 and 1963-64 and reported to be deposited in Antarctica in 1955 and 1965 (\pm 1 year) (Picciotto and Wilgain, 1963). These two dates are indicated by red vertical lines in Fig. 2.

Aerosol monitoring data from DDU (1991-2015) show an unequivocal fingerprint of rare summers during which the sea-ice retreat was not complete offshore the site through the absence of sodium maximum. Such events were observed in January 1995 (Jourdain and Legrand, 2002), and more recently in January 2012 and 2013 (Legrand et al., 2016). Prior to the start of DDU atmospheric monitoring in 1991 and to the availability of satellite sea-ice data in January 1979, two other years were characterized by a non-complete sea-ice retreat in summer offshore DDU, namely January 1969 and January 1979 (Patrice

Godon, personal communication). The identification of years 1995, 1969 and 1979 in S1C1 records is indicated by purple vertical lines in Fig. 2. Note that the chemical fingerprint of summer 1969 is equivocal, as it is defined by the absence of a sodium maximum, but coincides with a sulfate maximum, contrary to what is expected.

3.1.3 Combining layer counting with absolute age horizons

- 5 We assessed the concurrence of synchronous maximum values for Na^+ , MSA, SO_4^{2-} , NH_4^+ , NO_3^- and $\delta^{18}\text{O}$ to objectively identify summer horizons, indicated by the vertical continuous black lines in Fig. 2. Only 4 layers showed simultaneous peaks in all species (in 1959, 1966, 1984 and 2001). In the other cases, the determination was equivocal: either data were missing for the depth interval corresponding potentially to summer or peaks were not identified in some of the or, conversely 2 or 3 peaks appeared. Table 1 reports the number of occurrence of such cases for each species. We note that maxima in NO_3^- and $\delta^{18}\text{O}$ were often delayed with respect to maxima in other species. These two parameters can potentially be affected by diffusion in the firn, due to snow-vapor interactions (Johnsen, 1977; Mulvaney et al., 1998). Mulvaney et al. (1998) also reported that MSA could migrate in the firn. Potential seasonal signals had a very low amplitude (e.g. 1969 to 1975), and sometimes no signal could be discerned. Altogether, nsSO_4^{2-} ,_{winter} seems to be the most reliable species to identify seasonal cycles in the S1C1 core, as a seasonal pattern appears for every layer.
- 10
- 15 The remaining difficulty is associated with multiple peaks within one year. This appears for instance in year 1993 (represented in dashed vertical line in Fig. 2). Double peaks may be associated with year 1993 only, or with two successive years. Such situations were encountered 8 times (dashed vertical lines in Fig. 2). As a result, we made subjective choices for the identification of annual or sub-annual peaks in order to optimize the coherency with absolute age markers. We found 60 summer peaks (solid lines, Fig. 2), whereas the initial layers excluded from the final chronology are represented with dashed lines. As a result, the S1C1 ice core spans the period 1946-2006, as displayed in a depth (expressed in meter water equivalent)-age scale (Fig. 3).
- 20

3.2 Record of accumulation variability and comparison with stake measurements

- Annual accumulation variations were extracted from the S1C1 core by combining density measurements with annual mean layer counting (Fig. 4). The resulting annual accumulation varies between 9.4 and 38.0 cm w.e. y^{-1} , with a mean value of 21.8 cm w.e. y^{-1} , and a standard deviation of 6.9 cm w.e. y^{-1} . This value is 15% lower than the annual accumulation of 25.6 cm w.e. y^{-1} (standard deviation of 15.1 cm w.e. y^{-1}) measured between 2004 and 2015 on one stake located closest to the drilling site (Agosta et al., 2012) (Fig. 1b), or 27% lower than the mean value measured nearly at the same location between 1971 and 1991 (mean value of 29.9 cm w.e. y^{-1} and standard deviation of 26.6 cm w.e. y^{-1}). We identified remarkable years as those for which accumulation deviates from the mean value by more than two standard deviations. Remarkable high accumulation rates were encountered in 1981, 1983 and in 2001 (at respectively 35.9, 37.3 and 38.0 cm w.e. y^{-1}). No remarkable low accumulation rates were found. For stake accumulation measurements performed at the stake closest to S1C1, the highest values were measured in 1979 and 1981 (75.8 and 73.8 cm w.e. y^{-1}). ~~None of t~~These remarkable years can be found neither in the stake
- 25
- 30

average record nor in the stake data the closest to the S1C1 site. Moreover, small and non-significant linear correlation coefficients are found with the stake average record, and with the stake data the closest to the S1C1 site. Spectral analyses performed using the Multi-Taper method (Paillard et al., 1996) reveal significant periodicities of 6 and 8 years (harmonic F-test ≥ 0.94). We also note a periodicity of 12 years, but which is not detected as significant (harmonic F-test=0.8). Decadal variability is characteristic of the high latitudes of the Southern Hemisphere (Yuan and Yonekura, 2011). This motivates filtering using a 13-point binomial filter with bounce end-effects (Fig. 5) , i.e. repeating the first (last) value six times in order to calculate the six first (last) running means. From this analysis, we observe a slight accumulation increase from the 1950s until the 1980s, with secondary maxima in 1970s and 1990s (Fig. 5). A decrease appears from the 1980s to the 2000s, back to the initial mean level. Finally, the S1C1 core displays an unprecedented accumulation increase from the 1990s to the 2000s. This latter feature is surprising, as recent stake measurements from this area show no increase in mean values in 2004-2015 compared with earlier surveys (1971-1991). We therefore remain cautious about the recent accumulation increase inferred from one single ice core record, unless this finding can be supported by other lines of evidence. Finally, note that only a 5 year periodicity emerges from spectral analysis of DDU temperature (harmonic F-test=0.99).

3.3 Record of $\delta^{18}\text{O}$

With our age scale, each year is documented with 2 to 14 $\delta^{18}\text{O}$ 5 cm measurements, with a mean number of 7 values per year. Hereafter, the $\delta^{18}\text{O}$ record is resampled at this average temporal resolution using the Fourier method (Fig. 4). Annual mean $\delta^{18}\text{O}$ values are then calculated from January to December, for comparison with accumulation and other observational or simulation datasets (Fig. 5).

3.3.1 Other sources of information for $\delta^{18}\text{O}$ regional variability

Very few multi-year direct records of snowfall isotopic composition are available from Antarctica (Fujita and Abe, 2006; Landais et al., 2012; Schlosser et al., 2016), and none in our region of interest. Near S1C1, the single direct observation arises from a collection of 19 samples of precipitation at DDU, spanning the period from February to November of 1977 (*J. Jouzel, pers. comm.*). These data depict a mean $\delta^{18}\text{O}$ value of -18.0 ‰, a standard deviation of 3.9 ‰, with the lowest value in August (~ -27.7 ‰) and the highest values in March (-10.0 ‰) and November (-11.5 ‰). Despite its brevity, this dataset shows less depleted values, a different seasonal pattern (i.e. maxima do not appear at the same months), and lower variability than at Dome C, where recent measurements are available for the period 2008-2010 (Stenni et al., 2016). At Dome C, precipitation isotopic composition values range from -80.6 to -35.5 ‰, with a mean $\delta^{18}\text{O}$ value of -58.0 ‰, a standard deviation of 8.6 ‰ and a ~ 37 ‰ mean seasonal amplitude, with maximum values in December-January, as for near surface air temperature. This comparison is of course limited by the short dataset available for DDU and the fact that these measurements were not performed for the same time period. The distribution of $\delta^{18}\text{O}$ data at DDU appears consistent with the range of values observed in a multi-decadal (1982-1996) record of surface snow isotopic composition obtained from the coastal station of Neumayer, with a mean $\delta^{18}\text{O}$ value of -20.6 ‰, and a seasonal amplitude varying from 14.6 to 29.0 ‰ (Schlosser et al., 2008). Finally,

the Dumont d'Urville precipitation mean $\delta^{18}\text{O}$ value is also quite close to that of shallow ice cores from Law Dome (66.73 °S, 112.83 °E, 1395 m a.s.l.) (Delmotte et al, 2000; Masson-Delmotte et al, 2003), which display a mean value of ~ -21 ‰, and an average seasonal $\delta^{18}\text{O}$ amplitude of ~ 6 ‰, together with a larger inter-annual variability rather in local winter than in local summer.

5 3.3.2 Record of $\delta^{18}\text{O}$ variability and links with accumulation and regional climate records

The sub-annual record from raw measurements and resampling at an average of 7 points per year displays large year-to-year variations in the amplitude of the seasonal cycle, varying from 0.2 ‰ (in 1980) to 13.5 ‰ (in 2005), with a mean value of 2.5 ‰. The SIC1 record clearly displays a smaller intra-annual range than observed in DDU precipitation (17.7 ‰ for one single year), and an average intra-annual range about twice smaller than shallow ice core records from Law Dome (typically 5 ‰).

10 Note that the annual accumulation rate at Law Dome (64 cm. w.e. y^{-1}) is ~ 3 times higher than in the SIC1 core (21.9 cm. w.e. y^{-1}). However, the confidence in this finding is limited by the resolution of our record as well as by potential post-deposition processes affecting the preservation of the sub-seasonal to seasonal precipitation isotopic composition signal (Johnsen, 1977; Touzeau et al., 2016).

We again identified remarkable years as those deviating from the mean value by more than two standard deviations. Only one
15 remarkable low $\delta^{18}\text{O}$ values was encountered in 1996, while no remarkable high $\delta^{18}\text{O}$ values was encountered. The year 1984 is marked by the most enriched annual mean $\delta^{18}\text{O}$ values of the whole series. No long-term trend is observed. Spectral analyses performed using the Multi-Taper method evidence highly significant periodicities of 6 and 14 years (harmonic F-test > 0.99), close to those identified for accumulation. . This former result lead us to use a 13-point binomial filter with bounce end-effects, allowing us to explore the SIC1 $\delta^{18}\text{O}$ record at the decadal scale and to compare it with accumulation at the same scale (Figure
20 5). The resulting calculations depict a sharp decrease in the 1950s, with the strongest decadal minimum peaking in 1955. It is followed by a gradual increase, reaching the highest $\delta^{18}\text{O}$ decadal-mean values in ~ 1982 and ~ 1992 , with secondary maxima in ~ 1962 and ~ 1972 . A sharp decrease occurs in the 1990s, when mean levels from the 1950s are reached again. There is an anti-phase of the $\delta^{18}\text{O}$ and accumulation smoothed signals in the 1950s and the 2000s, while they appear in phase from the 1970s to 1990s, with multi-decadal variations.

25 We now explore linear relationships between the SIC1 records and regional climate records (Table 3). No significant linear correlation is identified between annual mean SIC1 $\delta^{18}\text{O}$ and accumulation records from 1946 to 2006. We also note that there is no coincidence between remarkable years for $\delta^{18}\text{O}$ and for accumulation.

There is no significant correlation between annual mean SIC1 $\delta^{18}\text{O}$ and DDU near surface air temperature over the available period at the annual scale. At the decadal scale, we observe a significant positive correlation, with a slope of 1.49 ‰ per °C.

30 Linear relationships between $\delta^{18}\text{O}$ and near surface air temperature were found in other Antarctic stations. At Law Dome, the DE08 ice Australian $\delta^{18}\text{O}$ record displays a weak negative correlation with Casey near surface air temperature with a slope of -0.31 ‰ per °C ($r=-0.45$ and $p=9.0\text{E-}3$ for the period 1959-1991) (Masson-Delmotte et al., 2003). At Dome C, over 3 years,

daily precipitation $\delta^{18}\text{O}$ displays a significant positive correlation with daily AWS near surface air temperature, with a slope of 0.49 ‰ per °C ($r=0.79$ and $p=3.2\text{E-}109$).

No significant relations are detected between annual mean SIC1 $\delta^{18}\text{O}$ and annual mean sea ice concentration in the Adélie land sector (Table 3).

5 3.4 Model-data comparison

3.4.1 Comparison between the ECHAM5-wiso and the SIC1 data

This comparison is limited by the fact that we only have one firn core record, and no estimation of the deposition noise. In the future, the latter may be estimated from signal-to-noise analyses of multiple ice core records from the same area (Masson-Delmotte et al., 2015). Moreover, recent monitoring of surface snow and surface vapour isotopic composition in polar regions have suggested isotopic exchanges between surface snow and water vapour in-between snowfall events (Ritter et al., 2016; Steen-Larsen et al., 2014). Such processes are not accounted for in the atmospheric models, and we can therefore only compare simulated precipitation-weighted $\delta^{18}\text{O}$ with our firn measurements. Similarly, we compare the ECHAM5-wiso model simulated precipitation with the ice core accumulation data, which may also reflect the impact of wind erosion.

The ECHAM5-wiso simulation produces a large increase in $\delta^{18}\text{O}$ and precipitation after 1979 (not shown). As such increase is not observed in the SIC1 record, we suggest that it may arise from a discontinuity in the ERA reanalyses data used as boundary conditions. Indeed, the lack of sea ice observations prior to the satellite era in the ERA-40 dataset leads to the unrealistic set of climatological sea ice coverage values around Antarctica prior to 1979. This deficit does not exist in the ERA interim dataset, starting from year 1979. Therefore, in the following, the model-data comparison is restricted to the period 1979-2006 (Fig. 6).

The ECHAM5-wiso simulation underestimates the average seasonal amplitude of $\delta^{18}\text{O}$ at the SIC1 grid point by a factor of 2.0, and its inter-annual standard deviation by a factor of 1.4. No strong similarity appears for year-to-year values. Weak but significant decreasing long-term trends appear in both the SIC1 record and in the model outputs ($r=-0.36$ and $p=0.058\text{E-}2$ and $r=-0.43$ and $p=0.022\text{E-}2$ respectively).

By contrast, the model precipitation amount (68.4 ± 11.7 cm w.e. y^{-1}) is much higher than observed (23.1 ± 7.3 cm w.e. y^{-1}) at SIC1 site on the same period. This difference cannot be explained by the impact of sublimation (in average, -4.8 cm w.e. y^{-1} in the simulation). Note that the model may not fully account for the impact of wind erosion, due to missing parameterizations for wind scouring and misrepresentation of small-scale katabatic winds. However, snow accumulation is highly variable in this region, due to the orographic effect on precipitation and to wind scouring. Along the first 50 km of the stake network (Agosta et al., 2012), the mean accumulation rate is estimated at 34.6 cm w.e. y^{-1} between 2004 and 2014. This result confirms that ECHAM5-wiso overestimates the regional accumulation rate. When considering deviations from average values (Fig. 6), no similarity emerges between inter-annual variations in the SIC1 record and in the simulation. The simulation captures the observed positive anomalies in 1993. No significant long-term trend is identified from 1979 to 2006.

The model-data mismatch may arise from the topographic effect of the Antarctic ice sheet margin on the distribution of precipitation, and the associated isotopic distillation. The model grid size used here (approx. $1.1^\circ \times 1.1^\circ$, i.e. $110 \times 110 \text{ km}^2$) might also be too coarse for a direct comparison of the simulation results to the S1C1 drill site. Further investigations are needed, and this requires also a regional network of shallow firm core records on the Antarctic ice sheet margin, in order to characterize spatio-temporal variations and signal-to-noise ratios.

In the simulation, we have also explored the $\delta^{18}\text{O}$ -precipitation and the $\delta^{18}\text{O}$ -temperature relationship at the annual scale. A significant linear relationship appears for temperature, with a slope of $0.29 \text{ ‰ } ^\circ\text{C}^{-1}$ ($r=0.39$, $p=0.038$). By contrast, no significant linear relationship is simulated for precipitation ($r=0.19$, $p=0.34$).

In summary, the ECHAM5-wiso model outputs appear to have a wet and $\delta^{18}\text{O}$ -depleted bias at the S1C1 drill site, overestimate the inter-annual accumulation variability, underestimate the $\delta^{18}\text{O}$ variability and its relationship with surface air temperature, and fail to capture the observed $\delta^{18}\text{O}$ -accumulation relationship.

Our model-data comparison is of course limited by comparing two different datasets. For the modelling results, we have analysed a pure atmospheric signal (precipitation). The signal recorded in the S1C1 core is produced by precipitation, but also potentially altered by post-deposition processes (such as sublimation, wind scouring and snow metamorphism). Also, the fact of having just one ice core record (also associated with age scale uncertainties) precludes an assessment of the signal-to-noise ratio. Indeed, with similar mean accumulation values, it was shown that 4-5 shallow ice cores may be needed to extract the common climatic signal in North-West Greenland (Masson-Delmotte et al, 2015).

3.4.2 Comparison between the ECHAM5-wiso model and the MAR model

We now investigate the results of the regional model MAR for accumulation. MAR produces a more realistic range of accumulation, with simulated values varying from $12.3 \text{ cm w.e. y}^{-1}$ (in 2006) to $32.4 \text{ cm w.e. y}^{-1}$ (in 1999). At this 40 km horizontal scale (against 110 km in the ECHAM5-wiso model), the slope of the East Antarctic ice sheet is better represented, a critical aspect for orographic precipitation. However, the inter-annual variability simulated by MAR is very different from that inferred from the S1C1 core compared to ECHAM5-wiso. This result may arise from the nudging technique: while the ECHAM5-wiso model is strongly nudged to reanalyses, the MAR model is only forced by large-scale circulation at the lateral boundaries and layers above 20 km, allowing the model to build its own atmospheric circulation. We conclude that systematic caveats of the ECHAM5-wiso model for coastal Antarctic precipitation amounts may arise from its resolution.

4. Discussion

Here, we propose an alternative ice-core chronology, given the annual layer counting uncertainties. For that purpose, we have screened peak-to-peak relationships between S1C1 record, stake accumulation measurements, and ECHAM5-wiso outputs. We first tried to optimize the match between S1C1 accumulation and stake data. However, the inter-annual standard deviation of S1C1 accumulation is ~~approximately~~ three times lower than calculated from either individual stake records,

or from the average stake record. As a result, we could not identify unequivocally remarkable low or high accumulation years as a robust signal. For instance, all stake area data show very low (close to zero) accumulation in years 1972 and 1988, but no such signal can be identified in the S1C1 record. We therefore used the ECHAM5-wiso $\delta^{18}\text{O}$ to test an alternative chronology (Section 4.1). We identified a high similarity between ECHAM5-wiso inter-annual precipitation variability and average stake data (Section 4.2). We then discussed processes that can produce non climatic noise (Section 4.3). After assessing $\delta^{18}\text{O}$ -temperature relationships (Section 4.4), we finally explored the spatial relevance of climatic records from the S1C1 location (Section 4.5).

4.1 An alternative age scale can improve the model-data comparison for $\delta^{18}\text{O}$

The comparison of the most remarkable annual anomalies in the S1C1 and simulated $\delta^{18}\text{O}$ series from ECHAM5-wiso reveals a one year shift: the minimum value is identified in 1996 for S1C1 but simulated in 1998, while the 1984 maximum value in the S1C1 core may coincide with the simulated maximum value in 1986. Given the uncertainties of age chronology of at least one year and potentially several years (Section 3.1), we reconsidered the annual layer counting to assess whether the S1C1 chronology can be reconciled with the ECHAM5-wiso $\delta^{18}\text{O}$ outputs.

Indeed, the identification of the summers 1999-2000 and 2000-2001 in our initial chronology (years 2000 and 2001 in Fig.2) are based on equivocal evidence due to multiple peaks in NO_3^- and the lack of a peak in $\delta^{18}\text{O}$. Vice-versa, we could have missed one year between the initial layers associated with the summers 1981-1982 and 1982-1983, where peaks are identified in Na^+ , nssSO_4^{2-} -winter, nssSO_4^{2-} -summer, NO_3^- and NH_4^+ . We therefore built an alternative depth-age scale (Table S4 Supplementary Material) following these two findings (Fig. 7 and Fig. 8), and discussed the implications for the S1C1 records. Consequently, we have produced new annual mean accumulation and $\delta^{18}\text{O}$ time series, from 1979 to 2006, following the same approach (Section 2.3.3).

With this alternative chronology, the resulting mean accumulation does not change, and the inter-annual standard deviation is slightly increased ($21.8 \pm 7.4 \text{ cm w.e. y}^{-1}$). It has no impact on $\delta^{18}\text{O}$ or accumulation multi-decadal variations or trends. The resulting accumulation dataset remains non-significantly correlated with the stake average record and with the closest stake data. In the alternative chronology, there is still no significant $\delta^{18}\text{O}$ -temperature relationship between the S1C1 record and the DDU near surface air temperature time series, and no relationship between S1C1 accumulation dataset and the ECHAM5-wiso precipitation output at the annual scale. However, it improves (by construction!) the strength of the correlation between the S1C1 $\delta^{18}\text{O}$ and the ECHAM5-wiso $\delta^{18}\text{O}$, from $r=0.17$ with $p=0.39$ for the initial chronology to $r=0.57$ with $p=1.6\text{E-}3$ for the alternative chronology

4.2 Comparison between stake data and ECHAM5-wiso simulation

No significant linear correlation is found neither between the S1C1 accumulation record (whatever chronology is used) and the stake accumulation measurements, nor between the S1C1 accumulation record and the ECHAM5-wiso simulated

precipitation. We therefore compared the stake measurements and the ECHAM5-wiso output, with the goal to investigate if there is a common climatic signal (for the period 1979-1991).

We observe a high and significant correlation between the ECHAM5-wiso simulated precipitation and the average stake record at the inter-annual scale ($r=0.62$ and $p=0.030$). This finding shows that the nudged ECHAM5-wiso simulation is able to capture almost 40% of the inter-annual average accumulation variance, and that there is a clear synoptic climatic deposition (and not only local deposition) in the stake accumulation record. We also note that there is a high dispersion in the inter-annual variability of accumulation across the individual stake records, as evidenced by the quartile distribution (Fig. 7). Each stake record is significantly correlated with the average stake record (r varies from 0.57 to 0.90, reaching 0.78 for the stake closest to S1C1, $p=3.2E-5$). However, significant differences are encountered. For instance, the sharp peak in accumulation displayed by the stake closest to S1C1 in 1979 is an outlier and is not recorded in the average stake signal. Similarly, the correlation coefficient between the ECHAM5-wiso simulated precipitation and individual stake records varies from 0.3 to 0.7, stressing potential non-climatic noise in local accumulation data.

We conclude that the common climatic signal in average stake accumulation time series is related to regional-scale circulation, and is captured by the ECHAM5-wiso simulation. The lack of correlation between the S1C1 accumulation record and both stake records and ECHAM5-wiso precipitation outputs may therefore reflect local non-climatic noise.

4.3 Processes causing non-climatic noise

The significant correlation between the ECHAM5-wiso precipitation and the stake average accumulation record stresses the fact that the inter-annual variability of the average accumulation is dominated by large-scale atmospheric circulation controls on precipitation. Given the spatio-temporal variability of accumulation reported previously, we could not use accumulation information to refine the initial S1C1 chronology, and conclude that the S1C1 accumulation record is probably heavily affected by non-climatic noise. The significant correlation between the ECHAM5-wiso precipitation and the stake average accumulation record stresses the fact that the inter-annual variability of the average accumulation is dominated by large-scale atmospheric circulation controls on precipitation. However, snow accumulation is spatially variable at the study site (Agosta et al., 2012). Indeed, the mean accumulation given by the stake located at D10 is 25.6 cm w.e y^{-1} and the standard deviation of mean accumulation values from the 14 stakes located within the first 10 km is 12.0 cm w.e y^{-1} . A high variability reaching tens of millimeter over few meters was also reported by Genthon et al. (2007) and Favier et al. (2011) over an ablation site located 4 km from D10.

This high variability can be associated to wind erosion, wind redistribution, sublimation, occurrence of gravity waves in the katabatic flow, and other processes during or after the precipitation event (Eisen et al., 2008). This leads to very high variability even at very small spatial scales, down to deca-meter scale (Libois et al., 2014), as reflected by the presence of sastrugi (Amory et al., 2015). Local features associated either with the distribution of precipitation or with wind-driven post-deposition erosion or deposition appear dominant for a given stake record, and for the S1C1 record as well.

Liquid precipitation or melting and subsequent refreezing appear of secondary importance in this region. Indeed, 2.5-m snow cores were collected every 0.5 km from the 156-km stake network of the Glacioclim observatory. These shallow cores were used for density measurements and screened for stratigraphic analysis. Small ice layers exceeding 2 mm were identified at the same depth. Near D10, one event of liquid precipitation event followed by refreezing was observed between December 31th, 2014 and January 1st, 2014. This single event led to ice layers reaching up to 6 cm of thickness. According from meteorological monitoring performed at the Météo France DDU station, this is the single such occurrence of a heavy liquid precipitation event since 1957. From stratigraphic analyses of pits and shallow ice cores at D10, spanning the last 10 years (prior to 2014), only one ice layer thicker than 3 mm was identified: a 3 cm thick ice layer was observed at 60 cm depth in the surface core collected in 2008-2009. There is therefore evidence for rare occurrence of liquid precipitation, and very limited melting and refreezing of surface snow at D10, with limited percolation effects, when compared to annual accumulation amounts.

Differences in accumulation estimates from the stake data and from S1C1 may also arise from variations in surface snow density. Indeed, stake height measurements were converted into water equivalent using a spatial estimate of mean density distribution (Agosta et al., 2012). Lastly, this analysis also highlights the limited information which can be extracted from one single ice core. In the future, obtaining several ice cores from this sector will help to quantify the common climatic signal and better characterize the non-climatic noise. It will also to confirm our hypothesis that there is a significant climatic signal from this single core, as suggested by the comparison of the average stake area record with the ECHAM5-wiso output.

4.4 $\delta^{18}\text{O}$ -temperature relationship

We now report the various estimates of the $\delta^{18}\text{O}$ -temperature relationship based on our S1C1 record, instrumental temperature data, and ECHAM5-wiso outputs (Table 4).

Correlations and slopes in the $\delta^{18}\text{O}$ -temperature relationship from the data (both chronologies) over the whole available period (1956-2006), are not significant at the annual scale contrary to the decadal scale. It suggests that the $\delta^{18}\text{O}$ -temperature is not stationary through time. This may arise from non-climatic noise at the inter-annual scale. Moreover, the decadal slopes are stronger than expected from a Rayleigh distillation, possibly resulting from either a decoupling between surface and condensation temperature, or from changes in moisture sources through time.

We note that over the period 1979-2006, although the $\delta^{18}\text{O}$ -temperature relationship from the first chronology is not significant, the relationship from the second one is significant but weak, with a slope close to the Rayleigh distillation.

The ECHAM5-wiso simulation (Section 2.3.1) shows that the seasonal cycle of $\delta^{18}\text{O}$ is not in phase with the seasonal cycle of temperature. Moreover, the inter-annual variability of $\delta^{18}\text{O}$ simulated in the S1C1 area is maximum in local spring (November), in contrast with the maximum inter-annual variability of DDU temperature, occurring in winter. This finding are also different from Dome C precipitation data (Stenni et al., 2016), showing a larger inter-annual variability of both temperature and $\delta^{18}\text{O}$ during local winter (possibly due to variability in frequency of maritime air mass intrusions). These model results suggest that processes other than local temperature play a key role in local $\delta^{18}\text{O}$ seasonal cycle and inter-annual variability, as suggested by Schlosser et al. (2016).

In the ECHAM5-wiso model, the $\delta^{18}\text{O}$ – temperature relationship is significant (but weak) at the annual scale, and therefore stronger than observed from the SIC1 record. At the decadal scale, as in the data, the correlation is higher. However, the slope is lower (0.63) than in the data, being closer to the Rayleigh distillation. To understand this mismatch between data and simulations, we investigated alternative approaches for the $\delta^{18}\text{O}$ -temperature relationship obtained using annual data through the combination of temperature extracted from the READER database and simulated $\delta^{18}\text{O}$, and the temperature extracted from the ECHAM5-wiso model and SIC1 $\delta^{18}\text{O}$ record (Table 4).

We found a high and significant correlation between inter-annual variations in temperature from the READER database and ECHAM5-wiso simulated near surface air temperature ($r=0.91$ and $p=2.2\text{E-}12$) but no significant correlation between inter-annual variations in $\delta^{18}\text{O}$ from the SIC1 core (from the first dating) and simulated by ECHAM5-wiso. The variance of the ECHAM5-wiso model result is about twice as small as in the SIC1 core (inter-annual standard deviation 0.6 ‰ for the ECHAM5-wiso model and 1.8 ‰ in the SIC1 core respectively for the period 1979-2006) (Table 2). Also, note that the strength of the correlation coefficient and the magnitude of the slope are higher for ECHAM $\delta^{18}\text{O}$ versus READER temperature than within ECHAM outputs for both annual and decadal time scales. This could be explained by a near surface temperature closer to the condensation temperature in the case of READER compared to ECHAM.

So far, we cannot conclude on the cause for such a difference in variance: the ice core record may be affected by post-deposition features that generate noise (Section 4.3), or the atmospheric model may not adequately resolve moisture transport pathways driving variability in the precipitation signal. Systematic comparisons between ECHAM5-wiso and results from direct precipitation sampling or from surface water vapour isotopic composition monitoring are needed to understand whether this mismatch arises from the atmospheric model or from signal-to-noise issues in one individual ice core record. So far, no such measurements are available in Adélie Land. This finding calls for a cautious use of simulated $\delta^{18}\text{O}$ -temperature relationships in coastal areas, before a full assessment of the model skills can be achieved.

4.5 Spatial extent of the representativeness of SIC1 site

We finally take advantage of the ECHAM5-wiso simulation in order to investigate the spatial relevance of the SIC1 site. For that purpose, we have calculated the correlation coefficients of the annual surface air temperature, precipitation amount and $\delta^{18}\text{O}$ between the model output at the SIC1 site and the model outputs for each other Antarctic grid point (cf. Fig. 9). Regarding temperature, SIC1 temperature appears closely related ($r \geq 0.8$) with regional temperature in an approximative ~1000 km from ~120 °E to 150 °E. SIC1 is strongly correlated with regional precipitation amount, although for a much reduced area close to SIC1, within ~500 km. In the model world, SIC1 precipitation-weighted $\delta^{18}\text{O}$ appears only related with regional signals, with the strongest correlation coefficients for a very local area (approximatively 100 km width).

5. Conclusions and perspectives

Documenting inter-annual climatic variations in coastal Antarctica is important to characterize natural climate variability, and provide a long-term context for recent changes beyond the instrumental period. The study of the SIC1 core addresses this challenge.

5 The initial chronology of the SIC1 ice core was established combining multi-parameter annual layer counting using major ions and $\delta^{18}\text{O}$, as well as reference horizons, ~~including~~ (nuclear test horizons and fingerprints of summers with no sea-ice retreat). The latter approach would not have been feasible without the knowledge provided by long-term aerosol monitoring at DDU. The SIC1 records encompass the period 1946-2006 with equivocal identification of 8 annual years.

The mean accumulation rate estimated from the SIC1 record is coherent with information from stake area measurements in Adélie Land. No long-term trend is detected in the stake data (Agosta et al., 2012) and in the SIC1 accumulation record. This robust finding challenges a recent regional modeling study showing a decrease of accumulation in coastal Adélie Land from 1979 to 2010 (Lenaerts et al., 2012). ~~The record is marked by periodicities of 6, 8 and 12 years, and multi-decadal variations, peaking in the 1980s.~~ We are not confident in the signal of higher accumulation rates in the 2000s, because no such signal is detected in the comparison of recent and historical stake measurements. The average stake area record is significantly correlated with results from the ECHAM5-wiso model, but not with the SIC1 record. This finding may arise from post-deposition noise associated with e.g. wind scouring ~~in an area marked by remarkable katabatic winds~~. The lack of similarity between the SIC1 ice core records and the stake measurements may also arise from the fact that the location of stake measurements may have moved through time (Agosta et al., 2012), and from the correction of height measurements using an average density value along the profile rather than simultaneous measurements of density which were not available.

20 The SIC1 $\delta^{18}\text{O}$ record shows a remarkable small amplitude of the seasonal cycle, when compared to other isotopic datasets from coastal East Antarctica. But note that the accumulation rate is site-dependent. We have stressed that remarkable years ~~are~~ in $\delta^{18}\text{O}$ and accumulation records do not coincide. Both records display a multi-decadal variability. The SIC1 $\delta^{18}\text{O}$ record is significantly correlated with DDU near surface air temperature only at the decadal scale, with a particularly large slope. We showed that the ECHAM5-wiso model strongly underestimates the inter-annual variability in $\delta^{18}\text{O}$. ~~This features and therefore the strength of the decadal slope of the $\delta^{18}\text{O}$ -temperature relationship. The under-estimation of the inter-annual variance of precipitation $\delta^{18}\text{O}$ by the ECHAM5-wiso model calls for a systematic assessment of the skills of the isotopically enabled atmospheric general circulation models against the whole variety of data regarding the temporal variability~~ ~~(vapour, precipitation and firm isotopic composition using shallow ice core data as well as the few precipitation and vapour measurements).~~ In order to better understand the drivers of isotopic variability in coastal Adélie Land, obtaining continuous vapour and precipitation isotopic composition measurements at DDU will offer the possibility of a direct comparison with atmospheric transport pathways, and with aerosol chemical data.

30 Implementing water stable isotopes in the regional MAR model is underway. Resolving regional aspects of the atmospheric circulation, especially related to katabatic winds and boundary layer dynamics, may indeed be important to resolve changes in

moisture origin at the inter-annual scale. Contrary to the regional MAR model, the ECHAM5-wiso model captures inter-annual variations in Adélie Land accumulation rate (as inferred from the average stake measurements) and remarkable $\delta^{18}\text{O}$ anomalies (as identified in the S1C1 record). Therefore, these variations are driven by large-scale atmospheric circulation. We have highlighted the fact that model outputs cannot be used in a climate sense prior to 1979, probably due to the lack of sea ice data used in the assimilation systems.

In this manuscript, we have also used the ECHAM5-wiso model outputs to challenge ~~the interpretation of ice core $\delta^{18}\text{O}$ records. First, we have quantified the source of errors associated with the use of seasonal cycle in precipitation $\delta^{18}\text{O}$ to detect summer layers. Second, we have identified the two strongest anomalies in the simulated and S1C1 $\delta^{18}\text{O}$ records, and challenged our~~ initial ice core chronology. None of our key conclusions is affected by the alternative chronology implying a two-year shift, ~~and compatible with the multi-parameter information used for layer counting. Finally~~ Third, we have used the ECHAM5-wiso model to explored the spatial relevance of precipitation and precipitation $\delta^{18}\text{O}$ outputs at the S1C1 site, and stressed the differences between a large-scale representativeness of temperature (typically, 1000 km), and a smaller-scale representativeness of $\delta^{18}\text{O}$ (typically, 100 km around the S1C1 site). In the future, obtaining a network of shallow ice core records in coastal East Antarctica will be critical to assess signal-to-noise aspects and test the validity of these findings.

Obtaining longer records will also allow to better characterize the multi-decadal variability and assess past changes in Antarctic temperature (Jones et al., 2016; PAGES 2k Consortium, 2013). ~~Moreover~~ Finally, characterizing spatio-temporal variations in deuterium excess will provide a complementary line of information, for the identification of seasonal variations, and for assessing past changes in moisture origin.

Further investigations are finally needed to explore the relationships between large-scale modes of variability such as the Southern Annular Mode (SAM), the Pacific – South American patterns (PSA), ENSO and climate variability in the Adélie Land sector. Indeed, composite analyses performed from 1979 to 2013 show significant imprints of SAM and PSA2 (associated with the tropical heating anomalies in the Pacific) on DDU temperature (Marshall and Thompson, 2016), and of La Niña on coastal East Antarctic climate (Welhouse et al., 2016). No significant relationships emerge with our S1C1 records.

~~We have evidenced multi-decadal variations in the S1C1 ice core records, DDU near surface air temperature and sea ice extent.~~ Our records, available back to 1946 (therefore 10 years earlier than the instrumental temperature series from DDU) depicts ~~a~~ decadal variations with a $\delta^{18}\text{O}$ minimum in the mid-1950s, within the range of subsequent variability. Altogether, these results imply no major climatic reorganization in this sector of East Antarctica prior to the 1970s. It contradicts suggestions for dramatic sea ice contraction in the mid-1950s, based on whaling ship records (Cotte and Guinet, 2007; William, 1997). Given discussions with respect to drivers of penguin demography (Raymond et al., 2015; Southwell et al., 2015), reconciling all sources of information for Adélie Land climate variability prior to the 1970s remains to be achieved.

Author contribution. : V. Favier compared the accumulation data from the S1C1 ice-core with surface accumulation data from stake measurements and designed Figure 1b. M. Fily and O. Magand participated in the TASTE-IDEA/VANISH 2006-2007 summer campaign, and processed density and radionuclides measurements. S. Preunkert performed the chemical

measurements, with support from B. Jourdain. M. Legrand provided insights on aerosol signals and layer counting. B. Minster performed the isotopic measurements. V. Masson-Delmotte designed the study and supervised the analyses of the records. M. Werner performed the simulation of the ECHAM5-wiso model while H. Gallée performed the simulation of the MAR model. S. Goursaud dated the SIC1 ice-core and wrote the manuscript with contributions from all co-authors.

5

Acknowledgements. This work and the PhD thesis of S. Goursaud are funded by the ASUMA project supported by the ANR (Agence Nationale de la Recherche, Project n°: ANR-14-CE01-0001). The SIC1 core was drilled within the International TASTE-IDEA (Trans-Antarctic Scientific Traverse Expeditions - Ice Divide of East Antarctica)/ VANISH (Vulnerability of Antarctic Ice Sheet and its atmosphere) programs supported by the ANR (Agence Nationale de la Recherche, Project n°: ANR-07-VULN-0013), during the 2006/2007 summer campaign, with logistical support from Institut Polaire Français-Paul Emile Victor (IPEV). Chemical analysis were supported by the French environmental observation service CESOA (Etude du cycle atmosphérique du Soufre en relation avec le climat aux moyennes et hautes latitudes Sud, http://www-igge.ujf-grenoble.fr/CESOA/rubri-que.php3?id_rubrique=2) dedicated to the study of the sulfur cycle at middle and high southern latitudes and supported by the CNRS (INSU) and IPEV. We thank all the field team members who contributed to the success of the 2006-2007 TASTE-IDEA/VANISH summer campaign. GLACIOCLIM-SAMBA observatory is supported by IPEV and INSU. Finally, this work was first presented as a poster to the 2016 IPICS (International Partnership in Ice Core Sciences) conference in Hobart, Tasmania. We are extremely grateful to the scientific and local organization committees for such a stimulating meeting!

References.

- 20 Agosta, C., Favier, V., Genthon, C., Gallée, H., Krinner, G., Lenaerts, J. T., and van den Broeke, M. R.: A 40-year accumulation dataset for Adelie Land, Antarctica and its application for model validation, *Climate dynamics*, 38, 75-86, 2012.
- Agosta, C., Favier, V., Krinner, G., Gallée, H., Fettweis, X., and Genthon, C.: High-resolution modelling of the Antarctic surface mass balance, application for the twentieth, twenty first and twenty second centuries, *Climate Dynamics*, 41, 3247-3260, 2013.
- 25 Amory, C., Trouvilliez, A., Gallée, H., Favier, V., Naaim-Bouvet, F., Genthon, C., Agosta, C., Piard, L., and Bellot, H.: Comparison between observed and simulated aeolian snow mass fluxes in Adélie Land, East Antarctica, *The Cryosphere Discussions*, 2015. 1373-1383, 2015.
- Bintanja, R.: Snowdrift suspension and atmospheric turbulence. Part I: Theoretical background and model description, *Boundary-layer meteorology*, 95, 343-368, 2000.
- 30 Casado, M., Landais, A., Masson-Delmotte, V., Genthon, C., Kerstel, E., Kassi, S., Arnaud, L., Picard, G., Prie, F., Cattani, O., Steen-Larsen, H. C., Vignon, E., and Cermak, P.: Continuous measurements of isotopic composition of water vapour on the East Antarctic Plateau, *Atmos. Chem. Phys.*, 16, 8521-8538, 2016.

- Center, E.: Sea ice concentrations from Nimbus-7 SMMR and DMSP SSM/I passive microwave data, 1996. 1996.
- Church, J. A., Clark, P. U., Cazenave, A., Gregory, J. M., Jevrejeva, S., Levermann, A., Merrifield, M. A., Milne, G. A., Nerem, R. S., and Nunn, P. D.: Sea level change, PM Cambridge University Press, 2013.
- 5 Cotte, C. and Guinet, C.: Historical whaling records reveal major regional retreat of Antarctic sea ice, Deep Sea Research Part I: Oceanographic Research Papers, 54, 243-252, 2007.
- Dee, D., Uppala, S., Simmons, A., Berrisford, P., Poli, P., Kobayashi, S., Andrae, U., Balmaseda, M., Balsamo, G., and Bauer, P.: The ERA-Interim reanalysis: Configuration and performance of the data assimilation system, Quarterly Journal of the Royal Meteorological Society, 137, 553-597, 2011.
- 10 Delmas, R. and Pourchet, M.: Utilisation de filtres échangeurs d'ions pour l'étude de l'activité globale d'un carottage glaciologique, International Association of Hydrological Sciences Publication, 118, 159-163, 1977.
- Eisen, O., Frezzotti, M., Genthon, C., Isaksson, E., Magand, O., Van Den Broeke, M. R., Dixon, D. A., Ekaykin, A., Holmlund, P., and Kameda, T.: Ground-based measurements of spatial and temporal variability of snow accumulation in East Antarctica, Reviews of Geophysics, 46, 2008.
- 15 Favier, V., Agosta, C., Genthon, C., Arnaud, L., Trouvilliez, A., and Gallée, H.: Modeling the mass and surface heat budgets in a coastal blue ice area of Adelie Land, Antarctica, Journal of Geophysical Research: Earth Surface, 116, 2011.
- Favier, V., Agosta, C., Parouty, S., Durand, G., Delaygue, G., Gallée, H., Drouet, A. S., Trouvilliez, A., and Krinner, G.: An updated and quality controlled surface mass balance dataset for Antarctica, The Cryosphere, 7, 583-597, 2013.
- Frezzotti, M., Urbini, S., Proposito, M., Scarchilli, C., and Gandolfi, S.: Spatial and temporal variability of surface mass balance near Talos Dome, East Antarctica, Journal of Geophysical Research: Earth Surface, 112, 2007.
- 20 Fujita, K. and Abe, O.: Stable isotopes in daily precipitation at Dome Fuji, East Antarctica, Geophysical Research Letters, 33, n/a-n/a, 2006.
- Gallée, H.: Simulation of the mesocyclonic activity in the Ross Sea, Antarctica, Monthly Weather Review, 123, 2051-2069, 1995.
- 25 Gallée, H., Guyomarc'h, G., and Brun, E.: Impact of snow drift on the Antarctic ice sheet surface mass balance: possible sensitivity to snow-surface properties, Boundary-Layer Meteorology, 99, 1-19, 2001.
- Gallée, H. and Schayes, G.: Development of a three-dimensional meso- γ primitive equation model: katabatic winds simulation in the area of Terra Nova Bay, Antarctica, Monthly Weather Review, 122, 671-685, 1994.
- Gallée, H., Trouvilliez, A., Agosta, C., Genthon, C., Favier, V., and Naaïm-Bouvet, F.: Transport of snow by the wind: a comparison between Observations in Adélie Land, Antarctica, and Simulations made with the Regional Climate Model MAR, Boundary-layer meteorology, 146, 133-147, 2013.
- 30 Genthon, C., Lardeux, P., and Krinner, G.: The surface accumulation and ablation of a coastal blue-ice area near Cap Prudhomme, Terre Adélie, Antarctica, Journal of Glaciology, 53, 635-645, 2007.

Mis en forme : Français (France)

- Ginot, P., Stampfli, F., Stampfli, D., Schwikowski, M., and Gaggeler, H.: FELICS, a new ice core drilling system for high-altitude glaciers, *Memoirs of National Institute of Polar Research. Special issue*, 56, 38-48, 2002.
- Graf, W., Reinwarth, O., Moser, H., Minikin, A., Wagenbach, D., Kipfstuhl, J., and Oerter, H.: Isotopic and chemical investigations of 10 m firn cores from the eastern part of the Ronne Ice Shelf, Antarctica, *FRISP Rep*, 5, 45-53, 1991.
- 5 Hoffmann, G., Werner, M., and Heimann, M.: Water isotope module of the ECHAM atmospheric general circulation model: A study on timescales from days to several years, *Journal of Geophysical Research: Atmospheres*, 103, 16871-16896, 1998.
- Johnsen, S.: Stable isotope homogenization of polar firn and ice, *Isotopes and impurities in snow and ice*, 1, 1977.
- Jones, D. A. and Simmonds, I.: Time and space spectral analyses of Southern Hemisphere sea level pressure variability, *Monthly weather review*, 121, 661-672, 1993.
- 10 Jones, J. M., Gille, S. T., Goosse, H., Abram, N. J., Canziani, P. O., Charman, D. J., Clem, K. R., Crosta, X., de Lavergne, C., and Eisenman, I.: Assessing recent trends in high-latitude Southern Hemisphere surface climate, *Nature Climate Change*, 6, 917-926, 2016.
- Jourdain, B. and Legrand, M.: Year-round records of bulk and size-segregated aerosol composition and HCl and HNO₃ levels in the Dumont d'Urville (coastal Antarctica) atmosphere: Implications for sea-salt aerosol fractionation in the winter and summer, *Journal of Geophysical Research: Atmospheres*, 107, 2002.
- 15 Kessler, E.: On the distribution and continuity of water substance in atmospheric circulation, 1969. 1969.
- König-Langlo, G., King, J., and Pettré, P.: Climatology of the three coastal Antarctic stations Dumont d'Urville, Neumayer, and Halley, *Journal of Geophysical Research: Atmospheres*, 103, 10935-10946, 1998.
- 20 Korona, J., Berthier, E., Bernard, M., Rémy, F., and Thouvenot, E.: SPIRIT. SPOT 5 stereoscopic survey of polar ice: reference images and topographies during the fourth International Polar Year (2007–2009), *ISPRS Journal of Photogrammetry and Remote Sensing*, 64, 204-212, 2009.
- Krinner, G., Magand, O., Simmonds, I., Genthon, C., and Dufresne, J.-L.: Simulated Antarctic precipitation and surface mass balance at the end of the twentieth and twenty-first centuries, *Climate Dynamics*, 28, 215-230, 2007.
- 25 Landais, A., Ekaykin, A., Barkan, E., Winkler, R., and Luz, B.: Seasonal variations of 17O-excess and d-excess in snow precipitation at Vostok station, East Antarctica, *Journal of Glaciology*, 58, 725-733, 2012.
- Legrand, M., Ducroz, F., Wagenbach, D., Mulvaney, R., and Hall, J.: Ammonium in coastal Antarctic aerosol and snow: Role of polar ocean and penguin emissions, *Journal of Geophysical Research: Atmospheres*, 103, 11043-11056, 1998.
- Legrand, M. and Wagenbach, D.: Impact of the Cerro Hudson and Pinatubo volcanic eruptions on the Antarctic air and snow chemistry, *Journal of Geophysical Research: Atmospheres*, 104, 1581-1596, 1999.
- 30 Legrand, M., Yang, X., Preunkert, S., and Theys, N.: Year-round records of sea salt, gaseous, and particulate inorganic bromine in the atmospheric boundary layer at coastal (Dumont d'Urville) and central (Concordia) East Antarctic sites, *Journal of geophysical research: atmospheres*, 121, 997-1023, 2016.

Lemeur: The Cryosphere, submitted. submitted.

Lenaerts, J., Den Broeke, M., Berg, W., Meijgaard, E. v., and Kuipers Munneke, P.: A new, high-resolution surface mass balance map of Antarctica (1979–2010) based on regional atmospheric climate modeling, *Geophysical Research Letters*, 39, 2012.

- 5 Levkov, L., Rockel, B., Kapitzka, H., and Raschke, E.: 3D mesoscale numerical studies of cirrus and stratus clouds by their time and space evolution, *Contributions to atmospheric physics*, 65, 35-58, 1992.

Libois, Q., Picard, G., Arnaud, L., Morin, S., and Brun, E.: Modeling the impact of snow drift on the decameter-scale variability of snow properties on the Antarctic Plateau, *Journal of Geophysical Research: Atmospheres*, 119, 2014.

- 10 Lin, Y.-L., Farley, R. D., and Orville, H. D.: Bulk parameterization of the snow field in a cloud model, *Journal of Climate and Applied Meteorology*, 22, 1065-1092, 1983.

Magand, O.: Bilan de masse de surface Antarctique: techniques de mesure et analyse critique, 2009. Citeseer, 2009.

Mis en forme : Français (France)

Marshall, G. J. and Thompson, D. W.: The signatures of large-scale patterns of atmospheric variability in Antarctic surface temperatures, *Journal of Geophysical Research: Atmospheres*, 121, 3276-3289, 2016.

- 15 Masson-Delmotte, V., Delmotte, M., Morgan, V., Etheridge, D., Van Ommen, T., Tartarin, S., and Hoffmann, G.: Recent southern Indian Ocean climate variability inferred from a Law Dome ice core: New insights for the interpretation of coastal Antarctic isotopic records, *Climate Dynamics*, 21, 153-166, 2003.

- 20 Masson-Delmotte, V., Hou, S., Ekaykin, A., Jouzel, J., Aristarain, A., Bernardo, R., Bromwich, D., Cattani, O., Delmotte, M., Falourd, S., Frezzotti, M., Gallée, H., Genoni, L., Isaksson, E., Landais, A., Helsen, M., Hoffmann, G., Lopez, J., Morgan, V., Motoyama, H., Noone, D., Oerter, H., Petit, J.-R., Royer, A., Uemura, R., Schmidt, G., Schlosser, E., Simões, J., Steig, E. J., Stenni, B., Stievenard, M., Van den Broeke, M. R., Van De Wal, R. S., Van de Berg, W., Vimeux, F., and White, J. W.: A review of Antarctic surface snow isotopic composition: observations, atmospheric circulation, and isotopic modeling*, *Journal of Climate*, 21, 3359-3387, 2008.

- 25 Masson-Delmotte, V., Steen-Larsen, H., Ortega, P., Swingedouw, D., Popp, T., Vinther, B., Oerter, H., Sveinbjornsdottir, A., Gudlaugsdottir, H., and Box, J.: Recent changes in north-west Greenland climate documented by NEEM shallow ice core data and simulations, and implications for past-temperature reconstructions, *Cryosphere (The)*, 9, 1481-1504, 2015.

Meyers, M. P., DeMott, P. J., and Cotton, W. R.: New primary ice-nucleation parameterizations in an explicit cloud model, *Journal of Applied Meteorology*, 31, 708-721, 1992.

- 30 Minikin, A., Legrand, M., Hall, J., Wagenbach, D., Kleefeld, C., Wolff, E., Pasteur, E. C., and Ducroz, F.: Sulfur-containing species (sulfate and methanesulfonate) in coastal Antarctic aerosol and precipitation, *Journal of Geophysical Research: Atmospheres*, 103, 10975-10990, 1998.

Morcrette, J.-J.: Assessment of the ECMWF model cloudiness and surface radiation fields at the ARM SGP site, *Monthly weather review*, 130, 257-277, 2002.

Mulvaney, R., Oerter, H., Peel, D. A., Graf, W., Arrowsmith, C., Pasteur, E. C., Knight, B., Littot, G. C., and Miners, W. D.: 1000 year ice-core records from Berkner Island, Antarctica, *Annals of Glaciology*, 35, 45-51, 2002.

- Mulvaney, R., Wagenbach, D., and Wolff, E.: Postdepositional change in snowpack nitrate from observation of year-round near-surface snow in coastal Antarctica, *Journal of geophysical research*, 103, 11,021-011,031, 1998.
- PAGES 2k Consortium: Continental-scale temperature variability during the past two millennia. *Nature Geosci* 6, 339e346. 2013.
- 5 Paillard, D., Labeyrie, L., and Yiou, P.: Macintosh program performs time-series analysis, *Eos, Transactions American Geophysical Union*, 77, 379-379, 1996.
- Palermé, C., Genthon, C., Claud, C., Kay, J. E., Wood, N. B., and L'Ecuyer, T.: Evaluation of current and projected Antarctic precipitation in CMIP5 models, *Climate Dynamics*, 2016. 1-15, 2016.
- 10 Périard, C. and Pettré, P.: Some aspects of the climatology of dumont D'Irville, adélie land, Antarctica, *International journal of climatology*, 13, 313-328, 1993.
- Picciotto, E. a. and Wilgain, S.: Fission products in Antarctic snow, a reference level for measuring accumulation, *Journal of Geophysical Research*, 68, 5965-5972, 1963.
- Preunkert, S. and Legrand, M.: Towards a quasi-complete reconstruction of past atmospheric aerosol load and composition (organic and inorganic) over Europe since 1920 inferred from Alpine ice cores, *Climate of the Past*, 9, 1403-1416, 2013.
- 15 Raymond, B., Lea, M. A., Patterson, T., Andrews-Goff, V., Sharples, R., Charrassin, J. B., Cottin, M., Emmerson, L., Gales, N., and Gales, R.: Important marine habitat off east Antarctica revealed by two decades of multi-species predator tracking, *Ecography*, 38, 121-129, 2015.
- Ritter, F., Steen-Larsen, H. C., Werner, M., Masson-Delmotte, V., Orsi, A., Behrens, M., Birnbaum, G., Freitag, J., Risi, C., and Kipfstuhl, S.: Isotopic exchange on the diurnal scale between near-surface snow and lower atmospheric water vapor at Kohnen station, East Antarctica, *The Cryosphere*, 10, 1647-1663, 2016.
- 20 Roeckner, E., Bäuml, G., Bonaventura, L., Brokopf, R., Esch, M., Giorgetta, M., Hagemann, S., Kirchner, I., Kornblueh, L., and Manzini, E.: The atmospheric general circulation model ECHAM 5. PART I: Model description, 2003. 2003.
- Schlosser, E., Oerter, H., Masson-Delmotte, V., and Reijmer, C.: Atmospheric influence on the deuterium excess signal in polar firn: implications for ice-core interpretation, *Journal of glaciology*, 54, 117-124, 2008.
- 25 Schlosser, E., Stenni, B., Valt, M., Cagnati, A., Powers, J. G., Manning, K. W., Raphael, M., and Duda, M. G.: Precipitation and synoptic regime in two extreme years 2009 and 2010 at Dome C, Antarctica—implications for ice core interpretation, *Atmospheric Chemistry and Physics*, 16, 4757-4770, 2016.
- Schmidt, G. A., LeGrande, A. N., and Hoffmann, G.: Water isotope expressions of intrinsic and forced variability in a coupled ocean-atmosphere model, *Journal of Geophysical Research: Atmospheres*, 112, 2007.
- 30 Simmonds, I. and Jacka, T.: Relationships between the interannual variability of Antarctic sea ice and the Southern Oscillation, *Journal of Climate*, 8, 637-647, 1995.

- Southwell, C., Emmerson, L., McKinlay, J., Newbery, K., Takahashi, A., Kato, A., Barbraud, C., DeLord, K., and Weimerskirch, H.: Spatially extensive standardized surveys reveal widespread, multi-decadal increase in East Antarctic Adélie penguin populations, *PloS one*, 10, e0139877, 2015.
- 5 Steen-Larsen, H. C., Masson-Delmotte, V., Hirabayashi, M., Winkler, R., Satow, K., Prié, F., Bayou, N., Brun, E., Cuffey, K. M., Dahl-Jensen, D., Dumont, M., Guillevic, M., Kipfstuhl, S., Landais, A., Popp, T., Risi, C., Steffen, K., Stenni, B., and Sveinbjörnsdóttir, A. E.: What controls the isotopic composition of Greenland surface snow?, *Climate of the Past*, 10, 377-392, 2014.
- 10 Stenni, B., Sarchilli, C., Masson-Delmotte, V., Schlosser, E., Ciardini, V., Dreossi, G., Grigioni, P., Bonazza, M., Cagnati, A., Karlicek, D., Risi, C., Udisti, R., and Valt, M.: Three-year monitoring of stable isotopes of precipitation at Concordia Station, East Antarctica, *The Cryosphere*, 10, 2415-2428, 2016.
- Touzeau, A., Landais, A., Stenni, B., Uemura, R., Fukui, K., Fujita, S., Guilbaud, S., Ekaykin, A., Casado, M., and Barkan, E.: Acquisition of isotopic composition for surface snow in East Antarctica and the links to climatic parameters, *The Cryosphere*, 10, 837-852, 2016.
- 15 Turner, J., Colwell, S. R., Marshall, G. J., Lachlan-Cope, T. A., Carleton, A. M., Jones, P. D., Lagun, V., Reid, P. A., and Iagovkina, S.: The SCAR READER project: toward a high-quality database of mean Antarctic meteorological observations, *Journal of Climate*, 17, 2890-2898, 2004.
- Uppala, S. M., Kållberg, P., Simmons, A., Andrae, U., Bechtold, V. d., Fiorino, M., Gibson, J., Haseler, J., Hernandez, A., and Kelly, G.: The ERA-40 re-analysis, *Quarterly Journal of the Royal Meteorological Society*, 131, 2961-3012, 2005.
- 20 Verfaillie, D., Fily, M., Le Meur, E., Magand, O., Jourdain, B., Arnaud, L., and Favier, V.: Snow accumulation variability derived from radar and firn core data along a 600 km transect in Adelie Land, East Antarctic plateau, *The Cryosphere*, 6, 1345-1358, 2012.
- Wagenbach, D., Ducroz, F., Mulvaney, R., Keck, L., Minikin, A., Legrand, M., Hall, J., and Wolff, E.: Sea-salt aerosol in coastal Antarctic regions, *Journal of Geophysical Research: Atmospheres*, 103, 10961-10974, 1998a.
- 25 Wagenbach, D., Legrand, M., Fischer, H., Pichlmayer, F., and Wolff, E.: Atmospheric near-surface nitrate at coastal Antarctic sites, *Journal of Geophysical Research: Atmospheres*, 103, 11007-11020, 1998b.
- Wang, Y., Ding, M., van Wessem, J., Schlosser, E., Altnau, S., van den Broeke, M. R., Lenaerts, J. T., Thomas, E. R., Isaksson, E., and Wang, J.: A comparison of Antarctic Ice Sheet surface mass balance from atmospheric climate models and in situ observations, *Journal of Climate*, 2016. 2016.
- 30 Welhouse, L. J., Lazzara, M. A., Keller, L. M., Tripoli, G. J., and Hitchman, M. H.: Composite analysis of the effects of ENSO events on Antarctica, *Journal of Climate*, 29, 1797-1808, 2016.
- Wendler, G., Stearns, C., Weidner, G., Dargaud, G., and Parish, T.: On the extraordinary katabatic winds of Adélie Land, *Journal of Geophysical Research: Atmospheres*, 102, 4463-4474, 1997.
- Werner, M., Heimann, M., and Hoffmann, G.: Isotopic composition and origin of polar precipitation in present and glacial climate simulations, *Tellus B*, 53, 2001.

Werner, M., Langebroek, P. M., Carlsen, T., Herold, M., and Lohmann, G.: Stable water isotopes in the ECHAM5 general circulation model: Toward high-resolution isotope modeling on a global scale, *Journal of Geophysical Research: Atmospheres*, 116, 2011.

William, K.: Abrupt mid-twentieth-century decline in Antarctic sea-ice extent from whaling records, *Nature*, 389, 57-60, 1997.

5 Wolff, E., Hall, J., Mulvaney, R., Pasteur, E., Wagenbach, D., and Legrand, M.: Relationship between chemistry of air, fresh snow and firn cores for aerosol species in coastal Antarctica, *Journal of Geophysical Research*, 103, 11057-11070, 1998.

Yuan, X. and Yonekura, E.: Decadal variability in the Southern Hemisphere, *Journal of Geophysical Research: Atmospheres*, 116, 2011.

10 **Tables**

Table 1. Occurrence of species not showing a summer peak for a identified summer (data missing in summer, peaks not identified at all, or 2 or 3 peaks appearing for the same year)

	Data missing in summer	Peaks not identified	2 or 3 peaks
Na ⁺	0	4	9
MSA	4	10	2
nssSO ₄ ²⁻ _{summer}	0	4	5
nssSO ₄ ²⁻ _{winter}	0	0	6
NH ₄ ⁺	0	7	5
NO ₃ ⁻	0	1	7
δ ¹⁸ O	2	25	0

5

Table 2. Statistical analyses : minimum (Min), maximum (Max), mean (μ) and standard deviation (σ) of the precipitation (extracted from ECHAM5-wiso) or the accumulation (from the S1C1 ice core) in cm w.e. y^{-1} , the $\delta^{18}\text{O}$ (extracted from ECHAM5-wiso or from the S1C1 ice core) in ‰ and the 2-meter temperature (2m-T, extracted from ECHAM5-wiso or from the READER database) in $^{\circ}\text{C}$ over the different available periods (1946-2007 for the S1C1 ice core and 1956-2007 for the READER database), and over the period 1979-2007.

		Precipitation (ECHAM) or Accumulation (S1C1) (cm w.e. y^{-1})				2m-T ($^{\circ}\text{C}$)				$\delta^{18}\text{O}$ (‰)			
		Min	Max	μ	σ	Min	Max	μ	σ	Min	Max	μ	σ
S1C1	1946-2006	9.4	38.0	21.8	7.0					-23.6	-15.9	-18.9	1.7
	1979-2006	9.7	38.0	23.1	7.5					-23.6	-15.9	-18.7	1.8
READER	1956-2006					-12.2	-8.6	-10.7	1				
	1979-2006					-11.9	-8.6	-10.6	0.7				
ECHAM	1979-2006	52.1	96.6	68.7	12.0	-18.1	-14.8	-16.9	0.8	-22.4	-19.6	-20.8	0.6

10

Table 3. Linear relationship between the SIC1 $\delta^{18}\text{O}$ and regional climate records showing the coefficient correlation and the p-value. Note that all data from the SIC1 core are annual averages from the 1st dating.

Period	Resolution	Record	r	p
1946-2006	annual	accumulation	4.4E-3	0.97
1956-2006	annual	READER surface temperature	-0.13	0.35
1956-2006	decadal	READER surface temperature	0.72	2.6E-9
1979-2006	annual	READER surface temperature	-0.15	0.44
1979-2006	annual	sea ice concentration in Adélie Land	0.04	0.82
1950-2006	annual	wind speed	-0.27	0.066E-2
1979-2001	annual	wind speed	-0.47	0.029E-2

Table 4. Linear relationships between temperature and $\delta^{18}\text{O}$ showing the slope, the coefficient correlation and the p-value. The indices associated with “S1C1” indicate the chronology (1, initial; 2, revised).

Period	Resolution	Source of the temperature	Source of the $\delta^{18}\text{O}$	Slope	r	p
1956-2006	annual	READER database	S1C1,1	-0.33	-0.13	0.35
		READER database	S1C1,2	0.36	0.15	0.30
	decadal	READER database	S1C1,1	1.49	0.72	2.6E-9
		READER database	S1C1,2	1.32	0.60	3.2E-6
1979-2006	annual	READER database	S1C1,1	-0.33	-0.15	0.44
		READER database	S1C1,2	0.77	0.31	0.1E-01
	decadal	READER database	S1C1,1	1.82	0.72	1.30E-05
		READER database	S1C1,2	1.38	0.51	5.7E-03
	annual	ECHAM	ECHAM	0.29	0.39	0.038E-2
	decadal	ECHAM	ECHAM	0.63	0.80	4.0E-7
	annual	READER database	ECHAM	0.42	0.48	0.010E-2
	decadal	READER database	ECHAM	0.98	0.89	3.6E-10
	annual	ECHAM	S1C1,1	-0.37	-0.17	0.40
	annual	ECHAM	S1C1,2	0.58	0.27	0.16

Figures.

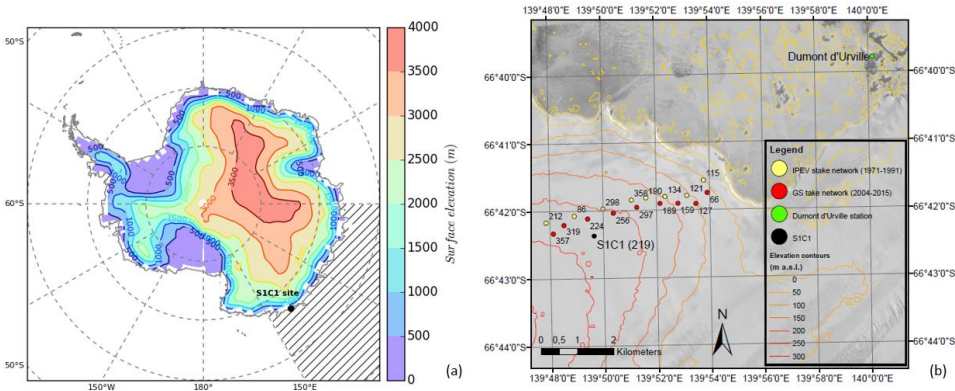


Figure 1: Maps showing the areas of interest with (a) a map of Antarctica representing the local topography (contours), the location of the SIC1 drilling site and the area used to extract regional sea-ice extent from the Nimbus-7 SMMR and DMSP SSM/I-SSMIS Passive Microwave Data (hatched area), and (b) an orientation map showing stake networks around SIC1 drilling site. Data from 1971 to 1991 were measurement by IPEV, whereas data from 2004 to 2015 were measured in the framework of GLACIOCLIM-SAMBA (GS) observatory. Elevation lines are from the digital elevation model of Korona et al. (2009), which was computed from SPOT5 images obtained during the fourth International Polar Year (2007–2009). The SPOT5 image is also included as a background map. Labels are mean accumulation values at each stake computed over the period with measurements.

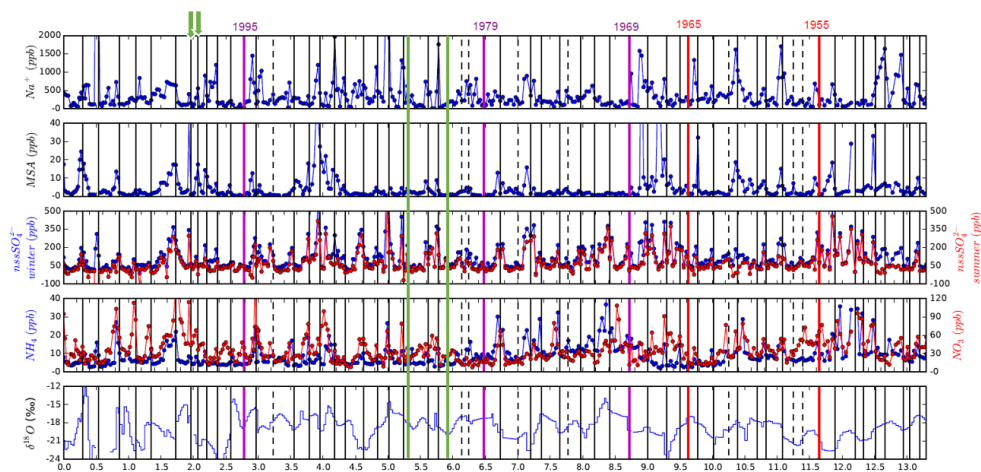
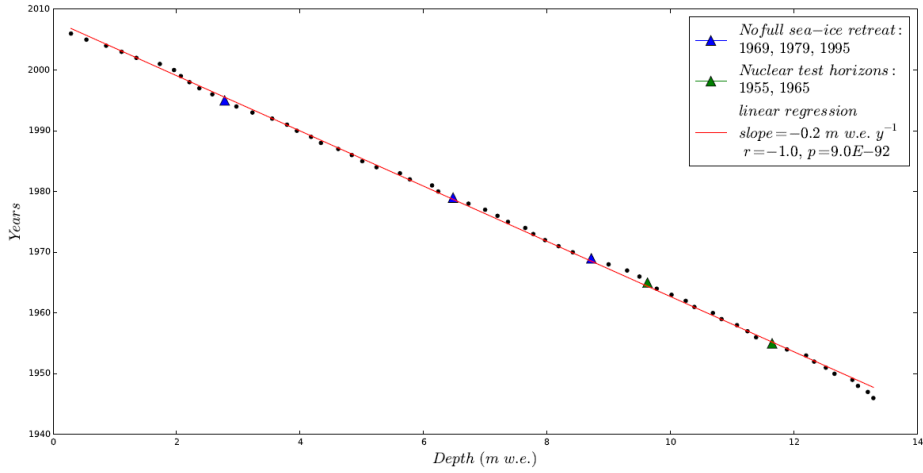


Figure 2: Dating of the S1C1 core based on sodium Na^+ , methanesulfonic acid (MSA), non-sea-salt sulfate (nssSO_4^{2-}), ammonium NH_4^+ , nitrate (NO_3), and $\delta^{18}\text{O}$. The black lines correspond to the December-January period of each year (solid lines are the layers for which all sources of information are consistent, while dashed lines are the layers for which we have contrasted results from one or more sources of information), the purple lines to the non-full sea-ice retreat horizons and the red lines to the nuclear test horizons. $\delta^{18}\text{O}$ data are shown as horizontal steps because one measurement corresponds to a value averaged over a 5 cm sample. Green lines stress the years which were added for the second dating, while the green stress those which were deleted (see text for details).



5 Figure 3: Depth-age relationship based on the dating of the SIC1 core.

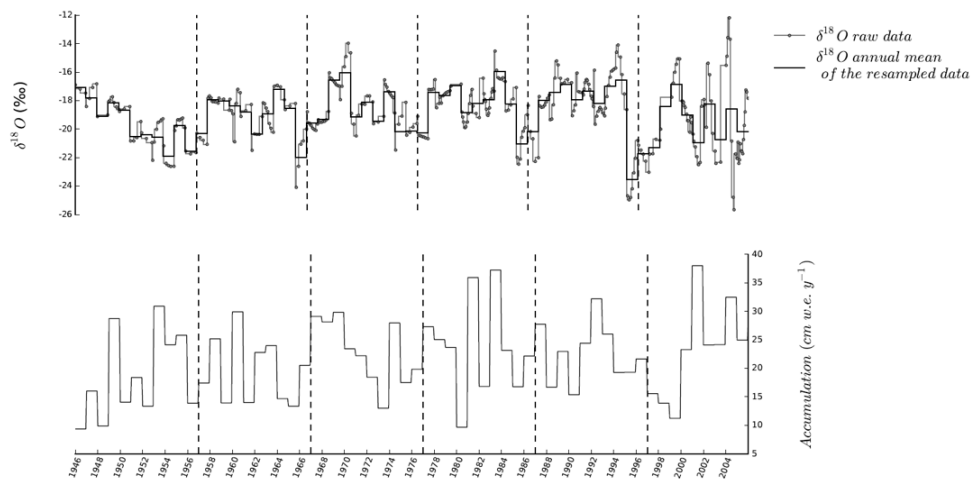


Figure 4: Time series of $\delta^{18}\text{O}$ (in ‰) and accumulation (in cm w.e. y^{-1}) extracted from the SIC1 core. Dark green points correspond to the raw data, while pale green points correspond to the resampled data (with 7 steps). Finally, the red and black lines correspond to the annual mean of the resampled data and the accumulation data resulting from the annual layer counting respectively.

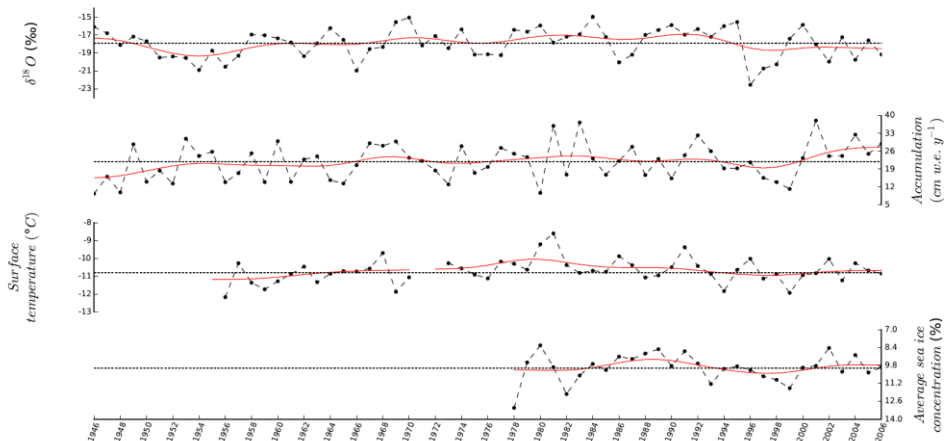


Figure 5: Comparison of the (resampled) $\delta^{18}\text{O}$ (‰) and the annual accumulation (cm w.e. y^{-1}) from the S1C1 core, with the near surface temperature (in $^{\circ}\text{C}$) extracted from the READER data base for Dumont d'Urville Station (<https://legacy.bas.ac.uk/met/READER/>) and the Average sea ice concentration extracted between 90°E and 150°E from the Nimbus-7 SMMR and DMSP SSM/I-SSMIS Passive Microwave Data (<http://nsidc.org/data/nsidc-0051>). Note that the y-axis of the lowest panel is reversed, to ensure visual coherency between lower sea-ice extent and higher temperatures. Black points linked by a dotted line correspond to the annual time series while the red lines correspond to the 13-point binomial filters with bounce end-effects.

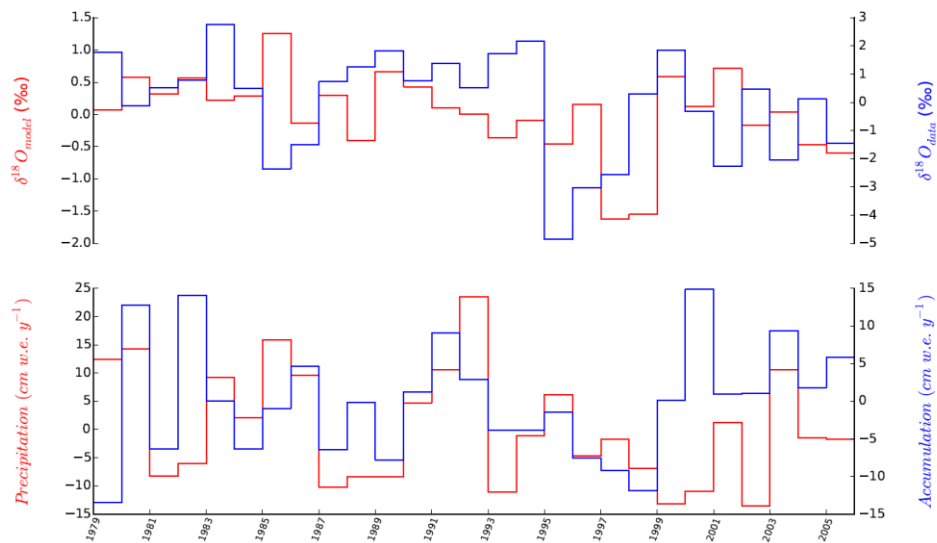


Figure 6: Model-data comparison of the anomalies (annual value minus the 1979-2006 average value) of $\delta^{18}\text{O}$ (‰) and accumulation (cm w.e. y^{-1}). The blue points and dashed lines correspond to the data from the SIC1 core while the red stair steps correspond to the simulations.

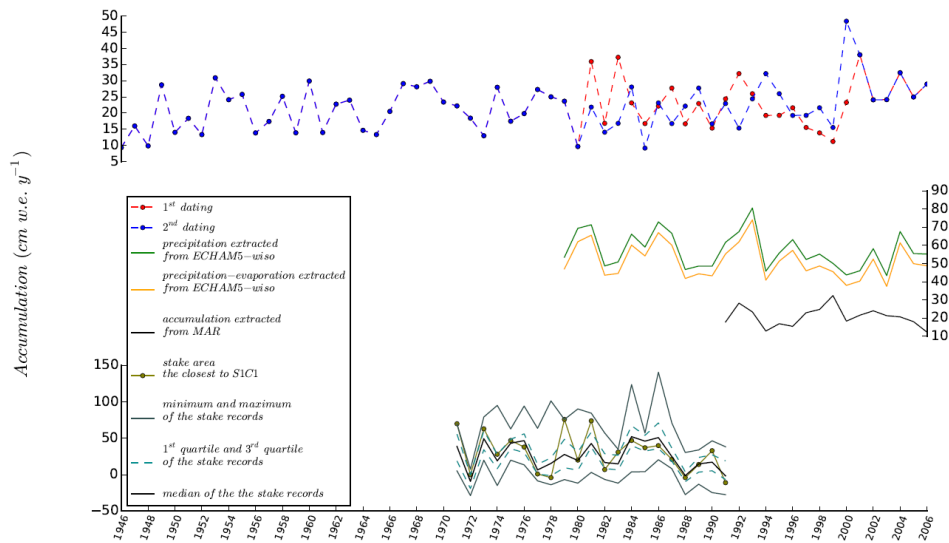


Figure 7: Comparison of accumulation data. Top panel: S1C1 reconstruction obtained from the first (red) and second (blue) dating. Note that the accumulation resulting from first dating and second dating overlap over 1946-1980 and 2001-2006 so only one colour line appears. Middle panel: precipitation (green) and precipitation minus evaporation (orange) simulated by ECHAM5-wiso (1979-2006), and accumulation simulated by MAR (1991-2006) (black). Lower panel: distribution of accumulation measurements from stake records, illustrated by minima and maxima (grey lines), first and third quartiles (dashed green lines), median value of stake measurements (black line) and measurements from one single stake, closest to the S1C1 site (solid green line). Two dashed vertical lines correspond to years 1984 and 1990.

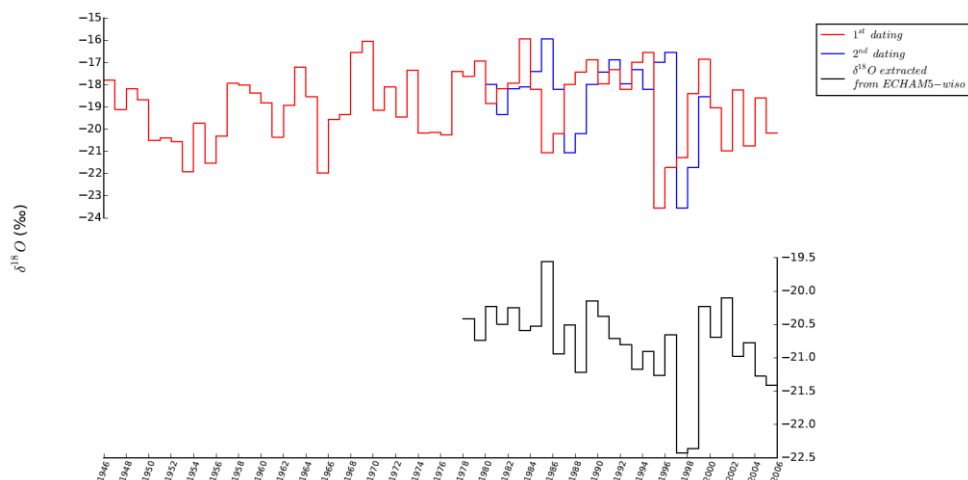


Figure 8: Comparison of dO18 data. Top panel: annual mean dO18 data from the SIC1 core on the first (red) and second (blue) dating, over 1946-2006. Note that the SIC1 dO18 resulting from first dating and second dating overlap in 1946-1980 and 2001-2006, when only one colour line is displayed. Bottom: annual mean (precipitation-weighted) precipitation dO18 simulated by the ECHAM5-wiso-model. Small vertical black lines and arrows illustrate the shift between the two SIC1 age scales for the years with the highest and lowest dO18 values of our record. Long vertical lines illustrate the match between the ECHAM5-wiso and SIC1 peaks used to build the second chronology.

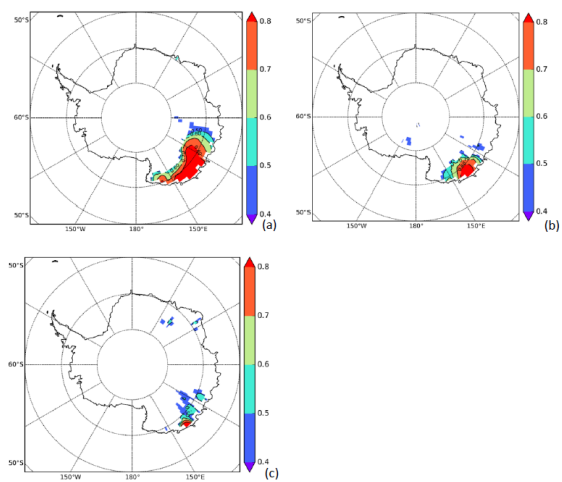


Figure 9: Correlation between simulated annual mean 2m-temperature (a), annual precipitation amount (b), precipitation annual mean $\delta^{18}\text{O}$ (c) at the SIC1 site with the same variable at each grid point of the ECHAM5-wiso model for $r>0.4$ and $p<0.03$. Only significant values are represented ($p<0.05$).