

Supplementary data

Surface mass balance and water stable isotopes derived from firn cores on three ice rises, Fimbul Ice Shelf, Antarctica

Carmen P. Vega,^{1,2} Elisabeth Schlosser,^{3,4} Dmitry V. Divine,¹ Jack Kohler,¹ Tõnu Martma,⁵ Anja

5 Eichler,⁶ Margit Schwikowski⁶, and Elisabeth Isaksson¹

¹Norwegian Polar Institute, N-9296 Tromsø, Norway

²Department of Earth Sciences, Uppsala University, Villavägen 16, SE 752 36, Uppsala, Sweden

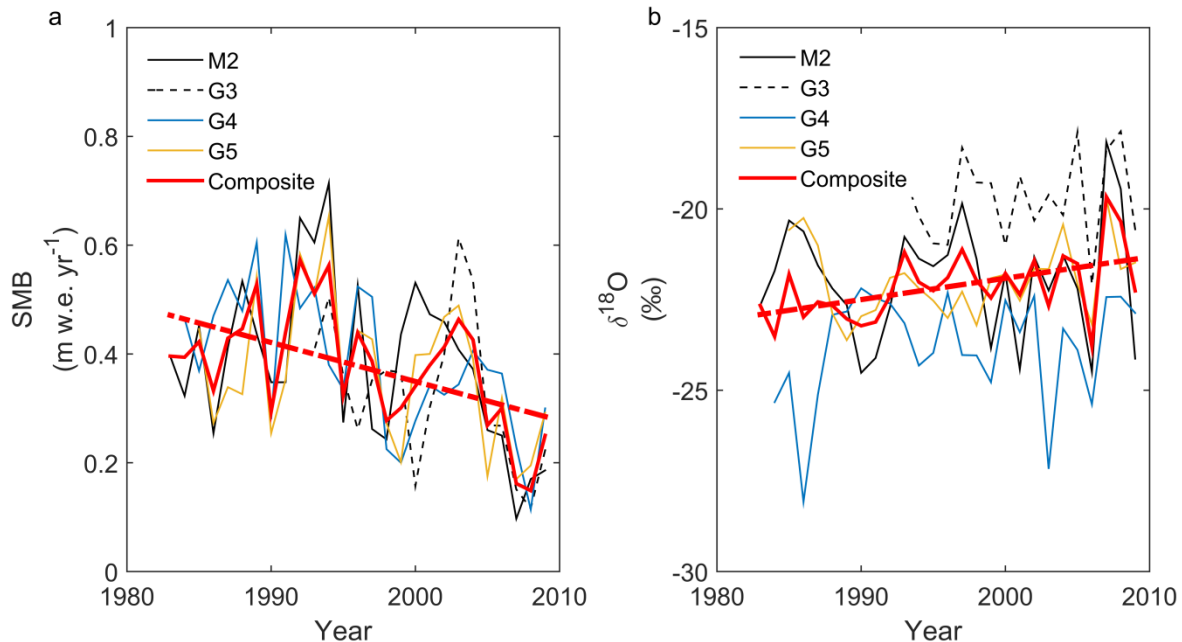
³Institute of Atmospheric and Cryospheric Sciences, University of Innsbruck, Innsbruck, Austria

⁴Austrian Polar Research Institute, Vienna, Austria

10 ⁵Institute of Geology, Tallinn University of Technology, Tallinn, Estonia

⁶Paul Scherrer Institute, 5232 Villigen PSI, Switzerland

Correspondence to: Carmen P. Vega (carmen.vega@geo.uu.se)



15

Figure S1: a) Annual SMB, and b) mean annual $\delta^{18}\text{O}$ for M2, G3, G4, G5 and the composite FIS core record (Schlosser et al., 2014). The dashed red line indicates the linear regression in the composite core for the period (1983–2009) shown in Figure 5 and 9 for SMB and $\delta^{18}\text{O}$, respectively.