

Columbus, October the 17th, 2016

Dear Professor M. van den Broeke,

5

I'm pleased to submit the revised version of the manuscript (MS# tc-2016-159) for your kind consideration. The title is detailed below.

" Age of the Mt. Ortles ice cores, the Tyrolean Iceman and glaciation of the highest summit of South Tyrol since the Northern Hemisphere Climatic Optimum"

10

We very much appreciate the useful and constructive comments submitted by the referees. We carefully considered the comments point by point when preparing this revised version (please, see below). In the revised manuscript we believe that we have successfully addressed the few concerns and improved our manuscript with other minor modifications, as detailed below.

15

The corresponding author is:

20 Dr. Paolo Gabrielli

Ice Core Paleoclimatology Research Group

Byrd Polar and Climate Research Center

The Ohio State University

108 Scott Hall, 1090 Carmack Road

25 Columbus, OH 43210-1002

USA

Tel: +614 2926664

Fax: +614 2924697

E-mail: gabrielli.1@osu.edu

30

Sincerely Yours

Paolo Gabrielli

Authors: Thank you very much for your interest in our work and your comments.

5 Sebastian Luening : The discovery of mid Holocene basal ice following the mid Holocene climate optimum is an important observation. It is convincing that the ice at the study location has apparently never fully melted, despite several late Holocene warm phases (e.g. Roman and Medieval Warm Periods).

While the manuscript discusses possible reasons why the ice might have survived at the study location, it should be made clearer, in my opinion, that the "continuous" ice coverage in the region might in fact be more an exception rather than a rule.

10 The location of the ice core in a rain shadow zone etc. may have helped. I therefore find the last sentence of the abstract too strong:

"Given the stratigraphic-chronological continuity of the Mt. Ortles cores over millennia, it can be argued that this behaviour is unprecedented since the Northern Hemisphere Climatic Optimum."

"Unprecedented" yes, but proven only for this (and the Iceman) locations, and not likely to be representative for the entire

15 Eastern Alps area. Therefore better: "...that this behaviour is unprecedented AT THIS LOCATION since the..."

Authors: the text has been changed accordingly (page 3- line 3).

Sebastian Luening: Likewise, another statement on page 3 (lines 31-33) needs additional context information, in order to
20 avoid over-generalization:

"This discovery also suggests that past atmospheric temperatures characterizing warm phases such as the Roman (250 BC – 400 AD) and the Medieval (950-1250 AD) periods may have never exceeded that of the current time in this sector of the Alps (Baroni and Orombelli, 1996)."

The cited reference from 1996 is now 20 years old. Meanwhile more recent studies have demonstrated that the proposed
25 concept is too simplistic. At Lake Silvaplana in the Upper Engadine (which is located only 65 km west of the ice core), Larocque-Tobler et al 2010c based on chironomids documented that the Medieval Warm Period (MWP) from 1030 AD (start of dataset) until 1260 AD was up to 1°C warmer than the modern climate reference period (1961–1990).
<http://www.sciencedirect.com/science/article/pii/S0277379110001277>

The warm MWP in nearby case studies provides additional evidence that mid to late Holocene ice preservation may have
30 been rather patchy than ubiquitous in the Eastern Alps. It may be worth clarifying and discussing this point in the final manuscript.

Authors: we have included this reference within the text (3-35) and noted that, according to Larocque-Tobler et al 2010, the Medieval Warm Period and modern temperatures would be 1°C warmer than the modern climate reference period (1961–1990) in the Eastern Alps.

Authors: Thank you very much for your review and your comments.

5

Referee #1: The manuscript (MS) presents an age scale of three ~75m deep ice cores drilled from near the summit of Alto dell'Ortles glacier in the Italian Alps. The MS is generally well written and argues convincingly for the suggested age scale that is based on radio-metric ages and nuclear fallout products. The deepest meters of the ice cores contain ice that is more than 1000 years old, and the MS argues that the glacier was formed during the Northern Hemisphere Climatic Optimum (NHCO). I have a few suggestions for the authors to consider:

10

In Figure 5, the orientation of the coordinate system is unclear to me. Are the X and ~~the~~ Y directions following the GPR lines in Figure 1c or are they respectively along and perpendicular to the ice flow as stated in the main text? The best would probably be to show the orientation of the X-profiles and Y-profiles in a map. Are the units on the abscissas of Figure 5 meters?

15

Authors: The orientations of the X-profiles and Y-profiles follow the GPS lines and are now displayed in Fig. 6. The main text has been corrected accordingly. The units on the abscissas of Figure 5 are meters (added).

20

Referee #1: In section 6.2, the authors argue that the only way the obtained age profile can come about is if the glacier flow pattern has recently changed significantly. I have difficulties following the argumentation of this section as not many details are given. A simple model is applied, but no results are presented.

Authors: We now report the simple model results in the new Figure 12.

25

Referee #1: There is one observation in Figure 5 that seems important to me in this context. The inclination of the 45 m deep melt layer seen in the GPR profile and in the cores is very steep. This isochrone suggests that the oldest ice of the glacier probably is to be found in right hand side of figures 5 (X-profiles), which is under the ice divide, if I got the geometry right. Alternatively, it suggests that the oldest ice is to be found in higher depth resolution below the ice divide. I'm uncertain if the authors take this observation into account, but to me the steep inclination of the melt layer suggests a significant increase in snow accumulation the further one gets away from the ice divide. Could it be that snow is blown away from the ice ridge and (re-)deposited further down the slope (on the lee side?). An increasing accumulation away from the ice ridge would probably lead to strong inclination of the deeper layers of the glacier and possibly explain why old ice is preserved close to the ice ridge where accumulation may be very low?

30

Authors: Referee #1 is correct. We observed modern snow accumulation at 3830 m, ~30 m below the drilling site (3859 m) and we determined a value of ~ 1000 mm w.e. (Festi et al. 2016), which is ~ 200 mm w.e. more than at the drilling site (3859 m). The point made by Referee #1 is now reported within the text (7-23).

5

Referee #1: In section 3, it is mentioned that limestone rock particles and pebbles are observed in the lowest meter of the ice cores. At the same time, the oldest ice is found in stratigraphic order in the same lowest meter of the cores. Indeed, the proposed age scale does look convincing based on the obtained C-14 ages, but still I am wondering how those pebbles got entrained in the ice if the ice is not disturbed (folded)?

10

Authors: Referee #1 is correct as the basal layers appear in stratigraphic order. In addition, the three stable isotopes profiles from the different cores match remarkably well down to the deepest ice layers (Fig. 10). One possibility is that, as already mentioned within the text, given the close rock outcrops near the Mt. Ortles summit, some relatively large pebbles were not entrained in the ice from the bedrock but from the glacier surface.

15

Referee #1: In section 2.2.2 it is suggested that the glacier bed could be lubricated by summer meltwater. This scenario seems rather implausible to me. If the ice is -2.8 C at 75 m depth, it seems highly unlikely that there is summer melt. There is no seasonal temperature variability possible at this depth.

20 Authors: The Mt. Ortles ice cores and the instrumental temperature record provide evidence of extensive surface melting on the Alto dell'Ortles summit during recent summers. Melt water percolation through the intersections of the glacier surface and bedrock, fractures and terminal crevasses, can thus lubricate the interface between basal ice and bedrock. There are several evidences in Svalbard and Greenland that seasonal meltwater can reach bedrock and change the ice velocity of cold-based ice caps and ice sheets (e.g. Dunse et al. The Cryosphere 2015; Bartholomew et al. Nature Geosc. 2010). We have
25 added this note to the text (14-7).

Bartholomew, I., Nienow, P., Mair, D., Hubbard, A., King, M. A., and Sole, A.: Seasonal evolution of subglacial drainage and acceleration in a Greenland outlet glacier, *Nature Geosci.*, 3, 408-411, 2010.

30 Dunse, T., Schellenberger, T., Hagen, J. O., Kääb, A., Schuler, T. V., and Reijmer, C. H.: Glacier-surge mechanisms promoted by a hydro-thermodynamic feedback to summer melt, *The Cryosphere*, 9, 197-215, 10.5194/tc-9-197-2015, 2015.

Referee #1: In section 2.3 it is mentioned about the bedrock step that 'this feature does not completely enclose the drilling site in every direction'. In fact, the bump is only to one side of the cores, so I would suggest a reformulation.

Authors: Done. We now report that this feature is only on one side of the drilling site (7-30).

Referee #1: In Figure 3 it is hard to see details around the drilling sites in the main image. There is a white spot right below
5 what appears to be BH3 and BH4. Is this a col, or does the spot indicate something else?

Authors: As mentioned in the caption of Fig. 3, the contour lines of the drilling dome are visible as the surface topography of the drill site was obtained from a LiDAR survey conducted exactly during the 2011 drilling campaign.

10 Referee #1: The authors argue that the ice started to form during the Holocene climatic optimum and that this same optimum is observed in the isotopic signature of nearby stalagmites. Is the NHCO seen in the isotopic signature of the deepest ice core ice? If the high frequency signal is removed? I cannot judge this from Figure 10.

Authors: Yes. Except the modern most enriched values, the lowest part of the ice core records, corresponding the NHCO,
15 shows the most isotopically enriched values during the early-mid Holocene. This is one of the topics of another manuscript in preparation.

Referee #1: In Tables 2 and 3 it is difficult to see which samples correspond to each other as depth is transferred between the cores. Would it be possible to assign a unique name to each sample, so the reader can trace them from one table to the other?

20

Authors: We have improved Tables 2 and 3 in order to facilitate tracing of the same samples.

The conclusion seems to state the main findings in a bit disorganized way.

25 Authors: We have now subdivided this paragraph in two sections linked to the paleoclimatological and glaciological conclusions, respectively (16-7).

In point 6) is says the accumulation at the drilling site is 850 m/year. Probably this should be 850 mm/year?

30 Authors: corrected (16-26). Many thanks.

Authors: Thank you very much for your review and your comments.

- 5 M. Kuhn: The glacier Alto dell' Ortles is an exceptional site for drilling into the Holocene history in the Eastern Alps. Its value and uniqueness were recognized in the Ortles Project (www.ortles.org) which produced three ice cores at 3859 m elevation that go back to about 7000 years and were analyzed by a large team of authors and laboratories who ensured the competent representation of the various disciplines involved in paleoclimate research. Analysis of ice cores requires them to be cold or polythermal, to have minimum annual accumulation and to have a flat topography that reduces the outflow of ice and conserves it in place for millennia. These conditions are not met by many mountains in the Eastern Alps. Suter and others (2001) modelled the firn temperature in the Alps and found from altitude and exposition that cold firn should exist above 3400 m in northerly aspect and above 4150 on south slopes.

- 15 Authors: we have added this last sentence and have provided more emphasis to the Suter et al. 2001 reference in the introduction (4-28).

- In the Eastern Alps this would include the peaks of Disgrazia, Bernina, Adamello, Ortles, Cevedale, Ötztal, Stubai, Zillertal, Venediger and Goßglockner. The second condition, that there should be flat glacier tops, ruled out most of these mountains. Topographically suitable candidates like Adamello at 3539 or Weißseespitze at 3510 m in the Ötztal Alps, however, turned temperate in the 1990s. Other peaks like Wildspitze 3768 m, and Venediger 3666 m may still be cold but their steep slopes do not keep ice in place for long. Alto dell' Ortles was timely chosen as research site. The lowermost meters of the Ortles ice cores are difficult to interpret, as is the slope of the internal layers detected by ground penetrating radar. They may reflect wind drift of snow, ablation or ice flow, all of which may have individual histories on a centennial time scale and may act on a very local scale as indicated by the bedrock contours in Fig. 6. As the paper refers to the Tyrolean Iceman – he too was found in a shallow bedrock depression, protected from shearing ice motion. But shear must have occurred above at a vertical distance comparable to the horizontal scale of bedrock roughness, and such shear could be one explanation of a possible hiatus in ice core layering.

- 30 Authors: we believe that while the depression may have facilitated the in situ retention of old bottom ice, it is unlikely to have caused a complete dynamical entrapment and the consequent formation of fossil ice decoupled from the upper stratigraphic sequence, which is also implied by the ice flow observed near bedrock.

This paper is of high current interest and deserves publication with minor changes as suggested by two previous comments.

I recommend numbering the profiles in Fig. 5 and entering them into Fig. 6.

Authors: done.

5 On page 2 / line 2 write Geologist instead of Geologin.

Authors: Geologin is the name of the company.

2/4: ENEA instead of Enea.

10

Authors: done. Thank you.

5-8 At the end of the introduction we have added a sentence that introduces the methodological part developed within the manuscript. In this way we hope that the reader will better follow the necessary and detailed presentation of the results.

5

11-1 We have carefully reviewed paragraph 4.3 linked to the carbon 14 analysis. In particular a different correction of the blanks has been applied (after Uglietti et al. 2016, The Cryosphere, this issue) resulting in minor changes in the carbon 14 dates. A different method (simple average) to combine carbon 14 results of different parts from one single ice section has also been used (after Uglietti et al. 2016, The Cryosphere, this issue) resulting in minor changes of the calculated age.

10 Finally, we have decided to use the year 2012 as a reference for “present” as it better reflects the time when the drilling operations were conducted in October 2011 (2011.8).

12-24 Empirical fitting of the age model has been conducted using the mid-depth of the samples expressed in water equivalent. This will also allow evaluating the strain rate while it causes minor changes in the depth-age relationship.

15

15-28 We have added in the discussion the reference of Ilyashuk et al. 2001 that suggests that it was ~2°C warmer than today during the 7.9-4.5 kyr BP period, supporting the hypothesis of temperate conditions during the Northern Hemisphere Climatic Optimum (NHCO), and indicating the possibility of a complete deglaciation of the drilling site during the warmest phase of the NHCO. We have added this observation within the text.

20

Ilyashuk, E. A., Koinig, K. A., Heiri, O., Ilyashuk, B. P., and Psenner, R.: Holocene temperature variations at a high-altitude site in the Eastern Alps: a chironomid record from Schwarzsee ob Sölden, Austria, *Quaternary Sci. Rev.*, 30, 176-191, <http://dx.doi.org/10.1016/j.quascirev.2010.10.008>, 2011.

Age of the Mt. Ortles ice cores, the Tyrolean Iceman and glaciation of the highest summit of South Tyrol since the Northern Hemisphere Climatic Optimum

5 Paolo Gabrielli^{1,2}, Carlo Barbante^{3,4,5}, Giuliano Bertagna¹, Michele Bertó³, Daniel Binder⁶, Alberto Carton⁷, Luca Carturan⁸, Federico Cazorzi⁹, Giulio Cozzi^{3,4}, Giancarlo Dalla Fontana⁸, Mary Davis¹, Fabrizio De Blasi⁸, Roberto Dinale¹⁰, Gianfranco Dragà¹¹, Giuliano Dreossi³, Daniela Festi¹², Massimo Frezzotti¹³, Jacopo Gabrieli^{3,4}, Stephan P. Galos¹⁴, Patrick Ginot^{15,16}, Petra Heidenwolf¹², Theo M. Jenk¹⁷, Natalie Kehrwald¹⁸, Donald Kenny¹, Olivier Magand^{15,16}, Volkmar Mair¹⁹, Vladimir Mikhalev²⁰, Ping Nan Lin¹, Klaus Oegg¹², Gianni Piffer²¹, Mirko Rinaldi²¹, Ulrich Schotterer²², Margit Schwikowski¹⁷, Roberto Seppi²³, Andrea Spolaor³, Barbara Stenni³, David Tonidandel¹⁹, Chiara Uglietti¹⁷, Victor Zagorodnov¹, Thomas Zanoner⁷ and Piero Zennaro³

¹Byrd Polar and Climate Research Center, The Ohio State University, Columbus, 43210, USA

15 ²School of Earth Sciences, The Ohio State University, 275 Mendenhall Laboratory, Columbus, 43210, USA

³Department of Environmental Sciences, Informatics and Statistics, Ca' Foscari University of Venice, Venice-Mestre, 30170, Italy

⁴Istituto per la Dinamica dei Processi Ambientali-CNR, Venice-Mestre, 30170, Italy

⁵Accademia Nazionale dei Lincei, Roma, 00196, Italy

20 ⁶Climate Research Section, Central Institute for Meteorology and Geodynamics ZAMG, Vienna, 1190, Austria

⁷Department of Geosciences, University of Padova, Padova, 35131, Italy

⁸Department of Land, Environment, Agriculture and Forestry, University of Padova, Agripolis, Legnaro, 35020, Italy

⁹Dipartimento di Scienze Agro-Alimentari, Ambientali e Animali, Università di Udine, Udine, 33100, Italy

¹⁰Ufficio Idrografico, Provincia Autonoma di Bolzano, Bolzano, 39100, Italy

¹¹Geologin, Varna, 39040, Italy

¹²Institute for Botany, University of Innsbruck, Innsbruck, 6020, Austria

¹³ENEA, Roma, 00196, Italy

¹⁴Institute of Atmospheric and Cryospheric Sciences, University of Innsbruck, Innsbruck, 6020, Austria

5 ¹⁵Laboratoire de Glaciologie et Géophysique de l'Environnement (LGGE), CNRS, Grenoble, 38041, France

¹⁶Univ. Grenoble Alpes, Grenoble, 38041, France

¹⁷Laboratory of Environmental Chemistry, Paul Scherrer Institut, 5232, Villigen PSI, Switzerland

¹⁸Geosciences and Environmental Change Science Center, U.S. Geological Survey, Denver, 80225, USA

¹⁹Ufficio Geologia e Prove materiali, Provincia Autonoma di Bolzano, Kardan, 39053, Italy

10 ²⁰Institute of Geography, Russian Academy of Sciences, Moscow, 119017, Russia

²¹Waterstones geomonitoring, Egna, 39044, Italy

²²University of Bern, Bern, 3012, Switzerland

²³Department of Earth and Environmental Sciences, University of Pavia, Pavia, 27100, Italy

Correspondence to: Paolo Gabrielli (gabrielli.1@osu.edu)

15

Abstract. In 2011 four ice cores were extracted from the summit of Alto dell'Ortles (3859 m), the highest glacier of South Tyrol in the Italian Alps. This drilling site is located only 37 km southwest from where the ~5.3 kyrs old Tyrolean Iceman was discovered emerging from the ablating ice field of Tisenjoch (3210 m, near the Italian-Austrian border) in 1991. The excellent preservation of this mummy suggested that the Tyrolean Iceman was continuously embedded in prehistoric ice and that additional ancient ice was likely preserved elsewhere in South Tyrol. Dating of the ice cores from Alto dell'Ortles based on ²¹⁰Pb, ³H, beta activity and ¹⁴C determinations, combined with an empirical model (COPRA), provides evidence of a chronologically ordered ice stratigraphy from the modern glacier surface down to the bottom ice layers with an age of ~7 kyrs which confirms the hypothesis. Our results indicate that the drilling site was continuously glaciated on frozen bedrock since ~7 kyrs BP. Absence of older ice on the highest glacier of South Tyrol is consistent with removal of basal ice from bedrock during the Northern Hemisphere Climatic Optimum (6-9 kyrs BP), the warmest interval in the European Alps during the Holocene. Borehole inclinometric measurements of the current glacier flow combined with surface GPR measurements indicate that, due to the sustained atmospheric warming since the 1980s, an acceleration of the glacier Alto dell'Ortles flow has just recently begun. Given the stratigraphic-chronological continuity of the Mt. Ortles cores over

25

Paolo Gabrielli 9/30/2016 4:31 PM

Deleted: nea

Paolo Gabrielli 10/6/2016 3:30 PM

Deleted: 2

Paolo Gabrielli 10/17/2016 11:19 AM

Deleted: coeval

millennia, it can be argued that this behaviour is unprecedented [at this location](#) since the Northern Hemisphere Climatic Optimum.

1 Introduction

Glaciers are sensitive indicators of climate change as their length, area and volume respond primarily to variations in air temperature and precipitation (e.g. [Oerlemans, 2001](#)). In general small and steep alpine glaciers show faster response (~10 years) to climate fluctuations than large, less inclined ice bodies (~100 years) (Holzhauser, 1997). In the European Alps, glaciers have undergone major variations at glacial-interglacial time scales as they greatly expanded during the last glacial period and contracted dramatically during the last deglaciation (Ivy-Ochs et al., 2008). While traces of the large expansions of the last glacial period are well preserved even at very low elevations (Ravazzi et al., 2014), evidence of the subsequent smaller Holocene glacier variations is most often overridden by the Little Ice Age expansion (LIA; 14th-19th century). Nevertheless organic fragments (e.g. wood, peat bogs) found recently in forefields of retreating glaciers provide information on the lower altitude limits of past glacial extents, demonstrating that glaciers in the Alps were smaller during the mid-Holocene than they are today (Hormes et al., 2001; Joerin et al., 2008; Joerin et al., 2006; Nicolussi and Patzelt, 2000; Porter and Orombelli, 1985).

The end of the Younger Dryas (11.7 kyrs BP) is generally considered to mark the onset of the Holocene. At that time conditions favourable to glaciers persisted in the European Alps until 10.5 kyrs BP (Ivy-Ochs et al., 2009) when a period of climatic warming started, culminating between 6 and 9 kyrs BP during the so-called Northern Hemisphere Climatic Optimum (Vollweiler et al., 2006). At this time the Northern Hemisphere summer insolation and solar irradiance reached maximum levels during the Holocene (Berger and Loutre, 1991; Stuiver et al., 1998). Specifically, this climatic optimum was characterized by three particularly warm phases at 9.2 kyrs BP, 7.45-6.65 kyrs BP and 6.20-5.65 kyrs BP (Joerin et al., 2008). A climate that was generally unfavourable for glacier advances persisted at least until 6.8 kyrs BP (Luetscher et al., 2011). Between 5.3 and 3.3 kyrs BP the changed climatic conditions marked the beginning of the Neoglaciation in the European Alps (Magny and Haas, 2004; Ivy-Ochs et al., 2009). During this new phase glaciers showed larger variations which culminated in three large LIA expansions (14th, 17th and 19th centuries) (Holzhauser et al., 2005), followed by an on-going phase of intense glacier waning (Zemp et al., 2006).

At the end of summer 1991, the 5300-year old Tyrolean Iceman mummy emerged from the ablating ice field of the Tisenjoch, a saddle at 3210 m near the Italian -Austrian border in the Eastern Alps (Seidler et al., 1992). The excellent state of preservation of the Tyrolean Iceman provides strong evidence for the minimum coverage of this ice field at this time, which has only recently been surpassed. This discovery suggests that past atmospheric temperatures characterizing warm phases such as the Roman (250 BC – 400 AD) and the Medieval (950-1250 AD) periods may have never exceeded that of the current time in this sector of the Alps (Baroni and Orombelli, 1996). [However, a recent chironomid based summer air temperature reconstruction from Lake Silvaplana, in the nearby Upper Engadine \(Switzerland\), documented that the 20th century and the Medieval period \(from 1030 AD, start of the dataset, until 1260 AD\) were both 1°C warmer than the modern](#)

Paolo Gabrielli 10/17/2016 3:14 PM
Deleted: (
Paolo Gabrielli 10/17/2016 3:15 PM
Formatted: Not Highlight
Paolo Gabrielli 10/17/2016 3:14 PM
Deleted:)

Paolo Gabrielli 10/6/2016 3:30 PM
Deleted: 2

Paolo Gabrielli 9/29/2016 12:11 PM
Deleted: also

Paolo Gabrielli 9/30/2016 11:40 AM
Formatted: Superscript

climate reference period (1961–1990) in the Eastern Alps. (Larocque-Tobler et al., 2010). Clearly, information about the glaciation of the Eastern Alps before the LIA remains sparse (Nicolussi and Patzelt, 2000).

In this context ice cores can provide useful information. In the Western Alps, an ice core extracted from Colle Gnifetti (4450 m, Monte Rosa, Italian-Swiss border) provided evidence of more than ~10 kyrs old ice in its lower section (Jenk et al., 2009), suggesting a continuous glaciation of at least the highest locations of the western Alps throughout the Holocene. In 1991, at the time of the discovery of the Tyrolean Iceman, only pollen analyses (Bortenschlager et al., 1992) were performed on the ice in which this mummy was embedded for ~5.3 kyrs at the Tisenjoch, which is now completely deglaciated. This is unfortunate because this now melted ice had the potential to be as old as the Tyrolean Iceman himself and may have preserved a unique snapshot of additional information of the past environmental conditions experienced by the Alpine populations during the mid-Holocene.

In 2010, we formulated the hypothesis that an ice core record encompassing the time of the Tyrolean Iceman was embedded in the upper reaches of the Alto dell'Ortles (3859 m), the main glacier of Mt. Ortles (3905 m, Italy), which is the highest mountain of South Tyrol, located 37 km from the Tisenjoch (Gabrielli et al., 2010). This idea was based on the following observations: i) Alto dell'Ortles is wind exposed and located in a rain shadow (Schwarb, 2000), and thus is likely characterized by a low accumulation rate compared to the average of the Alps; ii) the upper exposed margins of Alto dell'Ortles show laminated ice layers down to bedrock; and iii) the concomitant significant thickness and moderate tilt (8°–9°) of the upper part of Alto dell'Ortles may be indicative of minimal basal flow and a frozen ice/bedrock interface, as it could have also been expected at this elevation in this area (Suter et al., 2001).

Until recently, alpine ice core records have been obtained only from the Western Alps (Barbante et al., 2004; Barbante et al., 2001; Jenk et al., 2009; Legrand et al., 2003; Preunkert et al., 2001; Preunkert et al., 2000; Schwikowski et al., 1999b; Schwikowski et al., 1999a; Van de Velde et al., 2000a; Wagenbach et al., 1988) because of their high elevation and the consequent common occurrence of the cold firn zone (Golubev, 1975; Haeberli and Alean, 1985) which is more likely to retain climatic and environmental signals (Eichler et al., 2001). In contrast, because of their lower elevation, the highest glaciers in the Eastern Alps were assumed to be entirely within the temperate firn zone, and thus unsuitable for preserving intact ice core records (Oerter et al., 1985). However, Suter and co-workers modeled the firn temperature in the Alps and, based on altitude and exposure, suggested that cold firn should exist above 3400 m in northerly aspects and above 4150 m on southern slopes (Suter et al., 2001).

Modern climatic conditions in the Eastern Alps are very unusual because since ~1980 summer air temperatures have shown a step increase of about 2°C at high elevations (Gabrielli et al., 2010; Auer et al., 2006). Consequently the extensive summer meltwater percolation through the shallow (<10 m) temperate firn layers recently observed on Mt. Ortles could be a relatively recent phenomenon that intensified after ~1980 (Gabrielli et al., 2010). Interestingly, ice which preserved climatic and environmental signals was already found in 2003 below temperate firn on the Quelccaya ice cap in the Peruvian Andes, where recent and strong meltwater percolation did not affect the climatic signal embedded within the

Paolo Gabrielli 9/29/2016 12:07 PM

Deleted: Nevertheless

Paolo Gabrielli 10/6/2016 3:32 PM

Deleted: ,

Paolo Gabrielli 10/6/2016 3:33 PM

Deleted: 2

deepest impermeable ice layers (Thompson et al., 2006). We likewise speculated that a climatic signal might still be preserved within the deep ice layers of the glacier Alto dell'Ortles (Gabrielli et al., 2010).

During the Autumn of 2011, working within the framework of an international program aimed at studying past and present climate conditions in the Alps ("Ortles Project", www.ortles.org), we extracted from Alto dell'Ortles the first ice cores drilled to bedrock in the Eastern Alps (Gabrielli et al., 2012). Here we present glaciological observations (a digital elevation model, englacial characteristics, glacial dynamic and bedrock topography of the drilling site) and various dating techniques (based on tritium, beta emissions, ^{137}Cs , ^{210}Pb and ^{14}C) that allowed to obtain a time scale for the Mt. Ortles ice cores. We show that the Alto dell'Ortles cores contain records at millennial time scales and that the bottom ice dates back ~7 kys BP. Combining ice core and glaciological observations, we discuss these findings in light of the state of the knowledge of the glaciation of the Eastern Alps during the Holocene.

2 The drilling site

2.1 General characteristics

The Alto dell'Ortles glacier covers the northwestern side of Mt. Ortles, which gently slopes ($8^\circ - 9^\circ$) from near the summit for ~300 m, then flows on steeper bedrock into two major "tongues" down to 3018 m (Fig. 1). According to some recent LiDAR measurements (see section 2.2.2), the total surface area was of 1.12 km^2 in 2011 and of 1.07 km^2 in 2013, of which ~10% constitutes the upper gentle plateau. The ice core drilling campaign was conducted during September and October 2011 on a small col (3859 m; $10^\circ 32' 34''$, $46^\circ 30' 25''$) between the summit of Mt. Ortles (3905 m) and the Vorgipfel (3845 m) (Fig. 1-2). At the drilling site, the bedrock is at ~75 m of depth (Gabrielli et al., 2012; Gabrielli et al., 2010) and the current accumulation rate (2011-2013) is ~800 mm water equivalent (w.e.) per year.

Over the last three decades (1980-2009) the reconstructed average summer (JJA) air temperature was -1.6°C , ~2 $^\circ\text{C}$ higher than during the previous 115 years, with a peak of $+2^\circ\text{C}$ during the summer of 2003 (Gabrielli et al., 2010). In 2011, englacial temperatures provided firm evidence of the concomitant presence of a temperate firn portion, deep cold ice layers and a frozen bedrock. In fact, thermistors located within the firn indicated temperatures at or near the pressure melting point while those positioned in the ice (below the firn ice transition at ~30 m depth) clearly demonstrate negative temperatures at 35 m (-0.4°C), 55 m (-1.8°C) and at 75 m (-2.8°C) close to bedrock, confirming the presence of cold ice (Gabrielli et al., 2012). We concluded that this glacier probably represents a unique remnant of the colder climate prior to ~1980, which has since been shifting from a cold to a temperate state.

2.2 Current dynamic

2.2.1 Elevation changes

Comparison of terrestrial photographs of Alto dell'Ortles taken in 2010 and during the period from 1900 to 1930 (Fig. 2), suggests a thinning of 8-10 m at the drilling site. Comparison of digital terrain models (DTM) obtained from

Paolo Gabrielli 10/7/2016 3:33 PM

Deleted: show

Paolo Gabrielli 10/7/2016 3:46 PM

Formatted: Font:Not Bold

Paolo Gabrielli 10/7/2016 3:36 PM

Formatted: Superscript

Paolo Gabrielli 10/7/2016 3:36 PM

Formatted: Superscript

topographic maps created in 1962 and 1984 (obtained by aerial photogrammetry and provided by the Istituto Geografico Militare and Province of Bolzano, respectively) and from LiDAR surveys in 2005 and 2013 (provided by the Province of Bolzano and by the Institute of Atmospheric and Cryospheric Sciences, University of Innsbruck (Galos et al., 2015)) indicate a major thinning at the drilling site from 1962 to 1984 (-25 ± 4.7 m). From 1984 to 2005 thickening prevailed ($+10.5 \pm 7.9$ m), followed by minor elevation changes from 2005 to 2013 (-0.7 ± 1.0 m). More extended analyses covering the upper 50 m of the glacier Alto dell'Ortles, which includes the drilling site, indicate that thinning was widespread from 1962 to 1984 (-9.5 ± 4.7 m) in the upper part of this glacier, followed by rather stationary conditions (-1.5 ± 0.3 m) between 1984 and 2013.

These observations indicate that: i) the upper part of Alto dell'Ortles was subject to significant elevation changes during the last decades; ii) the drilling site itself experienced even larger elevation changes, and; iii) these elevations changes are not directly linked to atmospheric changes (e.g. summer atmospheric warming and surface glacier ablation). It is indeed remarkable that while the site thinned during the relatively cold period between the 1960s and 1980s, most glaciers at lower altitude expanded in this geographic area (Carturan et al., 2013, and references therein). Local elevation changes at the drilling site likely result from the interplay of glacier dynamics and spatial variability of ablation and, notably at this high-elevation site, snow accumulation and redistribution by the wind.

15

2.2.2 Surface and internal dynamics

A borehole displacement of 3.2 m y^{-1} over 1.7 years (5 October 2011-1 July 2013) was determined at the glacier surface by means of differential GPS measurements (Fig. 3). However, the glacial flow was not constant during this period as it varied between 3.7 m y^{-1} (5 October 2011-7 September 2012) and 2.6 m y^{-1} (7 September 2012-1 July 2013), suggesting a seasonal variability characterized by a higher flow in summer than in winter.

The direction of the measured displacement of the boreholes and the variability of the glacial flow during the observed periods are consistent with: i) glacier flow lines originating from the southern flank of Mt. Ortles, whose summit is located 270 m uphill from the drill site (Fig. 3); and ii) basal sliding of the glacier bed lubricated by summer meltwater, perhaps percolated from the outcrops of bedrock located uphill from the drilling site. The surface flow lines have been inferred from a DTM obtained with a LiDAR survey performed during the 2011 ice core drilling campaign, using the flow accumulation tool of ESRI ArcMap™. Importantly, this analysis also shows that the drilling site was located at or in very close proximity to the ice divide (as derived from the surface topography, Fig. 3).

In order to infer the internal dynamics of the glacier, inclinometric measurements were performed in borehole #2 43 days after the end of the drilling operation (5 October -17 November 2011). Further measurements were not possible because of the rupture of the pipe (or the formation of an internal ice lens) at 25 m depth. Uncertainty of this measure is $\pm 6 \text{ mm/25 m}$. A cumulative displacement of 277 mm (2.4 m y^{-1}) relative to the bottom part of the inclinometer was observed on the glacier surface (Fig. 4). We also note that the glacier flow decreased linearly with depth, which is inconsistent with the velocity fields typically recorded within glaciers frozen at the bed (Paterson, 1999). While the relative inclinometric measurement does not necessarily imply a net basal sliding of the drilling site, it does indicate that currently ice layers located next to

30

Paolo Gabrielli 10/17/2016 3:16 PM

Deleted: (

Paolo Gabrielli 10/17/2016 3:16 PM

Formatted: Not Highlight

Paolo Gabrielli 10/17/2016 3:16 PM

Deleted:)

bedrock are dynamically active (38 mm (0.3 m y⁻¹) at 65 m; 18 mm (0.2 m y⁻¹) at 70 m). This information is important in order to evaluate the age of the basal ice (see discussion in section 6.2).

2.3 Bedrock topography

Ground penetrating radar (GPR) was used to determine the bedrock topography (e.g. Binder et al., 2009; Moran et al., 2000), and to infer information about possible englacial features (e.g. Blindow and Thyssen, 1986; Konrad et al., 2013). 50 MHz GPR profiles were collected with a GSSI SIR 3000 system during July 2013. This spatial survey focused on a region of 50x50 m, including the four 2011 boreholes with an inter-profile distance of 4 m (Fig. 1c). Based on the available continuous snow/firn/ice density data from a snow pit and from borehole #2 (BH2), a 1D-velocity function was derived from the correlation between snow/ice-density and dielectric permittivity by Kovacs et al., 1995. The picked two-way travel times (TWTs) were converted to depth with the 1D velocity function and interpolated to continuous surfaces.

The reflection horizon at TWTs of 800-900 ns (~75-85 m) was interpreted as bedrock. For BH1, BH2, BH3 there is a good correspondence (within 1 m) between the GPR derived ice thicknesses and the ice core lengths (Fig. 5). The GPR derived ice depth for BH4 indicated that the ice core drilling was stopped ~15 m from bedrock. Since the applied snow/ice density – dielectric permittivity correlation is valid for dry polar conditions, this confirms a dry and cold glacial body at the drilling site. Fig. 5 shows orthogonal profile slices through the four boreholes according to the coordinate system displayed in Fig. 6.

A continuous internal layer was identified 20-40 m above the bedrock (Fig. 5). The internal layer could be tracked throughout the investigated area, which suggested an isochronal origin. Two close melt ice layers at a depth of about 45 m corresponded well with this spatially continuous englacial reflection. The inclination of this melt layer is consistent with the higher (+ 200 mm w.e.) modern annual snow accumulation (1000 mm w.e.) observed on the left side (Fig. 5, X-profiles) of the drilling site at 3830 m (Festi et al., 2015). It is likely that surface snow was blown away from the ice ridge and re-deposited further down the slope. Thus the steep isochrone suggests that the oldest ice of the glacier can be found on the right side (Fig. 5, X-profiles), which is under the ice divide. Alternatively, it indicates that the oldest ice can be found at higher depth resolution below the ice divide.

Detailed bedrock topography at the drill site, as obtained by spatial interpolation of GPR point measurements, is illustrated in Fig. 6. We note that the boreholes reached bedrock near a ~10 m step located between the drilling site and the Vorgipfel (Fig. 1,5,6). However, this feature is only on one side of the drilling site and thus we conclude that, while this morphological feature may have facilitated the in situ retention of old bottom ice, it is unlikely to have caused a complete dynamical entrapment and the consequent formation of fossil ice decoupled from the upper stratigraphic sequence, which is also implied by the ice flow observed near bedrock (Fig. 4).

3 Ice cores characteristics

Paolo Gabrielli 10/7/2016 3:44 PM

Deleted: [1]

Paolo Gabrielli 10/17/2016 3:16 PM

Deleted: (

Paolo Gabrielli 10/17/2016 3:17 PM

Formatted: Not Highlight

Paolo Gabrielli 10/17/2016 3:17 PM

Formatted: Not Highlight

Paolo Gabrielli 10/17/2016 3:16 PM

Deleted:)

Paolo Gabrielli 10/17/2016 3:16 PM

Deleted: (

Paolo Gabrielli 10/17/2016 3:17 PM

Formatted: Not Highlight

Paolo Gabrielli 10/17/2016 3:16 PM

Deleted:)

Paolo Gabrielli 10/17/2016 3:17 PM

Formatted: Not Highlight

Paolo Gabrielli 10/17/2016 3:16 PM

Deleted: (

Paolo Gabrielli 10/17/2016 3:17 PM

Formatted: Not Highlight

Paolo Gabrielli 10/17/2016 3:16 PM

Deleted:)

Paolo Gabrielli 9/30/2016 12:00 PM

Deleted: reverse to the flow direction (X-slices) and orthogonal to the flow direction (Y-slices)

Paolo Gabrielli 9/30/2016 2:23 PM

Deleted: (Festi et al., 2015)

Paolo Gabrielli 9/30/2016 2:52 PM

Deleted: does not completely enclose the drilling site in every direction

Paolo Gabrielli 9/30/2016 2:53 PM

Deleted: . W

The four cores were drilled on Alto dell'Ortles within ~10 m (Fig. 1), reaching final logged depths of 73.53 m (#1), 74.88 m (#2), 74.83 m (#3) and 61 m (#4). The drilling of core #4 was stopped for technical issues at a depth ~15 m above bedrock as determined by GPR (see previous section). It has been stored intact for possible future complementary analysis. Likewise, the drilling of core #1 stopped at 73.53 m just short of bedrock because of technical issues. On the other hand, it was obvious that cores #2 and #3 did reach bedrock since further penetration was not possible and damage to the drill cutters was observed. The comparable final logged depths of core #1, #2 and #3 (73.53, 74.88 m and 74.83 m) are in close agreement with the glacier thickness (75 m) as determined by GPR before (2009) (Gabrielli et al., 2010) and after (2013) the drilling operation (see previous section).

Consistent with the geology of the Mt. Ortles summit, a few limestone rock particles and pebbles were observed in the deepest sections of cores #1, #2 and #3 within ~1 m of bedrock, providing visible evidence of the bed material in the bottom ice. In core #2 a single large pebble (~1 cm) was observed 2.77 m above bedrock. This was either entrained from the bed or from the glacier surface because of the short distance (~250 meters) of the drilling site from the rock outcrops of the Mt. Ortles summit.

Density measurements of cores #1, #2 and #3 indicate a firm/ice transition at ~30 m depth (Fig 7), with a measured average ice density of 882 kg m^{-3} . The air bubbles entrapped within the ice layers throughout the core range from a few mm to less than ~1 mm in diameter. Elongated air bubbles (up to 10-15 mm) are widespread through the cores confirming that flow is a significant component of the ice dynamics of this drilling site (Gabrielli et al., 2012).

Direct observations of the three cores were performed and borehole images were obtained from a 360-degree continuous-imaging scan of borehole #1 (Optical Televiewer, Advanced Logic Technology, Luxemburg). As light reflectance is determined by the concentration and size of air bubbles, this technique highlights the core layers and the presence of ice lenses (melt layers). Horizontal to tilted (10-20°) bubble free ice lenses are present throughout the entire lengths of the cores, where the angles may reflect, at least in part, the tilt of the basal slope. The cumulative thickness of the ice lenses constitutes ~20% of the entire length of the firm portion (when expressed in ice equivalent), ~15% of the glacier ice between 30 and 55 m, and ~5% between 55 and 65 m depth (Gabrielli et al., 2012).

Borehole images of core #1 also suggest strong ice layer thinning from 60-65 m depth to the basal ice (Fig. 7). In this case we interpret the low reflectance of this basal ice as a consequence of the bubbles shrinking due to the overburden pressure over thousands of years (see section 4.3). The digital red index associated with the borehole images (this expresses numerically the red component of each pixel that displays colours as a combination of Red, Green and Blue; RGB color code) suggest that this transition does not occur abruptly (as expected in the case of a physical hiatus) but instead over ~5 m, perhaps indicating a continuous change of the physical properties of the ice over time. This observation is also important in order to evaluate the possible presence of a decoupled fossil ice portion near the bedrock.

4 Ice core samples analysis

4.1 Fission products

4.1.1 Beta activity and tritium

Depending on the ice mass available, analyses of beta activity (Byrd Polar and Climate Research Center, BPCRC) and tritium (University of Bern and University of Venice) were performed with various degrees of continuity and resolution in various sections of the cores using established methods (Maggi et al., 1998; Schotterer et al., 1998; van der Veen et al., 2001) (Fig 8). Three sections from core #2 (2.75 m, 22.95 m and 41.27 m) were reanalysed for beta activity at the Laboratory of Glaciology and Geophysics of the Environment (LGGE) in Grenoble, France by means of a Berthold LB770-2 gas-flow proportional counter (Ar/CH₄ gas) (Magand, 2009; Pourchet et al., 2003; Vimeux et al., 2008), showing variations that are consistent with those determined at BPCRC (Fig. 8).

A well-defined peak of beta and tritium activity can be observed at 41 m depth indicating the 1963 radioactive horizon resulting from nuclear weapon testing, which is consistent with ²¹⁰Pb dating (see below). The match between the tritium (entrained in the ice matrix) and beta emission (emitted by ions such as ⁹⁰Sr) peaks in core #2 suggests that post-depositional effects due to melt water percolation were negligible from the time of the deposition of this radioactive layer (1963) until it was entrained below the firm/ice transition. This is also a preliminary indication that the chemical stratigraphy in the firm and in the ice was preserved before the onset of the exceptional current warming (1980 in this area) and the linked surface melting and meltwater percolation (Gabrielli et al., 2012; Gabrielli et al., 2010). Scrutiny of the well-resolved beta record in core #2 indicates a secondary beta emission peak at 44 m depth, likely resulting from the widely reported 1955-1958 thermonuclear tests (Gabrieli et al., 2011).

Evidence of the radioactive fallout from the 9 March 2011 Fukushima nuclear plant accident is observed in the shallow spring-summer 2011 layer (Fig 8). In this case, while tritium levels remain low, beta activity reaches values that are comparable to the residual radioactivity released by the ice layers contaminated by the atmospheric nuclear tests of the 1950s and the beginning of the 1960s. Glaciological evidence of the Fukushima radioactive fallout has already been reported from Tibetan Plateau (Wang et al., 2015) and Arctic (Ezerinskis et al., 2014) snow samples. Our data from the Eastern Alps are consistent with the clearly detectable Fukushima radioactive fallout widely observed in Europe (Masson et al., 2011), including the northern Italian city of Milan (Clemenza et al., 2012).

An additional peak of beta activity can be observed in the Mt. Ortles cores at ~28 m of depth (Fig 8), near a thick ice lens immediately above the firm ice transition (~30 m). This signal does not seem to be directly related to the 1986 Chernobyl radioactive fallout as its timing is inconsistent with the ²¹⁰Pb age determined at this depth (1979.5 ± 3 ; see section 4.2). It is more likely that percolating summer meltwater transported Chernobyl radionuclides through the porous temperate firm from their actual deposition layers (see next section) down to ~28 m where at least part of the water refroze and the radionuclides were accumulated. This process also suggests that the chemical stratigraphy is not well preserved in the firm portion of the Mt. Ortles cores.

4.1.2 ¹³⁷Cs

The three sections analysed for beta emissions at LGGE (see previous section) were also analysed by a very low background germanium planar detector at the Laboratoire Souterrain de Modane (LSM – 4800 water equivalent) in France (Loaiza et al., 2011). These measurements were below the detection limit with the exception of the section at 41.27 m (1963), which showed a non-decay corrected activity of 0.035 ± 0.003 (Bq kg⁻¹) for ¹³⁷Cs. This result is consistent with ¹³⁷Cs values typically linked to the 1963 radioactive deposition (United-Nations-Scientific-Committee-on-the-Effects-of-Atomic-Radiation, 2000).

The undetected ¹³⁷Cs in the 22.95 m depth layers (~1986-1987 according to ²¹⁰Pb dating, see next section) is notable, taking into account the large ¹³⁷Cs quantities released in the European atmosphere during the 1986 Chernobyl accident (United-Nations-Scientific-Committee-on-the-Effects-of-Atomic-Radiation, 2000). This provides additional support to the idea of the occurrence of post-positional effects due to abundant multiyear meltwater percolation through the firm during the recent warm summers (Gabielli et al., 2010).

The very low ¹³⁷Cs values measured in Mt. Ortles snow within the top 2.75 m (spring-summer 2011) after the Fukushima accident are consistent with the low levels measured in aerosols over Europe, which is 3 to 4 orders of magnitude lower than activity levels encountered after the Chernobyl event (Mietelski et al., 2014; Povinec et al., 2013). Therefore, it is more likely that the beta activity detected in the Mt. Ortles shallow 2011 snow layer was the product of long-range transport of other Fukushima-derived radionuclides, especially ¹³¹I (Clemenza et al., 2012; Mietelski et al., 2014; Povinec et al., 2013; Lin et al., 2015). Given the short half-life of ¹³¹I (8 days), it might be expected that this layer could be only a short-term glaciological reference.

4.2 ²¹⁰Pb

²¹⁰Pb activity was determined continuously in core #2 between 0 and 58.67 m depth at a sample resolution of ~2.80 m length (Table 1) using an established method (Gäggeler et al., 1983; Eichler et al., 2000). The age-depth relationship was derived from the slope of the linear regression of the logarithmic ²¹⁰Pb activity as a function of depth in m w.e. (Fig. 9). The y-axis intercept (109±14 mBq kg⁻¹) corresponds to the ²¹⁰Pb activity at the surface of the Alto dell’Ortles glacier, and is comparable to values typically observed (~85±10 mBq kg⁻¹) in high altitude glaciers in the Alps (Eichler et al., 2000). At a depth of 41.92 m, the calculated age of 54±5 years (1953-1963, 1σ range) is consistent with the 1963 beta and tritium activity peak found at 41 m (see previous sections). The age of the lowest sample (bottom depth 58.67 m) dated by ²¹⁰Pb is 82±7 years (1923-1937, 1σ range).

4.3 ¹⁴C analysis

Jenk Theo Manuel 10/11/2016 9:29 AM
Deleted: 19587

Jenk Theo Manuel 10/11/2016 9:30 AM
Deleted: uncertainty

Jenk Theo Manuel 10/11/2016 9:43 AM
Deleted: 0

Four large (~1 kg) samples from Mt. Ortles cores #1 (68.96 and 72.48 m) and #3 (71.57 and 74.47 m) (Table 2) were selected for ^{14}C dating using a method based on ^{14}C determination in the water-insoluble organic carbon fraction (WIOC) of the aerosols in the ice (Jenk et al., 2009; Jenk et al., 2006; Jenk et al., 2007; Sigl et al., 2009). Core #2 was not sampled because sufficient ice volume was not available. Each ice section was divided into three sub-samples (top, middle and bottom), which were filtered separately and analysed. For the section at 72.48 m from core #1, the amount of filtered WIOC from the first sub-sample was estimated to be insufficient and therefore the three sub-samples were filtered together resulting in a total ice volume exceeding our standard dimensions, possibly introducing a larger blank because of the modified treatment (i.e. increased potential for contamination due to a higher number of steps during sample processing).

^{14}C analyses were conducted using the compact radiocarbon AMS system 'MICADAS' at the University of Bern (LARA laboratory). For details about sample preparation, WIOC separation, blank correction and calculation of F^{14}C , see (Uglietti et al., 2016). The conventional ^{14}C ages were calibrated using OxCal v4.2.4 software (Bronk Ramsey and Lee, 2013) with the IntCal13 calibration curve (Reimer et al., 2013). Dates are provided as radiocarbon ages (yr BP), calibrated radiocarbon ages (yr cal BP) or as years before the date of sampling with 2012 being the closest approximation of a full year (yr b2012 = 2012 - 1950 + yr cal BP). Average values (μ) are presented with a 1 sigma (σ) uncertainty.

The F^{14}C results obtained for the 3 sub-samples (top, middle, bottom) of section 98b at 68.96 m (core #1) and 102 at 71.57 m (core #3), respectively, were combined to obtain the most reliable ages representative for the mid-depth of these sections (mean value of the 3 sub-samples with 1 σ standard error) under the data supported assumption of a negligible age spread within these two sections. The resulting mean calibrated ages were 595 ± 205 yrs cal BP and 1521 ± 286 yrs cal BP, respectively (Table 2). On the other hand, the three sub-samples from the deepest section of core #3 (74.47 m) dated with an age of 4173 ± 523 yrs cal BP, 5178 ± 530 yrs cal BP and 6742 ± 365 yrs cal BP, respectively, indicate very strong glacier thinning close to bedrock and were thus treated as individual dating horizons. The analysis of the single sample from the section at 72.48 m (core #1) provided an age of 517 ± 291 yrs cal BP that would represent a chronological inversion with respect to all the other ^{14}C ages. Considering the above-mentioned increased risk of contamination during sample preparation this age value was disregarded.

^{14}C analyses of a larch leaf found at 73.25 m depth in core #1 was performed by AMS at the National Ocean Sciences Accelerator Mass Spectrometry Facility at the Woods Hole Oceanographic Institutions. This provided an additional, conventionally derived ^{14}C age of 2612 ± 101 yrs cal BP, which is stratigraphically and chronologically consistent with the WIOC ^{14}C ages of 1521 ± 286 yrs cal BP and 4173 ± 523 yrs cal BP obtained from core #3 at 71.57 and 74.02 m of depth, respectively (Table 2). Stratigraphic consistency also remains valid when a common depth scale for the three cores is adopted (see next section).

5 Ice core chronology

5.1 Depth scale alignment

Paolo Gabrielli 10/17/2016 12:17 PM
Deleted: recently introduced
Jenk Theo Manuel 10/11/2016 9:48 AM
Deleted: both ...s cal ...adiocarbon ages (y... [2]
Paolo Gabrielli 10/7/2016 3:56 PM
Deleted: 1... 20121 ... [3]
Jenk Theo Manuel 10/11/2016 9:47 AM
Deleted: (best approximation of a whole year at surface)...- 1950 + yr cal BP). ... [4]
Jenk Theo Manuel 10/11/2016 11:04 AM
Deleted: ages
Jenk Theo Manuel 10/11/2016 11:05 AM
Formatted: Superscript
Jenk Theo Manuel 10/11/2016 10:52 AM
Deleted: from ...or the 3 sub-samples (top,... [5]
Paolo Gabrielli 10/13/2016 4:30 PM
Deleted: 5
Jenk Theo Manuel 10/11/2016 10:55 AM
Deleted: were
Paolo Gabrielli 10/17/2016 12:22 PM
Deleted: the unbiased
Jenk Theo Manuel 10/11/2016 11:10 AM
Deleted: not significantly different (Table 2) and were therefore combined
Paolo Gabrielli 10/13/2016 3:55 PM
Deleted: (i.e. moderate thinning)
Jenk Theo Manuel 10/11/2016 10:51 AM
Deleted: using OxCal v4.2.4 to obtain single values
Paolo Gabrielli 10/7/2016 3:58 PM
Formatted: Highlight
Jenk Theo Manuel 10/11/2016 11:14 AM
Deleted: in average...ean calibrated ages o... [6]
Paolo Gabrielli 10/7/2016 3:59 PM
Deleted: 0...205103...yrs cal BP and ... [7]
Jenk Theo Manuel 10/11/2016 11:16 AM
Deleted: T...he three sub-samples (top, mi... [8]
Paolo Gabrielli 10/7/2016 4:01 PM
Deleted: 279...523619...yrs cal BP, ... [9]
Jenk Theo Manuel 10/11/2016 11:17 AM
Deleted: are
Paolo Gabrielli 10/7/2016 4:03 PM
Deleted: 801...291135 ... [10]
Paolo Gabrielli 10/7/2016 4:04 PM
Deleted: 1609+297...yrs cal BP and ... [11]

Cores #1, #2 and #3 were aligned on the same depth scale (Fig. 10) by matching their stable isotope records (smoothed by 3-sample moving averages), which were determined at the BPCRC (cores #2 and #3) and at the University of Venice (#core 1). Core #2 was chosen as the reference core because it was analysed at the highest resolution (3100 samples; 2220 for core #1 and 1038 for core #3) and because it is also the longest core (74.88 m vs. 73.53, 74.83 m for core #1 and #3). Similar features among the $\delta^{18}\text{O}$ records were matched and correlation coefficients (r) were calculated using the Analyseries 2.0.8 software. Seventeen tie points between core #2 and #1 ($r=0.72$) and 14 tie points between core #2 and #3 ($r=0.67$) were used to establish the correspondence between the records. Due to the close proximity of the boreholes, modifications of the original depths of cores #1 and #3 were consistently within 1 meter, which is confirmed by the common stratigraphic control point at ~ 41 m (1963 radioactive peak). The only depth interval in which the profiles of the three cores do not match is near the firm/ice transition (~ 30 m of depth), probably due to the localized differences in the extent of post-depositional effects from meltwater percolation. Nevertheless, the generally good correlation between the matching of the three stable isotopic records is compelling evidence of the stratigraphic consistency of the Mt. Ortles cores and further suggests the preservation of climatic and environmental signals.

5.2 Depth age relationship

Once a common depth scale for the three cores was established, we developed a continuous depth-age relationship by combining the results obtained from the various independent dating methods applied to the three cores. The chronological references we used are summarized in Table 3. When possible, priority was given to the most accurate time references (e.g. 1963 tritium peak instead of the corresponding ^{210}Pb determinations). Two approaches were attempted: i) the “Thompson 2-parameter model” (2-p model) (Thompson et al., 2002) successfully applied to an Alpine ice core from Colle Gnifetti to derive an age-depth relationship based on WIOC ^{14}C dates (Jenk et al., 2009); and ii) an empirical fitting of the depth age data points (expressed in meters of w.e. and yr b2012, respectively) by means of a Monte Carlo simulation (2000 simulation runs) (Breitenbach et al., 2012).

A fit by the 2-p model could not be achieved (not shown) because the degrees of freedom allowed by the underlying simple ice flow model cannot account for the observed strong and rapid thinning below ~ 60 meters of depth (Fig. 7b). On the other hand, the Monte Carlo simulation is purely empirical and does not require a glaciological model of unknown complexity. The resulting age-depth scale is exclusively defined by the reliability and precision of the individual dating horizons, and can account for potential changes in snow accumulation and/or strain rate (Fig. 11). It further allows for an objective uncertainty estimate for each depth, which is defined by the density of dating horizons and their individual uncertainties. As a consequence, the uncertainty is particularly high (20-50%) between 58 m (1930 AD) and 68 m (1355 AD) where unfortunately no dating horizons exist (Fig. 11).

Future identification of additional dating horizons and counting of annual layers (e.g. using variations in stable isotopes, dust, pollen concentrations and/or species) could help to better constrain this model. However, additional ^{210}Pb and ^{14}C techniques cannot be used because the age of the ice is either too high or too low for these methods. Horizons from

Paolo Gabrielli 10/17/2016 12:28 PM

Deleted: -

Jenk Theo Manuel 10/11/2016 11:38 AM

Deleted: defined by

Jenk Theo Manuel 10/11/2016 11:36 AM

Deleted: do not

Paolo Gabrielli 10/7/2016 4:08 PM

Deleted: 60

volcanic fallout could not be identified so far in the upper and central part of the core, probably due to masking by the significant sulphate deposition from recent anthropogenic activities and the sedimentary background of Mt. Ortles.

6 Discussion and implications

6.1 Age of the bottom ice

Dating of the ice filtered from the Mt. Ortles cores with the ^{14}C method employing WIOC provides evidence of a bottom ice age of 6.7 ± 0.4 kyr BP. The determination of ^{14}C in a larch leaf in core #1 by traditional methods provides an absolute and accurate timeline (2.6 ± 0.1 kyr BP) that is chronologically consistent with the ^{14}C ages of the ice samples (Fig. 11). While the exceptional thinning of the ice layer thicknesses below 58 m is difficult to explain, the monotonicity of the chronological empirical curve (Fig. 11) and of its derivative, together with the gradual change of the red index between 60 and 70 m (Fig. 7) suggests that the thinning process operated consistently, at least at a millennial time scale. Thus the overall ice core stratigraphy is likely continuous over millennia.

Nevertheless, a still unexplained physical process of thinning, or alternatively an unrecognized stratigraphic centennial scale hiatus between 58 and 68 m of depth must have taken place. Similar situations might also have been observed in other non-polar latitude-high altitude glaciers where the ice core records obtained were considered to be continuous (Thompson et al., 1995). We note that continuity of the ice core records is relative to the time scale considered as, by their own nature, ice cores are constituted by wet deposition occurring intermittently at different time scales (e.g. meteorological (snow events), seasonal (wet-dry seasons), decadal (droughts caused by recurring patterns of ocean-atmosphere climate variability etc.) and thus stratigraphic hiatuses are the norm rather than the exception. However, despite the inherent hiatuses, when considering the appropriate time scale (millennial in our case), continuity of the ice core records can be assumed.

The preservation of early Holocene ice in the Alto dell'Ortles glacier is probably due to at least two factors. First, the location of the drill site in a rain shadow and its exposure to wind scour result in relatively low snow accumulation. The medium term snow accumulation at the drilling site was estimated to be 850 mm w.e. /year between 1963 and 2011. This latter value was obtained by applying the Nye model to correct for firm compaction and ice thinning down to the well-dated 1963 radioactive peak at 41 m of depth; this is consistent with the current 2011-2013 observations of ~800 mm w.e. /year. Second, a frozen bedrock (current value, -2.8°C) did not allow basal melting and a significant basal flow (see next section), thus preserving in situ the oldest bottom ice.

Last glacial age ice has been observed at several high altitude-low latitude drill sites such as Huascarán (Peruvian Andes) (Thompson et al., 1995), Sajama and Illimani (Bolivian Andes) (Thompson et al., 1998; Ramirez et al., 2003) and Guliya (Western Tibetan Plateau) (Thompson et al., 1997). In contrast, ice core records from the Western Alps typically extend over just a few centuries (Barbante et al., 2004; Preunkert et al., 2001; Schwikowski et al., 1999a; Van de Velde et al., 2000b). However, the ice embedded in the deepest layers of Alto dell'Ortles dates to the demise of the Northern Hemisphere

Paolo Gabrielli 10/6/2016 3:45 PM

Deleted: 8

Climate Optimum (NHCO) and is among the oldest ice discovered in the European Alps, exceeded in age only by the more than 10 kyrs old ice retrieved at Colle Gnifetti (Jenk et al., 2009). We surmise that last glacial maximum ice does not exist in the Mt. Ortles record because of the lack of the significantly stable isotopic depletion (4 to 5‰) characteristic of such ice in the bottom of Alto dell'Ortles (Fig. 10). Bottom ice from several other low latitude, high altitude drill sites such as Dasuopu (Himalaya) (Thompson et al., 2000) and Tsambagarav (Western Mongolia) (Herren et al., 2013) behaves in the same way and extends back several millennia to the mid-Holocene.

6.2 Dynamic of the bottom ice

When considering the location of the drill site in the uppermost part of the glacier Alto dell'Ortles, the current glacier flow (3.2 m/year at the surface, ≥ 0 m/year at the base) and the age of the Mt. Ortles ice cores (6.7 kyrs cal BP at the bottom), one may wonder why such old ice deposited on the summit of Alto dell'Ortles was not quickly removed during the Holocene. Here we demonstrate that the only possible answer is that the observed significant ice flow must be a very recent phenomenon, and that consequently a much slower basal flow was typically common since the NHCO.

To study quantitatively the origin of the Mt. Ortles bottom ice and to verify its consistency with the local geography (e.g. the core layers cannot originate from a location beyond the margins of the glacier), we have employed a simple bi-dimensional dynamic model that estimates the lower limit of the distance covered by a single glacier layer over time, under the null hypothesis of an unchanged past dynamic of the glacier from the current conditions. We have therefore assumed a linear variation with depth of the glacier velocity (V_x) (as determined by means of current inclinometric measurements) between a negligible value (0 m/year at the bedrock, current lower limit value) and 2.6 m/year (current lower value recorded at the surface by GPS). For modelling the vertical glacier flow (V_z) we have employed two approaches: i) conservative use of a Nye model (not shown), and ii) more realistically, a linear combination of exponential functions that interpolate the empirical chronological timelines obtained along the depth profile (Fig. 12).

The results are generally consistent with our ice core sections originating uphill from the drill site along the flow line (Fig. 3). For instance, the 1963 radioactive ice layer (at 41 m) would originate from a location that is at least 90 m uphill of the drill site (using both the conservative and realistic V_z). However, several thousand year old ice (below 70 m of depth) would originate from an unrealistic minimum distance that is 300-500 m uphill (using the conservative and realistic V_z , respectively), thus much larger than the distance between the drill site and the origin of the flow lines (Fig. 3). As this result contradicts the null hypothesis of unchanged dynamic conditions over time, we conclude that the formation and preservation of very old ice at the Alto dell'Ortles drill site was possible only when the flow velocity of the ice layers near the base was much lower throughout the time since the formation, when compared to the values measured today. In other words, the significantly positive glacier flow V_x near the base, which was recorded at present day, must be the result of a very recent change in the ice dynamics at the drill site.

We interpret this result as possibly indicative of a large-scale dynamic change, probably involving the entire Alto dell'Ortles. However, this dynamic variation is likely not caused by changes in the slope of this glacier that, according to our

Paolo Gabrielli 10/13/2016 4:03 PM

Deleted: se two

Paolo Gabrielli 10/13/2016 4:03 PM

Deleted: s

Paolo Gabrielli 10/13/2016 4:03 PM

Deleted: either Colle Gnifetti or

Paolo Gabrielli 10/13/2016 4:05 PM

Deleted: 9

Paolo Gabrielli 10/13/2016 4:05 PM

Deleted: beginning of the

Paolo Gabrielli 10/13/2016 4:05 PM

Deleted:

Paolo Gabrielli 10/6/2016 3:49 PM

Deleted: 8

Jenk Theo Manuel 10/11/2016 12:42 PM

Deleted: contrast

Jenk Theo Manuel 10/11/2016 12:43 PM

Deleted: currently

large scale comparisons of the DTMs employed (not shown), seem negligible even under the action of the strong ablation occurring since 1980, especially in terms of calving at the lowermost margins of Alto dell'Ortles. Instead, we speculate that this dynamic variation may be a consequence of two possible alternatives or concomitant factors: i) recent summer meltwater influx from the bed outcrops uphill from the basal portion of the drilling site may be lubricating the glacier/bedrock interface. As shown for cold-based ice caps and ice sheets in Svalbard and Greenland, there are evidences that seasonal meltwater can reach bedrock and change the ice velocity (Bartholomew et al., 2010; Dunse et al., 2015). This would be consistent with the observed seasonal changes in the surface velocity, and with the quasi linear profile of V_x obtained with the inclinometer (Fig. 4). ii) changes in the plastic behaviour of the cold portion of the glacier as a consequence of the on-going thermic transition from polythermal to temperate conditions. This latter hypothesis would be consistent with: a) a negligible basal flow, b) long term changes in the vertical thermal profile (perhaps particularly significant since the end of the LIA), and c) the observed significant elevation changes of the drilling site during the last century.

6.3 The Alto dell'Ortles glaciation during the Holocene

A marked stable isotopic enrichment observed in the speleothem record from Spannagel Cave (2500 m, Austria) during the NHCO (Vollweiler et al., 2006) suggests that this period was likely the warmest during the entire Holocene in the sector of the Alps where Alto dell'Ortles is located. This is consistent with the minimum thickness of the Upper Grindelwald Glacier in Switzerland between 9.2 and 6.8 kyrs BP (Luetscher et al., 2011) and with the minimum extent of the Tschierwa glacier in the adjacent Mt. Bernina group (Joerin et al., 2008), which indicates that the equilibrium line altitude (ELA) was 220 ± 20 m higher than the 1985 reference level (2820 m).

Today the estimated ELA on Alto dell'Ortles lies at about 3300 m as inferred from in situ observations and from the ELA obtained from the nearby glacier of Vedretta della Mare (Carturan, 2016). Under the current warm climatic conditions the drilling site (3859 m) is polythermal, characterized by temperate firn and cold basal ice. Similarly to the adjacent Mt. Bernina group, the ELA was almost certainly higher than today on Alto dell'Ortles during the NHCO and thus it is certainly possible that this glacier was entirely under a temperate regime throughout its thickness. This would imply the occurrence of basal melting/sliding and thinning of the glacier and the quick removal of bottom ice during the NHCO. This mechanism might explain the absence of ice older than 6.7 kyrs BP at the drill site. Remarkably, a chironomid based air temperature reconstruction from another nearby site from Schwarzsee ob Sölden (2796 m, Austria), suggests that it was $\sim 2^\circ\text{C}$ warmer than today during the 7.9-4.5 kyr BP period (Ilyashuk et al., 2011). This finding, when combined with recent field evidences, supports the hypothesis of temperate conditions during the NHCO, and indicates the possibility of a complete deglaciation of the drilling site during the warmest phase of the NHCO.

At the end of the NHCO temperatures started to decrease (Vollweiler et al., 2006), probably causing a reversal of the thermal regime of Alto dell'Ortles from temperate to polythermal and thus allowing the accumulation of cold ice on frozen bedrock. As inferred from European paleo-lake levels, a short increase in precipitation at ~ 7 kyrs BP (Magny, 2004)

Paolo Gabrielli 10/17/2016 12:37 PM

Deleted: is

Paolo Gabrielli 10/13/2016 4:07 PM

Deleted:

Paolo Gabrielli 10/10/2016 10:58 AM

Deleted: ;

Jenk Theo Manuel 10/11/2016 12:47 PM

Deleted:

Paolo Gabrielli 10/6/2016 3:55 PM

Deleted: 8

could also have contributed higher accumulation and ice thickening recorded/inferred at ~6.8 kyrs BP for small and climatically sensitive glaciers such as Upper Grindelwald (Luetscher et al., 2011) and Alto dell'Ortles (this work), respectively. Although high precipitation did not persist during the mid-Holocene, progressively more favourable glacial conditions characterized the Eastern Alps at the end of the NHCO. While there was at least a warm spell (4.4 – 4.2 kyrs BP) in this area (Baroni and Orombelli, 1996), glaciers extended in general to lower elevations, including the Tisenjoch (3210 m) where the Tyrolean Iceman was buried in snow and ice since 5.3 kyrs BP. Today, due to the strong atmospheric summer warming, Alto dell'Ortles is transitioning back from a polythermal to a temperate state. Basal sliding conditions that could have occurred only during the NHCO are likely to be soon, or are already, fully restored with important and immediate consequences for the dynamic of the entire glacier.

7 Conclusions

7.1 Paleoclimatological conclusions

- The glacier Alto dell'Ortles contains a ~75 m record that spans ~7 kyrs of climatic and environmental history in the Alps. Dating back to the demise of the Northern Hemisphere Climatic Optimum, Mt. Ortles ice is among the oldest discovered in the European Alps.
- The Mt. Ortles drilling site was continuously glaciated on frozen bedrock since ~7 kyrs BP. Absence of older ice is consistent with removal of basal ice from bedrock during the Northern Hemisphere Climatic Optimum.

7.2 Glaciological conclusions

- The 2011 Fukushima radioactive signal was embedded in the shallow 2011 snow layers of the Mt. Ortles cores. This result further suggests that this event may be a new glaciological time horizon at a hemispheric scale, although only in the short-term, due to the short half-life of the radionuclides likely involved such as ¹³¹I.
- During the last century the Mt. Ortles drilling site experienced significant elevation changes (with a net lowering on the order of ~10 m).
- From 1963 to 2011 the accumulation rate at the drilling site (850 mm/year) is comparable to the rate (~800 mm/year) measured during the last few warm years (2011-2013).
- Dating of the upper core layers (mainly performed by means of ²¹⁰Pb), and bottom layers (performed by means of ¹⁴C), could only be empirically, but not physically, reconciled. While the Mt. Ortles ice core record can be considered continuous at a millennial time scale, a centennial hiatus in the stratigraphy between 58 m (1930 AD) and 68 m (1355 AD) cannot be entirely ruled out.
- Even assuming negligible basal sliding, detection of a significant shift of the deep ice layers relative to basal ice suggests a recent flow acceleration of the upper portion of Alto dell'Ortles that is unprecedented over the past ~7

Paolo Gabrielli 10/6/2016 4:20 PM

Deleted: 2

Jenk Theo Manuel 10/11/2016 12:52 PM

Deleted: 1)

Paolo Gabrielli 10/17/2016 12:43 PM

Formatted: List Paragraph, Bulleted + Level: 1 + Aligned at: 0.25" + Indent at:

Jenk Theo Manuel 10/11/2016 12:52 PM

Deleted: 2)

Jenk Theo Manuel 10/11/2016 12:51 PM

Deleted: ~

Paolo Gabrielli 9/30/2016 3:15 PM

Deleted: -

2) Alto dell'Ortles contains a ~75 m record that spans ~7 kyrs of climatic and environmental history. Dating back to the demise of the Northern Hemisphere Climatic Optimum, Mt. Ortles ice is among the oldest discovered in the European Alps. - 6)

Paolo Gabrielli 10/13/2016 4:08 PM

Deleted: T

Paolo Gabrielli 10/17/2016 12:44 PM

Formatted: List Paragraph, Bulleted + Level: 1 + Aligned at: 0.25" + Indent at:

Paolo Gabrielli 9/30/2016 3:11 PM

Moved down [1]: 2) Alto dell'Ortles contains a spans ~7 kyrs of climatic and environmental history. Dating back to the demise of the Northern Hemisphere Climatic Optimum, Mt. Ortles ice is among the oldest discovered in the European Alps. - 6)

Paolo Gabrielli 10/6/2016 4:21 PM

Deleted: 2) Alto dell'Ortles contains a ~75 m spans ~7 kyrs of climatic and environmental history. Dating back to the demise of the Northern Hemisphere Climatic Optimum, Mt. Ortles ice is among the oldest discovered in the European Alps. - 6)

Paolo Gabrielli 9/30/2016 3:14 PM

Deleted: 6)

Paolo Gabrielli 9/30/2016 3:15 PM

Deleted: -

2) Alto dell'Ortles contains a ~75 m record that spans ~7 kyrs of climatic and environmental history. Dating back to the demise of the Northern Hemisphere Climatic Optimum, Mt. Ortles ice is among the oldest discovered in the European Alps. ... [12]

kyrs. Thus we can expect that the old basal ice will be removed long before any possible deglaciation of Mt. Ortles in the future.

Acknowledgments

This work is a contribution to the Ortles project, a program supported by two NSF awards # 1060115 & #1461422 to The Ohio State University and by the Ripartizione Protezione antincendi e civile of the Autonomous Province of Bolzano in collaboration with the Ripartizione Opere idrauliche e Ripartizione Foreste of the Autonomous Province of Bolzano and the Stelvio National Park. This is Ortles project publication 7 (www.ortles.org) and Byrd Polar and Climate Research Center contribution 1555. The authors are grateful to the alpine guides of the Alpinschule of Solda, the Institute of Mountain Emergency Medicine of EURAC, the helicopter companies Airway, Air Service Center, Star Work Sky and the Hotel Franzenshöhe for the logistical support. We are also grateful for the valuable contribution of Lonnie Thompson in planning/performing the logistic activity and to discuss the ice core data. Finally, we would like to thank Sebastian Luening, Michael Kuhn and an Anonymous Reviewer for valuable comments that allowed to improve this manuscript and Matteo Cocetti for his help in the mathematical development of the model.

The data presented in this work are archived at the National Oceanic and Atmospheric Administration World Data Center-A for Paleoclimatology: <https://www.ncdc.noaa.gov/paleo/study/20367>.

References

- Auer, I., Bohm, R., Jurkovic, A., Lipa, W., Orlik, A., Potzmann, R., Schoner, W., Ungersbock, M., Matulla, C., Briffa, K., Jones, P., Efthymiadas, D., Brunetti, M., Nanni, T., Maugeri, M., Mercalli, L., Mestre, O., Moisselin, J.-M., Begert, M., Muller-Westermeier, G., Kveton, V., Bochnicek, O., Stastny, P., Lapin, M., Szalai, S., Szentimrey, T., Cegnar, T., Dolinar, M., Galjic-Capka, M., Zaninovic, K., Majstorovic, Z., and Nieplová, E.: HISTALP - historical instrumental climatological surface time series of the Greater Alpine Region, *Int. J. Clim.*, 27, 17-46, 2006.
- Barbante, C., Van de Velde, K., Cozzi, G., Capodaglio, G., Cescon, P., Planchon, F., Hong, S., Ferrari, C., and Boutron, C. F.: Post-World War II uranium changes in dated Mont Blanc ice and snow, *Environ. Sci. Technol.*, 35, 4026-4030, 10.1021/es0109186, 2001.
- Barbante, C., Schwikowski, M., Doring, T., Gäggeler, H. W., Shoterred, U., Tobler, L., Van de Velde, K., Ferrari, C., Cozzi, G., Turetta, A., Rosman, K., Bolshov, M. A., Capodaglio, G., Cescon, P., and Boutron, C. F.: Historical record of European emission of heavy metals to the atmosphere since the 1650s from alpine snow/ice cores drilled near Monte Rosa, *Environ. Sci. Technol.*, 38, 4085-4090, 10.1021/es049759r, 2004.
- Baroni, C., and Orombelli, G.: The Alpine "Iceman" and Holocene climatic change, *Quaternary Res.*, 46, 78-83, 1996.
- Bartholomew, I., Nienow, P., Mair, D., Hubbard, A., King, M. A., and Sole, A.: Seasonal evolution of subglacial drainage and acceleration in a Greenland outlet glacier, *Nature Geosci.*, 3, 408-411, 2010.
- Berger, A., and Loutre, M. F.: Insolation values for the climate of the last 10 million years, *Quaternary Sci. Rev.*, 10, 297-317, [http://dx.doi.org/10.1016/0277-3791\(91\)90033-Q](http://dx.doi.org/10.1016/0277-3791(91)90033-Q), 1991.
- Binder, D., Brueckl, E., Roch, K. H., Behm, M., Schoener, W., and Hynek, B.: Determination of total ice volume and ice-thickness distribution of two glaciers in the Hohe Tauern region, Eastern Alps, from GPR data, *Ann. Glaciol.*, 50, 71-79, 2009.

Paolo Gabrielli 9/30/2016 3:11 PM

Moved (insertion) [1]

Paolo Gabrielli 9/30/2016 3:17 PM

Deleted: 2) Alto dell'Ortles contains a ~75 m spans ~7 kyrs of climatic and environmental history. Dating back to the demise of the Northern Hemisphere Climatic Optimum, Mt. Ortles ice is among the oldest discovered in the European ... [13]

Paolo Gabrielli 10/6/2016 4:24 PM

Deleted: xxxx

Paolo Gabrielli 10/17/2016 12:47 PM

Formatted: Font:(Default) +Theme Body, 10 pt

Paolo Gabrielli 10/17/2016 12:47 PM

Formatted: Font:(Default) +Theme Body, 10 pt

Paolo Gabrielli 10/17/2016 12:47 PM

Formatted: Font:(Default) +Theme Body, 10 pt

- Blindow, N., and Thyssen, F.: Ice thickness and inner structure of the Vernagtferner (Oetztal Alps): results of electromagnetic reflection measurements, *Z. Gletscherkd. Glazialgeol.*, 22, 43-60, 1986.
- Bortenschlager, S., Kofler, W., Oegg, K., and Schoch, W.: Erste Ergebnisse der Auswertung der vegetabilischen Reste vom Hauslabjochfund, *Der Mann im Eis*, Innsbruck, 1992, 307-312.
- 5 Breitenbach, S. F. M., Rehfeld, K., Goswami, B., Baldini, J. U. L., Ridley, H. E., Kennett, D. J., Prufer, K. M., Aquino, V. V., Asmerom, Y., Polyak, V. J., Cheng, H., Kurths, J., and Marwan, N.: COConstructing Proxy Records from Age models (COPRA), *Clim. Past*, 8, 1765-1779, 10.5194/cp-8-1765-2012, 2012.
- Bronk Ramsey, C., and Lee, S.: Recent and planned developments of the Program OxCal, *Radiocarbon*, 55, 720-730, 2013.
- 10 Carturan, L., Filippi, R., Seppi, R., Gabrielli, P., Notarnicola, C., Bertoldi, L., Paul, F., Rastner, P., Cazorzi, F., Dinale, R., and Dalla Fontana, G.: Area and volume loss of the glaciers in the Ortles-Cevedale group (Eastern Italian Alps): controls and imbalance of the remaining glaciers, *The Cryosphere*, 7, 1339-1359, 10.5194/tc-7-1339-2013, 2013.
- Carturan, L.: Replacing monitored glaciers undergoing extinction: a new measurement series on La Mare Glacier (Ortles-Cevedale, Italy), *J. Glaciol.*, In press, 10.1017/jog.2016.107, 2016.
- 15 Clemenza, M., Fiorini, E., Previtali, E., and Sala, E.: Measurement of airborne 131I, 134Cs and 137Cs due to the Fukushima reactor incident in Milan (Italy), *J. Environ. Radioactiv.*, 114, 113-118, <http://dx.doi.org/10.1016/j.jenvrad.2011.12.012>, 2012.
- Dunse, T., Schellenberger, T., Hagen, J. O., Käab, A., Schuler, T. V., and Reijmer, C. H.: Glacier-surge mechanisms promoted by a hydro-thermodynamic feedback to summer melt, *The Cryosphere*, 9, 197-215, 10.5194/tc-9-197-2015, 2015.
- 20 Eichler, A., Schwikowski, M., Gaeggeler, H. W., Furrer, V., Synal, H. A., Beer, J., Saurer, M., and Funk, M.: Glaciochemical dating of an ice core from upper Grenzgletscher (4200 m a.s.l.), *J. Glaciol.*, 46, 507-515, 2000.
- Eichler, A., Schwikowski, M., and Gäggeler, H. W.: Meltwater-induced relocation of chemical species in Alpine firn, *Tellus B*, 53B, 192-203, 2001.
- 25 Ezerinskis, Z., Spolaor, A., Kirchgeorg, T., Cozzi, G., Vallelonga, P., Kjaer, H. A., Sapolaite, J., Barbante, C., and Druteikiene, R.: Determination of 129I in Arctic snow by a novel analytical approach using IC-ICP-SFMS, *J. Anal. Atom. Spectrom.*, 29, 1827-1834, 10.1039/c4ja00179f, 2014.
- Festi, D., Kofler, W., Bucher, E., Mair, V., Gabrielli, P., Carturan, L., and Oegg, K.: A novel pollen-based method to detect seasonality in ice cores: a case study from the Ortles Glacier (South Tyrol, Italy), *J. Glaciol.*, 61, 815-824, 2015.
- 30 Gabrieli, J., Cozzi, G., Vallelonga, P., Schwikowski, M., Sigl, M., Eickenberg, J., Wacker, L., Boutron, C., Gäggeler, H., Cescon, P., and Barbante, C.: Contamination of Alpine snow and ice at Colle Gnifetti, Swiss/Italian Alps, from nuclear weapons tests, *Atmos. Environ.*, 45, 587-593, 10.1016/j.atmosenv.2010.10.039, 2011.
- Gabrielli, P., Carturan, L., Gabrieli, J., Dinale, R., Krainer, K., Hausmann, H., Davis, M., Zagorodnov, V. S., Seppi, R., Barbante, C., Dalla Fontana, G., and Thompson, L. G.: Atmospheric warming threatens the untapped glacial archive of Ortles mountain, South Tyrol, *J. Glaciol.*, 56, 843-853, doi:10.4461/GFDQ.2012.35.10, 2010.
- 35 Gabrielli, P., Barbante, C., Carturan, L., Cozzi, G., Dalla Fontana, G., Dinale, R., Draga, G., Gabrieli, J., Kehrwald, N., Mair, V., Mikhalenko, V. N., Piffer, G., Rinaldi, M., Seppi, R., Spolaor, A., Thompson, L. G., and Tonidandel, D.: Discovery of cold ice in a new drilling site in the Eastern European Alps, *Geogr. Fis. Dinam. Quat.*, 35, 101-105, 2012.
- Gäggeler, H., Gunten, H. R. v., Rössler, E., Oeschger, H., and Schotterer, U.: 210Pb-dating of cold Alpine firn/ice cores from Colle Gnifetti, Switzerland, *J. Glaciol.*, 29, 165-177, 1983.
- 40 Galos, S., Klug, C., Prinz, R., Rieg, R., Saller, R., Dinale, R., and Kaser, G.: Recent glacier changes and related contribution potential to river discharge in the Vinschgau / Val Venosta, Italian Alps, *Geogr. Fis. Dinam. Quat.*, 38, 143-154, 10.4461/GFDQ.2015.38.13, 2015.
- Golubev, G. N.: The water regime of the glaciological zones, *Snow and Ice-Symposium—Neiges et glaces* (Proceedings of the Moscow Symposium, August 1971), Moscow, 1975, 111-122, 1975.
- 45 Haeblerli, W., and Alean, J.: Temperature and accumulation of high altitude firn in the Alps, *Ann. Glaciol.*, 6, 161-163, 1985.
- Herren, P.-A., Eichler, A., Machguth, H., Papina, T., Tobler, L., Zapf, A., and Schwikowski, M.: The onset of neoglaciation 6000 years ago in western Mongolia revealed by an ice core from the Tsambagarav mountain range, *Quaternary Sci. Rev.*, 69, 59-68, <http://dx.doi.org/10.1016/j.quascirev.2013.02.025>, 2013.

Paolo Gabrielli 10/17/2016 12:47 PM

Formatted: Font:(Default) +Theme Body, 10 pt

Paolo Gabrielli 10/17/2016 12:47 PM

Formatted: Font:(Default) +Theme Body, 10 pt

Paolo Gabrielli 10/17/2016 12:47 PM

Formatted: Font:(Default) +Theme Body, 10 pt

Paolo Gabrielli 10/17/2016 12:47 PM

Formatted: Font:(Default) +Theme Body, 10 pt

Holzhauser, H.: Fluctuations of the Grosser Aletsch Glacier and the Gorner Glacier during the last 3200 years: New results, in: *Glacier Fluctuations During the Holocene*, edited by: Frenzel, B., Boulton, G. S., Glaser, B., and Huckriede, U., Gustav Fischer Verlag, Stuttgart, Jena, Lubeck, Ulm, 35-58, 1997.

Holzhauser, H., Magny, M., and Zumbühl, H. J.: Glacier and lake-level variations in west-central Europe over the last 3500 years, *The Holocene*, 15, 789-801, 2005.

Hormes, A., Müller, B. U., and Schlüchter, C.: The Alps with little ice: evidence for eight Holocene phases of reduced glacier extent in the Central Swiss Alps *The Holocene*, 11, 255-265, 2001.

Ilyashuk, E. A., Koinig, K. A., Heiri, O., Ilyashuk, B. P., and Psenner, R.: Holocene temperature variations at a high-altitude site in the Eastern Alps: a chironomid record from Schwarzsee ob Sölden, Austria, *Quaternary Sci. Rev.*, 30, 176-191, <http://dx.doi.org/10.1016/j.quascirev.2010.10.008>, 2011.

Ivy-Ochs, S., Kerschner, H., Reuther, A., Preusser, F., Heine, K., Maisch, M., Kubik, P. W., and Schlüchter, C.: Chronology of the last glacial cycle in the European Alps, *J. Quaternary Sci.*, 23, 559-573, [10.1002/jqs.1202](https://doi.org/10.1002/jqs.1202), 2008.

Ivy-Ochs, S., Kerschner, H., Maisch, M., Christl, M., Kubik, P. W., and Schlüchter, C.: Latest Pleistocene and Holocene glacier variations in the European Alps, *Quaternary Sci. Rev.*, 28, 2137-2149, <http://dx.doi.org/10.1016/j.quascirev.2009.03.009>, 2009.

Jenk, T. M., Szidat, S., Schwikowski, M., Gäggeler, H. W., Brütisch, S., Wacker, L., Synal, H. A., and Saurer, M.: Radiocarbon analysis in an Alpine ice core: record of anthropogenic and biogenic contributions to carbonaceous aerosols in the past (1650-1940), *Atmos. Chem. Phys.*, 6, 5381-5390, [10.5194/acp-6-5381-2006](https://doi.org/10.5194/acp-6-5381-2006), 2006.

Jenk, T. M., Szidat, S., Schwikowski, M., Gäggeler, H. W., Wacker, L., Synal, H. A., and Saurer, M.: Microgram level radiocarbon (¹⁴C) determination on carbonaceous particles in ice, *Nucl. Instrum. Meth. B*, 259, 518-525, <http://dx.doi.org/10.1016/j.nimb.2007.01.196>, 2007.

Jenk, T. M., Szidat, S., Bolius, D., Sigl, M., Gäggeler, H. W., Wacker, L., Ruff, M., Barbante, C., Boutron, C. F., and Schwikowski, M.: A novel radiocarbon dating technique applied to an ice core from the Alps indicating late Pleistocene ages *J. Geophys. Res. Atmos.*, 114, [10.1029/2009JD011860](https://doi.org/10.1029/2009JD011860), 2009.

Joerin, U. E., Stocker, T. F., and Schlüchter, C.: Multicentury glacier fluctuations in the Swiss Alps during the Holocene, *The Holocene*, 16, 697-704, 2006.

Joerin, U. E., Nicolussi, K., Fischer, A., Stocker, T. F., and Schlüchter, C.: Holocene optimum events inferred from subglacial sediments at Tschierwa Glacier, Eastern Swiss Alps, *Quat. Sci. Rev.*, 27, 337-350, <http://dx.doi.org/10.1016/j.quascirev.2007.10.016>, 2008.

Konrad, H., Böhleber, P., Wagenbach, D., Vincent, C., and Eisen, O.: Determining the age distribution of Colle Gnifetti, Monte Rosa, Swiss Alps, by combining ice cores, ground-penetrating radar and a simple flow model, *J. Glaciol.*, 59, 177-189, [10.3189/2013JG12J072](https://doi.org/10.3189/2013JG12J072), 2013.

Kovacs, A., Gow, A. J., and Morey, R. M.: The in-situ dielectric constant of polar firn revisited, *Cold Reg. Sci. Technol.*, 23, 245-256, 1995.

Larocque-Tobler, I., Grosjean, M., Heiri, O., Trachsel, M., and Kamenik, C.: Thousand years of climate change reconstructed from chironomid subfossils preserved in varved lake Silvaplana, Engadine, Switzerland, *Quaternary Sci. Rev.*, 29, 1940-1949, <http://dx.doi.org/10.1016/j.quascirev.2010.04.018>, 2010.

Légrand, M., Preunkert, S., Wagenbach, D., Cachier, H., and Puxbaum, H.: A historical record of formate and acetate from a high elevation Alpine glacier: Implications for their natural versus anthropogenic budgets at the European scale, *J. Geophys. Res. Atmos.*, 108, [10.1029/2003JD003594](https://doi.org/10.1029/2003JD003594), 2003.

Lin, W., Chen, L., Yu, W., Ma, H., Zeng, Z., Lin, J., and Zeng, S.: Radioactivity impacts of the Fukushima Nuclear Accident on the atmosphere, *Atmos. Environ.*, 102, 311-322, <http://dx.doi.org/10.1016/j.atmosenv.2014.11.047>, 2015.

Loaiza, P., Chassaign, C., Hubert, P., Nachab, A., Perrot, F., Reyss, J. L., and Warot, G.: Low background germanium planar detector for gamma-ray spectrometry, *Nucl. Instrum. Meth. A*, 634, 64-70, <http://dx.doi.org/10.1016/j.nima.2011.01.017>, 2011.

Luetscher, M., Hoffmann, D. L., Frisia, S., and Spötl, C.: Holocene glacier history from alpine speleothems, Milchbach cave, Switzerland, *Earth Planet. Sci. Lett.*, 302, 95-106, <http://dx.doi.org/10.1016/j.epsl.2010.11.042>, 2011.

Magand, O.: Bilan de masse de surface Antarctique : Techniques de mesure et analyse critiques, Université Joseph Fourier, Grenoble, 2009.

Paolo Gabrielli 10/17/2016 12:47 PM
Formatted: Font:(Default) +Theme Body, 10 pt

Paolo Gabrielli 10/17/2016 12:47 PM
Formatted: Font:(Default) +Theme Body, 10 pt

Paolo Gabrielli 10/17/2016 12:47 PM
Formatted: Font:(Default) +Theme Body, 10 pt

Paolo Gabrielli 10/17/2016 12:47 PM
Formatted: Font:(Default) +Theme Body, 10 pt

Paolo Gabrielli 10/17/2016 12:47 PM
Formatted: Font:(Default) +Theme Body, 10 pt

Paolo Gabrielli 10/17/2016 12:47 PM
Formatted: Font:(Default) +Theme Body, 10 pt

Paolo Gabrielli 10/17/2016 12:47 PM
Formatted: Font:(Default) +Theme Body, 10 pt

Paolo Gabrielli 10/17/2016 12:47 PM
Formatted: Font:(Default) +Theme Body, 10 pt

Paolo Gabrielli 10/17/2016 12:47 PM
Formatted: Font:(Default) +Theme Body, 10 pt

Paolo Gabrielli 10/17/2016 12:47 PM
Formatted: Font:(Default) +Theme Body, 10 pt

Paolo Gabrielli 10/17/2016 12:47 PM
Formatted: Font:(Default) +Theme Body, 10 pt

Paolo Gabrielli 10/17/2016 12:47 PM
Formatted: Font:(Default) +Theme Body, 10 pt

Paolo Gabrielli 10/17/2016 12:47 PM
Formatted: Font:(Default) +Theme Body, 10 pt

Paolo Gabrielli 10/17/2016 12:47 PM
Formatted: Font:(Default) +Theme Body, 10 pt

Paolo Gabrielli 10/17/2016 12:47 PM
Formatted: Font:(Default) +Theme Body, 10 pt

- Maggi, V., Orombelli, G., Stenni, B., Flora, O., Udisti, R., Becagli, S., Traversi, R., Vermigli, S., and Petit, J. R.: 70 years of northern Victoria Land (Antarctica) accumulation rate, *Ann. Glaciol.*, 27, 215-219, 1998.
- Magny, M.: Holocene climate variability as reflected by mid-European lake-level fluctuations and its probable impact on prehistoric human settlements, *Quatern. Int.*, 113, 65-79, [http://dx.doi.org/10.1016/S1040-6182\(03\)00080-6](http://dx.doi.org/10.1016/S1040-6182(03)00080-6), 2004.
- 5 Magny, M., and Haas, J. N.: A major widespread climatic change around 5300 cal. yr BP at the time of the Alpine Iceman, *J. Quaternary Sci.*, 19, 423-430, 2004.
- Masson, O., Baeza, A., Bieringer, J., Brudecki, K., Bucci, S., Cappai, M., Carvalho, F. P., Connan, O., Cosma, C., Dalheimer, A., Didier, D., Depuydt, G., De Geer, L. E., De Vismes, A., Gini, L., Groppi, F., Gudnason, K., Gurriaran, R., Hainz, D., Halldórsson, O., Hammond, D., Hanley, O., Holeý, K., Homoki, Z., Ioannidou, A., Isajenko, K., Jankovic, M., Katzlberger, C., Kettunen, M., Kierepko, R., Kontro, R., Kwakman, P. J. M., Leconte, M., Leon Vintro, L., Leppänen, A. P., Lind, B., Lujanienė, G., Mc Ginnity, P., McMahon, C., Malá, H., Manenti, S., Manolopoulou, M., Mattila, A., Mäuring, A., Mietelski, J. W., Möller, B., Nielsen, S. P., Nikolic, J., Overwater, R. M. W., Pálsson, S. E., Papastefanou, C., Penev, I., Pham, M. K., Povinec, P. P., Ramebäck, H., Reis, M. C., Ringer, W., Rodriguez, A., Rulík, P., Saey, P. R. J., Samsonov, V., Schlosser, C., Sgorbati, G., Silobritiene, B. V., Söderström, C., Sogni, R., Solier, L., Sonck, M., Steinhauser, G., Steinkopff, T., Steinmann, P., Stoulos, S., Sýkora, I., Todorovic, D., Tooloutalaie, N., Tositti, L., Tschiersch, J., Ugron, A., Vagena, E., Vargas, A., Wershofen, H., and Zhukova, O.: Tracking of airborne radionuclides from the damaged Fukushima Dai-Ichi nuclear reactors by European networks, *Environ. Sci. Technol.*, 45, 7670-7677, 10.1021/es2017158, 2011.
- 10 Mietelski, J. W., Kierepko, R., Brudecki, K., Janowski, P., Kleszcz, K., and Tomankiewicz, E.: Long-range transport of gaseous ¹³¹I and other radionuclides from Fukushima accident to Southern Poland, *Atmos. Environ.*, 91, 137-145, <http://dx.doi.org/10.1016/j.atmosenv.2014.03.065>, 2014.
- 20 Moran, M. L., Greenfield, R. J., Arcone, S. A., and Delaney, A. J.: Delineation of a complexly dipping temperate glacier bed using short-pulse radar arrays, *J. Glaciol.*, 46, 274-286, 2000.
- Nicolussi, K., and Patzelt, G.: Discovery of early Holocene wood and peat on the forefield of the Pasterze Glacier, Eastern Alps, Austria, *The Holocene*, 10, 191-199, 2000.
- 25 Oerlemans, J.: *Glaciers and climate change*, A. A. Balkema publishers, Lisse, Netherlands, Exton PA, Tokyo, 148 pp., 2001.
- Oerter, H., Baker, D., Stichler, W., and Rauert, W.: Isotope studies of ice cores from a temperate Alpine glacier (Vernagtferner, Austria) with respect to the meltwater flow, *Ann. Glaciol.*, 7, 90-93, 1985.
- Paterson, W. S. B.: *The physics of glaciers*, 3 ed., edited by: Paperback, Butterworth Heinemann, Oxford, 1999.
- 30 Porter, S. C., and Orombelli, G.: Glacier contraction during the middle Holocene in the western Italian Alps: Evidence and implications, *Geology*, 13, 296-298, 1985.
- Pourchet, M., Magand, O., Frezzotti, M., Ekaykin, A., and Winther, J. G.: Radionuclides deposition over Antarctica, *J. Environ. Radioactiv.*, 68, 137-158, 10.1016/S0265-931X(03)00055-9, 2003.
- 35 Povinec, P. P., Gera, M., Holý, K., Hirose, K., Lujanienė, G., Nakano, M., Plastino, W., Sýkora, I., Bartok, J., and Gažák, M.: Dispersion of Fukushima radionuclides in the global atmosphere and the ocean, *Appl. Radiat. Isotopes*, 81, 383-392, <http://dx.doi.org/10.1016/j.apradiso.2013.03.058>, 2013.
- Preunkert, S., Wagenbach, D., Legrand, M., and Vincent, C.: Col du Dome (Mt Blanc Massif, French Alps) suitability for ice-core studies in relation with past atmospheric chemistry over Europe, *Tellus B*, 52B, 993-1012, 2000.
- 40 Preunkert, S., Legrand, M., and Wagenbach, D.: Sulfate trends in a Col du Dome (French Alps) ice core: A record of anthropogenic sulfate levels in the European midtroposphere over the twentieth century, *J. Geophys. Res. Atmos.*, 106, 31991-32004, 10.1029/2001JD000792, 2001.
- Ramirez, E., Hoffmann, G., Taupin, J. D., Francou, B., Ribstein, P., Caillon, N., Ferron, F. A., Landais, A., Petit, J. R., Pouyaud, B., Schotterer, U., Simoes, J. C., and Stievenard, M.: A new Andean deep ice core from Nevado Illimani (6350 m), Bolivia, *Earth Planet. Sci. Lett.*, 212, 337-350, [http://dx.doi.org/10.1016/S0012-821X\(03\)00240-1](http://dx.doi.org/10.1016/S0012-821X(03)00240-1), 2003.
- 45 Ravazzi, C., Pini, R., Badino, F., De Amicis, M., Londeix, L., and Reimer, P. J.: The latest LGM culmination of the Garda Glacier (Italian Alps) and the onset of glacial termination. Age of glacial collapse and vegetation chronosequence, *Quaternary Sci. Rev.*, 105, 26-47, <http://dx.doi.org/10.1016/j.quascirev.2014.09.014>, 2014.
- Reimer, P. J., Bard, E., Bayliss, A., Beck, J. W., Blackwell, P. G., Bronk Ramsey, C., Buck, C. E., Cheng, H., Edwards, R. L., Friedrich, M., Grootes, P. M., Guilderson, T. P., Hafliðason, H., Hajdas, I., Hatté, C., Heaton, T. J., Hoffmann, D. L., Hogg, A. G., Hughen, K. A., Kaiser, K. F., Kromer, B., Manning, S. W., Niu, M., Reimer, R. W., Richards, D. A., Scott,

Paolo Gabrielli 10/17/2016 12:47 PM
Formatted: Font:(Default) +Theme Body, 10 pt

Paolo Gabrielli 10/17/2016 12:47 PM
Formatted: Font:(Default) +Theme Body, 10 pt

Paolo Gabrielli 10/17/2016 12:47 PM
Formatted: Font:(Default) +Theme Body, 10 pt

Paolo Gabrielli 10/17/2016 12:47 PM
Formatted: Font:(Default) +Theme Body, 10 pt

Paolo Gabrielli 10/17/2016 12:47 PM
Formatted: Font:(Default) +Theme Body, 10 pt

Paolo Gabrielli 10/17/2016 12:47 PM
Formatted: Font:(Default) +Theme Body, 10 pt

Paolo Gabrielli 10/17/2016 12:47 PM
Formatted: Font:(Default) +Theme Body, 10 pt

Paolo Gabrielli 10/17/2016 12:47 PM
Formatted: Font:(Default) +Theme Body, 10 pt

Paolo Gabrielli 10/17/2016 12:47 PM
Formatted: Font:(Default) +Theme Body, 10 pt

Paolo Gabrielli 10/17/2016 12:47 PM
Formatted: Font:(Default) +Theme Body, 10 pt

- E. M., Southon, J. R., Staff, R. A., Turney, C. S. M., and van der Plicht, J.: IntCal13 and Marine13 radiocarbon age calibration curves 0–50,000 years cal BP, *Radiocarbon*, 55, 1869-1887, 2013.
- Schotterer, U., Schwartz, P., and Rajner, V.: From pre-bomb levels to industrial times: A complete tritium record from an alpine ice core and its relevance for environmental studies, International Atomic Energy Agency (IAEA), 1998.
- 5 Schwab, M.: The alpine precipitation climate. Evaluation of a high-resolution analysis scheme using comprehensive rain-gauge data, PhD, Swiss Federal Institute of Technology Zurich, Zurich, 131 pp., 2000.
- Schwikowski, M., Brutsch, S., Gaeggeler, H. W., and Schotterer, U.: A high-resolution air chemistry record from an Alpine ice core: Fiescherhorn glacier, Swiss Alps, *J. Geophys. Res. Atmos.*, 104, 13709-13719, 10.1029/1998JD100112, 1999a.
- 10 Schwikowski, M., Doscher, A., Gäggeler, H. W., and Schotterer, U.: Anthropogenic versus natural sources of atmospheric sulphate from an Alpine ice core, *Tellus B*, 51, 938-951, 1999b.
- Seidler, H., Bernhard, W., Teschler-Nicola, M., Platzner, W., zur Nedden, D., Henn, R., Oberhauser, A., and Sjøvold, T.: Some anthropological aspects of the prehistoric Tyrolean ice man Science, 258, 455-457, 1992.
- Sigl, M., Jenk, T. M., Kellerhals, T., Szidat, S., Gäggeler, H. W., Wacker, L., Synal, H. A., Boutron, C. F., Barbante, C., Gabrieli, J., and Schwikowski, M.: Instruments and methods: towards radiocarbon dating of ice cores, *J. Glaciol.*, 55, 985-996, 2009.
- 15 Stuiver, M., Reimer, P. J., and Braziunas, T. F.: High-precision radiocarbon age calibration for terrestrial and marine samples, *Radiocarbon*, 40, 1127-1151, 1998.
- Suter, S., Laternser, M., Haeblerly, W., Frauenfelder, R., and Hoelzle, M.: Cold firn and ice of high-altitude glaciers in the Alps: measurements and distribution modelling, *J. Glaciol.*, 47, 85-96, 2001.
- 20 Thompson, L. G., Mosley-Thompson, E., Davis, M. E., Lin, P.-N., Henderson, K. A., Cole-Dai, J., Bolzan, J. F., and Liu, K.-B.: Late Glacial Stage and Holocene tropical ice core records from Huascarán, Peru, *Science*, 269, 46-50, 10.1126/science.269.5220.46, 1995.
- Thompson, L. G., Yao, T., Davis, M., Henderson, K. A., Mosley-Thompson, E., Lin, P. N., Beer, J., Synal, H. A., Cole-Dai, J., and Bolzan, J. F.: Tropical climate instability: the last glacial cycle from a Qinghai-Tibetan ice core, *Science*, 276, 1821-1827, 10.1126/science.276.5320.1821, 1997.
- 25 Thompson, L. G., Davis, M. E., Mosley-Thompson, E., Sowers, T., Henderson, K. A., Zagorodnov, V. S., Lin, P. N., Mikhalevko, V. N., Campen, R. K., Bolzan, J. F., Cole-Dai, J., and Francou, B.: A 25,000-Year tropical climate history from Bolivian ice cores, *Science*, 282, 1858-1864, 10.1126/science.282.5395.1858, 1998.
- Thompson, L. G., Yao, T., Mosley-Thompson, E., Davis, M., Henderson, K. A., and Lin, P. N.: A high-resolution millennial record of the South Asian Monsoon from Himalayan ice cores, *Science*, 289, 1916-1919, 10.1126/science.289.5486.1916, 2000.
- 30 Thompson, L. G., Mosley-Thompson, E., Davis, M. E., Henderson, K. A., Brecher, H. H., Zagorodnov, V. S., Mashiotto, T. A., Lin, P. N., Mikhalevko, V. N., Hardy, D. R., and Beer, J.: Kilimanjaro ice core records: Evidence of Holocene climate change in tropical Africa, *Science*, 298, 589-593, 10.1126/science.1073198, 2002.
- 35 Thompson, L. G., Mosley-Thompson, E., Brecher, H. H., Davis, M., Leon, B., Les, D., Lin, P. N., Mashiotto, T. A., and Mountain, K.: Abrupt tropical climate change: Past and present, *Proc. Natl. Acad. Sci. USA*, 103, 10536-10543, 10.1073/pnas.0603900103, 2006.
- Uglietti, C., Zapf, A., Jenk, T. M., Szidat, S., Salazar, G., and Schwikowski, M.: Radiocarbon dating of glacier ice: overview, optimizations, validation and current potential, Submitted to *The Cryosphere*, 2016.
- 40 United-Nations-Scientific-Committee-on-the-Effects-of-Atomic-Radiation: Sources, effects and risks of ionizing radiation, exposures to the public from man-made sources of radiation, Annex C, UNSCEAR 2000 report to the general assembly, United Nations, New York, 2000.
- Van de Velde, K., Barbante, C., Cozzi, G., Moret, I., Bellomi, T., Ferrari, C. P., and Boutron, C. F.: Changes in the occurrence of silver, gold, platinum, palladium and rhodium in Mont Blanc ice and snow since the 18th century, *Atmos. Environ.*, 34, 3117-3127, 2000a.
- 45 Van de Velde, K., Boutron, C. F., Ferrari, C., Moreau, A. L., Delmas, R. F., Barbante, C., Bellomi, T., Capodaglio, G., and Cescon, P.: A two hundred years record of atmospheric cadmium, copper and zinc concentrations in high altitude snow and ice from the French-Italian Alps, *Geophys. Res. Lett.*, 27, 249-252, 10.1029/1999GL010786, 2000b.
- van der Veen, C. J., Mosley-Thompson, E., Jezek, K. C., Whillans, I. M., and Bolzan, J. F.: Accumulation rates in South and Central Greenland, *Polar Geog.*, 25, 79-162, 10.1080/10889370109377709, 2001.
- 50

Paolo Gabrielli 10/17/2016 12:47 PM

Formatted: Font:(Default) American Typewriter, 10 pt

Paolo Gabrielli 10/17/2016 12:47 PM

Formatted: Font:(Default) +Theme Body, 10 pt

- Vimeux, F., de Angelis, M., Ginot, P., Magand, O., Casassa, G., Pouyaud, B., Falourd, S., and Johnsen, S.: A promising location in Patagonia for paleoclimate and paleoenvironmental reconstructions revealed by a shallow firn core from Monte San Valentin (Northern Patagonia Icefield, Chile), *J. Geophys. Res.*, 113, n/a-n/a, 10.1029/2007JD009502, 2008.
- 5 Vollweiler, N., Scholz, D., Mühlinghaus, C., Mangini, A., and Spötl, C.: A precisely dated climate record for the last 9 kyr from three high alpine stalagmites, Spannagel Cave, Austria, *Geophys. Res. Lett.*, 33, 10.1029/2006GL027662, 2006.
- Wagenbach, D., Münnich, K. O., Schotterer, U., and Oeschger, H.: The anthropogenic impact on snow chemistry at Colle Gnifetti, Swiss Alps, *Ann. Glaciol.*, 10, 183-187, 1988.
- Wang, N., Wu, X., Kehrwald, N., Li, Z., Li, Q., Jiang, X., and Pu, J.: Fukushima Nuclear Accident Recorded in Tibetan Plateau Snow Pits, *PLoS ONE*, 10, e0116580, 10.1371/journal.pone.0116580, 2015.
- 10 Zemp, M., Haeberli, W., Hoelzle, M., and Paul, F.: Alpine glaciers to disappear within decades?, *Geophys. Res. Lett.*, 33, 10.1029/2006GL026319, 2006.

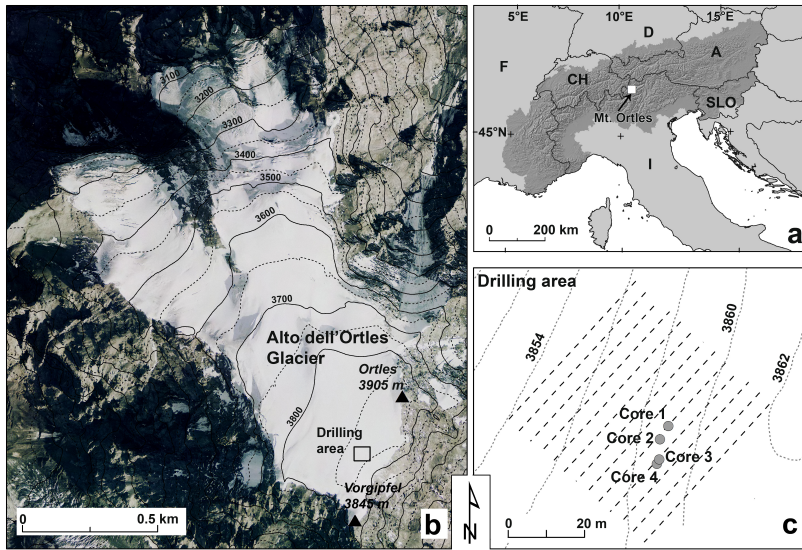


Figure 1: (a) Geographic location of Mt. Ortles. (b) Map of the Alto dell'Ortles glacier (South Tyrol, Italy), including the area (box) where the drilling operation was conducted during September-October 2011. (c) Detailed map of the drilling site, including i) the specific locations where the four cores were extracted and ii) the traces of the ground penetration radar (GPR) survey performed in July 2013.

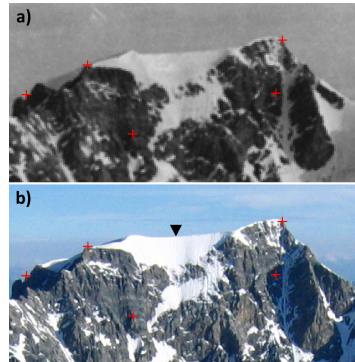


Figure 2: Comparison of terrestrial photographs of Mt. Ortles taken from the summit of Gran Zebrù (3851 m) a) during the years 1900-1930 (<http://www.montagnedifoto.com/>, last access 16 March 2016) and b) on the 4th of July 2010 (photo: Roberto Seppi). The triangle in panel b shows the position of the 2011 drilling site. The four symbols (+) indicate the reference points used for co-registering the two photos (ESRI ArcMap™) before estimating the thickness variation at the drilling site during this period.

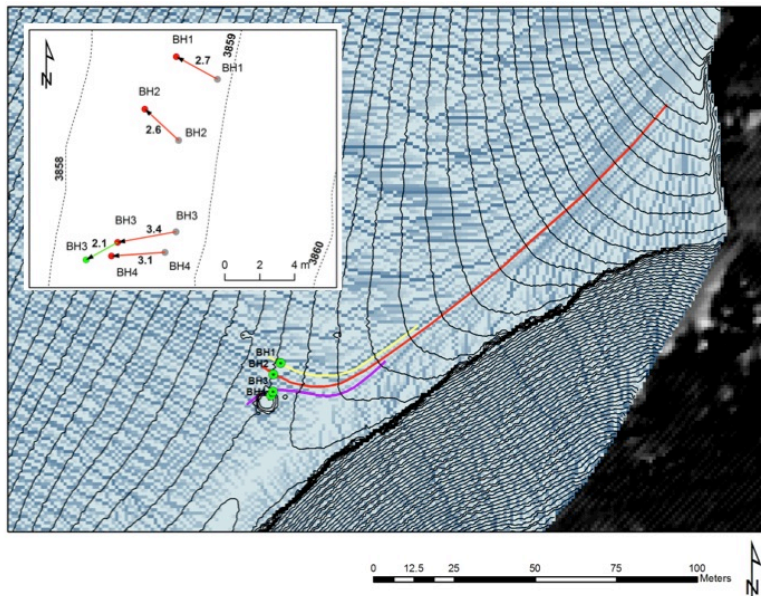


Figure 3: Reconstructed flow lines and borehole displacements over time. The surface topography of the drill site was obtained from a LiDAR survey conducted during the 2011 campaign (note that the contour lines of the drilling dome are visible). Insert: the displacement between the 5th of October 2011 and the 7th of September 2012 is shown in red while the shift between the 7th of September 2012 and the 1st of July 2013 is in green (borehole #3, only). The values indicate the displacement (in meters) measured by GPS during these two periods.

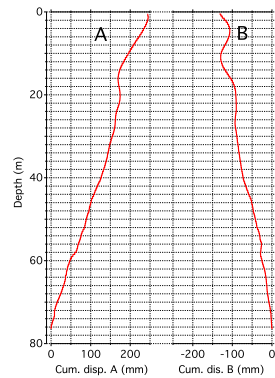


Figure 4: Relative cumulative displacement of borehole #2 along the two axes (A axis, 340° N; B axis, 70° N) during the 43 days after the end of the 2011 drilling operation. The cumulative displacement is relative as it uses as a reference the bottom portion of the inclinometer (not the bedrock).

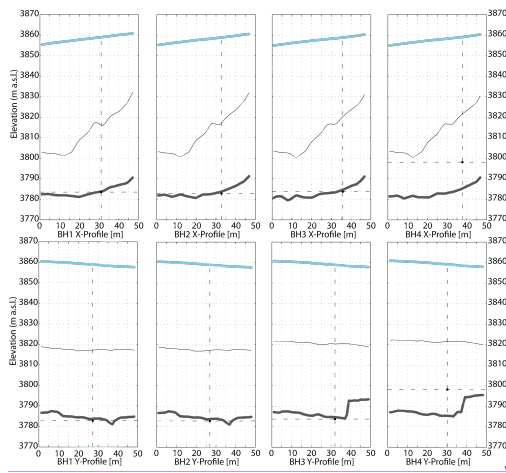


Figure 5: The top images illustrate the GPR X-profiles (constant x-coordinate) and Y-profiles (constant y-coordinate) through the locations of boreholes #1-4 (see also Fig. 6). Two-dimensional slices of the interpolated bedrock surfaces (thick grey line) and a possible englacial layer (thin grey line) are shown. The thick blue line indicates the glacier surface. Black dots show the logged depths for boreholes #1-4.

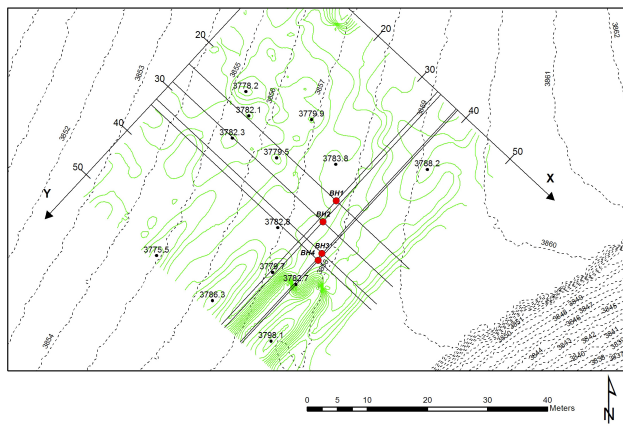


Figure 6: Bedrock contours and surface topography of the 2011 ice core drill site. Data were obtained during the 2013 GPR and lidar surveys, respectively. Bedrock contours are shown in green while the surface topography is displayed in black. The positions where the four cores were extracted in 2011 are shown as filled red circles. Also shown are the GPR X-profiles (constant x-coordinate) and Y-profiles (constant y-coordinate) through the locations of boreholes #1-4 (see also Fig. 5).

Paolo Gabrielli 10/7/2016 3:13 PM

Deleted:

Paolo Gabrielli 10/10/2016 11:36 AM
Deleted: 1

Paolo Gabrielli 10/7/2016 3:14 PM

Deleted:

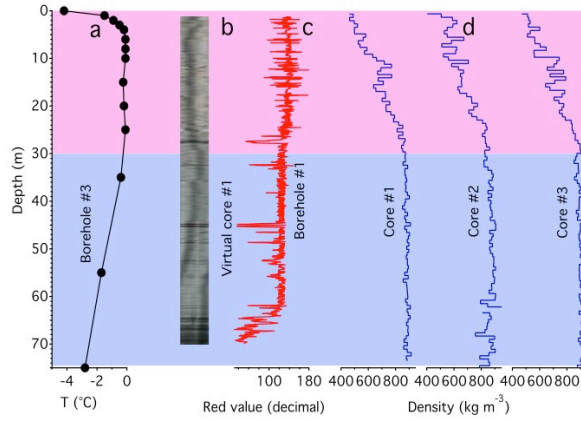


Figure 7: Physical characteristics of the Mt. Ortles cores. The temperate firn portion is enclosed in red shading while the cold ice is in blue. a) Borehole #3 temperatures recorded 43 days after the end of the drilling operations (from Gabrielli et al., 2012) b) Virtual image of core #1 reconstructed from 360° Televiwer visual scanning of borehole #1. c) Red component of the RGB digital signal obtained by means of visual scanning. High values indicate higher light reflection. d) Densities of the Mt. Ortles ice cores #1, #2 and #3.

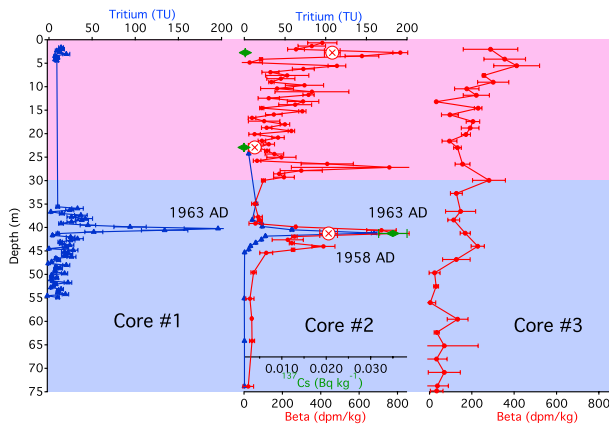


Figure 8: Fission products determined in the Mt. Ortles cores #1, #2 and #3. The temperate firn portion is enclosed in red shading while the cold ice is in blue. Tritium is depicted by blue triangles, beta emissions by red dots (BPCRC) or red crosses (LGGE) and ^{137}Cs by green diamonds. Beta emissions in cores #2 and #3 are determined at different resolutions depending on the available sample mass.

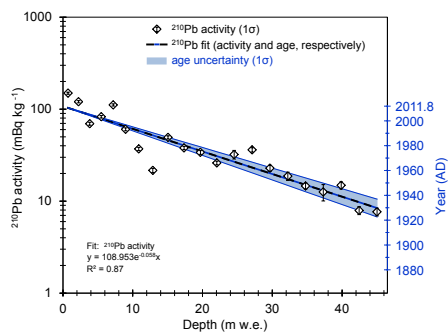


Figure 9: Measured ^{210}Pb activity (left y axis, logarithmic scale) and calculated age (right y axis) vs. depth (in meters of water equivalent) relationship in the Mt. Orles core #2. The fit is also reported for ^{210}Pb activity (logarithmic, black) and age (linear, blue), the latter is shown with its 1 σ confidence interval (in blue).

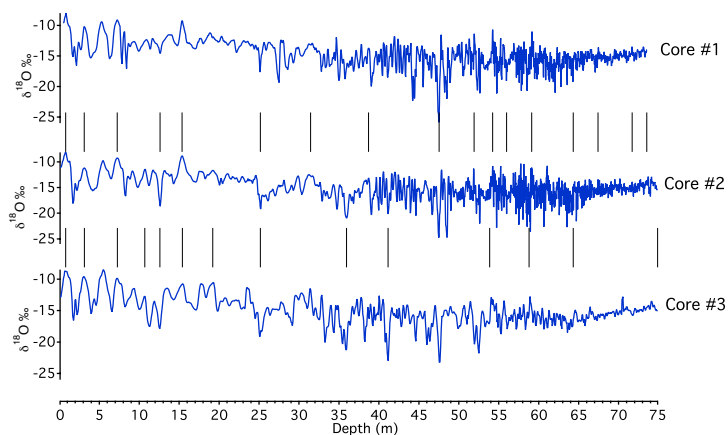
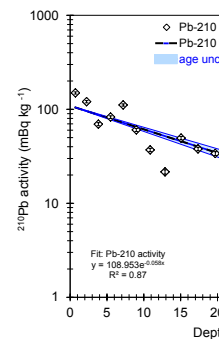


Figure 10: Alignment of the stable isotopic profiles from Mt. Orles cores #1, #2 and #3 by depth. Vertical bars indicate the points used to tie cores #1 and #3 to core #2. The latter is used as the reference.

Unknown

Formatted: Font:9 pt, Bold

Paolo Gabrielli 10/7/2016 3:21 PM

Deleted:

Jenk Theo Manuel 10/11/2016 12:59 PM

Deleted: best linear

Jenk Theo Manuel 10/11/2016 1:00 PM

Deleted: in

Paolo Gabrielli 10/17/2016 2:24 PM

Deleted: ,

Jenk Theo Manuel 10/11/2016 1:00 PM

Deleted: in

Jenk Theo Manuel 10/11/2016 1:01 PM

Deleted: including

Jenk Theo Manuel 10/11/2016 1:01 PM

Deleted: sigma uncertainty

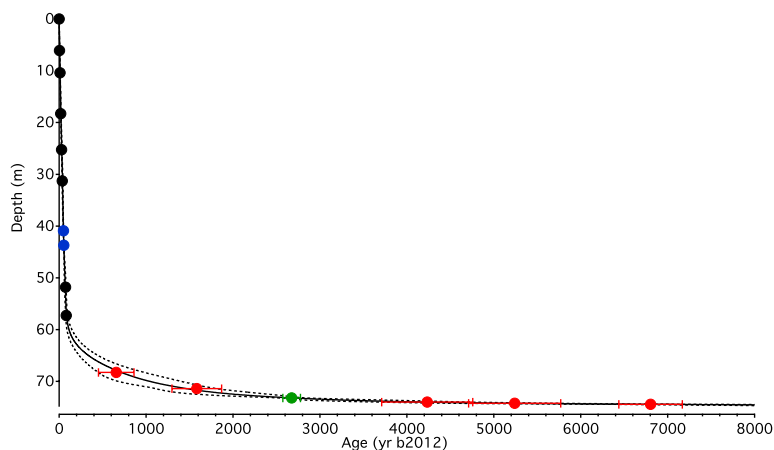


Figure 11: Construction of the Mt. Ortles ice core time scale. Age-depth relationship based on 2000 Monte Carlo realizations (continuous black line; dotted lines indicate the 1 σ confidence interval) fitting the absolute dated age horizons. Dots denote the surface and ^{210}Pb ages (black); the tritium 1963 and beta 1958 peaks (blue); the calibrated ^{14}C WIOC ages (red) and the calibrated ^{14}C age of the larch leaf (green), all shown with their respective 1 σ uncertainty (data are presented in Table 3).

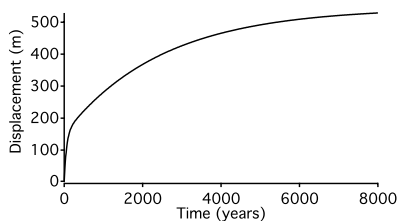
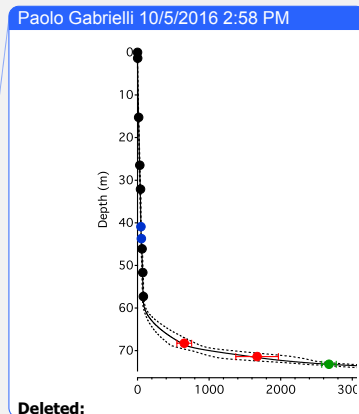


Figure 12: Horizontal displacement of a hypothetical glacier layer sinking from the surface to bedrock according to the vertical dynamic that follows the empirical age-depth relationship developed in this work.



- Deleted: in the Mt. Ortles cores based on [14]
- Deleted: according
- Deleted: sigma
- Deleted: see
- Deleted: also
- Deleted: for data
- Unknown
- Formatted: Font:9 pt, Bold
- Formatted: Centered

Top Depth (m)	Bottom depth (m)	Top depth (m w.e.)	Bottom depth (m w.e.)	Activity in 2011 (mBq/kg)	Uncertainty (mBq/kg)	Age (yr b2012)	Lower age -1σ (yr b2012)	Upper age +1σ (yr b2012)	Age (AD)
0.00	2.75	0.00	1.46	149.4	3.9	1.5	1.4	1.6	2010.5
2.75	5.56	1.46	3.02	120.4	3.4	4.3	3.9	4.6	2007.7
5.56	8.31	3.02	4.66	69.5	2.6	7.2	6.6	7.8	2004.8
8.31	11.09	4.66	6.33	82.7	2.7	10.2	9.3	11.1	2001.8
11.09	13.85	6.33	8.08	111.3	3.1	13.3	12.1	14.5	1998.7
13.85	16.64	8.08	9.89	60.4	2.2	16.6	15.1	18.0	1995.4
16.64	19.44	9.89	11.84	37.0	1.5	20.0	18.2	21.7	1992.0
19.44	22.25	11.84	13.92	21.6	1.2	23.6	21.6	25.7	1988.4
22.25	25.05	13.92	16.20	49.3	2.1	27.6	25.2	30.1	1984.4
25.05	27.88	16.20	18.52	37.8	1.7	31.8	29.0	34.6	1980.2
27.88	30.68	18.52	20.88	33.9	1.6	36.1	32.9	39.3	1975.9
30.68	33.52	20.88	23.24	26.0	1.3	40.4	36.8	43.9	1971.6
33.52	36.34	23.24	25.83	32.2	3.5	44.9	40.9	48.8	1967.1
36.34	39.15	25.83	28.40	36.1	2.0	49.6	45.2	54.0	1962.4
39.15	41.92	28.40	30.94	22.8	1.7	54.2	49.4	59.0	1957.8
41.92	44.74	30.94	33.52	18.7	1.9	58.9	53.6	64.1	1953.1
44.74	47.48	33.52	36.03	14.6	1.1	63.5	57.9	69.1	1948.5
47.48	50.27	36.03	38.59	12.6	2.5	68.1	62.1	74.2	1943.9
50.27	53.07	38.59	41.16	14.9	1.3	72.8	66.3	79.3	1939.2
53.07	55.88	41.16	43.74	7.9	0.8	77.5	70.6	84.4	1934.5
55.88	58.67	43.74	46.29	7.6	0.7	82.1	74.8	89.5	1929.9

Table 1: ²¹⁰Pb dating. Determinations of ²¹⁰Pb activity and calculated ages for the upper part of the Mt. Ortles ice core #2 (0-58.67 m). Note the used notation for ages in yr b2012.

Core #	Tube #	Measure	Top depth (m)	Bottom depth (m)	WIOC (μg)	F ¹⁴ C	¹⁴ C age (BP)	Cal age (cal BP)	μ cal age (cal BP)	μ cal age (yr b2012)	σ (yr)
1	98b	WIOC	68.26	68.49	17.11	0.971 ± 0.024	236 ± 199	(-4 - 461)	279	341	167
1	98b	WIOC	68.49	68.73	17.86	0.911 ± 0.021	749 ± 185	(550 - 902)	732	794	163
1	98b	WIOC	68.73	68.96	15.06	0.900 ± 0.024	846 ± 214	(562 - 974)	824	886	192
	98b WIOC**		68.26	68.96		0.927 ± 0.025	609 ± 217	(331 - 790)	595	657	205
3	102	WIOC	70.87	71.14	7.98	0.784 ± 0.043	1955 ± 451	(1395 - 2431)	2011	2073	517
3	102	WIOC	71.14	71.35	7.15	0.867 ± 0.065	1146 ± 602	(537 - 1720)	1253	1315	620
3	102	WIOC	71.35	71.57	13.28	0.818 ± 0.032	1614 ± 314	(1187 - 1921)	1590	1652	347
	102 WIOC**		70.87	71.57		0.823 ± 0.027	1565 ± 264	(1262 - 1818)	1521	1583	286
1	103b	WIOC	71.8	72.48	10.37	0.932 ± 0.037	569 ± 320	(156 - 903)	517	579	291
1	105b	Larch leaf	73.25	73.25	68*	0.728 ± 0.006	2550 ± 65	(2500 - 2752)	2612	2674	101
3	106	WIOC	73.73	74.02	10.91	0.628 ± 0.031	3737 ± 397	(3593 - 4787)	4173	4235	523
3	106	WIOC	74.02	74.24	11.50	0.568 ± 0.030	4544 ± 424	(4623 - 5715)	5178	5240	530
3	106	WIOC	74.24	74.47	18.47	0.481 ± 0.020	5879 ± 334	(6354 - 7156)	6742	6804	365

*Pure C extracted after combustion
 ** Combined values from the three sub-samples of tubes 98b and 102

Table 2: ¹⁴C analyses of the particle organic fraction (WIOC) obtained from the four sections (tubes) of the Mt. Ortles ice cores #1 and #3. Except for section 103b, the samples were analysed in three sub-samples (top, middle, bottom). ¹⁴C determination in section 105b (core #1) refers to a larch leaf that was found in the ice. **Samples reported in bold are those included also in Table 3.** Note the notation used for calibrated ages in yr b2012.

Paolo Gabrielli 10/5/2016 3:18 PM

Top Depth (m)	Bottom depth (m)	Top depth (m w.e.)
0.00	2.75	0.00
2.75	5.56	1.46
5.56	8.31	3.02
8.31	11.09	4.66
11.09	13.85	6.33
13.85	16.64	8.08
16.64	19.44	9.89
19.44	22.25	11.84
22.25	25.05	13.92
25.05	27.88	16.20
27.88	30.68	18.52
30.68	33.52	20.88
33.52	36.34	23.24
36.34	39.15	25.71
39.15	41.92	28.15
41.92	44.74	30.54
44.74	47.48	33.03
47.48	50.27	35.47
50.27	53.07	37.90
53.07	55.88	40.37
55.88	58.67	42.88

Deleted:

Unknown

Formatted: Font:9 pt, Bold

Unknown

Formatted: Font:9 pt, Bold

Jenk Theo Manuel 10/11/2016 1:15 PM

Formatted: Superscript

Jenk Theo Manuel 10/11/2016 1:15 PM

Deleted: , by means of the best fit linear regression, in

Paolo Gabrielli 10/7/2016 4:18 PM

Deleted: 1, which is defined as the year before sampling (2011)

Jenk Theo Manuel 10/11/2016 1:15 PM

Deleted:)

Paolo Gabrielli 10/17/2016 3:28 PM

Deleted: Page Break

Unknown

Formatted: Font:9 pt, Bold

Jenk Theo Manuel 10/11/2016 10:33 AM

Deleted: .

Paolo Gabrielli 10/7/2016 4:18 PM

Deleted: 1, which is defined as the year before sampling

Time reference	Top depth (m)*	Bottom depth (m)*	Mid depth (m)*	Top depth (m w.e.)*	Bottom depth (m w.e.)*	Mid depth (m w.e.)*	Age (yr b2012)	Age (yr AD, BC)	σ (yrs)
Surface constrain			0.00			0.00	0.3	2011.8	0
^{210}Pb			6.09			2.50	4.8	2007.2	0.4
^{210}Pb			10.39			5.00	9.3	2002.7	0.8
^{210}Pb			18.29			10.00	18.4	1993.6	1.6
^{210}Pb			25.25			15.00	27.5	1984.5	2.4
^{210}Pb			31.28			20.00	36.6	1975.4	3.2
Tritium peak	40.58	41.27		29.71	30.34	30.02	49.0	1963	1
Beta emission peak	43.33	44.04	43.69	32.23	32.88	32.56	54.0	1958	1
^{210}Pb			51.81			40.00	73.0	1939.0	6.5
^{210}Pb			57.26			45.00	82.1	1929.9	7.3
^{14}C in WIOC	67.90	68.61	68.26	54.75	55.40	55.08	657	1355	205
^{14}C in WIOC	71.15	71.60	71.38	57.73	58.15	57.94	1583	429	286
^{14}C in larch leaf			73.19			59.60	2674	-662	101
^{14}C in WIOC	73.84	74.11	73.98	60.20	60.45	60.32	4235	-2223	523
^{14}C in WIOC	74.11	74.31	74.21	60.45	60.63	60.54	5240	-3228	530
^{14}C in WIOC	74.31	74.53	74.42	60.63	60.83	60.73	6804	-4792	365

*All depths referred to the Ortles core #2 depth scale

5

Table 3: Data used in the depth-age modelling.

Time reference	Top depth (m)
Surface constrain	0.00
^{210}Pb	0.00
^{210}Pb	13.85
^{210}Pb	25.05
^{210}Pb	30.68
Tritium peak	40.58
Beta emission peak	43.33
^{210}Pb	44.74
^{210}Pb	50.27
^{210}Pb	55.88
^{14}C in WIOC	67.90
^{14}C in WIOC	71.15
^{14}C in larch leaf	73.19
^{14}C in WIOC	73.84
^{14}C in WIOC	74.11
^{14}C in WIOC	74.31

Deleted: *All depths referred to the Ortles core #.

Unknown

Formatted: Font:9 pt, Bold

Jenk Theo Manuel 10/11/2016 10:37 AM

Time reference	Top depth (m)*	Bottom depth (m)*
Surface constrain		
^{210}Pb		
^{210}Pb		
^{210}Pb		
^{210}Pb		
Tritium peak	40.58	41.27
Beta emission peak	43.33	44.04
^{210}Pb		
^{210}Pb		
^{14}C in WIOC	67.90	68.61
^{14}C in WIOC	71.15	71.60
^{14}C in larch leaf		
^{14}C in WIOC	73.84	74.11
^{14}C in WIOC	74.11	74.31
^{14}C in WIOC	74.31	74.53

Deleted: *All depths referred to the Ortles core #2 depth scale

Unknown

Formatted: Font:9 pt, Bold

Paolo Gabrielli 10/17/2016 3:12 PM

Time reference	Top depth (m)*	Bottom depth (m)*
Surface constrain		
^{210}Pb		
^{210}Pb		
^{210}Pb		
^{210}Pb		
^{210}Pb		
Tritium peak	40.58	41.27
Beta emission peak	43.33	44.04
^{210}Pb		
^{210}Pb		
^{14}C in WIOC	67.90	68.61
^{14}C in WIOC	71.15	71.60
^{14}C in larch leaf		
^{14}C in WIOC	73.84	74.11
^{14}C in WIOC	74.11	74.31
^{14}C in WIOC	74.31	74.53

Deleted: *All depths referred to the Ortles core #2 depth scale

Unknown

Formatted: Font:9 pt, Bold