

1 **Supplemental Material**

2 **Table S1.** Fit parameters for the calibration sonar occurrence distributions.

Depth, m	Q , L/s	σ_1 , db	σ_2 , db	a , db	b	R^2
40-35	0.019	-70	-53	-0.1328	-6.964	0.971
40-35	0.019	-53	-50	-0.5411	-29.01	0.8465
35-30	0.019	-70	-51	-0.151	-8.059	0.9738
35-30	0.019	-51	-50	-0.9285	-48.83	0.7025
30-25	0.019	-70	-50	-0.2119	-12.51	0.9235
40-35	0.028	-70	-57	-0.1358	-7.068	0.9571
40-35	0.028	-57	-50	-0.0354	-1.165	0.36
40-35	0.028	-50	-48	-0.8069	-40.22	0.921
35-30	0.028	70	-50	-0.1151	-5.623	0.978
35-30	0.028	-50	-48	-0.674	-33.85	0.9081
30-25	0.028	-70	-60	-0.2914	-17.88	0.9035
40-35	0.033	-70	-55	-0.128	-6.558	0.954
40-35	0.033	-55	-49	-0.01679	-0.3017	0.1049
40-35	0.033	-49	-47	-0.8539	-41.77	0.9515
35-30	0.033	-70	-48	-0.1151	-5.599	0.9716
35-30	0.033	-48	-46	-0.7112	-34.86	0.768
30-25	0.033	-70	-59	-0.3163	-19.39	0.9329
40-35	0.042	-70	-55	-0.1402	-7.251	0.9634
40-35	0.042	-55	-48	0.001935	0.548	0.001343
40-35	0.042	-48	-46	-1.067	-51.06	0.9517
35-30	0.042	-70	-54	-0.1359	-6.848	0.9507
35-30	0.042	-54	-48	-0.0866	-3.888	0.7971
35-30	0.042	-48	-46	-0.8484	-40.71	0.9565
30-25	0.042	-70	-52	-0.2636	-15.32	0.9799
40-35	0.6	-70	-55	-0.1854	-9.26	0.9535
40-35	0.6	-55	-43	-0.04924	-2.207	0.8892
40-35	0.6	-43	-40	-0.812	-34.75	0.9471
35-30	0.6	-70	-50	-0.1703	-8.186	0.9407

For submission to Cryospheres, Please do not cite

35-30	0.6	-50	-41	0.01915	0.7462	0.1745
35-30	0.6	-41	-39	-1.595	-65.43	0.9313
30-25	0.6	-70	-52	-0.1612	-8.014	0.9867
30-25	0.6	-52	-46	-0.1074	-4.965	0.9399
30-25	0.6	-46	-43	-0.6686	-30.89	0.9109
40-35	0.8	-70	-55	-0.2031	-10.69	0.9754
40-35	0.8	-55	-42	-0.05728	-2.643	0.9443
40-35	0.8	-42	-41	-1.121	-47.8	0.8962
35-30	0.8	-70	-54	-0.1571	-7.398	0.9494
35-30	0.8	-54	-42	-0.04081	-1.87	0.7363
35-30	0.8	-42	-40	-1.046	-43.93	0.9304
30-25	0.8	-70	-50	-0.1732	-8.38	0.9613
30-25	0.8	-50	-42	-0.002552	-0.08721	0.00269
30-25	0.8	-42	-40	-1.156	-48.47	0.9448
40-35	1.1	-70	-53	-0.1881	-9.428	0.954
40-35	1.1	-53	-42	-0.04272	-1.915	0.8601
40-35	1.1	-42	-40	-1.267	-53.37	0.9665
35-30	1.1	-70	-50	-0.1683	-8.042	0.9404
35-30	1.1	-50	-41	0.006602	0.1891	0.09718
35-30	1.1	-41	-39	-1.231	-50.15	0.9191
30-25	1.1	-70	-54	-0.1738	-8.598	0.9821
30-25	1.1	-54	-44	-0.07673	-3.425	0.9659
30-25	1.1	-44	-42	-0.8385	-36.97	0.9269

3 * Q is flow, σ is sonar return, a and b are fit parameters to $Q = a \sigma^b$.

4 **Table S2 – Power law coefficients to echosounder calibration curve**

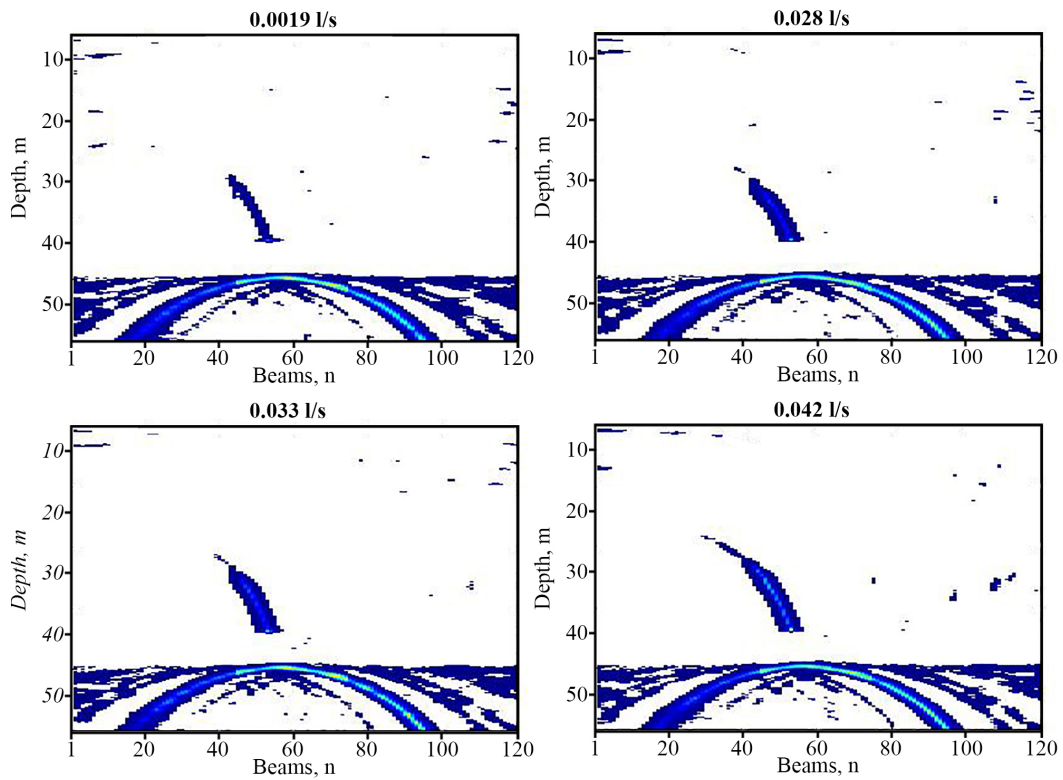
Depth, m	Sonar model	Flow	a	b	c	R^2
25-30	Simrad EK15	<i>Lo</i>	-53.22	-0.2188	45.03	0.9402
25-30	Simrad EK15	<i>Hi</i>	-2.322e-10	-43.82	-24.83	0.9079
25-30	Simrad EK15	<i>Total</i>	-12.32	-0.4396	-11.71	0.9951
27.5-32.5	Simrad EK15	<i>Lo</i>	-3.405	-0.6378	-27.91	0.9698
27.5-32.5	Simrad EK15	<i>Hi</i>	-0.5079	-2.285	-23.16	1
27.5-32.5	Simrad EK15	<i>Total</i>	-8.921	-0.4652	-14.26	0.9975
30-35	Simrad EK15	<i>Lo</i>	-0.07429	-1.467	-42.07	0.9945
30-35	Simrad EK15	<i>Hi</i>	3.026	0.7402	-26.65	1
30-35	Simrad EK15	<i>Total</i>	-4.865	-0.5782	-18.5	0.9985

For submission to Cryospheres, Please do not cite

32.5-37.5	Simrad EK15	<i>Lo</i>	-0.003329	-2.215	-44.61	0.9993
32.5-37.5	Simrad EK15	<i>Hi</i>	1.866	1.314	-26.04	1
32.5-37.5	Simrad EK15	<i>Total</i>	-2.865	-0.6914	-21.23	0.9971
35-40	Simrad EK15	<i>Lo</i>	-0.001277	-2.425	-43.74	1
35-40	Simrad EK15	<i>Hi</i>	-0.6316	-2.211	-23.15	1
35-40	Simrad EK15	<i>Total</i>	-2.811	-0.6764	-21.06	0.9966
25-30	Imagenex Delta-T	<i>Lo</i>	3.906e+15	10,88	-52.94	0.9124
25-30	Imagenex Delta-T	<i>Hi</i>	-1.171e-11	-51.72	-29.09	0.6868
25-30	Imagenex Delta-T	<i>Total</i>	108.4	0.06706	-137.3	0.9708
27.5-32.5	Imagenex Delta-T	<i>Lo</i>	3114	1.703	-52.12	0.9989
27.5-32.5	Imagenex Delta-T	<i>Hi</i>	-2.02e-08	-33.7	-26.01	0.9994
27.5-32.5	Imagenex Delta-T	<i>Total</i>	-2.481	-0.5907	-23.35	0.9914
30-35	Imagenex Delta-T	<i>Lo</i>	-1.876	-0.6577	-20.92	0.9992
30-35	Imagenex Delta-T	<i>Hi</i>	0.01162	46.11	-26.94	0.3469
30-35	Imagenex Delta-T	<i>Total</i>	-0.6475	-0.8726	-25.83	0.9952
32.5-37.5	Imagenex Delta-T	<i>Lo</i>	-3.25e-05	-3.208	-35.13	1
32.5-37.5	Imagenex Delta-T	<i>Hi</i>	0.01064	50.66	-29.38	0.2465
32.5-37.5	Imagenex Delta-T	<i>Total</i>	-0.1123	-1.264	-28.84	0.9732
35-40	Imagenex Delta-T	<i>Lo</i>	-2.804e-05	-3.242	-35.74	1
35-40	Imagenex Delta-T	<i>Hi</i>	0.008287	47.42	-29.37	0.3025
35-40	Imagenex Delta-T	<i>Total</i>	-0.1461	-1.202	-28.96	0.9871

- 5 *Lo* is low flow (from 0.019 to 0.042 L/s), *Hi* is high flow (from 0.6 to 11 L/s), *Total* is total
6 flow (from 0.019 to 1.1 L/s)

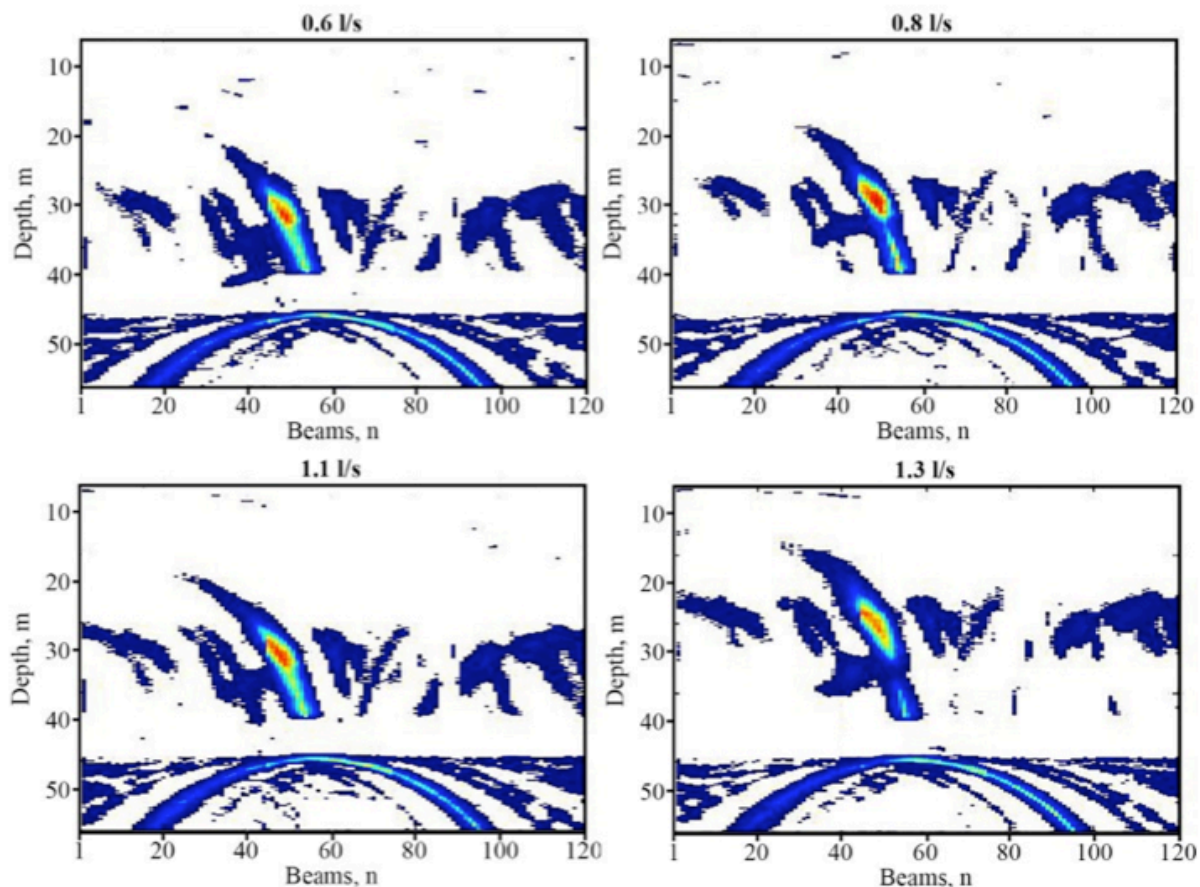
7



8

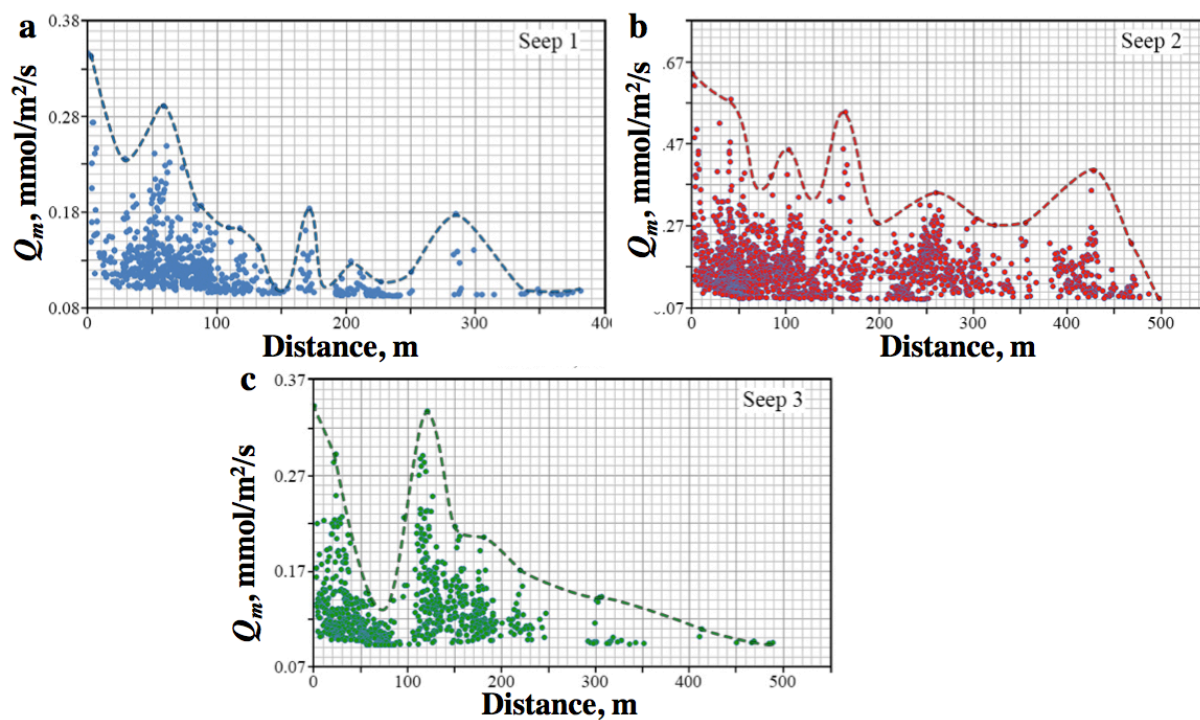
9 **Figure S1.** Example multibeam echosounder sonar data for calibration plume flux rates from
10 0.019 liter per second to 0.042 liter per second. Flux labeled on figure.

For submission to Cryospheres, Please do not cite



11

12 **Figure S2.** Example multibeam echosounder sonar data for calibration plume flux rate from
13 0.6 liter per second to 1.3 liter per second. Flux rate labeled on figure.



14

15 **Figure S3.** Radial distance, plots of mass flux, Q_m , for three seep areas. Radius origin shown
16 in Fig. 13.

17