

Corvallis, 12 August 2016

We want to thank the anonymous referee and Cathy Trudinger for their careful evaluation of our work. We have implemented all their suggestions, which we found to be constructive and useful. The reviewer comments are reproduced here in red, with our responses in black. We also attach a revised manuscript showing how the changes would be implemented.

Best regards, Christo Buizert and Jeff Severinghaus

### **Anonymous Referee #1**

General: The authors present in a very convincing paper the influence of barometric pressure variations on the dispersive mixing of the air contained in the firn layer. Their approach leads to improved firn air models that can now explain some hitherto not understood discrepancies between data and standard models. Using  $^{86}\text{Kr}$  excess as a new proxy of past synoptic activity looks very promising.

#### Specific comments:

p. 4, l. 2: ". and flow driven by synoptic-scale surface pressure variations": I suggest that the authors distinguish here two rather different phenomena. On one hand there are the alternating pressure variations (the main topic of this paper) and on the other hand there are wind driven flows (of Colbeck type driven by Bernoulli effect). The latter flow can be persistent over long time, e.g. in katabatic wind regime and lead to significant advection in the upper firn layer. These air flows are thus of quite different nature compared to the pure 1 dimensional pressure pumping.

We added the following to address the wind pumping at the point indicated by the reviewer:

"The upper few meters of the firn are furthermore subject to wind-driven air flow (e.g. Colbeck, 1989); the dispersion caused by this flow is minimal owing to the low dispersivity of near-surface firn, and overwhelmed by diffusion and convective mixing."

The effect of wind pumping was already addressed at a later point in the MS (p7, l16-19), and we left that section unchanged.

p. 5, l. 10: For completeness one could mention here that isothermal firn is assumed i.e. temperature and viscosity do not depend on depth.  
done

p. 8, l. 10: The velocity of the back flux scales roughly with the ice accumulation rate. I.e. at a high accumulation site it is on the order of  $10^{-8}$  m/s.

We now note the back flux is accumulation-rate dependent, and can be up to  $10^{-8}$  m/s

p. 11, l. 27: In my view the comparison with electrical current is not very instructive. An argument why AC-dispersivity is lower than DC-dispersivity would be more helpful.

The AC/DC terminology is introduced only for ease of use. We added the following argument to explain our reasoning better:

"Conceivably the AC-dispersivity of firn is lower than the DC-dispersivity we derived from Jakob Schwander's data, for example because in an alternating flow a portion of the air will retrace its path back to its original position (reducing the dispersion), which does not occur in direct flow."

p. 12, Fig. 6 caption: "The first control () is a control run -> the first scenario(?) is a control run done

p. 12, Fig. 6 caption and corresponding text: "...includes convective mixing and dispersion". Please specify how convective mixing is included.

We added: "(following Kawamura et al. (2006) with  $H = 2\text{m}$  and  $D_{\text{eddy},0} = 1 \times 10^{-5} \text{m}^2 \text{s}^{-1}$ )"

p. 13, l. 14: "... it is thus conceivable that gravitational isotopic enrichment has stopped, while molecular diffusion is still very much active." This statement could possibly be misleading in the sense that it could suggest to the reader that this is a special case of no gravitational enrichment in a diffusive regime. But if I understand this correctly then the authors state that despite of local intermittent diffusive zones the overall regime is dominated by dispersion.

We meant to imply that this is a mixed regime – a blending of the molecular diffusion-dominated diffusive zone, and the dispersion-dominated lock-in zone. Because the vertically connective pathways are dominated by dispersion, gravitational enrichment would be very weak.

We have replaced the potentially misleading sentence flagged by the reviewer by the following one: "In a layered firn it is thus conceivable that a mixed zone exists between the molecular diffusion-dominated diffusion zone and the dispersion-dominated lock-in zone, in which gravitational enrichment is very weak, yet molecular diffusion is still active."

p. 15, l. 8: As the LD DE08 site is mentioned repeatedly without showing data the reader is somewhat left up in the air or forced to go to the original papers to find out whether DE08 and DSSW20K data are similar or not. So a short notice why DE08 is mentioned and how it compares to DSSW20K would be very helpful.

We now added the DE08 d<sup>15</sup>N data to figure 6, panel (e). This will allow the reader to see the relevance of the DE08 site.

p. 15, l. 24: "Studies aiming to understand the glacial <sup>15</sup>N data-model mismatch in East Antarctica (Landais et al., 2006; Capron et al., 2013) should take this effect into consideration." As above, a short note on that problem and how dispersion could possibly help to solve it would be very helpful for the reader.

We now elaborate on this concept in the following way:

"It has been suggested that glacial firn has more pronounced layering than present-day firn (Bendel et al., 2013). However, climate models participating in PMIP2 (Paleoclimate Modeling Intercomparison Project Phase 2) disagree on the sign and magnitude of the change in cyclonic activity around Antarctica between the pre-industrial and last glacial maximum (Rojas et al., 2009). It is therefore conceivable, but highly uncertain, that dispersive mixing was stronger during glacial times. Several studies have noted a d<sup>15</sup>N model-data mismatch in central Antarctica during glacial climate conditions, with densification models suggesting a thickening of the firn column (relative to present), and d<sup>15</sup>N data suggest a thinning (Landais et al., 2006; Capron et al., 2013). We speculate that enhanced glacial dispersive mixing could contribute to the observed low gravitational enrichment in d<sup>15</sup>N."

p. 16, l. 1: delete one "where"  
done

# Dispersion in deep polar firn driven by synoptic-scale surface pressure variability

Christo Buizert<sup>1</sup> and Jeffrey P. Severinghaus<sup>2</sup>

<sup>1</sup>College of Earth, Ocean and Atmospheric Sciences, Oregon State University, Corvallis, OR 97331, USA

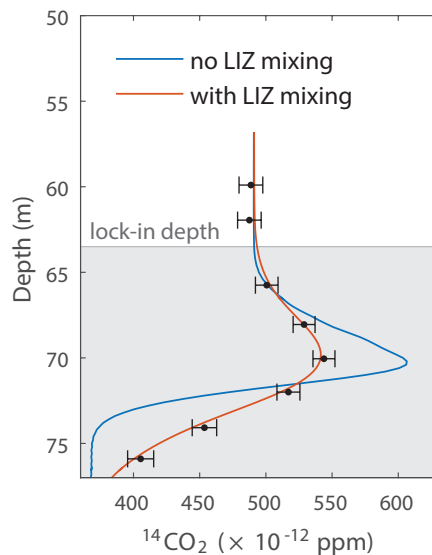
<sup>2</sup>Scripps Institution of Oceanography, University of California San Diego, La Jolla, CA 92093, USA

*Correspondence to:* buizertc@oregonstate.edu

**Abstract.** Commonly, three mechanisms of firn air transport are distinguished: molecular diffusion, advection, and near-surface convective mixing. Here we identify and describe a fourth mechanism, namely dispersion driven by synoptic-scale surface pressure variability (or barometric pumping). We use published gas chromatography experiments on firn samples to derive the along-flow dispersivity of firn, and combine this dispersivity with a dynamical air pressure propagation model forced by surface air pressure time series to estimate the magnitude of dispersive mixing in the firn. We show that dispersion dominates mixing within the firn lock-in zone. Trace gas concentrations measured in firn air samples from various polar sites confirm that dispersive mixing occurs. Including dispersive mixing in a firn air transport model suggests that our theoretical estimates have the correct order of magnitude, yet may overestimate the true dispersion. We further show that strong barometric pumping, such as at the Law Dome site, may reduce the gravitational enrichment of  $\delta^{15}\text{N}-\text{N}_2$  and other tracers below gravitational equilibrium, questioning the traditional definition of the lock-in depth as the depth where  $\delta^{15}\text{N}$  enrichment ceases. Last, we propose that  $^{86}\text{Kr}$  excess may act as a proxy for past synoptic activity (or paleo-storminess) at the site.

## 1 Introduction

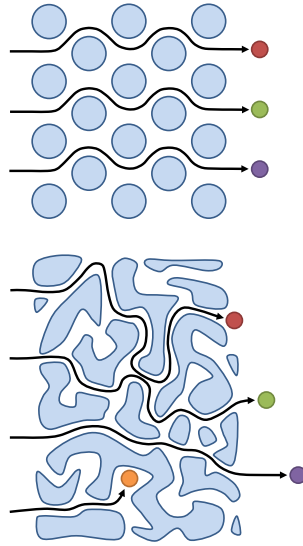
The firn layer is the upper 50–120 m of consolidating snow found in the accumulation zones of ice sheets and glaciers. Within this perennial snow pack a network of connected pores exists that facilitates the movement of air. The firn layer is a mixed blessing. On the one hand it complicates the interpretation of ice core records via the gas age-ice age difference (or  $\Delta\text{age}$ ; Schwander and Stauffer, 1984), water-isotope diffusion (Johnsen, 1977), the broadening of the gas age distribution (Schwander et al., 1993), diffusive isotopic fractionation of trace gases (Trudinger et al., 1997; Buizert et al., 2013) and non-atmospheric gas variations originating from layered bubble trapping (Etheridge et al., 1992; Rhodes et al., 2016). On the other hand, the firn provides a valuable archive of old air (Etheridge et al., 1996; Battle et al., 1996), and the characteristics of firn air movement give rise to additional signals that can be used as proxies for local temperature change (Severinghaus et al., 1998; Leuenberger et al., 1999), surface elevation (Raynaud and Lorius, 1973), or as tools for ice core dating (Bender, 2002; Kawamura et al., 2007). It is therefore clear that a complete scientific understanding of firn air transport is critical to both the correct interpretation of the ice core record, and for utilizing the unique possibilities offered by the firn-derived proxies.



**Figure 1.** The  $^{14}\text{CO}_2$  bomb spike as observed and simulated in firn air at NEEM, Northern Greenland (Buizert et al., 2012). Continued mixing within the lock-in zone (LIZ) is needed to correctly simulate the smoothness of the observations. Both simulations use the firn diffusivity values as presented in Buizert et al. (2012); the eddy-type LIZ diffusion was either turned on (red curve) or off (blue curve). The case without LIZ mixing was not tuned separately to the observations.

Commonly, firn air transport models include three mechanisms of air movement (Trudinger et al., 1997; Rommelaere et al., 1997; Buizert et al., 2012). The first is downward advection with the ice matrix, which operates along the full length of the firn column. In a Eulerian frame of reference, the downward velocity of the air ( $w_{\text{air}}$ ) is smaller than that of the ice itself ( $w_{\text{ice}}$ ) due to a back flux of air from pore compression (Buizert, 2013). The second mechanism is molecular diffusion in the open pores. As the tortuosity of the pore space increases with depth, the effective diffusivity decreases; at the so-called lock-in depth molecular diffusion effectively ceases. Molecular diffusion in the vertical direction leads to gravitational enrichment in  $\delta^{15}\text{N}-\text{N}_2$  and other tracers. The third mechanism is convective mixing, an umbrella term for several phenomena that vigorously ventilate the upper few meters of the firn column (Powers et al., 1985; Colbeck, 1989; Kawamura et al., 2006; Severinghaus et al., 2010). Convective mixing is commonly implemented in models as an eddy-type diffusivity that is equal in magnitude for all gases, and does not enrich gravitationally (Kawamura et al., 2006).

Diffusion effectively ceases at the lock-in depth, and consequently there is no gravitational enrichment within the lock-in zone (Sowers et al., 1992). However, detailed studies at the NEEM site in Northern Greenland and the Megadunes site in Antarctica suggest continued vertical mixing within the lock-in zone (Buizert et al., 2012; Severinghaus et al., 2010). Figure 1 shows the  $^{14}\text{CO}_2$  concentrations in NEEM firn air samples (black dots with error bar), which reflect the atmospheric “bomb spike” in  $\Delta^{14}\text{CO}_2$  caused by atmospheric nuclear weapons testing in the 1940s through 1960s. The two solid curves show model simulations using a firn air transport model either with, or without vertical mixing in the lock-in zone (LIZ). To correctly fit the firn air data, the models used in Buizert et al. (2012) require a LIZ mixing term on the order of  $2 \times 10^{-9} \text{ m}^2 \text{ s}^{-1}$ ;



**Figure 2.** Schematic depiction of dispersion. Fluid movement through a microscopically homogeneous, low-tortuosity porous medium (upper panel) is non-dispersive; fluid movement through a microscopically disordered porous medium (lower panel) disperses tracer molecules. Macroscopic fluid flow is from left to right.

at the time that study was published the nature of this mixing remained unclear, and a good fit to the data can be obtained regardless of whether this diffusivity is implemented as molecular-type, eddy-type, or a combination thereof. However, the remnant LIZ mixing is unlikely to be caused by molecular diffusion because of (1) the absence of LIZ gravitational enrichment, and (2) insights from percolation theory that suggest that in a porous medium the gas diffusivity vanishes abruptly at the percolation threshold (i.e. the lock-in depth) as the pore connectivity decreases (Ghanbarian and Hunt, 2014). Here we show that the LIZ mixing can readily be explained by dispersion occurring in the deep firn that is driven by air movement induced through synoptic-scale surface pressure variations.

Steady viscous fluid flow through a disordered porous medium leads to dispersion (Scheidegger, 1954, 1961; Sahimi et al., 1983). On the microscopic level, this process can be understood as a consequence of the different flow paths available to tracer molecules. Figure 2 schematically compares fluid flow through a microscopically ordered (upper) and disordered (lower) porous medium. In the upper panel all pathways are equivalent, and tracer molecules transiting the porous medium each have the same transit time and are not dispersed in passage. In the lower panel the tracer molecules traveling through different sections of the pore space have different transit times, and they are spatially dispersed as they transit the medium. The different pathways not only have unequal lengths. According to the Hagen-Poiseuille equation, the hydraulic conductance of a capillary (for laminar flow) scales as  $\propto r^4$ , with  $r$  the pore radius. Given that a range of pore radii exist in natural firn, the  $r^4$  power law will concentrate flow in the widest pathways, further broadening the distribution of tracer transit times.

On the macroscopic level, dispersion can be described as a diffusive process with a diffusivity  $D_{\text{disp}}$  with units of  $\text{m}^2 \text{s}^{-1}$  (Sahimi et al., 1983). Dispersion is much stronger in the longitudinal (along-flow) direction than in the transverse direction. This distinction is important in many applications (for example a point-source contamination in an aquifer subject to groundwater flow), but in firm air applications the source (the atmosphere) is laterally uniform, and only the longitudinal dispersion matters.

5 Fluid flow at a macroscopic mean velocity  $v$  results in dispersion of a magnitude

$$D_{\text{disp}} = \alpha_L \times v \tag{1}$$

where  $\alpha_L$  is the so-called longitudinal dispersivity, which is a property of the medium with units of m. In the case of firm air dispersion it is important to point out that  $D_{\text{disp}}$  does not lead to gravitational enrichment, as it originates in macroscopic air movement that does not discriminate between  $\text{N}_2$  isotopologues. There are two sources of macroscopic air movement in  
 10 deep firm: the aforementioned back flux due to pore compaction, and flow driven by synoptic-scale surface pressure variations. Here we will show that the latter is several orders of magnitude larger, and hence dominates the dispersive mixing. The upper few meters of the firm are furthermore subject to wind-driven air flow (e.g. Colbeck, 1989); the dispersion caused by this flow is minimal owing to the low dispersivity of near-surface firm, and overwhelmed by diffusion and convective mixing.

15 In this work we shall use published gas chromatography experiments by Schwander et al. (1988), which can be used to derive both the diffusivity and the dispersivity of firm samples. Schwander et al. (1988) correctly inferred that molecular diffusion is by far the dominant process in mixing firm air, and that study therefore focused on the first-order process of diffusive transport. We want to emphasize that Jakob Schwander fully realized the potential of these measurements to estimate dispersive gas mixing in firm also, as he wrote: “*This dependence of D on the gas-flow velocity can be used to estimate how air flow in the*  
 20 *firm caused by atmospheric pressure variations contributes to the gas mixing rate*” (Schwander et al., 1988). Since 1988 there has been enormous progress in observing and modeling firm air movement, and presently it is pertinent to also investigate the second-order effect of firm dispersion. Still, the present work should be considered a footnote to the seminal achievement of Schwander et al. (1988), and the many deep and early insights in firm movement in contains. The reader is strongly encouraged to (re-)read the original work.

## 25 2 Air pressure dynamics in the firm column

### 2.1 Mathematical description

Here we present a mathematical description of air pressure dynamics in polar firm, aimed towards understanding firm air movement in deep firm in response to surface pressure variations.

In hydrostatic equilibrium the firm air pressure  $p(z)$  increases with depth  $z$  following the barometric equation:

$$30 \quad p(z) = p_0 \exp\left(-\frac{Mg}{RT} z\right) \tag{2}$$

with  $p_0$  the surface pressure,  $M$  the molar mass of air,  $g$  the gravitational acceleration,  $R$  the gas constant and  $T$  the absolute temperature. Deviations from this hydrostatic balance result in viscous air flow, with a velocity given by Darcy's law:

$$v = -\frac{k}{\mu} \left( \frac{dp}{dz} - \frac{Mg}{RT} p \right) \quad (3)$$

with  $k$  the permeability of the firm and  $\mu$  the (temperature- and pressure-dependent) dynamic viscosity of air.

5 The continuity equation for macroscopic air movement within the firm is:

$$\frac{d}{dt} (s_{\text{op}} \rho) = -\frac{d}{dz} (s_{\text{op}} \rho v) \quad (4)$$

with  $\rho$  the fluid density and  $s_{\text{op}}$  the firm open porosity. Assuming static, isothermal firm properties (i.e.  $ds_{\text{op}}/dt = 0$  and  $dT/dz = 0$ ), and using the ideal gas law then gives:

$$\frac{dp}{dt} = -\frac{1}{s_{\text{op}}} \frac{d}{dz} (s_{\text{op}} p v) \quad (5)$$

10 Substituting Darcy's law into the continuity equation yields:

$$\frac{dp}{dt} = \frac{1}{\mu s_{\text{op}}} \left[ k^* p \frac{d^2 p}{dz^2} + \left( k^* \frac{dp}{dz} + \frac{dk^*}{dz} p - 2k^* \frac{Mg}{RT} p \right) \frac{dp}{dz} - \frac{dk^*}{dz} \frac{Mg}{RT} p^2 \right] \quad (6)$$

where  $k^* = k \cdot s_{\text{op}}$ .

Equation (6) is a non-linear differential equation that is difficult to solve numerically due to the various terms that scale as  $\mathcal{O}(p^2)$ ; a complication that arises from the compressibility of air, which makes the fluid density  $\rho$  a function of pressure.

15 Equation (6) can be simplified substantially by making the following approximation. In the continuity equation Eq. (5) the time-varying pressure  $p(t)$  is substituted by the mean annual pressure  $\bar{p}$  to get:

$$\frac{dp}{dt} = -\frac{1}{s_{\text{op}}} \frac{d}{dz} (s_{\text{op}} \bar{p} v) \quad (7)$$

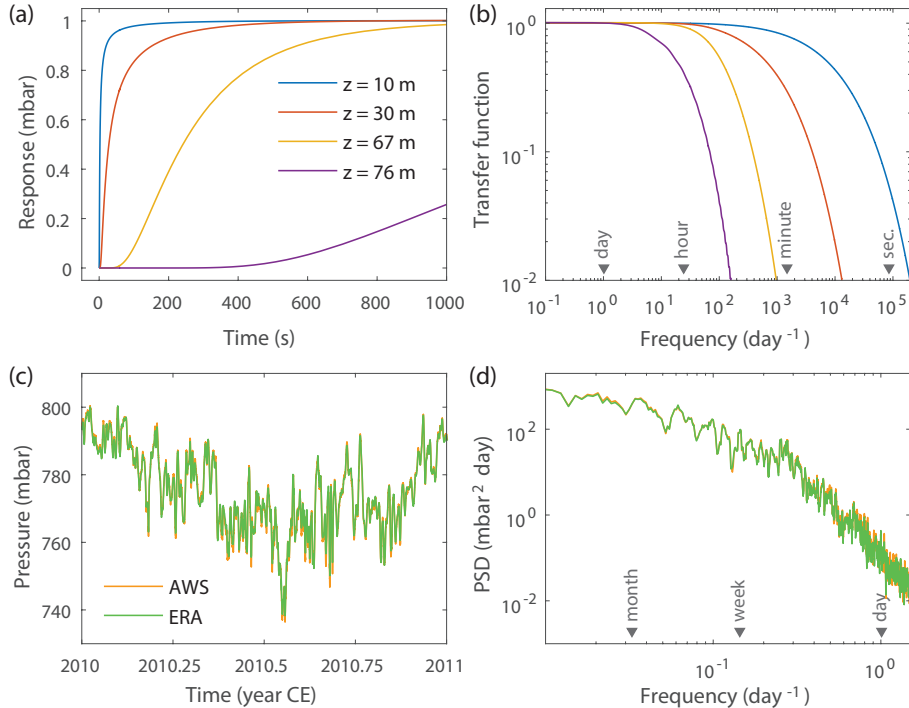
which in turn simplifies Eq. (6) to:

$$\frac{dp}{dt} = \frac{\bar{p}}{\mu s_{\text{op}}} \left[ k^* \frac{d^2 p}{dz^2} + \left( \frac{dk^*}{dz} - k^* \frac{Mg}{RT} \right) \frac{dp}{dz} - \frac{dk^*}{dz} \frac{Mg}{RT} p \right] \quad (8)$$

20 Equation 8 is a linear second-order partial differential equation that can be solved easily using finite difference methods.

The approximation in Eq. (7) makes the fluid density independent of the pressure; this changes the firm air mass flux from  $J = \rho v = pMv/RT$  to  $\bar{J} = \bar{\rho} v = \bar{p}Mv/RT$ . By doing so an error is introduced, because  $p(t)$  can differ from  $\bar{p}$ . This error, however, is rather small given that the atmospheric pressure  $p$  never deviates by more than 5% from the mean annual pressure  $\bar{p}$ . Note that this 5% error is much smaller than other errors such as the uncertainty in the firm permeability  $k$ . Moreover, in the

25 next section it is shown that the pressure response time of the firm is orders of magnitude faster than the synoptic-scale pressure variations that drive barometric pumping in the deep firm, rendering a 5% error irrelevant. We also neglect the small viscosity changes due to temperature and pressure.



**Figure 3.** Propagation of pressure variations into the firm at WAIS Divide. **(a)** Pressure response at indicated depths to a unit-step surface pressure increase of 1 mbar at time  $t = 0$ . **(b)** Low-pass filter characteristics of the firm column to surface pressure variability. **(c)** Surface pressure history of year 2010 at the WAIS Divide site from AWS measurements (orange) and from the ERA-Interim reanalysis (green). **(d)** Power Spectral Density (PSD) of the time series shown in panel (c).

## 2.2 Propagating pressure anomalies into the firm

In the numerical solutions presented here, Eq. (8) is solved using a Crank-Nicolson finite difference method, which employs implicit time stepping. At the surface boundary the pressure is set to equal the atmospheric pressure forcing; at the lower boundary the pressure gradient is set to zero. The  $s_{\text{op}}$  parameterization of Mitchell et al. (2015) is used, and the  $k$  parameterization of Adolph and Albert (2014).

In a first experiment we force the model with an atmospheric pressure  $p(t) = \bar{p} + u(t)$ , where  $u(t)$  denotes a 1 mbar-magnitude unit step (or Heaviside) function at time  $t = 0$ . Firm properties of the WAIS Divide site in West Antarctica are used. Equation (8) is solved at 0.1 m depth resolution, and at time increment  $\Delta t = 1 \times 10^{-10} \text{ yr} = 3.2 \times 10^{-3} \text{ s}$ . The propagation of the pressure anomaly into the firm is shown in Fig. 3a at four depth levels; the depths  $z = 67$  m and  $z = 76$  m are selected because they are the lock-in depth and deepest firm air sampling depth, respectively. Note that the pressure variations at depth are amplified relative to the surface forcing due to the hydrostatic effect (Eq. 2). Let  $t_{1/2}(z)$  be the time required at depth  $z$  for the pressure increase to reach half the final amplitude. The depth profile of  $t_{1/2}(z)$  is shown in Fig. 4a (note the logarithmic scale). It is clear that pressure fluctuations propagate relatively fast through the firm column; at  $z = 20$  m depth the response



time  $t_{1/2} = 20$ s, and at the lock-in depth  $t_{1/2} = 230$ s. This fast response need not be a surprise, given that in free air pressure variations propagate at the speed of sound; in firn the propagation speed is limited by the finite permeability of the medium. The largest increase in  $t_{1/2}(z)$  is seen within the lock-in zone, where firn permeability becomes vanishingly small as  $s_{op}$  approaches zero.

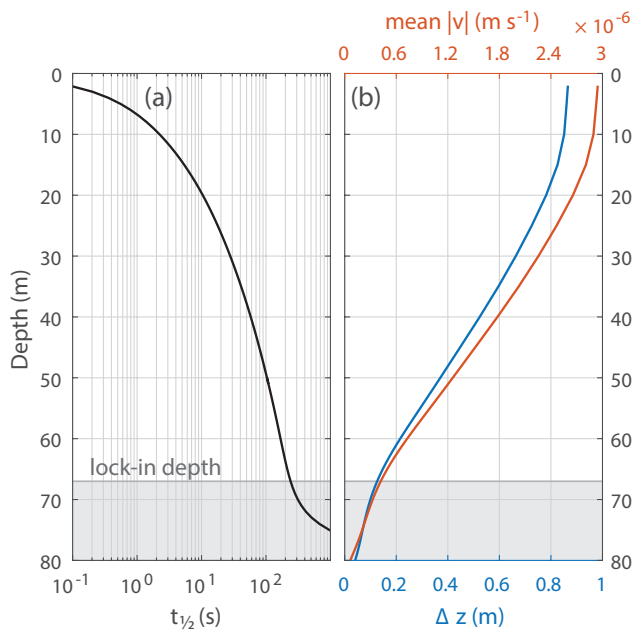
5 The response curves of Fig. 3a can be used via Fourier-transform to derive the low-pass filter characteristics of the firn to pressure variations; this is shown in Fig. 3b. For a surface pressure oscillation at any given frequency, the transfer function shows by how much the amplitude of that signal is attenuated in the firn (so a transfer function value of 1 means that the pressure oscillation is transmitted at full amplitude). The model shows that a surface pressure oscillation with a period of 1 hour or longer will have a nearly unattenuated response at the LID (yellow curve); pressure variations with a period of 1 minute  
10 or shorter (such as wind pumping events driven by wind gusts over surface topography) are completely dampened before they reach the LID. These conclusions depend on the assumption that the permeability measured on cm-scale samples is also valid on the macroscopic scale of the entire firn column. The ultimate test of these model results would be an in situ pressure gauge buried in the deep firn near the firn-ice transition, but to our knowledge such measurements have only been performed in the upper few meters of snow packs (e.g. Drake et al., 2016).

15 The firn transfer function of Fig. 3b can be compared to the spectral density of pressure variability at the site. Figure 3c shows hourly pressure data from an automated weather station (AWS) located at the WAIS Divide site (Lazzara et al., 2012), as well as 6-hourly data from the ERA-Interim reanalysis (Dee et al., 2011); Fig. 3d shows the power spectral densities of both time series. From analyzing the firn transfer functions, it is clear that most of the synoptic-scale pressure variability observed in these records will be expressed at full magnitude all the way down to the firn-ice transition.

### 20 2.3 Barometric pumping

The pressure variations described above are associated with net macroscopic air movement in the firn column, a phenomena known as barometric or atmospheric pumping (Nilson et al., 1991). Whenever surface pressure increases, firn air will move downwards as the underlying air parcels are being compressed (the same number of molecules occupy a smaller volume at higher  $p$ ), resulting in atmospheric air entering the upper firn column. And vice versa, when surface pressure decreases, the  
25 firn air moves upwards in the column with the upper air parcels being expelled into the free atmosphere. One can think of the entire firn column as “breathing” in and out in response to high- and low- pressure systems, respectively.

The  $2\sigma$  barometrically-driven vertical displacement of air parcels ( $\Delta z$ ) at WAIS Divide is plotted in blue in Fig. 4b. Near the surface, barometric pumping displaces air vertically on the order of 1 m, which presumably contributes to the establishment of a well-mixed zone (or “convective zone”). Note that the curve shows the  $2\sigma$  vertical displacement; the peak-to-peak displacement  
30 is much larger and on the order of 3.5m near the surface. Figure 4b furthermore shows the mean (absolute) velocity  $|v|$  in red. Both curves of course closely resemble each other, given that the vertical velocity is the first derivative of the air displacement. We plotted the actual air velocities in the pores themselves, i.e. the air velocity averaged over the pore cross-section. To obtain the velocity per unit of bulk sample cross-section, one has to multiply the values by  $s_{op}$



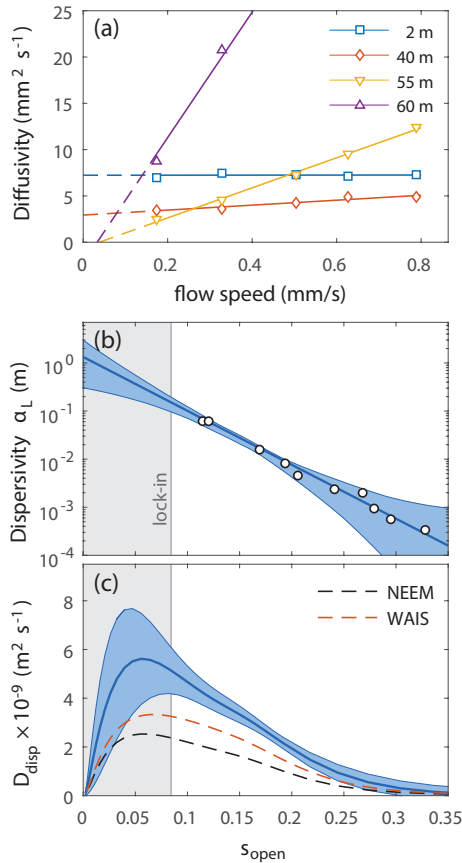
**Figure 4.** Firm air pressure response at the WAIS Divide site. **(a)** Response time  $t_{1/2}(z)$  to a unit-step surface forcing. **(b)** The  $2\sigma$  air displacement  $\Delta z$  as a function of depth (blue), and the mean absolute air velocity due to barometric pumping (red), both forced by the 2010 surface pressure time series (Fig. 3c).

Another source of macroscopic air movement in deep firn is the gradual closure of the pore space by the densification process, which leads to an upward air flow relative to the firn matrix (Rommelaere et al., 1997). The velocity of this (accumulation-rate dependent) back flux is on the order of  $10^{-9}$  to  $10^{-8}$   $\text{m s}^{-1}$ , and clearly negligible in magnitude compared to the barometrically-driven flow.

## 5 3 Dispersive mixing

### 3.1 Experimental dispersivity of polar firn samples

Here we revisit the published firn diffusion experiments by Schwander et al. (1988) to estimate the dispersivity of polar firn. In these experiments, cylindrical firn samples (30 mm diameter, 50 mm length) from Siple station, Antarctica, were placed in a  $-20^\circ\text{C}$  chamber inside a Gas Chromatograph (GC) and flushed through with a pure  $\text{N}_2$  carrier gas at a controlled superficial flow velocity ranging from 0.175 to 0.789  $\text{mm s}^{-1}$ . A small amount of  $\text{CO}_2$  or  $\text{O}_2$  is injected into the  $\text{N}_2$  carrier-gas stream before the firn sample, and the eluting peak is measured using a thermal conductivity detector. The effective firn diffusivity (as a function of flow speed) is reconstructed from the peak-width in the chromatogram using standard GC theory. More procedural details are given in the original publication (Schwander et al., 1988).



**Figure 5.** Firm dispersivity. **(a)** Effective diffusivity of CO<sub>2</sub> as a function of flow speed as measured by Schwander et al. (1988) on firn samples from Siple Station. **(b)** Experimental firm longitudinal (i.e. along-flow) dispersivity  $\alpha_L$  as a function of sample open porosity (white dots) with best fit (solid blue line); the shaded area indicates the estimated 95% confidence interval of the fit. **(c)** Dispersive mixing at NEEM, using the dispersivity envelope (95% confidence) from panel (b) multiplied by the mean absolute firm air velocity induced by barometric pumping at that site. The dashed black (red) line indicates the optimal level of dispersive mixing needed in the firn air transport model to fit the NEEM (WAIS Divide) firn air observations (Buizert et al., 2012; Battle et al., 2011).

The results at four representative sampling depths are shown in Fig. 5a, in each case at five different flow speeds. The solid lines give the linear least-squares fit to the diffusivity data (second order terms are small, and neglected here). The (extrapolated) intercept with the y-axis (zero flow speed) gives the molecular diffusivity of the sample. The data show that firn diffusivity decreases with depth as the tortuosity of the pore space increases; this result has since been confirmed many times both via direct measurements (Fabre et al., 2000; Adolph and Albert, 2014) and via inverse methods (Rommelaere et al., 1997; Trudinger et al., 1997; Witrant et al., 2012).

The slope of the fit represents  $\alpha_L$ , as per Eq. 1, with the longitudinal (or along-flow) orientation being vertical in natural firn setting. Near the surface ( $z = 2$  m) the reconstructed diffusivity is independent of the flow speed, suggesting  $\alpha_L = 0$  m. This is

due to the homogeneous and open pore geometry of shallow firn, in which the traveled path length and flow speed is identical for all pore clusters that contribute to the flow, and hence tracer molecules traveling through various parts of the pore space do not get dispersed. For deeper firn samples we see an increase in the slope of the fit, and therefore an increase in  $\alpha_L$ . This increased dispersivity is caused by heterogeneity of the pore geometry, by which the different pore clusters have increasingly

5 disparate path lengths, flow speeds and cul-de-sacs, that serve to disperse tracer molecules traveling through various parts of the pore space.

The firn dispersivity data are plotted in Fig. 5b as a function of  $s_{op}$  (white dots), where we used the average value of the CO<sub>2</sub> and O<sub>2</sub> experiments in Schwander et al. (1988). The data suggest an exponential dependence on  $s_{op}$  of the form:

$$\alpha_L(s_{op}) = a \cdot \exp(b \cdot s_{op}) \quad (9)$$

10 Propagating the 95% confidence intervals on the  $\alpha_L$  values estimated in the slope fitting, the following values for the fitting parameters are suggested:  $a = 1.26 \pm 0.40$  m and  $b = -25.7 \pm 2.2$ . Unfortunately there are no experimental data within the lock-in zone, which makes the exponential extrapolation of Eq. (9) uncertain. Using a Monte Carlo scheme, we construct an uncertainty envelope by fitting functions of the form  $a \cdot \exp(b \cdot s_{op} + c \cdot s_{op}^2)$ , while forcing the curve to intercept the y-axis at an  $\alpha_L(s_{op} = 0)$  value randomly selected from the interval 0.3 to 3 m, and randomly perturbing the  $\alpha_L$  data within their 95%

15 confidence intervals; this envelope is indicated as the blue shading in Fig. 5b.

### 3.2 Dispersive mixing driven by barometric pumping

Multiplying the experimental  $\alpha_L$  values with the estimated mean absolute velocity profile allows for a theoretical estimate of dispersive mixing in the firn column, as is shown in Fig. 5c for NEEM as the blue curve with uncertainty envelope. Note that the pore velocities of (Fig. 4b) are first multiplied by  $s_{op}$  to convert them to superficial velocities (average velocity in an open

20 tube with the same diameter as the sample) as used by (Schwander et al., 1988). The NEEM site is used here because it was the venue for an intensive study of firn air processes by 8 different research groups and had a very clear signal of continued mixing within the lock-in zone (Fig. 1). Six different firn air transport models were applied to two separate boreholes at the NEEM site, which together suggest a lock-in zone diffusivity in the range of  $\sim 2 \times 10^{-9}$  to  $7 \times 10^{-9} \text{ m}^2 \text{ s}^{-1}$  (Buizert et al., 2012); the theoretical estimate of dispersive mixing derived here corresponds very well with this range.

25 The dispersivity  $\alpha_L$  and the pumping velocity  $|v|$  have opposite trends with  $s_{op}$ . However, because  $\alpha_L$  scales more strongly with  $s_{op}$ , it ends up dominating the behavior of  $D_{disp}$  which generally increases as  $s_{op}$  gets smaller - the exception to this pattern is the lower half of the lock-in zone ( $s_{op} < 0.05$ ), where dispersive mixing decreases again as the air movement approaches zero. Dispersive mixing occurs throughout the firn column; however, within the diffusive zone it is overwhelmed by molecular diffusion which is about two to three orders of magnitude larger. Molecular diffusion effectively ceases at the lock-in depth,

30 and therefore dispersion dominates only in the lock-in depth.

### 3.3 Dispersive mixing in firm air transport modeling

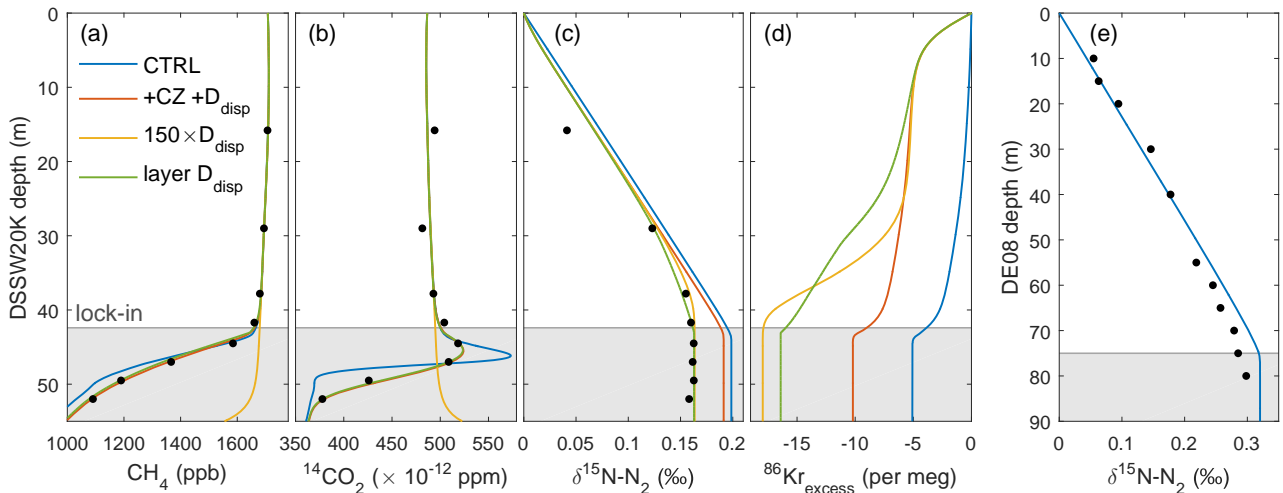
In this section we use the theoretical estimates of dispersive mixing strength in a firm air model to investigate whether it is consistent with the measured trace gas concentrations in air samples extracted from the pore space. We use the NEEM (Buizert et al., 2012) and WAIS Divide (Battle et al., 2011) sites, which are among the most well-characterized firm air sites in the literature. At both locations we use ERA-interim 6-hourly surface pressure data at the nearest grid point ( $0.75^\circ \times 0.75^\circ$  resolution grid) for the calendar years 2010 and 2011 to calculate the barometrically-driven air velocity and dispersive mixing strength. The theoretical  $D_{\text{disp}}$  values at WAIS Divide are about 15% higher than those at NEEM (the latter are shown as the blue enveloped curve in Fig. 5c). We assume that dispersive mixing at all times was equal to the average of the 2010-2011 period.

Next, using the CIC firm air model (Buizert et al., 2012), we calibrate the molecular diffusivity profile at both sites using well-established methods (Trudinger et al., 1997; Rommelaere et al., 1997; Battle et al., 2011; Buizert et al., 2012; Witrant et al., 2012; Trudinger et al., 2013), where dispersive mixing strength is set to  $D_{\text{disp}} = \gamma \cdot D_{\text{disp}}^0$  with  $D_{\text{disp}}^0$  the theoretical dispersive mixing strength, and  $\gamma$  a scaling factor that is changed in the calibration routine in order to optimize the model fit to the firm air data. The  $D_{\text{disp}}$  profiles that optimize the fit are shown in Fig. 5c as dashed lines. The fit to the firm air data is optimized at NEEM and WAIS Divide when we set dispersive mixing in the model to around 50% and 58% of the theoretical estimate, respectively.

The firm air data indicate that WAIS Divide has more dispersive mixing than NEEM, as also predicted by our theoretical calculations. This should thus be considered a robust result. While the theoretical estimates are of the correct order of magnitude, they appear to overestimate the dispersion suggested by observed trace gas concentrations. There may be several causes for this mismatch. First, to fit the same tracer data, different firm air transport models require slightly different diffusivity profiles (Buizert et al., 2012), and some of the mismatch could be an artifact of the firm air model used. Second, at the low  $s_{\text{op}}$  values of the lock-in zone (where dispersion dominates the transport) our  $\alpha_L$  parameterization relies on extrapolating the observational estimates (Fig. 5b), and Eq. (9) may thus overestimate the true firm dispersivity. Third, the data by Schwander et al. (1988) give the dispersion under steady flow conditions, whereas barometric pumping drives an air flow that is variable in time; the analogy from electronics would be direct current (DC) and alternating current (AC), respectively. Conceivably the AC-dispersivity of firm is lower than the DC-dispersivity we derived from Jakob Schwander's data, for example because in an alternating flow a portion of the air will retrace its path back to its original position (reducing the dispersion), which does not occur in direct flow.

### 3.4 Gravitational enrichment at Law Dome

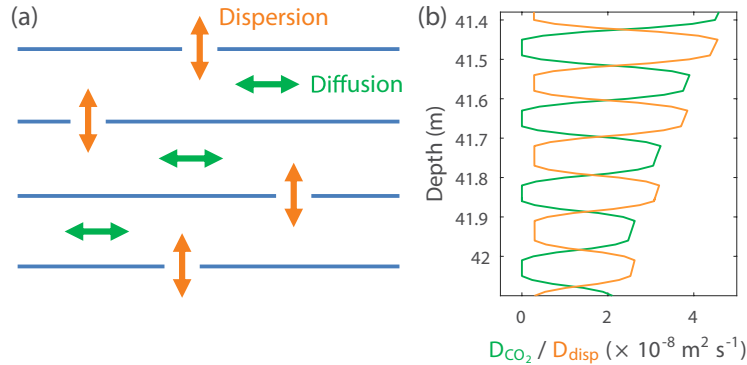
A site with strong barometric pumping is the Law Dome site in coastal Eastern Antarctica, where firm air has been sampled at the high accumulation DE08 site ( $1.2\text{m yr}^{-1}$  ice equivalent; Etheridge et al., 1996; Trudinger et al., 1997), and the DSSW20K site ( $0.16\text{m yr}^{-1}$  ice equivalent; Sturrock et al., 2002; Trudinger et al., 2002). We calculate dispersion at DE08 to be about 65% stronger than it is at NEEM.



**Figure 6.** Model simulations and firn air data for the Law Dome DSSW20K (panels a–d) and DE08 (panel e) sites, with model scenarios color coded. The first scenario (CTRL, blue) is a control run with no convective mixing or dispersion to show gravitational equilibrium. The second scenario (+CZ + $D_{\text{disp}}$ , red) includes convective mixing (following Kawamura et al. (2006) with  $H = 2$  m and  $D_{\text{eddy},0} = 1 \times 10^{-5} \text{ m}^2 \text{ s}^{-1}$ ) and dispersion to optimize the fit to all tracers except  $\delta^{15}\text{N}$ . The third scenario ( $150 \times D_{\text{disp}}$ , yellow) uses strongly enhanced dispersive mixing to optimize the fit to  $\delta^{15}\text{N}$  data. The fourth scenario (layered  $D_{\text{disp}}$ , green) uses layered dispersion and diffusivity to optimize the fit to all tracer data. Model details and atmospheric trace gas forcings as in (Buizert et al., 2012). Spatial model resolution is  $\Delta z = 0.1$  m for scenarios 1–3, and  $\Delta z = 0.01$  m for scenario 4. (a) DSSW20K Methane mixing ratio; (b) DSSW20K  $^{14}\text{CO}_2$  mixing ratio; (c) DSSW20K  $\delta^{15}\text{N}-\text{N}_2$ ; (d) DSSW20K  $^{86}\text{Kr}$  excess; (e) DE08  $\delta^{15}\text{N}-\text{N}_2$ .

A remarkable property of both Law Dome sites is that LIZ gravitational  $\delta^{15}\text{N}$  enrichment is much less than would be expected based on diffusive equilibrium. For DSSW20K and DE08 this is shown in Figs. 6c and 6e, respectively; note that the shallowest  $\delta^{15}\text{N}$  data may be impacted by thermal diffusion due to temperature seasonality (Severinghaus et al., 2001). Here we will focus on the DSSW20K site, for which more data are available. At DSSW20K gravitational enrichment in  $\delta^{15}\text{N}$  appears to stop  $\sim 7$  m above the actual lock-in depth. Here we explore the possibility that this anomaly is due to dispersive mixing in the deep firn. First, we calibrate the CIC firn model to the DSSW20K site using firn air data of  $\text{CH}_4$ ,  $\text{CO}_2$ ,  $\text{SF}_6$ ,  $\Delta^{14}\text{CO}_2$ , CFC-11, CFC-12 and CFC-113 (Sturrock et al., 2002) using established methods (Buizert et al., 2012). Following our findings at the NEEM and WAIS Divide sites, we set the deep firn dispersion to equal 55% of our theoretical estimate based on Law Dome surface pressure time series from the ERA-interim reanalysis. Next, we explore four instructive modeling scenarios that are color coded in Fig. 6.

In the first scenario (blue curves) we have eliminated both near-surface convection and deep-firn dispersion to show the  $\delta^{15}\text{N}$  gravitational signal in the absence of macroscopic mixing (Fig. 6c). It is clear that the  $\delta^{15}\text{N}$  data in the lock-in zone are about 40 per meg depleted relative to gravitational equilibrium. In the second scenario (red curves) we add the convective and dispersive mixing, and find an improved fit to all tracers except  $\delta^{15}\text{N}$ . This second scenario is equivalent to best current



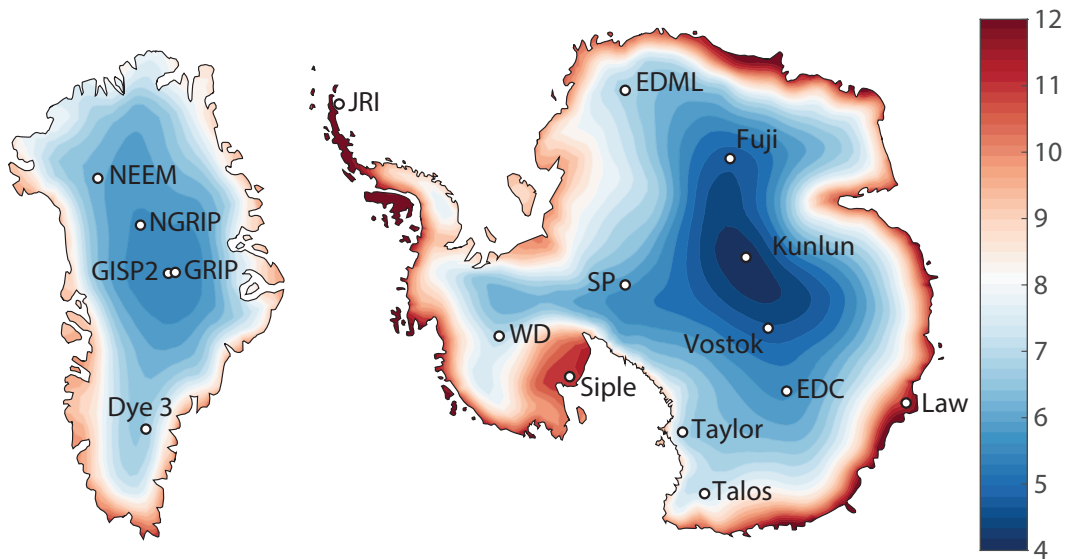
**Figure 7.** Diffusion and dispersion in layered firn. (a) Schematic of conceptual model where the horizontal blue lines depict dense firn strata with limited vertical connectivity. (b) Layering as implemented in the firn air diffusion model; the zoom is on four annual layers just above the lock-in depth.

modeling practices, and comparable to methods used above at the NEEM and WAIS Divide sites. We must conclude that our best practices cannot account for the anomalous deep-firn  $\delta^{15}\text{N}$  signal seen at DSSW20K (Fig. 6c) and DE08 (not shown).

In the third scenario (yellow curves), we attempt to fit the  $\delta^{15}\text{N}$  data simply by increasing the magnitude of  $D_{\text{disp}}$ . We have to increase dispersion 150-fold to simulate  $\delta^{15}\text{N}$  correctly; however doing so seriously compromises the model fit to all other tracers (Fig. 6a-b), showing this approach to be invalid.

In all modeling scenarios so far we have assumed that molecular diffusion and dispersion are both one-dimensional processes that vary smoothly with depth, and that occur independently without interactions between them. In reality, the pore space is a three-dimensional network that is strongly impacted by density layering (Martinerie et al., 1992; Hörhold et al., 2011; Mitchell et al., 2015). Diffusion and dispersion have generally opposite relationships to density. Thus, near the lock-in zone of a firn with strong density layering, we should expect to see alternating bands of high diffusivity (associated with low-density strata) and bands with high dispersion (associated with high-density strata). The high-density strata have a larger fraction of closed bubbles, and therefore relatively few vertically connective pathways; these pathways will channel the barometrically-induced flow, thereby becoming focal points of dispersive mixing. This situation is depicted schematically in Fig. 7a. In this conceptual model, dispersion dominates transport in the vertical direction, which leads to a strongly reduced gravitational enrichment. However, in the transverse directions molecular diffusion still dominates, particularly in the low-density strata. In a layered firn it is thus conceivable that a mixed zone exists between the molecular diffusion-dominated diffusive zone and the dispersion-dominated lock-in zone, in which gravitational enrichment is very weak, yet molecular diffusion is still active.

Next we attempt to capture the dynamics of such a layered firn in our one-dimensional model. In our fourth modeling scenario (green curves) we use an idealized layered firn model, with alternating annual bands of diffusive and dispersive mixing; details are shown in Fig. 7. The dispersion has been set to perfectly compensate the reduced molecular diffusion, and therefore the total mixing is comparable to that of scenario 2. We let the compensation be perfect for  $\text{CO}_2$ , which means it is imperfect for



**Figure 8.** Synoptic-scale barometric pumping strength for Greenland and Antarctica using 6-hourly ERA-Interim reanalysis surface pressure values for the period 01/01/2010 through 31/12/2011. Color scale gives the root mean square (RMS) of the pressure rate of change  $dp/dt$  in units of  $\text{mbar day}^{-1}$ . Key ice core drilling locations are indicated.

other trace gases. We find that using such a layered approach can simulate both the regular tracers and  $\delta^{15}\text{N}$  correctly (Fig. 6a–c). These modeling results confirm that  $\delta^{15}\text{N}$  enrichment can cease before the lock-in depth is reached. The common practice of defining the lock-in as the depth where  $\delta^{15}\text{N}$  enrichment stops (e.g. Sowers et al., 1992) may thus be invalid at sites that have both strong layering and large barometric variations. Instead, the lock-in depth should be identified with transient tracers such as  $\text{CO}_2$  and  $\text{CH}_4$ , using their sharp inflection point. However, our fourth modeling scenario is still flawed as it attempts to represent what is fundamentally a 3-D process into a one-1-D model. Furthermore our choice of perfectly compensating variations in dispersive and diffusive mixing is of course questionable – it is included here as an illustrative example only. To gain a meaningful representation of these processes it may be necessary to move to firn air transport models of two or more dimensions.

## 10 4 Discussion

### 4.1 Implications for firn air and ice core studies

There are probably three factors that contribute to the magnitude of dispersive mixing at any given site:

1. **Magnitude of barometric variability.** Figure 8 shows maps for Greenland and Antarctica of the time-averaged root-mean-square of the surface pressure change  $dp/dt$  expressed in  $\text{mbar day}^{-1}$ ; this is a good proxy for the barometric pumping power available a given site, as the air flow velocity scales with the rate of pressure change. The maps suggest

15



that barometric pumping is strongest near the ice sheet margins, and weakest in the interior. The Dome A ice core drilling site at Kunlun station has the smallest barometric pumping of all sites, whereas coastal cores such as Law Dome and James Ross Island (JRI) have strong barometric pumping.

2. **Firn column thickness.** The amount of barometrically-driven air flow at any given depth depends on the total size of the air reservoir below that depth (which is why air flow decreases with depth in Fig. 4). All other things being equal, a thicker firn column will have higher air flow velocities and hence more dispersive mixing than a thin column.
3. **Layering.** As argued in Sect. 3.4, firn density layering can enhance dispersive mixing by increasing medium heterogeneity, specifically through the formation of high-density, high-dispersivity layers. Melt layers and ice lenses may similarly act as focal points for dispersive mixing.

The NEEM and WAIS Divide sites have comparable firn thickness and density layering, and therefore the stronger barometric variability at the WAIS Divide site results in stronger dispersive mixing at that site (Fig. 5). The Law Dome DE08 and DSSW20K sites experience the same barometric variations, yet DE08 has a thicker firn column and DSSW20K has more (annually-spaced) high-density layers. It is therefore a priori not clear which of these two Law Dome sites has stronger dispersive mixing, and unfortunately the available firn air data are of insufficient resolution to establish this unambiguously.

Dispersive mixing influences the ice core record in several ways, the most important of which is via the broadening of the gas age distribution. A comparative firn model study at the NEEM site showed that the low-diffusion lock-in zone environment contributes more to the broadening of the final age distribution than the diffusive zone does (Buizert et al., 2012). The weak barometric variability in interior Antarctica (Fig. 8) may be part of the reason why gas records from central East Antarctic ice cores such as EDC have surprisingly little smoothing, as evidenced by the fact that abrupt methane transitions during e.g. the Younger Dryas period and DO cycle are well-preserved (Loulergue et al., 2008).

Dispersive mixing potentially has implications for the use of  $\delta^{15}\text{N}$  as a proxy for past firn column thickness, which is an additional constraint on past  $\Delta\text{age}$  (Sowers et al., 1992; Schwander et al., 1997; Goujon et al., 2003; Parrenin et al., 2012; Capron et al., 2013; Buizert et al., 2015). The cited studies all assume  $\delta^{15}\text{N}$  reflects the thickness of the diffusive zone, which is then used to estimate the lock-in depth by adding an estimated convective zone thickness. As we showed in Sect. 3.4, under circumstances of strong layering and intense barometric pumping,  $\delta^{15}\text{N}$  may underestimate the depth of the lock-in where  $\Delta\text{age}$  is fixed – this effect is likely to be important at coastal coring sites such as Law Dome, James Ross Island, Berkner Island and Roosevelt Island where barometric variability is strong, as well as at sites influenced by melt layers. It has been suggested that glacial firn has more pronounced layering than present-day firn (Bendel et al., 2013). However, climate models participating in PMIP2 (Paleoclimate Modeling Intercomparison Project Phase 2) disagree on the sign and magnitude of the change in cyclonic activity around Antarctica between the pre-industrial and last glacial maximum (Rojas et al., 2009). It is therefore conceivable, but highly uncertain, that dispersive mixing was stronger during glacial times. Several studies have noted a  $\delta^{15}\text{N}$  model-data mismatch in central Antarctica during glacial climate conditions, with densification models simulating a thickening of the firn column (relative to present), and  $\delta^{15}\text{N}$  data suggest a thinning (Landais et al., 2006; Capron et al., 2013). We speculate that enhanced glacial dispersive mixing could contribute to the observed low gravitational enrichment in  $\delta^{15}\text{N}$ .

Overall, more multi-tracer, high-resolution firm air studies at sites with strong barometric variability will be needed to better understand the influence of barometric pumping on gravitational enrichment and the  $\delta^{15}\text{N}$  proxy.

#### 4.2 $^{86}\text{Kr}$ excess as a proxy of past synoptic activity?

The degree of isotopic gravitational enrichment of any given gas species in the firm depends on the relative strength of molecular diffusion, which acts to drive isotopic enrichment towards gravitational equilibrium, and macroscopic transport processes (convection, advection and dispersion), which act to erase the enrichment. Slow-diffusing gases such as krypton (Kr) and xenon (Xe) will therefore always be less isotopically enriched than fast-diffusing gases such as  $\text{N}_2$  and argon (Ar). This effect was first observed by Kawamura et al. (2013), who studied deep air convection (a form of macroscopic transport) at the Antarctic Megadunes site (Severinghaus et al., 2010).

Here we define  $^{86}\text{Kr}$  excess as  $^{86}\text{Kr}_{\text{excess}} = \delta^{86}\text{Kr}/^{82}\text{Kr}|_{\text{tc}} - \delta^{40}\text{Ar}/^{36}\text{Ar}|_{\text{tc}}$ , where the subscript “tc” (“thermally corrected”) denotes that the isotopic ratios have been corrected for thermal fractionation either by using a thermal model or by paired  $\delta^{15}\text{N}$ - $\delta^{40}\text{Ar}$  data (Grachev and Severinghaus, 2003a, b). Due to the different molecular diffusivities of  $\text{N}_2$  and Kr, they are in a different state of gravitational disequilibrium, which makes  $^{86}\text{Kr}_{\text{excess}}$  a measure of the aggregate strength of non-diffusive transport processes in the firm column. There are several reasons for using  $^{86}\text{Kr}$  and  $^{40}\text{Ar}$  rather than e.g.  $^{136}\text{Xe}$  and  $^{15}\text{N}$ . First, Kr is over ten times as abundant in the atmosphere as Xe and therefore more easily measured. Second,  $\delta^{40}\text{Ar}$  is more precise in terms of gravitational signal-to-noise ratio, and less affected by thermal diffusion, than  $\delta^{15}\text{N}$ . Third,  $\delta^{40}\text{Ar}$  and  $\delta^{86}\text{Kr}$  can both be measured on air extracted from the same physical ice sample after removal of  $\text{O}_2$ ,  $\text{N}_2$  and other reactive gases via gettering (Severinghaus et al., 2003). Because  $\delta^{86}\text{Kr}$  is always less gravitationally enriched than  $\delta^{40}\text{Ar}$ ,  $^{86}\text{Kr}$  excess is always negative.

Figure 6d shows  $^{86}\text{Kr}$  excess for all four modeling scenarios discussed in Sect. 3.4. In scenario 1 (blue curves) the only macroscopic transport mechanism is advection, which results in a  $^{86}\text{Kr}_{\text{excess}}$  of -5 per meg. Adding convection and modest dispersion (scenario 2, red curve) increases  $^{86}\text{Kr}_{\text{excess}}$  in magnitude to -10.2 per meg, reflecting the increased degree of gravitational disequilibrium in the firm column. Both scenarios with strong dispersion (scenarios 3 and 4, yellow and green curves, respectively) show a further increase in  $^{86}\text{Kr}_{\text{excess}}$  magnitude to 16.5–18 per meg.

Measurements on the WAIS Divide ice core (WAIS-Divide Project Members, 2013; WAIS Divide Project Members, 2015) show  $^{86}\text{Kr}_{\text{excess}}$  values of around -35 per meg during the late Holocene (analytical precision is better than 20 per meg). However, older sections of the core show  $^{86}\text{Kr}_{\text{excess}}$  values as low as -90 per meg (Orsi et al., 2014), suggesting periods of greatly enhanced gravitational disequilibrium in the firm column (data not shown). One tantalizing interpretation could be that these very negative  $^{86}\text{Kr}_{\text{excess}}$  values represent periods of enhanced synoptic activity in (West) Antarctica, driving strong dispersive mixing.

We here propose that  $^{86}\text{Kr}_{\text{excess}}$  may act as a proxy for past synoptic-scale pressure variability (or storminess / cyclone density). Before this interpretation can be accepted, however, additional work is needed. The large spatial variability in barometric variability over Antarctica (Fig. 8) provides a valuable opportunity to verify whether ice core  $^{86}\text{Kr}_{\text{excess}}$  indeed scales with local barometric variability. Additional work is needed to reliably correct  $^{86}\text{Kr}_{\text{excess}}$  for the influence of advection and

convection in the firn column (Kawamura et al., 2013), preferably through detailed studies of  $^{86}\text{Kr}_{\text{excess}}$  in modern day firn. If corroborated,  $^{86}\text{Kr}_{\text{excess}}$  could hold important clues about past changes to the large-scale atmospheric circulation. In Greenland, changes in synoptic activity are presumably linked to the build-up of the Laurentide ice sheet, and its orographic influence on the storm tracks (Kageyama et al., 1999). In Antarctica, synoptic activity may be linked to e.g. meridional movement of the eddy-driven jet (Ceppi et al., 2013), atmospheric teleconnections to the tropical Pacific (Ding et al., 2012), or the position and depth of the Amundsen Sea low (Turner et al., 2013).

## 5 Summary and Conclusions

In this work we show that surface pressure variability on synoptic timescales drives macroscopic air movement in the deep firn, which in turn leads to dispersion of trace gases in the firn open porosity. The work resolves an outstanding question regarding the nature of lock-in zone mixing deduced from detailed firn air experiments at the North Greenland NEEM site (Buizert et al., 2012).

We present a mathematical description of the propagation of pressure anomalies in polar firn. We find that pressure variations on the timescale of order one hour or slower are propagated to the firn-ice transition at full amplitude; variations on shorter timescales are attenuated. Net barometrically-driven air movement is on the centimeter-scale in the deep firn, and on the meter-scale in the upper firn; mean velocities are on the order of  $10^{-6} \text{ m s}^{-1}$ . The precise values of the air displacement and velocity depend primarily on the firn thickness and the barometric variability at the site.

We use published firn sample gas chromatography experiments to estimate the dispersivity  $\alpha_L$  of firn, which is the proportionality constant in the relationship between superficial gas velocity and the apparent dispersion strength (Eq. 1). We find that  $\alpha_L$  scales exponentially with the open porosity  $s_{op}$ , with  $\alpha_L \approx 0.1 \text{ m}$  at the lock-in depth. Combining simulated air velocities and firn dispersivity we calculate dispersive mixing in the deep firn to be of the order of  $10^{-9} \text{ m}^2 \text{ s}^{-1}$ , with precise values again depending on firn thickness and the barometric variability at the site.

We apply these theoretical estimates of dispersion in a firn air transport model, and find that they overestimate the amount of lock-in zone dispersivity needed to optimize the fit to firn air trace gas measurements; this mismatch may be due to the fact that our firn dispersivity parameterization is based on steady-flow conditions, whereas barometric pumping induces a time-variable flow. We suggest that strong dispersive mixing at Law Dome, Antarctica, in combination with firn layering, may halt gravitational enrichment in  $\delta^{15}\text{N}$  before the lock-in zone is reached.

The dispersive mixing discussed here increases scientific understanding of firn air transport, and has direct implications for the modeling thereof. The ice core record is impacted by dispersive mixing primarily through the widening of the gas age distribution. We propose that  $^{86}\text{Kr}$  excess may be an ice core proxy for past synoptic activity, which is linked to the large-scale atmospheric circulation.

*Acknowledgements.* The authors want to thank Roy Haggerty for fruitful discussions, the European Centre for Medium-Range Weather Forecasts (ECMWF) for making ERA-Interim reanalysis datasets publicly available, and the U.S. National Science Foundation for financial

support under NSF grant numbers ANT-0944343, ANT-1543267 and ANT-1543229. The authors appreciate the support of the University of Wisconsin-Madison Automatic Weather Station Program (in particular Matthew Lazzara and Linda Keller) for the data set, data display, and information, NSF grant number ANT-1245663. The authors hereby propose as a golden rule of ice core science: *Any time you have a new idea, Jakob Schwander already had that same idea several decades earlier.*

## References

- Adolph, A. C. and Albert, M. R.: Gas diffusivity and permeability through the firn column at Summit, Greenland: measurements and comparison to microstructural properties, *The Cryosphere*, 8, 319–328, doi:10.5194/tc-8-319-2014, 2014.
- Battle, M., Bender, M., Sowers, T., Tans, P. P., Butler, J. H., Elkins, J. W., Ellis, J. T., Conway, T., Zhang, N., Lang, P., and Clark, A. D.:  
5 Atmospheric gas concentrations over the past century measured in air from firn at the South Pole, *Nature*, 383, 231–235, 1996.
- Battle, M. O., Severinghaus, J. P., Sofen, E. D., Plotkin, D., Orsi, A. J., Aydin, M., Montzka, S. A., Sowers, T., and Tans, P. P.: Controls on the movement and composition of firn air at the West Antarctic Ice Sheet Divide, *Atmos. Chem. Phys.*, 11, 11 007–11 021, doi:10.5194/acp-11-11007-2011, 2011.
- Bendel, V., Ueltzhöffer, K. J., Freitag, J., Kipfstuhl, S., Kuhs, W. F., Garbe, C. S., and Faria, S. H.: High-resolution variations in size, number  
10 and arrangement of air bubbles in the EPICA DML (Antarctica) ice core, *Journal of Glaciology*, 59, 972–980, 2013.
- Bender, M. L.: Orbital tuning chronology for the Vostok climate record supported by trapped gas composition, *Earth Planet. Sci. Lett.*, 204, 275–289, 2002.
- Buizert, C.: ICE CORE METHODS | Studies of Firn Air, in: *Encyclopedia of Quaternary Science (Second Edition)*, edited by Elias, S. A. and Mock, C. J., pp. 361–372, Elsevier, Amsterdam, 2013.
- 15 Buizert, C., Martinerie, P., Petrenko, V. V., Severinghaus, J. P., Trudinger, C. M., Witrant, E., Rosen, J. L., Orsi, A. J., Rubino, M., Etheridge, D. M., Steele, L. P., Hogan, C., Laube, J. C., Sturges, W. T., Levchenko, V. A., Smith, A. M., Levin, I., Conway, T. J., Dlugokencky, E. J., Lang, P. M., Kawamura, K., Jenk, T. M., White, J. W. C., Sowers, T., Schwander, J., and Blunier, T.: Gas transport in firn: multiple-tracer characterisation and model intercomparison for NEEM, Northern Greenland, *Atmos. Chem. Phys.*, 12, 4259–4277, doi:10.5194/acp-12-4259-2012, 2012.
- 20 Buizert, C., Sowers, T., and Blunier, T.: Assessment of diffusive isotopic fractionation in polar firn, and application to ice core trace gas records, *Earth and Planetary Science Letters*, 361, 110–119, doi:10.1016/j.epsl.2012.11.039, 2013.
- Buizert, C., Cuffey, K. M., Severinghaus, J. P., Baggenstos, D., Fudge, T. J., Steig, E. J., Markle, B. R., Winstrup, M., Rhodes, R. H., Brook, E. J., Sowers, T. A., Clow, G. D., Cheng, H., Edwards, L. R., Sigl, M., McConnell, J. R., and Taylor, K. C.: The WAIS Divide deep ice core WD2014 chronology – part 1: Methane synchronization (68–31 ka BP) and the gas age–ice age difference, *Climate of the Past*, 11,  
25 153–173, doi:10.5194/cp-11-153-2015, 2015.
- Capron, E., Landais, A., Buiron, D., Cauquoin, A., Chappellaz, J., Debret, M., Jouzel, J., Leuenberger, M., Martinerie, P., Masson-Delmotte, V., Mulvaney, R., Parrenin, F., and Prié, F.: Glacial–interglacial dynamics of Antarctic firn columns: comparison between simulations and ice core air- $\delta^{15}\text{N}$  measurements, *Clim. Past*, 9, 983–999, doi:10.5194/cp-9-983-2013, 2013.
- Ceppi, P., Hwang, Y.-T., Liu, X., Frierson, D. M. W., and Hartmann, D. L.: The relationship between the ITCZ and the Southern Hemispheric  
30 eddy-driven jet, *Journal of Geophysical Research: Atmospheres*, 118, 5136–5146, doi:10.1002/jgrd.50461, 2013.
- Colbeck, S. C.: Air Movement in Snow Due to Windpumping, *J. Glaciol.*, 35, 209–213, 1989.
- Dee, D. P., Uppala, S. M., Simmons, A. J., Berrisford, P., Poli, P., Kobayashi, S., Andrae, U., Balmaseda, M. A., Balsamo, G., Bauer, P., Bechtold, P., Beljaars, A. C. M., van de Berg, L., Bidlot, J., Bormann, N., Delsol, C., Dragani, R., Fuentes, M., Geer, A. J., Haimberger, L., Healy, S. B., Hersbach, H., Hólm, E. V., Isaksen, I., Kållberg, P., Köhler, M., Matricardi, M., McNally, A. P., Monge-Sanz, B. M., Morcrette, J.-J., Park, B.-K., Peubey, C., de Rosnay, P., Tavolato, C., Thépaut, J.-N., and Vitart, F.: The ERA-Interim reanalysis: configuration and performance of the data assimilation system, *Quarterly Journal of the Royal Meteorological Society*, 137, 553–597,  
35 doi:10.1002/qj.828, 2011.

- Ding, Q., Steig, E. J., Battisti, D. S., and Wallace, J. M.: Influence of the tropics on the Southern Annular Mode, *Journal of Climate*, 25, 6330–6348, 2012.
- Drake, S. A., Huwald, H., Parlange, M. B., Selker, J. S., Nolin, A. W., and Higgins, C. W.: Attenuation of wind-induced pressure perturbations in alpine snow, *Journal of Glaciology*, pp. 1–10, doi:10.1017/jog.2016.53, 2016.
- 5 Etheridge, D. M., Pearman, G. I., and Fraser, P. J.: Changes in tropospheric methane between 1841 and 1978 from a high accumulation-rate Antarctic ice core, *Tellus Ser. B-Chem. Phys. Meteorol.*, 44, 282–294, doi:10.1034/j.1600-0889.1992.t01-3-00006.x, 1992.
- Etheridge, D. M., Steele, L. P., Langenfelds, R. L., Francey, R. J., Barnola, J. M., and Morgan, V. I.: Natural and anthropogenic changes in atmospheric CO<sub>2</sub> over the last 1000 years from air in Antarctic ice and firn, *J. Geophys. Res.*, 101, 4115–4128, doi:10.1029/95jd03410, 1996.
- 10 Fabre, A., Barnola, J. M., Arnaud, L., and Chappellaz, J.: Determination of gas diffusivity in polar firn: Comparison between experimental measurements and inverse modeling, *Geophys. Res. Lett.*, 27, 557–560, 2000.
- Ghanbarian, B. and Hunt, A. G.: Universal scaling of gas diffusion in porous media, *Water Resources Research*, 50, 2242–2256, 2014.
- Goujon, C., Barnola, J. M., and Ritz, C.: Modeling the densification of polar firn including heat diffusion: Application to close-off characteristics and gas isotopic fractionation for Antarctica and Greenland sites, *J. Geophys. Res.-Atmos.*, 108, 18, doi:10.1029/2002jd003319, 15 2003.
- Grachev, A. M. and Severinghaus, J. P.: Determining the thermal diffusion factor for Ar-40/Ar-36 in air to aid paleoreconstruction of abrupt climate change, *J. Phys. Chem. A*, 107, 4636–4642, doi:10.1021/jp027817u, 2003a.
- Grachev, A. M. and Severinghaus, J. P.: Laboratory determination of thermal diffusion constants for N-29(2)/N-28(2) in air at temperatures from -60 to 0 degrees C for reconstruction of magnitudes of abrupt climate changes using the ice core fossil-air paleothermometer, 20 *Geochim. Cosmochim. Acta*, 67, 345–360, doi:10.1016/s0016-7037(02)01115-8, 2003b.
- Hörhold, M. W., Kipfstuhl, S., Wilhelms, F., Freitag, J., and Frenzel, A.: The densification of layered polar firn, *J. Geophys. Res.*, 116, F01 001, doi:10.1029/2009jf001630, 2011.
- Johnsen, S. J.: Stable isotope homogenization of polar firn and ice, pp. 210–219, Washington D.C., 1977.
- Kageyama, M., Valdes, P. J., Ramstein, G., Hewitt, C., and Wyputta, U.: Northern Hemisphere Storm Tracks in Present Day and Last Glacial 25 Maximum Climate Simulations: A Comparison of the European PMIP Models, *Journal of Climate*, 12, 742–760, doi:10.1175/1520-0442(1999)012<0742:NHSTIP>2.0.CO;2, 1999.
- Kawamura, K., Severinghaus, J. P., Ishidoya, S., Sugawara, S., Hashida, G., Motoyama, H., Fujii, Y., Aoki, S., and Nakazawa, T.: Convective mixing of air in firn at four polar sites, *Earth and Planetary Science Letters*, 244, 672–682, 2006.
- Kawamura, K., Parrenin, F., Lisiecki, L., Uemura, R., Vimeux, F., Severinghaus, J. P., Hutterli, M. A., Nakazawa, T., Aoki, S., Jouzel, J., 30 Raymo, M. E., Matsumoto, K., Nakata, H., Motoyama, H., Fujita, S., Goto-Azuma, K., Fujii, Y., and Watanabe, O.: Northern Hemisphere forcing of climatic cycles in Antarctica over the past 360,000 years, *Nature*, 448, 912–U4, doi:10.1038/nature06015, 2007.
- Kawamura, K., Severinghaus, J. P., Albert, M. R., Courville, Z. R., Fahnestock, M. A., Scambos, T., Shields, E., and Shuman, C. A.: Kinetic fractionation of gases by deep air convection in polar firn, *Atmos. Chem. Phys.*, 13, 11 141–11 155, doi:10.5194/acp-13-11141-2013, 2013.
- 35 Landais, A., Barnola, J. M., Kawamura, K., Caillon, N., Delmotte, M., Van Ommen, T., Dreyfus, G., Jouzel, J., Masson-Delmotte, V., Minster, B., Freitag, J., Leuenberger, M., Schwander, J., Huber, C., Etheridge, D., and Morgan, V.: Firn-air delta N-15 in modern polar sites and glacial-interglacial ice: a model-data mismatch during glacial periods in Antarctica?, *Quat. Sci. Rev.*, 25, 49–62, doi:10.1016/j.quascirev.2005.06.007, 2006.

- Lazzara, M. A., Weidner, G. A., Keller, L. M., Thom, J. E., and Cassano, J. J.: Antarctic Automatic Weather Station Program: 30 Years of Polar Observation, *Bulletin of the American Meteorological Society*, 93, 1519–1537, doi:10.1175/BAMS-D-11-00015.1, 2012.
- Leuenberger, M. C., Lang, C., and Schwander, J.: Delta(15)N measurements as a calibration tool for the paleothermometer and gas-ice age differences: A case study for the 8200 BP event on GRIP ice, *J. Geophys. Res.-Atmos.*, 104, 22 163–22 170, 1999.
- 5 Loulergue, L., Schilt, A., Spahni, R., Masson-Delmotte, V., Blunier, T., Lemieux, B., Barnola, J.-M., Raynaud, D., Stocker, T. F., and Chappellaz, J.: Orbital and millennial-scale features of atmospheric CH<sub>4</sub> over the past 800,000 years, *Nature*, 453, 383–386, doi:10.1038/nature06950, 2008.
- Martinerie, P., Raynaud, D., Etheridge, D. M., Barnola, J. M., and Mazaudier, D.: Physical and Climatic Parameters which Influence the Air Content in Polar Ice, *Earth Planet. Sci. Lett.*, 112, 1–13, 1992.
- 10 Mitchell, L. E., Buizert, C., Brook, E. J., Breton, D. J., Fegyveresi, J., Baggenstos, D., Orsi, A., Severinghaus, J., Alley, R. B., Albert, M., Rhodes, R. H., McConnell, J. R., Sigl, M., Maselli, O., Gregory, S., and Ahn, J.: Observing and modeling the influence of layering on bubble trapping in polar firn, *Journal of Geophysical Research: Atmospheres*, 120, 2558–2574, doi:10.1002/2014JD022766, 2015.
- Nilson, R. H., Peterson, E. W., Lie, K. H., Burkhard, N. R., and Hearst, J. R.: Atmospheric pumping: A mechanism causing vertical transport of contaminated gases through fractured permeable media, *Journal of Geophysical Research: Solid Earth*, 96, 21 933–21 948, doi:10.1029/91JB01836, 1991.
- 15 Orsi, A., Severinghaus, J. P., Buizert, C., Baggenstos, D., Kawamura, K., and Beaudette, R.: The inert gas isotope record at WAIS Divide, in: *WAIS Divide Ice Core 2014 Science Meeting*, La Jolla, CA, USA, 2014.
- Parrenin, F., Barker, S., Blunier, T., Chappellaz, J., Jouzel, J., Landais, A., Masson-Delmotte, V., Schwander, J., and Veres, D.: On the gas-ice depth difference ( $\Delta$ depth) along the EPICA Dome C ice core, *Clim. Past*, 8, 1239–1255, doi:10.5194/cp-8-1239-2012, 2012.
- 20 Powers, D., O’Neill, K., and Colbeck, S.: Theory of natural convection in snow, *Journal of Geophysical Research: Atmospheres*, 90, 10 641–10 649, 1985.
- Raynaud, D. and Lorius, C.: Climatic implications of total gas content in ice at Camp Century, 1973.
- Rhodes, R. H., Faïn, X., Brook, E. J., McConnell, J. R., Maselli, O. J., Sigl, M., Edwards, J., Buizert, C., Blunier, T., Chappellaz, J., and Freitag, J.: Local artifacts in ice core methane records caused by layered bubble trapping and in situ production: a multi-site investigation, *Climate of the Past*, 12, 1061–1077, doi:10.5194/cp-12-1061-2016, 2016.
- 25 Rojas, M., Moreno, P., Kageyama, M., Crucifix, M., Hewitt, C., Abe-Ouchi, A., Ohgaito, R., Brady, E. C., and Hope, P.: The Southern Westerlies during the last glacial maximum in PMIP2 simulations, *Climate Dynamics*, 32, 525–548, 2009.
- Rommelaere, V., Arnaud, L., and Barnola, J. M.: Reconstructing recent atmospheric trace gas concentrations from polar firn and bubbly ice data by inverse methods, *J. Geophys. Res.-Atmos.*, 102, 30 069–30 083, 1997.
- 30 Sahimi, M., Davis, H. T., and Scriven, L.: Dispersion in disordered porous media, *Chemical Engineering Communications*, 23, 329–341, 1983.
- Scheidegger, A.: General theory of dispersion in porous media, *Journal of Geophysical Research*, 66, 3273–3278, 1961.
- Scheidegger, A. E.: Statistical hydrodynamics in porous media, *Journal of Applied Physics*, 25, 994–1001, 1954.
- Schwander, J. and Stauffer, B.: Age difference between polar ice and the air trapped in its bubbles, *Nature*, 311, 45–47, 1984.
- 35 Schwander, J., Stauffer, B., and Sigg, A.: Air mixing in firn and the age of the air at pore close-off, *Annals of Glaciology*, 10, 141–145, 1988.
- Schwander, J., Barnola, J. M., Andrie, C., Leuenberger, M., Ludin, A., Raynaud, D., and Stauffer, B.: The Age of the Air in the Firn and the Ice at Summit, Greenland, *J. Geophys. Res.-Atmos.*, 98, 2831–2838, 1993.

- Schwander, J., Sowers, T., Barnola, J. M., Blunier, T., Fuchs, A., and Malaize, B.: Age scale of the air in the summit ice: Implication for glacial-interglacial temperature change, *J. Geophys. Res.-Atmos.*, 102, 19483–19493, 1997.
- Severinghaus, J. P., Sowers, T., Brook, E. J., Alley, R. B., and Bender, M. L.: Timing of abrupt climate change at the end of the Younger Dryas interval from thermally fractionated gases in polar ice, *Nature*, 391, 141–146, 1998.
- 5 Severinghaus, J. P., Grachev, A., and Battle, M.: Thermal fractionation of air in polar firn by seasonal temperature gradients, *Geochem. Geophys. Geosyst.*, 2, art. no.–2000GC000146, 2001.
- Severinghaus, J. P., Grachev, A., Luz, B., and Caillon, N.: A method for precise measurement of argon 40/36 and krypton/argon ratios in trapped air in polar ice with applications to past firn thickness and abrupt climate change in Greenland and at Siple Dome, Antarctica, *Geochim. Cosmochim. Acta*, 67, 325–343, 2003.
- 10 Severinghaus, J. P., Albert, M. R., Courville, Z. R., Fahnestock, M. A., Kawamura, K., Montzka, S. A., Muhle, J., Scambos, T. A., Shields, E., Shuman, C. A., Suwa, M., Tans, P., and Weiss, R. F.: Deep air convection in the firn at a zero-accumulation site, central Antarctica, *Earth Planet. Sci. Lett.*, 293, 359–367, doi:10.1016/j.epsl.2010.03.003, 2010.
- Sowers, T., Bender, M., Raynaud, D., and Korotkevich, Y. S.:  $\delta^{15}\text{N}$  of  $\text{N}_2$  in air trapped in polar ice: A tracer of gas transport in the firn and a possible constraint on ice age-gas age differences, *J. Geophys. Res.-Atmos.*, 97, 15683–15697, 1992.
- 15 Sturrock, G. A., Etheridge, D. M., Trudinger, C. M., Fraser, P. J., and Smith, A. M.: Atmospheric histories of halocarbons from analysis of Antarctic firn air: Major Montreal Protocol species, *J. Geophys. Res.-Atmos.*, 107, 14, doi:10.1029/2002jd002548, 2002.
- Trudinger, C. M., Enting, I. G., Etheridge, D. M., Francey, R. J., Levchenko, V. A., Steele, L. P., Raynaud, D., and Arnaud, L.: Modeling air movement and bubble trapping in firn, *J. Geophys. Res.-Atmos.*, 102, 6747–6763, 1997.
- Trudinger, C. M., Etheridge, D. M., Rayner, P. J., Enting, I. G., Sturrock, G. A., and Langenfelds, R. L.: Reconstructing atmospheric histories from measurements of air composition in firn, *J. Geophys. Res.-Atmos.*, 107, 13, doi:10.1029/2002jd002545, 2002.
- 20 Trudinger, C. M., Enting, I. G., Rayner, P. J., Etheridge, D. M., Buizert, C., Rubino, M., Krummel, P. B., and Blunier, T.: How well do different tracers constrain the firn diffusivity profile?, *Atmos. Chem. Phys.*, 13, 1485–1510, doi:10.5194/acp-13-1485-2013, 2013.
- Turner, J., Phillips, T., Hosking, J. S., Marshall, G. J., and Orr, A.: The Amundsen Sea low, *International Journal of Climatology*, 33, 1818–1829, doi:10.1002/joc.3558, 2013.
- 25 WAIS Divide Project Members: Onset of deglacial warming in West Antarctica driven by local orbital forcing, *Nature*, 500, 440–444, doi:10.1038/nature12376, 2013.
- WAIS Divide Project Members: Precise inter-polar phasing of abrupt climate change during the last ice age, *Nature*, 520, 661–665, doi:10.1038/nature14401, 2015.
- Wittrant, E., Martinerie, P., Hogan, C., Laube, J. C., Kawamura, K., Capron, E., Montzka, S. A., Dlugokencky, E. J., Etheridge, D., Blunier, T., and Sturges, W. T.: A new multi-gas constrained model of trace gas non-homogeneous transport in firn: evaluation and behaviour at
- 30 eleven polar sites, *Atmos. Chem. Phys.*, 12, 11465–11483, doi:10.5194/acp-12-11465-2012, 2012.