

Interactive comment on “Effects of local advection on the spatial sensible heat flux variation on a mountain glacier” by Tobias Sauter and Stephan P. Galos

Tobias Sauter and Stephan P. Galos

tobias.sauter@fau.de

Received and published: 21 September 2016

The final author comments can be found in the supplement.

Please also note the supplement to this comment:

<http://www.the-cryosphere-discuss.net/tc-2016-139/tc-2016-139-AC1-supplement.pdf>

Interactive comment on The Cryosphere Discuss., doi:10.5194/tc-2016-139, 2016.

Printer-friendly version

Discussion paper



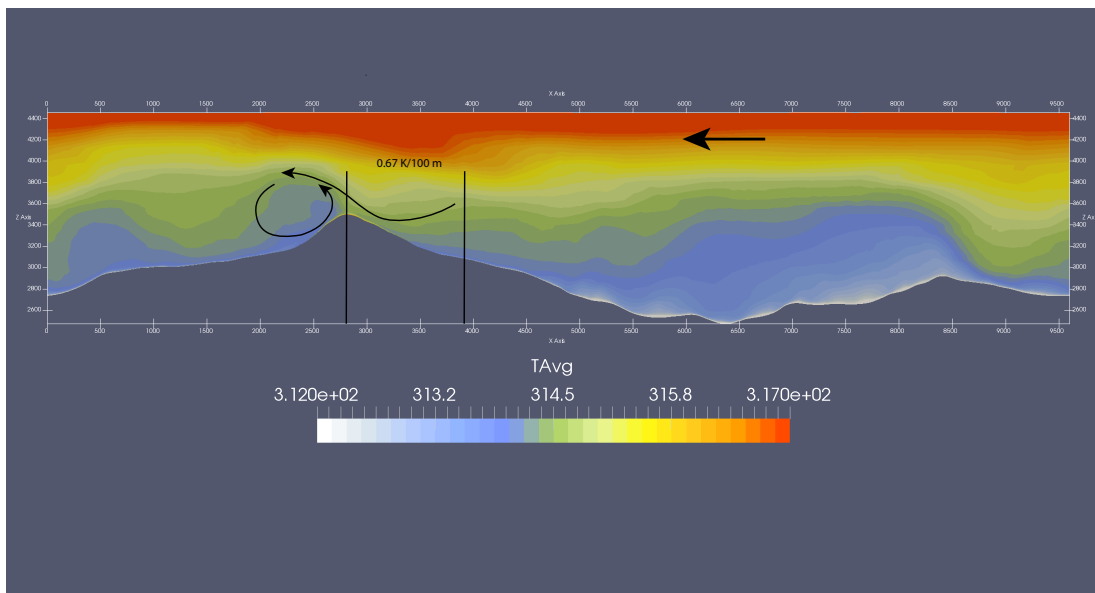


Fig. 1. Impacts of heat advection on lapse rate (easterly flow)

Printer-friendly version

Discussion paper



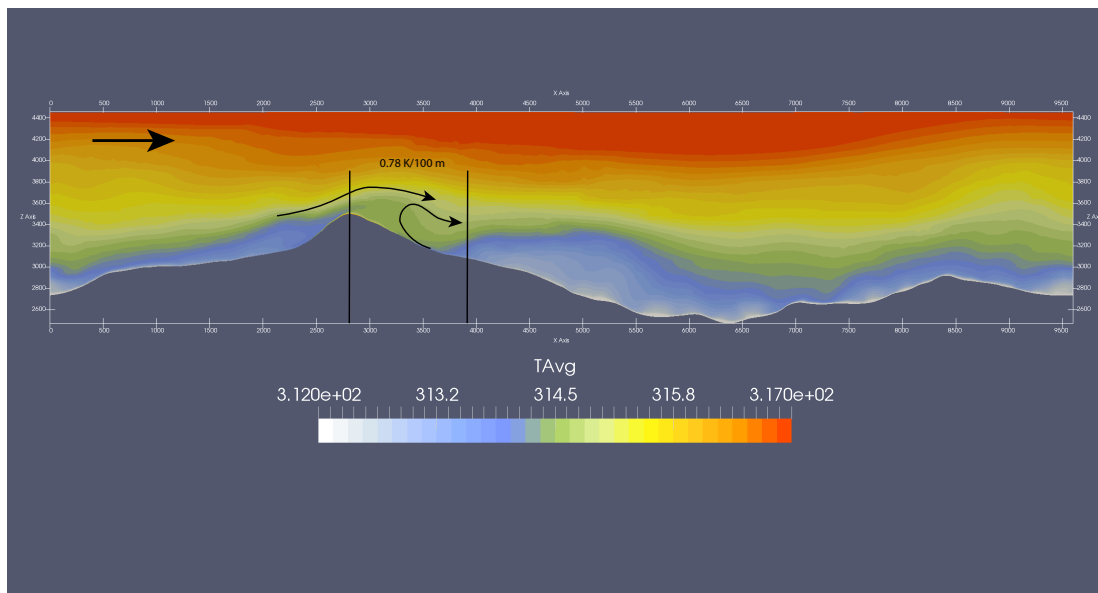


Fig. 2. Impacts of heat advection on lapse rate (westerly flow)

Printer-friendly version

Discussion paper

