

Author's response to Referee comments

RC = Comments from Referees

AR = Author's response

RM = revised manuscript, changes are marked in **bold**

Anonymous Referee #1

General Comments

RC.GC1

Even though a number of 2D geophysical surveys have been done on many rock glaciers, newly revealed subsurface heterogeneity is still valuable for discussing the kinematics and thermal history of rock glaciers. In particular, this paper shows detailed subsurface heterogeneity through a quasi-3D method. In addition to presenting valuable data, the authors well reviewed the related articles and carefully discussed the data. However, readers probably feel it difficult to follow the discussion on surface topography, because the visible information such as photos and maps are quite limited in this paper. To improve the paper, I recommend adding some geomorphological maps.

AR.GC1

We agree and changed and enlarged the photos of figure 1 and added geomorphological maps (new figure 2) for a better site overview.

RM.GC1

See new figures (fig. 1 and fig 2.) at the end of the document in original size.

Minor remarks

RC1.1

p.1 l. 25 topographical attributes and characteristics of the contributing area

It is difficult to understand what these terms mean.

AR1.1

These terms summarize several heterogeneously distributed parameters. We changed the sentence and name these parameters now explicitly.

RM1.1

This is due to complex interactions between small-scale surface conditions (**e.g. grain size composition, snow cover distribution**), topographical attributes (**e.g. aspect, slope**) and characteristics of the contributing area (**e.g. source of debris, extent of root zone**) (cf. Monnier et al., 2013; Luetsch et al., 2004; **Hanson and Hoelzle, 2004**; Harris and Pedersen, 1998)

RC1.2

p.1 l. 27 to l. 2 (p. 2)

The sentences connecting with “Therefore” refer to different topics, thus the connection seems to be logically wrong.

AR1.2

We agree and removed the logical connection.

RM1.2

[...] an enhanced knowledge of these interactions is needed. **The** detection and mapping of spatial variations within the internal structure can be seen [...].

RC1.3

p. 2 ll. 10-12

It would be better to revise the sentence, because the content of iii) is not equivalent to those of i) and ii). In general, iii) is firstly interpreted, then i) and ii) are discussed.

AR1.3

We agree and revised the sentence.

RM1.3

We changed from:

For rockglaciers and similar periglacial landforms, geophysical investigations of the internal structure can e.g., i) reveal glacier-permafrost interactions during the development of rockglaciers (Dusik et al., 2015; Krainer et al., 2012; Ribolini et al., 2010), ii) provide inferences with creep velocities (Hausmann et al., 2012; Kneisel and Käab, 2007) and iii) enable an assessment of subsurface material composition (Schneider et al., 2013; Musil et al., 2006).

To:

For rockglaciers and similar periglacial landforms, geophysical investigations of the internal structure **enable an assessment of the subsurface material composition and to distinguish between frozen and unfrozen areas (e.g. Schneider et al., 2013; Musil et al., 2006). This information can be used to investigate inferences with creep velocities (Hausmann et al., 2012; Kneisel and Käab, 2007) or to reveal glacier-permafrost interactions during the development of rockglaciers (cf. Dusik et al., 2015; Krainer et al., 2012; Ribolini et al., 2010).**

RC1.4

p. 3

It would be better to add a comment whether direct observation of the borehole core is available or not. If available, it would be much better to discuss the composition of the rock glaciers with the core stratigraphy.

AR1.4

We applied a destructive method, so no borehole cores are available. We added a comment.

RM1.4

As a destructive drilling method was applied, no borehole cores are available.

RC1.5

p.3 l. 14 2D SRT

This is incorrect. They only did conventional refraction survey.

AR1.5

The reviewer is right. We changed this information.

RM1.5

[...] who performed a **seismic refraction sounding** and one 2D ERT measurement [...].

RC1.6

p.3 ll. 21-31

Readers cannot check the topography mentioned in this part, because the photo and map in Fig. 1 are too small. Add a geomorphological map indicating not only the survey lines but also the lateral moraine, ice patches, rooting zone, ridges/furrows and LIA glacier extent.

AR1.6

We agree and added geomorphological maps as suggested.

RM1.6

See fig. 2 at the end of the document in original size.

RC1.7

p. 7 l. 13 first slices

Which is the first slice in the figure?

AR1.7

We changed the reference from the quantifier to the indicated depth level of the slice which is displayed in the figure.

RM1.7

[...] the talus cone (cf. fig. 5, **model slice 0.5–1m**) to [...].

RC1.8

p.7 l. 25 the centre of the rockglacier

It may confuse readers, because the center of the rock glacier does not corresponds to the center of Fig. 4 but the lower edge.

AR1.8

We refer to the centre of the rockglacier on a median plane but still remain in the upslope part of the rockglacier with the description. To avoid misunderstandings, we rephrased this paragraph.

RM1.8

[...] direction and towards the **lateral** margin of **this upslope part** of the rockglacier (up to 4 m thickness), while it remains thin in the **central upslope** part of the rockglacier **near the transition zone** (2 m to 3 m thickness).

RC1.9

p. 8 l. 21 reaches a depth of 7 m

Is it correct? Fig. 5 indicates that the deeper part (11-13 m) also has similar resistivity.

AR1.9

We see that the descriptions in the text and the corresponding structures of (former) figure 5 are difficult. To clarify what parts of the model slices are addressed, we split this structure (like we did with former structure 4 (now structure 3), changed the nomenclatures and highlighted the broad extent of the structures.

RM1.9

The first of the three structures is **60 m** long and reaches a depth of 7 m **in the upslope part (1a). In the downslope part (2b), the lower boundary could not be delimited within the model.**

See fig. 6 at the end of the document in original size.

RC1.10

p.8 ll. 22-23 The layer above this structure is highly variable in thickness and ranges from 4 m in the upslope part of the model over 1 m in the middle part to 5 m in the downslope part of the model.

It is impossible to understand where "this structure" is, because the relatively high resistivity structure (>6 kohmm) indicated as (2) is covered with a thin low resistivity layer only seen in the slice of 0.5-1m.

AR1.10

This remark refers to the same problem as the comment above. To make this section more understandable, we changed nomenclature and highlighted the described structures in the figure.

RM1.10

See fig. 6 at the end of the document in original size.

RC1.11

l. 32 to l. 1 (p. 9)

Readers cannot confirm the relation between surface topography and resistivity from Figs. 5 and 6. Add a hillshade image with contour lines of the survey area.

AR1.11

We think that the geomorphological maps (new figure 2) and the new figure 8 (which shows the topography) helps to illustrate the relation.

RM1.11

See figs. 2 and 8 at the end of the document in original size

RC1.12

p. 10 ll. 29-30 This is caused by the lower pore space volume and hence the lower ground ice volume. This interpretation is questionable. Reconsider basic permafrost physics that frozen finer soil holds more unfrozen water in it near the melting point.

AR1.12

We agree on this point and included this in the discussion.

RM1.12

This is caused **by the physical properties of fine materials which can store a relatively high amount of liquid water at temperatures close to the melting point or even at sub-zero temperatures, resulting in the observed low resistivity values (e.g. Schneider et al., 2013). Additionally,** the lower pore space volume **can generally lower the** ground ice volume which can develop by freezing of unconfined water (Scapozza et al., 2011; Vonder Mühl et al., 2000).

RC1.13

p. 11 ll. 22-26

I cannot understand what the authors want to say.

AR1.13

In this section, we discuss the formation and shape of the frozen structure of Nair rockglacier. We rephrased the section.

RM1.13

We changed the text from:

This represents a gradual decrease of ice content and is associated with a stepwise increase of ALT. The formation of this wedge-shaped structure can originate from meltwater of the embedded ice which drains into the rockglacier during summer and refreezes (Isaksen et al., 2000). The ability of the pebbly material to store water and to reduce the speed of runoff is likely to support this process

(Ikeda et al., 2008). It also explains the lower ice content at the lateral margin of the rockglacier which would also be less affected by meltwater flow.

To:

In this part of the rockglacier, the ability of the pebbly material to store water and to reduce the speed of runoff (Ikeda et al., 2008) supports the refreezing of the meltwater from the embedded sedimentary ice. This results in a gradual decrease of ice content in a downslope direction and towards the lateral margin of the rockglacier, which is less affected by meltwater flow than the main part of the rockglacier. Thus, it can explain the observed stepwise increase of ALT and forms the wedge-shaped structure.

RC1.14

p. 12

The paragraph of the section 5.4 is too long. It would be better to revise it into several paragraphs.

AR1.14

We divided this section into three parts.

RM1.14

We broke the paragraph at the following positions:

[...] advances during Holocene could have overridden the rockglacier. ¶

The occurrence of buried ice of [...]

[...] was mapped in the Dolomites by Seppi et al. (2015)

The observed pattern of frozen conditions [...]

RC1.15

P12 ll. 4-6, where ... 1998)

It would be better to remove this part from this sentence, because the topic is not discussed here but after the glacier-permafrost interaction.

AR1.15

We changed the position of this sentence to the section where we discuss the development of the ridges and furrow topography.

RM1.15

The observed pattern of frozen conditions below the ridges and unfrozen conditions below the furrows contrasts the commonly known distribution pattern, which shows colder temperatures in the furrows due to topographic or microclimatic effects (Hoelzle 1999; Harris and Pedersen, 1998). The formation of the characteristic ridge-furrow [...].

Anonymous Referee #2

Major Comments

RC2.1

The use of quasi-3D inversion is great and very valuable. However, I think its value cannot be really evaluated here because Figure 4 is not sufficient to analyze results. I suggest that the author also show a fence-type figure displaying various transects in 3D. This would help to see the variations in both depth and elevations. Also comparing results from a few transect inverted separately vs together would be useful to help the reader understand the value of quasi-3D ERI.

AR2.1

We added an additional figure (fig. 8) with fence-type illustrations from selected transects of both inversion approaches: independently 2D and 3D. We also added a description of the differences between both methods to the discussion section ('Methodological aspects').

RM2.1

See fig. 8 at the end of the document in original size.

A comparison between independently inverted 2D models and corresponding 2D slices of the 3D models (fig. 8) shows differences between the results of both approaches. This affects the modelled resistivity values as well as the depths of the detected structures. At Nair rockglacier e.g., resistivity values in the centre of the longitudinal profile (between the perpendicular profiles) are between 12 kΩm and 16 kΩm in the 2D model while they are between 8 kΩm and 12 kΩm in the 3D model. Greater differences are shown in the upslope part of the longitudinal profile of Uertsch_01 data set. Around Y = 90 m, the 3D model shows a high-resistivity structure which is displayed with much lower resistivity values by the independently inverted 2D data. The high-resistivity structure of Uertsch_02 data set (referred to as '4' in fig. 7), shows a shallow active layer in the results of the 2D approach, while it is obtained directly below the surface in the 3D model. Structures detected by the 3D approach are shaped smoother than the same structures detected by the 2D approach which is likely the result of diagonal filters and interpolation effects.

RC2.2

The description of the Figure 4 (5 and 6) and discussion in the manuscript is great (including the discussion of past studies). However, it is very hard to follow the discussion given the limited information in the figures. Topography is likely a key property in such analysis and has been measured (as visible in Figure 4) (I suggest that the authors add a sentence to explain how they measured it in more details). It would be great to have a map of the topography so that below structure could be more easily compared to surface variability (topography and micro-topography). Figure 4 shows that topography has been included in inversion but currently it is hard to observe and compare surface and subsurface features. Also a geomorphological map or any other information about the surface properties could significantly strengthen the paper.

AR2.2

We measured topography using an RTK-GNSS system or assessed it in the field and corrected the data afterwards. We added a sentence about the topography measurement in the method section.

Micro-topography can be obtained from the new created figure 8 and a better overview is presented in the geomorphological maps (fig. 2) and the new photos (fig. 1).

RM2.2

Topography (cf. fig. 8) was measured at each electrode using an RTK-GNSS system (Uertsch_02) or assessed in the field (Nair, Uertsch_01). The assessed topography data was corrected afterwards using digital elevation data. Topography was incorporated into the collated [...]

See figs. 1, 2 and 8 at the end of the document in original size.

RC2.3

I agree that the interpretation of thermistor data, EMI and SRT is generally difficult at temperature around 0 C. I think it would be very useful to see temperature profiles at other times of the year too for enhanced understanding of where the system is expected to be more dynamic. Please consider adding such a dataset in a figure.

AR2.2

We added temperature profiles from exemplary days which represent minimum and maximum temperatures (mean over all sensors) and mean values for each sensor to the figures (panel c).

RM2.3

See figs. 3 and 4 at the end of the document in original size.

RC2.4

There are several locations where wording could be possibly improved. E.g., "Its" or "their" on Line 6 (what does the "its" refer to)?; "and hence the performance"(Line 10) sounds awkward; "homogeneous decrease" or "constant decrease" (Line 12) ?; etc.

AR2.4

We checked and changed the mentioned parts. Further corrections were made throughout the text.

RM2.4

Interactions between different formative processes are reflected in the internal structure of rockglaciers. **Therefore, the detection of subsurface conditions** can help to enhance our understanding of landform development. For an assessment of subsurface conditions, [...].

At Nair rockglacier, we discovered a gradual descent of the frost table in a downslope direction and a **constant** decrease of ice content which follows the observed surface topography

Minor Comments:

RC2.5

L. 28 on page 2: Consider rewording last sentence.

AR2.5

We changed the word order.

RM2.5

Changed from:

'Although two-dimensional quantitative assessments of ground ice content have already been presented (Pellet et al., 2016; Hausmann et al., 2012; Hauck et al., 2011), we presume that a qualitative approach is sufficient for interpreting the results regarding rockglacier development, and as a quantitative approach would require an additional spatial assessment of porosity.'

To:

We present a qualitative assessment of ground ice content which we presume is sufficient for interpreting the results regarding rockglacier development. Quantitative assessments, as presented e.g. by Pellet et al., (2016), Hausmann et al., (2012) or Hauck et al., (2011), would additionally require a spatial assessment of porosity.

RC2.6

L.31 on page 2: "best investigated" in the world? Please be more specific

AR2.6

We limit it to the European Alps although it might be true for the whole world. We specified this.

RM2.6

The nearby rockglaciers Murtèl and Muragl **probably** belong to the best investigated rockglaciers in the **European Alps**.

RC2.7

L.2 on page 3: "boreholes" at each site? One at each site? Please clarify. I also suggest that authors name the two sites in this section.

AR2.7

Yes, there is one borehole at each site. We name the two sites in this section now explicitly.

RM2.7

In September 2014, **one borehole with a depth of 10 m was drilled at Uertsch rockglacier and one borehole with the same depth was drilled at Nair rockglacier. Both boreholes are** instrumented with thermistor strings with 15 temperature sensors.

RC2.8

L.21, page 4: what is the inter-electrode spacing (2m?)

AR2.8

Inter-line electrode spacing is 2 m for profiles in X-direction and 3 m for profiles in Y-direction. We added this information in an additional sentence.

RM2.8

Inter-line electrode spacings of 2 m and 3 m were used for profile lines in X- and Y-direction, respectively.

RC2.9

L.28, page 4: standard deviation larger than 5%. Please provide information on how this standard deviation is measured, by the acquisition system alone? Or using reciprocal measurements?

AR2.9

This value is measured by the acquisition system and shows the deviation between the results of several reciprocal measurements of the same datum point. We added this to the method section.

RM2.9

Each datum point was measured between two and four times and standard deviation between these reciprocal measurements was saved for quality checks.

RC2.10

L.30 page 4: "collated". Consider using "merged"

AR2.10

We exchanged the words following the suggestion.

RM2.10

The 2D data sets were **merged** into one single 3D file [...].

RC2.11

L. 17, page 5: the shots were all located on the transects. Please discuss shortly why no shot have been performed outside the geophone interval (as often done in seismic refraction).

AR2.11

Indeed, shot points outside the transects were performed. We pointed this out.

RM2.11

Additionally, offset shots outside the profile lines were performed.

RC2.12

Section 4.1: I got lost in this section because I did not understand what was discussed first. I suggest that the author clearly state that this section compare single ERT transect and SRT. I think personally that this section should be placed after the quasi-3D inversion and be only related to comparison between seismic and ERT.

AR2.12

We placed this section in front of the quasi-3D inversion because we think that the comparative approach provides information which is valuable for the interpretation of the 3D models. It would be difficult to investigate subsurface conditions from the solely resistivity-based 3D models. The comparative approach, in combination with the borehole data, confirms the permafrost occurrence which is used as prior information for the 3D models.

We added an introduction to this section to point this out.

RM2.12

A comparative analysis of single ERT and SRT profiles provides initial two-dimensional information on the local subsurface characteristics. The information of this comparative approach is valuable for interpreting the quasi-3D ERI models which are solely based on resistivity data. Additionally presented data from borehole temperature loggers gives information on the ground thermal regime and verifies the permanently frozen state of the subsurface of the investigated rockglaciers.

RC2.13

Line 5, page 6: "last two sensors". At which depths? The sentence is confusing, although I agree that temperature close to 0 C means that comparison between various dataset is difficult, as well as the assessment of permafrost presence or not.

AR2.13

Depths are 9 m and 10 m, we added the specific values. The sentence refers to the accuracy range of the sensors (± 0.25 °C) which we mentioned in an earlier section. We modified this sentence by repeating this information.

RM2.13

This means, that the difference from the freezing point is below the accuracy range of the sensors (**± 0.25 °C**). Year-round temperature logging (cf. exemplary plots in fig. 3c), shows that values of daily mean temperatures are consistently negative below a depth of 3 m, but only the sensors **at 9 m and 10 m depth** show values that are consistently lower than **-0.25 °C and hence confirm permafrost conditions**

RC2.14

Line 5 on page 10: "removed" using which criteria

AR2.14

We removed datum points using the following criteria: (i) more than 5% deviation between reciprocal measurements and (ii) RMS error higher than 100% in a trial inversion (procedure

proposed by Loke (2014)). We included this information in the method section and refer to this in the addressed sentence (L5 P10).

RM2.14

The measured apparent resistivity data sets were quality checked and bad datum points (standard deviation **between reciprocal measurements** > 5%) were deleted manually. [...] **This includes an elimination of datum points with an RMS errors of > 100% in a trial inversion.**

RC2.15

Line 9 on page 10: 'cut-off' value. Please clarify process. Although it is hard to evaluate penetration depth without knowing the acquisition geometry (a and n spacings), it seems to me that the bottom part in Figure 3 is not necessarily real. Please clarify your thoughts about this zone in the manuscript.

AR2.15

We performed the model resolution approach that we describe in the method section for an evaluation of investigation depth. For the data set which is presented in (former) figure 3, low model resolution values in the bottom part of the tomogram indeed indicate that this bottom part is not necessarily real. We already state this on page 7, line 2: 'However, it must be noted that data coverage is low in this deep part of both models'.

To point this out, we split this joint statement into separate sentences. We additionally modified the description of the model resolution approach in the method section.

RM2.15

Description of figure 3 modified:

However, low model resolution values in the bottom part of the model (not shown) indicate that this lower boundary is not necessarily backed by the measured data. [...] As for the ERT profile, it must be noted that data coverage is low in this deep part of the model.

New part in method section:

To investigate model reliability, a resolution matrix approach (Hilbich et al., 2009; Wilkinson et al., 2006; Stummer et al. 2004) was performed on all data sets. This approach provides a measure of the information content of the model cells. It enables an assessment of the independence of the modelled resistivity values from neighbouring cells or inversion settings. We also used the approach to evaluate investigation depth. In RES3DINV, the model resolution values are transferred into index values, which additionally take into account the model discretization (Loke, 2015). We followed the suggested index value of 10 as a lower limit to rate model cells as sufficiently resolved.

RC2.16

L.15, p.9: "could not rediscover" or "did not rediscover (or observe)". Please clarify the potential reason. Is it because environmental/climate change, thermal state during survey, difference in acquisition geometry?

AR2.16

We modified this sentence. The variation is likely caused by differences in data acquisition, but an influence of atmospheric warming also seems conceivable.

RM2.16

However, they observed an ALT of 2.2 m to 2.4 m which is lower than what we observed in our results. This is likely caused by differences in the methodological approach or in the acquisition geometry. However, the impact of atmospheric warming during the last decade is also conceivable.

RC2.17

L24, page 13 “with the observed surface ridge structure”, as well as in result and discussion section. It would be great to have more visual information (aerial image, geomorphological map, topography) to discuss these links.

AR2.17

We changed the photos presented in figure 1 and added some geomorphological maps (new fig 2). Information on topography can be obtained from the newly created figure 8.

RM2.17

See new fig. 1, 2 and 8 at the end of the document in original size.

RC2.18

Figure 2: all the other figures have similar range of values (colors) for ERT, except that one. For better comparison between the various figures, I suggest that the authors trim this color scale and clarify this in the caption.

AR2.18

We adjusted the colour scale of this figure to the same range that are used in the other figures.

RM2.18

See fig. 3 at the end of the document in original size.

RC2.19

Figure 6: there are some longitudinal features that can be clearly identified and discussed in the manuscript. It would be nice to see them in a fence diagram too (ERT transects reposition in space) (see major comment). This would also show the reader that these features are observed in multiple cross-sections.

AR2.19

We present transects which include these features in the fence-diagram of Uertsch_02 (new fig. 08). The reader can now see that these features are present in both X- and in Y-profiles.

See fig. 8 at the end of the document in original size.

Revised figures

Figure 1

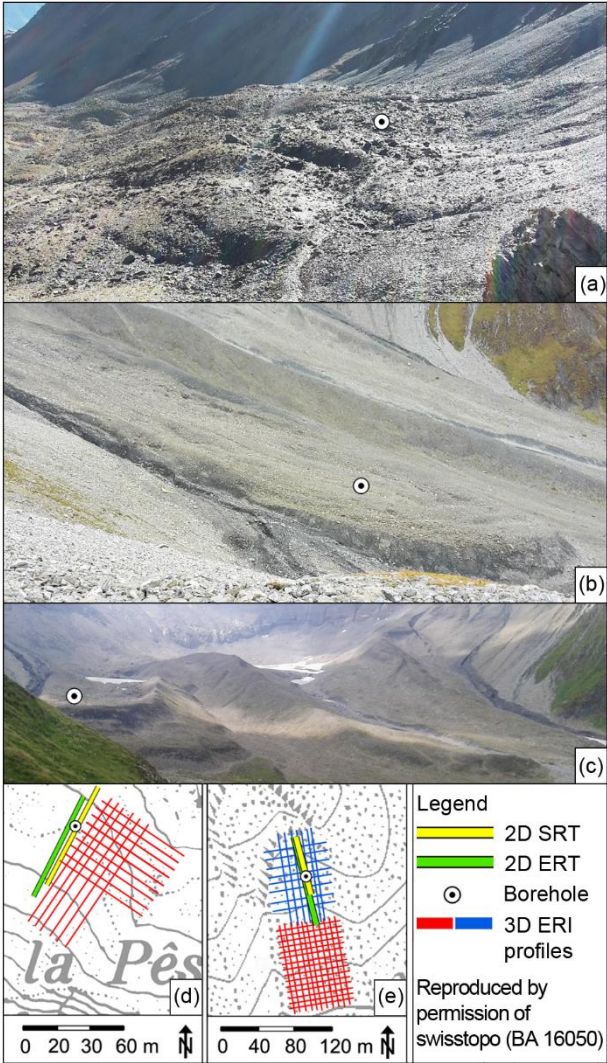


Fig. 1: Site overview and measurement setups. a) Photo Nair site; b) + c) Photos Uertsch site; d) quasi-3D ERI setup Nair; e) quasi-3D ERI setups Uertsch_01 (blue lines) and Uertsch_02 (red lines).

Figure 2

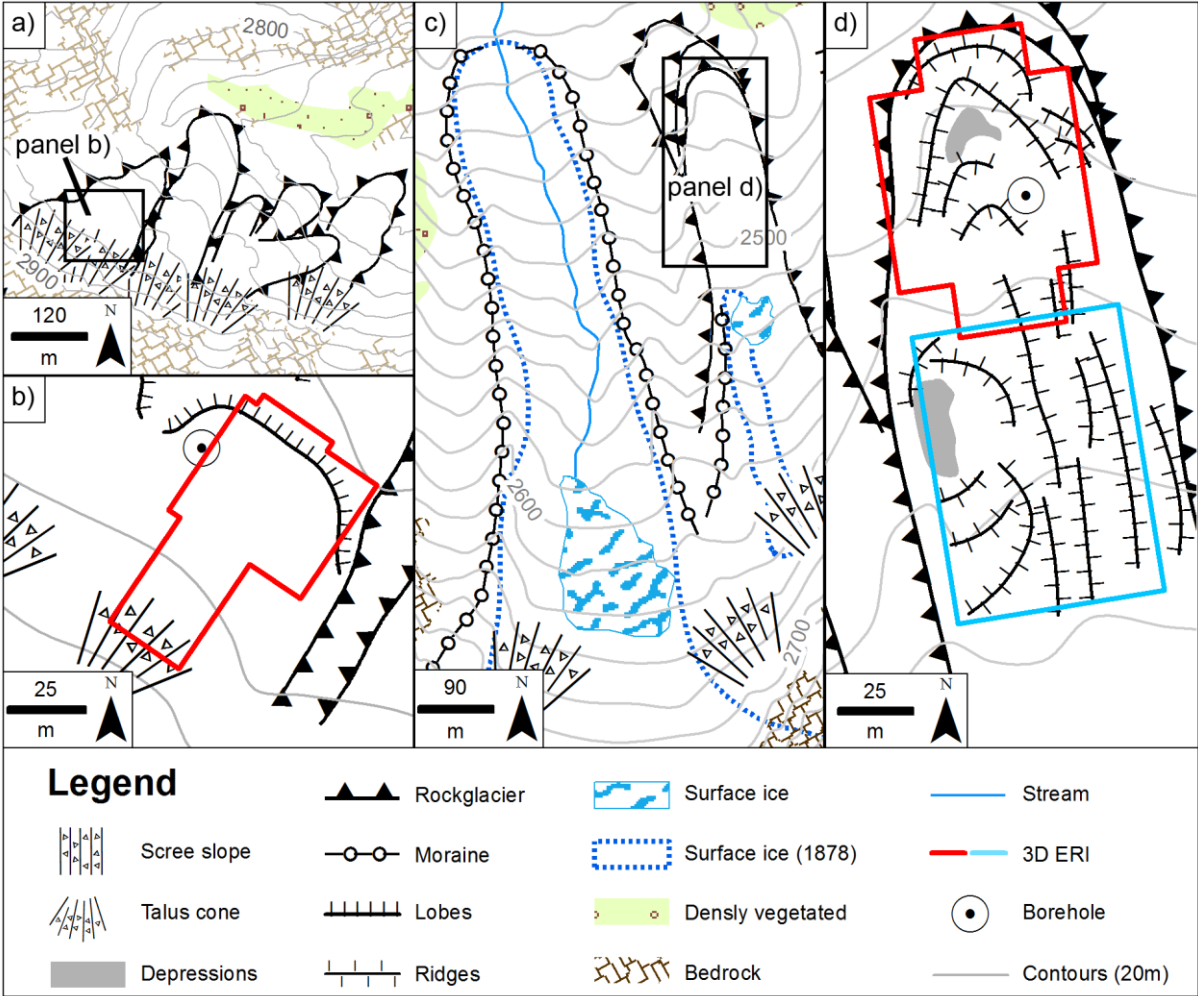


Fig. 2: Geomorphological setting. Panels a) + b): Nair c) +d): Uertsch. Legend adapted from Kneisel et al. (1998).

Figure 3

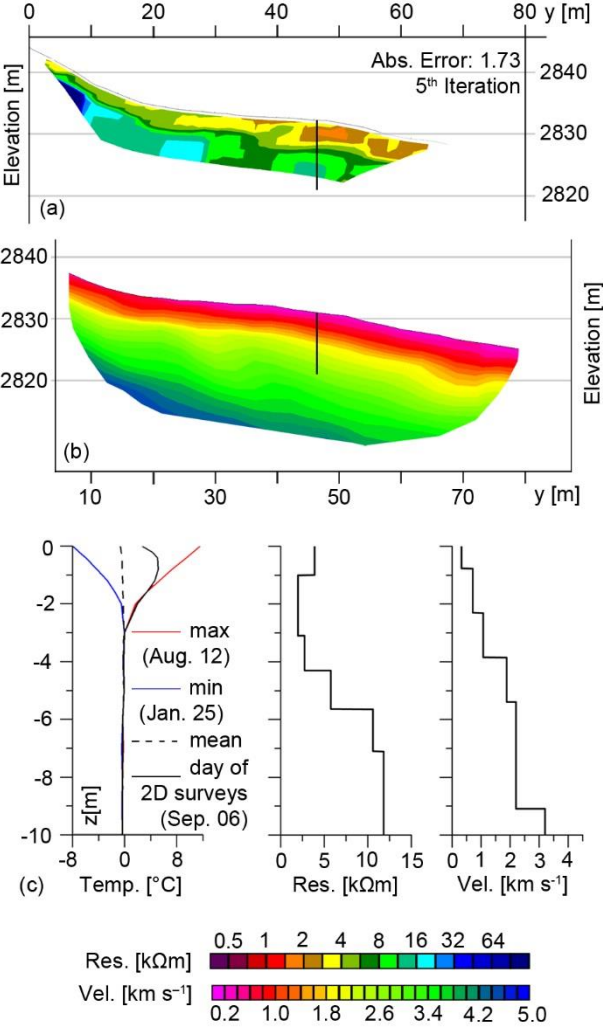


Fig. 3: Comparative analysis of (a) 2D ERT Profile, (b) 2D SRT Profile and (c) 1D Temperature/ Resistivity/ Velocity plots at Nair rockglacier.

Figure 4

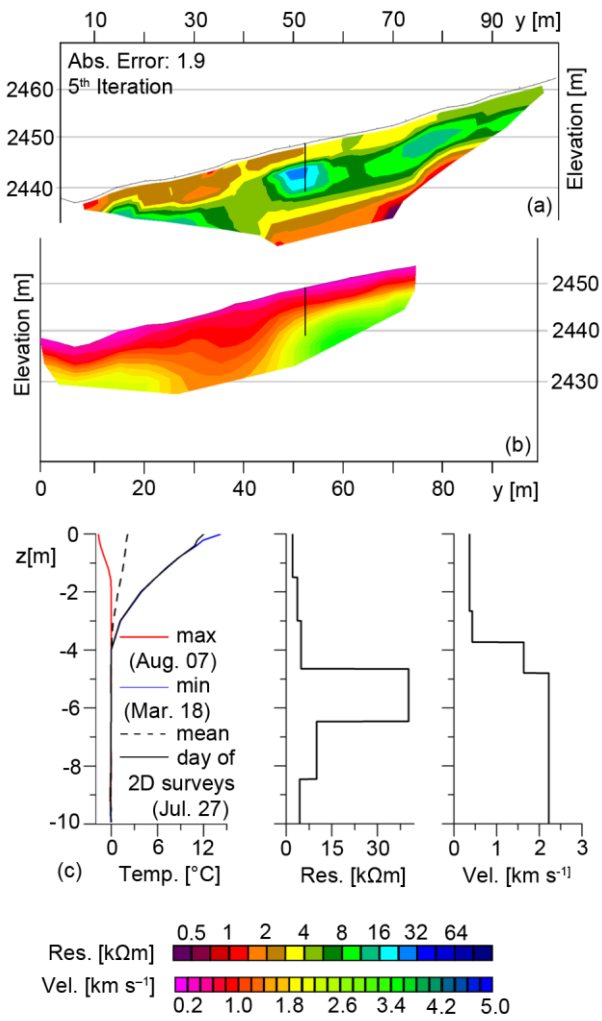


Fig. 4: Comparative analysis of (a) 2D ERT Profile, (b) 2D SRT Profile and (c) 1D Temperature/ Resistivity/ Velocity plots at Uertsch rockglacier.

Figure 5

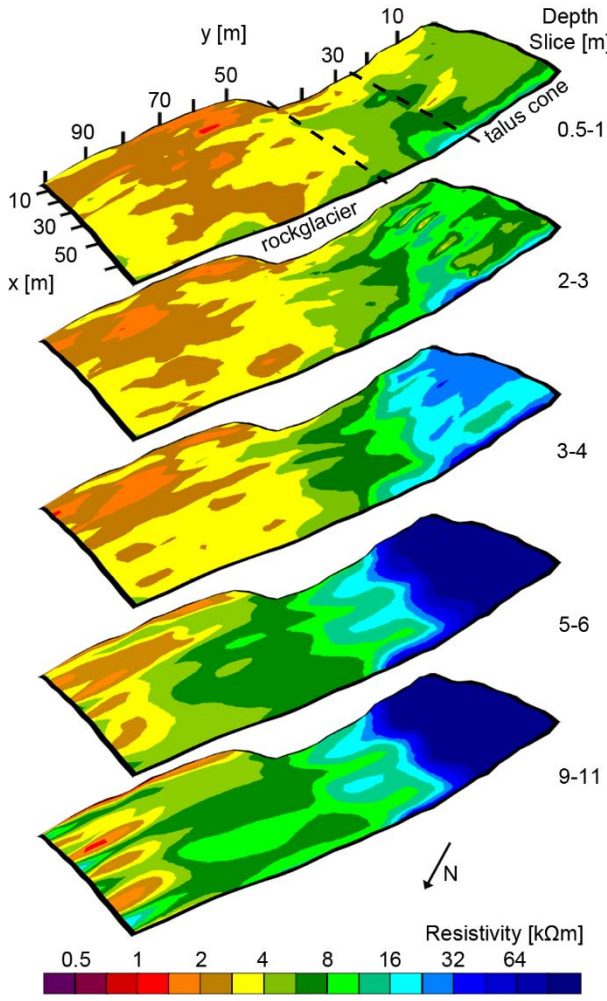


Fig. 5: Quasi-3D ERI Model Nair. Selected depth slices.

Figure 6

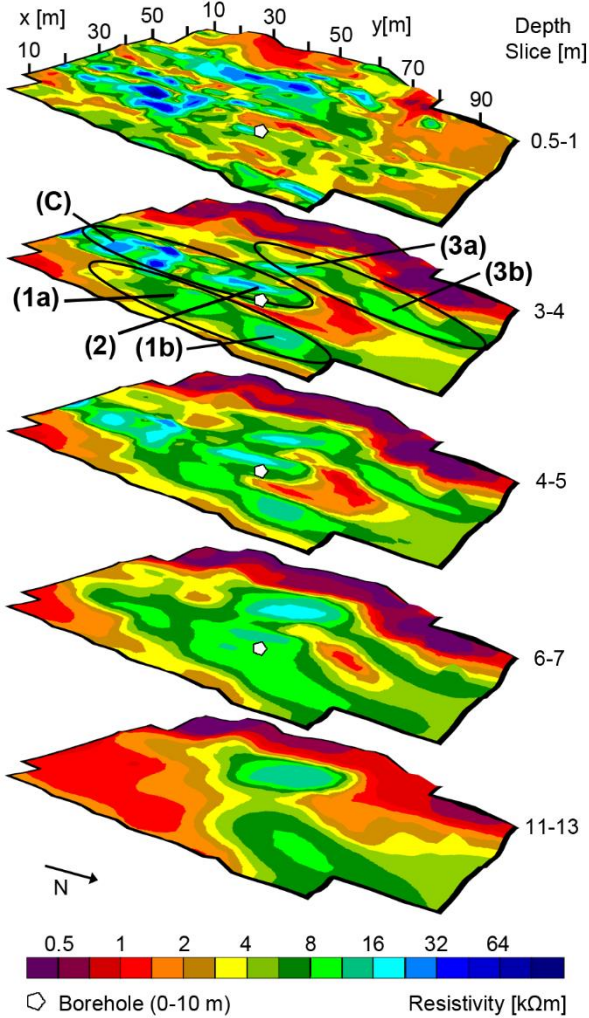


Fig. 6: Quasi-3D ERI Model Uertsch_01. Numbers refer to structures described in the text. Selected depth slices.

Figure 7

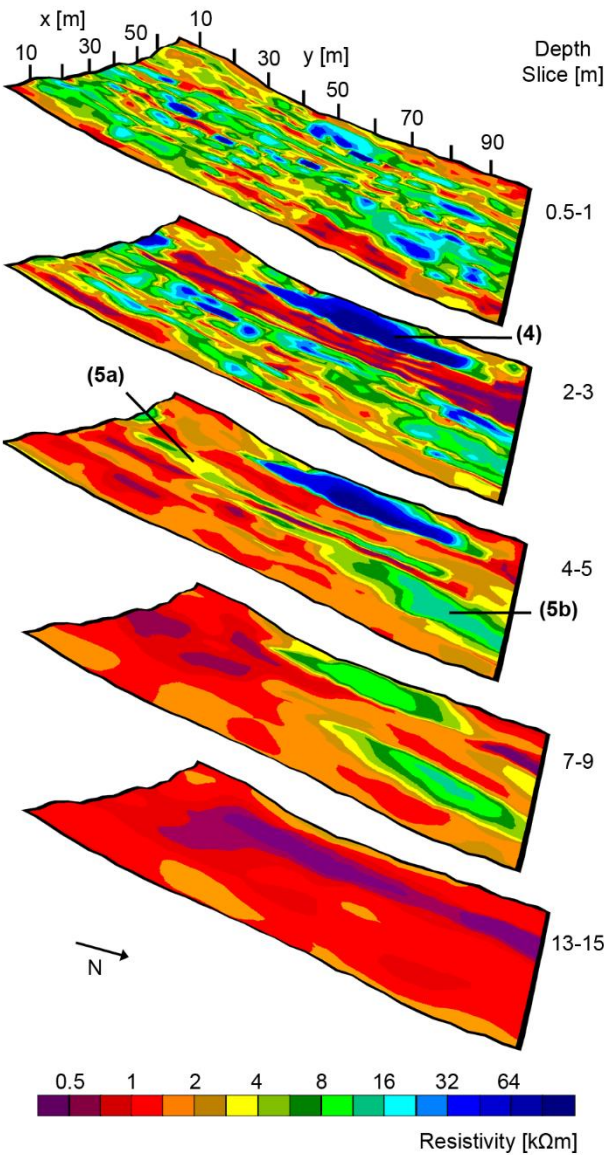


Fig. 7: Quasi-3D ERI Model Uertsch_02. Numbers refer to structures described in the text. Selected depth slices.

Figure 8

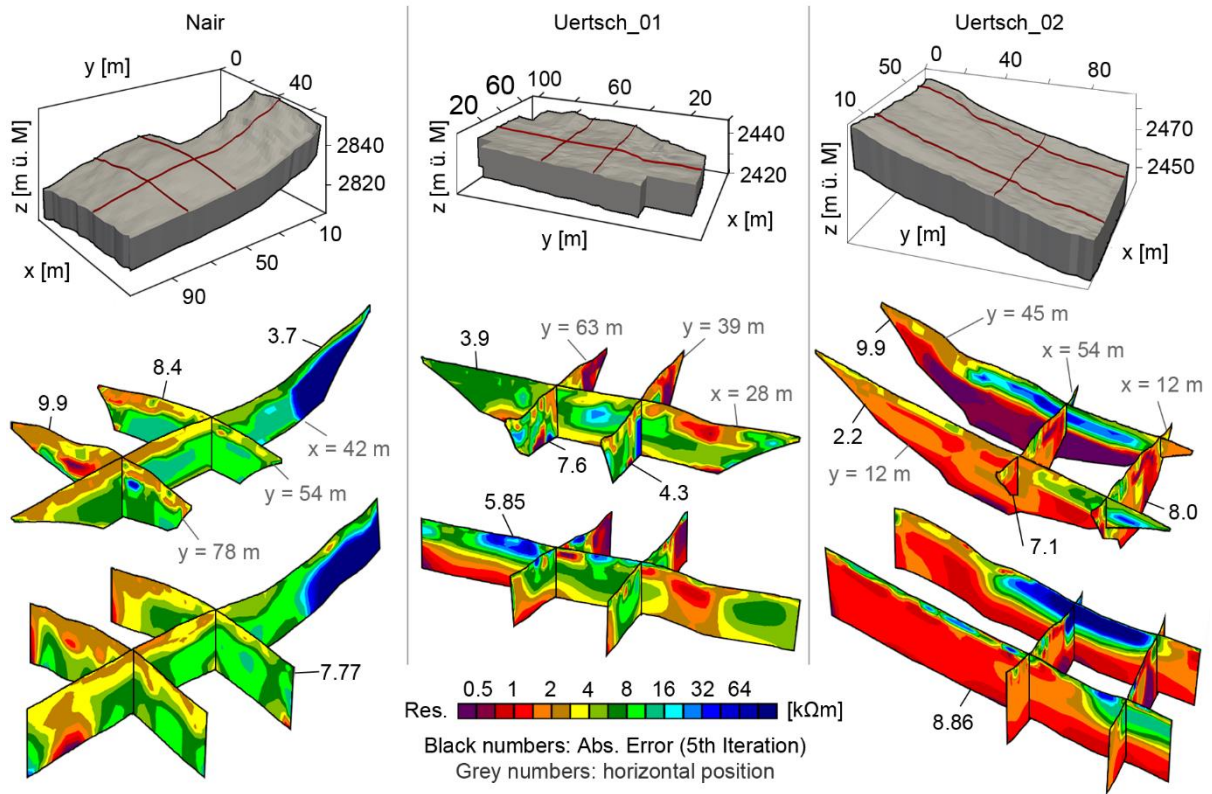


Fig. 8: Comparison between independently inverted 2D models (central row) and 3D models (lower row). Upper row shows model representation as blocks and position of the selected slices.

Internal structure of two alpine rockglaciers investigated by quasi-3D electrical resistivity imaging ~~(ERI)~~

Adrian Emmert¹, Christof Kneisel¹

¹Institute of Geography and Geology, University of Würzburg, D-97074, Germany

5 *Correspondence to:* Adrian Emmert (adrian.emmert@uni-wuerzburg.de)

Abstract. Interactions between different formative processes are reflected in the internal structure of rockglaciers. ~~Its~~ ~~Therefore, the~~ detection ~~of subsurface conditions~~ can ~~therefore~~ help to enhance our understanding of landform development. For an assessment of subsurface conditions, we present an analysis of the spatial variability of active layer thickness, ground ice content and frost table topography ~~at-for~~ two different rockglaciers ~~sites~~ in the Eastern Swiss Alps by means of quasi-3D electrical resistivity imaging (ERI). This approach enables an extensive mapping of subsurface structures and ~~hence-the~~ ~~performance-of~~ a spatial overlay between site-specific surface und subsurface characteristics. At Nair rockglacier, we discovered a gradual descent of the frost table in a downslope direction and a ~~homogenous-constant~~ decrease of ice content which follows the observed surface topography. This is attributed to ice formation by refreezing meltwater from an embedded snowbank or from a subsurface ice patch which reshapes the permafrost layer. The heterogeneous ground ice distribution at Uertsch rockglacier indicates that multiple processes on different time domains were involved in ~~the rockglacier~~ development. Resistivity values which represent frozen conditions vary within a wide range and indicate a successive formation which includes several ~~rockglacier~~ advances, past glacial overrides and creep processes on the rockglacier surface. In combination with the observed ~~rockglacier~~ topography, quasi-3D ERI enables us to delimit areas of extensive and compressive flow in close proximity. Excellent data quality was provided by a good coupling of electrodes to the ground in the pebbly material of the investigated rockglaciers. Results show the value of the quasi-3D ERI approach but advice the application of complementary geophysical methods for interpreting the results.

1 Introduction

In areas of sporadic and discontinuous permafrost, subsurface conditions (e.g., thickness of the active layer, frost table topography, ice content, etc.) can be highly heterogeneous within small distances and can vary within single landform units (Schneider et al., 2013; Langston et al., 2011; Scapozza et al., 2011; Kneisel, 2010a). This is due to complex interactions between small-scale surface conditions (e.g. grain size composition, snow cover distribution), topographical attributes (e.g. aspect, slope) and characteristics of the contributing area (e.g. source of debris, extent of root zone) (cf. Monnier et al., 2013; Luetsch et al., 2004; Hanson and Hoelzle, 2004; Harris and Pedersen, 1998) which influence the local ground thermal regime during landform formation (Otto et al., 2012; Lambiel and Pieracci, 2008). For a better understanding of the past and future

development of periglacial landforms in areas of sporadic and discontinuous permafrost, which are particularly sensitive to climate change (Schneider et al., 2012; Harris et al., 2009), an enhanced knowledge of these interactions is needed. ~~Therefore, the detection and mapping of spatial variations within the internal structure can be seen as a first step towards an identification of linkages between surface and subsurface processes which are key drivers in landform development (Kääb et al., 2007; Haeberli et al., 2006).~~ This spatial information can be valuable in combination with thermal modelling or process modelling approaches (Frehner et al., 2015; Scherler et al., 2013; Luetschg et al., 2008) which are, due to the heterogeneous subsurface conditions in alpine environments, often reduced to one or two dimensions. Hence, a detailed knowledge of three-dimensional subsurface conditions can support the interpretation of results from such models.

Geophysical techniques such as electrical resistivity tomography (ERT), seismic refraction tomography (SRT) or ground penetrating radar (GPR) are widely used today and provide a multi-dimensional investigation of subsurface conditions in permafrost environments and corresponding landforms. For rockglaciers and similar periglacial landforms, geophysical investigations enable an assessment of the subsurface material composition and to distinguish between frozen and unfrozen areas (e.g. Schneider et al., 2013; Musil et al., 2006). This information can be used to investigate inferences with creep velocities (Hausmann et al., 2012; Kneisel and Kääb, 2007) or to reveal glacier-permafrost interactions during the development of rockglaciers (cf. Dusik et al., 2015; Krainer et al., 2012; Ribolini et al., 2010) ~~of the internal structure can e.g., i) reveal glacier-permafrost interactions during the development of rockglaciers (Dusik et al., 2015; Krainer et al., 2012; Ribolini et al., 2010), ii) provide inferences with creep velocities (Hausmann et al., 2012; Kneisel and Kääb, 2007) and iii) enable an assessment of subsurface material composition (Schneider et al., 2013; Musil et al., 2006).~~

In contrast to those numerous one- or two-dimensional field studies, in which vertical and lateral variations of resistivity distribution could be detected, three-dimensional investigations are sparse in the field of periglacial geomorphology. Approaches were presented by Scapozza and Laigre (2014) and Langston et al. (2011) who graphically combined results from 2D ERT surveys to three-dimensional fence diagrams. However, these approaches do not take into account the actual three-dimensionality of the subsurface resistivity distribution and the so called '3D effects', which result from small-scale heterogeneities (Loke et al., 2013). This is achieved ~~through by running the performance of~~ a 3D inversion on a data set consisting of multiple intersecting 2D data sets ('quasi-3D' approach), which enables a horizontal mapping of resistivity variations, an assessment of the geometry of the detected structures and consequently a more realistic characterization of three-dimensional subsurface conditions (Kneisel et al., 2014; Rödder and Kneisel, 2012).

The objective of this paper is to describe the internal structure of two morphologically different rockglaciers with regard to frost table variations, active layer thickness (ALT), ice content and ground ice genesis. We therefore analyse the three-dimensional subsurface resistivity distribution which is modelled by quasi-3D ERI and the results from additionally performed comparative surveys of 2D ERT and 2D SRT. Ground truthing is achieved by borehole temperature measurements. ~~Although two-dimensional quantitative assessments of ground ice content have already been presented (Pellet et al., 2016; Hausmann et al., 2012; Haek et al., 2011), we presume that a qualitative approach is sufficient for interpreting the results regarding rockglacier development, and as a quantitative approach would require an additional spatial assessment of porosity. We present~~

a qualitative assessment of ground ice content which we presume is sufficient for interpreting the results regarding rockglacier development. Quantitative assessments, as presented e.g. by Pellet et al., (2016), Hausmann et al., (2012) or Hauck et al., (2011), would additionally require a spatial assessment of porosity.

2 Study Sites

5 The investigated rockglaciers are located in the Eastern Swiss Alps, an area which is well-known for the occurrence of permafrost and numerous rockglaciers. The nearby rockglaciers Murtèl and Muragl probably belong to the best investigated rockglaciers in the European Alps (e.g., Maurer and Hauck, 2007). For the presented study, two landforms described as ‘pebbly rockglaciers’ according to the relatively small grain size (dominant clast size < 20 cm) of the surface debris (Matsuoka et al., 2005) were chosen. The distance between the two sites is ca. 12 km. In September 2014, one borehole with a depth of 10 m ~~§~~
10 ~~were-was drilled at Uertsch rockglacier and one borehole with the same depth was drilled at Nair rockglacier. Both boreholes are to a depth of 10 m and~~ instrumented with thermistor strings with 15 temperature sensors ~~at both sites~~. The temperature sensors are located at the ground surface and 0.2 m, 0.4 m, 0.8 m, 1.2 m, 1.6 m, 2 m, 3 m, 4 m, 5 m, 6 m, 7 m, 8 m, 9 m and 10 m below the surface. As a destructive drilling method was applied, no borehole cores are available. Accuracy of the installed sensor type (Dallas, Geoprecision) is ± 0.25 °C and a temporal resolution of 1h is provided.

15 2.1 Nair rockglacier

Nair rockglacier (46°31’ N, 9°47’ E; ca. 2845–2820 m asl; fig. 1a, c) is located at the southern slope of a small high mountain valley near the city of Celerina, Upper Engadine. It is part of a widespread rockglacier assembly at the valley slope and roots below a steep talus cone (fig. 2a, b+e). It is composed of debris material from the sedimentary rocks of the Piz Nair summit area (mainly schist and marlstone). The Alpine Permafrost Index Map (Boeckli et al., 2012) describes the spatial distribution
20 of permafrost in the area of the rockglacier as ‘Permafrost in nearly all conditions’. The investigated rockglacier consists of several adjacent lobes, but our study concentrates on the uppermost eastern lobe which is about 90 m x 80 m in size. The occurrence of permanently frozen ground within this part of the rockglacier was reported by Ikeda and Matsuoka (2006) who performed one 2D-SRT-a seismic refraction sounding and one 2D ERT measurement (specified therein as ‘NN12’). Their study describes the rockglacier as ‘active’, but no velocity measurements were published. A glaciation of the site during Little
25 Ice Age (LIA) is not indicated by morphological traces but surface ice is displayed on ancient topographical maps from ca. 1917 to 1944 at the position of the present talus cones and at the root zone of the rockglacier (Coaz et al., 1925, 1946). The borehole is positioned in the upper part of the investigated rockglacier lobe.

2.2 Uertsch rockglacier

Uertsch rockglacier (46°36’ N, 9°51’ E; ca. 2570–2434 m asl; fig. 1b, d) is located at the head of a north-striking valley near
30 the city of Bergün, ca. 2 km north of Albula Pass. It is tongue-shaped and about 500 m x 100 m in size. It has a marked

topography with arcuate ridges contoured by deep furrows (vertical difference ca. 0.5 m to 3 m, fig. ~~2d+b~~) at the rockglacier snout. A several metres high lateral moraine at the western edge of the rockglacier next to a partly ice-filled depression (80 m x 40 m) at its proximal side indicates that an extensive glaciation existed on the rockglacier (fig. 2c). Surface ice is displayed on a topographical map from 1878, but pictured there only slightly larger than the extent of the recent ice patch (Coaz and Leuzinger, 1878). A similar lateral moraine is lacking at the eastern edge. Small longitudinal ridges occur in the central part of the rockglacier and several relict lobes in front of the rockglacier indicate a successive formation (fig. 2c, +d). On the surface, isolated pioneer plants indicate inactivity. The rockglacier mostly consists of fine-grained schist from the mountain ridge between Piz Üertsch and Piz Blaisun. The rooting zone is part of a wide amphitheatre-like catchment area, where remnant ice from a former glaciation and lateral moraines from the former glacier extent are visible (~~background of fig. 1b~~fig. 2c). However, this part is a little cut off from the root zone of the rockglacier. The Alpine Permafrost Index Map (Boeckli et al., 2012) describes the occurrence of permafrost at the main part of the rockglacier as ‘Permafrost only in very favourable conditions’. Only the area of the rooting zone of the rockglacier is described by the term ‘Permafrost mostly in cold conditions’. The borehole is located in the lower part of the rockglacier, situated at the edge of one of the surface ridges. Some morphometrical attributes (e.g., length, slope aspect, lithology, etc.) of the rockglacier were presented by Ikeda and Matsuoka (2006) (specified therein as ‘A8’), but no geophysical surveys were published.

3 Methods

The application of geophysical measurements for the detection of subsurface conditions is common practice in permafrost research (e.g. Hauck, 2013; Kneisel et al., 2008; Otto and Sass, 2006) and therefore only short descriptions of the basic approaches are given here. As the ranges of resistivity values for frozen and unfrozen conditions are partly overlapping, the application of complementary methods for the detection of frozen subsurface conditions is generally recommended (Schrott and Sass, 2008; Ikeda, 2006).

3.1 Electrical resistivity tomography (ERT)/ quasi-3D electrical resistivity imaging (ERI)

Geoelectrical measurements are based on the varying electrical conductivity of different materials (e.g., minerals, sediments, air and water) which are assumed to be heterogeneously distributed within the subsurface. Hence, the detection of potential difference patterns can be used to derive information on the geometry of structural heterogeneities and their electrical properties. The wide range of resistivity values for most loose materials is caused by their porosity, the varying water content and its state of matter. This connection allows to convert the image of resistivity distribution into an image of subsurface conditions. Resistivity measurements are carried out by injecting direct current into the ground via two current electrodes. Two potential electrodes are then used to measure the resulting voltage difference. The arrangement of these four electrodes is described by the ‘electrode array’ which determines investigation depth and sensitivity pattern of the measurement. For the quasi-3D ERI approach (cf. Kneisel et al., 2014 for more details) data points from a 2D network of parallel and perpendicular

survey lines are merged and treated as one 3D data set. Each of our 2D profiles uses 36 electrodes, connected to a multi-electrode resistivity imaging system (Syscal Pro, IRIS Instruments). Inter-line electrode spacings of 2 m and 3 m were used for profile lines in X- and Y-direction, respectively. Each datum point was measured between two and four times and standard deviation between these reciprocal measurements was saved for quality checks. Further specifications of the quasi-3D ERI data sets of this study are summarized in tab. 1 and the networks of 2D lines are presented in fig. 1c, d. Dipole–Dipole (DipDip) electrode array was performed preferably due to its high resolution in the shallow subsurface and the provided time efficiency by our multi-channel device, but also measurements with the more robust Wenner–Schlumberger (WenSI) array were performed at all sites (and partly included into the 3D data sets) to reach a higher level of reliability. Where no complete rectangular shaped grid could be set up due to topographical reasons, the model sections are partly blanked out. The measured apparent resistivity data sets were quality checked and bad datum points ~~and outliers~~ (standard deviation between reciprocal measurements > 5%) were deleted manually. The measured 2D data sets were inverted independently for 2D interpretation and further quality checks following the procedures proposed by Loke (2014) were performed. This includes an elimination of datum points with an RMS errors of > 100% in a trial inversion. The 2D data sets were ~~collated-merged~~ into one single 3D file using the software RES2DINVx64 (Geotomo Software). Topography (cf. fig. 8) was measured at each electrode using an RTK-GNSS system (Uertsch_02) or assessed in the field (Nair, Uertsch_01). The assessed topography data was corrected afterwards using digital elevation data. Topography was incorporated into the collated 3D data sets which were inverted using the software RES3DINVx64 Professional (Geotomo Software). We used the robust inversion scheme (L1-norm) for the smoothness-constrained regularization, which tends to produce models with sharp boundaries (Loke and Barker, 1996). The optimization method tries to reduce the absolute difference between the calculated and the measured apparent resistivity values by adjusting the resistivity of the model blocks. These differences are quantified as a mean absolute misfit error value (abs. Error). The inversion continues until acceptable convergence between the calculated and the measured data is reached (see Rödder and Kneisel (2012) for more details on inversion settings). ~~For To investigate investigating~~ model reliability, ~~the a~~ resolution matrix approach (~~Loke, 2014; Hilbich et al., 2009; Wilkinson et al., 2006; Stummer et al. 2004~~) was performed on all data sets. This approach provides a measure of the information content of the model cells. It enables an assessment of the independence of the modelled resistivity values from neighbouring cells or inversion settings. We also used the approach to evaluate investigation depth. In RES3DINV, the model resolution values are transferred into index values, which additionally take into account the model discretization (Loke, 2015). We followed the suggested index value of 10 as a lower limit to rate model cells as sufficiently resolved. For the conversion from resistivity values to subsurface conditions, we applied qualitative attributions based on direct observations by Ikeda and Matsuoka (2006) as their study was performed in the same area, as well as appraisals from our own borehole measurements.

3.2 Seismic refraction tomography (SRT)

Seismic refraction tomography (SRT) is a suitable complementary method to geoelectrical investigations as it is based on the independent parameter of seismic wave velocity (Kneisel et al., 2008). We used SRT to confirm the occurrence of frozen

ground and to derive a broad threshold value to distinguish between frozen and unfrozen subsurface conditions (Seppi et al., 2015). On each rockglacier, one SRT profile was performed. The 2D SRT survey lines were set up next to 2D ERT survey lines and in close proximity to the boreholes (fig. 1 c, d). 24 Geophones were used with an along-line separation of 3 m. We used a Geode Seismograph (Geometrics) and a sledge hammer as source of the seismic signal. Shot points were located

5 between the geophones at Nair rockglacier and between every second geophone at Uertsch rockglacier. Additionally, offset shots outside the profile lines were performed. We used the software package SeisImager 2D (Geometrics, Inc.) for data processing and analyses ~~were performed using the software package SeisImager 2D (Geometrics, Inc.). This~~ included a detection of the first onset of the seismic waves on the geophones and a reciprocity check of their travel time between source and receiver location (Geometrics, 2009). A tomographic inversion scheme with an initial model based on a prior time-term

10 inversion was used, as this method is well suited for the assumed heterogenic subsurface conditions (Schrott and Hoffmann, 2008). Surveys of comparative ERT and SRT were performed on 06 September 2015 (Nair) and 27 July 2015 (Uertsch), respectively.

4 Results

4.1 Frozen ground verification and characteristics

15 A comparative analysis of single ERT and SRT profiles provides initial two-dimensional information on the local subsurface characteristics. The information of this comparative approach is valuable for interpreting the quasi-3D ERI models which are solely based on resistivity data. Additionally presented data from borehole temperature loggers gives information on the ground thermal regime and verifies the permanently frozen state of the subsurface of the investigated rockglaciers.

4.1.1 Nair rockglacier

20 A boundary which reflects the characteristic sharp increase in both resistivity and velocity at the transition from unfrozen to frozen subsurface conditions can be obtained through the complete profiles at Nair rockglacier (fig. 32a, b). Corresponding values for this boundary are around 7 k Ω m in the ERT profile and 2 km s⁻¹ in the SRT profile, respectively. At the position of the borehole, the boundary reaches a depth of 4 m which is not in accordance with the depth where the temperature profile from the day of the geophysical measurements (daily means) undercuts the 0 °C line (fig. 23c). However, values from the

25 temperature sensors installed between depths of 3 m and 5 m vary between -0.07 °C and -0.19 °C. This means, that the difference from the freezing point is below the accuracy range of the sensors (± 0.25 °C). ~~The complete year-round temperature logging (not shown cf. exemplary plots in fig. 3c),~~ shows that values of daily mean temperatures are consistently negative below a depth of 3 m, but only the last two sensors of the thermistor chain at 9 m and 10 m depth show values that are consistently lower than -0.25 °C and hence confirm permafrost conditions. The upslope part of the 2D profiles, where the

30 geophysical profiles are overlapping (Y= 10–25 m), represents the steep talus cone at the root zone of the rockglacier. Active layer thickness in this part is 2 m. Resistivity values are around 4 k Ω m in the unfrozen active layer and vary between 7 k Ω m

and 20 k Ω m in the frozen layer. The latter values are considerably lower than the maximum values of the ERT model, which are in the range of several hundred k Ω m in an area which is not included in the SRT profile. Only the SRT model but not the shallower ERT model shows a second boundary in a depth of 12 m, where velocity values rise from 3.6 km s⁻¹ to 4.6 km s⁻¹. However, it must be noted that data coverage is low in this part. The downslope following part of the profiles (Y= 25–65 m) shows a steady increase of ALT from 3 m to 5 m with decreasing resistivity values from 5 k Ω m to 2 k Ω m. This can be linked to an increase in water content as runoff of unconfined water is reduced in this less steep part of the survey line. Resistivity values in the frozen layer are lower in this part of the model and vary between 12 k Ω m and 8 k Ω m. The lower boundary, which is detected only from the SRT model, descends and disappears at Y= 36 m. The dip angle of this boundary is much steeper than the slope angle of the rockglacier surface at this position. It therefore likely represents the depth of bedrock. The permafrost layer is shaped in a slightly wavy form in both models, which shows an undulating frost table topography. The courses of this boundary are not fully synchronous between the models, but this variation can be explained by the small parallel shift between the survey lines (fig. 1c).

4.1.2 Uertsch rockglacier

Similarly shaped structures can be observed in the geophysical results from Uertsch rockglacier (fig. 43a, b), although the positions of the structures seem to be slightly shifted between the profiles. At the position of the borehole, results are in good agreement with the observed subsurface temperatures from the day of the measurements (fig. 43c). At a depth of 4 m, a sharp increase of resistivity and velocity can be observed. The vertical temperature profile (daily means) of the borehole from the day of the geophysical surveys, reaches 0 °C at the same depth and shows that the detected boundary represents the frost table. Results from nearly-year-round temperature logging at the borehole (cf. exemplary plots in fig. 4c not shown), show that down from a depth of 4 m to the end of the thermistor chain, maximum daily mean temperature values remain between 0 °C and -0.18 °C. This represents permanently frozen conditions, but is within the accuracy range of the sensors. In the permafrost layer of the 2D models, resistivity values are between 8 k Ω m and 39 k Ω m. These values can be linked to strong variations of ice content, which range between ice-cemented and ice-supersaturated conditions (Ikeda and Matsuoka, 2006). Velocity values of this layer are between 2 km s⁻¹ and 3.2 km s⁻¹. An area of maximum high velocity and maximum high resistivity values, slightly shifted upslope in the SRT profile, is visible around the borehole location. Within the ERT profile, the detected permafrost layer ends at a depth of 11 m where resistivity values decrease again. However, low model resolution values in the bottom part of the model (not shown) indicate that this lower boundary is not necessarily backed by the measured data. Velocity values in the SRT section show a further increase with depth below the thermistor chain which indicates that the frozen layer is underlain by unfrozen material with a high level of compaction. However As for the ERT profile, it must be noted that data coverage is low in this deep part of both the models. Following the profile in a downslope direction, the layer of high velocity sharply descends in the SRT model between Y= 45 m and Y= 19 m. This coincides with a decrease of resistivity values to below 5 k Ω m and therefore likely represents unfrozen conditions over the complete depth in this part of the profile. The position of this unfrozen part corresponds to the end of the surface ridge structure where the borehole is placed on. In the further downslope

part of the profile, the detected structures resemble again those from the upslope part. Near the surface, low resistivity and low velocity values indicate an ALT of 6 m which is higher than the ALT of the upslope part.

4.2 3D subsurface models

4.2.1 Nair rockglacier

5 The 3D model of subsurface resistivity distribution at Nair rockglacier (fig. 45) shows a strong and stepwise decrease of resistivity values in Y-direction. The range of modelled resistivity values spans from 420 kΩm in the part of the model which corresponds to the talus cone (cf. fig. 54, model slice 0.5–1m first slice) to <1 kΩm in the shallow subsurface of the downslope part of the model. Variations in X-direction are less pronounced and only show a slight increase of resistivity values from the margin of the rockglacier towards the centre of the rockglacier. The highest resistivity values aggregate in a 15 m to 25 m long and ca. 40 m wide structure with values between 200 kΩm and 400 kΩm in its central part. These values indicate highly ice-supersaturated debris material (cf. Ikeda and Matsuoka, 2006). It is overlain by a 2m thick layer of lower resistivity values, which vary between 4 kΩm and 8 kΩm and is therefore regarded as the unfrozen active layer. The structure of high resistivity is not shaped homogeneously but narrows slightly along the X-axis towards the blanked out part from Y= 42 m to Y= 30 m. The vertical extent of the structure exceeds the maximum depth of the model (15 m). In a downslope direction, at the transition between talus cone and rockglacier, the structure of very high resistivity values ends with a sharp drop of resistivity to values ~~which vary~~ between 20 kΩm and 12 kΩm. These values, although over one magnitude lower than the maximum values, also represent frozen material as confirmed by the 2D models, but indicate a different type of ice genesis. The upper layer with lower resistivity values increases in thickness in a downslope direction and towards the lateral margin of this upslope part of the rockglacier (up to 4 m thickness), while it remains thin in the central upslope parte of the rockglacier near the transition zone (2 m to 3 m thickness). This forms a continuous and convex shaped frost table. Resistivity values in the upper layers are also reduced in this part of the model and vary between 4 kΩm and 6 kΩm, which corresponds to similar observations from the 2D models. The adjacent part, which corresponds to the main part of the rockglacier, generally shows much lower resistivity values. Like the upslope parts of the model, it can be divided vertically into two layers. An upper layer with values from 1 kΩm to 3 kΩm (unfrozen, high liquid water content) can be delimited from deeper parts of the model where resistivity values vary between 7 kΩm and 16 kΩm (frozen, probably ice-cemented). In Y-direction, the boundary between the two layers is descending stepwise to a vertical difference of 4 m. This forms a wedge-shaped outline of the permafrost layer which penetrates into the rockglacier from the talus cone. Behind Y= 85 m, the deeper layer disappears, except for a few cells at the outer margin of the resistivity model which are considered as artefacts from the inversion process. This part of the model represents a downslope thickening of the active layer and a decrease in ice content from ice-cemented to ice-free and hence probably permafrost-free conditions. The stepwise increasing ALT leads to an undulating topography of the frost table which indicates a successive formation. At the eastern part of the model, in front of the blanked out part, structures of high resistivity values do not form a consistent layer but display a patchy distribution. Resistivity variations in X-direction show that the ice content

also decreases from the central part of the rockglacier towards the eastern margin, which is accompanied by an increase of ALT. This part of the model corresponds to a part of the rockglacier which is positioned below a rockwall and not below the talus cone.

4.2.2 Uertsch rockglacier

5 The resistivity model of the lower part of Uertsch rockglacier (Uertsch_01, fig. 56) shows a heterogeneous pattern of small units. Modelled resistivity values vary between <0.1 k Ω m and ca. 40 k Ω m. In the western part of the model, a 10m wide curved structure of extraordinary low resistivity values (up to 1.5 k Ω m) is visible. This structure remains consistent through the complete model depth of 15 m and represents unfrozen subsurface conditions. It corresponds to a ridge at the western margin of the rockglacier which is ca. 1 m to 2 m high in this part and a continuation of the lateral moraine in the upslope part

10 of the rockglacier. The areas of the model which show high resistivity values can be divided into several tongue-shaped structures which root in a common zone (marked as (4'C') in fig. 65). These structures can be delimited by extrapolating the threshold value for frozen and unfrozen conditions which was gained from the comparison of geophysical and temperature data (~~The -on the whole rockglacier, which~~ is rather homogenous regarding debris size composition). Down to a depth of 6 m, three of those structures are visible at X= 12+4 m (12a, b), X= 24 m (23) and X= 46-38 m (34a, b). They are outlined by a band

15 of lower resistivity values. Below a model depth of 6 m, the boundaries between the tongue-shaped structures vanish, but some parts of the high resistivity structures remain. The first of the three structures is 55-60 m long and reaches a depth of 7 m in the upslope part (1a). In the downslope part (2b), the lower boundary could not be delimited within the model. Resistivity values vary between 7 k Ω m and 14 k Ω m. The layer above this structure is highly variable in thickness and ranges from ca. 1 m in the 4 m in the upslope part of the model (1a) over 1 m in the middle part to 5-4 m in the downslope part of the model 1b).

20 The second structure is about 70 m long and 10 m wide. This structure is hit by the borehole as marked in fig. 5. High resistivity values of up to 30 k Ω m aggregate in a layer of 6 m to 8 m thickness. The structure occurs in a depth of <1 m to 2 m and dips in a downslope direction. A shallow covering layer of low resistivity values exists only partly and shows values of up to 1.5 k Ω m. Below the layer of high resistivity, values decrease again to around 1 k Ω m to 3 k Ω m. About the same values are reached in the front of the structure, where a prominent U-shaped patch of lower resistivity values is visible (fig. 65, depth slices 3-4

25 m, 4-5 m.). The third area of high resistivity values is 70 m long and reaches to the northern boundary of the model. The upslope part of the structure (34a) is visible down from the first model slice while the downslope part (43b) initially occurs in a depth of 3 m underneath a layer of resistivity values of around 5 k Ω m. A lower boundary of the structure could not be delimited within the model boundaries in the upslope part, while the downslope part can be detected down to a depth of 9 m (no depth slice displayed). The resistivity distribution clearly reflects the arcuate ridges of the surface topography and illustrates

30 frozen conditions within the broad ridges and unfrozen conditions below the interrupting furrows and below a small surface depression (corresponding to U-shaped patch of lower resistivity values, cf. fig. 2d). The investigated part of the rockglacier lacks a continuous frost table and the strongly varying ALT indicates a disturbed development. It likely reflects a disequilibrium between the modern environmental conditions and those at the time of ground ice formation.

The resistivity model of the upper part of Uertsch rockglacier (Uertsch_02, fig. 76) directly follows the Uertsch_01 grid in an upslope direction (cf. fig. 1d, 2d). It shows a wider range of resistivity values (min: <0.1 kΩm; max: 250 kΩm) and differences in the resistivity distribution pattern. One dominant high-resistivity anomaly occurs at the central western side of the model (45). It reaches resistivity values from 35 kΩm to 250 kΩm. While the upslope part of the structure partly occurs directly below the surface in the first model slice, the downslope part is only visible down from a depth of 2 m where the structure reaches its maximum spatial extent. It remains spatially constant down to a depth of 5 m, where a slight decrease in resistivity values can be observed. The decrease in extent and resistivity of the structure increases with depth and at the lower boundary of the model (20 m) values of below 4 kΩm are displayed. The position of this structure corresponds to a surface depression which was partly covered with snow and ice at the date of the 3D survey (cf. fig 2d). Resistivity values indicate highly ice-supersaturated conditions and/ or altered ice of sedimentary origin. The downslope increasing ALT points towards an incorporation of an ice patch. A second, rather undefined pattern of high resistivity values (56a, b) becomes apparent as a spatial structure below a depth of 2 m, although some model cells in the area already display high resistivity values in upper depth slices. Attaching this structure to the resistivity distribution of Uertsch_01, reveals that this structure forms a precursor of the three tongue-shaped high resistivity structures in the lower part of the rockglacier. In the shallow subsurface of Uertsch_02 model, the structure displays values from 7 kΩm to 18 kΩm which represents frozen conditions. In a depth of 6 m, it loses an elongated segment (56a) and is reduced in extent to an area of 14 m x 30 m. It reduces further downwards by extent and by resistivity and is detectable only down to a depth of 11 m. Its connection to the central part of the high resistivity structures of Uertsch_01 model indicates that it represents an upslope part of the arcuate ridge structures. On the rockglacier surface, the resistivity structure corresponds to an area of longitudinal ridges with 0.3 m to 0.5 m height. Like in the downslope part of the rockglacier a continuous frost table does not exist, but ALT variations are less pronounced.

5 Discussion

5.1 Methodological aspects

A comparison between independently inverted 2D models and corresponding 2D slices of the 3D models (fig. 8) shows differences between the results of both approaches. This affects the modelled resistivity values as well as the depths of the detected structures. At Nair rockglacier e.g., resistivity values in the centre of the longitudinal profile (between the perpendicular profiles) are between 12 kΩm and 16 kΩm in the 2D model while they are between 8 kΩm and 12 kΩm in the 3D model. Greater differences are shown in the upslope part of the longitudinal profile of Uertsch_01 data set. Around Y = 90 m, the 3D model shows a high-resistivity structure which is displayed with much lower resistivity values by the independently inverted 2D data. The high-resistivity structure of Uertsch_02 data set (referred to as '4' in fig. 7), shows a shallow active layer in the results of the 2D approach, while it is obtained directly below the surface in the 3D model. Structures detected by the 3D approach are shaped smoother than the same structures detected by the 2D approach which is likely the result of diagonal filters and interpolation effects.

The quality of quasi-3D ERI models is influenced by the separation of the survey grid lines. In our investigation, the chosen value of twice the along-line electrode separation as distance between the Y-lines of all survey grids provides an adequate data coverage for investigations of the shallow subsurface (Gharibi and Bentley, 2005). The separation factor of X-lines was adjusted due to site-specific reasons, like deep snow fields or topographical obstacles and ranges between a factor of 3 and 6 of the along-line electrode spacing. However, this is still assumed to be sufficient as the application of perpendicular grid lines is not a mandatory requirement for 3D data acquisition but useful for the delimitation of small-scale structures orthogonal to the survey line direction (Loke et al., 2013; Rödder and Kneisel, 2012; Chambers et al., 2002). Despite the known limitations of the Dipole–Dipole electrode array under rough surface conditions (rather low signal strength), its application as a basic electrode array in this study provided very good results. This was likely promoted by the pebbly debris material which improved the coupling of the electrodes to the ground. The suitability of the approach is shown by the excellent data quality (only 4% of all data points were removed during processing, cf. method section and tab. 1) and by a comparison between ~~the~~ 3D results from the independently inverted Dipole–Dipole data points and Wenner–Schlumberger data points of the Uertsch_02 data set, which provided similar results (not shown). Additionally, we observed only a slight increase in misfit errors for the 3D models compared to the independently inverted 2D models, which indicates a precise grid setup. The resolution matrix approach, which was performed to evaluate the information content of the model cells and hence to assess model reliability and penetration depth (cf. method section) shows, ~~by using a cut-off value of > 0.05 (Hilbich et al., 2009; Stummer et al., 2004)~~, that most parts of the 3D models are significantly resolved (not shown). Only those parts of the model layers which are underneath the high resistivity anomalies and furthermore deeper than 9 m are weakly resolved and are hence interpreted carefully. Results from the comparative 2D SRT/ 2D ERT surveys show good structural accordance and validate the chosen approach. The detected structures from our geoelectrical investigations of Nair rockglacier broadly resemble the structures which were detected by Ikeda and Matsuoka (2006), who performed a single 2D ERT survey on the same rockglacier. The velocity values from their study for a two-layered subsurface (0.34 km s⁻¹; 2.9 km s⁻¹) were also broadly reproduced in our study. ~~However, but they~~ observed an ALT of delimited a 2.2 m to 2.4 m thick active layer which is lower than what we observed in our results. we could not rediscover in our study around a decade later This is likely caused by differences in the methodological approach or in the acquisition geometry. However, the impact of atmospheric warming during the last decade is also conceivable.

5.2 Range of resistivity values

For most parts of the presented rockglacier models, the range of resistivity values for frozen conditions is rather low compared to other rockglacier sites (Seppi et al., 2015; Dusik et al., 2015; Kneisel, 2010b; Hilbich et al., 2009; Maurer and Hauck, 2007) and is closer to those of landforms in fine-grained environments (Lewkowicz et al., 2011; Farbrot et al., 2007; Kneisel et al., 2007; Ross et al., 2007). Nevertheless, borehole temperature measurements and comparative SRT surveys presented in this study indicate the occurrence of permafrost, although velocity values are in the lowermost range for frozen ground (cf. compilation of Draebing (2016)). The detected threshold values for a frozen condition-state of around 7 kΩm at Nair

rockglacier and around 8 kΩm at Uertsch rockglacier are plausible for the sites as Ikeda and Matsuoka (2006) found similar values for frozen conditions at a similar rockglacier by a comparison between direct observations in a pit and ERT. However, the extrapolation of single threshold value on a whole rockglacier can be problematic due to variations of grain size and porosity. We think that the extrapolation is suitable at the investigated sites, as such variation are not visible on the surface.

5 The low level of resistivity values at the investigated sites can be explained by the small grain size of the debris material which is known to show much lower resistivity values in a frozen state than ice-bearing bouldery materials. This is caused by the physical properties of fine materials which can store a relatively high amount of liquid water at temperatures close to the melting point or even at sub-zero temperatures, resulting in the observed low resistivity values (e.g. Schneider et al., 2013). Additionally, ~~by~~ the lower pore space volume can and generally lower the hence the lower ground ice volume which can develop
10 by freezing of unconfined water (Scapozza et al., 2011; Vonder Mühll et al., 2000). ~~Additionally, at temperatures only slightly below the freezing point, the fine grained debris material can preserve a relatively high amount of liquid water even at sub-zero temperatures, which can cause the observed low resistivity values (Schneider et al., 2013).~~ The non-crystalline origin of the talus material can be listed as another factor which influences the local resistivity regime (Etzelmüller et al., 2006). A high proportion of unfrozen water can also be a reason for the mismatch between the observed frost table depths in the vertical plots
15 of resistivity, velocity and temperature at Nair rockglacier (fig. 23c). As the geophysical approaches are affected by material properties and not directly by temperature, the characteristic increase of resistivity and velocity does not coincide with the depth of the observed sub-zero temperatures (Pogliotti et al., 2015; Hauck, 2002). However, sensor accuracy must also be taken into account. Results from ERT and SRT at Uertsch borehole do not show this mismatch phenomenon. This might be linked to an unhindered drain of unconfined water into the adjacent unfrozen part of the transect profile.

20 **5.3 Structure of Nair rockglacier**

Ice content distribution at Nair rockglacier is probably determined by an ice patch of sedimentary origin, buried under the steep talus cone. This is indicated by resistivity values of up to 420 kΩm which display highly ice-supersaturated conditions. The occurrence of such structures in the root zone of rockglaciers is a well-known phenomenon which develops from buried snowbanks or ice patches which were incorporated into the subsurface, e.g. by rockfall (Monnier et al., 2011; Lugon et al.,
25 2004; Isaksen et al., 2000; Haeberli and Vonder Mühll, 1996). A high geomorphological activity is present at Nair rockglacier where frequent rockfall events were observed during several field campaigns. The sharp drop in resistivity values to 20 kΩm shows that a clear distinction between the embedded snowbank and the adjacent part is present. This may indicate a relatively young age of incorporation on time scales of landform development, as this contrast would probably diminish through time. A qualitatively similar drop of resistivity values was observed by Ribolini et al. (2010) at Schiantala rockglacier (French
30 Maritime Alps), where it separates an area of debris-covered sedimentary ice and an area of typical permafrost ice at the margin of an LIA glaciation. However, linking the incorporation of sedimentary ice into Nair rockglacier to the end of LIA, for which a glaciation is displayed on ancient maps (Coaz and Leuzinger, 1878), is speculative. The occurrence of ice of sedimentary

origin below the talus cone is also an adequate interpretation for the downslope following part of Nair rockglacier which shows resistivity values typical for congelation ice and a decrease from 20 kΩm to 12 kΩm.

~~In this part of the rockglacier, the ability of the pebbly material to store water and to reduce the speed of runoff (Ikeda et al., 2008) supports the refreezing of the meltwater from the embedded sedimentary ice. This results in a gradual decrease of ice content in a downslope direction and towards the lateral margin of the rockglacier, which is less affected by meltwater flow than the main part of the rockglacier. Thus, it can explain the observed stepwise increase of ALT and forms the wedge-shaped structure. This represents a gradual decrease of ice content and is associated with a stepwise increase of ALT. The formation of this wedge-shaped structure can originate from meltwater of the embedded ice which drains into the rockglacier during summer and refreezes (Isaksen et al., 2000). The ability of the pebbly material to store water and to reduce the speed of runoff is likely to support this process (Ikeda et al., 2008). It also explains the lower ice content at the lateral margin of the rockglacier which would also be less affected by meltwater flow.~~ If we consider the described processes as a current phenomenon, the ice-free parts at Nair rockglacier are equal to the permafrost-free parts and vice versa. Stable ground ice conditions at the rockglacier are indicated by the gradual shape of the continuous frost table, the generally permafrost-favourable conditions according to the Alpine Permafrost Index Map (Boeckli et al., 2012) and own nearly year-round measurements of ground surface temperatures (not shown).

5.4 Structure of Uertsch rockglacier

The observed ice content variations in the lower part of Uertsch rockglacier indicate that different processes were involved in rockglacier development. The ice-free and hence probably unfrozen ridge at the western edge of the rockglacier (extension of the lateral moraine) seems to be unconnected ~~with to~~ the more differentiated central part, ~~where the difference between frozen arcuate ridges and unfrozen furrows contrasts the commonly known distribution, which is usually attributed to topographic or microclimatic effects (Hanson and Hölzle, 2004; Harris and Pedersen, 1998).~~ The observed ice-free lateral moraine and the surface ice patch suggest that interactions between glacial and periglacial processes occurred, like they were assumed for multiple other rockglaciers (Monnier et al., 2011; Ribolini et al., 2010; Berger et al., 2004; Lugon et al., 2004). Glaciation during LIA as illustrated on an ancient topographical map from the 1870s, was only slightly more extensive than the recent surface ice patch and remained upslope the today ridge-affected part (cf. fig. 1d, Coaz and Leuzinger, 1878). But, like Monnier et al. (2013) pointed out for Sachette rockglacier (French Alps), one of the several other glacier advances during Holocene could have overridden the rockglacier.

The occurrence of buried ice of sedimentary origin is conceivable only for the well-defined structure in the central western part of Uertsch rockglacier (Uertsch_02 model), which corresponds to the presumably glacial depression. Next to a surface snow field which existed during the days of the 3D survey within this depression, maximum resistivity values were detected (250 kΩm). Although this is still not in the range of sedimentary ice which typically reaches up to several MΩm (Haeberli and Vonder Mühll, 1996), a subsurface formation of congelation ice by refreezing meltwater from sedimentary surface ice or an alteration of remnant sedimentary ice by multiple freeze-thaw cycles seems possible, especially in case of a former glaciation.

The occurrence of buried ice of glacial origin within the rockglacier snout, as also frequently observed at other sites, can be excluded by the range of the modelled resistivity values ($< 70 \text{ k}\Omega\text{m}$), which rather indicates distinct patches of congelation ice within the ridges by the three tongue-shaped structures of high resistivity values. A similarly shaped elongated geometry of ~~the~~ frozen structures was mapped in the Dolomites by Seppi et al. (2015).

5 The observed pattern of frozen conditions below the ridges and unfrozen conditions below the furrows contrasts the commonly known distribution pattern, which shows colder temperatures in the furrows due to topographic or microclimatic effects (Hoelzle 1999; Harris and Pedersen, 1998).-The formation of the characteristic ridge-furrow topography on the rockglacier surface is known to result from compressive processes (Frehner et al., 2015; Springman et al., 2012; Kääb and Weber, 2004). At Uertsch-our study siterockglacier, the model of overthrusting lobes, as generally presented by Kääb and Weber (2004) fits
10 well to the observations. Ridge formation is assumed to induce a local enrichment of ice content through a thickening of ice-saturated layers (Ikeda and Matsuoka, 2006) and can therefore explain the relatively high ice content within the transverse parts of the arcuate ridges in contrast to the lower ice content of the upslope longitudinal ~~parts~~ridges. A patchy occurrence of relatively high ice content within the ridges may also explain the low variation of borehole temperatures around the freezing point as much thermal energy will likely be lost by phase transitions of water. A thickening of the active layer as described by
15 Haeberli and Vonder Mühl (1996) could only be detected in the lowermost part of the ridges where the deformation is strongest. The upslope central part of the rockglacier, where ridges are shaped in longitudinal direction and show resistivity values from $8 \text{ k}\Omega\text{m}$ to $20 \text{ k}\Omega\text{m}$ lacks this thickening, likely due to a reduced dynamic forming. Regarding again the model of overthrusting processes, Kääb and Weber (2004) presumed that those lateral ridges are the result of ridge deformation by a decrease in speed at the margins of the flow area. This former marginal position of the longitudinal ridges supports the concept
20 of a successive rockglacier development. We assume that ridge formation at Uertsch rockglacier is connected to tongue-shaped areas of creep activity on the rockglacier surface. The lower resistivity values of the extensive flow structures are likely caused by freezing of ionically enriched water at the permafrost base (Haeberli and Vonder Mühl, 1996). However, a glacial formation of the ridges, as e.g. observed by Monnier et al. (2011) at Thabor rockglacier cannot be excluded as a general influence of surface ice on the formation of Uertsch rockglacier is obvious.

25 **6 Conclusions**

The application of quasi-3D ERI enables the detection and mapping of permafrost conditions in a spatially extensive way. At Uertsch rockglacier, the approach showed its value for the delimitation of several small-scale frozen structures within heterogeneous subsurface conditions. The rather homogenous subsurface layering at Nair rockglacier excludes the occurrence of major structural anomalies and shows an undulating frost table topography as well as a gradually decreasing ice content.
30 An excellent data quality was promoted by the pebbly grain size of the investigated rockglaciers and permitted the extensive application of Dipole-Dipole electrode array. However, due to the specific conditions at pebbly investigation sites, concerning e.g. the range of resistivity values and the influence of grain size on the occurring processes, results should be extrapolated to

bouldery rockglaciers only carefully. Inversion characteristics and additionally performed comparative surveys indicate reliable results and emphasize the suitability of the approach. Our results show that the following subsurface characteristics and their small-scale spatial variations can be derived from quasi-3D ERI and interpreted in combination with geomorphological observations from the investigated rockglaciers:

5

~~- Quasi-3D ERI results in combination with the observed surface ridge structures show that areas of compressional and extensional flow occur in close proximity and indicate a successive rockglacier development.~~

- Buried ice of sedimentary origin is a crucial factor for rockglacier development as related processes (e.g. meltwater flow) can influence ground ice content distribution and reflect past glacier–permafrost interactions.

10 ~~- Mapping frost table topography and consistency allows to infer the currency of shaping processes like melt–freeze cycles, and hence displays a state of equilibrium or disequilibrium to modern environmental conditions.~~

~~- Quasi-3D ERI results in combination with the observed surface ridge structures show that areas of compressional and extensional flow occur in close proximity and indicate a successive rockglacier development.~~

15 - Meltwater can strongly increase ground ice content in downslope and less inclined parts of rockglaciers and changes its distribution to a gradual decrease which follows the observed rockglacier topography and results in a wedge-shaped outline of the permafrost body.

~~- Mapping frost table topography and consistency allows to infer the occurrence of shaping processes and hence to assess whether a state of equilibrium or disequilibrium to modern environmental conditions exists.~~

20

To further improve our understanding of landform development, the additional application of GPR and the setup of a denser network of SRT profiles are advised as these approaches are preferably used for the detection of layer boundaries. The presented resistivity mapping further allows an overlay of resistivity distribution with mapping of surface velocity and subsurface porosity. This might be a next step towards an identification of surface–subsurface process interactions.

25 **Acknowledgements**

The authors gratefully acknowledge the German Research Foundation (DFG) for financial support (KN542/13-1) and the municipalities of Celerina and Bergün for the permission to use their access roads. Thanks to Danilo Fries and Carina Selbach for their assistance in the field. We would also like to thank the editor Christian Hauck and two anonymous reviewers for their constructive comments.

References

- Berger, J., Krainer, K., and Mostler, W.: Dynamics of an active rock glacier (Ötztal Alps, Austria), *Quaternary Res.*, 62, 233–242, doi:10.1016/j.yqres.2004.07.002, 2004.
- Boeckli, L., Brenning, A., Gruber, S., and Nötzli, J.: Permafrost distribution in the European Alps: Calculation and
5 evaluation of an index map and summary statistics, *Cryosphere*, 6, 807–820, doi:10.5194/tc-6-807-2012, 2012.
- Chambers, J. E., Ogilvy, R. D., Kuras, O., Cripps, J., and Meldrum, P. I.: 3D electrical imaging of known targets at a controlled environmental test site, *Environ. Geol.*, 41, 690–704, doi:10.1007/s00254-001-0452-4, 2002.
- Coaz, J. W. F. and Leuzinger, R.: *Bever, Eidg. Stabsbureau*, Bern, 1878.
- Coaz, J. W. F., Leuzinger, R., and Held, L.: *St. Moritz, Eidg. Stabsbureau [i.e. Eidg. Landestopographie]*, Bern, Nachträge
10 1917, 1925.
- Coaz, J. W. F., Leuzinger, R., and Held, L.: *St. Moritz, Eidg. Landestopographie*, Bern, Nachträge 1944, 1946.
- Draebing, D.: Application of refraction seismics in alpine permafrost studies: A review, *Earth-Sci. Rev.*, 155, 136–152, 2016.
- Dusik, J.-M., Leopold, M., Heckmann, T., Haas, F., Hilger, L., Morche, D., Neugirg, F., and Becht, M.: Influence of glacier
15 advance on the development of the multipart Riffeltal rock glacier, Central Austrian Alps, *Earth Surf. Proc. Land.*, 40, 965–980, doi:10.1002/esp.3695, 2015.
- Etzelmüller, B., Heggem, E. S. F., Sharkhuu, N., Frauenfelder, R., Kääb, A., and Goulden, C.: Mountain permafrost distribution modelling using a multi-criteria approach in the Hövsgöl area, northern Mongolia, *Permafrost Periglac.*, 17, 91–104, doi:10.1002/ppp.554, 2006.
- 20 Farbrot, H., Etzelmüller, B., Schuler, T. V., Guðmundsson, Á., Eiken, T., Humlum, O., and Björnsson, H.: Thermal characteristics and impact of climate change on mountain permafrost in Iceland, *J. Geophys. Res.*, 112, doi:10.1029/2006JF000541, 2007.
- Frehner, M., Ling, A. H. M., and Gärtner-Roer, I.: Furrow-and-Ridge Morphology on Rockglaciers Explained by Gravity-Driven Buckle Folding: A Case Study From the Murtèl Rockglacier (Switzerland), *Permafrost Periglac.*, 26, 57–66,
25 doi:10.1002/ppp.1831, 2015.
- Geometrics: *SeisImager/2D™ Manual*. Version 3.3. 2009.
- Gharibi, M. and Bentley, L. R.: Resolution of 3-D Electrical Resistivity Images from Inversions of 2-D Orthogonal Lines, *J. Environ. Eng. Geoph.*, 10, 339–349, doi:10.2113/JEEG10.4.339, 2005.
- Haeberli, W., Hallet, B., Arenson, L. U., Elconin, R., Humlum, O., Kääb, A., Kaufmann, V., Ladanyi, B., Matsuoka, N.,
30 Springman, S. M., and Vonder Mühll, D. S.: Permafrost creep and rock glacier dynamics, *Permafrost Periglac.*, 17, 189–214, doi:10.1002/ppp.561, 2006.
- Haeberli, W. and Vonder Mühll, D. S.: On the characteristics and possible origins of ice in rock glacier permafrost, *Z. Geomorphol. Supp.*, 104, 43–57, 1996.

- Hanson, S. and Höeßle, M.: The thermal regime of the active layer at the Murtèl rock glacier based on data from 2002, *Permafrost Periglac.*, 15, 273–282, doi:10.1002/ppp.499, 2004.
- [Hoelzle, M., Wegmann, M., and Krummenacher, B.: Miniature temperature dataloggers for mapping and monitoring of permafrost in high mountain areas: First experience from the Swiss Alps, *Permafrost Periglac. Process.*, 10, 113–124, doi:10.1002/\(SICI\)1099-1530\(199904/06\)10:2<113:AID-PPP317>3.0.CO;2-A, 1999.](#)
- 5 Harris, C., Arenson, L. U., Christiansen, H. H., Eitzelmueller, B., Frauenfelder, R., Gruber, S., Haeblerli, W., Hauck, C., Höeßle, M., Humlum, O., Isaksen, K., Käab, A., Kern-Lütsch, M. A., Lehning, M., Matsuoka, N., Murton, J. B., Nötzli, J., Phillips, M., Ross, N., Seppälä, M., Springman, S. M., and Vonder Mühll, D. S.: Permafrost and climate in Europe: Monitoring and modelling thermal, geomorphological and geotechnical responses, *Earth-Sci. Rev.*, 92, 117–
- 10 171, doi:10.1016/j.earscirev.2008.12.002, 2009.
- Harris, S. A. and Pedersen, D. E.: Thermal regimes beneath coarse blocky materials, *Permafrost Periglac.*, 9, 107–120, doi:10.1002/(SICI)1099-1530(199804/06)9:2<107:AID-PPP277>3.0.CO;2-G, 1998.
- Hauck, C.: Frozen ground monitoring using DC resistivity tomography, *Geophys. Res. Lett.*, 29, doi:10.1029/2002GL014995, 2002.
- 15 Hauck, C.: New Concepts in Geophysical Surveying and Data Interpretation for Permafrost Terrain, *Permafrost Periglac.*, 24, 131–137, doi:10.1002/ppp.1774, 2013.
- Hauck, C., Böttcher, M., and Maurer, H.: A new model for estimating subsurface ice content based on combined electrical and seismic data sets, *Cryosphere*, 5, 453–468, doi:10.5194/tc-5-453-2011, 2011.
- Hausmann, H., Krainer, K., Brückl, E., and Ullrich, C.: Internal structure, ice content and dynamics of Ölgrube and
- 20 Kaiserberg rock glaciers (Ötztal Alps, Austria) de-termined from geophysical surveys, *Austrian Journal of Earth Sciences*, 105, 12–31, 2012.
- Hilbich, C., Marescot, L., Hauck, C., Loke, M. H., and Mäusbacher, R.: Applicability of electrical resistivity tomography monitoring to coarse blocky and ice-rich permafrost landforms, *Permafrost Periglac.*, 20, 269–284, doi:10.1002/ppp.652, 2009.
- 25 Ikeda, A.: Combination of conventional geophysical methods for sounding the composition of rock glaciers in the Swiss Alps, *Permafrost Periglac.*, 17, 35–48, doi:10.1002/ppp.550, 2006.
- Ikeda, A. and Matsuoka, N.: Pebbly versus bouldery rock glaciers: Morphology, structure and processes, *Geomorphology*, 73, 279–296, doi:10.1016/j.geomorph.2005.07.015, 2006.
- Ikeda, A., Matsuoka, N., and Käab, A.: Fast deformation of perennially frozen debris in a warm rock glacier in the Swiss
- 30 Alps: An effect of liquid water, *J. Geophys. Res.*, 113, doi:10.1029/2007JF000859, 2008.
- Isaksen, K., ødegård, R. S., Eiken, T., and Sollid, J. L.: Composition, flow and development of two tongue-shaped rock glaciers in the permafrost of Svalbard, *Permafrost Periglac.*, 11, 241–257, doi:10.1002/1099-1530(200007/09)11:3<241:AID-PPP358>3.0.CO;2-A, 2000.

- Kääb, A., Frauenfelder, R., and Roer, I.: On the response of rockglacier creep to surface temperature increase, *Global Planet. Change*, 56, 172–187, doi:10.1016/j.gloplacha.2006.07.005, 2007.
- Kääb, A. and Weber, M.: Development of transverse ridges on rock glaciers: Field measurements and laboratory experiments, *Permafrost Periglac.*, 15, 379–391, doi:10.1002/ppp.506, 2004.
- 5 [Kneisel, C.: Legende für geomorphologische Kartierungen in Hochgebirgen \(GMK Hochgebirge\), Trierer geographische Studien, 18, Geographische Ges, Trier, 24 pp., 1998.](#)
- Kneisel, C.: Frozen ground conditions in a subarctic mountain environment, Northern Sweden, *Geomorphology*, 118, 80–92, doi:10.1016/j.geomorph.2009.12.010, 2010a.
- Kneisel, C.: The nature and dynamics of frozen ground in alpine and subarctic periglacial environments, *Holocene*, 20, 423–
- 10 445, doi:10.1177/0959683609353432, 2010b.
- Kneisel, C., Emmert, A., and Kästl, J.: Application of 3D electrical resistivity imaging for mapping frozen ground conditions exemplified by three case studies, *Geomorphology*, 210, 71–82, doi:10.1016/j.geomorph.2013.12.022, 2014.
- Kneisel, C., Hauck, C., Fortier, R., and Moonman, B.: Advances in geophysical methods for permafrost investigations, *Permafrost Periglac.*, 19, 157–178, doi:10.1002/ppp.616, 2008.
- 15 Kneisel, C. and Kääb, A.: Mountain permafrost dynamics within a recently exposed glacier forefield inferred by a combined geomorphological, geophysical and photogrammetrical approach, *Earth Surf. Proc. Land.*, 32, 1797–1810, doi:10.1002/esp.1488, 2007.
- Kneisel, C., Sæmundsson, Þ., and Beylich, A. A.: Reconnaissance Surveys Of Contemporary Permafrost Environments In Central Iceland Using Geoelectrical Methods: Implications For Permafrost Degradation And Sediment Fluxes, *Geogr. Ann. A*, 89, 41–50, doi:10.1111/j.1468-0459.2007.00306.x, 2007.
- 20 Krainer, K., Mussner, L., Behm, M., and Hausmann, H.: Multi-disciplinary investigation of an active rock glacier in the Sella Group (Dolomites; Northern Italy), *Austrian Journal of Earth Sciences*, 105, 48–62, 2012.
- Lambiel, C. and Pieracci, K.: Permafrost distribution in talus slopes located within the alpine periglacial belt, Swiss Alps, *Permafrost Periglac.*, 19, 293–304, doi:10.1002/ppp.624, 2008.
- 25 Langston, G., Bentley, L. R., Hayashi, M., McClymont, A., and Pidlisecky, A.: Internal structure and hydrological functions of an alpine proglacial moraine, *Hydrol. Process.*, 2967–2982, doi:10.1002/hyp.8144, 2011.
- Lewkowicz, A. G., Etzelmüller, B., and Smith, S. L.: Characteristics of Discontinuous Permafrost based on Ground Temperature Measurements and Electrical Resistivity Tomography, Southern Yukon, Canada, *Permafrost Periglac.*, 22, 320–342, doi:10.1002/ppp.703, 2011.
- 30 [Loke, M.H.: Rapid 3-D Resistivity & IP inversion using the least-squares method \(For 3-D surveys using the pole-pole, pole-dipole, dipole-dipole, rectangular, Wenner, Wenner-Schlumberger and non-conventional arrays\) On land, aquatic, cross-borehole and time-lapse surveys. Geotomo Software, 2015](#)
- Loke, M. H.: Tutorial: 2D and 3D electrical imaging surveys, Geotomo Software, Malaysia 2014.

- Loke, M. H. and Barker, R. D.: Practical techniques for 3D resistivity surveys and data inversion1, *Geophys. Prospect.*, 44, 499–523, doi:10.1111/j.1365-2478.1996.tb00162.x, 1996.
- Loke, M. H., Chambers, J. E., Rucker, D. F., Kuras, O., and Wilkinson, P. B.: Recent developments in the direct-current geoelectrical imaging method, *J. Appl. Geophys.*, 95, 135–156, doi:10.1016/j.jappgeo.2013.02.017, 2013.
- 5 Luetsch, M., Lehning, M., and Haerberli, W.: A sensitivity study of factors influencing warm/thin permafrost in the Swiss Alps, *J. Glaciol.*, 54, 696–704, doi:10.3189/002214308786570881, 2008.
- Luetsch, M., Stoeckli, V., Lehning, M., Haerberli, W., and Ammann, W.: Temperatures in two boreholes at Flüela Pass, Eastern Swiss Alps: The effect of snow redistribution on permafrost distribution patterns in high mountain areas, *Permafrost Periglac.*, 15, 283–297, doi:10.1002/ppp.500, 2004.
- 10 Lugon, R., Delaloye, R., Serrano, E., Reynard, E., Lambiel, C., and González-Trueba, J. J.: Permafrost and Little Ice Age glacier relationships, Posets Massif, Central Pyrenees, Spain, *Permafrost Periglac.*, 15, 207–220, doi:10.1002/ppp.494, 2004.
- Matsuoka, N., Ikeda, A., and Date, T.: Morphometric analysis of solifluction lobes and rock glaciers in the Swiss Alps, *Permafrost Periglac.*, 16, 99–113, doi:10.1002/ppp.517, 2005.
- 15 Maurer, H. and Hauck, C.: Geophysical imaging of alpine rock glaciers, *J. Glaciol.*, 53, 110–120, doi:10.3189/172756507781833893, 2007.
- Monnier, S., Camerlynck, C., Rejiba, F., Kinnard, C., Feuillet, T., and Dhemaied, A.: Structure and genesis of the Thabor rock glacier (Northern French Alps) determined from morphological and ground-penetrating radar surveys, *Geomorphology*, 134, 269–279, doi:10.1016/j.geomorph.2011.07.004, 2011.
- 20 Monnier, S., Camerlynck, C., Rejiba, F., Kinnard, C., and Galibert, P.-Y.: Evidencing a large body of ice in a rock glacier, Vanoise Massif, Northern French Alps, *Geogr. Ann. A*, 95, 109–123, doi:10.1111/geoa.12004, 2013.
- Musil, M., Maurer, H., Hollinger, K., and Green, A. G.: Internal structure of an alpine rock glacier based on crosshole georadar traveltimes and amplitudes, *Geophys. Prospect.*, 54, 273–285, doi:10.1111/j.1365-2478.2006.00534.x, 2006.
- Otto, J. C. and Sass, O.: Comparing geophysical methods for talus slope investigations in the Turtmann valley (Swiss Alps), *Geomorphology*, 76, 257–272, doi:10.1016/j.geomorph.2005.11.008, 2006.
- 25 Otto, J. C., Keuschnig, M., Götz, J., Marbach, M., and Schrott, L.: Detection Of Mountain Permafrost By Combining High Resolution Surface And Subsurface Information - An Example From The Glatzbach Catchment, Austrian Alps, *Geogr. Ann. A*, 94, 43–57, doi:10.1111/j.1468-0459.2012.00455.x, 2012.
- Pellet, C., Hilbich, C., Marmy, A., and Hauck, C.: Soil moisture data for the validation of permafrost models using direct and indirect measurement approaches at three alpine sites, *Front. Earth Sci.*, 3, doi:10.3389/feart.2015.00091, 2016.
- 30 Pogliotti, P., Guglielmin, M., Cremonese, E., Di Morra Cella, U., Filippa, G., Pellet, C., and Hauck, C.: Warming permafrost and active layer variability at Cime Bianche, Western European Alps, *Cryosphere*, 9, 647–661, doi:10.5194/tc-9-647-2015, 2015.

- Ribolini, A., Guglielmin, M., Fabre, D., Bodin, X., Marchisio, M., Sartini, S., Spagnolo, M., and Schoeneich, P.: The internal structure of rock glaciers and recently deglaciated slopes as revealed by geoelectrical tomography: Insights on permafrost and recent glacial evolution in the Central and Western Alps (Italy–France), *Quaternary Sci. Rev.*, 29, 507–521, doi:10.1016/j.quascirev.2009.10.008, 2010.
- 5 Rödder, T. and Kneisel, C.: Permafrost mapping using quasi-3D resistivity imaging, Murtèl, Swiss Alps, *Near Surf. Geophys.*, 10, 117–127, doi:10.3997/1873-0604.2011029, 2012.
- Ross, N., Brabham, P. J., Harris, C., and Christiansen, H. H.: Internal Structure of Open System Pingos, Adventdalen, Svalbard: The Use of Resistivity Tomography to Assess Ground-ice Conditions, *J. Environ. Eng. Geoph.*, 12, 113–126, doi:10.2113/JEEG12.1.113, 2007.
- 10 Scapozza, C. and Laigre, L.: The contribution of Electrical Resistivity Tomography (ERT) in Alpine dynamics geomorphology: case studies from the Swiss Alps, *Géomorphologie*, 27–42, 2014.
- Scapozza, C., Lambiel, C., Baron, L., Marescot, L., and Reynard, E.: Internal structure and permafrost distribution in two alpine periglacial talus slopes, Valais, Swiss Alps, *Geomorphology*, 132, 208–221, doi:10.1016/j.geomorph.2011.05.010, 2011.
- 15 Scherler, M., Hauck, C., H^{oe}ölzle, M., and Salzmann, N.: Modeled sensitivity of two alpine permafrost sites to RCM-based climate scenarios, *J. Geophys. Res.-Earth*, 118, 780–794, doi:10.1002/jgrf.20069, 2013.
- Schneider, S., Daengeli, S., Hauck, C., and H^{oe}ölzle, M.: A spatial and temporal analysis of different periglacial materials by using geoelectrical, seismic and borehole temperature data at Murtèl–Corvatsch, Upper Engadin, Swiss Alps, *Geogr. Helv.*, 68, 265–280, doi:10.5194/gh-68-265-2013, 2013.
- 20 Schneider, S., H^{oe}ölzle, M., and Hauck, C.: Influence of surface and subsurface heterogeneity on observed borehole temperatures at a mountain permafrost site in the Upper Engadine, Swiss Alps, *Cryosphere*, 6, 517–531, doi:10.5194/tc-6-517-2012, 2012.
- Schrott, L. and Hoffmann, T.: Refraction Seismics, in: *Applied Geophysics in Periglacial Environments*, Cambridge University Press, 57–80, 2008.
- 25 Schrott, L. and Sass, O.: Application of field geophysics in geomorphology: Advances and limitations exemplified by case studies, *Geomorphology*, 93, 55–73, doi:10.1016/j.geomorph.2006.12.024, 2008.
- Seppi, R., Zanoner, T., Carton, A., Bondesan, A., Francese, R., Carturan, L., Zumiani, M., Giorgi, M., and Ninfo, A.: Current transition from glacial to periglacial processes in the Dolomites (South-Eastern Alps), *Geomorphology*, 228, 71–86, doi:10.1016/j.geomorph.2014.08.025, 2015.
- 30 Springman, S. M., Arenson, L. U., Yamamoto, Y., Maurer, H., Kos, A., Buchli, T., and Derungs, G.: Multidisciplinary Investigations On Three Rock Glaciers In The Swiss Alps: Legacies And Future Perspectives, *Geogr. Ann. A*, 94, 215–243, doi:10.1111/j.1468-0459.2012.00464.x, 2012.
- Stummer, P., Maurer, H., and Green, A. G.: Experimental design: Electrical resistivity data sets that provide optimum subsurface information, *Geophysics*, 69, 120–139, doi:10.1190/1.1649381, 2004.

Vonder Mühl, D. S., Hauck, C., and Lehmann, F.: Verification of geophysical models in Alpine permafrost using borehole information, *Ann. Glaciol.*, 31, 300–306, doi:10.3189/172756400781820057, 2000.

Wilkinson, P. B., Meldrum, P. I., Chambers, J. E., Kuras, O., and Ogilvy, R. D.: Improved strategies for the automatic selection of optimized sets of electrical resistivity tomography measurement configurations, *Geophys. J. Int.*, 167, 1119–

5 1126, doi:10.1111/j.1365-246X.2006.03196.x, 2006.

Table 1: Details on quasi-3D ERI surveys.

	NAIR	UERTSCH_01	UERTSCH_02
Acquisition dates	12–14 Aug 2014	11–13 Sept 2014	26–31 Jul 2015
Number of grid lines	17 (9 X, 8 Y)	17 (9 X, 8 Y)	30 (17 X, 13 Y)
Outline of investigated area	70 m x 105 m	70 m x 105 m	74 m x 105 m
Number of collated 2D profiles	17	20	60
Array types for 2D profiles	17 DipDip	17 DipDip + 3 WenSI	30 DipDip + 30 WenSI
Number of data points for inversion	6294 (of max. 6936)	7372 (of max. 7800)	20523 (of max. 20880)
Abs. Error (Iteration)	7.77 (5)	5.85 (5)	8.86 (5)

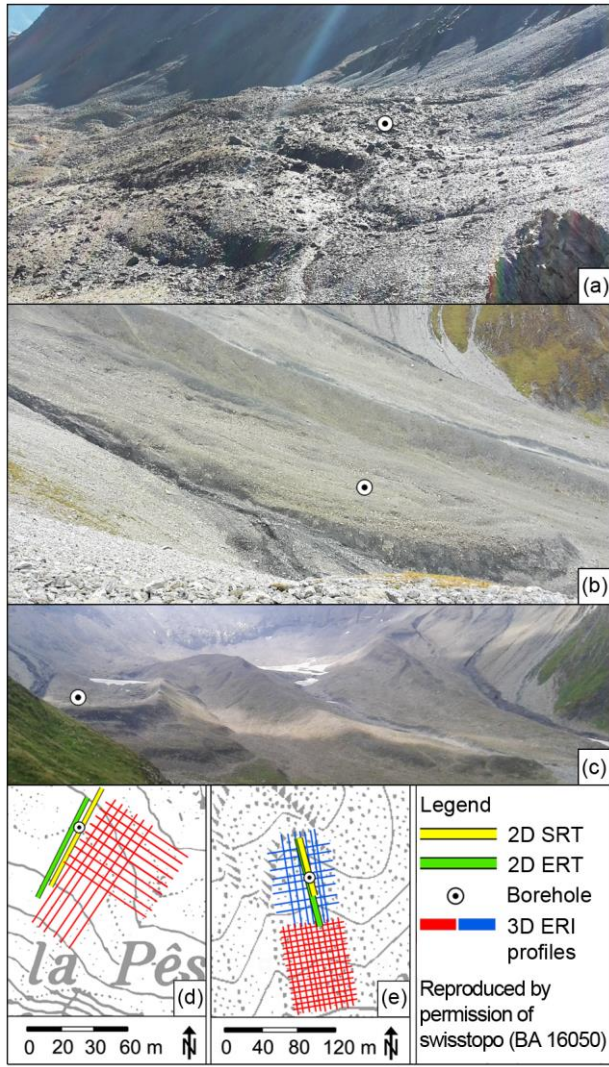
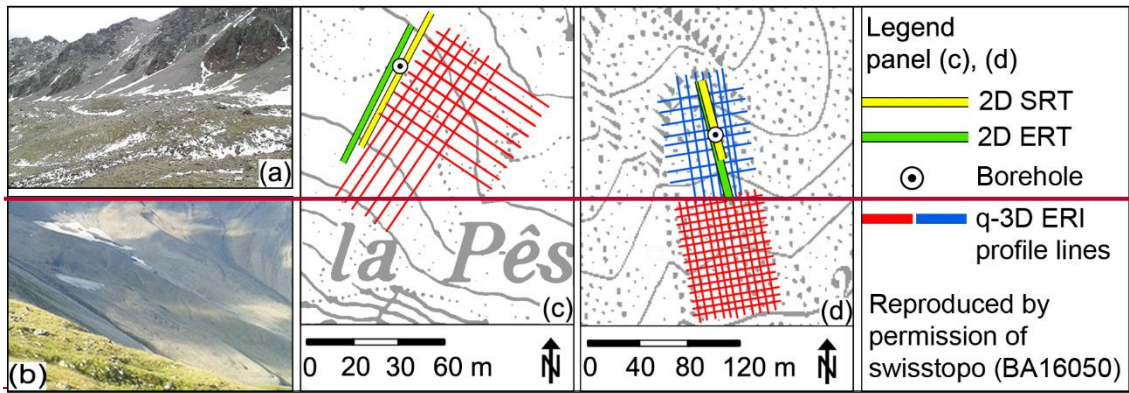


Fig. 1: Site overview and measurement setups. a) Photo Nair site; b) + c) Photos Uertsch site; d) e) quasi-3D ERI setup Nair; f) g) quasi-3D ERI setups Uertsch_01 (blue lines) and Uertsch_02 (red lines).

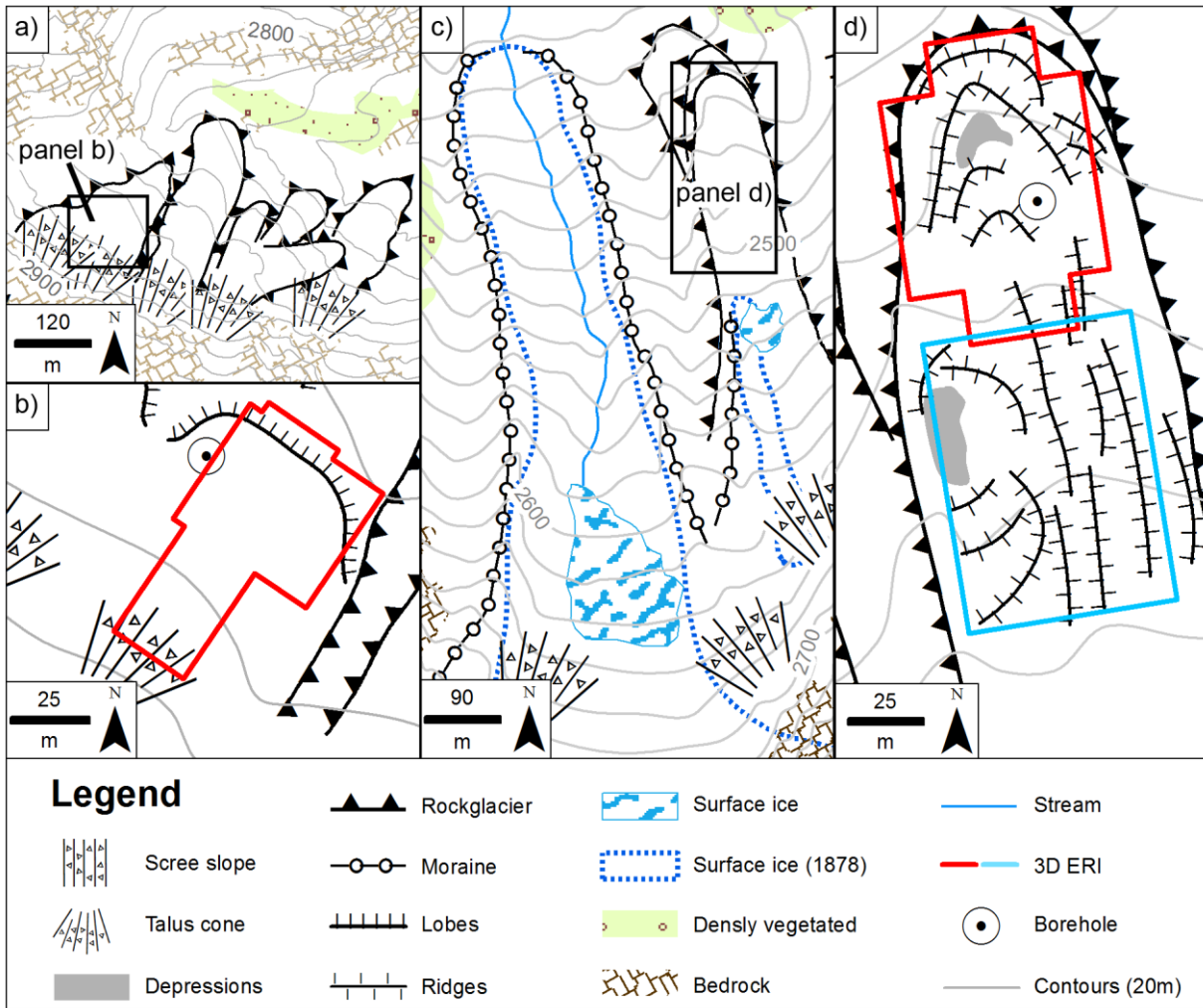
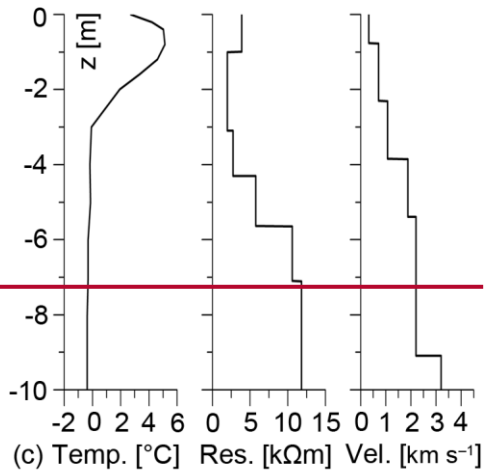
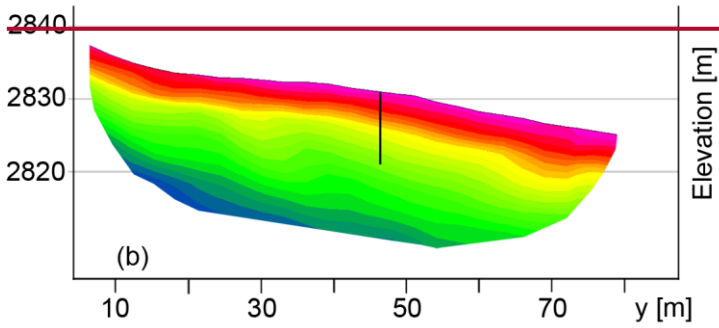
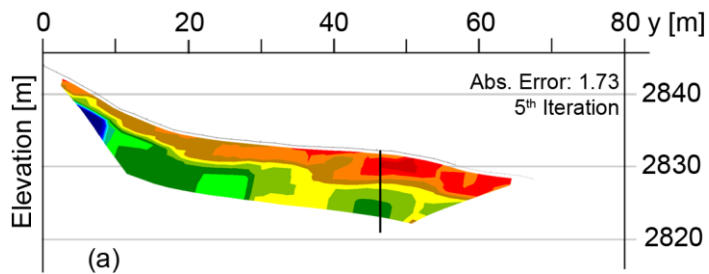


Fig. 2: Geomorphological setting. Panels a) + b) Nair; c) +d) Uertsch. Legend adapted from Kneisel et al. (1998).



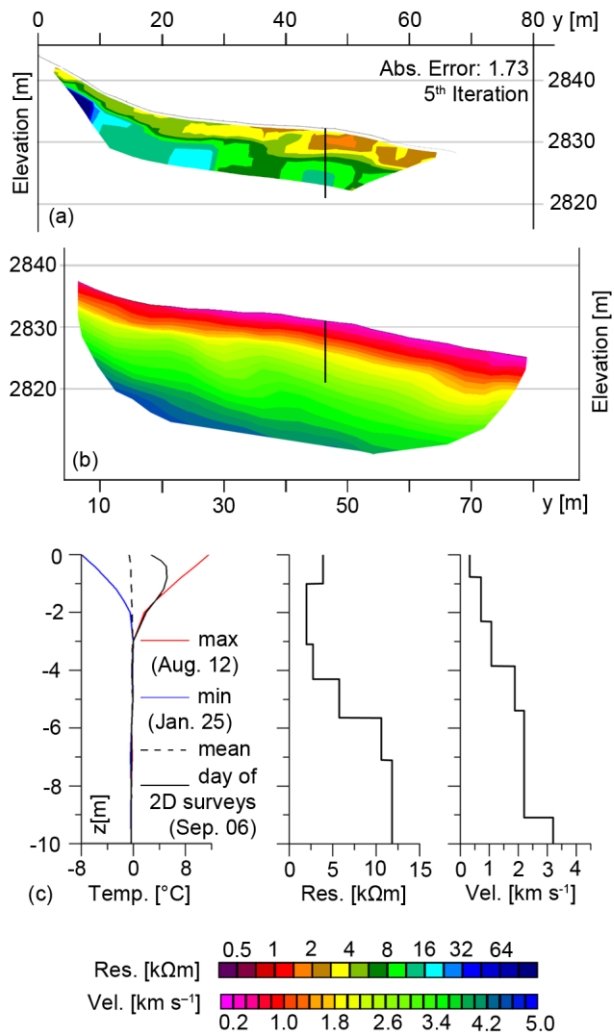
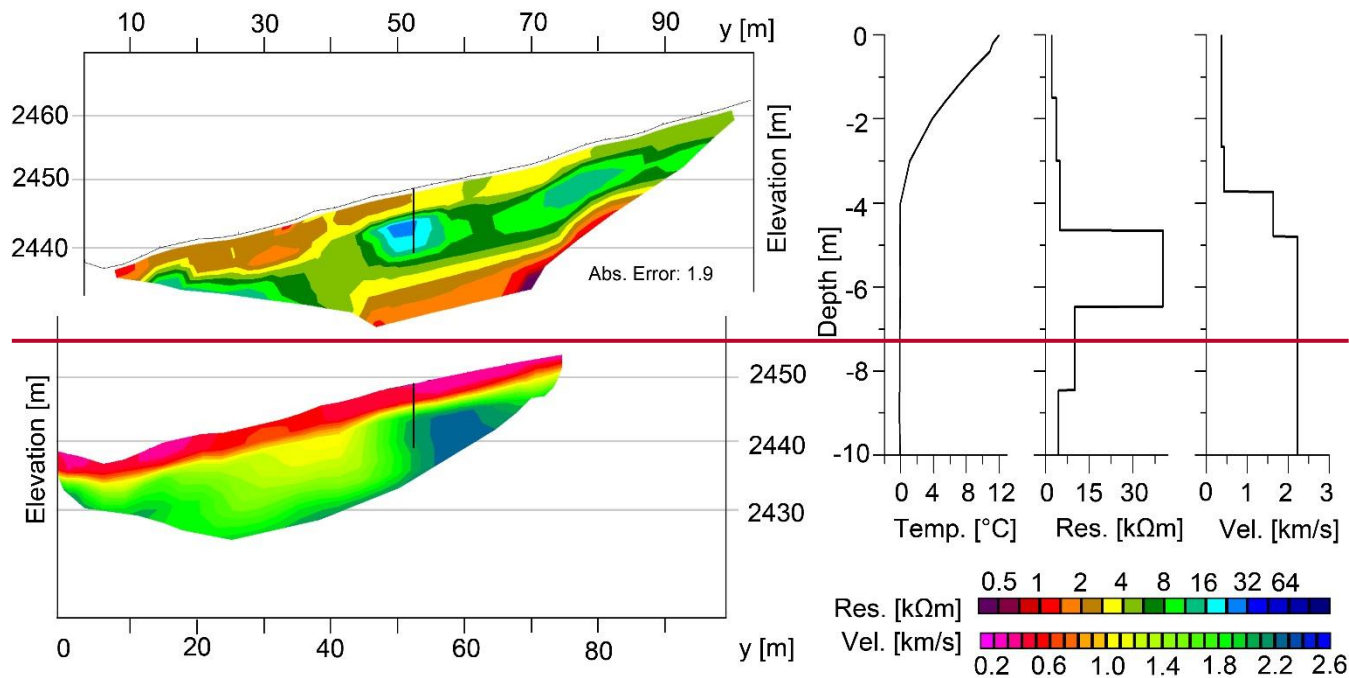


Fig. 23: Comparative analysis of (a) 2D ERT Profile, (b) 2D SRT Profile and (c) 1D Temperature/ Resistivity/ Velocity plots at Nair rockglacier.



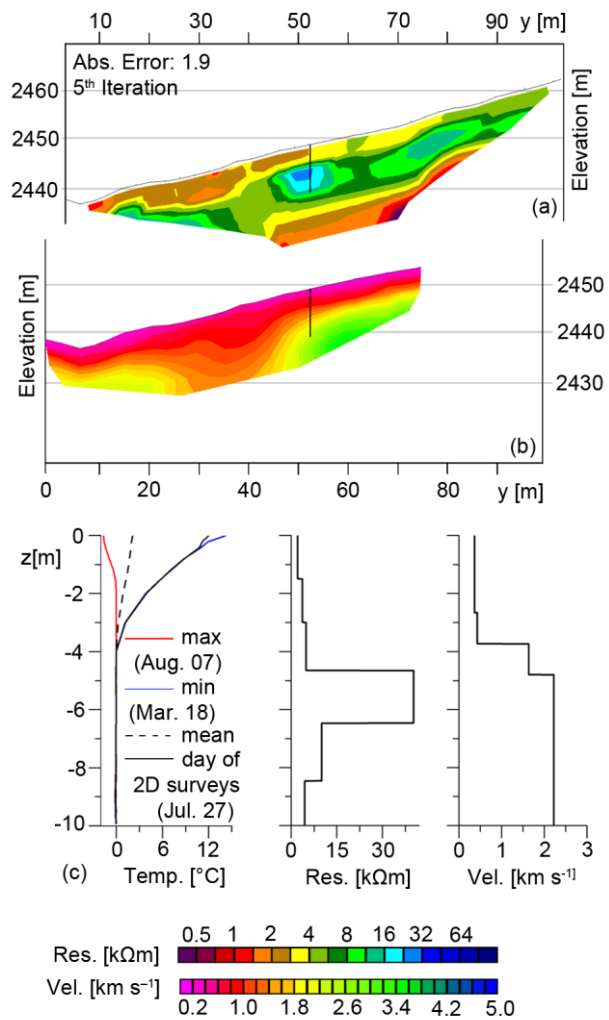
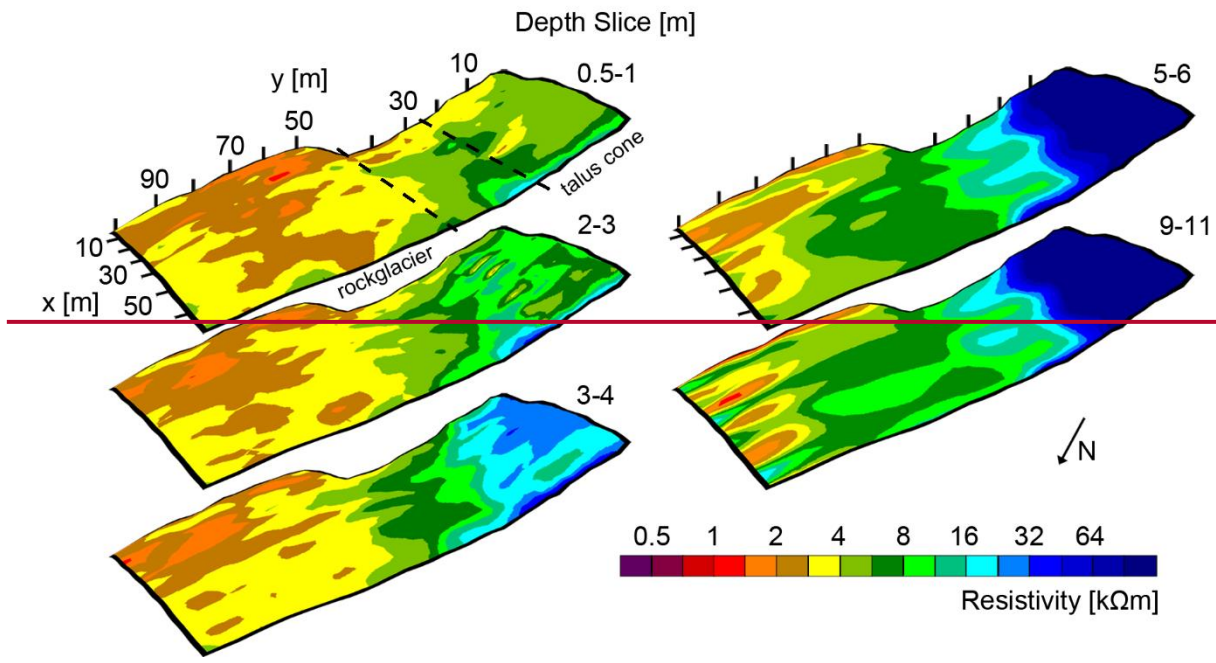


Fig. 43: Comparative analysis of (a) 2D ERT Profile, (b) 2D SRT Profile and (c) 1D Temperature/ Resistivity/ Velocity plots at Uertsch rockglacier.



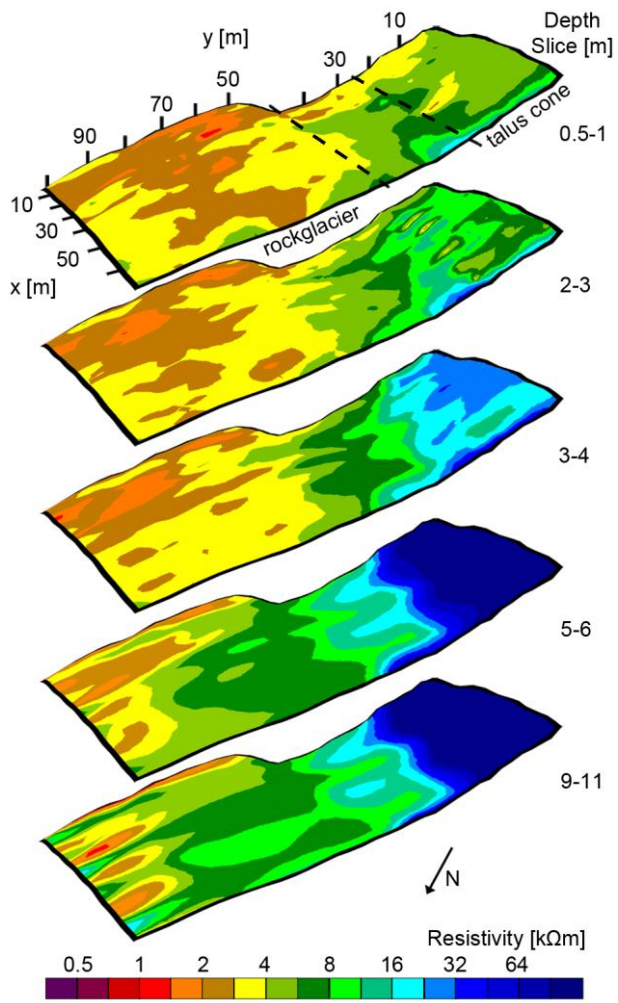
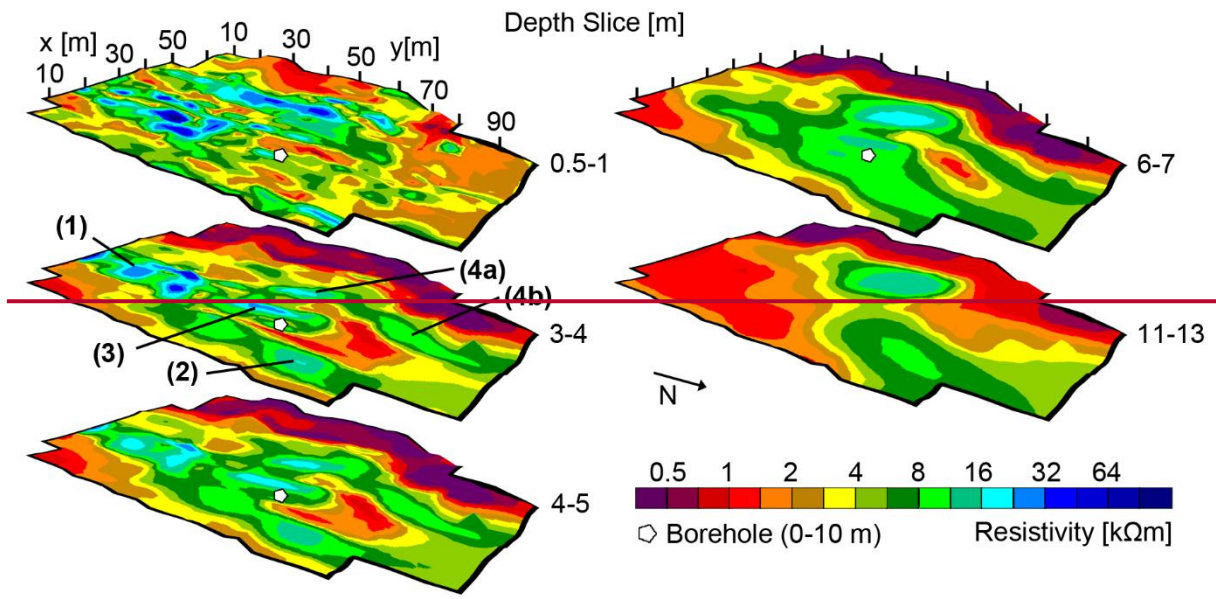


Fig. 54: Quasi-3D ERI Model Nair. ~~Chosen~~ Selected depth slices.



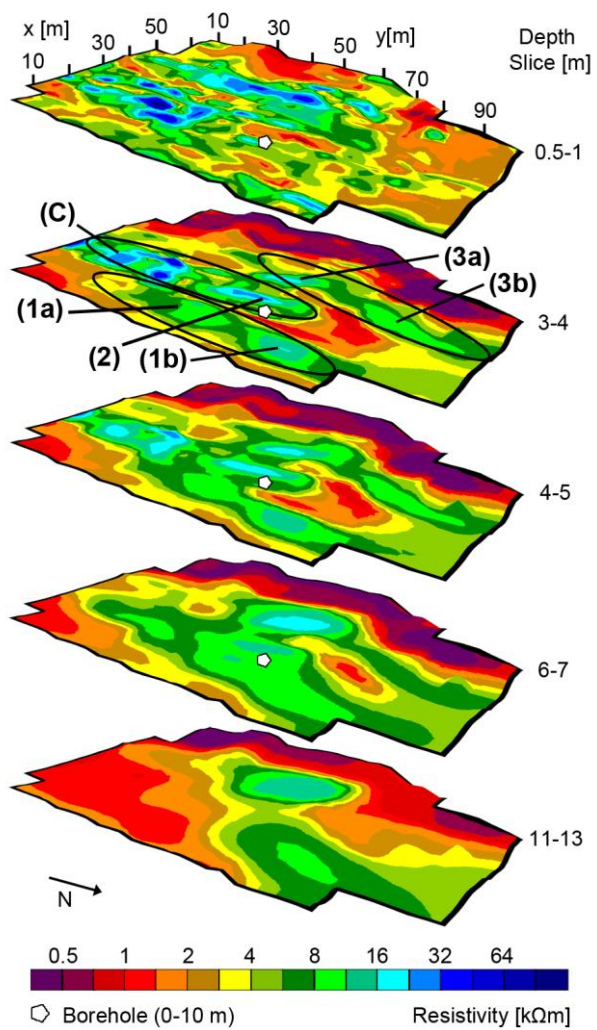
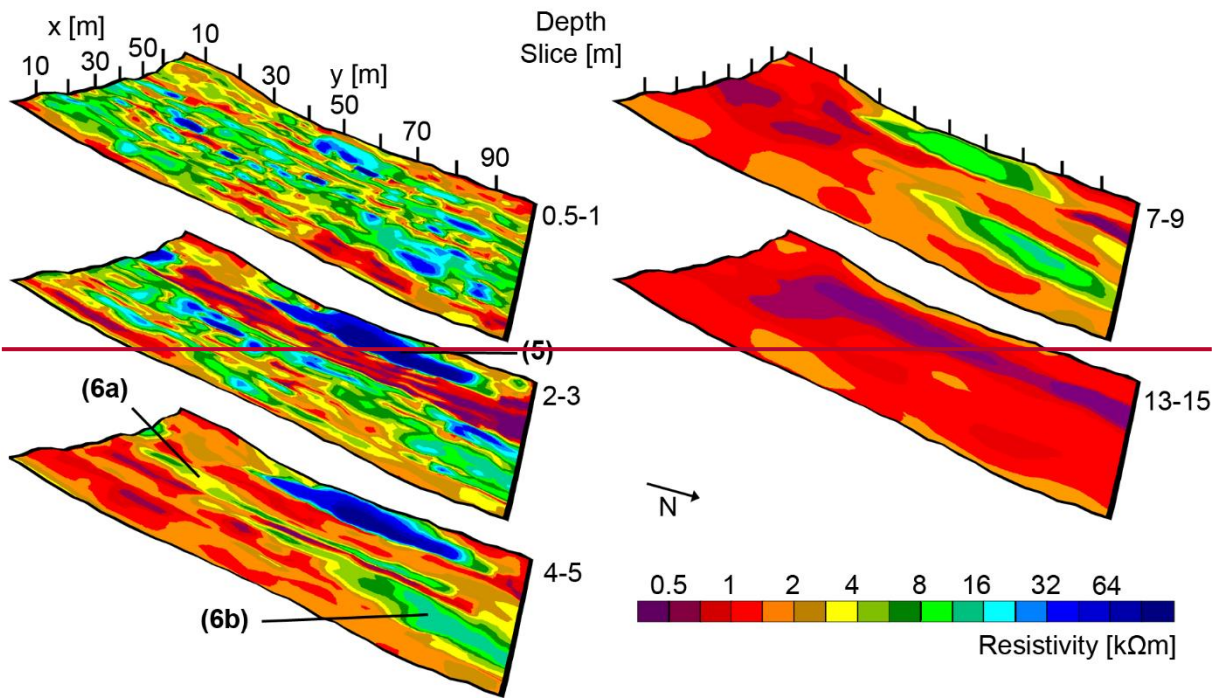


Fig. 65: Quasi-3D ERI Model Uertsch_01. Numbers refer to structures described in the text. ~~Chosen-Selected~~ depth slices.



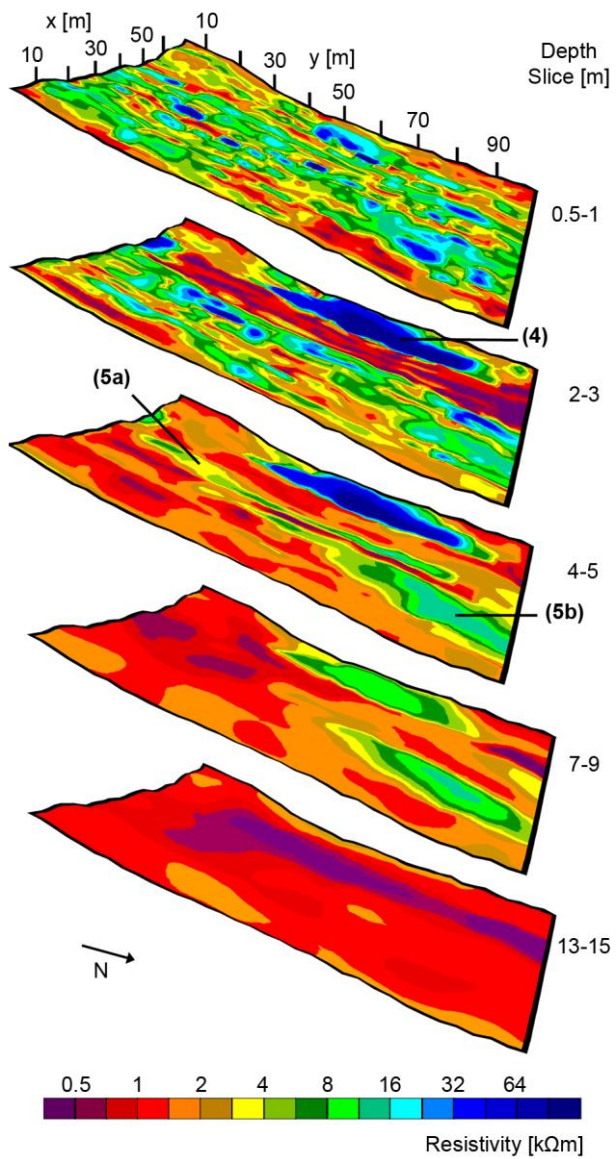


Fig. 76: Quasi-3D ERI Model Uertsch_02. Numbers refer to structures described in the text. ~~Chosen-Selected~~ depth slices.

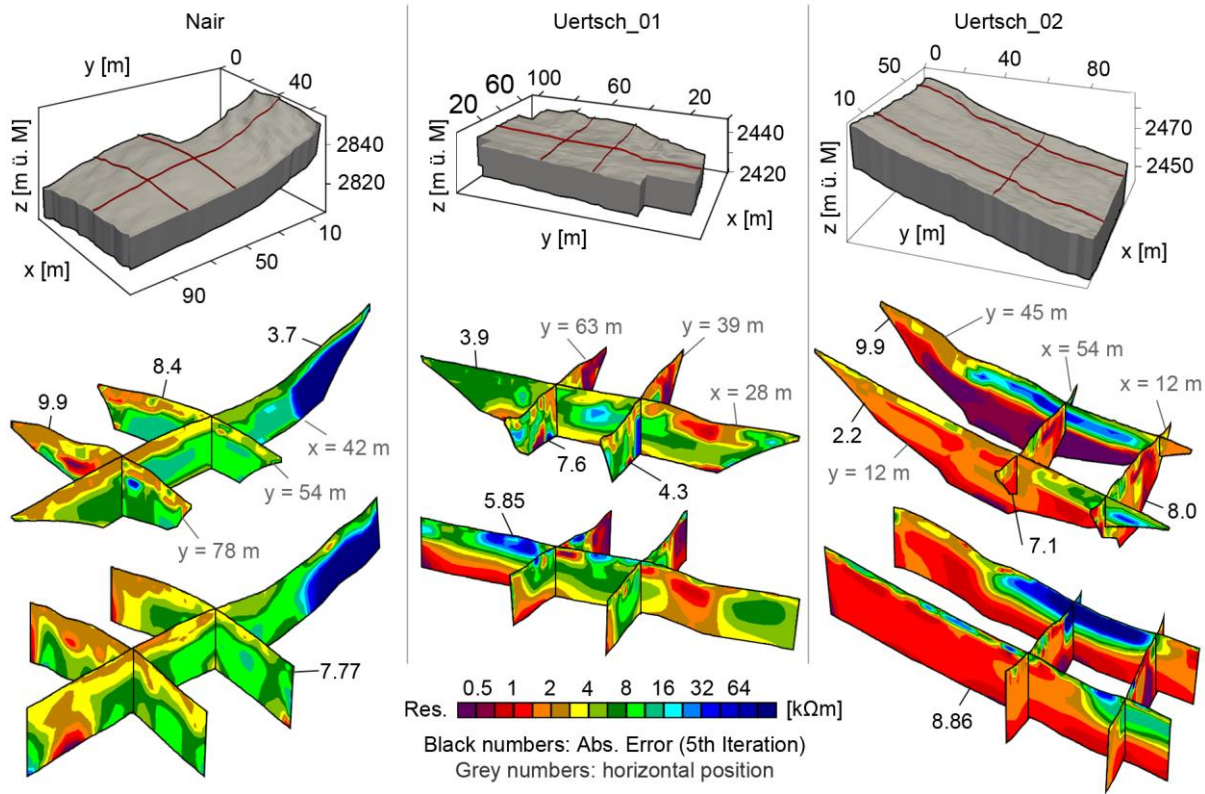


Fig. 8: Comparison between independently inverted 2D models (central row) and 3D models (lower row). Upper row shows model representation as blocks and position of the selected slices.