

Modelling rock wall permafrost degradation in the Mont Blanc massif from the LIA to the end of the 21st century

Florence Magnin¹, Jean-Yves Josnin¹, Ludovic Ravanel¹, Julien Pergaud², Benjamin Pohl², Philip Deline¹

¹EDYTEM Lab, Université Savoie Mont Blanc, CNRS, 73376 Le Bourget du Lac, France

5 ²Centre de Recherches de Climatologie, Biogéosciences, Université de Bourgogne Franche-Comté, CNRS, Dijon, France

Correspondence to: Florence Magnin (florence.magnin@univ-smb.fr)

10 **Abstract.** High alpine rock wall permafrost is extremely sensitive to climate change. Its degradation has strong impact on landscape evolution and can trigger rock falls constituting an increasing threat to socio-economical activities of highly frequented areas. Quantitative understanding of permafrost evolution is therefore crucial for stakeholders. This study investigates the long-term evolution of permafrost in three vertical cross-sections of rock wall sites between 3160 and 4300 m a.s.l. in the Mont Blanc massif, since the Little ice Age (LIA) steady-state conditions to 2100. Simulations are forced with
15 air temperature time series, including two contrasted air temperature scenarios for the 21st century representing possible lower and upper boundaries of future climate change according to the most recent models and climate change scenarios. The 2D Finite Element model accounts for heat conduction and latent heat transfers, and the outputs for the current period (2010-2015) are evaluated against borehole temperature measurements and an electrical resistivity transect: permafrost conditions are remarkably well represented. Along the past two decades, permafrost has disappeared into the S-exposed faces up to
20 3300 m a.s.l., and possibly higher. Warm permafrost (*i.e.* > -2°C) has extended up to 3300 and 3850 m a.s.l. in N and S-exposed faces, respectively. Along the 21st century, warm permafrost is likely to extent at least up to 4300 m a.s.l. into the S-exposed rock walls, and up to 3850 m a.s.l. at depth of the N-exposed faces. In the most pessimistic case, permafrost will disappear at depth of the S-exposed rock walls up to 4300 m a.s.l., whereas warm permafrost will extend at depth of the N faces up to 3850 m a.s.l., but could disappear at such elevation under the influence of a close S face. The results are site-
25 specific and extrapolation to other sites is limited by the imbrication of the local topographical and transient effects.

Keywords: rock wall, permafrost degradation, Mont Blanc massif, global warming, bi-dimensional modelling

1 Introduction

The IPCC Fifth Assessment Report (AR5) draws a global increase in permafrost temperature since the 1980s (IPCC, 2014). By the end of the 21st century, the near-surface permafrost area is projected to retreat by 37 to 81% according to RCP 2.6
30 (Representation Concentration Pathways with a projected increase in radiative forcing of 2.6 W.m⁻² since 1750; Vuuren et al., 2011) and RCP 8.5, respectively. Concerns about natural disasters resulting from mountain permafrost degradation have started to rise during the late 1990s (IPCC, 1996). Haeberli et al. (1997) identified various types of high mountain slope

instabilities prepared or triggered by interactive processes between bedrock, permafrost and glaciers. Although the examples were scarce, this warning study has been largely confirmed during the past two decades, especially with the increase in rock fall activity of high-elevated permafrost rock walls (Ravel and Deline, 2011).

5 Since the hot summer of 2003 and the remarkable number of rock falls observed in the European Alps (Schiermeier, 2003; Ravel et al., 2011), rock wall permafrost has been intensively studied in various mountain areas (Gruber, 2005; Noetzi, 2008; Allen et al., 2009; Hasler, 2011; Hipp, 2012; Magnin, 2015). The role of permafrost degradation in rock wall stability is more and more admitted (*e.g.*, Krautblatter et al., 2013; Gjermundsen et al., 2015) and mountain permafrost is of high concern for construction practices (Harris et al., 2001a; Bommer et al., 2010). The destabilisation of rock wall permafrost endangers high mountains activities, infrastructure (Duvillard et al., 2015), mountain-climbers and workers. Valley floors
10 could be affected by high mountain hazards owing to the possible cascading effects (Deline, 2001; Einhorn et al., 2015). The acceleration of rock wall retreat resulting of rapid permafrost degradation (Haeberli and Burn, 2002) has substantial implication for landscape evolution. Major changes are visible at human time scales, such as the sudden disappearance of the famous Bonatti rock pillar and its climbing routes in 2005 in the Mont Blanc massif (Ravel and Deline, 2008).

15 Rock wall permafrost is highly sensitive to air temperature change because (i) it is directly coupled with the atmosphere (absence of debris and seasonal snow cover), (ii) the delaying effect of latent heat processes is reduced due to the low ice content (Smith and Riseborough, 1996), and (iii) it is subject to multi-directional warming from the different summit sides (Noetzi et al., 2007). Therefore, it is prone to much faster changes than any other kind of permafrost (Haeberli et al., 2010).

The monitoring of rock wall permafrost has started in the late 1990s in Switzerland with the drilling of two boreholes at the Jungfrauoch site (PERMOS, 2004). A latitudinal transect along European mountains has been later installed in the
20 framework of the PACE project (Sollid et al., 2000; Harris et al., 2001b; Harris et al., 2009). A warming trend clearly appeared over the past decade in most of the existing boreholes (Blunden and Arndt, 2014).

The presence of ice in the fractures of steep alpine bedrock has been demonstrated by engineering work (Keusen and Haeberli, 1983; King, 1996; Gruber and Haeberli, 2007). This ice highly contributes to rock wall stability because it increases the tensile and shear strengths of the fractures (Davies et al., 2001; Krautblatter et al., 2013). The warming of an
25 ice-filled fracture has two effects on its stability: the loss of bonding and the release of water which increases the hydrostatic pressure. An ice-filled fracture becomes critically unstable by between -1.4 and 0°C (Davies et al., 2001). In this way, the warming of permafrost and the thickening of the active layer by heat conduction could be responsible for rock wall destabilization (Gruber and Haeberli, 2007). But heat advection through the circulation of water supplied by the melting of the interstitial ice, snow or glacier ice could warm permafrost at deeper layers than those reached by heat conduction (Hasler
30 et al., 2011a). Hydraulic and hydrostatic pressures in frozen bedrock are modified under freezing and thawing, and can be

involved in rock wall destabilisation throughout a large range of processes (for a review of these processes see Matsuoka and Murton, 2008; Krautblatter et al., 2012).

Historical and recent rock fall events have been systematically inventoried in the Mont Blanc massif (Ravanel et al., 2010a; Ravanel and Deline, 2013). Their trend revealed a clear relationship with hot climate signals at various time scales from seasonal to decadal (Ravanel et al., 2010b; Ravanel and Deline, 2011; Huggel et al., 2012). In some cases, extreme precipitation events are thought to be the main triggering factor by increasing the hydraulic pressure in an impermeable bedrock permafrost system (Fischer et al., 2010). But the role of extreme precipitations events in rock fall triggering is less obvious and systematic than with extreme air temperature. Given the recent evidences, one can assert that the magnitude and frequency of these hazards are likely to increase along the 21st century of projected global warming (IPCC, 2011). Knowledge about the current and future thermal state of the Mont Blanc massif rock walls is thus required in order to take into account a risk that threatens activities in this densely frequented high mountain area.

Patterns and processes of long-term permafrost changes in steep mountain flanks were studied in idealized cases for the European Alps (Noetzi et al., 2007; Noetzi and Gruber, 2009) and Norway (Myhra et al., 2015). But future changes in rock wall permafrost driven by the most recently released RCPs have not been addressed yet, whereas the site-specific response to 21st century climate change has not been considered. Furthermore, evaluation of time-dependent rock wall permafrost models has remained limited by the lack of empirical data. To address site-specific long-term changes in rock wall permafrost of the Mont Blanc massif we run a 2D Finite Element model accounting for heat conduction and latent heat transfers on NW-SE cross-sections of three sites covering an elevation transect, starting from 3160 up to 4300 m a.s.l., which encompasses currently warm and cold permafrost conditions. Transient simulations are run from the end of the LIA (c. 1850) to the end of the 21st century (2100) based on two different RCPs (4.5 and 8.5) accounting for moderately optimistic and pessimistic scenarios. Bi-dimensional models of the current period (2010-2015) are benchmarked against an independent data set in order to evaluate the model performance. Even though changes in precipitation patterns (seasonality, frequency of extreme events and liquid/solid ratio) may play a marginal role in permafrost degradation pathways and rock fall triggering, only air temperature scenarios are considered since it constitutes the dominant controlling factor of rock wall permafrost changes. Moreover, precipitation is governed by local processes, unlike air temperature driven by general circulation (Déqué et al., 2007). As a consequence, precipitation scenarios for the 21st century bear significant uncertainty (Heinrich et al., 2013). Underlying research questions are the following:

- Is our modelling approach suitable to reproduce current permafrost conditions at the site scale?
- How permafrost has changed within these sites along the past decades?
- 30 - How rock wall permafrost will possibly evolve by the end of the 21st century considering the latest IPCC projections?

This study provides insight as much in the recent changes of rock wall temperature as in its future evolution, usable for retrospective analyses of rock wall instability and for assessing future hazards.

2 Study site and available data

The Mont Blanc massif is an external variscan high mountain range culminating at 4809 m a.s.l., located on the western margin of the European Alps (Fig. 1). Its two major lithological units are a polymetamorphic basement along its western margin, and a unit of Mont Blanc granite at its core (Bussy and von Raumer, 1994). It covers 550 km² over France, Switzerland and Italy, of which 30 % are glaciated (Gardent et al., 2014; Fig. 1). About 65 % of its rock walls above 2300 m a.s.l. are permanently frozen, according to a first estimation of permafrost distribution on the French side and borders (Magnin et al., 2015a; Fig. 1). For the purpose of this study, we selected three sites at various elevations and under various permafrost conditions: Aiguille du Midi, Grands Montets, and Grand Pilier d'Angle. All the three sites are located in the granitic area of the massif. Their elevations as well as their permafrost conditions are representative of the Mont Blanc massif rock walls.

2.1. Aiguille du Midi and bedrock temperature data

Studies on rock wall permafrost have started by the end of 2005 in the Mont Blanc massif with the steady installation of 9 rock surface temperature (RST) sensors at the Aiguille du Midi summit (AdM), a set of three granite pillars. The AdM is accessible by cable-car throughout the year (500,000 visitors per year). As a pilot site in high-elevated permafrost research, the AdM is now equipped with a variety of instruments to measure rock wall temperature (Magnin et al., 2015b), snow cover (Magnin et al., 2016) and mechanics with extensometers (Ravanel et al., 2016). Three 10-m-deep boreholes of 15-nodes-thermistor chains are installed in the AdM bedrock and register temperature with a 3 h time step since December 2009 (NW and SE faces) and April 2010 (NE face). Therefore, the AdM has been chosen because of the possibility to quantitatively evaluate the model outputs. It is characterized by the coexistence of cold permafrost (-4.5°C at 10-m-depth) on its NW face and warm permafrost (-1.5°C at 10 m depth) on its SE face (Fig. 2). Thermal effects of snow are observed in the three boreholes (Magnin et al., 2015a). The local cooling effect of a fracture has been detected at 2.5 m depth of the NW borehole. Nevertheless, temperature at 10-m-depth seems mainly governed by conductive heat transfer processes and lateral heat fluxes from the warm South face to the cold North face.

2.2. Grands Montets and ERT data

The Grands Montets (GM) is a summit culminating at 3296 m a.s.l., lying northbound and about 800 m below the Aiguille Verte (4122 m a.s.l.). In 1962-63 a cable car was installed on its mid-steep North face (60°) to transport skiers up to the glaciated area. In May 2011, a RST logger was installed (GEOPrecision PT1000, sensor accuracy $\pm 0.1^\circ\text{C}$) at the foot of the highly fractured NW face (3058 m a.s.l.) in a 85° steep rock wall portion. It recorded the rock temperature at depths of 3, 10,

30 and 55 cm until January 2013. The 2012 mean annual rock surface temperature (MARST) at a depth of 3 cm was -1.4°C . In 2012 and 2013, electrical resistivity tomography (ERT) soundings have been conducted along the NW face of the GM and 4 other sites of the massif (Magnin et al., 2015c). The potential of ERT for qualitative evaluation of 2D permafrost models has been demonstrated by Noetzli et al. (2008). ERT covers a much wider and deeper rock wall portion than bedrock temperature. In a way, that makes ERT a better approach to evaluate distributed models of rock wall permafrost because it has the capacity to represent the spatial variability of rock wall permafrost (Magnin et al., 2015c). Conversely, direct temperature measurements allow for quantitative evaluation, but have the disadvantage to be only representative for the measurement point. We selected the GM site as a second site because (i) a 160-m-long and 25-m-deep ERT transect is available for model evaluation, (ii) the site bears socio-economical interests with around 200 000 persons using the cable car every year, and (iii) it is located within the warm permafrost fringe of the massif as revealed by the RST data, permafrost map (Fig. 1 and 2) and the ERT transect. Moreover, this site has been regularly affected by rock falls during the last decade which supports the interest in studying its thermal dynamics.

2.2. Grand Pilier d'Angle

Finally, the third site was chosen based on its elevation in order to also consider an entirely cold permafrost site. Cold permafrost is likely to be present at the Grand Pilier d'Angle (GPA, 4304 m a.s.l.) on all the rock faces according to the permafrost map (Fig. 2). The East face of the GPA was strongly affected by a rock avalanche in November 1920. About 3 million m^3 of rock detached from the face in several stages and travelled onto the Brenva Glacier on a distance > 5 km, reaching the valley floor (Deline et al., 2015). Because of its altitude, relief (900 m), stiffness (sub-vertical rock walls) and remoteness, the GPA includes climbing routes among the most difficult and exposed of the Mont Blanc massif. For this last site located on the Italian side of the massif, no data set is available for model evaluation, and the quality of the 2D models will be assessed based on the evaluation of the two other sites.

3 Modelling approach

3.1. Background and strategy

Rock wall permafrost is a relatively simple system since it has no debris or spatially and temporally continuous snow covers such as on gentler mountain slopes: it is straightforwardly coupled with the atmosphere. Therefore, it is mainly governed by air temperature and incoming solar radiations (Gruber et al., 2004), whereas patchy and intermittent snow deposits could further cool the bedrock (Hasler et al., 2011b). At depth, the temperature in hard rock mainly depends on the conductive heat transfer from the surface (Williams and Smith, 1989; Wegmann et al., 1998), and 3D heat fluxes induced by the aspect-dependent rock surface temperature (RST) variability (Noetzli et al., 2007).

Generally, modelling procedures of permafrost rock wall first calculate the RST and then solve the heat conduction equation to simulate subsurface temperature. Pioneer studies used distributed energy balance models to calculate the RST (Gruber et

al., 2004) and simulated the subsurface temperature fields with the mere consideration of (i) conductive heat transfer within idealized high mountain geometry and (ii) latent heat processes to account for water phase changes in the bedrock interstices (Noetzli et al., 2007; Noetzli and Gruber, 2009).

Due to the high computational efforts in energy balance approaches, statistical approaches were later adopted to compute the RST (Allen et al., 2009; Hipp et al., 2014; Myhra et al., 2015). The increasing amount of available RST time series in the European Alps has permitted the formulation of such statistical model for the entire Alpine range (Boeckli et al., 2012). This last model has been applied on a 4-m-resolution DEM of the French part and Italian border of the Mont Blanc massif with local air temperature input data to map the mean annual rock surface temperature (MARST; Fig. 1 and 2, Magnin et al., 2015a).

In our modelling procedure, we use the MARST map available for the French part of the Mont Blanc massif to generate the initial RST condition. We run the transient simulations in the commercial hydrogeological software DHI-WASY *Feflow* version 7.0 by forcing the RST with climate time series from 1850 to 2100, and solving the heat conduction equation in 2D with consideration of freeze and thaw processes in the bedrock interstices.

3.2. Heat transfers

3.2.1. Conceptual approach

Rock wall permafrost is composed of rock, ice and air in non-saturated conditions. Sass (2003) has approached alternating saturated/unsaturated conditions under freezing and thawing of the near-surface pore spaces of a rock wall by mean of geophysical soundings. But the rates of saturation of alpine rock walls remain fairly misunderstood. Thus, the numerical models of rock wall permafrost have so far considered a saturated, homogeneous and isotropic media (Wegmann et al., 1998; Noetzli et al., 2007; Hipp et al., 2014; Myhra et al., 2015). Nonetheless, such approaches have been shown satisfactory to simulate long-term temperature changes in alpine rock masses. Shorter time-scale processes are clearly a hydrogeological problem.

In the scope of this study, we used *Feflow* combined with the plug-in *Pi-Freeze* 1.0 which accounts for freeze and thaw processes. As a very first use, we adopted existing approaches of long term simulations (saturated, homogeneous and isotropic media) to simulate transient thermal processes along centennial time-scales. Further developments will use the potential of *Feflow* to simulate with various saturation rates and fluid transfers.

3.2.2. Heat transfers: numerical approach

The conservation equation of energy for advective dispersive-diffusive transport of thermal energy depends on fluid flows (in saturated or unsaturated conditions, *i.e.* Darcy law incorporated in continuity equation or Richards equation), but works in pure conduction when flows are zero. It is usually expressed as follows (Diersch, 2002):

$$\frac{\partial[(\varphi\rho_c)_L+(1-\varphi)(\rho_c)_s]T}{\partial t} = -\nabla \cdot [(\rho_c)_L q T - \Lambda \nabla T] \quad (1)$$

with φ the porosity (a-dimensional), ρ_{CL} and ρ_{CS} the volumetric heat capacities ($\text{J.m}^{-3}.\text{K}^{-1}$) of the liquid and solid phases respectively, A the hydrodynamic thermal dispersion tensor ($\text{J.m}^{-1}.\text{s}^{-1}.\text{K}^{-1}$) that includes thermal conductivity, T the temperature (K), and q the apparent flow velocity from Darcy or Richards equation (m.s^{-1}). Equation 1 accounts for only one fluid phase and only one solid phase (water and rock, respectively), which is the default use of *Feflow* in saturated conditions such as in this study.

The *Pi-Freeze* plug-in working with *Feflow7.0* adds the ice fraction in the solid phase in order to modify only the parameters of solid thermal conductivity and of solid thermal heat capacity in Equation 1. The addition of the ice in the whole modelled medium is expressed throughout the bulk volume as: $\varepsilon_a + \varepsilon_w + \varepsilon_i + \varepsilon_r = 1$, with ε_a , ε_w , ε_i and ε_r the bulk fractions of air ($\varepsilon_a = 0$ in our case), water, ice and rock, respectively. A relation is established between the bulk volume of ice and the bulk volume of liquid that is the mass fraction per bulk volume of the unfrozen liquid to the total liquid mass or freezing function (Clausnitzer and Mirnyy, 2015):

$$F = \frac{\varepsilon_w \rho_w}{\varepsilon_w \rho_w + \varepsilon_i \rho_i} \quad (2)$$

where ρ is the density of the corresponding phase ($_i$ for ice and $_w$ for water). This function F decreases with the fraction of ice. For the freezing point T_0 , the ice forms gradually within a predefined temperature interval of the length ΔT :

$$\left[T_0 - \frac{\Delta T}{2}, T_0 + \frac{\Delta T}{2} \right] \quad (3)$$

Taken into account the expressions of the bulk volume ε and of the freezing function F described just above, the thermal parameters of the Equation 1 are modified as follow:

a) The solid thermal conductivity λ ($\text{W. m}^{-1}.\text{K}^{-1}$) becomes:

$$\lambda_s = \lambda_{s,0} + \frac{\varepsilon_i(\lambda_i - \lambda_s)}{1 - \varepsilon} \quad (4)$$

b) Similarly, the solid volumetric heat capacity becomes:

$$\rho c_s = \rho c_{s,0} + \frac{(\rho c_i - \rho c_s)}{1 - \varepsilon} - \frac{\rho_i L_f}{1 - \varepsilon} \frac{\partial \varepsilon_i}{\partial F} \frac{\partial F}{\partial T} \quad (5)$$

where L_f is the latent heat of the ice formation.

3.2.3. Thermal parameters

The thermal conductivity of the rock was set to $3 \text{ W.m}^{-1}.\text{K}^{-1}$ which stands for a conservative value for saturated granitic rock (Cho et al., 2009). However, the thermal conductivity of a saturated media doesn't only depends on the mineral properties, but also on the water state, the ice being up to six times more conductive than the water at 0°C (Williams and Smith, 1989).

Thermal conductivity variations along freeze and thaw cycles are accounted for by *Pi-Freeze*. The heat capacity of the rock was set to $1.8 \text{ MJ.m}^3.\text{K}^{-1}$.

In addition to the usual adjustable parameters of *Feflow*, *Pi-Freeze* allows a user-defined freezing temperature, a customisable temperature interval for freeze/thaw combined with a linear freezing function, adaptable thermal properties of ice, a user-specified residual fluid content and a configurable latent heat. Such possibilities are highly promising for adapting the modelling approach to the natural conditions.

To account for the latent heat processes related to the freeze and thaw of the interstitial ice contained in pores and fractures, we took a 5 % porosity value following the procedure from Noetzli et al. (2007). This value is just on the top acceptable values for dense crystalline rocks (Domenico and Schwartz, 1997) or lowly fissured crystalline rocks (Banton and Bangoy, 1999). Indeed, dense crystalline rock porosity without any fissure is usually inferior to 1 % while fractured crystalline rock porosity quickly reaches values greater than 5 %. The 5 % value chosen here accounts then for the ice contained in fractures since bedrock discontinuities are not included.

Water contained in artificial pore-spaces is subject to a super-cooling, *i.e.* a temperature deviation from the equilibrium freezing point at 0°C , until it reaches a spontaneous freezing point which depends on pore size and material (Alba-Simionesco et al., 2006). Geophysical experiments on various hard rock samples and under controlled laboratory settings have quantified a freezing point depression of $-1.2^\circ\text{C} \pm 0.2^\circ\text{C}$ (Krautblatter, 2009) due to the pressure and water salinity. To account for this super-cooling characteristic of interstitial water, temperature freezing point T_0 was set to -1°C in the *Pi-Freeze* module, while the temperature interval ΔT of the freezing function was set to 1°C .

The latent heat of fusion was set to 334 kJ.kg^{-1} .

20

3.3. Boundary conditions

3.3.1. Rock surface temperature

We first extracted the topography and the MARST from the 4-m-resolution DEM (provided by RGD 73-74), and the MARST mapped over it to serve as upper boundary conditions along NW-SE vertical transects (Fig. 2). The MARST map has been evaluated against 43 measurement points of RST from the multi-year time series of the 9 RST loggers installed around the AdM. The modelled MARST tend to underestimate measured MARST values of sun-exposed rock faces and to over-estimate those of the shaded faces. Nevertheless, the mean bias of -0.21°C (Magnin et al., 2015a) indicates a generally good approximation of the real-world MARST at this site.

The linear regression used to produce the MARST map has been formulated with the mean air temperature of the 1961-1990 reference period (homogenised by Hiebl et al., 2009), and measured MARST adjusted to the reference period. The MARST were adjusted by applying the difference in air temperature between the reference period and the years of the MARST measurements (Boeckli et al., 2012). In our modelling procedure, we considered that the MARST extracted from the map is

30

representative of the year 1961. Then, we lowered this MARST by 1°C to approximate the MARST at the end of the LIA (Auer et al., 2007; Böhm et al., 2010) and set up the initial RST condition at the upper boundary of the model domain (Fig. 3). MARST differences driven by topo-climatic factors clearly appear along the extracted profiles but are site specific. At the GM, the MARST difference between the SE and NW face is only 1°C. It is of 5°C at the AdM and 6°C at the GPA. These
5 variable temperature differences for similar aspect differences (180°) are attributed to two factors: the differences in slope steepness and the local shading. The GM and AdM are isolated summits with no close shading. Conversely, the GPA NW face is located right below the Mont Blanc which shades the GPA West-exposed faces and lowers their MARST. The mid-steep NW slope and rounded summit of the GM receive solar radiations a larger part of the daylight than in sub-vertical settings and with a more perpendicular incidence of the beams.

10 Starting from the initial RST representative of the LIA conditions, we first initialise 2D steady-state temperature fields for the year 1850, and then run transient simulations using reconstructed, measured and projected climate time series until 2100 (see Sect. 3.3).

3.3.2. Model geometries

Below the topographical profiles, a box of a height of 5000 m was added to shut off the model geometry of each site. A
15 constant geothermal heat flux of 85 mW.m⁻² (Medici and Rybach, 1995; Maréchal et al., 2002) was set up as lower boundary condition. Above these boxes, a finite element mesh with triangular elements was generated to discretize the subsurface material (Fig. 3). Even though the spatial resolution of the boundary conditions is 4 m, we refined the meshes close to the surface in order to catch up the near surface temperature gradient. The spatial resolution of the initial RST, based on the 4 m resolution map, was refined accordingly using linear interpolation. This mesh and RST refinement does not provide much
20 information at depth, nor improve the quality of the models, but facilitates the model evaluation. At greater depth, we kept a mesh size of 4 m, in coherence with the resolution of the input data.

This approach resulted in 8548 nodes and 16141 mesh elements at the AdM, 5844 nodes and 10952 elements at the GM, and 12087 nodes and 23344 elements at the GPA (Fig. 3).

On the AdM site, 37 observation points were defined between the surface and 10 m depth of the NW and SE faces at the
25 location of the boreholes (Sect. 2.1). The mesh was refined along these observations points (Fig. 3) and simulated bedrock temperature is extracted at user defined time step during the transient simulations to serve for model evaluation (Sect. 4.2.1).

3.4. Transient simulations

3.4.1. Initial condition

To define an initial 2D temperature field in the model geometries, we run the heat transfers with the upper boundary
30 condition (the 1850 RST) and lower boundary condition (the geothermal heat flux) until we reach steady-state conditions, balancing the respective influence of the atmosphere and geothermal heat fluxes. Models run for 80 000 ± 10 000 years

before achieving steady-state conditions. After this initialisation procedure that provides an initial condition for 1850, we run transient simulations with air temperature forcing time series from 1850 to 2100.

3.4.2. Forcing data

The transient simulations are forced with air temperature time series created from various sources of data. The temporal resolution of these forcing data was gradually refined with the increasing quality of the available data and the periods of interest (Fig. 4). Along the period 1850-1961, no continuous air temperature measurements are available for the Mont Blanc massif. Therefore, we assumed a linear increase of 1°C between 1850 and 1961 (Auer et al., 2007; Böhm et al., 2010), and run the simulations at an annual time step. A sensitivity analysis to higher time step did not change the final results for the periods of interest.

10 For the period 1961-1993, a climate time series was created at a monthly time step in the scope of the MARST mapping based on measured temperature values in Chamonix (Magnin et al., 2015a). We used this monthly time series to force the model between 1961 and 1993, which constituted a first step in temporal resolution refinement of the forcing data.

In 1993, *Météo France* started continuous records of air temperature at hourly time step. From these hourly records, daily air temperature can be reliably calculated. Therefore, we forced the transient models with this daily air temperature time series
15 between 1993 and 2015.

Finally, two contrasted scenarios were retained for the 21st century. Time series consist in daily 2 m air temperature simulated by the IPSL-CM5A-MR Earth System Model (Dufresne et al., 2013) that participated to the 5th Coupled Model Inter-comparison Project (CMIP5, Taylor et al., 2012) / AR5 of IPCC (2013). For this study and for climate projections in the future decades, we used two contrasted radiative forcing scenarios, namely the Representative Concentration Pathway
20 (Moss et al., 2008) RCP4.5 and RCP8.5. They respectively correspond to an increase of +4.5 W.m⁻² and +8.5 W.m⁻² for 2100 relative to pre-industrial values, resulting in an air temperature increase of respectively +3 and +5°C by the end of the 21st century according to the comparison of the measured mean air temperature of the 1980-2010 period and the projected mean air temperature for the period 2070-2100.

For RCP4.5 anthropogenic greenhouse gases emissions peak around 2040 and then decline (moderately optimistic scenario),
25 while for RCP8.5 emissions continuously increase throughout the century (pessimistic scenario). The IPSL-CM5A-MR model was chosen because (i) its spatial resolution is among the highest among the CMIP5 model (1.25 × 2.5°), allowing for more realistic orographic effects in the simulated climate; (ii) its basic state is very close to the recent observational records during the first years of the 21st century (Fig. 4); and (iii) its response to the radiative forcing throughout the century is close to the median of the CMIP5 models, ensuring a representative behaviour to estimate long-term evolutions. Analysed time
30 series are obtained by extracting the closest grid-point (1336 m a.s.l.) to the Mont Blanc Massif.

4 Results

We here present the results of the simulations in three steps. First, we describe the permafrost conditions and changes between the steady-state at the end of the LIA to time-dependent conditions during the recent period. The recent conditions are illustrated through model snapshots in September 1992 and September 2015, displaying the active layer patterns in the uppermost layers; they are not presented since they go beyond the scope of this study and lie in the limits of our modelling approach (Sect. 5). In a second step, the model outputs for the recent period (2010-2015) are compared to an independent data set of real world conditions for assessing the quality of the simulations along the 20th and early 21st centuries. Finally, after model evaluation, thermal conditions by the end of the 21st century in response to RCP4.5 and 8.5 forcings are presented.

4.1. Permafrost evolution from the LIA to the current period

4.1.1. Steady-state at the LIA termination

Equilibrium conditions for the end of the LIA (1850) are displayed in Figure 5a for the three sites. In 1850, the GPA and the AdM were totally in cold permafrost ($< -2^{\circ}\text{C}$). At the GM, a cold permafrost body was characterizing the NW subsurface and was extending below the SE face between 3260 and 3280 m a.s.l. Warm permafrost was already occupying most of the site, including the top.

The shape of the isotherms varies from one site to another, depending on the topographical settings. The steepest site (AdM) shows sub-vertical isotherms down to 3720 m a.s.l., where they incline downwards and towards the NW to become more oblique. In the top part of the less steep site (GM), the -2°C isotherm is rather oblique whilst the -1°C one is sub-horizontal in the lower part. In the GPA, isotherms are vertical in the top part and oblique in the middle part. In the lower part of the SE face, in the $> -5^{\circ}\text{C}$ area, isotherms obliquity declines to become more parallel to the upwards geothermal heat flow.

The modelled temperature gradients directly depend on the temperature difference between NW and SE flanks (Sect. 3.2.1): small temperature gradients are visible in the GM cross section, in accordance with the initial RST difference, whereas they are higher in the sharper two other sites with more contrasted RST.

4.1.2. Transient temperature fields along the 20th and early 21st centuries

Figure 5b displays time-dependent conditions for the early 1990s, while Figure 5c exhibits those in 2015 after the two past decades of strong air temperature increase (Fig. 4). Along the 20th and early 21st centuries, permafrost has degraded in all the three sites. Warm permafrost has extended in the entire GM site and started to penetrate below the AdM SE face. But this degradation shows site-specific features in terms of isotherm shapes and temperature field distributions.

At the GM, the cold permafrost body has subsisted until the early 1990s below the NW face, but has narrowed down to two small bodies. Meanwhile, the lower limit of the -1°C isotherm has risen up below the SE face. Its initial sub-horizontal curve has moved into a more oblique shape down to 30 m, forming a square angle 25 m below the surface and inclining to a sub-

vertical shape more parallel to the SE surface in 1992. In 2015, the cold permafrost bodies have both totally disappeared and the -1°C isotherm has retreated inside the rock mass forming a sub-rounded body. At that stage, the 0°C isotherm is parallel 5-10 m deep below the NW surface and 15-20 m below the SE surface.

At the AdM, the isotherms kept almost the same shape along the past 160 years, but warm permafrost has already penetrated at depth of the SE face in 1992, and reaches 15-20 m depth in 2015. The -5°C isotherm has narrowed into a 15 m wide in the shallow layers and parallel to the NW face in 1992. It has totally disappeared by 2015, whereas the -4°C has followed the same pattern, subsisting between 3700 and 3820 m a.s.l. At this site, the 2°C warming between the end of the LIA and the recent period has affected the entire rock pillar.

Conversely, the central part of the GPA has remained unchanged along the past 160 years. But the -5°C isotherm, perpendicular to the SE face at 4130 m a.s.l. in LIA equilibrium conditions, has been affected by the climate change down to 30 m depth in 1992. It curves upwards to become more parallel to the SE face. In 2015, the -5°C isotherm has been affected by the atmospheric warming down to 70 m and obviously retreats towards the NW face. Meanwhile the -4°C isotherm, initially located at 4050 m a.s.l. of the SE face, started to curve upwards following the same dynamic. In the NW face, isotherms have kept the same shape parallel to the rock surface. The shallowest 60 m with a temperature of -11 to -5°C in the LIA equilibrium conditions, has turned into a uniform body of -8°C into the entire NW face by 1992. Two decades later, this body has narrowed: its width decreased by 20 m at depth, its lower limit rose up to 4070 m a.s.l., and highest limit lowered down to 4260 m a.s.l.

The air temperature rising experienced since the end of the LIA had variable effects depending on the site geometry and initial RST. The existing permafrost data in the Mont Blanc massif allow for an evaluation step of the model outputs at the current period.

4.2. Model evaluation

Modelled subsurface temperatures in rock walls are rarely benchmarked against measured borehole values due to the scarcity of subsurface temperature measurements, and because approved heat conduction models are assumed to be performant enough to reproduce accurate temperature in simple thermal systems such as rock wall permafrost. This assumption is valuable only if the upper boundary (the RST) is accurately simulated. Therefore, validation of modelled RST is often required before implementing heat conduction scheme, especially when it outcomes from complex energy balance simulations with many sources of uncertainties related to the high number of input data and parameters (Gruber et al., 2004; Noetzli et al., 2007). The quality of the initial RST was already mentioned in Section 3.2, based on the study from Magnin et al., (2015a). Here, we propose to evaluate simulated temperature at depth by mean of measured borehole temperatures and an electrical resistivity tomogram.

4.2.1. Evaluation with measured borehole temperature at the AdM

Feflow allows extracting model output at user defined observations points and time steps. We therefore requested extraction of simulated temperature for each observation point of the AdM model domain (see Sect. 3.2.2), and for each first day of each month between January 2010 and January 2015. Those modelled values are then compared to measured temperature in the AdM NW and SE boreholes to evaluate the model performances. Model output are first analysed at a daily time step before considering annual patterns. For better visibility, only four selected modelled temperatures of the year 2010 for each borehole, encompassing the four seasons, are displayed in Figure 6.

Daily features

The model reproduces very well the bedrock temperature below 6 m depth, especially in the NW borehole (Fig. 6a). Measured bedrock temperatures at shallowest depths are affected by snow cover, fractures and strong solar irradiation that are not taken into account in the modelling approach. This explains the greater discrepancy between modelled and measured ground temperature in winter (presence of snow) whereas summer temperatures better fit, especially in the NW face where the effect of solar radiation is weak.

The temperature profiles recorded by the NW borehole are significantly affected by an open fracture at 2.5 m depth which locally cools the bedrock due to air ventilation, especially during winter, whereas above the fracture, the insulating effect of a snow patch accumulating on a ledge at the borehole entrance warms the temperature profile down to the fracture depth (Magnin et al., 2015b). This is visible on the profile from the 1st January 2010 (Fig. 6a): the upper part shows small temperature gradient due to the snow insulation, while a stronger temperature gradient is visible below the fracture due to its shortcut effect between the air and the subsurface. Along the years 2010-2015, the maximum difference between measured and modelled daily temperature at 10 m depth in the NW borehole is 0.5°C and the mean difference of the 72 observation points (corresponding to 72 days between 2010 and 2015) is only 0.01°C.

In the SE borehole, the deepest measured temperatures seem less well reproduced by the model, but remain of reasonable accuracy with a maximum difference of 0.7°C is visible between measured and modelled value at 10 m depth along the observation period, and a mean difference of 0.1°C between the 60 measured points (two 3-4 months interruptions of the borehole records lower the number of available data) and simulated temperature at the same date. On the SE face, both the almost continuous snow cover from fall to spring/early summer (Magnin et al., 2016) and the high solar irradiation affect the rock temperature, but are not considered in the modelling approach. The solar radiation effect is well visible on the measured profile from the 1st July (Fig. 6a).

Annual features

On an annual average, differences between the measured and modelled temperature values are smaller than on the daily basis (Fig. 6b). At 10-m-depth, in the worst case (2010), the modelled value is 0.2°C higher than the measured one at the NW borehole, with a mean difference of 0.01°C along 2010-2015. At the SE borehole, the maximal difference between measured and modelled value is 0.04°C, but only two full years of observations (2010 and 2011) are available for model evaluation,

the 2012-2015 time series being affected by significant gaps. Therefore, the mean difference between observed and measured value was not calculated.

The model reproduces satisfyingly the negative temperature gradient along the SE profiles, resulting of the heat sink effect of the opposite North face (Noetzli et al., 2007; Magnin et al., 2015b). On the NW face, the model shows a significantly lower temperature gradient than the measured one. Since 3D effects seem well reproduced on the SE face, the difference between the measured and modelled temperature gradient on the NW face may rather result from the cooling effect of the fracture than 3D effects.

Borehole temperature provides information at the point scale which is limited to evaluate 2D models forced with data having a metric resolution. However, they are much more suited than RST measurement points since the temperature at 10 m depth results from the heat transfer of a pluri-metric area at the surface. Further evaluation is permitted with electrical resistivity transect, which has been proven a relevant support to improve model evaluation (Noetzli et al., 2008).

4.2.2. Evaluation with ERT at GM

In October 2012, an ERT sounding was performed along a 160-m-long profile of the GM NW face with an electrode spacing of 5 m (Magnin et al., 2015c). Field measurements were combined with laboratory testing on a Mont Blanc granite boulder in order to calibrate the resistivity-temperature relationship. Results allow for a semi-quantitative description of the permafrost state and suggested the presence of warm permafrost under the GM NW face. In Figure 7, the ERT transect is compared to the 2D temperature model of the GM for October 2012. The contour of the ERT transect is reported on the 2D model by a red line. The active layer is represented by the positive temperature near the surface and the resistivity body < 80 k Ω m corresponding to thawed granite. A warm permafrost body is delineated by the temperature in between -2 and 0°C and the resistivity between 80 and 200 k Ω m. These features are visible on both sources of data and corroborate the model performances in 2D representation of the permafrost. Further comments are limited by the lack of quantitative data: isotherms are not directly comparable to the iso-resistivities.

Given the remarkable capability of the transient simulations to reproduce current temperature conditions at the AdM borehole locations and in the GM NW face, the model can be judged performant enough to consider future long-term scenarios.

4.3. Future scenarios

In Figure 8, time-dependent conditions for September 2099 in response to RCP4.5 and RCP8.5, assuming a $+3$ and $+5^{\circ}\text{C}$ increase in air temperature, respectively, are displayed. Future scenarios result in highly contrasted permafrost conditions, from an almost total disappearance (only relict body subsisting at the core) to preservation of entire permafrost conditions, depending on both the RCP and the site.

At the GM, a relict body has subsisted in the internal part and below the topographical summit in both RCPs. Unlike the 20th century changes, with the isotherms retreating towards the NW face and in the interior of the summit, the permafrost body

retreats downward in the core of the massif along the 21st century. Temperature gradients depend on the RCP, but are stronger than during the 20th century in both cases, with a difference of 4°C and 6°C between the shallow layers and the deepest and core part for RCP4.5 and 8.5 respectively.

At the AdM, a 10-12 m wide body of cold permafrost (-3 to -2°C) still subsists under RCP4.5, located below the NW face and between 3710 and 3770 m a.s.l. All around, warm permafrost is largely present, and is found down to 7-10 m deep below the top and at 20-25 m depth of the central part of the SE face. Thus, permafrost has disappeared into the AdM SE face. In the most pessimistic scenario, permafrost has totally disappeared from the AdM summit, but warm permafrost will still exist in the NW rock wall at 3750 m a.s.l. Similarly to the GM, the permafrost body retreats downwards.

At the GPA, the entire geometry has been affected by the projected air temperature increases. In the case of RCP4.5, cold permafrost is still largely present. Warm permafrost has penetrated into the SE face, reaching 40 m depth at 4100 m a.s.l. The -5°C isotherm has kept a similar curving shape than in 2015, but has crept towards the NW face. A 50 m wide colder body (< -6°C) still persists at depth of the NW face between 4050 and 4250 m a.s.l. RCP8.5 lead to a different scenario: permafrost has disappeared in the shallowest 20-30 m of the SE face and warm permafrost exists at to 40-50 m depth of this face, with isotherms roughly parallel to the rock surface. The -5°C isotherm forms the coldest body which is 40 m wide, sub-rounded and located at 40 m depth of the NW face between 4060 and 4140 m a.s.l. In that case, the coldest areas are retreating in the core of the NW-half of the summit.

5 Discussion

In our study, we simulate long-term temperature evolution in three rock wall permafrost sites with different topographical settings. We use a relatively simple approach since transient simulations are only governed by air temperature changes applied to the RST and transferred at depth with the only consideration of heat conduction and latent heat exchange processes. Such simplifications in the calculation of RST changes ignore complex heat exchanges driving the energy balance at the rock wall surface and driving the heat transfers at depth in the natural environments. This results in a certain degree of uncertainty in the model output. However, such a simplified approach is permitted in steep rock walls due to the relative simplicity of the thermal system, and bears the main advantage to facilitate the identification of uncertainty sources, conversely to thermal models with complex energy transfers and multiple feedbacks. The limits in our modelling approach are first examined prior to discuss the implication of our results for determining future permafrost changes in the steep rock walls of the Mont Blanc massif and for investigating rock wall destabilisations.

5.1. Model limits

Model uncertainties arise from misrepresentation of the processes in the thermal system, unknown physical properties and errors in input data (Gupta et al., 2005; Gubler et al., 2013). Regarding the modelling approach adopted in this study, uncertainties mainly arise from five different sources.

5.1.1. Initialisation and forcing data

Assumptions and simplifications were necessary to generate the initial 2D temperature field at the end of the LIA and run transient simulations. Starting with LIA equilibrium conditions ignores possible transient effects from Würm and Holocene climate variability. But a thermal perturbation at depth due to millennial time-scale changes is unlikely given the geometry of the investigated sites (max. width of 350 m), and results from previous studies (Kohl, 1999; Noetzli and Gruber, 2009).

5 Simulated 2D temperature fields seem accurately reproduced by the modelling procedure. Their comparison to real-world data with the AdM borehole temperatures and the GM ERT transect underscores two strong points. Firstly, the closeness between measurements and model (Sect. 4.2.2) in the uppermost layer of the rock walls (*i.e.* the 10 and 25 shallowest meters at the AdM and the GM, respectively) suggests that the strategy to force transient simulations is relevant enough to simulate
10 the permafrost changes since the LIA up to the current period. In the meantime, it emphasizes the quality of the forcing data that have the advantage to be partly built upon direct measurements of air temperature in the Mont Blanc area. This ensures a better representativeness of the local climate variation compared to commonly used km-scale grids data set to simulate local distribution of alpine permafrost.

The resolution of the input data is one of the most challenging issues to force permafrost models in highly heterogeneous
15 land surfaces such as mountain permafrost (see next Section; Gruber, 2012; Fiddes et al., 2015). Downscaling methods are under development for mountain terrains (Fiddes and Gruber, 2012; 2014; Fiddes et al., 2015), but currently available km-scale data set remain better suited to drive numerical model on larger areas with a coarser spatial resolution (Gruber, 2012; Jafarov et al., 2012; Westermann et al., 2013; Gísnas et al., 2013). These approaches generally consider the most prominent controlling factors of the regional permafrost distribution, such as air temperature or precipitations, but are not representative
20 of smaller-scale heterogeneities induced by additional factors such as the solar radiation.

More sophisticated approaches capable of simulating complex energy exchanges at the bedrock-atmosphere interface have been proposed to model surface temperature of steep mountain slopes using specific algorithms to compute solar radiations (Stocker-Mittaz et al., 2002; Gruber et al., 2004; Salzmann et al., 2007). They provide information on the aspect-specific changes such as higher sensitivity of the North-facing slopes to future climate change, or a higher variability in the rate of
25 change of the South-exposed faces. But it has to be kept in mind that such complex approaches induce a high degree of uncertainty due to the numerous parameters and feedbacks owning their respective sources of error. In consequence, a certain proportion of the modelled RST variability between different model outputs is in the range of the model noise (Salzmann et al., 2007).

Finally, the energy balance at the rock surface is further influenced by the intermittent and heterogeneous presence of snow.
30 Current research developments focus on both the quantification of snow deposits onto steep slopes (Wirz et al., 2011; Sommer et al., 2015), and the modelling of its impact on the rock surface temperature (Pogliotti, 2011; Haberkorn et al., 2015a; 2015b) or on the active layer thickness (Magnin et al., 2016). But relevant data and parameterization technics are still lacking to drive long-term transient models of rock wall permafrost accounting for snow effects.

5.1.2. Future scenarios

In this study, possible climate evolutions over the future decades are obtained from one single climate model (namely, IPSL-CM5A-MR) and two scenarios for greenhouse gas emissions, out of four possible RCPs, and 20 to 40 models (depending on the model versions and the type of the climate simulations) that participated to the 5th Assessment Report of the IPCC (2013). The choice of the climate model was motivated by its realistic steady-state in present-day conditions when compared to observational time series, its median response to greenhouse effect evolutions, as well as its rather high spatial resolution, ensuring more realistic topographic effects. The retained radiative forcings for the 21st century consist of the so-called RCP4.5 and RCP8.5, that is, a moderately optimistic and a pessimistic scenario (see Section 3.3.2, Moss et al. 2008). These RCPs can be considered, today, as reasonable estimations of the lowest and highest air temperature changes likely to happen, and thus, plausible contrasted boundaries within which the permafrost could evolve. According to the Paris agreement on climate change adopted on December 2015 during the COP21, climate change should be limited “well below 2°C” above pre-industrial levels with more ambitious targets updated every five years. To date however, the reductions in greenhouse gas emissions planned by the participating countries lead to an estimated global warming of roughly 2.5-3°C, which lead us to discard the more optimistic RCP2.6 scenario, describing a rapid decrease in emissions as soon as the early 2020s, but makes RCP4.5 the most probable pathway for the 21st century.

Along the 21st century, more precipitations might be expected in winter in the European Alps, whereas they will certainly decrease in summer (Gobiet et al., 2014). On mid-steep slopes, substantial snow patches can accumulate and prevent from intense refreezing in winter, which favours early and deep thawing in summer (Magnin et al., 2016). An increase in extreme precipitation events is also projected (Rajczak et al., 2013) and the limit between solid and liquid precipitations is expected to rise by several hundreds of meters (Bavay et al., 2013), which suggests an increased frequency of liquid precipitation at high elevation. These changes in precipitation patterns might locally accelerate permafrost degradation by thermo-insulation in winter and water infiltration. Due to (i) the marginal and local effect of precipitation on long-term rock wall permafrost changes, (ii) the complexity of snow accumulation patterns on steep slopes, which do not only depend on precipitations but also on a variety of parameters such as slope roughness and steepness, aspect (melting), and wind patterns, and (iii) the large uncertainties in precipitation projections (Heinrich et al., 2013) as well as the persistent difficulties of current climate models to simulate them, precipitation scenarios were not considered to force the permafrost models in this study.

5.1.3. Model dimensions and resolution

Rock wall permafrost is highly sensitive to climate change since its signal penetrates throughout the different sides of a summit (Noetzli et al., 2007). In this study, we approach rock wall temperature changes in 2D only. Therefore, the simulated changes in permafrost distribution are possibly slightly under-estimated since the signals only penetrate through two sides (NW and SE). However sensitivity analyses have shown that bi-dimensional simulations show similar long-term transient

temperature pathways than in 3D situations (Noetzli and Gruber, 2009). Based on these previous findings, it can be assumed that the 2D temperature fields are acceptable to draw reasonable patterns of permafrost distribution and changes.

Also, the model resolution (4 m), defined by the initial RST resolution (Sect. 3.2.1), later refined for spatial discretisation of the model domain (Sect. 3.2.2), is sufficient to represent the main topographical control on the rock wall temperature distribution, and to drive long-term changes. Permafrost modelling often suffers of coarse topographical resolution which does not represent the natural variability of environmental parameters (Etzelmuller, 2013). Metric resolution is essential for realistic simulation of rock wall permafrost at the summit scale (Magnin et al., 2015a). The satisfying quality of the 2D model outputs for the current period (Sect. 4.2.1) confirms that the model resolution is enough to address long-term permafrost changes in the selected sites. The comparison of measured and modelled temperature profiles indicates that the bedrock temperature at depth, which results from the heat transfer in a pluri-metric catchment, is mainly a response to air temperature changes and conductive heat transfer. Simulations at shorter spatial and temporal scales, especially in the uppermost layers, would certainly require higher spatial resolution of the model domain and consistent input data.

5.1.4. Thermal parameters

Subsurface thermal parameters have been defined upon published values for hard rock. The thermal conductivity and heat capacity are assumed homogeneous in the model domain whereas they vary with frozen/thawed conditions in the natural environment due to the changing properties of the interstitial ice/water. The variable state of the interstitial ice/water results in variable thermal conductivity of the porous and saturated rock media along seasons (Wegmann et al., 1998) and longer term permafrost changes. This is accounted for in our modelling approach throughout Equation (4) and (5). But in natural conditions, this changing conductivity is heterogeneous in the rock mass due to variable fracture density and porosity, which is not taken into account in our study. Based on the model evaluation (Sect. 4.2), this lack of consideration of heterogeneous porosity and related latent heat processes is not an obvious limitation to simulate thermal fields at depth. However, to simulate near surface thermal processes at finer spatial and temporal resolutions, heterogeneous porosity would have to be better taken into account.

We selected conservative values for granitic rock but tested the model sensitivity to different thermal conductivity values (2.7 and 3 $\text{W}\cdot\text{m}^{-1}\cdot\text{K}^{-1}$). Results confirmed findings from previous studies: a lower conductivity increase the geothermal heat flux control (Maréchal et al., 2002; Noetzli et al., 2007) but did not lead to substantial changes (Kukkonen and Safanda, 2001). Furthermore, the thermal conductivity is naturally anisotropic (Goy et al., 1996), whereas it is considered isotropic in our modelling approach. Increasing the conductivity in horizontal directions increases the topo-climatic control, whereas increasing the conductivity in vertical direction gives more importance to the geothermal heat flux (Noetzli and Gruber, 2009).

The influence of the geothermal heat flux appears of relatively high importance for running steady-state conditions. Equilibrium conditions without the influence of the upwards and deep-seated flow only depends on the climate control, which can lead to highly different conditions than when balancing the respective influences of the geothermal heat flow and

the climate. In Figure 9, an example of the geothermal heat flux effect is given for the GM, which is the most sensitive site to this parameter given its relatively low relief and wide geometry. Without geothermal heat flow, the equilibrium condition for the LIA shows almost entirely cold permafrost conditions with more vertical isotherms. However, when running transient simulation, the influence of the geothermal heat flux is less significant on the temperature range. It only affects the shape of the isotherms at the summit basis, leading to permafrost retreat in the core of the summit instead of only lowering down. Simulations without geothermal heat flux were also run with a lower thermal conductivity ($2.7 \text{ W}\cdot\text{m}^{-1}\cdot\text{K}^{-1}$) and a monthly time step, which had no impact on the results of this study (Fig. 9): only the uppermost layers show different temperature range due to different time step in the forcing data (daily *versus* monthly), but this is far beyond the scope of this study. Idealized test cases suggested that mountain summits are decoupled from the deep-seated geothermal flow influence (Noetzi et al., 2007), but such settings are not representative of most of the alpine study cases, more or less wide and more or less elevated.

5.1.5. Heat transfer processes

Energy transfers inside the rock mass are mainly driven by heat conduction processes, whereas fluid flows can be, in a first approximation, neglected to simulate long-term changes (Kukkonen and Safanda, 2001). Nevertheless, advective heat transport by water circulation along fractures may locally warm the bedrock at depth (Hasler et al., 2011a). Conversely, air circulation in open clefts would rather cool the bedrock (Hasler et al., 2011b; Magnin et al., 2015b). These non-conductive heat transfers are not accounted in the here presented modelling approach. The evaluation step against borehole temperatures clearly shows their effect in the shallow layer (the 6 upper meters below the surface, Sect. 4.2.1) while temperature at deeper layers is accurately represented with the only consideration of 2D heat conduction.

The melting of ice bodies in the fractures may also be expected in the natural environment, such as suggested by recent observations in rock fall scars (Ravanel et al., 2010b). Ice melting may significantly dampen and lower the rate of temperature changes at depth by the consumption of latent heat (Wegmann et al., 1998; Kukkonen and Safanda, 2001). Some ice-filled fractures can turn into thawing corridor during the thawing season (Krautblatter and Hauck, 2007), which can favours the melting of ice-filled fractures, and degrades rock wall permafrost in unexpected areas and depths (Hasler et al., 2011a). Such processes were approximated with a relatively high porosity value in the model domain (5 %), which fails in representing the anisotropic and heterogeneous character of such processes. Further developments are highly encouraged to gain data on rock wall structure, especially with the use of geophysical soundings, which will not only support improvement of thermal modelling in alpine topography, but will also contribute in bridging the gap between thermal, hydraulic and mechanical models for future risk assessment (Sect. 5.3; Krautblatter et al., 2012).

30 5.2. Past and future permafrost degradation

Taking into consideration the model limits, the mid-term changes along the 21th century can not be reliably interpreted, whereas the interpretation of short-term changes is beyond the scope of this study. However, long-term permafrost changes

can be considered despite the shape of the isotherms remains partly uncertain due to limitations in the thermal parameters. In this section, we summarize the permafrost changes since the end of the LIA to the current period. Then, we examine possible changes by the end of the 21st century. The patterns of simulated 2D permafrost degradation from the termination of the LIA to the end of the 21st century show dependency to the topographical settings (summit width), to the bedrock temperature (latent heat effects), and to the intensity of the climate signal.

5.2.1. Permafrost degradation since the LIA termination

The rate of change between equilibrium conditions in 1850 and early 1990s was in the same range as the one experienced during the past three decades. Indeed, for the first time period, the thermal perturbation has been detected down to 30 m below the surface (depth at which the equilibrium isotherms have been affected), whereas it reaches at least twice deeper layers in 2015. Narrow peaks like the AdM have been entirely affected by the air temperature increase since the end of the LIA due to the short distance between both sides from which the signal penetrates, and the resulting intense lateral heat fluxes, especially at the top (Noetzli et al., 2007). The core of wider geometries, where N and S-facing surfaces are both distant by more than 150 m, such as the GPA and the GM, has remained intact.

Temperature changes during 1850-2015 were not as high at the GM as in the two other sites, and were not as high as the air temperature change, because the entire summit was in the temperature range within which latent heat exchanges occur. This pattern is aligned with the global trend showing the delaying effect of latent heat uptake in close to 0°C boreholes (Romanovsky et al., 2010). But the rate of temperature change strongly increases during the 21st century when the GM temperature becomes almost entirely positive.

In between the 1990s and 2010s, permafrost has disappeared and warm permafrost has largely penetrated in the shallow layers of the GM and AdM SE faces, respectively. Quantitative interpretations about the permafrost lower boundary and its changes are limited by the discontinuous character of mountain permafrost mainly governed by local conditions (Etzelmuller, 2013), topographical and transient controls, which respective influence is difficult to distinguish (Noetzli and Gruber, 2009). Nevertheless, results of our 2D simulations clearly suggest that climate change in between the LIA termination and the 2010s, especially since the 1990s, have led to permafrost disappearance below the S-exposed faces at least up to 3300 m a.s.l. (top of the GM), but not above 3700 m a.s.l. (foot of the AdM SE face). Thus, lower boundaries of snow-free and hard rock wall permafrost lie within this elevation interval, but Magnin et al. (2015a) have suggested that isolated permafrost bodies could exist down to 2800 m in favourable S-exposed slopes where conduction is not the prominent heat transfer process (due to high fracturing for example). Not taking into account snow and fracturing parameters could lead to a 3°C under-estimation of bedrock temperature in S-exposed rock walls (Hasler et al., 2011b).

Warm permafrost has thickened below the S-exposed face at up to 3850 m a.s.l. during the past two decades meanwhile it was extending below the N-facing slopes up to 3300 m. Whether warm permafrost reaches 20 m depth below the S-exposed AdM face in 2015, this depth can not be extrapolated to other sites due to the site-specific effects of the opposite N face.

5.2.2. Permafrost degradation during the 21st century

By the end of the 21st century, even the core of the relatively wide summits such as the GPA will be strongly affected by the projected increase in air temperature. Warm permafrost will extent at depth of the S-exposed faces at least up to 4300 m a.s.l., and at depth of the N-facing faces lower than 3850 m a.s.l., according to the RCP4.5. Permafrost will certainly disappear in all aspects below 3300 m, and up to 3850 m a.s.l. at least (top of the AdM) in the S-exposed faces. Following the most pessimistic scenario, permafrost will disappear in the subsurface of the S-exposed rock walls at least up to 4300 m a.s.l. (top of the GPA), while cold permafrost will still exist at same elevation in N-facing slopes if the S face influence does not affect it. At lower elevation such as at the AdM, warm permafrost will still occur below the N-exposed faces, but could disappear in the narrowest sections due to the S-facing slope influence. When both mountain sides do not allow for permafrost conditions any more, such as the GM, the permafrost body will retreat downwards, in the core of the summit. These degradation patterns locally depend on the topographical control, especially the summit width which either reinforces the intensity of the climatic signal in narrow geometries by mixing S-facing and N-facing slope influences, or maintains independency between the shallow layers of the S and N-exposed slopes when it is wide enough (pluri-hm). Site-specific patterns make the concept of “lower limit” not adapted to describe rock wall permafrost distribution and changes.

5.3. Towards geomorphological applications

Permafrost degradation is thought to be the prominent factor of the ongoing increasing rock fall activity observed in the European Alps (Gruber and Haeberli, 2007; Deline et al., 2015; Luethi et al., 2015) and other alpine ranges such as in New Zealand (Allen et al., 2009). In the Mont Blanc massif, Ravel et al. (2011) have reconstructed the past rock fall activity (with a volume > 500 m³) of the North side of the Aiguille de Chamonix and the West face of Les Drus since the LIA, using the numerous pictures and documents available for these areas. Most of the 29 recorded events are located between 2900 and 3450 m a.s.l. This corresponds to the fringe where warm permafrost has widely extended in North-facing slopes since the end of the LIA to the 1990s (Sect. 5.2.2.). During the 2000s, the rock fall activity has strongly intensified, in particular with the heatwave of 2003 (Ravel et al., 2011).

Despite rock falls are triggered by a complex combination of factors, such as the fracturing characteristics, the lithology, the glacial and periglacial influences, etc., the role of permafrost degradation in these events seems prominent. A combination of thermal, hydrological and mechanical models reproducing ice-filled fractures mechanics under varying bedrock temperature would permit detailed retrospective analysis of specific events. However, despite recent developments (Krautblatter et al., 2013), hydrological and mechanical processes remain fairly misunderstood and poorly represented in modelling approaches (Krautblatter et al., 2012). *Feflow* has the potential to simulate hydrological processes whereas mechanical models are under developments (Mamot et al., 2016). Future developments must account for hydrological and mechanical processes by including structural data such as the fracture characteristics, variable saturation and hydrostatic pressures, in combination

with high spatial and temporal thermal simulations. Such integrative approach will make major steps in understanding rock wall destabilisations.

6 Conclusions and perspectives

5 Former studies have described the 3D processes and patterns of permafrost degradation in idealized high mountain geometries of the European Alps following former IPCC reports (Noetzli et al., 2007). In this study, we investigated permafrost degradation from the LIA steady-state until the end of the 21st century in three summits representative of the topographical and permafrost settings of the Mont Blanc massif rock walls, and with the most recent climate models. Simulations are performed in vertical cross-sections with local air temperature forcing data and two possible air temperature
10 scenarios, accounting for moderately optimistic and pessimistic 21st century pathways. They provide insight in the past and future changes experienced by rock wall permafrost in the Mont Blanc area, relevant for geomorphological applications. The main outcomes are:

1. Thermal conditions for the current period (2010-2015) are remarkably well represented when comparing simulated temperature fields to independent data set. Our modelling approach is therefore well appropriate to run long-term transient
15 simulations in rock walls.

2. Thermal perturbation induced by climate change since the end of the LIA is visible down to 60-70 m below the surface, that is, the narrow AdM peak has been entirely affected.

3. In between the 1990s and the 2010s, (i) permafrost has disappeared in the shallowest 20 m of the S-exposed faces and warm permafrost has extended at depth of the N-exposed faces at least up to 3300 m a.s.l., (ii) warm permafrost has
20 extended at least up to 3850 m and penetrated down to 20 m depth of the S-exposed faces at 3700-3800 m a.s.l.

4. At the end of the 21st century, only relict permafrost body will persist in the core of the wide summits below 3300 m a.s.l.

5. Considering a moderately optimistic scenario (RCP4.5), permafrost will disappear along the 21st century in any topographical settings lower than 3300 m a.s.l., and at depth of the S-exposed faces up to 3850 m a.s.l. Warm permafrost will extent below the N-exposed faces at similar elevation and at least up to 4300 m a.s.l. below the S-exposed faces. Cold
25 permafrost will still exist below the N-exposed faces above 4000 m a.s.l.

6. Considering the most pessimistic scenario, permafrost will disappear of the S-exposed faces at least up to 4300 m a.s.l., and lead to permafrost disappearance in the narrow summits below 3850 m. But without the influence of a close S-exposed face, warm permafrost could persist at least down to 3700 m a.s.l. in the N-exposed faces. Cold permafrost will still exist, in spite of significant warming, at depth of the N-facing slopes higher than 4000 m a.s.l.

30 7. Locally, permafrost evolution patterns may be slightly different due to heterogeneous bedrock and non-conductive heat transfer occurring in fractures, as well as snow patch effects that is not taken into account in the modelling procedure.

8. The simulations show that the patterns of permafrost changes are mainly governed by the local topographical control, which underscores the specificity of rock wall permafrost and restricts the extrapolation of the results.
9. Transient simulations provide useful information for analysis of the thermal conditions at rock fall locations, but analysis of specific event would require to combine hydrologic, mechanical and thermal models at shorter time-scales with consistent
5 input data and thermal parameters.

These results provide useful information to analyse the link between rock wall thermal characteristics and rock fall triggering. Future development will use these results for a detailed analysis of the link between permafrost changes and the inventoried rock fall in the Mont Blanc massif. Future simulations will involve 3D modelling, shorter-time scale simulations
10 in anisotropic and fractured media, with non-saturated conditions and fluid transfers, as well as simulations with downscaled climate data. Those developments will constitute essential steps for bridging the gap between thermal and mechanical models.

Data availability

- 15 Data are available upon request to the first author.

Author contribution

Florence Magnin conducted the study. She designed the modelling approach, prepared the input data, performed the model evaluation, interpreted the results, and wrote the manuscript with inputs from the co-authors. Jean-Yves Josnin implemented
20 the modelling approach in *Feflow*, performed the model runs and contributed in writing of the methods. Ludovic Ravel is the responsible of the WP Permafrost in the *VIP Mont Blanc project*, and contributed in designing the study and writing of the manuscript. Benjamin Pohl and Julien Pergaud extracted the climate forcing variables, contributed in the choice of the RCP forcings and in writing of the methods and the discussion. Philip Deline contributed in writing of the manuscript.

Acknowledgments

- 25 This work was founded by the French *Agence Nationale de la Recherche* in the scope of the *VIP Mont Blanc* project ([ANR-14-CE03-0006](#)) and by the EU Interreg V-A France-Italy ALCOTRA 2014-2020 n°342 *PrévRisk Haute Montagne* project. We acknowledge Peter Schätzl and Carlos Rivera from Feflow's staff for their help with the Pi-Freeze plug-in.

References

- 30 Allen, S.K., Gruber, S., and Owens, I.F.: Exploring steep bedrock permafrost and its relationship with recent slope failures in the Southern Alps of New Zealand, *Permafr. Periglac. Process.* 20, 345–356, doi:10.1002/ppp.658, 2009.

- Auer, I., Böhm, R., Jurkovic, A., Lipa, W., Orlik, A., Potzmann, R., Schöner, W., Ungersböck, M., Matulla, C., Briffa, K., Jones, P.D., Efthymiadis, D., Brunetti, M., Nanni, T., Maugeri, M., Mercalli, L., Mestre, O., Moisselin, J-M., Begert, M., Müller-Westermeier, G., Kveton, V., Bochnicek, O., Stastny, P., Lapin, M., Szalai, S., Szentimrey, T., Cegnar, T., Dolinar, M., Gajic-Capka, M., Zaninovic, K., Majstorovic, Z., and Nieplova, E.: HISTALP—Historical instrumental climatological surface time series of the greater Alpine region 1760–2003. *Int J Climatol* 27:17–46, 2007.
- Banton, S. and Bangoy, L.M.: *Hydrogéologie multiscience environnementale des eaux souterraines*. Presses de l'Université du Québec, AUPELF, 460pp, 1999.
- Bavay, M., Grünewald, T., and Lehning, M.: Response of snow cover and runoff to climate change in high Alpine catchments of Eastern Switzerland. *Adv Water Resour* 55, 4-16, <http://dx.doi.org/10.1016/j.advwatres.2012.12.009>, 2013.
- Blunden, J., and Arndt, D. S.: State of the Climate in 2013, *Bull. Amer. Meteor. Soc.*, 95, 1–257, 2014.
- Boeckli, L., Brenning, A., Gruber, S., and Noetzli, J.: A statistical approach to modelling permafrost distribution in the European Alps or similar mountain ranges, *Cryosphere* 6, 125–140, doi:10.5194/tc-6-125-2012, 2012.
- Böhm, R., Jones, P. D., Hiebl, J., Frank, D., Brunetti, M., and Maugeri, M.: The early instrumental warm-bias: a solution for long central European temperature series 1760–2007. *Clim Change*, 101(1-2), 41-67, doi:10.1007/s10584-009-9649-4, 2010.
- Bommer, C., Phillips, M., and Arenson, L. U.: Practical recommendations for planning, constructing and maintaining infrastructure in mountain permafrost, *Permafrost Periglac. Process.*, 21, 97– 104, doi:10.1002/ppp.679, 2010.
- Bussy, F. and von Raumer, J. F.: U-Pb geochronology of Paleozoic magmatic events in the Mont Blanc crystalline massif, Western Alps. *Schweiz Mineral Petrogr Mitt*, 74 : 514-515, 1994.
- Clausnitzer, V., and Mirnyy, V.: Freeze/Thaw plug-in for FEFLOW, Feflow reference manual, 6pp, 2015
- Cho, W.J., Kwon, S., and Choi, J.W.: The thermal conductivity for granite with various water contents. *Eng. Geol.* 107, 167–171. doi:10.1016/j.enggeo.2009.05.012, 2009.
- Davies, M.C.R., Hamza, O., and Harris, C.: The effect of rise in mean annual temperature on the stability of rock slopes containing ice-filled discontinuities. *Permafr. Periglac. Process.* 12, 137–144. doi:10.1002/ppp.378, 2001.
- Déqué, M., Rowell, D. P., Lüthi, D., Giorgi, F., Christensen, J. H., Rockel, B., Jacob, D., Kjellström, E., de Castro, M., and van den Hurk, B.: An intercomparison of regional climate simulations for Europe: assessing uncertainties in model projections. *Clim. Chang.* 81, 53-70. doi: 10.1007/s10584-006-9228-x
- Deline, P.: Recent Brenva rock avalanches (Valley of Aosta): new chapter in an old story? *Supplementi di Geogr. Fis. e Din. Quat.*, 5, 55–63, 2001.
- Deline, P., Akçar, N., Ivy-Ochs, S., and Kubik, P.W.: Repeated Holocene rock avalanches onto the Brenva Glacier, Mont Blanc massif, Italy: a chronology. *Quaternary Sci. Rev.*, 126: 186–200. doi: 10.1016/j.quascirev.2015.09.004, 2015.
- Deline, P., Gruber, S., Delaloye, R., Fischer, L., Geertsema, M., Giardino, M., Hasler, A., Kirkbride, M., Krautblatter, M., Magnin, F., McColl, S., Ravel, L., and Schoeneich, P.: Ice loss and slope stability in high-mountain regions. In:

- Haerberli, W., and Whiteman, C. (Eds). Snow and ice-related hazards, risks, and disasters. Elsevier, Amsterdam, pp. 303-344, 2015.
- Diersch, H.J.G.: Feflow, Finite Element Subsurface Flow and Transport Simulation System, Reference Manual. Berlin: WASY GmbH., 292pp, 2002.
- 5 Domenico, P.A., and Schwartz F.W.: Physical and chemical hydrogeology. Wiley, 528pp, 1997.
- Dufresne, J.-L., Foujols, M.-A., Denvil, S., Caubel, A., Marti, O., Aumont, O., Balkanski, Y., Bekki, S., Bellenger, H., Benschila, R., Bony, S., Bopp, L., Braconnot, P., Brockmann, P., Cadule, P., Cheruy, F., Codron, F., Cozic, A., Cugnet, D., de Noblet, N., Duvel, J.-P., Ethe´, C., Fairhead, L., Fichet, T., Flavoni, S., Friedlingstein, P., Grandpeix, J.-Y., Guez, L., Guilyardi, E., Hauglustaine, D., Hourdin, F. Idelkadi, A., Ghattas, J., Joussaume, S., Kageyama, M., Krinner, G., Labetoulle, S., Lahellec, A., Lefebvre, M.-P., Lefevre, F., Levy, C., Li, Z. X., Lloyd, J., Lott, F., Madec, G., Mancip, M., Marchand, M., Masson, S., Meurdesoif, Y., Mignot, J., Musat, I., Parouty, S., Polcher, J., Rio, C., Schulz, M., Swingedouw, D., Szopa, S., Talandier, C., Terray, P., Viovy, N., and Vuichard, N.: Climate change projections using the IPSL-CM5 Earth System Model: from CMIP3 to CMIP5. *Clim. Dynam.*, doi: 40:2123–2165 DOI 10.1007/s00382-012-1636-1, 2013.
- 15 Duvillard, P.A., Ravel, L., and Deline, P.: Evaluation du risque de déstabilisation des infrastructures de haute montagne engendré par le réchauffement climatique dans les Alpes françaises. *J. Alp. Res.* doi:10.4000/rga.2816, 2015.
- Einhorn, B., Eckert, N., Chaix, C., Ravel, L., Deline, P., Gardent, M., Boudières, V., Richard, D., Vengeon, J.-M., Giraud, G., and Schoeneich, P.: Changements climatiques et risques naturels dans les Alpes, *J. Alp. Res.*, 103-2, DOI : 10.4000/rga.2829, 2015.
- 20 Eitzmüller, B.: Recent Advances in Mountain Permafrost Research. *Permafrost Periglac. Process.* 24, 99–107. doi:10.1002/ppp.1772, 2013.
- Fiddes, J. and Gruber, S.: TopoSUB: a tool for efficient large area numerical modelling in complex topography at sub-grid scales. *Geosci. Model Dev.* 5, 1245–1257. doi:10.5194/gmd-5-1245-2012, 2012
- Fiddes, J. and Gruber, S.: TopoSCALE v.1.0: downscaling gridded climate data in complex terrain. *Geosci. Model Dev.* 7, 387–405. doi:10.5194/gmd-7-387-2014, 2014.
- 25 Fiddes, J., Endrizzi, S., and Gruber, S.: Large-area land surface simulations in heterogeneous terrain driven by global data sets: application to mountain permafrost, *Cryosphere*, 9, 411–426, doi:10.5194/tc-9-411-2015, 2015
- Fischer, L., Amann, F., Moore, J.R., Huggel, C.: Assessment of periglacial slope stability for the 1988 Tschierwa rock avalanche (Piz Morteratsch, Switzerland). *Eng. Geol.* 116: 32–43, 2010.
- 30 Gardent, M., Rabatel, A., Dedieu, J. P., and Deline, P.: Multitemporal glacier inventory of the French Alps from the late 1960s to the late 2000s. *Global Planet. Change*, 120: 24–37. doi:10.1016/j.gloplacha.2014.05.004, 2014.
- Gisnås, K., Eitzmüller, B., Farbrøt, H., Schuler, T. V., and Westermann, S.: CryoGRID 1.0: permafrost distribution in Norway estimated by a spatial numerical model, *Permafrost Periglac.*, 24, 2–19, doi:10.1002/ppp.1765, 2013.

- Gjermundsen, E.F., Briner, J.P., Akçar, N, Foros, J., Kubik, P.W., Salvigsen, O., and Hormes, A.: Minimal erosion of Arctic alpine topography during late Quaternary glaciation, *Nat. Geosci.* 8: 789–792. DOI:10.1038/ngeo2524, 2015.
- Gobiet, A., Kotlarski, S., Beniston, M., Heinrich, G., Rajczak, J., and Stoffel, M.: 21st century climate change in the European Alps—A review, *Sci. Total Environ.*, 493, 1138–1151, doi:10.1016/j.scitotenv.2013.07.050, 2014.
- 5 Goy, L., Fabre, D., and Menard, G.: Modelling of rock temperatures for deep alpine tunnel projects. *Rock Mech Rock Eng* 29:1–18, 1996.
- Gruber, S.: Mountain permafrost: transient spatial modelling, model verification and the use of remote sensing. PhD thesis, University of Zürich, Zürich, Switzerland, 121pp, 2005.
- Gruber, S.: Derivation and analysis of a high-resolution estimate of global permafrost zonation, *Cryosphere*, 6, 221-233, doi:10.5194/tc-6-221-2012, 2012.
- 10 Gruber, S., and Haeberli, W.: Permafrost in steep bedrock slopes and its temperature-related destabilization following climate change. *Journal Geophys. Res.*, 112, DOI: 10.1029/2006JF000547, 2007.
- Gruber, S., Hoelzle, and M., Haeberli, W.: Rock-wall temperatures in the Alps: modelling their topographic distribution and regional differences. *Permafr. Periglac. Process.* 15, 299–307. doi:10.1002/ppp.501, 2004.
- 15 Gubler, S., Endrizzi, S., Gruber, S., and Purves, R.S.: Sensitivities and uncertainties of modeled ground temperatures in mountain environments. *Geosci. Model Dev.*, 6, 1319–1336. doi:10.5194/gmd-6-1319-2013, 2013.
- Gupta, H. V., Beven, K., and Wagener, T.: *Model Calibration and Uncertainty Estimation*, John Wiley & Sons, New York, 2005.
- Haberkorn, A., Phillips, M., Kenner, R., Rhyner, H., Bavay, M., Galos, S.P. and Hoelzle, M.: Thermal regime of rock and its relation to snow cover in steep Alpine rock walls: Gemsstock, central Swiss Alps. *Geogra. Ann. A*, 97, 579–597. DOI:10.1111/geoa.12101, 2015a
- 20 Haberkorn, A., Hoelzle, M., Phillips, M., and Kenner, R.: Snow as a driving factor of rock surface temperatures in steep rough rock walls, *Cold Regi. Sci. Technol.*, 118, 64-75, doi:10.1016/j.coldregions.2015.06.013, 2015b
- Haeberli, W. and Burn, C.R.: Natural hazards in forest: Glacier and permafrost effects as related to climate change. In Sidle, R.C. (ed), *Environmental Change and Geomorphic Hazards in Forests*, IUFRO Research Series 9: 167-202, 2002.
- 25 Haeberli, W., Wegmann,, M., and Vonder Mühl, D.: Slope stability problems related to glacier shrinkage and permafrost degradation in the Alps, *Eclogae Geol. Helv.*, 90, 407– 414, 1997.
- Haeberli, W., Noetzli, J., Arenson, L., Delaloye, R., Gärtner-Roer, I., Gruber, S., Isaksen, K., Kneisel, C., Krautblatter, and M., Phillips, M.: Mountain permafrost: development and challenges of a young research field. *J. Glaciol.* 56, 1043–1058. doi:10.3189/002214311796406121, 2010.
- 30 Harris, C., Haeberli, W., and Vonder Mühl, D. and King, L.: Permafrost Monitoring in the High Mountains of Europe: the PACE Project in its Global Context. *Permafrost Periglac.*, 12, 3-11, doi: 10.1002/ppp 377, 2001a.

- Harris C., Davies M.C.R., and Etzelmüller B.: The assessment of potential geotechnical hazards associated with mountain permafrost in a warming global climate. *Permafrost Periglac.*, 12: 145-156, 2001b.
- Harris, C., Arenson, L.U., Christiansen, H.H., Etzelmüller, B., Frauenfelder, R., Gruber, S., Haeberli, W., Hauck, C., Hölzle, M., Humlum, O., Isaksen, K., Kääb, A., Kern-Lütschg, M.A., Lehning, M., Matsuoka, N., Murton, J.B., Nötzli, J.,
5 Phillips, M., Ross, N., Seppälä, M., Springman, S.M., and Vonder Mühll, D.: Permafrost and climate in Europe: Monitoring and modelling thermal, geomorphological and geotechnical responses. *Earth-Sci. Rev.* 92, 117–171. doi:10.1016/j.earscirev.2008.12.002, 2009.
- Hasler, A.: Thermal conditions and kinematics of steep bedrock permafrost, PhD thesis, University of Zürich, Zürich, Switzerland, 177pp, 2011.
- 10 Hasler, A., Gruber, S., Font, M., and Dubois, A.: Advective Heat Transport in Frozen Rock Clefts: Conceptual Model, Laboratory Experiments and Numerical Simulation. *Permafr. Periglac. Process.* 22, 378–389. doi:10.1002/ppp.737, 2011a.
- Hasler, A., Gruber, S., and Haeberli, W.: Temperature variability and offset in steep alpine rock and ice faces. *Cryosphere*, 5, 977–988. doi:10.5194/tc-5-977-2011, 2011b.
- 15 Heinrich, G., Gobiet, A., Truhetz, H., and Mendlik, T.: Expected climate change and its uncertainty in the Alpine region: extended uncertainty assessment of the reclip:c entury and ENSEMBLES multi-model dataset. Wegener Center Scientific Report 50, 2013.
- Hiebl, J., Auer, I., Böhm, R., Schöner, W., Maugeri, M., Lentini, G., Spinoni, J., Brunetti, M., Nanni, T., Tadić, M.P., Bihari, Z., Dolinar, M., and Müller-Westermeier, G.: A high-resolution 1961–1990 monthly temperature climatology for the
20 greater Alpine region. *Meteorol. Z.* 18, 507–530. doi:10.1127/0941-2948/2009/0403, 2009.
- Hipp, T.: Mountain permafrost in Southern Norway: distribution, spatial variability and impacts of climate change. PhD thesis, University of Oslo, Oslo, Norway. 166pp, 2012.
- Hipp, T., Etzelmüller, B., and Westermann, S.: Permafrost in Alpine Rock Faces from Jotunheimen and Hurrungane, Southern Norway. *Permafr. Periglac. Process.* doi:10.1002/ppp.1799, 2014.
- 25 Huggel, C., Allen, S., Deline, P., Fischer, L., Noetzli, J., and Raveland, L.: Ice thawing, mountains falling - are alpine rock slope failures increasing? *Geology today*, 28, 98–104, 2012.
- IPCC.: *Climate Change 1995: Impacts, Adaptations, and Mitigation of Climate Change: Scientific-Technical Analyses.* Cambridge University Press, Cambridge, United Kingdom and New York, NY, USA, 1996.
- IPCC.: *Special report on Renewable energy sources and climate change mitigation, summary for policymakers and technical
30 summary, Report from Working Group III, Edenhofer, O., Pichs-Madruga, R., Sokona, Y. (Eds), Cambridge University Press, Cambridge, United Kingdom and New York, NY, USA, 246pp, 2011.*

- IPCC.: Climate Change 2013: The Physical Science Basis. Contribution of Working Group I to the Fifth Assessment Report of the Intergovernmental Panel on Climate Change, Stocker, T.F., Qin, D., Plattner, G.-K., Tignor, M., Allen, S.K., Boschung, J., Nauels, A., Xia, Y., Bex, V., and Midgley, P.M., (eds.). Cambridge University Press, Cambridge, United Kingdom and New York, NY, USA, 1535pp, doi:10.1017/CBO9781107415324, 2013.
- 5 IPCC.: Climate Change 2014: Synthesis Report. Contribution of Working Groups I, II and III to the Fifth Assessment Report of the Intergovernmental Panel on Climate Change, Pachauri, R.K. and Meyer, L.A. (eds.). IPCC, Geneva, Switzerland, 151pp, 2014.
- Jafarov, E. E., Marchenko, S. S., and Romanovsky, V. E.: Numerical modeling of permafrost dynamics in Alaska using a high spatial resolution dataset, *Cryosphere*, 6, 613–624, doi:10.5194/tc-6-613-2012, 2012.
- 10 Keusen, H. R. and Haerberli, W.: Site investigation and foundation design aspects of cable car construction in Alpine permafrost at the “Chli Matterhorn”, Wallis, Swiss Alps. In: *Permafrost: Proceedings of the 4th International Conference*. Natl. Acad. Press, Washington D.C., pp. 601-605, 1983.
- King, L.: Dauerfrostboden im Gebiet Zermatt – Gornergrat – Stockhorn: Verbreitung und permafrostbezogene Erschließungsarbeiten. *Z. Geomorph., Suppl.-Bd.* 104, 73-93, 1996.
- 15 Kohl, T.: Transient thermal effects below complex topographies. *Tectonophysics*, 306; 311-324, 1999.
- Krautblatter, M.: Detection and quantification of permafrost change in alpine rock walls and implications for rock instability. PhD thesis, University of Bonn, Bonn, Germany, 162pp, 2009.
- Krautblatter, M., Huggel, C., Deline, P., and Hasler, A.: Research Perspectives on Unstable High-alpine Bedrock Permafrost: Measurement, Modelling and Process Understanding. *Permafr. Periglac. Process.* 23, 80–88. doi:10.1002/ppp.740,
- 20 2012.
- Krautblatter, M., Funk, D., and Günzel, F. K.: Why permafrost rocks become unstable: a rock–ice-mechanical model in time and space. *Earth Surf. Process. Landforms*, 38, 876–887. doi: 10.1002/esp.3374, 2013.
- Kukkonen, I.T. and Šafanda, J.: Numerical modelling of permafrost in bedrock in northern Fennoscandia during the Holocene. *Glob. Planet. Change*, 29, 259–273. doi:10.1016/S0921-8181(01)00094-7, 2001.
- 25 Luethi, R., Gruber, S., and Ravanel, L.: Modelling of transient thermal conditions in rockfall detachment areas: towards a better understanding of failure mechanisms in a changing permafrost environment. *Geografiska Annaler A*, 97, 753–767. doi:10.1111/geoa.12114, 2015.
- Magnin, F.: Distribution et caractérisation du permafrost des parois du massif du Mont Blanc, une approche combinant monitoring, modélisation et géophysique, University of Grenoble-Alpes, Chambéry, France, 297pp, 2015.
- 30 Magnin, F., Brenning, A., Bodin, X., Deline, P., and Ravanel, L.: Statistical modelling of rock wall permafrost distribution: application to the Mont Blanc massif. *Géomorphologie Relief Process. Environ.* 21, 145–162. doi:10.4000/geomorphologie.10965, 2015a.

- Magnin, F., Deline, P., Ravanel, L., Noetzli, J., and Pogliotti, P.: Thermal characteristics of permafrost in the steep alpine rock walls of the Aiguille du Midi (Mont Blanc Massif, 3842 m a.s.l). *Cryosphere* 9, 109–121. doi:10.5194/tc-9-109-2015, 2015b.
- 5 Magnin, F., Krautblatter, M., Deline, P., Ravanel, L., Malet, E., and Bevington, A.: Determination of warm, sensitive permafrost areas in near-vertical rockwalls and evaluation of distributed models by electrical resistivity tomography. *J. Geophys. Res. Earth Surf.* 120, 2014JF003351. doi:10.1002/2014JF00335, 2015c.
- Magnin, F., Westermann, S., Pogliotti, P., Ravanel, L., Deline, P., and Malet, E.: Snow control on active layer thickness in steep alpine rock walls (Aiguille du Midi, 3842 m a.s.l., Mont Blanc massif), *Catena*. doi: 10.1016/j.catena.2016.06.006, 2016
- 10 Mamot, P., and Krautblatter, M.: Towards a mechanical failure model for degrading permafrost rock slopes representing changes in rock toughness and infill. In: Günther, F., Morgenstern, A. (Eds.), 11th Int. Conf. Permafrost, Potsdam, 2016.
- Maréchal, J.C., Perrochet, P., and Tacher, L.: Long-term simulations of thermal and hydraulic characteristics in a mountain massif: The Mont Blanc case study, French and Italian Alps, *Hydrogeol. J.*, 7, 4, 341-354, doi:10.1007/s100400050207, 15 2002.
- Matsuoka, N., and Murton, J.: Frost weathering: recent advances and future directions. *Permafr. Periglac. Process.* 19, 195–210. doi:10.1002/ppp.620, 2008.
- Medici, F., and Rybach, L.: Geothermal map of Switzerland 1995, (heat flow density). *Matériaux pour la Géologie de la Suisse*, 30, 1995.
- 20 Moss, R., Babiker, M., Brinkman, S., Calvo, E., Carter, T., Edmonds, J., Elgizouli, I., Emori, S., Erda, L., Hibbard, K., Jones, R., Kainuma, M., Kelleher, J., Lamarque, J._F., Manning, M., Matthews, B., Meehl, J., Meyer, L., Mitchell, J., Nakicenovic, N., O’Neill, B., Pichs, R., Riahi, K., Rose, S., Runci, P., Stouffer, R., van Vuuren, D., Weyant, J., Wilbanks, T., van Ypersele, J-P., Zurek, M.: *Towards New Scenarios for Analysis of Emissions, Climate Change, Impacts, and Response Strategies*, Geneva, Intergovernmental Panel on Climate Change, 132 pp, 2008.
- 25 Myhra, K.S., Westermann, S., and Etzelmüller, B.: Modelled Distribution and Temporal Evolution of Permafrost in Steep Rock Walls Along a Latitudinal Transect in Norway by CryoGrid 2D. *Permafr. Periglac. Process.* n/a-n/a. doi:10.1002/ppp.1884, 2015.
- Noetzli, J.: *Mountain permafrost: transient spatial modelling, model verification and use of remote sensing*, PhD thesis, University of Zürich, Zürich, Switzerland, 129pp, 2008.
- 30 Noetzli, J. and Gruber, S.: Transient thermal effects in Alpine permafrost. *The Cryosphere* 3, 85–99. doi:10.5194/tc-3-85-2009, 2009.

- Noetzli, J., Gruber, S., Kohl, T., Salzmann, N., and Haerberli, W.: Three-dimensional distribution and evolution of permafrost temperatures in idealized high-mountain topography. *J. Geophys. Res. Earth Surf.* 112, n/a–n/a. doi:10.1029/2006JF000545, 2007.
- Noetzli, J., Hilbich, C., Hauck, C., Hoelzle, M., and Gruber, S.: Comparison of simulated 2D temperature profiles with time-lapse electrical resistivity data at the Schilthorn Crest, Switzerland. *Proceedings of the 9th International Conference on Permafrost*, Fairbanks, US, 1293-1298, 2008.
- PERMOS, Permafrost in Switzerland, 2000/2001 and 2001/2002, Glaciological report (Permafrost), N°2/3, Vonder Mühll, D., Noetzli, J., Makowski, K., Delaloye, R. [eds], 97pp, 2004.
- Pogliotti, P.: Influence of Snow Cover on MAGST over Complex Morphologies in Mountain Permafrost Regions, Thèse de Doctorat. University of Torino, Turino, Italy, 79pp, 2011.
- Rajczak, J., Pall, P., and Schär C.: Projections of extreme precipitation events in regional climate simulations for Europe and the Alpine Region. *J Geophys Res* 2013;118:3610–26.
- Ravel, L. and Deline, P.: Climate influence on rockfalls in high-Alpine steep rockwalls: the North side of the Aiguilles de Chamonix (Mont Blanc massif) since the end of the Little Ice Age. *Holocene*, 21, 357–365. doi: 10.1177/0959683610374887, 2011.
- Ravel, L. and Deline, P.: A network of observers in the Mont Blanc massif to study rockfalls in high alpine rockwalls. *Geogr. Fis. e Din. Quat.*, 36 : 151–158. doi 10.4461/GFDQ.2013.36.12, 2013.
- Ravel, L., Deline, P., and Jaillet, S.: Quantification des éboulements/écroulements dans les parois à permafrost de haute montagne : quatre années de relevés laser terrestres dans le massif du Mont-Blanc. *Revue Française de Photogrammétrie et de Télédétection*, 192 : 58–65, 2010a.
- Ravel, L., Allignol, F., Deline, P., Gruber, S., and Ravello, M.: Rock falls in the Mont-Blanc massif in 2007 and 2008. *Landslides*, 7 : 493–501, doi: 10.1007/s10346-010-0206-z, 2010b.
- Ravel, L., Allignol, F., Deline, P., and Bruno, G. : Les écroulements rocheux dans le massif du Mont-Blanc pendant l'été caniculaire de 2003. In Lambiel, C., Reynard, E., Scapozza, C. (Eds), *La géomorphologie alpine : entre patrimoine et contrainte. Actes du colloque de la Société Suisse de Géomorphologie*, 3–5 septembre 2009, Olivone (Géovisions n° 36). IGUL, Lausanne : 245–261, 2011.
- Ravel, L., Grangier, G., Weber, S., Beutel, J., Magnin, F., Gruber, S., and Deline, P.: Kinematics and thermal conditions in the permafrost-affected rockwalls of the Aiguille du Midi (3842 m a.s.l., Mont Blanc massif, France). *Geophysical Research Abstracts*, 18: 11359, 2016.

- Romanovsky, V. E., Smith, S. L., and Christiansen, H. H.: Permafrost thermal state in the polar Northern Hemisphere during the International Polar Year 2007-2009: A synthesis *Permafr. Periglac. Process.* 21,106-116, doi: 10.1002/ppp.689. 2010.
- Salzmann, N., Noetzli, J., Hauck, C., Gruber, S., Hoelzle, M., and Haeberli, W.: Ground surface temperature scenarios in complex high-mountain topography based on regional climate model results. *J. Geophys. Res. Earth Surf.* 112, F02S12. doi:10.1029/2006JF000527, 2007.
- Sass, O.: Moisture distribution in rockwalls derived from 2D-resistivity measurements, *Z. Geomorph. N.F., Suppl.-Bd.* 132, 51– 69, 2003.
- Schiermeier, Q.: Alpine thaw breaks ice over permafrost's role, *Nature*, 424, 712, 2003.
- Smith, M.W. and Riseborough, D.W.: Permafrost monitoring and detection of climate change. *Permafr. Periglac. Process.* 7, 301–309. doi:10.1002/(SICI)1099-1530(199610)7:4<301::AID-PPP231>3.0.CO;2-R, 1996.
- Sollid, J.L., Holmlund, P., Isaksen, K., and Harris, C.: Deep permafrost boreholes in western Svalbard, northern Sweden and southern Norway. *Norsk Geogr Tidsskr.* 54, 186–191, 2000.
- Sommer, C.G., Lehning, M., and Mott, R.: Snow in a very steep rock face: accumulation and redistribution during and after a snowfall event, *Front. Earth Sci.*, 3, Article 73, doi:10.3389/feart.2015.00073, 2015.
- Stocker-Mittaz, C., Hoelzle, M., and Haeberli, W.: Modelling alpine permafrost distribution based on energy-balance data: a first step. *Permafr. Periglac. Process.* 13, 271–282. doi:10.1002/ppp.426, 2002.
- Taylor, K.E., R.J. Stouffer, and Meehl, G.A.: An Overview of CMIP5 and the experiment design.” *Bull. Amer. Meteor. Soc.*, 93, 485-498, doi:10.1175/BAMS-D-11-00094.1, 2012.
- Vuuren, D.P., Edmonds, J., Kainuma, M., Riahi, K., Thomson, A., Hibbard, K., Hurtt, G.C., Kram, T., Krey, V., Lamarque, J.-F., Masui, T., Meinshausen, M., Nakicenovic, N., Smith, S.J., and Rose, S.K.: The representative concentration pathways: an overview. *Clim. Change* 109, 5–31. doi:10.1007/s10584-011-0148-z, 2011.
- Wegmann, M., Gudmundsson, G.H., and Haeberli, W.: Permafrost changes in rock walls and the retreat of alpine glaciers: a thermal modelling approach. *Permafr. Periglac. Process.* 9, 23–33. doi:10.1002/(SICI)1099-1530(199801/03)9:1<23::AID-PPP274>3.0.CO;2-Y, 1998.
- Westermann, S., Schuler, T. V., Gislås, K., and Etzelmüller, B.: Transient thermal modeling of permafrost conditions in Southern Norway, *Cryosphere*, 7, 719–739, doi:10.5194/tc-7-719-2013, 2013.
- Williams, P. J. and Smith, M. W.: *The frozen earth, Studies in polar research.* Cambridge University Press, Cambridge, 306pp, 1989.
- Wirz, V., Schirmer, M., Gruber, S., and Lehning, M.: Spatio-temporal measurements and analysis of snow depth in a rock face, *Cryosphere*, 5, 893-905, doi:10.5194/tc-5-893-2011, 2011.

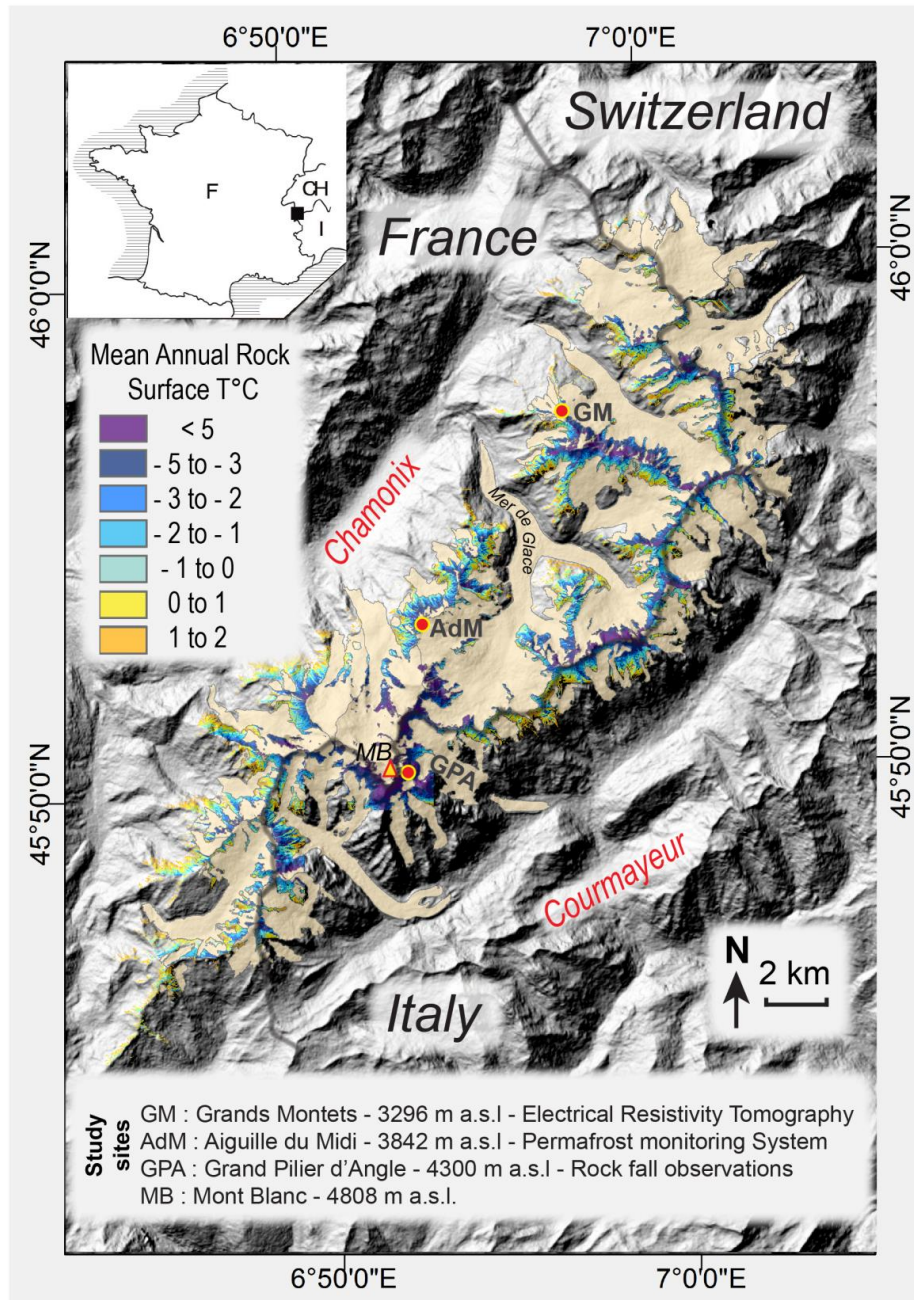


Figure 1: Location of the Mont Blanc massif, its glaciers and mean annual rock surface temperature (MARST). Areas with
 5 MARST <math>< 0^{\circ}\text{C}</math> can be considered as permanently frozen (Magnin et al., 2015a). Background topography: ASTER GDEM.

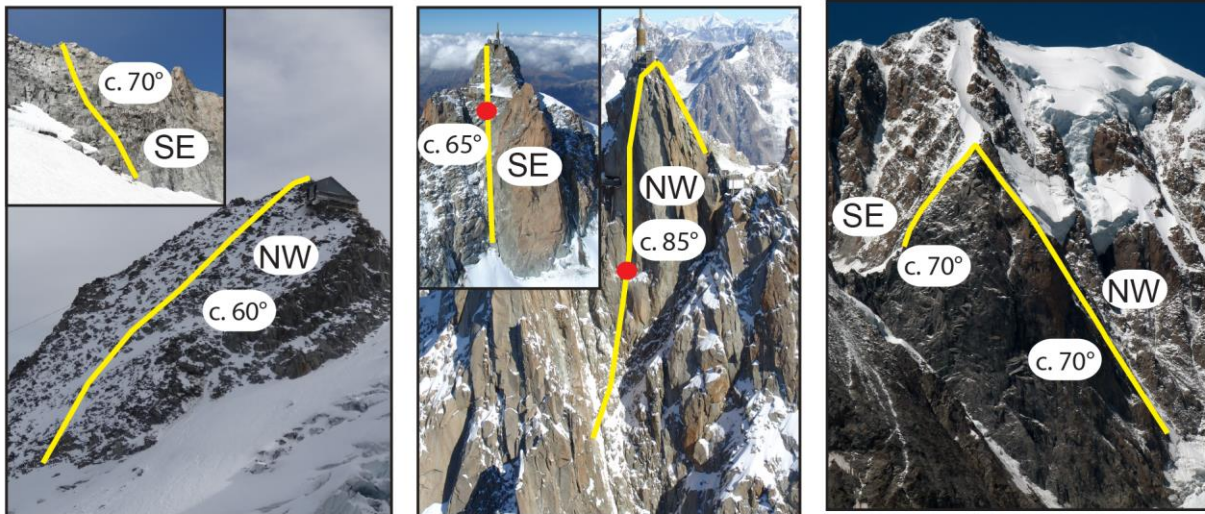
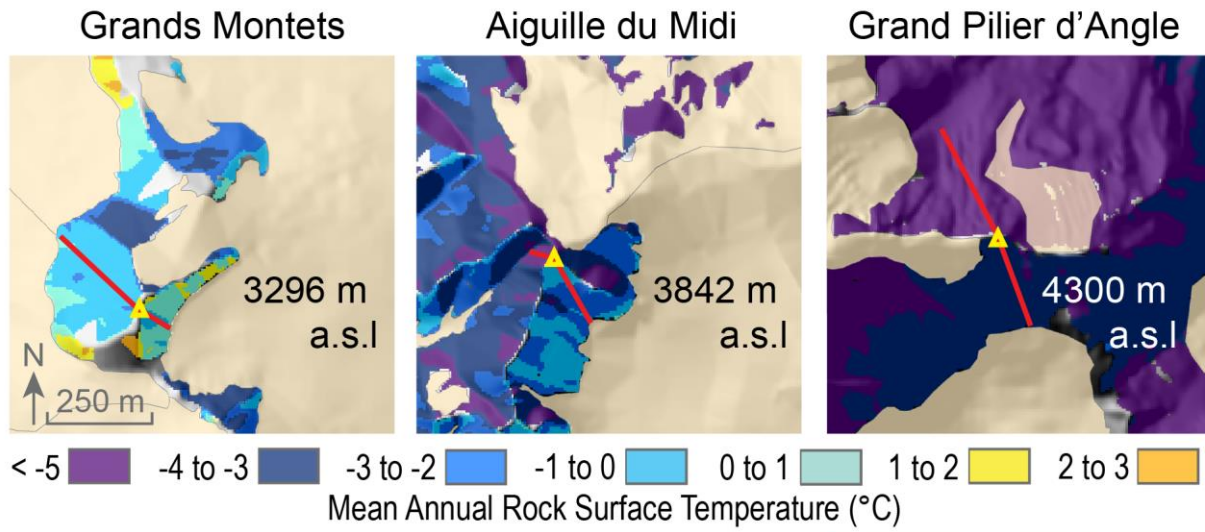


Figure 2: Topographical profile locations on the three sites.

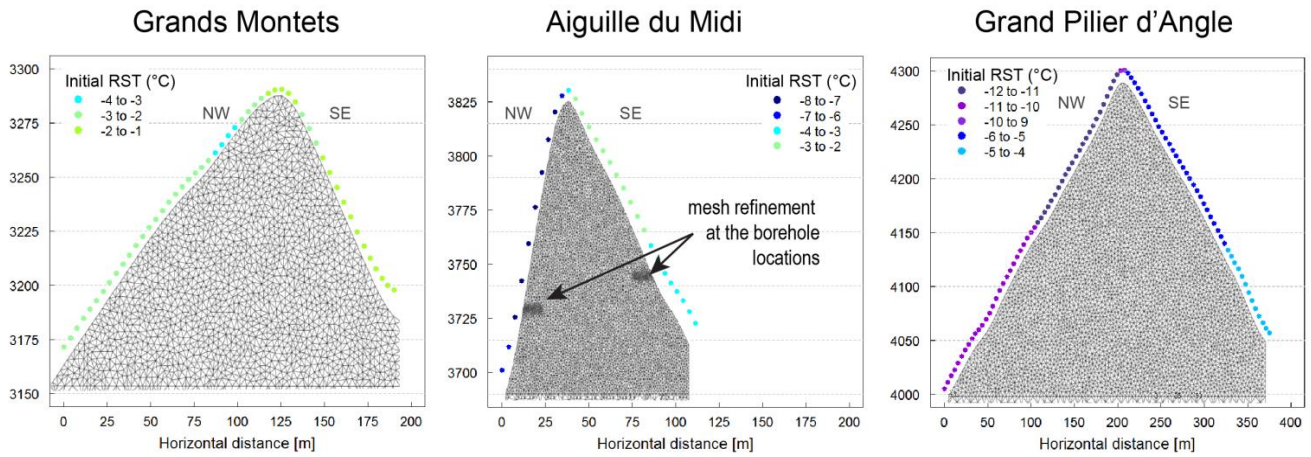


Figure 3: Boundary conditions: initial RST plotted over the models meshes for the three sites. The spatial resolution of the initial RST (coloured dots) has been refined at the mesh scale by linear interpolation. Below the topographies, a box of 5000 m elevation and a constant geothermal heat flux of 85 mW.m^{-2} were set up.

5

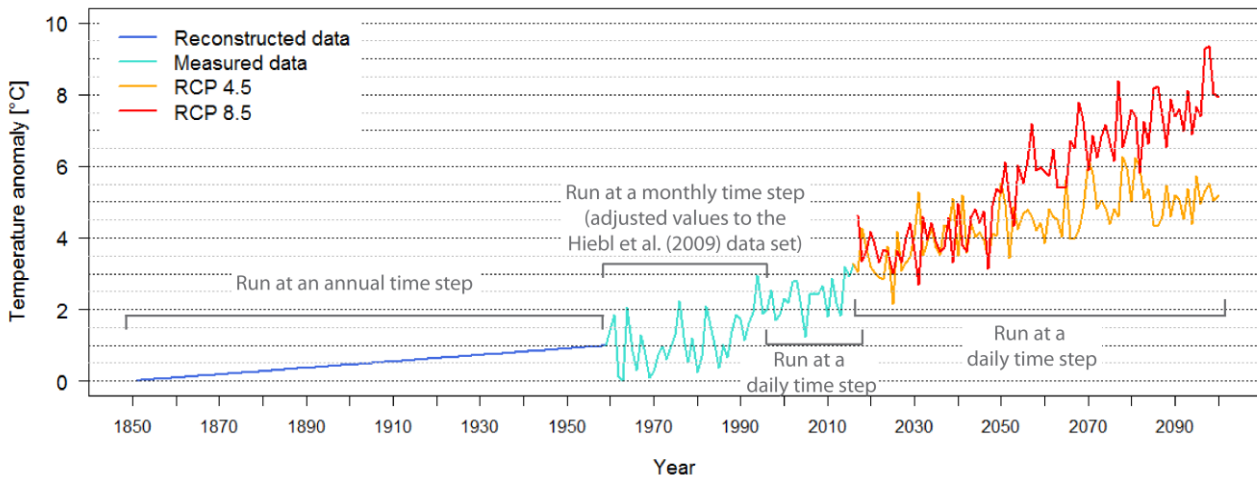


Figure 4. Forcing air temperature data displayed at an annual time step. For running the transient models, the time step was refined for some periods as described on the figure.

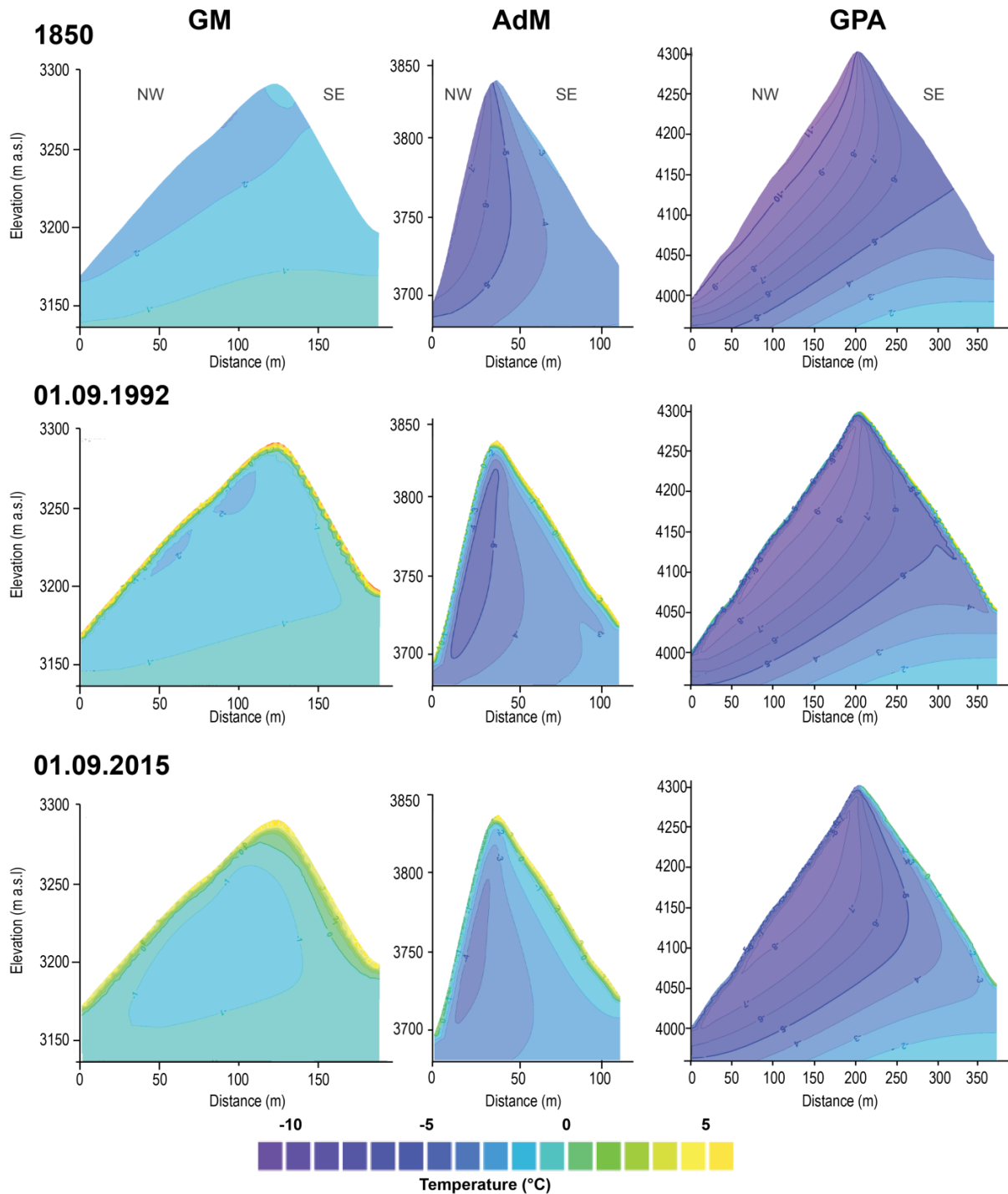
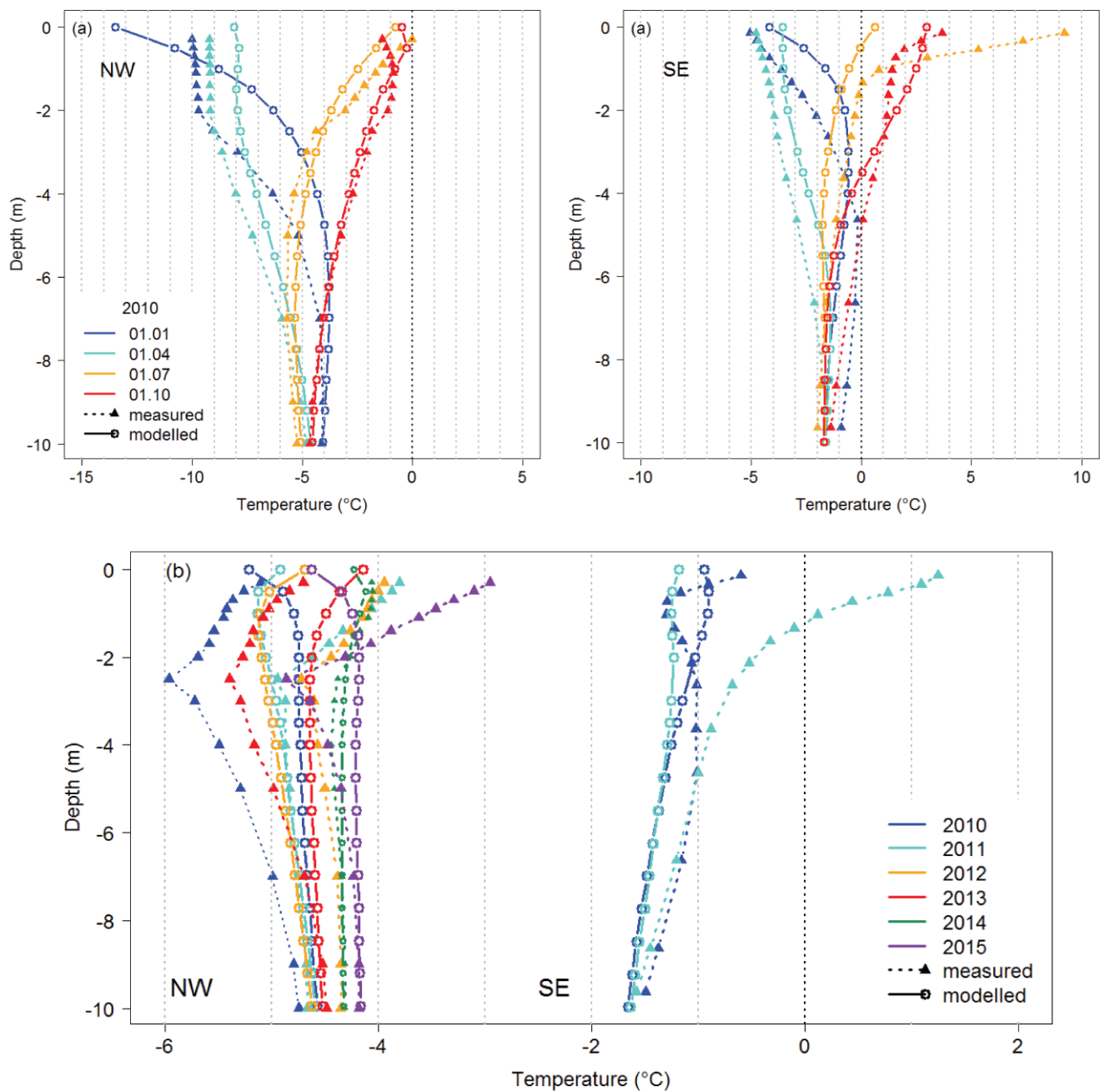
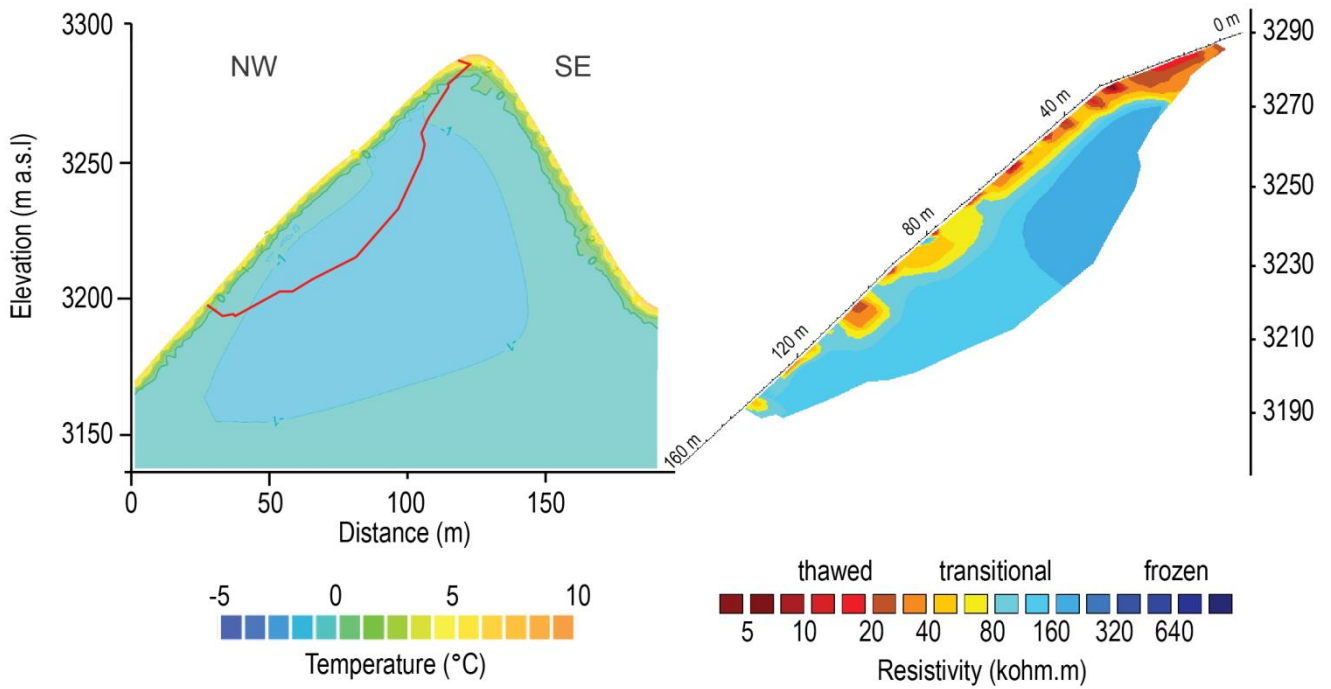


Figure 5. Initial steady-state (a) conditions and time-dependent conditions in September 1992 (b) and September 2015 (c) for the three studied sites (note that figure scales are different).



5 **Figure 6. Evaluation of modelled bedrock temperature against measured bedrock temperature in the AdM NW and SE boreholes at daily time-step (a) and annual time-step (b).**



5

Figure 7. Model evaluation (left) against ERT transect (right) for October 2012 at the GM. The red line on the left figure delineates the contour of the ERT transect.

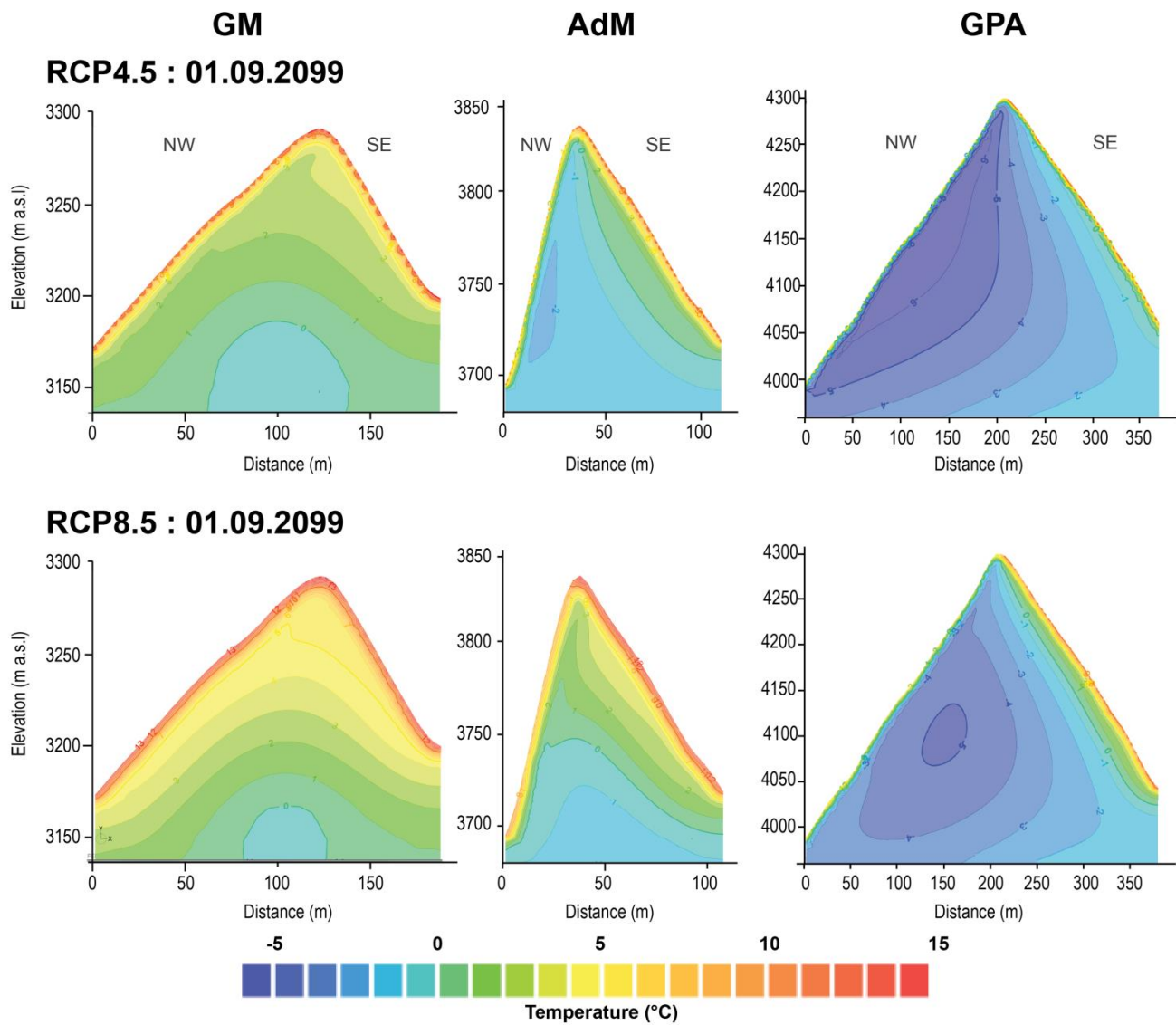


Figure 8. Time-dependent conditions in September 2099 after RCP4.5 and 8.5 forcings for the three investigated sites.

GM

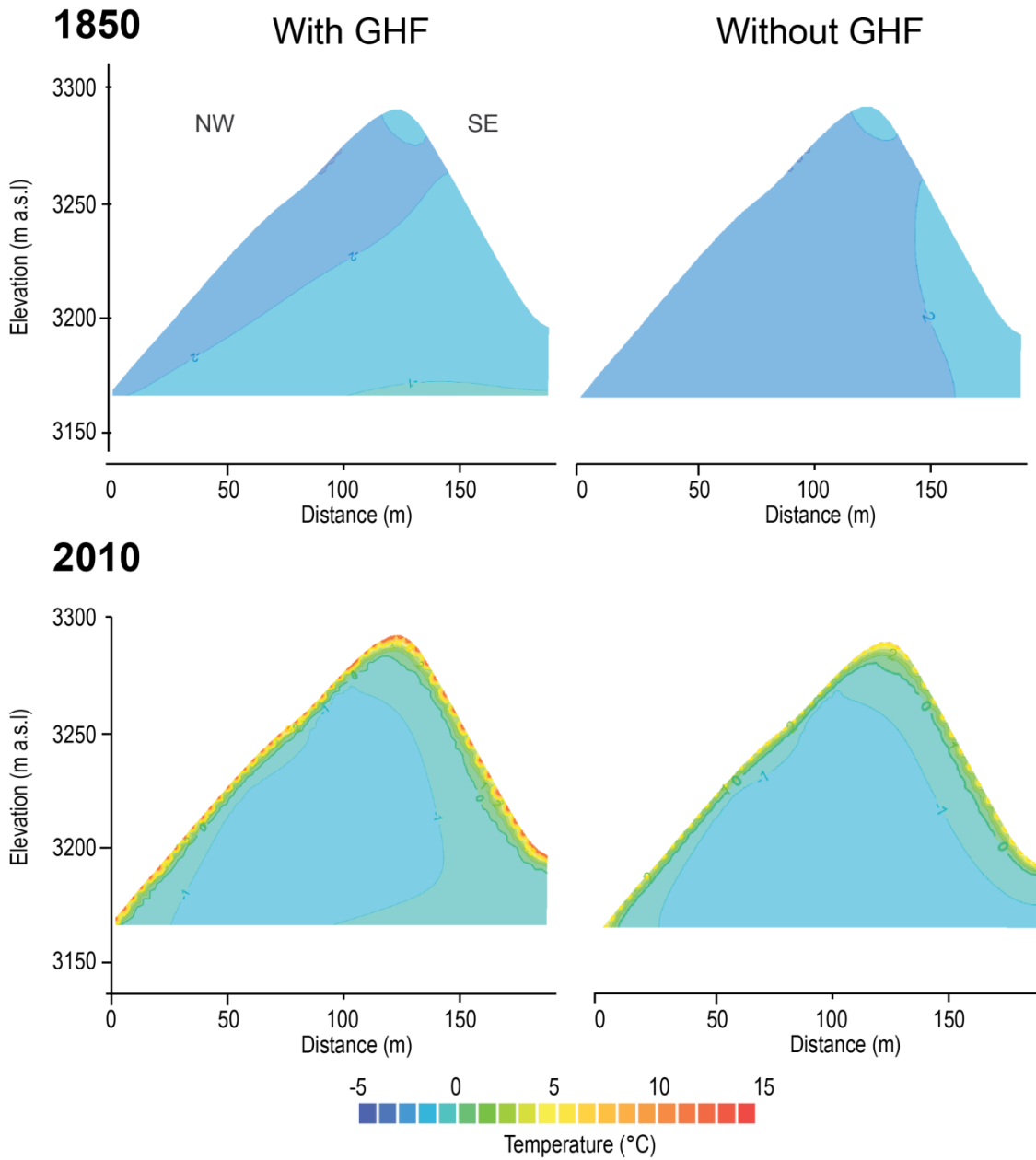


Figure 9: Bi-dimensional thermal fields at the GM site for steady-state conditions (1850) and transient conditions (2010). Models on the left are run at daily time step with a geothermal heat flux (GHF) of $85 \text{ mW}\cdot\text{m}^{-2}$ and a thermal conductivity of $3 \text{ W}\cdot\text{m}^{-1}\cdot\text{K}^{-1}$, whereas those on the right are run at monthly time step without geothermal heat flux and with a thermal conductivity of $2.7 \text{ W}\cdot\text{m}^{-1}\cdot\text{K}^{-1}$.