

# Reply to Reviewers

Ken Mankoff & Slawek Tulaczyk

**Comments from reviewers are in normal font and differentiated from the replies that use a bold colored font.**

## Contents

|          |                            |          |
|----------|----------------------------|----------|
| <b>1</b> | <b>Editor</b>              | <b>1</b> |
| <b>2</b> | <b>Referee 1</b>           | <b>2</b> |
| <b>3</b> | <b>Referee 2</b>           | <b>3</b> |
| 3.1      | Improved Methods . . . . . | 4        |
| 3.2      | Organization . . . . .     | 5        |
| 3.3      | Tedstone . . . . .         | 5        |
| 3.4      | Discussion . . . . .       | 6        |
| 3.5      | Figures . . . . .          | 7        |
| <b>4</b> | <b>References</b>          | <b>7</b> |

## 1 Editor

I have had now three new reviews from the previous reviewers on your manuscript. They all three acknowledge on the fact that the second version was greatly improved from the first one. Nevertheless, their reviews, even if being very contrasted, still indicate that your paper can and must be improved before it reaches the standard for being published in TC. I will then take the final decision on the basis of your reply to these new reviews and a third version of the paper. Importantly, this new version should clearly highlight that you are not just re-expressing the simulated increase in runoff in modified units and clearly state the limit of the approach about the effect of potential for subglacial channelisation. This will require rewording of some parts of the manuscript.

**We are grateful for the editor's support of this manuscript, and try to be sensitive to the disparate reviews from this last round. We address the two specific points you have raised (not just modified units, limits of approach) in the revised version.**

## 2 Referee 1

The revised paper is much improved from the original. I still find the whole calculation rather simplistic, and am not convinced that it provides new understanding, but I can accept that framing discussion in a different language may be helpful to some readers. The presentation of the revised manuscript is more coherent than the original, with more focus on results (figures), and I think this now makes it a helpful contribution, despite my reservations mentioned above and in the previous review.

I would now recommend publication, but I have some minor comments that should be considered.

**We are pleased to hear the referee recommends publication pending consideration of the comments. We agree that the calculations are simplistic, but point out that this is not a numerical modeling paper, but rather a discussion paper on changing hydrology. The focus is not on the calculations, and we view their simplicity as a positive feature of the paper. Adding more complicated equations may provide additional insights, but given that the system is highly underconstrained, many terms in any additional equations would be untested parameterizations, and we feel that would detract from this paper.**

In equation (1), make clear the partitioning into  $\phi_z$  and  $\phi_p$  - I don't think these are explicitly defined anywhere.

**Done.**

It may be preferable to describe the viscous heat dissipation in Watts, rather than J/year, as that would remove some of the ambiguity about increases over time (as rather confusingly raised in section 4.4). I doubt that units of PJ/year are any more informative to most readers than GW or MW.

**We originally wrote the manuscript with Watts, but switched to Joules because the energy is not released uniformly in time. The  $2.1 \text{ EJ year}^{-1}$  can more easily be conceptualized as 2.1 EJ per summer and 0 EJ per winter, while the equivalent 67 GW implicitly suggests a steady state output.**

Last paragraph of section 4.4, the sentences don't seem to agree with each other. One says that your results match the results from Tedstone et al; and then the last says there is a difference (10-20% increase rather than 50% increase). This might make sense if you mean that the runoff increase matches Tedstone et al, but the VHD increase is different; but then the explanation for the discrepancy does not really make sense, since this explanation seems to imply that the simulated runoff is incorrect. In any case, I am slightly confused why you treat the different increases in runoff and VHD as a discrepancy that needs explaining - there is no reason why they should be the same, since the VHD depends on the potential (effectively elevation) of the runoff as well as the magnitude.

**We meant to state that they roughly (increase in that sector), but not exactly (10-20% v. 50%) match. We have clarified the wording. We agree with the reviewer that an agreement between the Tedstone runoff increase and our VHD increase is not**

necessary, as they are different things. However, they are closely related, based on current subglacial hydrological theory. We think it is instructive to point out reasons for the possible discrepancy, and now include the point raised by the reviewer too.

The flowline in figure 6 is presumably an ice flowline, since you seem to have regions of negative potential gradient which suggest it is not possible for the water to be flowing along this line. Would it make more sense to follow a path taken by the water (ie. one of the flow paths obtained from the routing algorithm)?

**The flowline is a hydrological path following the maximum hydropotential from source to outflow, not an ice-flowline. There are not regions of negative potential gradient, but are regions of near-zero potential gradient. These occur if the gradient across a grid cell is near zero, and are likely indicative of small subglacial routes below the model resolution. The upstream and downstream grid cells probably have lower gradients, with the losses there contributing the gains in the grid cell between. Clarifying text added in section 4.5.**

In a couple of places (line 2, p8; line 5, p 11) it is suggested that viscous heat dissipation can have the effect of both accelerating and decelerating flow. Is this really what is meant? I think that is true when talking about increased runoff, because runoff has the effect of increasing pressures as well as increasing VHD (which then opens drainage space and lowers pressures). But do you have in mind a mechanism by which VHD itself causes an increase in ice velocity (rather than the runoff that is causing the VHD)?

**We meant increased runoff and have adjusted the text. We could not find an issue with line 5, p. 11, but checked our usage of VHD v. runoff elsewhere in the text.**

In section 5.2.1 (line 9, p8) it is suggested that it is 'likely' that there is a threshold change in VHD that leads to ice velocity decrease. This seems speculative to me, and I think should be phrased 'We suggest', or 'We speculate', rather than 'It is likely'. It seems well established that the effect of VHD might be to facilitate a decrease in velocity, but I do not see the evidence here for a threshold. It is also not clear what the 'baseline' for this change is (i.e. when should I measure the change from?).

**Yes this is highly speculative and we have changed the wording to reflect that. We do not have specific advice about a "baseline". Here we are simply using the same baseline as Tedstone et al. (2015).**

### 3 Referee 2

Aspects of this work have been greatly improved since the initial draft, notably a much simplified Methods section, and the idea behind the work remains interesting. However, other aspects of the manuscript still leave much to be desired, including the organization of the paper (which is muddled in places), the extensive comparison to Tedstone (which was unconvincing), and the majority of the Discussion text (which almost wholly lacks

synthesis). Unfortunately I do not think that the manuscript meets the standard of the journal at this time.

**We are glad to read that the reviewer considers the manuscript greatly improved and interesting. We have revised the latest version using your suggestions in the hope that it meets the standard for publication.**

### 3.1 Improved Methods

The work that the authors put into this section shows well. The methods are much more condensed and clear. However, I do still find some issues.

- I remain convinced that the outflow elevation of marine glaciers would be correctly defined as sea level, as AR1 also pointed out. The authors' treatment of this (P4 L10-13, P8 L27, and responses to reviewers) states otherwise. In my understanding, a parcel of water discharged at the base of a glacier may remain at that elevation, but it displaces a parcel of water upward, which itself displaces the next parcel upward. When these gains in potential energy are integrated, the net result is sea-level potential. However, this is only a small worry at this point.

**We agree, but the parcels described above are no longer underneath ice, and therefore outside the domain of the study, and the scope of this manuscript. These waters parcels rising vertically up marine terminating ice face are similar to the initial water falling down a moulin. The model begins at the moulin bottom with a pressure term (a function of the ice thickness), a depressed PTT, and the only elevation from the bed elevation. We no longer consider the water at the surface, falling down the moulin, etc. in this version, just as we do not consider the PTT change you describe above. Furthermore, one can argue the temperature of the water falling down the moulin may matter (it melts open the moulin), but the thermal issues raised above at the marine edge are insignificant compared to the heat content of the fjord waters in contact with the ice.**

- I am confused that the authors study only basal potential energy ( $\rho g b$ ) while discarding potential energy from the surface ( $\rho g s$ ), which is much greater in magnitude. The paragraph on supraglacial rivers suggests that the authors recognize this (P3 L16-17 especially). Perhaps my memory of the first manuscript colors this, though.

**All versions of this manuscript have only focused on energy at the bed. The original manuscript did consider the total potential energy, but only as a conceptual overview, before arguing that all that energy was released at the bed. However, the current manuscript does include  $\rho g s$  in the RHS of Eq. (1).**

- The treatment of PTT in the calculation seems to be inconsistent (P5 L11-14). The calculation ignores PTT changes when ice thins along the basal hydraulic gradient, but includes it when ice thickens along the water path.

**The calculation does not ignore PTT under thinning ice. Under thinning ice, VHD is**

reduced by the PTT, and we state that it is "not included in our VHD numbers". It is included in the calculation, but subtracted from the VHD value, hence the poorly-worded "not included". We have rephrased this to be clearer.

### 3.2 Organization

The manuscript suffers from poor organization. For instance:

- In Results, a methods paragraph (P4 L26-31) appears.

**Fixed.**

- In Discussion, a results sentence appears for the first and only time in the paper (P7 L8).

**Fixed.**

- The Discussion is repetitive of the Introduction (P7 L21-25 especially, with 4 of 5 references repeated for the same facts).

**We do not think that the occasional repetition is inappropriate.**

- There may be others. These basic offenses contributed to the difficulties I had in following the logic of this work.

### 3.3 Tedstone

In the revision, the authors added a substantial component to their analysis by attempting to parallel the Tedstone et al. (2015) study. To their original Historical / Present comparison (which I thought was good), the authors added a Reference / Baseline pair as well (which I found hard to keep track of, and which I think added little), based on Tedstone. I could not find that any of the reviewers asked for this addition.

**Tedstone was not added at the specific request from a reviewer, but because we think it connects the modeling work presented here to an independent observational result. We have clarified this in the text, at the end of the Introduction section. We have clarified the reference and baseline pairs when we introduce them in the Data section, and mention them later in the methods section.**

The authors bluntly state that one of the Tedstone conclusions is “likely” not true (P8 L9-10) and provide an alternative hypothesis.

**We have rephrased this to be more speculative.**

I found the support for this new idea (section 5.2.1) entirely unconvincing and difficult to even understand the authors’ path of reasoning. The authors say that if the increase in VHD in the Tedstone basin caused the observed slowdown there (P8 L12), then this is incompatible with the ice-sheet-wide decrease in VHD observed over that period having caused the generally observed ice-sheet-wide speedup (P8 L14) — although it seems to me that these ideas do not contradict one another at all. (I am putting aside obvious issues with comparing velocity changes observed over slightly different time periods, and

extrapolating land-terminating ice in western Greenland to the whole ice sheet.) But a few paragraphs later, the authors contradict themselves by extrapolating the Tedstone observations over the whole ice sheet after all (P8 L23-24). Such inconsistencies greatly undermined my confidence in this work.

**We have rewritten parts of Section 5.2.1. due to the reviewers comments. The idea that a future increase in VHD elsewhere in Greenland may lead to a slowdown near the marginal zone is not a contradiction to the earlier text in this paragraph. We now speculate that at present, an increase in VHD is correlated with a decrease in velocity. We point out elsewhere there is presently a decrease in VHD relative to the past. We do not compare with velocity elsewhere, because we now feel that the velocity change maps in Rignot et al. (2006) and Joughin et al. (2010) are not appropriate. They are not GIS-scale, or even regional-scale. Rather, they focus only on the outlet glaciers, which is a different scale than the work reported here.**

### 3.4 Discussion

The immaturity of the Discussion and the failure of this study to integrate its results with past work are major issues. While the authors include relevant citations, they do so largely in the form of a literature review. They do not demonstrate how their results build on this literature, except in the broadest strokes (i.e., VHD enhances conduit formation, which slows ice near the margin but not far from the margin) which were already made clear in the introduction. In short, the authors leave unclear what their work adds to the community's understanding.

Upon a closer read, I did find a few sentences where the authors introduce a nice (and perhaps novel) line of reasoning / speculation about the competing effects of increasing runoff and increasing VHD (P7 L14-17). However, that idea is buried deep within the text and not revisited. The rest of the subsection (3 paragraphs), which would normally be used to build on the idea, consists only of a rambling literature review. While I remain interested in this topic and would enjoy continuation along this line of thought, I am at a loss for specific suggestions at this point.

**The competing runoff and VHD discussion is expanded in sections 5.2.1 and 5.2.2.**

Alternately, it may still be possible to frame the paper differently from runoff / speedup — for example, around GHF vs VHD, which is presently an interesting section, and one that perhaps could be expanded toward greater ideas. (In fact, the abstract suggests that this is the main point of the paper, but this is not borne out.) But as it is framed now around ice sheet mass balance, the paper makes only a vague contribution. At this point, I agree with AR1 who said that the study merely converts future runoff rates into future VHD rates, which was not particularly illuminating.

**We were strongly encouraged by previous reviews to not compare to GHF, and we have reduced that section. Although we mention it in the abstract, we do not consider it a primary result. We respectfully disagree with this reviewer, and their interpre-**

tation of AR1's review, that a conversion of "future runoff rates into future VHD rates" is not useful. The flow routing, tracking of changes in PTT, GIS-wide perspective, consideration of spatial variability around the GIS, and consideration of future changes, combine to move this work beyond simple units conversion as suggested by the reviewer.

Some of the section headings (4.1 Volume of subglacial hydrology; 4.3 Flow-routed spatial distribution of VHD) are inscrutable.

**We have improved the former. We are not sure what is inscrutable about the latter.**

### 3.5 Figures

Figure 2 caption — how could water flow both uphill AND toward ice that thickens along flow?

**It can't. The statement is referring to different panels of the figure. We have changed "and" to "or".**

Figures 4/5 — Tedstone basin should be indicated

**Done.**

Figure 7 — it is hard to compare the small blue dots with the large black bars. Lightening the background relief map might help, as well as plotting the dots on the top layer and using colors that provide better contrast than blue/black.

**We have enlarged the blue dots and provided better contrast.**

## 4 References

- Joughin, I. R., B. Smith, I. M. Howat, T. A. Scambos, and T. Moon (2010). "Greenland flow variability from ice-sheet-wide velocity mapping". *Journal of Glaciology*. 56 (197), 415–430. ISSN: 0022-1430.
- Rignot, E. J. and P. Kanagaratnam (2006). "Changes in the velocity structure of the Greenland Ice Sheet". *Science*. 311 (5763), 986–990. DOI: 10.1126/science.1121381.
- Tedstone, A. J., P. W. Nienow, N. Gourmelen, A. Dehecq, D. Goldberg, and E. Hanna (2015). "Decadal slowdown of a land-terminating sector of the Greenland Ice Sheet despite warming". *Nature*. 526 (7575), 692–695. DOI: 10.1038/nature15722.



# The past, present, and future viscous heat dissipation available for Greenland subglacial conduit formation

Kenneth D. Mankoff<sup>1</sup> and Slawek M. Tulaczyk<sup>2</sup>

<sup>1</sup>Department of Geosciences, Pennsylvania State University, University Park, PA 16802

<sup>2</sup>Earth and Planetary Sciences Department, University of California Santa Cruz, Santa Cruz, CA 95064

*Correspondence to:* Ken Mankoff (mankoff@psu.edu)

## Abstract.

Basal hydrology of the Greenland Ice Sheet (GIS) influences its dynamics and mass balance through basal lubrication and ice/bed de-coupling, or efficient water removal and ice/bed coupling. Variations in subglacial water pressure through the seasonal evolution of the subglacial hydrological system help ~~to~~ control ice velocity. Near the ice sheet margin, large basal  
5 conduits are melted by the viscous heat dissipation (VHD) from surface runoff routed to the bed. These conduits may lead to efficient drainage systems that lower subglacial water pressure, increase basal effective stress, and reduce ice velocity. In this study we quantify the energy available for VHD historically, at present, and under future climate scenarios. At present, 345 km<sup>3</sup> of annual runoff delivers 2.1 EJ (2.1x10<sup>18</sup> J) to the base of the ice sheet per year. These values are already ~50% more than the historical 1960 – 1999 average of 1.4 EJ year<sup>-1</sup>. By 2100 under IPCC AR5 RCP8.5 (RCP4.5) scenarios, 1278 (524) km<sup>3</sup> of  
10 runoff may deliver 9.8 (3.5) EJ year<sup>-1</sup> to the ice sheet base. Hence, the ice sheet may experience a ~5-fold increase in VHD in the near future which will enhance opening of subglacial conduits near the margin and will warm basal ice in the interior. The other significant basal heat source is geothermal heat flux (GHF), with ~~historical values~~ an estimated value of 1.1 EJ year<sup>-1</sup> under the runoff area. ~~There is no significant increase expected in GHF.~~ With increasing surface meltwater penetration to the bed the basal heat budget in the active basal hydrology zone of the GIS will be increasingly dominated by VHD and relatively  
15 less sensitive to GHF, which may result in spatial changes in the ice flow field and in its seasonal variability.

## 1 Introduction

Numerical models and observations of the Greenland Ice Sheet (GIS) link surface meltwater penetration to the bed to both short (hourly, daily) and long (seasonal, decadal) temporal variations in ice velocity (Zwally et al., 2002; Bartholomew et al., 2011; Banwell et al., 2013; Shannon et al., 2013; Mayaud et al., 2014; Tedstone et al., 2015). However, the link between  
20 increased basal water inputs and ice sliding is a complex one, largely because viscous heat dissipation (VHD) from water flow beneath ice may melt out efficient drainage tunnels whose presence may decrease, or even reverse, the tendency for ice flow to accelerate with increasing meltwater inputs to the bed (Kamb, 1987; Sundal et al., 2011; Tedstone et al., 2015).

Early in the melt season water is added to the subglacial system but cannot be efficiently removed, increasing subglacial water pressures and ice velocities. Later in the melt season, increased runoff causes efficient drainage conduits to form, at least



near the ice sheet margin. These large drainage conduits reduce the subglacial water pressure and ice velocity (Hewitt, 2013). Even efficient drainage conduits can at times become over-pressured, with associated increase in ice velocity, until basal water is removed or the conduit opens more from additional melting (Schoof, 2010). This dynamic subglacial hydrologic system influences ice velocity during winter months as well. This behavior is less well understood, but in years with above average summer acceleration there is evidence of below average winter velocities and a reduced net annual displacement (Sundal et al., 2011). In addition, a recent observational study shows a regional and decadal velocity decrease coincident with a 50% runoff increase in southwest Greenland (Tedstone et al., 2015). Farther from the margin there is less surface runoff and therefore less subglacial water available. In this interior region channelized flow and subglacial conduits may not form. If they do form, they will in general creep closed more quickly than conduits that form under the thinner ice near the margin. ~~Fewer conduits~~ Less efficient drainage in the GIS interior, relative to the marginal zone, is one likely cause for the ice accelerations observed there under increased water inputs (e.g. Bartholomew et al. (2011); Shannon et al. (2013); Doyle et al. (2014)).

Studies examining surface melt, supra-glacial routing, subglacial hydrology, and the response of ice sheet outlet glaciers to those various inputs take place predominantly in southwest Greenland, focusing largely on the Russell, Leverett, Paakitsoq, or nearby glaciers (for example, Banwell et al. (2013); Arnold et al. (2014); Andrews et al. (2014); Tedstone et al. (2015)). Furthermore, present day weather, runoff, outflow, and other data are often used in those studies, since daily, hourly, or higher temporal resolution of the data is beneficial to the models. However, this approach limits the focus of these studies to recent seasons for which abundant in-situ sensor data exist. In order to examine future scenarios, Mayaud et al. (2014) built on the work of Banwell et al. (2013), but used a conduit model that includes melt opening and creep closure, driven by a positive degree day runoff model, to examine future changes to year 2095 under various IPCC RCP scenarios (Moss et al., 2010). Those models had hourly or daily resolution and were again limited to the ~~well-studied southwest sector~~ southwest sector of the ice sheet.

Here we perform a broader analysis that uses runoff over the entire GIS on annual and decade timescales, and discuss changes between a historical baseline and the present, and between the present and future RCP 4.5 and 85 scenarios. We employ flow routing to distribute the surface meltwater under the GIS following the common assumption of subglacial water pressure distribution being determined by local ice weight, and track the available energy at the bed as water runs down the hydropotential, accounting for the water phase transition temperature (PTT) variations due to changes in pressure. We frame the discussion in terms of changes in available heat, rather than focusing on water pressure in a conduit relative to overhead ice pressure. We report both the total GIS-wide energy budgets, and its distribution per basin and at a 5x5 km grid resolution. We also highlight a high-resolution (150 m) calculation near Petermann Glacier and along a single ice flowline in southwest Greenland.

## 2 Data

We use 150 m resolution basal topography and surface topography (IceBridge BedMachine Greenland, Version 2) from Morlighem et al. (2014, 2015) to calculate both surface and subglacial flow routing and subglacial pressures. Surface runoff, equal to the surface meltwater plus rain less refrozen water, comes from MAR v3.5.2 (Fettweis et al., 2013).

—We report results for a historical period (1960 – 1999), the present (2010 – 2019), and IPCC AR5 RCPs 4.5, and 8.5 (2090 –2099) (Moss et al., 2010). We also highlight a baseline (TB, 1985–1994) and reference (TR, 2007–2014) period that match ~~the~~ baseline and reference periods in Tedstone et al. (2015). ~~It is important to note that while our TB may match the baseline data from Tedstone et al. (2015), there is no expectation that TR matches the reference data from Tedstone et al. (2015). This is because the TB time frame use ERA-Interim reanalysis products, but the TR time-frame is from a "future" projection simulation (Fettweis et al., 2013), and is unlikely to have simulated the specific annual runoff, including the extreme melt in 2012.~~

We process the entire GIS at 5 km resolution, the area near Petermann Glacier at 150 m resolution, and part of West Greenland (near the Russell and Leverett glaciers) and at 150 m resolution, where we extract the sample flowline segment.

## 3 Model Description

### Methods

#### 15 3.1 Model Description

We use a flow-routing and energy balance model that incorporates common assumptions about glacier hydrology (e.g. Röthlisberger (1972), Shreve (1972)), but does not explicitly resolve subglacial conduits. We lay out our methods and assumptions by tracing the path of a unit parcel of surface meltwater from source to sink (ice surface elevation at the origin of a meltwater parcel to submarine or terrestrial outlet where it discharges from the ice sheet).

20 We assume all surface runoff that begins at elevations above 2000 m is unable to leave the surface or penetrate to the bed at those elevations (Poinar et al., 2015). Instead we route it on the surface to the 2000 m elevation contour. All surface runoff at or below 2000 m elevation is assumed to access the bed within the 5 km square grid cell in which it originates (Yang and Smith, 2013). In reality water may flow slightly farther before leaving the surface (Yang et al., 2015), but we ignore this horizontal transport because when streams do travel this far on the surface, they are most likely to do so in gently-sloped and crevasse-free  
25 regions (Poinar et al., 2015). Horizontal transport of surface meltwater with a small elevation drop implies only a small impact on the calculated VHD. Horizontal surface transport in an area with large surface slopes is unlikely, because such regions have high driving stress, and crevasses routing the stream to the bed are likely to be present.

Water storage may occur in ~~the~~ firn or in crevasses. We assume these volumes are insignificant (at most a few percent) relative to the total runoff amount, that ~~percent~~ their relative importance is not likely to change much in the future, and that  
30 englacial storage does not release heat at the bed, which is the focus of this study.

Once at the bed, flow routing moves water ~~in the direction of the negative of the~~ down the gradient of the hydropotential  $\phi$  (Shreve, 1972),

$$\nabla\phi = \nabla\phi_z + \nabla\phi_p = \rho_w g \nabla z_b + \alpha \rho_i g (\nabla z_s - \nabla z_b), \quad (1)$$

with  $\phi$  the hydropotential (units Pa),  $\phi_z$  the elevation component of the hydropotential,  $\phi_p$  the pressure component,  $\rho_w$  the density of meltwater (1000 kg m<sup>-3</sup>),  $g$  gravity,  $z_b$  the bed elevation,  $\alpha$  a flotation fraction (set to 0.9) because the subglacial system is often slightly less than the ice-overburden pressure (Engelhardt and Kamb (1997); Fountain (1994); Meierbachtol et al. (2013)),  $\rho_i$  the density of ice (917 kg m<sup>-3</sup>), and  $z_s$  the surface elevation. All water is assumed to move to the one neighboring cell with the lowest hydropotential with eight total neighbors considered. Flow routing is implemented using the `r.watershed` tool in GRASS GIS (Neteler et al., 2012) version 7.0.4.5, with  $\phi$  as the "elevation" input with all local minima filled so that all water leaves the ice sheet (see Supplemental Material).

The total hydropotential can be decomposed into an elevation term,  $\phi_z$  and a pressure term,  $\phi_p$ , where the former is the first term on the right hand side of Eq. 1 and the latter is the second term. We use this decomposition to examine in more detail the spatial distribution of flow driven by changes in the bed elevation, and flow driven by the pressure gradient.

The water remains at the pressure-dependent ~~phase transition temperature (PTT)~~ PTT and energy is released based on the change in hydropotential combined with the changing phase change temperature. Because our focus is on energy available at the glacier bed, we ignore heat released due to changing PTT down the moulin (e.g. Catania and Neumann (2010)), and the model is initialized at the moulin bottom with a depressed PTT.

Our energy budget model tracks energy between inputs at the ice sheet bed where energy begins as either pressure or gravitational potential energy (which may be net positive if the source bed elevation is above the discharge elevation, or negative if it is below), and the output where the energy is in one of three forms: 1) the latent heat of cumulative basal melt caused by VHD released along the subglacial water flow pathway, 2) gravitational potential energy of discharge from land-terminating glaciers with terminii above seal level, or 3) pressure if discharged below sea level from a marine terminating glacier.

Between the input and discharge locations, all energy is assumed to dissipate ~~as heat to the surrounding ice at the base as heat~~ within the grid cell where the energy transfer occurs (Isenko et al., 2005). As water flows down the hydropotential gradient, we track the energy released as heat,  $Q$ , based on the volume of water, the change in the hydropotential, and the change in the PTT,

$$Q = V(\nabla\phi - C_T c_p \nabla\phi_p \rho_w) \quad (2)$$

where  $V$  is the volume of water (Fig. 1),  $\nabla\phi$  the hydropotential gradient,  $C_T$  the Clausius-Clapeyron slope equal to  $8.6 \times 10^{-8}$  K Pa<sup>-1</sup> (Hooke, 2005),  $c_p$  the specific heat of water equal to 4184 J K<sup>-1</sup> kg<sup>-1</sup>,  $\nabla\phi_p$  the pressure component of the hydropotential gradient, and  $\rho_w$  the density of water. The last term of Eq. (2) is the adjustment for the PTT, which increases the heat

released along ~~the a~~ flowline when the ice thickens downstream and the PTT drops, and ~~reduces-decreases~~ the heat released along ~~the a~~ flowline when the ice thins downstream. If the second term on the right hand side of Eq. 2 is larger than the first term, then  $Q$  is negative, and basal freeze-on occurs (Alley et al., 1998; Bell et al., 2014)

This model is driven by surface runoff, but includes flow routing at the bed, heat released due to either a gravitational potential energy drop or a pressure drop, and tracks the spatially varying PTT. However, this model does not directly represent conduits or track changing basal water pressures. This is because the results are presented on decade average timescales, while conduits and water pressures vary on hourly to seasonal timescales.

### 3.2 Comparison between model results and observations

We compare our results to those of Tedstone et al. (2015). We do this because the comparison provides a connection between the model results presented here, which are necessarily speculative due to limited observations outside the southwest sector and in the future, and independent observation-based results.

As mentioned in Sec. 2, we produce a Tedstone baseline (TB, 1985–1994) and a Tedstone reference (TR, 2007–2014) data set. Because Tedstone et al. (2015) reports a 50% increase in runoff over the 1985 – 2015 time period, we divide TR by TB to compare our VHD percentage increase or decrease to the Tedstone et al. (2015) increase. After comparing our model results against Tedstone et al. (2015), we then compute absolute difference (TR - TB), along with differences between our historical and present (P - H), and future and present (45 - P, 85 - P) periods.

It is important to note that while TB may match the baseline data from Tedstone et al. (2015), TR may not match the reference data from Tedstone et al. (2015). This is because the TB period is from ERA-Interim reanalysis products, but the TR period is from a "future" projection simulation (Fettweis et al., 2013), and is unlikely to have simulated the specific annual runoff, including the extreme melt in 2012.

## 4 Results

### 4.1 ~~Volume of subglacial hydrology~~

#### 4.1 Subglacial water volume

~~Subglacial hydrology flow volumes are a combination of the surface runoff and the flow routing algorithm.~~ Annual average runoff volume has historically been 244 km<sup>3</sup>, presently is 345 km<sup>3</sup>, and in the future will be 524 or 1278 km<sup>3</sup> under the 4.5 or 8.5 scenarios. ~~Because we do not account for changes in water storage, total subglacial volumes are the same.~~ The spatial distribution of ~~flow volume flux~~ at the bed matches the large-scale surface distribution - more occurs in the south than the north, and the bulk occurs in the southwest sector. Most runoff also occurs at the edge of the ice sheet. Under RCP 8.5 it is predicted to occur at all elevations in south Greenland, but here only accesses the bed when the surface elevation is < 2000 m (Fig. 1).

Flow routing of basal hydrology causes orders of magnitude difference in water volume over small spatial distances as streams collect and discharge the water. At present, the largest volume of discharge is ~7 km<sup>3</sup> year<sup>-1</sup> from a single grid cell

(2% of the total annual runoff - that percentage has not and does not significantly change). The volume flow rate has increased from  $\sim 5 \text{ km}^3 \text{ year}^{-1}$  historically, and is 10 ~~or~~ and  $31 \text{ km}^3 \text{ year}^{-1}$  under the future 4.5 ~~or~~ and 8.5 scenarios, respectively.

## 4.2 Pressure v. elevation driven flow

The zone around Greenland with active subglacial flow has distinct regions where the flow is driven by changes in elevation (Fig. 2 panel  $\nabla \phi_z$ ) or pressure (Fig. 2 panel  $\nabla \phi_p$ ). Flow always leaves the ice sheet at the margin due to pressure-driven flow (i.e. from regions with thinning ice, red outer band in Fig. 2, panel  $\nabla \phi_p$ ), but inland ~~often travels~~ drainage often occurs under regions where ice thickens and pressure increases (blue regions in Fig. 2). Distinct regions of flow under thickening ice occur near the Petermann, Zachariae Isstrøm and 79 North Glaciers, and some coherent patches along the west coast.

Large differences in released heat ( $>35\%$ ) are due to flow under thinning or thickening ice. When water flows under thinning ice,  $\sim 35\%$  of the heat released by the reduction in pressure is used to warm the water with the rising PTT (Röthlisberger, 1972), and ~~not included in our VHD numbers~~ subtracted from the VHD value (last term of Eq. (2)). In the regions highlighted above where flow occurs under thickening ice, a decrease in the PTT increases the VHD term.

## 4.3 Flow-routed spatial distribution of VHD

A spatial map of basal VHD is shown in Fig. 3 with the energy calculated based on Eq. (2). Summing the spatial data in Fig. 3 gives annual GIS-wide VHD of 1.4, 2.1, 3.5, and  $9.8 \text{ EJ year}^{-1}$  ( $1 \text{ EJ} = 1 \times 10^{18} \text{ J}$ ) for the historical, present, RCP4.5 and RCP8.5 cases respectively (Table 1). There is a 5-fold increase in VHD between the present and the end of the century under RCP 8.5, or a 7-fold increase from the recent past.

At present a maximum up to  $\sim 1 \text{ W m}^{-2}$  is released where the largest volumes of water leave the ice sheet, over an entire  $5 \times 5 \text{ km}$  grid cell. More generally, between  $0.1$  and  $1 \text{ W m}^{-2}$  is released in the marginal zone, but by year 2100 under RCP8.5, this amount of heat is likely to be released throughout almost the entire area of GIS where runoff is projected to reach the bed. In the future, regions with high discharge may experience  $10 \text{ W m}^{-2}$  ~~VHD rates~~ of VHD.

In some regions, heating is "negative" which indicates basal freeze-on. These regions are a subset of the regions where ~~pressure increases~~ flow is uphill (blue  $\nabla \phi_z$  in Fig. 2) and pressure decreases due to ice ~~thickening~~ thinning along-flow (~~red  $\nabla \phi_p$~~  in Fig. 2). Locations of basal freeze-on occur throughout the GIS, including near Petermann where Bell et al. (2014) provides observational evidence of packages of basal freeze-on ice. Our model estimated locations (blue in Figure 7), and the Bell et al. (2014) observed locations (black in Figure 7) show some agreement and some disagreement. We interpret the disagreements as a combination of artifacts in the basal DEM and artifacts due to limitations in our routing model. We address each of these in the discussion section.

## 4.4 Basin-scale changes of VHD

Basin-scale changes between the three different time periods considered here are well illustrated when viewed as change (units Joule) in VHD per basin (Fig. 4) or percent increase (units %) in VHD per basin (Fig. 5). Basin size influences results for the

former, and the effect is removed for the latter. Because integrated per basin VHD removes the effect of flow routing, VHD per basin is approximately proportional to runoff per basin, and changes in basin VHD are proportional to changes in basin runoff.

Change between the Tedstone et al. (2015) reference period (TR) and the Tedstone et al. (2015) baseline period (TB, Fig. 4a) shows a  $2 \text{ PJ year}^{-1}$  ( $1 \text{ PJ} = 1 \times 10^{15} \text{ J}$ ) increase in the energy in each basin in the southwest sector where Tedstone et al. (2015) observed a general velocity decrease. (A  $2 \text{ PJ year}^{-1}$  increase means a cumulative increase of 2 PJ in the future years, not a rate of change of 2 PJ each year between the two time periods). Elsewhere, increases were minimal (southeast) or negative. A similar pattern emerges between the historical and present cases (Fig. 4b), with the bulk of the change in the southwest sector, but larger than for TB-TR. At present there is a  $10 \text{ PJ year}^{-1}$  difference compared to the historical rate. Between the present and the 2090s under the RCP 4.5 scenario,  $10 \text{ PJ year}^{-1}$  increases occur in all sectors except the northwest (Fig. 4c). In the RCP 8.5 scenario,  $100 \text{ PJ year}^{-1}$  increases occur in several basins (Fig. 4).

Percent increase between historical and present ~~shows that the increases scale become larger~~ with latitude. All of Greenland has experienced an increase, with many regions showing a 2- to 3-fold increase (+100-200%) in VHD (Fig. 5 panel P/H). Runoff, and therefore VHD, in the north of Greenland has experienced the largest percent increase. This is because VHD values are so small there that all increases appear large when viewed on a percentage scale.

However, the choice of baseline matters. The historical and present periods are 1960 – 1999 and 2010 – 2019 respectively. If the TR (1985 – 1994) and TB (2007 – 2014) periods are used instead, our results ~~instead more closely, but still not precisely~~ match the results from Tedstone et al. (2015), which showed a 50% increase in runoff in the basins just south of Jakobshavn Isbræ. The ~~issue with our TR data produced by a future simulation and not using reanalysis products may be the cause of the reason for the~~ difference between a ~50% increase in runoff reported by Tedstone et al. (2015) and the ~10-20% increase in VHD obtained here may be because our TR data come from a future simulation and not reanalysis products, or because VHD is a function of runoff volume (the property reported by Tedstone et al. (2015)), but also the other terms in Equation 2.

#### 4.5 VHD along a flowline in southwest Greenland

Viewing results along a flowline highlights that the hydropotential gradient driving the flow becomes ~~spatially both~~ larger and more variable toward the margin (Fig. 6a). Along a single flow-line, step-increases in volume occur where other major tributaries join the ~~tributary flowline~~ displayed here, causing 3 to 4 orders of magnitude increase in flow volume (Fig. 6b). This increase in water volume leads to a ~~3 to 4 orders of magnitude corresponding~~ increase in VHD (Fig. 6c). Variations in bed topography and ice thickness ~~create give rise to~~ variations in the gradient of  $\phi$  along the flowline (Fig. 6a) and ~~therefore, hence, to~~ variations in VHD along the flowline (Fig. 6c). Although ~~the general trend of VHD increases from inland to the margin~~ VHD increases generally toward the margins (Fig. 6c), due to increasing flux (Fig. 6b), the hydropotential gradient (Fig. 6a) ~~adds a high variability signal to appears as a high-frequency overprint on top of~~ the background flux-driven signal, with 1-2 orders of magnitude change in VHD over just a few of the 150 m grid cells. Gaps in Fig. 6c are due to low gradients at those locations causing the release of only minor amounts of VHD. Low gradients (Fig. 6a) occur naturally if the bed and ice surface are flat, or other combinations such that the LHS of Eq. (1) is small. Alternatively, low gradients may be due to actual high

gradient flow paths below the model resolution. In this case, the neighboring upstream and downstream grid cell gradients are likely reduced, contributing to an increased gradient between the two, with the total gradient over three grid cells unchanged.

## 4.6 VHD and GHF

Frictional basal heating is up to  $0.2 \text{ W m}^{-2}$  near the Russell and Leverett glaciers (Brinkerhoff et al., 2011), while geothermal heat flux (GHF) is estimated at  $\sim 0.050 \text{ W m}^{-2}$  (Shapiro and Ritzwoller, 2004) to as little as  $0.030 \text{ W m}^{-2}$  (Meierbachtol et al., 2015). The logarithmic scale used in Fig. 6c makes the differences between these heat sources and VHD appear small, but near the margin VHD exceeds GHF by one to two orders of magnitude. At present, VHD releases more heat than GHF from  $\sim 75$  km up the flowline ( $< 75$  km inland due to a sinuous path) to the margin. In the future, when larger volumes of water flow from farther in the interior, the zone where VHD surpasses GHF may increase its reach to  $\sim 150$  km upstream from the ice margin (Fig. 6c).

## 5 Discussion

### 5.1 The impact of VHD

~~An increase in the supply of surface runoff to the bed will lead to an increase in subglacial VHD as the climate warms in the future. We have shown that a six-fold increase in VHD is predicted by the end of the century under RCP 8.5. The impact of this increase is uncertain. This is because other results show that glaciers can either increase (Zwally et al., 2002) or decrease (Sundal et al., 2011; Tedstone et al., 2015) their mean annual velocity as additional water accesses the bed. The theory of efficient versus inefficient subglacial drainage explains the different observations, but it is not known what is the current mode of subglacial water drainage beneath all parts of Greenland, what specific thresholds may cause switches in drainage modes, nor the associated response of ice dynamics to these switches.~~

When discussing subglacial hydrology, a simplification can be made that ~~increased water input should lead to increased basal lubrication and faster sliding but increased~~ water decreases basal friction and leads to faster ice sliding but VHD leads to conduit formation, reduced subglacial water pressures ~~and slower,~~ and slower ice sliding. However, because VHD is generated by water flow, some condition is needed to define which behavior is dominant in a given setting. ~~We speculate that increasing VHD will have different impacts near the ice sheet margins compared to the interior of the GIS. Steep hydropotential gradients are found often near the margin,~~

Near the margin, steep hydropotential gradients (Fig. 6a) favor high VHD generation for a given water discharge ~~while small~~ gradients do the opposite. At the same time, under thinner ice near the margin, pressure available to close subglacial conduits is smaller than under thicker ice. In addition, thinner ice reduces the creep closure rate. These two combine to form larger conduits that stay open longer. In the interior, smaller gradients lead to smaller conduits, and higher overburden pressure will collapse any openings.



Existing observations support the above hypothesis. The marginal zone ice response to VHD has been well-studied and observed in the southwest sector, where ~~an~~ the summer increase in runoff is correlated with reduced glacier velocities (Bartholomew et al., 2010; Sundal et al., 2011; Tedstone et al., 2015). The interior ice response to increased runoff is less well-studied. However, Bartholomew et al. (2011) show that ~~that~~ ice does not slow down later in the season as more runoff reaches the bed, and Doyle et al. (2014) shows a year-on-year increase in velocity even with increasing runoff.

## 5.2 Increasing runoff and VHD

As the climate warms in the future an increase in the supply of surface runoff to the bed will lead to an increase in subglacial VHD. We predict a 5-to-7 times increase in VHD by the end of the century under RCP 8.5. The impact of this increase is uncertain. This is because other results show that glaciers can either increase (Zwally et al., 2002) or decrease (Sundal et al., 2011; Tedstone et al., 2015) mean annual velocity as additional water accesses the bed. The theory of efficient versus inefficient subglacial drainage explains the different observations, but it is not known what mode of subglacial water drainage currently exists beneath specific parts of Greenland, nor what specific thresholds may cause switches in drainage modes, nor the associated response of ice dynamics to these switches. We speculate that increasing VHD will have different impacts near the ice sheet margin as compared to the interior of the GIS, and that the well-studied southwest sector may not be representative of other regions since it is already the part of the GIS that is experiencing the highest VHD.

In the southwest sector, Mayaud et al. (2014) has bridged the gap spatially between the margin and the interior, and temporally between present and future, using the same runoff and RCP scenarios used in this study. They show that near the margin in the Paakitsoq region, conduits are likely to form earlier, remain longer, and reduce glacier velocity under RCP 4.5 and 8.5 compared to present. They also hypothesize that under thicker ice, conduits are unlikely to form, and increased water input into a more distributed subglacial drainage system may lead to an increase, rather than a decrease, in glacier velocity.

~~260~~ An increase in the interior ice velocity and a decrease in marginal velocity suggests that surface slopes and driving stresses will change, a result confirmed by Shannon et al. (2013). However, the range of possible results is not well enough constrained there to know the impact of the change in driving stress

or how downstream ice may pull or block the flow from upstream (e.g. Ryser et al. (2014)).

## 25 **5.3 Increasing VHD**

~~265~~ The contrasting impact of VHD on ice velocity appears to be primarily a function of basal pressure and subglacial hydrological flux (e.g. Schoof (2010)). Compared to the southwest sector the 2000 m contour (used here as an approximate boundary that defines where water accesses the bed) creates a much wider zone of active basal hydrology in the northeast and a much narrower zone in the southeast (Fig. 1). There are also much steeper bed elevation gradients on the east coast relative to the west and southwest coast (Fig. 2,  $\nabla \phi_z$ ), leading to increased VHD potential per grid cell (Fig. 2,  $\nabla \phi$ ). That increased potential is somewhat mitigated by less runoff on the east coast (Fig 1), but there is still predicted to be increased VHD in the east compared to the west per grid cell (Fig 3). However, east coast drainage basins are smaller, meaning the largest VHD increases per basin occur in the southwest sector (Fig. 4). Until field campaigns and model studies focus on regions of the GIS which

~~appear to have a different hydrological and basal system at present, the results of most southwest-focused studies should be generalized with caution. However, the specific conditions that cause a velocity increase or decrease have not been well defined. Andersen et al. (2011) performed a sensitivity study between glacier velocity and increased runoff, but that study was limited to 55 days and one marine terminating glacier. It is therefore hard to estimate what the impact of increasing VHD will be in the future on the GIS.~~

### 5.2.1 Increasing runoff and VHD in the marginal zone

~~A threshold of a 50% increase in runoff has been identified by Tedstone et al. (2015) as leading to a widespread reduction in glacier velocity in the southwest sector marginal zone. It is likely that the threshold is not a 1.5 times increase in runoff, but perhaps the absolute change in VHD. We demonstrate this by comparing both the change units J and relative change units % in VHD in our results to the relative change reported by Tedstone et al. (2015).~~

~~We Our results~~ show a 10-20% increase in basin-cumulative VHD over the same region and time period used by Tedstone et al. (2015) (Fig. 5, right panel). ~~However, our results include all of the GIS and relative decreases elsewhere do not match observed velocity trends over similar time periods (e.g. Rignot and Kanagaratnam (2006); Joughin et al. (2010)). We also show that this 10-20% increase, which~~ is equivalent to ~~an absolute increase of a~~  $\sim 2 \text{ PJ year}^{-1}$  per basin (Fig 4a). ~~Over this same period, much of the rest of the ice sheet has near zero or negative increases (when viewed on a petajoule scale) Elsewhere, except for a region in the southeast and a few isolated basins in the northwest, most basins show a decrease between the TB and TR periods, but currently the regional velocity changes elsewhere are not known beyond the localized outlet glaciers. If the regional correlation between our results and Tedstone et al. (2015) shown here is causal, then it appears that~~ an increase of VHD on the order of a 1 PJ ~~per basin or~~ may be near the threshold that causes a reduction in ice marginal zone velocities.

Under the RCP 4.5 scenario, every basin will experience a  $2 \text{ PJ year}^{-1}$  increase in VHD, with many gaining  $>10 \text{ PJ year}^{-1}$  (Fig. 4, note that these numbers are the total change of a rate, not a rate of change). These significant increases in VHD should cause conduits, where they do form, to form more quickly and grow to larger dimensions than they do at present.

~~The VHD results presented here match the location and magnitude of an increase in runoff that causes a slowdown near the margin according to Tedstone et al. (2015). This supports our proposition that~~ ~~At first, small increases in runoff may lead to faster ice flow, but eventually~~ significant increases of VHD around all of GIS in the future may cause a slowdown in marginal zones ~~elsewhere~~. At marine terminating glaciers, this effect may be less important than other processes determining glacier velocity and its variability, such as the processes related to ice-ocean interactions (e.g. Walter et al. (2012)). There may be fundamental differences in VHD between marine- and land- terminating glaciers. Relative to land-terminating glaciers, marine-terminating glaciers have a depressed PTT at the discharge location. ~~They~~ ~~Marine terminating glaciers~~ may also have reduced surface slopes near their margin and different basal topography (producing different hydropotential gradients), from the cumulative effect of a different flow regime due to their marine boundary.

### 5.2.2 Increasing runoff and VHD in the interior

Future runoff and VHD will be distributed over a longer part of a year relative to the present since climate warming prolongs the melt season in Greenland (Hanna et al., 2008). It will also be distributed spatially further inland relative to the present, and in the interior ~~is inefficient conduits are~~ less likely to form ~~conduits~~ (Dow et al., 2014). Additional heat and water at the bed will warm the basal ice. If ~~it the water~~ cannot be evacuated efficiently by conduits, ~~it will also increase basal water pressures and reduce friction~~ basal pressures will increase. Given that the primary cause of velocity decreases near the margin is assumed to be the evolution of subglacial conduits reducing basal water pressures, their absence in the interior means we expect velocities to increase, in line with existing observations (Doyle et al., 2014; Bartholomew et al., 2011). However, traditionally the relationship between basal friction and velocity is observed near the margins, where accelerating ice can flow unimpeded.  
10 If the interior ice accelerates due to increased basal pressures, but the marginal zone ice slows down due to increased VHD, then the interior ice flow may be modulated by the marginal ice flow (e.g. Ryser et al. (2014)).

When VHD occurs in new locations at the GIS bed it may convert a frozen bed to temperate and increase ice sliding (Parizek and Alley, 2004; Shannon et al., 2013). This is not likely to impact most of Greenland, where the frozen bed is under ice with a surface elevation >2000 m and therefore remains isolated from surface runoff. However, the northern sector has a frozen bed  
15 in regions where, according to our model, VHD increases markedly under the RCP 4.5 and 8.5 scenarios (MacGregor et al., 2016).

### 5.3 Other uses of energy than VHD

Not all of the incoming energy is converted to VHD and used to melt conduits, warm the basal ice, or warm the bed. The primary use of energy other than VHD is change in heat content of the water itself which needs to compensate for the spatially  
20 changing PTT. Classic glacier theory (i.e. Röthlisberger (1972)) states that when flow is driven by a pressure gradient, 35% of the available VHD is used internally to keep the water at the phase transition temperature (here termed a "loss"), and the remaining amount is dissipated as heat.

Our results show that different sectors may experience large changes in VHD relative to each other due to changes in the PTT. In practice, losses near 35% occur often - whenever elevation change across a grid cell is close to 0, and flow is driven  
25 primarily by a pressure gradient (Fig. 2). Negligible losses, near 0%, are also relatively common, when ice thickness does not change and both surface and bed elevation have similar gradients. Gains of 35% may also occur where the surface remains ~~near-nearly~~ flat and the bed drops drastically. Finally, in some ~~places~~ locations an increasing PTT may consume 100% of the available VHD and basal freeze-on occurs. Although here we use the term "freeze" and display locations of freeze-on in blue (Fig. 3), these regions inject excess heat into the subglacial water and basal ice (not tracked in our model), due to the release  
30 of latent heat as water freezes (Alley et al., 1998; Bell et al., 2014).

There are some disagreements in the location of basal freeze-on between our model and Bell et al. (2014) observations. The largest area of disagreement occurs in the upper Petermann catchment (bottom right of Fig. 7). In this area, the model does not estimate freeze-on within a few km of the observed basal ice packages. Conversely, in the northwest sector, several obser-

5 vational transects running east-west appear just southward of similar east-west model clusters of freeze-on locations. It seems likely that these agreements may also indicate an artifact in the basal DEM. The basal DEM is built, in part, from these same Bell et al. (2014) observational transects (Morlighem et al., 2014). The regular vertical spacing and linear horizontal clustering suggests a processing artifact. Finally, our routing model treats over-deepeneds and locations of basal freeze-on the same as other regions, which may be an invalid assumption. Hooke (1994) showed that on mountain glaciers, water preferentially routes englacially, rather than subglacially, as it crosses an over-deepened section, rather than subglacially. Englacial routing in the interior of the GIS may not be as likely to occur as in a mountain glacier, but alternate basal paths may be used by the water to avoid locations favorable for freeze-on.

10 It seems likely that part of the cause for the disagreement between our model results and Bell et al. (2014) observations is because the basal DEM does not accurately represent the bed topography, at least at 150 m resolution. If this is the case, it impacts locations of basal freeze-on, and has some impact on the flow routes modeled here, but should not change the basin-scale results. Those results are primarily a function of the surface runoff volume and location, large-scale ice-thickness, and locations of the outlet glaciers. The path the water takes between the source and sink only impacts local VHD distributions, not basin-scale quantities.

### 15 5.3.1 Geothermal Heat Flux

GHF is ~~spatially more~~ expected to be more spatially uniform than VHD, at least near the margin where conduits concentrate the flow. GHF is temporally more steady than VHD, which primarily occurs when surface melt is active. Nonetheless, it is worth comparing the magnitude and distribution of the two. Historically the total VHD of  $1.4 \text{ EJ year}^{-1}$  under the runoff area was similar to the total GHF of  $1.1 \text{ EJ year}^{-1}$  over that same area. That is no longer the case in our calculations for the recent time period, and although GHF flux does not change, the integrated amount does change because the area of integration changes. By the end of this century under RCP 8.5, VHD will contribute  $\sim 9.8 \text{ EJ year}^{-1}$  while GHF only increases to  $1.4 \text{ EJ year}^{-1}$  due to a slight increase in the runoff area that reaches the bed (when surface runoff is routed to 2000 m elevation before moving to the bed).

25 VHD and GHF comparisons and relative changes between present and future are most likely to matter in the region  $> 75 \text{ km}$  upstream of the margin and where VHD is active. This is because the change here a) switches which term is dominant and b) is far enough inland that conduits are less likely to form (Dow et al., 2014), meaning VHD is more likely to be spatially uniform rather than concentrated in smaller regions.

VHD dominates other basal heating terms considered in some glaciological models (for example, Brinkerhoff et al. (2011)). Models show that the GIS is sensitive to its basal temperature, with small differences in GHF producing significantly different GIS growth scenarios (Rogozhina et al., 2012). Local GHF highs also ~~coincides~~ coincide with onset of fast ice flow (Fahnestock et al., 2001). The results of our analysis and these GHF studies suggest that if VHD changes from 1 to 2 orders of magnitude less than GHF, to 1 to 2 orders magnitudes more than GHF, it will likely decrease the importance of GHF in modulating spatial dynamics of the ice sheet, at least within the zone of active basal hydrology dominated by surface water penetration to the bed.

## 5.4 Erosion and sediment transport

Large amounts of eroded material are also flushed out from under the GIS each year (Cowton et al., 2012). The erosion rates implied by the sediment flux are already several orders of magnitude above the background ( $>1000$  year) erosion rates (Koppes and Marchant, 2009). Larger VHD leads to larger conduits, faster water flow velocity, and higher erosion rates and sediment transport capacity. Conversely, slow subglacial water flow does not have as much impact on erosion and sediment transport (Hodson et al., 2016; Gimbert et al., 2016). ~~If 5~~ Five times the amount of water ~~flows~~ flowing along the GIS bed by the end of the century ~~, it~~ will likely increase sediment removal (Bogen and Bønsnes, 2003). If increased VHD and water at the bed of the GIS simultaneously cause sediment removal rates to increase ~~, while at the same time reducing the glacier velocity while~~ reducing glacier velocities (Tedstone et al., 2015) and therefore the production of sediment (Herman et al., 2015), the state of the bed may change over the coming centuries to millenia from potentially deformable subglacial sediments to rigid bedrock (Weertman, 1964; Kamb, 1970; Tulaczyk et al., 2000; Bougamont et al., 2014)

## 5.5 The impact of model spatial resolution on results

The model resolution is a 5x5 km grid for most of the analysis presented here, which means results are smoothed over that area. In reality, subglacial discharges occur approximately on the order of one every 5 km along the coast (Lewis and Smith, 2009). If a single conduit on the order of 10 – 100 m wide carries all of the water (Fig. 1) and is subject to all of the heating (Fig. 3), then values reported (here spread over 5000 m) are likely be one or more orders of magnitude larger in focused regions, and one or more orders of magnitude smaller outside the conduit. This limitation of the model domain is less important in the interior, where large conduits are less likely to form.

Our treatment of en- and sub- glacial hydrology is simplified because it does not represent actual conduits, but is at the same time more comprehensive than in existing global climate or ice-sheet models (e.g. Pollard and DeConto (2012)), and may offer a computationally efficient yet improved method to incorporate parameterizations of VHD at their existing grid resolution.

## 6 Conclusions

The high potential energy contained in large volumes of GIS surface meltwater is largely dissipated as heat at the ice sheet bed. This dissipated energy averaged  $1.4 \text{ EJ year}^{-1}$  between 1960 and 1999, but has recently increased to  $2.1 \text{ EJ year}^{-1}$  and will likely increase to 3.5 or  $9.8 \text{ EJ year}^{-1}$  by the end of the century under RCP 4.5 or 8.5 respectively. This viscous heat dissipation by subglacial water is the dominant basal heat source near the margin, and its impact will move inland due to increasing flux, even if conduits do not form in the interior. Under RCP 8.5, VHD will be about ten times larger than the  $\sim 1 \text{ EJ year}^{-1}$  contributed by geothermal heat flux to the same area.

Up to 6-7 times additional future VHD at the ice sheet bed (relative to the historical amount) should result in a similar 6-7 fold increase in basal ice melt volume and is expected to contribute to more numerous, larger, longer-lasting, and more widespread subglacial conduits in the margin zone. Based on recent measurements by others and glaciological theory of ice

sliding, increased VHD may decrease glacier velocity at the margin, and accelerate it in the interior where conduits either do not form or have insufficient impact on subglacial water pressures to influence ice sliding rates. ~~This~~The marginal decrease may be offset by other processes and there may still be a net acceleration, especially at marine terminating glaciers.

## Appendix A: ~~Appendix A:-~~

### 5 About This Document

This manuscript is prepared with the intent to create a "fully reproducible" scientific publication. We may not have completely succeeded, but have made progress in this direction. In order to be fully reproducible at the binary-level, a clone of our operating system with the full analysis software should be provided. This could be done with a virtual machine (VM) but we have not taken this step because VMs require ~20 GB of space, and journals do not yet support this size of supplemental materials.

Instead, we used only free and open source software above the operating system level, document in detail the version(s) of all software packages used, and provide every line of code required to reproduce the document, beginning with the commands to download the MAR (Fettweis et al., 2013) and IceBridge BedMachine Greenland, Version 2 (Morlighem et al., 2015, 2014) data sets, followed by the GRASS GIS (Neteler et al., 2012) and Python commands to produce intermediary data products and graphics.

The supplementary data is a plain-text file that contains the manuscript text and all of the code. As plain text, it can be viewed in any editor or document viewer. However, its internal structure is that of an Emacs Org Mode (Schulte and Davison, 2011; Schulte et al., 2012) file and is best viewed in Emacs, which supports execution of the embedded code blocks. A reader should be able to reproduce the contents of this document, although it will require 3rd-party applications (GRASS, Python, etc.), and, optionally, a similar system-level Emacs configuration as the authors.

We thank D. van As for initial discussions on this topic, M. Morlighem and X. Fettweis for providing accessible and documented data, R. Bell for sharing data, and D. Pollard, Anonymous referees, and The Cryosphere Discussion reviewers for comments. K. D. Mankoff was funded by NASA Headquarters under the NASA Earth and Space Science Fellowship Program (Grant NNX10AN83H) and the Postdoctoral Scholar Program at the Woods Hole Oceanographic Institution, with funding provided by the Ocean and Climate Change Institute. S. Tulaczyk was funded by NASA grant NNX11AH61G.

## References

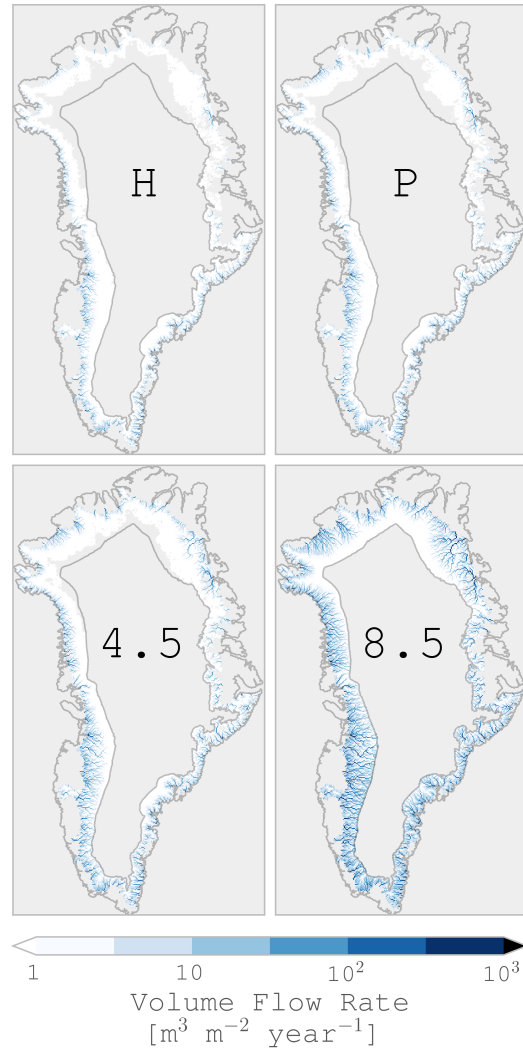
- Alley, R. B., Lawson, D. E., Evenson, E. B., Strasser, J. C., and Larson, G. J.: Glaciohydraulic supercooling: a freeze-on mechanism to create stratified, debris-rich basal ice: II. Theory, *Journal of Glaciology*, 44, 563–569, 1998.
- Andersen, M. L., Nettles, M., Elósegui, P., Larsen, T. B., Hamilton, G. S., and Stearns, L. A.: Quantitative estimates of velocity sensitivity to surface melt variations at a large Greenland outlet glacier, *Journal of Glaciology*, 57, 609, 2011.
- Andrews, L. C., Catania, G. A., Hoffman, M. J., Gulley, J. D., Lüthi, M. P., Ryser, C., Hawley, R. L., and Neumann, T. A.: Direct observations of evolving subglacial drainage beneath the Greenland Ice Sheet, *Nature*, 514, 80–83, doi:10.1038/nature13796, 2014.
- Arnold, N. S., Banwell, A. F., and Willis, I. C.: High-resolution modelling of the seasonal evolution of surface water storage on the Greenland Ice Sheet, *The Cryosphere*, 8, 1149–1160, doi:10.5194/tc-8-1149-2014, 2014.
- 10 Banwell, A. F., Willis, I. C., and Arnold, N. S.: Modelling subglacial water routing at Paakitsoq, W Greenland, *Journal of Geophysical Research: Earth Surface*, pp. 1282–1295, doi:10.1002/jgrf.20093, 2013.
- Bartholomew, I. D., Nienow, P. W., Mair, D. W. F., Hubbard, A., King, M. A., and Sole, A. J.: Seasonal evolution of subglacial drainage and acceleration in a Greenland outlet glacier, *Nature Geoscience*, 3, doi:10.1038/NGEO863, 2010.
- Bartholomew, I. D., Nienow, P. W., Sole, A. J., Mair, D. W. F., Cowton, T. R., King, M. A., and Palmer, S.: Seasonal variations in Greenland Ice Sheet motion: Inland extent and behaviour at higher elevations, *Earth and Planetary Science Letters*, 307, 271 – 278, doi:10.1016/j.epsl.2011.04.014, 2011.
- 15 Bell, R. E., Tinto, K. J., Das, I., Wolovick, M., Chu, W., Creyts, T. T., Frearson, N., Abdi, A., and Paden, J. D.: Deformation, warming and softening of Greenland’s ice by refreezing meltwater, *Nature Geoscience*, 7, 497–502, doi:10.1038/NGEO2179, 2014.
- Bogen, J. and Bønsnes, T. E.: Erosion and sediment transport in High Arctic rivers, Svalbard, *Polar Research*, 22, 175–189, doi:10.1111/j.1751-8369.2003.tb00106.x, 2003.
- 20 Bougamont, M., Christoffersen, P., Hubbard, A. L., Fitzpatrick, A. A., Doyle, S. H., and Carter, S. P.: Sensitive response of the Greenland Ice Sheet to surface melt drainage over a soft bed, *Nature Communications*, 5, 5052, doi:10.1038/ncomms6052, 2014.
- Brinkerhoff, D. J., Meierbachtol, T. W., Johnson, J. V., and Harper, J. T.: Sensitivity of the frozen/melted basal boundary to perturbations of basal traction and geothermal heat flux: Isunnguata Sermia, western Greenland, *Annals of Glaciology*, 52, 43 – 50, doi:10.3189/172756411799096330, 2011.
- 25 Catania, G. A. and Neumann, T. A.: Persistent englacial drainage features in the Greenland Ice Sheet, *Geophysical Research Letters*, 37, doi:10.1029/2009GL041108, 2010.
- Cowton, T., Nienow, P., Bartholomew, I. D., Sole, A., and Mair, D. W. F.: Rapid erosion beneath the Greenland ice sheet, *Geology*, 40, 343–346, doi:10.1130/G32687.1, 2012.
- 30 Dow, C. F., Kulessa, B., Rutt, I. C., Doyle, S. H., and Hubbard, A.: Upper bounds on subglacial channel development for interior regions of the Greenland ice sheet, *Journal of Glaciology*, 60, 1044–1052, doi:10.3189/2014JoG14J093, 2014.
- Doyle, S. H., Hubbard, A., Fitzpatrick, A. A. W., van As, D., Mikkelsen, A. P. B., Pettersson, R., and Hubbard, B. P.: Persistent flow acceleration within the interior of the Greenland Ice Sheet, *Geophysical Research Letters*, 41, 899–905, doi:10.1002/2013GL058933, 2014.
- 35 Engelhardt, H. and Kamb, B.: Basal hydraulic system of a West Antarctic ice stream: constraints from borehole observations, *Journal of Glaciology*, 43, 207–230, 1997.



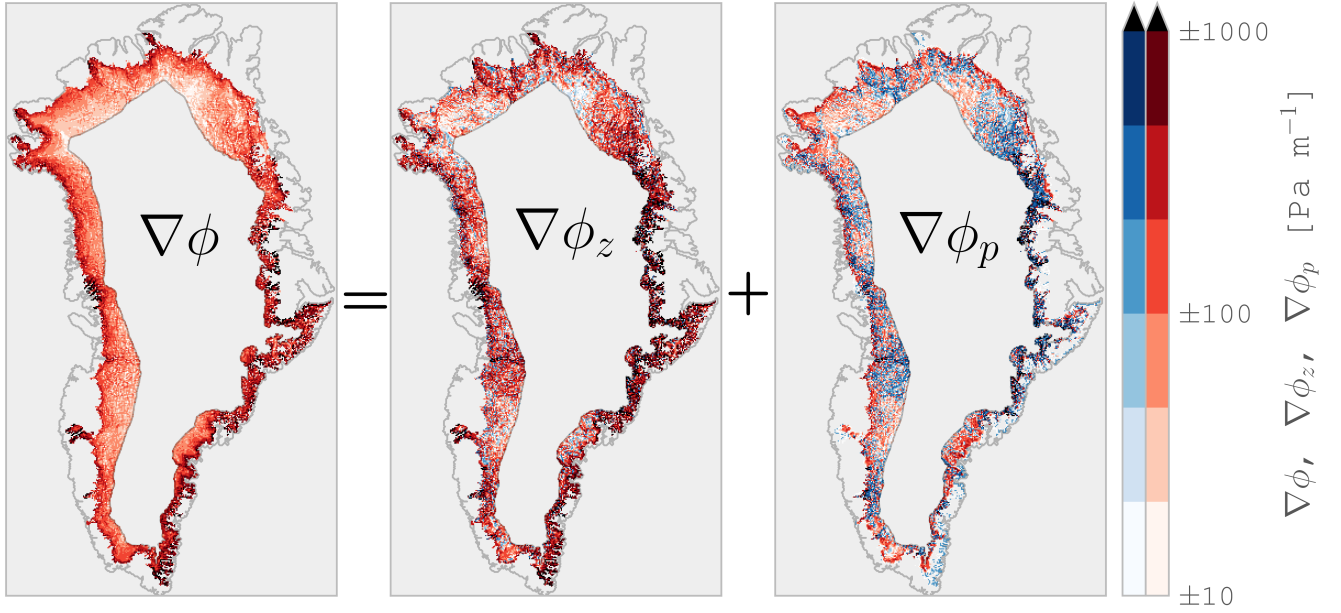
- Fahnestock, M., Abdalati, W., Joughin, I. R., Brozena, J., and Gogineni, P. S.: High geothermal heat flow, basal melt, and the origin of rapid ice flow in central Greenland, *Science*, 294, 2338–2342, doi:10.1126/science.1065370, 2001.
- Fettweis, X., Franco, B., Tedesco, M., van Angelen, J. H., Lenaerts, J. T. M., van den Broeke, M. R., and Gallée, H.: Estimating Greenland ice sheet surface mass balance contribution to future sea level rise using the regional atmospheric climate model MAR, *The Cryosphere*, 7, 469 – 489, doi:10.5194/tc-7-469-2013, 2013.
- Fountain, A. G.: Borehole water-level variations and implications for the subglacial hydraulics of South Cascade Glacier, Washington State, USA, *Journal of Glaciology*, 40, 1994.
- Gimbert, F., Tsai, V. C., Amundson, J. M., Bartholomäus, T. C., and Walter, J. I.: Subseasonal changes observed in subglacial channel pressure, size, and sediment transport, *Geophysical Research Letters*, 43, 3786–3794, doi:10.1002/2016GL068337, 2016.
- 10 Hanna, E., Huybrechts, P., Steffen, K., Cappelen, J., Huff, R., Shuman, C., Irvine-Fynn, T., Wise, S., and Griffiths, M.: Increased runoff from melt from the Greenland Ice Sheet: a response to global warming, *Journal of Climate*, 21, 331–341, doi:10.1175/2007JCLI1964.1, 2008.
- Herman, F., Beyssac, O., Brughelli, M., Lane, S. N., Leprince, S., Adatte, T., Lin, J. Y. Y., Avouac, J.-P., and Cox, S. C.: Erosion by an Alpine glacier, *Science*, 350, 193–195, doi:10.1126/science.aab2386, 2015.
- Hewitt, I. J.: Seasonal Changes in Ice Sheet Motion due to Melt Water Lubrication, *Earth and Planetary Science Letters*, 371–372, 16–25, doi:10.1016/j.epsl.2013.04.022, 2013.
- 15 Hodson, T. O., Powell, R. D., Brachfeld, S. A., Tulaczyk, S., and Scherer, R. P.: Physical processes in Subglacial Lake Whillans, West Antarctica: Inferences from sediment cores, *Earth and Planetary Science Letters*, 444, 56–63, doi:10.1016/j.epsl.2016.03.036, 2016.
- Hooke, R. L.: Hydrology of a segment of a glacier situated in an overdeepening, Storglaciären, Sweden, *Journal of Glaciology*, 40, 140 – 148, doi:10.3198/1994JoG40-134-140-148, 1994.
- 20 Hooke, R. L.: *Principles of Glacier Mechanics*, Cambridge University Press, 2nd edn., doi:10.1017/CBO9780511614231, 2005.
- Isenko, E., Naruse, R., and Mavlyudov, B.: Water temperature in englacial and supraglacial channels: Change along the flow and contribution to ice melting on the channel wall, *Cold Regions Science and Technology*, 42, 53–62, doi:10.1016/j.coldregions.2004.12.003, 2005.
- Joughin, I. R., Smith, B., Howat, I. M., Scambos, T. A., and Moon, T.: Greenland flow variability from ice-sheet-wide velocity mapping, *Journal of Glaciology*, 56, 415–430, 2010.
- 25 Kamb, B.: Sliding motion of glaciers: theory and observation, *Reviews of Geophysics*, 8, 673–728, 1970.
- Kamb, B.: Glacier surge mechanism based on linked cavity configuration of the basal water conduit system, *Journal of Geophysical Research*, 92, 9083–9100, 1987.
- Koppes, M. N. and Marchant, D. R.: The relative efficacy of fluvial and glacial erosion over modern to orogenic timescales, *Nature Geoscience*, 2, 644–647, doi:10.1038/NGEO616, 2009.
- 30 Lewis, S. M. and Smith, L. C.: Hydrologic drainage of the Greenland ice sheet, *Hydrological Processes*, 23, 2004–2011, doi:10.1002/hyp.7343, 2009.
- MacGregor, J. A., Fahnestock, M. A., Catania, G. A., Aschwanden, A., Clow, G. D., Colgan, W. T., Gogineni, P. S., Morlighem, M., Nowicki, S. M. J., Paden, J. D., Price, S. F., and Seroussi, H.: A synthesis of the basal thermal state of the Greenland Ice Sheet, *Journal of Geophysical Research: Earth Surface*, doi:10.1002/2015JF003803, 2016.
- 35 Mayaud, J. R., Banwell, A. F., Arnold, N. S., and Willis, I. C.: Modeling the response of subglacial drainage at Paakitsoq, West Greenland, to 21st century climate change, *Journal of Geophysical Research: Earth Surface*, 119, 2619–2634, doi:10.1002/2014JF003271, 2014.
- Meierbachtol, T. W., Harper, J., and Humphrey, N.: Basal Drainage System Response to Increasing Surface Melt on the Greenland Ice Sheet, *Science*, 341, 777–779, doi:10.1126/science.1235905, 2013.

- Meierbachtol, T. W., Harper, J. T., Johnson, J. V., Humphrey, N. F., and Brinkerhoff, D. J.: Thermal boundary conditions on Western Greenland: observational constraints and impacts on the modeled thermo-mechanical state, *Journal of Geophysical Research: Earth Surface*, 120, 623–636, doi:10.1002/2014JF003375, 2015.
- Morlighem, M., Rignot, E. J., Mouginot, J., Seroussi, H., and Larour, E.: Deeply incised submarine glacial valleys beneath the Greenland ice sheet, *Nature Geoscience*, 7, 418–422, doi:10.1038/NGEO2167, 2014.
- Morlighem, M., Rignot, E. J., Mouginot, J., and Seroussi, H.: IceBridge BedMachine Greenland, Version 2, doi:10.5067/AD7B0HQNSJ29, nASA DAAC at the National Snow and Ice Data Center, 2015.
- Moss, R. H., Edmonds, J. A., Hibbard, K. A., Manning, M. R., Rose, S. K., van Vuuren, D. P., Carter, T. R., Emori, S., Kainuma, M., Kram, T., Meehl, G. A., Mitchell, J. F. B., Nakicenovic, N., Riahi, K., Smith, S. J., Stouffer, R. J., Thomson, A. M., Weyant, J. P., and Wilbanks, T. J.: The next generation of scenarios for climate change research and assessment, *Nature*, 463, 747–756, doi:10.1038/nature08823, 2010.
- Neteler, M., Bowman, M., Landa, M., and Metz, M.: GRASS GIS: a multi-purpose Open Source GIS, *Environmental Modelling & Software*, 31, 124–130, doi:10.1016/j.envsoft.2011.11.014, 2012.
- Parizek, B. R. and Alley, R. B.: Implications of increased Greenland surface melt under global-warming scenarios: ice-sheet simulations, *Quaternary Science Reviews*, 23, 1013–1027, doi:10.1016/j.quascirev.2003.12.024, 2004.
- Poinar, K., Joughin, I., Das, S. B., Behn, M. D., Lenaerts, J. T. M., and Broeke, M. R.: Limits to future expansion of surface-melt-enhanced ice flow into the interior of western Greenland, *Geophysical Research Letters*, 42, 1800–1807, doi:10.1002/2015GL063192, 2015.
- Pollard, D. and DeConto, R. M.: Description of a hybrid ice sheet-shelf model, and application to Antarctica, *Geoscientific Model Development*, 5, 1273–1295, doi:10.5194/gmd-5-1273-2012, 2012.
- Rignot, E. J. and Kanagaratnam, P.: Changes in the velocity structure of the Greenland Ice Sheet, *Science*, 311, 986–990, doi:10.1126/science.1121381, 2006.
- Rogozhina, I., Hagedoorn, J. M., Martinec, Z., Fleming, K., Soucek, O., Greve, R., and Thomas, M.: Effects of uncertainties in the geothermal heat flux distribution on the Greenland Ice Sheet: An assessment of existing heat flow models, *Journal of Geophysical Research: Earth Surface*, 117, doi:10.1029/2011JF002098, 2012.
- Ryser, C., Lüthi, M. P., Andrews, L. C., Catania, G. A., Funk, M., Hawley, R. L., Hoffman, M. J., and Neumann, T. A.: Caterpillar-like ice motion in the ablation zone of the Greenland Ice Sheet, *Journal of Geophysical Research: Earth Surface*, 119, 2258–2271, doi:10.1002/2013JF003067, 2014.
- Röthlisberger, H.: Water pressure in intra- and subglacial channels, *Journal of Glaciology*, 11, 177 – 203, 1972.
- Schoof, C. G.: Ice-sheet acceleration driven by melt supply variability, *Nature*, 468, 803–806, doi:10.1038/nature09618, 2010.
- Schulte, E. and Davison, D.: Active documents with Org-mode, *Computing in Science & Engineering*, 13, 66–73, 2011.
- Schulte, E., Davison, D., Dye, T., and Dominik, C.: A multi-language computing environment for literate programming and reproducible research, *Journal of Statistical Software*, 46, 1–24, 2012.
- Shannon, S. R., Payne, A. J., Bartholomew, I. D., van den Broeke, M. R., Edwards, T. L., Fettweis, X., Gagliardini, O., Gillet-Chaulet, F., Goelzer, H., Hoffman, M. J., Huybrechts, P., Mair, D. W. F., Nienow, P. W., Perego, M., Price, S. F., Smeets, C. J. P. P., Sole, A. J., van de Wal, R. S. W., and Zwinger, T.: Enhanced basal lubrication and the contribution of the Greenland ice sheet to future sea-level rise, *Proceedings of the National Academy of Sciences*, 110, 14 156–14 161, doi:10.1073/pnas.1212647110, 2013.
- Shapiro, N. M. and Ritzwoller, M. H.: Inferring Surface Heat Flux Distributions Guided by a Global Seismic Model: Particular Application to Antarctica, *Earth and Planetary Science Letters*, 223, 213–224, doi:10.1016/j.epsl.2004.04.011, 2004.
- Shreve, R. L.: Movement of water in glaciers, *Journal of Glaciology*, 11, 205–214, 1972.

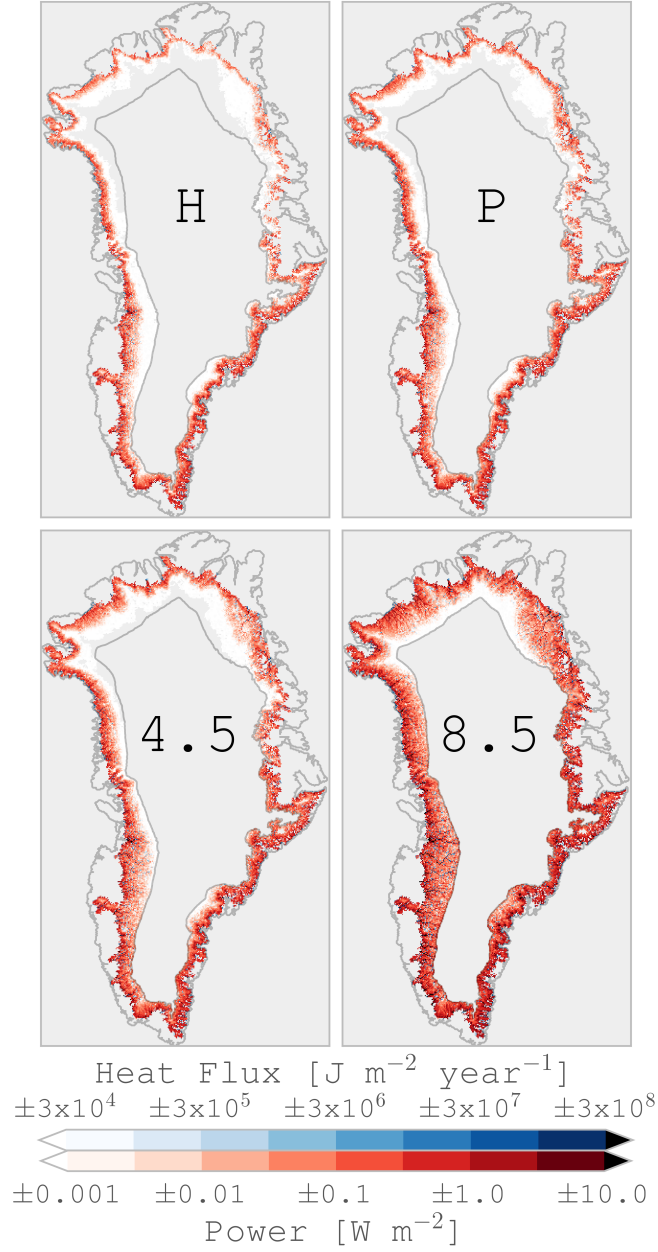
- Sundal, A. V., Shepherd, A., Nienow, P. W., Hanna, E., Palmer, S., and Huybrechts, P.: Melt-induced speed-up of Greenland ice sheet offset by efficient subglacial drainage, *Nature*, 469, 521–524, doi:10.1038/nature09740, 2011.
- Tedstone, A. J., Nienow, P. W., Gourmelen, N., Dehecq, A., Goldberg, D., and Hanna, E.: Decadal slowdown of a land-terminating sector of the Greenland Ice Sheet despite warming, *Nature*, 526, 692–695, doi:10.1038/nature15722, 2015.
- 5 Tulaczyk, S. M., Kamb, W. B., and Engelhardt, H. F.: Basal mechanics of Ice Stream B, West Antarctica 1. Till mechanics, *Journal of Geophysical Research*, 105, 463 – 481, 2000.
- Walter, J. I., Box, J. E., Tulaczyk, S. M., Brodsky, E. E., Howat, I. M., Ahn, Y., and Brown, A.: Oceanic mechanical forcings of the dynamics of a marine-terminating Greenland glacier by ice mélange removal and ocean tides, *Annals of Glaciology*, 53, 181 – 192, doi:10.3189/2012AoG60A083, 2012.
- 10 Weertman, J.: The Theory of Glacier Sliding, *Journal of Glaciology*, 5, 287–303, 1964.
- Yang, K. and Smith, L. C.: Supraglacial Streams on the Greenland Ice Sheet Delineated From Combined Spectral–Shape Information in High-Resolution Satellite Imagery, *IEEE Geoscience and Remote Sensing Letters*, 10, 801 – 805, doi:10.1109/LGRS.2012.2224316, 2013.
- Yang, K., Smith, L. C., Chu, V. W., Gleason, C. J., and Li, M.: A Caution on the Use of Surface Digital Elevation Models to Simulate
- 15 Supraglacial Hydrology of the Greenland Ice Sheet, *IEEE Journal of Selected Topics in Applied Earth Observations and Remote Sensing*, pp. 1–13, doi:10.1109/JSTARS.2015.2483483, 2015.
- Zwally, H. J., Abdalati, W., Herring, T., Larson, K., Saba, J. L., and Steffen, K.: Surface melt-induced acceleration of Greenland ice-sheet flow, *Science*, 297, 218–222, 2002.



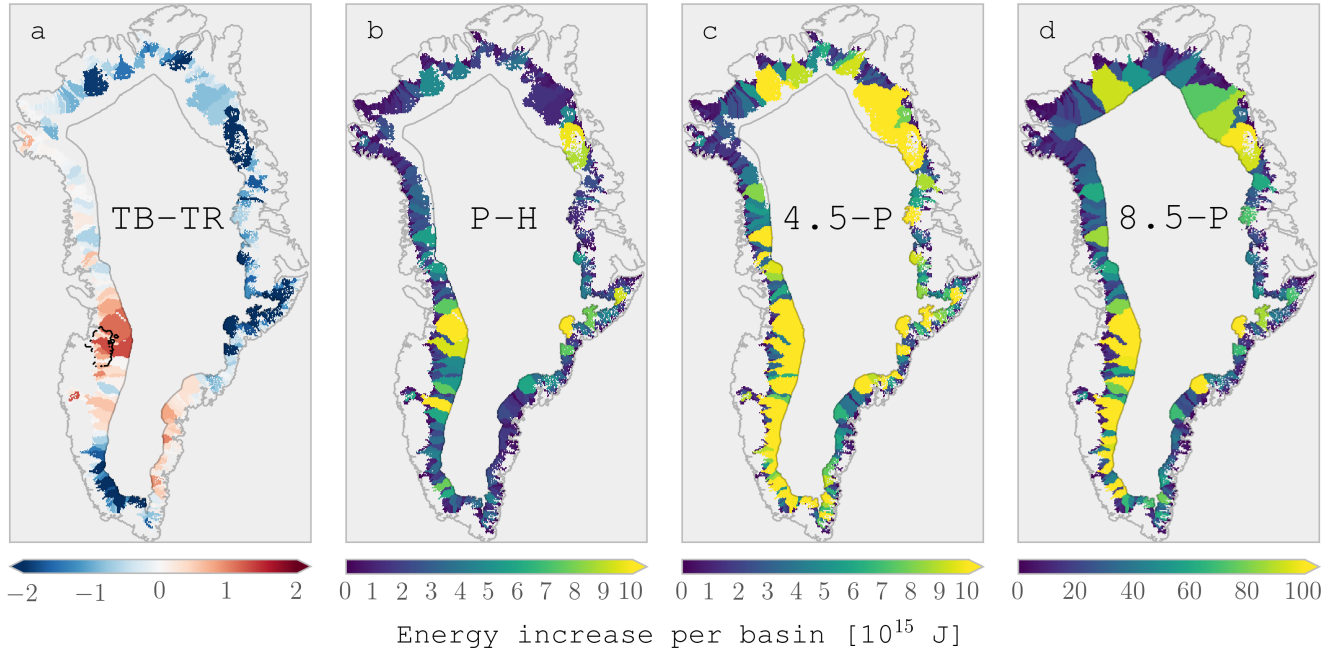
**Figure 1.** Accumulation of subglacial water flowing through each grid cell. Results are presented on a 5x5 km grid. Labels represent (H)istorical mean from 1960 – 1999, (P)resent mean from 2010 – 2019, (4.5) years 2090 – 2099 under IPCC AR5 RCP4.5, and (8.5) same as (4.5) but under scenario RCP8.5. Gray contours mark 0 and 2000 m elevation.



**Figure 2.** Net hydropotential gradient for each cell ( $\nabla\phi$ ), and the decomposition of net hydropotential gradient to elevation-driven hydropotential gradient ( $\nabla\phi_z$ ) and pressure-driven hydropotential gradient ( $\nabla\phi_p$ ). Red implies flow downhill ~~and~~ or under ~~thining~~ thinning ice. Blue implies flow uphill ~~and~~ or under thickening ice.

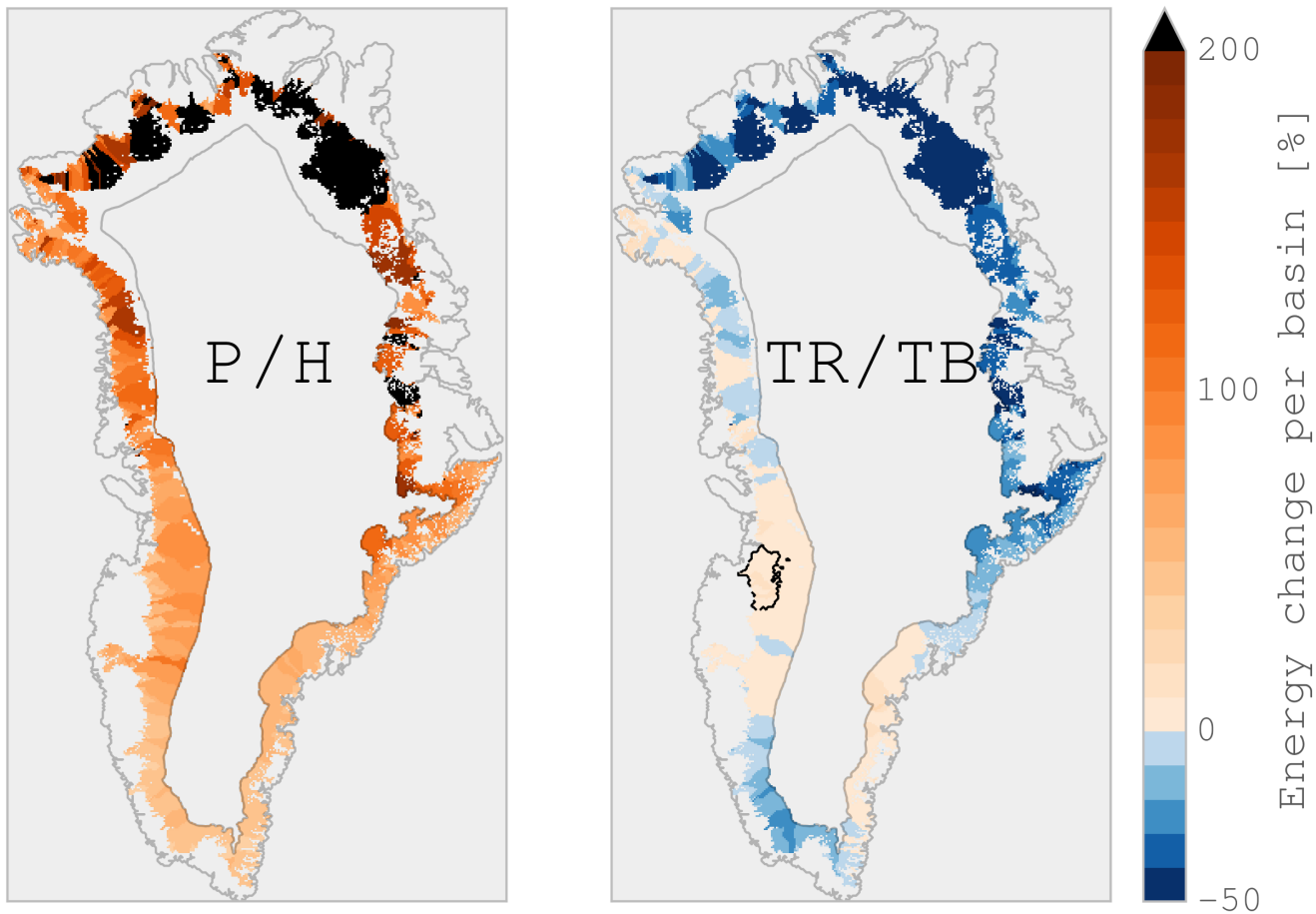


**Figure 3.** Heat released at the bed due to VHD. Labels same as Fig. 1. Colorbars represent heating (red) and cooling (blue), and numbers are valid for both colorbars (i.e.  $1 \text{ W m}^{-2}$  equals  $3 \times 10^7 \text{ J m}^2 \text{ year}^{-1}$ , and each of those values are positive on the red colorbar and negative on the blue colorbar). Gray contours mark 0 and 2000 m elevation.

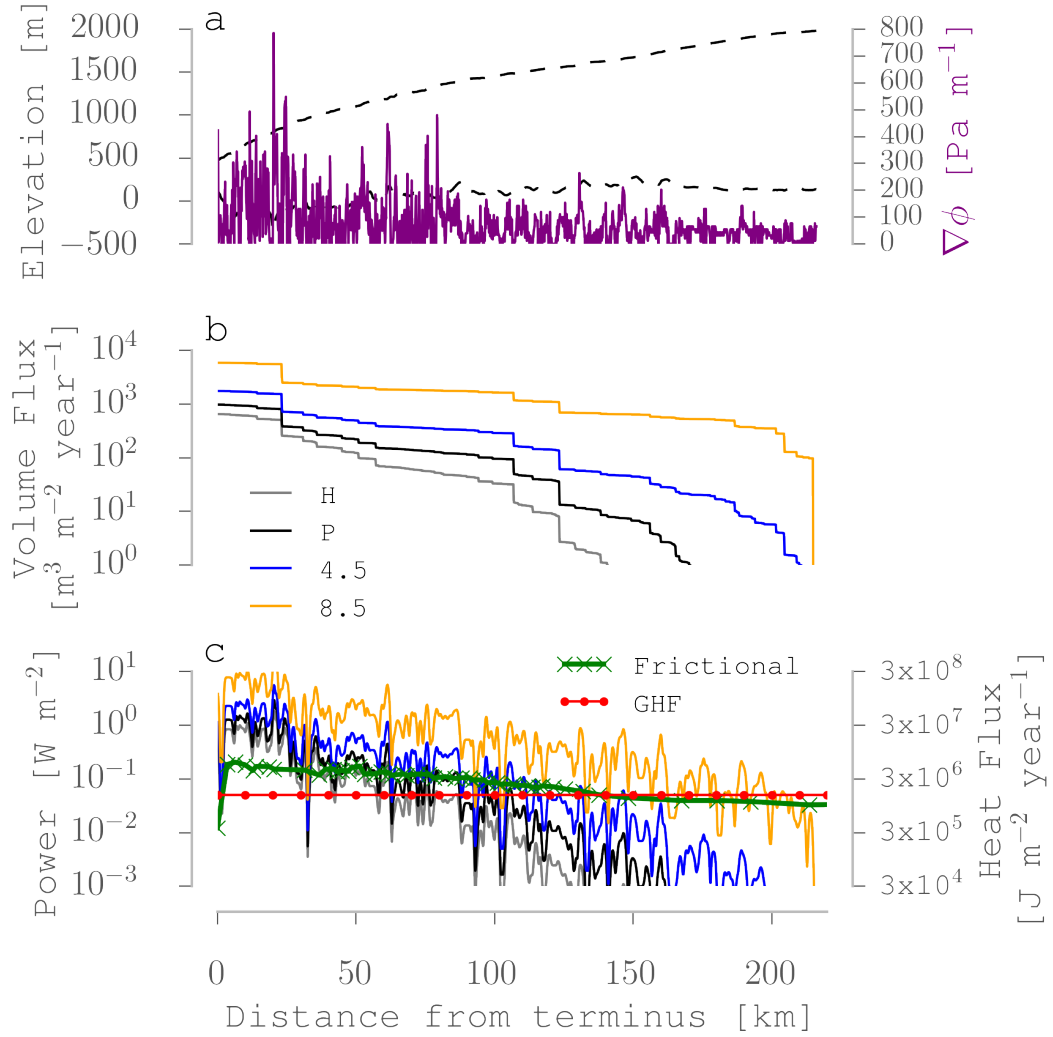


**Figure 4.** Change in VHD per basin. Label TB-TR represents increase from reference to baseline periods (1985–1994 and 2007–2014) from Tedstone et al. (2015), P-H increase from historical to present, 4.5-P increase from present to 2090s under RCP 4.5, and similarly for 8.5-P. Gray contours are 0 and 2000 m elevation. [Tedstone et al. \(2015\)](#) highlighted with black contour line in panel (a).

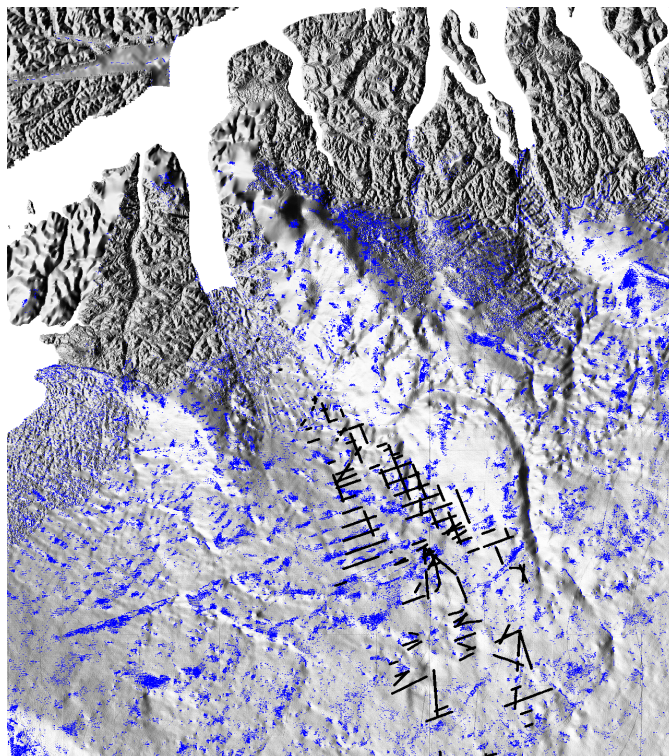




**Figure 5.** Relative change in VHD per basin highlighting the impact of different averaging periods. P/H is 100 x present divided by historical, and TR/TB is 100 x the reference (1985–1994) divided by baseline (2007–2014) years from Tedstone et al. (2015). Gray contours are 0 and 2000 m elevation. [Tedstone et al. \(2015\) highlighted with black contour line right panel.](#)



**Figure 6.** Detail along a flowline in Southwest Greenland. a) surface and bed elevation (left axis) and gradient of  $\phi$  (right axis), b) flow rate of subglacial water, and c) power or heat flux, frictional heating, and geothermal heat flux (GHF). Legend labels H, P, 4.5, and 8.5 same as Fig. 1. Frictional heating from Brinkerhoff et al. (2011), and GHF from Shapiro and Ritzwoller (2004). Lines in panel (c) are smoothed to reduce visual noise and are actually as variable as panel (a).



**Figure 7.** Close-up of Petermann glacier region at 150 m resolution. Gray basemap is shaded relief of hydropotential gradient. Blue dots and black lines are locations of basal freeze-on predicted by the model and from Bell et al. (2014), respectively. Each blue dot is a 150 m x 150 m square pixel.

**Table 1.** Properties of Greenland runoff and viscous heat dissipation. (H)istorical period covers 1960 – 1999, (P)resent spans 2010 – 2019, and the RCP(4.5) and (8.5) periods span 2090 – 2099. Runoff volume from MAR (Fettweis et al., 2013). Geothermal heat flux from Shapiro and Ritzwoller (2004) calculated only under runoff area.

| Property                          | Units                               | H   | P   | 4.5 | 8.5  |
|-----------------------------------|-------------------------------------|-----|-----|-----|------|
| Runoff volume                     | km <sup>3</sup> yr <sup>-1</sup>    | 244 | 345 | 524 | 1278 |
| Maximum discharge per 5x5 km grid | km <sup>3</sup> yr <sup>-1</sup>    | 5   | 7   | 10  | 31   |
| Viscous heat dissipation          | 10 <sup>18</sup> J yr <sup>-1</sup> | 1.4 | 2.1 | 3.5 | 9.8  |
| Geothermal heat flux              | 10 <sup>18</sup> J yr <sup>-1</sup> | 1.1 | 1.1 | 1.3 | 1.4  |