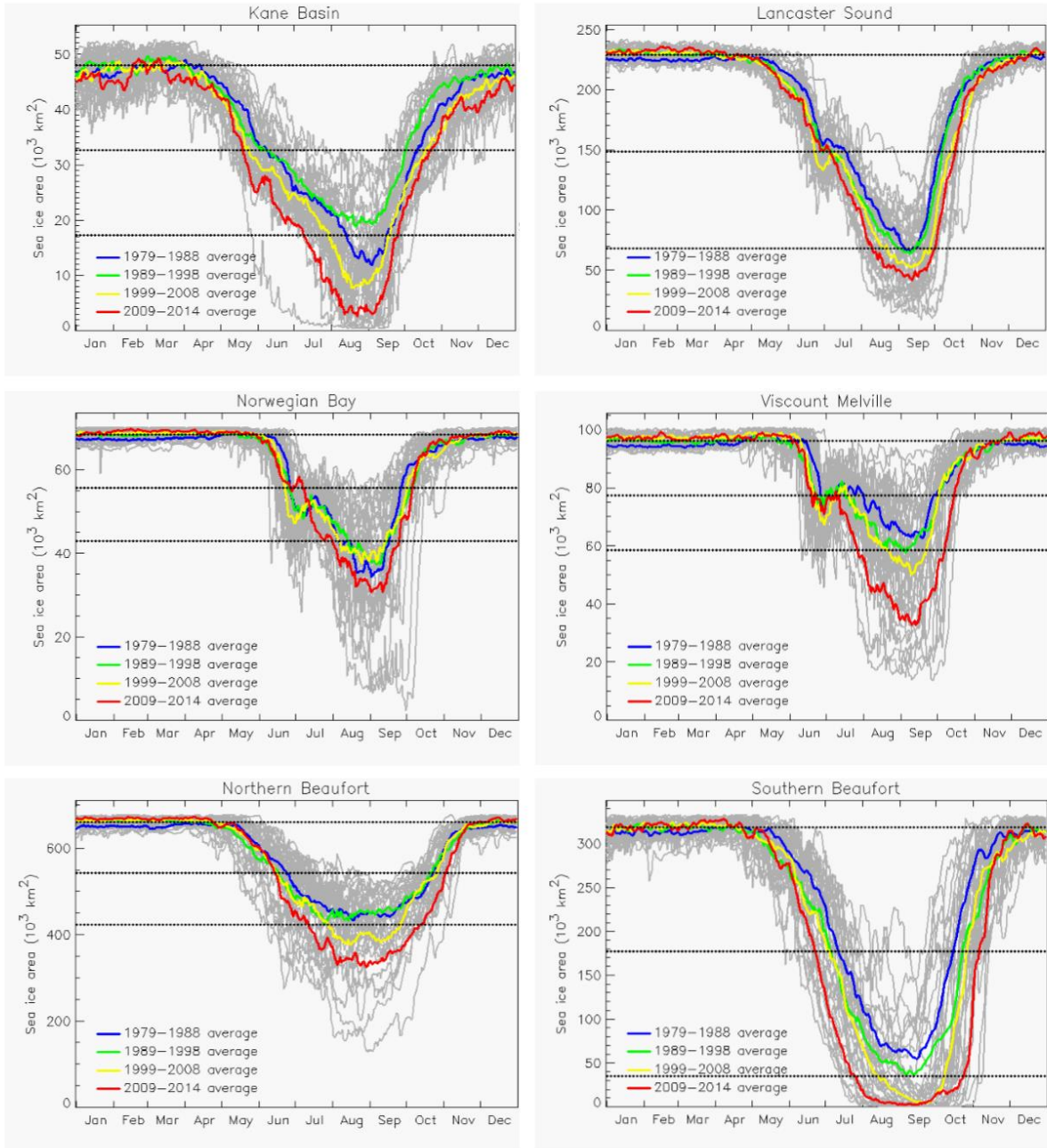


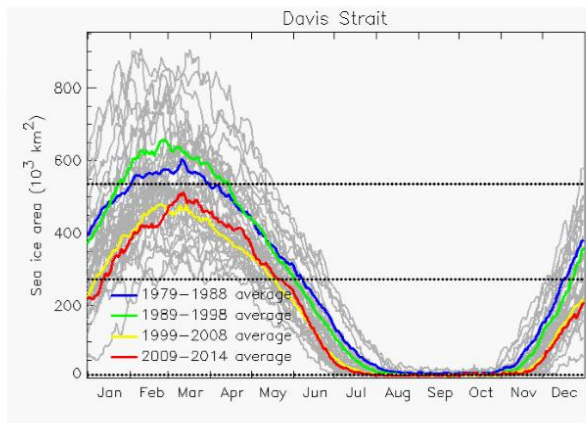
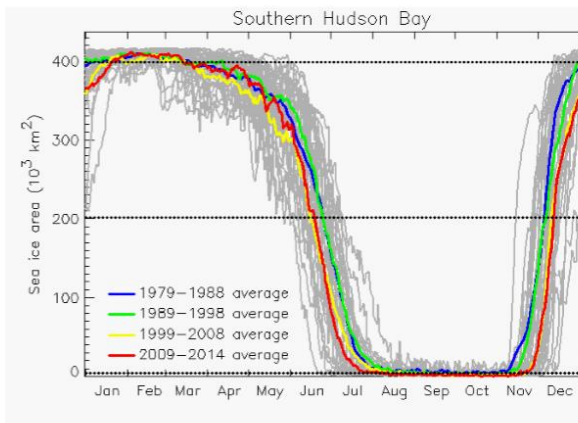
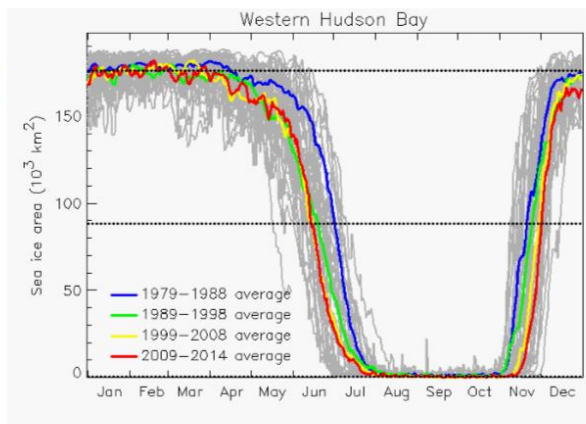
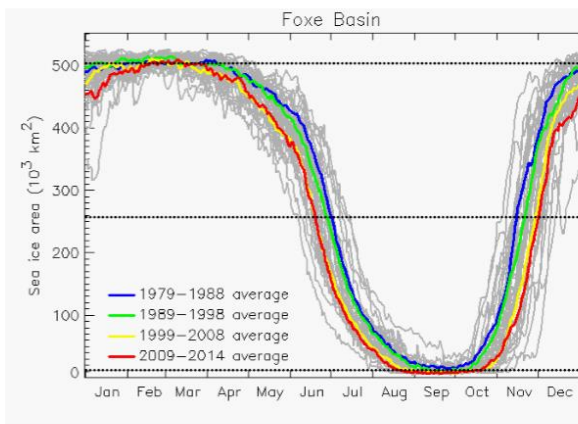
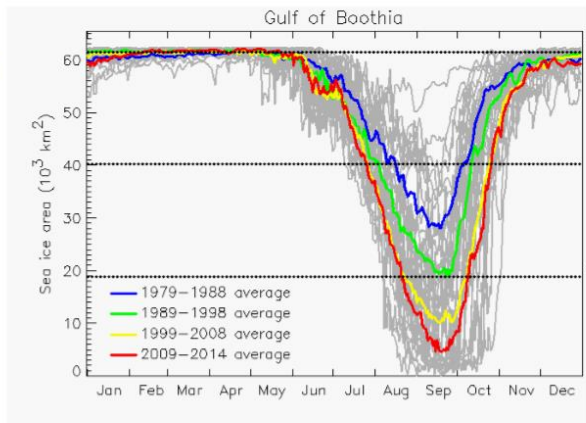
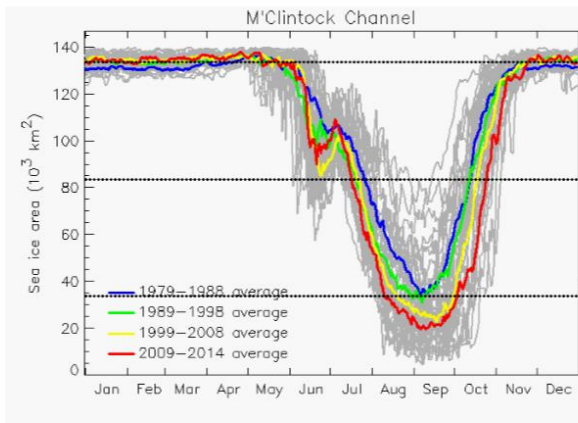
Supplement

A. Daily Sea-Ice Area

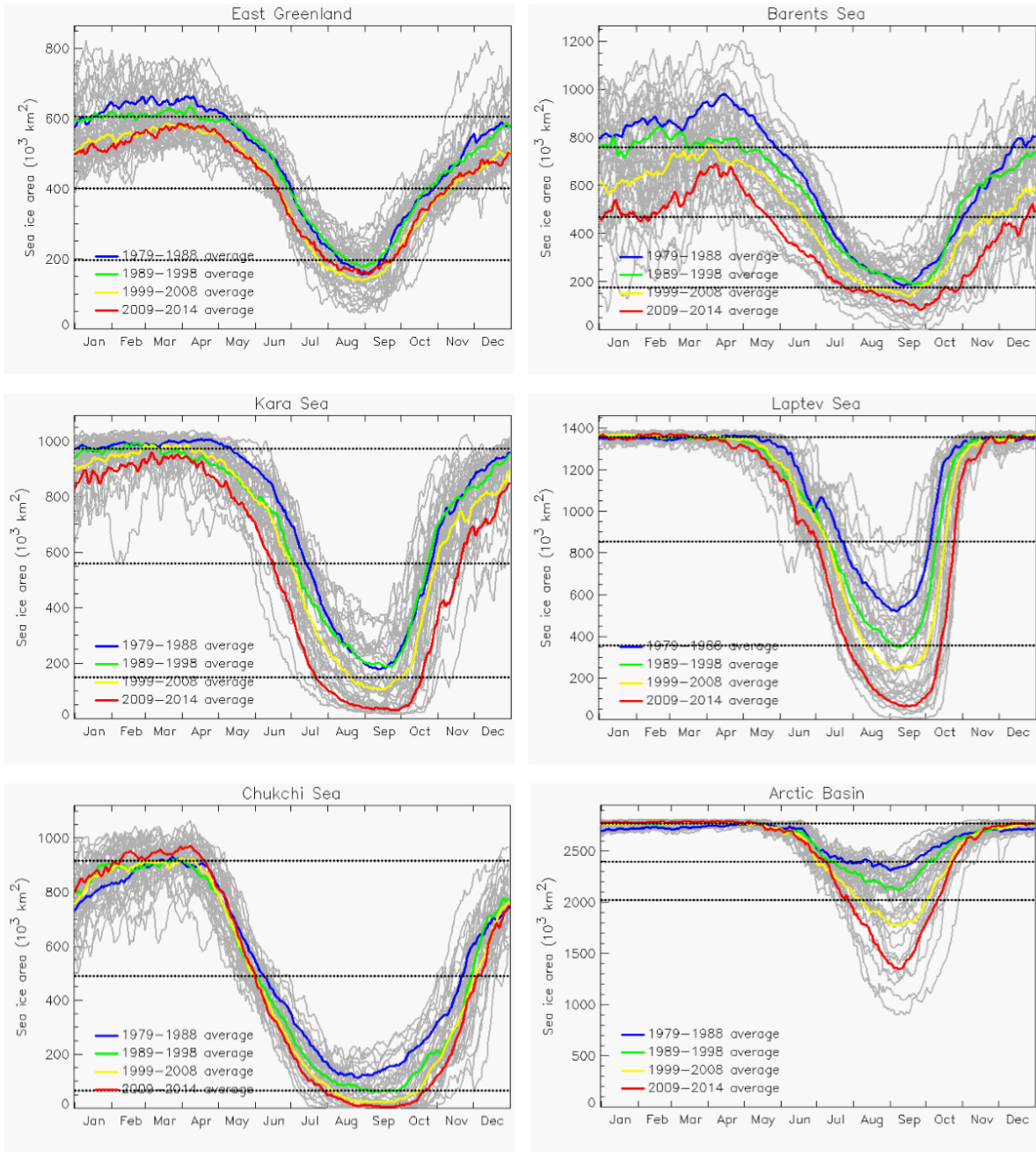


- 5 Daily sea-ice area, January-December, 1979-2014 (gray curves), by region (all depths). Colored curves are decadal averages as indicated. Upper horizontal dotted line is average sea-ice area in March; lower horizontal dotted line is average sea-ice area in September; middle horizontal dotted line is threshold for determining dates of spring sea-ice retreat and fall sea-ice advance. See Fig. 2 for Baffin Bay region. See Fig. 1 and Table 1 for locations of regions.

10

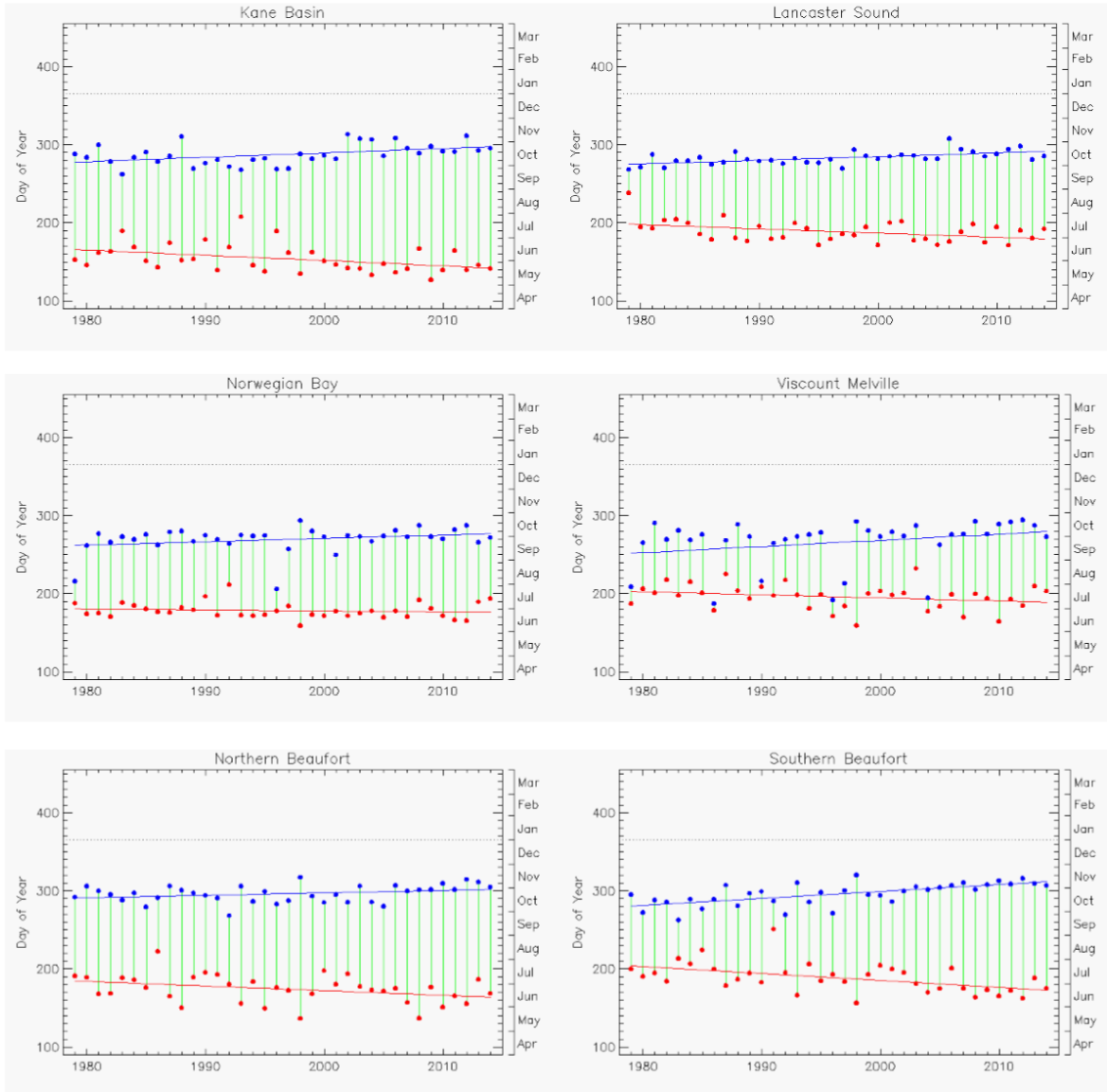


Daily sea-ice area by region (continued).



15 Daily sea-ice area by region (continued).

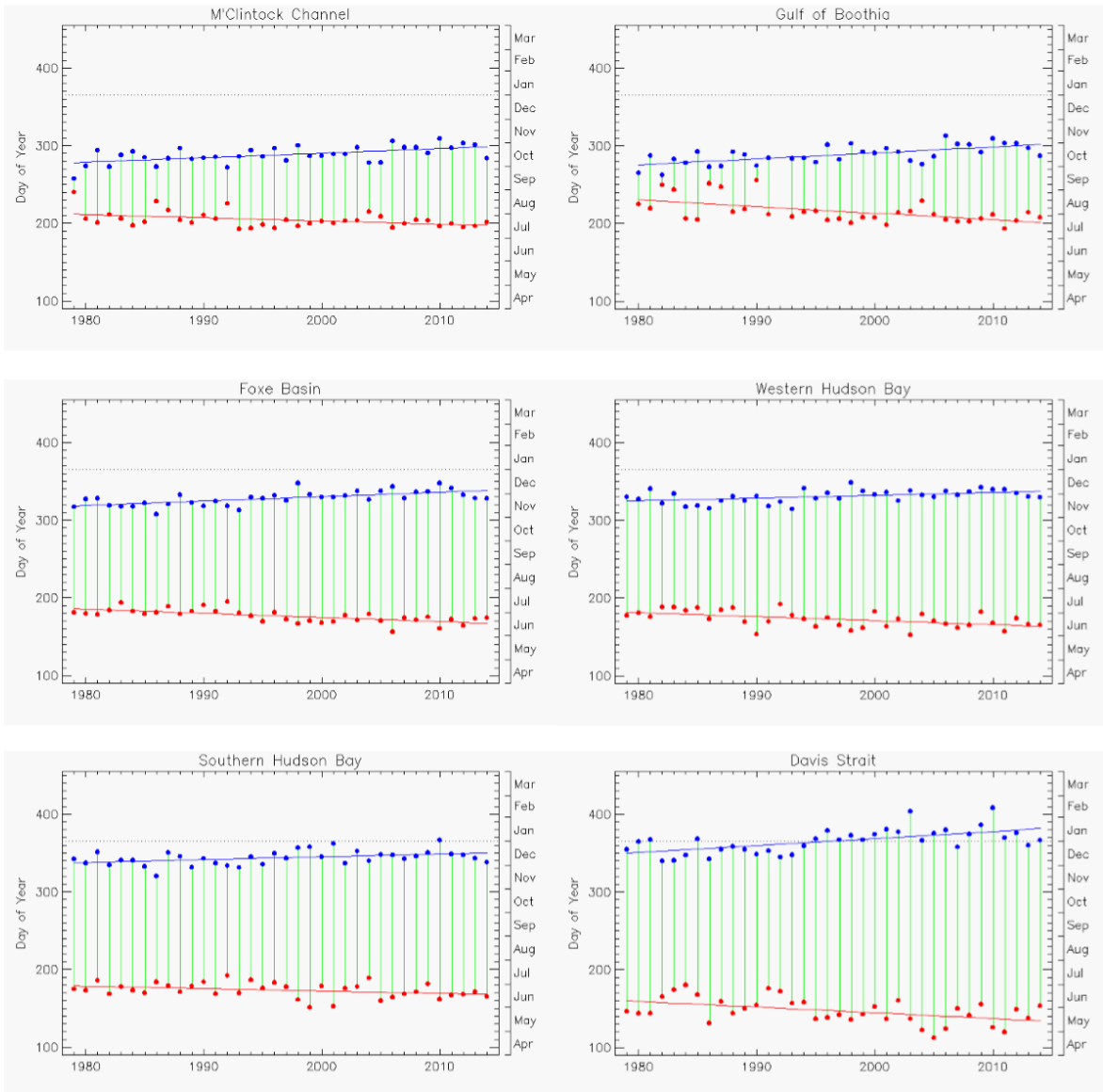
B. Dates of Sea-Ice Retreat and Advance



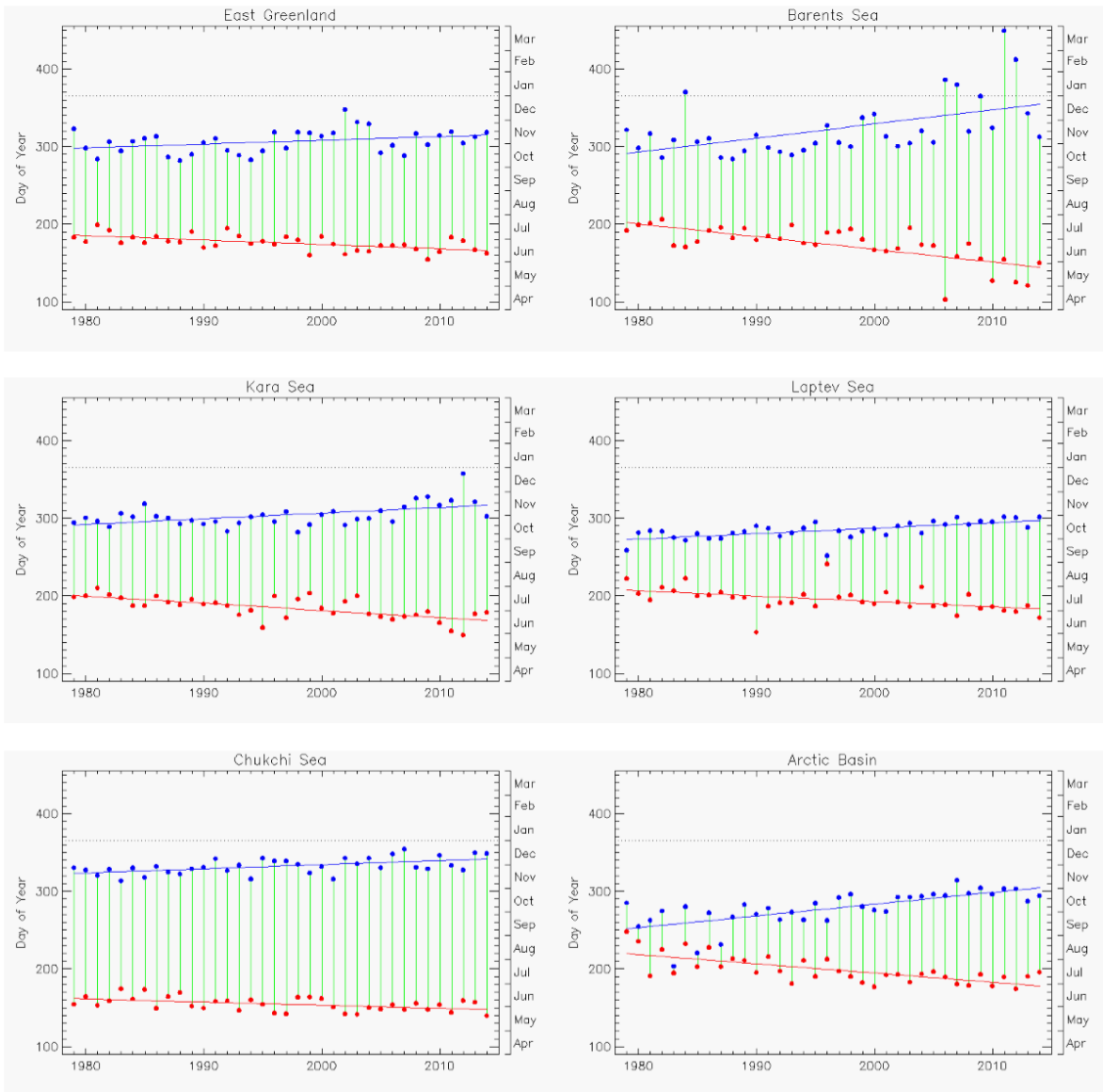
20

Dates of sea-ice retreat (red) and sea-ice advance (blue) for 1979-2014, by region (all depths). The red and blue lines are least-squares fits. The vertical green lines indicate the time interval between retreat and advance (i.e., length of summer season). See Fig. 4 for Baffin Bay region. See Table 3 for trends.

25

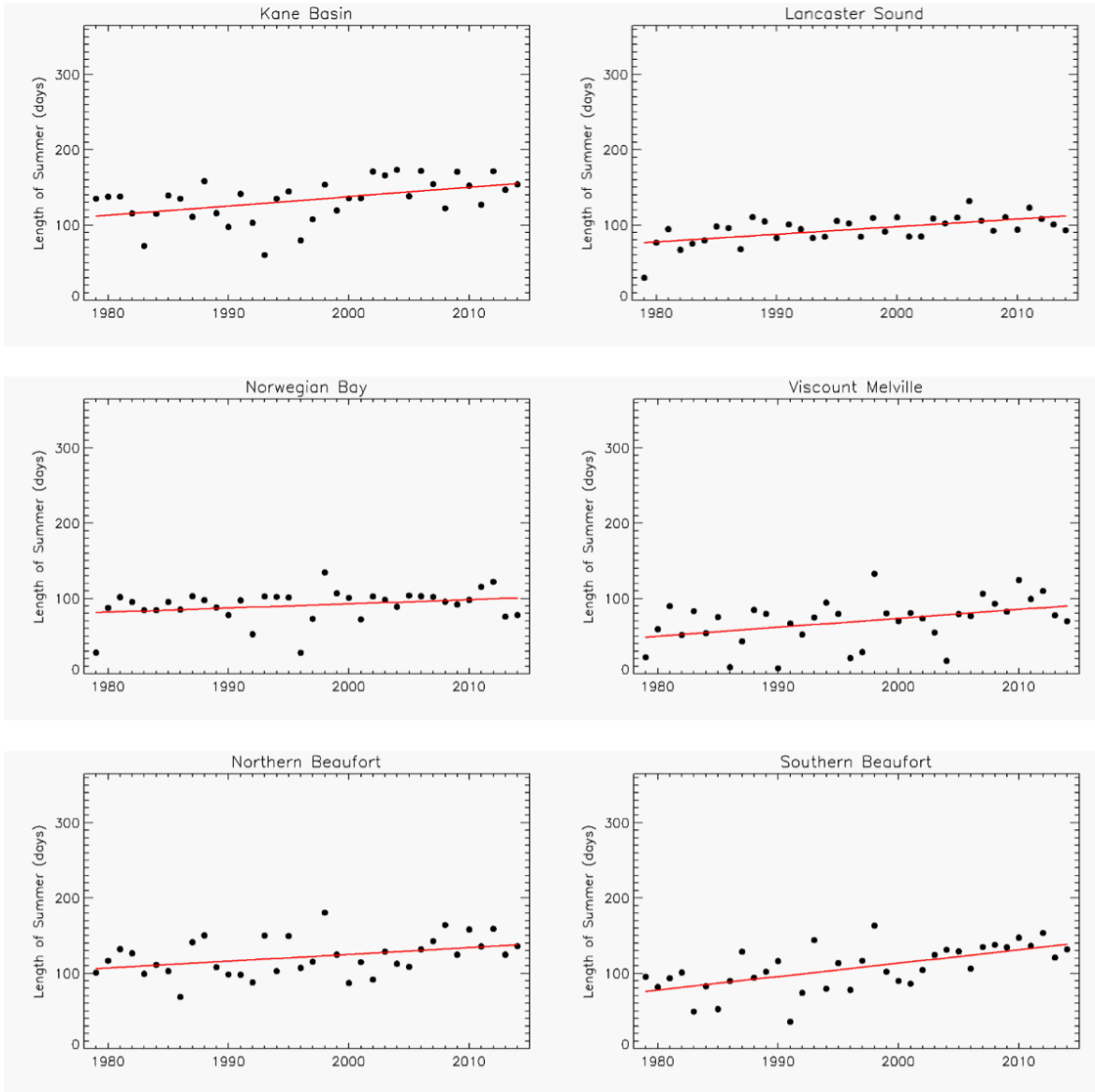


Dates of sea-ice retreat and advance, by region (continued).



30 Dates of sea-ice retreat and advance, by region (continued).

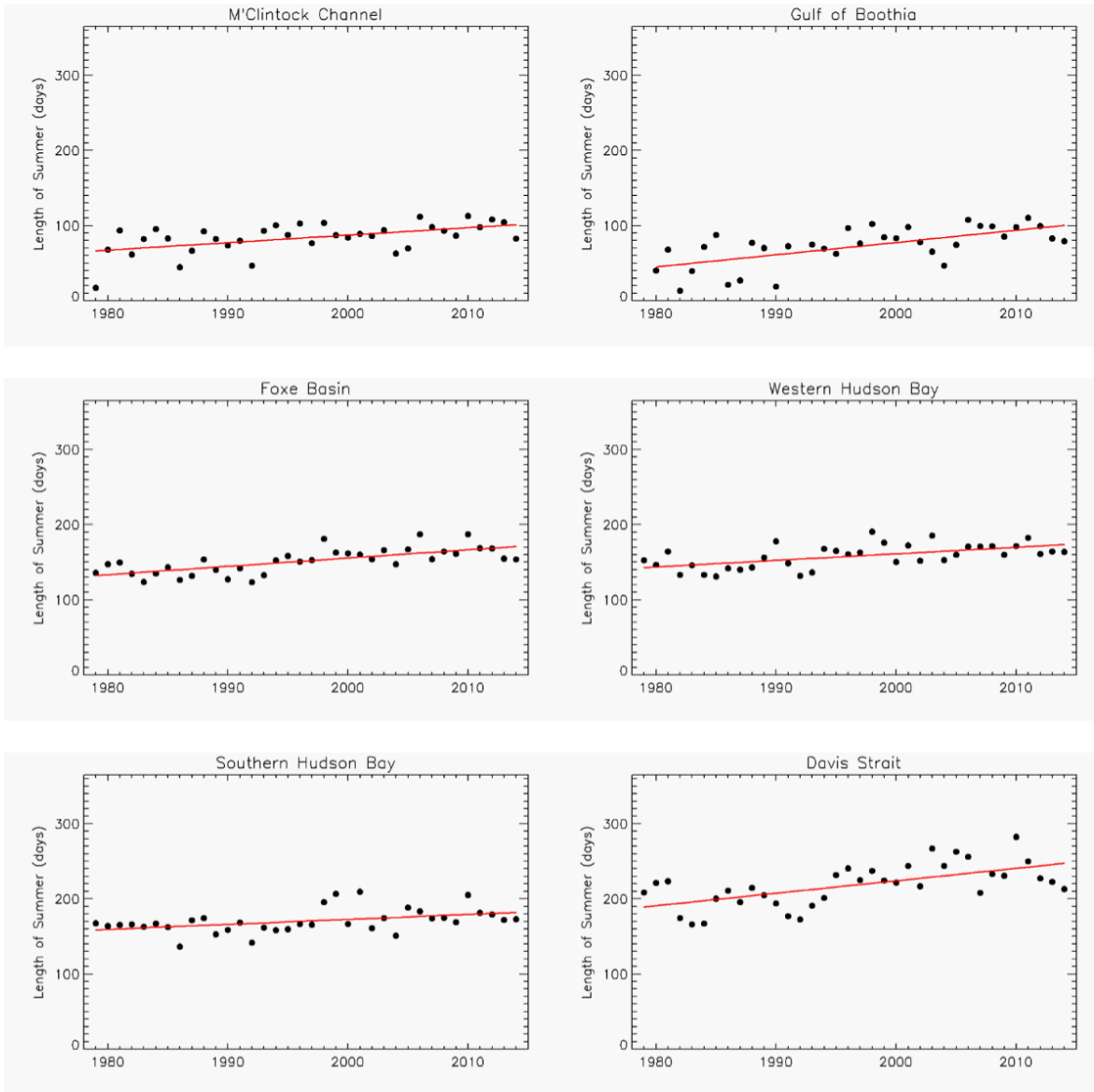
C. Length of the Summer Season



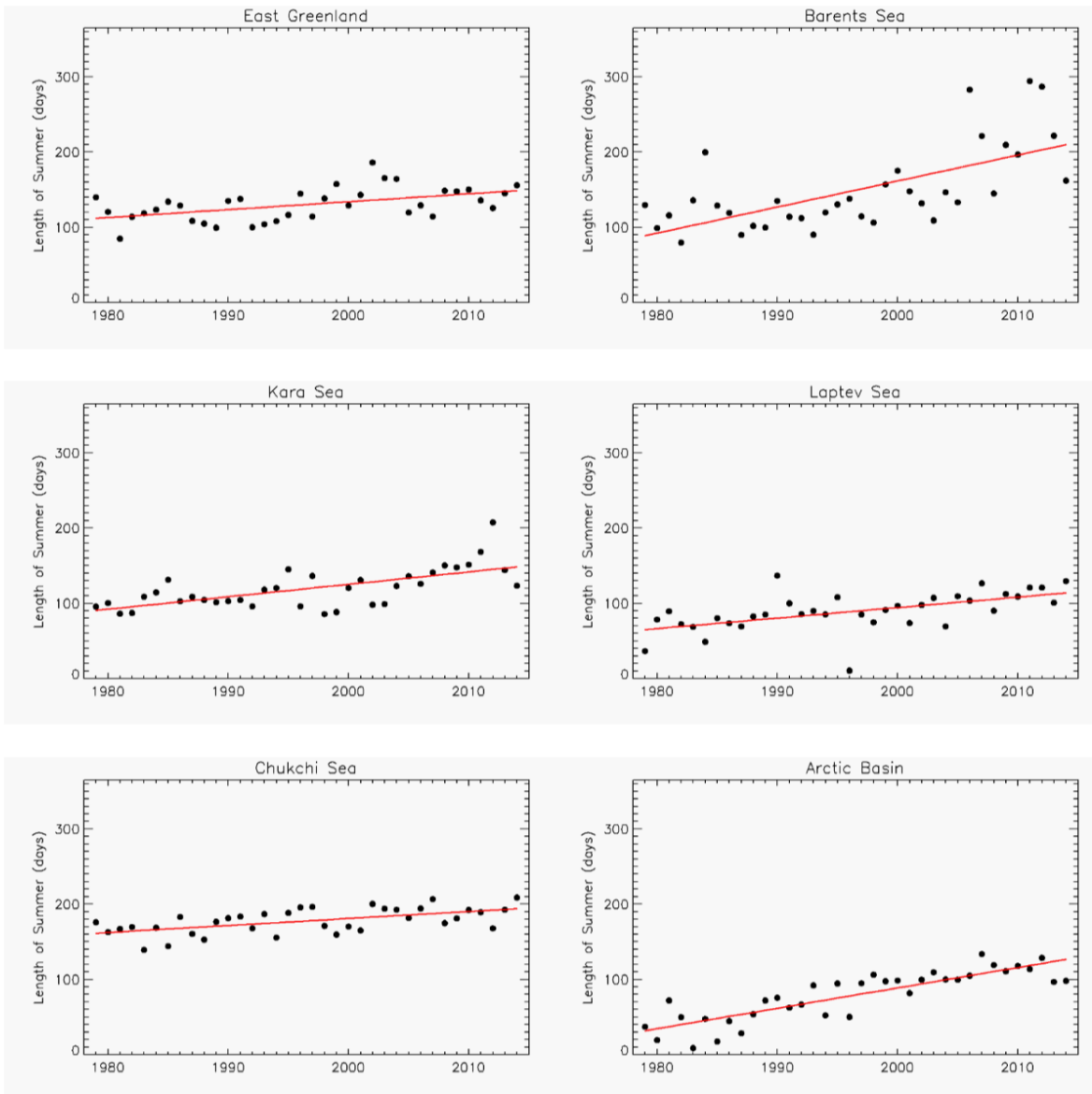
35

Length of the summer season (from spring sea-ice retreat to fall sea-ice advance) vs. year, by region (all depths), with least-squares line in red. See Fig. 5 for Baffin Bay region. See Table 3 for trends.

40

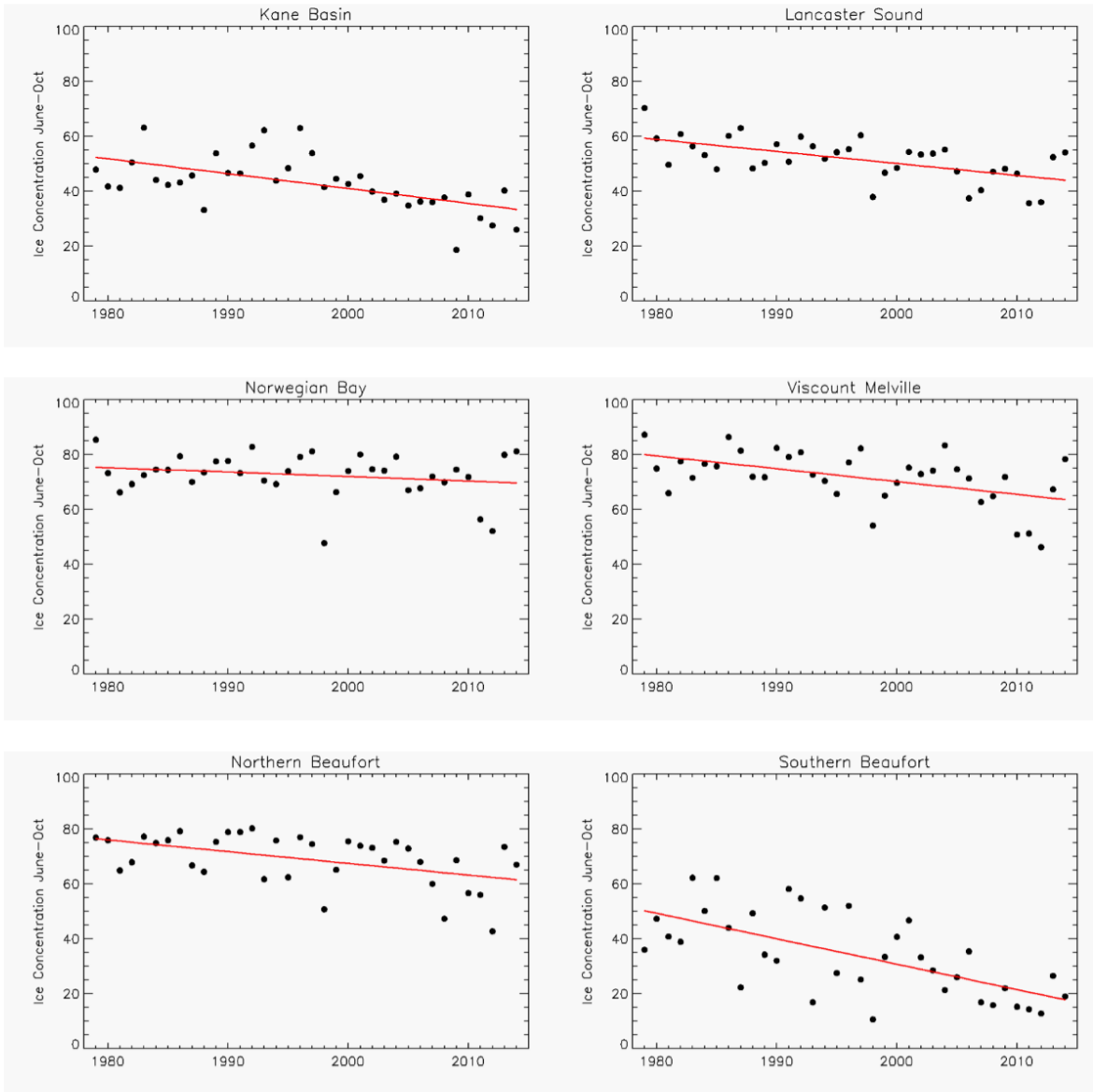


Length of the summer season, by region (continued).

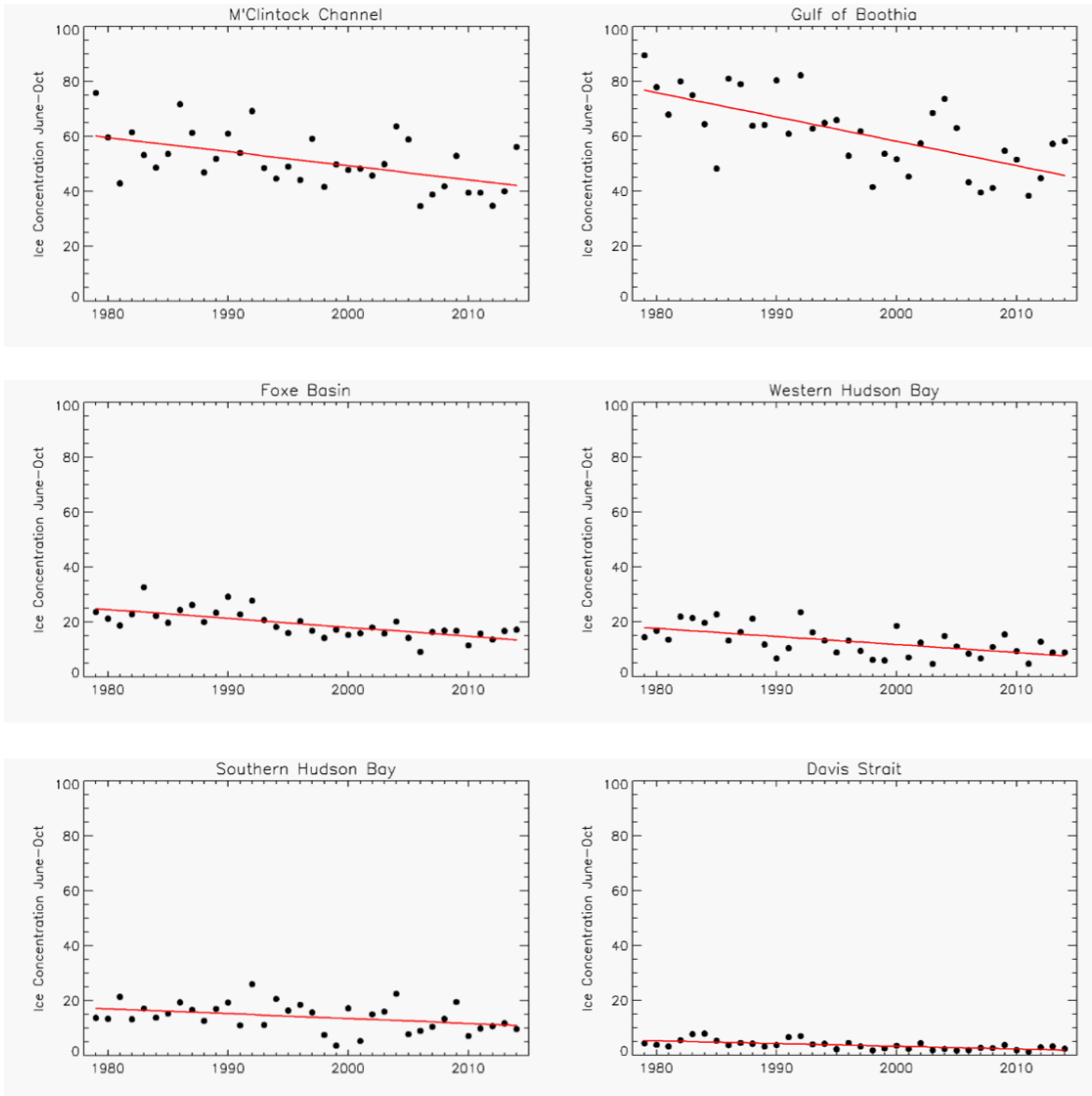


Length of the summer season, by region (continued).

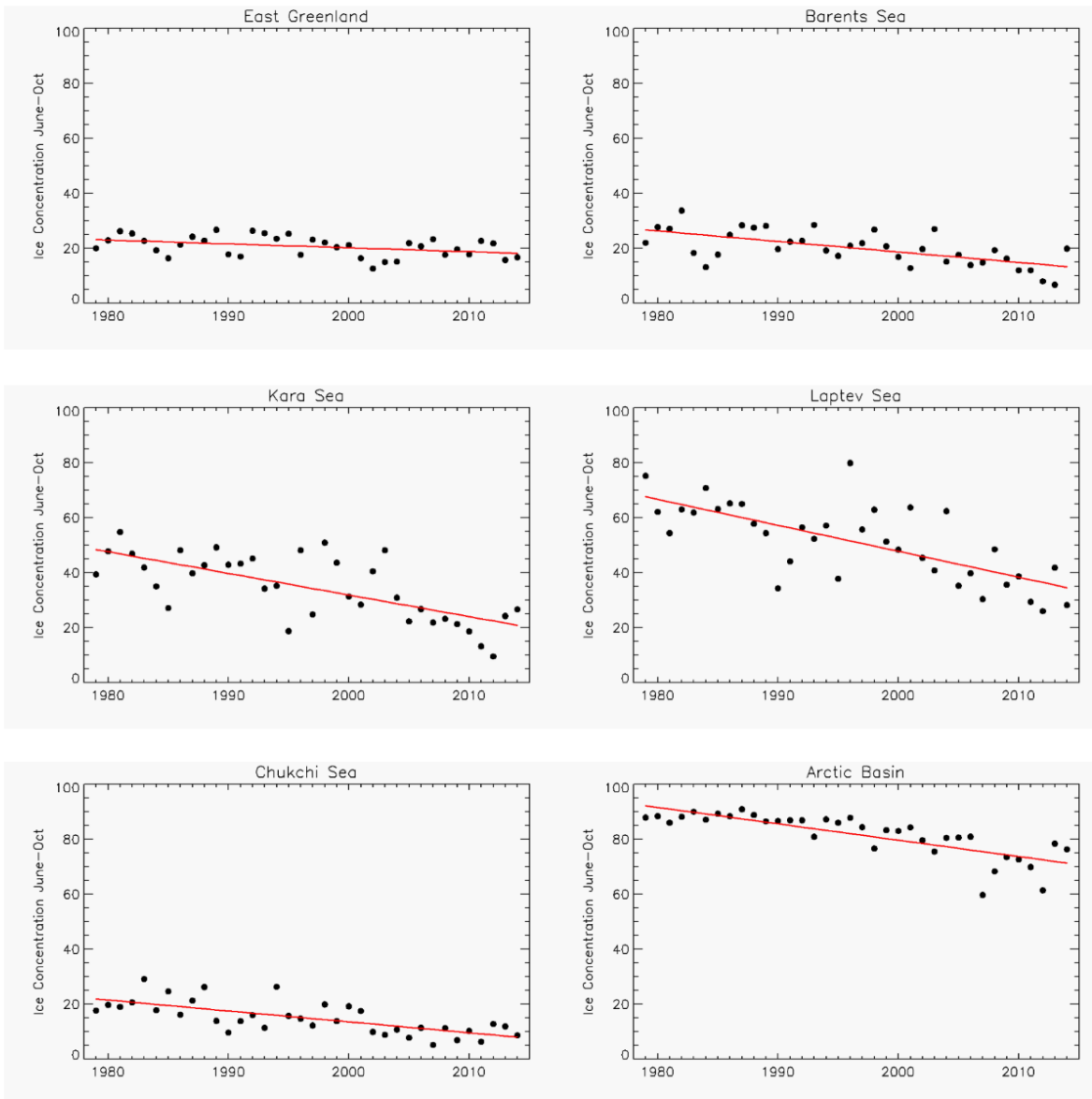
D. Summer Sea-Ice Concentration



50 Summer (June through October) sea-ice concentration vs. year, by region (all depths), with least-squares line in red. See Fig. 6 for Baffin Bay region. See Table 3 for trends.

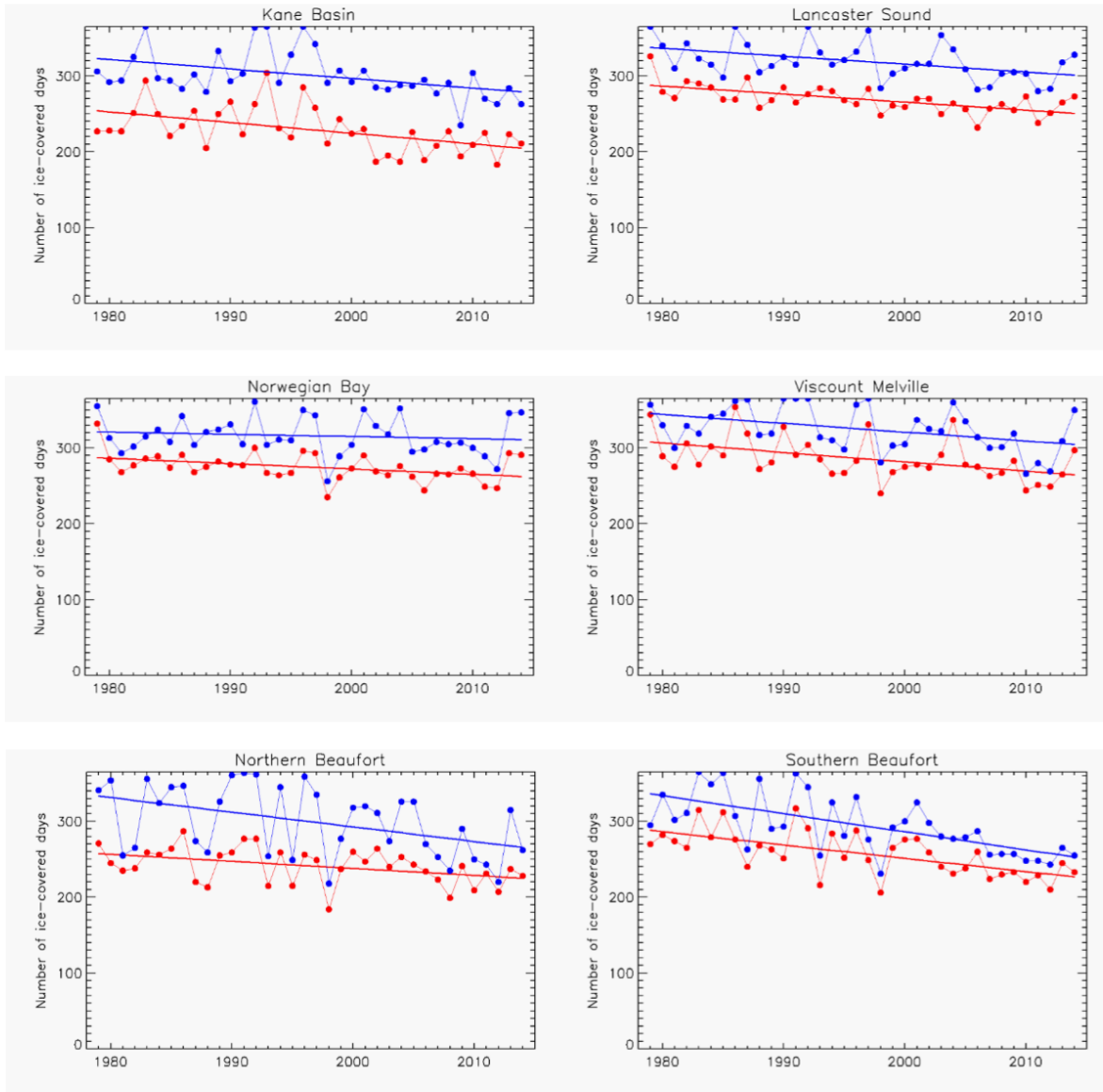


55 Summer (June through October) sea-ice concentration, by region (continued).



Summer (June through October) sea-ice concentration, by region (continued).

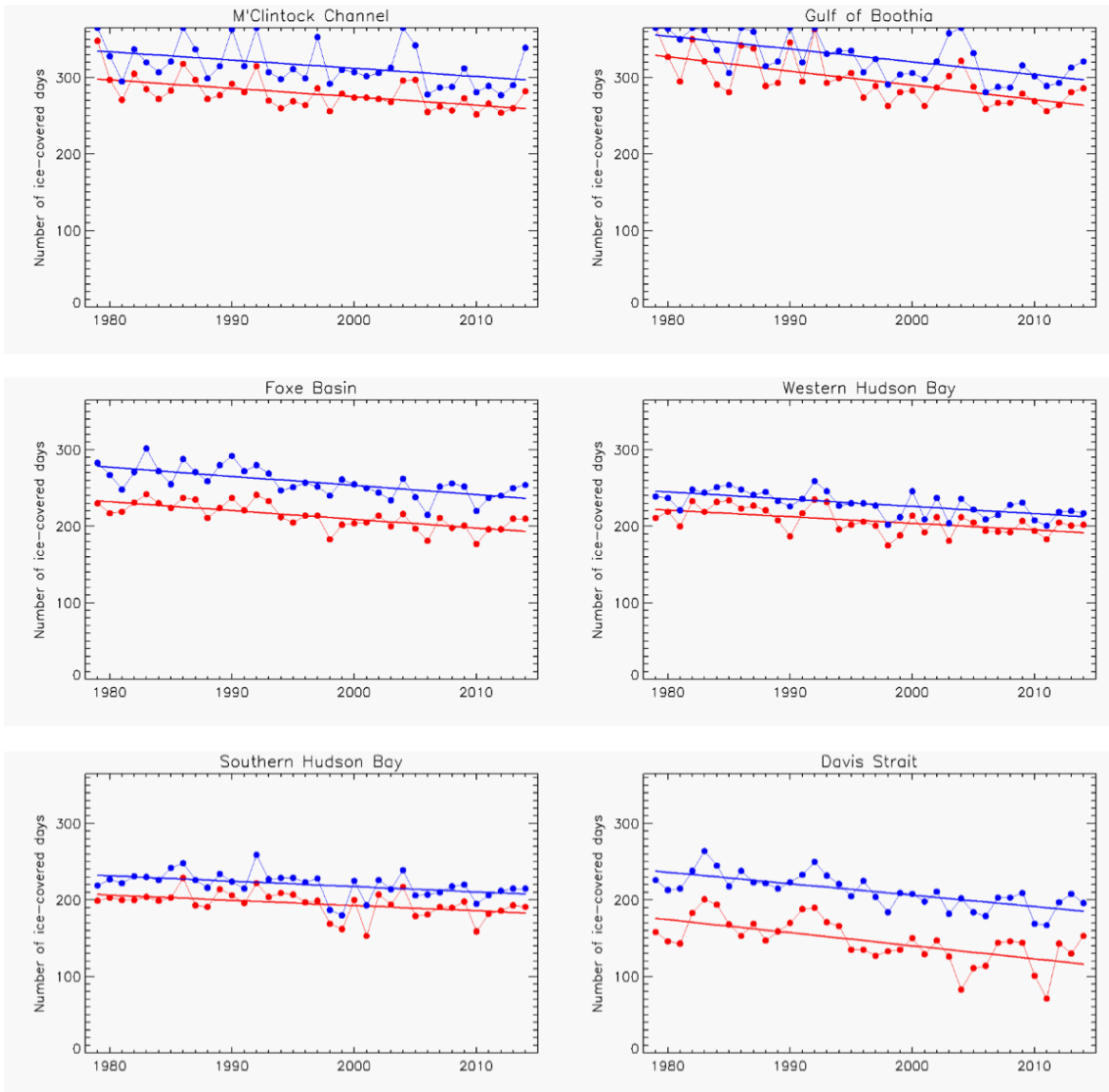
E. Number of Ice-Covered Days



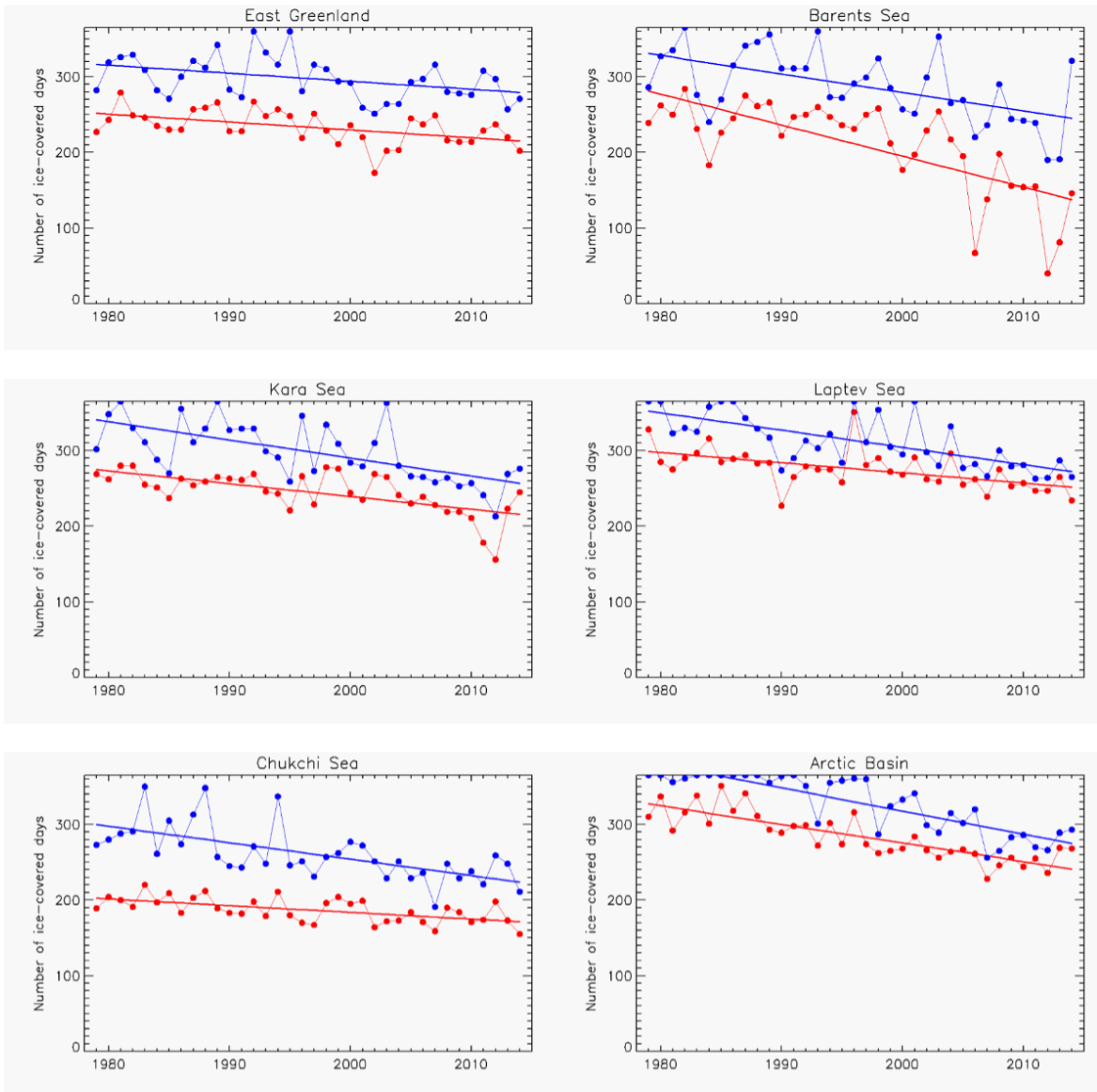
60

Number of ice-covered days per year, 1979-2014, by region (add depths). An ice-covered day is one in which the sea-ice area exceeds a threshold (defined in main text). Blue: number of ice-covered days above 15% threshold. Red: number of ice-covered days above 50% threshold. Least-squares lines are also shown. See Fig. 8 for Baffin Bay region. See Table 3 for trends.

65



Number of ice-covered days, by region (continued).



70 Number of ice-covered days, by region (continued).