

Rebuttal letter and revised manuscript

Dear Editor

This document contains or point-by-point responses to the comments of both Referees, as well as the comment by F. Salerno. These are identical to the Author Comments we have posted in the Interactive Discussion. Referee or short comments are shown in **bold type**, author reply in roman type. Only sections requiring a reply are reproduced.

At the end of this document, the revised manuscript is attached as a PDF with changes highlighted.

The comments by Anonymous Referee #1 were quite vague and it was difficult to distil how we could improve the paper in response to this review. Anonymous Referee #2 has been very helpful and we have made quite a lot of changes as proposed. In some instances, we have argued for a view that differs from that of the referees and we hope that this clarification will make our choices more transparent. We argue this review to be valuable despite (because of) the lack of research in the HKH, and that more case studies will be difficult to include as they would either (a) speculate on permafrost in the absence of research, or (b) be largely biased to the engineering corridor on the QTP and thus miss the main point of the manuscript: the amount and diversity of white spots on the 'permafrost map' in HKH mountains.

Given that several additions were asked in terms of expanding some sections, we hope that exceeding 100 references can be tolerated. It has been difficult to stay within 100 references, as we review a very broad body of permafrost literature, and additionally, climate and environmental background for the HKH.

We thank you and the three referees/commenters for your effort in evaluating and improving this manuscript.

Kind regards
Stephan Gruber, on behalf of all authors

Reply to comments made by Anonymous Referee #1

The manuscript is not a review in a strict sense. It contains passages with textbook contents (e.g. p. 3 and pgs. 8/9), and general speculations based on knowledge from other areas. This makes the manuscript interesting reading, e.g. valuable for student courses, and a perfect introduction to a book about Central Asian mountains. I am less convinced about the value in a high-impact

scientific journal. It is of course true that we can expect all sorts of impacts if permafrost thaws also in the Hindukush, it is only the question if this statement can be described as “review” or original research.

We agree that the manuscript is largely not a *Summary of permafrost research in the HKH*. Because there are not enough local studies available, it reviews a larger body of literature and makes inference on what may be relevant in the HKH. We review existing knowledge and provide a synthesis for a new field of application. This, in our mind, is the essence of a review, which otherwise would be a mere summary. During the access review, the editor has already raised this point and we have subsequently changed the title by introducing “inferring”. This should make it more transparent that we are not reviewing work in the HKH but work relevant to the HKH based on current understanding.

However, the manuscript of course contains lots of significant information. Important are the real review part, summarizing the work done for the area by the authors or other colleagues. And of course the discussion of the map by Gruber (2012), which is the only higher-resolution permafrost map for the area, providing a good image of the permafrost distribution of the area. This means, after my opinion, the manuscript is an important contribution, but could be much improved by:

1. Stick to the published investigations, and the map

2. Avoid/reduce substantially the text book passages, explaining basic permafrost/thermal processes etc.

Both points (1 and 2) are best commented together: We believe the value of this text is exactly in the informed interpretation of existing knowledge from outside the HKH to phenomena in the HKH. Some aspects of permafrost science deal with local phenomena, others however, are transferable like other laws in earth science of physics. We believe that (a) the specific composition of these passages is tailored to the HKH and contains a mix of insight derived from both polar and high-elevation permafrost research, and (b) the argumentation helps to show what special phenomena we can expect in the HKH and what is already known from other locations. We hope this argument will satisfy this suggestion for improvement without changing the text and also point to the response of Anonymous Referee #2 who found this section useful and important.

3. Keep the “perspective-part”, which was interesting reading. Besides that “promising methodologies” (p. 13, l. 22) maybe also are developed other places then for the Alps. And, if you relate to other mountain areas (which of course is ok within certain limits), maybe other arid mountain ranges as e.g. parts of the Andes etc. could be included more.

We have slightly modified the sentence and included two more recent and important non-Alpine references: “Promising methodologies for improved simulation in remote locations and mountain areas exist (Fiddes and Gruber, 2012, 2014; Fiddes et al., 2015; Westermann et al., 2015) and offer synergies with efforts in atmospheric sciences (Gutmann et al., 2016; Ménégoz et al., 2013), glaciology, and hydrology.”. In fact, however, most developments in permafrost simulation for

mountains did originate from the Alps in the last decade. Concerning other arid mountain ranges, about 15 references to local studies in the Andes, the Rockies, and Central Asia are already used in the text.

4. I would suggest to add some more illustrations, highlighting important work. Now only derivatives from Gruber 2012 are shown more or less.

It is difficult to add useful illustrations or even photographs without going into much case-specific speculation (Is there permafrost or not? Was permafrost really relevant for this vent?) – or showing just rock glaciers (and even there will be debate as to their status as permafrost landforms). Therefore, we have decided to keep the illustrations of this review rather minimal. We have expanded Figure 2 by three photographs (cf. response to Anonymous Referee #2).

In summary, I agree that the Hindu Kush Himalaya region is full of “white spots” in terms of understanding permafrost processes there, and that this of course justifies the author’s attempt to focus on this region. But I think the manuscript should undergo a thorough revision, focusing more on the “review” part and less on the “inferring” part.

Thank you, we have done a thorough revision, also in response to the comments made by Anonymous Referee 2 and F. Salerno.

Reply to comments made by Anonymous Referee #2

MAIN COMMENT 1. As reviewer#1 already pointed out there are large parts of textbook style text. I would say that the content on P.2 in the chapter "Principles governing...." is useful and important. Physical principles can and should be exchanged between regions while acknowledging that relative importance of processes may change. However, I think that particularly the chapter "Persistence and impacts of permafrost thaw in the HKH" draws too heavily on general permafrost research. The current text is a really nice summary of what can be expected based on known experience/knowledge but could be given more context by rooting in known events/ examples from the HKH in perhaps a more detailed case study style approach. Important topics/events could be GLOFS, landslides/rockfalls, engineering issues. The authors touch on all these topics but in a rather 'high level' manner. These more detailed "case-studies" could also be an opportunity for more figures in the manuscript, which I found quite sparse. I realize the challenge of providing a review over such a diverse area (as you state p7 l1-2) but still feel some more detailed examples would give the manuscript good grounding.

Thank you for acknowledging the value of passages with textbook character in this manuscript. We agree that it would be beneficial to scaffold and illustrate Section "Persistence and impacts of permafrost thaw in the HKH" with case studies and images and have invested a lot of thought into this. At the same time, we would be speculating on the existence and role of permafrost in the absence of published

studies (cf. reply to Anonymous Referee #2 with respect to inserting more images). Figure 2 is the best we thought we could do while making the uncertain character of permafrost estimates tangible via the model colors and the visible course-resolution grid: Part A refers to pastures (without having published evidence of the existence or role of permafrost at that location), Part B refers to engineering issues (roads in permafrost terrain) without having published evidence, Part C refers to the additional risk of GLOFs presented by large frozen summits over lakes as well as ground ice in dams without having to make a detailed argument at one location. We have now included photos in the new version of this figure.

Below is another figure we produced but then decided not to use. This was because it selects two types of landscapes and thus possibly shapes the perception of impacts more restrictively than what is useful. With this, we hope to illustrate here that we are not lightly brushing this comment aside, but rather have chosen the current very lean form of illustration in the manuscript with great care.

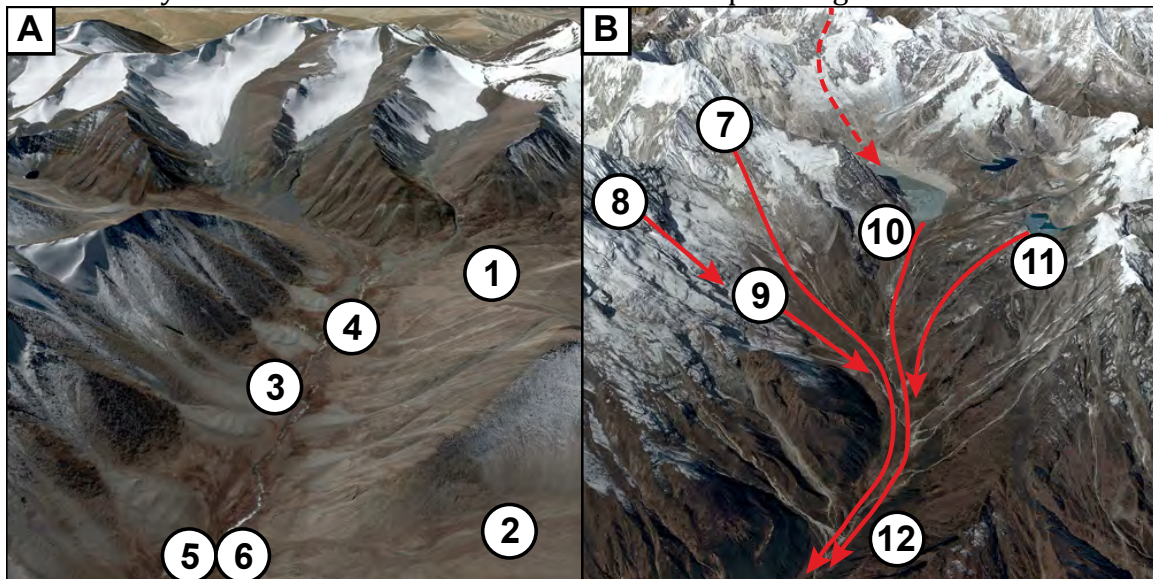


Figure 1: Possible impacts of permafrost exemplified in sample catchments: **(A)** Impacts on hydrology and water quality. 1) Drying near-surface soil caused by deepening active layer. 2) Drying of depressions and small creeks due to increasing deep percolation in catchment. 3) Increased soil moisture and discharge in small creeks due to meltwater release from ice-rich ground. 4) Increased solute availability through release from ground ice melt and leaching of newly permeable soil. 5) More base flow in larger streams and additional discharge from melt of old ground ice during and after hot summers. 6) Changed water chemistry in streams draining catchments with large permafrost extent. Vegetation will respond to changes in moisture and nutrient availability. This will likely results in large-scale reduction in vegetation density overprinted with local and transient greening. **(B)** Impacts on geohazards. 7) Large rock/ice fall or landslides with far reach. 8) Small rockfall. 9) Debris flows from thawing debris or remobilized rock fall deposits. 10) Lake outburst flood following impact of rock/ice fall. 11) Outburst flood following ground ice loss in lake dam. 12) Changes in stream geometry following increased

sediment load. The environments and configurations for actual impacts may differ from the examples shown. Other impacts described in text. Images derived from Google Earth.

MAIN COMMENT 2. I think the chapter on "climate and climate change..." could be expanded as there is certainly a reasonable amount of work in this field in the HKH (as compared permafrost research) and several high elevation initiatives. Climate in the end plays a large part in controlling the distribution and evolution of permafrost and an expanded section would serve as a good starting point for "inferring permafrost". Here it could also be mentioned that the northerly side of the Hindu Kush (Afghanistan) experiences a unimodal precipitation pattern (winter, as shown in Fig1D) dominated by westerlies as effect of monsoon is largely blocked by southern edge of the Hindu-Kush in Pakistan. In this section there could also be an opportunity to discuss snowcover in more detail due to both a good observational record and its important controlling effect on ground temperatures.

The chapter on climate and climate change has been significantly expanded based on this comment and the comments of F. Salerno. We also added: "In the far west of the HKH, a unimodal pattern of cyclonic winter precipitation can be found on the northern side of the Hindu Kush (Schiemann et al., 2008)." A new paragraph on snow cover has been inserted into Section "Climate and climate change in the HKH".

MAIN COMMENT 3. The climate change part of the climate chapter could be stronger as there is a good deal of literature on this topic that could be given coverage as this is central to inferring evolution of permafrost in different regions. Example being a discussion of the diverse effects expected in such a heterogeneous region as the HKH - how could relative changes in precip and temp play out with respect to permafrost in different regions?

This section has been strongly expanded and this includes more information on observed climate change and its patterns (regional, elevation, season). As for the consequences in different regions, the mechanisms are explained in the text. Making regional statements is difficult given the fact that differing landscape facets in one region already may show very different reactions. For this reason, a more general statement along these lines was inserted into Section "Persistence and impacts of permafrost thaw in the HKH": "Climate change (air temperature, precipitation, cloudiness...) in the HKH exhibits diverse regional patterns as well as differing trends at high/low elevation or during differing seasons. As these changes are further overprinted by topography, the resulting effect on permafrost is likely to be spatially highly diverse as well."

MAIN COMMENT 4. Although a lot of research questions are presented in the final chapter "Perspectives", I think a useful contribution this paper could make would be to clearly identify and focus on key current knowledge gaps on this topic in the HKH and possible strategies to addressing them. In this context the authors mention simulation and remote sensing (c.f. "Perspectives") but a section on what's needed in terms of ground-based

measurements/ networks would be good and how this compliments remote methods by assessing model performance or calibrating RS algorithms.

The clear identification of key knowledge gaps requires prioritizing some issues over others and thus attaching value to differing outcomes (e.g., scientific versus practical relevance or large engineering projects versus traditional livelihoods). Many of the rather diverse research questions presented have been developed by the authors and many others have been "...inspired by the outcomes of a group discussion during the International Symposium on Glaciology in High Mountain Asia, Kathmandu, Nepal, in March 2015." (Acknowledgements). We feel that a prioritization may be too subjective and speculative to be useful here. We agree that a high-level description of ground-based measurements and networks would be very useful and, at the same time, we do not want to be too descriptive on its form or implementation. We have changed a sentence in the beginning of the Perspective Section: "Long-term monitoring of ground temperature, ice content, and other variables at selected sites (cf., Vonder Mühl et al., 2008) will contribute to national and international programs and provide a basis for the evaluation of simulation and remote-sensing products." and included a reference to similar activity.

MAIN COMMENT 5. As authors from ICIMOD are present on this paper it might be a good opportunity to see what scope for regional initiatives there are.

What's going on currently in this topic (if anything) and what are the possibilities in the future?

In our opinion, this would challenge the scope of a scientific article. For the context of this reply, ICIMOD has been exploring and preparing regional initiatives via its Permafrost pilot study (<http://www.icimod.org/?q=11478>) and held a corresponding Scoping Meeting in 2015 (<http://www.icimod.org/?q=13932>). Some initiatives are starting and interested parties should contact:

Dorothea Stumm

Senior Glaciologist and Permafrost Project Coordinator

dorothea.stumm@icimod.org

TECHNICAL COMMENT 1. p.3 l.6: "In combination, these effects can cause differences in mean annual ground temperature of more than 10 °C within a distance of less than one kilometer.": reference would be useful here.

The statement can now be better traced based on three references given "(Gruber et al., 2004b; Gubler et al., 2011; Hasler et al., 2011b)".

TECHNICAL COMMENT 2. I think some references from Bodo Bookhagen's precipitation work could be included in the climate section.

Included Bookhagen and Burbank (2006, 2010).

TECHNICAL COMMENT 3. p.6 l.30 additional measurements references - Ishikawa 2001, Regmi 2008 (you already have these elsewhere).

The sentence specifically refers to ground temperature measurements. Ishikawa et al. (2001) report rock glacier distribution, air temperature and geophysics; Regmi (2008) reports rock glacier distribution.

TECHNICAL COMMENT 4. p.9 l21-23 - awkward sentence, perhaps review.

Restructured and shortened into: "In summary, permafrost thaw results in an increased frequency and possibly in unexpected locations of mass movements, as well as in increased sediment loads available for further downstream transport."

TECHNICAL COMMENT 5. p.12 l15-16; "or noticed" sounds odd, perhaps reconsider this sentence.

Deleted: " – or noticed"

TECHNICAL COMMENT 6. I'm missing Kaab et al 2005 - as an important mountain permafrost hazards reference.

Yes, indeed. The hazard paragraph of section 'Persistence and impacts of permafrost thaw in the HKH' now finishes with: "Often, processes related to glaciers and to permafrost conspire in producing high-mountain hazards. These represent a continuous threat to human lives and infrastructure and related disasters can kill thousands of people at once and cause damage on the order of 100 million dollars per year, globally (Kääb et al., 2005)."

TECHNICAL COMMENT 7. Figure 1: Hopefully this can be full page in final publication and perhaps consider adding country outlines (even if these are complex in places) in a subtle way to aid orientation. Glacier outlines are plotted on each subplot but only on legend of 1E I think - I found this slightly confusing at first. Perhaps this legend item should relate to the entire figure.

Thank you, we agree on the glacier outlines with respect to the legend. We have changed the figure and hope it is now less confusing. Concerning country outlines: The figures already contain very much information, and including boundaries would make them even denser. We have considered adding them but decided against it, thereby also following ICIMOD's publication policy for this rather delicate issue. Names of countries are given in 1A, which we hope will be sufficient.

TECHNICAL COMMENT 8. I think figure 2 would be enhanced if you could pairwise match the Google earth/model overlays to existing photos of each example you give, even if its just a small sample of the landscape you show. This would give informative local context.

Done.

Replies to comments made by Franco Salerno

[Line 3, page 3] Studies on recent climate trends from the Himalayan range are limited, and even completely absent at high elevation, at this regard, I

suggest to review the recent paper of Salerno et al., 2015 related to the time series of temperature and precipitation reconstructed from seven stations located between 2660 and 5600 m a.s.l. during 1994–2013 on the southern slopes of Mt. Everest.

This probably referred to Page 5, Line 3 in the discussion manuscript. We inserted reference to Salerno et al. (2015) here as well as Shea (2015).

[Line 9, page 3] The study of Shrestha et al., 1999 was updated by Kattel and Yao (2013). In western Himalaya (e.g., Bhutiyani et al., 2007; Shekhar et al., 2010), in eastern Himalaya and in the rest of India (e.g., Pal and Al-Tabbaa, 2010). At regional level, on the Tibetan Plateau, I suggest (Liu et al., 2006; Liu et al., 2009). Yang et al. (2006) in the northern part of the central Himalaya. Salerno et al., 2015 in the southern part of the central Himalaya. It is important to point out that winter trends are always found higher in the winter season. In the northern part of Himalaya the warming is observed to be influenced more markedly by the minimum temperature increase (as reported also by Pepin et al., 2015 for the region). In contrast, studies located south of the Himalayan ridge observed a prevalence of maximum increase. In this regard, Salerno et al., 2015 provide a sort of review of these studies. I think that the possible impacts on permafrost (and in general on cryosphere) in HKH are understandable if the scientific community start considering in greater detail the recent finding related to the climatic drivers of change, even if incomplete (considering the remoteness of the region), and even if sometime they do not go in the expected direction (e.g., summer increase of max temp).

We rewrote and expanded most of Section “Climate and climate change in the HKH” taking into account your suggestions and inserted several more local examples and references. The references provided were very useful for this, thank you very much.

[Line 9, page 3] In relation to the weakening of the monsoon, Salerno et al., 2015 at local scale, but with the unique existing land time series confirm an huge decreasing in the recent years. This analysis is recently confirmed also by Salerno et al., 2016 considering the behavior of glacial unconnected lakes a gridded climatic data.

The section on precipitation patterns and Monsoon weakening has been expanded; the differing sign of trends in some simulations is still mentioned.

Revised manuscript with changes highlighted attached below

Review article: Inferring permafrost and permafrost thaw in the mountains of the Hindu Kush Himalaya region

Stephan Gruber¹, Renate Fleiner², Emilie Guegan³, Prajjwal Panday⁴, Marc-Olivier Schmid², Dorothea Stumm², Philippus Wester², Yinsheng Zhang⁵, Lin Zhao⁶

¹Carleton University, Ottawa, Canada

²International Centre for Integrated Mountain Development (ICIMOD), Kathmandu, Nepal

³Norwegian University of Science and Technology, Trondheim, Norway

⁴Nichols College, Dudley, MA, USA

⁵Institute of Tibetan Plateau Research, Chinese Academy of Sciences, Beijing, China

⁶Cold and Arid Regions Environmental and Engineering Research Institute, Chinese Academy of Sciences, Lanzhou, Gansu, China

Correspondence to: Stephan Gruber (stephan.gruber@carleton.ca)

Abstract. The cryosphere reacts sensitively to climate change, as evidenced by the widespread retreat of mountain glaciers. Subsurface ice contained in permafrost is similarly affected by climate change, causing persistent impacts on natural and human systems. In contrast to glaciers, permafrost is not observable spatially and therefore its presence and possible changes are frequently overlooked. Correspondingly, little is known about permafrost in the mountains of the Hindu Kush Himalaya region, despite permafrost area exceeding that of glaciers in nearly all countries. Based on evidence and insight gained mostly in other permafrost areas globally, this review provides a synopsis on what is known or can be inferred about permafrost in the mountains of the HKH region. Given the extreme nature of the environment concerned, it is to be expected that the diversity of conditions and phenomena encountered in permafrost exceed what has previously been described and investigated. We further argue that climate change in concert with increasing development will bring about diverse permafrost-related impacts on vegetation, water quality, geohazards, and livelihoods. To better anticipate and mitigate these effects, a deepened understanding of high-elevation permafrost in subtropical latitudes as well as the pathways inter-connecting environmental changes and human livelihoods are needed.

25 Introduction

The mountain ranges spanning Afghanistan, Bhutan, China, India, Myanmar, Nepal and Pakistan, here referred to as the Hindu Kush Himalaya (HKH) region, are the source of the ten largest Asian river systems and provide water, ecosystem services and the basis for livelihoods to an estimated population of 200 million people. This region of more than four million km² is mostly comprised of high-elevation rugged terrain between 25° and 40° northern latitude (Figure 1 AB). It includes the Qinghai-Tibetan plateau (QTP), the Hindu-Kush, Himalaya, and parts of the Pamir and Karakoram mountain ranges. The HKH region has a glacier cover of around 70 thousand km². While glaciers, glacier changes, and the impacts of those

changes are comparably well investigated (Bolch et al., 2012; Kääb et al., 2012; Yao et al., 2012), permafrost (commonly defined as soil or rock remaining below 0°C for more than two consecutive years) and the potential impacts of its thaw remain largely unknown for most of the HKH.

We argue that knowledge about permafrost in the HKH is important, because of its large areal abundance (Figure 1 E), large population, and likely thaw-related impacts in the near future that can be inferred from other areas globally. Possible impacts include changed frequency and unexpected location of landslides, as well as changes to vegetation, runoff patterns, and water quality. Cumulatively and in a global context, these impacts will likely be less severe than those caused by e.g. earthquakes, drought or tropical storms. They will, however, be widespread, persistent and often unexpected, especially for populations on or near high-elevation terrain, whose livelihoods are strongly dependent on the surrounding land and ecosystems. While permafrost research and engineering around linear infrastructure on the QTP is developed and globally visible (Yang et al., 2010a; Zhang et al., 2008), there is virtually no local research capacity and very few measurements concerning permafrost in other areas of the HKH, more pronounced even than a similar lack of measurements identified with respect to glaciers and meteorology (Bolch et al., 2012).

With this review, we distil the current state of knowledge on the distribution and characteristics of permafrost in the HKH as well as on possible consequences of its thaw. In this, we rely strongly on research from other regions to infer conditions in the HKH because little local information on permafrost is available. This review comprises explanation and referencing to make it accessibility not only to permafrost scientists but also to readers with a background in environmental science but without research expertise on permafrost. After an explanation of basic permafrost phenomena and processes, we describe the climate and climate change in the HKH. With this background, we go on to infer the distribution of permafrost in the HKH and the possible consequences of its thaw.

Principles governing the occurrence and characteristics of permafrost

Permafrost is relevant because it usually contains ice, has been frozen for long a time (e.g., thousands of years), and brings about strong geomorphic, hydrologic, and ecologic changes during thaw. While glaciers are not considered permafrost, landforms derived from glaciers and glacier beds can be subject to permafrost conditions. Seasonal freezing and thawing near the ground surface define the active layer with a typical thickness of about ½–8 m. Permafrost is an important element of landscape evolution owing to characteristic landforms such as rock glaciers, push-moraines, ice faces and hanging glaciers, and to its affects on long-term sediment transfer mechanisms. Unlike glaciers or snow, permafrost is usually concealed beneath the active layer and therefore precluded from effective observation with e.g., satellite-based remote sensing. Permafrost can be identified locally with direct measurements in boreholes, excavated pits, or with geophysical methods.

Permafrost and ground ice result from the long-term energy and mass exchange between the atmosphere and the subsurface. The fundamental processes are the same for permafrost in lowlands and in mountains (Haeberli et al., 2010; Harris et al.,

2009), whereas the configuration and relative importance of processes vary in differing environments. Regional climate, determined by global atmospheric and oceanic circulation as well as continentality and latitude, controls major patterns of air temperature, solar radiation, as well as the amount and seasonality of precipitation. Topography modifies these patterns through the barrier effect on precipitation, local thermal effects such as diurnal wind patterns and valley inversions, and the differentiation of solar radiation (Riseborough et al., 2008). Elevation strongly affects air temperature as well as short- and long wave radiation incident on the ground surface. In combination, these effects can cause differences in mean annual ground temperature of more than 10 °C within a distance of less than one kilometer (Gruber et al., 2004b; Gubler et al., 2011; Hasler et al., 2011b).

The effects of climate and topography are further overprinted by ground conditions such as snow cover, vegetation, water availability, and subsurface characteristics, locally. Snow affects ground temperatures by providing insulation from the cold atmosphere when sufficiently thick, by its latent heat that needs to be overcome before ground beneath can warm above 0°C, and by increasing albedo (Zhang, 2005). The net effect of these mechanisms, however, is highly variable and dependent on site conditions. Vegetation can lower ground temperatures by shading and evapotranspiration, and in other places exert a warming influence by retaining snow cover in wind exposed areas (Hinkel and Hurd, 2006; Kokelj et al., 2010). Ground material further differentiates subsurface temperature and some substrates such as an organic layer (Burn and Smith, 1988; Goodrich, 1982) or coarse blocks (Delaloye and Lambiel, 2005; Gruber and Hoelzle, 2008) result in a relative lowering of subsurface temperatures. Local drainage characteristics affect ground temperatures through latent heat and the effect of water saturation on thermal conductivity contrasts between frozen and thawed soil (Endrizzi et al., 2014) and through differing albedo of wet and dry soil (Ma et al., 1999). Subsurface ice such as snow or glacier ice buried in debris can act as a latent heat sink and lower ground temperatures. In total, local surface characteristics can cause a differentiation of several °C in subsurface temperatures given the same conditions in climate and topography.

Subsurface ice largely determines the impacts of permafrost thaw and, like permafrost, escapes effective spatial observation (Mackay, 1972). The rapid freezing of moist sediment results in ice-cemented material with ice contents similar to the pore space in dry material. Material with higher ice content is referred to as ‘ice rich’ and originates from three main mechanisms:

(A) Burial of snow or glacier ice below debris or moraine, resulting in diverse phenomena including buried snow (Gruber and Haeberli, 2009), rock glaciers (Haeberli et al., 2006), ice-cored moraines (Østrem and Østrem, 1964), and debris-covered glaciers (Kirkbride, 2011). A wide variety of interactions and transitional forms exist between glaciers and permafrost (Etzelmüller and Hagen, 2005; Haeberli, 2005; Harris and Murton, 2005; Waller et al., 2012). (B) Ice segregation, resulting in progressive ice enrichment within permafrost (Guodong, 1983) that has even been observed in very arid mountain environments (Li and He, 1989). (C) Ice wedges, which on slopes are likely underestimated in their frequency of occurrence as their micro-topographic signature is suppressed by soil movement (Mackay, 1990). In bedrock permafrost, fractures often contain large amounts of ice, affecting slope stability and flow of water (Gruber and Haeberli, 2007; Ravelin et al., 2010), and the slow formation of ice-rich layers by segregation appears plausible (Girard et al., 2013). The freezing and melting of

Stephan Gruber 2016-7-31 17:26

Formatted: Font color: Accent 3

ice in soil or rock occurs progressively over a range of temperatures below 0°C and the high latent heat of fusion often subdues temperature change in frozen soil (Romanovsky and Osterkamp, 2000).

Because of this multitude of interacting factors, ground thermal regimes and ice contents resemble a highly variable mosaic, especially in mountains. This makes it difficult to predict permafrost conditions at individual locations, to evaluate computer models with a limited number of observations, to conclude from one feature (e.g., a rock glacier) the presence of permafrost in an adjacent area (e.g., a meadow), or to argue in terms of precise limits of permafrost occurrence. Our insight is, however, sufficient to describe important patterns of where permafrost is likely or unlikely to occur. On a coarser scale, the multi-decadal mean annual air temperature (MAAT) provides first estimates of the abundance of permafrost in an area (Brown and Pewe, 1973) and relationships long established for lowland permafrost appear to be adequate approximations in mountains (Boeckli et al., 2012). Often a MAAT of -1°C is used to delineate areas with a considerable proportion of permafrost where local conditions are appropriate.

Besides air temperature, total precipitation is useful for conceptualizing expected spatial differences of permafrost occurrence (Haeberli, 2005). In locations with high precipitation, the equilibrium line on glaciers is situated at higher MAAT (lower elevation) than in more arid areas (Benn and Lehmkuhl, 2000; Yao et al., 2012). As a consequence, the proportion of glaciers covering slopes that could otherwise be underlain by permafrost is much larger in areas with high precipitation. Correspondingly, the areal proportion of permafrost in cold mountains with similar MAAT increases with decreasing precipitation. Furthermore, increasingly thick and insulating winter snow cover exerts a warming effect on the ground beneath it. Steep bedrock sheds its snow and can have permafrost in shaded slopes even at an MAAT near 0°C (Boeckli et al., 2012; Hasler et al., 2011b), whereas sun-exposed slopes are without permafrost to much lower values of MAAT. Similarly, strongly wind-blown areas (Ishikawa et al., 2003) experience little warming by winter snow. Intact rock glaciers contain ice in the subsurface and are visible indicators of permafrost sometimes occurring at a MAAT as high as +2°C. In continental and arid areas, permafrost can exist below a dense vegetation cover. This is possible because for plant growth summer temperatures are a limiting factor (cf. Jobbágy and Jackson, 2000; Körner and Paulsen, 2004) and in continental areas the high seasonal temperature amplitudes allow for warmer summers at the same MAAT than in less continental regions.

Climate and climate change in the HKH

Climate in the HKH is diverse due to the interplay of latitude, continentality, topography and atmospheric circulation. Most notably, the relative influence of winter Westerlies, the Indian and the East Asian monsoon in summer, as well as continental anticyclones over the QTP (Benn and Lehmkuhl, 2000; Böhner, 2006; Kapnick et al., 2014) differentiate precipitation amounts and patterns (Figure 1 CD). Precipitation in the central and eastern part of the Himalayas as well as parts of the QTP tends to be unimodal with a distinct Monsoon-related maximum in summer. In the western parts, the combined influence of Monsoon and Westerlies causes a bimodal precipitation pattern with precipitation both in winter and in summer

(Bookhagen and Burbank, 2010; Palazzi et al., 2013). In the far west of the HKH, a unimodal pattern of cyclonic winter precipitation can be found on the northern side of the Hindu Kush (Schiemann et al., 2008). The advection of differing air masses results in variable temperature lapse rates and, in some areas, seasonal precipitation regimes differing between arid valley bottoms, where most meteorological stations are situated, and adjacent high elevation areas with ample precipitation (Hewitt, 2014; Immerzeel et al., 2015).

There is a paucity of climate stations in the HKH (Fowler and Archer, 2006; Salerno et al., 2015; Shea, 2015; Winiger et al., 2005), especially at high elevation. Furthermore, snowfall measurement is inherently difficult with errors often in the range of 20–50% undercatch (Rasmussen et al., 2012). Satellite-derived products such as the Tropical Rainfall Measuring Mission (TRMM) provide gridded precipitation in data-sparse regions but likely with reduced quality for snowfall and in high-elevation terrain (Derin et al., 2016; Immerzeel et al., 2015; Yin et al., 2008). As a consequence, gridded climate data are poorly characterized in the HKH (Bao and Zhang, 2013; Ménégos et al., 2013; Xie et al., 2007), especially at high elevation, and corresponding maps (including Figure 1 CD of this publication) need to be interpreted with care. This lack of reliable data, together with poorly known local phenomena and extreme elevation gradients, makes local prediction based on either the extrapolation of weather station data or on gridded atmospheric data challenging. These uncertainties invariably propagate to model predictions of permafrost in the HKH.

Long-term observations in the HKH show atmospheric warming (Shrestha et al., 1999; Yang et al., 2011) exceeding global averages (Hartmann et al., 2013) and with pronounced regional differences in magnitude and timing. On the QTP (Liu et al., 2009) and in the central Himalaya at 2660–5600 m a.s.l. (Salerno et al., 2015) diurnal minima were observed to increase faster than maximum temperatures. While this is similar to observations in other mountain ranges such as the European Alps or the Rocky mountains, a dominant increase of diurnal maxima was observed in the western Himalaya (Bhutiya et al., 2007; Shekhar et al., 2010) and on the southern slope of the central Himalayas between 1300–2500 m a.s.l. (Kattel and Yao, 2013). Seasonally, the strongest warming has been observed during winter months in the northwest (Bhutiya et al., 2007) and central (Salerno et al., 2015) Himalaya and on the eastern QTP (Liu et al., 2009). Often, stronger warming is found at high elevation (Liu et al., 2009) and this trend has been attributed to feedbacks related to snow and cloud cover.

Precipitation regimes in the HKH (Figure 1 CD) as well as their changes are diverse. Most notably, several studies detect a recent weakening of the Monsoon (Palazzi et al., 2013) with a significant reduction in liquid precipitation at high elevation in the central Himalaya (Salerno et al., 2015). Monsoon precipitation is strongest in areas of high relief and mid elevation (Bookhagen and Burbank, 2006, 2010), above this a sharp decrease of precipitation with elevation has been shown in the central Himalaya since the mid 1990s (Salerno et al., 2015, 2016). Climate model scenarios include both increasing and decreasing monsoon intensity (Moors et al., 2011; Palazzi et al., 2013) and thus an element of uncertainty even with respect to the direction of future changes. For the QTP, an increase in precipitation has been inferred between about 1960 and 1990 (Liu et al., 2011) and between 1951 and 2000 an increase in winter precipitation together with a partial decrease in summer precipitation were found (Zhai et al., 2005).

Stephan Gruber 2016-7-23 11:16

Formatted: Font color: Red

Stephan Gruber 2016-7-23 11:08

Formatted: Font color: Red

Stephan Gruber 2016-7-23 20:37

Deleted: measuring

Stephan Gruber 2016-7-23 19:22

Deleted: even in less remote areas

Stephan Gruber 2016-7-23 10:03

Formatted: Font color: Red, English (UK)

Stephan Gruber 2016-7-23 21:36

Deleted: superimposed with regional patterns (Fowler and Archer, 2006; Shekhar et al., 2010). Observed atmospheric warming is in agreement with global observations (Hartmann et al., 2013) and future scenarios (Collins et al., 2013).

Stephan Gruber 2016-7-29 20:50

Formatted: Normal

Stephan Gruber 2016-7-23 21:35

Moved (insertion) [1]

Stephan Gruber 2016-7-23 21:35

Moved up [1]: (Shrestha et al., 1999; Yang et al., 2011)

Stephan Gruber 2016-7-23 21:36

Deleted: Long-term observations show atmospheric warming (Shrestha et al., 1999; Yang et al., 2011) (Shrestha et al., 1999; Yang et al., 2011)

Stephan Gruber 2016-7-23 21:25

Deleted:

Stephan Gruber 2016-7-29 20:40

Deleted: and suggest a

Stephan Gruber 2016-7-29 20:45

Deleted: in the HKH

Stephan Gruber 2016-7-30 09:31

Moved (insertion) [2]

Stephan Gruber 2016-8-8 13:09

Deleted: ,

Stephan Gruber 2016-8-8 13:09

Deleted: however,

Stephan Gruber 2016-7-30 09:31

Deleted:

5 These observations underscore the notion that future climate change will be more pronounced at high elevations (Pepin et al., 2015) in the HKH than on a global or hemispheric average. The spatial and seasonal differences in the trends of air temperature and precipitation will compound difficulties in predicting permafrost based on gridded atmospheric data. Snow cover in the HKH, driven by precipitation and temperature, exhibits a similarly strong variability with elevation, season, and region as evidenced by a number of studies. Stable or slightly increasing snow cover, contrary to intuitive notions of global warming, is reported in the Karakoram during 2000–2009 (Tahir et al., 2011). Similarly, an increasing trend in snow cover was found for the QTP for the period 1951–1997 (Qin et al., 2006) but a slight decrease was detected for 2000–2006 (Pu and Xu, 2009). Snow cover in the interior of the QTP tends to be thin, patchy and of short duration with large inter-annual variability (Pu and Xu, 2009; Qin et al., 2006). On the QTP, snow cover is more persistent along the southern and western margins in high mountains and the seasonal cycle is differentiated with elevation (Pu and Xu, 2009): Below about 5000 m a.s.l., snow cover fraction is high in winter and low in summer, whereas at higher elevation, two peaks in snow cover fraction are detected in late October and early May with a second relative minimum December and January that is likely related to sublimation, snow redistribution, and reduced precipitation.

15 Regional glacier mean elevations range from 5150 m asl in the west to 5600 m asl in the central HKH (Bolch et al., 2012) and equilibrium line altitudes (ELA) from 4400 to 5900 m asl (Yao et al., 2012). The derivation and interpretation of these metrics, however, is subject to some uncertainty (Benn and Lehmkuhl, 2000). Observation of glacier changes, similar to atmospheric measurements, points to an overall warming trend superimposed with large regional differences (Kääb et al., 2012). Most glaciers have retreated over much of the HKH in recent decades (Kääb et al., 2012; Yao et al., 2012), with increasing loss since about 1995 (Bolch et al., 2012). The local observation of climate and glaciers thus agree with the global trend towards atmospheric warming, which is likely to accelerate in the coming decades.

Stephan Gruber 2016-7-30 09:31
Moved up [2]: Climate model scenarios, however, include both increasing and decreasing monsoon intensity (Moors et al., 2011; Palazzi et al., 2013) and thus an element of uncertainty even with respect to the direction of future changes.
 Stephan Gruber 2016-7-29 20:40
Deleted: for recent decades, s
 Stephan Gruber 2016-7-30 09:32
Deleted: It is likely that the effects of
 Stephan Gruber 2016-7-30 09:32
Deleted: even

Stephan Gruber 2016-7-30 16:25
Formatted: Font:English (CAN)

Occurrence and characteristics of permafrost in mountains of the HKH

Early reviews (Brown et al., 1998; Gorbunov, 1978; Matsuoka, 2003) already predicted large areas of permafrost in the HKH based on insight from neighboring mountain ranges and limited local field evidence. The areas of likely permafrost occurrence in mountains can now be more consistently constrained and visualized (Figure 2) based on a simple global model

25 (Gruber, 2012) with about 1km spatial resolution. In a first-order evaluation, this approximate simulation has been corroborated in the HKH with remote rock-glacier mapping (Schmid et al., 2015). Based on this model, which contains an estimate of uncertainty, the overall permafrost area is about one million km² or 14 times the area of glaciers in the HKH at present (Table 1). With two thirds of the QTP underlain by permafrost, China has by far the largest share of this. With the exception of Bhutan, the expected permafrost area is significantly larger than the glacier area in all countries (Table 1, Figure

30 3). The estimated elevation range of permafrost occurrence is large due to the regional variation in air temperature and topography. In some areas in the West of the HKH, permafrost can be expected to occur as low as 3500 m a.s.l. At the same

time, bedrock without permafrost is likely to exist in south-exposed faces to well over 6000 m a.s.l. in the central and eastern part of the HKH.

Rock glaciers are indicators of permafrost in mountains, their identification and the visual assessment of their activity (ice content) however, are often ambiguous (Hewitt, 2014; Schmid et al., 2015). Rock glaciers have been described in several areas of the HKH (Barsch and Jakob, 1998; Jakob, 1992; Regmi, 2008) at 3500–5500 m a.s.l. (Schmid et al., 2015). Their origin was interpreted as related to either talus slopes or glaciers and their moraines (Hewitt, 2014; Ishikawa et al., 2001; Owen and England, 1998; Shroder et al., 2000). The importance of rock glaciers in terms of abundance, sediment transport, and in advancing into modern floodplains has been described for the Lahul and Garhwal Himalayas and the Karakoram (Hewitt, 2014; Owen and England, 1998). While low precipitation has been recognized as favoring the development of rock glaciers, many examples have also been documented in humid parts of the HKH (Hewitt, 2014) and an absence of rock glaciers in extremely arid regions has been noted (Fort and van Vliet-Lanoe, 2007). Rock glacier complexes (Hewitt, 2014) consisting of tributaries coalescing into lobes 2–3 km wide and terminating in multiple lobes of sometimes differing activity and velocity have been described in the Karakoram. There, rock glaciers affect hydrology, mountain pastures, and tree cover in headwater basins. They impound lakes and frequently have small streams of clear water and reliable discharge associated with them (Hewitt, 2014). One author stated that rock glaciers seem to be more directly and extensively part of human settlement and land use in the Karakoram than glaciers are (Hewitt, 2014). The origin of ice-debris landforms in the HKH is often not clearly attributable to either glacial or periglacial processes.

Cold ice can sometimes be visually identified and provides indications of permafrost in contact with it. Other than temperate ice, which is at the melting point, cold ice usually does not contain much liquid water. Hanging glaciers and ice faces, visible in many iconic peaks of the HKH, are only stable in steep slopes because they are frozen to the underlying rock (Gruber and Haeberli, 2009). In arid regions, many small glaciers have cold tongues, which often are identifiable from their supraglacial drainage channels (Ryser et al., 2013). Indicators such as rock glaciers and hanging glaciers are reminders of the existence of permafrost in a landscape but have limited value for inferring the existence of permafrost beneath other surface features nearby.

Direct observations of permafrost in mountains of the HKH are sparse. The majority of Chinese permafrost research is focused on the QTP engineering corridor (Yang et al., 2010a) and observations in mountains aimed at understanding the effect of topography are rare by comparison. Nevertheless, unique insight into arid lands permafrost is provided by Chinese research and is invaluable in estimating permafrost conditions in the HKH. Outside of China, only a handful of ground temperature measurements (Fujii and Higuchi, 1976; Klimeš and Doležal, 2010; Shiraiwa, 1992) and few published observations of ground ice exist (Rastogi and Narayan, 1999). Nevertheless, knowledge on permafrost processes and on climate conditions in the HKH support a number of inferences about the characteristics and spatial distribution of permafrost in mountains of the HKH. The diverse and extreme character of the region implies a wide range of permafrost characteristics that can be expected to exceed what is known from other environments. That is why this large-area review can only infer

possible processes and phenomena for broad ranges of environments based on existing research, and concrete studies or reviews will require a more narrowly defined and quantified set of environmental conditions.

Permafrost likely follows known patterns in many ways: given the same MAAT, a larger abundance of permafrost is expected in arid areas than in areas with more precipitation. In humid areas, few debris slopes are expected to have permafrost with the exception of windblown areas devoid of snow, coarse block covers, peat lands, or debris with incorporated meteoric ice. In more arid areas, extensive permafrost occurrence is to be expected, even below vegetated surfaces. The distribution of permafrost in steep bedrock is much less affected by precipitation as sliding controls snow amounts. The effect of monsoonal precipitation regimes with wet summers and dry winters (Figure 1D) on the differentiation of ground temperature with respect to MAAT is unknown. Possible effects can include reversed thermal offset (Lin et al., 2015) as well as a changed net effect of snow cover, providing little insulation in winter and frequent increases in albedo and latent heat in summer.

Direct solar irradiance, which strongly controls the spatial differentiation of ground temperature in mountains, increases with elevation. By contrast, spatially more uniform fluxes (diffuse solar radiation, thermal irradiance, turbulent heat transport) tend to decrease (Gruber et al., 2004b). As a consequence, the temperature difference between shaded and sun-exposed slopes at extreme elevations likely exceeds known values.

Extreme aridity subdues typical periglacial forms (Fort and van Vliet-Lanoe, 2007; Wang and French, 1995). As a consequence, the geomorphic surface forms typically associated with permafrost may be absent in parts of the HKH. Aridity, and in more humid conditions topography, give rise to unsaturated conditions in the subsurface and alter the heat and moisture transport in the soil. In arid areas, ice-rich permafrost is known to exist (Zhang et al., 2008) and its amount may be governed by topography (Wang and French, 1995). It is conceivable that the incorporation of moisture into the top of permafrost provides a form of water storage capable of accumulating in more cold and humid periods and delayed release during unusually warm conditions. Many small lakes, often with signs of thermokarst, have been documented on the QTP and occur predominantly in ice-rich ground (Lin et al., 2011; Niu et al., 2011).

The burial of snow or avalanche deposits (Gruber and Haeberli, 2009) in talus slopes and cones is expected to cause large aggrading bodies of permafrost. Catchment size, topography, temperature, and relative ice content govern whether these mixtures develop into landforms with little movement, into rock glaciers, or into debris-covered glaciers. While moving landforms can be discerned visually, rather stationary ones can contain ground ice without easily visible clues. Buried ice can occur near the margins of present-day glaciers and in formerly glacierized areas. When this occurs in cold permafrost, buried ice can persist for long times and thus allow surface processes to gradually obliterate surface expressions of buried ice. Large areas with ground ice are to be expected in the HKH and depending on ground temperature, which is indicative of the potential to endure warm periods, this ice can be very old.

The QTP and greater Himalayas had similar elevation as today and were subject to varying patterns of monsoonal circulation throughout the last 2–4 million years (Clift et al., 2008; Zhisheng et al., 2001). Pleistocene maximum glacier extent occurred at times different from global maxima and, in response to changing circulation patterns, exhibited large regional differences

(Benn and Owen, 1998). During the Holocene, a climate optimum associated with warmer and/or wetter conditions has been inferred (Benn and Owen, 1998). Such patterns of changing precipitation and temperature point to spatially variable ages, depths, and ice contents of permafrost.

In steep terrain, three-dimensional effects (Noetzli and Gruber, 2009; Noetzli et al., 2007) can induce permafrost beneath slopes with positive mean annual ground temperatures due to heat conduction from nearby colder slopes. Similarly, temperate firn areas within otherwise cold-based glaciers may cause localized taliks in permafrost. Many of the high HKH peaks have complicated three-dimensional permafrost bodies inside.

In summary, some of the distribution and characteristics of permafrost in the mountainous parts of the HKH can be anticipated. At the same time, differing combinations of high elevation, monsoonal precipitation regimes, and aridity are likely to bring about a wealth of new and unexpected phenomena.

Persistence and impacts of permafrost thaw in the HKH

In the past two decades, the atmosphere has warmed throughout most of the HKH as observable in the accelerated loss of surface ice. Subsurface ice contained in permafrost, which is not readily observable, is expected to undergo changes of similar extent as the energy balance at the ground surface similarly drives it. Climate change (air temperature, precipitation, cloudiness) in the HKH exhibits diverse regional patterns as well as differing trends at high/low elevation or during differing seasons. As these changes are further overprinted by topography, the resulting effect on permafrost is likely to be spatially highly diverse as well. With intensifying climate change, widespread and persistent thaw of permafrost in the HKH is therefore likely in the decades to come. This is corroborated by observations of increasing permafrost thaw in diverse permafrost areas globally (Romanovsky et al., 2010) and on the QTP (Shaoling et al., 2000).

The energy exchange between the atmosphere and the subsurface is moderated by interacting factors such as air temperature, precipitation amounts and seasonality (monsoon), insolation, snow cover, surface material, vegetation cover, and subsurface properties. For this reason, differing facets of a landscape often differ drastically in their response to the same change in climate (Ma et al., 2015; Riseborough et al., 2008). Surface changes such as increased vegetation or snow cover can thereby amplify or counteract atmospheric forcing. To thaw permafrost, heat needs to be transferred between the ground surface and the permafrost at depth. As this is dominated by heat conduction, thaw is increasingly delayed with depth. Ice contained in the subsurface further slows the thaw of permafrost by absorbing heat during melt – the energy input required for changing ice to water is equivalent to raising the temperature of an equal volume of rock by about 150 °C (Gold and Lachenbruch, 1973). As a consequence, subsurface ice content affects both the impacts and the persistence of permafrost, which can easily span decades to centuries for thicknesses of tens to hundreds of meters. In summary, the highly variable mosaic of permafrost properties in mountains is further complicated by diverse trajectories of change imposed by variable surface and subsurface conditions. Therefore, mapping and forecasting impacts of permafrost thaw is difficult. Nevertheless, sustained

Stephan Gruber 2016-7-31 14:28

Deleted: it is similarly driven by the energy balance at the ground surface

atmospheric warming is expected to increase subsurface temperatures globally and this will be accompanied by at least partial thaw into the often ice-rich upper layers of nearly all permafrost.

The simplest impact of thawing ice-rich permafrost is ground subsidence due to ice loss. Additionally, changing mechanical properties (Arenson et al., 2007) can affect the rates, magnitudes, and locations of sediment removal by creep, sliding, or by flowing water. Ice increases the mechanical strength of sediments by providing cohesion. When frozen sediments thaw, their mechanical properties change drastically. Less obviously, even a warming of frozen ground at temperatures below zero can influence its mechanical stability via temperature-dependent properties of ice and changing liquid water contents (Arenson et al., 2007; Kurylyk and Watanabe, 2013). Similarly, warming is hypothesized to cause acceleration or destabilization of rock glaciers (Buchli et al., 2013; Kääb et al., 2007). The fast thaw into ice-rich fine material, which often originates from ice enrichment in the top of permafrost, can cause slope failures at surprising low angles (McRoberts and Morgenstern, 1974). Where massive ground ice is exposed in a cut slope, retrogressive thaw slumping can develop (Niu et al., 2012; Wang and French, 1995). The thaw of ice in aggrading slopes (Gruber and Haeberli, 2009) can expose previously accumulated stores of sediment to erosion by shallow landsliding and debris flows.

Warming and thaw of ice-filled rock clefts result in a transient reduction of stability that can trigger rock slope failure, increased triggering during earthquakes (Kargel et al., 2015), and lead to an acceleration of large-scale deformation. This is further enhanced by the potential of thawing clefts to build up hydrostatic pressure (Gruber and Haeberli, 2007). The role of permafrost in translating heat waves into rock fall is supported by field observations (Gruber et al., 2004a; Ravelle et al., 2010). The fast reaction of rock fall to summer heat waves (Gruber et al., 2004a) bears witness to a fast connection between surface conditions and stability conditions at depth. While the conductive warming of convex topography is faster than in flat terrain (Noetzli and Gruber, 2009), this is likely caused by either heat advection by water percolation (Hasler et al., 2011a) or by thermo-mechanical forcing (Hasler et al., 2012). Changing surface ice cover can affect the permafrost below it; instability in steep glaciers and in permafrost bedrock has been observed to occur together and to produce large ice-rock avalanches (Haeberli et al., 2004; Huggel et al., 2008; Lipovsky et al., 2008). In summary, permafrost thaw results in an increased frequency and possibly in unexpected locations of mass movements, as well as in increased sediment loads available for further downstream transport.

Mass movements in mountain terrain often have a far reach due to their high potential energy. This can be further extended due to the influence of ice content in the moving mass or the trajectory running over glacier ice (Schneider et al., 2011). Furthermore, landslides in mountain environments typically are complex, i.e. one mode of movement transforms into another. Possible transformations include rock slides turning into debris avalanches (Geertsema et al., 2006a) and debris flows (Geertsema et al., 2006b), and deposits of mass movements acting as dams creating temporary lakes. The sudden drainage of lakes can cause flooding and large debris flows (Osti and Egashira, 2009; Vuichard and Zimmermann, 1987). In this context, permafrost is relevant in terms of melting ice cores or ice-cement (Fujita et al., 2013; Watanabe et al., 1995) within the dam and in terms of triggering a breach when fast mass movements enter lakes and their displacement waves contribute to overtopping of dams. Large glacial lakes (cf. Figure 2C) are found within and outside the zone where recent

Stephan Gruber 2016-7-21 15:50

Deleted: for

Stephan Gruber 2016-7-21 15:50

Deleted: both in sediments and in bedrock

permafrost formation is expected (Iwata et al., 2004) and often dammed by debris-covered stagnant ice bodies (Richardson and Reynolds, 2000). In a first glacial lake inventory for Bhutan, Nepal and selected areas in China, India and Pakistan, 8790 glacial lakes have been identified and 203 classified as potentially dangerous (Ives et al., 2010). Glacier recession is expected to result in a further increase of their number and often also their size (Gardelle et al., 2011). The presence of steep bedrock permafrost above natural lakes, and possibly man-made reservoirs, gives the potential for increased frequency of large rock fall a much wider practical relevance. The extreme size of some glacial lakes in the HKH and correspondingly large outburst volumes give these events a potential for having extreme run-out distances (Richardson and Reynolds, 2000) far beyond the area of permafrost occurrence. Often, processes related to glaciers and to permafrost conspire in producing high-mountain hazards. These represent a continuous threat to human lives and infrastructure and related disasters can kill thousands of people at once and cause damage on the order of 100 million dollars per year, globally (Kääb et al., 2005).

Rock glaciers are creeping landforms consisting of frozen debris. A broad range of origins exists including debris-covered cold or polythermal glaciers (Bolch and Gorbunov, 2014), ice-cored moraines, and forms occurring independent of glaciers in their direct vicinity (Haeberli et al., 2006). Their typical velocities are in the range of a few cm to a few meters per year. A number of rock glaciers with velocities of several ten meters per year, with signs of disintegration (Roer et al., 2008), and one complete collapse (Krysiecki et al., 2008) of a rock glacier have been documented outside the HKH. These phenomena are hypothesized to be driven by a decadal-scale warming trend (Delaloye et al., 2008; Kääb et al., 2007; Sorg et al., 2015) and to react to seasonal forcing (Wirz et al., 2016). A widespread acceleration of rock glaciers can affect geohazards by supplying material to debris-flow starting zones and as a mobilization of large sediment stores (Otto et al., 2009; Owen and England, 1998), resulting in increased material delivery to streams (Gärtner-Roer, 2012). Rock glaciers, within which ice melt is retarded by thick debris, can thus advance in times when glaciers retreat. Meltwater release from rock glaciers and their role as aquifers affect local hydrology (Burger et al., 1999; Hewitt, 2014). Especially in arid mountain environments, they are considered an important element of hydrology (Azócar and Brenning, 2010; Rangecroft et al., 2015).

Permafrost thaw affects hydrology through increasing hydrologic permeability with ice loss in pores and through the release of water stored in frozen material. As an aquitard, permafrost can support perched water tables and increase near-surface soil moisture (Gorbunov, 1978; Ishikawa et al., 2005). In arid areas, wetlands often occur where this shallow groundwater seepage is focused by topographic depressions (Woo et al., 2008). Permafrost also enables artesian groundwater, where groundwater recharge or discharge (springs) can only occur in localized taliks. Permafrost thaw, through talik growth and higher permeability of partially frozen material, changes the hydrologic connectivity (Hinzman et al., 2005) in a catchment and affects the rates and amounts of flow along differing paths. An increasing proportion of deeper ground water flow has been postulated based on observations and computer simulation (Bense et al., 2012; Frey and McClelland, 2009) and linked with altered temporal runoff characteristics (Woo et al., 2008) such as higher base flow. Similarly, an observed strong lowering of groundwater and lake levels has been linked with permafrost thaw (Cheng and Jin, 2012; Jin et al., 2009). The thaw of ground ice releases water from long-term storage into the annual hydrologic cycle. As ground ice content, on average, is highest near the top of permafrost this can result in a transient pulse of water release under sustained atmospheric

Stephan Gruber 2016-7-21 16:28

Deleted:

Stephan Gruber 2016-8-8 09:58

Formatted: Font color: Red

warming. This effect, however, will eventually diminish as thaw progresses into deeper layers with less excess ice and stronger retardation by heat diffusion, and into progressively smaller areas of the regional hypsometry. The magnitude and timing of this effect will be difficult to predict (Cheng and Jin, 2012) and vary regionally and with the type of ground ice.

Water chemistry is affected by permafrost thaw via changed flow paths and the release of solutes from newly thawed material. Differing flow paths result in distinct geochemical signatures (Clark et al., 2001). As the hydrologic regime changes from near-surface drainage to deeper flow paths following active layer deepening and talik formation, changed cycle times and their proportional contribution to stream flow will affect solute contents in surface water (Frey and McClelland, 2009; Hinzman et al., 2005) and groundwater (Cheng and Jin, 2012). Additionally, the thaw of previously frozen material releases solutes (Hinzman et al., 2005; Kokelj and Burn, 2003; Williams et al., 2006). This can be due to the release of ions stored in ground ice (Kokelj and Burn, 2003; Kokelj et al., 2002) or, on longer time scales, caused by exposure of new material to leaching, as previously frozen deposits (Gruber and Haeberli, 2009) become hydraulically more permeable. In some cases, water originating from areas of inferred permafrost degradation has been shown to contribute to exceeding guideline values for drinking water quality with respect to selected heavy metals (Thies et al., 2007, 2013). Based on the dilution with direct runoff and water from non-permafrost areas, these effects on water quality are likely most pronounced in small and arid catchments.

Moisture conditions and the release of solutes and organic matter previously immobilized in frozen material affect vegetation and biochemical cycling. In arid areas, increased soil moisture due to perched groundwater promotes plant growth (Gorbunov, 1978) and in some areas, a clear relation between wetlands and permafrost is established (Jin et al., 2008b, 2009; Yang et al., 2010b). Such wetlands have been shown to dry up and evolve into semi-deserts and steppes following permafrost degradation (Cheng and Jin, 2012). Other desertification processes and loss of vegetation often result in soil warming and hence impacts on permafrost (Yang et al., 2010a). Similarly, a changed location of creeks seeping from water flowing over a permafrost aquitard was reported to cause the degradation and desertification of wetlands and pastoral land (Jin et al., 2009). Thaw-related mobilization of carbon stored in permafrost (Schuur et al., 2015) releases greenhouse gasses. In corresponding global estimates of carbon pools, little information exists on mid or low latitude mountain regions, which are instead considered with simple factors only (Zimov et al., 2006). Valley fills (Blöthe and Korup, 2013), deposits of solifluction, and aeolian material are environments in which carbon may have been accumulated and preserved in permafrost over long time scales, even in arid environments, although likely of smaller magnitude than high-latitude carbon storage (Fuchs et al., 2015).

With respect to water and ecosystems, the response of permafrost to climate change will have some similarity to that of glaciers but will be more delayed and persistent: an transient increase in runoff during warm periods followed, after years or decades, by a reduced capacity to buffer stream flow by water release in warm periods. The relative magnitude of impacts related to runoff, water quality, and vegetation will be greater in arid areas where the areal abundance and water content of permafrost is significant compared to that of glaciers. As the reaction of snow cover duration and glacier recession will be faster than permafrost thaw at depth, the relative proportion of runoff derived from thawing subsurface ice will increase

further. A transient increase in vegetation abundance can be imagined to result from the release of water and nutrients during sustained permafrost thaw, but over time will likely diminish into a permanently dryer and less vegetated state in a landscape transitioning to a smaller proportion of near-surface runoff.

The engineering properties of frozen ground are strongly dependent on temperature. While permafrost a few degrees below 0°C mostly has high strength in compression, excellent bearing capacity, and low hydraulic permeability, these properties change drastically when thaw occurs and ground ice gradually turns to water. Permafrost beneath engineered structures will be influenced by not only the thermal disturbance of the structure, but also the thermal impact of long-term climate change. As a consequence, engineered structures such as dams, roads, railways, or buildings will require increasing maintenance and repair as permafrost thaws. Similarly, geohazards affecting such structures can change their frequency of occurrence or occur from location previously considered safe. Frost mounds (Jin et al., 2008a), migrating pingos (Wu et al., 2005), or landslides (Huggel et al., 2013; Kargel et al., 2015) are examples of geohazards conditioned by permafrost. The consequences of permafrost thaw on structures can be mitigated by careful site selection and specialized building practices (Bommer et al., 2010; Zhang et al., 2008). Permafrost engineering has a long tradition based on development and infrastructure operation in Russia, North America, China, and Northern Europe. In HKH countries other than China, however, little awareness and expertise exists with respect to the design of structures for permafrost conditions or the assessment of possible geohazards connected with permafrost thaw. At the same time, infrastructure on or near permafrost exists in those countries (Figure 2).

Perspectives

Large areas of permafrost exist in the mountainous parts of the HKH. Despite its extent and likely scientific and societal relevance this permafrost has hardly been investigated. Based mostly on research from other regions or continents, we conclude that widespread permafrost thaw is virtually certain to occur in the future and that this persistent change in subsurface conditions will affect sediment budgets and geohazards, hydrology, water quality, and vegetation. The importance of permafrost phenomena in a region or catchment will be locally variable much like the impacts of glacier melt have differing magnitudes in headwater basins and in major rivers hundreds of kilometers downstream. The full diversity of impacts as well as pathways connecting them with human activity, however, are largely unknown because environmental and societal conditions in the HKH are markedly different from other permafrost areas and because relevant observations, data, and regional expertise are sparse. In this context, coordinated research and measurement programs are required, both to gain confidence in the application of knowledge gained in other regions, and to investigate phenomena unique to the HKH. Such research programs will strengthen local expertise and networks and provide important links to the international research community. Long-term monitoring of ground temperature, ice content, and other variables at selected sites (cf., Vonder Muehl et al., 2008) will contribute to national and international programs and provide a basis for the evaluation of simulation and remote sensing products.

Stephan Gruber 2016-7-21 15:45

Deleted: – or noticed

Stephan Gruber 2016-7-31 16:44

Formatted: Font color: Accent 3

For the basic understanding and assessment of permafrost environments a number of broad research questions emerge: What types of permafrost terrain are relevant and how can they be recognized? What amount and form of ground ice exists beneath differing terrain types? How fast is permafrost warming and losing ice in differing climates and terrain types? How can ice-debris landforms be better understood in combined permafrost and glacier studies? How do regional climates such as monsoon, high elevation, or aridity affect permafrost? What is the role of permafrost and seasonally frozen ground in controlling discharge and water quality in arid areas?

Similarly, understanding the physical impacts of permafrost thaw raises a number of questions: How much water is stored in frozen ground? How is melting ground ice affecting water resources in terms of quantity, timing, temperature, chemistry, sediment load, and freshwater ecology? What will be the long-term implications for local freshwater supply? What are the regional relationships between vegetation or wetlands and permafrost characteristics? What is the areal extent of pastures and rangelands in permafrost conditions? What are regionally important geohazards related to permafrost and its thaw? How do cascading processes connect permafrost and populated places? Is a changed geohazard regime detectable in permafrost areas? The answers to many of these questions may differ from established insight elsewhere, and likely locally, within the HKH.

The diversity of cultures and livelihoods present at high elevation in the HKH also motivates questions on the local interaction of humans and permafrost: How are permafrost phenomena and their change represented in local knowledge? Where in the HKH are significant amounts of people living on or close to permafrost? What are possible socio-economic and cultural consequences of permafrost thaw? To what extent do agro-pastoralists depend on pastures and rangelands in permafrost? Which (high value) species are linked with permafrost and may disappear with its thaw? What are suitable adaptation strategies to mitigate the possible impacts of permafrost thaw on local populations? How are research findings best communicated to the affected population?

Given the size and diversity of the HKH and the remoteness of many populated places, the ability to simulate permafrost conditions and to use remote sensing methods for the detection of relevant changes and impacts is important. This is because local measurements will not suffice to produce the first-order maps of permafrost characteristics or change needed.

Computer simulations help in distinguishing plausible from less likely future developments. Promising methodologies for improved simulation in remote locations and mountain areas exist (Fiddes and Gruber, 2012, 2014; Fiddes et al., 2015; Westermann et al., 2015) and offer synergies with efforts in atmospheric sciences (Gutmann et al., 2016; Ménégoz et al., 2013), glaciology, and hydrology. Furthermore, the trend to using more physics-based models, towards more rigorous model testing (Gubler et al., 2013), and towards greater attention to scaling issues (Muster et al., 2012; Zhang, 2013) will likely result in a more unified approach to simulating permafrost in both polar or sub-polar lowlands and lower-latitude mountain areas. Simulation and remote sensing will be key tools in the assessment of permafrost moderated climate impacts and related risk reduction.

The importance of permafrost for many phenomena is as easy to overlook as it is to not see permafrost itself: Landslides exist without permafrost. Engineering challenges exist without permafrost. In regions without permafrost, climate change

brings about hydrologic and ecologic change. The importance of permafrost lies in the profound transformation of physical characteristics of the subsurface in response to temperature change and the additional element of change and surprise this brings for the systems concerned. As many domains of environmental research (e.g., glaciology, hydrology, climatology) face similar challenges, there is great potential for synergy in joint research and discovery in the HKH.

Stephan Gruber 2016-7-31 17:31

Deleted:

... [1]

5 Author contributions

S. Gruber wrote most of the manuscript and produced the figures and tables. Additional input on hydrologic impacts was provided by P. Panday, on permafrost and lakes by M.O. Schmid, on permafrost engineering and permafrost on the QTP by E. Guegan, and on wetlands by R. Fleiner. L. Zhao and Y. Zhang contributed expertise regarding permafrost on the QTP and in mountains. S. Gruber, D. Stumm, and P. Wester conceived and planned the manuscript and review activities, and D. Stumm, and P. Wester contributed to the writing, commenting and editing of the manuscript. The views and interpretations in this publication are those of the authors and they are not necessarily attributable to their organizations.

Acknowledgements

The International Centre for Integrated Mountain Development (ICIMOD), Nepal, provided funding and logistical support for this review. This study was partially supported by core funds of ICIMOD contributed by the governments of Afghanistan, Australia, Austria, Bangladesh, Bhutan, China, India, Myanmar, Nepal, Norway, Pakistan, Switzerland, and the United Kingdom. The future research directions outlined in this contribution are partially inspired by the outcomes of a group discussion during the International Symposium on Glaciology in High Mountain Asia, Kathmandu, Nepal, in March 2015. F. Salerno and two anonymous reviewers provided valuable feedback and input during the discussion stage of this manuscript.

20 References

- Arenson, L. U., Springman, S. M. and Sego, D. C.: The rheology of frozen soils, *Appl. Rheol.*, 17(1), 1–14, 2007.
- Azócar, G. F. and Brenning, A.: Hydrological and geomorphological significance of rock glaciers in the dry Andes, Chile (27°–33°S), *Permafr. Periglac. Process.*, 21(1), 42–53, doi:10.1002/ppp.669, 2010.
- Bajracharya, S. and Shrestha, B.: The status of glaciers in the Hindu Kush-Himalayas, Kathmandu, Nepal., 2011.
- Bao, X. and Zhang, F.: Evaluation of NCEP–CFSR, NCEP–NCAR, ERA-Interim, and ERA-40 reanalysis datasets against independent sounding observations over the Tibetan Plateau, *J. Clim.*, 26(1), 206–214, doi:10.1175/JCLI-D-12-00056.1, 2013.
- Barsch, D. and Jakob, M.: Mass transport by active rockglaciers in the Khumbu Himalaya, *Geomorphology*, 26(1-3), 215–

- 222, doi:10.1016/S0169-555X(98)00060-9, 1998.
- Benn, D. I. and Lehmkuhl, F.: Mass balance and equilibrium-line altitudes of glaciers in high-mountain environments, *Quat. Int.*, 65/66, 15–29, doi:10.1016/S1040-6182(99)00034-8, 2000.
- Benn, D. I. and Owen, L. A.: The role of the Indian summer monsoon and the mid-latitude westerlies in Himalayan glaciation: review and speculative discussion, *J. Geol. Soc. London.*, 155(2), 353–363, doi:10.1144/gsjgs.155.2.0353, 1998.
- 5 Bense, V. F., Kooi, H., Ferguson, G. and Read, T.: Permafrost degradation as a control on hydrogeological regime shifts in a warming climate, *J. Geophys. Res.*, 117(F3), F03036, doi:10.1029/2011JF002143, 2012.
- Bhutiya, M. R., Kale, V. S. and Pawar, N. J.: Long-term trends in maximum, minimum and mean annual air temperatures across the Northwestern Himalaya during the twentieth century, *Clim. Change*, 85(1-2), 159–177, doi:10.1007/s10584-006-9196-1, 2007.
- 10 Blöthe, J. H. and Korup, O.: Millennial lag times in the Himalayan sediment routing system, *Earth Planet. Sci. Lett.*, 382, 38–46, doi:10.1016/j.epsl.2013.08.044, 2013.
- Boeckli, L., Brenning, a., Gruber, S. and Noetzli, J.: A statistical approach to modelling permafrost distribution in the European Alps or similar mountain ranges, *Cryosph.*, 6(1), 125–140, doi:10.5194/tc-6-125-2012, 2012.
- 15 Böhner, J.: General climatic controls and topoclimatic variations in Central and High Asia, *Boreas*, 35(2), 279–295, doi:10.1080/03009480500456073, 2006.
- Bolch, T. and Gorbunov, A. P.: Characteristics and origin of rock glaciers in northern Tien Shan (Kazakhstan/Kyrgyzstan), *Permafr. Periglac. Process.*, 25(4), 320–332, doi:10.1002/ppp.1825, 2014.
- Bolch, T., Kulkarni, A., Kääb, A., Huggel, C., Paul, F., Cogley, J. G., Frey, H., Kargel, J. S., Fujita, K., Scheel, M., 20 Bajracharya, S. and Stoffel, M.: The state and fate of Himalayan glaciers, *Science*, 336(6079), 310–4, doi:10.1126/science.1215828, 2012.
- Bommer, C., Phillips, M. and Arenson, L.: Practical recommendations for planning, constructing and maintaining infrastructure in mountain permafrost, *Permafr. Periglac. Process.*, 21, 97–104, 2010.
- Bookhagen, B. and Burbank, D. W.: Topography, relief, and TRMM-derived rainfall variations along the Himalaya, 25 *Geophys. Res. Lett.*, 33(8), L08405, doi:10.1029/2006GL026037, 2006.
- Bookhagen, B. and Burbank, D. W.: Toward a complete Himalayan hydrological budget: Spatiotemporal distribution of snowmelt and rainfall and their impact on river discharge, *J. Geophys. Res.*, 115(F3), F03019, doi:10.1029/2009JF001426, 2010.
- Brown, J., Ferrians, O., Heginbottom, J. A. and Melnikov, E.: Circum-Arctic Map of Permafrost and Ground-Ice Conditions., Boulder, Color. USA Natl. Snow Ice Data Center., 1998.
- 30 Brown, R. J. E. and Pewe, T. L.: Distribution of permafrost in North America and its relationship to the environment: a review, in *Permafrost: North American Contribution*, Second International Conference, pp. 71–100., 1973.
- Buchli, T., Merz, K., Zhou, X., Kinzelbach, W. and Springman, S. M.: Characterization and monitoring of the Furggwanhorn rock glacier, Turtmann Valley, Switzerland: results from 2010 to 2012, *Vadose Zo. J.*, 12(1),

doi:10.2136/vzj2012.0067, 2013.

- Burger, K. C., Degenhardt, J. J. and Giardino, J. R.: Engineering geomorphology of rock glaciers, *Geomorphology*, 31, 93–132, doi:10.1016/S0169-555X(99)00074-4, 1999.
- Burn, C. R. and Smith, C. A. S.: Observations of the "thermal offset" in near-surface mean annual ground temperatures at several sites near Mayo, Yukon Territory, Canada, *Arctic*, 41(2), 99–104, doi:10.14430/arctic1700, 1988.
- Cheng, G. and Jin, H.: Permafrost and groundwater on the Qinghai-Tibet Plateau and in northeast China, *Hydrogeol. J.*, 21(1), 5–23, doi:10.1007/s10040-012-0927-2, 2012.
- Clark, I. D., Lauriol, B., Harwood, L. and Marschner, M.: Groundwater contributions to discharge in a permafrost setting, Big Fish River, N.W.T., Canada, *Arctic, Antarct. Alp. Res.*, 33(1), 62, doi:10.2307/1552278, 2001.
- Clift, P. D., Hodges, K. V., Heslop, D., Hannigan, R., Van Long, H. and Calves, G.: Correlation of Himalayan exhumation rates and Asian monsoon intensity, *Nat. Geosci.*, 1(12), 875–880, doi:10.1038/ngeo351, 2008.
- Delaloye, R. and Lambiel, C.: Evidence of winter ascending air circulation throughout talus slopes and rock glaciers situated in the lower belt of alpine discontinuous permafrost (Swiss Alps), *Nor. Geogr. Tidsskr. - Nor. J. Geogr.*, 59(2), pp. 194–203, doi:10.1080/00291950510020673, 2005.
- Delaloye, R., Perruchoud, E., Avian, M., Kaufmann, V., Bodin, X., Hausmann, H., Ikeda, A., Kääb, A., Kellerer-Pirklbauer, A., Krainer, K., Lambiel, C., Mihajlovic, D., Staub, B., Roer, I. and Thibert, E.: Recent interannual variations of rock glacier creep in the European Alps, *Proceeding Ninth Int. Conf. Permafr.*, 343–348, 2008.
- Derin, Y., Anagnostou, E., Berne, A., Borga, M., Boudevillain, B., Buytaert, W., Chang, C.-H., Delrieu, G., Hong, Y., Hsu, Y. C., Lavado-Casimiro, W., Manz, B., Moges, S., Nikolopoulos, E. I., Sahl, D., Salerno, F., Rodríguez-Sánchez, J.-P., Vergara, H. J. and Yilmaz, K. K.: Multiregional satellite precipitation products evaluation over complex terrain, *J. Hydrometeorol.*, 17(6), 1817–1836, doi:10.1175/JHM-D-15-0197.1, 2016.
- Endrizzi, S., Gruber, S., Dall'Amico, M. and Rigon, R.: GEOtop 2.0: simulating the combined energy and water balance at and below the land surface accounting for soil freezing, snow cover and terrain effects, *Geosci. Model Dev.*, 7(6), 2831–2857, doi:10.5194/gmd-7-2831-2014, 2014.
- Etzelmueller, B. and Hagen, J. O.: Glacier-permafrost interaction in Arctic and alpine mountain environments with examples from southern Norway and Svalbard, *Geol. Soc. London, Spec. Publ.*, 242(1), 11–27, 2005.
- Fiddes, J. and Gruber, S.: TopoSUB: a tool for efficient large area numerical modelling in complex topography at sub-grid scales, *Geosci. Model Dev.*, 5(5), 1245–1257, doi:10.5194/gmd-5-1245-2012, 2012.
- Fiddes, J. and Gruber, S.: TopoSCALE v.1.0: downscaling gridded climate data in complex terrain, *Geosci. Model Dev.*, 7(1), 387–405, doi:10.5194/gmd-7-387-2014, 2014.
- Fiddes, J., Endrizzi, S. and Gruber, S.: Large-area land surface simulations in heterogeneous terrain driven by global data sets: application to mountain permafrost, *Cryosph.*, 9(1), 411–426, doi:10.5194/tc-9-411-2015, 2015.
- Fort, M. and van Vliet-Lanoe, B.: Permafrost and periglacial environment of Western Tibet, *Landf. Anal.*, 5, 25–29, 2007.
- Fowler, H. J. and Archer, D. R.: Conflicting signals of climatic change in the upper Indus basin, *J. Clim.*, 19(17), 4276–

- 4293, doi:10.1175/JCLI3860.1, 2006.
- Frey, K. E. and McClelland, J. W.: Impacts of permafrost degradation on arctic river biogeochemistry, *Hydrol. Process.*, 23(1), 169–182, doi:10.1002/hyp.7196, 2009.
- Fuchs, M., Kuhry, P. and Hugelius, G.: Low below-ground organic carbon storage in a subarctic Alpine permafrost environment, *Cryosph.*, 9, 427–438, doi:10.5194/tc-9-427-2015, 2015.
- 5 Fujii, Y. and Higuchi, K.: Ground temperature and its relation to permafrost occurrences in the Khumbu region and Hidden Valley, J. Japanese Soc. Snow Ice, 38, 125–128, doi:10.5331/seppyo.38.Special_125, 1976.
- Fujita, K., Sakai, A., Takenaka, S., Nuimura, T., Surazakov, A. B., Sawagaki, T. and Yamanokuchi, T.: Potential flood volume of Himalayan glacial lakes, *Nat. Hazards Earth Syst. Sci.*, 13, 1827–1839, doi:10.5194/nhess-13-1827-2013, 2013.
- 10 Gardelle, J., Arnaud, Y. and Berthier, E.: Contrasted evolution of glacial lakes along the Hindu Kush Himalaya mountain range between 1990 and 2009, *Glob. Planet. Change*, 75(1-2), 47–55, doi:10.1016/j.gloplacha.2010.10.003, 2011.
- Gärtner-Roer, I.: Sediment transfer rates of two active rockglaciers in the Swiss Alps, *Geomorphology*, 167-168, 45–50, doi:10.1016/j.geomorph.2012.04.013, 2012.
- Geertsema, M., Hungr, O., Schwab, J. W. and Evans, S. G.: A large rockslide–debris avalanche in cohesive soil at Pink Mountain, northeastern British Columbia, Canada, *Eng. Geol.*, 83(1-3), 64–75, doi:10.1016/j.enggeo.2005.06.025, 2006a.
- 15 Geertsema, M., Clague, J. J., Schwab, J. W. and Evans, S. G.: An overview of recent large catastrophic landslides in northern British Columbia, Canada, *Eng. Geol.*, 83(1-3), 120–143, doi:10.1016/j.enggeo.2005.06.028, 2006b.
- Girard, L., Gruber, S., Weber, S. and Beutel, J.: Environmental controls of frost cracking revealed through in situ acoustic emission measurements in steep bedrock, *Geophys. Res. Lett.*, 40(9), 1748–1753, doi:10.1002/grl.50384, 2013.
- 20 Gold, L. W. and Lachenbruch, A. H.: Thermal conditions in permafrost: a review of North American literature, in *North American Contribution to the Second International Conference on Permafrost*, pp. 3–25, National Research Council Canada., 1973.
- Goodrich, L. E.: The influence of snow cover on the ground thermal regime, *Can. Geotech. J.*, 19(4), 421–432, doi:10.1139/t82-047, 1982.
- 25 Gorbunov, A. P.: Permafrost investigations in high-mountain regions, *Arct. Alp. Res.*, 10(2), 283–294, 1978.
- Gruber, S.: Derivation and analysis of a high-resolution estimate of global permafrost zonation, *Cryosph.*, 6(1), 221–233, doi:10.5194/tc-6-221-2012, 2012.
- Gruber, S. and Haeberli, W.: Permafrost in steep bedrock slopes and its temperature-related destabilization following climate change, *J. Geophys. Res.*, 112, F02S18, doi:10.1029/2006JF000547, 2007.
- 30 Gruber, S. and Haeberli, W.: Mountain permafrost, in *Permafrost Soils*, edited by R. Margesin, pp. 33–44, Springer Berlin Heidelberg, Berlin, Heidelberg., 2009.
- Gruber, S. and Hoelzle, M.: The cooling effect of coarse blocks revisited: a modeling study of a purely conductive mechanism, in *Proceedings of the 9th International Conference on Permafrost 2008*, pp. 557–561, Fairbanks, Alaska, USA., 2008.

- Gruber, S., Hoelzle, M. and Haeberli, W.: Permafrost thaw and destabilization of Alpine rock walls in the hot summer of 2003, *Geophys. Res. Lett.*, 31(13), L13504, doi:10.1029/2004GL020051, 2004a.
- Gruber, S., Hoelzle, M. and Haeberli, W.: Rock-wall temperatures in the Alps: modelling their topographic distribution and regional differences, *Permafr. Periglac. Process.*, 15(3), 299–307, doi:10.1002/ppp.501, 2004b.
- 5 Gubler, S., Fiddes, J., Keller, M. and Gruber, S.: Scale-dependent measurement and analysis of ground surface temperature variability in alpine terrain, *Cryosph.*, 5(2), 431–443, doi:10.5194/tc-5-431-2011, 2011.
- Gubler, S., Endrizzi, S., Gruber, S. and Purves, R. S.: Sensitivities and uncertainties of modeled ground temperatures in mountain environments, *Geosci. Model Dev.*, 6(4), 1319–1336, doi:10.5194/gmd-6-1319-2013, 2013.
- Guodong, C.: The mechanism of repeated-segregation for the formation of thick layered ground ice, *Cold Reg. Sci. Technol.*, 8(1), 57–66, doi:10.1016/0165-232X(83)90017-4, 1983.
- 10 Gutmann, E., Barstad, I., Clark, M., Arnold, J. and Rasmussen, R.: The Intermediate Complexity Atmospheric Research Model (ICAR), *J. Hydrometeorol.*, 17(3), 957–973, doi:10.1175/JHM-D-15-0155.1, 2016.
- Haeberli, W.: Investigating glacier-permafrost relationships in high-mountain areas: historical background, selected examples and research needs, *Geol. Soc. London, Spec. Publ.*, 242(1), 29–37, 2005.
- 15 Haeberli, W., Huggel, C., Käab, A., Zraggen-Oswald, S., Polkvoj, A., Galushkin, I., Zotikov, I. and Osokin, N.: The Kolka-Karmadon rock/ice slide of 20 September 2002: an extraordinary event of historical dimensions in North Ossetia, Russian Caucasus, *J. Glaciol.*, 50(171), 533–546, doi:10.3189/172756504781829710, 2004.
- Haeberli, W., Hallet, B., Arenson, L., Elconin, R., Humlum, O. and Ka, A.: Permafrost creep and rock glacier dynamics, *Permafr. Periglac. Process.*, 17, 189–214, doi:10.1002/ppp, 2006.
- 20 Haeberli, W., Noetzli, J., Arenson, L., Delaloye, R., Gärtner-Roer, I., Gruber, S., Isaksen, K., Kneisel, C., Krautblatter, M. and Phillips, M.: Mountain permafrost: development and challenges of a young research field, *J. Glaciol.*, 56(200), 1043–1058, doi:10.3189/002214311796406121, 2010.
- Harris, C. and Murton, J. B.: Interactions between glaciers and permafrost: an introduction, *Geol. Soc. London, Spec. Publ.*, 242(1), 1–9, doi:10.1144/GSL.SP.2005.242.01.01, 2005.
- 25 Harris, C., Arenson, L. U., Christiansen, H. H., Etzelmüller, B., Frauenfelder, R., Gruber, S., Haeberli, W., Hauck, C., Hölzle, M., Humlum, O., Isaksen, K., Käab, A., Kern-Lütschg, M. a., Lehning, M., Matsuoka, N., Murton, J. B., Nötzli, J., Phillips, M., Ross, N., Seppälä, M., Springman, S. M. and Vonder Mühl, D.: Permafrost and climate in Europe: Monitoring and modelling thermal, geomorphological and geotechnical responses, *Earth-Science Rev.*, 92(3-4), 117–171, doi:10.1016/j.earscirev.2008.12.002, 2009.
- 30 Hartmann, D. L., Tank, A. M. G. K., Rusticucci, M., Alexander, L. V., Brönnimann, S., Charabi, Y., Dentener, F. J., Dlugokencky, E. J., Easterling, D. R., Kaplan, A., Soden, B. J., Thorne, P. W., Wild, M. and Zhai, P. M.: Observations: Atmosphere and Surface, in *Climate Change 2013: The Physical Science Basis. Contribution of Working Group I to the Fifth Assessment Report of the Intergovernmental Panel on Climate Change*, edited by T. F. Stocker, D. Qin, G.-K. Plattner, M. Tignor, S. K. Allen, J. Boschung, A. Nauels, Y. Xia, V. Bex, and P. M. Midgley, pp. 159–254, Cambridge University

- Press, Cambridge, United Kingdom and New York, NY, USA., 2013.
- Hasler, A., Gruber, S., Font, M. and Dubois, A.: Advective heat transport in frozen rock clefts: conceptual model, laboratory experiments and numerical simulation, *Permafr. Periglac. Process.*, 22(4), 378–389, doi:10.1002/ppp.737, 2011a.
- Hasler, A., Gruber, S. and Haeberli, W.: Temperature variability and offset in steep alpine rock and ice faces, *Cryosph.*, 5(4), 977–988, doi:10.5194/tc-5-977-2011, 2011b.
- Hasler, A., Gruber, S. and Beutel, J.: Kinematics of steep bedrock permafrost, *J. Geophys. Res.*, 117(F1), F01016, doi:10.1029/2011JF001981, 2012.
- Hewitt, K.: *Glaciers of the Karakoram Himalaya*, Springer Netherlands, Dordrecht., 2014.
- Hinkel, K. M. and Hurd, J. K.: Permafrost destabilization and thermokarst following snow fence installation, Barrow, Alaska, U.S.A., Arctic, *Antarct. Alp. Res.*, 38(4), 530–539, 2006.
- Hinzman, L. D., Bettez, N. D., Bolton, W. R., Chapin, F. S., Dyurgerov, M. B., Fastie, C. L., Griffith, B., Hollister, R. D., Hope, A., Huntington, H. P., Jensen, A. M., Jia, G. J., Jorgenson, T., Kane, D. L., Klein, D. R., Kofinas, G., Lynch, A. H., Lloyd, A. H., McGuire, a. D., Nelson, F. E., Oechel, W. C., Osterkamp, T. E., Racine, C. H., Romanovsky, V. E., Stone, R. S., Stow, D. a., Sturm, M., Tweedie, C. E., Vourlitis, G. L., Walker, M. D., Walker, D. a., Webber, P. J., Welker, J. M., Winker, K. S. and Yoshikawa, K.: Evidence and implications of recent climate change in northern Alaska and other Arctic regions, *Clim. Change*, 72(3), 251–298, doi:10.1007/s10584-005-5352-2, 2005.
- Huggel, C., Gruber, S. and Wessels, R. L.: The 2005 Mt. Steller, Alaska, rock-ice avalanche: a large slope failure in cold permafrost, in *Proceedings of the 9th International Conference on Permafrost 2008*, pp. 747–752, Fairbanks, Alaska, USA., 2008.
- Huggel, C., Gruber, S. and Korup, O.: Landslide hazards and climate change in high mountains, in *Treatise on Geomorphology*, vol. 13, pp. 288–301, Elsevier Ltd., 2013.
- Immerzeel, W. W., Wanders, N., Lutz, A. F., Shea, J. M. and Bierkens, M. F. P.: Reconciling high-altitude precipitation in the upper Indus basin with glacier mass balances and runoff, *Hydrol. Earth Syst. Sci.*, 19(11), 4673–4687, doi:10.5194/hess-19-4673-2015, 2015.
- Ishikawa, M., Watanabe, T. and Nakamura, N.: Genetic differences of rock glaciers and the discontinuous mountain permafrost zone in Kanchanjunga Himal, Eastern Nepal, *Permafr. Periglac. Process.*, 12(3), 243–253, doi:10.1002/ppp.394, 2001.
- Ishikawa, M., Fukui, K., Aoyama, M., Ikeda, A., Sawada, Y. and Matsuoka, N.: Mountain permafrost in Japan: distribution, landforms and thermal regimes, *Zeitschrift für Geomorphol. Suppl. Issue*, 130, 99–116, 2003.
- Ishikawa, M., Sharkhuu, N., Zhang, Y., Kadota, T. and Ohata, T.: Ground thermal and moisture conditions at the southern boundary of discontinuous permafrost, Mongolia, *Permafr. Periglac. Process.*, 16(2), 209–216, doi:10.1002/ppp.483, 2005.
- Ives, J., Shrestha, R. and Mool, P.: Formation of glacial lakes in the Hindu Kush-Himalayas and GLOF risk assessment, ICIMOD, Kathmandu, Nepal., 2010.
- Iwata, S., Ageta, Y., Sakai, A., Narama, C. and Naito, N.: Glacial geomorphology in the Lunana area in the Bhutan

- Himalaya: moraine stages, glacial lakes, and rock glaciers, *Himal. J. Sci.*, 2(4), 164–165, 2004.
- Jakob, M.: Active rock glaciers and the lower limit of discontinuous alpine permafrost, Khumbu Himalaya, Nepal, *Permafr. Periglac. Process.*, 3, 253–256, 1992.
- Jarvis, A., Reuter, H. I., Nelson, A. and Guevara, E.: Hole-filled SRTM for the globe Version 4, 2008.
- 5 Jin, H., Yu, Q., Wang, S. and Lü, L.: Changes in permafrost environments along the Qinghai–Tibet engineering corridor induced by anthropogenic activities and climate warming, *Cold Reg. Sci. Technol.*, 53(3), 317–333, doi:10.1016/j.coldregions.2007.07.005, 2008a.
- Jin, H., Sun, G., Yu, S., Jin, R. and He, R.: Symbiosis of marshes and permafrost in Da and Xiao Hinggan Mountains in northeastern China, *Chinese Geogr. Sci.*, 18(1), 62–69, doi:10.1007/s11769-008-0062-0, 2008b.
- 10 Jin, H., He, R., Cheng, G., Wu, Q., Wang, S., Lü, L. and Chang, X.: Changes in frozen ground in the source area of the Yellow River on the Qinghai–Tibet Plateau, China, and their eco-environmental impacts, *Environ. Res. Lett.*, 4(4), 045206, doi:10.1088/1748-9326/4/4/045206, 2009.
- Jobbágy, E. G. and Jackson, R. B.: Global controls of forest line elevation in the northern and southern hemispheres, *Glob. Ecol. Biogeogr.*, 9(3), 253–268, 2000.
- 15 Kääb, A., Reynolds, J. M. and Haeberli, W.: Glacier and permafrost hazards in high mountains, in *Global Change and Mountain Regions: An Overview of Current Knowledge*, pp. 225–234., 2005.
- Kääb, A., Frauenfelder, R. and Roer, I.: On the response of rockglacier creep to surface temperature increase, *Glob. Planet. Change*, 56(1), 172–187, 2007.
- Kääb, A., Berthier, E., Nuth, C., Gardelle, J. and Arnaud, Y.: Contrasting patterns of early twenty-first-century glacier mass change in the Himalayas, *Nature*, 488, 495–498, doi:10.1038/nature11324, 2012.
- 20 Kapnick, S. B., Delworth, T. L., Ashfaq, M., Malyshev, S. and Milly, P. C. D.: Snowfall less sensitive to warming in Karakoram than in Himalayas due to a unique seasonal cycle, *Nat. Geosci.*, (October), 1–7, doi:10.1038/ngeo2269, 2014.
- Kargel, J. S., Leonard, G. J., Shugar, D. H., Haritashya, U. K., Bevington, A., Fielding, E. J., Fujita, K., Geertsema, M., Miles, E. S., Steiner, J., Anderson, E., Bajracharya, S., Bawden, G. W., Breashears, D. F., Byers, A., Collins, B., Dhital, M.
- 25 R., Donnellan, A., Evans, T. L., Geai, M. L., Glasscoe, M. T., Green, D., Gurung, D. R., Heijenk, R., Hilborn, A., Hudnut, K., Huyck, C., Immerzeel, W. W., Jiang Liming, Jibson, R., Kaab, A., Khanal, N. R., Kirschbaum, D., Kraaijenbrink, P. D. A., Lamsal, D., Liu Shiyin, Lv Mingyang, McKinney, D., Nahirnick, N. K., Nan Zhuotong, Ojha, S., Olsenholler, J., Painter, T. H., Pleasants, M., KC, P., Yuan, Q., Raup, B. H., Regmi, D., Rounce, D. R., Sakai, A., Shangguan Donghui, Shea, J. M., Shrestha, A. B., Shukla, A., Stumm, D., van der Kooij, M., Voss, K., Wang Xin, Weihs, B., Wolfe, D., Wu Lizong, Yao
- 30 Xiaojun, Yoder, M. R. and Young, N.: Geomorphic and geologic controls of geohazards induced by Nepals 2015 Gorkha earthquake, *Science* (80-.), (in press), 1–18, doi:10.1126/science.aac8353, 2015.
- Kattel, D. B. and Yao, T.: Recent temperature trends at mountain stations on the southern slope of the central Himalayas, *J. Earth Syst. Sci.*, 122(1), 215–227, doi:10.1007/s12040-012-0257-8, 2013.
- Kirkbride, M.: Debris-covered glaciers, edited by V. P. Singh, P. Singh, and U. K. Haritashya, *Encycl. Snow, Ice Glaciers*,

- 190–192, doi:10.1007/978-90-481-2642-2, 2011.
- Klimeš, L. and Doležal, J.: An experimental assessment of the upper elevational limit of flowering plants in the western Himalayas, *Ecography (Cop.)*, 33, 590–596, doi:10.1111/j.1600-0587.2009.05967.x, 2010.
- Kokelj, S. V. and Burn, C. R.: Ground ice and soluble cations in near-surface permafrost, Inuvik, Northwest Territories, Canada, *Permafr. Periglac. Process.*, 14(3), 275–289, doi:10.1002/ppp.458, 2003.
- Kokelj, S. V., Smith, C. a. S. and Burn, C. R.: Physical and chemical characteristics of the active layer and permafrost, Herschel Island, western Arctic Coast, Canada, *Permafr. Periglac. Process.*, 13(2), 171–185, doi:10.1002/ppp.417, 2002.
- Kokelj, S. V., Riseborough, D., Coutts, R. and Kanigan, J. C. N.: Permafrost and terrain conditions at northern drilling-mud sumps: Impacts of vegetation and climate change and the management implications, *Cold Reg. Sci. Technol.*, 64(1), 46–56, doi:10.1016/j.coldregions.2010.04.009, 2010.
- Körner, C. and Paulsen, J.: A world-wide study of high altitude treeline temperatures, *J. Biogeogr.*, 31(5), 713–732, 2004.
- Krysiecki, J., Bodin, X. and Schoeneich, P.: Collapse of the Bérard rock glacier (southern French Alps), *Proc. 9th Int. Conf. Permafrost, Ext. Abstr.*, 153–154, 2008.
- Kurylyk, B. L. and Watanabe, K.: The mathematical representation of freezing and thawing processes in variably-saturated, non-deformable soils, *Adv. Water Resour.*, 60, 160–177, doi:10.1016/j.advwatres.2013.07.016, 2013.
- Li, S. and He, Y.: Features of permafrost in the West Kunlun Mountains, *Bull. Glacier Res.*, 7, 161–167, 1989.
- Lin, Z., Niu, F., Liu, H. and Lu, J.: Hydrothermal processes of Alpine Tundra Lakes, Beiluhe Basin, Qinghai-Tibet Plateau, *Cold Reg. Sci. Technol.*, 65(3), 446–455, doi:10.1016/j.coldregions.2010.10.013, 2011.
- Lin, Z., Burn, C. R., Niu, F., Luo, J., Liu, M. and Yin, G.: The Thermal Regime, including a Reversed Thermal Offset, of Arid Permafrost Sites with Variations in Vegetation Cover Density, Wudaoliang Basin, Qinghai-Tibet Plateau, *Permafr. Periglac. Process.*, (November 2014), n/a–n/a, doi:10.1002/ppp.1840, 2015.
- Lipovsky, P. S., Evans, S. G., Clague, J. J., Hopkinson, C., Couture, R., Bobrowsky, P., Ekström, G., Demuth, M. N., Delaney, K. B., Roberts, N. J., Clarke, G. and Schaeffer, A.: The July 2007 rock and ice avalanches at Mount Steele, St. Elias Mountains, Yukon, Canada, *Landslides*, 5(4), 445–455, doi:10.1007/s10346-008-0133-4, 2008.
- Liu, J., Yang, B. and Qin, C.: Tree-ring based annual precipitation reconstruction since AD 1480 in south central Tibet, *Quat. Int.*, 236(1-2), 75–81, doi:10.1016/j.quaint.2010.03.020, 2011.
- Liu, X., Cheng, Z., Yan, L. and Yin, Z.-Y.: Elevation dependency of recent and future minimum surface air temperature trends in the Tibetan Plateau and its surroundings, *Glob. Planet. Change*, 68(3), 164–174, doi:10.1016/j.gloplacha.2009.03.017, 2009.
- Ma, Y., Zhang, Y., Zubrzycki, S., Guo, Y. and Farhan, S. Bin: Hillslope-scale variability in seasonal frost depth and soil water content investigated by GPR on the southern margin of the sporadic permafrost zone on the Tibetan Plateau, *Permafr. Periglac. Process.*, 334(April), 321–334, doi:10.1002/ppp.1844, 2015.
- Ma, Z. G., Wei, H. L. and Fu, C. B.: Progress in the research on the relationship between soil moisture and climate change (in Chinese), *Adv. Earth Sci.*, 14(3), 299–305, 1999.

- Mackay, J. R.: The world of underground ice, *Ann. Assoc. Am. Geogr.*, 62(1), 1–22, doi:10.1111/j.1467-8306.1972.tb00839.x, 1972.
- Mackay, J. R.: Some observations on the growth and deformation of epigenetic, syngenetic and anti-syngenetic ice wedges, *Permafr. Periglac. Process.*, 1(1), 15–29, 1990.
- 5 Matsuoaka, N.: Contemporary permafrost and periglaciation in Asian high mountains: an overview, *Zeitschrift für Geomorphol. Suppl. Issue*, 47, 145–166, 2003.
- McRoberts, E. C. and Morgenstern, N. R.: The stability of thawing slopes, *Can. Geotech. J.*, 11(4), 447–469, 1974.
- Ménégot, M., Gallée, H. and Jacobi, H. W.: Precipitation and snow cover in the Himalaya: from reanalysis to regional climate simulations, *Hydrol. Earth Syst. Sci.*, 17(10), 3921–3936, doi:10.5194/hess-17-3921-2013, 2013.
- 10 Moors, E. J., Groot, A., Biemans, H., van Scheltinga, C. T., Siderius, C., Stoffel, M., Huggel, C., Wiltshire, A., Mathison, C., Ridley, J., Jacob, D., Kumar, P., Bhadwal, S., Gosain, A. and Collins, D. N.: Adaptation to changing water resources in the Ganges basin, northern India, *Environ. Sci. Policy*, 14(7), 758–769, doi:10.1016/j.envsci.2011.03.005, 2011.
- Muster, S., Langer, M., Heim, B., Westermann, S. and Boike, J.: Subpixel heterogeneity of ice-wedge polygonal tundra: a multi-scale analysis of land cover and evapotranspiration in the Lena River Delta, Siberia, *Tellus B*, 64, 1–19, doi:10.3402/tellusb.v64i0.17301, 2012.
- 15 Niu, F., Lin, Z., Liu, H. and Lu, J.: Characteristics of thermokarst lakes and their influence on permafrost in Qinghai-Tibet Plateau, *Geomorphology*, 132(3-4), 222–233, doi:10.1016/j.geomorph.2011.05.011, 2011.
- Niu, F., Luo, J., Lin, Z., Ma, W. and Lu, J.: Development and thermal regime of a thaw slump in the Qinghai-Tibet plateau, *Cold Reg. Sci. Technol.*, 83-84, 131–138, doi:10.1016/j.coldregions.2012.07.007, 2012.
- 20 Noetzli, J. and Gruber, S.: Transient thermal effects in Alpine permafrost, *Cryosph.*, 3(1), 85–99, doi:10.5194/tc-3-85-2009, 2009.
- Noetzli, J., Gruber, S., Kohl, T., Salzmann, N. and Haeberli, W.: Three-dimensional distribution and evolution of permafrost temperatures in idealized high-mountain topography, *J. Geophys. Res.*, 112(F2), F02S13, doi:10.1029/2006JF000545, 2007.
- Osti, R. and Egashira, S.: Hydrodynamic characteristics of the Tam Pokhari Glacial Lake outburst flood in the Mt. Everest region, Nepal, *Hydrol. Process.*, 23(August), 2943–2955, doi:10.1002/hyp.7405, 2009.
- 25 Østrem, G. and Ostrem, G.: Ice-cored moraines in Scandinavia, *Geogr. Ann.*, 46(3), 282, doi:10.2307/520383, 1964.
- Otto, J., Schrott, L., Jaboyedoff, M. and Dikau, R.: Quantifying sediment storage in a high alpine valley (Turtmanntal, Switzerland), , 1742, 1726–1742, doi:10.1002/esp, 2009.
- Owen, L. A. and England, J.: Observations on rock glaciers in the Himalayas and Karakoram mountains of northern Pakistan and India, *Geomorphology*, 26(1-3), 199–213, doi:10.1016/S0169-555X(98)00059-2, 1998.
- 30 Palazzi, E., Hardenberg, J. Von and Provenzale, A.: Precipitation in the Hindu-Kush Karakoram Himalaya: Observations and future scenarios, *J. Geophys. Res. Atmos.*, 118(November 2012), 85–100, doi:10.1029/2012JD018697, 2013.
- Pepin, N., Bradley, R. S., Diaz, H. F., Baraer, M., Caceres, E. B., Forsythe, N., Fowler, H., Greenwood, G., Hashmi, M. Z., Liu, X. D., Miller, J. R., Ning, L., Ohmura, A., Palazzi, E., Rangwala, I., Schöner, W., Severskiy, I., Shahgedanova, M.,

- Wang, M. B., Williamson, S. N. and Yang, D. Q.: Elevation-dependent warming in mountain regions of the world, *Nat. Clim. Chang.*, 5(5), 424–430, doi:10.1038/nclimate2563, 2015.
- Pfeffer, W. T., Arendt, A. A., Bliss, A., Bolch, T., Cogley, J. G., Gardner, A. S., Hagen, J.-O., Hock, R., Kaser, G., Kienholz, C., Miles, E. S., Moholdt, G., Mölg, N., Paul, F., Radić, V., Rastner, P., Raup, B. H., Rich, J. and Sharp, M. J.:
5 The Randolph Glacier Inventory: a globally complete inventory of glaciers, *J. Glaciol.*, 60(221), 537–552, doi:10.3189/2014JoG13J176, 2014.
- Pu, Z. and Xu, L.: MODIS/Terra observed snow cover over the Tibet Plateau: Distribution, variation and possible connection with the East Asian Summer Monsoon (EASM), *Theor. Appl. Climatol.*, 97(3–4), 265–278, doi:10.1007/s00704-008-0074-9, 2009.
- 10 Qin, D. H., Liu, S. Y. and Li, P. J.: Snow cover distribution, variability, and response to climate change in western China, *J. Clim.*, 19(9), 1820–1833, doi:10.1175/JCLI3694.1, 2006.
- Rangecroft, S., Harrison, S. and Anderson, K.: Rock glaciers as water stores in the Bolivian Andes: an assessment of their hydrological importance, *Arctic, Antarct. Alp. Res.*, 47(1), 89–98, doi:10.1657/AAAR0014-029, 2015.
- Rasmussen, R., Baker, B., Kochendorfer, J., Meyers, T., Landolt, S., Fischer, A. P., Black, J., Thériault, J. M., Kucera, P.,
15 Gochis, D., Smith, C., Nitu, R., Hall, M., Ikeda, K. and Gutmann, E.: How Well Are We Measuring Snow: The NOAA/FAA/NCAR Winter Precipitation Test Bed, *Bull. Am. Meteorol. Soc.*, 93(6), 811–829, doi:10.1175/BAMS-D-11-00052.1, 2012.
- Rastogi, S. P. and Narayan, S.: Permafrost in the Tso Kar Basin, Ladakh, in *Proceedings of the Symposium for Snow, Ice and Glaciers*, March 1999, Geological Survey of India Special Publication, vol. 53, pp. 315–319., 1999.
- 20 Raveland, L., Allignol, F., Deline, P., Gruber, S. and Ravello, M.: Rock falls in the Mont Blanc Massif in 2007 and 2008, *Landslides*, 7(4), 493–501, doi:10.1007/s10346-010-0206-z, 2010.
- Regmi, D.: Rock Glacier distribution and the lower limit of discontinuous mountain permafrost in the Nepal Himalaya, *Proc. Ninth Int. Conf. Permafr. (NICOP)*, June 29–July 3, 2008, Alaska Fairbanks, 1475–1480, 2008.
- Richardson, S. D. and Reynolds, J. M.: An overview of glacial hazards in the Himalayas, *Quat. Int.*, 65–66, 31–47,
25 doi:10.1016/S1040-6182(99)00035-X, 2000.
- Riseborough, D., Shiklomanov, N., Etzelmüller, B., Gruber, S., Marchenko, S., Etzelmüller, B., Gruber, S. and Marchenko, S.: Recent advances in permafrost modelling, *Permafr. Periglac. Process.*, 19(January), 137–156, doi:10.1002/ppp, 2008.
- Roer, I., Haeberli, W., Avian, M., Kaufmann, V., Delaloye, R., Lambiel, C. and Käab, a: Observations and considerations on destabilizing active rock glaciers in the European Alps, *Ninth Int. Conf. Permafr.*, (4), 1505–1510, doi:10.5167/uzh-6082,
30 2008.
- Romanovsky, V. E. and Osterkamp, T. E.: Effects of unfrozen water on heat and mass transport processes in the active layer and permafrost, *Permafr. Periglac. Process.*, 11(3), 219–239, doi:10.1002/1099-1530(200007/09)11:3<219::AID-PPP352>3.0.CO;2-7, 2000.
- Romanovsky, V. E., Smith, S. L. and Christiansen, H. H.: Permafrost thermal state in the polar northern hemisphere during

- the international polar year 2007-2009: A synthesis, *Permafr. Periglac. Process.*, 21(2), 106–116, doi:10.1002/ppp.689, 2010.
- Ryser, C., Lüthi, M., Blindow, N., Suckro, S., Funk, M. and Bauder, A.: Cold ice in the ablation zone: Its relation to glacier hydrology and ice water content, *J. Geophys. Res. Earth Surf.*, 118(2), 693–705, doi:10.1029/2012JF002526, 2013.
- Salerno, F., Guyennon, N., Thakuri, S., Viviano, G., Romano, E., Vuillermoz, E., Cristofanelli, P., Stocchi, P., Agrillo, G.,
5 Ma, Y. and Tartari, G.: Weak precipitation, warm winters and springs impact glaciers of south slopes of Mt. Everest (central Himalaya) in the last 2 decades (1994–2013), *Cryosph.*, 9(3), 1229–1247, doi:10.5194/tc-9-1229-2015, 2015.
- Salerno, F., Thakuri, S., Guyennon, N., Viviano, G. and Tartari, G.: Glacier melting and precipitation trends detected by surface area changes in Himalayan ponds, *Cryosph.*, 10(March), 1433–1448, doi:10.5194/tc-2016-39, 2016.
- Schiemann, R., Daniel, L., Vidale, L. and Sch, C.: The precipitation climate of Central Asia – intercomparison of
10 observational and numerical data sources in a remote semiarid region, *Int. J. Climatol.*, 28, 295–314, doi:10.1002/joc, 2008.
- Schmid, M.-O., Baral, P., Gruber, S., Shahi, S., Shrestha, T., Stumm, D. and Wester, P.: Assessment of permafrost distribution maps in the Hindu Kush Himalayan region using rock glaciers mapped in Google Earth, *Cryosph.*, 9(6), 2089–2099, doi:10.5194/tc-9-2089-2015, 2015.
- Schneider, D., Huggel, C., Haeberli, W. and Kaitna, R.: Unraveling driving factors for large rock-ice avalanche mobility,
15 *Earth Surf. Process. Landforms*, 36(14), 1948–1966, doi:10.1002/esp.2218, 2011.
- Schuur, E. A. G., McGuire, A. D., Grosse, G., Harden, J. W., Hayes, D. J., Hugelius, G., Koven, C. D. and Kuhry, P.: Climate change and the permafrost carbon feedback, *Nature*, 520, 171–179, doi:10.1038/nature14338, 2015.
- Shaoling, W., Huijun, J., Shuxun, L. and Lin, Z.: Permafrost degradation on the Qinghai-Tibet Plateau and its environmental impacts, *Permafr. Periglac. Process.*, 11, 43–53, 2000.
- Shea, J. M.: A comparative high-altitude meteorological analysis from three catchments in the Nepalese Himalaya, *Int. J. Water Resour. Dev.*, 2015.
- Shekhar, M. S., Chand, H., Kumar, S., Srinivasan, K. and Ganju, A.: Climate-change studies in the western Himalaya, *Ann. Glaciol.*, 51(54), 105–112, doi:10.3189/172756410791386508, 2010.
- Shiraiwa, T.: Freeze-thaw activities and rock breakdown in the Langtang Valley, Nepal Himalaya, *Environ. Sci. Hokkaido Univ. J. Grad. Sch. Environ. Sci.*, 15(1), 1–12, 1992.
- Shrestha, A. B., Wake, C. P., Mayewski, P. A. and Dibb, J. E.: Maximum temperature trends in the Himalaya and its vicinity: an analysis based on temperature records from Nepal for the period 1971–94, *J. Clim.*, 12(9), 2775–2786, doi:10.1175/1520-0442(1999)012<2775:MTTITH>2.0.CO;2, 1999.
- Shroder, J. F., Bishop, M. P., Copland, L. and Sloan, V. F.: Debris-covered glaciers and rock glaciers in the Nanga Parbat
30 Himalaya, Pakistan, *Geogr. Ann. Ser. A Phys. Geogr.*, 82(1), 17–31, doi:10.1111/j.0435-3676.2000.00108.x, 2000.
- Sorg, A., Kaab, A., Roesch, A., Bigler, C. and Stoffel, M.: Contrasting responses of Central Asian rock glaciers to global warming, *Sci. Rep.*, 5, 1–6, doi:10.1038/srep08228, 2015.
- Tahir, A. A., Chevallier, P., Arnaud, Y. and Ahmad, B.: Snow cover dynamics and hydrological regime of the Hunza River basin, Karakoram Range, Northern Pakistan, *Hydrol. Earth Syst. Sci.*, 15(7), 2275–2290, doi:10.5194/hess-15-2275-2011, 2011.

2011.

Thies, H., Nickus, U., Mair, V., Tessadri, R., Tait, D., Thaler, B. and Psenner, R.: Unexpected response of high Alpine Lake waters to climate warming., *Environ. Sci. Technol.*, 41(21), 7424–9, 2007.

Thies, H., Nickus, U., Tolotti, M., Tessadri, R. and Krainer, K.: Evidence of rock glacier melt impacts on water chemistry and diatoms in high mountain streams, *Cold Reg. Sci. Technol.*, 96, 77–85, doi:10.1016/j.coldregions.2013.06.006, 2013.

Vonder Mühll, D., Nötzli, J. and Roer, I.: PERMOS – A comprehensive monitoring network of mountain permafrost in the Swiss Alps, *Proc. 9th Int. Conf. Permafr.*, 1869–1874, doi:10.5167/uzh-4288, 2008.

Vuichard, D. and Zimmermann, M.: The 1985 catastrophic drainage of a moraine-dammed lake, Khumbu Himal, Nepal: cause and consequences, *Mt. Res. Dev.*, 7(2), 91–110, doi:10.2307/3673305, 1987.

10 Waller, R. I., Murton, J. B. and Kristensen, L.: Glacier–permafrost interactions: Processes, products and glaciological implications, *Sediment. Geol.*, 255–256, 1–28, doi:10.1016/j.sedgeo.2012.02.005, 2012.

Wang, B. and French, H.: Permafrost on the Tibet plateau, China, *Quat. Sci. Rev.*, 14(1925), 255–274, 1995.

Watanabe, T., Kameyama, S. and Sato, T.: Imja glacier dead-ice melt rates and changes in a supra-glacial lake, 1989–1994, Khumbu Himal, Nepal: danger of lake drainage, *Mt. Res. Dev.*, 15(4), 293–300, 1995.

15 Westermann, S., Østby, T., Gislås, K., Schuler, T. V. and Etzelmüller, B.: A ground temperature map of the North Atlantic permafrost region based on remote sensing and reanalysis data, *Cryosph. Discuss.*, 9, 753–790, doi:10.5194/tcd-9-753-2015, 2015.

Williams, M. W., Knauf, M., Caine, N., Liu, F. and Verplanck, P. L.: Geochemistry and source waters of rock glacier outflow, Colorado Front Range, *Permafr. Periglac. Process.*, 17(1), 13–33, doi:10.1002/ppp.535, 2006.

20 Winiger, M., Gumpert, M. and Yamout, H.: Karakorum-Hindukush-western Himalaya: assessing high-altitude water resources, *Hydrol. Process.*, 19(12), 2329–2338, doi:10.1002/hyp.5887, 2005.

Wirz, V., Gruber, S., Purves, R. S., Beutel, J., Gärtner-Roer, I., Gubler, S. and Vieli, A.: Short-term velocity variations of three rock glaciers and their relationship with meteorological conditions, *Earth Surf. Dyn.*, 4, 103–123, doi:10.5194/esurf-4-103-2016, 2016.

25 Woo, M., Kane, D. L., Carey, S. K. and Yang, D.: Progress in permafrost hydrology in the new millennium, *Permafr. Periglac. Process.*, 19(2), 237–254, doi:10.1002/ppp.613, 2008.

Wu, Z., Barosh, P. J., Hu, D., Wu, Z., Peisheng, Y., Qisheng, L. and Chunjing, Z.: Migrating pingos in the permafrost region of the Tibetan Plateau, China and their hazard along the Golmud–Lhasa railway, *Eng. Geol.*, 79(3–4), 267–287, doi:10.1016/j.enggeo.2005.02.003, 2005.

30 Xie, A., Ren, J., Qin, X. and Kang, S.: Reliability of NCEP/NCAR reanalysis data in the Himalayas/Tibetan Plateau, *J. Geogr. Sci.*, 17(4), 421–430, doi:10.1007/s11442-007-0421-2, 2007.

Yang, M., Nelson, F. E., Shiklomanov, N. I., Guo, D. and Wan, G.: Permafrost degradation and its environmental effects on the Tibetan Plateau: A review of recent research, *Earth-Science Rev.*, 103(1–2), 31–44, doi:10.1016/j.earscirev.2010.07.002, 2010a.

- Yang, X., Zhang, T., Qin, D., Kang, S. and Qin, X.: Characteristics and changes in air temperature and glacier's response on the north slope of Mt. Qomolangma (Mt. Everest), Arctic, Antarct. Alp. Res., 43(1), 147–160, doi:10.1657/1938-4246-43.1.147, 2011.
- Yang, Z., Ou, Y. H., Xu, X., Zhao, L., Song, M. and Zhou, C.: Effects of permafrost degradation on ecosystems, Acta Ecol. Sin., 30(1), 33–39, doi:10.1016/j.chnaes.2009.12.006, 2010b.
- 5 Yao, T., Thompson, L., Yang, W., Yu, W., Gao, Y., Guo, X., Yang, X., Duan, K., Zhao, H., Xu, B., Pu, J., Lu, A., Xiang, Y., Kattel, D. B. and Joswiak, D.: Different glacier status with atmospheric circulations in Tibetan Plateau and surroundings, Nat. Clim. Chang., 2(9), 663–667, doi:10.1038/nclimate1580, 2012.
- Yatagai, A., Kamiguchi, K., Arakawa, O., Hamada, A., Yasutomi, N. and Kitoh, A.: APHRODITE: Constructing a long-term daily gridded precipitation dataset for Asia based on a dense network of rain gauges, Bull. Am. Meteorol. Soc., 93(9), 1401–1415, doi:10.1175/BAMS-D-11-00122.1, 2012.
- 10 Yin, Z.-Y., Zhang, X., Liu, X., Colella, M. and Chen, X.: An Assessment of the Biases of Satellite Rainfall Estimates over the Tibetan Plateau and Correction Methods Based on Topographic Analysis, J. Hydrometeorol., 9(3), 301–326, doi:10.1175/2007JHM903.1, 2008.
- 15 Zhai, P., Zhang, X., Wan, H. and Pan, X.: Trends in total precipitation and frequency of daily precipitation extremes over China, J. Clim., 18(7), 1096–1108, doi:10.1175/JCLI-3318.1, 2005.
- Zhang, T.: Influence of the seasonal snow cover on the ground thermal regime: An overview, Rev. Geophys., 43(4), RG4002, doi:10.1029/2004RG000157, 2005.
- Zhang, T., Baker, T. H. W., Cheng, G. and Wu, Q.: The Qinghai–Tibet Railroad: A milestone project and its environmental impact, Cold Reg. Sci. Technol., 53(3), 229–240, doi:10.1016/j.coldregions.2008.06.003, 2008.
- 20 Zhang, Y.: Spatio-temporal features of permafrost thaw projected from long-term high-resolution modeling for a region in the Hudson Bay Lowlands in Canada, J. Geophys. Res. Earth Surf., 118, 542–552, doi:10.1002/jgrf.20045, 2013.
- Zhisheng, A., Kutzbach, J. E., Prell, W. L. and Porter, S. C.: Evolution of Asian monsoons and phased uplift of the Himalaya–Tibetan plateau since Late Miocene times, Nature, 411(6833), 62–66, doi:10.1038/35075035, 2001.
- 25 Zimov, S. A., Schuur, E. A. G. and Chapin, F. S.: Climate change. Permafrost and the global carbon budget., Science (80-.), 312(5780), 1612–3, doi:10.1126/science.1128908, 2006.

Tables

Table 1: Comparison of permafrost and glacier areas. Permafrost area is given as a best guess with an estimated uncertainty range in brackets (Gruber, 2012). Glacier area is derived from differing inventories resulting in two numbers per country. The first glacier area given is based on an inventory for around the year 2005 (Bajracharya and Shrestha, 2011). For China, this inventory is lacking parts of the Karakoram and Pamir. The second glacier area is based on the Randolph Glacier Inventory 5.0 (Pfeffer et al., 2014). For comparison, the permafrost area in the entire European Alps is about $6 \times 10^3 \text{ km}^2$.

Country	Permafrost area in HKH [10^3 km^2]	Glacier area in HKH [10^3 km^2]
Afghanistan	17.5 (5.9–31.6)	2.6 / 3.1
Bhutan	1.2 (0.3–3.5)	1.0 / 1.5
China	906 (486–1356)	29.2 / 33.6
India	40.1 (10.5–77.4)	11.8 / 19.6
Myanmar	0.1 (0.03–0.5)	0.04 / 0.06
Nepal	11.1 (6.4–16.1)	4.1 / 4.8
Pakistan	26.6 (7.2–53.3)	11.3 / 17.0
Total	1003 (516–1538)	60.1 / 79.8

Figure 1

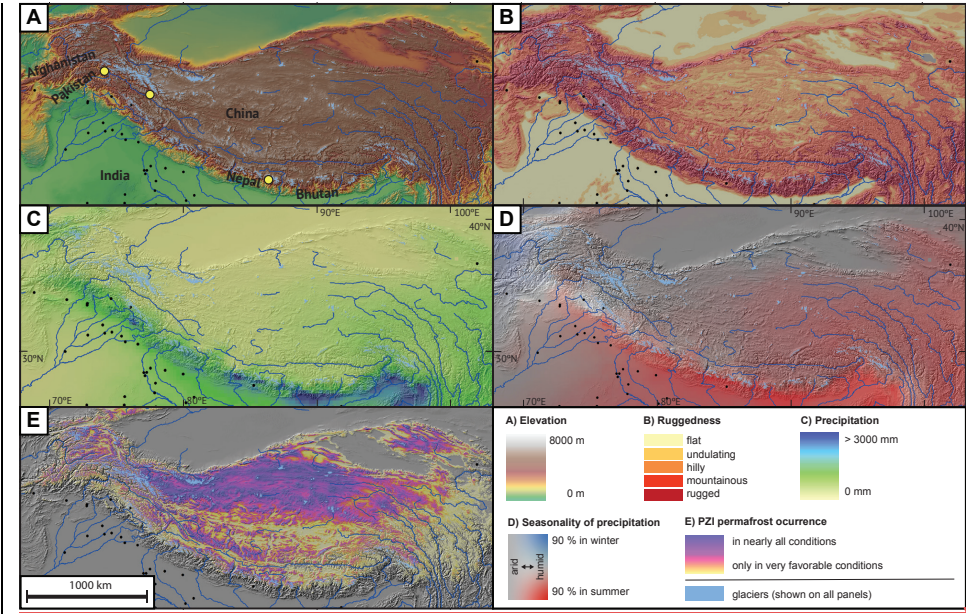
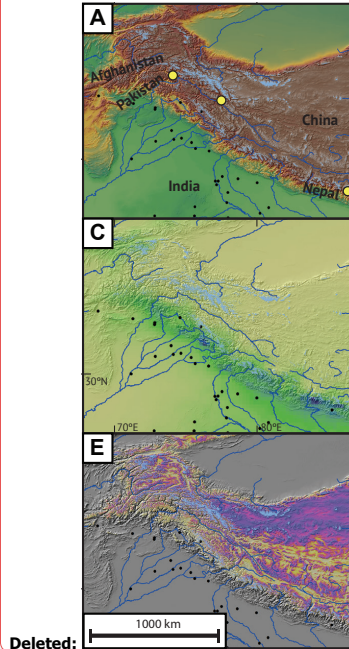


Figure 1: HKH region: (A) Physiography, yellow dots indicate locations shown in Figure 2. (B) Terrain ruggedness. (C) Mean annual precipitation sum 1988–2007. (D) Seasonality of precipitation expressed as the percentage received during winter (October to March) or summer (April to September) for 1988–2007. Where seasonality is unclear due to equal amounts or low total precipitation no color signature is shown. (E) Permafrost zonation. Urban areas and major rivers are shown for orientation. Permafrost zonation and terrain ruggedness from Gruber (2012), glacier polygons from Pfeffer et al. (2014), precipitation from Aphrodite (Yatagai et al., 2012), elevation from SRTM30 (Jarvis et al., 2008).

Stephan Gruber 2016-7-31 17:25



Deleted:

Figure 2

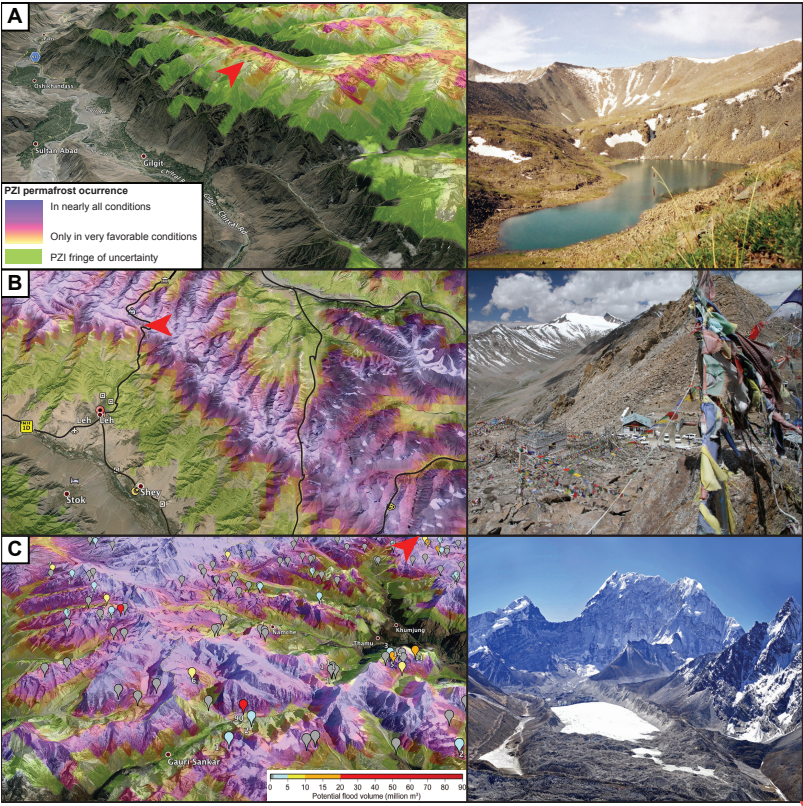
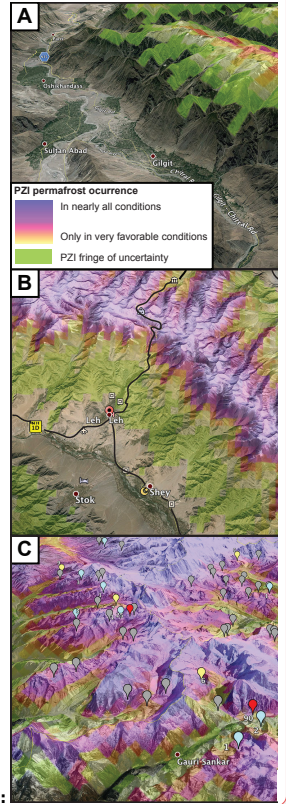


Figure 2: Examples of permafrost landscapes in the HKH. (A) Gilgit, Pakistan (35°55'N, 74°18'E, 1500–4700 m a.s.l.). Many of the high-elevation pastures surrounding Gilgit are likely underlain by permafrost and in direct proximity to rock glaciers. Photograph by Faheemsamad [permission still pending]. (B) Leh, India (34°9'N, 77°34'E, 3200–5600 m a.s.l.). Several high-elevation roads (black lines) traverse permafrost terrain. Photograph by Adrian Zraggen. (C) Mountain ranges on the border between Nepal and China (27°50'N, 86°30'E, 3500–8000m a.s.l.). Many of the high-elevation peaks are expected to have large permafrost bodies. Bubble symbols show the locations of glacial lakes as published by Fujita et al. (2013), color scale indicates potential flood volumes. Photograph by Sharad Joshi. All images on the left are derived from Google Earth with overlain Permafrost Zonation Index (PZI, Gruber, 2012). The “PZI fringe of uncertainty” is the lowermost estimate of where permafrost could be found, yellow to blue colors correspond to best estimate. The broad zone between green/yellow and blue colors provides an illustration of the degree of uncertainty inherent in estimating where permafrost occurs and where not. In this overlay, glaciers are not excluded from the PZI signature due to its coarse resolution. Photographs on the right illustrate the general character of the landscapes shown and their locations are indicated with red arrows.

Stephan Gruber 2016-7-31 17:22



Deleted:

Stephan Gruber 2016-7-31 17:08

Formatted: Font:(Default) Times New Roman, Not Bold, English (US), Not

Stephan Gruber 2016-7-31 17:25

Formatted: Highlight

Stephan Gruber 2016-7-31 17:11

Formatted: Font:Not Bold

Figure 3

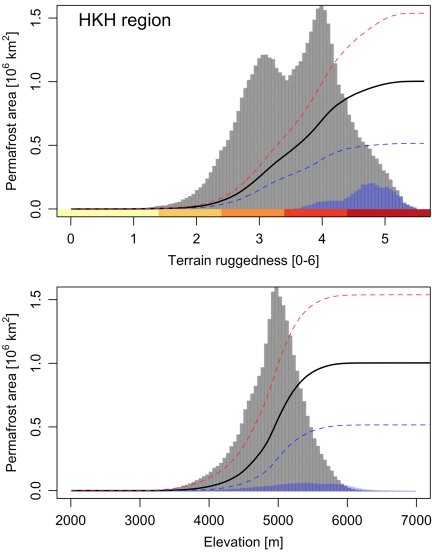


Figure 3: Cumulative distribution of estimated permafrost area with respect to terrain elevation and ruggedness (Gruber, 2012). Lines show cumulative permafrost area: best estimate (black), minimum estimate (blue dashed) and maximum estimate (red dashed). Histograms illustrate the distributions of permafrost (grey, best estimate, glacier areas already removed) and glaciers (blue, Pfeffer et al., 2014) but do not correspond to numbers on vertical cumulative axis. Country totals are given in Table 1.